

# Journal of Visualized Experiments

## Preparation and Qualification of Gene-Modified Nonhuman Primate Hematopoietic Stem and Progenitor Cells --Manuscript Draft--

Article Type:	Invited Methods Article - JoVE Produced Video
Manuscript Number:	JoVE58933R3
Full Title:	Preparation and Qualification of Gene-Modified Nonhuman Primate Hematopoietic Stem and Progenitor Cells
Keywords:	Hematopoietic Stem and Progenitor Cells; Gene therapy; Hematopoiesis; Nonhuman Primate Model; Cell isolation; Lentiviral Vectors
Corresponding Author:	Christopher Peterson UNITED STATES
Corresponding Author's Institution:	
Corresponding Author E-Mail:	cwpeters@fhcrc.org
Order of Authors:	Stefan Radtke Anai M. Perez Rasika Venkataraman Sowmya Reddy Kevin G Haworth Olivier Humbert Hans-Peter Kiem Christopher W. Peterson
Additional Information:	
Question	Response
Please indicate whether this article will be Standard Access or Open Access.	Standard Access (US\$2,400)
Please indicate the <b>city, state/province, and country</b> where this article will be <b>filmed</b> . Please do not use abbreviations.	Seattle, Washington, United States of America



**FRED HUTCH**  
CURES START HERE

October 18, 2018

Vineeta Bajaj, Ph.D.  
Review Editor  
*JoVE*  
1 Alewife Center Suite 200  
Cambridge MA 02140

**Christopher W. Peterson, PhD**  
T 206.667.6646 / F 206.667.6124  
Mail Stop D1-100  
[cwpeters@fredhutch.org](mailto:cwpeters@fredhutch.org)

Re: Invited Manuscript JoVE58933.R3

Dear Dr. Bajaj:

Please find attached a third round of revisions to our manuscript, which we have re-titled "**Preparation and Gene-Modification of Nonhuman Primate Hematopoietic Stem and Progenitor Cells**," as you requested. Our point-by-point responses to the editorial comments inserted within the document have been included below. With these further modifications, we hope that this manuscript will be suitable for publication in *JoVE*.

Sincerely,

Christopher W. Peterson  
Staff Scientist, Stem Cell and Gene Therapy Program  
Fred Hutchinson Cancer Research Center  
Research Assistant Professor, Department of Medicine, Division of Medical Oncology  
University of Washington School of Medicine

**TITLE:**

Preparation and Gene Modification of Nonhuman Primate Hematopoietic Stem and Progenitor Cells

**AUTHORS AND AFFILIATIONS:**

Stefan Radtke<sup>1</sup>, Anai M. Perez<sup>1</sup>, Rasika Venkataraman<sup>1</sup>, Sowmya Reddy<sup>1</sup>, Kevin G. Haworth<sup>1</sup>, Olivier Humbert<sup>1</sup>, Hans-Peter Kiem<sup>1,2,3</sup>, Christopher W. Peterson<sup>1,2</sup>

<sup>1</sup>Stem Cell and Gene Therapy Program, Fred Hutchinson Cancer Research Center, Seattle, Washington, USA

<sup>2</sup>Department of Medicine, University of Washington, Seattle, Washington, USA

<sup>3</sup>Department of Pathology, University of Washington, Seattle, Washington, USA

**Corresponding Author:**

Christopher W. Peterson (cwpeters@fredhutch.org)

**Email Addresses of Co-authors:**

Stefan Radtke (sradtke@fredhutch.org)

Anai M. Perez (amperez@fredhutch.org)

Rasika Venkataraman (rvenkata@fredhutch.org)

Sowmya Reddy (ssomashe@fredhutch.org)

Kevin Haworth (khaworth@fredhutch.org)

Olivier Humbert (ohumbert@fredhutch.org)

Hans-Peter Kiem (hkiem@fredhutch.org)

Chris Peterson (cwpeters@fredhutch.org)

**KEYWORDS:**

Hematopoietic stem and progenitor cells; gene therapy; hematopoiesis; nonhuman primate model; cell isolation; lentiviral vectors

**SUMMARY:**

The goal of this protocol is to isolate nonhuman primate CD34<sup>+</sup> cells from primed bone marrow, to gene-modify these cells with lentiviral vectors, and to prepare a product for infusion into the autologous host. The total protocol length is approximately 48 h.

**ABSTRACT:**

Hematopoietic stem and progenitor cell (HSPC) transplantation has been a cornerstone therapy for leukemia and other cancers for nearly half a century, underlies the only known cure of human immunodeficiency virus (HIV-1) infection, and shows immense promise in the treatment of genetic diseases such as beta thalassemia. Our group has developed a protocol to model HSPC gene therapy in nonhuman primates (NHPs), allowing scientists to optimize many of the same reagents and techniques that are applied in the clinic. Here, we describe methods for purifying CD34<sup>+</sup> HSPCs and long-term persisting hematopoietic stem cell (HSC) subsets from primed bone marrow (BM). Identical techniques can be employed for the purification of other HSPC sources

(e.g., mobilized peripheral blood stem cells [PBSCs]). Outlined is a 2 day protocol in which cells are purified, cultured, modified with lentivirus (LV), and prepared for infusion back into the autologous host. Key readouts of success include the purity of the CD34<sup>+</sup> HSPC population, the ability of purified HSPCs to form morphologically distinct colonies in semisolid media, and, most importantly, gene modification efficiency. The key advantage to HSPC gene therapy is the ability to provide a source of long-lived cells that give rise to all hematopoietic cell types. As such, these methods have been used to model therapies for cancer, genetic diseases, and infectious diseases. In each case, therapeutic efficacy is established by enhancing the function of distinct HSPC progeny, including red blood cells, T cells, B cells, and/or myeloid subsets. The methods to isolate, modify, and prepare HSPC products are directly applicable and translatable to multiple diseases in human patients.

## INTRODUCTION:

Stem cell gene therapy is a powerful means to address a wide range of human pathologies. HSPC gene therapy is a particularly attractive approach, due to i) the relative ease of collecting these cells from patients, ii) the wealth of knowledge that is available regarding cell surface phenotypes and *ex vivo* culture parameters, and, as the field expands, because iii) it presents scientists with an ever-increasing toolbox of gene modification strategies tailored to various diseases of interest. We are actively investigating HSPC gene therapy approaches from multiple angles, including the basic science of HSPC biology, the engraftment of gene-modified HSPCs in preclinical *in vivo* models, and the application to relevant patient populations. We and others have characterized the cell surface phenotype of functionally distinct HSPC subsets<sup>1-3</sup>, the mobilization and conditioning regimens that maximize HSPC yield and engraftment while minimizing toxicity<sup>4,5</sup>, and the gene modification and gene-editing strategies that have been tailored to a wide range of malignant, genetic, and infectious diseases<sup>6-10</sup>. The function and engraftment of gene-modified HSPCs can be evaluated in a number of small- and large-animal models, including mice, dogs, and NHPs. In particular, NHP models are advantageous because many reagents, for example, antibodies specific for HSPC cell surface proteins like CD34 and CD90, can be used interchangeably in human and NHP cells. Furthermore, in contrast to mice, large animals such as NHPs allow a closer approximation of the scale of gene modification necessary for clinical efficacy. Finally, NHPs are the gold standard for the modeling of human pathologies such as HIV-1 infection<sup>11</sup> and are an emerging model system for candidate anticancer and anti-HIV immunotherapies<sup>12,13</sup>.

The purpose of this protocol is to outline methods for purifying, genetically modifying, and preparing NHP HSPC infusion products. Although outside the scope of this protocol, we have previously shown that these products engraft in autologous NHP hosts, give rise to all hematopoietic lineages, and provide therapeutic efficacy in a broad range of disease models<sup>1</sup>. We have also characterized the clonality of engrafting HSPCs and built a platform to track the kinetics, trafficking, and phenotype of individual HSPCs and their progeny, following autologous transplantation<sup>1,14</sup>. The methods presented here have been developed with the following goals: i) to isolate highly pure HSPCs and long-term engrafting HSC subsets, ii) to maintain primitive HSCs during *ex vivo* culture, and iii) to efficiently gene-modify either bulk HSPCs or long-term engrafting HSC subsets. We employ magnetic-assisted cell-sorting (MCS), as well as fluorescence-



activated cell sorting (FACS), to isolate phenotypically/functionally distinct HSPC populations, consistent with the methods of many groups<sup>2,15,16</sup>. The maintenance of primitive HSCs in culture (*i.e.*, minimizing the differentiation of these cells into committed progenitors that give rise to fully differentiated lymphoid and myeloid subsets) is an essential facet of the protocol described here. Although we have previously characterized approaches to expand HSPCs while retaining a primitive phenotype<sup>17,18</sup>, here, we describe a protocol that focuses on maintaining HSCs *via* a minimal (48 h) and defined *ex vivo* culture.

The efficient modification of HSPCs and HSC subsets is a central goal of this protocol. Among several approaches we have reported, two are by far the most investigated in clinical trials: LV-mediated gene modification and nuclease-mediated gene editing<sup>1,6,19</sup>. Gene-editing strategies use one of a number of nuclease platforms to specifically modify a targeted gene of interest, for example, C-C chemokine receptor type 5 (CCR5) for the treatment of HIV infection<sup>7,19</sup> or Bcl11A for the treatment of hemoglobinopathies<sup>6</sup>. Here, we focus on LV-mediated gene modification, in which transgenic cargoes integrate semirandomly into the genome<sup>1,8,20</sup>. A key advantage of LV approaches is the ability to deliver large amounts of genetic material (up to 8 or 9 kilobases). Although gene-editing strategies are being developed to target a transgene of interest to integrate only at a specified locus by homologous donor recombination (HDR), these methods require further development *in vitro* and in small animal models. In contrast, LV vectors have been used extensively in NHPs and in patients<sup>21,22</sup>. Importantly, the protocol described here, which uses primed BM as a starting HSPC source, can be easily and broadly adapted, for example, to isolate PBSCs. As described above, we take advantage of the high degree of genetic similarity between NHPs and humans to use reagents that are applicable to both species. Finally, this approach has been adapted to modify other hematopoietic subsets, namely T cells<sup>12,23,24</sup>; the advent of efficacious T-cell immunotherapy approaches has relied heavily on the same LV platform utilized in this protocol. These methods are appropriate for any researcher interested in either HSPC biology or LV-mediated gene modification. For example, the HSPC purification protocol presented here could be used to characterize novel HSC-enriched subsets, as described previously<sup>1,15,25</sup>. Likewise, the LV transduction methods presented here could similarly be applied and further developed for numerous other cell types and experimental questions, both in *in vitro* and *in vivo* models.

In summary, we present methods to isolate and genetically modify NHP HSPCs. These methods can be easily adapted for other species and other sources of HSPCs. This thoroughly vetted protocol shows great promise in the modeling of efficacious therapies for numerous human diseases.

## **PROTOCOL:**

Autologous NHP transplants, priming (mobilization), the collection of cells, and gene modification are conducted consistent with previously published protocols<sup>26</sup>. All experimental procedures are reviewed and approved by the Institutional Animal Care and Use Committee of the Fred Hutchinson Cancer Research Center and the University of Washington (Protocol #3235-01). All studies are carried out in strict accordance with the recommendations in the Guide for the Care

and Use of Laboratory Animals of the National Institutes of Health ("The Guide"); animals were randomly assigned to the studies.

## **1. Enrichment of CD34<sup>+</sup> HSPCs and Overnight Culture (Day -1)**

### **1.1. Harvest BM and condition it.**

1.1.1. Mobilize NHPs with granulocyte colony-stimulating factor (GCSF) for 4 days as described previously<sup>26</sup>.

1.1.2. Sedate the animals with 100 mg/kg of ketamine and 0.03 mL/kg of dexmedetomidine (0.5 mg/mL stock). Administer analgesics (e.g., Buprenorphine SR) at the time of the draw.

1.1.3. Using clippers, shave the animal's hair from the proximal end of the humerus and/or the femur bone(s) and scrub the skin with iodine-based scrub or a similar antiseptic solution, alternate with alcohol, and repeat 3x. As an additional anesthetic, infuse the periosteum with bupivacaine (2 mg per site, 5 mg/mL stock).

1.1.4. Position the bone marrow aspiration needle (16 G) over the periosteal entry site (medullary cavity) and pierce the skin, penetrating the medullary cavity using a rotating motion. Remove the stylet of the aspiration needle and reserve it in a sterile field for further use.

NOTE: Choose the periosteal entry site to the medullary cavity in an area of the bone that is not covered by muscles and where the shape/landscape of the bone is either visible or can be easily felt through the skin (commonly toward the proximal or distal end of the bone).

1.1.5. To the BM needle, attach a prefilled syringe containing a mixture of anticoagulant citrate dextrose solution (ACD-A) and heparin (20 USP/mL, 1 mL per 9 mL of marrow to be collected).

1.1.6. Draw the plunger back while gently rocking the limb and rotating it, to agitate the syringe to mix aspirate and anticoagulant. Rotate the needle and reposition it throughout the aspiration and withdrawal to access a greater percentage of cells within the marrow space.

1.1.7. Once the sample is collected, remove the needle and apply pressure to the aspiration site until the bleeding stops.

NOTE: Depending on the volume needed, bone marrow from one to four limbs (two humeri, two femurs) may be drawn during a single collection. No more than 20 mL should be collected from each limb, and the total volume collected should constitute no more than 10% of the animal's weight (10 mL/kg).

1.1.8. If receiving aspirates from multiple limbs, combine and record the volume.

1.1.9. Let the NHP recover postanesthesia.

1.1.9.1. Reverse the effects of dexmedetomidine with 0.03 mL/kg atipamezole (5 mg/mL stock) after the procedure. Provide analgesics (e.g., Buprenorphine SR) as prescribed by clinical veterinary staff for at least 48 h after the procedure or longer, at the discretion of the clinical veterinarian, based on clinical signs.

1.1.9.2. Return the animal to its home cage after the procedure and monitor it every 15 - 20 min, until the animal is able to sit up on its own. Monitor the animal daily by vet staff until it is determined that the aspiration site(s) are healed. In addition, monitor for any signs of inflammation, infection, or pain.

1.1.10. In parallel to cell processing, condition the same NHP with myeloablative total body irradiation (TBI): 1,020 cGy at a rate of 7 cGy/min. Administer irradiation in fractionated doses over the 2 days before cell infusion.

## 1.2. Hemolyze the BM.

1.2.1. Divide the BM into 50 mL conical tubes (10 - 12 mL per tube) and add hemolytic buffer to bring the volume to 50 mL (**Table 1**). Incubate the cells at room temperature (RT) until they are lysed but no longer than for 7 min. Centrifuge at 800 x g for 5 min and aspirate the supernatant from the pellet(s), leaving 2 - 5 mL of volume/tube. Resuspend the pellet in the residual volume.

NOTE: Successfully lysed samples change color, from a dark red to a transparent light red.

1.2.2. Add 10 - 15 mL of hemolytic buffer/pellet. Remove any blood clots using 70 µm cell strainers. Add hemolytic buffer up to 50 mL, incubate for 5 min at RT, and spin at 800 x g for 5 min.

1.2.3. Aspirate the supernatant and resuspend the cells in 10 mL of MCS buffer (**Table 1**). Filter again through a 70 µm cell strainer. Rinse the tube and filter it with 40 mL of MCS buffer up to 50 mL.

## 1.3. Enrich the CD34<sup>+</sup> cells from the hemolyzed white blood cells (WBCs) using standard protocols.

1.3.1. Spin the cells at 800 x g for 15 min. Check the tubes to make sure no cell swirls are evident in the top/middle. If cells are present above the pellet, spin again at a higher speed (up to 1,000 x g maximum) and for up to 10 min.

1.3.2. Aspirate the supernatant and resuspend it in 10 mL or less of MCS buffer, noting the exact volume. Count the cells at a 1:100 or 1:1,000 dilution using a hemocytometer or an automated cell counter.

NOTE: This total WBC count is the pre-enrichment count.

1.3.3. Add MCS buffer to bring the cell concentration to  $1 \times 10^8$  cells/mL. If necessary, first repeat steps 1.3.1 - 1.3.2 (*e.g.*, due to a low pre-enrichment count). Reserve  $5 \times 10^6$  cells in MCS buffer for HSC subset staining (pre-enrichment sample).

1.3.4. Add unconjugated anti-CD34 antibody (clone 12.8, **Table of Materials**)<sup>27</sup> to the remaining pre-enrichment cells to a final concentration of  $40 \mu\text{g/mL}$  ( $1 \times 10^8$  cells/mL). Incubate the cell suspension at  $4^\circ\text{C}$  on a tube rotator (see the **Table of Materials**) for 25 - 30 min.

1.3.5. Use MCS buffer to bring the volume to 50 mL and spin the cells at  $800 \times g$  for 5 min. Aspirate the supernatant, resuspend the cells in 50 mL of MCS buffer, and spin again at  $800 \times g$  for 5 min.

1.3.6. Degas 100 mL of MCS buffer with two filter tubes, wrapping the air inlet with wax paper, for 25 - 30 min or till ready to use.

1.3.7. Calculate the necessary volume of magnetic beads: 1 mL of beads/ $10^9$  cells. Aspirate the supernatant and resuspend the cells to  $10^8$  cells/mL, after the beads are added. For example:  $3 \times 10^9$  cells + 3 mL of beads + 27 mL of MCS buffer to 30 mL of total volume.

1.3.8. Incubate the cell suspension at  $4^\circ\text{C}$  on a tube rotator for 25 - 30 min.

1.3.9. During step 1.3.8, acquire magnets for the columns; plan to use  $0.6 \times 10^9$  cells per column. Place the columns on the magnet and position a 50 mL conical tube below each column to collect the flow through. Prepare a 15 mL conical tube and the plunger for each column for elution (step 1.3.12).

1.3.10. When the incubation in step 1.3.8 is complete, add the MCS buffer to 50 mL and spin at  $800 \times g$  for 5 min. Aspirate the supernatant and resuspend the cells in degassed MCS buffer (2 mL per column). Pipette gently to avoid introducing bubbles.

1.3.11. Without allowing the column to run dry, add 1 mL of degassed MCS buffer to each column, followed by 2 mL of cell suspension. Rinse the filter and original tube with degassed MCS buffer and divide the solution equally between columns (6 mL/column); then, add 7 mL of degassed MCS buffer for the final wash.

1.3.12. Gently pull the column away from the magnet (push the top back) and collect the last drip into the flow-through tube. Add 5 mL of degassed MCS buffer to each column and apply the plunger to elute the cells into the sterile conical tube from step 1.3.9. Do not collect any liquid after bubbles appear.

1.4. Count the cells in both the enriched and the flow-through (FT) collection tubes at a dilution ratio of 1:10. Keep the cells on ice. Aliquot  $1 \times 10^6$  cells from the CD34-enriched fraction and  $5 \times 10^6$  cells from the FT fractions for analysis by flow cytometry. Store the FT fraction at  $4^\circ\text{C}$  until the quality control (step 2) is concluded.

NOTE: The number of CD34<sup>+</sup> cells required for successful multilineage engraftment in the NHP is dependent on the frequency of the HSC-enriched CD34<sup>+</sup>CD90<sup>+</sup>CD45RA<sup>-</sup> subset. Based on an average frequency of 3% - 5% and the minimum requirement of 122,000 CD34<sup>+</sup>CD90<sup>+</sup>CD45RA<sup>-</sup> cells per kilogram of body weight<sup>1</sup>, it is recommended to proceed with a total of at least 2.5 x 10<sup>6</sup> and up to 10 x 10<sup>6</sup> CD34<sup>+</sup> cells per kilogram of body weight.

1.5. Add MCS buffer to the CD34<sup>+</sup> enriched fraction to a 50 mL in total, spin at 800 x *g* for 5 min, aspirate the supernatant, and resuspend the cells to 10<sup>6</sup> cells/mL in HSPC media (**Table 1**).

1.5.1. Plate the cells at a density of 10<sup>6</sup> cells/mL in vented, tissue-culture (TC)-treated T-75 flasks, 10 - 20 mL per flask, and incubate them overnight in a 37 °C, 5% CO<sub>2</sub> incubator. Rest the flasks lengthwise (not standing up).

NOTE: If desired, additional CD34<sup>+</sup> cells or CD34<sup>-</sup> FT can be cryopreserved in 90% heat-inactivated fetal bovine serum (FBS) + 10% dimethyl sulfoxide (DMSO) at a concentration of 1 x 10<sup>6</sup> to 5 x 10<sup>6</sup> cells/mL, then slow-cooled at -80 °C (*e.g.*, using freezing containers). The average recovery yield of cryopreserved cells is dependent on the CD34<sup>+</sup> purity and commonly ranges from 50% to 80% with a viability of >80%.

## 2. Quality Control of CD34-enriched Cells (Day -1)

2.1. Prepare samples for flow cytometry.

2.1.1. Resuspend samples reserved from each isolation stage mentioned above (pre-enrichment, FT, and CD34-enriched fractions) in FACS buffer at a concentration of 10 x 10<sup>6</sup> cells/mL and transfer 100 µL of each cell suspension (**Table 1**) to a FACS tube.

NOTE: Control samples should include unstained cells from each isolation stage (*e.g.*, 5 x 10<sup>5</sup> cells) for the adjustment of forward scatter (FSC), side scatter (SSC), and autofluorescence in each fluorescence channel. In addition, single-stained compensation beads for each fluorochrome-conjugated antibody will be required to adjust for the compensation in between adjacent channels (**Table 2** and **Table 3**).

2.1.2. Add desired antibodies (*e.g.*, anti-CD45, anti-CD34, anti-CD45RA, and anti-CD90), according to the manufacturer's instructions, for one test (1 x 10<sup>6</sup> cells in 100 µL) (**Table 3**). Incubate for 20 min at 4 °C. Add 3 mL of FACS buffer and spin at 800 x *g* for 5 min, aspirate the supernatant, resuspend in 100 µL of FACS buffer, and analyze on an appropriate flow cytometer (step 2.2).

## 2.2. Prepare the flow cytometer/cell sorter for analysis.

NOTE: It is recommended to perform the analysis on the same machine that will be used for cell sorting in step 2.3.

2.2.1. Generate a protocol including FSC/SSC, CD45/CD34, and CD45RA/CD90 (three flow plots). Right-click on a flow plot and add the **Population hierarchy** layout.

2.2.2. Left-click on the FSC/SSC plot, select the polygon gate feature, and draw a gate to exclude debris and dead cells. Highlight the new gate and rename it to **Scatter** in the Inspector window.

NOTE: This is automatically termed as P1.

2.2.3. Right-click in the center of the CD45/CD34 flow plot, navigate to **Show populations**, and gate the plot on scatter. Draw a rectangular gate around the CD45<sup>int</sup>CD34<sup>+</sup> cells to exclude non-CD34 cells and nonhematopoietic cells, as well as residual platelets and erythrocytes (CD45<sup>-</sup>). Rename the gate to **CD34<sup>+</sup>**.

2.2.4. Gate the CD45RA/CD90 flow plot on the CD34<sup>+</sup> population. Draw three independent subgates around CD90<sup>+</sup>CD45RA<sup>-</sup> cells (enriched for HSCs), CD90<sup>-</sup>CD45RA<sup>-</sup> cells (enriched for multipotent and erythro-myeloid progenitors [MPPs/EMPs]), and CD90<sup>-</sup>CD45RA<sup>+</sup> cells (enriched for lympho-myeloid progenitors [LMPs]). Rename the gates to **HSC**, **MPP-EMP**, and **LMP**, respectively.

2.2.5. When complete, ensure that the **Population hierarchy** contains six hierarchically organized entries in the following order: 1) All Events; 2) Scatter; 3) CD34<sup>+</sup>; 4) HSC; 5) MPP-EMP; 6) LMP. Ensure that the flow plots and the shape of the gate look as illustrated in **Figure 4**.

2.2.6. Run unstained pre-enrichment WBCs to adjust the voltage for FSC, SSC, and all fluorescence channels (**Table 2**, sample 5). Run single-stained compensation beads to adjust the compensation in between adjacent channels (**Table 2**, samples 1 - 4). Run all remaining unstained and stained samples with the adjusted and compensated protocol, to document CD34 enrichment efficiency (**Table 2**, samples 6 - 9).

NOTE: Keep the final sample (**Table 2**, Sample 10) for the simultaneous flow analysis and cell sorting in step 2.4.

2.3. Configure the cell sorter for the sort-purification of CD34 subsets into colony-forming cell (CFC) assays.

NOTE: If a different machine has been used for analysis (step 2.2), set up the protocol on the cell sorter as previously described in steps 2.2.1 - 2.2.5.

2.3.1. Adjust the angle/voltage for the left- and right-side streams in the cell sorter software to deposit cells into 15 mL tubes containing CFC medium. Configure the angle of the side stream to prevent misalignment. Step-wise, fine-tune the angle of the deflected side stream until the sorted cells hit the CFC medium and not the side of the tube because very few cells are sorted.

2.3.2. In the Browser, open the Global Worksheets folder, and create a new sort-layout using the button in the top menu of the Browser window. Change the entry in the Collection Device drop-down menu to **2 tubes**, the entry in the Precision drop-down menu to **4-way purity** or **Single cell** and set the Target Events to 800 - 1,200 cells. Left-click on the sort-location field (Left or Right), select the **Entry add** in the menu, and choose the population to sort from the menu.

#### 2.4. Sort the cells for CFC assays.

NOTE: Sorting for the CFC assays is only performed with cells from the CD34-enriched product (**Table 2**, sample 10).

2.4.1. Load sample 10, record 2,000 - 3,000 events, and fine-adjust the sort gates to fit the signal strength and target populations.

2.4.2. When the setup is complete, acquire cells (**Table 2**, sample 10). Acquire data as described in step 2.2.3, adjust the flow rate to 500 - 1,000 cells/s, and sort 800 - 1,200 cells from i) the Scatter gate, ii) the CD34<sup>+</sup> gate, iii) the HSC gate, iv) the MPP-EMP gate, and v) the LMP gate into separate tubes containing 3.6 mL of CFC media.

NOTE: Sorting for CFC assays is only performed with cells from the CD34-enriched product (**Table 3**, sample 10). Cells from the Scatter and CD34<sup>+</sup> gates must be sorted individually, whereas HSCs, MPP-EMPs, and LMPs can be sorted simultaneously into the left and right tube holder position.

2.4.3. Vortex and dispense 1 mL of cell suspension to each of the 3 x 3.5 cm sterile, nontissue, culture-treated Petri dishes. Incubate the cells at 37 °C for 10 - 14 days in a secondary container (e.g., a 15 cm Petri dish).

2.4.4. On days 10 - 11 postplating, count individual colonies from all three plates per condition, based on colony morphology.

### 3. Gene Modification of CD34<sup>+</sup> HSPCs and Overnight Recovery (Day 0)

3.1. Dilute 2.5 mL of 1 µg/µL CH-296 solution to 50 µg/mL in 50 mL of Hank's balanced salt solution (HBSS, see the **Table of Materials**).

3.2. Prepare flasks for the LV transduction.

3.2.1. Determine the approximate number of nontissue-culture (non-TC)-treated flasks needed (usually from the cell counts determined in step 1.4). Plan to plate  $1 \times 10^7$  cells in 10 mL of media per T-75 flask ( $1 \times 10^8$  total cells would require 10 flasks) and include one non-TC-treated 12-well plate (mock transduction condition). Add sterile HBSS and 50 µg/mL CH-296 stock from step 3.1 to each flask/plate, at a concentration of 2 µg/cm<sup>2</sup>. For T-75 flasks, use 3 mL of 50 µg/mL CH-296 + 7 mL of HBSS; for the 12-well plate, use 160 µL of 50 µg/mL CH-296 + 340 µL of HBSS per well.

3.2.2. Allow the dishes to sit undisturbed at RT on a clean bench or in the hood for 2 h. Aspirate the CH-296 and replace it with a similar volume of sterile HBSS + 2% bovine serum albumin (BSA). Incubate at RT for 30 min, aspirate the HBSS/BSA, and wash the dishes with a similar volume of sterile HBSS containing 2.5% 1 M HEPES, pH 7.0. Aspirate immediately prior to plating the cells (step 3.4).

NOTE: Following step 3.2.2, do not allow the plates/flasks to dry out. Plates containing sterile HBSS + 2.5% 1 M HEPES are held at 4 °C overnight (*i.e.*, prepare on day -1).

### 3.3. Harvest and transduce the CD34<sup>+</sup> cells from day -1.

3.3.1. Using a 10 mL pipette, rinse loosely adherent cells by the repeated, gentle rinsing of each culture flask with sterile HBSS. Make sure that all cells will detach (if necessary, tap/slap the flask to loosen the cells).

3.3.2. Centrifuge the cells at 800 x *g* for 5 min, aspirate the supernatant, and resuspend the cells in transduction media to a concentration of 1 x 10<sup>6</sup> cells/mL. Once all cells have been collected, determine the cell count, using a hemocytometer or automated cell counter.

3.3.3. Add 1 mL of cell suspension (1 x 10<sup>6</sup> cells) to one well of the CH-296-coated 12-well plate (for the mock-transduced control sample). Divide the remainder of the cells among the T-75 flasks (step 3.2.2), adding approximately 10 mL (1 x 10<sup>7</sup> cells) per flask. Allow the cells to adhere to the CH-296 coating by incubating at 37 °C, 5% CO<sub>2</sub> for 30 min, with the caps vented.

3.3.4. Thaw virus-conditioned media (VCM, **Table of Materials**) and determine the titer in infectious units per milliliter (IU/mL)<sup>28-32</sup>. Add the appropriate volume of VCM to each T-75 flask from step 3.3.3 and incubate the cells at 37 °C, 5% CO<sub>2</sub>.

Note: If performing a single transduction, incubate overnight; if performing a double transduction, repeat this step approximately 6 - 8 h after the first transduction without a wash/recovery phase and, then, incubate overnight. For example, for one flask (1 x 10<sup>7</sup> cells) with a desired multiplicity of infection (MOI) of 10, add 1 mL of virus titered at 1 x 10<sup>8</sup> IU/mL.

## 4. Cell Harvest and Preparation for Infusion (Day 1)

### 4.1. Harvest the cells.

4.1.1. Collect transduced and mock cells as described in steps 3.3.1 - 3.3.2. Perform sequential washes with 10 mL of HBSS, transferring the washes to the conical tube with the cells. Ensure that all the cells have been removed from the flasks, tapping/slapping the flasks if necessary.

4.1.2. Centrifuge the cell suspensions at 800 x *g* for 5 min, aspirate the supernatant, and resuspend the pellet in 1 mL of HBSS. Combine the tubes containing cells from the same condition. Rinse each with 10 mL of HBSS and add that to the cell suspension. Determine the cell



counts using a hemocytometer. Bring the total cell volume to 50 mL in HBSS and centrifuge at 800 x *g* for 5 min.

#### 4.2. Pulse prostaglandin E2 (PGE2) and prepare reagents for the infusion product.

4.2.1. Aspirate the supernatant and resuspend the transduced cells (not mock) to  $5 \times 10^6$ /mL in HSPC media. Add 10 mM PGE2 to a final concentration of 10  $\mu$ M. Incubate the cells on ice for 2 h, gently swirling them every 30 min.

4.2.2. During step 4.2.1, heat-inactivate autologous serum (**Table of Materials**), wrapping the container in wax paper and incubating it at 56 °C for 30 min. Prepare 2% autologous serum in HBSS (500  $\mu$ L of heat-inactivated serum + 24.5 mL of HBSS), mix them well, and store the mixture on ice until use. Also, during step 4.2.1, harvest mock-transduced cells in a 12-well plate by pipetting the cells up and down vigorously. Add the cell suspension to a 15 mL conical tube, wash them 3x with 1 mL of HBSS, and add the washes to the same 15 mL conical tube.

4.2.3. After 2 h of PGE2 incubation, wash the cells 2x by centrifuging them at 800 x *g* for 5 min and discarding the supernatant. After the second wash, resuspend the cells in an appropriate volume of HBSS for counting, using a hemocytometer or an automated cell counter.

NOTE: Cells frequently clump after a PGE2 pulse, which can make for less reliable cell counts. If so, use the cell count from step 4.1.2 instead of the one from step 4.2.3.

4.3. Reserve mock and transduced cells for the quality control (step 5) of the infusion product:  $5 \times 10^5$  to  $1 \times 10^6$  cells for flow cytometry/cell sorting (steps 5.1 and 5.3) and approximately  $1 \times 10^6$  cells for liquid culture (step 5.2) and colony polymerase chain reaction (PCR) (step 5.4).

#### 4.4. Prepare the infusion product.

4.4.1. With the remainder of the transduced cells, perform a third wash in 50 mL of HBSS, aspirate the supernatant, and resuspend the cells in 10 mL of HBSS + 2% autologous serum (prepared in step 4.2.2). Draw the 10 mL solution into a 20 mL syringe fitted with a 16.5 G needle. Wash the tube with 10 mL of HBSS + 2% auto serum and draw the wash into the same syringe to bring the total volume to 20 mL. Cap the syringe with the needle cap, label the syringe, and place it on ice for transport/infusion.

4.4.2. Infuse the transduced cell product into the autologous host, located within an accredited animal research facility, *via* a central venous catheter<sup>33,34</sup>. Monitor the transplanted animals' complete blood cell counts (CBCs) and blood chemistries and perform study-specific gene-marking assays tailored to the project<sup>1,6,19</sup>.

### 5. Quality Control

NOTE: Flow cytometry and cell sorting are performed after the cells are infused into the animals as part of the follow-up described in step 4.4.2. Flow cytometric data is used immediately after transplantation to determine the composition of phenotypically defined stem and progenitor cell subsets in the infusion product (steps 5.1 and 5.3), whereas the analysis of CFC assays is performed 12 - 14 days postinfusion to determine the gene-modification efficiency by colony PCR (step 5.4).

#### 5.1. Perform flow cytometry and CFC sorting of the infusion product.

5.1.1. Analyze the cells by flow cytometry and sort-purify CD34 subsets for CFC assays, as described in section 2. Seed CFC assays from mock and transduced CD34 cells (the infusion product after the PGE2 pulse).

5.1.2. Sort a maximum of 800 cells per condition and vortex, plate, culture, and count CFC assays as described in step 2.4. After counting, pick the colonies from the CFC assays to perform colony PCR as described in step 5.4.

#### 5.2. Liquid culture

5.2.1. Plate cells for liquid culture in HSPC media at  $1 \times 10^6$ /mL in non-TC-treated plates. On days 2, 5, and 12 posttransduction, harvest and count the cells for flow cytometry. Cell sorting for CFC assays is not required.

5.2.2. On days 2 and 5, replate 33% of the cells in fresh HSPC media at  $1 \times 10^6$ /mL. Freeze 33% of the cells in DNA extraction buffer for quantitative real-time PCR. Use 33% of the cells for flow cytometry as described in steps 2.1 and 2.2.

5.2.3. Use these data from step 5.2.2 to analyze the phenotypic composition of hematopoietic progeny. Determine the frequency of CD34<sup>+</sup> cells and phenotypically defined subsets as described in step 2.2.2 within each sample. Compare the composition of CD34<sup>+</sup> cells between conditions to determine the effect of gene modification.

NOTE: CD34<sup>+</sup> cells should maintain their expression throughout the entire culture and contain all phenotypic subsets. A loss of CD90<sup>+</sup>CD45RA<sup>-</sup> cells or an overrepresentation of phenotypical subsets can indicate indirect or direct effects of gene modification.

#### 5.3. Quantify transgene expression (*e.g.*, green fluorescent protein [GFP]) by flow cytometry (optional and depending on the experimental setup), adapting the protocol from step 2.2.

5.3.1. Add three flow plots showing SSC/transgene (*e.g.*, SSC/GFP). Gate the first plot on HSCs, the second on MPPs-EMPs, and the third on LMPs. Plot each *versus* transgene (*e.g.*, GFP) and create gates named HSC-GFP<sup>+</sup>, MPP-EMP-GFP<sup>+</sup>, and LMP-GFP<sup>+</sup>, respectively.

5.3.2. When complete, the **Population hierarchy** has to contain nine hierarchically organized entries in the following order: 1) All Events; 2) Scatter; 3) CD34<sup>+</sup>; 4) HSC; 5) HSC-GFP<sup>+</sup>; 6) MPP-EMP; 7) MPP-EMP-GFP<sup>+</sup>; 8) LMP; 9) LMP-GFP<sup>+</sup>.

NOTE: Any transgene expression later in liquid culture (*e.g.*, days 5 and 12) will better reflect the gene modification efficiency determined by colony PCR in step 5.4. Earlier time points in liquid culture may overestimate the transgene expression, due to unintegrated LVs. Similarly, flow-sorting GFP<sup>+</sup> cells for CFC assays on day 1 will result in many false positive colonies.

#### 5.4. Perform colony PCR.

5.4.1. After the counting in steps 2.4.4 and 5.1.1, pick single colonies into 50 µL of DNA extraction buffer, using a 10 µL or 20 µL pipette, and pipette up and down to transfer the colonies to one tube of an 8-tube PCR strip cap. Pick eight colonies from the mock condition and 88 colonies from the transduced condition to generate one full 96-well plate. Add 50 µL of DNA extraction buffer to each well.

5.4.2. Extract DNA from the colonies, using a thermocycler and the following program: 65 °C/20 min, 99 °C/10 min, and a 4 °C hold. Plan to move the DNA to -20 °C as soon as possible for optimal quality.

5.4.3. Perform colony PCR to quantify LV-transduced cells, comparing the number of LV<sup>+</sup> colonies, using Lenti F/R primers, to total colonies, using Actin F/R and control primers (**Table of Materials**).

#### REPRESENTATIVE RESULTS:

The protocol described above is designed to isolate and gene-modify NHP CD34<sup>+</sup> HSPCs, which can subsequently be infused back into the autologous host (**Figure 1** and **Figure 2**). When following this protocol, we usually obtain up to 8 x 10<sup>9</sup> total WBCs from primed BM from pigtail macaques and, sometimes, double that amount from rhesus macaques. In both species, the number of CD34<sup>+</sup> HSPCs that we enrich is proportional to the input of the total WBC count (**Figure 3**). Previous findings demonstrate that the total CD34<sup>+</sup> HSPC product includes cells that are not true, long-term engrafting HSCs. Hence, we have developed flow-cytometry-based techniques (**Figure 4**) and use CFC assays (**Figures 5-6**) to identify long-term HSCs and committed progenitor subsets in cultures. Unlike true HSCs, committed progenitors will persist for a relatively short time period *in vivo*. Finally, the LV-mediated gene modification strategy results in robust gene marking in cultured CD34<sup>+</sup> HSPCs. These cells are monitored over up to 2 weeks in culture, in part to reduce the number of “false positive” cells that express GFP from nonintegrated LV vectors. Because these cells do not carry a stably integrated copy of the LV vector in the cellular genome, they will dilute out over the 12-day liquid culture assay (**Figure 7**).

#### FIGURE AND TABLE LEGENDS:

**Figure 1: Production of an autologous, gene-modified NHP HSPC product.** The protocol isolates CD34<sup>+</sup> HSPCs (day -1), gene-modifies these cells (day 0), and prepares an infusion product (day 1)

over a 48 h time course. Colony formation, liquid culture, and related *ex vivo* assays continue for an additional 2 weeks, in order to characterize these products.

**Figure 2: Timeline of events.** The average time to perform each individual step of the protocol, over approximately 2 days. The timing of individual steps varies depending on the stem cell source (step 1 of the protocol) and/or the type of gene modification (step 3 of the protocol).

**Figure 3: White blood cell and CD34 yield from primed pigtail and rhesus macaque bone marrow.** Enriched CD34<sup>+</sup> HSPC counts (step 1.4 of the protocol) as a function of total white blood cell counts (step 1.3.3 of the protocol) from 10 pigtail macaques (squares) and six rhesus macaques (triangles).

**Figure 4: Gating strategy for the quality control of CD34-enriched and gene-modified products.** Total white blood cells (“pre-enrichment”) and subsequently CD34-enriched HSPCs are stained with antibodies specific for CD34, CD45, CD90, and CD45RA, in order to quantify the number of HSC-, MPP-, EMP-, and LMP-enriched CD34 subsets.

**Figure 5: Morphology of CD34<sup>+</sup> cells before and after gene modification.** Top panels: Three representative brightfield images from HSPC colony assays. Bottom panels: GFP fluorescence corresponding to each brightfield image above. The scale bar = 1 mm.

**Figure 6: Colony-forming cell (CFC) potential of CD34<sup>+</sup> cells and sort-purified subsets.** Following the sort purification for CFC assays from HSPC subsets on day -1 (sections 1 and 2 of the protocol) and day 1 (section 5 of the protocol), single colonies are scored based on morphological characteristics. CFU-MIX = mix of myeloid (white) and erythroid (red) cells; BFU-E = only erythroid cells; CFU-G = granulocytes; CFU-GM = granulocytes and macrophages/monocytes; CFU-M = macrophages/monocytes.

**Figure 7: Representative flow cytometric data from gene-modified cells in liquid culture.** Percentage of CD34<sup>+</sup> HSPCs following transduction with a GFP-expressing LV vector. Cells are cultured for up to 2 weeks following transduction. A decrease in GFP<sup>+</sup> events over time reflects a loss of GFP signal from cells carrying nonintegrated LV vectors.

**Table 1: Buffer and media formulations.**

**Table 2: Representative flow panel for the quality control of CD34-enriched and gene-modified cell products.**

**Table 3: Antibody-staining panel for quality control by flow cytometry and cell sorting.**

**DISCUSSION:**

LV vector engineering is the best-characterized method to gene-modify cell types such as CD34<sup>+</sup> HSPCs, for subsequent transplantation *in vivo*. The protocol described here is designed to maximize the number of gene-modified HSPCs that persist long-term *in vivo*, and provide clinical

benefits to patients with various malignant, infectious, and genetic diseases. Although gene-editing strategies have emerged over the last decade, LV-modified cells are the best studied *in vitro*, in animal models, and in patients<sup>1,8,20-22</sup>.

Based on our extensive experience with this protocol, the enrichment of pure CD34<sup>+</sup> HSPCs (*i.e.*, >80% of the CD34<sup>+</sup> cells in the sorted cell product) is a critical aspect of success. Because these cells are derived from a mixed population of total BM WBCs, low-purity cultures may include cells that will not engraft long-term, in turn lowering the dose of true stem cells that are infused into the autologous host. Additionally, high-quality LV VCM will ensure the highest efficiency of gene modification.

To address shortcomings in the purity of enriched CD34<sup>+</sup> HSPC products, it is often useful to validate the quality of the reagents used to isolate these cells, namely the anti-CD34 antibody (which our group purifies in-house from a hybridoma cell line), and magnetic beads which bind antibody-labeled cells. We recommend an MOI of 10, with an option to repeat this transduction (MOI 10 x 2). Importantly, the MOI should be determined empirically, following a quality assessment of VCM, including the titration of each vector on a standardized titering cell line such as HT1080<sup>29</sup>. Importantly, different VCM-producing laboratories may use distinct titering cell lines, including HOS<sup>30</sup>, HeLA<sup>31</sup>, and 293T<sup>32</sup>, which may limit the ability to compare titers between facilities. We prefer to retiter a vector with the assay, in order to calculate the most accurate amount of VCM to efficiently gene-modify CD34<sup>+</sup> HSPC target cells. Once high-quality CD34<sup>+</sup> HSPCs and VCM have been obtained, transduction efficiency and engraftment are further enhanced in three distinct steps. First, the addition of cyclosporine to transduction media aids in the early steps of vector transduction and integration into target cells<sup>35,36</sup>, while protamine sulfate decreases repulsive forces between the lentiviral vector particles and the cell surface<sup>33,37</sup>. Second, treating plates with a recombinant fibronectin fragment (*e.g.*, RetroNectin, CH-296) increases transduction efficiency and also improves the *in vivo* engraftment potential of gene-modified HSPCs<sup>33,38,39</sup>. Notably, previous studies suggest that CH-296 is only important during, but not prior to, transduction<sup>33,38</sup>. Finally, we pulse gene-modified cell products with PGE2 to enhance engraftment and persistence *in vivo*, as has previously been shown for human and nonhuman primate CD34<sup>+</sup> HSPC products<sup>40,41</sup>.

LVs integrates randomly into the genome, as do their predecessor, gammaretroviral vectors (RVs). Although less clinical trial data is available for LVs than for RVs, current findings suggest that LV approaches carry substantially lower risks of cell transformations due to LV's insertional mutagenesis; RV strategies are less often used due to this risk<sup>42</sup>. A further limitation is that the efficiency of gene modification is less than 100%, and a proportion of gene-modified cells will not persist *in vivo*. For example, a 60% gene-modified HSPC product may result in 30% long-term engrafting, gene-modified cells. Whenever possible, the gene therapy strategies presented here are designed to overcome this limitation by introducing transgenes that provide therapeutic efficacy, even when expressed in a minority of hematopoietic-origin cells<sup>8,43</sup>.

The future is bright for LV-based HSPC modification approaches. We routinely use this protocol to "gene-mark" cells, enabling tracking *in vivo*<sup>1</sup>. We have also adapted this strategy to compare

LV variants within the same animal. Such “competitive” transplants allow a comparison of different vectors (*e.g.*, to identify those with better efficiency) and transgenes (*e.g.*, to track different HSPC subsets or compare them in disease models). Moving forward, we believe that LV gene therapy in HSPCs will remain an essential tool alongside gene-editing approaches, especially in situations where large genetic cargoes must be stably expressed for the lifetime of an individual.

#### ACKNOWLEDGMENTS:

The authors thank Helen Crawford for preparing this manuscript, Jim Woolace for graphic design, and Veronica Nelson and Devikha Chandrasekaran for participating in the development of the protocol. The development of this protocol was supported by grants from the NIH National Institute of Allergy and Infectious Diseases (R01 AI135953 and AI138329 to H.P.K.) and the National Heart, Lung, and Blood Institute (R01 HL136135, HL116217, P01 HL122173, and U19 HL129902 to H.P.K.), as well as NIH P51 OD010425 and, in part through the NIH/NCI Cancer Center, Support Grant P30 CA015704. H.P.K. is a Markey Molecular Medicine Investigator and received support as the inaugural recipient of the José Carreras/E. Donnall Thomas Endowed Chair for Cancer Research and the Fred Hutch Endowed Chair for Cell and Gene Therapy.

#### DISCLOSURES:

The authors have nothing to disclose.

#### REFERENCES:

1. Radtke, S. *et al.* A distinct hematopoietic stem cell population for rapid multilineage engraftment in nonhuman primates. *Science Translational Medicine*. **9** (414), eaan1145, doi: 10.1126/scitranslmed.aan1145, (2017).
2. Majeti, R., Park, C. Y., Weissman, I. L. Identification of a hierarchy of multipotent hematopoietic progenitors in human cord blood. *Cell Stem Cell*. **1** (6), 635-645 (2007).
3. Notta, F. *et al.* Isolation of single human hematopoietic stem cells capable of long-term multilineage engraftment. *Science*. **333** (6039), 218-221 (2011).
4. Hoggatt, J. *et al.* Rapid mobilization reveals a highly engraftable hematopoietic stem cell. *Cell*. **172** (1-2), 191-204 e110 (2018).
5. Chandrasekaran, D., Nakamoto, B., Watts, K. L., Kiem, H. P., Papayannopoulou, T. Modeling promising nonmyeloablative conditioning regimens in nonhuman primates. *Human Gene Therapy*. **25** (12), 1013-1022 (2014).
6. Humbert, O., Peterson, C. W., Norgaard, Z. K., Radtke, S., Kiem, H. P. A nonhuman primate transplantation model to evaluate hematopoietic stem cell gene editing strategies for beta-hemoglobinopathies. *Molecular Therapy. Methods & Clinical Development*. **8**, 75-86 (2018).
7. Peterson, C. W. *et al.* Differential impact of transplantation on peripheral and tissue-associated viral reservoirs: Implications for HIV gene therapy. *PLoS Pathogens*. **14** (4), e1006956-e1006956 (2018).
8. Zhen, A. *et al.* Long-term persistence and function of hematopoietic stem cell-derived chimeric antigen receptor T cells in a nonhuman primate model of HIV/AIDS. *PLoS Pathogens*. **13** (12), e1006753 (2017).
9. Moffett, H. F. *et al.* Hit-and-run programming of therapeutic cytoreagents using mRNA

nanocarriers. *Nature Communications*. **8** (1), 389 (2017).

10. Burtner, C. R. *et al.* Intravenous injection of a foamy virus vector to correct canine SCID-X1. *Blood*. **123** (23), 3578-3584 (2014).

11. Evans, D. T., Silvestri, G. Nonhuman primate models in AIDS research. *Current Opinion in HIV and AIDS*. **8** (4), 255-261 (2013).

12. Taraseviciute, A. *et al.* Chimeric antigen receptor T cell-mediated neurotoxicity in nonhuman primates. *Cancer Discovery*. **8** (6), 750-763 (2018).

13. McGary, C. S. *et al.* CTLA-4(+)PD-1(-) memory CD4(+) T cells critically contribute to viral persistence in antiretroviral therapy-suppressed, SIV-infected rhesus macaques. *Immunity*. **47** (4), 776-788 e775 (2017).

14. Beard, B. C., Adair, J. E., Trobridge, G. D., Kiem, H. P. High-throughput genomic mapping of vector integration sites in gene therapy studies. *Methods in Molecular Biology*. **1185**, 321-344 (2014).

15. Zonari, E. *et al.* Efficient *ex vivo* engineering and expansion of highly purified human hematopoietic stem and progenitor cell populations for gene therapy. *Stem Cell Reports*. **8** (4), 977-990, 10.1016/j.stemcr.2017.02.010 (2017).

16. Doulatov, S. *et al.* Revised map of the human progenitor hierarchy shows the origin of macrophages and dendritic cells in early lymphoid development. *Nature Immunology*. **11** (7), 585-593 (2010).

17. Fares, I. *et al.* Cord blood expansion. Pyrimidoindole derivatives are agonists of human hematopoietic stem cell self-renewal. *Science*. **345** (6203), 1509-1512 (2014).

18. Gori, J. L. *et al.* Endothelial cells promote expansion of long-term engrafting marrow hematopoietic stem and progenitor cells in primates. *Stem Cells Translational Medicine*. **6** (3), 864-876 (2017).

19. Peterson, C. W. *et al.* Long-term multilineage engraftment of autologous genome-edited hematopoietic stem cells in nonhuman primates. *Blood*. **127** (20), 2416-2426 (2016).

20. Peterson, C. W. *et al.* Multilineage polyclonal engraftment of Cal-1 gene-modified cells and *in vivo* selection after SHIV infection in a nonhuman primate model of AIDS. *Molecular Therapy. Methods & Clinical Development*. **3**, 16007 (2016).

21. Thompson, A. A. *et al.* Gene therapy in patients with transfusion-dependent beta-thalassemia. *The New England Journal of Medicine*. **378** (16), 1479-1493 (2018).

22. Eichler, F. *et al.* Hematopoietic stem-cell gene therapy for cerebral adrenoleukodystrophy. *The New England Journal of Medicine*. **377** (17), 1630-1638 (2017).

23. Paul, B. *et al.* Efficient enrichment of gene-modified primary T cells *via* CCR5-targeted integration of mutant dihydrofolate reductase. *Molecular Therapy. Methods & Clinical Development*. **5** (9), 347-357 (2018).

24. Levine, B. L., Miskin, J., Wonnacott, K., Keir, C. Global manufacturing of CAR T cell therapy. *Molecular Therapy. Methods & Clinical Development*. **4**, 92-101 (2017).

25. Masiuk, K. E. *et al.* Improving gene therapy efficiency through the enrichment of human hematopoietic stem cells. *Molecular Therapy*. **25** (9), 2163-2175 (2017).

26. Trobridge, G. D. *et al.* Efficient transduction of pigtailed macaque hematopoietic repopulating cells with HIV-based lentiviral vectors. *Blood*. **111** (12), 5537-5543 (2008).

27. Beard, B. C. *et al.* Efficient and stable MGMT-mediated selection of long-term repopulating stem cells in nonhuman primates. *Journal of Clinical Investigation*. **120** (7), 2345-2354 (2010).

28. Horn, P. A. *et al.* Efficient lentiviral gene transfer to canine repopulating cells using an overnight transduction protocol. *Blood*. **103** (10), 3710-3716 (2004).
29. Adair, J. E. *et al.* Semi-automated closed system manufacturing of lentivirus gene-modified haematopoietic stem cells for gene therapy. *Nature Communications*. **7**, 13173 (2016).
30. Kutner, R. H., Zhang, X. Y., Reiser, J. Production, concentration and titration of pseudotyped HIV-1-based lentiviral vectors. *Nature Protocols*. **4** (4), 495-505 (2009).
31. Salmon, P., Trono, D. Production and titration of lentiviral vectors. *Current Protocols in Human Genetics*. **54** (1) (2007).
32. Geraerts, M., Willems, S., Baekelandt, V., Debyser, Z., Gijssbers, R. Comparison of lentiviral vector titration methods. *BMC Biotechnology*. **6**, 34 (2006).
33. Kiem, H. P. *et al.* Improved gene transfer into baboon marrow repopulating cells using recombinant human fibronectin fragment CH-296 in combination with interleukin-6, stem cell factor, FLT-3 ligand, and megakaryocyte growth and development factor. *Blood*. **92** (6), 1878-1886 (1998).
34. Morton, W. R., Knitter, G. H., Smith, P. M., Susor, T. G., Schmitt, K. Alternatives to chronic restraint of nonhuman primates. *Journal of the American Veterinary Medical Association*. **191** (10), 1282-1286 (1987).
35. Noser, J. A. *et al.* Cyclosporine increases human immunodeficiency virus type 1 vector transduction of primary mouse cells. *Journal of Virology*. **80** (15), 7769-7774 (2006).
36. Uchida, N., Hsieh, M. M., Washington, K. N., Tisdale, J. F. Efficient transduction of human hematopoietic repopulating cells with a chimeric HIV1-based vector including SIV capsid. *Experimental Hematology*. **41** (9), 779-788 e771 (2013).
37. Cornetta, K., Anderson, W. F. Protamine sulfate as an effective alternative to polybrene in retroviral-mediated gene-transfer: implications for human gene therapy. *Journal of Virological Methods*. **23** (2), 187-194 (1989).
38. Goerner, M. *et al.* The use of granulocyte colony-stimulating factor during retroviral transduction on fibronectin fragment CH-296 enhances gene transfer into hematopoietic repopulating cells in dogs. *Blood*. **94** (7), 2287-2292 (1999).
39. Dao, M. A., Hashino, K., Kato, I., Nolte, J. A. Adhesion to fibronectin maintains regenerative capacity during *ex vivo* culture and transduction of human hematopoietic stem and progenitor cells. *Blood*. **92** (12), 4612-4621 (1998).
40. North, T. E. *et al.* Prostaglandin E2 regulates vertebrate haematopoietic stem cell homeostasis. *Nature*. **447** (7147), 1007-1011 (2007).
41. Goessling, W. *et al.* Prostaglandin E2 enhances human cord blood stem cell xenotransplants and shows long-term safety in preclinical nonhuman primate transplant models. *Cell Stem Cell*. **8** (4), 445-458 (2011).
42. Booth, C., Gaspar, H. B., Thrasher, A. J. Treating immunodeficiency through HSC gene therapy. *Trends in Molecular Medicine*. **22** (4), 317-327 (2016).
43. Humbert, O. *et al.* Rapid immune reconstitution of SCID-X1 canines after G-CSF/AMD3100 mobilization and *in vivo* gene therapy. *Blood Advances*. **2** (9), 987-999 (2018).



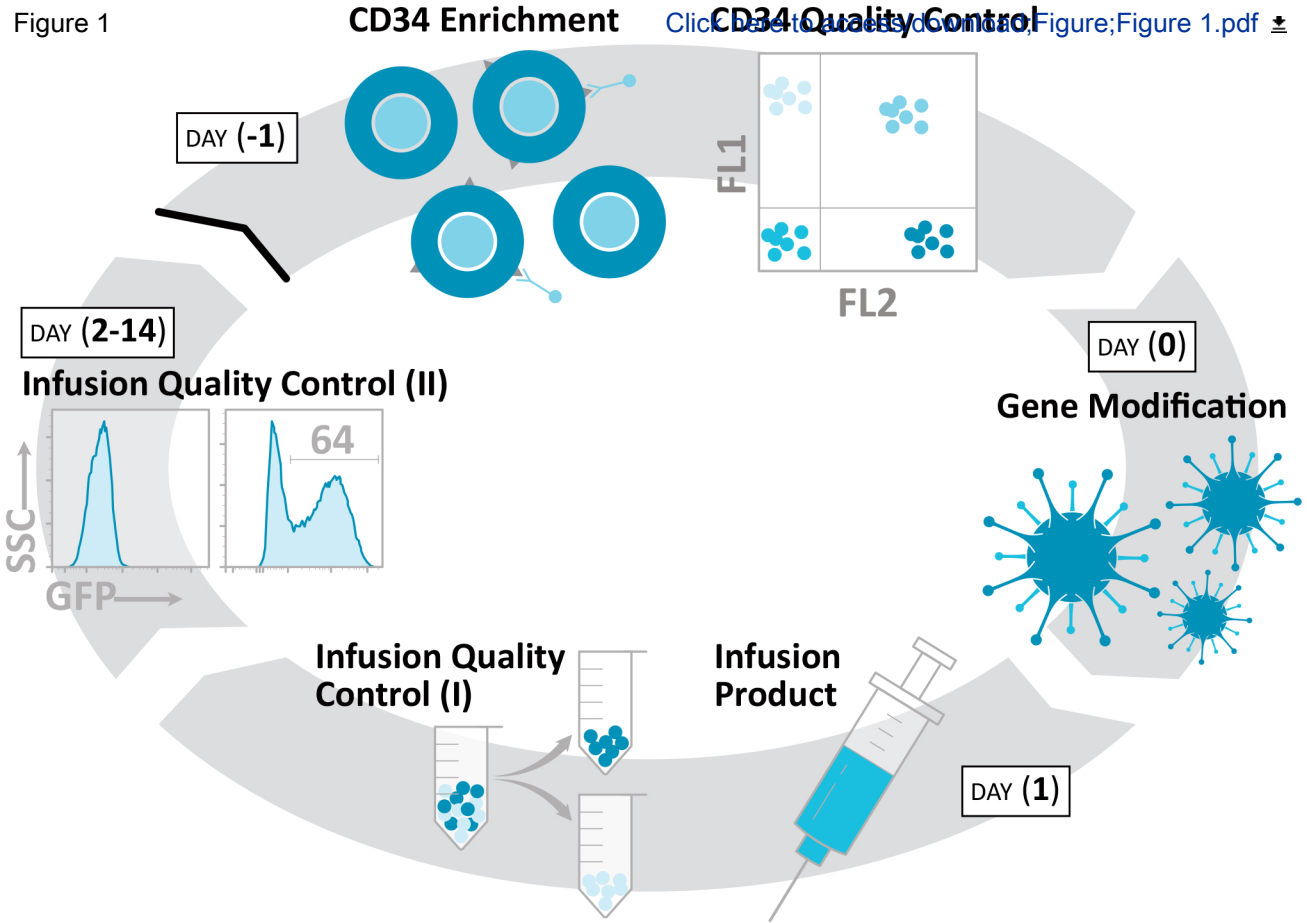


Figure 2

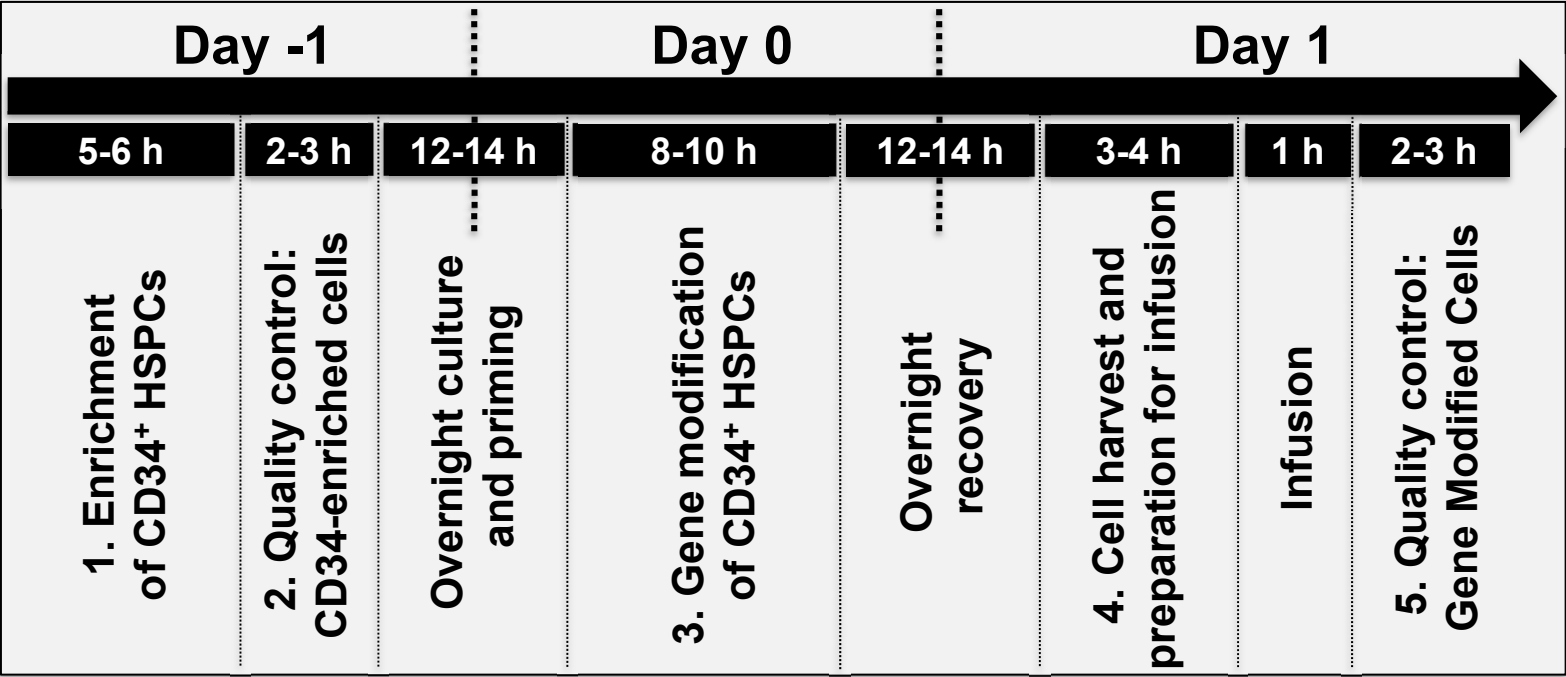
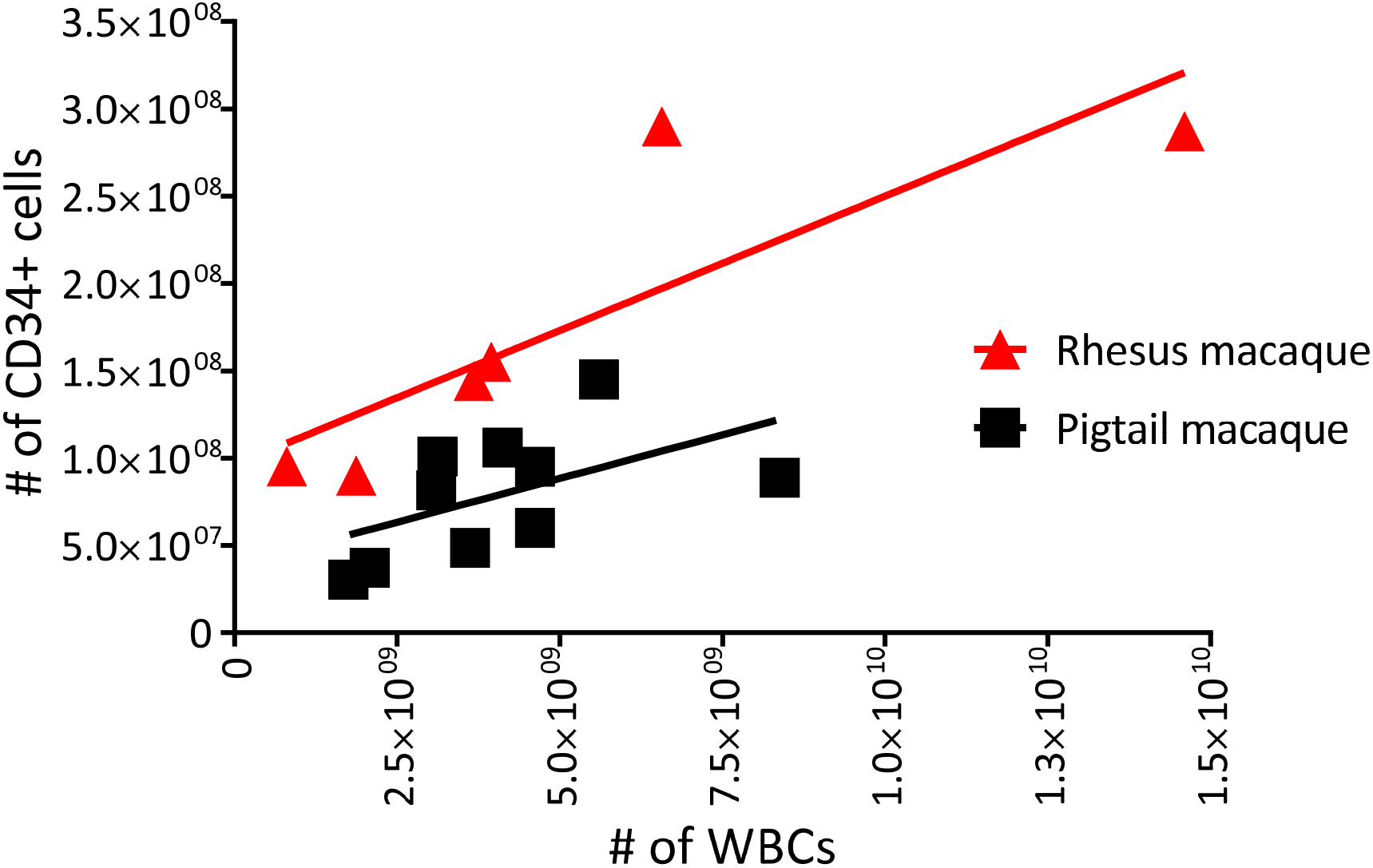
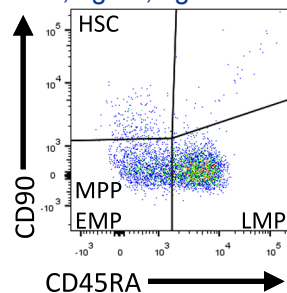
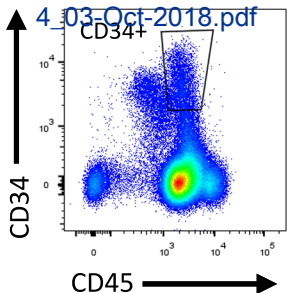
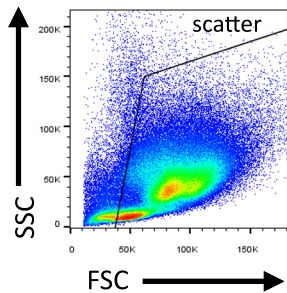


Figure 3



Primed bone marrow WBC



CD34-enriched

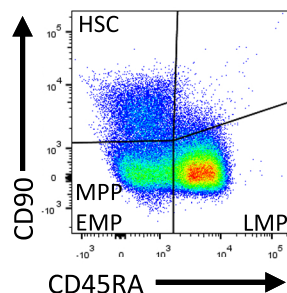
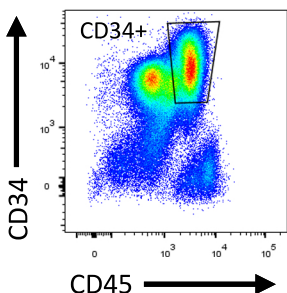
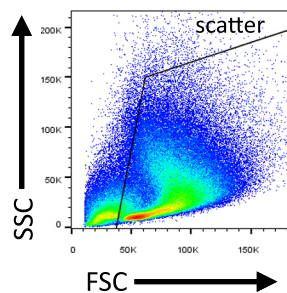
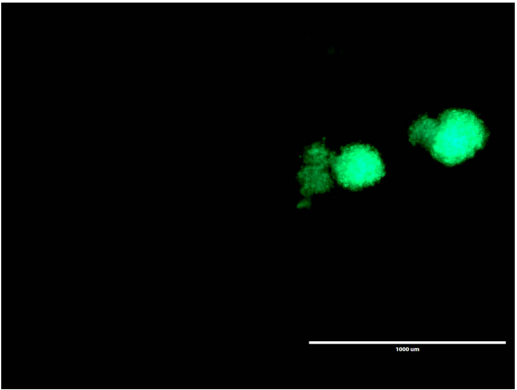
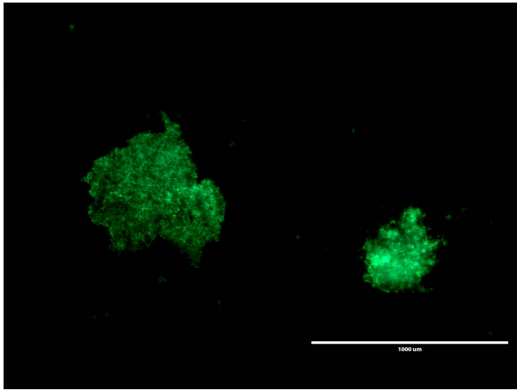
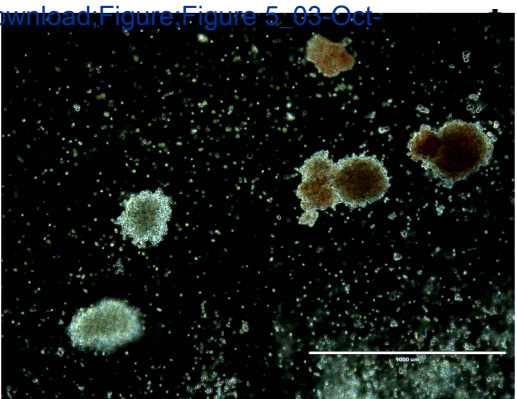
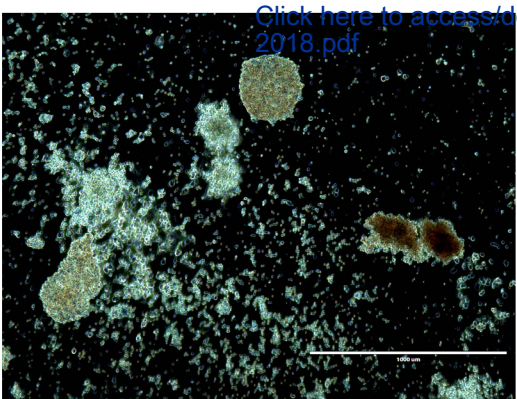
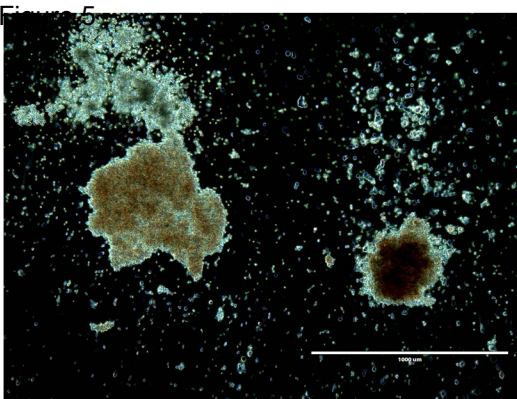


Figure 5



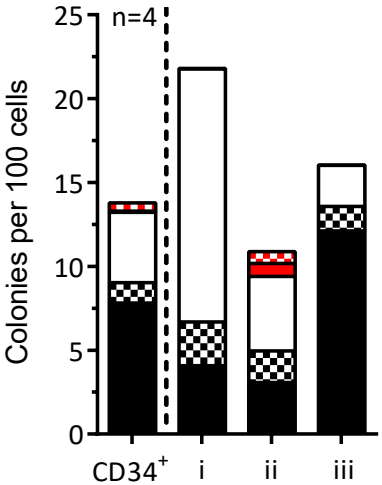
[Click here to access/download;Figure;Figure 5\\_03-Oct-2018.pdf](#)

Figure 6

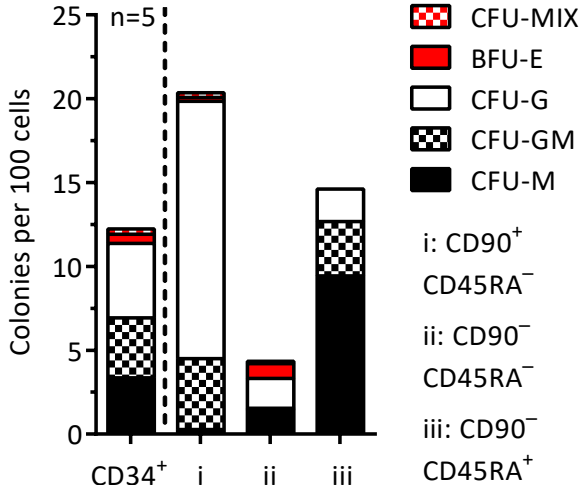
[Click here to access/download;Figure;Figure 6\\_03-Oct-](#)

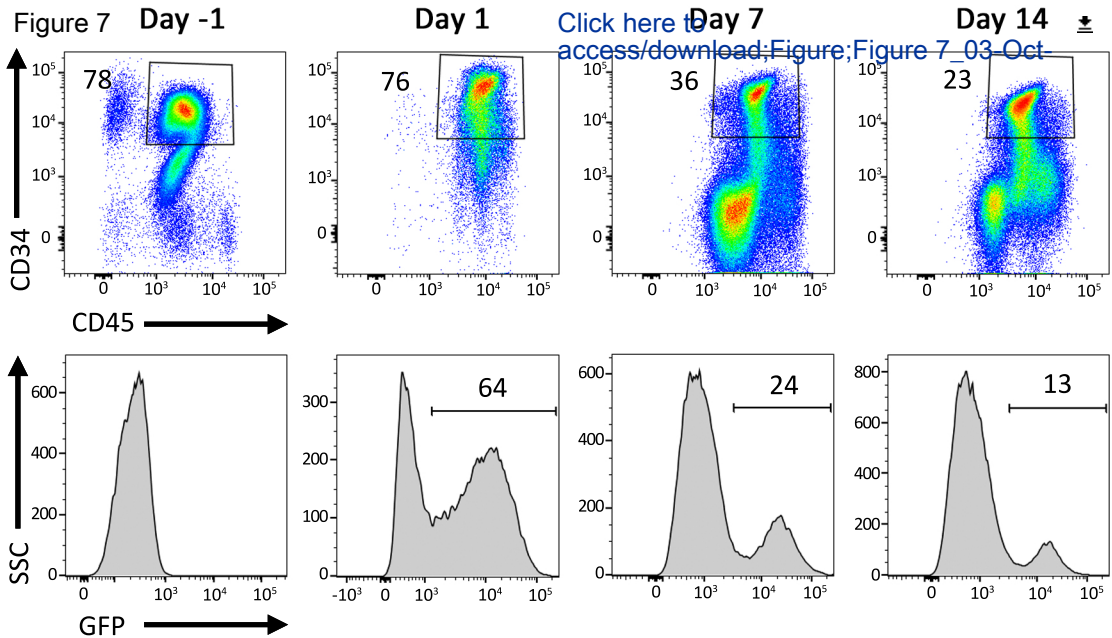


Pigtail macaque



Rhesus macaque





**Table 1: Buffer and Media**

<u>Name</u>
Hemolytic Buffer
Commercial Buffer
FACS buffer
HBSS + 2% BSA
HSPC Media
Transduction Media



## **Media Formulations**

### **Contents**

150 mM Ammonium Chloride, 12 mM Sodium Bicarbonate, 0.1 mM EDTA in double-distilled water (ddH<sub>2</sub>O)

Phosphate-buffered saline (1X) pH 7.2, 0.5% BSA, 2 mM EDTA

Phosphate-buffered saline (1X) pH 7.2, 2% Fetal Bovine Serum

Hank's Balanced Salt Solution, 2% Bovine Serum Albumin

StemSpan SFEM II, 1% Penicillin/Streptomycin, 100 ng/mL each recombinant human TPO, SCF, FLT-3

StemSpan SFEM II, 1% Penicillin/Streptomycin, 100 ng/mL each recombinant human TPO, SCF, FLT-3, 1 ug/mL Cyclosporine, 4 ug/mL Protamine Sulfate

**Table 2: Representative flow-panel for quality control of CD34-enric**

<u>ID</u>	<u>PE</u>	<u>PECF594</u>	<u>APC-Cy7</u>	<u>V450</u>
1	CD90	CD34	CD45RA	CD45
2				
3				
4				
5				
6	CD90	CD34	CD45RA	CD45
7	CD90	CD34	CD45RA	CD45
8				
9	CD90	CD34	CD45RA	CD45
10				

**hed and gene-modified cell products**

**Description**

Compensation Beads

Compensation Beads

Compensation Beads

Compensation Beads

Unstained WBCs before CD34-enrichment

Stained WBCs before CD34-enrichment

Unstained WBCs of flow-through (FT)

Stained WBCs of flow-through (FT)

Unstained WBCs of CD34-enriched product

Stained WBCs of CD34-enriched product

**Table 3: Antibody staining panel for the quality control by flow cytometry and c**

<u>Antigen</u>	<u>Clone</u>	<u>Fluorochrome</u>	<u>Laser</u>	<u>Filter</u>
CD45	D058-1284	V450	395 nm	450/40 nm
CD90	5.00E+10	PE	488 nm or 532 nm	585/42 nm
CD34	563	PE-CF594	488 nm or 532 nm	610/20 nm
CD45RA	5H9	APC-Cy7	633 nm	780/60 nm

*V450: violet 450 nm; PE: Phycoerythrin; PE- CF 594: trademark name from Biotiur*

ell sorting

$\gamma$ ; APC: *Allophycocyanin-cyanine 7*

## **Materials**

<u>Name</u>	<u>Company</u>
Stemspam SFEM II ("HSPC") Media	StemCell
Hank's Balanced Salt Solution	Gibco
Phosphate-Buffered Saline	Gibco
Penicillin/Streptomycin	Gibco
Dimethyl Sulfoxide	Sigma Aldrich
100% Ethanol	Decon labs
Cyclosporine	Sigma
500 mM EDTA	Invitrogen
Heat-Inactivated Fetal Bovine Serum	Sigma Aldrich
CH-296/ RetroNectin (2.5 mL, 1 µg/µL)	TaKaRA
Bovine Serum Albumin	Sigma
HEPES	Sigma
Rat anti-mouse IgM magnetic beads	Miltenyi Biotec
Recombinant Human Stem Cell Factor (SCF)	Peprotech
Recombinant Human Thrombopoietin (TPO)	Peprotech
Recombinant Human FMS-like tyrosine kinase 3 (FLT-3)	Peprotech
Protamine sulfate	Sigma
14 mL Polypropylene Round-Bottom Tube	Corning
Colony Gel 1402	ReachBio
QuadroMACS Separators	Miltenyi Biotec
MACS L25 Columns	Miltenyi biotec
10 mM PGE2	Cayman Chemical
TC-treated T-75 flasks	Bioexpress
Non-TC-treated T-75 flasks	Thermo-Fisher
20 ml syringes	BD Biosciences
16.5 G needles	BD Precision
Syringe Tip Cap	BD Biosciences
QuickExtract DNA Solution	Epicentre
8-tube strip cap PCR Tubes	USA scientific
96-well Thermocycler	Thermo-Fisher
Pre-Separation filters	Miltenyi Biotec
Strainer, Cell; BD Falcon; Sterile; Nylon mesh; Mesh size: 70 µm	fisher scientific
Ultracomp ebeads	eBioscience
MACSmix Tube Rotator	Miltenyi
3 mL Luer-Lock Syringes	Thermo-Fisher
35 mm x 10 mm cell culture dish	Corning
60 mm x 15 mm cell culture dish	Corning
150 mm x 25 mm cell culture dish	Corning
Non TC treated flasks	Falcon
Qiagen DNA extraction	Qiagen
PE Anti-Human CD90 (Thy1) Clone:5E10	Biolegend
PE-CF594 Mouse Anti-Human CD34 Clone:563	BD horizon
APC-H7 Mouse Anti-Human CD45RA Clone: 5H9	BD Pharmingen

V450 Mouse Anti-NHP CD45 Clone:d058-1283  
Autologous Serum

BD Biosciences  
Collected from  
autologous host and  
cryopreserved prior to  
mobilization and  
collection of CD34+  
HSPCs

Virus-Conditioned Media (VCM)

Kiem Lab, FHCRC Co-  
operative Center for  
Excellence in  
Hematology (CCEH)

Anti-CD34 antibody, Clone 12.8

Kiem Lab

Lenti F primer: AGAGATGGGTGCGAGAGCGTCA

Lenti R primer: TGCCTTGGTGGGTGCTACTCCTAA

Integrated DNA  
Technologies

Integrated DNA  
Technologies

Actin F primer: TCCTGTGGCACTCACGAAACT

Actin R primer: GAAGCATTGCGGTGGACGAT

Integrated DNA  
Technologies

Integrated DNA  
Technologies



<u>Catalog Number</u>	<u>Comments</u>
-----------------------	-----------------

09655	
14175095	
14190-144	
15140-122	
D2650-100	
M18027161M	
30024-25MG	
15575-038	
PS-0500-A	
T100B	
A7906-100g	
H9897	
130-047-301	
300-07	
300-18	
300-19	
P-4505	
352059	
1402	
130-090-976	
130-042-401	
14753-5mg	
T-3001-2	
13680-57	
302830	
305198	
305819	
QE09050	
1402-2708	
4375786	
130-041-407	
352350	
01-2222-42	
130-090-753	
14823435	
430165	
430196	
430599	
353133	
51104	
328110	
562449	
561212	

561291

N/A

Beard, B. C. et al. Efficient and stable MGMT-mediated selection of long-term repopulating stem cells in nonhuman primates. *Journal of Clinical Investigation*. 120 (7), 2345-2354, (2010).

N/A

Beard, B. C. et al. Efficient and stable MGMT-mediated selection of long-term repopulating stem cells in nonhuman primates. *Journal of Clinical Investigation*. 120 (7), 2345-2354, (2010).

N/A

Beard, B. C. et al. Efficient and stable MGMT-mediated selection of long-term repopulating stem cells in nonhuman primates. *Journal of Clinical Investigation*. 120 (7), 2345-2354, (2010).

N/A

Peterson, C. W. et al. Multilineage polyclonal engraftment of Cal-1 gene-modified cells and in vivo selection after SHIV infection in a nonhuman primate model of AIDS. *Mol Ther Methods Clin Dev*. 3 16007, (2016).

N/A

Peterson, C. W. et al. Multilineage polyclonal engraftment of Cal-1 gene-modified cells and in vivo selection after SHIV infection in a nonhuman primate model of AIDS. *Mol Ther Methods Clin Dev*. 3 16007, (2016).

N/A	<p>Peterson, C. W. et al.  Multilineage polyclonal  engraftment of Cal-1 gene-  modified cells and in vivo  selection after SHIV infection in  a nonhuman primate model of  AIDS. Mol Ther Methods Clin  Dev. 3 16007, (2016).</p> <p>Peterson, C. W. et al.  Multilineage polyclonal  engraftment of Cal-1 gene-  modified cells and in vivo  selection after SHIV infection in  a nonhuman primate model of  AIDS. Mol Ther Methods Clin  Dev. 3 16007, (2016).</p>
N/A	

## ARTICLE AND VIDEO LICENSE AGREEMENT

Title of Article:	Preparation of Gene-Modified Nonhuman Primate Hematopoietic Stem and Progenitor Cells
Author(s):	Stefan Radtke, Anai M. Perez, Rasika Venkataraman, Sowmya Reddy, Kevin G. Haworth, Olivier Humbert, Hans-Peter Kiem, Christopher W. Peterson

Item 1: The Author elects to have the Materials be made available (as described at <http://www.jove.com/publish>) via:



Standard Access



Open Access

Item 2: Please select one of the following items:



The Author is **NOT** a United States government employee.



The Author is a United States government employee and the Materials were prepared in the course of his or her duties as a United States government employee.



The Author is a United States government employee but the Materials were NOT prepared in the course of his or her duties as a United States government employee.

### ARTICLE AND VIDEO LICENSE AGREEMENT

1. **Defined Terms.** As used in this Article and Video License Agreement, the following terms shall have the following meanings: **"Agreement"** means this Article and Video License Agreement; **"Article"** means the article specified on the last page of this Agreement, including any associated materials such as texts, figures, tables, artwork, abstracts, or summaries contained therein; **"Author"** means the author who is a signatory to this Agreement; **"Collective Work"** means a work, such as a periodical issue, anthology or encyclopedia, in which the Materials in their entirety in unmodified form, along with a number of other contributions, constituting separate and independent works in themselves, are assembled into a collective whole; **"CRC License"** means the Creative Commons Attribution-Non Commercial-No Derivs 3.0 Unported Agreement, the terms and conditions of which can be found at: <http://creativecommons.org/licenses/by-nc-nd/3.0/legalcode>; **"Derivative Work"** means a work based upon the Materials or upon the Materials and other pre-existing works, such as a translation, musical arrangement, dramatization, fictionalization, motion picture version, sound recording, art reproduction, abridgment, condensation, or any other form in which the Materials may be recast, transformed, or adapted; **"Institution"** means the institution, listed on the last page of this Agreement, by which the Author was employed at the time of the creation of the Materials; **"JoVE"** means MyJoVE Corporation, a Massachusetts corporation and the publisher of The Journal of Visualized Experiments; **"Materials"** means the Article and / or the Video; **"Parties"** means the Author and JoVE; **"Video"** means any video(s) made by the Author, alone or in conjunction with any other parties, or by JoVE or its affiliates or agents, individually or in collaboration with the Author or any other parties, incorporating all or any portion

of the Article, and in which the Author may or may not appear.

2. **Background.** The Author, who is the author of the Article, in order to ensure the dissemination and protection of the Article, desires to have the JoVE publish the Article and create and transmit videos based on the Article. In furtherance of such goals, the Parties desire to memorialize in this Agreement the respective rights of each Party in and to the Article and the Video.

3. **Grant of Rights in Article.** In consideration of JoVE agreeing to publish the Article, the Author hereby grants to JoVE, subject to **Sections 4** and **7** below, the exclusive, royalty-free, perpetual (for the full term of copyright in the Article, including any extensions thereto) license (a) to publish, reproduce, distribute, display and store the Article in all forms, formats and media whether now known or hereafter developed (including without limitation in print, digital and electronic form) throughout the world, (b) to translate the Article into other languages, create adaptations, summaries or extracts of the Article or other Derivative Works (including, without limitation, the Video) or Collective Works based on all or any portion of the Article and exercise all of the rights set forth in (a) above in such translations, adaptations, summaries, extracts, Derivative Works or Collective Works and (c) to license others to do any or all of the above. The foregoing rights may be exercised in all media and formats, whether now known or hereafter devised, and include the right to make such modifications as are technically necessary to exercise the rights in other media and formats. If the "Open Access" box has been checked in **Item 1** above, JoVE and the Author hereby grant to the public all such rights in the Article as provided in, but subject to all limitations and requirements set forth in, the CRC License.

4. **Retention of Rights in Article.** Notwithstanding the exclusive license granted to JoVE in **Section 3** above, the Author shall, with respect to the Article, retain the non-exclusive right to use all or part of the Article for the non-commercial purpose of giving lectures, presentations or teaching classes, and to post a copy of the Article on the Institution's website or the Author's personal website, in each case provided that a link to the Article on the JoVE website is provided and notice of JoVE's copyright in the Article is included. All non-copyright intellectual property rights in and to the Article, such as patent rights, shall remain with the Author.

5. **Grant of Rights in Video – Standard Access.** This **Section 5** applies if the "Standard Access" box has been checked in **Item 1** above or if no box has been checked in **Item 1** above. In consideration of JoVE agreeing to produce, display or otherwise assist with the Video, the Author hereby acknowledges and agrees that, Subject to **Section 7** below, JoVE is and shall be the sole and exclusive owner of all rights of any nature, including, without limitation, all copyrights, in and to the Video. To the extent that, by law, the Author is deemed, now or at any time in the future, to have any rights of any nature in or to the Video, the Author hereby disclaims all such rights and transfers all such rights to JoVE.

6. **Grant of Rights in Video – Open Access.** This **Section 6** applies only if the "Open Access" box has been checked in **Item 1** above. In consideration of JoVE agreeing to produce, display or otherwise assist with the Video, the Author hereby grants to JoVE, subject to **Section 7** below, the exclusive, royalty-free, perpetual (for the full term of copyright in the Article, including any extensions thereto) license (a) to publish, reproduce, distribute, display and store the Video in all forms, formats and media whether now known or hereafter developed (including without limitation in print, digital and electronic form) throughout the world, (b) to translate the Video into other languages, create adaptations, summaries or extracts of the Video or other Derivative Works or Collective Works based on all or any portion of the Video and exercise all of the rights set forth in (a) above in such translations, adaptations, summaries, extracts, Derivative Works or Collective Works and (c) to license others to do any or all of the above. The foregoing rights may be exercised in all media and formats, whether now known or hereafter devised, and include the right to make such modifications as are technically necessary to exercise the rights in other media and formats. For any Video to which this **Section 6** is applicable, JoVE and the Author hereby grant to the public all such rights in the Video as provided in, but subject to all limitations and requirements set forth in, the CRC License.

7. **Government Employees.** If the Author is a United States government employee and the Article was prepared in the course of his or her duties as a United States government employee, as indicated in **Item 2** above, and any of the licenses or grants granted by the Author hereunder exceed the scope of the 17 U.S.C. 403, then the rights granted hereunder shall be limited to the maximum

rights permitted under such statute. In such case, all provisions contained herein that are not in conflict with such statute shall remain in full force and effect, and all provisions contained herein that do so conflict shall be deemed to be amended so as to provide to JoVE the maximum rights permissible within such statute.

8. **Protection of the Work.** The Author(s) authorize JoVE to take steps in the Author(s) name and on their behalf if JoVE believes some third party could be infringing or might infringe the copyright of either the Author's Article and/or Video.

9. **Likeness, Privacy, Personality.** The Author hereby grants JoVE the right to use the Author's name, voice, likeness, picture, photograph, image, biography and performance in any way, commercial or otherwise, in connection with the Materials and the sale, promotion and distribution thereof. The Author hereby waives any and all rights he or she may have, relating to his or her appearance in the Video or otherwise relating to the Materials, under all applicable privacy, likeness, personality or similar laws.

10. **Author Warranties.** The Author represents and warrants that the Article is original, that it has not been published, that the copyright interest is owned by the Author (or, if more than one author is listed at the beginning of this Agreement, by such authors collectively) and has not been assigned, licensed, or otherwise transferred to any other party. The Author represents and warrants that the author(s) listed at the top of this Agreement are the only authors of the Materials. If more than one author is listed at the top of this Agreement and if any such author has not entered into a separate Article and Video License Agreement with JoVE relating to the Materials, the Author represents and warrants that the Author has been authorized by each of the other such authors to execute this Agreement on his or her behalf and to bind him or her with respect to the terms of this Agreement as if each of them had been a party hereto as an Author. The Author warrants that the use, reproduction, distribution, public or private performance or display, and/or modification of all or any portion of the Materials does not and will not violate, infringe and/or misappropriate the patent, trademark, intellectual property or other rights of any third party. The Author represents and warrants that it has and will continue to comply with all government, institutional and other regulations, including, without limitation all institutional, laboratory, hospital, ethical, human and animal treatment, privacy, and all other rules, regulations, laws, procedures or guidelines, applicable to the Materials, and that all research involving human and animal subjects has been approved by the Author's relevant institutional review board.

11. **JoVE Discretion.** If the Author requests the assistance of JoVE in producing the Video in the Author's facility, the Author shall ensure that the presence of JoVE employees, agents or independent contractors is in accordance with the relevant regulations of the Author's institution. If more than one author is listed at the beginning of this Agreement, JoVE may, in its sole

## ARTICLE AND VIDEO LICENSE AGREEMENT

discretion, elect not take any action with respect to the Article until such time as it has received complete, executed Article and Video License Agreements from each such author. JoVE reserves the right, in its absolute and sole discretion and without giving any reason therefore, to accept or decline any work submitted to JoVE. JoVE and its employees, agents and independent contractors shall have full, unfettered access to the facilities of the Author or of the Author's institution as necessary to make the Video, whether actually published or not. JoVE has sole discretion as to the method of making and publishing the Materials, including, without limitation, to all decisions regarding editing, lighting, filming, timing of publication, if any, length, quality, content and the like.

12. **Indemnification.** The Author agrees to indemnify JoVE and/or its successors and assigns from and against any and all claims, costs, and expenses, including attorney's fees, arising out of any breach of any warranty or other representations contained herein. The Author further agrees to indemnify and hold harmless JoVE from and against any and all claims, costs, and expenses, including attorney's fees, resulting from the breach by the Author of any representation or warranty contained herein or from allegations or instances of violation of intellectual property rights, damage to the Author's or the Author's institution's facilities, fraud, libel, defamation, research, equipment, experiments, property damage, personal injury, violations of institutional, laboratory, hospital, ethical, human and animal treatment, privacy or other rules, regulations, laws, procedures or guidelines, liabilities and other losses or damages related in any way to the submission of work to JoVE, making of videos by JoVE, or publication in JoVE or elsewhere by JoVE. The Author shall be responsible for, and shall hold JoVE harmless from, damages caused by lack of sterilization, lack of cleanliness or by contamination due to


the making of a video by JoVE its employees, agents or independent contractors. All sterilization, cleanliness or decontamination procedures shall be solely the responsibility of the Author and shall be undertaken at the Author's expense. All indemnifications provided herein shall include JoVE's attorney's fees and costs related to said losses or damages. Such indemnification and holding harmless shall include such losses or damages incurred by, or in connection with, acts or omissions of JoVE, its employees, agents or independent contractors.

13. **Fees.** To cover the cost incurred for publication, JoVE must receive payment before production and publication the Materials. Payment is due in 21 days of invoice. Should the Materials not be published due to an editorial or production decision, these funds will be returned to the Author. Withdrawal by the Author of any submitted Materials after final peer review approval will result in a US\$1,200 fee to cover pre-production expenses incurred by JoVE. If payment is not received by the completion of filming, production and publication of the Materials will be suspended until payment is received.

14. **Transfer, Governing Law.** This Agreement may be assigned by JoVE and shall inure to the benefits of any of JoVE's successors and assignees. This Agreement shall be governed and construed by the internal laws of the Commonwealth of Massachusetts without giving effect to any conflict of law provision thereunder. This Agreement may be executed in counterparts, each of which shall be deemed an original, but all of which together shall be deemed to be one and the same agreement. A signed copy of this Agreement delivered by facsimile, e-mail or other means of electronic transmission shall be deemed to have the same legal effect as delivery of an original signed copy of this Agreement.

A signed copy of this document must be sent with all new submissions. Only one Agreement is required per submission.

### CORRESPONDING AUTHOR

Name:	Christopher W. Peterson	
Department:	Stem Cell and Gene Therapy Program (FHCRC) and Dept. of Medicine (UW)	
Institution:	Fred Hutchinson Cancer Research Center and University of Washington	
Title:	Staff Scientist (FHCRC) and Research Assistant Professor (UW)	
Signature:		Date: 8/6/18

Please submit a **signed** and **dated** copy of this license by one of the following three methods:

1. Upload an electronic version on the JoVE submission site
2. Fax the document to +1.866.381.2236
3. Mail the document to JoVE / Attn: JoVE Editorial / 1 Alewife Center #200 / Cambridge, MA 02140



**FRED HUTCH**  
CURES START HERE

October 18, 2018

Vineeta Bajaj, Ph.D.  
Review Editor  
*JoVE*  
1 Alewife Center Suite 200  
Cambridge MA 02140

**Christopher W. Peterson, PhD**  
T 206.667.6646 / F 206.667.6124  
Mail Stop D1-100  
[cwpeters@fredhutch.org](mailto:cwpeters@fredhutch.org)

Re: Invited Manuscript JoVE58933.R3

Dear Dr. Bajaj:

Please find attached a third round of revisions to our manuscript, which we have re-titled "**Preparation and Gene-Modification of Nonhuman Primate Hematopoietic Stem and Progenitor Cells**," as you requested. Our point-by-point responses to the editorial comments inserted within the document have been included below. With these further modifications, we hope that this manuscript will be suitable for publication in *JoVE*.

Sincerely,

Christopher W. Peterson  
Staff Scientist, Stem Cell and Gene Therapy Program  
Fred Hutchinson Cancer Research Center  
Research Assistant Professor, Department of Medicine, Division of Medical Oncology  
University of Washington School of Medicine



**Editorial comments:**

Table 2 can be combined with the materials table. if interested in retaining, please provide xxxx et al. instead of the reference number.

**Response:** Table 2 has been merged with the Table of Materials. Tables 3-4 have been adjusted as Tables 2-3 throughout the manuscript.

Line 2: Need a better word here

**Response:** We have modified the title as requested.

Line 123: Some of the subsection headings can be removed. This will help save the lines and will also reduce the protocol length.

**Response:** We have deleted individual headers to shorten the protocol.

Line 199 and 202: Reworded to reduce the length of the step.

**Response:** Thx. Reads well.

Line 265: Since this is highlighted we need a linking sentence from BM lysis to CD34 enrichment. So maybe some parts of section 1.3

**Response:** We did highlight the section header in line 205 (step 1.3) as a linking sentence in between the hemolysis and the CD34 plating.

Line 296: Please use degree symbol for this

**Response:** The degree symbol has been added.

Line 304: Since this is just a preparation of the flow cytometer, do you want to film this part? Are the settings novel for your protocol or is generally the norm? If it is general setting this can just stay in the protocol as is since it is important for the protocol but no need to film.

**Response:** That is a valid point. The settings are not really unique and among the users well established. What is more important is how the assessment and gating look. We have reassessed the highlighted section and included more relevant parts for filming.

Line 305: This is redundant and can be removed:

**Response:** The language in all substeps of 2.2 has been cleaned up and redundant phrases removed.

Line 308: This is redundant as it is already described in 2.2.1. So, you are basically providing all the button clicks and making the steps crisper as well.

**Response:** Redundant language has been removed in steps 2.2.2-2.2.5 according to instructions.

Line 328: Converted to imperative tense. Please check. Also, please avoid the usage of words like could, should etc.

**Response:** The tense has been changed.

Line 338 and 361: This is not an action step and hence converted to a note. Converted to a note since not in imperative tense and not an action step.

**Response:** Thank you for converting it.



Line 372: Sorting for CFC assays is only performed with cells from the CD34-enriched product (**Table 3**, Sample 10).

**Response:** This is a technical note and not in conflict with the referenced note. Sorting will only be performed from Sample 10. Within this sample, we identify subsets of cells which are sorted individually.

Line 376: Incubate cells for how long, what conditions etc.

**Response:** Information has been added to step 2.4.3.

Line 377: This is redundant.

**Response:** Redundant language has been removed.

Line 393: Does this contain virus as well?

**Response:** No, this is the coating. Reference to step 3. 1 has been added to prevent confusion.

Line 405: Removed substep 3.4 and combined together – to reduce the highlighted sentences to fit 2.75 pages.

**Response:** Thank you.

Line 420: From the flask coated with CH296

**Response:** This has been clarified above. The virus-conditioned medium is produced upfront and frozen at -80°C. We changed the language to prevent confusion.

Line 421: Which flask is the infection performed?

**Response:** References have been added to prevent confusion.

Line 433 and 494: Check the step number.

**Response:** Incorrect references have been changed.

Line 466: If this is highlighted, step 4.4.2 needs highlighting as well to bring out continuity.

**Response:** We have reassessed the highlighted section as requested.

Line 523: Imperative tense.

**Response:** Tense was changed.