

Journal of Visualized Experiments

Evaluation of Biomarkers in Glioma by Immunohistochemistry on Paraffin Embedded 3D-Glioma Neurosphere Cultures

--Manuscript Draft--

Article Type:	Invited Methods Article - JoVE Produced Video
Manuscript Number:	JoVE58931R2
Full Title:	Evaluation of Biomarkers in Glioma by Immunohistochemistry on Paraffin Embedded 3D-Glioma Neurosphere Cultures
Keywords:	Genetically engineered, Glioma, Neurospheres, 3D-cultures, Immunostaining, biomarkers, paraffin embedding
Corresponding Author:	Maria Castro University of Michigan Medical School Ann Arbor, Michigan UNITED STATES
Corresponding Author's Institution:	University of Michigan Medical School
Corresponding Author E-Mail:	mariacas@med.umich.edu
Order of Authors:	Felipe J. Núñez Flor M. Mendez Maria B. Garcia-Fabiani Joaquín Pardo Marta Edwards Pedro R. Lowenstein Maria Castro
Additional Information:	
Question	Response
Please indicate whether this article will be Standard Access or Open Access.	Standard Access (US\$2,400)
Please indicate the city, state/province, and country where this article will be filmed . Please do not use abbreviations.	Ann Arbor, MI, USA



Maria G. Castro, PhD
R. C. Schneider Collegiate Professor, Medical School
Department of Neurosurgery
Department of Cell and Developmental Biology
University of Michigan School of Medicine
1150 W. Medical Center Drive
MSRB II, Room 4570
Ann Arbor, MI 48109-5689

October 5, 2018

Nandita Singh, Ph.D.

Senior Science Editor

JoVE

Dear Dr. Singh,

Thank you very much for your review of our manuscript entitled “**Evaluation of Biomarkers in Glioma by Immunohistochemistry on Paraffin Embedded 3D-Glioma Neurosphere Cultures**”. We are now enclosing the revised manuscript for your consideration and a document that addresses each editorial comment individually.

We hope that our revised manuscript will now be acceptable for publication in JoVE. Please let me know if you have any further questions or issues.

Yours sincerely,

A handwritten signature in blue ink, appearing to read 'M G Castro', with a long horizontal flourish extending to the right.

Maria G. Castro, PhD
Professor
Department of Neurosurgery
Department of Cell and Developmental Biology
University of Michigan
Medical School

TITLE:

Evaluation of Biomarkers in Glioma by Immunohistochemistry on Paraffin-Embedded 3D Glioma Neurosphere Cultures

AUTHORS & AFFILIATIONS:

Felipe J. Núñez^{1,2}, Flor M. Mendez², Maria B. Garcia-Fabiani^{1,2}, Joaquín Pardo^{1,3}, Marta Edwards^{1,2}, Pedro R. Lowenstein^{1,2}, María G. Castro^{1,2}

¹Department of Neurosurgery, University of Michigan Medical School, Ann Arbor, MI, USA

²Department of Cell & Developmental Biology, University of Michigan, Ann Arbor, MI, USA

³INIBIOLP, Histology B-Pathology B, School of Medicine, UNLP, La Plata, Argentina

Corresponding Author:

Maria G. Castro (mariacas@med.umich.edu)

Tel: 734-764-0850

E-mail Addresses of Co-authors:

Felipe J. Nunez (nfelipe@umich.edu)

Flor M. Méndez (mendezf@umich.edu)

M. Belén García-Fabiani (mgarciaf@med.umich.edu)

Joaquín Pardo (joaquinpardo@med.unlp.edu.ar)

Marta Edwards (mdzaman@med.umich.edu)

Pedro R. Lowenstein (pedrol@umich.edu)

KEYWORDS:

Genetically engineered, glioma, neurospheres, 3D-cultures, immunostaining, biomarkers, paraffin embedding

SUMMARY:

Neurospheres grown as 3D cultures constitute a powerful tool to study glioma biology. Here we present a protocol to perform immunohistochemistry while maintaining the 3D structure of glioma neurospheres through paraffin embedding. This method enables the characterization of glioma neurosphere properties such as stemness and neural differentiation.

ABSTRACT:

Analysis of protein expression in glioma is relevant for several aspects in the study of its pathology. Numerous proteins have been described as biomarkers with applications in diagnosis, prognosis, classification, state of tumor progression, and cell differentiation state. These analyses of biomarkers are also useful to characterize tumor neurospheres (NS) generated from glioma patients and glioma models. Tumor NS provide a valuable *in vitro* model to assess different features of the tumor from which they are derived and can more accurately mirror glioma biology. Here we describe a detailed method to analyze biomarkers in tumor NS using immunohistochemistry (IHC) on paraffin-embedded tumor NS.

INTRODUCTION:

Gliomas are primary solid tumors of the central nervous system classified by their phenotypic and genotypic characteristics according to the World Health Organization¹. This classification incorporates the presence or absence of driver mutations, which represent an attractive source of biomarkers². Biomarkers are biological characteristics that can be measured and evaluated to indicate normal and pathological processes, as well as pharmacological responses to a therapeutic intervention³. Biomarkers can be detected in tumor tissue and cells derived from glioma, enabling its biological characterization in different aspects. Some examples of glioma biomarkers include mutated isocitrate dehydrogenase 1 (IDH1), a mutant enzyme characteristic of lower-grade gliomas associated with better prognosis⁴. Mutated IDH1 is frequently expressed in combination with TP53 and alpha-thalassemia/mental retardation syndrome X-linked (ATRX)-inactivating mutations, defining a specific glioma subtype^{4,5}. ATRX-inactivating mutations also occur in 44% of pediatric high-grade gliomas^{2,6} and have been associated with aggressive tumors and genomic instability^{6,7}. In addition, pediatric diffuse intrinsic pontine gliomas (DIPG) are differentiated in subgroups according to the presence or absence of a K27M mutation in histone H3 gene H3F3A, or in the HIST1H3B/C gene^{1,6}. Therefore, the introduction of molecular characterization permits the subdivision, study, and treatment of gliomas as separate entities, which will more allow the development of more targeted therapies for each subtype. In addition, the analysis of biomarkers can be used to evaluate different biological processes such as apoptosis⁸, autophagy⁹, cell cycle progression¹⁰, cell proliferation¹¹, and cell differentiation¹².

Genetically engineered animal models that harbor the genetic lesions present in human cancers are critical for the study of signaling pathways that mediate disease progression. Our laboratory has implemented the use of the Sleeping Beauty (SB) transposase system to develop genetically engineered mouse models of glioma harboring specific mutations that recapitulate human glioma subtypes^{13,14}. These genetically engineered mouse models are used for generating tumor-derived NS, which enable *in vitro* studies in a 3D system, mirroring salient features present in the tumors *in situ*¹⁵. Also, the orthotopical transplantation of NS into mice can generate secondary tumors that retain features of the primary tumor and mimic the histopathological, genomic, and phenotypic properties of the corresponding primary tumor¹⁵.

In serum-free culture, brain tumor cells with stem cell properties can be enriched, and in the presence of epidermal growth factors (EGF) and fibroblast growth factors (FGF), they can be grown as single cell-derived colonies such as NS cultures. In this selective culture system, most differentiating or differentiated cells rapidly die, whereas stem cells divide and form the cellular clusters. This allows the generation of a NS culture that maintains glioma tumor features¹⁶⁻¹⁸. Glioma NS can be used to evaluate several aspects of tumor biology, including the analysis of biomarkers that have applications in diagnosis, prognosis, classification, state of tumor progression, and cell differentiation state. Here, we detail a protocol to generate glioma NS and embed the 3D cultures in paraffin to be used for IHC staining. One advantage of fixing and embedding glioma NS is that the morphology of NS is maintained better compared to the conventional cytopspin method¹⁹, in which glioma NS are subjected to stressful manipulation for cell dissociation and become flattened. In addition, embedding quenches any endogenous fluorophore expression from genetically engineered tumor NS, enabling staining across the

fluorescent spectra. The overall goal of this method is to preserve the 3D structure of glioma cells through a paraffin embedding process and enable characterization of glioma neurospheres using immunohistochemistry.

PROTOCOL:

All methods described here have been approved by the Institutional Animal Care and Use Committee (IACUC) of the University of Michigan.

1. Generation of Brain Tumor Neurospheres Derived from a Mouse Model

1.1 Before the dissection procedure, prepare neural stem cell media (NSC Media: DMEM/F12 with 1x B27 supplement, 1x N2 supplement, 1x normocin, and 1x antibiotic/antimycotic supplemented with human recombinant EGF and basic-FGF at concentrations of 20 ng/mL each). Fill a 1.5 mL tube with 300 μ L of NSC media and reserve for later.

1.2 Select a mouse with a large tumor.

NOTE: The size of a tumor can be monitored by bioluminescence if the plasmid or virus injected encodes luciferin. Usually, a large tumor has a bioluminescence of $> 10^6$ photons/s/cm²/sr.

1.3 Euthanize the mouse with an overdose of isoflurane: infuse a tissue paper with isoflurane and introduce the tissue in a euthanization chamber, avoiding direct contact with the mice to prevent irritation. Wait until the mice do not show a pedal reflex (usually 5-10 min). Decapitate the mouse and dissect the brain as described in Calinescu *et al.*¹³.

1.4 If the tumors are fluorescent, use a dissecting microscope equipped with a fluorescent lamp to identify the tumor mass within the brain. With fine forceps, dissect the tumor (usually 5-7 mm in diameter) from the normal brain tissue.

1.5 Place the dissected tumor in the 1.5 mL tube with NSC media (step 1.1). Homogenize the tumor with a disposable plastic pestle that fits into the walls of the microcentrifuge tube by applying gentle pressure.

1.6 To dissociate the cell clumps, add 1 mL of enzyme-free dissociation media and incubate for 5 min at 37 °C.

1.7 Filter the cell suspension through a 70 μ m cell strainer and wash the strainer with 20 mL of NSC media.

1.8 Centrifuge at 300 x g for 5 min, decant the supernatant, and re-suspend the pellet into 6 mL or 15 mL of NSC media, depending on the size of the pellet.

1.9 Plate the tumor cell suspension into a T-75 culture flask and culture at 37 °C in a tissue culture incubator with an atmosphere of 95% air and 5% CO₂.

1.10 After 3 days, to remove dead cells, transfer the cell suspension into a 15 mL conical tube and collect only the cells that sink to the bottom using a micropipette.

NOTE: There will usually be a mixed population of cells, some will be dead, some will have adhered, and some will be forming NS that will be floating in the media (the cells that sink are the healthy NS). Transfer the healthy NS and re-plate them into a T-25 or T-75 tissue culture flask. If necessary, add more NSC media to the culture.

2. Maintaining and Passaging the NS

NOTE: Prevent overgrowth and maintain cells at relatively high density. Confluence is determined by spheres size (black centers of large spheres mean overgrowth). The growth rate of the NS will depend on the oncogenes used to generate tumors.

2.1 Once the NS culture has reached confluency, collect the culture in a sterile centrifuge tube and pellet the NS at 300 x g for 5 min.

2.2 Discard the supernatant, add 1 mL of the cell detachment solution, and pipette to re-suspend the pellet.

2.3 Incubate at 37 °C for 5 min, flicking the tube every 2 min to help cell dissociation.

NOTE: When NS reach confluency, they can be usually seen macroscopically as small white spheres. To assure cell dissociation, at least all the visible NS must have disappeared.

2.4 Add 5 mL of HBSS 1x and pipette several times. Pellet cells at 300 x g for 5 min. Discard the supernatant. Re-suspend the pellet in 5 mL of NSC media supplemented with recombinant EGF and basic-FGF.

2.5 Add 1 mL of cells to 15 mL of NSC media and culture in T-75 flasks at 37 °C in a tissue culture incubator with an atmosphere of 95% air and 5% CO₂.

2.6 Add growth factors (EGF and basic-FGF) every 3 days. If the media turns light orange and the cells are not yet confluent, change the media. To do this, centrifuge the NS at 300 x g for 4 min and re-suspend in NSC media supplemented with growth factors.

NOTE: Depending on the size of the pellet formed, cells may need to be split into more flasks.

3. Freezing NS for Long-term Storage

3.1 When the NS culture becomes confluent, dissociate the cells as described in steps 2.1-2.4. Once the pellet has been re-suspended in HBSS, remove an aliquot and count the cells.

3.2 Centrifuge cells at 300 x g for 4 min and remove as much as possible of the supernatant.

3.3 Re-suspend the pellet in freezing media (heat-inactivated FBS, 10% DMSO). It is recommended to freeze between 1×10^6 and 3×10^6 cells per vial per mL.

3.4 Divide the re-suspended cells in as many cryovials as needed and slowly cool down the vials by first transferring them to ice, then to -20°C , then to -80°C , and finally the next day to a liquid nitrogen storage container.

4. Fixation of Tumor NS

4.1 Culture tumor NS in a T-25 flask for 2-3 days until cells are confluent ($\sim 3 \times 10^6$ cells). Collect tumor NS in a 15 mL conical tube from a least one T-25 confluent flask. Pellet at 300 x g for 5 min.

4.2. Re-suspend the pellet in 1 mL of 10% formalin and keep at room temperature (RT) for 10 min. Add 5 mL of 1x HBSS and pellet the cells as done in step 3.2. Repeat this step one more time.

4.3. Place the 15 mL conical tube containing the pellet on ice.

5. Paraffin Embedding of Tumor NS

5.1 Re-suspend the washed NS pellet in 500 μL of 2% warm liquid agarose and mix gently by pipetting.

5.2 Immediately place the agarose-embedded NS on ice until the agarose polymerizes. Remove the agarose piece harboring the NS. Place the polymerized agarose piece with the NS into the cassette for tissue processing (**Figure 2**).

5.3 Continue with tissue processing (using an automatic paraffin processor) and paraffin embedding (using an embedding station).

6. Sectioning of Paraffin-embedded NS

6.1 Set the water bath to 42°C and insert the blade on the microtome carefully using two paint brushes to make sure it is leveled. Use this blade only for trimming.

6.2 Place the paraffin block on the microtome. With the non-dominant hand, press down on the lever located on left-hand side that controls the thickness of each section. Press to the second stop that indicates a $30\ \mu\text{m}$ thickness.

6.3 Begin trimming the block (*i.e.*, removing excess paraffin) by turning the coarse hand wheel with the right hand until the surface of the sample is reached. At this point, release the lever that controls the trim thickness to either $10\ \mu\text{m}$ or, to completely trim, to $5\ \mu\text{m}$. Stop trimming when the surface of the sample is reached.

6.4 Fill an ice box with ice and add just enough water so that when the paraffin block is placed on ice, the water acts as a film around the paraffin block, protecting it from directly touching the ice. Incubate the paraffin block on ice for 20 min.

6.5 Discard the old blade and insert a new one for sectioning. Dry block using gauze, then place it on the microtome.

6.6 With the non-dominant hand, obtain a pair of curved forceps that will be used to pull the paraffin ribbon. Keep a damp paint brush near the right hand, which will be used to transfer the paraffin ribbon to the water bath. Begin to section by turning the coarse hand wheel with the right hand at a fast pace. Use the forceps in the left hand to hold the paraffin ribbon.

6.8 Use the damp paint brush to transfer the paraffin ribbon to the water bath.

6.9 Use the curve of the forceps to break apart the sections by superficially placing the forceps in between two paraffin sections, then pushing the two sections away gently.

NOTE: This motion should be entirely on the surface of the paraffin section. Do not press down on the section.

6.10 Use the damp paint brush to push the separated paraffin sections onto positively charged adhesion microscope slides.

6.11 Allow the slides to dry overnight inside a chemical hood before storing them in slide boxes. The storage of slides depends on the type of stain performed.

NOTE: If performing 3,3'-diaminobenzidine (DAB) staining, the slides can be stored at RT. However, if immunofluorescence staining is performed, slides should be stored in the dark at 20 °C to reduce photo-bleaching.

7. Immunohistochemistry (IHC) of Paraffin-embedded NS

7.1. Melt paraffin by placing the slides in a metal rack and incubating them at 60 °C for 20 min.

7.2. Deparaffinize the slides by incubation in a rehydration train at RT: 3x xylene for 5 min, 100% 2x ethanol for 2 min, 95% 2x ethanol for 2 min, 70% 1x ethanol for 2 min, and 1x deionized water for 2 min. Hereon, keep the slides in tap water until antigen retrieval, as drying out will cause non-specific antibody binding.

7.3. Incubate the slides in citrate buffer (10 mM citric acid, 0.05% non-ionic detergent, pH 6) at 125 °C for 30 s and at 90 °C for 10 s. Let them cool down, then rinse the slides 5 times with distilled water.

265 7.4. Incubate slides at RT in 0.3% H₂O₂ for 30 min.

266
267 7.5. Wash the slides 3 times in washing buffer (0.025% detergent in TBS) for 5 min with gentle
268 agitation.

269
270 7.6. Incubate the slides at RT with blocking solution (10% horse serum, 0.1% BSA in TBS) for 30
271 min.

272
273 7.7. Incubate the slides overnight at 4 °C in a humidified chamber with primary antibody prepared
274 in dilution solution (0.1% BSA in TBS). Wash the slides 3 times in washing buffer for 5 min with
275 gentle agitation.

276
277 7.9. Incubate the slides at RT for 1 h with biotinylated secondary antibody prepared in dilution
278 solution. Wash the slides 3 times in washing buffer for 5 min with gentle agitation.

279
280 7.11. Incubate the slides at RT in the dark for 30 min with avidin-biotinylated horseradish
281 peroxidase complex. Wash the slides 3 times in washing buffer for 5 min with gentle agitation.

282
283 7.13. Incubate the slides with DAB-H₂O₂ substrate brands here for 2-5 min at RT.

284
285 7.14. Rinse 3 times with tap water. Dip (1-2 s) the slides in hematoxylin solution to counterstain,
286 and rinse them thoroughly in tap water until clearing.

287
288 7.16. Dehydrate the slides as follows: incubate in distilled water for 2 min, dip 3 times in 80%
289 ethanol, incubate in 95% ethanol 2 times for 2 min each, incubate in 100% ethanol 2 times for 2
290 min each, and finally in xylene 3 times for 3 min each.

291
292 7.17. Coverslip the slides with a xylene-based mounting medium and let them dry on a flat surface
293 at RT until they are ready for imaging.

294 295 REPRESENTATIVE RESULTS:

296 To monitor tumor development and evaluate if the tumor has reached the size necessary to
297 generate NS, we analyzed the luminescence emitted by tumors using bioluminescence. This
298 allows the study of transduction efficiency in the pups and tumor progression by the
299 luminescence signal of luciferase (**Figure 1A** and **1B**). When the tumor size reaches a signal of 1×10^7
300 photons/s/cm²/sr (**Figure 1B**), the brain can be processed for NS generation. Another
301 advantage of this system is that the coding sequence of different fluorescent proteins can be
302 added to the plasmids used for gene delivery and tumor generation. We can then confirm the
303 expression of the inserted genetic alterations, using a dissecting microscope equipped with a
304 fluorescent lamp (**Figure 1C**). The NS generated from wt-IDH1 (**Figure 1D**) and mIDH1 (**Figure 1E**)
305 tumors are identified by the characteristic spherical morphology, and the expression of
306 fluorophores associated with the specific genetic lesion (*i.e.*, GFP associated with shATRX and
307 shp53, and Katushka associated with mIDH1; **Figure 1D** and **1E**). To proceed with the IHC on NS,
308 cells are fixed, then embedded in agarose and paraffin (**Figure 2**). Embedding the NS in paraffin

blocks has several advantages, including the preservation of 3D structures of the NS and allowing for long-term storage. The embedded NS can be stained for specific glioma biomarkers. Using this technique, we analyzed the expression of ATRX, Ki67 and OLIG2 (oligodendrocyte differentiation marker) (**Figure 3A-3C**). We confirmed the low expression levels of ATRX protein in our NS cultures (**Figure 3A**), which is a feature of the LGG glioma subtype currently being studied⁴. Also, Ki-67, a well-described biomarker of cell proliferation, was positive in the mIDH1 NS (**Figure 3B**), demonstrating active proliferation, which is a key feature of tumor cells. Interestingly, cells localized in the center of the larger glioma NS clusters were negative for Ki-67 (**Figure 3B**), indicating that they were not proliferating, unlike the Ki-67 positive cells localized to the periphery. This phenomenon may be due to the fact that peripheral cells do not have access to nutrients from the growth media. When they reach this larger size, the glioma NS should be dissociated and passaged. Finally, wt-IDH1 NS were positive for Olig2, a transcription factor participating in oligodendrocyte differentiation (**Figure 3C**).

FIGURE AND TABLE LEGENDS:

Figure 1: Glioma neurospheres generated from GFP- and Katushka-positive sleeping beauty (SB) brain tumor. (A) Luminescent signal of a neonate mouse injected with SB-transposase plasmid in combination with plasmids harboring genetic lesions to induces glioma (NRAS/shP53/shATRX/IDH1-R132H). (B) Luminescence indicating tumor development at 132 days post-injection (DPI). (C) A bright-field and fluorescent image of a brain harvested from a mouse that reached the end-point stage. The tumor area is delineated by the dotted line and positive for the fluorescent reporters, GFP and Katushka. (D and E) Tumor neurospheres generated from SB brain tumors expressing GFP associated to shP53 and shATRX; and Katushka associated to IDH1-R132H. Scale bar = 100 μ m.

Figure 2: Representation of the workflow for paraffin-embedded glioma NS. NS are collected from a t-25 flask into a 15 mL conical tube and fixed in 10% formalin. Then, NS are washed with HBSS and embedded in 2% agarose. Polymerized agarose containing glioma NS are placed in a cassette for tissue processing and paraffin embedding.

Figure 3: Representative results of immunohistochemistry with HRP-DAB detection of biomarkers. (A-C) IHC performed on paraffin-embedded mIDH1 glioma NS stained for ATRX (A) and Ki67 (B), and wt-IDH1 glioma NS stained for OLIG2 (C). Red arrows indicate positive cells for the biomarker staining. Scale bar = 50 μ m.

DISCUSSION:

In this article, we detail a versatile and reproducible method to perform immunohistochemistry on paraffin-embedded glioma NS, which maintain the characteristic 3D structure of tumor cells growing in the brain *in situ*. This technique possesses the following advantages over using cells plated onto glass or plastic surfaces: i) preservation of the 3D structure of NS; ii) avoiding of stress of cell dissociation before analysis of protein expression; iii) quenching of any endogenous fluorophore expression from genetically engineered tumor NS, enabling staining across the fluorescent spectra; and iv) long-term storage.

A critical step of this technique is to ensure that the cells are re-suspended well in the agarose to ensure that they are homogenously distributed and not clumped together. One limitation of this technique is the time-consuming steps related to cell culturing and NS processing before the IHC staining procedure. A second limitation is the high number of cells needed to execute this method. If the number of cells is less than 1×10^6 cells, there will be too few cells per field of view NS clusters in each section. Therefore, it could be difficult to reach the ideal number of cells if the glioma cell culture is slow-growing. We used a confluent T-25 flask containing at least 3.0×10^6 cells. The number of cells used can be modified as desired; however, it is necessary to obtain a NS pellet of appropriate size for the embedding procedure. After this, the embedded NS can be manipulated as a regular paraffin-embedded block, and it can then proceed to sectioning and IHC staining to analyze protein expression by immunofluorescence or IHC using DAB staining.

After sectioning of the blocks and following the protocol for IHC, sections should be counterstained with hematoxylin (blue). If tissue expresses the target protein, a brown signal should be visible (**Figure 3**). If after IHC the sections are too brown (high background), this could be due to 1) non-specific binding of the secondary antibody, 2) an incomplete quenching of the endogenous peroxidase, or 3) insufficient blocking. These issues can be solved by 1) using a negative control slide (incubated only with a secondary antibody) to check non-specific binding of the secondary antibody, 2) increasing the peroxidase quenching time, or 3) increasing the blocking incubation period. On the other hand, if no signal is detected, it is possible that the epitopes are still masked, which may be related to the type of buffer used for antigen retrieval. In our experience, we have had satisfactory staining using citrate buffer, but this can be tissue- and antibody-dependent, and different formulations for antigen retrieval buffers can be used such as 0.1 M Tris-HCl (pH 8.0) buffer²¹. These are some of the most common issues related to IHC staining, but if other difficulty arises, troubleshooting should be carried out as with any other IHC (*i.e.*, trying different dilutions of the primary and secondary antibodies, different blocking reagents, different blocking times, *etc.*).

An alternative method to evaluate protein expression using paraffin-embedded cells was previously described by Hasselbach *et al.*²⁰. This method does not include the agarose steps, which in this protocol enable adequate special distribution of the 3D cell clusters. We also describe an accurate method for NS culturing, passaging, and freezing for long-term storage. This method also illustrates how to collect, fix, and embed NS without altering 3D structure (**Figure 2**).

Since the NS can be generated from glioma tissue obtained from patients and glioma animal models, this technique constitutes a powerful tool that can be used to analyze biomarker expression in different glioma subtypes and validate the original models. Here we describe the technique with NS originated from genetically engineered mice using the SB transposase system (**Figure 1**). However, this technique can also be used to analyze protein in paraffin-embedded human glioma cells that grow as 3D cultures without modifications to the protocol, other than the cell culture conditions. So, this method may also be applied to 3D cultures obtained from transplantable animal models, human PDX models, and other genetically engineered models. Lastly, this method may be used with other types of cancer, both mouse models and human

cancers, in addition to gliomas.

ACKNOWLEDGMENTS:

This work was supported by National Institutes of Health/National Institute of Neurological Disorders & Stroke (NIH/NINDS) Grants R37-NS094804, R01-NS074387, R21-NS091555 to M.G.C.; NIH/NINDS Grants R01-NS076991, R01-NS082311, and R01-NS096756 to P.R.L.; NIH/NINDS R01-EB022563; 1U01CA224160; the Department of Neurosurgery; Leah's Happy Hearts to M.G.C. and P.R.L.; and RNA Biomedicine Grant F046166 to M.G.C. F.M.M. is supported by an F31 NIH/NINDS-F31NS103500. J.P. was supported by a Fulbright-Argentinian Ministry of Sports and Education Fellowship.

DISCLOSURES:

The authors have nothing to disclose.

REFERENCES:

- 1 Louis, D. N., *et al.* The 2016 World Health Organization Classification of Tumors of the Central Nervous System: a summary. *Acta Neuropathologica*. **131** (6), 803-820 (2016).
- 2 Hochberg, F. H., *et al.* Glioma diagnostics and biomarkers: an ongoing challenge in the field of medicine and science. *Expert Review of Molecular Diagnosis*. **14** (4), 439-452 (2014).
- 3 Ziegler, A., Koch, A., Krockenberger, K., Grosshennig, A. Personalized medicine using DNA biomarkers: a review. *Human Genetics*. **131** (10), 1627-1638 (2012).
- 4 Ceccarelli, M., *et al.* Molecular Profiling Reveals Biologically Discrete Subsets and Pathways of Progression in Diffuse Glioma. *Cell*. **164** (3), 550-563 (2016).
- 5 Cancer Genome Atlas Research, N., *et al.* Comprehensive, Integrative Genomic Analysis of Diffuse Lower-Grade Gliomas. *The New England Journal of Medicine*. **372** (26), 2481-2498 (2015).
- 6 Mackay, A., *et al.* Integrated Molecular Meta-Analysis of 1,000 Pediatric High-Grade and Diffuse Intrinsic Pontine Glioma. *Cancer Cell*. **32** (4), 520-537 e525 (2017).
- 7 Koschmann, C., *et al.* ATRX loss promotes tumor growth and impairs nonhomologous end joining DNA repair in glioma. *Science Translational Medicine*. **8** (328), 328ra328 (2016).
- 8 Ward, T. H., *et al.* Biomarkers of apoptosis. *British Journal of Cancer*. **99** (6), 841-846 (2008).
- 9 Gil, J., Pesz, K. A., Sasiadek, M. M. May autophagy be a novel biomarker and antitumor target in colorectal cancer? *Biomarkers in Medicine*. **10** (10), 1081-1094 (2016).
- 10 Williams, G. H., Stoeber, K. The cell cycle and cancer. *Journal of Pathology*. **226** (2), 352-364 (2012).
- 11 Preusser, M., *et al.* Ki67 index in intracranial ependymoma: a promising histopathological candidate biomarker. *Histopathology*. **53** (1), 39-47 (2008).
- 12 Trepant, A. L., *et al.* Identification of OLIG2 as the most specific glioblastoma stem cell marker starting from comparative analysis of data from similar DNA chip microarray platforms. *Tumour Biology*. **36** (3), 1943-1953 (2015).
- 13 Calinescu, A. A., *et al.* Transposon mediated integration of plasmid DNA into the subventricular zone of neonatal mice to generate novel models of glioblastoma. *Journal*

441 *of Visualized Experiments*.(96), (2015).

442 14 Wiesner, S. M., *et al.* De novo induction of genetically engineered brain tumors in mice
443 using plasmid DNA. *Cancer Research*. **69** (2), 431-439 (2009).

444 15 Xie, Y., *et al.* The Human Glioblastoma Cell Culture Resource: Validated Cell Models
445 Representing All Molecular Subtypes. *EBioMedicine*. **2** (10), 1351-1363 (2015).

446 16 Vescovi, A. L., Galli, R., Reynolds, B. A. Brain tumour stem cells. *Nature Reviews Cancer*. **6**,
447 425 (2006).

448 17 Dirks, P. B. Brain tumor stem cells: bringing order to the chaos of brain cancer. *Journal of*
449 *Clinical Oncology*. **26** (17), 2916-2924 (2008).

450 18 Lenting, K., Verhaak, R., Ter Laan, M., Wesseling, P., Leenders, W. Glioma: experimental
451 models and reality. *Acta Neuropathologica*. **133** (2), 263-282 (2017).

452 19 Koh, C. M. Preparation of cells for microscopy using cytospin. *Methods in Enzymology*.
453 **533**, 235-240 (2013).

454 20 Hasselbach, L. A., *et al.* Optimization of high grade glioma cell culture from surgical
455 specimens for use in clinically relevant animal models and 3D immunochemistry. *Journal*
456 *of Visualized Experiments*. (83), e51088 (2014).

457 21 Pileri, S. A., *et al.* Antigen retrieval techniques in immunohistochemistry: comparison of
458 different methods. *The Journal of Pathology*. **183** (1), 116-23 (1997).

459

Fig 1. Nunez et al JoVE 2018

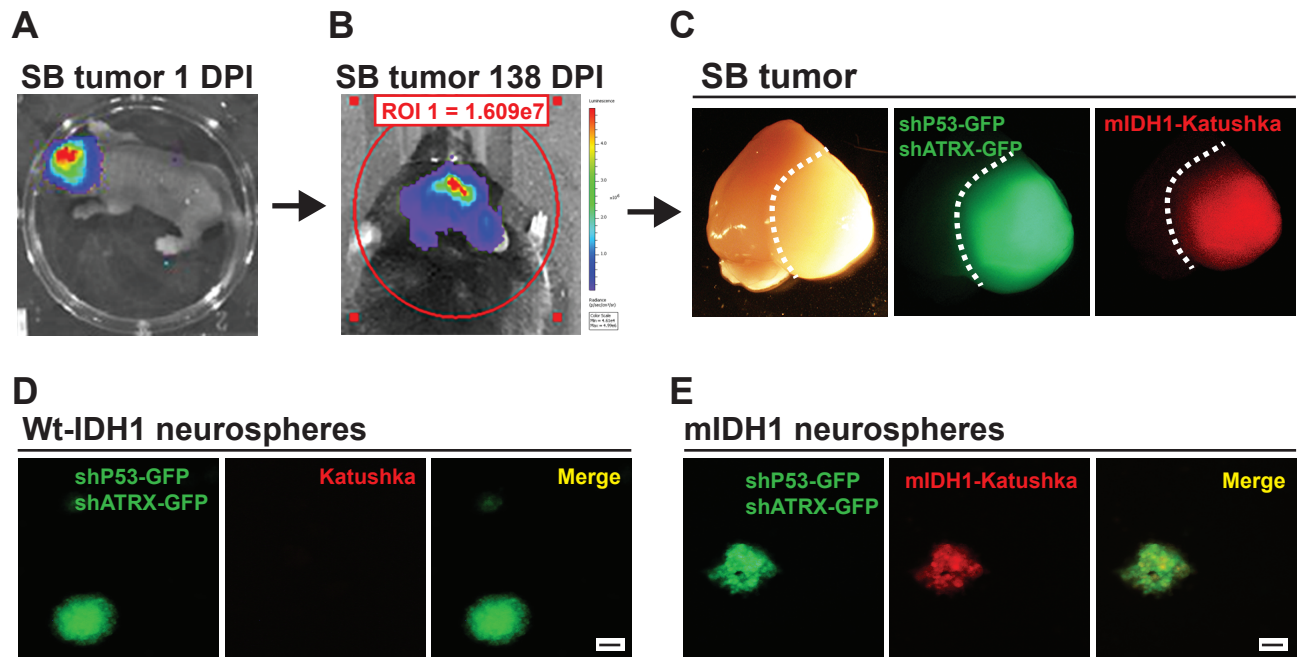


Fig 2. Nunez et al JoVE 2018

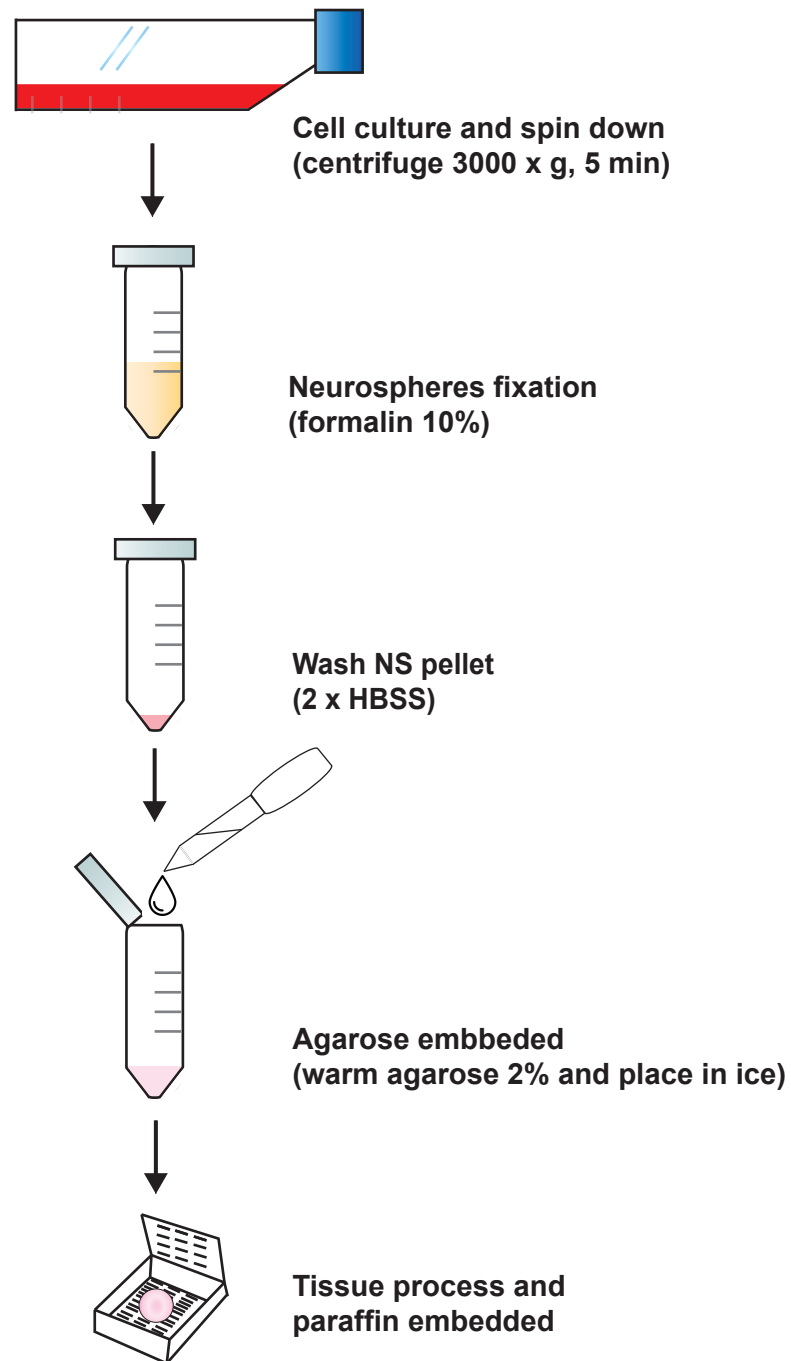
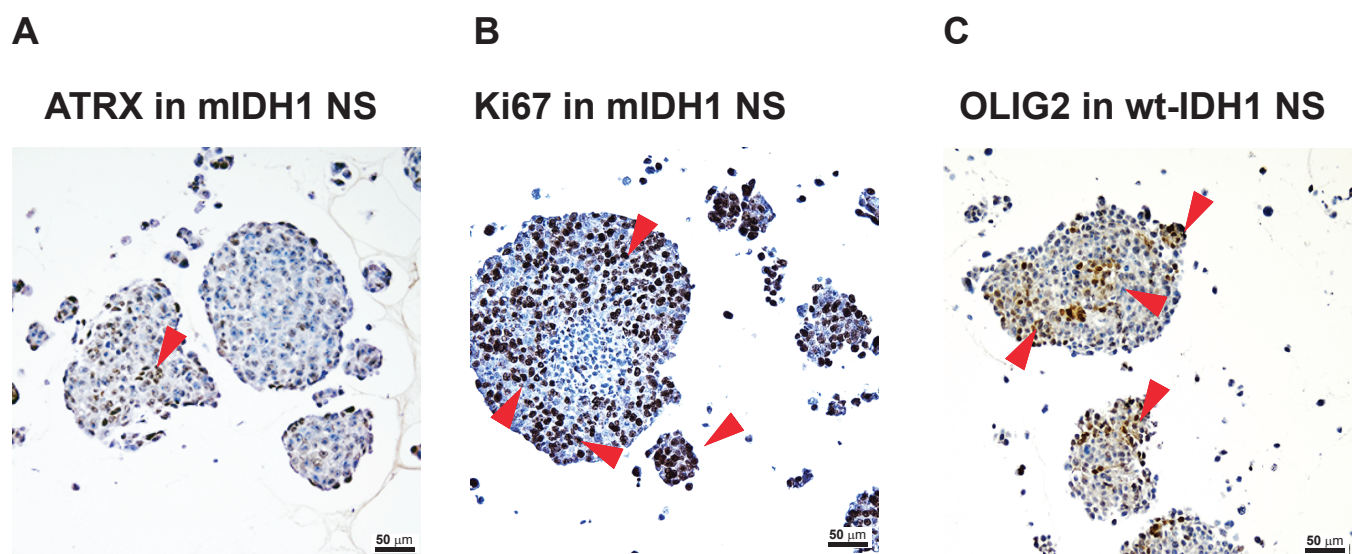


Fig 3. Nunez et al JoVE 2018



Name of Material/ Equipment	Company	Catalog Number
Coated microtome blade HP35	Thermo Scientific	3150734
Microtome RM 2135	Leica	MR2135
Formalin solution, neutral buffered, 10%	Sigma-aldrich	HT501128-4L
Rabbit polyclonal anti-ATRX,	Santa Cruz Biotechnology	sc-15408
Rabbit polyclonal anti-Ki-67	Abcam	Ab15580
Rabbit polyclonal anti-OLIG2	Millipore	AB9610
Goat polyclonal anti-rabbit biotin-conjugated	Dako	E0432
Vectastain Elite ABC HRP kit	Vector Laboratories Inc	PK-6100
BETAZOID DAB CHROMOGEN KIT	Biocare medical	BDB2004 L/price till 12/18
N-2 Supplement	ThermoFisher	17502048
N-27 Supplement	ThermoFisher	A3582801
Accutase® Cell Detachment Solution	Biolegend	423201
AGAROSE LE	GoldBio	A-201-1000
Genesee Sc. Corporation	Olympus 15 ml	21-103
Genesee Sc. Corporation	TC-75 treated Flask	25-209
Genesee Sc. Corporation	TC-25 treated Flask	25-207
DMEM/F12	Gibco	11330-057
HBSS	Gibco™	14175-103
C57BL/6	Taconic	B6-f

Comments/Description

IHC, 1:250 dilution
IHC, 1:1000 dilution
IHC, 1:500 dilution
IHC, 1:1000 dilution

NS media
balanced salt solution
C57BL/6 mouse

ARTICLE AND VIDEO LICENSE AGREEMENT

Title of Article:

Evaluation of Biomarkers in Glioma by Immunohistochemistry on Paraffin Embedded 3D-Glioma Neurosphere Cultures

Author(s):

Felipe J. Núñez, Flor M. Mendez, M. Belen Garcia-Fabiani, Marta Edwards, Pedro R. Lowenstein, and Maria G. Castro

Item 1 (check one box): The Author elects to have the Materials be made available (as described at

<http://www.jove.com/author>) via: ☒ Standard Access ☐ Open Access

Item 2 (check one box):

- ☒ The Author is NOT a United States government employee.
- ☐ The Author is a United States government employee and the Materials were prepared in the course of his or her duties as a United States government employee.
- ☐ The Author is a United States government employee but the Materials were NOT prepared in the course of his or her duties as a United States government employee.

ARTICLE AND VIDEO LICENSE AGREEMENT

1. Defined Terms. As used in this Article and Video License Agreement, the following terms shall have the following meanings: “**Agreement**” means this Article and Video License Agreement; “**Article**” means the article specified on the last page of this Agreement, including any associated materials such as texts, figures, tables, artwork, abstracts, or summaries contained therein; “**Author**” means the author who is a signatory to this Agreement; “**Collective Work**” means a work, such as a periodical issue, anthology or encyclopedia, in which the Materials in their entirety in unmodified form, along with a number of other contributions, constituting separate and independent works in themselves, are assembled into a collective whole; “**CRC License**” means the Creative Commons Attribution-Non Commercial-No Derivs 3.0 Unported Agreement, the terms and conditions of which can be found at: <http://creativecommons.org/licenses/by-nc-nd/3.0/legalcode>; “**Derivative Work**” means a work based upon the Materials or upon the Materials and other pre-existing works, such as a translation, musical arrangement, dramatization, fictionalization, motion picture version, sound recording, art reproduction, abridgment, condensation, or any other form in which the Materials may be recast, transformed, or adapted; “**Institution**” means the institution, listed on the last page of this Agreement, by which the Author was employed at the time of the creation of the Materials; “**JoVE**” means MyJove Corporation, a Massachusetts corporation and the publisher of *The Journal of Visualized Experiments*; “**Materials**” means the Article and / or the Video; “**Parties**” means the Author and JoVE; “**Video**” means any video(s) made by the Author, alone or in conjunction with any other parties, or by JoVE or its affiliates or agents, individually or in collaboration with the Author or any other parties, incorporating all or any portion of the Article, and in which the Author may or may not appear.

2. Background. The Author, who is the author of the Article, in order to ensure the dissemination and protection of the Article, desires to have the JoVE publish the Article and create and transmit videos based on the Article. In furtherance of such goals, the Parties desire to memorialize in this Agreement the respective rights of each Party in and to the Article and the Video.

3. Grant of Rights in Article. In consideration of JoVE agreeing to publish the Article, the Author hereby grants to JoVE, subject to **Sections 4** and **7** below, the exclusive, royalty-free, perpetual (for the full term of copyright in the Article, including any extensions thereto) license (a) to publish, reproduce, distribute, display and store the Article in all forms, formats and media whether now known or hereafter developed (including without limitation in print, digital and electronic form) throughout the world, (b) to translate the Article into other languages, create adaptations, summaries or extracts of the Article or other Derivative Works (including, without limitation, the Video) or Collective Works based on all or any portion of the Article and exercise all of the rights set forth in (a) above in such translations, adaptations, summaries, extracts, Derivative Works or Collective Works and (c) to license others to do any or all of the above. The foregoing rights may be exercised in all media and formats, whether now known or hereafter devised, and include the right to make such modifications as are technically necessary to exercise the rights in other media and formats. If the “Open Access” box has been checked in **Item 1** above, JoVE and the Author hereby grant to the public all such rights in the Article as provided in, but subject to all limitations and requirements set forth in, the CRC License.

ARTICLE AND VIDEO LICENSE AGREEMENT

4. Retention of Rights in Article. Notwithstanding the exclusive license granted to JoVE in **Section 3** above, the Author shall, with respect to the Article, retain the non-exclusive right to use all or part of the Article for the non-commercial purpose of giving lectures, presentations or teaching classes, and to post a copy of the Article on the Institution's website or the Author's personal website, in each case provided that a link to the Article on the JoVE website is provided and notice of JoVE's copyright in the Article is included. All non-copyright intellectual property rights in and to the Article, such as patent rights, shall remain with the Author.

5. Grant of Rights in Video – Standard Access. This **Section 5** applies if the "Standard Access" box has been checked in **Item 1** above or if no box has been checked in **Item 1** above. In consideration of JoVE agreeing to produce, display or otherwise assist with the Video, the Author hereby acknowledges and agrees that, Subject to **Section 7** below, JoVE is and shall be the sole and exclusive owner of all rights of any nature, including, without limitation, all copyrights, in and to the Video. To the extent that, by law, the Author is deemed, now or at any time in the future, to have any rights of any nature in or to the Video, the Author hereby disclaims all such rights and transfers all such rights to JoVE.

6. Grant of Rights in Video – Open Access. This **Section 6** applies only if the "Open Access" box has been checked in **Item 1** above. In consideration of JoVE agreeing to produce, display or otherwise assist with the Video, the Author hereby grants to JoVE, subject to **Section 7** below, the exclusive, royalty-free, perpetual (for the full term of copyright in the Article, including any extensions thereto) license (a) to publish, reproduce, distribute, display and store the Video in all forms, formats and media whether now known or hereafter developed (including without limitation in print, digital and electronic form) throughout the world, (b) to translate the Video into other languages, create adaptations, summaries or extracts of the Video or other Derivative Works or Collective Works based on all or any portion of the Video and exercise all of the rights set forth in (a) above in such translations, adaptations, summaries, extracts, Derivative Works or Collective Works and (c) to license others to do any or all of the above. The foregoing rights may be exercised in all media and formats, whether now known or hereafter devised, and include the right to make such modifications as are technically necessary to exercise the rights in other media and formats. For any Video to which this Section 6 is applicable, JoVE and the Author hereby grant to the public all such rights in the Video as provided in, but subject to all limitations and requirements set forth in, the CRC License.

7. Government Employees. If the Author is a United States government employee and the Article was prepared in the course of his or her duties as a United States government employee, as indicated in **Item 2** above, and any of the licenses or grants granted by the Author hereunder exceed the scope of the 17 U.S.C. 403, then the rights granted hereunder shall be limited to the maximum rights permitted under such

statute. In such case, all provisions contained herein that are not in conflict with such statute shall remain in full force and effect, and all provisions contained herein that do so conflict shall be deemed to be amended so as to provide to JoVE the maximum rights permissible within such statute.

8. Likeness, Privacy, Personality. The Author hereby grants JoVE the right to use the Author's name, voice, likeness, picture, photograph, image, biography and performance in any way, commercial or otherwise, in connection with the Materials and the sale, promotion and distribution thereof. The Author hereby waives any and all rights he or she may have, relating to his or her appearance in the Video or otherwise relating to the Materials, under all applicable privacy, likeness, personality or similar laws.

9. Author Warranties. The Author represents and warrants that the Article is original, that it has not been published, that the copyright interest is owned by the Author (or, if more than one author is listed at the beginning of this Agreement, by such authors collectively) and has not been assigned, licensed, or otherwise transferred to any other party. The Author represents and warrants that the author(s) listed at the top of this Agreement are the only authors of the Materials. If more than one author is listed at the top of this Agreement and if any such author has not entered into a separate Article and Video License Agreement with JoVE relating to the Materials, the Author represents and warrants that the Author has been authorized by each of the other such authors to execute this Agreement on his or her behalf and to bind him or her with respect to the terms of this Agreement as if each of them had been a party hereto as an Author. The Author warrants that the use, reproduction, distribution, public or private performance or display, and/or modification of all or any portion of the Materials does not and will not violate, infringe and/or misappropriate the patent, trademark, intellectual property or other rights of any third party. The Author represents and warrants that it has and will continue to comply with all government, institutional and other regulations, including, without limitation all institutional, laboratory, hospital, ethical, human and animal treatment, privacy, and all other rules, regulations, laws, procedures or guidelines, applicable to the Materials, and that all research involving human and animal subjects has been approved by the Author's relevant institutional review board.

10. JoVE Discretion. If the Author requests the assistance of JoVE in producing the Video in the Author's facility, the Author shall ensure that the presence of JoVE employees, agents or independent contractors is in accordance with the relevant regulations of the Author's institution. If more than one author is listed at the beginning of this Agreement, JoVE may, in its sole discretion, elect not take any action with respect to the Article until such time as it has received complete, executed Article and Video License Agreements from each such author. JoVE reserves the right, in its absolute and sole discretion and without giving any reason therefore, to accept or decline any work submitted to JoVE. JoVE and its employees, agents and independent contractors shall have

ARTICLE AND VIDEO LICENSE AGREEMENT

full, unfettered access to the facilities of the Author or of the Author's institution as necessary to make the Video, whether actually published or not. JoVE has sole discretion as to the method of making and publishing the Materials, including, without limitation, to all decisions regarding editing, lighting, filming, timing of publication, if any, length, quality, content and the like.

11. **Indemnification.** The Author agrees to indemnify JoVE and/or its successors and assigns from and against any and all claims, costs, and expenses, including attorney's fees, arising out of any breach of any warranty or other representations contained herein. The Author further agrees to indemnify and hold harmless JoVE from and against any and all claims, costs, and expenses, including attorney's fees, resulting from the breach by the Author of any representation or warranty contained herein or from allegations or instances of violation of intellectual property rights, damage to the Author's or the Author's institution's facilities, fraud, libel, defamation, research, equipment, experiments, property damage, personal injury, violations of institutional, laboratory, hospital, ethical, human and animal treatment, privacy or other rules, regulations, laws, procedures or guidelines, liabilities and other losses or damages related in any way to the submission of work to JoVE, making of videos by JoVE, or publication in JoVE or elsewhere by JoVE. The Author shall be responsible for, and shall hold JoVE harmless from, damages caused by lack of sterilization, lack of cleanliness or by contamination due to the making of a video by JoVE its employees, agents or independent contractors. All sterilization, cleanliness or decontamination procedures shall be solely the responsibility of the Author and shall be undertaken at the Author's


expense. All indemnifications provided herein shall include JoVE's attorney's fees and costs related to said losses or damages. Such indemnification and holding harmless shall include such losses or damages incurred by, or in connection with, acts or omissions of JoVE, its employees, agents or independent contractors.

12. **Fees.** To cover the cost incurred for publication, JoVE must receive payment before production and publication the Materials. Payment is due in 21 days of invoice. Should the Materials not be published due to an editorial or production decision, these funds will be returned to the Author. Withdrawal by the Author of any submitted Materials after final peer review approval will result in a US\$1,200 fee to cover pre-production expenses incurred by JoVE. If payment is not received by the completion of filming, production and publication of the Materials will be suspended until payment is received.

13. **Transfer, Governing Law.** This Agreement may be assigned by JoVE and shall inure to the benefits of any of JoVE's successors and assignees. This Agreement shall be governed and construed by the internal laws of the Commonwealth of Massachusetts without giving effect to any conflict of law provision thereunder. This Agreement may be executed in counterparts, each of which shall be deemed an original, but all of which together shall be deemed to be one and the same agreement. A signed copy of this Agreement delivered by facsimile, e-mail or other means of electronic transmission shall be deemed to have the same legal effect as delivery of an original signed copy of this Agreement.

A signed copy of this document must be sent with all new submissions. Only one Agreement required per submission.

CORRESPONDING AUTHOR:

Name:	Maria G. Castro	
Department:	Neurosurgery	
Institution:	University of Michigan, Medical School	
Article Title:	Evaluation of Biomarkers in Glioma by Immunohistochemistry on Paraffin Embedded 3D-Glioma Neurosphere Cultures	
Signature:		Date: 8-9-2018

Please submit a signed and dated copy of this license by one of the following three methods:

- 1) Upload a scanned copy of the document as a pdf on the JoVE submission site;
- 2) Fax the document to +1.866.381.2236;
- 3) Mail the document to JoVE / Attn: JoVE Editorial / 1 Alewife Center #200 / Cambridge, MA 02139

For questions, please email submissions@jove.com or call +1.617.945.9051

Below find enclosed our responses to each editorial reviewer comment raised:

- 1- Please do not write the representative result in the legend style. Please explain the Representative Results in the context of the technique you have described, e.g., how do these results show the technique, suggestions about how to analyze the outcome, etc. The paragraph text should refer to all of the figures. Data from both successful and sub-optimal experiments can be included.**

Thank you very much for this comment. We re-wrote the representative results section in the context of the technique that we described as the editorial reviewer requested.

- 2- As we are a methods journal, please revise the Discussion to explicitly cover the following in detail in 3-6 paragraphs with citations:**
 - a) Critical steps within the protocol**
 - b) Any modifications and troubleshooting of the technique**
 - c) Any limitations of the technique**
 - d) The significance with respect to existing methods**
 - e) Any future applications of the technique****Please ensure that you make different paragraphs for each of the points mentioned above.**

We re-organized our discussion according to the editorial reviewer's suggestion

- 3- Some parts of this can be moved to the representative result section.**

We moved parts of the discussion to the representative results section as requested.

- 4- Please do not abbreviate journal titles.**

We added full journal titles as requested.