

Journal of Visualized Experiments

Murine model to test host-pathogen responses and vaccine efficacy

--Manuscript Draft--

Article Type:	Invited Methods Article - JoVE Produced Video
Manuscript Number:	JoVE58930R3
Full Title:	Murine model to test host-pathogen responses and vaccine efficacy
Keywords:	vaccine, mouse model, host-pathogen, bacteria
Corresponding Author:	Purnima Dubey UNITED STATES
Corresponding Author's Institution:	
Corresponding Author E-Mail:	Purnima.Dubey@osumc.edu
Order of Authors:	Kyle Caution Kacy Yount Rajendar Deora Purnima Dubey
Additional Information:	
Question	Response
Please indicate whether this article will be Standard Access or Open Access.	Standard Access (US\$2,400)
Please indicate the city, state/province, and country where this article will be filmed . Please do not use abbreviations.	Columbus, OH, USA

TITLE:

Evaluation of Host-Pathogen Responses and Vaccine Efficacy in Mice

AUTHORS AND AFFILIATIONS:

Kyle Caution¹, Kacy Yount¹, Rajendar Deora^{1,2}, Purnima Dubey¹

¹Department of Microbial Infection & Immunity, The Ohio State University, Columbus, OH, USA

²Department of Microbiology, The Ohio State University, Columbus, OH, USA

Corresponding Author:

Purnima Dubey (purnima.dubey@osumc.edu)

Email Addresses of Co-authors:

Kyle Caution (kyle.caution@osumc.edu)

Kacy Yount (kacy.yount@osumc.edu)

Rajendar Deora (Rajendar.deora@osumc.edu)

KEYWORDS:

Vaccine, immunity, mouse model, *Bordetella pertussis*, cytokines, CFU, parenteral administration, infectious disease

SUMMARY:

Here we present an elegant protocol for *in vivo* evaluation of vaccine effectiveness and host immune responses. This protocol can be adapted for vaccine models that study viral, bacterial, or parasitic pathogens.

ABSTRACT:

Vaccines are a 20th century medical marvel. They have dramatically reduced the morbidity and mortality caused by infectious diseases and contributed to a striking increase in life expectancy around the globe. Nonetheless, determining vaccine efficacy remains a challenge. Emerging evidence suggests that the current acellular vaccine (aPV) for *Bordetella pertussis* (*B. pertussis*) induces suboptimal immunity. Therefore, a major challenge is designing a next-generation vaccine that induces protective immunity without the adverse side effects of a whole-cell vaccine (wPV). Here we describe a protocol that we used to test the efficacy of a promising, novel adjuvant that skews immune responses to a protective Th1/Th17 phenotype and promotes a better clearance of a *B. pertussis* challenge from the murine respiratory tract. This article describes the protocol for mouse immunization, bacterial inoculation, tissue harvesting, and analysis of immune responses. Using this method, within our model, we have successfully elucidated crucial mechanisms elicited by a promising, next-generation acellular pertussis vaccine. This method can be applied to any infectious disease model in order to determine vaccine efficacy.

INTRODUCTION:

Vaccines represent one of the greatest public health achievements of the 20th century, yet we still do not fully understand the mechanisms by which successful vaccines stimulate protective immunity. The identification of molecular signatures (e.g., cell activation markers, expansion of cellular subtypes, and patterns of gene expression) induced after vaccination provides a plethora of information for predicting and generating an efficacious immune response. The complexity of host-pathogen responses cannot be adequately replicated using *in vitro* cell culture systems¹. *In vivo* vaccine models are designed to concomitantly evaluate multiple immune cell types within the host. This provides an advantage when characterizing vaccine antigen processing and presentation, differential cytokine secretion, and expansion of immune cells. The protocol described here provides a detailed method to determine vaccine efficacy through evaluation of the systemic and local immune responses and quantification of pathogen burden in tissues of interest. The example provided here tests the efficacy of an experimental vaccine for the pathogen *Bordetella pertussis* (*B. pertussis*).

B. pertussis is a gram-negative bacterium that is the etiological agent of the respiratory disease whooping cough (pertussis)^{2,3}. Close contact with infected individuals (symptomatic or asymptomatic) leads to transmission, colonization, and disease. Despite significant global vaccine coverage⁴, pertussis is considered a resurging disease in many nations around the world and is a major cause of preventable childhood deaths⁵⁻⁸. In 2015, *B. pertussis* and pertussis were included in the National Institute of Allergy and Infectious Diseases (NIAID) emerging infectious pathogen/disease list, emphasizing the need for development of a better vaccine that confers long-lived protective immunity.

Currently, an active area of investigation to control pertussis resurgence is development of a next-generation acellular pertussis vaccine (aPV) with an optimal combination of novel adjuvants and antigens to mimic the immune response elicited by the whole-cell pertussis vaccine (wPV)⁹. Using the protocol described, we recently reported that the modification of a current FDA-approved aPV by the addition of a novel adjuvant, *Bordetella* colonization factor A (BcfA), resulted in more efficient reduction of *B. pertussis* bacterial load from mouse lungs^{10,11}. This increased protection was accompanied by the skewing of an alum-induced Th1/Th2 immune response to the more protective Th1/Th17 immune profile¹⁰. This protocol is detailed and comprehensive, enabling the investigator to obtain maximal information through concurrent evaluation of host and immune responses to a variety of pathogens.

The protocol described here follows the representative vaccine schedule, shown in **Figure 1**, to ensure optimal host immune responses.

PROTOCOL:

All experiments with live animals were conducted following a protocol approved by The Ohio State University IACUC in accordance with IACUC guidelines. C57BL/6 mice were used in all immunizations and infections. Both male and female mice are used in each group as per NIH guidelines. The number of animals per group was determined by power calculations based on the predicted differences in outcome among experimental groups. For example, 8 mice per group

will yield 80% power at $\alpha = 0.05$ (2-sided) for a 2-sample *t*-test to detect differences in the outcome of interest of 1.33 standard deviations (SDs).

1. Immunization of Mice

1.1) Prepare a master vaccine mix in a sterile physiological buffer such as saline or DPS.

NOTE: The total volume in the mix should include 10% more than that required for immunization of the whole group. Concentrations of the vaccine composition are detailed below in steps 1.1.1 and 1.1.2. Transport the items to the vivarium on ice.

1.1.1) For *B. pertussis* studies, include the following vaccine groups: aPV and aPV + BcfA. In addition, use alum, vaccine antigens alone (FHA, and Prn), and naïve (non-immunized) mice as control groups.

NOTE: aPV is 1/5th the human dose of an FDA-approved aPV, which is composed of tetanus toxoid, reduced diphtheria toxoid, pertussis toxoid (PT), filamentous hemagglutinin (FHA), and pertactin (Prn) adsorbed to aluminum salts. One human dose of current pertussis aPV is 0.5 mL, therefore, 1/5th of a dose is 0.1 mL. Volumes for aPV + BcfA are 0.1 mL of the aPV (1/5th the human dose) + 0.046 mL of BcfA (30 µg) per mouse. The maximum volume that can be safely delivered to one muscle is 0.1 mL. Because the aPV + BcfA vaccine volume is greater than 0.1 mL, the vaccine must be delivered into both shoulders, divided roughly equally, in order to be administered safely.

1.1.2) To prepare an experimental vaccine, for one dose combine 1 µg of FHA and 0.5 µg of Prn with 50 µg of aluminum hydroxide gel in sterile PBS. Allow the experimental aPV to mix on a laboratory roller for 15 min at room temperature (RT). Afterwards, spin the tube at 18,000 x g for 5 min at 4 °C. Remove the supernatant and resuspend the contents in 1 mL of sterile PBS.

1.2) In the vivarium, set up the anesthesia machine (**Figure 2**).

NOTE: Ensure there are adequate levels of oxygen and isoflurane in their respective tanks before use. Weigh the isoflurane scavenger canister and replace when its weight increases by 50 g.

1.3) Thoroughly clean the biological safety cabinet (BSC) and place the clean induction chamber inside the BSC. Connect the anesthesia and scavenger lines from the anesthesia machine to the induction chamber. Open the oxygen tank *via* the regulator to ensure oxygen is flowing and set the level to 1.5-2 L/min.

1.4) Place mice of desired age (6-12 weeks) into the induction chamber. Turn on the isoflurane to 2.5-3% in order to lightly anesthetize the mice. Monitor the animals until they are not moving in the chamber and their breathing has slowed.

1.5) Test the level of induction by toe-pinching, observing for any reflexive movement. If there is none, then the mice are ready to inject.

NOTE: In this experiment, the whole cage of animals were anesthetized at once. One can choose to anesthetize animals individually for injection or to inject the animals without anesthesia. Either of these methods is appropriate.

1.6) Meanwhile, prepare 1 mL insulin syringes (28G1/2) with 0.1 mL of vaccine each. When animals are fully induced, remove one animal from the chamber and lay the mouse ventrally on a towel or bench pad.

1.7) Administer the vaccine intramuscularly. With the syringe at a 45° angle and with the bevel facing up, insert the syringe ~5 mm into the deltoid of the mouse and inject the vaccine.

NOTE: The hind quarter/flank may be used as an injection site instead of the deltoid.

1.8) After injection, keep the needle inserted in the muscle for ~5-10 s. Once the volume is delivered, rotate the syringe at 180° so that the bevel faces away to create a seal and prevent the leakage of the vaccine. Then, slowly pull the needle out of the injection site.

1.9) Return the mouse to the cage. Repeat the procedure with all animals in the designated group.

1.10) Turn off the isoflurane and flush the induction chamber with oxygen before anesthetizing the next cage of mice.

1.11) Monitor the animals until they are all alert and moving in the cage. Return the cage to the housing location.

1.12) Monitor animals every 12 h post vaccination, up to 48 h, for clinical symptoms of morbidity such as rough/unkept coat, slow gait, or labored breathing. If symptoms persist, confer with the institutional veterinarian and remove the mice from the study if needed.

2. Growth of *B. pertussis* Strains and Preparation of Infection Inoculum

2.1) From frozen stocks [cryopreserved at -80 °C in 15% glycerol, frozen from planktonic growth in Stainer-Scholte (SS) media¹²], streak out *B. pertussis* on Bordet-Gengou (BG) agar¹³ plates supplemented with 10% defibrinated sheep's blood and 100 µg/mL streptomycin (10% BG + Sm) for selection. Incubate the plate at 37 °C for 4 days.

2.2) Pick ~8-10 individual colonies of the strain(s) from the plate and inoculate 3 mL of SS media supplemented with 22.8 mM L-cysteine, 3.6 mM ferrous sulfate, 3.3 mM niacin, 48.8 mM glutathione, 227 mM ascorbic acid, 1 mg/mL heptakis, and 100 µg/mL streptomycin. Grow the culture at 37 °C in a roller drum at 60 rpm for 16-24 h.

2.3) The next day, dilute the primary culture 1:600, 1:300, 1:120, 1:60, 1:30, and 1:15 in 3 mL of supplemented SS media. Incubate the culture at 37 °C in roller drum at 60 rpm for 16-24 h.

2.4) Perform optical density measurements at 600 nm (OD₆₀₀) for the bacterial cultures. Using spectrophotometer cuvettes, dilute the cultures 1:10 by adding 0.1 mL of the liquid cultures to 0.9 mL of sterile PBS.

2.5) Select a culture with OD₆₀₀ ≈ 0.8-1.2. Calculate the volume needed to obtain 1 OD (**Figure 3**). Spin down the volume in a 1.5 mL microcentrifuge tube at 6000 x g for 5 min at 25 °C. Aspirate the supernatant and resuspend bacterial cell pellet in 1 mL of sterile PBS to obtain a density of 1 OD/mL [$1-3 \times 10^9$ colony forming units (CFU)/mL].

2.6) To prepare an inoculum of $\sim 5 \times 10^5$ to 1.5×10^6 CFUs/mouse in 40-50 µL, vortex and serially dilute the bacterial solution (from step 2.5) 100-fold in 1 mL of sterile PBS to achieve $\sim 1-3 \times 10^7$ CFUs/mL (**Figure 4A**). Transport the inoculum to the vivarium on ice.

3. Murine Intranasal Infection Model

3.1) In the vivarium, set oxygen and anesthesia conditions as described in steps 1.3 and 1.4. As described in step 1.5, place the mice in the chamber to anesthetize. Monitor the animals until anesthesia takes effect.

3.2) When the mice are anesthetized, remove one animal at a time from the induction chamber. Pick up the mouse by the scruff of the dorsal thorax, behind the shoulder blades and neck. Position the mouse upright to access the nose.

3.3) Using a 200 µL pipette tip, slowly apply 40-50 µL of the bacterial inoculum to the nares of the mouse (20-25 µL in each nare). Hold the mouse until the entire inoculum has been inhaled by the animal. If some of the inoculum bubbles out, collect the bubbles and re-instill into the nares. Deliver an equal amount of sterile PBS to one group of mice as negative control.

3.4) As done in steps 1.10-1.12, return the inoculated animals to their cage and monitor the animals until they are alert and moving. Return the cage back to its original housing space on the rack. Flush the induction chamber with oxygen to remove the residual isoflurane before anesthetizing the next set of animals. Monitor the animals for 48 h post-infection.

3.5) In the laboratory, plate serial dilutions of the inoculum, in sterile PBS, to verify the actual CFUs delivered to the mice. Plate 0.1 mL of dilutions on 10% BG + Sm plates (**Figure 4A**). Place the plates in the 37 °C incubator and grow for 4 days. Count and calculate the CFUs from the inoculum delivered to the mouse (**Figure 4B**).

4. Harvesting of Animal Tissue after Infection

4.1) Prepare for mouse dissection and tissue harvest.

4.1.1) Sterilize all tools (coarse and fine scissors, curved scissors, fine forceps, pellet pestles, and triangle spreaders) needed for processing tissues in an autoclave. Seal the tools in sterilization pouches. Wrap the glass dounce homogenizers in foil and add autoclave tape to indicate sterility.

4.1.2) Prepare agar plates 1 or 2 days prior to the tissue harvest to ensure that plates are solidified prior to use. For *B. pertussis*, use 10% BG + Sm. Label plates for nasal septum, trachea, and lung for each mouse with the desired dilutions, determined empirically for each experiment.

4.1.3) Fill and label CFU dilution tubes. Add 0.9 mL of sterile PBS to sterile 1.5 mL microcentrifuge tubes based on the number of organs to process and dilutions per organ.

4.1.4) Fill and label tubes for tissue collection:

4.1.4.1) Nasal septum and trachea: fill a sterile 1.5 mL microcentrifuge tube with 0.3 mL of sterile 1% casein in PBS (Ca^{2+} and Mg^{2+} -free). Store at 4 °C.

4.1.4.2) Lungs: add 2 mL of sterile 1% casein in PBS to a sterile 15 mL conical tube and store at 4 °C. To harvest lungs for histology, add 2 mL of 10% neutral buffered formalin (NBF) and store at RT.

4.1.4.3) Spleen: add 3 mL of RPMI + 5% FBS to a 15 mL conical tube. Store at 4 °C.

4.1.4.4) Blood: label two sets of sterile 1.5 mL microcentrifuge tubes, one for whole blood and one for serum.

4.1.5) Fresh 70% ethanol should be prepared to fill beakers and spray bottles for dissection.

4.2) Transport all materials to the vivarium on a cart on the day of harvest. Clean the BSC and set up the anesthesia machine as in steps 1.3 and 1.4.

4.3) Place the mice to be dissected in the induction chamber and, with oxygen flowing, turn on the isoflurane to 5% and wait until animals are unconscious. Remove mice one at a time, and cervically dislocate the animal as a secondary method to ensure death.

4.4) Position the mouse, ventral side facing up, on the dissection board and pin the arms and legs open. Spray down the body of the mouse with 70% ethanol.

4.5) Using forceps, clasp the skin below the abdomen, in the center of the pelvis. Using sharp scissors, make a vertical cut up to the mandible. Then, dissect the skin away from the peritoneal wall by pushing the two layers apart, using small motions with the scissors closed. Place the skin to the sides of the carcass to create an unobstructed field for sterile organ harvest.

4.6) Grasp the intact peritoneum below the rib cage at or around the liver and cut it open moving towards the rib cage. Expose the lower digestive tract and move the colon to the left revealing the spleen. Using curved forceps, grasp the spleen and dissect away the connective tissue with scissors. Place the spleen in a 15 mL conical tube containing 3 mL of RPMI + 5% FBS and place the tube on ice.

4.7) Use forceps to stabilize the rib cage at the xiphoid process and cut open the diaphragm. Lungs should deflate and fall towards the spine. Cut open the rib cage at the sides to remove the breast plate.

4.8) Isolate and remove the superior lobe of the right lung¹⁴, cutting the pulmonary arteries and veins. Place the lobe in a 15 mL conical tube containing 10% NBF and place the tube at RT for at least 24 h to fix the tissue. Isolate the remaining lobes of the right lung and the left lung. Place lobes in a 15 mL conical tube containing 2 mL of 1% casein in PBS and place it on ice.

4.9) After cutting the pulmonary veins and arteries to dissect out the lungs, allow the chest cavity to fill with blood as the mouse exsanguinates. Using a 1 mL pipette, collect the blood and transfer it to the pre-labeled 1.5 mL microcentrifuge tube. Place the tube on ice.

4.10) Then, from the neck, remove the soft tissue (parotid, sublingual, and submaxillary glands and lymph nodes) that covers the trachea. Open and remove the protective membranes surrounding the trachea. Delicately, using fine forceps and scissors, separate the trachea from the esophagus and any other connective tissue from top of the collarbones to bottom of the mandible.

4.11) Using forceps, hold on to the trachea and cut the trachea at the top of the clavicle. Pull the trachea down to maximize elasticity and cut the trachea at the bottom of the mandible right above the larynx, isolating as much as possible (~1 cm). Place the organ in a pre-labeled 1.5 mL microcentrifuge tube with 0.3 mL of 1% casein in PBS and place it on ice.

4.12) Unpin the mouse and lay it ventrally, with the mouse facing the researcher for clear access to the nose. Spray the head of the mouse with 70% ethanol and, using hands, grasp the mouse directly behind the skull.

4.13) Using scissors, cut away soft flesh of the snout, starting from the bottom of the nose and moving upward. In addition, remove the fur, skin, and whiskers around the nose. Then, with forceps and curved scissors, insert the tips of scissors into nares with the curves pointed outward, and cut open the nasal passage towards the eyes, creating a V-like formation.

4.14) Using fine forceps, collect the nasal septum and soft tissue within the created formation. Place the tissue in a pre-labeled 1.5 mL microcentrifuge tube with 0.3 mL of 1% casein in PBS and place it on ice.

4.14) Dispose of the carcass in a biohazard bag. Before dissecting the next animal, rinse the

tools with deionized water, and then place in a beaker filled with 70% ethanol. Remove the tools, shake off excess ethanol, and then proceed with the next dissection

4.15) Dissect each mouse following steps 4.3-4.14.

4.16) Process the tissues as described below.

5. Processing of Spleen

5.1) To dissociate spleens, place a 70 μ m cell strainer in a 60 mm tissue culture dish. Pour the spleen and accompanying media into the filter, using the plunger of a 3 mL syringe. Carefully mash the organ until it is completely dissociated and filtered through cell strainer.

5.2) Rinse the filter with 3 mL of RPMI + 5% FBS into the tissue culture dish. Collect the cell suspension and place it in its original 15 mL tube. Centrifuge the tubes at 450 x g for 5 min at 4 °C to pellet the cells.

5.3) Aspirate or decant the supernatant and lyse the red blood cells by resuspending the pellet in 2 mL of ammonium chloride potassium (ACK) buffer (150 mM ammonium chloride, 10 mM potassium bicarbonate, 0.1 mM sodium EDTA). Incubate for 3 min at RT (25 °C).

5.4) Fill the tubes up to 8 mL with RPMI + 5% FBS and centrifuge tubes at 450 x g for 5 min at 4°C. Aspirate or decant the supernatant. Resuspend the cell pellets in 5 mL of RPMI + 5% FBS and count the splenocytes using a hemocytometer and microscope.

5.5) Calculate the volume of cells needed to stimulate 2.5×10^6 cells per well. In a 48-well plate, seed the cells in 0.5 mL of T-cell media (RPMI 1640 + 10% FBS, 10 μ g/mL gentamicin, and 50 μ M β -mercaptoethanol) per well.

5.6) Based on the above calculation, place the required volume of the cell suspension into a fresh tube and pellet-cells at 450 x g for 5 min at 4 °C.

5.7) Resuspend the pellet in the required volume of T-cell media. For a *B. pertussis* infection model, test the antigen-specific cytokine response to vaccine antigens: pertactin (Prn) and filamentous hemagglutinin adhesion (FHA). Therefore, 3 treatments are needed: 1) no stimulation (NS, as negative control), 2) Prn, and 3) FHA. For the assay, 7.5×10^6 cells in 1.5 mL of T-cell media is required (2.5×10^6 cells per 0.5 mL).

5.8) Aliquot 0.5 mL of the cell suspension into a 48-well plate.

5.9) To stimulate cells, mix antigens at 2 times the desired concentration in T-cell media. Final concentrations of Prn and FHA = 1 μ g/mL and 0.5 μ g/mL, respectively. Therefore, mix 2 μ g/mL Prn or 1 μ g/mL FHA in 0.5 mL. Then, aliquot 0.5 mL of the stimulation medium into each designated well, diluting the antigen treatment to 1x in a final volume of 1 mL in each well.

5.10) Incubate the plates at 37 °C in 5% CO₂. Collect supernatants on day 7 and aliquot 0.5 mL of the supernatants into pre-labeled microcentrifuge tubes. Store the samples in a -20 °C until ready to test antigen-specific cytokines by ELISA (**Figure 5**).

6. Processing of Lungs

6.1) Transfer the lungs (in 2 mL of 1% casein in PBS) into a sterile, 15 mL dounce homogenizer. Use pestle to homogenize tissue. Dissociate until no large particles of tissue remain. Place the homogenized suspension back in the original 15 mL tube.

6.2) Remove a 0.3 mL aliquot for plating CFUs and centrifuge the homogenate at 450 x g for 5 min at 4 °C. Collect and aliquot the supernatant in 0.5 mL aliquots into pre-labeled microcentrifuge tubes. Store the samples in a -20 °C until the analysis of cytokines by ELISA.

6.3) Prepare chosen dilutions by serially diluting 0.1 mL of the homogenized lung suspension in dilution tubes (0.9 mL of sterile PBS). Plate 0.1 mL of empirically chosen dilutions onto pre-labeled 10% BG + Sm plates and spread using sterile triangle spreader.

6.4) Incubate the plates at 37 °C in room air for 4 days.

6.5) Count and calculate CFUs/lung (**Figure 6**). Briefly, multiply recovered CFU numbers by the dilution factor of the plate, then also by the total volume in which the organ was processed. The CFU calculations are then transformed into Log₁₀ values for each animal and graphed.

6.5.1) Plates with 30-300 colonies are easily and accurately counted. Plates with less than 6 colonies should not be used for calculations since such low colony numbers introduce error¹⁵. To obtain a lower limit of detection, the total volume in which an organ was homogenized is divided by the volume used to spot onto a plate from the undiluted homogenate (*e.g.*, 2 mL total volume divided by 0.1 mL of undiluted homogenate equals the lower limit of 20 CFUs detectable).

7. Processing of Nasal Septum and Trachea

7.1) Homogenize the tissue in the 0.3 mL of 1% PBS/casein with pellet pestle cordless motor homogenizers. Homogenize the tissue for 0.5-1 min until the tissue is largely dissociated. Bacteria should be shed into the suspension.

7.2) Prepare chosen 10x dilutions by serial dilution of 0.1 mL of the homogenized suspension in dilutions tubes containing 0.9 mL of sterile PBS. Dot 0.1 mL of each dilution onto pre-labeled 10% BG + Sm plates and spread the suspension using a triangle spreader that has been sterilized by a 70% ethanol wash and flame.

7.3) Incubate the plates at 37 °C in room air for 4 days.

7.4) Count and calculate CFUs/organ as in step 6.5 (**Figure 6**). To obtain a lower limit of detection, the total volume in which an organ was homogenized is divided by the volume used to dot on a plate from the undiluted homogenate (*e.g.*, 0.3 mL total volume divided by 0.1 mL of undiluted equals the lower limit of 3 CFUs detectable).

8. Processing of Blood

8.1) Centrifuge the tubes containing isolated whole blood at 18,000 x g for 30 min at 4 °C to pellet red blood cells.

8.2) Carefully take off the serum supernatant and pipet into a pre-labeled serum microcentrifuge tube. Store the tubes in -20 °C until ready for further downstream analysis (*i.e.*, total and specific Ig ELISA).

REPRESENTATIVE RESULTS:

The model described shows a method to evaluate vaccine efficiency and immune responses during host-pathogen interactions. **Figure 1** depicts the representative vaccine schedule used to immunize and infect mice and harvest tissues for analysis. **Figure 2** demonstrates the setup of the anesthesia system employed to induce mice, enabling investigators to deliver immunizations and bacterial inoculums. **Figure 3** shows example OD₆₀₀ measurements and calculations to achieve a 1 OD bacterial suspension to prepare 100-fold diluted bacterial inoculum to be delivered to mice. **Figure 4** depicts the inoculum preparation used for the infection, the plating scheme of the serial dilutions, and the example calculations used to enumerate CFUs delivered to mice based upon plating serial dilutions. **Figure 5** shows antigen-specific recall responses elicited after seven days of stimulation with the vaccine antigen FHA. Immunize spleen cells from the combination vaccine group, Alum/FHA/BcfA, produced IFN γ and IL-17, while significantly downregulating IL-5. This effect promotes a Th1/Th17 polarization of the immune response during *B. pertussis* infection. Background levels of cytokines were produced by incubation of immunized spleen cells with media alone, indicating that the cytokines detected were recall responses to the immunization (data not shown). **Figure 6** depicts an example CFU enumeration of bacteria recovered from respiratory tract tissues of an immunized mouse, using serial dilutions of *B. pertussis* tissue homogenates plated on 10% BG + Sm plates. Raw counts were multiplied by the dilution factor and total volume of the tissue lysate and the data were log transformed. CFUs from immunized animals are then compared to non-immunized (naïve) animals to determine the protective effect of the vaccine.

FIGURE AND TABLE LEGENDS:

Figure 1: Representative vaccine schedule. Mice are immunized on day 0 and then boosted ~4 weeks later (d28) with the appropriate aPV. Infection of the mice with *B. pertussis* occurs ~2 weeks (d42) after boosting mice. After infection the animals are killed on various days (d43-56) post-inoculation. Tissue and blood is collected for downstream analysis (*e.g.*, CFU enumeration, cytokine and antibody ELISAs).

Figure 2: Anesthesia machine setup. Shown is an anesthetic vaporizer with attached induction chamber and scavenger system (inside biological safety cabinet).

Figure 3: Preparation of 1 OD₆₀₀ bacterial suspension. OD₆₀₀ values were obtained from diluted primary *B. pertussis* cultures. One culture in log phase was used to calculate volume needed to obtain a culture at 1 OD₆₀₀ culture for infection. Briefly, an OD₆₀₀ of 1 was divided by the calculated OD₆₀₀ of the desired culture to obtain a volume equaling 1 OD to be used for infection.

Figure 4: Calculation of delivered intranasal inoculum. (A) Schematic of serial dilution of infection inoculum that is diluted to 10⁻⁴, 10⁻⁵, and 10⁻⁶. These dilutions are plated on 10% BG + Sm, incubated for 4 days at 37 °C and then counted. (B) Counts from 10⁻⁴, 10⁻⁵, and 10⁻⁶ dilutions are then used to calculate intranasally delivered CFUs.

Figure 5: Cytokine production by spleen cells immunized with FHA, Alum/FHA, BcfA/FHA, and Alum/BcfA/FHA. Dissociated cells were cultured with FHA for 7 days. Supernatants were tested by sandwich ELISA for (A) IFN-γ, (B) IL-17, and (C) IL-5. Errors bars are expressed as standard deviation of the mean of each group, n = 5 per group. ***p < 0.001. The figure is adapted from a previous publication¹⁰.

Figure 6: *B. pertussis* CFUs and calculations from harvested tissue from mice. (A) *B. pertussis* CFUs from homogenized mouse tissue. 0.1 mL serial dilutions incubated at 37 °C for 4 days. (B) Calculations based upon CFUs obtained from homogenized trachea. CFUs were multiplied by the respective dilution and then multiplied by 10 to achieve CFUs per mL. In order to obtain CFU per organ, the CFUs per mL were multiplied by the total volume in which the organ was homogenized (0.3 mL). The CFUs per organ were then log transformed.

DISCUSSION:

The comprehensive protocol described here to study vaccine-induced immunity to *B. pertussis* infection will also permit evaluation of host responses to a variety of other pathogens. The protocol discusses methods to deliver immunizations, determine vaccine efficacy following pathogen challenge, and parallel dissection of immune function. In adapting the protocol in order to study other pathogens, several parameters would need to be modified. These include, but are not limited to, the mode of animal anesthesia, vaccine composition, dose, and route of administration. In addition, the dose and route of administration of the challenged pathogen of interest, selected tissue for harvest, and downstream evaluation of immune responses are factors that may be modified for the pathogen/disease of interest.

The mouse model of *B. pertussis* infection is widely used and is an excellent model for pathogenesis and vaccinology studies¹⁶⁻²⁰. Murine models exhibit many similarities to human infection, including: i) bacteria are limited to the respiratory tract and multiply rapidly, ii) young animals display comparatively severe infections, iii) good correspondence between vaccines that protect children against pertussis and those that protect mice against infection, and iv) *B. pertussis*-specific T-cells and antibodies mediate natural and vaccine-induced protective immunity²¹⁻²⁴. Therefore, the murine model permits the study of immunization effects on

bacterial clearance²⁵. Another advantage of using mice to model *B. pertussis* infections is the availability of genetically modified knockout and transgenic animals to study critical players in vaccine-induced immune responses^{19,26}.

The majority of immunizations are administered parenterally, specifically *via* the intramuscular (i.m.) route. This route is preferred because it elicits systemic immunity with minimal local reactogenicity²⁷⁻²⁹. Alternatives to intramuscular injections include subcutaneous (s.c.) or intraperitoneal (i.p.) delivery, which also induce systemic responses. Subcutaneous routes are also attractive, as there is a large population of resident antigen presenting cells (APC) within the dermis with access to the vascular and lymphatic systems³⁰. However, intradermal delivery has not been explored for the pertussis vaccine. Intraperitoneal delivery of experimental aPV generates similar immunity to intramuscular immunization³¹ and is a reliable injection route for murine studies, albeit impractical for clinical use.

This protocol utilizes the i.m. immunization route, which provides protection in the lungs but not the nasopharynx³². Recent studies have shown that an intranasal (i.n.) vaccine promotes a local, mucosal immune response that protects the upper and lower respiratory tracts, particularly the nose, which serves as a reservoir of bacteria that may be subsequently transmitted to other hosts³³. In addition, i.n. immunization has been shown to generate tissue resident memory that is not generated by systemic immunization^{33,34}. Therefore, the choice of vaccine administration route depends greatly on the type of vaccine and immune response required to protect against disease.

The intranasal route of bacterial delivery described in this protocol is a widely used method for respiratory pathogens that safely and consistently delivers a bacterial inoculum directly into the respiratory tract of anesthetized mice. Our protocol uses a high-volume dose (40-50 μ L) that is inhaled into the nasopharynx and travels into the lower respiratory tract. A low volume inoculum (10-20 μ L) would colonize the nasopharynx, but colonization of the lungs will be minimal³⁵. However, inhalation of *B. pertussis*-containing air droplets is considered the natural mode of infection of individuals and transmission. This route of administration has been used in various animal models^{36,37}. To achieve comparable levels of infection to direct i.n. inoculation, considerably higher concentrations of the bacterial inoculum (10^9 - 10^{11} CFUs/mL) and delivery time are required³⁸.

To establish colonization of mouse respiratory tract, this protocol uses fresh bacteria, grown in liquid culture to ensure that bacteria used for inoculation are in the virulent phase and are replicating in the log stage. Experimenters can also use an inoculum from pre-titrated, frozen stocks. This enables an knowledge of the CFUs being administered to the mouse. However, the bacteria in these inoculums may be in the non-virulent phase, which can reduce the efficiency of respiratory tract colonization³⁹. After the infection, the inoculum is plated in order to determine the bacterial CFUs delivered to the mouse. Investigators may also choose to plate the inoculum prior to the *in vivo* infection to ensure viability of the bacteria and confirm dose of the inoculum.

After infection, bacterial CFUs are enumerated by homogenizing isolated tissue from sacrificed mice at a predetermined timepoint. A disadvantage to this method is its inability to kinetically track pathogen CFUs for a specified set of mice. Researchers must use multiple groups of animals sacrificed at different timepoints to examine vaccine-induced bacterial restriction. The number of mice in each experiment will vary depending on the number of timepoints to examine and the desired effect size. This may introduce increased biological variation. Integration of a bioluminescent or fluorescent reporter gene into the pathogen of interest will permit non-invasive monitoring of growth and dissemination *in vivo* throughout the course of infection³⁵. This method reduces biological variation and minimizes the required number of experimental animals, since longitudinal data are obtained from the same group of animals.

The tissue dissociation and homogenization protocol employed here for respiratory tract tissues is also applicable for colony enumeration of other solid tissues such as liver, kidney, intestine, and/or bladder to interrogate sites of infection and dissemination of pathogens of interest.

Along with CFU enumeration, this protocol enables characterization of immune responses elicited by immunization and natural infection. Specifically, quantification of cytokines produced systemically and locally allow for the determination of efficacious immune profiles resulting from immunization. Cytokines are immunomodulators that promote cellular influx to affected tissues and activation of cellular immunity, as well as provide help for generation of humoral responses^{10,40,41}. Using this protocol, cytokines produced in various tissue compartments, such as the lung and spleen, are detected. Although not shown here, the stimulation protocol is also applicable for evaluation of responses in the draining lymph nodes.

ELISA analysis allows detection and quantification of cytokines in media supernatants or mixed suspensions (*i.e.*, homogenates or serum), yielding information at the population level and characterizing antigen-specific cytokine responses from a mixed cell culture at designated timepoints. In contrast, methods like ELISPOT or flow cytometry permit evaluation of the number of cells that produce an analyte and the level of expression per cell^{42,43}. Although not described here, these methods are also applicable to detection of antigen-specific B cells. The combination of CFU enumeration and immunological assays provide complete picture of the response to immunization.

Other analyses that may be performed using this infection protocol include epigenetic or transcriptomic analysis when DNA and RNA is obtained from tissues of interest⁴⁴. Thus, with consideration of the appropriate vaccine composition, immunization, and pathogen delivery route, this protocol is versatile in its implementation and easily suited for various models of infection. These techniques are also applicable to non-infectious diseases (*i.e.*, cancer, multiple sclerosis, asthma, autoimmune diseases) where vaccines are used as a therapeutic modality.

ACKNOWLEDGMENTS:

This work was supported by 1R01AI125560-01 and start-up funds from The Ohio State University.

DISCLOSURES:

The authors have nothing to disclose.

REFERENCES:

- 1 Tacken, P. J., Figdor, C. G. Targeted antigen delivery and activation of dendritic cells *in vivo*: steps towards cost effective vaccines. *Seminars in Immunology*. **23** (1), 12-20 (2011).
- 2 Kilgore, P. E., Salim, A. M., Zervos, M. J., Schmitt, H. J. Pertussis: Microbiology, Disease, Treatment, and Prevention. *Clinical Microbiology Reviews*. **29** (3), 449-486 (2016).
- 3 Dorji, D., *et al.* *Bordetella Pertussis* virulence factors in the continuing evolution of whooping cough vaccines for improved performance. *Medical Microbiology and Immunology*. **207** (1), 3-26 (2018).
- 4 Feldstein, L. R., *et al.* Global Routine Vaccination Coverage, 2016. *Morbidity and Mortality Weekly Report*. **66** (45), 1252-1255 (2017).
- 5 Cherry, J. D. Epidemic pertussis in 2012--the resurgence of a vaccine-preventable disease. *New England Journal of Medicine*. **367** (9), 785-787 (2012).
- 6 Celentano, L. P., *et al.* Resurgence of pertussis in Europe. *The Pediatric Infectious Disease Journal*. **24** (9), 761-765 (2005).
- 7 McNabb, S. J., *et al.* Summary of notifiable diseases. *Morbidity and Mortality Weekly Report* p. **54** (53), 1-92 (2007).
- 8 Sealey, K. L., Belcher, T., Preston, A. *Bordetella pertussis* epidemiology and evolution in the light of pertussis resurgence. *Infection, Genetics, and Evolution*. **40**, 136-143 (2016).
- 9 Warfel, J. M., Merkel, T. J. The baboon model of pertussis: effective use and lessons for pertussis vaccines. *Expert Reviews of Vaccines*. **13** (10), 1241-1252 (2014).
- 10 Jennings-Gee, J., *et al.* The adjuvant *Bordetella* Colonization Factor A attenuates alum-induced Th2 responses and enhances *Bordetella pertussis* clearance from mouse lungs. *Infection and Immunity*. 10.1128/IAI.00935-17, (2018).
- 11 Sukumar, N., Mishra, M., Sloan, G. P., Ogi, T., Deora, R. Differential Bvg phase-dependent regulation and combinatorial role in pathogenesis of two *Bordetella* paralogs, BipA and BcfA. *Journal of Bacteriology*. **189** (10), 3695-3704 (2007).
- 12 Stainer, D. W., Scholte, M. J. A simple chemically defined medium for the production of phase I *Bordetella pertussis*. *Journal of General Microbiology*. **63** (2), 211-220 (1970).
- 13 Bordet J., G. O. Le microbe de le coqueluche. *Annales de l'Institut Pasteur*. **20**, 731-741 (1906).
- 14 Cook, M. J. *The Anatomy of the Laboratory Mouse*. (Academic Press, 1965).
- 15 Sutton, S. Accuracy of Plate Counts. *Journal of Validation Techniques*. **17** (3), 42-46 (2011).
- 16 Conover, M. S., Sloan, G. P., Love, C. F., Sukumar, N., Deora, R. The Bps polysaccharide of *Bordetella pertussis* promotes colonization and biofilm formation in the nose by functioning as an adhesin. *Molecular Microbiology*. **77** (6), 1439-1455 (2010).
- 17 Cattelan, N., Jennings-Gee, J., Dubey, P., Yantorno, O. M., Deora, R. Hyperbiofilm Formation by *Bordetella pertussis* Strains Correlates with Enhanced Virulence Traits. *Infection and Immunity*. **85** (12), (2017).
- 18 Andreasen, C., Carbonetti, N. H. Pertussis toxin inhibits early chemokine production to delay neutrophil recruitment in response to *Bordetella pertussis* respiratory tract infection in mice. *Infection and Immunity*. **76** (11), 5139-5148 (2008).

612 19 Mills, K. H., Gerdt, V. Mouse and pig models for studies of natural and vaccine-induced
613 immunity to *Bordetella pertussis*. *Journal of Infectious Diseases*. **209 Suppl 1**, S16-19
614 (2014).

615 20 Dunne, A., *et al.* A novel TLR2 agonist from *Bordetella pertussis* is a potent adjuvant that
616 promotes protective immunity with an acellular pertussis vaccine. *Mucosal Immunology*.
617 **8** (3), 607-617 (2015).

618 21 Denoel, P., Godfroid, F., Guiso, N., Hallander, H., Poolman, J. Comparison of acellular
619 pertussis vaccines-induced immunity against infection due to *Bordetella pertussis* variant
620 isolates in a mouse model. *Vaccine*. **23** (46-47), 5333-5341 (2005).

621 22 Marr, N., *et al.* Protective activity of the *Bordetella pertussis* BrkA autotransporter in the
622 murine lung colonization model. *Vaccine*. **26** (34), 4306-4311 (2008).

623 23 Feunou, P. F., Bertout, J., Loch, C. T- and B-cell-mediated protection induced by novel,
624 live attenuated pertussis vaccine in mice. Cross protection against parapertussis. *PLoS*
625 *One*. **5** (4), e10178.

626 24 Mills, K. H., Ryan, M., Ryan, E., Mahon, B. P. A murine model in which protection correlates
627 with pertussis vaccine efficacy in children reveals complementary roles for humoral and
628 cell-mediated immunity in protection against *Bordetella pertussis*. *Infection and*
629 *Immunity*. **66** (2), 594-602 (1998).

630 25 Higgs, R., Higgins, S. C., Ross, P. J., Mills, K. H. Immunity to the respiratory pathogen
631 *Bordetella pertussis*. *Mucosal Immunology*. **5** (5), 485-500 (2012).

632 26 Alving, C. R. Design and selection of vaccine adjuvants: animal models and human trials.
633 *Vaccine*. **20 Suppl 3**, S56-64 (2002).

634 27 Ipp, M. M., *et al.* Adverse reactions to diphtheria, tetanus, pertussis-polio vaccination at
635 18 months of age: effect of injection site and needle length. *Pediatrics*. **83** (5), 679-682
636 (1989).

637 28 Fessard, C., Riche, O., Cohen, J. H. Intramuscular versus subcutaneous injection for
638 hepatitis B vaccine. *Vaccine*. **6** (6), 469 (1988).

639 29 Bergeson, P. S., Singer, S. A., Kaplan, A. M. Intramuscular injections in children. *Pediatrics*.
640 **70** (6), 944-948 (1982).

641 30 Zhang, L., Wang, W., Wang, S. Effect of vaccine administration modality on
642 immunogenicity and efficacy. *Expert Review of Vaccines*. **14** (11), 1509-1523 (2015).

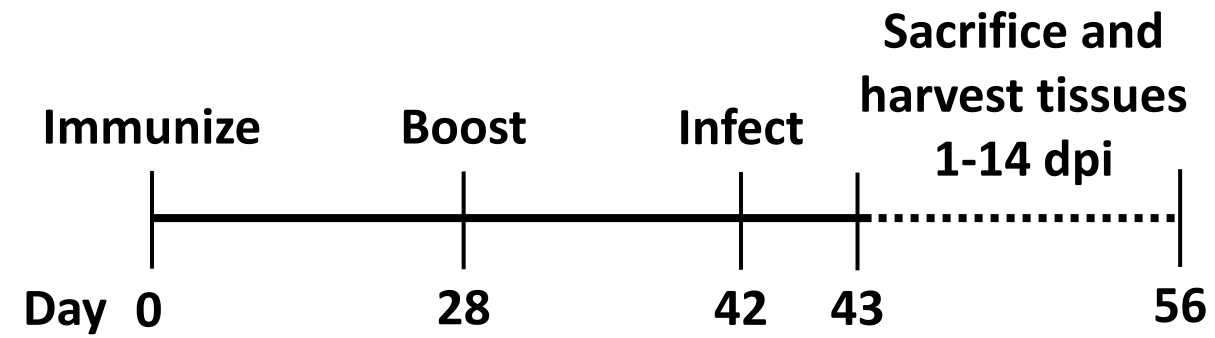
643 31 Ross, P. J., *et al.* Relative Contribution of Th1 and Th17 Cells in Adaptive Immunity to
644 *Bordetella pertussis*: Towards the Rational Design of an Improved Acellular Pertussis
645 Vaccine. *PLoS Pathogens*. **9** (4), e1003264 (2013).

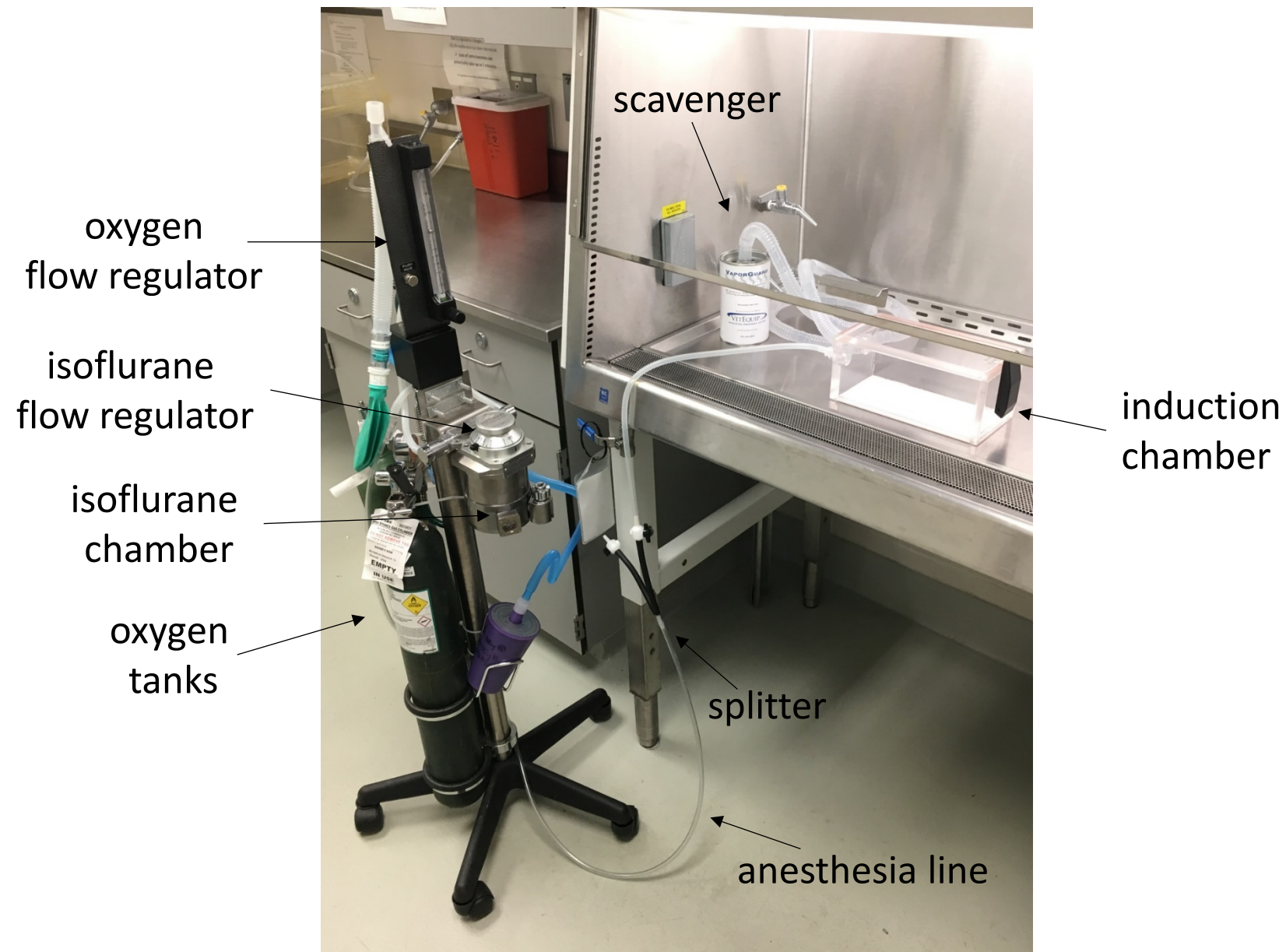
646 32 Warfel, J. M., Zimmerman, L. I., Merkel, T. J. Acellular pertussis vaccines protect against
647 disease but fail to prevent infection and transmission in a nonhuman primate model.
648 *Proceedings of the National Academy of Sciences USA*. **111** (2), 787-792 (2014).

649 33 Allen, A. C., *et al.* Sustained protective immunity against *Bordetella pertussis* nasal
650 colonization by intranasal immunization with a vaccine-adjuvant combination that
651 induces IL-17-secreting TRM cells. *Mucosal Immunology*. 10.1038/s41385-018-0080-x,
652 (2018).

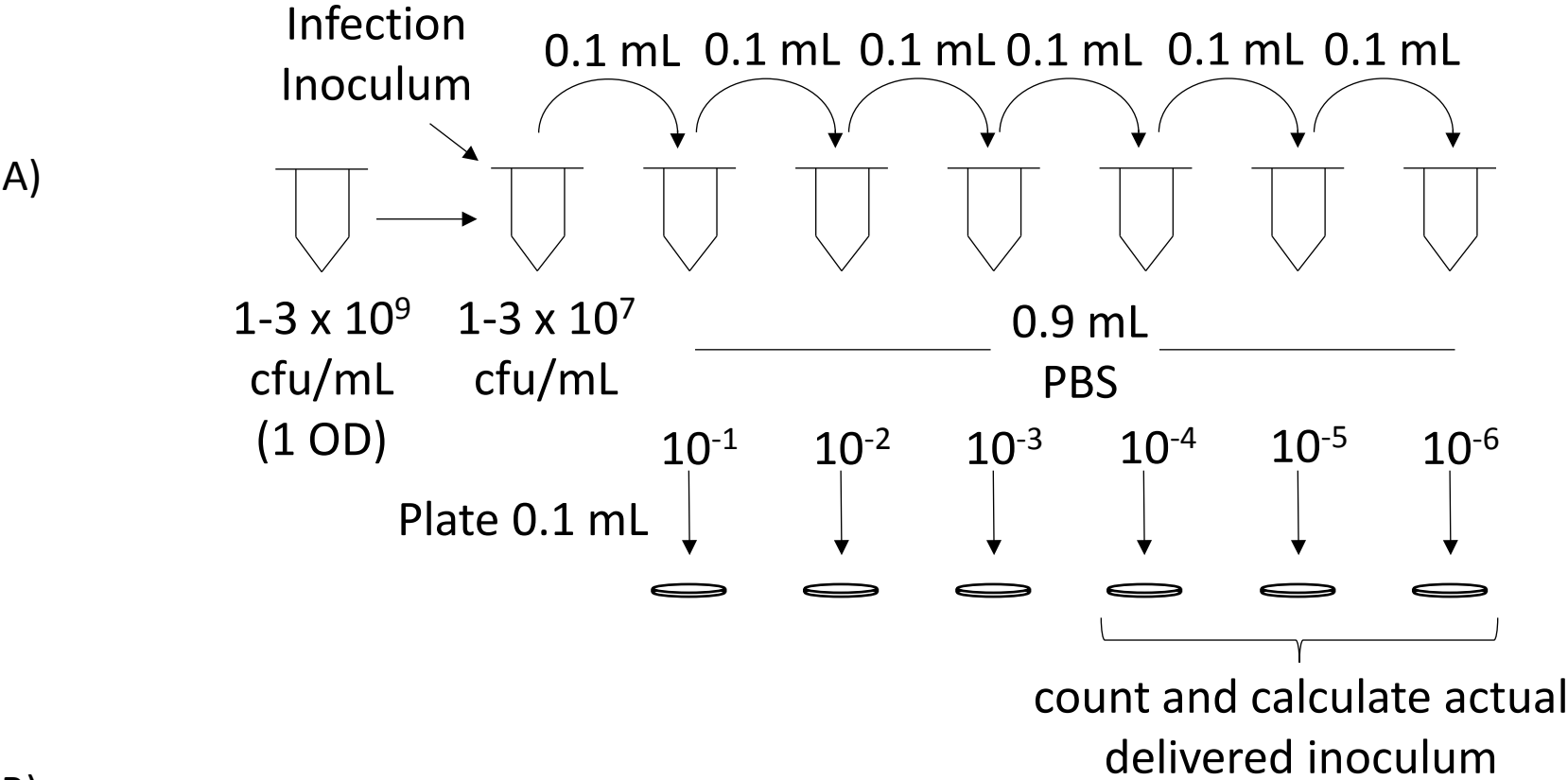
653 34 Solans, L., *et al.* IL-17-dependent SIgA-mediated protection against nasal *Bordetella*
654 *pertussis* infection by live attenuated BPZE1 vaccine. *Mucosal Immunology*.
655 10.1038/s41385-018-0073-9, (2018).

- 35 Miller, M. A., *et al.* Visualization of murine intranasal dosing efficiency using luminescent *Francisella tularensis*: effect of instillation volume and form of anesthesia. *PLoS One*. **7** (2), e31359 (2012).
- 36 Sato, Y., Izumiya, K., Sato, H., Cowell, J. L., Manclark, C. R. Aerosol infection of mice with *Bordetella pertussis*. *Infection and Immunity*. **29** (1), 261-266 (1980).
- 37 Warfel, J. M., Beren, J., Merkel, T. J. Airborne transmission of *Bordetella pertussis*. *Journal of Infectious Diseases*. **206** (6), 902-906 (2012).
- 38 Scanlon, K. M., Snyder, Y. G., Skerry, C., Carbonetti, N. H. Fatal Pertussis in the Neonatal Mouse Model Is Associated with Pertussis Toxin-Mediated Pathology beyond the Airways. *Infection and Immunity*. **85** (11), (2017).
- 39 Martinez de Tejada, G., *et al.* Neither the Bvg- phase nor the vrg6 locus of *Bordetella pertussis* is required for respiratory infection in mice. *Infection and Immunity*. **66** (6), 2762-2768 (1998).
- 40 Higgins, S. C., Jarnicki, A. G., Lavelle, E. C., Mills, K. H. TLR4 mediates vaccine-induced protective cellular immunity to *Bordetella pertussis*: role of IL-17-producing T-cells. *Journal of Immunology*. **177** (11), 7980-7989 (2006).
- 41 Mahon, B. P., Brady, M. T., Mills, K. H. Protection against *Bordetella pertussis* in mice in the absence of detectable circulating antibody: implications for long-term immunity in children. *Journal of Infectious Diseases*. **181** (6), 2087-2091 (2000).
- 42 Karlsson, A. C., *et al.* Comparison of the ELISPOT and cytokine flow cytometry assays for the enumeration of antigen-specific T-cells. *Journal of Immunological Methods*. **283** (1-2), 141-153 (2003).
- 43 Hagen, J., *et al.* Comparative Multi-Donor Study of IFNgamma Secretion and Expression by Human PBMCs Using ELISPOT Side-by-Side with ELISA and Flow Cytometry Assays. *Cells*. **4** (1), 84-95 (2015).
- 44 Raeven, R. H. M., *et al.* Molecular and cellular signatures underlying superior immunity against *Bordetella pertussis* upon pulmonary vaccination. *Mucosal Immunology*. **11** (3), 1009 (2018).



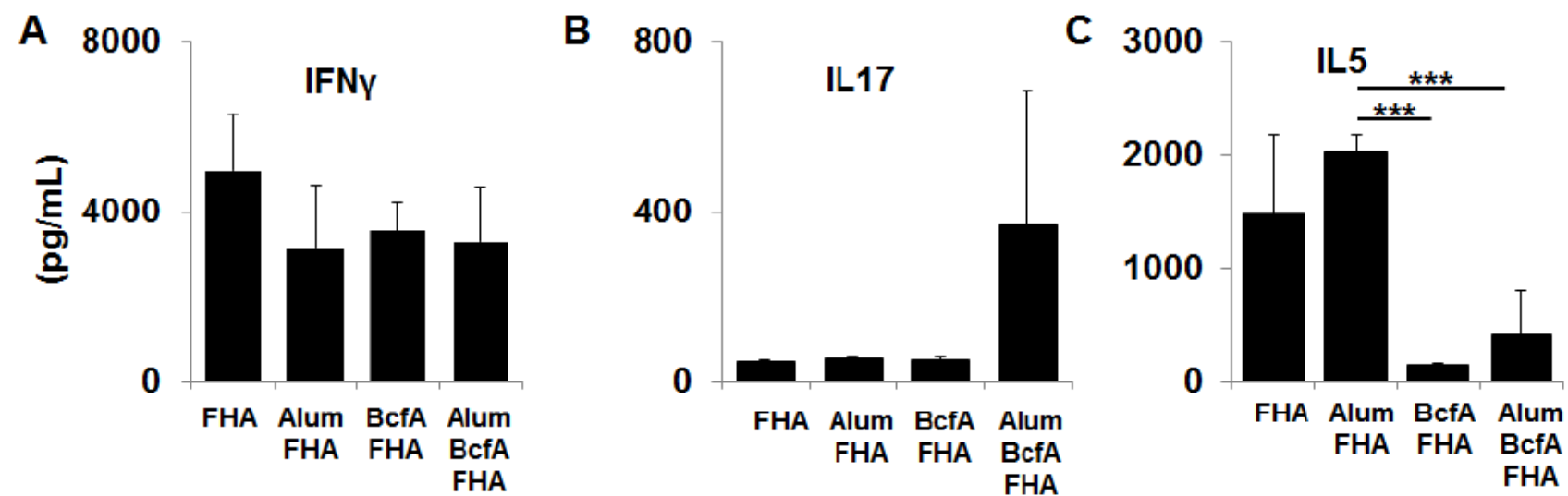


<i>B. pertussis</i>	volume of culture in 3mL SS (μL)	dilution	raw OD ₆₀₀	calculated OD ₆₀₀	calculated volume (mL) needed for 1 OD ₆₀₀ suspension
1	5	1:600	0.01	0.1	
2	10	1:300	0.016	0.16	
3	25	1:120	0.043	0.43	
4	50	1:60	0.087	0.87	1.15
5	100	1:30	0.178	1.78	

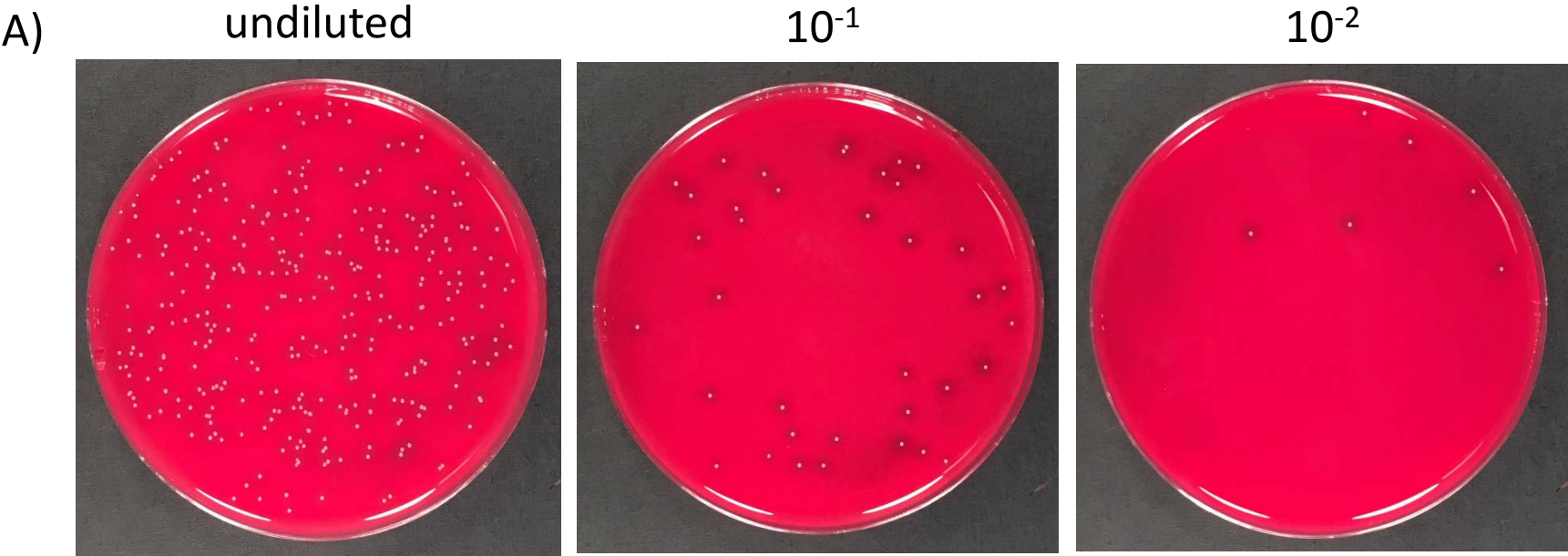


B)

<i>B. pertussis</i>	Count plate 1	Count plate 2	Average	dilution factor	CFU/mL	average	mouse inoculum (0.05 mL)	Log ₁₀
10 ⁻⁴	100	98	99	990000	9.90 x 10 ⁶	1.71 x 10 ⁷	8.6 x 10 ⁵	5.93
10 ⁻⁵	11	12	11.5	1150000	1.15 x 10 ⁷			
10 ⁻⁶	3	3	3	3000000	3 x 10 ⁸			



(from reference #10)



B)

	CFU	dilution factor	CFU/mL	CFU/organ	Log ₁₀	Avg. Log ₁₀
undiluted	330	330	3300	990	3.00	3.10
10^{-1}	38	380	3800	1140	3.06	
10^{-2}	6	600	6000	1800	3.26	

Name of Material/ Equipment	Company	Catalog Number	Comments/Description
2L induction chamber	Vet Equip	941444	
Fluriso	Vet One	V1 501017	any brand is appropriate
Bordet Gengou Agar Base	BD bioscience	248200	
Casein	Sigma	C-7078	
Casamino acids	VWR	J851-500G	Strainer Scholte (SS) media components
L-Glutamic acid	Research Products Int	G36020-500	
L-Proline	Research Products Int	P50200-500	
Sodium Chloride	Fisher	BP358-10	
Potassium Phosphate monobasic	Fisher	BP362-1	
Potassium Chloride	Fisher	P217-500	
Magnesium Chloride hexahydrate	Fisher	M2670-500G	
Calcium Chloride	Fisher	C75-500	
Tris base	Fisher	BP153-1	
L-cysteine HCl	Fisher	BP376-100	SS media supplements
Ferrous Sulfate heptahydrate	Sigma	F-7002	
Niacin	Research Products Int	N20080-100	
Glutathione	Research Products Int	G22010-25	
Ascorbic acid	Research Products Int	A50040-500	
RPMI 1640	ThermoFisher Scientific	11875093	
FBS	Sigma	F2442-500mL	any US source, non-heat inactivated
gentamicin	ThermoFisher Scientific	15710064	
B-mercaptoethanol	Fisher	BP176-100	
15mL dounce tissue grinder	Wheaton	357544	any similar brand is appropriate
Cordless Hand Homogenizer	Kontes/Sigma	Z359971-1EA	any similar brand is appropriate
Instruments - scissors, curve scissors, forceps, fine forceps, triangle spreaders			any brand is appropriate
3mL syringes	BD bioscience	309657	
15mL conical tubes	Fisher	339651	
1.5mL microfuge tubes	Denville	C2170	
70um cell strainers	Fisher	22363548	
60mm plates	ThermoFisher Scientific	130181	
48-well tissue culture plates	ThermoFisher Scientific	08-772-1C	
1mL insulin syringe 28G1/2	Fisher Scientific/Excel Int.	14-841-31	

Mouse IFN-gamma ELISA Ready-SET-Go! Kit	Invitrogen / eBioscience	50-173-21	
Mouse IL-17 ELISA Ready-SET-Go! Kit	Invitrogen / eBioscience	50-173-77	
Mouse IL-5 ELISA Ready-SET-Go! Kit	Invitrogen / eBioscience	50-172-09	



1 Alewife Center #200
Cambridge, MA 02140
tel. 617.945.9051
www.jove.com

ARTICLE AND VIDEO LICENSE AGREEMENT

Title of Article:

Murine model to test host pathogen responses and vaccine efficacy

Author(s):

Kyle Caution, Kacy Yount, Rajender Deora, Punima Dubey

Item 1: The Author elects to have the Materials be made available (as described at <http://www.jove.com/publish>) via:

☒ Standard Access

☐ Open Access

Item 2: Please select one of the following items:

☒ The Author is **NOT** a United States government employee.

☐ The Author is a United States government employee and the Materials were prepared in the course of his or her duties as a United States government employee.

☐ The Author is a United States government employee but the Materials were NOT prepared in the course of his or her duties as a United States government employee.

ARTICLE AND VIDEO LICENSE AGREEMENT

1. **Defined Terms.** As used in this Article and Video License Agreement, the following terms shall have the following meanings: **"Agreement"** means this Article and Video License Agreement; **"Article"** means the article specified on the last page of this Agreement, including any associated materials such as texts, figures, tables, artwork, abstracts, or summaries contained therein; **"Author"** means the author who is a signatory to this Agreement; **"Collective Work"** means a work, such as a periodical issue, anthology or encyclopedia, in which the Materials in their entirety in unmodified form, along with a number of other contributions, constituting separate and independent works in themselves, are assembled into a collective whole; **"CRC License"** means the Creative Commons Attribution-Non Commercial-No Derivs 3.0 Unported Agreement, the terms and conditions of which can be found at: <http://creativecommons.org/licenses/by-nc-nd/3.0/legalcode>; **"Derivative Work"** means a work based upon the Materials or upon the Materials and other pre-existing works, such as a translation, musical arrangement, dramatization, fictionalization, motion picture version, sound recording, art reproduction, abridgment, condensation, or any other form in which the Materials may be recast, transformed, or adapted; **"Institution"** means the institution, listed on the last page of this Agreement, by which the Author was employed at the time of the creation of the Materials; **"JoVE"** means MyJove Corporation, a Massachusetts corporation and the publisher of The Journal of Visualized Experiments; **"Materials"** means the Article and / or the Video; **"Parties"** means the Author and JoVE; **"Video"** means any video(s) made by the Author, alone or in conjunction with any other parties, or by JoVE or its affiliates or agents, individually or in collaboration with the Author or any other parties, incorporating all or any portion

of the Article, and in which the Author may or may not appear.

2. **Background.** The Author, who is the author of the Article, in order to ensure the dissemination and protection of the Article, desires to have the JoVE publish the Article and create and transmit videos based on the Article. In furtherance of such goals, the Parties desire to memorialize in this Agreement the respective rights of each Party in and to the Article and the Video.

3. **Grant of Rights in Article.** In consideration of JoVE agreeing to publish the Article, the Author hereby grants to JoVE, subject to **Sections 4 and 7** below, the exclusive, royalty-free, perpetual (for the full term of copyright in the Article, including any extensions thereto) license (a) to publish, reproduce, distribute, display and store the Article in all forms, formats and media whether now known or hereafter developed (including without limitation in print, digital and electronic form) throughout the world, (b) to translate the Article into other languages, create adaptations, summaries or extracts of the Article or other Derivative Works (including, without limitation, the Video) or Collective Works based on all or any portion of the Article and exercise all of the rights set forth in (a) above in such translations, adaptations, summaries, extracts, Derivative Works or Collective Works and (c) to license others to do any or all of the above. The foregoing rights may be exercised in all media and formats, whether now known or hereafter devised, and include the right to make such modifications as are technically necessary to exercise the rights in other media and formats. If the "Open Access" box has been checked in **Item 1** above, JoVE and the Author hereby grant to the public all such rights in the Article as provided in, but subject to all limitations and requirements set forth in, the CRC License.

ARTICLE AND VIDEO LICENSE AGREEMENT

4. **Retention of Rights in Article.** Notwithstanding the exclusive license granted to JoVE in **Section 3** above, the Author shall, with respect to the Article, retain the non-exclusive right to use all or part of the Article for the non-commercial purpose of giving lectures, presentations or teaching classes, and to post a copy of the Article on the Institution's website or the Author's personal website, in each case provided that a link to the Article on the JoVE website is provided and notice of JoVE's copyright in the Article is included. All non-copyright intellectual property rights in and to the Article, such as patent rights, shall remain with the Author.

5. **Grant of Rights in Video – Standard Access.** This **Section 5** applies if the "Standard Access" box has been checked in **Item 1** above or if no box has been checked in **Item 1** above. In consideration of JoVE agreeing to produce, display or otherwise assist with the Video, the Author hereby acknowledges and agrees that, Subject to **Section 7** below, JoVE is and shall be the sole and exclusive owner of all rights of any nature, including, without limitation, all copyrights, in and to the Video. To the extent that, by law, the Author is deemed, now or at any time in the future, to have any rights of any nature in or to the Video, the Author hereby disclaims all such rights and transfers all such rights to JoVE.

6. **Grant of Rights in Video – Open Access.** This **Section 6** applies only if the "Open Access" box has been checked in **Item 1** above. In consideration of JoVE agreeing to produce, display or otherwise assist with the Video, the Author hereby grants to JoVE, subject to **Section 7** below, the exclusive, royalty-free, perpetual (for the full term of copyright in the Article, including any extensions thereto) license (a) to publish, reproduce, distribute, display and store the Video in all forms, formats and media whether now known or hereafter developed (including without limitation in print, digital and electronic form) throughout the world, (b) to translate the Video into other languages, create adaptations, summaries or extracts of the Video or other Derivative Works or Collective Works based on all or any portion of the Video and exercise all of the rights set forth in (a) above in such translations, adaptations, summaries, extracts, Derivative Works or Collective Works and (c) to license others to do any or all of the above. The foregoing rights may be exercised in all media and formats, whether now known or hereafter devised, and include the right to make such modifications as are technically necessary to exercise the rights in other media and formats. For any Video to which this **Section 6** is applicable, JoVE and the Author hereby grant to the public all such rights in the Video as provided in, but subject to all limitations and requirements set forth in, the CRC License.

7. **Government Employees.** If the Author is a United States government employee and the Article was prepared in the course of his or her duties as a United States government employee, as indicated in **Item 2** above, and any of the licenses or grants granted by the Author hereunder exceed the scope of the 17 U.S.C. 403, then the rights granted hereunder shall be limited to the maximum

rights permitted under such statute. In such case, all provisions contained herein that are not in conflict with such statute shall remain in full force and effect, and all provisions contained herein that do so conflict shall be deemed to be amended so as to provide to JoVE the maximum rights permissible within such statute.

8. **Protection of the Work.** The Author(s) authorize JoVE to take steps in the Author(s) name and on their behalf if JoVE believes some third party could be infringing or might infringe the copyright of either the Author's Article and/or Video.

9. **Likeness, Privacy, Personality.** The Author hereby grants JoVE the right to use the Author's name, voice, likeness, picture, photograph, image, biography and performance in any way, commercial or otherwise, in connection with the Materials and the sale, promotion and distribution thereof. The Author hereby waives any and all rights he or she may have, relating to his or her appearance in the Video or otherwise relating to the Materials, under all applicable privacy, likeness, personality or similar laws.

10. **Author Warranties.** The Author represents and warrants that the Article is original, that it has not been published, that the copyright interest is owned by the Author (or, if more than one author is listed at the beginning of this Agreement, by such authors collectively) and has not been assigned, licensed, or otherwise transferred to any other party. The Author represents and warrants that the author(s) listed at the top of this Agreement are the only authors of the Materials. If more than one author is listed at the top of this Agreement and if any such author has not entered into a separate Article and Video License Agreement with JoVE relating to the Materials, the Author represents and warrants that the Author has been authorized by each of the other such authors to execute this Agreement on his or her behalf and to bind him or her with respect to the terms of this Agreement as if each of them had been a party hereto as an Author. The Author warrants that the use, reproduction, distribution, public or private performance or display, and/or modification of all or any portion of the Materials does not and will not violate, infringe and/or misappropriate the patent, trademark, intellectual property or other rights of any third party. The Author represents and warrants that it has and will continue to comply with all government, institutional and other regulations, including, without limitation all institutional, laboratory, hospital, ethical, human and animal treatment, privacy, and all other rules, regulations, laws, procedures or guidelines, applicable to the Materials, and that all research involving human and animal subjects has been approved by the Author's relevant institutional review board.

11. **JoVE Discretion.** If the Author requests the assistance of JoVE in producing the Video in the Author's facility, the Author shall ensure that the presence of JoVE employees, agents or independent contractors is in accordance with the relevant regulations of the Author's institution. If more than one author is listed at the beginning of this Agreement, JoVE may, in its sole

ARTICLE AND VIDEO LICENSE AGREEMENT

discretion, elect not take any action with respect to the Article until such time as it has received complete, executed Article and Video License Agreements from each such author. JoVE reserves the right, in its absolute and sole discretion and without giving any reason therefore, to accept or decline any work submitted to JoVE. JoVE and its employees, agents and independent contractors shall have full, unfettered access to the facilities of the Author or of the Author's institution as necessary to make the Video, whether actually published or not. JoVE has sole discretion as to the method of making and publishing the Materials, including, without limitation, to all decisions regarding editing, lighting, filming, timing of publication, if any, length, quality, content and the like.

12. **Indemnification.** The Author agrees to indemnify JoVE and/or its successors and assigns from and against any and all claims, costs, and expenses, including attorney's fees, arising out of any breach of any warranty or other representations contained herein. The Author further agrees to indemnify and hold harmless JoVE from and against any and all claims, costs, and expenses, including attorney's fees, resulting from the breach by the Author of any representation or warranty contained herein or from allegations or instances of violation of intellectual property rights, damage to the Author's or the Author's institution's facilities, fraud, libel, defamation, research, equipment, experiments, property damage, personal injury, violations of institutional, laboratory, hospital, ethical, human and animal treatment, privacy or other rules, regulations, laws, procedures or guidelines, liabilities and other losses or damages related in any way to the submission of work to JoVE, making of videos by JoVE, or publication in JoVE or elsewhere by JoVE. The Author shall be responsible for, and shall hold JoVE harmless from, damages caused by lack of sterilization, lack of cleanliness or by contamination due to


the making of a video by JoVE its employees, agents or independent contractors. All sterilization, cleanliness or decontamination procedures shall be solely the responsibility of the Author and shall be undertaken at the Author's expense. All indemnifications provided herein shall include JoVE's attorney's fees and costs related to said losses or damages. Such indemnification and holding harmless shall include such losses or damages incurred by, or in connection with, acts or omissions of JoVE, its employees, agents or independent contractors.

13. **Fees.** To cover the cost incurred for publication, JoVE must receive payment before production and publication the Materials. Payment is due in 21 days of invoice. Should the Materials not be published due to an editorial or production decision, these funds will be returned to the Author. Withdrawal by the Author of any submitted Materials after final peer review approval will result in a US\$1,200 fee to cover pre-production expenses incurred by JoVE. If payment is not received by the completion of filming, production and publication of the Materials will be suspended until payment is received.

14. **Transfer, Governing Law.** This Agreement may be assigned by JoVE and shall inure to the benefits of any of JoVE's successors and assignees. This Agreement shall be governed and construed by the internal laws of the Commonwealth of Massachusetts without giving effect to any conflict of law provision thereunder. This Agreement may be executed in counterparts, each of which shall be deemed an original, but all of which together shall be deemed to be one and the same agreement. A signed copy of this Agreement delivered by facsimile, e-mail or other means of electronic transmission shall be deemed to have the same legal effect as delivery of an original signed copy of this Agreement.

A signed copy of this document must be sent with all new submissions. Only one Agreement is required per submission.

CORRESPONDING AUTHOR

Name:	PURNIMA DUBEY	
Department:	MICROBIAL INFECTION & IMMUNITY	
Institution:	THE OHIO STATE UNIVERSITY	
Title:	ASSOCIATE PROFESSOR	
Signature:		Date: 9-14-18

Please submit a **signed** and **dated** copy of this license by one of the following three methods:

1. Upload an electronic version on the JoVE submission site
2. Fax the document to +1.866.381.2236
3. Mail the document to JoVE / Attn: JoVE Editorial / 1 Alewife Center #200 / Cambridge, MA 02140

September 14th, 2018

Vineeta Bajaj, PhD
Review Editor
JoVE

Dear Dr. Bajaj,

We thank you and the reviewers for the thorough review of our manuscript, JoVE58930 "*Murine model to test host-pathogen responses and vaccine efficacy*". Our responses to the comments are below:

Editorial comments:

Changes to be made by the Author(s) regarding the written manuscript:

1. Please take this opportunity to thoroughly proofread the manuscript to ensure that there are no spelling or grammar issues.

- [As requested.](#)

2. Please print and sign the attached Author License Agreement (ALA). Please then scan and upload the signed ALA with the manuscript files to your Editorial Manager account.

- [As requested.](#)

3. Please rephrase the Introduction to include a clear statement of the overall goal of this method.

- [As requested, a more explicit explanation was included in the first paragraph.](#)

4. Please move the ethics statement before your numbered protocol steps, indicating that the protocol follows the animal care guidelines of your institution.

- [As requested.](#)

5. 1.2: Please specify the vaccines and buffer used in this step, and the ratio of vaccine/buffer to mix.

- [As requested. This is detailed in step 1.1.1-1.1.3](#)

6. 3.3: Please break into two steps.

- [As requested.](#)

7. 4.1: Please refrain from using bullets, dashes, or indentations. Sub-steps of 4.1 should be 4.1.1, 4.1.2, 4.1.3, etc.

- [As requested, these have been changed to follow the appropriate format.](#)

8. Line 190: Please remove commercial language (Kontes™).

- [As requested.](#)

9. 6.8: Please mention how to calculate CRUs/total organ.

- [As requested, a description of CFU calculations was included in step 6.5.](#)

10. Please combine some of the shorter Protocol steps so that individual steps contain 2-3 actions and maximum of 4 sentences per step.

- As requested.

11. After you have made all the recommended changes to your protocol (listed above), please highlight 2.75 pages or less of the Protocol (including headings and spacing) that identifies the essential steps of the protocol for the video, i.e., the steps that should be visualized to tell the most cohesive story of the Protocol.

- As requested.

12. Please highlight complete sentences (not parts of sentences). Please ensure that the highlighted part of the step includes at least one action that is written in imperative tense. Please do not highlight any steps describing anesthetization and euthanasia.

- As requested.

13. Please include all relevant details that are required to perform the step in the highlighting. For example: If step 2.5 is highlighted for filming and the details of how to perform the step are given in steps 2.5.1 and 2.5.2, then the sub-steps where the details are provided must be highlighted.

- As requested.

14. Please upload each Figure individually to your Editorial Manager account as a .png, .tiff, .pdf, .svg, .eps, .psd, or .ai file.

- As requested.

15. Figures 2 and 3: Please include a space between numbers and their units (1 mL, 0.9 mL, 0.1 mL, 50 μ L, etc.). Please make 600 a subscript in Figure 2. Please consider converting Figure 2 to a table. Please use exponential notation (instead of E notation) for numbers in Figure 3.

- As requested.

16. Figures 4 and 5: Are these figures reprinted from a previous publication? If yes, please obtain explicit copyright permission to reuse any figures from a previous publication. Explicit permission can be expressed in the form of a letter from the editor or a link to the editorial policy that allows re-prints. Please upload this information as a .doc or .docx file to your Editorial Manager account. The Figure must be cited appropriately in the Figure Legend, i.e. "This figure has been modified from [citation]."

- Yes, the figure come from reference #10: Jennings-Gee, J. *et al.* The adjuvant Bordetella Colonization Factor A attenuates alum-induced Th2 responses and enhances Bordetella pertussis clearance from mouse lungs. *Infection and Immunity*. 10.1128/IAI.00935-17, (2018). The manuscript is cited in the figure legend. Explicit permission to republish/adapt parts of articles are given in the following statement from their editorial policy:

Authors may republish/adapt portions of their articles

ASM also grants the author the right to republish discrete portions of his/her article in any other publication (including print, CD-ROM, and other electronic formats) of which he or she is author or editor, provided that proper credit is given to the original ASM publication. An ASM author also retains the right to reuse the full article in his/her dissertation or thesis. "Proper credit" means either the copyright lines shown on the top of

the first page of the PDF version, or "Copyright © American Society for Microbiology, [insert journal name, volume number, year, page numbers and DOI]" of the HTML version.

17. Figure 5: Please label the y-axis. Please define error bars.

- The figure is republished from reference #10 and the y-axis has been labeled as "pg/mL" in that article. A sentence was added to the figure legend to define error bars as standard deviations.

18. Figures 3 and 6: Please use the capitalized (A, B, C) letters for panel labels.

- As requested.

19. Discussion: As we are a methods journal, please also discuss critical steps within the protocol and any limitations of the technique.

- As requested. We have included expanded sections to include a more thorough discussion about immunizations, infections, and tissue harvest and limitations of each method.

20. Please revise the Acknowledgements section to include any acknowledgments and all funding sources for this work.

- As requested.

21. References: Please do not abbreviate journal titles.

- Corrected as requested.

22. Please remove trademark (™) and registered (®) symbols from the Table of Equipment and Materials. Please use SI abbreviations for all units (μm) and include a space between all numerical values and their corresponding units (15 mL, 60 mm, etc.).

- As requested.

Reviewers' comments:

Please note that novelty is not a requirement for publication and reviewer comments questioning the novelty of the article can be disregarded.

Reviewer #1:

Manuscript Summary:

The manuscript entitled "Murine model to test host-pathogen responses and vaccine efficacy" provides a clear and concise protocol for the immunization and intranasal infection of mice, in addition to instruction on the harvesting and processing of tissue for the purpose of immune profiling. The manuscript is well written, suitably titled and describes appropriate controls. The protocol is easily followed and the expected results are reasonable given the information provided. The figures provided are beneficial and easily interpreted.

Major Concerns:

*Step 4.11, a description of blood collection is provided but the blood processing steps stop at "Place tube on ice". A description of how the blood is processed should be added to the manuscript

- As requested. This was included and is Step 8.

*The manuscript would benefit from a description of the timeline used e.g immunization day, infection day and harvest day

- As requested. This was included and is Figure 1.

Minor Concerns:

*Line 114, step 1.8, please describe the gauge and size of needle, and depth of insertion

- As requested.

*The authors should detail controls used for the vaccine immunization procedure

- As requested. This is detailed in step 1.1.1-1.1.3.

*The abbreviation "10% BG + antibiotic" is used throughout the text without prior description, add abbreviation to description in section 2.1

- As requested.

*Step 2.6 & 3.5, describe the buffer in which bacteria should be diluted

- As requested.

*Line 173/ 174, typo: "as negative control" is repeated twice in the sentence

- As requested.

*Line 210, add a description of the type of tubes used for blood collection

- As requested.

*Line 225, typo: "Make sure lay to skin to the side" correct

- As requested.

*Step 4.16, this step could benefit from further description, for example a description of where the first incision should be made and what direction etc.

- The description was expanded to include these details.

*Line 324/ 325, assuming both antigens are not mixed in the same sample, line should read "Therefore, mix 2ug/ml Prn or 1ug/ml FHA in 0.5 ml" not "Prn and 1ug/ml FHA"

- As requested.

*Step 6.8, the authors describe the earlier removal of the right superior lobe for histopathology, but describe the calculation for bacterial burden as CFUs/total organ, how is the missing lobe accounted for?

- We thank the reviewer for the comment. For the lung CFU enumeration, it is technically correct that we are not enumerating CFUs for the total organ as the superior lung is taken for histopathology. Therefore, we have changed the text to read "CFU/lung" instead of whole organ. Since the superior lung is taken for histology from all animals, the CFUs are enumerated from the same amount of lung tissue for each animal.

*Line 404, Figure 5 legend, a more accurate description would highlight that this is cytokine production by immunized spleen cells following stimulation with ... e.g. vaccine components/ antigens/ adjuvants

- Thank you for the suggestion, we have changed the legend accordingly.

*Line 420-425, references should be added to support each statement

- We thank the reviewer for the comment and have added references #21-24.

*Table of materials, the table should include information on the type/ source of 48 well plate, needle information and details on the source of SS media

- As requested.

Reviewer #2:

Manuscript Summary:

In this manuscript "Murine model to test host-pathogen responses and vaccine efficacy" by Caution et al., the authors describe the in vivo evaluation of vaccine effectiveness and host immune responses using a Bordetella pertussis inactivated vaccine.

Major concerns:

There are several major and minor (not included in this review) concerns that the authors should contemplate to provide a more focus and overall novel manuscript.

1) The authors claim that the protocol can be adapted for vaccine models that study viral, bacterial or other parasitic pathogens. However, there are several parameters that would need to be adapted for a particular pathogen. These include, among many others, vaccine dose and route of administration, dose and route of administration of the challenged pathogen, animal anesthesia, evaluation of adaptive B and T cell responses, etc....

- Thank you for the comment. We acknowledge that an investigator would need to modify the protocol to fit the individual experimental design.

2) There is several key information missing in the manuscript. This include, for instance, how many mice would be needed to provide with sufficient statistical power analysis to conclude from the described experiments. Likewise, experiments to assess morbidity (e.g. mouse body weight and/or clinical signs of disease) as well as mortality (e.g. percentage of animal survival) have not been included in the manuscript. Moreover, information regarding the sex of the animals should be provided since it has been shown how sex is an important biological variable for different pathogens. Finally, the authors did not include information regarding the use of appropriated controls to validate their results, etc....

- We thank the reviewer for the comment and have added information to clarify these points. We have an animal ethics statement at the beginning of the protocol to detail number of mice per group for determination of statistical power, and a statement regarding the gender of experimental animals. In addition, vaccine treatment groups and necessary control groups are detailed in steps 1.1.1-1.1.3. A statement regarding monitoring and animals post vaccination and infection for clinical signs of disease has been included at step 1.10.1 and 3.4.1, respectively.

3) The authors have not provided details on the preparation and source of the B. pertussis vaccine used in this study.

- We thank the reviewer for the comment and have added information about the acellular vaccine (contents and ratios used) and appropriate controls in steps 1.1.1-1.1.3.

4) There are several sections in the manuscript that can be obtained from basic microbiology books. This include, for instance, the preparation/growth of the bacteria for the challenge experiments. There are also several figures in the manuscript that can be found in basic microbiology and/or biology books. This include, for instance, Figure 2 (Preparation of 1 OD600 bacterial suspension), Figures 3A (Schematic representation of serial bacterial dilutions) and 3B (Calculation of the bacterial dilutions for mice infections), Figure 4 (Schematic representation of mouse lungs), and Figure 6 (B. pertussis colony formation and calculation of bacterial titers).

- We agree that some procedures are established in the field. For completeness, and smooth protocol flow, descriptions for those procedures have also been included..

5) Some of the experimental approaches described in the manuscript have been described in other Jove manuscripts (e.g. intranasal infection of mice, harvest of animal lung and nasal mucosa tissues, etc....)

- See response to #4 above

6) The authors should include a schematic representation of the overall vaccination/challenge protocol for the reader (and reviewer) to understand the overall experimental approach.

- As requested. This was included and is Figure 1.

Reviewer #3:

Manuscript Summary:

The manuscript describes a clear protocol to vaccinate mice followed by intranasal challenge with B. pertussis. The authors also discuss how tissues can be processed to determine bacterial load and/or immune responses, or a combination thereof.

Minor Concerns:

There are a couple of questions/minor concerns that should be addressed:

-1.3 It is not clear to me why the mice would need to be sedated for intramuscular immunization. In our facility we only knock mice out if the procedure cannot be performed without significant discomfort to the mice and even though mice recover quickly from isoflurane treatment it also causes stress. I.m. vaccination can easily be performed without anesthesia by two qualified technicians with one fixating the mouse and the other administering the vaccine.

- Step 1.4 now includes this option. -1.5 To minimize variation between experiments we typically sedate mice one at a time in the isoflurane box, leaving them in for a set amount of time. This is particularly useful in the challenge studies to minimize spread in challenge dose.
- Step 1.4 has been modified to address this option.

-2.4 The authors use freshly grown bacteria to prepare the challenge inoculum. There are both advantages and disadvantages to this approach. One of the disadvantage compared to using frozen challenge stocks is that variation may be introduced in the challenge dose during culture that can only be identified when the inoculum is counted retrospectively. This may become important when experiments become too big to challenge all mice on the same day or when comparing multiple experiments.

- This option has been addressed in step 2.6.1.

-3.3 50 ul is a very high volume for Balb/c mice, which are quite small, and it may be difficult to deliver the full inoculum into the lungs. In our experience, a volume of 40 ul is also sufficient to induce infection of the lower respiratory tract.

- We modified step 3.3 to reflect the range of 40-50 μ l. -3.5 I suggest that the authors also plate out the inoculum prior to challenge as the viable count may go down when many mice have to be challenged over a longer period of time.
- A note after step 2.6 includes this control. -5.13 I suggest to store the supernatants in multiple aliquots as repeated freeze-thaw cycles will negatively affect detection of many cytokines.
- We thank for the reviewer for the suggestion and have included this modification to step 6.2.

-Figure 3: From the calculations that are shown I understand that the average CFU is taken of 3 different serial dilutions. It may be useful to provide a minimum and maximum number of CFU per plate that is used for counting as it will be difficult to count colonies when there are very dense plates. This may lead to inaccurate counts as bacteria may clump together and form one colony, resulting in lower CFUs.

- Step 6.5 & 6.5.1 are modified as per the suggestion.

-Figure 6: I suggest that undiluted tissue samples are always plated as the bacterial counts on this plate will determine the lower limit of detection.

- Step 6.5.1 & 7.4 now includes this control.

-In the discussion the authors mention that infection of mice with B. pertussis has many similarities with human infection. Some more references are warranted in this section.

- References #21-24 have been added to address this point.

-Mice are challenged by intranasal inoculation. This is a common method but is certainly not the only one and there are also groups that infect mice using aerosols, which is likely closer to human infection. Some discussion of these two methods may be useful.

- We thank the reviewer for the comment and have included this point in the Discussion.

We hope this revised manuscript is suitable for publication in JoVE

Sincerely,



Purnima Dubey, PhD