

# Journal of Visualized Experiments

## Spontaneous Formation and Rearrangement of Artificial Lipid Nanotube Networks as a Bottom-Up Model for Endoplasmic Reticulum --Manuscript Draft--

<b>Article Type:</b>	Invited Methods Article - JoVE Produced Video
<b>Manuscript Number:</b>	JoVE58923R1
<b>Full Title:</b>	Spontaneous Formation and Rearrangement of Artificial Lipid Nanotube Networks as a Bottom-Up Model for Endoplasmic Reticulum
<b>Keywords:</b>	biomaterials; Biomembranes; Artificial Organelles; Phospholipid Nanotube; Endoplasmic Reticulum; Lipid Nanotube Network; Biointerfaces; nanotechnology
<b>Corresponding Author:</b>	Irep Gözen Universitetet i Oslo Oslo, Oslo NORWAY
<b>Corresponding Author's Institution:</b>	Universitetet i Oslo
<b>Corresponding Author E-Mail:</b>	irep.gozen@ncmm.uio.no
<b>Order of Authors:</b>	Patrícia F Belletati Elif Senem Köksal Ganna Reint Ragni Olsson Kira Leidl Ilayda Kantarci Irep Gözen
<b>Additional Information:</b>	
<b>Question</b>	<b>Response</b>
Please indicate whether this article will be Standard Access or Open Access.	Open Access (US\$4,200)
Please indicate the <b>city, state/province, and country</b> where this article will be <b>filmed</b> . Please do not use abbreviations.	Oslo-Norway



UiO : **University of Oslo**

Irep Gözen, PhD  
University of Oslo  
Centre for Molecular Medicine Norway  
Postboks 1137 Blindern 0318 OSLO  
E-mail: [irep@uio.no](mailto:irep@uio.no)  
Phone: +4722840596

25-September-2018

Dear Editor,

Please find our revised manuscript “**Spontaneous Formation and Rearrangement of Artificial Lipid Nanotube Networks as a Bottom-Up Model for Endoplasmic Reticulum**” by Elif Senem Köksal, Patrícia F. Belletati, Ganna Reint, Ragni Olsson, Kira Leidl, Ilayda Kantarci and Irep Gözen; which we are submitting to be considered for publication to JoVe.

Together with the revised manuscript with changes highlighted in green, we attach our point-by-point response to the referees’ questions and comments which have greatly helped to improve the manuscript.

We suggested in our original publication, and maintain that here, that the complexity of this early ER model can potentially be gradually increased. The method we present in this manuscript can enable the interested readership to build this model at their convenience, and explore further directions. In addition to serving mainly as a bottom-up model for the still incompletely understood cellular ER, the lipid route to nanotube networks described in this protocol can be interesting for researchers studying self-assembly, nanofluidics, single molecule and colloid transport phenomena, Marangoni flow and others. The presented method would therefore be of interest to a broad community of researchers and readers; and we are confident that our manuscript is suitable for JoVe.

All of the data presented were recently reproduced and not a part of the original publication in which the method was introduced. The manuscript is not under consideration with any other journal and there are no conflicts of interest.

We are looking forward to reading your decision.

Sincerely,

A handwritten signature in black ink, appearing to read "Irep Gözen", with a stylized flourish at the end.

Irep Gözen

**TITLE:**

**Spontaneous Formation and Rearrangement of Artificial Lipid Nanotube Networks as a Bottom-Up Model for Endoplasmic Reticulum**

**AUTHORS AND AFFILIATIONS:**

Elif Senem Köksal<sup>1</sup>, Patrícia F Belletati<sup>1</sup>, Ganna Reint<sup>1</sup>, Ragni Olsson<sup>1</sup>, Kira D. Leidl<sup>1</sup>, Ilayda Kantarci<sup>1</sup>, Irep Gözen<sup>1,2,3</sup>

<sup>1</sup>Centre for Molecular Medicine Norway, Faculty of Medicine, University of Oslo, Oslo, Norway

<sup>2</sup>Department of Chemistry, Faculty of Mathematics and Natural Sciences, University of Oslo, Oslo, Norway

<sup>3</sup>Department of Chemistry and Chemical Engineering, Chalmers University of Technology, Göteborg, Sweden

**Corresponding Author:**

Irep Gözen

irep@uio.no

Tel: +47-22840596

**Email Addresses of Co-authors:**

Elif Köksal (elif.koksal@ncmm.uio.no)

Patrícia Belletati (p.f.belletati@ncmm.uio.no)

Ganna Reint (ganna.reint@ncmm.uio.no)

Ragni Olsson (ragni.olsson@gmail.com)

Kira Leidl (kira.leidl@ncmm.uio.no)

Ilayda Kantarci (kantarcii@itu.edu.tr)

**KEYWORDS:**

Endoplasmic reticulum, phospholipid nanotube, lipid nanotube network, double lipid bilayer, thin film deposition, aluminum oxide

**SUMMARY:**

Solid-supported, protein-free, double phospholipid bilayer membranes (DLBM) can be transformed into complex and dynamic lipid nanotube networks and can serve as 2D bottom-up models of the endoplasmic reticulum.

**ABSTRACT:**

We present a convenient method to form a bottom-up structural organelle model for the endoplasmic reticulum (ER). The model consists of highly dense lipidic nanotubes that are, in terms of morphology and dynamics, reminiscent of ER. The networks are derived from phospholipid double bilayer membrane patches adhering to a transparent Al<sub>2</sub>O<sub>3</sub> substrate. The adhesion is mediated by Ca<sup>2+</sup> in the ambient buffer. Subsequent depletion of Ca<sup>2+</sup> by means of BAPTA/EDTA causes retraction of the membrane, resulting in spontaneous lipid nanotube network formation. The method only comprises phospholipids and microfabricated surfaces for simple formation of an ER model and does not require the addition of proteins or chemical energy

(e.g., GTP or ATP). In contrast to the 3D morphology of the cellular endoplasmic reticulum, the model is two-dimensional (albeit the nanotube dimensions, geometry, structure, and dynamics are maintained). This unique *in vitro* ER model consists of only a few components, is easy to construct, and can be observed under a light microscope. The resulting structure can be further decorated for additional functionality, such as the addition of ER-associated proteins or particles to study transport phenomena among the tubes. The artificial networks described here are suitable structural models for the cellular ER, whose unique characteristic morphology has been shown to be related to its biological function, whereas details regarding formation of the tubular domain and rearrangements within are still not completely understood. We note that this method uses Al<sub>2</sub>O<sub>3</sub> thin-film-coated microscopy coverslips, which are commercially available but require special orders. Therefore, it is advisable to have access to a microfabrication facility for preparation.

## INTRODUCTION:

The ER carries out crucial tasks in the biological cell including protein folding, lipid synthesis, and calcium regulation<sup>1,2</sup>. The ER morphology is intrinsic to the functions it performs. It combines planar stacks and dense-dynamic tubular domains, which continuously interact with the cytoskeleton and undergo constant motion and rearrangement. Some of the remodeling that ER structures undergo include the continuous transformation between planar sheets and tubes, vesicle formation from or fusion to the ER lumen, elongation of pre-existing tubes, tube retraction, fusion, and breakage<sup>3</sup>. The peculiar structure of the tubular networks is energetically unfavorable. The pathways and mechanisms by which the ER generates and maintains this organization as well as how this relates to its function is not yet fully understood<sup>4,5</sup>.

It is known that the ER malfunctions when it loses its homeostatic state, resulting in ER stress, a condition caused by an increase in protein synthesis, accumulation of misfolded proteins, or changes in Ca<sup>2+</sup> and oxidative balance. ER stress in turn causes deformation of the natural morphology of the organelle, specifically by disturbing the network organization<sup>6,7</sup>. As a response, the cell activates a repair mechanism to return to a homeostatic state. Failure in repair can lead to ER-induced cell apoptosis, which contributes to several metabolic and degenerative diseases such as Alzheimer's disease, type 2 diabetes, Parkinson's disease, amyotrophic lateral sclerosis, and several others<sup>7,8</sup>. Current research targets the organization of the tubular ER networks, and several studies are focusing on reconstituting the ER *in vitro*<sup>2</sup>. A few existing models<sup>2,9,10</sup> require proteins to initiate and maintain membrane curvature<sup>3,11</sup> and help the organelle reach its shape. Clearly, model systems that mirror some of the key structural and organizational features of the ER and provide access to advanced experimental studies are in great demand.

We present here procedures for the preparation of a facile, protein/chemical energy-free, dynamic *in vitro* model for the ER, providing a basic platform to study ER morphology and associated functions<sup>4</sup>. In this method, an ER model is fabricated with a bottom-up approach using only a few elements, in which the molecules of interest can be integrated to add complexity. The network represents ER structure and dynamics. Furthermore, reversible transformation between the planar membrane and the tubes, vesicle formation from the tubes, tube fusion, sliding and

retraction can all be observed. In addition to serving as a bottom-up model for the incompletely understood cellular ER, the lipid route to nanotube networks described in this protocol can be applicable for researchers studying self-assembly, nanofluidics, single-molecule and colloid transport phenomena, Marangoni flow, and other related fields. The only molecular building blocks used in our method are phospholipids. The protocol requires little laboratory work and basic equipment and is accessible for the incorporation of additional elements.

## PROTOCOL:

### 1. Preparation of Phospholipid Vesicle Suspension

NOTE: For all materials referred to as “clean” in this protocol, thoroughly wash them with isopropanol followed by deionized water and blow-dry them with nitrogen. Note that a treatment of glass substrates with strongly oxidizing acidic agents (Piranha solution), which is typically applied in preparation protocols for supported lipid films on solid substrates, should not be performed on Al<sub>2</sub>O<sub>3</sub>-coated carriers.

1.1. Dissolve in a clean round-bottom 10 mL glass flask: Soy L- $\alpha$  phosphatidyl choline (PC, 69% w/w), 1,2-dioleoyl-sn-glycero-3-phosphoethanolamine (DOPE, 30% w/w), and a lipid-conjugated fluorophore of choice [e.g., Texas Red 1,2-dihexadecanoyl-sn-glycero-3-phosphoethanolamine triethylammonium salt (TR-DHPE, 1% w/w)] in chloroform; for a total amount of 3000  $\mu$ g of lipids in 300  $\mu$ L of chloroform, resulting in a final concentration of 10 mg/mL.

NOTE: Use clean, glass, gas-tight syringes with polytetrafluoroethylene plungers when handling compounds containing chloroform.

CAUTION: Chloroform is toxic and highly volatile and should always be handled under a fume hood with associated personal protective equipment.

1.2. Transfer the lipid solution into a 25 mL inverted pear-shaped flask (pointed bottom), connect it to a rotary evaporator, position with a tilt of 45°, and rotate at 24 rpm inside a water bath at 23 °C for 6 h with reduced air pressure to slowly and completely remove the chloroform. Start reducing the pressure right after initiating the rotation by steps of 20 kPa every 2 min until it reaches 20 kPa (150 Torr, 80% vacuum).

NOTE: The formation of a homogenous lipid film of uniform thickness in the preparation vessel is the most important requirement for the rotavap procedure. Lipid preparations are sensitive to rotation velocity, rapid pressure changes, and final pressure value; therefore, strictly follow the slow reduction steps as well as the end pressure and rotation velocity. Position the flask with a tilt of 45° to guarantee that the dehydrated lipid cake is formed evenly as a film on the wall of the flask. Too fast of a rotation leads to turbulences and too slow of a rotation leads (due to gravity) to the accumulation of a thick layer of fluid at the bottom of the flask. During the subsequent overnight swelling process, a very inhomogenous lipid mass is produced that does not respond well to the final sonication step, and the resulting fractions are of different

compositions. Pressure and time within the range specified in the method ensures slow desolvation. With chloroform as the solvent, too rapid of a drop in pressure cools down the mixture, resulting in increased viscosity and aggregate and uneven film formation. The long time period of 6 h is recommended in order to remove solvent to the greatest extent possible, as the organic solvent partitions into the lipid material upon rehydration.

1.3. After 6 h, stop the rotation and increase the air pressure again, gradually, by steps of 20 kPa every 2 min until reaching 100 kPa. Remove the flask from the rotary evaporator and add 3 mL of PBS and 30  $\mu$ L of glycerol. Gently swirl the flask to dissolve the glycerol. Use an air-tight glass stopper to seal the flask containing the lipids.

NOTE: The glycerol is used to prevent the complete dehydration of the lipid film and enables bilayer separation<sup>12</sup>. It should be heated before use to decrease its viscosity, which facilitates the handling of this compound. The warmed glycerol does still not immediately mix with the PBS buffer. Gentle swirling is required until the glycerol is completely dissolved.

1.4. Store the flask in the refrigerator at 4 °C overnight for rehydration and swelling of the lipid films.

1.5. On the following day, sonicate the lipids with an ultrasonic water bath at room temperature (RT, ~21 °C) and at 35 kHz frequency until achieving a uniform, slightly turbid lipid suspension.

NOTE: Sonication can take around 10-30 s. Prolonged sonication (~1 min) produces heat and is detrimental to vesicle formation.

1.6. Steps 1.1-1.5 yield a suspension containing two types of vesicular structures: multilamellar vesicles (MLV) and giant unilamellar vesicles (GUV) (**Figure 1A-1F**).

1.7. For storage, divide the lipid suspension into 100  $\mu$ L aliquots, using a total of 30 microcentrifuge tubes, and store them in a freezer at -20 °C.

NOTE: Flash freezing with liquid nitrogen is not necessary and not used before storage. The protocol can be paused here. Leaving lipid suspensions in the 4 °C refrigerator for prolonged times causes lipid lysis, which affects the membrane composition.

## 2. Preparation of Substrates

NOTE: The following protocol is performed at a cleanroom classified as ISO 8 in the ISO 14644-1 standard specification. Atomic layer deposition (ALD) is used to fabricate Al<sub>2</sub>O<sub>3</sub> substrates. The specified process parameters are instrument-dependent and may vary between different models of equipment. They can be used as initial parameters to develop the process.

2.1. Set the temperature of the ALD reactor to 200 °C.

2.2. Load the glass surfaces (*e.g.*, glass coverslips) into the sample chamber together with a silicon wafer, which will be used later as a reference surface to determine thickness of the deposition by ellipsometry.

NOTE: Glass substrates were used out-of-the-box and were not solvent-cleaned before deposition. They were only flushed with nitrogen gas to remove particles.

2.3. Pump down the sample chamber pressure to 400 Pa (3 torr) or lower and the reactor pressure to less than 200 Pa (1.5 torr).

NOTE: The temperature of the reactor must be maintained at 200 °C for proper deposition. Temperature fluctuations after sample loading must therefore be equilibrated before initiating the deposition. Chamber pressure is set to be higher than reactor pressure to avoid any precursors to spread outside the chamber.

2.4. Start depositing the atomic film. One cycle consists of a 150 ms pulse trimethyl aluminum exposure, followed by a 1 s purge, and subsequently, a H<sub>2</sub>O exposure of 200 ms duration followed by a 1 s purge.

NOTE: All settings including chamber and reactor pressure, length of the cycles, and purges are automated to achieve a defined rate of deposition. These parameters may vary among the various models of equipment. The pre-configured recipes are often prepared by the vendor or tool responsible in the clean room and communicated to the user as deposited film thickness per unit of time.

2.5. To reach 10 nm of Al<sub>2</sub>O<sub>3</sub> on the substrate, repeat the process for 100 cycles. The number of cycles depends on the deposition rate, which may vary among different recipes or equipment.

2.6. To remove the samples from the reactor, first vent the chamber until its pressure reaches atmospheric pressure, then remove the samples.

2.7. Store the samples in air tight containers at RT until use.

NOTE: No further cleaning is recommended before use. The protocol can be paused here.

NOTE: The samples should ideally be used immediately after deposition. The optimal storage requires positioning the surfaces inside polypropylene wafer carriers, followed by enveloping the carriers in clean room-compatible plastic bags, which are to be nitrogen-flushed before vacuum sealing. The purpose is to avoid exposing the surface to air-borne contaminants. If necessary, the surfaces can be kept in air tight containers at RT at maximum for 5 days. Longer storage is not recommended. For users who do not have easy access to a clean room nearby, and purchase or obtain the surfaces from abroad, re-oxidizing the substrates by means of oxygen plasma or ozone treatment may be an alternative solution<sup>13</sup>.

### 3. Transformation of Molecular Phospholipid Films to Tubular Networks

3.1. Thaw the lipid suspension and transfer a 4  $\mu$ L droplet of suspension onto a clean glass microscope slide/cover slip.

3.2. Desiccate the droplet for 20 min. The droplet will collapse into a flat circular film of lipids after desiccation, which is visible to the eye.

3.3. Rehydrate the lipid film with 1 mL of HEPES buffer (see **Table of Materials**) for 3 min.

NOTE: The volume of rehydration buffer affects the density of vesicle suspension (the number of vesicles per unit volume), which is subsequently transferred to the observation chamber. Depending on the volume of the observation chamber and the desired vesicle density, the rehydration volume can be tuned to 0.5-1 mL. Clean borosilicate slides tend to support droplets of several hundred microliters up to 1.5 mL without problems. Since the coverslip does not need to be moved, this does not lead to a technical problem. On more hydrophilic surfaces, such as SU-8 polymer-coated slides, even 1.5 mL can be deposited<sup>12</sup>.

NOTE: Lipids should be freshly prepared, as exposure of the rehydrated lipid film for more than 20 min at RT leads to evaporation of the buffer and partial dehydration of the previously rehydrated vesicles, which leads to a poorly defined composition.

3.4. Prepare the observation chamber: to allow for buffer exchange by means of an automatic pipette, which is required to initiate the ER transformation, an observation chamber with an open top was used. This chamber consists of a polydimethylsiloxane (PDMS) frame with dimensions 1.5 x 1.5 x 0.5 cm, adhered onto the Al<sub>2</sub>O<sub>3</sub> deposited coverslip. A scheme of the mounted observation chamber is represented in **Figure 1G**. The following steps were performed to fabricate the PDMS frame and assemble the observation chamber:

3.4.1. Prepare a KOH solution by mixing 100 g of KOH with 100 mL of isopropanol in a beaker in an ice bath. Stir for 10 h or longer until the KOH is completely dissolved using a magnetic stirrer and magnetic stir plate.

CAUTION: KOH solution is corrosive and can lead to skin burns, so always handle with proper personal protective equipment.

NOTE: The solubility of KOH in isopropanol is not as high as in water. The dissolution is exothermic. Crushing the KOH pellets prior to dissolving and continuous stirring is advisable.

3.4.2. Submerge a glass Petri dish (d = 6 cm) into the KOH solution at RT and keep it overnight.

3.4.3. The following day, remove the glass dish from the solution, immerse it in a container with deionized water for 5 min, rinse it several times with water, and place it inside a drying oven at 80 °C for 1 h. Blow the surface briefly with a stream of nitrogen to ensure that particles are



removed.

3.4.4. To passivate the surface and prevent bonding to PDMS, transfer 200  $\mu\text{L}$  of dimethyldichlorosilane with a plastic syringe into a clean plastic container such as a weighting boat.

3.4.5. Store the glass Petri dish together with the silane for 1 h in an evacuated desiccator (low vacuum,  $\sim 20$  kPa).

CAUTION: Dimethyldichlorosilane is toxic and should always be handled under a fume hood with associated personal protective equipment.

3.4.6. Wait 15 min before collecting the Petri dish in order for the remaining dimethyldichlorosilane vapor to dissipate. The Petri dish is now silanized, and the surface is hydrophobic.

NOTE: A quick way to test the success of this step is to place a water droplet onto the silanized Petri dish. The contact angle of the droplet with the surface must visibly increase compared to untreated glass.

3.4.7. In a 250 mL plastic container (transparent plastic cup fresh from the package), mix 10 g of silicone elastomer base with 1 g of silicone elastomer curing agent (10:1). Stir using a plastic stirrer/plastic spatula for 5 min.

NOTE: Air bubbles are formed upon stirring, and the PDMS will look pale-white.

3.4.8. Desiccate the mixture to degas at  $< 20$  kPa until all expanding air bubbles have collapsed (higher vacuum accelerates the process). Pour the degassed mixture into the silanized Petri dish.

3.4.9. Cure at  $65^\circ\text{C}$  for 2 h in an oven.

NOTE: It is possible to double the curing speed by increasing the temperature to  $> 95^\circ\text{C}$ . The increasing curing temperature results in an increase in stiffness of the material.

3.4.10. Cool down the Petri dish filled with the cured PDMS to RT and remove the PDMS slab with a spatula.

3.4.11. With a scalpel, cut the frame into the dimensions and geometry appropriate for the available opening in the microscope stage. Dimensions of 1.5 (length) x 1.5 (width) x 0.5 (height) cm are suitable for most setups.

3.4.12. Bring the smooth side (the bottom side that was in contact with the Petri dish) of the PDMS frame into contact with the active side of the surface where the  $\text{Al}_2\text{O}_3$  film resides, and gently apply pressure to push the frame and surface against each other to make them adhere.

NOTE: The adhesion between the PDMS frame and Al<sub>2</sub>O<sub>3</sub> substrate is weak. The presence of air bubbles at the contact interface may cause de-attachment and, consequently, the leakage of the buffer and related content. The PDMS frame can be used several times if immediately after and before each use it is rinsed with isopropanol, followed by rinsing with DI water and blow-drying with nitrogen. The silanized Petri dish can also be reused.

3.5. Fill the observation chamber with Ca<sup>2+</sup>-HEPES buffer (see **Table of Materials**).

NOTE: The surface should be used immediately after unsealing the package. Contact with air leads to adsorption of contaminants, which decreases the activity of the surface gradually. The chamber should be filled with buffer immediately after assembly. Do not fill the entire chamber volume to allow for addition of the rehydrated lipids in the subsequent step.

3.6. Place the chamber onto the confocal microscope stage. Transfer the rehydrated lipid material, now a suspension containing giant vesicles, into the chamber with a plastic Pasteur pipette (**Figure 1A-1G**).

3.7. Wait 10-20 min to let the vesicles adhere onto the substrate and spread across the surface (**Figure 1H-1J**).

NOTE: The spreading starts immediately after deposition of lipids on the surface. The rate of spreading might slightly vary depending on the lipid composition, Al<sub>2</sub>O<sub>3</sub> deposition technique (ADL, RF-sputtering, chemical vapor deposition, *etc.*), freshness of the substrate, and divalent cation concentration in the buffer. Ensure that buffer exchange is performed before rupturing of the spreading patches<sup>14</sup>.

3.8. After observing multiple lipid spreads, slowly remove the ambient buffer via an automatic pipette, such that only a thin buffer film remains on the bottom.

NOTE: Rapid removal of buffer perturbs the lipid structures on the surface.

3.9. Proceed to the ambient buffer exchange by slowly filling the observation chamber with chelator-HEPES buffer (see **Table of Materials**) using an automatic pipette (**Figure 1K**).

NOTE: Abrupt addition of buffer perturbs the lipid structures on the surface.

3.10. This final step yields dynamic nanotubular networks, formed as a result of the chelator-induced depinning and retraction of the DLBM to the MLV<sup>4</sup> (**Figure 1L-1Y**).

#### 4. Microscopy Observation

4.1. Acquire the images with an inverted laser scanning confocal microscope using a 40X oil (1.3 NA) immersion objective with a scanning frequency of 400 Hz. Employ a white light laser source

to excite the Texas Red DHPE at 595 nm. Collect the emission from 605 to 700 nm by using a hybrid photon detector.

NOTE: Alternatively, an epi-fluorescence microscope can be used for imaging. Depending on the light sources available, select an appropriate lipid-dye conjugate.

#### REPRESENTATIVE RESULTS:

The lipid suspension obtained in step 1 of the protocol and used throughout the experiments contains two main types of vesicles: MLVs and GUVs. **Figure 1A-1F** shows laser scanning confocal micrographs of the vesicles in the initial sample constructed in 3D. **Figure 1A-1C** shows an MLV (lipid deposit) in the xyz, xz, and yz planes, respectively. **Figure 1D-1F** shows similar views of a giant unilamellar vesicle (GUV). The inner part of the GUVs, which lack multilamellarity, is hollow; hence, the lipid material for spreading is significantly limited. Therefore, the only useful lipid reservoirs for this method are MLVs.

When the lipid suspension is transferred to the observation chamber containing the  $\text{Ca}^{2+}$ -HEPES buffer (**Figure 1G**), the MLVs (**Figure 1A-1C**) start to settle on the  $\text{Al}_2\text{O}_3$  surface. Upon contact, the vesicles adhere to the surface, and a circular flat double lipid bilayer membrane (DLBM) starts to spread from each MLV onto the solid support (**Figure 1H-1J**). The MLV acts as a reservoir that provides the lipids for the continuously expanding DLBM. The distal (upper) bilayer membrane, with respect to the solid support, is connected to the proximal (lower) bilayer membrane along the circumference of the circular edge, performing a rolling motion (**Figure 1I**). The two bilayers are positioned flatly on top of each other, only having a thin liquid film encapsulated between them. During spreading, the proximal membrane continuously adheres to the support surface underneath, while the distal membrane is laterally pulled at the edges by the expanding proximal membrane edge. The spreading of the DLBM is mediated by  $\text{Ca}^{2+}$ , which acts as a fusogenic agent between lipid head groups from the proximal membrane and solid substrate<sup>4</sup>.

If the spreading continues for prolonged periods, the membrane tension increases, leading to ruptures (**Figure 2A and 2B**). After that point, membrane retraction, which is necessary to create the ER tubular morphology, can no longer be induced. Therefore, it is important to recognize the ruptured membranes. Since the lipids in our experiments are fluorescently labelled, the rupturing can be directly observed. A key indicator of rupturing is the significant drop in fluorescence intensity in the ruptured region (**Figure 2A and 2B**)<sup>14</sup>. The rupturing is a result of the increased tension and subsequent pore formation in the distal membrane. Under a fluorescent microscope, the ruptured regions will therefore exhibit half the emission intensity (single proximal bilayer) of the unruptured regions (double bilayer)<sup>14</sup> (**Figure 2B**). During pore formation, the membrane material, which was initially positioned at the ruptured regions, migrates to the edges of the spreading patch. This in turn causes a growth of the overall patch area. Therefore, a rapid expansion of the contour of the circular patch can also be observed during rupturing.

To avoid the extensive growth leading to the rupture of the patches, immediately after the circular patch area reaches 100-200  $\mu\text{m}$ , the  $\text{Ca}^{2+}$ -HEPES buffer is gently removed with an automatic pipette until a thin film of liquid remains on the surface. The Chelator-HEPES buffer is

then gently added to the chamber to initiate the retraction (**Figure 1K**). A complete dehydration of the sample (**Figure 2C**) or rapid exchange of buffers (**Figure 2D** and **2E**) causes disturbance, rupturing, or deformation of the patches. The addition of chelators gradually removes  $\text{Ca}^{2+}$  from the space between the surface and membrane. The Chelator-HEPES buffer gradually accesses the inter-bilayer-substrate space, starting from the periphery of the lipid membrane patch. Therefore, the removal of the pinning sites starts from the edges of the circular patch and propagates inwards (**Figure 1K-1Q**). As a result of depinning, the lipid membrane starts to detach and retract from the edges inwards, progressing towards the MLV at the center. The retraction process leads to a new interface of dynamically developing lipidic tubular networks<sup>4</sup> (**Figure 1L-1Y**). The persistent regions of pinning, which do not allow the membrane to detach completely, remain on the surface and nucleate tabulation, leading to long branched network of nanotubes. (**Figure 1L-1Y**). Continuous de-pinning and further retraction of lipid nanotubes are observed over time as result of the gradual chelation process. This coarsening and rearrangement of the network branches plays a key role in the dynamic behavior of the tubular networks, which resemble the smooth ER.

**Figure 1L-1Y** shows the micrographs of the nanotube networks obtained in the protocol. **Figure 1L** is a close-up of the region in **Figure 1M** marked in the white frame. The continuous bright-red regions in **Figure 1L** and **1M** are the retracting fraction of the DLBM (marked with a blue dashed line in **Figure 1M**). The micrograph of a tubular network in **Figure 1N** and **1O** is inverted to increase contrast. **Figure 1P** and **1Q** depicts the reduction of the tubular density on a membrane region over the course of 3 h and 20 min. The decrease of tubular density occurs due to the gradual depinning followed by retraction of the DLBM from the surface over the experimental time period. Over time, the number of points freed from pinning increases, leading to rearrangements and a reduction of the area covered by tubes (**Figure 1P** and **1Q**). The tubular rearrangements are motivated by surface free energy minimization of a lipid nanotube suspended between two fixed points. It is well-established that the most efficient way of minimizing the surface energy of a nanotube is to reduce its length<sup>15</sup>. Therefore, when the fusogenic regions, which initially hold the nanotubes on the surface, are de-pinned, the nanotubes slide and arrange themselves spontaneously, adopting a minimal length. These rearrangements cause a gradually reduced coverage of the surface by the nanotubes (**Figure 1P** and **1Q**).

We cannot visualize the  $\text{Ca}^{2+}$ -mediated pinning points, but we establish their locations as the points where tubes have terminal or sharp turns. Sharp turns are referred to as V-junctions<sup>15</sup> or turning-points because of the sudden shift in direction of the tube's alignment (green arrows in **Figure 1R** and **1X**). The end-point represents the terminus of the tube, which prevents the tube from retracting (orange arrows in **Figure 1X**). During re-organization, energetically favorable disposition of tubes identified as "Y-junctions" or "3-way junctions", appear. The Y-junction connects three tubes with approximately 120° angles between each tube, where the shortest total tube length can be secured. The Y-junctions, which do not possess an end-point and instead are positioned between multiple nanotubes, are not pinned. This is the only Y-junction type that can perform sliding (blue arrows, **Figure 1R**). As shown in **Figure 1R** and **1S**, sliding of a Y-junction along a highly instable intersection results in the formation of two individual Y-junctions (blue

arrows in **Figure 1S**). The dashed white line superimposed onto **Figure 1S** represents the contour of the tubular network fragment in **Figure 1R**. A fraction of the Y-junctions possesses end terminals (yellow arrow in **Figure 1T**) which, over time, eventually retract (**Figure 1U**). The transformation of a V-junction to a single, straight tube by depinning of the intersection point of the two line segments and by retraction of one of the tubes forming the V shape can be observed in **Figure 1V** and **1W** and **Figure 1X** and **1Y**, respectively.

#### FIGURE LEGENDS:

**Figure 1: Transformation of lipid deposits to ER-like tubular networks.** (A-F) Laser scanning confocal micrographs of the vesicles in the initial sample, constructed in 3D. (A-C) Multilamellar lipid vesicle (MLV, lipid deposit) in xyz, xz, and yz planes, respectively. (D-F) Similar views of a giant unilamellar vesicle (GUV). The inner part of the GUVs is hollow, which makes the lipid material for spreading significantly limited. The useful lipid reservoirs for this method are therefore MLVs. (G) Illustration of the observation chamber mounted on an inverted microscope onto which the buffer and lipids are deposited. The chamber is composed of a PDMS frame adhered onto an Al<sub>2</sub>O<sub>3</sub> coated coverslip, providing an open volume top. (H-J) Illustration of the spreading phenomena of the MLV in the presence of Ca<sup>2+</sup>. (H) Upon contact with Al<sub>2</sub>O<sub>3</sub>, the MLV spontaneously spreads in form of a circular, double lipid bilayer membrane (DLBM). (I) Schematic side view of the DLBM in the xz plane, where the peripheries perform rolling motion. MLV (d = 5-15 μm) and DLBM (thickness = 10 nm) are not drawn to scale. (J) A confocal micrograph of a spreading DLBM from top-view. (K) Describes the main step of this protocol, where the buffer is exchanged to one containing Ca<sup>2+</sup> chelating agents, inhibiting the spreading, causing retraction of the DLBM to the MLV, and leading to formation of the lipid nanotubes. (L-Y) Micrographs of the nanotube networks obtained with the described method. (L) Close-up of the region in (M) marked in a frame. The continuous bright-red regions in (L and M) represent the DLBM (also marked with a blue dashed line in M). The micrograph of a tubular network in (N and O) is inverted to increase contrast. (P and Q) Depiction of the reduction of the tubular density on a membrane region over the course of 3 h and 20 min. (R-Y) Representative tubular rearrangements. (R and S) Sliding, (T and U) transitioning of a Y-junction to V-junction by retraction of one end-point, and (V and W) de-pinning of a turning point, resulting in the eradication of a V-junction. (X and Y) Retraction of an end-point.

**Figure 2: Potential negative results.** (A and B) Rupturing of the distal membrane due to a long waiting time before the exchange of the buffers. The ruptured areas, where the proximal membrane becomes visible, appear as dark regions in comparison to the unruptured distal membrane regions. The inset to panel B shows the light intensity along the blue arrow on the micrograph. The intensity of the ruptured regions of the membrane (proximal/single bilayer becomes visible) corresponds to half the intensity of the unruptured membrane (distal/double bilayer). (C) Appearance of a dry lipid patch formed as a result of removal of all liquid from the observation chamber. (D and E) Disruption of the membrane by rapid exchange of buffers *via* automatic pipette. In (D), the MLV has split into 2 MLVs, leading to a non-circular, deformed lipid patch. In (E), the pattern of the flow (arrows), created by strong injection of the chelator-HEPES buffer, is reflected on the tubulated membrane structure.

## DISCUSSION:

In the following discussion, the critical steps, possible modifications, and limitations of the protocol are described. The first critical step is the proper assembly of the observation chamber, given that the adhesion of the PDMS frame to the  $\text{Al}_2\text{O}_3$  surface is intrinsically weak. In the case where the frame does not adhere to the substrate properly, the content will leak from the observation chamber and the experiment will come to a halt. The main factors that hinder proper sealing of the surface and frame are 1) a lack of thorough cleaning of the (re-used) PDMS frame and 2) air bubbles that occasionally get entrapped between frame and substrate. A newly prepared or thoroughly cleaned PDMS frame should be used. The frame should be rinsed before and after each use with isopropanol, followed by rinsing with DI water and blow-drying with nitrogen. The  $\text{Al}_2\text{O}_3$  surfaces do not require any prior cleaning, since they are fabricated in a cleanroom environment and kept in sealed containers until use. Due to the amphoteric nature of  $\text{Al}_2\text{O}_3$ , it should not be exposed to strongly acidic or basic solutions. Other designs for the observation chamber can be employed, depending on accessibility of the individual setup. Important features of this chamber are free access to the liquid sample from the open top and the inertness of the frame material with respect to the used solutions and samples. The chamber dimensions are also a significant factor, as they should accommodate a volume from 0.5 to 1 mL. Since the surfaces used are typically standard-sized coverslips (24 x 60 mm), the volume of the chamber is mostly determined by the thickness of the frame. To our knowledge, spacers with the size and depth which can accommodate the sample volumes typically handled in this protocol are not commercially available. We therefore have dedicated a section in the protocol to details of the fabrication and assembly of a sample chamber frame.

The other critical step in this protocol is the buffer exchange. A challenge in this step is the timing needed to perform this exchange. The spreading of the MLV upon contact with the  $\text{Al}_2\text{O}_3$  substrate is instant, and the continuous expansion of the DLBM leads to its rupturing, terminating the experiment (**Figure 2A,B**). Therefore, the spreading should be constantly monitored, and the buffer exchange must be performed in a timely manner. The exchange should not be performed too quickly after initialization of the spreading, in order to allow the membrane patches to reach an optimal size (100-200  $\mu\text{m}$  in diameter). On the other hand, continuous adhesion on the surface causes high membrane tension, which leads to rupturing. Thus, all membrane patches eventually rupture if spreading is not interrupted. The timing of the rupturing differs for each patch, since it depends on the size and internal structure of the MLV and accessibility of the lipids therein. Hence, the moment of the exchange should be arranged to a timepoint at which the un-ruptured patches with optimal sizes represent a majority of the entire population. Another challenge in the buffer exchange step is the rate of removal and addition of the buffers. Performing this substitution too rapidly has a detrimental influence on the final membrane structures (**Figure 2C-E**). The excessive extraction of the  $\text{Ca}^{2+}$ -HEPES buffer without leaving a thin liquid film on the substrate, results in dried and irreversibly deformed membrane patches (**Figure 2C**). Even if a proper amount of liquid is maintained on the surface, abrupt addition of the Chelator-HEPES buffer also causes perturbation of the membrane structures. **Figure 2D,E** shows the typical appearance of hydrodynamically disrupted membrane patches. The overall morphological disruption does not necessarily influence the dynamic properties of the final structures (*i.e.*, the tubular rearrangements in remaining areas will still occur). However, it will become difficult to

observe the material transformation on the deformed structures. For example, in **Figure 2D**, it would be difficult to determine the direction towards which MLV the DLBM retracts.

One possible modification of the protocol is the lipid composition used. The main focus has been on phospholipids that dominate the ER composition in mammals and yeast<sup>16</sup> (*e.g.*, phosphatidylcholine (PC), phosphatidylethanolamine (PE), and phosphatidylinositol (PI). The original experiments were performed using PC and PI mixtures<sup>4</sup>. In the results presented, a mixture of PC and DOPE and a derivative of PE was used. However, not all arbitrary lipid compositions have been found to create the tubular structures obtained through this protocol. A few of the other experimentally investigated lipid mixtures involve total heart extract, soy bean extract polar, *E. coli* extract polar, mixtures of PC with stearyl-2-hydroxy-sn-glycero-3-phosphoinositol (Lyso-PI) in varying ratios, and mixtures of PC-PE-PI-Phosphatidyl serine (PS) in varying ratios. Since tubular membrane structures possess high curvatures and require special arrangement of individual lipid molecules, it is expected that the observed phenomenon is lipid composition-specific.

Another modification applied in this protocol is the method for surface fabrication. Here, the ALD was used to fabricate the Al<sub>2</sub>O<sub>3</sub> coated coverslips. This differs from the originally reported deposition method, reactive sputtering<sup>4</sup>. While this indicates that an alternative surface fabrication method can still lead to ER-like tabulation, one important limitation appears to be the specificity of the surface material. The mode of spreading and strength of adhesion is highly dependent on properties of the surface material, which influence factors such as electrostatic interactions, wettability, hydrophobicity, and roughness of the surface. Al<sub>2</sub>O<sub>3</sub> surfaces provide optimal adhesion strength, and lipid films can both attach strongly enough to spread as a double lipid bilayer membrane and detach to form tubular networks upon removal of Ca<sup>2+</sup> ions. We previously tested the same experiment with SiO<sub>2</sub>, in which the multilamellar vesicles spread as a double lipid bilayer membrane, but no tubular network formation was observed upon addition of chelators<sup>17</sup>. De-attachment and tube formation are observed only on Al<sub>2</sub>O<sub>3</sub> or plasma etched Al<sup>18</sup>. Our investigations revealed that the contributing parameter leading to such a phenomenon was the zeta potential of the surfaces, for which Al and Al<sub>2</sub>O<sub>3</sub> were close to zero (mV) and SiO<sub>2</sub> significantly negative. The zeta potential of borosilicate is similar to SiO<sub>2</sub><sup>19</sup>; therefore, adhesion of lipid films on borosilicate is equally strong and irreversible. In fact, multilamellar lipid reservoir contact with borosilicate surfaces typically leads to immediate rupture and formation of single lipid bilayers<sup>20</sup>. The Al<sub>2</sub>O<sub>3</sub> surfaces required for this protocol are not readily or commercially available. They can, however, be custom-ordered from specialty glass and substrate manufacturers. Access to cleanroom facilities with thin-film fabrication equipment is highly recommended.

The other existing bottom-up methods to fabricate ER-like tubular networks<sup>2,10</sup> involve proteins as well as input of chemical energy (*e.g.*, GTP and ATP). Rapoport and colleagues<sup>2</sup> reported the formation of ER-networks on glass coverslips *in vitro* by mixing the membrane-bending proteins present in ER, with phospholipids and GTP. The work by Bachand *et al.*<sup>10</sup> shows how such dynamic tubular networks can be created by using molecular motors and ATP as the energy source. This protocol presented does not require membrane proteins or hydrolysis of organic compounds for

energy. The only essential components are the solid substrate and the phospholipids. Purification and extraction of proteins are not required. This protocol provides, in terms of simplicity of the constitutive molecules, the most basic ER model.

With this basic, lipid-based ER model established, building up complexity by adding ER-associated components is of interest, since it enables investigation of individual impacts on the system. Similar to the actual ER networks, tubes in the model are dynamic. The conjugation to and migration of the labeled membrane proteins, or fluorescent particles throughout the tubular network, may give information about the direction of membrane movement. Encapsulation and monitoring of the fluorescent liquids inside the DLBM and tubes during the transformation and a possible mapping of the intratubular content transport may serve as another focus. Finally, a transition from the 2D ER model resulting from this protocol towards a 3D smooth ER model may be adopted through encapsulation of the networks in hydrogel architectures.

#### ACKNOWLEDGMENTS:

We thank Prof. Aldo Jesorka from the Chalmers University of Technology in Sweden for his invaluable comments on the manuscript. This work was made possible through financial support obtained from the Research Council of Norway (Forskningsrådet) Project Grant 274433, UiO: Life Sciences Convergence Environment, the Swedish Research Council (Vetenskapsrådet) Project Grant 2015-04561, as well as the start-up funding provided by the Centre for Molecular Medicine Norway & Faculty of Mathematics and Natural Sciences at the University of Oslo.

#### DISCLOSURES:

The authors have nothing to disclose.

#### REFERENCES:

- 1 Chen, S., Novick, P., Ferro-Novick, S. ER structure and function. *Current Opinion in Cell Biology*. **25** (4), 428-433 (2013).
- 2 Powers, R. E., Wang, S., Liu, T. Y., Rapoport, T. A. Reconstitution of the tubular endoplasmic reticulum network with purified components. *Nature*. **543** (7644), 257-260 (2017).
- 3 Pendin, D., McNew, J. A., Daga, A. Balancing ER dynamics: Shaping, bending, severing, and mending membranes. *Current Opinion in Cell Biology*. **23** (4), 435-442 (2011).
- 4 Bilal, T., Gözen, I. Formation and dynamics of endoplasmic reticulum-like lipid nanotube networks. *Biomaterials Science*. **5** (7), 1256-1264 (2017).
- 5 Shibata, Y., *et al.* Mechanisms determining the morphology of the peripheral ER. *Cell*. **143** (5), 774-788 (2010).
- 6 Ozcan, L., Tabas, I. Role of endoplasmic reticulum stress in metabolic disease and other disorders. *Annual Review of Medicine*. **63**, 317-328 (2012).
- 7 Yamanaka, T., Nukina, N. ER dynamics and derangement in neurological diseases. *Frontiers in Neuroscience*. **12** (Feb), (2018).
- 8 Taalab, Y. M., *et al.* Mechanisms of disordered neurodegenerative function: Concepts and facts about the different roles of the protein kinase RNA-like endoplasmic reticulum kinase (PERK). *Reviews in the Neurosciences*. 10.1515/revneuro-2017-0071, (2018).



617 9 Shemesh, T., *et al.* A model for the generation and interconversion of ER morphologies.  
618 *Proceedings of the National Academy of Sciences of the United States of America.* **111**  
619 (49), E5243-E5251 (2014).

620 10 Boussein, N. F., Carroll-Portillo, A., Bachand, M., Sasaki, D. Y., Bachand, G. D. A continuous  
621 network of lipid nanotubes fabricated from the gliding motility of kinesin powered  
622 microtubule filaments. *Langmuir.* **29** (9), 2992-2999 (2013).

623 11 Sackmann, E. Endoplasmatic reticulum shaping by generic mechanisms and protein-  
624 induced spontaneous curvature. *Advances in Colloid and Interface Science.* **208**, 153-160  
625 (2014).

626 12 Jesorka, A., *et al.* Generation of phospholipid vesicle-nanotube networks and transport of  
627 molecules therein. *Nature Protocols.* **6**, 791 (2011).

628 13 Hook, D. A., Olhausen, J. A., Krim, J., Dugger, M. T. Evaluation of Oxygen Plasma and UV  
629 Ozone Methods for Cleaning of Occluded Areas in MEMS Devices. *Journal of*  
630 *Microelectromechanical Systems.* **19** (6), 1292-1298 (2010).

631 14 Gözen, I., *et al.* Fractal avalanche ruptures in biological membranes. *Nature Materials.* **9**  
632 (11), 908-912 (2010).

633 15 Lobovkina, T., Dommersnes, P., Joanny, J.-F., Hurtig, J., Orwar, O. *Zipper Dynamics of*  
634 *Surfactant Nanotube Y Junctions.* **97**, (2006).

635 16 van Meer, G., Voelker, D. R., Feigenson, G. W. Membrane lipids: where they are and how  
636 they behave. *Nature Reviews Molecular Cell Biology.* **9** (2), 112-124 (2008).

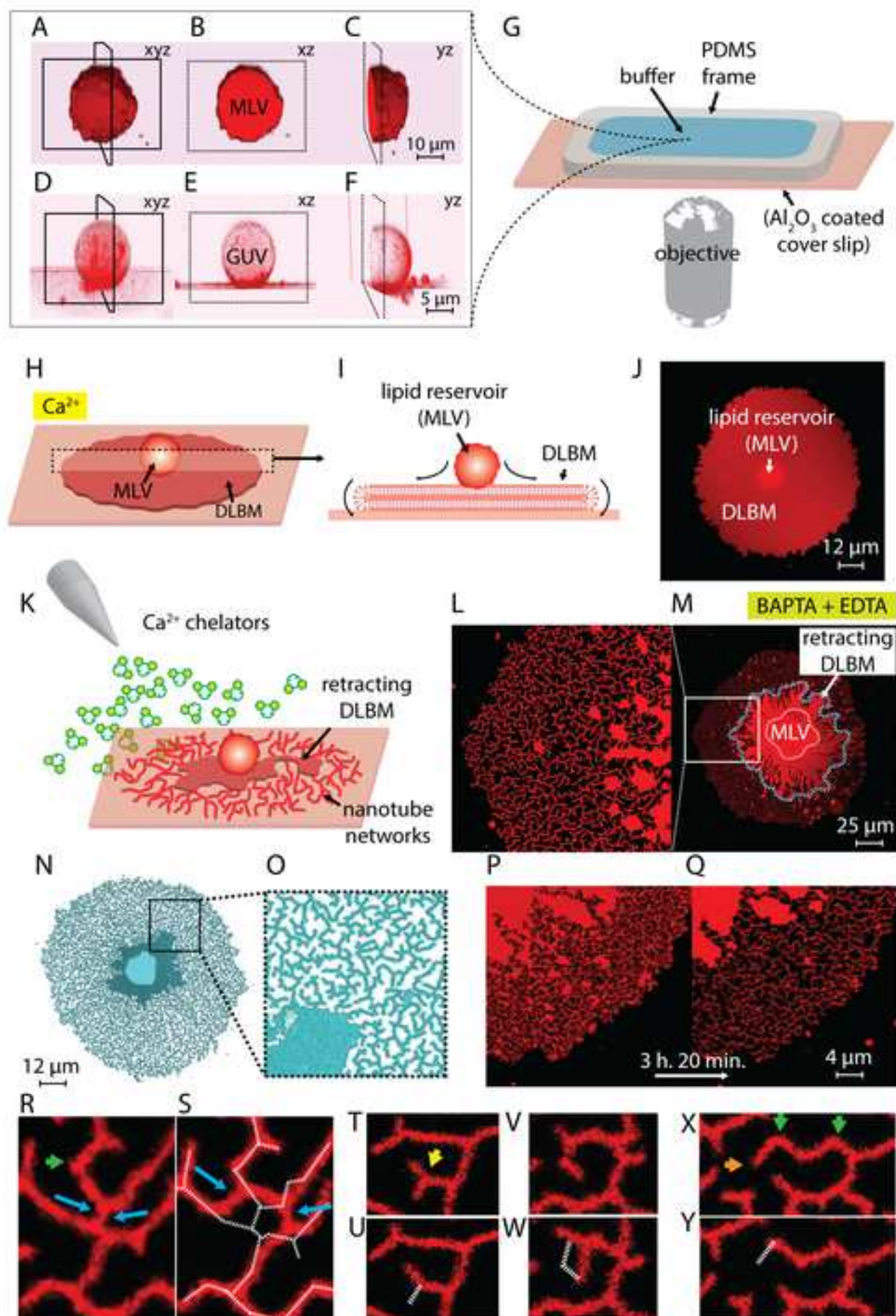
637 17 Gözen, I., *et al.* Repair of large area pores in supported double bilayers. *Soft Matter.* **9**  
638 (10), 2787-2792 (2013).

639 18 Gözen, I., *et al.* Thermal migration of molecular lipid films as a contactless fabrication  
640 strategy for lipid nanotube networks. *Lab on a Chip.* **13** (19), 3822-3826 (2013).

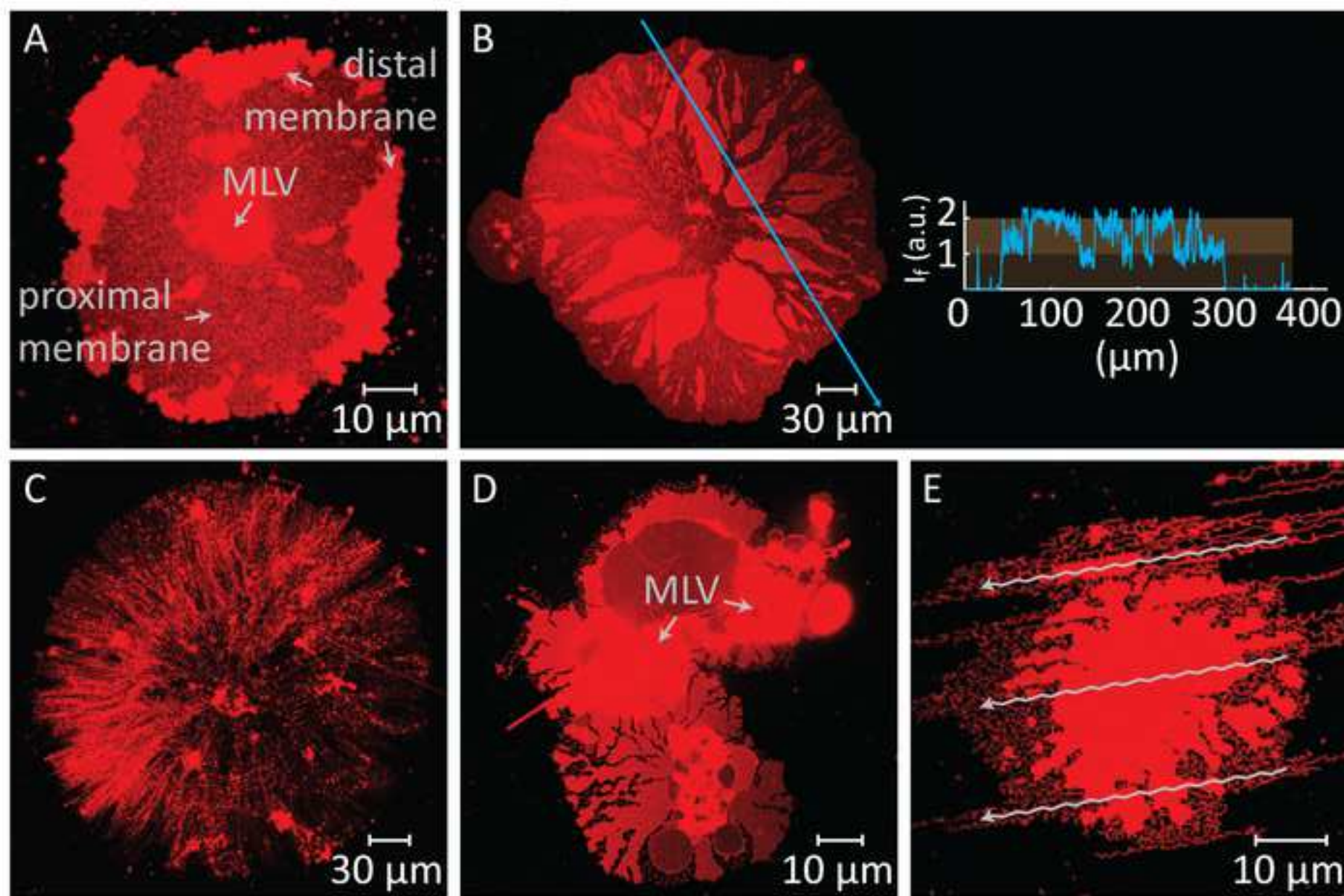
641 19 Sides, P. J., Hoggard, J. D. Measurement of the Zeta Potential of Planar Solid Surfaces by  
642 Means of a Rotating Disk. *Langmuir.* **20** (26), 11493-11498 (2004).

643 20 Nissen, J., Jacobs, K., Rädler, J. O. Interface Dynamics of Lipid Membrane Spreading on  
644 Solid Surfaces. *Physical Review Letters.* **86** (9), 1904-1907 (2001).

645







Name of Material/ Equipment	Company	Catalog Number	Comments/Description
Pear-shape flask 10 mL	Lenz Laborglasinstrumente	3.0314.13	In which the lipid mixture is prepared
Hamilton 5 mL glass syringe (P/N)	Hamilton	P/N81520	For transfer of the chloroform to beaker
Custom large hub needle Gauge 22 S	Hamilton	7748-18	Removable needle for syringe specified in row 3
Hamilton 250 µL glass syringe	Hamilton	7639-01	Used for transfer of lipids in chloroform to the flask
Large hub Gauge 22 S	Hamilton	7780-03	Removable needle for syringe specified in row 5
Hamilton 50 µL glass syringe	Hamilton	7637-01	Used for transfer of fluorophore-conjugated lipids to the flask
Small hub Gauge 22 S	Hamilton	7770-01	Removable needle for syringe specified in row 7
Chloroform anhydrous (≥99%)	Sigma-Aldrich	288306	Used to complete the lipid mixture to a total of 300 µL
Soy L-α Phosphatidyl choline lipid (Soy PC)	Avanti Polar Lipids Inc	441601	phospholipid species contributing to 69% of the total composition/mixture

1,2-dioleoyl-sn-glycero-3-phosphoethanolamine (DOPE)	Avanti Polar Lipids Inc	850725	phospholipid species contributing to 30% of the lipid composition/mixture
L-α Phosphatidyl inositol lipid (Soy PI)	Avanti Polar Lipids Inc	840044	alterative phospholipid species contributing to 30% of the lipid composition/mixture (from the original article Bilal and Gözen, Biomaterials Science, 2017)
Texas Red 1,2-dihexadecanoyl-sn-glycero-3-phosphoethanolamine,triethylammonium salt (Texas Red DHPE)	Invitrogen (Thermo Fisher Scientific)	T1395MP	Fluorescent-lipid conjugate, 1% of the lipid composition/mixture
Digital Dry Baths/Block Heaters	Thermo Fischer	88870006	To warm glycerol in order to decrease its viscosity
Glycerol for molecular biology (≥99%)	Sigma Life Science	G5516	For lipid preparation
<b>PBS buffer (pH=7.8); ingredients below in rows 17-21</b>			Used to prepare the lipid suspension
TRIZMA base, primary standard and buffer (≥99%)	Sigma Life Science	T1503	Used to prepare PBS buffer
Potassium phosphate tribasic, reagent grade (≥98%) (K <sub>3</sub> PO <sub>4</sub> )	Sigma-Aldrich	P5629	PBS buffer ingredient

Magnesium sulfate heptahydrate, BioUltra (≥99,5%) KT (MgSO <sub>4</sub> ·7H <sub>2</sub> O)	Sigma Life Science	63138	PBS buffer ingredient
Potassium phosphate monobasic, anhydrous, free flowing, Redi-Dri, ACS (KH <sub>2</sub> PO <sub>4</sub> )	Sigma-Aldrich	795488	PBS buffer ingredient
Ethylenediaminetetraacetic acid disodium salt dihydrate ACS reagent, 99.0-101.0% (Na <sub>2</sub> EDTA)	Sigma-Aldrich	E4884	PBS and Chelator-HEPES buffer ingredient
Ultrasonic cleaner USC-TH	VWR	142-0084	Ultrasonication of rehydrated lipids
Rotary evaporator - Büchi rotary evaporator Model R-200	Sigma	Z626797	For evaporation of chloroform
Pressure meter - Vacuum regulator IRV-100	SMC	IRV10/20	For controlling the pressure value during lipid dehydration
<b>HEPES-buffer (pH=7.8); ingredients below in rows 26-27</b>			Used for rehydration of lipids. Content: 10 mM HEPES with 100 m NaCl diluted in ultrapure deionized water
HEPES ≥99.5% (titration)	Sigma Life Science	H3375	HEPES-buffer ingredient
Sodium chloride for molecular biology, DNase, RNase, and protease, none detected, ≥98% (titration) (NaCl)	Sigma Life Science	S3014	HEPES-buffer ingredient

**Calcium-HEPES buffer (pH=7.8);  
effective ingredient below in row  
29**

Used for spreading of lipids. Content: 10 mM HEPES, 100 mM NaCl, 4 mM CaCl<sub>2</sub> diluted in ultrapure deionized water

Calcium chloride anhydrous,  
BioReagent, suitable for insect cell  
culture, suitable for plant cell  
culture, ≥96.0% (CaCl<sub>2</sub>)

Sigma Life Science C5670

To prepare Calcium-HEPES buffer

**Chelator-HEPES buffer (pH=7.8);  
effective ingredient below in row  
31**

Used to promote the formation of tubular networks. Content: 10 mM HEPES, 100 mM NaCl, 10 mM EDTA and 7 mM BAPTA diluted in ultrapure deionized water

1,2-Bis(2-aminophenoxy)ethane-  
N,N,N',N'-tetraacetic acid  
tetrasodium salt ≥95% (HPLC)  
(BAPTA-Na<sub>4</sub>)

Sigma Life Science 14513

Chelator-HEPES buffer ingredient

Sodium Hydroxide

Sigma 30620

Basic solution used to adjust the pH of the buffers

pH meter accumet™ AE150 pH

Fisher Scientific 1544693

Used to measure the pH of all buffers

Glass petri dish

VWR HECH41042012

6 cm, used for making the PDMS sheet

Potassium hydroxide ACS reagent, $\geq 85\%$ , pellets (KOH)	Sigma-Aldrich	221473	To make the KOH solution for cleaning glass petri dish for the fabrication of the PDMS sheet
Isopropanol prima ren 99.5%	Antibac AS	600079	KOH solution ingredient
Heating and drying oven - venticell r	MMM Medcente Einrichtun gen GmbH	MC000714	For drying of the glass petri dish after silanization and to cure PDMS
Dichlorodimethylsilane $\geq 99.5\%$	Sigma-Aldrich	440272	Used for silanization of glass petri dish in which PDMS sheet is prepared
Vacuum pump	Cole-Parmer	EW-79202-05	Connected to desiccator
Sylgard 184 silicone elastomer curing agent Sylgard 184 Silicone elastomer base	Dow corning	24236-10	Kit to make PDMS solution
Disposable scalpel	Swann-Morton	11798343	Used to cut the PDMS
Cover slips	Menzel - Gläser	MEZ102460	24x60 mm. Used to deposit thin film of $\text{Al}_2\text{O}_3$
Atomic layer deposition system	Beneq	TFS200 (model number)	Atomic Layer deposition system used to deposit thin film of $\text{Al}_2\text{O}_3$ in microscope cover glass



Ellipsometer	J.A. Woollan Co.	Alpha-SE (model name)	System used to characterize the thickness of the film deposited on glass surface
Laser scanning confocal microscope	Leica Microsystems	Leica TCS SP8 X	Microscope used for visualization of the experiment
Objective 40x, 1.3 NA	Leica Microsystems	1550635	Used for visualization of the experiment
White light laser source	Leica Microsystems	Leica TCS SP8 X	For excitation of the membrane fluorophore



1 Alewife Center #200  
Cambridge, MA 02140  
tel. 617.945.9051  
www.jove.com

## ARTICLE AND VIDEO LICENSE AGREEMENT

Title of Article:	Spontaneous Formation and Rearrangement of Artificial Lipid Nanotube Networks as a Bottom-Up Model for Endoplasmic Reticulum
Author(s):	Patrícia F Belletati, Elif Senem Köksal, Ganna Reint, Ragni Olsson, Kira Leitl, İlayda Kantarci and İrep Gözen

Item 1: The Author elects to have the Materials be made available (as described at <http://www.jove.com/publish>) via:

☐

Standard Access

☒

Open Access

Item 2: Please select one of the following items:

☒

The Author is **NOT** a United States government employee.

☐

The Author is a United States government employee and the Materials were prepared in the course of his or her duties as a United States government employee.

☐

The Author is a United States government employee but the Materials were NOT prepared in the course of his or her duties as a United States government employee.

### ARTICLE AND VIDEO LICENSE AGREEMENT

1. **Defined Terms.** As used in this Article and Video License Agreement, the following terms shall have the following meanings: **"Agreement"** means this Article and Video License Agreement; **"Article"** means the article specified on the last page of this Agreement, including any associated materials such as texts, figures, tables, artwork, abstracts, or summaries contained therein; **"Author"** means the author who is a signatory to this Agreement; **"Collective Work"** means a work, such as a periodical issue, anthology or encyclopedia, in which the Materials in their entirety in unmodified form, along with a number of other contributions, constituting separate and independent works in themselves, are assembled into a collective whole; **"CRC License"** means the Creative Commons Attribution-Non Commercial-No Derivs 3.0 Unported Agreement, the terms and conditions of which can be found at: <http://creativecommons.org/licenses/by-nc-nd/3.0/legalcode>; **"Derivative Work"** means a work based upon the Materials or upon the Materials and other pre-existing works, such as a translation, musical arrangement, dramatization, fictionalization, motion picture version, sound recording, art reproduction, abridgment, condensation, or any other form in which the Materials may be recast, transformed, or adapted; **"Institution"** means the institution, listed on the last page of this Agreement, by which the Author was employed at the time of the creation of the Materials; **"JoVE"** means MyJoVE Corporation, a Massachusetts corporation and the publisher of The Journal of Visualized Experiments; **"Materials"** means the Article and / or the Video; **"Parties"** means the Author and JoVE; **"Video"** means any video(s) made by the Author, alone or in conjunction with any other parties, or by JoVE or its affiliates or agents, individually or in collaboration with the Author or any other parties, incorporating all or any portion

of the Article, and in which the Author may or may not appear.

2. **Background.** The Author, who is the author of the Article, in order to ensure the dissemination and protection of the Article, desires to have the JoVE publish the Article and create and transmit videos based on the Article. In furtherance of such goals, the Parties desire to memorialize in this Agreement the respective rights of each Party in and to the Article and the Video.

3. **Grant of Rights in Article.** In consideration of JoVE agreeing to publish the Article, the Author hereby grants to JoVE, subject to **Sections 4 and 7** below, the exclusive, royalty-free, perpetual (for the full term of copyright in the Article, including any extensions thereto) license (a) to publish, reproduce, distribute, display and store the Article in all forms, formats and media whether now known or hereafter developed (including without limitation in print, digital and electronic form) throughout the world, (b) to translate the Article into other languages, create adaptations, summaries or extracts of the Article or other Derivative Works (including, without limitation, the Video) or Collective Works based on all or any portion of the Article and exercise all of the rights set forth in (a) above in such translations, adaptations, summaries, extracts, Derivative Works or Collective Works and (c) to license others to do any or all of the above. The foregoing rights may be exercised in all media and formats, whether now known or hereafter devised, and include the right to make such modifications as are technically necessary to exercise the rights in other media and formats. If the "Open Access" box has been checked in **Item 1** above, JoVE and the Author hereby grant to the public all such rights in the Article as provided in, but subject to all limitations and requirements set forth in, the CRC License.

## ARTICLE AND VIDEO LICENSE AGREEMENT

4. **Retention of Rights in Article.** Notwithstanding the exclusive license granted to JoVE in **Section 3** above, the Author shall, with respect to the Article, retain the non-exclusive right to use all or part of the Article for the non-commercial purpose of giving lectures, presentations or teaching classes, and to post a copy of the Article on the Institution's website or the Author's personal website, in each case provided that a link to the Article on the JoVE website is provided and notice of JoVE's copyright in the Article is included. All non-copyright intellectual property rights in and to the Article, such as patent rights, shall remain with the Author.

5. **Grant of Rights in Video – Standard Access.** This **Section 5** applies if the "Standard Access" box has been checked in **Item 1** above or if no box has been checked in **Item 1** above. In consideration of JoVE agreeing to produce, display or otherwise assist with the Video, the Author hereby acknowledges and agrees that, Subject to **Section 7** below, JoVE is and shall be the sole and exclusive owner of all rights of any nature, including, without limitation, all copyrights, in and to the Video. To the extent that, by law, the Author is deemed, now or at any time in the future, to have any rights of any nature in or to the Video, the Author hereby disclaims all such rights and transfers all such rights to JoVE.

6. **Grant of Rights in Video – Open Access.** This **Section 6** applies only if the "Open Access" box has been checked in **Item 1** above. In consideration of JoVE agreeing to produce, display or otherwise assist with the Video, the Author hereby grants to JoVE, subject to **Section 7** below, the exclusive, royalty-free, perpetual (for the full term of copyright in the Article, including any extensions thereto) license (a) to publish, reproduce, distribute, display and store the Video in all forms, formats and media whether now known or hereafter developed (including without limitation in print, digital and electronic form) throughout the world, (b) to translate the Video into other languages, create adaptations, summaries or extracts of the Video or other Derivative Works or Collective Works based on all or any portion of the Video and exercise all of the rights set forth in (a) above in such translations, adaptations, summaries, extracts, Derivative Works or Collective Works and (c) to license others to do any or all of the above. The foregoing rights may be exercised in all media and formats, whether now known or hereafter devised, and include the right to make such modifications as are technically necessary to exercise the rights in other media and formats. For any Video to which this **Section 6** is applicable, JoVE and the Author hereby grant to the public all such rights in the Video as provided in, but subject to all limitations and requirements set forth in, the CRC License.

7. **Government Employees.** If the Author is a United States government employee and the Article was prepared in the course of his or her duties as a United States government employee, as indicated in **Item 2** above, and any of the licenses or grants granted by the Author hereunder exceed the scope of the 17 U.S.C. 403, then the rights granted hereunder shall be limited to the maximum

rights permitted under such statute. In such case, all provisions contained herein that are not in conflict with such statute shall remain in full force and effect, and all provisions contained herein that do so conflict shall be deemed to be amended so as to provide to JoVE the maximum rights permissible within such statute.

8. **Protection of the Work.** The Author(s) authorize JoVE to take steps in the Author(s) name and on their behalf if JoVE believes some third party could be infringing or might infringe the copyright of either the Author's Article and/or Video.

9. **Likeness, Privacy, Personality.** The Author hereby grants JoVE the right to use the Author's name, voice, likeness, picture, photograph, image, biography and performance in any way, commercial or otherwise, in connection with the Materials and the sale, promotion and distribution thereof. The Author hereby waives any and all rights he or she may have, relating to his or her appearance in the Video or otherwise relating to the Materials, under all applicable privacy, likeness, personality or similar laws.

10. **Author Warranties.** The Author represents and warrants that the Article is original, that it has not been published, that the copyright interest is owned by the Author (or, if more than one author is listed at the beginning of this Agreement, by such authors collectively) and has not been assigned, licensed, or otherwise transferred to any other party. The Author represents and warrants that the author(s) listed at the top of this Agreement are the only authors of the Materials. If more than one author is listed at the top of this Agreement and if any such author has not entered into a separate Article and Video License Agreement with JoVE relating to the Materials, the Author represents and warrants that the Author has been authorized by each of the other such authors to execute this Agreement on his or her behalf and to bind him or her with respect to the terms of this Agreement as if each of them had been a party hereto as an Author. The Author warrants that the use, reproduction, distribution, public or private performance or display, and/or modification of all or any portion of the Materials does not and will not violate, infringe and/or misappropriate the patent, trademark, intellectual property or other rights of any third party. The Author represents and warrants that it has and will continue to comply with all government, institutional and other regulations, including, without limitation all institutional, laboratory, hospital, ethical, human and animal treatment, privacy, and all other rules, regulations, laws, procedures or guidelines, applicable to the Materials, and that all research involving human and animal subjects has been approved by the Author's relevant institutional review board.

11. **JoVE Discretion.** If the Author requests the assistance of JoVE in producing the Video in the Author's facility, the Author shall ensure that the presence of JoVE employees, agents or independent contractors is in accordance with the relevant regulations of the Author's institution. If more than one author is listed at the beginning of this Agreement, JoVE may, in its sole



## ARTICLE AND VIDEO LICENSE AGREEMENT

discretion, elect not take any action with respect to the Article until such time as it has received complete, executed Article and Video License Agreements from each such author. JoVE reserves the right, in its absolute and sole discretion and without giving any reason therefore, to accept or decline any work submitted to JoVE. JoVE and its employees, agents and independent contractors shall have full, unfettered access to the facilities of the Author or of the Author's institution as necessary to make the Video, whether actually published or not. JoVE has sole discretion as to the method of making and publishing the Materials, including, without limitation, to all decisions regarding editing, lighting, filming, timing of publication, if any, length, quality, content and the like.

12. **Indemnification.** The Author agrees to indemnify JoVE and/or its successors and assigns from and against any and all claims, costs, and expenses, including attorney's fees, arising out of any breach of any warranty or other representations contained herein. The Author further agrees to indemnify and hold harmless JoVE from and against any and all claims, costs, and expenses, including attorney's fees, resulting from the breach by the Author of any representation or warranty contained herein or from allegations or instances of violation of intellectual property rights, damage to the Author's or the Author's institution's facilities, fraud, libel, defamation, research, equipment, experiments, property damage, personal injury, violations of institutional, laboratory, hospital, ethical, human and animal treatment, privacy or other rules, regulations, laws, procedures or guidelines, liabilities and other losses or damages related in any way to the submission of work to JoVE, making of videos by JoVE, or publication in JoVE or elsewhere by JoVE. The Author shall be responsible for, and shall hold JoVE harmless from, damages caused by lack of sterilization, lack of cleanliness or by contamination due to

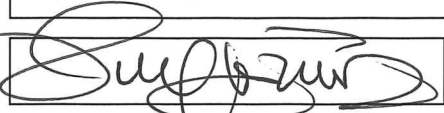
the making of a video by JoVE its employees, agents or independent contractors. All sterilization, cleanliness or decontamination procedures shall be solely the responsibility of the Author and shall be undertaken at the Author's expense. All indemnifications provided herein shall include JoVE's attorney's fees and costs related to said losses or damages. Such indemnification and holding harmless shall include such losses or damages incurred by, or in connection with, acts or omissions of JoVE, its employees, agents or independent contractors.

13. **Fees.** To cover the cost incurred for publication, JoVE must receive payment before production and publication the Materials. Payment is due in 21 days of invoice. Should the Materials not be published due to an editorial or production decision, these funds will be returned to the Author. Withdrawal by the Author of any submitted Materials after final peer review approval will result in a US\$1,200 fee to cover pre-production expenses incurred by JoVE. If payment is not received by the completion of filming, production and publication of the Materials will be suspended until payment is received.

14. **Transfer, Governing Law.** This Agreement may be assigned by JoVE and shall inure to the benefits of any of JoVE's successors and assignees. This Agreement shall be governed and construed by the internal laws of the Commonwealth of Massachusetts without giving effect to any conflict of law provision thereunder. This Agreement may be executed in counterparts, each of which shall be deemed an original, but all of which together shall be deemed to me one and the same agreement. A signed copy of this Agreement delivered by facsimile, e-mail or other means of electronic transmission shall be deemed to have the same legal effect as delivery of an original signed copy of this Agreement.

A signed copy of this document must be sent with all new submissions. Only one Agreement is required per submission.

### CORRESPONDING AUTHOR

Name:	Irep Gözen
Department:	Centre for Molecular Medicine Norway
Institution:	University of Oslo
Title:	Research group leader, Associate Professor
Signature:	
Date:	08.08.18

Please submit a **signed** and **dated** copy of this license by one of the following three methods:

1. Upload an electronic version on the JoVE submission site
2. Fax the document to +1.866.381.2236
3. Mail the document to JoVE / Attn: JoVE Editorial / 1 Alewife Center #200 / Cambridge, MA 02140

We thank the referees for their careful review of the manuscript and their helpful comments. We have revised the manuscript to address the comments, and we provide a detailed response to each comment below.

#### **Editorial comments:**

- 1. Please take this opportunity to thoroughly proofread the manuscript to ensure that there are no spelling or grammar issues.**

We have checked the whole manuscript for spelling and grammar issues.

- 2. Please revise the protocol text to avoid the use of any personal pronouns (e.g., "we", "you", "our" etc.).**

We have checked the protocol text and removed all personal pronouns.

- 3. 2.4: How to set up the cycles?**

All settings including chamber and reactor pressure, length of the cycles and purges are automated to achieve a defined rate of deposition. These parameters may vary among the various models of equipment. The pre-configured recipes are often prepared by the vendor or tool responsible in the clean room, and communicated to the user as deposited film thickness per unit time. It is not possible for us to determine the deposition parameters to the extent a specialist would be able to. This will in nearly all instances be the situation which the readers find in their own shared clean room facilities. We added this information as a note to the protocol following 2.4.

- 4. Lines 319-323: Please write all text in the imperative tense.**

The tense in protocol section 4 (lines 319-323 before revision) has been corrected.

- 5. Reference 15: Please add journal title and page number.**

The format of the reference 15 before revision, now 17, has been corrected.

#### **Reviewers' comments:**

Reviewer #1:

Minor Concerns:

**The authors have included many notes in the protocol to help those who want to reproduce the results in this protocol. However, for my personal point of view, it is important to have a "trouble-shooting" section in the protocol to list all the possible problems during the experiments. If things go well, it is straightforward. But in many cases, things could go wrong due to some minor changes. "Trouble-shooting" section can serve as a guide to solve the problems.**

We appreciate your concern and agree with the importance of trouble-shooting for experiments. We followed the guidelines of JoVe about providing information for sub-optimal experiments to demonstrate the range of possible outcomes in discussion. We included a detailed description of the results to expect if critical steps were not followed, and instructions on how to avoid them. This part, also represented by Figure 2, constitutes the trouble-shooting. We also added notes throughout the protocol for every critical step and associated potential complications.

Reviewer #2:

Minor Concerns:

- 1. While piranha treatment of the Al<sub>2</sub>O<sub>3</sub>-coated microscope slides ought to be avoided, the authors may want to comment on other less aggressive methods of treating surfaces for use with this method. In particular, RF/plasma and UV/ozone treatments which may allow less-rigorous storage of substrates, and provide a way of activating surfaces just prior to use for (potentially) better reproducibility.**

The samples should ideally be used immediately after deposition. The optimal storage requires positioning the surfaces inside polypropylene wafer carriers, followed by enveloping the carriers in clean room-compatible plastic bags, which are to be nitrogen flushed before vacuum sealing. The purpose is to avoid exposing the surface to air-borne contaminants. If necessary, the surfaces can be kept in air tight containers at RT at maximum for 5 days. Longer storage is not recommended. For users who do not have easy access to a clean room nearby, and purchase or obtain the surfaces from abroad, re-oxidizing the substrates by means of oxygen plasma or ozone treatment may be an alternative solution<sup>1</sup>. We added this information as a note to the protocol following 2.7.

- 2. It's not entirely clear why Al<sub>2</sub>O<sub>3</sub> is required and not simply suitably cleaned borosilicate surfaces. While not necessary for reproducing the authors results, it may be helpful to share briefly what other substrates the authors have tried, the results, and reference their prior work documenting work with other substrates.**

Al<sub>2</sub>O<sub>3</sub> surfaces provide optimal adhesion strength, where lipid films can attach strongly enough to spread as a double lipid bilayer membrane, but also can de-attach and form tubular networks upon removal of Ca<sup>2+</sup> ions. We previously tested the same experiment on SiO<sub>2</sub>, where the multilamellar vesicles spread as a double lipid bilayer membrane, but no tubular network formation was observed upon addition of chelators<sup>2</sup>. De-attachment and tube formation are observed only on Al<sub>2</sub>O<sub>3</sub> or plasma etched Al<sup>3</sup>. Our investigations revealed that the major contributing parameter leading to such phenomenon was the zeta potential of the surfaces which for Al and Al<sub>2</sub>O<sub>3</sub> were close to zero (mV), and for SiO<sub>2</sub> significantly negative. The zeta potential of borosilicate is similar to SiO<sub>2</sub><sup>4</sup>, therefore adhesion of lipid films on borosilicate is equally strong and irreversible. In fact, multilamellar lipid reservoir contact with borosilicate surfaces typically leads to immediate rupture and formation of single lipid bilayers<sup>5</sup>. We included a paragraph on this in the discussion (highlighted in green).

- 3. It is asserted by the authors that lipid preparations are sensitive to rotation velocity, rapid pressure changes, and final pressure value. Please explain with supporting information, even if only anecdotal, or add a citation for this assertion.**

The formation of a homogenous lipid film of uniform thickness in the preparation vessel is the most important requirement for the rotavap procedure. Too fast rotation leads to turbulences, and too slow rotation leads, due to gravitation, to the accumulation of a thick layer of fluid at the bottom of the flask. During the subsequent overnight swelling process, a very inhomogenous lipid mass is produced, that does not respond well to the final

sonication step, and the resulting fractions are of different composition. To our knowledge, this has never been systematically studied, as the procedure was originally optimized to obtain unilamellar vesicles with attached multilamellar vesicles. The size of multilamellar vesicles produced by the method under the conditions specified is most suitable for the depositions described in this article. Thicker lipid deposits often led to excessively large multilamellar aggregates, that do not break down to the appropriate size during sonication.

Similarly, pressure and time within the range specified in the method ensures slow desolvation. With chloroform as solvent, too rapid of a drop in pressure cools down the mixture, resulting in increased viscosity, aggregate formation and uneven film formation. It is noted that the long process time of 6 hours is recommended in order to remove solvent to the greatest extent possible, as the organic solvent partitions into the lipid material upon rehydration.

We added this information as a note to the protocol following 1.2.

**4. What is the purpose of the glycerol? Are there other similar agents that could fulfill the same purpose?**

The glycerol is used to prevent the complete dehydration of the lipid film and enables bilayer separation<sup>6</sup>. We have not tested alternative agents for the same purpose but we added a note below section 1.3 stating the reason for using glycerol.

Note to the reviewer: The effectiveness of antidesiccants has been systematically studied by Shapiro et al. in 1985<sup>7</sup>. For example, Base oil, folicote, SAG 470 (at 1–10%); foam fighter F, and klearol (at 2.5–10%); 2251 oil (at 5–10%); and several other oils (at 10%) were listed besides glycerol as effective antievaporants.

Reviewer #3:

Major Concerns:

**My major concern is that the authors presented this artificial lipid nanotube networks as a suitable model as a bottom-up-generated structural model for the cellular ER. This claim has not been substantiated by data, was only proposed in their original research article (reference 4, Bilal and Gozen, Biomater. Sci. 2017), and thus should not be presented as a fact. The generation of a dynamic artificial lipid nanotube network itself is very interesting. Given that JOVE does not require novelty for publication, I strongly suggest toning down the claim of ER-relevance in the text (particularly in the title and the introduction), so as not to mislead readers in their research.**

We show in this protocol, as we showed in the original publication, the similarity of the morphology and dynamic tubular rearrangements of our lipid-based model to cellular ER (Figure 1). We originally suggested that it may serve as a ‘bottom-up’ model for the ER, based on morphological features and similarities in the self-organization of the structures. This is a degree of similarity that has been found to be noteworthy. We originally suggested further, and maintain that here, that the complexity of this early model can potentially be gradually increased. Exactly here lies the purpose of the current manuscript, enabling the interested

readership to build this model at their convenience, and explore further directions. This appears to us as a reasonable approach for obtaining new facts on behalf of the validity of this model, which in the future may be verified or falsified. It can, in any case, enable additional, more focused research. We assume that we have been invited to prepare our method paper with exactly this future potential in mind. We do appreciate greatly that the referee emphasizes the other possible angles may exist for the reader. Therefore we added the following sentences to the introduction (highlighted in green): In addition to serving as a bottom-up model for the still incompletely understood cellular ER, the lipid route to nanotube networks described in this protocol can be interesting for researchers studying self-assembly, nanofluidics, single molecule and colloid transport phenomena, Marangoni flow and others. Reviewer 2 also suggested that the structures we obtain may enable interesting research in a wider context, which we thankfully adopt and incorporate.

Minor Concerns:

**1. Please clarify the model and settings of the ultrasonic water bath used in Protocol 1.5.**

We specified the model of the ultrasonic bath in the Table of materials in line 22. We operate at 35 kHz at RT as now specified in 1.5.

**2. Please clarify if it is necessary to flash freeze the lipid suspension in LN2 in Protocol 1.7.**

Flash freezing the lipid suspensions in LN is not necessary at any stage of the protocol. Direct storage at -20 °C is sufficient. The reviewer makes an interesting connection to cryopreservation, where flash-freezing is indeed a way to preserve the structure of membranes. However, to our knowledge the subsequent re-warming to RT is also known to cause substantial harm to the membranes. This might be one of the reasons why flash-freezing has not found widespread application in the preparation of giant vesicles. We added an informative sentence as a note to the protocol following 1.7.

**3. Please clarify Protocol 3.3. Is the 1 ml HEPES buffer deposited directed on the glass slide with the dried film of lipids (after desiccation in Protocol 3.2)? A volume of 1 ml is rather large to be deposited on a microscope slide/coverglass.**

Indeed, 1 ml HEPES buffer is deposited directly on the glass slide for rehydration of the dry lipid film. There are examples employing similar protocols showing deposition of such volumes on cover slips with photographs<sup>6</sup>. We note that that large amount cannot be deposited on strongly hydrophilic surfaces (e.g. SiO<sub>2</sub>), where due to the interfacial tension the droplet immediately spreads out. On more hydrophilic surfaces, such as SU-8 polymer-coated slides, even 1.5 ml can apparently be deposited, as is evident from the images in the above mentioned article. Clean borosilicate slides tend to support droplets of several hundred microliters up to 1.5 ml without problems. Since the coverslip does not need to be moved, we do not consider this a technical problem. The volume of rehydration buffer effects the density of vesicle suspension (the number of vesicles per unit volume) which is subsequently transferred to the observation chamber. Depending on the volume of the observation chamber and the desired vesicle density, the rehydration volume can be tuned to 0.5-1 ml. We included this information in the protocol as a note following 3.3.



I cannot parse the description "... exposure of the dehydrated lipid film more than 20 min at room temperature leads to evaporation of the buffer and partial dehydration of the previously rehydrated vesicles". How does the exposure of the dehydrated lipid film lead to evaporation of the buffer and partial dehydration? Does the author mean "exposure of rehydrated lipid"?

We apologize for the confusion, this was a mistake in wording that we overlooked. By mistake we used the word dehydrated instead of rehydrated. We very much appreciate that the reviewer noticed what all authors have apparently overlooked. It is now corrected.

## References

- 1 Hook, D. A., Olhausen, J. A., Krim, J. & Dugger, M. T. Evaluation of Oxygen Plasma and UV Ozone Methods for Cleaning of Occluded Areas in MEMS Devices. *Journal of Microelectromechanical Systems*. **19** (6), 1292-1298, (2010).
- 2 Gözen, I. *et al.* Repair of large area pores in supported double bilayers. *Soft Matter*. **9** (10), 2787-2792, (2013).
- 3 Gözen, I. *et al.* Thermal migration of molecular lipid films as a contactless fabrication strategy for lipid nanotube networks. *Lab on a Chip*. **13** (19), 3822-3826, (2013).
- 4 Sides, P. J. & Hoggard, J. D. Measurement of the Zeta Potential of Planar Solid Surfaces by Means of a Rotating Disk. *Langmuir*. **20** (26), 11493-11498, (2004).
- 5 Nissen, J., Jacobs, K. & Rädler, J. O. Interface Dynamics of Lipid Membrane Spreading on Solid Surfaces. *Physical Review Letters*. **86** (9), 1904-1907, (2001).
- 6 Jesorka, A. *et al.* Generation of phospholipid vesicle-nanotube networks and transport of molecules therein. *Nature Protocols*. **6** 791, (2011).
- 7 Shapiro, M., McLane, W. & Belli, R. Laboratory Evaluation of Selected Chemicals as Antidesiccants for the Protection of the Entomogenous Nematode, *Steinernema feltiae* (Rhabditidae: Steinernematidae), Against *Lymantria dispar* (Lepidoptera: Lymantriidae). *Journal of Economic Entomology*. **78** (6), 1437-1441, (1985).