

# Journal of Visualized Experiments

## Lipid bilayer experiments with Contact Bubble Bilayers for Patch-clampers

--Manuscript Draft--

<b>Article Type:</b>	Methods Article - JoVE Produced Video
<b>Manuscript Number:</b>	JoVE58840R1
<b>Full Title:</b>	Lipid bilayer experiments with Contact Bubble Bilayers for Patch-clampers
<b>Keywords:</b>	lipid bilayer; patch-clamp; water-in-oil droplet; monolayer; ion channel; electrophysiology; surface chemistry; bilayer tension; contact bubble bilayer.
<b>Corresponding Author:</b>	Shigetoshi Oiki, M.D., Ph.D. University of Fukui Yoshida-gun, Fukui JAPAN
<b>Corresponding Author's Institution:</b>	University of Fukui
<b>Corresponding Author E-Mail:</b>	oiki@u-fukui.ac.jp
<b>Order of Authors:</b>	Masayuki Iwamoto Shigetoshi Oiki, M.D., Ph.D.
<b>Additional Information:</b>	
<b>Question</b>	<b>Response</b>
Please indicate whether this article will be Standard Access or Open Access.	Standard Access (US\$2,400)
Please indicate the <b>city, state/province, and country</b> where this article will be <b>filmed</b> . Please do not use abbreviations.	Yoshida-gun, Fukui, Japan

September 24, 2018

Dr. Nandita Singh  
Senior Science Editor  
*Journal of Visualized Experiments*

Dear Dr. Singh:

Please find enclosed our manuscript entitled, "Lipid bilayer experiments with Contact Bubble Bilayers for Patch-clampers" by Masayuki Iwamoto and Shigetoshi Oiki, which we are submitting for publication in the Journal of Visualized Experiments.

We would like to thank the Editor for handling our manuscript and are grateful for the constructive comments provided. We have responded to all points raised by the reviewers and revised the manuscript accordingly. We have uploaded a pdf file in which all revised sentences are highlighted.

We believe that the manuscript satisfies the requirements of the journal.

Yours sincerely,



Shigetoshi Oiki, M.D., Ph.D.

Department of Molecular Physiology and Biophysics

University of Fukui Faculty of Medical Sciences

23-3 Matsuokashimoaizuki, Eihei-cho, Yoshida-gun, Fukui 910-1193, Japan

Phone: 81-776-61-8306; FAX: 81-776-61-8101; E-mail: [oiki-fki@umin.ac.jp](mailto:oiki-fki@umin.ac.jp)

**TITLE:**

Lipid Bilayer Experiments with Contact Bubble Bilayers for Patch-Clampers

**AUTHORS AND AFFILIATIONS:**

Masayuki Iwamoto<sup>1</sup>, Shigetoshi Oiki<sup>1</sup>

<sup>1</sup>Department of Molecular Physiology and Biophysics, University of Fukui Faculty of Medical Sciences, Yoshida-gun, Fukui, Japan

**EMAIL ADDRESS OF CO-AUTHOR:**

Masayuki Iwamoto (iwamoto@u-fukui.ac.jp)

**CORRESPONDING AUTHOR:**

Shigetoshi Oiki (oiki-fki@umin.ac.jp)

**KEYWORDS:**

Lipid Bilayer, Patch Clamp, Water-In-Oil Droplet, Monolayer, Ion Channel, Electrophysiology, Surface Chemistry

**SUMMARY:**

Here, we present a protocol for the formation of lipid bilayers using a contact bubble bilayer method. A water bubble is blown into an organic solvent, whereby a monolayer is formed at the water-oil interface. Two pipettes are manipulated to dock the bubbles to form a bilayer.

**ABSTRACT:**

Lipid bilayers provide a unique experimental platform for functional studies of ion channels, allowing the examination of channel-membrane interactions under various membrane lipid compositions. Among them, the droplet interface bilayer has gained popularity; however, the large membrane size hinders the recording of low electrical background noise. We have established a contact bubble bilayer (CBB) method that combines the benefits of planar lipid bilayer and patch-clamp methods, such as the ability to vary the lipid composition and to manipulate the bilayer mechanics, respectively. Using the setup for conventional patch-clamp experiments, CBB-based experiments can be readily performed. In brief, an electrolyte solution in a glass pipette is blown into an organic solvent phase (hexadecane), and the pipette pressure is maintained to obtain a stable bubble size. The bubble is spontaneously lined with a lipid monolayer (pure lipids or mixed lipids), which is provided from liposomes in the bubbles. Next, the two monolayer-lined bubbles (~50  $\mu\text{m}$  in diameter) at the tip of the glass pipettes are docked for bilayer formation. Introduction of channel-reconstituted liposomes into the bubble leads to the incorporation of channels in the bilayer, allowing for single-channel current recording with a signal-to-noise ratio comparable to that of patch-clamp recordings. CBBs with an asymmetric lipid composition are readily formed. The CBB is renewed repeatedly by blowing out the previous bubbles and forming new ones. Various chemical and physical perturbations (*e.g.*, membrane perfusion and bilayer tension) can be imposed on the CBBs. Herein, we present the basic procedure for CBB formation.

## INTRODUCTION:

For ion channels, the cell membrane is not simply a supporting material but a partner for generating the ion flux. Functionally, the membrane is an electrical insulator in which ion channels are embedded, and all cell membranes are imparted with a resting membrane potential. In previous studies, an arbitrary membrane potential was imposed from an external circuit by which electrical current through the channels was measured. This quantitative evaluation of the ion flux at different membrane potentials revealed the molecular properties of these channels, such as their ion-selective permeation and gating functions<sup>1,2</sup>. The membrane platform for functional studies of ion channels is either the cell membrane or the lipid bilayer membrane. Historically, single-channel electrical current recordings were first performed in lipid bilayers<sup>3,4</sup>, and the relevant techniques were developed for cell membranes, such as the patch-clamp method (**Figure 1A**)<sup>5,6</sup>. Since then, these two techniques have evolved separately for different purposes (**Figure 1**)<sup>7,8</sup>.

Membrane lipids and bilayer membranes are currently the focus of research for their roles in supporting the structure and function of channel proteins. Therefore, the ready availability of methods to vary the lipid composition in bilayers is in high demand. Lipid bilayer formation methods such as the planar lipid bilayer (PLB)<sup>8–11</sup>, water-in-oil droplet bilayer<sup>12</sup>, and droplet interface bilayer (DIB)<sup>13–19</sup> techniques (**Figure 1**) are common choices, providing an opportunity for examining the channel function under varying lipid compositions<sup>20</sup>. Although the DIB is technically much easier to produce than the conventional PLB, the large size of the DIB has created a disincentive for patch-clampers to apply it for studying single-channel current recordings with usual-sized conductance (<100 pS).

To circumvent the background noise, the bilayer area must be minimized. This issue recalls the repetitions of history in developing electrophysiological techniques for lipid bilayers (**Figure 1**). In the early days, a small-sized bilayer (1–30  $\mu\text{m}$  in diameter) was formed at the tip of a pipette (tip-dip method; **Figure 1C**)<sup>21–23</sup>, rather than using a free-standing bilayer ( $\sim 100$   $\mu\text{m}$  in diameter) on a hydrophobic septum in a chamber (**Figure 1B**). The tip-dip method allowed for electrical measurements with much lower background noise<sup>24</sup>. Our experiences with the PLB<sup>25, 26</sup>, tip-dip<sup>22,23,27</sup>, and patch-clamp<sup>28–31</sup> methods led us to a novel idea of forming lipid bilayers by using the principles of the water-in-oil bilayer. We have referred to this as the contact bubble bilayer (CBB) method<sup>20,32</sup>. In this method, rather than hanging the water droplets in an oil phase (**Figure 1D**), a water bubble is blown from a glass pipette (with tip diameter of approximately 30  $\mu\text{m}$ ) into the oil phase (**Figure 1E and 2**), where the bubble is maintained by applying a steady pressure. A monolayer forms spontaneously at the water–oil interface at the surface of the bubble. Then, two bubbles are docked through the manipulation of two glass pipettes, and the bilayer is formed as the two monolayers approach each other, yielding an equilibrium bilayer area. The size of the bubble is controlled by the intra-bubble pressure (holding pressure), and likewise the bilayer size. An average diameter of 50  $\mu\text{m}$  is frequently used. Although the volume of the bubble is small (<100 pL), it is connected to the larger volume of the pipette solution that is in the microliter range, constituting the bulk electrolyte phase.

There are many benefits to use the CBB method (**Table 1**). As a lipid bilayer formation technique, membranes of various lipid compositions can be produced, and asymmetric membranes are more readily formed<sup>32</sup> than are those by the conventional folding method<sup>33</sup>. The bilayer can be mechanically manipulated, unlike the conventional PLB that can only be bent with a hydrostatic pressure difference<sup>34,35</sup>. By changing the holding pressure, the bubbles either expand or shrink, leading to increased or decreased membrane tension<sup>32</sup>. The bilayer is mechanically detachable into monolayers, similar to the freeze-fracture technique<sup>36,37</sup> of membranes in morphological studies, but with the CBB, a maneuver allows for repeated detach and attach cycles<sup>32</sup>. The small volume of the electrolyte solution within the bubble allows efficient fusion of channel-reconstituted liposomes into the bilayer, and the probability of getting channel recordings is much higher than with the conventional PLB technique. The small bubble volume also allows rapid perfusion (within ~20 ms) once another injection pipette is inserted into either of the bubbles. Unlike the patch-clamp method, a broken CBB-based membrane is re-formed immediately and repeatedly, and pipettes can be used several times a day. By integrating benefits of the patch-clamp and PLB methods, the CBB provides a versatile platform to vary the physicochemical conditions of the membrane, allowing for unprecedented studies of channel-membrane interactions.

Before presenting a detailed protocol of the CBB formation process, the physicochemical background of the bilayer formation is presented first, which will be helpful for patch-clampers to resolve experimental difficulties relating to the membrane formation that are encountered.

CBB experiments impart lessons of surface chemistry science<sup>38</sup>. The CBB is similar to a soap bubble blown from a straw into the air, where likewise, a water bubble is blown into an organic solvent. One will notice that a water bubble is hardly inflated when membrane lipids are not included in either the water bubble or the organic solvent. In the absence of amphipathic lipids, the surface tension at a water-oil interface is high, and the intra-bubble pressure for blowing a bubble will be high. This is a realization of the Laplace equation ( $\Delta P = 2 \gamma / R$ , where  $\Delta P$  is the intra-bubble pressure,  $\gamma$  is the surface tension, and  $R$  is the bubble radius). When the concentration of lipids in either the organic phase or the electrolyte solution is high, the density of lipids in the monolayer increases, as dictated by the Gibbs adsorption isotherm ( $-d\gamma = \Gamma_i d\mu_i$ , where  $\Gamma_i$  is the surface excess of compound  $i$ , and  $\mu_i$  is the chemical potential of component  $i$ )<sup>39</sup>, leading to a lower surface tension and ease of bubble formation. In the CBB, the bilayer can be observed from a tangential angle (**Figure 2**), and the contact angle between the monolayer and bilayer is measurable. This angle represents an equilibrium between the surface tensions of the monolayer and bilayer (Young equation:  $\gamma_{bi} = \gamma_{mo} \cos(\theta)$ , where  $\gamma_{bi}$  is the bilayer tension,  $\gamma_{mo}$  is the monolayer tension, and  $\theta$  is the contact angle). The changes in the contact angle indicate changes in the bilayer tension, given that the monolayer tension is evaluated from changes in the contact angle as a function of the membrane potential (Young-Lippmann equation:  $\gamma_{mo} = C_m V^2 / 4 (\cos(\theta_0) - \cos(\theta_v))$ , where  $C_m$  is the membrane capacitance,  $V$  is the membrane potential, and  $\theta_0$  and  $\theta_v$  are the contact angles at 0 and  $V$  mV, respectively)<sup>40-42</sup>. When two bubbles are close enough, they approach each other spontaneously. This is due to the van der Waals force, and we can visually observe this dynamic process in CBB formation.

A CBB system consists of distinct phases: namely, a bulk oil phase, water bubbles coated with a monolayer, and a contacting bilayer (**Figure 3**). These are reminiscent of the multiple phases observed in a PLB, such as a solvent-containing torus around the bilayer phase and a thin organic phase sandwiched by two monolayers<sup>43,44</sup>. In the CBB, the monolayer phase is continuous with the bilayer leaflet, and lipid molecules readily diffuse between the monolayer and the leaflet. The monolayer phase covers most of the bubble surface, constituting the major phase that serves as a lipid reservoir. Because the hydrophobic tail of lipids in the monolayer extends outward to the bulk oil phase, the bilayer interior or the hydrophobic core opens to the bulk oil phase. Thus, a hydrophobic substance injected into the oil phase close to the bilayer is able to readily access the bilayer interior. This is the membrane perfusion technique we had developed recently<sup>45</sup>, by which the lipid composition in the bilayer is changed rapidly (within a second) during single-channel current recordings. We found that the cholesterol content in the bilayer could be reversibly controlled by switching the cholesterol perfusion on and off<sup>45</sup>. In the event that the concentration of the relevant substance in the monolayer and bilayer differs, the concentration gradient of the relevant substance is immediately dissolved through diffusion, which is known as the Marangoni effect<sup>46,47</sup>. On the other hand, flip-flops across the monolayers are slow<sup>48–50</sup>.

Using the CBB method, the bilayer is formed under versatile physicochemical conditions, such as an electrolyte pH as low as 1<sup>51</sup>, a salt ( $K^+$ ,  $Na^+$ , *etc.*) concentration up to 3 M, a membrane potential as high as  $\pm 400$  mV, and a system temperature of up to 60 °C.

There are several options for formation of the CBB and incorporation of channel molecules therein. For formation of the monolayer at the water–oil interface, lipids are added either in an organic solvent (lipid-out method; **Figure 4A, 4C**) or in a bubble as liposomes (lipid-in method; **Figure 4B, 4D**). Notably, the lipid-in method allows for the formation of asymmetric membranes<sup>15,32</sup>. Channel molecules soluble in aqueous solution (*e.g.*, channel-forming peptides) are directly added into the bubble (**Figure 4A, B**)<sup>52,53</sup>, whereas channel proteins are reconstituted into liposomes, which are then added into the bubble (**Figure 4C, D**). Herein, the formation of CBBs by the lipid-in method for either a channel peptide (polytheonamide B (pTB); **Figure 4A**) or a protein (KcsA potassium channel, **Figure 4C**) is shown.

## PROTOCOL:

### 1 Prepare Liposomes

1.1 Disperse phospholipids (*e.g.*, 10 mg in powder) in chloroform at a desired concentration (*e.g.*, 10 mg/mL).

1.2 Evaporate chloroform.

1.2.1 Place the phospholipid solution in a round-bottom flask and set it on a rotary evaporator (see **Table of Materials**) connected to a  $N_2$  gas cylinder. Rotate the flask under  $N_2$  flow at room temperature until a thin phospholipid film appears (after ~30 min).

1.2.2 Place the open flask into a desiccator that is connected to a vacuum pump. Using the vacuum pump, aspirate the inside of the desiccator for several hours to remove the chloroform thoroughly.

1.3 Add an appropriate volume of an electrolyte solution to the flask and suspend the phospholipid to obtain a 2 mg/mL phospholipid suspension.

1.4 Sonicate the suspension for several tens of seconds using a bath sonicator (see **Table of Materials**) to obtain a multilayered vesicle (MLV) suspension.

1.5 For preparation of proteoliposomes that contain ion channel proteins, add a protein solution (with the proteins solubilized using appropriate detergents; 2% volume is the maximum) to the MLV suspension and sonicate for several seconds using the bath sonicator.

## **2 Prepare Large-Bore Glass Pipettes**

2.1 Set a glass capillary to a pipette puller and fabricate micropipettes with a fine tapered tip through two-step pulling.

2.2 Set the micropipette on a microforge and contact the tip of the micropipette to a platinum filament at the tapered portion with a diameter of 30 to 50  $\mu\text{m}$ .

2.3 Heat the filament briefly (5 s) and immediately turn it off.

NOTE: This manipulation forms a crack at the heating point, whereby the tip of the micropipette is cut off, leaving a wide bore with a diameter of 30 to 50  $\mu\text{m}$ .

## **3 Treat the Surface of Glass Slide with a Shallow Concave Well (Siliconization for a Water-Repellent Finish)**

3.1 Clean the surface of the glass slide with a shallow well with distilled water and ethanol.

3.2 Apply an appropriate volume (*e.g.*, 100  $\mu\text{L}$ ) of a siliconizing reagent (water-repellent) onto the hole slide glass.

3.3 Dry the reagent completely in the air.

3.4 Place the glass slide on the stage of an inverted microscope.

## **4 Form the CBB and Perform Electrophysiological Measurement**

4.1 Add 100  $\mu\text{L}$  of hexadecane into the shallow well of the siliconized hole slide glass.

NOTE: For the lipid-out method, phospholipids are dispersed in hexadecane (20 mg/mL) beforehand.

4.2 Fill the electrolyte solution up to half the length of the micropipette, using a tuberculin syringe.

4.3 Set the micropipette onto the micropipette holder with a pressure port, allowing the Ag/AgCl wire electrode to soak into the pipette electrolyte solution.

4.4 Connect one of the micropipette holders to the head stage of a patch-clamp amplifier and the other one to the electrical ground.

4.5 Connect a microinjector to the pressure port of the micropipette holder.

4.6 Set the micropipette to an appropriate position above the stage of an inverted microscope by manipulating the micromanipulator.

4.7 Adjust the electrode offset potential.

4.7.1 Place 1  $\mu$ L of the same electrolyte solution used to fill the micropipette on the flat surface around the shallow well of the hole slide glass, creating an electrolyte dome.

4.7.2 Soak the tip of both micropipettes into the electrolyte dome by manipulating the micromanipulator.

4.7.3 Adjust the electrode offset potential of the patch-clamp amplifier.

4.7.4 Confirm the correct offset at the end of experiments by breaking the CBB via application of a high membrane potential (electrical breakdown; using Zap on the amplifier), causing the two bubbles to be fused into one (bubble fusion).

4.7.5 Correct the liquid junction potential<sup>54</sup> in the cases where asymmetric electrolyte solutions are used, such that the calculated value is added to the applied membrane potential for the true membrane potential.

NOTE: The liquid junction potential is calculated using the program JPCalc<sup>55</sup>.

4.8 Draw the liposome solution from the tip.

NOTE: When water-soluble channels are examined using the lipid-out method, suctioning of the liposome solution is not necessary.

4.8.1 Place 1  $\mu$ L of liposome solution on the flat surface around the shallow well of the hole slide glass (liposome-containing dome).



4.8.2 Manipulate the micromanipulator and insert the tip of the micropipette into the liposome-containing dome.

4.8.3 Aspirate the liposome-containing solution by lowering the pressure inside the micropipette holder using the microinjector.

4.8.4 Repeat the procedure for the other pipette.

4.9 Manipulate the micromanipulator and dip the tip of the micropipette into the hexadecane in the shallow well.

4.10 Blow a water bubble slowly by increasing the pressure until the bubble reaches the desired size (*e.g.*, 50  $\mu\text{m}$  in diameter) and maintain the same pressure thereafter.

4.11 Discard the bubbles by passing the tip through the oil–air interface if it is hard to keep the size of the bubbles stable.

4.12 Repeat steps 4.8 to 4.9 until stable bubbles are formed.

4.13 Manipulate the bubbles to allow contact between them (**Figure 5**).

NOTE: Sometimes, the bubbles approach each other spontaneously to form the CBB. In other cases, the bubbles are close but do not contact each other. In this case, push the bubbles each other mechanically.

4.14 Fine-tune the pressure to maintain the bubble size, because the size may gradually change even at the constant intra-bubble pressure.

4.15 Set the membrane potential to the appropriate value using the patch-clamp amplifier and wait for the channel current to emerge (**Figure 6**).

## 5 Measure Bilayer Capacitance

5.1 Measure the bilayer electrical capacitance ( $C_{\text{el}}$ ) by applying a ramp potential.

NOTE: When the rate of the voltage change in the ramp command is 10 mV/10 ms (or 1 V/s) followed by –10 mV/10 ms, the amplitude of the current jump upon changes in the slope corresponds to the read of the membrane's capacitance value (*e.g.*, 100 pA  $\rightarrow$  100 pF).

5.2 Evaluate the bilayer area of two bubbles stacked one on the other and focus the microscope at the bilayer level to view the edge of the bilayer (**Figure 6**).

NOTE: The bilayer shape is mostly circular, and the area is calculated from the radius.

5.3 Calculate the specific membrane capacitance ( $C_{sp}$ ) by dividing the electrical capacitance by the bilayer area ( $C_{sp} = C_{el}/A$ ).

5.4 Calculate the bilayer thickness (thickness of the hydrophobic core) using  $D_c = (\epsilon_r \epsilon_0)/C_{sp}$  (where  $\epsilon_r$  and  $\epsilon_0$  represent the permittivity of the hydrophobic region of the bilayer and the permittivity of a vacuum, respectively).

#### REPRESENTATIVE RESULTS:

A typical CBB had a diameter of 50  $\mu\text{m}$  (**Figure 5, 6**) and the specific membrane capacitance in hexadecane was 0.65  $\mu\text{F}/\text{cm}^2$ . The bubble size was arbitrarily controlled by the intra-bubble pressure. When small bubbles are necessary for low-noise recordings, the tip diameter should be correspondingly small. For example, for a bubble size of 50  $\mu\text{m}$  in diameter, the tip diameter should be 30  $\mu\text{m}$ .

Once the CBB had formed, the channel molecules either in aqueous solution or in the liposome were spontaneously inserted into the bilayer within a span of a few to dozens of minutes. Insertion of the channels was confirmed by the stepwise increase of current amplitude (**Figure 7**) under the applied membrane potential. The smaller membrane area ( $<1,000 \mu\text{m}^2$ ) relative to that in the conventional PLB and DIB systems substantially improved the electrical signal-to-noise ratio.

Current recordings could be continued until the membrane was disrupted and the two bubbles merged. New bubbles were blown and the CBB formed immediately and repeatedly. The pipette could be used repeatedly within a day.

**Duty cycle of attach and detach.** A bilayer formed by the CBB method can be disintegrated into two monolayers. Detach-attach of the CBB can be repeated by manipulating the two bubbles (duty cycle of detach-attach). This process was monitored by the appearance of the channel current of pTB, a peptide channel from a marine sponge, as it was readily inserted into the lipid bilayer to form a monovalent cation-selective pore<sup>52,56</sup>. The pTB channel current emerged immediately after attaching the two monolayers, and the current became larger as the area of contact increased (**Figure 8**). The amplitude of the current was synchronized with the detach-attach manipulation of the CBB.

**Single-channel measurements of the KcsA channel.** The KcsA potassium channel is pH sensitive, being activated by acidic intracellular pH<sup>57</sup>. Thus, the electrolyte solution was set to be asymmetric<sup>58–60</sup>. In step 4.2 of CBB formation, the pipette solution of the left side was set at pH 4, whereas that of the right side was set at pH 7.5<sup>25</sup>. In step 4.7.1, a proteoliposome suspension, rather than liposome suspension, was placed onto the slide glass for aspiration into the left pipette. Accordingly, the KcsA channel was oriented in the membrane with its cytoplasmic domain facing the left bubble. Liposomes with the protein:lipid weight ratio of 1:2000 are suitable for single-channel current recording, and those with a 1:10 ratio are for macroscopic current recording.

**Asymmetric membrane.** An asymmetric lipid bilayer can be formed using different liposome suspensions for each bubble (lipid-in)<sup>15,32</sup>. The orientation of the KcsA channel in the membrane was regulated by setting an asymmetric solution pH (pH 4<sub>in</sub>/pH 7<sub>out</sub>), leading to its cytoplasmic side being toward the left side. Accordingly, the left side was assigned as “in,” whereas the right side was assigned as “out.” To examine lipid dependence on the gating of the KcsA channel, four types of CBB (including an asymmetric CBB) were used; namely, PG<sub>in</sub>/PG<sub>out</sub>, PG<sub>in</sub>/PC<sub>out</sub>, PC<sub>in</sub>/PG<sub>out</sub>, and PC<sub>in</sub>/PC<sub>out</sub> (PG: phosphatidylglycerol) (**Figure 9**). The KcsA channel exhibited high open probability (>90%) only in the PG<sub>in</sub>/PG<sub>out</sub> and PG<sub>in</sub>/PC<sub>out</sub> membranes. The KcsA channel requires the existence of anionic phospholipids in the inner leaflet of the membrane for a high open probability<sup>26</sup>.

#### TABLES AND FIGURE LEGENDS:

**Figure 1: Lipid bilayer and patch-clamp methods.** Various methods have been developed for forming the lipid bilayer. (A) Patch-clamp method. (B) Conventional planar lipid bilayer method, which provides a free-standing, mostly vertical, bilayer on a small hole. (C) Tip-dip method. A monolayer at the air–water interface is positioned on the tip of a glass electrode. Various modifications have been developed. (D) Droplet interface bilayer method. (E) Contact bubble bilayer method.

**Figure 2: Contact bubble bilayer formation.** As a bubble is blown into an oil phase, lipid molecules transfer spontaneously to the water–oil interface. Different types of lipids as liposomes are included in each bubble (lipid-in), and monolayers are formed exclusively by the relevant lipids. Docking two monolayers generates an asymmetric bilayer membrane.

**Figure 3: Distinct phases in the contact bubble bilayer, and the dynamics of lipids therein.** Lipids lining the bubble constitute a phase where they belong to either a monolayer or a bilayer. Flip-flop of lipids across the bilayer is infrequent, and the asymmetric membrane is retained for a long time.

**Figure 4: Delivering lipids with the lipid-out or lipid-in method.** Lipids are added either in an organic solvent (lipid-out; A and C) or in aqueous solution as liposomes (lipid-in; B and D). In the lipid-in method, an asymmetric membrane is formed. Channel-forming substances that are soluble in aqueous solution (blue), such as peptides, are added into one of the bubbles and spontaneously inserted into the bilayer. In the lipid-in method, a part of the channels is inserted into liposomes, which are then fused to the bilayer. Channel proteins (red) are reconstituted into liposomes in either the lipid-out or lipid-in method, which are then added into one of the bubbles and spontaneously fused to the bilayer.

**Figure 5: Formation and microscopic image of the contact bubble bilayer.** The bilayer is observed from a tangential direction.

**Figure 6: Observation of the bilayer for measuring the bilayer area.** Two bubbles are stacked one on the other through pipette manipulation, and the microscope is focused at the level of the contact bubble bilayer.

**Figure 7: Stepwise insertion of the KcsA channel into the contact bubble bilayer membrane.** The E71A mutant of the KcsA channel was used to show the immediate detection of the inserted channels.

**Figure 8: Detach-attach of monolayers and responses of channels.** A peptide channel, polytheonamide B, was added into one of the bubbles, which was then spontaneously incorporated into the membrane. When detached, channels in the membrane withdrew but were retained at the membrane leaflet of the channel-added side. Upon attachment, the channels were inserted into the membrane.

**Figure 9: Formation of an asymmetric membrane and channel activity dependent on the composition of the leaflet.** The KcsA channel is regulated by acidic lipids, such as PG, in the inner leaflet of the membrane.

**Table 1: Characteristics of various lipid bilayer membranes.**

## **DISCUSSION:**

The CBB method of lipid bilayer formation is based on the principle of a water-in-oil droplet lined by a monolayer<sup>20</sup>. Technically, the procedures for forming CBBs are easy, especially for patch-clamp researchers, who are proficient in manipulating glass micropipettes. The electrophysiological setup for the patch clamp is readily used in the CBB when two pipette manipulators with microinjectors are available. On the other hand, because the CBB is a successor of the conventional PLB, for which a large amount of physicochemical knowledge has been accumulated<sup>8,61</sup>, this background as well as knowledge of surface chemistry<sup>38</sup> is helpful for operating and manipulating CBBs. The CBB serves a versatile platform for studying channel-membrane interplays. By using the CBB method, the bilayer can be modulated in terms of chemical composition and physical manipulation. In the CBB, lipids lining the bubble can diffuse freely across the border of the monolayer phase and leaflet of the bilayer, which enables various experimental procedures. Various physical and chemical modifications to the bilayer are now made possible, and we have developed other techniques such as the bilayer attach-detach and the membrane perfusion methods<sup>45</sup>. We have extended CBBs for *in vitro* channel protein synthesis, where channel synthesis was performed in the bubble, and newly synthesized channel proteins were subjected to spontaneous transfer to the bilayer under application of a membrane potential where nascent channel functions of the KcsA channel was traced from the time of initiating the transcription/translation of KcsA DNA<sup>62</sup>.

Among the steps of the protocol, maintaining the bubble size is critical. The bubbles may slowly swell or shrink spontaneously because lipid transfer to the interface is slow and the monolayer tension is prone to change. In particular, the first bubble inflated just after suction of the liposome solution (steps 4.8.3 and 4.10) is hard to maintain because the monolayer tension is

lowered by the liposomes accumulated at the tip of the pipette. Discarding the initial bubbles and subsequent formation of the bubbles provide the stable CBB. Visual tracing of the bubble size and fine tuning of the pressure are necessary.

There are experimental limitations to the CBB method. Although the CBB is designed for electrophysiological measurements, the electrical resistance of the bilayer for certain lipid compositions may not be high enough (*e.g.*, 100 GΩ) for single-channel recordings. For example, dioleoyl phosphatidylcholine is frequently used for liposomes, but it forms electrically leaky CBBs at 25 °C<sup>63</sup>. CBBs cannot even be formed with lipid species whose phase transition temperature is above the recording temperature. Indeed, CBB formation was difficult with dipalmitoyl phosphatidylcholine at room temperature, but raising the temperature above  $T_m$  circumvented the problem<sup>64</sup>. In these experiments, the temperature was controlled by using a transparent heat plate (see **Table of Materials**) beneath the slide glass<sup>62</sup>. The phase transition temperature of the frequently used lipid diphytanoyl phosphatidylcholine is below 0 °C<sup>65</sup>, and CBBs are readily formed<sup>32,45,51</sup> at a broad temperature range.

Phospholipids of the water–oil interface are provided from either the lipid-in or lipid-out method, where the transfer rate is relatively slower in the lipid-out than in the lipid-in method<sup>63</sup>. In addition, for reasons unknown, the electrical resistance of the bilayer membrane is relatively smaller with the lipid-out method than with the lipid-in method.

In the protocol (step 4.8), a solution of liposomes and channel-reconstituted liposomes (1 μL) is loaded from the tip of the pipette (steps 4.9 and 4.10), and the rest of the pipette contains the previously filled electrolyte solution. This is merely for conserving materials, such as lipids and channel molecules. Consequently, the liposomes diffuse gradually toward the upper pipette solution, and after a while, the lipid concentration at the tip of the pipette becomes insufficient to form lipid monolayers. In this case, fresh liposome solution should be aspirated from the tip (step 4.8). This temporal concentration change can be circumvented when the whole pipette is filled with the solution containing lipids and channel molecules, whereas liposomes gradually settle down into the bubbles. In this case, bubbles are renewed.

Electrophysiologically, the CBB size is larger than that of the patch clamp, thus yielding a larger membrane capacitance. However, the series resistance (the electrical resistance in a series of membrane resistance) is much lower (~100 kΩ) than that for the patch clamp (pipette resistance > 1 MΩ), which accelerates the speed of the voltage clamp and attenuates the background noise and series resistance errors in the voltage-clamped membrane potentials<sup>66–68</sup>. The background noise is a function of the membrane capacitance and the series resistance, where a low series resistance complements a high membrane capacitance, resulting in low background noise<sup>9</sup>.

As a rule of lipid bilayer experiments, detergents should not be used to wash glassware. Even a trace amount of detergent perturbs the integrity of the bilayer. Organic solvents such as chloroform/methanol and ethanol should be used for such cleaning purposes instead.

Overall, the CBB integrates the benefits of both the patch clamp (*e.g.*, the mechanical manipulation of the membrane) and the PLB (*e.g.*, the ability to modify the lipid composition of the membrane). Various types of channel-forming substances and channel proteins have been studied<sup>52,69–71</sup>. The development of this method is opportune since increasingly more researchers are focusing on channel–membrane interplay, and the CBB provides a versatile platform for various experiments. Further experimental developments in the CBB method are expected.

#### ACKNOWLEDGEMENTS:

The authors would like to thank Mariko Yamatake and Masako Takashima for technical assistance. This work was supported in part by KAKENHI grant numbers 16H00759 and 17H04017 (SO).

#### DISCLOSURES:

The authors have no conflict of interest to disclose.

#### REFERENCES

1. Hille, B. *Ion channels of excitable membranes*. Sinauer Associates Inc. Sunderland. (2001).
2. Oiki, S. Channel function reconstitution and re-animation: a single-channel strategy in the postcrystal age. *The Journal of Physiology*. **593**, 2553–2573, doi: 10.1113/JP270025 (2015).
3. Mueller, P., Rudin, D.O., Tien, H.T., Wescott, W.C. Reconstitution of cell membrane structure in vitro and its transformation into an excitable system. *Nature*. **194** (4832), 979–980, doi: 10.1038/194979a0 (1962).
4. Hladky, S.B., Haydon, D.A. Discreteness of conductance change in bimolecular lipid membranes in the presence of certain antibiotics. *Nature*. **225**, 451–453 (1970).
5. Neher, E., Sakmann, B. Single-channel currents recorded from membrane of denervated frog muscle fibres. *Nature*. **260**, 799–802 (1976).
6. Hamill, O.P., Marty, A., Neher, E., Sakmann, B., Sigworth, F.J. Improved patch-clamp techniques for high-resolution current recording from cells and cell-free membrane patches. *Pflugers Arch*. **391** (2), 85–100 (1981).
7. Sakmann, B., Neher, E. *Single-Channel Recording*. Springer. New York. (2009).
8. *Ion Channel Reconstitution*. Springer. New York. (1986).
9. Wonderlin, W.F., Finkel, A., French, R.J. Optimizing planar lipid bilayer single-channel recordings for high resolution with rapid voltage steps. *Biophysical journal*. **58** (2), 289–297, doi: 10.1016/S0006-3495(90)82376-6 (1990).
10. Oiki, S. Planar Lipid Bilayer Method for Studying Channel Molecules. *Patch Clamp Techniques*. 229–275 (2012).
11. Kapoor, R., H. Kim, J., Ingolfson, H., Sparre Andersen, O. Preparation of Artificial Bilayers for Electrophysiology Experiments. *Journal of Visualized Experiments*. (20), e1033, doi: 10.3791/1033 (2008).
12. Funakoshi, K., Suzuki, H., Takeuchi, S. Lipid bilayer formation by contacting monolayers in a microfluidic device for membrane protein analysis. *Analytical Chemistry*. **78** (24), 8169–8174, doi: 10.1021/ac0613479 (2006).
13. Bayley, H. *et al.* Droplet interface bilayers. *Molecular BioSystems*. **4** (12), 1191–1208, doi: 10.1039/b808893d (2008).

14. Watanabe, R., Soga, N., Hara, M., Noji, H. Arrayed water-in-oil droplet bilayers for membrane transport analysis. *Lab on a Chip*. **16** (16), 3043–3048, doi: 10.1039/c6lc00155f (2016).
15. Hwang, W.L., Chen, M., Cronin, B., Holden, M.A., Bayley, H. Asymmetric droplet interface bilayers. *Journal of the American Chemical Society*. **130** (18), 5878–5879, doi: 10.1021/ja802089s (2008).
16. Tonooka, T., Sato, K., Osaki, T., Kawano, R., Takeuchi, S. Lipid bilayers on a picoliter microdroplet array for rapid fluorescence detection of membrane transport. *Small (Weinheim an der Bergstrasse, Germany)*. **10** (16), 3275–82, doi: 10.1002/smll.201303332 (2014).
17. Dixit, S.S., Kim, H., Vasilyev, A., Eid, A., Faris, G.W. Light-driven formation and rupture of droplet bilayers. *Langmuir*. **26** (9), 6193–6200, doi: 10.1021/la1010067 (2010).
18. Malmstadt, N., Nash, M. a, Purnell, R.F., Schmidt, J.J. Automated formation of lipid-bilayer membranes in a microfluidic device. *Nano letters*. **6** (9), 1961–1965, doi: 10.1021/nl0611034 (2006).
19. Najem, J.S. *et al.* Multifunctional, Micropipette-based Method for Incorporation And Stimulation of Bacterial Mechanosensitive Ion Channels in Droplet Interface Bilayers. *Journal of Visualized Experiments*. (105), doi: 10.3791/53362 (2015).
20. Oiki, S., Iwamoto, M. Channel-Membrane Interplay in Lipid Bilayer Membranes Manipulated through Monolayer Technologies. *Biological & Pharmaceutical Bulletin*. **41**, 303–311 (2018).
21. Andersen, O.S. Ion movement through gramicidin A channels. Single-channel measurements at very high potentials. *Biophysical Journal*. **41** (2), 119–133, doi: 10.1016/S0006-3495(83)84414-2 (1983).
22. Oiki, S., Danho, W., Madison, V., Montal, M. M2 delta, a candidate for the structure lining the ionic channel of the nicotinic cholinergic receptor. *Proceedings of the National Academy of Sciences of the United States of America*. **85** (22), 8703–8707 (1988).
23. Oiki, S., Koeppe, R.E., Andersen, O.S. Voltage-dependent gating of an asymmetric gramicidin channel. *Proceedings of the National Academy of Sciences of the United States of America*. **92** (6), 2121–2125, doi: 10.1073/pnas.92.6.2121 (1995).
24. Sigworth, F.J., Urry, D.W., Prasad, K.U. Open channel noise. III. High-resolution recordings show rapid current fluctuations in gramicidin A and four chemical analogues. *Biophysical Journal*. **52** (6), 1055–1064, doi: S0006-3495(87)83299-X [pii] 10.1016/S0006-3495(87)83299-X (1987).
25. Iwamoto, M. *et al.* Surface structure and its dynamic rearrangements of the KcsA potassium channel upon gating and tetrabutylammonium blocking. *The Journal of Biological Chemistry*. **281** (38), 28379–28386, doi: 10.1074/jbc.M602018200 (2006).
26. Iwamoto, M., Oiki, S. Amphipathic antenna of an inward rectifier K<sup>+</sup> channel responds to changes in the inner membrane leaflet. *Proceedings of the National Academy of Sciences of the United States of America*. **110** (2), 749–754, doi: 10.1073/pnas.1217323110 (2013).
27. Oiki, S., Koeppe, R.E., Andersen, O.S. Asymmetric gramicidin channels: heterodimeric channels with a single F6Val1 residue. *Biophysical Journal*. **66** (6), 1823–1832 (1994).
28. Ando, H., Kuno, M., Shimizu, H., Muramatsu, I., Oiki, S. Coupled K<sup>+</sup>-water flux through the HERG potassium channel measured by an osmotic pulse method. *The Journal of General Physiology*. **126** (5), 529–538, doi: 10.1085/jgp.200509377 (2005).

29. Kuno, M. *et al.* Temperature dependence of proton permeation through a voltage-gated proton channel. *The Journal of General Physiology*. **134** (3), 191–205, doi: 10.1085/jgp.200910213 (2009).
30. Iwamoto, M., Oiki, S. Counting Ion and Water Molecules in a Streaming File through the Open-Filter Structure of the K Channel. *The Journal of Neuroscience*. **31** (34), 12180–12188, doi: 10.1523/JNEUROSCI.1377-11.2011 (2011).
31. Chang, H.K., Iwamoto, M., Oiki, S., Shieh, R.C. Mechanism for attenuated outward conductance induced by mutations in the cytoplasmic pore of Kir2.1 channels. *Scientific Reports*. **5**, doi: 10.1038/srep18404 (2015).
32. Iwamoto, M., Oiki, S. Contact Bubble Bilayers with Flush Drainage. *Scientific Reports*. **5**, 9110, doi: 10.1038/srep09110 (2015).
33. Montal, M., Mueller, P. Formation of bimolecular membranes from lipid monolayers and a study of their electrical properties. *Proceedings of the National Academy of Sciences of the United States of America*. **69** (12), 3561–3566, (1972).
34. Petelska, A.D. Interfacial tension of bilayer lipid membranes. *Central European Journal of Chemistry*. **10** (1), 16–26, doi: 10.2478/s11532-011-0130-7 (2012).
35. Benz, R., Conti, F. Effects of hydrostatic pressure on lipid bilayer membranes. I. Influence on membrane thickness and activation volumes of lipophilic ion transport. *Biophysical Journal*. **50** (1), 91–98, doi: 10.1016/S0006-3495(86)83442-7 (1986).
36. Meryman, H.T., Kafir, E. *The study of frozen specimens, ice crystals and ice crystal growth by electron microscopy*. Naval Medical Research Institute, National Naval Medical Center. (1955).
37. Steere, R.L. Electron microscopy of structural detail in frozen biological specimens. *The Journal of Biophysical and Biochemical Cytology*. **3** (1), 45–60, doi: 10.1083/jcb.3.1.45 (1957).
38. de Gennes, P.-G., Brochard-Wyart, F., Quere, D. *Capillarity and Wetting Phenomena: Drops, Bubbles, Pearls, Waves*. Springer. (2003).
39. Butt, H.-J., Kappl, M. *Surface and Interfacial Forces*. Wiley-VCH. Weinheim. (2018).
40. Requena, J., Haydon, D.A. The lippmann equation and the characterization of black lipid films. *Journal of Colloid and Interface Science*. **51** (2), 315–327, doi: 10.1016/0021-9797(75)90119-8 (1975).
41. Taylor, G.J. *et al.* Direct in situ measurement of specific capacitance, monolayer tension, and bilayer tension in a droplet interface bilayer. *Soft Matter*. **11** (38), 7592–7605, doi: 10.1039/C5SM01005E (2015).
42. Dixit, S.S., Pincus, A., Guo, B., Faris, G.W. Droplet shape analysis and permeability studies in droplet lipid bilayers. *Langmuir*. **28** (19), 7442–7451, doi: 10.1021/la3005739 (2012).
43. White, S.H. Analysis of the torus surrounding planar lipid bilayer membranes. *Biophysical Journal* **12** (4), 432–445 (1972).
44. White, S.H. The physical nature of planar bilayer membranes. *Ion Channel Reconstitution* (1986).
45. Iwamoto, M., Oiki, S. Membrane Perfusion of Hydrophobic Substances Around Channels Embedded in the Contact Bubble Bilayer. *Scientific Reports*. **7** (1), 6857, doi: 10.1038/s41598-017-07048-4 (2017).
46. Velarde, M.G., Zeytounian, R.K., others *Interfacial phenomena and the Marangoni effect*. Springer. (2002).



47. Ryazantsev, Y.S., *et al.* Thermo- and soluto-capillarity: Passive and active drops. *Advances in Colloid and Interface Science*. **247**, 52–80 (2017).
48. Kornberg, R.D., McConnell, H.M. Inside-Outside Transitions of Phospholipids in Vesicle Membranes. *Biochemistry*. **10** (7), 1111–1120, doi: 10.1021/bi00783a003 (1971).
49. Wimley, W.C., Thompson, T.E. Exchange and Flip-Flop of Dimyristoylphosphatidylcholine in Liquid-Crystalline, Gel, and Two-Component, Two-Phase Large Unilamellar Vesicles. *Biochemistry*. **29** (5), 1296–1303, doi: 10.1021/bi00457a027 (1990).
50. Nakao, H. *et al.* pH-dependent promotion of phospholipid flip-flop by the KcsA potassium channel. *Biochimica et Biophysica Acta (BBA) - Biomembranes*. **1848** (1), 145–150, doi: 10.1016/j.bbamem.2014.10.001 (2015).
51. Matsuki, Y. *et al.* Rectified Proton Grotthuss Conduction Across a Long Water-Wire in the Test Nanotube of the Polytheonamide B Channel. *Journal of the American Chemical Society*. **138** (12), 4168–4177, doi: 10.1021/jacs.5b13377 (2016).
52. Iwamoto, M., Shimizu, H., Muramatsu, I., Oiki, S. A cytotoxic peptide from a marine sponge exhibits ion channel activity through vectorial-insertion into the membrane. *FEBS letters*. **584** (18), 3995–3999, doi: S0014-5793(10)00644-7 [pii] 10.1016/j.febslet.2010.08.007 (2010).
53. Iwamoto, M. *et al.* Channel Formation and Membrane Deformation via Sterol-Aided Polymorphism of Amphidinol 3. *Scientific Reports*. **7** (1), 10782, doi: 10.1038/s41598-017-11135-x (2017).
54. Barry, P.H., Lynch, J.W. Liquid junction potentials and small cell effects in patch-clamp analysis. *The Journal of Membrane Biology*. **121** (2), 101–117 (1991).
55. Barry, P.H. JPCalc, a software package for calculating liquid junction potential corrections in patch-clamp, intracellular, epithelial and bilayer measurements and for correcting junction potential measurements. *Journal of Neuroscience Methods*. **51** (1), 107–116, doi: 10.1016/0165-0270(94)90031-0 (1994).
56. Oiki, S., Muramatsu, I., Matsunaga, S., Fusetani, N. A channel-forming peptide toxin: polytheonamide from marine sponge (*Theonella swinhoei*). *Nihon Yakurigaku Zasshi*. **110** (Suppl. 1), 195P–198P (1997).
57. Heginbotham, L., LeMasurier, M., Kolmakova-Partensky, L., Miller, C. Single streptomyces lividans K(+) channels: functional asymmetries and sidedness of proton activation. *The Journal of General Physiology*. **114** (4), 551–560 (1999).
58. Cortes, D.M., Perozo, E. Structural dynamics of the Streptomyces lividans K<sup>+</sup> channel (SKC1): oligomeric stoichiometry and stability. *Biochemistry*. **36** (33), 10343–10352, doi: 10.1021/bi971018y [pii] (1997).
59. MacKinnon, R., Cohen, S.L., Kuo, A., Lee, A., Chait, B.T. Structural Conservation in Prokaryotic and Eukaryotic Potassium Channels. *Science*. **280** (5360), 106–109, doi: 10.1126/science.280.5360.106 (1998).
60. LeMasurier, M., Heginbotham, L., Miller, C. KcsA: it's a potassium channel. *The Journal of General Physiology*. **118** (3), 303–314 (2001).
61. Oiki, S. Planar lipid bilayer methods for channel study. *New Patch-Clamp Experimental Techniques*. 208–244 (2001).
62. Iwamoto, M., Elfaramawy, M.A., Yamatake, M., Matsuura, T., Oiki, S. Concurrent in Vitro Synthesis and Functional Detection of Nascent Activity of the KcsA Channel under a Membrane Potential. *ACS Synthetic Biology*. **7** (4), 1004–1011, doi: 10.1021/acssynbio.7b00454 (2018).

63. Venkatesan, G.A. *et al.* Adsorption kinetics dictate monolayer self-assembly for both lipid-in and lipid-out approaches to droplet interface bilayer formation. *Langmuir*. **31** (47), 12883–12893, doi: 10.1021/acs.langmuir.5b02293 (2016).
64. Silvius, J.R. Thermotropic phase transitions of pure lipids in model membranes and their modifications by membrane proteins. *Lipid-protein Interactions*. **2**, 239–281 (1982).
65. Lindsey, H., Petersen, N.O., Chan, S.I. Physicochemical characterization of 1,2-diphytanoyl-sn-glycero-3-phosphocholine in model membrane systems. *Biochimica et Biophysica Acta (BBA) - Biomembranes*. **555** (1), 147–167, doi: 10.1016/0005-2736(79)90079-8 (1979).
66. Moore, J.W., Hines, M., Harris, E.M. Compensation for resistance in series with excitable membranes. *Biophysical Journal*. **46** (4), 507–514 (1984).
67. Armstrong, C.M., Chow, R.H. Supercharging: a method for improving patch-clamp performance. *Biophysical Journal* **52** (1), 133–136 (1987).
68. Armstrong, C.M., Gilly, W.F. Access resistance and space clamp problems associated with whole-cell patch clamping. *Methods in Enzymology*. **207**, 100–122 (1992).
69. Kojima, S., Iwamoto, M., Oiki, S., Tochigi, S., Takahashi, H. Thylakoid membranes contain a non-selective channel permeable to small organic molecules. *Journal of Biological Chemistry*. **293** (20), 7777–7785, doi: 10.1074/jbc.RA118.002367 (2018).
70. Winterstein, L.M. *et al.* Reconstitution and functional characterization of ion channels from nanodiscs in lipid bilayers. *Journal of General Physiology*. **150** (4), 637–646 (2018).
71. Iwamoto, M. *et al.* Channel Formation and Membrane Deformation via Sterol-Aided Polymorphism of Amphidinol. *Scientific Reports*. **7** (1), doi: 10.1038/s41598-017-11135-x (2017).

Figure 1

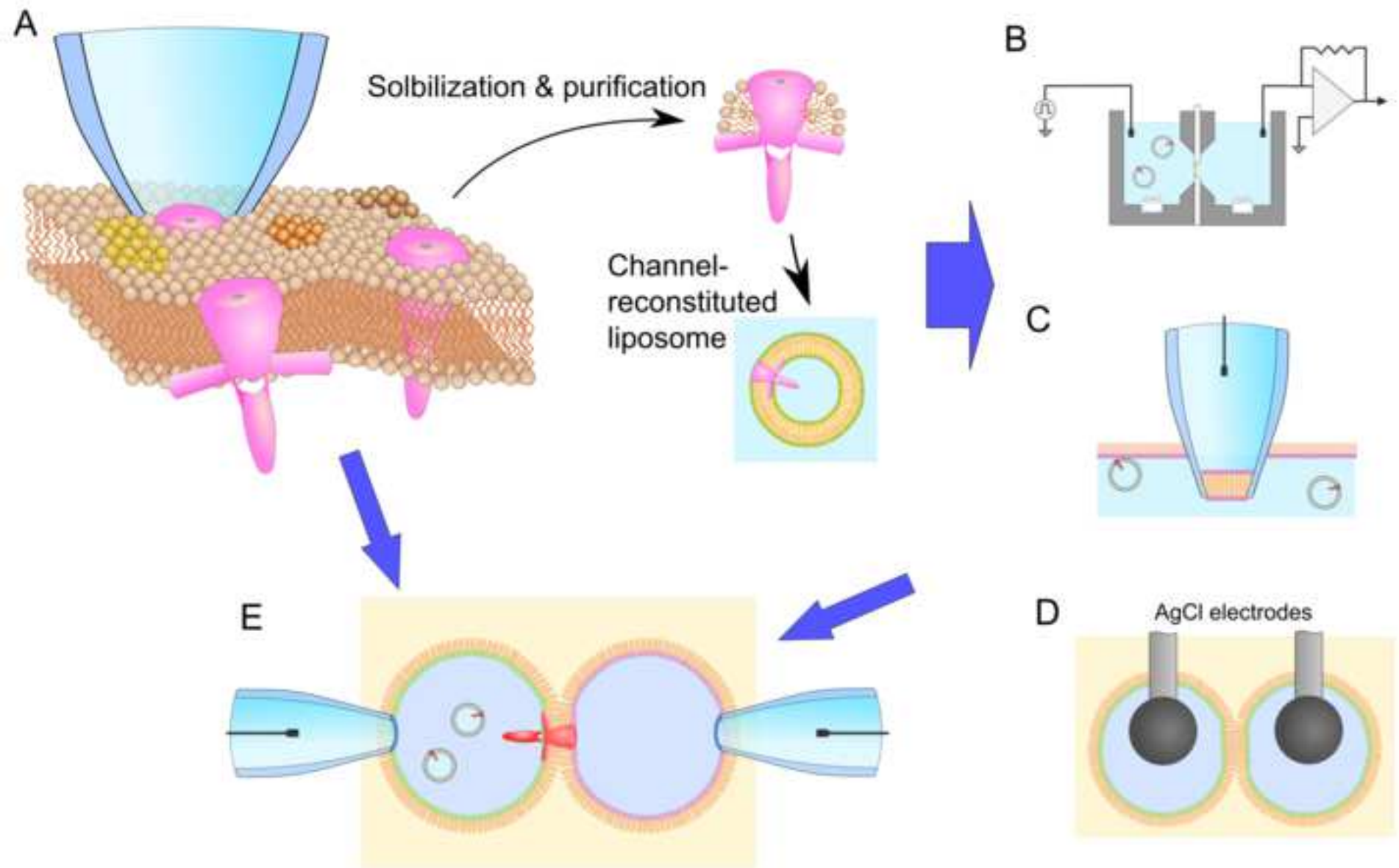
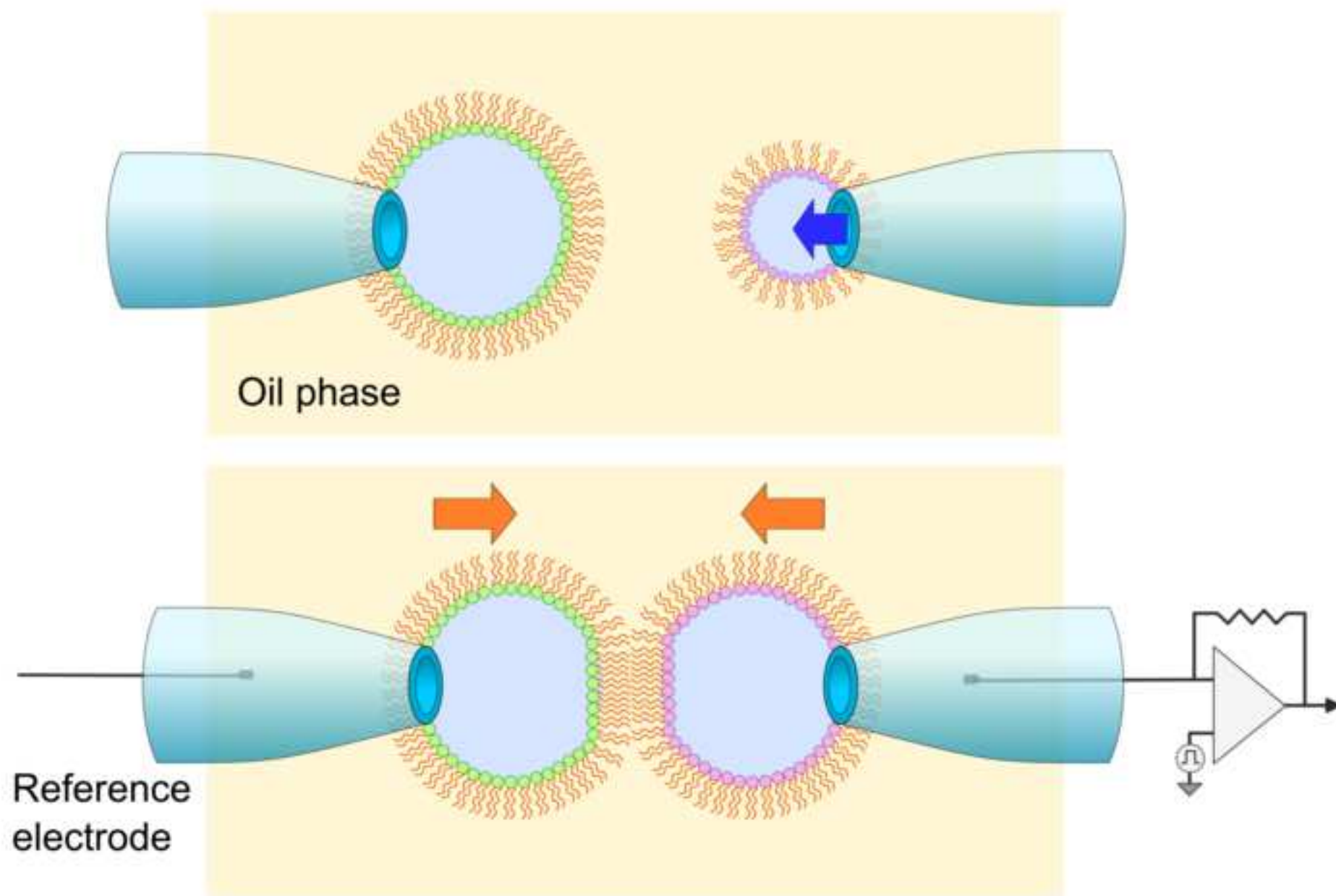


Figure 2



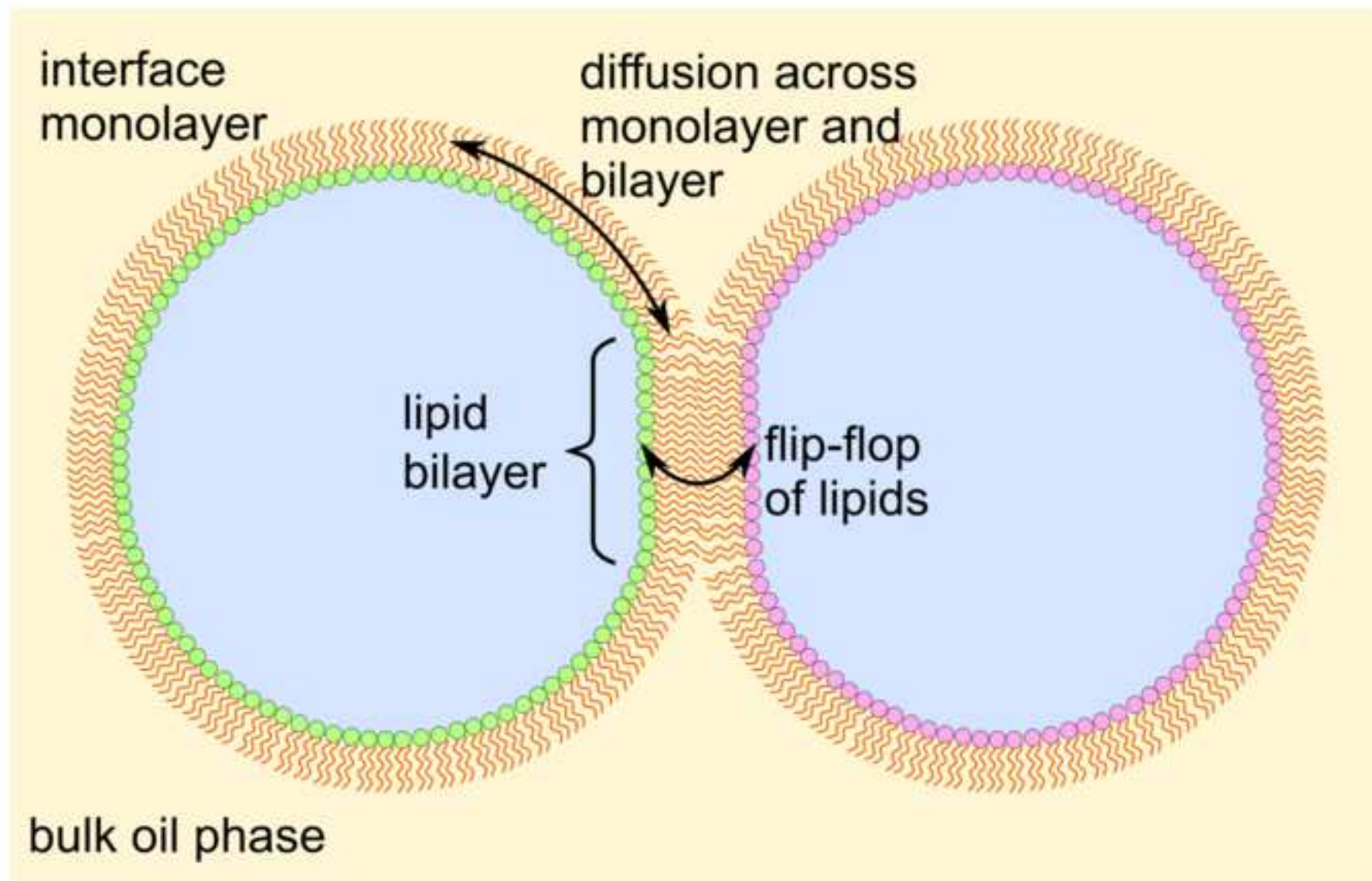
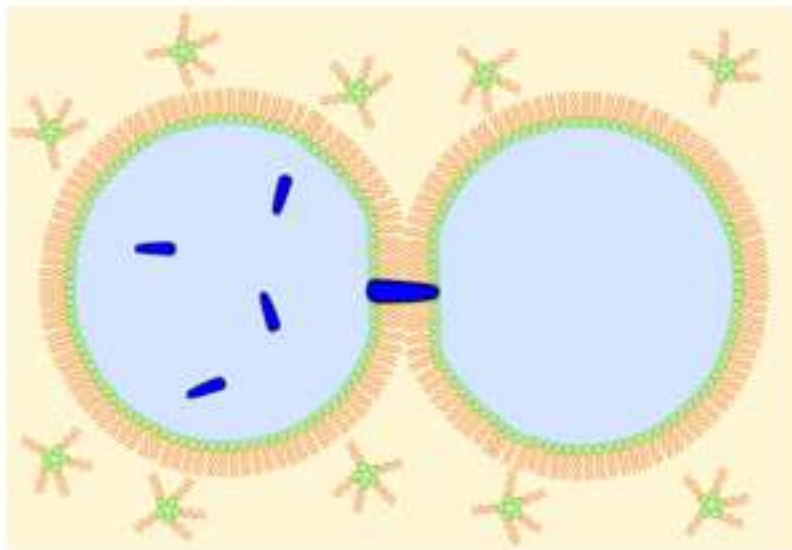




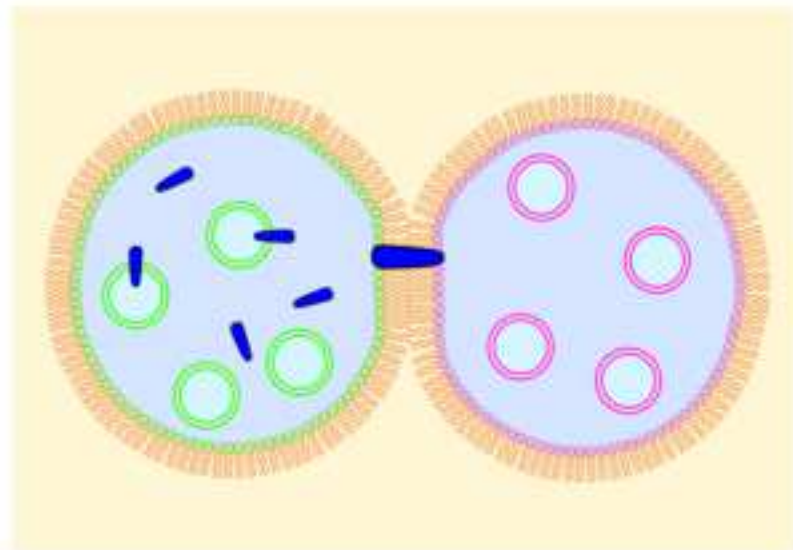
Figure 4

[Click here to access/download;Figure;Fig4.png](#)

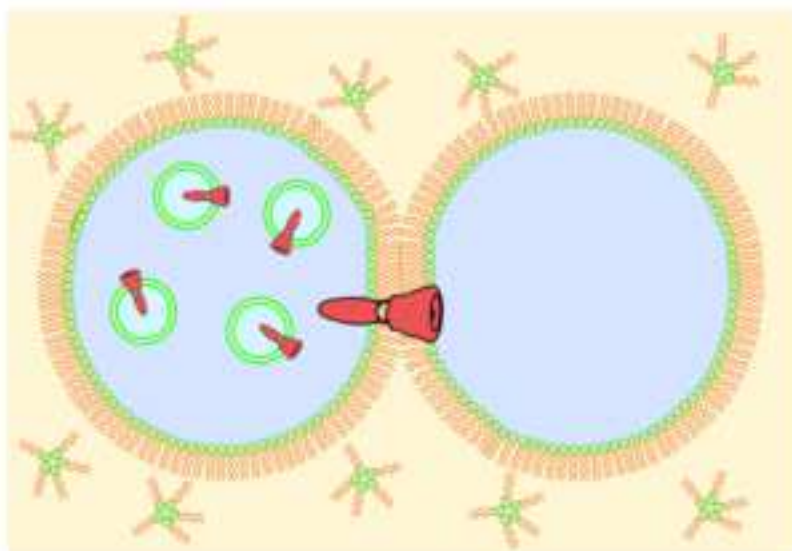
A



B



C



D

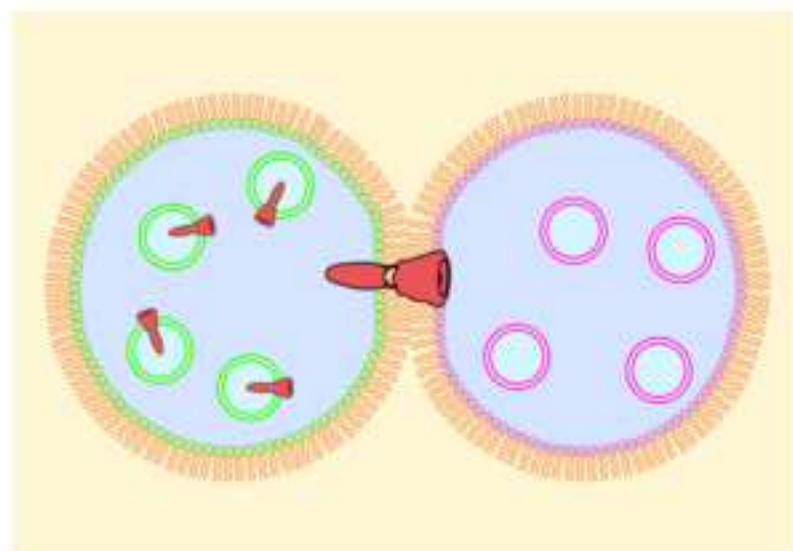


Figure 5

[Click here to access/download;Figure;Fig5.png](#) 

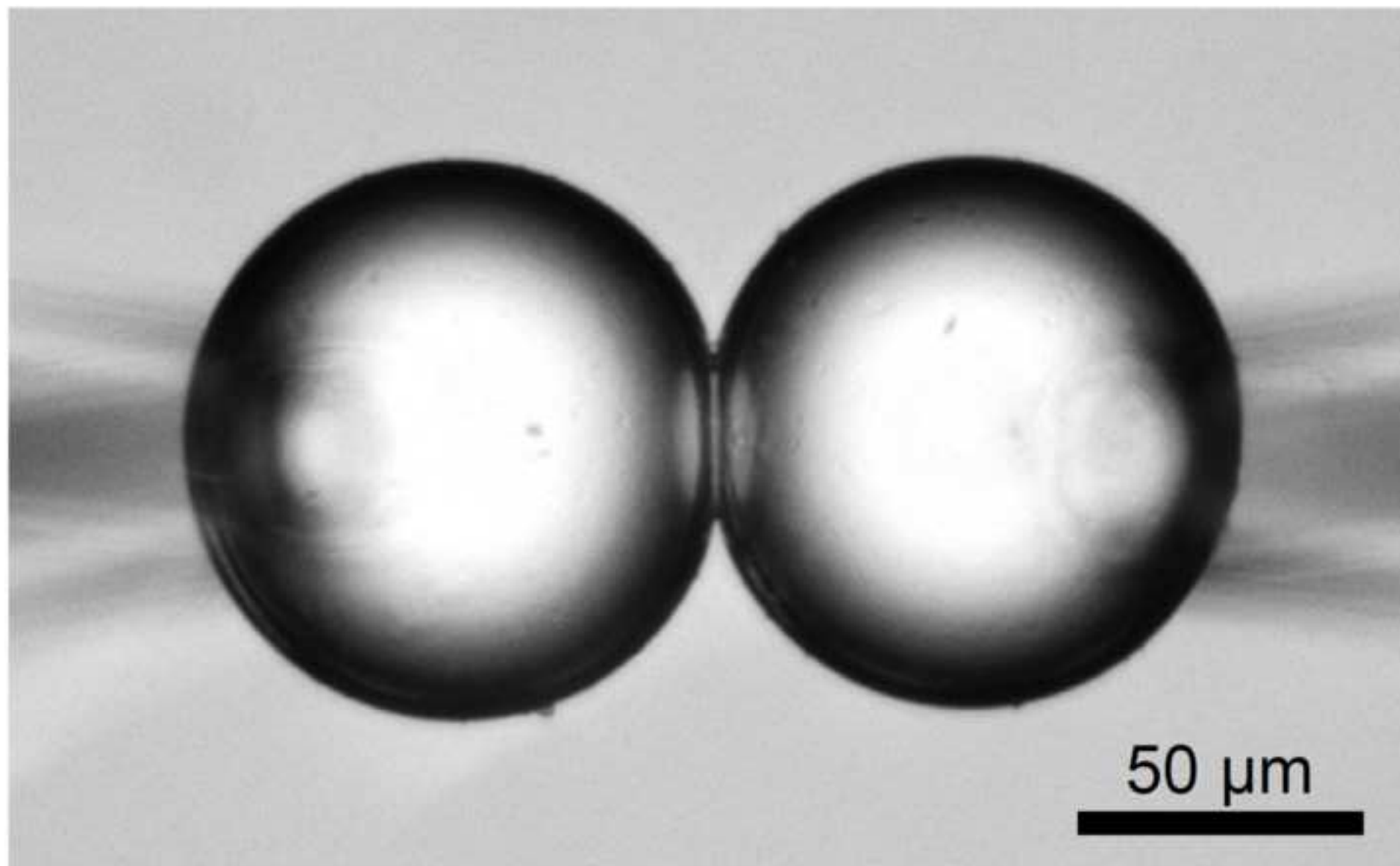
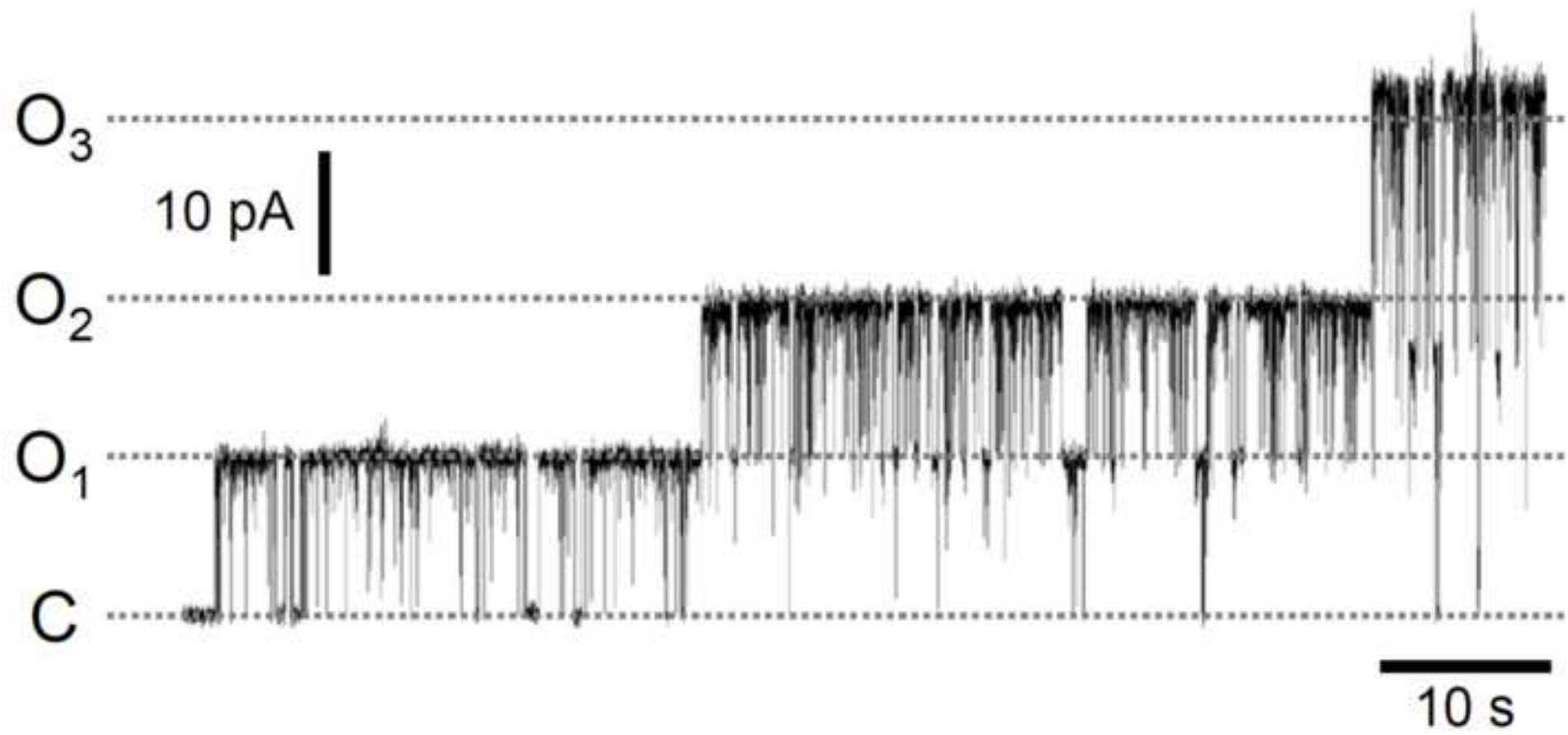


Figure 6





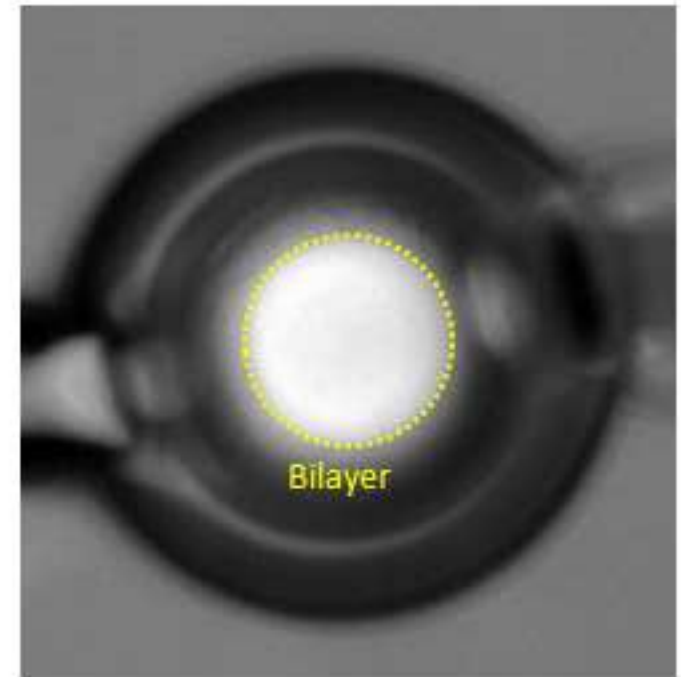
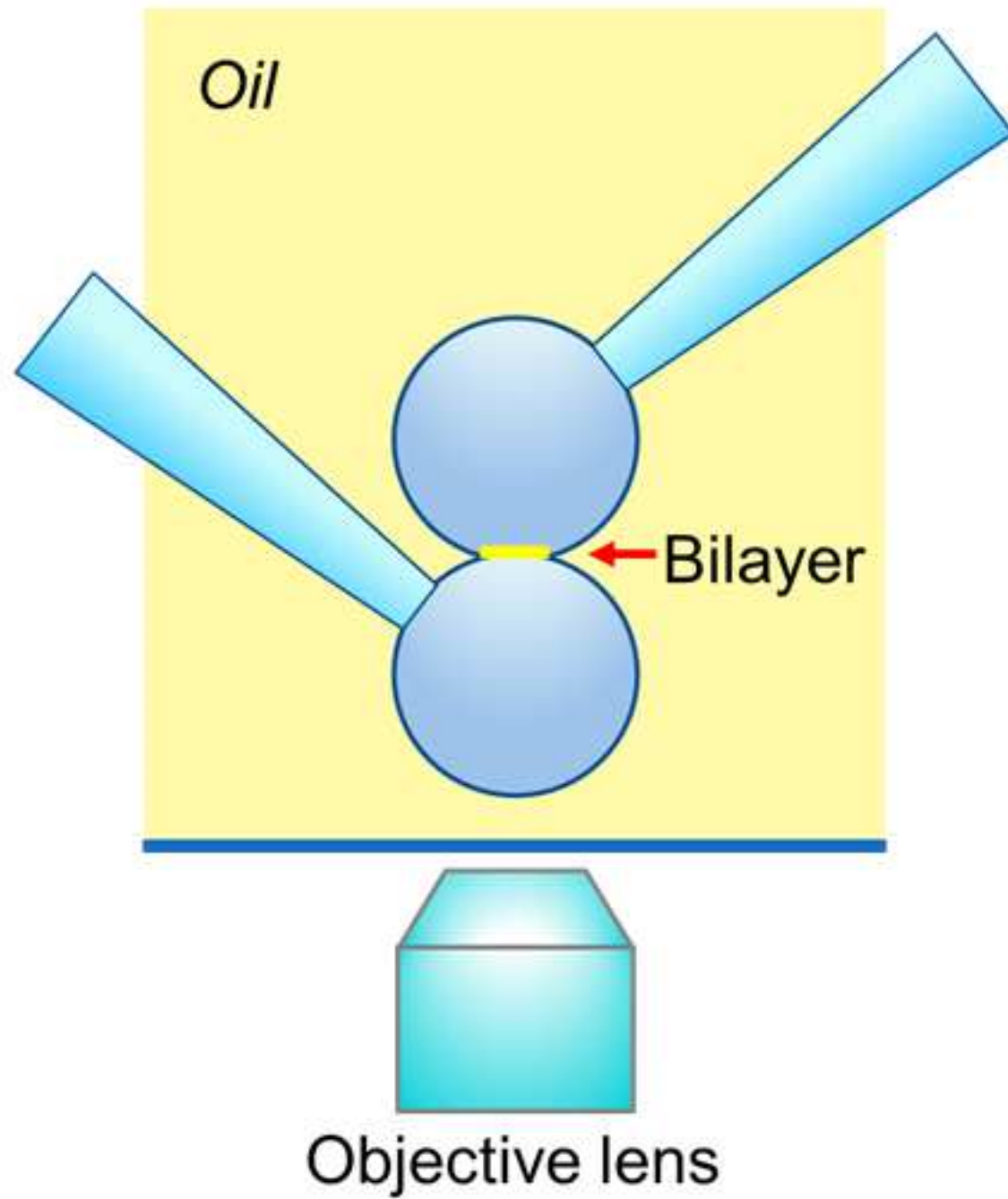


Figure 8

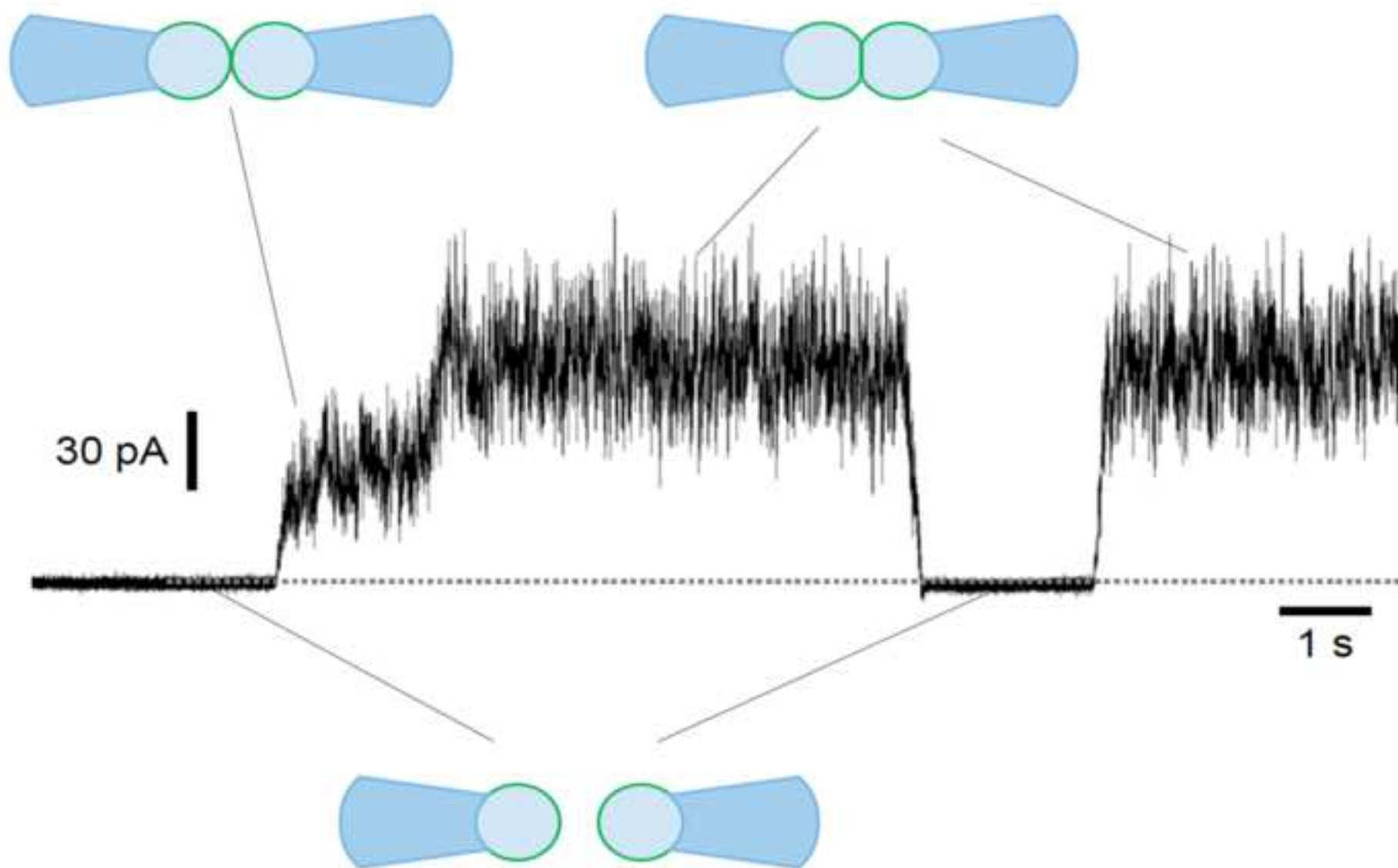
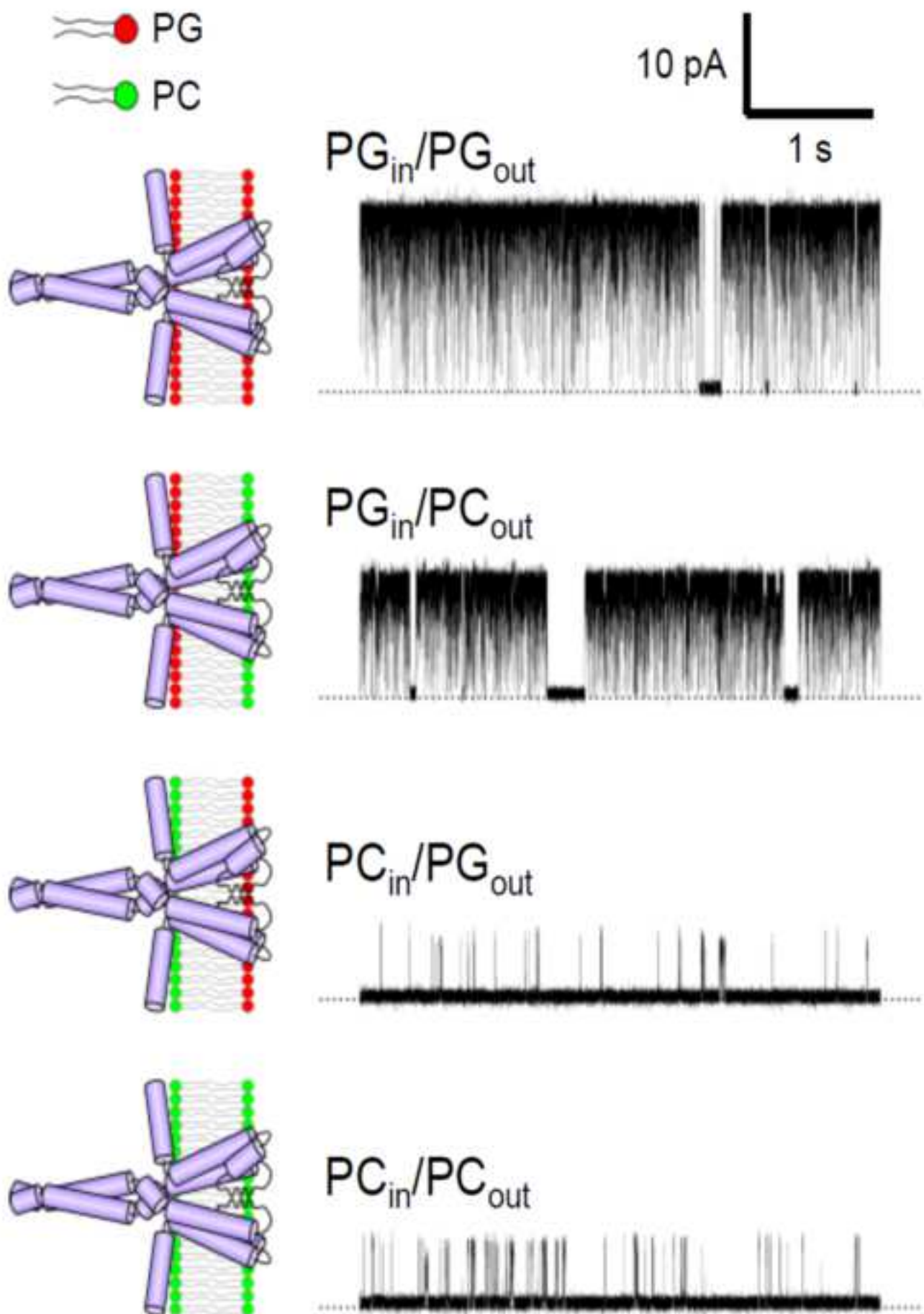


Figure 9



Success rate <sup>1</sup>
Immediate reformability <sup>2</sup>
Asymmetric membrane
Solution exchange
S/N ratio <sup>3</sup>
Membrane deformation
Mechanical manipulation
Membrane perfusion
Lipid compositions

<sup>1</sup>The success rate of forming stable lipid bilayer per trial.

<sup>2</sup>Formation of a new membrane quickly after break down of a membrane. Also, membrane is formed repeatedly.

<sup>3</sup>The signal-to-noise (S/N) ratio represents the electrical background noise primary generated from the membrane capacitance.

<sup>4</sup>Concave or convex membrane can be formed by applying different inner pressure between two bubbles.

<sup>5</sup>Only increasing the membrane tension.

<sup>6</sup>Phospholipids that can form giant unilamellar vesicles are applicable, but the giga-seal may not be attained.

Conventional PLB	Liposome patch
high	low
yes	no
yes	no
slow	very fast
low	high
no	no
no	yes <sup>5</sup>
no	no
diverse	limited <sup>6</sup>

DIB	CBB
very high	very high
intermediate	yes
yes	yes
slow	fast
low	high
no	yes <sup>4</sup>
yes	yes
yes	yes
diverse	diverse

Name of Reagent/ Equipment	Company	Catalog Number	Comments/Description
Azolectin (L- $\alpha$ -Phosphatidylcholine, Type IV-S)	Sigma-Aldrich	P3644	
A/D Converter	Molecular Devices	Digidata1550A	
Ag/AgCl electrode	Warner Instruments	64-1317	
Bath Sonicator	Branson	M1800H-J	
Camera	Hamamatsu Photonics	C11440-10C	
Glass Capillary	Harvard Apparatus	30-0062	
Hepes	Dojindo	342-01375	
Hole Slideglass	Matsunami Glass	S339929	
Inverted Microscope	Olympus	IX73	
Isolation Table	Herz	TDI-86LA(Y)2	
Micro Injenctor	Narishige	IM-11-2	
Micro Manipulator	Narishige	EMM	
Microforge	Narishige	MF-830	
Micropipette holder			
n-Hexadecane	Nacalai	07819-32	
Patch-Clamp Amplifier	HEKA	EPC800	
	Sutter Instrument		
Pipette Puller	Co.	P-87	
POPC (1-palmitoyl-2-oleoyl-glycero-3-phosphocholine)	Avanti Polar Lipids	850457	

POPE (1-palmitoyl-2-oleoyl-sn-glycero-3-phosphoethanolamine )	Avanti Polar Lipids	850757
POPG (1-palmitoyl-2-oleoyl-sn-glycero-3-phospho-(1'-rac-glycerol) )	Avanti Polar Lipids	840457
Potassium Chloride	Nacalai	28514-75
Rotary Evaporator	Iwaki	REN-1000
Succinic Acid	Nacalai	32402-05
Vacuum Pump	Buchi	V-100





1 Alewife Center #200  
Cambridge, MA 02140  
tel. 617.945.9051  
[www.jove.com](http://www.jove.com)

## ARTICLE AND VIDEO LICENSE AGREEMENT

Title of Article:	Lipid Bilayer Experiments with Contact Bubble Bilayers for Patch-Clampers
Author(s):	Masayuki Iwamoto and Shigetoshi Oiki

Item 1: The Author elects to have the Materials be made available (as described at <http://www.jove.com/publish>) via:



Standard Access



Open Access

Item 2: Please select one of the following items:



The Author is **NOT** a United States government employee.



The Author is a United States government employee and the Materials were prepared in the course of his or her duties as a United States government employee.



The Author is a United States government employee but the Materials were NOT prepared in the course of his or her duties as a United States government employee.

### ARTICLE AND VIDEO LICENSE AGREEMENT

1. **Defined Terms.** As used in this Article and Video License Agreement, the following terms shall have the following meanings: **"Agreement"** means this Article and Video License Agreement; **"Article"** means the article specified on the last page of this Agreement, including any associated materials such as texts, figures, tables, artwork, abstracts, or summaries contained therein; **"Author"** means the author who is a signatory to this Agreement; **"Collective Work"** means a work, such as a periodical issue, anthology or encyclopedia, in which the Materials in their entirety in unmodified form, along with a number of other contributions, constituting separate and independent works in themselves, are assembled into a collective whole; **"CRC License"** means the Creative Commons Attribution-Non Commercial-No Derivs 3.0 Unported Agreement, the terms and conditions of which can be found at: <http://creativecommons.org/licenses/by-nc-nd/3.0/legalcode>; **"Derivative Work"** means a work based upon the Materials or upon the Materials and other pre-existing works, such as a translation, musical arrangement, dramatization, fictionalization, motion picture version, sound recording, art reproduction, abridgment, condensation, or any other form in which the Materials may be recast, transformed, or adapted; **"Institution"** means the institution, listed on the last page of this Agreement, by which the Author was employed at the time of the creation of the Materials; **"JoVE"** means MyJoVE Corporation, a Massachusetts corporation and the publisher of The Journal of Visualized Experiments; **"Materials"** means the Article and / or the Video; **"Parties"** means the Author and JoVE; **"Video"** means any video(s) made by the Author, alone or in conjunction with any other parties, or by JoVE or its affiliates or agents, individually or in collaboration with the Author or any other parties, incorporating all or any portion

of the Article, and in which the Author may or may not appear.

2. **Background.** The Author, who is the author of the Article, in order to ensure the dissemination and protection of the Article, desires to have the JoVE publish the Article and create and transmit videos based on the Article. In furtherance of such goals, the Parties desire to memorialize in this Agreement the respective rights of each Party in and to the Article and the Video.

3. **Grant of Rights in Article.** In consideration of JoVE agreeing to publish the Article, the Author hereby grants to JoVE, subject to **Sections 4** and **7** below, the exclusive, royalty-free, perpetual (for the full term of copyright in the Article, including any extensions thereto) license (a) to publish, reproduce, distribute, display and store the Article in all forms, formats and media whether now known or hereafter developed (including without limitation in print, digital and electronic form) throughout the world, (b) to translate the Article into other languages, create adaptations, summaries or extracts of the Article or other Derivative Works (including, without limitation, the Video) or Collective Works based on all or any portion of the Article and exercise all of the rights set forth in (a) above in such translations, adaptations, summaries, extracts, Derivative Works or Collective Works and (c) to license others to do any or all of the above. The foregoing rights may be exercised in all media and formats, whether now known or hereafter devised, and include the right to make such modifications as are technically necessary to exercise the rights in other media and formats. If the "Open Access" box has been checked in **Item 1** above, JoVE and the Author hereby grant to the public all such rights in the Article as provided in, but subject to all limitations and requirements set forth in, the CRC License.

## ARTICLE AND VIDEO LICENSE AGREEMENT

4. **Retention of Rights in Article.** Notwithstanding the exclusive license granted to JoVE in **Section 3** above, the Author shall, with respect to the Article, retain the non-exclusive right to use all or part of the Article for the non-commercial purpose of giving lectures, presentations or teaching classes, and to post a copy of the Article on the Institution's website or the Author's personal website, in each case provided that a link to the Article on the JoVE website is provided and notice of JoVE's copyright in the Article is included. All non-copyright intellectual property rights in and to the Article, such as patent rights, shall remain with the Author.

5. **Grant of Rights in Video – Standard Access.** This **Section 5** applies if the "Standard Access" box has been checked in **Item 1** above or if no box has been checked in **Item 1** above. In consideration of JoVE agreeing to produce, display or otherwise assist with the Video, the Author hereby acknowledges and agrees that, Subject to **Section 7** below, JoVE is and shall be the sole and exclusive owner of all rights of any nature, including, without limitation, all copyrights, in and to the Video. To the extent that, by law, the Author is deemed, now or at any time in the future, to have any rights of any nature in or to the Video, the Author hereby disclaims all such rights and transfers all such rights to JoVE.

6. **Grant of Rights in Video – Open Access.** This **Section 6** applies only if the "Open Access" box has been checked in **Item 1** above. In consideration of JoVE agreeing to produce, display or otherwise assist with the Video, the Author hereby grants to JoVE, subject to **Section 7** below, the exclusive, royalty-free, perpetual (for the full term of copyright in the Article, including any extensions thereto) license (a) to publish, reproduce, distribute, display and store the Video in all forms, formats and media whether now known or hereafter developed (including without limitation in print, digital and electronic form) throughout the world, (b) to translate the Video into other languages, create adaptations, summaries or extracts of the Video or other Derivative Works or Collective Works based on all or any portion of the Video and exercise all of the rights set forth in (a) above in such translations, adaptations, summaries, extracts, Derivative Works or Collective Works and (c) to license others to do any or all of the above. The foregoing rights may be exercised in all media and formats, whether now known or hereafter devised, and include the right to make such modifications as are technically necessary to exercise the rights in other media and formats. For any Video to which this **Section 6** is applicable, JoVE and the Author hereby grant to the public all such rights in the Video as provided in, but subject to all limitations and requirements set forth in, the CRC License.

7. **Government Employees.** If the Author is a United States government employee and the Article was prepared in the course of his or her duties as a United States government employee, as indicated in **Item 2** above, and any of the licenses or grants granted by the Author hereunder exceed the scope of the 17 U.S.C. 403, then the rights granted hereunder shall be limited to the maximum

rights permitted under such statute. In such case, all provisions contained herein that are not in conflict with such statute shall remain in full force and effect, and all provisions contained herein that do so conflict shall be deemed to be amended so as to provide to JoVE the maximum rights permissible within such statute.

8. **Protection of the Work.** The Author(s) authorize JoVE to take steps in the Author(s) name and on their behalf if JoVE believes some third party could be infringing or might infringe the copyright of either the Author's Article and/or Video.

9. **Likeness, Privacy, Personality.** The Author hereby grants JoVE the right to use the Author's name, voice, likeness, picture, photograph, image, biography and performance in any way, commercial or otherwise, in connection with the Materials and the sale, promotion and distribution thereof. The Author hereby waives any and all rights he or she may have, relating to his or her appearance in the Video or otherwise relating to the Materials, under all applicable privacy, likeness, personality or similar laws.

10. **Author Warranties.** The Author represents and warrants that the Article is original, that it has not been published, that the copyright interest is owned by the Author (or, if more than one author is listed at the beginning of this Agreement, by such authors collectively) and has not been assigned, licensed, or otherwise transferred to any other party. The Author represents and warrants that the author(s) listed at the top of this Agreement are the only authors of the Materials. If more than one author is listed at the top of this Agreement and if any such author has not entered into a separate Article and Video License Agreement with JoVE relating to the Materials, the Author represents and warrants that the Author has been authorized by each of the other such authors to execute this Agreement on his or her behalf and to bind him or her with respect to the terms of this Agreement as if each of them had been a party hereto as an Author. The Author warrants that the use, reproduction, distribution, public or private performance or display, and/or modification of all or any portion of the Materials does not and will not violate, infringe and/or misappropriate the patent, trademark, intellectual property or other rights of any third party. The Author represents and warrants that it has and will continue to comply with all government, institutional and other regulations, including, without limitation all institutional, laboratory, hospital, ethical, human and animal treatment, privacy, and all other rules, regulations, laws, procedures or guidelines, applicable to the Materials, and that all research involving human and animal subjects has been approved by the Author's relevant institutional review board.

11. **JoVE Discretion.** If the Author requests the assistance of JoVE in producing the Video in the Author's facility, the Author shall ensure that the presence of JoVE employees, agents or independent contractors is in accordance with the relevant regulations of the Author's institution. If more than one author is listed at the beginning of this Agreement, JoVE may, in its sole

## ARTICLE AND VIDEO LICENSE AGREEMENT

discretion, elect not take any action with respect to the Article until such time as it has received complete, executed Article and Video License Agreements from each such author. JoVE reserves the right, in its absolute and sole discretion and without giving any reason therefore, to accept or decline any work submitted to JoVE. JoVE and its employees, agents and independent contractors shall have full, unfettered access to the facilities of the Author or of the Author's institution as necessary to make the Video, whether actually published or not. JoVE has sole discretion as to the method of making and publishing the Materials, including, without limitation, to all decisions regarding editing, lighting, filming, timing of publication, if any, length, quality, content and the like.

12. **Indemnification.** The Author agrees to indemnify JoVE and/or its successors and assigns from and against any and all claims, costs, and expenses, including attorney's fees, arising out of any breach of any warranty or other representations contained herein. The Author further agrees to indemnify and hold harmless JoVE from and against any and all claims, costs, and expenses, including attorney's fees, resulting from the breach by the Author of any representation or warranty contained herein or from allegations or instances of violation of intellectual property rights, damage to the Author's or the Author's institution's facilities, fraud, libel, defamation, research, equipment, experiments, property damage, personal injury, violations of institutional, laboratory, hospital, ethical, human and animal treatment, privacy or other rules, regulations, laws, procedures or guidelines, liabilities and other losses or damages related in any way to the submission of work to JoVE, making of videos by JoVE, or publication in JoVE or elsewhere by JoVE. The Author shall be responsible for, and shall hold JoVE harmless from, damages caused by lack of sterilization, lack of cleanliness or by contamination due to

the making of a video by JoVE its employees, agents or independent contractors. All sterilization, cleanliness or decontamination procedures shall be solely the responsibility of the Author and shall be undertaken at the Author's expense. All indemnifications provided herein shall include JoVE's attorney's fees and costs related to said losses or damages. Such indemnification and holding harmless shall include such losses or damages incurred by, or in connection with, acts or omissions of JoVE, its employees, agents or independent contractors.

13. **Fees.** To cover the cost incurred for publication, JoVE must receive payment before production and publication of the Materials. Payment is due in 21 days of invoice. Should the Materials not be published due to an editorial or production decision, these funds will be returned to the Author. Withdrawal by the Author of any submitted Materials after final peer review approval will result in a US\$1,200 fee to cover pre-production expenses incurred by JoVE. If payment is not received by the completion of filming, production and publication of the Materials will be suspended until payment is received.

14. **Transfer, Governing Law.** This Agreement may be assigned by JoVE and shall inure to the benefits of any of JoVE's successors and assignees. This Agreement shall be governed and construed by the internal laws of the Commonwealth of Massachusetts without giving effect to any conflict of law provision thereunder. This Agreement may be executed in counterparts, each of which shall be deemed an original, but all of which together shall be deemed to be one and the same agreement. A signed copy of this Agreement delivered by facsimile, e-mail or other means of electronic transmission shall be deemed to have the same legal effect as delivery of an original signed copy of this Agreement.

A signed copy of this document must be sent with all new submissions. Only one Agreement is required per submission.

### CORRESPONDING AUTHOR

Name:

Shigetoshi Oiki

Department:

Department of Molecular Physiology and Biophysics


Institution:

University of Fukui, Faculty of Medical Sciences

Title:

M.D., Ph.D.

Signature:



Date:

September 26, 2018

Please submit a **signed** and **dated** copy of this license by one of the following three methods:

1. Upload an electronic version on the JoVE submission site
2. Fax the document to +1.866.381.2236
3. Mail the document to JoVE / Attn: JoVE Editorial / 1 Alewife Center #200 / Cambridge, MA 02140

Dear Editor,

We would like to thank the Editor for handling our manuscript and are grateful for the constructive comments provided. We have responded to all points raised by the reviewers and revised the manuscript accordingly. We have uploaded a pdf file in which all revised sentences are highlighted.

Responses to Reviewer #1:

Thank you very much for the constructive comments. We have added a statement regarding the experimental condition, as far as possible. Also, we added suggestions on how to form a stable lipid bilayer.

Minor Concerns:

Since lipids and lipid bilayers and their stability is significantly effected by the temperature, pH, salt and buffer conditions, I will recommend authors to elaborate on the information regarding their conditions in the paper. What are the limitations of forming successful and high efficiency contact bubble bilayers in a variety of electrolytes (such as NaCl, KCl), and pH conditions. If the authors have experience with modulating these conditions or having a condition, which performs the best for bilayer stability, they should definitely include it in this manuscript. This will be highly useful for researchers adapting this protocol in their labs.

The limitations of the CBB method have been added and are summarized in the Discussion section.

Responses to Reviewer #2:

We appreciate the valuable comments on our manuscript. The awkward expressions were corrected according to the suggestions of a native English speaker.

-The term "patch-clampers" is overly colloquial English for me. I would replace these words with a different terminology in all places where the term appears.

We agree that the term "patch-clampers" is colloquial English, and we had discussed this term with a native English speaker doing patch clamp experiments. The term is one that we all understand. The alternative would be to refer to such people as "specialists in patch-clamp recording techniques" or "users of patch-clamp recording techniques." These phrases are awkward and cumbersome. Also, there is no concise alternative. So generally speaking, we would prefer to retain "patch-clamper."

-In the abstract, the word "manipulability" is awkward. I would choose a different wording.

We have replaced "bilayer mechanical manipulability" with "to manipulate bilayer mechanics" in the text.

-In the short abstract (and a few other places), there is a choice to be made between past tense and present tense ("was blown" and "was formed" versus "is blown" and "is formed"). There are other places where the past tense and present tense are mixed. Please try to be consistent.

We have unified the tenses in the text.

-In line 101 the word "impat" is incorrect. Perhaps "impart" was intended.

This has been corrected.

-Insert "the" at the end of line 140 to give: "We found that the cholesterol content . . ."

We have inserted "the" at the indicated position.

-In line 141 change "switch" to "switching" and delete "of".

We have revised the phrase as suggested.

-In line 355, change "is" to "are" to agree with "procedures." The remainder of the Discussion has multiple places where there is awkward use of the English language. Please edit the entire manuscript for minor improvements in the grammar and the flow of the language. Notably, in line 391, see "glass wears" ?? There are other examples, too numerous, that need to be checked.

Thank you for this indication. The entire manuscript has been copy edited by a professional English-language editor.

Responses to Reviewer #3:

Thank you very much for

1. Line 115: Please elaborate what you mean by changes in surface tension? Changes in the bilayer tension or changes in the monolayer tension? Presumably both, but how do you sort this out?

Thank you for pointing out this important aspect. We have revised the relevant part as follows:

"The changes in the contact angle indicate changes in the bilayer tension, given that the monolayer tension is evaluated from changes in the contact angle as a function of the membrane potential (Young-Lippmann equation:  $\gamma_{mo} = C_m V^2/4 (\cos(\theta_0) - \cos(\theta_v))$ , where  $C_m$  is the membrane capacitance,  $V$  is the membrane potential, and  $\theta_0$  and  $\theta_v$  are the contact angles at 0 and  $V$  mV, respectively)."

2. Line 119: At first reading, I did not understand what was meant by "multiple phases." Multiple components is likely to be a better term.

We have revised the indicated part as follows:

"A CBB system consists of distinct phases; namely, a bulk oil phase, water bubbles coated with a monolayer, and a contacting bilayer."

3. Line 125: Is it necessary to introduce the Marangoni effect? It is likely to confuse, unless you make use of this later in the presentation.

The "Marangoni effect" is a concept known among surface chemists and admittedly might be unfamiliar to other readers. However, this phenomenon is an essential one that must be kept in mind for the CBB experiment. In the revised version, we have explained the Marangoni effect more clearly. Also, the reference #47 was replaced.

4. Lines 127 - 130: This needs to be clarified; the transition temperature for DOPC is close to -20 C, which should allow for stable bilayers.

We have moved the indicated part to the Discussion, revised as follows:

“For example, dioleoylphosphatidylcholine is frequently used for liposomes, but it forms electrically leaky CBBs at 25 °C<sup>62</sup>. CBBs cannot even be formed with lipid species whose phase transition temperature is above the recording temperature. Indeed, CBB formation was difficult with dipalmitoylphosphatidylcholine at room temperature, but raising the temperature above  $T_m$  circumvented the problem<sup>63</sup>.”

5. Line 183, and elsewhere: The term "hole slide glass" is unknown to me, and I did not see it illustrated in any of the figures.

We have illustrated the hole slide glass in the text: hole slide glass (slide glass with a shallow concave well)

6. Line 193: This is in part redundant with what is stated on line 188.

7. Line 201: Again some redundancy.

We have revised the indicated parts.

8. Lines 213-214: Please change the tense to be present tense.

We have revised the sentence using the present tense.

9. Lines 226 - 231: This was unclear to me. Please revise.

We have moved the indicated part to the Discussion, revised as follows:

“In our protocol (step 4.8), a solution of liposomes and channel-reconstituted liposomes (1  $\mu$ L) is loaded from the tip of the pipette (steps 4.9 and 4.10), and the rest of the pipette contains the previously filled electrolyte solution. This is merely for conserving materials, such as lipids and channel molecules. Consequently, the liposomes diffuse gradually toward the upper pipette solution, and after a while, the lipid concentration at the tip of the pipette becomes insufficient to form lipid monolayers. In this case, fresh liposome solution should be aspirated from the tip (step 4.8).”

10. Lines 234 - 235: This probably should moved to be right after lines 127 - 130.

We have moved the relevant part to the Discussion.

11. Lines 263 - 264: It is not clear to me what the authors refer to. It would be good to refer to Figure 5, which I assume shows what the authors have in mind.

We have added a new figure (Figure 7) to illustrate the indicated point.

12. Line 355: Please change "is" to "are."

This has been corrected.

13. Line 360: Suggest deleting "and unprecedented."

14. Line 365: Same comment.

These have been deleted.

15. Table 1: It would be preferable if Rows 1 "Success Rate" and 5 "S/N ration" had numbers assigned

to "low," "high" and "very high."

In this table, we intended to show the rough characterization of and comparison between the techniques. Each item was expressed qualitatively because they varied substantially in each experiment and channels used.



Responses to the editorial comments:

[We have made the corrections throughout the text according to the editor's comments.](#)

1. Please take this opportunity to thoroughly proofread the manuscript to ensure that there are no spelling or grammar issues.
2. Please provide an email address for each author.
3. Please rephrase the Short Abstract to clearly describe the protocol and its applications in complete sentences between 10-50 words: "Here, we present a protocol to ..."

[This has been corrected \(Lines 15–18\).](#)

4. Please rephrase the Introduction to include a clear statement of the overall goal of this method.

[This has been corrected \(Lines 95–98\).](#)

5. Please spell out each abbreviation the first time it is used.

[This has been corrected.](#)

6. JoVE cannot publish manuscripts containing commercial language. This includes trademark symbols (™), registered symbols (®), and company names before an instrument or reagent. Please remove all commercial language from your manuscript and use generic terms instead. All commercial products should be sufficiently referenced in the Table of Materials and Reagents. You may use the generic term followed by "(see table of materials)" to draw the readers' attention to specific commercial names. Examples of commercial sounding language in your manuscript are: Sigmacote, Axopatch, etc.

[This has been corrected.](#)

7. Please adjust the numbering of the Protocol to follow the JoVE Instructions for Authors. For example, 1 should be followed by 1.1 and then 1.1.1 and 1.1.2 if necessary. Please refrain from using bullets, dashes, or indentations.
8. Please revise the protocol to contain only action items that direct the reader to do something (e.g., "Do this," "Ensure that," etc.). The actions should be described in the imperative tense in complete sentences wherever possible. Avoid usage of phrases such as "could be," "should be," and "would be" throughout the Protocol. Any text that cannot be written in the imperative tense may be added as a "Note." Please include all safety procedures and use of hoods, etc. However, notes should be used sparingly and actions should be described in the imperative tense wherever possible.

[This has been corrected \(Lines 154–258\).](#)

9. Lines 147-154, 226-235, etc.: The Protocol should be made up almost entirely of discrete steps without large paragraphs of text between sections. Please move the discussion about the protocol to the Discussion.

[This has been moved to Lines 389–392.](#)

10. Please add more details to your protocol steps. There should be enough detail in each step to supplement the actions seen in the video so that viewers can easily replicate the protocol. Please ensure you answer the "how" question, i.e., how is the step performed? Alternatively, add references to published material specifying how to perform the protocol action. See examples below:  
Line 157: Listing an approximate volume to prepare would be helpful.



Line 160: What temperature is set during rotary evaporation and how long does it take to form a thin phospholipid film?

Line 175: Please specify the settings of the pipette puller.

It is generally difficult to show the settings since the platinum heating sheet varies substantially, and so too the settings.

Line 179: Heat for how long?

Line 185: What is considered to be an appropriate volume?

All the points, except for Line 175, were corrected.

11. Step 5 is difficult to follow. Please try to combine this specific protocol with previous steps. For instance, indicate the modifications made for KcsA potassium channel in steps 2 and 7.

Step 1.5 was included in Lines 170–172.

12. Please include single-line spaces between all paragraphs, headings, steps, etc.

This has been corrected.

13. After you have made all the recommended changes to your protocol (listed above), please highlight 2.75 pages or less of the Protocol (including headings and spacing) that identifies the essential steps of the protocol for the video, i.e., the steps that should be visualized to tell the most cohesive story of the Protocol.

14. Please highlight complete sentences (not parts of sentences). Please ensure that the highlighted part of the step includes at least one action that is written in imperative tense.

15. Please include all relevant details that are required to perform the step in the highlighting. For example: If step 2.5 is highlighted for filming and the details of how to perform the step are given in steps 2.5.1 and 2.5.2, then the sub-steps where the details are provided must be highlighted.

This has been corrected.

16. Discussion: Please also discuss critical steps within the protocol.

We have added sentences for the critical steps (Lines 378–384)

17. For in-text references, the corresponding reference numbers should appear as superscripts after the appropriate statement(s) in the text (before punctuation but after closed parenthesis). The references should be numbered in order of appearance.

This has been corrected.

18. Please ensure that the references appear as the following: [Lastname, F.I., LastName, F.I., LastName, F.I. Article Title. Source. Volume (Issue), FirstPage – LastPage (YEAR).] For more than 6 authors, list only the first author then et al. See the example below:

Bedford, C.D., Harris, R.N., Howd, R.A., Goff, D.A., Koolpe, G.A. Quaternary salts of 2-[(hydroxyimino)methyl]imidazole. Journal of Medicinal Chemistry. 32 (2), 493-503 (1998).

19. References: Please do not abbreviate journal titles.

This has been corrected.



17 Sellers Street  
Cambridge, MA 02139  
Tel.: +1 617 945 9051  
www.jove.com

## Standard Manuscript Template

### Lipid Bilayer Experiments with Contact Bubble Bilayers for Patch-Clampers

**AUTHORS:** Masayuki Iwamoto and Shigetoshi Oiki  
Department of Molecular Physiology and Biophysics  
University of Fukui Faculty of Medical Sciences  
Yoshida-gun, Fukui, Japan

Masayuki Iwamoto: iwamoto@u-fukui.ac.jp

**CORRESPONDING AUTHOR:** Shigetoshi Oiki; oiki-fki@umin.ac.jp

**KEYWORDS:** Lipid bilayer, patch-clamp, water-in-oil droplet, monolayer, ion channel, electrophysiology, surface chemistry

**SHORT ABSTRACT:** (10 words minimum, 50 words maximum) 50

Herein, we present a protocol for the formation of lipid bilayers using a contact bubble bilayer is a water-in-oil droplet bilayer, which can be mechanically manipulated via glass pipettes. From a patch pipette (tip diameter = 30  $\mu\text{m}$ ), a method. A water bubble was blown from a patch pipette into an organic solvent, whereby a monolayer was formed at the water-oil interface, subjected. Two pipettes are manipulated to be docked dock the bubbles to form a bilayer.

**LONG ABSTRACT:** (150 words minimum, 300 words maximum) 250;

Lipid bilayer experiments bilayers provide a unique experimental platform for functional studies of ion channels, allowing the examination of channel-membrane interactions under various membrane lipid compositions. Among them, water-in-oil droplet bilayers, such as the the droplet interface bilayer (DIB), have has gained popularity; but a however, the large membrane size hinders the recordings recording of low electrical background noise that the patch clampers anticipate. We have established the a contact bubble bilayer (CBB) method, which that combines the benefits of planar lipid bilayer and patch-clamp methods, such as the ability to vary the lipid compositions composition and to manipulate the bilayer mechanical manipulability mechanics, respectively. With an experimental Using the setup for conventional patch-clamping clamp experiments, CBB-based experiments can be readily performed. Electrolyte In brief, an electrolyte solution in a glass pipette was blown into an organic solvent phase (hexadecane), and a bubble was the pipette pressure is maintained to obtain a stable bubble size. The bubble is spontaneously lined with a lipid monolayer (pure lipids or mixed lipids) through the transfer of lipids from either the electrolyte solution or the organic solvent, which is provided from liposomes in the bubbles. Next, two monolayer-lined bubbles ( $\sim 50 \mu\text{m}$  in diameter) at the tip of the glass pipettes were docked for bilayer formation. Thereafter, pipette pressure was maintained are docked for a stable bubble size. By applying a high membrane potential ( $\sim 1000 \text{ mV}$ ), a membrane was broken and the two bubbles were fused, whereby the electrode offset potential is readily adjusted. The CBB is renewed by blowing out a

書式変更: フォント: Times New Roman, 12 pt, 太字 (なし), フォントの色: 自動

書式変更: 左揃え, インデント: 最初の行: 0 mm

書式変更: フォント: Calibri, 12 pt

書式変更: 左揃え

書式変更: 上: 25.4 mm, 端からフッターまでの距離: 10.7 mm, 段落番号: 現在の位置から開始

書式変更: フォント: Calibri, 12 pt

書式変更: フォント: Calibri

書式変更: 左揃え, 改ページ時 1 行残して段落を区切らない

書式変更: フォント: Calibri

書式変更: フォント: Calibri

書式変更: 左揃え, 改ページ時 1 行残して段落を区切らない

書式変更: フォント: Calibri

書式変更: フォント: Calibri

書式変更: 左揃え

書式変更: 左揃え, 改ページ時 1 行残して段落を区切らない

書式変更: フォント: Calibri

~~fused bubble and forming new bubbles.~~ bilayer formation. Introduction of channel-reconstituted liposomes ~~in~~ into the bubble ~~led~~ leads to the incorporation of ~~the~~ channels in the bilayer, allowing for single-channel current ~~recordings~~ recording with a signal-to-noise ratio comparable to ~~patch-clamp recordings.~~ that of patch-clamp recordings. CBBs with an asymmetric lipid composition are readily formed. The CBB is renewed repeatedly by blowing out the previous bubbles and forming new ones. Various chemical and physical perturbations ~~can be applied (e.g., membrane perfusion and bilayer tension) can be imposed~~ on CBB and here the CBBs. Herein, we present the basic procedure for CBB formation.

#### INTRODUCTION: *(150 words minimum, 1500 words maximum)*

~~Ion channels carry out their function in the membrane, without which the channel function that is required for generating ion flux is never attained. Functionally, the membrane is an electric insulator in which ion channels are embedded, and all the cell membranes are imparted with the resting membrane potential. In experiments, an arbitrary membrane potential is imposed from an external circuit by which electric current through channels is measured. Measurements of ion flux at different membrane potentials constitute quantitative studies of channel molecular properties, such as ion permeation and gating (1, 2). The membrane platform is served by either the cell membrane or lipid bilayer membrane. Historically, single channel electric current recordings were first performed in lipid bilayers (3, 4), and the relevant techniques were developed for cell membrane, such as the patch clamp (Fig. 1E)(5, 6). Since then these two techniques have been evolved separately for different purposes (Fig. 1)(7, 8).~~

Membrane lipids and bilayer membranes are currently in focus for their roles in supporting structure and function of channel proteins, and the readily availability of methods to vary the lipid compositions in bilayers is in demand. The lipid bilayer methods such as planar lipid bilayer (PLB)(8–11) and a water-in-oil droplet bilayer (12), including droplet interface bilayer (DIB)(13–19) (Fig. 1), are methods of choice, providing an opportunity for examining channel function under varying lipid compositions (20). Even though DIB is technically much easier than the conventional planar lipid bilayer, the large size of the bilayer has created a disincentive for patch-clampers to apply it for studying single channel current recordings having usual-sized conductance (<100 pS).

To circumvent the background noise, the bilayer area must be minimized. This issue recalls to the repetitions of history for developing electrophysiological techniques (Fig. 1). In early days, a small size bilayer (1–30  $\mu\text{m}$  in diameter) was formed at the tip of a pipette (tip-dip method; Fig. 1C)(21–23), rather than using a free-standing bilayer ( $\sim 100 \mu\text{m}$  in diameter) on a hydrophobic septum in a chamber (Fig. 1B). The tip-dip method allowed electric measurements with much lower background noise (24). Our experiences with the planar lipid bilayer (25, 26), tip-dip (22, 23, 27) and patch-clamp (28–31) methods led us to an idea of a novel method for forming a lipid bilayer using the principles of water-in-oil bilayer. This is referred to as the contact bubble bilayer (CBB) method (20, 32). Rather than hanging the water droplets in an oil phase (Fig. 1D), a water bubble was blown from a glass pipette (the tip diameter of approximately 30  $\mu\text{m}$ ) into the oil phase (Fig. 1F and 2), where the bubble was maintained by applying steady pressure. A monolayer was formed at the water-oil interface at the surface of the bubble. Two bubbles were

docked through manipulation with two glass pipettes, and the bilayer was spontaneously formed as the two monolayers approached each other, yielding an equilibrium bilayer area. The size of the bubble is controlled by the intra-bubble pressure (holding pressure), and so is the bilayer size. The average size of 50  $\mu\text{m}$  in diameter is frequently used. The volume of the bubble is small ( $< 100\text{ pL}$ ), but it is connected to the pipette solution, whose volume is in  $\mu\text{L}$  range.

There are many benefits to use the CBB (Table 1). As a lipid bilayer method, membranes of various lipid compositions can be formed and asymmetric membranes are more readily formed (32) than by the conventional folding method (33). The bilayer is able to be mechanically manipulated, which cannot be performed in the conventional planar lipid bilayer, except for bending the bilayer with a hydrostatic pressure difference (34, 35). By changing the holding pressure, the bubbles either expand or shrink, leading to increased or decreased membrane tension. The bilayer is mechanically detachable into monolayers, similar to the freeze fracture technique (36, 37) of membranes in morphological studies, but this unprecedented maneuver allows for repeated detach and attach cycles (32). A small volume of the electrolyte solution within the bubble allows efficient fusion of channel-reconstituted liposomes to the bilayer, and the probability of getting channel recordings is much higher than with the conventional planar lipid bilayer technique. The small bubble volume also allows rapid perfusion within  $\sim 20\text{ ms}$  once another injection pipette is inserted into either of the bubbles. Unlike the patch-clamp, a broken membrane is reformed immediately and repeatedly, and pipettes can be repeatedly used several times a day.

Before presenting a detailed protocol for the formation of the CBB, for ion channels, the cell membrane is not simply a supporting material but a partner for generating the ion flux. Functionally, the membrane is an electrical insulator in which ion channels are embedded, and all cell membranes are imparted with a resting membrane potential. In previous studies, an arbitrary membrane potential was imposed from an external circuit by which electrical current through the channels was measured. This quantitative evaluation of the ion flux at different membrane potentials revealed the molecular properties of these channels, such as their ion-selective permeation and gating functions<sup>1, 2</sup>. The membrane platform for functional studies of ion channels is either the cell membrane or lipid bilayer membrane. Historically, single-channel electrical current recordings were first performed in lipid bilayers<sup>3, 4</sup>, and the relevant techniques were developed for cell membranes, such as the patch-clamp method (Figure 1A)<sup>5</sup>. Since then, these two techniques have evolved separately for different purposes (Figure 1)<sup>7, 8</sup>.

Membrane lipids and bilayer membranes are currently the focus of research for their roles in supporting the structure and function of channel proteins. Therefore, the ready availability of methods to vary the lipid composition in bilayers is in high demand. Lipid bilayer formation methods such as the planar lipid bilayer (PLB)<sup>8-11</sup>, water-in-oil droplet bilayer<sup>12</sup>, and droplet interface bilayer (DIB)<sup>13-19</sup> techniques (Figure 1) are common choices, providing an opportunity for examining channel function under varying lipid compositions<sup>20</sup>. Although the DIB is technically much easier to produce than the conventional PLB, the large size of the DIB has created a disincentive for patch-clampers to apply it for studying single-channel current recordings with usual-sized conductance ( $< 100\text{ pS}$ ).

To circumvent the background noise, the bilayer area must be minimized. This issue recalls the repetitions of history in developing electrophysiological techniques for lipid bilayers (Figure

1). In the early days, a small-sized bilayer (1–30  $\mu\text{m}$  in diameter) was formed at the tip of a pipette (tip-dip method; Figure 1C)<sup>21–23</sup>, rather than using a free-standing bilayer (~100  $\mu\text{m}$  in diameter) on a hydrophobic septum in a chamber (Figure 1B). The tip-dip method allowed for electrical measurements with much lower background noise<sup>24</sup>. Our experiences with the PLB<sup>25</sup>,<sup>26</sup>, tip-dip<sup>22, 23, 27</sup>, and patch-clamp<sup>28–31</sup> methods led us to a novel idea of forming lipid bilayers by using the principles of the water-in-oil bilayer. We have referred to this as the contact bubble bilayer (CBB) method<sup>20, 32</sup>. In this method, rather than hanging the water droplets in an oil phase (Figure 1D), a water bubble is blown from a glass pipette (with tip diameter of approximately 30  $\mu\text{m}$ ) into the oil phase (Figure 1E and 2), where the bubble is maintained by applying a steady pressure. A monolayer forms spontaneously at the water–oil interface at the surface of the bubble. Then, two bubbles are docked through the manipulation of two glass pipettes, and the bilayer is formed as the two monolayers approach each other, yielding an equilibrium bilayer area. The size of the bubble is controlled by the intra-bubble pressure (holding pressure), and likewise the bilayer size. An average diameter of 50  $\mu\text{m}$  is frequently used. Although the volume of the bubble is small (<100 pL), it is connected to the larger volume of the pipette solution that is in the microliter range, constituting the bulk electrolyte phase.

There are many benefits to use the CBB method (Table 1). As a lipid bilayer formation technique, membranes of various lipid compositions can be produced, and asymmetric membranes are more readily formed<sup>32</sup> than are those by the conventional folding method<sup>33</sup>. The bilayer can be mechanically manipulated, unlike the conventional PLB that can only be bent with a hydrostatic pressure difference<sup>34, 35</sup>. By changing the holding pressure, the bubbles either expand or shrink, leading to increased or decreased membrane tension<sup>32</sup>. The bilayer is mechanically detachable into monolayers, similar to the freeze-fracture technique<sup>36, 37</sup> of membranes in morphological studies, but with the CBB, a maneuver allows for repeated detach and attach cycles<sup>32</sup>. The small volume of the electrolyte solution within the bubble allows efficient fusion of channel-reconstituted liposomes into the bilayer, and the probability of getting channel recordings is much higher than with the conventional PLB technique. The small bubble volume also allows rapid perfusion (within ~20 ms) once another injection pipette is inserted into either of the bubbles. Unlike the patch-clamp method, a broken CBB-based membrane is re-formed immediately and repeatedly, and pipettes can be used several times a day. By integrating benefits of the patch-clamp and PLB methods, the CBB provides a versatile platform to vary the physicochemical conditions of the membrane, allowing for unprecedented studies of channel–membrane interactions.

Before presenting a detailed protocol of the CBB formation process, the physicochemical background of the bilayer formation in CBB is presented first, which ~~is~~will be helpful for patch-clampers to ~~solve issues when~~resolve experimental difficulties relating to membrane formation that are encountered.

**The Sense of surface chemistry in the CBB:** CBB experiments impart lessons of surface chemistry science<sup>38</sup>. The CBB is similar to a soap bubble blown from a straw into the air, where likewise, a water bubble is blown into an organic solvent. One will notice that a water bubble is hardly inflated when membrane lipids are not included in either the water bubble or the organic solvent. In the absence of amphipathic lipids, the surface tension at a water–oil

interface is high, and the intra-bubble pressure for blowing a bubble will be high. This is a realization of the Laplace equation ( $\Delta P = 2 \gamma / R$ , where  $\Delta P$  is the intra-bubble pressure,  $\gamma$  is the surface tension, and  $R$  is the bubble radius). When the concentration of lipids in either the organic phase or the electrolyte solution is high, the density of lipids in the monolayer increases, as dictated by the Gibbs adsorption isotherm ( $-\mathrm{d}\gamma = \Gamma_i \mathrm{d}\mu_i$ , where  $\Gamma_i$  is the surface excess of compound  $i$ , and  $\mu_i$  is the chemical potential of component  $i$ )<sup>39</sup>, leading to a lower surface tension and ease of bubble formation. In the CBB, the bilayer can be observed from a tangential angle (Figure 2), and the contact angle between the monolayer and bilayer is measurable. This angle represents an equilibrium between the surface tensions of the monolayer and bilayer (Young equation:  $\gamma_{bi} = \gamma_{mo} \cos(\theta)$ , where  $\gamma_{bi}$  is the bilayer tension,  $\gamma_{mo}$  is the monolayer tension, and  $\theta$  is the contact angle). The changes in the contact angle indicate changes in the bilayer tension, given that the monolayer tension is evaluated from changes in the contact angle as a function of the membrane potential (Young-Lippmann equation:  $\gamma_{mo} = C_m V^2 / 4 (\cos(\theta_0) - \cos(\theta_v))$ , where  $C_m$  is the membrane capacitance,  $V$  is the membrane potential, and  $\theta_0$  and  $\theta_v$  are the contact angles at 0 and  $V$  mV, respectively)<sup>40–42</sup>. When two bubbles are close enough, they approach each other spontaneously. This is due to van der Waals force, and we can visually observe this dynamic process in CBB formation.

A CBB system consists of distinct phases; namely, a bulk oil phase, water bubbles coated with a monolayer, and a contacting bilayer (Figure 3). These are reminiscent of the multiple phases observed in a PLB, such as a solvent-containing torus around the bilayer phase and a thin organic phase sandwiched by two monolayers<sup>43,44</sup>. In the CBB, the monolayer phase is continuous with the bilayer leaflet, and lipid molecules readily diffuse between the monolayer and the leaflet. The monolayer phase covers most of the bubble surface, constituting the major phase that serves as a lipid reservoir. Because the hydrophobic tail of lipids in the monolayer extends outward to the bulk oil phase, the bilayer interior or the hydrophobic core opens to the bulk oil phase. Thus, a hydrophobic substance injected into the oil phase close to the bilayer is able to readily access the bilayer interior. This is the membrane perfusion technique we had developed recently<sup>45</sup>, by which the lipid composition in the bilayer is changed rapidly (within a second) during single-channel current recordings. We found that the cholesterol content in the bilayer could be reversibly controlled by switching the cholesterol perfusion on and off<sup>45</sup>. In the event that the concentration of the relevant substance in the monolayer and bilayer differs, the concentration gradient of the relevant substance is immediately dissolved through diffusion, which is known as the Marangoni effect<sup>46,47</sup>. On the other hand, flip-flops across the monolayers are slow<sup>48–50</sup>.

Using the CBB method, the bilayer is formed under versatile physicochemical conditions, such as an electrolyte pH as low as 1<sup>51</sup>, a salt ( $K^+$ ,  $Na^+$ , etc.) concentration up to 3 M, a membrane potential as high as  $\pm 400$  mV, and a system temperature of up to 60 °C. There are several options for formation of the CBB and incorporation of channel molecules therein. For formation of the monolayer at the water–oil interface, lipids are added either in an organic solvent (lipid-out method; Figure 4A,C) or in a bubble as liposomes (lipid-in method; Figure 4B,D). Notably, the lipid-in method allows for the formation of asymmetric membranes<sup>15,32</sup>. Channel molecules soluble in aqueous solution (e.g., channel-forming peptides). **The Sense of surface chemistry in the CBB:** CBB experiments impart lessons of surface

書式変更: フォント : Calibri

書式変更: フォント : Calibri

書式変更: フッター

書式変更: フォント : Times New Roman, 12 pt

chemistry science (38). CBB is similar to a soap bubble blown from a straw into the air. A water bubble is blown into an organic solvent, and one will notice that a water bubble is hardly formed when membrane lipids are not included in either the water bubble or the organic solvent. In the absence of amphipathic lipids, surface tension at a water-oil interface is high, and the intra-bubble pressure for blowing a bubble will be high. This is a realization of the Laplace equation ( $\Delta P = 2\gamma/R$ ;  $\Delta P$ : intra-bubble pressure,  $\gamma$ : surface tension,  $R$ : the bubble radius). When the concentration of lipids in either the organic phase or the electrolyte solution is high, the density of lipids in the monolayer becomes higher as dictated by the Gibbs absorption isotherm ( $dy = \sum_i \Gamma_i d\mu_i$ ;  $\Gamma_i$ : the surface excess of compound  $i$ ,  $\mu_i$ : the chemical potential of component  $i$ ) (39), leading to lower surface tension and ease of bubble formation. In CBB, bilayer is observed from a tangential angle, and the contact angle between monolayer and bilayer is measurable. This angle represents equilibrium of surface tension of monolayer and bilayer (Young equation;  $\gamma_{bi} = \gamma_{mo} \cos(\theta)$ ;  $\gamma_{bi}$ : the bilayer tension,  $\gamma_{mo}$ : the monolayer tension,  $\theta$ : the contact angle), and the changes in the contact angle indicate changes in surface tension (40–42). When two bubbles are close enough, they approach each other spontaneously. This is due to van der Waals force, and we are visually observing this dynamic process in CBB formation.

CBB provides unique phases (Fig. 3), which is reminiscent of multiple phases observed in a planar lipid bilayer, such as a torus around the bilayer phase (43, 44). In CBB, a monolayer phase is continuous with a leaflet of the bilayer, and lipid molecules readily diffuse between the monolayer and the leaflet. A monolayer phase covers most of a bubble surface, constituting a major phase serving as a lipid reservoir. When a concentration gradient of a lipid constituents exists between a monolayer and a leaflet, the relevant molecule diffuses rapidly down the gradient, which is known as the Marangoni effect (45, 46). On the other hand, flip-flops across the monolayers are slow (47–49).

For CBB composed of certain lipid species, the electrical resistance of CBB is low and cannot be used for single-channel current recordings. Even the bilayer cannot be formed. This is mostly because of the physical feature of constituent lipids, whose phase transition temperature is above the recording temperature. For example, dioleoylphosphatidylcholine (DOPC) is frequently used for liposomes, but the electrical resistance is low at 25 °C (50). CBB formation was difficult with dipalmitoylphosphatidylcholine (DPPC) at room temperature but was possible above the phase transition temperature (51). The frequently used lipid diphytanoylphosphatidylcholine (DPPC) has its phase transition temperature below 0 °C (52), and CBB is readily formed (32, 53, 54) at a broad temperature range.

As the hydrophobic tail of lipids extends outwards are directly added into the bubble (Figure 4A,B)<sup>52, 53</sup>, whereas channel proteins are reconstituted into liposomes, which are then added into the bubble (Figure 4C,D). Herein, the formation of CBBs by the lipid-in method for either a channel peptide (polytheonamide B (pTB); Figure 4A) or a protein (KcsA potassium channel, Figure 4C) is shown.

~~to the bulk oil phase, the bilayer interior or the hydrophobic core opens to the bulk oil phase. Thus, a hydrophobic substance injected into the oil phase close to the bilayer is able to readily access the bilayer interior. This is the membrane perfusion we recently developed (53), by which the lipid composition in the bilayer is changed rapidly, within a second, during single-channel~~

書式変更: フォント : Calibri

書式変更: フッター

書式変更: フォント : Times New Roman, 12 pt



current recordings. We found that cholesterol content in the bilayer can be reversibly controlled by switch on and off of the cholesterol perfusion.

## PROTOCOL:

1 For formation of the monolayer at the water-oil interface, lipids are added either in an organic solvent (lipid-out) or in a bubble as liposomes (lipid-in) (Fig. 4). In either case, lipids transfer to the water-oil interface, while the transfer rate is relatively slow in lipid-out than in the lipid-in method (50). In addition, the electrical resistance of the bilayer membrane is relatively smaller in lipid-out than that with the lipid-in method for reasons unknown. Notably, the lipid-in method yields asymmetric membranes (15, 32). Prepare liposomes

~~Channel molecules soluble in aqueous solution (e.g., channel-forming peptides) can be directly added in a bubble (55, 56), and channel proteins are reconstituted into liposomes, which are then added in a bubble.~~

書式変更: フォント : Calibri

### 1—Preparation of liposomes

~~1)1.1~~ 1.1 Phospholipids in chloroform: Disperse phospholipids (e.g., 10 mg in powder) in chloroform at an appropriate ~~a~~ desired concentration (e.g., 10 mg/~~mL~~ mL).

#### ~~2)1.2~~ 1.2 Chloroform evaporation: Evaporate chloroform

~~i)1.2.1~~ 1.2.1 Place the phospholipid solution in a round-bottom flask and set it on a rotary evaporator (see table of materials) connected ~~with~~to a N<sub>2</sub> gas cylinder. Rotate the flask under N<sub>2</sub> flow at room temperature until a thin phospholipid film appears. ~~(after ~30 min).~~

~~ii)1.2.2~~ 1.2.2 Place the open flask ~~in~~into a desiccator, ~~which that~~ is connected to a vacuum pump.

~~Aspirate~~Using the vacuum pump, aspirate the inside of the desiccator ~~using the vacuum pump~~ for several hours to remove the chloroform thoroughly.

~~3)1.3~~ 1.3 Phospholipid suspensionSuspend the phospholipid: Add an appropriate volume of an electrolyte solution to the flask and suspend the phospholipid to obtain a 2 mg/~~mL~~ mL phospholipid suspension.

~~4)1.4~~ 1.4 Sonicate the suspension for several tens of seconds using a bath sonicator (see table of materials) to obtain a multilayered vesicle (MLV ~~liposome~~) suspension.

~~5)1.5~~ 1.5 For preparation of proteoliposomes that contain ion channel proteins, add ~~less than 2% volume of~~ a protein solution (with the proteins ~~are~~ solubilized using appropriate detergents; 2% volume is the maximum) to the MLV ~~liposome~~ suspension and sonicate for several seconds using the bath sonicator.

### 2-2 Preparation of Prepare large-bore glass pipettes

~~1)2.1~~ 2.1 Set a glass capillary (see table of materials) to a pipette puller (see table of materials) and fabricate ~~two~~ micropipettes with a fine tapered tip through two-step pulling.

~~2)2.2~~ 2.2 Set the micropipette on a microforge (see table of materials) and contact the tip of the micropipette to a platinum filament at the tapered portion with a diameter of 30 to 50 μm.

書式変更: フッター

書式変更: フォント : Times New Roman, 12 pt



3)2.3 Heat the filament ~~for a moment~~ briefly (5 s) and immediately turn it off. This manipulation forms a crack at the heating point ~~and, whereby~~ the tip of the micropipette is cut off, leaving a wide bore with a diameter of 30 to 50  $\mu\text{m}$ .

3.3 ~~Surface treatment~~ Treat the surface of hole slide glass (slide glass with a shallow concave well; see table of materials); siliconization for a water-repellent finish)

4)3.1 Clean the surface of ~~a~~the hole slide glass with distilled water and ~~EtOH~~ethanol.

2)3.2 Apply an appropriate volume (e.g., 100  $\mu\text{L}$ ) of a siliconizing reagent (water-repellent; e.g., Sigmacote) ~~on to; see table of materials~~ onto the hole slide glass.

3.3 Use after ~~Dry~~ the reagent ~~dries~~ completely.

3.4 The hole slide glass is placed on the stage of the inverted microscope.

#### 4— Formation of the CBB and electrophysiological measurement

3.3 Equipment: micropipette holders (x 2): The micropipette holder should be equipped with a pressure port. ~~An Ag/AgCl wire electrode was used. in the air.~~

3.4 Place the ~~siliconized~~ hole slide glass on the stage of an inverted microscope (see tables of materials).

#### 4 Form the CBB and ~~add~~perform electrophysiological measurement

4)4.1 Add 100  $\mu\text{L}$  of hexadecane into the ~~hole~~shallow well of the siliconized hole slide glass.

Note: For the lipid-out method, phospholipids are dispersed in hexadecane (20 mg/mL) beforehand.

2)4.2 Fill the electrolyte solution up to half the length of the ~~glass pipette~~micropipette, using a tuberculin syringe.

3)4.3 Set the micropipette ~~to~~onto the micropipette holder, ~~which is mounted on with a micro manipulator, and pressure port~~ (see table of materials), allowing the Ag/AgCl wire electrode (see table of materials) to soak ~~the Ag/AgCl wire electrode~~ into the pipette electrolyte solution.

4)4.4 Connect one of the micropipette holders to the head stage of a patch-clamp amplifier ~~and another~~(see table of materials) and the other one to the electrical ground.

5)4.5 Connect a ~~micro injector~~microinjector (see table of materials) to the pressure port of the micropipette holder.

6)4.6 Set the micropipette to an appropriate position above the stage of an inverted microscope by manipulating the ~~micro manipulator~~micromanipulator (see tables of materials).

4.7 ~~Suction~~Adjust the electrode offset potential.

4.7.1 Place 1  $\mu\text{L}$  of the same electrolyte solution used to fill the micropipette on the flat surface around the shallow well of the hole slide glass, creating an electrolyte dome.

4.7.2 Soak the tip of both micropipettes into the electrolyte dome by manipulating the micromanipulator.

4.7.3 Adjust the electrode offset potential of the patch-clamp amplifier.

4.7.4 Confirm the correct offset at the end of experiments by breaking the CBB via application of a high membrane potential (electrical breakdown; using Zap on the amplifier), causing the two bubbles to be fused into one (bubble fusion).

4.7.5 Correct the liquid junction potential<sup>54</sup> in the case where asymmetric electrolyte solutions are used, such that the calculated value is added to the applied membrane potential for the true membrane potential.  
 Note: The liquid junction potential is calculated using the program JPCalc<sup>55</sup>.

4.8 Draw liposome solution from the tip  
 Place 1  $\mu$ L droplet of Note: When water-soluble channels are examined using the lipid-out method, suctioning of the liposome solution is not necessary.

i) 4.8.1 Place 1  $\mu$ L of liposome solution on the flat surface around the hole shallow well of the hole slide glass (liposome-containing dome).

ii) 4.8.2 Manipulate the micro manipulator/micromanipulator and insert the tip of the micropipette into the droplet/liposome-containing dome.

iii) 4.8.3 Aspirate the droplet/liposome-containing solution by lowering the pressure inside the micropipette holder using the micro injector/microinjector.

iv) 4.8.4 Repeat the procedure for the other pipette.

5) 4.9 Manipulate the micro manipulator/micromanipulator and dip the tip of the micropipette into the hexadecane oil in the hole shallow well.

9) 4.10 Blow a water bubble was slowly blown by increasing the pressure until the bubble reached/reaches the desired size (e.g., 50  $\mu$ m in diameter), and maintain the same pressure was maintained thereafter (maintaining pressure).

10) 4.11 If it is hard to keep the size of the bubbles stable, discard/Discard the bubbles by passing the tip through the oil-air interface if it is hard to keep the size of the bubbles stable.

11) 4.12 Repeat steps 4.8 to 4.9 until stable bubbles are formed.

4.13 Manipulators are used/Manipulate the bubbles to allow contact between bubbles them (Figure 5).

12) Note: Sometimes, the bubbles approach each other spontaneously approach to form the CBB. In other cases, the bubbles are close but do not contact each other. In this case, push the bubbles each other mechanically.

13) 4.14 The bubble size should be maintained by fine-tuning/Fine-tune the pressure to maintain the bubble size, because the size may gradually change even at the constant intra-bubble pressure.

14) 4.15 Set the membrane potential to the appropriate value using the patch-clamp amplifier and wait for the channel current to emerge. (Figure 6).

In our study, a solution of liposomes and channel-reconstituted liposomes was drawn from the tip into the pipette electrolyte solution (step 9 and 10). This is merely for conserving materials such as lipids and channel molecules. Consequently, the sample and lipid concentration gradually decrease because of diffusion towards the upper pipette solution, and after a while, monolayers cannot be formed. In this case, fresh lipid solution should be aspirated from the tip (step 7). This temporal concentration change can be circumvented when the whole pipette is filled with the solution containing lipids and channel molecules, whereas liposomes gradually settled down into the bubbles. Measure. In this case, bubbles are renewed. When the phase transition temperature ( $T_m$ ) is high, CBB must be performed at above the  $T_m$ , and the temperature is controlled using a transparent heat plate beneath the slide glass (57)

## 5—KcsA potassium channel specific protocol (58–60)

- 1) Asymmetric electrolyte solution: The channel is activated only when the cytoplasmic side is acidic (61). Accordingly, in step 2 in the CBB formation, ‘functional’ orientation of the KcsA channel in the membrane was controlled by setting the pH of the two pipette solutions asymmetric (i.e., pH4 and 7) (25).
- 2) In step 7 for the CBB formation, proteoliposome suspension rather than liposome suspension is placed on the glass vessel for aspiration into pipettes.
- 3) Concentration of KcsA: In the case of the KcsA potassium channel, use of liposomes with the protein/lipid weight ratio of 1/2000 is suitable for single-channel current recording, and that of 1/10, for macroscopic current recording.

## 6—Adjustment of the electrode offset potential

Setting the zero offset potential is prerequisite for the electrophysiological measurements.

- 1) Upon aspirating the liposome solution, two electrodes are soaked in a same liposome dome. Now, two AgCl electrodes are connected via a electrolyte solution of the dome, and the electrode offset potential can be adjusted.
- 2) At the end of experiments, CBB is broken by applying high membrane potential (electrical breakdown; using Zap in the Axopatch amplifier) and the two bubbles are fused into one (bubble fusion) to confirm the correct offset.
- 3) In case of asymmetric solutions, the liquid junction potential (62) should be corrected using the program JPCalc (63).

## 7.5—Measurement of bilayer capacitance

1)5.1 The bilayer ~~electric~~electrical capacitance is measured ( $C_{el}$ ) by applying a ramp potential.

Note: When the rate of the voltage change in the ramp command is 10 mV/10 ms (or 1 V/sec), followed by -10 mV/10 ms, the measured current amplitude of the current jump upon changes in the slope corresponds to the jump in current upon the application of ramp potential. read of the membrane’s capacitance value (e.g., 100 pA → 100 pF).

2)5.2 To evaluate the bilayer area, of two bubbles are stacked next to each other on the other, and focus the microscope is focused at the bilayer level. The to view the edge of the bilayer is visually discernible. (Figure 6).

Specific membrane capacitance can be measured from the electricNote: The bilayer shape is mostly circular, and the area is calculated from the radius.

3)5.3 Calculate the specific membrane capacitance and the bilayer area as ( $C_{sp} = C_{el}/A$ . The specific membrane) by dividing the electrical capacitance in hexadecane is 0.65  $\mu\text{F}/\text{cm}^2$  by the bilayer area ( $C_{sp} = C_{el}/A$ ).

4)5.4 Bilayer Calculate the bilayer thickness (thickness of the hydrophobic core) is evaluated as using  $D_c = (\epsilon_r \epsilon_0)/C_{sp}$  (where  $\epsilon_r$  and  $\epsilon_0$  represent the permittivity of the hydrophobic region of the bilayer and the permittivity of a vacuum, respectively).

## 8—Asymmetric membrane

An asymmetric membrane can be formed, when different types of lipids are added in each bubble, in the form of liposomes (lipid-in) (15, 64).

## REPRESENTATIVE RESULTS:

A typical CBB ~~hashad~~ a diameter of 50  $\mu\text{m}$  (Fig-Figure 5,6) and the specific membrane capacitance in hexadecane was 0.65  $\mu\text{F}/\text{cm}^2$ . The bubble size ~~iswas~~ arbitrarily controlled by the intra-bubble pressure. ~~The size of the CBB is governed by the bubble size because the bilayer is spontaneously formed as two bubbles approach each other.~~ When small bubbles are necessary for low-noise recordings, the tip diameter should be correspondingly small. For example, for a bubble size of 50  $\mu\text{m}$  in diameter, the tip diameter should be 30  $\mu\text{m}$ .

Once the CBB ~~ishad~~ formed, the channel molecules ~~either in aqueous solution or~~ in the liposome ~~arewere~~ spontaneously inserted into the CBBbilayer within a span of ~~a few minutes~~ to dozens of minutes. Insertion of the channels ~~canbewas~~ confirmed by ~~athe~~ stepwise increase of current amplitude (Fig-6Figure 7) under the applied membrane potential. The smaller membrane area ( $<1000 \mu\text{m}^2$ ) relative to that in the conventional PLB and DIB ~~systems~~systems substantially ~~improves~~improved the electrical signal-to-noise ratio.

Current recordings ~~cancould~~ be continued until the membrane ~~iswas~~ disrupted and the two bubbles ~~are~~merged. New bubbles ~~canbewere~~ blown and the CBB ~~is~~formed immediately and repeatedly. The pipette ~~cancould~~ be ~~used~~ repeatedly ~~used, and the new bubbles readily form another CBB~~within a day.

~~The duty cycle of attach and detach:~~ Similar to freeze fracture procedure for morphological studies using the electron microscope, a bilayer formed by the CBB method can be disintegrated into two monolayers. ~~Detach-attach of the CBB can be repeated by manipulating the two bubbles (duty cycle of detach-attach).~~ Such a process is also monitored by the appearance of the channel current of polytheonamide B (pTB), a peptide channel from a marine sponge, as it is readily inserted into the lipid bilayer to form a monovalent cation-selective pore (55, 65). The pTB channel current emerged immediately after attaching the two monolayers and current became larger as the area of contact increased (Fig. 7). The amplitude of the current was synchronized with the detach-attach manipulation of the CBB.

### Duty cycle of attach and detach:

A bilayer formed by the CBB method can be disintegrated into two monolayers. ~~Detach-attach of the CBB can be repeated by manipulating the two bubbles (duty cycle of detach-attach).~~ This process was monitored by the appearance of the channel current of pTB, a peptide channel from a marine sponge, as it was readily inserted into the lipid bilayer to form a monovalent cation-selective pore<sup>52, 56</sup>. The pTB channel current emerged immediately after attaching the two monolayers, and the current became larger as the area of contact increased (Figure 8). The amplitude of the current was synchronized with the detach-attach manipulation of the CBB.

### Single-channel measurements of the KcsA channel:

The KcsA potassium channel is pH sensitive, being activated by acidic intracellular pH<sup>57</sup>. Thus, the electrolyte solution was set to be asymmetric<sup>58–60</sup>. In step 4.2 of CBB formation, the pipette solution of the left side was set at pH 4, whereas that of the right side was set at pH 7.5<sup>25</sup>. In step 4.7.1, a proteoliposome suspension, rather than liposome suspension, was placed onto the slide glass for aspiration into the left pipette. Accordingly, the KcsA channel was oriented in the membrane with its cytoplasmic domain facing the left bubble. Liposomes with the protein/lipid weight ratio of 1/2000 are suitable for single-channel current recording, and those with a 1/10 ratio are for macroscopic current recording.

#### Asymmetric membrane: Asymmetric

An asymmetric lipid bilayer can be formed using different liposome suspensions for each bubble—(lipid-in)<sup>15, 32</sup>. The orientation of the KcsA channel in the membrane was regulated by setting an asymmetric solution pH (pH 4<sub>in</sub>/pH 7<sub>out</sub>), leading to its cytoplasmic side being toward the left side. Accordingly, the left side was assigned as “in,” whereas the right side was assigned as “out.” To examine lipid-dependence on the gating of the KcsA channel, four types of CBB (including an asymmetric CBB) were used, i.e., namely, PG<sub>in</sub>/PG<sub>out</sub>, PG<sub>in</sub>/PC<sub>out</sub>, PC<sub>in</sub>/PG<sub>out</sub>, and PC<sub>in</sub>/PC<sub>out</sub> (Fig. 8). Here, the pH of the two bubbles was set asymmetrically as pH 4<sub>in</sub>/pH 7<sub>out</sub>. PG: phosphatidylglycerol (Figure 9). The KcsA channel exhibited high open probability (>90%) only in the PG<sub>in</sub>/PG<sub>out</sub> and PG<sub>in</sub>/PC<sub>out</sub> membranes. The KcsA channel requires the existence of anionic phospholipids in the inner leaflet of the membrane for a high open probability<sup>(26), 26</sup>.

#### Tables and Figures:

**Figure 1:** Lipid bilayer and patch-clamp methods. Various methods have been developed for forming the lipid bilayer. (A) Patch-clamp method. (B) Conventional planar lipid bilayer method, which provides a free-standing, mostly vertical, bilayer on a small hole. (C) Tip-dip method. A monolayer at the air–water interface is positioned on the tip of a glass electrode. Various modifications have been developed. (D) Droplet interface bilayer method. (E) Contact bubble bilayer method.

**Figure 2:** Contact bubble bilayer formation. As a bubble is blown into an oil phase, lipid molecules transfer spontaneously to the water–oil interface. Different types of lipids as liposomes are included in each bubble (lipid-in), and monolayers are formed exclusively by the relevant lipids. Docking two monolayers generates an asymmetric bilayer membrane.

**Figure 3:** Distinct phases in the contact bubble bilayer, and the dynamics of lipids therein. Lipids lining the bubble constitute a phase where they belong to either a monolayer or a bilayer. Flip-flop of lipids across the bilayer is infrequent, and the asymmetric membrane is retained for a long time.

**Figure 4:** Delivering lipids with the lipid-out or lipid-in method. Lipids are added either in an organic solvent (lipid-out; A and C) or in aqueous solution as liposomes (lipid-in; B and D). In the

lipid-in method, an asymmetric membrane is formed. Channel-forming substances that are soluble in aqueous solution (blue), such as peptides, are added into one of the bubbles and spontaneously inserted into the bilayer. In the lipid-in method, a part of the channels is inserted into liposomes, which are then fused to the bilayer. Channel proteins (red) are reconstituted into liposomes in either the lipid-out or lipid-in method, which are then added into one of the bubbles and spontaneously fused to the bilayer.

**Figure 5:** Formation and microscopic image of the contact bubble bilayer. The bilayer is observed from a tangential direction.

**Figure 6:** Observation of the bilayer for measuring the bilayer area. Two bubbles are stacked one on the other through pipette manipulation, and the microscope is focused at the level of the contact bubble bilayer.

**Figure 7:** Stepwise insertion of the KcsA channel into the contact bubble bilayer membrane. The E71A mutant of the KcsA channel was used to show the immediate detection of the inserted channels.

**Figure 8:** Detach-attach of monolayers and responses of channels. A peptide channel, polytheonamide B, was added into one of the bubbles, which was then spontaneously incorporated into the membrane. When detached, channels in the membrane withdrew but were retained at the membrane leaflet of the channel-added side. Upon attachment, the channels were inserted into the membrane.

**Figure 9:** Formation of an asymmetric membrane and channel activity dependent on the composition of the leaflet. The KcsA channel is regulated by acidic lipids, such as PG, in the inner leaflet of the membrane.

#### DISCUSSION: (3-6 paragraphs)

The CBB method of lipid bilayer formation is based on the principle of a water-in-oil droplet lined by a monolayer<sup>20</sup>. Technically, the procedures for forming CBBs are easy, especially for patch-clamp researchers, who are proficient in manipulating glass micropipettes. The electrophysiological setup for the patch clamp is readily used in the CBB when two pipette manipulators with microinjectors are available. On the other hand, because the CBB is a successor of the conventional PLB, for which a large amount of physicochemical knowledge has been accumulated<sup>8, 61</sup>, this background as well as knowledge of surface chemistry<sup>38</sup> is helpful for operating and manipulating CBBs. The CBB serves a versatile platform for studying channel-membrane interplays. By using the CBB method, the bilayer can be modulated in terms of chemical composition and physical manipulation. In the CBB, lipids lining the bubble can diffuse freely across the border of the monolayer phase and leaflet of the bilayer, which enables various experimental procedures. Various physical and chemical modifications to the bilayer are now made possible, and we have developed other techniques such as the bilayer attach-detach

and the membrane perfusion methods<sup>45</sup>. We have extended CBBs for *in vitro* channel protein synthesis, where channel synthesis was performed in the bubble, and newly synthesized channel proteins were subjected to spontaneous transfer to the bilayer under application of a membrane potential where nascent channel functions of the KcsA channel was traced from the time of initiating the transcription/translation of KcsA DNA<sup>62</sup>.

Among the steps of the protocol, maintaining the bubble size is critical. The bubbles may slowly swell or shrink spontaneously because lipid transfer to the interface is slow and the monolayer tension is prone to change. In particular, the first bubble inflated just after suction of the liposome solution (steps 4.8.3 and 4.10) is hard to maintain because the monolayer tension is lowered by the liposomes accumulated at the tip of the pipette. Discarding the initial bubbles and subsequent formation of the bubbles provide the stable CBB. Visual tracing of the bubble size and fine tuning of the pressure are necessary.

There are experimental limitations to the CBB method. Although the CBB is designed for electrophysiological measurements, the electrical resistance of the bilayer for certain lipid compositions may not be high enough (e.g., 100 GΩ) for single-channel recordings. For example, dioleoylphosphatidylcholine is frequently used for liposomes, but it forms electrically leaky CBBs at 25 °C<sup>63</sup>. CBBs cannot even be formed with lipid species whose phase transition temperature is above the recording temperature. Indeed, CBB formation was difficult with dipalmitoylphosphatidylcholine at room temperature, but raising the temperature above  $T_m$  circumvented the problem<sup>64</sup>. In these experiments, the temperature was controlled by using a transparent heat plate (see table of materials) beneath the slide glass<sup>62</sup>. The phase transition temperature of the frequently used lipid diphytanoylphosphatidylcholine is below 0 °C<sup>65</sup>, and CBBs are readily formed<sup>32, 45, 51</sup> at a broad temperature range.

Phospholipids of the water–oil interface are provided from either the lipid-in or lipid-out method, where the transfer rate is relatively slower in the lipid-out than in the lipid-in method<sup>63</sup>. In addition, for reasons unknown, the electrical resistance of the bilayer membrane is relatively smaller with the lipid-out method than with the lipid-in method.

In our protocol (step 4.8), a solution of liposomes and channel-reconstituted liposomes (1 μL) is loaded from the tip of the pipette (steps 4.9 and 4.10), and the rest of the pipette contains the previously filled electrolyte solution. This is merely for conserving materials, such as lipids and channel molecules. Consequently, the liposomes diffuse gradually toward the upper pipette solution, and after a while, the lipid concentration at the tip of the pipette becomes insufficient to form lipid monolayers. In this case, fresh liposome solution should be aspirated from the tip (step 4.8). This temporal concentration change can be circumvented when the whole pipette is filled with the solution containing lipids and channel molecules, whereas liposomes gradually settle down into the bubbles. In this case, bubbles are renewed.

The CBB is a method to form a lipid bilayer based on the principle of water-in-oil bilayer (20). Technically, procedures for forming CBB is easy, especially for patch-clampers. Electrophysiological setup for the patch-clamp is readily used in the CBB when two pipette manipulators with microinjectors are available. On the other hand, CBB is a successor of the conventional planar lipid bilayer, for which a large amount of physicochemical knowledge has been accumulated, and this background, as well as knowledge of surface chemistry, are a prerequisite for operating and manipulating CBB. The CBB serves a versatile and unprecedented

書式変更: インデント : 最初の行 : 1.77 字

書式変更: フォント : Calibri

書式変更: フッター

書式変更: フォント : Times New Roman, 12 pt



platform for studying channel-membrane interplays. By using the CBB method, bilayer can be modulated in terms of chemical composition and physical manipulation. In CBB, lipids lining a bubble are freely diffusible across the border of the monolayer phase and leaflet of the bilayer, which enables various experimental procedures. Various applications are now made possible and we have developed unprecedented techniques such as the attach-detach and the membrane perfusion. We extended CBB for *in vitro* channel protein synthesis (*in bulla* synthesis), in which channel synthesis was performed in the bubble, and newly synthesized channel proteins are subjected to spontaneous transfer to the bilayer where nascent channel functional of the KcsA channel was traced from the time of initiating the transcription/translation of KcsA DNA (57).

There are experimental limitations in the CBB method. CBB is designed for electrophysiological measurements, but the bilayer resistance should be as high as 100 G $\Omega$ . This high resistance membrane cannot be attained for lipid molecules having  $T_m$  above experimental temperature. Raising temperature above the  $T_m$  circumvents the problem. Electrophysiologically, the bilayer size is larger than that of the patch-clamp, yielding larger membrane capacitance in the CBB method. However, the series resistance (the electric resistance in series of the membrane resistance) is much lower ( $\sim 100$  k $\Omega$ ) than that for the patch-clamp (the pipette resistance  $> 1$  M $\Omega$ ), which accelerates the speed of voltage clamp and attenuates the background noise and the series resistance errors in the voltage-clamped membrane potentials (66–68). The background noise is a function of the membrane capacitance and the series resistance, and a low series resistance complements high membrane capacitance, resulting in low background noise (9).

Overall, CBB integrates the benefits of patch-clamp, such as the mechanical manipulability of the membrane, and those of planar lipid bilayer, such as the ability to modify lipid composition of the membrane. Various types of channel-forming substances and channel proteins have been studied (55, 56, 69, 70). Development of this method is opportune since more and more researchers are focusing on channel-membrane interplay, and the CBB provides a versatile platform for various experiments. Further experimental developments are expected in CBB.

**Trouble shooting** Electrophysiologically, the CBB size is larger than that of the patch clamp, thus yielding a larger membrane capacitance. However, the series resistance (the electrical resistance in a series of membrane resistance) is much lower ( $\sim 100$  k $\Omega$ ) than that for the patch clamp (pipette resistance  $> 1$  M $\Omega$ ), which accelerates the speed of the voltage clamp and attenuates the background noise and series resistance errors in the voltage-clamped membrane potentials<sup>66–68</sup>. The background noise is a function of the membrane capacitance and the series resistance, where a low series resistance complements a high membrane capacitance, resulting in low background noise<sup>9</sup>.

Overall, the CBB integrates the benefits of both the patch clamp (e.g., the mechanical manipulation of the membrane) and the PLB (e.g., the ability to modify the lipid composition of the membrane). Various types of channel-forming substances and channel proteins have been studied<sup>52, 69–71</sup>. The development of this method is opportune since increasingly more researchers are focusing on channel-membrane interplay, and the CBB provides a versatile platform for various experiments. Further experimental developments in the CBB method are expected.



**Troubleshooting:** As a general rule of lipid bilayer experiments, detergents should not be used ~~in the washing of glass wear~~to wash glassware. Even a trace amount of detergent perturbs the integrity of the bilayer. Organic solvents such as chloroform/methanol and ethanol should be used for such cleaning purposes instead.

#### ACKNOWLEDGEMENTS:

The authors would like to thank Mariko Yamatake and Masako Takashima for technical assistance. This work was supported in part by KAKENHI grant numbers 16H00759, and 17H04017 (SO).

#### DISCLOSURES:

The authors have no conflict of interest to disclose.

#### REFERENCES

- 1.- Hille, B. ~~(2001)~~, *Ion channels of excitable membranes*, ~~Sinauer Associates Inc.~~ Sunderland), ~~3rd Ed.~~, (2001).
- 2.- Oiki, S. ~~(2015)~~, Channel function reconstitution and re-animation: a single-channel strategy in the postcrystal age. ~~J. Physiol.~~ *The Journal of Physiology*, ~~593~~, 2553–2573, doi: ~~10.1113/JP270025~~ (2015).
- 3.- Mueller, P., ~~et al.~~ (1962), Rudin, D.O., Tien, H.T., Wescott, W.C. Reconstitution of cell membrane structure in vitro and its transformation into an excitable system. *Nature*, ~~194~~ (4832), 979–980, doi: ~~10.1038/194979a0~~ (1962).
- 4.- Hladky, ~~S.B.~~ S.B., Haydon, ~~DA~~ (1970), D.A. Discreteness of conductance change in bimolecular lipid membranes in the presence of certain antibiotics. *Nature*, ~~225~~, 451–453, (1970).
- 5.- Neher, E., Sakmann, B. (1976). Single-channel currents recorded from membrane of denervated frog muscle fibres. *Nature*, ~~260~~, 799–802, (1976).
- 6.- Hamill, ~~OP~~, O.P., Marty, A., Neher, E., Sakmann, B., Sigworth, ~~FJ~~ (1981), F.J. Improved patch-clamp techniques for high-resolution current recording from cells and cell-free membrane patches. *Pflugers Arch*, ~~391~~ (2), 85–100, (1981).
- 7.- Sakmann, B., Neher, E. (2009). *Single-Channel Recording*, ~~(Springer, New York)~~, 2nd Ed., (2009).
- 8.- ~~Miller C ed.~~ (1986), *Ion Channel Reconstitution*, ~~(Springer, New York)~~, (1986).
- 9.- Wonderlin, ~~WF~~, W.F., Finkel, A., French, ~~RJ~~ (1990), R.J. Optimizing planar lipid bilayer single-channel recordings for high resolution with rapid voltage steps. *Biophys J* ~~58(2):289–97~~ *Biophysical journal*, ~~58~~ (2), 289–297, doi: ~~10.1016/S0006-3495(90)82376-6~~ (1990).
- 10.- Oiki, S. (2012). Planar Lipid Bilayer Method for Studying Channel Molecules. *Patch Clamp Techniques*, ~~ed Okada Y~~ (Springer Verlag), pp. 229–275, (2012).

- 11.- Kapoor, R., Kim, J., Ingolfson, H., Sparre Andersen, O. (2008). Preparation of Artificial Bilayers for Electrophysiology Experiments. *J Vis Exp Journal of Visualized Experiments*. (20), doi: 10.3791/1033 (2008).
- 12.- Funakoshi, K., Suzuki, H., Takeuchi, S. (2006). Lipid bilayer formation by contacting monolayers in a microfluidic device for membrane protein analysis. *Anal Chem Analytical Chemistry*. **78** (24), 8169–8174, doi: 10.1021/ac0613479 (2006).
- 13.- Bayley, H. et al. (2008). Droplet interface bilayers. *Mol Biosyst Molecular BioSystems*. **4** (12), 1191–1208, doi: 10.1039/b808893d (2008).
- 14.- Watanabe, R., Soga, N., Hara, M., Noji, H. (2016). Arrayed water-in-oil droplet bilayers for membrane transport analysis. *Lab on a Chip*. **16** (16), 3043–3048, doi: 10.1039/c6lc00155f (2016).
- 15.- Hwang, W.L., Chen, M., Cronin, B., Holden, M.A., Bayley, H. (2008). Asymmetric droplet interface bilayers. *J Am Chem Soc Journal of the American Chemical Society*. **130** (18), 5878–5879, doi: 10.1021/ja802089s (2008).
- 16.- Tonooka, T., Sato, K., Osaki, T., Kawano, R., Takeuchi, S. (2014). Lipid bilayers on a picoliter microdroplet array for rapid fluorescence detection of membrane transport. *Small (Weinheim an der Bergstrasse, Germany)*. **10** (16), 3275–3282, doi: 10.1002/sml.201303332 (2014).
- 17.- Dixit, S.S., Kim, H., Vasilyev, A., Eid, A., Faris, G.W. (2010). G.W. Light-driven formation and rupture of droplet bilayers. *Langmuir*. **26** (9), 6193–6200, doi: 10.1021/la1010067 (2010).
- 18.- Malmstadt, N., Nash, M. a, Purnell, R.F., Schmidt, J.J. (2006). J.J. Automated formation of lipid-bilayer membranes in a microfluidic device. *Nano Letters*. **6** (9), 1961–1965, doi: 10.1021/nl0611034 (2006).
- 19.- Najem, J.S., et al. (2015). Multifunctional, Micropipette-based Method for Incorporation And Stimulation of Bacterial Mechanosensitive Ion Channels in Droplet Interface Bilayers. *J Vis Exp (105):1–10 Journal of Visualized Experiments*. (105), doi: 10.3791/53362 (2015).
- 20.- Oiki, S., Iwamoto, M. (2018). Channel-Membrane Interplay in Lipid Bilayer Membranes Manipulated through Monolayer Technologies. *Biol Pharm Bull Biological & Pharmaceutical Bulletin*. **41**, 303–311, (2018).
- 21.- Andersen, O.S. (1983). O.S. Ion movement through gramicidin A channels. Single-channel measurements at very high potentials. *Biophys J*. **41** (2), 119–133, doi: 10.1016/S0006-3495(83)84414-2 (1983).
- 22.- Oiki, S., Danho, W., Madison, V., Montal, M. (1988). M2delta, M2 delta, a candidate for the structure lining the ionic channel of the nicotinic cholinergic receptor. *Proc Natl Acad Sci U S A*. **85** (22), 8703–8707, doi: 10.1073/pnas.85.22.8703 (1988).
- 23.- Oiki, S., Koeppe, R.E., Andersen, O.S. (1995). O.S. Voltage-dependent gating of an asymmetric gramicidin channel. *Proc Natl Acad Sci U S A Proceedings of the National Academy of Sciences of the United States of America*. **92** (March), 2121–2125, doi: 10.1073/pnas.92.6.2121 (1995).

- 24.- Sigworth ~~FJ, F.J.~~, Urry ~~DW, D.W.~~, Prasad ~~KU (1987), K.U.~~. Open channel noise. III. High-resolution recordings show rapid current fluctuations in gramicidin A and four chemical analogues. *Biophys J* ~~52(6):1055–64~~. *Biophysical Journal*. **52** (6), 1055–1064, doi: S0006-3495(87)83299-X [pii] 10.1016/S0006-3495(87)83299-X (1987).
- 25.- Iwamoto, M, ~~et al. (2006)~~, Shimizu, H., Inoue, F., Konno, T., Sasaki, Y.C., Oiki, S. Surface structure and its dynamic rearrangements of the KcsA potassium channel upon gating and tetrabutylammonium blocking. *J-Biol-Chem* ~~The Journal of Biological Chemistry~~. **281** (38)-, 28379–28386-, doi: M602018200 [pii] 10.1074/jbc.M602018200 (2006).
- 26.- Iwamoto, M, ~~et al. (2013)~~, Oiki, S. Amphipathic antenna of an inward rectifier K<sup>+</sup> channel responds to changes in the inner membrane leaflet. *Proc Natl Acad Sci U S A* ~~110(2):749–54~~. *Proceedings of the National Academy of Sciences of the United States of America*. **110** (2), 749–754, doi: 10.1073/pnas.1217323110 (2013).
- 27.- Oiki, S, ~~et al. (1994)~~, Koeppe, ~~RE, R.E.~~, Andersen, ~~OS (1994), O.S.~~ Asymmetric gramicidin channels: heterodimeric channels with a single F6Val1 residue. *Biophys J* ~~Biophysical Journal~~. **66** (6)-, 1823–~~32~~, 1832 (1994).
- 28.- Ando, H, ~~et al. (2005)~~, Kuno, M, ~~et al. (2005)~~, Shimizu, H, ~~et al. (2005)~~, Muramatsu, I, ~~et al. (2005)~~, Oiki, S. Coupled K<sup>+</sup>-water flux through the HERG potassium channel measured by an osmotic pulse method. *J-Gen Physiol* ~~The Journal of general physiology~~. **126** (5)-, 529–~~38~~, 538, doi: 10.1085/jgp.200509377 (2005).
- 29.- Kuno, M, ~~et al. (2009)~~, Temperature dependence of proton permeation through a voltage-gated proton channel. *J-Gen Physiol* ~~The Journal of general physiology~~. **134** (3)-, 191–205-, doi: 10.1085/jgp.200910213 (2009).
- 30.- Iwamoto, M, ~~et al. (2011)~~, Oiki, S. Counting Ion and Water Molecules in a Streaming File through the Open-Filter Structure of the K Channel. *J-Neurosci* ~~31(34):12180–8~~. *The Journal of neuroscience*. **31** (34), 12180–12188, doi: 10.1523/JNEUROSCI.1377-11.2011 (2011).
- 31.- Chang, ~~HK, H.K.~~, Iwamoto, M, ~~et al. (2015)~~, Oiki, S, ~~et al. (2015)~~, Shieh, ~~RC (2015), R.C.~~ Mechanism for attenuated outward conductance induced by mutations in the cytoplasmic pore of Kir2.1 channels. *Sci-Rep* ~~Scientific Reports~~. **5**-, doi: 10.1038/srep18404- (2015).
- 32.- Iwamoto, M, ~~et al. (2015)~~, Oiki, S. Contact Bubble Bilayers with Flush Drainage. *Sci-Rep* ~~Scientific Reports~~. **5**-, 9110-, doi: 10.1038/srep09110 (2015).
- 33.- Montal, M, ~~et al. (1972)~~, Mueller, P. Formation of bimolecular membranes from lipid monolayers and a study of their electrical properties. *Proc Natl Acad Sci U S A* ~~69(12):3561–6~~. *Proceedings of the National Academy of Sciences of the United States of America*. **69** (12), 3561–3566, (1972).
- 34.- Petelska, ~~AD (2012), A.D.~~ Interfacial tension of bilayer lipid membranes. *Cent-Eur J Chem* ~~Central European Journal of Chemistry~~. **10** (1)-, 16–26-, doi: 10.2478/s11532-011-0130-7 (2012).
- 35.- Benz, R, ~~et al. (1986)~~, Conti, F. Effects of hydrostatic pressure on lipid bilayer membranes. I. Influence on membrane thickness and activation volumes of lipophilic ion transport. *Biophys J* ~~50(1):91–98~~. *Biophysical Journal*. **50** (1), 91–98, doi: 10.1016/S0006-3495(86)83442-7 (1986).

- 36.- Meryman ~~HT~~, H.T., Kafig, E. ~~(1955)~~. *The study of frozen specimens, ice crystals and ice crystal growth by electron microscopy*. Naval Medical Research Institute, National Naval Medical Center. (1955).
- 37.- Steere ~~RL~~ ~~(1957)~~, R.L. Electron microscopy of structural detail in frozen biological specimens. ~~*J. Biophys. Biochem. Cytol.*~~ *The Journal of biophysical and biochemical cytology*. **3** (1), 45–60, doi: 10.1083/jcb.3.1.45 (1957).
- 38.- de Gennes, P., G., Brochard-Wyart, F., Quere, D. ~~(2003)~~. *Capillarity and Wetting Phenomena: Drops, Bubbles, Pearls, Waves*. Springer. (2003).
- 39.- Butt, H.-J., Kappl, M. ~~(2018)~~. *Surface and Interfacial Forces*. Wiley-VCH, Weinheim. ~~2nd Ed.~~ (2018).
- 40.- Requena, J., Haydon ~~DA~~ ~~(1975)~~, D.A. The lippmann equation and the characterization of black lipid films. *Journal of Colloid and Interface Science*. **51** (2), 315–327, doi: 10.1016/0021-9797(75)90119-8 (1975).
- 41.- Taylor ~~GJ~~, G.J. et al. ~~(2015)~~ Direct in situ measurement of specific capacitance, monolayer tension, and bilayer tension in a droplet interface bilayer. *Soft Matter*. **11** (38), 7592–7605, doi: 10.1039/C5SM01005E (2015).
- 42.- Dixit ~~SS~~, S.S., Pincus, A., Guo, B., Faris ~~GW~~ ~~(2012)~~, G.W. Droplet shape analysis and permeability studies in droplet lipid bilayers. *Langmuir*. **28** (19), 7442–7451, doi: 10.1021/la3005739 (2012).
- 43.- White ~~SH~~ ~~(1972)~~, S.H. Analysis of the torus surrounding planar lipid bilayer membranes. *Biophys. J.* **12** (4), 432–445 (1972).
- 44.- White ~~SH~~ ~~(1986)~~, S.H. The physical nature of planar bilayer membranes. *Ion Channel Reconstitution* (Plenum, New York 1986).
- 45.- Iwamoto, M., Oiki, S. *Membrane Perfusion of Hydrophobic Substances Around Channels Embedded in the Contact Bubble Bilayer*. 45. ——— Marangoni C (1865) *Sull'espansione delle gocce d'un liquido galleggianti sulla superficie di altro liquido* (Pavia tipografia dei Fratelli Fusi).
- Scientific Reports*. **7** (1), 6857, doi: 10.1038/s41598-017-07048-4 (2017).
- 46.- Velarde ~~MG~~, M.G., Zeytounian ~~RK~~, R.K., others ~~(2002)~~ *Interfacial phenomena and the Marangoni effect*. Springer. (2002).
- 47.- Ryazantsev, Y.S., Velarde, M.G., Rubio, R.G., Guzmán, E., Ortega, F., López, P. *Thermo- and soluto-capillarity: Passive and active drops*. *Adv Colloid Interface Sci.* **247**, 52–80 (2017).
- 48.- Kornberg ~~RD~~, R.D., McConnell ~~HM~~ ~~(1971)~~, H.M. Inside-Outside Transitions of Phospholipids in Vesicle Membranes. *Biochemistry*. **10** (7), 1111–1120, doi: 10.1021/bi00783a003 (1971).
- 48–49. Wimley ~~WC~~, W.C., Thompson ~~TE~~ ~~(1990)~~, T.E. Exchange and Flip-Flop of Dimyristoylphosphatidylcholine in Liquid-Crystalline, Gel, and Two-Component, Two-Phase Large Unilamellar Vesicles. *Biochemistry*. **29** (5), 1296–1303, doi: 10.1021/bi00457a027 (1990).
- 49–50. Nakao, H., et al. ~~(2015)~~ pH-dependent promotion of phospholipid flip-flop by the KcsA potassium channel. *Biochim. Biophys. Acta - Biomembr.* **1848** (1), 145–150, doi: 10.1016/j.bbamem.2014.10.001 (2015).

50. Venkatesan GA, et al. (2016) Adsorption kinetics dictate monolayer self-assembly for both lipid-in and lipid-out approaches to droplet interface bilayer formation. *Langmuir* 31(47):12883–12893.
51. Silvius JR (1982) Thermotropic phase transitions of pure lipids in model membranes and their modifications by membrane proteins. *Lipid-protein Interact* 2:239–281.
52. Lindsey H, Petersen NO, Chan SI (1979) Physicochemical characterization of 1,2-diphytanoyl-sn-glycero-3-phosphocholine in model membrane systems. *Biochim Biophys Acta Biomembr* 555(1):147–167.
53. Iwamoto M, Oiki S (2017) Membrane Perfusion of Hydrophobic Substances Around Channels Embedded in the Contact Bubble Bilayer. *Sci Rep* 7(1):6857.
54. Matsuki Y, et al. (2016) Matsuki, Y., Iwamoto, M., Mita, K., Shigemitsu, K., Matsunaga, S., Oiki, S. Rectified Proton Grotthuss Conduction Across a Long Water-Wire in the Test Nanotube of the Polytheonamide B Channel. *J Am Chem Soc Journal of the American Chemical Society*. 138 (12):, 4168–4177, doi: 10.1021/jacs.5b13377 (2016).
55. Iwamoto M, Shimizu H, Muramatsu I, Oiki S (2010) A cytotoxic peptide from a marine sponge exhibits ion channel activity through vectorial-insertion into the membrane. *FEBS Letters*. 584 (18):, 3995–3999, doi: S0014-5793(10)00644-7 [pii] 10.1016/j.febslet.2010.08.007 (2010).
56. Iwamoto M, et al. (2017) Sumino, A., Shimada, E., Kinoshita, M., Matsumori, N., Oiki, S. Channel Formation and Membrane Deformation via Sterol-Aided Polymorphism of Amphidinol 3. *Sci Rep Scientific Reports*. 7 (1):, 10782, doi: 10.1038/s41598-017-11135-x (2017).
57. Iwamoto M, Elfaramawy MA, Yamatake M, Matsuura T, Oiki S (2018) Concurrent in-Vitro Synthesis and Functional Detection of Nascent Activity of the KcsA Channel under a Membrane Potential. *ACS Synth Biol* 7(4):1004–1011.
58. Cortes DM, Perozo E (1997) Structural dynamics of the Streptomyces lividans K<sup>+</sup> channel (KcsA): oligomeric stoichiometry and stability. *Biochemistry* 36(33):10343–10352.
59. MacKinnon R, Cohen SL, Kuo A, Lee A, Chait BT (1998) Structural Conservation in Prokaryotic and Eukaryotic Potassium Channels. *Science* (80-) 280(5360):106–109.
60. LeMasurier M, Heginbotham L, Miller C (2001) KcsA: it's a potassium channel. *J Gen Physiol* 118(3):303–14.
61. Heginbotham L, LeMasurier M, Kolmakova-Partensky L, Miller C (1999) Single streptomyces lividans K<sup>+</sup> channels: functional asymmetries and sidedness of proton activation. *J Gen Physiol* 114(4):551–60.
62. Barry PH, P.H., Lynch JW (1991), J.W. Liquid junction potentials and small cell effects in patch-clamp analysis. *J Membr Biol The Journal of membrane biology*. 121 (2):, 101–117 (1991).
63. Barry PH (1994), P.H. JPCalc, a software package for calculating liquid junction potential corrections in patch-clamp, intracellular, epithelial and bilayer measurements and for correcting junction potential measurements. *J Neurosci Journal of Neuroscience Methods*. 51 (1):, 107–116, doi: 10.1016/0165-0270(94)90031-0 (1994).
64. Iwamoto M, Oiki S (2015) Contact Bubble Bilayers with Flush Drainage. *Sci Rep* 5:9110.

65. Oiki S, Muramatsu I, Matsunaga S, Fusetani N (1997). A channel-forming peptide toxin: polytheonamide from marine sponge (Theonella swinhoei). *Nihon Yakurigaku Zasshi*. **110** (Suppl. 1): 195P–198P. (1997).
57. Heginbotham, L., LeMasurier, M., Kolmakova-Partensky, L., Miller, C. Single streptomyces lividans K(+) channels: functional asymmetries and sidedness of proton activation. *The Journal of General Physiology*. **114** (4), 551–560 (1999).
58. Cortes, D.M., Perozo, E. Structural dynamics of the Streptomyces lividans K+ channel (SKC1): oligomeric stoichiometry and stability. *Biochemistry*. **36** (33), 10343–10352, doi: 10.1021/bi971018y [pii] (1997).
59. MacKinnon, R., Cohen, S.L., Kuo, A., Lee, A., Chait, B.T. Structural Conservation in Prokaryotic and Eukaryotic Potassium Channels. *Science*. **280** (5360), 106–109, doi: 10.1126/science.280.5360.106 (1998).
60. LeMasurier, M., Heginbotham, L., Miller, C. KcsA: it's a potassium channel. *J Gen Physiol*. **118** (3), 303–314 (2001).
61. Oiki, S. Planar lipid bilayer methods for channel study. *New Patch-Clamp Experimental Techniques*. 208–244 (2001).
62. Iwamoto, M., Elfaramawy, M.A., Yamatake, M., Matsuura, T., Oiki, S. Concurrent in Vitro Synthesis and Functional Detection of Nascent Activity of the KcsA Channel under a Membrane Potential. *ACS Synthetic Biology*. **7** (4), 1004–1011, doi: 10.1021/acssynbio.7b00454 (2018).
63. Venkatesan, G.A., Lee, J., Farimani, Amir Barati Heiranian, M., Collier, C.P., Aluru, N.R., Sarles, S.A. Adsorption kinetics dictate monolayer self-assembly for both lipid-in and lipid-out approaches to droplet interface bilayer formation. *Langmuir*. **31** (47), 12883–12893, doi: 10.1021/acs.langmuir.5b02293 (2016).
64. Silvius, J.R. Thermotropic phase transitions of pure lipids in model membranes and their modifications by membrane proteins. *Lipid-protein interactions*. **2**, 239–281 (1982).
65. Lindsey, H., Petersen, N.O., Chan, S.I. Physicochemical characterization of 1,2-diphytanoyl-sn-glycero-3-phosphocholine in model membrane systems. *Biochimica et Biophysica Acta (BBA) - Biomembranes*. **555** (1), 147–167, doi: 10.1016/0005-2736(79)90079-8 (1979).
66. Moore JW, Hines M, Harris EM (1984), E.M. Compensation for resistance in series with excitable membranes. *Biophys J*. **46** (4): 507–514. (1984).
67. Armstrong CM, Chow RH (1987), R.H. Supercharging: a method for improving patch-clamp performance. *Biophys J*. **52** (1): 133–136. (1987).
68. Armstrong CM, Gilly WF (1992), W.F. Access resistance and space clamp problems associated with whole-cell patch clamping. *Methods Enzymol*. **207**: 100–122. (1992).
69. Kojima S, Iwamoto M, Oiki S, Tochigi S, Takahashi H (2018). Thylakoid membranes contain a non-selective channel permeable to small organic molecules. *J Biol Chem Journal of Biological Chemistry*. **293** (20): 7777–7785. doi: 10.1074/jbc.RA118.002367 (2018).

895 70.- Winterstein ~~LM, L.M.~~ *et al.* ~~(2018)~~ Reconstitution and functional characterization of ion  
896 channels from nanodiscs in lipid bilayers. ~~*Journal of genaral Physiology*~~. **150**(4),  
897 637–646- ~~(2018)~~.  
898 71. Iwamoto, M., Sumino, A., Shimada, E., Kinoshita, M., Matsumori, N., Oiki, S. Channel  
899 Formation and Membrane Deformation via Sterol-Aided Polymorphism of Amphidinol.  
900 *Scientific Reports*. **7** (1), doi: 10.1038/s41598-017-11135-x (2017).  
901  
902  
903

書式変更: フッター  
書式変更: フォント : Times New Roman, 12 pt