

# Journal of Visualized Experiments

## Sperm Collection of Differential Quality using Density Gradient Centrifugation

--Manuscript Draft--

<b>Article Type:</b>	Invited Methods Article - JoVE Produced Video
<b>Manuscript Number:</b>	JoVE58833R1
<b>Full Title:</b>	Sperm Collection of Differential Quality using Density Gradient Centrifugation
<b>Keywords:</b>	Fertility; Spermatozoa; Reproduction; Chicken; Reproductive Techniques; semen; birds
<b>Corresponding Author:</b>	Andrew Benson, Ph.D University of Georgia Athens , Georgia UNITED STATES
<b>Corresponding Author's Institution:</b>	University of Georgia
<b>Corresponding Author E-Mail:</b>	dbenson@uga.edu
<b>Order of Authors:</b>	Andrew Benson, Ph.D Muslah Uddin Ahammad Zachery Ryan Jarrell
<b>Additional Information:</b>	
<b>Question</b>	<b>Response</b>
Please indicate whether this article will be Standard Access or Open Access.	Standard Access (US\$2,400)
Please indicate the <b>city, state/province, and country</b> where this article will be <b>filmed</b> . Please do not use abbreviations.	Athens, Georgia

**TITLE:**

Sperm Collection of Differential Quality using Density Gradient Centrifugation

**AUTHORS AND AFFILIATIONS:**

Muslah Uddin Ahammad\*

muslah@uga.edu

Zachery Ryan Jarrell\*

zjarrell@uga.edu

Andrew Parks Benson

dbenson@uga.edu

\*These authors contributed equally

Department of Poultry Science, University of Georgia, Athens, GA, USA

**CORRESPONDING AUTHOR:**

*Andrew Parks Benson*

**KEYWORDS:**

Sperm; Mobility; Density Gradient; Discontinuous

**SUMMARY:**

In this paper, we aim to describe the performance of the density gradient centrifugation technique and its application in sperm physiology research.

**ABSTRACT:**

In sexual reproduction, a male gamete or sperm cell fuses with a female gamete to bring about fertilization. However, a large number of sperm cells with fertilizing ability are required to interact with a female gamete to ensure fertilization. As such, the fertilizing ability of individual sperm cells is critical for successful reproduction. Density gradient centrifugation has been utilized for several decades as a reproducible, fast, efficient, effective and extremely adaptable method to collect only high-quality sperm to be used in assisted reproductive technology. The protocols we described herein focus on the utilization of the discontinuous Percoll density gradient centrifugation (PDGC) technique to isolate three distinct populations of rooster sperm by their quality. We were able to collect low-, medium- and high-quality sperm. We also describe reproducible protocols that entail determining fertility potential of sperm by assessing their viability, mobility and penetrability. Collection of sperm by their quality using PDGC technique would be useful to accurately and thoroughly characterize sperm with differential fertility potential.

**INTRODUCTION:**

In vertebrates, male gametes undergo intense selective pressure; therefore reproductive fitness of a male is pivotal for achieving successful fertilization. Males of any given vertebrate species must be able to produce sperm cells in large quantities and of sufficient quality in order to meet the needs of fertilization. Sperm cells, having both a sperm head and a flagellum, are the most polarized cells in the body. They are also very heterogeneous in quality of sperm (live and dead, morphologically normal and abnormal, and immobile, low mobile and high mobile), which is revealed through the wide variation in reproductive efficiency of the males. The larger the proportion of high-quality sperm, the fewer the number of matings required to successfully fertilize the ovum. However, to achieve fertility, morphologically normal sperm cells rely on propulsive forces generated by their flagella to reach the site of fertilization as well as to penetrate the zona pellucida<sup>1</sup> (ZP; in the case of mammals) or inner perivitelline layer<sup>2</sup> (IPVL; in the case of birds and reptiles) of the ovum following natural mating or artificial insemination (AI). Determining sperm quality is necessary for use in assisted reproductive technologies<sup>3</sup> (ART) and selection of breeding males to be used in AI programs<sup>4</sup>. On the other hand, the success of ART solely relies upon the accurate evaluation of sperm quality. A number of laboratory tests have been developed to determine the functional characteristics of sperm. The most important parameters are sperm morphology, viability, mobility, capacitation (avian sperm do not require capacitation<sup>5</sup>), acrosome reaction (AR; exocytosis and release of a proteolytic enzyme from the acrosome of the sperm head), sperm penetration of ZP or IPVL, and fertilization<sup>6-11</sup>. Measures of fertility alone do not provide an accurate evaluation of the fertilizing ability of a sperm population<sup>11</sup>. Measures of the several events leading up to fertilization of an egg allow for an appropriate representation of the performance of individual spermatocytes<sup>7</sup>.

The methodology developed for measuring sperm function is primarily species-specific. For example, in avian sperm, viability, mobility and penetration of IPVL are the most common parameters used to assess sperm quality<sup>8,11,12</sup>. The number of live sperm in the ejaculate plays a crucial role for the survival of sperm because the presence of a large number of dead sperm in the semen affects the quality of sperm. This enhances the production of reactive oxygen species in the semen and causes oxidative damage to the live sperm<sup>13</sup>. Sperm mobility, the capacity for flagellar movement of avian sperm against resistance at body temperature, is known to play a direct role in bringing about fertilization<sup>8</sup>. It is well established that mobility is positively correlated with fertility and is, therefore, a primary determinant of fertility<sup>8</sup>. However, a mobile sperm must also have the ability to undergo an AR and to penetrate the IPVL<sup>11</sup>. IPVL penetration assays take account for every sperm that participates in the process of fertilization<sup>11</sup>.

In the application of ART, ejaculate is usually processed in order to maximize the concentration of high-quality sperm and minimize concentration of low-quality sperm. After collection of semen, the proportion of high-quality sperm can be enriched through sperm separation procedures commonly used in both industry and research practices. Many of these procedures have been developed, all with respective benefits and limitations, but all utilize the heterogeneous nature of sperm to collect only the sperm with high fertilizing ability. These procedures include sperm migration methods, adherence column filtration and density gradient centrifugation (DGC)<sup>14-20</sup>. Among the available techniques, DGC has been found to be very

simple, repeatable, cost-effective and efficient in isolating the maximum amount of high-quality sperm for use in ART with the goal of maximizing chance of fertilization<sup>14,15</sup>. In addition, DGC is not injurious to the sperm cell membrane. In contrast, sperm migration methods collect only progressively mobile sperm<sup>18,19</sup>, but the quantity of sperm collected is very low, making it inefficient in collecting large volumes of sperm<sup>18,20</sup>. Adherence column filtration is very efficient in filtering highly mobile sperm from semen<sup>17</sup>; however, it tends to be injurious to sperm membranes<sup>20,21</sup>.

In the DGC technique, the most commonly used substrate for generating the density gradient is Percoll, which consists of colloidal silica particles coated in polyvinylpyrrolidone. Percoll density gradient centrifugation (PDGC) can either be continuous or discontinuous but a discontinuous gradient is most commonly used for high yield isolation of highly mobile sperm<sup>13,16,20</sup>. In a discontinuous gradient, lower density media floats above higher density media, creating a gradient that increases in density from the top to the bottom of a conical tube. This creates boundaries at the interface between the two media of differing density. The efficiency of PDGC is derived from two factors: 1) the propulsive ability of individual sperm cells and 2) the tendency of sperm cells with high structural integrity to have an increased density. Sperm with higher mobility are better able to cross from lower density media and penetrate into a higher density media. Lower mobility sperm are more likely to become trapped at the boundary created by the interface between media of differing density. Sperm cells with high structural integrity and mobility tend to have a higher density than dead, abnormal or low mobile sperm cells. When centrifugal force is applied in PDGC, this facilitates movement of sperm with different densities to their respective place in the gradient.

In general practice, after PDGC is performed, the soft pellet of sperm with high fertility potential at the bottom of the conical tube is collected, and the remainder is discarded. However, an underutilized advantage of this technique is its ability to separate sperm cells into several groups based on the quality differences. For research purposes, separation of sperm by degree of quality utilizing the PDGC technique allows for study of sperm quality as it pertains to physiologic, metabolomic and proteomic differences. Here, we aim to detail how this technique may be used to separate sperm by quality, as well as demonstrate these differences in quality, using the previously established eosin-nigrosin vital staining for viability, Accudenz assay for mobility, and sperm-IPVL interaction assay for penetrability.

## **PROTOCOL:**

All methods described here have been approved by the Institutional Animal Care and Use Committee (IACUC) of the University of Georgia.

### **1. Washing using Traditional Centrifugation**

1.1) Prepare phosphate buffer solution (PBS). Add 8.0 g of NaCl, 0.2 g of KCl, 1.44 g of Na<sub>2</sub>HPO<sub>4</sub> and 0.24 g of KH<sub>2</sub>PO<sub>4</sub> to 800 mL of distilled water (dH<sub>2</sub>O). Adjust the pH to 7.4 using 0.1 N HCl and bring the solution to 1 L using dH<sub>2</sub>O.

1.2) Prepare motility buffer. Add 6.5 g of NaCl, 4.5 g of glucose, 0.444 g of CaCl<sub>2</sub> and 11.5 g of N-tris-[hydroxymethyl] methyl-2-amino-ethanesulfonic acid (TES) to 800 mL of dH<sub>2</sub>O. Adjust the pH to 7.4 using 1 M NaOH and bring the solution to 1 L using dH<sub>2</sub>O.

1.3) Pipette 0.5 mL of semen into a polypropylene microcentrifuge tube. Add 1.0 mL of PBS and mix gently.

1.4) Centrifuge at 1,500 x g for 10 min at room temperature (RT) and discard the supernatant. Resuspend the sperm pellet with PBS up to 1.5 mL.

1.5) Centrifuge at 1,500 x g for 10 min at RT. Resuspend the sperm pellet with motility buffer up to 0.5 mL.

## **2. Performing the PDGC technique**

**NOTE:** Perform the entire process of PDGC at room temperature.

2.1) Make 3.0 mL of 1.08 g/mL and 1.07 g/mL Percoll solutions in two separate tubes.

2.1.1) In a clean test tube, add 1.712 mL of the 1.13 g/mL original Percoll to 0.3 mL of 1.5 M NaCl solution. Add 0.988 mL of dH<sub>2</sub>O and mix by gentle inversion to make 3.0 mL of a 1.08 g/mL density solution.

2.1.2) In a clean test tube, add 1.482 mL of the 1.13 g/mL original Percoll to 0.3 mL of 1.5 M NaCl solution. Add 1.218 mL of dH<sub>2</sub>O and mix by gentle inversion to make 3.0 mL of a 1.07 g/mL density solution.

2.2) In a clean test tube, dilute 1.0 mL of semen sample 1:2 with 2.0 mL of PBS. Mix gently by pipetting.

2.3) Pipet 3.0 mL of the 1.07 g/mL density solution into a sterile 15 mL conical tube. Carefully pipet 3.0 mL of the 1.08 g/mL density solution beneath the 1.07 g/mL density solution. Ensure that the two layers do not mix. A long-form (9 in) Pasteur pipette can make this step easier.

2.4) Pipet 3.0 mL of diluted semen sample overtop the PDG. To ensure that the semen sample does not mix with the PDG, gently tilt the conical tube containing the PDG at a 45° angle. Pipet the sample along the wall of the tube and allow it to flow down the tube and over the PDG.

2.5) Prepare a blank tube to match the mass of the PDG with overlaid sample. Centrifuge both tubes at 1500 x g for 20 min. Be careful to maintain the discontinuous gradient while transferring the tubes from the bench to the balance and then to the centrifuge.

**Note:** Do not use the brake at the end of centrifugation.

2.6) Observe the results. Ensure that three distinct semen layers have formed in the tube, as seen in **Figure 1**.

2.7) Aspirate isolated semen layers with a pipette. Collect the top layer of semen first, the middle layer second, and last the hard pellet at the bottom of the tube. Transfer each to a clean and sterile polypropylene microcentrifuge tube.

2.8) Dilute each sample to 1.5 mL with PBS. Centrifuge at 1500 x g for 10 min.

2.9) Pour off the supernatant. Reconstitute sperm pellet with motility buffer by gentle pipetting.

Note: Alternative densities may be used to suit investigator needs. Determine amounts of ingredients used with the following equation, where  $v_0$  is volume of stock density solution used,  $v$  is final volume of solution desired,  $p$  is density of final density solution desired and  $p_0$  is the density of the stock density solution:

$$v_0 = v * \frac{p - 1.0058}{p_0 - 1}$$

Always use 0.3 mL of 1.5 M NaCl in preparation of density solutions to match the NaCl concentration of physiological saline.

### 3. Determining Sperm Quality

3.1) Calculate the sperm concentration as previously described<sup>22</sup>.

3.2) Perform eosin-nigrosin vital staining as previously described<sup>12</sup> with the following modifications:

3.2.1) Prepare 100  $\mu$ L of sperm solution at a concentration of  $1 \times 10^8$  cells/mL.

3.2.2) Pipet 50  $\mu$ L of sperm solution in a polypropylene microcentrifuge tube containing an equal volume of eosin-nigrosin stain. Incubate the mixture for 5 min at room temperature.

3.2.2) Place a 20  $\mu$ L drop of stained sperm sample at one end of a glass slide and smear uniformly in a manner similar to that used for blood smears. Air-dry the smeared slides at room temperature for 3-5 min.

3.2.3) Observe the smear under microscope. Count the number of live sperm (no stain) and dead sperm (stained pink) and calculate the percentage of live sperm.

3.3) Perform the Accudenz assay, as previously validated for the chicken sperm, to objectively assess the sperm mobility<sup>8</sup> with the following modifications:

3.3.1) Pipet 1.0 mL of 6% assay solution into polystyrene cuvettes, as illustrated in **Figure 2**.  
Incubate to 41 °C.

**Note:** 41 °C is used to match the internal temperature of a hen. The incubation temperature should match that of the female reproductive tract of the species being investigated.

3.3.2) Overlay the preheated assay solution with 100 µL of semen sample at a concentration of  $5 \times 10^8$  cells/mL.

3.3.3) Place the cuvette containing overlaid sperm sample in the spectrophotometer. Record the absorbance value at 550 nm.

3.4) Perform IPVL-penetration assay as previously described<sup>11</sup> with the following modifications:

3.4.1) Cut a piece (0.5 cm x 0.5 cm) of non-germinal disc region of intact IPVL.

3.4.2) Adjust sperm concentration to  $4 \times 10^6$  cells/mL

3.4.3) Incubate sperm in motility buffer with IPVL in a small glass vial for 15 min at 37 °C, as illustrated in **Figure 3**.

3.4.4) Immerse the IPVL piece in 3% NaCl to stop the interaction between the IPVL and sperm.

3.4.5) Mount the IPVL piece on a microscope slide and stain with Schiff's reagent for 10 min following fixation with 10% formalin for 20 s.

3.4.6) Observe the IPVL under a microscope for successful sperm penetration holes and count the number of all visible holes per  $0.25 \text{ mm}^2$  at 40X magnification.

#### **REPRESENTATIVE RESULTS:**

The PDGC technique resulted in distinct separation of three layers of sperm by degree of quality across all parameters. Sperm separates into a high-quality layer below the higher density solution, a medium-quality layer between the higher and lower density solution and a low-quality layer above the lower density solution. These differences in quality are evidenced by clear differences in viability (**Figure 4**), mobility (**Figure 5**) and penetrability (**Figure 6**). Sperm isolated from the high-quality layer of the PDG exhibited increases in all three parameters relative to those of the traditionally washed sample. Those layers noted as medium- and low-quality upon separation by PDGC display moderate and dramatic, respectively, decreases across all test parameters.

#### **FIGURE AND TABLE LEGENDS:**

**Figure 1: Isolation of sperm with differential quality using PDGC.** Overlay 3 mL of sperm solution on prepared PDG solution. Centrifuge at  $1500 \times g$  for 20 min. Collect three distinct groups of sperm with low-, medium- and high-quality.

**Figure 2: Determination of sperm mobility using Accudenz assay.**

Overlay 100  $\mu$ L of sperm sample on a 6% assay solution in a cuvette. Incubate at 41 °C for 5 min. Record the mobility of sperm as a function of absorbance at 550 nm.

**Figure 3: A model of formation of sperm penetration holes in IPVL.**

Incubate sperm with a small section of IPVL at 37 °C for 15 min. Upon contact with IPVL, sperm cells bind with the IPVL, undergo an acrosome reaction and penetrate the IPVL, creating penetration holes. Count the number of penetration holes and measure the penetrability of sperm.

**Figure 4: Viability of sperm as assessed by eosin-nigrosin vital staining.** Digital micrographs showing eosin-nigrosin vital staining of sperm obtained through a process of traditional wash (A) and PDGC (B, low motile sperm; C, medium motile sperm; D, high motile sperm). Scale bar = 50  $\mu$ m at 40 x magnification. Pink staining indicates dead sperm which have taken up eosin stain. Data were subjected to one-way ANOVA, followed by the Tukey-Kramer test. Error bars indicate the standard error of the mean (SEM). Values are presented as the mean  $\pm$  SEM (n = 5). <sup>a-d</sup> Values without a common superscript differed (P < 0.05). Sperm isolated by PDGC into low-, medium- and high-quality groups (E) reveal significant differences in percentage viability, 66.0  $\pm$  4.7, 77.0  $\pm$  8.9 and 92.8  $\pm$  3.4, respectively. Sperm washed by traditional methods displayed an 81.6  $\pm$  4.9% viability, lower than the high-quality group but higher than the medium- and low-quality groups.

**Figure 5: Mobility of sperm as assessed.** Absorbance values act as a proxy measure for sperm mobility in assessment by the Accudenz assay. Data were subjected to one-way ANOVA, followed by the Tukey-Kramer test. Error bars indicate the standard error of the mean (SEM). Values are presented as the mean  $\pm$  SEM (n = 5). <sup>a-d</sup> Values without a common superscript differed (P < 0.05). Sperm isolated into low-, medium- and high-quality groups by the PDGC technique exhibited markedly different low (0.11  $\pm$  0.03), medium (0.34  $\pm$  0.01) and high (0.87  $\pm$  0.03) absorbance values, respectively. Sperm washed by traditional methods exhibited an absorbance of 0.71  $\pm$  0.03, an absorbance lower than that of the high-quality group, but higher than that of the medium- and low-quality groups.

**Figure 6: Penetrability of sperm as assessed by sperm-inner perivitelline layer (IPVL) interaction assay.** Digital micrographs showing *in vitro* formation of holes on the surface of the IPVL by chicken sperm (4 x 10<sup>6</sup> cells/mL) during incubation in motility buffer at 37 °C for 15 min. Micrographs represent IPVL penetrated by sperm having undergone traditional wash (A) and sperm from low- (B), medium- (C) and high- (D) quality groups from PDGC. Scale bar = 50  $\mu$ m at 40X magnification. Data were subjected to one-way ANOVA, followed by the Tukey-Kramer test. Error bars indicate the standard error of the mean (SEM). Values are presented as the mean  $\pm$  SEM (n = 5). <sup>a-d</sup> Values without a common superscript differed (P < 0.05). The number of penetration holes per 0.25 mm<sup>2</sup> (E) differed between the sperm isolated from the different gradients of the density media. Sperm isolated into low-, medium- and high-quality groups by PDGC produced a low (24.40  $\pm$  1.1), medium (33.20  $\pm$  1.4) and high (51.20  $\pm$  1.3) number of



penetration holes, respectively. The sperm washed using the traditional method produced  $46.40 \pm 1.8$  penetration holes, a value lower than the high-quality group but higher than the medium- and low-quality groups.

## DISCUSSION:

Fertility not only determines the profitability of animal production but also acts as a means of natural selection of species for existence. The ultimate function of a sperm cell is to fertilize an ovum. The oviduct of a female selects only those fittest sperm in order to ensure fertilization of the ovum<sup>23,24</sup>. *In vitro* studies have also revealed a close correlation between qualitative sperm traits and fertilization success<sup>4,11,23,24</sup>. Reduced fertility is associated with poor quality of sperm<sup>4,11,25</sup>. As such, it necessitates processing semen for improvement of sperm quality. In ART, PDGC has been applied to collect only the high-quality sperm to supplement fertility of humans and agriculturally-important animals<sup>13,16,20,26</sup>. Using this technique, we, however, demonstrated a gentle, non-invasive technique of separating low-, medium- and high-quality sperm in the domestic chicken model.

The presented protocol of PDGC, when performed correctly, allows separation of not only high-quality sperm, but also effective separation of low- and medium-quality sperm. The degree of success of PDGC is reliant on careful preparation of the discontinuous gradient as well as equally careful collection of isolated layers. Diameter of the conical tube used also influences success of PDGC. We have observed that a larger tube diameter results in decreased efficiency of the technique. It is important that PDGC is performed at room temperature in order to maintain integrity of the PDG. Any previously refrigerated samples should be adjusted to room temperature before being placed on the PDG. The most common issue that could be observed after performing PDGC is inefficient separation; the isolated layers will not be distinct from one another. If this issue occurs, in addition to addressing the above critical steps, it may be corrected by reducing sample dilution, increasing the volumes of density solutions used and ensuring the volumes of solutions used are equal.

PDGC is very adaptable. Any range of densities between 1.00 and 1.13 g/mL may be used for preparation of the gradient. We have found that 1.07 and 1.08 g/mL density solutions work well for separation of chicken sperm by quality, but these densities may need adjustment for other sample types or experimental purposes. The number of density solutions used in the gradient may also be adjusted to suit the needs of the experimenter. The number of quality groups isolated will always be one more than the number of density solutions used.

PDGC is much more effective than alternative methods of sample separation *in situ* where large quantities of sample are needed<sup>13,16,20,26</sup>. Migration assays effectively separate the highest quality sperm from a sample<sup>18,19</sup>, but they cannot be used to resolve the sample any further. Migration assays are also incapable of preparing large volumes of sample<sup>18,20</sup>. Adherence column assays effectively separate large volumes of sample<sup>17</sup>; however, the process is deleterious to the quality of the sperm collected, making confirmation of the quality groups after separation difficult<sup>20,21</sup>. PDGC, however, does have its own limitations. In the case of mammalian sperm, it should not be used for preparation of samples for *in vitro* fertilization,

due to the possible contamination with endotoxins<sup>27</sup>. The effect of Percoll contamination with endotoxins has not been investigated in other animal classes. Sperm performance is not affected by endotoxins, meaning the PDGC is still appropriate for research purposes.

Collection of sperm by their quality using the PDGC technique will be instrumental for a wide range of applications including studies involving sperm physiologic, metabolomic, transcriptomic and proteomic research. Application of this technique will contribute to the discovery of biomarkers of sperm quality for usage in marker-assisted fertility improvement programs.

#### ACKNOWLEDGMENTS:

None.

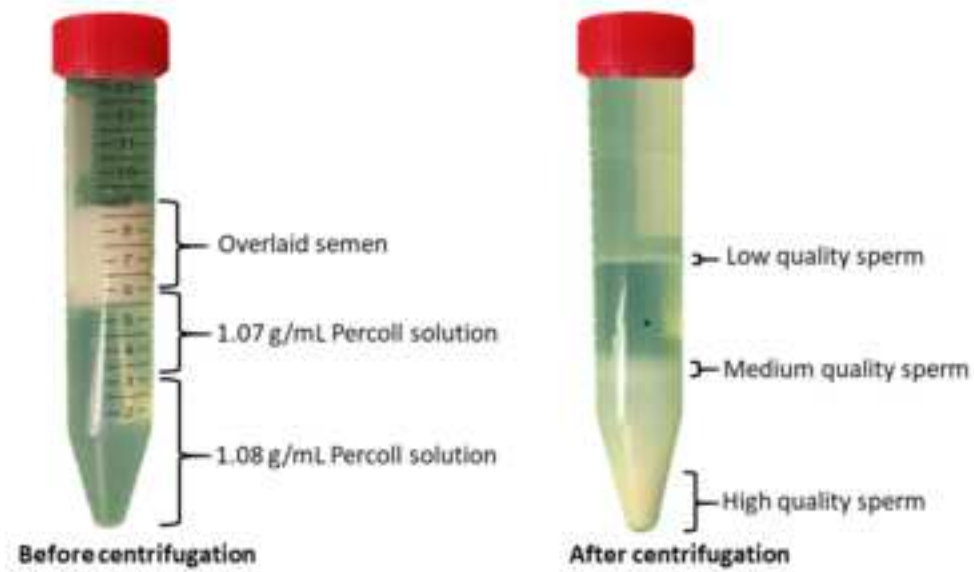
#### DISCLOSURES:

The authors have nothing to disclose.

#### REFERENCES:

1. Spargo, S.C., Hope, R.M. Evolution and nomenclature of the zona pellucida gene family. *Biology Reproduction*. **68**, 358-362 (2003).
2. Okamura, F., Nishiyama, H. The passage of spermatozoa through the vitelline membrane in the domestic fowl, *Gallus gallus*. *Cell and Tissue Research*. **188** (3), 497-508 (1978).
3. Henkel, R. *et al.* Sperm function and assisted reproduction technology. *Reproductive Medicine and Biology*. **4**, 7–30 (2005).
4. Reddy, R.P. Artificial Insemination of broilers: Economic and management implications. In: Bakst M.R., Wishart G.J. (Eds.), *Proceedings of 1<sup>st</sup> International Symposium on Artificial Insemination of Poultry*. Poultry Science Association, Savoy, IL, pp: 73-89 (1995).
5. Howarth, B.Jr. An Examination for Sperm Capacitation in the Fowl. *Biology of Reproduction*. **3**, 338-341 (1971).
6. Menkveld, R., Holleboom, C.A.G., Rhemrev, J.P.T. Measurement and significance of sperm morphology. *Asian Journal of Andrology*. **13**, 59–68 (2011).
7. Kumaresan, A., Johannisson, A., Al-Essawe, E.M., Morrell, J.M. Sperm viability, reactive oxygen species, and DNA fragmentation index combined can discriminate between above- and below-average fertility bulls. *Journal of Dairy Science*. **100**, 5824–5836 (2017).
8. Froman, D.P., McLean, D.J. Objective measurement of sperm motility based upon sperm penetration of Accudenz. *Poultry Science*. **75**, 776–84 (1996).
9. Zaneveld, L.J., De Jonge, C.J., Anderson, R.A., Mack, S.R. Human sperm capacitation and the acrosome reaction. *Human Reproduction*. **6** (9), 1265-1274 (1991).
10. Ahammad, M.U. *et al.* Acrosome reaction of fowl sperm: Evidence for shedding of acrosomal cap in intact form to release acrosomal enzyme. *Poultry Science*. **92** (3), 798-803 (2013).
11. Ahammad, M.U. *et al.* Maturational changes in motility, acrosomal proteolytic activity, and penetrability of the inner perivitelline layer of fowl sperm, during their passage through the male genital tract. *Theriogenology*. **76** (6), 1100-1109 (2011).
12. Chalah, T., Brillard, J.P. *Theriogenology*. **50** (3), 487-493 (1998).

13. Aitken, R.J., West, K.M. Analysis of the relationship between reactive oxygen species production and leukocyte infiltration in fractions of human semen separated on Percoll gradients. *International Journal of Andrology*. **13**, 433-451 (1990).
14. Mortimer, D., Mortimer, S.T. Density Gradient Separation of Sperm for Artificial Insemination. In: Carrell, D., Aston, K. (eds) *Spermatogenesis. Methods in Molecular Biology (Methods and Protocols)*, 927. Humana Press, Totowa, NJ, USA (2013)
15. Qingling, Y. *et al.* Processing of semen by density gradient centrifugation selects spermatozoa with longer telomeres for assisted reproduction techniques. *Reproductive BioMedicine Online*. **31**, 44–50 (2015).
16. Moohan, J.M., Lindsay, K.S. Spermatozoa selected by a discontinuous Percoll density gradient exhibit better motion characteristics, more hyperactivation, and longer survival than direct swim-up. *Fertility and Sterility*. **64** (1), 160-165 (1995).
17. Paulson J.D., Polakoski, K.L. A glass wool column procedure for removing extraneous material from human ejaculate. *Fertility and Sterility*. **28**, 178–181 (1977).
18. Ahammad, M.U., Chiaki, N., Tatemoto, H., Kawamoto, Y., Nakada T. Utilization of the swim-up migration sedimentation technique to separate viable and progressively motile fowl spermatozoa. *World's Poultry Science Association Proceedings*. Cambridge University Press. (2010).
19. Lucena, E. *et al.* Recovery of motile sperm using the migration-sedimentation technique in an *in vitro* fertilization-embryo transfer programme. *Human Reproduction*. **4** (2), 163-165 (1989).
20. Henkel, R. Sperm Processing for IVF. *Clinical Embryology: A Practical Guide*. Springer Science and Business Media, New York, USA. (2013).
21. Sherman, J., Paulson, D., Liu, K. Effect of glass wool filtration on ultrastructure of human spermatozoa. *Fertility and Sterility*. **36**, 643–647 (1981).
22. Freund, M., Carol, B. Factors affecting haemocytometer counts of sperm concentration in human semen. *Journal of Reproduction and Fertility*. **8**, 149–155 (1964).
23. Bakst, M.R., Wishart, G.J., Brillard, J.P. Oviducal sperm selection, transport and storage in poultry. *Poultry Science Review*. **5**, 117– 143 (1994).
24. Ahammad, M.U., Okamoto, S., Kawamoto, Y., Nakada, T. The effects of regular fluid secretion from the uterus of laying hens on the longevity and fertilization ability of fowl sperm in the oviduct. *Poultry Science Journal*. **1** (1), 13-22 (2013).
25. Ahammad, M.U. *et al.* Maturational changes in the survivability and fertility of fowl sperm during their passage through the male reproductive tract. *Animal Reproduction Science*. **128** (1-4), 129-136 (2011).
26. Choi, K.H., Emery, D.A., Straub, D.E., Lee, C.S. Percoll process can improve semen quality and fertility in turkey breeders. *Asian-Australasian Journal of Animal Sciences*. **12** (5), 702-707 (1999).
27. Chen, M.J., Bongso, A. Comparative evaluation of two density gradient preparations for sperm separation for medically assisted conception. *Human Reproduction*. **14** (3), 759-64 (1999).



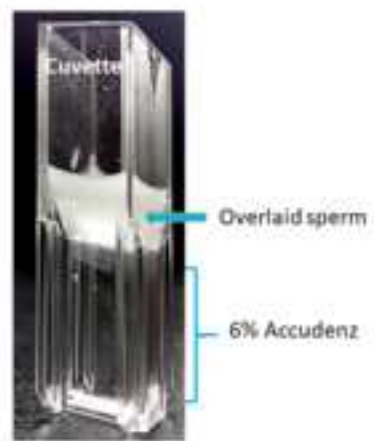


Figure 3

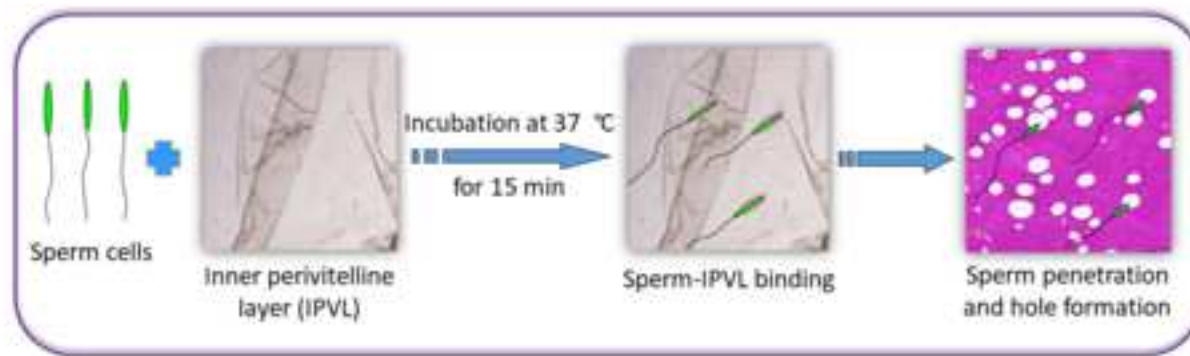
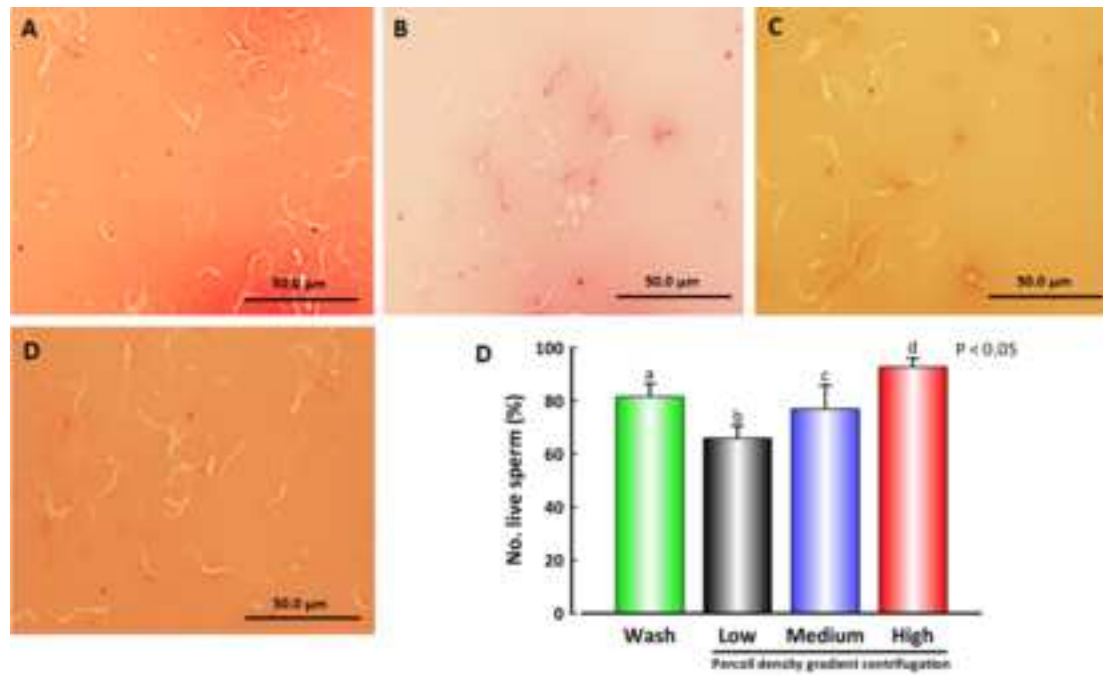


Figure 4

[Click here to access/download;Figure;Figure 4.TIF](#)



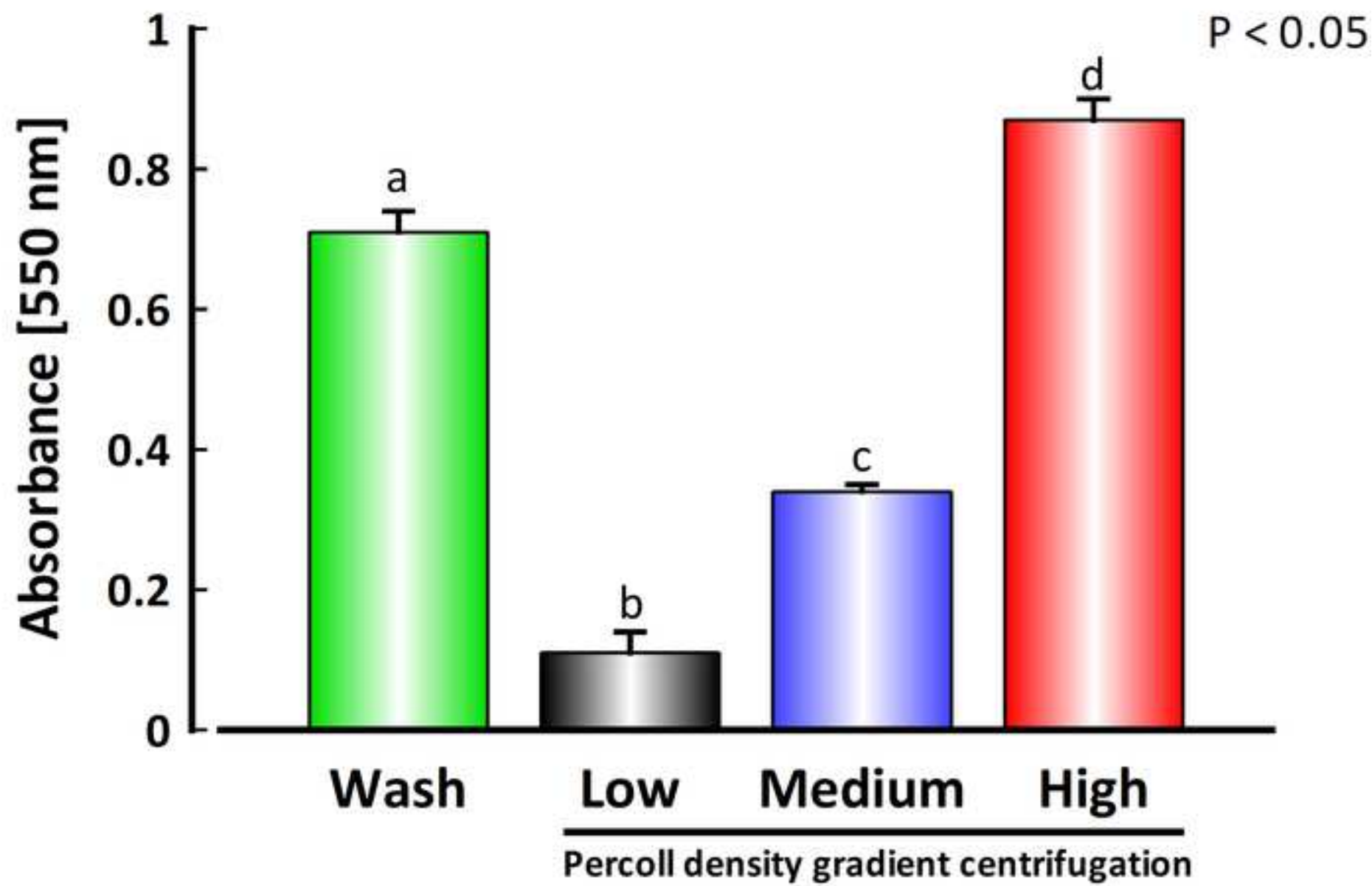
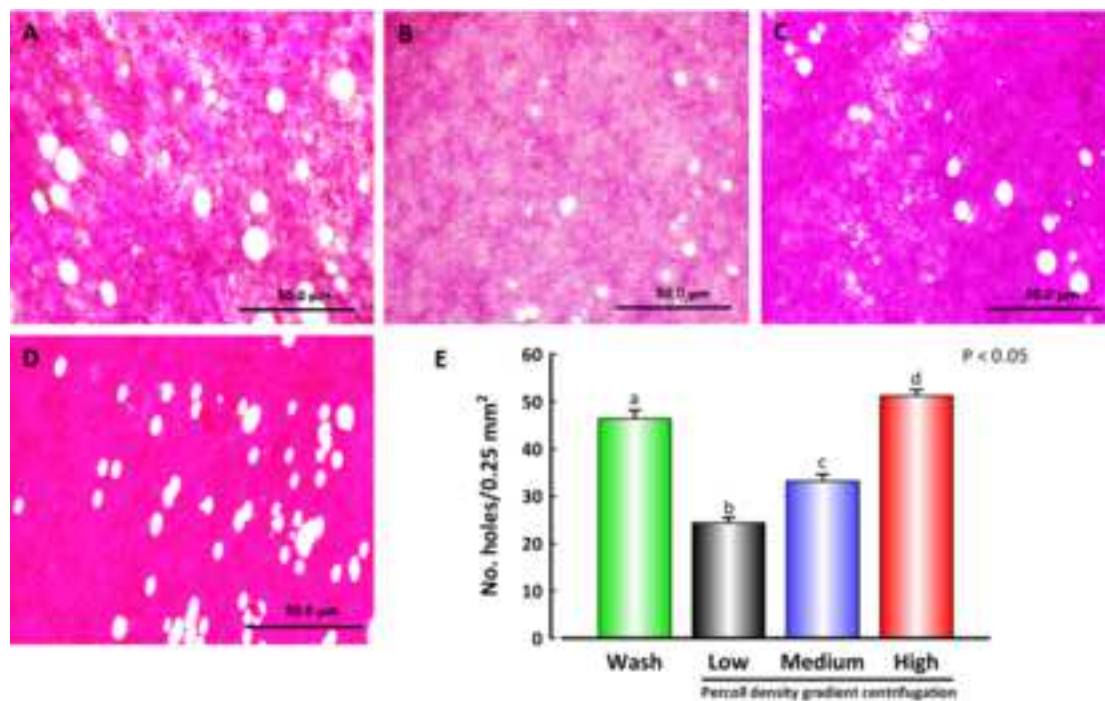




Figure 6

[Click here to access/download;Figure;Figure 6.TIF](#) 



Name of Material/ Equipment	Company	Catalog Number	Comments/Description
Accudenz	Accurate Chemical and Scientific Corporation, Westbury, NY, USA	AN7050	
Percoll	Sigma-Aldrich, Corp., St. Louis, MO, USA	P7828	
Schiff’s reagent	Sigma-Aldrich, Corp., St. Louis, MO, USA	3952016	
TES	Sigma-Aldrich, Corp., St. Louis, MO, USA	T1375	
Eosin Y	Sigma-Aldrich, Corp., St. Louis, MO, USA	E4009	
Nigrosin	Sigma-Aldrich, Corp., St. Louis, MO, USA	198285	
ST 40R Centrifuge	Thermo Scientific, Waltham, MA, USA	75004524	
DU 530 Life Sciences UV/Vis Spectrophotometer	Beckman Coulter, Brea, CA, USA		No catalogue is found
Olympus IX 71 Inverted Fluorescence and Phase Contrast Microscope	Olympus America Inc., PA, USA		No catalogue is found



1 Alewife Center #200  
Cambridge, MA 02140  
tel. 617.945.9051  
[www.jove.com](http://www.jove.com)

## ARTICLE AND VIDEO LICENSE AGREEMENT

Title of Article:

**Collection of sperm with differential quality using Percoll density gradient centrifugation technique**

Author(s):

**Muslah Uddin Ahammad, Zachery Ryan Jarrell, Andrew Parks Benson**

Item 1: The Author elects to have the Materials be made available (as described at <http://www.jove.com/publish>) via:



Standard Access



Open Access

Item 2: Please select one of the following items:



The Author is **NOT** a United States government employee.



The Author is a United States government employee and the Materials were prepared in the course of his or her duties as a United States government employee.



The Author is a United States government employee but the Materials were NOT prepared in the course of his or her duties as a United States government employee.

### ARTICLE AND VIDEO LICENSE AGREEMENT

1. **Defined Terms.** As used in this Article and Video License Agreement, the following terms shall have the following meanings: **"Agreement"** means this Article and Video License Agreement; **"Article"** means the article specified on the last page of this Agreement, including any associated materials such as texts, figures, tables, artwork, abstracts, or summaries contained therein; **"Author"** means the author who is a signatory to this Agreement; **"Collective Work"** means a work, such as a periodical issue, anthology or encyclopedia, in which the Materials in their entirety in unmodified form, along with a number of other contributions, constituting separate and independent works in themselves, are assembled into a collective whole; **"CRC License"** means the Creative Commons Attribution-Non Commercial-No Derivs 3.0 Unported Agreement, the terms and conditions of which can be found at: <http://creativecommons.org/licenses/by-nc-nd/3.0/legalcode>; **"Derivative Work"** means a work based upon the Materials or upon the Materials and other pre-existing works, such as a translation, musical arrangement, dramatization, fictionalization, motion picture version, sound recording, art reproduction, abridgment, condensation, or any other form in which the Materials may be recast, transformed, or adapted; **"Institution"** means the institution, listed on the last page of this Agreement, by which the Author was employed at the time of the creation of the Materials; **"JOVE"** means MyJove Corporation, a Massachusetts corporation and the publisher of The Journal of Visualized Experiments; **"Materials"** means the Article and / or the Video; **"Parties"** means the Author and JoVE; **"Video"** means any video(s) made by the Author, alone or in conjunction with any other parties, or by JoVE or its affiliates or agents, individually or in collaboration with the Author or any other parties, incorporating all or any portion

of the Article, and in which the Author may or may not appear.

2. **Background.** The Author, who is the author of the Article, in order to ensure the dissemination and protection of the Article, desires to have the JoVE publish the Article and create and transmit videos based on the Article. In furtherance of such goals, the Parties desire to memorialize in this Agreement the respective rights of each Party in and to the Article and the Video.

3. **Grant of Rights in Article.** In consideration of JoVE agreeing to publish the Article, the Author hereby grants to JoVE, subject to **Sections 4** and **7** below, the exclusive, royalty-free, perpetual (for the full term of copyright in the Article, including any extensions thereto) license (a) to publish, reproduce, distribute, display and store the Article in all forms, formats and media whether now known or hereafter developed (including without limitation in print, digital and electronic form) throughout the world, (b) to translate the Article into other languages, create adaptations, summaries or extracts of the Article or other Derivative Works (including, without limitation, the Video) or Collective Works based on all or any portion of the Article and exercise all of the rights set forth in (a) above in such translations, adaptations, summaries, extracts, Derivative Works or Collective Works and (c) to license others to do any or all of the above. The foregoing rights may be exercised in all media and formats, whether now known or hereafter devised, and include the right to make such modifications as are technically necessary to exercise the rights in other media and formats. If the "Open Access" box has been checked in **Item 1** above, JoVE and the Author hereby grant to the public all such rights in the Article as provided in, but subject to all limitations and requirements set forth in, the CRC License.

## ARTICLE AND VIDEO LICENSE AGREEMENT

4. **Retention of Rights in Article.** Notwithstanding the exclusive license granted to JoVE in **Section 3** above, the Author shall, with respect to the Article, retain the non-exclusive right to use all or part of the Article for the non-commercial purpose of giving lectures, presentations or teaching classes, and to post a copy of the Article on the Institution's website or the Author's personal website, in each case provided that a link to the Article on the JoVE website is provided and notice of JoVE's copyright in the Article is included. All non-copyright intellectual property rights in and to the Article, such as patent rights, shall remain with the Author.

5. **Grant of Rights in Video – Standard Access.** This **Section 5** applies if the "Standard Access" box has been checked in **Item 1** above or if no box has been checked in **Item 1** above. In consideration of JoVE agreeing to produce, display or otherwise assist with the Video, the Author hereby acknowledges and agrees that, Subject to **Section 7** below, JoVE is and shall be the sole and exclusive owner of all rights of any nature, including, without limitation, all copyrights, in and to the Video. To the extent that, by law, the Author is deemed, now or at any time in the future, to have any rights of any nature in or to the Video, the Author hereby disclaims all such rights and transfers all such rights to JoVE.

6. **Grant of Rights in Video – Open Access.** This **Section 6** applies only if the "Open Access" box has been checked in **Item 1** above. In consideration of JoVE agreeing to produce, display or otherwise assist with the Video, the Author hereby grants to JoVE, subject to **Section 7** below, the exclusive, royalty-free, perpetual (for the full term of copyright in the Article, including any extensions thereto) license (a) to publish, reproduce, distribute, display and store the Video in all forms, formats and media whether now known or hereafter developed (including without limitation in print, digital and electronic form) throughout the world, (b) to translate the Video into other languages, create adaptations, summaries or extracts of the Video or other Derivative Works or Collective Works based on all or any portion of the Video and exercise all of the rights set forth in (a) above in such translations, adaptations, summaries, extracts, Derivative Works or Collective Works and (c) to license others to do any or all of the above. The foregoing rights may be exercised in all media and formats, whether now known or hereafter devised, and include the right to make such modifications as are technically necessary to exercise the rights in other media and formats. For any Video to which this **Section 6** is applicable, JoVE and the Author hereby grant to the public all such rights in the Video as provided in, but subject to all limitations and requirements set forth in, the CRC License.

7. **Government Employees.** If the Author is a United States government employee and the Article was prepared in the course of his or her duties as a United States government employee, as indicated in **Item 2** above, and any of the licenses or grants granted by the Author hereunder exceed the scope of the 17 U.S.C. 403, then the rights granted hereunder shall be limited to the maximum

rights permitted under such statute. In such case, all provisions contained herein that are not in conflict with such statute shall remain in full force and effect, and all provisions contained herein that do so conflict shall be deemed to be amended so as to provide to JoVE the maximum rights permissible within such statute.

8. **Protection of the Work.** The Author(s) authorize JoVE to take steps in the Author(s) name and on their behalf if JoVE believes some third party could be infringing or might infringe the copyright of either the Author's Article and/or Video.

9. **Likeness, Privacy, Personality.** The Author hereby grants JoVE the right to use the Author's name, voice, likeness, picture, photograph, image, biography and performance in any way, commercial or otherwise, in connection with the Materials and the sale, promotion and distribution thereof. The Author hereby waives any and all rights he or she may have, relating to his or her appearance in the Video or otherwise relating to the Materials, under all applicable privacy, likeness, personality or similar laws.

10. **Author Warranties.** The Author represents and warrants that the Article is original, that it has not been published, that the copyright interest is owned by the Author (or, if more than one author is listed at the beginning of this Agreement, by such authors collectively) and has not been assigned, licensed, or otherwise transferred to any other party. The Author represents and warrants that the author(s) listed at the top of this Agreement are the only authors of the Materials. If more than one author is listed at the top of this Agreement and if any such author has not entered into a separate Article and Video License Agreement with JoVE relating to the Materials, the Author represents and warrants that the Author has been authorized by each of the other such authors to execute this Agreement on his or her behalf and to bind him or her with respect to the terms of this Agreement as if each of them had been a party hereto as an Author. The Author warrants that the use, reproduction, distribution, public or private performance or display, and/or modification of all or any portion of the Materials does not and will not violate, infringe and/or misappropriate the patent, trademark, intellectual property or other rights of any third party. The Author represents and warrants that it has and will continue to comply with all government, institutional and other regulations, including, without limitation all institutional, laboratory, hospital, ethical, human and animal treatment, privacy, and all other rules, regulations, laws, procedures or guidelines, applicable to the Materials, and that all research involving human and animal subjects has been approved by the Author's relevant institutional review board.

11. **JoVE Discretion.** If the Author requests the assistance of JoVE in producing the Video in the Author's facility, the Author shall ensure that the presence of JoVE employees, agents or independent contractors is in accordance with the relevant regulations of the Author's institution. If more than one author is listed at the beginning of this Agreement, JoVE may, in its sole

## ARTICLE AND VIDEO LICENSE AGREEMENT

discretion, elect not take any action with respect to the Article until such time as it has received complete, executed Article and Video License Agreements from each such author. JoVE reserves the right, in its absolute and sole discretion and without giving any reason therefore, to accept or decline any work submitted to JoVE. JoVE and its employees, agents and independent contractors shall have full, unfettered access to the facilities of the Author or of the Author's institution as necessary to make the Video, whether actually published or not. JoVE has sole discretion as to the method of making and publishing the Materials, including, without limitation, to all decisions regarding editing, lighting, filming, timing of publication, if any, length, quality, content and the like.

12. **Indemnification.** The Author agrees to indemnify JoVE and/or its successors and assigns from and against any and all claims, costs, and expenses, including attorney's fees, arising out of any breach of any warranty or other representations contained herein. The Author further agrees to indemnify and hold harmless JoVE from and against any and all claims, costs, and expenses, including attorney's fees, resulting from the breach by the Author of any representation or warranty contained herein or from allegations or instances of violation of intellectual property rights, damage to the Author's or the Author's institution's facilities, fraud, libel, defamation, research, equipment, experiments, property damage, personal injury, violations of institutional, laboratory, hospital, ethical, human and animal treatment, privacy or other rules, regulations, laws, procedures or guidelines, liabilities and other losses or damages related in any way to the submission of work to JoVE, making of videos by JoVE, or publication in JoVE or elsewhere by JoVE. The Author shall be responsible for, and shall hold JoVE harmless from, damages caused by lack of sterilization, lack of cleanliness or by contamination due to

the making of a video by JoVE its employees, agents or independent contractors. All sterilization, cleanliness or decontamination procedures shall be solely the responsibility of the Author and shall be undertaken at the Author's expense. All indemnifications provided herein shall include JoVE's attorney's fees and costs related to said losses or damages. Such indemnification and holding harmless shall include such losses or damages incurred by, or in connection with, acts or omissions of JoVE, its employees, agents or independent contractors.

13. **Fees.** To cover the cost incurred for publication, JoVE must receive payment before production and publication the Materials. Payment is due in 21 days of invoice. Should the Materials not be published due to an editorial or production decision, these funds will be returned to the Author. Withdrawal by the Author of any submitted Materials after final peer review approval will result in a US\$1,200 fee to cover pre-production expenses incurred by JoVE. If payment is not received by the completion of filming, production and publication of the Materials will be suspended until payment is received.

14. **Transfer, Governing Law.** This Agreement may be assigned by JoVE and shall inure to the benefits of any of JoVE's successors and assignees. This Agreement shall be governed and construed by the internal laws of the Commonwealth of Massachusetts without giving effect to any conflict of law provision thereunder. This Agreement may be executed in counterparts, each of which shall be deemed an original, but all of which together shall be deemed to be one and the same agreement. A signed copy of this Agreement delivered by facsimile, e-mail or other means of electronic transmission shall be deemed to have the same legal effect as delivery of an original signed copy of this Agreement.

A signed copy of this document must be sent with all new submissions. Only one Agreement is required per submission.

### CORRESPONDING AUTHOR

Name:

**Andrew Benson**

Department:

**Department of Poultry Science**

Institution:

**University of Georgia**

Title:

**Assistant Professor of Poultry Science**

Signature:



Date:

**7/26/2018**

Please submit a **signed** and **dated** copy of this license by one of the following three methods:

1. Upload an electronic version on the JoVE submission site
2. Fax the document to +1.866.381.2236
3. Mail the document to JoVE / Attn: JoVE Editorial / 1 Alewife Center #200 / Cambridge, MA 02140



Lyndsay Troyer  
Science Editor  
Journal of Visualized Experiments  
Alewife Center Suite 200  
Cambridge, Massachusetts

Dr. Drew Benson  
Assistant Professor of Poultry Science  
210 Poultry Science Building  
Athens, GA 30602

September 3, 2018

Dear Dr. Troyer

We have updated and revised the submitted entry "Collection of sperm with differential quality using Percoll density gradient centrifugation technique" for publication as an article in the Journal of Visualized Experiments (JoVE).

On the submission website you will find an updated entry for the following: manuscript, figures 1-6, and table of materials. In the revision we addressed the concerns of the editor, as well as, both peer reviewers. For the editor, we made all suggested changes and provided further detail in the protocol to reflect the future filming of the procedure. For both peer reviewers, we included details concerning our statistical analysis and information concerning replicates. For peer reviewer 1, we addressed his concern with sperm hole variability by updating the manuscript to reflect that the assay was performed using the non-germinal disc region. We changed figure 4 thanks to peer reviewer 2, who discovered the discrepancy in the figure. You will find further detail in the individual response to reviewer documents uploaded with the revision.

We look forward to hearing from you. Let me know if you have any questions or concerns.

Thanks,

Drew Benson, Ph.D  
Assistant Professor of Poultry Science  
University of Georgia

**Your comment:**

1. Please take this opportunity to thoroughly proofread the manuscript to ensure that there are no spelling or grammar issues.

**Our Response:**

We checked the revised manuscript thoroughly for spelling or grammar errors

**Your comment:**

2. Please provide an email address for each author.

**Our Response:**

The following email address for each author has been provided in the revised manuscript (lines 5-26).

**AUTHORS AND AFFILIATIONS:**

Muslah Uddin Ahammad\*

Department of Poultry Science

University of Georgia

Athens, GA 30602, USA

[muslah@uga.edu](mailto:muslah@uga.edu)

Zachery Ryan Jarrell\*

Department of Poultry Science

University of Georgia

Athens, GA 30602, USA

[zjarrell@uga.edu](mailto:zjarrell@uga.edu)

\*These authors contributed equally

Andrew Parks Benson

Department of Poultry Science

University of Georgia

Athens, GA 30602, USA

[dbenson@uga.edu](mailto:dbenson@uga.edu)

Corresponding Author: *Andrew Parks Benson*

**Your comment:**

3. Keywords: Please provide at least 6 keywords or phrases.

**Our Response:**

We added the following 2 new key words in the revised manuscript (line 29)

**KEYWORDS:** Percoll; [sperm](#); mobility; density gradient; [discontinuous](#); Accudenz

**Your comment:**

4. Please remove commercial language, like Eppendorf.

**Our Response:**



We changed the word “Eppendorf” to “polypropylene microcentrifuge” as follows in the revised manuscript:

Page 4, Line 143: Pipette 0.5 mL semen into polypropylene microcentrifuge tube.

Page 5, Line 188: sterile polypropylene microcentrifuge tube.

**Your comment:**

5. 1.1: What is dH<sub>2</sub>O? What is the concentration of HCl?

**Our Response:**

dH<sub>2</sub>O means distilled water. The concentration of HCl was 0.1N

We revised our manuscript as follows:

Page 4, Line 136: 0.24 g KH<sub>2</sub>PO<sub>4</sub> to 800 mL distilled water (dH<sub>2</sub>O). pH the solution to 7.4 using 0.1 N HCl

**Your comment:**

6. 1.2: What is the concentration of NaOH?

**Our Response:**

The concentration of NaOH was 1M.

We revised our manuscript as follows:

Page 4, line 141: ....using 1 M NaOH and bring solution to 1 L using dH<sub>2</sub>O.

**Your comment:**

7. 3.2, 3.4: Please provide more details so that these steps can be adequately filmed.

**Our Response:**

We included detailed protocols for the steps in 3.2 (lines 209-219 in the revised manuscript) and 3.4 (lines 231-249 in the revised manuscript).

**Your comment:**

8. Figure 4-6: Please define error bars in the figure legend. Also, what statistical tests were used?

**Our Response:**

Error bars indicate the standard error of the mean (SEM). All statistical analyses were performed with the Statistical Analysis System “R” software package. Data for the absorbance value, live and dead sperm, and hole number were subjected to one-way ANOVA, followed by the Tukey-Kramer test. Values are presented as the mean ± SEM (n = 5) of two independent experimental replicates, and five replicates were considered for the test.

**Your comment:**

9. Figure 5: Please include a space between the number and its unit (i.e., 550 nm).

**Our Response:**

We revised the figure 5: Absorbance [550 nm], and figure 6: No. holes/0.25 mm<sup>2</sup>

**Your comment:**

10. Please reference Figures 2 and 3 in the manuscript.

**Our Response:**



We revised the manuscript as follows:

Page 5, line 223: Pipet 1.0 mL 6 % Accudenz solution into polystyrene cuvettes, as illustrated in Figure 2.

Page 5, line 241: Incubate sperm in motility buffer with IPVL for 15 min at 37 °C, as illustrated in Figure 3.

**Your comment:**

11. Figure legends: Details of the methodology should not be in the Figure Legends, but rather the Protocol.

**Our Response:**

**Your comment:**

12. Please revise the Acknowledgements section to include any acknowledgments and all funding sources for this work.

**Our Response:**

There is none but the listed authors who contributed to this study. There was no funding source for this study.

**Your comment:**

13. Please remove trademark (™) and registered (®) symbols from the Table of Equipment and Materials.

**Our Response:**

As suggested by you, we have removed trademark (™) and registered (®) symbols from the Table of Equipment and Materials.

We would like to thank you for your careful and thorough reviewing our submitted manuscript. We sincerely appreciate your thoughtful comments and constructive suggestions, which help improve the quality of this manuscript.

All changes are made in the revised manuscript according to your scholastic suggestions. The questions raised by you are sincerely and respectfully answered in the revised manuscript and in this response letter.

**Your Concern:**

1. I did not see anything about statistical analysis. How did you analysis your data? Did you repeat your experiment? How many replicates did you consider for your test? What did figure (e.g.  $33.20 \pm 1.4$ ) represent?

**Our Response:**

All statistical analyses were performed with the Statistical Analysis System “R” software package. Data for the absorbance value, live and dead sperm, and hole number were subjected to one-way ANOVA, followed by the Tukey-Kramer test. Values are presented as the mean  $\pm$  SEM ( $n = 5$ ) of two independent experimental replicates, and five replicates were considered for the test.

**Your Concern:**

2. Usually we have a relatively high variability regarding sperm penetration holes. But you have low Standard deviation or Standard error in the current study. Could you explain more about data collection method?

**Our Response:**

We had collected F1 follicular Inner perivitelline layer (IPVL) from laying hens for sperm penetration test. As it is well known that germinal disc region (GDR) possesses 15-20-fold more sperm-binding ligands made of glycoprotein than non-germinal disc region (NGDR), thereby attracting more sperm to bind to and penetrate into the GD region than the NGD region. To avoid this type of variability between GD and NGD for penetration holes, the present method involved pre-removal of GDR making hole in the follicle and collection of entire NGDR only in intact form to allow making many replicate pieces.

We would like to thank you for your careful and thorough reviewing our submitted manuscript. We sincerely appreciate your thoughtful comments and constructive suggestions, which help improve the quality of this manuscript.

All changes are made in the revised manuscript according to your scholastic suggestions. The questions raised by you are sincerely and respectfully answered in the revised manuscript and in this response letter.

**Your Comment:**

1. The authors didn't give any information about statistical analysis, name of statistical tools, number of replicates.

**Our Response:**

All statistical analyses were performed with the Statistical Analysis System “R” software package. Data for the absorbance value, live and dead sperm, and hole number were subjected to one-way ANOVA, followed by the Tukey-Kramer test. Values are presented as the mean  $\pm$  SEM (n = 5).

**Your Comment:**

2. Figures containing cell images doesn't revealed data on the graphs. The quality of cell images is very poor and required changes. Now they aren't clear and scale bar on them isn't visible.

**Our Response:**

We have changed pictures in figure 4 and rearranged pictures in figure 6. For clear visibility, we have manually added scale bars in the pictures.

**Your Comment:**

3. The Percoll density gradient centrifugation should be always performed in the same temperature, because density the Percoll vary in relation with temperature. The Authors didn't precise the stable and replicate temperature of cell separation via Percoll. This information is very important to replicate this method successfully by other scientists.

**Our Response:**

We revised the manuscript as follows:

Page 4, line 154: **Perform the entire process of PDGC at room temperature.**