

Journal of Visualized Experiments

Inducement and evaluation of a murine model of experimental myopia

--Manuscript Draft--

Article Type:	Invited Methods Article - JoVE Produced Video
Manuscript Number:	JoVE58822R2
Full Title:	Inducement and evaluation of a murine model of experimental myopia
Keywords:	Myopia; mouse; methodology; Animal model; Neuroscience; drug administration
Corresponding Author:	Toshihide Kurihara Keio University School of Medicine Shinjuku-ku, Tokyo JAPAN
Corresponding Author's Institution:	Keio University School of Medicine
Corresponding Author E-Mail:	kurihara@z8.keio.jp
Order of Authors:	Xiaoyan Jiang Toshihide Kurihara Shin-ichi Ikeda Hiromitsu Kunimi Kiwako Mori Hidemasa Torii Kazuo Tsubota
Additional Information:	
Question	Response
Please indicate whether this article will be Standard Access or Open Access.	Standard Access (US\$2,400)
Please indicate the city, state/province, and country where this article will be filmed . Please do not use abbreviations.	Tokyo, Japan

TITLE:

Inducement and Evaluation of a Murine Model of Experimental Myopia

AUTHORS & AFFILIATIONS:

Xiaoyan Jiang^{1,2}, Toshihide Kurihara^{1,2}, Shin-ichi Ikeda^{1,2}, Hiromitsu Kunimi^{1,2}, Kiwako Mori^{1,2}, Hidemasa Torii^{1,2}, and Kazuo Tsubota²

¹Laboratory of Photobiology, Keio University School of Medicine, Tokyo, Japan

²Department of Ophthalmology, Keio University School of Medicine, Tokyo, Japan

Corresponding Authors:

Toshihide Kurihara

Kazuo Tsubota

KEYWORDS:

Myopia, mouse, methodology, animal model, neuroscience, drug administration

SUMMARY:

In this protocol, we describe the full process of experimental myopia inducement in mice using newly designed eyeglasses and the technic needed for achieving stable and reproducible results in ocular parameter measurements.

ABSTRACT:

Murine model of myopia can be a powerful tool for myopia research because of the comparatively easy genetic manipulation. One way to induce myopia in animals is to put clear minus lenses in front of eyes for weeks (lens-induced myopia, LIM). However, extant protocols for inducement and evaluation vary from laboratory to laboratory. Here, we described a highly practical and reproducible method to induce LIM in mice using newly designed eyeglasses. The method fixes the lens stably in front of the mouse eye while allows the lens to be taken off for cleaning or topical drug administration. The phenotype is robust and efficient, and the variance is small. The method described here can be applied to mice right after weaning which extends the possible duration for experiments. We also gave technical advises for achieving reproducible results in refraction and axial length measurements. We hope the step-by-step protocol described here and the detailed article can help researchers perform myopia experiments with myopia more smoothly and make the data comparable across laboratories.

INTRODUCTION:

The prevalence of myopia has increased dramatically recently, while the mechanism of its onset and progression are still largely unknown¹. The most characteristic phenotype of myopia is the elongation of axial length (AL), which increases risk for retinal complications or even blindness². To better understand the pathogenesis of myopia and develop effective treatments, robust myopic animal models and stable phenotype evaluation are necessary.

Briefly, two methods exist for inducing myopic states in animals: form-deprivation myopia (FDM) and lens-induced myopia (LIM)³. The former places diffusers in front of the eye or sutures the

eyelid to obscure the image, which influences the normal development of the eyeball, resulting in a myopia phenotype. The latter places minus lenses in front of the eye to move the focal point behind the retina. The retina detects the shift of the focus and elongates the eyeball to realign the retina and focal point. For FDM, after the eyelid is closed or the diffuser has been fixed in front of the eye, almost no further maintenance is needed. For LIM, the lens needs to be taken off for cleaning in order to keep it transparent. Thus, FDM is relatively easy to be induced technically. However, the mechanisms of FDM and LIM are different, and which method mimics the myopia in human better is still under debate³. One of the strengths of LIM is the stronger phenotype compared with FDM, at least in the case of mice⁴.

Animals that have been used for inducing myopia include chicks⁵, monkeys⁶, tree shrews⁷, guinea pigs⁸, and mice⁴. Considering the possibility of genetic manipulation, abundant available antibodies, and low cost for breeding, mice could have been the first choice as the animal model of myopia. However, compared with other larger animals, fixing lenses or diffusers in front of the mouse eye is relatively difficult especially for young mice such as right after weaning. For the experiments that need topical drug administration or multiple interim eye measurements, it is also necessary for the frame to be removable. Another challenge is the small morphological change of mouse eyeball, which needs sophisticated technics and devices to evaluate. To date, different inducing and measuring protocols used in different research teams make it hard to compare and repeat the results across laboratories. A standard protocol with details is needed.

Previous works described multiple methods to fix lenses or diffusers in front of the mouse eye, such as gluing⁹, stitching¹⁰ and head-mounted goggle frame^{11,12}. We combined the exist head-mounted goggle technics¹¹⁻¹³ with our newly designed frame to develop an ameliorated protocol for inducing robust and efficient experimental myopia in mice. The protocol can be applied to young mice soon after weaning at postnatal day 21 (p21). We also optimized the processes for stable and precise evaluation of phenotypes including the refraction and AL. We hope this standardized protocol can help to make myopic mice a more easily accessible model for myopia research.

PROTOCOL:

All procedures were approved by the Ethics Committee on Animal Research of the Keio University School of Medicine adhered to the ARVO Statement for the Use of Animals in Ophthalmic and Vision Research, the Institutional Guidelines on Animal Experimentation at Keio University, and the Animal Research: Reporting of In Vivo Experiments (ARRIVE) guidelines for the use of animals in research.

1. Assembling the Eyeglasses for Mice

1.1. Prepare parts needed for assembling the eyeglasses (**Figure 1a**). For each mouse, prepare all followings: one head-mounted nylon stick, one higher and one lower titanium frame, two lenses with proper powers according to the purpose of the experiment, one M1.4 size screw with the length of 10 mm, one nut for M1.4 size screw, one plain washer for M1.4 size screw with the thickness of 0.3 mm, and two artificial fingernail tips (**Table of Materials**).

NOTE: Two kinds of frames exist with different heights. For one mouse, one higher frame and one lower frame are used as a set. Higher frames should be put above the lower ones in order to make the vision fields symmetrical. Frames and lenses are specially designed and manufactured by authors' research group. These are available by contacting the corresponding authors of this article. Other parts can be found in retail tool shops.

1.2. Assemble the frame for the right and left eye separately.

1.2.1. Arrange the fingernail tip to face the outside direction to achieve the best protective effect. Adjust the angle between the fingernail tip and the frame to be about 130° to avoid masking the mouse vision field (**Figure 1b**). Adhere the artificial fingernail tips to the frame using cyanoacrylate adhesive.

NOTE: Fingernail tips can help to protect the lens from being scratched by the mouse. The direction of the fingernail tips must be opposite because the higher frame and the lower frame are used for the right eye and the left eye, respectively.

1.2.2. Wait for at least 12 h to let the adhesive dry completely, then use a nail clipper to adjust the shape of the fingernail tips to be about 1 cm × 1 cm by cutting and trimming.

1.2.3. Adhere the lens to the frame using cyanoacrylate adhesive. Put the lens onto the frame by hand and hold the frame horizontally. Inject the cyanoacrylate adhesive from the edge of the lens and let the adhesive spread by surface tension.

NOTE: The adhesive will erode the lens and influence its transparency, so make sure the adhesive only touches the peripheral part of the lens. Use 0 diopter (D) plano lens as control and minus lens to induce myopia. The effect of different powers of minus lenses (−10 D to −50 D) has been described elsewhere⁴. To maximize the myopia inducement, −30 D lens is recommended for inducing myopia. FDM can also be induced with the same device simply by changing the lens into the cap of 1.5 mL microtube as the diffuser.

1.3. Tighten the screw into the nylon stick together with the washer from the flat side of the stick. Prepare the eye glasses and sticks before the experiment respectively and stock for further use (**Figure 1c**).

NOTE: The protocol can be paused here.

2. Measurements of the Refraction and AL Baseline.

2.1. Apply one drop of mydriatic agent containing 5 mg/mL tropicamide and 5 mg/mL phenylephrine hydrochloride on each side of the eyeball to dilate the pupil. Wait for at least 5 min before general anesthesia.

NOTE: Dilate the pupil under general anesthesia will cause reversible cataract which influences the measurement afterwards. Always dilate the pupil before general anesthesia and wait for at least 5 min. One drop (approximately 0.05 mL) of the mydriatic agent is enough for dilating the pupil of the mouse eye, while more agent will do no harm to the following steps.

2.2. Put the mouse under general anesthesia. Grasp the back skin of the mouse softly to keep the mouse from bumping its eye until it is completely anaesthetized. Judge the depth of general anesthesia to be enough if the mouse does not move around when it is put on the table freely.

NOTE: A combination of midazolam (40 $\mu\text{g}/100\text{ }\mu\text{L}$), medetomidine (7.5 $\mu\text{g}/100\text{ }\mu\text{L}$) and butorphanol tartrate (50 $\mu\text{g}/100\text{ }\mu\text{L}$) is recommended for general anesthesia for mice with a volume of 0.01 mL/g intraperitoneal injection. Generally, less than 5 min are needed for mice to fall asleep. Long time of general anesthesia causes low body temperature and slow heartbeat. To avoid the potential influence of general anesthesia to the measurement, finishing all the measurements within 10 min after the injection of anesthetic is recommended.

2.3. Measure the refraction of the mouse eye using an infrared photorefractor^{4,9,14}. Adjust the direction of one of the mouse eyes to keep the first Purkinje image in the center of the pupil and measure the refraction along the optical axis. After the measurement, measure the opposite eye with the same procedures (**Figure 2a**).

NOTE: The value measured for the refraction is strongly influenced by the position of the mouse eye along the optic axis. Ensure the first Purkinje image is aligned within ± 3 degrees from the center of the pupil. The workbench of the spectral domain optical coherence tomography (SD-OCT) system may be used for fine tuning of the direction of pupil in refraction measurements⁴.

2.4. Measure the AL of the mouse eye using a SD-OCT system^{4,15,16}. Define the AL as the distance from the corneal vertex to the brightest boundary near the optical nerve (**Figure 2b**).

NOTE: Similar with the measurement of the refraction, the AL is strongly influenced by the direction of the mouse eye. The corneal vertex can be confirmed by the point-like reflection on the surface of the cornea. The boundary of the retina side will be very hazy at the point of optical nerve. Adjust the direction a little to let the boundary be clear enough for measuring but not too far from the optical nerve.

3. Fixation of the Frame onto the Mouse Cranium.

3.1. Apply one drop of 0.1% purified sodium hyaluronate eye drop to prevent dryness on each eye.

NOTE: Eye drop on the eye surface will influence the values of refraction and axial length measurements. Do not use the eye drop after the anesthesia until all the measurements are done.

3.2. Put the chin of the anesthetized mouse onto a slope made of clay or anything can be used

as a pillow to make the upfront plane of the cranium be horizontal.

3.3. Sterilize the hair and scalp between ears and eyes using cotton swab with 70% ethanol.

3.4. Cut the skin between ears and eyes to expose the skull for about 0.8 cm² using surgical scissors and tweezers. Use dental etching liquid and cotton swab to remove the periosteum. Sterilize the surgical scissors and tweezers with 70% ethanol before the surgery of each mouse.

NOTE: In most cases, the dental etching liquid can be found as one of the attachments in the self-cure dental adhesive system. If the dental etching liquid is not available, use 70% ethanol instead.

3.5. Assemble a set of frames without lens to help fix the stick onto the right position. Put the frames onto the mouse head. Carefully adjust the position of the frames to make sure both eyes are in the middle of the empty frame.

3.6. Use a self-cure dental adhesive system to attach the stick onto the mouse head. Be careful not to let the liquid of the adhere system flow into the mouse eye.

NOTE: The method for using the self-cure dental adhesive system is different between products. Refer to the instruction carefully.

CAUTION: Some of the reagents in the dental adhesive system may be toxic.

3.7. Wait for about 5 min and take off the frame and the nut carefully without changing the position of the stick (**Figure 3a**).

3.8. Inject 0.75 mg/kg atipamezole hydrochloride intraperitoneally to help the mouse to recovery from the anesthesia more quickly. Put the mouse into an individual cage until fully recovered. Do not leave the mouse unattended until it has regained sufficient consciousness to maintain sternal recumbency. The protocol can be paused here.

4. Initiation of the Myopia Induction and the Maintenance Afterwards

4.1. Wait for at least 24 h after the surgery to let the mouse recover from anesthesia completely. Grasp the stick and put on the frames with lenses. The inducement begins at this time point (**Figure 3b**).

NOTE: To minimize the discomfort during the recovery from anesthesia and give enough time for the dental adhesive system to coagulate, it is highly recommended to put on the frame after the mice fully recovered from anesthesia. The resin cement of the adhesive system will fully cover the cut of the scalp. Therefore, no specific post-surgical treatment is needed for preventing infection and ameliorating post-surgical pain. Right after the first time of putting on the frame, mice will be over conscious to the existence of the lens and scratch it a lot. The gross behavior will be back to normal after a few hours.

4.2. Remove the frame and clean the lenses with cotton swabs at least twice a week to maintain the transparency of the lens.

NOTE: It is not necessary to put the mouse under anesthesia for removing and putting on the frame.

4.2.1. If an interim measurement is necessary, put the mouse under anesthesia and measure the mouse as previously described. The inducement can be continued after the mouse recovering from the anesthesia.

4.3. Clean the case at least twice a week.

NOTE: This help to maintain lens clarity. Putting a net between the mouse and the cage bottom to filtrate the food scraps may also be helpful.

4.4. Monitor the body weight and gross behavior. Compare them with the same age untouched mice during the whole experimental process.

NOTE: Except for some scratching behaviors, no significant change including the body weight is found between experiment mice with untreated mice.

REPRESENTATIVE RESULTS:

At first, check if all the necessary parts are prepared (**Figure 1a**). An example of a piece of assembled eyeglasses is shown in **Figure 1b**. Except for the main body of the frames and the nut, all other parts are disposable for each mouse. A set of completed eyeglasses is shown in **Figure 1c**. Change the angle between the two frames to fit the mouse with different ages.

An example of the refraction measurement is shown in **Figure 2a**. This is a mouse eye induced by a -30 D lens for 3 weeks starting from p21. Note that the gaze shall be controlled close to 0 degree in both x and y axis which means that the mouse is seeing right in front of the camera⁹. **Figure 2b** shows an example of a whole eye image taken by a SD-OCT system tuned for mice and the definition of each part of the eye. Generally, SD-OCT systems present actual measured value directly.

An image of the stick adhered to the mouse head is shown in **Figure 3a**. The border of the cut should be at least 3 mm away from the eye to avoid influencing the function of the eyelid. The stick stays on the mouse head until the end of the inducement and provides the foundation to fix the eyeglasses. The adhesive strength of the dental adhesive system is supposed to be enough for the fixation of eyeglasses during the whole experiment for about 3 to 4 weeks. Assemble the eyeglasses as shown in **Figure 3b**. Two pieces of eyeglasses should be fairly symmetrical.

Presentative results are shown in **Figure 4**. In this experiment, 0 D plano lenses were fixed in front of the left eyes as internal controls and -30 D lenses were fixed in front of the right eye to induce

myopia (C57B6/J mice, inducement started from p21, $n = 4$). Refractions and ALs were measured once a week after the beginning of the inducement for three weeks. Compared with 0 D plano lenses, -30 D induced a strong myopic shift in both refraction and AL. The change of refraction reached to the peak in the first week and stayed flat for the following two weeks. The difference between the change of myopic eyes and control eyes in AL was significant from the first week and became larger and larger in the following two weeks.

FIGURE AND TABLE LEGENDS:

Figure 1. The design of the skull-mounted eyeglasses. (a) All parts needed for assembling the mouse glasses. (b) An example of the position of the frame and the nail tip for the right side of the eye. (c) An example of one set of assembled glasses. Adjust the joint part to change the angle of the frames to fit for mice in different ages. This figure has been modified from Jiang, X. *et al*⁴, available under a Creative Commons Attribution 4.0 International License. <http://creativecommons.org/licenses/by/4.0/>.

Figure 2. Sample images of the measurement of the refraction and AL. (a) An image of the refraction measurement for a myopic eye using an infrared photorefractor. (b) A sample image of an AL measurement of the mouse eye using a SD-OCT system and the definition of each part of the eye ball. This figure has been modified from Jiang, X. *et al*⁴, available under a Creative Commons Attribution 4.0 International License. <http://creativecommons.org/licenses/by/4.0/>.

Figure 3. An image of one mouse after the surgery. (a) An example of one mouse after the surgery for adhering the stick. (b) One mouse with eyeglasses in both sides. This figure has been modified from Jiang, X. *et al*⁴, available under a Creative Commons Attribution 4.0 International License. <http://creativecommons.org/licenses/by/4.0/>.

Figure 4. Presentative results of a three-week follow-up of myopia inducement in four mice using -30 D lenses and 0 D lenses as internal controls. (a) Changes of refractions for three weeks. A sudden change can be observed one week after the inducement. (b) In contrast, changes in AL were relatively mild. Asterisk marks showed the statistical significances between the eyes wearing 0 D and -30 D lenses in each week, respectively. $*p < 0.05$, $**p < 0.01$. Student *t*-test.

Figure 5. Recommended flowchart for inducing myopia in mice. The flowchart showed here represent one possible pattern for inducing myopia in mice.

DISCUSSION:

To make sure the eyeglasses to be fixed stably on the mouse head, several steps in this protocol need to be paid great attention. The periosteum must be removed completely before using the dental adhesive system. The blood on the skull also need to be cleaned up with care. While a little fine tuning is acceptable right after the application of the adhesive, do not move the stick frequently before the adhesive system dry up. Follow the instruction of the adhesive system carefully, especially the ratio of each component of the final mixture. When grasp the mouse during the maintenance of the eyeglasses or the follow-up measurements after the surgery, do not grasp the stick with the body of the mouse together. The relative movement between the

skull and the stick is the most frequent cause of the dropping down of the stick. With proper surgery and grasping skill, the number of individuals that drop down the stick would be less than one in a 3-week experiment including 20 individuals.

Hairs and food scraps may slip into the interval between the eye and the lens. To keep the transparency of the lens, at least two times of cleaning are necessary each week. This will also reduce the incidence of complications to the cornea. Leave a space for about 1 mm between the frame and the skin to allow the mouse to blink. The lenses may make it hard for mice to eat the food outside the cage through the grid. Therefore, it is necessary to put some food on the floor of the cage directly. Change the cage into clean one for about twice a week will also help to keep the lenses clean. Dirty lenses become diffusers inducing myopia through form-deprivation mechanism, which may make the result to be hard to interpret since evidences showed that FDM and LIM are different in etiology³.

Due to the small size of the mouse eye, the measured eye parameters tend to be unstable. We recommend the infrared photorefractor developed by Dr. Schaeffel for the refraction measurement⁹ and a SD-OCT system for AL⁴ (see **Table of Materials**). Both systems present enough information for judging the reliability of the measured value to ensure the repeatability of the measurement. For refraction, as argued in previous reports, it is extremely important to maintain the measurement on-axis^{4,14}. Keeping the gaze control within ± 3 degrees could receive stable results. To achieve this precise measurement, the tube of the SD-OCT system might be helpful when tweaking the direction of the mouse eye. For AL measurement, the reflected light on the corneal vertex and the brightest boundary near the optical nerve are two reliable anatomical marks that ensure the repeatability of this measurement.

The protocol described here induced significant myopic states in mice within one week. Although the mechanism is still unknown, the change in refraction and AL are not necessarily parallel. Since the AL kept growing myopic after one week, we recommend the measurement to be done three times in total: before, one week and three weeks after the inducement. One of the example flowcharts for myopia induction is showed in **Figure 5**. Based on previous report⁴, starting from p21 and using -30 D lenses are recommended for LIM. Experiments last for over 4 weeks may have high incidence of severe cornea complications that influence the measured value and accelerate the consumption of lenses. The most frequent complication is corneal scarring. Mice cannot clean their faces and eyelids wearing the frame, which might be the reason for the complication.

The device described in this protocol can be applied to mice right after weaning (p21). This may partially contribute to the strong phenotype observed⁴. The frame is removable without general anesthesia. This allows not only the researcher to clean up the lenses easily, but also make the topical drug delivery possible⁴. Another strength is that the lenses can be easily changed into diffusers or lenses with different diopters (*e.g.*, plus lenses), which extends the possibilities of this method. One limitation of this method is that the surgery needs some practice before the frames can be adhered stably for the whole experiment. The measurements also need patience to collect reliable data.

Mice are irreplaceable animal model with its possibility of genetic manipulation and the low cost for breeding. We hope the protocol described here could make the experimental myopia in mice a more practical model for myopia research.

ACKNOWLEDGMENTS:

We thank M.T. Pardue for advice on the SD-OCT, F. Schaeffel for advice on measurements of refraction and corneal curvature, Mr. Sanshouo for recreating the three-dimensional frame data, M. Miyauchi; K. Tsubota; Y. Tanaka; S. Kondo; C. Shoda; M. Ibuki; Y. Miwa; Y. Hagiwara; A. Ishida; Y. Tomita; Y. Katada; E. Yotsukura; K. Takahashi; and Y. Wang for critical discussions. This work was supported by Grants-in-Aid for Scientific Research (KAKENHI, number 15K10881) from the Ministry of Education, Culture, Sports, Science and Technology (MEXT) to TK. This work is also supported by the grant for myopia research from Tsubota Laboratory, Inc. (Tokyo Japan).

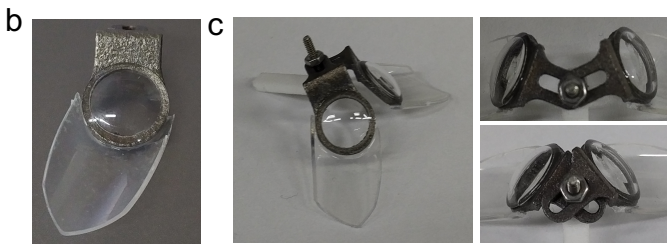
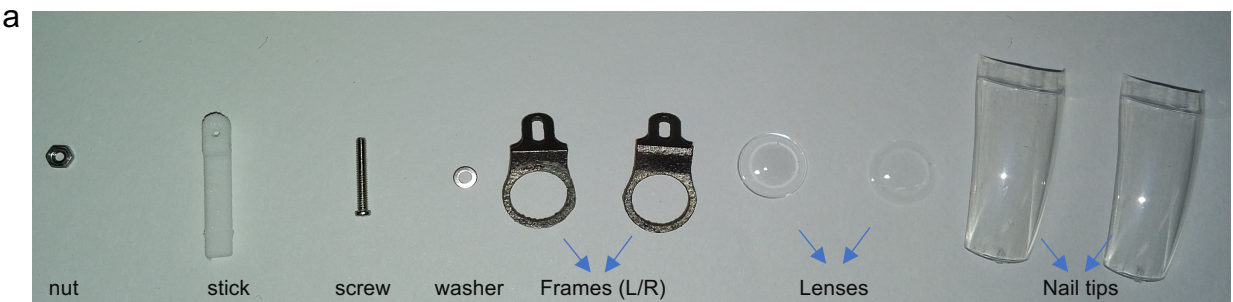
DISCLOSURES:

The design of the mouse eyeglass has been applied for a patent (Application no. 2017-41349).

REFERENCES:

- 1 Dolgin, E. The myopia boom. *Nature*. **519** (7543), 276-278, (2015).
- 2 Ohno-Matsui, K. Pathologic Myopia. *Asia-Pacific Journal of Ophthalmology (Philadelphia, Pa.)*. **5** (6), 415-423, (2016).
- 3 Morgan, I. G., Ashby, R. S. & Nickla, D. L. Form deprivation and lens-induced myopia: are they different? *Ophthalmic & Physiological Optics*. **33** (3), 355-361, (2013).
- 4 Jiang, X. *et al.* A highly efficient murine model of experimental myopia. *Scientific Reports*. **8** (1), 2026, (2018).
- 5 Torii, H. *et al.* Violet Light Exposure Can Be a Preventive Strategy Against Myopia Progression. *EBioMedicine*. **15** 210-219, (2017).
- 6 Smith, E. L., 3rd *et al.* Effects of Long-Wavelength Lighting on Refractive Development in Infant Rhesus Monkeys. *Investigative Ophthalmology & Visual Science*. **56** (11), 6490-6500, (2015).
- 7 Gawne, T. J., Siegwart, J. T., Jr., Ward, A. H. & Norton, T. T. The wavelength composition and temporal modulation of ambient lighting strongly affect refractive development in young tree shrews. *Experimental Eye Research*. **155** 75-84, (2017).
- 8 Wu, Y. *et al.* Early quantitative profiling of differential retinal protein expression in lens-induced myopia in guinea pig using fluorescence difference two-dimensional gel electrophoresis. *Molecular Medicine Reports*. 10.3892/mmr.2018.8584, (2018).
- 9 Schaeffel, F., Burkhardt, E., Howland, H. C. & Williams, R. W. Measurement of refractive state and deprivation myopia in two strains of mice. *Optometry and Vision Science*. **81** (2), 99-110, (2004).
- 10 Tkatchenko, T. V., Shen, Y. & Tkatchenko, A. V. Mouse experimental myopia has features of primate myopia. *Investigative Ophthalmology & Visual Science*. **51** (3), 1297-1303, (2010).
- 11 Faulkner, A. E., Kim, M. K., Iuvone, P. M. & Pardue, M. T. Head-mounted goggles for murine form deprivation myopia. *Journal of Neuroscience Methods*. **161** (1), 96-100,

397 (2007).
398 12 Gu, Y. *et al.* A Head-Mounted Spectacle Frame for the Study of Mouse Lens-Induced
399 Myopia. *Journal of Ophthalmology*. **2016** 8497278, (2016).
400 13 Siegart, J. T., Jr. & Norton, T. T. Goggles for controlling the visual environment of small
401 animals. *Laboratory Animal Science*. **44** (3), 292-294, (1994).
402 14 Tkatchenko, T. V. & Tkatchenko, A. V. Ketamine-xylazine anesthesia causes hyperopic
403 refractive shift in mice. *Journal of Neuroscience Methods*. **193** (1), 67-71, (2010).
404 15 Chou, T. H. *et al.* Postnatal elongation of eye size in DBA/2J mice compared with C57BL/6J
405 mice: in vivo analysis with whole-eye OCT. *Investigative Ophthalmology & Visual Science*.
406 **52** (6), 3604-3612, (2011).
407 16 Park, H. *et al.* Assessment of axial length measurements in mouse eyes. *Optometry and*
408 *Vision Science*. **89** (3), 296-303, (2012).
409



[Click here to access/download;Figure;fig2.pdf](#)

The screenshot displays a gaze control system interface. At the top, a status bar shows 'P1 found' in green and 'P2 not found' in red. Below this, a 'gaze control' box contains the text 'P1 found and eye position OK'. The main display area shows a simulated eye with a yellow fixation point and a green line indicating the gaze direction. The background is a dark, textured image of a celestial body. At the bottom, a large green text overlay reads 'gaze_x = -1 deg, gaze_y = -0 deg' and 'P1 found and eye position OK'. The interface also includes several numerical readouts: 'average refraction = 0.06 +/- 0.27 D', 'average pupil size 2.53 +/- 0.01 mm', 'input brightness = 14.02', 'gaze control', 'gaze_x = -1 deg, gaze_y = -0 deg', and 'P1 found and eye position OK'. A blue box highlights the 'gaze control' section, and a blue arrow points from it to the bottom text overlay.

gaze control

gaze_x = -1 deg, gaze_y = -0 deg

P1 found and eye position OK

average refraction = 0.06 +/- 0.27 D

average pupil size 2.53 +/- 0.01 mm

input brightness = 14.02

gaze control

gaze_x = -1 deg, gaze_y = -0 deg

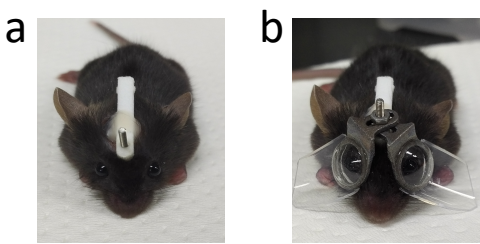
P1 found and eye position OK

gaze_x = -1 deg, gaze_y = -0 deg

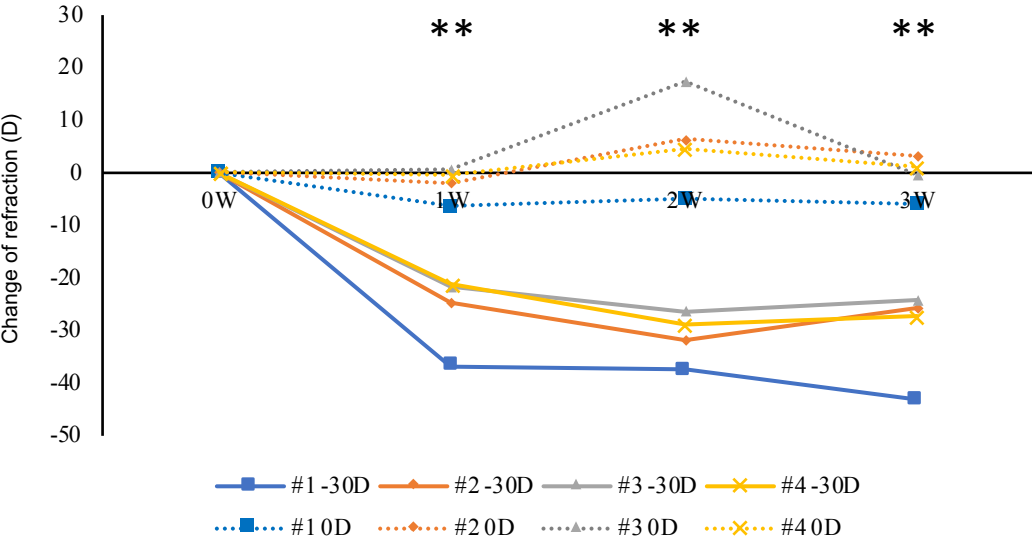
P1 found and eye position OK

A schematic diagram of an eye cross-section with blue lines and arrows indicating the measurement of axial length. The diagram labels the following components from top to bottom: Corneal thickness, Anterior chamber depth, Lens thickness, and Vitreous chamber depth + Retinal thickness. A large vertical double-headed arrow on the right side spans the entire distance from the cornea to the retina, labeled 'Axial length'.

Figure 3



a



b

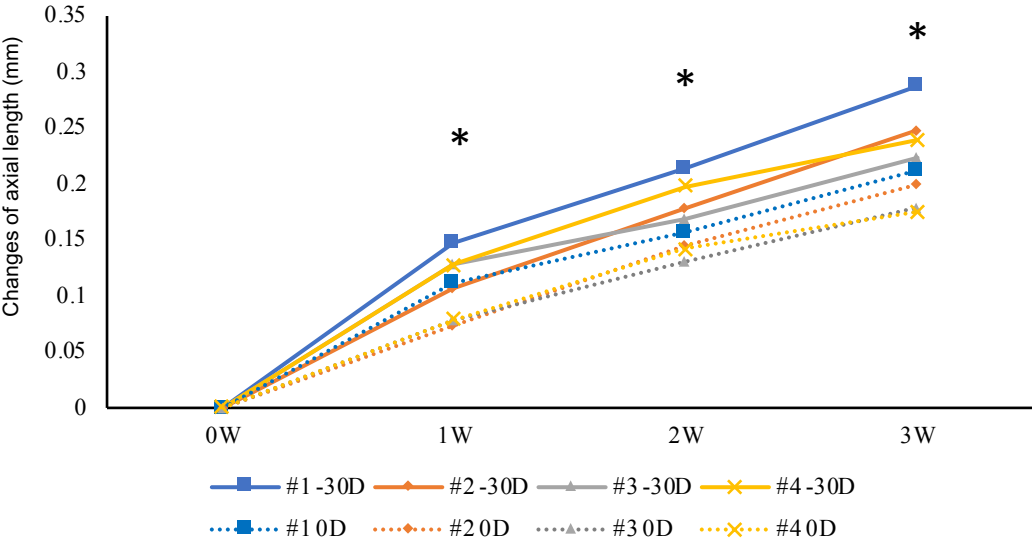
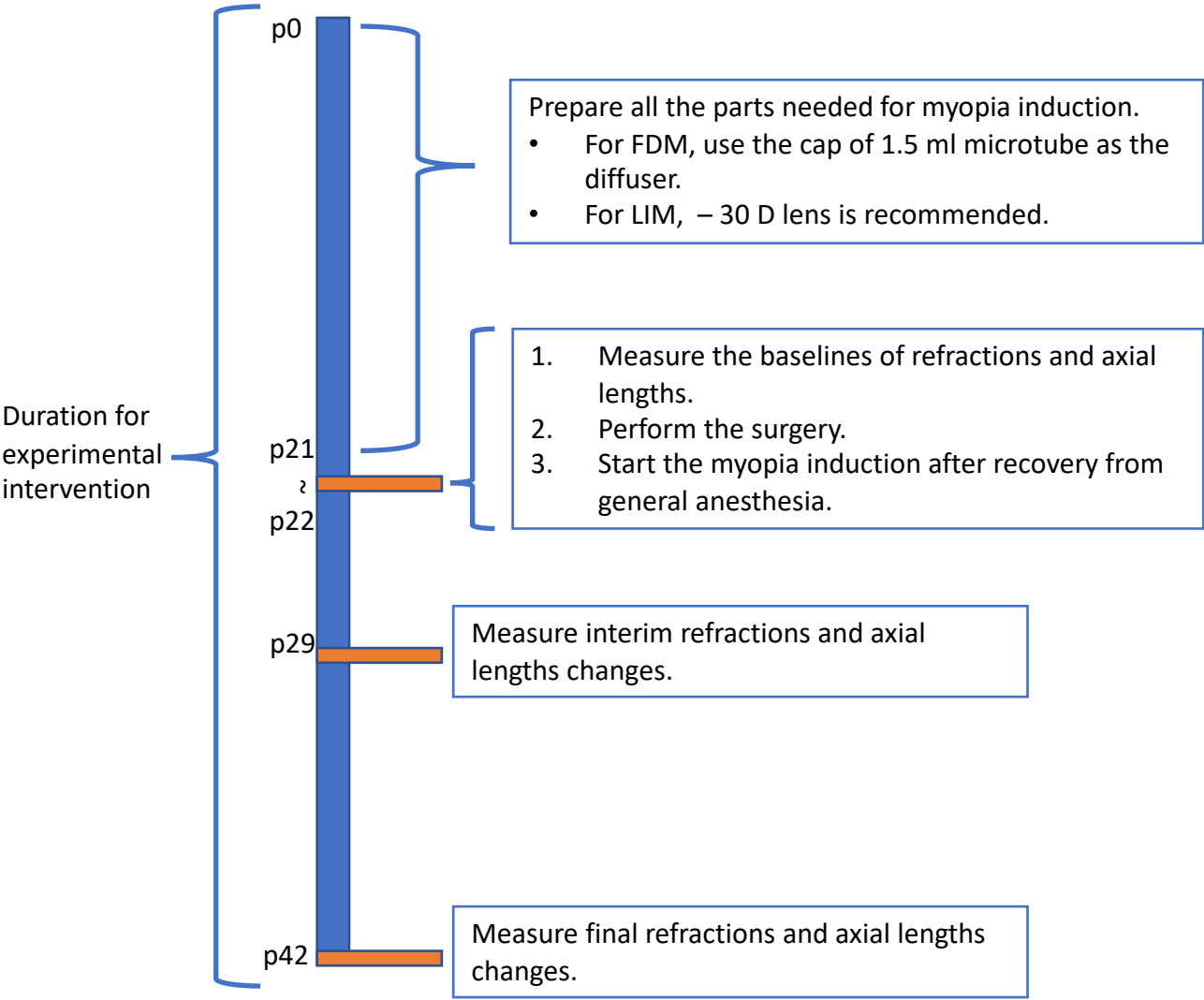


Figure 5



Name of Material/ Equipment	Company	Catalog Number	Comments/Description
screw	NBK	SNZS-M1.4-10	
washer	MonotaRO	42166397	
nut	MonotaRO	42214243	
stick	DMM Make	none	designed by authers and output by the 3D printer rented from DMM Make.
frame	DMM Make	none	designed by authers and output by the 3D printer rented from DMM Make.
lenses	RAINBOW CONTACT LENS	none	customized for mice use by the company
cyanoacrylate glue	OK MODEL	MP 20g	
dental adhesive resin cement	SUN MEDICAL	super bond	contains the etching liquid used for removing the periosteum of the mouse skull
infrared photorefractor	Steinbeis Transfer Center	none	designed and offered by Dr. Frank Schaeffel from university of Tübingen
Spectral domain OCT	Leica	R4310	
Tropicamide, Penylephrine Hydrochloride solution	Santen	Mydrin-P	
midazolam	Sandoz K.K.	SANDOZ	
medetomidine	Orion Corporation	Domitor	
butorphanol tartrate	Meiji Seika Pharma	Vetorphale	
0.1 % purified sodium hyaluronate	Santen	Hyalein	
atipamezole hydrochloride	Zenoaq	antisedan	components for the anesthetic



1 Alewife Center #200
Cambridge, MA 02140
tel. 617.945.9051
www.jove.com

ARTICLE AND VIDEO LICENSE AGREEMENT

Title of Article:

Inducement and evaluation of a murine model of experimental myopia

Author(s):

Xiaoyan Jiang, Toshihide Kurihara*, Shin-ichi Ikeda, Hiromitsu Kunimi, Kiwako Mori, Hidemasa Torii, and Kazuo Tsubota* (*Corresponding Authors)

Item 1: The Author elects to have the Materials be made available (as described at <http://www.jove.com/publish>) via:

☒ Standard Access

☐ Open Access

Item 2: Please select one of the following items:

☒ The Author is **NOT** a United States government employee.

☐ The Author is a United States government employee and the Materials were prepared in the course of his or her duties as a United States government employee.

☐ The Author is a United States government employee but the Materials were NOT prepared in the course of his or her duties as a United States government employee.

ARTICLE AND VIDEO LICENSE AGREEMENT

1. **Defined Terms.** As used in this Article and Video License Agreement, the following terms shall have the following meanings: **"Agreement"** means this Article and Video License Agreement; **"Article"** means the article specified on the last page of this Agreement, including any associated materials such as texts, figures, tables, artwork, abstracts, or summaries contained therein; **"Author"** means the author who is a signatory to this Agreement; **"Collective Work"** means a work, such as a periodical issue, anthology or encyclopedia, in which the Materials in their entirety in unmodified form, along with a number of other contributions, constituting separate and independent works in themselves, are assembled into a collective whole; **"CRC License"** means the Creative Commons Attribution-Non Commercial-No Derivs 3.0 Unported Agreement, the terms and conditions of which can be found at: <http://creativecommons.org/licenses/by-nc-nd/3.0/legalcode>; **"Derivative Work"** means a work based upon the Materials or upon the Materials and other pre-existing works, such as a translation, musical arrangement, dramatization, fictionalization, motion picture version, sound recording, art reproduction, abridgment, condensation, or any other form in which the Materials may be recast, transformed, or adapted; **"Institution"** means the institution, listed on the last page of this Agreement, by which the Author was employed at the time of the creation of the Materials; **"JoVE"** means MyJoVE Corporation, a Massachusetts corporation and the publisher of The Journal of Visualized Experiments; **"Materials"** means the Article and / or the Video; **"Parties"** means the Author and JoVE; **"Video"** means any video(s) made by the Author, alone or in conjunction with any other parties, or by JoVE or its affiliates or agents, individually or in collaboration with the Author or any other parties, incorporating all or any portion

of the Article, and in which the Author may or may not appear.

2. **Background.** The Author, who is the author of the Article, in order to ensure the dissemination and protection of the Article, desires to have the JoVE publish the Article and create and transmit videos based on the Article. In furtherance of such goals, the Parties desire to memorialize in this Agreement the respective rights of each Party in and to the Article and the Video.

3. **Grant of Rights in Article.** In consideration of JoVE agreeing to publish the Article, the Author hereby grants to JoVE, subject to **Sections 4 and 7** below, the exclusive, royalty-free, perpetual (for the full term of copyright in the Article, including any extensions thereto) license (a) to publish, reproduce, distribute, display and store the Article in all forms, formats and media whether now known or hereafter developed (including without limitation in print, digital and electronic form) throughout the world, (b) to translate the Article into other languages, create adaptations, summaries or extracts of the Article or other Derivative Works (including, without limitation, the Video) or Collective Works based on all or any portion of the Article and exercise all of the rights set forth in (a) above in such translations, adaptations, summaries, extracts, Derivative Works or Collective Works and (c) to license others to do any or all of the above. The foregoing rights may be exercised in all media and formats, whether now known or hereafter devised, and include the right to make such modifications as are technically necessary to exercise the rights in other media and formats. If the "Open Access" box has been checked in **Item 1** above, JoVE and the Author hereby grant to the public all such rights in the Article as provided in, but subject to all limitations and requirements set forth in, the CRC License.

ARTICLE AND VIDEO LICENSE AGREEMENT

4. **Retention of Rights in Article.** Notwithstanding the exclusive license granted to JoVE in **Section 3** above, the Author shall, with respect to the Article, retain the non-exclusive right to use all or part of the Article for the non-commercial purpose of giving lectures, presentations or teaching classes, and to post a copy of the Article on the Institution's website or the Author's personal website, in each case provided that a link to the Article on the JoVE website is provided and notice of JoVE's copyright in the Article is included. All non-copyright intellectual property rights in and to the Article, such as patent rights, shall remain with the Author.

5. **Grant of Rights in Video – Standard Access.** This **Section 5** applies if the "Standard Access" box has been checked in **Item 1** above or if no box has been checked in **Item 1** above. In consideration of JoVE agreeing to produce, display or otherwise assist with the Video, the Author hereby acknowledges and agrees that, Subject to **Section 7** below, JoVE is and shall be the sole and exclusive owner of all rights of any nature, including, without limitation, all copyrights, in and to the Video. To the extent that, by law, the Author is deemed, now or at any time in the future, to have any rights of any nature in or to the Video, the Author hereby disclaims all such rights and transfers all such rights to JoVE.

6. **Grant of Rights in Video – Open Access.** This **Section 6** applies only if the "Open Access" box has been checked in **Item 1** above. In consideration of JoVE agreeing to produce, display or otherwise assist with the Video, the Author hereby grants to JoVE, subject to **Section 7** below, the exclusive, royalty-free, perpetual (for the full term of copyright in the Article, including any extensions thereto) license (a) to publish, reproduce, distribute, display and store the Video in all forms, formats and media whether now known or hereafter developed (including without limitation in print, digital and electronic form) throughout the world, (b) to translate the Video into other languages, create adaptations, summaries or extracts of the Video or other Derivative Works or Collective Works based on all or any portion of the Video and exercise all of the rights set forth in (a) above in such translations, adaptations, summaries, extracts, Derivative Works or Collective Works and (c) to license others to do any or all of the above. The foregoing rights may be exercised in all media and formats, whether now known or hereafter devised, and include the right to make such modifications as are technically necessary to exercise the rights in other media and formats. For any Video to which this **Section 6** is applicable, JoVE and the Author hereby grant to the public all such rights in the Video as provided in, but subject to all limitations and requirements set forth in, the CRC License.

7. **Government Employees.** If the Author is a United States government employee and the Article was prepared in the course of his or her duties as a United States government employee, as indicated in **Item 2** above, and any of the licenses or grants granted by the Author hereunder exceed the scope of the 17 U.S.C. 403, then the rights granted hereunder shall be limited to the maximum

rights permitted under such statute. In such case, all provisions contained herein that are not in conflict with such statute shall remain in full force and effect, and all provisions contained herein that do so conflict shall be deemed to be amended so as to provide to JoVE the maximum rights permissible within such statute.

8. **Protection of the Work.** The Author(s) authorize JoVE to take steps in the Author(s) name and on their behalf if JoVE believes some third party could be infringing or might infringe the copyright of either the Author's Article and/or Video.

9. **Likeness, Privacy, Personality.** The Author hereby grants JoVE the right to use the Author's name, voice, likeness, picture, photograph, image, biography and performance in any way, commercial or otherwise, in connection with the Materials and the sale, promotion and distribution thereof. The Author hereby waives any and all rights he or she may have, relating to his or her appearance in the Video or otherwise relating to the Materials, under all applicable privacy, likeness, personality or similar laws.

10. **Author Warranties.** The Author represents and warrants that the Article is original, that it has not been published, that the copyright interest is owned by the Author (or, if more than one author is listed at the beginning of this Agreement, by such authors collectively) and has not been assigned, licensed, or otherwise transferred to any other party. The Author represents and warrants that the author(s) listed at the top of this Agreement are the only authors of the Materials. If more than one author is listed at the top of this Agreement and if any such author has not entered into a separate Article and Video License Agreement with JoVE relating to the Materials, the Author represents and warrants that the Author has been authorized by each of the other such authors to execute this Agreement on his or her behalf and to bind him or her with respect to the terms of this Agreement as if each of them had been a party hereto as an Author. The Author warrants that the use, reproduction, distribution, public or private performance or display, and/or modification of all or any portion of the Materials does not and will not violate, infringe and/or misappropriate the patent, trademark, intellectual property or other rights of any third party. The Author represents and warrants that it has and will continue to comply with all government, institutional and other regulations, including, without limitation all institutional, laboratory, hospital, ethical, human and animal treatment, privacy, and all other rules, regulations, laws, procedures or guidelines, applicable to the Materials, and that all research involving human and animal subjects has been approved by the Author's relevant institutional review board.

11. **JoVE Discretion.** If the Author requests the assistance of JoVE in producing the Video in the Author's facility, the Author shall ensure that the presence of JoVE employees, agents or independent contractors is in accordance with the relevant regulations of the Author's institution. If more than one author is listed at the beginning of this Agreement, JoVE may, in its sole

ARTICLE AND VIDEO LICENSE AGREEMENT

discretion, elect not take any action with respect to the Article until such time as it has received complete, executed Article and Video License Agreements from each such author. JoVE reserves the right, in its absolute and sole discretion and without giving any reason therefore, to accept or decline any work submitted to JoVE. JoVE and its employees, agents and independent contractors shall have full, unfettered access to the facilities of the Author or of the Author's institution as necessary to make the Video, whether actually published or not. JoVE has sole discretion as to the method of making and publishing the Materials, including, without limitation, to all decisions regarding editing, lighting, filming, timing of publication, if any, length, quality, content and the like.

12. **Indemnification.** The Author agrees to indemnify JoVE and/or its successors and assigns from and against any and all claims, costs, and expenses, including attorney's fees, arising out of any breach of any warranty or other representations contained herein. The Author further agrees to indemnify and hold harmless JoVE from and against any and all claims, costs, and expenses, including attorney's fees, resulting from the breach by the Author of any representation or warranty contained herein or from allegations or instances of violation of intellectual property rights, damage to the Author's or the Author's institution's facilities, fraud, libel, defamation, research, equipment, experiments, property damage, personal injury, violations of institutional, laboratory, hospital, ethical, human and animal treatment, privacy or other rules, regulations, laws, procedures or guidelines, liabilities and other losses or damages related in any way to the submission of work to JoVE, making of videos by JoVE, or publication in JoVE or elsewhere by JoVE. The Author shall be responsible for, and shall hold JoVE harmless from, damages caused by lack of sterilization, lack of cleanliness or by contamination due to


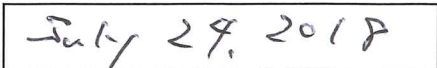
the making of a video by JoVE its employees, agents or independent contractors. All sterilization, cleanliness or decontamination procedures shall be solely the responsibility of the Author and shall be undertaken at the Author's expense. All indemnifications provided herein shall include JoVE's attorney's fees and costs related to said losses or damages. Such indemnification and holding harmless shall include such losses or damages incurred by, or in connection with, acts or omissions of JoVE, its employees, agents or independent contractors.

13. **Fees.** To cover the cost incurred for publication, JoVE must receive payment before production and publication the Materials. Payment is due in 21 days of invoice. Should the Materials not be published due to an editorial or production decision, these funds will be returned to the Author. Withdrawal by the Author of any submitted Materials after final peer review approval will result in a US\$1,200 fee to cover pre-production expenses incurred by JoVE. If payment is not received by the completion of filming, production and publication of the Materials will be suspended until payment is received.

14. **Transfer, Governing Law.** This Agreement may be assigned by JoVE and shall inure to the benefits of any of JoVE's successors and assignees. This Agreement shall be governed and construed by the internal laws of the Commonwealth of Massachusetts without giving effect to any conflict of law provision thereunder. This Agreement may be executed in counterparts, each of which shall be deemed an original, but all of which together shall be deemed to be one and the same agreement. A signed copy of this Agreement delivered by facsimile, e-mail or other means of electronic transmission shall be deemed to have the same legal effect as delivery of an original signed copy of this Agreement.

A signed copy of this document must be sent with all new submissions. Only one Agreement is required per submission.

CORRESPONDING AUTHOR

Name:	Toshihide Kurihara	
Department:	Laboratory of Photobiology. Department of Ophthalmology	
Institution:	Keio University School of Medicine	
Title:	Associate professor	
Signature:		Date: 

Please submit a **signed** and **dated** copy of this license by one of the following three methods:

1. Upload an electronic version on the JoVE submission site
2. Fax the document to +1.866.381.2236
3. Mail the document to JoVE / Attn: JoVE Editorial / 1 Alewife Center #200 / Cambridge, MA 02140

We appreciate your careful review of our manuscript (JoVE58822). As requested, we resubmitted a revised copy of the manuscript. For emphasis, new text added to the manuscript is colored red, and the editorial comments are italicized and colored blue in this document. We believe that the revision addresses all of the comments raised by the editor and hope that it will be published in *Journal of Visualized Experiments*.

Editorial comments:

1. Please take this opportunity to thoroughly proofread the manuscript to ensure that there are no spelling or grammar issues.

Thank you very much for your suggestion. We have proofread the manuscript carefully before the submission.

2. Please use h, min, s for time units.

3. Please use standard SI unit symbols and prefixes such as μL , mL, L, g, m, etc.

We replaced the units as suggested in the revised manuscript.

4. Please specify the use of vet ointment on eyes to prevent dryness while under anesthesia.

We used sodium hyaluronate eye drop to prevent dryness instead of vet ointment. Following contents were added as step 3.1 in the revised manuscript:

3.1 Drop one drop of 0.1 % purified sodium hyaluronate eye drop to prevent dryness on each eye.

Note: Eye drop on the eye surface will influence the values of refraction and axial length measurements. Do not use the eye drop after the anesthesia until all the measurements are done.

5. For survival strategies, discuss post-surgical treatment of animal, including recovery conditions and treatment for post-surgical pain.

Thank you very much for your comments. We added step 3.8 and updated the note of step 4.1 as follows:

3.8 Inject 0.75 mg/kg atipamezole hydrochloride intraperitoneally to help the mouse to

recovery from the anesthesia more quickly. Put the mouse into an individual cage until fully recovered.

The resin cement of the adhesive system will fully cover the cut of the scalp. Therefore, no specific post-surgical treatment is needed for preventing infection and ameliorating post-surgical pain.

6. Discuss maintenance of sterile conditions during survival surgery.

Thank you for your reminding. We added step 3.3 and updated the note of step 3.4 as follows:

3.3 Sterilize the hair and scalp between ears and eyes using cotton swab with 70 % ethanol.

Sterilize the surgical scissors and tweezers with 70 % ethanol before the surgery of each mouse.

7. Please specify that the animal is not left unattended until it has regained sufficient consciousness to maintain sternal recumbency.

8. Please specify that the animal that has undergone surgery is not returned to the company of other animals until fully recovered.

Thank you very much for your comments. We added following contents in our revised manuscript:

3.8 Inject 0.75 mg/kg atipamezole hydrochloride intraperitoneally to help the mouse to recovery from the anesthesia more quickly. Put the mouse into an individual cage until fully recovered.

Note: Do not left the mouse unattended until it has regained sufficient consciousness to maintain sternal recumbency.