

Journal of Visualized Experiments

Design and Implementation of a Bespoke Robotic Manipulator for Extra-corporeal Ultrasound --Manuscript Draft--

Article Type:	Invited Methods Article - JoVE Produced Video
Manuscript Number:	JoVE58811R2
Full Title:	Design and Implementation of a Bespoke Robotic Manipulator for Extra-corporeal Ultrasound
Keywords:	medical robot; robotic ultrasound; extra-corporeal ultrasound; robot design; mechanism design; linkages and manipulators; robot safety; 3D-printing; Rapid prototyping
Corresponding Author:	Shuangyi Wang King's College London London, UNITED KINGDOM
Corresponding Author's Institution:	King's College London
Corresponding Author E-Mail:	shuangyi.wang@kcl.ac.uk
Order of Authors:	Shuangyi Wang James Housden Yohan Noh Anisha Singh Junghwan Back Lukas Lindenroth Hongbin Liu Joseph Hajnal Kaspar Althoefer Davinder Singh Kawal Rhode
Additional Information:	
Question	Response
Please indicate whether this article will be Standard Access or Open Access.	Standard Access (US\$2,400)
Please indicate the city, state/province, and country where this article will be filmed . Please do not use abbreviations.	London

TITLE:

Design and Implementation of a Bespoke Robotic Manipulator for Extra-corporeal Ultrasounds

AUTHORS AND AFFILIATIONS:

Shuangyi Wang¹ *, James Housden¹ *, Yohan Noh¹, Anisha Singh², Junghwan Back³, Lukas Lindenroth³, Hongbin Liu³, Joseph Hajnal¹, Kaspar Althoefer⁴, Davinder Singh², Kawal Rhode¹

¹School of Biomedical Engineering & Imaging Sciences, King's College London, London, UK

²Xtronics Ltd., Gravesend, UK

³Department of Informatics, King's College London, London, UK

⁴Faculty of Science & Engineering, Queen Mary University of London, London, UK

*These authors contributed equally to this manuscript.

Corresponding Author:

Shuangyi Wang (shuangyi.wang@kcl.ac.uk)

Tel: +44 (0) 7835234417

Email Addresses of Co-authors:

James Housden (richard.housden@kcl.ac.uk)

Yohan Noh (yohan.noh@kcl.ac.uk)

Anisha Singh (lucky@xtronics.co.uk)

Junghwan Back (junghwan.back@kcl.ac.uk)

Lukas Lindenroth (lukas.lindenroth@kcl.ac.uk)

Hongbin Liu (hongbin.liu@kcl.ac.uk)

Joseph Hajnal (jo.hajnal@kcl.ac.uk)

Kaspar Althoefer (k.althoefer@qmul.ac.uk)

Davinder Singh (xtronics@me.com)

Kawal Rhode (kawal.rhode@kcl.ac.uk)

KEYWORDS:

Medical robot, robotic ultrasound, extra-corporeal ultrasound, robot design, mechanism design, linkages and manipulators, robot safety, 3D printing, rapid prototyping

SUMMARY:

This paper introduces the design and implementation of a bespoke robotic manipulator for extra-corporeal ultrasound examination. The system has five degrees of freedom with lightweight joints made by 3D printing and a mechanical clutch for safety management.

ABSTRACT:

With the potential for high precision, dexterity, and repeatability, a self-tracked robotic system can be employed to assist the acquisition of real-time ultrasounds. However, limited numbers of robots designed for extra-corporeal ultrasound have been successfully translated into clinical use. In this study, we aim to build a bespoke robotic manipulator for extra-corporeal ultrasound examination, which is lightweight and has a small footprint. The robot is formed by five specially

shaped links and custom-made joint mechanisms for probe manipulation, to cover the necessary range of motion with redundant degrees of freedom to ensure the patient's safety. The mechanical safety is emphasized with a clutch mechanism, to limit the force applied to patients. As a result of the design, the total weight of the manipulator is less than 2 kg and the length of the manipulator is about 25 cm. The design has been implemented, and simulation, phantom, and volunteer studies have been performed, to validate the range of motion, the ability to make fine adjustments, mechanical reliability, and the safe operation of the clutch. This paper details the design and implementation of the bespoke robotic ultrasound manipulator, with the design and assembly methods illustrated. Testing results to demonstrate the design features and clinical experience of using the system are presented. It is concluded that the current proposed robotic manipulator meets the requirements as a bespoke system for extra-corporeal ultrasound examination and has great potential to be translated into clinical use.

INTRODUCTION:

An extra-corporeal robotic ultrasound (US) system refers to the configuration in which a robotic system is utilized to hold and manipulate a US probe for external examinations, including its use in cardiac, vascular, obstetric, and general abdominal imaging¹. The use of such a robotic system is motivated by the challenges of manually holding and manipulating a US probe, for instance, the challenge of finding standard US views required by clinical imaging protocols and the risk of repetitive strain injury²⁻⁴, and also by the needs of US screening programs, for instance, the requirement for experienced sonographers to be on-site^{5,6}. With emphases on different functionalities and target anatomies, several robotic US systems, as reviewed in earlier works^{1,7,8}, have been introduced since the 1990s, to improve different aspects of US examination (*e.g.*, long-distance teleoperation⁹⁻¹², as well as robot-operator interaction and automatic control)^{13,14}. In addition to the robotic US systems used for diagnostic purposes, robotic high-intensity focused ultrasound (HIFU) systems for treatment purposes have been widely investigated as summarized by Priester *et al.*¹, with some recent works^{15,16} reporting the latest progress.

Although several robotic US systems have been developed with relatively reliable technologies for control and clinical operation, only a few of them have been successfully translated into clinical use, such as a commercially available tele-ultrasound system¹⁷. One possible reason is the low level of acceptance for large-size industrial-looking robots working in a clinical environment, from the point of view of both patients and sonographers. Additionally, for safety management, the majority of the existing US robots rely on force sensors to monitor and control the applied pressure to the US probe, while more fundamental mechanical safety mechanisms to limit the force passively are usually not available. This may also cause concerns when translating into clinical use as the safety of robot operation would be purely dependent on electrical systems and software logic.

With the recent advancements of 3D printing techniques, specially shaped plastic links with custom-made joint mechanisms could provide a new opportunity for developing bespoke medical robots. Carefully designed lightweight components with a compact appearance could improve clinical acceptance. Specifically for US examination, a bespoke medical robot aimed at being translated into clinical use should be compact, with enough degrees of freedom (DOFs) and

range of motion to cover the region of interest of a scan; for example, the abdominal surface, including both the top and sides of the belly. Additionally, the robot should also incorporate the ability to perform fine adjustments of the US probe in a local area, when trying to optimize a US view. This usually includes tilting movements of the probe within a certain range, as suggested by Essomba *et al.*¹⁸ and Bassit¹⁹. To further address the safety concerns, it is expected that the system should have passive mechanical safety features which are independent of electrical systems and software logic.

In this paper, we present the detailed design and assembly method of a 5-DOF dexterous robotic manipulator, which is used as the key component of an extra-corporeal robotic US system. The manipulator consists of several lightweight 3D-printable links, custom-made joint mechanisms, and a built-in safety clutch. The specific arrangement of the DOFs provides full flexibility for probe adjustments, allowing easy and safe operations in a small area without colliding with the patient. The proposed multi-DOF manipulator aims to work as the main component that is in contact with patients and it can be simply attached to any conventional 3-DOF global positioning mechanism to form a complete US robot with fully active DOFs to perform a US scan.

PROTOCOL:

1. Preparation of Each Link, End-effector, and Additional Components

1.1. Print all the links (L_0 , L_1 , L_2 , L_3 , and L_4) and the end-effector as shown in **Figure 1**, with acrylonitrile butadiene styrene (ABS) plastic, polylactic acid (PLA) plastic, or nylon, using a 3D-printing service. Use the .STL files provided in the **Supplementary Materials** when printing.

NOTE: Changes in shape and scale of each part can be made based on the provided files. The inner profile of the end-effector can be changed to fit different US probes.

1.2. Print all the required additional components as shown in **Figure 2** in nylon, using a 3D-printing service. Refer to the **Table of Materials** for the required number of each component. Use the .STL files provided in the **Supplementary Materials** when printing.

1.3. Polish all the printed plastic parts with polishing tools if necessary. Remove any supporting materials left from 3D printing, if necessary.

NOTE: Some structures in the provided end-effector design are for a force sensor, which is not a part of the protocol reported here and will not be used for the assembly. The force sensor design concept has been reported in previous work²⁰; thus, it is not covered in this paper.

2. Assembly of Joint 1

NOTE: The assembly of joint 1 (J_1) is based on **Figure 3**.

2.1. Place the four small, geared stepper motors (with 20-teeth spur gears attached) into the

mounting cavities of L_0 and mount them with screws.

2.2. Place the two 37 mm OD bearings into the bearing housings of L_0 and secure the 120-teeth spur gear (Type A) onto the hexagon key of L_1 .

2.3. Insert the shaft on L_1 into the shaft hole on L_0 with the four small driving spur gears and the large, driven spur gear engaged, and assemble the shaft collar to secure and retain the shaft.

3. Assembly of Joint 2

NOTE: The assembly of joint 2 (J_2) is based on **Figure 4**.

3.1. Place the four small, geared stepper motors (with 20-teeth spur gears attached) into the mounting cavities of L_1 and mount them with screws.

3.2. Attach the two 120-teeth spur gears (Type B) to the two 37 mm OD bearings and position them into the gear cavities of L_1 , with the 120-teeth spur gear (Type B) engaged with the 20-teeth spur gears mounted on the motors.

3.3. Insert the four ball-spring pairs into the clutch holes in L_2 with the two round clutch covers pushing the spring into the clutch mechanism for preloading.

3.4. Insert the shaft (e.g., an M6 bolt with a nut) into the bores of L_1 and L_2 with the two joints properly aligned and place the two 12 mm OD bearings into the bearing housings of L_2 .

4. Assembly of Joint 3

NOTE: The assembly of joint 3 (J_3) is based on **Figure 5**.

4.1. Place the two small, geared stepper motors (with 20-teeth spur gears attached) into the mounting cavities of L_2 and mount them with screws.

4.2. Place the 37 mm OD bearing into the bearing housing of the 120-teeth spur gear (Type C) and place the 32 mm OD bearing into the bearing housing of L_3 .

4.3. Secure the large spur gear into the hexagon keyhole of L_3 (additional screws can be used if necessary) and insert the shaft on L_2 into the bores on the large spur gear and L_3 , with the small and the large spur gears engaged. Ensure the driven, large spur gear rotates freely on the 37 mm OD bearing and L_3 rotates freely on the 32 mm OD bearing.

5. Assembly of Joint 4

NOTE: The assembly of joint 4 (J_4) is based on **Figure 6**.

5.1. Place the two small, geared stepper motors into the mounting cavities of L_3 and mount them with screws. Place the 8 mm OD bearings into the bearing housings of L_4 .

5.2. Mount the 20-teeth long spur gear onto the two small stepper motors and insert the shaft into the shaft hole of L_3 and L_4 after the two links are aligned (e.g., using an M5 bolt with a nut). Ensure the built-in driven gear structure on L_4 matches with the 20-teeth long spur gear.

6. Assembly of Joint 5

NOTE: The assembly of joint 5 (J_5) is based on **Figure 7**.

6.1. Place the two small, geared stepper motors (with 18-teeth bevel gears attached) into the mounting cavities of L_4 and mount them with screws.

6.2. Position the driving 144-teeth bevel gear onto the extrusion of L_4 , with its bottom gear part engaged with the two driving, small bevel gears.

6.3. Insert the end-effector into the keyway of the large bevel gear and vertically position the end-effector with the end-effector collar screwed onto it. Ensure that the end-effector collar, rotating on the top round surface of L_4 , holds and positions the end-effector vertically.

REPRESENTATIVE RESULTS:

Following the protocol, the resulting system is a robotic manipulator with five specially shaped links (L_0 to L_4) and five revolute joints (J_1 to J_5) for moving, holding, and locally tilting a US probe (**Figure 8**). The top rotation joint (J_1), with gear mechanisms actuated by four motors, can rotate the following structures 360° , to allow the US probe to point toward different sides of the scanning area, such as the top, bottom, and sides of the abdomen. The main tilting joint (J_2), with gear mechanisms actuated by four motors, is used to tilt down the probe to align it with the surface of the scanning area. As this joint is also crucial to the force management, a mechanical clutch with balls, springs, and detent holes was incorporated. The last three orthogonal revolute joints (J_3 , J_4 , and J_5), with gear mechanisms actuated by two motors each, are used to control the tilting and axial rotation of the probe, allowing fine adjustments of the probe in a local area. The last revolute joint, J_5 , also allows the mounting of a US probe in a specially shaped end-effector. The total weight and length of the proposed robotic manipulator, which is the only structure usually on top of the patient's body, are less than 2 kg and 25 cm. The resulting design is such that a large range of probe positions can be reached with only small movements of the remaining global positioning mechanism when using the proposed robotic US manipulator. Considering just the proposed manipulator on its own, the probe can be rotated axially to any angle, tilted to follow a surface angled between 0° and 110° to the horizontal in any direction, and positioned within a circle with a diameter of 360 mm. Additionally, the revolute joints J_3 and J_4 provide a tilting angle, in two directions, in the ranges of -180° to 180° and -30° to 45° , which is used for local fine adjustments of the US probe. The ranges of movements and tilting angles meet the required ranges for obtaining an ideal acoustic window for US examinations as suggested by Essomba *et al.*¹⁸ and Bassit¹⁹. The technical details of the proposed robotic manipulator are

summarized in **Table 1** (Denavit–Hartenberg parameters and joint specifications), based on the coordinate definitions shown in **Figure 8**. The estimated cost of the system is 500 GBP, based on the current manufacturing method, components, and materials.

As an example used in this research, we employed a global positioning system which has a revolute joint (R_1) with a chain mechanism for rotating the complete arm and a two-bar arm-based set of parallel link mechanisms (R_2 and R_3) with worm-gear drives (**Figure 9**). This 3-DOF mechanism will work with the proposed 5-DOF manipulator to form a complete robotic US system. Based on the proposed robotic manipulator and the example global positioning option used for this research, **Figure 10** shows a simulation example of the robot in positions around an abdominal phantom, demonstrating that it is able to reach around both sides of the abdomen and a range of positions on top. The design of the redundant joints in the system, particularly the configurations of J_1 and J_2 , allows tilting the probe to large angles with most of the mechanical structures still staying away from the patient's body, as can be observed in **Figure 10**. Consequently, with the last three joints (J_3 , J_4 , and J_5) specified to rotate within limited ranges for fine tilting adjustments, collision is avoided between the moving parts of the robot and the patient's body.

With the electronics and the conventional stepper motor control system developed, experiments have been performed to test the output force and validate the expected range of motion. The current control unit is a box with microcontrollers, stepper motor drivers, power supply and regulators, and other supporting electronic components included. The overall size of the control box is 40 cm long, 23 cm wide, and 12 cm deep. Based on the repeated testing of the system, the maximum force which the robotic manipulator can currently exert is set to 27 N before the mechanical safety clutch is triggered, specifying the output force range of the proposed system to be 0 - 27 N. With the configuration of the mechanical clutch, it was verified by repeated testing that in the default position, when the clutch is engaged, the balls are partially in the detent holes of L_1 . Therefore, the movements of the driven, large spur gears actuate L_2 . However, when excessive force is exerted at the end-effector, the clutch is disengaged, with the balls moving out of the detent holes of L_1 .

The range of motion of each joint reported in **Table 1** was also repeatedly tested and validated. The reliable working of the robotic manipulator over a long period of time has been extensively tested on a fetal phantom and continuously verified with abdominal scans of internal healthy volunteers (**Figure 11**). The study was approved by the local ethics committee. So far, 20 volunteer scans for general abdominal ultrasound examinations using the robotic manipulator have been successfully performed with the basic software control of the robot, mainly to evaluate the reliability and feasibility of the mechanical design. It was concluded from the phantom and volunteer studies that the current design of the robotic manipulator can reach the required movement range at the required force, and provides enough fine adjustment to obtain images similar to the hand-held operation of the US probe for abdominal imaging. For all these scans, no safety concerns or uncomfortable feelings were reported by the volunteers. The selection of motors, mechanical ratios of mechanisms, and power levels have been verified such that they ensure the reliable movement of the probe on the patient's body, while at the same

time resulting in slippage if excess forces are generated. Further details of this on-going volunteer study and clinical evidence for the use of the robot will be presented separately.

FIGURE AND TABLE LEGENDS:

Figure 1: Computer-aided design (CAD) drawing of all the links (L_0 , L_1 , L_2 , L_3 , and L_4) and the end-effector. The shape of each link is shown for reference when 3D printing using the provided .STL files. The end-effector is illustrated with a US probe included in the assembly.

Figure 2: CAD drawing of the required additional components. The shape of each component is shown for reference when 3D printing using the provided .STL files. The components include spur and bevel gears in different sizes, a shaft collar, a clutch cover, and an end-effector collar.

Figure 3: Assembly instruction for J_1 . The required links, motors, gears, and bearings are shown, with some structures changed to transparent to illustrate the assembly.

Figure 4: Assembly instruction for J_2 . The required links, motors, gears, ball-spring pairs, and bearings are shown, with some structures changed to transparent to illustrate the assembly.

Figure 5: Assembly instruction for J_3 . The required links, motors, gears, and bearings are shown with two perspective views to illustrate the assembly.

Figure 6: Assembly instruction for J_4 . The required links, motors, gears, and bearings are shown, with the assembled J_4 mechanism indicated.

Figure 7: Assembly instruction for J_5 . The required link and end-effector, motors, and gears are shown, with some structures changed to transparent to illustrate the assembly.

Figure 8: Summary of the proposed 5-DOF robotic manipulator with the end-effector holding a US probe. The coordinate definition of each joint and the overall size of the assembled manipulator are indicated.

Figure 9: CAD drawing of the example global positioning device. This arm-based device is used to work with the proposed robotic manipulator for testing. The notations and the main dimensions are shown in the drawing.

Figure 10: Kinematic simulation of four different scanning postures around the phantom. This demonstrates an adequate range of motion for a typical abdominal US scan.

Figure 11: Implemented US robot using the described protocol. (a) The robotic manipulator with the example global positioning mechanism. **(b)** Clinical use of the proposed robotic manipulator on a patient's abdominal area.

Table 1: Technical details of the proposed robotic manipulator, including the Denavit–

Hartenberg parameters and the joint specifications.

Supplementary Files. 3D printable STL files.

DISCUSSION:

Unlike many other industrial robots that have been translated into medical applications, the proposed robotic manipulator described in the protocol was specifically designed for US examinations according to clinical requirements for the range of motion, application of force, and safety management. The lightweight robotic manipulator itself has a wide range of movements sufficient for most extra-corporeal US scanning, without the need for large movements of the global positioning mechanism. As the closest mechanical structure to the patient, the proposed links are also specially shaped to be away from the patient. With most DOFs embedded into a compact manipulator, robotic US scanning using this device can be done in an intuitive way similar to human operation without the necessity of occupying a large space. Because of all these features, we expect that the system produced following the protocol could gain acceptance from clinicians and patients, which is being validated with the on-going volunteer study. With the proposed robotic manipulator, different conventional architectures for global positioning can be used based on the particular requirement, such as a gantry or ceiling mounting designs. An example global positioning device was used in this paper to enable the tests of the proposed robotic manipulator.

The current protocol suggests that all the links can be printed using ABS or PLA plastics or nylon, based on the availability of the local 3D-printing service, while using the nylon prints is preferred in general due to nylon's material strength. Importantly, as stated in the protocol, the additional components, especially the gears, should be printed with nylon or another strong material to ensure the reliability of the system. As new 3D-printing materials are introduced, the use of materials could be altered. The current protocol employs an end-effector specifically designed for a particular US probe, with the probe's 3D shape scanned by a CT imaging system to assist the design of the inner profile of the end-effector. When the manipulator is used with other US probes with different shapes, it is important to ensure that the inner profile of the end-effector is redesigned to tightly match with the outer profile of the US probe, in order to guarantee the safe holding of the probe. The 3D shape and profile of the probe could also be obtained from other types of 3D scanning. Additionally, it should be noted that some of the design details described in the protocol, such as exact shapes and dimensions, shaft sizes, mounting keyways, screws, and use of bearings, could be altered. For the same reason, some of the details are not provided when they are obviously based on common knowledge of mechanical design.

The current design has a passive mechanical clutch which can be adjusted and used to limit the maximum force applied to the patient. This is a safety feature that does not rely on any electrical systems or software logic, which guarantees the fundamental safety of using the robot for US examinations. The triggering point was set based on the range from previous measurements²¹ of the vertical force applied by human operators to the patients during normal US scans, as well as similar results reported from the existing literature¹⁸, both of which suggest that the maximum vertical force usually does not exceed 20 N. This was treated as the prerequisite that the trigger

force of the clutch should be more than 20 N with some given allowances. The amount of triggering force can be adjusted by changing the number of ball-spring pairs, the spring constant, the size of the detent holes, and the preloading of the springs²². A potential modification of the designed protocol for this is to change the number of cavities for holding the ball-spring pairs in L_2 . In practice, when using the proposed system, the correct working of the clutch can be easily verified by manually rotating the clutch joint and having the clutch disengage and re-engage before any robotic US examination is performed. In the current protocol, the safety clutch is only applied to J_2 as this joint is designed to align the probe with the surface of the abdomen and can be directly used to limit the vertical force exerted on the patient by the US probe. With a similar concept, a safety clutch can also be implemented for the J_1 spur gear, which will ensure the safety of the J_1 rotational movement of the following structures. This is not seen as an essential safety feature in the current protocol but could be a potential modification for a finalized version. The last three joints, J_3 , J_4 , and J_5 , are used for fine adjustments of the probe's orientation. Kinematically, they are not used to generate any excessive force and are not likely to collide with any obstacle. To minimize the size and weight of the proposed manipulator, a safety mechanical clutch is not suggested for these three joints in any modification of the protocol.

Following the protocol presented here to build the proposed manipulator for US examinations, the same reliability of the mechanical system, the same ranges of motion, similar weights of the whole manipulator, and a similar level of triggering force of the clutch are expected as are reported in this paper. However, the repeatability and accuracy of the movements, as well as the repeatability of the exact triggering force level of the mechanical clutch, would strongly depend on the 3D-printing and assembly accuracy compared to the CAD design. This cannot be guaranteed for the current prototype as a lab-based low-end 3D-printing service was used for manufacturing and the assembly was done manually for the purpose of preliminary prototyping. It is expected that an industrial level of manufacturing and assembly following the design protocol would result in good repeatability and high accuracy, although this is currently not our aim before the system is made into a final product for clinical trial. The testing of the performance would also require a separate protocol, which includes kinematic modeling, a robotic control method, motion tracking, and calibration methods, and is, thus, not included in the current paper. Similarly, the control precision and response of the proposed manipulator are determined by the motor control method, robot control algorithm, and communication between the electronics of the manipulator and the control interface. As these are beyond the aim of the current protocol of introducing the new mechanical design and can be implemented using many existing architectures, details are not provided in this paper.

ACKNOWLEDGMENTS:

This work was supported by the Wellcome Trust IEH Award [102431] and by the Wellcome/EPSRC Centre for Medical Engineering [WT203148/Z/16/Z]. The authors acknowledge financial support from the Department of Health *via* the National Institute for Health Research (NIHR) comprehensive Biomedical Research Centre award to Guy's & St Thomas' NHS Foundation Trust in partnership with King's College London and King's College Hospital NHS Foundation Trust.

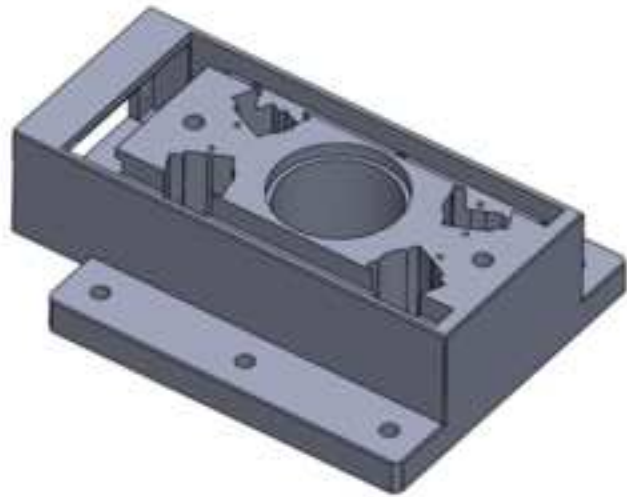
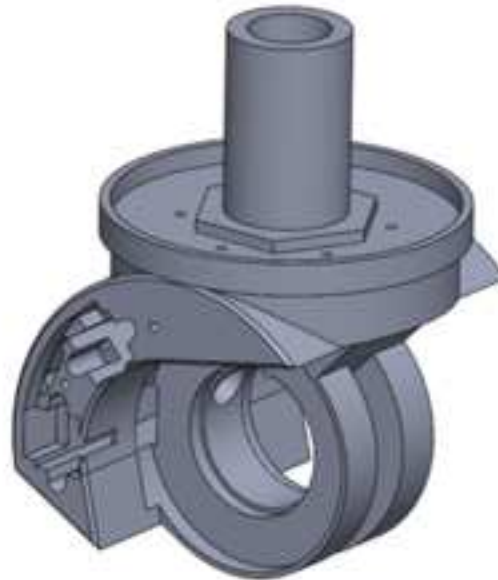
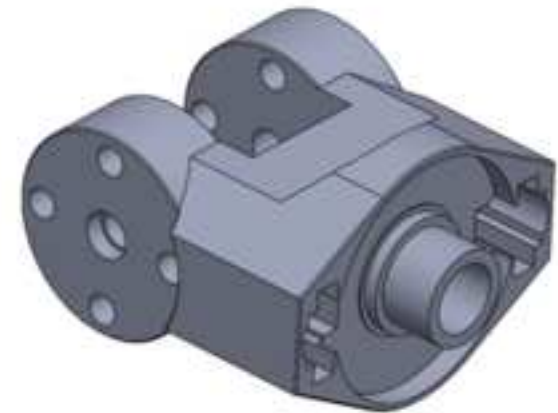
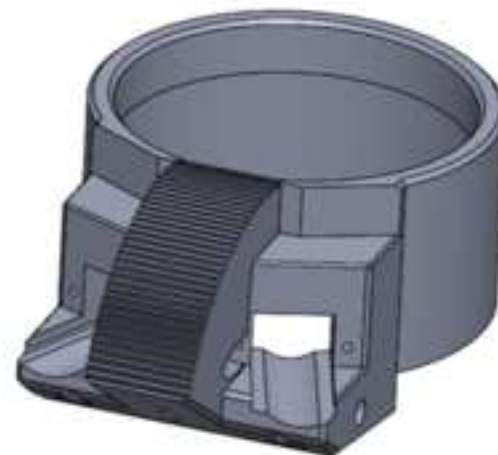
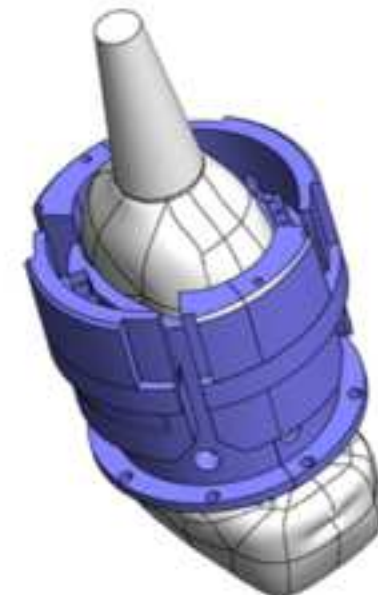
DISCLOSURES:

The authors have nothing to disclose.

REFERENCES:

1. Priester, A. M., Natarajan, S., Culjat, M. O. Robotic ultrasound systems in medicine. *IEEE Transactions on Ultrasonics, Ferroelectrics, and Frequency Control*. **60** (3), 507-523 (2013).
2. Magnavita, N., Bevilacqua, L., Mirk, P., Fileni, A., Castellino, N. Work-related musculoskeletal complaints in sonologists. *Journal of Occupational and Environmental Medicine*. **41** (11), 981-988 (1999).
3. Jakes, C. Sonographers and Occupational Overuse Syndrome: Cause, Effect, and Solutions. *Journal of Diagnostic Medical Sonography*. **17** (6), 312-320 (2001).
4. Society of Diagnostic Medical Sonography. Industry Standards for the Prevention of Work-Related Musculoskeletal Disorders in Sonography: Consensus Conference on Work-Related Musculoskeletal Disorders in Sonography. *Journal of Diagnostic Medical Sonography*. **27** (1), 14-18 (2011).
5. LaGrone, L. N., Sadasivam, V., Kushner, A. L., Groen, R. S. A review of training opportunities for ultrasonography in low and middle income countries. *Tropical Medicine & International Health*. **17** (7), 808-819 (2012).
6. Shah, S. *et al.* Perceived barriers in the use of ultrasound in developing countries. *Critical Ultrasound Journal*. **7** (1), 28 (2015).
7. Swerdlow, D. R., Cleary, K., Wilson, E., Azizi-Koutenaei, B., Monfaredi, R. Robotic Arm-Assisted Sonography: Review of Technical Developments and Potential Clinical Applications. *American Journal of Roentgenology*. **208** (4), 733-738 (2017).
8. Nouaille, L., Laribi, M., Nelson, C., Zeghloul, S., Poisson, G. Review of Kinematics for Minimally Invasive Surgery and Tele-Echography Robots. *Journal of Medical Devices*. **11** (4), 040802 (2017).
9. Georgescu, M., Sacccomandi, A., Baudron, B., Arbeille, P. L. Remote sonography in routine clinical practice between two isolated medical centers and the university hospital using a robotic arm: a 1-year study. *Telemedicine and e-Health*. **22** (4), 276-281 (2016).
10. Arbeille, P. *et al.* Use of a robotic arm to perform remote abdominal telesonography. *American Journal of Roentgenology*. **188** (4), W317-W322 (2007).
11. Arbeille, P. *et al.* Fetal tele-echography using a robotic arm and a satellite link. *Ultrasound in Obstetrics & Gynecology*. **26** (3), 221-226 (2005).
12. Vieyres, P. *et al.* A tele-operated robotic system for mobile tele-echography: The OTELO project. In *M-Health: Emerging Mobile Health Systems*. Edited by Istepanian, R. H., Laxminarayan, S., Pattichis, C. S., 461-473, Springer. Boston, MA (2006).
13. Abolmaesumi, P., Salcudean, S. E., Zhu, W.H., Sirouspour, M. R., DiMaio, S. P. Image-guided control of a robot for medical ultrasound. *IEEE Transactions on Robotics and Automation*. **18** (1), 11-23 (2002).
14. Abolmaesumi, P., Salcudean, S., Zhu, W. Visual servoing for robot-assisted diagnostic ultrasound. *Engineering in Medicine and Biology Society, Proceedings of the 22nd Annual International Conference of the IEEE*. Chicago, IL (July 23-28, 2000).
15. Menikou, G., Yiallouras, C., Yiannakou, M., Damianou, C. MRI-guided focused ultrasound robotic system for the treatment of bone cancer. *The International Journal of Medical Robotics and Computer Assisted Surgery*. **13** (1), e1753 (2017).
16. Yiallouras, C. *et al.* Three-axis MR-conditional robot for high-intensity focused ultrasound for

- treating prostate diseases transrectally. *Journal of Therapeutic Ultrasound*. **3** (1), 2 (2015).
17. AdEchoTech. MELODY, a remote, robotic ultrasound solution. <http://www.adechotech.com/products/> (2018).
18. Essomba, T. *et al.* A specific performances comparative study of two spherical robots for tele-echography application. *Proceedings of the Institution of Mechanical Engineers, Part C: Journal of Mechanical Engineering Science*. **228** (18), 3419-3429 (2014).
19. Bassit, L. A. Structure mécanique à modules sphériques optimisées pour un robot médical de télé-échographie mobile. PhD thesis. Université d'Orléans, France (2005).
20. Noh, Y. *et al.* Multi-Axis force/torque sensor based on Simply-Supported beam and optoelectronics. *Sensors*. **16** (11), 1936 (2016).
21. Noh, Y. *et al.* An ergonomic handheld ultrasound probe providing contact forces and pose information. *Engineering in Medicine and Biology Society, Proceedings of the 37th Annual International Conference of the IEEE*. Milan, Italy (August 25-29, 2015).
22. Maplesoft. Translational Detent – MapleSim Help. <https://www.maplesoft.com/support/help/MapleSim/view.aspx?path=DrivelineComponentLibrary/translationalDetent> (2018).

Link 0 (L_0)Link 1 (L_1)Link 2 (L_2)Link 3 (L_3)Link 4 (L_4)

End-effector

Figure 2

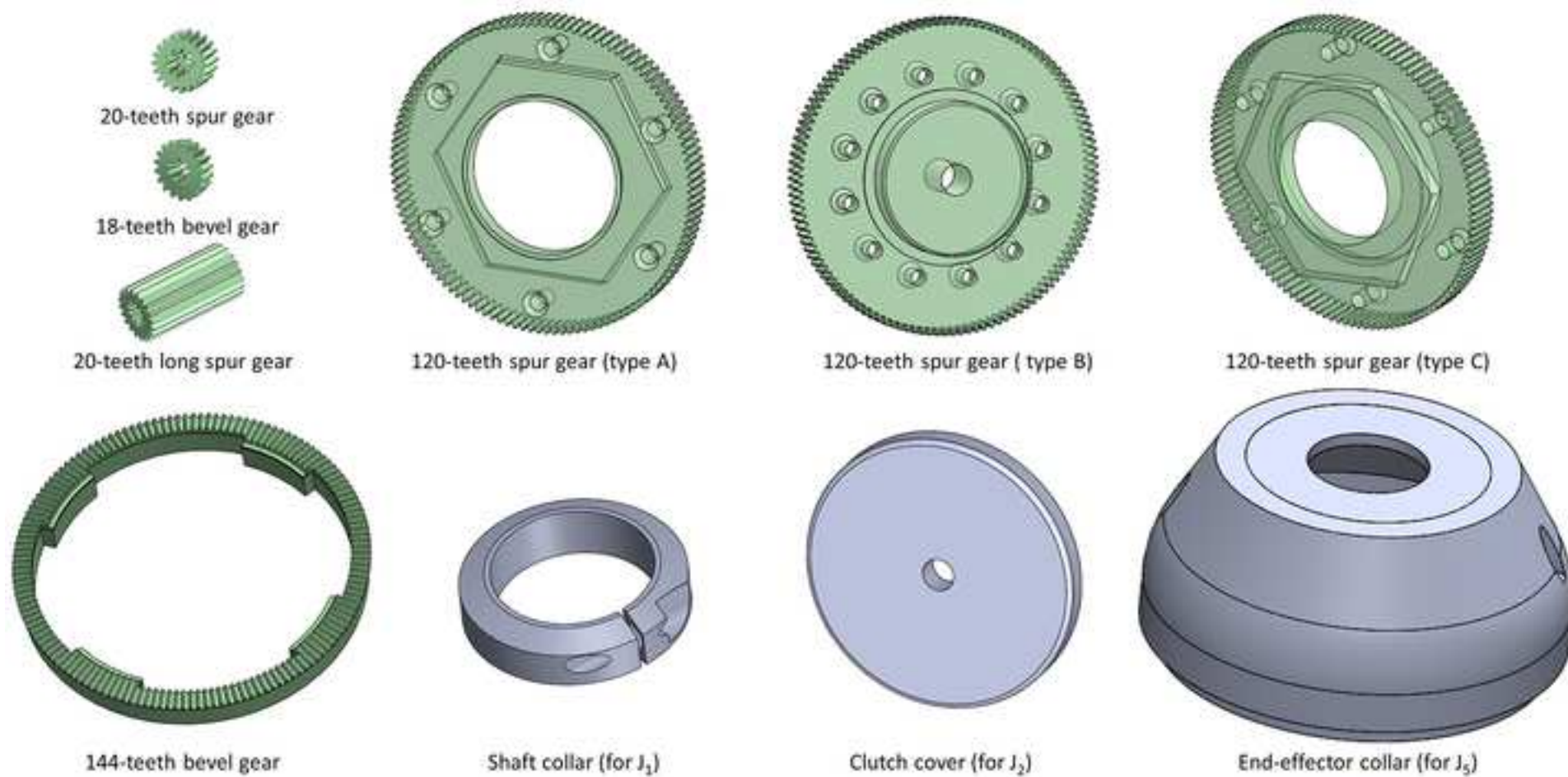


Figure 3

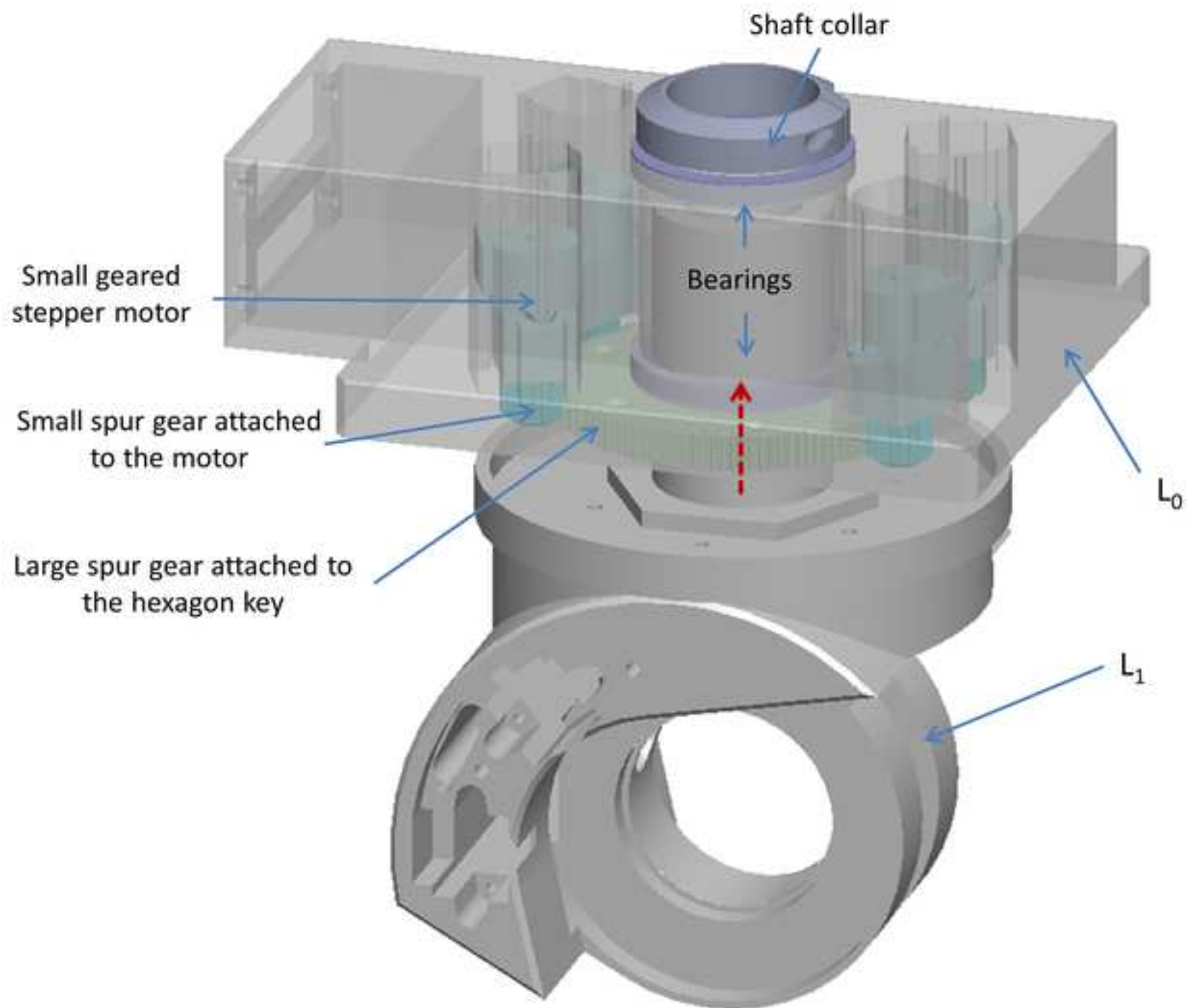


Figure 4

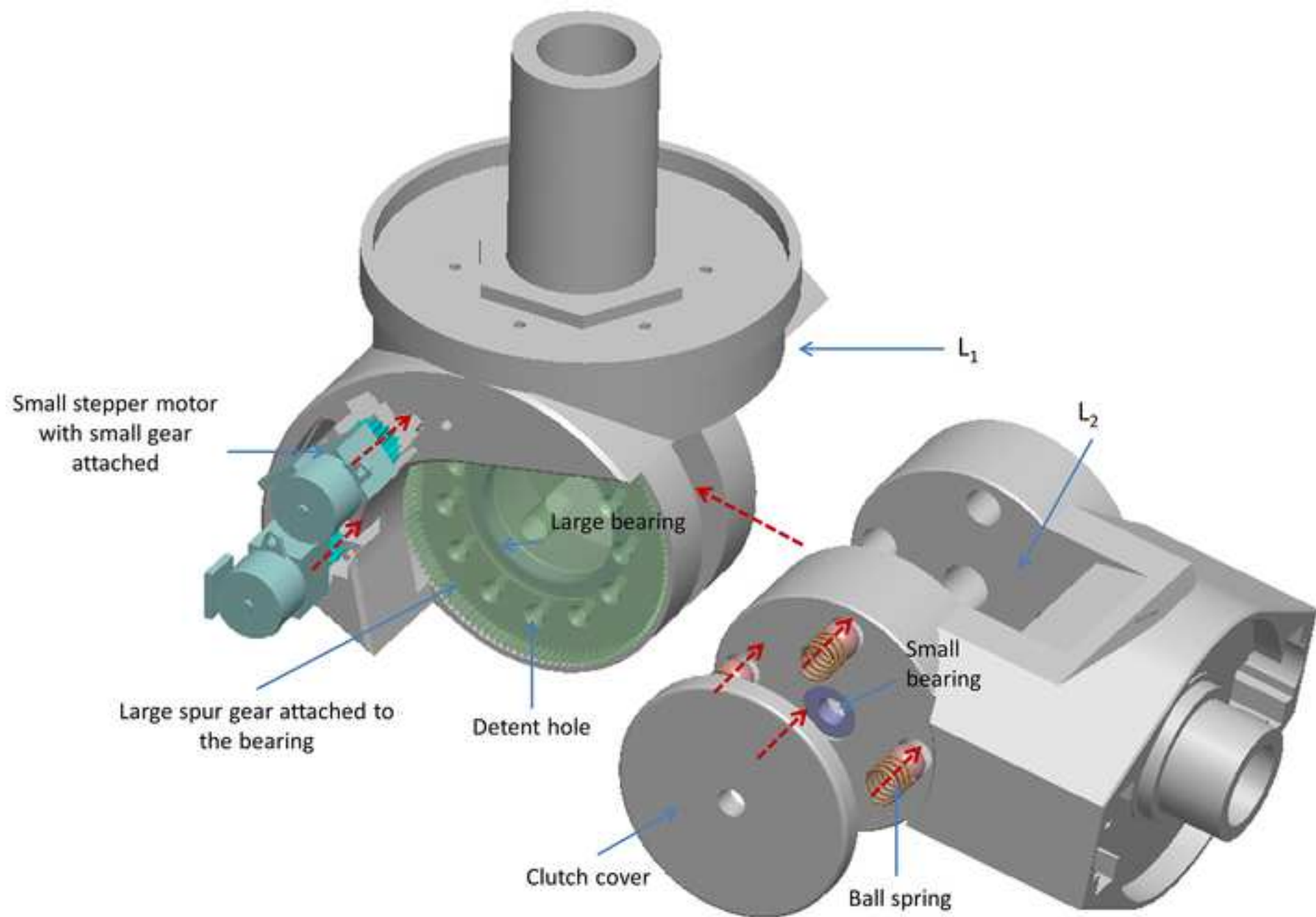


Figure 5

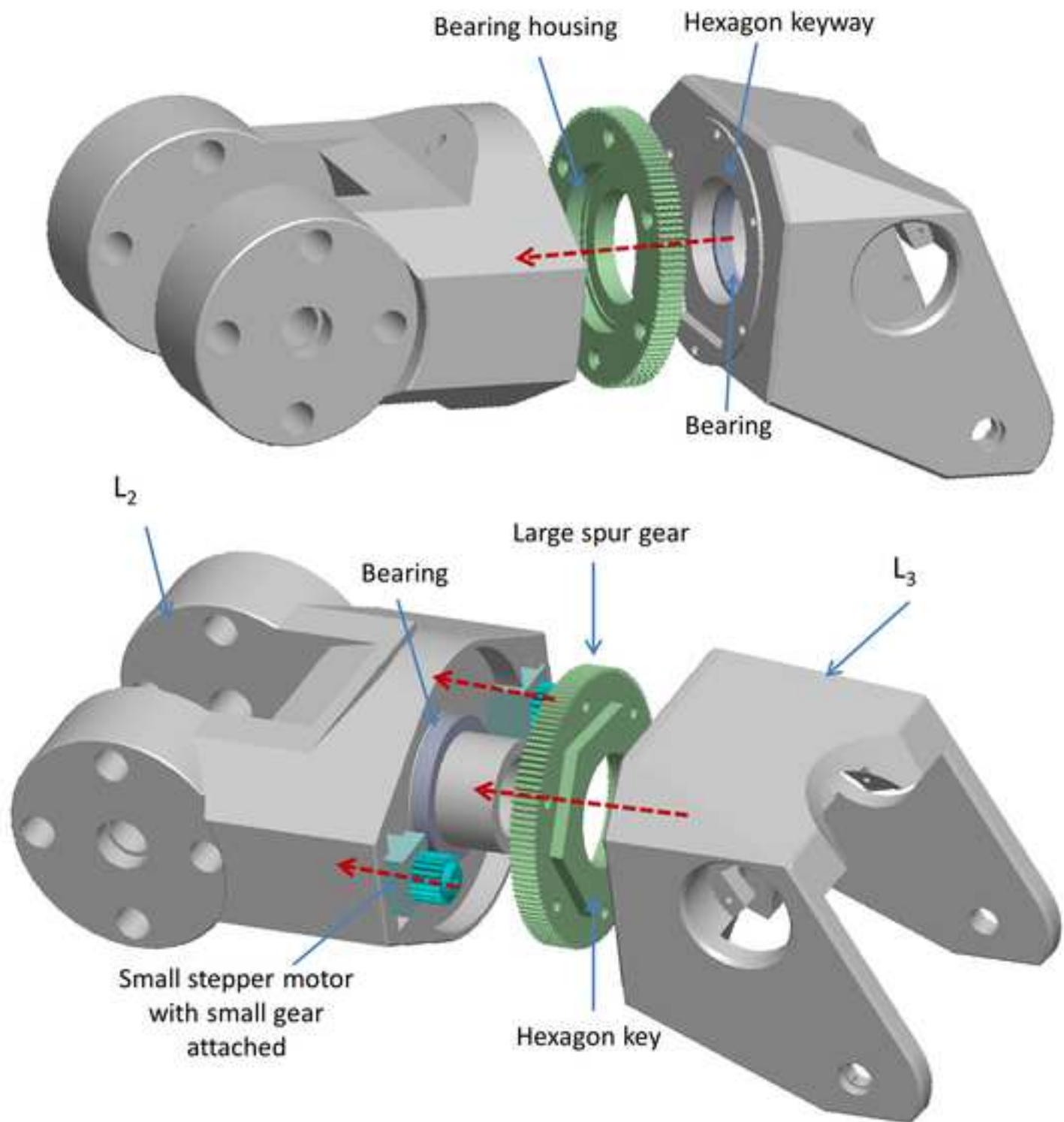


Figure 6

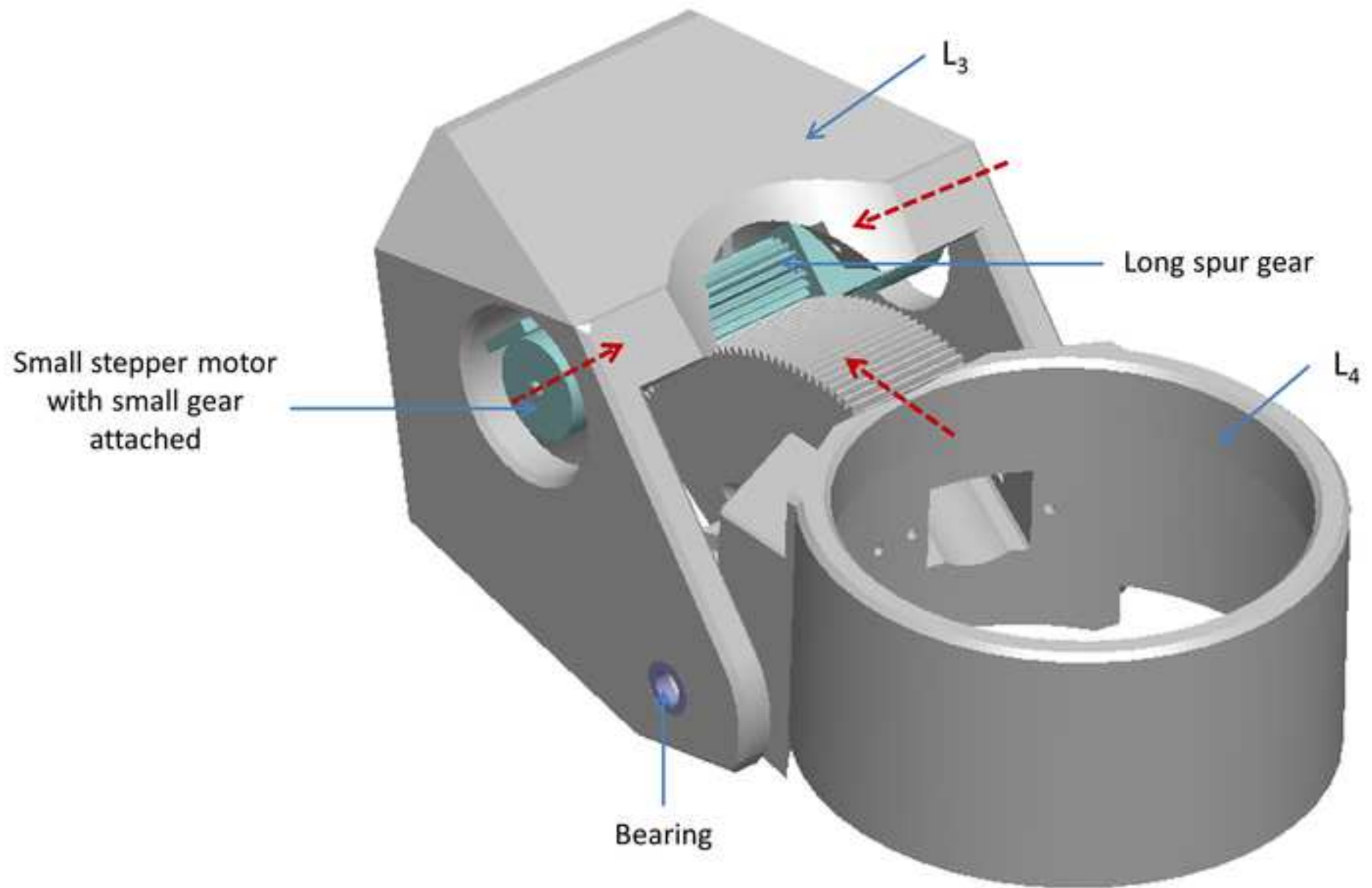


Figure 7

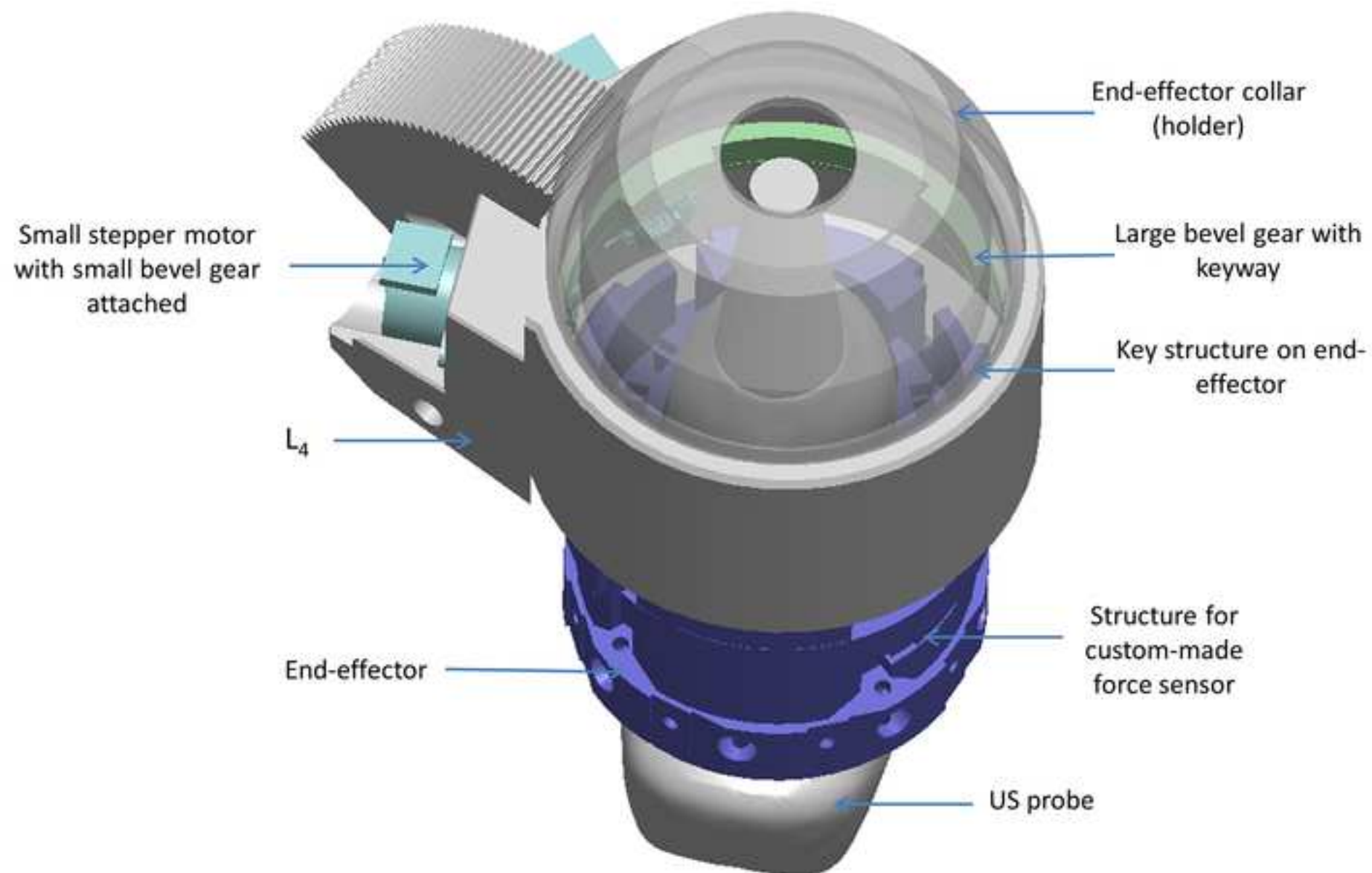


Figure 8

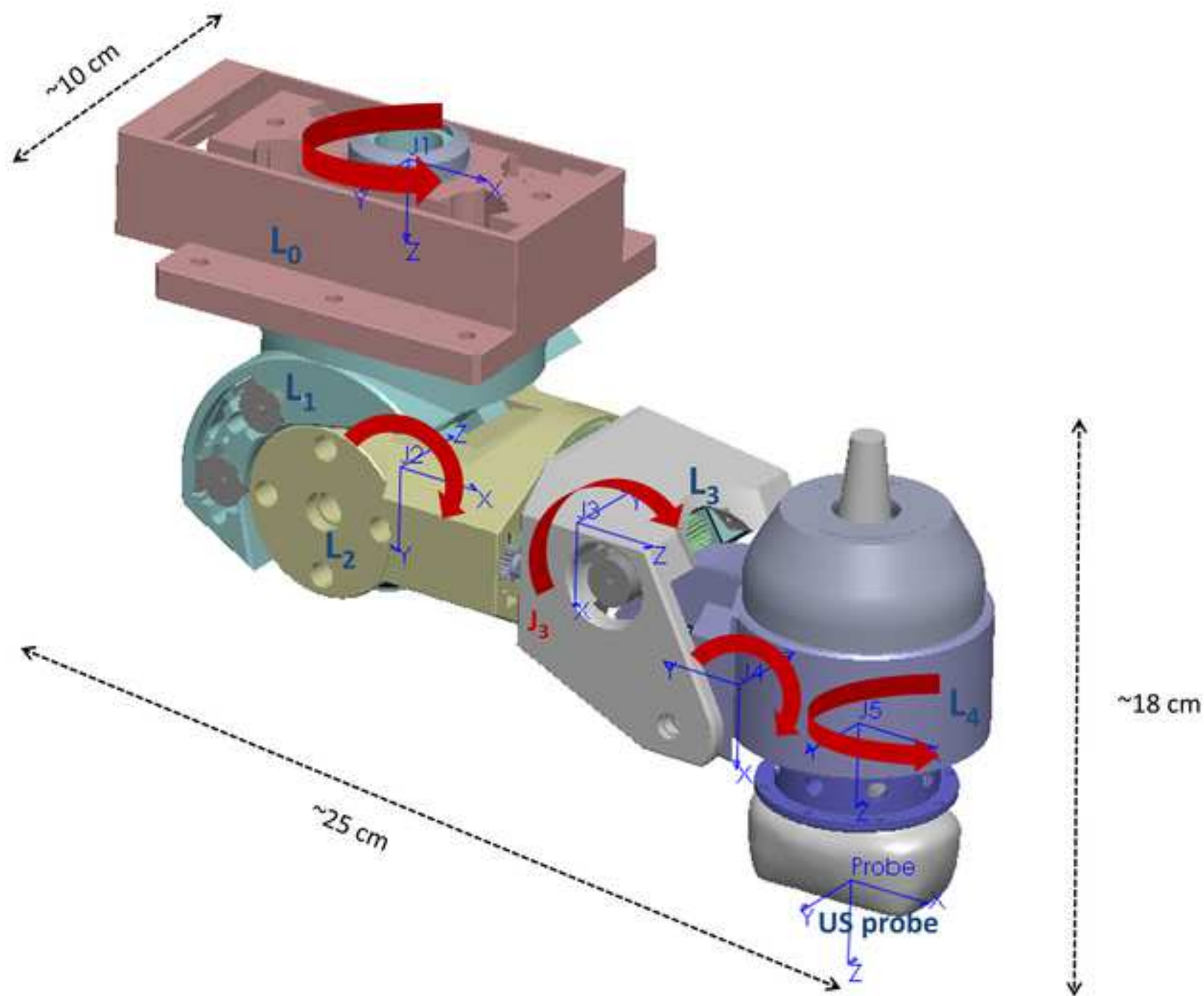


Figure 9

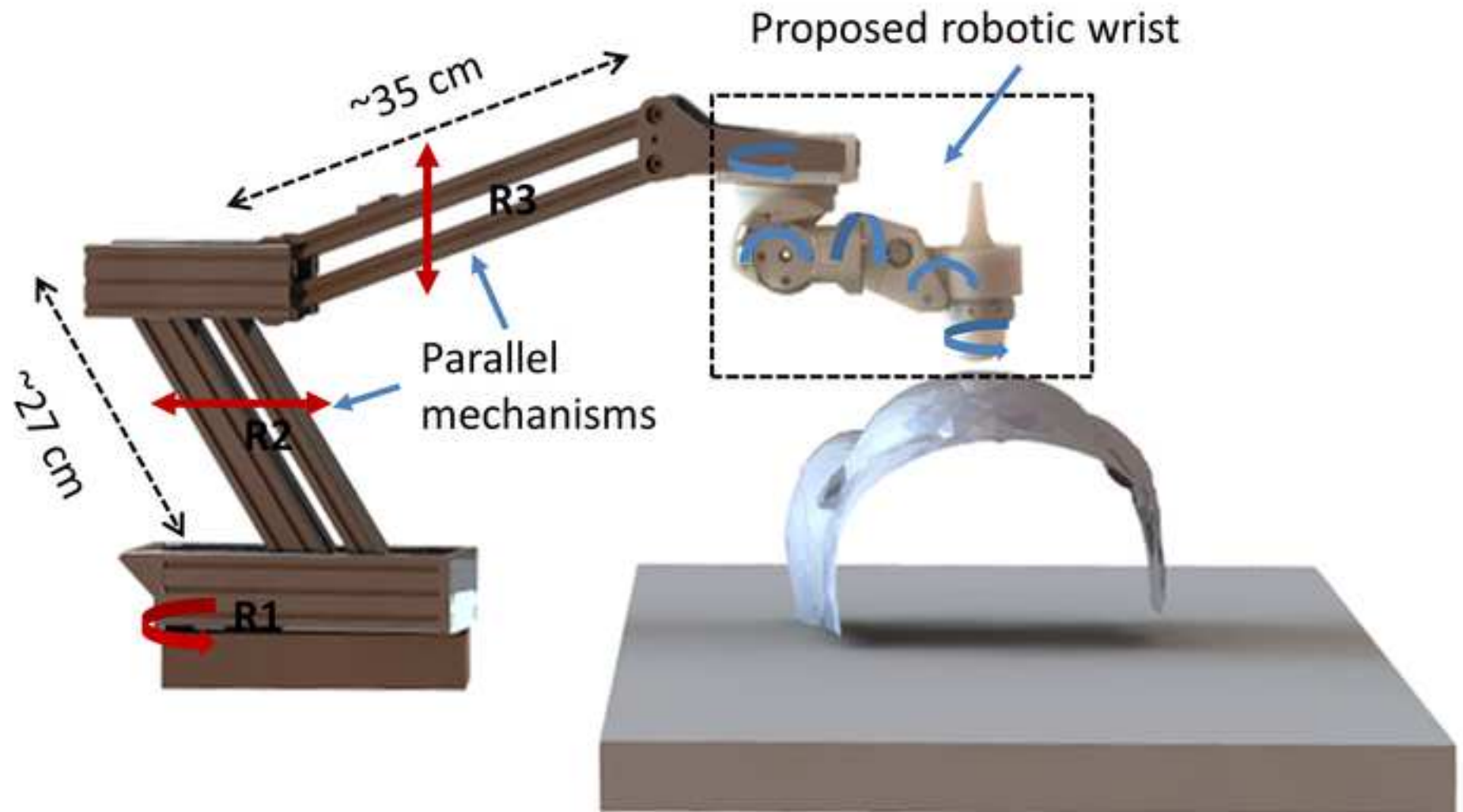
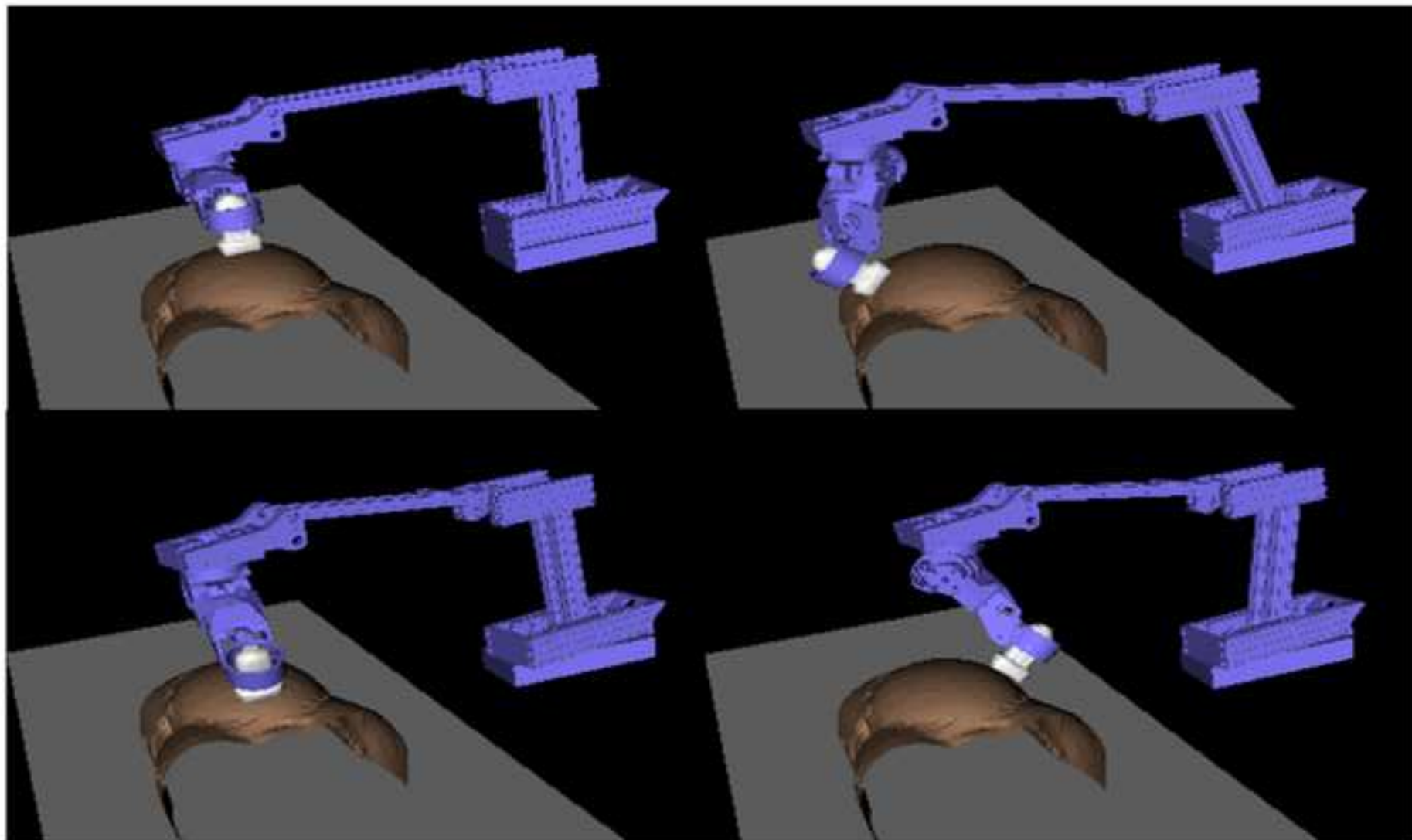


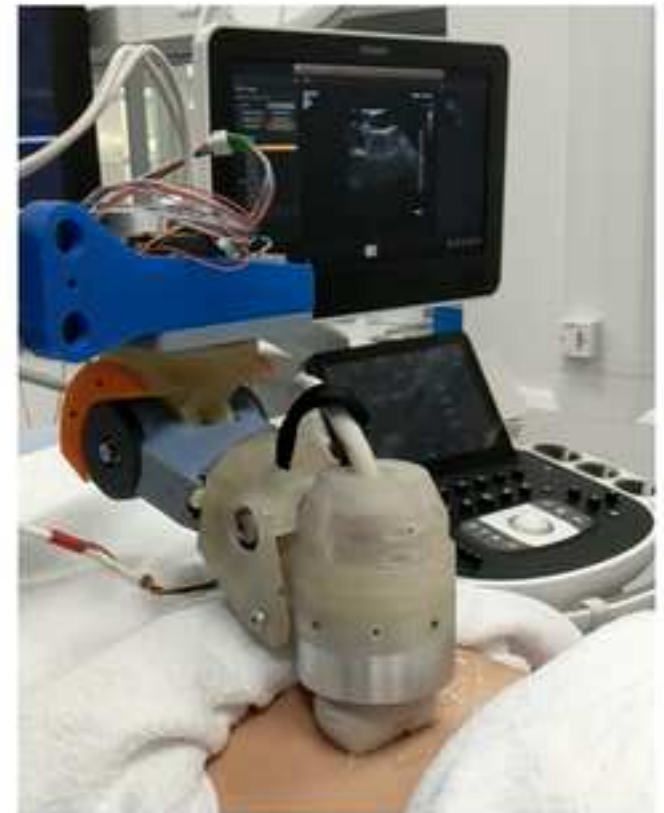
Figure 10

[Click here to access/download;Figure;Fig.10.tiff](#) 

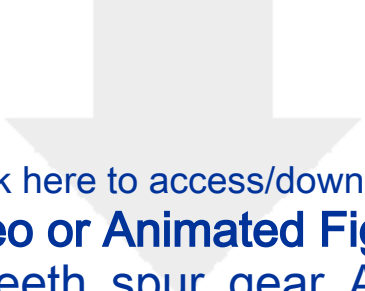




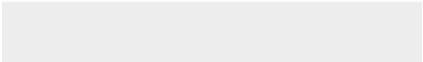

(a)

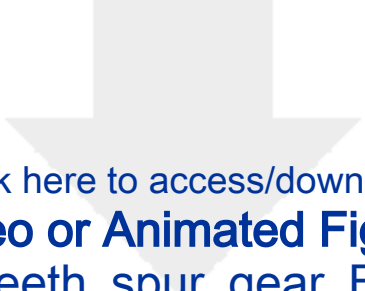


(b)

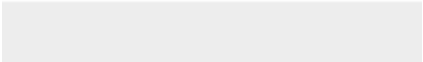



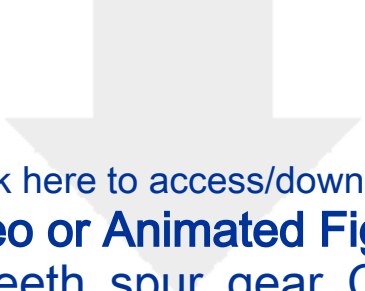
[Click here to access/download](#)
Video or Animated Figure
120Teeth_spur_gear_A.STL



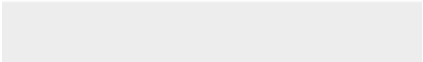



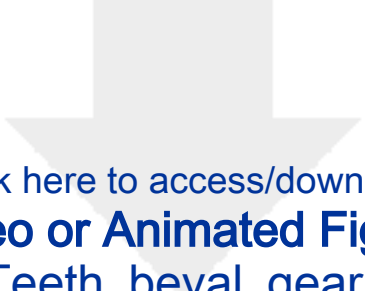
[Click here to access/download](#)
Video or Animated Figure
120Teeth_spur_gear_B.STL



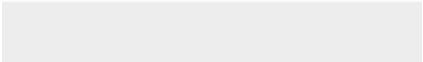



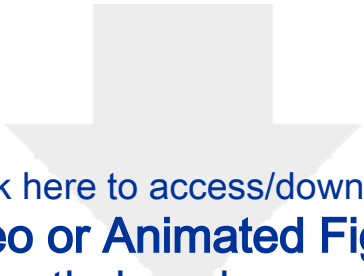
Click here to access/download
Video or Animated Figure
120Teeth_spur_gear_C.STL



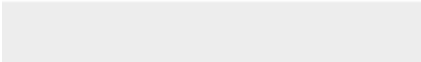



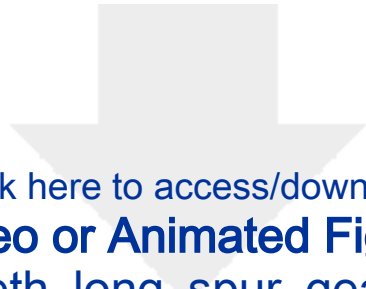
Click here to access/download
Video or Animated Figure
144Teeth_beval_gear.STL





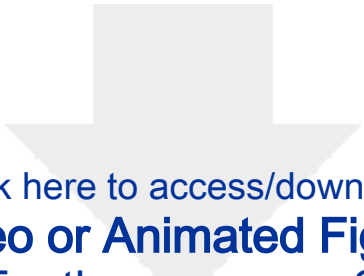
[Click here to access/download](#)
Video or Animated Figure
18Teeth_beval_gear.STL



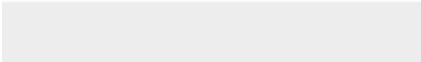



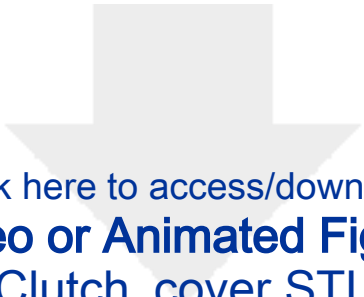
Click here to access/download
Video or Animated Figure
20Teeth_long_spur_gear.STL



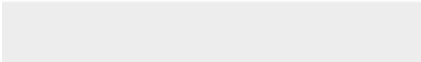



Click here to access/download
Video or Animated Figure
20Teeth_spur_gear.STL





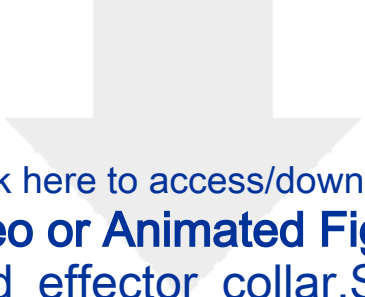
Click here to access/download
Video or Animated Figure
Clutch_cover.STL



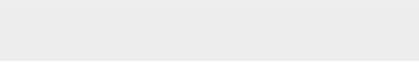
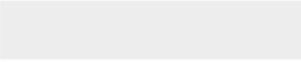


Click here to access/download
Video or Animated Figure
End_effector.STL





[Click here to access/download](#)
Video or Animated Figure
End_effector_collar.STL





Click here to access/download
Video or Animated Figure
Link0.STL





Click here to access/download
Video or Animated Figure
Link1.STL





Click here to access/download
Video or Animated Figure
Link2.STL





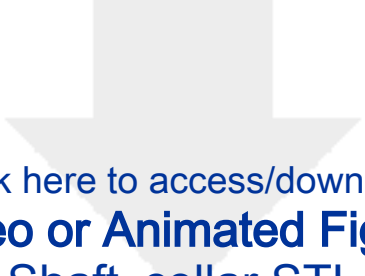
Click here to access/download
Video or Animated Figure
Link3.STL



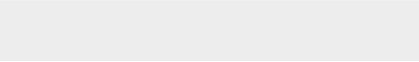
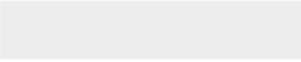


Click here to access/download
Video or Animated Figure
Link4.STL





Click here to access/download
Video or Animated Figure
Shaft_collar.STL



Name of Material/ Equipment	Company	Catalog Number
3D-printed link L ₀	3D printing service	1
3D-printed link L ₁	3D printing service	1
3D-printed link L ₂	3D printing service	1
3D-printed link L ₃	3D printing service	1
3D-printed link L ₄	3D printing service	1
3D-printed end-effector	3D printing service	1
20-teeth spur gear	3D printing service	12
18-teeth bevel gear	3D printing service	2
120-teeth spur gear (Type A)	3D printing service	1
120-teeth spur gear (Type B)	3D printing service	2
120-teeth spur gear (Type C)	3D printing service	1
20-teeth long spur gear	3D printing service	1
144-teeth bevel gear	3D printing service	1
Bearing (37 mm O.D and 30 mm I.D)	Bearing Station Ltd., UK	5
Bearing (12 mm O.D and 6 mm I.D)	Bearing Station Ltd., UK	2
Bearing (32 mm O.D and 25 mm I.D)	Bearing Station Ltd., UK	1
Bearing (8 mm O.D and 5 mm I.D)	Bearing Station Ltd., UK	2
Plastic/metal shaft (6 mm O.D, 70 mm long)	TR Fastenings Ltd., UK	1
Plastic/metal shaft (5 mm O.D, 70 mm long)	TR Fastenings Ltd., UK	1
Ball-spring pairs	WDS Ltd., UK	4
Clutch covers	3D printing service	2
3D-printed shaft collar	3D printing service	1
3D-printed end-effector collar	3D printing service	1
Small geared stepper motors	AOLONG TECHNOLOGY Ltd., China	14

Comments/Description

As shown in Figure 1, with the STL file provided

As shown in Figure 1, with the STL file provided

As shown in Figure 1, with the STL file provided

As shown in Figure 1, with the STL file provided

As shown in Figure 1, with the STL file provided

As shown in Figure 1, with the STL file provided

0.5 module, 5 mm face width, with mounting keyway, as shown in Figure 2, with the STL file provided

0.5 module, 5 mm face width, with mounting keyway, as shown in Figure 2, with the STL file provided

0.5 module, 6 mm face width, with mounting keyway, bearing housing, and bore, as shown in Figure 2, with the STL file provided

0.5 module, 6 mm face width, with detent holes, bearing housing, and bore, as shown in Figure 2, with the STL file provided

0.5 module, 6 mm face width, with mounting key, bearing housing, and bore, as shown in Figure 2, with the STL file provided

0.5 module, 21.5 mm face width, with mounting keyways, as shown in Figure 2, with the STL file provided

0.5 module, 7 mm face width, with mounting keyways, as shown in Figure 2, with the STL file provided

Bearing size and supplier can be varied

Bearing size and supplier can be varied

Bearing size and supplier can be varied

Bearing size and supplier can be varied

e.g. Could be an M6 bolt and a nut

e.g. Could be an M5 bolt and a nut

Numbers of ball-spring pairs could varied to adjust the triggering force of the clutch

104 mm O.D, 5mm face width, 6 mm bore, as shown in Figure 2, with the STL file provided

35 mm O.D and 30 mm I.D, 8mm face width, as shown in Figure 2, with the STL file provided

As shown in Figure 2, with the STL file provided

Part number: GM15BYS; Internal gear ratio 232:1 or 150:1, all acceptable

Title of Article:

Design and Implementation of a Dexterous Robotic Wrist for Extra-corporeal Ultrasound with Lightweight Joints and Built-in Mechanical Safety Clutch

Author(s):

Shuangyi Wang, James Housden, Yohan Noh, Anisha Singh, Junghwan Back, Lukas Lindenroth, Hongbin Liu, Joseph Hajnal, Kaspar Althoefer, Davinder Singh, Kawal Rhode

Item 1 (check one box): The Author elects to have the Materials be made available (as described at

<http://www.jove.com/author>) via: ☒ Standard Access ☐ Open Access

Item 2 (check one box):

- ☒ The Author is NOT a United States government employee.
- ☐ The Author is a United States government employee and the Materials were prepared in the course of his or her duties as a United States government employee.
- ☐ The Author is a United States government employee but the Materials were NOT prepared in the course of his or her duties as a United States government employee.

ARTICLE AND VIDEO LICENSE AGREEMENT

1. **Defined Terms.** As used in this Article and Video License Agreement, the following terms shall have the following meanings: “**Agreement**” means this Article and Video License Agreement; “**Article**” means the article specified on the last page of this Agreement, including any associated materials such as texts, figures, tables, artwork, abstracts, or summaries contained therein; “**Author**” means the author who is a signatory to this Agreement; “**Collective Work**” means a work, such as a periodical issue, anthology or encyclopedia, in which the Materials in their entirety in unmodified form, along with a number of other contributions, constituting separate and independent works in themselves, are assembled into a collective whole; “**CRC License**” means the Creative Commons

Attribution 3.0 Agreement (also known as CC-BY), the terms and conditions of which can be found at: <http://creativecommons.org/licenses/by/3.0/us/legalcode>;

“**Derivative Work**” means a work based upon the Materials or upon the Materials and other pre-existing works, such as a translation, musical arrangement, dramatization, fictionalization, motion picture version, sound recording, art reproduction, abridgment, condensation, or any other form in which the Materials may be recast, transformed, or adapted; “**Institution**” means the institution, listed on the last page of this Agreement, by which the Author was employed at the time of the creation of the Materials; “**JoVE**” means MyJoVE Corporation, a Massachusetts corporation and the publisher of *The Journal of Visualized Experiments*;

“**Materials**” means the Article and / or the Video; “**Parties**” means the Author and JoVE; “**Video**” means any video(s) made by the Author, alone or in conjunction with any other parties, or by JoVE or its affiliates or agents, individually or in collaboration with the Author or any other parties, incorporating all or any portion of the Article, and in which the Author may or may not appear.

2. **Background.** The Author, who is the author of the Article, in order to ensure the dissemination and protection of the Article, desires to have the JoVE publish the Article and create and transmit videos based on the Article. In furtherance of such goals, the Parties desire to memorialize in this Agreement the respective rights of each Party in and to the Article and the Video.

3. **Grant of Rights in Article.** In consideration of JoVE agreeing to publish the Article, the Author hereby grants to JoVE, subject to **Sections 4 and 7** below, the exclusive, royalty-free, perpetual (for the full term of copyright in the Article, including any extensions thereto) license (a) to publish, reproduce, distribute, display and store the Article in all forms, formats and media whether now known or hereafter developed (including without limitation in print, digital and electronic form) throughout the world, (b) to translate the Article into other languages, create adaptations, summaries or extracts of the Article or other Derivative Works (including, without limitation, the Video) or Collective Works based on all or any portion of the Article and exercise all of the rights set forth in (a) above in such translations, adaptations, summaries, extracts, Derivative Works or Collective Works and

(c) to license others to do any or all of the above. The foregoing rights may be exercised in all media and formats, whether now known or hereafter devised, and include the right to make such modifications as are technically necessary to exercise the rights in other media and formats. If the “Open Access” box has been checked in **Item 1** above, JoVE and the Author hereby grant to the public all such rights in the Article as provided in, but subject to all limitations and requirements set forth in, the CRC License.

4. **Retention of Rights in Article.** Notwithstanding the exclusive license granted to JoVE in **Section 3** above, the

Author shall, with respect to the Article, retain the non-exclusive right to use all or part of the Article for the non-commercial purpose of giving lectures, presentations or teaching classes, and to post a copy of the Article on the

Institution's website or the Author's personal website, in each case provided that a link to the Article on the JoVE website is provided and notice of JoVE's copyright in the Article is included. All non-copyright intellectual property rights in and to the Article, such as patent rights, shall remain with the Author.

5. Grant of Rights in Video – Standard Access. This **Section 5** applies if the "Standard Access" box has been checked in **Item 1** above or if no box has been checked in **Item 1** above. In consideration of JoVE agreeing to produce, display or otherwise assist with the Video, the Author hereby acknowledges and agrees that, Subject to **Section 7** below, JoVE is and shall be the sole and exclusive owner of all rights of any nature, including, without limitation, all copyrights, in and to the Video. To the extent that, by law, the Author is deemed, now or at any time in the future, to have any rights of any nature in or to the Video, the Author hereby disclaims all such rights and transfers all such rights to JoVE.

6. Grant of Rights in Video – Open Access. This **Section 6** applies only if the "Open Access" box has been checked in **Item 1** above. In consideration of JoVE agreeing to produce, display or otherwise assist with the Video, the Author hereby grants to JoVE, subject to **Section 7** below, the exclusive, royalty-free, perpetual (for the full term of copyright in the Article, including any extensions thereto) license (a) to publish, reproduce, distribute, display and store the Video in all forms, formats and media whether now known or hereafter developed (including without limitation in print, digital and electronic form) throughout the world, (b) to translate the Video into other languages, create adaptations, summaries or extracts of the Video or other Derivative Works or Collective Works based on all or any portion of the Video and exercise all of the rights set forth in (a) above in such translations, adaptations, summaries, extracts, Derivative Works or Collective Works and (c) to license others to do any or all of the above. The foregoing rights may be exercised in all media and formats, whether now known or hereafter devised, and include the right to make such modifications as are technically necessary to exercise the rights in other media and formats.

7. Government Employees. If the Author is a United States government employee and the Article was prepared in the course of his or her duties as a United States government employee, as indicated in **Item 2** above, and any of the licenses or grants granted by the Author hereunder exceed the scope of the 17 U.S.C. 403, then the rights granted hereunder shall be limited to the maximum rights permitted under such statute. In such case, all provisions contained herein that are not in conflict with such statute shall remain in full force and effect, and all provisions contained herein that do so conflict

shall be deemed to be amended so as to provide to JoVE the maximum rights permissible within such statute.

8. Protection of the work. The Author(s) authorize JoVE to take steps in the Author(s) name and on their behalf if JoVE believes some third party could be infringing or might infringe the copyright of either the Author's Article and/or Video

9. Likeness, Privacy, Personality. The Author hereby grants JoVE the right to use the Author's name, voice, likeness, picture, photograph, image, biography and performance in any way, commercial or otherwise, in connection with the Materials and the sale, promotion and distribution thereof. The Author hereby waives any and all rights he or she may have, relating to his or her appearance in the Video or otherwise relating to the Materials, under all applicable privacy, likeness, personality or similar laws.

10. Author Warranties. The Author represents and warrants that the Article is original, that it has not been published, that the copyright interest is owned by the Author (or, if more than one author is listed at the beginning of this Agreement, by such authors collectively) and has not been assigned, licensed, or otherwise transferred to any other party. The Author represents and warrants that the author(s) listed at the top of this Agreement are the only authors of the Materials. If more than one author is listed at the top of this Agreement and if any such author has not entered into a separate Article and Video License Agreement with JoVE relating to the Materials, the Author represents and warrants that the Author has been authorized by each of the other such authors to execute this Agreement on his or her behalf and to bind him or her with respect to the terms of this Agreement as if each of them had been a party hereto as an Author. The Author warrants that the use, reproduction, distribution, public or private performance or display, and/or modification of all or any portion of the Materials does not and will not violate, infringe and/or misappropriate the patent, trademark, intellectual property or other rights of any third party. The Author represents and warrants that it has and will continue to comply with all government, institutional and other regulations, including, without limitation all institutional, laboratory, hospital, ethical, human and animal treatment, privacy, and all other rules, regulations, laws, procedures or guidelines, applicable to the Materials, and that all research involving human and animal subjects has been approved by the Author's relevant institutional review board.

11. JoVE Discretion. If the Author requests the assistance of JoVE in producing the Video in the Author's facility, the Author shall ensure that the presence of JoVE employees, agents or independent contractors is in accordance with the relevant regulations of the Author's institution. If more than one author is listed at the beginning of this Agreement, JoVE may, in its sole discretion, elect not take any action with respect to the Article until such time as it has received complete, executed Article and Video License Agreements from each such author. JoVE reserves the right, in its absolute and sole discretion and

without giving any reason therefore, to accept or decline any work submitted to JoVE. JoVE and its employees, agents and independent contractors shall have full, unfettered access to the facilities of the Author or of the Author's institution as necessary to make the Video, whether actually published or not. JoVE has sole discretion as to the method of making and publishing the Materials, including, without limitation, to all decisions regarding editing, lighting, filming, timing of publication, if any, length, quality, content and the like.

11. Indemnification. The Author agrees to indemnify JoVE and/or its successors and assigns from and against any and all claims, costs, and expenses, including attorney's fees, arising out of any breach of any warranty or other representations contained herein. The Author further agrees to indemnify and hold harmless JoVE from and against any and all claims, costs, and expenses, including attorney's fees, resulting from the breach by the Author of any representation or warranty contained herein or from allegations or instances of violation of intellectual property rights, damage to the Author's or the Author's institution's facilities, fraud, libel, defamation, research, equipment, experiments, property damage, personal injury, violations of institutional, laboratory, hospital, ethical, human and animal treatment, privacy or other rules, regulations, laws, procedures or guidelines, liabilities and other losses or damages related in any way to the submission of work to JoVE, making of videos by JoVE, or publication in JoVE or elsewhere by JoVE. The Author shall be responsible for, and shall hold JoVE harmless from, damages caused by lack of sterilization, lack of cleanliness or by contamination due to the making of a video by JoVE its employees, agents or independent contractors. All sterilization, cleanliness or decontamination procedures shall be solely the


responsibility of the Author and shall be undertaken at the Author's expense. All indemnifications provided herein shall include JoVE's attorney's fees and costs related to said losses or damages. Such indemnification and holding harmless shall include such losses or damages incurred by, or in connection with, acts or omissions of JoVE, its employees, agents or independent contractors.

12. Fees. To cover the cost incurred for publication, JoVE must receive payment before production and publication the Materials. Payment is due in 21 days of invoice. Should the Materials not be published due to an editorial or production decision, these funds will be returned to the Author. Withdrawal by the Author of any submitted Materials after final peer review approval will result in a US\$1,200 fee to cover pre-production expenses incurred by JoVE. If payment is not received by the completion of filming, production and publication of the Materials will be suspended until payment is received.

13. Transfer, Governing Law. This Agreement may be assigned by JoVE and shall inure to the benefits of any of JoVE's successors and assignees. This Agreement shall be governed and construed by the internal laws of the Commonwealth of Massachusetts without giving effect to any conflict of law provision thereunder. This Agreement may be executed in counterparts, each of which shall be deemed an original, but all of which together shall be deemed to be one and the same agreement. A signed copy of this Agreement delivered by facsimile, e-mail or other means of electronic transmission shall be deemed to have the same legal effect as delivery of an original signed copy of this Agreement.

A signed copy of this document must be sent with all new submissions. Only one Agreement required per submission.

AUTHOR:

Name:	Shuangyi Wang		
Department:	School of Biomedical Engineering & Imaging Sciences		
Institution:	King's College London		
Article Title:	Design and Implementation of a Dexterous Robotic Wrist for Extra-corporeal Ultrasound with Lightweight Joints and Built-in Mechanical Safety Clutch		
Signature:		Date:	21/07/2018

Please submit a signed and dated copy of this license by one of the following three methods:

- 1) Upload a scanned copy as a PDF to the JoVE submission site upon manuscript submission (preferred);
- 2) Fax the document to +1.866.381.2236; or
- 3) Mail the document to JoVE / Attn: JoVE Editorial / 1 Alewife Center Suite 200 / Cambridge, MA 02140

For questions, please email editorial@jove.com or call +1.617.945.9051.

MS # (internal use):

Response to Editor

We would like to thank the editor for the careful re-review of the modified paper. We have carefully read and addressed all the comments and detailed responses are given below:

1. Please take this opportunity to thoroughly proofread the manuscript to ensure that there are no spelling or grammar issues.

Response: This has been done with a few small corrections made.

2. Please do not highlight notes for filming.

Response: We have deleted the highlights for the notes.

3. Please split some long steps into two or more sub-steps so that each step contains only 2-3 actions and is less than 4 lines.

Response: We have split the long steps into more sub-steps. This can be found in the revised PROTOCOL section.

4. For steps that are done using software, a step-wise description of software usage must be included in the step. Please mention what button is clicked on in the software, or which menu items need to be selected to perform the step.

Response: In our revised manuscript, we decided to share and upload the 3D printable STL file of each component of our proposed robotic manipulator as a supplementary material, rather than describing the detailed drawing steps of each part in a CAD software. This is for the following reasons: 1) the joints we proposed have complex shapes. It will be very difficult and will take many pages and figures to describe step-by-step in terms of how to draw each component; 2) With the STL files uploaded, the readers will be very easily able to follow and reproduce the rest of the protocol for assembly, and modify the design if needed. Sharing the STL files therefore makes the protocol much more valuable.

As a result, each component of the robotic manipulator is provided in the revised manuscript. The protocol starts from 3D printing of these parts and focuses on the assembly and implementation methods. These changes can be found in the revised PROTOCOL section with new uploaded supplementary material for each of the STL files. Additionally, figures for all the links have been combined into one figure with unnecessary information deleted as the e-files are already provided.

5. Steps 1.1-1.4: These steps cannot be filmed unless detailed software usage is provided.

Response: please refer to the response for point 4.

6. For each figure, please provide a short description in addition to the figure title in the Figure Legend.

Response: a short description in addition to the concise figure title in Figure Legend has been added for each figure. This can be found in the revised FIGURE AND TABLE LEGENDS section.

7. Please ensure that the references appear as the following: Lastname, F.I., LastName, F.I., LastName, F.I. Article Title. Source. Volume (Issue), FirstPage – LastPage, (YEAR). For more than 6 authors, list only the first author then et al.

Response: All the reference items have been checked and corrected.