

Journal of Visualized Experiments

Implantation of hiPSC derived cardiac-muscle patches after myocardial injury in a guinea pig model --Manuscript Draft--

Article Type:	Invited Methods Article - JoVE Produced Video
Manuscript Number:	JoVE58810R3
Full Title:	Implantation of hiPSC derived cardiac-muscle patches after myocardial injury in a guinea pig model
Keywords:	Cardiac repair; Engineered heart tissue; iPSC; Myocardial Infarction; cardiac regeneration; tissue engineering
Corresponding Author:	Simon Pecha University Heart Center Hamburg Hamburg, GERMANY
Corresponding Author's Institution:	University Heart Center Hamburg
Corresponding Author E-Mail:	s.pecha@uke.de
Order of Authors:	Liesa Castro Birgit Geertz Marina Reinsch Bülent Aksehirlioglu Arne Hansen Thomas Eschenhagen Hermann Reichensperner Florian Weinberger Simon Pecha
Additional Information:	
Question	Response
Please indicate whether this article will be Standard Access or Open Access.	Standard Access (US\$2,400)
Please indicate the city, state/province, and country where this article will be filmed . Please do not use abbreviations.	Hamburg/Germany

TITLE:

Implantation of hiPSC Derived Cardiac-Muscle Patches after Myocardial Injury in a Guinea Pig Model

AUTHORS AND AFFILIATIONS:

Liesa Castro^{1,2}, Birgit Geertz³, Marina Reinsch^{2,3}, Bülent Aksehirlioglu³, Arne Hansen^{2,3}, Thomas Eschenhagen^{2,3}, Hermann Reichenspurner^{1,2}, *Florian Weinberger^{2,3}, *Simon Pecha^{1,2}

¹Department of Cardiovascular Surgery, University Heart Center Hamburg, Germany

²German Centre for Cardiovascular Research (DZHK), partner site Hamburg/
Kiel/Lübeck, Germany

³Department of Experimental Pharmacology and Toxicology, Cardiovascular Research
Center, University Medical Center Hamburg-Eppendorf, Germany

* These authors contributed equally

Email Address of Corresponding Author:

Simon Pecha (s.pecha@uke.de)

Email Addresses of Co-Authors:

Liesa Castro (l.castro@uke.de)

Birgit Geertz (b.geertz@uke.de)

Marina Reinsch (m.reinsch@uke.de)

Bülent Aksehirlioglu (b.aksehirlioglu@uke.de)

Arne Hansen (a.hansen@uke.de)

Thomas Eschenhagen (t.eschenhagen@uke.de)

Hermann Reichenspurner (reichenspurner@uke.de)

Florian Weinberger (f.weinberger@uke.de)

KEYWORDS:

Engineered heart tissue, cardiomyocytes, cryoinjury, guinea pig, cardiac muscle patch, iPS-cells

SUMMARY

Here we present a protocol for the induction of left ventricular cryoinjury followed by the implantation of a cardiac muscle patch, derived from human iPS-cell cardiomyocytes in a guinea pig model.

ABSTRACT

Due to the limited regeneration capacity of the heart in adult mammals, myocardial infarction results in an irreversible loss of cardiomyocytes. This loss of relevant amounts of heart muscle mass can lead to the heart failure. Besides heart transplantation, there is no curative treatment option for the end-stage heart failure. In times of organ donor shortage, organ independent treatment modalities are needed. Left-ventricular assist devices are a promising therapy option, however, especially as destination therapy, limited by its side-effects like stroke, infections and bleedings. In recent years, several cardiac repair strategies including stem cell injection, cardiac progenitors or myocardial tissue engineering have been investigated. Recent improvements in cell biology allow for the differentiation of large

amounts of cardiomyocytes derived from human induced pluripotent stem cells (iPSC). One of the cardiac repair strategies currently under evaluation is to transplant artificial heart tissue. Engineered heart tissue (EHT) is a three-dimensional *in-vitro* created cardiomyocyte network, with functional properties of native heart tissue. We have created EHT-patches from hiPSC derived cardiomyocytes. Here we present a protocol for the induction of left ventricular myocardial cryoinjury in a guinea pig, followed by implantation of hiPSC derived EHT on the left ventricular wall.

INTRODUCTION

The number of patients with heart failure is increasing in our aging population. For end-stage heart failure, orthotopic heart transplantation is the only curative treatment option. However, especially in European countries, there is an increasing organ donor shortage. Therefore, alternative treatment options are necessary. Recent achievements in mechanical circulatory support are promising, but especially in the long-term run, limited by its side effects like bleeding, pump thrombosis and infectious complications¹.

The endogenous regeneration capacity of the adult human heart is extremely limited. Therefore, cardiac regeneration therapies might become an alternative treatment option for end-stage heart failure patients^{2,3}. Different techniques including stem cell-based cell injection or tissue engineering approaches have been described³⁻⁵.

Human induced pluripotent stem cells (hiPSC), as well as human embryonic stem cells (hESC) can be effectively differentiated to spontaneously beating human cardiomyocytes⁶, which has been a major achievement in the field of cardiac regenerative therapies.

To replace myocardium after a myocardial infarction and to improve the function of a failing heart, survival of a suitable number of cardiomyocytes and their mechanical and electrical coupling with the native heart is essential. To investigate the potential of cardiac regenerative therapies with human iPS cell derived cardiomyocytes, a suitable research model is needed. The ideal model should be cost-effective and have a human-like physiology and electrophysiology. Large animal models like pigs would be ideal from that point of view, however, those experiments are very expensive and large amounts of cardiomyocytes would be necessary to replace a relevant number of cardiomyocytes in order to see effects on the left ventricular function in a pig infarction model.

To answer elementary biological questions towards human cell-based cardiac regeneration, e.g., cell survival, vascularization, and electrical coupling, small animal models are more suitable. From the available small animal models, the guinea pig is the most useful species, as compared to rats and mice, as their electrophysiology more closely resembles the situation in humans⁷. In this guinea pig model, we induced a transmural cryoinjury of the left ventricle. One week after induction of myocardial infarction implantation of a three-dimensional, spontaneously beating hiPS-cell derived cardiomyocyte patch was performed. Cardiomyocyte cell survival was evaluated 28 days after implantation by histological examination.

PROTOCOL

Animals received humane care in compliance with the Guide for the Principles of Laboratory Animals, prepared by the Institute of Laboratory Animal Resources, and published by the National Institutes of Health. All animal protocols were approved by the responsible local

authority ("Amt für Gesundheit und Verbraucherschutz, Hansestadt Hamburg"/ Animal protocol # 109/16).

1. Obtain Animals

1.1. Commercially obtain female Guinea pigs weighing 500 - 600 g.

1.2. House them under conventional conditions in animal cages. Feed standard rat chow and autoclaved water *ad libitum*.

2. Transthoracic Echocardiography

2.1. Place the guinea pig in an induction chamber and anesthetize the animal with isoflurane (2-3%). Check the depth of anesthesia by lack of response to the toe-pinch.

2.2. Place the anesthetized Guinea pig on a warming platform (40 - 42 °C) in a supine position. Continue anesthesia via a nose cone (isoflurane 1.5-2%)

2.3. Shave and depilate the guinea pig's thorax using an electric animal hair shaver.

2.4. Apply prewarmed (approx. 25 °C) ultrasound transducer gel. Use an echocardiography system that is equipped with a transducer frequency higher than 15 MHz.

2.5. Acquire two-dimensional parasternal long axis views by placing the transducer on the guinea's pig thorax facing from the right neck towards the left leg and record long axis B-mode images at the plane of the aortic valve with a concurrent visualization of the LV apex. Investigate the pre-operative left-ventricular function.

2.6. Turn the transducer by 90° degrees to obtain a short axis B-mode view at the mid-papillary level.

Note: The animal is then immediately transferred to the OR table. The animal is continuously anesthetized with 3% isoflurane. 0.05 mg/kg atropine (i.m.) is injected to avoid increased bronchial secretion during mechanical ventilation.

3. Surgery

3.1. Induction of Myocardial infarction

3.1.1. Inject 4-5 mg/kg carprofen and 0.05 mg/kg buprenorphine subcutaneously with a 21 G needle and a 10 mL syringe.

3.1.2. Place the guinea pig on its back and keep anesthesia with a facemask covering mouth and nose. Check the depth of anesthesia by pinching the hind feet (lack of pedal reflex).

3.1.3. Spread the guinea pigs' legs and fix the position using tape.

3.1.4. Shave the chest and the tracheal region of the anesthetized animal with an electric

145 shaver. Disinfect the area widely using iodine-based scrub, followed by 80% ethanol. Repeat
146 this disinfection steps twice.

147
148 3.1.5. Perform a 1.5 cm vertical incision in the tracheal area and bluntly dissect the muscles
149 covering the trachea until you see the trachea. Puncture the trachea with 18 G i.v. cannula
150 and insert the flexible part of the cannula as a tracheal tube.

151
152 3.1.6. Connect the tracheal tube to an animal respirator to continuously ventilate the guinea
153 pig during the procedure.

154
155 Note: Now the anesthesia is maintained with isoflurane 3% via the tracheal tube (inspiration
156 assisted ventilation with maximum inspiration pressure, respiration rate: 100-120/min, peak
157 inspiration pressure: 18-22 cm Hg using PEEP-ventilation while the chest is open).

158
159 3.1.7. Identify the 5th intercostal space by counting the rib spaces beginning at the first
160 intercostal space. Perform a 2 cm horizontal incision on the 5th intercostal space on the left
161 side of the guinea pig using scissors and a tweezer. Insert a small animal retractor. Dissect the
162 muscles with an electrocautery until the intercostal muscles are reached, which can be seen
163 after removing the subcutaneous tissue, are reached.

164
165 3.1.8. Gently dissect the intercostal muscles with tweezers until the pleural space is reached
166 and one can see the left lung in front. Insert the retractor between the ribs and open it
167 carefully until a good view of the heart is obtained.

168
169 3.1.9. Open the pericardium approximately 1 cm in the region of the anterior left ventricular
170 wall with scissors. Place a compress on the left lung to protect it from damage when inducing
171 the cryoinjury of the left ventricle.

172
173 3.1.10. Place the tip of an eroded metal stamp with a cross-sectional diameter of 0.5 cm into
174 liquid nitrogen for 3 min.

175
176 3.1.11. Press the nitrogen cooled probe onto the left anterior wall of the heart for 30 s. Then
177 separate it from the heart using an electric soldering iron (200 °C) which is placed inside the
178 stamp to warm it up. Repeat this procedure 3 times to obtain a transmural myocardial injury.
179 Observe the blanching of the myocardium.

180
181 3.1.12. Inflate the lungs with maximum pressure (by clamping the outflow tube of the
182 ventilator for 2 s), to avoid atelectasis of the lung. Remove the retractor from the intercostal
183 space.

184
185 3.1.13 Close the ribs with two 3-0 sutures. Close the muscles over the ribs with a 4-0 running
186 suture. For closure of the skin use 5-0 suture single stitches.

187
188 3.1.14. Reduce the isoflurane to 1%. When the animal is breathing spontaneously, remove the
189 tracheal tube, and continue anesthesia with a facemask (isoflurane 2-3%).

190
191 3.1.15. Assure the absence of reflexes by pinching the hind limb to monitor sufficient depth
192 of anesthesia. Then use a single 8-0 suture to close the puncture site at the trachea. Close the

wound with three single stitch 4-0 sutures.

3.1.16. Use buprenorphine (0.05 mg/kg per 12 h) and carprofen (5 mg/kg per 24 h) for pain medication for the following 5 days.

3.2. Implantation of EHT (7 days after cryoinjury)

3.2.1. Place the guinea pig in an induction chamber and anesthetize the animal with isoflurane. Check the depth of anesthesia by the lack of response to the toe-pinch.

3.2.2 Inject 4-5 mg/kg carprofen and 0.05 mg/kg buprenorphine subcutaneously with a 21 G needle and a 10 mL syringe after induction of anesthesia. Place the guinea pig on its back and keep anesthesia with a facemask covering mouth and nose.

Note: Sufficiency of anesthesia should be checked by pinching the hind feet.

3.2.3. Spread the guinea pig's legs and fix the position using tape.

3.2.4. Perform the pre-surgical preparations as described in step 3.1.4-3.1.6. Perform a 2 cm horizontal skin incision in the scar area of the left lateral side using scissors and tweezers.

3.2.5. Gently dissect the extrapleural adhesions using an electrocautery. Carefully open the pleural space with scissors. Insert a rib spreader to expose the heart.

3.2.6. Visually identify the region of the infarction by its pale color in comparison to the healthy surrounding myocardium. Place the engineered heart tissue patch over the infarction region.

3.2.7. Secure it with two 8-0 sutures at both sides. Make sure to secure the patch in the non-infarcted area of the heart (**Figure 1**). Inflate the lungs with pressure, to avoid atelectasis of the lung. Remove the retractor from the intercostal space.

3.2.8. Close the ribs with two 3-0 sutures. Close the muscles over the ribs with a 4-0 running suture. For closure of the skin use 5-0 suture single stitches.

3.2.9. Reduce the isoflurane to 1%. When the animal is breathing spontaneously, remove the tracheal tube, and continue anesthesia with a facemask (isoflurane 2-3%).

3.2.10. Assure the absence of reflexes by pinching the hind limb to monitor sufficient depth of anesthesia. Then use a single 8-0 suture to close the puncture site at the trachea. Close the wound with three single stitch 4-0 sutures.

3.2.11. Use buprenorphine (0.05 mg/kg per 12 h) and carprofen (5 mg/kg per 24 h) for pain medication for the following 5 days.

3.2.12. Four weeks after EHT implantation perform a transthoracic echocardiography (as described in step 2) to monitor LV function over time.

NOTE: The LV function is monitored before EHT implantation and 4 weeks after implantation to monitor for improvement of cardiac function by EHT implantation

3.2.13. Euthanize the animal which IACUC approved protocol and surgically explant the heart for further analysis.

RESULTS

This guinea pig model is a suitable model to investigate cardiac regeneration after implantation of hiPSC derived EHT-patches. It reproducibly leads to large transmural myocardial injuries. Scar size is evaluated by histology four weeks after cryoinjury. Mason trichrome staining reveals large transmural scars (**Figure 2**). Scar size was similar over a large number of injured animals reflecting a high degree of reproducibility⁸. On average 25% of the left ventricular myocardium was replaced by scar tissue. Dystrophin staining demonstrated large myocardial grafts that partially remuscularized the scar (**Figure 3a**). Staining for human Ku80 proved the human origin of this newly formed myocardium (**Figure 3b**). Higher magnification revealed that these grafts consisted of densely packed myocytes. Left ventricular function was monitored using transthoracic echocardiography. A successful EHT implantation is characterized by an improvement in LVEF, Fractional area shortening, and a decrease in Left ventricular end-diastolic diameter (**Figure 4**).

FIGURE LEGEND

Figure 1: hEHT-patches after implantation. (A) Patch immediately after implantation. (B) Patch four weeks after implantation.

Figure 2: Determination of infarction on Masson's trichrome stained paraffin section 28 days after cryoinjury. The infarction is determined by the blue color in Masson's trichrome staining, representing fibrotic tissue. Scale bar 2mm.

Figure 3: Staining with Dystrophin and Human Ku80. (A) Dystrophin staining shows large muscle islands (brown) in the scar area (B) Ku-Staining of paraffin sectioned heart. Ku-80 is a human-specific antibody. Therefore, the positively stained cells (brown color) are from human origin.

Figure 4: M-Mode measurement of the left ventricle using transthoracic echocardiography. (A) at baseline and (B) one week after cryoinjury. (IVS: Intraventricular septum, LV: Left ventricle, PW: Posterior wall). Measurements are performed 3 times. At baseline, 1 week after cryoinfarction and 4 weeks after EHT implantation

DISCUSSION

A variety of small animal models are available to study the effect that cell transplantation exerts on injured hearts⁹⁻¹¹. We chose a guinea pig model because of all small animal models its (electro)physiology resembles most closely that of humans. The advantages of small animal models are simple housing, manageable costs, and few workforces. In comparison with mice and rats, guinea pigs' cardiac (electro)physiology is more similar to humans. In particular heart frequency is lower (~250/min), ventricular action potential shows a plateau phase and the potassium current I_{Kr} is important for repolarization⁷. Furthermore, the larger size of the animals facilitates surgeries, which is especially important as a re-thoracotomy is required one

week after the induction of injury. However, guinea pigs are sensitive to anesthesia requiring some experience.

Shiba *et al.*, described the use of 50 mg/kg ketamine and 2 mg/kg xylazine (i.p.) to anesthetize guinea pigs for cardiac cryoinjury⁴. We have also evaluated this anesthesia regiment. One of the disadvantages is the fact that it is impossible to suspend the narcotic effect of xylazine and ketamine due to missing potent antidotes. Considering that guinea pigs are at high risk of hypoglycemia during surgical procedures, we decided to use a narcotic gas whose effect is easy to control and therefore leading to a very short anesthetic recovery phase. A tracheotomy is used to ensure a safe ventilation throughout the procedure. An oro-tracheal intubation is technically very demanding in guinea pigs, as the visualization of the opening of the trachea is often difficult and a safe intubation cannot be guaranteed.

Although cryo-injury induces a severe myocardial injury it does not precisely mirror a coronary artery disease/ myocardial infarction in humans. In this respect, the ligation of the LAD or even an ischemia-reperfusion injury model more closely recapitulates the human pathophysiology. However, the coronary artery anatomy in guinea-pigs is characterized by an extensive collateralization. Therefore, a ligation of the left anterior descending coronary artery does not reproducibly result in large myocardial injuries in guinea pigs^{12,13}. LAD-ligation in mice and rats leads to an extensive remodeling and eventually thinning of the anterior wall, a characteristic that is not seen in humans to this extent. The guinea-pig cryo-injury model induces remodeling processes and thinning of the ventricular wall, but to an extent, that more closely resembles a myocardial injury seen in humans. Therefore, a cryoinjury model resulting in a more reliable myocardial injury was chosen¹³. Periprocedural mortality is a major problem with this model. Initially, about 30% of the animals died during the first operation or within 7 days after cardiac injury. Another 30% died during EHT implantation accounting for an overall mortality of 60%. Several modifications lead to a significant decrease in mortality. Isoflurane induces heavy salivation and bronchial secretion. Atropine reduces bronchial secretion and was a major factor to decrease mortality. The second factor that heavily decreased mortality is the use of a soldering iron to release the cold metal stamp from the heart. Warm water was initially used to detach the stamp from the myocardium. However, it was difficult to remove the water from the thoracic cavity. Remaining water negatively influenced respiration and lead to the development of adhesion that worsened the animal's prognosis. Another modification that positively influenced the procedure was the protection of the left lung from the cold metal stamp with a compress. After these modifications were implemented mortality dropped to ~20% for the cardiac injury operation (including the first postoperative week) and another 25 % for EHT transplantation. Induction of cryo injury represents the technically easier operation and consistent results can be achieved after 5-10 animals have been operated under supervision. EHT-transplantation is more demanding and about 20 surgeries under supervision are recommended until reproducible results can be obtained.

In the beginning, we used warm saline to rinse the heart and, therefore, detach the frozen probe from the left ventricular wall. This procedure is easier to handle but a few milliliters of saline remain in the thorax increasing the risk of respiratory failure.

In conclusion, the depicted guinea pig model is reproducible, inexpensive and leads to consistent results. Transthoracic echocardiography offers a feasible and non-invasive tool to

evaluate the presence of cardiac injury before re-operation and graft-implantation is performed.

ACKNOWLEDGMENTS

No funding was received for this study

DISCLOSURES

None of the authors has competing financial interests or other conflicts of interest to declare.

REFERENCES

- 1 Kirklin, J. K. *et al.* Seventh INTERMACS annual report: 15,000 patients and counting. *The Journal of heart and lung transplantation: the official publication of the International Society for Heart Transplantation*. **34**, 1495-1504, doi:10.1016/j.healun.2015.10.003 (2015).
- 2 Soonpaa, M. H. & Field, L. J. Survey of studies examining mammalian cardiomyocyte DNA synthesis. *Circulation research*. **83**, 15-26 (1998).
- 3 Shiba, Y., Hauch, K. D. & Laflamme, M. A. Cardiac applications for human pluripotent stem cells. *Current pharmaceutical design*. **15**, 2791-2806 (2009).
- 4 Shiba, Y. *et al.* Human ES-cell-derived cardiomyocytes electrically couple and suppress arrhythmias in injured hearts. *Nature*. **489**, 322-325, doi:10.1038/nature11317 (2012).
- 5 Chong, J. J. *et al.* Human embryonic-stem-cell-derived cardiomyocytes regenerate non-human primate hearts. *Nature*. **510**, 273-277, doi:10.1038/nature13233 (2014).
- 6 Kattman, S. J. *et al.* Stage-specific optimization of activin/nodal and BMP signaling promotes cardiac differentiation of mouse and human pluripotent stem cell lines. *Cell stem cell*. **8**, 228-240, doi:10.1016/j.stem.2010.12.008 (2011).
- 7 Watanabe, T., Rautaharju, P. M. & McDonald, T. F. Ventricular action potentials, ventricular extracellular potentials, and the ECG of guinea pig. *Circulation research*. **57**, 362-373 (1985).
- 8 Weinberger, F. *et al.* Cardiac repair in guinea pigs with human engineered heart tissue from induced pluripotent stem cells. *Science translational medicine*. **8**, 363ra148, doi:10.1126/scitranslmed.aaf8781 (2016).
- 9 Shiba, Y. *et al.* Electrical Integration of Human Embryonic Stem Cell-Derived Cardiomyocytes in a Guinea Pig Chronic Infarct Model. *Journal of Cardiovascular Pharmacology and Therapy*. **19**, 368-381, doi:10.1177/1074248413520344 (2014).
- 10 van Laake, L. W. *et al.* Human embryonic stem cell-derived cardiomyocytes survive and mature in the mouse heart and transiently improve function after myocardial infarction. *Stem cell research*. **1**, 9-24, doi:10.1016/j.scr.2007.06.001 (2007).
- 11 Zimmermann, W. H. *et al.* Engineered heart tissue grafts improve systolic and diastolic function in infarcted rat hearts. *Nature medicine*. **12**, 452-458, doi:10.1038/nm1394 (2006).
- 12 Johns, T. N. & Olson, B. J. Experimental myocardial infarction. I. A method of coronary occlusion in small animals. *Annals of surgery*. **140**, 675-682 (1954).
- 13 van den Bos, E. J., Mees, B. M., de Waard, M. C., de Crom, R. & Duncker, D. J. A novel model of cryoinjury-induced myocardial infarction in the mouse: a comparison with coronary artery ligation. *American journal of physiology. Heart and circulatory physiology*. **289**, H1291-1300, doi:10.1152/ajpheart.00111.2005 (2005).

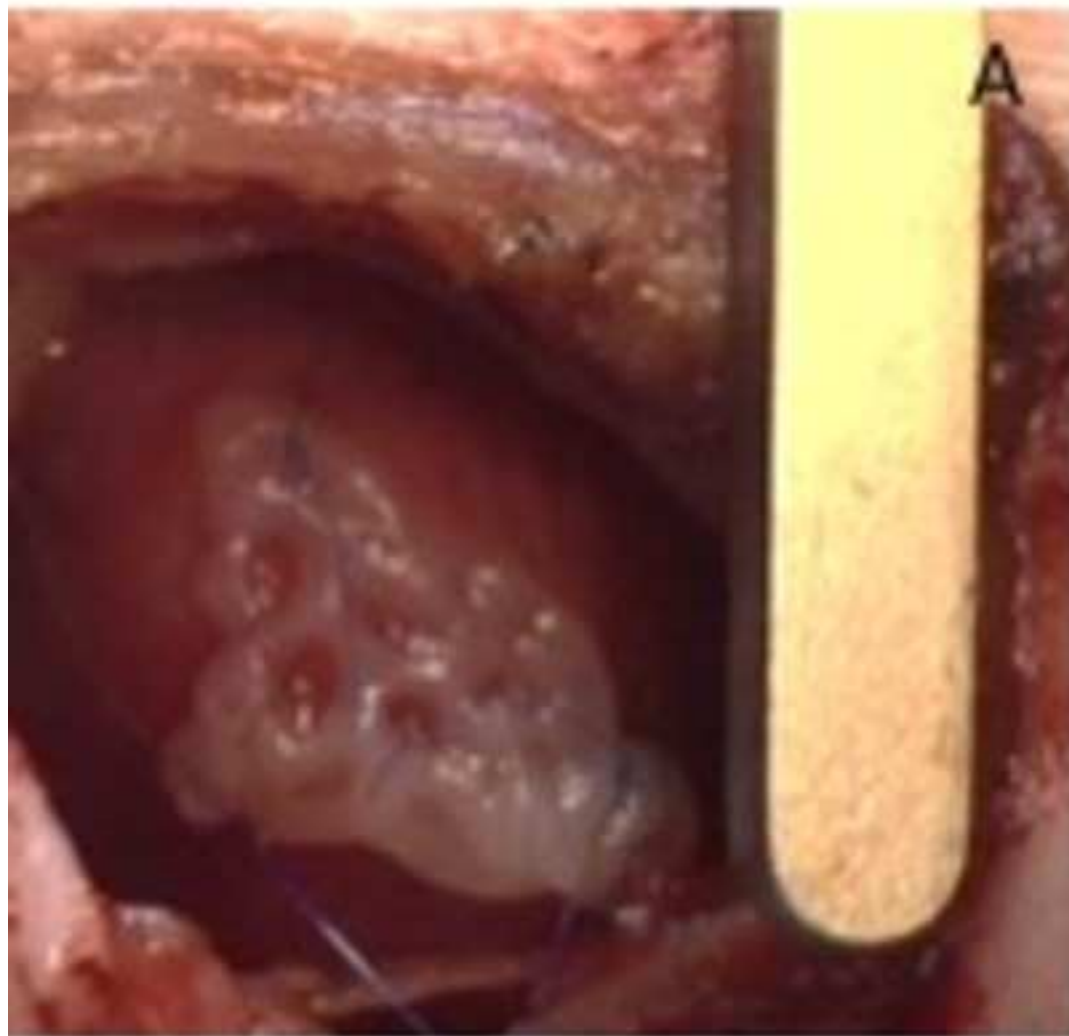


Figure 2

[Click here to access/download;Figure;Fig 2 JOVE.jpg](#)

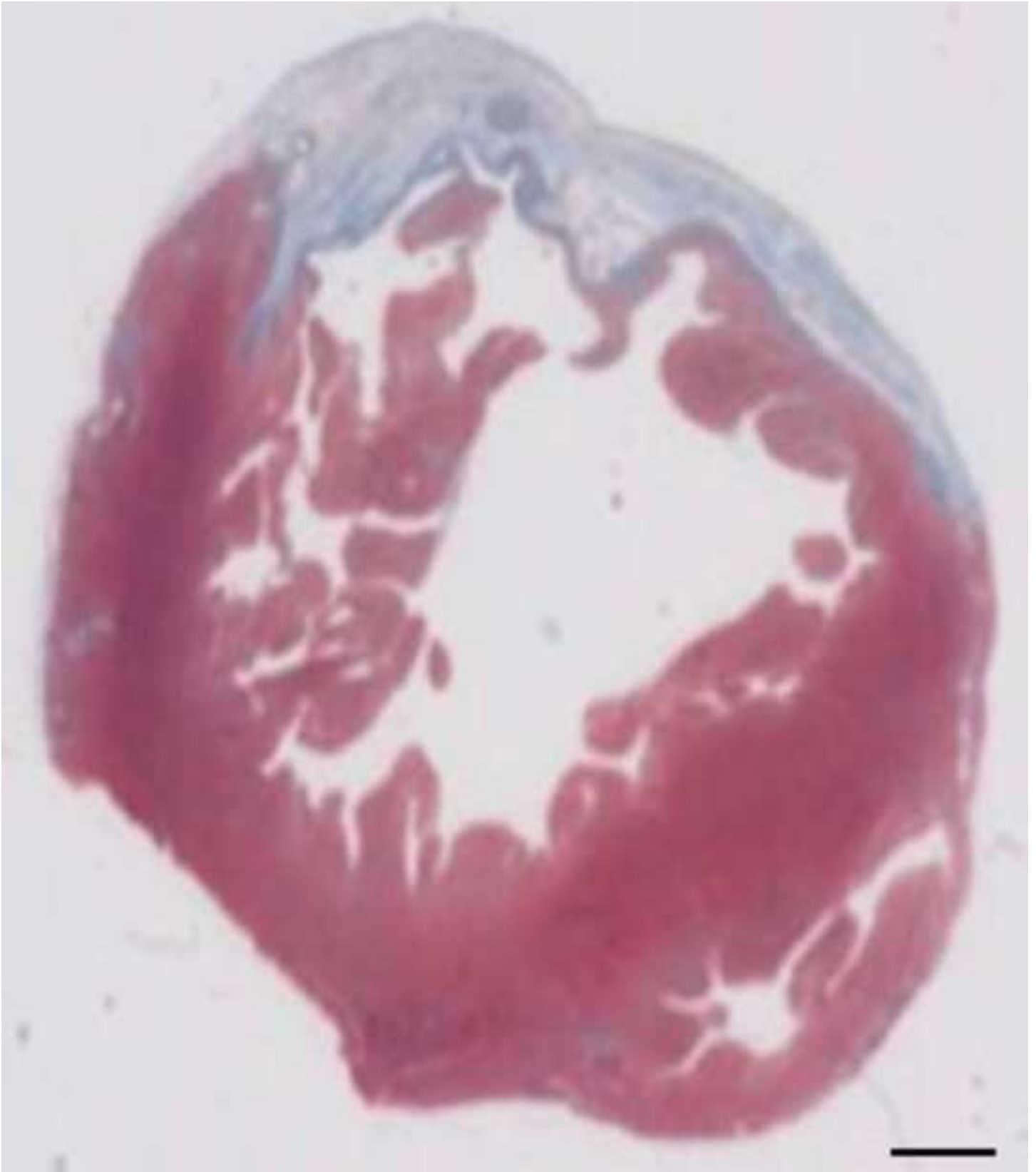


Figure 3

[Click here to access/download;Figure;Fig3ab.jpg](#)

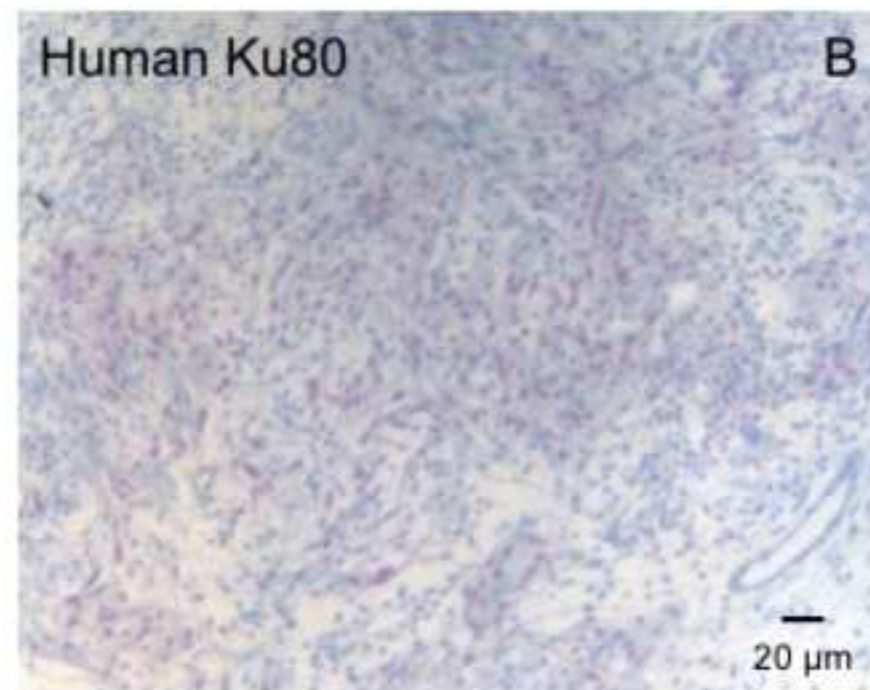
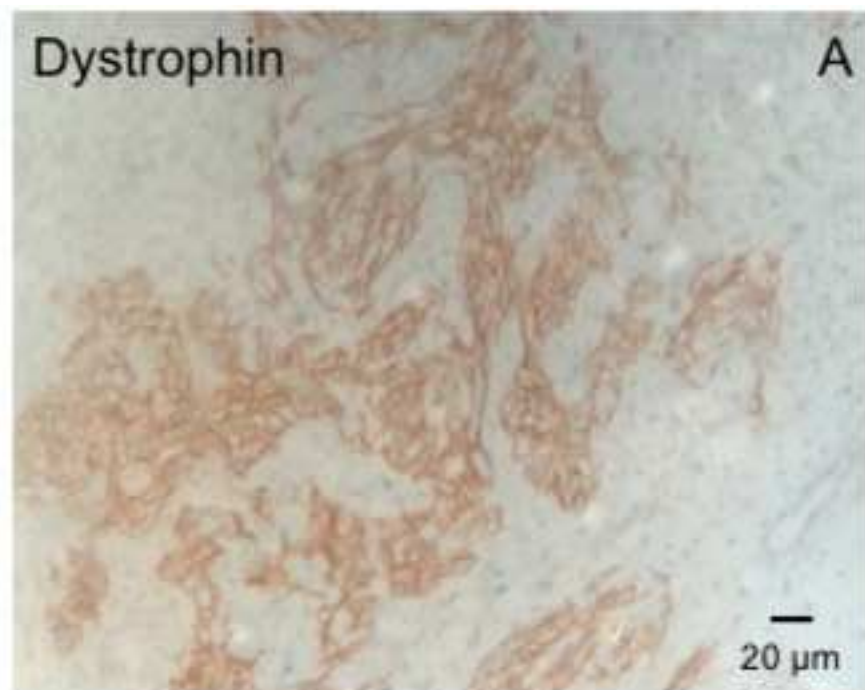
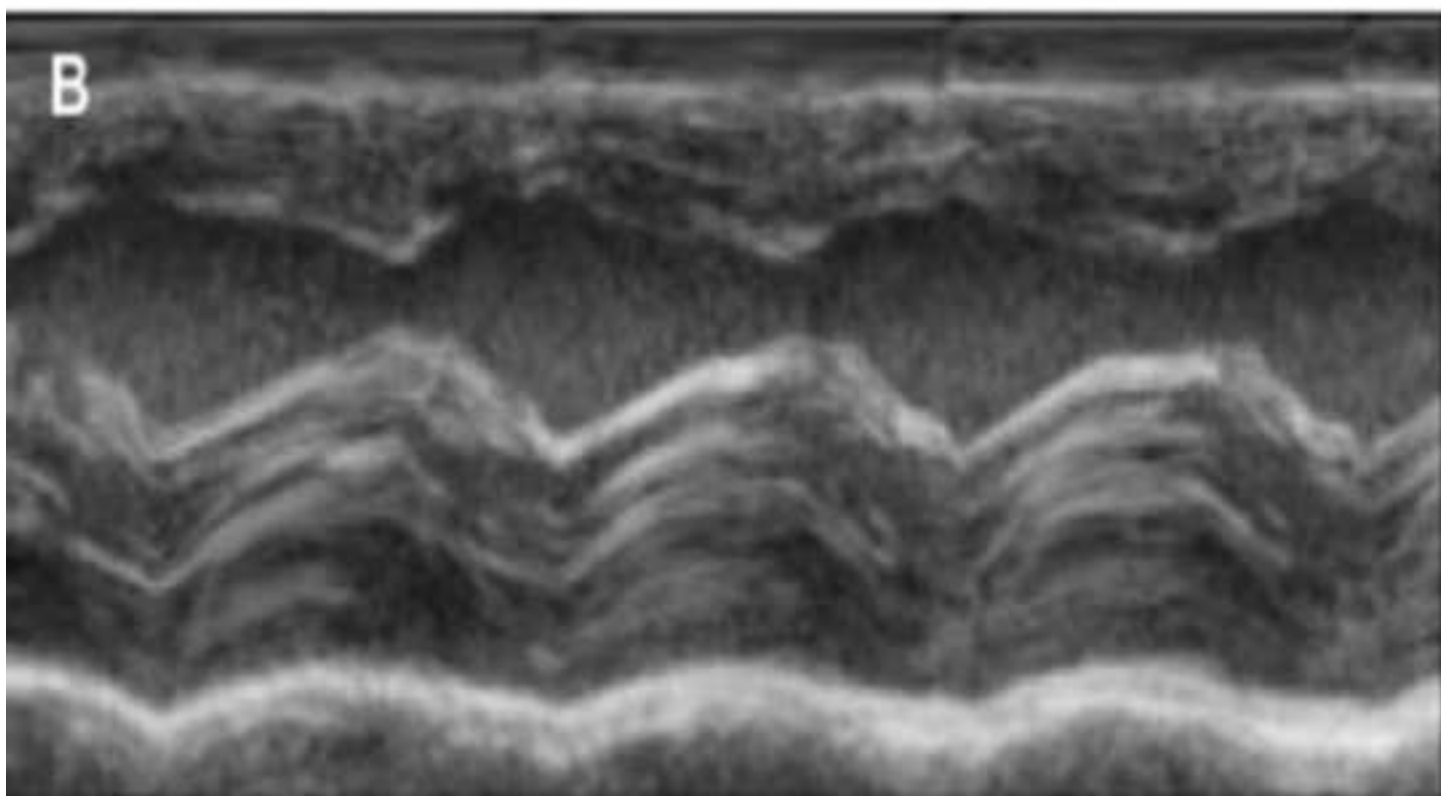
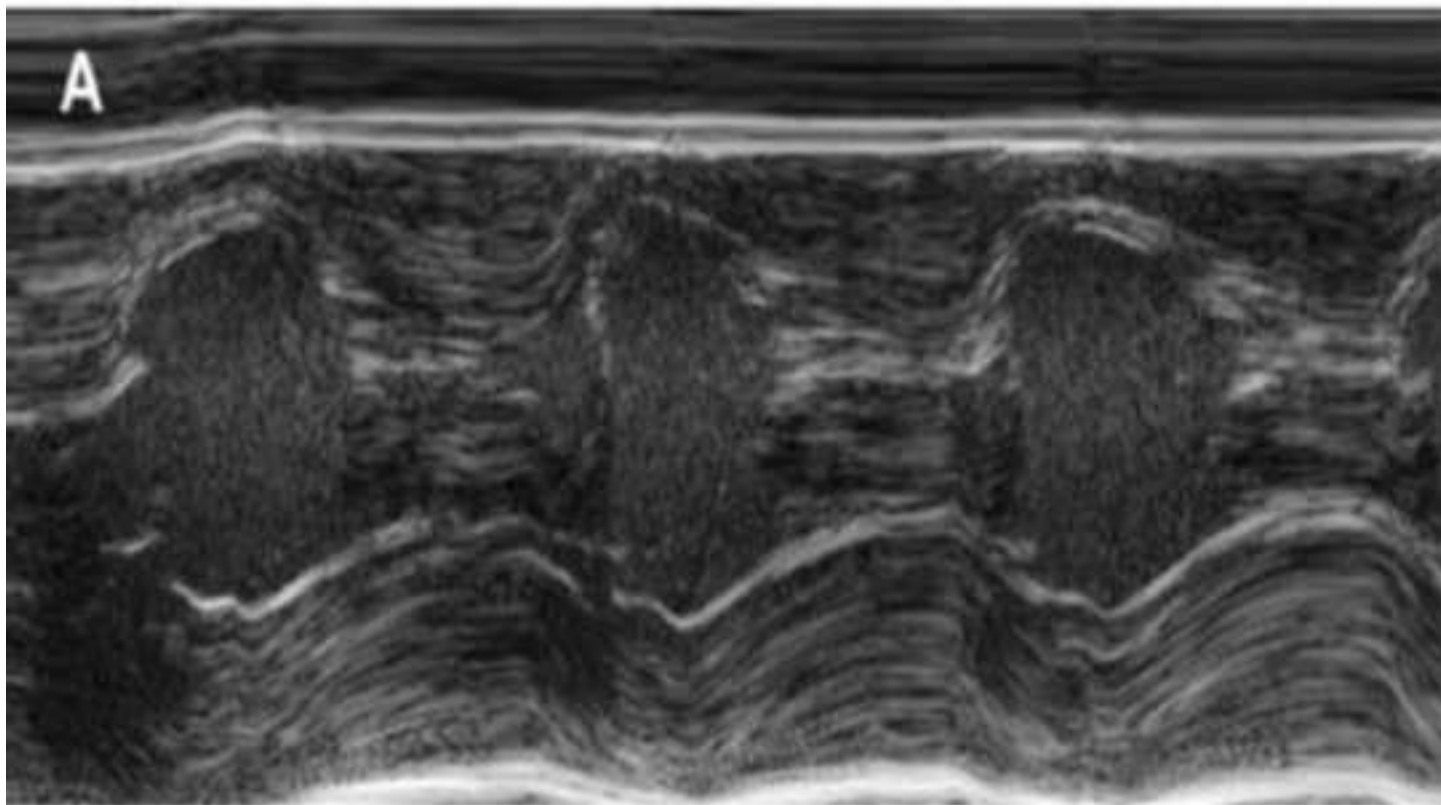


Figure 4



Name of Material/ Equipment	Company	Catalog Number
Ventilator (VetFlo Dual Mode)	Kent Scientific	
Forene	abbvie	1000009819
Carprofen	Zoetis	256692
Atropin	Braun	PZN 00648037
Buprenorphin	Sigma	
Metal stamp		
Electric soldering iron	Claytools	
3-0 prolene suture	Ethicon	
4-0 prolene suture	Ethicon	662SLH
5-0 prolene suture	Ethicon	8710H
8-0 prolene suture	Ethicon	8841H
Tungsten Carbide Scissor	FST	No. 14568-12
Stainless sterilization Container	FST	No. 20890-51
Graefe Forceps	FST	No.11652-10
Extra fine Graefe Forceps	FST	No.11150-10
Forceps	FST	No. 11022-15
Halsted- Mosquito	FST	No. 13009-12
Forceps	FST	No.13003-10
Baby Mixer	FST	No. 13013-14
Needle holder (Castroviejo with Tungsten Carbide Jaw)	FST	No. 12565-14
Needle Holder (Halsey)	FST	No. 12501-13
Alm Retractor with Blunt Teeth	FST	No. 17008-07
Spring Scissor	FST	No. 15000-00
Compress 5x5	Fink + Walter	PZN 08821417
Venflon Pro Safety	Becton Dickinson	PZN11123964
Cautery High Temp 2"	Bovie Medical Corporation	0100607151011055

Comments/Description



1 Alewife Center #200
Cambridge, MA 02142
tel. 617.945.9051
www.jove.com

ARTICLE AND VIDEO LICENSE AGREEMENT

Title of Article:

Implantation of hiPSC derived cardiac-muscle patches after myocardial injury in a guinea pig model / Liera Castro, Simon Pecha

Author(s):

Item 1 (check one box): The Author elects to have the Materials be made available (as described at

<http://www.jove.com/author>) via: ☒ Standard Access ☐ Open Access

Item 2 (check one box):

☒ The Author is NOT a United States government employee.

☐ The Author is a United States government employee and the Materials were prepared in the course of his or her duties as a United States government employee.

☐ The Author is a United States government employee but the Materials were NOT prepared in the course of his or her duties as a United States government employee.

ARTICLE AND VIDEO LICENSE AGREEMENT

1. **Defined Terms.** As used in this Article and Video License Agreement, the following terms shall have the following meanings: "Agreement" means this Article and Video License Agreement; "Article" means the article specified on the last page of this Agreement, including any associated materials such as texts, figures, tables, artwork, abstracts, or summaries contained therein; "Author" means the author who is a signatory to this Agreement; "Collective Work" means a work, such as a periodical issue, anthology or encyclopedia, in which the Materials in their entirety in unmodified form, along with a number of other contributions, constituting separate and independent works in themselves, are assembled into a collective whole; "CRC License" means the Creative Commons Attribution-Non Commercial-No Derivs 3.0 Unported Agreement, the terms and conditions of which can be found at: <http://creativecommons.org/licenses/by-nc-nd/3.0/legalcode>; "Derivative Work" means a work based upon the Materials or upon the Materials and other pre-existing works, such as a translation, musical arrangement, dramatization, fictionalization, motion picture version, sound recording, art reproduction, abridgment, condensation, or any other form in which the Materials may be recast, transformed, or adapted; "Institution" means the institution, listed on the last page of this Agreement, by which the Author was employed at the time of the creation of the Materials; "JoVE" means MyJoVE Corporation, a Massachusetts corporation and the publisher of *The Journal of Visualized Experiments*; "Materials" means the Article and / or the Video; "Parties" means the Author and JoVE; "Video" means any video(s) made by the Author, alone or in conjunction with any other parties, or by JoVE or its affiliates or agents, individually or in collaboration with the Author or any other parties, incorporating all or any portion of the Article, and in which the Author may or may not appear.

2. **Background.** The Author, who is the author of the Article, in order to ensure the dissemination and protection of the Article, desires to have the JoVE publish the Article and create and transmit videos based on the Article. In furtherance of such goals, the Parties desire to memorialize in this Agreement the respective rights of each Party in and to the Article and the Video.

3. **Grant of Rights in Article.** In consideration of JoVE agreeing to publish the Article, the Author hereby grants to JoVE, subject to Sections 4 and 7 below, the exclusive, royalty-free, perpetual (for the full term of copyright in the Article, including any extensions thereto) license (a) to publish, reproduce, distribute, display and store the Article in all forms, formats and media whether now known or hereafter developed (including without limitation in print, digital and electronic form) throughout the world, (b) to translate the Article into other languages, create adaptations, summaries or extracts of the Article or other Derivative Works (including, without limitation, the Video) or Collective Works based on all or any portion of the Article and exercise all of the rights set forth in (a) above in such translations, adaptations, summaries, extracts, Derivative Works or Collective Works and (c) to license others to do any or all of the above. The foregoing rights may be exercised in all media and formats, whether now known or hereafter devised, and include the right to make such modifications as are technically necessary to exercise the rights in other media and formats. If the "Open Access" box has been checked in Item 1 above, JoVE and the Author hereby grant to the public all such rights in the Article as provided in, but subject to all limitations and requirements set forth in, the CRC License.

ARTICLE AND VIDEO LICENSE AGREEMENT

4. **Retention of Rights in Article.** Notwithstanding the exclusive license granted to JoVE in **Section 3** above, the Author shall, with respect to the Article, retain the non-exclusive right to use all or part of the Article for the non-commercial purpose of giving lectures, presentations or teaching classes, and to post a copy of the Article on the Institution's website or the Author's personal website, in each case provided that a link to the Article on the JoVE website is provided and notice of JoVE's copyright in the Article is included. All non-copyright intellectual property rights in and to the Article, such as patent rights, shall remain with the Author.

5. **Grant of Rights in Video – Standard Access.** This **Section 5** applies if the "Standard Access" box has been checked in **Item 1** above or if no box has been checked in **Item 1** above. In consideration of JoVE agreeing to produce, display or otherwise assist with the Video, the Author hereby acknowledges and agrees that, Subject to **Section 7** below, JoVE is and shall be the sole and exclusive owner of all rights of any nature, including, without limitation, all copyrights, in and to the Video. To the extent that, by law, the Author is deemed, now or at any time in the future, to have any rights of any nature in or to the Video, the Author hereby disclaims all such rights and transfers all such rights to JoVE.

6. **Grant of Rights in Video – Open Access.** This **Section 6** applies only if the "Open Access" box has been checked in **Item 1** above. In consideration of JoVE agreeing to produce, display or otherwise assist with the Video, the Author hereby grants to JoVE, subject to **Section 7** below, the exclusive, royalty-free, perpetual (for the full term of copyright in the Article, including any extensions thereto) license (a) to publish, reproduce, distribute, display and store the Video in all forms, formats and media whether now known or hereafter developed (including without limitation in print, digital and electronic form) throughout the world, (b) to translate the Video into other languages, create adaptations, summaries or extracts of the Video or other Derivative Works or Collective Works based on all or any portion of the Video and exercise all of the rights set forth in (a) above in such translations, adaptations, summaries, extracts, Derivative Works or Collective Works and (c) to license others to do any or all of the above. The foregoing rights may be exercised in all media and formats, whether now known or hereafter devised, and include the right to make such modifications as are technically necessary to exercise the rights in other media and formats. For any Video to which this **Section 6** is applicable, JoVE and the Author hereby grant to the public all such rights in the Video as provided in, but subject to all limitations and requirements set forth in, the CRC License.

7. **Government Employees.** If the Author is a United States government employee and the Article was prepared in the course of his or her duties as a United States government employee, as indicated in **Item 2** above, and any of the licenses or grants granted by the Author hereunder exceed the scope of the 17 U.S.C. 403, then the rights granted hereunder shall be limited to the maximum rights permitted under such

statute. In such case, all provisions contained herein that are not in conflict with such statute shall remain in full force and effect, and all provisions contained herein that do so conflict shall be deemed to be amended so as to provide to JoVE the maximum rights permissible within such statute.

8. **Likeness, Privacy, Personality.** The Author hereby grants JoVE the right to use the Author's name, voice, likeness, picture, photograph, image, biography and performance in any way, commercial or otherwise, in connection with the Materials and the sale, promotion and distribution thereof. The Author hereby waives any and all rights he or she may have, relating to his or her appearance in the Video or otherwise relating to the Materials, under all applicable privacy, likeness, personality or similar laws.

9. **Author Warranties.** The Author represents and warrants that the Article is original, that it has not been published, that the copyright interest is owned by the Author (or, if more than one author is listed at the beginning of this Agreement, by such authors collectively) and has not been assigned, licensed, or otherwise transferred to any other party. The Author represents and warrants that the author(s) listed at the top of this Agreement are the only authors of the Materials. If more than one author is listed at the top of this Agreement and if any such author has not entered into a separate Article and Video License Agreement with JoVE relating to the Materials, the Author represents and warrants that the Author has been authorized by each of the other such authors to execute this Agreement on his or her behalf and to bind him or her with respect to the terms of this Agreement as if each of them had been a party hereto as an Author. The Author warrants that the use, reproduction, distribution, public or private performance or display, and/or modification of all or any portion of the Materials does not and will not violate, infringe and/or misappropriate the patent, trademark, intellectual property or other rights of any third party. The Author represents and warrants that it has and will continue to comply with all government, institutional and other regulations, including, without limitation all institutional, laboratory, hospital, ethical, human and animal treatment, privacy, and all other rules, regulations, laws, procedures or guidelines, applicable to the Materials, and that all research involving human and animal subjects has been approved by the Author's relevant institutional review board.

10. **JoVE Discretion.** If the Author requests the assistance of JoVE in producing the Video in the Author's facility, the Author shall ensure that the presence of JoVE employees, agents or independent contractors is in accordance with the relevant regulations of the Author's institution. If more than one author is listed at the beginning of this Agreement, JoVE may, in its sole discretion, elect not take any action with respect to the Article until such time as it has received complete, executed Article and Video License Agreements from each such author. JoVE reserves the right, in its absolute and sole discretion and without giving any reason therefore, to accept or decline any work submitted to JoVE. JoVE and its employees, agents and independent contractors shall have

ARTICLE AND VIDEO LICENSE AGREEMENT

full, unfettered access to the facilities of the Author or of the Author's institution as necessary to make the Video, whether actually published or not. JoVE has sole discretion as to the method of making and publishing the Materials, including, without limitation, to all decisions regarding editing, lighting, filming, timing of publication, if any, length, quality, content and the like.

11. Indemnification. The Author agrees to indemnify JoVE and/or its successors and assigns from and against any and all claims, costs, and expenses, including attorney's fees, arising out of any breach of any warranty or other representations contained herein. The Author further agrees to indemnify and hold harmless JoVE from and against any and all claims, costs, and expenses, including attorney's fees, resulting from the breach by the Author of any representation or warranty contained herein or from allegations or instances of violation of intellectual property rights, damage to the Author's or the Author's institution's facilities, fraud, libel, defamation, research, equipment, experiments, property damage, personal injury, violations of institutional, laboratory, hospital, ethical, human and animal treatment, privacy or other rules, regulations, laws, procedures or guidelines, liabilities and other losses or damages related in any way to the submission of work to JoVE, making of videos by JoVE, or publication in JoVE or elsewhere by JoVE. The Author shall be responsible for, and shall hold JoVE harmless from, damages caused by lack of sterilization, lack of cleanliness or by contamination due to the making of a video by JoVE its employees, agents or independent contractors. All sterilization, cleanliness or decontamination procedures shall be solely the responsibility of the Author and shall be undertaken at the Author's

expense. All indemnifications provided herein shall include JoVE's attorney's fees and costs related to said losses or damages. Such indemnification and holding harmless shall include such losses or damages incurred by, or in connection with, acts or omissions of JoVE, its employees, agents or independent contractors.

12. Fees. To cover the cost incurred for publication, JoVE must receive payment before production and publication the Materials. Payment is due in 21 days of invoice. Should the Materials not be published due to an editorial or production decision, these funds will be returned to the Author. Withdrawal by the Author of any submitted Materials after final peer review approval will result in a US\$1,200 fee to cover pre-production expenses incurred by JoVE. If payment is not received by the completion of filming, production and publication of the Materials will be suspended until payment is received.

13. Transfer, Governing Law. This Agreement may be assigned by JoVE and shall inure to the benefits of any of JoVE's successors and assignees. This Agreement shall be governed and construed by the internal laws of the Commonwealth of Massachusetts without giving effect to any conflict of law provision thereunder. This Agreement may be executed in counterparts, each of which shall be deemed an original, but all of which together shall be deemed to be one and the same agreement. A signed copy of this Agreement delivered by facsimile, e-mail or other means of electronic transmission shall be deemed to have the same legal effect as delivery of an original signed copy of this Agreement.

A signed copy of this document must be sent with all new submissions. Only one Agreement required per submission.

CORRESPONDING AUTHOR:

Name: Dr. Simon Pecha
Department: Cardiovascular Surgery
Institution: University Heart Center Hamburg
Article Title: MD
Signature: [Signature] Date: 16.07.18

Please submit a signed and dated copy of this license by one of the following three methods:

- 1) Upload a scanned copy of the document as a pdf on the JoVE submission site;
- 2) Fax the document to +1.866.381.2236;
- 3) Mail the document to JoVE / Attn: JoVE Editorial / 1 Alewife Center #200 / Cambridge, MA 02139

For questions, please email submissions@jove.com or call +1.617.945.9051

Dear Prof. Singh,

attached please find the revised version of our manuscript entitled "**Implantation of hiPSC derived cardiac-muscle patches after myocardial injury in a guinea pig model**".

The reviewers comments have been very helpful in improving the manuscript. Please find attached a revised version with the changes highlighted in yellow.

Editor: Converted to a note please check.

Answer: We agree with the Editor that this should be a note.

Editor: Please provide a figure for this. This is important

Answer: We have now provided a figure showing Dystrophin, as well as Ku80 Staining

Editor: Yes, monitoring is fine... please describe your observation as well.

Answer: A successful EHT implantation is characterized by an improvement in LVEF, Fractional area shortening, and a decrease in Left ventricular end-diastolic diameter.

Editor: Please expand on what is being observed with the staining. Please provide a scale bar in the figure and describe it in the figure legend.

Answer: The infarction is determined by the blue color in Masson's trichrome staining, representing fibrotic tissue. Scale bar 2mm.

Sincerely

Simon Pecha