

Journal of Visualized Experiments

Using Ustilago maydis as a Trojan Horse for in situ Delivery of Maize Proteins

--Manuscript Draft--

Article Type:	Invited Methods Article - JoVE Produced Video
Manuscript Number:	JoVE58746R1
Full Title:	Using Ustilago maydis as a Trojan Horse for in situ Delivery of Maize Proteins
Keywords:	Ustilago maydis; Trojan horse; protein delivery; Zea mays; tassel; anther; ear, cob; silk; adult leaf
Corresponding Author:	Karina van der Linde Universitat Regensburg Regensburg, GERMANY
Corresponding Author's Institution:	Universitat Regensburg
Corresponding Author E-Mail:	karina.van-der-linde@ur.de
Order of Authors:	Isabell-Christin Fiedler Arne Weiberg Karina van der Linde
Additional Information:	
Question	Response
Please indicate whether this article will be Standard Access or Open Access.	Standard Access (US\$2,400)
Please indicate the city, state/province, and country where this article will be filmed . Please do not use abbreviations.	Munich, Germany

TITLE:

Using *Ustilago maydis* as a Trojan Horse for *in situ* Delivery of Maize Proteins

AUTHORS AND AFFILIATIONS:

Isabell-C. Fiedler¹, Arne Weiberg², Karina van der Linde¹

¹Department of Biology, Regensburg University, Regensburg, Germany

²Department of Biology, Ludwig-Maximilians University of Munich, Munich, Germany

Corresponding author:

Karina van der Linde

karina.van-der-linde@ur.de

Email addresses of co-authors:

Isabell-C. Fiedler (isabell-christin.fiedler@ur.de)

Arne Weiberg (a.weiberg@lmu.de)

KEYWORDS:

Ustilago maydis, Trojan Horse, Protein Delivery, *Zea mays*, Tassel, Anther, Ear, Cob, Silk, Adult Leaf

SUMMARY:

This work describes the cloning of an *Ustilago maydis* Trojan horse strain for the *in situ* delivery of secreted maize proteins into three different types of maize tissues.

ABSTRACT:

Inspired by Homer's Trojan horse myth, we engineered the maize pathogen *Ustilago maydis* to deliver secreted proteins into the maize apoplast permitting *in vivo* phenotypic analysis. This method does not rely on maize transformation but exploits microbial genetics and secretory capabilities of pathogens. Herein, it allows inspection of *in vivo* delivered secreted proteins with high spatiotemporal resolution at different kinds of infection sites and tissues. The Trojan horse strategy can be utilized to transiently complement maize loss-of-function phenotypes, to functionally characterize protein domains, to analyze off-target protein effects, or to study onside protein overdosage, making it a powerful tool for protein studies in the maize crop system. This work contains a precise protocol how to generate a Trojan horse strain followed by standardized infection protocols to apply this method to three different maize tissue types.

INTRODUCTION:

The biotrophic pathogen *Ustilago maydis* is the causative agent of the corn smut disease¹. It infects all aerial parts of maize resulting in large tumors that contain melanized, black spores. On the global level, *U. maydis* is estimated to cause an annual loss of around 2% of corn yield, while tumors are appreciated as a gastronomical delicacy in Mexico. Plant infection is initiated by an appressorium that secretes cell-wall lysing enzymes to penetrate the first layer of maize epidermal cells. From a primary infection site, *U. maydis* grows intracellularly and

intercellularly, invading one to two cell layers every day^{1,2}. Successful infection results in plant hypertrophy that turns into visible tumors upon five days post infection^{1,3,4}. During all infection stages, fungal hyphae invaginate the plant cytoplasm membrane without any direct contact to the host cytoplasm^{1,2}. The tight apoplastic space between the infecting hyphae and the plant plasma membrane is considered to be the host/pathogen interactive site, called the biotrophic interaction zone. In order to overcome the plant innate immune system, *U. maydis* secretes an array of effector proteins into the biotrophic interaction zone¹. Some effectors are taken up by plant cells, while others remain in the biotrophic interaction zone⁵⁻⁸. One apoplastic effector is UmPit2, which interacts with apoplastic maize proteases to prevent the release of the signaling peptide ZmZIP1 from ZmPROZIP by apoplastic protease activity^{9,10}.

Over the last decades, *U. maydis* became not only a model for fungal genetics in plant-pathogen interaction, but also a valuable tool in biotechnology due to a well-understood life cycle, easy genetic accessibility and heterologous expression of secreted proteins¹¹⁻¹³. Signals for both conventional and unconventional protein secretion have been determined allowing the control of posttranslational modifications¹⁴. Recently, *U. maydis* was employed as a Trojan horse tool to study small, secreted maize proteins *in situ*¹⁵. The Trojan horse approach was successfully used to analyze the function of the small, secreted protein ZmMAC1 that is involved in another development. ZmMAC1 induces the periclinal division of pluripotent cells and cell fate specification of the newly formed cells¹⁵. By the same method, the biological function of the maize damage-associated peptide ZmZIP1 was revealed. *U. maydis* secreting the maize ZmZIP1 resulted in impaired tumor formation¹⁰. Thus, the Trojan horse approach represents a valuable alternative route to protein *in situ* studies with high spatiotemporal resolution that does neither require generation of stable maize transformation lines nor tissue infiltration with heterologously expressed and purified proteins. In particular, the Trojan horse strategy enables the secretion of any heterologous protein into the maize apoplast and direct comparison of infected *versus* non-infected plant cells within the same tissue.

This protocol illustrates the major steps for generating an *U. maydis* Trojan horse strain to study a protein of interest. It further includes precise information on infection procedures of three different maize tissue types (adult leaves, tassels and ears) with *U. maydis*, which is a prerequisite for studying the spatiotemporal infection progression and protein function in these target tissues. No further specifications are given on maize gene amplification and microscopic imaging techniques, since these steps are target-specific and instrument-dependent. Thus, this protocol is addressed to experienced users of standard molecular biology techniques.

PROTOCOL:

1. Construction of an *U. maydis* Trojan Horse

NOTE: See Figure 1.

1.1. Amplify a gene of interest from maize cDNA using gene-specific primers and a proofreading DNA polymerase. Clone the primary PCR product and transform the construct into *E. coli*

following the plasmid vendor's instructions. Verify the correct gene of interest sequence by Sanger sequencing prior to use for the next cloning steps.

NOTE: PCR specifications need to be optimized due to primer sequence specificities and optimal DNA polymerase reaction conditions.

1.2. Design primers to amplify the maize gene of interest without the sequence encoding a signal peptide (SP).

1.3. Extend the 5' end of the reverse primer with the RSIATA motif and an *NcoI* cutting site (Table 1).

1.4. Amplify the maize gene of interest with a proofreading DNA polymerase using the PCR construct generated in 1.1 as the PCR template.

1.5. Double-digest the PCR product and the *U. maydis* transformation plasmid, p123-P_{Umpit2}-*Sp*_{Umpit2}-*Zmmac1-mCherry-Ha*¹⁵, with *XbaI* and *NcoI*. Purify the digested PCR product and plasmid.

1.6. Ligate the digested PCR product into the p123-P_{Umpit2}-*Sp*_{Umpit2}-*Zmmac1-mCherry-Ha* template using T4 DNA ligase following the manufacturer's instructions. Transform the ligation product into *E. coli* and verify the correct gene of interest sequence by Sanger sequencing.

1.7. Linearize the p123-P_{Umpit2}-*Sp*_{Umpit2}-*Zmgene of interest-mCherry-Ha* with the restriction enzyme *SspI* and transform DNA into the solopathogenic *U. maydis* strain SG200¹⁶. Isolate *U. maydis* transformants by carboxin selection and confirm isolated transformants by Southern blot analysis¹⁶.

NOTE: For each protein of interest, at least three independent *U. maydis* transformants should be isolated and analyzed to estimate any phenotype effects of random background mutations.

2. Culture Media

2.1. Prepare YEPS_{light} liquid medium¹⁶: 1.0% (w/v) yeast extract, 0.4% (w/v) Bacto-Peptone, and 0.4% (w/v) sucrose. Dissolve all components in ddH₂O and autoclave at 121 °C for 15 min; autoclaving at a higher temperature, for a longer period of time or repeatedly would reduce the quality of the medium.

2.2. Prepare potato-dextrose-agar (PD-agar)²¹: 3.9% (w/v) potato dextrose agar, and 1.0% (w/v) 1 M Tris-HCl pH 8.0 (f.c. 0.01 M). Mix all components directly in the bottle for autoclaving and add ddH₂O plus a magnetic stir bar. Autoclave at 121 °C for 15 min; autoclaving at a higher temperature, for a longer period of time or repeatedly would reduce the quality of the medium.

2.3. Prepare PD-Charcoal agar²¹: 3.9% (w/v) potato dextrose agar, 1% (w/v) charcoal, and 1.0% (v/v) 1 M Tris-HCl pH 8.0 (f.c. 0.01 M). Mix all components directly in the bottle for autoclaving and add ddH₂O plus a magnetic stir bar. Autoclave at 121 °C for 15 min; autoclaving at a higher temperature, for a longer period of time or repeatedly would reduce the quality of the medium.

3. Plant Infection

3.1. Perform analysis of maize cell division in response to Trojan horse delivered protein (*e.g.*, microscopy-based cell counting), beforehand. *U. maydis* induced maize cell proliferation and subsequent tumor formation starts around 4-5 days post infection. Quantitative disease assessments are tissue dependent and should be performed from 6 to 14 days post infection.

NOTE: Distinct maize cultivars show different levels of susceptibility to *U. maydis* infection. Maize cvs. W23, A188, Gaspé flint, Early Golden Bantam or Va35 show susceptibility towards this pathogen and are thus suitable cultivars for Trojan horse studies.

3.2. Preparation of the *U. maydis* inoculum

3.2.1. Include the progenitor strain SG200 as a negative control in all Trojan horse experiments in order to estimate side effects on the infection by the transgenic strain. Here, use an *U. maydis* strain expressing a non-secreted version of the protein of interest as a negative control. However, for reasons of practicability (*e.g.*, larger screenings), the progenitor strain may be the easier choice of control.

3.2.2. Before starting the experiment, estimate what amounts of infection culture are needed. Keep in mind that infection of each plant requires 1 - 1.5 mL of *U. maydis* suspension dependent on the maize tissue type.

NOTE: Approximately 1 mL of an overnight culture is sufficient for dilution to an OD₆₀₀ of 0.2 in 20 mL of YEPS_{light} medium, and 25 mL of an *U. maydis* culture with an OD₆₀₀ of 0.8-1.0 are sufficient for infection of 13-16 plants.

3.2.3. Scratch *U. maydis* from a PD agar plate using a sterile Pasteur pipette, inoculate in 5 mL of YEPS_{light} medium and let the culture grow at 28 °C with constant shaking at 200 rpm for 16 h.

3.2.4. Prior to infection, examine the *U. maydis* inoculation culture by standard light microscopy for proper growth and bacterial contamination at 400X magnification.

NOTE: In a suitable culture, only the cigar-shaped fungus is visible (**Figure 2**).

3.2.5. Mix 900 µL of fresh YEPS_{light} with 100 µL of the overnight culture and measure the OD₆₀₀ using YEPS_{light} medium as a blank in the spectrophotometer analysis.

3.2.6. Dilute the overnight culture with fresh YEPS_{light} medium to an OD₆₀₀ of 0.2 and let the culture grow at 28 °C with constant shaking at 200 rpm until reaching the mid-log growth phase indicated by an OD_{600 nm} of 0.8–1.0.

NOTE: *U. maydis* cells duplicate every 2 h under these conditions, thus the desired OD₆₀₀ is reached after 4-5 h of cultivation.

3.2.7. Harvest the cells at OD₆₀₀ of 0.8–1.0 by spinning at 3000 x *g* for 10 min and discard the supernatant.

3.2.8. Wash the cell pellet one time with ddH₂O. For this purpose, add one culture volume of ddH₂O, spin with 3000 x *g* for 10 min and discard the supernatant.

3.2.9. Resuspend the cell pellet carefully in ddH₂O using a 20-mL glass pipette, thereby adjusting the final OD₆₀₀ to 3.0 (for a Trojan horse assay) or 1.0 (for disease rating).

3.3. Verification of the Trojan horse: *in planta* secretion of the maize fusion protein

3.3.1. Infect maize seedlings with a Trojan horse strain¹⁸.

3.3.2. Perform microscopic imaging of infected seedlings at 2 – 3 days post infection using a confocal laser-scanning microscope. To this end, excise a rectangular piece of the leaf 1 cm below the point of injection, place the sample onto a microscope slide and add a drop of ddH₂O. To visualize mCherry fusion protein, excite specimen at $\lambda = 561$ nm and record emission at $\lambda = 580 - 630$ nm.

3.4. Infection of adult maize leaves

3.4.1. Cultivate maize plants to the stage of adult leaves (when at least leaf 7 grows within the stalk).

NOTE: This stage is reached after four weeks upon sowing under greenhouse conditions of 14 h, 28 °C day/10 h, 22 °C night rhythm using cv. W23. Duration may vary with the maize cultivar and greenhouse conditions.

3.4.2. Transfer the *U. maydis* culture (see 3.2.9) into a 3-mL syringe with a 20G x 1 hypodermic needle.

3.4.3. Press the stalk carefully to localize the meristem tissue in the stalk. The base of the meristem can be distinguished by a transition from harder stalk to softer tissue.

3.4.4. Mark the meristem on the stalk using a pen.

3.4.5. Inject 1.5 mL of *U. maydis* culture 1 cm above the shoot meristem or inflorescence meristem.

3.4.6. Rate disease symptoms at 6 and 12 days post infection.

3.5. Infection of tassels

3.5.1. Grow maize plants until reaching the tassel stage.

NOTE: A detailed timeline on anther and tassel development in maize cv. W23 was previously described^{17,19,20}. Tassels containing pre-meiotic anthers are highly susceptible to *U. maydis* infection; in the maize cv. W23 tassels are the size of 4 - 7 cm.

3.5.2. Press the stalk carefully to localize the tassel in the stem.

3.5.3. Mark the tip and the base of the tassel on the stem using a pen.

3.5.4. Transfer the *U. maydis* culture (see 3.2.9) into a 3-mL syringe with a 20G x 1 hypodermic needle.

3.5.5. Inject 1.5 mL of the inoculum around the tassel. To ensure equal distribution of the inoculum, slowly place 0.5 mL each at the tip, the middle part, and the base of the tassel marked with the pen.

3.5.6. Rate disease symptoms at 10 days post infection.

3.6. Infection of ears

NOTE: The ear tissue development differs in distinct maize cultivars and greenhouse conditions and must be carefully observed prior to inoculation. Ears starting to outgrow silks are highly susceptible to *U. maydis* infection.

3.6.1. Transfer the *U. maydis* culture (see 3.2.9) into a 3-mL syringe with a 20G x 1 hypodermic needle.

3.6.2. Inject the inoculation needle into the space between the husk leaves as deeply as possible without injuring the ear.

3.6.3. Release 1.5 mL of the inoculum around the ear.

3.6.4. Remove the syringe plus needle and carefully massage the cob to distribute the *U. maydis* solution equally.

3.6.5. Rate disease symptoms at 14 days post infection.

3.7. Confirm viability of *U. maydis* inoculum

3.7.1. Drop 10 µL of the inoculum on a PD charcoal agar plate and incubate at room temperature for 2 days.

NOTE: If the respective *U. maydis* culture is able to form filaments, fluffy, white mycelium becomes visible (Figure 5).

REPRESENTATIVE RESULTS:

Constructs for *U. maydis* Trojan horse experiments are cloned into the plasmid p123-P_{Umpit2}-*Sp_{Umpit2}-gene of interest-mCherry-Ha*. The maize gene of interest is fused to a *mCherry* fluorescence reporter and an epitope *HA*-tag. The expression of the fusion protein is under control of the *U. maydis* *Umpit2* promoter which is specifically activated during infection²². To direct secretion of the protein of interest peptide into the biotrophic interaction zone, the coding region is fused to the signal peptide sequence of *U. maydis* *Umpit2*²² (Figure 1). Upon *U. maydis* transformation, the transgene is inserted into the SG200 *ip*-locus by homologous recombination, and targeted genome insertion can be verified by Southern blot analysis. Secretion of the fusion protein is confirmed by confocal laser scanning microscopic imaging in seedling leaves infected with a Trojan horse strain (Figure 3). As an example, seedlings infected with either the *U. maydis* Trojan horse strain SG200Zmmac1 secreting a ZmMAC1-mCHERRY or a non-Trojan horse control strain expressing noSP-Zmmac1-mCHERRY that lack the *Umpit2*-SP, and subsequently does not secrete the ZmMAC1-mCHERRY-HA protein, are shown in Figure 3¹⁵. Hyphae secreting ZmMAC1 are surrounded by fluorescent mCherry signal (Figure 3A). In contrast, non-secreting hyphae only show fluorescence signal in the fungal cytoplasm (Figure 3B).

In particular, tassel infection with *U. maydis* relies on proper tissue inoculation, as described in step 3.5. Improper tassel localization or unequal distribution of the inoculum can result in non-infected tassel (Figure 4A) or only partial infection of the tassel (Figure 4B). To ensure even distribution, the inoculum needs to be slowly released from the inoculation needle to acquire entire tissue infection (Figure 4C). Viability of the inoculum can be verified by placing a droplet on PD-Charcoal agar. Infectious strains form filaments appearing as white fluff on the plate as shown for the solopathogenic Trojan Horse progenitor strain SG200 (Figure 5A) while the *U. maydis* strain FB1 requires mating before infectious filament formation (Figure 5B).

FIGURE LEGENDS:

Table 1: Sequences of primer additions to add restriction sites and the RSIATA motif coding sequence to the maize gene of interest.

Figure 1: Schematic overview of the *U. maydis* Trojan horse plasmid cloning strategy.

Zmmac1 (light grey) is released by double digest from p123-P_{Umpit2}-*Sp_{Umpit2}-Zmmac1-mCherry-Ha*. In parallel, the gene of interest (yellow) is amplified by PCR. For cloning purpose, forward and reverse primers are designed which include *Xba*I and *Nco*I cloning sites and a RSIATA linker

(purple). The PCR product is digested with *Xba*I and *Nco*I. After ligation, the Trojan horse plasmid contains the following elements: Driven by the *Umpit2* promoter, an *Umpit2*-SP (blue) is fused N-terminally to a maize gene of interest ORF (yellow). At the C-terminus, a RSIATA linker, a *mCHERRY* reporter gene (red) and an *HA* epitope tag (green) are fused followed by a stop codon. Prior to *U. maydis* transformation, the Trojan horse plasmid is digested with *Ssp*I to allow homologous integration into the *U. maydis ip*-locus (grey).

Figure 2: Light-microscopic examination of *U. maydis* inoculation culture. Several cigar-shaped *U. maydis* sporidia are visible, some of which undergo budding (indicated by asterisks). No further cells are present which would indicate a contamination of the culture. Scale bar represents 20 μ m.

Figure 3: *In planta* confocal laser scanning microscopic imaging of an *Ustilago* Trojan horse strain. Imaging of the mCherry-fused maize protein ZmMAC1 after maize seedling infection using the Trojan horse strain SG200Zmmac1 (**A**) or a non-Trojan horse strain SG200Zmmac1-noSP lacking the *Umpit2*-SP (**B**). Secreted ZmMAC1-mCHERRY-HA fusion protein is located on the surface of *U. maydis* hyphae (**A**)¹⁵, indicated by the arrow heads. In SG200Zmmac1-noSP only cytoplasmic localization of ZmMAC1 is visible (**B**), indicated by the asterisk¹⁵. Scale bars represent 5 μ m.

Figure 4: Tassel infection with *U. maydis*. Unsuccessful infection of tassel with *U. maydis* (A), partial tassel infection (B) and complete tassel infection (C) 12 days after infection are shown.

Figure 5: Inoculum viability assay on PD-Charcoal agar. The solopathogenic strain SG200¹ was used for Trojan horse generation. SG200 is self-stimulating and forms infectious filaments on a PD-Charcoal agar plate (**A**). The haploid *U. maydis* strain FB1 requires mating with a compatible strain prior to filamentous grow (**B**)²³. Scale bars represent 2 mm.

DISCUSSION:

Modern crop research demands protocols for molecular analysis on genetic and protein levels. Genetic accessibility *via* transformation is not available or inefficient and time-consuming for most crop species such as maize. Moreover, reliable genetic tools such as promoter reporter systems are scarce, which makes it difficult to study *in situ* protein function with high spatiotemporal resolution at distinct tissue sites. Apoplastic proteins can be studied by infiltration of heterologously expressed and purified proteins into tissues. However, despite advances in heterologous protein expression, targeted infiltration into crop tissues remains difficult and often inefficient for protein functional analysis. The Trojan horse strategy is an alternative approach that does not require transformation or protein infiltration. By employing the secretion apparatus of the maize pathogen *U. maydis*, delivery of theoretically any protein of interest into the plant apoplast of infected tissue can be achieved. Regarding the size of a protein of interest, the limits of this technique have yet to be explored. In former assays, the 290 amino acids *U. maydis* effector Cmu1 fused to mCherry was successfully secreted⁷. However, the applicability of the Trojan horse method to bigger proteins remains to be tested.

If additions of posttranslational modifications to the protein of interest are undesirable, unconventional secretion may be used as an alternative route to classical secretion *via* SP¹⁴.

U. maydis is employed as a standard tool in protein biotechnology because of reliable protein folding, posttranslational modification, and secretion efficiencies¹¹⁻¹³. Nevertheless, protein secretion for each new Trojan horse strain needs to be carefully analyzed as described in the Step 3. It is recommended to perform an initial testing of every newly generated Trojan horse strain by infecting seedlings that are easy to infect and to inspect by microscopic imaging.

SG200 is a solopathogenic strain that does not require mating prior to the Trojan horse experiments and is thus easier to handle. Although the infection efficiency of compatible strains like FB1 and FB2 is higher²⁴, the efficiency of SG200 is sufficient for Trojan horse experiments. Some *U. maydis* effector proteins are taken up by host cells, while others remain in the apoplast. The differentiation between both groups seems to be a controlled and specific process; however, the underlying mechanisms remain elusive⁸ and cannot be taken into account when designing an experiment. Therefore, proteins of interest that have to be integrated into the cell wall or that have to act intracellularly are no suitable candidates for the Trojan horse approach.

Since *U. maydis* is omnipotent in infecting diverse aerial maize tissues, the Trojan horse method can be applied for multiple proteins, in distinct tissues and at different plant developmental stages, such as seedling leaves, adult leaves, tassels, and ears. To name just a few useful applications, the Trojan horse allows testing local overdosage, offside protein effects, or functional characterization of distinct protein domains.

Maintaining an uncontaminated *U. maydis* culture is crucial for all described experiments since co-infection with a large amount of bacteria triggers the plant's immune response and alters its reaction towards the protein of interest, thus rendering any results inconclusive. Trojan horse studies in adult leaves, tassels and ears have to be performed with maximally 1.5 mL infection culture as higher volumes may result in tissue damage. Tassel and ear infections can be trained using food color-stained water instead of *Ustilago* inoculum.

ACKNOWLEDGMENTS:

The authors would like to thank Thomas Dresselhaus, Martin Parniske, Nouredine Djella, and Armin Hildebrand for providing lab space and plant material. The original work on the Trojan horse method was supported by a Leopoldina postdoc fellowship and NSF project IOS13-39229. The work presented in this article was supported by SFB924 (projects A14 and B14) of the DFG.

DISCLOSURES:

The authors have nothing to disclose.

REFERENCES:

- 1 Kämper, J. *et al.* Insights from the genome of the biotrophic fungal plant pathogen *Ustilago maydis*. *Nature* **444**, 97-101 (2006).

393 2 Doehlemann, G. *et al.* Establishment of compatibility in the *Ustilago maydis*/maize
394 pathosystem. *Journal of Plant Physiology* **165**, 29-40 (2008).

395 3 Matei, A. *et al.* How to make a tumour: cell type specific dissection of *Ustilago maydis*-
396 induced tumour development in maize leaves. *New Phytologist* (2018).

397 4 Doehlemann, G. *et al.* Reprogramming a maize plant: transcriptional and metabolic
398 changes induced by the fungal biotroph *Ustilago maydis*. *The Plant Journal* **56**, 181-195 (2008).

399 5 Doehlemann, G. *et al.* Pep1, a secreted effector protein of *Ustilago maydis*, is required
400 for successful invasion of plant cells. *PLOS Pathogens* **5**, e1000290 (2009).

401 6 Redkar, A. *et al.* A secreted effector protein of *Ustilago maydis* guides maize leaf cells to
402 form tumors. *The Plant Cell* **27**, 1332-1351 (2015).

403 7 Djamei, A. *et al.* Metabolic priming by a secreted fungal effector. *Nature* **478**, 395-398
404 (2011).

405 8 Tanaka, S. *et al.* A secreted *Ustilago maydis* effector promotes virulence by targeting
406 anthocyanin biosynthesis in maize. *eLife* **3**, e01355 (2014).

407 9 Mueller, A. N., Ziemann, S., Treitschke, S., Assmann, D., Doehlemann, G. Compatibility in
408 the *Ustilago maydis*-maize interaction requires inhibition of host cysteine proteases by the
409 fungal effector Pit2. *PLOS Pathogens* **9**, e1003177 (2013).

410 10 Ziemann, S. *et al.* An apoplastic peptide activates salicylic acid signalling in maize. *Nature*
411 *Plants* **4**, 172-180 (2018).

412 11 Juárez-Montiel, M. *et al.* The corn smut ('Huitlacoche') as a new platform for oral
413 vaccines. *PLoS One* **10**, e0133535 (2015).

414 12 Sarkari, P., Feldbrügge, M., Schipper, K. in *Gene Expression Systems in Fungi:*
415 *Advancements and Applications* (eds Monika Schmoll & Christoph Dattenböck) 183-200
416 (Springer International Publishing, 2016).

417 13 Monreal-Escalante, E. *et al.* The corn smut-made cholera oral vaccine is thermostable
418 and induces long-lasting immunity in mouse. *Journal of Biotechnology* **234**, 1-6 (2016).

419 14 Stock, J. *et al.* Applying unconventional secretion of the endochitinase Cts1 to export
420 heterologous proteins in *Ustilago maydis*. *Journal of Biotechnology* **161**, 80-91 (2012).

421 15 van der Linde, K. *et al.* Pathogen Trojan horse delivers bioactive host protein to alter
422 maize (*Zea mays*) anther cell behavior *in situ*. *The Plant Cell* **30**, 528-542 (2018).

423 16 Bösch, K. *et al.* Genetic manipulation of the plant pathogen *Ustilago maydis* to study
424 fungal biology and plant microbe interactions. *Journal of Visualized Experiments*, e54522
425 (2016).

426 17

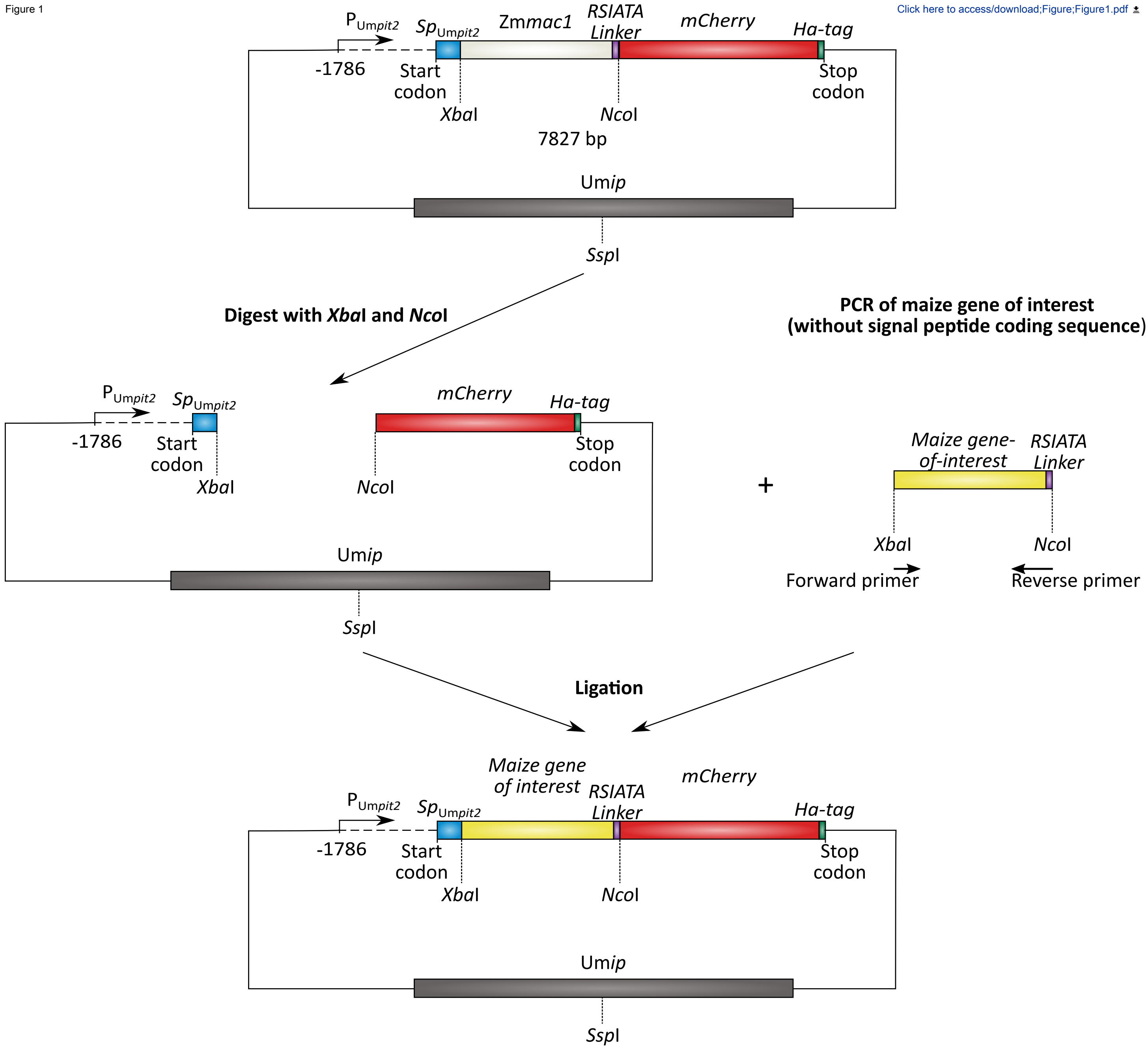
427 18 Chavan, S., Smith, S. M. A rapid and efficient method for assessing pathogenicity of
428 *Ustilago maydis* on maize and teosinte lines. *Journal of Visualized Experiments*, e50712 (2014).

429 19 Kelliher, T., Walbot, V. Emergence and patterning of the five cell types of the *Zea mays*
430 anther locule. *Developmental Biology* **350**, 32-49 (2011).

431 20 Egger, R. L., Walbot, V. Quantifying *Zea mays* tassel development and correlation with
432 anther developmental stages as a guide for experimental studies. *Maydica* **60**, M34 (2015).

433 21 Holliday, R. in *Bacteria, Bacteriophages, and Fungi: Volume 1* (ed Robert C. King) 575-
434 595 (Springer US, 1974).

- 435 22 Doehlemann, G., Reissmann, S., Aßmann, D., Fleckenstein, M., Kahmann, R. Two linked
436 genes encoding a secreted effector and a membrane protein are essential for *Ustilago maydis*-
437 induced tumour formation. *Molecular Microbiology* **81**, 751-766 (2011).
- 438 23 Banuett, F., Herskowitz, I. Different *a* alleles of *Ustilago maydis* are necessary for
439 maintenance of filamentous growth but not for meiosis. *Proceedings of the National Academy*
440 *of Sciences* **86**, 5878-5882 (1989).
- 441 24 Bortfeld, M., Auffarth, K., Kahmann, R., Basse, C. W. The *Ustilago maydis* *a2* mating-type
442 locus genes *lga2* and *rga2* compromise pathogenicity in the absence of the mitochondrial p32
443 family protein Mrb1. *The Plant Cell* **16**, 2233-2248 (2004).



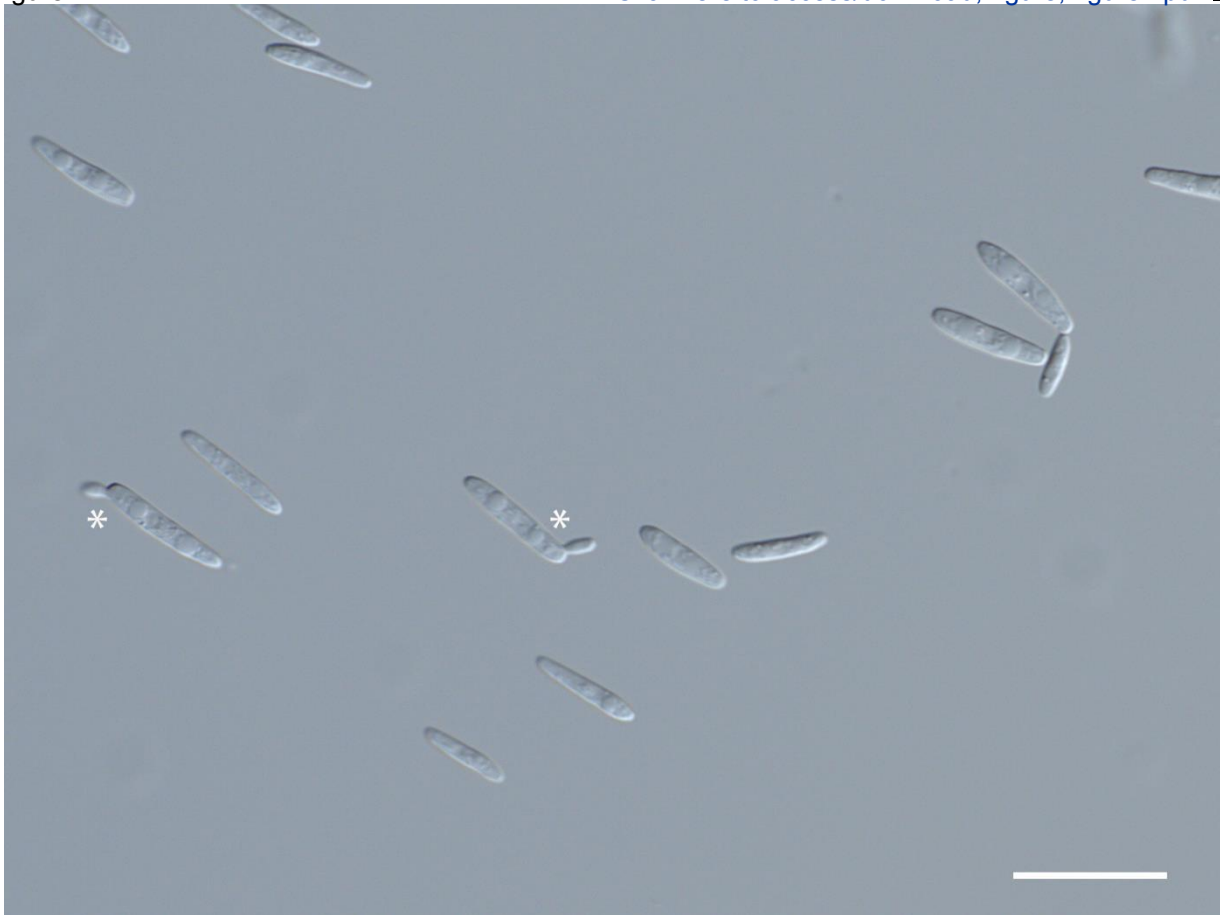
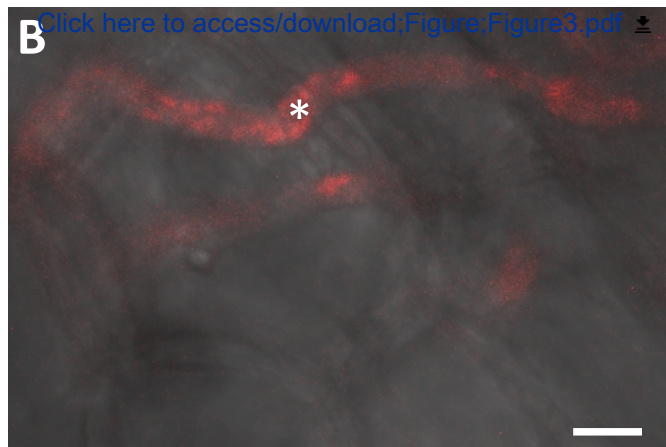
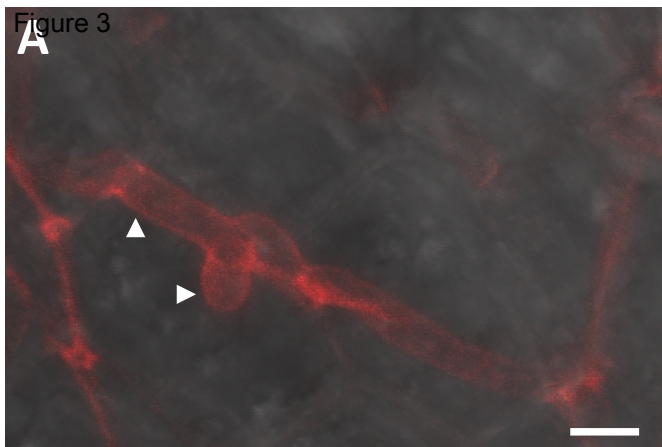


Figure 3



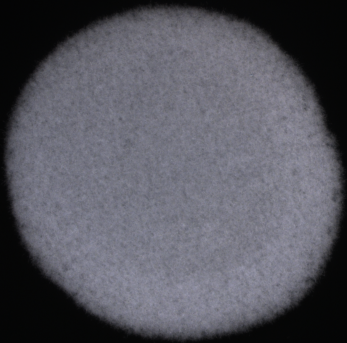
[Click here to access/download;Figure;Figure3.pdf](#)

A**B****C**

[Click here to access/download;Figure;Figure4.pdf](#)

A

Figure 5



B

[Click here to access/download;Figure;Figure5.pdf](#)

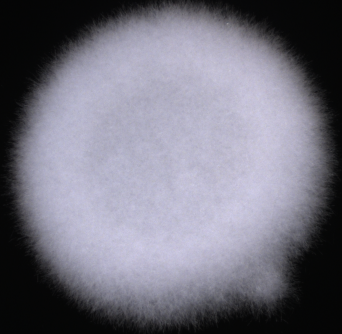


Table1: Sequences of primer additions to add restriction sides and the RSIATA motif coding sequence to the maize gene of interest.

Name	Primer addition	Sequence (5'→3')
Forward	<i>Xba</i> I-maize gene	GCTCTAGA...
Reverse	<i>Nco</i> I-RSIATA-maize gene	CATGCCATGGAGGCGGTGGCGATCGAGCG....

Name of Material/ Equipment	Company	Catalog Number	Comments/Description
2 mL syringe	B. Braun	4606027V	
23G x 1 1/4 hypodermic needle	B. Braun	4657640	
Bacto Peptone	BD	211677	
cDNA from maize			from maize tissue expressing the gene of interest
Charcoal	Sigma-Aldrich	05105	
Confocal laser scanning microscope			use locally available equipment
Cuvette (10 x 4 x 45 mm)	Sarstedt	67742	
Incubator-shaker set to 28 °C, 200 rpm			use locally available equipment
Light microscope with 400-fold magnification			use locally available equipment
<i>Nco</i> I	NEB	R0193	
p123-P _{Umpit2} - <i>Sp</i> _{Umpit2} - <i>Zmmac1-mCherry-Ha</i>			please contact the corresponding author
Pasteur pipet (glass, long tip)	VWR	14673-043	
pCR-Blunt-II-TOPO	Thermo Fisher Scientific	K280002	can be exchanged for other basic cloning vectors like pENTR or pJET
Potato Dextrose Agar	VWR	90000-745	
Sharpie pen			use locally available equipment
Spectrophotometer			use locally available equipment
<i>Ssp</i> I	NEB	R0132	
Sucrose	Sigma-Aldrich	S0389	
T4 DNA ligase	NEB	M0202	
TRIS	Sigma-Aldrich	TRIS-RO	
<i>Xba</i> I	NEB	R0145	
Yeast extract	BD	212750	



1 Alewife Center #200
Cambridge, MA 02140
tel. 617.945.9051
www.jove.com

ARTICLE AND VIDEO LICENSE AGREEMENT

Title of Article:	Guidelines for using <i>Ustilago maydis</i> as a Trojan horse for <i>in situ</i> delivery of maize proteins
Author(s):	Isabell-C. Fiedler, Arne Weiberg, Karina van der Linde

Item 1: The Author elects to have the Materials be made available (as described at <http://www.jove.com/publish>) via:

☒ Standard Access

☐ Open Access

Item 2: Please select one of the following items:

☒ The Author is **NOT** a United States government employee.

☐ The Author is a United States government employee and the Materials were prepared in the course of his or her duties as a United States government employee.

☐ The Author is a United States government employee but the Materials were NOT prepared in the course of his or her duties as a United States government employee.

ARTICLE AND VIDEO LICENSE AGREEMENT

1. **Defined Terms.** As used in this Article and Video License Agreement, the following terms shall have the following meanings: “**Agreement**” means this Article and Video License Agreement; “**Article**” means the article specified on the last page of this Agreement, including any associated materials such as texts, figures, tables, artwork, abstracts, or summaries contained therein; “**Author**” means the author who is a signatory to this Agreement; “**Collective Work**” means a work, such as a periodical issue, anthology or encyclopedia, in which the Materials in their entirety in unmodified form, along with a number of other contributions, constituting separate and independent works in themselves, are assembled into a collective whole; “**CRC License**” means the Creative Commons Attribution-Non Commercial-No Derivs 3.0 Unported Agreement, the terms and conditions of which can be found at: <http://creativecommons.org/licenses/by-nc-nd/3.0/legalcode>; “**Derivative Work**” means a work based upon the Materials or upon the Materials and other pre-existing works, such as a translation, musical arrangement, dramatization, fictionalization, motion picture version, sound recording, art reproduction, abridgment, condensation, or any other form in which the Materials may be recast, transformed, or adapted; “**Institution**” means the institution, listed on the last page of this Agreement, by which the Author was employed at the time of the creation of the Materials; “**JoVE**” means MyJoVE Corporation, a Massachusetts corporation and the publisher of The Journal of Visualized Experiments; “**Materials**” means the Article and / or the Video; “**Parties**” means the Author and JoVE; “**Video**” means any video(s) made by the Author, alone or in conjunction with any other parties, or by JoVE or its affiliates or agents, individually or in collaboration with the Author or any other parties, incorporating all or any portion

of the Article, and in which the Author may or may not appear.

2. **Background.** The Author, who is the author of the Article, in order to ensure the dissemination and protection of the Article, desires to have the JoVE publish the Article and create and transmit videos based on the Article. In furtherance of such goals, the Parties desire to memorialize in this Agreement the respective rights of each Party in and to the Article and the Video.

3. **Grant of Rights in Article.** In consideration of JoVE agreeing to publish the Article, the Author hereby grants to JoVE, subject to **Sections 4 and 7** below, the exclusive, royalty-free, perpetual (for the full term of copyright in the Article, including any extensions thereto) license (a) to publish, reproduce, distribute, display and store the Article in all forms, formats and media whether now known or hereafter developed (including without limitation in print, digital and electronic form) throughout the world, (b) to translate the Article into other languages, create adaptations, summaries or extracts of the Article or other Derivative Works (including, without limitation, the Video) or Collective Works based on all or any portion of the Article and exercise all of the rights set forth in (a) above in such translations, adaptations, summaries, extracts, Derivative Works or Collective Works and (c) to license others to do any or all of the above. The foregoing rights may be exercised in all media and formats, whether now known or hereafter devised, and include the right to make such modifications as are technically necessary to exercise the rights in other media and formats. If the “Open Access” box has been checked in **Item 1** above, JoVE and the Author hereby grant to the public all such rights in the Article as provided in, but subject to all limitations and requirements set forth in, the CRC License.

612542.6 For questions, please contact us at submissions@jove.com or +1.617.945.9051.

ARTICLE AND VIDEO LICENSE AGREEMENT

4. **Retention of Rights in Article.** Notwithstanding the exclusive license granted to JoVE in **Section 3** above, the Author shall, with respect to the Article, retain the non-exclusive right to use all or part of the Article for the non-commercial purpose of giving lectures, presentations or teaching classes, and to post a copy of the Article on the Institution's website or the Author's personal website, in each case provided that a link to the Article on the JoVE website is provided and notice of JoVE's copyright in the Article is included. All non-copyright intellectual property rights in and to the Article, such as patent rights, shall remain with the Author.

5. **Grant of Rights in Video – Standard Access.** This **Section 5** applies if the "Standard Access" box has been checked in **Item 1** above or if no box has been checked in **Item 1** above. In consideration of JoVE agreeing to produce, display or otherwise assist with the Video, the Author hereby acknowledges and agrees that, Subject to **Section 7** below, JoVE is and shall be the sole and exclusive owner of all rights of any nature, including, without limitation, all copyrights, in and to the Video. To the extent that, by law, the Author is deemed, now or at any time in the future, to have any rights of any nature in or to the Video, the Author hereby disclaims all such rights and transfers all such rights to JoVE.

6. **Grant of Rights in Video – Open Access.** This **Section 6** applies only if the "Open Access" box has been checked in **Item 1** above. In consideration of JoVE agreeing to produce, display or otherwise assist with the Video, the Author hereby grants to JoVE, subject to **Section 7** below, the exclusive, royalty-free, perpetual (for the full term of copyright in the Article, including any extensions thereto) license (a) to publish, reproduce, distribute, display and store the Video in all forms, formats and media whether now known or hereafter developed (including without limitation in print, digital and electronic form) throughout the world, (b) to translate the Video into other languages, create adaptations, summaries or extracts of the Video or other Derivative Works or Collective Works based on all or any portion of the Video and exercise all of the rights set forth in (a) above in such translations, adaptations, summaries, extracts, Derivative Works or Collective Works and (c) to license others to do any or all of the above. The foregoing rights may be exercised in all media and formats, whether now known or hereafter devised, and include the right to make such modifications as are technically necessary to exercise the rights in other media and formats. For any Video to which this **Section 6** is applicable, JoVE and the Author hereby grant to the public all such rights in the Video as provided in, but subject to all limitations and requirements set forth in, the CRC License.

7. **Government Employees.** If the Author is a United States government employee and the Article was prepared in the course of his or her duties as a United States government employee, as indicated in **Item 2** above, and any of the licenses or grants granted by the Author hereunder exceed the scope of the 17 U.S.C. 403, then the rights granted hereunder shall be limited to the maximum

rights permitted under such statute. In such case, all provisions contained herein that are not in conflict with such statute shall remain in full force and effect, and all provisions contained herein that do so conflict shall be deemed to be amended so as to provide to JoVE the maximum rights permissible within such statute.

8. **Protection of the Work.** The Author(s) authorize JoVE to take steps in the Author(s) name and on their behalf if JoVE believes some third party could be infringing or might infringe the copyright of either the Author's Article and/or Video.

9. **Likeness, Privacy, Personality.** The Author hereby grants JoVE the right to use the Author's name, voice, likeness, picture, photograph, image, biography and performance in any way, commercial or otherwise, in connection with the Materials and the sale, promotion and distribution thereof. The Author hereby waives any and all rights he or she may have, relating to his or her appearance in the Video or otherwise relating to the Materials, under all applicable privacy, likeness, personality or similar laws.

10. **Author Warranties.** The Author represents and warrants that the Article is original, that it has not been published, that the copyright interest is owned by the Author (or, if more than one author is listed at the beginning of this Agreement, by such authors collectively) and has not been assigned, licensed, or otherwise transferred to any other party. The Author represents and warrants that the author(s) listed at the top of this Agreement are the only authors of the Materials. If more than one author is listed at the top of this Agreement and if any such author has not entered into a separate Article and Video License Agreement with JoVE relating to the Materials, the Author represents and warrants that the Author has been authorized by each of the other such authors to execute this Agreement on his or her behalf and to bind him or her with respect to the terms of this Agreement as if each of them had been a party hereto as an Author. The Author warrants that the use, reproduction, distribution, public or private performance or display, and/or modification of all or any portion of the Materials does not and will not violate, infringe and/or misappropriate the patent, trademark, intellectual property or other rights of any third party. The Author represents and warrants that it has and will continue to comply with all government, institutional and other regulations, including, without limitation all institutional, laboratory, hospital, ethical, human and animal treatment, privacy, and all other rules, regulations, laws, procedures or guidelines, applicable to the Materials, and that all research involving human and animal subjects has been approved by the Author's relevant institutional review board.

11. **JoVE Discretion.** If the Author requests the assistance of JoVE in producing the Video in the Author's facility, the Author shall ensure that the presence of JoVE employees, agents or independent contractors is in accordance with the relevant regulations of the Author's institution. If more than one author is listed at the beginning of this Agreement, JoVE may, in its sole

ARTICLE AND VIDEO LICENSE AGREEMENT

discretion, elect not take any action with respect to the Article until such time as it has received complete, executed Article and Video License Agreements from each such author. JoVE reserves the right, in its absolute and sole discretion and without giving any reason therefore, to accept or decline any work submitted to JoVE. JoVE and its employees, agents and independent contractors shall have full, unfettered access to the facilities of the Author or of the Author's institution as necessary to make the Video, whether actually published or not. JoVE has sole discretion as to the method of making and publishing the Materials, including, without limitation, to all decisions regarding editing, lighting, filming, timing of publication, if any, length, quality, content and the like.

12. **Indemnification.** The Author agrees to indemnify JoVE and/or its successors and assigns from and against any and all claims, costs, and expenses, including attorney's fees, arising out of any breach of any warranty or other representations contained herein. The Author further agrees to indemnify and hold harmless JoVE from and against any and all claims, costs, and expenses, including attorney's fees, resulting from the breach by the Author of any representation or warranty contained herein or from allegations or instances of violation of intellectual property rights, damage to the Author's or the Author's institution's facilities, fraud, libel, defamation, research, equipment, experiments, property damage, personal injury, violations of institutional, laboratory, hospital, ethical, human and animal treatment, privacy or other rules, regulations, laws, procedures or guidelines, liabilities and other losses or damages related in any way to the submission of work to JoVE, making of videos by JoVE, or publication in JoVE or elsewhere by JoVE. The Author shall be responsible for, and shall hold JoVE harmless from, damages caused by lack of sterilization, lack of cleanliness or by contamination due to

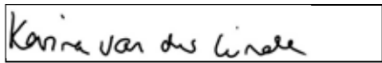
the making of a video by JoVE its employees, agents or independent contractors. All sterilization, cleanliness or decontamination procedures shall be solely the responsibility of the Author and shall be undertaken at the Author's expense. All indemnifications provided herein shall include JoVE's attorney's fees and costs related to said losses or damages. Such indemnification and holding harmless shall include such losses or damages incurred by, or in connection with, acts or omissions of JoVE, its employees, agents or independent contractors.

13. **Fees.** To cover the cost incurred for publication, JoVE must receive payment before production and publication the Materials. Payment is due in 21 days of invoice. Should the Materials not be published due to an editorial or production decision, these funds will be returned to the Author. Withdrawal by the Author of any submitted Materials after final peer review approval will result in a US\$1,200 fee to cover pre-production expenses incurred by JoVE. If payment is not received by the completion of filming, production and publication of the Materials will be suspended until payment is received.

14. **Transfer, Governing Law.** This Agreement may be assigned by JoVE and shall inure to the benefits of any of JoVE's successors and assignees. This Agreement shall be governed and construed by the internal laws of the Commonwealth of Massachusetts without giving effect to any conflict of law provision thereunder. This Agreement may be executed in counterparts, each of which shall be deemed an original, but all of which together shall be deemed to be one and the same agreement. A signed copy of this Agreement delivered by facsimile, e-mail or other means of electronic transmission shall be deemed to have the same legal effect as delivery of an original signed copy of this Agreement.

A signed copy of this document must be sent with all new submissions. Only one Agreement is required per submission.

CORRESPONDING AUTHOR

Name:	Karina van der Linde	
Department:	Department of Biology	
Institution:	Regensburg University, Regensburg, Germany	
Title:	Dr. rer. nat	
Signature:		Date: 07/06/2018

Please submit a **signed** and **dated** copy of this license by one of the following three methods:

1. Upload an electronic version on the JoVE submission site
2. Fax the document to +1.866.381.2236
3. Mail the document to JoVE / Attn: JoVE Editorial / 1 Alewife Center #200 / Cambridge, MA 02140

612542.6 For questions, please contact us at submissions@jove.com or +1.617.945.9051.



Universität Regensburg

FAKULTÄT FÜR BIOLOGIE
UND VORKLINISCHE MEDIZIN
CELL BIOLOGY AND PLANT
BIOCHEMISTRY**Dr. rer. nat. Karina van der Linde**
Phone +49 941 943-3006
Fax +49 941 943-3352
Universitätsstraße 31
93053 Regensburg
karina.van-der-linde@ur.de

Regensburg, 09.09.2018

Dear Dr. Steindel,

We are pleased to resubmit the manuscript "Guidelines for using *Ustilago maydis* as a Trojan horse for in situ delivery of maize proteins" and would like to thank the editors and reviewers for their time and helpful comments, which allowed us to improve the manuscript quality.

We revised our manuscript according to the editorial instructions (e.g., adding "Notes" and splitting some of the steps) and added further information on issues which seem to have been unclear before and which were kindly highlighted by you and the reviewers. This involves adding more detail to the protocol (e.g., regarding the preparation of *U. maydis* inoculum or recommended time frames for the respective assays) as well as including more information in the discussion as was requested by reviewers 2 and 3 (e.g. regarding the size limit of candidate proteins, possible uptake of the protein by the plant cell, or use of crossed, compatible *U. maydis* strains).

Please find a detailed response to all editor and reviewer comments on the next pages. Major changes in figures, supplemental figures, and the manuscript are highlighted in red.

Best regards,

Editorial comments:

1. Please take this opportunity to thoroughly proofread the manuscript to ensure that there are no spelling or grammar issues.

Author response:

We performed a final proofreading of the manuscript and removed all remaining issues.

2. Please obtain explicit copyright permission to reuse any figures from a previous publication. Explicit permission can be expressed in the form of a letter from the editor or a link to the editorial policy that allows re-prints. Please upload this information as a .doc or .docx file to your Editorial Manager account. The Figure must be cited appropriately in the Figure Legend, i.e. "This figure has been modified from [citation]."

Author response:

We did not reuse any figures from previous publications for this manuscript.

3. Please use SI abbreviations for all units: L, mL, μ L, h, min, s, etc.

Author response:

We made corrections throughout the manuscript.

4. Please include a space between all numbers and their corresponding units: 15 mL, 37 °C, 60 s; etc.

Author response:

We changed the manuscript accordingly.

5. Please use centrifugal force (x g) for centrifuge speeds.

Author response:

We changed this throughout the manuscript.

6. Please revise the protocol text to avoid the use of any personal pronouns (e.g., "we", "you", "our" etc.).

Author response:

We changed the manuscript accordingly.

7. Please revise the protocol to contain only action items that direct the reader to do something (e.g., “Do this,” “Ensure that,” etc.). The actions should be described in the imperative tense in complete sentences wherever possible. Avoid usage of phrases such as “could be,” “should be,” and “would be” throughout the Protocol.

Author response:

Regarding the phrase “should be”, we altered the manuscript.

8. Any text that cannot be written in the imperative tense may be added as a “Note.” Please include all safety procedures and use of hoods, etc. However, notes should be used sparingly and actions should be described in the imperative tense wherever possible.

Author response:

We added notes at multiple steps throughout the manuscript.

9. The Protocol should be made up almost entirely of discrete steps without large paragraphs of text between sections. Please simplify the Protocol so that individual steps contain only 2-3 actions per step and a maximum of 4 sentences per step. Use sub-steps as necessary. Please move the discussion about the protocol to the Discussion.

Author response:

We altered the manuscript accordingly in steps 1.1, 1.4, and 1.5.

10. Please add more details to your protocol steps. There should be enough detail in each step to supplement the actions seen in the video so that viewers can easily replicate the protocol. Please ensure you answer the “how” question, i.e., how is the step performed? Alternatively, add references to published material specifying how to perform the protocol action. Some examples: 2.3.2: Please add more details here about how to investigate the culture. What is observed? What type of water is used, deionized/distilled? What volume of water is used to wash? Please specify throughout. 2.3.7: What volume of water is used to resuspend the cells?

Author response:

Regarding step 2.3.2 (now step 2.3.4), please see the newly added Figure 2 and line 145.

Regarding the type of water, we replaced H₂O by ddH₂O.

Regarding step 2.3.7/2.3.8: please see new steps 2.3.8 and 2.3.9.

Moreover, further details were added to the protocol for steps 2.3.1, 2.3.3 (formerly part of 2.3.1), 2.3.4 (formerly 2.3.2), 2.3.8 (formerly 2.3.6), 2.3.9 (formerly 2.3.7), 2.4.2, 2.5.3 and 2.8.1. Steps 2.3.2, 2.5.6, 2.6.6 and 2.7.6 were newly added (see also response to reviewer #2, point 5).

11. Please reference Table 1 in the manuscript.

Author response:

Please see line 95.

12. Discussion: Please discuss critical steps within the protocol and any limitations of the technique.

Author response:

For discussion of critical steps within the protocol, please see lines 358-363 and 368-373.

Possible limitations are addressed in lines 339-345 and 356-368.

13. For in-text references, the corresponding reference numbers should appear as superscripts after the appropriate statement(s) in the text (before punctuation but after closed parenthesis). The references should be numbered in order of appearance.

Author response:

We changed references throughout the manuscript.

14. Please ensure that the references appear as the following: [Lastname, F.I., LastName, F.I., LastName, F.I. Article Title. Source. Volume (Issue), FirstPage – LastPage (YEAR).] For more than 6 authors, list only the first author then et al.

Author response:

We changed the references to the above-mentioned style.

15. References: Please do not abbreviate journal titles. Please include volume and issue numbers for all references.

Author response:

We include full journal titles, volumes, and issue numbers in all references.

Reviewer #1:

1. I wonder if the method can be used for the introduction of genes from an origin distinct to plants.

Author response:

As mentioned in line 71 and line 345-350 of the manuscript, theoretically any protein of interest can be secreted into the apoplast, thus including non-plant proteins.

Reviewer #2:

Major concerns:

1. Determining protein function(s) in situ is critical to advancing our understanding of the roles they play. But this method seems tailored to the analysis of small, secreted maize proteins that exert their function from the apoplast on a cellular process that must be measured with a microscope. Can the Trojan horse strategy be used to study the function of other types of proteins like an enzyme, transcription factor, signaling molecule, receptor or structural protein? If so, please give examples where this has worked.

Author response:

We now added some information on this issue within the discussion (lines 340-350); see also Editorial comments #11 and Reviewer #1.

2. The abstract states the strategy can be used to transiently complement a loss-of-function phenotype, characterize the function of protein domains, and study off-target or over-accumulation

effects. This was done quite elegantly for the ZmMAC1 protein but have the authors shown this will work for any other protein, even another small secreted peptide (e.g., any of the CLE-related peptides)?

Author response:

As mentioned in line 65-67, the method was also successfully applied to the investigation of the maize peptide ZmZIP1.

3. Do the secreted proteins remain in the apoplast where they exert their effects at the plasma membrane? Or are they taken up by the adjacent cells where they might also function in the cytoplasm or nucleus? This might be mentioned as it would be important for choosing what type of protein to use with this strategy.

Author response:

We added information about this to the discussion (lines 344–366).

Minor concerns:

1. Is there a size limit or recommended maximum on the size of the protein that can be expressed and secreted (especially since it is fused to mCherry already)?

Author response:

We now added information on this issue in lines 345-350.

2. Smut tumors appear within 7, 10 or 12 days depending on tissue and maize cultivar used. I assume tumor formation might affect the analysis of the protein being studied and so is there a recommended time frame for when protein effects should be assessed (e.g., between 1 - 3 days after inoculation but not past 5 days)?

Author response:

We added Note 2.1, which gives instructions on the proper timing for different experiments.

3. In line 113, three independent U. maydis transformants should be used to assess protein function. Does this mean, each independent transformant should be used in replicated inoculations? Or can the transformants bulked prior to inoculation? Or should this be avoided?

Author response:

A more detailed explanation towards this issue is now added to this step (lines 110-112). We thank the reviewer for highlighting any misleading phrasings.

4. For the negative control, you suggest using the untransformed SG200 strain but also you suggest using a "no signal peptide" version of the studied protein. Are both needed? It seems, the "not secreted" version of the studied protein would be the best negative control. If there is another compelling reason to also use the untransformed SG200 strain, please state why.

Author response:

We now added further information on this issue within the protocol (see 2.3.1).

5. The two tables are split on multiple pages making them difficult to read.

Author response:

We thank the reviewer for its thorough revision. Both tables have been changed to fit on one page.

6. Some of the grammar and word choices are not correct. Copy editing would help. For example:Line 32 "offside"..... "onside". Perhaps "off-target" and "target (on-target?)" are better.Line 85 The Trojan horse strategy enables "the secretion of" any heterologous.....There are others too.

Author response:

Regarding general grammar/word choices, please view our response to the Editorial comments (#1). We applied the reviewer's suggestion for "off-target" instead of "offside" (line 32).

Reviewer #3:

1. Therefore, the authors need to describe in the introduction the following papers: The Corn Smut ('Huitlacoche') as a New Platform for Oral Vaccines. PLoS ONE 10(7): e0133535. <https://doi.org/10.1371/journal.pone.0133535>; and The corn smut-made cholera oral vaccine is thermostable and induces long-lasting immunity in mouse. Journal of Biotechnology (2016), Pages 1-6. <https://doi.org/10.1016/j.jbiotec.2016.04.047>; in this papers the production of an oral vaccine using the Ustilago maydis expression system has been successfully achieved.

Author response:

We thank the reviewer for the suggestion and added the respective literature to our citations in the introduction as well as in the discussion (see lines 56 and 348).

2. Another important point is that the authors propose to use the strain SG200, this strain being only pathogenic would have the advantage of not requiring the crossing of 2 compatible strains; however, in my experience the infection efficiency is low with the SG200 strain, compared to using compatible strains such as FB1 and FB2, so the authors could mention the possibility of using compatible strains in their system.

Author response:

We now addressed this issue in the discussion (see line 358-366).