

# Journal of Visualized Experiments

## Creation of Colonic Anastomosis in Mice

--Manuscript Draft--

<b>Article Type:</b>	Methods Article - JoVE Produced Video
<b>Manuscript Number:</b>	JoVE58742R1
<b>Full Title:</b>	Creation of Colonic Anastomosis in Mice
<b>Keywords:</b>	Surgery, Anastomosis, Mouse, Colon, Medicine, Anatomy, Leak, Breakdown, Stricture
<b>Corresponding Author:</b>	William L Berry, Ph.D. University of Oklahoma Health Sciences Center Oklahoma City, Oklahoma UNITED STATES
<b>Corresponding Author's Institution:</b>	University of Oklahoma Health Sciences Center
<b>Corresponding Author E-Mail:</b>	william-berry@ouhsc.edu
<b>Order of Authors:</b>	Cullen K McCarthy Paul K McGaha Noah S Rozich Jason S Lees Nathaniel A Yokell William L Berry, Ph.D.
<b>Additional Information:</b>	
<b>Question</b>	<b>Response</b>
Please indicate whether this article will be Standard Access or Open Access.	Standard Access (US\$2,400)
Please indicate the <b>city, state/province, and country</b> where this article will be <b>filmed</b> . Please do not use abbreviations.	University of Oklahoma Health Sciences Center, 975 N.E. 10TH ST, BRC 213, Oklahoma City, OK, 73104

William Berry, Ph.D.  
Department of Surgery  
University of Oklahoma Health Sciences Center  
975 NE 10<sup>th</sup> Street, BRC-213  
Oklahoma City, OK 73104, USA  
Tel.: +1-405-271-8001 ext 45505  
E-mail: William-berry@ouhsc.edu  
August 31<sup>st</sup>, 2018

To whom it may concern:

Please find attached our revised manuscript entitled “Creation of Colonic Anastomosis in Mice” (JoVE58742). The work presented is original and has not been previously submitted to or accepted by another journal. All authors declare that no conflict of interest exists. We thank the reviewers for their scientific input and have complied as best we can with all of their requests, as detailed in our rebuttal letter.

Thank you very much for reconsideration.

Respectfully,

William Berry

**TITLE:**

Creation of Colonic Anastomosis in Mice

**AUTHORS:**

Cullen K. McCarthy, Paul K. McGaha II, Noah S. Rozich, Nathaniel A. Yokell, Jason S. Lees, William L. Berry

Department of Surgery, University of Oklahoma Health Sciences Center, Oklahoma City, OK, USA

**Corresponding Author:**

William Berry (William-Berry@ouhsc.edu)

**Email Addresses of Co-Authors:**

Cullen-McCarthy@ouhsc.edu

Jason-Lees@ouhsc.edu

Paul-mcgahaii@ouhsc.edu

Noah-Rozich@ouhsc.edu

Nathaniel-yokell@ouhsc.edu

William-Berry@ouhsc.edu

**KEYWORDS:**

Surgery, Anastomosis, Mouse, Colon, Medicine, Anatomy, Leak, Breakdown, Stricture

**SHORT ABSTRACT:**

Anastomotic leak or breakdown after surgery is a major cause of postoperative morbidity and mortality. Our surgery for creating a colonic anastomosis is a reliable and reproducible method for studying the healing mechanisms of anastomoses.

**LONG ABSTRACT:**

Intestinal anastomoses are commonly performed in both elective and emergent operations. Even so, anastomotic leaks are a highly feared complications of colonic surgeries and can occur in up to 26% of surgical anastomoses, with mortality being up to 39% for patients with such a leak. Currently, there remains a paucity of data detailing the cellular mechanisms of anastomotic healing. Devising preventative strategies and treatment modalities for anastomotic leak could be greatly potentiated by a better understanding of appropriate anastomotic healing.

A murine model is ideal as previous studies have shown that the murine anastomosis is the most clinically similar to the human case as compared with other animal models. We offer an easily reproducible murine model of colonic anastomosis in mice that will allow for further illustration of anastomotic healing.

**INTRODUCTION:**

A highly feared complication of surgical anastomosis of the intestine is anastomotic breakdown or leak. Anastomotic leak, which causes spillage of the intraluminal contents into the abdominal

cavity, is life threatening and can quickly lead to intra-abdominal sepsis; shock rates vary from 0.3% to 5.5% following small bowel anastomoses, and rise to between 0.5% and 26% for colonic anastomoses<sup>1,2</sup>. Mortality rates following leaks can be as high as 39% due to the swift onset of sepsis and rapid progression to death following intraabdominal contamination<sup>3</sup>. Preventative strategies and treatment modalities are currently based on pathophysiology that is not fully understood.

Currently, anastomotic healing is often compared to the more widely studied cutaneous wound healing, which is proving to be a relatively poor facsimile. Healing occurs in a series of overlapping phases, starting with the initial lag phase. During days 0-4 after creation of the intestinal anastomosis, the lag phase is defined by an acute inflammatory response that clears the wound of cellular debris. Next, over days 3-4, fibroblastic proliferation and production of collagen typifies the fibroplasia phase. Finally, after day 10, a prolonged period of collagen remodeling is known as the maturation phase. It is important to note that anastomotic strength is quite low and depends on the extrinsic support of surgically placed staples or suture until collagen is deposited<sup>4</sup>. Understanding the role and timing each layer of the bowel wall plays in anastomotic wound healing and the involvement in inflammatory-mediated cell types such as macrophages, as well as elucidating surrogate markers to predict anastomotic failure or success could greatly reduce morbidity, mortality, and healthcare expenditure following colon operations<sup>5</sup>.

The murine model has been shown in previous studies to be the useful in mimicking human anastomosis<sup>6</sup>. While there are popular, proven and well-studied examples of the murine colonic anastomotic model, particularly the method described by Komen *et al.*<sup>7</sup>, these models favor ileocecal or ascending colocolonic anastomotic techniques<sup>8</sup>. Previous studies of human patients have demonstrated significant difference in leak rates between ileocecal, colocolonic and colorectal anastomoses, highlighting the need for further experimental models at varying anatomic locations. Additional, popularly used methods are aimed at developing a model which intentionally creates an anastomotic leak rather than elucidate the cellular mechanisms required for normal anastomotic wound healing<sup>9</sup>. Rat models have been attempted in the past but have rates of anastomotic dehiscence and/or signs of leak (*i.e.*, abscess formation) significantly lower than humans and mice<sup>6,7</sup>. Additionally, more genetically modified experimental lines are available in mice than rats. This makes the rat model less useful for an anastomotic model. In addition, porcine and canine models have had less clinical investigation than the murine model<sup>6,7</sup>.

We propose a safe, technically simple, and easily and quickly reproducible procedure for the creation of colonic anastomoses in a murine model that should facilitate further investigation into the underreported mechanism of anastomotic wound healing<sup>10</sup>.

#### **PROTOCOL:**

The following protocol has been approved by the University of Oklahoma Health Sciences Center Institutional Animal Care and Use Committee (IACUC) and complies with all institutional ethical guidelines regarding the use of research animals. Additionally, all experiments were performed in accordance with institutional, state and federal regulations regarding experimental animal research.



NOTE: For this protocol, we used female and male congenic in-bred C57BL6/J mice at 12 to 72 weeks of age. All mice used for this procedure were kept at our non-barrier facility for at least one week prior to the operation to adapt to the local biome. Animals were allowed to feed up to time of operation and we used neither oral mechanical bowel preparation nor rectal flushing prior to procedure.

## **1) Creation of Anastomoses**

1.1) Autoclave the surgical instruments, warm the saline irrigation solution and thoroughly clean all operative surfaces with 70% ethanol.

1.2) Anesthetize the mouse with 2-3% inhaled isoflurane.

1.3) Place the animal on a warming device, such as a heating pad, to prevent hypothermia.

1.4) Subcutaneously inject 0.1 mg/kg buprenorphine (3 µg for a 30 g mouse) for postoperative analgesia and 10 mg/kg of enrofloxacin for preoperative antibiotic prophylaxis.

NOTE: Though pre- and postoperative antibiotics are not required for this operation, institutional guidelines and the animal care and use committee at our institution recommended their use at our facility.

1.5) Place the anesthetic nose cone around the mouse's snout. Throughout the operation, carefully monitor the respiratory rate of the animal and adjust the anesthetic flow rate as needed. Maintain a respiratory rate at 30-40 breaths per minute.

1.6) Use a hair clipper followed by a depilatory agent to remove the hair from the entire skin surface of the abdomen. Thoroughly remove the depilatory agent with gauze wetted with water or 70% ethanol. Thoroughly dry the animal.

1.7) Prior to prepping the abdomen, tape the mouse's limbs to the heating pad or operative surface at the end of each leg to prevent the mouse from shifting during surgery. Disinfect the abdomen with chlorhexidine. Include the entire shaved area as well as the hair on the edges of the shaved area. Place a sterile drape over the mouse (**Figure 1A**).

1.7.1) Prior to draping, cut a small ovoid or rectangular window into the drape to expose the prepped abdomen.

NOTE: The window should expose the entire abdomen of the mouse but cover the limbs, tail, head and thorax. We cut a 4 x 3 cm<sup>2</sup> window for our operations (**Figure 1B**).

1.7.2) Make a small slit along the drape midline, from the bottom edge towards the ovoid or rectangular window, to allow access to the rectum during the procedure (**Figure 1C**).

1.8) Make a skin incision. Start along the midline of the lower abdomen and incise skin with scissors vertically to the xiphoid. Incise only the skin and avoid cutting the abdominal wall musculature (**Figure 2A**).

1.9) Grasp the midline of the abdominal wall with forceps and lift away from the abdominal contents. Taking care not to injure intraabdominal structures, incise the length of the midline abdominal fascia vertically with sharp scissors. Extend the length of the skin incision (**Figure 2B**).

1.10) When the intestines are exposed, locate the cecum and small bowel, and rotate the left-sided viscera medially to expose the descending and sigmoid colon. Coat the blunt probe tip with lubricating jelly and carefully advance the probe into the rectum to aid in the identification of the descending/sigmoid colon (**Figure 3**).

NOTE: Unlike humans, the mouse cecum is generally found in the left upper quadrant of the abdomen. Take care not to perforate the bowel wall with the probe in this step. If bowel wall is perforated, terminate the procedure and euthanize the mouse.

1.10.1) Avoid grasping the cecum with toothed or sharp forceps. Instead use atraumatic forceps, cotton tipped applicator, or gentle finger manipulation to rotate viscera.

1.10.2) Use warmed sterile saline to ensure the exposed bowel is kept moist throughout the procedure.

1.10.3) The colon will be on the left of midline and attached to the retroperitoneum *via* the mesentery. After identification, withdraw the blunt probe partially to facilitate colotomy.

1.11) Perform transverse colotomy of the sigmoid colon.

1.11.1) Gently grasp the sigmoid colon superior to the pelvic inlet with atraumatic forceps (**Figure 4A**).

1.11.2) Using sharp micro-scissors, make a cut across the sigmoid colon perpendicular to the direction of the colon and extending across 80-90% the width of the colon. This will help prevent retraction of one end of the colon out of the surgical field, and facilitate repair (**Figure 4B**).

1.11.3) If a mesenteric blood vessel is injured during the course of the visceral rotation or colotomy, gently hold pressure for up to 2 min with gauze or a cotton-tipped applicator. If bleeding persists after this time, place a figure-of-eight 8-0 monofilament suture around the point of bleeding.

NOTE: If the bowel shows signs of necrosis or injury after this, terminate the procedure and euthanize the mouse using a humane method approved by your institutional animal use committee.

177  
178 1.12) Repair the sigmoid colotomy.

179  
180 1.12.1) Using a Castroviejo needle driver, place 5-6 simple interrupted 8-0 nonabsorbable  
181 polypropylene stitches to repair the colostomy. Place sutures 1 mm apart from each other with  
182 0.5 mm bites.

183  
184 1.12.1.1) Take care to avoid rolling the edges of bowel into the repair by taking slightly more  
185 serosa than mucosa with each stitch. Leave the tails 5 mm long. Take care not to accidentally  
186 catch surrounding bowel into the suture (**Figure 4C**).

187  
188 NOTE: It is helpful to begin suturing at the near the mesenteric border of the colotomy, saving  
189 the anti-mesenteric-most portion of the colotomy for last.

190  
191 1.12.1.2) As the repair progresses, advance the trans-anal blunt-tipped dissection probe to span  
192 the repair before the final sutures are placed. This will help prevent too narrow a repair and  
193 decrease rates of anastomotic stricture.

194  
195 1.13) Using a 10 mL syringe filled with warmed saline, irrigate the abdomen several times. If the  
196 surface underneath the mouse becomes soaked, dry the mouse or move the mouse to a dry  
197 surface in order to avoid hypothermia.

198  
199 1.13.1) Use a sterile gauze placed over the incision to soak up excess irrigation.

200  
201 1.13.2) At the final irrigation, fill the abdomen with sterile saline. Carefully advance a lubricated  
202 18 G angiocatheter into the rectum and inflate with 0.5-1 cm<sup>3</sup> of air. This will demonstrate any  
203 leaks in the anastomosis than can be repaired with another interrupted polypropylene suture  
204 using the sterile probe to span the anastomosis.

205  
206 1.13.3) Deflate the colon using the angiocatheter before removal.

207  
208 1.14) Make sure that there is no active bleeding. If there is, apply gentle pressure directly onto  
209 the point of bleeding for 1-2 min. Place hemostatic suture as described above if bleeding  
210 continues.

211  
212 1.15) Gently return the medialized viscera to its normal anatomic position (**Figure 5A**).

213  
214 1.16) Close the abdominal incision (**Figure 5B**).

215  
216 1.16.1) Using 4-0 absorbable braided sutures, place a running suture along the muscular layer of  
217 the abdominal wall starting at the top of the incision and finishing at the inferior aspect of the  
218 incision. Install a tie and cut the suture leaving 5 mm tails.

219  
220 NOTE: Do not accidentally incorporate intestine in the abdominal wall closure.

1.16.2) Repeat with 4-0 monofilament suture to close the skin (**Figure 5C**).

1.17) Ensure that the entire animal is warm and dry, to prevent postoperative hypothermia.

1.18) Carefully monitor the animal as it recovers from anesthesia. Administer 0.1 mg/kg buprenorphine every 72 h for 2-3 days after the procedure for pain control.

1.19) Mix 0.1 mg/mL of enrofloxacin with the mouse's drinking water for 7 days following surgery to prevent intra-abdominal infection or sepsis due to fecal contamination associated with the operation.

## 2) **Harvesting Anastomotic Tissue**

2.1) Just before excising anastomotic tissue, euthanize the mouse using a humane method approved by the institutional animal use committee.

NOTE: Based on institutional policy, we euthanize our animals by placing them in a carbon monoxide chamber with 100% carbon monoxide gas infusion for 5 min before performing bilateral thoracotomy.

2.2) Sterilize the abdomen with chlorhexidine followed by 70% ethanol.

2.3) Re-incise the original midline incision with sharp scissors. Start at the lower pole of the previous incision and extend this cut superiorly to the xiphoid (**Figure 6A**).

2.4) Using scissors, cut into the muscular layer, and after entering the peritoneal space, extend the cut to the top and bottom of the incision. Take care to avoid injuring the bowel when entering the abdomen or disrupting the anastomosis, as there may be bowel adhered to the incision or anastomotic site.

2.5) Carefully perform a left medial visceral rotation exposing the repaired sigmoid colon (**Figure 6B**). There will likely be bowel to bowel adhesions surrounding the repair. Gently and bluntly dissect these adhesions away from the site of repair. Take great care not to disrupt the anastomosis.

2.5.1) Identify the repair site by locating the tails of the polypropylene suture used for the repair. Using scissors and starting 1 cm proximal to the repair, transversely transect through the descending colon. Repeat this step 1 cm distal to site of anastomosis.

2.6) Remove the sigmoidal segment by sharply dissecting the colon from the attached mesentery along the posterior border of the colon with fine scissors (**Figure 7**).

2.7) Identify the mesenteric border of the colon specimen and use fine scissors to cut along the length of the mesenteric border in a longitudinal fashion. This will create a square or rectangular section of colon from the cylindrical specimen previously removed (**Figure 8**).

2.8) Use a marking pen to demarcate the anti-mesenteric border of the colon prior to removal of the colon segment. After removal, make a longitudinal cut along the length of the colon opposite the marking. Fix, embed and cut sample tissue as needed for histology and/or immunostaining.

#### **REPRESENTATIVE RESULTS:**

At 7 days following surgery, the anastomosis should be well healed. The anastomosis can be harvested at time points before and after seven days to better illustrate the stages of anastomotic healing. In **Figure 9**, the histological analysis shows a fibrotic (collagen visualized by trichrome staining) response mediated by smooth muscle alpha-actin positive myofibroblasts. However, we have found that results from histological analyses vary between mice, specifically the degree of re-epithelialization and concentration of myofibroblasts at the anastomotic site. We report mortality following this procedure to be less than 10%, with more than 90% of surviving mice having well-healed anastomoses at 7 days.

#### **FIGURE AND TABLE LEGENDS:**

**Figure 1. Draping and surgical preparation.** (A) A Sterile drape is placed over the mouse after the abdomen has been prepped. (B) A small oval or rectangle is cut into the drape to expose the abdomen. (C) A small slit should be made along the midline of the drape near the ovoid or rectangular window, to allow access to the rectum during the procedure.

**Figure 2. Incisions.** (A) A skin incision is made while taking care not to injure the peritoneum. (B) The peritoneum is elevated away from the abdominal contents and incised exposing the intra-abdominal contents.

**Figure 3: Probe placement.** A blunt probe is gently placed in the rectum. After locating the cecum, the contents of the abdomen are rotated medially visualizing the rectal probe previously placed.

**Figure 4. Colotomy and repair.** (A) The sigmoid is grasped with atraumatic forceps. (B) Using sharp micro-scissors, make a cut across the sigmoid colon perpendicular to the direction of the colon and extending across 80-90% the width of the colon. (C) Using a Castro-Viejo needle driver, place 5-6 simple interrupted 8-0 polypropylene stitches to repair the colotomy. Sutures should be about 1 mm apart from each other with 0.5 mm bites.

**Figure 5. Wound closure.** (A) The visceral organs are returned to their normal anatomic position. (B) The abdominal incision is closed with 4-0 braided suture. (C) The skin is closed with 4-0 monofilament suture.

**Figure 6. Incision post-surgery.** (A) Re-open the original midline incision revealing the intra-abdominal contents. Be sure to extend the incision superiorly and laterally for better exposure to the sigmoid. (B) Rotate the viscera medially revealing the sigmoid anastomosis.

**Figure 7: Harvesting the anastomosis.** Remove the segment of bowel proximal and distal to the anastomosis by 1 cm on each side.

**Figure 8: Orientation for tissue sections.** Cut along the length of the mesenteric border in a longitudinal fashion. This leaves a rectangular specimen. This depicts specimen of sigmoid anastomosis.

**Figure 9: Histology and immunohistochemical analysis of a fully healed colonic anastomosis.** Histological analysis shows fibrotic (collagen visualized by trichrome staining) response mediated by smooth muscle alpha-actin positive myofibroblasts

#### **DISCUSSION:**

There are several key steps to ensure the success of and minimize the morbidity/mortality associated with this procedure. First, ensure careful handling of intestinal tissue and take care to prevent traction injury when rotating the viscera to expose the colon. Undue tension on the bowel or mesentery can injury the bowel or vasculature and cause bowel necrosis away from the site of anastomosis. Additionally, sharp forceps or forceps with teeth should not be used to handle the bowel.

Injury to the bowel separate from the site of planned anastomosis, either during visceral rotation or by perforation with the blunt probe, should result in euthanasia of the animal. In our experience, bowel necrosis or injury can lead to intra-abdominal sepsis or death, and a greatly increased inflammatory response that makes recovery of a healed anastomotic specimen prohibitively difficult.

Transection of the colon should span as much of the descending colon as possible, but care should be taken to not transect the bowel serosa in contact with the mesentery. In our experience, transection that includes the serosa—and especially the mesentery—can lead to retraction of the proximal section of the colon that makes anastomosis more difficult and can lead to further injury trying to recover the retracted segment.

Anastomosis can be repaired with 5-6 interrupted sutures. More may be needed for large mice. Sutures should be 1 mm apart. Place sutures on either side of the mesenteric border and then on alternating sides of the transection to meet in the middle at the anti-mesenteric border facilitates an easier and quicker anastomosis. Before the final suture, spanning the anastomosis with the blunt probe ensures a patent anastomosis and prevents “back-walling” the anastomosis, which would effectively ligate the colon.

Ensure hemostasis before abdominal closure. Despite postoperative antibiotic coverage, hemoperitoneum in the recovery period after intraabdominal contamination can lead to an unacceptably high rate of intra-abdominal infection and adhesive disease.

When first performing this procedure, several mice may be lost in the postoperative period. Our initial mortality rate approximated 30%. We have found this to be mainly due to anastomotic stricture leading to obstruction and bowel necrosis, breakdown of anastomotic repair, or bowel wall necrosis away from site of anastomosis likely due to ischemia after mesenteric injury. All of these can lead to intra-abdominal infection, sepsis and death. Once experienced in this procedure, operating surgeon should experience a mortality rate of under 10%. Evidence of subclinical anastomotic site leak, illustrated by purulence and dense adhesions at the site of anastomosis, were present in a further 10%. While this procedure can be done without the aid of magnification, its largest drawback as a reproducible experimental model is the relative technical challenge when compared to ileocecal or ascending colon anastomoses. We found surgical loupes exceedingly helpful in performing the anastomosis while minimizing trauma to the bowel wall. A surgical microscope may also be used, but we did not find that necessary.

Many techniques have been used to describe animal models for colonic anastomosis; particularly utilizing rat and rabbit models. We have found there to be a paucity of reproducible procedures of descending colon anastomosis in mouse models; we suspect this is due to the smaller size of mice increasing the technical difficulty of anastomotic procedures. However, mice have greater selection and wider availability of transgenic lines and antibodies, which to this point were unavailable to be used in a colon anastomosis model. We developed the current model to unify the mouse model with a model of colon anastomosis.

Our experience with this procedure includes both male and female mice of varying sizes and ages. At this point, we have not compared anastomotic wound healing results between ages, sizes or sexes of mice, though differences may certainly exist, and this model would allow that comparison.

We believe that this model can be easily and consistently reproduced and used to study anastomotic wound healing. Although we recommend first specimen harvests at seven days, earlier and later time points may be helpful in illustrating a timeline of anastomotic healing; demonstrating, for example, early migration of inflammatory cells and mediators into the anastomotic site and the deposition of collagen by fibroblasts in the following weeks.

#### **ACKNOWLEDGMENTS:**

None

#### **DISCLOSURES:**

The authors declare that they have no competing financial interests.

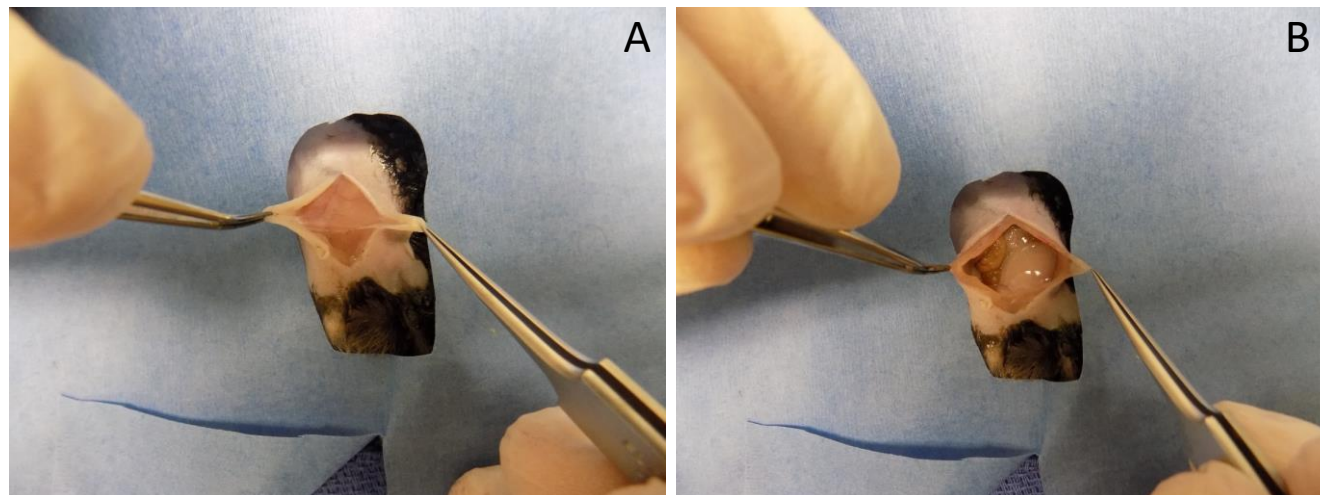
#### **REFERENCES:**

- 1 Murrell, Z. A., Stamos, M. J. Reoperation for anastomotic failure. *Clinics in colon and rectal*

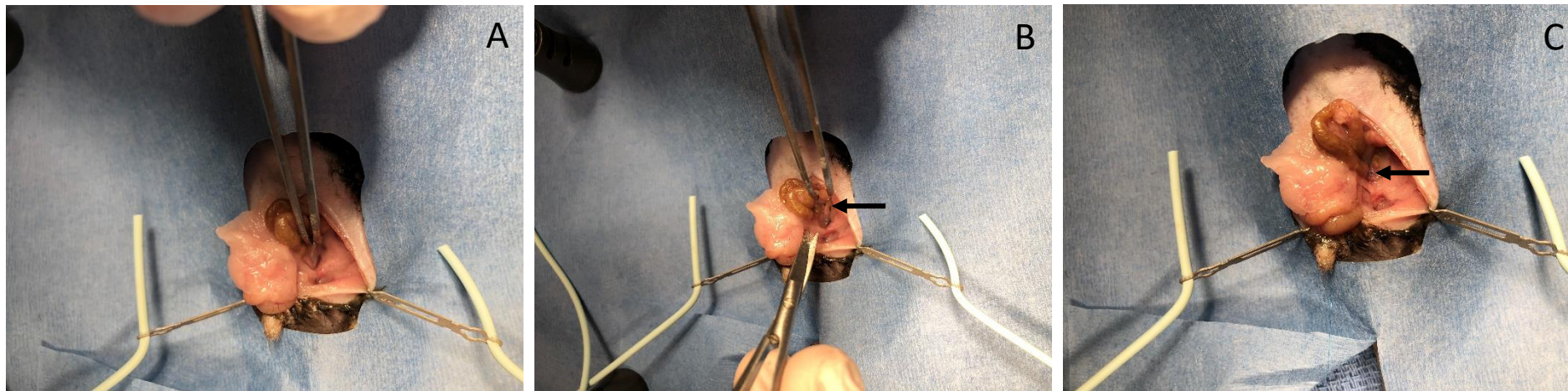
- surgery* **19**, 213-216, doi:10.1055/s-2006-956442 (2006).
- 2 Shaban, F., Carney, K., McGarry, K. & Holtham, S. Perforated Diverticulitis: To Anastomose or Not to Anastomose? A Systematic Review and Meta-Analysis. *International journal of surgery (London, England)*, doi:10.1016/j.ijssu.2018.08.009 (2018).
- 3 Chambers, W. M., Mortensen, N. J. Postoperative leakage and abscess formation after colorectal surgery. *Best practice, research. Clinical gastroenterology* **18**, 865-880, doi:10.1016/j.bpg.2004.06.026 (2004).
- 4 Ashkanani, F., Krukowski, Z. H. Intestinal Anastomosis. *Surgery - Oxford International Edition* **20**, 104-107, doi:10.1383/surg.20.5.104.14630 (2002).
- 5 Raptis, D., Pramateftakis, M. G., Kanellos, I. Our 20-year experience with experimental colonic anastomotic healing. *Journal of medicine and life* **11**, 5-14 (2018).
- 6 Pommergaard, H. C., Rosenberg, J., Schumacher-Petersen, C., Achiam, M. P. Choosing the best animal species to mimic clinical colon anastomotic leakage in humans: a qualitative systematic review. *European surgical research. Europäische chirurgische Forschung. Recherches chirurgicales europeennes* **47**, 173-181, doi:10.1159/000330748 (2011).
- 7 Komen, N. et al. Colorectal anastomotic leakage: a new experimental model. *The Journal of surgical research* **155**, 7-12, doi:10.1016/j.jss.2008.08.019 (2009).
- 8 Perry, T., Borowiec, A., Dicken, B., Fedorak, R., Madsen, K. Murine ileocolic bowel resection with primary anastomosis. *Journal of visualized experiments : JoVE*, e52106, doi:10.3791/52106 (2014).
- 9 Pommergaard, H. C., Achiam, M. P., Rosenberg, J. Colon anastomotic leakage: improving the mouse model. *Surgery today* **44**, 933-939, doi:10.1007/s00595-013-0632-3 (2014).
- 10 Bosmans, J. W. A. M., Jongen, A. C. H. M., Bouvy, N. D., Derikx, J. P. M. Colorectal anastomotic healing: why the biological processes that lead to anastomotic leakage should be revealed prior to conducting intervention studies. *BMC Gastroenterology* **15**, 180, doi:10.1186/s12876-015-0410-3 (2015).





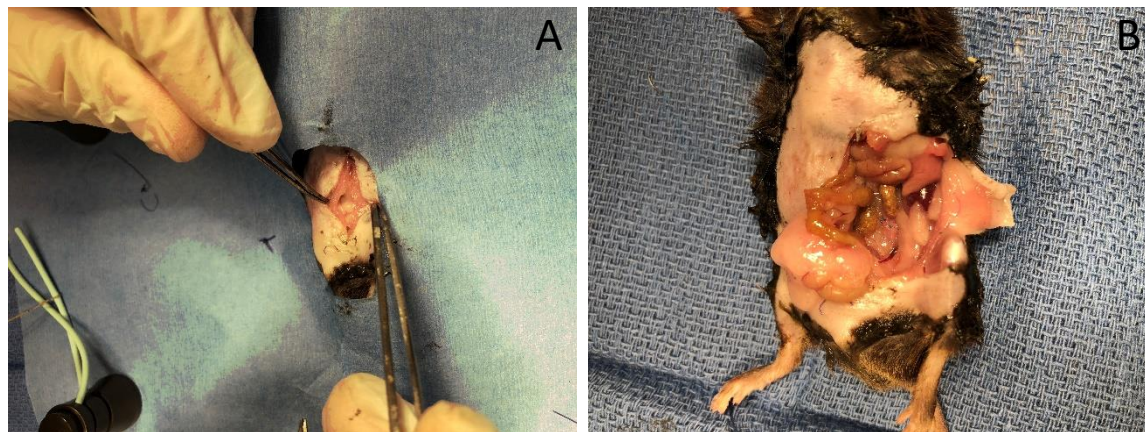




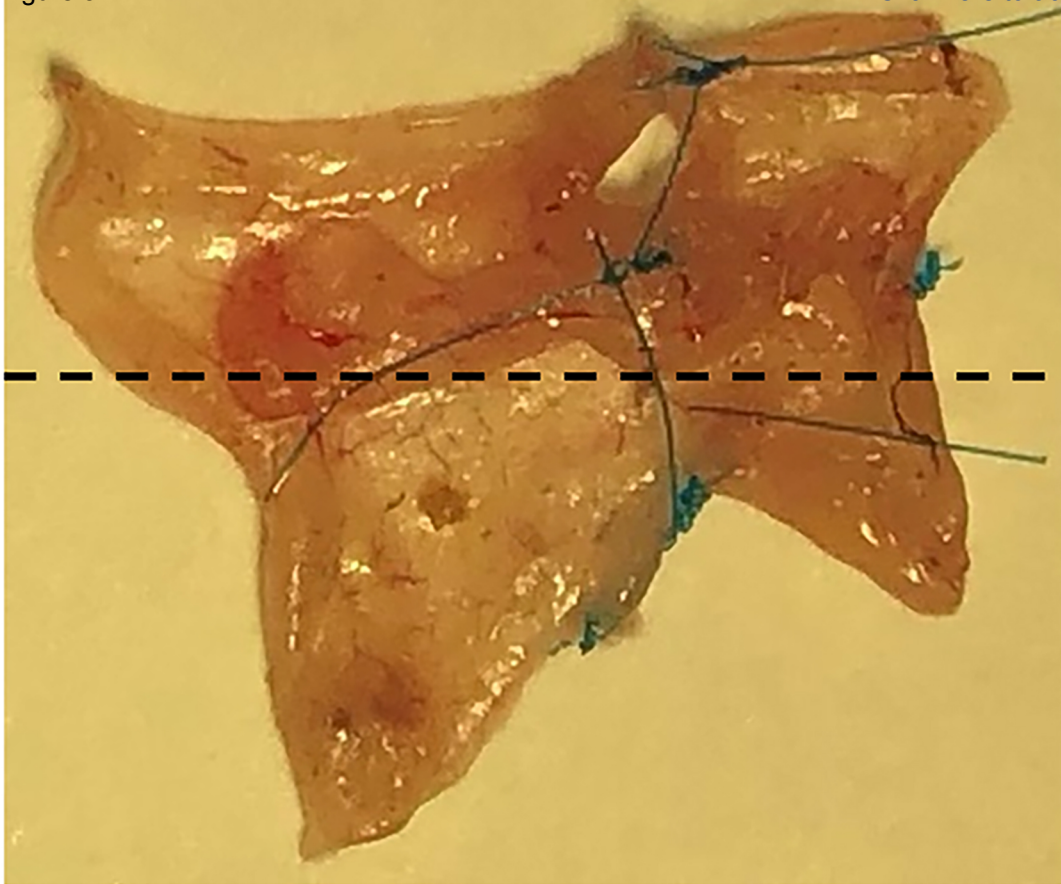








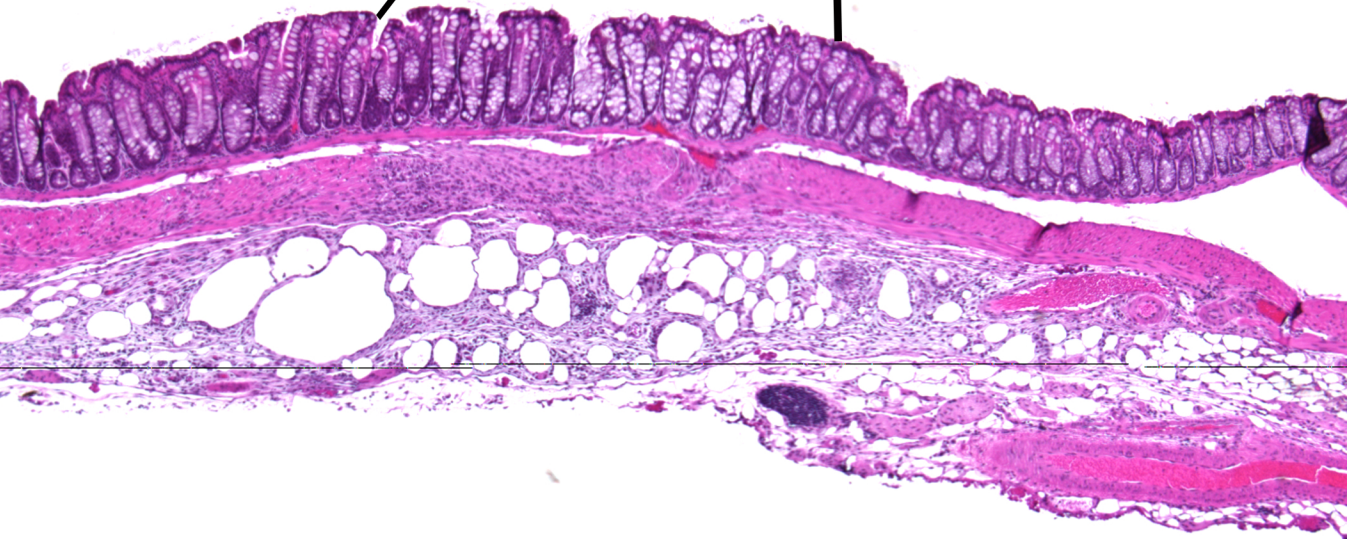
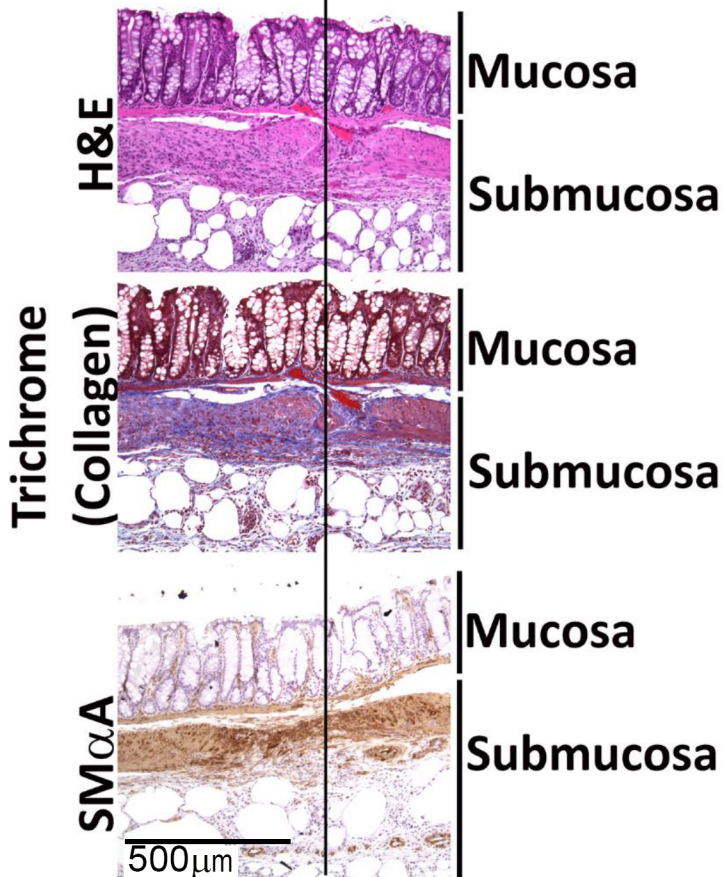




Orientation  
for tissue  
sections



Site of Anastomosis



Name of Reagent/ Equipment	Company	Catalog Number	Comments/Description
C57BL6/J mice	Jackson Labs	#00664	
Fisherbrand Absorbent Underpads, 20" x 24"	Fisher Scientific	14-206-62	
Polylined Sterile Field, 18" x 24"	Busse Hospital Disposables	696	Cut a rectangular hole
Isothesia isoflurane	Henry Schein	50033	
Fisherbrand Sterile cotton gauze pad, 4" x 4"	Fisher Scientific	22-415-469	
Puralube petrolatum ophthalmic ointment, 1/8 oz. tube	Dechra Veterinary Products	NDC 17033-211-38	
Nair depilatory cream	Church & Dwight Co.	22339-05	
Buprenex buprenorphine 0.3 mg/ml	Reckitt Benckiser Pharma Inc	NDC 12496-0757-5	
1 cc insulin syringe, 27 G	Becton Dickinson	329412	
Chloraprep Shampoo	Medline	APL82287	
Webcol alcohol prep swabs	Covidien	6818	
BioGel PI surgical gloves	Mölnlycke Health Care	ALA42675Z	
Micro Forceps with teeth	Roboz	RS-5150	
Fine scissors- sharp	Fine Science Tools	14060-09	
Straight serrated forceps	Fine Science Tools	11050-10	
Castro-Viejo needle driver	Fine Science Tools	12565-14	
0.9% Sodium Chloride Irrigation	Baxter	BHL2F7121	Warm to 37 °C prior to use
10 ml syringe	Becton Dickinson	309604	
4-0 Vicryl absorbable braided suture, 18", PS-2 needle	Henry Schein	6546037	
Blue monofilament suture 24" BV-1 needle	Henry Schein	8305H	Usually comes double-armed. Cut the suture at the midway point to generate two usable sutures.
Cole-Parmer Microscissors, Standard Grade, Straight, 4".	Cole- Parmer	EW-10818-06	
Medline Sterile lubricating jelly	Medline	MDS032273H	





1 Alewife Center #200  
Cambridge, MA 02140  
tel. 617.945.9051  
www.jove.com

## ARTICLE AND VIDEO LICENSE AGREEMENT

Title of Article:

Creation of Colonic Anastomosis in Mice

Author(s):

Cullen McCarthy, Paul McCabe, Noah Rozich, Nathaniel Yokell, Jason Lee, William Berry

Item 1 (check one box): The Author elects to have the Materials be made available (as described at

<http://www.jove.com/author>) via: ☒ Standard Access ☐ Open Access

Item 2 (check one box):



The Author is NOT a United States government employee.



The Author is a United States government employee and the Materials were prepared in the course of his or her duties as a United States government employee.



The Author is a United States government employee but the Materials were NOT prepared in the course of his or her duties as a United States government employee.

### ARTICLE AND VIDEO LICENSE AGREEMENT

1. **Defined Terms.** As used in this Article and Video License Agreement, the following terms shall have the following meanings: "**Agreement**" means this Article and Video License Agreement; "**Article**" means the article specified on the last page of this Agreement, including any associated materials such as texts, figures, tables, artwork, abstracts, or summaries contained therein; "**Author**" means the author who is a signatory to this Agreement; "**Collective Work**" means a work, such as a periodical issue, anthology or encyclopedia, in which the Materials in their entirety in unmodified form, along with a number of other contributions, constituting separate and independent works in themselves, are assembled into a collective whole; "**CRC License**" means the Creative Commons Attribution-Non Commercial-No Derivs 3.0 Unported Agreement, the terms and conditions of which can be found at: <http://creativecommons.org/licenses/by-nc-nd/3.0/legalcode>; "**Derivative Work**" means a work based upon the Materials or upon the Materials and other pre-existing works, such as a translation, musical arrangement, dramatization, fictionalization, motion picture version, sound recording, art reproduction, abridgment, condensation, or any other form in which the Materials may be recast, transformed, or adapted; "**Institution**" means the institution, listed on the last page of this Agreement, by which the Author was employed at the time of the creation of the Materials; "**JoVE**" means MyJove Corporation, a Massachusetts corporation and the publisher of *The Journal of Visualized Experiments*; "**Materials**" means the Article and / or the Video; "**Parties**" means the Author and JoVE; "**Video**" means any video(s) made by the Author, alone or in conjunction with any other parties, or by JoVE or its affiliates or agents, individually or in collaboration with the Author or any other parties, incorporating all or any portion of the Article, and in which the Author may or may not appear.

2. **Background.** The Author, who is the author of the Article, in order to ensure the dissemination and protection of the Article, desires to have the JoVE publish the Article and create and transmit videos based on the Article. In furtherance of such goals, the Parties desire to memorialize in this Agreement the respective rights of each Party in and to the Article and the Video.

3. **Grant of Rights in Article.** In consideration of JoVE agreeing to publish the Article, the Author hereby grants to JoVE, subject to **Sections 4 and 7** below, the exclusive, royalty-free, perpetual (for the full term of copyright in the Article, including any extensions thereto) license (a) to publish, reproduce, distribute, display and store the Article in all forms, formats and media whether now known or hereafter developed (including without limitation in print, digital and electronic form) throughout the world, (b) to translate the Article into other languages, create adaptations, summaries or extracts of the Article or other Derivative Works (including, without limitation, the Video) or Collective Works based on all or any portion of the Article and exercise all of the rights set forth in (a) above in such translations, adaptations, summaries, extracts, Derivative Works or Collective Works and (c) to license others to do any or all of the above. The foregoing rights may be exercised in all media and formats, whether now known or hereafter devised, and include the right to make such modifications as are technically necessary to exercise the rights in other media and formats. If the "Open Access" box has been checked in **Item 1** above, JoVE and the Author hereby grant to the public all such rights in the Article as provided in, but subject to all limitations and requirements set forth in, the CRC License.



## ARTICLE AND VIDEO LICENSE AGREEMENT

4. Retention of Rights in Article. Notwithstanding the exclusive license granted to JoVE in **Section 3** above, the Author shall, with respect to the Article, retain the non-exclusive right to use all or part of the Article for the non-commercial purpose of giving lectures, presentations or teaching classes, and to post a copy of the Article on the Institution's website or the Author's personal website, in each case provided that a link to the Article on the JoVE website is provided and notice of JoVE's copyright in the Article is included. All non-copyright intellectual property rights in and to the Article, such as patent rights, shall remain with the Author.

5. Grant of Rights in Video – Standard Access. This **Section 5** applies if the "Standard Access" box has been checked in **Item 1** above or if no box has been checked in **Item 1** above. In consideration of JoVE agreeing to produce, display or otherwise assist with the Video, the Author hereby acknowledges and agrees that, Subject to **Section 7** below, JoVE is and shall be the sole and exclusive owner of all rights of any nature, including, without limitation, all copyrights, in and to the Video. To the extent that, by law, the Author is deemed, now or at any time in the future, to have any rights of any nature in or to the Video, the Author hereby disclaims all such rights and transfers all such rights to JoVE.

6. Grant of Rights in Video – Open Access. This **Section 6** applies only if the "Open Access" box has been checked in **Item 1** above. In consideration of JoVE agreeing to produce, display or otherwise assist with the Video, the Author hereby grants to JoVE, subject to **Section 7** below, the exclusive, royalty-free, perpetual (for the full term of copyright in the Article, including any extensions thereto) license (a) to publish, reproduce, distribute, display and store the Video in all forms, formats and media whether now known or hereafter developed (including without limitation in print, digital and electronic form) throughout the world, (b) to translate the Video into other languages, create adaptations, summaries or extracts of the Video or other Derivative Works or Collective Works based on all or any portion of the Video and exercise all of the rights set forth in (a) above in such translations, adaptations, summaries, extracts, Derivative Works or Collective Works and (c) to license others to do any or all of the above. The foregoing rights may be exercised in all media and formats, whether now known or hereafter devised, and include the right to make such modifications as are technically necessary to exercise the rights in other media and formats. For any Video to which this Section 6 is applicable, JoVE and the Author hereby grant to the public all such rights in the Video as provided in, but subject to all limitations and requirements set forth in, the CRC License.

7. Government Employees. If the Author is a United States government employee and the Article was prepared in the course of his or her duties as a United States government employee, as indicated in **Item 2** above, and any of the licenses or grants granted by the Author hereunder exceed the scope of the 17 U.S.C. 403, then the rights granted hereunder shall be limited to the maximum rights permitted under such

statute. In such case, all provisions contained herein that are not in conflict with such statute shall remain in full force and effect, and all provisions contained herein that do so conflict shall be deemed to be amended so as to provide to JoVE the maximum rights permissible within such statute.

8. Likeness, Privacy, Personality. The Author hereby grants JoVE the right to use the Author's name, voice, likeness, picture, photograph, image, biography and performance in any way, commercial or otherwise, in connection with the Materials and the sale, promotion and distribution thereof. The Author hereby waives any and all rights he or she may have, relating to his or her appearance in the Video or otherwise relating to the Materials, under all applicable privacy, likeness, personality or similar laws.

9. Author Warranties. The Author represents and warrants that the Article is original, that it has not been published, that the copyright interest is owned by the Author (or, if more than one author is listed at the beginning of this Agreement, by such authors collectively) and has not been assigned, licensed, or otherwise transferred to any other party. The Author represents and warrants that the author(s) listed at the top of this Agreement are the only authors of the Materials. If more than one author is listed at the top of this Agreement and if any such author has not entered into a separate Article and Video License Agreement with JoVE relating to the Materials, the Author represents and warrants that the Author has been authorized by each of the other such authors to execute this Agreement on his or her behalf and to bind him or her with respect to the terms of this Agreement as if each of them had been a party hereto as an Author. The Author warrants that the use, reproduction, distribution, public or private performance or display, and/or modification of all or any portion of the Materials does not and will not violate, infringe and/or misappropriate the patent, trademark, intellectual property or other rights of any third party. The Author represents and warrants that it has and will continue to comply with all government, institutional and other regulations, including, without limitation all institutional, laboratory, hospital, ethical, human and animal treatment, privacy, and all other rules, regulations, laws, procedures or guidelines, applicable to the Materials, and that all research involving human and animal subjects has been approved by the Author's relevant institutional review board.

10. JoVE Discretion. If the Author requests the assistance of JoVE in producing the Video in the Author's facility, the Author shall ensure that the presence of JoVE employees, agents or independent contractors is in accordance with the relevant regulations of the Author's institution. If more than one author is listed at the beginning of this Agreement, JoVE may, in its sole discretion, elect not take any action with respect to the Article until such time as it has received complete, executed Article and Video License Agreements from each such author. JoVE reserves the right, in its absolute and sole discretion and without giving any reason therefore, to accept or decline any work submitted to JoVE. JoVE and its employees, agents and independent contractors shall have



## ARTICLE AND VIDEO LICENSE AGREEMENT

full, unfettered access to the facilities of the Author or of the Author's institution as necessary to make the Video, whether actually published or not. JoVE has sole discretion as to the method of making and publishing the Materials, including, without limitation, to all decisions regarding editing, lighting, filming, timing of publication, if any, length, quality, content and the like.

11. **Indemnification.** The Author agrees to indemnify JoVE and/or its successors and assigns from and against any and all claims, costs, and expenses, including attorney's fees, arising out of any breach of any warranty or other representations contained herein. The Author further agrees to indemnify and hold harmless JoVE from and against any and all claims, costs, and expenses, including attorney's fees, resulting from the breach by the Author of any representation or warranty contained herein or from allegations or instances of violation of intellectual property rights, damage to the Author's or the Author's institution's facilities, fraud, libel, defamation, research, equipment, experiments, property damage, personal injury, violations of institutional, laboratory, hospital, ethical, human and animal treatment, privacy or other rules, regulations, laws, procedures or guidelines, liabilities and other losses or damages related in any way to the submission of work to JoVE, making of videos by JoVE, or publication in JoVE or elsewhere by JoVE. The Author shall be responsible for, and shall hold JoVE harmless from, damages caused by lack of sterilization, lack of cleanliness or by contamination due to the making of a video by JoVE its employees, agents or independent contractors. All sterilization, cleanliness or decontamination procedures shall be solely the responsibility of the Author and shall be undertaken at the Author's

expense. All indemnifications provided herein shall include JoVE's attorney's fees and costs related to said losses or damages. Such indemnification and holding harmless shall include such losses or damages incurred by, or in connection with, acts or omissions of JoVE, its employees, agents or independent contractors.

12. **Fees.** To cover the cost incurred for publication, JoVE must receive payment before production and publication the Materials. Payment is due in 21 days of invoice. Should the Materials not be published due to an editorial or production decision, these funds will be returned to the Author. Withdrawal by the Author of any submitted Materials after final peer review approval will result in a US\$1,200 fee to cover pre-production expenses incurred by JoVE. If payment is not received by the completion of filming, production and publication of the Materials will be suspended until payment is received.

13. **Transfer, Governing Law.** This Agreement may be assigned by JoVE and shall inure to the benefits of any of JoVE's successors and assignees. This Agreement shall be governed and construed by the internal laws of the Commonwealth of Massachusetts without giving effect to any conflict of law provision thereunder. This Agreement may be executed in counterparts, each of which shall be deemed an original, but all of which together shall be deemed to be one and the same agreement. A signed copy of this Agreement delivered by facsimile, e-mail or other means of electronic transmission shall be deemed to have the same legal effect as delivery of an original signed copy of this Agreement.

A signed copy of this document must be sent with all new submissions. Only one Agreement required per submission.

### CORRESPONDING AUTHOR:

Name:

William L. Berry

Department:

Department of Surgery

Institution:

University of Oklahoma Health Sciences Center

Article Title:

Creation of Colonic Anastomosis in Mice

Signature:

*William L. Berry*

Date:

7/5/18

Please submit a signed and dated copy of this license by one of the following three methods:

- 1) Upload a scanned copy of the document as a pdf on the JoVE submission site;
- 2) Fax the document to +1.866.381.2236;
- 3) Mail the document to JoVE / Attn: JoVE Editorial / 1 Alewife Center #200 / Cambridge, MA 02139

For questions, please email [submissions@jove.com](mailto:submissions@jove.com) or call +1.617.945.9051

## Response to Reviewers

*We thank both reviewers for their overall positive evaluation of our manuscript and their insightful critiques, which have helped to ameliorate this article. We have appreciated the scientific input of the reviewers, as well as their effort to help us correct grammatical errors. We have scrutinized the manuscript again, and corrected identifiable mistakes.*

### Response to Reviewer 1

The author describe the rationale for choosing the mouse is that other animals do not develop clinical leakage. However, it seems that none of the animals develop clinical leakage in the present study. So why is the model superior to the common rat model of a healed colonic anastomosis?

*Our intention with this model is not to examine the causes or effects of clinical leakage at an anastomotic site, per se. We aim to development a model of colonic anastomosis that would allow the study of cellular mechanisms required for appropriate anastomotic healing. A murine model offers a wider and more readily available selection of genetically engineered models.*

Also, it is difficult to assess the value of the model without any outcome data on animal survival, operative findings etc.

*We feel we have addressed outcome data on both survival and operative finding in the discussion as follows:*

*When first performing this procedure, several mice may be lost in the postoperative period. Our initial mortality rate approximated 30%. We have found this to mainly be due to anastomotic stricture leading to obstruction and bowel necrosis, breakdown of anastomotic repair, or bowel wall necrosis away from site of anastomosis, likely due to ischemia after mesenteric injury. All of these can lead to intraabdominal infection, sepsis and death. Once experienced in this procedure, operating surgeon should experience a mortality rate of under 10%. Evidence of subclinical anastomotic site leak, illustrated by purulence and dense adhesions at the site of anastomosis were present in a further 10%.*

The authors should comment the rationale for choosing a different part of the colon for anastomosis compared with the validated model by Komen et al, where clinical leakage was demonstrated.

*The reviewers critique is well taken. We are familiar with the Komen model and are not attempting to produce a better model, rather an alternative model of anastomosis at a different anatomic location. We have addressed this issue in the introduction as follows:*

*The murine model has been shown in previous studies to be the useful in mimicking human*

*anastomosis (6). While there are popular, proven and well-studied examples of the murine colonic anastomotic model, particularly the method described by Komen et al. (2009) (7), these models favor ileocecal or colocolonic anastomotic techniques (8). Previous studies of human patients have demonstrated significant difference in leak rates between ileocecal, colocolonic and colorectal anastomoses, highlighting the need for further experimental models at varying anatomic locations. Additional, popularly used methods are aimed at developing a model which intentionally creates an anastomotic leak rather than elucidate the cellular mechanisms required for normal anastomotic wound healing (9).*

## **Response to Reviewer 2**

1. Regarding the introduction: The introduction is kept very brief, which is tolerable for a protocol, however a short paragraph about the different phases of anastomotic healing might be helpful. Furthermore, the authors state, that the mechanism of anastomotic healing is not fully understood and investigations are underreported. This is true, since in depth details of anastomotic healing and leakage formation are still unknown. However, there has already been a high number of publications in the field, that should at least be briefly mentioned. The method the authors describe has no novelty on itself and has been used for decades, at least the preceding work shall be acknowledged otherwise the reader gets the impression as if only very superficial literature research has been performed.

*As suggested by the reviewer, we have addressed this in the introduction as follows:*

*Currently, anastomotic healing is often compared to the more widely studied cutaneous wound healing, which is proving to be a relatively poor facsimile. Healing occurs in a series of overlapping phases, starting with the initial lag phase. During days 0-4 after creation of the intestinal anastomosis, the lag phase is defined by an acute inflammatory response that clears the wound of cellular debris. Next, over days 3-4, fibroblastic proliferation and production of collagen typifies the fibroplasia phase. Finally, after day 10, a prolonged period of collagen remodeling is known as the maturation phase. It is important to note that anastomotic strength is quite low and depends on the extrinsic support of surgically placed staples or suture until collagen is deposited (4). Understanding the role and timing each layer of the bowel wall plays in anastomotic wound healing and the involvement in inflammatory-mediated cell types such as macrophages, as well as elucidating surrogate markers to predict anastomotic failure or success could greatly reduce morbidity, mortality, and healthcare expenditure following colon operations (5).*

*The murine model has been shown in previous studies to be the useful in mimicking human anastomosis (6). While there are popular, proven and well-studied examples of the murine colonic anastomotic model, particularly the method described by Komen et al. (2009) (7), these models favor ileocecal or colocolonic anastomotic techniques (8). Previous studies of human patients have demonstrated significant difference in leak rates between ileocecal, colocolonic and colorectal anastomoses, highlighting the need for further experimental models at varying anatomic locations. Rat models have been attempted in the past but have rates of anastomotic dehiscence and/or signs of leak (i.e. abscess formation) significantly lower than humans (6, 7).*

*Additionally, more genetically modified experimental lines are available in mice than rats. This makes the rat model less useful for an anastomotic model. In addition, pig and dog models have had less clinical investigation than the murine model (6, 7).*

2. Please give more detailed information about preoperative preparations: e.g. do you starve the animals prior to the operation? Are bowel preps used/ is the colon flushed? What age and weight is optimal for the operation? Do you use male and female mice? Please say that animals need to be kept in the facility at least 1 week before the operation to adapt to the local microbiome of the facility.

*At the request of the reviewer, we have addressed this in the protocol:*

*For this protocol, we used female and male congenic in-bred C57BL6/J (#00664 Jackson Labs) mice at 12 to 72 weeks of age. All mice used for this procedure are kept at our non-barrier facility for at least one week prior to the operation to adapt to the local biome. Animals are allowed to feed up to time of operation and we use neither oral mechanical bowel preparation nor rectal flushing prior to procedure.*

3. Regarding the use of antibiotics: Not all departments use antibiotics neither single shot nor postop treatment. In my opinion a single shot might be useful, but is still matter of discussion. A postoperative antibiotic Therapie regime as you describe is not mandatory at all. Like in human surgery, postoperative antibiotic treatment shall only be performed in presence of septic complications. Please comment.

*We agree with the reviewer. Our use of postoperative antibiotics was a stipulation made by the institution's animal care and use committee. We have mentioned this in our protocol:*

1.1) *Subcutaneously inject 0.1 mg/kg buprenorphine (3 µg for a 30 g mouse) for postoperative pain control and 10 mg/kg of enrofloxacin for preoperative antibiotic prophylaxis.*

1.4.1) *Though pre- and postoperative antibiotics are not required for this operation, institutional guidelines and the animal care and use committee at our institution were consulted and recommended their use at our facility.*

4. About the figures: The authors need to be complimented for very clean and good pictures of the operation itself. However figures 8 and 9 need major revision. Figure 8: the line for performance of cross sections is not correct. You should cut through the anastomosis to show both ends in parallel to the colon and not parallel to the anastomotic line, otherwise you will not see the anastomosis. Figure 9: To be honest, I can not identify the anastomosis at all. Even after 7 days and in fully healed anastomoses the epithelium is not perfectly closed like in the figure, furthermore the submucosal reaction in the anastomosis is very limited. It would be



good to have a histologic picture on day3, day5 and day7 after the operation.

*We appreciate being made aware of this error. We do embed and section the tissue according to how we described it in the text, however, we did generate the figure incorrectly. We have now corrected the orientation in Figure 8. We originally cropped the images in figure 9, we have now added an uncropped version of the H&E to better illustrate the uninjured parts of tissue flanking the anastomosis. Figure 9 is a representative image, however, some mice do not exhibit epithelium that has healed this well. We better described that in the discussion:*

*At seven days following surgery, the anastomosis should be well healed. Anastomosis can be harvested at time points before and after seven days to better illustrate the stages of anastomotic healing. In this representative image, the histological analysis shows a fibrotic (collagen visualized by trichrome staining) response mediated by Smooth muscle alpha-actin positive myofibroblasts (**Figure 9**). However, we find histological analysis varies between mice, specifically the degree of re-epithelialization and concentration of myofibroblasts at the anastomotic site.*