

# Journal of Visualized Experiments

## Profiling the folate receptor beta macrophage and vascular immune microenvironment in giant cell arteritis: an immunohistopathologic study --Manuscript Draft--

Article Type:	Invited Methods Article - JoVE Produced Video
Manuscript Number:	JoVE58713R2
Full Title:	Profiling the folate receptor beta macrophage and vascular immune microenvironment in giant cell arteritis: an immunohistopathologic study
Keywords:	immunohistochemistry; folate receptor beta macrophages; giant cell arteritis; vasculitis; immune microenvironment; temporal artery biopsy
Corresponding Author:	Shirley Albano-Aluquin, M.D. Penn State Hershey College of Medicine Hershey, PA UNITED STATES
Corresponding Author's Institution:	Penn State Hershey College of Medicine
Corresponding Author E-Mail:	salbanoaluquin@hmc.psu.edu
Order of Authors:	Shirley Angeles Albano-Aluquin, M.D. Jozef Malysz Michal Kidacki Manohar Ratnam Nancy J Olsen
Additional Information:	
Question	Response
Please indicate whether this article will be Standard Access or Open Access.	Standard Access (US\$2,400)
Please indicate the <b>city, state/province, and country</b> where this article will be <b>filmed</b> . Please do not use abbreviations.	Hershey , PA

**TITLE:**

**An Immunohistopathologic Study to Profile the Folate Receptor Beta Macrophage and Vascular Immune Microenvironment in Giant Cell Arteritis**

**AUTHORS AND AFFILIATIONS:**

Shirley Albano-Aluquin<sup>1</sup>, Jozef Malysz<sup>2</sup>, Michal Kidacki<sup>3</sup>, Manohar Ratnam<sup>4</sup>, Nancy J Olsen<sup>1</sup>

<sup>1</sup>Department of Medicine, Penn State University, Hershey, PA, USA

<sup>2</sup>Department of Pathology, Penn State University, Hershey, PA, USA

<sup>3</sup>Penn State College of Medicine, Hershey PA, USA

<sup>4</sup>Department of Oncology, Wayne State University School of Medicine, Detroit, MI

**Corresponding Author:**

Shirley Albano-Aluquin (salbanoaluquin@hmc.psu.edu)

Tel: (717) 531-5384

**Email Addresses of Co-authors:**

Jozef Malysz (jmalysz@hmc.psu.edu)

Michal Kidacki (mkidacki@hmc.psu.edu)

Manohar Ratnam (ratnamm@karmanos.org)

Nancy J Olsen (nolsen@hmc.psu.edu)

**KEYWORDS:**

Immunohistochemistry, folate receptor beta macrophage, giant cell arteritis, vasculitis, immune microenvironment, temporal artery biopsy

**SUMMARY:**

The protocol illustrates the use of histopathologic examination and immunohistochemistry to profile the folate receptor beta macrophage and its relationship with the total immune cell infiltrate in temporal artery biopsies in giant cell arteritis.

**ABSTRACT:**

Giant cell arteritis (GCA) is a chronic immune-mediated disease of medium-to-large sized arteries that affects older adults. GCA manifests with arthritis and occlusive symptoms of headaches, stroke or vision loss. Macrophages and T-helper lymphocytes infiltrate the vascular wall and produce a pro-inflammatory response that lead to vessel damage and ischemia. To date, there is no GCA biomarker that can monitor disease activity and guide therapeutic response.

Folate receptor beta (FRB) is a glycosylphosphatidylinositol protein that is anchored on cell membranes and normally expressed in the myelomonocytic lineage and in the majority of myeloid leukemia cells as well as in tumor and rheumatoid synovial macrophages, where its expression correlates with disease severity. The ability of FRB to bind folate compounds, folic acid-conjugates and antifolate drugs has made it a druggable target in cancer and inflammatory disease research. This report describes the histopathologic and immunohistochemical methods used to assess expression and distribution of FRB in relation to GCA immunopathology.

Formalin-fixed and paraffin-embedded temporal artery biopsies from GCA and normal controls

were stained with Hematoxylin and Eosin to review tissue histology and identify pathognomonic features. Immunohistochemistry was used to detect FRB, CD68 and CD3 expression. A microscopic analysis was performed to quantify the number of positively stained cells on 10 selected high-power-field sections and their respective locations in the arterial wall.

Lymphohistiocytic (LH) inflammation accompanied by intimal hyperplasia and disrupted elastic lamina was seen in GCA with none found in controls. The LH infiltrate was composed of approximately 60% lymphocytes and 40% macrophages. FRB expression was restricted to macrophages, comprising 31% of the total CD68+ macrophage population and localized to the media and adventitia. No FRB was seen in controls.

This protocol demonstrated a distinct numerical and spatial pattern of the FRB macrophage relative to the vascular immune microenvironment in GCA.

## **INTRODUCTION:**

Giant cell arteritis (GCA) is an inflammatory disease of medium-to-large arteries, targeting the aorta and its branches and affecting older adults. It presents with mild to severe ischemic complications such as headaches, jaw pain, vision loss, stroke and tissue gangrene. The diagnosis is confirmed by high inflammatory markers like erythrocyte sedimentation rate (ESR) and a distinct histopathologic pattern on the temporal artery biopsy (TAB)<sup>1</sup>. GCA is the most common adult vasculitis, and the accessibility of the temporal artery obtained for diagnosis presents an advantage over other vasculopathies, thus enabling one to study its pathogenesis more readily. The typical findings on TAB include an infiltrate of macrophages/histiocytes and T lymphocytes found across all vascular layers of the tunica intima, media, and adventitia with concurrent destruction of the elastic lamina that normally separates these compartments<sup>2</sup>. The current evidence demonstrates that GCA involves an unknown antigen that activates dendritic cells in the vascular adventitia, followed by the recruitment of helper T (Th) cells, specifically Th1 and Th17 subtypes which secrete interleukin-17 and interferon-gamma (IFG) respectively. IFG then recruits and activates macrophages to produce cytokines and proteases. These include pro-inflammatory cytokines; including IL-12, which reciprocally activates Th1 cells thus providing a positive feedback loop; tumor necrosis factor; and interleukin-6, which cause arthritis and fevers and metalloproteases that damage the elastic lamina. Glucocorticoids (GC), which constitute the standard chronic therapy, partially control the cytokine pathways by attenuating the Th17/IL-17 but not the Th1/IFG arm of the immune response<sup>3,4</sup>. Unfortunately, discontinuation of GC results in disease relapse. As an alternative modality, methotrexate has been repurposed for GCA treatment, but the desired clinical endpoints were not consistently achieved although more sensitive biomarkers have not been utilized for therapeutic monitoring<sup>5,6</sup>. In 2017, the interleukin 6 blocker, tocilizumab, was approved for the treatment of GCA as it effectively demonstrated disease control and steroid sparing effects<sup>7,8</sup>.

To date, there are no good biomarkers for GCA. As a result, it is difficult to monitor disease activity and titrate doses of available drugs to avoid adverse effects and reduce the burden of cost to society. Thus, it is imperative to look for a candidate biomarker that correlates with disease activity, provide novel insights on pathogenesis and aid in therapeutic decisions.

The dysregulation of macrophage activation is a critical factor in GCA pathogenesis. Thus, an

effective means of treating GCA may be the selective targeting of activated macrophages. The folate receptor beta (FRB) is a glycosyl-phosphatidylinositol glycoprotein that is anchored on the cell membrane expressed in normal myelomonocytic cells, myeloid leukemia cells and activated macrophages. Its ligand, folic acid, is an essential vitamin in its reduced form, which enables cellular DNA synthesis, methylation and repair<sup>9</sup>. FRB expression is induced in autoimmune disease and during carcinogenesis. Its expression is restricted to the surface of monocytes or pro-inflammatory M1 macrophages in rheumatoid arthritis, or to anti-inflammatory M2 macrophages in solid organ and myeloid malignancies<sup>10-13</sup>. In addition to its potential role as a biomarker of activated macrophages, the FRB can enable selective drug transport thru a multi-step process that starts with the receptor binding to folic acid, antifolates or folate-conjugated drugs at the cell surface, followed by internalization, release and eventual delivery of desired drug to the internal cell machinery<sup>12,14-16</sup>. In contrast to FRB expressed in cancer cells and activated macrophages, FRB expressed in normal hematopoietic cells is unable to bind folates thereby ensuring that FRB/folate-mediated drug delivery is limited to FRB-positive inflammatory or cancer cells.

In our previous study, we demonstrated for the first time that FRB is expressed in GCA macrophages and its expression correlated with CD68+ and endothelin receptor beta macrophages, which contribute to GCA pathogenesis<sup>17</sup>. In this report, we describe the histopathological and immunohistochemical methods used to assess the FRB macrophage, and analyzed the total lymphocyte and macrophage counts to gain insight into the FRB's position in the GCA vascular landscape.

## **PROTOCOL:**

All methods described were approved by the Penn State Institutional Review Board.

### **1. Histopathological Preparation, Processing, and Staining After Obtaining Temporal Artery Biopsy**

Note: The temporal artery biopsy is performed under local anesthesia and sterile conditions by a certified ophthalmologist/surgeon. Specimen selection is performed after verifying the medical records. The diagnosis is based on the American College of Rheumatology 1990 criteria which requires that subjects fulfill 3 of 5 domains: age >50 years, new headache, temporal artery tenderness, an erythrocyte sedimentation rate > 50 mm/hour by Westergren method and an abnormal TAB. Protective gloves must be worn at all times when handling the specimens, chemicals and antibodies.

1.1. After surgically obtaining a 3 cm section of temporal artery on the more affected side, fix the specimen in formalin immediately for 24 hours.

1.2. Divide into sections of 3 to 4 mm.

1.3. Embed the sections in paraffin, making sure of proper tissue alignment in the block and store

at room temperature.

1.4. With a microtome, cut tissues into 5 µm sections and stain with Hematoxylin and Eosin (H&E). Use a control section of selected normal tissue for quality assurance.

## **2. Immunohistochemical Preparation, Dewaxing, Antigen Retrieval and Staining<sup>15,18-20</sup>.**

2.1. From the embedded blocks, cut 4-5 µm thick sections using a microtome.

2.2. Float cut sections on a warm water bath heated to 40 °C to remove wrinkles and pick up with a coated glass microscopic slide.

2.3. Place the glass slides on a warm plate in a 60 °C oven for 60 minutes to facilitate drying and adherence of section to the slide.

2.4. Mount 3 sections on microscope slides.

2.5. Place slides in a vertical rack and dry overnight at 37 °C for 24 hours. Place slides in a container and store at 4 °C.

2.6. Load slides into a slide rack. Run the rack through dishes as follows: Twice in 100% xylene for 5 minutes with 10 seconds of gentle agitation every 30 seconds, once in 100% ethanol with 10 seconds agitation, once in 90% ethanol with 10 seconds agitation, once in 70% ethanol with 10 seconds agitation, and twice in double distilled H<sub>2</sub>O with 10 seconds agitation.

Note: Handling of xylene and acetone should be done in ventilated hoods to avoid inhalation and respiratory toxicity.

2.7. Retrieve the antigen by transferring the rack into a glass container with 200 mL of 10 mmol/L, pH 6.0 citrate buffer prewarmed to 95 °C. Set the timer for 30 minutes in the water bath, then cool in room temperature for 20 minutes then rinse with running water for 5 minutes.

2.8. Remove endogenous peroxidase activity by incubating in 200 mL of 3% hydrogen peroxide for 10 minutes. Wash slides 3 times in 200 µL of Tris-buffered saline solution (TBSS).

2.9. Remove the slides from the rack and dab each one gently to wipe excess buffer. For staining, add 200 µL of the following primary antibodies, add cover slips on slides and incubate in a humid chamber for 1 hour at room temperature:

Anti-FRB antibody diluted 1:800

Monoclonal mouse anti-human CD68, 1:200 dilution

Polyclonal rabbit anti-CD3 1:100 dilution

Note: Formalin-fixed paraffin-embedded sections of placenta were also processed as outlined in

Steps 2.1 to 2.9 and incubated with anti-FRB<sup>18</sup> and used as positive control. Staining results were obtained by finding the optimal antibody concentration and was performed by titrating the antibody in double dilutions (e.g. 1:50, 1:100, 1:200, 1:400, 1:800, 1:1600).

2.10. Remove cover slip after incubation and discard. Rinse slides 3 times for 2 minutes each with TBSS, drain and wipe excess buffer.

2.11. Add 200 µL of secondary antibody solution containing biotinylated AntiRabbit/Mouse secondary antibody to react with unconjugated primary antibody bound to tissue antigen. Place coverslips on slides and incubate in a humid chamber for 45 minutes at room temperature.

2.12. Remove cover slip after incubation and discard. Rinse slides 3 times for 2 minutes each with TBS, drain and wipe excess buffer.

2.13. Add 200 µL of diaminobenzidine (DAB)+substrate buffer (Imidazole HCl) -chromogen system and incubate for 10 minutes to visualize staining pattern. Wash with TBSS then in running tap water for 10 minutes.

2.14. Counterstain with hematoxylin for 3 minutes.

2.15. Mount the slides by applying 70 µL of mounting medium to the surface of the slide. Slowly tip the coverslip onto the mounting medium and avoid creating bubbles as you lower it into place. Wait 24 hours to dry.

### **3. Histopathologic and Immunohistochemical (IHC) Analysis.**

3.1. Examine the H&E and IHC stained sections from GCA positive and normal subjects using a light microscope.

3.2. For the H&E stained sections:

3.2.1. Assess the vascular architecture and identify endothelial cells in the tunica intima, smooth muscle cells in the tunica media, and fibroblasts and vasa vasorum in the tunica adventitia<sup>21,22</sup>.

3.2.2. Identify GCA features, which include lymphocyte and macrophage/histiocyte infiltration, cellular hyperplasia, and internal elastic lamina degradation.

3.2.3. Analyze the lymphohistiocytic infiltrate by identifying and quantifying the number of macrophages relative to the lymphocytes. Assess the extent of internal elastic lamina disruption and hyperplastic changes in resident cells and compare with controls.

3.3. For the IHC stained sections:

3.3.1. Examine the staining pattern of FRB, taking note of its expression by a particular type or

types of cells and its distribution within the vascular layers and its relationship to the total immune infiltrate, the total macrophage marker, anti-CD68, and the pan lymphocyte marker anti CD3.

3.3.2. Quantify the expression of FRB, CD68 and CD3 cells by counting the positively stained cells on 10 multiple randomly selected high power fields (hpf) and record the means.

Note: Identification of these normal and pathologic cells and structures were performed by a certified cardiovascular pathologist (J.M.) and rheumatologist (S.A.A.) and the results were recorded for all cases.

3.3.3. Capture representative images using a digital camera.

Note: After these steps, remaining aliquots may be stored at -80 °C.

## **REPRESENTATIVE RESULTS:**

### **Histopathologic findings**

The H&E stains in normal specimens demonstrated normal arterial anatomy with endothelial cells in the tunica intima, smooth muscle cells in the tunica media, and a heterogenous collagen matrix which include fibroblasts and feeder vessels called vasa vasorum in the tunica adventitia. There is no inflammatory infiltrate identified. GCA positive temporal arteries demonstrated moderate to severe inflammation with aggregates of macrophages/histiocytes, lymphocytes, occasional plasma cells, and multinucleated giant cells. Luminal narrowing was noted and accompanied by intimal thickening and 90% disruption of the internal elastic lamina (**Figure 1**).

### **Immunohistochemical findings**

CD3+ lymphocytes and CD68+ macrophages were present in all GCA+ specimens and demonstrated similar staining patterns in all biopsies. The lymphocytes predominated over macrophages with a CD3/CD68 ratio of 1.6. Staining for FRB was restricted to macrophages and multinucleated giant cells which preferentially localized to the adventitia and media (**Table 1** and **Figure 2**). Control specimens showed minimal leukocytes (<5 cells/high-power field) and no FRB expression.

## **FIGURE AND TABLE LEGENDS:**

**Figure 1: H&E images of temporal arteries. (A)** Representative H&E image of a normal temporal artery with distinct layers of the tunica (t) adventitia, media, and intima from the outermost to the innermost/Luminal side respectively. Note the network of collagen and vasa vasorum in the adventitia (thick arrows), the smooth muscle cells in the media (thin arrows), and the endothelial cells in the intima (10X magnification). **(B)** An enlarged micrograph of the intima-media interface is highlighted by the rectangular inset in A and is separated by the internal elastic lamina (arrowheads) (20X magnification). **(C)** Representative H&E image of a TA with giant cell arteritis

marked by a transmural lymphohistiocytic infiltrate (thick arrows), intimal hyperplasia and destruction of the internal elastic lamina (arrowheads) (10X magnification).

**Figure 2: Immunohistochemical staining of temporal arteries with giant cell arteritis. (A)** Representative images demonstrate an extensive inflammatory infiltrate with CD68 positive macrophages and giant cells (arrows) found mostly in the media and adventitia (x10 magnification). **(B)** Folate receptor beta (FRB) was selectively expressed in activated macrophages (arrows) (10X magnification). Image taken at higher power demonstrated FRB positive macrophages in **(C)** and CD68 positive macrophages in **(D)** (100X magnification).

**Table 1: Summary of FRB, CD68, and CD3 expression.**

**DISCUSSION:**

GCA is the most common vasculitis in adults, and its pathologic hallmark exemplifies a potent combination of T helper lymphocytes and activated macrophages that can also be found in other granulomatous diseases or vasculopathies like sarcoidosis and granulomatous polyangiitis<sup>4</sup>. In GCA, the temporal artery provides a good representation of a medium-to-large sized artery and the TA biopsy gives a sizeable sample that can be stored in paraffin blocks for years, thus creating opportunities to study the roles of emerging diagnostic and therapeutic targets like FRB in the vasculitic microenvironment. We therefore took this advantage presented by accessible tissue and standard immunopathologic methods to ask whether the FRB can be reliably analyzed through IHC. Our findings demonstrate that histopathology and IHC can serve as valuable tools not only in confirming the diagnosis and extent of vascular damage but also in validating the role of different macrophage subtypes in GCA.

The histopathology and IHC methods are both labor intensive and require the skills of the histochemical technician, pathologist and rheumatologist, but the techniques have been well established and can serve as a launching pad for using other methods such as immunofluorescence and flow cytometry. The disadvantage of such methods, however, is the need for fresh frozen tissue which requires prospective collection. The IHC, together with histopathologic examination, is invaluable in presenting a panoramic perspective of the vascular immune microenvironment that can be repeatedly accessed and analyzed especially with the emergence of novel proteins like the FRB. The Hematoxylin and Eosin (H&E) staining enables one to review tissue histology. Hematoxylin stains the nucleus and highlights the nuclear details while eosin serves as a counterstain which aids in demonstrating the differences between the nuclear and cytoplasmic features. The use of a control section of selected normal tissue is essential to evaluate for quality assurance.

The IHC detects the antigen of interest in frozen or formalin-fixed and paraffin-embedded tissues through the use of multiple antibodies which are visualized by microscopy. The protocol described was adapted from van der Heijden *et al.*<sup>15</sup>, who demonstrated FRB expression in synovial macrophages in rheumatoid arthritis. The essential IHC steps include tissue preparation, dewaxing/deparaffinization, antigen retrieval and staining<sup>23</sup>. It is essential to ensure that the tissue removed from the patient is immediately fixed in formalin and tissue alignment and



orientation meticulously preserved when fixed in paraffin. The tissue is thinly sectioned with the use of a microtome and undergoes a dewaxing step that requires multiple washes in xylene, ethanol and water. The next step, called antigen retrieval, is needed to break down the methylene linkages formed during formalin fixation and requires a citrate-based buffer and moist heat. The slides are treated with hydrogen peroxide to block endogenous peroxidase enzymes that can interfere with antigen detection. The staining procedure is next performed by incubating the slides with diluted primary antibodies that will bind the antigen of interest followed by applying a secondary antibody that will detect the primary antigen-antibody reaction. This is followed by labeling with a chromogen DAB-substrate which forms a brown pigment that is visualized under the microscope. The final step is the careful mounting of the tissue with a permanent solution making sure that no interfering substances like bubbles are formed between the cover slip and surface. The protocol required modifications to accommodate the use of arterial tissue. Since the study was the first to evaluate FRB in GCA, the optimal antibody concentration was unknown and needed multiple dilutions at 1:50, 1:100, 1:200, 1:400, 1:800, 1:1600, 1:3200 with the best staining quality at the lowest background noise or signal achieved at 1:800.

The membrane-associated FRB was earlier validated by Ross *et al.*<sup>8,24</sup> and was found to be expressed in normal placental cells, neutrophils, leukemic blasts in chronic myelogenous leukemia, promyelocytic leukemia, myeloblast populations of myelomonocytic, and erythroleukemias and variably in M1/M2 acute myelogenous leukemia. The affinity-purified rabbit polyclonal antibody specific for FRB used in these earlier works have since been applied to studies of rheumatoid arthritis positive synovial macrophages and solid organ tumors. The FRB antibody used in this protocol is not commercially available and may hamper broad application. Conceivably, the methodology described here may also work for other FRB antibodies but will require individual optimization before its use in larger numbers. Since FRB is expressed significantly in placenta, this tissue has been repeatedly used as a positive control.

The study design was limited by a small sample size and requires validation in larger numbers of TABs ideally obtained at early and late stages of GCA. In addition, since the FRB macrophage can serve as a potential diagnostic and therapeutic target with folic conjugated agents and antifolates, the data obtained here supports the need to examine FRB expression in the context of M1 and M2 macrophage polarization. With respect to other diagnostics, these results open opportunities for non-invasive imaging approaches with FRB targeted folic acid conjugated SPECT of PET imaging agents. Additionally, given that macrophage infiltration is a hallmark of disease progression and activity in atherosclerosis, scleroderma, sarcoidosis, and rheumatoid arthritis, the use of this protocol can find applications in these conditions.

This is the first protocol to explore the expression and distribution of the FRB in GCA. The IHC permitted a panoramic cross-sectional and multiple views of the TA and allows analysis of the numerical relationships between the immune infiltrate and the arterial microenvironment. The FRB comprised 30% of the total macrophages that infiltrated all layers of the vascular wall, but interestingly, the FRB was not found in the intima and localized only to the adventitia and media. This pattern of distribution may reveal novel insights on FRB macrophage tropism for the

differential collagen composition found in the media and adventitial layers<sup>25</sup>. The immune infiltrate consisted of about 60% lymphocytes (as measured by the pan-lymphocyte marker anti-CD3) and 40% macrophages (marked by pan-macrophage marker anti-CD68). A recent study correlated CD3 with a higher sensitivity for GCA diagnosis while another linked CD68 expression higher disease activity. Thus, we propose that the early GCA vascular immune milieu starts with a 60:40 ratio of lymphocytes:macrophages with 30% of the macrophages being FRB positive. Whether this holds true for and consistently demonstrated in patients with early disease should be further validated in future and prospective experiments. If this cellular infiltrate distribution holds consistently, it may then serve as biomarker composite for GCA disease activity.

In conclusion, this protocol demonstrated for the first time the presence of FRB infiltration in the media and adventitia of temporal arteries in GCA. FRB macrophages represented about one third of the total macrophage population in an early and active GCA microenvironment composed of 60% lymphocytes and 40% macrophages.

#### **ACKNOWLEDGMENTS:**

This work was supported by the Division of Rheumatology, Department of Medicine, Penn State University, Hershey PA, USA.

#### **DISCLOSURES:**

The authors have nothing to disclose.

#### **REFERENCES:**

- 1 Klippel, J. H., Stone, J. H. & White, P. H. *Primer on the rheumatic diseases*. (Springer Science & Business Media, 2008).
- 2 Weyand, C. M. & Goronzy, J. J. Immune mechanisms in medium and large-vessel vasculitis. *Nature Reviews Rheumatol.* **9** (12), 731-740, doi:10.1038/nrrheum.2013.161, (2013).
- 3 Weyand, C. M., Liao, Y. J. & Goronzy, J. J. The immunopathology of giant cell arteritis: diagnostic and therapeutic implications. *Journal of Neuro-ophthalmology.* **32** (3), 259-265, doi:10.1097/WNO.0b013e318268aa9b, (2012).
- 4 Hilhorst, M., Shirai, T., Berry, G., Goronzy, J. J. & Weyand, C. M. T cell-macrophage interactions and granuloma formation in vasculitis. *Frontiers in Immunology.* **5** 432, doi:10.3389/fimmu.2014.00432, (2014).
- 5 Mahr, A. D. *et al.* Adjunctive methotrexate for treatment of giant cell arteritis: an individual patient data meta-analysis. *Arthritis & Rheumatology.* **56** (8), 2789-2797, doi:10.1002/art.22754, (2007).
- 6 Hoffman, G. S. *et al.* A multicenter, randomized, double-blind, placebo-controlled trial of adjuvant methotrexate treatment for giant cell arteritis. *Arthritis & Rheumatology.* **46** (5), 1309-1318, doi:10.1002/art.10262, (2002).
- 7 Stone, J. H., Klearman, M. & Collinson, N. Trial of Tocilizumab in Giant-Cell Arteritis. *New England Journal of Medicine.* **377** (15), 1494-1495, doi:10.1056/NEJMc1711031, (2017).

395 8 Milman, N. Tocilizumab increased sustained glucocorticoid-free remission from giant cell  
396 arteritis. *Annals of Internal Medicine*. **167** (12), JC63, doi:10.7326/ACPJC-2017-167-12-  
397 063, (2017).

398 9 Xia, W. *et al.* A functional folate receptor is induced during macrophage activation and  
399 can be used to target drugs to activated macrophages. *Blood*. **113** (2), 438-446,  
400 doi:10.1182/blood-2008-04-150789, (2009).

401 10 Shen, J. *et al.* Folate receptor-beta constitutes a marker for human proinflammatory  
402 monocytes. *Journal of Leukocyte Biology*. **96** (4), 563-570, doi:10.1189/jlb.2AB0713-372R,  
403 (2014).

404 11 Salazar, M. D. & Ratnam, M. The folate receptor: what does it promise in tissue-targeted  
405 therapeutics? *Cancer and Metastasis Reviews*. **26** (1), 141-152, doi:10.1007/s10555-007-  
406 9048-0, (2007).

407 12 Low, P. S., Henne, W. A. & Doorneweerd, D. D. Discovery and development of folic-acid-  
408 based receptor targeting for imaging and therapy of cancer and inflammatory diseases.  
409 *Accounts of Chemical Research*. **41** (1), 120-129, doi:10.1021/ar7000815, (2008).

410 13 Puig-Kroger, A. *et al.* Folate receptor beta is expressed by tumor-associated macrophages  
411 and constitutes a marker for M2 anti-inflammatory/regulatory macrophages. *Cancer*  
412 *Research*. **69** (24), 9395-9403, doi:10.1158/0008-5472.CAN-09-2050, (2009).

413 14 Nakashima-Matsushita, N. *et al.* Selective expression of folate receptor beta and its  
414 possible role in methotrexate transport in synovial macrophages from patients with  
415 rheumatoid arthritis. *Arthritis & Rheumatology*. **42** (8), 1609-1616, doi:10.1002/1529-  
416 0131(199908)42:8<1609::AID-ANR7>3.0.CO;2-L, (1999).

417 15 van der Heijden, J. W. *et al.* Folate receptor beta as a potential delivery route for novel  
418 folate antagonists to macrophages in the synovial tissue of rheumatoid arthritis patients.  
419 *Arthritis & Rheumatology*. **60** (1), 12-21, doi:10.1002/art.24219, (2009).

420 16 Jansen, G. & Peters, G. J. Novel insights in folate receptors and transporters: implications  
421 for disease and treatment of immune diseases and cancer. *Pteridines*. **26** (2), 41-53  
422 (2015).

423 17 Albano-Aluquin, S., Malysz, J., Aluquin, V. R., Ratnam, M. & Olsen, N. An  
424 immunohistochemical analysis of folate receptor beta expression and distribution in giant  
425 cell arteritis - a pilot study. *American Journal of Clinical and Experimental Immunology*. **6**  
426 (6), 107-114 (2017).

427 18 Ross, J. F., Chaudhuri, P. K. & Ratnam, M. Differential regulation of folate receptor  
428 isoforms in normal and malignant tissues *in vivo* and in established cell lines. Physiologic  
429 and clinical implications. *Cancer*. **73** (9), 2432-2443 (1994).

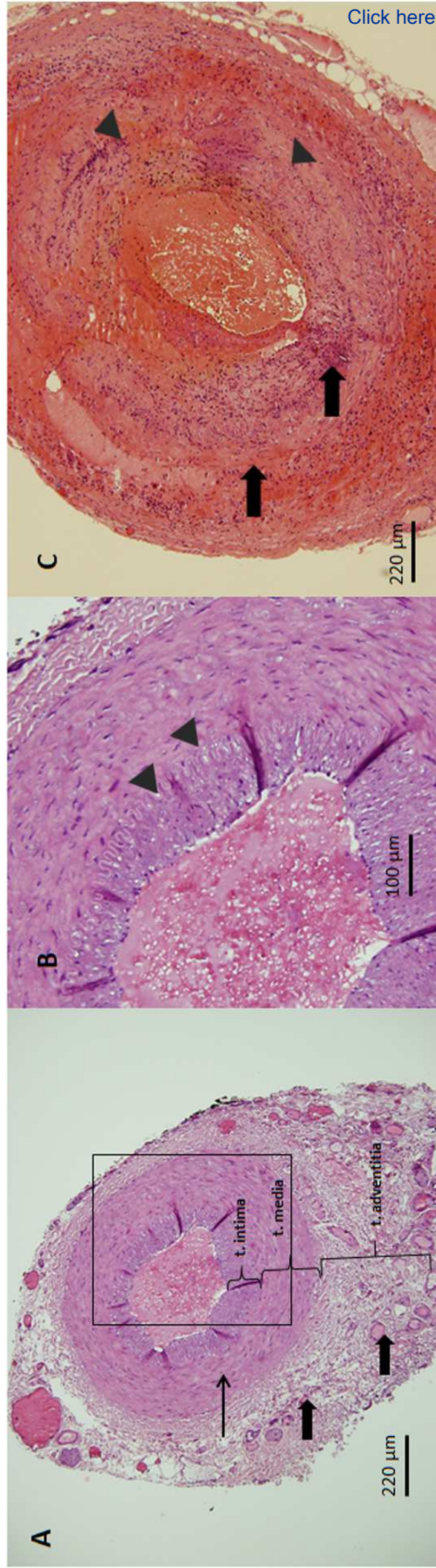
430 19 Reiner, N. E. Methods in molecular biology. Macrophages and dendritic cells. Methods  
431 and protocols. Preface. *Methods in Molecular Biology*. **531**, v-vi (2009).

432 20 Robertson, D., Savage, K., Reis-Filho, J. S. & Isacke, C. M. Multiple immunofluorescence  
433 labelling of formalin-fixed paraffin-embedded (FFPE) tissue. *BMC Cell Biology*. **9** 13,  
434 doi:10.1186/1471-2121-9-13, (2008).

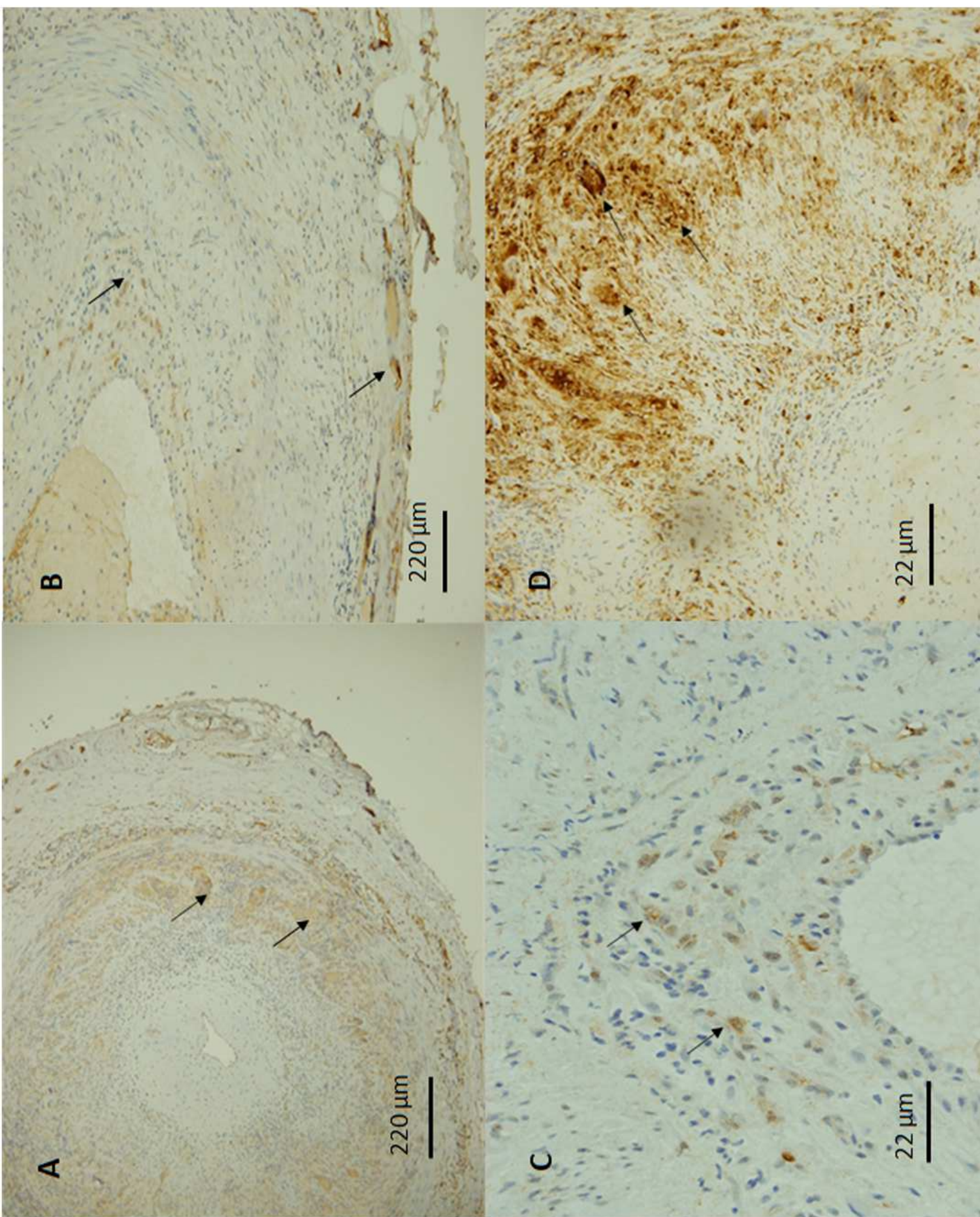
435 21 Pawlina, W. *Histology: A text and atlas with correlated cell and molecular biology*.  
436 (Walters Kluwer, 2016)

437 22 Kumar, V., Abbas, A., Aster, J. *Robbins and Cotran pathologic basis of disease*. Elsevier  
438 Saunders, 2015.

439 23 Dabbs, D. J. *Diagnostic immunohistochemistry*. (Elsevier, Inc, 2019)  
440 24 Ross, J. F. *et al.* Folate receptor type beta is a neutrophilic lineage marker and is  
441 differentially expressed in myeloid leukemia. *Cancer*. **85** (2), 348-357 (1999).  
442 25 Holzapfel G. A. Collagen in arterial walls: biomechanical aspects. In *Collagen. Structure*  
443 *and Mechanics*. P. Fratzl, editor. Springer-Verlag, Heidelberg, pp 285-324, (2008).  
444 26 Sultan, H., Smith, S. V., Lee, A. G. & Chevez-Barrios, P. Pathologic Markers Determining  
445 Prognosis in Patients with Treated or Healing Giant Cell Arteritis. *American Journal of*  
446 *Ophthalmology*. doi:10.1016/j.ajo.2018.05.031, (2018).  
447  
448  
449  
450







GCA subjects (n=5)	Mean (±SD)
CD3 (% of immune infiltrate)	61.7 ± 4.1
CD68 (% of immune infiltrate)	38.3 ± 4.1
CD68 histiocytes/macrophages (cells/hpf)	34.8 ± 10.4
FRB+ macrophages (cells/.hpf)	10.8 ± 4.4
%FRB/%CD68	31 ± 12.7

Name of Material/Equipment	Company	Catalogue Number
Microtome	Reichert-Jung	
plain and frosted microscope slides and cover slips	Fisher Scientific	
Vertical rack	Fisher Scientific	
Light microscope	Olympus BX60 microscope	
Xylene		
Acetone in distilled water		
Tris-buffered saline solution (TBS)	Dako Wash BufferS3006	
3% hydrogen peroxide in TBS		
Diaminobenzidine (DAB)	Sigma Fast Tablet set	
Chemical Permunt Mounting Medium	Fisher Scientific	SP-15-100
Harleco Gill's III Hematoxylin	Fiisher Scientific 23-750-019	
Harleco Eosin Y 1% Alcoholic Stock Solution	Fisher Scientific	23-749-977
10 mM citric acid monohydrate (pH 6.0)		
Polyclonal rabbit anti-folate receptor beta	Manohar Ratnam	
Monoclonal mouse anti-human CD68	Dako	M071801
Polyclonal rabbit anti-CD3	Agilent Dako	A0452
Polymer goat anti- rabbit/mouse secondary antibody	Dako	
Placental tissue		



Comments/Description
concentrations 100%, 90%, 70%
optimized at 1:800
optimized at 1:200
optimized at 1:100

for FRB positive control
--------------------------



1 Alewife Center #200  
Cambridge, MA 02140  
tel. 617.945.9051  
[www.jove.com](http://www.jove.com)

## ARTICLE AND VIDEO LICENSE AGREEMENT

Title of Article:

Profiling the folate receptor beta macrophage and vascular immune  
microenvironment in giant cell arteritis: an immunohistopathologic study

Author(s):

Albano-Aluquin, S, Malysz, J, Kidacki, M, Ratnam, M, Olsen N

Item 1 (check one box): The Author elects to have the Materials be made available (as described at

<http://www.jove.com/author>) via: ☒ Standard Access ☐ Open Access

Item 2 (check one box):

- ☒ The Author is NOT a United States government employee.
- ☐ The Author is a United States government employee and the Materials were prepared in the course of his or her duties as a United States government employee.
- ☐ The Author is a United States government employee but the Materials were NOT prepared in the course of his or her duties as a United States government employee.

### ARTICLE AND VIDEO LICENSE AGREEMENT

1. **Defined Terms.** As used in this Article and Video License Agreement, the following terms shall have the following meanings: “**Agreement**” means this Article and Video License Agreement; “**Article**” means the article specified on the last page of this Agreement, including any associated materials such as texts, figures, tables, artwork, abstracts, or summaries contained therein; “**Author**” means the author who is a signatory to this Agreement; “**Collective Work**” means a work, such as a periodical issue, anthology or encyclopedia, in which the Materials in their entirety in unmodified form, along with a number of other contributions, constituting separate and independent works in themselves, are assembled into a collective whole; “**CRC License**” means the Creative Commons Attribution-Non Commercial-No Derivs 3.0 Unported Agreement, the terms and conditions of which can be found at: <http://creativecommons.org/licenses/by-nc-nd/3.0/legalcode>; “**Derivative Work**” means a work based upon the Materials or upon the Materials and other pre-existing works, such as a translation, musical arrangement, dramatization, fictionalization, motion picture version, sound recording, art reproduction, abridgment, condensation, or any other form in which the Materials may be recast, transformed, or adapted; “**Institution**” means the institution, listed on the last page of this Agreement, by which the Author was employed at the time of the creation of the Materials; “**JOVE**” means MyJove Corporation, a Massachusetts corporation and the publisher of *The Journal of Visualized Experiments*; “**Materials**” means the Article and / or the Video; “**Parties**” means the Author and JOVE; “**Video**” means any video(s) made by the Author, alone or in conjunction with any other parties, or by JOVE or its affiliates or agents, individually or in collaboration with the Author or any other parties, incorporating all or any portion of the Article, and in which the Author may or may not appear.

2. **Background.** The Author, who is the author of the Article, in order to ensure the dissemination and protection of the Article, desires to have the JOVE publish the Article and create and transmit videos based on the Article. In furtherance of such goals, the Parties desire to memorialize in this Agreement the respective rights of each Party in and to the Article and the Video.

3. **Grant of Rights in Article.** In consideration of JOVE agreeing to publish the Article, the Author hereby grants to JOVE, subject to **Sections 4** and **7** below, the exclusive, royalty-free, perpetual (for the full term of copyright in the Article, including any extensions thereto) license (a) to publish, reproduce, distribute, display and store the Article in all forms, formats and media whether now known or hereafter developed (including without limitation in print, digital and electronic form) throughout the world, (b) to translate the Article into other languages, create adaptations, summaries or extracts of the Article or other Derivative Works (including, without limitation, the Video) or Collective Works based on all or any portion of the Article and exercise all of the rights set forth in (a) above in such translations, adaptations, summaries, extracts, Derivative Works or Collective Works and (c) to license others to do any or all of the above. The foregoing rights may be exercised in all media and formats, whether now known or hereafter devised, and include the right to make such modifications as are technically necessary to exercise the rights in other media and formats. If the “Open Access” box has been checked in **Item 1** above, JOVE and the Author hereby grant to the public all such rights in the Article as provided in, but subject to all limitations and requirements set forth in, the CRC License.

## ARTICLE AND VIDEO LICENSE AGREEMENT

4. Retention of Rights in Article. Notwithstanding the exclusive license granted to JoVE in **Section 3** above, the Author shall, with respect to the Article, retain the non-exclusive right to use all or part of the Article for the non-commercial purpose of giving lectures, presentations or teaching classes, and to post a copy of the Article on the Institution's website or the Author's personal website, in each case provided that a link to the Article on the JoVE website is provided and notice of JoVE's copyright in the Article is included. All non-copyright intellectual property rights in and to the Article, such as patent rights, shall remain with the Author.

5. Grant of Rights in Video – Standard Access. This **Section 5** applies if the "Standard Access" box has been checked in **Item 1** above or if no box has been checked in **Item 1** above. In consideration of JoVE agreeing to produce, display or otherwise assist with the Video, the Author hereby acknowledges and agrees that, Subject to **Section 7** below, JoVE is and shall be the sole and exclusive owner of all rights of any nature, including, without limitation, all copyrights, in and to the Video. To the extent that, by law, the Author is deemed, now or at any time in the future, to have any rights of any nature in or to the Video, the Author hereby disclaims all such rights and transfers all such rights to JoVE.

6. Grant of Rights in Video – Open Access. This **Section 6** applies only if the "Open Access" box has been checked in **Item 1** above. In consideration of JoVE agreeing to produce, display or otherwise assist with the Video, the Author hereby grants to JoVE, subject to **Section 7** below, the exclusive, royalty-free, perpetual (for the full term of copyright in the Article, including any extensions thereto) license (a) to publish, reproduce, distribute, display and store the Video in all forms, formats and media whether now known or hereafter developed (including without limitation in print, digital and electronic form) throughout the world, (b) to translate the Video into other languages, create adaptations, summaries or extracts of the Video or other Derivative Works or Collective Works based on all or any portion of the Video and exercise all of the rights set forth in (a) above in such translations, adaptations, summaries, extracts, Derivative Works or Collective Works and (c) to license others to do any or all of the above. The foregoing rights may be exercised in all media and formats, whether now known or hereafter devised, and include the right to make such modifications as are technically necessary to exercise the rights in other media and formats. For any Video to which this Section 6 is applicable, JoVE and the Author hereby grant to the public all such rights in the Video as provided in, but subject to all limitations and requirements set forth in, the CRC License.

7. Government Employees. If the Author is a United States government employee and the Article was prepared in the course of his or her duties as a United States government employee, as indicated in **Item 2** above, and any of the licenses or grants granted by the Author hereunder exceed the scope of the 17 U.S.C. 403, then the rights granted hereunder shall be limited to the maximum rights permitted under such

statute. In such case, all provisions contained herein that are not in conflict with such statute shall remain in full force and effect, and all provisions contained herein that do so conflict shall be deemed to be amended so as to provide to JoVE the maximum rights permissible within such statute.

8. Likeness, Privacy, Personality. The Author hereby grants JoVE the right to use the Author's name, voice, likeness, picture, photograph, image, biography and performance in any way, commercial or otherwise, in connection with the Materials and the sale, promotion and distribution thereof. The Author hereby waives any and all rights he or she may have, relating to his or her appearance in the Video or otherwise relating to the Materials, under all applicable privacy, likeness, personality or similar laws.

9. Author Warranties. The Author represents and warrants that the Article is original, that it has not been published, that the copyright interest is owned by the Author (or, if more than one author is listed at the beginning of this Agreement, by such authors collectively) and has not been assigned, licensed, or otherwise transferred to any other party. The Author represents and warrants that the author(s) listed at the top of this Agreement are the only authors of the Materials. If more than one author is listed at the top of this Agreement and if any such author has not entered into a separate Article and Video License Agreement with JoVE relating to the Materials, the Author represents and warrants that the Author has been authorized by each of the other such authors to execute this Agreement on his or her behalf and to bind him or her with respect to the terms of this Agreement as if each of them had been a party hereto as an Author. The Author warrants that the use, reproduction, distribution, public or private performance or display, and/or modification of all or any portion of the Materials does not and will not violate, infringe and/or misappropriate the patent, trademark, intellectual property or other rights of any third party. The Author represents and warrants that it has and will continue to comply with all government, institutional and other regulations, including, without limitation all institutional, laboratory, hospital, ethical, human and animal treatment, privacy, and all other rules, regulations, laws, procedures or guidelines, applicable to the Materials, and that all research involving human and animal subjects has been approved by the Author's relevant institutional review board.

10. JoVE Discretion. If the Author requests the assistance of JoVE in producing the Video in the Author's facility, the Author shall ensure that the presence of JoVE employees, agents or independent contractors is in accordance with the relevant regulations of the Author's institution. If more than one author is listed at the beginning of this Agreement, JoVE may, in its sole discretion, elect not take any action with respect to the Article until such time as it has received complete, executed Article and Video License Agreements from each such author. JoVE reserves the right, in its absolute and sole discretion and without giving any reason therefore, to accept or decline any work submitted to JoVE. JoVE and its employees, agents and independent contractors shall have

## ARTICLE AND VIDEO LICENSE AGREEMENT

full, unfettered access to the facilities of the Author or of the Author's institution as necessary to make the Video, whether actually published or not. JoVE has sole discretion as to the method of making and publishing the Materials, including, without limitation, to all decisions regarding editing, lighting, filming, timing of publication, if any, length, quality, content and the like.

11. **Indemnification.** The Author agrees to indemnify JoVE and/or its successors and assigns from and against any and all claims, costs, and expenses, including attorney's fees, arising out of any breach of any warranty or other representations contained herein. The Author further agrees to indemnify and hold harmless JoVE from and against any and all claims, costs, and expenses, including attorney's fees, resulting from the breach by the Author of any representation or warranty contained herein or from allegations or instances of violation of intellectual property rights, damage to the Author's or the Author's institution's facilities, fraud, libel, defamation, research, equipment, experiments, property damage, personal injury, violations of institutional, laboratory, hospital, ethical, human and animal treatment, privacy or other rules, regulations, laws, procedures or guidelines, liabilities and other losses or damages related in any way to the submission of work to JoVE, making of videos by JoVE, or publication in JoVE or elsewhere by JoVE. The Author shall be responsible for, and shall hold JoVE harmless from, damages caused by lack of sterilization, lack of cleanliness or by contamination due to the making of a video by JoVE its employees, agents or independent contractors. All sterilization, cleanliness or decontamination procedures shall be solely the responsibility of the Author and shall be undertaken at the Author's

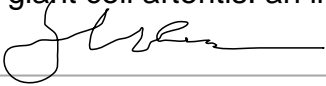
expense. All indemnifications provided herein shall include JoVE's attorney's fees and costs related to said losses or damages. Such indemnification and holding harmless shall include such losses or damages incurred by, or in connection with, acts or omissions of JoVE, its employees, agents or independent contractors.

12. **Fees.** To cover the cost incurred for publication, JoVE must receive payment before production and publication the Materials. Payment is due in 21 days of invoice. Should the Materials not be published due to an editorial or production decision, these funds will be returned to the Author. Withdrawal by the Author of any submitted Materials after final peer review approval will result in a US\$1,200 fee to cover pre-production expenses incurred by JoVE. If payment is not received by the completion of filming, production and publication of the Materials will be suspended until payment is received.

13. **Transfer, Governing Law.** This Agreement may be assigned by JoVE and shall inure to the benefits of any of JoVE's successors and assignees. This Agreement shall be governed and construed by the internal laws of the Commonwealth of Massachusetts without giving effect to any conflict of law provision thereunder. This Agreement may be executed in counterparts, each of which shall be deemed an original, but all of which together shall be deemed to be one and the same agreement. A signed copy of this Agreement delivered by facsimile, e-mail or other means of electronic transmission shall be deemed to have the same legal effect as delivery of an original signed copy of this Agreement.

A signed copy of this document must be sent with all new submissions. Only one Agreement required per submission.

### CORRESPONDING AUTHOR:

Name:	Shirley Albano-Aluquin		
Department:	Medicine-Rheumatology		
Institution:	Penn State Hershey College of Medicine		
Article Title:	Profiling the folate receptor beta macrophage and vascular immune microenvironment in giant cell arteritis: an immunohistopathologic study		
Signature:		Date:	10/15/2018

Please submit a signed and dated copy of this license by one of the following three methods:

- 1) Upload a scanned copy of the document as a pdf on the JoVE submission site;
- 2) Fax the document to +1.866.381.2236;
- 3) Mail the document to JoVE / Attn: JoVE Editorial / 1 Alewife Center #200 / Cambridge, MA 02139

For questions, please email [submissions@jove.com](mailto:submissions@jove.com) or call +1.617.945.9051



September 16, 2018

Phillip Steindel, Ph.D.  
Review Editor  
Journal of Visualized Experiments

Re: Rebuttal letter for manuscript no. JoVE 58713 : Profiling the folate receptor beta macrophage and the vascular immune microenvironment in Giant Cell Arteritis: an immunohistopathologic study

Dear Dr Steindel

I am submitting the final manuscript after reviewing all editorial and peer commentaries. Please note that the manuscript, when viewed with tracked changes, reflected a comprehensive overhaul given the extent of the modification needed from citation formatting, removal of commercial language, phrases written in the imperative tense and additions to the protocol and discussion as advised by the reviewers.

The rebuttal to the comments and questions as outlined below were duly addressed in the manuscript and typed in italicized text as below. Thank you so much.

Sincerely yours,



Shirley Albano-Aluquin, MD  
Corresponding author

#### Editorial comments:

Changes to be made by the Author(s) regarding the manuscript:

1. Please take this opportunity to thoroughly proofread the manuscript to ensure that there are no spelling or grammar issues. *done*.
2. Please include a scale bar for all images taken with a microscope to provide context to the magnification used. Define the scale in the appropriate figure Legend. *done*
3. Please remove the titles and Figure Legends from the uploaded figures. The information provided in the Figure Legends after the Representative Results is sufficient. *done*
4. Keywords: Please provide at least 6 keywords or phrases. *done*
5. Please shorten the Abstract to 150-300 words. Please focus on the method being presented rather than the results of a specific experiment. *done*
6. Please change citations are superscripted numbers. *done*
7. JoVE cannot publish manuscripts containing commercial language. This includes trademark symbols (™), registered symbols (®), and company names before an instrument or reagent. Please remove all commercial language from your manuscript and use generic terms instead. All commercial products should be sufficiently referenced in the Table of Materials and Reagents. For example: TechMate, Ventana Biotech, M071801 Dako, A0452 Agilent Dako, Envision™, Olympus, etc. *done*
8. Please revise the protocol to be a numbered list: step 1 followed by 1.1, followed by 1.1.1, etc. *done*
9. Please revise the protocol to contain only action items that direct the reader to do something (e.g.,

April 2018

“Do this,” “Ensure that,” etc.). The actions should be described in the imperative tense in complete sentences wherever possible. Avoid usage of phrases such as “could be,” “should be,” and “would be” throughout the Protocol. Any text that cannot be written in the imperative tense may be added as a “Note.” Please include all safety procedures and use of hoods, etc. Please move the discussion about the protocol to the Discussion. *done*

10. Please add more details to your protocol steps. There should be enough detail in each step to supplement the actions seen in the video so that viewers can easily replicate the protocol. Please ensure you answer the “how” question, i.e., how is the step performed? Alternatively, add references to published material specifying how to perform the protocol action. *done*

11. Step 1: What is used to cut? How to mount on plus slides? How many sections are mounted on each slide? *A microtome was used for cutting. Procedure for mounting was described. Three sections were mounted on microscope slides.*

12. Step 2: What type of water is used? How will you rehydrate? What containers are used? *Double distilled water was used. Rehydration was amended and further described in Protocol steps 2.5 to 2.7.*

13. Step 3: What is the incubation temperature in the steamer? Are the slides taken out from the steamer after the 15-min incubation? *Procedure amended in step 2.7*

14. Step 4: What is the incubation temperature? *Room temperature as noted in Step 2.9*

15. Step 5: Please describe how to apply the antibodies. *Noted in Steps 2.9 and 2.10*

16. Step 6: What volume of PBS is used? *200  $\mu$ l of TBS used and indicated in Step 2.8*

17. Step 7: Please specify the amount of antibody applied. *200  $\mu$ l of antibody used and indicated in Step 2.9*

18. Step 8, 10-15: Please describe how these are actually done. As currently written, they do not have enough detail to replicate as currently written. *done*

19. Discussion: Please also discuss critical steps within the protocol. *done*

20. Please ensure that the references appear as the following: [LastName, F.I., LastName, F.I., LastName, F.I. Article Title. Source. Volume (Issue), FirstPage – LastPage (YEAR).] For more than 6 authors, list only the first author then et al. *done*

21. References: Please do not abbreviate journal titles. *I referred to other JOVE articles and used Endnote program which both presented citations in abbreviated format.*

## **Reviewers' comments:**

### **Reviewer #1:**

#### **Manuscript Summary:**

This manuscript describes a protocol for the immunohistochemical and histopathological examination of folate receptor beta (FR $\beta$ )-positive macrophages among other immune cell infiltrates (i.e., CD68+ macrophages and CD3+ lymphocytes) in formalin-fixed paraffin-embedded temporal artery biopsies (TAB) from 5 patients with giant cell arteritis (GCA) and 2 negative controls. The results of this study demonstrate that adventitia and media infiltration of FR $\beta$ -positive macrophages, representing approximately one third of total macrophage population, may be utilized as a novel biomarker for disease activity in GCA.

This study is of potential clinical interest and the visual demonstration of the immunohistochemical staining procedure for FR $\beta$ -positive macrophages in TABs of GCA can also serve application and examination of various other tissues in autoimmune related diseases featuring macrophage infiltration as a hallmark of disease progression and activity. In fact, the reported results for GCA share similarities with synovial macrophage infiltration in arthritis patients with active disease.

#### **Minor Concerns:**

I want to suggest a series of (minor) technical and textual amendments to further improve the

manuscript:

# lines 115-144: Anticipating that specific details will be presented in a video presentation, I would still recommend extending on some details of the protocol in the following lines:

# line 120: ".....rehydration with water"; please indicate volume and time. *A more elaborate procedure was described in Steps 2.2 to 2.7*

# line 121: "incubating ...citrate buffer pH 6.0 ..."; please indicate volume. *Volume used was 200 ml and described in Step 2.7.*

# line 123: indicate volume of incubation with 3% hydrogen peroxide. *Volume used was 200 ml and indicated in Step 2.8.*

# line 126: indicate how many  $\mu$ l of diluted FR $\beta$  antibody was used. *Volume was 200  $\mu$ l as noted in Step 2.9.*

Also provide the original references for the antibody (JF Ross et al, Cancer 1994; and JF Ross et al, Cancer 1999). *done*

It should be stated, either in the text or in the video presentation, that this polyclonal FR $\beta$  antibody is not commercially available and thus may hamper broad application of this protocol. Conceivably, this protocol may also work for any FR $\beta$  antibody when they may become commercially available. A recent report described the use of a commercially available FR $\beta$  antibody (EM-35, EXBIO Praha) for flow cytometry (C Machacek et al, J Immunol 2016;197:2229-2238) and claim it could also work for immunohistochemistry, but that has not been proven. Also caution needs to be exercised as the immunogen for the EM-35 antibody was T cell lymphoma cell line, which, other than myeloid cells, should not express appreciable levels of FR $\beta$ . Just in case the authors have tested other FR $\beta$  antibodies, this would be worthwhile to mention. *Noted*

# line 127: indicate how many  $\mu$ l of antibody dilution was used. *200  $\mu$ l and noted in Step 2.9*

# line 128: indicate how many  $\mu$ l of antibody dilution was used. *200  $\mu$ l and noted in Step 2.9*

# line 129: indicate the volume of PBS washes. *done*

# line 130: indicate how many  $\mu$ l of secondary antibody (and dilution) was used. *200  $\mu$ l at 1:800 and noted in Step 2.11*

# line 135: was this done according to manufacturer's instructions? Please indicate. *Procedure amended and described in Step 2.13.*

# line 136: rinsing with wash buffer; one time, multiple times? *3 times as described in Step 2.8*

# line 150: It may be helpful and instructive to point out the representative examples of the indicated cell types and areas in Figure 1 with specific arrows. *Done*

# lines 163-170: it may be helpful to point out the indicated areas in Figures 1-3. *done*

# line 199: with respect to diagnostics, the results of this study would also open opportunities for non-invasive imaging approaches with FR $\beta$  targeted folic acid conjugated SPECT or PET imaging agents. *done*

Finally, although beyond the context of this study, it may be worthwhile to examine FR $\beta$  expression in GCA in the context of M1-M2 macrophage polarization. *added*

## **Reviewer #2:**

### **Manuscript Summary:**

In this manuscript, the authors described the protocol to evaluate the immune cell infiltrations including folate receptor beta positive macrophages in the temporal artery biopsy specimens from patients with giant cell arteritis. The protocol is somewhat described well. However, I have a number of concerns as I wrote in the specific comments.

### **Major Concerns:**

1. The protocol described in this manuscript is just of conventional immunohistochemistry. Are there

any special techniques to stain temporal artery specimen or any caveat of the procedures? If there are, please describe in detail and discuss them.

Minor Concerns:

1. The procedures how to fix the obtained temporal artery specimens should also be described in the protocol. *Done and described in Steps 1.1 to 1.4*
2. The paragraph of specimen selection should be amended. I think this paragraph is for their previous paper in Am J Clin Exp Immunol 2017. *done*
3. The setting of steamer for antigen retrieval should be described. *Amended method stated in Step 2.7*
4. The procedure #8 should be described in more detail. *Done and described in Step 2.13*
5. The procedure of hematoxylin staining should be described in more detail. *Noted in Step 1.4*
6. I think any tissues should be fine for positive control of hematoxylin staining. Are there any reasons to recommend placental tissue? *FRB was found expressed in myeloid leukemia cells and normal placental tissue.*





October 15, 2018

Phillip Steindel, Ph.D.  
Review Editor  
Journal of Visualized Experiments

Re: Response to editorial comments dated 9/29/2018 for manuscript no. JoVE 58713 : Profiling the folate receptor beta macrophage and the vascular immune microenvironment in Giant Cell Arteritis: an immunohistopathologic study

Dear Dr Steindel

I am submitting the final manuscript after reviewing the most recent editorial commentaries as outlined below. Thank you so much.

**Editorial comments**

1. Unfortunately, some sections of the current manuscript show overlap with previous work, including, perhaps, the author's own. Please see the attached iThenticate report and revise: lines 139-147, 152-154, and 217-220- Answer: These lines were revised accordingly.
2. Please move the notes in the Notes section to where they are more relevant (e.g. note 7 after 2.6). Please write them on a separate line with 'NOTE:' preceding them. Answer: This was done.
3. 1.1: Please include more details (possibly including references) on the biopsy procedure and handling of sample immediately afterwards. In particular, how much time can elapse between the biopsy and fixation and how is the section stored in the meantime? Answer: This was addressed.
4. 1.3: How much paraffin/what size mold? Answer: This was done.
5. 2.2: Coated slides don't appear to be in the Table of Materials. Answer: This was done.
6. 2.5: What do you mean by 'slides are date'? Answer: This was a typographical error and deleted.
7. 2.6: How is agitation done? Answer: This was addressed.
8. 2.9: Please explain more about how the positive control is created; also, these aren't primary antibodies and I assume are not added to the samples. Answer: This was done.
9. 3: This section in general needs more detail if you wish to film it; e.g., how exactly is vascular architecture assessed and endothelial cells identified? Answer: This was addressed.

Sincerely yours,



Shirley Albano-Aluquin, MD  
Corresponding author

April 2018