

Journal of Visualized Experiments

Simultaneous recordings of cortical local field potentials and electrocorticogram in response to nociceptive laser stimuli from freely-moving rats

--Manuscript Draft--

Article Type:	Invited Methods Article - JoVE Produced Video
Manuscript Number:	JoVE58686R2
Full Title:	Simultaneous recordings of cortical local field potentials and electrocorticogram in response to nociceptive laser stimuli from freely-moving rats
Keywords:	Electroencephalogram (EEG); Electrocorticogram (ECoG); Local field potential (LFP); Laser evoked potential (LEP); Pain; Animal model; Simultaneous recording.
Corresponding Author:	Li Hu Institute of Psychology, Chinese Academy of Sciences Beijing, CHINA
Corresponding Author's Institution:	Institute of Psychology, Chinese Academy of Sciences
Corresponding Author E-Mail:	huli@psych.ac.cn
Order of Authors:	Lupeng Yue Fengrui Zhang Xuejing Lu You Wan Li Hu
Additional Information:	
Question	Response
Please indicate whether this article will be Standard Access or Open Access.	Standard Access (US\$2,400)
Please indicate the city, state/province, and country where this article will be filmed . Please do not use abbreviations.	Beijing, China

KEY LABORATORY OF MENTAL HEALTH
INSTITUTE OF PSYCHOLOGY
CHINESE ACADEMY OF SCIENCES

Li Hu, PhD

Professor, Chinese Academy of Sciences, Beijing

Tel: +86 18084053555; Fax: +86-10-84249369

URL: www.huilab.com; Email: huli@psych.ac.cn



Beijing, 6th September 2018

Dear Editor,

Please find attached the revised version of our manuscript entitled **“Simultaneous recordings of cortical local field potentials and electrocorticogram in response to nociceptive laser stimuli from freely-moving rats”** (JoVE58686R2).

We also attach a detailed point-to-point reply to the reviewers' comments and a version of the manuscript with changes tracked (and new text redlined). All comments have been addressed.

Thank you for your consideration.

Yours faithfully,

A handwritten signature in black ink, appearing to be "Huli".

Li Hu, PhD

TITLE:

Simultaneous Recordings of Cortical Local Field Potentials and Electrocorticograms in Response to Nociceptive Laser Stimuli from Freely Moving Rats

AUTHORS & AFFILIATIONS:

Lupeng Yue^{1,2}, Fengrui Zhang³, Xuejing Lu^{1,2}, You Wan^{4,5,6}, Li Hu^{1,2}

¹CAS Key Laboratory of Mental Health, Institute of Psychology, Beijing, China

²Department of Psychology, University of Chinese Academy of Sciences, Beijing, China

³Research Center of Brain Cognitive Neuroscience, Liaoning Normal University, Dalian, China

⁴Neuroscience Research Institute, Peking University, Beijing, China

⁵Department of Neurobiology, School of Basic Medical Sciences, Peking University, Beijing, China

⁶Key Laboratory for Neuroscience, Ministry of Education/National Health and Family Planning Commission, Peking University, Beijing, China

Corresponding authors:

You Wan (ywan@hsc.pku.edu.cn)

Tel: +86-10-82805185

Li Hu (huli@psych.ac.cn)

Tel: +86 18084053555

Fax: +86-10-84249369

E-mail Addresses of the Co-authors:

Lupeng Yue (yuelp@psych.ac.cn)

Fengrui Zhang (zhangfr11@lzu.edu.cn)

Xuejing Lu (luxj@psych.ac.cn)

KEYWORDS:

Electroencephalogram (EEG), electrocorticogram (ECoG), local field potential (LFP), laser-evoked potential (LEP), pain, animal model, simultaneous recording

SUMMARY:

We developed a technique that simultaneously records both electrocorticography and local field potentials in response to nociceptive laser stimuli from freely moving rats. This technique helps establish a direct relationship of electrocortical signals at the mesoscopic and macroscopic levels, which facilitates the investigation of nociceptive information processing in the brain.

ABSTRACT:

Electrocortical responses, elicited by laser heat pulses that selectively activate nociceptive free nerve endings, are widely used in many animal and human studies to investigate the cortical processing of nociceptive information. These laser-evoked brain potentials (LEPs) consist of several transient responses that are time-locked to the onset of laser stimuli. However, the functional properties of the LEP responses are still largely unknown, due to the lack of a sampling technique that can simultaneously record neural activities at the surface of the cortex (*i.e.*,

electrocorticogram [ECoG] and scalp electroencephalogram [scalp EEG]) and inside the brain (*i.e.*, local field potential [LFP]). To address this issue, we present here an animal protocol using freely moving rats. This protocol is composed of three main procedures: (1) animal preparation and surgical procedures, (2) a simultaneous recording of ECoG and LFP in response to nociceptive laser stimuli, and (3) data analysis and feature extraction. Specifically, with the help of a 3-D-printed protective shell, both ECoG and LFP electrodes implanted on the rat's skull were securely held together. During data collection, laser pulses were delivered on the rat's forepaws through gaps in the bottom of the chamber when the animal was in spontaneous stillness. Ongoing white noise was played to avoid the activation of the auditory system by the laser-generated ultrasounds. As a consequence, only nociceptive responses were selectively recorded. Using the standard analytical procedures (*e.g.*, band-pass filtering, epoch extraction, and baseline correction) to extract stimulus-related brain responses, we obtained results showing that LEPs with a high signal-to-noise ratio were simultaneously recorded from ECoG and LFP electrodes. This methodology makes the simultaneous recording of ECoG and LFP activities possible, which provides a bridge of electrocortical signals at the mesoscopic and macroscopic levels, thereby facilitating the investigation of nociceptive information processing in the brain.

INTRODUCTION:

EEG is a technique to record electrical potentials and oscillatory brain activities generated by the synchronized activities of thousands of neurons in the brain. It is popularly used in many basic studies and clinical applications^{1,2}. For instance, EEG responses to intense laser heat pulses (*i.e.*, LEPs) are widely adopted to investigate the peripheral and central processing of nociceptive sensory input^{3,4,5}. In humans, LEPs mainly consist of three distinct deflections: the early component (N1) that is somatotopically organized and likely to reflect the activity of the primary somatosensory cortex (S1)⁶, and the late components (N2 and P2) that are centrally distributed and more likely to reflect the activity of bilateral generators in the secondary somatosensory cortex, insula, and anterior cingulate cortex^{7,8}. In previous studies^{9,10}, we demonstrated that rat LEPs, sampled using ECoG (a type of intracranial EEG) from electrodes placed directly on the exposed surface of the brain, also consist of three distinct deflections (*i.e.*, somatotopically organized N1 and the centrally distributed N2 and P2). The polarity, order, and topography of the rat LEP components are similar to human LEPs¹¹. However, due to the limited spatial resolution of the scalp EEG and subdural ECoG recordings¹², as well as the inaccurate nature of EEG source analysis techniques¹³, the detailed contribution of the neural activities to the LEP components is much debated. For example, it is unclear if and the extent to which S1 contributes to the early part of the cortical response (N1) elicited by laser stimuli⁶.

Different from the recording technique at the macroscopic level, direct intracranial recordings using microwire arrays aided by a stereotaxic apparatus and microdrives^{14,15} could measure neural activities (*e.g.*, LFPs) of specific regions. LFPs mainly reflect the summation of inhibitory or excitatory postsynaptic potentials of local neuronal populations¹⁶. Since LFP-sampled neural activities reflect neuronal processes occurring within hundreds of micrometers around the recording electrode, this recording technique is widely used to investigate the information processing in the brain at the mesoscopic level. However, it only focuses on precise local changes of brain activities and cannot answer the question of how signals from multiple regions are

integrated (*e.g.*, how LEP components are integrated at multiple brain regions).

It is worth noting that the simultaneous recording of an ECoG and cortical LFPs from freely moving rats could facilitate the investigation of cortical information processing at both macroscopic and mesoscopic levels. In addition, this methodology provides an excellent opportunity to investigate the extent to which the neural activities of the predefined brain regions contribute to the LEPs. Indeed, several previous studies have assessed the coherence between spikes, cortical LFP, and ECoG signals^{17,18} and demonstrated that the LFP^{19,20} adjacent to the EEG electrode contributes to the formation of stimulus-related brain responses. However, the existing technique is usually used to record brain responses from anesthetized animals due to the lacking of a protective shell to prevent the electrodes from being damaged by the collision. In other words, the technique that could build the bridge of electrocortical signals at the mesoscopic (cortical LFP) and macroscopic (EEG and ECoG) levels in freely moving rats is still lacking.

To address this issue, we developed a technique that could record an ECoG and cortical LFPs in multiple brain regions simultaneously from freely moving rats. This technique helps establish the direct relationship of electrocortical signals at the mesoscopic and macroscopic levels, thus facilitating the investigation of nociceptive information processing in the brain.

PROTOCOL:

Adult male Sprague-Dawley rats (weighing 400 - 450 g) were used in the experiment. All surgical and experimental procedures followed the Guide for Care and Use of Laboratory Animals of the National Institutes of Health. The procedures were approved by the Research Ethics Committee at the Institute of Psychology, Chinese Academy of Sciences.

1. Electrode Implantation

1.1. Anesthetize the rat in a chamber with 5% isoflurane and an air flow rate of 1 L/min before the surgery.

1.2. Using a stereotaxic apparatus, fix the head of the rat with its nose placed into the anesthetic mask. Administrate isoflurane *via* the anesthetic mask at a concentration of 2% with an air flow rate of 0.5 L/min to maintain the anesthetic depth during the surgery. Note that the surgical tolerance is achieved when the rat fails to respond to toe-pinching.

1.3. Apply ophthalmic ointment to the eyes to avoid corneal drying.

1.4. Shave the top of the rat scalp using a standard shaver.

1.5. Sterilize the scalp using the medical iodophor disinfectant solution and 75% alcohol to remove the iodine.

1.6. Inject lidocaine (2%) into the scalp for local analgesia. Administer atropine (0.2 mL i.p.) to

133 inhibit respiratory hypersecretion.

134
135 1.7. Make a midline incision of approximately 2 - 3 cm on the scalp using a scalpel. Cut and
136 remove part of the scalp along the midline and expose the cranium. Use the electrocoagulator to
137 stop the bleeding, when necessary.

138
139 1.8. Mark the locations of ECoG electrodes based on the predefined stereotaxic coordinates
140 (placed according to the position of Bregma) and the locations of the reference and ground
141 electrodes on the midline (placed 2 and 4 mm caudally to the Lambda, respectively).

142
143 1.9. Drill holes (diameter: 0.5 mm) for the ECoG screws, using an electric cranial drill on the skull
144 at the marked sites, without destroying the dura.

145
146 1.10. Drive a stainless-steel screw (outside diameter: 0.6 mm), which connects to the insulation-
147 coated copper wire, into the hole for approximately 1 mm depth without penetrating the
148 underlying dura. These screws act as ECoG, reference, and ground electrodes during the
149 experiment.

150
151 1.11. Place a protective shell base on the cranium. Fix the base with its adjacent screws on the
152 cranium using dental acrylic. Use medical cotton that could be removed afterward to protect the
153 area that is intended to be used for depth wire implantation from being covered.

154
155 NOTE: The protective shell is a custom-designed 3-D-printed polylactic product, which consists
156 of three parts: a base, a wall, and a cap. The wall is covered by copper tapers to construct as a
157 Faraday cage.

158
159 1.12. Mark the locations of the depth wire electrodes based on the predefined stereotaxic
160 coordinates.

161
162 1.13. Drill small holes (diameter: 0.2 mm) on the skull around the marked sites for wire
163 implantation, and carefully remove the bone flap to expose the dura. Wash the craniotomy
164 frequently, using normal saline. **Figure 1** describes the set-up before the implantation of the
165 depth wire electrodes.

166
167 1.14. Using a needle, lift and cut the dura without damaging the pia mater, vessels, and the
168 surface of the neocortex.

169
170 1.15. Lower the depth wire electrodes to the surface of the neocortex and, then, slowly
171 penetrate the brain to the target depth. Frequently stop moving down the electrodes for cortical
172 resilience. In the present study, the depth of the wire tip is 0.5 mm under the cortical surface.

173
174 1.16. Seal the craniotomy with a mixture of wax and paraffin oil to ensure that the depth wire
175 electrodes can be moved for subsequent experimental manipulations.

176

1.17. Fix the electrode apparatus using dental acrylic on the skull.

1.18. Weld each copper wire that connects to the ECoG screw to the corresponding channel on the connector module. Cover the welding spots using clay to avoid potential contact between different channels.

1.19. Assemble the protective shell wall to the base and weld the reference and ground electrodes to the corresponding channels.

1.20. Fix the cap to the protective shell using tapes to avoid contamination.

1.21. Inject the rat with penicillin (60,000 U, i.p.) immediately after surgery to prevent postsurgical infections.

1.22. Single-house the rat in a temperature- and humidity-controlled cage and keep it in a 12-h day/night cycle after the surgery, with food and water *ad libitum* for at least one week prior to the LEP experiment.

NOTE: To simultaneously record ECoG and cortical LFP activities, an apparatus was used here that was assembled with two types of electrodes linked to a connector module, which contained several microdrives attached to the tungsten wire arrays. The gold pins were used to connect the tungsten wires to the electrode interface board (EIB) of the connector module by pressing the wires into small metal holes on the EIB. Two metal holes on the EIB were soldered with coated copper wires, and the open end of each copper wire was soldered with the corresponding copper wire connected to ECoG screw. The details of fabrication have been described elsewhere²¹.

2. Data Collection

2.1. Tickle the rat at least 1x a day for three or more consecutive days before the experiment to ensure that the rat gets familiar with the experimenter²².

2.2. Place the rat in the behavior chamber for at least 1 h before the experiment to ensure the rat acclimatizes to the recording environment.

NOTE: The chamber is a plastic cube with a side length of 30 cm. The bottom of the chamber is made of an iron grating with ~8 mm gaps.

2.3. Connect the recording headstage with the electrode module gently, to avoid scaring the rat and damaging the electrode module.

2.4. Set up the laser generator, connect the optic fiber, and adjust the spot size of the laser according to the equipment operator's manual. Connect the digital output from the trigger generator to the digital input port of the recording board.

NOTE: Take care not to curl the optic fiber excessively to avoid breaking off the fiber. Before recording, make sure the trigger signals are displayed and recorded by the recording software. In this protocol, radiant-heat stimuli are generated by an infrared neodymium yttrium aluminum perovskite (Nd: YAP) laser with a wavelength of 1.34 μm . The diameter of the laser spot size is set at approximately 5 mm by focusing lenses. A He-Ne laser pointed to the stimulated area, which is defined depending on the objective of the experiment. Also, the stimulus energy of the laser pulses is determined according to the experimental design. The laser pulse duration is 4 ms.

2.5. Set the video camera beneath the corner of the experimental chamber to continuously record the nociceptive behaviors of the rat when its paw receives nociceptive laser stimuli. Adjust the position and direction of the camera to make sure the nociceptive behaviors are completely recorded throughout the experiment.

NOTE: A high-speed charge-coupled device (CCD) camera is highly recommended, as it can deliver the operating signals to the main board of the recording system to record the onset time and duration of the nociceptive behavior precisely. Nociceptive behaviors are assessed by the experimenter after each laser stimulus, according to previously defined criteria based on the animal movement^{23,24}, as follows: no movement (score = 0), head-turning (including shaking or elevating the head; score = 1), flinching (*i.e.*, a small abrupt body jerking movement; score = 2), withdrawal (*i.e.*, paw retraction from the laser stimulus; score = 3), licking and whole-body movement (score = 4).

2.6. Deliver ongoing white noise (50 dB SPL) via a loudspeaker at the top of the chamber.

NOTE: As shown in previous studies^{10,25}, laser stimulation delivered on the skin generates ultrasounds that can be detected by the rat auditory system. For this reason, ongoing white noise is played throughout the experiment to avoid the activation of the auditory system in response to laser-generated ultrasounds. This procedure allows the selective recording of brain responses related to the activation of the nociceptive system.

2.7. Collect the electrophysiological data from both the ECoG and the depth wire electrodes, using the recording system according to the equipment operator's manual.

NOTE: The operating signals of the camera and the trigger signals of the laser pulses are sampled simultaneously with the electrophysiological data at the same sampling rate (all data are amplified and digitized using a sampling rate of 20,000 Hz), which ensures that all data are time-synchronized.

2.8. Deliver the laser pulses to the plantar of the rat's forepaw through the gaps in the bottom of the chamber.

NOTE: The laser stimulus is only delivered when the rat is spontaneous stillness for more than 2 s based on the experimenter's observation, to minimize the signal contamination of the movement-related artifacts. To avoid nociceptor fatigue or sensitization, the target of the laser

beam is displaced manually after each stimulus, and the interstimulus interval is never shorter than 40 s. ECoG and LFP signals can be recorded several times from each rat. The rat needs to be put in the experimental chamber 1 h before each recording session. After all recording sessions, the rat was deeply anesthetized and perfused transcardially with ice-cold phosphate-buffered saline followed by 4% paraformaldehyde. The brain was removed from the skull and sectioned to identify the electrode positions.

3. Data Analysis

3.1. Filter the continuous data with a band-pass filter between 1 and 30 Hz.

3.2. Epoch the data using an analysis window of 3 s, extended from 1 s before to 2 s after the onset of laser stimuli. Baseline correction is performed by subtracting the mean amplitude within the prestimulus interval.

3.3. Manually reject the epochs that are contaminated by gross artifacts.

3.4. Compute the averaged LEP waveforms and time lock to the onset of laser stimuli for each experimental condition.

3.5. Compute the wavelet transform coherence (WTC) of LEP waveforms recorded from ECoGs and depth wire electrodes.

NOTE: WTC is a technique to perform the coherence between pairs of electrodes as a function of time and frequency. The WTC between two signals can be calculated for any time-frequency point, which has the advantage of generating coherence values for the entire time-frequency spectrum. The details of the methodology have been described elsewhere²⁶.

REPRESENTATIVE RESULTS:

In the representative experiment, the electrophysiological data from five rats were recorded. The laser stimuli were delivered to the right forepaw of each rat for 20 times with 40 s interstimulus intervals. The laser-evoked brain responses were recorded using both ECoG screws and depth wires, and the depth wires were implanted in bilateral primary somatosensory cortices (S1) and primary motor cortices (M1).

As summarized in **Figure 1**, two ECoGs (marked in black) and depth wire electrodes (marked in color, five wires for each of the four regions) were placed according to stereotaxic coordinates in the following positions (expressed in reference to the Bregma, in mm; positive X and Y axis values indicate right and anterior locations, respectively): in the left ECoG, X = -1.5 and Y = 1.75; in the right ECoG, X = 1.5 and Y = 1.75; in the left S1, X = -4 and Y = 0.5; in the right S1, X = 4 and Y = 0.5; in the left M1, X = -3 and Y = 3; in the right M1, X = 3 and Y = 3.

Figure 2 shows the raw electrophysiological data from all electrodes (two ECoG screws plus four by five tungsten wires, five tungsten wires in each brain region), with the onset of laser stimulus

marked by a vertical dot line. Please note that clear LEP responses are detectable after the onset of the laser stimulus.

Figure 3 shows the group-level-averaged LEP waveforms from six electrodes (two ECoG screws plus four tungsten wires, a representative tungsten wire in each brain region) of five rats. Regardless of the recording site, the LEP responses consist of a dominant negative deflection (N1 wave). The latency and amplitude of the N1 wave are as follows (mean \pm SEM): for the left ECoG, 143 ± 9 ms and -51 ± 4 μ V; for the right ECoG, 145 ± 9 ms and -47 ± 4 μ V; for the left S1, 149 ± 9 ms and -86 ± 7 μ V; for the right S1, 168 ± 10 ms and -71 ± 6 μ V; for the left M1, 179 ± 12 ms and -74 ± 7 μ V; for the right M1, 185 ± 11 ms and -63 ± 6 μ V. Importantly, N1 latencies in the bilateral ECoG and LFP signals recorded from the contralateral S1 are similar, which are clearly shorter than those recorded from the ipsilateral S1 and bilateral M1. In contrast, N1 amplitudes are largest in contralateral S1 and smallest in bilateral ECoGs.

Figure 4 shows the WTC between LEPs sampled using the ECoG screws (the signals from two ECoG screws were averaged) and depth wires at different brain regions (right M1, right S1, left M1, and left S1). Note that the contralateral (left) S1 and M1 showed a higher coherence than the ipsilateral (right) S1 and M1 at the gamma-frequency band (50 - 100 Hz).

FIGURE LEGENDS:

Figure 1: Electrode implantation set-up. Before the implantation of the depth wire electrodes, a protective shell base is placed on the cranium, and the screws used as ECoG electrodes are driven into the predefined holes and fixed by dental acrylic. Four holes are drilled for the implantation of depth wire electrodes (*e.g.*, tungsten wire arrays) at the positions. These positions are at the top of the left and right S1 and M1, respectively. The screws used as reference and ground electrodes are placed 2 and 4 mm caudally to the Lambda and fixed with the protective shell base. The panel on the left shows the photo of surgery after the implantation of a protective shell base. The panel on the right shows the diagram of surgery, which showed the general shape of the protective shell base.

Figure 2: Raw electrophysiological data of a representative rat. Displayed signals are recorded from a representative rat with two ECoGs and 20 depth wire electrodes (five electrodes in each brain region), using the electrode located 2 mm caudally to the Lambda as reference. The onset of the laser stimulus is marked using a vertical dot line.

Figure 3: Group-level-averaged LEP waveforms. The displayed averaged signals are recorded from five rats at two ECoGs and four depth wire electrodes (one representative electrode in each brain region), using the electrode located 2 mm caudally to the Lambda as reference.

Figure 4: The wavelet transform coherence. The displayed results show the wavelet transform coherence between LEPs sampled using ECoG screws and depth wires at different brain regions (right M1, right S1, left M1, and left S1). The coherence was normalized to the respective baseline (0.5 s before the laser stimulus onset).

DISCUSSION:

In the present study, we described a technique to concurrently record ECoGs and cortical LFP responses elicited by nociceptive laser stimuli from freely moving rats. The results showed that LEP responses could be clearly detected after the onset of laser stimuli in both ECoG and LFP signals. The successful simultaneous recording of ECoG and cortical LFP signals will enable scientists to investigate their relationship for better understanding the contribution of neuronal activities to the LEP components.

Five critical steps in the proposed technique should be noted. First, it is important to make sure that the surface of the cranium is clean and dry before fixing the protective shell base on it, using dental acrylic. This step enables that the protective shell base is stably fixed. Second, since the diameter of the ECoG screws is slightly larger than that of the holes, the initial screw driving will enlarge the hole to form the screw-thread. In the present study, the distance between the hole for tungsten wires and the hole for the ECoG screw is very small (*e.g.*, less than 0.3 mm). If all holes are drilled before the ECoG screw driving and depth wire insertion, the skull around the ECoG holes would be fragile, and it would not bear the mechanical load of the hole enlargement during the screw driving. For this reason, the ECoG screws need to be driven into the holes to form the screw-thread prior to the hole drilling for the tungsten wire insertion. If the inserted ECoG screws obstruct the view when drilling the holes for the tungsten wires, it is recommended they are to be driven out and driven in again after step 1.14 of the protocol. Third, when inserting the depth wire electrodes, the experimenter is supposed to pay attention to the resistance at the tip of the tungsten wires, which usually indicates that the depth wires are blocked by the hole edge on the skull or the dura when that has not been completely removed. If this is the case, the depth wires must be raised, and the possible obstacles should be cleaned out before reinserting the electrodes²⁰. Fourth, when filling the craniotomy holes with the mixture of wax and paraffin oil after the electrode implantation, the implanted wires should not be touched. Therefore, it is preferable to melt the nearby-placed mixture using electrocoagulator. Fifth, it is important to ensure that the distance between the laser end piece and the target site on the rat is kept at approximately 1 cm to guarantee that the perceived laser energies are consistent among different trials^{10,25}.

Indeed, to make sure that the protective shell can cover and protect the whole apparatus, the size of the shell is designed to be relatively large (a cube with a side length of 3.5 mm) compared to the rat's head. To minimize the influence of the over-the-head device on the rat's movement, we recommend using rats who weighed more than 400 g in the experiment. For this reason, this technique cannot be used to study sophisticated behaviors in the rat model and should not be adopted in other models of smaller animals (*e.g.*, mice), even though the proposed technique can be combined with other techniques and extended to many other applications. For example, this technique can be easily applied to record brain responses evoked by stimuli of different sensations (*e.g.*, auditory and visual)^{27,28} and applied in identifying brain features of psychiatric diseases (*e.g.*, epilepsy)²⁹ in freely moving rats, which would promote the investigation of their respective neural mechanisms. In addition, the electrode implantation can withstand the test for about one month, which provides the possibility to perform a longitudinal study in the future.

Altogether, we provide a valid technique to simultaneously record ECoG and LFP activities from freely moving rats. This technique enables us to investigate the information processing in the brain at both mesoscopic and macroscopic levels. This is important for translational studies to document experimental animal findings for a better understanding of human physiology and pathophysiology.

ACKNOWLEDGMENTS:

This work was supported by the National Natural Science Foundation of China (31471082, 31671141, and 31822025 to L.H.), the 13th Five-year Informatization Plan of the Chinese Academy of Sciences (XXH13506 to L.H.), the Scientific Foundation project of the Institute of Psychology, Chinese Academy of Sciences (Y6CX021008 to L.H.).

DISCLOSURES:

The authors have nothing to declare.

REFERENCES:

1. Klimesch, W., Doppelmayr, M., Schwaiger, J., Winkler, T., Gruber, W. Theta oscillations and the ERP old/new effect: independent phenomena? *Clinical Neurophysiology*. **111** (5), 781-793 (2000).
2. Peng, W. *et al.* Brain oscillations reflecting pain-related behavior in freely moving rats. *Pain*. **159** (1), 106-118 (2018).
3. Treede, R. D. Neurophysiological studies of pain pathways in peripheral and central nervous system disorders. *Journal of Neurology*. **250** (10), 1152-1161 (2003).
4. Iannetti, G. D. *et al.* Evidence of a specific spinal pathway for the sense of warmth in humans. *Journal of Neurophysiology*. **89** (1), 562-570 (2003).
5. Bromm, B., Treede, R. D. Nerve fibre discharges, cerebral potentials and sensations induced by CO₂ laser stimulation. *Human Neurobiology*. **3** (1), 33-40 (1984).
6. Valentini, E. *et al.* The primary somatosensory cortex largely contributes to the early part of the cortical response elicited by nociceptive stimuli. *NeuroImage*. **59** (2), 1571-1581 (2012).
7. Valeriani, M. *et al.* Parallel spinal pathways generate the middle-latency N1 and the late P2 components of the laser evoked potentials. *Clinical Neurophysiology*. **118** (5), 1097-1104 (2007).
8. Kuo, C. C., Yen, C. T. Comparison of anterior cingulate and primary somatosensory neuronal responses to noxious laser-heat stimuli in conscious, behaving rats. *Journal of Neurophysiology*. **94** (3), 1825-1836 (2005).
9. Hu, L. *et al.* The primary somatosensory cortex and the insula contribute differently to the processing of transient and sustained nociceptive and non-nociceptive somatosensory inputs.

441 *Human Brain Mapping*. **36** (11), 4346-4360 (2015).

442
443 10. Xia, X. L., Peng, W. W., Iannetti, G. D., Hu, L. Laser-evoked cortical responses in freely-moving
444 rats reflect the activation of C-fibre afferent pathways. *NeuroImage*. **128**, 209-217 (2016).

445
446 11. Jin, Q. Q. *et al.* Somatotopic Representation of Second Pain in the Primary Somatosensory
447 Cortex of Humans and Rodents. *The Journal of Neuroscience*. **38** (24), 5538-5550 (2018).

448
449 12. Lenkov, D. N., Volnova, A. B., Pope, A. R., Tsytsarev, V. Advantages and limitations of brain
450 imaging methods in the research of absence epilepsy in humans and animal models. *Journal of*
451 *Neuroscience Methods*. **212** (2), 195-202 (2013).

452
453 13. Mouraux, A., Iannetti, G. D. Across-trial averaging of event-related EEG responses and
454 beyond. *Magnetic Resonance Imaging*. **26** (7), 1041-1054 (2008).

455
456 14. Li, X. *et al.* Extracting Neural Oscillation Signatures of Laser-Induced Nociception in Pain-
457 Related Regions in Rats. *Frontiers in Neural Circuits*. **11**, 71 (2017).

458
459 15. Zhao, Z. F., Li, X. Z., Wan, Y. Mapping the Information Trace in Local Field Potentials by a
460 Computational Method of Two-Dimensional Time-Shifting Synchronization Likelihood Based on
461 Graphic Processing Unit Acceleration. *Neuroscience Bulletin*. **33** (6), 653-663 (2017).

462
463 16. Buzsaki, G., Anastassiou, C. A., Koch, C. The origin of extracellular fields and currents--EEG,
464 ECoG, LFP and spikes. *Nature Reviews. Neuroscience*. **13** (6), 407-420 (2012).

465
466 17. Bimbi, M. *et al.* Simultaneous scalp recorded EEG and local field potentials from monkey
467 ventral premotor cortex during action observation and execution reveals the contribution of
468 mirror and motor neurons to the mu-rhythm. *NeuroImage*. **175**, 22-31 (2018).

469
470 18. Musall, S., von Pfohl, V., Rauch, A., Logothetis, N. K., Whittingstall, K. Effects of neural
471 synchrony on surface EEG. *Cerebral Cortex*. **24** (4), 1045-1053 (2014).

472
473 19. Bruyns-Haylett, M. *et al.* The neurogenesis of P1 and N1: A concurrent EEG/LFP study.
474 *NeuroImage*. **146**, 575-588 (2017).

475
476 20. Kang, S., Bruyns-Haylett, M., Hayashi, Y., Zheng, Y. Concurrent Recording of Co-localized
477 Electroencephalography and Local Field Potential in Rodent. *Journal of Visualized Experiments*.
478 (129), e56447 (2017).

479
480 21. Shikano, Y., Sasaki, T., Ikegaya, Y. Simultaneous Recordings of Cortical Local Field Potentials,
481 Electrocardiogram, Electromyogram, and Breathing Rhythm from a Freely Moving Rat. *Journal of*
482 *Visualized Experiments*. (134), e56980 (2018).

483
484 22. Cloutier, S., LaFollette, M. R., Gaskill, B. N., Panksepp, J., Newberry, R. C. Tickling, a Technique

for Inducing Positive Affect When Handling Rats. *Journal of Visualized Experiments*. (135), e57190 (2018).

23. Fan, R. J., Kung, J. C., Olausson, B. A., Shyu, B. C. Nocifensive behaviors components evoked by brief laser pulses are mediated by C fibers. *Physiology & Behavior*. **98** (1-2), 108-117 (2009).

24. Fan, R. J., Shyu, B. C., Hsiao, S. Analysis of nocifensive behavior induced in rats by CO2 laser pulse stimulation. *Physiology & Behavior*. **57** (6), 1131-1137 (1995).

25. Hu, L. *et al.* Was it a pain or a sound? Across-species variability in sensory sensitivity. *Pain*. **156** (12), 2449-2457 (2015).

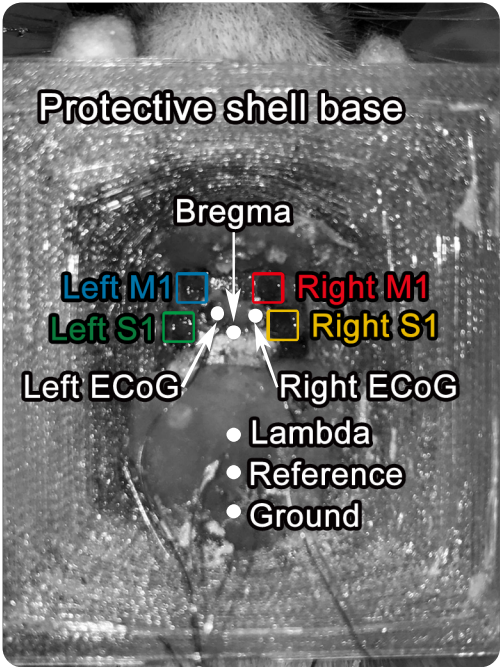
26. Catarino, A. *et al.* Task-related functional connectivity in autism spectrum conditions: an EEG study using wavelet transform coherence. *Molecular Autism*. **4** (1), 1 (2013).

27. Polterovich, A., Jankowski, M. M., Nelken, I. Deviance sensitivity in the auditory cortex of freely moving rats. *PLoS One*. **13** (6), e0197678 (2018).

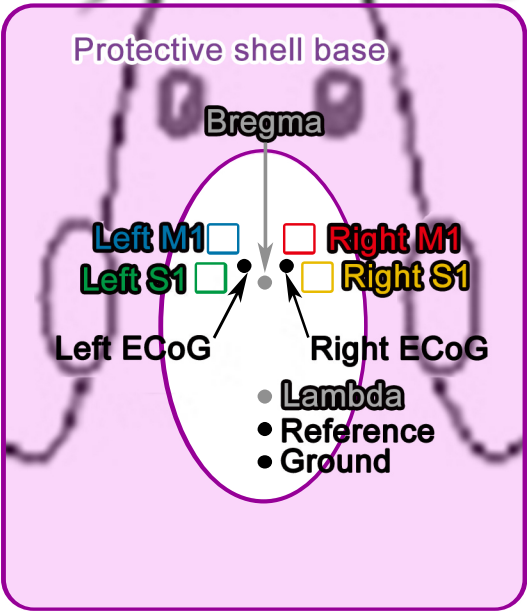
28. Li, G., Baker, C. L., Functional organization of envelope-responsive neurons in early visual cortex: organization of carrier tuning properties. *The Journal of Neuroscience*. **32** (22), 7538-7549 (2012).

29. Fujita, S., Toyoda, I., Thamattoor, A. K., Buckmaster, P. S. Preictal activity of subicular, CA1, and dentate gyrus principal neurons in the dorsal hippocampus before spontaneous seizures in a rat model of temporal lobe epilepsy. *The Journal of Neuroscience*. **34** (50), 16671-16687 (2014).

Figure1

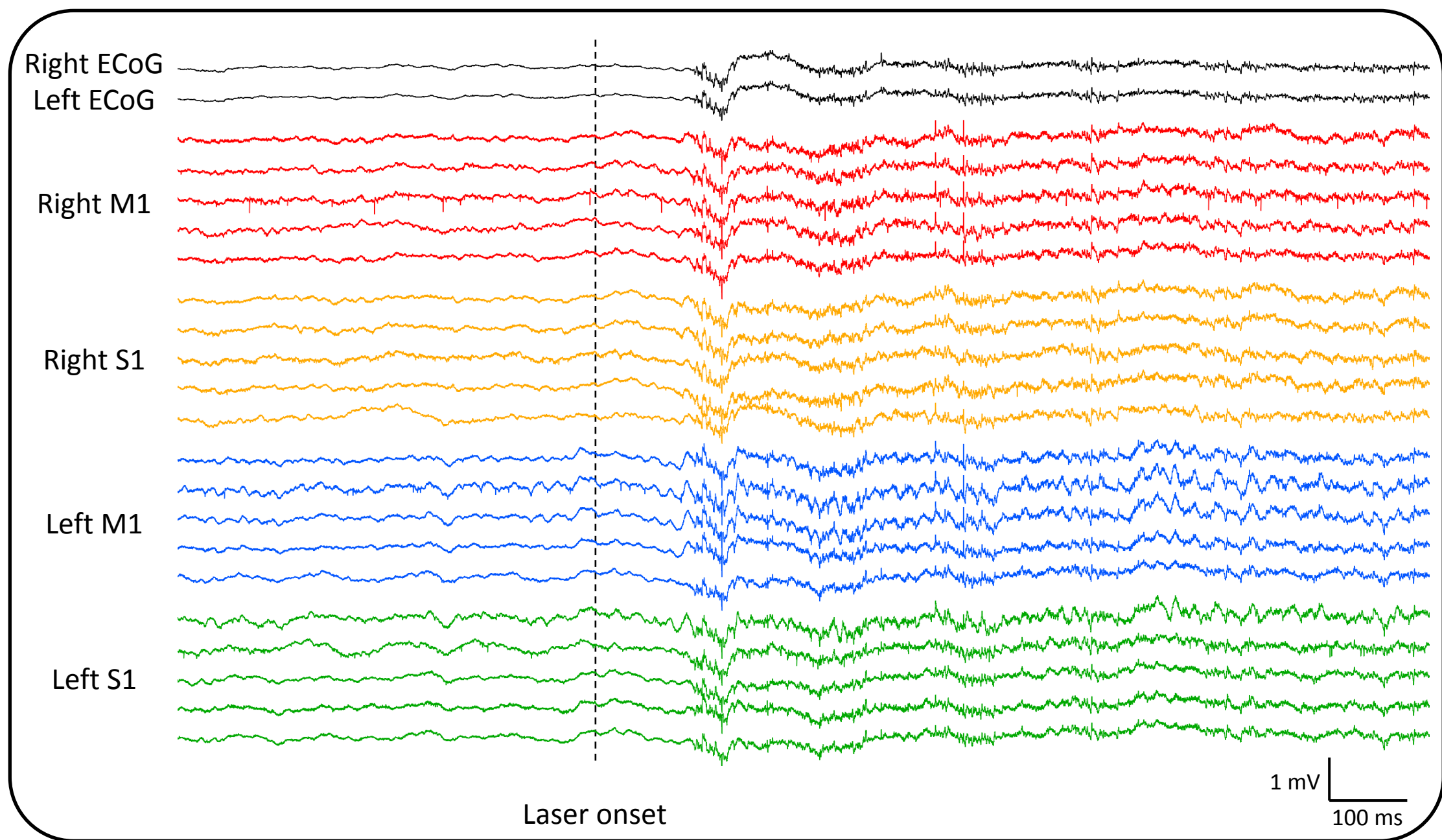


Surgery



Diagram

Figure 2



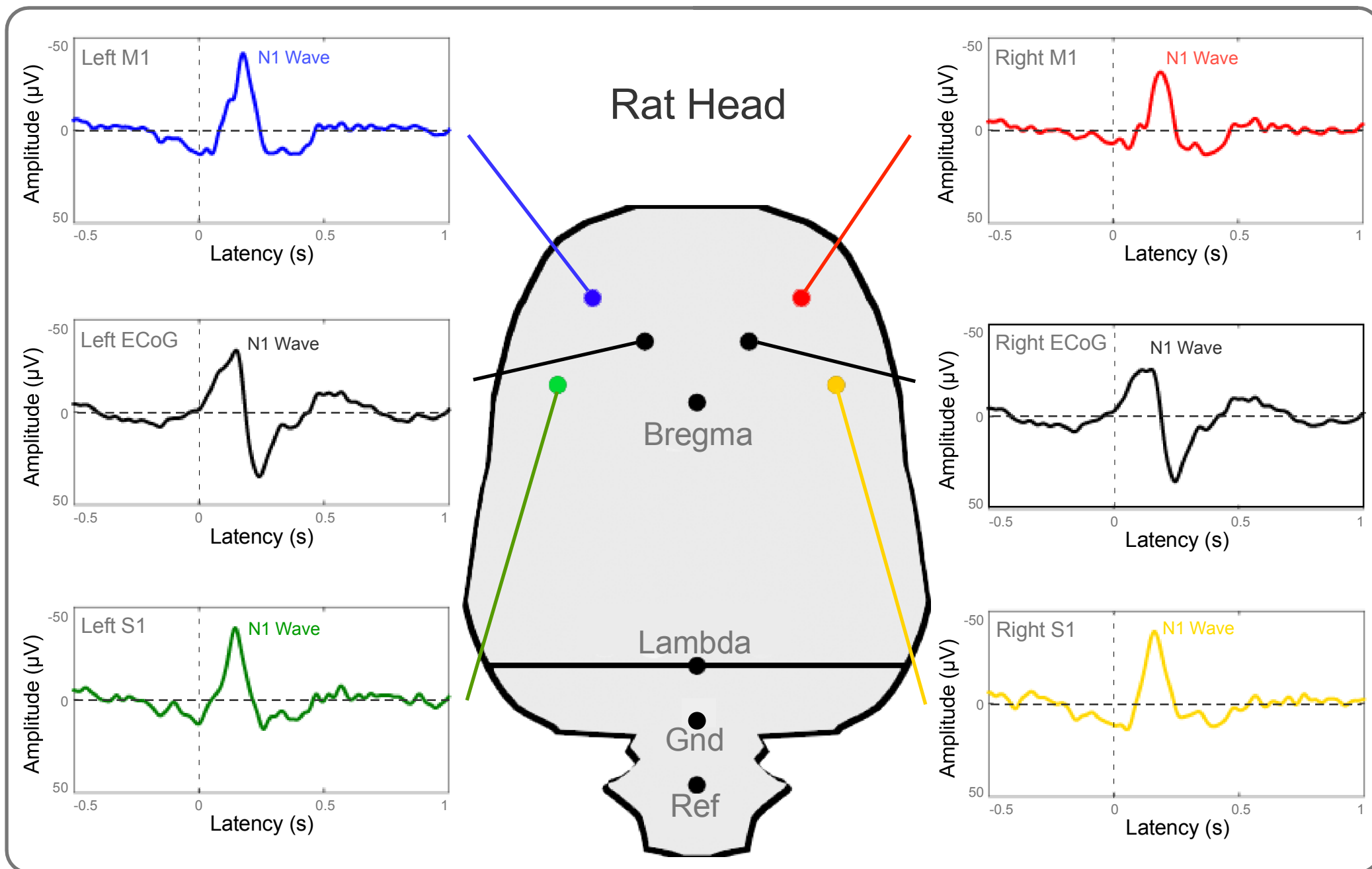
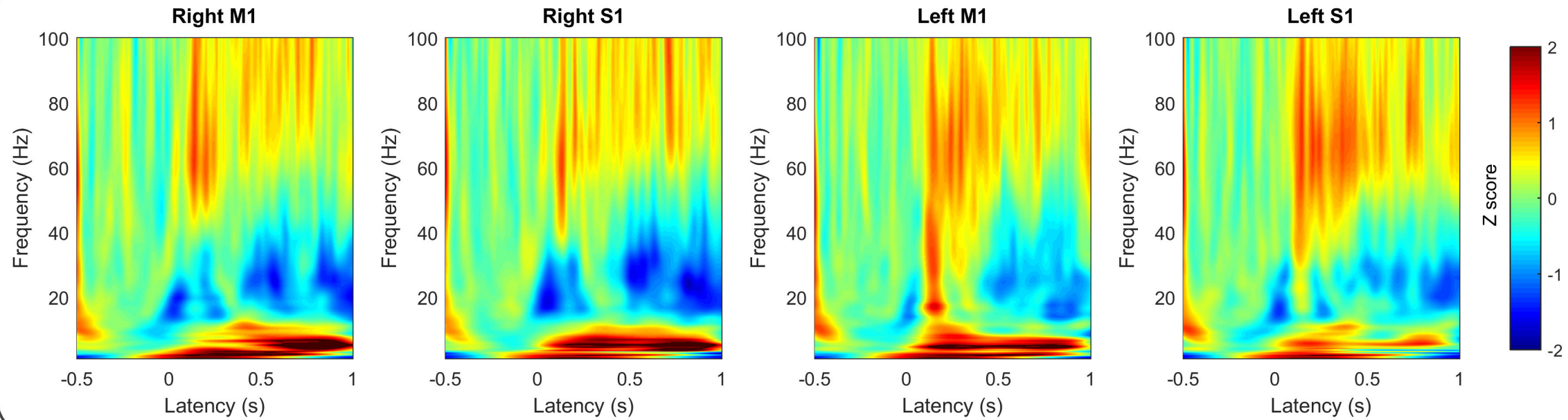


Figure 4



Name of Material/ Equipment	Company	Catalog Number	Comments/Description
Male Sprague-Drawley rats	Vital River		
Isoflurane	RWD Life Science		
Small animal isoflurane anaesthetic system	RWD Life Science		Including the anesthesia gas mask for rats
Stereotaxic apparatus	RWD Life Science		
The apparatus with combined ECoG and LFP electrodes			The apparatus is home-made, which assembles the ECoG and depth wire electrodes to a connector module
3D-printed protective shell			The texture of shell is polylactic, and the shell is home-made and contains three parts: a base, a wall and a cap. The wall is covered by copper tapers to construct as a Faraday cage
Tungsten wires (diameter: 50 μ m)	California Fine Wires Company		The electrodes for cortical LFP recording
Stainless steel screws (diameter: 0.6 mm)			The electrodes for ECoG recording
Electric cranial drill	RWD Life Science		
Drill bit (diameter: 0.5 mm)	RWD Life Science		The drill is used for drilling the holes of ECoG screws
Drill bit (diameter: 0.2 mm)	RWD Life Science		The drill is used for drilling the holes of depth wires
Dental acrylic powder	SNC dental		
Dental acrylic liquid	SNC dental		
Paraffin	Fisher Scientific		The mixture is used for seal the craniotomy to ensure the following movement of micro-wire arrays
Mineral Oil	Fisher Scientific		
Electrocoagulator	Bovie medical Corporation		
RHD2132 Amplifier Boards	Intan Technologies		A 32-channel headstage

RHD2000 system	Intan Technologies		The data acquisition system
Infrared neodymium yttrium aluminum perovskite (Nd:YAP) laser generator	Electronical Engineering		
Matlab R2016b	The MathWorks		



1 Alewife Center #200
Cambridge, MA 02140
tel. 617.945.9051
www.jove.com

ARTICLE AND VIDEO LICENSE AGREEMENT

Title of Article:	A technique to record laser-evoked potentials at both mesoscopic and macroscopic levels from freely-moving rats
Author(s):	Lupeng Yue, Fengrui Zhang, Xuejing Lu, You Wan, Li Hu

Item 1: The Author elects to have the Materials be made available (as described at <http://www.jove.com/publish>) via:



Standard Access



Open Access

Item 2: Please select one of the following items:



The Author is **NOT** a United States government employee.



The Author is a United States government employee and the Materials were prepared in the course of his or her duties as a United States government employee.



The Author is a United States government employee but the Materials were NOT prepared in the course of his or her duties as a United States government employee.

ARTICLE AND VIDEO LICENSE AGREEMENT

1. **Defined Terms.** As used in this Article and Video License Agreement, the following terms shall have the following meanings: “**Agreement**” means this Article and Video License Agreement; “**Article**” means the article specified on the last page of this Agreement, including any associated materials such as texts, figures, tables, artwork, abstracts, or summaries contained therein; “**Author**” means the author who is a signatory to this Agreement; “**Collective Work**” means a work, such as a periodical issue, anthology or encyclopedia, in which the Materials in their entirety in unmodified form, along with a number of other contributions, constituting separate and independent works in themselves, are assembled into a collective whole; “**CRC License**” means the Creative Commons Attribution-Non Commercial-No Derivs 3.0 Unported Agreement, the terms and conditions of which can be found at: <http://creativecommons.org/licenses/by-nc-nd/3.0/legalcode>; “**Derivative Work**” means a work based upon the Materials or upon the Materials and other pre-existing works, such as a translation, musical arrangement, dramatization, fictionalization, motion picture version, sound recording, art reproduction, abridgment, condensation, or any other form in which the Materials may be recast, transformed, or adapted; “**Institution**” means the institution, listed on the last page of this Agreement, by which the Author was employed at the time of the creation of the Materials; “**JoVE**” means MyJoVE Corporation, a Massachusetts corporation and the publisher of The Journal of Visualized Experiments; “**Materials**” means the Article and / or the Video; “**Parties**” means the Author and JoVE; “**Video**” means any video(s) made by the Author, alone or in conjunction with any other parties, or by JoVE or its affiliates or agents, individually or in collaboration with the Author or any other parties, incorporating all or any portion

of the Article, and in which the Author may or may not appear.

2. **Background.** The Author, who is the author of the Article, in order to ensure the dissemination and protection of the Article, desires to have the JoVE publish the Article and create and transmit videos based on the Article. In furtherance of such goals, the Parties desire to memorialize in this Agreement the respective rights of each Party in and to the Article and the Video.

3. **Grant of Rights in Article.** In consideration of JoVE agreeing to publish the Article, the Author hereby grants to JoVE, subject to **Sections 4** and **7** below, the exclusive, royalty-free, perpetual (for the full term of copyright in the Article, including any extensions thereto) license (a) to publish, reproduce, distribute, display and store the Article in all forms, formats and media whether now known or hereafter developed (including without limitation in print, digital and electronic form) throughout the world, (b) to translate the Article into other languages, create adaptations, summaries or extracts of the Article or other Derivative Works (including, without limitation, the Video) or Collective Works based on all or any portion of the Article and exercise all of the rights set forth in (a) above in such translations, adaptations, summaries, extracts, Derivative Works or Collective Works and (c) to license others to do any or all of the above. The foregoing rights may be exercised in all media and formats, whether now known or hereafter devised, and include the right to make such modifications as are technically necessary to exercise the rights in other media and formats. If the “Open Access” box has been checked in **Item 1** above, JoVE and the Author hereby grant to the public all such rights in the Article as provided in, but subject to all limitations and requirements set forth in, the CRC License.

ARTICLE AND VIDEO LICENSE AGREEMENT

4. **Retention of Rights in Article.** Notwithstanding the exclusive license granted to JoVE in **Section 3** above, the Author shall, with respect to the Article, retain the non-exclusive right to use all or part of the Article for the non-commercial purpose of giving lectures, presentations or teaching classes, and to post a copy of the Article on the Institution's website or the Author's personal website, in each case provided that a link to the Article on the JoVE website is provided and notice of JoVE's copyright in the Article is included. All non-copyright intellectual property rights in and to the Article, such as patent rights, shall remain with the Author.

5. **Grant of Rights in Video – Standard Access.** This **Section 5** applies if the "Standard Access" box has been checked in **Item 1** above or if no box has been checked in **Item 1** above. In consideration of JoVE agreeing to produce, display or otherwise assist with the Video, the Author hereby acknowledges and agrees that, Subject to **Section 7** below, JoVE is and shall be the sole and exclusive owner of all rights of any nature, including, without limitation, all copyrights, in and to the Video. To the extent that, by law, the Author is deemed, now or at any time in the future, to have any rights of any nature in or to the Video, the Author hereby disclaims all such rights and transfers all such rights to JoVE.

6. **Grant of Rights in Video – Open Access.** This **Section 6** applies only if the "Open Access" box has been checked in **Item 1** above. In consideration of JoVE agreeing to produce, display or otherwise assist with the Video, the Author hereby grants to JoVE, subject to **Section 7** below, the exclusive, royalty-free, perpetual (for the full term of copyright in the Article, including any extensions thereto) license (a) to publish, reproduce, distribute, display and store the Video in all forms, formats and media whether now known or hereafter developed (including without limitation in print, digital and electronic form) throughout the world, (b) to translate the Video into other languages, create adaptations, summaries or extracts of the Video or other Derivative Works or Collective Works based on all or any portion of the Video and exercise all of the rights set forth in (a) above in such translations, adaptations, summaries, extracts, Derivative Works or Collective Works and (c) to license others to do any or all of the above. The foregoing rights may be exercised in all media and formats, whether now known or hereafter devised, and include the right to make such modifications as are technically necessary to exercise the rights in other media and formats. For any Video to which this **Section 6** is applicable, JoVE and the Author hereby grant to the public all such rights in the Video as provided in, but subject to all limitations and requirements set forth in, the CRC License.

7. **Government Employees.** If the Author is a United States government employee and the Article was prepared in the course of his or her duties as a United States government employee, as indicated in **Item 2** above, and any of the licenses or grants granted by the Author hereunder exceed the scope of the 17 U.S.C. 403, then the rights granted hereunder shall be limited to the maximum

rights permitted under such statute. In such case, all provisions contained herein that are not in conflict with such statute shall remain in full force and effect, and all provisions contained herein that do so conflict shall be deemed to be amended so as to provide to JoVE the maximum rights permissible within such statute.

8. **Protection of the Work.** The Author(s) authorize JoVE to take steps in the Author(s) name and on their behalf if JoVE believes some third party could be infringing or might infringe the copyright of either the Author's Article and/or Video.

9. **Likeness, Privacy, Personality.** The Author hereby grants JoVE the right to use the Author's name, voice, likeness, picture, photograph, image, biography and performance in any way, commercial or otherwise, in connection with the Materials and the sale, promotion and distribution thereof. The Author hereby waives any and all rights he or she may have, relating to his or her appearance in the Video or otherwise relating to the Materials, under all applicable privacy, likeness, personality or similar laws.

10. **Author Warranties.** The Author represents and warrants that the Article is original, that it has not been published, that the copyright interest is owned by the Author (or, if more than one author is listed at the beginning of this Agreement, by such authors collectively) and has not been assigned, licensed, or otherwise transferred to any other party. The Author represents and warrants that the author(s) listed at the top of this Agreement are the only authors of the Materials. If more than one author is listed at the top of this Agreement and if any such author has not entered into a separate Article and Video License Agreement with JoVE relating to the Materials, the Author represents and warrants that the Author has been authorized by each of the other such authors to execute this Agreement on his or her behalf and to bind him or her with respect to the terms of this Agreement as if each of them had been a party hereto as an Author. The Author warrants that the use, reproduction, distribution, public or private performance or display, and/or modification of all or any portion of the Materials does not and will not violate, infringe and/or misappropriate the patent, trademark, intellectual property or other rights of any third party. The Author represents and warrants that it has and will continue to comply with all government, institutional and other regulations, including, without limitation all institutional, laboratory, hospital, ethical, human and animal treatment, privacy, and all other rules, regulations, laws, procedures or guidelines, applicable to the Materials, and that all research involving human and animal subjects has been approved by the Author's relevant institutional review board.

11. **JoVE Discretion.** If the Author requests the assistance of JoVE in producing the Video in the Author's facility, the Author shall ensure that the presence of JoVE employees, agents or independent contractors is in accordance with the relevant regulations of the Author's institution. If more than one author is listed at the beginning of this Agreement, JoVE may, in its sole

ARTICLE AND VIDEO LICENSE AGREEMENT

discretion, elect not take any action with respect to the Article until such time as it has received complete, executed Article and Video License Agreements from each such author. JoVE reserves the right, in its absolute and sole discretion and without giving any reason therefore, to accept or decline any work submitted to JoVE. JoVE and its employees, agents and independent contractors shall have full, unfettered access to the facilities of the Author or of the Author's institution as necessary to make the Video, whether actually published or not. JoVE has sole discretion as to the method of making and publishing the Materials, including, without limitation, to all decisions regarding editing, lighting, filming, timing of publication, if any, length, quality, content and the like.

12. **Indemnification.** The Author agrees to indemnify JoVE and/or its successors and assigns from and against any and all claims, costs, and expenses, including attorney's fees, arising out of any breach of any warranty or other representations contained herein. The Author further agrees to indemnify and hold harmless JoVE from and against any and all claims, costs, and expenses, including attorney's fees, resulting from the breach by the Author of any representation or warranty contained herein or from allegations or instances of violation of intellectual property rights, damage to the Author's or the Author's institution's facilities, fraud, libel, defamation, research, equipment, experiments, property damage, personal injury, violations of institutional, laboratory, hospital, ethical, human and animal treatment, privacy or other rules, regulations, laws, procedures or guidelines, liabilities and other losses or damages related in any way to the submission of work to JoVE, making of videos by JoVE, or publication in JoVE or elsewhere by JoVE. The Author shall be responsible for, and shall hold JoVE harmless from, damages caused by lack of sterilization, lack of cleanliness or by contamination due to


the making of a video by JoVE its employees, agents or independent contractors. All sterilization, cleanliness or decontamination procedures shall be solely the responsibility of the Author and shall be undertaken at the Author's expense. All indemnifications provided herein shall include JoVE's attorney's fees and costs related to said losses or damages. Such indemnification and holding harmless shall include such losses or damages incurred by, or in connection with, acts or omissions of JoVE, its employees, agents or independent contractors.

13. **Fees.** To cover the cost incurred for publication, JoVE must receive payment before production and publication the Materials. Payment is due in 21 days of invoice. Should the Materials not be published due to an editorial or production decision, these funds will be returned to the Author. Withdrawal by the Author of any submitted Materials after final peer review approval will result in a US\$1,200 fee to cover pre-production expenses incurred by JoVE. If payment is not received by the completion of filming, production and publication of the Materials will be suspended until payment is received.

14. **Transfer, Governing Law.** This Agreement may be assigned by JoVE and shall inure to the benefits of any of JoVE's successors and assignees. This Agreement shall be governed and construed by the internal laws of the Commonwealth of Massachusetts without giving effect to any conflict of law provision thereunder. This Agreement may be executed in counterparts, each of which shall be deemed an original, but all of which together shall be deemed to be one and the same agreement. A signed copy of this Agreement delivered by facsimile, e-mail or other means of electronic transmission shall be deemed to have the same legal effect as delivery of an original signed copy of this Agreement.

A signed copy of this document must be sent with all new submissions. Only one Agreement is required per submission.

CORRESPONDING AUTHOR

Name:	Li Hu		
Department:	Key Laboratory of Mental Health, Institute of Psychology		
Institution:	Chinese Academy of Sciences		
Title:	Professor		
Signature:		Date:	2018 Jun. 27th

Please submit a **signed** and **dated** copy of this license by one of the following three methods:

1. Upload an electronic version on the JoVE submission site
2. Fax the document to +1.866.381.2236
3. Mail the document to JoVE / Attn: JoVE Editorial / 1 Alewife Center #200 / Cambridge, MA 02140

Editorial comments:

The manuscript has been modified and the updated manuscript, 58686_R1.docx, is attached and located in your Editorial Manager account. Please use the updated version to make your revisions.

1. Please take this opportunity to thoroughly proofread the manuscript to ensure that there are no spelling or grammar issues.

R: We have proofread the manuscript to ensure that there are no spelling or grammar issues.

2. Please how proper anesthetization is confirmed.

R: We have added the details in step 1.2 (lines 128-129).

3. Step 2.3: Please highlight complete sentences (not parts of sentences) for filming.

R: We have highlighted completed sentences in step 2.3 (lines 221-222).

4. Step 2.6: Please ensure that all text is written in imperative tense. Please highlight enough details, showing how to deliver white noise.

R: The necessary changes have been made in step 2.6 (lines 251-253).

5. 2.7: Please ensure that all text is written in imperative tense. Please specify how to run the system.

R: The necessary changes have been made in step 2.7 (lines 259-260).

6. Step 3.1-3.5: Calculation steps without user graphical interface cannot be filmed. For steps that are done using software with user graphical interface, a step-wise description of software usage must be included in the step. Please mention what button is clicked on in the software, or which menu items need to be selected to perform the step.

R: We analyzed the data using custom written scripts, without user graphical interface. Therefore, we have undone the highlighting in steps 3.1-3.5.