

# Journal of Visualized Experiments

## Microfluidic Assay for the Assessment of Leukocyte Adhesion to Human Induced Pluripotent Stem Cell-derived Endothelial Cells (hiPSC-ECs)

--Manuscript Draft--

<b>Article Type:</b>	Invited Methods Article - JoVE Produced Video
<b>Manuscript Number:</b>	JoVE58678R2
<b>Full Title:</b>	Microfluidic Assay for the Assessment of Leukocyte Adhesion to Human Induced Pluripotent Stem Cell-derived Endothelial Cells (hiPSC-ECs)
<b>Keywords:</b>	Human induced pluripotent stem cell-derived endothelial cells (hiPSC-ECs), inflammatory responses, leukocytes, flow adhesion assay, microfluidics, live imaging
<b>Corresponding Author:</b>	Valeria Orlova Leids Universitair Medisch Centrum Leiden, Zuid-Holland NETHERLANDS
<b>Corresponding Author's Institution:</b>	Leids Universitair Medisch Centrum
<b>Corresponding Author E-Mail:</b>	V.Orlova@lumc.nl
<b>Order of Authors:</b>	Oleh V Halaidych Francijna van den Hil Christine L Mummery Valeria Orlova
<b>Additional Information:</b>	
<b>Question</b>	<b>Response</b>
Please indicate whether this article will be Standard Access or Open Access.	Open Access (US\$4,200)
Please indicate the <b>city, state/province, and country</b> where this article will be <b>filmed</b> . Please do not use abbreviations.	Leiden, ZH, Netherlands

**TITLE:**

Microfluidic Assay for the Assessment of Leukocyte Adhesion to Human Induced Pluripotent Stem Cell-derived Endothelial Cells (hiPSC-ECs).

**AUTHORS & AFFILIATIONS:**

Oleh V. Halaidych<sup>1</sup>, Francijna van den Hil<sup>1</sup>, Christine L. Mummery<sup>1,2</sup> and Valeria V. Orlova<sup>1</sup>

<sup>1</sup>Department of Anatomy and Embryology, Leiden University Medical Center, Leiden, The Netherlands

<sup>2</sup>Department of Applied Stem Cell Technologies, University of Twente, Enschede, The Netherlands

**Corresponding Author:**

Valeria V. Orlova

Email Address: v.orlova@lumc.nl

Tel: +31-71-526-9585

**KEYWORDS:**

Human induced pluripotent stem cell-derived endothelial cells (hiPSC-ECs), inflammatory responses, leukocytes, flow adhesion assay, microfluidics, live imaging

**SHORT ABSTRACT:**

This step-by-step protocol provides a detailed description of the experimental setup and data analysis for the assessment of inflammatory responses in hiPSC-ECs and the analysis of leukocyte adhesion under physiological flow.

**LONG ABSTRACT:**

Endothelial cells (ECs) are essential for the regulation of inflammatory responses by either limiting or facilitating leukocyte recruitment into affected tissues via a well-characterized cascade of pro-adhesive receptors which are upregulated on the leukocyte cell surface upon the inflammatory trigger. Inflammatory responses differ between individuals in the population and the genetic background can contribute to these differences. Human induced pluripotent stem cells (hiPSCs) have been shown to be a reliable source of ECs (hiPSC-ECs), thus representing an unlimited source of cells that capture the genetic identity and any genetic variants or mutations of the donor. hiPSC-ECs can therefore be used for modeling inflammatory responses in donor-specific cells. Inflammatory responses can be modeled by determining leukocyte adhesion to the hiPSC-ECs under physiological flow. This step-by-step protocol provides a detailed description of the experimental setup and data analysis for the assessment of inflammatory responses in hiPSC-ECs and the analysis of leukocyte adhesion under physiological flow.

**INTRODUCTION:**

Inflammation plays a pivotal role in many pathological conditions, including cardiovascular and neurodegenerative disorders, sepsis and adverse drug responses (ADRs). Endothelial cells (ECs) play an essential role in regulating inflammatory responses via the induction of pro-adhesive receptors, such as E-selectin, intercellular adhesion molecule-1 (ICAM-1) and vascular cell

adhesion molecule-1 (VCAM-1) on their surface<sup>1,2</sup>. Microvascular ECs in different tissues are known to exhibit heterogeneity in inflammatory responses<sup>3,4</sup>. Furthermore, genetic background or certain genetic conditions might result in the differences in inflammatory responses between individuals; it is therefore important to have access to ECs from different individuals. More recently, human induced pluripotent stem cells (hiPSCs)<sup>5</sup>, that can be derived from virtually any individual, were shown to serve as a reliable and renewable source of ECs<sup>6-9</sup>. Therefore, the assessment of inflammatory responses and leukocyte recruitment in hiPSC-ECs is valuable, not only for modeling of certain genetic disorders, but also to provide indications of inter-individual variability and to use as a tool for personalized medicine in the future.

Flow assays provide a useful tool for studying endothelial-leukocyte interaction. Advances in microfluidic devices enable the reproduction of physiological fluid flow conditions with precise control of vascular bed-specific shear stress levels. Live imaging allows monitoring of the cascade of events of leukocyte capture, rolling, crawling, adhesion and transmigration. Several flow assays to study endothelial-leukocyte interaction have been developed, however, they all utilize primary ECs<sup>10-13</sup>. Here, we will describe in detail the assay for the assessment of human leukocyte adhesion to hiPSC-ECs under physiological flow. In this procedure, we describe optimized conditions of hiPSC-EC stimulation with pro-inflammatory stimuli, such as tumor necrosis factor alpha (TNF $\alpha$ ), dissociation, seeding into a microfluidic chip with eight parallel channels. We describe a step-by-step protocol for the perfusion of hiPSC-ECs with the suspension of fluorescently labeled leukocytes in microfluidic chips, live cell imaging and automated counting of adherent leukocytes.

This protocol is useful for the assessment of inflammatory responses in hiPSC-ECs in drug screening, disease modeling and personalized regenerative medicine.

## **PROTOCOL:**

### **1. Preparation of Solutions and Reagents**

1.1 Prepare complete Human Endothelial-SFM medium (EC-SFM FULL) by adding platelet-poor plasma-derived serum (1%), basic fibroblast growth factor (bFGF, 20 ng/mL) and vascular endothelial growth factor (VEGF, 50 ng/mL) to Human Endothelial-SFM (see **Table of Materials**). Filter the medium through a 0.22  $\mu$ m pore filter and store it at 4 °C for up to 2 weeks.

1.2 Prepare complete RPMI medium by adding fetal bovine serum (10%), 2-mercaptoethanol (0.05 nM), L-glutamine (1%), Penicillin-Streptomycin (25 U/mL) to RPMI medium (see **Table of Materials**). Store at 4 °C for up to 3 weeks.

### **2. Coating of Microfluidic Chips**

2.1. Place a sterile biochip into a 10 cm sterile Petri dish.

2.2. Prepare fibronectin working solution by reconstituting the stock solution in phosphate-buffered saline (PBS) without  $\text{Ca}^{2+}/\text{Mg}^{2+}$  to a final concentration of 50  $\mu\text{g}/\text{mL}$ . Estimate 80  $\mu\text{L}$  of working solution per biochip.

2.3. Inject 10  $\mu\text{L}$  of fibronectin working solution into each channel of the biochip. Use a pipette with small 10  $\mu\text{L}$  tips and make sure to form a tight contact between the channel inlet and the pipette tip (**Figure 1C**, left).

2.4. Close the lid of the Petri dish containing the biochip and place it in a humidified chamber (**Figure 2B**). Store the chamber at 4 °C overnight. To humidify the chamber, place a clean tissue paper at the bottom of the humidified chamber and add 5 mL of sterile  $\text{H}_2\text{O}$ .

2.5. Next day, before the assay, pre-warm the biochip at 37 °C in the incubator.

### 3. Preparation of hiPSC-ECs

NOTE: In the protocol described here, hiPSC-ECs were differentiated, purified, cryopreserved and thawed as previously described<sup>8</sup>.

3.1. Thaw and plate hiPSC-ECs in complete EC-SFM FULL into one 0.1 % gelatin-coated T75 flask, three to four days prior the assay.

3.2. The night prior to the assay, stimulate hiPSC-ECs with  $\text{TNF}\alpha$  by adding EC-SFM FULL supplemented with 10 ng/mL  $\text{TNF}\alpha$  and incubate overnight (~12 h) at 37 °C, as previously described<sup>7</sup>.

### 4. hiPSC-ECs Dissociation and Seeding into Microfluidic Chip

4.1. On the day of the assay, take the flask of hiPSC-ECs from the incubator and examine the cells under the microscope. Ensure that hiPSC-ECs are 80-100% confluent and have a typical EC-like morphology.

4.2. Transfer the flask into the cell culture hood.

4.3. Aspirate the medium from the flask of hiPSC-ECs.

4.4. Briefly wash the cell culture by adding 10 mL of PBS without  $\text{Ca}^{2+}/\text{Mg}^{2+}$ . Aspirate the PBS.

4.5. Add 4 mL per flask of 1x dissociation enzyme. Incubate for 5 min at room temperature (RT) (**Figure 1B**).

4.6. Stop the dissociation reaction by adding 8 mL of Human Endothelial-SFM medium per flask. Gently detach and collect the hiPSC-ECs suspension in a 15 mL conical tube using a 5 mL pipette.



132  
133 4.7. Count the total number of the cells in the suspension.

134  
135 4.8. Centrifuge the cells at 300 x g for 3 min at RT.

136  
137 4.9. Aspirate the supernatant and resuspend the cell pellet in EC-SFM FULL to a final  
138 concentration of  $1.5 \times 10^6$  cells/mL.

139  
140 4.10. Take out the Petri dish with the biochip from the incubator and transfer it to the cell  
141 culture hood.

142  
143 4.11. Aspirate the fibronectin solution from all the channels of the microfluidic chip.

144  
145 4.12. Inject 6  $\mu$ L of the cell suspension into each channel using a pipette with a small 10  $\mu$ L tip  
146 (**Figure 1C**, middle). Make sure that the cell suspension is mixed well before the injection and  
147 avoid cell precipitation.

148  
149 4.13. Examine the biochip under the microscope and ensure that the cells are uniformly  
150 distributed, and the cell density is high (**Figure 2C**).

151  
152 4.14. Incubate the biochip for 15 min at 37 °C.

153  
154 4.15. Add 40  $\mu$ L of EC-SFM FULL into the medium reservoirs from both sides of each channel.

155  
156 4.16. Incubate the biochip for 1 h at 37 °C (**Figure 1C**, right).

157  
158 4.17. Add another 50  $\mu$ L of EC-SFM FULL into the reservoirs from both sides of each channel.

## 159 160 **5. Preparation of Human Leukocytes**

161  
162 NOTE: In the protocol described here, a commercially available monocytic cell line (THP-1) was  
163 used. Alternatively, peripheral blood mononuclear cells or neutrophils can be used. Isolation of  
164 peripheral blood monocytes and neutrophils can be performed using standard procedure<sup>11</sup>.  
165 Perform all steps described in this paragraph in a cell culture hood.

166  
167 5.1. Collect the leukocytes in a 50 mL conical tube.

168  
169 5.2. Wash the leukocytes with 10 mL of PBS without  $\text{Ca}^{2+}/\text{Mg}^{2+}$ . Centrifuge the cells at 300 x g  
170 for 3 min at RT (**Figure 1D**).

171  
172 5.3. Aspirate the supernatant and resuspend the cell pellet in 1 mL of PBS with DiOC6 dye ( $\lambda_{\text{ex}}$   
173 = 485 nm,  $\lambda_{\text{em}}$  = 501 nm) (1:5000). Incubate the cells in the dark for 10 min at RT.

174

5.4. Wash the leukocytes with 10 mL of PBS without  $\text{Ca}^{2+}/\text{Mg}^{2+}$ . Centrifuge the cells at 300 x g for 3 min at RT. Repeat the washing step one more time.

5.5. Count the total number of the cells in the suspension.

5.6. Aspirate the supernatant and resuspend the cell pellet in complete RPMI medium to a final concentration of  $2.5 \times 10^6$  cells/mL.

## 6. Preparation of the Microfluidic Pump

6.1. Assemble the microfluidic pump with the 8-channel manifold.

6.2. Connect the pump to a PC with the installed operating software.

6.3. Start the microfluidic software and load the protocol by clicking **Open Protocol** and navigate on the PC to select the microfluidic protocol.

6.4. Connect the software and the pump by selecting the **Setup** folder and clicking **Run Assay Step**.

6.5. Define the geometry of the channels for the correct flow rate control: select **Update Geometry** in the **Geometry Setup** folder and click **Run Assay Step**.

NOTE: Make sure that the geometry details match the syringe and channels to be used (Geometry ID = 1, Number of channels = 8, Channel width = 800.0  $\mu\text{m}$ , Channel depth = 120.0  $\mu\text{m}$ , Syringe volume = 250  $\mu\text{L}$ ) and the viscosity of the sample (Liquid viscosity = 1.0).

6.6. Wash the pump by placing the inlet cable (orange) into the 50 mL conical tube containing 80% ethanol. Place the outlet cable (green) in the 50 mL conical empty tube (waste container).

6.7. Select the **Washout/Pump Washout** folder and click **Run Assay Step** (Wash volume = 2000  $\mu\text{L}$ , Wash volume step = 250  $\mu\text{L}$ , Washout direction = Output). Repeat the washing step once more.

6.8. Repeat the pump washing steps (Steps 6.6 - 6.7) with cell culture grade water, and Human Endothelial-SFM culture medium.

6.9. Continue with the washing step of the manifold.

6.10. Manually open the valve between the syringe and the manifold by placing the 3-way adapter into the correct position (indicator **OFF** is turned to the left).

6.11. Select **Set Current Channel/Open** step in the **Washout/Manifold Wash** folder and click **Run Assay Step** to open all valves of the manifold.

6.12. Wash the manifold manually by pushing 5 mL of 80% ethanol from the syringe, followed by 5 mL of cell culture grade water.

6.13. Wash the manifold by pushing 5 mL of Human Endothelial-SFM culture medium from the syringe.

6.14. Remove all large air bubbles that are trapped in the manifold. To do this, place the 8-well pin adapter into the 10 cm Petri dish with the medium and perform pushing/pulling with the syringe until all large air bubbles are gone (small bubbles are not a problem).

6.15. Select **Set Current Channel/Close** step in the **Washout/Manifold Wash** folder and click **Run Assay Step** to close all valves of the manifold.

6.16. Connect the green outlet cable from the pump to the manifold adapter.

6.17. Switch the 3-way valve back to the **OFF** position to close the syringe.

6.18. Select **Washout/Cable Washout** folder and click **Run Assay Step** to wash each port with RPMI medium individually, ensuring that all bubbles are removed from each cable (Dispense volume = 100  $\mu$ L).

NOTE: Each valve of the manifold is opened one-by-one, 1 to 8, and 100  $\mu$ L of the medium is dispensed through each individual channel while keeping the other channels closed. Make sure that the liquid runs from each pin. If there is no liquid coming out, it is an indication of an air bubble or a clog.

## 7. Preparation of the Microfluidic Chip for Live Imaging

7.1. Ensure that the microfluidic setups are ready, and the live imaging chamber is pre-equilibrated to 37 °C and the level of CO<sub>2</sub> reaches 5% (**Figure 3A, B**).

7.2. Take the biochip from the incubator and position it in the microscope chip holder. Mount the chip holder on the microscope imaging stage (**Figure 3C**).

7.3. In order to connect the biochip to the pump via the manifold, place the 8-pin adapter close to the outlet reservoirs of the chip and deepen all pins in the medium (but do not connect completely).

7.4. Select the **Washout | Connect to Chip** folder and click **Run Assay Step** to dispense RPMI medium prior to connecting the chip (Dispense volume = 30  $\mu$ L). Once the medium is dispensed, insert the 8-pin adapter into the outlet of the biochip.

NOTE: During this step, all channels are set to **On** (open) and 30  $\mu\text{L}$  of the medium is dispensed through each channel and following this the channels are set to **Off** (closed). This ensures that no air bubbles will be introduced into the channels of the microfluidic chip.

7.5. Manually aspirate the medium from all inlet reservoirs of the biochip with a pipette.

7.6. Select the **Washout | Chip Washout** folder and click **Run Assay Step** to perfuse 40  $\mu\text{L}$  of EC-SFM FULL medium through each of the channels one-by-one to get rid of the dead cells/debris from the channel (Washout volume = 40  $\mu\text{L}$ , Maximum washout shear = 40 dynes/cm<sup>2</sup>).

## 8. Flow Adhesion Assay and Image Acquisition

8.1. Manually aspirate the medium from the inlet reservoir of the channel of interest with a pipette.

8.2. Add 100  $\mu\text{L}$  of leukocytes from Step 5.6 to the inlet reservoir of the channel of interest.

Note: Gently mix the cells to make a single-cell suspension.

8.3. In the **Cell Assay | Step Description** folder, select **Set Current Channel/Step Description** and, in the list of channels, select only the current channel of interest and set to **On** (open) and set all other seven channels to **Off** (closed).

8.4. Select the **Cell Assay | Step Description** folder and click **Run Assay Step**.

NOTE: Make sure that **Variable Flow Rate Dispensing** applies constant negative pressure to pull the leukocyte suspension from the inlet reservoir through the channel for 5 min (Shear set = Constant, Shear stress = -0.5 dyne/cm<sup>2</sup>, Duration = 00:05:00, Scan delay = 00:00:00). The negative value of shear stress ensures the correct direction of the flow.

8.5. Aspirate the remaining leukocytes from the inlet reservoir.

8.6. Add 100  $\mu\text{L}$  of complete RPMI medium to the inlet reservoir. Select **Cell Assay/Step description** folder and click **Run Assay Step** to perfuse the channel for 5 min with RPMI medium in order to wash out all non-adherent leukocytes (Shear set = Constant, Shear stress = -0.5 dyne/cm<sup>2</sup>, Duration = 00:05:00, Scan delay = 00:00:00).

8.7. Acquire images from at least three to four different positions of the channel to image the adhered leukocytes (to ensure that representative areas are captured).

8.8. Repeat Steps 8.1. – 8.7. for functional assessment of all the rest of the channels.

NOTE: It is possible to run multiple channels at once. To do so, open all the channels of interest during the Step 8.3. and perform all aforementioned Steps 8.4. – 8.7. for multiple channels of

interest.

## 9. Completing the Assay and Cleaning the Microfluidic Pump

9.1. After completing the experiment, export and save all images in a RAW format.

9.2. While saving the results, run the microfluidic pump and the manifold cleaning protocol.

9.3. For the microfluidic pump, run the **Washout/Pump Washout** folder first by perfusing 4 mL of cell culture grade water, followed by 4 mL of 80% ethanol as described in Steps 6.6.-6.7. Dry the pump by running air for several minutes.

9.4. In order to clean the manifold, run **Washout/Manifold Wash** step with the syringe. Follow the steps to open the syringe and the manifold valves as described in Steps 6.10.-6.11. Wash first with 80% ethanol and next with cell culture grade water. Dry the manifold by pushing air via the syringe. Close the syringe valve and the manifold valves as described in Steps 6.10 and 6.15.

## 10. Counting of Adherent Leukocytes

10.1. Download and install the image processing software<sup>14</sup> from <http://cellprofiler.org>.

NOTE: Image processing in this study was performed using software version 2.1.1. If using a newer version, the pipeline might require minor adaptation.

10.2. Download the pipeline **Count\_leukocytes.cpipe**. Click **File | Import | Pipeline** from the file and navigate on PC to choose the pipeline **Count\_leukocytes.cpipe**.

10.3. Drag-and-drop a folder with acquired RAW images of adherent leukocytes to the File list window in the **Input modules | Images** section for analysis.

10.4. Specify the typical size of leukocytes via **Analysis modules | IdentifyPrimaryObjects**. Specify the minimal and maximal diameter of adherent leukocytes in pixels.

10.5. Select the filtering criteria via **Analysis modules | FilterObjects**. Specify the minimally accepted area of objects in pixels.

10.6. Start the analysis by pressing the **Analyze images** button.

NOTE: All the RAW images will be processed, and the results will be saved in a default output folder. The **Image.txt** output file contains the numbers of adherent leukocytes in each processed image (each number corresponds to one image, *i.e.*, each acquired field of view).

## REPRESENTATIVE RESULTS:

First, the response of hiPSC-ECs to the stimulation with pro-inflammatory agent TNF $\alpha$  should be examined, as previously described<sup>7</sup>. TNF $\alpha$  treatment for 12 h triggers the upregulation of E-selectin with the peak at 6 h after starting treatment. Additionally, ICAM-1 is upregulated 6 – 12 h post-treatment. Although we did not observe the expected upregulation of VCAM-1, it is typically observed in primary human umbilical vein endothelial cells (HUVECs). We found overnight (12 h) TNF $\alpha$  treatment to be the most convenient for the leukocyte adhesion assay.

Optimal hiPSC-ECs dissociation should result in a single-cell suspension free of cell clumps. **Figure 2C** illustrates the optimal hiPSC-EC density right after injection. Typically, 15 min after injection, hiPSC-ECs attach to the bottom of the channel and start to spread (**Figure 2D**). 1 h after injection, hiPSC-ECs form a well-spread monolayer along the channel and will be ready to begin the flow assay (**Figure 2E**).

Labeling of leukocytes with fluorescent tracer is beneficial for phase contrast images in automated image quantification, as it makes the cell identification step easier, especially because the leukocytes adhere to the monolayer of ECs and it is often difficult for software to distinguish different cell types.

Free open-source image processing software is very useful for automated quantification of adherent leukocytes. The pipeline described in the protocol here is based on primary object identification using adaptive thresholding of fluorescent images of leukocytes (**Figure 4A**). Filtering of identified objects based on a minimal area additionally filters out falsely identified objects, such as cell debris, autofluorescence or any other non-specific fluorescent signal (**Figure 4C, D**).

One microfluidic chip with eight parallel channels allows the comparison of two independent groups, for instance, ECs differentiated from independent hiPSCs, such as healthy donors or patients with genetic disorders. Additional controls, such as untreated ECs, or pre-treatment with an ICAM-1 blocking antibody can be included as well<sup>10,11</sup>. Two to three microfluidic chips can be processed at a time. For the robustness of the conclusions, a minimum of three independent biological experiments performed on independent days is recommended.

#### **FIGURE AND TABLE LEGENDS:**

**Figure 1: Preparation of hiPSC-ECs and leukocytes for the flow assay. (A)** Pre-treatment of hiPSC-ECs with the pro-inflammatory stimulus (TNF $\alpha$ ). **(B)** Schematic representation of hiPSC-ECs enzymatic dissociation, centrifugation, and resuspension. **(C)** Schematic representation of coating of the channels (C, left), injection of the hiPSC-EC suspension (C, middle) and cell culture medium addition after hiPSC-ECs attachment in the microfluidic chip. **(D)** Schematic representation of the leukocyte washing step, labeling with fluorescent dye DiOC6 and resuspension.

**Figure 2: Microfluidic chip with hiPSC-ECs. (A)** Microfluidic chip in a 10 cm Petri dish. **(B)** The humidified chamber used for incubation. **(C, D, E)** Representative images of hiPSC-ECs in the microfluidic channel 0 min (**C**), 15 min (**D**), 1 h (**E**) after injection. Scale bar, 200  $\mu$ m.

**Figure 3: Experimental setup of the live cell imaging and leukocyte perfusion assay. (A, B)** Photo (A) and schematic representation (B) of the experimental setup of the live cell imaging and flow assay: (1) – inverted fluorescent microscope with mounted live imaging chamber (5% CO<sub>2</sub>, 37 °C, humidified), (2) – microfluidic pump, (3) – 8-channel manifold, (4) – PC for microscope control and image acquisition, (5) – PC for microfluidic pump control. **(C)** Microfluidic chip with the inserted tubing of the 8-channel manifold fixed in a plate holder and mounted in the motorized stage of the microscope. **(D)** Schematic representation of the major steps of the flow assay.

**Figure 4: Image analysis and automated detection of adherent leukocytes. (A)** The dialog window of the image processing software with specified settings for the identification of leukocytes. **(B)** The dialog window of the image processing software with specified filtering criteria of the identified objects based on minimally accepted surface area ( $SA_{min} = 70$  px). **(C)** Example of correct identification of leukocytes and filtering of non-specific objects of the small surface area (SA) (typical diameter in pixel (Min, Max) = (9, 15); Filtering criteria  $SA_{min} = 70$  px). Accepted objects are depicted in green and discarded objects are depicted in violet. **(D)** Example of incorrect identification of leukocytes due to the incorrect range of typical diameter (Typical diameter in pixel (Min, Max) = (3, 15); Filtering criteria  $SA_{min} = 70$  px). Accepted objects are depicted in green and discarded objects are depicted in violet.

#### DISCUSSION:

This protocol describes the characterization of hiPSC-EC treatment with pro-inflammatory stimuli, such as TNF $\alpha$ , functional assessment of leukocyte adhesion to hiPSC-ECs in the flow assay using live imaging and automated counting of adherent leukocytes.

Overnight stimulation of hiPSC-ECs with TNF $\alpha$  results in the elongated appearance that typically indicates an activated pro-inflammatory phenotype in ECs. During the optimization stage, expression levels of E-selectin, ICAM-1, VCAM-1 should be verified by FACS<sup>7,8</sup>, and primary human umbilical vein ECs (HUVECs) are advisable to be included as positive controls.

Optimal hiPSC-ECs dissociation and seeding density should be reached to achieve a confluent monolayer without forming cell clumps and channel clogs. It is critical to re-suspend leukocytes right before perfusion in order to avoid cell precipitation and maintain a constant concentration when assaying each channel. Human peripheral blood leukocytes, such as monocytes and neutrophils can be used, or established monocytic cell lines, such as THP-1 or HL-60 could be used as an alternative.

During the assembly of the microfluidic setup and during the flow assay, it is critical to prevent air bubbles from being trapped in the microfluidic tubing and channels as they can result in the detachment of hiPSC-ECs and/or adherent leukocytes. Fluid-to-fluid interface or incorporation of the additional washing steps during the preparation of the microfluidic setup could help to prevent air bubbles.

It is advisable that the protocol is run by two operators where one prepares the cells and the second prepares the microfluidic system and flow assay. This ensures that ECs are plated into microfluidic chips within a constant time-window prior to processing and improves the accuracy and reproducibility of the results. In addition, this also allows setting up blinded experiments to avoid bias in the results.

For successful cell detection with the automated image processing pipeline, it is important to acquire images in focus with a high signal-to-noise ratio and to avoid autofluorescence of non-specific objects, such as cell clumps. Of crucial importance is the correct specification of minimal and maximal limits of the typical size of adherent leukocytes that need to be identified. One can estimate the typical size of leukocytes using a line measurement tool in ImageJ. For instance, in our analysis, we used the range of 9-15 pixels which corresponds to the physical size of 10.3-17.1  $\mu\text{m}$  (**Figure 4C**). When using a wrong range, *e.g.*, 3-15 pixels (3.4-17.1  $\mu\text{m}$ ), a single leukocyte is identified not as one cell, but rather its subparts are identified as separate objects (**Figure 4D**). This leads to the false number of objects to be identified.

Many objects of a low intensity and smaller surface area than leukocytes may be detected using the provided adaptive thresholding method. This might take place due to autofluorescence or any other non-specific fluorescent signals. Nevertheless, these non-specific objects, if their area is lower than the typical area of a single leukocyte, can be filtered by defining the minimally accepted surface area (**Figure 4C**).

The flow assay described here allows direct assessment of leukocyte adhesion to an EC monolayer, elucidating the interaction of these two cell types, but does not take into account other cell types, such as pericytes that are present in the vascular wall and might also participate in the regulation of leukocyte extravasation<sup>15</sup>. Integrating a 3D culture microenvironment with other cell types could improve the physiological relevance of the system. Despite these limitations, the flow assay for the assessment of inflammatory responses described here provides a valuable tool for basic characterization and disease modeling applications of hiPSC-ECs.

#### **ACKNOWLEDGMENTS:**

The authors would like to acknowledge the following grants: European Research Council (ERCAdG 323182 STEMCARDIOVASC); Netherlands Organ-on-Chip Initiative, an NWO Gravitation project funded by the Ministry of Education, Culture and Science of the government of the Netherlands (024.003.001).

#### **DISCLOSURES:**

The authors have nothing to disclose.

#### **REFERENCES:**

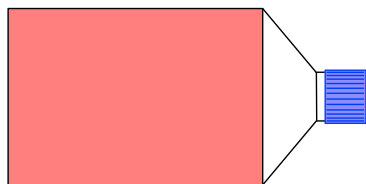
1. Vestweber, D. How leukocytes cross the vascular endothelium. *Nature Reviews Immunology* **15** (11), 692–704 (2015).
2. Hajishengallis, G. & Chavakis, T. Endogenous modulators of inflammatory cell recruitment. *Trends in Immunology* **34** (1), 1–6 (2013).



- 480 3. Molema, G. Heterogeneity in endothelial responsiveness to cytokines, molecular causes,  
481 and pharmacological consequences. *Seminars in thrombosis and hemostasis* **36** (3), 246–264  
482 (2010).
- 483 4. Aird, W. C. Endothelial Cell Heterogeneity. *Cold Spring Harbor Perspectives in Medicine* **2**  
484 (1), a006429–a006429 (2012).
- 485 5. Shi, Y., Inoue, H., Wu, J. C. & Yamanaka, S. Induced pluripotent stem cell technology: a  
486 decade of progress. *Nature Reviews Drug Discovery* **16** (2), 1–16 (2016).
- 487 6. Lin, Y., Gil, C.H. & Yoder, M. C. Differentiation, Evaluation, and Application of Human  
488 Induced Pluripotent Stem Cell-Derived Endothelial Cells. *Arteriosclerosis, Thrombosis, and*  
489 *Vascular Biology* **37** (11), 2014–2025 (2017).
- 490 7. Halaidych, O. V., Freund, C., *et al.* Inflammatory Responses and Barrier Function of  
491 Endothelial Cells Derived from Human Induced Pluripotent Stem Cells. *Stem Cell Reports* (2018).
- 492 8. Orlova, V. V., van den Hil, F. E., Petrus-Reurer, S., Drabsch, Y., Dijke, ten, P. & Mummery,  
493 C. L. Generation, expansion and functional analysis of endothelial cells and pericytes derived from  
494 human pluripotent stem cells. *Nature Protocols* **9** (6), 1514–1531 (2014).
- 495 9. Orlova, V. V., Drabsch, Y., *et al.* Functionality of endothelial cells and pericytes from  
496 human pluripotent stem cells demonstrated in cultured vascular plexus and zebrafish xenografts.  
497 *Arteriosclerosis, Thrombosis, and Vascular Biology* **34** (1), 177–186 (2014).
- 498 10. Shetty, S., Weston, C. J., Adams, D. H. & Lalor, P. F. A Flow Adhesion Assay to Study  
499 Leucocyte Recruitment to Human Hepatic Sinusoidal Endothelium Under Conditions of Shear  
500 Stress. *Journal of Visualized Experiments* (85), 1–6 (2014).
- 501 11. Muller, W. A. & Luscinskas, F. W. Assays of transendothelial migration in vitro. *Methods*  
502 *in enzymology* **443**, 155–176 (2008).
- 503 12. Ganguly, A., Zhang, H., Sharma, R., Parsons, S. & Patel, K. D. Isolation of Human Umbilical  
504 Vein Endothelial Cells and Their Use in the Study of Neutrophil Transmigration Under Flow  
505 Conditions. *Journal of Visualized Experiments* (66), 1–5 (2012).
- 506 13. Vajen, T., Heinzmann, A. C. A., *et al.* Laminar Flow-based Assays to Investigate Leukocyte  
507 Recruitment on Cultured Vascular Cells and Adherent Platelets. *Journal of Visualized Experiments*  
508 134 (2018).
- 509 14. Carpenter, A. E., Jones, T. R., *et al.* CellProfiler: image analysis software for identifying and  
510 quantifying cell phenotypes. *Genome Biology* **7** (10), R100 (2006).
- 511 15. Nourshargh, S. & Alon, R. Leukocyte Migration into Inflamed Tissues. *Immunity* **41** (5),  
512 694–707 (2014).

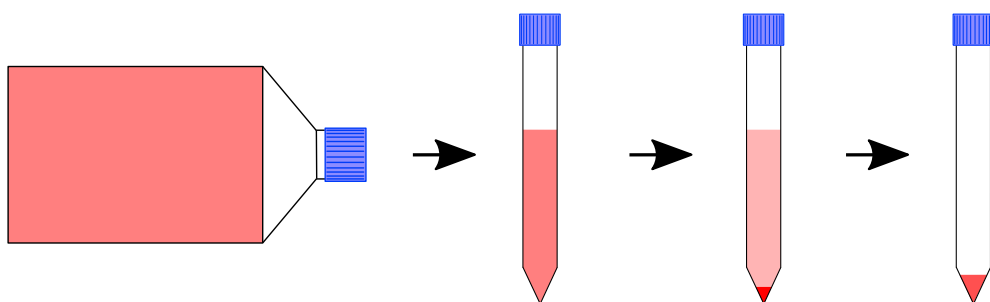
**A**

Stimulate hiPSC-ECs with TNF $\alpha$  (10 ng/mL) in EC-SFM FULL overnight

**B**

Wash the cells with PBS. Add 4 mL per flask of dissociation enzyme and incubate for 5 min at RT

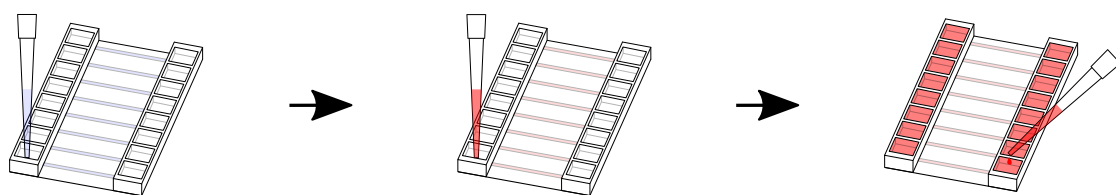
Dilute the enzyme with 8 mL per flask of EC-SFM. Collect the cells in 15 mL conical tube. Centrifuge the cells at 300 x g for 3 min at RT. Resuspend the cell pellet in EC-SFM FULL to make a  $\sim 1.5 \times 10^4$  cells/ $\mu$ L suspension

**C**

Coat the chip with human recombinant fibronectin (50  $\mu$ g/mL) and incubate overnight at +4 °C

Inject 6  $\mu$ L of hiPSC-ECs suspension ( $1.5 \times 10^4$  cells/ $\mu$ L) and incubate for 15 min at +37 °C

Add 40  $\mu$ L of EC-SFM FULL into reservoirs at both ends of each channel and incubate for 1h at +37 °C. Add 50  $\mu$ L more after 1 h.

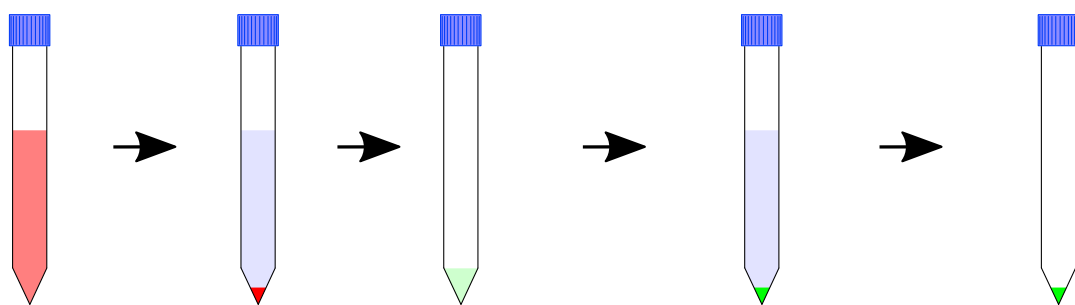
**D**

Wash leukocytes with PBS and centrifuge at 300 x g for 3 min at RT

Stain leukocytes with DiOC6 (1  $\mu$ M) in PBS for 10 min at RT in the dark

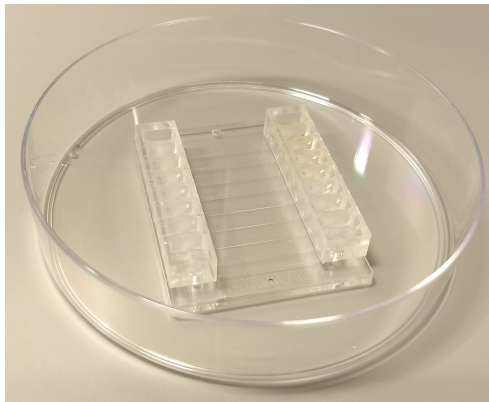
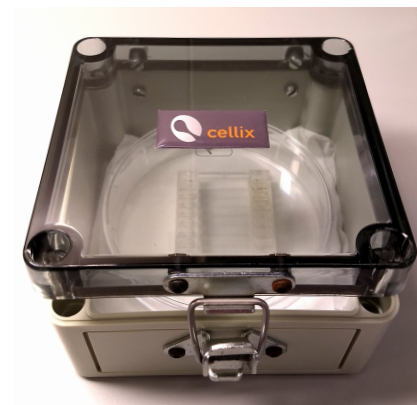
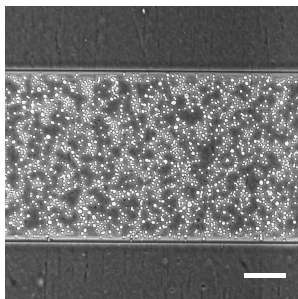
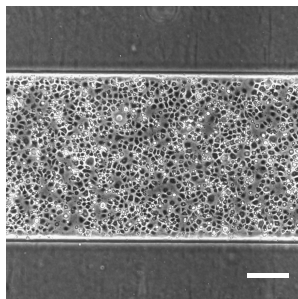
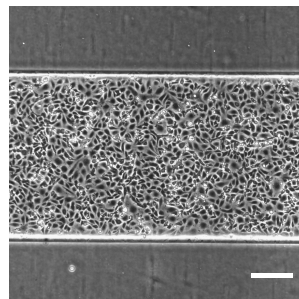
Wash leukocytes with PBS and centrifuge at 300 x g for 3 min at RT

Resuspend leukocytes in RPM1 medium at the end concentration  $2.5 \times 10^6$  cells/mL



# Figure 2

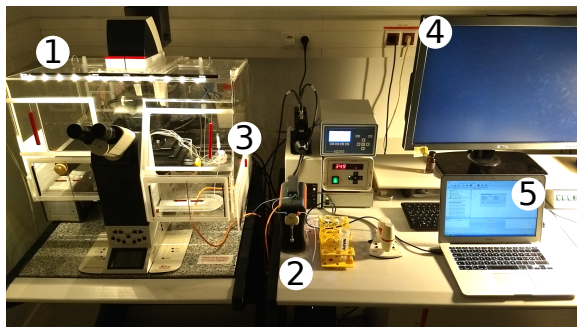
Click here to  
access/download;Figure;Fig2.pdf

**A****B****C****D****E**

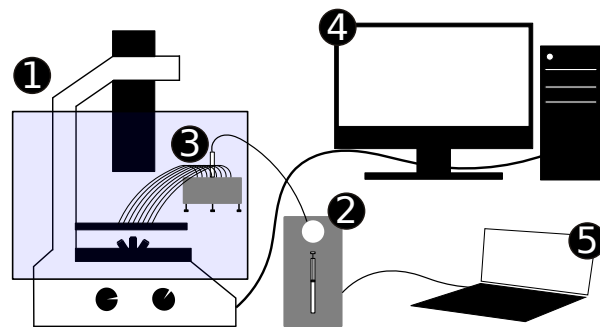
# Figure 3

[Click here to access/download;Figure;Fig3.pdf](#) 

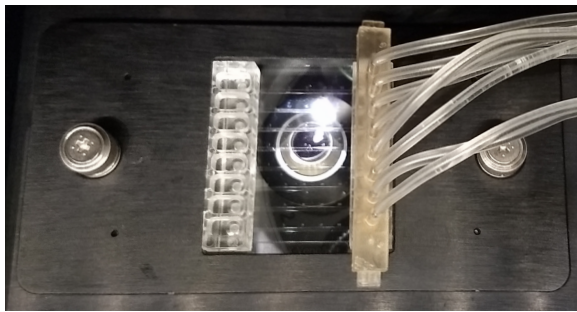
**A**



**B**



**C**



**D**

Perfuse hiPSC-ECs with leukocyte suspension (5 min)

Record three phase-contrast videos during leukocyte perfusion

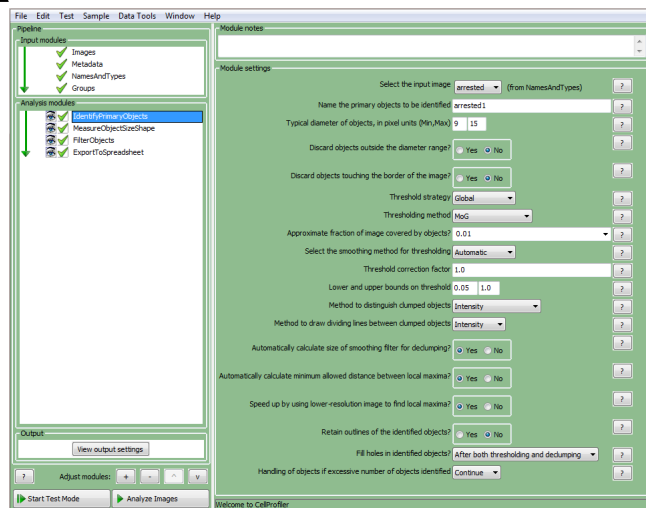
Wash non-adherent leukocytes (5 min)

Acquire three fluorescent images of adherent leukocytes

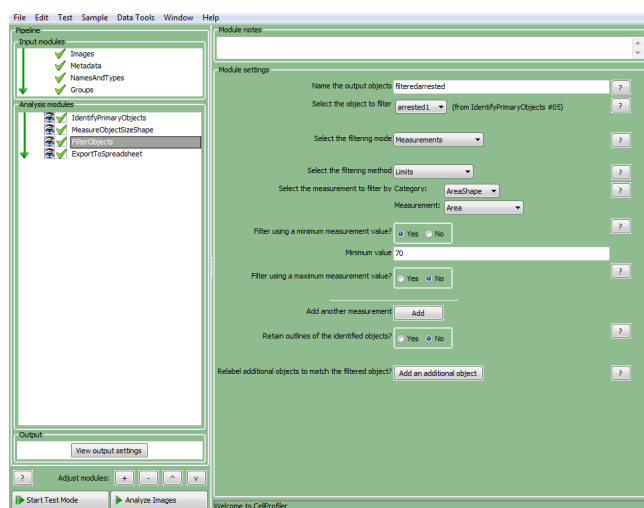
Figure 4

[Click here to access/download;Figure;Fig4.pdf](#)

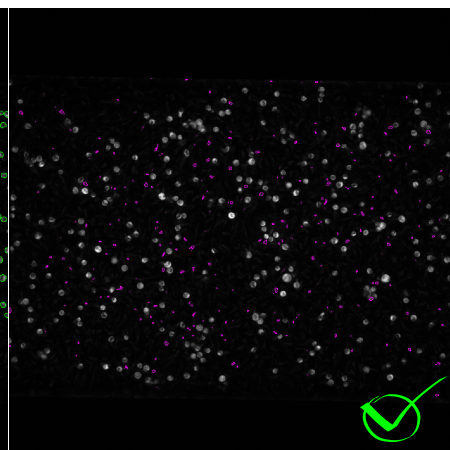
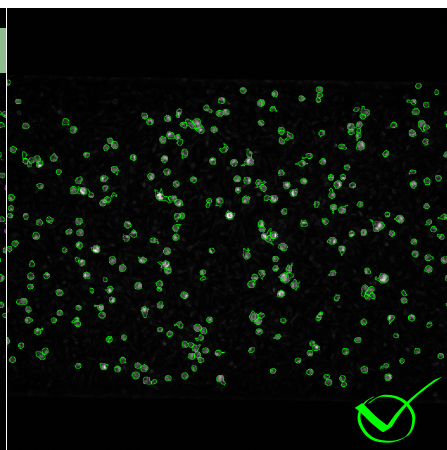
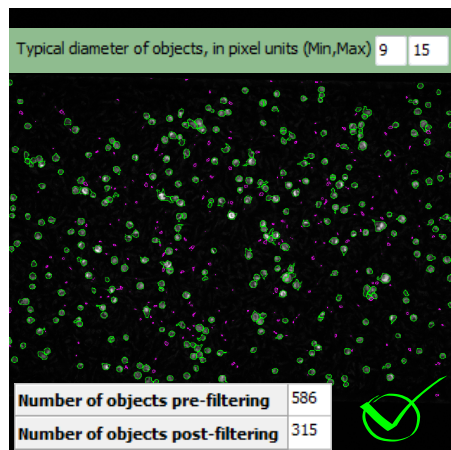
A



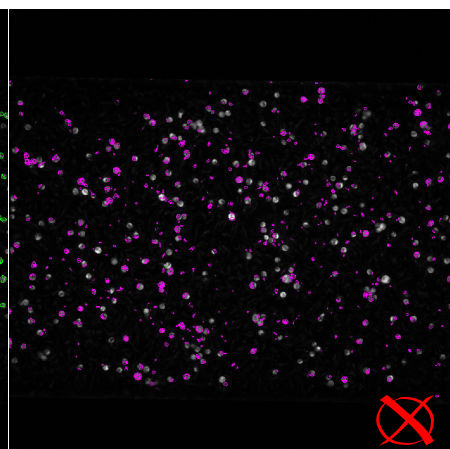
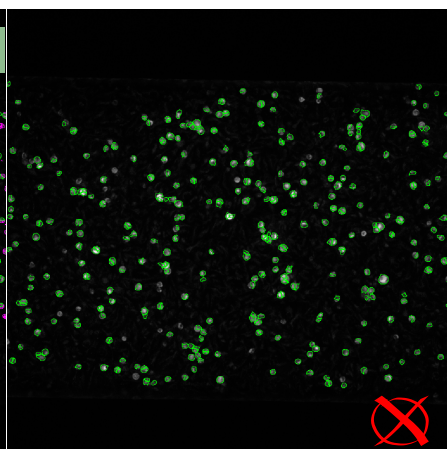
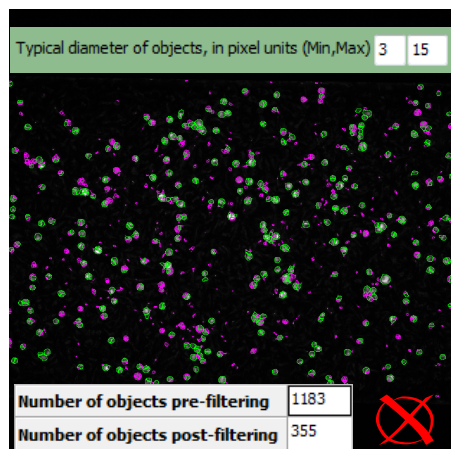
B



C



D



Name of Material/ Equipment	Company	Catalog Number
Vena8 Endothelial+ biochip	Cellix Ltd	V8EP-800-120-02P10
Mirus Evo Nanopump	Cellix Ltd	MIRUS-EVO-PUMP
8-channel manifold MultiFlow8	Cellix Ltd	MIRUS-MULTIFLOW8
Humidified box	Cellix Ltd	HUMID-BOX
Fluorescence imaging system Leica AF6000	Leica Microsystems	
Electron-multiplying charge-coupled device camera	Hamamatsu	C9100
Biological safety cabinet/laminar flow-hood	Cleanair	
CO <sub>2</sub> cell-culture incubator	Panasonic	MCO-170AICUV
Centrifuge	Hitachi	himac-CT6EL
Handheld pipetman (P-10 (10 mL), P-200 (200 µL), P-1000 (1,000 µL))	Gilson international	4807 (10µl), 4810 (200µl), 4809 (1000µl)
Sterile plastic pipette	Greiner Bio-One	606180 (5ml), 607180 (10ml)
Petri dish	VWR/ Duran Group	391-0860
Culture flasks (75 cm <sup>2</sup> )	CELLSTAR	658,170
Centrifuge tube (15 mL)	CELLSTAR	188271
Name of Material/ Equipment	Company	Catalog Number
Gelatin from porcine skin, type A	Sigma-Aldrich	G1890
Fibronectin (Bovine plasma)	Sigma-Aldrich	F1141
DPBS, no calcium, no magnesium	Life Technologies	14190-169
Human Endothelial-SFM	Life Technologies	11111-044
Human VEGF 165 IS, premium grade	Miltenyi Biotec	130-109-386
Human FGF-2, premium grade	Miltenyi Biotec	130-093-842
Platelet-poor Plasma Derived Serum, bovine	Biomedical Technologies	BT-214
Recombinant Human TNF-α	Tebu-bio	300-01A-A
TrypLE Select	Life Technologies	12563029

DiOC6(3)	Sigma-Aldrich	318426
RPMI 1640 Medium	Life Technologies	21875-034
2-Mercaptoethanol (50 mM)	Life Technologies	31350010
FBS	Life Technologies	10270-106
L-glutamine	Life Technologies	25030-024
Penicillin-Streptomycin (5,000 U/mL)	Life Technologies	15070-063
Distilled water	Life Technologies	15230-089
Ethanol absolute	Merck	1.00983.2500
VCAM-1	R&D systems	FAB5649P
E-Selectin	R&D systems	BBA21
ICAM-1	R&D systems	BBA20
<b>Name of Material/ Equipment</b>	<b>Company</b>	<b>Software version</b>
Cellrofiler	CellProfiler	2.1.1
VenaFluxAssay Software	Cellix Ltd	2.3.a

### Comments/Description

1 x syringe pump;  
1 x VenaFluxAssay Software;  
1 x tubing kit;  
power supply and cables.

### Comments/Description



**Comments/Description**



1 Alewife Center #200  
Cambridge, MA 02140  
tel. 617.945.9051  
www.jove.com

## ARTICLE AND VIDEO LICENSE AGREEMENT

Title of Article:	<b><i>Microfluidic Assay for the Assessment of Inflammatory Responses of Human Pluripotent Stem Cell-derived Endothelial Cells (hiPSC-ECs).</i></b>
Author(s):	<b><i>Oleh V Halaidych, Francijna van den Hil, Christine L. Mummery and Valeria V. Orlova</i></b>

Item 1: The Author elects to have the Materials be made available (as described at <http://www.jove.com/publish>) via:

☐ Standard Access

☒ Open Access

Item 2: Please select one of the following items:

☒ The Author is **NOT** a United States government employee.

☐ The Author is a United States government employee and the Materials were prepared in the course of his or her duties as a United States government employee.

☐ The Author is a United States government employee but the Materials were NOT prepared in the course of his or her duties as a United States government employee.

### ARTICLE AND VIDEO LICENSE AGREEMENT

1. **Defined Terms.** As used in this Article and Video License Agreement, the following terms shall have the following meanings: **"Agreement"** means this Article and Video License Agreement; **"Article"** means the article specified on the last page of this Agreement, including any associated materials such as texts, figures, tables, artwork, abstracts, or summaries contained therein; **"Author"** means the author who is a signatory to this Agreement; **"Collective Work"** means a work, such as a periodical issue, anthology or encyclopedia, in which the Materials in their entirety in unmodified form, along with a number of other contributions, constituting separate and independent works in themselves, are assembled into a collective whole; **"CRC License"** means the Creative Commons Attribution-Non Commercial-No Derivs 3.0 Unported Agreement, the terms and conditions of which can be found at: <http://creativecommons.org/licenses/by-nc-nd/3.0/legalcode>; **"Derivative Work"** means a work based upon the Materials or upon the Materials and other pre-existing works, such as a translation, musical arrangement, dramatization, fictionalization, motion picture version, sound recording, art reproduction, abridgment, condensation, or any other form in which the Materials may be recast, transformed, or adapted; **"Institution"** means the institution, listed on the last page of this Agreement, by which the Author was employed at the time of the creation of the Materials; **"JoVE"** means MyJoVE Corporation, a Massachusetts corporation and the publisher of The Journal of Visualized Experiments; **"Materials"** means the Article and / or the Video; **"Parties"** means the Author and JoVE; **"Video"** means any video(s) made by the Author, alone or in conjunction with any other parties, or by JoVE or its affiliates or agents, individually or in collaboration with the Author or any other parties, incorporating all or any portion

of the Article, and in which the Author may or may not appear.

2. **Background.** The Author, who is the author of the Article, in order to ensure the dissemination and protection of the Article, desires to have the JoVE publish the Article and create and transmit videos based on the Article. In furtherance of such goals, the Parties desire to memorialize in this Agreement the respective rights of each Party in and to the Article and the Video.

3. **Grant of Rights in Article.** In consideration of JoVE agreeing to publish the Article, the Author hereby grants to JoVE, subject to **Sections 4 and 7** below, the exclusive, royalty-free, perpetual (for the full term of copyright in the Article, including any extensions thereto) license (a) to publish, reproduce, distribute, display and store the Article in all forms, formats and media whether now known or hereafter developed (including without limitation in print, digital and electronic form) throughout the world, (b) to translate the Article into other languages, create adaptations, summaries or extracts of the Article or other Derivative Works (including, without limitation, the Video) or Collective Works based on all or any portion of the Article and exercise all of the rights set forth in (a) above in such translations, adaptations, summaries, extracts, Derivative Works or Collective Works and (c) to license others to do any or all of the above. The foregoing rights may be exercised in all media and formats, whether now known or hereafter devised, and include the right to make such modifications as are technically necessary to exercise the rights in other media and formats. If the "Open Access" box has been checked in **Item 1** above, JoVE and the Author hereby grant to the public all such rights in the Article as provided in, but subject to all limitations and requirements set forth in, the CRC License.



4. **Retention of Rights in Article.** Notwithstanding the exclusive license granted to JoVE in **Section 3** above, the Author shall, with respect to the Article, retain the non-exclusive right to use all or part of the Article for the non-commercial purpose of giving lectures, presentations or teaching classes, and to post a copy of the Article on the Institution's website or the Author's personal website, in each case provided that a link to the Article on the JoVE website is provided and notice of JoVE's copyright in the Article is included. All non-copyright intellectual property rights in and to the Article, such as patent rights, shall remain with the Author.

5. **Grant of Rights in Video – Standard Access.** This **Section 5** applies if the "Standard Access" box has been checked in **Item 1** above or if no box has been checked in **Item 1** above. In consideration of JoVE agreeing to produce, display or otherwise assist with the Video, the Author hereby acknowledges and agrees that, Subject to **Section 7** below, JoVE is and shall be the sole and exclusive owner of all rights of any nature, including, without limitation, all copyrights, in and to the Video. To the extent that, by law, the Author is deemed, now or at any time in the future, to have any rights of any nature in or to the Video, the Author hereby disclaims all such rights and transfers all such rights to JoVE.

6. **Grant of Rights in Video – Open Access.** This **Section 6** applies only if the "Open Access" box has been checked in **Item 1** above. In consideration of JoVE agreeing to produce, display or otherwise assist with the Video, the Author hereby grants to JoVE, subject to **Section 7** below, the exclusive, royalty-free, perpetual (for the full term of copyright in the Article, including any extensions thereto) license (a) to publish, reproduce, distribute, display and store the Video in all forms, formats and media whether now known or hereafter developed (including without limitation in print, digital and electronic form) throughout the world, (b) to translate the Video into other languages, create adaptations, summaries or extracts of the Video or other Derivative Works or Collective Works based on all or any portion of the Video and exercise all of the rights set forth in (a) above in such translations, adaptations, summaries, extracts, Derivative Works or Collective Works and (c) to license others to do any or all of the above. The foregoing rights may be exercised in all media and formats, whether now known or hereafter devised, and include the right to make such modifications as are technically necessary to exercise the rights in other media and formats. For any Video to which this **Section 6** is applicable, JoVE and the Author hereby grant to the public all such rights in the Video as provided in, but subject to all limitations and requirements set forth in, the CRC License.

7. **Government Employees.** If the Author is a United States government employee and the Article was prepared in the course of his or her duties as a United States government employee, as indicated in **Item 2** above, and any of the licenses or grants granted by the Author hereunder exceed the scope of the 17 U.S.C. 403, then the rights granted hereunder shall be limited to the maximum

rights permitted under such statute. In such case, all provisions contained herein that are not in conflict with such statute shall remain in full force and effect, and all provisions contained herein that do so conflict shall be deemed to be amended so as to provide to JoVE the maximum rights permissible within such statute.

8. **Protection of the Work.** The Author(s) authorize JoVE to take steps in the Author(s) name and on their behalf if JoVE believes some third party could be infringing or might infringe the copyright of either the Author's Article and/or Video.

9. **Likeness, Privacy, Personality.** The Author hereby grants JoVE the right to use the Author's name, voice, likeness, picture, photograph, image, biography and performance in any way, commercial or otherwise, in connection with the Materials and the sale, promotion and distribution thereof. The Author hereby waives any and all rights he or she may have, relating to his or her appearance in the Video or otherwise relating to the Materials, under all applicable privacy, likeness, personality or similar laws.

10. **Author Warranties.** The Author represents and warrants that the Article is original, that it has not been published, that the copyright interest is owned by the Author (or, if more than one author is listed at the beginning of this Agreement, by such authors collectively) and has not been assigned, licensed, or otherwise transferred to any other party. The Author represents and warrants that the author(s) listed at the top of this Agreement are the only authors of the Materials. If more than one author is listed at the top of this Agreement and if any such author has not entered into a separate Article and Video License Agreement with JoVE relating to the Materials, the Author represents and warrants that the Author has been authorized by each of the other such authors to execute this Agreement on his or her behalf and to bind him or her with respect to the terms of this Agreement as if each of them had been a party hereto as an Author. The Author warrants that the use, reproduction, distribution, public or private performance or display, and/or modification of all or any portion of the Materials does not and will not violate, infringe and/or misappropriate the patent, trademark, intellectual property or other rights of any third party. The Author represents and warrants that it has and will continue to comply with all government, institutional and other regulations, including, without limitation all institutional, laboratory, hospital, ethical, human and animal treatment, privacy, and all other rules, regulations, laws, procedures or guidelines, applicable to the Materials, and that all research involving human and animal subjects has been approved by the Author's relevant institutional review board.

11. **JoVE Discretion.** If the Author requests the assistance of JoVE in producing the Video in the Author's facility, the Author shall ensure that the presence of JoVE employees, agents or independent contractors is in accordance with the relevant regulations of the Author's institution. If more than one author is listed at the beginning of this Agreement, JoVE may, in its sole



## ARTICLE AND VIDEO LICENSE AGREEMENT

discretion, elect not take any action with respect to the Article until such time as it has received complete, executed Article and Video License Agreements from each such author. JoVE reserves the right, in its absolute and sole discretion and without giving any reason therefore, to accept or decline any work submitted to JoVE. JoVE and its employees, agents and independent contractors shall have full, unfettered access to the facilities of the Author or of the Author's institution as necessary to make the Video, whether actually published or not. JoVE has sole discretion as to the method of making and publishing the Materials, including, without limitation, to all decisions regarding editing, lighting, filming, timing of publication, if any, length, quality, content and the like.

12. **Indemnification.** The Author agrees to indemnify JoVE and/or its successors and assigns from and against any and all claims, costs, and expenses, including attorney's fees, arising out of any breach of any warranty or other representations contained herein. The Author further agrees to indemnify and hold harmless JoVE from and against any and all claims, costs, and expenses, including attorney's fees, resulting from the breach by the Author of any representation or warranty contained herein or from allegations or instances of violation of intellectual property rights, damage to the Author's or the Author's institution's facilities, fraud, libel, defamation, research, equipment, experiments, property damage, personal injury, violations of institutional, laboratory, hospital, ethical, human and animal treatment, privacy or other rules, regulations, laws, procedures or guidelines, liabilities and other losses or damages related in any way to the submission of work to JoVE, making of videos by JoVE, or publication in JoVE or elsewhere by JoVE. The Author shall be responsible for, and shall hold JoVE harmless from, damages caused by lack of sterilization, lack of cleanliness or by contamination due to

the making of a video by JoVE its employees, agents or independent contractors. All sterilization, cleanliness or decontamination procedures shall be solely the responsibility of the Author and shall be undertaken at the Author's expense. All indemnifications provided herein shall include JoVE's attorney's fees and costs related to said losses or damages. Such indemnification and holding harmless shall include such losses or damages incurred by, or in connection with, acts or omissions of JoVE, its employees, agents or independent contractors.

13. **Fees.** To cover the cost incurred for publication, JoVE must receive payment before production and publication the Materials. Payment is due in 21 days of invoice. Should the Materials not be published due to an editorial or production decision, these funds will be returned to the Author. Withdrawal by the Author of any submitted Materials after final peer review approval will result in a US\$1,200 fee to cover pre-production expenses incurred by JoVE. If payment is not received by the completion of filming, production and publication of the Materials will be suspended until payment is received.

14. **Transfer, Governing Law.** This Agreement may be assigned by JoVE and shall inure to the benefits of any of JoVE's successors and assignees. This Agreement shall be governed and construed by the internal laws of the Commonwealth of Massachusetts without giving effect to any conflict of law provision thereunder. This Agreement may be executed in counterparts, each of which shall be deemed an original, but all of which together shall be deemed to be one and the same agreement. A signed copy of this Agreement delivered by facsimile, e-mail or other means of electronic transmission shall be deemed to have the same legal effect as delivery of an original signed copy of this Agreement.

A signed copy of this document must be sent with all new submissions. Only one Agreement is required per submission.

### CORRESPONDING AUTHOR

Name:

Valeria V. Orlova

Department:

ANATOMY AND EMBRYOLOGY

Institution:

Leiden University Medical Center

Title:

DR.

Signature:

*Orlova*

Date:

26-06-2018

Please submit a **signed** and **dated** copy of this license by one of the following three methods:

1. Upload an electronic version on the JoVE submission site
2. Fax the document to +1.866.381.2236
3. Mail the document to JoVE / Attn: JoVE Editorial / 1 Alewife Center #200 / Cambridge, MA 02140

**Editorial comments:**

1. Please take this opportunity to thoroughly proofread the manuscript to ensure that there are no spelling or grammar issues.

*Done*

2. Please do not highlight notes for filming.

*Corrected*

3. The highlighted protocol steps are over 2.75 page limit. Please reduce the amount of highlighted protocol steps.

*We reduced the amount of highlighted protocol steps*

4. Please define all abbreviations before use, e.g., FBS, Pen-strep, etc.

*Corrected*

5. Step 8.2: What is used to resuspend leukocytes? What's the final concentration?

*The aim of "resuspend" in this step is to make single-cell suspension. We modified the wording and also refer to the step 5.6. where preparation of leukocytes is described*

6. Figure 1: Please use mL,  $\mu$ L instead of ml,  $\mu$ l.

*Corrected*