

Journal of Visualized Experiments

Preparation of Graphene Liquid Cells for the Observation of Lithium-ion Battery Material

--Manuscript Draft--

Article Type:	Invited Methods Article - JoVE Produced Video
Manuscript Number:	JoVE58676R2
Full Title:	Preparation of Graphene Liquid Cells for the Observation of Lithium-ion Battery Material
Keywords:	graphene liquid cell, lithium ion battery, in situ TEM , electrode, electrolyte, electron beam
Corresponding Author:	Jongmin Yuk Korea Advanced Institute of Science and Technology Daejeon, Daejeon KOREA, REPUBLIC OF
Corresponding Author's Institution:	Korea Advanced Institute of Science and Technology
Corresponding Author E-Mail:	jongmin.yuk@kaist.ac.kr
Order of Authors:	Joon Ha Chang Jun Young Cheong Hyeon Kook Seo Il-Doo Kim Jongmin Yuk
Additional Information:	
Question	Response
Please indicate whether this article will be Standard Access or Open Access.	Standard Access (US\$2,400)
Please indicate the city, state/province, and country where this article will be filmed . Please do not use abbreviations.	Daejeon, South Korea

TITLE:

Preparation of Graphene Liquid Cells for the Observation of Lithium-ion Battery Material

AUTHORS AND AFFILIATIONS:

Joon Ha Chang¹ *, Jun Young Cheong¹ *, Hyeon Kook Seo¹, Il-Doo Kim¹, Jong Min Yuk¹

¹Department of Materials Science and Engineering, Korea Advanced Institute of Science and Technology, Daejeon, Republic of Korea

* These authors contributed equally.

Corresponding Authors:

Il-Doo Kim (idkim@kaist.ac.kr)

Jong Min Yuk (jongmin.yuk@kaist.ac.kr)

E-mail Address of the Co-authors:

Joon Ha Chang (joondury@kaist.ac.kr)

Jun Young Cheong (nice8872@kaist.ac.kr)

Hyeon Kook Seo (aceshk@kaist.ac.kr)

KEYWORDS:

Graphene liquid cell, lithium-ion battery, *in situ* transmission electron microscopy (TEM), electrode, electrolyte, electron beam

SUMMARY:

Here, we present a protocol for the fabrication and preparation of a graphene liquid cell for *in situ* transmission electron microscopy observation, along with a synthesis of electrode materials and electrochemical battery cell tests.

ABSTRACT:

In this work, we introduce the preparation of graphene liquid cells (GLCs), encapsulating both electrode materials and organic liquid electrolytes between two graphene sheets, and the facile synthesis of one-dimensional nanostructures using electrospinning. The GLC enables *in situ* transmission electron microscopy (TEM) for the lithiation dynamics of electrode materials. The *in situ* GLC-TEM using an electron beam for both imaging and lithiation can utilize not only realistic battery electrolytes, but also the high-resolution imaging of various morphological, phase, and interfacial transitions.

INTRODUCTION:

Recently, the consumption of energy has constantly increased, as well as the importance of high-performance energy storage devices. To meet such a demand, the development of lithium-ion batteries that have a high energy density, durability, and safety is necessary^{1,2}. In order to develop batteries with superior properties, a fundamental understanding of energy storage mechanisms during battery operation is essential³⁻⁵.

In situ transmission electron microscopy (TEM) provides rich insights as it can show both structural and chemical information during the operation of batteries³. Among many *in situ* TEM techniques, GLCs have been used for the observation of the lithiation dynamics of nanomaterials⁶⁻¹². GLCs consist of a liquid pocket sealed by two graphene membranes, which provide an actual electrode/electrolyte interface by preventing the evaporation of the liquid inside the high vacuum in a TEM column^{6,7}. The advantages of GLCs are that they allow a superior spatial resolution and high imaging contrast because they employ electron transparent monatomic-thick graphene as liquid sealing membrane¹³⁻¹⁶. Also, conventional TEM can be applicable to observe the battery reactions, without using expensive *in situ* TEM holders.

In this text, we introduce how the lithiation reaction can be observed with GLCs. Specifically, electron beam irradiation produces solvated electrons inside the liquid electrolyte, and they initiate lithiation by separating Li ions from solvent molecules.

GLCs also serve as the most optimal platform to allow the direct observation of nanomaterials with various morphologies, including nanoparticles^{6,9}, nanotubes^{7,10,11}, and even multidimensional materials¹². Together with the *ex situ* TEM analysis of electrode materials after the actual electrochemical cell testing, it is possible that the GLC system presented here can be used to investigate the fundamental reaction mechanism.

With such advantages of GLCs and *ex situ* experiments, we introduce here detailed experiment methods for researchers who are willing to carry out similar GLC experiments. The protocols cover 1) the synthesis of tin (IV) oxide (SnO₂) nanotubes as the typical one-dimensional nanostructured electrode materials, 2) the electrochemical battery cell test, 3) the preparation of GLC, and 4) the performance of a real-time TEM observation.

PROTOCOL:

1. Synthesis of SnO₂ Nanotubes by Electrospinning and Subsequent Heat Treatment¹⁷

1.1. Prepare an electrospinning solution.

1.1.1. Dissolve 0.25 g of tin chloride dihydrate in a solvent mixture of 1.25 g of ethanol and 1.25 g of dimethylformamide (DMF) at room temperature (RT, 25 °C).

1.1.2. After stirring for 2 h, add 0.35 g of polyvinylpyrrolidone (PVP) to the electrospinning solution and stir the mixture for another 6 h.

1.2. Perform an electrospinning of the Sn precursor/PVP composite nanofibers.

1.2.1. When the electrospinning solution is well prepared, wash the rectangular, flexible stainless steel (30 x 20.5 cm) with deionized (DI) water and ethanol 2x - 5x and air-dry it at 60 °C for 10 min.

1.2.2. Transfer the electrospinning solution to a 10 mL syringe by blocking one side of the syringe and letting the electrospinning solution flow into the syringe.

1.2.3. Connect a 25 G needle to the syringe.

NOTE: Other types of needles, such as 23 G and 17 G needles, can also be used. In this protocol, the 25 G needle is used as the standard needle.

1.2.4. Fix the dried flexible stainless steel into the drummer with tape.

1.2.5. Open the electrospinning controller software and enter the electrospinning parameters (flow rate: 5 - 20 $\mu\text{L min}^{-1}$, total amount of the solution: 3 - 15 mL) for the proper functioning of the electrospinning device.

NOTE: Here, the optimal flow rate is 10 $\mu\text{L min}^{-1}$ and the total amount of solution is 5 mL.

1.2.6. Fix the syringe with the 25 G needle into the electrospinning device and, then, fix it with tape.

1.2.7. Before electrospinning, press the syringe towards the collector until the electrospinning solution flows well through the 25 G needle. Then, connect the tip of the needle to the double-ended crocodile clips, which are also connected to the collector.

1.2.8. Roll the roller (100 rpm) and initiate the electrospinning program software.

1.2.9. Modulate the applied voltage by using a voltage bias (**Figure 1a**) between 10 - 25 kV to allow the electrojetting of the Taylor cones to operate the electrospinning process.

NOTE: Here, the optimal applied voltage is 16 kV.

1.3. Perform the calcination of the Sn precursor/PVP composite nanofibers.

1.3.1. When the electrospinning process is finished, scrape the as-spun nanofibers on the flexible stainless steel with a razor and transfer them into an alumina box.

1.3.2. Insert the alumina box into the box furnace and set the heat treatment conditions for the box furnace: 600 °C or 700 °C for 1 h, with a ramping rate of 10 °C min^{-1} .

1.3.3. After calcination, cool down the furnace to 50 °C and, then, transfer the calcined samples (*i.e.*, SnO₂ nanotubes) to the vial glass (**Figure 1b**).

2. Electrochemical Battery Cell Test

2.1. Prepare the electrode.

NOTE: The electrode slurry is composed of 10 wt% binder, 10 wt% carbon black, and 80 wt% of active materials (in this case, SnO₂ nanotubes). The amount of slurry and the composition of each ingredient in the slurry can be adjusted.

2.1.1. Cut the copper (Cu) foil into 10 cm width x 30 cm length and, using ethanol, fix it on a rectangular glass substrate (25 x 15 x 0.5 cm).

2.1.2. Mix 0.02 g of carbon black, 0.027 g of polyacrylic acid (35 wt%), and 0.166 g of carboxymethyl cellulose (6 wt%) in a crucible. Add three to six drops of deionized (DI) water into the crucible to allow for a homogeneous mixing.

2.1.3. Add 0.16 g of SnO₂ nanotubes into the crucible. Then, add three to eight drops of DI water into the crucible to allow for a homogeneous mixing.

2.1.4. Ground all the ingredients in the crucible for 30 min to ensure that the slurry is sufficiently viscous to be cast well on the Cu foil.

2.1.5. When the electrode slurry is prepared well, place the slurry on the top side of the Cu foil on the glass substrate, and cast it evenly using a casting roller.

NOTE: Usually, the thickness of the slurry is 60 μm but can be more or less.

2.1.6. Air-dry the slurry-cast Cu foil at 60 °C for 10 min and seal it inside the plastic bag prior to the battery cell assembly.

NOTE: The slurry-cast Cu foil can be seen in **Figure 1c**.

2.2. Assemble the battery cells.

2.2.1. Heat the convection oven to 150 °C. Then, place the slurry-cast Cu foil into the oven.

2.2.2. Fill the convection oven with vacuum by rotary pumps to dry the residual solvent in the slurry while avoiding the oxidation of the Cu foil.

2.2.3. After heating the slurry-cast Cu foil at 150 °C for 2 h, refill the convection oven with air by closing the vacuum line and opening the vent line in the rotary pump to open the chamber.

2.2.4. Take the slurry-cast Cu foil out of the chamber and punch it with a circle puncher (punch diameter: 14 mm). Weigh the punched slurry-cast Cu foil and place it into the bottom battery cell.

2.2.5. Use half a cell for the assembly of the battery cells. After placing the slurry-cast Cu foil into the bottom of the battery cell, transfer the samples to the antichamber of the glove box.

2.2.6. Vacuum the antichamber for 30 min and, then, transfer the samples into the inside glove box.

2.2.7. Assemble the battery cells in the following order: bottom battery cell, slurry-cast Cu foil, separator, gasket, spring, spacer, and top battery cell. Drop the electrolyte after the separator is put into the battery cell.

2.2.8. Compress the battery cell into a complete battery cell by a compactor. Then, move the battery cells for electrochemical tests into the antichamber in the glove box and take the battery cells out of the glove box.

2.2.9. Measure the open circuit voltage (OCV) by a digital multimeter and age the battery cell at RT for 1 - 2 d.

2.3. Test the electrochemical battery cell.

2.3.1. Calculate the weight of the active materials by subtracting the weight of Cu foil from that of the slurry-cast Cu foil and dividing it by the portion of the active material.

2.3.2. Calculate the current at which the battery cell needs to be run by multiplying the current density (mA g^{-1}) with the weight of the active material.

2.3.3. Insert the electrochemical battery cells in the battery cell tester. Apply the current (corresponding to 0.05 A g^{-1} for the formation cycle and various current densities in the range of 0.1 A g^{-1} to 10.0 A g^{-1} for the cycle tests and rate capabilities) for each battery cell using the battery cell tester program.

2.3.4. Apply different currents for each battery cell if it is tested at various current densities.

3. Preparation of the Graphene Liquid Cell

3.1. Synthesize graphene by chemical vapor deposition (CVD).

3.1.1. Cut Cu foil (purity: 99.9%, thickness: 0.0125 mm) with scissors into pieces with a dimension of 10 x 3 cm.

3.1.2. Rinse the Cu foil from step 3.1.1 with isopropyl alcohol (IPA) to remove any dust or contaminants and treat it with 100 mL of 20 wt% phosphoric acid (H_3PO_4) for 20 min to remove native oxide on the surface of the Cu foil in a glass Petri dish. Then, place the Cu foil in DI water for another 10 min to fully rinse the remaining H_3PO_4 .

3.1.3. Move the Cu foil to the quartz tube (outer diameter: 40 mm, inner diameter: 36 mm) of the CVD equipment.

3.1.4. Run the rotary pump and wait until the vacuum level is under 2×10^{-3} Torr. Then, elevate the temperature to 150 °C to fully remove the oxygen and moisture inside the quartz tube of the CVD.

3.1.5. Elevate the temperature from RT to 1,000 °C in 40 min with 10 sccm of H₂ gas flow. Maintain the temperature of the chamber for another 40 min to anneal the Cu foil.

3.1.6. Turn on 60 sccm of CH₄ gas for 25 min. Cool down the CVD chamber to RT. Turn the CH₄ and H₂ gases off at 300 °C.

3.1.7. Take the Cu foil (**Figure 2a**) from the CVD chamber and keep it in a desiccator.

3.2. Transfer the graphene.

3.2.1. To remove the graphene on the backside of the Cu foil, conduct plasma etching by using a plasma cleaner with the following settings: a flow of Ar (of 100 sccm), time (of 60 s), power (of 30 W), and a base pressure (of 5.0×10^{-2} Torr).

3.2.2. Cut the Cu foil with the graphene that was synthesized in step 3.1 to 3 x 3 mm with scissors. Place the Cu foil pieces between two slide glasses and press to make them flat.

NOTE: Four Cu foil pieces are placed together between two slide glasses.

3.2.3. Place holey carbon Au grids (300 mesh, R2/2) on each piece of Cu foil (**Figure 2b**). Drop 20 µL of IPA on the Au grid/Cu foil.

3.2.4. Suction IPA with a micropipette tip that is connected to a rotary pump. After suctioning, dry the Au grid/Cu foil at 50 °C for 5 min.

3.2.5. Conduct the etching of the Cu foil in 10 mL of 0.1 M ammonium persulfate for 6 h in a 6 cm glass Petri dish (**Figure 2c**).

NOTE: Glass Petri dishes must be cleaned with IPA and DI water prior to use in order to avoid the contamination of the Si particles.

3.2.6. Scoop the Au grids with a Pt loop and move it to a glass Petri dish filled with DI water at 50 °C, in order to fully remove any remaining contaminants from the etchant¹⁶.

3.2.7. Scoop the Au grids from the DI water and dry them for 6 h at RT and with atmospheric pressure.

3.3. Fabricate GLCs.

3.3.1. Prepare the electrolyte and nanotube mixture. Disperse 0.06 g of nanotube powder in 10 mL of electrolyte, which is composed of 1.3 M lithium hexafluorophosphate (LiPF_6) in ethylene carbonate (EC) and diethylene carbonate (DEC) (3:7 volume ratio) with 10 wt% of fluoroethylene carbonate (FEC).

NOTE: The composition of the electrolyte is the same as the one used in the electrochemical battery cell test. Various electrolytes can be employed in GLCs, such as 1 M LiPF_6 dissolved in EC, DEC, and dimethyl carbonates (DMC) in a volumetric ratio of 1:1:1, 1 M of sodium hexafluorophosphate (NaPF_6) dissolved in EC, 1 M of sodium perchlorate (NaClO_4) dissolved in polyethylene carbonate (PC) with 5 wt% of FEC, 0.1 M of magnesium bis(trifluoromethanesulfonimide) (MgTFSI) in diglyme, and 1 M NaClO_4 in PC.

3.3.2. Move the graphene-transferred Au grids and electrolyte mixture into a glove box that is filled with Ar.

3.3.3. Place one graphene-transferred Au grid on the bottom. Drop 20 μL of electrolyte mixture on the bottom grid.

3.3.4. Hold another graphene-transferred grid with a tweezer and place it on the top of the bottom grid.

NOTE: This procedure must be done quickly before the electrolyte has dried (**Figure 2d**).

3.3.5. Dry the sample inside the glove box for 30 min, during which the liquid is spontaneously encapsulated between the two graphene sheets as it dries.

NOTE: The amount of entrapped liquid depends on how well the graphene has been transferred and how well the upper grid is placed.

4. Performing Real-time TEM

4.1. Load GLCs on a conventional single-tilt TEM holder.

4.1.1. Place the GLC sample (two attached graphene-transferred Au grids) on the single-tilt TEM holder.

4.1.2. If the two grids are not stacked up perfectly, the GLC sample will not fit in the TEM holder. In that case, cut the edge of the Au grids with a razor blade.

4.1.3. After the GLC sample is mounted on the TEM holder, put the TEM holder inside the TEM and carefully check the vacuum level.

4.2. Record real-time TEM videos.

4.2.1. Find the region where the SnO₂ nanotube is encapsulated with liquid electrolyte.

NOTE: To find out whether liquid exists around the SnO₂ nanotube, irradiate an electron beam for a few seconds. If some movement of liquid or the decomposition of an electrolyte is observed, it is highly likely that the area is encapsulated with liquid.

4.2.2. Do alignment for TEM and set the electron beam dosage to initiate the reaction by adjusting the brightness knob.

NOTE: The suitable alignment for TEM includes user alignment, such as Z-height alignment, gun tilt/shift, beam tilt/shift, aperture alignment, and stigmation alignment. These procedures are better done in another area (right next to the region found in step 4.2.1) in order not to give any damage to the SnO₂ nanotube and liquid electrolyte. The electron beam dose rate for initiating the lithiation is usually $\sim 10^3 \text{ e}^-/\text{\AA}^2\cdot\text{s}$, but it may differ with every TEM instrument.

4.2.3. Run the microscopy program and charge-coupled device (CCD) camera according to the manufacturer's instructions.

4.2.4. Press the record button on the high definition (HD) video window and record the reaction occurring in the GLC sample.

REPRESENTATIVE RESULTS:

SnO₂ nanotubes were fabricated by electrospinning and subsequent calcination, during which the nanotubular and porous structures could be seen clearly, according to the SEM image (**Figure 3a**). Such a nanotubular structure comes from the decomposition of PVP, while the Sn precursor in the core is moved outward due to the Kirkendall effect^{17,18}. Additionally, Ostwald ripening occurs in addition to the Kirkendall effect, resulting in the growth of SnO₂ nanogains¹⁹. The TEM image (**Figure 3b**) shows that such porous sites are more visually clear, indicated by a number of white spots within the SnO₂ nanotubes. The crystal structures of SnO₂ are polycrystalline cassiterite structures (**Figure 3c**), in accordance with previously published literature¹⁷.

In terms of electrochemical characteristics of the SnO₂ nanotubes, various aspects of the SnO₂ nanotubes were examined in detail. To start with, the charge and discharge profile of the SnO₂ nanotubes in the formation cycle is shown (**Figure 4a**), which exhibits stable voltage profiles with an initial coulombic efficiency of 67.8%. The voltage plateau, which exists at 0.9 V, can be attributed to the two-phase reaction (the conversion reaction of SnO₂ to Sn), similar to descriptions in previous works^{9,20}. The irreversible formation of Li₂O during the conversion reaction of SnO₂, along with the unstable formation of the solid electrolyte interphase (SEI) layer, resulted in a poorly reversible reaction with Li in the formation cycle. The SnO₂ nanotubes exhibit stable cycling at 500 mA g⁻¹, with coulombic efficiencies above 98% (**Figure 4b**). The rate capabilities of SnO₂ nanotubes (**Figure 4c**) are also presented, where the SnO₂ nanotubes retain considerable capacity (> 700 mAh g⁻¹) even at a high current density of 1,000 mA g⁻¹. Nevertheless, initial irreversible capacity loss needs to be examined more in detail using *in situ* TEM methods.

Overall characterizations of graphene are shown in **Figure 5**. **Figure 5a** shows the Raman spectrum of graphene synthesized on Cu foil. The ratio between I_g and I_{2D} was 2.81, which matches well with the ratio of monolayer graphene on polycrystalline Cu substrate, indicating that monolayer graphene was synthesized. The SEM image of transferred graphene on an Au TEM grid is shown in **Figure 5b**, demonstrating that the coverage of graphene was good after its transfer to the Au TEM grid. The TEM image and the corresponding selected area electron diffraction (SAED) pattern of the transferred graphene are shown in **Figure 5c,d**. The hexagonal diffraction spots indicate the monolayer graphene well.

Time-series TEM images of GLCs are shown in **Figure 6**, which are captured from **Movie S1**. When GLCs are fabricated well, they have multiple liquid pockets whose sizes range from tens of nanometers to hundreds of nanometers, depending on the solution and nanoparticles^{7,14}. In this experiment, using EC/DEC/FEC solution and SnO₂ nanotubes, the size of the liquid pocket was 300 - 400 nm. The accelerating voltage was 300 kV and the electron beam dosage 743.9 e⁻/Å²·s, which is enough for lithiation to proceed but not for severe beam damage. Through constant electron beam irradiation, dissolved electrons and radicals trigger a secondary reaction with the salt and solvent. Here, the decomposition of electrolyte and the formation of an SEI layer were observed at the initial stage, in agreement with some of the previously reported results^{6-9,21}.

FIGURE AND TABLE LEGENDS:

Figure 1: Digital camera images of the electrospinning setup and prepared SnO₂ nanotubes and electrode. (a) Electrospinning, (b) SnO₂ nanotubes, and (c) the slurry-cast electrode.

Figure 2: Digital camera images showing the graphene-transferred grid and fabrication of the graphene liquid cells. (a) The synthesized monolayer graphene on Cu foil, (b) an Au TEM grid on Cu foil, (c) the etching process of Cu foils in 0.1 M ammonium persulfate, and (d) stacked Au grids inside a glove box.

Figure 3: Characterization of SnO₂ nanotubes before their encapsulation inside the graphene sheet. These panels show (a) an SEM image, (b) a TEM image, and (c) the SAED pattern of the SnO₂ nanotubes.

Figure 4: Electrochemical battery cell testing of the SnO₂ nanotubes. These panels show (a) the charge and discharge profile, (b) the cycle retention characteristics, and (c) the rate capabilities of the SnO₂ nanotubes.

Figure 5: Characterization of synthesized graphene. These panels show (a) the Raman spectrum, (b) the SEM image, (c) the TEM image, and (d) the SAED pattern of the monolayer graphene.

Figure 6: Real-time TEM images of the lithiation process of GLCs. Decomposed electrolyte and the formation of an SEI layer on the surface of an SnO₂ nanotube are observed for 0 - 45 s.

Movie S1. Lithiation of GLCs. The surface of an SnO₂ nanotube is visualized inside liquid electrolyte.

DISCUSSION:

There are critical steps within the protocol. First, the transfer of the graphene onto the TEM grid needs the researchers' careful attention. It is important to handle the grids with tweezers and not damage any of grids, for instance by destroying the amorphous carbon membrane or bending the frame. These kinds of damages will result in a poor coverage of the graphene and affect the number of liquid pockets. In addition, placing the upper grid at the right position is critical. As described in the protocol, the top grid must be placed quickly before the liquid has dried. During this process, researchers may damage the upper grid or place it in the wrong position (*i.e.*, not in the center of the bottom grid). Similar to any damages incurred during the transfer process, this will lower the yield of liquid cells. Thus, much practice with handling the TEM grids is needed to repeatedly fabricate GLCs.

It is important to make sure that the slurry-cast Cu foil has fully dried prior to the cell assembly. This is important because the presence of water can degrade the overall cell performance. Additionally, the slurry should be cast on the Cu foil uniformly, so that the loading amount of active material is similar. Moreover, it is important to find the right place for the TEM observation, where the liquid is completely sealed by the graphene sheets and enough liquid exists so that lithiation can continuously take place. Even though researchers followed the steps as they are demonstrated in the protocol, they will often observe incomplete reactions and depletion of liquid electrolyte around active materials. To find the right place for the TEM observation, the researchers should illuminate the electron beam for a few seconds and observe whether enough liquid exists for further reaction to occur.

The limitation of the GLC technique with observing lithiation is that the dynamics are possible only upon lithiation, not delithiation. Because lithiation inside GLCs is initiated by an electron beam and the reduction of surrounding electrolyte, the opposite oxidizing environment cannot be realized. This is a limitation compared to other *in situ* TEM techniques that can apply bias to the system, such as a scanning tunneling microscope (STM)-TEM holder or electrochemistry holders. Also, as two grids are attached and the upper grid is not removed in this experiment, aqueous solvents have less ability to stick two grids together and organic electrolyte is therefore preferred.

GLCs provide major advances in three different ways. 1) They provide high-resolution imaging in a liquid electrolyte that is hardly achievable in other *in situ* TEM platforms. 2) They do not require the purchase of an additional *in situ* TEM holder. 3) Also, various kinds of nanomaterials (such as nanosheet, nanoparticle, and nanofiber) can be visualized inside the liquid electrolyte.

GLCs can be used further to observe not only the dynamics of electrode materials upon lithiation but, also, sodiation (Na-ion batteries), magnesiation (Mg-ion batteries), potassiation (K-ion batteries), and zinc insertion (Zn-ion batteries). Furthermore, beyond the decomposition of various kinds of electrolytes, morphological changes of electrode materials can be visualized

inside the GLC^{9,10}. We expect that such information will provide valuable insights for engineers who are working on designing advanced secondary ion batteries.

ACKNOWLEDGMENTS:

This work was supported by the National Research Foundation of Korea (NRF), grant no. 2014R1A4A1003712 (BRL Program), the Korea CCS R&D Center (KCRC) grant funded by the Korea government (Ministry of Science, ICT & Future Planning) (No. NRF-2014M1A8A1049303), an End-Run grant from KAIST funded by the Korea government in 2016 (Ministry of Science, ICT & Future Planning) (N11160058), the Wearable Platform Materials Technology Center (WMC) (NR-2016R1A5A1009926), an National Research Foundation of Korea (NRF) Grant funded by the Korean Government (NRF-2017H1A2A1042006-Global Ph.D. Fellowship Program), a National Research Foundation of Korea (NRF) grant funded by the Korea government (MSIP; Ministry of Science, ICT & Future Planning) (NRF-2018R1C1B6002624), the Nano-Material Technology Development Program through the National Research Foundation of Korea (NRF) funded by the Ministry of Science, and an ICT and Future Planning (2009-0082580) and NRF grant funded by the Korea government (MSIP; Ministry of Science, ICT & Future Planning) (NRF-2018R1C1B6002624).

DISCLOSURES:

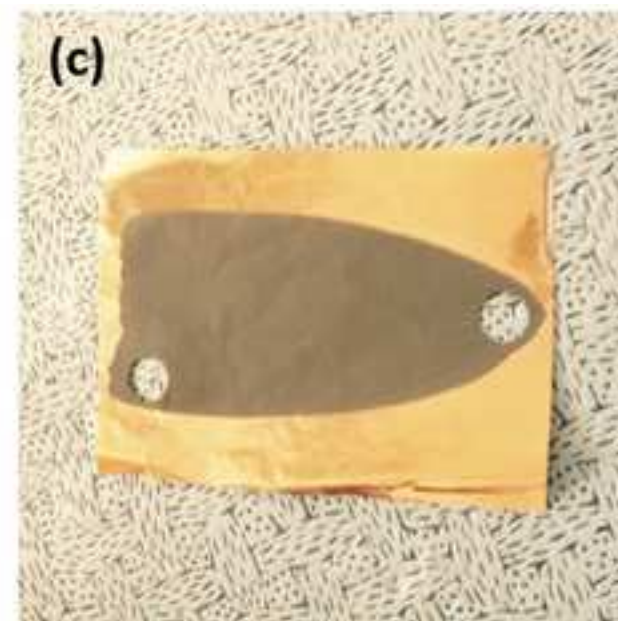
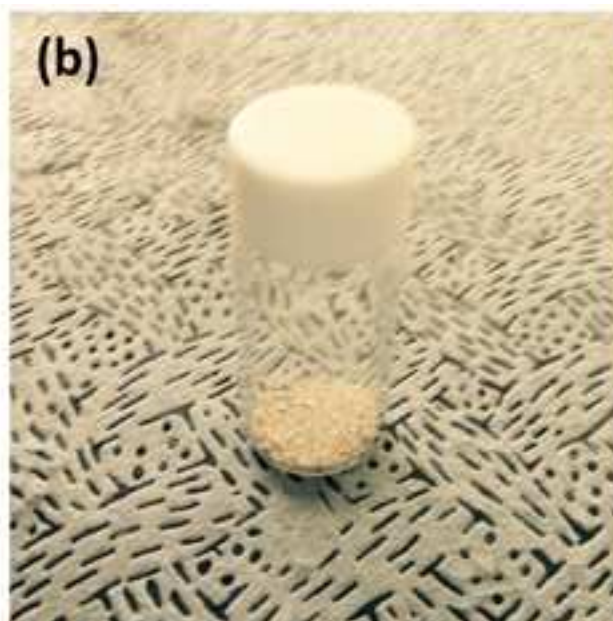
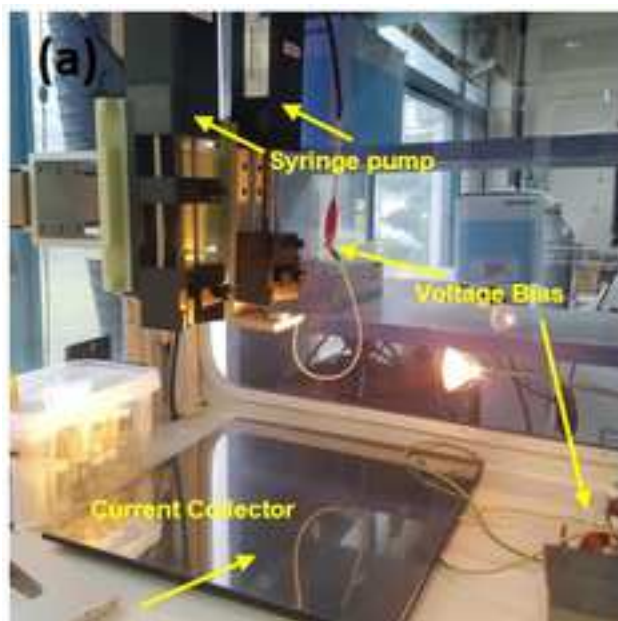
The authors have nothing to disclose.

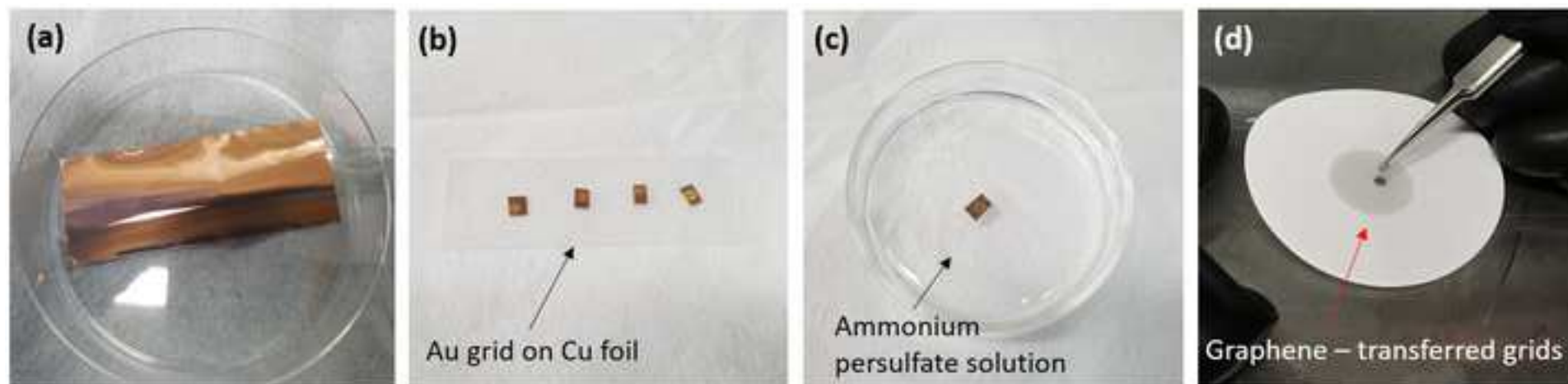
REFERENCES:

1. Sun, Y.-K. *et al.* Nanostructured high-energy cathode materials for advanced lithium batteries. *Nature Materials*. **11** (11), 942-947 (2012).
2. Manthiram, A., Fu, Y., Chung, S.-H., Zu, C., Su, Y.-S. Rechargeable Lithium–Sulfur Batteries. *Chemical Reviews*. **114** (23), 11751-11787 (2014).
3. Liu, X.H., Huang, J.Y. *In situ* TEM electrochemistry of anode materials in lithium ion batteries. *Energy Environmental Science*. **4** (10), 3844-3860 (2011).
4. Xie, Z.-H., Jiang, Z., Zhang, X. Review-Promises and Challenges of In Situ Transmission Electron Microscopy Electrochemical Techniques in the Studies of Lithium Ion Batteries. *Journal of the Electrochemical Society*. **164** (9), A2100-A2123 (2017).
5. Tripathi, A.M., Su, W.-N., Hwang, B.J. *In situ* analytical techniques for battery interface analysis. *Chemical Society Reviews*. **47** (3), 736-851 (2018).
6. Yuk, J.M., Seo, H.K. Choi, J.W., Lee, J.Y. Anisotropic lithiation onset in silicon nanoparticle anode revealed by *in situ* graphene liquid cell electron microscopy. *ACS Nano*. **8** (7), 7478-7485 (2014).
7. Cheong, J.Y. *et al.* Growth dynamics of solid electrolyte interphase layer on SnO₂ nanotubes realized by graphene liquid cell electron microscopy. *Nano Energy*. **25**, 154-160 (2016).

8. Lee, K., Shin, S., Degen, T., Lee, W., Yoon, Y.S. In situ analysis of SnO₂/Fe₂O₃/RGO to unravel the structural collapse mechanism and enhanced electrical conductivity for lithium-ion batteries. *Nano Energy*. **32**, 397-407 (2017).
9. Chang, J.H. *et al.* Direct realization of complete conversion and agglomeration dynamics of SnO₂ nanoparticles in liquid electrolyte. *ACS Omega*. **2** (10), 6329-6336 (2017).
10. Cheong, J.Y. *et al.* *In Situ* High-Resolution Transmission Electron Microscopy (TEM) Observation of Sn Nanoparticles on SnO₂ Nanotubes Under Lithiation. *Microscopy Microanalysis*. **23** (6), 1107-1115 (2017).
11. Cheong, J.Y. *et al.* Revisiting on the effect and role of TiO₂ layer thickness on SnO₂ for enhanced electrochemical performance for lithium-ion batteries. *Electrochimica Acta*. **258**, 1140-1148 (2017).
12. Hwa, Y., Seo, H.K., Yuk, J.M., Cairns, E.J. Freeze-Dried Sulfur–Graphene Oxide–Carbon Nanotube Nanocomposite for High Sulfur-Loading Lithium/Sulfur Cells. *Nano Letters*. **17** (11), 7086-7094 (2017).
13. Yuk, J.M. *et al.* High-Resolution EM of Colloidal Nanocrystal Growth Using Graphene Liquid Cells. *Science*. **336** (6084), 61-64 (2012).
14. Jeong, M., Yuk, J.M., Lee, J.Y. Observation of Surface Atoms during Platinum Nanocrystal Growth by Monomer Attachment. *Chemistry of Materials*. **27** (9), 3200-3202 (2015).
15. Yuk, J.M. *et al.* Real-Time Observation of Water-Soluble Mineral Precipitation in Aqueous Solution by *In situ* High-Resolution Electron Microscopy. *ACS Nano*. **10** (1), 88-92 (2015).
16. Wang, C., Qiao, Q., Shokuhfar, T., Klie, R.F. High-Resolution Electron Microscopy and Spectroscopy of Ferritin in Biocompatible Graphene Liquid Cells and Graphene Sandwiches. *Advanced Materials*. **26** (21), 3410-3414 (2014).
17. Cheong, J.Y., Kim, C., Jang, J.S., Kim, I.-D. Rational design of Sn-based multicomponent anodes for high performance lithium-ion batteries: SnO₂@TiO₂@reduced graphene oxide nanotubes. *RSC Advances*. **6** (4), 2920-2925 (2016).
18. Mel, A.-A.E., Nakamura, R., Bittencout. The Kirkendall effect and nanoscience: hollow nanospheres and nanotubes. *Beilstein Journal of Nanotechnology*. **6**, 1348-1361 (2015).
19. Cheong, J.Y., Kim, C., Jung, J.-W., Yoon, K.R., Kim, I.-D. Porous SnO₂-CuO nanotubes for highly reversible lithium storage. *Journal of Power Sources*. **373**, 11-19 (2018).

- 525 20. Ao, X. *et al.* Porous Honeycomb-inspired design of ultrafine SnO₂@C nanospheres embedded
526 in carbon film as anode materials for high performance lithium- and sodium-ion battery. *Journal*
527 *of Power Sources*. **359**, 340-348 (2017).
528
- 529 21. Abellan, P. *et al.* Probing the Degradation Mechanisms in Electrolyte Solutions for Li-Ion
530 Batteries by in Situ Transmission Electron Microscopy. *Nano Letters*. **14**, 1293-1299 (2014).
531





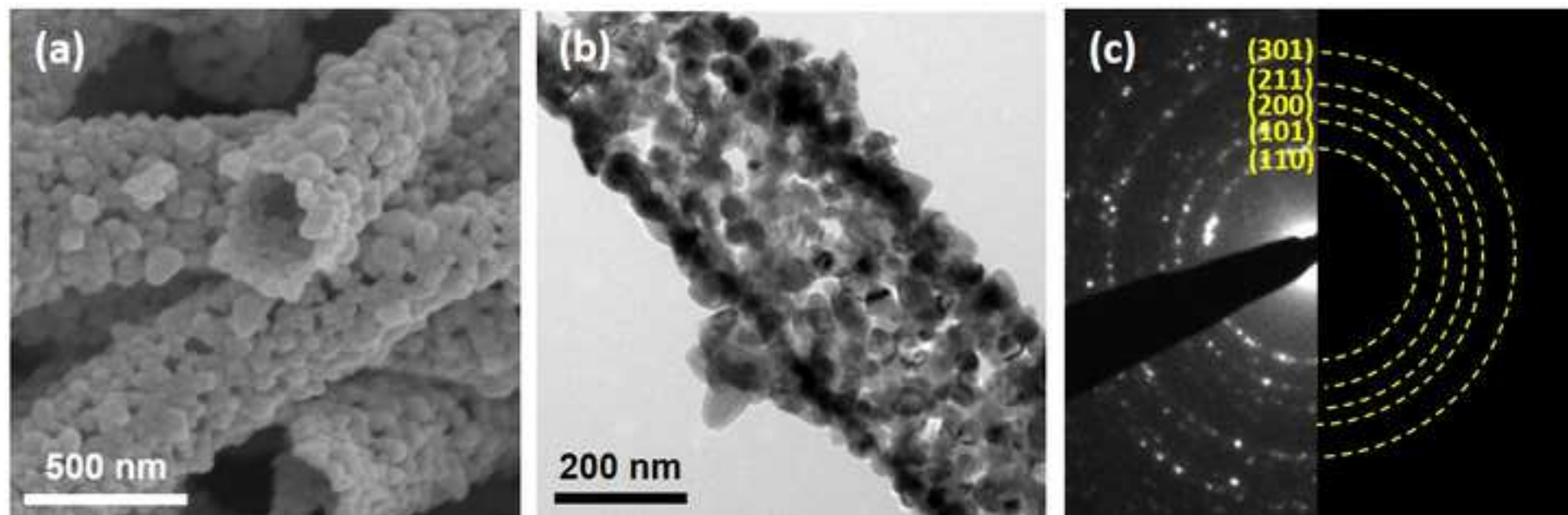


Figure 4

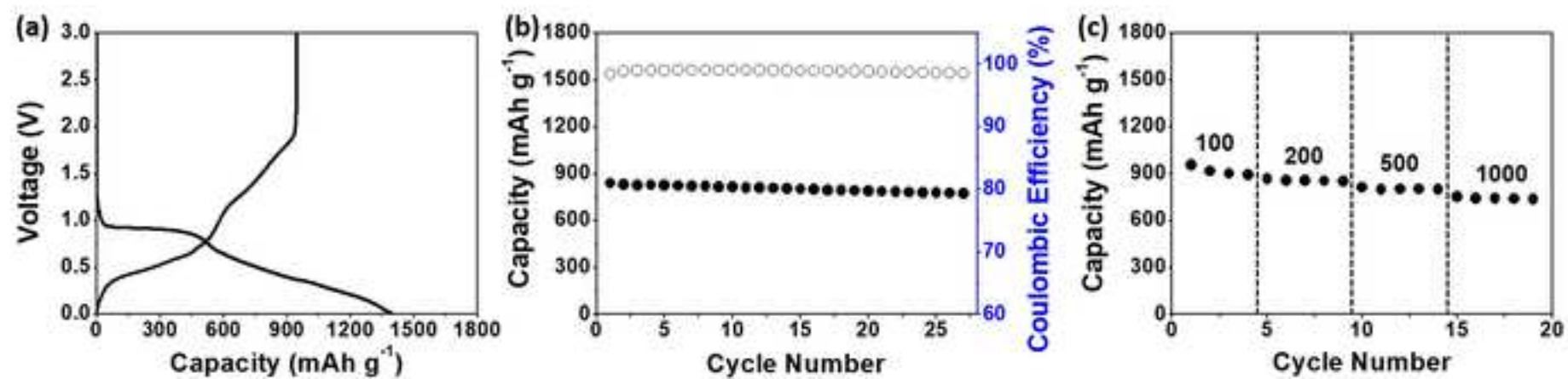


Figure 5

[Click here to access/download;Figure;Figure 5.jpg](#) 

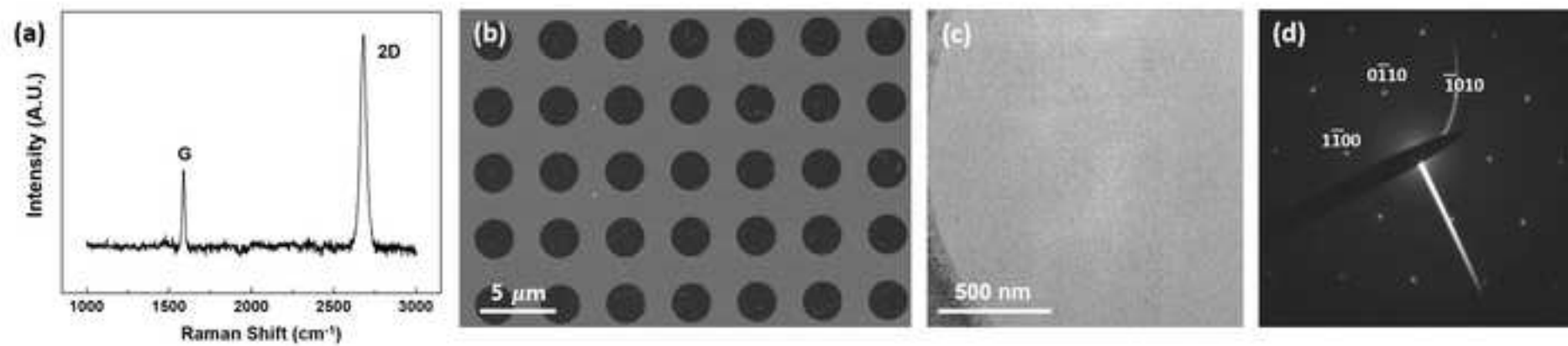
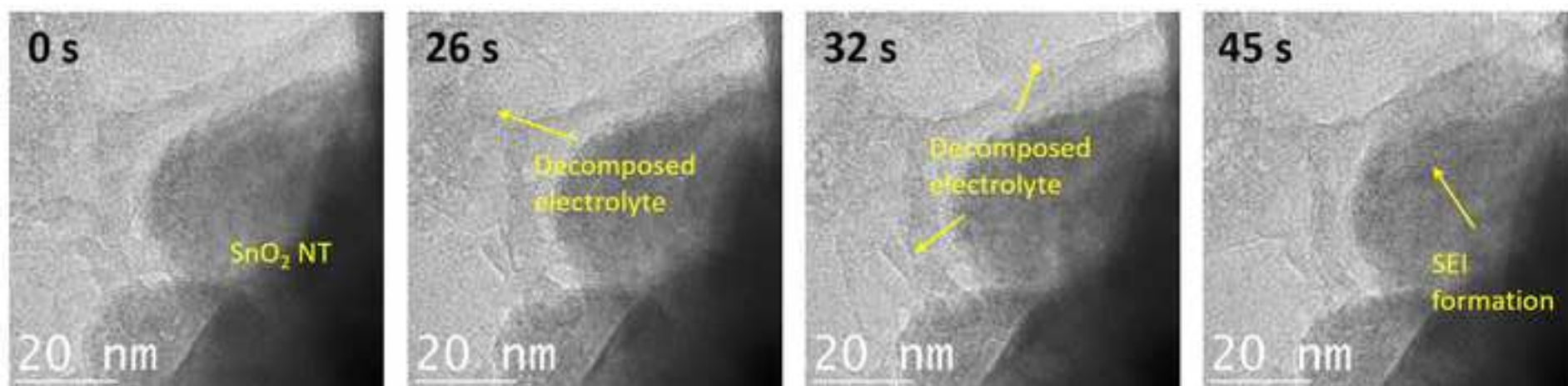
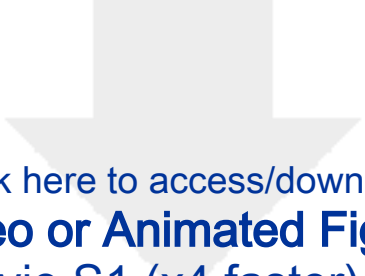


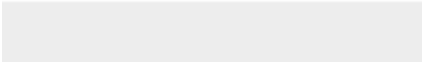
Figure 6

[Click here to access/download;Figure;Figure 6.jpg](#) 





Click here to access/download
Video or Animated Figure
Movie S1 (x4 faster).avi



Name of Material/ Equipment

Tin chloride dihydrate
 Ethanol
 Dimethylformamide
 Polyvinylpyrrolidone
 Cell tester
 Cell tester 2
 Sodium perchlorate
 25 gauge needle
 1.3 M of lithium hexafluorophosphate (LiPF₆) dissolved in
 EC/DEC with 10 wt% of FEC
 Propylene carbonate
 Super P Carbon Black
 Cell components (bottom cell, top cell, separator, gasket,
 spring, spacer)
 Cell punch

 Glove Box
 Box Furnace
 Electrospinning device
 Hydrofluoric acid
 Cu foil
 Holy carbon Au grid
 Isopropyl alcohol
 Ammonium persulfate
 Transmission electron microscope (TEM)
 Chemical vapor deposition (CVD)
 Charge coupled device (CCD)
 Plasma Cleaner
 Electrospinning program

Company

Sigma Aldrich
 Merck
 Sigma Aldrich
 Sigma Aldrich
 KOREA THERMO-TECH
 WonaTech
 Sigma Aldrich
 Hwa-In Science Ltd.

 PANAX ETEC
 Sigma Aldrich
 Alfa-Aesar

 Wellcos Corporation
 Wellcos Corporation
 Moisture Oxygen Technology
 (MOTEK)
 Naytech
 NanoNC
 Junsei
 Alfaesar
 SPI
 Sigmaaldrich
 Sigmaaldrich
 JEOL
 Scientech
 Gatan
 Femtosience
 NanoNC

Catalog Number

CAS 10025-69-1

CAS 64-17-5

CAS 68-12-2

CAS 9003-39-8

Maccor Series 4000

WBCS4000

CAS 7601-89-0

CAS 108-32-7

CAS 1333-86-4

Vulcan 3-550

84045-0350

38381

Quantifoil R2/2 Micromachined Holey Carbon Grids, 300 Mesh Gold

W292907

248614

JEOL JEM 3010

Orius SC200

VITA

NanoNC eS- robot

Comments/Description

In a glass bottle

In a glass bottle

In a glass bottle

In a plastic bottle

In a glass bottle

In a stainless steel bottle

In a glass bottle

In a glass bottle

85%

Copper Thinfoil, 0.0125mm thick, 99.9%

Quantifoil R2/2 Micromachined Holey Carbon Grids, 300 Mesh Gold

99.70%

98%

300 kV



1 Alewife Center #200
Cambridge, MA 02140
tel. 617.945.9051
www.jove.com

ARTICLE AND VIDEO LICENSE AGREEMENT

Title of Article:

Preparation of graphene liquid cells for next-generation battery material observation

Author(s):

Joon Ha Chang*, Jun Young Cheon*, Hyeon Kook Seo, Il-Doo Kim, Jong Min Yuk

Item 1 (check one box): The Author elects to have the Materials be made available (as described at

<http://www.jove.com/author>) via: ☒ Standard Access ☐ Open Access

Item 2 (check one box):



The Author is NOT a United States government employee.



The Author is a United States government employee and the Materials were prepared in the course of his or her duties as a United States government employee.



The Author is a United States government employee but the Materials were NOT prepared in the course of his or her duties as a United States government employee.

ARTICLE AND VIDEO LICENSE AGREEMENT

1. **Defined Terms.** As used in this Article and Video License Agreement, the following terms shall have the following meanings: “**Agreement**” means this Article and Video License Agreement; “**Article**” means the article specified on the last page of this Agreement, including any associated materials such as texts, figures, tables, artwork, abstracts, or summaries contained therein; “**Author**” means the author who is a signatory to this Agreement; “**Collective Work**” means a work, such as a periodical issue, anthology or encyclopedia, in which the Materials in their entirety in unmodified form, along with a number of other contributions, constituting separate and independent works in themselves, are assembled into a collective whole; “**CRC License**” means the Creative Commons Attribution-Non Commercial-No Derivs 3.0 Unported Agreement, the terms and conditions of which can be found at: <http://creativecommons.org/licenses/by-nc-nd/3.0/legalcode>; “**Derivative Work**” means a work based upon the Materials or upon the Materials and other pre-existing works, such as a translation, musical arrangement, dramatization, fictionalization, motion picture version, sound recording, art reproduction, abridgment, condensation, or any other form in which the Materials may be recast, transformed, or adapted; “**Institution**” means the institution, listed on the last page of this Agreement, by which the Author was employed at the time of the creation of the Materials; “**JoVE**” means MyJoVE Corporation, a Massachusetts corporation and the publisher of *The Journal of Visualized Experiments*; “**Materials**” means the Article and / or the Video; “**Parties**” means the Author and JoVE; “**Video**” means any video(s) made by the Author, alone or in conjunction with any other parties, or by JoVE or its affiliates or agents, individually or in collaboration with the Author or any other parties, incorporating all or any portion of the Article, and in which the Author may or may not appear.

2. **Background.** The Author, who is the author of the Article, in order to ensure the dissemination and protection of the Article, desires to have the JoVE publish the Article and create and transmit videos based on the Article. In furtherance of such goals, the Parties desire to memorialize in this Agreement the respective rights of each Party in and to the Article and the Video.

3. **Grant of Rights in Article.** In consideration of JoVE agreeing to publish the Article, the Author hereby grants to JoVE, subject to **Sections 4** and **7** below, the exclusive, royalty-free, perpetual (for the full term of copyright in the Article, including any extensions thereto) license (a) to publish, reproduce, distribute, display and store the Article in all forms, formats and media whether now known or hereafter developed (including without limitation in print, digital and electronic form) throughout the world, (b) to translate the Article into other languages, create adaptations, summaries or extracts of the Article or other Derivative Works (including, without limitation, the Video) or Collective Works based on all or any portion of the Article and exercise all of the rights set forth in (a) above in such translations, adaptations, summaries, extracts, Derivative Works or Collective Works and (c) to license others to do any or all of the above. The foregoing rights may be exercised in all media and formats, whether now known or hereafter devised, and include the right to make such modifications as are technically necessary to exercise the rights in other media and formats. If the “Open Access” box has been checked in **Item 1** above, JoVE and the Author hereby grant to the public all such rights in the Article as provided in, but subject to all limitations and requirements set forth in, the CRC License.

ARTICLE AND VIDEO LICENSE AGREEMENT

4. Retention of Rights in Article. Notwithstanding the exclusive license granted to JoVE in **Section 3** above, the Author shall, with respect to the Article, retain the non-exclusive right to use all or part of the Article for the non-commercial purpose of giving lectures, presentations or teaching classes, and to post a copy of the Article on the Institution's website or the Author's personal website, in each case provided that a link to the Article on the JoVE website is provided and notice of JoVE's copyright in the Article is included. All non-copyright intellectual property rights in and to the Article, such as patent rights, shall remain with the Author.

5. Grant of Rights in Video – Standard Access. This **Section 5** applies if the "Standard Access" box has been checked in **Item 1** above or if no box has been checked in **Item 1** above. In consideration of JoVE agreeing to produce, display or otherwise assist with the Video, the Author hereby acknowledges and agrees that, Subject to **Section 7** below, JoVE is and shall be the sole and exclusive owner of all rights of any nature, including, without limitation, all copyrights, in and to the Video. To the extent that, by law, the Author is deemed, now or at any time in the future, to have any rights of any nature in or to the Video, the Author hereby disclaims all such rights and transfers all such rights to JoVE.

6. Grant of Rights in Video – Open Access. This **Section 6** applies only if the "Open Access" box has been checked in **Item 1** above. In consideration of JoVE agreeing to produce, display or otherwise assist with the Video, the Author hereby grants to JoVE, subject to **Section 7** below, the exclusive, royalty-free, perpetual (for the full term of copyright in the Article, including any extensions thereto) license (a) to publish, reproduce, distribute, display and store the Video in all forms, formats and media whether now known or hereafter developed (including without limitation in print, digital and electronic form) throughout the world, (b) to translate the Video into other languages, create adaptations, summaries or extracts of the Video or other Derivative Works or Collective Works based on all or any portion of the Video and exercise all of the rights set forth in (a) above in such translations, adaptations, summaries, extracts, Derivative Works or Collective Works and (c) to license others to do any or all of the above. The foregoing rights may be exercised in all media and formats, whether now known or hereafter devised, and include the right to make such modifications as are technically necessary to exercise the rights in other media and formats. For any Video to which this Section 6 is applicable, JoVE and the Author hereby grant to the public all such rights in the Video as provided in, but subject to all limitations and requirements set forth in, the CRC License.

7. Government Employees. If the Author is a United States government employee and the Article was prepared in the course of his or her duties as a United States government employee, as indicated in **Item 2** above, and any of the licenses or grants granted by the Author hereunder exceed the scope of the 17 U.S.C. 403, then the rights granted hereunder shall be limited to the maximum rights permitted under such

statute. In such case, all provisions contained herein that are not in conflict with such statute shall remain in full force and effect, and all provisions contained herein that do so conflict shall be deemed to be amended so as to provide to JoVE the maximum rights permissible within such statute.

8. Likeness, Privacy, Personality. The Author hereby grants JoVE the right to use the Author's name, voice, likeness, picture, photograph, image, biography and performance in any way, commercial or otherwise, in connection with the Materials and the sale, promotion and distribution thereof. The Author hereby waives any and all rights he or she may have, relating to his or her appearance in the Video or otherwise relating to the Materials, under all applicable privacy, likeness, personality or similar laws.

9. Author Warranties. The Author represents and warrants that the Article is original, that it has not been published, that the copyright interest is owned by the Author (or, if more than one author is listed at the beginning of this Agreement, by such authors collectively) and has not been assigned, licensed, or otherwise transferred to any other party. The Author represents and warrants that the author(s) listed at the top of this Agreement are the only authors of the Materials. If more than one author is listed at the top of this Agreement and if any such author has not entered into a separate Article and Video License Agreement with JoVE relating to the Materials, the Author represents and warrants that the Author has been authorized by each of the other such authors to execute this Agreement on his or her behalf and to bind him or her with respect to the terms of this Agreement as if each of them had been a party hereto as an Author. The Author warrants that the use, reproduction, distribution, public or private performance or display, and/or modification of all or any portion of the Materials does not and will not violate, infringe and/or misappropriate the patent, trademark, intellectual property or other rights of any third party. The Author represents and warrants that it has and will continue to comply with all government, institutional and other regulations, including, without limitation all institutional, laboratory, hospital, ethical, human and animal treatment, privacy, and all other rules, regulations, laws, procedures or guidelines, applicable to the Materials, and that all research involving human and animal subjects has been approved by the Author's relevant institutional review board.

10. JoVE Discretion. If the Author requests the assistance of JoVE in producing the Video in the Author's facility, the Author shall ensure that the presence of JoVE employees, agents or independent contractors is in accordance with the relevant regulations of the Author's institution. If more than one author is listed at the beginning of this Agreement, JoVE may, in its sole discretion, elect not take any action with respect to the Article until such time as it has received complete, executed Article and Video License Agreements from each such author. JoVE reserves the right, in its absolute and sole discretion and without giving any reason therefore, to accept or decline any work submitted to JoVE. JoVE and its employees, agents and independent contractors shall have

ARTICLE AND VIDEO LICENSE AGREEMENT

full, unfettered access to the facilities of the Author or of the Author's institution as necessary to make the Video, whether actually published or not. JoVE has sole discretion as to the method of making and publishing the Materials, including, without limitation, to all decisions regarding editing, lighting, filming, timing of publication, if any, length, quality, content and the like.

11. **Indemnification.** The Author agrees to indemnify JoVE and/or its successors and assigns from and against any and all claims, costs, and expenses, including attorney's fees, arising out of any breach of any warranty or other representations contained herein. The Author further agrees to indemnify and hold harmless JoVE from and against any and all claims, costs, and expenses, including attorney's fees, resulting from the breach by the Author of any representation or warranty contained herein or from allegations or instances of violation of intellectual property rights, damage to the Author's or the Author's institution's facilities, fraud, libel, defamation, research, equipment, experiments, property damage, personal injury, violations of institutional, laboratory, hospital, ethical, human and animal treatment, privacy or other rules, regulations, laws, procedures or guidelines, liabilities and other losses or damages related in any way to the submission of work to JoVE, making of videos by JoVE, or publication in JoVE or elsewhere by JoVE. The Author shall be responsible for, and shall hold JoVE harmless from, damages caused by lack of sterilization, lack of cleanliness or by contamination due to the making of a video by JoVE its employees, agents or independent contractors. All sterilization, cleanliness or decontamination procedures shall be solely the responsibility of the Author and shall be undertaken at the Author's


expense. All indemnifications provided herein shall include JoVE's attorney's fees and costs related to said losses or damages. Such indemnification and holding harmless shall include such losses or damages incurred by, or in connection with, acts or omissions of JoVE, its employees, agents or independent contractors.

12. **Fees.** To cover the cost incurred for publication, JoVE must receive payment before production and publication the Materials. Payment is due in 21 days of invoice. Should the Materials not be published due to an editorial or production decision, these funds will be returned to the Author. Withdrawal by the Author of any submitted Materials after final peer review approval will result in a US\$1,200 fee to cover pre-production expenses incurred by JoVE. If payment is not received by the completion of filming, production and publication of the Materials will be suspended until payment is received.

13. **Transfer, Governing Law.** This Agreement may be assigned by JoVE and shall inure to the benefits of any of JoVE's successors and assignees. This Agreement shall be governed and construed by the internal laws of the Commonwealth of Massachusetts without giving effect to any conflict of law provision thereunder. This Agreement may be executed in counterparts, each of which shall be deemed an original, but all of which together shall be deemed to be one and the same agreement. A signed copy of this Agreement delivered by facsimile, e-mail or other means of electronic transmission shall be deemed to have the same legal effect as delivery of an original signed copy of this Agreement.

A signed copy of this document must be sent with all new submissions. Only one Agreement required per submission.

CORRESPONDING AUTHOR:

Name:	Jong Min Yuk	
Department:	Department of Materials Science and Engineering	
Institution:	Korea Advanced Institute of Science and Technology	
Article Title:	Preparation of graphene liquid cells for next-generation battery material observation	
Signature:		Date: 6/26/2018

Please submit a signed and dated copy of this license by one of the following three methods:

- 1) Upload a scanned copy of the document as a pdf on the JoVE submission site;
- 2) Fax the document to +1.866.381.2236;
- 3) Mail the document to JoVE / Attn: JoVE Editorial / 1 Alewife Center #200 / Cambridge, MA 02139

For questions, please email submissions@jove.com or call +1.617.945.9051



Korea Advanced Institute of Science and Technology
291 Daehak-ro, Yuseong-gu Daejeon 34141 Korea | Tel: +82-42-350-3322 | Email: jongmin.yuk@kaist.ac.kr

September 05, 2018

To: Editor Prof. Xiaoyan Cao
Editor of *Journal of Visualized Experiments*
Re: **Manuscript ID: JOVE58676**

Dear Prof. Xiaoyan Cao,

We received the reviewer's comments on our manuscript entitled "**Preparation of graphene liquid cells for lithium ion battery material observation**" submitted to *Journal of Visualized Experiments*.

We would like to first thank the editor and reviewer for his/her prompt yet careful and thorough report. We greatly appreciate his/her comments and recommendations and we have made all efforts to address them properly in **blue** in provided response letter. The changes in the revised manuscript according to the reviewers' directions are clearly highlighted in **red**. We believe we have made the required revisions recommended by the reviewers and look forward to acceptance of the revised manuscript.

Sincerely Yours,



Jong Min Yuk, Assistant professor

Tel) 82-42-350-3322

Fax) 82-42-350-3310

Email) jongmin.yuk@kaist.ac.kr

W1-1 #3304

Dept. of Materials Science and Engineering

Korea Advance Institute of Science and Technology
(KAIST)

291 Daehak-ro, Yuseong-gu, Daejeon 34141, Republic
of Korea

<Response letter to the editor's comments>

Editor's remark: Your manuscript, JoVE58676R1 "Preparation of graphene liquid cells for lithium ion battery material observation," has been editorially reviewed and the following comments need to be addressed. Please track the changes to identify all of the manuscript edits. After revising the submission, please also upload a separate document that addresses each of the editorial comments individually with the revised manuscript:

(Response) We appreciate the editor's kind comments in the manuscript, which strengthen our manuscript. Especially, the combination of some of the steps improves the overall quality of the paper, for which we respect the most. For all the editorial comments individually, we have made the changes in the revised manuscript. For the comments that did not have any changes, they were in agreement what the reviewer had suggested (such as some of the comments regarding the combination of two sub-steps into one step).

1. After you have made all the recommended changes to your protocol (see specific comments below), please highlight 2.75 pages or less of the Protocol (including headings and spacing) that identifies the essential steps of the protocol for the video, i.e., the steps that should be visualized to tell the most cohesive story of the Protocol.

(Response) We appreciate the editor's kind comments, which will strengthen the manuscript.

2. Please include all relevant details that are required to perform the step in the highlighting. For example: If step 2.5 is highlighted for filming and the details of how to perform the step are given in steps 2.5.1 and 2.5.2, then the sub-steps where the details are provided must be highlighted.

(Response) We appreciate the editor's comments, which will strengthen the manuscript. As the editor commented, we also highlighted the sub-steps where the details are provided. For instance, we have additionally highlighted some parts of the section 2.2.8, where it gives more details into how the cell is assembled. We have highlighted both the steps and the sub-steps that add more detail to the experimental steps.

3. 1.2.9. Please specify which software.

(Response) We appreciate the editor's comments, which will strengthen the manuscript. As the editor commented, we revised our manuscript and added specific program name in Jove_Materials excel file.

(Revised manuscript, protocol 1.2.9)

1.2.9. Roll the roller (100 rpm) and initiate the electrospinning program software.

4. 1.2.10 How? Using a voltage bias?

(Response) We appreciate the editor's comments, which will strengthen the manuscript. As the editor commented, we need to indicate how we modulated the applied voltage. Based on this point, we have revised the manuscript.

(Revised manuscript, protocol 1.2.10)

1.2.10. Lastly, modulate the applied voltage by using a voltage bias (**Figure 1a**) between 10-25 kV to allow the electrojetting of the Taylor cones to operate the electrospinning process.

5. 1.3.2 I have combined shorter steps. Please check for accuracy here.

(Response) We appreciate the editor's comments, which will strengthen the manuscript. The currently combined steps are accurate.

6. 1.3.3 Please check the accuracy here as I rephrased the sentences. Please also note that I highlighted this step for filming because it shows the final product of this step and including it tells a complete story of fabrication of SnO₂ nanotubes.

(Response) We appreciate the editor's comments, which will strengthen the manuscript. As the editor commented, the rephrased sentence precisely describes what we had wanted to explain. Moreover, this tells a complete theory of fabrication of SnO₂ nanotubes.

7. 2.1 What slurry? Electrode slurry?

(Response) We appreciate the editor's comments, which will strengthen the manuscript. As the editor commented, it is important to indicate what kind of slurry it is. It is the electrode slurry and we added this in our manuscript.

(Revised manuscript, protocol 2.1)

The electrode slurry is composed of 10 wt% binder, 10 wt% Super P carbon, and 80 wt% of active materials (in this case, SnO₂ nanotubes).

8. 2.1 Carbon in what form, carbon black?

(Response) We appreciate the editor's comments, which will strengthen the manuscript. As the editor commented, it is important to indicate what carbon it is. The form of carbon is Super P carbon and we added this information in our manuscript.

(Revised manuscript, protocol 2.1)

The electrode slurry is composed of 10 wt% binder, 10 wt% Super P carbon, and 80 wt% of active materials (in this case, SnO₂ nanotubes).

9. 2.1.1 What glass substrate?

(Response) We appreciate the editor's comments, which will strengthen the manuscript. As the editor commented, it is important to indicate what glass substrate it is. It is the rectangular glass substrate with dimension of 25 cm x 15 cm x 0.5 cm. We have revised the manuscript:

(Revised manuscript, protocol 2.1.1)

2.1.1. Cut the copper (Cu) foil into 10 cm width × 30 cm length and fix it on a rectangular glass substrate (25cm x 15 cm x 0.5 cm) by using ethanol.

10. 2.1.5 Diameter?

(Response) We appreciate the editor's comments, which will strengthen the manuscript. 60 μm is not diameter, but thickness of the slurry. We specified this and revised our manuscript.

(Revised manuscript, protocol 2.1.5)

2.1.5. When the slurry is well prepared, place the slurry on the top side of the Cu foil on the glass substrate, and cast it evenly using a casting roller.

Note: Usually thickness of slurry is 60 μm but can be higher or lower).

11. 2.2.1 I have combined shorter steps. Please check for accuracy.

(Response) We appreciate the editor's comments, which will strengthen the manuscript. As the editor commented, the combination of shorter steps in 2.2.1 needs to be checked for accuracy. The currently

combined shorter steps are accurate.

12. 2.2.2 I rephrased this sentence. Please check whether the original meaning has been retained.

(Response) We appreciate the editor's comments, which will strengthen the manuscript. As the editor commented, rephrased sentence in 2.2.2 needs to be checked for retaining the original meaning. The rephrased sentence has retained the original meaning.

13. 2.2.9 At what conditions? Temperature?

(Response) We appreciate the editor's comments, which will strengthen the manuscript. As the editor commented, it is important to indicate what condition it is. We have indicated the condition, as shown below:

(Revised manuscript, protocol 2.2.9)

2.2.9. Measure the open circuit voltage (OCV) by a digital multimeter and age the battery cell **at room temperature** for 1-2 days.

14. 2.3.3 Please specify the specific current values applied.

(Response) We appreciate the editor's comments, which will strengthen the manuscript. As the editor commented, it is important to specify the specific current values. We have indicated the current values, as shown below:

(Revised manuscript, protocol 2.3.3)

2.3.3. Insert the electrochemical battery cells in the battery cell tester. Apply the current (corresponding to 0.05 A g⁻¹ for formation cycle and various current densities in the range of 0.1 A g⁻¹ to 10.0 A g⁻¹ for cycle tests and rate capabilities) for each battery cell using the battery cell tester program.

15. 3.1.1 This has been rephrased. Please check for accuracy.

(Response) We appreciate the editor's comments, which will strengthen the manuscript. The meaning of rephrased sentence is correct and we left this as it is.

16. 3.1.2 Do you mean Cu foil pieces, as 3.1.1 cuts the foil into pieces?

(Response) We appreciate the editor's comments, which will strengthen the manuscript. The Cu foil is 10 cm x 3 cm that is cut in 3.1.1. We rephrased this sentence in order not to make any confusion.

(Revised manuscript, protocol 3.1.2)

3.1.2. Rinse Cu foil from 3.1.1 with isopropyl alcohol (IPA) to remove dust or contaminants and treat it with 100 mL of 20 wt% phosphoric acid (H_3PO_4) for 20 min to remove native oxide on the surface in a glass Petri dish. Then place Cu foil in DI water for another 10 min to fully rinse remaining H_3PO_4 .

17. 3.1.2 Please specify the concentration and volume of H_3PO_4 used.

(Response) We appreciate the editor's comments, which will strengthen the manuscript. The concentration of H_3PO_4 is 20 weight% and volume is 100 mL. We added this information in our manuscript.

(Revised manuscript, protocol 3.1.3)

3.1.2. Rinse Cu foil from 3.1.1 with isopropyl alcohol (IPA) to remove dust or contaminants and treat it with 100 mL of 20 wt% phosphoric acid (H_3PO_4) for 20 min to remove native oxide on the surface in a glass Petri dish. Then place Cu foil in DI water for another 10 min to fully rinse remaining H_3PO_4 .

18. 3.1.5 Do you mean hold at 1000 °C for 40 min or elevate the temperature to 1000 °C in 40 min?

(Response) We appreciate the editor's comments, which will strengthen the manuscript. The temperature is elevated from room temperature (25 °C) to 1000 °C in 40 minutes. We specified this in our manuscript.

(Revised manuscript, protocol 3.1.5)

3.1.5. Elevate the temperature from room temperature (25 °C) to 1000 °C for 40 min with 10 sccm of H_2 gas flow. Maintain the temperature of chamber for another 40 min to anneal the Cu foil.

19. 3.2.1 Is etching performed in a specific instrument? Please specify.

(Response) We appreciate the editor's comments, which will strengthen the manuscript. The plasma etching is conducted with a specific plasma cleaner instrument (Femtoscience VITA). We added this information in our manuscript and Jove Materials excel file.

(Revised manuscript, protocol 3.2.1)

3.2.1. To remove graphene on the backside of Cu foil, conduct plasma etching using plasma cleaner by following settings: flow of Ar (100 sccm), time (60 s), power (30 W), and base pressure (5.0×10^{-2} Torr).

20. 3.2.2 Please specify in which step graphene is synthesized.

(Response) We appreciate the editor's comments, which will strengthen the manuscript. As-synthesized graphene is the one synthesized in protocol 3.1. We specified this in our manuscript.

(Revised manuscript, protocol 3.2.2)

3.2.2. Cut Cu foil with graphene which was synthesized in 3.1, by 3 mm x 3 mm with scissors. Place Cu foil pieces between two slide glasses and press to make them flat.

Note: 4 Cu foil pieces are placed together between two slide glasses.

21. 3.2.2 How many pieces are placed between two slide glasses.

(Response) We appreciate the editor's comments, which will strengthen the manuscript. Usually, 4 Cu foil pieces are placed between two slide glasses. This will be also included in movie, so readers will be able to understand this process clearly. We added this information in our manuscript.

(Revised manuscript, protocol 3.2.2)

3.2.2. Cut Cu foil with graphene which was synthesized in 3.1, by 3 mm x 3 mm with scissors. Place Cu foil pieces between two slide glasses and press to make them flat.

Note: 4 Cu foil pieces are placed together between two slide glasses.

22. 3.2.4 What is suctioned, IPA?

We appreciate the editor's comments, which will strengthen the manuscript. IPA is suctioned at this process because the only liquid exist here is IPA. We revised this step so that readers are not confused.

(Revised manuscript, protocol 3.2.4)

3.2.4. Suction IPA with a micropipet tip that is connected to a rotary pump. After suctioning, dry Au grid/Cu foil at 50 °C for 5 min.

23. 3.2.6 This is unclear. Do you mean contaminants from etchant?

We appreciate the editor's comments, which will strengthen the manuscript. This phrase originally means contaminants from etchant, as the editor pointed out. We revised our manuscript.

(Revised manuscript, protocol 3.2.6)

3.2.6. Scoop Au grids Pt loop and move it to a glass Petri dish filled with DI water at 50 °C, in order to fully remove remaining contaminants from etchant¹⁶.

24. 3.2.7 Please specify conditions. In an oven? At what temperature?

We appreciate the editor's comments, which will strengthen the manuscript. The Au grids with graphene are not dried at special condition. The drying condition is at room temperature and atmospheric pressure.

(Revised manuscript, protocol 3.2.7)

3.2.7. Scoop Au grids from DI water and dry them for 6 h at room temperature and atmospheric pressure.

25. 3.3.1 Please check for accuracy.

(Response) We appreciate the editor's kind comments, which will strengthen the manuscript. The revised sentence of the editor is accurate.

26. 3.3.4 Please check for accuracy.

(Response) We appreciate the editor's kind comments, which will strengthen the manuscript. As shown in Figure 2d, the other grid is held with a tweezer and placed on the top of the bottom one. We slightly changed this step with editor's revised one.

(Revised manuscript, protocol 3.2.7)

3.3.4. Hold another graphene transferred grid with a tweezer and place it on the top of the bottom grid.

Note: This procedure must be done quickly before electrolyte is dried (**Figure 2d**).

27. 3.3.4 Figure 3c does not show grid. Please reference the correct figure. Figure 2d?

(Response) We appreciate the editor's kind comments, which will strengthen the manuscript. As the editor pointed out, Figure 2d is correct. We revised our manuscript based on the editor's comment.

(Revised manuscript, protocol 3.2.7)

3.3.4. Hold another graphene transferred grid with a tweezer and place it on the top of the bottom grid.

Note: This procedure must be done quickly before electrolyte is dried (**Figure 2d**).

28. 4.2.1, 4.2.2 Please provide more specific details about how these steps are done.

(Response) We appreciate the editor's comments, which will strengthen the manuscript. As the editor pointed out, specific details are needed in these steps.

(Revised manuscript, protocol 4.2.1)

4.2.1. Find the region where SnO₂ nanotube is encapsulated with liquid electrolyte.

Note: To find out whether liquid exist around SnO₂ nanotube, irradiate electron beam for few seconds. If some movement of liquid or decomposition of electrolyte is observed, it is highly likely that the area is encapsulated with liquid.

(Revised manuscript, protocol 4.2.2)

4.2.2. Do alignment for TEM and set electron beam dosage to initiate the reaction by adjusting brightness knob.

Note: Suitable alignment for TEM includes user alignment such as Z height alignment, gun tilt/shift, beam tilt/shift, aperture alignment and stigmation alignment. These procedures are better done in other area (right next to the region found in 4.2.1) in order not to give any damage to SnO₂ nanotube and liquid electrolyte. The electron beam dose rate for initiating the lithiation is usually $\sim 10^3 \text{ e}^-/\text{\AA}^2 \cdot \text{s}$, but it may differ with every TEM instrument.

29. 4.2.2 Every TEM instrument or TEM measurement? Please specify.

(Response) We appreciate the editor's comments, which will strengthen the manuscript. As the editor pointed out, the protocol should be specified. The original meaning of this phrase is every TEM instrument.

(Revised manuscript, protocol 4.2.2)

4.2.2. Do alignment for TEM and set electron beam dosage to initiate the reaction by adjusting brightness knob.

Note: Suitable alignment for TEM includes user alignment such as Z height alignment, gun tilt/shift, beam tilt/shift, aperture alignment and stigmation alignment. These procedures are better done in other area (right next to the region found in 4.2.1) in order not to give any damage to SnO₂ nanotube and liquid electrolyte. The electron beam dose rate for initiating the lithiation is usually $\sim 10^3 \text{ e}^-/\text{\AA}^2 \cdot \text{s}$, but it may differ with every TEM instrument.

30. Please define SAED.

(Response) We appreciate the editor's comments, which will strengthen the manuscript. As the editor pointed out, SAED must be defined. We revised our manuscript.

(Revised manuscript, page 9, line 6)

TEM image and corresponding selected area electron diffraction (SAED) pattern of transferred graphene are shown in Figures 5c and 5d.

31. Please describe Movie S1 in the figure legend.

(Response) We appreciate the editor's comments, which will strengthen the manuscript. As the editor pointed out, SAED must be defined. We revised the figure legend part in our manuscript.

(Revised manuscript, page 9, line 40-41)

Movie S1. Movie showing lithiation of GLC. The surface of SnO₂ nanotube is visualized inside liquid electrolyte.

31. Figure 5. Please add one sentence to describe this figure in general.

(Response) We appreciate the editor's comments, which will strengthen the manuscript. As the editor pointed out, one sentence to describe Figure 5 is needed. We added this information in our manuscript.

(Revised manuscript, page 9, line 34)

Figure 5. Characterization of synthesized graphene. (a) Raman spectrum, (b) SEM image, (c) TEM image, and (d) SAED pattern of the monolayer graphene.

32. Figure 6. Please spell out SEI.

(Response) We appreciate the editor's kind comments, which will strengthen the manuscript. As the editor pointed out, SEI must be defined. We defined solid electrolyte interphase (SEI) in revised our manuscript.

(Revised manuscript, page 8, line 38)

The irreversible formation of Li_2O during conversion reaction of SnO_2 along with unstable formation of solid electrolyte interphase (SEI) layer resulted in poor reversible reaction with Li in the formation cycle.