

Journal of Visualized Experiments

Flow Cytometric Detection of Newly-Formed Breast Cancer Stem Cell-like Cells After Apoptosis Reversal --Manuscript Draft--

Article Type:	Invited Methods Article - JoVE Produced Video
Manuscript Number:	JoVE58642R2
Full Title:	Flow Cytometric Detection of Newly-Formed Breast Cancer Stem Cell-like Cells After Apoptosis Reversal
Keywords:	cancer stem cells; breast cancer; apoptosis; apoptosis reversal; flow cytometry; fluorescence-activated cell sorting
Corresponding Author:	Faye TSANG HONG KONG
Corresponding Author's Institution:	
Corresponding Author E-Mail:	fayetsang@cuhk.edu.hk
Order of Authors:	Yiyue Xu Chun So Hon-Ming Lam Ming-Chiu Fung Suk-Ying TSANG
Additional Information:	
Question	Response
Please indicate whether this article will be Standard Access or Open Access.	Standard Access (US\$2,400)
Please indicate the city, state/province, and country where this article will be filmed . Please do not use abbreviations.	Hong Kong SAR, China

Suk Ying Tsang
School of Life Sciences
The Chinese University of Hong Kong
Shatin, N.T.
Hong Kong
Voice: (852) 3943-1020
Fax: (852) 2603-7732
Email: fayetsang@cuhk.edu.hk

8th October, 2018

Editors
Journal of Visualized Experiments (JoVE)

Dear Editors,

Please find enclosed our 2nd revised manuscript entitled "Flow Cytometric Detection of Newly-Formed Breast Cancer Stem Cell-like Cells After Apoptosis Reversal".

We thank the editor for the useful comments. In this revised manuscript, we have addressed the comments by the editor. A point-to-point response is attached in our "Responses to the editor". We hope that the manuscript has now fulfilled the requirement for publication in your journal.

We would like to thank you in advance for considering our manuscript for publication in the *JoVE*.

Yours sincerely,
Suk Ying Tsang, PhD
for all the authors

TITLE:

Flow Cytometric Detection of Newly-Formed Breast Cancer Stem Cell-like Cells After Apoptosis Reversal

AUTHORS:

Yiyue Xu^{1,2}, Chun So¹, Hon-Ming Lam^{1,2,*}, Ming-Chiu Fung^{1,2,*}, Suk-Ying Tsang^{1,2,3,4,*}

¹School of Life Sciences, The Chinese University of Hong Kong, Hong Kong SAR

²State Key Laboratory of Agrobiotechnology, The Chinese University of Hong Kong, Hong Kong SAR

³Key Laboratory for Regenerative Medicine, Ministry of Education, The Chinese University of Hong Kong, Hong Kong SAR

⁴Centre for Novel Biomaterials, The Chinese University of Hong Kong, Hong Kong SAR

CORRESPONDING AUTHOR:

Suk-Ying Tsang (fayetsang@cuhk.edu.hk)

Ming-Chiu Fung (fl9923mc@gmail.com)

Hon-Ming Lam (honming@cuhk.edu.hk)

Email address of Co-Authors:

Yiyue Xu: yiyuex@gmail.com

Chun So: kownman@yahoo.com.hk

KEYWORDS:

cancer stem cells, breast cancer, apoptosis, apoptosis reversal, flow cytometry, fluorescence-activated cell sorting

SUMMARY:

Here, we present a protocol to isolate apoptotic breast cancer cells by fluorescence-activated cell sorting and further detect the transition of breast non-stem cancer cells to breast cancer stem cell-like cells after apoptosis reversal by flow cytometry.

ABSTRACT:

Cancer recurrence has long been studied by oncologists while the underlying mechanisms remain unclear. Recently, we and others found that a phenomenon named apoptosis reversal leads to increased tumorigenicity in various cell models under different stimuli. Previous studies have been focused on tracking this process *in vitro* and *in vivo*; however, the isolation of real reversed cells has yet to be achieved, which limits our understanding on the consequences of apoptosis reversal. Here, we take advantage of a Caspase-3/7 Green Detection dye to label cells with activated caspases after apoptotic induction. Cells with positive signals are further sorted out by fluorescence-activated cell sorting (FACS) for recovery. Morphological examination under confocal microscopy helps confirm the apoptotic status before FACS. An increase in tumorigenicity can often be attributed to the elevation in the percentage of cancer stem cell

(CSC)-like cells. Also, given the heterogeneity of breast cancer, identifying the origin of these CSC-like cells would be critical to cancer treatment. Thus, we prepare breast non-stem cancer cells before triggering apoptosis, isolating caspase-activated cells and performing the apoptosis reversal procedure. Flow cytometry analysis reveals that breast CSC-like cells re-appear in the reversed group, indicating breast CSC-like cells are transited from breast non-stem cancer cells during apoptosis reversal. In summary, this protocol includes the isolation of apoptotic breast cancer cells and detection of changes in CSC percentage in reversed cells by flow cytometry.

INTRODUCTION:

Cancer has been a leading cause of death, causing heavy burden to countries worldwide¹. Breast cancer ranks high both in terms of incidence and mortality in female patients among all types of cancer¹. Due to the cancer heterogeneity, a combination of drugs is usually used in chemotherapy to achieve cancer cell death²⁻⁴. However, since common chemotherapeutic drugs often target DNA^{5,6}, protein synthesis^{7,8} and/or microtubule dynamics⁹, rapidly growing cells are affected the most while quiescent cells such as cancer stem cell (CSC)s are usually less affected¹⁰. CSCs are, therefore, more likely to survive after the treatment, which later leads to drug resistance and cancer relapse^{10,11}. Hence, elimination of CSCs has become an important topic for cancer treatment and study of the origin of CSCs is necessary.

More studies on the phenomenon of apoptosis reversal have been performed in the recent decade¹²⁻¹⁹. Before the emergence of this concept, it has been widely accepted that cells will irreversibly undergo apoptosis after caspase activation. Caspases are a family of protein enzymes that play key roles in the initiation and execution stages of apoptosis, including the formation of the apoptotic complex and the cleavage of downstream substrates²⁰. Activation of executioner caspases such as caspase 3 or caspase 7 has been considered as the “point of no return” for apoptosis²¹. However, researchers recently observed that apoptosis reversal occurs both *in vitro* and *in vivo*, during which cells can recover from apoptosis even after caspase activation¹²⁻¹⁹. Moreover, aggressive features such as higher resistance to the original apoptotic inducer and higher invasiveness are detected in the reversed cancer cells¹⁵. Hence, it was proposed that the percentage of CSC-like cells would be higher in the reversed population when compared to the untreated cells, eventually contributing to the more malignant features after apoptosis reversal¹⁸.

Previously, many efforts have been made to track the apoptosis reversal *in vitro* and more importantly, *in vivo*, which greatly help in confirming the universality of this process^{16,17,19}. However, a systemic study on the consequences of reversed cells is lacking due to the unsatisfactory isolation of cells that have genuinely undergone apoptosis reversal. There is a need to acquire pure apoptotic cells and recover them for further study. Thus, we use the traditionally well-accepted marker of executioner caspase activation as the marker of the “point of no return”²¹ for apoptosis and utilize fluorescence-activated cell sorting (FACS) to discriminate caspase-activated cells stained with Caspase-3/7 Green Detection dye. The dye is covalently linked to a short amino acid sequence, DEVD, which can be recognized and cleaved by active caspases 3/7. The cleavage helps release the dye, which will translocate from the cytosol to the

nucleus where it binds to DNA and emits strong fluorescence. This procedure avoids using a bulk cell population in which some cells may not have undergone apoptosis.

CSCs or tumor-initiating cells have been identified in many solid tumors using a single or a combination of several surface marker(s) and very few numbers of these cells are sufficient to form tumors in immunodeficient mice²²⁻²⁷. A combination of CD44 and CD24 has been commonly used in breast CSC studies, and CD44⁺/CD24⁻ cells have been defined as the breast CSCs²⁶⁻³⁰. Recently, we have performed a series of experiments to confirm the proposed relationship between apoptosis reversal and CSCs and demonstrate that reversed breast cancer cells gained increased tumor-forming ability *in vitro* and *in vivo* with an elevated percentage of cells with CSC markers¹⁸. Although we could not exclude the possibility that breast CSCs survive better and thus get enriched after apoptosis reversal, importantly, when we isolate non-stem cancer cells and subject them to apoptosis reversal, CSC will emerge in the originally non-stem cancer cell population, suggesting that non-stem cancer cells can contribute to the increase in the percentage of CSCs during apoptosis reversal.

This article aims to demonstrate the transition from breast non-stem cancer cells to breast CSC-like cells after apoptosis reversal and to detect this transition by flow cytometry. The breast non-stem cancer cells are initially prepared by isolating CD44⁻/CD24⁺ breast cancer cells by FACS. Then, apoptosis is induced and confirmed by morphological changes under the microscope. Afterwards, apoptotic cells positively-labelled by Caspase 3/7 Green Detection dye are isolated by FACS and further cultured in the absence of apoptotic inducers for apoptosis reversal. The reversed cells are then stained with CSC markers after 7 days of recovery for flow cytometric analysis. Cells with CD44⁺/CD24⁻ markers re-appear in the reversed population, suggesting that transition from non-stem cancer cells to CSC-like cells has occurred during apoptosis reversal.

Apoptosis reversal has been observed in multiple cancer cell lines as well as normal primary cells treated with different apoptotic stimuli *in vitro*^{12,13}. This process has also been traced in *Drosophila* model *in vivo*^{16,17,19}. Much information regarding the underlying mechanism of cancer relapse in different cancer disease models and the origin of CSCs can be obtained through the use of the technique as described in this manuscript.

PROTOCOL:

1. Preparation of Breast Non-Stem Cancer Cells

1.1) Culture MCF-7 and MDA-MB-231 cells in 10 mL of phenol red-free Roswell Park Memorial Institute (RPMI) 1640 medium supplemented with 10% heat-inactivated fetal bovine serum (FBS) in a 100 mm dish. Culture T47D in 10 mL of phenol red-free RPMI 1640 medium supplemented with 2 mM L-glutamine, 10% heat-inactivated FBS, and 1% v/v Penicillin-Streptomycin (PS) in a 100 mm dish. Culture cells at 37 °C in a 5% CO₂/95% air cell culture incubator.

NOTE: Phenol-red affects fluorescence-based detection but also has a potential influence on the

growth of breast cancer cells due to its estrogen-like effects³¹. For example, phenol red could stimulate progesterone receptor and growth of MCF-7 cells³¹. It could also stimulate the growth of T47D cells³¹.

1.2) Wash cells with 2 mL of phosphate buffered saline (PBS) twice. Add 2 mL of 0.05% trypsin-EDTA to MCF-7 and MDA-MB-231 or 2 mL of 0.25% trypsin-EDTA to T47D cells.

NOTE: The concentration of trypsin-EDTA needed for separation of cells among different breast cancer cell types vary while an inappropriate concentration may affect the expression pattern of some cell surface markers such as CD44 and CD24³².

1.3) Culture the dishes for 5 min at 37 °C under an atmosphere of 5% CO₂/95% air. Frequently check the detachment of cells under the microscope to prevent cells from over-digestion by trypsin-EDTA.

1.4) When over 90% cells detach, add 5 mL of completed RPMI medium to the dish and pipette it over the cell layer surface several times.

1.5) Transfer the cells to a 15 mL conical tube and centrifuge at 300 x g and 4 °C for 5 min.

NOTE: Usually, around 6 x 10⁶ cells can be obtained from a 100 mm dish when the confluency reaches 70%.

1.6) Discard the supernatant and resuspend the pellets at 10⁶ cells/100 µL of FACS buffer (PBS containing 0.5% BSA and 0.1% sodium azide) in a 1.5 mL microcentrifuge tube.

1.7) Divide the cells into several tubes. For MCF-7 cells, divide the cells into 4 tubes: two for isotype controls, one for CD24 single staining as CD24 positive control and one for dual staining.

1.8) For T47D cells, divide the cells into 3 tubes: two for isotype controls and one for dual staining.

1.9) For MDA-MB-231 cells, divide the cells into 4 tubes: two for isotype controls, one for CD44 single staining as CD44 positive control and one for dual staining.

1.10) Centrifuge the tubes again at 300 x g and 4 °C for 5 min. Discard the supernatant, and then add Fc block diluted 1:50 in FACS buffer.

1.11) Incubate the samples on ice for 20 min in the dark before centrifugation at 300 x g and 4 °C for 5 min. Discard the supernatant.

1.12) Add fluorochrome-conjugated monoclonal antibodies against human CD44 (PerCP-Cy5.5) and CD24 (PE) at 1:40 and 1:10 dilutions (in FACS buffer) in the dual staining groups. For positive controls, add CD44 (PerCP-Cy5.5) to MDA-MB-231 and add CD24 (PE) to MCF-7 cells at the same

concentration, respectively.

NOTE: The combination of CD44 and C24 has been commonly used in breast CSC study²⁶⁻³⁰.

1.13) For the isotype control groups, add PerCP-Cy5.5 Mouse IgG2b, κ at a 1:40 dilution as the isotype control for CD44 and PE Mouse IgG2a, κ at a 1:10 dilution as the isotype control for CD24 at 10^6 cells/100 μ L.

NOTE: Isotype controls for the antibodies of interest are recommended as negative controls³³.

1.14) Incubate the samples (from steps 1.12 and 1.13) at 4 °C in the dark for 30 min. Centrifuge at 300 x g and 4 °C for 5 min. Discard the supernatant.

1.15) Wash the pellet twice with 500 μ L of PBS and centrifuge at 300 x g and 4 °C for 5 min.

1.16) Resuspend the pellet in 0.5 mL of PBS and filter through a 40 μ m nylon mesh before running on a fluorescence-activated cell sorter.

1.17) For gating and compensation purposes, stain MCF-7 cells with PE-conjugated anti-CD24 antibodies and stain MDA-MB-231 cells with PerCP-Cy5.5-conjugated anti-CD44 antibodies as positive controls. Use cells stained with isotype controls as negative controls (**Figure 1**).

1.18) Collect cells with CD44⁺/CD24⁺ markers in round-bottom polystyrene 12 × 75 mm tubes containing 1 mL of collection medium (phenol red-free RPMI 1640 medium supplemented with 20% heat-inactivated FBS and 2% v/v PS). Centrifuge the tubes at 300 x g and RT for 5 min and discard the supernatant.

NOTE: CSC-like cells in breast cancer cells are defined as CD44⁺/CD24⁻ cells²⁶⁻³⁰, and breast non-stem cancer cells are defined as CD44⁻/CD24⁺ cells¹⁸ (**Figure 1**).

1.19) Plate the sorted breast non-stem cancer cells in the culture dish containing fresh collection medium for further culture at 37 °C in 5% CO₂ cell culture incubator.

2. Apoptotic Induction and Detection

2.1) Prepare 1 mM staurosporine^{12,34} in DMSO. For the treated MCF-7 group, add 25 μ L of 1 mM staurosporine to the completed medium of MCF-7 cells to make up to 10 mL of final volume (2.5 μ M staurosporine) in a 15 mL conical tube. Pipette to mix the content evenly.

2.2) Remove the culture medium from the cells, wash the cells with 2 mL of PBS once. Then add the 10 mL of medium with 2.5 μ M staurosporine to MCF-7 cells for 6 h to induce apoptosis when cell density reaches 70% confluency.

2.3) Prepare 1 mM paclitaxel^{35,36} in DMSO. For the treated T47D group, add 12.5 µL of 1 mM paclitaxel to the completed medium of T47D cells to make up to a final volume of 10 mL (5 µM paclitaxel) in a 15 mL conical tube. Pipette to mix the content evenly.

2.4) Remove the culture medium from the cells, and wash the cells with 2 mL of PBS once. Then add the 10 mL of medium with 5 µM paclitaxel to the T47D cells for 10 h to induce apoptosis when cell density reaches 70% confluency.

NOTE: The induction time and the concentration of the inducers that induce apoptosis should be optimized whenever a new cell line is used for the first time.

2.5) For the solvent-treated MCF-7 group, add 25 µL of sterile dimethyl sulfoxide (DMSO) to the completed medium of MCF-7 cells to make up to a final volume of 10 mL (*i.e.*, 0.25% v/v DMSO) in a 15 mL conical tube. Pipette to mix the content evenly.

2.6) Remove the culture medium from the solvent treated MCF-7 cells, wash with 2 mL of PBS once. Then add the 10 mL of medium with 0.25% v/v DMSO for 6 h as the solvent control for STS.

2.7) For the solvent-treated T47D group, add 5 µL of sterile DMSO to the completed medium of T47D cells to make up to 10 mL final volume (*i.e.*, 0.05% v/v DMSO) in a 15 mL conical tube. Pipette to mix the content evenly.

2.8) Remove the culture medium from the solvent treated T47D cells, wash with 2 mL of PBS once. Then, add the 10 mL of medium with 0.05% v/v DMSO for 10 h as the solvent control for paclitaxel.

2.9) To observe the morphological changes of treated cells, stain cells with 50 nM Mitotracker Red CMXRos and 250 ng/mL Hoechst 33342, and incubate for another 20 min at 37 °C under an atmosphere of 5% CO₂/95% air. Observe the typical apoptotic cell morphology under a 60X confocal laser scanning microscope (**Figure 2**).

NOTE: Typical apoptosis morphology includes cell shrinkage, membrane blebbing, mitochondria fragmentation and nuclear condensation but with intact cellular membrane^{12-15, 18, 37}.

3. Isolation of Apoptotic Cells and Apoptosis Reversal Procedure

3.1) Stain both the apoptotic inducer- and solvent-treated MCF-7 or T47D cells with 3 µM Caspase-3/7 Green Detection dye at the cell concentration of 10⁶/mL in the dark for 30 min at 37 °C under an atmosphere of 5% CO₂/95% air.

3.2) Filter the cells through a 40 µm nylon mesh before running on the sorter for sorting.

3.3) For gating purposes, first gate the major population (R1) and exclude the debris by plotting the graph in dots with forward scatter and side scatter (**Figure 3**).

3.4) Use the untreated cells without adding the Caspase-3/7 Green Detection dye as a negative control to gate the negative region (R2) (**Figure 3A**).

3.5) Use cells treated with staurosporine^{12,18,34} for 24 h and stained with the dye as a positive control to gate the positive region (R3) (**Figure 3B**).

3.6) Collect positive cells (R3) from the inducer-treated groups in round-bottom polystyrene 12 × 75 mm tubes containing 1 mL of collection medium (same as the collection medium in step 1.18) (**Figures 3C-3D**). Centrifuge the tubes at 300 x g and RT for 5 min and discard the supernatant.

3.7) Collect negative cells (R2) from solvent-treated groups in round-bottom polystyrene 12 × 75 mm tubes with 1 mL of collection medium as in step 3.6 (**Figures 3E-3F**).

NOTE: A small portion of cells (such as 10,000 cells) can be collected and re-run on the sorter to check the pattern of active caspases marker. If over 90% of sorted solvent-treated cells are shown in the caspase-negative region or over 90% of sorted inducer-treated cells are shown in the caspase-positive region, these collected cells are believed to be relatively pure (**Figures 3C-3F**). Otherwise, the sorting region and/or the sorter should be reset.

3.8) Resuspend the sorted cells in fresh collection medium and seed them in 12-well tissue culture plates and culture at 37 °C under an atmosphere of 5% CO₂/95% air for 7 days for apoptosis reversal.

4. Confirmation of Apoptosis in Caspase-Activated Cells

4.1) Mix 10 mM HEPES, 140 mM NaCl, and 2.5 mM CaCl₂ to prepare annexin-binding buffer (pH 7.4). Store the buffer at 4 °C and avoid the buffer to expose to light.

4.2) Prepare a 100 µg/mL working solution of propidium iodide (PI) by diluting 5 µL of the 1 mg/mL PI stock solution in 45 µL of annexin-binding buffer. Store the solution at 4 °C and avoid the solution to expose to light.

NOTE: PI is a potential mutagen and should be handled with care.

4.3) Prepare the inducer-treated cells as in steps 2.1 to 2.5.

4.4) Collect the inducer-treated MCF-7 or T47D cells by pipetting the medium over the cell layer 3-5x to detach the cells. Transfer the cells to a 15 mL conical tube.

4.5) Centrifuge at 300 x g and RT for 5 min. Discard the supernatant.

4.6) Resuspend the cells with completed medium at the cell concentration of 10^6 /mL in a 1.5-mL microcentrifuge tube and stain cells with 3 μ M Caspase 3/7 Green Detection dye in the dark for 30 min at 37 °C.

4.7) Centrifuge at 300 x g and RT for 5 min. Discard the supernatants.

4.8) Wash the cells with 1 mL of ice-cold PBS and centrifuge at 300 x g and 4 °C for 5 min. Discard the supernatants.

4.9) Resuspend the cells in 100 μ L of annexin-binding buffer with the add 5 μ L of the annexin V conjugate and 1 μ L of 100 μ g/mL PI working solution to each 100 μ L of cell suspension and incubate the cells for 15 min at room temperature.

NOTE: Annexin V and PI are commonly used together to label apoptotic cells in flow cytometry³⁸⁻⁴⁰.

4.10) Add 400 μ L of annexin-binding buffer, mix gently. Keep the samples on ice before running on a flow cytometer.

5. Measurement of Breast CSC-Like Cells by Flow Cytometry

5.1) Harvest the reversed MCF-7 in both inducer- or solvent-treated groups with 0.05% trypsin-EDTA. Harvest T47D cells in both inducer- or solvent-treated groups or with 0.25% trypsin-EDTA as in steps 1.2 to 1.5.

5.2) Stain the cells with fluorochrome-conjugated monoclonal antibodies against human CD44 (PerCP-Cy5.5) and CD24 (PE) as in step 1.12. Meanwhile, prepare the isotype controls as in step 1.13.

5.3) Run the cells on a flow cytometer and detect the percentage of cells with CD44⁺/CD24⁻ markers.

REPRESENTATIVE RESULTS:

In order to observe the transition from breast non-stem cancer cells to breast CSC-like cells, a first sorting of CD44⁻/CD24⁺ breast cancer cells were needed. For the MCF-7 cell line, which has around 0.15% cells with CSC markers in the original population (**Figure 1**), this step helped exclude the possibility of CSC enrichment during apoptosis reversal. On the contrary, if there were no cells with CSC markers in the original population, such as for T47D cells (**Figure 1**), this sorting procedure could be omitted. Indeed, gating affected the definition of the positive and negative of each marker, which would eventually influence the percentage of CSC determined. Therefore, appropriate controls including isotype controls for antibodies of interest, single

stained controls for each marker should be carefully chosen and prepared for gate adjustment (Figure 1).

With breast non-stem cancer cells, the apoptosis reversal model could thereafter be established. Typical morphological changes could be observed after adding apoptotic inducers and cells should recover from apoptosis with similar morphology after drug withdrawal (Figure 2). Caspase-3/7 recognizes the amino acid sequence DEVD in the Caspase-3/7 Green Detection dye and the active forms of caspase-3/7 are able to cleave this site⁴¹. Originally, the fluorescence of the Caspase-3/7 Green Detection dye in cytosol is weak while if the dye is cleaved and translocated to the nucleus, the fluorescence signal would be amplified after its binding to DNA in the nucleus. This obvious difference could be distinguished by flow cytometry. Hence, those caspase-activated cells could be labelled and sorted out based on their higher fluorescence intensity comparing to those without caspase activation (Figures 3A - 3D). During the apoptotic induction process, an appropriate solvent control must be included: solvent-treated cells without caspase activation were collected (Figures 3E and 3F) to exclude the possibility that the FACS procedure or the solvent itself was the cause for transition, if any.

In order to show that those FACS-sorted caspase-activated cells were indeed apoptotic, we co-stained these cells with Annexin V and PI. One of the early-stage changes in apoptotic cells is the translocation of phosphatidylserine from the inner side of plasma membrane to the external surface of the cell^{13,38-40}; this externalization of phosphatidylserine could be detected by Annexin V. While this change is not unique to apoptosis, PI can be used for distinguishing apoptosis from necrosis based on the integrity of the cell membrane. Thus, cells with Annexin V binding but without PI staining are regarded as apoptotic cells. Caspase-activated cells in the apoptotic inducer treatment groups were found to be Annexin V positive and PI negative, suggesting that they were apoptotic cells (Figure 4).

After the second sorting based on caspase activation in apoptotic cells, these apoptotic cells were collected and subsequently cultured for recovery. The reversed cells that were alive were able to attach the culture container bottom and continue to proliferate. After 7 days, staining of CD44 and CD24 was performed in the reversed cells while controls were prepared at the same time as before. Compared with the solvent-treated groups (Figure 1), flow cytometric analysis showed that there were events (cells) appearing in the CD44⁺/CD24⁻ quadrant in the reversed breast non-stem cancer cell population (Figure 1). Since we had already excluded cells with CD44⁺/CD24⁻ in advance of apoptosis induction and only CD44⁻/CD24⁺ breast non-stem cancer cells were chosen, these CD44⁺/CD24⁻ CSC-like cells could only be transited from breast non-stem cancer cells during apoptosis reversal.

FIGURE LEGENDS:

Figure 1: Representative breast CSC marker staining on breast cancer cells in flow cytometry. MCF-7, MDA-MB-231 and T47D were stained with fluorochrome-conjugated monoclonal antibodies against human CD44 (PerCP-Cy5.5) and CD24 (PE). Cells were first gated by forward

scatter (FSC) and side scatter (SSC) (P1) to exclude debris. Isotype controls of CD24 and CD44 were used as negative controls for CD24 and CD44 respectively. MCF-7 cells stained with CD24 was used as positive control for CD24 and MDA-MB-231 cells stained with CD44 was used as positive control for CD44. Non-stem MCF-7 breast cancer cells (P2) were sorted. These sorted cells and T47D cells were subjected to apoptosis reversal procedure. CSC-like (CD44⁺CD24⁻) cells appeared after apoptosis reversal.

Figure 2: Morphological changes of breast cancer cells under apoptotic stimulus induction.

Breast cancer cells showed typical apoptotic morphological changes including cell shrinkage, membrane blebbing, mitochondria fragmentation (yellow arrows in the monochrome figures) and nuclear condensation. Nuclei (in blue): nuclei of cells stained with Hoechst 33342 were shown in blue color. Mitochondria (in pink): mitochondria of cells stained with Mitotracker Red CMXRos were shown in pink color. Merged: figures merged in dual colors showing both mitochondria and nuclei. Mitochondria (in gray): mitochondria of cells stained with Mitotracker Red CMXRos were shown in monochrome. Differential Interference Contrast (DIC): whole cells. Upper: MCF-7 cells were treated with staurosporine (STS) for 6 h then reversed for 24 h. Lower: T47D cells were treated with paclitaxel for 10 h with reversal for 24 h. Scale bars: 20 μ m.

Figure 3: Caspase activation analysis by sorter. A: Unstained MCF-7 cells without staurosporine (STS) treatment were used as negative control (R2). **B:** MCF-7 cells treated with staurosporine (STS) for 24 h. Cells in R3 region were regarded as the caspase-activated cells. **C:** MCF-7 cells treated with staurosporine (STS) for 6 h. Cells in R3 region were FACS-sorted. **D:** FACS-sorted caspase-activated MCF-7 cells after staurosporine (STS) treatment for 6 hours were re-run. **E:** DMSO-treated MCF-7 cells. **F:** FACS-sorted cells without caspase activation after DMSO treatment for 6 hours were re-run.

Figure 4: Annexin V and PI staining of caspase-activated cells in flow cytometry.

MCF-7 and T47D cells were firstly gated by forward scatter (FSC) and side scatter (SSC) (P1) to exclude debris. Cells that were untreated with apoptotic inducers and without any staining were used as negative controls. For cells treated with apoptotic inducers, caspase-activated cells [*i.e.*, Caspase-3/7 Green positive cells] were selected (P3) to show the fluorescence intensity of Annexin V and PI staining. All Caspase-3/7 Green positive cells were Annexin V positive and PI negative, suggesting that they were apoptotic.

DISCUSSION:

This protocol describes a direct and clear way for detecting the transition of breast non-stem cancer cells into breast CSC-like cells as a result of apoptosis reversal. Confirmation of the CSC properties of these reversed cells could be assisted by using *in vitro* mammosphere formation assay and *in vivo* xenograft transplantation in immunodeficient mice^{18,24,26,27,42-45}. Here, we use two breast cancer cell lines, but this protocol can be further applied in other breast cancer cell lines. Since this phenomenon is apparent in the breast cancer cell line in which fewer number of CD44⁺/CD24⁻ cells exist originally, it is suggested not to choose cell lines such as MDA-MB-231 in which there are more than 90% of CD44⁺ cells.

Since gating is important in flow analysis, proper and sufficient controls should be prepared in advance. For sorting, the purity should also be determined before the actual collection of cells. For example, to know the purity of the first sorting, a small portion of cells (such as 10,000 cells) can be collected and re-run on the sorter to check the pattern of CSC markers. If over 90% of these sorted cells are CD44⁻/CD24⁺ and are not shown in the CD44⁺/CD24⁻ region, the collected cells are believed to be relatively pure (**Figure 1**). If cells appear in the CD44⁺/CD24⁻ region, the sorting region and/or the sorter should be reset. Sorting should be conducted as sterile as possible either by using a sorter inside culture hood or adding antibiotics in the collection and culture medium for sorted cells.

Cancer cell types other than breast cancer can also be chosen and induced with various apoptotic stimuli to establish the apoptosis reversal model. While caspase activation could be detected as early as 2 h, the sorting time should be carefully selected. Since cells in the population are not synchronized, at one specific time point, each cell may have reached different stages of apoptosis. Meanwhile, cells keep going on to an apoptotic death after caspase activation. Therefore, if the inducers are removed only when all the cells reach caspase activation, some cells may have already reached the stage of DNA fragmentation, making them unable to recover even after inducer removal. It is not suggested to induce apoptosis for too long time to achieve a higher percentage of caspase-activated cells but with the cost of leaving a large number of cells dying after collection. Besides, the incubation time and the dye concentration that labels caspase-activated cells should be optimized whenever a new cell line is used for the first time.

Another concern as of successfully inducing apoptosis reversal in the apoptotic cells is the low recovery rate of the cells (usually less than 10%). The cells have gone through apoptosis plus the sorting procedure; therefore, they require very gentle handling during centrifugation and transfer at the collection and resuspension steps. Also, the choice of plate or dish used for subsequent culture should not be dependent on the number of cells collected but on the expected number of recoveries. Otherwise, cells could be allocated too sparsely to reverse and re-grow. Given that non-stem cancer cells grow at a higher speed and may dominate in the re-constituted cell population⁴⁶, the detection time should not be too far away from the first recovery day.

This method first isolates breast non-stem cancer cell then applies them for apoptotic induction where a second sorting is done based on caspase activation before cells get recovered. The re-appearance of breast CSC-like cells in the reversed population is detected by flow cytometry. Since this *in vitro* apoptosis reversal procedure isolates pure apoptotic cancer cells, a number of experiments now can be conducted to understand the consequences of these real reversed cells. Apart from breast cancer cells, other solid tumor types as well as hematologic malignancy that are with known CSC markers can be studied and various apoptotic stimulus can be used. Hence, this method is extendable and applicable to a boarder scope of cancer investigation.

ACKNOWLEDGMENTS:

This work was supported by the Innovative Technology Fund of Innovation Technology Commission: Funding Support from the State Key Laboratory of Agrobiotechnology (CUHK), the Lo Kwee-Seong Biomedical Research Fund and the Lee Hysan Foundation. Y.X. was supported by the postgraduate studentship from the CUHK.

DISCLOSURES:

The authors have nothing to disclose.

REFERENCES

1. McGuire, S. World Cancer Report 2014. Geneva, Switzerland: World Health Organization, International Agency for Research on Cancer, WHO Press, 2015. *Advances in Nutrition*. **7** (2), 418-419, 10.3945/an.116.012211 (2016).
2. Slamon, D. J., *et al.* Use of chemotherapy plus a monoclonal antibody against HER2 for metastatic breast cancer that overexpresses HER2. *New England Journal of Medicine*. **344** (11), 783-792, 10.1056/NEJM200103153441101 (2001).
3. Geyer, C.E., *et al.* Lapatinib plus capecitabine for HER2-positive advanced breast cancer. *New England Journal of Medicine*. **355** (26), 2733-2743, 10.1056/NEJMoa064320 (2006).
4. Cameron, D., *et al.* A phase III randomized comparison of lapatinib plus capecitabine versus capecitabine alone in women with advanced breast cancer that has progressed on trastuzumab: updated efficacy and biomarker analyses. *Breast Cancer Research and Treatment*. **112**, (3), 533-543, 10.1007/s10549-007-9885-0 (2008).
5. Liu, L.F. DNA topoisomerase poisons as antitumor drugs. *Annual Review of Biochemistry*. **58**, 351-375, 10.1146/annurev.bi.58.070189.002031 (1989).
6. Hertel, L.W., *et al.* Evaluation of the antitumor activity of gemcitabine (2',2'-difluoro-2'-deoxycytidine). *Cancer Research*. **50** (14), 4417-4422 (1990).
7. Ni, H., *et al.* Analysis of expression of nuclear factor kappa B (NF-kappa B) in multiple myeloma: downregulation of NF-kappa B induces apoptosis. *British Journal of Haematology*. **115** (2), 279-286, 10.1046/j.1365-2141.2001.03102.x (2001).
8. Richardson, P.G., Mitsiades, C., Hideshima, T. & Anderson, K.C. Bortezomib: proteasome inhibition as an effective anticancer therapy. *Annual Review of Medicine*. **57**, 33-47, 10.1146/annurev.med.57.042905.122625 (2006).
9. Dumontet, C. & Jordan, M.A. Microtubule-binding agents: a dynamic field of cancer therapeutics. *Nature Review Drug Discovery*. **9** (10), 790-803, 10.1038/nrd3253 (2010).
10. Dean, M., Fojo, T. & Bates, S. Tumour stem cells and drug resistance. *Nature Review Cancer*. **5** (4), 275-284, 10.1038/nrc1590 (2005).
11. Pirozzi, G., *et al.* Prognostic value of cancer stem cells, epithelial-mesenchymal transition and circulating tumor cells in lung cancer. *Oncology Reports*. **29** (5), 1763-8, doi:10.3892/or.2013.2294 (2013).
12. Tang, H.L., Yuen, K.L., Tang, H.M. & Fung, M.C. Reversibility of apoptosis in cancer cells. *British Journal of Cancer*. **100** (1), 118-122, 10.1038/sj.bjc.6604802 (2009).
13. Tang, H.L., *et al.* Cell survival, DNA damage, and oncogenic transformation after a transient and reversible apoptotic response. *Molecular Biology of the Cell*. **23** (12), 2240-2252, 10.1091/mbc.E11-11-0926 (2012).

14. Xie, X., Wang, S.S., Wong, T.C.S. & Fung, M.C. Genistein promotes cell death of ethanol-stressed HeLa cells through the continuation of apoptosis or secondary necrosis. *Cancer Cell International*. **13** (1), 63, 10.1186/1475-2867-13-63 (2013).
15. Wang, S.S., Xie, X., Wong, C.S., Choi, Y. & Fung, M.C. HepG2 cells recovered from apoptosis show altered drug responses and invasiveness. *Hepatobiliary & Pancreatic Diseases International*. **13** (3), 293-300, 10.1016/S1499-3872(14)60042-4 (2014).
16. Tang, H.L., Tang, H.M., Fung, M.C. & Harwick, J.M. In vivo CaspaseTracker biosensor system for detecting anastasis and non-apoptotic caspase activity. *Scientific Reports*. **5**, 9015, 10.1038/srep09015 (2015).
17. Tang, H.L., Tang, H.M., Hardwick, J.M. & Fung, M.C. Strategies for tracking anastasis, a cell survival phenomenon that reverses apoptosis. *Journal of Visualized Experiments*. **16** (96), 10.3791/51964 (2015).
18. Xu, Y., So, C., Lam, H.M., Fung, M.C. & Tsang, S.Y. Apoptosis reversal promotes cancer stem cell-like cell formation. *Neoplasia*. **20** (3), 295-303, 10.1016/j.neo.2018.01.005 (2018).
19. Tang, H.M., Fung, M.C. & Tang, H.L. Detecting anastasis in vivo by CaspaseTracker biosensor. *Journal of Visualized Experiments*. **1** (132), 10.3791/54107 (2018).
20. Li, J. & Yuan, J. Caspases in apoptosis and beyond. *Oncogene*. **27** (48), 6194-6206, 10.1038/onc.2008.297 (2008).
21. Green, D.R. & Amarante-Mendes, G.P. The point of no return: mitochondria, caspases, and the commitment to cell death. *Results and Problems in Cell Differentiation*. **24**, 45-61, 10.1007/978-3-540-69185-3_3 (1998).
22. Singh, S.K., *et al.* Identification of a cancer stem cell in human brain tumors. *Cancer Research*. **63** (18), 5821-5828 (2003).
23. Ricci-Vitiani, L., *et al.* Identification and expansion of human colon-cancer-initiating cells. *Nature*. **445** (7123), 111-115, 10.1038/nature05384 (2007).
24. O'Brien, C.A., Pollett, A., Gallinger, S. & Dick, J.E. A human colon cancer cell capable of initiating tumour growth in immunodeficient mice. *Nature*. **445** (7123), 106-110, 10.1038/nature05372 (2007).
25. Cioffi, M., *et al.* Identification of a distinct population of CD133(+) CXCR4(+) cancer stem cells in ovarian cancer. *Scientific Reports*. **5**, 10357, 10.1038/srep10357 (2015).
26. Al-Hajj, M., Wicha, M.S., Benito-Hernandez, A., Morrison, S.J. & Clarke, M.F. Prospective identification of tumorigenic breast cancer cells. *Proceedings of the National Academy of Sciences of the United States of America*. **100** (7), 3983-3988, 10.1073/pnas.0530291100 (2003).
27. Ponti, D., *et al.* Isolation and in vitro propagation of tumorigenic breast cancer cells with stem/progenitor cell properties. *Cancer Research*. **65** (13), 5506-5511, 10.1158/0008-5472.CAN-05-0626 (2005).
28. Liu, S., *et al.* Breast cancer stem cells transition between epithelial and mesenchymal states reflective of their normal counterparts. *Stem Cell Reports*. **2** (1), 78-91, 10.1016/j.stemcr.2013.11.009 (2013).
29. Sheridan, C., *et al.* CD44+/CD24- breast cancer cells exhibit enhanced invasive properties: an early step necessary for metastasis. *Breast Cancer Research*. **8** (5), R59, 10.1186/bcr1610 (2006).
30. Phillips, T.M., McBride, W.H. & Pajonk, F. The response of CD24(-/low)/CD44+ breast

559 cancer-initiating cells to radiation. *Journal of the National Cancer Institute*. **98** (24), 1777-85,
560 10.1093/jnci/djj495 (2006).

561 31. Welshons, W.V., Wolf, M.F., Murphy, C.S. & Jordan, V.C. Estrogenic activity of phenol red.
562 *Molecular and Cellular Endocrinology*. **57** (3), 169-178, 10.1016/0303-7207(88)90072-X (1998).

563 32. Tsuji, K., *et al.* Effects of Different Cell-Detaching Methods on the Viability and Cell Surface
564 Antigen Expression of Synovial Mesenchymal Stem Cells. *Cell Transplantation*. **26** (6), 1089-
565 1102, 10.3727/096368917X694831 (2017).

566 33. Herzenberg, L.A., Tung, J., Moore, W.A., Herzenberg, L.A. & Parks, D.R. Interpreting flow
567 cytometry data: a guide for the perplexed. *Nature Immunology*. **7** (7), 681-685, 10.1038/ni0706-
568 681 (2006).

569 34. Belmokhtar, C.A., Hillion, J. & Ségal-Bendirdjian, E. Staurosporine induces apoptosis through
570 both caspase-dependent and caspase-independent mechanisms. *Oncogene*. **20** (26), 3354-
571 3362, 10.1038/sj.onc.1204436 (2001).

572 35. Saunders, D.E., *et al.* Paclitaxel-induced apoptosis in MCF-7 breast-cancer cells.
573 *International Journal of Cancer*. **70** (2), 214-220, 10.1002/(SICI)1097-
574 0215(19970117)70:2%3c214::AID-IJC13%3e3.0.CO;2-I (1997).

575 36. Miller, A.V., *et al.* Paclitaxel-induced apoptosis is BAK-dependent, but BAX and BIM-
576 independent in breast tumor. *PLoS One*. **8** (4), e60685, 10.1371/journal.pone.0060685 (2013).

577 37. Elmore, S. Apoptosis: a review of programmed cell death. *Toxicologic Pathology*. **35** (4), 495-
578 516, 10.1080/01926230701320337 (2007).

579 38. Vermes, I., Haanen, C., Steffens-Nakken, H. & Reutelingsperger, C. A novel assay for
580 apoptosis. Flow cytometric detection of phosphatidylserine expression on early apoptotic cells
581 using fluorescein labelled Annexin V. *Journal of Immunological Methods*. **184** (1), 39-51,
582 10.1016/0022-1759(95)00072-I (1995).

583 39. Ng, S.Y., *et al.* Role of voltage-gated potassium channels in the fate determination of
584 embryonic stem cells. *Journal of Cellular Physiology*. **224** (1), 165-77, 10.1002/jcp.22113 (2010).

585 40. Lo, I.C., *et al.* TRPV3 channel negatively regulates cell cycle progression and safeguards the
586 pluripotency of embryonic stem cells. *Journal of Cellular Physiology*. **231** (1), 403-413,
587 10.1002/jcp.25086 (2016).

588 41. Talanian, R.V., *et al.* Substrate specificities of caspase family proteases. *Journal of Biological*
589 *Chemistry*. **272** (15), 9677-9682, 10.1074/jbc.272.15.9677 (1997).

590 42. Dontu, G., *et al.* In vitro propagation and transcriptional profiling of human mammary
591 stem/progenitor cells. *Genes & Development*. **17** (10), 1253-1270, 10.1101/gad.1061803 (2003).

592 43. Vermeulen, L., *et al.* Wnt activity defines colon cancer stem cells and is regulated by the
593 microenvironment. *Nature Cell Biology*. **12** (5), 468-476, 10.1038/ncb2048 (2010).

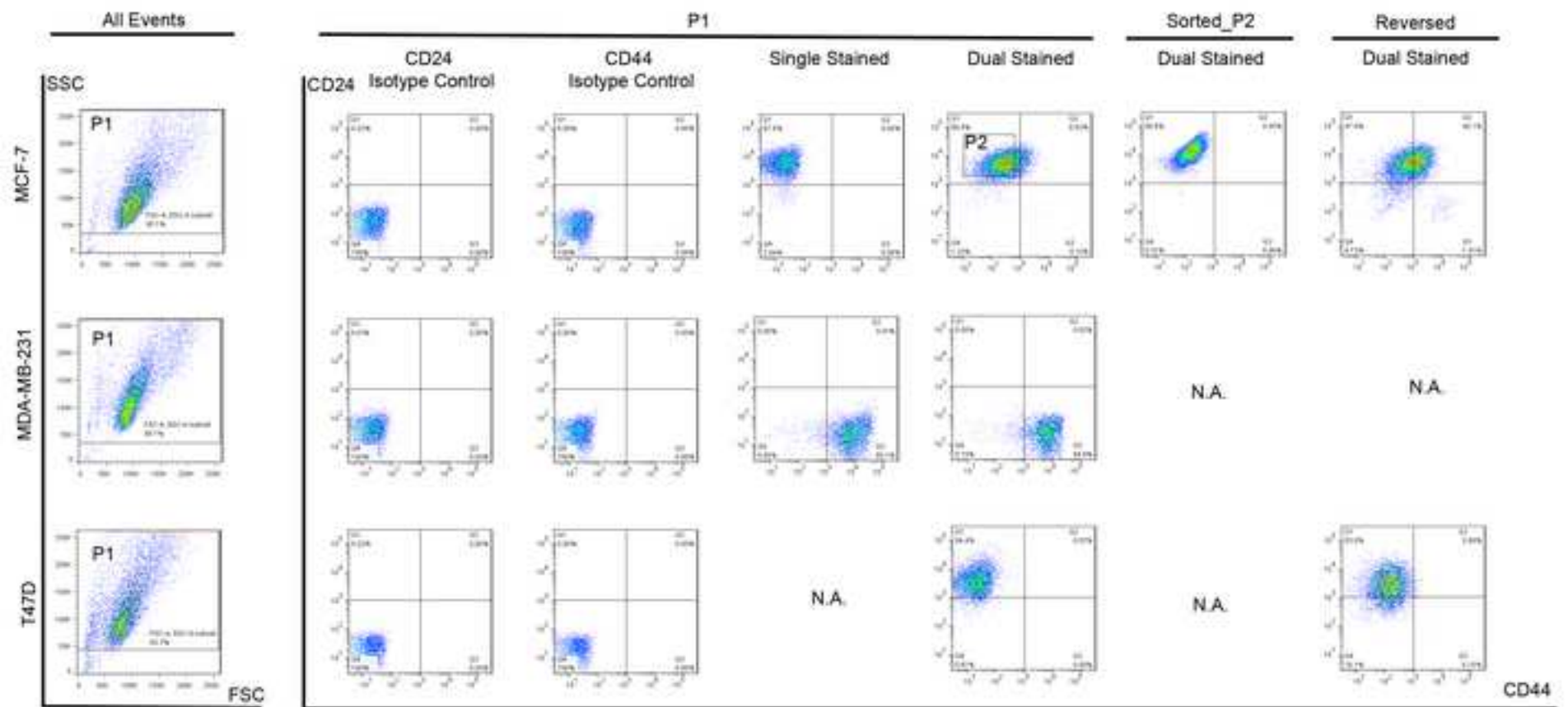
594 44. Shaw, F.L., *et al.* A detailed mammosphere assay protocol for the quantification of breast
595 stem cell activity. *Journal of Mammary Gland Biology and Neoplasia*. **17** (2), 111-117,
596 10.1007/s10911-012-9255-3 (2012).

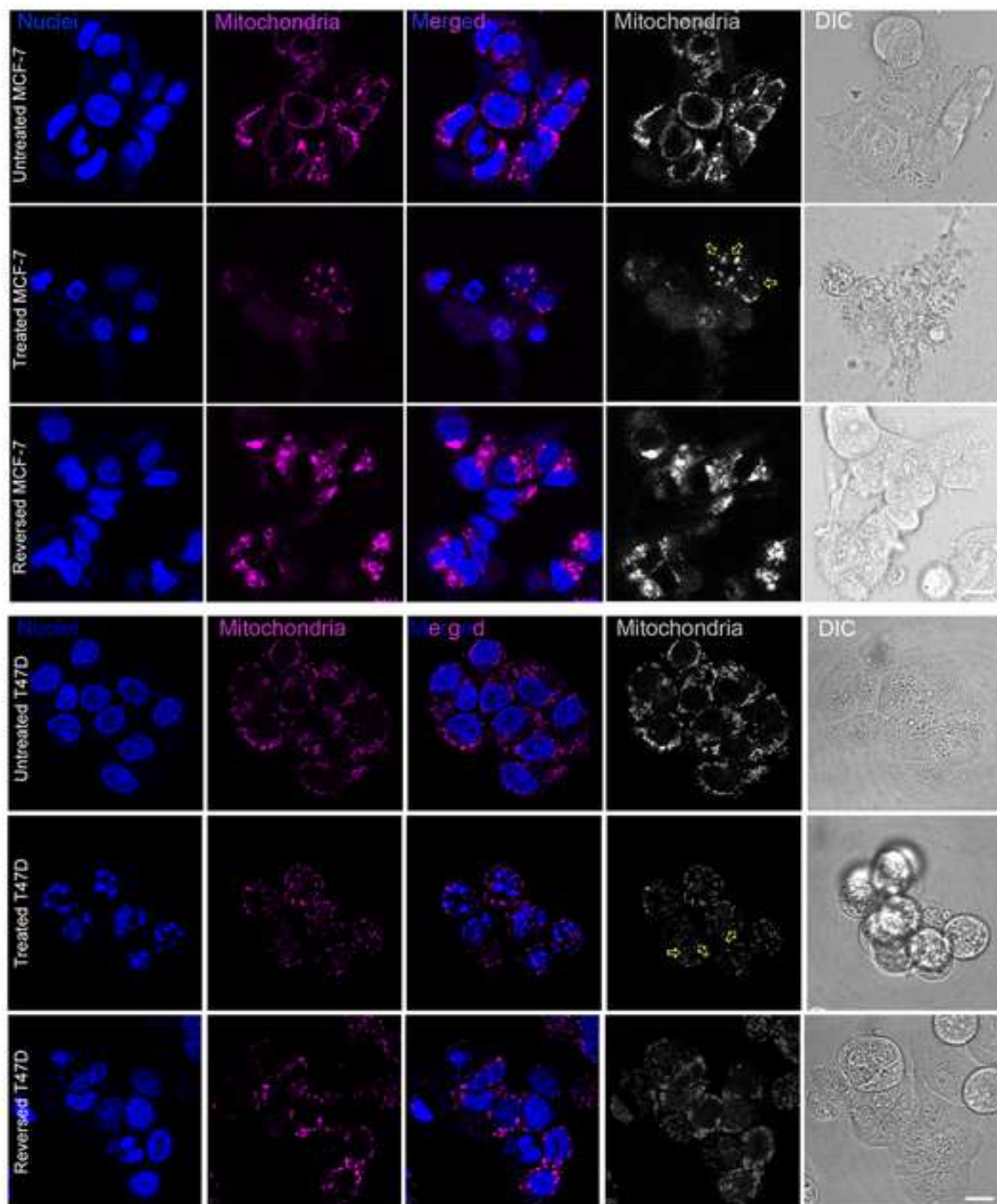
597 45. Desiderio, V., *et al.* Increased fucosylation has a pivotal role in invasive and metastatic
598 properties of head and neck cancer stem cells. *Oncotarget*. **6** (1), 71-84,
599 10.18632/oncotarget.2698 (2015).

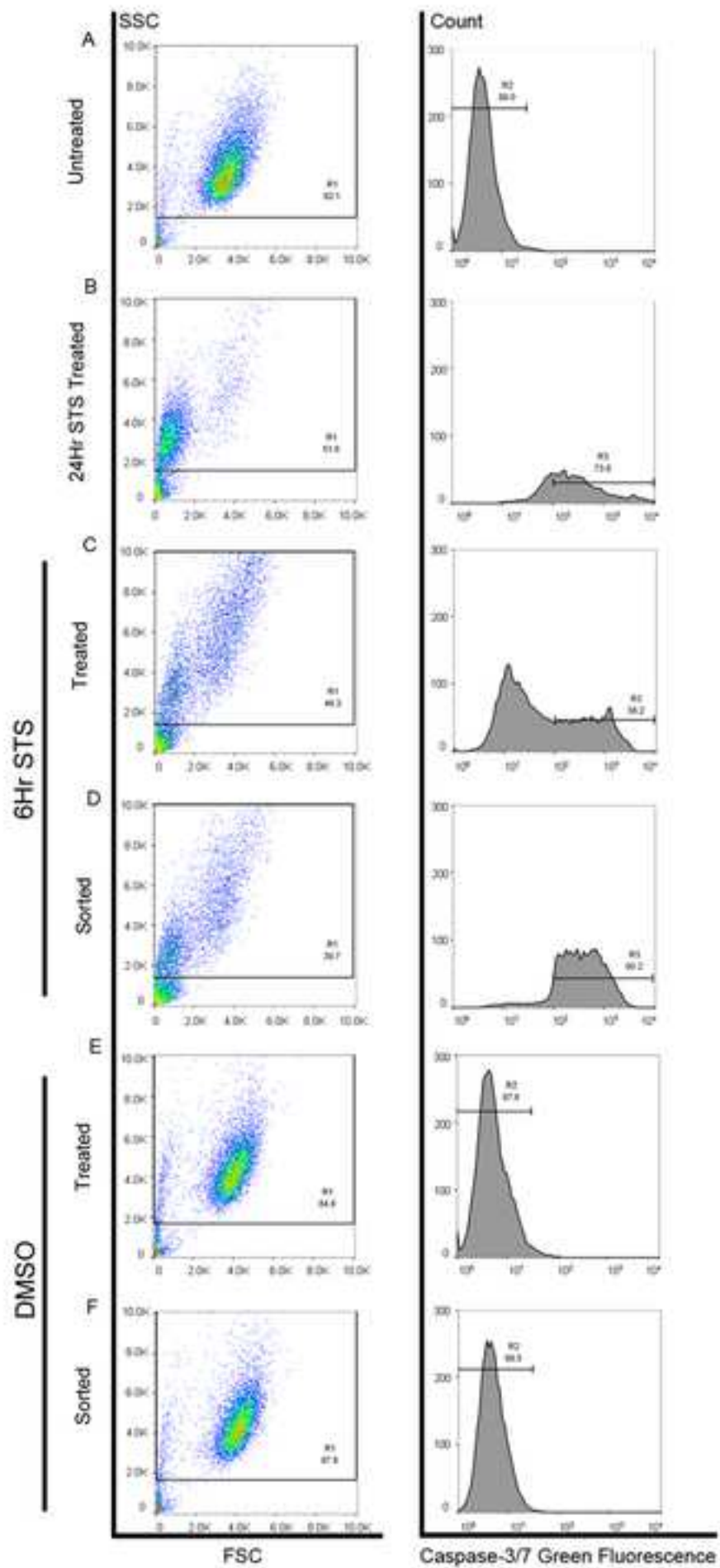
600 46. Gupta, P.B., *et al.* Stochastic State Transitions Give Rise to Phenotypic Equilibrium in
601 Populations of Cancer Cells. *Cell*. **146** (4), 633-644, 10.1016/j.cell (2011).

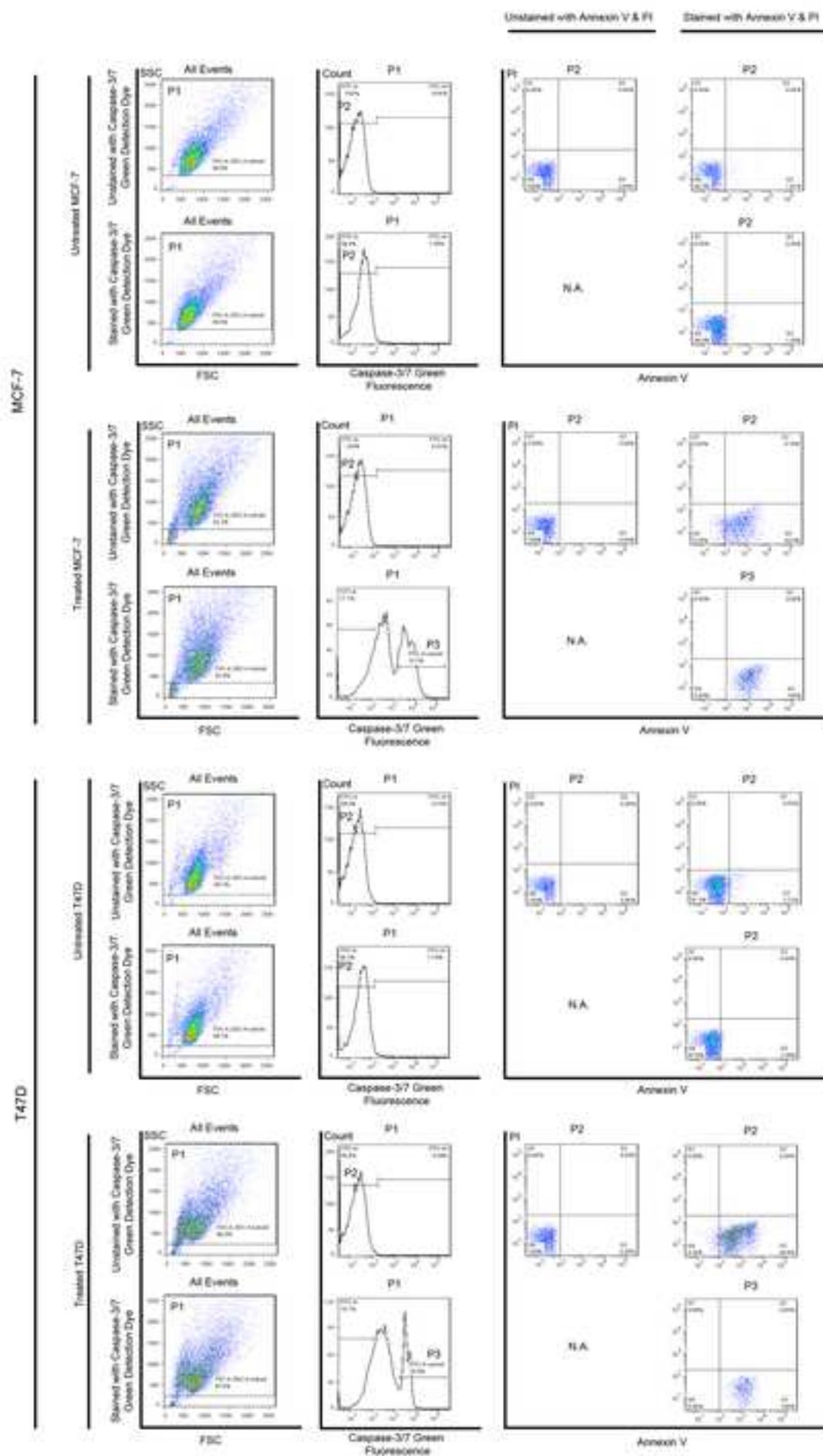
Figure 1

[Click here to access/download;Figure;Figure 1.tif](#)









Name of Reagent/ Equipment	Company	Catalog Number
MCF-7	American Type Culture Collection (ATCC)	HTB-22
MDA-MB-231	American Type Culture Collection (ATCC)	HTB-26
T47D	American Type Culture Collection (ATCC)	HTB-133
Reagent		
0.05% trypsin-EDTA	Invitrogen	25300054
0.25% trypsin-EDTA	Invitrogen	25200072
Alexa Fluor 680 annexin V conjugate	Invitrogen	A35109
bovine serum albumin	USB	9048-46-8
CaCl ₂ · 2H ₂ O	Sigma-Aldrich	C-5080
CellEvent caspase-3/7 green fluorescent dye	Invitrogen	C10423
dimethyl sulfoxide	Sigma-Aldrich	D2650
Fc block	Miltenyi Biotec	130-059-901
fetal bovine serum	Invitrogen	16000044
HEPES	USB	16926
Hoechst 33342	Invitrogen	H3570
L-glutamine	Invitrogen	25030081
Mitotracker Red CMXRos	Invitrogen	M7512
monoclonal antibodies against human CD24	BD Biosciences	555428
monoclonal antibodies against human CD44	BD Biosciences	560531
NaCl	Sigma-Aldrich	31434
paclitaxel	Sigma-Aldrich	T7402
PE Mouse IgG2a, κ Isotype Control	BD Biosciences	554648
Penicillin-Streptomycin	Invitrogen	15070-063
PerCP-Cy5.5 Mouse IgG2b, κ Isotype Control	BD Biosciences	558304
phosphate buffered saline	Thermo Fisher Scientific	21600010
propidium iodide	Invitrogen	P1304MP
Roswell Park Memorial Institute 1640 medium	Invitrogen	11835055
sodium azide	Sigma-Aldrich	S2002
staurosporine	Sigma-Aldrich	S4400

Equipment

100 mm culture dish	Greiner Bio-One	664160
12-well tissue culture plates	Thermo Fisher Scientific	150628
Cell Strainer 40-µm nylon mesh	BD Biosciences	08-771-1
FACSuite software bundle v1.0	BD Biosciences	651360
FACSVerse	BD Biosciences	651155
FluoView FV1000 confocal microscope	Olympus	IX81
FV10-ASW Viewer software Ver.4.2b	Olympus	-
round-bottom polystyrene 12 × 75 mm tubes	BD Biosciences	352003
S3e sorter	Bio-Rad	1451006

Comments/Description

heat-inactivated

PE Clone:ML5 Lot:5049759 RRID:AB_395822

PERCP-CY5.5 Clone:G44-26 Lot:7230770 RRID:AB_1727485

Clone:G155-178 (RUO) RRID:AB_395491

Clone:27-35 RRID:AB_647257

phenol red-free

60X objective



1 Alewife Center #200
Cambridge, MA 02140
tel. 617.945.9051
www.jove.com

ARTICLE AND VIDEO LICENSE AGREEMENT

Title of Article:

Detection of newly-formed breast cancer stem cell-like cells after apoptosis reversal by flow cytometry

Author(s):

Yiyue Xu, Chun So, Hon Ming Lam, Ming Chiu Fung and Suk Ying Tsang

Item 1 (check one box): The Author elects to have the Materials be made available (as described at

<http://www.jove.com/author>) via: ☒ Standard Access ☐ Open Access

Item 2 (check one box):

- ☒ The Author is NOT a United States government employee.
- ☐ The Author is a United States government employee and the Materials were prepared in the course of his or her duties as a United States government employee.
- ☐ The Author is a United States government employee but the Materials were NOT prepared in the course of his or her duties as a United States government employee.

ARTICLE AND VIDEO LICENSE AGREEMENT

1. **Defined Terms.** As used in this Article and Video License Agreement, the following terms shall have the following meanings: "Agreement" means this Article and Video License Agreement; "Article" means the article specified on the last page of this Agreement, including any associated materials such as texts, figures, tables, artwork, abstracts, or summaries contained therein; "Author" means the author who is a signatory to this Agreement; "Collective Work" means a work, such as a periodical issue, anthology or encyclopedia, in which the Materials in their entirety in unmodified form, along with a number of other contributions, constituting separate and independent works in themselves, are assembled into a collective whole; "CRC License" means the Creative Commons Attribution-Non Commercial-No Derivs 3.0 Unported Agreement, the terms and conditions of which can be found at: <http://creativecommons.org/licenses/by-nc-nd/3.0/legalcode>; "Derivative Work" means a work based upon the Materials or upon the Materials and other pre-existing works, such as a translation, musical arrangement, dramatization, fictionalization, motion picture version, sound recording, art reproduction, abridgment, condensation, or any other form in which the Materials may be recast, transformed, or adapted; "Institution" means the institution, listed on the last page of this Agreement, by which the Author was employed at the time of the creation of the Materials; "JoVE" means MyJoVE Corporation, a Massachusetts corporation and the publisher of *The Journal of Visualized Experiments*; "Materials" means the Article and / or the Video; "Parties" means the Author and JoVE; "Video" means any video(s) made by the Author, alone or in conjunction with any other parties, or by JoVE or its affiliates or agents, individually or in collaboration with the Author or any other parties, incorporating all or any portion of the Article, and in which the Author may or may not appear.

2. **Background.** The Author, who is the author of the Article, in order to ensure the dissemination and protection of the Article, desires to have the JoVE publish the Article and create and transmit videos based on the Article. In furtherance of such goals, the Parties desire to memorialize in this Agreement the respective rights of each Party in and to the Article and the Video.

3. **Grant of Rights in Article.** In consideration of JoVE agreeing to publish the Article, the Author hereby grants to JoVE, subject to Sections 4 and 7 below, the exclusive, royalty-free, perpetual (for the full term of copyright in the Article, including any extensions thereto) license (a) to publish, reproduce, distribute, display and store the Article in all forms, formats and media whether now known or hereafter developed (including without limitation in print, digital and electronic form) throughout the world, (b) to translate the Article into other languages, create adaptations, summaries or extracts of the Article or other Derivative Works (including, without limitation, the Video) or Collective Works based on all or any portion of the Article and exercise all of the rights set forth in (a) above in such translations, adaptations, summaries, extracts, Derivative Works or Collective Works and (c) to license others to do any or all of the above. The foregoing rights may be exercised in all media and formats, whether now known or hereafter devised, and include the right to make such modifications as are technically necessary to exercise the rights in other media and formats. If the "Open Access" box has been checked in Item 1 above, JoVE and the Author hereby grant to the public all such rights in the Article as provided in, but subject to all limitations and requirements set forth in, the CRC License.

ARTICLE AND VIDEO LICENSE AGREEMENT

4. Retention of Rights in Article. Notwithstanding the exclusive license granted to JoVE in Section 3 above, the Author shall, with respect to the Article, retain the non-exclusive right to use all or part of the Article for the non-commercial purpose of giving lectures, presentations or teaching classes, and to post a copy of the Article on the Institution's website or the Author's personal website, in each case provided that a link to the Article on the JoVE website is provided and notice of JoVE's copyright in the Article is included. All non-copyright intellectual property rights in and to the Article, such as patent rights, shall remain with the Author.

5. Grant of Rights in Video – Standard Access. This Section 5 applies if the "Standard Access" box has been checked in Item 1 above or if no box has been checked in Item 1 above. In consideration of JoVE agreeing to produce, display or otherwise assist with the Video, the Author hereby acknowledges and agrees that, Subject to Section 7 below, JoVE is and shall be the sole and exclusive owner of all rights of any nature, including, without limitation, all copyrights, in and to the Video. To the extent that, by law, the Author is deemed, now or at any time in the future, to have any rights of any nature in or to the Video, the Author hereby disclaims all such rights and transfers all such rights to JoVE.

6. Grant of Rights in Video – Open Access. This Section 6 applies only if the "Open Access" box has been checked in Item 1 above. In consideration of JoVE agreeing to produce, display or otherwise assist with the Video, the Author hereby grants to JoVE, subject to Section 7 below, the exclusive, royalty-free, perpetual (for the full term of copyright in the Article, including any extensions thereto) license (a) to publish, reproduce, distribute, display and store the Video in all forms, formats and media whether now known or hereafter developed (including without limitation in print, digital and electronic form) throughout the world, (b) to translate the Video into other languages, create adaptations, summaries or extracts of the Video or other Derivative Works or Collective Works based on all or any portion of the Video and exercise all of the rights set forth in (a) above in such translations, adaptations, summaries, extracts, Derivative Works or Collective Works and (c) to license others to do any or all of the above. The foregoing rights may be exercised in all media and formats, whether now known or hereafter devised, and include the right to make such modifications as are technically necessary to exercise the rights in other media and formats. For any Video to which this Section 6 is applicable, JoVE and the Author hereby grant to the public all such rights in the Video as provided in, but subject to all limitations and requirements set forth in, the CRC License.

7. Government Employees. If the Author is a United States government employee and the Article was prepared in the course of his or her duties as a United States government employee, as indicated in Item 2 above, and any of the licenses or grants granted by the Author hereunder exceed the scope of the 17 U.S.C. 403, then the rights granted hereunder shall be limited to the maximum rights permitted under such

statute. In such case, all provisions contained herein that are not in conflict with such statute shall remain in full force and effect, and all provisions contained herein that do so conflict shall be deemed to be amended so as to provide to JoVE the maximum rights permissible within such statute.

8. Likeness, Privacy, Personality. The Author hereby grants JoVE the right to use the Author's name, voice, likeness, picture, photograph, image, biography and performance in any way, commercial or otherwise, in connection with the Materials and the sale, promotion and distribution thereof. The Author hereby waives any and all rights he or she may have, relating to his or her appearance in the Video or otherwise relating to the Materials, under all applicable privacy, likeness, personality or similar laws.

9. Author Warranties. The Author represents and warrants that the Article is original, that it has not been published, that the copyright interest is owned by the Author (or, if more than one author is listed at the beginning of this Agreement, by such authors collectively) and has not been assigned, licensed, or otherwise transferred to any other party. The Author represents and warrants that the author(s) listed at the top of this Agreement are the only authors of the Materials. If more than one author is listed at the top of this Agreement and if any such author has not entered into a separate Article and Video License Agreement with JoVE relating to the Materials, the Author represents and warrants that the Author has been authorized by each of the other such authors to execute this Agreement on his or her behalf and to bind him or her with respect to the terms of this Agreement as if each of them had been a party hereto as an Author. The Author warrants that the use, reproduction, distribution, public or private performance or display, and/or modification of all or any portion of the Materials does not and will not violate, infringe and/or misappropriate the patent, trademark, intellectual property or other rights of any third party. The Author represents and warrants that it has and will continue to comply with all government, institutional and other regulations, including, without limitation all institutional, laboratory, hospital, ethical, human and animal treatment, privacy, and all other rules, regulations, laws, procedures or guidelines, applicable to the Materials, and that all research involving human and animal subjects has been approved by the Author's relevant institutional review board.

10. JoVE Discretion. If the Author requests the assistance of JoVE in producing the Video in the Author's facility, the Author shall ensure that the presence of JoVE employees, agents or independent contractors is in accordance with the relevant regulations of the Author's institution. If more than one author is listed at the beginning of this Agreement, JoVE may, in its sole discretion, elect not take any action with respect to the Article until such time as it has received complete, executed Article and Video License Agreements from each such author. JoVE reserves the right, in its absolute and sole discretion and without giving any reason therefore, to accept or decline any work submitted to JoVE. JoVE and its employees, agents and independent contractors shall have

ARTICLE AND VIDEO LICENSE AGREEMENT

full, unfettered access to the facilities of the Author or of the Author's institution as necessary to make the Video, whether actually published or not. JoVE has sole discretion as to the method of making and publishing the Materials, including, without limitation, to all decisions regarding editing, lighting, filming, timing of publication, if any, length, quality, content and the like.

11. **Indemnification.** The Author agrees to indemnify JoVE and/or its successors and assigns from and against any and all claims, costs, and expenses, including attorney's fees, arising out of any breach of any warranty or other representations contained herein. The Author further agrees to indemnify and hold harmless JoVE from and against any and all claims, costs, and expenses, including attorney's fees, resulting from the breach by the Author of any representation or warranty contained herein or from allegations or instances of violation of intellectual property rights, damage to the Author's or the Author's institution's facilities, fraud, libel, defamation, research, equipment, experiments, property damage, personal injury, violations of institutional, laboratory, hospital, ethical, human and animal treatment, privacy or other rules, regulations, laws, procedures or guidelines, liabilities and other losses or damages related in any way to the submission of work to JoVE, making of videos by JoVE, or publication in JoVE or elsewhere by JoVE. The Author shall be responsible for, and shall hold JoVE harmless from, damages caused by lack of sterilization, lack of cleanliness or by contamination due to the making of a video by JoVE its employees, agents or independent contractors. All sterilization, cleanliness or decontamination procedures shall be solely the responsibility of the Author and shall be undertaken at the Author's

expense. All indemnifications provided herein shall include JoVE's attorney's fees and costs related to said losses or damages. Such indemnification and holding harmless shall include such losses or damages incurred by, or in connection with, acts or omissions of JoVE, its employees, agents or independent contractors.

12. **Fees.** To cover the cost incurred for publication, JoVE must receive payment before production and publication the Materials. Payment is due in 21 days of invoice. Should the Materials not be published due to an editorial or production decision, these funds will be returned to the Author. Withdrawal by the Author of any submitted Materials after final peer review approval will result in a US\$1,200 fee to cover pre-production expenses incurred by JoVE. If payment is not received by the completion of filming, production and publication of the Materials will be suspended until payment is received.

13. **Transfer, Governing Law.** This Agreement may be assigned by JoVE and shall inure to the benefits of any of JoVE's successors and assignees. This Agreement shall be governed and construed by the internal laws of the Commonwealth of Massachusetts without giving effect to any conflict of law provision thereunder. This Agreement may be executed in counterparts, each of which shall be deemed an original, but all of which together shall be deemed to be one and the same agreement. A signed copy of this Agreement delivered by facsimile, e-mail or other means of electronic transmission shall be deemed to have the same legal effect as delivery of an original signed copy of this Agreement.

A signed copy of this document must be sent with all new submissions. Only one Agreement required per submission.

CORRESPONDING AUTHOR:

Name:

Suk Ying Tsang

Department:

School of Life Sciences

Institution:

The Chinese University of Hong Kong

Article Title:

Detection of newly-formed breast cancer stem cell-like cells after apoptosis reversal by flow cytometry

Signature:

Tsuk Ying Tsang

Date:

28 Sept, 2018

Please submit a signed and dated copy of this license by one of the following three methods:

- 1) Upload a scanned copy of the document as a pdf on the JoVE submission site;
- 2) Fax the document to +1.866.381.2236;
- 3) Mail the document to JoVE / Attn: JoVE Editorial / 1 Alewife Center #200 / Cambridge, MA 02139

For questions, please email submissions@jove.com or call +1.617.945.9051

Responses to the editor:

Editorial comments:

1. The editor has formatted the manuscript to match the journal's style. Please retain the same.

Our response: Thank you for the Editor's help. We retained the format the same.

2. Please address all the specific comments marked in the manuscript.

Our response: Thank you for the Editor's comments. We have addressed all the comments. Our responses to the comments and the revisions have been marked on the revised manuscript (a version with changes tracked has been uploaded with file named 'Xu et al., 2018, JoVE, R2, commented & tracked changes version'). In response to the comments, we have also revised figures 2-4. New figures 2-4 have also been uploaded.

3. Once formatted, please highlight 2.75 pages or less of the Protocol (including headings and spacing) that identifies the essential steps of the protocol for the video, i.e., the steps that should be visualized to tell the most cohesive story of the Protocol. The highlighted steps should form a cohesive narrative with a logical flow from one highlighted step to the next. Remember that non-highlighted Protocol steps will remain in the manuscript, and therefore will still be available to the reader.

Our response: Thank you for the Editor's note. We have uploaded a version of our revised manuscript with highlights (file named 'Xu et al., JoVE, R2, Highlighted version') to identifies essential steps of the protocol for the video.

4. Please obtain explicit copyright permission to reuse any figures from a previous publication. Explicit permission can be expressed in the form of a letter from the editor or a link to the editorial policy that allows re-prints. Please upload this information as a .doc or .docx file to your Editorial Manager account. The Figure must be cited appropriately in the Figure Legend, i.e. "This figure has been modified from [citation]."

Our response: Thank you for the Editor's note. We have not reused any figures from a previous publication.

5. Please refer figures in the order of numbering, so figure 1 should be referenced before figure 2.

Our response: Thank you for the Editor's note. We have referred figures in the order of numbering.