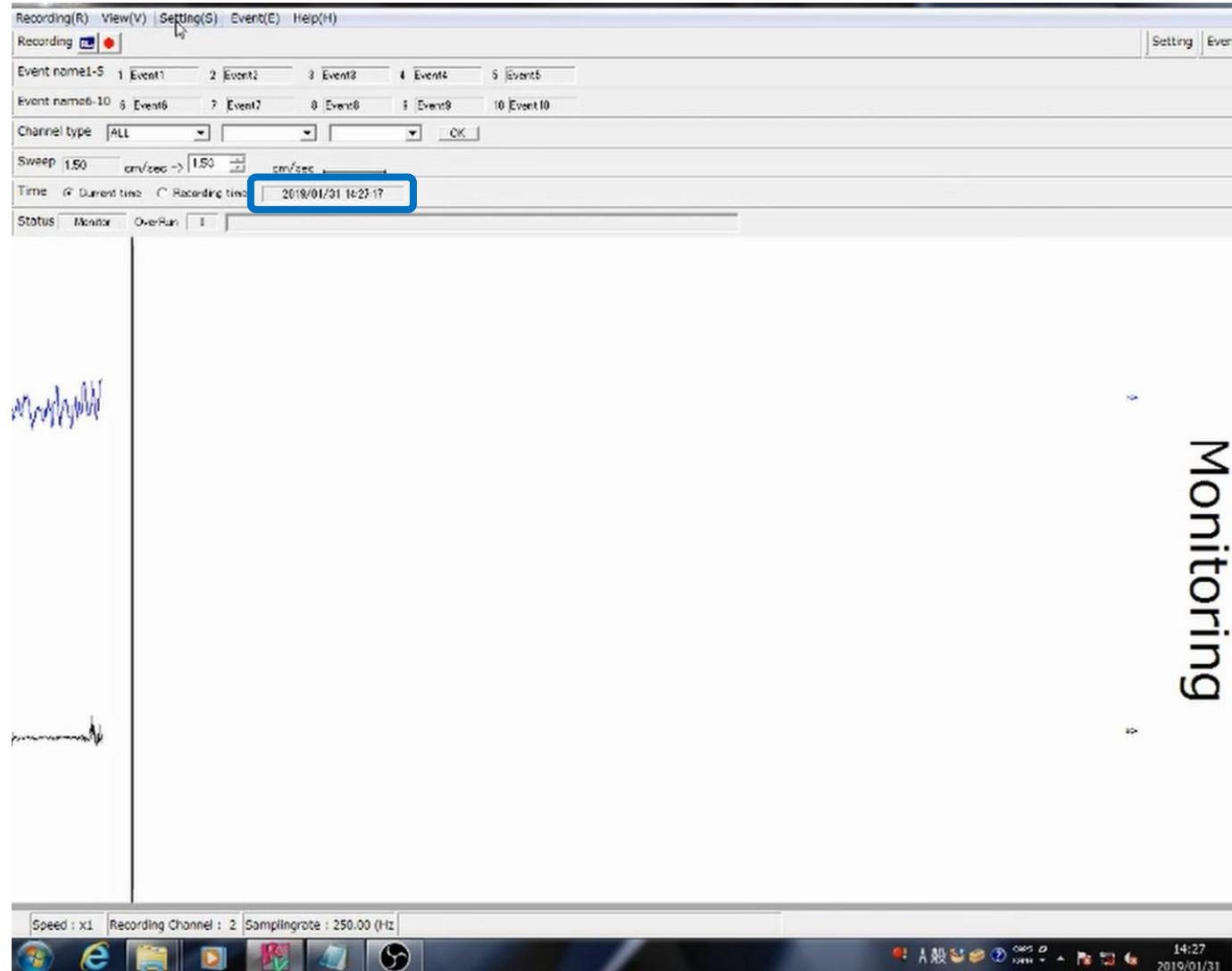
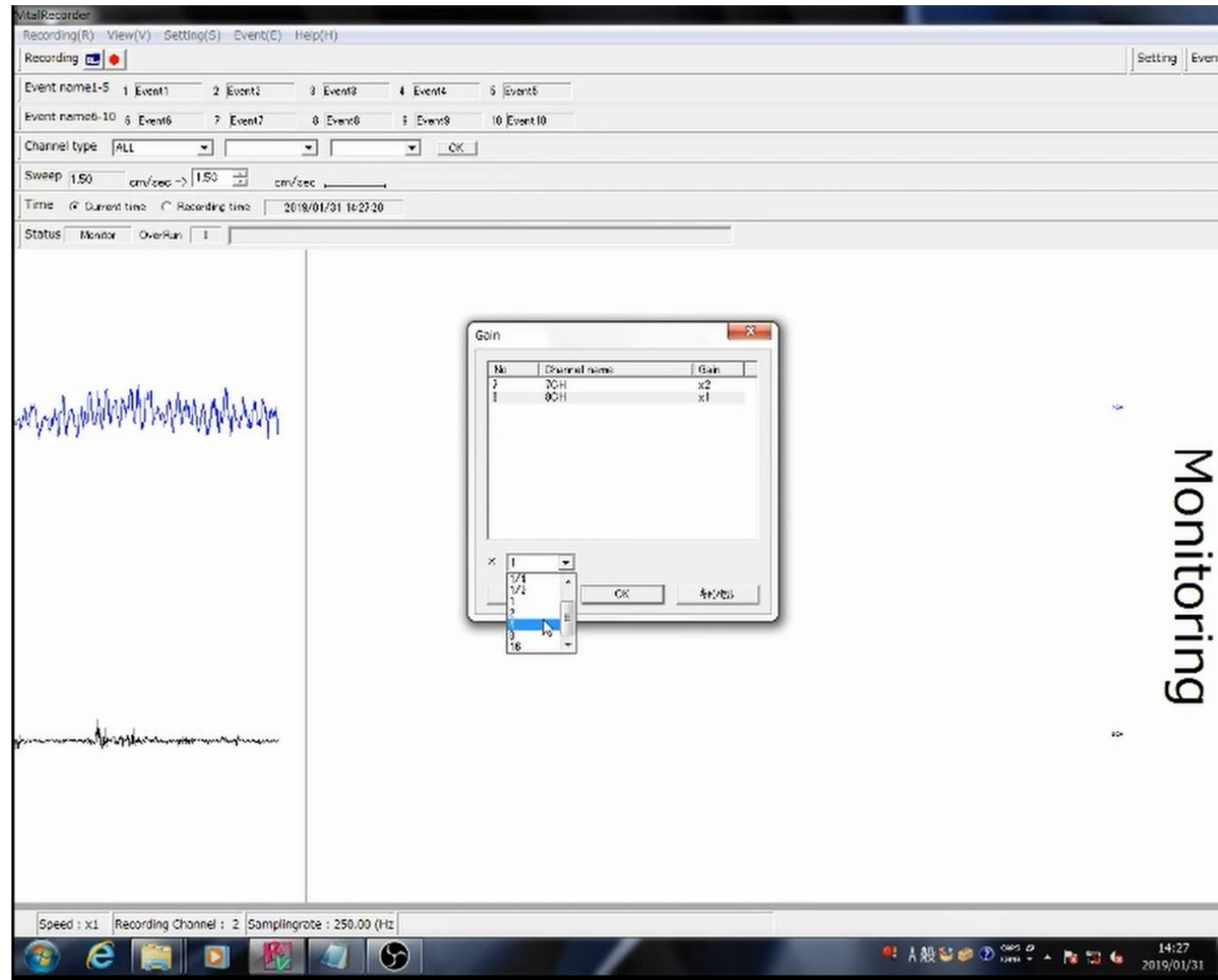


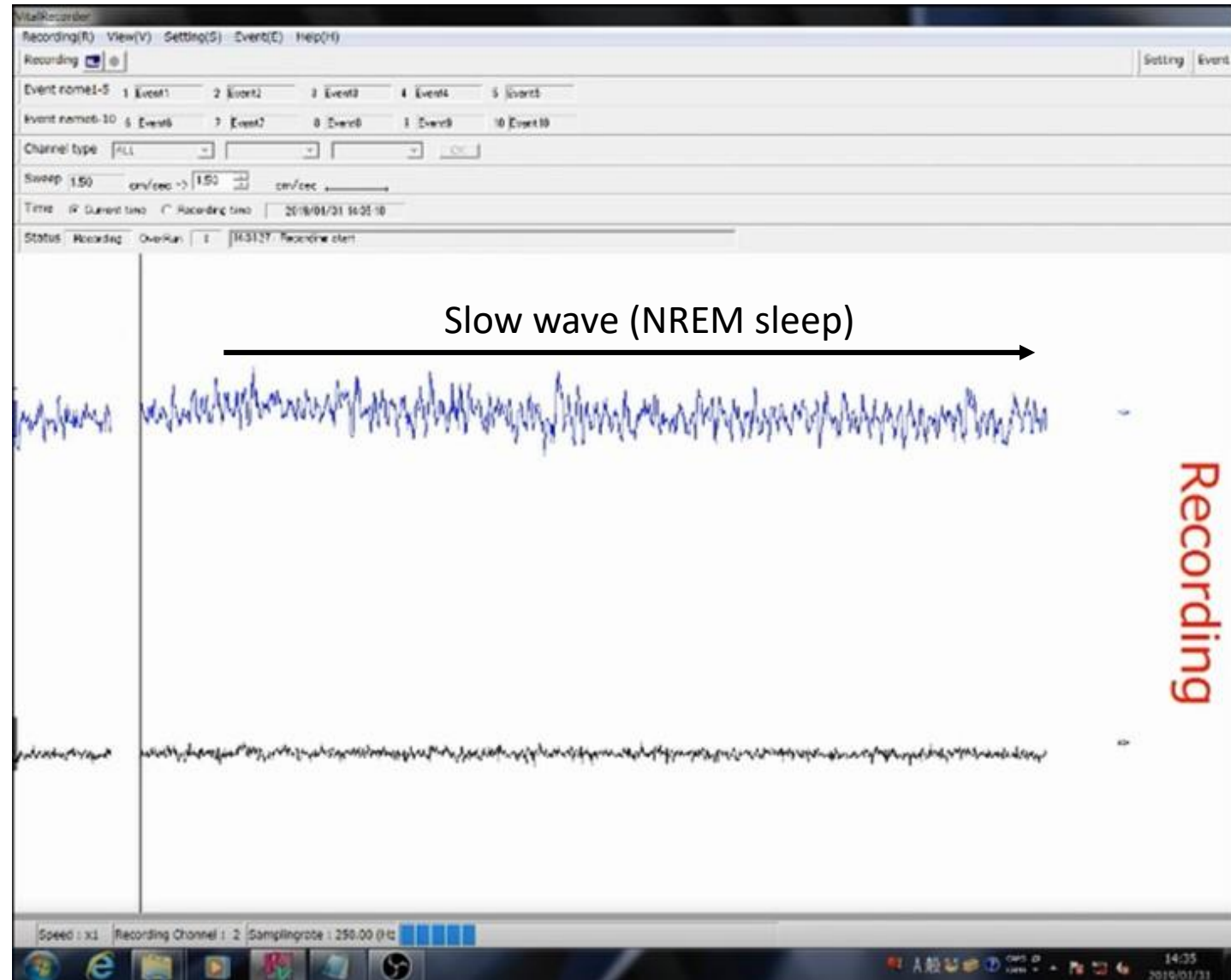
Screen shot of Step 5.8.1 original movie. Blue rectangular represents the local time. Please highlight this area in the edited movie.



Screen shot of Step 5.9.1 original movie. This shoot represents the adjustment of EMG signals.



Screen shot of Step 5.10.1 original movie. This shoot represents stable slow waves which mean mouse sleeping state is NREM sleep.



Screen shot of Step 5.10.3 original movie. This shoot represents photo stimulation is applied to mouse in NREM sleep and immediately causes wakefulness.



Screen shot of Step 5.11.1 original movie. This shoot represents photo stimulation in NREM cause immediate wakefulness. Blue arrow represents the point of photo stimulation and red one shows transition point from REM sleep to wakefulness.

