

# Journal of Visualized Experiments

## Orthotopic Injection of Breast Cancer Cells into Mice Mammary Fat Pad

--Manuscript Draft--

<b>Article Type:</b>	Invited Methods Article - JoVE Produced Video
<b>Manuscript Number:</b>	JoVE58604R2
<b>Full Title:</b>	Orthotopic Injection of Breast Cancer Cells into Mice Mammary Fat Pad
<b>Keywords:</b>	Orthotopic Injection; Breast cancer; Metastasis; Tumor growth; Tumor microenvironment; Mammary fat pad
<b>Corresponding Author:</b>	Xiao-Min Dr. Wang Beijing Hospital of Traditional Chinese Medicine Beijing, CHINA
<b>Corresponding Author's Institution:</b>	Beijing Hospital of Traditional Chinese Medicine
<b>Corresponding Author E-Mail:</b>	wangxiaomin_bhtcm@126.com
<b>Order of Authors:</b>	Gan-Lin Zhang Yi Zhang Ke-Xin Cao Xiao-Min Dr. Wang
<b>Additional Information:</b>	
<b>Question</b>	<b>Response</b>
Please indicate whether this article will be Standard Access or Open Access.	Standard Access (US\$2,400)
Please indicate the <b>city, state/province, and country</b> where this article will be <b>filmed</b> . Please do not use abbreviations.	No.23 Back Road of Art Gallery, Beijing Hospital of Traditional Chinese Medicine, Beijing, China

Dear editor Ronald Myers,

I enclose the manuscript entitled "**Orthotopic Injection of Breast Cancer Cells into Mice Mammary Fat Pad**", for possible publication in Journal of Visualized Experiments, with authors as **Gan-lin Zhang, Yi Zhang, Ke-xin Cao, Xiao-min Wang**. Gan-lin Zhang and me will be the correspondence authors. All of the authors agree to the submission of this paper. The manuscript was prepared according to the journal's instructions to authors, and all required supporting documentations are attached.

Murine cancer models are good bridges between preclinical and clinical studies, and a good mimic murine disease model will increase the accuracy of research on disease and medicine. For breast cancer, orthotopic disease models with proper mammary fat pad environment play irreplaceable roles in understanding diseases and screening for potential medicines. In this article, we describe how to implant breast cancer cells into mammary fat pad in a simple, less invasive and easy-handle way, and follow the metastasis to distant organs.

There are few articles using orthotopic injection, however their orthotopic injection need surgery near mammary fat pad which has risk to bias research results. While in our technology there is no surgery, this is the big difference and advantage of our method.

We thank you for considering this work and look forward to your response. Please direct all correspondence about this manuscript to me or Dr. Gan-Lin Zhang, e-mail: [kalinezhang@163.com](mailto:kalinezhang@163.com).

Sincerely,

Xiao-Min Wang

2018.6.10

**TITLE:**

Orthotopic Injection of Breast Cancer Cells into the Mice Mammary Fat Pad

**AUTHORS & AFFILIATIONS:**

Gan-Lin Zhang<sup>1</sup>, Yi Zhang<sup>1</sup>, Ke-Xin Cao<sup>1</sup>, Xiao-Min Wang<sup>1</sup>

<sup>1</sup>Oncology Department, Beijing Hospital of Traditional Chinese Medicine, Capital Medical University, Beijing, China

**Corresponding Authors:**

Xiao-Min Wang (wangxiaomin\_bhtcm@126.com)

Gan-Lin Zhang (kalinezhang@163.com)

Tel: (86)-10-52176673

**KEYWORDS:**

Orthotopic injection, breast cancer, metastasis, tumor growth, tumor microenvironment, mammary fat pad

**SUMMARY:**

Here, we present a protocol to implant breast cancer cells into the mammary fat pad in a simple, less invasive, and easy-to-handle way, and this mouse orthotopic breast cancer model with a proper mammary fat pad environment can be used to investigate various aspects of cancer.

**ABSTRACT:**

A proper animal model is crucial for a better understanding of diseases. Animal models established by different methods (subcutaneous injections, xenografts, genetic manipulation, chemical reagents induction, *etc.*) have various pathological characters and play important roles in investigating certain aspects of diseases. Although no single model can totally mimic the whole human disease progression, orthotopic organs disease models with a proper stromal environment play an irreplaceable role in understanding diseases and screening for potential drugs. In this article, we describe how to implant breast cancer cells into the mammary fat pad in a simple, less invasive, and easy-to-handle way, and follow the metastasis to distant organs. With the proper features of primary tumor growth, breast and nipple pathological changes, and a high occurrence of other organs' metastasis, this model maximumly mimics human breast cancer progression. Primary tumor growth *in situ*, long-distant metastasis, and the tumor microenvironment of breast cancer can be investigated by using this model.

**INTRODUCTION:**

Breast cancer is the leading cause of female mortality worldwide. With its progressively increasing incidence, breast cancer has become a serious challenge to public health<sup>1</sup>. Murine cancer models are good bridges between preclinical and clinical studies, and a good mimic murine disease model will increase the accuracy of research on disease and medicine.

Primary tumor growth starts the progress of malignant disease, while metastasis and complications are the main causes of death and poor life qualities in most cancer patients.

Several murine models are used to mimic the pathology of human breast cancer<sup>2-4</sup>. Xenograft models are widely used for cancer study to understand the pathological characters and to screen drugs for safety and efficacy<sup>5-7</sup>. Genetically engineered mice (GEM) are generated to mimic human breast cancer by targeting certain oncogenes or tumor suppressor genes<sup>8</sup>. GEM have a relatively simple and uniformed background to understand the role of genes in cancerous progress; however, the artificial environment and background are limited to investigate the metastasis pathology and related therapies<sup>9</sup>. Human cancer cells, although with human pathological features, can only be implanted in immune-deficient mice, and the insufficiency of the tumor-host immune interaction may lead to biased results<sup>10</sup>.

Where the solid tumor initiates has a direct influence on the biological and pathological characters of the disease<sup>11-13</sup>. Since cancerous progress is the complicated outcome of interactions among tumor cells, stromal cells, immunology cells, inflammatory cells, growth factors, and proteases, primary tumors implanted *in situ* will provide better insight and mimic the cancerous process more accurately than tumors induced by chemical agents or a subcutaneous injection of tumor cells. Chemical agents used to induce tumors may be harmful to researchers and environment and are even forbidden in some countries. Because of the absence of a mammary fat pad environment, the pathological progress of a subcutaneous injection may differ with that in real breast cancer patients, whose cancer originates and irritates from the mammary fat pad. The disadvantages of subcutaneous injections encourage the use of orthotopic models to study tumor growth. In earlier research, highly metastatic MDA-MB-231 tumors, developed after seven orthotopic transplantations, indicated the importance of the injection location<sup>14</sup>. Recently, the orthotopic implantation of breast cancer cells into the mammary fat pad with surgery was reported<sup>15,16</sup>. With the mammary pad environment, the tumor growth and the migration into distant organs cover the entire process of breast cancer at pathologically relevant sites, which makes this model a miniature of the progress of human diseases. However, after the surgery, the skin automatically attempts to heal itself, which may bring the potential risk of interfering with the normal breast cancer origination and bias the results.

We have compared some breast cancer models and established a minimally invasive orthotopic model to investigate the potential effect of drugs on breast cancer progression<sup>17,18</sup>. In this study, a video protocol on how to orthotopically inject breast cancer cells into the mammary fat pad in a simple, less invasive way is presented. This orthotopic injection method without surgery is advantageous in many ways. First, the operation is simple and rapid, about 1 minute per mouse. Second, with primary tumor foci starting at the right pathological sites, it covers the whole tumorigenic process of breast cancer progression from the tumor growth to other organs metastasis, which provides a good experimental animal model for studying the interaction of tumor cells and tumor microenvironment. Besides, it can be a valuable model to estimate the treatment effects at all stages of breast cancer. The goal of this method is to provide an animal model to maximumly mimic human breast cancer progression.

#### **PROTOCOL:**

Animal experiments were conducted in accordance with the Provision and General

Recommendation of Chinese Experimental Animal Administration Legislation and were approved by the Institution of Animal Care and Use Committee of Capital Medical University (Ref no. AEEI-2014-052). Female Balb/c mice aged 6 to 8 weeks were used.

## **1. Preparation of the Cells and Animals**

1.1 One day before the operation, shave the hair around the fourth nipples to expose the operating area.

1.1.1 Use one hand to hold the mouse tightly at the back to make sure the mouse will not move freely, turn up the mouse to expose its belly to the operator, and then use another hand to shave the fur around the fourth nipples with an electronic shaver.

1.1.2 Put a thin layer of hair removal cream around the nipples for 30 - 60 s, clean away the cream with distilled water, and then dry the mouse with soft paper.

1.2 On the day of the operation, collect murine breast cancer cells (4T1-luc2), count the cell number, and adjust the cell density to  $2 \times 10^5$  cells/mL in phosphate-buffered saline (PBS) in sterile microcentrifuge tubes and keep them on ice. For each mouse,  $1 \times 10^4$  cells/50  $\mu$ L in a 1-mL syringe is prepared.

## **2. Orthotopic Injection**

### **2.1 Anesthesia of mice**

2.1.1 Induce anesthesia. Put the mice in a closed transparent container and turn on 2% isoflurane gas to anesthetize the mice for about 5 min, till they all lie down and fall asleep.

2.1.2 Maintain anesthesia. Transfer the mice from the container to individual anesthesia masks, put some vet ointment on their eyes to avoid dryness, keep the mice supinely with their nipples exposed to the operator, and let them continue to inhale isoflurane gas for a few minutes until the injection has been performed.

2.1.3 Confirm the success of anesthesia by the lack of a toe pinch withdrawal reflex.

2.1.4 Apply ophthalmic ointment to the eyes of the mice to prevent eye dryness.

Note: According to the container size and the number of individual anesthesia masks available, a group of mice can be anesthetized together and injected one by one under individual anesthesia.

### **2.2 Performance of the injection**

2.2.1 Use one hand to tent up the skin around the fourth nipple with tweezers, to set up an uplifted "tunnel" for the syringe to follow. Use the other hand to hold the syringe with the needle

turned upwards to enter the skin subcutaneously at 5 - 10 mm from nipple; then, follow the “tunnel” until the needle tip comes close to the nipple, carefully move the needle tip up into the mammary fat pad till the needle eye comes under the nipple tip, discard the tweezers, and inject the cells slowly.

2.2.2 Turn around the needle a little and retract the syringe slowly; use a cotton swab to press the needle wound for 10 - 20 s to make sure there is no fluid seepage.

2.2.3 Observe the fourth nipple to confirm a successful injection: one white transparent flat sphere with the nipple as the center can be observed (**Figure 1**).

2.3 Keep the mice anesthetized for another minute to avoid letting the mice recover and move too quickly, which will cause the injection wound to open and the tumor cells to leak out.

### **3. Analysis of the Tumor Growth and Metastasis**

Note: Primary tumors are identified as transparent or blister-like bumps after injections, and as spherical or ellipsoid solid lumps with the nipple a few days later. Tumor growth is evaluated by tumor volume and tumor bioluminescence.

3.1 To establish the tumor volume, hold the mouse with one hand. Expose its belly to the operator and use the other hand to caliper the tumor length (L) and width (W). Calculate the tumor volume (V) as follows.

$$V = (L \times W^2)/2$$

3.2 To capture the tumor bioluminescence, inject 150 mg/kg D-luciferin at the back of the mouse's neck, 10 min before imaging. Anesthetize the mice with 2% isoflurane gas for 5 min and transfer them to individual anesthesia masks to let them inhale isoflurane gas for 5 min longer. Following the manufacturer's instructions, capture bioluminescence images of the primary tumor and metastasis, with auto exposure time, medium binning, and f/stop at 1.

### **4. Harvesting of the Primary Tumor and Metastasis Organs for Analysis**

Note: When achieving the purpose of this experiment, or reaching the humane endpoint, the primary tumor can be harvested for further study. In this study, tumors are removed at 4 to 5 weeks after the injection, when the tumor volume reaches about 800 mm<sup>3</sup>. The lungs are removed at week 8.

#### **4.1 Harvesting of the primary tumor**

4.1.1 Perform the surgery in a sterile hood to maintain a sterile atmosphere. Anesthetize the animals by isoflurane. Confirm the success of anesthesia by the lack of toe pinch withdrawal reflexes. Apply ophthalmic ointment to the eyes of the mice to prevent them from drying out.

4.1.2 Dissociate the tumor from the skin with scissors, dropwise antibiotic (2 mg/mL gentamicin, 1 drop of about 50  $\mu$ L per mouse), and painkiller (1 mg/mL tramadol, 1 drop of about 50  $\mu$ L per mouse) to prevent infections and relieve postoperative pain.

4.1.3 Stitch the skin with a surgical suture.

4.1.4 Cut the primary tumor in half with a scalpel, put 1/2 of the tumor into 4% paraformaldehyde for further hematoxylin and eosin (H&E) staining and immunohistochemistry, and immediately freeze the other 1/2 with liquid nitrogen for western blotting or an RNA isolation study later.

4.1.5 After suturing, warm the mice with a lamp till they recover, keep the mice in single cages until fully recovered. Continuously use 200 mg/L gentamicin in water and administer 10 mg/kg tramadol with an oral gavage for 3 d after the surgery.

## 4.2 Harvesting of metastasis organs

4.2.1 Euthanize the mice with an overdose of pentobarbital, open their chests with scissors, gently take out the lungs, and wash them with PBS. Lung metastasis foci can be identified as white transparent bumps which are morphologically different and distinguishable from normal pink lung tissue.

4.2.2 Put the lungs into 4% paraformaldehyde to verify the metastasis by H&E staining.

## REPRESENTATIVE RESULTS:

After a successful injection, one white transparent flat sphere with the nipple as the out-surface round center can be observed (**Figure 1**). Primary tumor growth can be measured by tumor volume and living tumor cell bioluminescence (**Figure 2**). Both the tumor volume and the total flux increased during the experiment before resection. At an early stage, metastasis cannot be found because no secondary tumor has happened or the strong bioluminescent signals of the primary tumor obstruct the detection of small metastasis foci with weak signals. After resection, the bioluminescent signal from the metastatic foci of distant organs can be detected and analyzed. The morphology of both the primary breast tumor and the lung sections were studied with H&E staining, while angiogenesis was investigated by staining the tumor with vessel marker CD31 for microvessel density (MVD) (**Figure 3**).

## FIGURE LEGENDS:

**Figure 1: Picture after the orthotopic injection at the mammary fat pad of female Balb/c mice.** The operation was performed, and the picture was taken while the mice were under isoflurane anesthesia.

**Figure 2: Volume and total flux of the primary tumor were measured from 7 days after the implantation.** The cell suspension implantation generated an increased primary tumor both in

volume, which was visualized and determined using calipers, and in total flux, which was measured by the Spectrum system. The figure shows bioluminescent images of primary tumors and metastasis observed at various time points after day 7 of implantation. p/s = photons/second. This figure has been modified from Zhang *et al.*<sup>17</sup>.

**Figure 3: H&E staining and immunohistochemical staining analysis of primary tumors and lung metastasis.** Tissues were fixed in 4% paraformaldehyde, embedded in paraffin, and stained. (A and B) Sections were stained with hematoxylin and eosin (H&E). (C and D) Sections were stained with anti-CD31 antibody. Brownish staining indicated CD31+ vessels. Panels A and C present primary tumor tissue, panels B and D present lung metastasis. CD = cluster of differentiation. The magnification used = 200X. The scale bar = 50  $\mu$ m. This figure has been modified from Zhang *et al.*<sup>17</sup>.

### DISCUSSION:

The cells used in this study are 4T1-luc2, murine triple-negative breast cancer cells with luciferase labeling, which are a useful tool for investigating antitumor and antimetastatic effects of drugs due to their highly invasive nature<sup>2,19</sup>. Luciferases, stable to the next cell generation, are used to indicate the living tumor cells, both at the mammary gland and at other distant organs<sup>20</sup>. In some cases, hypoxia and nutrient deficiency within the tumor result in a decrease in the bioluminescent signal, and the volume of the primary tumor is not inconsistent with the bioluminescent signal at a later stage of tumor progression. The technique of the cellular orthotopic injection (COI) of cell suspensions can also be performed with other breast cancer cell lines, such as human cells MDA-MB-231 (unpublished data). In this study, with the mammary gland as its environment, it is a proper animal model to study tumor microenvironment, crossing talking between tumor cells and stromal cells. During the tumor progress, in some mice, the nipple can ulcerate, scab, grow red granulation tissue, flatten, or even disappear, similar to what happens in human nipples during breast cancer. Mice may experience discomfort with ulcerations; humane care should be taken. More nipple change has been found in mice using this COI technique than with the micro-invasive surgery technique. The surgical orthotopic implantation (SOI) of histologically intact human tumor tissue, compared with the cellular orthotopic injection (COI) of cell suspensions, shows higher malignant cancers in the bladder, lung, stomach, kidney, and colon<sup>21</sup> that mimic what is seen in patients<sup>22</sup>.

With a high incidence of metastasis, especially lung metastasis, the murine breast cancer model established in this study is a good syngeneic cancer model to explore the spontaneous migration and invasion, compared with an artificial metastasis model, such as a tail vein injection. The tumor cell activities and characters also play important roles in metastasis. Other cell lines, such as human breast cancer cell MCF-7, even implanted by an orthotopic injection at the mammary fat pad of immune-deficient Balb/c mice, have a lower metastatic ability. With the modification of cells or mice, such as the over-expression or down-expression of a certain gene, this technology can be applied in more research fields.

The crucial operation of this injection is to carefully and slowly move up the needle tip, from subcutaneous into the mammary fat pad. When the syringe tip comes close to the nipple, the



operator will feel insistence from the tissue. Since the mouse gland is very small, only a little more pressure is needed to let the syringe tip pass through the insistence. Too much pressure will result in the tip passing through the gland and breaking the skin, which results in a failure of the injection. Logarithmic-phase cells, a single-cell suspension, the standard operation protocol (SOP), and skilled operators are all required to reduce the variation among mice. Tumor cell behavior is important for the formation and the repeatability of tumor models. Harvest logarithmic-phase cells when they grow to about 80% - 90% confluence; too low or too high cell densities will interfere with the tumor model and result in variations between experiments. The single-cell suspension is also important since cell clumps result in miscalculations of the cell number. Trypsin, an EDTA solution, or other appropriate methods are chosen to detach the cells according to the experiment aims and the targets the researcher is interested in. Dependent on the syringe scale and cell density, the injection volume could vary from 25 to 100  $\mu$ L. The amount of  $1 \times 10^4$  to  $1 \times 10^6$  cells is commonly used to irritate tumor growth according to different cell types. Trypan blue staining is used to distinguish viable cells from dead ones. More than 95% cell viability is regarded as a good situation to induce a rapid tumor growth and metastasis *in vivo*. These are also suitable for any other tumor models when preparing tumor cells. To correctly caliper the primary tumor size and get an accurate bioluminescent signal, the fur around the nipple should be removed again once it grows back. When the primary tumor grows to a large mass and its bioluminescent signal is too strong for researchers to observe other organ metastases (*e.g.*, lung metastasis), cover it with black electrical tape before bioluminescence images are taken, or remove it by surgery. A painkiller can be used for post-surgical pain.

Successful inoculation can result in lung metastasis: with an occurrence rate of more than 90%, metastatic foci at non-injected breasts, bone, or lymph nodes are quite common, while celiac metastasis is rare. The secondary tumors are a translucent mass and can be distinguished from the surrounding normal tissues. An imprecise application of the injection can lead to experimental errors in tumor size and shape and metastasis locations. Any leakage from the flat sphere after the injection will reduce the tumor size, any leakage from the mammary gland into the "tunnel" will result in a long cylindrical tumor which will obstruct the determination of the tumor volume when we use a digital caliper to measure it. Subcutaneous injections around the mammary fat pad seldom lead to lung metastasis and are not suitable for distant metastasis-associated study. To make the inoculation stable and reduce the risk of leakage, Matrigel can be used when suspending tumor cells. However, Matrigel is not a single solvent, it is regarded as a kind of extracellular matrix (ECM), and some types of gel even contain factors which may interfere with the experiments. In the experiment aimed at tumor microenvironment, ECM, crossing talking among tumor cells or with stromal cells, it is better to avoid using Matrigel. For injected cells with the luciferase tag D-luciferin, the substrate of luciferase is injected to bind the living tumor cells in mice. In this study, the dynamics of bioluminescence *in vivo* suggested that at 10 minutes after D-luciferin injection, the bioluminescent signal reach the peak and can be stable for about 10 - 15 minutes (varying between different mice), whether with an intraperitoneal injection or a subcutaneous injection. Considering the tested drug is injected intraperitoneally, to avoid the interaction of the tested drug with D-luciferin and to reduce the peritoneal irritation, a subcutaneous injection is suggested.

In conclusion, the orthotopic injection of breast cancer cells outlined in this paper is a very useful and powerful tool in studying the pathology and progression of breast cancer. It is easy to handle and can be performed quickly. The primary tumor originates at the mammary gland with a high occurrence of metastasis, which maximumly mimics the pathophysiological process of human breast carcinoma.

#### ACKNOWLEDGMENTS:

The authors would like to thank the National Natural Science Foundation of China (grant no. 81673924, 81774039, 81503517), the Beijing Natural Science Foundation (grant no. 7172095, 7162084, 7162083), and the Xu Xia Foundation of the Beijing Hospital of Traditional Chinese Medicine (grant no, xx201701).

#### DISCLOSURES:

The authors have nothing to disclose.

#### REFERENCES:

1. Torre, L. A. *et al.* Global cancer statistics, 2012. *CA: A Cancer Journal for Clinicians*. **65** (2), 87-108 (2015).
2. Rashid, O. M., Takabe, K. Animal models for exploring the pharmacokinetics of breast cancer therapies. *Expert Opinion on Drug Metabolism & Toxicology*. **11** (2), 221-230 (2015).
3. Wagner, K. U. Models of breast cancer: quo vadis, animal modeling? *Breast Cancer Research*. **6** (1), 31-38 (2004).
4. Horas, K., Zheng, Y., Zhou, H., Seibel, M. J. Animal models for breast cancer metastasis to bone: opportunities and limitations. *Cancer Investigation*. **33** (9), 459-468 (2015).
5. Kawaguchi, T., Foster, B. A., Young, J., Takabe, K. Current Update of Patient-Derived Xenograft Model for Translational Breast Cancer Research. *Journal of Mammary Gland Biology and Neoplasia*. **22** (2), 131-139 (2017).
6. Wright, L. E. *et al.* Murine models of breast cancer bone metastasis. *BoneKEy Reports*. **5**, 804 (2016).
7. Cassidy, J. W., Batra, A. S., Greenwood, W., Bruna, A. Patient-derived tumour xenografts for breast cancer drug discovery. *Endocrine-Related Cancer*. **23** (12), T259-T270 (2016).
8. Stiedl, P., Grabner, B., Zboray, K., Bogner, E., Casanova, E. Modeling cancer using genetically engineered mice. *Methods in Molecular Biology*. **1267**, 3-18 (2015).
9. Menezes, M. E. *et al.* Genetically engineered mice as experimental tools to dissect the critical events in breast cancer. *Advances in Cancer Research*. **121**, 331-382 (2014).

10. Talmadge, J. E., Singh, R. K., Fidler, I. J., Raz, A. Murine models to evaluate novel and conventional therapeutic strategies for cancer. *The American Journal of Pathology*. **170** (3), 793-804 (2007).
11. Spaw, M., Anant, S., Thomas, S. M. Stromal contributions to the carcinogenic process. *Molecular Carcinogenesis*. **56** (4), 1199-1213 (2017).
12. Joyce, J. A., Pollard, J. W. Microenvironmental regulation of metastasis. *Nature Reviews Cancer*. **9** (4), 239-252 (2009).
13. Hanahan, D., Weinberg, R. A. Hallmarks of cancer: the next generation. *Cell*. **144** (5), 646-674 (2011).
14. Yano, S. *et al.* Tumor-targeting adenovirus OBP-401 inhibits primary and metastatic tumor growth of triple-negative breast cancer in orthotopic nude-mouse models. *Oncotarget*. **7** (51), 85273-85282 (2016).
15. Kocaturk, B., Versteeg, H. H. Orthotopic injection of breast cancer cells into the mammary fat pad of mice to study tumor growth. *Journal of Visualized Experiments*. (96), e51967 (2015).
16. Tavera-Mendoza, L. E., Brown, M. A less invasive method for orthotopic injection of breast cancer cells into the mouse mammary gland. *Lab Animal*. **51** (1), 85-88 (2017).
17. Zhang, Y. *et al.* Establishment of a murine breast tumor model by subcutaneous or orthotopic implantation. *Oncology Letters*. **15** (5), 6233-6240 (2018).
18. Zhang, Y. *et al.* Gubenyliliu II Inhibits Breast Tumor Growth and Metastasis Associated with Decreased Heparanase Expression and Phosphorylation of ERK and AKT Pathways. *Molecules*. **22** (5) (2017).
19. Kwon, Y. S., Lee, K. S., Chun, S. Y., Jang, T. J., Nam, K. S. Suppressive effects of a proton beam on tumor growth and lung metastasis through the inhibition of metastatic gene expression in 4T1 orthotopic breast cancer model. *International Journal of Oncology*. **49** (1), 336-342 (2016).
20. Kalra, J. *et al.* Validating the use of a luciferase labeled breast cancer cell line, MDA435LCC6, as a means to monitor tumor progression and to assess the therapeutic activity of an established anticancer drug, docetaxel (Dt) alone or in combination with the ILK inhibitor, QLT0267. *Cancer Biology & Therapy*. **11** (9), 826-838 (2011).
21. Hoffman, R. M. Orthotopic metastatic mouse models for anticancer drug discovery and evaluation: a bridge to the clinic. *Investigational New Drugs*. **17** (4), 343-359 (1999).
22. Hoffman, R. M. Patient-derived orthotopic xenografts: better mimic of metastasis than subcutaneous xenografts. *Nature Reviews Cancer*. **15**, 451 (2015).



Figure 1


[Click here to access/download;Figure;figure1.eps](#) 



Figure 2

[Click here to access/download;Figure;figure2.eps](#)

Primary tumor

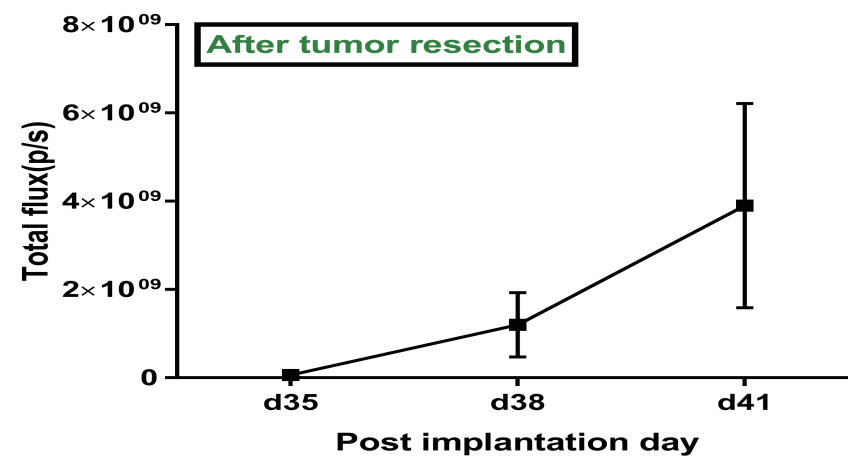
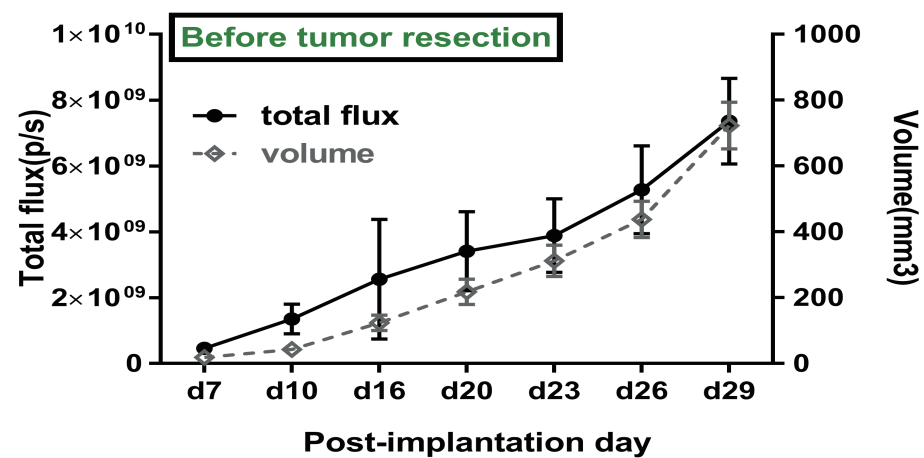
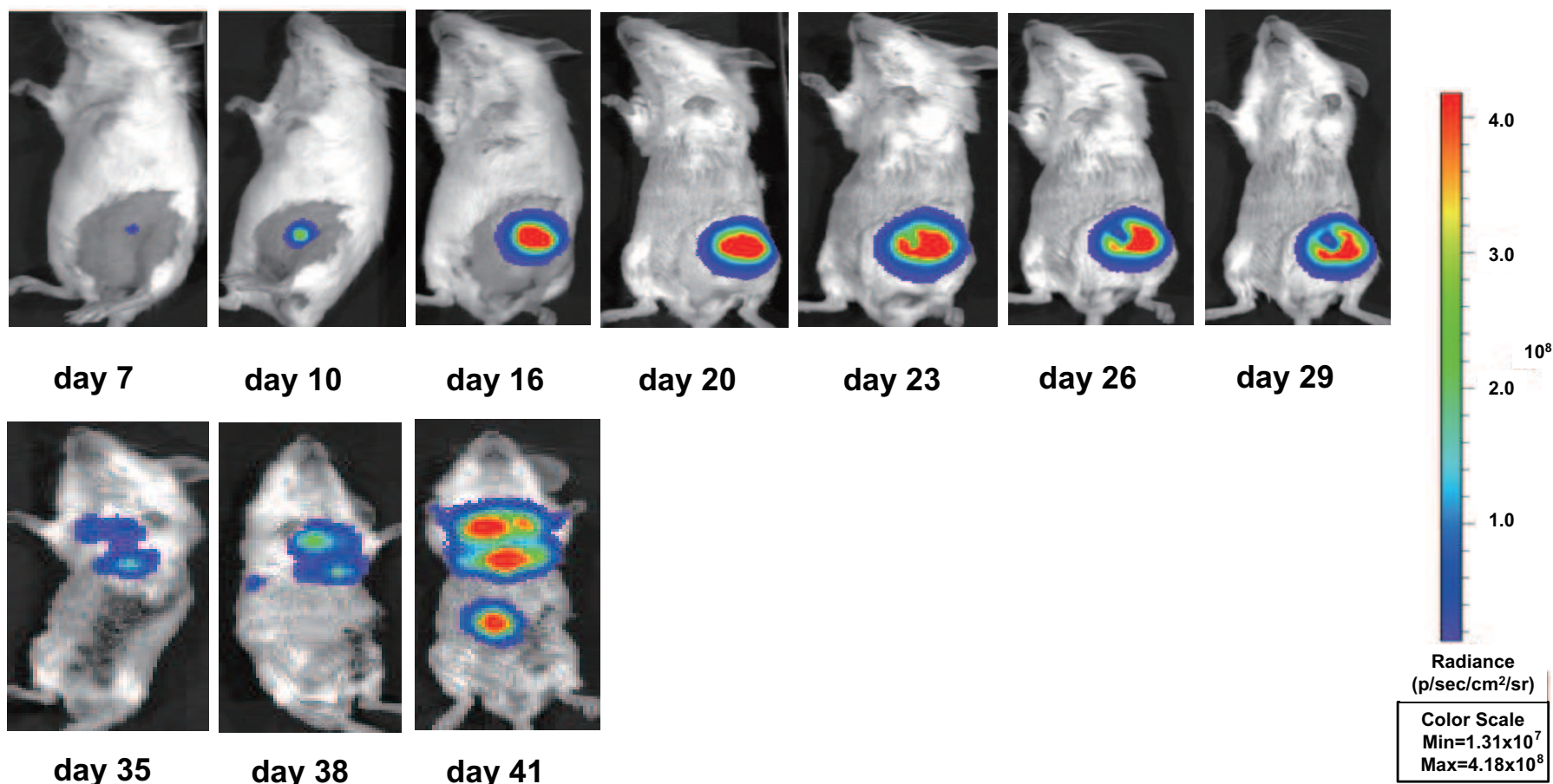
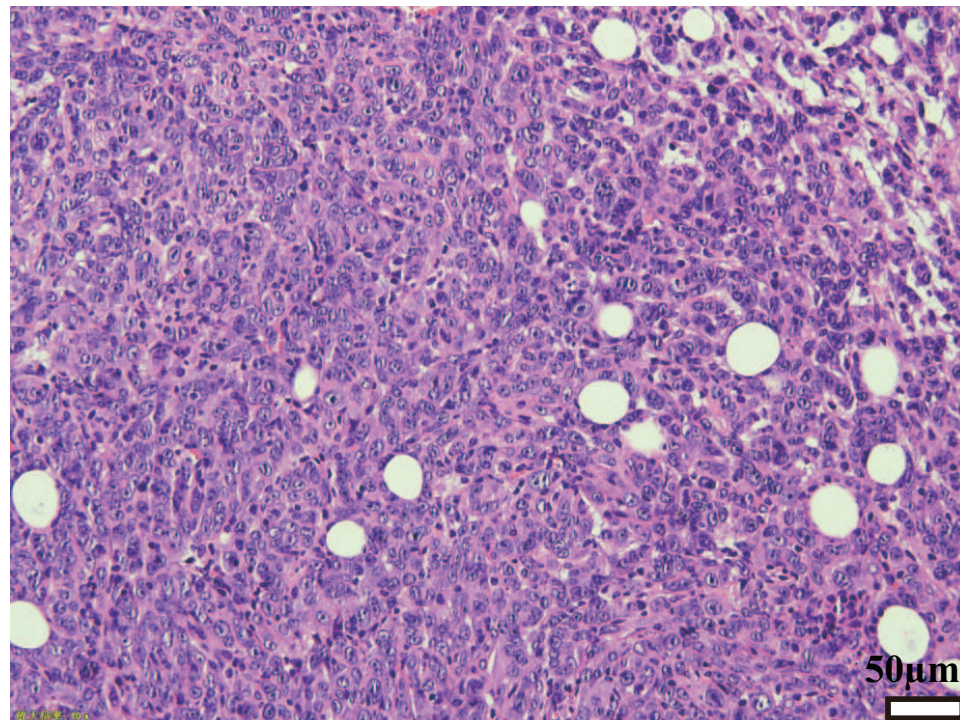


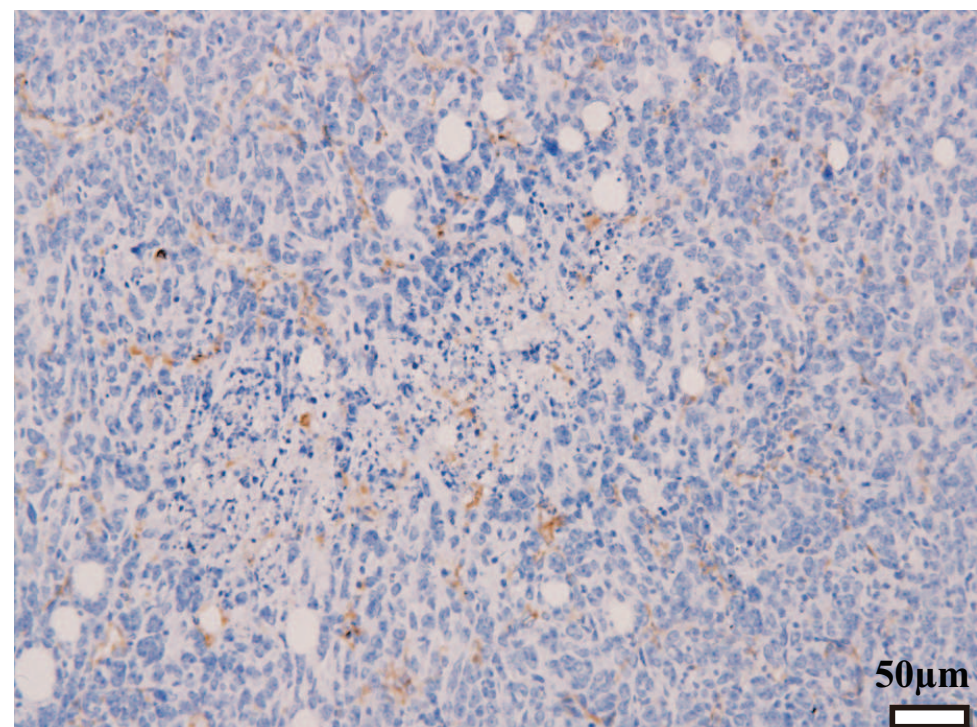


Figure 3

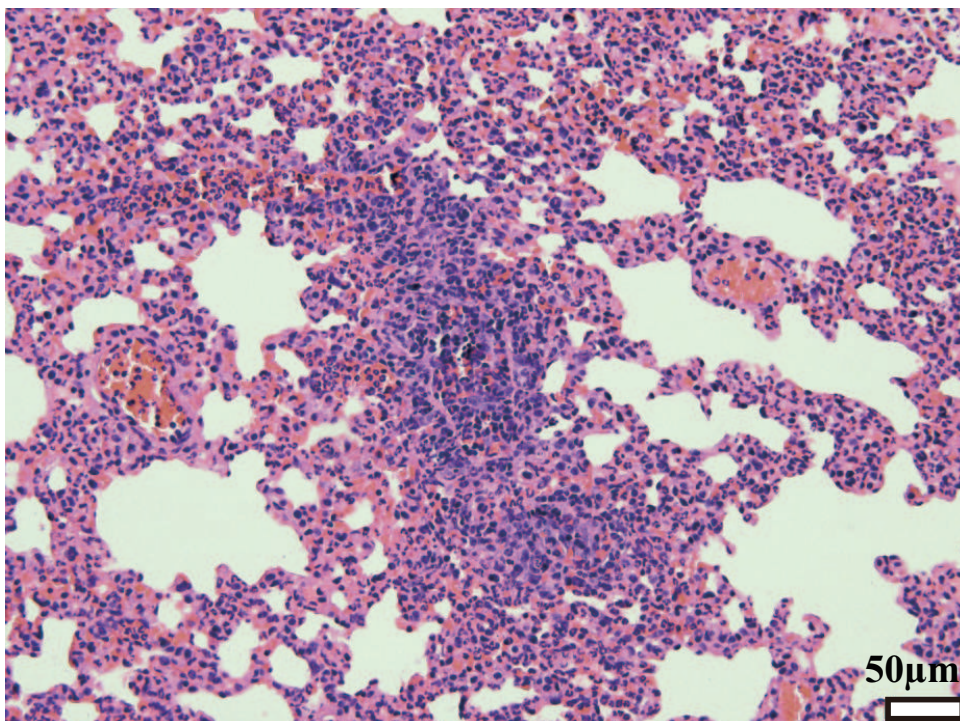
A



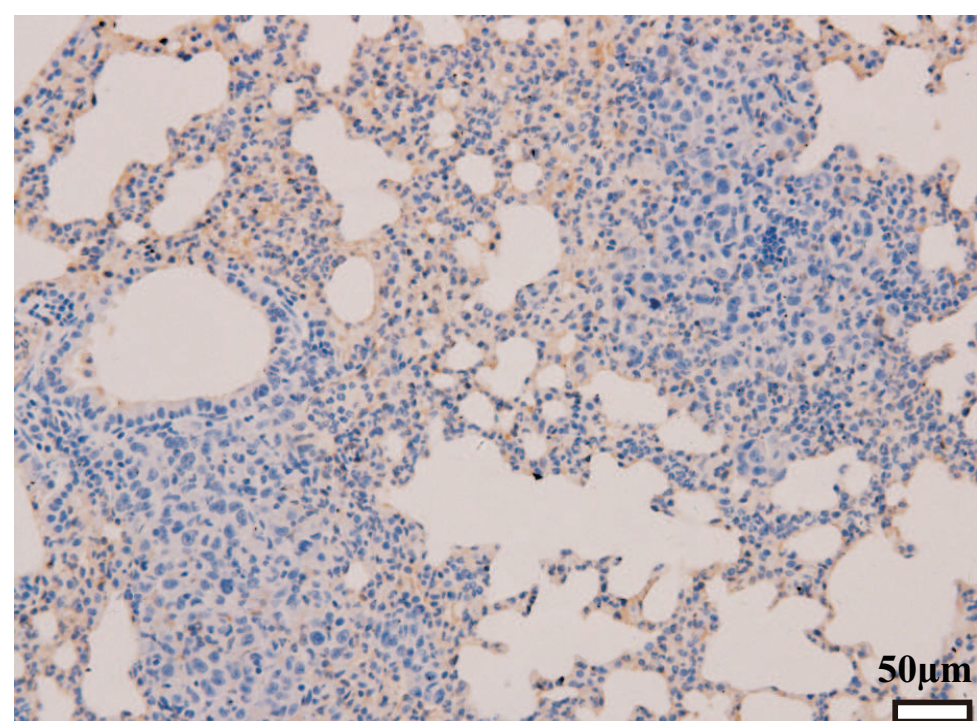
C



B



D





Name of Material/ Equipment	Company	Catalog Number
anesthesia machine	Midmark Corporation, Dayton, OH, USA	Matrx VMS
<i>In Vivo</i> Imaging System	PerkinElmer	IVIS Spectrum
isoflurane	Hebei yipin chemical reagents company	O21400
1 mL syringe	Becton, Dickinson and Company	A257
digital caliper	Shang Hai Shen Han Measuring Tools Co., Ltd.	S-H
gentamicin	Shan Xi Zhao Yi Biology limited company	-
tramadol	Mundipharma company	-
D-luciferin	Gold Biotechnology Inc.	LUCK-1G
The primary antibody against cluster of	Abcam	ab28364
hematoxylin and eosin staining kit	Beijing Zhong Shan Jinqiao Biotechnology Co.,	ZLI-9615
hair removal cream	Veet	-
Carbomer Eye Gel	Dr.GerhardMannChem- Pharm.FabrikGmbH	-



**Comments/Description**

anesthesia
used for bioluminescence deteccion
anesthesia
cell injection
volume measurement
infection provention
pain killer
used for bioluminescence deteccion
used for MVD detection
histology
hair removal cream
ophthalmic ointment

## ARTICLE AND VIDEO LICENSE AGREEMENT

Title of Article:

Orthotopic Injection of Breast Cancer Cells into Mice Mammary Gland

Author(s):

Gan-Lin Zhang, Yi Zhang, Ke-Xin Cao, Xiao-Min Wang

Item 1: The Author elects to have the Materials be made available (as described at <http://www.jove.com/publish>) via:



Standard Access



Open Access

Item 2: Please select one of the following items:



The Author is **NOT** a United States government employee.



The Author is a United States government employee and the Materials were prepared in the course of his or her duties as a United States government employee.



The Author is a United States government employee but the Materials were NOT prepared in the course of his or her duties as a United States government employee.

### ARTICLE AND VIDEO LICENSE AGREEMENT

1. **Defined Terms.** As used in this Article and Video License Agreement, the following terms shall have the following meanings: “**Agreement**” means this Article and Video License Agreement; “**Article**” means the article specified on the last page of this Agreement, including any associated materials such as texts, figures, tables, artwork, abstracts, or summaries contained therein; “**Author**” means the author who is a signatory to this Agreement; “**Collective Work**” means a work, such as a periodical issue, anthology or encyclopedia, in which the Materials in their entirety in unmodified form, along with a number of other contributions, constituting separate and independent works in themselves, are assembled into a collective whole; “**CRC License**” means the Creative Commons Attribution-Non Commercial-No Derivs 3.0 Unported Agreement, the terms and conditions of which can be found at: <http://creativecommons.org/licenses/by-nc-nd/3.0/legalcode>; “**Derivative Work**” means a work based upon the Materials or upon the Materials and other pre-existing works, such as a translation, musical arrangement, dramatization, fictionalization, motion picture version, sound recording, art reproduction, abridgment, condensation, or any other form in which the Materials may be recast, transformed, or adapted; “**Institution**” means the institution, listed on the last page of this Agreement, by which the Author was employed at the time of the creation of the Materials; “**JoVE**” means MyJoVE Corporation, a Massachusetts corporation and the publisher of The Journal of Visualized Experiments; “**Materials**” means the Article and / or the Video; “**Parties**” means the Author and JoVE; “**Video**” means any video(s) made by the Author, alone or in conjunction with any other parties, or by JoVE or its affiliates or agents, individually or in collaboration with the Author or any other parties, incorporating all or any portion

of the Article, and in which the Author may or may not appear.

2. **Background.** The Author, who is the author of the Article, in order to ensure the dissemination and protection of the Article, desires to have the JoVE publish the Article and create and transmit videos based on the Article. In furtherance of such goals, the Parties desire to memorialize in this Agreement the respective rights of each Party in and to the Article and the Video.

3. **Grant of Rights in Article.** In consideration of JoVE agreeing to publish the Article, the Author hereby grants to JoVE, subject to **Sections 4 and 7** below, the exclusive, royalty-free, perpetual (for the full term of copyright in the Article, including any extensions thereto) license (a) to publish, reproduce, distribute, display and store the Article in all forms, formats and media whether now known or hereafter developed (including without limitation in print, digital and electronic form) throughout the world, (b) to translate the Article into other languages, create adaptations, summaries or extracts of the Article or other Derivative Works (including, without limitation, the Video) or Collective Works based on all or any portion of the Article and exercise all of the rights set forth in (a) above in such translations, adaptations, summaries, extracts, Derivative Works or Collective Works and (c) to license others to do any or all of the above. The foregoing rights may be exercised in all media and formats, whether now known or hereafter devised, and include the right to make such modifications as are technically necessary to exercise the rights in other media and formats. If the “Open Access” box has been checked in **Item 1** above, JoVE and the Author hereby grant to the public all such rights in the Article as provided in, but subject to all limitations and requirements set forth in, the CRC License.



## ARTICLE AND VIDEO LICENSE AGREEMENT

4. **Retention of Rights in Article.** Notwithstanding the exclusive license granted to JoVE in **Section 3** above, the Author shall, with respect to the Article, retain the non-exclusive right to use all or part of the Article for the non-commercial purpose of giving lectures, presentations or teaching classes, and to post a copy of the Article on the Institution's website or the Author's personal website, in each case provided that a link to the Article on the JoVE website is provided and notice of JoVE's copyright in the Article is included. All non-copyright intellectual property rights in and to the Article, such as patent rights, shall remain with the Author.

5. **Grant of Rights in Video – Standard Access.** This **Section 5** applies if the "Standard Access" box has been checked in **Item 1** above or if no box has been checked in **Item 1** above. In consideration of JoVE agreeing to produce, display or otherwise assist with the Video, the Author hereby acknowledges and agrees that, Subject to **Section 7** below, JoVE is and shall be the sole and exclusive owner of all rights of any nature, including, without limitation, all copyrights, in and to the Video. To the extent that, by law, the Author is deemed, now or at any time in the future, to have any rights of any nature in or to the Video, the Author hereby disclaims all such rights and transfers all such rights to JoVE.

6. **Grant of Rights in Video – Open Access.** This **Section 6** applies only if the "Open Access" box has been checked in **Item 1** above. In consideration of JoVE agreeing to produce, display or otherwise assist with the Video, the Author hereby grants to JoVE, subject to **Section 7** below, the exclusive, royalty-free, perpetual (for the full term of copyright in the Article, including any extensions thereto) license (a) to publish, reproduce, distribute, display and store the Video in all forms, formats and media whether now known or hereafter developed (including without limitation in print, digital and electronic form) throughout the world, (b) to translate the Video into other languages, create adaptations, summaries or extracts of the Video or other Derivative Works or Collective Works based on all or any portion of the Video and exercise all of the rights set forth in (a) above in such translations, adaptations, summaries, extracts, Derivative Works or Collective Works and (c) to license others to do any or all of the above. The foregoing rights may be exercised in all media and formats, whether now known or hereafter devised, and include the right to make such modifications as are technically necessary to exercise the rights in other media and formats. For any Video to which this **Section 6** is applicable, JoVE and the Author hereby grant to the public all such rights in the Video as provided in, but subject to all limitations and requirements set forth in, the CRC License.

7. **Government Employees.** If the Author is a United States government employee and the Article was prepared in the course of his or her duties as a United States government employee, as indicated in **Item 2** above, and any of the licenses or grants granted by the Author hereunder exceed the scope of the 17 U.S.C. 403, then the rights granted hereunder shall be limited to the maximum

rights permitted under such statute. In such case, all provisions contained herein that are not in conflict with such statute shall remain in full force and effect, and all provisions contained herein that do so conflict shall be deemed to be amended so as to provide to JoVE the maximum rights permissible within such statute.

8. **Protection of the Work.** The Author(s) authorize JoVE to take steps in the Author(s) name and on their behalf if JoVE believes some third party could be infringing or might infringe the copyright of either the Author's Article and/or Video.

9. **Likeness, Privacy, Personality.** The Author hereby grants JoVE the right to use the Author's name, voice, likeness, picture, photograph, image, biography and performance in any way, commercial or otherwise, in connection with the Materials and the sale, promotion and distribution thereof. The Author hereby waives any and all rights he or she may have, relating to his or her appearance in the Video or otherwise relating to the Materials, under all applicable privacy, likeness, personality or similar laws.

10. **Author Warranties.** The Author represents and warrants that the Article is original, that it has not been published, that the copyright interest is owned by the Author (or, if more than one author is listed at the beginning of this Agreement, by such authors collectively) and has not been assigned, licensed, or otherwise transferred to any other party. The Author represents and warrants that the author(s) listed at the top of this Agreement are the only authors of the Materials. If more than one author is listed at the top of this Agreement and if any such author has not entered into a separate Article and Video License Agreement with JoVE relating to the Materials, the Author represents and warrants that the Author has been authorized by each of the other such authors to execute this Agreement on his or her behalf and to bind him or her with respect to the terms of this Agreement as if each of them had been a party hereto as an Author. The Author warrants that the use, reproduction, distribution, public or private performance or display, and/or modification of all or any portion of the Materials does not and will not violate, infringe and/or misappropriate the patent, trademark, intellectual property or other rights of any third party. The Author represents and warrants that it has and will continue to comply with all government, institutional and other regulations, including, without limitation all institutional, laboratory, hospital, ethical, human and animal treatment, privacy, and all other rules, regulations, laws, procedures or guidelines, applicable to the Materials, and that all research involving human and animal subjects has been approved by the Author's relevant institutional review board.

11. **JoVE Discretion.** If the Author requests the assistance of JoVE in producing the Video in the Author's facility, the Author shall ensure that the presence of JoVE employees, agents or independent contractors is in accordance with the relevant regulations of the Author's institution. If more than one author is listed at the beginning of this Agreement, JoVE may, in its sole



## ARTICLE AND VIDEO LICENSE AGREEMENT

discretion, elect not take any action with respect to the Article until such time as it has received complete, executed Article and Video License Agreements from each such author. JoVE reserves the right, in its absolute and sole discretion and without giving any reason therefore, to accept or decline any work submitted to JoVE. JoVE and its employees, agents and independent contractors shall have full, unfettered access to the facilities of the Author or of the Author's institution as necessary to make the Video, whether actually published or not. JoVE has sole discretion as to the method of making and publishing the Materials, including, without limitation, to all decisions regarding editing, lighting, filming, timing of publication, if any, length, quality, content and the like.

**12. Indemnification.** The Author agrees to indemnify JoVE and/or its successors and assigns from and against any and all claims, costs, and expenses, including attorney's fees, arising out of any breach of any warranty or other representations contained herein. The Author further agrees to indemnify and hold harmless JoVE from and against any and all claims, costs, and expenses, including attorney's fees, resulting from the breach by the Author of any representation or warranty contained herein or from allegations or instances of violation of intellectual property rights, damage to the Author's or the Author's institution's facilities, fraud, libel, defamation, research, equipment, experiments, property damage, personal injury, violations of institutional, laboratory, hospital, ethical, human and animal treatment, privacy or other rules, regulations, laws, procedures or guidelines, liabilities and other losses or damages related in any way to the submission of work to JoVE, making of videos by JoVE, or publication in JoVE or elsewhere by JoVE. The Author shall be responsible for, and shall hold JoVE harmless from, damages caused by lack of sterilization, lack of cleanliness or by contamination due to

the making of a video by JoVE its employees, agents or independent contractors. All sterilization, cleanliness or decontamination procedures shall be solely the responsibility of the Author and shall be undertaken at the Author's expense. All indemnifications provided herein shall include JoVE's attorney's fees and costs related to said losses or damages. Such indemnification and holding harmless shall include such losses or damages incurred by, or in connection with, acts or omissions of JoVE, its employees, agents or independent contractors.

**13. Fees.** To cover the cost incurred for publication, JoVE must receive payment before production and publication the Materials. Payment is due in 21 days of invoice. Should the Materials not be published due to an editorial or production decision, these funds will be returned to the Author. Withdrawal by the Author of any submitted Materials after final peer review approval will result in a US\$1,200 fee to cover pre-production expenses incurred by JoVE. If payment is not received by the completion of filming, production and publication of the Materials will be suspended until payment is received.

**14. Transfer, Governing Law.** This Agreement may be assigned by JoVE and shall inure to the benefits of any of JoVE's successors and assignees. This Agreement shall be governed and construed by the internal laws of the Commonwealth of Massachusetts without giving effect to any conflict of law provision thereunder. This Agreement may be executed in counterparts, each of which shall be deemed an original, but all of which together shall be deemed to be one and the same agreement. A signed copy of this Agreement delivered by facsimile, e-mail or other means of electronic transmission shall be deemed to have the same legal effect as delivery of an original signed copy of this Agreement.

A signed copy of this document must be sent with all new submissions. Only one Agreement is required per submission.

### CORRESPONDING AUTHOR

Name:	Xiao-Min Wang, and Gan-lin Zhang	
Department:	Oncology Department	
Institution:	Beijing Hospital of Traditional Chinese Medicine, Capital Medical University	
Title:	Prof	
Signature:		Date: 2018.6.10

Please submit a **signed** and **dated** copy of this license by one of the following three methods:

1. Upload an electronic version on the JoVE submission site
2. Fax the document to +1.866.381.2236
3. Mail the document to JoVE / Attn: JoVE Editorial / 1 Alewife Center #200 / Cambridge, MA 02140

**Editorial comments:**

The manuscript has been modified and the updated manuscript, **58604\_R1.docx**, is attached and located in your Editorial Manager account. **Please use the updated version to make your revisions.**

1. Please take this opportunity to thoroughly proofread the manuscript to ensure that there are no spelling or grammar issues.

- The revised manuscript has been proofread thoroughly.

2. JoVE cannot publish manuscripts containing commercial language. This includes company names of an instrument or reagent. Please remove all commercial language from your manuscript and use generic terms instead. All commercial products should be sufficiently referenced in the Table of Materials and Reagents.

-Company names of instruments and reagents have been removed.

3. Please revise the text in Protocol to avoid the use of any personal pronouns (e.g., "we", "you", "our" etc.).

- The protocol has been revised by withdraw personal pronouns.

4. Step 2.2.4: Please write this step in imperative tense.

- The step has been revised in imperative tense.

5. 3.1: Please write this step in imperative tense. Please add more details about the measurement.

- This step has been revised in imperative tense, and more details on how to measure have been added.

6. 4.1.2: Please specify the dose of antibiotic and painkiller.

- The dose of antibiotic and painkiller has been specified in revised manuscript.

7. Being a video based journal, JoVE authors must be very specific when it comes to the humane treatment of animals. Regarding animal treatment in the protocol, please add the following information to the text:

a) Please mention how proper anesthetization is confirmed.

- Confirm the success of anesthesia by the lack of toe pinch withdrawal reflex. The

description has been added in revised manuscript.

b) Please specify the use of vet ointment on eyes to prevent dryness while under anesthesia.

- Thank you for your remembering. Ophthalmic ointment has been used to prevent eyes from drying out while under anesthesia, and the description has been addressed in revised manuscript.

c) For survival strategies, discuss post-surgical treatment of animal, including recovery conditions and treatment for post-surgical pain.

- Warm lamp, gentamicin, tramadol are used for survival strategies, and the description has been added in revised manuscript.

d) Discuss maintenance of sterile conditions during survival surgery.

- Survival surgery is performed in a sterile hood, and has been discussed in revised manuscript.

e) Please specify that the animal is not left unattended until it has regained sufficient consciousness to maintain sternal recumbency.

- A warm lamp is used to keep body temperature until animals regain consciousness, and this has been addressed in revised manuscript.

f) Please specify that the animal that has undergone surgery is not returned to the company of other animals until fully recovered.

- Thank you for your remembering. Mouse is kept in single cage after surgery until fully recovered, and this has been emphasized in revised manuscript

g) Please do not highlight any steps describing euthanasia or anesthesia.

- Steps about anesthesia have not been highlighted in revised manuscript.

126 网易免费邮

wangxiaomin\_bhtcm@126.com (738)

世界杯 | 专业版 | 升级VIP | 升级服务 | 设置 | 帮助 | 退出

OL

首页 | 通讯录 | 应用中心 | SC投稿相关 | 网易严选 | 考拉海购 | 搜索邮件 | Re:[Molecul... | Spandidos... |

收信 | 写信

收件箱 (4)

红旗邮件

待办邮件

智能标签

星标联系人邮件

oncotarget Edit...

ijmm@spand...

草稿箱 (6)

已发送

订阅邮件 (15)

SC投稿相关

发票翻译模板

审稿相关

其他5个文件夹

邮件标签

邮箱中心

文件中心

附件图集

网易邮箱登录有礼

您今日的登录好礼待领取!

点击领取 >

Spandidos Publications Esub no. : 168390

发件人: ol<ol@osats.spandidos-publications.com> (由 bounce+3510d7.34cd88-wangxiaomin\_bhtcm=126.com@osats.spandidos-publications.com 代发; 帮助)

收件人: 我<wangxiaomin\_bhtcm@126.com>

抄送人: cmdzhangyi<cmdzhangyi@126.com>

时间: 2018年07月18日 20:01 (星期三)

邮件已被转发 查看详情

【午睡醒来的办公室下午茶】被加入购物车最多的严选10大必吃美食! 马上体验 >>

Dear Dr xiaomin wang,

Our reference: OL-11038-168390-03

Title: Selection of a murine breast tumor model: subcutaneous or orthotopic implantation?

By: YI ZHANG

We give our permission for the use of the figures. Please cite them appropriately.

Yours sincerely,

Spandidos Publications

快速回复给: ol\_cmdzhangyi