

Journal of Visualized Experiments

Extraction of lignin with high β -O-4 content by mild ethanol extraction and its effect on the depolymerization yield.

--Manuscript Draft--

Article Type:	Invited Methods Article - JoVE Produced Video
Manuscript Number:	JoVE58575R3
Full Title:	Extraction of lignin with high β -O-4 content by mild ethanol extraction and its effect on the depolymerization yield.
Keywords:	lignocellulose; fractionation, lignin; 2D-NMR; depolymerization; acetals, phenols
Corresponding Author:	Johannes de Vries, Ph.D. Leibniz Institute for Catalysis Rostock, Mecklenburg-Vorpommern GERMANY
Corresponding Author's Institution:	Leibniz Institute for Catalysis
Corresponding Author E-Mail:	Johannes.deVries@catalysis.de
Order of Authors:	Johannes de Vries, Ph.D. Douwe S. Zijlstra Alessandra de Santi Bert Oldenburger Katalin Barta Peter J. Deuss
Additional Information:	
Question	Response
Please indicate whether this article will be Standard Access or Open Access.	Open Access (US\$4,200)
Please indicate the city, state/province, and country where this article will be filmed . Please do not use abbreviations.	University of Groningen, Nijenborgh 4, 9747AG Groningen, The Netherlands

TITLE:

Extraction of Lignin with High β -O-4 Content by Mild Ethanol Extraction and its Effect on the Depolymerization Yield

AUTHORS & AFFILIATIONS:

Douwe S Zijlstra¹, Alessandra De Santi², Bert Oldenburger^{1,2}, Johannes G de Vries^{2,3}, Katalin Barta², Peter J Deuss¹

¹Department of Chemical Engineering (ENTEG), University of Groningen, Groningen, The Netherlands

²Stratingh Institute for Chemistry, University of Groningen, Groningen, The Netherlands

³Leibniz-Institut für Katalyse e.V., Universität Rostock, Rostock, Germany

Corresponding Author:

Peter J Deuss

Email Address: p.j.deuss@rug.nl

Tel: +31503634918

Email Addresses of Co-authors:

Douwe S Zijlstra (d.s.zijlstra@rug.nl)

Alessandra de Santi (a.de.santi@rug.nl)

Bert Oldenburger (b.oldenburger@student.rug.nl)

Katalin Barta (k.barta@rug.nl)

Johannes G de Vries (johannes.devries@catalysis.de)

KEYWORDS:

Lignocellulose, fractionation, lignin, 2D-NMR, depolymerization, acetals, phenols

SHORT ABSTRACT:

Here, we present a protocol to perform ethanol extraction of lignin from several biomass sources. The effect of the extraction conditions on the lignin yield and β -O-4 content are presented. Selective depolymerization is performed on the obtained lignins to obtain high aromatic monomer products.

LONG ABSTRACT:

Lignin valorization strategies are a key factor for achieving more economically competitive biorefineries based on lignocellulosic biomass. Most of the emerging elegant procedures to obtain specific aromatic products rely on the lignin substrate having a high content of the readily cleavable β -O-4 linkage as present in the native lignin structure. This provides a miss-match with typical technical lignins that are highly degraded and therefore are low in β -O-4 linkages. Therefore, the extraction yields, and the quality of the obtained lignin are of utmost importance to access new lignin valorization pathways. In this manuscript, a simple protocol is presented to obtain lignins with high β -O-4 content by relatively mild ethanol extraction that can be applied to different lignocellulose sources. Furthermore, analysis procedures to determine the quality of the lignins are presented together with a depolymerization protocol that yields specific phenolic

2-arylmethyl-1,3-dioxolanes, which can be used to evaluate the obtained lignins. The presented results demonstrate the link between lignin quality and potential for the lignins to be depolymerized into specific monomeric aromatic chemicals. Overall, the extraction and depolymerization demonstrates a trade-off between the lignin extraction yield and the retention of the native aryl-ether structure and thus the potential of the lignin to be used as the substrate for the production of chemicals for higher-value applications.

INTRODUCTION:

For the chemical industry to become sustainable, renewable feedstocks such as lignocellulosic biomass should be used as alternative to current dominant fossil ones¹. However, to make the use of such feedstocks economically viable, high-value applications should be sought for all its contents. Lignocellulosic biomass can contain about 30 wt% of the lignin that is an aromatic biopolymer for which currently only a few applications have been developed beyond its use as low-value fuel². Therefore, the methodology towards potentially increased-value aromatic components is of major interest to ensure the success of future biorefineries.

Recent research has focused heavily on the development of novel methodologies for the selective cleavage of the most abundant β -O-4 linkage (**Figure 1a**) in lignin to obtain specific aromatic, typically phenolic, monomers³⁻⁶. For example, the application of acids between 80 °C to 180 °C is very effective in cleaving the β -O-4 linkage forming aldehyde and ketone fragments^{7,8}. Our groups and others have recently demonstrated that acidolysis combined with the methodologies to stabilize and trap reactive fragments is extremely potent to obtain phenolic monomers with specific chemical motifs⁹⁻¹². Of these, in particular acetal trapping of reactive aldehydes with alcohols to obtain phenolic 2-arylmethyl-1,3-dioxolanes (acetals) proved powerful due to its relative simple application and the retention of the highly functionalized nature of the lignin monomers (**Figure 1b**)^{13,14}. These acetals are obtained from the depolymerization in a ratio that relates to the distribution of the H, G and S monomers present in the parent lignin feedstock.

Acid catalyzed depolymerization, like many of the most elegant methodologies developed, are relatively mild and do not cleave stronger C-C bonds that occur in lignin¹⁵. However, C-C bonds become especially abundant when harsh lignocellulose fractionation conditions are applied due to the condensation of reactive fragments released from the cleavage of weaker C-O bonds^{16,17}. The loss of β -O-4 content from the biomass processing method is clearly demonstrated by the analysis of a range of technical lignins, which were shown to only retain up to 6 β -O-4 linkages per 100 aromatic units¹⁸, while in lignocellulose these numbers range from 45 to 90 linkages per 100 aromatic units depending on the source¹⁶. Turning to milder extraction conditions, lignins can be obtained with the linkage distributions that better reflect the natural lignin. Nevertheless, this demands a trade-off between the extraction efficiency and the quality of the obtained lignin material¹⁷. This also has precedence in organosolv extraction of lignin, which is a popular method to fractionate lignin. Many variations of this process exist, with the methods employing different temperatures, acid content, extraction times and solvents. Here, the extraction severity has a direct impact on the obtained lignin structure and thus its suitability for further valorization¹⁹⁻²¹. For example, organosolv lignin produced by the ethanol based Alcell process, operated for 5

years at demonstration scale, had relatively low amount of β -O-4 linkages left as it was operated at relatively high temperature to ensure efficient delignification in order to obtain high quality carbohydrates for bioethanol production. Nevertheless, biobased solvents with little environmental impact like ethanol are preferred and thus the extraction methods that result in lignins of higher value are of interest. Alcoholic solvents are of particular interest as in addition to being the extraction medium they also incorporate into the lignin structure, for example, β' -O-4 (**Figure 1a**)²², which partly “protects” the structure from undesired cleavage. A suitable method would potentially be first to obtain lignin with a high β -O-4 content and in a sequential step to remove the remainder of the lignin to access high value cellulose.

In this manuscript, we describe a straight forward and highly reproducible procedure for the extraction of high β -O-4 lignin by mild ethanol extraction. Depending on the biomass source, this can lead to relatively high extraction efficiency and yield. Procedures for the characterization of the obtained lignin are provided as well as how to “deprotect” the etherified β' -O-4²⁰. Additionally, an assessment procedure is presented for the potential of these lignins in selective depolymerization procedures that rely on selective cleavage of the β -O-4 linkages. This assessment is performed using the iron(III) triflate catalyzed depolymerization in the presence of ethylene glycol to obtain phenolic 2-arylmethyl-1,3-dioxolanes²³ which demonstrates the link between β -O-4 content in the lignin material and the monomer yields²¹. The results show the balance between high lignin extraction efficiency and the potential of the obtained lignin to be depolymerized to specific aromatic monomers.

PROTOCOL:

1. Pretreatment of the Walnut Feedstock before Lignin Extraction

1.1. Production of cut walnut shells

1.1.1. Feed the walnut shells to a hammer cutter to fracture the shells. Equip the hammer cutter with a 5 mm sieve at the outlet. Collect the fractured walnut shells in a 1 L glass beaker.

1.1.2. Feed the fractured shells to a micro hammer cutter to obtain ground shells. Equip the micro hammer cutter with a 2 mm sieve at the outlet. Collect the ground walnut shells in a 1 L glass beaker.

1.2. Extraction of fatty acids from ground walnut shells

1.2.1. Put 150 g of the cut walnut shells in a 500 mL round-bottom flask. Add 200 mL of toluene and a stirring bar to the round-bottom flask.

1.2.2. Attach a reflux condenser to the round-bottom flask. Heat the mixture at reflux temperature (111 °C) with an oil bath for 2 h with vigorous stirring.

1.2.3. Stop the heating after 2 h and let the mixture cool down to room temperature by

removing it from the oil bath.

1.2.4. Remove the toluene by filtration (185 mm diameter, 10 µm pore size). Discard the toluene filtrate.

1.2.5 Remove the toluene residues by heating the walnut shells overnight in a vacuum oven at 80 °C and 50 mbar.

1.3. Milling of pre-extracted walnut shells

1.3.1. Place 7 ZrO₂ grinding balls with a 20 mm diameter into a 250 mL grinding bowl made of ZrO₂.

1.3.2. Fill the bowl with 40 g of walnut particles. Add 60 mL of isopropanol to the grinding bowl.

1.3.3. Perform the grinding of the walnut shells with a rotary ball mill. Grind in 4 cycles of 2 min grinding at 27 x g followed by a 4 min pause. Keep the temperature of the bowl below 80 °C at any time. Perform no more than 3 batches and let the bowl cool down afterwards.

1.3.4. Collect the finely ground walnut shells into a 500 mL round-bottom flask. Remove the isopropanol by rotary evaporation at 40 °C and 125 mbar.

1.3.5. Dry the walnut shells overnight in a vacuum oven at 50 °C and 50 mbar.

1.3.6. Sieve the finely ground walnut shells through a 1 mm sieve. Ground the particles that are too large again with the rotary ball mill.

2. Preparation of the Wood Feedstocks

2.1. Cutting of the wooden planks

2.1.1. Place the wooden planks under a drill, which is equipped with a flat wood speed drill bit. Collect the wood shavings in a glass beaker.

2.1.2. Place the wooden shavings in a coffee grinder to cut them into smaller pieces.

2.2. Extraction of fatty acids from wood

2.2.1. Perform the extraction of the fatty acids from wood in precisely the same manner as described for walnut shells in Step 1.2.

Note: No milling of the wood is performed in the ball mill, as the conditions described in Step 1.3 did not result in a reduction of the particle size.

3. Extraction of High β -O-4 Ethanosolv Lignin

3.1. Mild ethanol extraction (Method A)

3.1.1. Put 25 g of the feedstock in a 500 mL round-bottom flask. Add an 80:20 ethanol/water mixture (200 mL), 4 mL of 37% HCl solution (0.24 M) and a magnetic stirring bar to the round-bottom flask.

3.1.2. Attach a reflux condenser to the round-bottom flask. Heat the mixture at reflux temperature with an oil bath for 5 h with vigorous stirring.

3.1.3. Allow the mixture to cool to room temperature by removing it from the oil bath. Filter the mixture (185 mm diameter, 10 μ m pore size) and wash the residue with 4 times 25 mL of ethanol.

3.2. Work-up and isolation of lignin

3.2.1. Collect the liquor in a 500 mL round-bottom flask. Concentrate the liquor by rotary evaporation at 40 °C and 150 mbar.

3.2.2. Dissolve the obtained solid in 30 mL of acetone. Use an ultrasonic bath if the solid does not dissolve completely.

3.2.3. Precipitate the lignin by adding the mixture to 600 mL of water. If no precipitation occurs, add a small amount of saturated aqueous Na₂SO₄ solution to flocculate the lignin.

3.2.4. Collect the lignin by filtration (185 mm diameter, 10 μ m pore size). Wash the lignin with 25 mL of water 4 times. Discard the filtrate if no analysis of the hemicellulose fraction is required. If the filtrate is very turbid, add it to a centrifugation tube and collect the (solid) bottom fraction by centrifugation.

3.2.5. Allow the lignin to air dry overnight. Dry the lignin further in a vacuum oven (overnight at 50 °C and 50 mbar).

3.2.6. Determine the yield after the lignin is dried overnight in a vacuum oven.

3.2.7 Determine the lignin extraction efficiency by dividing it with the total lignin content as determined by the Klason method²⁴.

3.3. Higher temperature ethanol extraction (Method B)

3.3.1. Put 15 g of the feedstock in a 250 mL autoclave. Add an 80:20 ethanol/water mixture (120 mL), 2.4 mL of HCl (0.24 M) and a magnetic stirring bar.

3.3.2. Heat the mixture at 120 °C for 5 h with a stirring speed of 5.2 x g. Cool the mixture

afterwards in an ice bath.

3.3.3. Filter the mixture (185 mm diameter, 10 μ m pore size) and wash the residue 4 times with 15 mL of ethanol.

3.3.4. Perform further work-up and isolation precisely as described in Step 3.2.

3.4. Larger scale higher temperature ethanol extraction of walnut shell (Method C*)

3.4.1. Put 90 g of finely ground walnut shell in a 1 L high pressure autoclave. Add an 80:20 ethanol/water mixture (750 mL) and 6.25 mL of H₂SO₄ (0.12 M).

3.4.2. Heat the mixture at 120 °C for 5 h with a stirring speed of 35.8 x g. Cool the mixture back to room temperature by turning on the reactors cooling system after the 5 h reaction time.

3.4.3. Filter the mixture (185 mm diameter, 10 μ m pore size) and wash the residue 4 times with 75 mL of ethanol.

Note: Using multiple filters saves a lot of time.

3.4.4. Collect the liquors in 2 equal batches. Perform the work-up and isolation as described as in Step 3.2 with double amount of the solvents for both batches.

3.5 Control experiments of Step 3.1. (**Method A***) and Step 3.3. (**Method B***) (optional)

3.5.1. Put the exact same materials as described in Step 3.1.1 but replace the HCl solution with 1.67 mL of H₂SO₄ (0.12M). The rest of Step 3.1-3.2 is identical to **Method A**.

3.5.2. Put the exact same materials as described in Step 3.3.1 but replace the HCl solution with 1.0 mL of H₂SO₄ (0.12M). The rest of Step 3.3 is identical to **Method B**.

4. De-etherification of the Lignin (optional)

4.1. Dissolve 1000 mg of lignin in a 24 mL of 1:1 1,4-dioxane/water mixture in a 100 mL round-bottom flask. Add 1 mL of a 37% HCl solution to the mixture.

4.2. Add a stirring bar and attach a reflux condenser to the round-bottom flask. Heat the mixture to 100 °C with an oil bath for 5 h with vigorous stirring.

4.3. Allow the mixture to cool down to room temperature by removing it from the oil bath. Add the mixture to 160 mL of water to precipitate the lignin.

4.4. Collect the lignin by filtration (185 mm diameter, 10 μ m pore size) and wash the lignin with 25 mL of water 2 times. Allow the lignin to air dry overnight. Dry the lignin further in a

vacuum oven (overnight at 50 °C and 50 mbar).

5. Analysis of Lignin

5.1. Two-dimensional nuclear magnetic resonance (2D-NMR) analysis

5.1.1. Dissolve 60 mg of dried lignin in 0.7 mL of d₆-acetone. Add a few drops of D₂O if the lignin does not fully dissolve. Put the mixture in an NMR-tube and take a 2D proton heteronuclear single quantum coherence spectra (HSQC) with an NMR spectrometer with the following parameters: (11, -1), (160, -10), nt = 4, ni = 512²⁰.

5.1.2. Analyze the obtained HSQC spectra. Adjust the spectra by manual phase corrections on both axis until all signals are positive, as this is especially important along the horizontal (f2) axis. Perform no baseline corrections. The positions of all the linkages are given in Step 5.1.3 and 5.1.6.

5.1.3. Integrate the signals in the aromatic region that correspond to the three different aromatic units (proton numbering as per **Figure 4**). These signals are in the region [(Proton range)(Carbon range)]:

S _{2/6} :	[(6.48-6.90)(104-109)]
S' _{2/6} :	[(7.17-7.50)(105-109)]
S _{condensed} :	[(6.35-6.65)(106-109)]
G ₂ :	[(6.78-7.14)(111.5-116)]
G ₅ :	[(6.48-7.06)(115-120.5)]
G ₆ :	[(6.65-6.96)(120.5-124.5)]
H _{2/6} :	[(7.05-7.29)(128.5-133)]

Note: H_{3/5} overlaps with the G₅ signal, and it is assumed that H_{2/6} has the same intensity as H_{3/5}. The signal for condensed G overlaps with G₅. If no (or hardly any) G₂ and G₆ signals are present, this indicates that full condensation of G has occurred.

5.1.4. Calculate the amount of aromatic units with the formula:

$$\text{Total aromatic} = (((S_{2/6} + S'_{2/6}) / 2) + S_{\text{condensed}}) + ((G_2 + G_5 + G_6 - H_{2/6}) / 3) + (H_{2/6} / 2)$$

5.1.5. Calculate the percentage of G, H and S units with the following formulas:

$$\text{Ratio S} = (((S_{2/6} + S'_{2/6}) / 2) + S_{\text{condensed}}) : \text{total aromatic} \times 100\%$$

$$\text{Ratio G} = ((G_2 + G_5 + G_6 - H_{2/6}) / 3) : \text{total aromatic} \times 100\%$$

$$\text{Ratio H} = (H_{2/6} / 2) : \text{total aromatic} \times 100\%$$

5.1.6. Integrate the signals in the aliphatic region signals that correspond to the β-O-4, β-β and β-5 linkages and Hibbert Ketones. These are in the region [(proton range)(carbon range)]:

β-O-4 _α	[(4.76-5.10)(73-77.5)]
β'-O-4 _α	[(4.44-4.84)(81.5-86)]
β-O-4 _β and β'-O-4 _β	[(4.03-4.48)(85-90.5)]
β-O-4 _γ and β'-O-4 _γ	[(3.10-4.00)(58.5-62)]

309	β -5 $_{\alpha}$	[(5.42-5.63)(88-92)]
310	β -5 $_{\beta}$	[(3.36-3.56)(53-54.5)]
311	β -5 $_{\gamma}$	[(3.50-4.00)(62-64.5)]
312	β - β_{α}	[(4.59-4.77)(86.5-89.5)]
313	β - β_{β}	[(2.98-3.20)(55.5-59)]
314	β - β_{γ}	[(3.75-3.96)(72.5-76)] and [(4.10-4.31)(72.5-76)]
315	HK $_{\gamma}$	[(4.20-4.30)(66-68)]

316
 317 Note: The β -protons of the β -O-4 and β' -O-4 linkages overlap. The structural motifs of these
 318 linkages are given in **Figure 1**.

319
 320 5.1.7. The total number of linkages per 100 C9 units are all based on the signal of the α proton
 321 of the linkages. Calculate the total number of linkages with the following formulas:

322 # β -O-4 linkages = $(\beta$ -O-4 $_{\alpha}$ + β' -O-4 $_{\alpha}$) / total aromatic x 100
 323 # β -5 linkages = β -5 $_{\alpha}$ / total aromatic x 100
 324 # β - β linkages = β - β_{α} / total aromatic x 100

325
 326 5.2. Gel permeation chromatography (GPC) analysis

327
 328 5.2.1. Dissolve 10 mg of dried lignin in 1 mL of tetrahydrofuran (THF) (with a drop of toluene as
 329 the internal standard). Filter this mixture through a 0.45 μ m syringe filter into an autosampler
 330 vial with a reduced volume inlet of 0.3 mL. Close the autosampler vial with a cap.

331
 332 5.2.2. Inject 20 μ L of the sample into a THF GPC. Process the obtained data.

333
 334 5.2.3. Correct the obtained signal for the reference signal (toluene). Select the elution volume
 335 for the correct range (~200-10000 Da). Calculate mass distribution by the software.

336 337 **6. Depolymerization of Lignins to Phenolic 2-Arylmethyl-1,3-Dioxolanes (Acetals)**

338
 339 6.1. Place 50 mg of dried lignin in a 20 mL microwave vial as the reaction vessel equipped with
 340 a magnetic stirrer. Add 0.85 mL of 1,4-dioxane, 50 μ L of ethylene glycol in 1,4-dioxane (0.54
 341 mL/mL) and 50 μ L of octadecane (internal standard) in 1,4-dioxane (26 mg/mL).

342
 343 6.2. Close the reaction vessel and heat the solution to 140 $^{\circ}$ C while stirring at 3.8 x g.

344
 345 6.3. When the reaction vessel reaches 140 $^{\circ}$ C, add 50 μ L of Fe(III)OTf₃ in 1,4-dioxane (0.1
 346 g/mL).

347
 348 6.4. Stir the reactor for 15 min.

349
 350 6.5. Cool the reactor to room temperature and remove the depolymerization liquid as
 351 described in Step 7.1.

352

7. Work up and Analysis of Depolymerization Mixtures

7.1. Filter the liquid over Celite (permeability: 2.60-6-50 darcy; particle size: 150 mesh Tyler; sieve retain (140 M US): 2.0-25.0%) and collect in a 2 mL centrifuge tube.

7.2. Concentrate the liquid overnight at 35 °C in a rotational vacuum concentrator.

7.3. Extract the final oil/solid with the following procedure:

7.3.1. Suspend and swell the residue in 0.15 mL of dichloromethane (DCM) by extensive mixing (by vortex), 15 min of sonication and 30 min in automatic wheel.

7.3.2. Centrifuge the samples for up to 10 s using a minispin tabletop centrifuge to ensure that the liquid is at the bottom of the tube (centrifugation speed: 671 x g).

7.3.3. Add 0.75 mL of toluene and mix extensively (by vortex and 10 min sonication).

7.3.4. Centrifuge the samples for up to 10 s using a minispin tabletop centrifuge (centrifugation speed: 671 x g) to ensure that the liquid is at the bottom of the tube.

7.3.5. Separate the light organic liquid from the solid or thick oily residue and filter this liquid over a plug of Celite and collect in a glass vial.

Note: This procedure for suspension/washing is repeated three times, and in the last extraction, 0.5 mL of toluene is used.

7.4. Concentrate the combined organic phases by rotary evaporation (40 °C, 20 mbar).

7.5. Dissolve the oily residue in 1 mL of DCM for gas chromatography flame ionization detector (GC-FID) analysis.

7.6. Perform GC-FID using a GC equipped with an FID detector and use helium as the carrier gas. Standard settings: 1 µL injection, a split ratio of 50:1, a helium flow of 0.95 mL/min. Equip the GC apparatus with a HP5 column (30 m x 0.25 mm x 0.25 µm) and run with a temperature profile which starts with a 5 min 60 °C isotherm. Follow-up by a 10 °C/min ramp for 20 min to 260 °C. Hold this temperature for 20 min.

7.7. Integrate the peaks in the spectra manually. The retention times of the peaks are as following: octadecane (21.4 min), H-acetal (19.5 min), G-acetal (20.8 min), S-acetal (23.4 min). Use the obtained values in Step 7.8 to perform the quantification.

7.8. Perform the quantification of G acetal, which is based on a calibration curve with a standard compound isolated using an internal standard (octadecane).

Note: Calibration curve: $\frac{\text{grams G acetal}}{\text{grams octadecane}} = 1,94 * \frac{\text{Area G acetal}}{\text{Area octadecane}} + 0,042$ ($R^2=0,9991$)

Yield G-acetal: $\frac{\text{grams G acetal}}{\text{grams lignin}} * 100$

Based on previous results^{9,21,23} a response factor was estimated for H and S acetal as 2.19 and 1.82, respectively.

REPRESENTATIVE RESULTS:

In **Figure 2**, the obtained feedstock after pretreatment are shown (left column). All feedstock was obtained as small chips present apart from beech wood, which was acquired as shavings of suitable particle size for extraction. The lignins obtained after the extraction show a wide range of colors and particle sizes. The lignins obtained from mild treatments (method A and second column **Figure 2**) are typically red/pink in color and acquired as small flakes. When harsher conditions are applied (methods B and C*), the obtained lignins have a brown/brownish yellow color (third and fourth column **Figure 2**). The yield did increase for all the extractions performed under harsher conditions (methods B and C*) compared to milder conditions (Reaction scheme in **Figure 1**, results in **Table 1**). This effect was much more profound for walnut (10.2% increase), beech (8.5% increase) and cedar wood (5.1% increase) compared to pine wood (only 0.5% increase). Based on the lignin content of the biomass before extraction (40.3% for walnut, 28.6% for pine²⁵, 18.8% for beech²⁵ and 35.1% for cedar²⁵), the lignin extraction efficiency of beech wood is especially high (73.9%), whereas for the other sources lower extraction efficiency was obtained. Methods A* and B*, control experiments with sulfuric acid for methods A and B, showed some clear differences in extraction yield. Mild extraction of walnut shells with sulfuric acid (method A*) gave only a very low yield of 2.6%, which is markedly lower than the extraction with hydrochloric acid (method A) (2.6% and 5.0%). However, with harsher extraction conditions, the extraction with sulfuric acid (method B*) shows a higher yield compared to hydrochloric acid (method B) (19.3% and 15.2%), but it should be noted that sugar traces are present in the product obtained by extraction with sulfuric acid.

From the NMR analysis of the different lignins (example shown in **Figure 4**), the H/G/S ratio and amount of linkages were determined (**Table 1**). Due to the overlap of the β and γ -protons of the β -O-4 and the β' -O-4 linkage, the amount of linkages is quantified using the α -protons. Additionally, the $G_{5/6}$ and $H_{3/5}$ signals overlap but these can be corrected by adjusting the ratios accordingly using the $H_{2/6}$ signals. Also, a signal corresponding to the γ -protons of the Hibbert Ketones and a signal for oxidized S units, which likely are caused by lignin end-groups, are identified.

The ratios obtained from NMR show that in general extractions with method B provides lignin with higher S content compared to those with method A in the case that the native material contains S units. Also, the extractions with method B provide lignin with a lower amount of total β -O-4 linkages compared to method A, indicating increased degradation upon increase in temperature. An exception is the walnut lignin obtained from methods A and B for which the amount of total β -O-4 linkages was very similar. The number of β - β and β -5 linkages

does decrease when harsher conditions are applied, although to a lesser extent. Additionally, NMR revealed that all the lignins obtained after ethanol extraction showed a degree of structural modification of the β -O-4 linkage. These have at least ~50% substitution at the α -OH group, resulting in the α -ethoxylated β' -O-4 linkage. The lignin extraction shows high reproducibility, which was proven by performing the mild extraction of walnut shells (method A) 4 times. Especially, the deviation in the total number of β -O-4 linkages is remarkably small. When the extraction was performed under harsher conditions (methods B and C*), the percentage of α -ethoxylation increased. In the HSQC spectra of beech lignin extracted at harsher condition (method B), a signal for S condensed is visible, which fits perfectly with the significant decrease in the amount of β -O-4 linkages. The walnut extraction performed at large scale (method C*) shows a significant decrease for all linkages and a signal for S condensed is visible in the HSQC spectra. The relatively high yield for the extraction of cedar at mild conditions (method A) is caused by the presence of a substantial amount of fatty acid. Control experiments with sulfuric acid gave good insight in the effect of the acid on the composition of the obtained lignin. With mild extraction conditions (method A*), a very pure lignin was obtained which was similar in composition compared to the other mild extractions (method A). The somewhat lower amount of β -O-4 linkages can be attributed to a less efficient incorporation of ethanol into the lignin framework, resulting in a lower number of β' -O-4 linkages. At harsher extraction conditions (method B*), the differences with the obtained lignin is much more profound compared with the lignin obtained from walnut shells extracted in the presence of hydrochloric acid (method B). The total number of β -O-4 linkages shows a sharp decrease (35 and 74, respectively) and the lignin obtained with sulfuric acid shows a high amount of condensation in the aromatic region (48%), which was determined by the integration of the signals corresponding the $S_{\text{condensed}}$ and $G_{\text{condensed}}$ (Step 5.1.3). This high amount of condensation can be fully attributed to sulfuric acid, as the product obtained from the same extraction with hydrochloric acid showed no condensation in the aromatic region. The composition of the product obtained at harsh larger scale extraction (method C*) shows no big difference with the product obtained at a smaller scale (method B*). The only big difference is the lower amount of condensation in the aromatic region in the large-scale extraction (9%) and subsequently a higher amount of β -O-4 linkages. This difference could be caused by the difference in the heating profile between the different autoclaves.

The lignins were also analyzed by GPC (**Figure 5**) to provide insight in the molecular weight (**Table 2**). These reveal that when harsher extraction conditions (method B) are applied, both the weight average molecular weight (M_w) and the polydispersity are increasing for all sources. The number average molecular weight (M_n) between the extraction conditions are comparable for each source. Overall, these results show that harsher extraction conditions have a two-fold effect, and larger fragments are extracted in addition to additional breakdown of such fragments.

For some applications, the formation of β' -O-4 linkage is undesired, for example, when applying depolymerization methods that rely on the oxidation of the benzylic (α) hydroxyl group²⁶⁻²⁸. The transformation of β' -O-4 linkage of ethanosolv lignin to regular β -O-4 linkages was previously reported²⁰ and was performed with a lignin batch obtained from walnut shells that is comparable to the lignin obtained from walnut shells reported in this paper (**Figure 6**). This lignin consisted of 30 native β -O-4 linkages and 39 α -ethoxylated β' -O-4 linkages (34 and 38 linkages, respectively

for the lignin in this paper). De-etherification converted almost all the α -ethoxylated linkages to the native structure as the obtained lignin consisted of 57 β -O-4 linkages and only 3 α -ethoxylated β' -O-4 linkages, showing a small loss in the total number of β -O-4 units. The mass of the lignin was 72% of the original lignin, which is primarily caused by the loss of the ethyl group.

To demonstrate the potential of the lignin for the production of aromatic monomers through mild depolymerization, acidolysis reactions with $\text{Fe}(\text{OTf})_3$ in the presence of ethylene glycol were performed (**Figure 7**). This reaction yields three different phenolic 2-arylmethyl-1,3-dioxolanes (acetals) that relate to the H, G and S units present in the lignin. **Table 3** shows the yield of the S, G and H acetals and the total yields are shown in **Figure 8**. It is visible that the lignin extraction method has a major effect being the yield of acetals. Lower yields are obtained for lignin extracted using harsher conditions (method **B**). This is likely due to a more modified (higher percentage of α -ethoxylation) condensed structure as described in the previous paragraph.

The importance of the β -O-4 units is reflected by providing correlations to monomer yield in depolymerization such as presented in the protocol (**Figure 9**). A clear trend is visible considering the total β -O-4 content and the non-etherified β -O-4 linkages, where a higher β -O-4 content generally results in higher yield of phenolic 2-arylmethyl-1,3-dioxolanes (acetals) which is in line with previous results²¹. When considering the etherified β' -O-4 linkages, the trend is also clear, showing that the depolymerization yield is not related to the number of β' -O-4 linkages. Under reaction conditions, the etherified β -O-4 linkages can be de-etherified but this additional step results in the loss of material, as described earlier.

Overall, correcting the monomer depolymerization yield for the lignin extraction yield, the following results can be obtained (**Table 4**). These show that comparing methods **A** & **B**, generally higher amounts of acetal can be obtained by harsher extraction providing higher overall lignin yields followed by a (less selective) depolymerization. Nevertheless, the results for pinewood also show that this is dependent on the biomass source since the increase in extraction severity does not provide a significant yield increase. Retention of the β -O-4 structure is preferred for this wood type to give higher overall phenolic 2-phenylmethyl-1,3-dioxolane (acetals) yields.

FIGURE AND TABLE LEGENDS:

Figure 1. Chemical structures of the obtained products. (a) Common structural motifs as present in the lignin structure. (b) Acid catalyzed lignin depolymerization combined with acetal trapping to obtain phenolic 2-arylmethyl-1,3-dioxolanes (acetals).

Figure 2. Obtained lignin from different feedstocks. Image of the four different lignocellulose feedstocks after pretreatment (Steps 1 and 2) and the obtained lignins after organosolv extraction at different conditions (method A-step 3.1, method B-step 3.3 and method C*-step 3.4).

Figure 3. Reaction scheme for ethanosolv extraction. Overview of the obtained linkages: β -O-4 ($R' = \text{H}$), β' -O-4 ($R' = \text{Et}$), β - β and β -5. Conditions: (A) 80 °C, 0.24 M HCl (step 3.1), (B) 120 °C, 0.24 M HCl (step 3.3), (C*) 120 °C, 0.12 M H_2SO_4 (step 3.4) and the control experiment A* and B* (step

3.5).

Figure 4: HSQC analysis of lignin. Identification of all lignin linkages measured with 2D-HSQC of lignin obtained from walnut shells using mild treatment (step 3.1). The signals for HK_γ and S'_{2/6} are magnified to make them visible.

Figure 5: Molecular weight of lignin. GPC graphs of the obtained lignins divided by source (**a** = walnut, **b** = pine wood, **c** = beech wood and **d** = cedar wood). The lines correspond to different samples as given by **Table 2**.

Figure 6: De-etherification of lignin. Reaction scheme of the de-etherification of the obtained ethanosolv lignin from walnut shells (step 4).

Figure 7: Lignin depolymerization to acetals. Reaction scheme for depolymerization of lignin to phenolic 2-arylmethyl-1,3-dioxolanes (acetals). H unit: R¹ = R² = H; G unit: R¹ = OMe, R² = H; S unit: R¹ = R² = OMe (step 6).

Figure 8. Acetal yield per source. Yields of phenolic 2-arylmethyl-1,3-dioxolanes (acetals) obtained from depolymerization of lignin from different sources.

Figure 9. Influence of β-O-4 linkages on the acetal yield. Yields of phenolic 2-arylmethyl-1,3-dioxolanes (acetals) obtained from lignin depolymerization compared to the total β-O-4 (blue), non-etherified β-O-4 (orange) and etherified β-O-4 (gray) content in the lignin feedstock.

Table 1. Ethanosolv extraction results. Obtained yields, aromatic distribution and linkages for the different extractions performed on biomass. *Sulfuric acid is used as acid. ¹Yield of lignin (wt%)/Lignin content in the feedstock as determined by Klason lignin determination. ²Hemicellulose and S-condensed present in the product. ³32% of the S-units are condensed.

Table 2: Molecular weights of the obtained lignins.

Table 3: Acetal yields of lignin depolymerization. Yields of phenolic 2-arylmethyl-1,3-dioxolones (acetals) obtained from depolymerization of lignin from different sources. Conditions: 50 mg lignin, 60 wt% ethylene glycol, 10 wt% Fe(OTf)₃, solvent: 1,4-dioxane, 140 °C (1 mL total volume), 15 minutes (step 7).

Table 4: Overall acetal yield corrected with extraction yield. Yields of phenolic 2-arylmethyl-1,3-dioxolanes (acetals) obtained from depolymerization of lignin from different sources corrected for lignin extraction yield. ¹Calculation: 100*(lignin yield/100)*(total acetal yield/100). Conditions: 50 mg lignin, 60 wt% ethylene glycol, 10 wt% Fe(OTf)₃, solvent: 1,4-dioxane, 140 °C, 15 min (reaction via step 6 & work-up via step 7).

DISCUSSION:

The results from the extractions at different conditions and from different biomass sources reveal

how the optimal conditions for lignin extraction with a relatively high content of β -O-4 linkages can vary depending on the source. For example, walnut extraction at harsher conditions (method B) provides a three-fold increase in the yield with a near retention of the amount of β -O-4 units, while for beech and cedar the yield increases but is accompanied by a significant drop in the amount of β -O-4 units. On the other hand, for pine, the harsher extraction conditions provide very little benefit in yield and also lead to a lignin with a very low amount of β -O-4 units. This means that typically some form of optimization has to be involved to get the correct balance between the lignin yield and quality in the form of retention of the amount of β -O-4 units in the obtained lignin material.

The large increase in the M_w of the lignin material obtained from harsher extraction conditions demonstrates that under these conditions larger fragments can be extracted providing higher yields. However, at these conditions, additional fragmentation occurs, providing additional lower molecular weight material and thus increasing the polydispersity as can be clearly seen in the GPC graphs of walnut (**Figure 5a**) and cedar (**Figure 5d**) in the form of the signal at ~ 500 Da.

HSQC NMR is an important informative tool to provide comparative data on the quality of different lignins. It should be noted that in this procedure a standard HSQC experiment is performed, this is great for obtaining comparative data but is not necessarily quantitative due to differences in relaxation times. The high amount of linkages displayed for some lignins in **Table 1** are overestimated. Quantitative HSQC experiments provide better results but cost significantly more NMR time, although alternatives exist²⁹. In our experience, the numbers in **Table 1** should be divided by a factor of a 1.3 to better reflect the actual amount of β -O-4 units per 100 aromatic units.

As previously mentioned, the reported results point out how finding optimum conditions can vary depending on the source in order to obtain the maximum monomer yields. For instance, when walnut is used as the starting material, the overall total acetals yield increases around two times if harsher conditions (method B) are employed for lignin extraction. However, this is mainly due to the great difference in lignin extraction yield, without affecting the β -O-4 content. Differently, when pine is used milder extraction conditions (method A) are preferable. In fact, lignin extraction results in very similar yields in the two cases but harsher conditions cause a drop in β -O-4 units (especially non-etherified β -O-4 linkages) which can be the reason for such a low monomer yield, as indicated in the previous paragraph. A significant loss of non-etherified β -O-4 linkages can be observed as well in the cases of beech and cedar if conditions (method B) are applied for extraction which possibly leads to a lower monomers yield. However, the overall acetal yield does not differ that much depending on the extraction conditions. In fact, an approximate two-fold increase in lignin extraction yield is observed for both biomass sources switching from methods A to B which compensates for the roughly two-fold decrease in monomer yield.

ACKNOWLEDGMENTS:

The work was funded by the European Union (Marie Curie ITN 'SuBiCat' PITN-GA-2013-607044, PJD, KB and JGdV), in addition to financial support from the European Research Council, ERC

Starting Grant 2015 (CatASus) 638076 (AdS and KB) and the research programme Talent Scheme (Vidi) with project number 723.015.005 (KB), which is partly financed by the Netherlands Organisation for Scientific Research (NWO).

DISCLOSURES:

The authors report no conflict of interest

REFERENCES:

1. Tuck, C.O., Pérez E., Horváth, I.T., Sheldon, R.A., Poliakoff, M. Valorization of Biomass: Deriving More Value from Waste. *Science* **337**, 695-699 (2012).
2. Ragauskas, A.J. *et al.* Lignin Valorization: Improving Lignin Processing in the Biorefinery. *Science* **344**, 709-719 (2014).
3. Sun, Z., Fridrich, B., de Santi, A., Elangovan, S., Barta, K. Bright Side of Lignin Depolymerization: Toward New Platform Chemicals. *Chemical Reviews*, **118** (2), 614-678 (2018).
4. Schutyser, W., Renders, T., Van den Bosch, S., Koelewijn, S.-F., Beckham, G.T., Sels, B.F., Chemicals from lignin: an interplay of lignocellulose fractionation, depolymerization, and upgrading. *Chemical Society Reviews* **47** (3), 852-908 (2018).
5. Kärkäs, M.D., Matsuura, B.S., Monos, T.M., Magallanes, G., Stephenson, C.R.J. Transition-metal catalyzed valorization of lignin: the key to a sustainable carbon-neutral future. *Organic & Biomolecular Chemistry* **14** (6), 1853-1914 (2016).
6. Deuss, P.J., Barta, K. From models to lignin: Transition metal catalysis for selective bond cleavage reactions. *Coordination Chemistry Review* **306**, 510-532 (2016).
7. Yokoyama, T. Revisiting the Mechanism of β -O-4 Bond Cleavage During Acidolysis of Lignin. Part 6: A Review. *Journal of Wood Chemistry and Technology* **35** (1), 27-42 (2014).
8. Sturgeon, M.R. *et al.* A Mechanistic Investigation of Acid-Catalyzed Cleavage of Aryl-Ether Linkages: Implications for Lignin Depolymerization in Acidic Environments. *ACS Sustainable Chemistry and Engineering* **2** (3), 472-485 (2014).
9. Deuss, P.J., Scott, M., Tran, F., Westwood, N.J., de Vries, J.G., Barta, K. Aromatic monomers by in situ conversion of reactive intermediates in the acid-catalyzed depolymerization of lignin, *Journal of the American Chemical Society* **137** (23), 7456-7467 (2015).
10. Jastrzebski, R., Constant, S., Lancefield, C.S., Westwood, N.J., Weckhuysen, B.M., Bruijninx, P.C.A. Tandem Catalytic Depolymerization of Lignin by Water-Tolerant Lewis Acids and Rhodium Complexes, *ChemSusChem* **9** (16), 2074-2079 (2016).
11. Kaiho, A., Kogo, M., Sakai, R., Saito, K., Watanabe, T. In situ trapping of enol intermediates with alcohol during acid-catalysed de-polymerization of lignin in a nonpolar solvent. *Green Chemistry* **17** (5), 2780-2783 (2015).
12. Huang, X., Zhu, J., Korányi, T.I., Boot, D.B., Hensen, E.J.M. Effective Release of Lignin Fragments from Lignocellulose by Lewis Acid Metal Triflates in the Lignin-First Approach. *ChemSusChem* **9** (23), 3262-3267 (2016).
13. Kaiho, A., Mazzarella, D., Satake, M., Kogo, M., Sakai, R., Watanabe, T. Construction of di(trimethylolpropane) cross linkage and phenylnaphthalene structure coupled with selective β -O-4 bond cleavage for synthesizing lignin-based epoxy resins with controlled glass transition temperature. *Green Chemistry* **18** (24), 6526-6535 (2016).
14. Lahive, C.W. *et al.* Advanced model compounds for understanding acid-catalyzed lignin

660 depolymerization: Identification of renewable aromatics and a lignin-derived solvent. *Journal of*
661 *the American Chemical Society* **138** (28), 8900-8911 (2016)

662 15. Shuai, L., Saha, B. Towards high-yield lignin monomer production. *Green Chemistry*. **19** (16),
663 3752-3758 (2017).

664 16. Rinaldi, R. *et al.* Paving the Way for Lignin Valorisation: Recent Advances in Bioengineering,
665 Biorefining and Catalysis. *Angewandte Chemie International Edition* **55** (29), 8167-8215 (2016).

666 17. Schutyser, W., Renders, T., van den Bosch, S., Koelewijn, S.-F., Beckham, G.T., Sels, B.F.
667 Chemicals from lignin: an interplay of lignocellulose fractionation, depolymerization, and
668 upgrading. *Chemical Society Reviews* **47** (3), 852-908 (2018).

669 18. Constant, S. *et al.* New insights into the structure and composition of technical lignins: a
670 comparative characterization study. *Green Chemistry* **18** (9), 2651-2665 (2016).

671 19. Smit, A., Huijgen, W., Effective fractionation of lignocellulose in herbaceous biomass and
672 hardwood using a mild acetone organosolv process. *Green Chemistry* **19** (22), 5505-5514 (2017).

673 20. Lancefield, C.S., Panovic, I., Deuss, P.J., Barta, K., Westwood, N.J. Pre-treatment of
674 lignocellulosic feedstocks using biorenewable alcohols: towards complete biomass valorization.
675 *Green Chemistry*. **19** (1), 202-214 (2017).

676 21. Deuss, P.J., Lancefield, C.S., Narani, A., de Vries, J.G., Westwood, N.J., Barta, K. Phenolic
677 acetals from lignins of varying compositions via iron (III) triflate catalysed depolymerization.
678 *Green Chemistry* **19** (12), 2774-2782 (2017).

679 22. Bauer, S., Sorek, H., Mitchell, V.D., Ibáñez, A.B., Wemmer, D.E., Characterization of
680 *Miscanthus giganteus* Lignin Isolated by Ethanol Organosolv Process under Reflux Condition.
681 *Journal of Agricultural and Food Chemistry* **60** (33), 8203-8212 (2012).

682 23. Deuss, P.J. *et al.* Metal triflates for the production of aromatics from lignin. *ChemSusChem* **9**
683 (2), 2974-2981.

684 24. Nicholson, D. J., Leavit, A. T., Francis, R. C. A three-stage Klason method for more accurate
685 determinations of hardwood lignin content. *Cellulose Chemistry and Technology* **48** (1-2), 53-59
686 (2014)

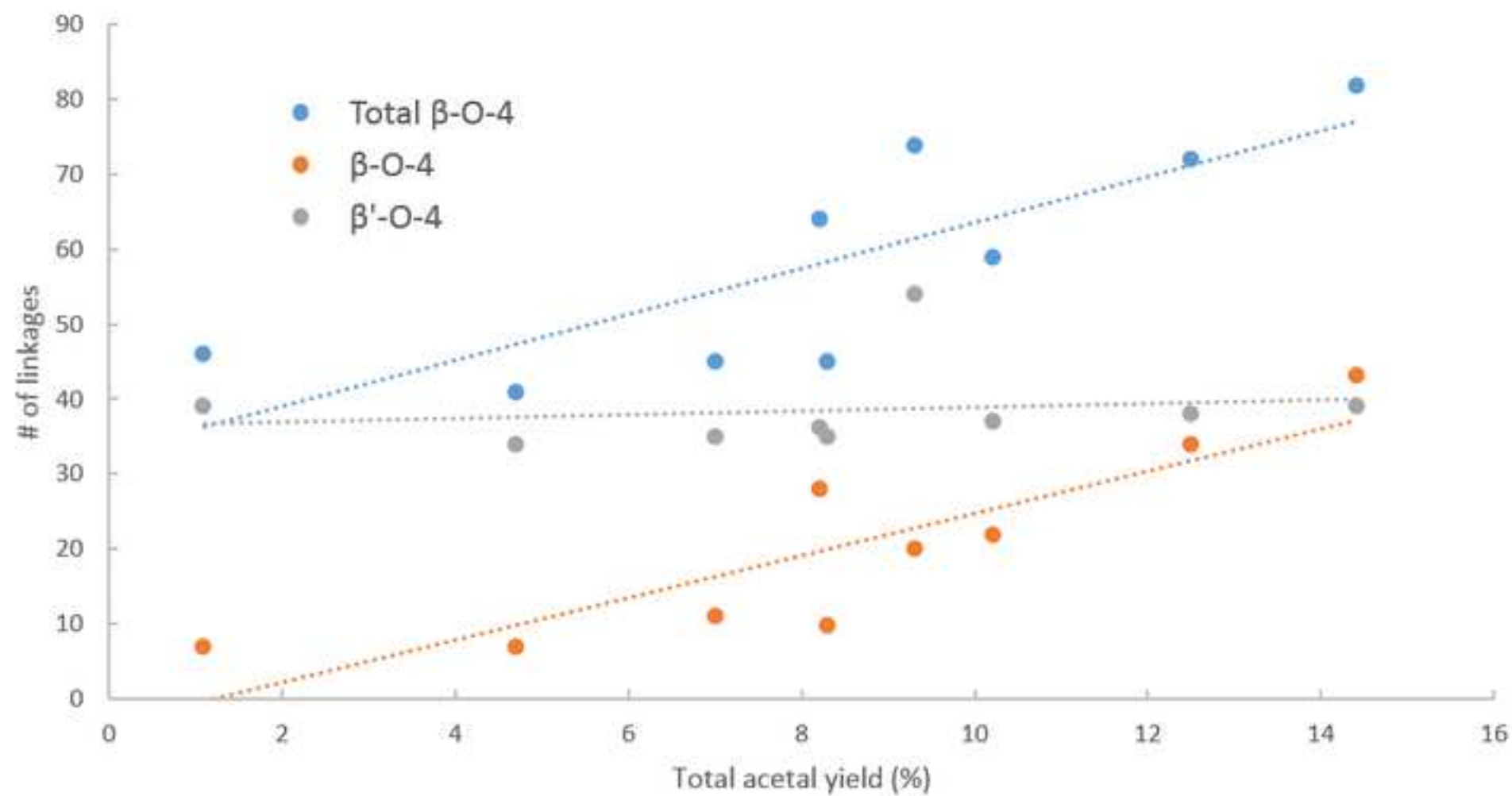
687 25. Sun, Z. *et al.* Complete lignocellulose conversion with integrated catalyst recycling yielding
688 valuable aromatics and fuels. *Nature catalysis* **1**, 82-92 (2018)

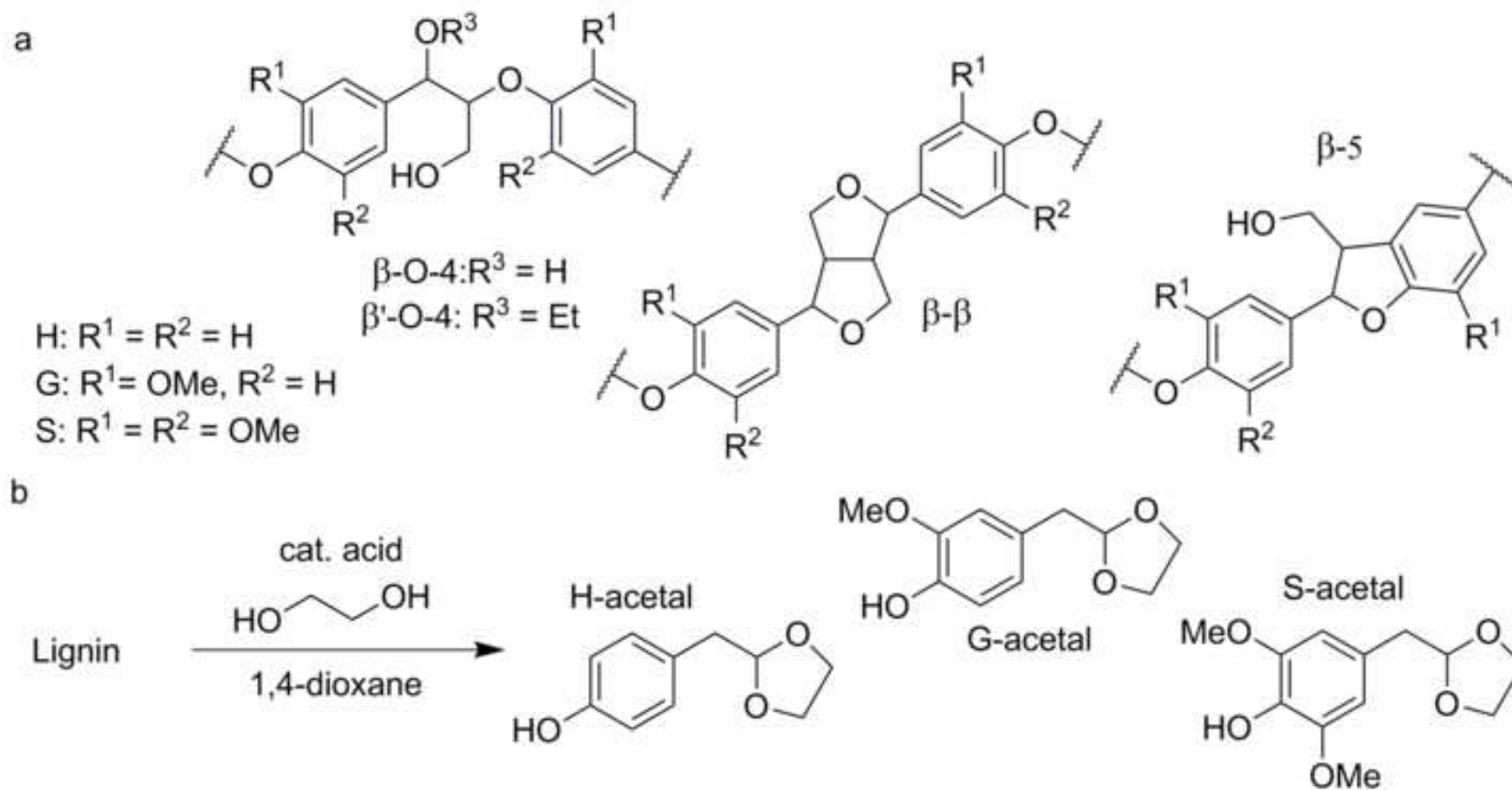
689 26. Lancefield, C.S., Ojo, O.S., Tran, F., Westwood, N.J. Isolation of Functionalized Phenolic
690 Monomers through Selective Oxidation and C-O Bond Cleavage of the β -O-4 Linkages in Lignin.
691 *Angewandte Chemie International Edition* **54** (1), 258-262 (2015).

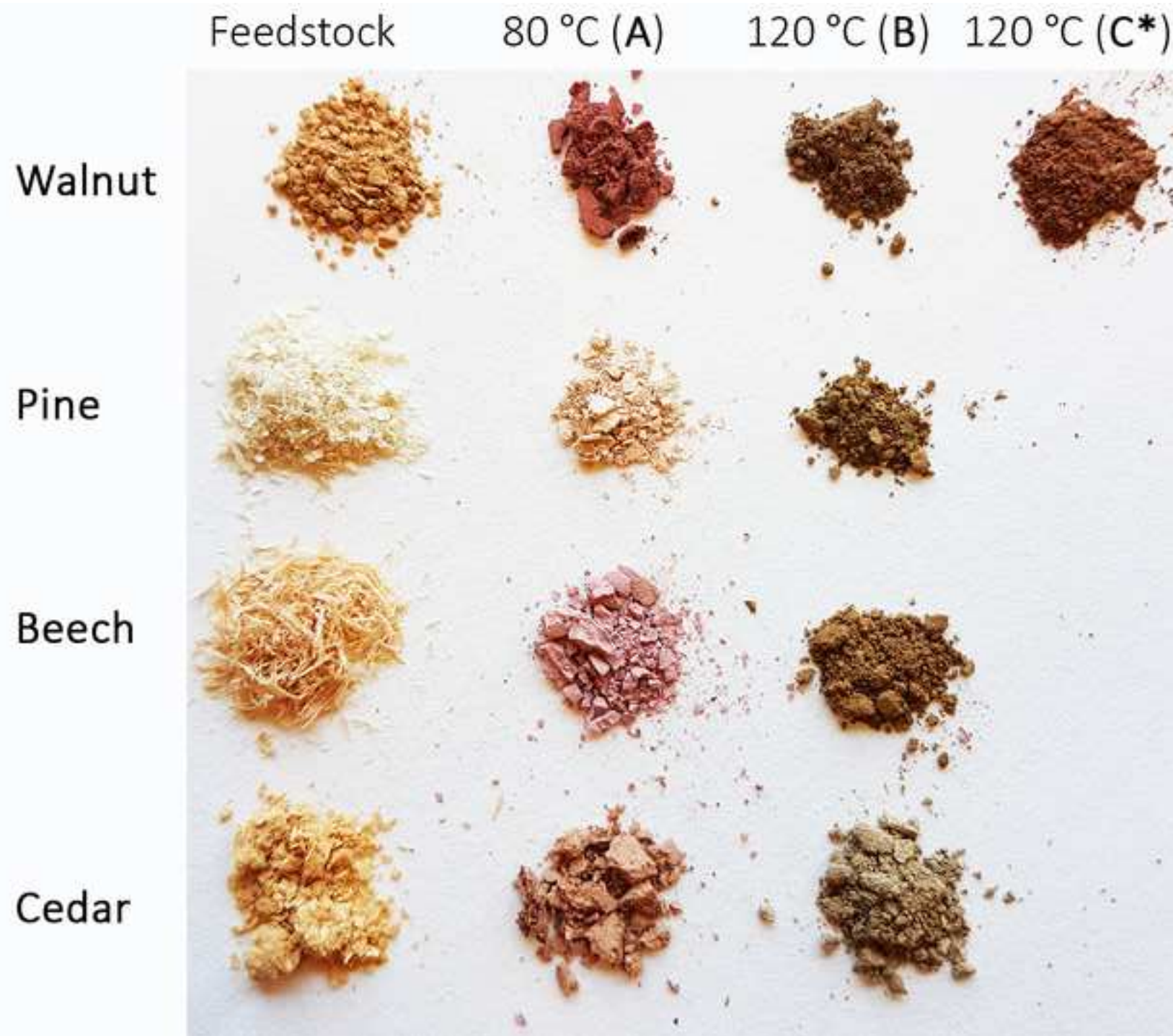
692 27. Rahimi, A., Ulbrich, A., Coon, J.J., Stahl, S.S. Formic-acid-induced depolymerization of oxidized
693 lignin to aromatics. *Nature* **515**, 249-252 (2014).

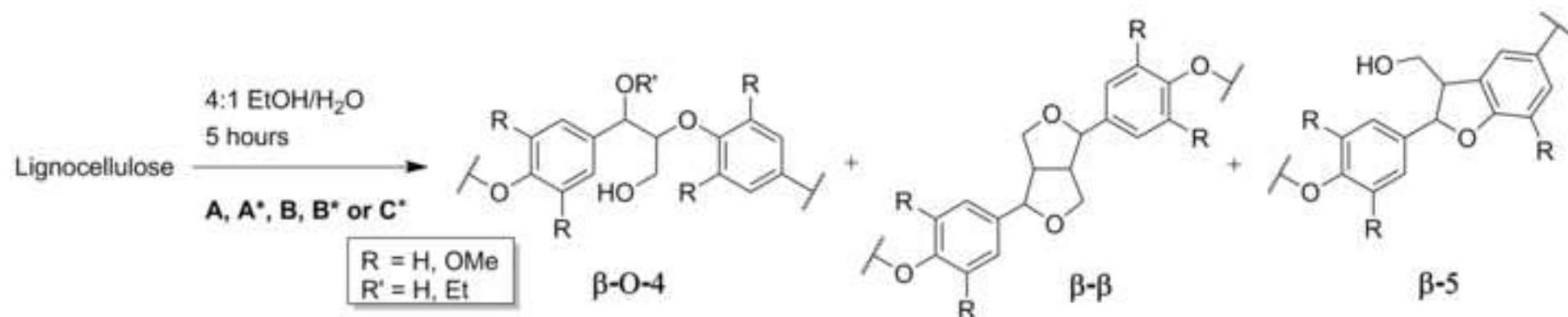
694 28. Bosque, I., Magallanes, G., Rigoulet, M., Kärkäs, M.D., Stephenson, C.R.J. Redox Catalysis
695 Facilitates Lignin Depolymerization, *ACS Central Science* **3** (6), 621-628 (2017).

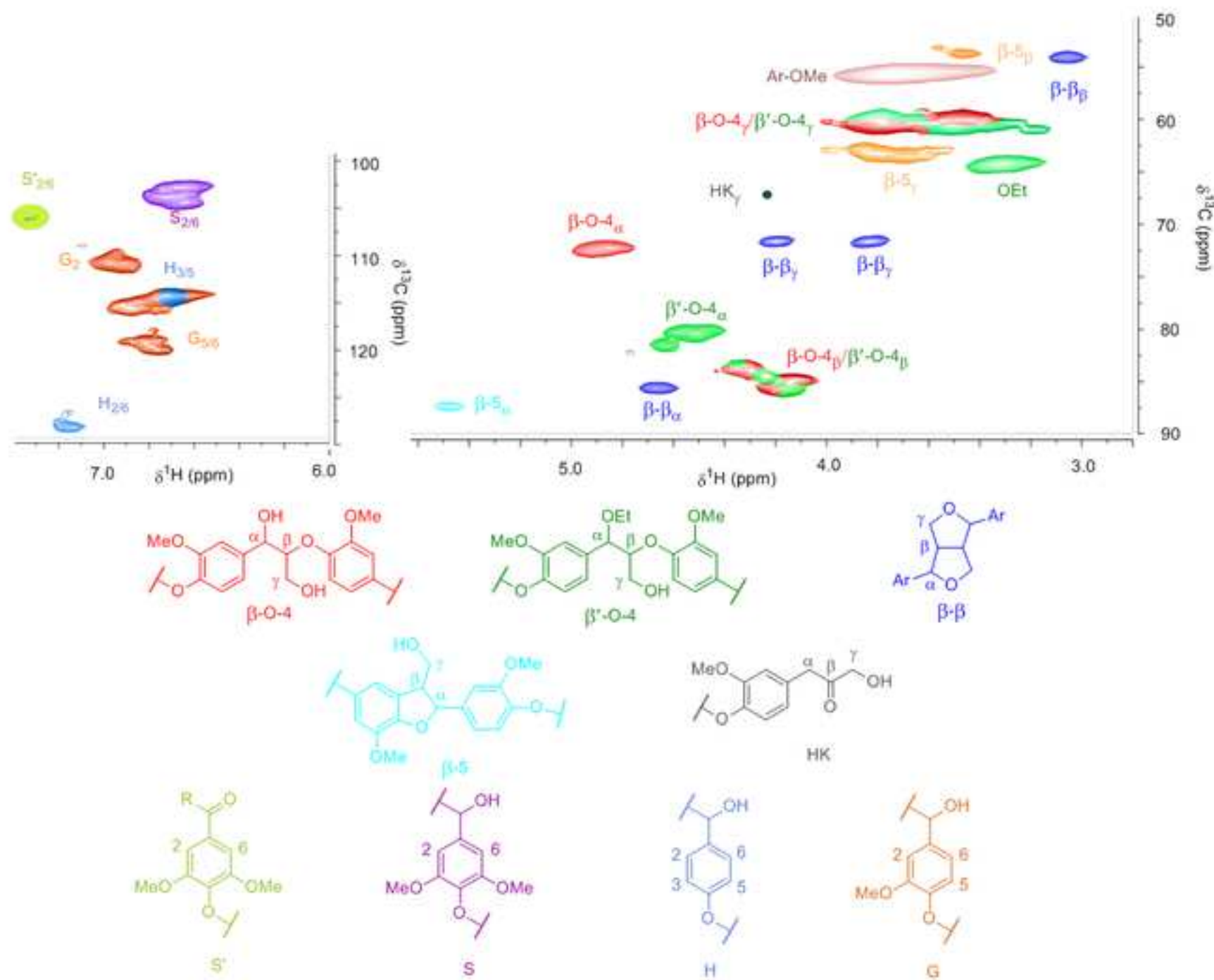
696 29. Sette, M., Wechselberger, R., Crestini, C., Elucidation of Lignin Structure by Quantitative 2D
697 NMR. *Chemistry - A European Journal* **17** (34), 9529-9535 (2011).

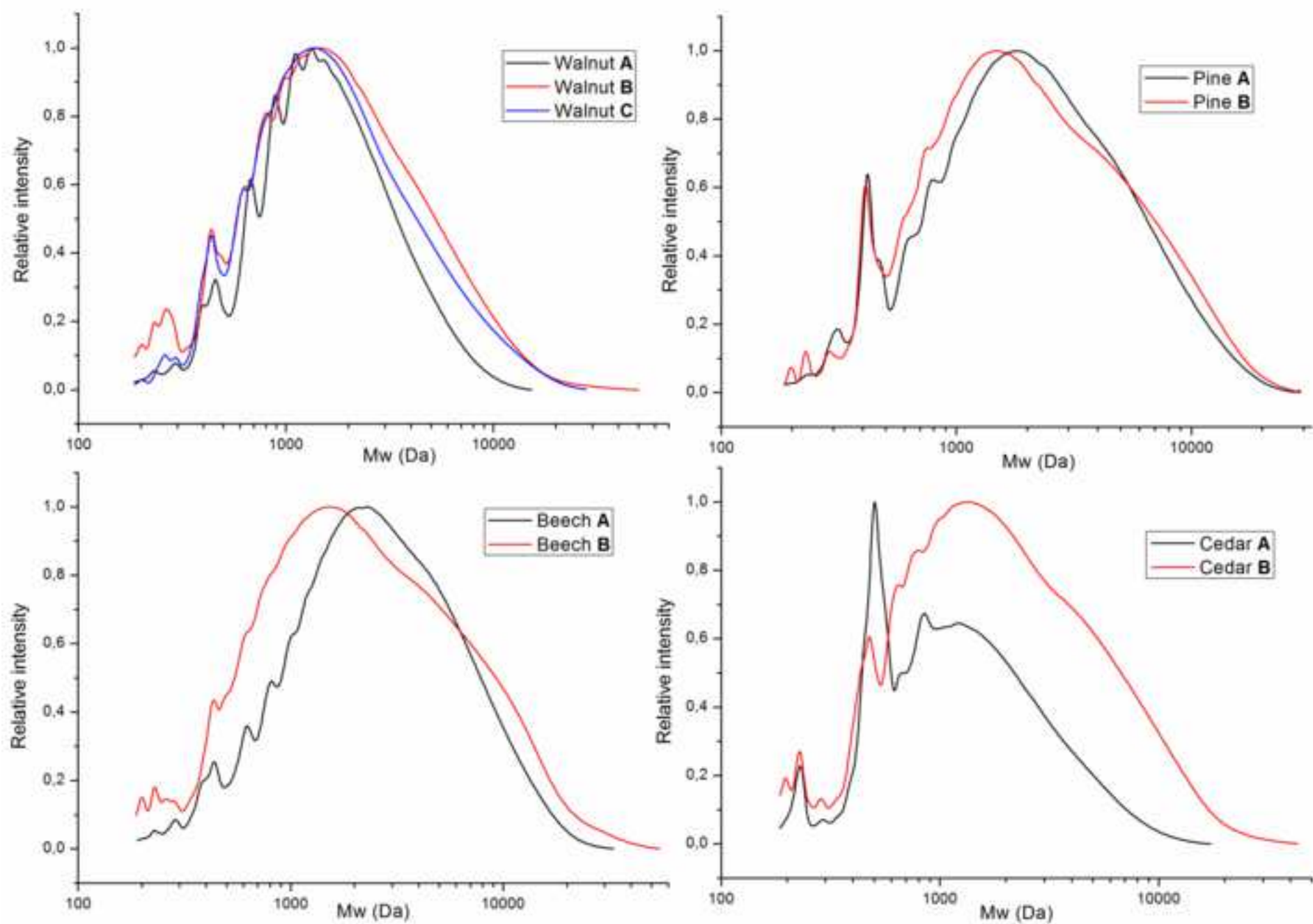


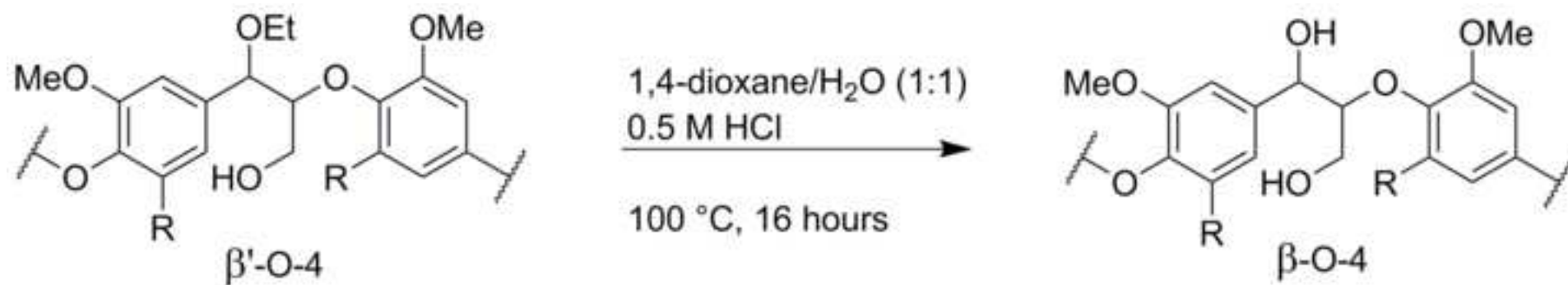


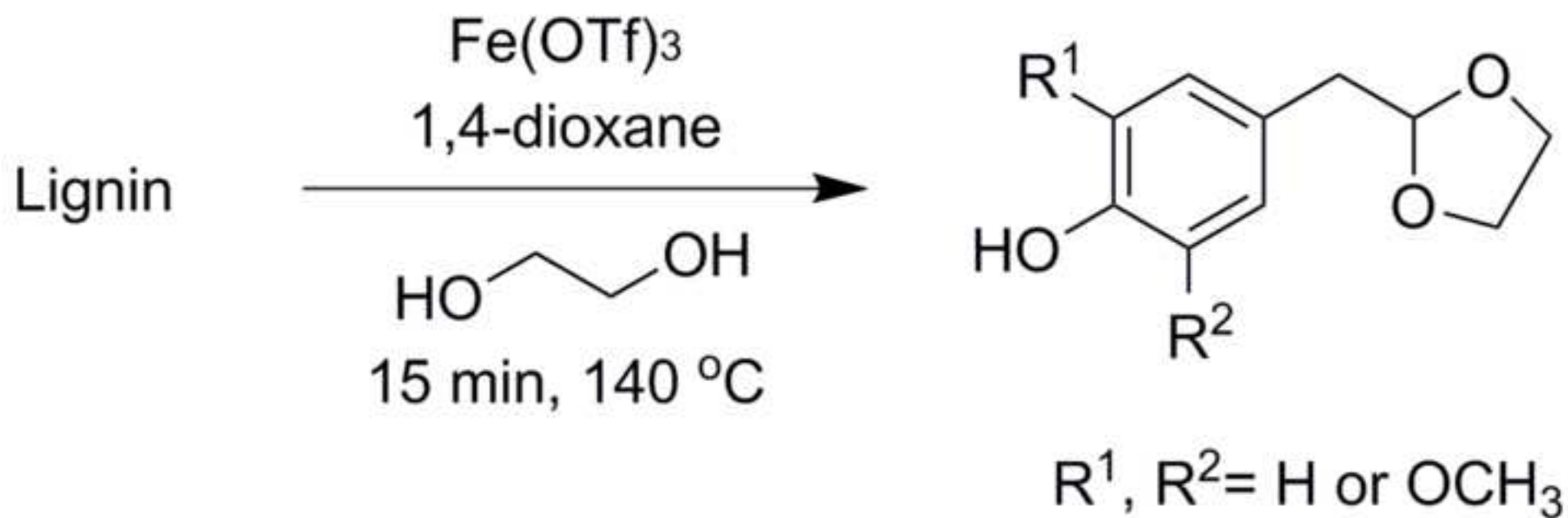


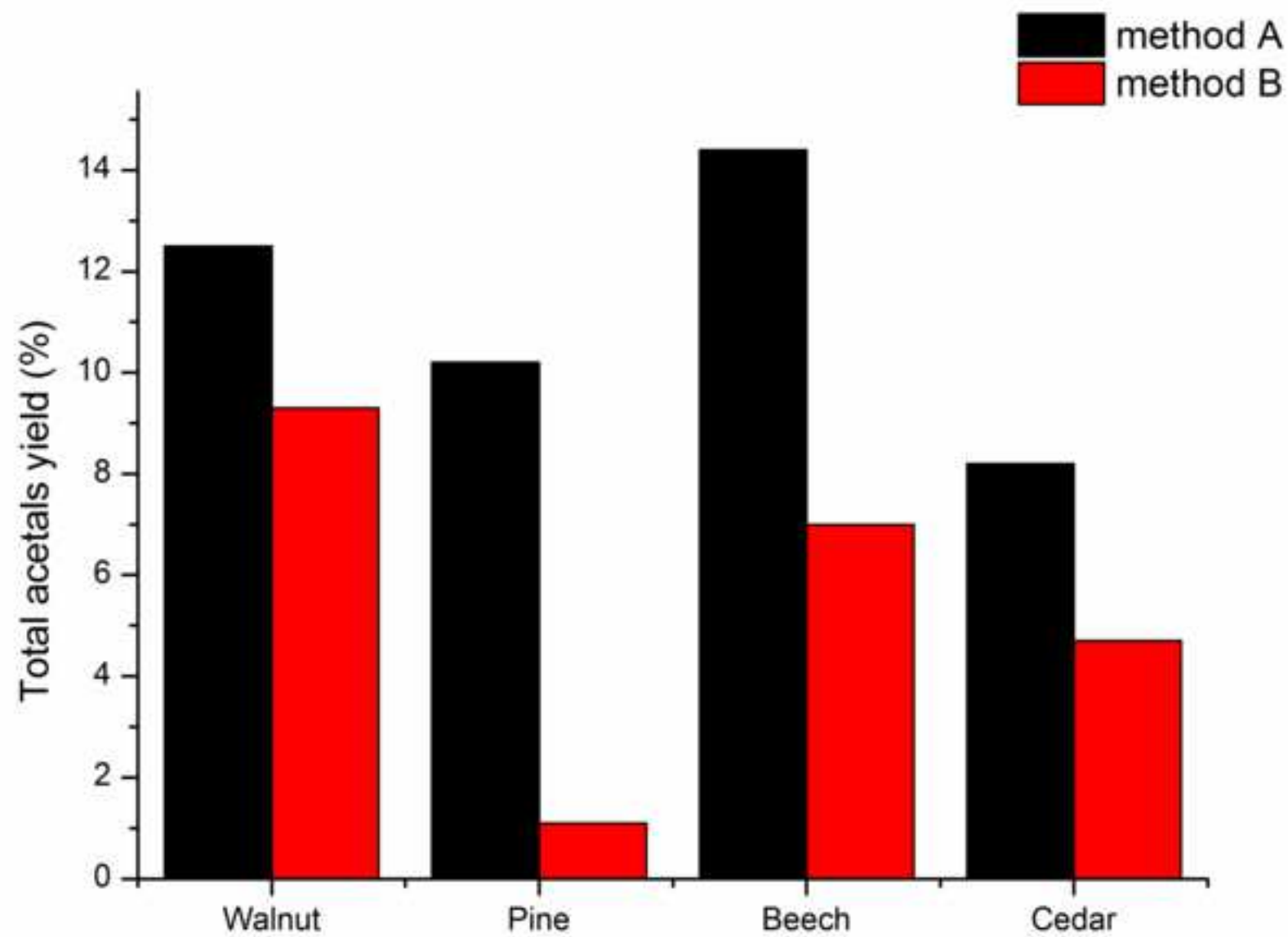












Source	Conditions	Yield (%)	Extraction efficiency (%) ¹	S/G/H ratio	Total β-O-4	β-O-4	β'-O-4
Walnut	A	5.0 ± 0.7	12.4	45/46/9	75 ± 2.5	36 ± 2.6	39 ± 3.1
Walnut	A*	2.6	6.5	47/45/8	53	32	21
Walnut	B	15.2	37.7	59/37/4	74	20	54
Walnut ²	B*	19.3	47.9	75/25/0	35	5	30
Walnut ²	C*	16.2	40.2	65/33/2	45	10	35
Pine	A	3.5	12.2	0/>99/<1	59	22	37
Pine	B	4.0	14.0	0/>99/<1	46	7	39
Beech	A	5.4	28.7	63/37/0	82	43	39
Beech ³	B	13.9	73.9	83/17/0	45	11	35
Cedar	A	6.4	18.2	0/>99/<1	64	28	36
Cedar	B	11.5	32.8	0/>99/<1	41	7	34

β - β

β -5

11 ± 0.7	5 ± 1.5
9	4
9	6
7	3
8	3
0	14
0	8
12	5
9	2
0	6
0	7

<i>Source</i>	<i>Conditions</i>	<i>M_n</i> <i>(g/mol)</i>	<i>M_w</i> <i>(g/mol)</i>	<i>Đ</i>
<i>Walnut</i>	A	1096	1805	1.65
<i>Walnut</i>	B	1174	2934	2.50
<i>Walnut</i>	C*	1248	2930	2.35
<i>Pine</i>	A	1331	3071	2.31
<i>Pine</i>	B	1319	3596	2.73
<i>Beech</i>	A	1645	3743	2.28
<i>Beech</i>	B	1368	4303	3.14
<i>Cedar</i>	A	860	1626	1.89
<i>Cedar</i>	B	1188	3292	2.77

Source	Conditions	Yield (%)	S/G/H ratio	Total β-O-4	S acetal (wt%)	G acetal (wt%)	H acetal (wt%)
Walnut	A	5.0	45/46/9	72	4.5	5.9	2.1
Walnut	B	15.2	59/37/4	74	3.6	4.7	1.0
Walnut	C*	16.2	65/33/2	45	3.8	3.9	0.6
Pine	A	3.5	0/>99/<1	59	0	9.9	0.3
Pine	B	4.0	0/>99/<1	46	0	1.1	0
Beech	A	5.4	63/37/0	82	7.7	6.7	0
Beech	B	13.9	83/17/0	45	3.6	3.4	0
Cedar	A	6.4	0/>99/<1	64	0	8.1	0.1
Cedar	B	11.5	0/>99/<1	41	0	4.7	0

Total acetal
yield (wt%)

12.5
9.3
8.3
10.2
1.1
14.4
7.0
8.2
4.7

Source	Conditions	Lignin extraction yield (%)	β -O-4	β' -O-4	Total β - O-4	Total acetal yield (wt%)
Walnut	A	5.0	34	38	72	12.5
Walnut	B	15.2	20	54	74	9.3
Walnut	C*	16.2	10	35	45	8.2
Pine	A	3.5	22	37	59	10.2
Pine	B	4.0	7	39	46	1.1
Beech	A	5.4	43	39	82	14.4
Beech	B	13.9	11	35	45	6.9
Cedar	A	6.4	28	36	64	8.2
Cedar	B	11.5	7	34	41	4.7

Overall acetal yield
corrected for lignin
extraction yield (wt%)¹

0.63
1.41
1.33
0.36
0.04
0.78
0.96
0.52
0.54

Name of Material/ Equipment	Company	Catalog Number
Materials		
Iron (III) triflate	Sigma Aldrich	708801-1G
Octadecane	Sigma Aldrich	0652-100G
Celite	Alfa Aesar	H33152.0B
Silica Gel	SiliCycle	R12030B-1KG
Dichloromethane	Macron Fine Chemicals	6779-25
Walnut shells		
Pine wood		
Cedar wood		
Beech wood		
Ethanol	JT Baker Chemicals	00832000001
Isopropanol	Acros Organics	149320025
Acetone	Macron Fine Chemicals	2440-06
Tetrahydrofuran	Boom B.V.	164240025
Toluene	Macron Fine Chemicals	8608-02
Water		
1,4-Dioxane	Acros Organics	408820010
Hydrochloric acid	Acros Organics	124620026
Sulfuric acid	Boom B.V.	760519081000
Acetone-d6	Acros Organics	325320500
Deuterium oxide	Sigma Aldrich	151882-100G
Filters	Munktell	400303185
Magnetic stirring bars	VWR	442-4525
Syringe filter	Sartorius	17559-Q
Autosampler vial (2 mL)	Brown	151123
Reduced volume inlet (0.3 mL)	Brown	150820
Autosampler caps (11 mm)	Brown	151216
Autosampler vial crimper		
Oil bath		
Syringes (1 mL)	Henke Sass Wolf	4010-200V0
Heating block-4 positions	IKA	

Micro tubes 2 ml	Sarstedt	72691
Crimp seals-20 mm	Brown Chromatography Supplies	151287
Equipment		
Rotary Ball Mill	Fritsch	06.2000.00
Hammer mill	Brabender	
Micro Hammer mill	Brabender	
Vacuum oven	Heraeus	
Reflux setup and other glassware	CBN Suppliers B.V.	
Rotary evaporator	IKA	
250 mL high pressure autoclave	Berghof	
1 L high pressure autoclave	Medimex	
Ultrasonic bath	Emerson	
NMR instrument	Bruker	
THF-GPC	Hewlett Packard	
Magnetic stirring plate	SalmenKipp	SK861492220263
Coffee grinder	Profi Cook	PC-KSW1021
Drilling machine	Solid	
GC-FID	Shimadzu	
BUCHI Reveleris PREP purification system	Buchi	
BUCHI C18 column	Buchi	
20 ml microwave vials	???	
Univapo 150 ECH rotational vacuum concentrator	UniEquip	
Eppendorf minispin tabletop centrifuge	Eppendorf	
SB2 rotator	Stuart	
Vortex	Wilten	

Processing Software

WinGPC Unichrom
MestReNova

Comments/Description

purity: 90%

purity: 99%

P60 40-63 μm

Ethanol absolute

99.5+% extra pure

stabilized with BHT

Demi water from the internal supply

99+% extra pure

37% solution in water

95-97%

99.8 atom% D

99.9 atom% D

185 mm diameter, 10 μm pore size

0.45 μm filter

with Silicone/PTFE septa

Laboratory Planetary Mono Mill PULVERISETTE 6

Heraeus Vacutherm

Reflux condensor, Roundbottom flask, Beaker glass and funnels

type Branson 3210

Ascend 600

1100 series

type x-1250

type TB 13 S

150 mm × 21.2 mm × 10 μm



1 Alewife Center #200
Cambridge, MA 02140
tel. 617.945.9051
www.jove.com

ARTICLE AND VIDEO LICENSE AGREEMENT

Title of Article:

mild ethanol extraction of lignin. Balancing yield, β-O₄ content and the effect on the depolymerization yield.

Author(s):

D.S. Zylstra, A. de Santi, B. Oldenburger, J. G. de Vries, K. Barta
P. J. Dours

Item 1 (check one box): The Author elects to have the Materials be made available (as described at

<http://www.jove.com/author>) via: ☐ Standard Access ☒ Open Access

Item 2 (check one box):



The Author is NOT a United States government employee.



The Author is a United States government employee and the Materials were prepared in the course of his or her duties as a United States government employee.



The Author is a United States government employee but the Materials were NOT prepared in the course of his or her duties as a United States government employee.

ARTICLE AND VIDEO LICENSE AGREEMENT

1. **Defined Terms.** As used in this Article and Video License Agreement, the following terms shall have the following meanings: “**Agreement**” means this Article and Video License Agreement; “**Article**” means the article specified on the last page of this Agreement, including any associated materials such as texts, figures, tables, artwork, abstracts, or summaries contained therein; “**Author**” means the author who is a signatory to this Agreement; “**Collective Work**” means a work, such as a periodical issue, anthology or encyclopedia, in which the Materials in their entirety in unmodified form, along with a number of other contributions, constituting separate and independent works in themselves, are assembled into a collective whole; “**CRC License**” means the Creative Commons Attribution-Non Commercial-No Derivs 3.0 Unported Agreement, the terms and conditions of which can be found at: <http://creativecommons.org/licenses/by-nc-nd/3.0/legalcode>; “**Derivative Work**” means a work based upon the Materials or upon the Materials and other pre-existing works, such as a translation, musical arrangement, dramatization, fictionalization, motion picture version, sound recording, art reproduction, abridgment, condensation, or any other form in which the Materials may be recast, transformed, or adapted; “**Institution**” means the institution, listed on the last page of this Agreement, by which the Author was employed at the time of the creation of the Materials; “**JoVE**” means MyJoVE Corporation, a Massachusetts corporation and the publisher of *The Journal of Visualized Experiments*; “**Materials**” means the Article and / or the Video; “**Parties**” means the Author and JoVE; “**Video**” means any video(s) made by the Author, alone or in conjunction with any other parties, or by JoVE or its affiliates or agents, individually or in collaboration with the Author or any other parties, incorporating all or any portion of the Article, and in which the Author may or may not appear.

2. **Background.** The Author, who is the author of the Article, in order to ensure the dissemination and protection of the Article, desires to have the JoVE publish the Article and create and transmit videos based on the Article. In furtherance of such goals, the Parties desire to memorialize in this Agreement the respective rights of each Party in and to the Article and the Video.

3. **Grant of Rights in Article.** In consideration of JoVE agreeing to publish the Article, the Author hereby grants to JoVE, subject to **Sections 4 and 7** below, the exclusive, royalty-free, perpetual (for the full term of copyright in the Article, including any extensions thereto) license (a) to publish, reproduce, distribute, display and store the Article in all forms, formats and media whether now known or hereafter developed (including without limitation in print, digital and electronic form) throughout the world, (b) to translate the Article into other languages, create adaptations, summaries or extracts of the Article or other Derivative Works (including, without limitation, the Video) or Collective Works based on all or any portion of the Article and exercise all of the rights set forth in (a) above in such translations, adaptations, summaries, extracts, Derivative Works or Collective Works and (c) to license others to do any or all of the above. The foregoing rights may be exercised in all media and formats, whether now known or hereafter devised, and include the right to make such modifications as are technically necessary to exercise the rights in other media and formats. If the “Open Access” box has been checked in **Item 1** above, JoVE and the Author hereby grant to the public all such rights in the Article as provided in, but subject to all limitations and requirements set forth in, the CRC License.

ARTICLE AND VIDEO LICENSE AGREEMENT

4. Retention of Rights in Article. Notwithstanding the exclusive license granted to JoVE in **Section 3** above, the Author shall, with respect to the Article, retain the non-exclusive right to use all or part of the Article for the non-commercial purpose of giving lectures, presentations or teaching classes, and to post a copy of the Article on the Institution's website or the Author's personal website, in each case provided that a link to the Article on the JoVE website is provided and notice of JoVE's copyright in the Article is included. All non-copyright intellectual property rights in and to the Article, such as patent rights, shall remain with the Author.

5. Grant of Rights in Video – Standard Access. This **Section 5** applies if the "Standard Access" box has been checked in **Item 1** above or if no box has been checked in **Item 1** above. In consideration of JoVE agreeing to produce, display or otherwise assist with the Video, the Author hereby acknowledges and agrees that, Subject to **Section 7** below, JoVE is and shall be the sole and exclusive owner of all rights of any nature, including, without limitation, all copyrights, in and to the Video. To the extent that, by law, the Author is deemed, now or at any time in the future, to have any rights of any nature in or to the Video, the Author hereby disclaims all such rights and transfers all such rights to JoVE.

6. Grant of Rights in Video – Open Access. This **Section 6** applies only if the "Open Access" box has been checked in **Item 1** above. In consideration of JoVE agreeing to produce, display or otherwise assist with the Video, the Author hereby grants to JoVE, subject to **Section 7** below, the exclusive, royalty-free, perpetual (for the full term of copyright in the Article, including any extensions thereto) license (a) to publish, reproduce, distribute, display and store the Video in all forms, formats and media whether now known or hereafter developed (including without limitation in print, digital and electronic form) throughout the world, (b) to translate the Video into other languages, create adaptations, summaries or extracts of the Video or other Derivative Works or Collective Works based on all or any portion of the Video and exercise all of the rights set forth in (a) above in such translations, adaptations, summaries, extracts, Derivative Works or Collective Works and (c) to license others to do any or all of the above. The foregoing rights may be exercised in all media and formats, whether now known or hereafter devised, and include the right to make such modifications as are technically necessary to exercise the rights in other media and formats. For any Video to which this Section 6 is applicable, JoVE and the Author hereby grant to the public all such rights in the Video as provided in, but subject to all limitations and requirements set forth in, the CRC License.

7. Government Employees. If the Author is a United States government employee and the Article was prepared in the course of his or her duties as a United States government employee, as indicated in **Item 2** above, and any of the licenses or grants granted by the Author hereunder exceed the scope of the 17 U.S.C. 403, then the rights granted hereunder shall be limited to the maximum rights permitted under such

statute. In such case, all provisions contained herein that are not in conflict with such statute shall remain in full force and effect, and all provisions contained herein that do so conflict shall be deemed to be amended so as to provide to JoVE the maximum rights permissible within such statute.

8. Likeness, Privacy, Personality. The Author hereby grants JoVE the right to use the Author's name, voice, likeness, picture, photograph, image, biography and performance in any way, commercial or otherwise, in connection with the Materials and the sale, promotion and distribution thereof. The Author hereby waives any and all rights he or she may have, relating to his or her appearance in the Video or otherwise relating to the Materials, under all applicable privacy, likeness, personality or similar laws.

9. Author Warranties. The Author represents and warrants that the Article is original, that it has not been published, that the copyright interest is owned by the Author (or, if more than one author is listed at the beginning of this Agreement, by such authors collectively) and has not been assigned, licensed, or otherwise transferred to any other party. The Author represents and warrants that the author(s) listed at the top of this Agreement are the only authors of the Materials. If more than one author is listed at the top of this Agreement and if any such author has not entered into a separate Article and Video License Agreement with JoVE relating to the Materials, the Author represents and warrants that the Author has been authorized by each of the other such authors to execute this Agreement on his or her behalf and to bind him or her with respect to the terms of this Agreement as if each of them had been a party hereto as an Author. The Author warrants that the use, reproduction, distribution, public or private performance or display, and/or modification of all or any portion of the Materials does not and will not violate, infringe and/or misappropriate the patent, trademark, intellectual property or other rights of any third party. The Author represents and warrants that it has and will continue to comply with all government, institutional and other regulations, including, without limitation all institutional, laboratory, hospital, ethical, human and animal treatment, privacy, and all other rules, regulations, laws, procedures or guidelines, applicable to the Materials, and that all research involving human and animal subjects has been approved by the Author's relevant institutional review board.

10. JoVE Discretion. If the Author requests the assistance of JoVE in producing the Video in the Author's facility, the Author shall ensure that the presence of JoVE employees, agents or independent contractors is in accordance with the relevant regulations of the Author's institution. If more than one author is listed at the beginning of this Agreement, JoVE may, in its sole discretion, elect not take any action with respect to the Article until such time as it has received complete, executed Article and Video License Agreements from each such author. JoVE reserves the right, in its absolute and sole discretion and without giving any reason therefore, to accept or decline any work submitted to JoVE. JoVE and its employees, agents and independent contractors shall have

ARTICLE AND VIDEO LICENSE AGREEMENT

full, unfettered access to the facilities of the Author or of the Author's institution as necessary to make the Video, whether actually published or not. JoVE has sole discretion as to the method of making and publishing the Materials, including, without limitation, to all decisions regarding editing, lighting, filming, timing of publication, if any, length, quality, content and the like.

11. Indemnification. The Author agrees to indemnify JoVE and/or its successors and assigns from and against any and all claims, costs, and expenses, including attorney's fees, arising out of any breach of any warranty or other representations contained herein. The Author further agrees to indemnify and hold harmless JoVE from and against any and all claims, costs, and expenses, including attorney's fees, resulting from the breach by the Author of any representation or warranty contained herein or from allegations or instances of violation of intellectual property rights, damage to the Author's or the Author's institution's facilities, fraud, libel, defamation, research, equipment, experiments, property damage, personal injury, violations of institutional, laboratory, hospital, ethical, human and animal treatment, privacy or other rules, regulations, laws, procedures or guidelines, liabilities and other losses or damages related in any way to the submission of work to JoVE, making of videos by JoVE, or publication in JoVE or elsewhere by JoVE. The Author shall be responsible for, and shall hold JoVE harmless from, damages caused by lack of sterilization, lack of cleanliness or by contamination due to the making of a video by JoVE its employees, agents or independent contractors. All sterilization, cleanliness or decontamination procedures shall be solely the responsibility of the Author and shall be undertaken at the Author's

expense. All indemnifications provided herein shall include JoVE's attorney's fees and costs related to said losses or damages. Such indemnification and holding harmless shall include such losses or damages incurred by, or in connection with, acts or omissions of JoVE, its employees, agents or independent contractors.

12. Fees. To cover the cost incurred for publication, JoVE must receive payment before production and publication the Materials. Payment is due in 21 days of invoice. Should the Materials not be published due to an editorial or production decision, these funds will be returned to the Author. Withdrawal by the Author of any submitted Materials after final peer review approval will result in a US\$1,200 fee to cover pre-production expenses incurred by JoVE. If payment is not received by the completion of filming, production and publication of the Materials will be suspended until payment is received.

13. Transfer, Governing Law. This Agreement may be assigned by JoVE and shall inure to the benefits of any of JoVE's successors and assignees. This Agreement shall be governed and construed by the internal laws of the Commonwealth of Massachusetts without giving effect to any conflict of law provision thereunder. This Agreement may be executed in counterparts, each of which shall be deemed an original, but all of which together shall be deemed to me one and the same agreement. A signed copy of this Agreement delivered by facsimile, e-mail or other means of electronic transmission shall be deemed to have the same legal effect as delivery of an original signed copy of this Agreement.

A signed copy of this document must be sent with all new submissions. Only one Agreement required per submission.

CORRESPONDING AUTHOR:

Name:

Johannes G. de Vries

Department:

Catalysis with Renewables

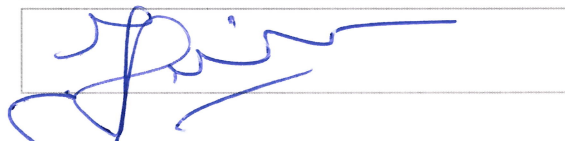
Institution:

Leibniz Institut für Katalyse

Article Title:

mild ethanol extraction of lignin. Balancing yield...

Signature:



Date:

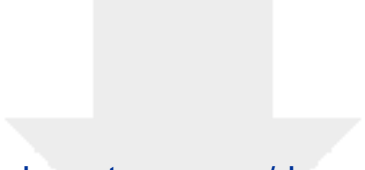
June 1st, 2018

Please submit a signed and dated copy of this license by one of the following three methods:

- 1) Upload a scanned copy of the document as a pdf on the JoVE submission site;
- 2) Fax the document to +1.866.381.2236;
- 3) Mail the document to JoVE / Attn: JoVE Editorial / 1 Alewife Center #200 / Cambridge, MA 02139

For questions, please email submissions@jove.com or call +1.617.945.9051

1. Please take this opportunity to thoroughly proofread the manuscript to ensure that there are no spelling or grammar issues.
2. Please convert centrifuge speeds to centrifugal force (x g) instead of revolutions per minute (rpm).
The values for rpm have been adjusted to centrifugal force.
3. Step 7.6: Please ensure that all text is written in imperative tense.
This step is rewritten to the imperative tense.
4. For all references, if there are more than 6 authors, list only the first author then *et al.*
References 2,8,14,16,18,23 and 25 have been adjusted.



[Click here to access/download](#)
Supplemental Coding Files
JOVESI.docx

