

Journal of Visualized Experiments

Purification and in vitro activity assay for a (p)ppGpp synthetase from *Clostridium difficile* --Manuscript Draft--

Article Type:	Invited Methods Article - JoVE Produced Video
Manuscript Number:	JoVE58547R2
Full Title:	Purification and in vitro activity assay for a (p)ppGpp synthetase from <i>Clostridium difficile</i>
Keywords:	protein purification; histidine tag; (p)ppGpp; thin layer chromatography (TLC); radionuclide labeling; pyrophosphokinase; phosphotransfer
Corresponding Author:	Erin Purcell Old Dominion University Norfolk, VA UNITED STATES
Corresponding Author's Institution:	Old Dominion University
Corresponding Author E-Mail:	epurcell@odu.edu
Order of Authors:	Erin Purcell Astha Pokhrel Asia Poudel
Additional Information:	
Question	Response
Please indicate whether this article will be Standard Access or Open Access.	Standard Access (US\$2,400)
Please indicate the city, state/province, and country where this article will be filmed . Please do not use abbreviations.	Alfriend Chemistry Building 4541 Hampton Blvd Norfolk VA 23529

TITLE

A Purification and *In Vitro* Activity Assay for a (p)ppGpp Synthetase from *Clostridium difficile*

AUTHORS AND AFFILIATIONS:

Astha Pokhrel¹, Asia Poudel¹, Erin B. Purcell¹

¹ Department of Chemistry and Biochemistry, Old Dominion University, Norfolk VA

Corresponding Author:

Erin B. Purcell (epurcell@odu.edu)

Email Addresses of Co-authors:

Astha Pokhrel (apokhrel@odu.edu)

Asia Poudel (apoudel@odu.edu)

KEYWORDS:

Protein purification, histidine tag (p)ppGpp, thin layer chromatography, radionuclide labeling, pyrophosphokinase, phosphotransfer

SHORT ABSTRACT:

Here, we describe a method for purifying histidine-tagged pyrophosphokinase enzymes and utilizing thin layer chromatography of radiolabelled substrates and products to assay for the enzymatic activity *in vitro*. The enzyme activity assay is broadly applicable to any kinase, nucleotide cyclase, or phosphor-transfer reaction whose mechanism includes nucleotide triphosphate hydrolysis.

LONG ABSTRACT:

Kinase and pyrophosphokinase enzymes transfer the gamma phosphate or the beta-gamma pyrophosphate moiety from nucleotide triphosphate precursors to substrates to create phosphorylated products. The use of γ -³²P labeled NTP precursors allows simultaneous monitoring of substrate utilization and product formation by radiography. Thin layer chromatography (TLC) on cellulose plates allows rapid separation and sensitive quantification of substrate and product. We present a method for utilizing the thin-layer chromatography to assay the pyrophosphokinase activity of a purified (p)ppGpp synthetase. This method has previously been used to characterize the activity of cyclic nucleotide and dinucleotide synthetases and is broadly suitable for characterizing the activity of any enzyme that hydrolyzes a nucleotide triphosphate bond or transfers a terminal phosphate from a phosphate donor to another molecule.

INTRODUCTION:

Kinase and pyrophosphokinase (or diphospho-kinase) enzymes transfer phosphates from nucleotide triphosphate (NTP) precursors to substrate molecules. The substrates can include other nucleotides, amino acids or proteins, carbohydrates, and lipids¹. Bioinformatic analyses can sometimes predict an enzyme's cognate substrate or substrates based on the similarity to

characterized enzymes, but experimental validation is still necessary. Similarly, the affinity of an enzyme for its substrate(s) and the rate at which it catalyzes the phosphor-transfer reaction, and the effects of co-factors, inhibitors, or other enzyme effectors must be determined experimentally. To avoid depletion of the ATP precursor by other ATP-consuming enzymes present in bacterial cytoplasm, quantitative activity assays require purified protein.

Protein purification by metal affinity chromatography has been covered thoroughly in the literature^{2,3}. Histidine tags consisting of six consecutive histidine residues appended to the N- or C-terminus of a recombinant protein allow rapid purification by metal affinity chromatography⁴⁻⁶. These sequences are small compared to the proteins they modify and typically have a minimal effect on protein function, although they can sometimes alter protein stability and/or enzyme kinetics^{7,8}. Histidine tags at the N- and C-termini of the same protein can have different effects, which are difficult to predict without knowing the structure of the protein in question. Histidine tags are typically incorporated during the cloning of a recombinant protein by designing primers that encode six histidine residues, either immediately 3' to the ATG start codon or immediately 5' to the stop codon of the open reading frame. After amplification, the hexahistidine-containing gene is ligated into a vector under the control of an inducible promoter and expressed, typically in a laboratory strain of *E. coli*. The recombinant protein can then be isolated on an affinity resin containing immobilized divalent cations (typically nickel or cobalt)⁹. Contaminating native metal-binding proteins can be removed by titration with imidazole, which competitively displaces bound protein². Finally, the target protein is eluted from the column with higher concentrations of imidazole. There are several commercial sources for immobilized metal cation resins, and the manufacturers provide recommendations for the buffer conditions and imidazole concentrations. After elution, protein may be analyzed by sodium dodecyl sulfate-polyacrylamide gel electrophoresis (SDS-PAGE), dialyzed, or used immediately in functional assays.

There are several methods to indirectly monitor kinase activity by coupling ATP phosphate bond hydrolysis to a second reaction that releases or excites a fluorophore or generates chemiluminescence, but these reactions have multiple moving parts and can be logistically challenging¹⁰. The most straightforward way to specifically measure phosphor-transfer activity is to directly monitor the transfer of a radiolabeled phosphate group from a commercially available γ -³²P NTP precursor to a non-radiolabeled substrate¹¹⁻¹³. Mixtures of radiolabeled substrates and products can be separated and quantified by thin layer chromatography (TLC). TLC utilizes the differential mobility of solutes in a given solvent by allowing the solvent (liquid phase) to migrate by capillary action across a surface (solid phase) upon which a mixture of solutes has been adsorbed¹⁴. Solute that are small and/or lack favorable interactions with the solid phase will migrate longer distances from their initial location than solutes with higher molecular weights or great affinities for the solid. For examination of phosphor-transfer, phosphate moieties increase the molecular weight of molecules they are added to, and add negative ionic charge at neutral or acidic pH^{11,12,14}. This decreases their mobility on a basic surface such as PEI-cellulose. When developed in acidic potassium phosphate buffer, mixtures of mono-, di-, tri-, tetra-, and pentaphosphate species can be readily separated on PEI-cellulose, allowing quantification of each species (**Figures 2-3**). Such assays can be performed using cell lysates containing the enzyme of interest, but this includes the potential for the activity of other kinases, phosphatases, and

general ATPases to deplete the substrate and/or product. For a quantitative *in vitro* assessment of enzyme activity, it is necessary to purify the enzyme of interest.

Guanosine tetraphosphate (ppGpp) and guanosine pentaphosphate (pppGpp) are ribonucleotide signaling molecules formed by the transfer of a pyrophosphate group from an adenosine triphosphate (ATP) precursor to, respectively, a guanosine diphosphate (GDP) or guanosine tetraphosphate (GTP) substrate¹⁵. These single ribonucleotide signals, collectively known as (p)ppGpp, mediate a cell-wide response to environmental stress known as the stringent response in diverse bacterial species^{15,16}. Two conserved classes of enzymes catalyze the formation of (p)ppGpp^{15,17}. Rel/Spo homolog (RSH) enzymes are 'long' bifunctional (p)ppGpp synthetase/hydrolases named for their similarity to the RelA and SpoT (p)ppGpp metabolic enzymes from *Escherichia coli* which contain synthetase, hydrolase, and regulatory domains, while small alarmone synthetase (SAS) enzymes are short monofunctional synthetases found exclusively in Gram positive bacteria^{15,17,18}. The spore-forming Gram-positive bacterium *Clostridium difficile* encodes putative RSH and SAS genes¹⁹. Here, we present initial activity assays that confirm that the *C. difficile* RSH enzyme is a catalytically active (p)ppGpp synthetase.

PROTOCOL:

1. Inducible Overexpression of a Histidine-Tagged Protein

1.1. Amplify *rsh* from *C. difficile* R20291 genomic DNA.

1.1.1. Use a high-fidelity polymerase and follow the manufacturer's instructions.

1.1.2. Amplify *C. difficile* *rsh* using primers

rsh_F(CAGGTACCGTTATATGCATGATAAAGAATTACAAG) and

rsh_R(CCCTGCACTAATGGTGATGGTGATTGTCTATTCTATAAATAC), which introduces a C-terminal hexahistidine tag.

Note: The KpnI and PstI cut sites in the primer sequences are bolded.

1.1.3. Digest the pMMBneo vector and the *rsh-his6* PCR product with XhoI and KpnI restriction cut sites at 37 °C for 45 min.

1.1.4. Purify the linearized vector and the PCR fragments via agarose gel electrophoresis and subsequent purification with a DNA gel extraction kit.

1.1.5. Measure the 280 nm absorbance (A_{280}) of the vector and the amplified PCR product. Use the equation $[DNA] \frac{\mu g}{mL} = A_{260} \times \text{dilution factor} \times 50$ to determine the DNA concentration of each DNA fragment.

1.2. Ligate *rsh* into pMMBneo for expression.

1.2.1. Combine 25 ng of digested PMMBneo vector, 125 ng of *rsh-his6* gene product, 2 µL of 10x ligase buffer, and 1 µL of DNA ligase. Use the nuclease free water to adjust the total volume to 20 µL. Incubate at 16 °C for 16 h.

NOTE: The efficacy of ligation depends on fragment size and must be adjusted based on manufacturer protocols.

1.2.2. Transform the ligated vector product into *E. coli* DH5-α or another *recA*- plasmid maintenance strain. Select for transformed cells on LB plates with 100 µg/mL kanamycin and incubate for 16-24 h at 37 °C.

1.2.3. Pick four colonies from the transformation plate (s) and streak each on a fresh plate containing 100 µg/mL kanamycin for DNA isolation. Incubate the new plates at 37 °C for 16-24 h and select one isolate for the subsequent protein expression.

1.2.4. To confirm the successful ligation of the intact *rsh* protein coding region, pick a colony of the chosen isolate into 20 µL of water, heat at 95 °C for 10 min, and use as a template for a confirmatory PCR using the same primer used to amplify the gene.

1.2. Transform the verified plasmid according to standard transformation protocols for *E. coli* bacterial plasmid transformation into *E. coli* BL21 system for high yield protein production.

1.3. Express RSH-His6 in *E. coli*.

1.3.1. Select a single colony of *E. coli* BL21 transformed with pMMBneo::*rsh* and inoculate 2 mL of LB medium with 100 µg/mL kanamycin. Incubate at 37 °C 12-16 h while shaking at 250 rpm.

1.3.2. Inoculate 500 mL of LB medium containing 50 µg/mL kanamycin with 0.5 mL of the overnight culture for cell growth and protein expression.

1.3.3. Incubate the expression culture at 37 °C and 250 rpm in an incubator shaker until the cell density reaches an OD₆₀₀ 0.167 at 37 °C.

1.3.4. Reduce the incubator temperature to 30 °C and wait 30 min for the culture temperature to drop.

1.3.5. Induce RSH expression by adding isopropyl β-D-thiogalactoside (IPTG) to a final concentration of 0.5 mM. Allow the induction to take place overnight (for 16 - 18 h) at 30 °C, shaking at 250 rpm.

1.3.6. Pellet by centrifugation at 3080 x g for 30 min at 4 °C.

NOTE: The pellet can be stored overnight at -20 °C for purifying target protein the following day without noticeable loss of protein yield or enzymatic activity.

2. Protein Purification by Nickel Affinity Chromatography

NOTE: Continue directly with protein purification steps provided below after clarifying the cell lysate. Storing clarified lysate at 4 °C overnight for subsequent protein purification reduces the protein yield.

2.1 Purify protein using 1 mL of Nickel-Nitriloacetic Acid (Ni-NTA) resin on a gravity column.

2.1.1. The day before use, equilibrate the column overnight at 4 °C with 2 mL of equilibration buffer (10 mM Tris-HCl pH 7.79, 300 mM NaCl, 50 mM NaH₂PO₄, 0.5 mg/mL lysozyme, 5 mM MgCl₂, 10 mM imidazole, 0.25 mM DTT, 5 mM phenylmethane sulfonyl fluoride (PMSF), 10% glycerol).

2.1.2. The following day bring the column from 4 °C to RT prior to loading the clarified lysate and let it stand for ~ 2 - 3 h.

Note: Bringing the column to thermal equilibrium is crucial to avoid air bubbles forming within the column.

2.1.3. Resuspend the pellet obtained in step 1.3.6 in the lysis buffer (10 mM Tris-HCl pH 7.8, 300 mM NaCl, 5 mM MgCl₂, 50 mM NaH₂PO₄, 10% glycerol, 0.5 mg/mL lysozyme, 10 mM imidazole, 0.25 mM DTT and 5 mM PMSF).

2.1.4. Sonicate cells on ice for 10 x 10 s intervals, pausing 30 s between pulses.

2.1.5. Clarify the lysate by centrifugation at 3080 x g for 30 min at 4 °C using a microcentrifuge.

2.1.6. Immediately apply the clarified lysate to the column and collect the flow-through.

2.1.7. Reapply clarified lysate flow-through to the column and collect the secondary flow-through.

2.1.8. Wash the column with wash buffer 1 (10 mM Tris-HCl (pH 7.79), 300 mM NaCl, 5 mM MgCl₂, 50 mM NaH₂PO₄, 30 mM imidazole, 10% glycerol). Collect the flow-through.

Note: Inclusion of 5 mM MgCl₂ in the wash and elution buffers is important for enzymatic activity of the purified protein.

2.1.9. Wash the column with wash buffer 2 (10 mM Tris-HCl (pH 7.79), 300 mM NaCl, 5 mM MgCl₂, 50 mM NaH₂PO₄ and 50 mM imidazole). Collect the flow-through.

2.1.10. Apply 2 mL elution buffer (10 mM Tris-HCl (pH 7.79), 300 mM NaCl, 50 mM NaH₂PO₄, 10% glycerol and 75 mM imidazole). Collect flow-through in two fractions of 1 mL each.

NOTE: The column after this step can be stored in equilibration buffer at 4 °C if the same protein will be purified in the next purification assay. The column can be used up to 3 times if stored properly.

2.2. Assess column fractions for purity by SDS-PAGE.

2.2.1. To qualitatively assess protein purification, run 20 µL aliquots of all column fractions on a 4%/10% polyacrylamide gel for 60 min at 170 V.

2.2.2. Stain the gel with 0.1% Coomassie blue at room temperature for 5 h, rocking gently on a benchtop rocker.

2.2.3. Destain the gel in 40% methanol, 10% glacial acetic acid overnight at room temperature, rocking on a benchtop rocker.

Note: A representative gel is pictured in **Figure 1**.

2.3. Dialyze elute fraction 2 overnight at 4 °C.

2.3.1. Dialyze against dialysis buffer (15.7 mM Tris-HCl (pH 7.6), 471.9 mM NaCl, 15.69 mM MgCl₂, 1.57 mM DTT, 1.5 mM PMSF, and 15.7% glycerol) at a 200:1 ratio using a 1 mL dialysis device with a 20 kDa molecular weight cut-off (MWCO).

2.3.2. Determine the concentration of dialyzed protein sample by measuring absorbance at 280 nm and using the calculated molar extinction coefficient 82085 M⁻¹cm⁻¹ ²⁰.

2.3.3. Store 100 µL aliquots of the dialyzed protein sample in aliquots at – 80 °C until use.

3. Protein Activity Assay by Thin Layer Chromatography

3.1. Prepare the thin layer chromatography plate.

3.1.1. Prior to performing the reaction, prepare polyethyleneimine (PEI)-cellulose plates by washing in deionized water. Place the plates in a glass chamber with double distilled water to a depth of ~ 0.5 cm.

3.1.2. Allow water to migrate to the top of the plate.

Note: Washing the plates is not strictly necessary, as plates may be used without it, but washing does increase the clarity of resulting images. Washing the plates in two perpendicular directions

further ensures that any contaminants present in the resin are isolated in one corner of the plate (Figure 2).

3.1.3. Bring the plates out of the glass chamber and leave on a benchtop rack to dry overnight (12 - 18 h).

3.1.4. Mark the dry plates 2.0 cm from one edge with a soft pencil to indicate where the samples will be applied for TLC. For 2 μ L samples, apply samples no less than 1.0 cm apart (Figure 2).

NOTE: This allows clear separation between adjacent spot, which is critical for signal quantification. As long as the cellulose resin is not scratched, small pencil marks on the surface will not interfere with solvent migration.

3.1.5. When planning experiments, always leave one spot on each plate unused.

Note: This will provide a blank lane for sample quantification (Figure 2). A 20 cm TLC plate will have room for 19 spots.

3.2. Enzyme activity assay

3.2.1. Prepare a 5x buffer mix containing 50 mM Tris-HCl (pH 7.5), 25 mM ammonium acetate, 10 mM KCl, 1 mM DTT and 0.6 mM ATP.

Note: This mix may be prepared in large quantities and frozen in 10 μ L aliquots for later use. Do not subject mix to multiple freeze-thaw cycles.

3.2.2. Prepare individual reactions containing 3 μ M RSH, 1x buffer mix, 0.6 mM GDP, 1.2 mM MgCl_2 . Add 1.0 μ Ci of γ - ^{32}P -ATP per 10 μ L of reaction and use nuclease free water to bring the reaction up to a desired volume. Add the RSH after the other components have been mixed, as the addition of RSH to the nucleotide-containing mix initiates the enzymatic activity assay.

NOTE: Final reaction volume will depend on the number of timepoints sampled. To sample 2 μ L/timepoint, assemble 10 μ L of reaction mixture for each 4 timepoints.

3.2.3. To control for ATP hydrolysis from contaminating nuclease activity, assemble a 10 μ L reaction containing no protein and incubate it in parallel. Spot 2 μ L samples at $t = 0$ and at the end of the experiment to ensure that ATP was not hydrolyzed in the absence of protein.

3.2.4. Immediately upon addition of RSH, remove 2 μ L and spot it onto the labeled PEI-cellulose plate as the $t = 0$ min sample.

3.2.5. Incubate the reaction at 37 $^\circ\text{C}$, removing 2 μ L aliquots at desired timepoints.

Note: Enzymatic activity will cease when the sample is adsorbed onto the cellulose plate. Wait 10-30 minutes after the last spot is added to plate before development to ensure complete adsorption and sample drying.

3.3. Thin layer chromatography

3.3.1. Fill the chromatography chamber with 1.5 M 1.5 M KH_2PO_4 (pH 3.64) to a depth of 0.5 cm.

NOTE: The volume needed will depend on the dimensions of the chromatography tank. Any glass container with a level bottom that is wide enough to allow insertion of the TLC plate without bending may be used as a developing tank with the addition of a cover. The TLC plate can be cut into narrower strips with a clean razorblade to enable development in a glass beaker covered in plastic film.

3.3.2. Immerse the bottom edge of the plate in solvent. Allow the solvent to migrate to the top of the plate (~90 min).

NOTE: While solvent migration will halt at the top of the plate and samples will not be lost or run together during a longer immersion, plates should not be left in solvent overnight. Immersions longer than 4 hours can cause the resin to detach from the plate backing and result in loss of signal.

3.3.3. Remove the plate from the chromatography tank and place it on a benchtop drying rack.

3.3.4. Allow the plate to air dry overnight.

NOTE: Drying may be accelerated by the use of a hair drier. Dryness can be assessed by the color of the resin, which will darken when wet and return to the color of an unused plate when completely dry.

3.3.5. After the plate is dry, wrap the plate in plastic film to avoid transfer of radioactive material to the imaging cassette and analyze by autoradiography (**Figure 3**).

3.4. Data analysis

3.4.1. Expose the PEI-cellulose plate containing separated reactions to a phosphorimager cassette for 4 h at room temperature.

NOTE: This is sufficient exposure to yield a very clear image using the indicated concentrations of fresh γ - ^{32}P -ATP. If lower amounts of radiolabelled substrate are used, exposure time can be increased to 12-16 h.

3.4.1. Image the cassette on a phosphorimager.

3.4.2. Using imaging software with a graphical user interface, draw Regions of Interest (ROIs) by selecting **Draw Rectangle** and using the mouse to draw rectangular ROIs around one entire lane and the ATP and ppGpp spots contained within that lane (**Figure 3**).

3.4.3. Use the **Select, Copy, and Paste** commands to draw identical ROIs within the other lanes to ensure that the ROIs are measuring signal within identical areas in each lane. Include ROIs from an unused lane, to be used as blanks.

3.4.4. Using the **Analyze | Tools | ROI Manager | Add** commands of the imaging software, select all of the ROIs drawn on the PEI cellulose plate.

3.4.5. Using the **Analyze | Set Measurements | Measure** commands, quantify the signal intensity within each ROI and export the measurements as a spreadsheet (**Figure 3**). Subtract blank ROI values from experimental signals.

3.4.6. Calculate what percentage of the blanked signal within each lane is attributable to ATP and ppGpp using the formulas $\% ATP = \frac{\text{blanked ATP}}{\text{blanked total signal}} \times 100$ and $\% ppGpp = \frac{\text{blanked ppGpp}}{\text{blanked total signal}} \times 100$.

NOTE: ROIs may be drawn and quantitated using commercial software compatible with the phosphorimager or freely available ImageJ software (National Institutes of Health).

REPRESENTATIVE RESULTS:

We present a method for the affinity purification of a (p)ppGpp synthetase from *Clostridium difficile* and the assessment of its enzymatic activity. **Figure 1** demonstrates the protein purification achieved by metal affinity chromatography. The second elution (E2) fraction from this purification was dialyzed and used for the enzymatic activity assay. **Figure 2** details the necessary steps to prepare for and carry out pyrophosphotransferase assays by thin layer chromatography. **Figure 3** illustrates how data from these experiments is quantitated with an emphasis on appropriate blanking and conversion of signal intensity to percentages. In **Figure 4A**, we present a representative TLC autoradiograph of a (p)ppGpp synthetase assay using purified RSH, a *C. difficile* (p)ppGpp synthetase. The initial spot location, ppGpp, and ATP spots are clearly visible on the autoradiograph, as is the solvent front that is visible because it contains trace amounts of radiolabeled inorganic phosphate. Molecules with more phosphoric acid moieties exhibit less mobility from the initial spot location, as they have greater molecular weights and more negative ionic charge; this impedes their mobility on the basic PEI-cellulose. Over the course of 120 min at 37 °C, ppGpp accumulation and ATP depletion are negligible in reactions lacking the synthetase enzyme, while both ATP depletion and ppGpp accumulation are readily apparent in the presence of RSH (**Figure 4A**). **Figure 4B** shows the absolute ATP and ppGpp signals from four experiments. **Figure 4C** shows the same data as **Figure 4B** with the absolute signals converted to percentages of the total radioactive signal. This minimizes inaccuracies due to pipetting error and/or radioactive decay and allows data from experiments performed on different days to be pooled without introducing uncertainty to the data.

FIGURE LEGENDS:

Figure 1. Nickel affinity purification of RSH. A Coomassie-stained SDS-PAGE gel showing lysate (L) and centrifuged lysate (CL) of induced BL21 pMMB::rsh-his6 as well as the flow-through (FT), wash 1 (W1), wash 2, and elution (E1 and E2) fractions after nickel affinity purification. The E2 fraction was dialyzed and used for subsequent enzymatic assays. Molecular weights of protein size standards are shown on the right.

Figure 2. Preparation of TLC plates. (A) Plates are washed in one dimension by placing the bottom edge in water (blue). Contaminants (yellow) migrate to the top of the plate with the solvent. (B) After a plate is dried completely, it is washed in a second dimension by rotating it 90° relative to the first wash and again allowing water to migrate to the top of the plate. (C) After washing, any contaminants are isolated in one corner of the plate. The resin of a washed TLC plate may be marked gently with a soft pencil to indicate where samples should be spotted. For 2 µL samples, a minimum of 1 cm between spots will ensure adequate sample separation. Samples are spotted 2 cm from the 'bottom' of the plate. After sample application, solvent is allowed to run to the 'top,' where any contaminants will have been isolated by the water washes.

Figure 3. Signal quantification. Regions of interest (ROIs) defining the total, ATP, and ppGpp signal are shown for a blank lane and an experimental lane. Signal intensity within each blank ROI is subtracted from the experimental value, and the ATP and ppGpp signals are normalized to the total signal using the equations shown to present the percentage of the total radioactive signal attributable to ATP and ppGpp.

Figure 4. Autoradiograph of a representative TLC plate. (A) This image shows the solvent front, ATP, ppGpp, and initial spot locations of a reaction carried out using purified *C. difficile* RSH. A control reaction containing no protein (n.p.) allows quantification of uncatalyzed ATP hydrolysis while a blank lane allows accurate signal quantification. (B) Absolute signal intensities of ATP and ppGpp during 120 minutes of incubation with *C. difficile* RSH. Shown are the means and standard deviations of four independent experiments. (C) The same data from (B) with the ppGpp signal presented as a percentage of the total radioactive signal. ppGpp accumulation in the no protein (n.p.) control reaction is shown in black. Shown are the means and standard deviations of four independent experiments.

DISCUSSION:

Here we report the purification of His-tagged RSH from *C. difficile* and present a method for activity quantification using radiolabeled thin layer chromatography. This method has previously been used to assess the activity of diguanylate cyclase enzymes from *C. difficile*, as well as (p)ppGpp synthetase, nucleotide cyclase, kinase and phosphodiesterase enzymes from other organisms^{11-13,21}. While the method is not novel, it is broadly applicable to many types of assay, and we hope researchers will find its presentation in video format helpful.

The most critical steps within the protocol are the protein purification (steps 2.1.3-2.1.10), reaction preparation for thin layer chromatography (step 2.2-2.3), and data analysis (step 3.4). We have found the following modifications to be especially helpful: the addition of MgCl_2 to the buffers used for nickel column purification (steps 2.1.3-2.1.10) is crucial for the enzymatic activity of the purified protein, and the presentation of the enzyme activity data as % ppGpp produced rather than absolute ppGpp produced ensures that data collected on different days, with different of $\gamma\text{-}^{32}\text{P}\text{-ATP}$ are consistent. This method is accessible to any research group with access to a phosphorimager, and the data analysis is straightforward. By quantitating phosphotransfer activity as a percentage of ^{32}P converted to ppGpp, we ensure data reproducibility. Because very small reaction volumes are spotted onto the PEI-cellulose plates, there is significant potential for slight pipetting inaccuracies to introduce significant error in the absolute quantity of $\gamma\text{-}^{32}\text{P}\text{-ATP}$ or $^{32}\text{P}\text{-ppGpp}$ in a given lane on the TLC plate, but the distribution of the radioactive signal between the possible forms is independent of the total signal present. In addition, the total radioactive signal in a given lane can depend on the age of the $\gamma\text{-}^{32}\text{P}\text{-ATP}$ used in the experiment. ^{32}P has a half-life of 14.3 days, so independent assays performed several days apart can show substantial differences in the total radioactive signal detected but the relative amounts of radiolabeled ATP and ppGpp depend only on enzyme activity. Presenting the data as 'percent ppGpp' rather than absolute ppGpp signal prevents the introduction of random noise from pipetting error or radioactive decay. This is illustrated by the differences between **Figures 4B and 4C**. Both display the means and standard deviations of the data from the same four experiments, but the data in **Figure 4C** has been normalized to the total radioactive signal.

We have determined that the *C. difficile* RSH enzyme is a functional ppGpp synthetase *in vitro*, capable of rapid pyrophosphotransfer from an ATP phosphodonor and a GDP acceptor. This reaction is dependent on magnesium, which coordinates ATP and guanosine binding by RSH family enzymes²². We have modified the manufacturer protocols for nickel affinity chromatography to include 5 mM MgCl_2 in the lysis and wash buffers as well as the elution buffer because we have found that purification in the absence of magnesium is detrimental to the enzymatic activity of the purified protein. This suggests that magnesium ions may play a non-catalytic role in stabilizing protein structure in the absence of nucleotide binding, but further structural characterization will be necessary to confirm this.

To our knowledge, this work is the first published report of ppGpp synthesis in *C. difficile* and indicates that this organism is likely to utilize a (p)ppGpp-mediated stringent response to survive extracellular stress. (p)ppGpp metabolism has never before been reported in this important human pathogen. Given that the stringent response is implicated in persistence in many other pathogens, it is likely that (p)ppGpp-mediated signaling may play a role in the high stress tolerance of *C. difficile* cells and the high recurrence rate of *C. difficile* infection²³⁻²⁵.

Acknowledgements:

This work was funded by NIAID 1K22AI118929-01. EBP was supported by a Summer Research Fellowship Program Grant from the Office of Research at Old Dominion University, Norfolk, Virginia, USA.

Disclosure:

The authors declare no competing financial interests or other conflicts of interest.

REFERENCES:

- 1 Cheek, S., Ginalski, K., Zhang, H. & Grishin, N. V. A comprehensive update of the sequence and structure classification of kinases. *BMC Structural Biology*. **5** (1), 6 (2005).
- 2 Porath, J. Immobilized metal ion affinity chromatography. *Protein Expression and Purification*. **3** (4), 263-281 (1992).
- 3 Arnau, J., Lauritzen, C. & Pedersen, J. Cloning strategy, production and purification of proteins with exopeptidase-cleavable His-tags. *Nature Protocols*. **1** (5), 2326-2333 (2006).
- 4 Porath, J., Carlsson, J., Olsson, I. & Belfrage, G. Metal chelate affinity chromatography, a new approach to protein fractionation. *Nature*. **258** (5536), 598-599 (1975).
- 5 Smith, M. C., Furman, T. C., Ingolia, T. D. & Pidgeon, C. Chelating peptide-immobilized metal ion affinity chromatography. A new concept in affinity chromatography for recombinant proteins. *Journal of Biological Chemistry*. **263** (15), 7211-7215 (1988).
- 6 Graslund, S. *et al.* Protein production and purification. *Nature Methods*. **5** (2), 135-146 (2008).
- 7 Booth, W. T. *et al.* Impact of an N-terminal Polyhistidine Tag on Protein Thermal Stability. *ACS Omega*. **3** (1), 760-768 (2018).
- 8 Thielges, M. C., Chung, J. K., Axup, J. Y. & Fayer, M. D. Influence of histidine tag attachment on picosecond protein dynamics. *Biochemistry*. **50** (25), 5799-5805 (2011).
- 9 Chaga, G. S. Twenty-five years of immobilized metal ion affinity chromatography: past, present and future. *Journal of Biochemical and Biophysical Methods*. **49** (1-3), 313-334 (2001).
- 10 Ma, H., Deacon, S. & Horiuchi, K. The challenge of selecting protein kinase assays for lead discovery optimization. *Expert opinion on drug discovery*. **3** (6), 607-621 (2008).
- 11 Tamayo, R., Tischler, A. D. & Camilli, A. The EAL domain protein VieA is a cyclic diguanylate phosphodiesterase. *Journal of Biological Chemistry*. **280** (39), 33324-33330 (2005).
- 12 Purcell, E. B., McKee, R. W., McBride, S. M., Waters, C. M. & Tamayo, R. Cyclic Diguanylate Inversely Regulates Motility and Aggregation in *Clostridium difficile*. *Journal of Bacteriology*. **194** (13), 3307-3316 (2012).
- 13 Purcell, E. B. & Tamayo, R. Identification and characterization of cyclic nucleotide phosphodiesterases. *Methods in Molecular Biology*. **1016** 235-243 (2013).
- 14 Ross, P. *et al.* Control of cellulose synthesis *Acetobacter xylinum*. A unique guanyl oligonucleotide is the immediate activator of the cellulose synthase. *Carbohydrate Research*. **149** (1), 101-117 (1986).
- 15 Potrykus, K. & Cashel, M. (p)ppGpp: still magical? *Annual Review of Microbiology*. **62** 35-51 (2008).
- 16 Boutte, C. C. & Crosson, S. Bacterial lifestyle shapes stringent response activation. *Trends in Microbiology*. **21** (4), 174-180.

520 17 Nanamiya, H. *et al.* Identification and functional analysis of novel (p)ppGpp synthetase
521 genes in *Bacillus subtilis*. *Molecular Microbiology*. **67** (2), 291-304 (2008).

522 18 Gaca, A. O. *et al.* Basal Levels of (p)ppGpp in *Enterococcus faecalis*: the Magic beyond the
523 Stringent Response. *mBio*. **4** (5) (2013).

524 19 Sebaihia, M. *et al.* The multidrug-resistant human pathogen *Clostridium difficile* has a
525 highly mobile, mosaic genome. *Nature Genetics*. **38** (7), 779-786 (2006).

526 20 Gasteiger, E. *et al.* ExPASy: The proteomics server for in-depth protein knowledge and
527 analysis. *Nucleic Acids Research*. **31** (13), 3784-3788 (2003).

528 21 Purcell, E. B. *et al.* A nutrient-regulated cyclic diguanylate phosphodiesterase controls
529 *Clostridium difficile* biofilm and toxin production during stationary phase. *Infection and*
530 *Immunity*. 10.1128/iai.00347-17 (2017).

531 22 Mechold, U., Murphy, H., Brown, L. & Cashel, M. Intramolecular Regulation of the
532 Opposing (p)ppGpp Catalytic Activities of RelSeq, the Rel/Spo Enzyme from *Streptococcus*
533 *equisimilis*. *Journal of Bacteriology*. **184** (11), 2878-2888 (2002).

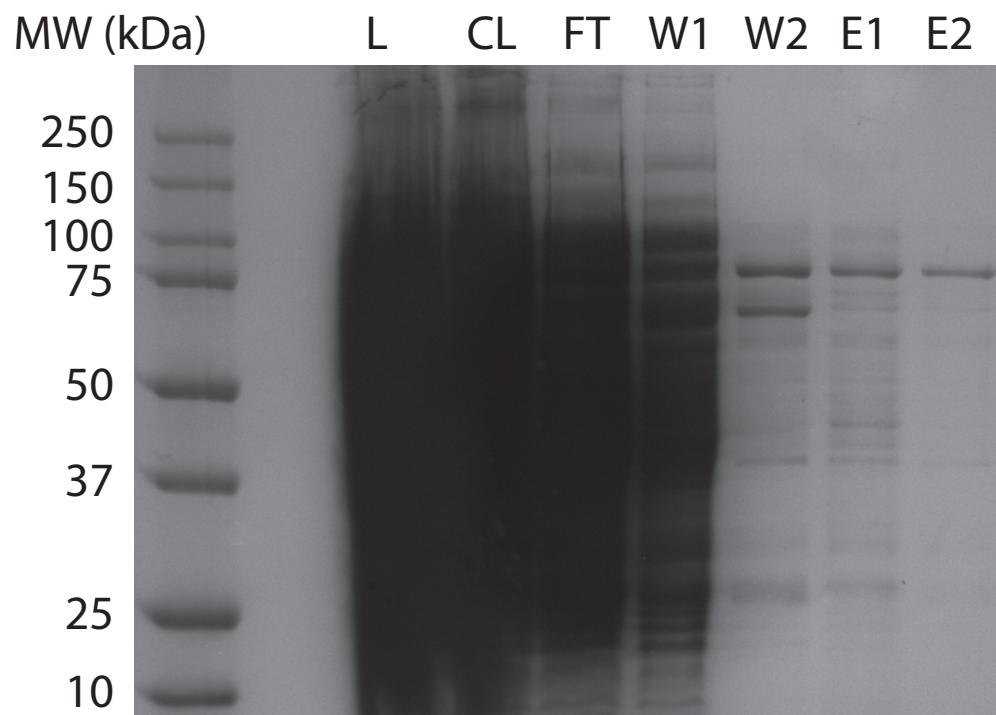
534 23 Dalebroux, Z. D., Svensson, S. L., Gaynor, E. C. & Swanson, M. S. ppGpp Conjugates Bacterial
535 Virulence. *Microbiology and Molecular Biology Reviews*. **74** (2), 171-199 (2010).

536 24 Bartlett, J. G. *Clostridium difficile*: progress and challenges. *Annals of the New York*
537 *Academy of Sciences*. **1213** 62-69 (2010).

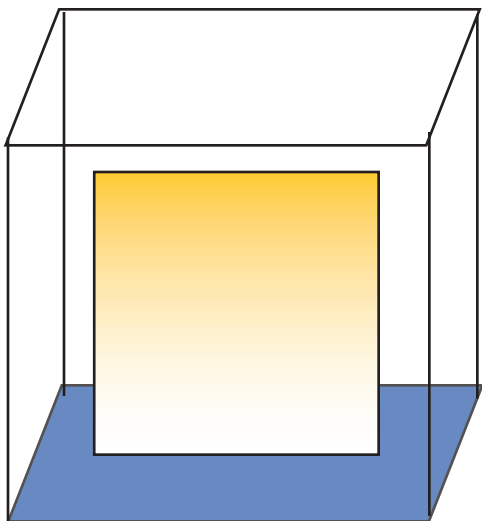
538 25 US Department of Health and Human Services (Centers for Disease Control and
539 Prevention, US Department of Health and Human Services, Atlanta, GA, 2013).

540

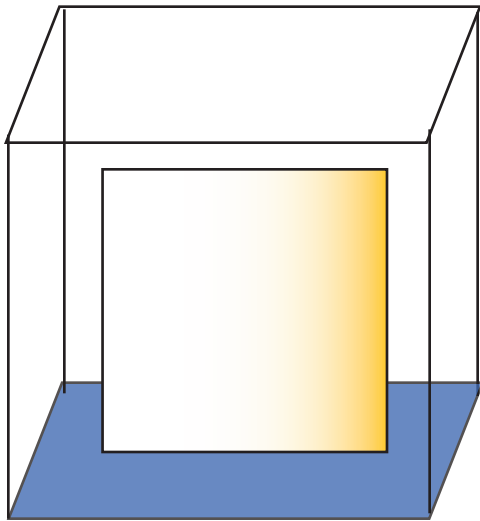
541



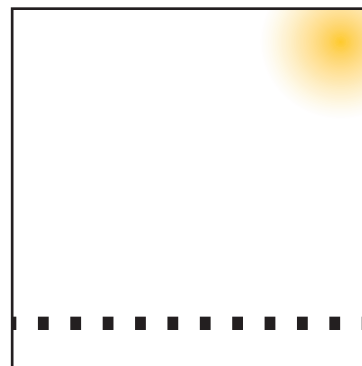
A

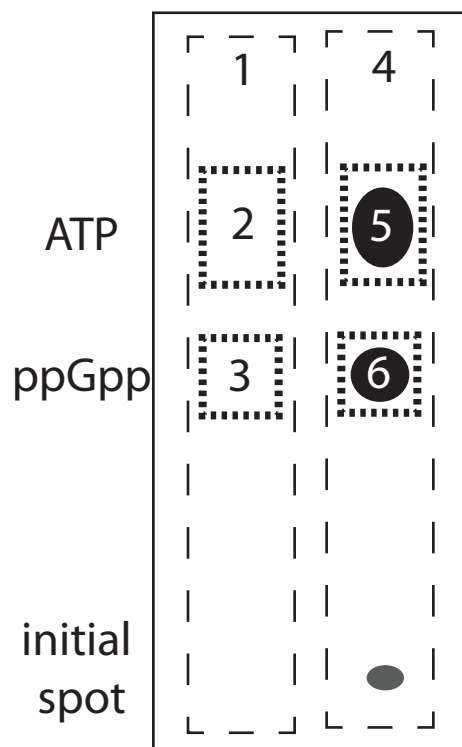


B



C





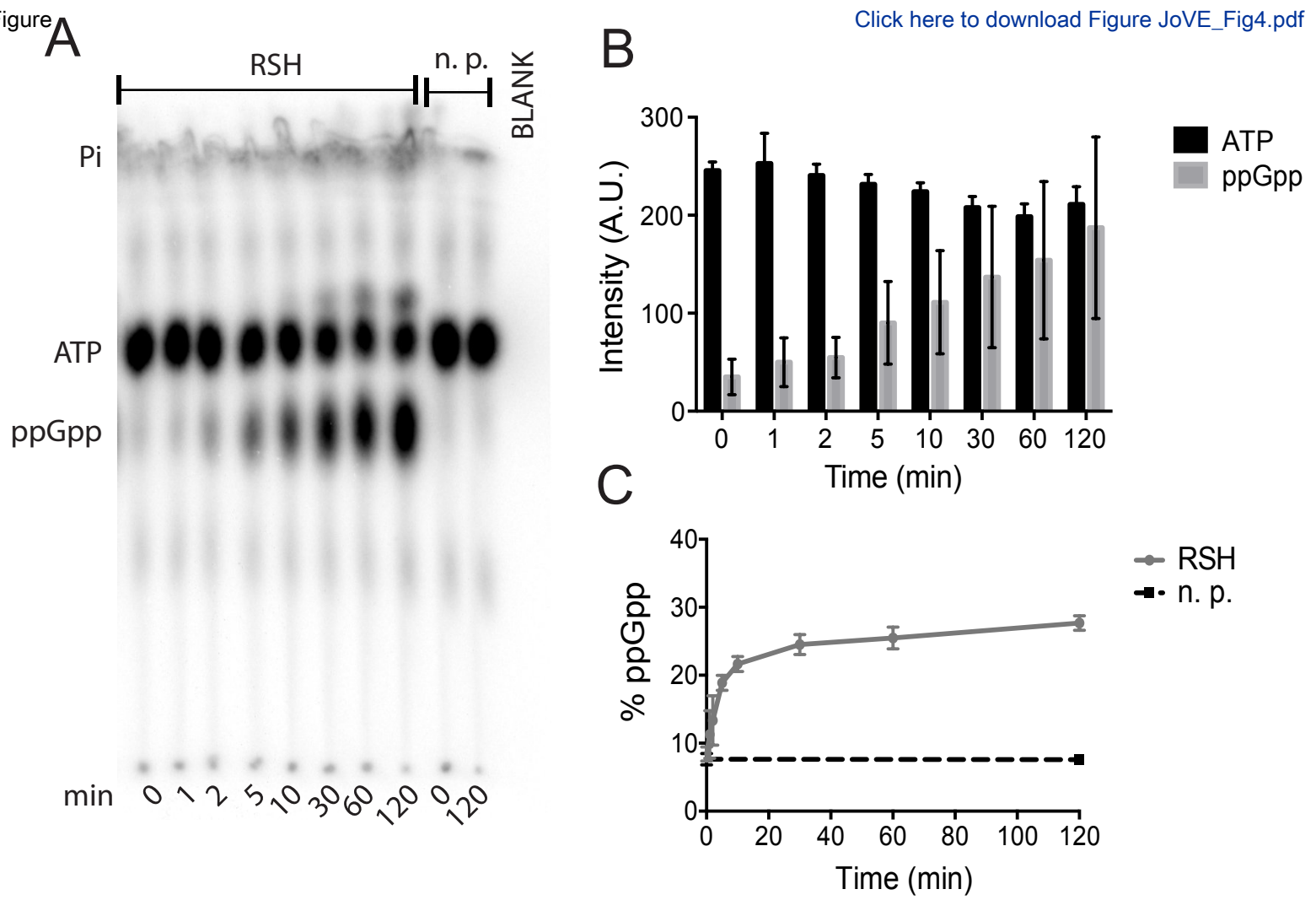
$$\text{TOTAL signal} = 4 - 1$$

$$\text{ATP signal} = 5 - 2$$

$$\text{ppGpp signal} = 6 - 3$$

$$\% \text{ ATP} = (5 - 2) / (4 - 1)$$

$$\% \text{ ppGpp} = (6 - 3) / (4 - 1)$$



Materials	Source
Inducible overexpression of a histidine-tagged protein	
Phusion polymerase	New England Biolabs (NEB)
QIAEX II DNA Gel Extraction Kit	Qiagen
KpnI restriction enzyme	NEB
PstI restriction enzyme	NEB
T4 DNA ligase	NEB
NEB® 5-alpha Competent E. coli (High Efficiency)	NEB
BL21 (DE3) Competent E. coli	NEB
IPTG	Sigma-Aldrich
JXN-26 centrifuge with JLA 10.500 rotor	Beckman Coulter Avanti
Microcentrifuge with D3024/D3024R rotor	Scilogex
MaxQ SHKE6000 Incubator	Thermo Scientific
Ultrasonic processor	Sonics
Protein purification by nickel affinity chromatography	
Ni-NTA resin	G Biosciences
Pierce Disposable Gravity columns, 10 mL	Thermo Scientific
1 mL Spectra/ Por float-A-lyzer G2 dialysis device (MWCO: 20-kD)	Spectrum
Mini-Protean Electrophoresis Cell	BioRad
Protein activity assay by thin layer chromatography	
Thin layer chromatograph (TLC) development tank	General Glass Blowing Company
Polyethylenimine (PEI)-cellulose plates (20 cm x 20 cm, 100 um thickness) with polyester support	Sigma-Aldrich
ATP, [γ - ³² P]- 3000 Ci/mmol 10mCi/ml lead, 100 μ Ci	Perkin Elmer
Adenosine 5'-triphosphate (ATP) 100 mM	Bio Basic Canada
Guanosine-5'-diphosphate disodium salt (GDP)	Alfa Aesar

Storage phosphor screen	GE Healthcare Life Sciences
Storm 860 phosphorimager	GE Healthcare Life Sciences

Catalog/Model number

M0530L
20021
R0142S
R0140S
M0202
C2987I
C2527I
10724815001
-
-
-
VC-750

786-940/941
29924
G235033
1658004

80-3
Z122882-25EA
NEG002A
AB0311
AAJ61646MC/E

BAS-IP TR 2040 E

Tritium Screen

-



1 Alewife Center #200
Cambridge, MA 02140
tel. 617.945.9051
www.jove.com

ARTICLE AND VIDEO LICENSE AGREEMENT

Title of Article:

Protocol

Author(s):

Astha Pokhrel, Asia Poudel, Erin B. Purcell

Item 1: The Author elects to have the Materials be made available (as described at <http://www.jove.com/publish>) via:



Standard Access



Open Access

Item 2: Please select one of the following items:



The Author is **NOT** a United States government employee.



The Author is a United States government employee and the Materials were prepared in the course of his or her duties as a United States government employee.



The Author is a United States government employee but the Materials were NOT prepared in the course of his or her duties as a United States government employee.

ARTICLE AND VIDEO LICENSE AGREEMENT

1. **Defined Terms.** As used in this Article and Video License Agreement, the following terms shall have the following meanings: **"Agreement"** means this Article and Video License Agreement; **"Article"** means the article specified on the last page of this Agreement, including any associated materials such as texts, figures, tables, artwork, abstracts, or summaries contained therein; **"Author"** means the author who is a signatory to this Agreement; **"Collective Work"** means a work, such as a periodical issue, anthology or encyclopedia, in which the Materials in their entirety in unmodified form, along with a number of other contributions, constituting separate and independent works in themselves, are assembled into a collective whole; **"CRC License"** means the Creative Commons Attribution-Non Commercial-No Derivs 3.0 Unported Agreement, the terms and conditions of which can be found at: <http://creativecommons.org/licenses/by-nc-nd/3.0/legalcode>; **"Derivative Work"** means a work based upon the Materials or upon the Materials and other pre-existing works, such as a translation, musical arrangement, dramatization, fictionalization, motion picture version, sound recording, art reproduction, abridgment, condensation, or any other form in which the Materials may be recast, transformed, or adapted; **"Institution"** means the institution, listed on the last page of this Agreement, by which the Author was employed at the time of the creation of the Materials; **"JoVE"** means MyJoVE Corporation, a Massachusetts corporation and the publisher of The Journal of Visualized Experiments; **"Materials"** means the Article and / or the Video; **"Parties"** means the Author and JoVE; **"Video"** means any video(s) made by the Author, alone or in conjunction with any other parties, or by JoVE or its affiliates or agents, individually or in collaboration with the Author or any other parties, incorporating all or any portion

of the Article, and in which the Author may or may not appear.

2. **Background.** The Author, who is the author of the Article, in order to ensure the dissemination and protection of the Article, desires to have the JoVE publish the Article and create and transmit videos based on the Article. In furtherance of such goals, the Parties desire to memorialize in this Agreement the respective rights of each Party in and to the Article and the Video.

3. **Grant of Rights in Article.** In consideration of JoVE agreeing to publish the Article, the Author hereby grants to JoVE, subject to **Sections 4** and **7** below, the exclusive, royalty-free, perpetual (for the full term of copyright in the Article, including any extensions thereto) license (a) to publish, reproduce, distribute, display and store the Article in all forms, formats and media whether now known or hereafter developed (including without limitation in print, digital and electronic form) throughout the world, (b) to translate the Article into other languages, create adaptations, summaries or extracts of the Article or other Derivative Works (including, without limitation, the Video) or Collective Works based on all or any portion of the Article and exercise all of the rights set forth in (a) above in such translations, adaptations, summaries, extracts, Derivative Works or Collective Works and (c) to license others to do any or all of the above. The foregoing rights may be exercised in all media and formats, whether now known or hereafter devised, and include the right to make such modifications as are technically necessary to exercise the rights in other media and formats. If the "Open Access" box has been checked in **Item 1** above, JoVE and the Author hereby grant to the public all such rights in the Article as provided in, but subject to all limitations and requirements set forth in, the CRC License.

ARTICLE AND VIDEO LICENSE AGREEMENT

4. **Retention of Rights in Article.** Notwithstanding the exclusive license granted to JoVE in **Section 3** above, the Author shall, with respect to the Article, retain the non-exclusive right to use all or part of the Article for the non-commercial purpose of giving lectures, presentations or teaching classes, and to post a copy of the Article on the Institution's website or the Author's personal website, in each case provided that a link to the Article on the JoVE website is provided and notice of JoVE's copyright in the Article is included. All non-copyright intellectual property rights in and to the Article, such as patent rights, shall remain with the Author.

5. **Grant of Rights in Video – Standard Access.** This **Section 5** applies if the "Standard Access" box has been checked in **Item 1** above or if no box has been checked in **Item 1** above. In consideration of JoVE agreeing to produce, display or otherwise assist with the Video, the Author hereby acknowledges and agrees that, Subject to **Section 7** below, JoVE is and shall be the sole and exclusive owner of all rights of any nature, including, without limitation, all copyrights, in and to the Video. To the extent that, by law, the Author is deemed, now or at any time in the future, to have any rights of any nature in or to the Video, the Author hereby disclaims all such rights and transfers all such rights to JoVE.

6. **Grant of Rights in Video – Open Access.** This **Section 6** applies only if the "Open Access" box has been checked in **Item 1** above. In consideration of JoVE agreeing to produce, display or otherwise assist with the Video, the Author hereby grants to JoVE, subject to **Section 7** below, the exclusive, royalty-free, perpetual (for the full term of copyright in the Article, including any extensions thereto) license (a) to publish, reproduce, distribute, display and store the Video in all forms, formats and media whether now known or hereafter developed (including without limitation in print, digital and electronic form) throughout the world, (b) to translate the Video into other languages, create adaptations, summaries or extracts of the Video or other Derivative Works or Collective Works based on all or any portion of the Video and exercise all of the rights set forth in (a) above in such translations, adaptations, summaries, extracts, Derivative Works or Collective Works and (c) to license others to do any or all of the above. The foregoing rights may be exercised in all media and formats, whether now known or hereafter devised, and include the right to make such modifications as are technically necessary to exercise the rights in other media and formats. For any Video to which this **Section 6** is applicable, JoVE and the Author hereby grant to the public all such rights in the Video as provided in, but subject to all limitations and requirements set forth in, the CRC License.

7. **Government Employees.** If the Author is a United States government employee and the Article was prepared in the course of his or her duties as a United States government employee, as indicated in **Item 2** above, and any of the licenses or grants granted by the Author hereunder exceed the scope of the 17 U.S.C. 403, then the rights granted hereunder shall be limited to the maximum

rights permitted under such statute. In such case, all provisions contained herein that are not in conflict with such statute shall remain in full force and effect, and all provisions contained herein that do so conflict shall be deemed to be amended so as to provide to JoVE the maximum rights permissible within such statute.

8. **Protection of the Work.** The Author(s) authorize JoVE to take steps in the Author(s) name and on their behalf if JoVE believes some third party could be infringing or might infringe the copyright of either the Author's Article and/or Video.

9. **Likeness, Privacy, Personality.** The Author hereby grants JoVE the right to use the Author's name, voice, likeness, picture, photograph, image, biography and performance in any way, commercial or otherwise, in connection with the Materials and the sale, promotion and distribution thereof. The Author hereby waives any and all rights he or she may have, relating to his or her appearance in the Video or otherwise relating to the Materials, under all applicable privacy, likeness, personality or similar laws.

10. **Author Warranties.** The Author represents and warrants that the Article is original, that it has not been published, that the copyright interest is owned by the Author (or, if more than one author is listed at the beginning of this Agreement, by such authors collectively) and has not been assigned, licensed, or otherwise transferred to any other party. The Author represents and warrants that the author(s) listed at the top of this Agreement are the only authors of the Materials. If more than one author is listed at the top of this Agreement and if any such author has not entered into a separate Article and Video License Agreement with JoVE relating to the Materials, the Author represents and warrants that the Author has been authorized by each of the other such authors to execute this Agreement on his or her behalf and to bind him or her with respect to the terms of this Agreement as if each of them had been a party hereto as an Author. The Author warrants that the use, reproduction, distribution, public or private performance or display, and/or modification of all or any portion of the Materials does not and will not violate, infringe and/or misappropriate the patent, trademark, intellectual property or other rights of any third party. The Author represents and warrants that it has and will continue to comply with all government, institutional and other regulations, including, without limitation all institutional, laboratory, hospital, ethical, human and animal treatment, privacy, and all other rules, regulations, laws, procedures or guidelines, applicable to the Materials, and that all research involving human and animal subjects has been approved by the Author's relevant institutional review board.

11. **JoVE Discretion.** If the Author requests the assistance of JoVE in producing the Video in the Author's facility, the Author shall ensure that the presence of JoVE employees, agents or independent contractors is in accordance with the relevant regulations of the Author's institution. If more than one author is listed at the beginning of this Agreement, JoVE may, in its sole

ARTICLE AND VIDEO LICENSE AGREEMENT

discretion, elect not take any action with respect to the Article until such time as it has received complete, executed Article and Video License Agreements from each such author. JoVE reserves the right, in its absolute and sole discretion and without giving any reason therefore, to accept or decline any work submitted to JoVE. JoVE and its employees, agents and independent contractors shall have full, unfettered access to the facilities of the Author or of the Author's institution as necessary to make the Video, whether actually published or not. JoVE has sole discretion as to the method of making and publishing the Materials, including, without limitation, to all decisions regarding editing, lighting, filming, timing of publication, if any, length, quality, content and the like.

12. **Indemnification.** The Author agrees to indemnify JoVE and/or its successors and assigns from and against any and all claims, costs, and expenses, including attorney's fees, arising out of any breach of any warranty or other representations contained herein. The Author further agrees to indemnify and hold harmless JoVE from and against any and all claims, costs, and expenses, including attorney's fees, resulting from the breach by the Author of any representation or warranty contained herein or from allegations or instances of violation of intellectual property rights, damage to the Author's or the Author's institution's facilities, fraud, libel, defamation, research, equipment, experiments, property damage, personal injury, violations of institutional, laboratory, hospital, ethical, human and animal treatment, privacy or other rules, regulations, laws, procedures or guidelines, liabilities and other losses or damages related in any way to the submission of work to JoVE, making of videos by JoVE, or publication in JoVE or elsewhere by JoVE. The Author shall be responsible for, and shall hold JoVE harmless from, damages caused by lack of sterilization, lack of cleanliness or by contamination due to

the making of a video by JoVE its employees, agents or independent contractors. All sterilization, cleanliness or decontamination procedures shall be solely the responsibility of the Author and shall be undertaken at the Author's expense. All indemnifications provided herein shall include JoVE's attorney's fees and costs related to said losses or damages. Such indemnification and holding harmless shall include such losses or damages incurred by, or in connection with, acts or omissions of JoVE, its employees, agents or independent contractors.

13. **Fees.** To cover the cost incurred for publication, JoVE must receive payment before production and publication the Materials. Payment is due in 21 days of invoice. Should the Materials not be published due to an editorial or production decision, these funds will be returned to the Author. Withdrawal by the Author of any submitted Materials after final peer review approval will result in a US\$1,200 fee to cover pre-production expenses incurred by JoVE. If payment is not received by the completion of filming, production and publication of the Materials will be suspended until payment is received.

14. **Transfer, Governing Law.** This Agreement may be assigned by JoVE and shall inure to the benefits of any of JoVE's successors and assignees. This Agreement shall be governed and construed by the internal laws of the Commonwealth of Massachusetts without giving effect to any conflict of law provision thereunder. This Agreement may be executed in counterparts, each of which shall be deemed an original, but all of which together shall be deemed to be one and the same agreement. A signed copy of this Agreement delivered by facsimile, e-mail or other means of electronic transmission shall be deemed to have the same legal effect as delivery of an original signed copy of this Agreement.

A signed copy of this document must be sent with all new submissions. Only one Agreement is required per submission.

CORRESPONDING AUTHOR

Name:

Erin B. Purcell

Department:

Chemistry and Biochemistry

Institution:

Old Dominion University

Title:

Assistant Professor

Signature:

Erin B. Purcell

Date:

May 31, 2018

Please submit a **signed** and **dated** copy of this license by one of the following three methods:

1. Upload an electronic version on the JoVE submission site
2. Fax the document to +1.866.381.2236
3. Mail the document to JoVE / Attn: JoVE Editorial / 1 Alewife Center #200 / Cambridge, MA 02140



July 31, 2018

To the editor,

Thank you for your consideration of our paper (JoVE58547). Attached, please find our revised manuscript. We have made several formatting and wording changes requested by the JoVE editorial staff. Notably, we have highlighted the steps we believe are most useful to include in the video. We have highlighted steps within the protein purification section of the protocol and the enzyme activity assay section. If time permits, both would be useful, but we believe that the enzyme activity assay is the most important section of the paper. If necessary, the protein purification section could be excluded from the video, if this allows more thorough coverage within a reasonable video length of the enzyme activity assay. As none of the authors have direct experience with filming a protocol video, we would like to defer to the Journal's expertise re: inclusion of the protein purification section.

As requested, we have removed all direct references to commercial products from the protocol and added more detail to the Table of Materials. We have added more detail to the data analysis section detailing the specific commands used to quantitate signal within Regions of Interest (section C, part 4).

We thank the editorial staff for their detailed reading of the manuscript.

Sincerely,

Erin B. Purcell, Ph.D.
Assistant Professor of Chemistry and Biochemistry
Old Dominion University
epurcell@odu.edu
(757) 683-4240