

# Journal of Visualized Experiments

## Isolation of glomeruli and in vivo labeling of glomerular cell surface proteins

--Manuscript Draft--

<b>Article Type:</b>	Invited Methods Article - JoVE Produced Video
<b>Manuscript Number:</b>	JoVE58542R2
<b>Full Title:</b>	Isolation of glomeruli and in vivo labeling of glomerular cell surface proteins
<b>Keywords:</b>	In vivo biotinylation; cell surface protein labeling; glomeruli; isolation of glomeruli; dynabeads; endocytosis; in vivo protein trafficking
<b>Corresponding Author:</b>	Johannes Stegbauer GERMANY
<b>Corresponding Author's Institution:</b>	
<b>Corresponding Author E-Mail:</b>	johannes.stegbauer@med.uni-duesseldorf.de
<b>Order of Authors:</b>	Eva Königshausen Sebastian A. Potthoff Raphael Haase Catherine Meyer-Schwesinger Ernest Kaufmann Lars Christian Rump Johannes Stegbauer Lorenz Sellin Ivo Quack Magdalena Woznowski
<b>Additional Information:</b>	
<b>Question</b>	<b>Response</b>
Please indicate whether this article will be Standard Access or Open Access.	Standard Access (US\$2,400)
Please indicate the <b>city, state/province, and country</b> where this article will be <b>filmed</b> . Please do not use abbreviations.	Experimentelle Nephrologie, Heinrich-Heine University, Geb.23.12.00 R21-28, Universitätsstrasse 1, 40225 Düsseldorf, Germany

**TITLE:**

Isolation of Glomeruli and *In Vivo* Labeling of Glomerular Cell Surface Proteins

**AUTHORS:**

Eva Königshausen<sup>1</sup>, Sebastian A. Potthoff<sup>1</sup>, Raphael Haase<sup>1</sup>, Catherine Meyer-Schwesinger<sup>2</sup>, Ernest Kaufmann<sup>1</sup>, L. Christian Rump<sup>1</sup>, Johannes Stegbauer<sup>1</sup>, Lorenz Sellin<sup>1</sup>, Ivo Quack<sup>1</sup>, Magdalena Woznowski<sup>1</sup>

<sup>1</sup>Department of Nephrology, Medical Faculty, Heinrich-Heine-University, Düsseldorf, Germany

<sup>2</sup>III. Medical Clinic, University Hospital Eppendorf, Hamburg, Germany

**Corresponding Author:**

Dr. Eva Königshausen

(Eva.koenigshausen@med.uni-duesseldorf.de)

Tel: +49-2118117726

**Email Addresses of Co-Authors:**

Sebastian A. Potthoff

(Sebastian.potthoff@med.uni-duesseldorf.de)

Raphael Haase

(raphael\_haase@gmx.de)

Catherine Meyer-Schwesinger

(c.meyer-schwesinger@uke-uni-hamburg.de)

Ernest Kaufmann

(ernest.kaufmann@uni-duesseldorf.de)

L. Christian Rump

(Christian.rump@med.uni-duesseldorf.de)

Johannes Stegbauer

(Johannes.stegbauer@med.uni-duesseldorf.de)

Lorenz Sellin

(Lorenz.sellin@med.uni-duesseldorf.de)

Ivo Quack

(ivo.quack@glkn.de)

Magdalena Woznowski

(Magdalena.woznowski@med.uni-duesseldorf.de)

**KEYWORDS:**

*In vivo* biotinylation, cell surface protein labeling, glomeruli, isolation of glomeruli, magnetic beads, endocytosis, *in vivo* protein trafficking

**SUMMARY:**

Here we present a protocol for murine *in vivo* labeling of glomerular cell surface proteins with biotin. This protocol contains information on how to perfuse mouse kidneys, isolate glomeruli, and perform endogenous immunoprecipitation of the protein of interest.

**ABSTRACT:**

Proteinuria results from the disruption of the glomerular filter that is composed of the fenestrated endothelium, glomerular basement membrane, and podocytes with their slit diaphragms. The delicate structure of the glomerular filter, especially the slit diaphragm, relies on the interplay of diverse cell surface proteins. Studying these cell surface proteins has so far been limited to *in vitro* studies or histologic analysis. Here, we present a murine *in vivo* biotinylation labeling method, which enables the study of glomerular cell surface proteins under physiologic and pathophysiologic conditions. This protocol contains information on how to

perfuse mouse kidneys, isolate glomeruli, and perform endogenous immunoprecipitation of a protein of interest. Semi-quantitation of glomerular cell surface abundance is readily available with this novel method, and all proteins accessible to biotin perfusion and immunoprecipitation can be studied. In addition, isolation of glomeruli with or without biotinylation enables further analysis of glomerular RNA and protein as well as primary glomerular cell culture (*i.e.*, primary podocyte cell culture).

## INTRODUCTION:

Proteinuria is a hallmark of glomerular injury and usually accompanies disruption of the glomerular filter<sup>1</sup>. The glomerular filter is composed of the fenestrated endothelium, glomerular basement membrane, and podocytes. The delicate molecular structure of the glomerular filter is highly dynamic and subject to cell surface protein trafficking in both healthy and diseased kidneys<sup>2-6</sup>. Endocytosis of cell surface proteins has been shown to be essential for the survival of podocytes<sup>7</sup>. Nephritin and podocalyxin are transmembrane proteins expressed on podocytes. Nephritin is the backbone of the glomerular slit diaphragm, while podocalyxin is a sialoglycoprotein coating the secondary foot processes of podocytes<sup>8-10</sup>. Endocytic trafficking has previously been shown for nephritin and podocalyxin<sup>3,11-14</sup>.

To the best of our knowledge, endocytosis of cell surface proteins has not yet been described in glomerular endothelial cells in the literature. However, endothelial cells in general express all necessary proteins for the different types of endocytosis (*i.e.*, clathrin-dependent, raft-dependent endocytosis)<sup>15,16</sup>. Therefore, endothelial cell surface trafficking may be studied with this method using, for example, vascular endothelial (VE)-cadherin and intracellular adhesion molecule (ICAM-2) as a cell surface marker protein for glomerular endothelial cells<sup>17</sup>.

Unfortunately, there is no accurate *in vitro* model for the delicate three-layered glomerular filter in which cell surface protein trafficking can be studied. The goal of this method is thus to study glomerular protein trafficking *in vivo*. In addition, this protocol contains information on how to isolate glomeruli, enabling further analysis of glomerular RNA, proteins, or cells. Similar glomerular isolation techniques have been described by different groups<sup>18,19</sup>.

Previously, we and others have used *ex vivo* labeling of glomerular cell surface proteins by biotinylation<sup>2-4,20,21</sup>. However, in this *ex vivo* method, isolated glomeruli were exposed to mechanical stress, which may influence endocytic trafficking. Alternatively, immunofluorescence labeling of glomerular cell surface proteins has extensively been used in the literature<sup>2,20,22</sup>. With this method, however, only a small number of proteins can be analyzed within one slide, and quantitation of immunofluorescence images is often difficult.

This novel *in vivo* method offers a reliable tool to study glomerular cell surface protein abundance and trafficking accurately in healthy and diseased kidneys, and it can be used as an addition to immunofluorescence tests.

**PROTOCOL:**

Mice were obtained as an in-house breed from the local animal care facility or from Janvier Labs in France. The investigations were conducted according to the guidelines outlined in the Guide for Care and Use of Laboratory Animals (U.S. National Institutes of Health Publication No. 85-23, revised 1996). All animal experiments were performed in accordance with the relevant institutional approvals (state government LANUV reference number AZ:84-02.04. 2016.A435).

**1. Preparation of Instruments, Solutions, and Equipment**

1.1) Prepare 1 L of phosphate buffered saline supplemented with 1 mM magnesium chloride (MgCl<sub>2</sub>) and 0.1 mM calcium chloride (CaCl<sub>2</sub>) (PBSCM) and filter it through a sterile filter.

1.2) Prepare 5 mL of sterile PBSCM per mouse for perfusion and place it on ice.

1.3) For each mouse, prepare 5 mL of sterile PBSCM supplemented with 0.5 mg/mL biotin.

1.4) For each mouse, prepare 5 mL of sterile PBSCM and add  $0.8 \times 10^8$  magnetic beads (*e.g.*, 200  $\mu$ L of a  $4 \times 10^8$  beads/mL solution, without pretreatment) for embolization of the glomeruli. Prepare this solution under the cell culture bench to keep the magnetic beads in the original tube sterile. Place this solution on ice.

1.5) Prepare a quenching solution by adding 100 mM glycine to PBSCM (5 mL per mouse) and keep it on ice.

1.6) Make a collagenase solution (0.378 U/mL collagenase A in sterile PBSCM). Per mouse, pipette 1 mL of the collagenase solution into a 2 mL tube and place it on ice.

1.7) For washing, prepare sterile PBSCM (see step 1.1) in a 50 mL tube and place it on ice.

1.8) For perfusion, use a syringe pump with a flow of 2.0 mL/min.

1.9) Prepare a 10 mL syringe with a 21G needle. Place the tip of the needle in a 20-30 cm long catheter (inner diameter, ID = 0.58 mm). Connect the catheter (ID 0.58 mm) with a 10 cm short catheter (ID 0.28 mm) and cut the tip of the smaller catheter oblique for an easy insertion into the mouse aorta.

1.10) For ligature procedures during the surgery, cut three 5-7 cm silk threads (4-0 to 6-0) per mouse.

1.11) For the surgery, prepare 3 surgical clamps, 2 surgical scissors, 2 tweezers, 2 fine tweezers, 1 fine scissor, and swabs. Prepare the anesthesia (*e.g.*, intraperitoneal anesthesia ketamine 100 mg/kg bodyweight and xylazine 5 mg/kg bodyweight).

1.12) For isolation of the glomeruli of two kidneys, use a 100 µm cell strainer, two 50 ml tubes, and a magnet catcher.

1.13) Prepare CHAPS lysis buffer: 20 mM 3-[(3-cholamidopropyl)dimethylammonio]-1-propanesulfonate (CHAPS); 20 mM Tris(hydroxymethyl)-aminomethan (Tris) pH 7.5; 50 mM sodiumchloride (NaCl); 50 mM sodiumfluoride (NaF); 15 mM Na<sub>4</sub>P<sub>2</sub>O<sub>7</sub>; 0.1 mM Ethylenediaminetetraacetic acid (EDTA) pH 8.0; 2 mM sodiumorthovanadate; and 2 mM adenosinetriphosphat (ATP).

1.14) Cool centrifuges to 4 °C.

## **2. Surgery Under the Microscope**

2.1) Anesthetize the mouse (*e.g.*, with ketamine/xylazine intraperitoneally, see step 1.11). Perform the toe-pinch test to confirm proper anesthesia.

2.2) Disinfect the ventral side of the mouse with 70% isopropanol.

2.3) Perform a median cut through the skin from the pelvis to the sternum and remove the skin from the abdominal fascia using tweezers and surgical scissors. Cut the skin on both sides in the middle of the abdomen with surgical scissors.

2.4) Change surgical tools. Apply a median cut from xiphoid to the bladder through the abdominal muscle layer and divide them into four quadrants using tweezers and surgical scissors. Attach the upper two aside with clamps toward the neck of the mouse with two surgical clamps.

Note: The abdomen is now opened.

2.5) Put visceral organs aside with a sterile swab and cut the hepatic-phrenic ligament with fine scissors.

2.6) Free the distal aorta from fascia, fat, and other tissues and prepare a ligation around the hepatic/mesenteric artery cranial of the renal arteries using fine surgical tweezers.

2.7) Prepare a ligation (with a silk thread 4-0 to 6-0) around the aorta distal of the renal arteries and clamp the vena cava and aorta at the height of the bifurcation.

2.8) Prepare a ligation (with a silk thread 4-0 to 6-0) around the aorta proximal of the renal arteries on the height of the adrenal gland with two fine tweezers. Tighten the ligation to abolish the blood flow with tweezers.

2.9) Cut a small hole into the aorta distal to the renal arteries so that the hole is half the diameter of the aorta. Put the catheter into the aorta and fix it with the prepared ligature.

CAUTION: Avoid bubbles in the perfusion system to prevent air embolism.

2.10) Start perfusion with the ice-cold PBSCM at a flow rate of 2 mL/min.

2.11) Cut a hole into the renal vein at the level of the renal arteries with fine surgical scissors and tighten the ligation around the hepatic and mesenteric arteries.

Note: Kidneys should turn pale after starting the perfusion.

### 3. *In Vivo* Biotinylation

3.1) Change the syringe bubble-free to ice-cold PBSCM supplemented with 0.5 mg/mL biotin for surface labelling, and perfuse kidneys with 5 mL at a flow rate of 2 mL/min.

Note: Mix the PBSCM solutions (*e.g.*, by turning the 50 mL tubes) gently to avoid forming bubbles within the solution. After aspiration of the solution within the syringe, evacuate any bubbles or air from the syringe. Use an extra cannula (21G) on the syringe to fill the space in the cannula that is connected to the catheter system. Finally, stick the syringe into the cannula with the catheter without bubbles.

3.2) Change the syringe bubble-free to ice-cold PBSCM supplemented with 100 mM glycine to quench the glomeruli and perfuse with 5 mL at a flow of 2 mL/min.

3.2) Change the syringe bubble-free to ice-cold PBSCM supplemented with 200  $\mu$ L magnetic beads/mL and perfuse kidneys at 2 mL/min.

Note: On the kidney surface, embolization of glomeruli with brown magnetic beads will be visible.

### 4. Isolation of Glomeruli from Two Kidneys

4.1) Remove kidneys at the hilum and remove the capsule. Place the kidneys on ice in 15 mL of PBSCM in a 10 cm cell culture dish.

4.2) Cut kidneys into the smallest pieces possible with a new double-edge blade. Move the tissue into a 2 mL tube with 1 mL of collagenase A (see step 1.6) and digest at 37 °C for 30 min. Before and after digestion, mix gently with a 1000  $\mu$ L cut pipette.

4.3) Rinse the digested tissue through a 100  $\mu$ m cell strainer using ice-cold PBSCM. Gently use the cell-scraper to mince the remaining tissue through the cell strainer and rinse it with ice-cold PBSCM afterwards to a total volume of 50 mL.

4.4) Centrifuge the suspension at 4 °C 5000 x g for 5 min. Remove the supernatant and resuspend the pellet with slightly less than 1.5 mL of ice-cold PBSCM while vortexing the pellet. Afterwards, put the glomerular suspension into a new 2 mL tube.

## 5. Washing

5.1) Use the magnet catcher to pull the glomeruli to one side. Wait for 1 min before the glomeruli have moved toward the magnet.

5.2) Remove the supernatant with a 1000 µL pipette while the 2 mL tube remains in the magnet catcher. During the first and second washing steps (see step 5.3), 250 µL of supernatant remains in the tube to avoid the loss of glomeruli. Perform this procedure quickly to avoid letting tubular structures sink to the bottom of the tube.

Note: The washing procedure will last longer otherwise.

5.3) Remove the 2 mL tube from magnet catcher and add 1 mL of PBSCM, pipette up and down (very important), then vortex.

5.4) Put the tube back into the magnet catcher and start over with step 5.2.

5.5) Repeat the washing steps until the purity of glomeruli has reached 90%. For this, examine a representative aliquot of the supernatant under a microscope (40-100X).

Note: Glomeruli will appear as round structures containing brown magnetic beads. Elongated structures are tubular fragments, and free magnetic beads appear as brown round dots. Cell debris might appear as bulky structures.

5.6) If purity is reached, estimate the count of glomeruli by dissolving the glomeruli in 1 mL of PBSCM. After mixing, take an aliquot of 10 µL and count the glomeruli under the microscope. Calculate the number of glomeruli with the following equation: final number of glomeruli = number of glomeruli in 10 µL aliquot x 100.

5.7) Successful isolation of glomeruli leads to a range of 10,000-40,000 glomeruli.

## 6. Protein Extraction and Immunoprecipitation (IP)

6.1) Collect glomeruli by centrifugation at 4 °C at 6800 x g for 5 min. Remove the supernatant while using a magnet catcher and resuspend the pellet in ice-cold lysis buffer (e.g., 30,000 glomeruli in 300 µL; CHAPS, see step 1.11). Homogenize the samples with a tissue homogenizer at the highest speed for 30 s and lyse them on ice for 30 min.

6.2) Remove insoluble material by centrifugation at 15.000 x g for 30 min for 4 °C. Pipette the

supernatant which includes the cell lysate into a new 1.5 mL tube. Discard the pellet.

6.3) Measure the protein concentration of the supernatant by using a bicinchoninic (BCA)-based method following the manufacturer's instructions. A successful lysis of 30,000 glomeruli yields to a glomerular protein amount of 700-1,000 µg/mL. Adjust to equal protein amounts with lysis buffer.

6.4) Take an aliquot of 10% of the total volume for glomerular lysate and add 2x Laemmli + dithiothreitol (DTT) before incubation for 5 min at 95 °C.

6.5) For IP, incubate the rest of the lysate with streptavidin agarose beads overnight at 4 °C on an overhead shaker.

6.6) Centrifuge agarose beads at 1000 x g for 3 min at 4 °C, remove the supernatant, and add 800 µL of lysis buffer to wash the beads for unspecific protein binding.

6.7) Repeat the wash 3 times, and remove the supernatant completely.

6.8) Add 30 µL of 2x Laemmli + DTT and incubate at 95 °C for 5 min.

6.9) Load the lysate and IP probes on a 10% SDS gel and run the SDS gel at 70 V for 30 min, then at 20 mA per gel for 1.5 h. Afterwards, blot the gel for 2h at 200 mA on a nitrocellulose membrane.

6.10) Block the nitrocellulose membrane overnight at 4 °C with 5% bovine serum albumin (BSA) in washing buffer.

6.11) Incubate the membrane with the antibody of interest overnight at 4 °C. Wash with washing buffer 3 times for 5 min on a shaker and incubate the membrane with the HRP-tagged secondary antibody for 1 h at room temperature. Repeat the washing step.

6.12) Visualize the lysate and immunoprecipitation probes on the membrane by using a super-resolution chemiluminescent agent with a CCD camera.

#### **REPRESENTATIVE RESULTS:**

To isolate glomeruli accurately, it is necessary to perfuse murine kidneys with PBSCM first. Perfusion with PBSCM turns kidneys pale (**Figure 1A**). Embolization of glomeruli with magnetic beads will be visible as brown dots on the kidney surface (**Figure 1B**). Isolation of glomeruli with the magnet catcher may show contamination with renal tubuli (**Figure 1C**). Before further analysis of glomeruli, a > 95% purity of glomeruli needs to be achieved by washing the glomeruli more thoroughly (**Figure 1D**).



*In vivo* biotinylation relies on the ability to label cell surface proteins with biotin. To study this, murine kidneys are perfused with PBSCM or non-cell-membrane permeable biotin. As shown in **Figure 2**, biotin labels the capillary loops in biotin-perfused but not in control mouse kidneys. To investigate cell surface proteins of the glomerulus labeled by *in vivo* biotin perfusion, immunoprecipitation of the biotin fraction of glomerular extracts is performed. **Figure 3A** demonstrates that glomerular transmembrane proteins nephrin and podocalyxin are immunoprecipitated within the biotin fraction. However, in control mice, no nephrin or podocalyxin is detected in the immunoprecipitated fraction of biotinylated proteins. As a negative control, the intracellular protein extracellular-signal regulated kinases p42 and p44 (ERK) are not found in the immunoprecipitated fraction of biotinylated proteins of both control and biotin-perfused mouse kidneys. To confirm that the cell surface protein nephrin is actually biotinylated by this method, nephrin is precipitated from control and biotin-perfused mouse kidneys. To visualize biotin, the immunoprecipitated fraction is stained with streptavidin. **Figure 3B** shows biotinylated nephrin in biotin-perfused but not control animals. Lysate controls indicate equal amounts of protein in control and biotin-perfused animals. Endothelial protein vascular endothelial (VE)-cadherin is immunoprecipitated within the biotin fraction as shown in **Figure 3C**. In control mice, no VE-cadherin is precipitated, while VE-cadherin is present in lysates of control and biotin-perfused animals. Intracellular adhesion molecule 2 (ICAM-2) is precipitated from biotin-perfused animals, and no ICAM-2 is found in control animals. Lysates of control and biotin-perfused animals show equal amounts of ICAM-2 (**Figure 3C**). Actin served as the loading control.

This method can be used to quantify amounts of glomerular cell surface proteins in models of nephropathy (e.g., nephrotoxic nephritis, NTN). In the early phase of NTN [day 1 (1 d) after NTN serum injection], proteinuria increases rapidly. In the later phase of NTN [day 18 (18 d)], proteinuria decreases significantly. **Figure 4** shows nephrin cell surface abundance in early NTN (1 d). The *in vivo* biotinylation assay (**Figure 4A**) shows a reduction of cell surface nephrin in NTN animals compared to controls. The densitometric analysis shows a significant reduction of biotinylated nephrin (57%) in NTN animals compared to controls (**Figure 4C**). Quantitative analysis of total nephrin to actin reveals no significant differences between controls and NTN mice (**Figure 4B**). Using a p57 podocyte cell specific staining, podocyte numbers display equal amounts in NTN and control animals (**Figures 4D and 4E**). **Figure 5** displays the results of nephrin cell surface abundance in late NTN (18 d). **Figure 5A** shows the *in vivo* biotinylation assay in control and NTN mice indicating a recovery of cell surface nephrin. Densitometric analysis displays no significant differences of cell surface nephrin in control and NTN mice (**Figure 5B**). Total nephrin was reduced by 25% in NTN mice (**Figure 5C**). Podocyte numbers were decreased in NTN mice compared to controls by approximately 19% (**Figures 5D and 5E**).

#### FIGURE LEGENDS:

**Figure 1: Kidney perfusion and isolation of glomeruli.** (A) View through the microscope into the murine situs after perfusion with PBSCM. The catheter in the aorta is indicated with an arrow. Perfusion with PBSCM leads the kidneys to turn pale. (B) Embolization of glomeruli with magnetic beads appear as brown dots on the kidney surface. (C) View though the microscope showing i) contamination of glomeruli (brown round structures); ii) with tubuli (light elongated structures);

and iii) cell debris. Purity of the glomeruli is approximately 50%. Free magnetic beads appear as brown dots (magnification 100X). (D) View through the microscope showing a 95% purity of glomeruli (magnification 100X). Scale bars = 100  $\mu$ m.

**Figure 2: Biotin detected in the glomerular capillary loop.** Representative immunofluorescence image of mouse glomeruli (C57BL/6) perfused with PBSCM (control) and biotin (biotin). Biotin (green) is visualized by streptavidin in the glomerular capillary loop only in biotin-perfused mice. Control mice do not show glomerular biotin staining. WT1 (red) is detected in the nuclei of podocytes in both mice. This figure has been modified from a previous publication<sup>20</sup>.

**Figure 3: *In vivo* biotin labeling of glomerular cell surface proteins.** (A) Western blot analysis of immunoprecipitated (IP) biotinylated cell surface proteins (IP: streptavidin agarose beads) and lysates (lysate) of kidneys from PBSCM-perfused (control) and biotin-perfused (biotin) mice. The transmembrane proteins nephrin and podocalyxin are only detected in immunoprecipitated samples of biotin-perfused mouse kidneys. In control mice, nephrin and podocalyxin are not detected in immunoprecipitated probes of control mouse kidneys. In lysates of control and biotin-perfused animals, total nephrin and podocalyxin are expressed equally in both groups. The intracellular protein extracellular-signal regulated kinases p42 and p44 (ERK) are not detected in immunoprecipitated probes of control and biotin-perfused mouse kidneys. In the lysates of both mouse groups, ERK is detected in equal amounts. Actin is stained as a loading control. (B) Western blot analysis of immunoprecipitated nephrin (IP:  $\alpha$ -nephrin) in PBSCM-perfused (control) and biotin-perfused (biotin) mice. In biotin-perfused kidneys, nephrin is visualized with streptavidin staining, while no detection for nephrin is found in control mice. The immunoprecipitated fraction of nephrin (IP:  $\alpha$ -nephrin, WB: nephrin) as well as the lysate fraction (lysate, WB: nephrin) stained for nephrin show equal amounts of nephrin. Actin is used as a loading control. (C) Western blot analysis of immunoprecipitated biotinylated cell surface protein (IP: streptavidin agarose beads) and lysates (lysate) of kidneys from PBSCM perfused (control) and biotin-perfused (biotin) mice. The transmembrane marker protein vascular endothelial (VE)-cadherin and intracellular adhesion molecule 2 (ICAM-2) are only detected in the immunoprecipitated fraction of biotin-perfused animals. In control mice, no VE-cadherin or ICAM-2 are detected. Actin serves as a loading control. This figure has been modified from a previous publication<sup>20</sup>.

**Figure 4: Glomerular protein nephrin abundance in early nephrotoxic nephritis nephropathy (NTN).** (A) Western blot analysis of surface nephrin (IP:  $\alpha$ -nephrin, WB: streptavidin) and total nephrin (IP:  $\alpha$ -nephrin or lysate, WB: nephrin) in control and nephrotoxic serum-treated mice (NTN 1 d). Actin serves as a loading control. Compared to controls, NTN treated mice show reduced cell surface nephrin (IP:  $\alpha$ -nephrin, WB streptavidin) compared to controls. (B) Quantitative analysis of total nephrin/actin in control and NTN 1 d mice [control n = 4, NTN n = 6, non-significant differences (ns)]. (C) Densitometric analysis of cell surface nephrin (biotinylated nephrin/total nephrin) in control and NTN mice (\*p < 0.01, control n = 4, NTN n = 6). (D) Immunohistochemistry of p57 showing podocytes in control and NTN 1 d mice. (E) Quantitative analysis of p57 positive cells per tuft area ( $\mu$ m<sup>2</sup>). (40 glomeruli per mouse quantified, ns). Western

blot data show means  $\pm$  SD. Podocyte counts show means  $\pm$  SEM. Unpaired *t*-test with Welch's correction. Scale bar = 50  $\mu$ m. This figure has been modified from a previous publication<sup>20</sup>.

**Figure 5: Glomerular protein nephrin abundance in late nephrotoxic nephritis nephropathy (NTN).** (A) Western blot analysis of surface nephrin (IP:  $\alpha$ -nephrin, WB: streptavidin) and total nephrin (IP:  $\alpha$ -nephrin or lysate, WB: nephrin) in control and nephrotoxic serum treated mice (NTN 18 d). In comparison to controls, NTN 18 d mice show equal amounts of cell surface nephrin (IP:  $\alpha$ -nephrin, WB: streptavidin). NTN treated mice on day 18 display less total nephrin, and actin serves as a loading control. (B) Densitometric analysis displays no significant differences in cell surface nephrin between controls and NTN 18 d mice (control *n* = 4, NTN *n* = 3). (C) Densitometric analysis of total nephrin to actin. In NTN mice at day 18, there is less expression of nephrin compared to controls (control *n* = 4, NTN *n* = 3, \*\**p* < 0.001). (D) Immunohistochemistry of p57 showing podocytes in control and NTN 18 d mice. There are less p57 positive cells (red) in NTN 18 d mice compared to controls. Magnetic beads appear as black dots. (E) Quantitative analysis of p57 positive cells per glomerular tuft area ( $\mu$ m<sup>2</sup>) (\*\**p* < 0.0001, control *n* = 2, NTN *n* = 2, 40 glomeruli per mouse quantified). Western blot data show means  $\pm$  SD. Podocyte counts show means  $\pm$  SEM. Statistical analysis: unpaired *t*-test with Welch's correction. Scale bar = 50  $\mu$ m. This figure has been modified from a previous publication<sup>20</sup>.

## DISCUSSION:

The presented method enables successful isolation of glomeruli to investigate glomerular RNA or protein. In addition, primary glomerular cell cultures can be performed from the isolated glomeruli. If biotin is applied before glomerular isolation, labeling of glomerular cell surface proteins can be performed. With this method, *in vivo* glomerular cell surface protein trafficking can be studied, and semi-quantitation of protein abundance is possible. The most critical steps for successfully testing glomerular cell surface protein abundance are 1) developing manual expertise in mouse surgery especially cannulation of the aorta, 2) bubble-free connection of syringes in order to avoid air embolization of the glomeruli, and 3) working under ice-cold conditions once perfusion with PBSCM has started.

For this technique, manual expertise in mouse surgery is essential. Cannulation of the aorta is especially critical, as dissection of the vessel will prevent perfusion of the kidneys. The cut in the aorta should be large enough (approximately 50% of the vessel diameter) to create enough space to introduce the catheter. If the catheter is cut diagonally, introduction of the catheter into the aorta will be easier. In addition to dissection, the introduced catheter should be placed high within the aorta in order to not obstruct the renal arteries. The renal arteries will otherwise not be perfused with biotin and the magnetic beads.

Biotin is a small vitamin that binds with high affinity to streptavidin proteins. Because of its small size (244 Da), biotin does not alter the function of conjugated proteins and will be filtered through the glomerulus. By incubation with streptavidin, biotinylated proteins can easily be separated from untagged proteins by agarose beads or other methods. N-hydroxysuccinimide (NHS) esters of biotin bind to amine (-NH<sub>2</sub>) groups of proteins, which are abundant on side chains of lysine

residues, for example. Sulfo-NHS LC-biotin is water soluble and cell-impermeable, if cell membranes are intact. Sulfo-NHS-LC-biotin has been shown to label cell surface proteins<sup>23</sup>. Binding of biotin NHS esters to amine groups is dependent on pH (7-9) and the use of amine-free buffers (*i.e.*, PBSCM). PBSCM with a pH of 7.4 was therefore used to perfuse mouse kidneys with biotin, as it combines ideal physiological properties with optimal solubility and the function of biotin. To quench proteins after labeling, perfusion of PBSCM with glycine is performed, allowing free biotin to become bound to amine groups of glycine. To prevent cellular processes after death of the animal, it is important to perform perfusion with an ice-cold solution and continue working on ice.

Similar to *ex vivo* biotinylation methods, the mechanical stress of processing glomeruli during *in vivo* biotinylation protocols may also impact endocytosis, rapid signaling events, and RNA integrity. It is therefore essential that all processing steps are performed on ice to reduce the risk of enzymatic cellular activity.

Proteinuric animal models like nephrotoxic serum nephritis (NTN) damage mouse kidneys severely. In particular, NTN results in mesangial expansion, glomerular sclerosis, and tubular lesions, leading to kidney fibrosis in advanced stages of the disease (42 days)<sup>24</sup>. Impaired perfusion of sclerosed glomeruli in disease models may lead to biased results of protein abundance. Sclerosed glomeruli will likely not be perfused with magnetic beads and thus may not become isolated in this method. In disease models leading to severe glomerular sclerosis, using techniques to isolate glomeruli via different sieving steps may be an alternative to the magnetic beads method used in this protocol<sup>25</sup>. However, if glomeruli are severely sclerosed, even perfusion with biotin may be impaired. In addition, *ex vivo* biotinylation, in which extracted glomeruli are bathed *ex vivo* in biotin solutions<sup>21</sup>, will probably not be advantageous in these models. Alternatively, use of immunofluorescence to detect protein abundance in severely diseased glomeruli may be advantageous, as it does not rely on perfusion of glomeruli.

Semi-quantitation of protein abundance using this technique works well by using densitometry. However, small differences in protein abundance can be missed as result of the detection limit of densitometry.

The described technique can be transferred to other animal organs that are perfused, provided that the structures of interest are accessible by isolation techniques or the surface protein of interest is specific to one cell type or organ structure. Even though all surface proteins are biotinylated by this technique, using a specific antibody for immunoprecipitation will lead to the fraction of cell surface protein expression of the specific protein (as shown for nephrin in **Figure 3B**).

#### **ACKNOWLEDGMENTS:**

The authors thank Blanka Duvnjak for her exceptional technical assistance. This work was supported by Deutsche Forschungsgemeinschaft ([www.dfg.de](http://www.dfg.de)) WO1811/2-1 to M.W. and QU280/3-1 to I.Q. The funder had no role in the study design, data collection, data analysis,

decision to publish, and preparation of the manuscript.

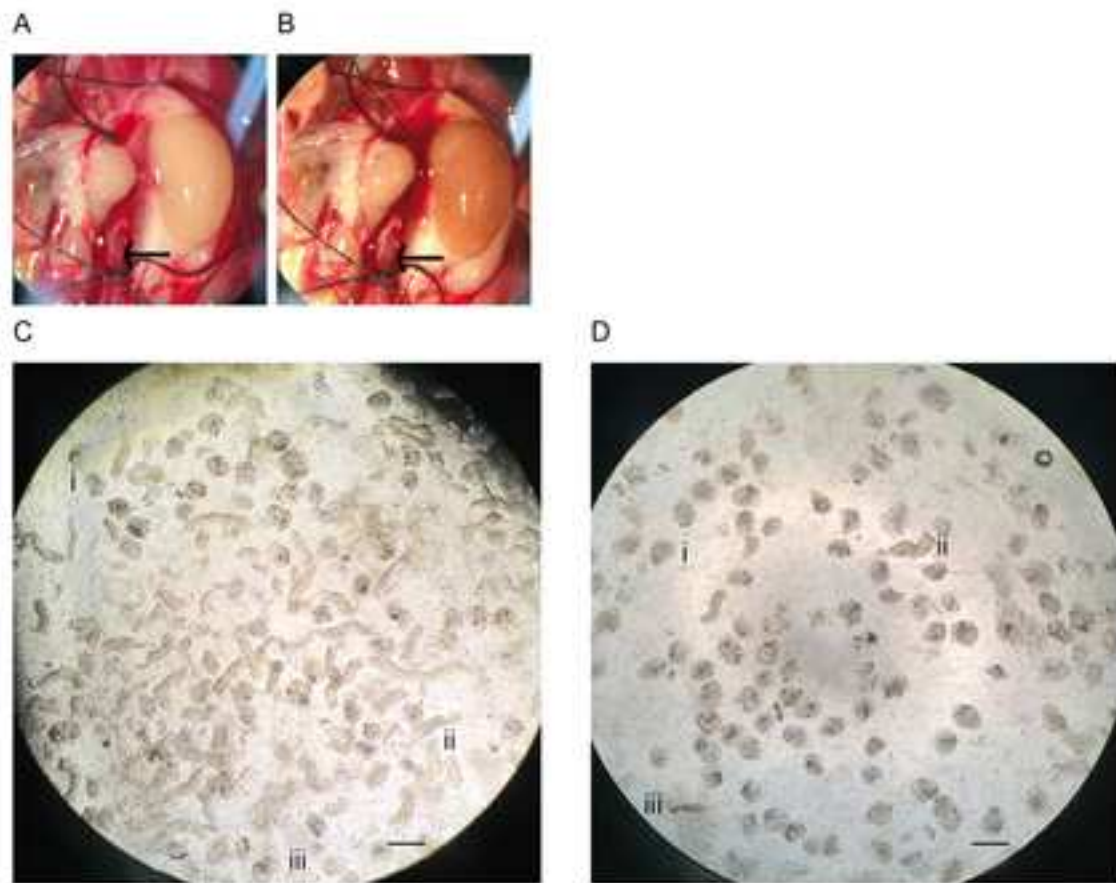
#### DISCLOSURES:

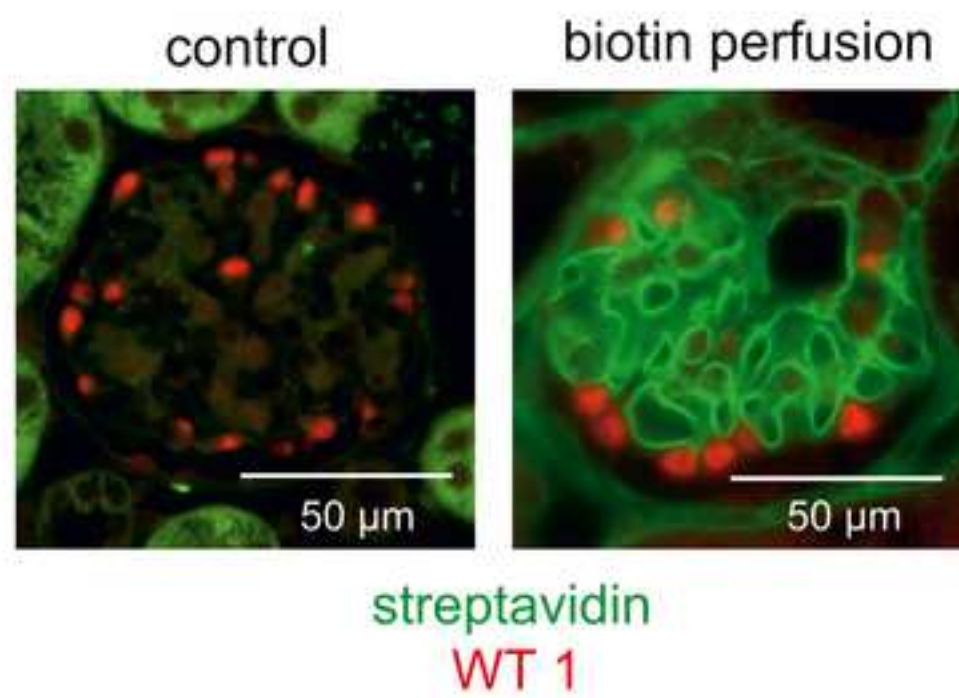
The authors have nothing to disclose.

#### REFERENCES:

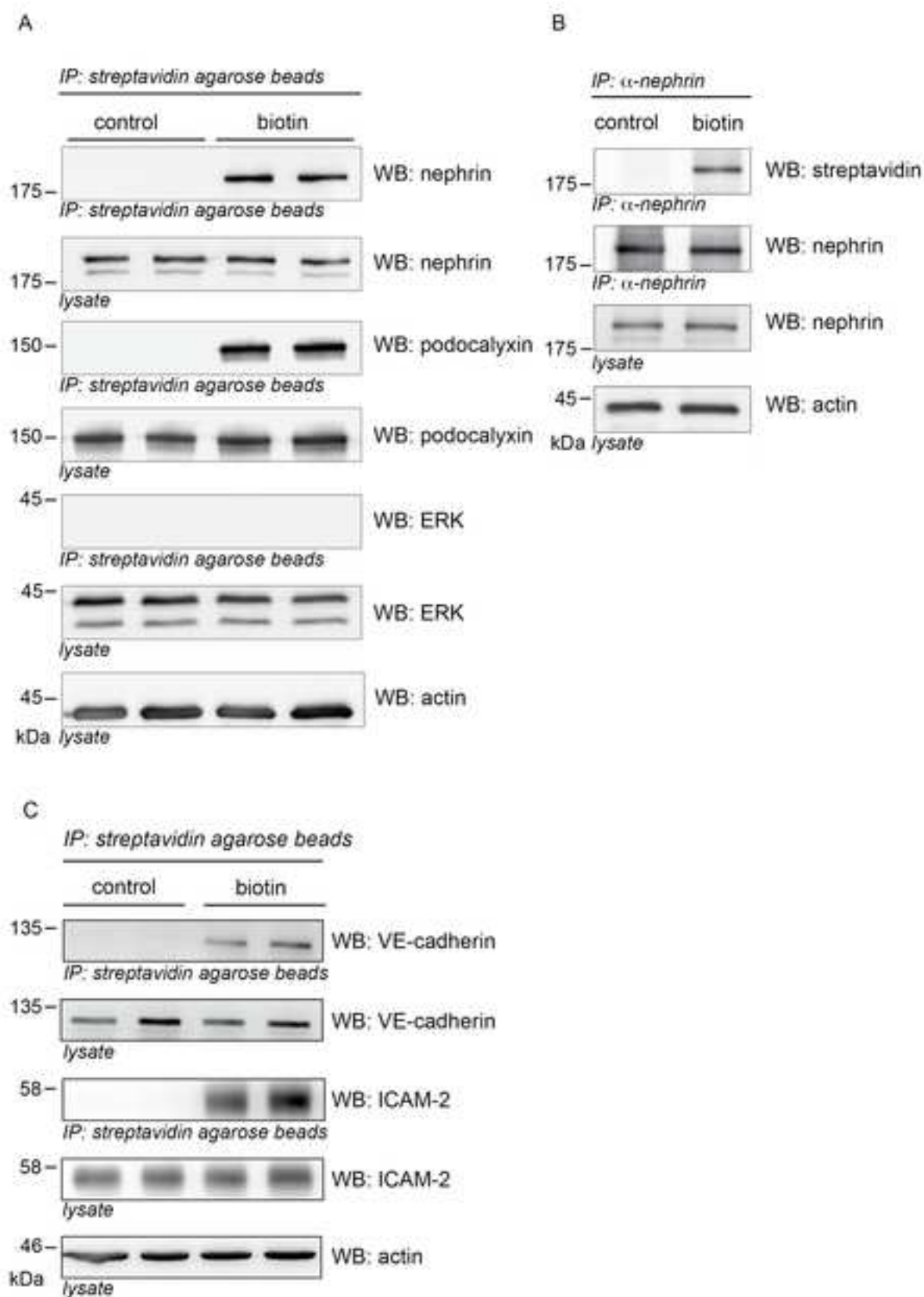
- 1 Jefferson, J. A., Alpers, C. E., Shankland, S. J. Podocyte biology for the bedside. *American Journal of Kidney Disease*. **58** (5), 835-845 (2011).
- 2 Konigshausen, E., *et al.* Angiotensin II increases glomerular permeability by beta-arrestin mediated nephrin endocytosis. *Scientific Reports*. **6**, 39513 (2016).
- 3 Quack, I., *et al.* beta-Arrestin2 mediates nephrin endocytosis and impairs slit diaphragm integrity. *Proceedings of the National Academy of Science of the United States of America*. **103** (38), 14110-14115 (2006).
- 4 Quack, I., *et al.* PKC alpha mediates beta-arrestin2-dependent nephrin endocytosis in hyperglycemia. *Journal of Biological Chemistry*. **286** (15), 12959-12970 (2011).
- 5 Swiatecka-Urban, A. Endocytic Trafficking at the Mature Podocyte Slit Diaphragm. *Frontiers in Pediatrics*. **5**, 32 (2017).
- 6 Swiatecka-Urban, A. Membrane trafficking in podocyte health and disease. *Pediatric Nephrology*. **28** (9), 1723-1737 (2013).
- 7 Soda, K., *et al.* Role of dynamin, synaptojanin, and endophilin in podocyte foot processes. *The Journal of Clinical Investigation*. **122** (12), 4401-4411 (2012).
- 8 Kestila, M., *et al.* Positionally cloned gene for a novel glomerular protein--nephrin--is mutated in congenital nephrotic syndrome. *Molecular Cell*. **1** (4), 575-582 (1998).
- 9 Martin, C. E., Jones, N. Nephrin Signaling in the Podocyte: An Updated View of Signal Regulation at the Slit Diaphragm and Beyond. *Frontiers in Endocrinology (Lausanne)*. **9**, 302 (2018).
- 10 Nielsen, J. S., McNaghy, K. M. The role of podocalyxin in health and disease. *Journal of the American Society of Nephrology*. **20** (8), 1669-1676 (2009).
- 11 Yasuda, T., Saegusa, C., Kamakura, S., Sumimoto, H., Fukuda, M. Rab27 effector Slp2-a transports the apical signaling molecule podocalyxin to the apical surface of MDCK II cells and regulates claudin-2 expression. *Molecular Biology of the Cell*. **23** (16), 3229-3239 (2012).
- 12 Tossidou, I., *et al.* Podocytic PKC-alpha is regulated in murine and human diabetes and mediates nephrin endocytosis. *Public Library of Science One*. **5** (4), e10185 (2010).
- 13 Qin, X. S., *et al.* Phosphorylation of nephrin triggers its internalization by raft-mediated endocytosis. *Journal of the American Society of Nephrology*. **20** (12), 2534-2545 (2009).
- 14 Waters, A. M., *et al.* Notch promotes dynamin-dependent endocytosis of nephrin. *Journal of the American Society of Nephrology*. **23** (1), 27-35 (2012).
- 15 Zhang, X., Simons, M. Receptor tyrosine kinases endocytosis in endothelium: biology and signaling. *Arteriosclerosis Thrombosis and Vascular Biology*. **34** (9), 1831-1837 (2014).
- 16 Maes, H., Olmeda, D., Soengas, M. S., Agostinis, P. Vesicular trafficking mechanisms in endothelial cells as modulators of the tumor vasculature and targets of antiangiogenic therapies. *Federation of European Biochemical Societies Journal*. **283** (1), 25-38 (2016).

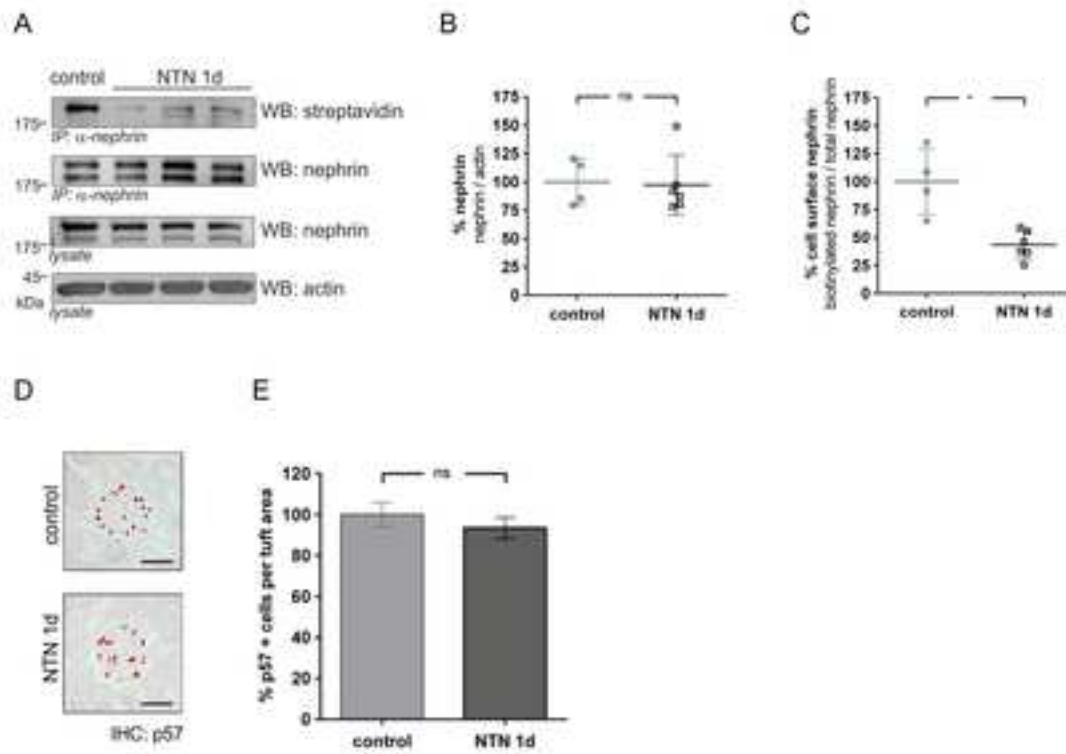
- 17 Satchell, S. C., *et al.* Conditionally immortalized human glomerular endothelial cells expressing fenestrations in response to VEGF. *Kidney International*. **69** (9), 1633-1640 (2006).
- 18 Takemoto, M., *et al.* A new method for large scale isolation of kidney glomeruli from mice. *American Journal of Pathology*. **161** (3), 799-805 (2002).
- 19 Liu, X., *et al.* Isolating glomeruli from mice: A practical approach for beginners. *Experimental and Therapeutic Medicine*. **5** (5), 1322-1326 (2013).
- 20 Haase, R., *et al.* A novel in vivo method to quantify slit diaphragm protein abundance in murine proteinuric kidney disease. *Public Library of Science One*. **12** (6), e0179217 (2017).
- 21 Satoh, D., *et al.* aPKCλ maintains the integrity of the glomerular slit diaphragm through trafficking of nephrin to the cell surface. *Journal of Biochemistry*. **156** (2), 115-128 (2014).
- 22 Tomas, N. M., *et al.* Thrombospondin type-1 domain-containing 7A in idiopathic membranous nephropathy. *New England Journal of Medicine*. **371** (24), 2277-2287 (2014).
- 23 Daniels, G. M., Amara, S. G. Selective labeling of neurotransmitter transporters at the cell surface. *Methods in Enzymology*. **296**, 307-318 (1998).
- 24 Ougaard, M. K. E., *et al.* Murine Nephrotoxic Nephritis as a Model of Chronic Kidney Disease. *International Journal of Nephrology*. **2018**, 8424502 (2018).
- 25 Salant, D. J., Darby, C., Couser, W. G. Experimental membranous glomerulonephritis in rats. Quantitative studies of glomerular immune deposit formation in isolated glomeruli and whole animals. *Journal of Clinical Investigation*. **66** (1), 71-81 (1980).

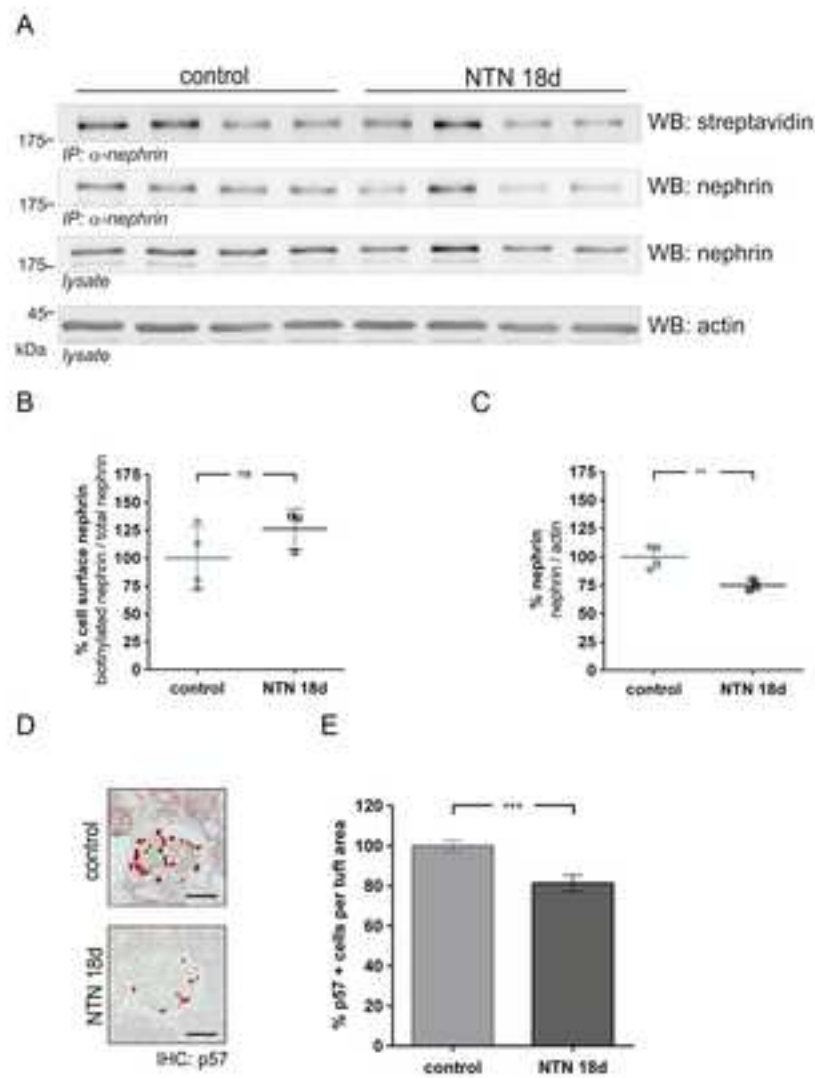


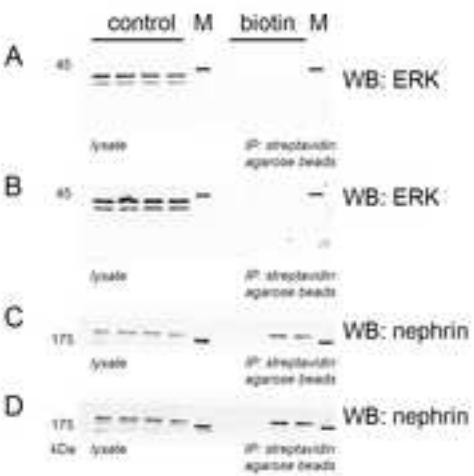


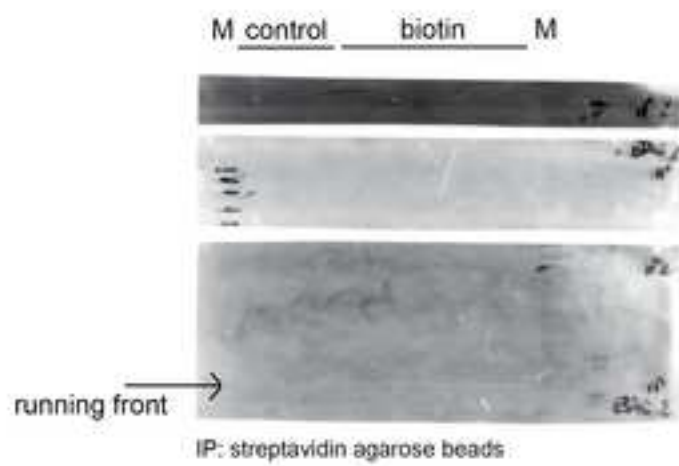












Name of Reagent/ Equipment	Company	Catalog Number	Comments/Description
Motic SMZ168 BL	Motic	SMZ168BL	microscope for mouse surgery
KL1500LCD	Pulch and Lorenz	150500	light for mouse surgery
Rompun (Xylazin) 2%	Bayer	PZN:01320422	anesthesia
Microfederschere	Aesculap	FD100R	fine scissors, for cut into the aorta
Durotip Feine Scheren	Braun, Aesculap	BC210R	for abdominal cut
Anatomische Pinzette	Aesculap	BD215R	or surgery until the abdomen is opened
Präparierklemme	Aesculap	BJ008R	for surgery
Seraflex	Wiessner	IC108000	silk thread
Ketamine 10%	Medistar		anesthesia
Rompun (Xylazin) 2%	Bayer		anesthesia
Fine Bore Polythene Tubing ID 0.28mm OD 0.61mm	Portex	800/100/100	Catheter
Fine Bore Polythene Tubing ID 0.58mm OD 0.96mm	Portex	800/100/200	Catheter
Harvard apparatus 11 Plus	Harvard Apparatus	70-2209	syringe pump
EZ-link Sulfo-NHC-LC-Biotin	Thermo Scientific	21335	biotin
Dynabeads Untouched Mouse T-cells	Invitrogen	11413D	to embolize glomeruli
Collagenase A	Roche	10103578001	to digest kidney tissue
DynaMag-2	Invitrogen	123.21D	Magnet catcher
100µm cell stainer	Greiner-bio	542000	for glomerular isolation
Axiovert 40 CFL	Zeiss	non available	to confirm glomerular purity

TissueRuptor	Quiagen	9002755	Tissue homogenizer
CHAPS	Sigma-Aldrich	C3023	for lysis buffer
Tris-HCL	Sigma-Aldrich	T5941	for lysis buffer
NaCl	VWR chemicals	27810295	for lysis buffer
NaF	Sigma-Aldrich	201154	for lysis buffer
EDTA	Sigma-Aldrich	E5134	for lysis buffer
ATP	Sigma-Aldrich	34369-07-8	for lysis buffer
Pierce BCA Protein Assay Kit	Scientific	23225	Follow the manufacturer's instructions for westernblot
nephrin antibody	Progen	GP-N2	
Polyclonal goat anti-podocalyxin antibody	R&D Systems	AF15556-SP	for westernblot
Streptavidin Agarose Resin	Thermo Scientific	20347	for immunoprecipitation
Protein A sepharose CL-4B	GE Healthcare	17096303	for immunoprecipitation
polyclonal rabbit anti-p57 antibody	SCBT	sc-8298	for Immunohistochemistry
mouse monoclonal anti-beta actin antibody, clone AC-74	Sigma-Aldrich	A2228	Western blot loading control
rabbit anti-p44/42	cell signalling	4695	for westernblot
Pierce High sensitivity streptavidin-HRP	Thermo Scientific	21130	for westernblot
polyclonal mouse ICAM-2 antibody	R&D Systems	AF774	for westernblot
polyclonal mouse anti-VE-cadherin	R&D Systems	AF1002	for westernblot

d







1 Alewife Center #200  
Cambridge, MA 02140  
tel. 617.945.9051  
www.jove.com

## ARTICLE AND VIDEO LICENSE AGREEMENT

Title of Article: Isolation of glomeruli and in vivo labeling of glomerular cell surface proteins  
Author(s): Königshausen, E., Pothoff S.A., Heese R., Hege-Schweninger, C., Kaufman, E., Rump, L.C., Stegbauer, J., Sellin, C., Quach, I., Woznowski, H.  
Item 1 (check one box): The Author elects to have the Materials be made available (as described at <http://www.jove.com/author>) via: ☒ Standard Access ☐ Open Access

Item 2 (check one box):

- ☒ The Author is NOT a United States government employee.  
☐ The Author is a United States government employee and the Materials were prepared in the course of his or her duties as a United States government employee.  
☐ The Author is a United States government employee but the Materials were NOT prepared in the course of his or her duties as a United States government employee.

### ARTICLE AND VIDEO LICENSE AGREEMENT

1. **Defined Terms.** As used in this Article and Video License Agreement, the following terms shall have the following meanings: “**Agreement**” means this Article and Video License Agreement; “**Article**” means the article specified on the last page of this Agreement, including any associated materials such as texts, figures, tables, artwork, abstracts, or summaries contained therein; “**Author**” means the author who is a signatory to this Agreement; “**Collective Work**” means a work, such as a periodical issue, anthology or encyclopedia, in which the Materials in their entirety in unmodified form, along with a number of other contributions, constituting separate and independent works in themselves, are assembled into a collective whole; “**CRC License**” means the Creative Commons Attribution-Non Commercial-No Derivs 3.0 Unported Agreement, the terms and conditions of which can be found at: <http://creativecommons.org/licenses/by-nc-nd/3.0/legalcode>; “**Derivative Work**” means a work based upon the Materials or upon the Materials and other pre-existing works, such as a translation, musical arrangement, dramatization, fictionalization, motion picture version, sound recording, art reproduction, abridgment, condensation, or any other form in which the Materials may be recast, transformed, or adapted; “**Institution**” means the institution, listed on the last page of this Agreement, by which the Author was employed at the time of the creation of the Materials; “**JoVE**” means MyJoVE Corporation, a Massachusetts corporation and the publisher of *The Journal of Visualized Experiments*; “**Materials**” means the Article and / or the Video; “**Parties**” means the Author and JoVE; “**Video**” means any video(s) made by the Author, alone or in conjunction with any other parties, or by JoVE or its affiliates or agents, individually or in collaboration with the Author or any other parties, incorporating all or any portion of the Article, and in which the Author may or may not appear.

2. **Background.** The Author, who is the author of the Article, in order to ensure the dissemination and protection of the Article, desires to have the JoVE publish the Article and create and transmit videos based on the Article. In furtherance of such goals, the Parties desire to memorialize in this Agreement the respective rights of each Party in and to the Article and the Video.

3. **Grant of Rights in Article.** In consideration of JoVE agreeing to publish the Article, the Author hereby grants to JoVE, subject to **Sections 4 and 7** below, the exclusive, royalty-free, perpetual (for the full term of copyright in the Article, including any extensions thereto) license (a) to publish, reproduce, distribute, display and store the Article in all forms, formats and media whether now known or hereafter developed (including without limitation in print, digital and electronic form) throughout the world, (b) to translate the Article into other languages, create adaptations, summaries or extracts of the Article or other Derivative Works (including, without limitation, the Video) or Collective Works based on all or any portion of the Article and exercise all of the rights set forth in (a) above in such translations, adaptations, summaries, extracts, Derivative Works or Collective Works and (c) to license others to do any or all of the above. The foregoing rights may be exercised in all media and formats, whether now known or hereafter devised, and include the right to make such modifications as are technically necessary to exercise the rights in other media and formats. If the “Open Access” box has been checked in **Item 1** above, JoVE and the Author hereby grant to the public all such rights in the Article as provided in, but subject to all limitations and requirements set forth in, the CRC License.



## ARTICLE AND VIDEO LICENSE AGREEMENT

**4. Retention of Rights in Article.** Notwithstanding the exclusive license granted to JoVE in **Section 3** above, the Author shall, with respect to the Article, retain the non-exclusive right to use all or part of the Article for the non-commercial purpose of giving lectures, presentations or teaching classes, and to post a copy of the Article on the Institution's website or the Author's personal website, in each case provided that a link to the Article on the JoVE website is provided and notice of JoVE's copyright in the Article is included. All non-copyright intellectual property rights in and to the Article, such as patent rights, shall remain with the Author.

**5. Grant of Rights in Video – Standard Access.** This **Section 5** applies if the "Standard Access" box has been checked in **Item 1** above or if no box has been checked in **Item 1** above. In consideration of JoVE agreeing to produce, display or otherwise assist with the Video, the Author hereby acknowledges and agrees that, Subject to **Section 7** below, JoVE is and shall be the sole and exclusive owner of all rights of any nature, including, without limitation, all copyrights, in and to the Video. To the extent that, by law, the Author is deemed, now or at any time in the future, to have any rights of any nature in or to the Video, the Author hereby disclaims all such rights and transfers all such rights to JoVE.

**6. Grant of Rights in Video – Open Access.** This **Section 6** applies only if the "Open Access" box has been checked in **Item 1** above. In consideration of JoVE agreeing to produce, display or otherwise assist with the Video, the Author hereby grants to JoVE, subject to **Section 7** below, the exclusive, royalty-free, perpetual (for the full term of copyright in the Article, including any extensions thereto) license (a) to publish, reproduce, distribute, display and store the Video in all forms, formats and media whether now known or hereafter developed (including without limitation in print, digital and electronic form) throughout the world, (b) to translate the Video into other languages, create adaptations, summaries or extracts of the Video or other Derivative Works or Collective Works based on all or any portion of the Video and exercise all of the rights set forth in (a) above in such translations, adaptations, summaries, extracts, Derivative Works or Collective Works and (c) to license others to do any or all of the above. The foregoing rights may be exercised in all media and formats, whether now known or hereafter devised, and include the right to make such modifications as are technically necessary to exercise the rights in other media and formats. For any Video to which this Section 6 is applicable, JoVE and the Author hereby grant to the public all such rights in the Video as provided in, but subject to all limitations and requirements set forth in, the CRC License.

**7. Government Employees.** If the Author is a United States government employee and the Article was prepared in the course of his or her duties as a United States government employee, as indicated in **Item 2** above, and any of the licenses or grants granted by the Author hereunder exceed the scope of the 17 U.S.C. 403, then the rights granted hereunder shall be limited to the maximum rights permitted under such

statute. In such case, all provisions contained herein that are not in conflict with such statute shall remain in full force and effect, and all provisions contained herein that do so conflict shall be deemed to be amended so as to provide to JoVE the maximum rights permissible within such statute.

**8. Likeness, Privacy, Personality.** The Author hereby grants JoVE the right to use the Author's name, voice, likeness, picture, photograph, image, biography and performance in any way, commercial or otherwise, in connection with the Materials and the sale, promotion and distribution thereof. The Author hereby waives any and all rights he or she may have, relating to his or her appearance in the Video or otherwise relating to the Materials, under all applicable privacy, likeness, personality or similar laws.

**9. Author Warranties.** The Author represents and warrants that the Article is original, that it has not been published, that the copyright interest is owned by the Author (or, if more than one author is listed at the beginning of this Agreement, by such authors collectively) and has not been assigned, licensed, or otherwise transferred to any other party. The Author represents and warrants that the author(s) listed at the top of this Agreement are the only authors of the Materials. If more than one author is listed at the top of this Agreement and if any such author has not entered into a separate Article and Video License Agreement with JoVE relating to the Materials, the Author represents and warrants that the Author has been authorized by each of the other such authors to execute this Agreement on his or her behalf and to bind him or her with respect to the terms of this Agreement as if each of them had been a party hereto as an Author. The Author warrants that the use, reproduction, distribution, public or private performance or display, and/or modification of all or any portion of the Materials does not and will not violate, infringe and/or misappropriate the patent, trademark, intellectual property or other rights of any third party. The Author represents and warrants that it has and will continue to comply with all government, institutional and other regulations, including, without limitation all institutional, laboratory, hospital, ethical, human and animal treatment, privacy, and all other rules, regulations, laws, procedures or guidelines, applicable to the Materials, and that all research involving human and animal subjects has been approved by the Author's relevant institutional review board.

**10. JoVE Discretion.** If the Author requests the assistance of JoVE in producing the Video in the Author's facility, the Author shall ensure that the presence of JoVE employees, agents or independent contractors is in accordance with the relevant regulations of the Author's institution. If more than one author is listed at the beginning of this Agreement, JoVE may, in its sole discretion, elect not take any action with respect to the Article until such time as it has received complete, executed Article and Video License Agreements from each such author. JoVE reserves the right, in its absolute and sole discretion and without giving any reason therefore, to accept or decline any work submitted to JoVE. JoVE and its employees, agents and independent contractors shall have



## ARTICLE AND VIDEO LICENSE AGREEMENT

full, unfettered access to the facilities of the Author or of the Author's institution as necessary to make the Video, whether actually published or not. JoVE has sole discretion as to the method of making and publishing the Materials, including, without limitation, to all decisions regarding editing, lighting, filming, timing of publication, if any, length, quality, content and the like.

11. **Indemnification.** The Author agrees to indemnify JoVE and/or its successors and assigns from and against any and all claims, costs, and expenses, including attorney's fees, arising out of any breach of any warranty or other representations contained herein. The Author further agrees to indemnify and hold harmless JoVE from and against any and all claims, costs, and expenses, including attorney's fees, resulting from the breach by the Author of any representation or warranty contained herein or from allegations or instances of violation of intellectual property rights, damage to the Author's or the Author's institution's facilities, fraud, libel, defamation, research, equipment, experiments, property damage, personal injury, violations of institutional, laboratory, hospital, ethical, human and animal treatment, privacy or other rules, regulations, laws, procedures or guidelines, liabilities and other losses or damages related in any way to the submission of work to JoVE, making of videos by JoVE, or publication in JoVE or elsewhere by JoVE. The Author shall be responsible for, and shall hold JoVE harmless from, damages caused by lack of sterilization, lack of cleanliness or by contamination due to the making of a video by JoVE its employees, agents or independent contractors. All sterilization, cleanliness or decontamination procedures shall be solely the responsibility of the Author and shall be undertaken at the Author's

expense. All indemnifications provided herein shall include JoVE's attorney's fees and costs related to said losses or damages. Such indemnification and holding harmless shall include such losses or damages incurred by, or in connection with, acts or omissions of JoVE, its employees, agents or independent contractors.

12. **Fees.** To cover the cost incurred for publication, JoVE must receive payment before production and publication the Materials. Payment is due in 21 days of invoice. Should the Materials not be published due to an editorial or production decision, these funds will be returned to the Author. Withdrawal by the Author of any submitted Materials after final peer review approval will result in a US\$1,200 fee to cover pre-production expenses incurred by JoVE. If payment is not received by the completion of filming, production and publication of the Materials will be suspended until payment is received.

13. **Transfer, Governing Law.** This Agreement may be assigned by JoVE and shall inure to the benefits of any of JoVE's successors and assignees. This Agreement shall be governed and construed by the internal laws of the Commonwealth of Massachusetts without giving effect to any conflict of law provision thereunder. This Agreement may be executed in counterparts, each of which shall be deemed an original, but all of which together shall be deemed to be one and the same agreement. A signed copy of this Agreement delivered by facsimile, e-mail or other means of electronic transmission shall be deemed to have the same legal effect as delivery of an original signed copy of this Agreement.

A signed copy of this document must be sent with all new submissions. Only one Agreement required per submission.

### CORRESPONDING AUTHOR:

Name:

Eva Königshausen

Department:

Nephrology

Institution:

Medical faculty Heinrich-Heine University

Article Title:

Isolation of glomeruli and *in vivo* labeling of glomerular cell surface proteins

Signature:

*E. Königshausen*

Date:

30.5.18

Please submit a signed and dated copy of this license by one of the following three methods:

- 1) Upload a scanned copy of the document as a pdf on the JoVE submission site;
- 2) Fax the document to +1.866.381.2236;
- 3) Mail the document to JoVE / Attn: JoVE Editorial / 1 Alewife Center #200 / Cambridge, MA 02139

For questions, please email [submissions@jove.com](mailto:submissions@jove.com) or call +1.617.945.9051



UKD • Klinik für Nephrologie • Postfach 101007 • 40001 Düsseldorf



Vineeta Bajaj, Ph.D.  
Review Editor  
JoVE  
1 Alewife Center, Suite 200  
Cambridge, MA 02140  
USA

Ansprechpartner:  
Dr. Eva Königshausen

Durchwahl:  
0211 81 17726

E-Mail:

Datum:  
14.08.2018

Rebuttle document manuscript JoVE58542

Dear Dr. Bajaj,

Thank you for editorial review of the manuscript. Below you will find the Point by Point reply:

Editorial comments:

1. The editor has formatted the manuscript as per the journal's style. Please retain the same.

Response: Thank you, we have retained the format.

2. Please address all the specific comments marked in the manuscript.

2.1 We cannot have commercial terms in the manuscript. Please use a generic term instead. Also, commercial terms cannot be a keyword. All commercial terms should be sufficiently referenced in the Table of Materials. Maybe --- magnetic beads?

Response: Thank you for pointing this out. We have changed all the terms "dynabeads" to magnetic beads.

2.2. Introduction, first sentence: Citation?

Response: We have included a citation (Jefferson J.A. et al.; Podocyte Biology for the Bedside, American Journal of Kidney Disease 2011).

#### Sekretariat

Frau Janssen  
Tel.: (0211) 81-17726  
Fax: (0211) 81-17722  
e-mail:  
Christian.Rump@med.uni-duesseldorf.  
Liliane.janssen@med.uni-duesseldorf.c

#### Stellvertreterin des Klinikdirektors und leitende Oberärztin

Prof. K. Ivens (0211) 81-16146

#### Geschäftsführender Oberarzt

Prof. L. Sellin (0211) 81-17723

#### Oberärzte:

Dr. A. Hansen (0211) 81-08136

Dr. S. Kücükköylü (0211) 81-18928

Dr. S. Potthoff (0211) 81-18928

PD Dr. J. Stegbauer (0211) 81-17502

Dr. M. Woznowski (0211) 81-04861

**Oberarztsekretariat** (0211) 81-17773

#### Stationen

##### ZA03 (Notaufnahme)

Tel.: (0211) 81-17012

Fax: (0211) 81-19518

##### MD 01 (Dialyseabteilung):

Tel.: (0211) 81-17763

Fax: (0211) 81-19797

Funk: 715 0048

##### ME04:

Tel.: (0211) 81-17843

Fax: (0211) 81-19798

##### ME05:

Tel.: (0211) 81-18927

Fax: (0211) 81-19519

#### Ambulanzen

##### Privatambulanz

Tel.: (0211) 81-17726

Sprechstunden: nach Vereinbarung

##### Nephrologische Ambulanz

Tel.: (0211) 81-18790

Fax: (0211) 81-18045

Sprechstunden: Mo-Fr. 8.00-16.00 U

##### Transplantationsbüro

Tel.: (0211) 81-18627

Fax: (0211) 81-19282

Sprechstunden: nach Vereinbarung

##### KFH Nierenzentrum

Tel.: (0211) 81-18923 (Peritonealdialyse)

Fax: (0211) 81-19282

Tel.: (0211) 81-18923 (Hämodialyse)

Sprechstunden: Mo-Fr. 8.00-16.00 U

#### Funktionsbereiche

##### Nephrologische Sonographie:

Tel.: (0211) 81-18910

##### Wissenschaftliches Labor:

Tel.: (0211) 81-10841, -18627

##### Studienzentrum:

Tel.: (0211) 81-17770

#### Webseiten der Klinik:

www.uniklinik-duesseldorf.de/nephro



2.3. Protocol point 1.4: Magnetic beads?

Response: Thank you. We have changed dynabeads to magnetic beads accordingly.

2.4 Protocol point 2.7: Is this the same as vena cava?

Response: Thank you for this comment. We have changed cava vein into vena cava.

2.5. Protocol point 2.8: Ligation how- with a sterile suture? If yes what size?

Response: Thank you for pointing this out. The ligation is performed with a silk thread, size 4-0 to 6-0. We have added this information to the sentence.

2.6 Protocol 3.2: How do you ensure that the syringe is bubble free- any extra precaution which needs to be taken during changing? – Please include it as a note here.

Response: Thank you for your comment. We have included a note accordingly.

2.7 Protocol point 4.1: How much PBSCM?

Response: Thank you. We have added 15 mL PBSCM to point 4.1.

2.8 Protocol point 4.4: Into a new tube right?

Response: Thank you for this point. The digested tissue is centrifuged in a 50 mL tube. The pellet is then transferred into a new 2 mL tube. We have added the term “new” to point 4.4.

2.9 Protocol point 5.1: How do you ensure that only glomeruli gets attached to the magnetic beads?

Response: Thank you for this well taken point. As the magnetic beads embolize the glomeruli, they will not be found in the tubular system. However, tubular structures and cell debris might be still attached to embolized glomeruli before washing. Remaining attached tubular structures and cell debris will be lost during the washing procedure. Free magnetic beads will however attach to the magnet but will not confound future analysis as they do not contain any tissue/cells.

2.10. Protocol point 5.2: Provide the step number from below. -5.3?

Response: We added 5.3 accordingly.

2.11 Protocol point 5.3: Include a note stating what kind of structures will be observed under the microscope?

Response: Thank you for this comment. We have included a note indicating the structures that can be observed under the microscope.

2.12. Representative Results: Magnetic beads.

Response: We have changed dynabeads to magnetic beads.

2.13. Figure legends, Figure 1: Please include a scale bar for C and D in the figure as well.

Response: Thank you. We have included a scale bar in figures 1C and 1D.

2.14 Figure legends, Figure 3: For the IP blots please show equal loading control blot as well.

Response: Thank you for pointing this out. For figure 3B the nephrin staining (IP:nephrin, WB:nephrin) is the loading control for the IP. For figures 3A and 3C, IPs performed with



streptavidin beads show no staining for actin. The lysis buffer contains ATP so that actin is released from its adapters. In addition, actin does not precipitate with streptavidin agarose beads as it is an intracellular protein. Other cell surface markers will not be stained in control animals, as they have not been perfused with biotin. For the biotin perfused animal, commercially available antibodies against NepH1 and GLEPP1 did not work in our hands and this experiment. To show equal loading of the gel, we performed an amido black staining. As you can see from the additional figure for the editor, the running front shows equal loading. However, the sensitivity of the staining seems to be not enough to show all of the proteins on the blot.

2.1.5 Figure legends, figure 4: Please include a scale bar for panel D.

Response: We have included a scale bar in the figure and figure legend.

2.1.6 Figure legends, figure 5: Please include a scale bar for panel D.

Response: We have included a scale bar in the figure and figure legend.

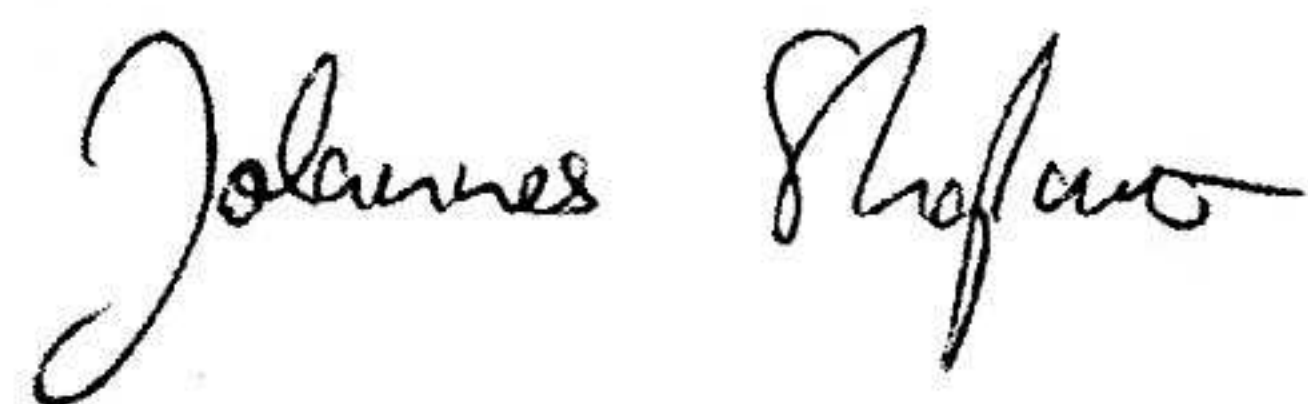
2.1.7 Discussion: 3x magnetic beads?

Response: We have changed dynabeads to magnetic beads

3. After editing, please ensure that the highlight is no more than 2.75 pages including heading and spacings.

Response: Thank you for this helpful comment. We have changed the highlighted part accordingly.

Yours Sincerely,



Johannes Stegbauer



Eva Königshausen