

# Journal of Visualized Experiments

## An ex vivo chicken primary bursal-cell culture model to study IBDV pathogenesis

--Manuscript Draft--

Article Type:	Invited Methods Article - JoVE Produced Video
Manuscript Number:	JoVE58489R1
Full Title:	An ex vivo chicken primary bursal-cell culture model to study IBDV pathogenesis
Keywords:	Chicken; primary cells; bursa of Fabricius; B cells; virus; infectious bursal disease virus; IBDV
Corresponding Author:	Andrew Broadbent UNITED KINGDOM
Corresponding Author's Institution:	
Corresponding Author E-Mail:	andrew.broadbent@pirbright.ac.uk
Order of Authors:	Katherine L Dulwich Amin S Asfor Alice G Gray Venugopal Nair Andrew J Broadbent
Additional Information:	
Question	Response
Please indicate whether this article will be Standard Access or Open Access.	Open Access (US\$4,200)
Please indicate the <b>city, state/province, and country</b> where this article will be <b>filmed</b> . Please do not use abbreviations.	The Pirbright Institute, Ash Road, Woking, GU24 0NF, UK

The Pirbright Institute  
Ash Road  
Woking  
GU24 0NF

May 18<sup>th</sup> 2018

To whom it may concern,

We have the pleasure of submitting our manuscript entitled:  
“An *ex vivo* chicken primary bursal-cell culture model to study IBDV pathogenesis”.

Here, we describe the isolation of chicken primary bursal cells from the bursa of Fabricius, the culture and infection of the cells with IBDV, and quantification of viral replication. This model has the potential to expand our understanding of how avian B-cell tropic viruses interact with their host cells while reducing the number of birds used in *in vivo* infection studies. The techniques can be applied to multiple lymphoid organs, multiple viruses and potentially multiple species of birds, making it an attractive model that can contribute to the avian virology and immunology fields.

We hope that the manuscript will make a valuable addition to your journal and look forward to hearing from you in due course.

Yours faithfully,



Andrew Broadbent  
MA VetMB MSc PhD MRCVS

Research Fellow  
The Pirbright Institute

**TITLE:**

An *ex vivo* Chicken Primary Bursal-cell Culture Model to Study Infectious Bursal Disease Virus Pathogenesis

**AUTHORS AND AFFILIATIONS:**

Katherine L. Dulwich<sup>1</sup> \*, Amin Asfor<sup>1</sup> \*, Alice G. Gray<sup>1</sup>, Venugopal Nair<sup>1</sup>, Andrew J. Broadbent<sup>1</sup>

<sup>1</sup>The Pirbright Institute, Ash Road, Woking, UK

\* These authors contributed equally.

**Corresponding Author:**

Andrew Broadbent (andrew.broadbent@pirbright.ac.uk)

**Email Addresses of the Co-Authors:**

Katherine L. Dulwich (kate.dulwich@pirbright.ac.uk)

Amin Asfor (amin.asfor@pirbright.ac.uk)

Alice G. Gray (alicegray2396@yahoo.co.uk)

Venugopal Nair (venugopal.nair@pirbright.ac.uk)

Andrew J. Broadbent (andrew.broadbent@pirbright.ac.uk)

**KEYWORDS:**

Chicken, primary cells, bursa of Fabricius, B cells, virus, infectious bursal disease virus, IBDV

**SUMMARY:**

Here we describe the isolation of chicken primary bursal cells from the bursa of Fabricius, the culture and infection of the cells with infectious bursal disease virus, and the quantification of viral replication.

**ABSTRACT:**

Infectious bursal disease virus (IBDV) is a birnavirus of economic importance to the poultry industry. The virus infects B cells, causing morbidity, mortality, and immunosuppression in infected birds. In this study, we describe the isolation of chicken primary bursal cells from the bursa of Fabricius, the culture and infection of the cells with IBDV, and the quantification of viral replication. The addition of chicken CD40 ligand significantly increased cell proliferation fourfold over six days of culture and significantly enhanced cell viability. Two strains of IBDV, a cell-culture adapted strain, D78, and a very virulent strain, UK661, replicated well in the *ex vivo* cell cultures. This model will be of use in determining how cells respond to IBDV infection and will permit a reduction in the number of infected birds used in IBDV pathogenesis studies. The model can also be expanded to include other viruses and could be applied to different species of birds.

**INTRODUCTION:**

The global poultry industry is essential to secure enough food for an expanding human population. However, immunosuppression is the threat to food security and the welfare of

affected birds and represents a key economic challenge to the industry. The majority of cases of immunosuppression in chickens are caused by the infection with immunosuppressive viruses, with those most responsible for impairing acquired immunity having a tropism for T and B lymphocytes<sup>1</sup>. In birds, the majority of B cells are located within an organ known as the bursa of Fabricius (BF). B cells are susceptible to infection with several immunosuppressive viruses, including those that cause lysis, such as IBDV and Marek's disease virus (MDV), and those that cause transformation, such as avian leukosis virus (ALV) and reticuloendotheliosis virus (REV).

In order to develop better strategies for controlling these infections, it is essential to characterize the interaction of the viruses with chicken B cells. However, when B cells are removed from a bird, they do not survive well in *ex vivo* culture<sup>2</sup>, making it difficult to perform a thorough analysis of the interactions of IBDV with chicken B cells, or the early events following ALV or REV infection. Consequently, many host cell-virus interactions have been studied *in vivo*<sup>3-10</sup>. Although these studies are informative, they involve the use of infected birds which suffer from diseases that can be severe.

The CD40 ligand is a molecule that induces B cell proliferation<sup>11</sup>. Following identification of the gene encoding chicken CD40L (chCD40L), a soluble fusion protein was engineered that, when added to the culture media, induced the proliferation of chicken primary B cells *ex vivo*<sup>12</sup>. In 2015, B cells cultured in this fashion were found to support the replication of MDV<sup>2</sup> and in 2017, we and others found that primary bursal cells stimulated with chCD40L could be used as a model to study IBDV replication<sup>13,14</sup>. Here, we describe the isolation and culture of chicken primary bursal cells, the infection of the cells with IBDV, and the quantification of viral replication. Although we describe the method in the context of the BF, this could be applied to isolate and culture cells from different lymphoid organs.

## **PROTOCOL:**

All procedures with animals must be ethically approved in advance. In our institution, all procedures are performed in accordance with the UK Animal (Scientific Procedures) Act 1986 under Home Office Establishment, Personal and Project licenses, after the approval of the internal Animal Welfare and Ethical Review Board (AWERB).

### **1. Preparation of chCD40L**

1.1 Culture HEK 293-msCD8-CD40L cells that stably express a soluble chCD40L construct in 1x Roswell Park Memorial Institute (RPMI) medium supplemented with 10% heat-inactivated (hi) fetal calf serum (FCS) and 1 µg/mL puromycin at 37 °C in an atmosphere containing 5% CO<sub>2</sub>.

Note: These cells are available from The Pirbright Institute following the signing of the appropriate material transfer agreement.

1.2 Split the cells at a 1:5 density when confluent. Collect the supernatant (containing the soluble chCD40L construct) each time the cells are split, centrifuge it at 400 x *g* for 5 min to remove

cellular debris, and store it at 4 °C.

1.3 When 500 mL of the supernatant has been collected, pool the liquid and filter-sterilize it through a 0.2- $\mu$ m filter.

1.4 Concentrate the supernatant using centrifugal protein concentrators with a molecular-weight cutoff of 10 K according to the manufacturer's instructions. Extract the concentrated supernatant from each column, pool it together, and filter-sterilize it by passing it through a 0.22- $\mu$ m syringe filter.

1.5 Determine the final concentration to be used in experiments by serially diluting the chCD40L solution in 1x Iscove's modified Dulbecco's medium (IMDM) (described in step 2.4) and culturing primary bursal cells in the presence of the dilutions. Determine the number and percentage viability of the cells daily for up to a week.

Note: The lowest concentration where cell proliferation and viability are adequate is the concentration to use in the assay. This is likely to be between 1:20 and 1:50.

## **2. Preparation of Solutions for Chicken Primary Bursal Cell Isolation**

2.1 Prepare 1x Hanks' balanced salt solution (HBBS) with calcium (Ca) by adding 10 mL of 10x HBBS with Ca to 90 mL of sterile H<sub>2</sub>O and 0.47  $\mu$ L of 7.5% NaHCO<sub>3</sub>.

2.2 Prepare collagenase D stock solution at 8 mg/mL in 1x HBBS with Ca. Filter-sterilize the solution through a 0.2- $\mu$ m filter.

Note: It is advisable to prepare 5-mL aliquots and freeze them at -20 °C.

2.3 Prepare 1x RPMI medium supplemented with 5% hi FCS. Store the media at 4 °C.

2.4 Prepare 1x 500 mL of IMDM supplemented with 8% hi FCS, 2% hi chicken serum, 50 mM  $\beta$ -mercaptoethanol, 50  $\mu$ L of insulin-transferrin-sodium-selenite, and 1% penicillin/streptomycin. Store the media at 4 °C.

Note: Prepare all the above-mentioned solutions in advance.

2.5 Prepare 1x HBBS with Ca. Store the solution on ice.

2.6 Prepare 1x HBBS without Ca by adding 10 mL of 10x HBBS without Ca to 90 mL of sterile H<sub>2</sub>O, 0.47  $\mu$ L of 7.5% NaHCO<sub>3</sub>, and EDTA at a final concentration of 10 mM. Store the solution on ice.

2.7 Prepare 1x collagenase D solution by adding 5 mL of collagenase D stock solution to 13 mL of HBBS with Ca to make a total of 18 mL. Store the solution on ice.

Note: Prepare the solutions mentioned in steps 2.5 - 2.7 on the day of the experiment.

### **3. Removal of the Bursa of Fabricius (BF)**

3.1 Rear and hatch chickens in an appropriate, approved facility and humanely cull them at 2 - 3 weeks of age.

Note: Use institute-approved methods for culling.

3.2 Collect the BF from each chicken using aseptic techniques.

Note: Use the protocols in place at the institution.

3.2.1 Place the carcass in dorsal recumbency and sterilize the skin and feathers overlaying the abdomen and thorax with a solution of 70% ethanol, diluted in water.

3.2.2 Make a ventral midline incision in the lower abdomen using a sterilized scalpel or scissors.

3.2.3 Locate the bursa of Fabricius, which is connected to the caudal section of the colon, cranial to the cloaca.

3.2.4 Using sterilized forceps and scissors, cut the bursa of Fabricius free from the colon. Take care to avoid puncturing the gut.

3.3 Place the organ in cold PBS and transfer it to the laboratory on ice.

Note: Primary cells should be isolated as soon as possible after the organ harvest.

### **4. Isolation of Chicken Primary Bursal Cells**

4.1 Working in a microbiological safety cabinet, wash the BF at least 3x in 30 mL of cold PBS.

4.2 Transfer the tissue to a Petri dish (92 mm in diameter, 21 mm in height) and add 5 mL of 1x collagenase D solution.

4.3 Using sterile scissors or a scalpel blade, cut the BF into pieces of less than 5 mm in diameter.

4.4 Incubate the tissue at 37 °C with periodic gentle agitation for 30 min.

Note: The collagenase solution will begin to digest the tissue.

4.5 Using a sterile Pasteur pipette, repeatedly aspirate the mixture to encourage disintegration of the tissue. If necessary, cut the tissue into smaller pieces.

4.6 Add another 5 mL of 1x collagenase D solution to the tissue and incubate it at 37 °C with periodic gentle agitation for another 30 min.

4.7 Repeat steps 4.6 and 4.7 until the tissue is completely digested.

Note: There will be small granules that do not dissolve further.

4.8 Pass the cell suspension through a 100-µm cell strainer into 20 mL of 1x HBBS without Ca.

4.9 Centrifuge the cell suspension at 400 x *g* for 5 min.

4.10 Discard the supernatant and resuspend the pellet in 10 mL of 1x RPMI with 5% FCS.

4.11 Either overlay 10 mL of the cell suspension on top of 5 mL of density gradient media containing polysucrose and sodium diatrizoate or underlay 5 mL of density gradient media beneath the 10-mL cell suspension. Ensure there is a clear interface between the two.

4.12 Centrifuge the overlay at 900 x *g* for 20 min at 4 °C. Lower or remove the centrifuge break.

Note: The cells should form a band at the interface between the cell media and the density gradient media.

4.13 Using a sterile Pasteur pipette, remove the cells and place them in cold PBS. Wash the cells 3x by centrifuging them at 400 x *g* for 5 min and resuspending them in cold PBS.

#### **4. Culture of Chicken Primary Bursal Cells**

4.1 Centrifuge the cell suspension at 400 x *g* for 5 min and resuspend them in 1x complete IMDM.

4.2 Take an aliquot of the cell suspension, add it to a Trypan blue solution and count the number of viable cells that exclude the Trypan blue. Determine the number of cells and the percentage viability.

4.3 Centrifuge the cell suspension at 400 x *g* for 5 min and resuspend it in complete IMDM supplemented with a 1:20 dilution of chicken CD40L at a density of 1 x 10<sup>7</sup> cells/mL. Titrate the concentrated supernatant containing the chCD40L to determine the optimal dilution, which is likely to lie in the range of 1:10 to 1:50.

4.4 Culture the cells in either 96- or 24-well plates at 37 °C for 48 - 72 h. U-bottomed 96-well plates are preferable to flat-bottomed plates.

#### **5. Infection of Chicken Primary Bursal Cells with IBDV**

5.1 48 - 72 h post-isolation, thaw an aliquot of the virus, vortex the sample, and store it on ice.

5.2 Resuspend the primary bursal cells, take a 10- $\mu$ L aliquot of the cell suspension, add it to 10  $\mu$ L of a Trypan blue solution, and determine the number of cells and percentage viability.

5.3 Dilute the virus in 1x complete IMDM to the appropriate multiplicity of infection (MOI) to make the virus inoculum and vortex.

5.4 Centrifuge the cell suspension at 400 x *g* for 5 min.

5.5 Remove the supernatant and resuspend the cells in the virus inoculum.

5.6 Incubate the cell suspension at 37 °C for 1 h with periodic agitation.

5.7 Centrifuge the cell suspension at 400 x *g* for 5 min, remove the virus inoculum, and wash the cells in 1x complete IMDM media.

5.8 Centrifuge the cell suspension at 400 x *g* for 5 min, remove the supernatant, and resuspend the cells in complete IMDM media supplemented with chicken CD40L at a density of 1 x 10<sup>7</sup> cells per mL.

5.9 Culture the cells in either 96- or 24-well plates at 37 °C.

## 6. Quantification of IBDV Replication in Chicken Primary Bursal Cells

6.1 At the desired time-point postinfection, resuspend the cells, transfer them to an appropriate tube, centrifuge them at 400 x *g* for 5 min and harvest the supernatant for virus titration by either plaque assay or TCID<sub>50</sub> assay as per the Reed-Muench method<sup>15</sup>.

6.2 Wash the cells in 1 mL of PBS and prepare them either for immunostaining with an antibody specific to IBDV, or extract RNA using an appropriate kit (following the manufacturer's instructions) and perform reverse transcription quantitative polymerase chain reaction (RT-qPCR) using primers specific for an IBDV gene (Forward, GAGGTGGCCGACCTCAACT; Reverse, GCCCGGATTATGTCTTTGAAG). Mock-infected cell cultures should be used as a control.

## REPRESENTATIVE RESULTS:

### Chicken Primary Bursal Cells Can Be Cultured in the Presence of Chicken CD40L

When chicken primary bursal cells were cultured in the presence of soluble chCD40L, the number of cells increased fourfold from 9.02 x 10<sup>5</sup> to 3.63 x 10<sup>6</sup> per mL over a period of 6 days, in contrast to when it was absent (*p* < 0.05) (**Figure 1A**). Cell viability was also significantly improved, for example from 25% at day 3 post-culture in the absence of chCD40L to 48% in the presence of chCD40L (*p* < 0.05) (**Figure 1B**)<sup>13</sup>.

### Chicken Primary Bursal Cells Can Support the Replication of Both Cell-culture Adapted and Very



## Virulent Strains of IBDV

Mock-infected and infected cell cultures were fixed 18 hours postinfection, labeled with a monoclonal antibody against IBDV VP2 and a secondary antibody conjugated to Alexa Fluor 488, and counterstained with DAPI. Infected cells had evidence of green fluorescence around the nucleus (**Figure 2A**), consistent with the presence of IBDV in the cytoplasm. This was evident for two strains of IBDV, a cell-culture adapted strain, D78, and a very virulent strain, UK661 (**Figure 2A**). At 5, 18, 24, and 48 hours postinfection, RNA was extracted from infected cultures and subjected to RT-qPCR with primers specific to a conserved region of the IBDV VP4 gene. The expression of VP4 was first normalized to the house-keeping gene TBP and then expressed as fold change relative to mock samples in a  $\Delta\Delta C_t$  analysis. IBDV VP4 expression increased to 16,603 copies at 48 hours postinfection with D78 and 38,632 copies at 48 hours postinfection with UK661. Taken together, these data demonstrate that the chicken primary bursal cells could support the replication of cell-culture-adapted and very virulent IBDV strains<sup>13</sup>.

## FIGURE AND TABLE LEGENDS:

**Figure 1: Chicken primary bursal cells can be cultured in the presence of chicken CD40L.** Chicken primary bursal cells were cultured in the presence or absence of chCD40L (black bars and white bars, respectively). (**A**) The number of live cells and (**B**) the percentage of viable cells were determined at the indicated time-points postinfection. The data shown are representative of at least three replicate experiments, the error bars represent the standard deviation of the mean, and the statistical significance was determined using a paired Student's *t*-test at each time-point, \*  $p < 0.05$ . This figure has been modified with permission from Dulwich *et al.*<sup>13</sup>.

**Figure 2: Chicken primary bursal cells can support the replication of both cell-culture adapted and very virulent strains of IBDV.** (**A**) Chicken primary bursal cells were mock-infected or infected with either D78 or UK661 and a sample from each culture was fixed, labeled and imaged: IBDV VP2, green; nuclei, blue. The scale bar is 7  $\mu\text{m}$ . (**B**) RNA was extracted at the indicated time-points postinfection, reverse-transcribed, and a conserved region of the IBDV VP4 gene was amplified by quantitative PCR. The  $\log_{10}$  fold change in VP4 copy number was normalized to the TBP housekeeping gene and expressed relative to mock-infected samples as per the  $2^{-\Delta\Delta C_t}$  method. The data shown are representative of at least three replicate experiments, and the error bars represent the standard deviation of the mean. This figure has been modified with permission from Dulwich *et al.*<sup>13</sup>.

## DISCUSSION:

In this study, we describe the successful culture of chicken primary bursal cells *ex vivo* in the presence of soluble chCD40L and demonstrate that these cells can support the replication of an attenuated strain and a very virulent strain of IBDV. This *ex vivo* model can be used to determine how the cells respond to an IBDV infection<sup>13</sup>, which has distinct advantages over *in vivo* and *in vitro* studies.

When harvesting the BF, it is critical to not puncture the gut so as to avoid bacterial contamination of the isolated bursal cells. In addition, it is important to isolate the primary cells

as soon as possible after the organ harvest to limit cell death. The need to use chCD40L is a limitation of the technique; however, work conducted by Soubies *et al.* shows that the use of phorbol 12-myristate 13-acetate (PMA) to prolong bursal cell viability instead of chCD40L<sup>14</sup> may enable the model to be adopted by a greater number of laboratories. The protocol outlined above determines the optimal concentration of chCD40L empirically, by culturing primary B cells in serially diluted concentrations of the molecule and observing cell proliferation and viability. One potential modification to the protocol could be to purify the chCD40L molecule and to add a specific concentration to the cell culture media to avoid batch-to-batch variability.

*In vivo* studies have shown that following IBDV infection, there is an increase in the expression of genes involved in pro-inflammatory cytokine responses, Type I IFN responses, and apoptosis in the BF<sup>5,9,10</sup>. However, following infection, there is an influx of inflammatory cells and effector T cells into the BF, which differ in the genes they express compared to the infected B cell population<sup>9</sup>. It is, therefore, difficult to interpret how infected cells respond to IBDV. To address this, some research groups have characterized the transcriptional response of cells infected with IBDV in culture<sup>16-20</sup>. These *in vitro* studies have the advantage of well-defined MOIs and time-points postinfection. However, *in vitro* studies have typically been characterized in either fibroblast cells<sup>16,17,20</sup> or dendritic cells<sup>18</sup>. While providing some insight into host cell-IBDV interactions, the current belief is that the infection of B cells is crucial to the pathogenesis of IBDV and, therefore, the relevance of the data cannot be overinterpreted. Prior to our *ex vivo* bursal cell culture model, only one study had characterized the cellular response of B cells to IBDV infection<sup>19</sup>; however, this study utilized an immortalized B cell line that was transformed due to infection with ALV, limiting the conclusions that could be made. In contrast, the *ex vivo* model of IBDV infection described here allows researchers to retain the advantages of *in vitro* studies, such as defined MOIs and time-points, while studying the interactions of the virus with its relevant host cell. As the primary bursal cells are obtained from uninfected BF tissue, there are no inflammatory or T cells present, and we have demonstrated by flow cytometry (using standard conditions) that, following chCD40L stimulation, 97% of the cell population is positive for the B cell marker Bu-1 (data not shown). Given that 3% of the cells are Bu-1 negative, it will be interesting to determine whether these cells become infected with IBDV and explore their gene expression and contribution to the pathogenesis.

We anticipate that the *ex vivo* chicken primary bursal cell culture model can also be expanded to study the host cell-virus interactions of other B-cell tropic viruses infecting chickens, such as ALV or REV, and could also be expanded to other avian species (*e.g.*, ducks or turkeys). The ability to culture primary bursal cells *ex vivo* also opens up the possibility to study aspects of the pathogenesis and immunosuppression caused by these viruses without the need to infect birds. As *in vivo* studies cause significant morbidity, this will have a substantial impact on the replacement, refinement, and reduction of the use of animals in research.

In summary, the *ex vivo* chicken primary bursal cell culture model described here has the potential to expand the understanding of how avian B-cell tropic viruses interact with their host cells while reducing the number of birds used in *in vivo* infection studies. The techniques can be applied to multiple lymphoid organs, multiple viruses, and, potentially, multiple species of birds,

making it an attractive model that can contribute to the avian virology and immunology fields.

#### **ACKNOWLEDGMENTS:**

The authors would like to thank the Animal Services team at The Pirbright Institute for their expertise in hatching, rearing, and culling birds and the expertise of Caroline Holt in aseptically removing the bursa of Fabricius. A.B. is funded through the Biotechnology and Biological Sciences Research Council (BBSRC) *via* grant BBS/E/I/00001845, K.D. is funded through the BBSRC *via* studentship BBS/E/I/00002115, and A.A. is funded through the National Centre for the Replacement, Refinement & Reduction of Animals in Research (NC3Rs) *via* grant NC/R001138/1.

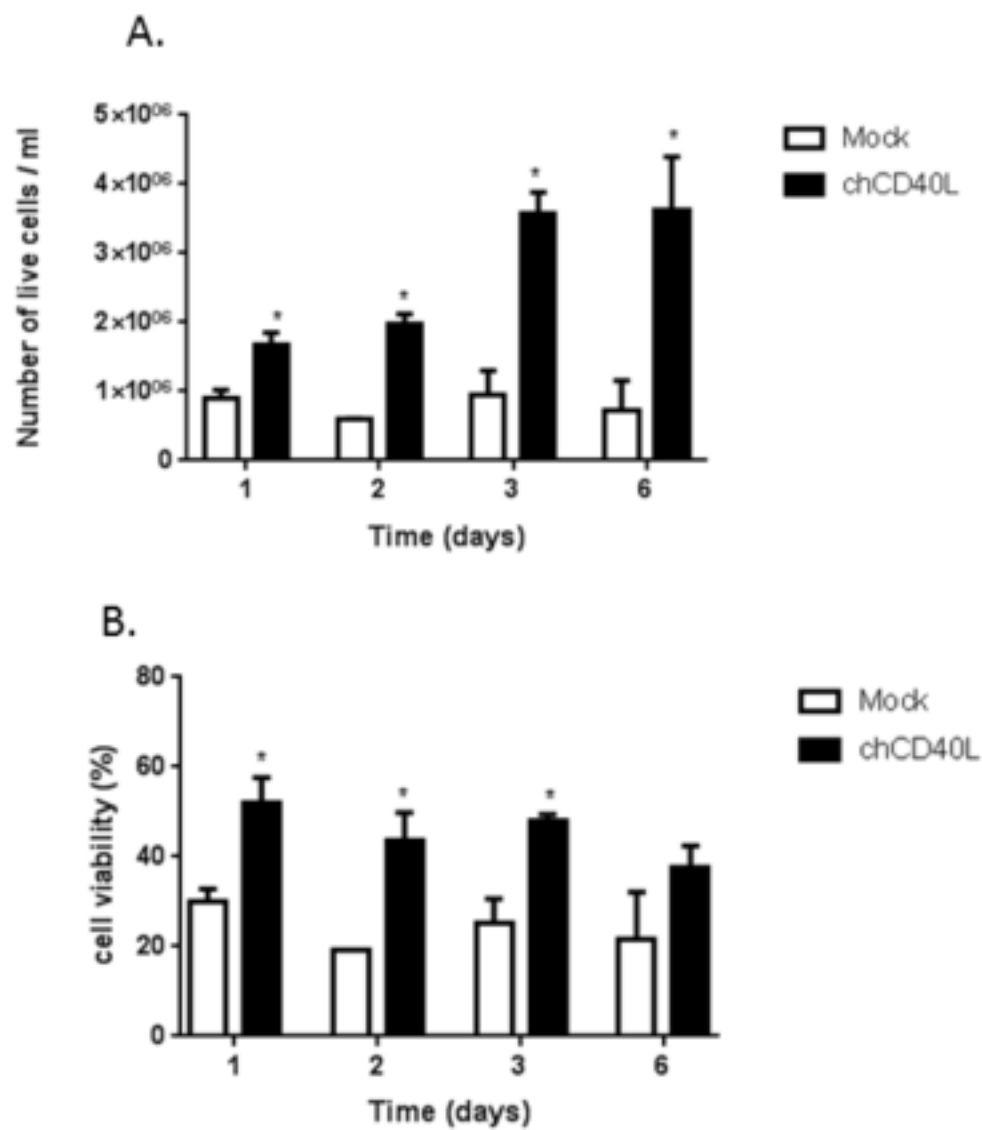
#### **DISCLOSURES:**

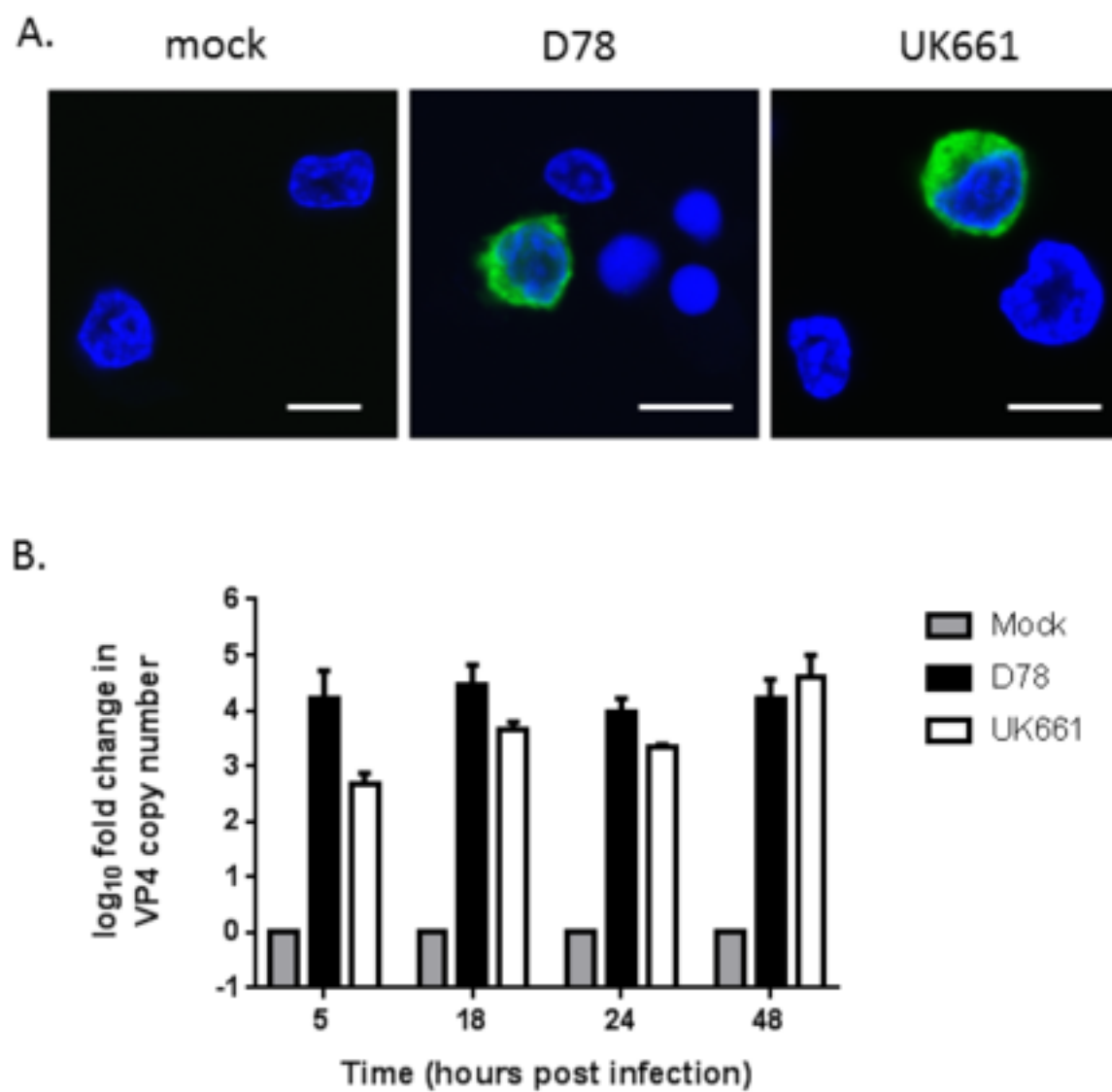
The authors have nothing to disclose.

#### **REFERENCES:**

1. Hoerr, F.J. Clinical aspects of immunosuppression in poultry. *Avian Diseases*. **54** (1), 2-15 (2010).
2. Schermuly, J. *et al.* In vitro model for lytic replication, latency, and transformation of an oncogenic alphaherpesvirus. *Proceedings of the National Academy of Sciences of the United States of America*. **112** (23), 7279-7284 (2015).
3. Farhanah, M.I. *et al.* Bursal immunopathology responses of specific-pathogen-free chickens and red jungle fowl infected with very virulent infectious bursal disease virus. *Archives of Virology* (2018).
4. Farhanah, M.I. *et al.* Bursal transcriptome profiling of different inbred chicken lines reveals key differentially expressed genes at 3 days post-infection with very virulent infectious bursal disease virus. *Journal of General Virology*. **99** (1), 21-35 (2018).
5. Guo, X. *et al.* Differential expression of the Toll-like receptor pathway and related genes of chicken bursa after experimental infection with infectious bursa disease virus. *Archives of Virology*. **157** (11), 2189-2199 (2012).
6. He, X. *et al.* Differential Regulation of chTLR3 by Infectious Bursal Disease Viruses with Different Virulence In Vitro and In Vivo. *Viral Immunology*. **30** (7), 490-499 (2017).
7. Ou, C. *et al.* Transcription profiles of the responses of chicken bursae of Fabricius to IBDV in different timing phases. *Virology Journal*. **14** (1), 93 (2017).
8. Rasoli, M. *et al.* Differential modulation of immune response and cytokine profiles in the bursae and spleen of chickens infected with very virulent infectious bursal disease virus. *BMC Veterinary Research*. **11**, 75 (2015).

9. Ruby, T. *et al.* Transcriptional profiling reveals a possible role for the timing of the inflammatory response in determining susceptibility to a viral infection. *Journal of Virology*. **80** (18), 9207-9216 (2006).
10. Smith, J. *et al.* Analysis of the early immune response to infection by infectious bursal disease virus in chickens differing in their resistance to the disease. *Journal of Virology*. **89** (5), 2469-2482 (2015).
11. Tregaskes, C.A. *et al.* Conservation of biological properties of the CD40 ligand, CD154 in a non-mammalian vertebrate. *Developmental & Comparative Immunology*. **29** (4), 361-374 (2005).
12. Kothlow, S. *et al.* CD40 ligand supports the long-term maintenance and differentiation of chicken B cells in culture. *Developmental & Comparative Immunology*. **32** (9), 1015-1026 (2008).
13. Dulwich, K.L. *et al.* Differential gene expression in chicken primary B cells infected ex vivo with attenuated and very virulent strains of infectious bursal disease virus (IBDV). *Journal of General Virology*. **98** (12), 2918-2930 (2017).
14. Soubies, S.M. *et al.* Propagation and titration of infectious bursal disease virus, including non-cell-culture-adapted strains, using ex vivo-stimulated chicken bursal cells. *Avian Pathology*. **47** (2), 179-188 (2018).
15. Reed, L., Muench, H. A simple method of estimating fifty percent endpoints. *American Journal of Hygiene*. **27**, 494-497 (1938).
16. Hui, R.K., Leung, F.C. Differential Expression Profile of Chicken Embryo Fibroblast DF-1 Cells Infected with Cell-Adapted Infectious Bursal Disease Virus. *PLoS One*. **10** (6), e0111771 (2015).
17. Li, Y.P. *et al.* Transcriptional profiles of chicken embryo cell cultures following infection with infectious bursal disease virus. *Archives of Virology*. **152** (3), 463-478 (2007).
18. Lin, J. *et al.* Genome-wide profiling of chicken dendritic cell response to infectious bursal disease. *BMC Genomics*. **17** (1), 878 (2016).
19. Quan, R. *et al.* Transcriptional profiles in bursal B-lymphoid DT40 cells infected with very virulent infectious bursal disease virus. *Virology Journal*. **14** (1), 7 (2017).
20. Wong, R.T. *et al.* Screening of differentially expressed transcripts in infectious bursal disease virus-induced apoptotic chicken embryonic fibroblasts by using cDNA microarrays. *Journal of General Virology*. **88** (Pt 6), 1785-1796 (2007).





**Name of Material/ Equipment**

RPMI-1640 Medium

FBS

Puromycin Dihydrochloride

Nalgene Rapid-Flow Sterile Disposable Filter with a PES membrane

Pierce Protein Concentrator PES (10K MWCO, 20ml)

0.22µm Millex-GP Syringe Filter

Hanks' Balanced Salt Solution (HBBS) + CaCl<sub>2</sub> + MgCl<sub>2</sub>Hanks' Balanced Salt Solution (HBBS) - CaCl<sub>2</sub> - MgCl<sub>2</sub>

Ethylenediaminetetraacetic acid solution (EDTA)

Iscove's Modified Dulbecco's Medium (IMDM) (1 X) + GlutaMAX

Chicken Serum

2-Mercaptoethanol 50mM

insulin-transferrin-sodium-selenite

Collagenase D

100µm Cell Strainer

Histopaque-1083

Trypan Blue solution

Nunc96 Well-Polystyrene Round Bottom Microwell Plates

Falcon 24-well Clear Flat Bottom TC-treated Multiwell Cell Culture Plate, with Lid, Sterile

Rneasy Mini Kit

<b>Company</b>	<b>Catalog Number</b>	<b>Comments/Description</b>
Merck	R8758-500ML	
gibco by Life Technologies	10099-141	heat-inactivate at 56°C for 1 hour
Thermo Fisher Scientific	A1113802	
Thermo Fisher Scientific	168-0045	
Thermo Fisher Scientific	88528	
Merck	F7648	
gibco by Life Technologies	14060-040	
gibco by Life Technologies	14180-046	
Merck	03690-100ML	
gibco by Life Technologies	31980-030	
Merck	C5405-100ML	
gibco by Life Technologies	31350-010	
gibco by Life Technologies	41400-045	
Roche Diagnostics GmbH	11088882001	
Corning	431752	
Merck	10831-100ML	
Merck	T8154-20ML	
Thermo Fisher Scientific	163320	
Corning	353047	
Qiagen	74104	





1 Alewife Center #200  
Cambridge, MA 02140  
tel. 617.945.9051  
www.jove.com

## ARTICLE AND VIDEO LICENSE AGREEMENT - UK

Title of Article:

An ex vivo chicken primary buccal-cell culture model to study IBV pathogens

Author(s):

Katherine L. Sullivan, Anna Asfor, Alice G. Gray, Venugopal Nair, Andrew J. Broadbent

Item 1 (check one box): The Author elects to have the Materials be made available (as described at

<http://www.jove.com/author>) via:

☐

Standard Access

☒

Open Access

Item 2 (check one box):

☒

The Author is NOT a United States government employee.

☐

The Author is a United States government employee and the Materials were prepared in the course of his or her duties as a United States government employee.

☐

The Author is a United States government employee but the Materials were NOT prepared in the course of his or her duties as a United States government employee.

### ARTICLE AND VIDEO LICENSE AGREEMENT

1. **Defined Terms.** As used in this Article and Video License Agreement, the following terms shall have the following meanings: "Agreement" means this Article and Video License Agreement; "Article" means the article specified on the last page of this Agreement, including any associated materials such as texts, figures, tables, artwork, abstracts, or summaries contained therein; "Author" means the author who is a signatory to this Agreement; "Collective Work" means a work, such as a periodical issue, anthology or encyclopedia, in which the Materials in their entirety in unmodified form, along with a number of other contributions, constituting separate and independent works in themselves, are assembled into a collective whole; "CRC License" means the Creative Commons Attribution 3.0 Agreement (also known as CC-BY), the terms and conditions of which can be found at: <http://creativecommons.org/licenses/by/3.0/us/legalcode>;

"Derivative Work" means a work based upon the Materials or upon the Materials and other pre-existing works, such as a translation, musical arrangement, dramatization, fictionalization, motion picture version, sound recording, art reproduction, abridgment, condensation, or any other form in which the Materials may be recast, transformed, or adapted; "Institution" means the institution, listed on the last page of this Agreement, by which the Author was employed at the time of the creation of the Materials; "JoVE" means MyJoVE Corporation, a Massachusetts corporation and the publisher of *The Journal of Visualized Experiments*;

"Materials" means the Article and / or the Video; "Parties" means the Author and JoVE; "Video" means any video(s) made by the Author, alone or in conjunction with any other parties, or by JoVE or its affiliates or agents, individually or in collaboration with the Author or any other parties, incorporating all or any portion of the Article, and in which the Author may or may not appear.

2. **Background.** The Author, who is the author of the Article, in order to ensure the dissemination and protection of the Article, desires to have the JoVE publish the Article and create and transmit videos based on the Article. In furtherance of such goals, the Parties desire to memorialize in this Agreement the respective rights of each Party in and to the Article and the Video.

3. **Grant of Rights in Article.** In consideration of JoVE agreeing to publish the Article, the Author hereby grants to JoVE, subject to Sections 4 and 7 below, the exclusive, royalty-free, perpetual (for the full term of copyright in the Article, including any extensions thereto) license (a) to publish, reproduce, distribute, display and store the Article in all forms, formats and media whether now known or hereafter developed (including without limitation in print, digital and electronic form) throughout the world, (b) to translate the Article into other languages, create adaptations, summaries or extracts of the Article or other Derivative Works (including, without limitation, the Video) or Collective Works based on all or any portion of the Article and exercise all of the rights set forth in (a) above in such translations, adaptations, summaries, extracts, Derivative Works or Collective Works and

(c) to license others to do any or all of the above. The foregoing rights may be exercised in all media and formats, whether now known or hereafter devised, and include the right to make such modifications as are technically necessary to exercise the rights in other media and formats. If the "Open Access" box has been checked in Item 1 above, JoVE and the Author hereby grant to the public all such rights in the Article as provided in, but subject to all limitations and requirements set forth in, the CRC License.

4. **Retention of Rights in Article.** Notwithstanding the exclusive license granted to JoVE in Section 3 above, the

Author shall, with respect to the Article, retain the non-exclusive right to use all or part of the Article for the non-commercial purpose of giving lectures, presentations or teaching classes, and to post a copy of the Article on the

Institution's website or the Author's personal website, in each case provided that a link to the Article on the JoVE website is provided and notice of JoVE's copyright in the Article is included. All non-copyright intellectual property rights in and to the Article, such as patent rights, shall remain with the Author.

**5. Grant of Rights in Video – Standard Access.** This Section 5 applies if the "Standard Access" box has been checked in Item 1 above or if no box has been checked in Item 1 above. In consideration of JoVE agreeing to produce, display or otherwise assist with the Video, the Author hereby acknowledges and agrees that, Subject to Section 7 below, JoVE is and shall be the sole and exclusive owner of all rights of any nature, including, without limitation, all copyrights, in and to the Video. To the extent that, by law, the Author is deemed, now or at any time in the future, to have any rights of any nature in or to the Video, the Author hereby disclaims all such rights and transfers all such rights to JoVE.

**6. Grant of Rights in Video – Open Access.** This Section 6 applies only if the "Open Access" box has been checked in Item 1 above. In consideration of JoVE agreeing to produce, display or otherwise assist with the Video, the Author hereby grants to JoVE, subject to Section 7 below, the exclusive, royalty-free, perpetual (for the full term of copyright in the Article, including any extensions thereto) license (a) to publish, reproduce, distribute, display and store the Video in all forms, formats and media whether now known or hereafter developed (including without limitation in print, digital and electronic form) throughout the world, (b) to translate the Video into other languages, create adaptations, summaries or extracts of the Video or other Derivative Works or Collective Works based on all or any portion of the Video and exercise all of the rights set forth in (a) above in such translations, adaptations, summaries, extracts, Derivative Works or Collective Works and (c) to license others to do any or all of the above. The foregoing rights may be exercised in all media and formats, whether now known or hereafter devised, and include the right to make such modifications as are technically necessary to exercise the rights in other media and formats.

**7. Government Employees.** If the Author is a United States government employee and the Article was prepared in the course of his or her duties as a United States government employee, as indicated in Item 2 above, and any of the licenses or grants granted by the Author hereunder exceed the scope of the 17 U.S.C. 403, then the rights granted hereunder shall be limited to the maximum rights permitted under such statute. In such case, all provisions contained herein that are not in conflict with such statute shall remain in full force and effect, and all provisions contained herein that do so conflict

shall be deemed to be amended so as to provide to JoVE the maximum rights permissible within such statute.

**8. Likeness, Privacy, Personality.** The Author hereby grants JoVE the right to use the Author's name, voice, likeness, picture, photograph, image, biography and performance in any way, commercial or otherwise, in connection with the Materials and the sale, promotion and distribution thereof. The Author hereby waives any and all rights he or she may have, relating to his or her appearance in the Video or otherwise relating to the Materials, under all applicable privacy, likeness, personality or similar laws.

**9. Author Warranties.** The Author represents and warrants that the Article is original, that it has not been published, that the copyright interest is owned by the Author (or, if more than one author is listed at the beginning of this Agreement, by such authors collectively) and has not been assigned, licensed, or otherwise transferred to any other party. The Author represents and warrants that the author(s) listed at the top of this Agreement are the only authors of the Materials. If more than one author is listed at the top of this Agreement and if any such author has not entered into a separate Article and Video License Agreement with JoVE relating to the Materials, the Author represents and warrants that the Author has been authorized by each of the other such authors to execute this Agreement on his or her behalf and to bind him or her with respect to the terms of this Agreement as if each of them had been a party hereto as an Author. The Author warrants that the use, reproduction, distribution, public or private performance or display, and/or modification of all or any portion of the Materials does not and will not violate, infringe and/or misappropriate the patent, trademark, intellectual property or other rights of any third party. The Author represents and warrants that it has and will continue to comply with all government, institutional and other regulations, including, without limitation all Institutional, laboratory, hospital, ethical, human and animal treatment, privacy, and all other rules, regulations, laws, procedures or guidelines, applicable to the Materials, and that all research involving human and animal subjects has been approved by the Author's relevant institutional review board.

**10. JoVE Discretion.** If the Author requests the assistance of JoVE in producing the Video in the Author's facility, the Author shall ensure that the presence of JoVE employees, agents or independent contractors is in accordance with the relevant regulations of the Author's institution. If more than one author is listed at the beginning of this Agreement, JoVE may, in its sole discretion, elect not take any action with respect to the Article until such time as it has received complete, executed Article and Video License Agreements from each such author. JoVE reserves the right, in its absolute and sole discretion and without giving any reason therefore, to accept or decline any work submitted to JoVE. JoVE and its employees, agents and independent contractors shall have full, unfettered access to the facilities of the Author or of the Author's institution as necessary to make the Video, whether actually published or not. JoVE has sole discretion as to the method of making and publishing the Materials, including,

without limitation, to all decisions regarding editing, lighting, filming, timing of publication, if any, length, quality, content and the like.

11. **Indemnification.** The Author agrees to indemnify JoVE and/or its successors and assigns from and against any and all claims, costs, and expenses, including attorney's fees, arising out of any breach of any warranty or other representations contained herein. The Author further agrees to indemnify and hold harmless JoVE from and against any and all claims, costs, and expenses, including attorney's fees, resulting from the breach by the Author of any representation or warranty contained herein or from allegations or instances of violation of intellectual property rights, damage to the Author's or the Author's institution's facilities, fraud, libel, defamation, research, equipment, experiments, property damage, personal injury, violations of institutional, laboratory, hospital, ethical, human and animal treatment, privacy or other rules, regulations, laws, procedures or guidelines, liabilities and other losses or damages related in any way to the submission of work to JoVE, making of videos by JoVE, or publication in JoVE or elsewhere by JoVE. The Author shall be responsible for, and shall hold JoVE harmless from, damages caused by lack of sterilization, lack of cleanliness or by contamination due to the making of a video by JoVE its employees, agents or independent contractors. All sterilization, cleanliness or decontamination procedures shall be solely the responsibility of the Author and shall be undertaken at the Author's expense. All indemnifications provided herein shall include JoVE's attorney's fees and costs related to said losses or

damages. Such indemnification and holding harmless shall include such losses or damages incurred by, or in connection with, acts or omissions of JoVE, its employees, agents or independent contractors.

12. **Fees.** To cover the cost incurred for publication, JoVE must receive payment before production and publication the Materials. Payment is due in 21 days of invoice. Should the Materials not be published due to an editorial or production decision, these funds will be returned to the Author. Withdrawal by the Author of any submitted Materials after final peer review approval will result in a US\$1,200 fee to cover pre-production expenses incurred by JoVE. If payment is not received by the completion of filming, production and publication of the Materials will be suspended until payment is received.

13. **Transfer, Governing Law.** This Agreement may be assigned by JoVE and shall inure to the benefits of any of JoVE's successors and assignees. This Agreement shall be governed and construed by the internal laws of the Commonwealth of Massachusetts without giving effect to any conflict of law provision thereunder. This Agreement may be executed in counterparts, each of which shall be deemed an original, but all of which together shall be deemed to be one and the same agreement. A signed copy of this Agreement delivered by facsimile, e-mail or other means of electronic transmission shall be deemed to have the same legal effect as delivery of an original signed copy of this Agreement.

A signed copy of this document must be sent with all new submissions. Only one Agreement required per submission.

**AUTHOR:**

Name: ANDREW BRONROBERT

Department: Avian Viral Diseases

Institution: The Pirbright Institute

Article Title: An ex vivo chicken primary bursal-cell culture model to study IBDV pathogenesis

Signature: A. J. Bronrobert Date: 18/5/18

Please submit a signed and dated copy of this license by one of the following three methods:

- 1) Upload a scanned copy as a PDF to the JoVE submission site upon manuscript submission (preferred);
- 2) Fax the document to +1.866.381.2236; or
- 3) Mail the document to JoVE / Attn: JoVE Editorial / 1 Alewife Center Suite 200 / Cambridge, MA 02140

For questions, please email [editorial@jove.com](mailto:editorial@jove.com) or call +1.617.945.9051.

MS # (Internal use):



**Editorial comments:**

Changes to be made by the Author(s):

1. Please take this opportunity to thoroughly proofread the manuscript to ensure that there are no spelling or grammar issues. The JoVE editor will not copy-edit your manuscript and any errors in the submitted revision may be present in the published version.

**We have checked the manuscript for errors.**

2. Please obtain explicit copyright permission to reuse any figures from a previous publication. Explicit permission can be expressed in the form of a letter from the editor or a link to the editorial policy that allows re-prints. Please upload this information as a .doc or .docx file to your Editorial Manager account. The Figure must be cited appropriately in the Figure Legend, i.e. "This figure has been modified from [citation]."

**We emailed The Journal of General Virology regarding permissions and received the following reply: "The copyright transfer agreement/licence to publish that was signed by the authors gives express permission for authors to reuse their own content, provided that the journal is acknowledged as the original source. No further permission is required." We have uploaded a copy of this email and updated the figure legends.**

3. Figure 2B: Please capitalize the first word in the labels on the x axis (i.e., Time).

**This has been addressed.**

4. Please remove the titles and Figure Legends from the uploaded figures. The information provided in the Figure Legends after the Representative Results is sufficient.

**This has been addressed.**

5. Please provide an email address for each author.

**Katherine L. Dulwich:** [kate.dulwich@pirbright.ac.uk](mailto:kate.dulwich@pirbright.ac.uk)

**Amin Asfor:** [amin.asfor@pirbright.ac.uk](mailto:amin.asfor@pirbright.ac.uk)

**Alice G. Gray:** [alicegray2396@yahoo.co.uk](mailto:alicegray2396@yahoo.co.uk)

**Venugopa Nair:** [venugopal.nair@pirbright.ac.uk](mailto:venugopal.nair@pirbright.ac.uk)

**Andrew J. Broadbent:** [andrew.broadbent@pirbright.ac.uk](mailto:andrew.broadbent@pirbright.ac.uk)

6. Please use SI abbreviations for all units: L, mL,  $\mu$ L, h, min, s, etc.

**This has been addressed.**

7. Please include a space between all numbers and their corresponding units: 15 mL, 37 °C, 60 s; etc.

**This has been addressed.**

8. Please use centrifugal force (x g) for centrifuge speeds.

**This was already the case.**

9. Please move the ethics statement before your numbered protocol steps, indicating that the protocol follows the animal care guidelines of your institution.

**This has been addressed.**

10. Please adjust the numbering of the Protocol to follow the JoVE Instructions for Authors. For example, 1 should be followed by 1.1 and then 1.1.1 and 1.1.2 if necessary. Please refrain from using bullets, dashes, or indentations.

**This has been addressed.**

11. Please revise the protocol to contain only action items that direct the reader to do something. The actions should be described in the imperative tense in complete sentences wherever possible. Avoid usage of phrases such as "could be," "should be," and "would be" throughout the Protocol. Any text that cannot be written in the imperative tense may be added as a "Note."

**This has been addressed.**

12. Please revise the protocol text to avoid the use of any personal pronouns (e.g., "we", "you", "our" etc.).

This has been addressed.

13. Line 86: Please specify the culture conditions.

This has been addressed.

14. Line 94: Please mention the pore size of the filter.

This has been addressed.

15. Line 100: What is used to titrate the chCD40L solution?

As described, the chCD40L is titrated using primary bursal cells. Briefly, the chCD40L is serially diluted and the cells cultured in the presence of the chCD40L dilutions. The lowest concentration where cell proliferation and viability is adequate should be used in the infection experiments. The text has been modified to clarify this in the protocol and discussion.

16. Lines 129-130: Please add more details to this step. For instance, mention how animals are anesthetized and how proper anesthetization is confirmed. Please specify all surgical instruments used. This step does not have enough detail to replicate as currently written. Alternatively, add references to published material specifying how to perform the protocol action.

No animals are anaesthetized. Animals are humanely culled and tissues removed at necropsy. Describing the culling steps is beyond the scope of our protocol. The labs that are trying to adopt this protocol will already have procedures in place to humanely cull their animals. In addition, legal methods of culling differ from country to country and it would be inappropriate to be prescriptive in our protocol. There are also multiple ways to remove the organ and the lab should use the protocols in place at their institution. The text has been modified to describe one such method if no protocols are in place.

17. Line 131: What volume of PBS is used to wash?

This has been addressed.

18. Line 132: How large is the petri dish?

This has been addressed.

19. Line 134: Please specify the instrument used to cut.

This has been addressed.

20. Line 159: Please specify the volume of cell suspension and Trypan Blue solution used.

This has been addressed.

21. Lines 187-192: Please add more details to your protocol steps. For instance, how are plaque assay or TCID<sub>50</sub> assay performed? Please ensure that for all PCR, conditions and primers are listed. Alternatively, add references to published material specifying how to perform the protocol action.

A reference has been added.

22. Please include single-line spaces between all paragraphs, headings, steps, etc. After that, please highlight 2.75 pages or less of the Protocol (including headings and spacing) that identifies the essential steps of the protocol for the video, i.e., the steps that should be visualized to tell the most cohesive story of the Protocol.

This has been addressed.

23. As we are a methods journal, please revise the Discussion to explicitly cover the following in detail in 3-6 paragraphs with citations:

- a) Critical steps within the protocol
- b) Any modifications and troubleshooting of the technique
- c) Any limitations of the technique
- d) The significance with respect to existing methods
- e) Any future applications of the technique

This has been addressed.

24. Please ensure that the references appear as the following: [Lastname, F.I., LastName, F.I.,



LastName, F.I. Article Title. Source. Volume (Issue), FirstPage – LastPage (YEAR).] For more than 6 authors, list only the first author then et al.

Can the editor please advise an appropriate endnote format to use? JoVE is not an option in Endnote X8

25. References: Please do not abbreviate journal titles. Please include volume and issue numbers for all references.

Can the editor please advise an appropriate endnote format to use? JoVE is not an option in Endnote X8

## **Reviewers' comments:**

### **Reviewer #1:**

Manuscript Summary:

Dulwich and coworkers describe the isolation of chicken B cells from the bursa of Fabricius for cell culture and infection with Infectious Bursal Disease Virus (IBDV). The protocol will be very useful for the study of primary chicken B cells and studies on several other immunosuppressive chicken viruses that cause major losses in poultry farming. Furthermore, this protocol may prove very useful for the isolation and culture of B cells of other avian species as monoclonal antibodies for positive or negative selection for B cell isolation are largely lacking for other avian species. The title and abstract are succinct. The protocol is detailed with all reagents needed and steps well explained and appears straightforward to allow successful implementation by other groups. The data is convincing with appropriate controls included and findings nicely illustrated.

Major Concerns:

None

Minor Concerns:

None

We thank the reviewer for their comments.

### **Reviewer #2:**

Manuscript Summary:

IBDV is an important immunosuppressive pathogen responsible for the Infectious Bursal Disease (IBD). The very virulent strain of IBDV is still difficult to grow in currently available cell lines, which hampers the research progress in pathogenesis of IBDV. The authors describe the isolation of chicken primary bursal cells from the bursa of Fabricius, the culture and infection of the cells with IBDV, and quantification of viral replication. The addition of chicken CD40 ligand significantly increased cell proliferation and enhanced cell viability. Importantly, in addition to D78, a cell-culture adapted strain of IBDV, the very virulent strain UK661 replicated well in the ex vivo cell cultures. This model will be very helpful to the investigators working on the pathogenesis of IBDV. Overall, the article was well and clearly written and very informative to those working in this field. However there is a minor concern to be addressed.

Major Concerns:

No

**Minor Concerns:**

Lines 100-103. There is still much room in Step 5 for improvement. The purity of CD40L is a potential issue. It would be much better if the quantity of CD40L was more accurately determined with SDS-PAGE using a purified non-relevant protein of similar mass as a standard control for comparison, followed by the measurement of the protein band of interest with densitometry. Thus, the final concentration of CD40L in the culture medium could be calculated as microgram/mL instead of dilution. In this case, the different concentrations of CD40L purified from batch to batch could be properly diluted when CD40L was used in cell culture.

We thank the reviewer for their comments. We agree that the protein could be purified from the supernatant in the manner they describe. This is something that we could do going forward. For our current needs, simply concentrating the supernatant and adding it as a 1:20 - 1:50 dilution to the culture media works adequately.

**Reviewer #3:**

**Manuscript Summary:**

The manuscript described an interesting method to isolate chicken primary bursal cells from the bursa of Fabricius and then successfully infected the cells with different virulent IBDVs. The protocols were clearly described. The only concerns is that the origin of the important ingredient "chCD40L" that support the cell growing is complicated to obtain, which means it is still difficult for other researchers to follow the protocol even though the authors noted that phorbol 12-myristate 13-acetate could be used as well instead of chCD40.

We thank the reviewer for their comments. The chCD40L is available to labs upon the signing of an appropriate MTA. However, we have acknowledged the limitation of this in the discussion and provide a reference where PMA is used to stimulate the cells which the reader can try.

**Reviewer #4:**

Title: An ex vivo chicken primary bursal-cell culture model to study IBDV pathogenesis

**Review report**

The manuscript is well written and designed and has relevance in the field of infectious diseases in poultry. Following are my concerns that should be addressed in the revised manuscript.

1. Bursal tissue contains heterogeneous cell population. So the characterisation of B-cells should be mentioned properly like markers, antibodies used. Although flowcytometry procedure in the discussion portion (line 271) mentioning the increased B-proliferation by the chCD40L stimulation has been indicated. But should be properly explained.

We thank the reviewer for their comments and we agree that the population of cells is heterogeneous. We have therefore been careful to use the term 'bursal' cell and not 'B' cell throughout the manuscript. Flow cytometry was used to characterise the cell population before and after chCD40L stimulation, using standard conditions, but we have not yet characterised the infected cell population with cellular markers. When staining with the chicken B cell marker anti-Bu-1 (SouthernBiotech), we found that 97% of our cultures



stained positive following chCD40L stimulation. The text has been adjusted to reflect this. It is also important to determine whether the Bu-1 negative population are infected with IBDV, and we have added this statement to the manuscript text. This work is ongoing in the laboratory.

2. It could have been more informative and conclusive if the primary bursal tissue cells infected with IBDV(untreated) would have been compared with the infected primary bursal tissue cells (treated with chCD40L) to demonstrate specific B-cell infection.

As shown in figure 1, the number of cells is low and the viability poor when the cells are not treated with chCD40L. We did not infect these cultures with IBDV as it would be difficult to make meaningful conclusions as the cell population is dying before infection and may be altering the expression of cellular genes. It might be interesting, however, to do these experiments in the future to determine whether the Bu-1 negative population are infected. However, as we have stated 'bursal' cell population in this manuscript, these experiments are beyond the scope of the current study.

3. Line 57-62 Reference should be incorporated

This text has been removed as a result of revisions

4. Line 76 Indicate type of cell

We have modified the text to state that the cells are primary bursal cells stimulated with chCD40L.

5. Line 99 Provide molecular weight of protein. Also mention how supernatant containing protein is sterilised filtered.

The molecular weight of the protein is 55kDa (see Tregaskes et al., Dev & Comp Imm, 2005). The supernatant from the stably expressing cell-line is first concentrated and then passed through a 0.2 µm syringe filter to ensure no bacterial contamination is present.

6. Line 107-108 indicate amount of calcium

HBSS supplemented with calcium is available to buy from ThermoFisher (cat no: 14060-040), but it does not specify the amount of calcium present in the buffer. We have provided JoVE with a materials list and include the catalogue number to help the reader.

7. Line 113 50ul of insulin-transferin-sodium-slenite in how much amount of media.

This is for one 500ml bottle of IMDM. We have addressed this in the text.

8. Line 140 Check spelling of "gentile"

This has been addressed.

9. Line 142 Correct the sentence that "do no not"

This has been addressed.

10. Line 147 Explain "ensure any missing"

'Ensure any mixing' refers to the fact that the cell suspension should be layered on top of the histopaque. We have removed this from the manuscript to avoid confusion.

11. Line 163 Mention concentration of CD40L

This has been addressed.

12. Line 172 Explain properly which type of cells are resuspended

This has been addressed.

13. Line 174 Mention appropriate MOI

The appropriate MOI will depend on the experiment in question. If a multi-step growth curve is required, a low MOI is recommended. If a single step growth curve is required, a high MOI is recommended.



Vineeta Bajaj <vineeta.bajaj@jove.com>

---

**re: RE: Response Requested: JoVE Submission JoVE58489R1 - [EMID:daf4b1b4b76fa005]**

---

**Andrew Broadbent** <andrew.broadbent@pirbright.ac.uk>  
To: "vineeta.bajaj@jove.com" <vineeta.bajaj@jove.com>

Tue, Jul 24, 2018 at 1:15 PM

Hi- please see reprint permission in the email below as apparently the one I uploaded to your system was corrupted.

Many thanks,

Andrew

---

**From:** MicrobioSoc Journals [mailto:[journals@microbiologysociety.org](mailto:journals@microbiologysociety.org)]  
**Sent:** 13 May 2018 08:29  
**To:** Andrew Broadbent  
**Subject:** Re: permisison for use of figures in another manuscript

Dear Andrew Broadbent

Thank you for your permission request. The Microbiology Society no longer responds to individual permission requests; these are now handled by the Copyright Clearance Center.

If you are an author (or an author's representative) of the content for which you are requesting permission:

The copyright transfer agreement/licence to publish that was signed by the authors gives express permission for authors to reuse their own content, provided that the journal is acknowledged as the original source. No further permission is required.

If another publisher requires confirmation that permission has been granted, please forward this email to them.

If you are NOT an author of the content for which you are requesting permission:

Please click on the '© Get Permissions' link that appears with the online article. Alternatively, you can visit [www.copyright.com](http://www.copyright.com).

Please note that the Copyright Clearance Center will charge a processing fee for each request. Additional charges may apply for reuse for "for-profit" purposes.

For manuscripts published with open access or beyond 12 months of publication, all of the content in the articles are published under an open access license called "CC-BY". This license allows you to download, reuse, reprint, modify, distribute, and/or copy articles or images. You must give appropriate credit, provide a link to the license, and indicate if changes were made. You may do so in any reasonable manner, but not in any way that suggests the licensor endorses you or your use.

With Kind Regards,

Kirsty Vance

Editorial Office

Journal Of General Virology

---

**From:** Andrew Broadbent <[andrew.broadbent@pirbright.ac.uk](mailto:andrew.broadbent@pirbright.ac.uk)>

**Sent:** 12 May 2018 18:35

**To:** JGV

**Subject:** permisison for use of figures in another manuscript

Dear Editorial office,

I am writing a methods article for the Journal of Visualized Experiments (JoVE). The journal publishes methods that have been used to generate data previously published in results-driven journals and allows figures or results from a prior publication providing the author obtains permission from the original publisher and include appropriate citation (<https://www.jove.com/publish/editorial-policies/>). I would like to include figures 1 and 2 from a manuscript published in Journal of General Virology by ourselves, doi: 10.1099/jgv.0.000979 (<http://jgv.microbiologyresearch.org/content/journal/jgv/10.1099/jgv.0.000979>).

Please could you let me know how to proceed?

Many thanks,

Best wishes,

Andrew

--

Andrew Broadbent, PhD MRCVS

Research Fellow

The Pirbright Institute

Ash Road,

Pirbright,

Woking,

GU24 0NF

Tel: 01483 231420

Email: [andrew.broadbent@pirbright.ac.uk](mailto:andrew.broadbent@pirbright.ac.uk)

---

The Pirbright Institute receives strategic funding from BBSRC.

The information contained in this message may be confidential or legally privileged and is intended solely for the addressee. If you have received this message in error please delete it & notify the originator immediately. Unauthorised use, disclosure, copying or alteration of this message is forbidden & may be unlawful. The contents of this e-mail are the views of the sender and do not necessarily represent the views of the Institute. This email and associated attachments has been checked locally for viruses but we can accept no responsibility once it has left our systems. Communications on Institute computers are monitored to secure the effective operation of the systems and for other lawful purposes.

7/25/2018

JoVE Mail - re: RE: Response Requested: JoVE Submission JoVE58489R1 - [EMID:daf4b1b4b76fa005]

The Pirbright Institute is a company limited by guarantee, registered in England no. 559784. The Institute is also a registered charity.