

Journal of Visualized Experiments

An in vivo method for evaluating the gut-blood barrier and liver metabolism of microbiota products --Manuscript Draft--

Article Type:	Invited Methods Article - Author Produced Video
Manuscript Number:	JoVE58456R3
Full Title:	An in vivo method for evaluating the gut-blood barrier and liver metabolism of microbiota products
Keywords:	gut-blood barrier; intestinal permeability; liver clearance; portal blood sampling; gut bacteria; TMA; TMAO; short chain fatty acids
Corresponding Author:	Marcin Ufnal Warszawski Uniwersytet Medyczny Warsaw, Mazowieckie POLAND
Corresponding Author's Institution:	Warszawski Uniwersytet Medyczny
Corresponding Author E-Mail:	mufnal@wum.edu.pl
Order of Authors:	Kinga Jaworska Tomasz Huc Marta Gawrys Maksymilian Onyszkiewicz Emilia Samborowska Marcin Ufnal
Additional Information:	
Question	Response
Please indicate whether this article will be Standard Access or Open Access.	Standard Access (US\$1200)

TITLE:

An *In Vivo* Method for Evaluating the Gut-Blood Barrier and Liver Metabolism of Microbiota Products

AUTHORS & AFFILIATIONS:

Kinga Jaworska¹, Tomasz Huc¹, Marta Gawrys¹, Maksymilian Onyszkiewicz¹, Emilia Samborowska², Marcin Ufnal¹

¹Department of Experimental Physiology and Pathophysiology, Laboratory of Centre for Preclinical Research, Medical University of Warsaw, Warsaw, Poland

²Mass Spectrometry Laboratory, Institute of Biochemistry and Biophysics, Polish Academy of Sciences, Warsaw, Poland

CORRESPONDING AUTHOR:

Marcin Ufnal, MD, PhD (mufnal@wum.edu.pl)

Phone.: +48 22 116 6195, Fax: +48 22 116 6195

E-MAIL ADDRESSES OF CO-AUTHORS:

Kinga Jaworska (kingapham@gmail.com)

Tomasz Huc (thuc@wum.edu.pl)

Marta Gawrys (martagawrys@op.pl)

Maksymilian Onyszkiewicz (maksymilian.onyszkiewicz@gmail.com)

Emilia Samborowska (emi.sambor@gmail.com)

KEYWORDS:

Gut-blood barrier, intestinal permeability, liver clearance, portal blood sampling, gut bacteria, TMA, short chain fatty acids

SUMMARY:

The access of nutrients, microbiota metabolites and medicines to the circulation is controlled by the gut-blood barrier (GBB). We describe a direct method for measuring the GBB permeability *in vivo*, which, in contrast to commonly used indirect methods, is virtually not affected by liver and kidney functions.

ABSTRACT:

The gut-blood barrier (GBB) controls the passage of nutrients, bacterial metabolites and drugs from intestinal lumen to the bloodstream. The GBB integrity is disturbed in gastrointestinal, cardiovascular and metabolic diseases, which may result in easier access of biologically active compounds, such as gut bacterial metabolites, to the bloodstream. Thus, the permeability of the GBB may be a marker of both intestinal and extraintestinal diseases. Furthermore, the increased penetration of bacterial metabolites may affect the functioning of the entire organism.

Commonly used methods for studying the GBB permeability are performed *ex vivo*. The accuracy of those methods is limited, because the functioning of the GBB depends on intestinal blood flow.

On the other hand, commonly used *in vivo* methods may be biased by liver and kidney performance, as those methods are based on evaluation of urine or/and peripheral blood concentrations of exogenous markers. Here, we present a direct measurement of GBB permeability in rats using an *in vivo* method based on portal blood sampling, which preserves intestinal blood flow and is virtually not affected by the liver and kidney function.

Polyurethane catheters are inserted into the portal vein and inferior vena cava just above the hepatic veins confluence. Blood is sampled at baseline and after administration of a selected marker into a desired part of the gastrointestinal tract. Here, we present several applications of the method including (1) evaluation of the colon permeability to TMA, a gut bacterial metabolite, (2) evaluation of liver clearance of TMA, and (3) evaluation of a gut-portal blood-liver-peripheral blood pathway of gut bacteria-derived short-chain fatty acids. Furthermore, the protocol may also be used for tracking intestinal absorption and liver metabolism of drugs or for measurements of portal blood pressure.

INTRODUCTION:

The gut-blood barrier (GBB), also known as the intestinal barrier, is a complex multilayer system that separates the gut lumen from the bloodstream in order to limit the passage of harmful compounds while allowing the absorption of nutrients¹. It consists of the three main layers: the mucus layer, epithelium and lamina propria.

Numerous factors may affect the GBB integrity and function². It has been shown that GBB is disturbed in both gastrointestinal and extraintestinal diseases, including cardiovascular and metabolic diseases³, which may lead to an increased passage of gut bacterial metabolites to the bloodstream⁴. An increased penetration of gut bacterial metabolites may affect the functioning of the entire organism. For example, recent studies show a significant impact of bacterial metabolites, such as indoles, H₂S, short-chain fatty acids (SCFA), and trimethylamine N-oxide, on the circulatory system functions⁵⁻⁹. Finally, it has been proposed that an increased GBB permeability may serve as a marker of cardiovascular and metabolic diseases which are associated with morphological and functional alterations in the intestines¹⁰. Therefore, tracking the gut-portal blood-liver-systemic blood pathway of bacterial metabolites may be of interest for both basic and clinical sciences.

Commonly utilized experimental methods for the evaluation of GBB permeability are performed *in vitro* using resected intestinal segments, fragments of mucosa, or artificial membranes^{11,12}. The accuracy of those methods is compromised by the fact that proper functioning of the GBB requires constant intestinal blood flow. On the other hand, the available *in vivo* methods are based on the evaluation of urine or peripheral blood concentrations of exogenous markers¹³. However, peripheral blood and urine concentration of exogenous compounds is influenced by kidney function, *i.e.*, glomerular filtration rate and tubular excretion, as well as by liver metabolism, *i.e.*, first pass metabolism. Both parameters may differ significantly between study subjects independently of the GBB function.

This paper describes a direct measurement of the GBB permeability in rats using portal blood

sampling. This *in vivo* method preserves the intestinal blood flow and is virtually not influenced by liver and kidney function. The described approach is not commonly used, possibly because of some methodological difficulties. We describe in detail the catheterization of the portal vein and inferior vena cava just above the hepatic vein confluence. Blood sampling from the portal vein and inferior vena cava allows evaluation of the GBB permeability and liver clearance as well as tracking of gut-portal blood-liver-systemic blood pathway of molecules of interest, such as gut bacterial metabolites or medicines. We also present several applications of the method that were tested in our laboratory. These include the evaluation of the colon permeability to TMA, a gut bacterial metabolite, evaluation of liver clearance of TMA, and evaluation of a gut-portal blood-liver-systemic blood pathway of SCFA.

To evaluate gut-blood barrier permeability, the following protocol steps should be followed, in order: **1** (insertion of the line for intrainestinal administrations), **3** (portal vein catheterization), **4** (portal vein blood sampling), **6** (administration of a gut permeability marker), **4**.

To evaluate liver clearance and a gut-portal blood-liver-systemic blood pathway, the following protocol steps should be followed, in order: **1** (insertion of the line for intrainestinal administrations), **2** (inferior vena cava catheterization), **3** (portal vein catheterization), **4** (portal vein blood sampling), **5** (inferior vena cava blood sampling), **6** (administration of a gut permeability marker), **4, 5, 7** (calculation of liver clearance).

PROTOCOL:

The experiments were performed on male Wistar Kyoto rats according to Directive 2010/63 EU on the protection of animals used for scientific purposes and were approved by the Local Bioethical Committee in Warsaw.

1. Insertion of the Line for Intrainestinal Administration

Note: Here we propose intracolonic administration of a marker using a catheter. It may be modified by oral administration or gavage at various levels of the digestive tract *e.g.* stomach or duodenum. Remember to use disposable surgical clothing, including surgical gown, hood and gloves, and ensure to follow the safety precautions related to the sharp tools used in surgery (needles, *etc.*) during procedures 1-6.

1.1. Fast animals overnight before the procedure. Perform all procedures during general anesthesia, *i.e.*, obtained by injection of urethane 1.5 g/kg bw i.p. Assess proper anesthetization by the lack of palpebral and corneal reflexes, and by toe-pinch and tail-pinch method.

1.2. Use a pediatric Foley catheter (10F or 8F) as a colonic catheter. Mark the catheter to indicate the part that will be inserted into the colon (approximately 8 cm).

1.3. Check the anal region and the stool content in the rectum before inserting the catheter into the colon. If stool is present, empty the rectum by massaging the rectal area.

1.4. Put a lubricant (*e.g.* glycerin or petrolatum) along the catheter. Moisten the anus and its surroundings with the lubricant.

1.5. Insert the catheter with a guide wire approximately 8 cm through the external anal sphincter. Make slow forward-backward and circular movements.

Note: Keep on checking the location of the catheter by abdominal palpation while inserting the catheter.

2. Inferior Vena Cava Catheterization

2.1. Shave fur in the groin. Alternately disinfect the skin with alcohol and povidone iodine 3 times and cover the groin area with surgical drapes.

2.2. Try to feel the pulse on the femoral artery and cut the skin longitudinally for the length of about 2.0 cm in the place where the pulse is palpable.

2.3. Dissect the fascia and muscles to visualize the neurovascular bundle.

2.4. Dissect the femoral vein from the neurovascular bundle: first nerves, then the femoral artery, and then the vein.

Note: Be careful during the dissection of the neurovascular bundle, since tiny branches of the femoral vein may easily be damaged, producing bleeding.

2.5. Put two ligatures on the femoral vein. Do not tie the knots yet. Catch the ends of the proximal ligature with a needle holder.

2.6. Carefully pull the ligature ends with the holder upwards to close the proximal part of the vein. Wait until the vein is filled with blood and tie the distal knot.

2.7. Make a small incision (*ca.* 1 mm) on the vein between the knot and proximal ligature, using microsurgical scissors. Insert the catheter using tweezers or the needle with the curved end.

Note: Puncture the vein and use the bended tip of the needle as a guide for the catheter. Loosen the proximal ligature while inserting the catheter. Insert the catheter for 6-7.0 cm.

2.8. Secure the catheter in the femoral vein with two single surgical knots. Tie the proximal ligature as well.

2.9. Check the patency of the catheter by attempting to draw blood with a syringe. Rinse the catheter with 0.3 mL of the heparinized saline (100 units/mL).

2.10. Close the surgical wound with two layers of single stitches.

3. Portal Vein Catheterization

3.1. Prepare the portal catheter according to **Figure 1**.

[Place **Figure 1** here]

3.1.1. Insert the cut end of the needle (OD: 9 mm) into the polyurethane catheter OD: 0.025".

3.1.2. Tie the ligature 3/0 at the junction of the needle and catheter.

Note: Ensure that the longer part of the ligature is at least 6 cm long.

3.1.3. Insert the end of the catheter OD: 0.025" into the polyethylene catheter OD: 0.040".

3.1.4. Close the catheter with a metal or plastic plug.

3.2. Midline laparotomy

3.2.1. Shave fur in the abdomen, alternately disinfect the skin with alcohol and povidone iodine 3 times, and cover the area with surgical drapes.

3.2.2. Cut the skin longitudinally from the xiphoid of the sternum to the navel.

3.2.3. Cut the muscles of the abdominal wall along the white line.

3.2.4. Expand the cut rostrally in the Y shape so that the xiphoid cartilage is between two cuts.

3.3. Portal vein dissection

3.3.1. Moisten the surgical swabs with saline.

3.3.2. Exteriorize the cecum, ascending and transverse colon, and small intestine loop. Put the intestines on the left side to expose the root of the mesentery.

Note: Cover the intestines with gauze moistened with a physiological saline to protect the intestines from drying.

3.3.3. To expose the portal vein, carefully move the hepatic lobes to the sides or upwards towards the diaphragm with the moistened swabs.

3.3.4. Localize the part of the portal vein that is not covered with the mesentery (in the hepatic hilum, about 5 mm long) and pass the ligature 3/0 (15 cm long) under the portal vein.

Note: To protect tissues from damage while placing the ligature, moisten the ligature with a physiological saline solution.

3.3.5. Clamp the ends of ligature with forceps and tighten it gently to stabilize the vessel.

3.4. Insertion and stabilization of the catheter

3.4.1. Pass the longer part of the portal catheter's ligature under the free part of the portal vein and pull it so that the catheter is located just next to the portal vein.

3.4.2. Insert the needle into the upper mesenteric vein 3 mm below the junction of upper mesenteric vein and the portal vein. Hold the needle at a 30° angle and, after entering into the vein, reduce the angle and advance the needle almost horizontally, in parallel to the portal vein.

Note: Insert the needle for a length of approximately 6-7 mm. The stabilizing ligature should gently tighten the portal vein while inserting the catheter.

3.4.3. Apply 1-2 drops of tissue glue at the place where the needle is inserted. Remove the swabs that cover the liver.

3.4.4. Put the intestines back into the abdominal cavity.

3.4.5. Moisten the intestines with a warmed up saline solution and cover it with moistened sterile gauze.

3.4.6. Check the patency of the catheter and rinse the catheter with 0.3 mL of the heparinized saline (100 units/mL).

Note: Venous blood spontaneously backflows in the catheter.

3.5. Ending of the surgery

3.5.1. After 5 minutes, check the color of the intestines and peristaltic movements, make sure that the proper mesenteric blood flow is maintained.

3.5.2. Close the abdominal cavity with 3 stitches: wall peritoneum with the inner layer of the abdominal wall muscles - a continuous, absorbable suture; remaining muscles of the abdominal wall – a continuous, absorbable suture; skin and subcutaneous tissue – single, non-absorbable sutures.

Note: Exteriorize the distal part of the catheter around the navel.

4. Portal Vein Blood Sampling

4.1. Sample portal vein blood at times according to the specific testing protocol used; see **Table 1**.

[Place **Table 1** here]

Note: The time between consecutive blood sampling depends mainly on the bioavailability of the tested substances and the site of administration (colon, stomach, *etc.*).

4.2. Open the portal catheter plug and let the blood flow freely.

4.3. Use syringe (vol. 2 mL) and blunt needle OD: 0.9 mm. Collect no more than 0.7 mL of blood.

4.4. Rinse the catheter with 0.3 mL of heparinized saline (100 units/mL) and close the catheter plug.

5. Inferior Vena Cava Blood Sampling

5.1. Sample inferior vena cava blood at times according to the specific testing protocol used; see **Table 2**.

[Place **Table 2** here]

5.2. Open the inferior vena cava catheter plug and let the blood flow freely.

5.3. Collect no more than 0.7 mL of blood using syringe (vol. 2 mL) and broken needle OD: 0.9mm.

5.4. Rinse the catheter with 0.2-0.3 mL of heparinized saline (100 units/mL) and close the catheter plug.

6. Administration of a Gut Permeability Marker

6.1. Remove the guide wire and inflate the colonic catheter balloon, using adequate volume of sterile water (usually 1 mL but check actual balloon size before insertion).

Note: The balloon diameter should not exceed 1 cm.

6.2. Place the rat head down (inclination about 15%) to minimize the risk of the outflow of the administered solution from the colon.

6.3. Slowly administer the tested substance (*e.g.* trimethylamine, 100 mg/kg bw) using a drainage port in colonic catheter.

Note: Do not exceed the volume of 0.75 mL of the administered solution and the feeding speed

of 0.5 mL/min to prevent the outflow of the administered solution from the anus.

6.4. After 10 min deflate the catheter balloon.

6.5. Sample blood from the inferior vena cava and the portal vein according to the specific testing protocol used; see **Table 1 and Table 2**.

6.6. Euthanize animal via approved method.

7. Calculation of Liver Clearance

7.1. Express liver clearance, understood as hepatic extraction, by the difference between portal blood concentration and inferior vena cava blood concentration or by the ratio of inferior vena cava to portal blood concentration, $(1 - (\text{inferior vena cava concentration} / \text{portal vein concentration}))$.

8. Evaluation of the Test Substance Concentration in Blood Samples

8.1. Depending on the test substance and test methodology, subject the sample to appropriate laboratory procedures (centrifugation, etc.). In the proposed protocols, we evaluate TMA/TMAO and SCFA concentration using liquid chromatography coupled with triple-quadrupole mass spectrometry. Please find a detailed description of the method in Supplemental Material.

REPRESENTATIVE RESULTS:

We have successfully measured the GBB permeability and liver clearance of TMA in rats. We have demonstrated that hypertensive rats have an increased colon permeability to TMA in comparison to normotensive rats (**Figure 2**)⁴. In another study we found that high salt intake does not affect the GBB permeability and liver clearance of TMA (**Figure 3**)¹⁴.

Measuring the concentration of SCFA in stools, portal blood, and peripheral blood, we traced the path of the molecules from the intestine to the peripheral blood. The exemplary results for those experiments are presented in **Table 3**.

Figure Legends:

Figure 1: Portal catheter. The portal catheter consists of a needle OD: 0.9 mm with a length of about 25.0 mm [A], a flexible polyurethane catheter OD: 0.025", length about 100.0 mm [B], a flexible polyethylene tip of the catheter OD: 0.040", approximately 15.0 mm long [C], a plug [D], and a ligature 3/0 with a length of 100.0 mm [E].

Figure 2: Hypertension-associated changes in gut-blood barrier permeability. Intracolonic administration of TMA produced a significant increase in portal blood TMA in each group (n=12 for each group). The increase in portal blood TMA in the hypertensive (SHR) group was significantly higher than in normotensive (WKY) group. We used the long protocol consisting of

blood sampling 30 min and 60 min after TMA administration (IC TMA). Values are means, + SE, * $p < 0.05$ vs baseline, # $p < 0.05$ WKY vs SHR. This figure has been modified from Jaworska *et al.*⁴

Figure 3: Gut-blood barrier permeability and liver clearance after high salt intake. (A) Intracolonic administration of TMA produced a significant increase in portal blood TMA. The size of the increase was similar between the groups ($n=7$ for each group). We used a simplified protocol, taking blood samples at baseline (0) and 15 min after administration of TMA (IC TMA). (B) TMA liver clearance was similar between the groups at baseline, and 15 min after the intracolonic administration of TMA. Values are means, + SE. * $p < 0.05$ vs baseline. This figure has been modified from Bielinska *et al.*¹⁴

Table 1: Portal blood sampling protocols for gut permeability assessment.

Table 2: Protocol of blood sampling for liver clearance measurement and tracking the gut-portal blood-liver-systemic blood pathway.

Table 3: SCFA concentration in stool, portal blood, and peripheral blood ($n=7$).

Table 4: Exemplary test substances with possible applications.

DISCUSSION:

The described direct, *in vivo*, method of measuring the GBB permeability maintains close-to-physiological conditions in the gastrointestinal system (preserves the intestinal blood flow), and is virtually not influenced by liver and kidney function.

The critical step of this technique is the insertion of the portal catheter. This must be done gently and decisively at the same time. A mild, short bleeding may occur from the correctly performed puncture of the portal vein; however, it stops when the needle is inserted into the vessel. Persistent bleeding indicates that the portal vein is perforated. To facilitate the catheter insertion, the portal vein should be well exposed. After exteriorizing the intestines, when the mesenteric root is well exposed, the upper mesenteric vein should also be visible (mesenteric vein enters cranially into the portal vein). The portal vein is usually covered by the hepatic lobes, which have to be moved to the sides. Also, the proper stabilization of the portal catheter is crucial for a successful procedure, since the catheter's movement may produce portal vein rupture and bleeding, especially in longer experiments. Additional stabilization of the catheter may be achieved by attaching the catheter to mesentery by sticking it to a mesentery with tissue glue or by applying two single stitches (thread 6/0). After closing the abdominal cavity to secure the placement of the catheter, a purse-string suture may be applied on the catheter.

There are several minor difficulties that may occur during the experiment. After catheterization of the femoral vein, if the venous blood does not backflow in the catheter, try the following solutions: flush the catheter with heparinized saline, gently pull the catheter 1-2 mm from the vein, remove the surgical knots, and tie a new one, pull the catheter out and reinsert, or replace

with a new catheter. Remember to confirm the proper placement of the catheter after the experiment. The catheter should be inserted for 6-7 cm, depending on the size of the animal, to place the proximal tip of the catheter in the inferior vena cava just above the hepatic vein confluence. When it comes to colon catheterization, if you have problems with advancing the catheter you may inject 0.3-0.5 mL of saline or leave the catheter in the colon for 5-10 minutes, and try again. Do not use force while inserting a catheter to avoid perforation of the intestine.

In our studies, we used a gut bacteria-derived molecule, trimethylamine (TMA), as a marker of the colon GBB permeability, as TMA is produced mostly by colonic bacteria. However, many other substances, including classic permeability markers like FITC-dextran or sugars, may be used as well (see **Table 4**). When preparing a solution of the test substance, take into account its irritating effect on the intestinal mucosa and appropriately choose the concentration of the substance. Further laboratory procedures of the blood samples must be adjusted to the selected marker.

In our protocol, we propose intracolonic administration of a marker; however, it may be modified by oral administration or gavage at various levels of the digestive tract. The variable speed of peristalsis and possible interactions with enzymes and gastric acid should be taken into account while administering a marker into upper parts of the gastrointestinal tract *e.g.* stomach or duodenum. Accordingly, time of blood sampling after administration of a marker needs to be adjusted.

There are several limitations of the presented method, including adverse effects of anesthesia and fasting overnight, that may both influence GBB function. It should be taken into account as the procedure is terminal and involves blood sampling during not fully physiological conditions. However, as mentioned before, it has still many advantages over other experimental methods assessing GBB permeability, especially performed *in vitro*¹¹. For example, an Ussing chamber measures the conductance and particle flux through the intestinal epithelial cells. The main weakness of this technique lies in its excessive simplification. It is difficult to describe the complex physiological system of the intestinal mucosa using a small number of measurements on epithelial cell layer alone. Some researchers use whole-thickness intestine for Ussing chamber studies, but this procedure is accompanied by several methodological complications¹⁵. Furthermore, the accuracy of the method is compromised by a limited viability of tissues isolated from the organism. Some *in vitro* methods used in pharmacokinetic studies use artificial membranes as a model of the intestinal barrier¹². However, those methods, similarly to the Ussing chamber, do not reflect the complexity of the GBB structure and functions.

There are also *in vivo* permeability assays available in experimental and clinical studies. They are mostly based on urine or peripheral blood sampling after oral or colonic administration of various markers¹³. The widely used sugar test involves oral intake of mono- and oligosaccharides, which are not metabolized in mammalian organism, *e.g.* mannitol and lactulose. The method is non-invasive and may be employed in both experimental and clinical use^{16,17}; however, the results are affected by first-pass liver metabolism and kidney function, which may differ significantly between the study subjects. In contrast to the above mentioned indirect methods, collecting blood from the portal vein allows direct evaluation of the GBB permeability¹². This method is not

dependent on liver and kidney function and virtually preserves physiological conditions in the intestines which is an important advantage over *ex vivo* or *in vitro* methods.

The techniques described in this paper also allow for a relatively accurate liver clearance evaluation, as the blood is collected from the portal vein and inferior vena cava just above the hepatic vein confluence. The representative results for the hepatic extraction are presented in **Figure 3** (for TMA) and **Table 3** (for SCFA). Our data suggest that three main SCFA, acetate, propionate, and butyrate, are characterized by different hepatic clearance, which is supported by previous studies, where Bloemen *et al.* shown that intestinal release of butyrate and propionate, but not acetate, is almost equaled by hepatic uptake¹⁸. Therefore, the presented protocol is suitable for tracking intestinal absorption and liver metabolism of drugs, which can be used in pharmacokinetic studies.

The techniques may also be adjusted to other experimental purposes. Catheterization of the portal vein may be used to measure portal blood pressure or for administration of drugs directly to the portal vein, in order to study hepatic circulation. For instance, in our previous work, we administered hydrogen sulfide donors to the portal vein to assess its influence on hepatic circulation and portal pressure¹⁹.

ACKNOWLEDGMENTS:

The work is supported by the Ministry of Science and Higher Education Republic of Poland, Diamond grant no: DI2017 009247.

DISCLOSURES:

The authors have nothing to disclose.

REFERENCES

- 1 Camilleri, M., Madsen, K., Spiller, R., Greenwood-Van Meerveld, B. & Verne, G. N. Intestinal barrier function in health and gastrointestinal disease. *Neurogastroenterology and Motility: The Official Journal of the European Gastrointestinal Motility Society*. **24** (6), 503-512, (2012).
- 2 Keita, A. V. & Soderholm, J. D. The intestinal barrier and its regulation by neuroimmune factors. *Neurogastroenterology and Motility: The Official Journal of the European Gastrointestinal Motility Society*. **22** (7), 718-733, (2010).
- 3 Farhadi, A., Banan, A., Fields, J. & Keshavarzian, A. Intestinal barrier: an interface between health and disease. *Journal of Gastroenterology and Hepatology*. **18** (5), 479-497, (2003).
- 4 Jaworska, K. *et al.* Hypertension in rats is associated with an increased permeability of the colon to TMA, a gut bacteria metabolite. *PloS one*. **12** (12), e0189310, (2017).
- 5 Fujii, H., Nakai, K. & Fukagawa, M. Role of oxidative stress and indoxyl sulfate in progression of cardiovascular disease in chronic kidney disease. *Therapeutic Apheresis and Dialysis: Official Peer-Reviewed Journal of the International Society for Apheresis, the Japanese Society for Apheresis, the Japanese Society for Dialysis Therapy*. **15** (2), 125-128, (2011).

485 6 Tomasova, L. *et al.* Intracolonic hydrogen sulfide lowers blood pressure in rats. *Nitric*
486 *Oxide: Biology and Chemistry*. **60**, 50-58, (2016).

487 7 Brahe, L. K., Astrup, A. & Larsen, L. H. Is butyrate the link between diet, intestinal
488 microbiota and obesity-related metabolic diseases? *Obesity Reviews: An Official Journal*
489 *of the International Association for the Study of Obesity*. **14** (12), 950-959, (2013).

490 8 Ufnal, M. *et al.* Trimethylamine-N-oxide: a carnitine-derived metabolite that prolongs the
491 hypertensive effect of angiotensin II in rats. *The Canadian Journal of Cardiology*. **30** (12),
492 1700-1705, (2014).

493 9 Huc, T., Nowinski, A., Drapala, A., Konopelski, P. & Ufnal, M. Indole and indoxyl sulfate,
494 gut bacteria metabolites of tryptophan, change arterial blood pressure via peripheral and
495 central mechanisms in rats. *Pharmacological Research*. **130**, 172-179, (2018).

496 10 Ufnal, M. & Pham, K. The gut-blood barrier permeability - A new marker in cardiovascular
497 and metabolic diseases? *Medical Hypotheses*. **98**, 35-37, (2017).

498 11 Le Ferrec, E. *et al.* *In vitro* models of the intestinal barrier. The report and
499 recommendations of ECVAM Workshop 46. European Centre for the Validation of
500 Alternative methods. *Alternatives to Laboratory Animals: ATLA*. **29** (6), 649-668, (2001).

501 12 Bohets, H. *et al.* Strategies for absorption screening in drug discovery and development.
502 *Current Topics in Medicinal Chemistry*. **1** (5), 367-383, (2001).

503 13 Grootjans, J. *et al.* Non-invasive assessment of barrier integrity and function of the human
504 gut. *World Journal of Gastrointestinal Surgery*. **2** (3), 61-69, (2010).

505 14 Bielinska, K. *et al.* High salt intake increases plasma trimethylamine N-oxide (TMAO)
506 concentration and produces gut dysbiosis in rats. *Nutrition*. **54**, 33-39, (2018).

507 15 Clarke, L. L. A guide to Ussing chamber studies of mouse intestine. *American journal of*
508 *physiology. Gastrointestinal and Liver Physiology*. **296** (6), G1151-1166, (2009).

509 16 Denno, D. M. *et al.* Use of the lactulose to mannitol ratio to evaluate childhood
510 environmental enteric dysfunction: a systematic review. *Clinical Infectious Diseases: An*
511 *Official Publication of the Infectious Diseases Society of America*. **59 Suppl 4**, S213-219,
512 (2014).

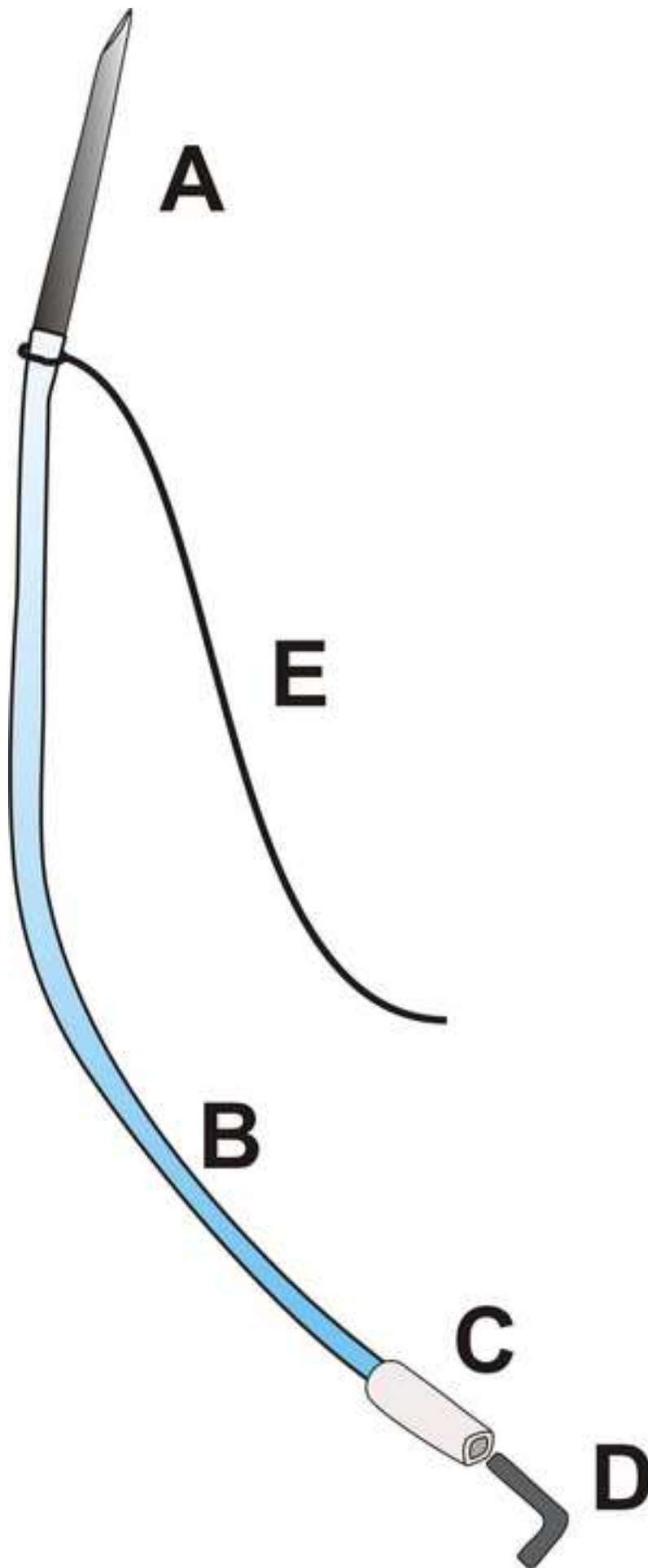
513 17 Lugea, A., Salas, A., Casalot, J., Guarner, F. & Malagelada, J. R. Surface hydrophobicity of
514 the rat colonic mucosa is a defensive barrier against macromolecules and toxins. *Gut*. **46**
515 (4), 515-521, (2000).

516 18 Bloemen, J. G. *et al.* Short chain fatty acids exchange across the gut and liver in humans
517 measured at surgery. *Clinical Nutrition*. **28** (6), 657-661, (2009).

518 19 Huc, T. *et al.* Colonic hydrogen sulfide produces portal hypertension and systemic
519 hypotension in rats. *Experimental Biology and Medicine*. **243** (1), 96-106, (2018).

520

Figure 1



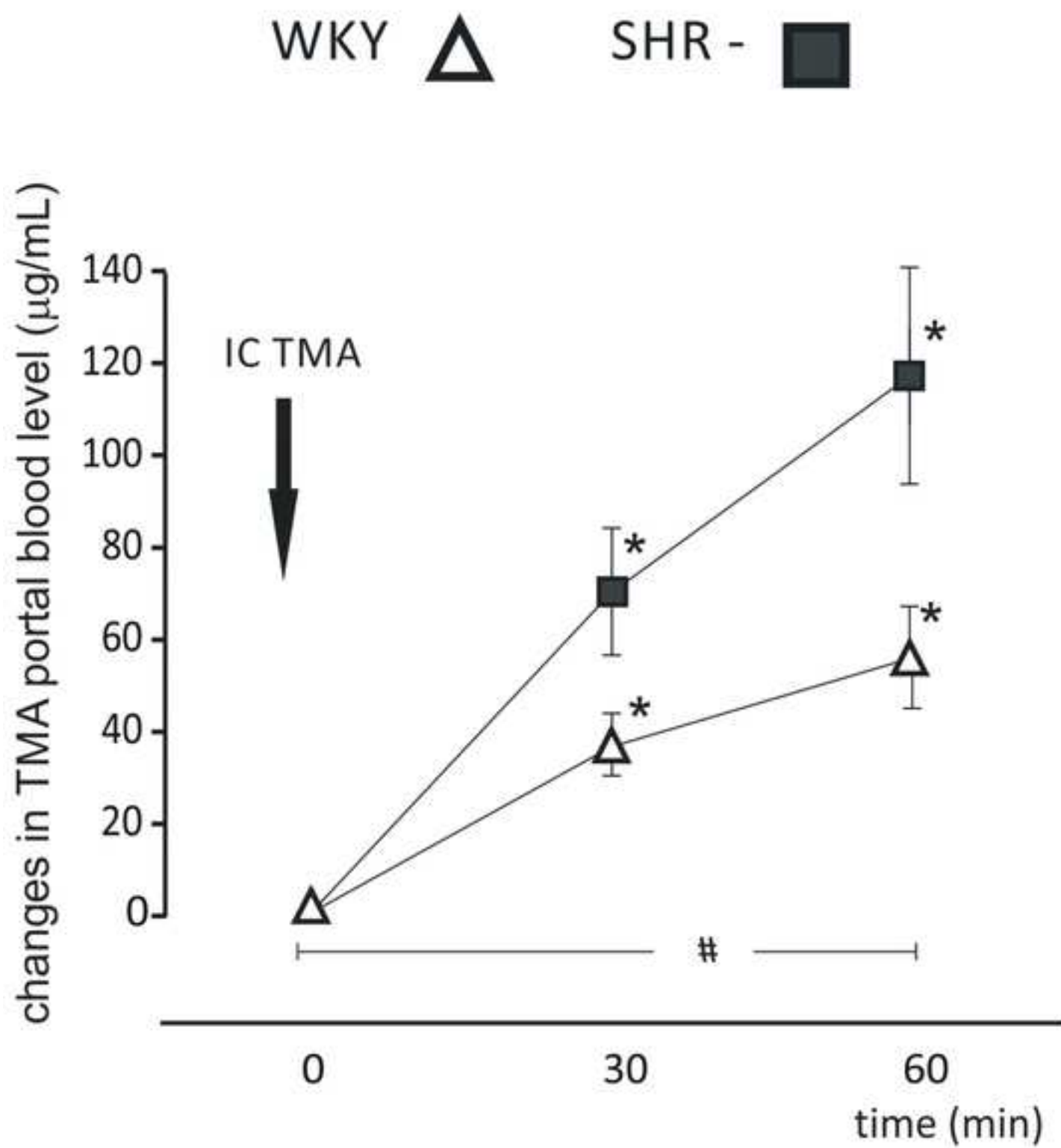
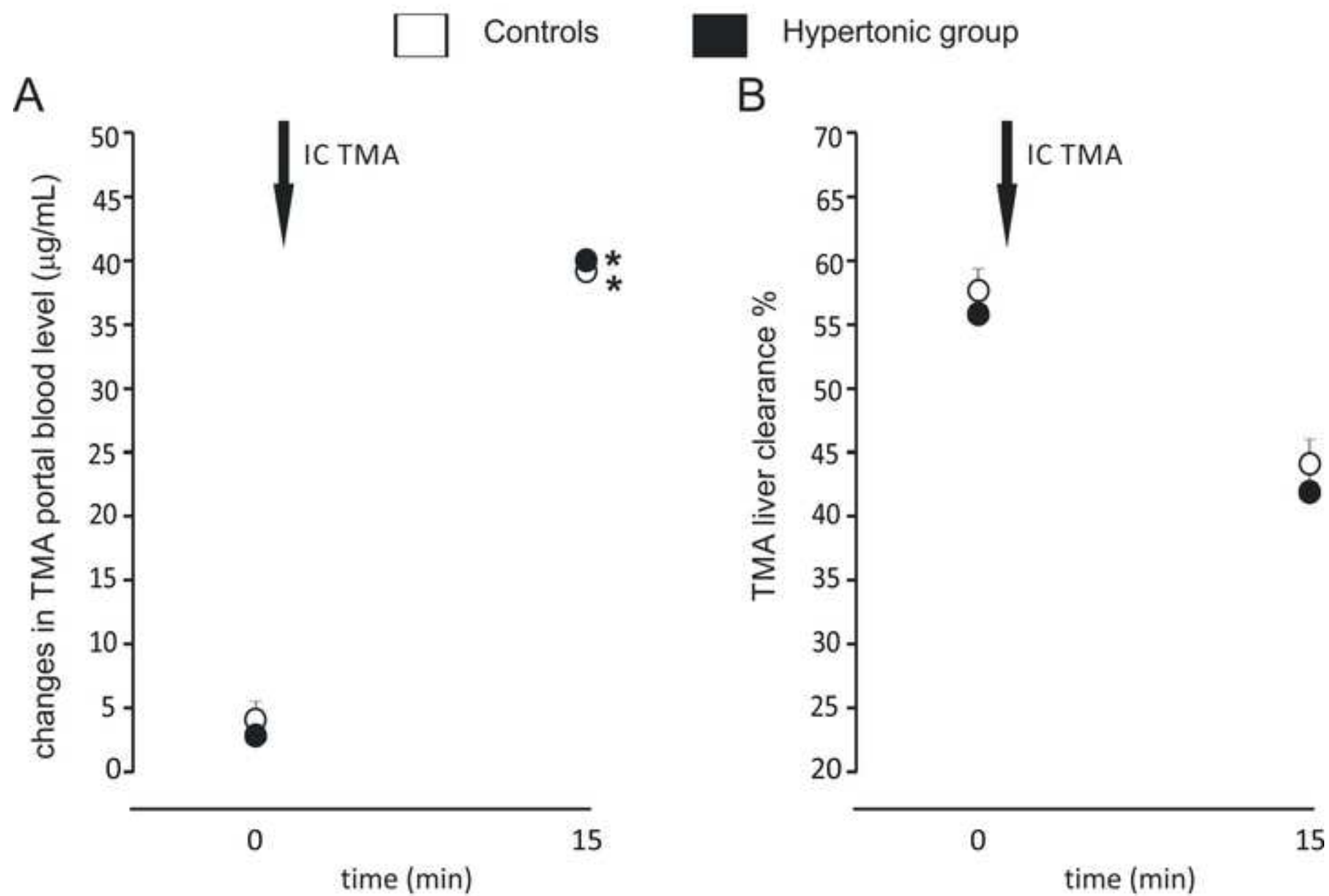


Figure 3

[Click here to access/download;Figure;Figure 3.tif](#)



Short protocol
 t_0 – baseline (before intracolonic administration)
 t_1 – 5 min after intracolonic administration
 t_2 – 30 min after intracolonic administration

Long protocol

t_0 – baseline (before intracolonic administration)

t_1 – 30 min after intracolonic administration

t_2 – 60 min after intracolonic administration

Portal vein
t₀ – baseline (before intracolonic administration)
t₁ – 30 min after intracolonic administration

Inferior vena cava

t_0 – baseline (before intracolonic administration)

t_1 – 30 min after intracolonic administration

SCFA	Stool concentration (μM)	Portal blood concentration (μM)
AA- acetic acid (C2)	15998.40 \pm 4317.58	564.22 \pm 155.34
IPA- propionic acid (C3)	5390.70 \pm 1016.19	138.25 \pm 55.50
IBA- isobutyric acid (C4)	191.20 \pm 123.87	4.51 \pm 1.60
BA- butyric acid (C4)	4159.80 \pm 3141.68	143.14 \pm 68.42
2MeB- 2 methylbutyric acid (C5)	80.90 \pm 59.86	2.02 \pm 0.88
IVA- isovaleric acid (C5)	109.10 \pm 56.05	2.59 \pm 1.07
VA- valeric acid (C5)	281.9 \pm 158.20	8.55 \pm 3.56
ICA- isocaproic acid/ 4-methylvaleric acid (C6)	5.9 \pm 2.95	0.61 \pm 0.15
CA- caproic acid (C6)	287.00 \pm 309.68	11.19 \pm 4.94

Peripheral blood concentration (μM)
149.89 ± 31.74
5.36 ± 3.25
1.14 ± 1.16
6.43 ± 4.18
1.14 ± 1.42
0.90 ± 1.22
0.72 ± 1.02
1.76 ± 0.87
1.12 ± 0.93

Test substance

Bacterial metabolites:
trimethylamine (TMA), short chain fatty acids (SCFA),
hydrogen sulfide, etc.

Classic permeability markers:
FITC-dextran, polysaccharides, PEG, etc.
Drugs

Possible application

GBB permeability studies

Tracking a gut-portal blood-liver-systemic blood
pathway

Hepatic clearance studies

GBB permeability studies

absorption and hepatic clearance studies

Name of Material/ Equipment

Needle OD: 9 mm
Polyethylene catheter ID: 0.025", OD: 0.040"
Polyethylene catheter ID: 0.012", OD: 0.025"
C-Flex Tubing, Opaque White 1/50" ID x 1/12 " OD
Pediatric Foley catheter (size 10F or 8F)
Surgical ligatures 3/0
Absorbable surgical sutures - Polyglactine 910 4/0
Tissue glue - Loctite 454 Cyanoacrylate Adhesive
Povidone iodine
Heparin - Heparinium WZF
Glycerin 86%
Xylocaine 2%
Urethane
Trimethylamine solution 45%
Syringes 2 mL
Saline 250 mL
Surgical scissors, straight, length 115 mm, 4 1/2 " blunt ends
Artery forceps type Micro-Adson bent, length 140 mm 5 1/2 "
Anatomic forceps, length 95 mm, 3 3/4" sharp 0.7x0.55
Micro Scissors type Vannas, straight, length 85 mm, 3 3/8 " the length of the blades 6 mm
Towel clamps type Backhouse, length 130 mm, 5 1/8"
Needle holders, length 150 mm, 6" t=0.4 1/2
Delicate Scissors, length 110 mm, straight, 4 3/8" sharp
Anatomic forceps, length 95 mm, 3 3/4" sharp

Company	Catalog Number	Comments/Description
Becton Dickinson S.A.	301300	
Scientific Commodities, Inc.	#BB520-40	
Scientific Commodities, Inc.	#BB520-25	
Cole-Parmer Instrument Co.	06424-59	
Sigmed	0000 80305	
Yavo Sp. Z o.o.	P48JE	
KRUUSE Polska Sp. Zo.o.	152336	
Loctite	1370127	
EGIS Pharmaceuticals PLC	4449 11	
WZF Polfa S.A.	02BK0417	Dilute 10 times with physiolog
Laboratorium Farmaceutyczne Avena	5.90999E+12	Serves as a lubricant in colon c
AstraZenca	9941342	
Sigma-Aldrich (Merck)	U2500-500G	
Sigma-Aldrich (Merck)	92262-1L	
B.Braun Melsungen AG	4606027V	
Fraesenius Kabi Polska Sp. Z o.o.	15LL707WL	
Braun	NS-010-115-PKM	
Braun	KN-008-140-ZMK	
Braun	PO-001-007-ZMK	
Braun	NO-010-085-PMK	
Braun	HO-128-130-PMK	
Braun	IM-927-150-PZMK	
Braun	NO-052-110-PMK	
Braun	PO-022-001-PMK	

ical saline
atheterization



1 Alewife Center #200
Cambridge, MA 02140
tel. 617.945.9051
www.jove.com

ARTICLE AND VIDEO LICENSE AGREEMENT

Title of Article: AN IN VIVO METHOD FOR EVALUATING THE GUT-BLIND BACTERIA
Author(s): K. J. ALONSO, T. MUC, M. GAUR, R. OKSZA, W. C. F. SAMMONS, M. VFNAL

Item 1 (check one box): The Author elects to have the Materials be made available (as described at <http://www.jove.com/author>) via: ☒ Standard Access ☐ Open Access

Item 2 (check one box):

- ☒ The Author is NOT a United States government employee.
☐ The Author is a United States government employee and the Materials were prepared in the course of his or her duties as a United States government employee.
☐ The Author is a United States government employee but the Materials were NOT prepared in the course of his or her duties as a United States government employee.

ARTICLE AND VIDEO LICENSE AGREEMENT

1. **Defined Terms.** As used in this Article and Video License Agreement, the following terms shall have the following meanings: "**Agreement**" means this Article and Video License Agreement; "**Article**" means the article specified on the last page of this Agreement, including any associated materials such as texts, figures, tables, artwork, abstracts, or summaries contained therein; "**Author**" means the author who is a signatory to this Agreement; "**Collective Work**" means a work, such as a periodical issue, anthology or encyclopedia, in which the Materials in their entirety in unmodified form, along with a number of other contributions, constituting separate and independent works in themselves, are assembled into a collective whole; "**CRC License**" means the Creative Commons Attribution-Non Commercial-No Derivs 3.0 Unported Agreement, the terms and conditions of which can be found at: <http://creativecommons.org/licenses/by-nc-nd/3.0/legalcode>; "**Derivative Work**" means a work based upon the Materials or upon the Materials and other pre-existing works, such as a translation, musical arrangement, dramatization, fictionalization, motion picture version, sound recording, art reproduction, abridgment, condensation, or any other form in which the Materials may be recast, transformed, or adapted; "**Institution**" means the institution, listed on the last page of this Agreement, by which the Author was employed at the time of the creation of the Materials; "**JoVE**" means MyJoVE Corporation, a Massachusetts corporation and the publisher of *The Journal of Visualized Experiments*; "**Materials**" means the Article and / or the Video; "**Parties**" means the Author and JoVE; "**Video**" means any video(s) made by the Author, alone or in conjunction with any other parties, or by JoVE or its affiliates or agents, individually or in collaboration with the Author or any other parties, incorporating all or any portion of the Article, and in which the Author may or may not appear.

2. **Background.** The Author, who is the author of the Article, in order to ensure the dissemination and protection of the Article, desires to have the JoVE publish the Article and create and transmit videos based on the Article. In furtherance of such goals, the Parties desire to memorialize in this Agreement the respective rights of each Party in and to the Article and the Video.

3. **Grant of Rights in Article.** In consideration of JoVE agreeing to publish the Article, the Author hereby grants to JoVE, subject to **Sections 4 and 7** below, the exclusive, royalty-free, perpetual (for the full term of copyright in the Article, including any extensions thereto) license (a) to publish, reproduce, distribute, display and store the Article in all forms, formats and media whether now known or hereafter developed (including without limitation in print, digital and electronic form) throughout the world, (b) to translate the Article into other languages, create adaptations, summaries or extracts of the Article or other Derivative Works (including, without limitation, the Video) or Collective Works based on all or any portion of the Article and exercise all of the rights set forth in (a) above in such translations, adaptations, summaries, extracts, Derivative Works or Collective Works and (c) to license others to do any or all of the above. The foregoing rights may be exercised in all media and formats, whether now known or hereafter devised, and include the right to make such modifications as are technically necessary to exercise the rights in other media and formats. If the "Open Access" box has been checked in **Item 1** above, JoVE and the Author hereby grant to the public all such rights in the Article as provided in, but subject to all limitations and requirements set forth in, the CRC License.

ARTICLE AND VIDEO LICENSE AGREEMENT

4. Retention of Rights in Article. Notwithstanding the exclusive license granted to JoVE in **Section 3** above, the Author shall, with respect to the Article, retain the non-exclusive right to use all or part of the Article for the non-commercial purpose of giving lectures, presentations or teaching classes, and to post a copy of the Article on the Institution's website or the Author's personal website, in each case provided that a link to the Article on the JoVE website is provided and notice of JoVE's copyright in the Article is included. All non-copyright intellectual property rights in and to the Article, such as patent rights, shall remain with the Author.

5. Grant of Rights in Video – Standard Access. This **Section 5** applies if the "Standard Access" box has been checked in **Item 1** above or if no box has been checked in **Item 1** above. In consideration of JoVE agreeing to produce, display or otherwise assist with the Video, the Author hereby acknowledges and agrees that, Subject to **Section 7** below, JoVE is and shall be the sole and exclusive owner of all rights of any nature, including, without limitation, all copyrights, in and to the Video. To the extent that, by law, the Author is deemed, now or at any time in the future, to have any rights of any nature in or to the Video, the Author hereby disclaims all such rights and transfers all such rights to JoVE.

6. Grant of Rights in Video – Open Access. This **Section 6** applies only if the "Open Access" box has been checked in **Item 1** above. In consideration of JoVE agreeing to produce, display or otherwise assist with the Video, the Author hereby grants to JoVE, subject to **Section 7** below, the exclusive, royalty-free, perpetual (for the full term of copyright in the Article, including any extensions thereto) license (a) to publish, reproduce, distribute, display and store the Video in all forms, formats and media whether now known or hereafter developed (including without limitation in print, digital and electronic form) throughout the world, (b) to translate the Video into other languages, create adaptations, summaries or extracts of the Video or other Derivative Works or Collective Works based on all or any portion of the Video and exercise all of the rights set forth in (a) above in such translations, adaptations, summaries, extracts, Derivative Works or Collective Works and (c) to license others to do any or all of the above. The foregoing rights may be exercised in all media and formats, whether now known or hereafter devised, and include the right to make such modifications as are technically necessary to exercise the rights in other media and formats. For any Video to which this Section 6 is applicable, JoVE and the Author hereby grant to the public all such rights in the Video as provided in, but subject to all limitations and requirements set forth in, the CRC License.

7. Government Employees. If the Author is a United States government employee and the Article was prepared in the course of his or her duties as a United States government employee, as indicated in **Item 2** above, and any of the licenses or grants granted by the Author hereunder exceed the scope of the 17 U.S.C. 403, then the rights granted hereunder shall be limited to the maximum rights permitted under such

statute. In such case, all provisions contained herein that are not in conflict with such statute shall remain in full force and effect, and all provisions contained herein that do so conflict shall be deemed to be amended so as to provide to JoVE the maximum rights permissible within such statute.

8. Likeness, Privacy, Personality. The Author hereby grants JoVE the right to use the Author's name, voice, likeness, picture, photograph, image, biography and performance in any way, commercial or otherwise, in connection with the Materials and the sale, promotion and distribution thereof. The Author hereby waives any and all rights he or she may have, relating to his or her appearance in the Video or otherwise relating to the Materials, under all applicable privacy, likeness, personality or similar laws.

9. Author Warranties. The Author represents and warrants that the Article is original, that it has not been published, that the copyright interest is owned by the Author (or, if more than one author is listed at the beginning of this Agreement, by such authors collectively) and has not been assigned, licensed, or otherwise transferred to any other party. The Author represents and warrants that the author(s) listed at the top of this Agreement are the only authors of the Materials. If more than one author is listed at the top of this Agreement and if any such author has not entered into a separate Article and Video License Agreement with JoVE relating to the Materials, the Author represents and warrants that the Author has been authorized by each of the other such authors to execute this Agreement on his or her behalf and to bind him or her with respect to the terms of this Agreement as if each of them had been a party hereto as an Author. The Author warrants that the use, reproduction, distribution, public or private performance or display, and/or modification of all or any portion of the Materials does not and will not violate, infringe and/or misappropriate the patent, trademark, intellectual property or other rights of any third party. The Author represents and warrants that it has and will continue to comply with all government, institutional and other regulations, including, without limitation all institutional, laboratory, hospital, ethical, human and animal treatment, privacy, and all other rules, regulations, laws, procedures or guidelines, applicable to the Materials, and that all research involving human and animal subjects has been approved by the Author's relevant institutional review board.

10. JoVE Discretion. If the Author requests the assistance of JoVE in producing the Video in the Author's facility, the Author shall ensure that the presence of JoVE employees, agents or independent contractors is in accordance with the relevant regulations of the Author's institution. If more than one author is listed at the beginning of this Agreement, JoVE may, in its sole discretion, elect not take any action with respect to the Article until such time as it has received complete, executed Article and Video License Agreements from each such author. JoVE reserves the right, in its absolute and sole discretion and without giving any reason therefore, to accept or decline any work submitted to JoVE. JoVE and its employees, agents and independent contractors shall have

ARTICLE AND VIDEO LICENSE AGREEMENT

full, unfettered access to the facilities of the Author or of the Author's institution as necessary to make the Video, whether actually published or not. JoVE has sole discretion as to the method of making and publishing the Materials, including, without limitation, to all decisions regarding editing, lighting, filming, timing of publication, if any, length, quality, content and the like.

11. **Indemnification.** The Author agrees to indemnify JoVE and/or its successors and assigns from and against any and all claims, costs, and expenses, including attorney's fees, arising out of any breach of any warranty or other representations contained herein. The Author further agrees to indemnify and hold harmless JoVE from and against any and all claims, costs, and expenses, including attorney's fees, resulting from the breach by the Author of any representation or warranty contained herein or from allegations or instances of violation of intellectual property rights, damage to the Author's or the Author's institution's facilities, fraud, libel, defamation, research, equipment, experiments, property damage, personal injury, violations of institutional, laboratory, hospital, ethical, human and animal treatment, privacy or other rules, regulations, laws, procedures or guidelines, liabilities and other losses or damages related in any way to the submission of work to JoVE, making of videos by JoVE, or publication in JoVE or elsewhere by JoVE. The Author shall be responsible for, and shall hold JoVE harmless from, damages caused by lack of sterilization, lack of cleanliness or by contamination due to the making of a video by JoVE its employees, agents or independent contractors. All sterilization, cleanliness or decontamination procedures shall be solely the responsibility of the Author and shall be undertaken at the Author's

expense. All indemnifications provided herein shall include JoVE's attorney's fees and costs related to said losses or damages. Such indemnification and holding harmless shall include such losses or damages incurred by, or in connection with, acts or omissions of JoVE, its employees, agents or independent contractors.

12. **Fees.** To cover the cost incurred for publication, JoVE must receive payment before production and publication the Materials. Payment is due in 21 days of invoice. Should the Materials not be published due to an editorial or production decision, these funds will be returned to the Author. Withdrawal by the Author of any submitted Materials after final peer review approval will result in a US\$1,200 fee to cover pre-production expenses incurred by JoVE. If payment is not received by the completion of filming, production and publication of the Materials will be suspended until payment is received.

13. **Transfer, Governing Law.** This Agreement may be assigned by JoVE and shall inure to the benefits of any of JoVE's successors and assignees. This Agreement shall be governed and construed by the internal laws of the Commonwealth of Massachusetts without giving effect to any conflict of law provision thereunder. This Agreement may be executed in counterparts, each of which shall be deemed an original, but all of which together shall be deemed to be one and the same agreement. A signed copy of this Agreement delivered by facsimile, e-mail or other means of electronic transmission shall be deemed to have the same legal effect as delivery of an original signed copy of this Agreement.

A signed copy of this document must be sent with all new submissions. Only one Agreement required per submission.

CORRESPONDING AUTHOR:

Name:

MARCIN URMAL

Department:

DEPT. OF EXPERIMENTAL PHYSIOLOGY AND PATHOPHYSIOLOGY

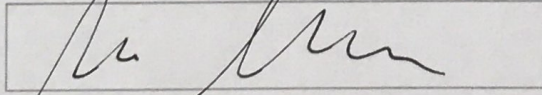
Institution:

MEDICAL UNIVERSITY OF WARSAW

Article Title:

AN IN VIVO METHOD FOR EVALUATING THE GUT-HOOP

Signature:



Date:

11.05.2018

Please submit a signed and dated copy of this license by one of the following three methods:

- 1) Upload a scanned copy of the document as a pdf on the JoVE submission site;
- 2) Fax the document to +1.866.381.2236;
- 3) Mail the document to JoVE / Attn: JoVE Editorial / 1 Alewife Center #200 / Cambridge, MA 02139

For questions, please email submissions@jove.com or call +1.617.945.9051

Editorial and production comments

Dear Editorial Board,

Thank you for the formatting changes and valuable remarks that will improve the quality of our Video and the Manuscript. Please find below our response to your comments.

Note that some formatting changes have been made to better fit JoVE standards, in particular in the protocol.

1. There is some flickering in the video from around 2:36 to 2:48; if practical, could you fix this?

We are very sorry about that flickering effect. However, it is not seen in preview in our video making program and though we tried, we are not able to correct that.

2. The order of protocol steps is somewhat confusing-the general order is to sample blood, administer, and sample after set time points, correct? If so, this isn't mentioned in step 6 (and in fact you say to euthanize the animal after step 6). Can you clarify this a bit more in step 6?

Thank you for this remark. We have clarified the proper order (blood sampling also after marker administration) lines 320, 321.



Copyright permissions:

1. Figure 2 - modified from:

Jaworska, K. *et al.* Hypertension in rats is associated with an increased permeability of the colon to TMA, a gut bacteria metabolite. *PloS one*. **12** (12), e0189310, (2017).

Link to the editorial policy that allows re-prints:

<http://journals.plos.org/plosone/s/licenses-and-copyright>

2. Figure 3 – modified from:

Bielinska, K. *et al.* High salt intake increases plasma trimethylamine N-oxide (TMAO) concentration and produces gut dysbiosis in rats. *Nutrition*. **54** 33-39, (2018).

Letter from the editor that allows re-prints:

**ELSEVIER LICENSE
TERMS AND CONDITIONS
Jul 30, 2018**

This Agreement between Medical University of Warsaw -- Marcin Ufnal ("You") and Elsevier ("Elsevier") consists of your license details and the terms and conditions provided by Elsevier and Copyright Clearance Center.

License Number	4398671501619
License date	Jul 30, 2018
Licensed Content Publisher	Elsevier
Licensed Content Publication	Nutrition
Licensed Content Title	High salt intake increases plasma trimethylamine N-oxide (TMAO) concentration and produces gut dysbiosis in rats
Licensed Content Author	Klaudia Bielinska,Marek Radkowski,Marta Grochowska,Karol Perlejewski,Tomasz Huc,Kinga Jaworska,Daisuke Motooka,Shota Nakamura,Marcin Ufnal
Licensed Content Date	Oct 1, 2018
Licensed Content Volume	54
Licensed Content Issue	n/a
Licensed Content Pages	7
Start Page	33
End Page	39
Type of Use	reuse in a journal/magazine

Requestor type	author of new work
Intended publisher of new work	Other
Portion	figures/tables/illustrations
Number of figures/tables/illustrations	1
Format	electronic
Are you the author of this Elsevier article?	Yes
Will you be translating?	No
Original figure numbers	Figure 5.
Title of the article	An in vivo method for evaluating the gut-blood barrier and liver metabolism of microbiota products.
Publication new article is in	Jove-Journal of Visualized Experiments
Publisher of the new article	Other
Author of new article	Kinga Jaworska, Tomasz Huc, Marta Gawrys, Maksymilian Onyszkiewicz, Emilia Samborowska, Marcin Ufnal
Expected publication date	Aug 2018
Estimated size of new article (number of pages)	13
	Medical University of Warsaw Zwirki i Wigury 61
Requestor Location	Warsaw, 02-091 Poland Attn: Medical University of Warsaw
Publisher Tax ID	GB 494 6272 12
Customer VAT ID	PL5250005828
Total	0.00 USD

Terms and Conditions

INTRODUCTION

1. The publisher for this copyrighted material is Elsevier. By clicking "accept" in connection with completing this licensing transaction, you agree that the following terms and conditions apply to this transaction (along with the Billing and Payment terms and conditions established by Copyright Clearance Center, Inc. ("CCC"), at the time that you opened your Rightslink account and that are available at any time at <http://myaccount.copyright.com>).

GENERAL TERMS

2. Elsevier hereby grants you permission to reproduce the aforementioned material subject to the terms and conditions indicated.

3. Acknowledgement: If any part of the material to be used (for example, figures) has appeared in our publication with credit or acknowledgement to another source, permission must also be sought from that source. If such permission is not obtained then that material may not be included in your publication/copies. Suitable acknowledgement to the source must be made, either as a footnote or in a reference list at the end of your publication, as follows:

"Reprinted from Publication title, Vol /edition number, Author(s), Title of article / title of chapter, Pages No., Copyright (Year), with permission from Elsevier [OR APPLICABLE SOCIETY COPYRIGHT OWNER]." Also Lancet special credit - "Reprinted from The Lancet, Vol. number, Author(s), Title of article, Pages No., Copyright (Year), with permission from Elsevier."

4. Reproduction of this material is confined to the purpose and/or media for which permission is hereby given.

5. Altering/Modifying Material: Not Permitted. However figures and illustrations may be altered/adapted minimally to serve your work. Any other abbreviations, additions, deletions and/or any other alterations shall be made only with prior written authorization of Elsevier Ltd. (Please contact Elsevier at permissions@elsevier.com). No modifications can be made to any Lancet figures/tables and they must be reproduced in full.

6. If the permission fee for the requested use of our material is waived in this instance, please be advised that your future requests for Elsevier materials may attract a fee.

7. Reservation of Rights: Publisher reserves all rights not specifically granted in the combination of (i) the license details provided by you and accepted in the course of this licensing transaction, (ii) these terms and conditions and (iii) CCC's Billing and Payment terms and conditions.

8. License Contingent Upon Payment: While you may exercise the rights licensed immediately upon issuance of the license at the end of the licensing process for the transaction, provided that you have disclosed complete and accurate details of your proposed use, no license is finally effective unless and until full payment is received from you (either by publisher or by CCC) as provided in CCC's Billing and Payment terms and conditions. If full payment is not received on a timely basis, then any license preliminarily granted shall be deemed automatically revoked and shall be void as if never granted. Further, in the event that you breach any of these terms and conditions or any of CCC's Billing and Payment terms and conditions, the license is automatically revoked and shall be void as if never granted. Use of materials as described in a revoked license, as well as any use of the materials beyond the scope of an unrevoked license, may constitute copyright infringement and publisher reserves the right to take any and all action to protect its copyright in the materials.

9. Warranties: Publisher makes no representations or warranties with respect to the licensed material.

10. Indemnity: You hereby indemnify and agree to hold harmless publisher and CCC, and their respective officers, directors, employees and agents, from and against any and all

claims arising out of your use of the licensed material other than as specifically authorized pursuant to this license.

11. **No Transfer of License:** This license is personal to you and may not be sublicensed, assigned, or transferred by you to any other person without publisher's written permission.

12. **No Amendment Except in Writing:** This license may not be amended except in a writing signed by both parties (or, in the case of publisher, by CCC on publisher's behalf).

13. **Objection to Contrary Terms:** Publisher hereby objects to any terms contained in any purchase order, acknowledgment, check endorsement or other writing prepared by you, which terms are inconsistent with these terms and conditions or CCC's Billing and Payment terms and conditions. These terms and conditions, together with CCC's Billing and Payment terms and conditions (which are incorporated herein), comprise the entire agreement between you and publisher (and CCC) concerning this licensing transaction. In the event of any conflict between your obligations established by these terms and conditions and those established by CCC's Billing and Payment terms and conditions, these terms and conditions shall control.

14. **Revocation:** Elsevier or Copyright Clearance Center may deny the permissions described in this License at their sole discretion, for any reason or no reason, with a full refund payable to you. Notice of such denial will be made using the contact information provided by you. Failure to receive such notice will not alter or invalidate the denial. In no event will Elsevier or Copyright Clearance Center be responsible or liable for any costs, expenses or damage incurred by you as a result of a denial of your permission request, other than a refund of the amount(s) paid by you to Elsevier and/or Copyright Clearance Center for denied permissions.

LIMITED LICENSE

The following terms and conditions apply only to specific license types:

15. **Translation:** This permission is granted for non-exclusive world **English** rights only unless your license was granted for translation rights. If you licensed translation rights you may only translate this content into the languages you requested. A professional translator must perform all translations and reproduce the content word for word preserving the integrity of the article.

16. **Posting licensed content on any Website:** The following terms and conditions apply as follows: Licensing material from an Elsevier journal: All content posted to the web site must maintain the copyright information line on the bottom of each image; A hyper-text must be included to the Homepage of the journal from which you are licensing at <http://www.sciencedirect.com/science/journal/xxxxx> or the Elsevier homepage for books at <http://www.elsevier.com>; Central Storage: This license does not include permission for a scanned version of the material to be stored in a central repository such as that provided by Heron/XanEdu.

Licensing material from an Elsevier book: A hyper-text link must be included to the Elsevier homepage at <http://www.elsevier.com> . All content posted to the web site must maintain the copyright information line on the bottom of each image.

Posting licensed content on Electronic reserve: In addition to the above the following clauses are applicable: The web site must be password-protected and made available only to bona fide students registered on a relevant course. This permission is granted for 1 year only. You may obtain a new license for future website posting.

17. For journal authors: the following clauses are applicable in addition to the above:

Preprints:

A preprint is an author's own write-up of research results and analysis, it has not been peer-reviewed, nor has it had any other value added to it by a publisher (such as formatting, copyright, technical enhancement etc.).

Authors can share their preprints anywhere at any time. Preprints should not be added to or enhanced in any way in order to appear more like, or to substitute for, the final versions of articles however authors can update their preprints on arXiv or RePEc with their Accepted Author Manuscript (see below).

If accepted for publication, we encourage authors to link from the preprint to their formal publication via its DOI. Millions of researchers have access to the formal publications on ScienceDirect, and so links will help users to find, access, cite and use the best available version. Please note that Cell Press, The Lancet and some society-owned have different preprint policies. Information on these policies is available on the journal homepage.

Accepted Author Manuscripts: An accepted author manuscript is the manuscript of an article that has been accepted for publication and which typically includes author-incorporated changes suggested during submission, peer review and editor-author communications.

Authors can share their accepted author manuscript:

- immediately
 - via their non-commercial person homepage or blog
 - by updating a preprint in arXiv or RePEc with the accepted manuscript
 - via their research institute or institutional repository for internal institutional uses or as part of an invitation-only research collaboration work-group
 - directly by providing copies to their students or to research collaborators for their personal use
 - for private scholarly sharing as part of an invitation-only work group on commercial sites with which Elsevier has an agreement
- After the embargo period
 - via non-commercial hosting platforms such as their institutional repository
 - via commercial sites with which Elsevier has an agreement

In all cases accepted manuscripts should:

- link to the formal publication via its DOI
- bear a CC-BY-NC-ND license - this is easy to do
- if aggregated with other manuscripts, for example in a repository or other site, be shared in alignment with our hosting policy not be added to or enhanced in any way to appear more like, or to substitute for, the published journal article.

Published journal article (JPA): A published journal article (PJA) is the definitive final record of published research that appears or will appear in the journal and embodies all value-adding publishing activities including peer review co-ordination, copy-editing, formatting, (if relevant) pagination and online enrichment.

Policies for sharing publishing journal articles differ for subscription and gold open access articles:

Subscription Articles: If you are an author, please share a link to your article rather than the full-text. Millions of researchers have access to the formal publications on ScienceDirect, and so links will help your users to find, access, cite, and use the best available version.

Theses and dissertations which contain embedded PJAs as part of the formal submission can be posted publicly by the awarding institution with DOI links back to the formal publications on ScienceDirect.

If you are affiliated with a library that subscribes to ScienceDirect you have additional private sharing rights for others' research accessed under that agreement. This includes use for classroom teaching and internal training at the institution (including use in course packs and courseware programs), and inclusion of the article for grant funding purposes.

Gold Open Access Articles: May be shared according to the author-selected end-user license and should contain a [CrossMark logo](#), the end user license, and a DOI link to the formal publication on ScienceDirect.

Please refer to Elsevier's [posting policy](#) for further information.

18. For book authors the following clauses are applicable in addition to the above: Authors are permitted to place a brief summary of their work online only. You are not allowed to download and post the published electronic version of your chapter, nor may you scan the printed edition to create an electronic version. **Posting to a repository:** Authors are permitted to post a summary of their chapter only in their institution's repository.

19. Thesis/Dissertation: If your license is for use in a thesis/dissertation your thesis may be submitted to your institution in either print or electronic form. Should your thesis be published commercially, please reapply for permission. These requirements include permission for the Library and Archives of Canada to supply single copies, on demand, of the complete thesis and include permission for Proquest/UMI to supply single copies, on demand, of the complete thesis. Should your thesis be published commercially, please reapply for permission. Theses and dissertations which contain embedded PJAs as part of

the formal submission can be posted publicly by the awarding institution with DOI links back to the formal publications on ScienceDirect.

Elsevier Open Access Terms and Conditions

You can publish open access with Elsevier in hundreds of open access journals or in nearly 2000 established subscription journals that support open access publishing. Permitted third party re-use of these open access articles is defined by the author's choice of Creative Commons user license. See our [open access license policy](#) for more information.

Terms & Conditions applicable to all Open Access articles published with Elsevier:

Any reuse of the article must not represent the author as endorsing the adaptation of the article nor should the article be modified in such a way as to damage the author's honour or reputation. If any changes have been made, such changes must be clearly indicated.

The author(s) must be appropriately credited and we ask that you include the end user license and a DOI link to the formal publication on ScienceDirect.

If any part of the material to be used (for example, figures) has appeared in our publication with credit or acknowledgement to another source it is the responsibility of the user to ensure their reuse complies with the terms and conditions determined by the rights holder.

Additional Terms & Conditions applicable to each Creative Commons user license:

CC BY: The CC-BY license allows users to copy, to create extracts, abstracts and new works from the Article, to alter and revise the Article and to make commercial use of the Article (including reuse and/or resale of the Article by commercial entities), provided the user gives appropriate credit (with a link to the formal publication through the relevant DOI), provides a link to the license, indicates if changes were made and the licensor is not represented as endorsing the use made of the work. The full details of the license are available at <http://creativecommons.org/licenses/by/4.0>.

CC BY NC SA: The CC BY-NC-SA license allows users to copy, to create extracts, abstracts and new works from the Article, to alter and revise the Article, provided this is not done for commercial purposes, and that the user gives appropriate credit (with a link to the formal publication through the relevant DOI), provides a link to the license, indicates if changes were made and the licensor is not represented as endorsing the use made of the work. Further, any new works must be made available on the same conditions. The full details of the license are available at <http://creativecommons.org/licenses/by-nc-sa/4.0>.

CC BY NC ND: The CC BY-NC-ND license allows users to copy and distribute the Article, provided this is not done for commercial purposes and further does not permit distribution of the Article if it is changed or edited in any way, and provided the user gives appropriate credit (with a link to the formal publication through the relevant DOI), provides a link to the license, and that the licensor is not represented as endorsing the use made of the work. The full details of the license are available at <http://creativecommons.org/licenses/by-nc-nd/4.0>. Any commercial reuse of Open Access

articles published with a CC BY NC SA or CC BY NC ND license requires permission from Elsevier and will be subject to a fee.

Commercial reuse includes:

- Associating advertising with the full text of the Article
- Charging fees for document delivery or access
- Article aggregation
- Systematic distribution via e-mail lists or share buttons

Posting or linking by commercial companies for use by customers of those companies.

20. Other Conditions:

v1.9

Questions? customercare@copyright.com or +1-855-239-3415 (toll free in the US) or +1-978-646-2777.

SUPPLEMENTAL MATERIAL

1. Evaluation of TMA, TMAO and indoxyl sulfide concentration using liquid chromatography coupled with triple-quadrupole mass spectrometry.

Chemicals

Following chemicals were used: LC-MS grade - acetonitrile, 25% ammonium hydroxide and formic acid, HPLC gradient grade Acetone, trimethylamine N-oxide dihydrate (TMAO), trimethylamine hydrochloride (TMA), indoxyl sulfate potassium salt, trimethylamine- $^{13}\text{C}_3$, ^{15}N hydrochloride (TMA- $^{13}\text{C}_3$, ^{15}N IS for TMA), indoxyl-4,5,6,7- D_4 sulfate potassium salt (IS for indoxyl sulfate). Trimethylamine N-oxide D_9 (TMAO- D_9 IS for TMAO) solution was prepared in methanol and stored at -20°C . Ultra-pure water was obtained from water purification system.

Sample preparation

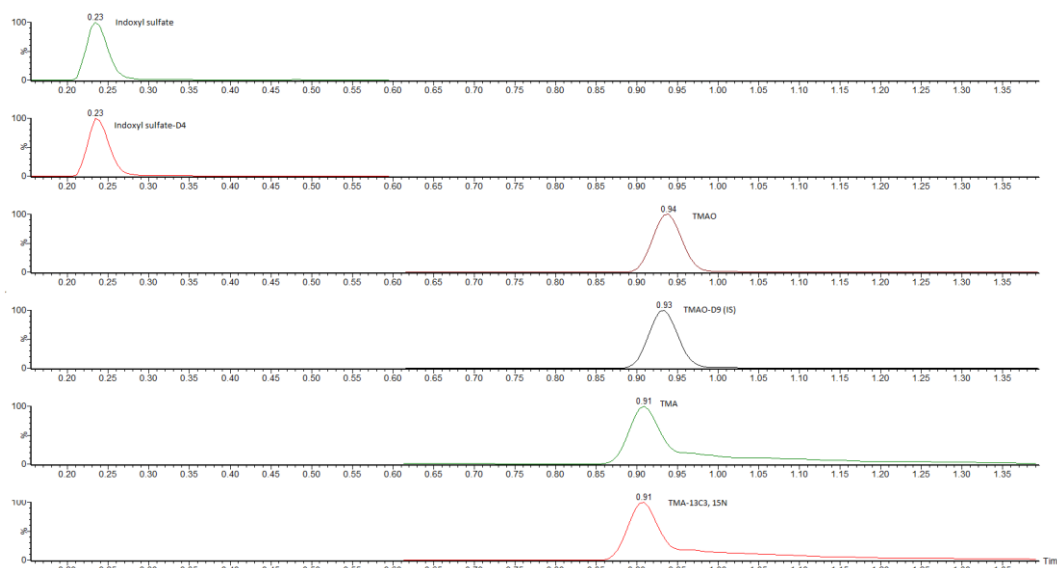
Sample preparation was performed as follows: 10 μL of sample (plasma, urine, stool extract, calibrators) was transferred into 1.5mL test tube, then 100 μL of acetone containing internal standards was added for protein precipitation and analytes extraction. After the mixture was vortexed and centrifuged. A 10 μL of aliquot was injected into apparatus.

Analyzes

The instrumentation consisted of a Waters Acquity Ultra Performance Liquid Chromatograph coupled with Waters TQ-S triple-quadrupole mass spectrometer. For the instrument control and data acquisition Waters MassLynx software was used. Waters TargetLynx was used to processed data. Chromatographic separation was performed using a Waters HILIC column (1.7 μm , 2.1 mm x 50 mm) thermostatted at 70°C . Mobile phase A was Mili-Q water with addition of 1 mL of 25% NH_4OH per 1000 mL of water, and mobile phase B was pure acetonitrile. The flow rate of mobile phase was set at 0.5 mL/min. The gradient scheme is presented in Supplemental Table 1. The total time of separation was 1.7 min. The injection volume was 10 μL . The chromatogram is presented in Supplemental Figure 1.

Supplemental Table 1. LC gradient

Time [min]	Flow [mL/min]	%A	%B
-	0.5	5.0	95.0
1.2	0.5	98.0	2.0
1.3	0.5	5.0	95.0



Supplemental Figure 1. Chromatograms of TMA, TMAO, indoxyl sulfate and corresponding internal standards

The mass spectrometer operated in multiple-reaction monitoring (MRM)- negative electrospray ionization (ESI) mode for indoxyl sulfate and in multiple-reaction monitoring (MRM)- positive electrospray ionization (ESI) mode. Mass spectrometer optimized settings are presented in Supplemental Table 2. MRM transitions, cone voltages, collision energies and retention times used in described methods are presented in Supplemental Table 3. The first MRM transition of each compound served as a quantitative transition, the second as a confirmation transition.

The calibration curve ranges were 0.02-20 µg/mL for TMAO, 0.1-120 µg/mL for TMA and 0.1- 50 µg/mL for indoxyl sulfate. Mean R2 coefficients of a calibration curves from 6 calibrators was not lower than 0.99.

Supplemental Table 2. Mass spectrometer parameters

Parameter	ESI (-)	ESI (+)
Capillary voltage [kV]	1.5	2.5
Source temperature [°C]	150	150
Desolvation temperature [°C]	380	380
Cone gas flow [l/h]	150	150
Desolvation gas flow [l/h]	300	300
Nebuliser gas pressure [Bar]	7.0	7.0

Supplemental Table 3. Monitored transitions, cone voltages, collision energies, retention times of analyzed compounds

Analyte	MRM transition	Cone voltage	Collision energy	Retention time [min]
TMAO	76,076>57,97 (*)	15	20	0.94
	76,076>41,95	15	20	
TMAO- D ₉ (IS)	85,13>68,2 (*)	20	10	0.93

	85,13>66,2	20	14	
TMA	60,08>45,05 (*)	20	10	0.91
	05760,08>44,05	20	34	
TMA- ¹³ C ₃ , ¹⁵ N (IS)	64,09>48,04 (*)	20	18	0.91
	64,09>47,05	20	18	
Indoxyl sulfate	212,0>79,96 (*)	30	20	0.23
	212,0>132,04	30	20	
Indoxyl sulfate – D ₄	216,11>135,76 (*)	30	20	0.23

2. Evaluation of short chain fatty acids (SCFA) concentration using liquid chromatography coupled with triple-quadrupole mass spectrometry.

Chemicals

Short fatty acids standards (acetic acid-AA (C2), propionic acid- PA (C3), butyric acid-BA (C4), isobutyric acid-IBA (C4), valeric acid- VA (C5), isovaleric acid-IVA (C5), 2-methylbutyric acid- 2MBA (C5), caproic acid- CA (C6), 3-methylvaleric acid- 3MVA (C6), 4-methylvaleric acid- 4MVA (C6)), short fatty acids isotope-labeled standards (acetic acid-¹³C₂, propionic acid-D₆, butyric acid-¹³C₂, isobutyric acid-D₇, valeric acid-D₉), pyridine anhydrous, 2-nitrophenylhydrazine (3NPH·HCl), N-(3-dimethylaminopropyl)-N'-ethylcarbodiimide (EDC·HCl). All SCFAs stock solutions were prepared in 50% acetonitrile and stored in -20 °C. LC-MS grade acetonitrile, HPLC grade acetonitrile, HPLC grade methanol, and formic acid. Ultra-pure water was produced by a water purification system.

Sample preparation

Solutions of 400 mM 3NPH and 240 mM EDC-6% pyridine were freshly prepared in 50% aqueous acetonitrile. Derivatization procedure was as follows: 40 µL of plasma, stool extract and calibration samples were mixed with 80 µL methanol (containing internal standards) on 96-well 2 mL sample plate. After, 20 µL of 3NPH solution and 20 µL of EDC- pyridine solution were added. The mixture was incubated in room temperature for 30 min. Next, solution was diluted to 1 mL with 15% aqueous acetonitrile, centrifuged and aliquot was injected into apparatus.

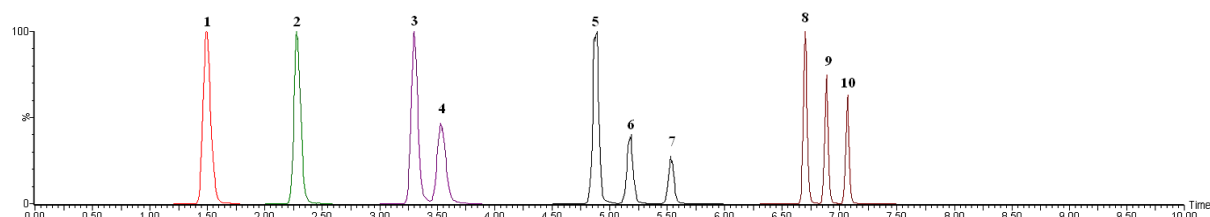
Analyzes

The instrumentation consisted of a Waters Acquity Ultra Performance Liquid Chromatograph coupled with Waters TQ-S triple-quadrupole mass spectrometer. For the instrument control and data acquisition Waters MassLynx software was used. Waters TargetLynx was used to processed data.

The analytes separation were performed using a Waters BEH C18 column (1.7 µm, 2.1 mm x 50 mm) and Waters BEH C18 guard column (1.7 µm, 2.1 mm x 5 mm). Mobile phase A consisted of 1 mL of formic acid in 1 L of water, and mobile phase B consisted of 1 mL of formic acid in acetonitrile. The flow rate of mobile phase was set at 0.6 mL/min. The column temperature was 60 °C, the autosampler was kept at 5 °C. The gradient scheme is presented in Supplemental Table 4. The injection volume was 10 µL. The chromatogram is presented in Supplemental Figure 2.

Supplemental Table 4. LC gradient

Time [min]	Flow [mL/min]	%A	%B
-	0.6	85.0	15.0
2.0	0.6	80.0	20.0
7.0	0.6	60.0	40.0
7.5	0.6	0.0	100.0
8.0	0.6	0.0	100.0
8.5	0.6	80.0	20.0
9.5	0.6	85.0	15.0



Supplemental Figure 2. Chromatograms of ten SCFAs: 1- AA, 2- PA, 3- IBA, 4- BA, 5- 2MBA, 6- IVA, 7- VA, 8- 3MVA, 9- 4MVA, 10-CA

The mass spectrometer operated in multiple-reaction monitoring (MRM) - negative electrospray ionization (ESI) mode. For all analyzed compounds mass spectrometer optimized settings were as follows: capillary voltage = 2.25 kV, desolvation temperature = 550 °C, desolvation gas flow = 550 L/h, cone gas flow = 150 L/h, nebuliser gas pressure = 7.0 bar, source temperature = 150 °C. MRM transitions, cone voltages, collision energies and retention times used in described methods are presented in Supplemental Table 5. The first MRM transition of each compound served as a quantitative transition, the second as a confirmation transition.

Supplemental Table 5. Monitored transitions for SCFAs derivatives, cone voltages, collision energies, retention times of analyzed compounds

Analyte	MRM transition	Cone voltage	Collision energy	Retention time [min]
AA	194.1>137.1 (qt)	20	20	1.49
	194.1>152.1	20	20	
AA- ¹³ C ₂ (IS for AA)	196.1>137.1 (qt)	20	20	1.49
	196.1>152.1	20	20	
PA	208.1>137.1 (qt)	20	15	2.29
	208.1>165.1	20	20	
PA- D ₆ (IS for PA)	212.1>137.1 (qt)	20	15	2.26
	212.1>165.1	20	20	
BA	222.1>137 (qt)	20	20	3.54
	222.1>152.1	20	20	

BA- ¹³ C ₂ (IS for BA)	224.1>137.1 (qt)	20	20	3.53
	224.1>152.1	20	20	
IBA	222.1>137 (qt)	20	20	3.31
	222.1>152.1	20	20	
IBA- D ₇ (IS for IBA)	229.1>137.1 (qt)	20	20	3.24
	229.1>152.1	20	20	
2MBA	236.2>137.1 (qt)	20	20	4.88
IVA	236.2>152.1	20	20	5.18
VA				5.54
VA- D ₉ (IS for VA, CA, 3MVA and 4MVA)	244.2>137.1 (qt)	20	20	5.45
	244.2>152.1	20	20	
IVA-D ₉ (IS for IVA and 2 MBA)	245.2>137.1 (qt)	20	20	5.08
	245.2>152.1	20	20	
3MVA	252.2>152.1 (qt)	20	20	6.7
4MVA	252.2>137	20	20	6.89
CA				7.06

The concentration of short fatty acids was calculated using calibration standard mix derived from a series of calibrator samples by spiking standard stock solutions into water. Calibration curves for SCFAs were generated by compared a ratio of the peak area of the analyzed compound to the peak of the internal standard against known analyte concentrations. Stool extract samples and plasma samples were compared with a obtained calibration curve. Mean R² coefficients of a calibration curves from 6 calibrators was not lower than 0.99. The linear ranges are presented in Supplemental Table 6. The method showed a good intra- and interassay precision below 10%.

Supplemental Table 6. Linearity for stool (S) and plasma (P) samples

Analyte	Linear range [uM]
AA	P: 10-1000
	S: 250-5000
PA	P: 1-250
	S: 125-4000
BA	P: 1-250
	S: 50-4000

IBA	P: 0.1-10 S: 5-1000
2MBA	P: 0.1-50 S: 1-250
IVA	P: 0.1-10 S: 5-500
VA	P: 0.1-50 S: 5-1000
3MVA	P: 0.1-50 S: 0.2-50
4MVA	P: 0.1-50 S: 0.2-1000
CA	P: 0.1-50 S: 0.2-1000