

Journal of Visualized Experiments

A novel in vitro model of blast traumatic brain injury

--Manuscript Draft--

Article Type:	Methods Article - JoVE Produced Video
Manuscript Number:	JoVE58400R3
Full Title:	A novel in vitro model of blast traumatic brain injury
Keywords:	Blast traumatic brain injury, primary blast injury, blast-induced neurotrauma, shock tube, in vitro model, TBI, organotypic hippocampal slice cultures,
Corresponding Author:	Robert Dickinson Imperial College London Faculty of Medicine London, London UNITED KINGDOM
Corresponding Author's Institution:	Imperial College London Faculty of Medicine
Corresponding Author E-Mail:	r.dickinson@ic.ac.uk
Order of Authors:	Rita Campos-Pires Amina Yonis Warren Macdonald Katie Harris Christopher J Edge Peter F Mahoney Robert Dickinson
Additional Information:	
Question	Response
Please indicate whether this article will be Standard Access or Open Access.	Open Access (US\$4,200)
Please indicate the city, state/province, and country where this article will be filmed . Please do not use abbreviations.	Imperial College London, Department of Surgery & Cancer, c/o Biophysics, 4th floor, Sir Ernst Chain Building, South Kensington Campus, Exhibition Road, LONDON SW7 2AZ

TITLE:

A Novel *In Vitro* Model of Blast Traumatic Brain Injury

AUTHORS AND AFFILIATIONS:

Rita Campos-Pires^{1, 2}, Amina Yonis¹, Warren Macdonald^{2,3}, Katie Harris¹, Christopher J Edge^{4,5}, Peter F Mahoney⁶, Robert Dickinson^{1, 2}

¹ Anaesthetics, Pain Medicine and Intensive Care Section, Department of Surgery and Cancer, Imperial College London, London, United Kingdom

² Royal British Legion Centre for Blast Injury Studies, Department of Bioengineering, Imperial College London, London, United Kingdom

³ Department of Bioengineering, Imperial College London, London, United Kingdom

⁴ Department of Life Sciences, Imperial College London, London, United Kingdom

⁵ Department of Anaesthetics, Royal Berkshire Hospital NHS Foundation Trust, London Road, Reading, United Kingdom

⁶ Royal Centre for Defence Medicine, Medical Directorate Joint Force Command, Birmingham, United Kingdom

Corresponding Author:

Robert Dickinson

r.dickinson@imperial.ac.uk

Tel: +44 (0) 20 7594 7633

Email Addresses of Co-Authors:

Rita Campos-Pires (r.santos-e-sousa12@imperial.ac.uk)

Amina Yonis (aminayonis@live.co.uk)

Warren Macdonald (w.macdonald@imperial.ac.uk)

Katie Harris (KEHarris@hotmail.co.uk)

Christopher J Edge (c.edge@imperial.ac.uk)

Peter F Mahoney (profpfm62@me.com)

KEYWORDS:

Blast traumatic brain injury, primary blast injury, blast-induced neurotrauma, shock tube, *in vitro* model, TBI, organotypic hippocampal slice cultures

SUMMARY:

This paper describes a novel model of primary blast traumatic brain injury. A compressed-air driven shock tube is used to expose *in vitro* mouse hippocampal slice cultures to a single shock wave. This is a simple and rapid protocol generating a reproducible brain tissue injury with a high throughput.

ABSTRACT:

Traumatic brain injury is a leading cause of death and disability in military and civilian populations. Blast traumatic brain injury results from the detonation of explosive devices,

however, the mechanisms that underlie the brain damage resulting from blast overpressure exposure are not entirely understood and are believed to be unique to this type of brain injury. Preclinical models are crucial tools that contribute to better understand blast-induced brain injury. A novel *in vitro* blast TBI model was developed using an open-ended shock tube to simulate real-life open-field blast waves modelled by the Friedlander waveform. C57BL/6N mouse organotypic hippocampal slice cultures were exposed to single shock waves and the development of injury was characterized up to 72 h using propidium iodide, a well-established fluorescent marker of cell damage that only penetrates cells with compromised cellular membranes. Propidium iodide fluorescence was significantly higher in the slices exposed to a blast wave when compared with sham slices throughout the duration of the protocol. The brain tissue injury is very reproducible and proportional to the peak overpressure of the shock wave applied.

INTRODUCTION:

Blast traumatic brain injury (TBI) is a complex type of brain injury that results from the detonation of explosive devices^{1,2}. Blast TBI has emerged as a major health issue in the last 15 years with the recent military conflicts in Iraq and Afghanistan^{2,3}. Overall, it is estimated that between 4.4% and 22.8% of soldiers returning from Iraq and Afghanistan have suffered mild TBI, a large proportion of these being blast-related, with a higher reported rate of blast TBI in the US forces compared with the UK forces^{4,5}.

The use of improvised explosive devices has been responsible for most of the blast-associated trauma, including blast TBI, endured by the military forces⁶. The detonation of an explosive charge results in a very rapid, but transient, increase in pressure occurring in milliseconds. The resulting overpressure wave from a real-life free-field explosion is modelled by the Friedlander function, with a sudden rise to the peak overpressure followed by an exponential decay^{7,8}. The range of extreme forces and their rapid time course seen in a blast event are usually not experienced in non-blast traumas^{1,9}. The peak overpressure, which is the maximum pressure of the waveform, and the duration of the positive wave are believed to be important contributors to blast brain injury and these depend on the explosive charge and the distance from the detonation^{10,11}.

The trauma that results from an explosive blast is classified as four discrete components, designated as primary, secondary, tertiary and quaternary blast injury^{10,12-14}. Each of these components is associated with specific mechanisms of injury. Primary blast injury results from the direct action of the overpressure wave on organs and tissues^{2,13}. Secondary blast injury results from the impact of projectile fragments, causing penetrating and non-penetrating wounds^{2,15}. Tertiary blast injury occurs when the victim's body is displaced against the ground or surrounding objects and is associated with acceleration/deceleration forces^{1,10,13}. Quaternary blast injury describes a heterogeneous group of injuries directly related to the explosion not covered by the first three injury mechanisms described^{12,13}. It includes (but is not limited to) thermal injury, smoke inhalation, radiation, electromagnetic waves, and adverse psychological effects^{13,15}. Most blast-associated TBI results directly from the first three mechanisms of injury, while the quaternary mechanisms of blast injury are usually associated with systemic injury¹³.

The effects of acceleration/deceleration forces (e.g., whiplash), blunt and penetrating traumatic brain injury have been extensively studied in relation to other types of TBI (e.g., motor vehicle crashes, falls, ballistic injury). However, the primary blast overpressure wave is unique to blast injury and its effects on brain tissue are much less well understood¹⁶. The primary blast injury mechanisms, associated with an overpressure wave, are the first of the mechanical forces to interact with the brain.

Numerous preclinical TBI models have been developed over the last decades that have been invaluable to understand blast TBI mechanisms of injury and pathophysiology and investigate potential new treatments, which would otherwise be impossible to do exclusively in the clinical setting¹⁷⁻¹⁹. Although no single preclinical model can reproduce the complexity of clinical blast brain trauma, typically different preclinical TBI models replicate distinct aspects of human TBI. The damaging action of the forces associated with a blast explosion can be studied in isolation or in combination in both *in vitro* and *in vivo* blast TBI models. *In vitro* models have the advantage of allowing a tight control of the experimental environment (tissue physiologic conditions and injury biomechanics), which reduces biological variability and improves reproducibility, permitting the study of specific molecular cascades without the confounders present in animal models²⁰. Our goal was developed an *in vitro* model to investigate the effects of primary blast on brain tissue. We aimed to develop a model with a supersonic shockwave with a Friedlander waveform representative of a free-field explosion such as that produced by an improvised explosive device (IED).

PROTOCOL:

The experiments described in this manuscript were done in compliance with the United Kingdom Animals (Scientific procedures) Act of 1986 and have been approved by the Animal Welfare & Ethical Review Body of Imperial College London. Animal care was in compliance with the institutional guidelines of Imperial College London.

1. Hippocampal Organotypic Slice Preparation and Culture

Note: This protocol allows the production of organotypic hippocampal slices according to the interface method described by Stoppini and colleagues with minor modifications²¹⁻²³. Ideally, no more than three animals should be euthanized and dissected in one session to ensure each step is done swiftly and to avoid compromising the quality of the slices. Use aseptic technique throughout.

1.1. Ensure the following steps are taken before starting the dissection protocol.

1.1.1. Prepare and filter sterilize all solutions in advance using a 0.22 μ m filter.

1.1.2. Keep the solutions at 4 °C during the storage and throughout the brain dissection and hippocampal slice preparation by keeping the storage containers and Petri dishes on a metal heat sink sitting on wet ice at all times.

1.1.3. Autoclave all metal instruments, rings and paper tissues.

1.1.4. Ensure all instruments and material to be used for each step of the protocol are ready to use, laid out in advance and sprayed with 70% ethanol. Ensure that they are allowed to cool down and dry.

1.2. Euthanize a 5-7 day-old C57BL/6N mouse pup by cervical dislocation and briefly wipe the whole skin surface with sterile paper tissue soaked in 70% ethanol. Pat the skin dry and decapitate the pup using Mayo scissors.

1.3. Cut the scalp skin with iris scissors along the midline of the head starting in the occipital region and ending near the snout and retract it laterally.

1.4. Insert the tip of Vannas scissors in the foramen magnum and make two small lateral cuts on the bone along the transverse sinuses, then cut the skull along the midline up to the olfactory bulb and make two small cuts perpendicularly to the midline in this region.

1.5. Using fine point curved forceps, retract the flaps of bone laterally away from the midline, carefully remove the brain with a small spatula and transfer it to a 90 mm silicone elastomer-coated Petri dish containing "dissection medium".

Note: Dissection medium is Gey's balanced salt solution (5 mg/mL D-glucose, 1% antibiotic-antimycotic solution, 10,000 units/mL penicillin, 10 mg/mL and 25 µg/mL amphotericin B).

1.6. Remove the cerebellum and separate the cerebral hemispheres along the midline using a razor blade. Use a spatula to transfer the cerebral hemispheres to a new 90 mm silicone elastomer-coated Petri dish filled with fresh ice-cold dissection medium. If more than one animal is to be used in one session, repeat Steps 1.2-1.6.

1.7. Under a stereomicroscope, cut the olfactory bulb and the tip of the frontal cortex with a razor blade and separate the cerebral cortex from the rest of the cerebral tissue using fine tip forceps. This step leaves the hippocampus exposed on the medial surface of the cortical tissue. From this step onward, use a laminar flow tissue culture hood (ultraviolet sterilized and cleaned with 70% ethanol solution).

1.8. Apply ice-cold dissection medium to a flat plastic chopping disk and, using a spatula, position the brain tissue on the disk such that the medial surface of the cortex is facing up and the axis of the hippocampus is perpendicular to the axis of the chopping blade.

1.9. Remove as much as possible of the dissection medium from the chopping disk using a fine tip Pasteur pipette.

1.10. Cut the brain into 400 µm slices using a tissue chopper at a 50% chopping speed and force.

Note: It is very important that this step is done as quickly as possible as the brain tissue is not submerged in dissection medium.

1.11. Replace the dissection medium in the silicone elastomer-coated Petri dish with fresh ice-cold medium.

1.12. Once the tissue chopper is finished, carefully submerge the brain tissue in fresh dissection medium, and transfer the cut tissue back to the 90 mm silicone elastomer-coated Petri dish using a straight blade scalpel.

1.13. Under a stereomicroscope, carefully separate the cortical slices using fine tip forceps. For each slice, inspect the hippocampus for morphology and potential tissue damage resulting from the dissection or slicing.

1.14. Separate the hippocampi from the entorhinal cortex and from the fimbria using fine tip forceps and small Vannas scissors. Typically, around 6 to 8 hippocampal slices are generated per hemisphere.

1.15. Transfer up to 6 hippocampal slices to a tissue culture insert using a cut Pasteur pipette and place it inside a 35 mm Petri dish. Ensure that the slices are spread a few millimeters apart (this will ensure each slice can be imaged individually).

1.16. Immediately add ice-cold “growth medium” to the bottom of each Petri dish, under the tissue culture insert, just below the top of the tissue culture insert rim.

Note: Growth medium contains 50% Minimum essential medium Eagle, 25% Hanks’ balanced salt solution, 25% horse serum, 5 mg/mL D-glucose, 2 mmol/L L-glutamine, 1% antibiotic-antimycotic solution, and 10 mmol/L HEPES, titrated to pH 7.2 with sodium hydroxide.

1.17. Change the growth medium the day after the dissection and then every 2 to 3 days thereafter (use growth medium at 37 °C). Ensure that the growth medium is added in sufficient amount, but not so much that it overflows over the tissue culture insert membrane, which could compromise the viability of the tissue slices.

1.18. Keep the tissue slices in a humidified incubator at 37 °C with 5% carbon dioxide in air for 12 to 14 days prior to being used in experiments.

2. Preparation of the Hippocampal Organotypic Slices for the Experimental Blast TBI Protocol

Note: All the steps of this section, except imaging, take place in a laminar flow tissue culture hood.

2.1. Insert the custom-made stainless-steel rings into a 6 well plate (one per well).

Notes: The rings have a rim with a notch (which should sit in the 12 o'clock position) and fit snugly inside the wells, while the tissue culture inserts fit easily in this rim. Ensure that the rings are washed with a bactericidal disinfectant, thoroughly rinsed with purified water, autoclaved and allowed to cool down in advance.

2.2. Fill the well of the 6-well plate with pre-warmed (37 °C) serum-free "experimental medium" with propidium iodide.

Note: Experimental medium with propidium iodide is: 75% Minimum essential medium Eagle, 25% Hanks' balanced salt solution, 5 mg/mL D-glucose, 2 mmol/L L-glutamine, 1% antibiotic-antimycotic solution, 10 mmol/L HEPES and 4.5 µmol/L propidium iodide, titrated pH to 7.2 with sodium hydroxide.

2.3. Ensure that the level of the medium does not reach above the notch of the ring. Transfer the 6-well plate with the rings back to the incubator for 1 h to ensure that the medium is at 37 °C immediately before the tissue culture inserts are transferred.

2.4. Transfer the tissue culture inserts with the organotypic slices from the 35 mm Petri dishes into the 6-well plate with the rings and the experimental medium with forceps.

2.5. Make a dot on the insert rim in the 3 o'clock position with a permanent marker pen.

Note: The inserts are going to be removed from the 6-well plate during the experiment and this step facilitates returning the insert to its original position after the shock wave exposure and to easily keep track of each slice throughout the protocol.

2.6. Label each 6-well plate with a unique name & date and make a map of the wells of each plate, naming each well (*e.g.*, A, B, C, *etc.*) and each slice in each well (*e.g.*, 1, 2, 3, *etc.*), so that each slice has a unique identifier (*e.g.*, A1, A2, A3, *etc.*).

2.7. Transfer the 6-well plate to the incubator for 1 h to ensure the slices are at 37 °C immediately before imaging.

Note: Avoid overflow of medium or any bubbles of air underneath the tissue culture insert membrane, which could compromise the viability of the slices.

2.8. 1 h after transferring to experimental medium, image each slice individually using a fluorescence microscope (2X objective, NA 0.06) fitted with an appropriate excitation (BP 535/50 nm) and emission (LP 610 nm) filter to assess slice health before the injury protocol is carried out.

Notes: The slices that exhibit areas of dense red staining at this stage should be considered to present compromised viability and should be excluded from further analysis (these typically represent less than 10% of the total number of slices generated). Ensure that imaging is

performed in a sequential manner and as swiftly as possible to minimize the time that the slices are outside the incubator (typically 6 wells should take just under 30 min to image).

2.9. Keep the lid of the 6-well plate on at all times. Some condensation may build up on the inside of the lid. If this happens, briefly use a hairdryer on the low setting.

2.10. Ensure that all imaging conditions are identical on different days and between experiments.

Note: The aim of imaging is to quantify the tissue fluorescence, hence this step is important to ensure the reproducibility of the results and allow the comparison of the data obtained.

3. Submersion and Transport of the Tissue Culture Inserts with the Hippocampal Organotypic Slices

3.1. Immediately after imaging, in a laminar flow hood, take one tissue culture insert out of the 6-well plate using forceps.

3.2. Carefully transfer the insert to a sterile polyethylene bag (3" x 5") pre-filled with 20 mL of warm (37 °C) experimental medium freshly bubbled with 95% oxygen and 5% carbon dioxide.

Note: Ensure that the oxygen and carbon dioxide enriched experimental medium was bubbled for at least 40 min with 95% oxygen and 5% carbon dioxide using a scintered-glass bubbler inside a Dreschel bottle and transferred into the sterile polyethylene bags inside a laminar flow tissue culture hood using a 20 mL syringe with a bacterial filter and a sterile filling tube (127 mm) attached. Seal the bags immediately and transfer then to a 37 °C incubator for at least 1 h before the tissue culture insert transfer.

3.3. Ensure that each sterile bag is correctly labelled (with the plate and well identification). Repeat this step for each tissue culture insert. Exclude the air bubbles carefully upon sealing the sterile bags (done securely by twisting the top of the bags and by applying a plastic clamp).

3.4. Return the sterile bags with the tissue culture inserts and the 6-well plates with experimental medium into the 37 °C incubator.

3.5. After 1 h, carefully pack the sterile bags with the tissue culture inserts in plastic boxes inside a thermo-regulated box filled with de-ionized water at 37 °C in order to keep the organotypic slices at physiologic temperature throughout the shock wave exposure protocol.

4. Preparation of the Shock Tube and Hippocampal Organotypic Slice Shock Wave Exposure

4.1. Wear steel-toe protective boots, a laboratory coat and gloves during the preparation of the shock tube and the shock wave exposure.

4.2. Bolt the sterile bag holder frame to the shock tube distal flange, ensuring that the central hole is aligned with the shock tube outlet (using a blanking rod).

4.3. Mount two pressure transducers radially: sensor 1, in the middle part of the driven section and sensor 2 in the distal flange of the shock tube (**Figure 1A**). Connect the pressure transducers to an oscilloscope through a current source power unit.

4.4. Ensure that all shock tube release valves and flow controls are closed.

4.5. Open the external compressed air line and charge the solenoid valve to 2.5 bar.

4.6. Open the compressed air cylinder safety valve and slowly open the pressure regulator to increase the pressure to approximately 5 bar.

Note: The pressure set for this regulator should be slightly above the highest diaphragm bursting pressure.

4.7. Prepare the diaphragms by cutting 23 μm -thick polyester sheets into 10 x 10 cm squares. Prepare the handles using autoclave tape and sticking them to the top and bottom of each diaphragm.

4.8. Position one diaphragm (single slot of the double breech – single diaphragm configuration) or two diaphragms (both slots of the double breech – double diaphragm configuration) in the breech (**Figure 1B**).

4.9. Center the diaphragms, and clamp them using four M24 bolts and nuts, fastening them sequentially in a diagonally symmetric way, and ensuring that the diaphragms are wrinkle-free.

4.10. Clamp each sterile bag individually in vertical position on the holder frame, ensuring that the surface of the tissue culture inserts with the organotypic hippocampal slices is facing the shock tube outlet and the tissue culture insert is centered inside the sterile bag (**Figure 1C**). Make sure that the sterile bag is securely clamped all around to ensure firm and even immobilization.

4.11. Wear ear defenders and safety spectacles when pressuring the shock tube. Switch on the current source power unit and oscilloscope to acquire the shock wave data (an acquisition rate of 50 mega-samples/s, record length 20 ms, 1 million points) and close solenoid valve.

4.12. Using the flow control knob on the shock tube control panel, slowly pressurize the driver volume section of the shock tube for single diaphragm configuration or both the driver volume section and the double breech section of the shock tube for double diaphragm configuration.

Notes: For single diaphragm configuration, the burst pressure will depend only on the diaphragm material and thickness and the diaphragm will rupture spontaneously once the material bursting

pressure is reached. For double diaphragm configuration, the bursting pressure will also depend on the gas pressure differential in both the driver and the double breech chambers and, for the diaphragms to burst in a controlled way, the double breech safety valve is opened manually once the target pressures are reached.

4.13. As soon as the diaphragm ruptures (producing a loud noise), quickly close the compressed air flow using the flow knob and open the solenoid valve.

Note: The total volume of the driver section can be modified by the insertion of blanking segments, allowing a wider range of shock wave peak overpressure and durations to be obtained. The ideal combination of shock wave parameters should be enough to cause tissue injury but not so high that it causes tissue culture insert or sterile bag distortion or rupture.

4.14. Expose each sterile bag with a tissue culture insert to a single shock tube wave and return it immediately to the thermo-regulated box before a new sterile bag is taken from the box and clamped on the holder frame. Ensure that Steps 4.10-4.14 are performed as smoothly and swiftly as possible (within a few minutes) to prevent the experimental medium cooling down, as temperatures below 37 °C may interfere with injury development.

4.15. Once all tissue culture inserts have been exposed to a shock wave (or sham protocol), return the tissue culture inserts to the original 6-well plate and to their respective well (inside a laminar flow tissue culture hood) and return to the incubator.

4.16. Keep the 6-well plate in the incubator with 5% carbon dioxide in air at 37 °C until further imaging.

4.17. Include sham controls for each experiment, together with the slice shock wave exposure.

Note: Sham slices are treated identically to the slices exposed to a shock wave (sealed in the sterile bags with experimental medium, transported to the shock tube laboratory in the same thermo-regulated box and suspended on the metal frame for an equivalent period of time) but the shock tube is not fired.

5. Hippocampal Organotypic Slice Injury Quantification

5.1. At 24 h, 48 h and 72 h, image the slices as described in Steps 2.8 and 2.9.

5.2. After imaging at 72 h post shock wave exposure, discard the tissue following local biological waste protocols and disinfect and autoclave the metal rings.

REPRESENTATIVE RESULTS:

The shock tube used in this method allows the generation of overpressure transients that simulate real-life open field explosions modelled by the Friedlander function^{7,8}. Supersonic shockwaves with a velocity of 440 m/s (Mach 1.3) were obtained (**Figure 1A**). The waveform data

reported is from sensor 2, positioned radially at the end of the driven section of the shock tube.

Using the protocol described above, organotypic hippocampal slice cultures exposed to a single shock wave (**Figure 2A**) develop significant injury quantified using propidium iodide, a highly polar fluorescent dye that only penetrates the cells with compromised cellular membranes^{24,25} (**Figure 2B, C**).

Even under optimal conditions, and consistent to other OHSC published models^{21,22}, there is a low level of background propidium iodide fluorescence due, in part, to minor damage resulting from the inherent tissue manipulations (such as media changes during the culture period or removal from the incubator for imaging). This blast TBI protocol involves substantial manipulation that includes the submersion of the slices in medium inside sterile bags and a considerable degree of handling during the shock wave exposure protocol (*e.g.*, clamping the sterile bags to the holder frame). However, if all steps are performed carefully, this additional manipulation does not have an impact on the underlying health of the OHSC as no significant differences were seen between a control group of slices kept in the 6-well plates at all times (*i.e.*, the inserts were not submerged or handled) and the sham group, which included slices that were submerged inside sterile bags clamped to the shock tube (**Figure 2B**).

The two shock waves chosen, at 50 kPa and 55 kPa peak overpressure, produced significant ($p<0.05$ and $p<0.0001$, respectively) and reproducible injury when compared to the uninjured sham slices at all time-points after the blast exposure protocol (**Figure 2B**) without causing any damage to the tissue culture inserts or the sterile bags. In order to determine the sensitivity of the model to small differences in peak-overpressure, we decided to select values that were different by ~10 %. These results also show that, as expected, the injury resulting from 55 kPa is higher than that after a 50 kPa shock wave.

The data are expressed as mean \pm standard error of the mean. Significance was assessed using a 2-way repeated measures analysis of variance using Holm-Sidak *post hoc* test. Factor 1 was group (control, sham, blast) and factor 2 was time after the injury (-1 h, 24 h, 48 h and 72 h), where factor 1 was the repeated factor. The adjustment of p value for multiple comparisons was used. P values of less than 0.05 were taken to indicate a significant difference between groups. Statistical tests were implemented using a graphing and statistics software package.

FIGURE LEGENDS:

Figure 1. Schematic of the shock tube device with the sterile bag holder frame. (A). The shock tube is a 3.8 m long stainless-steel tube, made of three 1.22 m long sections, connected by gaskets and flanges, with an internal diameter of 59 mm. (B) Inset shows the double breech assembly. One or two Mylar diaphragms can be clamped in the assembly with seal provided by rubber o-rings. (C) Sterile bag holder frame. The body of the frame consists of two metal plates with a centered circular hole (59 mm diameter) that aligns with the shock tube outlet. Two thin (4 mm) sheets of silicone elastomer are fitted between the two metal plates. The purpose of these sheets is to provide an even and non-slippery surface to clamp the sterile bags. The distance between the bag and the outlet of the shock tube is 7 cm.

Figure 2. Typical shockwave and resulting injury in organotypic hippocampal slice cultures. (A) Representative example of shock wave obtained using 23 μm -thick polyester film, 2.16 bar burst pressure, 55 kPa peak overpressure, 0.4 ms positive wave duration, 10.1 kPa \cdot ms impulse. Waveform data were obtained from a sensor 2 radially mounted on the distal flange of the shock tube driven section. The shock wave velocity was 440 m/s (Mach 1.3). **(B)** The development of injury is proportional to the intensity of the shock wave. Both 50 kPa and 55 kPa peak overpressure shock waves caused significant injury that developed throughout the 72-h protocol when compared with the sham group. The injury resulting from a 55 kPa peak overpressure wave exposure was significantly higher than after 50 kPa at 48 h and 72 h. Bars represent mean values and error bars are standard errors (n = 7, controls; n = 48, sham; n = 30, blast 50 kPa; n = 51, blast 55 kPa; n = number of slices, from 6 separate experiments). * p <0.05, **** p <0.0001 compared with sham. # p <0.05, ## p <0.01 compared with blast 55 kPa. **(C)** Representative propidium iodide fluorescence images of organotypic slices from (i) sham, (ii) blast 50 kPa and (iii) blast 55 kPa groups at 72 h after injury. The sham slice shows low levels of fluorescence, *i.e.*, injury, and the blast exposed slices show high levels of diffuse injury, more pronounced on the 55 kPa peak overpressure exposed slice (scale bar = 500 μm).

DISCUSSION:

Among all the mechanisms of injury associated with blast TBI (primary, secondary and tertiary blast injury mechanisms), primary blast injury is unique to blast trauma and it is the least understood of the blast-associated mechanisms^{1,2}. The novel protocol described here was developed to study primary blast TBI using an open-ended shock tube to expose *in vitro* mouse hippocampal slice cultures to a single shock wave using a simple and rapid protocol that allows the creation of a reproducible primary blast TBI with a high throughput.

The first *in vitro* primary blast TBI models applied hydrostatic pressure waves to cells^{26,27}. However, the pressure output did not model the Friedlander function as the duration of a hydrostatic pressure pulse was much longer than airborne blast overpressure waves¹³. The characteristic Friedlander function can be easily modelled in the laboratory using a shock tube^{1,8}. The shock tube can produce shock waves that simulate real-life open field explosions in a conventional laboratory environment, while allowing the precise control of wave parameters, such as peak overpressure, positive wave duration and impulse, by varying the diaphragm material and thickness, and the driver volume^{8,28,29}.

Simple *in vitro* models such as cell cultures usually lack the heterogeneity of cell types and synaptic connectivity³⁰. Recently, the effect of blast on *in vitro* brain cell 'spheroids' incorporating different cell types has been investigated³¹. Further investigation of these interesting preparations is merited; however, it is not clear how their cellular organization and connectivity mirrors the intact brain. OHSC are a well-established *in vitro* experimental model^{23,32}, are easy to culture and their three-dimensional tissue cytoarchitecture, cell differentiation and synaptic connectivity are well preserved and very similar to that *in vivo*³³⁻³⁶. OHSCs represent an intermediate level of complexity between cell culture and an *in vivo* model^{23,32}. OHSCs have been demonstrated to reproduce *in vitro* pathological neurodegenerative cascades seen in *in vivo*

models and have been very useful in the screening of potential neuroprotective drugs and in understanding their mechanisms of action^{17,21,22,37,38}. Finally, the anatomic area studied, the hippocampus, is highly relevant in translational TBI studies, as this region is frequently damaged in TBI patients³⁹⁻⁴¹. OHSC have been used to model blast TBI^{28,42-44}, however, our model is relatively simple and can be adapted to existing shock-tubes in either horizontal or vertical configurations without complex adaptations.

OHSC can be kept in culture for many days, which facilitates the investigation of biological processes over time³⁴. In this model, the tissue injury that resulted from shock wave exposure was measured daily over three days, following the blast exposure using propidium iodide, a well-established marker of cell damage. Propidium iodide is a nontoxic highly polar dye that penetrates the cells with compromised cellular membranes, where it binds to nucleic acids and exhibits a characteristic bright red fluorescence^{24,25,45}. The fluorescence measured with propidium iodide shows a good correlation with injured cell count using Nissl staining^{46,47}.

Given that the injury produced in this model was diffuse (**Figure 2C**), the fluorescence of the whole slice was measured when performing the analysis, similar to previously published work in other brain injury paradigms^{21,22}, instead of using specific regions, as has been done in other *in vitro* blast TBI models^{28,43,44,48}. The global approach used in the model described in this article also eliminates the potential variability that is introduced when outlining defined regions of interest and provides a more comprehensive picture of the blast-related injury. Both shock wave peak overpressures, 50 kPa and 55 kPa, produced significant ($p<0.05$ and $p<0.0001$, respectively) injury when compared to sham slices (**Figure 2 B**). As anticipated, the shock wave with the highest peak overpressure, 55 kPa, produced more injury than the 50 kPa wave. In an *in vitro* model with isolated brain tissue directly exposed to a shockwave, how to accurately scale to the whole organism or a human being is not straightforward. Nevertheless, the shockwaves we used are within the range of peak overpressures observed in the field, typically 50 – 1000kPa^{8,49}.

In order to maintain the OHSC exposed to physiologic temperature and the levels of oxygen and carbon dioxide, while ensuring that they were free from contamination throughout the shock wave exposure protocol, the tissue culture inserts were sealed into sterile polyethylene bags following an aseptic technique, submerged in experimental medium warmed to 37 °C and freshly bubbled with 95% oxygen and 5% carbon dioxide, similarly to previously published work^{28,43,44,48}. Contrary to these models where complex devices were used to hold the sterile bags during shock wave exposure, in this protocol, a simple and rapid method was used to suspend the OHSC tissue culture inserts in front of the shock tube outlet (**Figure 1A, C**). The model described in this paper allows rapid processing and high throughput, while minimizing the risk hypothermia. These aspects are particularly relevant for neuroprotection studies given that some therapeutic interventions may have a very limited time window of potential application after TBI. This novel shock wave exposure protocol allows 6 to 9 tissue culture inserts (typically 36 to 54 hippocampal organotypic tissue slices) to be exposed to a shock wave in a short interval of time (approximately 1 h).

The OHSCs require good aseptic technique throughout. It is important to use an aseptic laminar

flow hood throughout the culturing and when transferring to the sterile bags for blast. In order to carry out the slice imaging under aseptic conditions with the lids of the 6-well plates in place, we use custom-made metal rings to raise the cell culture inserts to the focal plane of the microscope. An important part of our protocol is that we include uninjured sham slices in every experiment. Sham slices are treated identically to blast slices with the exception that the shock-tube is not fired pre-imaging; another important step is that all slices are imaged 1 h before injury or sham treatment, to ensure that the health of the population of slices used are identical (**Figure 2B**).

In addition to quantifying cell injury in the slices over time, the tissue can be fixed at the end of the experiment for conventional immunohistochemistry⁵⁰. We developed and evaluated the method using mouse hippocampal slices. However, our technique could be easily adapted to use other tissue that can be grown in culture, such as spinal cord, retina, lung or epithelial tissue. In this paper and our previous work with the model, we investigated only the effect of exposure to a single blast. However, the model would be well suited to investigate the effects of repeated low-level blasts on brain or other tissue. OHSCs can be kept in culture for many weeks or even months, allowing chronic effects to be investigated.

In vitro models, being simpler than *in vivo* models, have a higher throughput, are less expensive and experiments can usually be completed on a shorter time scale¹⁷. However, the results obtained using *in vitro* models need to be validated in animal models as *in vitro* cultured tissues are kept in an artificial environment and may respond to injury differently from what they would *in vivo*¹⁷. Nonetheless, *in vitro* models have been extremely valuable in increasing our understanding of brain injury cascades and in screening neuroprotective drugs before the use of more complex *in vivo* models^{17,22,51,52}. Despite the many advantages offered by this model, it is important to note that *in vitro* models lack the key features of TBI present in animals and *in vivo* models, such as the effects on vascular system, increased intracranial pressure, systemic immune response and functional behavioral impairment, which highlights the need to validate the results found in *in vitro* models in the whole animal. Nevertheless, *in vitro* models such as the model described in this paper are extremely useful translationally relevant scientific tools.

In conclusion, this work describes a simple and straightforward novel method where mouse organotypic hippocampal tissue cultures are exposed to tightly controlled and reproducible real-life relevant shock waves using a laboratory shock tube. The resulting global injury, which was quantified using propidium iodide, a well-established marker of cell damage, is very reproducible and is proportional to the peak overpressure of the shock waves applied.

ACKNOWLEDGMENTS:

Supported by: Royal Centre for Defence Medicine, Birmingham, United Kingdom, Royal British Legion Centre for Blast Injury Studies, Imperial College London, United Kingdom. Medical Research Council, London, United Kingdom (MC_PC_13064; MR/N027736/1). The Gas Safety Trust, London, United Kingdom. Rita Campos-Pires was the recipient of a doctoral training award from the Fundação para a Ciência e a Tecnologia, Lisbon, Portugal. Katie Harris was the recipient of a PhD studentship from the Westminster Medical School Research Trust, London, United

Kingdom.

This model was developed with the support of the Royal British Legion Centre for Blast Injury Studies (RBLCBIS) at Imperial College. We would like to acknowledge the financial support of the Royal British Legion. Researchers interested in collaborations or further detail may contact the authors or RBLCBIS.

We thank Dr Amarjit Samra, Director of Research, Royal Centre for Defence Medicine, Birmingham, United Kingdom, for supporting this work, Scott Armstrong, Department of Surgery & Cancer, Imperial College London, for assistance with preliminary experiments, Theofano Eftaxiopolou, Hari Arora & Luz Ngoc Nguyen, Department of Bioengineering Imperial College London, & William Proud, Department of Physics Imperial College London, for advice on the shock-tube, Raquel Yustos, research technician, Department of Life Sciences, Imperial College London, for technical support, Paul Brown MBE, workshop manager and Steve Nelson, workshop technician, Department of Physics, Imperial College London, for making the metal rings, Neal Powell of the Department of Physics, Imperial College London, for artwork.

DISCLOSURES:

The authors have no competing financial interests.

REFERENCES:

- 1 Risling, M. & Davidsson, J. Experimental animal models for studies on the mechanisms of blast-induced neurotrauma. *Frontiers in Neurology*. **3** 30, (2012).
- 2 Nakagawa, A. *et al.* Mechanisms of primary blast-induced traumatic brain injury: insights from shock-wave research. *Journal of Neurotrauma*. **28** (6), 1101-1119, (2011).
- 3 Goldstein, L. E., McKee, A. C. & Stanton, P. K. Considerations for animal models of blast-related traumatic brain injury and chronic traumatic encephalopathy. *Alzheimer's Research & Therapy*. **6** (5), 64, (2014).
- 4 Rona, R. J. *et al.* Mild traumatic brain injury in UK military personnel returning from Afghanistan and Iraq: cohort and cross-sectional analyses. *Journal of Head Trauma and Rehabilitation*. **27** (1), 33-44, (2012).
- 5 Terrio, H. *et al.* Traumatic brain injury screening: preliminary findings in a US Army Brigade Combat Team. *Journal of Head Trauma and Rehabilitation*. **24** (1), 14-23, (2009).
- 6 Elder, G. A., Stone, J. R. & Ahlers, S. T. Effects of low-level blast exposure on the nervous system: is there really a controversy? *Frontiers in Neurology*. **5** 269, (2014).
- 7 Ling, G., Bandak, F., Armonda, R., Grant, G. & Ecklund, J. Explosive blast neurotrauma. *Journal of Neurotrauma*. **26** (6), 815-825, (2009).
- 8 Bass, C. R. *et al.* Brain injuries from blast. *Annals of Biomedical Engineering*. **40** (1), 185-202, (2012).
- 9 Young, L. A., Rule, G. T., Bocchieri, R. T. & Burns, J. M. Biophysical mechanisms of traumatic brain injuries. *Seminars in Neurology*. **35** (1), 5-11, (2015).
- 10 Wolf, S. J., Bebarta, V. S., Bonnett, C. J., Pons, P. T. & Cantrill, S. V. Blast injuries. *Lancet*. **374** (9687), 405-415, (2009).

616 11 Kluger, Y., Nimrod, A., Biderman, P., Mayo, A. & Sorkin, P. The quinary pattern of blast
617 injury. *American Journal of Disaster Medicine*. **2** (1), 21-25, (2007).

618 12 Champion, H. R., Holcomb, J. B. & Young, L. A. Injuries from explosions: physics,
619 biophysics, pathology, and required research focus. *Journal of Trauma: Injury, Infection, and*
620 *Critical Care*. **66** (5), 1468-1477; discussion 1477, (2009).

621 13 Chen, Y. C., Smith, D. H. & Meaney, D. F. In-vitro approaches for studying blast-induced
622 traumatic brain injury. *Journal of Neurotrauma*. **26** (6), 861-876, (2009).

623 14 Edwards, D. S. & Clasper, J. in *Blast Injury Science and Engineering: A Guide for Clinicians*
624 *and Researchers* 10.1007/978-3-319-21867-0_6 eds Anthony M. J. Bull, Jon Clasper, & Peter F.
625 Mahoney) 87-104 (Springer International Publishing, 2016).

626 15 Kirkman, E., Watts, S. & Cooper, G. Blast injury research models. *Philosophical*
627 *Translations of the Royal Society B: Biological Sciences*. **366** (1562), 144-159, (2011).

628 16 Hicks, R. R., Fertig, S. J., Desrocher, R. E., Koroshetz, W. J. & Pancrazio, J. J. Neurological
629 effects of blast injury. *J Trauma*. **68** (5), 1257-1263, (2010).

630 17 Morrison, B., 3rd, Elkin, B. S., Dolle, J. P. & Yarmush, M. L. In vitro models of traumatic
631 brain injury. *Annual Reviews of Biomedical Engineering*. **13** 91-126, (2011).

632 18 Johnson, V. E., Meaney, D. F., Cullen, D. K. & Smith, D. H. Animal models of traumatic brain
633 injury. *Handbook of Clinical Neurology*. **127** 115-128, (2015).

634 19 Xiong, Y., Mahmood, A. & Chopp, M. Animal models of traumatic brain injury. *Nature*
635 *Reviews Neuroscience* **14** (2), 128-142, (2013).

636 20 Morganti-Kossmann, M. C., Yan, E. & Bye, N. Animal models of traumatic brain injury: is
637 there an optimal model to reproduce human brain injury in the laboratory? *Injury*. **41** **Suppl 1**
638 S10-13, (2010).

639 21 Banks, P., Franks, N. P. & Dickinson, R. Competitive inhibition at the glycine site of the N-
640 methyl-D-aspartate receptor mediates xenon neuroprotection against hypoxia-ischemia.
641 *Anesthesiology*. **112** (3), 614-622, (2010).

642 22 Harris, K. *et al.* Neuroprotection against traumatic brain injury by xenon, but not argon, is
643 mediated by inhibition at the N-methyl-D-aspartate receptor glycine site. *Anesthesiology*. **119**
644 (5), 1137-1148, (2013).

645 23 Stoppini, L., Buchs, P. A. & Muller, D. A simple method for organotypic cultures of nervous
646 tissue. *Journal of Neuroscience Methods*. **37** (2), 173-182, (1991).

647 24 Noraberg, J., Kristensen, B. W. & Zimmer, J. Markers for neuronal degeneration in
648 organotypic slice cultures. *Brain Research Protocols*. **3** (3), 278-290, (1999).

649 25 Macklis, J. D. & Madison, R. D. Progressive incorporation of propidium iodide in cultured
650 mouse neurons correlates with declining electrophysiological status: a fluorescence scale of
651 membrane integrity. *Journal of Neuroscience Methods*. **31** (1), 43-46, (1990).

652 26 Salvador-Silva, M. *et al.* Responses and signaling pathways in human optic nerve head
653 astrocytes exposed to hydrostatic pressure in vitro. *Glia*. **45** (4), 364-377, (2004).

654 27 Howard, D. & Sturtevant, B. In vitro study of the mechanical effects of shock-wave
655 lithotripsy. *Ultrasound Medical Biology*. **23** (7), 1107-1122, (1997).

656 28 Effgen, G. B. *et al.* A Multiscale Approach to Blast Neurotrauma Modeling: Part II:
657 Methodology for Inducing Blast Injury to in vitro Models. *Front Neurol*. **3** 23, (2012).

658 29 Nguyen, T. T. *The characterisation of a shock tube system for blast injury studies* PhD
659 Thesis, Imperial College London, (2016).

660 30 Noraberg, J. *et al.* Organotypic hippocampal slice cultures for studies of brain damage,
661 neuroprotection and neurorepair. *Current Drug Targets CNS and Neurological Disorders*. **4** (4),
662 435-452, (2005).

663 31 Sawyer, T. W. *et al.* Investigations of primary blast-induced traumatic brain injury. *Shock*
664 *Waves*. **28** (1), 85-99, (2017).

665 32 Gahwiler, B. H. Organotypic monolayer cultures of nervous tissue. *Journal of Neuroscience*
666 *Methods*. **4** (4), 329-342, (1981).

667 33 Gahwiler, B. H., Capogna, M., Debanne, D., McKinney, R. A. & Thompson, S. M.
668 Organotypic slice cultures: a technique has come of age. *Trends in Neuroscience* **20** (10), 471-477,
669 (1997).

670 34 De Simoni, A. & Yu, L. M. Preparation of organotypic hippocampal slice cultures: interface
671 method. *Nature Protocols*. **1** (3), 1439-1445, (2006).

672 35 Gogolla, N., Galimberti, I., DePaola, V. & Caroni, P. Long-term live imaging of neuronal
673 circuits in organotypic hippocampal slice cultures. *Nature Protocols*. **1** (3), 1223-1226, (2006).

674 36 De Simoni, A., Griesinger, C. B. & Edwards, F. A. Development of rat CA1 neurones in acute
675 versus organotypic slices: role of experience in synaptic morphology and activity. *Journal of*
676 *Physiology*. **550** (Pt 1), 135-147, (2003).

677 37 Sundstrom, L., Morrison, B., 3rd, Bradley, M. & Pringle, A. Organotypic cultures as tools
678 for functional screening in the CNS. *Drug Discovery Today*. **10** (14), 993-1000, (2005).

679 38 Cater, H. L. *et al.* Stretch-induced injury in organotypic hippocampal slice cultures
680 reproduces in vivo post-traumatic neurodegeneration: role of glutamate receptors and voltage-
681 dependent calcium channels. *Journal of Neurochemistry*. **101** (2), 434-447, (2007).

682 39 Atkins, C. M. Decoding hippocampal signaling deficits after traumatic brain injury.
683 *Translational Stroke Research*. **2** (4), 546-555, (2011).

684 40 Bigler, E. D. *et al.* Hippocampal volume in normal aging and traumatic brain injury.
685 *American Journal of Neuroradiology*. **18** (1), 11-23, (1997).

686 41 Umile, E. M., Sandel, M. E., Alavi, A., Terry, C. M. & Plotkin, R. C. Dynamic imaging in mild
687 traumatic brain injury: support for the theory of medial temporal vulnerability. *Archives of*
688 *Physical Medicine and Rehabilitation*. **83** (11), 1506-1513, (2002).

689 42 Effgen, G. B. *et al.* Primary Blast Exposure Increases Hippocampal Vulnerability to
690 Subsequent Exposure: Reducing Long-Term Potentiation. *Journal of Neurotrauma*. **33** (20), 1901-
691 1912, (2016).

692 43 Effgen, G. B. *et al.* Isolated primary blast alters neuronal function with minimal cell death
693 in organotypic hippocampal slice cultures. *Journal of Neurotrauma*. **31** (13), 1202-1210, (2014).

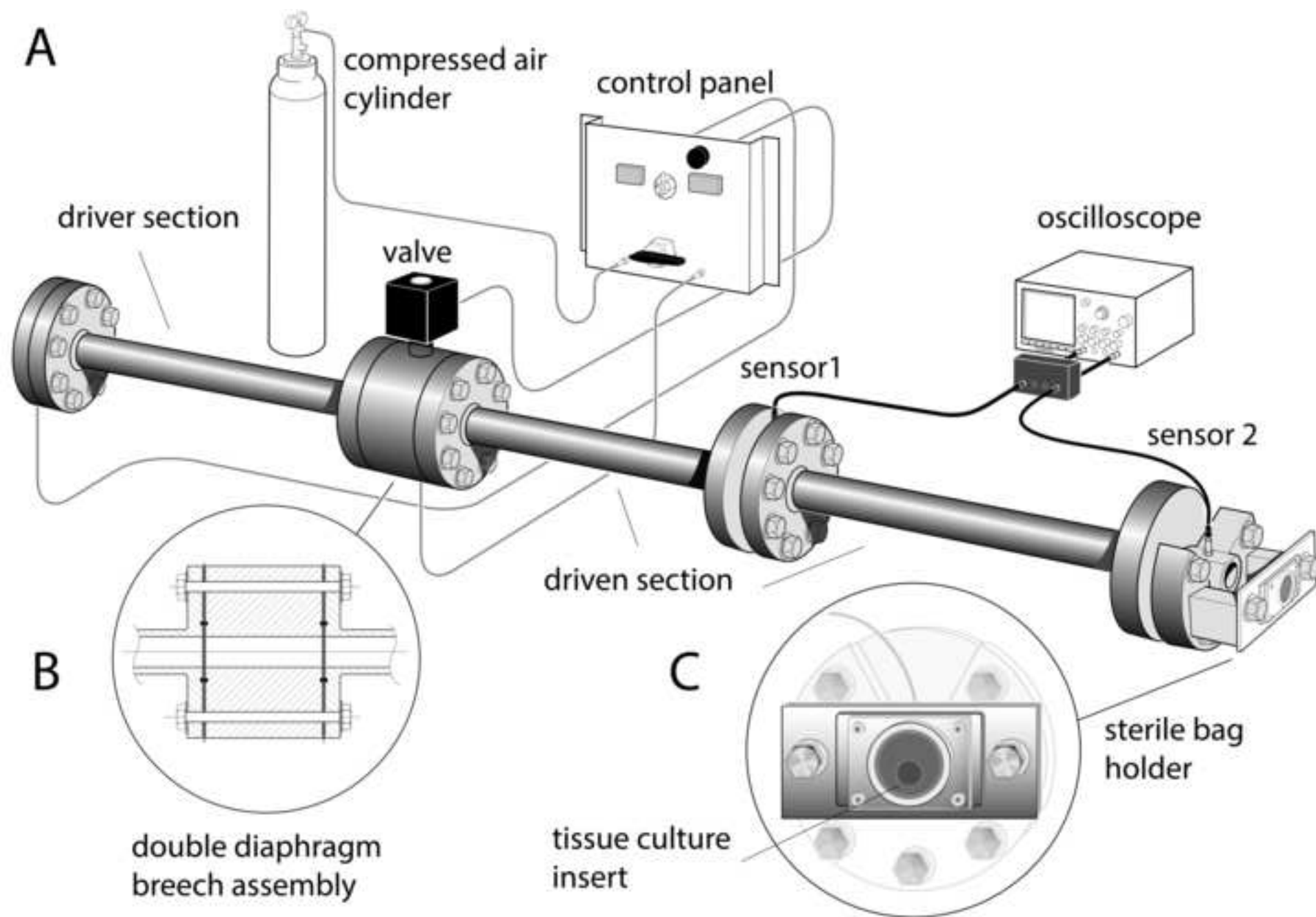
694 44 Vogel Iii, E. W. *et al.* Isolated Primary Blast Inhibits Long-Term Potentiation in Organotypic
695 Hippocampal Slice Cultures. *Journal of Neurotrauma*. 10.1089/neu.2015.4045, (2015).

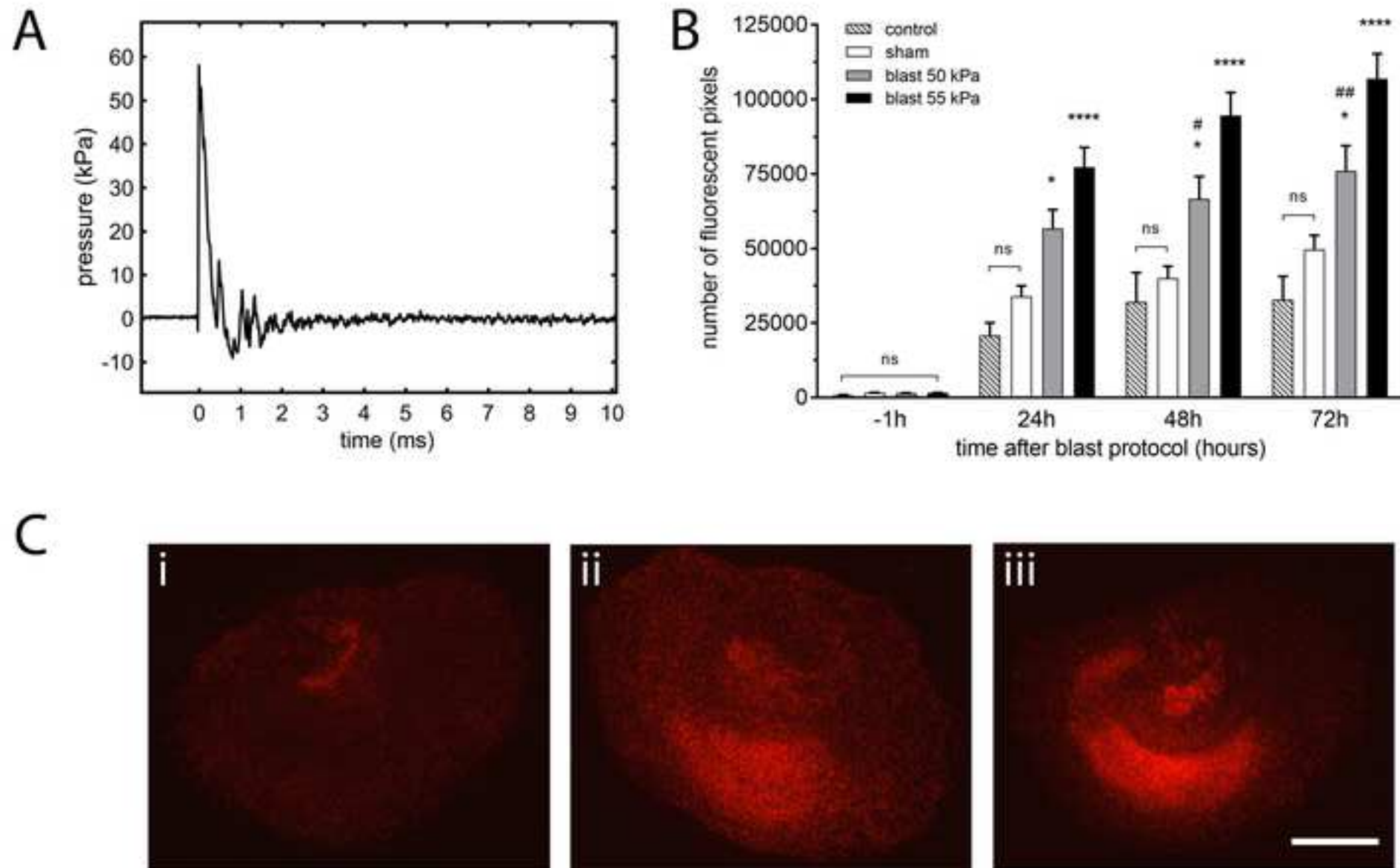
696 45 Vornov, J. J., Tasker, R. C. & Coyle, J. T. Direct observation of the agonist-specific regional
697 vulnerability to glutamate, NMDA, and kainate neurotoxicity in organotypic hippocampal
698 cultures. *Experimental Neurology*. **114** (1), 11-22, (1991).

699 46 Cho, S. *et al.* Spatiotemporal evidence of apoptosis-mediated ischemic injury in
700 organotypic hippocampal slice cultures. *Neurochemistry International*. **45** (1), 117-127, (2004).

701 47 Newell, D. W., Barth, A., Papermaster, V. & Malouf, A. T. Glutamate and non-glutamate
702 receptor mediated toxicity caused by oxygen and glucose deprivation in organotypic
703 hippocampal cultures. *The Journal of Neuroscience*. **15** (11), 7702-7711, (1995).

704 48 Miller, A. P. *et al.* Effects of blast overpressure on neurons and glial cells in rat organotypic
705 hippocampal slice cultures. *Frontiers in Neurology*. **6** 20, (2015).
706 49 Panzer, M. B., Wood, G. W. & Bass, C. R. Scaling in neurotrauma: how do we apply animal
707 experiments to people? *Experimental Neurology*. **261** 120-126, (2014).
708 50 Campos-Pires, R. *et al.* Xenon Protects against Blast-Induced Traumatic Brain Injury in an
709 In Vitro Model. *Journal of Neurotrauma*. **35** (8), 1037-1044, (2018).
710 51 Coburn, M., Maze, M. & Franks, N. P. The neuroprotective effects of xenon and helium in
711 an in vitro model of traumatic brain injury. *Critical Care Medicine*. **36** (2), 588-595, (2008).
712 52 Campos-Pires, R. *et al.* Xenon improves neurologic outcome and reduces secondary injury
713 following trauma in an in vivo model of traumatic brain injury. *Critical Care Medicine*. **43** (1), 149-
714 158, (2015).
715





Name of Material/ Equipment	Company	Catalog Number
Geys balanced salt solution	Sigma UK	G9779
D- glucose	Sigma UK	G8270
Antibiotic/antimycotic	Sigma UK	A5955
Minimum essential medium Eagle	Sigma UK	M4655
Hanks balanced salt solution	Sigma UK	H9269
Horse serum	Sigma UK	H1138
L-glutamine	Sigma UK	G7513
HEPES	VWR Prolabo, Belgium	441476L
Sodium hydroxide	Sigma UK	S-0945
Tissue culture inserts	Millicell CM 30 mm low height Millipore	PICM ORG 50
6-well plates	NUNC, Denmark	140675
Propidium iodide	Sigma UK	P4864
Sterile polyethylene bags - Twirl'em sterile sample bags	Fisherbrand	01-002-30
Portex Avon Kwill Filling Tube 5" (127mm)	Smiths Medical Supplies	E910
Epifluorescence microscope	NIKON Eclipse 80i, UK	
Microscope objective	Nikon Plan UW magn. 2x, NA 0.06, WC 7.5 mm	
Microscope filter	Nikon G-2B (longpass emission)	
Mylar electrical insulating film, 304 mm x 200 mm x 0.023 mm	RS Components UK	785-0782
Pressure transducer	Dytran Instruments Inc.	2300V1
	Mickle Laboratory Engineering Co., Guildford, Surrey, United Kingdom.	Mcllwain tissue chopper
Tissue chopper		
Silicone elastomer	Dow Corning, USA	Sylgard 184
Graphing & statistics software	GraphPad Software, USA	Prism 7.0



1 Alewife Center #200
Cambridge, MA 02140
tel. 617.945.9051
www.jove.com

ARTICLE AND VIDEO LICENSE AGREEMENT - UK

Title of Article:

A novel in vitro model of blast traumatic brain injury

Author(s):

Rita Campos-Pires, Amina Yonis, Warren Macdonald, Katie Harris, Christopher J Edge, Peter F Mahoney, Robert Dickinson

Item 1: The Author elects to have the Materials be made available (as described at <http://www.jove.com/publish>) via:

☐

Standard Access

☒

Open Access

Item 2: Please select one of the following items:

☒

The Author is **NOT** a United States government employee.

☐

The Author is a United States government employee and the Materials were prepared in the course of his or her duties as a United States government employee.

☐

The Author is a United States government employee but the Materials were NOT prepared in the course of his or her duties as a United States government employee.

ARTICLE AND VIDEO LICENSE AGREEMENT

1. **Defined Terms.** As used in this Article and Video License Agreement, the following terms shall have the following meanings: "**Agreement**" means this Article and Video License Agreement; "**Article**" means the article specified on the last page of this Agreement, including any associated materials such as texts, figures, tables, artwork, abstracts, or summaries contained therein; "**Author**" means the author who is a signatory to this Agreement; "**Collective Work**" means a work, such as a periodical issue, anthology or encyclopedia, in which the Materials in their entirety in unmodified form, along with a number of other contributions, constituting separate and independent works in themselves, are assembled into a collective whole; "**CRC License**" means the Creative Commons Attribution 3.0 Agreement (also known as CC-BY), the terms and conditions of which can be found at: <http://creativecommons.org/licenses/by/3.0/us/legalcode>; "**Derivative Work**" means a work based upon the Materials or upon the Materials and other pre-existing works, such as a translation, musical arrangement, dramatization, fictionalization, motion picture version, sound recording, art reproduction, abridgment, condensation, or any other form in which the Materials may be recast, transformed, or adapted; "**Institution**" means the institution, listed on the last page of this Agreement, by which the Author was employed at the time of the creation of the Materials; "**JoVE**" means MyJoVE Corporation, a Massachusetts corporation and the publisher of The Journal of Visualized Experiments; "**Materials**" means the Article and / or the Video; "**Parties**" means the Author and JoVE; "**Video**" means any video(s) made by the Author, alone or in conjunction with any other parties, or by JoVE or its affiliates or agents, individually or in collaboration with the Author or any other parties, incorporating all or any portion

of the Article, and in which the Author may or may not appear.

2. **Background.** The Author, who is the author of the Article, in order to ensure the dissemination and protection of the Article, desires to have the JoVE publish the Article and create and transmit videos based on the Article. In furtherance of such goals, the Parties desire to memorialize in this Agreement the respective rights of each Party in and to the Article and the Video.

3. **Grant of Rights in Article.** In consideration of JoVE agreeing to publish the Article, the Author hereby grants to JoVE, subject to **Sections 4 and 7** below, the exclusive, royalty-free, perpetual (for the full term of copyright in the Article, including any extensions thereto) license (a) to publish, reproduce, distribute, display and store the Article in all forms, formats and media whether now known or hereafter developed (including without limitation in print, digital and electronic form) throughout the world, (b) to translate the Article into other languages, create adaptations, summaries or extracts of the Article or other Derivative Works (including, without limitation, the Video) or Collective Works based on all or any portion of the Article and exercise all of the rights set forth in (a) above in such translations, adaptations, summaries, extracts, Derivative Works or Collective Works and (c) to license others to do any or all of the above. The foregoing rights may be exercised in all media and formats, whether now known or hereafter devised, and include the right to make such modifications as are technically necessary to exercise the rights in other media and formats. If the "Open Access" box has been checked in **Item 1** above, JoVE and the Author hereby grant to the public all such rights in the Article as provided in, but subject to all limitations and requirements set forth in, the CRC License.

4. **Retention of Rights in Article.** Notwithstanding the exclusive license granted to JoVE in **Section 3** above, the Author shall, with respect to the Article, retain the non-exclusive right to use all or part of the Article for the non-commercial purpose of giving lectures, presentations or teaching classes, and to post a copy of the Article on the Institution's website or the Author's personal website, in each case provided that a link to the Article on the JoVE website is provided and notice of JoVE's copyright in the Article is included. All non-copyright intellectual property rights in and to the Article, such as patent rights, shall remain with the Author.

5. **Grant of Rights in Video - Standard Access.** This **Section 5** applies if the "Standard Access" box has been checked in **Item 1** above or if no box has been checked in **Item 1** above. In consideration of JoVE agreeing to produce, display or otherwise assist with the Video, the Author hereby acknowledges and agrees that, subject to **Section 7** below, JoVE is and shall be the sole and exclusive owner of all rights of any nature, including, without limitation, all copyrights, in and to the Video. To the extent that, by law, the Author is deemed, now or at any time in the future, to have any rights of any nature in or to the Video, the Author hereby disclaims all such rights and transfers all such rights to JoVE.

6. **Grant of Rights in Video - Open Access.** This **Section 6** applies only if the "Open Access" box has been checked in **Item 1** above. In consideration of JoVE agreeing to produce, display or otherwise assist with the Video, the Author hereby grants to JoVE, subject to **Section 7** below, the exclusive, royalty-free, perpetual (for the full term of copyright in the Article, including any extensions thereto) license (a) to publish, reproduce, distribute, display and store the Video in all forms, formats and media whether now known or hereafter developed (including without limitation in print, digital and electronic form) throughout the world, (b) to translate the Video into other languages, create adaptations, summaries or extracts of the Video or other Derivative Works or Collective Works based on all or any portion of the Video and exercise all of the rights set forth in (a) above in such translations, adaptations, summaries, extracts, Derivative Works or Collective Works and (c) to license others to do any or all of the above. The foregoing rights may be exercised in all media and formats, whether now known or hereafter devised, and include the right to make such modifications as are technically necessary to exercise the rights in other media and formats.

7. **Government Employees.** If the Author is a United States government employee and the Article was prepared in the course of his or her duties as a United States government employee, as indicated in **Item 2** above, and any of the licenses or grants granted by the Author hereunder exceed the scope of the 17 U.S.C. 403, then the rights granted hereunder shall be limited to the maximum rights permitted under such statute. In such case, all provisions contained herein that are not in conflict with such statute shall remain in full force and effect, and all provisions contained herein that do so conflict shall be

deemed to be amended so as to provide to JoVE the maximum rights permissible within such statute.

8. **Protection of the work.** The Author(s) authorize JoVE to take steps in the Author(s) name and on their behalf if JoVE believes some third party could be infringing or might infringe the copyright of either the Author's Article and/or Video.

9. **Likeness, Privacy, Personality.** The Author hereby grants JoVE the right to use the Author's name, voice, likeness, picture, photograph, image, biography and performance in any way, commercial or otherwise, in connection with the Materials and the sale, promotion and distribution thereof. The Author hereby waives any and all rights he or she may have, relating to his or her appearance in the Video or otherwise relating to the Materials, under all applicable privacy, likeness, personality or similar laws.

10. **Author Warranties.** The Author represents and warrants that the Article is original, that it has not been published, that the copyright interest is owned by the Author (or, if more than one author is listed at the beginning of this Agreement, by such authors collectively) and has not been assigned, licensed, or otherwise transferred to any other party. The Author represents and warrants that the author(s) listed at the top of this Agreement are the only authors of the Materials. If more than one author is listed at the top of this Agreement and if any such author has not entered into a separate Article and Video License Agreement with JoVE relating to the Materials, the Author represents and warrants that the Author has been authorized by each of the other such authors to execute this Agreement on his or her behalf and to bind him or her with respect to the terms of this Agreement as if each of them had been a party hereto as an Author. The Author warrants that the use, reproduction, distribution, public or private performance or display, and/or modification of all or any portion of the Materials does not and will not violate, infringe and/or misappropriate the patent, trademark, intellectual property or other rights of any third party. The Author represents and warrants that it has and will continue to comply with all government, institutional and other regulations, including, without limitation all institutional, laboratory, hospital, ethical, human and animal treatment, privacy, and all other rules, regulations, laws, procedures or guidelines, applicable to the Materials, and that all research involving human and animal subjects has been approved by the Author's relevant institutional review board.

11. **JoVE Discretion.** If the Author requests the assistance of JoVE in producing the Video in the Author's facility, the Author shall ensure that the presence of JoVE employees, agents or independent contractors is in accordance with the relevant regulations of the Author's institution. If more than one author is listed at the beginning of this Agreement, JoVE may, in its sole discretion, elect not take any action with respect to the Article until such time as it has received complete, executed Article and Video License Agreements from each such author. JoVE reserves the right, in its absolute and sole

ARTICLE AND VIDEO LICENSE AGREEMENT - UK

discretion and without giving any reason therefore, to accept or decline any work submitted to JoVE. JoVE and its employees, agents and independent contractors shall have full, unfettered access to the facilities of the Author or of the Author's institution as necessary to make the Video, whether actually published or not. JoVE has sole discretion as to the method of making and publishing the Materials, including, without limitation, to all decisions regarding editing, lighting, filming, timing of publication, if any, length, quality, content and the like.

12. **Indemnification.** The Author agrees to indemnify JoVE and/or its successors and assigns from and against any and all claims, costs, and expenses, including attorney's fees, arising out of any breach of any warranty or other representations contained herein. The Author further agrees to indemnify and hold harmless JoVE from and against any and all claims, costs, and expenses, including attorney's fees, resulting from the breach by the Author of any representation or warranty contained herein or from allegations or instances of violation of intellectual property rights, damage to the Author's or the Author's institution's facilities, fraud, libel, defamation, research, equipment, experiments, property damage, personal injury, violations of institutional, laboratory, hospital, ethical, human and animal treatment, privacy or other rules, regulations, laws, procedures or guidelines, liabilities and other losses or damages related in any way to the submission of work to JoVE, making of videos by JoVE, or publication in JoVE or elsewhere by JoVE. The Author shall be responsible for, and shall hold JoVE harmless from, damages caused by lack of sterilization, lack of cleanliness or by contamination due to the making of a video by JoVE its employees, agents or independent contractors. All sterilization, cleanliness or

decontamination procedures shall be solely the responsibility of the Author and shall be undertaken at the Author's expense. All indemnifications provided herein shall include JoVE's attorney's fees and costs related to said losses or damages. Such indemnification and holding harmless shall include such losses or damages incurred by, or in connection with, acts or omissions of JoVE, its employees, agents or independent contractors.

13. **Fees.** To cover the cost incurred for publication, JoVE must receive payment before production and publication of the Materials. Payment is due in 21 days of invoice. Should the Materials not be published due to an editorial or production decision, these funds will be returned to the Author. Withdrawal by the Author of any submitted Materials after final peer review approval will result in a US\$1,200 fee to cover pre-production expenses incurred by JoVE. If payment is not received by the completion of filming, production and publication of the Materials will be suspended until payment is received.

14. **Transfer, Governing Law.** This Agreement may be assigned by JoVE and shall inure to the benefits of any of JoVE's successors and assignees. This Agreement shall be governed and construed by the internal laws of the Commonwealth of Massachusetts without giving effect to any conflict of law provision thereunder. This Agreement may be executed in counterparts, each of which shall be deemed an original, but all of which together shall be deemed to be one and the same agreement. A signed copy of this Agreement delivered by facsimile, e-mail or other means of electronic transmission shall be deemed to have the same legal effect as delivery of an original signed copy of this Agreement.

A signed copy of this document must be sent with all new submissions. Only one Agreement is required per submission.

CORRESPONDING AUTHOR

Name:	Robert Dickinson		
Department:	Surgery & Cancer		
Institution:	Imperial College London		
Title:	A novel in vitro model of blast traumatic brain injury		
Signature:	<i>Robert Dickinson</i>	Date:	29-June-2018

Please submit a **signed** and **dated** copy of this license by one of the following three methods:

1. Upload an electronic version on the JoVE submission site
2. Fax the document to +1.866.381.2236
3. Mail the document to JoVE / Attn: JoVE Editorial / 1 Alewife Center #200 / Cambridge, MA 02140

Imperial College
London

Dr Robert Dickinson

Anaesthetics, Pain Medicine & Intensive Care
Dept of Surgery & Cancer
Biophysics, 4th Floor
Sir Ernst Chain Building
South Kensington campus
London, SW7 2AZ, UK

Tel: +44 (0) 20 7594 7633
Fax: +44 (0) 20 7594 7628
r.dickinson@imperial.ac.uk

Bing Wu, Ph.D.
Review Editor
[JoVE](#)
617.674.1888

29th June 2018

Dear Dr Wu,

Thank you for the opportunity to submit a revised version of our manuscript “A novel *in vitro* model of blast traumatic brain injury” by Rita Campos-Pires *et al.*

We have revised the manuscript to address the remaining Editorial comments. We enclose a copy of the revised manuscript, with the changes marked **in red**, together with detailed responses to the Editorial comments shown **in blue** below.

We believe the manuscript has been improved as a result of the reviewing process. We trust that the revised manuscript will be suitable for publication in JOVE. We look forward to hearing from you.

Best wishes,

Robert Dickinson

Editorial comments:

The manuscript has been modified and the updated manuscript, **58400_R2.docx**, is attached and located in your Editorial Manager account. **Please use the updated version to make your revisions.**

1. Please take this opportunity to thoroughly proofread the manuscript to ensure that there are no spelling or grammar issues.

Thank you, we have carefully proof read the manuscript.

2. Please use the updated version to make your revisions.

Thank you, we apologise for this confusion. We have now revised and edited the updated version of the Word document, now renamed 58400R3.

3. The highlighted protocol steps are over 2.75 pages (including the spacing and headings). Please adjust the highlighting.

Thank you, the highlighted protocol steps are now 2.72 pages (including spacing and headings), but excluding 'notes' and step 4.16 which is no longer highlighted.

4. Step 3.2: Please split this step into two or more sub-steps.

Thank you. The last 6 lines of that 'step' are a 'note'. This was in the submitted version and now in this revised version.

5. Please do not include the figures in the manuscript. All figures should be uploaded to your Editorial Manager account separately.

Thank you. We apologise for this confusion. The Figures are uploaded separately and have now been removed from the document text.

6. Please sign the new Author License Agreement and upload it to your Editorial Manager account.

Thank you. We have uploaded a new signed and dated Author Licence Agreement.



[Click here to access/download](#)

Supplemental Coding Files

58400_R3 - 2 - 29-6-18_Highlighted text for video
filming.docx

