

Journal of Visualized Experiments

Noninvasive determination of vortex formation time using transesophageal echocardiography during cardiac surgery

--Manuscript Draft--

Article Type:	Invited Methods Article - JoVE Produced Video
Manuscript Number:	JoVE58374R1
Full Title:	Noninvasive determination of vortex formation time using transesophageal echocardiography during cardiac surgery
Keywords:	Transmitral blood flow efficiency; vortex formation time; early left ventricular filling; Fluid Mechanics; diastolic function; intraventricular blood flow; continuity equation; transesophageal echocardiography
Corresponding Author:	Paul S Pagel, MD PhD Clement J Zablocki VA Medical Center Milwaukee, Wisconsin UNITED STATES
Corresponding Author's Institution:	Clement J Zablocki VA Medical Center
Corresponding Author E-Mail:	pspagel@mcw.edu
Order of Authors:	Paul S Pagel, MD PhD Lonnie Dye Graham E. D. Hill Juan L. Vega Justin N. Tawil Derek J. De Vry Kiran Chandrashekarappa Zafar Iqbal Brent T. Boettcher Julie K. Freed
Additional Information:	
Question	Response
Please indicate whether this article will be Standard Access or Open Access.	Standard Access (US\$2,400)
Please indicate the city, state/province, and country where this article will be filmed . Please do not use abbreviations.	Zablocki VA Medical Center, 5000 West National Avenue, Milwaukee, Wisconsin 53295

August 3, 2018

Alisha DSouza PhD
Senior Review Editor
Journal of Visualized Experiments

RE: Revision of JoVE58374 “Noninvasive determination of vortex formation time using transesophageal echocardiography during cardiac surgery” by PS Pagel et al

Dear Dr. DSouza:

Thank you for the critical reviews of our manuscript. I revised our manuscript in response to your comments and those of the referees. As can be seen in my responses to the comments, I incorporated all of the changes into the revised manuscript. I verified that the .tif images comply with the journal requirements that you emphasized in your letter of June 27. Please note that I do not use the “track changes” function of Microsoft Word; I find this software cumbersome and difficult to follow. As a result of your efforts, I believe that the manuscript has been substantially improved as a result, and I hope that you will now find it acceptable for publication in the *Journal of Visualized Experiments*.

Thank you for your consideration, and best wishes.

Sincerely,

Paul S. Pagel MD PhD

TITLE:

Noninvasive Determination of Vortex Formation Time using Transesophageal Echocardiography During Cardiac Surgery

AUTHORS & AFFILIATIONS:

Paul S. Pagel¹, Lonnie Dye III², Graham E. D. Hill², Juan L. Vega², Justin N. Tawil², Derek J. De Vry², Kiran Chandrashekarappa¹, Zafar Iqbal¹, Brent T. Boettcher¹, Julie K. Freed²

¹Anesthesia Service, Clement J. Zablocki Veterans Affairs Medical Center, Milwaukee, WI, USA

²Department of Anesthesiology, Medical College of Wisconsin, Milwaukee, WI, USA

KEYWORDS:

Trans-mitral blood flow efficiency, vortex formation time, early left ventricular filling, fluid mechanics, diastolic function, intraventricular blood flow, continuity equation, transesophageal echocardiography

Corresponding Author:

Paul S. Pagel, MD, PhD
Tel: (414) 384-2000, ext. 42417
pspagel@mcw.edu

Email Addresses of Co-Authors:

Lonnie Dye	(ldye@mcw.edu)
Graham Hill	(grhill@mcw.edu)
Juan Vega	(jvega@mcw.edu)
Justin Tawil	(jtawil@mcw.edu)
Derek DeVry	(ddevry@icloud.com)
Kiran Chandrashekarappa	(kchandra@mcw.edu)
Zafar Iqbal	(ziqbal@mcw.edu)
Brent Boettcher	(bboettcher@mcw.edu)
Julie Freed	(jfreed@mcw.edu)

SUMMARY:

We describe a protocol to measure vortex formation time, an index of left ventricular filling efficiency, using standard transesophageal echocardiography techniques in patients undergoing cardiac surgery. We apply this technique to analyze vortex formation time in several groups of patients with differing cardiac pathologies.

ABSTRACT:

Trans-mitral blood flow produces a three-dimensional rotational body of fluid, known as a vortex ring, that enhances the efficiency of left ventricular (LV) filling compared with a continuous linear jet. Vortex ring development is most often quantified with vortex formation time (VFT), a dimensionless parameter based on fluid ejection from a rigid tube. Our group is interested in factors that affect LV filling efficiency during cardiac surgery. In this report, we describe how to

use standard two-dimensional (2D) and Doppler transesophageal echocardiography (TEE) to noninvasively derive the variables needed to calculate VFT. We calculate atrial filling fraction (β) from velocity-time integrals of trans-mitral early LV filling and atrial systole blood flow velocity waveforms measured in the mid-esophageal four-chamber TEE view. Stroke volume (SV) is calculated as the product of the diameter of the LV outflow track measured in the mid-esophageal long axis TEE view and the velocity-time integral of blood flow through the outflow track determined in the deep transgastric view using pulse-wave Doppler. Finally, mitral valve diameter (D) is determined as the average of major and minor axis lengths measured in orthogonal mid-esophageal bicommissural and long axis imaging planes, respectively. VFT is then calculated as $4 \times (1-\beta) \times SV/(\pi D^3)$. We have used this technique to analyze VFT in several groups of patients with differing cardiac abnormalities. We discuss our application of this technique and its potential limitations and also review our results to date. Noninvasive measurement of VFT using TEE is straightforward in anesthetized patients undergoing cardiac surgery. The technique may allow cardiac anesthesiologists and surgeons to assess the impact of pathological conditions and surgical interventions on LV filling efficiency in real time.

INTRODUCTION:

Fluid mechanics is a critical yet often underappreciated determinant of left ventricular (LV) filling. A three-dimensional rotational body of fluid, known as a vortex ring, is generated whenever a fluid traverses an orifice¹⁻³. This vortex ring improves the efficiency of fluid transport compared with a continuous linear jet⁴. Movement of blood through the mitral valve during early LV filling causes a vortex ring to form⁵⁻⁸ and facilitates its propagation into the chamber by preserving fluid momentum and kinetic energy⁹. These actions enhance LV filling efficiency^{4,10-13}. The ring not only inhibits blood flow stasis in the LV apex¹⁴⁻¹⁷ but also directs flow preferentially beneath the anterior mitral leaflet^{7,18}, effects that decrease the risk of apical thrombus formation and facilitate filling of the LV outflow track¹⁹, respectively. Contrast echocardiography¹⁷, Doppler vector flow mapping^{6,20,21}, magnetic resonance imaging⁷, and particle imaging velocimetry^{9,22-24} have been used to demonstrate the appearance and behavior of trans-mitral vortex rings under normal and pathological conditions. The left atrial-LV pressure gradient, the degree of diastolic mitral annular excursion, the minimum LV pressure achieved during diastole, and the rate and extent of LV relaxation are the four major determinants of the duration, size, flow intensity, and position of the trans-mitral ring^{2,12,25-29}.

Vortex ring development is most often quantified with a dimensionless parameter (vortex formation time; VFT) based on fluid ejection from a rigid tube³, where VFT is defined as the product of the time-averaged fluid velocity and the duration of ejection divided by the orifice diameter. The optimal size of a vortex ring is achieved when VFT is 4 *in vitro* because trailing jets and energetic limitations prevent it from attaining a larger size^{3,4}. Mitral valve VFT has been approximated clinically using transthoracic echocardiography^{8,30,31}. Based on analysis of trans-mitral blood flow velocity and mitral valve diameter (D), it can be easily shown⁸ that $VFT = 4 \times (1-\beta) \times EF \times \alpha^3$, where β = atrial filling fraction, EF = LV ejection fraction, and $\alpha = EDV^{1/3}/D$, where EDV = end-diastolic volume. Ejection fraction is the ratio of stroke volume (SV) and EDV, allowing this equation to be simplified to $VFT = 4 \times (1-\beta) \times SV/(\pi D^3)$. Because VFT is dimensionless (volume/volume), this index allows direct comparison between patients of varying size without

adjustment for weight or body surface area⁸. Optimal VFT ranges between 3.3 and 5.5 in healthy subjects⁸, and results are consistent with those obtained in fluid dynamics models^{3,32}. VFT was shown to be ≤ 2.0 in patients with depressed LV systolic function, findings that are also supported by theoretical predictions⁸. Reductions in VFT independently predicted morbidity and mortality in patients with heart failure³⁰. Elevated LV afterload³³, Alzheimer's disease³⁴, abnormal diastolic function¹⁹, and replacement of the native mitral valve with a prosthesis³⁵ have also been shown to decrease VFT. Measurement of VFT may also be useful to identify blood flow stasis or thrombosis in patients with acute myocardial infarction^{36,37}.

Our group is interested in factors that affect LV filling efficiency during cardiac surgery³⁸⁻⁴¹. We use standard two-dimensional and Doppler transesophageal echocardiography (TEE) to noninvasively derive the variables required to calculate VFT. In this report, we describe this methodology in detail and review our findings to date.

Protocol:

The Institutional Review Board of the Clement J. Zablocki Veterans Affairs Medical Center approved the protocols. Written informed consent was waived because invasive cardiac monitoring and TEE are routinely used in all patients undergoing cardiac surgery in our institution. Patients with relative or absolute contraindications for TEE, those undergoing repeat median sternotomy or emergency surgery, and those with atrial or ventricular tachyarrhythmias were excluded from participation.

1. Anesthesia

1.1. Provide each patient with intravenous midazolam (1 to 3 mg) and fentanyl (50 to 150 mcg) for conscious sedation before surgery.

1.2. Use local anesthesia (subcutaneous 1% lidocaine) for insertion of intravenous and radial artery catheters. Test the quality of the local anesthesia with a pinprick.

1.3. Ensure that the patient receives supplemental oxygen using a nasal cannula (2 to 4 L/min).

1.4. Place a central venous or pulmonary artery catheter using local anesthesia (subcutaneous 1% lidocaine) under sterile conditions through the right or left internal jugular vein with ultrasound guidance based on appropriate clinical indications.

1.5. Induce anesthesia using intravenous fentanyl (5 mcg/kg), propofol (1 to 2 mg/kg), and rocuronium (0.1 mg/kg). Maintain anesthesia using inhaled isoflurane (end-tidal concentration of 1%) in an air-oxygen mixture, fentanyl (1 to 2 mcg/kg/h), and rocuronium (0.05 mg/kg) titrated to effect using neuromuscular monitoring.

1.6. Suction the stomach using an oral-gastric tube.

1.7. Place ultrasound jelly in the patient's hypopharynx. Lift the jaw anteriorly and advance a TEE probe into the esophagus with gentle pressure to overcome resistance of the hypopharyngeal muscle.

2. Transesophageal Echocardiography

2.1. Perform a comprehensive TEE examination following American Society of Echocardiography/Society of Cardiovascular Anesthesiologists guidelines⁴² in each patient.

2.2. Place a pulse-wave Doppler sample volume between the tips of the mitral leaflets to record trans-mitral blood flow velocity in the mid-esophageal four-chamber TEE imaging plane (**Figure 1**).

2.3. Identify the early LV filling and atrial systole blood flow waveforms of trans-mitral blood flow velocity, and measure their corresponding peak velocities and velocity-time integrals (VTI_E and VTI_A, respectively) using the echocardiography equipment's integrated software package (**Figure 1**).

2.4. Calculate the atrial filling fraction (β) as the ratio of atrial to total LV filling:

$$\beta = \frac{VTI_A}{VTI_E + VTI_A}$$

2.5. Measure the maximum diameter of the LV outflow tract immediately below the aortic valve in the mid-esophageal aortic valve long axis TEE view during mid-systole (**Figure 2A**).

2.6. Calculate the area of the LV outflow tract assuming circular geometry as the product of $\pi/4$ and the square of the diameter (see step 2.5 above).

2.7. Obtain a deep transgastric long axis TEE view, and place a pulse-wave Doppler sample volume in the distal LV outflow tract to record a blood flow velocity envelope (**Figure 2B**) at the same level where the diameter was measured (see step 2.5 above); integrate the area of this waveform using the echocardiography equipment's software package to obtain VTI.

2.8. Multiply the resulting velocity-time integral (VTI) of the LV outflow track blood flow velocity waveform (**Figure 2B**) by the area of the outflow track (see step 2.6) to obtain stroke volume (SV).

2.9. Record video clips of the mid-esophageal bicommissural and LV long axis TEE imaging planes, respectively⁴². Be sure to include several cardiac cycles in each recording.

2.10. Visually inspect slow-motion images of the video clips (see step 2.9 above) after the ECG T-wave to choose the maximum opening of the mitral valve leaflets.

2.11. Measure the distance between the mitral leaflets (**Figures 3A and 3B**) using the echocardiography equipment's "caliper" function.

2.12. Calculate the mitral valve diameter (D) as the average of the major (transcommissural anterior-lateral-posterior-medial) and minor (anterior-posterior) lengths.

2.13. Calculate VFT using the formula:

$$VFT = 4 \times (1 - \beta) \times \frac{SV}{\pi D^3}$$

2.14. Perform all quantitative echocardiographic measurements in triplicate at end-expiration.

3. Experimental Design

3.1. Determine VFT, indices of LV diastolic function, and hemodynamics during steady-state conditions 30 minutes before and 15, 30, and 60 minutes after cardiopulmonary bypass (CPB) in 10 patients with normal preoperative LV ejection fraction under coronary artery surgery to test the hypothesis that CPB transiently decreases VFT³⁹.

3.2. Test the hypothesis that LV pressure-overload hypertrophy produced by aortic valve stenosis reduces VFT by examining (in one group of 8 patients undergoing aortic valve replacement) for severe aortic stenosis and comparing observations to another group of 8 patients with normal LV wall thickness undergoing coronary artery surgery⁴⁰. Measure VFT, LV diastolic function, hemodynamics, and end-diastolic posterior wall thickness during steady-state conditions 30 minutes before CPB.

3.3. Test the hypothesis that abnormal diastolic blood flow entering the LV affects trans-mitral LV filling efficiency in 8 patients with aortic valve stenosis and moderate aortic insufficiency versus 8 patients with aortic stenosis who do not have regurgitant valves³⁸. Measure VFT and other parameters as described above (step 3.2).

3.4. Test the hypothesis that advanced age is associated with a reduction in LV filling efficiency quantified using VFT in 7 octogenarians (82 ± 2 years) compared to 7 younger patients (55 ± 6 years)⁴¹ undergoing coronary artery surgery. Ensure that both groups have normal preoperative LV ejection fraction. Measure VFT and other parameters as described above (step 3.2).

4. Statistics

4.1. Present the data as mean \pm standard deviation.

4.2. Evaluate data using analysis of variance (ANOVA) followed by Bonferroni's modification of Student's *t*-test.

4.3. Use linear regression analysis to determine the relationships between VFT and end-diastolic posterior wall thickness and between VFT and age.

4.4. Reject the null hypothesis when $p < 0.05$.

Representative Results:

The current technique allowed us to reliably measure VFT during cardiac surgery under a variety of clinical conditions by obtaining each determinant from blood flow and dimensional recordings in standard TEE imaging planes. A pulse-wave Doppler sample volume was placed at the tips of the mitral leaflets in the mid-esophageal four-chamber view to obtain the trans-mitral blood flow velocity profile necessary to calculate atrial filling fraction (β ; **Figure 1**). Stroke volume was determined using the continuity equation (velocity-time integral of the LV outflow track blood flow velocity waveform multiplied by the area of the outflow track) and LV outflow track diameter was measured in the mid-esophageal LV long-axis view (**Figure 2A**), whereas blood flow through the outflow tract was determined in the deep transgastric short axis imaging plane (**Figure 2B**). Finally, average mitral valve diameter was calculated as the average of major and minor axis diameters measured in the mid-esophageal bicommissural and LV long-axis planes (**Figures 3A and 3B**, respectively). Measurement of VFT was associated with intra- and interobserver variability of 5% and 7%, respectively, similar to other indices of dimension and blood flow measured using TEE (data not shown). Using this technique, we first showed that exposure to CPB reduced VFT (5.3 ± 1.8 before vs. 4.0 ± 1.5 15 minutes after bypass, $p < 0.05$; **Figure 4**) in patients undergoing coronary artery surgery. VFT recovered to baseline values within 60 minutes after CPB. An increase in β (0.33 ± 0.04 before vs. 0.41 ± 0.07 15 minutes after CPB, $p < 0.05$) consistent with greater atrial contribution to LV filling was primarily responsible for the decline in VFT because SV and mitral valve diameter remained unchanged.

We also showed that a decrease in VFT occurs in patients with severe aortic valve stenosis and LV pressure-overload hypertrophy compared with those with normal LV wall thickness (3.0 ± 0.6 vs. 4.3 ± 0.5 , respectively; $p < 0.05$; **Figure 5**). Early LV filling was attenuated (*e.g.*, E/A, 0.77 ± 0.11 compared with 1.23 ± 0.13 ; β , 0.43 ± 0.09 compared with 0.35 ± 0.02 ; $p < 0.05$ for each), and SV was reduced (72 ± 12 mL compared with 95 ± 10 mL; $p < 0.05$) in patients with vs. without LV hypertrophy; however, mitral valve diameter was similar between groups. A significant inverse correlation between VFT and posterior wall thickness (PWT) was shown with linear regression analysis ($VFT = -2.57 \times PWT + 6.81$; $r = 0.408$; $p = 0.017$). In addition, our results using this technique demonstrated that the presence compared to absence of moderate aortic insufficiency in patients with severe aortic valve stenosis increased VFT (5.7 ± 1.7 vs. 3.0 ± 0.6 , respectively; $p < 0.05$; **Figure 5**) concomitant with a decrease in mitral valve diameter (2.2 ± 0.2 vs. 2.6 ± 0.1 cm, respectively; $p < 0.05$), whereas indices of LV diastolic dysfunction and SV were similar between groups. Finally, we were able to use our technique of measuring VFT to show that VFT was lower in octogenarians compared with younger patients (3.0 ± 0.9 vs. 4.5 ± 1.2 ; $p < 0.05$) concomitant with an impaired relaxation pattern of LV diastolic dysfunction (*e.g.*, E/A of 0.81 ± 0.16 vs. 1.29 ± 0.19 ; β of 0.44 ± 0.05 vs. 0.35 ± 0.03 , $p < 0.05$ for each). A significant inverse correlation between VFT and age was also demonstrated ($VFT = -0.0627 \times \text{age} + 8.24$; $r = 0.639$; $p = 0.0139$; **Figure 6**).

FIGURE LEGENDS:

Figure 1: Trans-mitral blood flow velocity waveforms. Trans-mitral blood flow velocity waveforms during early LV filling (E) and atrial systole (A) obtained in the mid-esophageal four-chamber TEE view (left side of image); the area of each envelope was integrated using the equipment's software to obtain velocity-time integrals (right side of image) and the atrial filling fraction (β) was calculated. In this example, $\beta = 4.28 \text{ cm} / (4.28 \text{ cm} + 6.73 \text{ cm}) = 0.39$ (see text).

Figure 2: Measurement of LV outflow track diameter. Measurement of LV outflow track diameter during mid-systole in the aortic valve long axis TEE view (**A**) (diameter = 2.23 cm); (**B**) blood flow velocity was measured in the in the distal LV outflow track using the deep transgastric long axis TEE view and the area of the resulting envelope (left side of panel B) integrated using the equipment's software to obtain a velocity-time integral (white arrow, right side of panel B). In this example, stroke volume = $\pi/4 \times (2.23 \text{ cm})^2 \times 19.8 \text{ cm} = 77 \text{ mL}$ (see text).

Figure 3: Average mitral valve diameter was calculated as the average of major and minor axis diameters measured in the mid-esophageal bicommissural and LV long-axis planes. Mid-esophageal bicommissural (**A**) and LV outflow tract (**B**) TEE images were used to determine major (transcommissural anterior-lateral-posterior-medial) and minor (anterior-posterior) axis diameters, respectively. In this example, mitral valve diameter = $(3.04 \text{ cm} + 2.18 \text{ cm})/2 = 2.61 \text{ cm}$. This figure is reproduced with permission from Elsevier³⁸.

Figure 4: Temporal changes in VFT. Temporal changes in VFT before and 15, 30, and 60 minutes after cardiopulmonary bypass (CPB) in patients undergoing coronary artery surgery; *indicates significant ($p < 0.05$) difference from the "before CPB" measurement.

Figure 5: Effects of LV pressure-overload hypertrophy resulting from severe aortic valve stenosis in the absence (-) or presence (+) of moderate aortic insufficiency (AI) in patients undergoing aortic valve replacement. Patients with normal LV wall thickness undergoing coronary artery surgery served as controls (normal). *Significantly ($p < 0.05$) different from normal; †Significantly ($p < 0.05$) different from both normal and hypertrophy-AI.

Figure 6: Correlation between age and VFT in 14 patients undergoing coronary artery surgery. $VFT = -0.0627 \times \text{age} + 8.24$; $r = 0.639$; $p = 0.0139$.

DISCUSSION:

The current results illustrate that VFT can be reliably measured during cardiac surgery using the TEE techniques described here. Previous descriptions of VFT used transthoracic echocardiography in conscious subjects, but this approach cannot be utilized when the chest is open. We used intraoperative TEE to determine VFT in the anesthetized patients undergoing cardiac surgery during which changes in LV filling dynamics are often encountered as a result of ischemia-reperfusion injury or surgical interventions. Our findings indicate that VFT measurements reflect changes in LV filling efficiency produced by transient CPB-induced impaired relaxation pattern diastolic dysfunction, aortic valve disease, and aging. The current

technique for calculating VFT during cardiac surgery requires high-quality TEE images and video clips during steady-state hemodynamic conditions to assure precise measurements of mitral valve and LV outflow tract dimension and blood flow (**Figures 1, 2, and 3**). Not all patients will have optimal imaging windows because of off-axis rotation of the heart or pathological changes in cardiac geometry. Despite these potential limitations, experienced intraoperative echocardiographers should be able to easily obtain the necessary mid-esophageal four-chamber, mid-esophageal bicommissural, mid-esophageal LV long axis, and deep transgastric long axis views during the comprehensive TEE examination⁴². The technique may also be unreliable when rapidly changing hemodynamic conditions are present. It does not provide direct visualization of blood flow movement within the LV associated with the vortex, as previously characterized using Doppler vector flow mapping^{6,20,21} or particle imaging velocimetry^{9,22-24}. Accurate measurement of LV outflow track diameter using two-dimensional echocardiography is especially important because this variable is squared in the calculation of area and errors are magnified as a result. Similarly, accurate measurements of mitral valve minor and major axis length are essential because the cube of the average of these two dimensions appears in the denominator of the VFT formula. Two-dimensional echocardiography consistently underestimates aortic and mitral valve areas compared with three-dimensional reconstruction techniques^{43, 44}. The impact of these differences between two- and three-dimensional TEE on VFT is an area of current research by our group.

Additionally, isoflurane was used for maintenance of anesthesia in our studies. This volatile anesthetic is a vasodilating negative inotrope that reduces LV preload and afterload, decreases myocardial contractility, and affects LV diastolic function in a dose-related manner^{45,46}. These cardiovascular changes may have influenced atrial filling fraction and stroke volume in our studies. Nevertheless, the values of VFT obtained in anesthetized patients with normal preoperative LV ejection fraction undergoing coronary artery surgery before CPB were similar to those described in healthy conscious subjects⁸. These data suggest that baseline anesthesia does not substantially alter LV filling efficiency, but we are currently examining this hypothesis. VFT has been previously shown to be an independent predictor of mortality in patients with congestive heart failure³⁰, but it is unknown whether intraoperative changes in VFT are predictive of perioperative morbidity or mortality in cardiac surgery patients. This topic is also an area of interest that we are actively pursuing.

We first used this technique of noninvasively calculating VFT in a study examining the impact of CPB on VFT in isoflurane-fentanyl-anesthetized patients with normal preoperative LV ejection fraction undergoing coronary artery surgery³⁹. LV diastolic dysfunction occurs after cardiopulmonary bypass as a result of global ischemia-reperfusion injury and a profound systemic inflammatory response⁴⁷⁻⁴⁹. This diastolic dysfunction eventually recovers within minutes to hours based on the efficacy of myocardial protection during and the duration of CPB⁵⁰. Indeed, our findings confirmed that LV diastolic dysfunction occurs after CPB. This effect was accompanied by transient reductions in VFT that recovered within one hour after separation from CPB. The declines in VFT resulted from an increase in β and a modest decrease in SV because mitral valve diameter was unchanged. The recoveries of VFT, β , E/A, and SV after CPB were similar. Notably, VFT observed here did not fall below the normal range of VFT (3.3 to 5.5) in

healthy individuals. Our patients had normal preoperative LV systolic and diastolic function, were exposed to relatively short CPB times (93 ± 27 min), and were treated with regular doses of antegrade and retrograde cardioplegia. These factors probably combined to reduce ischemia-reperfusion injury during aortic cross-clamp application³⁹. CPB has also been shown to cause transient declines in trans-mitral blood flow propagation velocity (V_p) consistent with attenuated early LV filling in patients undergoing coronary artery surgery⁴⁹ as a result of decreases in LV compliance⁵¹ and reductions in early diastolic intraventricular pressure gradients⁵². A relationship between vortex ring formation and V_p was previously demonstrated⁵³, and our findings supported those of other investigators⁴⁹ in similar patient populations.

We subsequently examined the effects of pressure-overload LV hypertrophy produced by severe calcific degenerative aortic valve stenosis in patients with preserved LV systolic function undergoing aortic valve replacement⁴⁰. A second group of patients with normal LV wall thickness undergoing coronary artery surgery served as controls. Chronically elevated LV end-systolic wall stress causes LV pressure-overload hypertrophy as a compensatory response in the presence of aortic valve stenosis⁵⁴. LV wall thickening without dilatation occurs as a consequence of an increase in the diameter of individual myocytes. This LV remodeling is associated with interstitial fibrosis^{55,56}. Delays in apical recoil^{57,58} also occur that further attenuate early LV filling^{58,59}, which causes LV diastolic dysfunction by delaying LV relaxation and reducing LV compliance^{55,60}. Thus, VFT is reduced in the presence of delayed relaxation in patients with LV pressure-overload hypertrophy vs. those with normal LV wall thickness. Our findings were attributed to an increase in β and decline in SV at similar filling pressures consistent with a decrease in LV compliance. A significant correlation between decreases in VFT and the severity of hypertrophy was shown using linear regression analysis. This observation suggests that the degree of pressure-overload hypertrophy is inversely related to LV filling efficiency quantified using vortex formation time.

Valvular insufficiency often occurs in conjunction with severe calcific degenerative aortic valve stenosis because prominent leaflet calcification prevents complete coaptation. We conducted another investigation to ascertain whether regurgitant blood flow into the LV through an incompetent aortic valve affects LV filling efficiency by interfering with trans-mitral blood flow³⁸. We compared patients with severe aortic valve stenosis undergoing valve replacement who had moderate centrally-directed aortic insufficiency with a second group of patients who did not have regurgitation. We quantified aortic insufficiency using the regurgitant jet width LV outflow track diameter ratio measure with color Doppler M-mode echocardiography⁶¹. Our results showed that moderate aortic insufficiency increases VFT in patients with aortic valve stenosis. However, this increase in VFT does not suggest an improvement in LV filling efficiency has occurred because of abnormal regurgitant flow into the LV through the aortic valve. LV diastolic pressure rapidly increases in moderate to severe aortic insufficiency⁶², attenuating trans-mitral LV filling and reducing mitral valve area⁶³⁻⁶⁵. The results indicate that mitral valve diameter and area were reduced in patients with moderate aortic insufficiency *versus* those without regurgitation. These observations were most likely due to a decrease in minor axis length, resulting from attenuated anterior mitral leaflet opening caused by aortic regurgitant during LV filling, thereby, falsely elevated VFT. Indeed, VFT reported in our study (5.7 ± 1.7) was greater than the upper limit of normal VFT (5.5) in healthy conscious individuals⁸ and patients with normal LV geometry during

anesthesia (4.3 ± 0.5)⁴⁰. Therefore, it is highly likely that abnormal diastolic flow into the LV invalidates VFT as an index of LV filling efficiency.

We recently studied the influence of advanced age on VTF in elderly patients undergoing coronary artery surgery⁴¹. Progressive LV diastolic stiffening⁶⁶, decreased intraventricular diastolic kinetic energy⁶⁷, and attenuated diastolic suction⁶⁸ cause LV diastolic function in the elderly⁶⁹⁻⁷². Octogenarians with normal preoperative LV ejection were compared with a younger cohort of patients (≤ 62 years of age). We found that VFT was lower in octogenarians compared with younger patients. These observations were expected and occurred in conjunction with an impaired relaxation pattern of LV diastolic dysfunction and a modest reduction in SV at similar LV filling pressures. Mitral valve diameter was similar in octogenarians *versus* younger patients and did not contribute to the differences in VFT between groups. It is noteworthy that VFT was similar in octogenarians compared with patients with severe aortic valve stenosis that we previously reported^{38,40}. Indeed, aortic stenosis is another condition characterized by impaired relaxation LV diastolic dysfunction and reductions in LV compliance. A significant inverse correlation between VFT and age was also demonstrated despite the small sample size ($n = 7$ per group; **Figure 6**). The decline in VFT that occurs with age that may eventually become indistinguishable from heart failure produced by pathological processes such as restrictive diastolic dysfunction¹⁹ or dilated cardiomyopathy⁸. Our results were consistent with reductions in early peak diastolic intraventricular kinetic energy in elderly subjects with depressed LV function⁶⁷.

In summary, noninvasive measurement of VFT using standard two-dimensional and Doppler TEE is straightforward in anesthetized patients undergoing cardiac surgery. This technique may allow cardiac anesthesiologists and surgeons to assess the impact of pathological conditions and surgical interventions on LV filling efficiency in real time.

Acknowledgements:

This material is the result of work supported with resources and the use of the facilities at the Clement J. Zablocki Veterans Affairs Medical Center in Milwaukee, Wisconsin.

Disclosures:

The authors have no competing financial interests or other conflicts of interest pursuant to this work.

References

1. Collier, E., Hertzberg, J., Shandas, R. Regression analysis for vortex ring characteristics during left ventricular filling. *Biomedical Sciences Instrumentation*. **38** (2), 307-311 (2002).
2. Kheradvar, A., Gharib, M. Influence of ventricular pressure drop on mitral annulus dynamics through the process of vortex ring formation. *Annals of Biomedical Engineering*. **35** (12), 2050-2064 (2007).
3. Gharib, M., Rambod, E., Shariff, K. A universal time scale for vortex ring formation. *Journal of Fluid Mechanics*. **360** (1), 121-140 (1998).
4. Krueger, P. S., Gharib, M. The significance of vortex ring formation to the impulse and thrust of a starting jet. *Physics of Fluids*. **15** (5), 1271-1281 (2003).

5. Reul, H., Talukder, N., Muller, W. Fluid mechanics of the natural mitral valve. *Journal of Biomechanics*. **14** (5), 361-372 (1981).
6. Kim, W. Y., *et al.* Two-dimensional mitral flow velocity profiles in pig models using epicardial Doppler echocardiography. *Journal of the American College of Cardiology*. **24** (2), 532-545 (1994).
7. Kilner, P. J., *et al.* Asymmetric redirection of flow through the heart. *Nature*. **404** (6779), 759-761 (2000).
8. Gharib, M., Rambod, E., Kheradvar, A., Sahn, D. J., Dabiri, J. O. Optimal vortex formation as an index of cardiac health. *Proceedings of the National Academy of Sciences USA*. **103** (16), 6305-6308 (2006).
9. Rodriguez Munoz, D., *et al.* Intracardiac flow visualization: current status and future directions. *European Heart Journal Cardiovascular Imaging*. **14** (11), 1029-1038 (2013).
10. Martinez-Legazpi, P., *et al.* Contribution of the diastolic vortex ring to left ventricular filling. *Journal of the American College of Cardiology*. **64** (16), 1711-1721 (2014).
11. Dabiri, J. O., Gharib, M. The role of optimal vortex formation in biological fluid transport. *Proceedings of the Royal Society B*. **272** (1572), 1557-1560 (2003).
12. Kheradvar, A., Gharib, M. On mitral valve dynamics and its connection to early diastolic flow. *Annals of Biomedical Engineering*. **37** (1), 1-13 (2009).
13. Linden, P. F., Turner, J. S. The formation of "optimal" vortex rings, and the efficiency of propulsion devices. *Journal of Fluid Mechanics*. **427** (1), 61-72 (2001).
14. Domenichini, F., Pedrizzetti, G., Baccani, B. Three-dimensional filling flow into a model left ventricle. *Journal of Fluid Mechanics*. **539** (1), 179-198 (2005).
15. Sengupta, P. P., *et al.* Left ventricular isovolumic flow sequence during sinus and paced rhythms: new insights from use of high-resolution Doppler and ultrasonic digital particle imaging velocimetry. *Journal of the American College of Cardiology*. **49** (8), 899-908 (2007).
16. Rodriguez Munoz, D., *et al.* Flow mapping inside a left ventricular aneurysm: a potential tool to demonstrate thrombogenicity. *Echocardiography*. **31** (1), E10-E12 (2014).
17. Son, J. W., *et al.* Abnormal left ventricular vortex flow patterns in association with left ventricular apical thrombus formation in patients with anterior myocardial infarction: a quantitative analysis by contrast echocardiography. *Circulation Journal*. **76** (11), 2640-2646 (2012).
18. Kheradvar, A., Falahatpisheh, A. The effects of dynamic saddle annulus and leaflet length on trans-mitral flow pattern and leaflet stress of a bileaflet bioprosthesis mitral valve. *The Journal of Heart Valve Disease*. **21** (2), 225-233 (2012).
19. Kheradvar, A., Assadi, R., Falahatpisheh, A., Sengupta, P. P. Assessment of trans-mitral vortex formation in patients with diastolic dysfunction. *Journal of the American Society of Echocardiography*. **25** (2), 220-227 (2012).
20. Chen, R., *et al.* Assessment of left ventricular hemodynamics and function of patients with uremia by vortex formation using vector flow mapping. *Echocardiography*. **29** (9), 1081-1090 (2012).
21. Hendabadi, S., *et al.* Topology of blood transport in the human left ventricle by novel processing of Doppler echocardiography. *Annals of Biomedical Engineering*. **41** (12), 2603-2616 (2013).

22. Sengupta, P. P., Pedrizetti, G., Narula, J. Multiplanar visualization of blood flow using echocardiographic particle imaging velocimetry. *Journal of the American College of Cardiology Cardiovascular Imaging*. **5** (5), 566-569 (2012).
23. Sengupta, P. P., *et al.* Emerging trends in CV flow visualization. *Journal of the American College of Cardiology Cardiovascular Imaging*. **5** (3), 305-316 (2012).
24. Hong, G. R., Kim, M., Pedrizzetti, G., Vannan, M. A. Current clinical application of intracardiac flow analysis using echocardiography. *Journal of Cardiovascular Ultrasound*. **21** (4), 155-162 (2013).
25. Kheradvar, A., Milano, M., Gharib, M. Correlation between vortex ring formation and mitral annulus dynamics during ventricular rapid filling. *American Society for Artificial Internal Organs Journal*. **53** (1), 8-16 (2007).
26. Hong, G. R., *et al.* Characterization and quantification of vortex flow in the human left ventricle by contrast echocardiography using vector particle image velocimetry. *Journal of the American College of Cardiology Cardiovascular Imaging*. **1** (6), 705-717 (2008).
27. Zhang, H., *et al.* The evolution of intraventricular vortex during ejection studied by using vector flow mapping. *Echocardiography*. **30** (1), 27-36 (2013).
28. Nogami, Y., *et al.* Abnormal early diastolic intraventricular flow 'kinetic energy index' assessed by vector flow mapping in patients with elevated filling pressure. *European Heart Journal Cardiovascular Imaging*. **14** (3), 253-260 (2013).
29. Zhang, H., *et al.* The left ventricular intracavity vortex during the isovolumic contraction period as detected by vector flow mapping. *Echocardiography*. **29** (5), 579-587 (2012).
30. Poh, K. K., *et al.* Left ventricular filling dynamics in heart failure: echocardiographic measurement and utilities of vortex formation time. *European Heart Journal Cardiovascular Imaging*. **13** (5), 385-393 (2012).
31. Belohlavek, M. Vortex formation time: an emerging echocardiographic index of left ventricular filling efficiency? *European Heart Journal Cardiovascular Imaging*. **13** (5), 367-369 (2012).
32. Dabiri, J. O., Gharib, M. Starting flow through nozzles with temporally variable exit diameter. *Journal of Fluid Mechanics*. **538** (1), 111-136 (2005).
33. Jiamsripong, P., *et al.* Impact of acute moderate elevation in left ventricular afterload on diastolic trans-mitral flow efficiency: analysis by vortex formation time. *Journal of the American Society of Echocardiography*. **22** (4), 427-431 (2009).
34. Belohlavek, M., *et al.* Patients with Alzheimer disease have altered trans-mitral flow: echocardiographic analysis of the vortex formation time. *Journal of Ultrasound in Medicine*. **28** (11), 1493-1500 (2009).
35. Pedrizzetti, G., Domenichini, F., Tonti, G. On the left ventricular vortex reversal after mitral valve replacement. *Annals of Biomedical Engineering*. **38** (3), 769-773 (2010).
36. Martinez-Legazpi, P., *et al.* Stasis mapping using ultrasound: a prospective study in acute myocardial infarction. *Journal of the American College of Cardiology Cardiovascular Imaging*. **11** (3), 514-515 (2018).
37. Harfi, T. T., *et al.* The E-wave propagation index (EPI): a novel echocardiographic parameter for prediction of left ventricular thrombus. Derivation from computational fluid dynamic modeling and validation on human subjects. *International Journal of Cardiology*. **227** (1), 662-667 (2017).

38. Pagel, P. S., Boettcher, B. T., De Vry, D. J., Freed, J. K., Iqbal, Z. Moderate aortic valvular insufficiency invalidates vortex formation time as an index of left ventricular filling efficiency in patients with severe degenerative calcific aortic stenosis undergoing aortic valve replacement. *Journal of Cardiothoracic and Vascular Anesthesia*. **30** (5), 1260-1265 (2016).
39. Pagel, P. S., Gandhi, S. D., Iqbal, Z., Hudetz, J. A. Cardiopulmonary bypass transiently inhibits intraventricular vortex ring formation in patients undergoing coronary artery bypass graft surgery. *Journal of Cardiothoracic and Vascular Anesthesia*. **26** (3), 376-380 (2012).
40. Pagel, P. S., Hudetz, J. A. Chronic pressure-overload hypertrophy attenuates vortex formation time in patients with severe aortic stenosis and preserved left ventricular systolic function undergoing aortic valve replacement. *Journal of Cardiothoracic and Vascular Anesthesia*. **27** (4), 660-664 (2013).
41. Pagel, P. S., Dye III, L., Boettcher, B. T., Freed, J. K. Advanced age attenuates left ventricular filling efficiency quantified using vortex formation time: a study of octogenarians with normal left ventricular systolic function undergoing coronary artery surgery. *Journal of Cardiothoracic and Vascular Anesthesia*. **32** (4), 1775-1779 (2018).
42. Shanewise, J. S., *et al.* ASE/SCA guidelines for performing a comprehensive intraoperative multiplane transesophageal echocardiography examination: recommendations of the American Society of Echocardiography Council for Intraoperative Echocardiography and the Society of Cardiovascular Anesthesiologists Task Force for Certification in Perioperative Transesophageal Echocardiography. *Journal of the American Society of Echocardiography*. **12** (10), 884-900 (1999).
43. Gaspar, T., *et al.* Three-dimensional imaging of the left ventricular outflow tract: impact on aortic valve area estimation by the continuity equation. *Journal of the American Society of Echocardiography*. **25** (7), 749-757 (2012).
44. Karamnov, S., Burbano-Vera, N., Huang, C. C., Fox, J. A., Shernan, S. A. Echocardiographic assessment of mitral stenosis orifice area: a comparison of a novel three-dimensional method *versus* conventional techniques. *Anesthesia and Analgesia*. **125** (3), 774-780 (2017).
45. Pagel, P. S., Kampine, J. P., Schmeling, W. T., Warltier, D. C. Comparison of end-systolic pressure-length relations and preload recruitable stroke work as indices of myocardial contractility in the conscious and anesthetized, chronically instrumented dog. *Anesthesiology*. **73** (2), 278-290 (1990).
46. Pagel, P. S., Kampine, J. P., Schmeling, W. T., Warltier, D. C. Alteration of left ventricular diastolic function by desflurane, isoflurane, and halothane in the chronically instrumented dog with autonomic nervous system blockade. *Anesthesiology*. **74** (6), 1103-1114 (1991).
47. De Hert, S. G., Rodrigus, I. E., Haenen, L. R., De Mulder, P. A., Gillebert, T. C. Recovery of systolic and diastolic left ventricular function early after cardiopulmonary bypass. *Anesthesiology*. **85** (5), 1063-1075 (1996).
48. Gorcsan III, J., Diana, P., Lee, J., Katz, W. E., Hattler, B. G. Reversible diastolic dysfunction after successful coronary artery bypass surgery. Assessment by transesophageal Doppler echocardiography. *Chest*. **106** (5), 1364-1369 (1994).
49. Djaiani, G. N., *et al.* Mitral flow propagation velocity identifies patients with abnormal diastolic function during coronary artery bypass graft surgery. *Anesthesia and Analgesia*. **95** (3), 524-530 (2002).

50. Casthely, P. A., *et al.* Left ventricular diastolic function after coronary artery bypass grafting: a correlative study with three different myocardial protection techniques. *Journal of Thoracic and Cardiovascular Surgery*. **114** (2), 254-260 (1997).
51. Tulner, S. A., *et al.* Perioperative assessment of left ventricular function by pressure-volume loops using the conductance catheter method. *Anesthesia and Analgesia*. **97** (4), 950-957 (2003).
52. Firstenberg, M. S., *et al.* Relationship between early diastolic intraventricular pressure gradients, an index of elastic recoil, and improvements in systolic and diastolic function. *Circulation*. **104** (12 Suppl 1), I330-I335 (2001).
53. Cooke, J., Hertzberg, J., Boardman, M., Shandas, R. Characterizing vortex ring behavior during ventricular filling with Doppler echocardiography: an *in vitro* study. *Annals of Biomedical Engineering*. **32** (2), 245-256 (2004).
54. Grossman, W., Jones, D., McLaurin, L. P. Wall stress and patterns of hypertrophy in the human left ventricle. *Journal of Clinical Investigation*. **56** (1), 56-64 (1975).
55. Hess, O. M., *et al.* Diastolic function and myocardial structure in patients with myocardial hypertrophy. Special reference to normalized viscoelastic data. *Circulation*. **63** (2), 360-371 (1981).
56. Hess, O. M., *et al.* Diastolic stiffness and myocardial structure in aortic valve disease before and after valve replacement. *Circulation*. **69** (5), 855-865 (1984).
57. Sandstede, J. J. W., *et al.* Cardiac systolic rotation and contraction before and after valve replacement for aortic stenosis: a myocardial tagging study using MR imaging. *American Journal of Roentgenology*. **178** (4), 953-958 (2002).
58. Stuber, M., *et al.* Alterations in the local myocardial motion pattern in patients suffering from pressure overload due to aortic stenosis. *Circulation*. **100** (4), 361-368 (1999).
59. Nagel, E., *et al.* Cardiac rotation and relaxation in patients with aortic valve stenosis. *European Heart Journal*. **21** (7), 582-589 (2000).
60. Rakowski, H., *et al.* Canadian consensus recommendations for the measurement and reporting of diastolic dysfunction by echocardiography: from the Investigators of Consensus on Diastolic Dysfunction by Echocardiography. *Journal of the American Society of Echocardiography*. **9** (5), 736-760 (1996).
61. von Homeyer, P., Oxorn, D. C. Aortic regurgitation: echocardiographic diagnosis. *Anesthesia and Analgesia*. **122** (1), 37-42 (2016).
62. Landzberg, J. S., *et al.* Etiology of the Austin Flint murmur. *Journal of the American College of Cardiology*. **20** (2), 408-413 (1992).
63. Flint, A. On cardiac murmurs. *American Journal of Medical Sciences*. **91** (1), 27 (1886).
64. Botvinick, E. H., Schiller, N. B., Wickramasekaran, R., Klausner, S. C., Gertz, E. Echocardiographic demonstration of early mitral valve closure in severe aortic insufficiency. Its clinical implications. *Circulation*. **51** (5), 836-847 (1975).
65. Mann, T., McLaurin, L., Grossman, W., Craige, E. Assessing the hemodynamic severity of acute aortic regurgitation due to infective endocarditis. *New England Journal of Medicine*. **293** (3), 108-113 (1975).
66. Borlaug, B. A., *et al.* Longitudinal changes in left ventricular stiffness: a community-based study. *Circulation Heart Failure*. **6** (5), 944-952 (2013).

- 606 67. Wong, J., *et al.* Age-related changes in intraventricular kinetic energy: a physiological or
607 pathological adaptation? *American Journal of Physiology Heart Circulatory Physiology*. **310** (6),
608 H747-H755 (2016).
- 609 68. Carrick-Ranson, G., *et al.* Effect of healthy aging on left ventricular relaxation and diastolic
610 suction. *American Journal of Physiology Heart Circulatory Physiology*. **303** (3), H315-H322 (2012).
- 611 69. Iskandrian, A. S., Hakki, A. H. Age-related changes in left ventricular diastolic performance.
612 *American Heart Journal*. **112** (1), 75-78 (1986).
- 613 70. Schulman, S. P., *et al.* Age-related decline in left ventricular filling at rest and exercise.
614 *American Journal of Physiology*. **263** (6 Pt 2), H1932-H1938 (1992).
- 615 71. Stork, M., *et al.* Age-related hemodynamic changes during diastole: a combined M-mode and
616 Doppler echo study. *Internal Journal of Cardiovascular Imaging*. **6** (1), 23-30 (1991).
- 617 72. Sanders, D., Dudley, M., Groban, L. Diastolic dysfunction, cardiovascular aging, and the
618 anesthesiologist. *Anesthesiology Clinics*. **27** (3), 497-517 (2009).
- 619
- 620

Figure 1

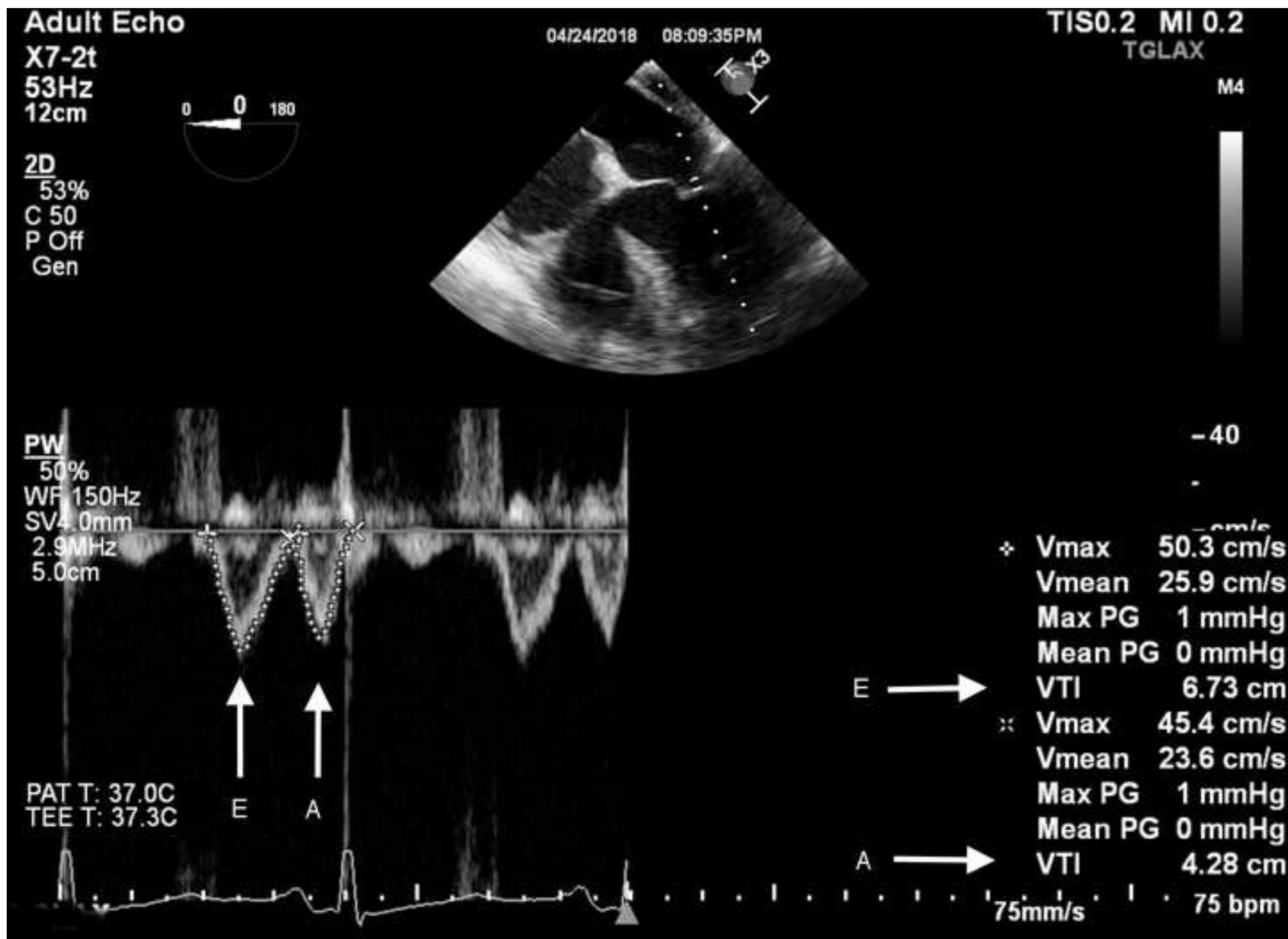
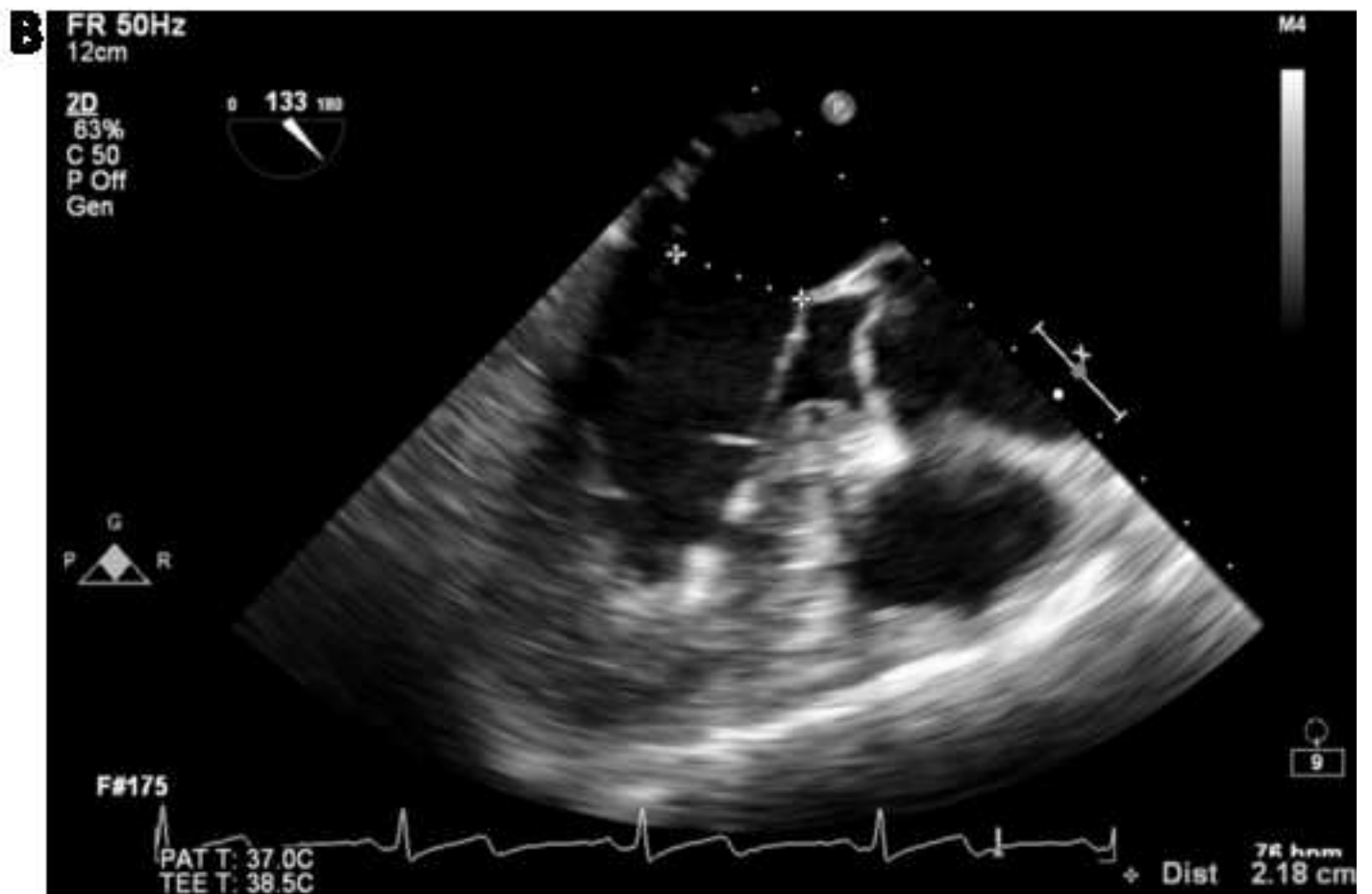
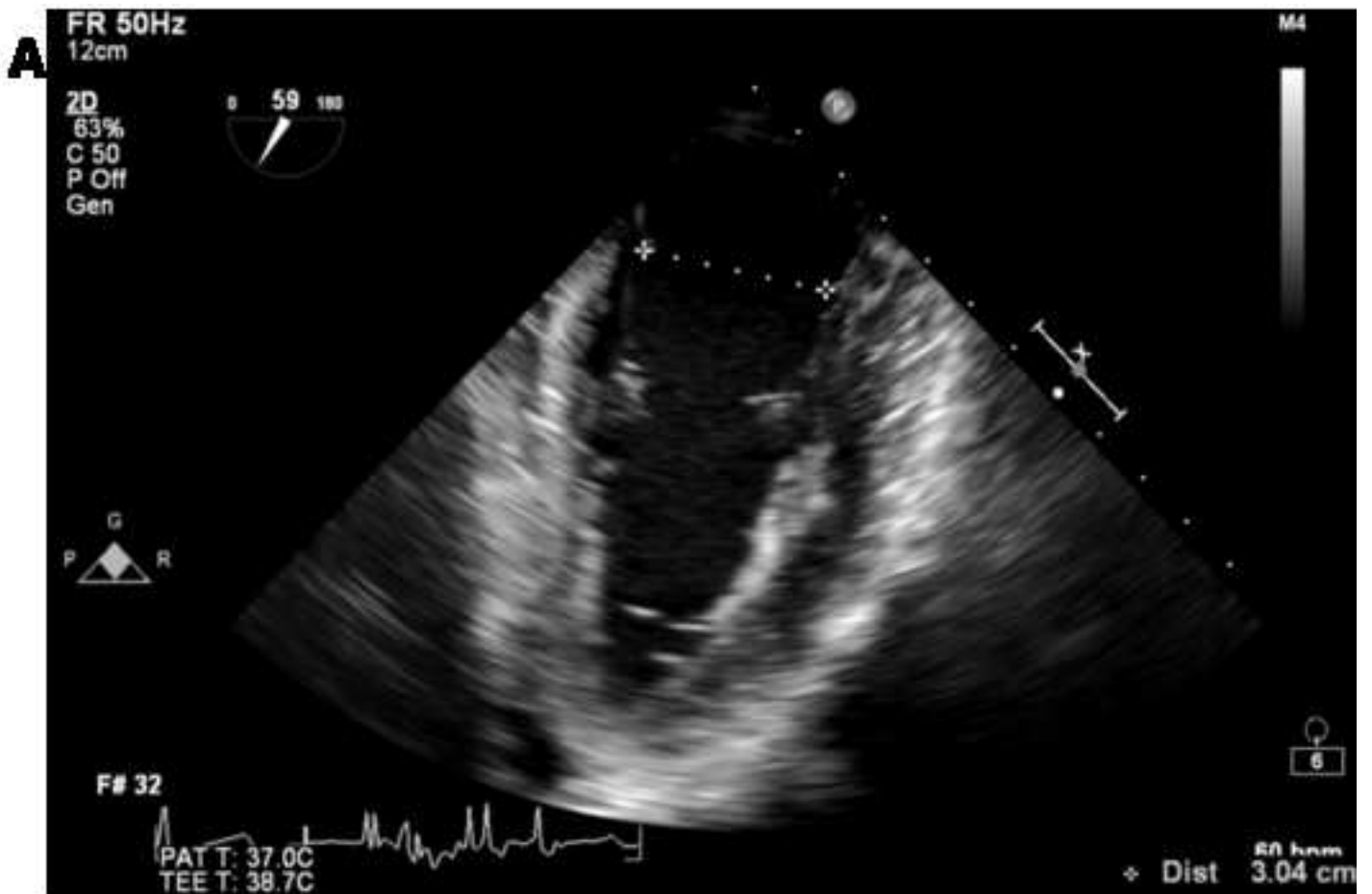
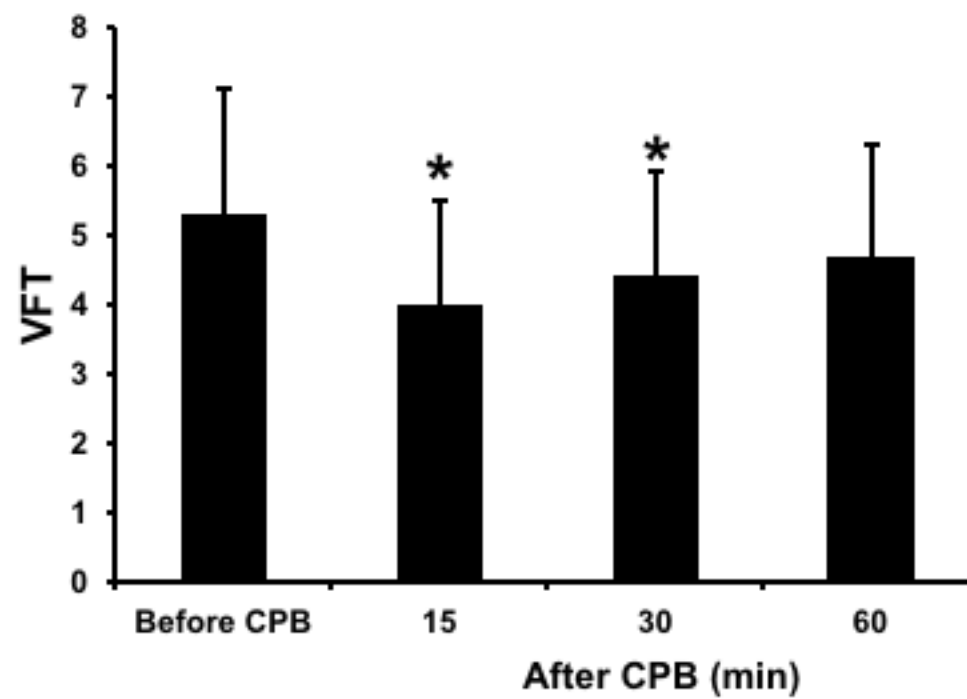


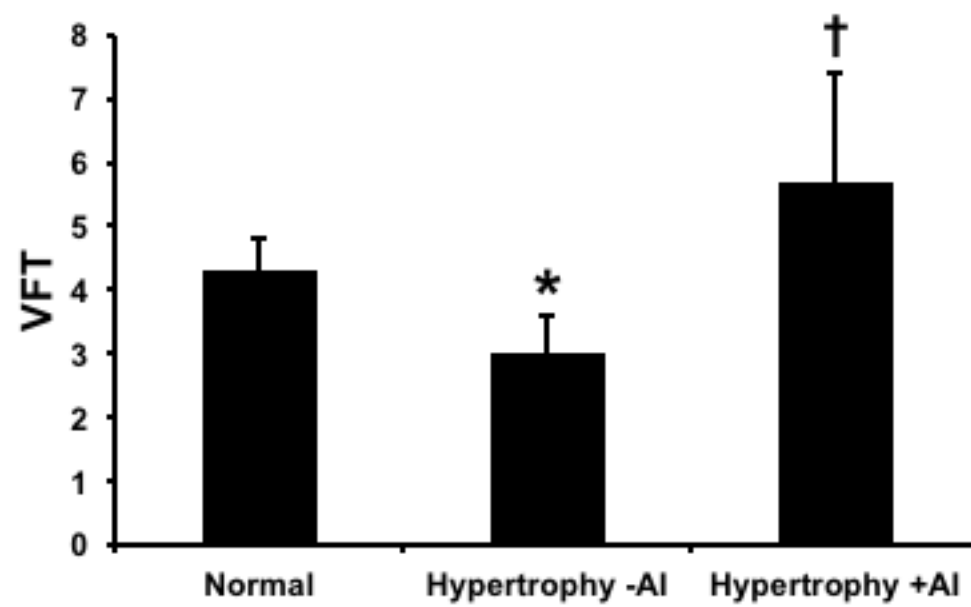


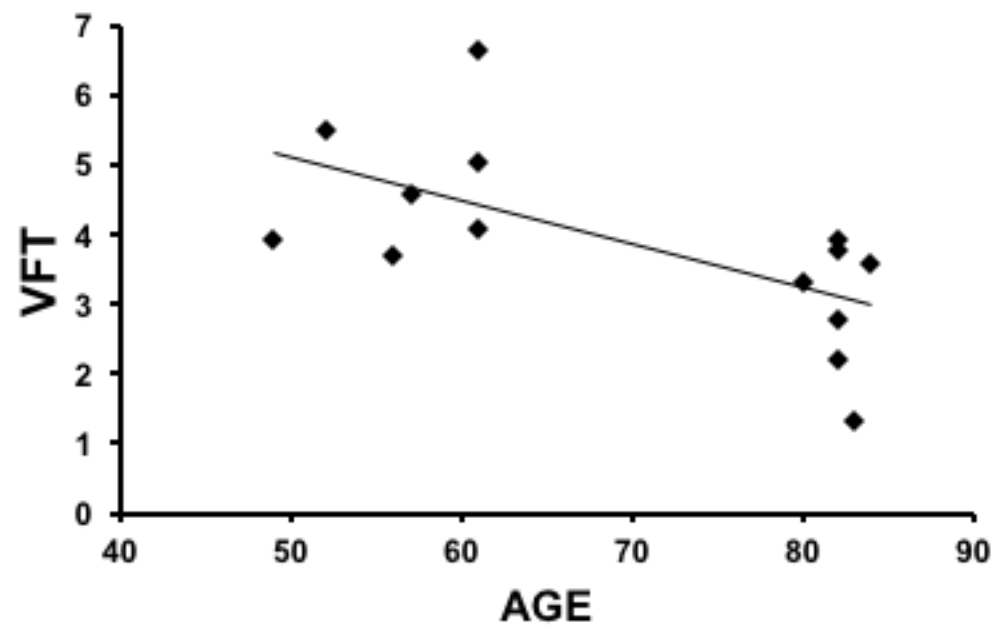
Figure 3

[Click here to access/download;Figure;fig 3.png](#)









Name of Material/ Equipment	Company	Catalog Number	Comments/Description
Echocardiography Machine	Philips Ultrasound, Bothall, WA	iE33	
Transesophageal			
Echocardiography Probe	Philips Ultrasound, Bothall, WA	X7-2t	
Statistical Software	AnalystSoft, Walnut, CA	StatPlus:mac Pro	



1 Alewife Center #200
Cambridge, MA 02140
tel. 617.945.9051
www.jove.com

ARTICLE AND VIDEO LICENSE AGREEMENT

Title of Article:

Noninvasive evaluation of vortex formation time....

Author(s):

Pagel PS, Dye III L, Hill GED, Vega DJL, Tawfik N et al

Item 1 (check one box): The Author elects to have the Materials be made available (as described at <http://www.jove.com/author>) via: ☒ Standard Access ☐ Open Access

Item 2 (check one box):

- ☐ The Author is NOT a United States government employee.
- ☐ The Author is a United States government employee and the Materials were prepared in the course of his or her duties as a United States government employee.
- ☒ The Author is a United States government employee but the Materials were NOT prepared in the course of his or her duties as a United States government employee.

ARTICLE AND VIDEO LICENSE AGREEMENT

1. **Defined Terms.** As used in this Article and Video License Agreement, the following terms shall have the following meanings: "**Agreement**" means this Article and Video License Agreement; "**Article**" means the article specified on the last page of this Agreement, including any associated materials such as texts, figures, tables, artwork, abstracts, or summaries contained therein; "**Author**" means the author who is a signatory to this Agreement; "**Collective Work**" means a work, such as a periodical issue, anthology or encyclopedia, in which the Materials in their entirety in unmodified form, along with a number of other contributions, constituting separate and independent works in themselves, are assembled into a collective whole; "**CRC License**" means the Creative Commons Attribution-Non Commercial-No Derivs 3.0 Unported Agreement, the terms and conditions of which can be found at: <http://creativecommons.org/licenses/by-nc-nd/3.0/legalcode>; "**Derivative Work**" means a work based upon the Materials or upon the Materials and other pre-existing works, such as a translation, musical arrangement, dramatization, fictionalization, motion picture version, sound recording, art reproduction, abridgment, condensation, or any other form in which the Materials may be recast, transformed, or adapted; "**Institution**" means the institution, listed on the last page of this Agreement, by which the Author was employed at the time of the creation of the Materials; "**JoVE**" means MyJoVE Corporation, a Massachusetts corporation and the publisher of *The Journal of Visualized Experiments*; "**Materials**" means the Article and / or the Video; "**Parties**" means the Author and JoVE; "**Video**" means any video(s) made by the Author, alone or in conjunction with any other parties, or by JoVE or its affiliates or agents, individually or in collaboration with the Author or any other parties, incorporating all or any portion of the Article, and in which the Author may or may not appear.

2. **Background.** The Author, who is the author of the Article, in order to ensure the dissemination and protection of the Article, desires to have the JoVE publish the Article and create and transmit videos based on the Article. In furtherance of such goals, the Parties desire to memorialize in this Agreement the respective rights of each Party in and to the Article and the Video.

3. **Grant of Rights in Article.** In consideration of JoVE agreeing to publish the Article, the Author hereby grants to JoVE, subject to **Sections 4 and 7** below, the exclusive, royalty-free, perpetual (for the full term of copyright in the Article, including any extensions thereto) license (a) to publish, reproduce, distribute, display and store the Article in all forms, formats and media whether now known or hereafter developed (including without limitation in print, digital and electronic form) throughout the world, (b) to translate the Article into other languages, create adaptations, summaries or extracts of the Article or other Derivative Works (including, without limitation, the Video) or Collective Works based on all or any portion of the Article and exercise all of the rights set forth in (a) above in such translations, adaptations, summaries, extracts, Derivative Works or Collective Works and (c) to license others to do any or all of the above. The foregoing rights may be exercised in all media and formats, whether now known or hereafter devised, and include the right to make such modifications as are technically necessary to exercise the rights in other media and formats. If the "Open Access" box has been checked in **Item 1** above, JoVE and the Author hereby grant to the public all such rights in the Article as provided in, but subject to all limitations and requirements set forth in, the CRC License.

ARTICLE AND VIDEO LICENSE AGREEMENT

4. Retention of Rights in Article. Notwithstanding the exclusive license granted to JoVE in **Section 3** above, the Author shall, with respect to the Article, retain the non-exclusive right to use all or part of the Article for the non-commercial purpose of giving lectures, presentations or teaching classes, and to post a copy of the Article on the Institution's website or the Author's personal website, in each case provided that a link to the Article on the JoVE website is provided and notice of JoVE's copyright in the Article is included. All non-copyright intellectual property rights in and to the Article, such as patent rights, shall remain with the Author.

5. Grant of Rights in Video – Standard Access. This **Section 5** applies if the "Standard Access" box has been checked in **Item 1** above or if no box has been checked in **Item 1** above. In consideration of JoVE agreeing to produce, display or otherwise assist with the video, the Author hereby acknowledges and agrees that, Subject to **Section 7** below, JoVE is and shall be the sole and exclusive owner of all rights of any nature, including, without limitation, all copyrights, in and to the Video. To the extent that, by law, the Author is deemed, now or at any time in the future, to have any rights of any nature in or to the Video, the Author hereby disclaims all such rights and transfers all such rights to JoVE.

6. Grant of Rights in Video – Open Access. This **Section 6** applies only if the "Open Access" box has been checked in **Item 1** above. In consideration of JoVE agreeing to produce, display or otherwise assist with the Video, the Author hereby grants to JoVE, subject to **Section 7** below, the exclusive, royalty-free, perpetual (for the full term of copyright in the Article, including any extensions thereto) license (a) to publish, reproduce, distribute, display and store the Video in all forms, formats and media whether now known or hereafter developed (including without limitation in print, digital and electronic form) throughout the world, (b) to translate the Video into other languages, create adaptations, summaries or extracts of the Video or other Derivative Works or Collective Works based on all or any portion of the Video and exercise all of the rights set forth in (a) above in such translations, adaptations, summaries, extracts, Derivative Works or Collective Works and (c) to license others to do any or all of the above. The foregoing rights may be exercised in all media and formats, whether now known or hereafter devised, and include the right to make such modifications as are technically necessary to exercise the rights in other media and formats. For any Video to which this Section 6 is applicable, JoVE and the Author hereby grant to the public all such rights in the Video as provided in, but subject to all limitations and requirements set forth in, the CRC License.

7. Government Employees. If the Author is a United States government employee and the Article was prepared in the course of his or her duties as a United States government employee, as indicated in **Item 2** above, and any of the licenses or grants granted by the Author hereunder exceed the scope of the 17 U.S.C. 403, then the rights granted hereunder shall be limited to the maximum rights permitted under such

statute. In such case, all provisions contained herein that are not in conflict with such statute shall remain in full force and effect, and all provisions contained herein that do so conflict shall be deemed to be amended so as to provide to JoVE the maximum rights permissible within such statute.

8. Likeness, Privacy, Personality. The Author hereby grants JoVE the right to use the Author's name, voice, likeness, picture, photograph, image, biography and performance in any way, commercial or otherwise, in connection with the Materials and the sale, promotion and distribution thereof. The Author hereby waives any and all rights he or she may have, relating to his or her appearance in the Video or otherwise relating to the Materials, under an applicable privacy, likeness, personality or similar laws.

9. Author Warranties. The Author represents and warrants that the Article is original, that it has not been published, that the copyright interest is owned by the Author (or, if more than one author is listed at the beginning of this Agreement, by such authors collectively) and has not been assigned, licensed, or otherwise transferred to any other party. The Author represents and warrants that the author(s) listed at the top of this Agreement are the only authors of the Materials. If more than one author is listed at the top of this Agreement and if any such author has not entered into a separate Article and Video License Agreement with JoVE relating to the Materials, the Author represents and warrants that the Author has been authorized by each of the other such authors to execute this Agreement on his or her behalf and to bind him or her with respect to the terms of this Agreement as if each of them had been a party hereto as an Author. The Author warrants that the use, reproduction, distribution, public or private performance or display, and/or modification of all or any portion of the Materials does not and will not violate, infringe and/or misappropriate the patent, trademark, intellectual property or other rights of any third party. The Author represents and warrants that it has and will continue to comply with all government, institutional and other regulations, including, without limitation all institutional, laboratory, hospital, ethical, human and animal treatment, privacy, and all other rules, regulations, laws, procedures or guidelines, applicable to the Materials, and that all research involving human and animal subjects has been approved by the Author's relevant institutional review board.

10. JoVE Discretion. If the Author requests the assistance of JoVE in producing the Video in the Author's facility, the Author shall ensure that the presence of JoVE employees, agents or independent contractors is in accordance with the relevant regulations of the Author's institution. If more than one author is listed at the beginning of this Agreement, JoVE may, in its sole discretion, elect not take any action with respect to the Article until such time as it has received complete, executed Article and Video License Agreements from each such author. JoVE reserves the right, in its absolute and sole discretion and without giving any reason therefore, to accept or decline any work submitted to JoVE. JoVE and its employees, agents and independent contractors shall have

ARTICLE AND VIDEO LICENSE AGREEMENT

full, unfettered access to the facilities of the Author or of the Author's institution as necessary to make the Video, whether actually published or not. JoVE has sole discretion as to the method of making and publishing the Materials, including, without limitation, to all decisions regarding editing, lighting, filming, timing of publication, if any, length, quality, content and the like.

11. Indemnification. The Author agrees to indemnify JoVE and/or its successors and assigns from and against any and all claims, costs, and expenses, including attorney's fees, arising out of any breach of any warranty or other representations contained herein. The Author further agrees to indemnify and hold harmless JoVE from and against any and all claims, costs, and expenses, including attorney's fees, resulting from the breach by the Author of any representation or warranty contained herein or from allegations or instances of violation of intellectual property rights, damage to the Author's or the Author's institution's facilities, fraud, libel, defamation, research equipment, experiments, property damage, personal injury, violations of institutional, laboratory, hospital, ethical, human and animal treatment, privacy or other rules, regulations, laws, procedures or guidelines, liabilities and other losses or damages related in any way to the submission of work to JoVE, making of videos by JoVE, or publication in JoVE or elsewhere by JoVE. The Author shall be responsible for, and shall hold JoVE harmless from, damages caused by lack of sterilization, lack of cleanliness or by contamination due to the making of a video by JoVE its employees, agents or independent contractors. All sterilization, cleanliness or decontamination procedures shall be solely the responsibility of the Author and shall be undertaken at the Author's

expense. All indemnifications provided herein shall include JoVE's attorney's fees and costs related to said losses or damages. Such indemnification and holding harmless shall include such losses or damages incurred by, or in connection with, acts or omissions of JoVE, its employees, agents or independent contractors.

12. Fees. To cover the cost incurred for publication, JoVE must receive payment before production and publication the Materials. Payment is due in 21 days of invoice. Should the Materials not be published due to an editorial or production decision, these funds will be returned to the Author. Withdrawal by the Author of any submitted Materials after final peer review approval will result in a US\$1,200 fee to cover pre-production expenses incurred by JoVE. If payment is not received by the completion of filming, production and publication of the Materials will be suspended until payment is received.

13. Transfer. Governing Law. This Agreement may be assigned by JoVE and shall inure to the benefits of any of JoVE's successors and assignees. This Agreement shall be governed and construed by the internal laws of the Commonwealth of Massachusetts without giving effect to any conflict of law provision thereunder. This Agreement may be executed in counterparts, each of which shall be deemed an original, but all of which together shall be deemed to be one and the same agreement. A signed copy of this Agreement delivered by facsimile, e-mail or other means of electronic transmission shall be deemed to have the same legal effect as delivery of an original signed copy of this Agreement.

A signed copy of this document must be sent with all new submissions. Only one Agreement required per submission.

CORRESPONDING AUTHOR:

Name:

PAUL S. PAGEL MD PhD

Department:

ANESTHESIOLOGY

Institution:

CLEMENT J. ZABLOCKI VA MEDICAL CENTER

Article Title:

NON-INVASIVE EVALUATION OF VORTEX FORMATION TIME ...

Signature:



Date:

4/24/18

Please submit a signed and dated copy of this license by one of the following three methods:

- 1) Upload a scanned copy of the document as a pdf on the JoVE submission site;
- 2) Fax the document to +1.866.381.2236;
- 3) Mail the document to JoVE / Attn: JoVE Editorial / 1 Alewife Center #200 / Cambridge, MA 02139

For questions, please email submissions@jove.com or call +1.617.945.9051

Responses to Editor and Reviewer Comments

Editor

1. I've proofread the manuscript to be sure that it is entirely correct. There are no spelling or grammatical errors.
2. These sections have been revised.
3. These changes have been made.
4. I have no idea how to accomplish this task nor do I know anyone who knows how to do it. I've left the figures in separate panels as a result.
5. The title has been simplified as requested.
6. An email address for each author has been included in the revised manuscript.
7. I've added the following short abstract as requested: "Here, we present a protocol to measure vortex formation time, an index of left ventricular filling efficiency, using standard transesophageal echocardiography techniques in patients undergoing cardiac surgery. We apply this technique to analyze vortex formation time in several groups of patients with differing cardiac pathologies."
8. The Abstract has been rewritten to emphasize the methodology as requested.
9. The numbering of the Protocol has been adjusted to follow the JoVE Instructions for Authors as requested.
10. Spacing has been adjusted throughout the manuscript as requested.
11. All commercial language has been removed from the manuscript as requested. The Table of Materials and Reagents has been updated.
12. The protocol has been rewritten in imperative tense as requested.
13. Additional information has been added to the protocol as requested.
14. The dosages of all medications are now specified in the revised text.
15. Local anesthesia was administered subcutaneously using 1% lidocaine and its efficacy verified using a pinprick. This information has been added to the text as requested.
16. Supplemental oxygen was provided using a nasal cannula. This information has been added to the text as requested.
17. Additional details were added as requested.
18. The text was revised to include a description of how parameters were calculated.
19. The Representative Results section has been reviewed as requested. I've commented about how reproducible results were obtained using measurements of cardiac dimension and blood flow in several standard, easily obtained, transesophageal imaging planes. I've discussed figures 1, 2, and 3 in the text in this context.
20. I revised the Discussion to include commentary about the protocol, modifications/troubleshooting the technique, limitations to the technique, significance, and potential future applications as requested.
21. An acknowledgements section has been added as requested.
22. A disclosures section has been added as requested. The authors have competing financial interests or other conflicts of interest pursuant to this work.
23. The references have been reformatted as instructed.
24. See response above. The references have been changed to comply with the journal's style.
25. The table of essential supplies, reagents, and equipment has been revised as requested.

Reviewer #1

Major Comments

1. The reviewer is correct that we did not visualize blood flow movement in the LV. This limitation has been inserted in the revised manuscript. The reviewer is also correct that transthoracic echocardiography cannot be performed during cardiac surgery in the presence of an open chest (this requires an epicardial approach instead); I've also commented on this limitation in the revised manuscript.
2. I respectfully disagree with the reviewer's assertion. The rapid increase in LV pressure that occurs in aortic insufficiency is known to attenuate early LV filling (see references #63-65). Our data indicate that mitral valve minor axis diameter was reduced in this setting, whereas atrial filling fraction and stroke volume (the other determinants of VFT) were unaffected (see reference #40).

Minor Comments

1. I'm not sure what to make of this comment. There doesn't appear to be a question here. The control values of VFT in patients with coronary artery disease and normal LV ejection fraction was similar those previously reported in conscious healthy subjects (see reference #8).
2. The sample sizes are small, but power analyses indicated that the sample sizes were appropriate for the purposes of meaningful statistical comparison (see "statistical analysis" sections of references #38-41).
3. We did not conduct tissue Doppler analysis and cannot calculate E/e' as an estimate of left atrial filling pressure as a result. Diastolic function was graded in the original papers (see references #38-41 for details) using transmitral and pulmonary venous blood flow velocity profiles. This is standard practice in the operating room.
4. Measurement of diastolic dysfunction was not the primary objective of the current work or that of the cited papers. Transmitral blood flow velocity patterns were obtained to calculate atrial filling fraction. As mentioned, we also reported pulmonary venous blood flow velocity profiles in the original papers.
5. The reviewer should refer to the primary manuscripts (references #38 and 40) for details. The mitral valve dimension measurements to which the author refers are located in table 2 of each of these papers.
6. I respectfully disagree with this contention. The power analysis indicated that the sample size was adequate for statistical analysis. The regression analysis also provided a statistically inverse significant correlation between posterior wall thickness and VFT in patients with aortic valve stenosis (see reference #40).
7. The concluding sentence has been qualified with this potential limitation in mind.

Reviewer #2

Thank you for your kind comments about our manuscript. I've revised the Introduction modestly to include the reviewer's two suggested citations.

Reviewer #3

Major Concerns

1. Kheradvar *et al* (reference #19) examined the relationship between VFT and E/A. They demonstrated that VFT is decreased in delayed relaxation, pseudonormal, and restrictive diastolic dysfunction. This topic was discussed in our other reports (references #38-41), and I'd prefer not to repeat it here (the readers can refer to these papers for additional details as desired). To my knowledge, VFT has not been directly compared with e' or other tissue Doppler indices.
2. It is clear that VFT is an independent predictor of outcome in patients with heart failure (see reference #30). Whether VFT predicts morbidity or mortality in patients undergoing cardiac surgery is not clear at present, but we are conducting studies to address this hypothesis, as mentioned in the revised Discussion.

Minor Concerns

None.

ELSEVIER LICENSE
TERMS AND CONDITIONS

Apr 27, 2018

This Agreement between Paul S Pagel ("You") and Elsevier ("Elsevier") consists of your license details and the terms and conditions provided by Elsevier and Copyright Clearance Center.

License Number	4337130221551
License date	Apr 27, 2018
Licensed Content Publisher	Elsevier
Licensed Content Publication	Journal of Cardiothoracic and Vascular Anesthesia
Licensed Content Title	Moderate Aortic Valvular Insufficiency Invalidates Vortex Formation Time as an Index of Left Ventricular Filling Efficiency in Patients With Severe Degenerative Calcific Aortic Stenosis Undergoing Aortic Valve Replacement
Licensed Content Author	Paul S. Pagel,Brent T. Boettcher,Derek J. De Vry,Julie K. Freed,Zafar Iqbal
Licensed Content Date	Oct 1, 2016
Licensed Content Volume	30
Licensed Content Issue	5
Licensed Content Pages	6
Start Page	1260
End Page	1265
Type of Use	reuse in a journal/magazine
Requestor type	author of new work
Intended publisher of new work	Other
Portion	figures/tables/illustrations
Number of figures/tables /illustrations	1
Format	both print and electronic
Are you the author of this Elsevier article?	Yes
Will you be translating?	No
Original figure numbers	Figure 1
Title of the article	Review article

Print This Page