

# Journal of Visualized Experiments

## Colostrum in the newborn gut modulates cellular stress and inflammation in oxytocin-secreting nuclei in the brain --Manuscript Draft--

<b>Article Type:</b>	Methods Article - JoVE Produced Video
<b>Manuscript Number:</b>	JoVE58341R2
<b>Full Title:</b>	Colostrum in the newborn gut modulates cellular stress and inflammation in oxytocin-secreting nuclei in the brain
<b>Keywords:</b>	nutrient insufficiency; NTS; stress response; GCN2; NF-kappaB; eIF2a
<b>Corresponding Author:</b>	Martha Welch Columbia University New York, NY UNITED STATES
<b>Corresponding Author's Institution:</b>	Columbia University
<b>Corresponding Author E-Mail:</b>	mgw13@gmail.com
<b>Order of Authors:</b>	Benjamin Klein Hadassah Tamir Robert Ludwig Sara Glickstein Martha Welch
<b>Additional Information:</b>	
<b>Question</b>	<b>Response</b>
Please indicate whether this article will be Standard Access or Open Access.	Standard Access (US\$2,400)
Please indicate the <b>city, state/province, and country</b> where this article will be <b>filmed</b> . Please do not use abbreviations.	51 Audobon Ave, suite 100, New York NY 10032

**TITLE:**

Assessing Cellular Stress and Inflammation in Discrete Oxytocin-Secreting Brain Nuclei in the Neonatal Rat Before and After First Colostrum Feeding

**AUTHORS AND AFFILIATIONS:**

Benjamin Y. Klein<sup>1</sup>, Hadassah Tamir<sup>1,2,3</sup>, Muhammad Anwar<sup>1</sup>, Robert J. Ludwig<sup>1</sup>, Sara B. Glickstein<sup>4</sup>, Martha G. Welch<sup>1,2</sup>

<sup>1</sup>Department of Psychiatry, Columbia University Medical Center, New York, NY, USA

<sup>2</sup>Department of Pathology & Cell Biology, Columbia University Medical Center, New York, NY, USA

<sup>3</sup>Department of Psychiatry, Division of Molecular Imaging and Neuropathology, New York State Psychiatric Institute, New York, NY, USA

<sup>4</sup>EB Sciences, Oakland, CA, USA

**Corresponding Authors:**

Benjamin Y. Klein (Bk2348@cumc.columbia.edu)

Martha G. Welch (mgw13@columbia.edu)

Tel: (212)-342-4400

**Email Addresses of Co-authors:**

Hadassah Tamir (ht3@columbia.edu)

Muhammad Anwar (ma432@columbia.edu)

Robert Ludwig (rjl2028@columbia.edu)

Sara Glickstein (saraglickstein@gmail.com)

**KEYWORDS:**

Nutrient insufficiency, nucleus tractus solitarius (NTS), stress response, general control nonderepressible 2 (GCN2), nuclear factor- $\kappa$ B (NF- $\kappa$ B), eukaryotic translation initiation factor 2A (eIF2a)

**SUMMARY:**

Here, we present a protocol to isolate brain nuclei in the neonatal rat brain in conjunction with first colostrum feeding. This technique allows the study of nutrient insufficiency stress in the brain as modulated by enterocyte signaling.

**ABSTRACT:**

The goal of this protocol is to isolate oxytocin-receptor rich brain nuclei in the neonatal brain before and after first colostrum feeding. The expression of proteins known to respond to metabolic stress was measured in brain-nuclei isolates using Western blotting. This was done to assess whether metabolic stress-induced nutrient insufficiency in the body triggered neuronal stress. We have previously demonstrated that nutrient insufficiency in neonates elicits metabolic stress in the gut. Furthermore, colostrum oxytocin modulates cellular stress response, inflammation, and autophagy markers in newborn rat gut villi prior to and after first feed.

Signaling protein markers associated with the endoplasmic reticulum stress [ER chaperone binding immunoglobulin protein (BiP), eukaryotic translation initiation factor 2A (eIF2a), and eIF2a kinase protein kinase R (p-PKR)], as well as two inflammation-signaling proteins [nuclear factor- $\kappa$ B (NF- $\kappa$ B) and inhibitor  $\kappa$ B (I $\kappa$ B)], were measured in newborn brain nuclei [nucleus of the solitary tract (NTS), paraventricular nucleus (PVN), supra-optic nucleus (SON), cortex (CX), striatum nuclei (STR), and medial preoptic nucleus (MPO)] before the first feed (unprimed by colostrum) and after the start of nursing (primed by colostrum). Expression of BiP/GRP78 and p-eIF2a were upregulated in unprimed and downregulated in primed NTS tissue. NF- $\kappa$ B was retained (high) in the CX, STR, and MPO cytoplasm, whereas NF- $\kappa$ B was lower and unchanged in NTS, PVN, and SON in both conditions. The collective BiP and p-eIF2 findings are consistent with a stress response. eIF2a was phosphorylated by dsRNA dependent kinase (p-PKR) in the SON, CX, STR, and MPO. However, in the NTS (and to a lesser extent in PVN), eIF2a was phosphorylated by another kinase, general control nonsuppressed-2 kinase (GCN2). The stress-modulating mechanisms previously observed in newborn gut enterocytes appear to be mirrored in some OTR-rich brain regions. The STN and PVN may utilize a different phosphorylation mechanism (under nutrient deficiency) from other regions and be refractory to the impact of nutrient insufficiency. Collectively, this data suggests that brain responses to nutrient insufficiency stress are offset by signaling from colostrum-primed enterocytes.

## INTRODUCTION:

In contrast to our understanding of early brain development occurring over the course of days-to-weeks postpartum, relatively little is known about the myriad of dynamic changes occurring in the first hours of life in rats. A key challenge has been the small size of the neonatal rat brain and a requirement for high-tech tools to isolate discrete brain regions or single cells. Studies often assess gene transcription and not translation<sup>1,2</sup>, which does not give a firm understanding of functional levels of activated signaling molecules. Others examine expression using immunohistochemistry to reference brain regions, which does not allow for the quantification of expression levels<sup>3</sup>. No study to date has examined the activation of signaling pathways associated with rats' first colostrum feed in discrete brain regions, which requires rapid isolation and sacrifice and measurement of protein expression and protein phosphorylation using Western blotting. While brain microdissection is performed on older and larger brains, we have not identified a reference performing a non-single-cell brain punch in a P0 brain. This paper presents a protocol for isolating restricted regions of the neonatal brain using a relatively low-tech punch technique and a Western blotting procedure to measure protein expression in relatively small samples. This protocol may be suitable for research questions that require the assessment of protein expression and post-translational modifications (*e.g.*, phosphorylation) in relatively restricted regions of small brains of any species, provided that the user can visually identify the brain region of interest with an atlas and identifiable landmarks.

This technique was developed to understand changes occurring in the brain as a result of the neonatal rats' first colostrum feed, which is rich in oxytocin (OT). OT has been long known for its ability to stimulate milk let-down and uterine contraction. However, OT is now known to play a wide range of roles in the regulation of many bodily functions and behaviors<sup>4</sup>. For example, OT opposes stress and inflammation in conjunction with adaptive affiliative behaviors<sup>5</sup>, delays

gastric emptying, and slows intestinal transit. OT receptors (OTR) have been identified in enteric neurons and intestinal epithelium<sup>6-8</sup>. The gastrointestinal effects of OT are particularly important to the infant during the early postnatal period. For instance, breastfeeding is associated with the delivery of significant quantities of OT to the neonatal gut<sup>9,10</sup>, and data show that the OTR is heavily overexpressed in duodenal villi during the milk suckling period<sup>8</sup>.

*In vitro* experiments using a gut cell line have demonstrated at the cellular level that oxytocin modulates important molecules in the stress signaling pathway<sup>11,12</sup> and plays a regulatory role in translation of proteins<sup>12</sup>. These studies suggest that components of milk, including exogenous oxytocin from the mother, are important in the unfolded protein response in neonates to reduce cellular stress<sup>13</sup>.

*In vivo* and *ex vivo* studies have shown that colostrum OT modulates the cellular stress response, inflammation, and autophagy markers in newborn rat gut villi. Newborn enterocytes suffer substantial cellular stress on their luminal side when the gut is simultaneously exposed to microbiota from the mother in colostrum<sup>14,15</sup> and numerous proteins, including hormones such as OT<sup>9,10,16</sup>.

The effects of OT on the brain have been studied<sup>17</sup>. However, the OT signaling mechanisms demonstrated in the gut during the early postnatal period have not been studied in the brain. In this paper, a method for isolating discrete brain nuclei in the neonatal rat brainstem and hypothalamus using electrophoresis is used to profile isolated brain regions. The overall goal of this method is to capture the state of cell signaling in brain areas as close as possible to birth, before and after the first milk suckling, in brain tissue with the lowest glial/neuronal index. The rationale for the development of this technique is that it allows for the rapid isolation of restricted, microscopic brain regions in neonatal pups with a more homogenous collection of neurons for *ex vivo* studies using an automated Western blotting methodology, offering highly consistent results on relatively small dissected samples. A shortcoming of prior work includes more gross dissection (brain slices or whole brain) and older animals<sup>18,19</sup>. The brains of young pups are incredibly dynamic, featuring waves of glial differentiation after birth. In order to study brain changes influenced by the pups' first feeding, studying restricted neuronal nuclei with reproducible dissection is necessary.

Milk feed is usually analyzed for its immunological and nutritional impact on health or gene expression (for example, in enterocytes<sup>20,21</sup>), whereas its effect on brain areas during brain development is rarely studied. The effect of milk transit in the gut on brain function was analyzed in reference to gut cholecystokinin receptors vagal relay to brain stem nuclei, but not to intracellular signaling pathways<sup>22</sup>. There is a vast literature on vulnerability of the developing neonate brain to malnutrition of mothers during pregnancy<sup>23</sup>, but the stress and inflammation signals are not addressed. Importantly, the current method takes advantage of a phenomenon in day-zero rat newborns that isolates the blood-born colostrum stimuli from vagal relay of visceral stimuli. This is the so-called stress hypo-responsiveness period characterized by immature nucleus tractus solitarius (NTS)-hypothalamic circuit immediately after birth<sup>24,25</sup> that restricts NTS, paraventricular nucleus (PVN), and supraoptic nucleus (SON) signals to blood-born

stimuli.

This method is useful for analysis of multiple signaling pathways and relatively restricted to neuronal cells, provided that brain tissue is harvested at postnatal day-0 in rats, in addition to whether mothers have been challenged or not by any kind of treatment during pregnancy. Litters can be analyzed for the effects of colostrum feed versus pre-feeding signaling. When comparing signals between brain areas with poor versus rich protein yield, this method enables in-capillary determination of total protein of the polypeptide bands in capillaries run parallel to immune-quantitation of protein antigens. This method enables the quantitative comparison, using arbitrary units, of results obtained by the same antibody without standard quantitative curves and by reference to total protein per capillary. Comparing results obtained by different antibodies is possible only using quantitative standard curves.

This method allowed for the assessment of bidirectional signaling occurring between the gut and the brain and that can impact function in both organs<sup>26</sup>. The association between oxytocin and food intake, which has been extensively studied in recent years<sup>27</sup>, supports a link between increased oxytocin signaling and nutrient availability. These studies also support the converse concept that energy deficits are coupled with reductions in hypothalamic oxytocin signaling.

Earlier studies of the effect of OT on brain activity demonstrated that induced gut inflammation elicited cFos transcription in hypothalamic PVN, amygdala, and piriform cortex which was refractory to vagotomy<sup>28</sup>. However, systemic infusion of OT with secretin decreased the brain cFos response to the provoked inflammatory reaction in the gut<sup>28</sup>. This suggested that the effect of exogenous OT was carried out by routes other than vagal relays, possibly via blood-borne signaling molecules carried through the area postrema<sup>6,29</sup>.

In this study, the cellular stress signaling pathways that have previously observed in the gut were assessed in the brain. The hypothesis was that milk components may protect or defer the effect of inflammation on gut permeability to microbial and other metabolites, and in turn, the effects on brain function. The clear antagonistic differences in I $\kappa$ B versus BiP signaling found in villi, before and after priming by colostrum<sup>13</sup>, suggested that the brains of neonates, still in the process of developing, may sense these colostrum-induced gut signals.

Signaling protein markers used in previous gut experiments that are associated with endoplasmic reticulum stress were measured. They include the ER chaperone BiP, translation initiation factor eIF2a (which serves as a stress response integrator<sup>30</sup>), eIF2a kinase p-PKR, and two inflammation-signaling proteins (NF- $\kappa$ B and its inhibitor, I $\kappa$ B).

Six brain regions based on their ability in adults to secrete or respond to OT were chosen. The NTS, located at the upper medulla, is the first relay of the visceral input and receives direct signaling from vagal sensory neurons in the gut<sup>31</sup> and possibly blood-born cytokines, toxins, and hormones via the adjacent area-postrema<sup>32</sup>. The PVN, supraoptic nucleus (SON), striatum nuclei (STR), cerebral cortex (CX), and medial preoptic nucleus (MPO) receive signaling from the gut via the NTS.

Results showed that the cellular stress response during the immediate postnatal period prior to colostrum priming and immediately after first feeding is different in NTS compared to PVN and SON. Signaling in CX, STR, and MPO differed from that of PVN and SON, as well. The distinct protective functions of OT shown previously to modulate cell stress and inflammation in the gut are likely sensed by some areas of the brain. Collectively, the data indicate that at the cellular level, during the first hours after birth, the brain responds to the metabolic stress associated with nutrient insufficiency. The data also show that the extent and direction of the modulating effects of the colostrum feed are region-dependent and that in some regions, they mirror OT effects shown previously in the gut.

## **PROTOCOL:**

This study was approved by the Institutional Animal Care and Use Committees at Columbia University and the New York State Psychiatric Institute.

### **1. Tissue Preparation**

1.1. Order timed pregnant rats from vendor.

1.2. Follow timed pregnant rats by observing their growing abdomens in the weeks after their arrival and subsequently looking for pups on the expected delivery date by inspecting the cage every 2 h until delivery begins.

1.3. Remove pups with a gloved hand by their tail before their first feed for unprimed pups (no white milk belly is apparent when viewing abdomen) or after the first feed for primed pups (at which point a white stomach will be visible on their abdomen) as described in the timeline (**Figure S1**).

Note: The first colostrum feed is termed as priming the pup; thus, a pup is unprimed until the first feed, after which they are colostrum-primed.

1.4. Quickly decapitate the unanesthetized pup using sharp, clean surgical scissors.

1.5 Remove the brain by cutting the skin down the midline and top surface of the skull to the nose. Then, using forceps, gently pry away the bone to expose the brain (**Figure 1A**) and localize the bregma, marking it with a pen as the bone plates are removed (**Figure 1B**).

1.6. Rapidly place the whole brain in a polymethyl methacrylate brain mold at room temperature for coronal slicing at room temperature (**Figure 1C**).

1.7. Without delay, make 500  $\mu$ m-thick slices using a fresh razor blade. Lay the slices rostral to caudal in a Petri dish to maintain orientation of sections (**Figure 2**).

1.8. Quickly add artificial cerebrospinal fluid (ACSF; 1.0 mM  $\text{KH}_2\text{PO}_4$ , 26 mM  $\text{NaHCO}_3$ , 118.6 mM  $\text{NaCl}$ , 3.0 mM  $\text{KCl}$ , 203.3 mM  $\text{MgCl}_2 \cdot 6\text{H}_2\text{O}$ ) without glucose and incubate the slices for 60 min at 28-30 °C, constantly stirring on an orbital shaker to metabolically and differentially challenge the unprimed versus colostrum-primed tissues.

1.9. Identify the brain nuclei that are required to punch using a brain atlas<sup>33</sup> and anatomic landmarks on the tissue section. Place this slice with the nuclei of interest in a Petri dish and move it to the dissecting microscope.

1.10. Once visualized, quickly punch out 4 of 6 different nuclei using a coring tool, selecting the size to best punch the nucleus in question and consistently between samples (**Figure 2**).

Note: The remaining brain slice will now have a hole where brain tissue was removed. In this study, we excised the following nuclei using the below coordinates. All anterior/posterior (A/P) coordinates are from Bregma (except NTS, which is with reference to the Calamus Scriptorius). All dorsal/ventral (D/V) coordinates are from the surface of the cortex (except NTS, which is from the surface of the medulla). The following coordinates include A/P, medial/lateral (M/L), and D/V in mm: 1) solitary tract nucleus (NTS, A/P, 0.4 to 0.8; L,  $\pm 0.2$ ; D/V, 0.3 (from the surface of the medulla), 2) paraventricular nucleus (PVN, -0.8;  $\pm 0.2$ ; 0), 3) supra-optic nucleus (SON, -1.1;  $\pm 1.4$ ; 4.3), 4) cortex (CX, partial cortex area 1, -2.8;  $\pm 1.5$ ; 0.6), 5) striatum nuclei (STR, -0.0;  $\pm 1.6$ ; 1.8), and 6) medial preoptic nucleus (MPO, -0.6;  $\pm 0.2$ ; 4.2).

1.11. Rapidly immerse the punched nuclei in 0.06 mL of ice-cold, protein extraction buffer containing protease inhibitors and phosphatase inhibitors for 60 minutes (see step 2.3).

## 2. Protein Extraction

2.1 Prepare the protein extraction solution using the protein lysis kit (**Table of Materials**) on the day before expected pup delivery.

2.2 Thaw (on ice) the frozen (-20 °C) aqueous solution of the protease and phosphatase inhibitors of the lysis buffer kit and place the lysis buffer and DMSO solution of the proteases/phosphatases inhibitors on ice.

2.3 Add 1.85 mL of lysis buffer into a clean, ice-cold 15 mL tube. Then, add 0.1 mL of aqueous solution of inhibitors and 0.05 mL of DMSO-dissolved inhibitors. Finally, cap and briefly vortex the tube and keep it at -20 °C until use.

2.4 Label 24 clean microcentrifuge tubes (0.5 mL each) for the lysis procedure. Designate 12 tubes per brain for the colostrum-unprimed group (U) [6 left (L) and 6 right (R) brain nuclei], and label according to nuclei acronym, side, and condition (*e.g.*, NTS-L-U, NTS-R-U, *etc.*). Label the second group of 12 tubes for the colostrum-primed samples.

2.5 Label two additional sets of tubes as done in step 2.4 for the stock protein extracts (using 1.5 mL Eppendorf-style tubes) and for the first set of sample preparation (using 0.5 mL tubes). Keep these tubes in two separate, labeled freezing boxes (each designed for 100 tubes). One box will be used for the unprimed samples and the other for the primed samples.

2.6 Thaw the lysis solution on ice on the day that the pups are delivered, and while incubating brain slices in ACSF, aliquot 0.06 mL lysis solution into the lysis procedure tubes (from step 2.4) and add nuclei punches and incubate in ice for 60 min.

2.7 Centrifuge the incubated lysed nuclei for 30 min in a cooled mini-centrifuge at 14000 rpm (10000 x g) and carefully aspirate 0.055 mL of supernatant with a properly set pipette. Transfer the supernatant into the pre-cooled 1.5 mL stock tubes (from step 2.5) and put them on ice. Before freezing (at -20 °C) the protein stock tubes, transfer 0.012 mL of supernatant into the 0.5 mL pre-cooled tubes for the first sample preparation (from step 2.5) and leave them on ice.

### **3. Sample Preparation for In-Capillary Protein Measurement**

3.1 Use a kit and prepare the reagents for separation according to manufacturer's directions. Add 0.003 mL of master-mix reagent to each of the 12 samples in the 0.5 mL labeled tubes (from step 2.5) on ice that contain 0.012 mL of the protein extracts.

3.2 Turn on the heating block to 95 °C and add 0.004 mL of the reagent prepared in step 3.1 to a biotinylated molecular-weight (MW) ladder in a tube with 0.016 mL of deionized water. To denature the ladder and samples, place the ladder tube and the 12 samples of unprimed protein extracts in the heat block at 95 °C for 5 min and store them at 4 °C until use.

3.3 Repeat steps 2.0 to 3.2, from protein extraction to sample preparation, for the nuclei punched from colostrum-primed rats.

### **4. Electrophoresis Preparation**

4.1 Thaw the biotin labeling reagent (stored in the deep freezer at -80 °C) on the bench and prepare the protein detection kit on ice at 4 °C following the manufacturer's directions.

4.2 Mix 0.15 mL of luminol with 0.15 mL of peroxide and load 0.01 mL into 25 wells (row E, wells 1-25) of the plate for the automated Western machine. Load 0.008 mL of Streptavidin-HRP from the kit into wells D1 to D25

4.3 Load 0.01 mL of the antibody diluent solution into wells C1 to C25 and B1.

4.4 Spin the 24 protein samples and ladder tubes briefly (2-3 seconds) in a minicentrifuge to pool down evaporated water from the tube caps.



4.5 Load 0.0003 mL of 12 unprimed samples into wells A2 to A13, 0.003 mL of 12 colostrum-primed samples into wells A14 to A25, and 0.005 mL of the biotinylated ladder into well A1.

4.6 Leave row F empty and load 0.45 mL of wash buffer into each of the 5 compartments in each of the 3 rows below row F. Cover the plate with its plastic lid to avoid evaporation during the remaining procedures.

4.7 Briefly vortex the thawed biotin labeling reagent and add 0.15 mL of the reagent to its designated tube; then add to it 0.15 mL of the total protein reconstitution agent and mix them to homogeneity.

4.8 Remove the cover from the plate and load 0.01 mL of agents 1 and 2 into wells B2 to B25. Cover the plate and centrifuge it for 10 min at 1000 x g to remove any air bubbles from the various solutions. Use an empty plate in the centrifuge for balance.

## **5. Electrophoresis**

5.1 While the plate is spinning, open a run file in the automated Western machine-attached computer by indicating in the dropdown page from “file” to run a total protein assay and clicking the respective spot.

5.2 Annotate the samples by well in the computer. Then, remove the plate from the centrifuge remove the cover and carefully peel off the aluminum cover from the separation solution compartments.

5.3 Place the plate in the automated Western instrument, peel off the cover from the capillary cartridge box, insert the cartridge in its designated place, and close the door.

5.4 Click the “RUN” button, and when prompted with the type of the assay (“total protein”), type in the name of the samples (for example, “unprimed 2-13 and colostrum-primed 14-25”). Click “OK”, and when prompted by the activated run date and ID number of the run file, make a note of the time when the run ends.

5.5 At the end of the run (170 min after the start), open the instrument door, remove the capillary cartridge, and discard it into the sharps disposal. Discard the plate in the biological matter disposal.

5.6 Click the separation curves icon in the analysis page of the run file, and check that all the samples have run properly and are showing multiple protein curves in all capillaries.

## **6. Analysis of Signaling Proteins**

349 6.1 In a labeled 1.5 mL tube, add 0.003 mL of rabbit anti phospho-eIF2a (p-eIF2a) antibody and  
350 suspend it in 0.3 mL (1:100 dilution) in antibody diluent from the suitable detection kit. Then,  
351 keep it on ice.

352  
353 6.2 Label a luminol tube and add 0.15 mL of luminol and 0.15 mL of peroxide from this detection  
354 module kit and dispense 0.01 mL into wells E1 to E25 of a fresh, automated Western plate.

355  
356 6.3 Dispense 0.01 mL of the secondary anti rabbit antibody into wells D2 to D25, and add 0.01 mL  
357 of streptavidin-HRP from the kit to well D1.

358  
359 6.4 Dispense 0.01 mL of the primary antibody (from step 6.1) into wells C2 to C25, and add 0.01  
360 mL of antibody diluent 2 solution to wells C1 and B1 to B25.

361  
362 6.5 Leave the row F wells empty and fill 0.45 mL of wash buffer into the 5 compartments of 3  
363 rows below the F row.

364  
365 6.6 Briefly spin the refrigerated samples for 3 seconds, and add 0.003 mL of each sample to row  
366 A in the same order they were added for the total protein assay, starting from A2 to A25. Add  
367 0.005 mL of the biotinylated MW ladder to well A1 and cover the plate.

368  
369 6.7 Centrifuge the plate as done in step 4.8. While the plate is spinning, open (in the automated  
370 Western-associated software and computer) a new run file and indicate in the dropdown page  
371 from "File" to run a molecular size assay by clicking the respective spot.

372  
373 6.8 In the assay page, type the sample names in each capillary, then type the name of the primary  
374 antibody in the allocated spot and the secondary anti-rabbit antibody below it.

375  
376 6.9 At the end of centrifugation, repeat steps 5.3-5.5, except the name given to the run file this  
377 time should be "p-eIF2a on unprimed 2-13 and colostrum-primed 14-25".

378  
379 6.9 After the electrophoresis separation, check the run file for immune-reactivity peaks of  
380 antigens at sizes of 40-43 kDa. Where MW of peaks this size are missing, right-click below the  
381 curve and indicate inside the dropdown list to add MW to the peak, which ensures that the size  
382 and arbitrary quantity below the curve are recorded.

## 383 384 **7. Processing the Results**

385  
386 7.1 Open a spreadsheet file for total protein run in the automated Western run file and provide  
387 an ID number.

388  
389 7.2 Open the run file of the total protein assay at the analysis page at the curve mode and mark  
390 all the peaks in individual capillaries. Then, copy and paste them into the spreadsheet and sum  
391 the areas under the curve of all peaks recorded in the entire capillary.

392

7.3 In a separate column, arrange the total amount of protein for each column with capillary numbers, names of the respective brain nuclei, and the ID numbers of the run files.

7.4 Open a spreadsheet for the p-eIF2a antigen, and in a single column, record the area under the curve from each capillary side-by-side with its respective capillary number, name of brain nucleus, and ID number of the run file.

7.5 Copy the total protein column (parallel to the p-eIF2a curve quantities) into a third spreadsheet and compute p-eIF2a:total protein ratios in a third column.

7.6 Collect results from steps 4 to 6 for each brain nucleus, arrange them in groups of nuclei, and generate a bar graph.

#### **REPRESENTATIVE RESULTS:**

The representative bands of immunoreactivity relative to total protein show that there are brain nuclei with very low harvested protein. This requires the use of the automated Western blot technique, which is highly sensitive compared to the canonical Western blot. This approach can be run with fortyfold less protein per capillary compared to the per-lane in Western blots.

##### *Differential effects of colostrum priming on BiP levels in brain nuclei*

Coronal sections of rat brains were harvested before the first colostrum feeding (unprimed) and after the first feeding (primed). Samples were fractionated by capillary electrophoresis (on WES), and proteins were quantified using the kit for in-capillary total protein staining (see **Protocol**). Additional immune capillary fractionation on the automated Western provided identification of the respective protein antigens. In **Figure 3A**, representative BiP protein expression is shown in the upper panel, with the corresponding total protein shown below. BiP is an ER chaperone protein. In **Figure 3B**, quantitated immunoreactivities are presented by bar graphs relative to the corresponding total protein.

Within the unprimed tissue samples, BiP levels in NTS were significantly higher compared to all other regions ( $p < 0.05$ ,  $n = 4$  nuclei). Priming of gut tissue with colostrum had an opposite effect in NTS, compared with increased BiP in other regions, relative to unprimed tissue (**Figure 3B**). Priming decreased BiP in NTS (**Figure 3B**) and had no effect on PVN and SOPT. However, priming increased BiP in CX, STR, and MPO relative to unprimed tissue. This data implies that BiP levels in the various tested brain nuclei respond differently to gut priming and that there not yet any demonstrated cross-talk between the various nuclei tested.

##### *Differential effects of colostrum priming on eIF2a and p-eIF2a levels in brain nuclei*

Brain tissue samples were prepared, analyzed, and quantified as shown in **Figures 3A** and **3B**. As with BiP levels (**Figure 3B**), eIF2a and p-eIF2a levels in NTS were elevated in the unprimed condition relative to other nuclei (**Figures 4B** and **4C**). As demonstrated with BiP levels, the response in NTS to priming of gut tissue with colostrum was opposite to that in other nuclei. Levels of both eIF2a and p-eIF2a in NTS were reduced relative to unprimed tissue. In all other tested nuclei, priming increased levels in eIF2a and p-eIF2a relative to unprimed tissue (**Figures**

437 **4B and 4C).**

438  
439 *Phosphorylation of eIF2a by kinase GCN2 in NTS and PVN after colostrum priming*

440 Brain tissue samples were prepared, analyzed, and quantified as shown in **Figure 3**. Priming  
441 decreased p-PKR in PVN ( $\chi^2 p = 0.025$ ), unlike in all other regions where it was increased. Contrary  
442 to p-eIF2a findings (**Figure 4C**), levels of p-PKR were low in unprimed samples relative to primed  
443 samples in NTS (**Figure 5A**). Phosphorylation of eIF2a is usually catalyzed by its kinase PKR in  
444 response to viruses<sup>34</sup> and by OT in the gut, as previously demonstrated<sup>11</sup>. However, the fact that  
445 p-PKR levels were very low in unprimed versus primed NTS (relative to other nuclei, **Figure 5A**)  
446 strongly suggests that another kinase must be involved in phosphorylating eIF2a (**Figure 4C**).  
447 Accordingly, GCN2 levels were tested in NTS and PVN because it is also a known kinase of eIF2a<sup>35</sup>.  
448 Levels of p-GCN2 (active form) were higher in unprimed samples compared to primed samples in  
449 NTS and PVN (**Figure 5B**), and GCN2 (inactive form), compared to p-GCN2, was inversely  
450 expressed in PVN (**Figure 5C**). pGCN2 in NTS (**Figure 5C**) was expressed inversely to pPKR (**Figure**  
451 **5A**) in both unprimed and primed NTS. In primed tissue, p-eIF2a was considerably lower in NTS  
452 than in all other brain regions [PVN ( $p < 0.01$ ), SON ( $p < 0.01$ ), CX ( $p < 0.01$ ), and MPO ( $p = 0.02$ )].  
453 This indicates that pGCN2, rather than pPKR, was responsible for eIF2 inhibition in NTS.

454  
455 *Colostrum priming inhibits NF-kB in CX, STR, and MPO*

456 **Figure 6A** shows that I $\kappa$ B levels were significantly higher in SON unprimed samples vs primed  
457 samples. I $\kappa$ B levels in SON, CX, STR, and MPO trended higher in the same direction. In **Figure 6C**,  
458 NF-kB levels in CX, STR, and MPO were significantly higher in primed versus unprimed tissue.  
459 However, NF-kB levels were significantly lower in primed NTS tissue, which suggests that  
460 colostrum had a distinct anti-inflammatory effect on this brain region. Cytosolic NF-kB was higher  
461 (retained) in unprimed NTS samples, whereas its inhibitor I $\kappa$ B was low and unchanged in primed  
462 samples. This suggests that a distinct anti-inflammatory mechanism is regulating NF-kB in NTS.  
463 This nutrient insufficiency stress effect is consistent with current findings that stress markers BiP  
464 and p-eIF2a are both regulated by the presence of colostrum priming (**Figures 3 and 4**,  
465 respectively), also shown in previous BiP and p-eIF2a findings<sup>10</sup>. The reason for the distinct  
466 response of I $\kappa$ B and NF-kB in NTS compared with CX, STR, and MPO is not yet fully understood.  
467 However, it is consistent with the observation that the NTS, which relays signals from the gut to  
468 the brain, may play a crucial role in responding uniquely and oppositely versus other brain regions  
469 compared to peripheral inflammation<sup>36</sup>. Levels of I $\kappa$ B in CX, STR, and MPO were low (**Figure 6A**),  
470 compared to high levels of NF-kB in the same areas (**Figure 6C**). While this finding apparently  
471 contradicts the premise that I $\kappa$ B is binding and retaining NF $\kappa$ B in the cytosol, different calculation  
472 of the data which combines and compares all primed samples in CX, STR, and MPO using  
473 regression analysis shows that NF-kB highly correlates with I $\kappa$ B ( $p < 0.0001$ ,  $n = 24$ )

474  
475 **FIGURE AND TABLE LEGENDS:**

476 **Figure 1: Dissected neonatal rat brain.** (A) The dissected brain is shown with bones removed  
477 rostral to bregma. (B) The brain is shown after a line has been drawn at bregma, after which the  
478 remaining bone plates were removed. (C) The brain is shown in a polymethyl methacrylate brain  
479 mold just before being sliced with a razor blade.

**Figure 2: Brain slices arranged from rostral to caudal with punches (red circles).** Abbreviations: CX = cortex, parietal lobe; MPO = medial preoptic area; NTS = nucleus tractus solitaries; PVN = paraventricular nucleus; SON = supraoptic nucleus; and STR = striatum.

**Figure 3: BiP/GRP78 response in NTS is inverted to that of other nuclei.** (A) Representative BiP protein expression in the upper panel relative to the total protein presented in the panel below. Note that the total protein density in the various capillaries are heterogeneous, and these are used to equalize the respective BiP expression per protein in panel B. (B) Shown is the mean BiP relative to total protein in brain nuclei of unprimed samples (blue) versus colostrum-primed samples (brown). Asterisks of respective colors designate significant differences ( $p < 0.05$ ,  $n = 4$  nuclei) between BiP in NTS versus BiP in the other nuclei. BiP expression in unprimed versus primed samples in NTS are significantly inverted to those in STR ( $\chi^2 p = 0.028$ ,  $n = 4$ ).

**Figure 4: Active and inactive eIF2a (p-eIF2a) response to colostrum priming versus unprimed samples in NTS inverted to that of other nuclei.** (A) Representative eIF2a and p-eIF2a protein expressions are shown in the upper panels. The total protein lanes are presented at the lower panel. (B) Shown is the mean eIF2a of 4 samples expressed relative to total protein (from lower panel A) in brain nuclei of unprimed samples (blue) versus colostrum-primed samples (brown), and (C) the inactive form of eIF2a (p-eIF2a). Asterisks of respective colors designate significant differences ( $p < 0.05$ ,  $n = 4$  nuclei) between both eIF2a forms in NTS versus respective levels in the other nuclei. Active eIF2a expression in unprimed versus primed samples in NTS are significantly inverted to those in CX, STR, and MPO ( $\chi^2 p < 0.05$  versus all three nuclei,  $n = 4$ ). Error bars represent standard error.

**Figure 5: NTS expresses eIF2a kinase p-GCN2 in accord with p-eIF2 level and inversely to p-PKR level.** (A) The level of p-PKR (activated dsRNA kinase of eIF2a) is expressed in unprimed versus colostrum-primed NTS inversely to 1) the level of p-PKR in PVN ( $\chi^2 p = 0.025$ ) and 2) its expected targeted substrate eIF2a after its phosphorylation (to p-eIF2a, **Figure 2C**). Note that the pattern of p-PKR in SOPT, CX, STR, and MPO of unprimed versus colostrum-primed samples fits the respective patterns of p-eIF2a from **Figure 2C**. (B) Activated eIF2a kinase (p-GCN2) in unprimed versus primed NTS samples follows a similar pattern of p-eIF2a expression from **Figure 2C** and an inverse pattern of pPRK expression from **Figure 3A** ( $\chi^2 p = 0.028$ ). C = mean levels of inactive GCN2. Error bars represent standard error.

**Figure 6: Cytoplasmic expression of NF-kB and IkB in brain nuclei from unprimed and colostrum-primed gut samples.** (A) Mean cytoplasmic expression of IkB relative to total protein (from panel C) at indicated brain nuclei. (B) Representative cytoplasmic bands of IkB protein are presented in the upper panel and total protein density in respective lanes in the lower panel. (C) Mean cytoplasmic expression of NF-kB relative to total protein (from panel D) at indicated brain nuclei. (D) Representative cytoplasmic bands of NF-kB bands are presented in the upper panel and total cytoplasmic protein density in respective lanes in the lower panel. Colored asterisks designate significant differences between indicated samples ( $p < 0.05$ ,  $n = 4$ ). Note that cytoplasmic NF-kB levels are higher in colostrum-primed CX, STR, and MPO than in hypothalamic nuclei NTS, PVN, and SON in disagreement with the levels of NF-kB inhibitor (IkB).

**Figure 7: Schematic comparing hypothesized OT signaling in colostrum-primed gut and brain regions.** (A) Colostrum OT in enterocytes activates its receptor via direct interaction with the OTR, reducing inflammation via increased I $\kappa$ B downstream signaling. Protein translation is inhibited by increasing p-PKR, which decreases eIF2 $\alpha$  activity through phosphorylation. Homeostasis is restored via increased BiP gene expression<sup>13,37</sup>. (B) Neuronal or circulatory OT activates its receptor in the CS, STR, and MPO regions of the brain, downregulating inflammation and protein translation via the same molecules as the gut (see panel A). (C) The hypothesized effects of colostrum priming in the NTS region of the brain are distinct and opposite from those in panels A and B. GCN2, which is sensitive to amino acid supply, increases both eIF2 $\alpha$  and protein translation. At the same time, low levels of I $\kappa$ B allow NF- $\kappa$ B to enter the nucleus and induce inflammation. Note that BiP acts similarly to restore homeostasis in the gut and in NTS in the brain.

**Supplementary Figure 1: Schematic showing the protocol timeline.**

#### **DISCUSSION:**

A technique for microdissection of discrete, OTR-rich brain nuclei in the neonatal rat brain is presented in this paper. It is well recognized that neurons are highly specialized, even within well-characterized nuclei in the brain. This highly reproducible approach to isolate specific OTR-rich nuclei enables robust hypothesis testing. Using automated Western blotting, the consistency and reproducibility of the results were further improved. While a limitation of this technique remains modest brain punch variability; this technique represents an advance over single-cell, whole brain or brain slice approaches. Single-cell approaches are complicated by providing very limited snap shots. Using the whole brain, any findings may be diluted if the effect is restricted to a brain region or neuronal subtype. Brain slice approaches without microdissection can introduce profound variability in results within mere microns in a slice, which is especially problematic for the hypothalamus in this study, due to tight clustering of distinct nuclei. Using a standardized punch and the assistance of a microscope, the variability in protein measurements was reduced.

There are several critical steps within this protocol. These include adherence to the timing of tissue harvest with respect to the first feed, using a minimal volume of protein extraction buffer, incubation of brain slices in ACSF so that molecular inhibitors or stimulants may be used, and using a sensitive immune-electrophoretic device. Possible modifications include the choice of reagents for incubation and the duration of incubation and extending the time of unprimed starvation to compare brains at equivalent times. Important limitations include the presence of some non-neuronal cells (even during this very early neonatal period) and a restricted number of samples that can be prepared from one litter of newborns in one day. Furthermore, this approach is completely dependent on when the pups are born. With respect to existing methods, gene expression in the brain at this age is typically and more conveniently assessed at the transcriptional level. However, for cell signaling analysis, the proteomic approach executed by core facility equipment is more expensive than the desktop automated instruments. The conventional Western blot method requires much more protein, takes several days to complete, and involves several manipulation steps by the technical manpower. This automated approach

requires 0.8 µg protein per capillary, once loaded into the instrument all the steps are performed without human hands interference and takes 2 h and 50 min to complete the run. This technique can be used for studying the immediate postnatal brain development in rats and wide range of genetically manipulated mouse models.

Using this technique, the effects of OT at the cellular level, specifically in the very critical period between birth and feeding, were investigated when the OTR is maximally expressed in the epithelium<sup>8</sup>. The modulating effects of OT on cell signaling molecules in gut cells, both in a cell line<sup>37</sup> and in vivo<sup>13</sup>, were previously demonstrated. In the present study, the effects observed in gut cells were assessed in brain regions rich in OTR. The expression of BiP/GRP78 and p-eIF2a was upregulated in unprimed (consistent with an expected response to stress) and downregulated in primed NTS tissue (consistent with an attenuated response to stress), whereas NF-kB was high and stable in both conditions<sup>38</sup>. Expressions of BiP and NF-kB were the same in the other tested regions in both unprimed and primed conditions. eIF2a was phosphorylated by dsRNA dependent kinase (pPKR) in the SON, CX, STR, and MPO. However, in the NTS, and to a lesser extent in PVN, eIF2a was phosphorylated by another kinase, general control nonsuppressed2 kinase (GCN2). A schematic depicting hypothesized differences in signaling in the brain and gut elicited by colostrum exposure is presented in **Figure 7**.

This microdissection technique makes it possible to test hypotheses related to the impact of the first colostrum feed on stress-related signaling in discrete OTR-rich nuclei in the neonatal brain. This data suggest that the stress modulating mechanisms previously observed in new born gut enterocytes are mirrored in specific brain regions rich in OTR, as shown by increased cytosolic retention of NFKB (PVN, SON CX, STR, and MPO). Results also indicate that NTS and PVN utilize a different phosphorylation mechanism from the other regions that may be refractory to the impact of nutrient insufficiency. Collectively, the data indicate that cell signaling in the brain associated with nutrient and hormonal insufficiency during the first hours following birth is similar to cell signaling in the gut under the same conditions. This data supports the importance of breast milk at the time of birth for stress modulation in both gut and brain. These results underscore the need for further exploration of the impact of colostrum on brain function.

#### **ACKNOWLEDGMENTS:**

The authors thank Manon Ranger, Jasmine Kaidbey, and Alexandra Schulz for their assistance in preparing this protocol.

#### **DISCLOSURES:**

The authors have nothing to disclose.

#### **REFERENCES:**

- 1 Hietaniemi, M., *et al.* Gene expression profiles in fetal and neonatal rat offspring of energy-restricted dams. *Journal of Nutrigenetics and Nutrigenomics*. **2** (4-5), 173-183 (2009).
- 2 Okabe, A., *et al.* Homogenous glycine receptor expression in cortical plate neurons and Cajal-Retzius cells of neonatal rat cerebral cortex. *Neuroscience*. **123** (3), 715-724 (2004).

612 3 Maillieux, P., Takazawa, K., Erneux, C., Vanderhaeghen, J. J. Distribution of the neurons  
613 containing inositol 1,4,5-trisphosphate 3-kinase and its messenger RNA in the developing rat  
614 brain. *Journal of Comparative Neurology*. **327** (4), 618-629 (1993).

615 4 Carter, C. S. Oxytocin and Human Evolution. *Current Topics in Behavioral Neuroscience*.  
616 (2017).

617 5 Sippel, L. M., *et al.* Oxytocin and Stress-related Disorders: Neurobiological Mechanisms  
618 and Treatment Opportunities. *Chronic Stress (Thousand Oaks)*. **1**, (2017).

619 6 Agnati, L. F., *et al.* Aspects on the integrative actions of the brain from neural networks to  
620 "brain-body medicine". *Journal of Receptors and Signal Transduction Research*. **32** (4), 163-180  
621 (2012).

622 7 Welch, M. G., Margolis, K. G., Li, Z., Gershon, M. D. Oxytocin regulates gastrointestinal  
623 motility, inflammation, macromolecular permeability, and mucosal maintenance in mice.  
624 *American Journal Physiology: Gastrointestinal and Liver Physiology*. **307** (8), G848-862 (2014).

625 8 Welch, M. G., *et al.* Expression and developmental regulation of oxytocin (OT) and  
626 oxytocin receptors (OTR) in the enteric nervous system (ENS) and intestinal epithelium. *Journal*  
627 *of Comparative Neurology*. **512** (2), 256-270 (2009).

628 9 Prakash, B. S., Paul, V., Kliem, H., Kulozik, U., Meyer, H. H. Determination of oxytocin in  
629 milk of cows administered oxytocin. *Analytica Chimica Acta* . **636** (1), 111-115 (2009).

630 10 Solangi, A. R., Memon, S. Q., Mallah, A., Khuhawar, M. Y., Bhangar, M. I. Quantitative  
631 separation of oxytocin, norfloxacin and diclofenac sodium in milk samples using capillary  
632 electrophoresis. *Biomedical Chromatography* . **23** (9), 1007-1013 (2009).

633 11 Klein, B. Y., *et al.* Oxytocin modulates markers of the unfolded protein response in  
634 Caco2BB gut cells. *Cell Stress and Chaperones*. **19** (4), 465-477 (2014).

635 12 Klein, B. Y., Tamir, H., Hirschberg, D. L., Glickstein, S. B., Welch, M. G. Oxytocin modulates  
636 mTORC1 pathway in the gut. *Biochemical and Biophysical Research Communications*. **432** (3),  
637 466-471 (2013).

638 13 Klein, B. Y., Tamir, H., Ludwig, R. J., Glickstein, S. B., Welch, M. G. Colostrum oxytocin  
639 modulates cellular stress response, inflammation, and autophagy markers in newborn rat gut  
640 villi. *Biochemical and Biophysical Research Communications*. **487** (1), 47-53 (2017).

641 14 Donnet-Hughes, A., *et al.* Potential role of the intestinal microbiota of the mother in  
642 neonatal immune education. *Proceedings of the Nutritional Society*. **69** (3), 407-415 (2010).

643 15 Perez, P. F., *et al.* Bacterial imprinting of the neonatal immune system: lessons from  
644 maternal cells? *Pediatrics*. **119** (3), e724-732 (2007).

645 16 Takeda, S., Kuwabara, Y., Mizuno, M. Concentrations and origin of oxytocin in breast milk.  
646 *Endocrinologia Japonica* . **33** (6), 821-826 (1986).

647 17 Quintana, D. S., Outhred, T., Westlye, L. T., Malhi, G. S., Andreassen, O. A. The impact of  
648 oxytocin administration on brain activity: a systematic review and meta-analysis protocol.  
649 *Systematic Reviews*. **5** (1), 205 (2016).

650 18 Dobbing, J., Sands, J. Comparative aspects of the brain growth spurt. *Early Human*  
651 *Development*. **3** (1), 79-83 (1979).

652 19 Orr, M. E., Garbarino, V. R., Salinas, A., Buffenstein, R. Extended Postnatal Brain  
653 Development in the Longest-Lived Rodent: Prolonged Maintenance of Neoteny Traits in the  
654 Naked Mole-Rat Brain. *Frontiers in Neuroscience*. **10**, 504 (2016).



655 20 Hansson, J., *et al.* Time-resolved quantitative proteome analysis of in vivo intestinal  
656 development. *Molecular and Cellular Proteomics*. **10** (3), M110 005231 (2011).

657 21 Mochizuki, K., Yorita, S., Goda, T. Gene expression changes in the jejunum of rats during  
658 the transient suckling-weaning period. *Journal of Nutritional Science and Vitaminology (Tokyo)*.  
659 **55** (2), 139-148 (2009).

660 22 Rinaman, L., Banihashemi, L., Koehnle, T. J. Early life experience shapes the functional  
661 organization of stress-responsive visceral circuits. *Physiology and Behavior*. **104** (4), 632-640  
662 (2011).

663 23 Johannes, G., Sarnow, P. Cap-independent polysomal association of natural mRNAs  
664 encoding c-myc, BiP, and eIF4G conferred by internal ribosome entry sites. *RNA*. **4** (12), 1500-  
665 1513 (1998).

666 24 Rinaman, L. Hindbrain noradrenergic A2 neurons: diverse roles in autonomic, endocrine,  
667 cognitive, and behavioral functions. *American Journal of Physiology: Regulatory, Integrative and*  
668 *Comparative Physiology*. **300** (2), R222-235 (2011).

669 25 Walker, C. D., Toufexis, D. J., Burlet, A. Hypothalamic and limbic expression of CRF and  
670 vasopressin during lactation: implications for the control of ACTH secretion and stress  
671 hyporesponsiveness. *Progress in Brain Research*. **133**, 99-110 (2001).

672 26 Montiel-Castro, A. J., Gonzalez-Cervantes, R. M., Bravo-Ruiseco, G., Pacheco-Lopez, G.  
673 The microbiota-gut-brain axis: neurobehavioral correlates, health and sociality. *Frontiers in*  
674 *Integrative Neuroscience*. **7**, 70 (2013).

675 27 Blevins, J. E., Ho, J. M. Role of oxytocin signaling in the regulation of body weight. *Reviews*  
676 *in Endocrine and Metabolic Disorders*. **14** (4), 311-329 (2013).

677 28 Welch, M. G., *et al.* Combined administration of secretin and oxytocin inhibits chronic  
678 colitis and associated activation of forebrain neurons. *Neurogastroenterology Motility*. **22** (6),  
679 654-e202 (2010).

680 29 Berthoud, H. R., Neuhuber, W. L. Functional and chemical anatomy of the afferent vagal  
681 system. *Autonomic Neuroscience: Basic and Clinical*. **85** (1-3), 1-17, doi:10.1016/S1566-  
682 0702(00)00215-0, (2000).

683 30 Taniuchi, S., Miyake, M., Tsugawa, K., Oyadomari, M., Oyadomari, S. Integrated stress  
684 response of vertebrates is regulated by four eIF2alpha kinases. *Scientific Reports*. **6**, 32886 (2016).

685 31 Altschuler, S. M., Bao, X. M., Bieger, D., Hopkins, D. A., Miselis, R. R. Viscerotopic  
686 representation of the upper alimentary tract in the rat: sensory ganglia and nuclei of the solitary  
687 and spinal trigeminal tracts. *Journal of Comparative Neurology*. **283** (2), 248-268 (1989).

688 32 Shapiro, R. E., Miselis, R. R. The central neural connections of the area postrema of the  
689 rat. *Journal of Comparative Neurology*. **234** (3), 344-364 (1985).

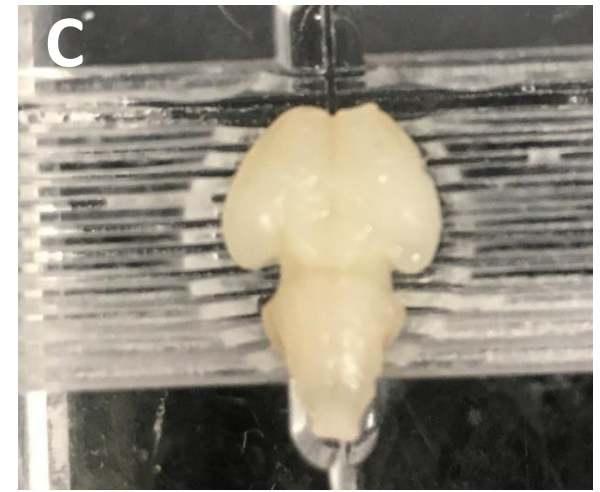
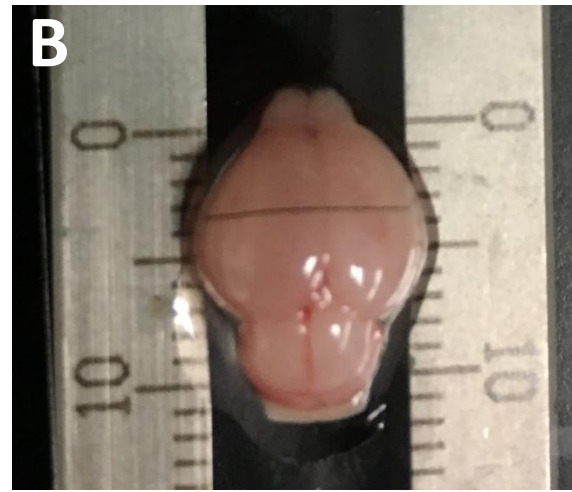
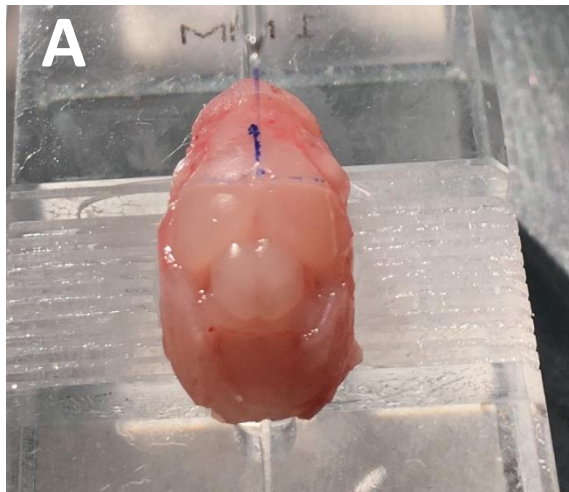
690 33 Paxinos, G., Watson, C. *The Rat Brain in Stereotaxic Coordinates*. (Academic Press, 1997).

691 34 Nayak, R., Pintel, D. J. Adeno-associated viruses can induce phosphorylation of eIF2alpha  
692 via PKR activation, which can be overcome by helper adenovirus type 5 virus-associated RNA.  
693 *Journal of Virology*. **81** (21), 11908-11916 (2007).

694 35 Zaborske, J. M., *et al.* Genome-wide analysis of tRNA charging and activation of the eIF2  
695 kinase Gcn2p. *Journal of Biological Chemistry*. **284** (37), 25254-25267 (2009).

696 36 Hollis, J. H., Lightman, S. L., Lowry, C. A. Integration of systemic and visceral sensory  
697 information by medullary catecholaminergic systems during peripheral inflammation. *Annals of*  
698 *the New York Academy of Sciences*. **1018**, 71-75 (2004).

699 37 Klein, B. Y., *et al.* Oxytocin opposes effects of bacterial endotoxin on ER-stress signaling in  
700 Caco2BB gut cells. *Biochimica et Biophysica Acta*. **1860** (2), 402-411 (2016).  
701 38 Kaltschmidt, B., Kaltschmidt, C. NF-kappaB in the nervous system. *Cold Spring Harbor*  
702 *Perspectives in Biology*. **1** (3), a001271 (2009).  
703



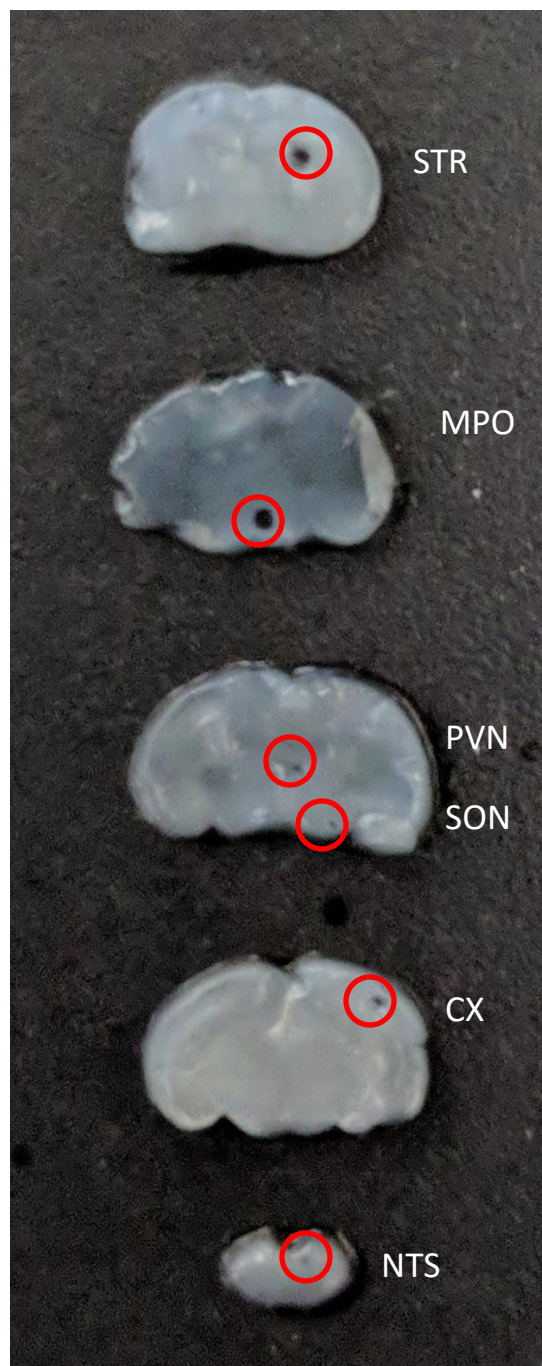
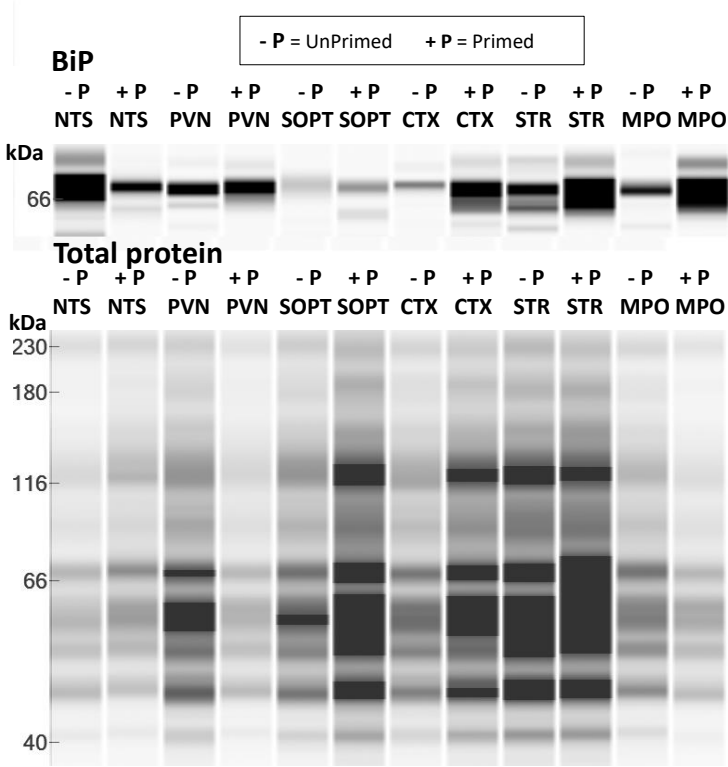
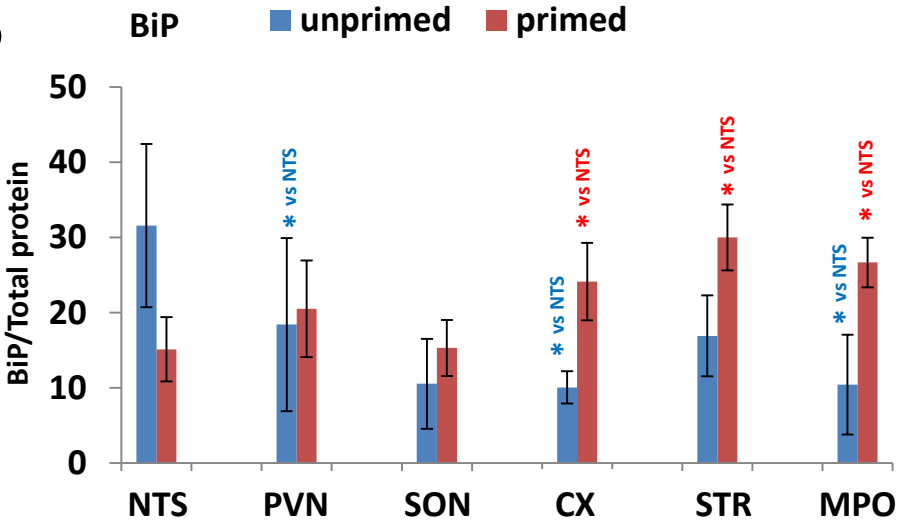


Figure  
Figure 1

**A**



**B**



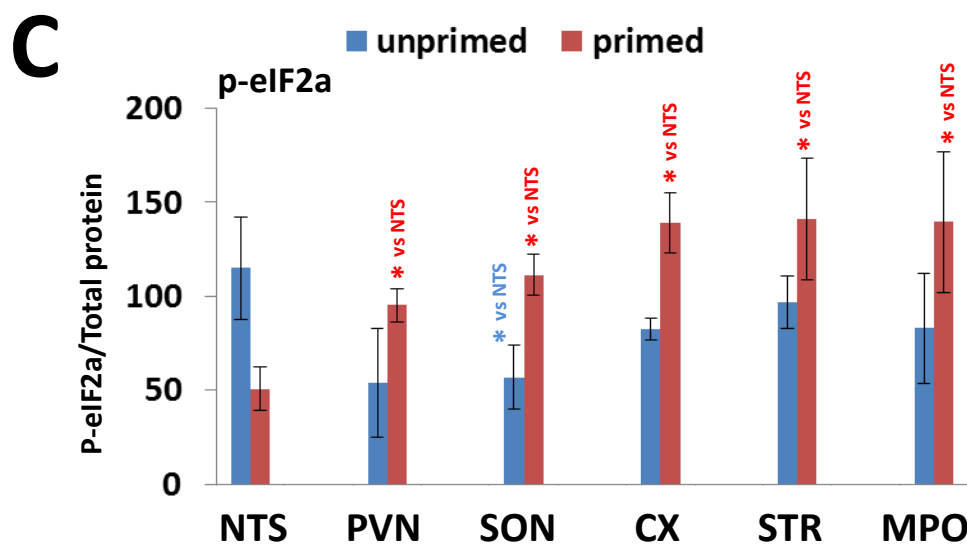
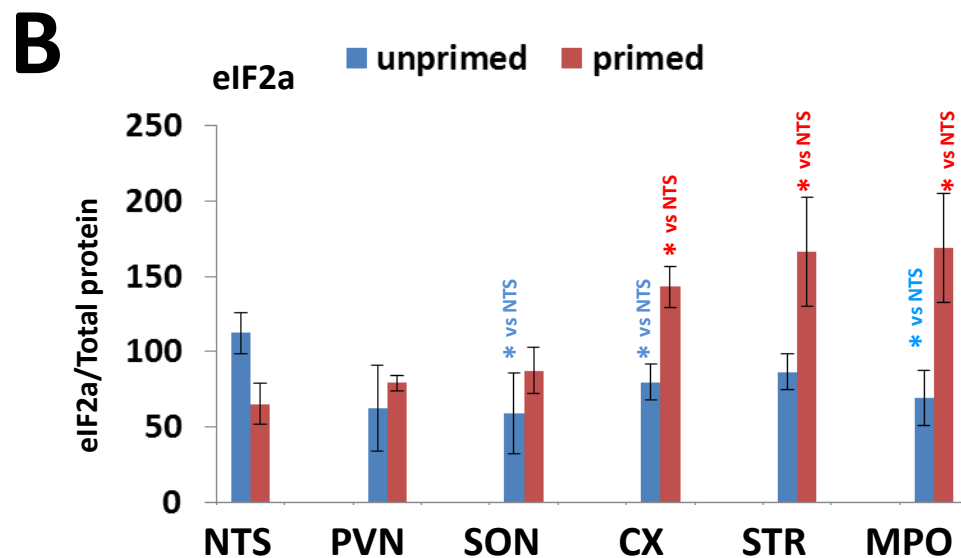
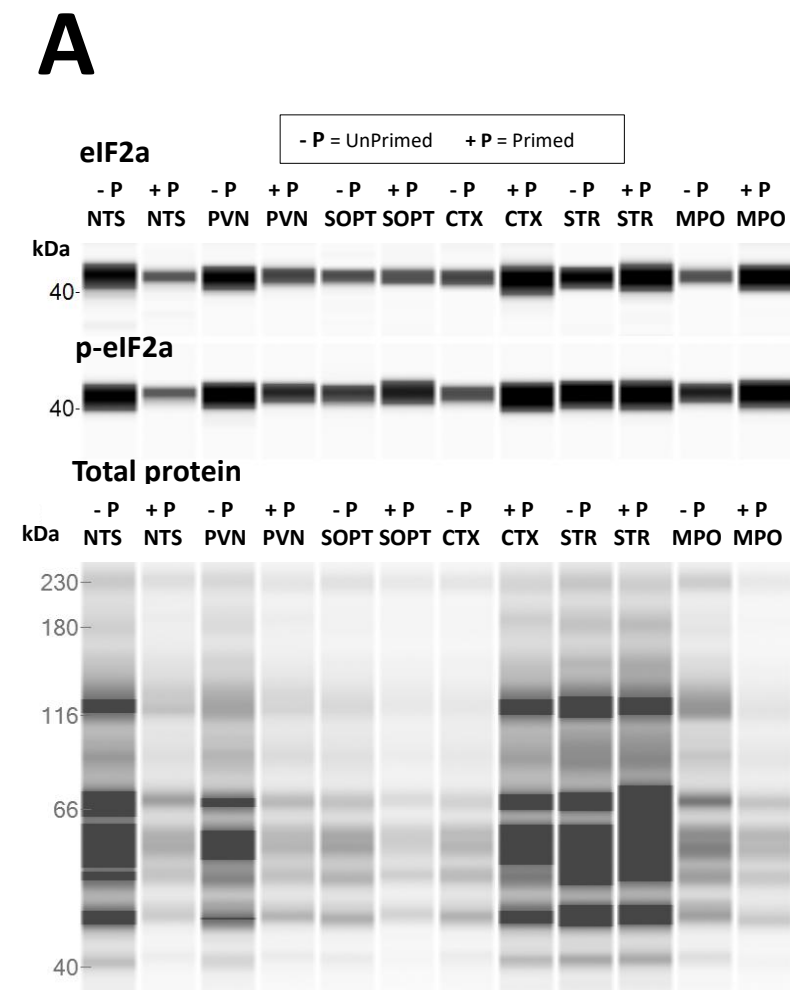
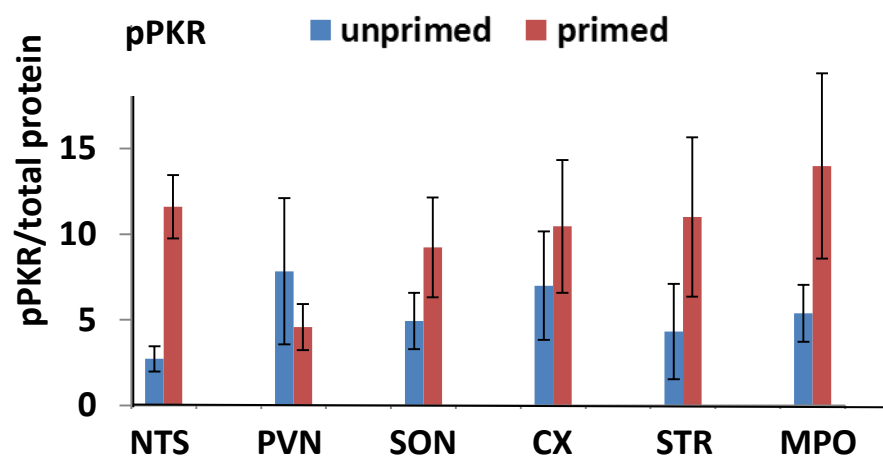
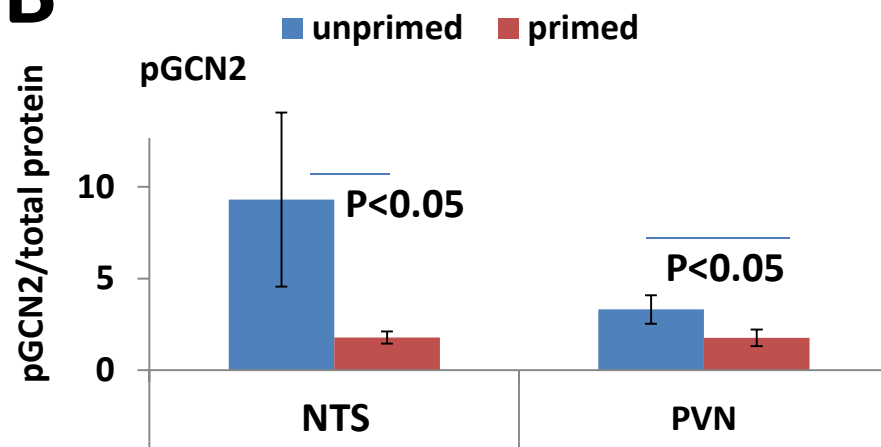


Figure  
Figure 3

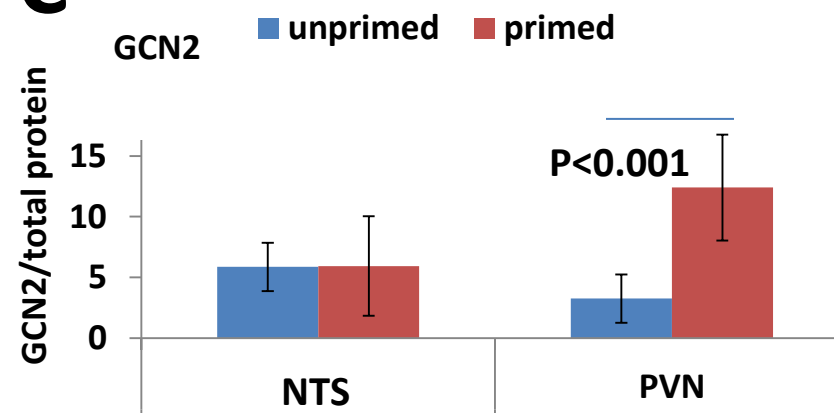
**A**

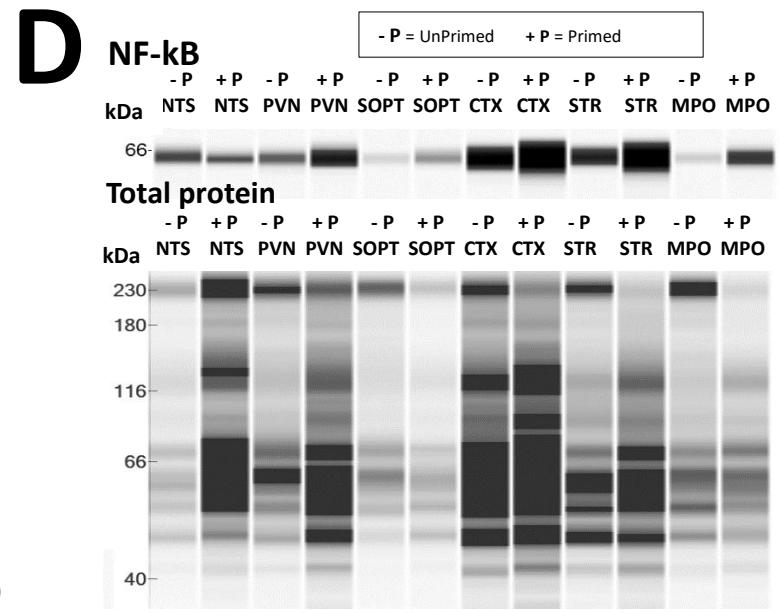
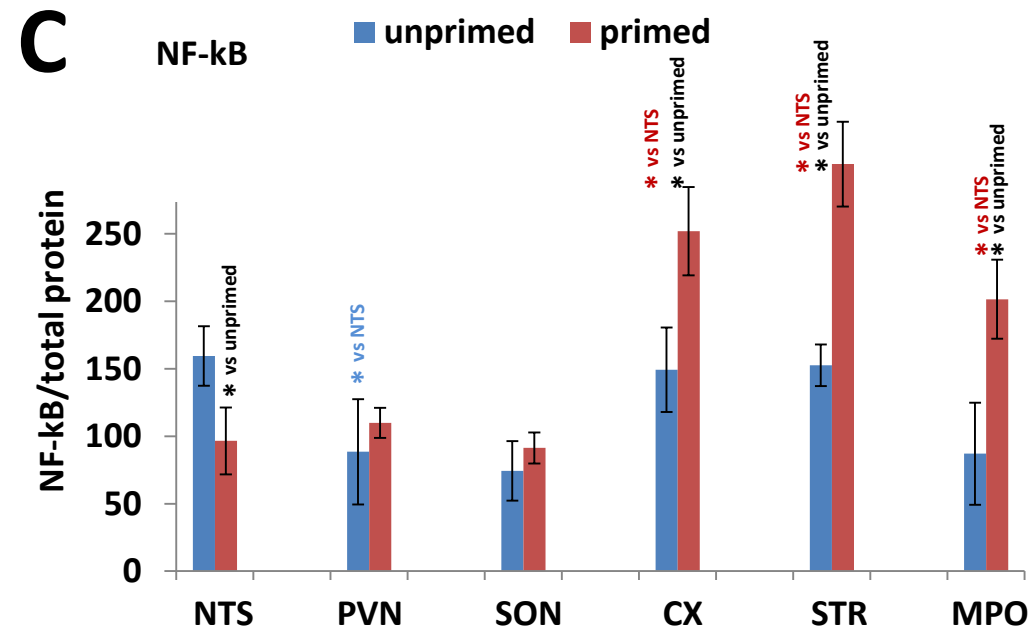
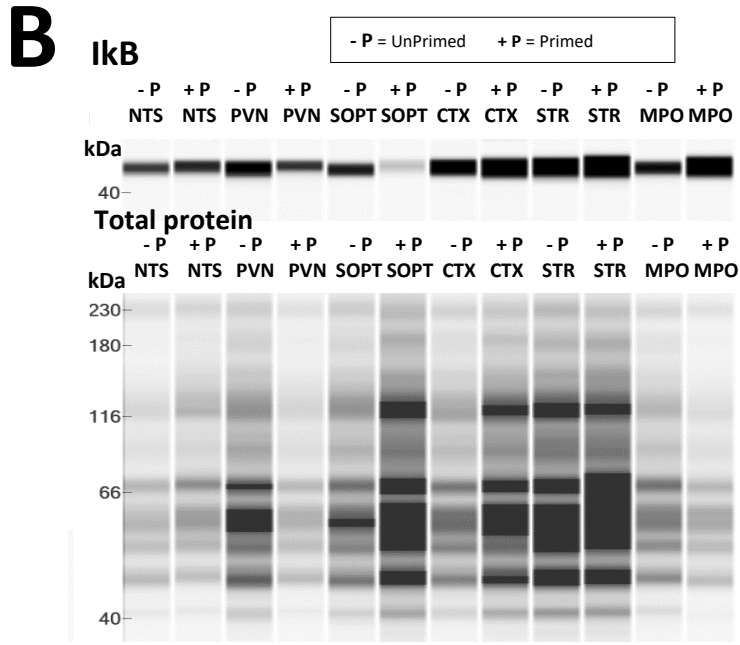
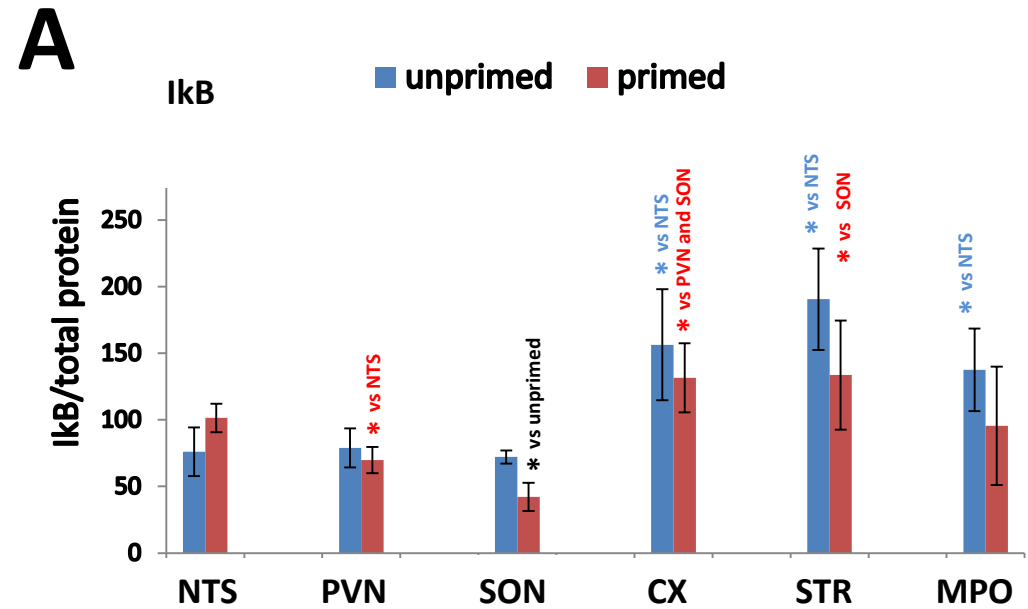


**B**

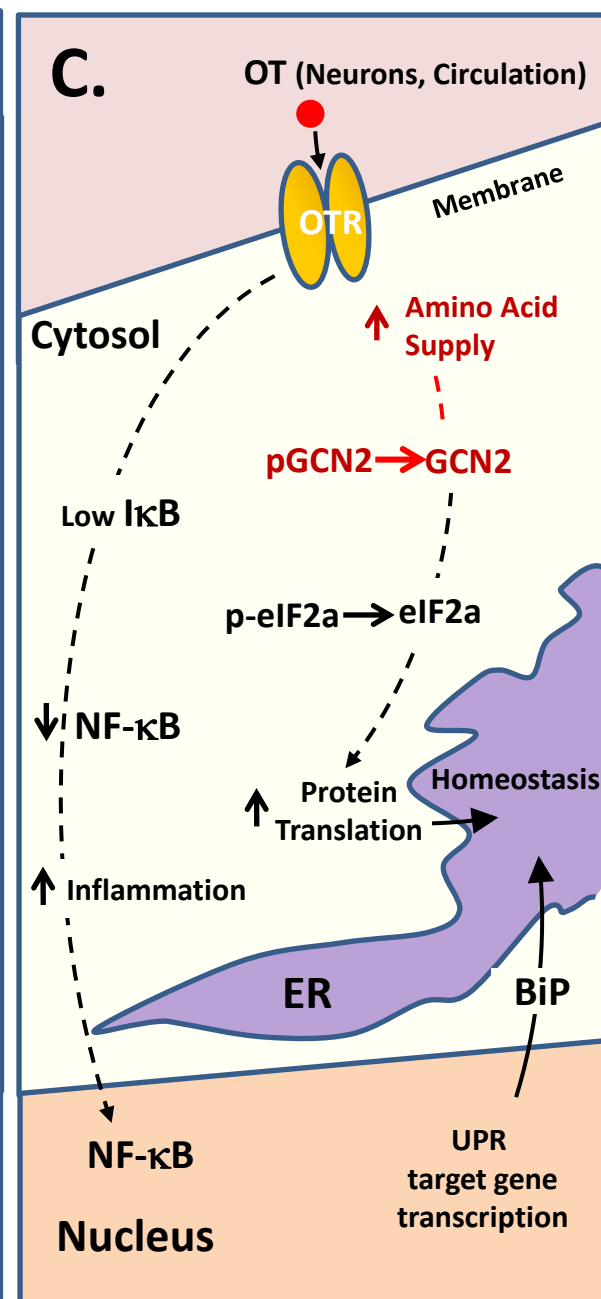
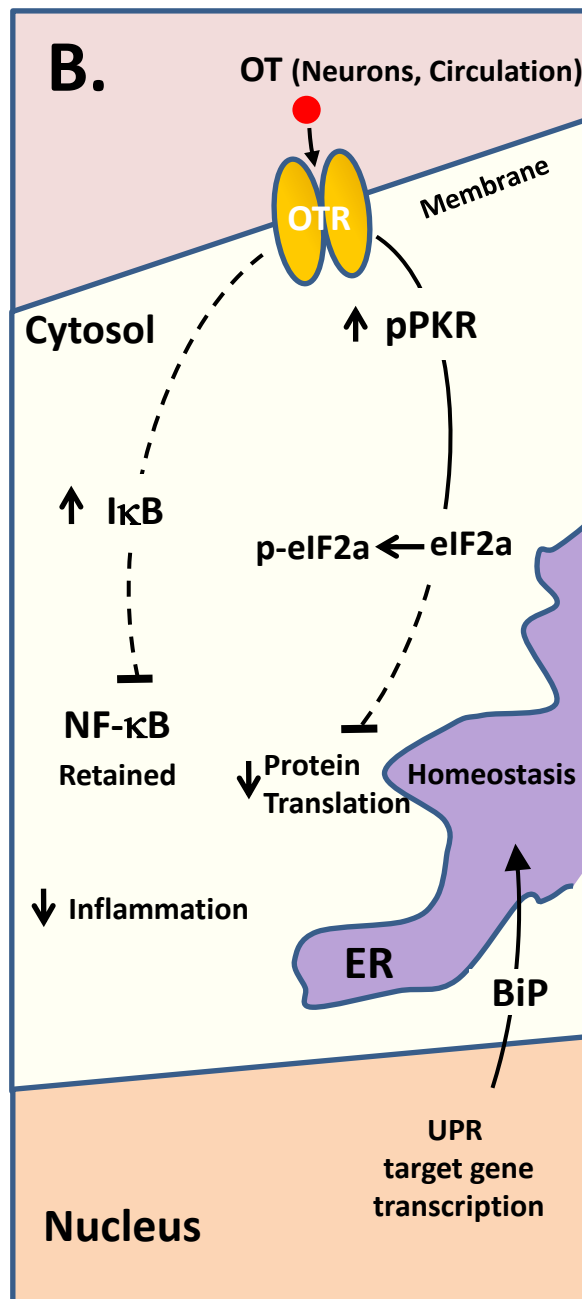
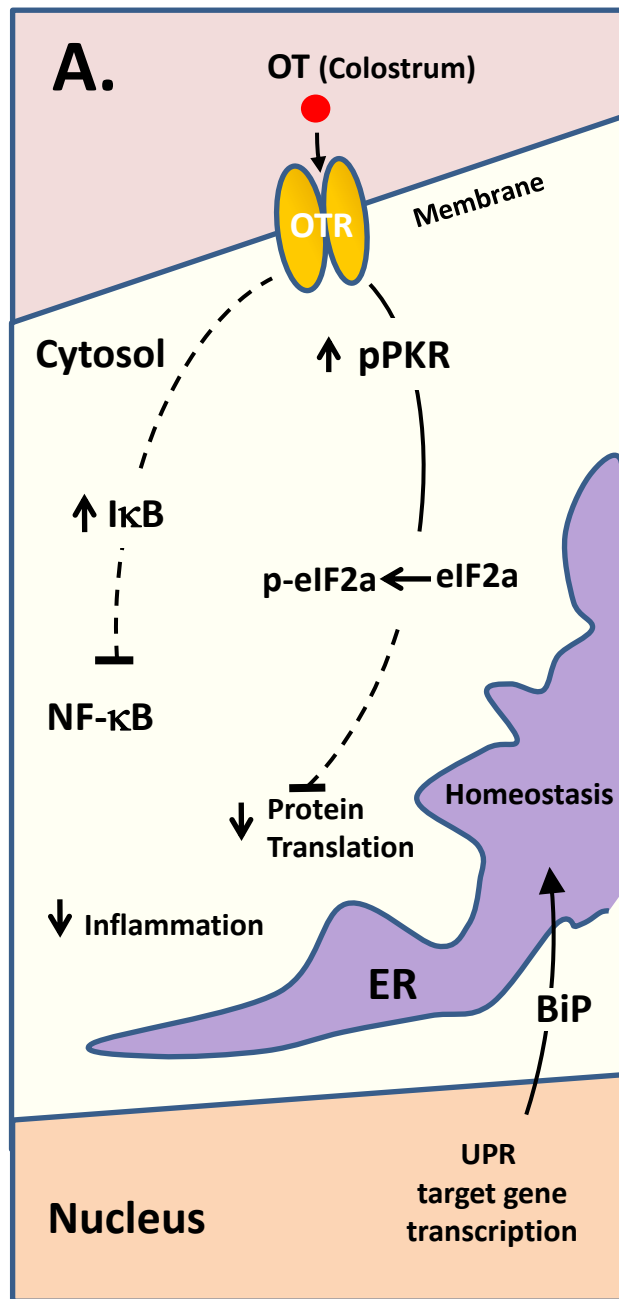


**C**









Name of Material/ Equipment	Company	Catalog Number	Comments/Description
Bradford solution	Bio Rad		
Protein lysis kit	Protein simple	CBS403	Bicine/CHAPS
		WES-Mouse 12-230 master kit (PS-MK15), WES-Rabbit 12-230 master kit (PS-MK14), WES 12-230 kDa total	
WES kits	Protein simple	Protein master kit (PS-TP07)	
anti-mouse IgG HRP conjugate	Protein simple		
	Cell Signaling technology		
Rabbit anti-phospho-eIF2a	y Cell Signaling technology	SER51, 9721	
mouse mAb anti-PKR	y	2103	
Rabbit anti-phospho-PKR	Millipore Cell Signaling technology	Thr451, 07-886	
Rabbit mAb anti-PKR	y Cell Signaling technology	12297	
rabbit mAb anti-GAPDH	y	2118	

mouse mAb anti-phospho-IKB	Cell Signaling technolog y	9246
mouse mAb anti-IKB	Cell Signaling technolog y	4814
rabbit anti-BiP	Cell Signaling technolog y	3183
Rabbit anti GCN2	Cell Signaling technolog y	3302
Rabbit mAb anti-phospho-GCN2	BIORBYT Charles River Laboratori es	T899
pregnant Sprague-Dawley rats	WellTech Rapid Core	
Punch device	or Harris Uni-Core	0.35, 0.50, 0.75, 1.0, 1.20, 1.50



1 Alewife Center #200  
Cambridge, MA 02140  
tel. 617.945.9051  
[www.jove.com](http://www.jove.com)

## ARTICLE AND VIDEO LICENSE AGREEMENT

Title of Article:

Colostrum in the newborn gut modulates cellular stress and inflammation

Author(s):

Klein, B, Tamir, H, Ludwig, R, Glickstein, S, Welch, MW

Item 1 (check one box): The Author elects to have the Materials be made available (as described at <http://www.jove.com/author>) via: ☒ Standard Access ☐ Open Access

Item 2 (check one box):

- ☒ The Author is NOT a United States government employee.
- ☐ The Author is a United States government employee and the Materials were prepared in the course of his or her duties as a United States government employee.
- ☐ The Author is a United States government employee but the Materials were NOT prepared in the course of his or her duties as a United States government employee.

### ARTICLE AND VIDEO LICENSE AGREEMENT

1. **Defined Terms.** As used in this Article and Video License Agreement, the following terms shall have the following meanings: "**Agreement**" means this Article and Video License Agreement; "**Article**" means the article specified on the last page of this Agreement, including any associated materials such as texts, figures, tables, artwork, abstracts, or summaries contained therein; "**Author**" means the author who is a signatory to this Agreement; "**Collective Work**" means a work, such as a periodical issue, anthology or encyclopedia, in which the Materials in their entirety in unmodified form, along with a number of other contributions, constituting separate and independent works in themselves, are assembled into a collective whole; "**CRC License**" means the Creative Commons Attribution-Non Commercial-No Derivs 3.0 Unported Agreement, the terms and conditions of which can be found at: <http://creativecommons.org/licenses/by-nc-nd/3.0/legalcode>; "**Derivative Work**" means a work based upon the Materials or upon the Materials and other pre-existing works, such as a translation, musical arrangement, dramatization, fictionalization, motion picture version, sound recording, art reproduction, abridgment, condensation, or any other form in which the Materials may be recast, transformed, or adapted; "**Institution**" means the institution, listed on the last page of this Agreement, by which the Author was employed at the time of the creation of the Materials; "**JoVE**" means MyJoVE Corporation, a Massachusetts corporation and the publisher of *The Journal of Visualized Experiments*; "**Materials**" means the Article and / or the Video; "**Parties**" means the Author and JoVE; "**Video**" means any video(s) made by the Author, alone or in conjunction with any other parties, or by JoVE or its affiliates or agents, individually or in collaboration with the Author or any other parties, incorporating all or any portion of the Article, and in which the Author may or may not appear.

2. **Background.** The Author, who is the author of the Article, in order to ensure the dissemination and protection of the Article, desires to have the JoVE publish the Article and create and transmit videos based on the Article. In furtherance of such goals, the Parties desire to memorialize in this Agreement the respective rights of each Party in and to the Article and the Video.

3. **Grant of Rights in Article.** In consideration of JoVE agreeing to publish the Article, the Author hereby grants to JoVE, subject to **Sections 4 and 7** below, the exclusive, royalty-free, perpetual (for the full term of copyright in the Article, including any extensions thereto) license (a) to publish, reproduce, distribute, display and store the Article in all forms, formats and media whether now known or hereafter developed (including without limitation in print, digital and electronic form) throughout the world, (b) to translate the Article into other languages, create adaptations, summaries or extracts of the Article or other Derivative Works (including, without limitation, the Video) or Collective Works based on all or any portion of the Article and exercise all of the rights set forth in (a) above in such translations, adaptations, summaries, extracts, Derivative Works or Collective Works and (c) to license others to do any or all of the above. The foregoing rights may be exercised in all media and formats, whether now known or hereafter devised, and include the right to make such modifications as are technically necessary to exercise the rights in other media and formats. If the "Open Access" box has been checked in **Item 1** above, JoVE and the Author hereby grant to the public all such rights in the Article as provided in, but subject to all limitations and requirements set forth in, the CRC License.



## ARTICLE AND VIDEO LICENSE AGREEMENT

4. **Retention of Rights in Article.** Notwithstanding the exclusive license granted to JoVE in **Section 3** above, the Author shall, with respect to the Article, retain the non-exclusive right to use all or part of the Article for the non-commercial purpose of giving lectures, presentations or teaching classes, and to post a copy of the Article on the Institution's website or the Author's personal website, in each case provided that a link to the Article on the JoVE website is provided and notice of JoVE's copyright in the Article is included. All non-copyright intellectual property rights in and to the Article, such as patent rights, shall remain with the Author.

5. **Grant of Rights in Video – Standard Access.** This **Section 5** applies if the "Standard Access" box has been checked in **Item 1** above or if no box has been checked in **Item 1** above. In consideration of JoVE agreeing to produce, display or otherwise assist with the Video, the Author hereby acknowledges and agrees that, Subject to **Section 7** below, JoVE is and shall be the sole and exclusive owner of all rights of any nature, including, without limitation, all copyrights, in and to the Video. To the extent that, by law, the Author is deemed, now or at any time in the future, to have any rights of any nature in or to the Video, the Author hereby disclaims all such rights and transfers all such rights to JoVE.

6. **Grant of Rights in Video – Open Access.** This **Section 6** applies only if the "Open Access" box has been checked in **Item 1** above. In consideration of JoVE agreeing to produce, display or otherwise assist with the Video, the Author hereby grants to JoVE, subject to **Section 7** below, the exclusive, royalty-free, perpetual (for the full term of copyright in the Article, including any extensions thereto) license (a) to publish, reproduce, distribute, display and store the Video in all forms, formats and media whether now known or hereafter developed (including without limitation in print, digital and electronic form) throughout the world, (b) to translate the Video into other languages, create adaptations, summaries or extracts of the Video or other Derivative Works or Collective Works based on all or any portion of the Video and exercise all of the rights set forth in (a) above in such translations, adaptations, summaries, extracts, Derivative Works or Collective Works and (c) to license others to do any or all of the above. The foregoing rights may be exercised in all media and formats, whether now known or hereafter devised, and include the right to make such modifications as are technically necessary to exercise the rights in other media and formats. For any Video to which this Section 6 is applicable, JoVE and the Author hereby grant to the public all such rights in the Video as provided in, but subject to all limitations and requirements set forth in, the CRC License.

7. **Government Employees.** If the Author is a United States government employee and the Article was prepared in the course of his or her duties as a United States government employee, as indicated in **Item 2** above, and any of the licenses or grants granted by the Author hereunder exceed the scope of the 17 U.S.C. 403, then the rights granted hereunder shall be limited to the maximum rights permitted under such

statute. In such case, all provisions contained herein that are not in conflict with such statute shall remain in full force and effect, and all provisions contained herein that do so conflict shall be deemed to be amended so as to provide to JoVE the maximum rights permissible within such statute.

8. **Likeness, Privacy, Personality.** The Author hereby grants JoVE the right to use the Author's name, voice, likeness, picture, photograph, image, biography and performance in any way, commercial or otherwise, in connection with the Materials and the sale, promotion and distribution thereof. The Author hereby waives any and all rights he or she may have, relating to his or her appearance in the Video or otherwise relating to the Materials, under all applicable privacy, likeness, personality or similar laws.

9. **Author Warranties.** The Author represents and warrants that the Article is original, that it has not been published, that the copyright interest is owned by the Author (or, if more than one author is listed at the beginning of this Agreement, by such authors collectively) and has not been assigned, licensed, or otherwise transferred to any other party. The Author represents and warrants that the author(s) listed at the top of this Agreement are the only authors of the Materials. If more than one author is listed at the top of this Agreement and if any such author has not entered into a separate Article and Video License Agreement with JoVE relating to the Materials, the Author represents and warrants that the Author has been authorized by each of the other such authors to execute this Agreement on his or her behalf and to bind him or her with respect to the terms of this Agreement as if each of them had been a party hereto as an Author. The Author warrants that the use, reproduction, distribution, public or private performance or display, and/or modification of all or any portion of the Materials does not and will not violate, infringe and/or misappropriate the patent, trademark, intellectual property or other rights of any third party. The Author represents and warrants that it has and will continue to comply with all government, institutional and other regulations, including, without limitation all institutional, laboratory, hospital, ethical, human and animal treatment, privacy, and all other rules, regulations, laws, procedures or guidelines, applicable to the Materials, and that all research involving human and animal subjects has been approved by the Author's relevant institutional review board.

10. **JoVE Discretion.** If the Author requests the assistance of JoVE in producing the Video in the Author's facility, the Author shall ensure that the presence of JoVE employees, agents or independent contractors is in accordance with the relevant regulations of the Author's institution. If more than one author is listed at the beginning of this Agreement, JoVE may, in its sole discretion, elect not take any action with respect to the Article until such time as it has received complete, executed Article and Video License Agreements from each such author. JoVE reserves the right, in its absolute and sole discretion and without giving any reason therefore, to accept or decline any work submitted to JoVE. JoVE and its employees, agents and independent contractors shall have



## ARTICLE AND VIDEO LICENSE AGREEMENT

full, unfettered access to the facilities of the Author or of the Author's institution as necessary to make the Video, whether actually published or not. JoVE has sole discretion as to the method of making and publishing the Materials, including, without limitation, to all decisions regarding editing, lighting, filming, timing of publication, if any, length, quality, content and the like.

11. **Indemnification.** The Author agrees to indemnify JoVE and/or its successors and assigns from and against any and all claims, costs, and expenses, including attorney's fees, arising out of any breach of any warranty or other representations contained herein. The Author further agrees to indemnify and hold harmless JoVE from and against any and all claims, costs, and expenses, including attorney's fees, resulting from the breach by the Author of any representation or warranty contained herein or from allegations or instances of violation of intellectual property rights, damage to the Author's or the Author's institution's facilities, fraud, libel, defamation, research, equipment, experiments, property damage, personal injury, violations of institutional, laboratory, hospital, ethical, human and animal treatment, privacy or other rules, regulations, laws, procedures or guidelines, liabilities and other losses or damages related in any way to the submission of work to JoVE, making of videos by JoVE, or publication in JoVE or elsewhere by JoVE. The Author shall be responsible for, and shall hold JoVE harmless from, damages caused by lack of sterilization, lack of cleanliness or by contamination due to the making of a video by JoVE its employees, agents or independent contractors. All sterilization, cleanliness or decontamination procedures shall be solely the responsibility of the Author and shall be undertaken at the Author's

expense. All indemnifications provided herein shall include JoVE's attorney's fees and costs related to said losses or damages. Such indemnification and holding harmless shall include such losses or damages incurred by, or in connection with, acts or omissions of JoVE, its employees, agents or independent contractors.

12. **Fees.** To cover the cost incurred for publication, JoVE must receive payment before production and publication the Materials. Payment is due in 21 days of invoice. Should the Materials not be published due to an editorial or production decision, these funds will be returned to the Author. Withdrawal by the Author of any submitted Materials after final peer review approval will result in a US\$1,200 fee to cover pre-production expenses incurred by JoVE. If payment is not received by the completion of filming, production and publication of the Materials will be suspended until payment is received.

13. **Transfer, Governing Law.** This Agreement may be assigned by JoVE and shall inure to the benefits of any of JoVE's successors and assignees. This Agreement shall be governed and construed by the internal laws of the Commonwealth of Massachusetts without giving effect to any conflict of law provision thereunder. This Agreement may be executed in counterparts, each of which shall be deemed an original, but all of which together shall be deemed to be one and the same agreement. A signed copy of this Agreement delivered by facsimile, e-mail or other means of electronic transmission shall be deemed to have the same legal effect as delivery of an original signed copy of this Agreement.

A signed copy of this document must be sent with all new submissions. Only one Agreement required per submission.

### CORRESPONDING AUTHOR:

Name:

Martha Welch

Department:

Pediatrics

Institution:

Columbia University

Article Title:

Clostridium in the newborn gut modulates cellular stress and inflammation in cryptic secretory nuclei in the brain

Signature:

Martha Welch

Digitally signed by Martha Welch  
DN: cn=Martha Welch, o=ou,  
email=mgw13@columbia.edu, c=US  
Date: 2018.04.23 21:35:40 -07'00'

Date:

Please submit a signed and dated copy of this license by one of the following three methods:

- 1) Upload a scanned copy of the document as a pdf on the JoVE submission site;
- 2) Fax the document to +1.866.381.2236;
- 3) Mail the document to JoVE / Attn: JoVE Editorial / 1 Alewife Center #200 / Cambridge, MA 02139

For questions, please email [submissions@jove.com](mailto:submissions@jove.com) or call +1.617.945.9051

Friday, July 6, 2018

JoVE

Re: Assessing Cellular Stress and Inflammation in Discrete Oxytocin-Secreting Nuclei in the Neonatal Rat Before and After First Colostrum Feeding

Dear Vineeta Bajaj,

Thanks to you and the reviewer for the careful review of our manuscript. Below we detail our responses to reviewer feedback. We have made the suggested revisions and believe this paper has benefited greatly from the review process.

Thank you for your consideration of our paper.

Respectfully,

Benjamin Y. Klein, MD and Martha G. Welch, MD  
[Bk2348@cumc.columbia.edu](mailto:Bk2348@cumc.columbia.edu) and [mgw13@columbia.edu](mailto:mgw13@columbia.edu)  
Tel: (212)-342-4400

---

**Editorial comments:**

Changes to be made by the Author(s):

1. Please take this opportunity to thoroughly proofread the manuscript to ensure that there are no spelling or grammar issues. The JoVE editor will not copy-edit your manuscript and any errors in the submitted revision may be present in the published version.

We have proofread the manuscript.

2. Please revise lines 93-95, 221-227, 237-239, 400-401, and 410-412 to avoid previously published text.

We have revised the text for lines 93-95, 400-401, and 410-412. The text for lines 221-227 and 237-239 is methods text and remains as is.

3. Figures: Please list the panels in order from left to right and then top to bottom. Please be consistent throughout.

We have made this edit, which includes an updated Figure 4.

4. Figure 2: Please line up panels B and C. Please define error bars in the figure legend.

This figure has been updated and the legend updated to define error bars.

5. Figure 3: Please define error bars in the figure legend.

The figure legend has been updated.

6. Figure S1: Please change “hr” to “h” and include a space between the number and time unit (i.e., 1 h, 2 h, etc.).

We have made this edit.

7. Please revise the Introduction to include all of the following:

a) A clear statement of the overall goal of this method

We have added a statement (Lines 90-92).

b) The rationale behind the development and/or use of this technique

We have added this (Lines 92-96).

c) The advantages over alternative techniques with applicable references to previous studies

We have added this text (Lines 96-100)

d) A description of the context of the technique in the wider body of literature

We have added this (Lines 100 – 112).

e) Information to help readers to determine whether the method is appropriate for their application

We have added this (Lines 114-123)

8. Please use SI abbreviations for all units: L, mL, µL, h, min, s, etc.

done

9. Please include a space between all numbers and their corresponding units: 15 mL, 37 °C, 60 s; etc.

Done

10. Please revise the protocol text to avoid the use of any personal pronouns (e.g., "we", "you", "our" etc.).

Done.



11. Please remove all commercial language from your manuscript and use generic terms instead. All commercial products should be sufficiently referenced in the Table of Materials and Reagents. For example: Bio Rad, ProteinSimple, WES-Mouse 12-230 master kit, Cell Signaling Technology (CST), Inc., Millipore, BIORBYT, Charles River Laboratories, etc.

Done

12. Please revise the protocol to contain only action items that direct the reader to do something. The actions should be described in the imperative tense in complete sentences wherever possible. Avoid usage of phrases such as “could be,” “should be,” and “would be” throughout the Protocol. Any text that cannot be written in the imperative tense may be added as a “Note.”

Done

13. Please revise the Protocol steps so that individual steps contain only 2-3 actions per step and a maximum of 4 sentences per step. Use sub-steps as necessary.

Done

14. Please add more details to your protocol steps. Please ensure you answer the “how” question, i.e., how is the step performed? Alternatively, add references to published material specifying how to perform the protocol action.

We have added additional detail.

15. Lines 135 and 151: Please move material information to the Table of Equipment and Materials.

Moved.

16. 1.1.2/1.1.3/1.3.2: Please break up into sub-steps and add more details to each sub-step.

We have added additional substeps.

17. 1.2.2: The Protocol should contain only action items that direct the reader to do something. Please move the discussion about the protocol to the Discussion.

Done

18. 1.3.1: Please remove the weblink which contains commercial language. Please add more details to this step.

Done

19. Lines 229-249: Unclear what we can show here. Please describe the actions.

We have added additional detail.

20. Please revise to explain the Representative Results in the context of the technique you have described, e.g., how do these results show the technique, suggestions about how to analyze the outcome, etc.

Done (Lines 295-298)

21. As we are a methods journal, please revise the Discussion to explicitly cover the following in detail in 3-6 paragraphs with citations:

- a) Critical steps within the protocol
- b) Any modifications and troubleshooting of the technique
- c) Any limitations of the technique
- d) The significance with respect to existing methods
- e) Any future applications of the technique

Done

22. JoVE article does not have a Conclusion section. Please move information in the Conclusion section or Results or Discussion section.

done

23. References: Please do not abbreviate journal titles.

done

#### **Reviewers' comments:**

##### **Reviewer #1:**

##### **Manuscript Summary:**

To study the effect of colostrum oxytocin in gut on the activity of oxytocin receptor-rich brain regions, authors used a novel method for punching neonatal brain nuclei and then assessed BiP, eIF2 $\alpha$ , NF- $\kappa$ B and I $\kappa$ B expressions using Western blotting before and after first colostrum feeding. The results showed that the stress modulating mechanisms previously observed in newborn gut enterocytes appear to be mirrored in some OTR-rich brain regions. Under nutrient deficiency the STN and PVN may utilize a different phosphorylation mechanism from other regions and be refractory to the impact of nutrient insufficiency. The authors concluded that brain responses to nutrient insufficiency stress are offset by signaling from colostrum-primed enterocytes. This work does show some innovation in the methods of sampling and in-capillary protein assay and is useful for establishing a theory that nutrient-insufficiency-related metabolic stress is a body-wide stressor. However, serious concerns about the methods and analyses should be addressed.

##### **Major Concerns:**

1. Feeding itself, even without milk or oxytocin, can strongly influence vagal input and brain activity (see Line 92). Thus a milk control containing no oxytocin or liquid without nutrients should be given.

We are grateful to the author for raising this important point. We did not pursue a “sham-feed” for two reasons. First, at Day 0 – 1 the vagal inputs is not yet developed fully and, second, the handling required for a sham-feed and equivalent handling in the primed group would also impact our measures and data interpretation.

2. Line 164, the sampling time between the unprimed and primed pups differed by 3-5 hours, which casts the

doubt that the priming effect could reflect the natural developing process or adaptation process to the external environment. Thus, it is necessary to set an unprimed control group wherein sampling time is the same as the primed group. Alternatively, the authors may consider to provide the priming at the same time of the unprimed group.

We agree with the authors that the timing between primed and unprimed groups requires further evaluation. We chose to sacrifice unprimed pups prior to any stress response to eliminate the impact of stress related to the pup's request for the first feed on gene expression. We will explore this feature in a subsequent paper.

3. Line 172: why was "artificial cerebrospinal fluid with 203.3mM MgCl<sub>2</sub> · 6H<sub>2</sub>O used? No dehydration occurred?

Incubation in ACSF is necessary as a baseline for future options to examine the signaling response to selected inhibitors or stimulants for any signaling pathway.

4. In identification of said brain regions, histological presentation is necessary since the ordination or the surface marker of the skull was not showed.

We have indicated the distance from bregma, which allows for the identification.

5. Line 192, the meaning of "this extraction cocktail should contain protease inhibitors and phosphatase inhibitors" is not clear. Did it "contained" or did not contain" the inhibitors?

We have corrected, it contained inhibitors.

6. Line 109-201: "Protein Simple kit for Biotin-labeling of the total proteins concomitantly during electrophoresis to measure protein concentration, as opposed to adjusting the protein concentration to equal volumes in advance" raises the question if the quantification is valid.

As shown in Figure 2 that changes in the areas of eIF2 $\alpha$  and p-eIF2 $\alpha$  are almost the same, and so does the total protein (SOPT and MPO are exceptional). Without a visual hint of clear changes, how could the authors get the values shown in the bar graphs? Are the exemplary bands representative? If the WES detected the density correctly, a loading control with adjusting the protein solution to equal concentration/amount should be presented, at least.

The tissue yield of some brain nuclei is very small to normalize against protein.

7. Discussion should address the comments listed above.

We have had to substantially modify the discussion to meet journal style and discuss primarily the technique. We have added some of this detail to the introduction.

#### Minor Concerns:

Line 177: the name of brain atlas referred should be given.

We have added.

#### Reviewer #2:

**Manuscript Summary:**

This is modification of current techniques used to determine protein levels in brain tissue.

**Major Concerns:**

While present in the introduction, there is no premise/rationale presented in the abstract. There is nothing to pull the reader in to the topic of the research.

We have made these additions. Thank you for bringing this to our attention.

**Minor Concerns:**

1. The grammar is generally good, but could use an overall revision for a few minor issues.

We have given the manuscript a proofread.

2. Line 169, is this with a standard razor blade?

Yes, we have corrected.

3. Lines 203-206. This sentence is difficult to comprehend.

This sentence has been removed in accordance with journal requirements to remove any commercial information.

4. Line 208, should this be -80C?

Yes, thank you for noticing, this has been corrected.

5. The graphs with asterisks are visually challenging. I'm not sure if the use of letters would be preferable by all, but alternative designs should be explored.

We have improved.

**Reviewer #3:**

**Manuscript Summary:**

Traditionally Oxytocin was known only to involve in milk production and delivery. But the ever increasing roles of Oxytocin is further supported by the present study.

Although there are other techniques such as single cell or brain slice approaches currently popular, but the authors put forward a detailed description of an efficient method to specifically isolate different OTR-rich regions within the rat-brain. Expression of different signaling proteins were tested in different brain regions and were compared to their already published data from gut. Based on their results, authors concluded that cell signaling in the brain associated with nutrient and hormonal insufficiency during the first hours following birth is similar to the gut under similar conditions.

The method is well described and is probably reproducible, as authors claim. This method can probably be used to develop new protocols in different tissues too.

All the best

Thanks

**Major Concerns:**

NONE

Minor Concerns:

NONE

- 1      Hansson, J. *et al.* Time-resolved quantitative proteome analysis of in vivo intestinal development. *Mol Cell Proteomics*. **10** (3), M110 005231, doi:10.1074/mcp.M110.005231, (2011).
- 2      Mochizuki, K., Yorita, S. & Goda, T. Gene expression changes in the jejunum of rats during the transient suckling-weaning period. *J Nutr Sci Vitaminol (Tokyo)*. **55** (2), 139-148 (2009).
- 3      Rinaman, L., Banihashemi, L. & Koehnle, T. J. Early life experience shapes the functional organization of stress-responsive visceral circuits. *Physiol Behav*. **104** (4), 632-640, doi:10.1016/j.physbeh.2011.04.008, (2011).
- 4      Dobbing, J. Boyd Orr memorial lecture. Early nutrition and later achievement. *Proc Nutr Soc*. **49** (2), 103-118 (1990).
- 5      Rinaman, L. Hindbrain noradrenergic A2 neurons: diverse roles in autonomic, endocrine, cognitive, and behavioral functions. *Am J Physiol Regul Integr Comp Physiol*. **300** (2), R222-235, doi:10.1152/ajpregu.00556.2010, (2011).
- 6      Walker, C. D., Toufexis, D. J. & Burlet, A. Hypothalamic and limbic expression of CRF and vasopressin during lactation: implications for the control of ACTH secretion and stress hyporesponsiveness. *Prog Brain Res*. **133** 99-110 (2001).

