

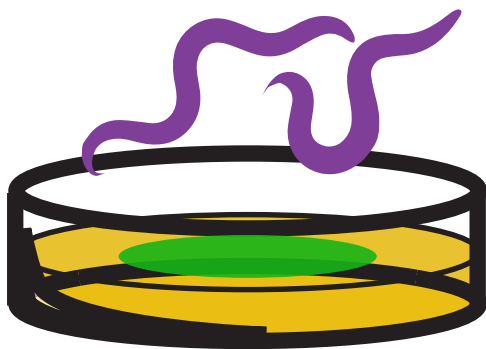
A



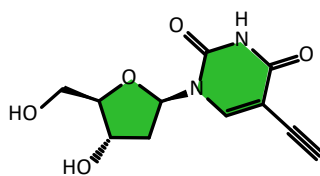
Culture synchronized
population with *E. coli*



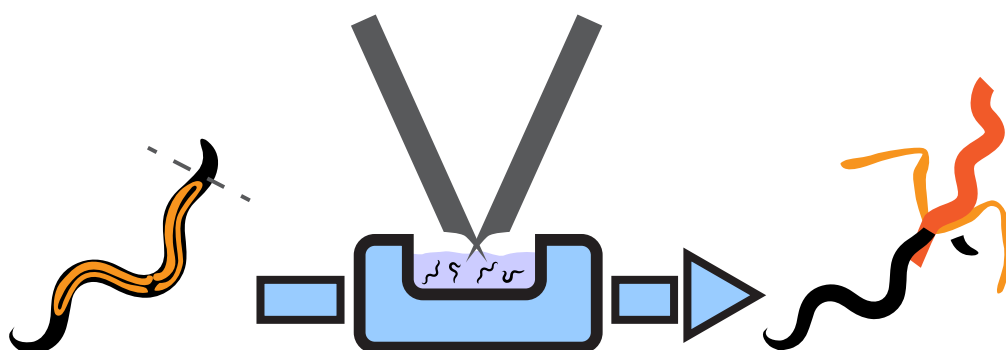
B



Culture with
EdU labeled bacteria
for 0.5, 4, 7, or 10 hours



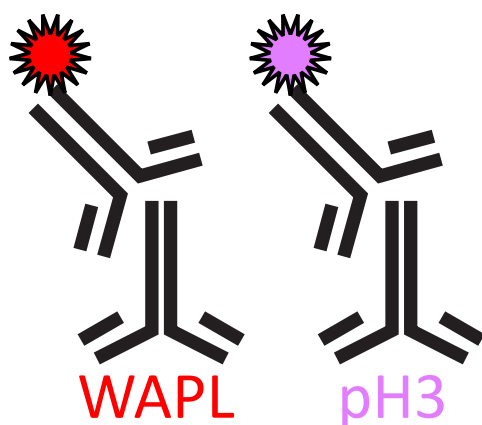
C



Dissect and fix
gonad



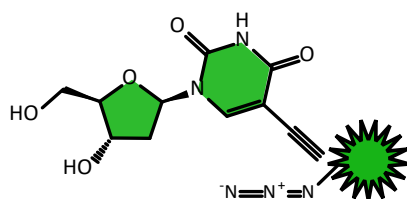
D



Stain proteins
with antibodies



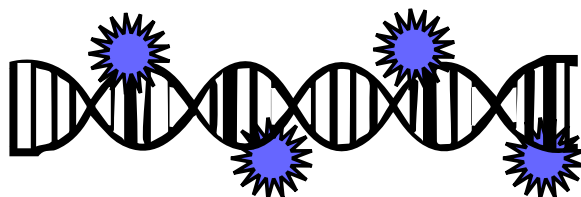
E



Stain EdU
with Click reaction



F



Stain DNA
with DAPI



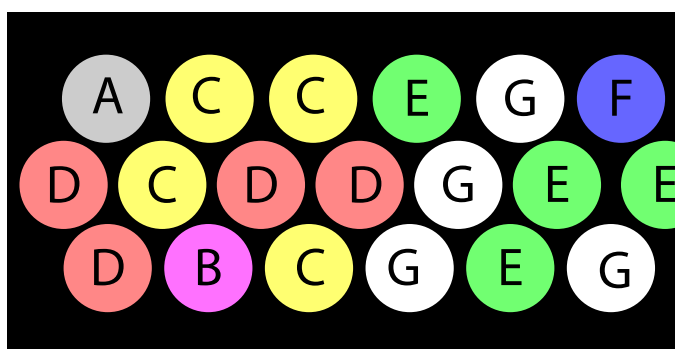
G



Confocal microscopy



H



Count nuclei