

# Journal of Visualized Experiments

## Isolation of primary mouse hepatocytes for nascent protein synthesis analysis by non-radioactive L-Azidohomoalanine labeling method --Manuscript Draft--

<b>Article Type:</b>	Invited Methods Article - JoVE Produced Video
<b>Manuscript Number:</b>	JoVE58323R2
<b>Full Title:</b>	Isolation of primary mouse hepatocytes for nascent protein synthesis analysis by non-radioactive L-Azidohomoalanine labeling method
<b>Keywords:</b>	primary mouse hepatocytes, nascent protein synthesis, AMPK signaling, rotenone, L-Azidohomoalanine, chemo-selective ligation reaction, non-radioactive method
<b>Corresponding Author:</b>	Takahisa Nakamura, Ph.D. Cincinnati Children's Hospital Medical Center Cincinnati, OH UNITED STATES
<b>Corresponding Author's Institution:</b>	Cincinnati Children's Hospital Medical Center
<b>Corresponding Author E-Mail:</b>	Takahisa.Nakamura@cchmc.org
<b>Order of Authors:</b>	Takahisa Nakamura, Ph.D. Esam S.B. Salem Kazutoshi Murakami Toshimasa Takahashi Elise Bernhard Vishnupriya Borra Mridula Bethi
<b>Additional Information:</b>	
<b>Question</b>	<b>Response</b>
Please indicate whether this article will be Standard Access or Open Access.	Standard Access (US\$2,400)
Please indicate the <b>city, state/province, and country</b> where this article will be <b>filmed</b> . Please do not use abbreviations.	3333 Burnet Ave, Cincinnati, OH 45229, Cincinnati Children's Hospital, Division of Endocrinology

**TITLE:**

Isolation of Primary Mouse Hepatocytes for Nascent Protein Synthesis Analysis by Non-Radioactive L-Azidohomoalanine Labeling Method

**Authors and Affiliation:**

Esam S.B. Salem<sup>1,2\*</sup>; Kazutoshi Murakami<sup>2\*</sup>; Toshimasa Takahashi<sup>2</sup>; Elise Bernhard<sup>2</sup>; Vishnupriya Borra<sup>2</sup>; Mridula Bethi<sup>2</sup>, Takahisa Nakamura<sup>2,3</sup>

<sup>1</sup>Department of Pharmacology and Systems Physiology, College of Medicine, University of Cincinnati, Ohio, USA,

<sup>2</sup>Division of Endocrinology, Cincinnati Children's Hospital Medical Center, Ohio, USA

<sup>3</sup>Division of Developmental Biology, Cincinnati Children's Hospital Medical Center, Ohio, USA

\*These authors contributed equally

**Email address of corresponding author:**

Takahisa Nakamura (takahisa.nakamura@cchmc.org)

**Email Addresses of Co-Author:**

Esam S.B. Salem (esam.salem@cchmc.org)

Kazutoshi Murakami (kazutoshi.murakami@cchmc.org)

Toshimasa Takahashi (toshimasa.takahashi@cchmc.org)

Elise Bernhard (elise.bernhard@cchmc.org)

Vishnupriya Borra (vishnupriya.borra@cchmc.org)

Mridula Bethi (bethima@mail.uc.edu)

**Keywords:**

primary mouse hepatocytes, nascent protein synthesis, AMPK signaling, rotenone, L-Azidohomoalanine, non-radioactive method

**SUMMARY:**

Here, we present a protocol for the isolation of healthy and functional primary mouse hepatocytes. Instructions for detecting hepatic nascent protein synthesis by non-radioactive labeling substrate were provided to help understand the mechanisms underlying protein synthesis in the context of energy-metabolism homeostasis in the liver.

**LONG ABSTRACT:**

Hepatocytes are parenchymal cells of the liver and engage multiple metabolic functions, including synthesis and secretion of proteins essential for systemic energy homeostasis. Primary hepatocytes isolated from the murine liver constitute a valuable biological tool to understand the functional properties or alterations occurring in the liver. Herein we describe a method for the isolation and culture of primary mouse hepatocytes by performing a two-step collagenase perfusion technique and discuss their utilization for investigating protein metabolism. The liver of an adult mouse is sequentially perfused with ethylene glycol-bis tetraacetic acid (EGTA) and

collagenase, followed by the isolation of hepatocytes with the density gradient buffer. These isolated hepatocytes are viable on culture plates and maintain the majority of endowed characteristics of hepatocytes. These hepatocytes can be used for assessments of protein metabolism including nascent protein synthesis with non-radioactive reagents. We show that the isolated hepatocytes are readily controlled and comprise a higher quality and volume stability of protein synthesis linked to energy metabolism by utilizing the chemo-selective ligation reaction with a Tetramethylrhodamine (TAMRA) protein detection method and western blotting analyses. Therefore, this method is valuable for investigating hepatic nascent protein synthesis linked to energy homeostasis. The following protocol outlines the materials and methods for the isolation of high-quality primary mouse hepatocytes and detection of nascent protein synthesis.

## INTRODUCTION

Protein is an important nutritional element and approximately 50% of the dry weight of a human body is composed of proteins which have several biological traits and functions<sup>1</sup>. Consequently, protein synthesis is one of the most energy consuming events and an alteration in protein metabolism is highly associated with the development of diseases, including metabolic diseases<sup>2-4</sup>. In the liver, protein biosynthesis accounts for approximately 20-30% of total energy consumption<sup>5, 6</sup>. In addition, proteins function as not only passive or building blocks of the liver, but also active signal-mediating factors intracellularly or extracellularly to regulate the systemic metabolism<sup>7</sup>. For instance, reduced levels of serum albumin, which is synthesized and secreted by the liver and the most abundant protein in the plasma<sup>8</sup>, increases the risk of type 2 diabetes development<sup>9-11</sup>, whereas a higher concentration of serum albumin is protective against developing metabolic syndrome<sup>12</sup>. Furthermore, disturbed or disruption of secretory or membrane-bound hepatic proteins, which modulate cholesterol homeostasis, including lipoproteins, LDLR, and LRP1, can lead to the development of insulin resistance, hyperlipidemia, or atherosclerosis<sup>13</sup>. Therefore, the identification of molecular pathophysiological mechanisms that are involved in protein metabolism disturbance in the liver and its associated metabolic complications might be useful for discovering novel pharmacological approaches to retard onset or treat metabolic diseases such as insulin resistance, diabetes, and non-alcoholic fatty liver.

Protein synthesis is tightly linked to the cellular energy status (*e.g.*, the formation of one peptide bond during the elongation step of protein synthesis requires 4 phosphodiester bonds<sup>14</sup>) and is regulated by molecular pathways that sense inter- and intra-cellular nutrient availability<sup>15, 16</sup>. AMP-activated protein kinase (AMPK) is one of the intracellular energy sensors that maintain energy homeostasis<sup>17</sup>. Once AMPK is activated when cellular energy levels become lower, AMPK and its targeted substrates function to stimulate catabolic pathways and inhibit anabolic processes including protein synthesis<sup>18, 19</sup>. The regulation of protein synthesis is mediated by phosphorylation of multiple translation factors and ribosomal proteins<sup>20</sup>. Of note, the mammalian target of rapamycin complex 1 (mTORC1), a major driver of protein synthesis, is one of the main targets of AMPK<sup>21</sup>. Activation of the mTORC1 pathway enhances the cell growth and proliferation by stimulating protein translation and autophagy<sup>20, 21</sup>. Therefore, it is logical that activation of AMPK can inhibit mTORC1-mediated protein synthesis<sup>22</sup>. Indeed, activation of AMPK counteracts and directly phosphorylates mTORC1 on threonine residue 2446 (Thr<sup>2446</sup>) leading to its inactivation<sup>23</sup> and suppression of protein biosynthesis<sup>24</sup>. Moreover, AMPK can indirectly

inhibit mTORC1 function by phosphorylation and activation of tuberous sclerosis complex 2 (TSC2)<sup>25</sup> which is the upstream regulator of mTORC1 signaling cascade. In short, dysregulation of these pathways in the liver is often linked to the development of metabolic diseases and therefore there is a critical need to establish effective experimental tools to investigate the role of these pathways in the regulation of energy and protein metabolism in hepatocytes.

There is a stronger similarity between the functional properties of isolated primary hepatocytes and *in vivo* hepatocytes than with *in vitro* liver-derived cell lines<sup>26-28</sup>. It has been shown that primary human hepatocytes share 77% similarity with that of liver biopsies, whereas HepG2 cells, which are well-differentiated hepatic cancerous cells and widely used to investigate hepatic functions, display less than 48% in the context of gene expression profiles<sup>29</sup>. Therefore, utilization of primary hepatocytes, rather than immortalized culture cells, is of vital importance in investigating hepatic function and physiology, and several protocols are available for the isolation and culture of primary hepatocytes especially from rats<sup>30, 31</sup>. While the rat hepatocytes are useful with a relatively higher yield of cells, mouse hepatocytes have a greater potential in many scientific aspects because of the wide availability of genetically modulated mice. However, there are several technical challenges in isolating healthy and abundant primary hepatocytes from mice for cellular- and molecular-based assessments: first, cannula insertion to perfuse the liver with buffer reagents is very difficult to handle because of the small and thin mouse portal vein or inferior vena cava; second, a longer manipulation time of cells during the isolation can cause reduction in cell quantity and quality; third, non-enzymatic mechanical separation methods can result in severe damage and produce a low yield of viable isolated primary hepatocytes<sup>32, 33</sup>. In the 1980s, collagenase perfusion technique was introduced for isolating hepatocytes from the livers of animals<sup>34</sup>. This method is based on collagenase perfusion of the liver<sup>35-37</sup>, infusion of the liver with calcium chelator solution<sup>38, 39</sup>, enzymatic digestion and mechanical dissociation of the hepatic parenchyma<sup>35</sup>. In the first step, a mouse liver is perfused with a calcium [Ca<sup>2+</sup>] free buffer containing a [Ca<sup>2+</sup>] chelator (ethylenediamine tetraacetic acid, EDTA). In the second step, the mouse liver is perfused with a collagenase-containing buffer to hydrolyze the cellular-extracellular matrix interactions. Unlike the buffer used in step one, the presence of [Ca<sup>2+</sup>] ions in the buffer of the second step is required for effective collagenase activity, after which the digested liver has to be further gently and mechanically separated using forceps between the hepatic capsule and parenchymatous tissue. Finally, connective tissue is removed by filtering, and subsequent centrifugation separates viable hepatocytes from both non-parenchymal cells and non-living hepatocyte with the use of density gradient buffer<sup>40-42</sup>. In the present study, we show a modified two-step collagenase perfusion technique to isolate primary hepatocytes from a mouse liver for the analysis of protein synthesis.

The radiolabeling of proteins is widely used to quantify the expression levels, turnover rates, and determine the biological distribution of proteins<sup>43</sup> due to the high sensitivity of detection of radioactivity<sup>44</sup>. However, the use of radioactive isotopes requires highly controlled research circumstances and procedures<sup>45</sup>. Alternative non-radioactive methods have been developed and have increasingly gained in popularity. The chemo-selective ligation reaction with a Tetramethylrhodamine (TAMRA) protein detection method is one of them and is based on the chemo-selective reaction between an azide and alkyne groups<sup>46</sup>, which can be utilized to analyze

cellular events such as detecting nascent protein synthesis and subclasses of glycoproteins modified with an azide group. For nascent protein synthesis, L-Azidohomoalanine (L-AHA, an azide-modified amino acid) can be metabolically incorporated into proteins and detected by using the TAMRA protein detection method<sup>47</sup>. By using this assay in primary mouse hepatocytes, we show that the nascent protein synthesis rate is tightly linked to the availability of ATP from mitochondrial and AMPK activation (**Figure 1**).

In summary, utilization of primary mouse hepatocytes is crucial to investigating the protein and energy metabolism and quantifying nascent protein synthesis is valuable for gaining insights into the physiological role of pathways relevant to the development and cure of hepatocyte-related diseases.

## **PROTOCOL**

This protocol contains the use of laboratory mice. Animal care and experimental procedures were performed according to procedures approved by the animal care committees of Cincinnati Children Hospital Medical Center.

### **1. Isolation of primary Mouse Hepatocytes**

#### **1.1 Pre-isolation preparations**

1.1.1 Prepare 450 mL of 40% density gradient buffer as described in **Table 1** and keep at 4 °C (15 mL/mouse).

1.1.2 Prepare 500 mL of Williams' Medium E as described in **Table 1** and keep at 4 °C.

1.1.3 Prepare 500 mL of DMEM as described in **Table 1** and keep on ice (30 mL/mouse).

1.1.4 Prepare 500 mL of HBSS (-) Buffer as described in **Table 1** and keep at 42 °C in the water bath (40 mL/mouse).

1.1.5 Prepare 500 mL of HBSS (+) Buffer with 0.3 mg/mL Collagenase Type X as described in **Table 1** with 30 min incubation at 42 °C in the water bath (40 mL/mouse).

1.1.6 Set up the perfusion pump by placing the intravenous (I.V) administration tubing across the latching foot pedal and by checking the flow of flushing solution without air bubbles.

1.1.7 Warm up the tube heater at 42 °C.

1.1.8 Cool down the centrifuge machine to 4 °C.

#### **1.2. Anesthesia and Perfusion**

1.2.1 Clean the work areas and the pump.

1.2.2 Rinse out the pump-connected IV tube by running 70% ethanol thoroughly for 10 min.

1.2.3 Remove the residual ethanol from the pump-connected IV tube by rinsing with DDW entirely for 10 min.

1.2.4 Wipe the scissors and forceps with 70% ethanol.

1.2.5 Place the mouse in a plastic container with a mesh bottom and with the 2 mL isoflurane-soaked gauze underneath the mesh to avoid the direct contact.

1.2.6 Assess the depth of anesthesia by pedal reflex (firm toe pinch).

1.2.7 Remove the mouse when it has reached the desired depth of anesthesia.

**Note:** The induction time of anesthesia should not be more than 1 min.

1.2.8 Construct a nose cone using a 15 mL conical tube with 1 mL isoflurane-soaked pad pushed to the end of the tube.

1.2.9 Control the depth of anesthesia by moving the nose cone closer or away from the mouse nostrils.

1.2.10 Place the mouse on the working platform with the ventral side facing up.

1.2.11 Spray 70% ethanol over the abdominal area of the mouse and then open the abdominal cavity by making a large transverse incision of the dermis and peritoneum by using sharp scissors and toothed forceps.

1.2.12 Then, make a vertical cut of the abdominal layers until all abdominal organs are completely exposed by using sharp scissors and toothed forceps.

1.2.13 Move small and large intestines toward the left side of the mouse with autoclaved cotton tip until liver, portal vein, and inferior vena cava (IVC) are clearly exposed.

1.2.14 Insert a 24 G catheter into IVC just at the bifurcation with right renal vein carefully without shaking hands to avoid the injury of IVC and bleeding.

**Note:** If bleeding occurs while you are inserting the catheter into IVC, then you should try to insert the new catheter into a portal vein.

1.2.15 Remove the needle of the catheter and control the position of the cannula to avoid getting out of IVC, then connect 24 G cannula with perfusion tube by using the connector.

**Note:** Avoid the presence of air bubbles before starting the perfusion.

1.2.16 Start the perfusion of the liver with warm HBSS (-) at a flow rate of 4 mL/min and cut off the splenic vein quickly to drain out the internal blood by using scissors.

**Note:** If the cannulation is successful, the liver will begin to blanch due to the backflow distribution of the buffer from IVC to hepatic veins. The portal vein is formed by the union of splenic and superior mesenteric veins; therefore, it is quite safe to cut the splenic vein since it is big and distal from the liver.

1.2.17 Continue perfusion with 35 mL of warm HBSS (-).

**Note:** The liver will become pale in color if the perfusion is adequate, and the mouse still alive under anesthesia at this stage.

### 1.3. Digestion and extraction

1.3.1 Perfuse the mouse liver with warm 35 mL of HBSS (+) including Collagenase Type X at a flow rate of 4 mL/min.

1.3.2 Every few minutes, clamp the splenic vein by using forceps for ~10 s to allow the entire volume of HBSS (+) to diffuse into all anatomical parts of the liver.

**Note:** Liver begins to swell after clamping the splenic vein due to buffer congestion.

1.3.3 Pour 5 mL of prepared warm HBSS (+) with Collagenase Type X into 100 mm Petri dish at the end of the perfusion process.

1.3.4 Cut off the perfused liver from the rest of the body before stopping the pump to avoid the backflow of blood into the liver, remove the gallbladder by forceps, and then wipe the liver gently with a paper towel to remove the blood.

1.3.5 Transfer the liver to the Petri dish which contains 5 mL of prepared warm HBSS (+) and remove the liver capsule gently using straight-tipped forceps.

**Note:** The liver capsule is a thin layer of connective tissue that surrounding the liver.

1.3.6 Disperse the parenchymal tissue carefully by using the forceps. Add 15 mL cold DMEM to the Petri dish.

**Note:** The medium will turn cloudy due to parenchymal cells if the liver is well digested.

1.3.7 Shake the torn liver gently to release the residual parenchymal cells into the medium and add another 15 mL cold DMEM to the Petri dish to get the rest of the cells.

1.3.8 Transfer DMEM with the dissolved liver through 100  $\mu$ m cell strainer into a 50 mL conical tube and keep in ice.

## 1.4. Purification

1.4.1 Centrifuge the cell suspension at 60 x *g* for 2 min at 4 °C, carefully remove the supernatant by vacuum aspiration and resuspend the pellet in 10 mL DMEM.

1.4.2 Add resuspended pellet as a thin layer on the top of 40% density gradient buffer, and centrifuge at 800 x *g* for 10 min without brake at 4 °C.

1.4.3 Carefully remove supernatant including the upper layer (DMEM) and the middle layer (dead or non-parenchymal cells), but not the lower layer (Pellet: primary parenchymal hepatocytes).

1.4.4 Resuspend the primary cells with 2-3 mL William's medium E, and transfer to the new 50 mL tube to avoid contamination of dead cells on the wall of the tube.

1.4.5 Add 7-8 mL William's medium E, mix gently, and centrifuge at 800 x *g* for 1 min at 4 °C.

1.4.6 Carefully remove supernatant by vacuum aspiration and then resuspend pellet again with 10, 20 or 30 mL of William's medium E (according to the size of the pellet).

1.4.7 Count the cells by using an automated cell counter.

1.4.8 Seed  $0.6 \times 10^6$  cells in a 6 well plate with William's medium E, keep the plate in an incubator at 37 °C for 2-3 h, then replace the medium with 10% FBS DMEM medium with Anti-Anti to remove the dead or unattached cells and for overnight incubation at 37 °C.

1.4.9 Next day, primary mouse hepatocytes are ready for experimental use.

## 2. Chemo-Selective Ligation Reaction Assay for the Detection of Nascent Protein Synthesis

### 2.1. Metabolic labeling

2.1.1 (Pre-treatment) Wash primary hepatocytes with 37 °C warm PBS twice and add the methionine-free DMEM medium for 30 min to deplete the cytoplasmic methionine reserves.

**Note:** L-Azidohomoalanine, is an amino acid and analog to methionine, contains an azido moiety that can be incorporated into proteins during biosynthesis of cellular proteins so that depletion of cytoplasmic methionine will enhance the feeding and incorporation of L-Azidohomoalanine into newly synthesized proteins of cultured primary hepatocytes.

2.1.2 (Treatment) Wash primary hepatocytes with 37 °C warm PBS twice and add the methionine-free DMEM medium with 25  $\mu$ M AHA (L-Azidohomoalanine) for 4-6 h.



2.1.3 Add any specific chemical (*i.e.* 10  $\mu$ M rotenone) in the medium for 4-6 h in presence of AHA in order to investigate its effect on nascent protein expression levels.

2.1.4 After incubation, remove the medium by vacuum aspiration and wash primary hepatocytes with cold PBS three times.

2.1.5 Add 200  $\mu$ L lysis buffer to the plate and incubate for 15-30 min on ice, then tilt the plate and take the whole cell lysate into 1.7 mL tube.

**Note:** You should observe that cell lysate is very sticky during the cell harvesting.

2.1.6 Sonicate the cell lysate on ice for 5 s three times by using a probe sonicator to solubilize the proteins and disperse the DNA.

2.1.7 Vortex the cell lysate for 5 min, centrifuge the cell lysate at 21130 x *g* for 10 min at 4 °C and then transfer the clear supernatant into a new tube. Measure the protein concentration twice.

**Note:** At this stage, protein samples can be stored at -20 °C for two weeks if they are not immediately used.

## 2.2 Labeling the Azide-modified nascent protein

2.2.1 Prepare the components (A+B) by adding 60  $\mu$ L of component (A) to component (B).

**Note:** The solution turns to bright pink in color after adding component (A) to (B).

2.2.2 Prepare the buffers (D) and (E) according to the protocol.

2.2.3 Take 20-40  $\mu$ g cell lysate and add 50  $\mu$ L 2x reaction buffer (component A+B), then adjust the volume to 80  $\mu$ L by adding DDW and vortex for 5 s.

2.2.4 Add 5  $\mu$ L CuSO<sub>4</sub> (component C), and vortex for 5 s.

2.2.5 Add 5  $\mu$ L reaction buffer additive 1 (freshly prepared component D), then vortex for 5 s and wait for 3 min.

2.2.6 Add 10  $\mu$ L reconstituted reaction buffer additive 2 (component E), then vortex for 5 s and rotate samples for 20 min at 4 °C by using a multi-rotator machine.

**Note:** The solution turns to bright orange in color after adding component (E). The samples should be protected from light during the rotation.

2.2.7 Add 300  $\mu$ L methanol and vortex for 5 s, add 75  $\mu$ L chloroform and vortex for 5 s, then add 200  $\mu$ L DDW and vortex for 5 s.

2.2.8 Centrifuge the samples at 21130  $\times g$  and 4  $^{\circ}$ C for 5 min, then discard the aqueous supernatant and keep the pellet.

2.2.9 Add 250  $\mu$ L methanol to the tube, vortex, and spin again for 5 min at 21130  $\times g$ .

2.2.10 Discard the supernatant, then cover the samples with the lint-free tissue and allow the pellets to air-dry for 15 min at room temperature.

### 2.3. PAGE analysis and western blotting

2.3.1 Solubilize the pellet in 20  $\mu$ L of loading buffer **without**  $\beta$ -mercaptoethanol, vortex for 10 min, heat at 70  $^{\circ}$ C by using heat block for 10 min. Then load the samples into 10% SDS gel (1.5 mm) for Tetramethylrhodamine (TAMRA) detection.

2.3.2 Detect AHA signal using a variable mode laser scanner for precise quantitation of nascent proteins.

2.3.3 Wash the Gel with DDW for 15 min.

2.3.4 Then, stain the 10% SDS gel with a fast and sensitive coomassie-dye reagent for 15-60 min to detect total proteins as a control.

2.3.5. De-stain the Gel with DDW for 1-2 h and acquire the image by using a UV fluorescence imager.

### REPRESENTATIVE RESULTS

Primary mouse hepatocytes isolation results in a yield of approximately  $20 \times 10^6$  total cells/mouse. Histologically, live and attached primary hepatocytes appear polygonal or typical hexagonal in shape with clearly outlined membranous boundary after 24 h incubation (**Figure 2**).

To confirm whether isolated cells are primary hepatocytes, we compared expression levels of albumin protein in isolated primary mouse hepatocytes (PMHs), mouse embryonic fibroblasts (MEFs), a mouse hepatoma cell line (Hepa 1-6), and mouse livers. The albumin protein expression was detected in primary mouse hepatocytes and mouse livers but was not detectable in either MEFs or Hepa 1-6 cells (**Figure 3**).

To determine whether the effects of rotenone on hepatic AMP-activated protein kinase (AMPK) activation is cell-autonomous, we compared the time-dependent response of primary hepatocytes isolated from a liver of wild-type mouse. Primary hepatocytes were treated without or with 10  $\mu$ M rotenone for 0, 4 or 6 h. In these cells, rotenone treatment robustly induced AMPK

activation, as detected by increased phosphorylation levels on AMPK-T172 similar to those seen *in vivo*<sup>48</sup> (Figure 4).

To directly measure the effects of rotenone treatment on nascent protein synthesis in primary hepatocytes, the incorporation of non-radioactive AHA into protein over 5 h was assessed by performing the chemo-selective ligation reaction assay. Treatment with 10  $\mu$ M rotenone for 5 h had profound inhibitory effects on nascent protein synthesis in treated primary hepatocytes when compared to untreated primary hepatocytes (Figure 5).

## FIGURE LEGENDS

**Figure 1: An illustration shows the steps of primary mouse hepatocytes isolation, western blot analysis, and chemo-selective ligation reaction procedures.**

**Figure 2: Phase contrast morphological images of primary mouse hepatocytes.** Representative pictures of isolated primary hepatocytes were acquired at 2, 12, 24, and 72 h after plating. Scale bars represent 100  $\mu$ m.

**Figure 3: Western blot analysis for albumin protein expression in primary mouse hepatocytes.** Western blot analysis was conducted with the loading of 10  $\mu$ g protein/lane from primary mouse hepatocytes (PMHs), mouse embryonic fibroblasts (MEFs), Hepa 1-6 cells, and mouse livers. One-way ANOVA showed a significant albumin protein expression in PMHs compared to MEF or Hepa 1-6 cells. Values are means  $\pm$  SEM of group size (n = 3). \**P*, #*P* < 0.001 vs. Hepa 1-6 or MEFs, respectively. <sup>§</sup>*P* < 0.001 vs. liver lysate.

**Figure 4: Induction of phosphorylation of AMPK in rotenone-treated primary mouse hepatocytes.** Primary hepatocytes from a wild-type mouse liver were treated with 10  $\mu$ M rotenone for 0, 4 or 6 h. Phosphorylation levels of AMPK were detected by western blotting and  $\beta$ -actin was used as a loading control (10  $\mu$ g protein was loaded/lane). Repeated measurements 2-way ANOVA showed that treatment caused a significant increase in protein expression of phospho-AMPK in comparison to untreated primary hepatocytes. Values are means  $\pm$  SEM of group size (n = 3). \**P* < 0.001 vs. Untreated hepatocytes.

**Figure 5: Reduction of hepatic nascent protein expression after rotenone treatment.** Primary hepatocytes from a wild-type mouse liver were treated with 10  $\mu$ M rotenone for 5 h, followed by a nascent protein synthesis assay with non-radioactive AHA method. Protein synthesis levels were assessed by a laser scanner detecting the TAMRA fluorescence. Total protein loading levels for this assay were detected by the coomassie-dye reagent.

## DISCUSSION

Although several immortalized hepatic cell lines have been proposed and used to investigate liver functions<sup>49-52</sup>, these cells generally lack the important and fundamental functions of normal hepatocytes, such as the expression of albumin (Figure 3). It is widely recognized, therefore, that utilizing primary hepatocytes is a valuable option for examining liver physiology and metabolism in culture, despite the challenges of culturing and maintaining of these cells. Herein, our study

439 details the successful isolation of primary mouse hepatocytes by conducting a two-step  
440 collagenase method in a relatively convenient and efficient manner. Through these procedures,  
441 the majority of isolated primary hepatocytes within the culture retain their metabolic  
442 functionality and morphological stability and can be used for investigating hepatic functions  
443 including protein metabolism, gluconeogenesis, and mitochondrial respiration.

444  
445 Isolated primary hepatocytes are a powerful experimental tool to examine molecular  
446 mechanisms of hepatic energy metabolism. Rotenone interferes with the electron transport  
447 chain complex I activity in mitochondria and blocks oxidative phosphorylation with the limited  
448 synthesis of ATP<sup>53</sup>, as evidenced by the activation of AMPK (**Figure 4**). The AMPK activation  
449 triggers the cellular adaptive responses that suppress the anabolic mechanism to compensate  
450 the rotenone-induced energy-deficient stress. Under this condition, we successfully detected the  
451 drastic reduction of nascent protein synthesis levels in primary hepatocytes using a non-  
452 radioactive, chemo-selective ligation reaction with a TAMRA protein detection method (**Figure**  
453 **5**). These results confirm the importance of energy supply from the mitochondria for appropriate  
454 protein synthesis in primary hepatocytes. These techniques are useful to provide the information  
455 regarding a drug action or toxicity within therapeutically relevant concentrations in the context  
456 of hepatic protein synthesis of healthy and diseased conditions. In addition, these techniques are  
457 applicable for examining the role of specific pathways modulating protein and energy  
458 metabolism by analyzing primary hepatocytes isolated from genetically manipulated mice.

459  
460 In general, low yield and cell viability are the major drawbacks of the use of primary hepatocytes.  
461 These issues are due to several reasons such as initial cannulation, insufficient washing with  
462 HBSS, inappropriate concentration of collagenase, or long-perfusion period. Our current protocol  
463 optimizes these multiple steps and leads to gaining a higher yield and viable cells around 20  
464 million/liver/adult mice. Especially, there are two critical steps: one is to adjust the temperature  
465 and the flow rate of digested buffers with proper collagenase concentration to digest the hepatic  
466 parenchyma efficiently in 15-20 min from cannula insertion until liver excision, and another is to  
467 process these collagenases treated samples quickly as described in order to keep cells in healthy  
468 condition. While isolated hepatocytes-based studies have been conducted within 48 h time  
469 frame in many published data, primary hepatocytes isolated with our procedures endure the  
470 longer-term culture (**Figure 2**). With these cells, we show the robust labeling of hepatic nascent  
471 protein synthesis through the chemo-selective ligation reaction assay, although the  
472 concentration and incubation time with AHA in the protocol may have to be re-optimized in  
473 different biological conditions of cells (e.g. physiological vs. pathological, wild-type vs. transgenic  
474 or knockout/down cells).

475  
476 In summary, we have established procedures to analyze primary mouse hepatocytes for nascent  
477 protein synthesis in a non-radioactive manner. These cells respond well to mitochondrial stress  
478 and exhibit suppression of protein synthesis with activation of the AMPK pathway. Thus, these  
479 isolated hepatocytes are valuable models for investigating the pathophysiology of hepatic  
480 protein and energy metabolism *ex vivo*.

## 481 482 **Acknowledgments**

We thank Drs. Joonbae Seo and Vivian Hwa for their scientific input and discussion. This work was supported by National Institute of Health (NIH) (R01DK107530). T.N. was supported by the PRESTO from the Japan Science and Technology Agency. A part of this study was supported by a grant from NIH (P30DK078392) for the Digestive Disease Research Core Center in Cincinnati.

#### Disclosures

The authors indicate they have no conflicts of interest.

#### Reference List

1. FORBES,R.M., COOPER,A.R., & MITCHELL,H.H. The composition of the adult human body as determined by chemical analysis. *Journal of Biological Chemistry*. 203, 359-366 (1953).
2. Charlton,M.R. Protein metabolism and liver disease. *Baillieres Clinical Endocrinology and Metabolism*. 10, 617-635 (1996).
3. De,F.P. & Lucidi,P. Liver protein synthesis in physiology and in disease states. *Current Opinion in Clinical Nutrition and Metabolic Care*. 5, 47-50 (2002).
4. Stoll,B., Gerok,W., Lang,F., & Haussinger,D. Liver cell volume and protein synthesis. *Biochemical Journal*. 287 ( Pt 1), 217-222 (1992).
5. Brown,G.C. Control of respiration and ATP synthesis in mammalian mitochondria and cells. *Biochemical Journal* 284 ( Pt 1), 1-13 (1992).
6. Buttgerit,F. & Brand,M.D. A hierarchy of ATP-consuming processes in mammalian cells. *Biochemical Journal* 312 ( Pt 1), 163-167 (1995).
7. Morrison,C.D. & Laeger,T. Protein-dependent regulation of feeding and metabolism. *Trends in Endocrinology and Metabolism*. 26, 256-262 (2015).
8. Bernardi,M., Ricci,C.S., & Zaccherini,G. Role of human albumin in the management of complications of liver cirrhosis. *Journal of Clinical and Experimental Hepatology*. 4, 302-311 (2014).
9. Abbasi,A. *et al.* Liver function tests and risk prediction of incident type 2 diabetes: evaluation in two independent cohorts. *PLoS. One*. 7, e51496 (2012).
10. Schmidt,M.I. *et al.* Markers of inflammation and prediction of diabetes mellitus in adults (Atherosclerosis Risk in Communities study): a cohort study. *Lancet*. 353, 1649-1652 (1999).
11. Stranges,S. *et al.* Additional contribution of emerging risk factors to the prediction of the risk of type 2 diabetes: evidence from the Western New York Study. *Obesity. (Silver. Spring)*. 16, 1370-1376 (2008).
12. Jin,S.M. *et al.* Change in serum albumin concentration is inversely and independently associated with risk of incident metabolic syndrome. *Metabolism*. 65, 1629-1635 (2016).
13. van de Sluis,B., Wijers,M., & Herz,J. News on the molecular regulation and function of hepatic low-density lipoprotein receptor and LDLR-related protein 1. *Current Opinion in Lipidology*. 28, 241-247 (2017).
14. Viollet,B. *et al.* Activation of AMP-activated protein kinase in the liver: a new strategy for the management of metabolic hepatic disorders. *Journal of Physiology*. 574, 41-53 (2006).

15. Li,H., Lee,J., He,C., Zou,M.H., & Xie,Z. Suppression of the mTORC1/STAT3/Notch1 pathway by activated AMPK prevents hepatic insulin resistance induced by excess amino acids. *Amerian Journal of Physiology-Endocrinology and Metabolism*. 306, E197-E209 (2014).
16. Qian,S.B. *et al.* mTORC1 links protein quality and quantity control by sensing chaperone availability. *The Journal of Biological Chemistry*. 285, 27385-27395 (2010).
17. Carling,D. The AMP-activated protein kinase cascade--a unifying system for energy control. *Trends in Biochemical Sciences*. 29, 18-24 (2004).
18. Hardie,D.G., Scott,J.W., Pan,D.A., & Hudson,E.R. Management of cellular energy by the AMP-activated protein kinase system. *FEBS Letters*. 546, 113-120 (2003).
19. Li,H. *et al.* AMPK activation prevents excess nutrient-induced hepatic lipid accumulation by inhibiting mTORC1 signaling and endoplasmic reticulum stress response. *Biochimica et Biophysica Acta*. 1842, 1844-1854 (2014).
20. Proud,C.G. Role of mTOR signalling in the control of translation initiation and elongation by nutrients. *Current Topics in Microbiology and Immunology*. 279, 215-244 (2004).
21. Sarbassov,D.D., Ali,S.M., & Sabatini,D.M. Growing roles for the mTOR pathway. *Current Opinion in Cell Biology*. 17, 596-603 (2005).
22. Reiter,A.K., Bolster,D.R., Crozier,S.J., Kimball,S.R., & Jefferson,L.S. Repression of protein synthesis and mTOR signaling in rat liver mediated by the AMPK activator aminoimidazole carboxamide ribonucleoside. *American Journal of Physiology-Endocrinology and Metabolism*. 288, E980-E988 (2005).
23. Cheng,S.W., Fryer,L.G., Carling,D., & Shepherd,P.R. Thr2446 is a novel mammalian target of rapamycin (mTOR) phosphorylation site regulated by nutrient status. *Journal of Biological Chemistry*. 279, 15719-15722 (2004).
24. Howell,J.J. *et al.* Metformin Inhibits Hepatic mTORC1 Signaling via Dose-Dependent Mechanisms Involving AMPK and the TSC Complex. *Cell Metabolism*. 25, 463-471 (2017).
25. Inoki,K., Zhu,T., & Guan,K.L. TSC2 mediates cellular energy response to control cell growth and survival. *Cell*. 115, 577-590 (2003).
26. Wilkening,S., Stahl,F., & Bader,A. Comparison of primary human hepatocytes and hepatoma cell line Hepg2 with regard to their biotransformation properties. *Drug Metabolism Disposition*. 31, 1035-1042 (2003).
27. Li,A.P. *et al.* Present status of the application of cryopreserved hepatocytes in the evaluation of xenobiotics: consensus of an international expert panel. *Chemico-Biology Interactaction*. 121, 117-123 (1999).
28. Hengstler,J.G. *et al.* Cryopreserved primary hepatocytes as a constantly available in vitro model for the evaluation of human and animal drug metabolism and enzyme induction. *Drug Metabolism and Reviews*. 32, 81-118 (2000).
29. Olsavsky,K.M. *et al.* Gene expression profiling and differentiation assessment in primary human hepatocyte cultures, established hepatoma cell lines, and human liver tissues. *Toxicology and Applied Pharmacology*. 222, 42-56 (2007).
30. Shen,L., Hillebrand,A., Wang,D.Q., & Liu,M. Isolation and primary culture of rat hepatic cells. *Journal of Visualized Experiments*.(2012).
31. Li,Y., Cai,S., Zhang,L., & Li,X. [Simultaneous isolation and primary culture of rat hepatocytes, hepatic stellate cells, Kupffer's cells and hepatic sinus endothelial cells]. *Nan. Fang Yi. Ke. Da. Xue. Xue. Bao*. 34, 532-537 (2014).

568 32. Edwards,M., Houseman,L., Phillips,I.R., & Shephard,E.A. Isolation of mouse hepatocytes.  
569 *Methods in Molecular Biology*. 987, 283-293 (2013).

570 33. Schreiber,G. & Schreiber,M. The preparation of single cell suspensions from liver and their  
571 use for the study of protein synthesis. *Subcellular Biochemistry*. 2, 307-353 (1973).

572 34. Klaunig,J.E., Goldblatt,P.J., Hinton,D.E., Lipsky,M.M., & Trump,B.F. Mouse liver cell culture. II.  
573 Primary culture. *In Vitro*. 17, 926-934 (1981).

574 35. Puviani,A.C., Ottolenghi,C., Tassinari,B., Pazzi,P., & Morsiani,E. An update on high-yield  
575 hepatocyte isolation methods and on the potential clinical use of isolated liver cells. *Comparative*  
576 *Biochemistry and Physiology A Molecular and Integrative Physiology*. 121, 99-109 (1998).

577 36. Park,K.H. & Song,S.C. Morphology of spheroidal hepatocytes within injectable,  
578 biodegradable, and thermosensitive poly(organophosphazene) hydrogel as cell delivery vehicle.  
579 *Journal of Biosciences and Bioengineering*. 101, 238-242 (2006).

580 37. Li,K. *et al.* Improved performance of primary rat hepatocytes on blended natural polymers.  
581 *Journal of Biomedicine and Material Research Part A*. 75, 268-274 (2005).

582 38. Battle,T. & Stacey,G. Cell culture models for hepatotoxicology. *Cell Biology Toxicology*. 17,  
583 287-299 (2001).

584 39. Kravchenko,L., Petrenko,A., Shanina,I., & Fuller,B. A simple non-enzymatic method for the  
585 isolation of high yields of functional rat hepatocytes. *Cell Biology International*. 26, 1003-1006  
586 (2002).

587 40. Berry,M.N., Grivell,A.R., Grivell,M.B., & Phillips,J.W. Isolated hepatocytes--past, present and  
588 future. *Cell Biology and Toxicology*. 13, 223-233 (1997).

589 41. Jiang,Q.D. *et al.* Isolation and identification of bovine primary hepatocytes. *Genetics and*  
590 *Molecular Research*. 12, 5186-5194 (2013).

591 42. Pertoft,H., Laurent,T.C., Laas,T., & Kagedal,L. Density gradients prepared from colloidal silica  
592 particles coated by polyvinylpyrrolidone (Percoll). *Analytical Biochemistry*. 88, 271-282 (1978).

593 43. Lipford,G.B., Feng,Q., & Wright,G.L., Jr. A method for separating bound versus unbound label  
594 during radioiodination. *Analytical Biochemistry*. 187, 133-135 (1990).

595 44. Mukai,T. *et al.* In-vivo evaluation of indium-111-diethylenetriaminepentaacetic acid-labelling  
596 for determining the sites and rates of protein catabolism in mice. *Journal of Pharmacy and*  
597 *Pharmacology*. 51, 15-20 (1999).

598 45. Wilson,M.S.C. & Saiardi,A. Importance of Radioactive Labelling to Elucidate Inositol  
599 Polyphosphate Signalling. *Topics in Current Chemistry*. (Cham.) 375, 14 (2017).

600 **46.** Rostovtsev,V.V., Green,L.G., Fokin,V.V., & Sharpless,K.B. A stepwise huisgen  
601 cycloaddition process: copper(I)-catalyzed regioselective "ligation" of azides and terminal  
602 alkynes. *Angewandte Chemie International Edition*. 41, 2596-2599 (2002).

603 47. Banerjee,P.S., Ostapchuk,P., Hearing,P., & Carrico,I.S. Unnatural amino acid incorporation  
604 onto adenoviral (Ad) coat proteins facilitates chemoselective modification and retargeting of Ad  
605 type 5 vectors. *Journal of Virology*. 85, 7546-7554 (2011).

606 48. Hou,W.L. *et al.* Inhibition of mitochondrial complex I improves glucose metabolism  
607 independently of AMPK activation. *Journal of Cell Molecular Medicine*. 22, 1316-1328 (2018).

608 49. Davalos,A. *et al.* miR-33a/b contribute to the regulation of fatty acid metabolism and insulin  
609 signaling. *Proceedings of the National Academy of Science U. S. A* 108, 9232-9237 (2011).

50. DiPersio,C.M., Jackson,D.A., & Zaret,K.S. The extracellular matrix coordinately modulates liver transcription factors and hepatocyte morphology. *Molecular and Cellular Biology*. 11, 4405-4414 (1991).
51. Xu,L. *et al.* Human hepatic stellate cell lines, LX-1 and LX-2: new tools for analysis of hepatic fibrosis. *Gut*. 54, 142-151 (2005).
52. Yang,L., Li,P., Fu,S., Calay,E.S., & Hotamisligil,G.S. Defective hepatic autophagy in obesity promotes ER stress and causes insulin resistance. *Cell Metabolism*. 11, 467-478 (2010).
53. Heinz,S. *et al.* Mechanistic Investigations of the Mitochondrial Complex I Inhibitor Rotenone in the Context of Pharmacological and Safety Evaluation. *Science Reports* 7, 45465 (2017).



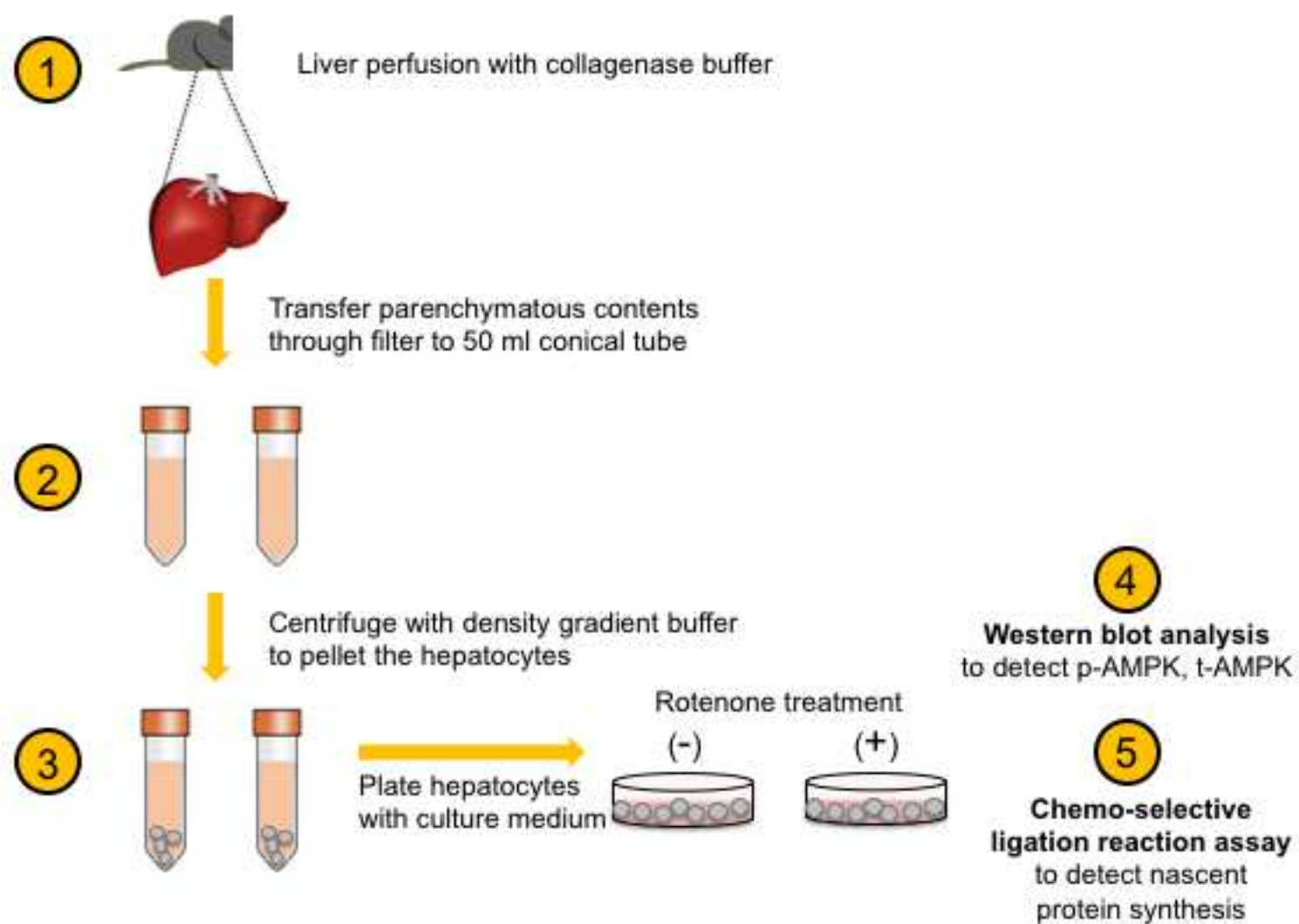


Figure 2

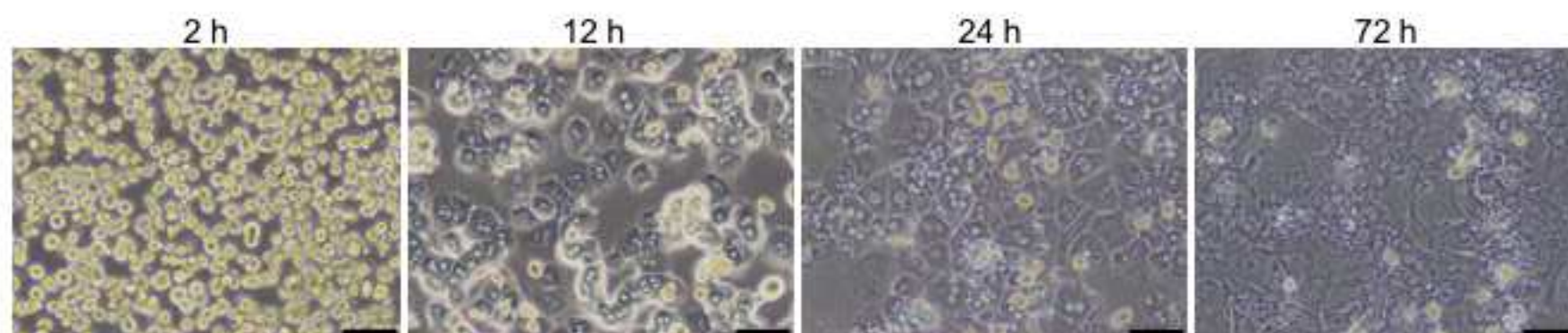


Figure 3

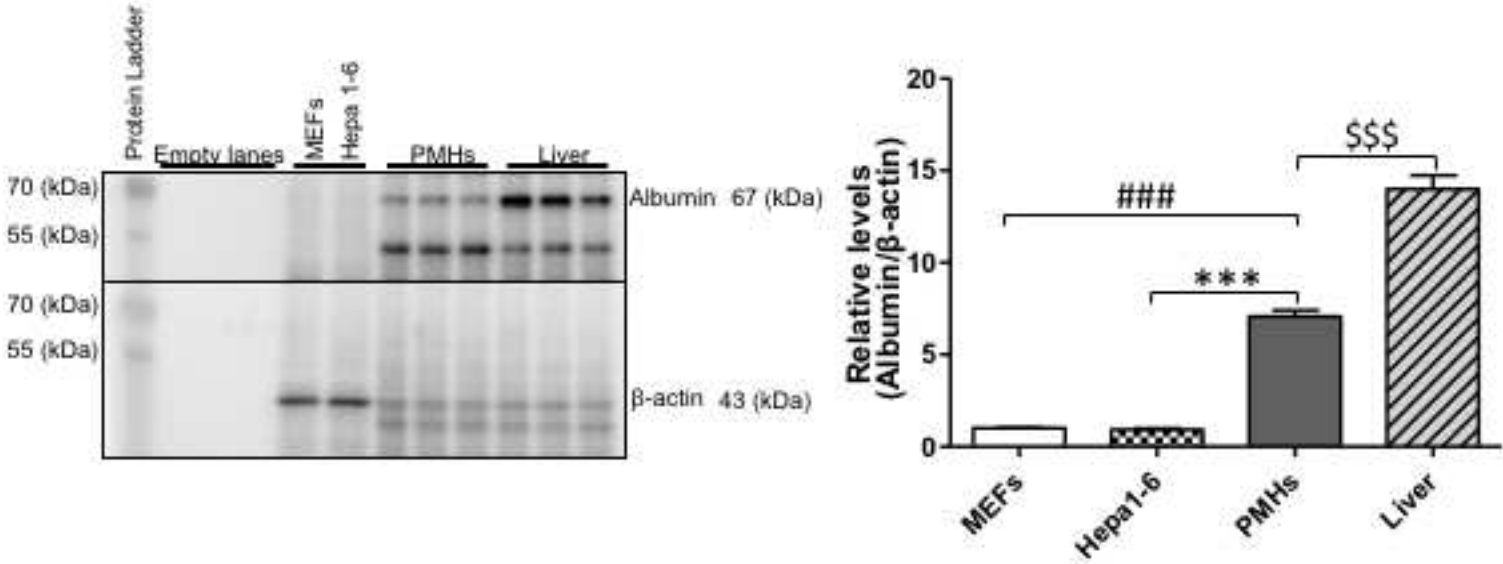


Figure 4

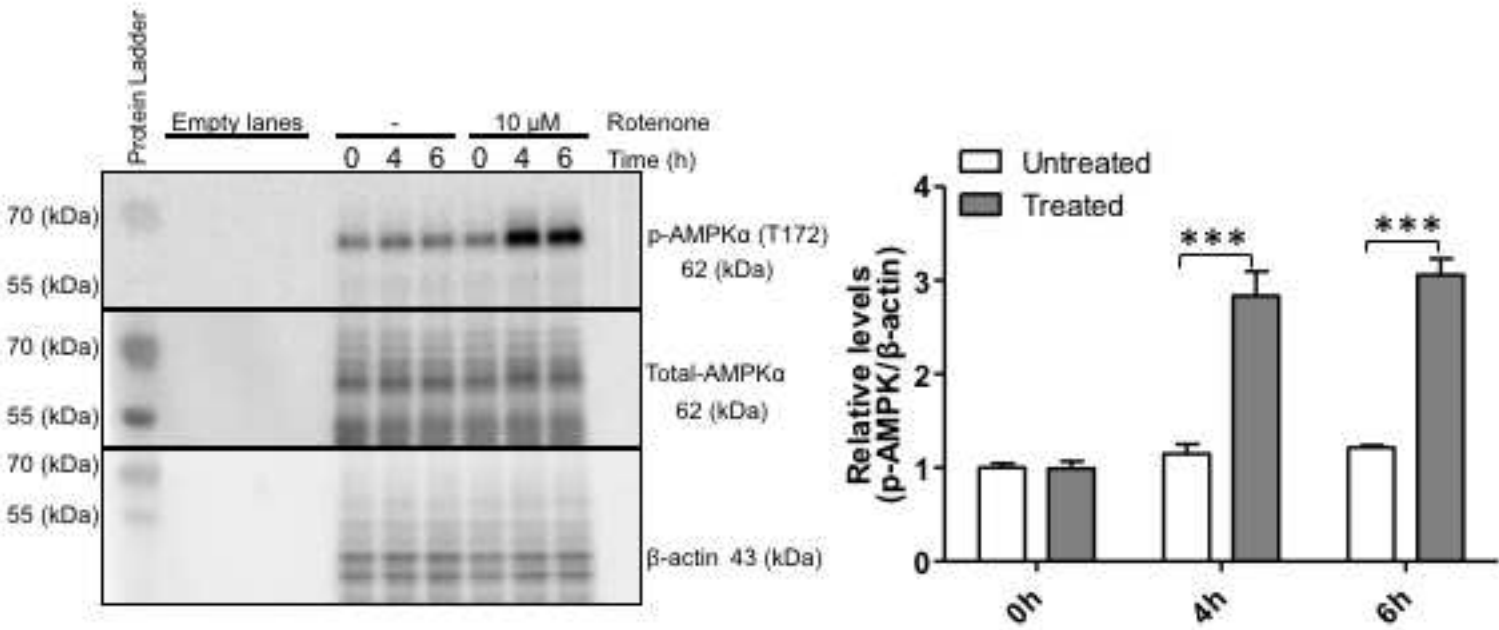
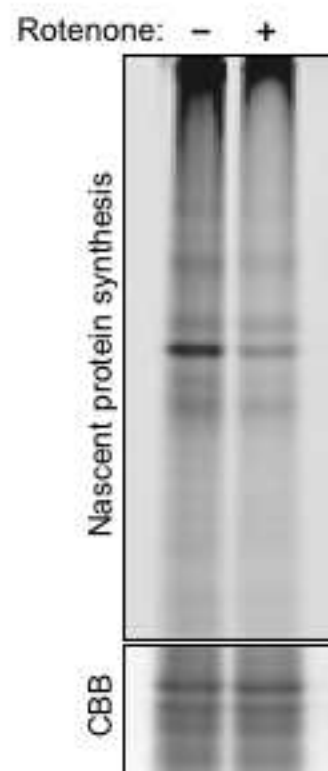


Figure 5



## **Isolation of primary mouse hepatocytes**

### **1. HBSS (-) Buffer 500 ml:**

- 1.1. HEPES: 1.1915 g
- 1.2. D-glucose: 0.9 g
- 1.3. EGTA: 0.095 g
- 1.4. Anti-Anti: 5 ml
- 1.5. HBSS (10 X): 50 ml
- 1.6. Add distilled deionized water (DDW) up to 500 ml

(**Note:** Adjust pH to 7.4, Filter, and Store at 4 °C)

### **2. HBSS (+) Buffer 500 ml:**

- 2.1. HEPES: 1.1915 g
- 2.2. CaCl<sub>2</sub>·2H<sub>2</sub>O: 0.3675 g
- 2.3. Anti-Anti: 5 ml
- 2.4. HBSS (10 X): 50 ml
- 2.5. Add DDW up to 500 ml

(**Note:** Adjust pH to 7.4, Filter, and Store at 4 °C)

### **3. 40% density gradient buffer 450 ml:**

- 3.1. density gradient buffer: 180 ml
- 3.2. HBSS (10 X): 45 ml
- 3.3. DDW: 225 ml

(**Note:** Filter and Store at 4 °C)

### **4. DMEM:**

- 4.1. DMEM: 500 ml
- 4.2. FBS: 56 ml
- 4.3. Anti-Anti: 5.6 ml

(**Note:** Store at 4 °C)

### **5. Williams' Medium E:**

- 5.1. Williams' Medium E: 500 ml
- 5.2. FBS: 30 ml
- 5.3. Anti-Anti: 5.4 ml
- 5.4. L-alanyl-L-glutamine dipeptide: 5.4 ml

(**Note:** Store at 4 °C)

## **Chemoselective ligation reaction assay for detection of na**

### **1. Protein analysis detection Kit, TAMRA alkyne**

- 1.1. Component A (TAMRA alkyne)
- 1.2. Component B (reaction buffer)
- 1.3. Component C (CuSO<sub>4</sub>)
- 1.4. Component D (reaction buffer additive 1)
- 1.5. Component E (reaction buffer additive 2)

### **2. AHA: L-azidohomoalanine**

### **3. Methionine-free DMEM medium**

- 3.1. DMEM: 500 mL

3.2. FBS: 56 mL

3.3. Anti-Anti: 5.6 mL

3.4. L-Cystine Dihydrochloride

3.5. L-alanyl-L-glutamine dipeptide: 5.6 mL

**(Note:** Store at 4 °C)

#### **4. Warm PBS**

#### **5. Lysis buffer**

5.1. 50 mM Tris-HCl

5.2. 1% SDS

5.3. Protease inhibitor

5.4. Phosphatase inhibitor

**scent protein synthesis**



Name of Material/ Equipment	Company	Catalog or Lot Number
HEPES buffer	Fisher Scientific	BP310-500
D-glucose	Fisher Scientific	D16-500
Ethylene glycol-bis( $\beta$ -aminoethyl ether)-tetraacetic acid	AmericanBio	AB00505-00025
Antibiotic-Antimycotic (100X)	Gibco	15240-062
HBSS (10X) no calcium, magnesium, phenol red	Gibco	14185-052
Calcium Chloride Dihydrate ( $\text{CaCl}_2 \cdot 2\text{H}_2\text{O}$ )	Fisher Scientific	C79-500
Density gradient buffer	GE Healthcare	17-0891-02
DMEM (Dulbecco's Modified Eagle Medium) low glucose, pyruvate	Gibco	11885-084
Fetal Bovine Serum	Hyclone	SH30910.03
Phosphate Buffered Saline (PBS) (1X)	Gibco	1897141
Williams medium E, no glutamine	Gibco	12551-032
L-alanyl-L-glutamine dipeptide supplement	Gibco	35050-061
Collagenase Type X	Wako Pure Chemical Industries	039-17864
Perfusion pump	Cole-Parmer	Masterflex L/S
IV administration set	EXELINT	29081
A water bath	REVSCI	RS-PB-200
Tube heater	Fisher Scientific	Isotemp
Ethanol	Decon Lab, Inc	0-39613
Isoflurane	PHOENIX	10250
Autoclaved Cotton Tips	Fisherbrand	23-400-124
100 mm Petri Dish	TPP	93100
Connector (Male Luer Lock Ring)	Cole-Parmer instrument	EW-4551807
24G catheters	TERUMO	Surflo 24Gx3/4'
100 $\mu\text{m}$ Filter (CELL STRAINERS)	VWR	10199-658
15 ml conical-bottom centrifuge tubes	VWR	89039-666
50 ml conical-bottom centrifuge tubes	VWR	89039-658
Chemoselective ligation reaction PROTEIN ANALYSIS DETECTION KIT, TAMRA ALKYNE	Invitrogen	C33370
AHA (L-azidohomoalanine)	Invitrogen	C10102
DMEM (methionine free)	Gibco	21013024

L-Cystine Dihydrochloride	SIGMA	C2526
Laemmli sample buffer	BioRad	161-0737
Protease Inhibitor Cocktail	SIGMA	P9599
SDS solution (20%)	BioRad	161-0418
Tris-HCL (1M)	American Bioanalytical	AB14044-01000
Phosphatase Inhibitor Cocktail	SIGMA	P5726
Protein concentration measuring Kit (Bovin Serum Albumin-BSA)	BioRad	500-0207
6-well tissue culture plate	TPP	92006
Digital Heatblock	VWR	12621-092
Multi-Rotator	Grant-bio	PTR-60
Ultrasonic Sonicator	Cole-Parmer	GE130PB
Standard Heavy-Duty Vortex Mixer	VWR	97043-566
A variable mode laser scanner	GE Healthcare Life Science	FLA 9500
Coomassie-dye reagent	Thermo Scientific	24594
Inverted microscope	Olympus	CKX53
Western Blotting apparatus	BioRad	1658004
Centrifuge	Eppendorf	5424R
Automated cell counter	BioRad	TC20
FluorChem R system	proteinsimple	-
p-Ampka (T172) antibody	Cell signaling	2535
Total-AMPK antibody	Cell signaling	5832
Albumin antibody	Cell signaling	4929
beta actin antibody	Santa Cruz	sc-130656
Fine scissors and forceps		

[illegible]

Equipment
-----------

Equipment
-----------

Equipment
-----------

Equipment
Equipment
Equipment
Equipment
Equipment
Equipment
Equipment
Equipment
Equipment
Equipment



1 Alewife Center #200  
Cambridge, MA 02140  
tel. 617.945.9051  
[www.jove.com](http://www.jove.com)

## ARTICLE AND VIDEO LICENSE AGREEMENT

Title of Article:

Isolation of mouse primary hepatocytes for nascent protein synthesis analysis by non-radioactive L-Azidothymine labeling method

Author(s):

Salem, Esam S.B.; Murakami, Kazutoshi; Takahashi, Toshimasa; Bernhard, Elise; Borra, Vishnupriya; Bethi, Mridula; Nakamura, Takahisa

Item 1 (check one box): The Author elects to have the Materials be made available (as described at <http://www.jove.com/author>) via: ☒ Standard Access ☐ Open Access

Item 2 (check one box):

- ☒ The Author is NOT a United States government employee.
- ☐ The Author is a United States government employee and the Materials were prepared in the course of his or her duties as a United States government employee.
- ☐ The Author is a United States government employee but the Materials were NOT prepared in the course of his or her duties as a United States government employee.

### ARTICLE AND VIDEO LICENSE AGREEMENT

1. **Defined Terms.** As used in this Article and Video License Agreement, the following terms shall have the following meanings: **"Agreement"** means this Article and Video License Agreement; **"Article"** means the article specified on the last page of this Agreement, including any associated materials such as texts, figures, tables, artwork, abstracts, or summaries contained therein; **"Author"** means the author who is a signatory to this Agreement; **"Collective Work"** means a work, such as a periodical issue, anthology or encyclopedia, in which the Materials in their entirety in unmodified form, along with a number of other contributions, constituting separate and independent works in themselves, are assembled into a collective whole; **"CRC License"** means the Creative Commons Attribution-Non Commercial-No Derivs 3.0 Unported Agreement, the terms and conditions of which can be found at: <http://creativecommons.org/licenses/by-nc-nd/3.0/legalcode>; **"Derivative Work"** means a work based upon the Materials or upon the Materials and other pre-existing works, such as a translation, musical arrangement, dramatization, fictionalization, motion picture version, sound recording, art reproduction, abridgment, condensation, or any other form in which the Materials may be recast, transformed, or adapted; **"Institution"** means the institution, listed on the last page of this Agreement, by which the Author was employed at the time of the creation of the Materials; **"JoVE"** means MyJoVE Corporation, a Massachusetts corporation and the publisher of *The Journal of Visualized Experiments*; **"Materials"** means the Article and / or the Video; **"Parties"** means the Author and JoVE; **"Video"** means any video(s) made by the Author, alone or in conjunction with any other parties, or by JoVE or its affiliates or agents, individually or in collaboration with the Author or any other parties, incorporating all or any portion of the Article, and in which the Author may or may not appear.

2. **Background.** The Author, who is the author of the Article, in order to ensure the dissemination and protection of the Article, desires to have the JoVE publish the Article and create and transmit videos based on the Article. In furtherance of such goals, the Parties desire to memorialize in this Agreement the respective rights of each Party in and to the Article and the Video.

3. **Grant of Rights in Article.** In consideration of JoVE agreeing to publish the Article, the Author hereby grants to JoVE, subject to **Sections 4 and 7** below, the exclusive, royalty-free, perpetual (for the full term of copyright in the Article, including any extensions thereto) license (a) to publish, reproduce, distribute, display and store the Article in all forms, formats and media whether now known or hereafter developed (including without limitation in print, digital and electronic form) throughout the world, (b) to translate the Article into other languages, create adaptations, summaries or extracts of the Article or other Derivative Works (including, without limitation, the Video) or Collective Works based on all or any portion of the Article and exercise all of the rights set forth in (a) above in such translations, adaptations, summaries, extracts, Derivative Works or Collective Works and (c) to license others to do any or all of the above. The foregoing rights may be exercised in all media and formats, whether now known or hereafter devised, and include the right to make such modifications as are technically necessary to exercise the rights in other media and formats. If the "Open Access" box has been checked in **Item 1** above, JoVE and the Author hereby grant to the public all such rights in the Article as provided in, but subject to all limitations and requirements set forth in, the CRC License.



## ARTICLE AND VIDEO LICENSE AGREEMENT

4. Retention of Rights in Article. Notwithstanding the exclusive license granted to JoVE in **Section 3** above, the Author shall, with respect to the Article, retain the non-exclusive right to use all or part of the Article for the non-commercial purpose of giving lectures, presentations or teaching classes, and to post a copy of the Article on the Institution's website or the Author's personal website, in each case provided that a link to the Article on the JoVE website is provided and notice of JoVE's copyright in the Article is included. All non-copyright intellectual property rights in and to the Article, such as patent rights, shall remain with the Author.

5. Grant of Rights in Video – Standard Access. This **Section 5** applies if the "Standard Access" box has been checked in **Item 1** above or if no box has been checked in **Item 1** above. In consideration of JoVE agreeing to produce, display or otherwise assist with the Video, the Author hereby acknowledges and agrees that, Subject to **Section 7** below, JoVE is and shall be the sole and exclusive owner of all rights of any nature, including, without limitation, all copyrights, in and to the Video. To the extent that, by law, the Author is deemed, now or at any time in the future, to have any rights of any nature in or to the Video, the Author hereby disclaims all such rights and transfers all such rights to JoVE.

6. Grant of Rights in Video – Open Access. This **Section 6** applies only if the "Open Access" box has been checked in **Item 1** above. In consideration of JoVE agreeing to produce, display or otherwise assist with the Video, the Author hereby grants to JoVE, subject to **Section 7** below, the exclusive, royalty-free, perpetual (for the full term of copyright in the Article, including any extensions thereto) license (a) to publish, reproduce, distribute, display and store the Video in all forms, formats and media whether now known or hereafter developed (including without limitation in print, digital and electronic form) throughout the world, (b) to translate the Video into other languages, create adaptations, summaries or extracts of the Video or other Derivative Works or Collective Works based on all or any portion of the Video and exercise all of the rights set forth in (a) above in such translations, adaptations, summaries, extracts, Derivative Works or Collective Works and (c) to license others to do any or all of the above. The foregoing rights may be exercised in all media and formats, whether now known or hereafter devised, and include the right to make such modifications as are technically necessary to exercise the rights in other media and formats. For any Video to which this Section 6 is applicable, JoVE and the Author hereby grant to the public all such rights in the Video as provided in, but subject to all limitations and requirements set forth in, the CRC License.

7. Government Employees. If the Author is a United States government employee and the Article was prepared in the course of his or her duties as a United States government employee, as indicated in **Item 2** above, and any of the licenses or grants granted by the Author hereunder exceed the scope of the 17 U.S.C. 403, then the rights granted hereunder shall be limited to the maximum rights permitted under such

statute. In such case, all provisions contained herein that are not in conflict with such statute shall remain in full force and effect, and all provisions contained herein that do so conflict shall be deemed to be amended so as to provide to JoVE the maximum rights permissible within such statute.

8. Likeness, Privacy, Personality. The Author hereby grants JoVE the right to use the Author's name, voice, likeness, picture, photograph, image, biography and performance in any way, commercial or otherwise, in connection with the Materials and the sale, promotion and distribution thereof. The Author hereby waives any and all rights he or she may have, relating to his or her appearance in the Video or otherwise relating to the Materials, under all applicable privacy, likeness, personality or similar laws.

9. Author Warranties. The Author represents and warrants that the Article is original, that it has not been published, that the copyright interest is owned by the Author (or, if more than one author is listed at the beginning of this Agreement, by such authors collectively) and has not been assigned, licensed, or otherwise transferred to any other party. The Author represents and warrants that the author(s) listed at the top of this Agreement are the only authors of the Materials. If more than one author is listed at the top of this Agreement and if any such author has not entered into a separate Article and Video License Agreement with JoVE relating to the Materials, the Author represents and warrants that the Author has been authorized by each of the other such authors to execute this Agreement on his or her behalf and to bind him or her with respect to the terms of this Agreement as if each of them had been a party hereto as an Author. The Author warrants that the use, reproduction, distribution, public or private performance or display, and/or modification of all or any portion of the Materials does not and will not violate, infringe and/or misappropriate the patent, trademark, intellectual property or other rights of any third party. The Author represents and warrants that it has and will continue to comply with all government, institutional and other regulations, including, without limitation all institutional, laboratory, hospital, ethical, human and animal treatment, privacy, and all other rules, regulations, laws, procedures or guidelines, applicable to the Materials, and that all research involving human and animal subjects has been approved by the Author's relevant institutional review board.

10. JoVE Discretion. If the Author requests the assistance of JoVE in producing the Video in the Author's facility, the Author shall ensure that the presence of JoVE employees, agents or independent contractors is in accordance with the relevant regulations of the Author's institution. If more than one author is listed at the beginning of this Agreement, JoVE may, in its sole discretion, elect not take any action with respect to the Article until such time as it has received complete, executed Article and Video License Agreements from each such author. JoVE reserves the right, in its absolute and sole discretion and without giving any reason therefore, to accept or decline any work submitted to JoVE. JoVE and its employees, agents and independent contractors shall have



## ARTICLE AND VIDEO LICENSE AGREEMENT

full, unfettered access to the facilities of the Author or of the Author's institution as necessary to make the Video, whether actually published or not. JoVE has sole discretion as to the method of making and publishing the Materials, including, without limitation, to all decisions regarding editing, lighting, filming, timing of publication, if any, length, quality, content and the like.

11. **Indemnification.** The Author agrees to indemnify JoVE and/or its successors and assigns from and against any and all claims, costs, and expenses, including attorney's fees, arising out of any breach of any warranty or other representations contained herein. The Author further agrees to indemnify and hold harmless JoVE from and against any and all claims, costs, and expenses, including attorney's fees, resulting from the breach by the Author of any representation or warranty contained herein or from allegations or instances of violation of intellectual property rights, damage to the Author's or the Author's institution's facilities, fraud, libel, defamation, research, equipment, experiments, property damage, personal injury, violations of institutional, laboratory, hospital, ethical, human and animal treatment, privacy or other rules, regulations, laws, procedures or guidelines, liabilities and other losses or damages related in any way to the submission of work to JoVE, making of videos by JoVE, or publication in JoVE or elsewhere by JoVE. The Author shall be responsible for, and shall hold JoVE harmless from, damages caused by lack of sterilization, lack of cleanliness or by contamination due to the making of a video by JoVE its employees, agents or independent contractors. All sterilization, cleanliness or decontamination procedures shall be solely the responsibility of the Author and shall be undertaken at the Author's


expense. All indemnifications provided herein shall include JoVE's attorney's fees and costs related to said losses or damages. Such indemnification and holding harmless shall include such losses or damages incurred by, or in connection with, acts or omissions of JoVE, its employees, agents or independent contractors.

12. **Fees.** To cover the cost incurred for publication, JoVE must receive payment before production and publication the Materials. Payment is due in 21 days of invoice. Should the Materials not be published due to an editorial or production decision, these funds will be returned to the Author. Withdrawal by the Author of any submitted Materials after final peer review approval will result in a US\$1,200 fee to cover pre-production expenses incurred by JoVE. If payment is not received by the completion of filming, production and publication of the Materials will be suspended until payment is received.

13. **Transfer, Governing Law.** This Agreement may be assigned by JoVE and shall inure to the benefits of any of JoVE's successors and assignees. This Agreement shall be governed and construed by the internal laws of the Commonwealth of Massachusetts without giving effect to any conflict of law provision thereunder. This Agreement may be executed in counterparts, each of which shall be deemed an original, but all of which together shall be deemed to be one and the same agreement. A signed copy of this Agreement delivered by facsimile, e-mail or other means of electronic transmission shall be deemed to have the same legal effect as delivery of an original signed copy of this Agreement.

A signed copy of this document must be sent with all new submissions. Only one Agreement required per submission.

### CORRESPONDING AUTHOR:

Name:	Takahisa Nakamura	
Department:	Pediatrics/Endocrinology	
Institution:	Cincinnati Children's Hospital	
Article Title:	Isolation of mouse primary hepatocytes for nascent protein synthesis analysis by non-radioactive L-Azidohomoalanine labeling method	
Signature:		Date: 4/18/2018

Please submit a signed and dated copy of this license by one of the following three methods:

- 1) Upload a scanned copy of the document as a pdf on the JoVE submission site;
- 2) Fax the document to +1.866.381.2236;
- 3) Mail the document to JoVE / Attn: JoVE Editorial / 1 Alewife Center #200 / Cambridge, MA 02139

For questions, please email [submissions@jove.com](mailto:submissions@jove.com) or call +1.617.945.9051

## Editorial comments:

1. The editor has formatted the manuscript to match the journal's style. Please retain the same.

We have retained the same format to match the journal style as requested.

2. Please address all specific comments marked in the manuscript.

We have addressed all editorial specific comments that marked in the manuscript.

3. JoVE policy states that the video narrative is objective and not biased towards a particular product featured in the video. The goal of this policy is to focus on the science rather than to present a technique as an advertisement for a specific item. Please remove the term Click-iT assay throughout the manuscript and refer it in the table of materials instead.

We have removed the term “Click-iT assay” from the whole manuscript and changed to “**Chemo-selective ligation reaction**” in both manuscript and table of materials.

4. Please remove the materials section from the protocol and add it to the table of materials.

We have transferred the materials section from the protocol and added it to the list of materials. Also, all buffer and medium preparations have been removed from the protocol section and added them in a separate Excel sheet as a **Table 1**.

5. Please adjust the numbering of the Protocol to follow the JoVE Instructions for Authors. For example, 1 should be followed by 1.1 and then 1.1.1 and 1.1.2 if necessary. Please refrain from using bullets or dashes.

Based on the JoVE Instructions, we have changed and adjusted the numbering throughout the protocol section.

6. Please ensure you answer the “how” question, i.e., how is the step performed? Also please use complete crisp sentences throughout the protocol section.

We have edited the protocol section in order to provide clear and complete sentences.

7. Please ensure that the highlight is no more than 2.75 pages including heading and spacing and forms the most cohesive story in the manuscript. Also aligns with the title.

We have highlighted in yellow the headings and steps that form the cohesive story in the manuscript.



8. Please provide a result to show that the cells obtained are hepatocytes and nothing else.

We have conducted western blotting analysis to demonstrate the ability of isolated primary mouse hepatocytes to express albumin protein as seen in liver lysate samples, but not in MEF and Hepa 1-6 cells (Figure 3).

9. Please obtain explicit copyright permission to reuse any figures from a previous publication. Explicit permission can be expressed in the form of a letter from the editor or a link to the editorial policy that allows re-prints. Please upload this information as a .doc or .docx file to your Editorial Manager account. The Figure must be cited appropriately in the Figure Legend, i.e. "This figure has been modified from [citation]."

We have made and provided an original schematic illustration (Figure 1), and have not used any figures from previous publications.

10. Please proofread the manuscript carefully before submitting.

We have proofread throughout the manuscript carefully several times before re-submitting.

## **1) Isolation of primary mouse hepatocytes**

### **1.1 Pre-isolation preparations:**

- 1.1.1 Prepare 450 ml of 40% density gradient buffer as described in **Table 1** and keep at 4 °C (15 ml/mouse).
- 1.1.2 Prepare 500 ml of Williams' Medium E as described in **Table 1** and keep at 4 °C
- 1.1.3 Prepare 500 ml of DMEM as described in **Table 1** and keep on ice (30 ml/mouse)
- 1.1.4 Prepare 500 ml of HBSS (-) Buffer as described in **Table 1** and keep at 42 °C in water bath (40 ml/mouse)
- 1.1.5 Prepare 500 ml of HBSS (+) Buffer with 0.3 mg/ml Collagenase Type X as described in **Table 1** with 30 min incubation at 42 °C in the water bath (40 ml/mouse)

### **2. Perfusion:**

- 1.2.11 Spray 70% ethanol over the abdominal area of the mouse and then open the abdominal cavity by making a large transverse incision of the dermis and peritoneum by using sharp scissors and toothed forceps
- 1.2.12 Then, make a vertical cut of the abdominal layers until all abdominal organs are completely exposed by using sharp scissors and toothed forceps
- 1.2.13 Move small and large intestines toward the left side of the mouse with autoclaved cotton tip until liver, portal vein, and inferior vena cava (IVC) are clearly exposed
- 1.2.14 Insert a 24 G catheter into IVC just at the bifurcation with right renal vein carefully without shaking hands to avoid the injury of IVC and bleeding
- 1.2.15 Then remove the needle of the catheter and control the position of the cannula so that it should not get out of IVC
- 1.2.16 Connect 24 G cannula with perfusion tube tightly by using the connector
- 1.2.17 Start the perfusion of the liver with warm HBSS (-) at a flow rate of 4 ml/min
- 1.2.18 Then, cut off the splenic vein quickly to drain out the internal blood by using scissors
- 1.2.19 Continue perfusion with 35 ml of warm HBSS (-)

### **3. Digestion and Extraction**

- 1.3.1 Perfuse the mouse liver with warm 35 ml of HBSS (+) including Collagenase Type X at a flow rate of 4 ml/min
- 1.3.3 Pour 5 ml of prepared warm HBSS (+) with Collagenase Type X into 100 mm Petri dish at the end of perfusion process
- 1.3.4 Cut off the perfused liver from the rest of the body before stopping the pump to avoid the backflow of blood into the liver
- 1.3.5 Remove the gallbladder by forceps, and then wipe the liver gently with paper towel to remove the blood
- 1.3.6 Transfer the liver to the Petri dish which contains 5 ml of prepared warm HBSS (+)
- 1.3.7 Remove the liver capsule gently using straight-tipped forceps
- 1.3.8 Disperse the parenchymal tissue carefully by using the forceps
- 1.3.9 Add 15 ml cold DMEM to the Petri dish
- 1.3.10 Shake the torn liver gently to release the residual parenchymal cells into the medium
- 1.3.11 Add another 15 ml cold DMEM to the Petri dish to get the rest of the cells

1.3.12 Transfer DMEM with the dissolved liver through 100  $\mu\text{m}$  cell strainer into a 50 ml conical tube and keep in ice

#### **4. Purification:**

1.4.1 Centrifuge cell suspension at 60 x  $g$  for 2 min at 4 °C

1.4.2 Carefully remove the supernatant by vacuum aspiration

1.4.3 Resuspend the pellet in 10 ml DMEM

1.4.4 Add resuspended pellet as a thin layer on the top of 40% density gradient buffer

1.4.5 Centrifuge at 800 x  $g$  for 10 min without brake at 4 °C

1.4.6 Carefully remove supernatant including the upper layer (DMEM) and middle layer (dead or non-parenchymal cells), but not lower layer (Pellet: primary parenchymal hepatocytes)

1.4.7 Resuspend the primary cells with 2-3 ml William's medium E

1.4.8 Transfer the pellet with William's medium E to the new 50 ml tube to avoid contamination of dead cells on the wall of tube

1.4.9 Add 7-8 ml William's medium E, and mix gently by hand

1.4.10 Centrifuge at 800 x  $g$  for 1 min at 4 °C

1.4.11 Carefully remove supernatant by vacuum aspiration, and then resuspend pellet again with 10, 20 or 30 ml of William's medium E (according to the size of the pellet)

1.4.13 Seed  $0.6 \times 10^6$  cells in a 6 well plate with William's medium E

1.4.14 Keep the plate in incubator at 37 °C for 2-3 h

1.4.15 Replace the medium with 10% FBS DMEM medium with Anti-Anti to remove dead or unattached cells and for overnight incubation at 37 °C

## **2) Chemo-selective ligation reaction assay for detection of nascent protein synthesis**

### **1. Metabolic labeling:**

2.1.1 (Pre-treatment) Wash primary hepatocytes with 37 °C warm PBS twice, and add the methionine-free DMEM medium as described in **Table 1** for 30 min to deplete cytoplasmic methionine reserves

2.1.2 (Treatment) Wash primary hepatocytes with 37 °C warm PBS twice, and add the methionine-free DMEM medium with 25  $\mu\text{M}$  AHA (L-Azidohomoalanine) for 4-6 h

2.1.3 Add any specific chemical (*i.e.* 10  $\mu\text{M}$  rotenone) in the medium for 4-6 h in presence of AHA in order to investigate its effect on nascent protein expression levels

2.1.4 After incubation, remove the medium by vacuum aspiration, and wash primary hepatocytes with warm PBS three times

2.1.5 Add 200  $\mu\text{l}$  lysis buffer to the plate and incubate for 15-30 min on ice.

2.1.6 Tilt the plate and take the whole cell lysate into 1.7 ml tube

2.1.7 Sonicate the cell lysate on ice for 5 sec three times by using a probe sonicator to solubilize the proteins and disperse the DNA

2.1.8 Vortex the cell lysate for 5 min

2.1.9 Centrifuge the cell lysate at 21130 x  $g$  for 10 min at 4 °C

2.1.10 Transfer the clear supernatant into a new tube and measure the protein concentration twice

## **2. Labeling the Azide-modified nascent protein:**

2.2.3 Take 20-40 µg cell lysate and add 50 µl 2 X reaction buffer (component A+B), then adjust the volume to 80 µl by adding DDW and vortex for 5 sec

2.2.4 Add 5 µl CuSO<sub>4</sub> (component C), and vortex for 5 sec

2.2.5 Add 5 µl reaction buffer additive 1 (freshly prepared component D), then vortex for 5 sec and wait for 3 min

2.2.6 Add 10 µl reconstituted reaction buffer additive 2 (component E), then vortex for 5 sec

2.2.7 Rotate samples for 20 min at 4 °C by using a multi-rotator machine

2.2.8 Add 300 µl methanol and vortex for 5 sec

2.2.9 Add 75 µl chloroform and vortex for 5 sec

2.2.10 Add 200 µl DDW and vortex for 5 sec

2.2.11 Centrifuge the samples at 21130 x g and 4 °C for 5 min

2.2.12 Discard the aqueous supernatant and keep the pellet

2.2.13 Add 250 µl methanol to the tube, vortex and spin again for 5 min at 21130 x g

2.2.14 Discard the supernatant

2.2.15 Cover the samples with lint-free tissue and allow the pellets to air-dry for 15 min at room temperature

## **3. PAGE analysis and western blotting:**

2.3.1 Solubilize the pellet in 20 µl of loading buffer **without** β-mercaptoethanol

2.3.2 Vortex for 10 min, and heat at 70 °C by using heat block for 10 min

2.3.3 Load the samples into 10% SDS gel (1.5 mm) for Tetramethylrhodamine (TAMRA) detection

## **4. Detection:**

2.4.1 Detect AHA signal using a variable mode laser scanner for precise quantitation of nascent proteins