

# Journal of Visualized Experiments

## Anaerobic protein purification and kinetic analysis via oxygen electrode for studying dioxygenase activity and inhibition of DesB

--Manuscript Draft--

Article Type:	Invited Methods Article - JoVE Produced Video
Manuscript Number:	JoVE58307R2
Full Title:	Anaerobic protein purification and kinetic analysis via oxygen electrode for studying dioxygenase activity and inhibition of DesB
Keywords:	dioxygenase; lignin; ring-cleavage; oxygen electrode kinetics; anaerobic purification; DesB
Corresponding Author:	Erika A. Taylor Wesleyan University Middletown, Connecticut UNITED STATES
Corresponding Author's Institution:	Wesleyan University
Corresponding Author E-Mail:	eataylor@wesleyan.edu
First Author:	Stacy N. Uchendu
Other Authors:	Stacy N. Uchendu
	Angelika Rafalowski
	Erin F. Cohn
	Luke W. Davoren
Additional Information:	
Question	Response
Please indicate whether this article will be Standard Access or Open Access.	Standard Access (US\$2,400)
Please indicate the <b>full address</b> at which this article will be <b>filmed</b> .	52 Lawn Ave., Hall-Atwater Labs Room 171, Middletown, CT 06459

**TITLE:**

Anaerobic Protein Purification and Kinetic Analysis via Oxygen Electrode for Studying DesB Dioxygenase Activity and Inhibition

**AUTHORS AND AFFILIATIONS:**

Stacy N. Uchendu, Angelika Rafalowski, Erin F. Cohn, Luke W. Davoren, Erika A. Taylor  
Department of Chemistry, Wesleyan University, Middletown, Connecticut, USA

**Corresponding Author:**

Erika A. Taylor  
eataylor@wesleyan.edu  
Tel: 860-685-2739

**Email Addresses of Co-Authors:**

Stacy N. Uchendu (suchendu@wesleyan.edu)  
Angelika Rafalowski (arafalowski@wesleyan.edu)  
Erin F. Cohn (ecohn@wesleyan.edu)  
Luke W. Davoren (ldavoren@wesleyan.edu)

**KEYWORDS:**

Anaerobic purification, dioxygenase, oxygen electrode kinetics, DesB, lignin, ring cleavage

**SUMMARY:**

Here we present a protocol for anaerobic protein purification, anaerobic protein concentration, and subsequent kinetic characterization using an oxygen electrode system. The method is illustrated using the enzyme DesB, a dioxygenase enzyme which is more stable and active when purified and stored in an anaerobic environment.

**ABSTRACT:**

Oxygen-sensitive proteins, including those enzymes which utilize oxygen as a substrate, can have reduced stability when purified using traditional aerobic purification methods. This manuscript illustrates the technical details involved in the anaerobic purification process, including the preparation of buffers and reagents, the methods for column chromatography in a glove box, and the desalting of the protein prior to kinetics. Also described are the methods for preparing and using an oxygen electrode to perform kinetic characterization of an oxygen-utilizing enzyme. These methods are illustrated using the dioxygenase enzyme DesB, a gallate dioxygenase from the bacterium *Sphingobium* sp. strain SYK-6.

**INTRODUCTION:**

Enzymes that utilize iron or other metals to activate oxygen are often susceptible to inactivation during the purification process because of their removal from the reducing environment of a cell. Therefore, these proteins must be used as cell lysates, be subjected to external reducing agents, or be purified anaerobically to ensure that they have optimal enzymatic activity<sup>1-4</sup>. For those enzymes that are oxygen-sensitive (specifically iron-containing enzymes), performing all the

purification and characterization steps while maintaining anaerobic conditions is necessary to fully characterize them. This has led researchers to develop entire laboratory set-ups within the confines of anaerobic chambers for studies ranging from protein expression through crystallography<sup>5-8</sup>.

Herein, we report methods for the anaerobic purification and kinetic characterization of the enzyme DesB using an oxygen electrode system. DesB is a gallate dioxygenase from the bacterium *Sphingobium* sp. strain SYK-6 that is related to LigAB, a protocatechuate dioxygenase from the same organism. Both enzymes belong to the type II protocatechuate dioxygenase (PCAD) superfamily which has not been extensively studied to date<sup>9</sup>, likely in part due to enzymes of this superfamily being susceptible to inactivation when purified using standard aerobic protein purification methods. Since some of the PCAD enzymes display substrate promiscuity while others are substrate-specific<sup>2,10</sup>, further characterization of this superfamily is necessary to identify specificity determinants. As has been observed in several enzyme superfamilies<sup>11-15</sup>, small molecules can alter activity via direct competitive inhibition or the binding of molecules to separate allosteric pockets which causes an increase or decrease in enzymatic activity<sup>16</sup>. While kinetics alone cannot differentiate the binding location of a modulator, determining the magnitude of an activity change is important for understanding the effects. As such, methods for kinetic characterization of native DesB activity and its activity in the presence of 4-nitrocatechol (4NC), a compound commonly used to characterize and inhibit dioxygenase enzymes<sup>2,17,18</sup>, are shown.

DesB is able to break down gallate, a lignin-derived aromatic compound, via an extradiol dioxygenase (EDO) reaction in which ring opening is catalyzed using oxygen as one of the substrates<sup>10,19</sup>. This enzymatic reaction occurs within the context of the breakdown of lignin, an aromatic heteropolymer found in the cell wall of plants. Lignin can be depolymerized, yielding a variety of aromatic compounds that can be further broken down into central metabolites<sup>3,20-33</sup>. Extradiol dioxygenases (EDO) catalyze a ring opening reaction on dihydroxylated aromatic compounds, where cleavage occurs adjacent to a metal-coordinated diol; in contrast, intradiol dioxygenases cleave analogous aromatic compounds between the two hydroxyl groups (**Figure 1**). EDOs, like many other metalloenzymes, have a divalent metal center for coordinating Fe(II) composed of a two-histidine, one-carboxylate triad<sup>9,34,35</sup>. These metalloenzymes become oxidized, through either autoxidation or mechanism-based inactivation, whereas the enzyme is rendered inactive<sup>2,36-38</sup>.

In the experimental procedures described in this manuscript, we utilize DesB, a member of the PCAD superfamily from the bacterium *Sphingobium* sp. SYK-6, to catalyze the addition of oxygen across the C4-C5 bond of gallate (**Figure 2A**). The regiochemistry of this cleavage is analogous to LigAB, which is a protocatechuate-4,5-dioxygenase (**Figure 2B**). Thus far, investigations of this gallate dioxygenase include no reports of compounds that inhibit DesB<sup>10,19,39</sup>. With the use of aerobic purification methods, DesB exhibited variable activity, while with the use of anaerobic methods we were able to consistently obtain protein with reproducible activity. The kinetic studies described here show the methods for anaerobic purification of DesB, kinetic

characterization of the reaction of DesB with gallate, and the inhibition of DesB by 4-nitrocatechol (4NC).

## PROTOCOL

### 1. General Materials and Methods

1.1. Prepare all the required media as described in **Table 1**. Autoclave at 120 °C for 15 min. Sterile filter the SOC solution, after the addition of MgCl<sub>2</sub> and glucose, by passing it through a 0.2 µm filter. Adjust the pH of the Miller's Lysogeny Broth (LB media) solution prior to autoclaving. Supplement the LB-Amp media solution after autoclaving with sterile solutions of 0.2 mM L-cysteine, then 0.1 mM ferrous ammonium sulfate to enhance protein expression and solubility.

1.2. Prepare the Laemmli buffer and running buffer for polyacrylamide gel electrophoresis (PAGE) as described in **Table 2**. Adjust the pH of the solutions (using 1 M HCl and Tris base for buffer preparation) before diluting the components to their final volumes.

1.3. Prepare the buffers for protein purification as described in **Table 3**. Adjust the pH of the solutions (using 1 M HCl and Tris base for buffer preparation) before diluting the components to their final volumes.

1.4. Transfer the prepared buffers to a bottle that can be sealed with a one-hole rubber stopper and contains a glass tube.

1.4.1. Use a hose to connect the glass tube in the stopper to a vacuum source. Allow the solution to degas under negative pressure for approximately 30 min while stirring at medium speed.

1.4.2. Break the vacuum seal first, then turn off the vacuum. Next, pierce through the rubber stopper with two 20G needles (one that is long enough to reach the bottom of the bottle, and one shorter needle that can be used as a gas escape vent). Bubble in a steady flow of nitrogen while stirring at medium speed for 30 min.

1.4.3. Remove the needles and repeat the degassing and bubbling in nitrogen for a total of three cycles. When finished, properly seal the bottle with a solid rubber stopper. Further secure the stopper with paraffin film and copper wire (20G), and place them into the glovebox.

Note: All materials are placed into the glovebox and subjected to 3 cycles of purging the antechamber, followed by vacuuming out the oxygen and refilling it with nitrogen. Buffers used for purification and concentration can be capped and stored in the glove box indefinitely.

1.5. Prepare the sodium dithionite solution by dissolving approximately one spatula (0.31" x 2", the smaller end of a double-ended micro-tapered stainless-steel spatula) full of sodium dithionite in approximately 1 mL of degassed water in a 1.5 mL microcentrifuge tube. Seal the tube with paraffin film before removal from the glove box.

Note: Store solid sodium dithionite in the glove box to prevent oxidation.

## **2. Preparation of the Amylose Column for Protein Purification**

2.1. Make a slurry from high flow amylose resin (15 mL) combined with 5 column volumes (75 mL) of amylose column buffer. Transfer the resin slurry into two 50 mL serum bottles and seal each bottle with a rubber septum. Puncture a 20G, 305 mm needle through the septa, and bubble nitrogen into the slurry for approximately 1 minute to remove oxygen from the suspension. Transfer the resin and protein-containing solution into the glove box.

2.2. In the glove box, pour the resin into a 2 x 30 cm borosilicate column fitted with a simple stopcock, allowing the resin to settle and create a level bed. Drain off the column buffer and equilibrate the column with 3 column volumes (~30 mL total) of degassed amylose column buffer using pressurized nitrogen gas to push the buffer through the resin at approximately 1 drop/s or 5 mL/min, until the solvent is just above the resin bed.

Note: After the protein is eluted (see step 3.5 below), the amylose column resin is regenerated by washing with 1 column volume (10 mL) of water, then 1 column volume of 1% sodium dodecyl sulfate (SDS), and finally, 3 column volumes (30 mL) of water. This step can be completed outside of the glove box. The column resin is stored at 4 °C in 20% ethanol and can be regenerated up to 5 times.

## **3. Protein Expression and Anaerobic Purification of DesB**

Note: The DesB gene was commercially synthesized, having been placed into pET-15b, pET-32a, and pMAL- c5x vectors using the NdeI and BamHI restriction cloning sites.

3.1. Complete the protein expression assays according to manufacturer's guidelines to determine the correct conditions for large scale expression (described in brief below).

3.1.1. Transform the DesB-containing plasmids into commercially made, chemically competent *E. coli* BL21 (DE3) cells, according to the manufacturer's instructions. In brief, thaw the cells on ice for 10 min, add approximately 10-50 ng of plasmid DNA to the cell mixture, heat shock the cells at 42 °C for 10 s, and incubate them on ice for an additional 5 min. Add SOC media to obtain a final volume of 1 mL and allow the cells to shake (~200 rpm) at 37 °C for 60 min. To an LB-Amp plate, add and spread 100 µL of the cell solution and incubate overnight at 37 °C.

3.1.2. Select a single colony-forming unit from the plate after overnight incubation and use this colony to inoculate 10 mL of LB-Amp media. Grow the cells overnight, with shaking (~200 rpm) at 37 °C.

3.1.3. To 10 mL of media, add 100 µL of the overnight growth solution, and shake the new media as described in step 3.1.2 at 37 °C. When the optical density at 600 nm (OD<sub>600</sub>) is between 0.4-

0.8, add isopropyl  $\beta$ -D-1-thiogalactopyranoside (IPTG) to obtain a final solution concentration of 1 mM.

3.1.4. Immediately remove a 1 mL aliquot of the solution and transfer it to a 1.5 mL microcentrifuge tube with labeled time = 0 hours. Spin the tube at 15,000 x g for 10 min to pellet the cells. After spinning, remove the supernatant and store the cells at 4 °C.

3.1.5. Remove additional aliquots (1 mL each) at time intervals after the addition of IPTG (typically at 5, 10, 12, 18 and 24 h). As described in step 3.1.4, centrifuge each tube, decant the supernatant, and store the cells at 4 °C.

3.1.6. Once all the aliquots are obtained, resuspend the cells from each timepoint in 30  $\mu$ L of bacterial protein extraction solution, incubate them at room temperature for 10-15 minutes, and centrifuge the tubes at 15,000 x g for 5 min to separate the soluble and insoluble proteins.

3.1.7. Transfer the soluble protein solution to a new microcentrifuge tube and resuspend the remaining insoluble pellets with 30  $\mu$ L of bacterial protein extraction solution.

3.1.8. Combine the 30  $\mu$ L of each solution (both soluble and insoluble solutions for each timepoint) with an equal volume of Laemmli buffer, then visualize on an SDS-PAGE gel<sup>40</sup>. Select conditions corresponding to the lanes containing the correct size bands in the soluble fraction for large scale protein expression and purification.

Note: Since minimal soluble protein was initially generated using the conditions above, various supplements were added to test for effects on the soluble protein expression, with 0.2 mM L-cysteine and 0.1 mM ferrous ammonium sulfate showing enhanced protein expression. According to this protein expression screen, an appropriate expression vector for soluble production of DesB was pMAL- c5x vector.

3.2. Following transformation into *Escherichia coli* BL21 (DE3), make a stock of DesB/pMal-c5x by combining 900  $\mu$ L of bacterial culture (grown overnight with shaking at 200 rpm and 37 °C) with 100  $\mu$ L of 80% glycerol. Store the stock at -80 °C in a cryogenic tube.

Note: Make a new frozen stock approximately every 6-8 months.

3.3. Use a pipette tip to scrape cells from the frozen stock and start a bacterial culture, growing overnight in 5 mL of LB-Amp media at 37 °C with shaking. Inoculate 1.5 liters of LB-Amp media in a 2 L flask at 37 °C and 200 rpm, using the overnight grown bacterial culture.

Note: Due to the observed sensitivity of the protein to oxygen, it was found that reduced headspace in the flask and moderate shaking speeds improved protein yield for large-scale expression.

3.4. Induce protein expression when the optical density at 600 nm ( $OD_{600}$ ) is between 0.4-0.8 with 1 mM IPTG and supplemented with 0.2 mM L-cysteine and 0.1 mM ferrous ammonium sulfate. Lower the incubation temperature to 30 °C and shake at 200 rpm. Spin down the cells via centrifugation after 24 h post-induction at 4,700 x g for 10 min and discard the spent media.

3.5. Resuspend the cell pellet in 20 mL of amylose column buffer per every 1.5 L of growth, followed by the addition of 1 mg of lysozyme. Stir for 20 minutes on ice.

Note: More buffer can be added if the solution is too viscous, as protein solutions that are too viscous may disrupt the following homogenizing step.

3.6. Lyse the resuspended cell solution via high pressure homogenization with 3-5 passes at approximately 15,000 psi. Transfer the protein to a 50 mL centrifuge tube and flush the headspace with nitrogen for 1 min. Then, centrifuge the cell lysate at 20,000 x g for 40 min to remove the insoluble debris.

Note: Successful homogenizing causes the protein to form micelles as it flows through the tube and into the collection flask, and the solution appears as a translucent grey-brown color. Keep the homogenized protein on ice throughout the process.

3.7. After centrifugation, transfer the supernatant into a 50 mL tube (more than one may be necessary), cap the tube with a rubber septum, and with a 20-gauge needle, slowly bubble nitrogen gas through the solution for 2 min to displace oxygen. Wrap the septum with paraffin film and further secure it with copper wire, and bring the supernatant into the glove box along with the column materials.

3.8. Equilibrate the column (see step 2.3) and load the protein supernatant onto the column. Collect the flow-through in 5 mL fractions under moderately pressurized nitrogen (1 drop/second or approximately 5 mL/min). Next, wash the column using another 3 column volumes of amylose column buffer and manually collect 3 mL fractions in glass test tubes under moderately pressurized nitrogen (approximately 5 mL/min). Elute the protein using 5 column volumes (~50 mL) of elution buffer and manually collect 3 mL fractions under moderate nitrogen pressure (approximately 5 mL/min).

Note: The fractions can alternatively be collected using gravity filtration. Approximately 12 elution fractions should be collected.

3.9. Collect 30  $\mu$ L aliquots of fractions and remove them from the glove box to allow the visualization of protein-containing fractions via SDS-PAGE analysis.

Note: The collected fractions remain in the glove box for the duration of this test. Purified DesB typically elutes from the column in fractions 3 through 5.

#### 4. Anaerobic Protein Concentration/Buffer Exchange

4.1. Assemble the pressurized, stirred cell concentrator with a 76 mm reconstituted cellulose membrane filter (10 kDa cutoff). Add a sufficient amount of 20% ethanol into the concentrator to keep the membrane wet as the assembled concentrator is transferred into the glove box.

Note: Ensure that there are no tears in the membrane and that the O-ring is not wrinkled.

4.2. After bringing the stirred cell concentrator into the glove box, wash the ethanol solution off the membrane with water. Cap and pressurize the stirred cell to clean the tubing and membrane of any excess water.

4.3. Add all the fractions containing protein as determined by SDS-PAGE (**Figure 3**) to the concentrator. Add sufficient exchange buffer to yield 150 mL of total protein solution volume.

4.4. Pressurize the stirred cell chamber using an external N<sub>2</sub> line and concentrate the protein to 50 mL with moderate stirring speed.

Note: Achieving a concentration of 50 mL takes approximately 20 min.

4.5. Supplement 100 mL of exchange buffer with 0.1 mM dithiothreitol (DTT) and 0.1 mM ferrous ammonium sulfate, add the solution to the stirred cell, and concentrate the protein to a total volume of 50 mL with a moderate stirring speed.

4.6. After the solution reaches a volume of 50 mL, add in the supplemented exchange buffer once more, but concentrate the solution to a total volume of 10 mL with moderate stirring speed.

4.7. Filter the concentrated protein using a 0.45 µm pore size syringe filter and aliquot into individual 0.2 mL polymerase chain reaction (pcr) tubes (each containing approximately 150 µL of the protein solution). Remove the capped aliquots from the glove box and immediately flash freeze them with liquid nitrogen. Store the aliquots at -80 °C.

## 5. Desalting DesB

5.1. Flush the glove bag with nitrogen gas for approximately 1.5 hours before use.

5.2. Thaw a 150 µL aliquot of purified DesB protein inside of the glove bag, on ice.

5.3. While the protein thaws, prepare a small gravity, desalting column containing 3 mL of Sephadex G-25 coarse desalting gel in a 9 mL borosilicate column. Wash the column with 2 column volumes (~6 mL) of degassed desalt buffer.

Note: Replace the desalting gel when there is a change in gel color from white to yellow (after approximately 7 uses).



5.4. Load the thawed DesB onto the column via a gravity-controlled process. Discard the flow-through. Elute the protein with approximately 5 mL of desalting buffer.

Note: The pressure from the gas tank continually filling the glove bag will affect the rate at which the solutions drip from the column.

5.5.1 For initial determination of protein elution from the column, collect 12 vials/elutions (containing 3 drops per vial). Sealed with a rubber septum, remove them from the glove bag and test for the presence of protein either directly (through SDS-PAGE gel analysis) or indirectly (through examination of the activity of each fraction).

Note: Typically, the fractions are tested individually for activity, as described in step 7.1, with the greatest activity corresponding to the fraction with the greatest concentration of active protein. DesB usually elutes starting in the 7th drop, after which the following 9 drops of desalted protein are collected. Protein aliquots are stored on ice during the kinetics measurements (steps 7.1-7.4).

## 6. Preparing the Oxygen Electrode

6.1. Polish the silver anode ring and platinum cathode with electrode cleaner and a damp Q-tip until there are no visible signs of black oxide deposits.

6.2. With scissors, cut approximately one 1.5-inch square of spacer paper (or cigarette rolling paper, which works equally as well). Then, cut 1) small triangles onto each face of the square and 2) slits into the corners to aid wrapping of the electrode.

6.3. Add 5 drops of a 50% KCl solution onto the silver anode groove and connect them so they form one continuous ring of solution. Add 2 drops of the 50% KCl solution to the top of the platinum electrode. Carefully place the spacer paper on top of the platinum electrode and smooth out the spacer paper so there are no air bubbles.

Note: Use caution to avoid tearing the spacer paper.

6.4. Cut a piece of the S4 30m PTFE (polytetrafluoroethylene) membrane that is approximately 2 inches long and place it on top of the spacer paper. Cut off the edges of the membrane so they are aligned with the outer ring of the electrode.

6.5. Using the O-ring applicator, push the small O-ring over the electrode to secure the spacer paper and membrane onto the electrode. Place the larger O-ring onto the circular groove of the electrode, ensuring there is no membrane underneath it. Slide the top chamber of the electrode onto the base and screw the two together.

Note: The two are screwed on properly if no air bubbles stick to the sides of the chamber.

6.6. Place the assembled electrode on its base and connect the electrode to the monitoring system. Initiate the electrode control program and calibrate the electrode by performing the liquid phase calibration protocol (**Figure 4A**). The temperature variable should be the temperature of the room in which the experiment is performed, and the ambient pressure variable is dependent on the region and current weather conditions.

Note: Ambient pressure can be obtained from a weather report for the region.

6.7. Add 1 mL of 25 mM Tris buffer to the electrode chamber, insert the plunger, begin the calibration of an oxygen saturated solution, and adjust the stirrer speed to 100. After the electrode stabilizes, the calibration set-point for the oxygen saturated solution is determined (**Figure 4B**).

6.8. Without removing the plunger, use a 1.2 x 40 mm needle and 1 mL syringe to inject approximately 1 mL of sodium dithionite solution into the chamber, being careful to avoid adding any air bubbles (**Figure 4C**). Use a rubber stopper to seal the electrode chamber immediately after sodium dithionite addition.

6.9. Allow the calibration to continue until all the oxygen is utilized and the program is completed and save the calibration (**Figure 4D**). Aspirate the solution from the chamber and rinse the plunger and chamber with deionized water 5-6 times to ensure complete removal of the sodium dithionite. When rinsing, use a plastic tube equipped with a pipette tip connected to a side-arm vacuum flask. Avoid damaging the membrane.

## 7. Kinetic Assays Using the Oxygen Electrode

7.1. Identify the desalted aliquots containing active protein by serially testing 1  $\mu$ L of enzyme solution for activity in a solution of 25 mM Tris buffer, with pH 7.5 and containing 100  $\mu$ M gallate. Use the aliquot(s) with the greatest observed activity for the remaining experiments. (See step 5.5.1)

7.2. Determine the rate of the enzymatic reaction by measuring O<sub>2</sub> consumption using an O<sub>2</sub>-sensitive Clark-type electrode with computer integration via the electrode control unit.

7.2.1. For each kinetics data point measurement of DesB, add 1 mL of 25 mM Tris buffer (pH 7.5) to the electrode chamber. Add a calculated volume of a 25 mM stock solution of gallate to the Tris buffer to achieve the desired final substrate concentration (0.05-25 mM).

Note: Prepare fresh stock solutions of gallate and inhibitory compounds with water daily and adjust the pH to 7.5 with the addition of 0.1 mM NaOH, if necessary.

7.2.2. After 10 s of stirring to allow for mixing of the solution, seal the chamber with the plunger slowly and screw the top down. A clean tissue may be used to soak up the excess liquid that is displaced from the chamber. Allow the electrode to equilibrate where it can produce a stable

measurement of the oxygen concentration in the solution for at least 1 minute before proceeding to the addition of enzyme (background O<sub>2</sub> consumption rate of  $\pm 0.5 \mu\text{M}/\text{min}$ ).

7.2.3. Using a gas tight 10  $\mu\text{L}$  syringe, add approximately 1  $\mu\text{L}$  of enzyme (approximately 3-7  $\mu\text{M}$  enzyme) to the electrode chamber through the plunger.

Note: The amount of enzyme can be increased or decreased in response to the observed activity of the specific aliquot to allow for reaction rates to be sufficient.

7.2.4. Calculate the reaction velocity based on the slope of the first 30 s of linear data after enzyme addition and correct for background O<sub>2</sub> consumption using the 30 s of data immediately prior to enzyme addition. The rate of catalysis is equal to the rate of O<sub>2</sub> consumption (**Figure 5A**).

7.2.5. After collection of the rate data for a given substrate concentration, empty the electrode chamber through aspiration by using a plastic tube connected to a side-arm vacuum flask and rinsing repeatedly with water for 4-6 cycles. Set up the solution in the electrode as described in step 7.2.1 using a new substrate concentration.

7.2.6. Vary substrate concentrations in an unordered manner and replicate throughout the course of the experiment to account for decreases in enzyme activity with time (**Figure 5B**).

Note: When replicates of a specific concentration are run and demonstrate more than a 30% decrease in rate compared to an earlier run, no additional assays should be performed with that batch of enzyme. Typically, after 30-40 runs, the enzyme demonstrates a 30% decrease in activity.

7.2.7. Determine the kinetic parameters,  $k_{\text{cat}}$  (the catalytic constant for the conversion of substrate to product) and  $K_m$  (the Michaelis constant, operationally defined as the substrate concentration at which the initial rate is one-half of the maximum velocity), by a least-squares fitting of data from each of the substrate concentrations to the Michaelis–Menten equation (**Figure 6**) using GraphPad Prism.

7.3. Add 4-nitrocatechol (4NC) to test its impact on dioxygenation kinetics and determine the inhibition constant ( $K_i$ ) with DesB. For each reaction condition, stock solutions of Tris (50 mM), gallate (25 mM), and 4NC (25 mM) are combined and diluted with water to yield a 2 mL solution of 25 mM Tris buffer (pH 7.5) with 1 mM gallate and varying concentrations of 4NC. The volume of 4NC was varied to achieve the desired final inhibitor concentration (0.05-20 mM).

7.3.1. After 10 seconds of stirring to allow mixing of the solution, place the plunger in the chamber slowly and screw the top down. A clean tissue may be used to soak up the excess liquid that is displaced from the chamber. Allow the electrode to equilibrate and produce a stable measurement of oxygen concentration in the solution for at least 1 minute before proceeding to the addition of enzyme (background O<sub>2</sub> consumption rate of  $\pm 0.5 \mu\text{M}/\text{min}$ ).

7.3.2. As described previously, add the protein (step 7.2.3), determine the reaction rate (step 7.2.4), and reset the electrode for the next condition.

7.3.3. As a part of this series of experiments, determine the reaction rate in the absence of inhibitor multiple times. Determine the inhibition by standardization of the rates of oxygen consumption in the presence of various inhibitor concentrations with 1 mM substrate and the absence of inhibitor ( $v/v_0$ ).

7.3.4. Fit the inhibition of gallate dioxygenation to equation 7.3A and then the inhibition data to equation 7.3B using a graphing program (**Figure 7**).

7.4. Determine the precise enzyme concentration for each experiment by performing a Bradford assay after completion of all kinetic runs.

Note: All rates were corrected for enzyme concentration. This step does not need to be done in a glove box or glove bag.

#### **REPRESENTATIVE RESULTS:**

Shown is the SDS-PAGE gel analysis of individual fractions from purification of the DesB-maltose binding protein (MBP) fusion construct (**Figure 3**). The gel reveals that the protein is pure (MW = 91.22 kDa), except for the presence of DesB (MW = 49.22 kDa) and MBP protein domain (42 kDa) cleaved from each other. Fractions E2 and E3 were selected for concentration (step 4.2).

Reproducible results from DesB kinetic assays depend on correct assembly, calibration, and experimental technique. It is necessary to input the correct ambient temperature and pressure, as these variables determine the percentage of O<sub>2</sub> expected to be dissolved in solutions during the assay (**Figure 4A**). The initial signal should be between 1800 and 2000 nmol/mL and should produce a stable rate close to zero, indicating that the oxygen saturation of the solution is minimally changing (**Figure 4B**). Once the sodium dithionite is added and the chamber is sealed, the rate of O<sub>2</sub> consumption should rapidly and steadily increase until there is minimal O<sub>2</sub> (<60 nmol/mL) left in the solution. A steady negative slope indicates that 1) the assembled electrode has no air leaks and 2) the electrode is adequately responding to changes in O<sub>2</sub> concentration (**Figures 4C and D**). If the O<sub>2</sub> remaining in solution is not sufficiently low, the calibration offset value will be incorrect. The calibration will have to be repeated with the electrode assembled correctly, and fresh sodium dithionite must be used.

When the electrode is correctly calibrated, kinetic assays can be performed. The first measurement establishes the activity of the freshly desalted enzyme using 100 μM gallate in 25 mM Tris buffer and 1 μL of enzyme. Before addition of the enzyme, the Tris buffer and gallate are stirred in the chamber with the plunger in position. This should produce an approximate initial signal between 250 and 350 nmol/mL, and the signal should stabilize ( $\pm 5$  nmol/mL/min) before the enzyme is added. A stable signal indicates that there are no variables (*e.g.*, torn membrane, leftover sodium dithionite, dirty electrode) that may cause inconsistent measurements. When enzyme is added, the signal should rapidly and steadily decrease, indicating that the reaction of

DesB is proceeding, since O<sub>2</sub> is consumed in the reaction with gallate. The slope of the initial rate before enzyme addition and the catalytic rate were determined by using the rate tools and adjusting the window to 30 seconds (**Figure 5A**). After approximately 1-1.5 hours of use, the enzyme activity decreases by about 30-50%, at which point it should no longer be used (**Figure 5B**).

Once all kinetic measurements have been taken, the data can be plotted using a modeling program (**Figure 6**). The activity of DesB with gallate is obtained by measuring the rate of O<sub>2</sub> consumption in varying gallate concentrations. The background rate before enzyme addition is subtracted from the catalytic rate to obtain the corrected rate. The background corrected rate is

$$v = \frac{V_{max}[S]}{\left([S] + K_M + \left(\frac{[S]^2}{K_{si}}\right)\right)} \quad \text{Equation 7.3A}$$

$K_{si}$  = substrate inhibition constant

divided by the enzyme concentration and fitted to **equation 7.3A** (See step 7.3.3). A sufficient fit is dependent on the initial parameters for  $K_M$  and  $K_{si}$  (initial parameters:  $K_M = .125$  mM,  $K_{si} = 1$  mM). The result shows a hyperbolic curve that reaches a maximum plateau, then slopes downward slightly as [gallate] increases. This is a typical curve for an enzyme that exhibits substrate inhibition at high substrate concentrations.

$$v = \frac{V_{max}[S]}{\left([S] + K_M \left(1 + \frac{[I]}{K_i}\right)\right)} \quad \text{Equation 7.3B}$$

The rate of inhibition of DesB with 4-nitrocatechol was determined by observing the reduction in oxygen consumption rate of DesB with 1 mM gallate in the presence of varying concentrations of 4-nitrocatechol (**Figure 7**). The 4-NC concentration was plotted against the normalized activity (the rate in the presence of inhibitor was divided by the uninhibited rate) and fit to **equation 7.3B** (see step 7.3.3). The results indicate that 4-NC inhibits the consumption of oxygen, thus inhibiting the DesB reaction.

#### TABLE AND FIGURE LEGENDS:

**Table 1. Ingredients for preparation of super optimal broth with catabolite repression (SOC media) and Miller's lysogeny broth with ampicillin (LB-Amp media).**

**Table 2. Ingredients for preparation of Laemelli and running buffers for SDS-PAGE analysis.**

**Table 3. Ingredients for preparation of buffers for protein purification.**

**Figure 1: Comparison of the reactions catalyzed by ring cleaving dioxygenases.** The wavy lines show the corresponding carbon-carbon bond that is cleaved during the dioxygenase reaction,

where intradiol cleavage (red) breaks the bond between the two hydroxyl groups and extradiol cleavage (blue) breaks a carbon-carbon bond adjacent to the hydroxyl groups.

**Figure 2. The reactions catalyzed by DesB and LigAB, two related extradiol dioxygenases which belong to the type II protocatechuate dioxygenase (PCAD) superfamily.**

**Figure 3: SDS-PAGE gel of DesB showing purification and concentration steps results.** Lanes are labeled as follows: S = protein standard, FT1 and FT2 = the collected flow-through fractions, W1 and W2 = the collected wash fractions, E1-E4 = the collected elute fractions.

**Figure 4: Generation of calibration curves for the oxygen electrode.** (A) Prior to calibration, ambient temperature and pressure are entered into the program to determine oxygen concentrations for air-equilibrated solutions. (B) The oxygen saturated solution reaches equilibrium and generates a prompt. (C) Sodium dithionite solution is added to utilize all the oxygen, as indicated by the decrease in oxygen signal. (D) Calibration is obtained when the signal stabilizes at zero oxygen concentration.

**Figure 5: Representative kinetic curves illustrating a typical loss of activity over time.** (A) The reaction of 100  $\mu\text{M}$  gallate using fresh DesB, with an  $\text{O}_2$  utilization rate of  $-56.61 \mu\text{M}/\text{min}$ . (B) The reaction of 100  $\mu\text{M}$  gallate using DesB after 2 h of data collection, with an  $\text{O}_2$  utilization rate of  $-29.56 \mu\text{M}/\text{min}$ .

**Figure 6. Plot of DesB activity with gallate, fit to the Michaelis-Menton equation.**

**Figure 7. Plot of 4-nitrocatechol inhibition of DesB dioxygenation of gallate (1 mM).**

**Figure 8. Coordination of gallate by DesB (pdb ID = 3wr3).** As seen in many dioxygenases, the ligand coordinates to an active site iron(II) atom in a bidentate fashion. Based on the structural similarities between gallate and 4-nitrocatechol (4NC), the inhibition of DesB by 4NC was predicted.

## DISCUSSION:

The critical steps in obtaining active, purified DesB protein involve the forming and maintaining of the reduced Fe(II) active site in the enzyme. As such, correct performance of the induction, purification, concentration, and desalting steps are essential to successfully obtaining active enzyme. Inducing protein expression in the presence of 1 mM ferrous ammonium sulfate ensures that Fe(II) is correctly incorporated into the active site of DesB. This method is inspired by studies like those with amidohydrolase metalloenzymes, which often require the addition of metal to growth media to allow proper folding and full occupancy of the metal binding site<sup>6,41-43</sup>.

The anaerobic purification and concentration in the glove box are perhaps the most critical and technically difficult steps in this protocol. It is essential to maintain an oxygen-free atmosphere in the glove box. This requires maintaining the deoxygenation catalyst in the glovebox as prescribed by the manual, periodically changing the nitrogen tanks that are attached to the box

when they are low, ensuring that there are no holes in the gloves attached to the glovebox, and keeping a tray of fresh desiccant in the glovebox. Oxygen-sensitive strips that change color when exposed to ambient O<sub>2</sub> may be placed in the box to test for an O<sub>2</sub>-free atmosphere. Furthermore, it is necessary to fully degas all buffers and solutions that will be used during the purification and concentration process. To ensure minimal O<sub>2</sub> in the buffers, take great care to limit exposure of the degassed buffers to air when switching between nitrogen bubbling and vacuuming cycles.

When running the column in the glove box, a good test to determine whether there is oxygen present in the buffers is to take a small portion of one of the wash fractions (approximately 0.1-0.5 mL) and place it in a microcentrifuge tube with a small portion of ferrous ammonium sulfate and DTT (less than the amount necessary for the concentration step). It is then important to mix the contents of the tube well and observe the color change. If the solution turns black, dark yellow, or orange, there is oxygen present in the protein fractions, and there will likely be reduced catalytic activity after the complete purification and concentration process. If the solution is a light lavender or very light-yellow color, there may be minimal O<sub>2</sub> present, but it is likely that the enzyme will still have high activity. The dark yellow to orange color change when oxygen is present is likely caused by oxidation of the iron in the ferrous ammonium sulfate to Fe(III), forming rust<sup>44</sup>. To fix this issue, it is recommended to degas the buffers and allow nitrogen to bubble through crude the protein solution for 1-2 extra minutes before placing them in the glove box. Also, it is important to ensure that the atmosphere in the glove box is truly O<sub>2</sub>-free by using O<sub>2</sub>-sensitive strips.

The last critical step, desalting the enzyme prior to kinetic characterization, requires an oxygen-free atmosphere and must be done on ice, as the purified protein is prone to denaturation at room temperature. Determining when the desalted protein comes off the column is essential to successful kinetic assays, as the most concentrated fractions give the most reproducible results. The fraction where the desalted protein is eluted must be determined every time a new batch of protein is purified and when the column is repacked with new resin. If activity is low during kinetic assays and the purification and concentration steps have been technically mastered, the issue may lie in the desalting step. When troubleshooting this step, it is crucial to check that the 50 mM Tris/10% t-butanol buffer is thoroughly degassed, repack the column with fresh Sephadex resin, and ensure that there are no holes in the glove bag.

After DesB has been successfully purified and desalted, kinetic assays using the oxygen electrode must be performed carefully to obtain data on catalytic activity of the enzyme. Kinetic measurements are typically reproducible when a catalytically active and concentrated protein is used. If data points are not reproducible when repeating a run for a substrate or inhibitor concentration data point, the issue may be that the protein has denatured or oxidized after extended use. Freshly desalted protein can be generated to allow continuation of data collection. It is important to retain all vials of the enzyme, so the exact protein concentration can be determined after completion of the data collection using a Bradford assay. This step is performed after the kinetics measurements because the enzyme loses activity over time, so performing it first may lead to lower activity and inaccurate kinetics measurements. The protein concentration is then used to convert observed catalytic rates into the reaction rates that are needed to

determine the turnover number. In addition to concerns about the loss of enzyme activity leading to irreproducible kinetics results, degradation of the membrane covering the electrode after extended use may also cause challenges when reproducing data. Membrane degradation is typically indicated by an increase in the initial signal (from 250-350 nmol/mL to >350 nmol/mL) or an inability to attain a stable background rate before enzyme addition ( $\geq 5$  nmol/mL/min). If either is observed, it is recommended to disassemble the electrode, clean any oxides off the electrode using the supplied cleaning powder, reassemble the electrode, and recalibrate.

The method of anaerobic purification is very important for enzymes with a metal center that can be oxidized, especially for those that have tightly bound metals which cannot be exchanged after the protein folds. Although enzymes have evolved to protect themselves by coordinating oxygen only after substrate coordination, they have done so in a cellular environment - the saturating amounts of oxygen in an *in vitro* environment can lead to rapid oxidation of metals and the conversion of Fe(II) into the inactive Fe(III) form<sup>31</sup>. This oxidation/inactivation can lead to skewed results in which the enzyme is not in its catalytically active state. The kinetic assays using an oxygen-sensitive electrode can be applied to enzymes that rely on oxygen as a substrate. Rather than obtaining kinetics parameters using the change in intensity of substrate or product absorption, this method allows for the visualization of oxygen consumption saturated in solution. This method has been used previously with LigAB, another extradiol dioxygenase in the protocatechuate dioxygenase superfamily that similarly relies on a Fe(II) in its active site to coordinate and cleave its substrates.

This manuscript also provides additional information about the enzyme DesB from *Sphingobium* sp. strain SYK-6. Following the work that defined the enzymatic function and structure of DesB<sup>10,19,39</sup>, it was determined herein that DesB is a competent catalyst of the dioxygenation of gallate, with  $k_{cat}$  of  $17.8 \pm 1.0$  s<sup>-1</sup> and  $K_m$  of  $45 \pm 13$   $\mu$ M, resulting in  $k_{cat}/K_m$  of  $3.98 \times 10^5$  M/s. These rates are comparable to those determined for other dioxygenase enzymes, including LigAB ( $k_{cat}$  of 51 s<sup>-1</sup> and  $k_{cat}/K_M$  of  $4.26 \times 10^6$  M<sup>-1</sup>s<sup>-1</sup>) and other dioxygenases which have  $k_{cat}/K_m$  values ranging from  $10^5$ - $10^8$  M<sup>-1</sup>s<sup>-1</sup> <sup>36,45-50</sup>.

The DesB active site was previously shown to be at the dimer interface, with residues from both monomers contributing to the coordination of substrate [residues originating from the monomer that binds the Fe(II) are indicated by their residue number, while residues from the other monomer are indicated by their residue number and a prime (*i.e.*, Glu377')]<sup>6</sup>. In the absence of structural information showing the binding interactions of 4NC with DesB, the structural similarities and differences between gallate and 4NC can provide insight into how DesB might be inhibited by 4NC. Gallate has three hydroxyl substituents at C3, C4, and C5, with its C3 and C4 hydroxyls being coordinated to the Fe(II) center, and the C5 hydroxyl being coordinated by Glu377' (**Figure 8**). The carboxylic acid group at C1 is coordinated by Tyr-391', Tyr-412', Thr-13, and Thr-267 in the DesB active site. 4NC, which proved to be a modest inhibitor of DesB, has two hydroxyls available to coordinate the Fe(II) center and one C1 nitro group that is isosteric to a carboxylate (while also having two oxygens for coordination by residues 391, 412, 13, and 267), but is much more electron-withdrawing than the carboxylic acid on gallate. Since 4NC displayed only 36.6% inhibition of the DesB dioxygenation of gallate when the inhibitor was present in 5-



fold excess over substrate, it is unsurprising that it was not a very potent inhibitor (with a  $K_i$  of  $2.3 \pm 0.3$  mM). This suggests that the C5 hydroxyl and C1 substituent play a significant role in promoting the enzyme-ligand complex. Since residues Glu377', Tyr-391', and Tyr-412' are all implicated in these interactions, this suggests that DesB active site contacts with adjacent monomers are important for the placement of a compound and structuring the active site.

#### ACKNOWLEDGMENTS:

We would like to thank Dr. Camille Keller of Wesleyan University for technical support. Special thanks to Professor Lindsay D. Eltis and Jenna K. Capyk from the University of British Columbia, as well as Christian Whitman from the University of Texas at Austin, for their advice regarding anaerobic protein purification methods and the use of an O<sub>2</sub>-sensitive electrode.

#### DISCLOSURES:

The authors have no competing financial interests or other conflicts of interest.

#### REFERENCES:

- 1 Awaya, J. D., Walton, C., Borthakur, D. The pydA–pydB fusion gene produces an active dioxygenase–hydrolase that degrades 3-hydroxy-4-pyridone, an intermediate of mimosine metabolism. *Applied Microbiology and Biotechnology*. **75** (3), 583-588 (2007).
- 2 Barry, K. P., Taylor, E. A. Characterizing the Promiscuity of LigAB, a Lignin Catabolite Degrading Extradiol Dioxygenase from *Sphingomonas paucimobilis* SYK-6. *Biochemistry*. **52** (38), 6724-6736 (2013).
- 3 Colabroy, K. L., Smith, I. R., Vlahos, A. H. S., Markham, A. J., Jakubik, M. E. Defining a kinetic mechanism for l-DOPA 2,3 dioxygenase, a single-domain type I extradiol dioxygenase from *Streptomyces lincolnensis*. *Biochimica et Biophysica Acta (BBA) - Proteins and Proteomics*. **1844** (3), 607-614 (2014).
- 4 Imsand, E. M., Njeri, C. W., Ellis, H. R. Addition of an external electron donor to *in vitro* assays of cysteine dioxygenase precludes the need for exogenous iron. *Archives of Biochemistry and Biophysics*. **521** (1), 10-17 (2012).
- 5 Tsai, C.-L., Tainer, J. A. in *Methods in Enzymology* Vol. 599 (ed Sheila S. David) 157-196 (Academic Press, 2018).
- 6 Kuchenreuther, J. M., *et al.* High-Yield Expression of Heterologous [FeFe] Hydrogenases in *Escherichia coli*. *Public Library of Science ONE*. **5** (11), e15491 (2010).
- 7 Dupuy, J., *et al.* Crystallization and preliminary X-ray diffraction data for the aconitase form of human iron-regulatory protein 1. *Acta Crystallographica Section F*. **61** (5), 482-485 (2005).
- 8 Fan, L., *et al.* XPD Helicase Structures and Activities: Insights into the Cancer and Aging Phenotypes from XPD Mutations. *Cell*. **133** (5), 789-800 (2008).
- 9 Vaillancourt, F. H., Bolin, J. T., Eltis, L. D. The ins and outs of ring-cleaving dioxygenases. *Critical Reviews in Biochemistry and Molecular Biology*. **41**, 241-267 (2006).
- 10 Sugimoto, K., *et al.* Molecular Mechanism of Strict Substrate Specificity of an Extradiol Dioxygenase, DesB, Derived from *Sphingobium* sp. SYK-6. *Public Library of Science ONE*. **9** (3), e92249 (2014).

690 11 Lewis-Ballester, A., *et al.* Structural insights into substrate and inhibitor binding sites in  
691 human indoleamine 2,3-dioxygenase 1. *Nature Communications*. **8**, (2017).

692 12 Lipscomb, J. D., Hoffman, B. M. Allosteric control of O-2 reactivity in Rieske oxygenases.  
693 *Structure*. **13** (5), 684-685 (2005).

694 13 Mccray, J. A., Brady, F. O. Allosteric Control of Transient Kinetics of Carbon Monoxide-L-  
695 Tryptoochan-2,3-Dioxygenase Complex-Formation. *Federation Proceedings*. **32** (3), 469-&  
696 (1973).

697 14 Pearson, J. T., Siu, S., Meininger, D. P., Wienkers, L. C., Rock, D. A. *In Vitro* Modulation of  
698 Cytochrome P450 Reductase Supported Indoleamine 2,3-Dioxygenase Activity by  
699 Allosteric Effectors Cytochrome b(5) and Methylene Blue. *Biochemistry*. **49** (12), 2647-  
700 2656 (2010).

701 15 Walsh, H. A., Daya, S. Inhibition of hepatic tryptophan-2,3-dioxygenase: Superior  
702 potency of melatonin over serotonin. *Journal of Pineal Research*. **23** (1), 20-23 (1997).

703 16 Barry, K. P., *et al.* Exploring allosteric activation of LigAB from *Sphingobium* sp strain  
704 SYK-6 through kinetics, mutagenesis and computational studies. *Archives of*  
705 *Biochemistry and Biophysics*. **567**, 35-45 (2015).

706 17 Reynolds, M. F., *et al.* 4-Nitrocatechol as a probe of a Mn(II)-dependent extradiol-  
707 cleaving catechol dioxygenase (MndD): comparison with relevant Fe(II) and Mn(II)  
708 model complexes. *Journal of Biological Inorganic Chemistry*. **8** (3), 263-272 (2003).

709 18 Tyson, C. A. 4-Nitrocatechol as a colorimetric probe for non-heme iron dioxygenases.  
710 *Journal of Biological Chemistry*. **250** (5), 1765-1770 (1975).

711 19 Kasai, D., Masai, E., Miyauchi, K., Katayama, Y., Fukuda, M. Characterization of the  
712 gallate dioxygenase gene: Three distinct ring cleavage dioxygenases are involved in  
713 syringate degradation by *Sphingomonas paucimobilis* SYK-6. *Journal of Bacteriology*. **187**  
714 (15), 5067-5074 (2005).

715 20 Billings, A. F., *et al.* Genome sequence and description of the anaerobic lignin-degrading  
716 bacterium *Tolomonas lignolytica* sp. nov. *Standards in Genomic Sciences*. **10** (1), 106  
717 (2015).

718 21 Brown, M. E., Chang, M. C. Y. Exploring bacterial lignin degradation. *Current Opinion in*  
719 *Chemical Biology*. **19**, 1-7 (2014).

720 22 Bugg, T. D. H., Ahmad, M., Hardiman, E. M., Rahmanpour, R. Pathways for degradation  
721 of lignin in bacteria and fungi. *Natural Product Reports*. **28** (12), 1883-1896 (2011).

722 23 Clarkson, S. M., *et al.* Construction and Optimization of a Heterologous Pathway for  
723 Protocatechuate Catabolism in *Escherichia coli* Enables Bioconversion of Model  
724 Aromatic Compounds. *Applied and Environmental Microbiology*. **83** (18), (2017).

725 24 de Gonzalo, G., Colpa, D. I., Habib, M. H. M., Fraaije, M. W. Bacterial enzymes involved  
726 in lignin degradation. *Journal of Biotechnology*. **236** 110-119 (2016).

727 25 Falade, A. O., Eyisi, O. A. L., Mabinya, L. V., Nwodo, U. U., Okoh, A. I. Peroxidase  
728 production and ligninolytic potentials of fresh water bacteria *Raoultella ornithinolytica*  
729 and *Ensifer adhaerens*. *Biotechnology Reports*. **16**, 12-17 (2017).

730 26 Gall, D. L., Ralph, J., Donohue, T. J., Noguera, D. R. A Group of Sequence-Related  
731 Sphingomonad Enzymes Catalyzes Cleavage of  $\beta$ -Aryl Ether Linkages in Lignin  $\beta$ -Guaiacyl  
732 and  $\beta$ -Syringyl Ether Dimers. *Environmental Science & Technology*. **48** (20), 12454-12463  
733 (2014).

734 27 Li, J., Yuan, H., Yang, J. Bacteria and lignin degradation. *Frontiers of Biology in China*. **4**  
735 (1), 29-38 (2009).

736 28 Masai, E., Katayama, Y., Nishikawa, S., Fukuda, M. Characterization of *Sphingomonas*  
737 *paucimobilis* SYK-6 genes involved in degradation of lignin-related compounds. *Journal*  
738 *of Industrial Microbiology & Biotechnology*. **23**, 364-373 (1999).

739 29 Morales, L. T., González-García, L. N., Orozco, M. C., Restrepo, S., Vives, M. J. The  
740 genomic study of an environmental isolate of *Scedosporium apiospermum* shows its  
741 metabolic potential to degrade hydrocarbons. *Standards in Genomic Sciences*. **12** (1), 71  
742 (2017).

743 30 Shettigar, M., *et al.* Isolation of the (+)-Pinoresinol-Mineralizing *Pseudomonas* sp. Strain  
744 SG-MS2 and Elucidation of Its Catabolic Pathway. *Applied and Environmental*  
745 *Microbiology*. **84** (4), (2018).

746 31 Shi, Y., *et al.* Characterization and genomic analysis of kraft lignin biodegradation by the  
747 beta-proteobacterium *Cupriavidus basilensis* B-8. *Biotechnology for Biofuels*. **6** (1), 1  
748 (2013).

749 32 Varman, A. M., *et al.* Decoding how a soil bacterium extracts building blocks and  
750 metabolic energy from ligninolysis provides road map for lignin valorization. *Proceedings*  
751 *of the National Academy of Sciences*. **113** (40), E5802-E5811 (2016).

752 33 Wu, W., *et al.* Lignin Valorization: Two Hybrid Biochemical Routes for the Conversion of  
753 Polymeric Lignin into Value-added Chemicals. *Scientific Reports*. **7** (1), 8420 (2017).

754 34 Koehntop, K. D., Emerson, J. P., Que, L. The 2-His-1-carboxylate facial triad: a versatile  
755 platform for dioxygen activation by mononuclear non-heme iron(II) enzymes. *Journal of*  
756 *Biological Inorganic Chemistry*. **10** (2), 87-93 (2005).

757 35 Lipscomb, J. D. Mechanism of extradiol aromatic ring-cleaving dioxygenases. *Current*  
758 *Opinion in Structural Biology*. **18** (6), 644-649 (2008).

759 36 Machonkin, T. E., Doerner, A. E. Substrate specificity of *Sphingobium chlorophenolicum*  
760 2,6-dichlorohydroquinone 1,2-dioxygenase. *Biochemistry*. **50**, 8899-8913 (2011).

761 37 Suzuki, T., Kawamichi, H., Imai, K. Amino Acid Sequence, Spectral, Oxygen-Binding, and  
762 Autoxidation Properties of Indoleamine Dioxygenase-Like Myoglobin from the  
763 Gastropod Mollusc *Turbo cornutus*. *Journal of Protein Chemistry*. **17** (8), 817-826 (1998).

764 38 Vaillancourt, F. H., Labbe, G., Drouin, N. M., Fortin, P. D., Eltis, L. D. The Mechanism-  
765 based Inactivation of 2,3-Dihydroxybiphenyl 1,2-Dioxygenase by Catecholic Substrates.  
766 *Journal of Biological Chemistry*. **277** (3), 2019-2027 (2002).

767 39 Sugimoto, K., *et al.* Crystallization and preliminary crystallographic analysis of gallate  
768 dioxygenase DesB from *Sphingobium* sp. SYK-6. *Acta Crystallographica Section F*. **65**  
769 (11), 1171-1174 (2009).

770 40 R., G. S. SDS-Polyacrylamide Gel Electrophoresis (SDS-PAGE). *Current Protocols in*  
771 *Essential Laboratory Techniques*. **6** (1), 7.3.1-7.3.28 (2012).

772 41 Xiang, D. F., *et al.* Function Discovery and Structural Characterization of a  
773 Methylphosphonate Esterase. *Biochemistry*. **54** (18), 2919-2930 (2015).

774 42 Vladimirova, A., *et al.* Substrate Distortion and the Catalytic Reaction Mechanism of 5-  
775 Carboxyvanillate Decarboxylase. *Journal of the American Chemical Society*. **138** (3), 826-  
776 836 (2016).

777 43 Korczynska, M., *et al.* Functional Annotation and Structural Characterization of a Novel  
 778 Lactonase Hydrolyzing d-Xylono-1,4-lactone-5-phosphate and l-Arabino-1,4-lactone-5-  
 779 phosphate. *Biochemistry*. **53** (28), 4727-4738 (2014).  
 780 44 Netto, L. E. S., Stadtman, E. R. The Iron-Catalyzed Oxidation of Dithiothreitol Is a Biphasic  
 781 Process: Hydrogen Peroxide Is Involved in the Initiation of a Free Radical Chain of  
 782 Reactions. *Archives of Biochemistry and Biophysics*. **333** (1), 233-242 (1996).  
 783 45 Arciero, D. M., Orville, A. M., Lipscomb, J. D. Protocatechuate 4,5-Dioxygenase from  
 784 *Pseudomonas testosteroni*. *Methods in Enzymology*. **188** 89-95, (1990).  
 785 46 Harpel, M. R., Lipscomb, J. D. Gentisate 1,2-dioxygenase from pseudomonas.  
 786 Purification, characterization, and comparison of the enzymes from *Pseudomonas*  
 787 *testosteroni* and *Pseudomonas acidovorans*. *Journal of Biological Chemistry*. **265** (11),  
 788 6301-6311 (1990).  
 789 47 Ishida, T., Tanaka, H., Horiike, K. Quantitative structure-activity relationship for the  
 790 cleavage of C3/C4-substituted catechols by a prototypal extradiol catechol dioxygenase  
 791 with broad substrate specificity. *Journal of Biochemistry*. **135** (6), 721-730 (2004).  
 792 48 Vaillancourt, F. H., Han, S., Fortin, P. D., Bolin, J. T., Eltis, L. D. Molecular Basis for the  
 793 Stabilization and Inhibition of 2,3-Dihydroxybiphenyl 1,2-Dioxygenase by t-Butanol.  
 794 *Journal of Biological Chemistry*. **273** (52), 34887-34895 (1998).  
 795 49 Veldhuizen, E. J. A., *et al.* Steady-state kinetics and inhibition of anaerobically purified  
 796 human homogentisate 1,2-dioxygenase. *Biochemical Journal*. **386**, 305-314 (2005).  
 797 50 Wolgel, S. A., *et al.* Purification and Characterization of Protocatechuate 2,3-  
 798 Dioxygenase from *Bacillus macerans*: a New Extradiol Catecholic Dioxygenase. *Journal of*  
 799 *Bacteriology*. **175** (14), 4414-4426 (1993).  
 800

Figure 1

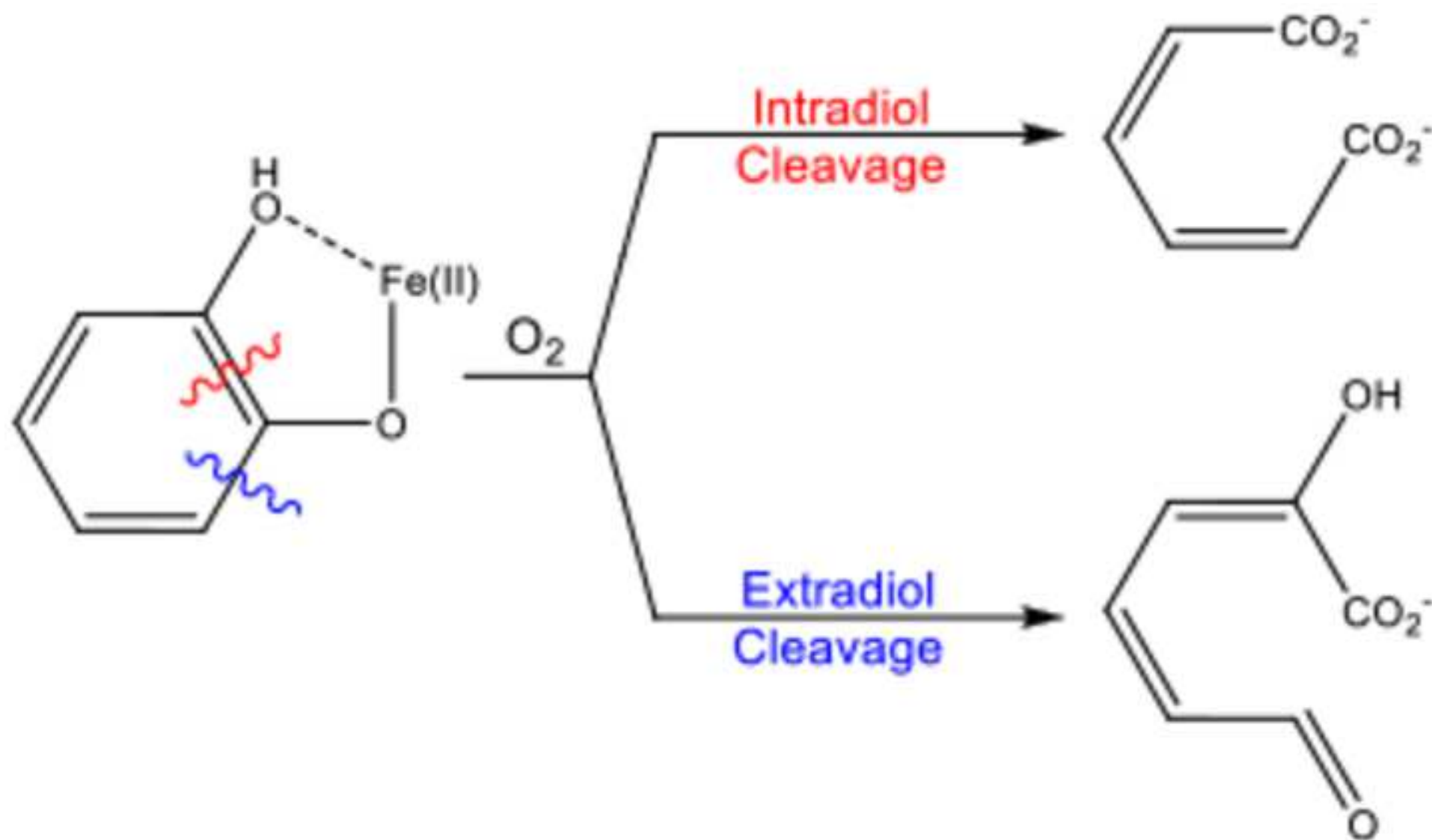


Figure 2

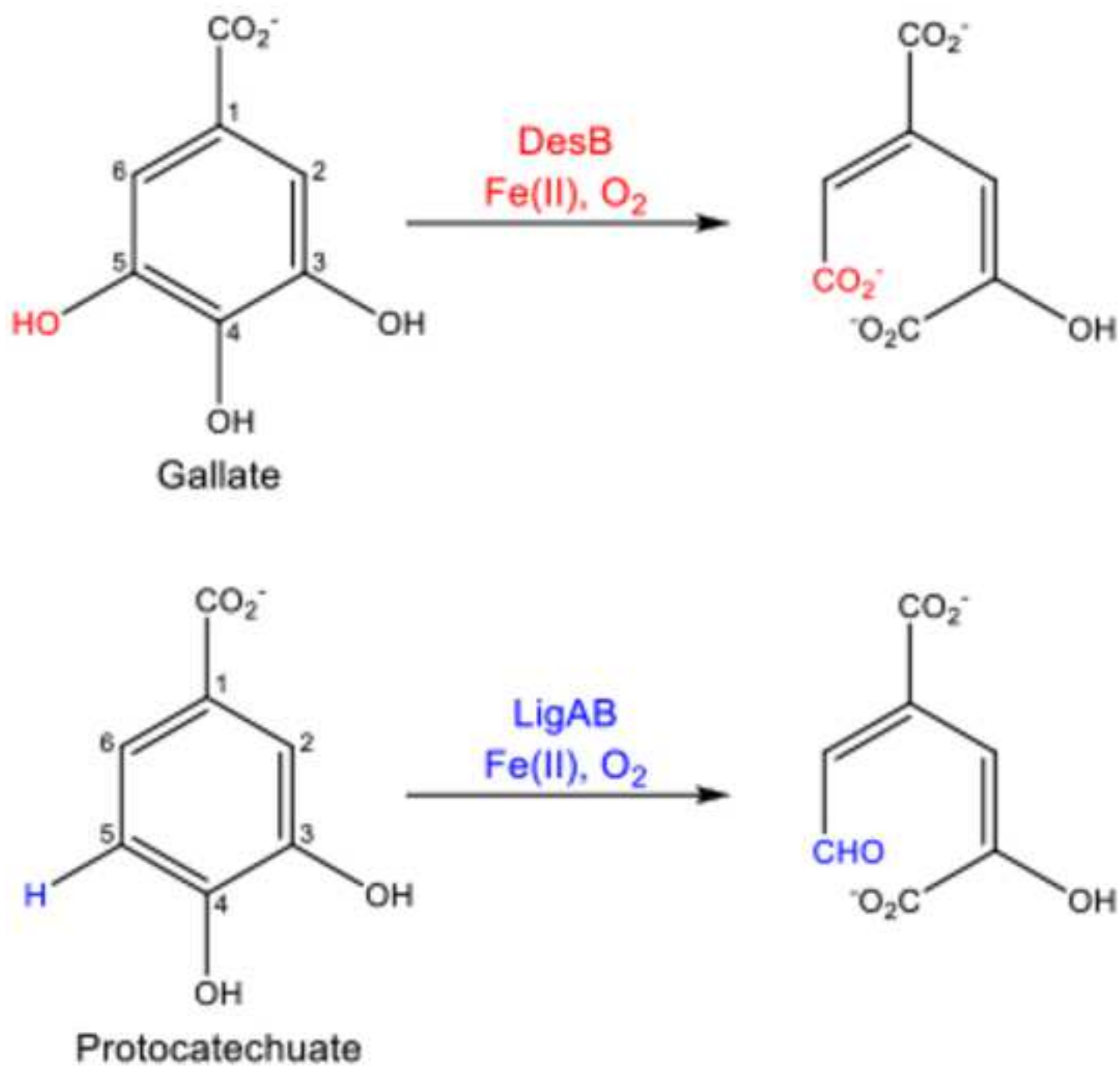


Figure 3

[Click here to download Figure figure 3.tif](#)

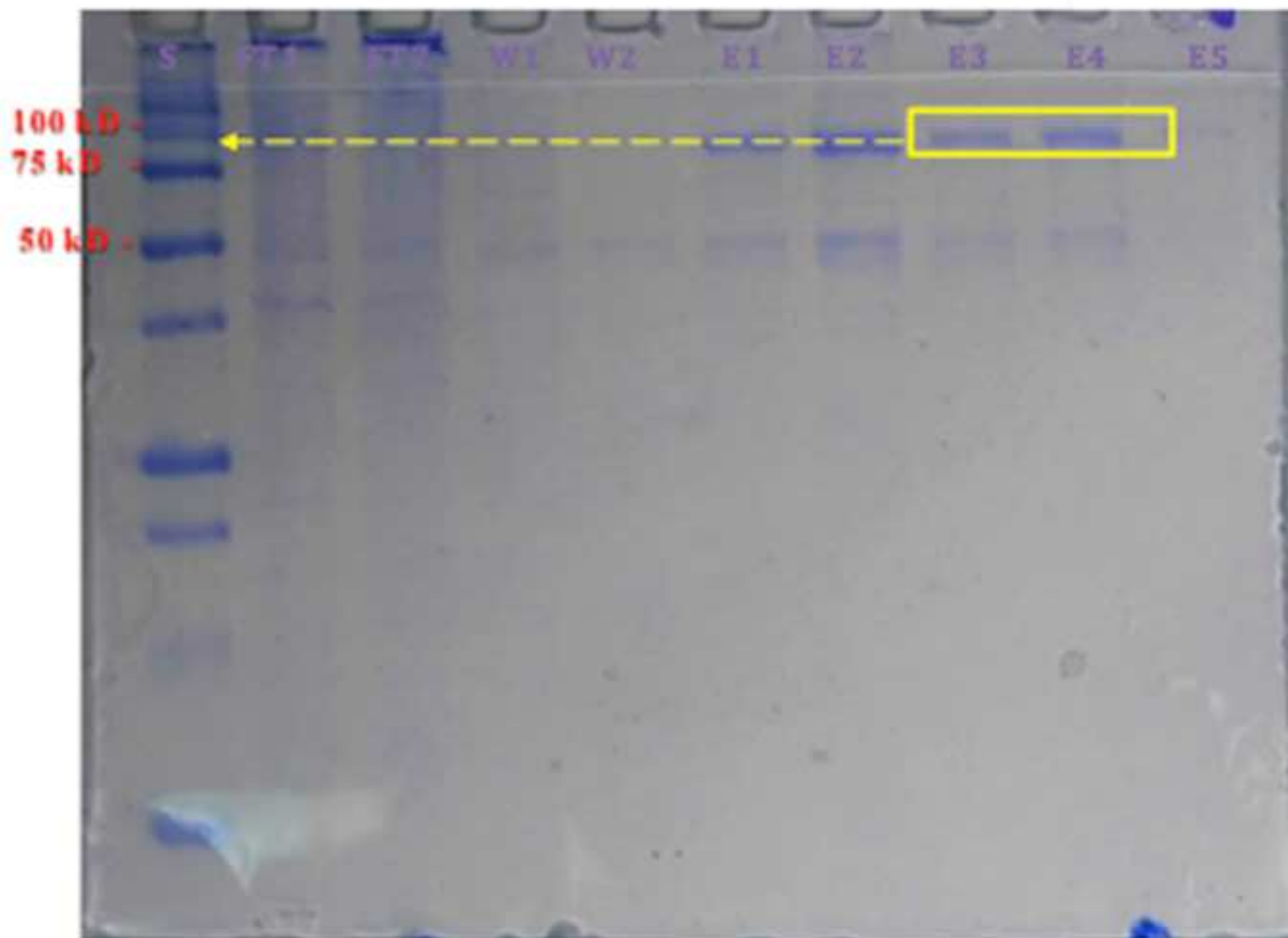


Figure 4

[Click here to download Figure figure 4.tif](#)

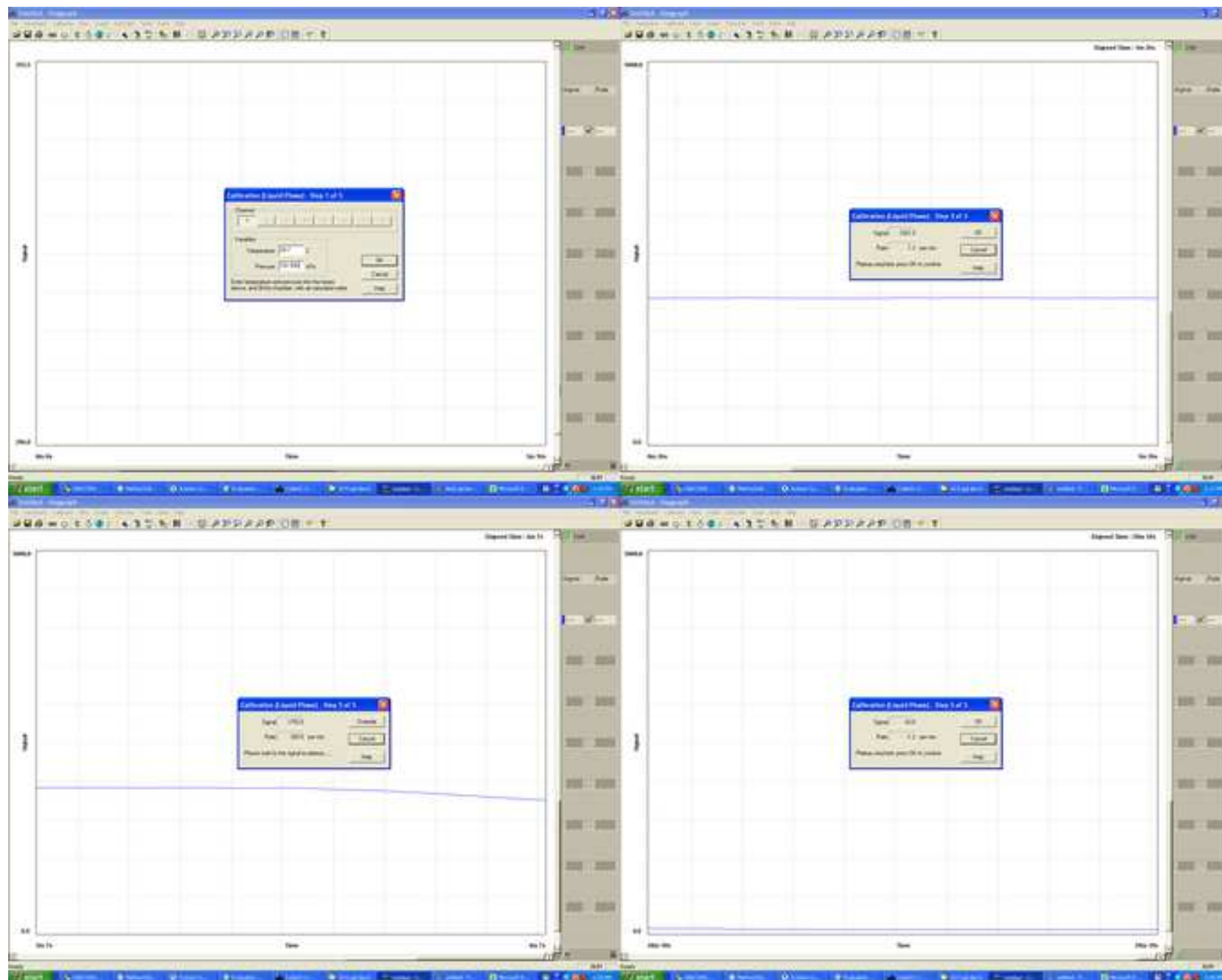




Figure 5

[Click here to download Figure figure 5.tif](#)

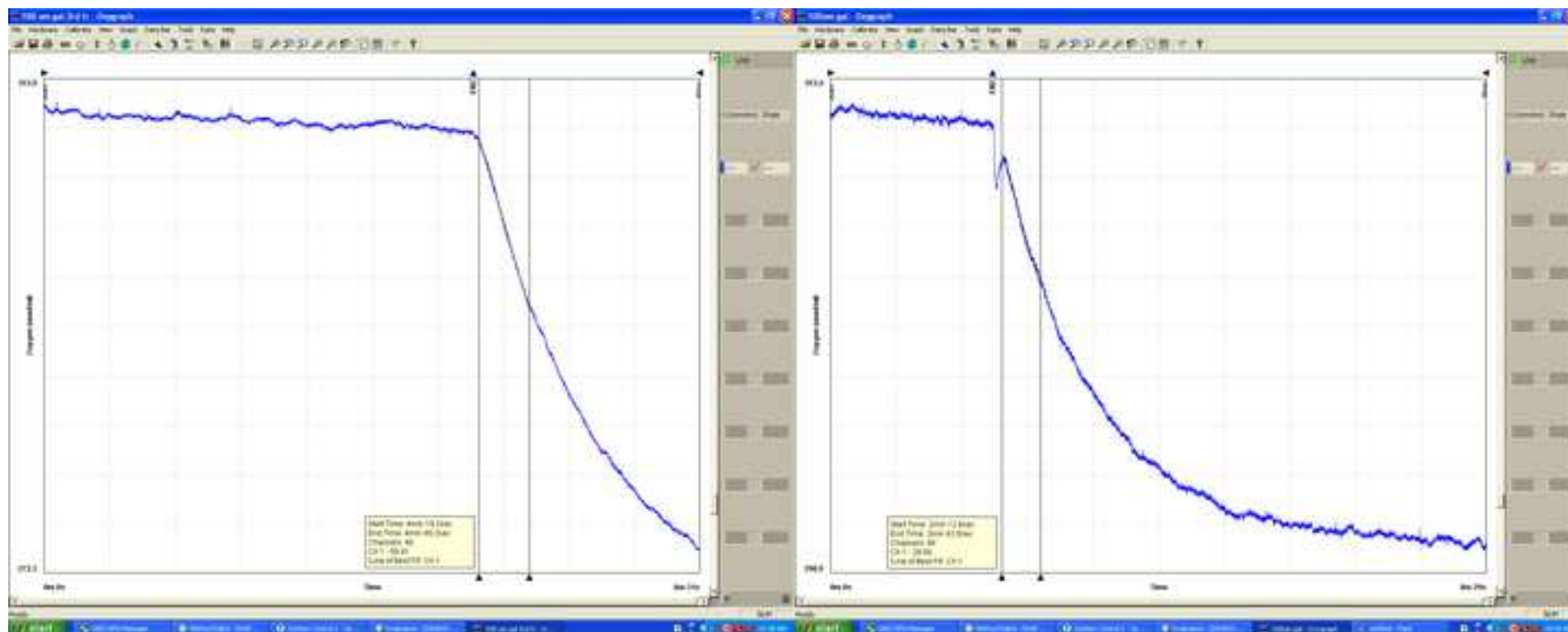


Figure 6

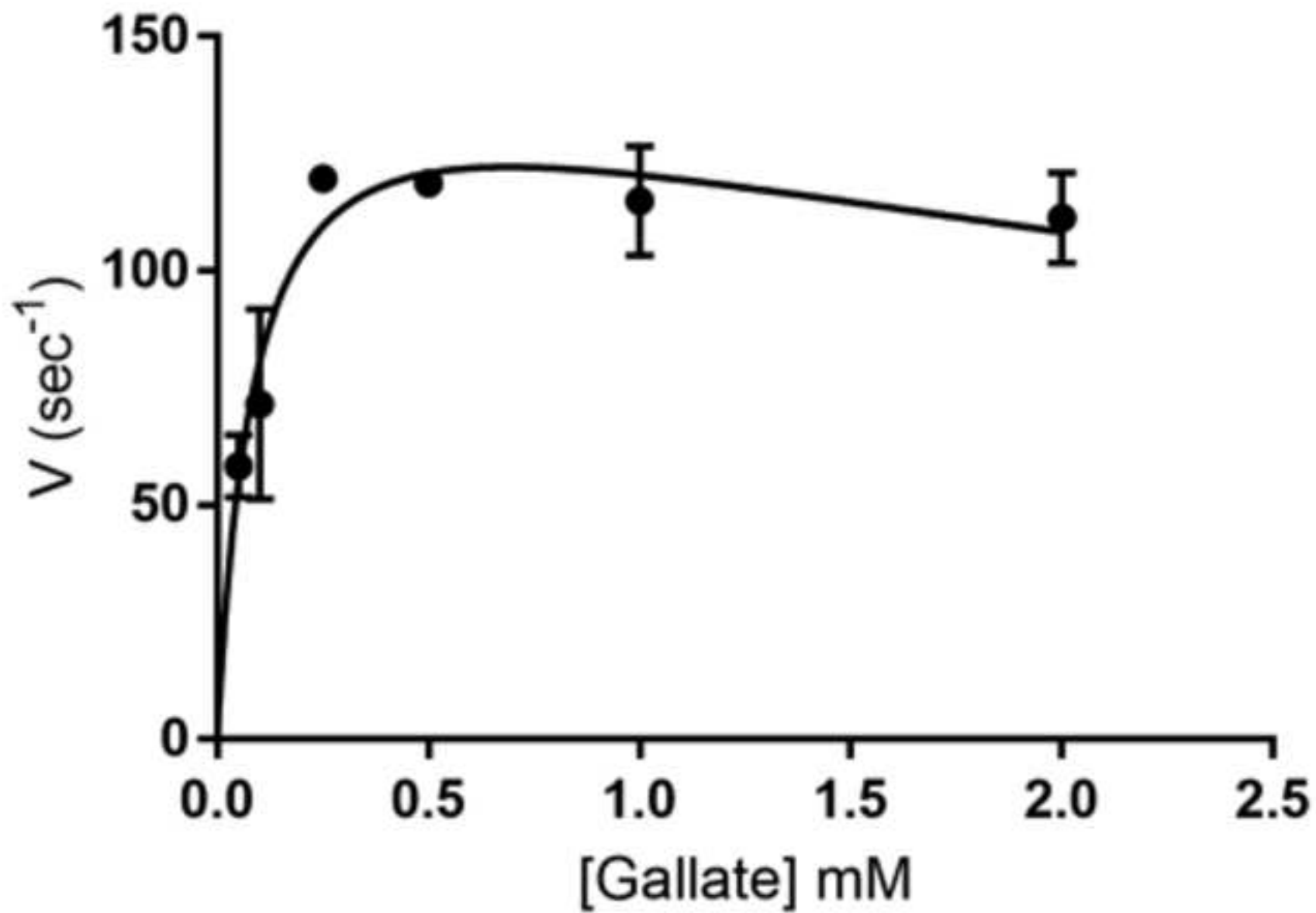
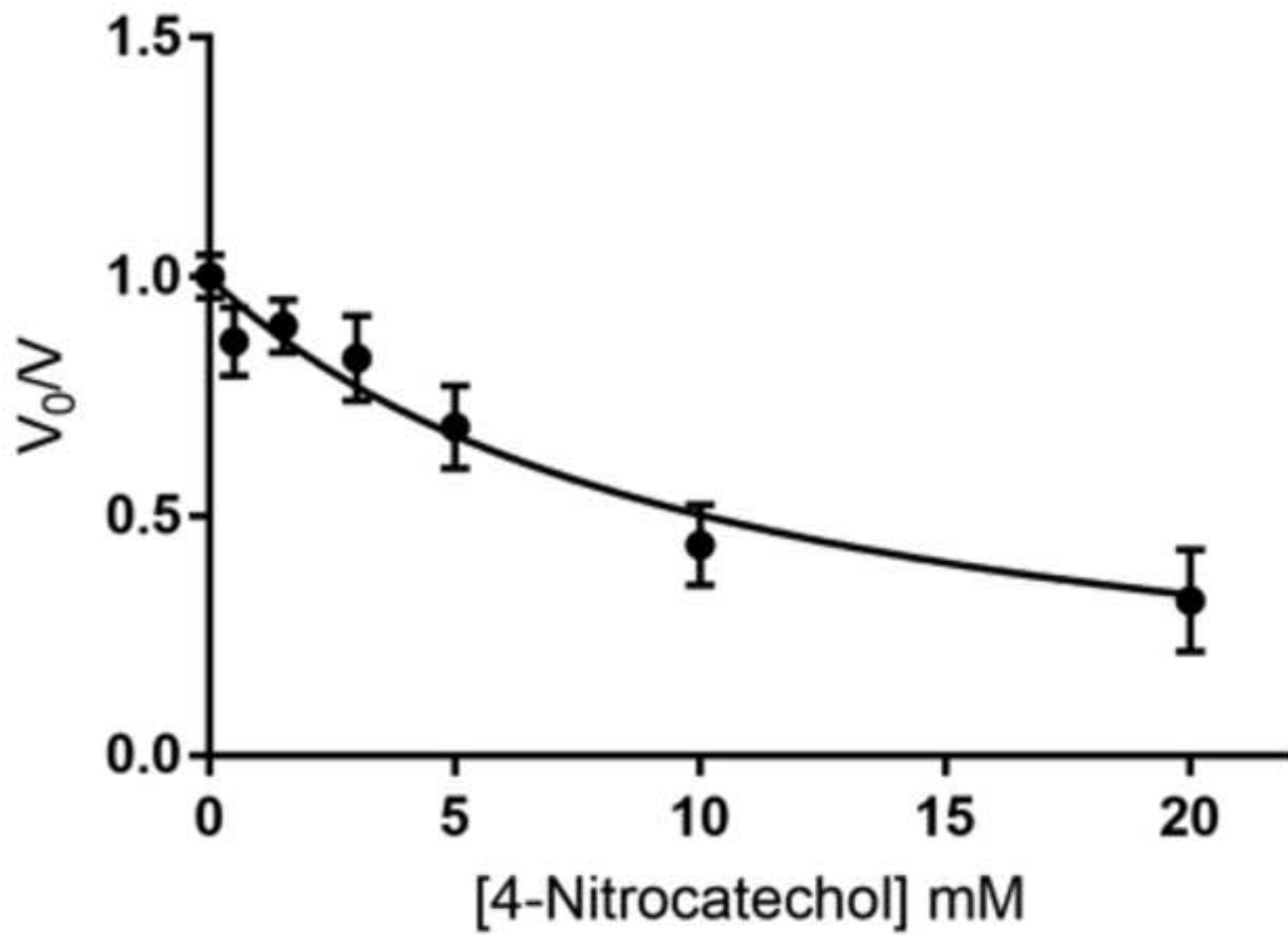
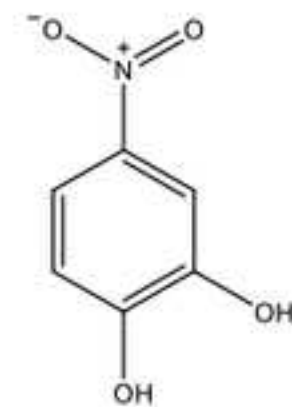
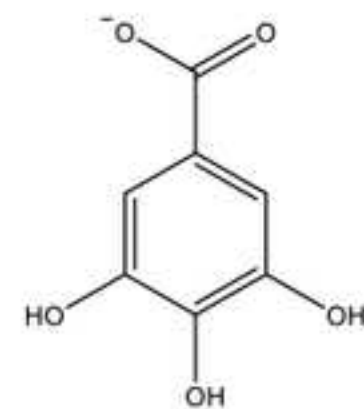
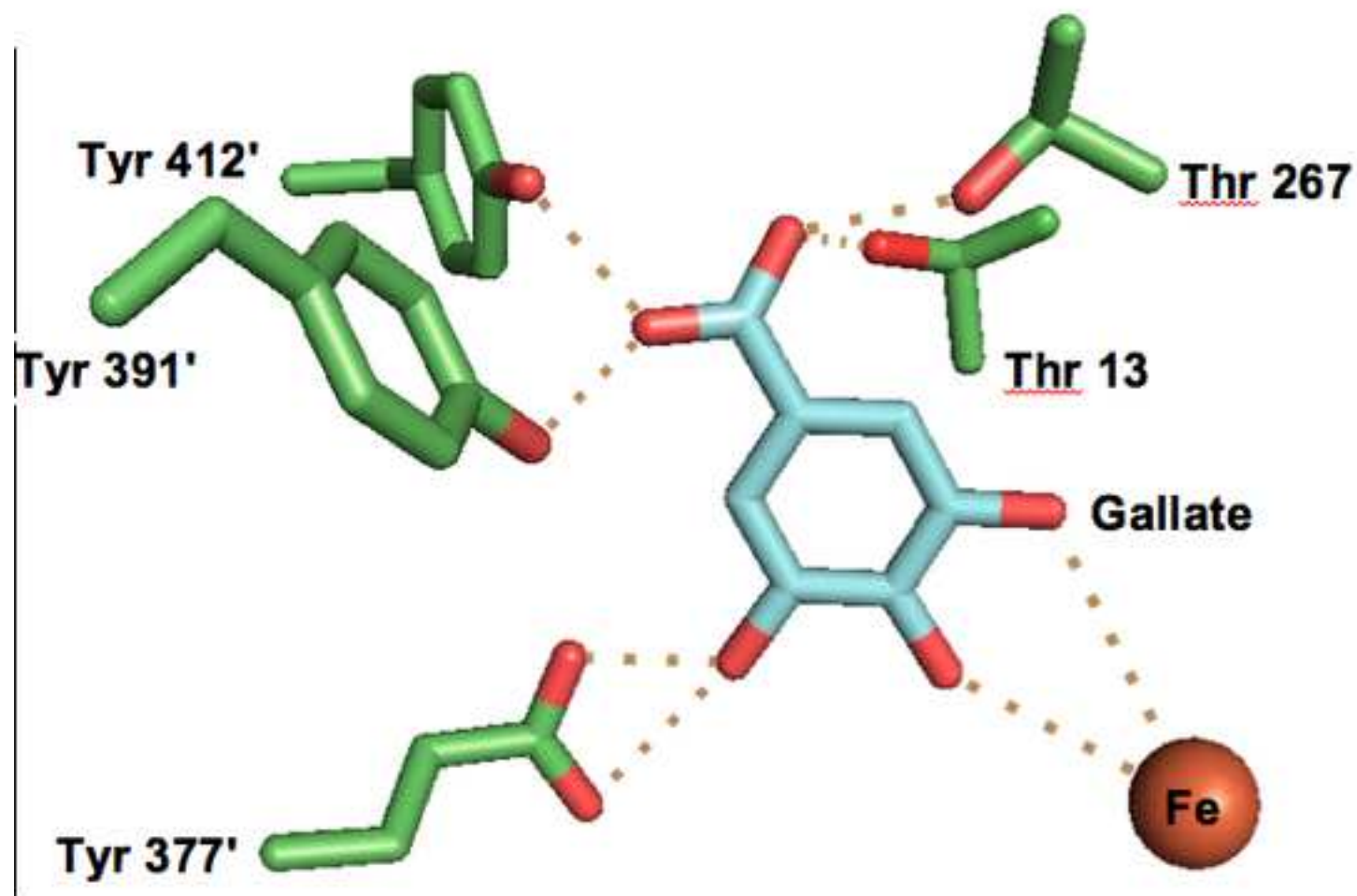


Figure 7





Media Type	Components
Super Optimal broth with Catabolite repression (SOC media)	2% (w/v) tryptone 0.5% (w/v) yeast extract 10 mM NaCl 2.5 mM KCl 10 mM MgCl <sub>2</sub> (added after sterilization) 20 mM glucose (added after sterilization)
Miller's Lysogeny Broth with Ampicillin (LB-Amp media)	0.5% (w/v) yeast extract 1% (w/v) tryptone 1% (w/v) NaCl 0.1 mg/mL Ampicillin (added after sterilization)

Working Solution	Component final concentrations
Laemelli Buffer, pH 6.8	100 mM tris(hydroxymethyl)aminomethane (Tris)
	200 mM dithiothreitol (DTT),
	4% sodium dodecyl sulfate (SDS)
	0.05% bromophenol blue
	20% glycerol
Running Buffer pH 8.3	25 mM Tris
	192 mM glycine
	0.1% SDS

Working Solution	Component final concentrations
Amylose Column Buffer, pH 7.4	20 mM tris(hydroxymethyl)aminomethane (Tris)
	1 mM ethylenediaminetetraacetic acid (EDTA)
	200 mM NaCl
Elution Buffer pH 7.4	20 mM Tris
	1 mM EDTA
	200 mM NaCl
	10 mM maltose
Exchange Buffer, pH 7.5	50 mM Tris
	10% glycerol
Desalt Buffer, pH 7.5	50 mM Tris
	10% t-butanol

Name of Material/ Equipment	Company	Catalog Number	Comments/Description
Isopropyl β-D-1-thiogalactopyranodise	Gold Bio Technologies	I2481C50	
Coomassie Brilliant Blue R-250	Bio-Rad	161-0400	
Ammonium persulfate	Bio-Rad	161-0700	
30% Acrylamide	Bio-Rad	161-0158	
N,N'tetramethyl-ethylenediamine	Bio-Rad	161-0801	
Amylose Resin High Flow	New England Biolabs	E8022S	
BL21 (DE3) competent Escherichia coli cells	New England Biolabs	C2527I	
L-cysteine	Sigma Aldrich	C7352	
gallic acid	Sigma Aldrich	G7384	
4-nitrocatechol	Sigma Aldrich	N15553	
Ferrous ammonium sulfate	Mallinckrodt		5064
Sodium dithionite	Alfa Aesar	33381-22	
wheaton serum bottles	Fisher Scientific	06-406G	
25 mm Acrodisc PF Syringe Filter with Supor Membrane	Pall Corporation		4187
400 mL Amicon Stirred Cell Concentrator	EMD Millipore	UFSC40001	
76 mm Millipore Ultracel 10 kDa cutoff reconstituted cellulose membrane filter	EMD Millipore	PLGC07610	



DL-dithiothreitol	Gold Bio	
Sephadex G-25 coarse desalting gal column	Technologies DTT50 GE Healthcare 17-0033-01 Fisher	
2 mL Crimp-Top Vials	Scientific 03-391-38	
Oxygraph Plus Electrode Control Unit	Hansatech Instruments OXYG1 Plus Hansatech	
Oxygen Eletrode Chamber	Instruments DW1 Hansatech	
Electrode Disc	Instruments S1	
PTFE (0.0125 mmX25mm) 30m reel	Hansatech Instruments S4 Hansatech	
Electrode cleaning Kit	Instruments S16	
Spacer paper		available at any gas station
He-series Dri-Lab glove box	Zig Zag Vacuum/Atm ospheres Company Vacuum/Atm ospheres	
HE-493 Dri-Train	Company	
Double-Ended Micro-Tapered	Fisher	
Stainless Steel Spatula	Scientific 21-401-10	
DWK Life Sciences Kimble Kontes	Fisher	
Flex Column Economy Column	Scientific k420400-1530	
10 µL, Model 701 N SYR, Cemented NDL 26s ga, 2 in, point stlye 2 syringe	Hamilton	80300

DWK Life Sciences Kimble Kontes	Fisher	
Flex Column Economy Column	Scientific	K420401-1505
Emulsiflex-C5 high-pressure hom	Avestin	
	Thermo	
B-PER Complete Bacterial Protein	Fisher	
Extraction Reagent	Scientific	89821
Lysozyme from chicken egg white	Sigma Aldrich	12650-88-3
	Thermo	
	Fisher	
Sodium dodecyl sulfate	Scientific	151-21-3
ampicillin	Sigma Aldrich	7177-48-2
	Fisher	
Tryptone	Scientific	BP-1421-500
	Fisher	
Yeast extract	Scientific	BP1422-2
	Fisher	
Sodium Chloride	Scientific	S271-10
	Fisher	
Potassium Chloride	Scientific	P217-3
	Fisher	
Magnesium Chloride	Scientific	M33-500
	Fisher	
Dextrose	Scientific	D16-3
	Fisher	
Sodium Hydroxide	Scientific	S318-1
	Fisher	
Tris hydrochloride	Scientific	BP153-500
	Fisher	
Maltose	Scientific	BP684-500

Glycine

Fisher  
Scientific

G46-500



1 Alewife Center #200  
Cambridge, MA 02140  
tel. 617.945.9051  
www.jove.com

## ARTICLE AND VIDEO LICENSE AGREEMENT

Anaerobic protein purification and kinetic analysis via oxygen electrode for studying dioxygenase activity and inhibition of DesB

Title of Article:

Author(s):

Stacy N. Uchendu; Angelika Rafalowski; Erin F. Cohn; Luke W. Davoren; Erika A. Taylor

Item 1 (check one box): The Author elects to have the Materials be made available (as described at <http://www.jove.com/author>) via: ☒ Standard Access ☐ Open Access

Item 2 (check one box):

- ☒ The Author is NOT a United States government employee.
- ☐ The Author is a United States government employee and the Materials were prepared in the course of his or her duties as a United States government employee.
- ☐ The Author is a United States government employee but the Materials were NOT prepared in the course of his or her duties as a United States government employee.

### ARTICLE AND VIDEO LICENSE AGREEMENT

1. **Defined Terms.** As used in this Article and Video License Agreement, the following terms shall have the following meanings: “**Agreement**” means this Article and Video License Agreement; “**Article**” means the article specified on the last page of this Agreement, including any associated materials such as texts, figures, tables, artwork, abstracts, or summaries contained therein; “**Author**” means the author who is a signatory to this Agreement; “**Collective Work**” means a work, such as a periodical issue, anthology or encyclopedia, in which the Materials in their entirety in unmodified form, along with a number of other contributions, constituting separate and independent works in themselves, are assembled into a collective whole; “**CRC License**” means the Creative Commons Attribution-Non Commercial-No Derivs 3.0 Unported Agreement, the terms and conditions of which can be found at: <http://creativecommons.org/licenses/by-nc-nd/3.0/legalcode>; “**Derivative Work**” means a work based upon the Materials or upon the Materials and other pre-existing works, such as a translation, musical arrangement, dramatization, fictionalization, motion picture version, sound recording, art reproduction, abridgment, condensation, or any other form in which the Materials may be recast, transformed, or adapted; “**Institution**” means the institution, listed on the last page of this Agreement, by which the Author was employed at the time of the creation of the Materials; “**JoVE**” means MyJoVE Corporation, a Massachusetts corporation and the publisher of *The Journal of Visualized Experiments*; “**Materials**” means the Article and / or the Video; “**Parties**” means the Author and JoVE; “**Video**” means any video(s) made by the Author, alone or in conjunction with any other parties, or by JoVE or its affiliates or agents, individually or in collaboration with the Author or any other parties, incorporating all or any portion of the Article, and in which the Author may or may not appear.

2. **Background.** The Author, who is the author of the Article, in order to ensure the dissemination and protection of the Article, desires to have the JoVE publish the Article and create and transmit videos based on the Article. In furtherance of such goals, the Parties desire to memorialize in this Agreement the respective rights of each Party in and to the Article and the Video.

3. **Grant of Rights in Article.** In consideration of JoVE agreeing to publish the Article, the Author hereby grants to JoVE, subject to **Sections 4 and 7** below, the exclusive, royalty-free, perpetual (for the full term of copyright in the Article, including any extensions thereto) license (a) to publish, reproduce, distribute, display and store the Article in all forms, formats and media whether now known or hereafter developed (including without limitation in print, digital and electronic form) throughout the world, (b) to translate the Article into other languages, create adaptations, summaries or extracts of the Article or other Derivative Works (including, without limitation, the Video) or Collective Works based on all or any portion of the Article and exercise all of the rights set forth in (a) above in such translations, adaptations, summaries, extracts, Derivative Works or Collective Works and (c) to license others to do any or all of the above. The foregoing rights may be exercised in all media and formats, whether now known or hereafter devised, and include the right to make such modifications as are technically necessary to exercise the rights in other media and formats. If the “Open Access” box has been checked in **Item 1** above, JoVE and the Author hereby grant to the public all such rights in the Article as provided in, but subject to all limitations and requirements set forth in, the CRC License.

## ARTICLE AND VIDEO LICENSE AGREEMENT

4. Retention of Rights in Article. Notwithstanding the exclusive license granted to JoVE in **Section 3** above, the Author shall, with respect to the Article, retain the non-exclusive right to use all or part of the Article for the non-commercial purpose of giving lectures, presentations or teaching classes, and to post a copy of the Article on the Institution's website or the Author's personal website, in each case provided that a link to the Article on the JoVE website is provided and notice of JoVE's copyright in the Article is included. All non-copyright intellectual property rights in and to the Article, such as patent rights, shall remain with the Author.

5. Grant of Rights in Video – Standard Access. This **Section 5** applies if the "Standard Access" box has been checked in **Item 1** above or if no box has been checked in **Item 1** above. In consideration of JoVE agreeing to produce, display or otherwise assist with the Video, the Author hereby acknowledges and agrees that, Subject to **Section 7** below, JoVE is and shall be the sole and exclusive owner of all rights of any nature, including, without limitation, all copyrights, in and to the Video. To the extent that, by law, the Author is deemed, now or at any time in the future, to have any rights of any nature in or to the Video, the Author hereby disclaims all such rights and transfers all such rights to JoVE.

6. Grant of Rights in Video – Open Access. This **Section 6** applies only if the "Open Access" box has been checked in **Item 1** above. In consideration of JoVE agreeing to produce, display or otherwise assist with the Video, the Author hereby grants to JoVE, subject to **Section 7** below, the exclusive, royalty-free, perpetual (for the full term of copyright in the Article, including any extensions thereto) license (a) to publish, reproduce, distribute, display and store the Video in all forms, formats and media whether now known or hereafter developed (including without limitation in print, digital and electronic form) throughout the world, (b) to translate the Video into other languages, create adaptations, summaries or extracts of the Video or other Derivative Works or Collective Works based on all or any portion of the Video and exercise all of the rights set forth in (a) above in such translations, adaptations, summaries, extracts, Derivative Works or Collective Works and (c) to license others to do any or all of the above. The foregoing rights may be exercised in all media and formats, whether now known or hereafter devised, and include the right to make such modifications as are technically necessary to exercise the rights in other media and formats. For any Video to which this Section 6 is applicable, JoVE and the Author hereby grant to the public all such rights in the Video as provided in, but subject to all limitations and requirements set forth in, the CRC License.

7. Government Employees. If the Author is a United States government employee and the Article was prepared in the course of his or her duties as a United States government employee, as indicated in **Item 2** above, and any of the licenses or grants granted by the Author hereunder exceed the scope of the 17 U.S.C. 403, then the rights granted hereunder shall be limited to the maximum rights permitted under such

statute. In such case, all provisions contained herein that are not in conflict with such statute shall remain in full force and effect, and all provisions contained herein that do so conflict shall be deemed to be amended so as to provide to JoVE the maximum rights permissible within such statute.

8. Likeness, Privacy, Personality. The Author hereby grants JoVE the right to use the Author's name, voice, likeness, picture, photograph, image, biography and performance in any way, commercial or otherwise, in connection with the Materials and the sale, promotion and distribution thereof. The Author hereby waives any and all rights he or she may have, relating to his or her appearance in the Video or otherwise relating to the Materials, under all applicable privacy, likeness, personality or similar laws.

9. Author Warranties. The Author represents and warrants that the Article is original, that it has not been published, that the copyright interest is owned by the Author (or, if more than one author is listed at the beginning of this Agreement, by such authors collectively) and has not been assigned, licensed, or otherwise transferred to any other party. The Author represents and warrants that the author(s) listed at the top of this Agreement are the only authors of the Materials. If more than one author is listed at the top of this Agreement and if any such author has not entered into a separate Article and Video License Agreement with JoVE relating to the Materials, the Author represents and warrants that the Author has been authorized by each of the other such authors to execute this Agreement on his or her behalf and to bind him or her with respect to the terms of this Agreement as if each of them had been a party hereto as an Author. The Author warrants that the use, reproduction, distribution, public or private performance or display, and/or modification of all or any portion of the Materials does not and will not violate, infringe and/or misappropriate the patent, trademark, intellectual property or other rights of any third party. The Author represents and warrants that it has and will continue to comply with all government, institutional and other regulations, including, without limitation all institutional, laboratory, hospital, ethical, human and animal treatment, privacy, and all other rules, regulations, laws, procedures or guidelines, applicable to the Materials, and that all research involving human and animal subjects has been approved by the Author's relevant institutional review board.

10. JoVE Discretion. If the Author requests the assistance of JoVE in producing the Video in the Author's facility, the Author shall ensure that the presence of JoVE employees, agents or independent contractors is in accordance with the relevant regulations of the Author's institution. If more than one author is listed at the beginning of this Agreement, JoVE may, in its sole discretion, elect not take any action with respect to the Article until such time as it has received complete, executed Article and Video License Agreements from each such author. JoVE reserves the right, in its absolute and sole discretion and without giving any reason therefore, to accept or decline any work submitted to JoVE. JoVE and its employees, agents and independent contractors shall have



## ARTICLE AND VIDEO LICENSE AGREEMENT

full, unfettered access to the facilities of the Author or of the Author's institution as necessary to make the Video, whether actually published or not. JoVE has sole discretion as to the method of making and publishing the Materials, including, without limitation, to all decisions regarding editing, lighting, filming, timing of publication, if any, length, quality, content and the like.

11. **Indemnification.** The Author agrees to indemnify JoVE and/or its successors and assigns from and against any and all claims, costs, and expenses, including attorney's fees, arising out of any breach of any warranty or other representations contained herein. The Author further agrees to indemnify and hold harmless JoVE from and against any and all claims, costs, and expenses, including attorney's fees, resulting from the breach by the Author of any representation or warranty contained herein or from allegations or instances of violation of intellectual property rights, damage to the Author's or the Author's institution's facilities, fraud, libel, defamation, research, equipment, experiments, property damage, personal injury, violations of institutional, laboratory, hospital, ethical, human and animal treatment, privacy or other rules, regulations, laws, procedures or guidelines, liabilities and other losses or damages related in any way to the submission of work to JoVE, making of videos by JoVE, or publication in JoVE or elsewhere by JoVE. The Author shall be responsible for, and shall hold JoVE harmless from, damages caused by lack of sterilization, lack of cleanliness or by contamination due to the making of a video by JoVE its employees, agents or independent contractors. All sterilization, cleanliness or decontamination procedures shall be solely the responsibility of the Author and shall be undertaken at the Author's

expense. All indemnifications provided herein shall include JoVE's attorney's fees and costs related to said losses or damages. Such indemnification and holding harmless shall include such losses or damages incurred by, or in connection with, acts or omissions of JoVE, its employees, agents or independent contractors.

12. **Fees.** To cover the cost incurred for publication, JoVE must receive payment before production and publication the Materials. Payment is due in 21 days of invoice. Should the Materials not be published due to an editorial or production decision, these funds will be returned to the Author. Withdrawal by the Author of any submitted Materials after final peer review approval will result in a US\$1,200 fee to cover pre-production expenses incurred by JoVE. If payment is not received by the completion of filming, production and publication of the Materials will be suspended until payment is received.

13. **Transfer, Governing Law.** This Agreement may be assigned by JoVE and shall inure to the benefits of any of JoVE's successors and assignees. This Agreement shall be governed and construed by the internal laws of the Commonwealth of Massachusetts without giving effect to any conflict of law provision thereunder. This Agreement may be executed in counterparts, each of which shall be deemed an original, but all of which together shall be deemed to me one and the same agreement. A signed copy of this Agreement delivered by facsimile, e-mail or other means of electronic transmission shall be deemed to have the same legal effect as delivery of an original signed copy of this Agreement.

A signed copy of this document must be sent with all new submissions. Only one Agreement required per submission.

### CORRESPONDING AUTHOR:

Name:

Department:

Institution:

Article Title:

Signature:  Date:

Please submit a signed and dated copy of this license by one of the following three methods:

- 1) Upload a scanned copy of the document as a pdf on the JoVE submission site;
- 2) Fax the document to +1.866.381.2236;
- 3) Mail the document to JoVE / Attn: JoVE Editorial / 1 Alewife Center #200 / Cambridge, MA 02139

For questions, please email [submissions@jove.com](mailto:submissions@jove.com) or call +1.617.945.9051

# W E S L E Y A N

## U N I V E R S I T Y

---

Erika A. Taylor, Ph.D.  
Associate Professor  
Department of Chemistry  
Middletown, CT 06459  
(860) 685-2739; FAX (860) 685-2211  
[eataylor@wesleyan.edu](mailto:eataylor@wesleyan.edu)

June 5, 2018

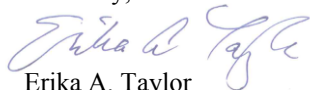
Vineeta Bajaj, Ph.D.  
Review Editor  
JoVE  
1 Alewife Center, Suite 200  
Cambridge, MA 02140  
Office: 617-674-1888

Dear Dr. Bajaj,

We are exceedingly appreciative of the additional, helpful comments from you/editorial staff and respectfully resubmit our paper entitled “Anaerobic protein purification and kinetic analysis via oxygen electrode for studying dioxygenase activity and inhibition of DesB”. The revised document has been further re-written, ensuring to comply with the formatting comments provided in the last draft, including making the methods all in the imperative, highlighting only 2.75 pages for filming, moving the figures and tables to separate documents, changing the formatting of the references and more. Point by point response to the comments we received on May 24<sup>th</sup> are provided in the body of the text and are listed below (in blue).

The paper has been seen and approved by all authors and is submitted exclusively to *JoVE*. We look forward to the results of your review.

Sincerely,



Erika A. Taylor

## Editorial comments:

1. The editor has formatted the manuscript in the journal's style. Please retain the same.

[The style is maintained in the editing.](#)

2. Please address all the specific comments marked in the manuscript.

[A reply to all comments is provided in the text.](#)

3. Please ensure that all text in the protocol section is written in the imperative tense as if telling someone how to do the technique (e.g., "Do this," "Ensure that," etc.). The actions should be described in the imperative tense in complete sentences wherever possible. Avoid usage of phrases such as "could be," "should be," and "would be" throughout the Protocol. Any text that cannot be written in the imperative tense may be added as a "Note." However, notes should be concise and used sparingly. Please include all safety procedures and use of hoods, etc. To this end, Please refer section 1 of the protocol and revise the remaining section accordingly.

[The protocol section is in the imperative tense.](#)

4. Please remember to add every detail on how to perform that step.

[Where appropriate additional details have been added to the protocol.](#)

5. Extraneous details, optional steps, or recommendations should be added as Notes.

[Numerous recommendations have been moved to "Notes".](#)

6. The Protocol should contain only action items that direct the reader to do something. Each individual action step should only contain 2-3 actions per step.

[Protocol steps were separated out to contain only 2-3 actions per step.](#)

7. There is a 10-page limit for the Protocol, but there is a 2.75-page limit for filmable content. This includes both headings and spacings.

[Only 2.75 pages of content are now highlighted.](#)

8. Please ensure that the highlighted steps (yellow highlighting) is no more than 2.75 pages including heading and spacings. This will be used for filming purpose. Please ensure that the highlighted steps form a cohesive narrative with a logical flow from one highlighted step to the next.

[Only 2.75 pages of content are now highlighted.](#)

9. For the representative result section, please describe the results in paragraph style in the context of the technique you have described, e.g., how do these results show the technique, suggestions about how to analyze the outcome, etc. The paragraph text should refer to all of the figures. Data from both successful and sub-optimal experiments can be included.

[The representative results are in paragraph style and refer to all figures.](#)

10. Please do not include any figures in the representative result section. All figures whether it is for protocol or for results need to be uploaded individually in your editorial manager account and should be referred in the order of their numbering.

[All figures have been moved to individual files to be separately uploaded.](#)

11. After representative result section, please include Table and Figure legend section. All figure legend should have a one-liner title in bold and must include measurement definitions, scale bars, and error bars (if applicable). After this will be the discussion followed by acknowledgment, disclosures, and references.

[Table and figure legend section are now included at the end of the document.](#)

12. Please obtain explicit copyright permission to reuse any figures from a previous publication. Explicit permission can be expressed in the form of a letter from the editor or a link to the editorial policy that allows re-prints. Please upload this information as a .doc or .docx file to your



Editorial Manager account. The Figure must be cited appropriately in the Figure Legend, i.e. “This figure has been modified from [citation].”

No Figures are a reproduction from a previous paper, but were generated for the purpose of this publication.