

Journal of Visualized Experiments

Antigenic liposomes for generation of disease-specific antibodies

--Manuscript Draft--

Article Type:	Invited Methods Article - JoVE Produced Video
Manuscript Number:	JoVE58285R1
Full Title:	Antigenic liposomes for generation of disease-specific antibodies
Keywords:	liposomal nanoparticles; B-cells; antibodies; peanut; allergies; mouse model; immunogen
Corresponding Author:	Matthew Macauley University of Alberta Edmonton, Alberta CANADA
Corresponding Author's Institution:	University of Alberta
Corresponding Author E-Mail:	macauley@ualberta.ca
Order of Authors:	Kyle J. Bednar Lakeya Hardy Johnanna Smeekens Dharmendra Raghuwanshi Shiteng Duan Mike D Kullis Matthew Macauley
Additional Information:	
Question	Response
Please indicate whether this article will be Standard Access or Open Access.	Standard Access (US\$2,400)
Please indicate the city, state/province, and country where this article will be filmed . Please do not use abbreviations.	11227 Saskatchewan Dr., Edmonton, Alberta, Canada, T6S 2G2

TITLE:

Antigenic Liposomes for Generation of Disease-specific Antibodies

AUTHORS AND AFFILIATIONS:

Kyle J. Bednar^{*1}, Lakeya Hardy^{*2,3}, Johanna Smeekens^{*3,4}, Dharmendra Raghuwanshi⁵, Shiteng Duan⁶, Mike D. Kulis^{3,4}, Matthew S. Macauley^{5,7}

¹Janssen R&D, Spring House, PA, USA

²Department of Microbiology and Immunology, University of North Carolina, Chapel Hill, NC, USA

³UNC Food Allergy Initiative, University of North Carolina, Chapel Hill, NC, USA

⁴Department of Pediatrics, University of North Carolina, Chapel Hill, NC, USA

⁵Department of Chemistry, University of Alberta, Edmonton, Alberta, Canada

⁶Department of Molecular Medicine, The Scripps Research Institute, La Jolla, CA, USA

⁷Department of Medical Microbiology and Immunology, University of Alberta, Edmonton, Alberta, Canada

*These authors contributed equally to this work

Corresponding Author:

Matthew Macauley

macauley@ualberta.ca

780-492-5239

Email Addresses of Co-authors:

Kyle Bednar (kbednar5@its.jnj.com)

Lakeya Hardy (lchardy@email.unc.edu)

Johanna Smeekens (smeeken3@email.unc.edu)

Dharmendra Raghuwanshi (raghuwan@ualberta.ca)

Shiteng Duan (sduan@scripps.edu)

Mike Kulis (mkulis@email.unc.edu)

KEYWORDS:

Nanoparticles; Liposomes; Anaphylaxis; Peanut Allergy; Calcium Flux; Flow Cytometry; Antigen Specific; Ara h 2; food allergy; IgE

SUMMARY:

Described is the preparation of antigenic liposomal nanoparticles and their use in stimulating B-cell activation *in vitro* and *in vivo*. Consistent and robust antibody responses led to the development of a new peanut allergy model. The protocol for generating antigenic liposomes can be extended to different antigens and immunization models.

ABSTRACT:

Antibody responses provide critical protective immunity to a wide array of pathogens. There remains a high interest in generating robust antibodies for vaccination as well as understand how

pathogenic antibody responses develop in allergies and autoimmune disease. Generating robust antigen-specific antibody responses is not always trivial. In mouse models, it often requires multiple rounds of immunizations with adjuvant that leads to a great deal of variability in the levels of induced antibodies. One example is in mouse models of peanut allergies where more robust and reproducible models that minimize mouse numbers and the use of adjuvant would be beneficial. Presented here is a highly reproducible mouse model of peanut allergy anaphylaxis. This new model relies on two key factors: (1) antigen-specific splenocytes are adoptively transferred from a peanut-sensitized mouse into a naïve recipient mouse, normalizing the number of antigen-specific memory B- and T-cells across a large number of mice; and (2) recipient mice are subsequently boosted with a strong multivalent immunogen in the form of liposomal nanoparticles displaying the major peanut allergen (Ara h 2). The major advantage of this model is its reproducibility, which ultimately lowers the number of animals used in each study, while minimizing the number of animals receiving multiple injections of adjuvant. The modular assembly of these immunogenic liposomes provides relatively facile adaptability to other allergic or autoimmune models that involve pathogenic antibodies.

INTRODUCTION:

Food allergy affects 8% of children in the United States, and has increased in prevalence over the past decade¹. Allergy to peanut affects 1% of children and is not typically outgrown². Although several promising clinical trials are underway for the treatment of food allergy, including oral immunotherapy (OIT), sublingual immunotherapy (SLIT), and epicutaneous immunotherapy (EPIT), there are currently no FDA-approved treatment strategies for desensitizing peanut-allergic individuals³⁻⁸. Therefore, allergic individuals must strictly avoid allergens to avoid anaphylaxis. Many questions remain regarding routes of sensitization and underlying mechanisms of food allergy development.

Mouse models are a valuable tool for studying the mechanisms of allergy as well as developing new tolerogenic and desensitization therapies⁹⁻¹². This is particularly true because the major peanut allergen (Ara h 2; Ah2) in humans is also the dominant allergen in several described mouse models^{13,14}. While mouse models of peanut allergy are invaluable in studying mechanisms of sensitization and tolerance, a drawback is that they can be variable and require the use of adjuvants. More potent immunogens would be one way to minimize the intrinsic variability of such models. Since B-cells are strongly activated by multivalent antigens, antigenic liposomes displaying the allergen are a good option because of their ability to potentially activate B-cells through the B-cell receptor (BCR) while also having the property of efficiently priming the T-cell compartment through being taken up non-specifically by antigen-presenting cells.

Here, we describe a detailed protocol for conjugating protein antigens to liposomal nanoparticles using a facile and modular strategy. Using a surrogate antigen, anti-IgM Fab fragment, we demonstrate how potent such antigenic liposomes can be in stimulating B-cell activation. Antigenic liposomes displaying Ah2 antigen were used to develop a new mouse model of conferred sensitivity. In this model, splenocytes from verified peanut allergic mice, containing peanut-specific memory B- and T-cells, are transferred into naïve congenic mice. Memory antibody responses are induced by injection of liposomes conjugated with Ah2 into the recipient

mice, in order to induce antibodies against Ah2. Followed by only one boost with soluble Ah2, Ah2-specific antibodies give rise to a strong anaphylactic response when these mice are subsequently challenged with Ah2. As mice undergoing the allergic reaction respond in a highly uniform manner and have not received an adjuvant, this approach is a desirable peanut allergy model and the outcomes suggest that it may have utility in other mouse models driven by antigens directed at allergens and possibly autoantigens.

PROTOCOL:

The general method of coupling protein to lipid and incorporating into liposomes is based largely on earlier work¹⁵. All animal procedures described below have been approved by the University of North Carolina at Chapel Hill Institutional Animal Care and Use Committee (IACUC). All mice used in the peanut allergy model are BALB/cJ females purchased from at 3 weeks of age. The University of Alberta Animal Care and Use Committee (ACUC) has approved experiments involving use of mouse spleens for *ex vivo* analysis from C57Bl/6 mice of at least 6 weeks of age.

1. Conjugation of Protein Antigen to PEGylated Lipid

1.1) Add 3 g of cross-linked dextran gel beads with a fractionation range of 1,500 – 30,000 Daltons (Da) to a 250 mL vacuum flask. Add 60 mL of phosphate buffered saline (PBS) and continually stir with a magnetic stir bar. Seal the flask and attach to a vacuum to initiate de-gassing on a stir plate for a minimum of 1 h.

1.2) In a 1.0 cm x 30 cm glass chromatography column with the turnover stopper closed, add PBS to the column to wash. Open the turnover stopper and drain the column. Following washing, add the slurry of de-gassed beads to the column. Continually add the slurry until the column is packed to a bead height of approximately 24 cm.

1.3) Once the column has a 'head' of approximately 4-5 cm of PBS above the packed beads, have the following steps ready.

1.3.1) Create a gravity flow siphon by measuring a piece of tubing long enough to reach a shelf 1-2 feet above the top of the column and create a loop that drops near the bottom of the column and returns to the top of the column. Add a turnover stopper to one end of the tubing, leaving one side of the tubing open. Place the open tube end into a 500 mL bottle of PBS and place on the shelf above the column.

1.3.2) Take the end with the turnover stopper and attach a 10 mL syringe. Open the turnover stopper valve on the tubing line and draw PBS through the tube. Once the PBS has reached three quarters of the way through the tubing, quickly remove the syringe and add the turnover stopper to the top of the column — liquid should be running onto the column.

Note: The amount of 'head' of PBS left on the top of the column should be between 1 and 3 cm. The minimal amount to wash the column is 3 column volumes.

1.4) Determine the amount of protein (moles) to be linked to lipid based on its molecular weight (MW).

Note: The Fab fragment of goat anti-mouse IgM (itself an IgG) is used here as a universal surrogate antigen for polyclonal stimulation of B-cells. Accordingly, the Fab fragment of goat IgG has a MW of approximately 48 kiloDalton (kDa) and is commercially available in a total quantity of 1.3 mg. Thus, the amount of protein to be linked is 27.1 μmol .

1.5) Determine the extinction coefficient of the protein of interest. If unknown, measure the protein absorbance at 280 nm using a spectrophotometer and divide the A_{280} value by the number of moles calculated in step 1.4.

Note: The extinction co-efficient of Fab of goat IgG at 280 nm is 64,600 M^{-1} .

1.6) To ensure that trace amounts of amine-containing buffer are removed, desalt the protein on the column created in steps 1.1-1.3 and collect protein fractions into 1.5 mL microcentrifuge tubes (~500 μL per fraction).

1.6.1) Close the turnover stopper valve connected to the top of the column and remove the top of the column. If not already open, open the turnover stopper valve at the bottom of the column and wait until the 'head' of PBS hits the top of the beads.

1.6.2) Slowly add in the protein of interest to the top of the beads using a glass Pasteur pipette, being careful to minimize disturbance to the top of the beads.

1.6.3) Once the 'head' of the protein solution has reached the top of the beads, add 1 mL of PBS gently *via* a Pasteur pipette. Repeat three times. Add PBS to create a head of 4-5 cm and repeat step 1.3 to wash the column.

Note: This step can be skipped if it is certain that no amine-containing buffer is present.

1.7) Determine the fractions that contain protein by measuring A_{280} values and pool the fractions that give approximately 90% recovery of the protein.

Note: This typically dilutes the protein 1.5-2-fold. Determine the protein concentration after pooling. Concentrate the protein at this step, if necessary, using a centrifugation concentrator.

1.8) Add 2.5 molar equivalent of the heterobifunctional crosslinker to the protein.

1.8.1) First, weigh approximately 5 mg of succinimidyl 3-(2-pyridyldithio)propionate (SPDP, MW = 314 g/mol) into a microcentrifuge tube. To determine the volume to dissolve the SPDP, take the molar protein concentration and multiply it by 250x to generate a 100x solution that will give a 2.5 molar excess in the reaction.

Note: For example, if the protein concentration is 50 μ M, a solution of SPDP at 12.5 mM is needed. For 5 mg of SPDP, this corresponds to 1.27 mL of dimethyl sulfoxide (DMSO).

1.9) Add SPDP to the protein of interest at a 1:100 dilution. Place the reaction on an oscillating shaker at room temperature (RT) for approximately 1 h.

1.10) To remove excess SPDP and protect the endogenous disulfide bond(s), in the protein in the subsequent reduction step, equilibrate, and wash the column created in steps 1.1-1.3 in 100 mM sodium acetate (NaOAc) at pH 5.5 or create an identical column solely for use in this buffer.

1.11) After 1 h incubation with SPDP, desalt the protein on the column equilibrated in 100 mM NaOAc. Carry out this step in an identical manner as step 1.6 except using 100 mM NaOAc (pH 5.5) as the eluent. Collect the fractions, determine the A_{280} , and pool the top fractions. Wash the column in PBS.

1.12) Prepare a solution of 2.5 M of DTT (MW = 154 g/mol) in double distilled water (ddH₂O). Add 25 mM DTT to the pooled fractions of protein for 5-10 min.

1.13) Measure the A_{280} of the protein and divide this by the extinction coefficient. Also, determine the A_{343} . Calculate the linking ratio based on the molarity of protein (A_{280}) and linker (A_{343}).

Note: Turn off the A340 auto-calibration if using a nanodrop spectrophotometer. The A_{343} measurement represents the absorbance of the pyridine 2-thione group (extinction coefficient = 7550 M⁻¹) that is removed from the SPDP cross-linker by the DTT. A molar ratio of linker : protein ratio of 1.2-1.5 is generally achieved when performing the reaction with a 2.5 molar excess of SPDP on a wide range of proteins.

1.14) Run the pooled fractions over the column washed in PBS as described above. Collect the fractions, determine the A_{280} , and pool top fractions. Determine the concentration of protein by A_{280} after pooling the fractions.

1.15) Prepare DSPE-PEG(2000)-Maleimide (1,2-distearoyl-sn-glycero-3-phosphoethanolamine-N-[methoxy(polyethylene glycol)-2000]-Maleimide. This will be added to the protein at a 10:1 molar ratio. Prepare a 100x stock of DSPE-PEG(2000)-Maleimide to achieve the desired concentration.

1.15.1) For example, if the protein concentration is 10 μ M after step 1.14, prepare a stock of DSPE-PEG(2000)-Maleimide at 10 mM. Carefully weigh out DSPE-PEG(2000)-Maleimide (MW = 3000 g/mol) and add the appropriate amount of DMSO. Multiple rounds of gentle vortexing and sonicating may get it fully dissolved.

1.16) Determine the total volume of the fractions from step 1.14 and transfer the solution carefully into a small (10-25 mL) round bottom flask (RBF). Add the appropriate amount of 100x

DSPE-PEG(2000)-Maleimide to the protein to achieve a 1x, 10-fold molar excess, final concentration. Gently swirl the solution to ensure that the DMSO is fully dispersed.

1.17) Run reaction overnight under nitrogen in a sealed RBF. Use a rubber septum and place in a fume hood.

1.17.1) Remove the atmosphere by puncturing the septum with a 20 G needle attached to a 3 mL syringe at the end of tubing attached to a vacuum, and turn on vacuum for 3-5 s.

1.17.2) Replace the atmosphere with nitrogen. Fill a balloon attached to a 3 mL syringe cut in half with nitrogen and attach a 20 G needle. Puncture the septum to fill the atmosphere inside the round bottom flask with nitrogen. Repeat the removal of the atmosphere and replacement with nitrogen once more and leave the nitrogen balloon attached overnight.

1.18) Prepare a separate cross-linked dextran gel bead column with a fractionation range of 4,000 – 150,000 Da in a 1.0 cm x 50 cm glass chromatography column (as per steps 1.1-1.3).

1.19) The following day, remove the protein from the round bottom flask prepared in step 1.17 and run (follow the method used in step 1.6) over the cross-linked dextran gel bead column (from step 1.18).

Note: The total amount to load onto the column should be no more than 2 mL. If a larger reaction was used, split into two and run on separate columns or run on a larger diameter column.

1.19.1) Collect the fractions, determine the A_{280} , pool top fractions, and determine the concentration of protein. The presence of the lipid will not affect the measurements.

1.20) Store the final pooled fractions of lipid-linked protein at 4 °C until ready for use.

2. Liposome Preparation

2.1) Weigh out the lipids: DSPE-PEG(2000) (1,2-distearoyl-sn-glycero-3-phosphoethanolamine-N-[methoxy(polyethylene glycol)-2000, MW = 2805.5 g/mol; Cholesterol (3 β -Hydroxy-5-cholestene, 5-Cholesten-3 β -ol), MW = 386.7 g/mol; and DSPC (1,2-distearoyl-sn-glycero-3-phosphocholine), MW = 790.1 g/mol. Create a 5 mg/mL solution of DSPC, 4 mg/mL solution of Cholesterol, and 2 mg/mL solution of DSPE-PEG(2000) in chloroform.

2.2) Ensure that the molar ratio of lipids in the liposomes is: 57% DSPC, 38% Cholesterol, and 5% DSPE-PEG(2000), as represented in Table 1.

Note: It is important to control the amount of antigen on the liposome, which generally ranges from 0.01-0.1%. In Table 1, 0.1% of goat anti-mouse IgM Fab fragment linked to PEGylated lipid is used. It is critical to take into account of the 10-fold molar excess of DSPE-PEG(2000)-Maleimide

that was added to the protein in step 1.15, to ensure that the total amount of PEGylated lipid does not exceed 5%.

2.3) Consider the final lipid amounts (μmol) when creating lipids for extrusion. See **Table 1** for an example of calculating molar lipid concentrations for the creation of liposomes at a $1.25 \mu\text{M}$ total lipid concentration.

2.4) Once the correct amount of each lipid to be added together has been calculated, combine all into a 12 mL borosilicate glass test tube.

2.5) Carefully blow off the chloroform.

2.5.1) Use the tubing and a 3 mL syringe with needle, prepared in step 1.17.1, to carefully blow off chloroform in the tube with nitrogen. Gently blow a stream of nitrogen on the solution while rotating the tube with the other hand. Be careful to minimize splashing or causing the liquid to run way up the side of tube as it may be more difficult to get this into solution in the next step.

2.6) Add $100 \mu\text{L}$ of DMSO to each tube and lyophilize this solution overnight. Cover the top of the tube with a non-static laboratory wipe, secure with a rubber band, and freeze -80°C .

3. Liposome Extrusion

3.1) Add 1 mL of PBS containing the lipid-linked protein to the 12 mL tube containing the lipids. Sonicate the solution for approximately 30 s to 1 min in a sonication water bath. Rest for 5 min or longer between each round and repeat 3-4 times.

3.2) Prepare an extruder as directed by the manufacturer.

3.2.1) Add the filter supports to the internal membrane support, place a few drops ($10 \mu\text{L}$ each) of PBS on paraffin film. Using tweezers, grab an edge of the filter support and dip it in the $10 \mu\text{L}$ drop.

3.2.2) Place the filter inside the O-ring. Do this for both sides. Using tweezers, grab a $0.8 \mu\text{m}$ filter on the edge and dip in the $10 \mu\text{L}$ drop and coat the outside of the O-ring with PBS. Place the $0.8 \mu\text{m}$ filter gently on the O-ring so the filter does not over hang the internal membrane support.

3.3) Place the extruder heating block onto a hot plate to pre-heat the extruder. Switch the hot plate on low and allow the extruder heating block to reach the desired temperature. To avoid potential issues with protein aggregation, do not heat the block past 37°C .

3.4) Load the sonicated sample into one of the extruding syringes placed into the extruder. Place the extruder syringe into the other end of the extruder. Make sure the empty syringe plunger is set to zero. The empty syringe will fill as the lipid is extruded through the polycarbonate $0.8 \mu\text{m}$ membrane. Try to avoid passing bubbles back and forth through the membrane.

3.5) Place the fully assembled extruder into the heating block. Gently push the plunger of the filled syringe with lipids to the empty syringe. Depending on the lipid concentration, this will be difficult to push through. Repeat 20x.

3.6) Remove the fully assembled extruder from the heating block. Slowly remove the filled syringe from the extruder, be sure to collect any lipids that may leak out when removing. Place liposomes into a clean vial. Repeat steps 3.4-3.6 using polycarbonate 0.2 μm and 0.1 μm membranes.

3.7) Create a 0.7 x 50 cm cross-linked agarose bead column with separation range of 0.7-10 Mega Daltons (MDa) equilibrated in PBS. Add the liposomes and run as in step 1.6. Fractions containing liposomes will have decreased transmission of light in the 250-400 nm range.

3.8) Store the liposomes at 4 °C and do not freeze.

4. Calcium Flux to monitor B-cell activation by antigenic liposomes

4.1) Euthanize mice by carbon dioxide (CO_2) or isoflurane overdose, according to institutional standard operating procedures. Confirm euthanasia of mice by cervical dislocation.

4.2) Sterilize surgical instruments and mice carcass using 70% ethanol. Use 10 cm long, 0.8 mm tip, curved iris forceps to separate the skin covering the chest cavity from the rib cage. Use 10 cm long, straight dissecting scissors to make a distal incision with a bilateral incision.

4.3) Use curved iris forceps and dissecting scissors to extract the spleen from the abdominal cavity. Remove fatty tissue surrounding spleen and then place it in a 15 mL polystyrene conical tube filled with RPMI1640 medium containing 1% fetal calf serum (FCS), and penicillin-streptomycin.

4.4) Transfer spleen and media over a 40 μm cell strainer fitted on a 50 mL conical tube. Using the rubber end of a 3 mL syringe plunger, gently crush the spleen. Wash the 40 μm cell strainer with the media. Repeat this process until only fat tissue is left in the 40 μm cell strainer. Rinse the sieve with 3-5 mL of media to increase cell recovery.

4.6) Centrifuge cell homogenate at 300 x g for 5 min at RT. After centrifugation, discard the supernatant and add 10 mL of 1x RBC lysis buffer to the pellet. Pipette up and down, leave for 2-3 min at RT, and then centrifuge at 300 x g for 5 min at RT.

4.7) Discard the supernatant and resuspend red blood cell depleted splenocytes in 10 mL of media. Determine total cell numbers using a hemocytometer or other cell counting device. Pellet the cells by centrifugation as described above.

Note: The ideal final concentration necessary for Indo-1 loading of splenocytes is $10\text{--}20 \times 10^6$ cells/mL, but a lower concentration of cells can be used.

4.8) Resuspend splenocytes at 15×10^6 cells/mL in calcium flux loading buffer (RPMI1640 medium containing 1% FCS, 10mM 4-(2-hydroxyethyl)-1-piperazineethanesulfonic acid (HEPES), 1mM magnesium chloride (MgCl_2), 1mM ethylene glycol-bis(β -aminoethyl ether)-N,N,N',N'-tetraacetic acid (EGTA), and 5% penicillin-streptomycin). Add in 1.5 μM Indo-1 from a 1 mM DMSO stock solution, invert the tube several times to mix. Protect from light, and incubate cells at 37 °C water bath for 30 min.

4.9) Following the 30 min incubation, add in 5x the amount of calcium flux loading buffer. Centrifuge at 300 x g for 7 min at RT.

4.10) For gating on B cells, stain cells with 1:200 anti-mouse CD5-PE and anti-mouse 1:200 B220-PE/Cy7 in 0.5 mL of loading buffer at 4 °C for 20 min, protected from light.

4.11) Wash splenocytes in calcium flux loading buffer and centrifuge at 300 x g for 7 min at RT. Resuspend cells at $10\text{--}20 \times 10^6$ cells/mL in calcium flux running buffer (Hank's balanced salt solution (HBSS) containing 1% FCS, 1 mM MgCl_2 and 1 mM calcium chloride (CaCl_2)). Store on ice, protected from light until ready to run on flow cytometer.

4.12) Setup flow cytometry with unstained and single stain controls for compensation.

4.12.1) Run the stained cells to setup the gates appropriately (see **Figure 2A**). Setup Indo-1 (violet) *versus* Indo-1 (blue) plot, adjust the voltages in the Indo-1 channels to place the cells staining at a slope of 45-60° to maximize the signal : noise ratio of the Indo-1 violet : blue change in ratio following B-cell stimulation.

Note: Make sure that the voltages are not too high, such that a significant percentage of the cells (>5%) are up against the top of the plot.

4.12.3) Create a diagonal gate that encapsulates the top left portion (Violet⁺Blue⁻) of the plot, such that without stimulation <10% of the cells are in the gate, which should ideally increase to >75% following stimulation.

4.13) Add 0.5 mL of cells to a capped 5 mL round bottom polystyrene tube (fluorescence-activated cell sorting (FACS) tube) and warm the cells to 37 °C for 3-5 min in a water bath. Place the FACS tube in the 37 °C water-jacketed chamber that is connected to a re-circulating water bath.

4.13.1) Run the tube in the water-jacket on the flow cytometer and initiate acquisition, without storing the data, at approximately 5,000 – 10,000 events/s. Once the cells have stabilized (15-30 s), initiate data acquisition and collect data for at least 10 s to establish the background.

4.13.2) At the 10 s mark, quickly remove the tube from the flow cytometer, add the stimulation (5-50 μ M antigenic liposomes in 2-20 μ L), pulse vortex, and return FACS tube onto the flow cytometer. Maintain data acquisition and storage through this time and collect data for 3-5 min.

4.14) Analyze data in appropriate analysis software under the kinetics functions.

5. Preparation of peanut extract

5.1) Extract peanut proteins by mixing peanut flour in a 1:5 (wt:vol) ratio of phosphate buffered saline (PBS) with 1 M sodium chloride (NaCl). Mix solution on magnetic stir plate for 2 h at RT while maintaining at pH 8.5.

5.2) Centrifuge solution at 3000 x g for 45 min at 4 °C. Decant and filter-sterilize supernatant sequentially through a 0.4 μ m filter followed by a 0.2 μ m filter. Determine protein concentration by bicinchoninic acid (BCA) assay using bovine serum albumin (BSA) as the standard.

5.3) Reduce and denature a sample of peanut proteins with 50 mM dithiothreitol (DTT) in a buffer containing lithium dodecyl sulfate at a pH of 8.4, which allows for maximal activity of the reducing agent and heat at 70 °C for 10 min.

5.5) Run 10 μ g of denatured peanut protein on a Bis-Tris 4-12% precasted polyacrylamide gel designed to give optimal separation gradient gel with molecular weight pre-stained standard.

5.6) Stain the gel with disulfonated triphenylmethane and destain with ddH₂O. Identify known major peanut allergens Ara h 1, 2 and 3 in extract preparations. Ara h 1 appears at 63 kDa, Ara h 2 should appear as two isoforms at 17 and 19 kDa, and Ara h 3 appears at 37 kDa (acidic subunit).

6. Sensitization of mice to peanut

6.1) Resuspend 1 mg Cholera toxin in 1 mL ultrapure water. Prepare 200 μ L diluted peanut extract containing 2 mg peanut protein and 10 μ g cholera toxin in PBS.

6.2) Administer 200 μ L of the peanut extract containing Cholera toxin (2 mg peanut protein and 10 μ g Cholera toxin) *via* oral gavage to each 4 – 5 week old BalB/cJ female mouse. Repeat once a week for three weeks (*i.e.*, Days 0, 7, and 14).

6.3) Administer 300 μ L diluted peanut extract (containing 5 mg peanut protein and 10 μ g Cholera toxin) *via* oral gavage to each mouse in the fourth week (*i.e.*, Day 21).

7. Challenge mice with peanut extract

7.1) On day 28, prepare peanut extract to a final concentration of 1 mg/mL in PBS. Measure baseline body temperatures using a rectal thermometer (approximately 37.5-38.5 °C). Administer 200 μ L (200 μ g) of peanut extract *via* intraperitoneal (i.p.) injection.

7.2) Measure body temperature with rectal thermometer every 15 min for 1 h after injection. A dip in body temperature indicates allergy to peanut.

Note: Hypothermia is a hallmark of anaphylaxis in mice. This challenge will demonstrate that mice are allergic to peanut. Typically, 90% of Balb/cJ mice that undergo the sensitization protocol develop allergic reactions during challenge characterized by at least a 2-3 °C temperature decrease.

8. Isolation of splenocytes from allergic mice and adoptive transfer

8.1) Isolate the splenocytes from naïve and peanut allergic mice.

8.1.1) On day 30, euthanize both naïve and confirmed peanut allergic mice by administering 3 L/min of CO₂ in a gas chamber. Confirm euthanasia of mice by bilateral thoracotomy. Sterilize surgical instruments and mouse carcass using 70% ethanol. Use forceps to separate the skin covering the chest cavity from the rib cage. Use straight dissecting scissors to make a bilateral incision breaking the left and right ribs.

8.1.2) Use forceps and dissecting scissors to extract the spleen from the abdominal cavity. Remove fatty tissue surrounding spleen before placing in polystyrene 15 mL conical tube, filled with 10 mL RPMI 1640 medium.

8.1.3) In a sterile laminar flow hood, pour spleen and media into a 35 mm polystyrene Petri dish. Keep naïve and allergic splenocytes in separate Petri dishes and media during cell isolation. Use sterilized forceps and dissecting scissors to cut spleen into three pieces and return to Petri dish.

8.1.4) Using the rough, frosted edge of two glass microscope slides, gently homogenize (in RPMI) the spleen pieces until white tissue remains between slides. Change slides between groups.

8.1.5) Transfer cell homogenate from Petri dish through a 70 µm cell strainer fitted on a 50 mL conical tube. Pass the remaining spleen fragments through the strainer with a plunger from a 1 mL syringe. Rinse the sieve with 5 mL of RPMI to maximize cell recovery. Transfer filtrate to a polystyrene 15 mL conical tube, and centrifuge (450 x g, 10 min, RT).

8.1.6) Aspirate supernatant and add resuspend cell pellet in 2 mL red blood cell lysis buffer (0.83% ammonium chloride in 10 mM Tris buffer, pH 7.2). Mix and incubate at RT for 2-3 min. Add 10 mL of PBS-2% FBS and centrifuge at 300 x g for 7 min at RT.

8.1.7) Wash the cells again with 12 mL PBS-2% FBS to completely remove any residual ammonium chloride, and centrifuge at 300 x g for 7 min at RT. Re-suspend cell pellet in 2 mL of RPMI 1640 medium. Count cells using either a hemocytometer or automatic hematology analyzer.

8.2) Using a 27 G, 5/8-inch needle on a 1 mL insulin syringe, intravenously inject 15×10^6 allergic or naïve splenocytes extracted as described above (in 200 μ L) *via* the tail vein into naïve (unsensitized) mice.

9. Injection of mice with Ara h 2 antigenic liposomes

9.1) Prepare Ah2 liposomes containing 0.1% Ah2 at 2.5 mM lipid. For calculating protein concentration, the extinction coefficient of Ah2 is $15,000 \text{ M}^{-1}$. Dilute liposomes to 300 μ M in sterile PBS.

9.2) One day after adoptive transfer (day 31) of allergic or naïve splenocytes, intravenously inject 200 μ L of PBS or the Ah2 antigenic liposomes (300 μ M) containing a total of 1.38 μ g of Ah2 *via* the tail vein of BALB/cJ mice that received the splenocytes in step 8.2.

10. Boost and challenge of mice with Ara h 2

10.1) Two weeks after the injection with Ah2 liposomes, on day 45, use a 4 mm animal lancet to collect 50-200 μ L of blood from the submandibular junction of the mouse. Collect blood in a serum separator tube without heparin; separate the serum by centrifuging at $6000 \times g$ for 15 min. Use the collected serum later on to measure antigen-specific antibodies.

10.2) On day 46, two weeks after injecting mice with liposomes (step 9.2), boost mice by an i.p. injection of 200 μ L of PBS or 200 μ g of soluble Ah2 (purified as described previously¹⁶).

10.3) On day 60, collect 50-200 μ L of blood from the submandibular junction of the mouse, and process blood as described previously.

10.4) On day 61, challenge each group of mice with an i.p. injection of 200 μ L of 300 μ g soluble Ah2. Measure body temperatures with rectal probe every 15 min as in Section 7.

11. Quantification of Ara h 2-specific IgE and IgG1 by ELISA

11.1) Coat a 96-well enzyme-linked immunosorbent assay (ELISA)-compatible plate with 100 μ L HSA-DNP (2,4-dinitrophenyl hapten conjugated to human serum albumin, 20 μ g/mL) for standard curve or Ah2 (5 μ g/mL) for serum samples collected in steps 10.1 and 10.3, diluted in coating buffer (50 mM carbonate-bicarbonate buffer, pH 9.6) at 4 °C overnight or 37 °C for >1 h.

11.2) Wash three times with 200 μ L PBS-T (PBS with 0.05% Tween-20) and block wells with 200 μ L PBS-T containing 2% BSA at 37 °C for >2 h.

11.3) For Ah2-specific IgE ELISA, add 50 μ L IgE-anti-DNP standards (2 μ g/mL – 0.002 μ g/mL, prepared from 1:2 serial dilutions) or mouse serum samples (1:20 dilution) and incubate overnight at 4 °C. For Ah2-specific IgG1 ELISA, add 100 μ L purified IgG1-anti-DNP standards (2

µg/mL – 0.002 µg/mL, prepared from 1:2 serial dilutions) or mouse serum samples (1:500 dilution) and incubate overnight at 4 °C or 1 h at 37 °C.

11.4) Wash three times with 200 µL PBS-T. For Ah2-specific IgE ELISA, add 100 µL Sheep anti-Mouse IgE (0.5 µg/mL) and incubate at 37 °C for 1 h. For Ah2-specific IgG1 ELISA, add 100 µL HRP Goat anti-Mouse IgG1 (diluted 1:40,000 in PBS-T-2% BSA). Incubate at 37 °C for 1 h.

11.5) Wash three times with 200 µL PBS-T. For Ah2-specific IgE ELISA, add 100 µL biotinylated-Donkey anti-Sheep IgG (0.5 µg/mL) and incubate at 37 °C for 45 min. For Ah2-specific IgG1 ELISA, skip to step 11.7.

11.6) Wash three times with 200 µL PBS-T. For Ah2-specific IgE ELISA, add 100 µL neutrally charged avidin-horseradish peroxidase (*e.g.*, NeutrAvidin-HRP, 0.3 µg/mL) and incubate at 37 °C for 30 min.

11.7) Add 100 µL 3,3',5,5'-Tetramethylbenzidine (TMB) substrate, incubate 10-15 min, or until samples turn dark blue, then add 100 µL TMB stop solution. Read the plate at 450 nm.

REPRESENTATIVE RESULTS:

Conjugation of the protein of interest with DSPE-PEG(2000) can be demonstrated by running a reducing showing an increase in molecular weight compared to the unconjugated protein. **Figure 1A** shows a representative gel of anti-mouse IgM F(ab) fragment conjugation to PEG-DSPE, which shows a 2-3 kDa bandshift for the denatured protein. Note that approximately 50% of the protein appears to be modified, which is expected given that 1:1 stoichiometry was achieved on the Fab fragment that is a heterodimer of the heavy and light chain. **Figure 1B** shows a representative gel of Ah2 conjugation to PEG-DSPE. To assess calcium flux of B-cells stimulated by antigenic liposomes, two things are crucial: (1) the instrument settings are tuned to see a difference in the ratio of Indo-1 fluorescence in the Ca²⁺ bound (violet) and unbound (blue) forms and (2) the proper gating strategy is used to assess B-cell activation. **Figure 2A** shows the gating scheme for the flow cytometry-based calcium flux assay. Live lymphocytes are gated in an SSC-A *versus* FSC-A (left panel), doublets are gated out in a FSC-W *versus* SSC-W plot (middle panel), and B200⁺CD5⁻ B-cells are selected from a CD5-PE vs B220-PE/Cy7 plot (right panel). **Figure 2B** demonstrates the ratio of Indo-1 (violet) vs Indo-1 (blue) fluorescence over time as analyzed. Note that the total protein concentration of F(ab) and F(ab')₂ in these assays were the same, demonstrating the superior ability of antigenic liposomes in stimulating B-cell activation. After preparing the peanut extract, run an aliquot on an SDS-PAGE gel to determine the relative quantities of Ara h 1, 2 and 3 within the extract. **Figure 3** shows a representative gel of a peanut extraction that was run alongside purified Ah2. **Figure 4** shows a schematic of the overall adoptive peanut allergy mouse model, including initial sensitization to peanut, challenge to peanut, splenocyte isolation and adoptive transfer, liposome injections, blood draw followed by Ah2 boost, and challenge to Ah2. Ah2-specific IgE and IgG1 ELISAs were run to quantify immunoglobulins in serum, as shown in **Figure 5A** and **B**. Mice with conferred sensitivity that have been boosted with Ah2 will have Ah2-specific IgE and IgG1 in their serum. Body temperatures recorded during the Ah2 challenge are shown in **Figure 5C**; allergic mice had decreased body temperatures following the challenge,

while body temperatures in naïve mice remained consistent. Photos showing naïve mice compared to peanut-allergic mice during the challenge are shown in **Figure 6**.

FIGURE AND TABLE LEGENDS:

Figure 1. Representative gel of anti-mouse IgM F(ab) and Ah2 conjugation to PEG-DSPE. (A, B) SDS-page analysis of (A) goat anti-mouse IgM F(ab) fragment and (B) Ah2 before and after conjugation to PEG-DSPE. Goat anti-mouse IgM and Ah2 have molecular weights of approximately 48 and 18 kDa, respectively. Following modification, a slightly larger molecular weight (~2.5 kDa) is clearly observed for both proteins.

Figure 2. Representative gating strategy, calcium flux results, and analysis. (A) Cells were analyzed through the following gating strategy: live lymphocytes (FSC-A vs. SSC-A), single cells (FSC-W vs. SSC-W), and B-cells (B220⁺CD5⁻). **(B)** The Indo-1/Ca²⁺ flux response (violet vs. blue) of the B-cells. Shown is the calcium flux for anti-IgM Fab fragment liposomes and anti-IgM F(ab')₂ at the same protein concentration (2.5 µg/mL) as well as buffer-stimulated cells as a control. Note that between 10-22 s is when the stimulation is added and, therefore, no data is acquired during this time.

Figure 3. Representative gel showing peanut extract and Ah2. Peanut extract contains several proteins, including allergens Ara h 1, 2, 3 and 6, compared to the two isoforms that appear for Ah2.

Figure 4: Schematic of adoptive transfer protocol. Naïve BALB/cJ mice were sensitized with peanut extract (PN) and cholera toxin (CT), and subsequently challenged to PN. Splenocytes from confirmed allergic mice were isolated and transferred into naïve mice. Mice were later primed with immunogenic Ara h 2 liposomes or PBS, then boosted with soluble Ah2. Finally, mice were challenged with Ah2 to monitor anaphylaxis. Blood collected on days 45 and 60 were used to quantify Ah2-specific immunoglobulins.

Figure 5: Immunogenic Ara h 2 liposome boosts conferred-memory allergic responses. Serum was isolated pre (day 45) and post (day 60) boost with PBS or 200 µL of 300 µM immunogenic Ah2 liposome to measure Ah2-specific IgE (A) and IgG1 (B). Individual mice are represented with lines indicating medians. Mice that received allergic splenocytes and were administered Ah2 liposomes on day 32 had significantly higher levels of Ah2-specific IgE and IgG1. Anaphylaxis was measured in the different treatment groups by recording body temperatures after Ah2 challenge (C). Mean body temperatures depicted with SEM. Naïve: PBS (Naïve splenocytes and PBS prime), Allergic: PBS (confirmed allergic splenocytes and PBS prime), Allergic: Ah2 (confirmed allergic splenocytes and Ah2immunogenic liposome prime). * P < 0.05, ** P < 0.01, *** P < 0.001, **** P < 0.0001 determined by unpaired 2-tailed Student's *t*-test. Note that these results are representative of two independent experiments.

Figure 6. Anaphylactic symptoms observed during Ah2 challenge. Naïve mice remain active and have pink complexion on their feet (A, C). Allergic mice have decreased activity, are often

hunched up, have labored breathing and experience cyanosis, indicated by darker purple complexion on their feet (B, D).

Table 1. Calculations for creating a 1.25 μ M total lipid concentration liposome. Example of calculation table for goat anti-mouse IgM F(ab) fragment liposomes.

DISCUSSION:

The methods outlined here are a general protocol for the conjugation of a protein to a lipid which enables the display of the protein on liposomal nanoparticles. For very large multi-subunit proteins, this protocol may have limited utility. The ideal method would be the introduction of a site-specific tag that enables a biorthogonal chemical linking strategy to be used. If expressing the protein recombinantly, this can be possible using available site-specific strategies¹⁷, and a wide array of functional groups at the end of the PEGylated lipid that are commercially available. Accordingly, this protocol is geared towards the linking of protein isolated from natural sources and is accessible to a wide-range of scientists not necessarily familiar with chemical and biochemical transformations.

A key aspect of running a calcium flux experiment that should to be emphasized is that the cells should not be activated before running them on the flow cytometry. If sterile technique is not rigorously used, this will account for a high background signal from activated cells (Indo-1 fluorescence skewed towards its emission in the violet channel). Similarly, cells should be kept on ice prior to running the assay to avoid abnormal levels of background signal in the Indo-1 channels. It is also important to ensure that the cells are warmed for 2-3 min prior to acquiring by flow cytometry and throughout stimulation during data acquisition. If the cells are not maintained at 37 °C during data acquisition, it can be expected that cells will not respond maximally. Since antigen-specific B-cells are present in mice at very small numbers, using a surrogate antigen to stimulate all B-cells from mice is ideal. Although numerous transgenic mouse strains are available that express antigen-specific B-cells, the purpose of this technique is to enable the average user to be able to validate their ability to make antigenic liposomes using wild-type mice. To accomplish this objective, Fab fragments of anti-mouse IgM were linked to lipids and formulated into antigenic liposomes that cross-link the B-cell receptor (BCR) in a polyclonal fashion. It is noteworthy that it was previously demonstrated that this method can be used to stimulate human B-cells¹⁰ using the appropriate anti-human IgM Fab fragment, which is significant because it is not possible to access significant numbers of antigen-specific human B-cells. In these studies, the potency of antigenic liposomes to stimulate B-cell activation was illustrated by their enhanced ability to induce calcium flux compared to equal amounts of anti-mouse IgM F(ab')₂ fragments.

The use of antigenic liposomes has enabled the development of a method for sensitizing BALB/cJ mice to peanut, transferring splenocytes from allergic mice into naïve mice, injecting the host mice with Ah2 liposomes, and challenging them with Ah2. Antibody levels and anaphylactic responses within groups of mice are reproducible in this model. It has been well-established that memory B- and T-cell responses are critical in the development of peanut-specific antibodies in mice. Moreover, a recent study has shown that memory B-cells repopulate plasma cells in mice,

which maintain elevated antigen-specific IgE levels; therefore allergen-specific memory B-cells are an attractive target for therapeutic intervention¹⁸. The model described here now allows an opportunity to directly target Ah2-specific memory B cells, as opposed to an immunosuppressive approach using bortezomib to deplete the entire plasma cell repertoire¹⁹. Another approach to combat allergies is to induce tolerance in the T-cell compartment. One potential strategy is to encapsulate tolerance-inducing adjuvants within the liposome. Previously, nanoparticles encapsulating rapamycin were used to induce Tregs and diminish autoimmune disease²⁰. This type of approach could be employed to develop tolerogenic therapies to treat peanut allergy. Overall, manipulation of the allergen-specific liposome by conjugating molecules to the surface allows for tailored immune responses, and encapsulating drug-like molecules enables delivery of drug to the allergen-specific cell.

General limitations of this mouse model of peanut allergy are that sensitization to peanut with Cholera toxin and subsequent peanut challenge *via* i.p. injection is not entirely representative of peanut allergy in humans (*e.g.*, humans have reactions upon oral ingestion). However, this allergy model is the current standard in the field^{11,18,21}, and allows us to investigate molecular mechanisms of allergic disease and develop novel therapeutic approaches. Compared to these conventional approaches, this adoptive transfer model offers three primary advantages. The first is that it enables memory B- and T-cells specific to the allergen to be studied more directly. Indeed, evidence now strongly implicates memory B-cells as the major source of long-term allergies¹⁸. Second, because the same number of memory B- and T-cells are implanted into each recipient mouse, the allergic responses are minimally variable. Third, this model provides the opportunity to study allergic responses to individual allergens, which is useful in the context of testing new immunotherapies. One intriguing application of this model is to use the general approach in the context of a humanized mouse model, where allergic responses have been studied in immunized models²². Applied in the context of an adoptive transfer model, a humanized mouse model could be a powerful approach to expanding and *in vivo* testing of B- and T-cells from allergic patients.

Antibody disease pathogenesis does not only occur in allergic models, but also in B-cell mediated autoimmune diseases²³. Adoptively transferring sensitized splenocytes from mice given an autoantigen would ultimately be very useful in lowering the number of animals used, minimize the number of animals receiving multiple injections of adjuvant, and increase the reproducibility of responses between cohorts of mice in multiple disease indications. One example would be in an experimental autoimmune model of myasthenia gravis (EAMG) in which susceptible mouse strains (C57BL/6, SJL, and AKR) are immunized multiple times with acetylcholine receptor (AChR) in adjuvant to develop pathogenic autoantibodies. These autoantibodies ultimately lead to immunopathological features present in humans such as muscle fatigue/weakness, deposit of immunoglobulins, and complement components on neuromuscular junctions and in severe cases morbidity/death²⁴. In EAMG, the disease incidence varies widely between 50%-70%, so to account for this variability large animal cohorts are needed to reach statistical significance^{25,26}. The method described here would ultimately reduce the number of animals used by decreasing the variability in disease incidence. As previously mentioned, EAMG is induced by multiple injections with AChR + adjuvants (Complete Freund's Adjuvant and Incomplete Freund's

Adjuvant) to trigger auto-antibody responses. This method would reduce the number of animals that receive multiple injects with adjuvant. Finally, due to the nature of multiple immunizations and boosts, it is relatively difficult to define appropriate therapeutic windows for prophylactic and therapeutic treatments. This method would help synchronize the antibody response and disease pathogenesis window, making it a more predictable and reproducible. This same logic can be applied to many other mouse models of antibody mediated autoimmune diseases, such as Rheumatoid arthritis²⁷.

ACKNOWLEDGMENTS:

This research was supported by grants from the Department of Defense (W81XWH-16-1-0302 and W81XWH-16-1-0303).

DISCLOSURES:

The authors have nothing to disclose.

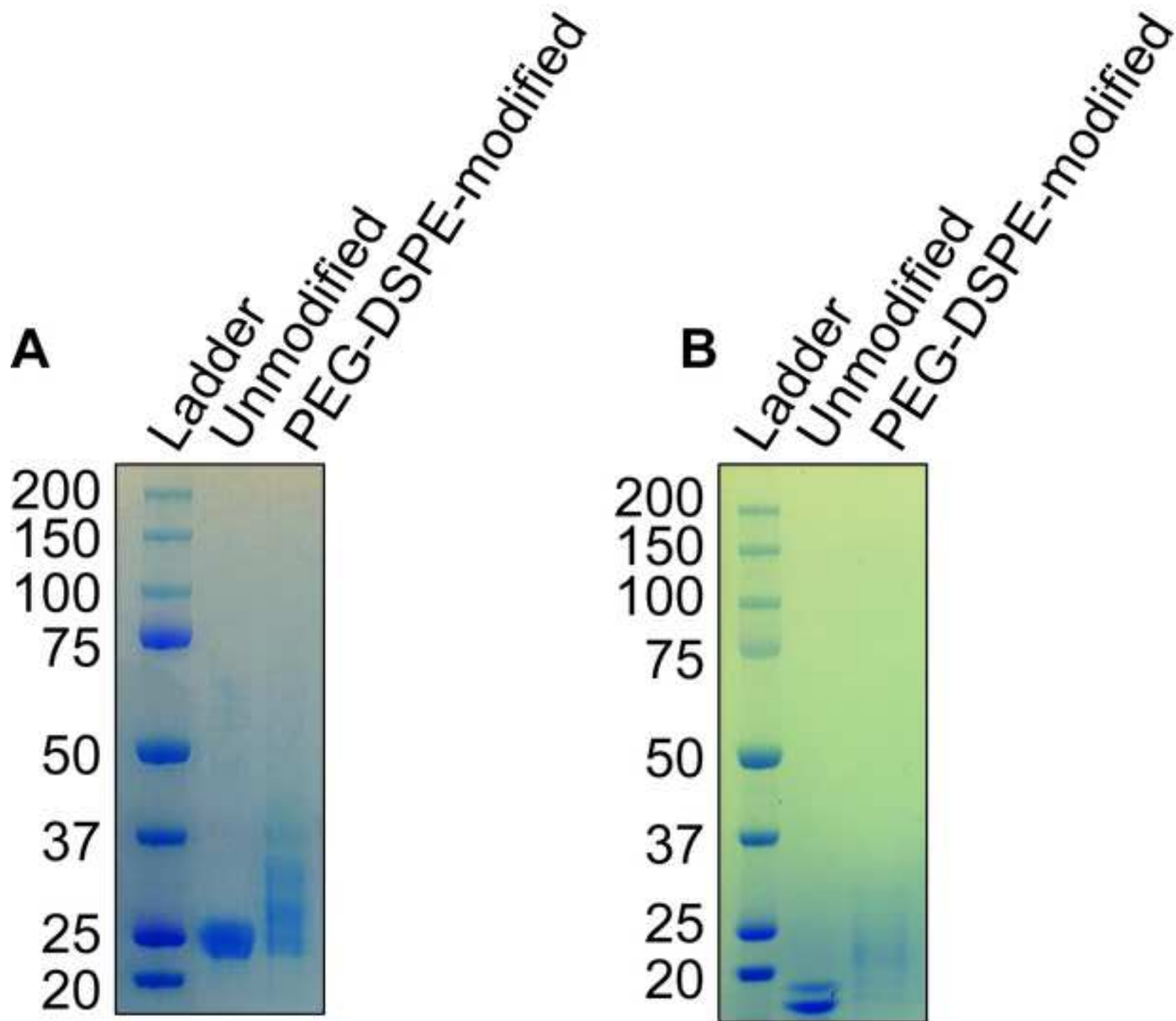
REFERENCES:

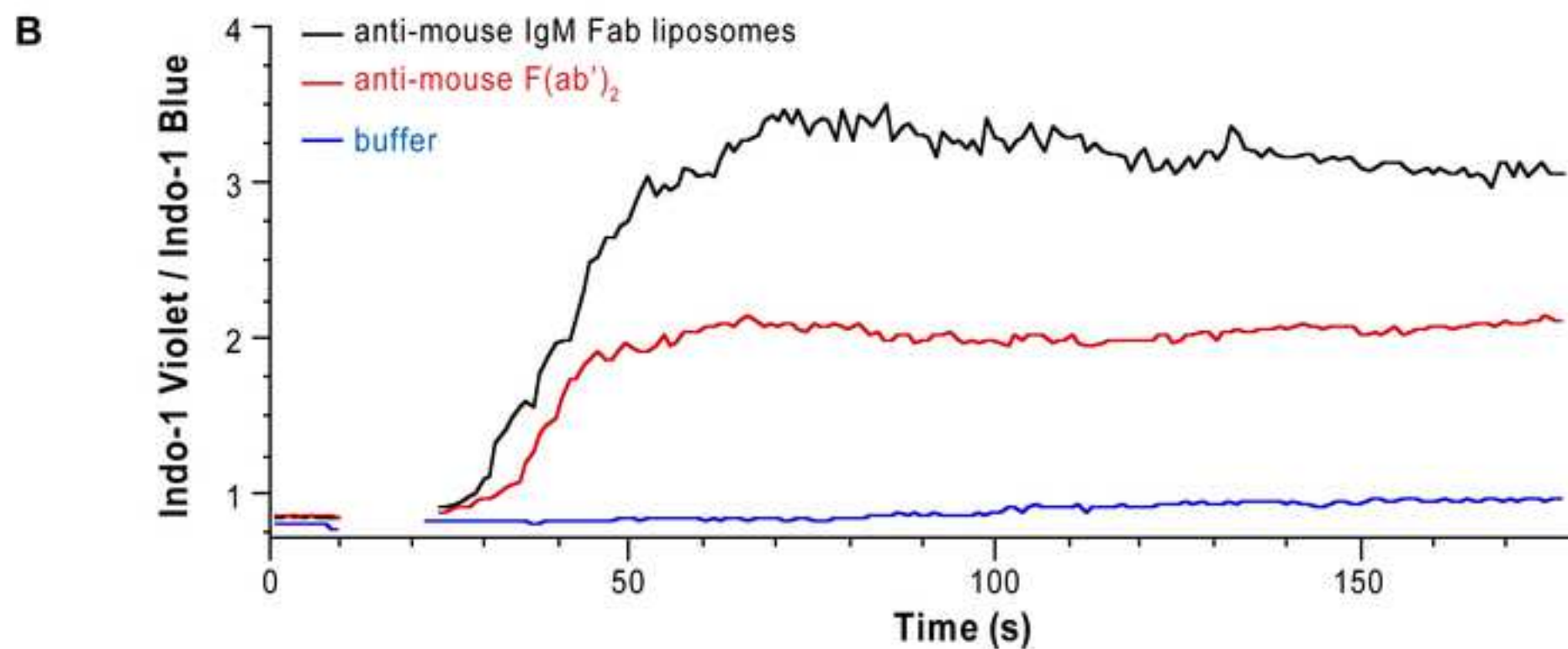
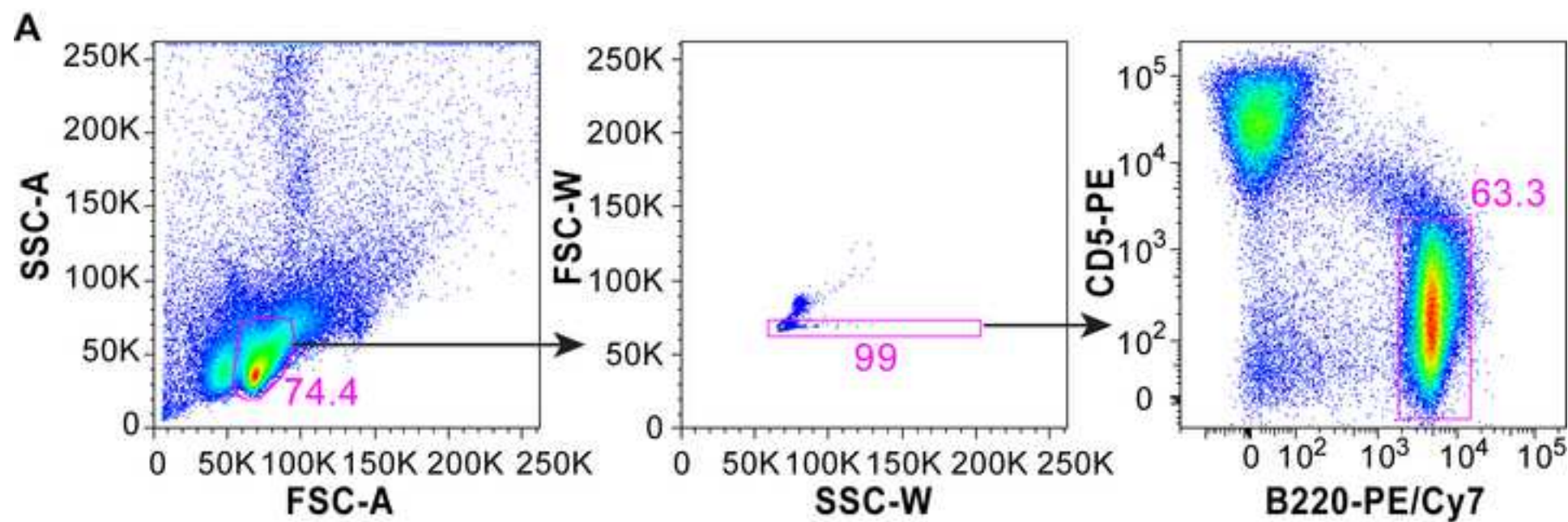
- 1 Gupta, R. S. *et al.* The prevalence, severity, and distribution of childhood food allergy in the United States. *Pediatrics*. **128** (1), e9-17, doi:10.1542/peds.2011-0204, (2011).
- 2 Sicherer, S. H., Munoz-Furlong, A., Godbold, J. H. & Sampson, H. A. US prevalence of self-reported peanut, tree nut, and sesame allergy: 11-year follow-up. *Journal of Allergy and Clinical Immunology*. **125** (6), 1322-1326, doi:10.1016/j.jaci.2010.03.029, (2010).
- 3 Kim, E. H. *et al.* Sublingual immunotherapy for peanut allergy: clinical and immunologic evidence of desensitization. *Journal of Allergy Clinical Immunology*. **127** (3), 640-646 e641, doi:10.1016/j.jaci.2010.12.1083, (2011).
- 4 Vickery, B. P. *et al.* Sustained unresponsiveness to peanut in subjects who have completed peanut oral immunotherapy. *Journal of Allergy and Clinical Immunology*. **133** (2), 468-+, doi:10.1016/j.jaci.2013.11.007, (2014).
- 5 Jones, S. M. *et al.* Epicutaneous immunotherapy for the treatment of peanut allergy in children and young adults. *Journal of Allergy and Clinical Immunology*. **139** (4), 1242-+, doi:10.1016/j.jaci.2016.08.017, (2017).
- 6 Varshney, P. *et al.* A randomized controlled study of peanut oral immunotherapy: clinical desensitization and modulation of the allergic response. *Journal of Allergy Clinical Immunology*. **127** (3), 654-660, doi:10.1016/j.jaci.2010.12.1111, (2011).
- 7 Anagnostou, K. *et al.* Assessing the efficacy of oral immunotherapy for the desensitisation of peanut allergy in children (STOP II): a phase 2 randomised controlled trial. *Lancet*. **383** (9925), 1297-1304, doi:10.1016/S0140-6736(13)62301-6, (2014).
- 8 Sampson, H. A. *et al.* Effect of Varying Doses of Epicutaneous Immunotherapy vs Placebo on Reaction to Peanut Protein Exposure Among Patients With Peanut Sensitivity: A Randomized Clinical Trial. *The Journal of the American Medical Association*. **318** (18), 1798-1809, doi:10.1001/jama.2017.16591, (2017).
- 9 Bednar, K. J. *et al.* Human CD22 Inhibits Murine B Cell Receptor Activation in a Human CD22 Transgenic Mouse Model. *Journal Immunology*. **199** (9), 3116-3128, doi:10.4049/jimmunol.1700898, (2017).
- 10 Macauley, M. S. *et al.* Antigenic liposomes displaying CD22 ligands induce antigen-specific

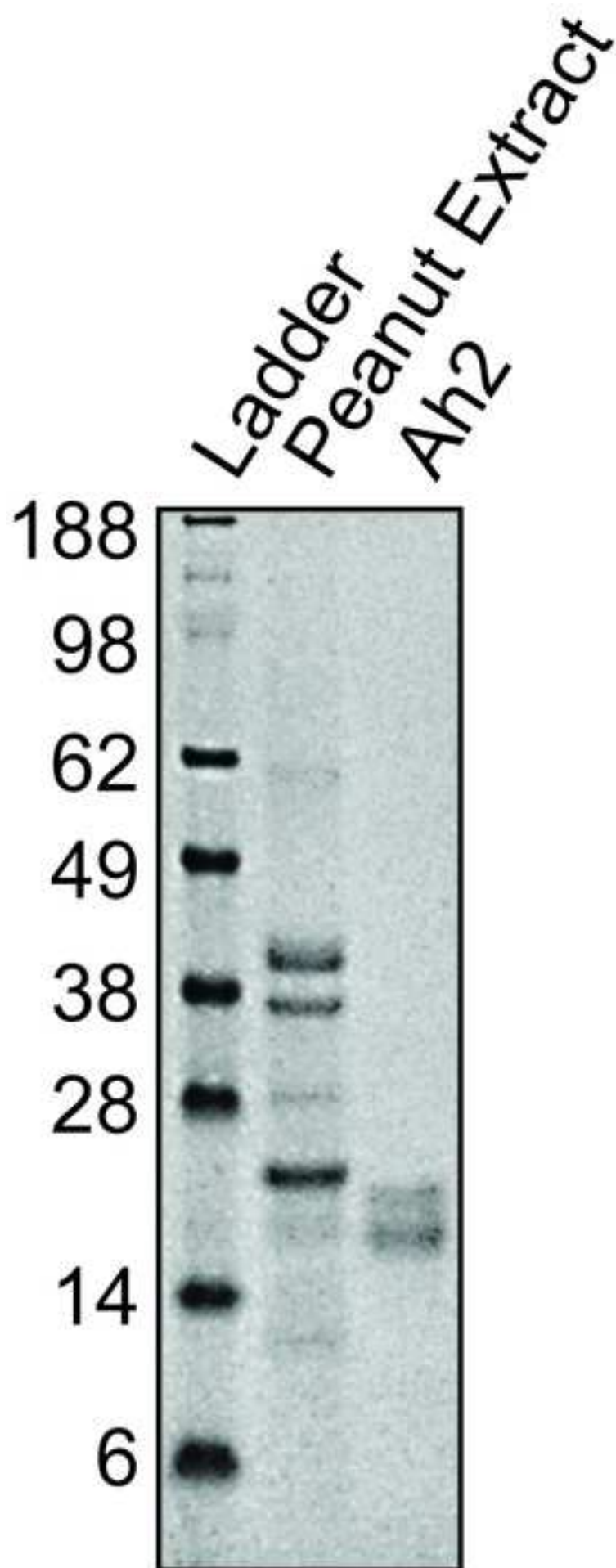
- B cell apoptosis. *Journal Clinical Investigation*. **123** (7), 3074-3083, doi:10.1172/JCI69187, (2013).
- 11 Orgel, K. A. *et al.* Exploiting CD22 on antigen-specific B cells to prevent allergy to the major peanut allergen Ara h 2. *Journal Allergy Clinical Immunology*. **139** (1), 366-369 e362, doi:10.1016/j.jaci.2016.06.053, (2017).
- 12 Smarr, C. B., Hsu, C. L., Byrne, A. J., Miller, S. D. & Bryce, P. J. Antigen-fixed leukocytes tolerize Th2 responses in mouse models of allergy. *Journal of Immunology*. **187** (10), 5090-5098, doi:10.4049/jimmunol.1100608, (2011).
- 13 Kulis, M. *et al.* The 2S albumin allergens of *Arachis hypogaea*, Ara h 2 and Ara h 6, are the major elicitors of anaphylaxis and can effectively desensitize peanut-allergic mice. *Clinical and Experimental Allergy*. **42** (2), 326-336, doi:10.1111/j.1365-2222.2011.03934.x, (2012).
- 14 Dang, T. D. *et al.* Increasing the accuracy of peanut allergy diagnosis by using Ara h 2. *Journal of Allergy Clinical Immunology*. **129** (4), 1056-1063, doi:10.1016/j.jaci.2012.01.056, (2012).
- 15 Loughrey, H. C., Choi, L. S., Cullis, P. R. & Bally, M. B. Optimized procedures for the coupling of proteins to liposomes. *Journal Immunological Methods*. **132** (1), 25-35 (1990).
- 16 Sen, M. *et al.* Protein structure plays a critical role in peanut allergen stability and may determine immunodominant IgE-binding epitopes. *Journal of Immunology*. **169** (2), 882-887 (2002).
- 17 Krall, N., da Cruz, F. P., Boutureira, O. & Bernardes, G. J. Site-selective protein-modification chemistry for basic biology and drug development. *Nature Chemistry*. **8** (2), 103-113, doi:10.1038/nchem.2393, (2016).
- 18 Jimenez-Saiz, R. *et al.* Lifelong memory responses perpetuate humoral TH2 immunity and anaphylaxis in food allergy. *Journal Allergy and Clinical Immunology*. **140** (6), 1604-1615 e1605, doi:10.1016/j.jaci.2017.01.018, (2017).
- 19 Moutsoglou, D. M. & Dreskin, S. C. Prolonged Treatment of Peanut-Allergic Mice with Bortezomib Significantly Reduces Serum Anti-Peanut IgE but Does Not Affect Allergic Symptoms. *International Archives of Allergy and Immunology*. **170** (4), 257-261, doi:10.1159/000449247, (2016).
- 20 LaMothe, R. A. *et al.* Tolerogenic Nanoparticles Induce Antigen-Specific Regulatory T Cells and Provide Therapeutic Efficacy and Transferrable Tolerance against Experimental Autoimmune Encephalomyelitis. *Frontiers in Immunology*. **9** 281, doi:10.3389/fimmu.2018.00281, (2018).
- 21 Srivastava, K. D. *et al.* Investigation of peanut oral immunotherapy with CpG/peanut nanoparticles in a murine model of peanut allergy. *J Allergy Clin Immunol*. **138** (2), 536-543 e534, doi:10.1016/j.jaci.2016.01.047, (2016).
- 22 Bellinghausen, I. & Saloga, J. Analysis of allergic immune responses in humanized mice. *Cellular Immunology*. **308** 7-12, doi:10.1016/j.cellimm.2016.07.008, (2016).
- 23 Pillai, S., Mattoo, H. & Cariappa, A. B cells and autoimmunity. *Curr Opin Immunol*. **23** (6), 721-731, doi:10.1016/j.coi.2011.10.007, (2011).
- 24 Mantegazza, R., Cordiglieri, C., Consonni, A. & Baggi, F. Animal models of myasthenia gravis: utility and limitations. *International Journal of General Medicine*. **9** 53-64, doi:10.2147/IJGM.S88552, (2016).

- 788 25 Berman, P. W. & Patrick, J. Experimental myasthenia gravis. A murine system. *J Exp Med.*
789 **151** (1), 204-223 (1980).
- 790 26 Berman, P. W. & Patrick, J. Linkage between the frequency of muscular weakness and loci
791 that regulate immune responsiveness in murine experimental myasthenia gravis. *J Exp*
792 *Med.* **152** (3), 507-520 (1980).
- 793 27 Derksen, V., Huizinga, T. W. J. & van der Woude, D. The role of autoantibodies in the
794 pathophysiology of rheumatoid arthritis. *Seminars in Immunopathology.* **39** (4), 437-446,
795 doi:10.1007/s00281-017-0627-z, (2017).
796

Figure 1







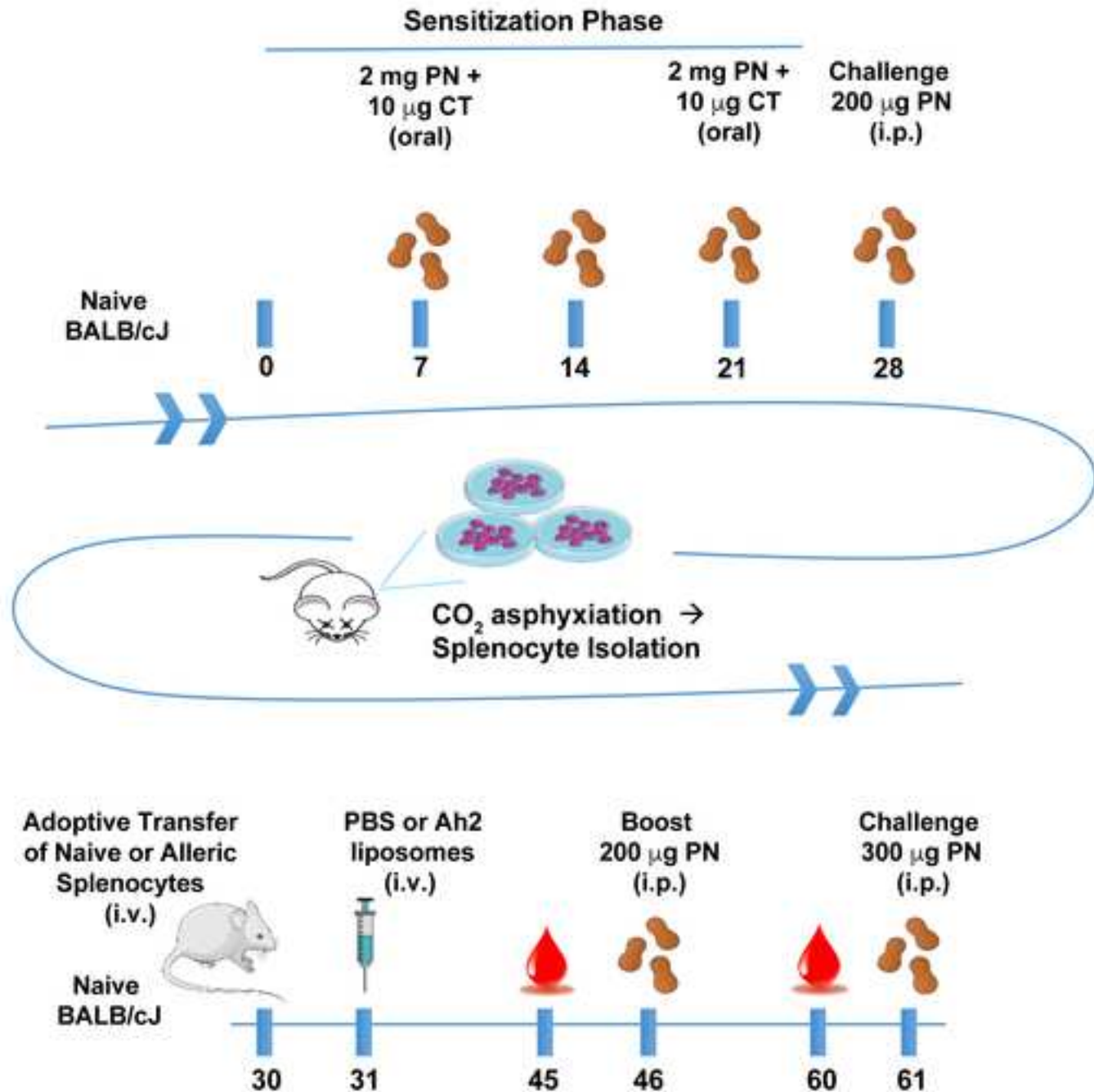


Figure 5

[Click here to download Figure Figure 5.tif](#)

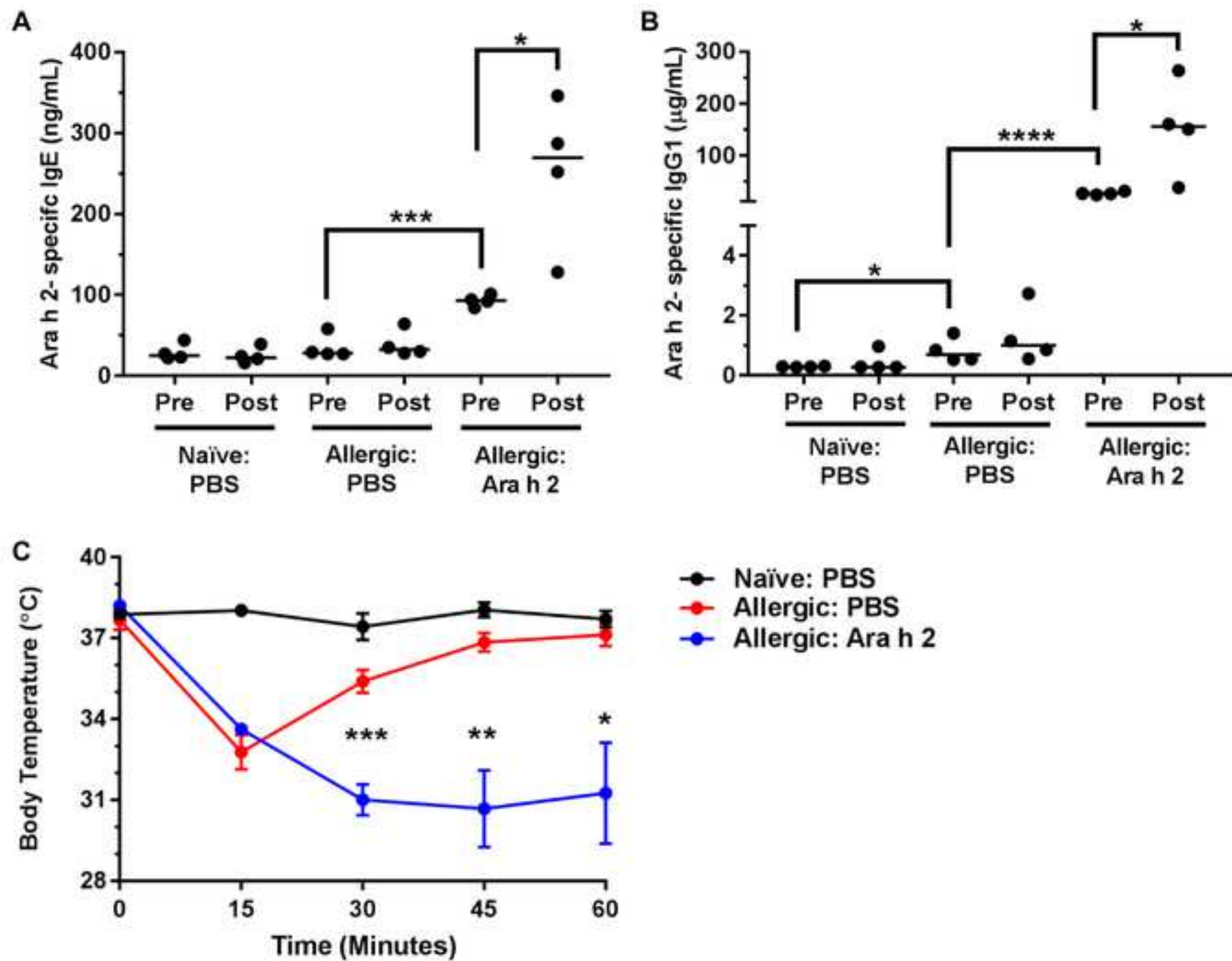


Figure 6

[Click here to download Figure Fiugre 6 - mouse response.tif](#)



MW	790	387	2900	3000	48000	
	DSPC	Cholesterol	PEG-DSPE	excess PEG-DSPE	α IgM-PEG-DSPE	TOTAL
Molar ratio	57	38	3.9	1	0.1	100.00
mass (mg)	0.56	0.18	0.14	0.04	0.06	0.98
μ mol	0.71	0.47	0.05	0.01	0.00	1.25
mL	112.50	45.93	70.64	0.00	525.97	755.03

Conc. (mg/mL)	
DSPC	5
Cholesterol	4
PEG-DSPE	2
α IgM-PEG-DSPE	0.114

Name of Material/ Equipment	Company	Catalog Number	Comments/Description
Model 2110 Fraction Collector	BioRad	7318122	
Cholestrol	Sigma	C8667	Sigma grade 99%
SPDP	Thermo Fisher Scientific	21857	
DSPC	Avanti	850365	
DSPE-PEG 18:0	Avanti	880120	
DSPE-PEG Maleimide	Avanti	880126	
Extruder	Avanti	610000	1mL syringe with holder/heating block
Filters 0.1 µm	Avanti	610005	
Filters 0.8 µm	Avanti	610009	
10mm Filter Supports	Avanti	6100014	
Glass Round Bottom Flask	Sigma	Z100633	
Turnover stoppers	Thermo Fisher Scientific	P-301398	
Tubing	Thermo Fisher Scientific	P-198194	
Leur Lock	Thermo Fisher Scientific	k4201634503	
Sephadex G50 Beads	GE Life Sciences	17004201	
Sephadex G100 Beads	GE Life Sciences	17006001	
Heat Inactivated Fetal Calf Serum	Thermo Fisher Scientific	10082147	
HEPES (1M)	Thermo Fisher Scientific	15630080	
EGTA	Sigma	E3889	
Penicillin-Streptomycin (10,000 U/mL)	Thermo Fisher Scientific	15140122	
1x RBC lysis Buffer	Thermo Fisher Scientific	00-4333-57	
Indo-1	Invitrogen	I1203	
CD5-PE	BioLegend	100608	
B220-PE-Cy7	BioLegend	103222	
HBSS	Thermo Fisher Scientific	14170112	without calcium and magnesium
MgCl ₂	Sigma	M8266	
CaCl ₂	Sigma	C4901	
Fab anti-mouse IgM	Jackson ImmunoResearch	115-007-020	
F(ab') ₂ anti-mouse IgM	Jackson ImmunoResearch	115-006-020	
Peanut flour	Golden Peanut Co.	521271	12% fat light roast, 50% protein
Animal feeding needles	Cadence Science	7920	22g x 1.5", 1.25 mm - straight

Microprobe thermometer	Physitemp	BAT-12	
Rectal probe for mice	Physitemp	Ret-3	
	List Biological		
Cholera toxin, from <i>vibrio cholera</i>	Laboratories, Inc.	100B	Azide free
BCA Protein Assay Kit	Pierce	23225	
Carbonate-bicarbonate buffer	Sigma	C3041	
TMB Stop Solution	KPL	50-85-06	
SureBlue TMB Microwell Peroxidase			
Substrate	KPL	5120-0077	
96 well Immulon 4HBX plate	Thermo Scientific	3855	
Purified soluble Ara h 2	N/A	N/A	purified as in: Sen, et al., 2002, Journal of Immunolog
HSA-DNP	Sigma	A-6661	
Mouse IgE anti-DNP	Accurate Chemical	BYA60251	
Sheep anti-Mouse IgE	The Binding Site	PC284	
Biotinylated Donkey anti-Sheep IgG	Accurate Chemical	JNS065003	
NeutrAvidin Protein, HRP	ThermoFisher Scientific	31001	
Mouse IgG1 anti-DNP	Accurate Chemical	MADNP105	
HRP Goat anti-mouse IgG1	Southern Biotech	1070-05	
1 mL Insulin Syringes	BD	329412	U-100 Insulin, 0.40 mm(27G) x 16.0 mm (5/8")
Superfrost Microscope Slides	Fisher Scientific	12-550-14	25 x 75 x 1.0 mm
	gibco by Life		
ACK Lysing Buffer	Technologies	A10492-01	100 mL
RPMI 1640 Medium	Thermo Fisher Scientific	11875093	500 mL
Cell Strainer	Corning	352350	70 µm Nylon, White, Sterile, Individually packaged
NuPAGE 4-12% Bis-Tris Protein Gels	Invitrogen	NP0322BOX	10 gels
NuPAGE LDS buffer, 4X	Invitrogen	NP0008	250 mL
SeeBlue Plus2 Pre-stained standard	Invitrogen	LC5925	500 µL
NuPAGE MES/SDS running buffer, 20X	Invitrogen	NP0002	500 mL

GelCode Blue Stain

Thermo Scientific

24590

500 mL

3Y



1 Alewife Center #200
 Cambridge, MA 02140
 tel. 617.945.9051
www.jove.com

ARTICLE AND VIDEO LICENSE AGREEMENT

Title of Article:

Antigenic liposomes for generation of disease-specific antibodies

Author(s):

Kyle J. Bednar, Lakeya Hardy, Johanna Smeekens, Dharmendra
 Raghuwanshi, Shiteng Duan, Mike D. Kulis, Matthew S. Macauley

Item 1 (check one box): The Author elects to have the Materials be made available (as described at

<http://www.jove.com/author>) via: ☒ Standard Access ☐ Open Access

Item 2 (check one box):



The Author is NOT a United States government employee.



The Author is a United States government employee and the Materials were prepared in the course of his or her duties as a United States government employee.



The Author is a United States government employee but the Materials were NOT prepared in the course of his or her duties as a United States government employee.

ARTICLE AND VIDEO LICENSE AGREEMENT

1. Defined Terms. As used in this Article and Video License Agreement, the following terms shall have the following meanings: “**Agreement**” means this Article and Video License Agreement; “**Article**” means the article specified on the last page of this Agreement, including any associated materials such as texts, figures, tables, artwork, abstracts, or summaries contained therein; “**Author**” means the author who is a signatory to this Agreement; “**Collective Work**” means a work, such as a periodical issue, anthology or encyclopedia, in which the Materials in their entirety in unmodified form, along with a number of other contributions, constituting separate and independent works in themselves, are assembled into a collective whole; “**CRC License**” means the Creative Commons Attribution-Non Commercial-No Derivs 3.0 Unported Agreement, the terms and conditions of which can be found at: <http://creativecommons.org/licenses/by-nc-nd/3.0/legalcode>; “**Derivative Work**” means a work based upon the Materials or upon the Materials and other pre-existing works, such as a translation, musical arrangement, dramatization, fictionalization, motion picture version, sound recording, art reproduction, abridgment, condensation, or any other form in which the Materials may be recast, transformed, or adapted; “**Institution**” means the institution, listed on the last page of this Agreement, by which the Author was employed at the time of the creation of the Materials; “**JoVE**” means MyJoVE Corporation, a Massachusetts corporation and the publisher of *The Journal of Visualized Experiments*; “**Materials**” means the Article and / or the Video; “**Parties**” means the Author and JoVE; “**Video**” means any video(s) made by the Author, alone or in conjunction with any other parties, or by JoVE or its affiliates or agents, individually or in collaboration with the Author or any other parties, incorporating all or any portion of the Article, and in which the Author may or may not appear.

2. Background. The Author, who is the author of the Article, in order to ensure the dissemination and protection of the Article, desires to have the JoVE publish the Article and create and transmit videos based on the Article. In furtherance of such goals, the Parties desire to memorialize in this Agreement the respective rights of each Party in and to the Article and the Video.

3. Grant of Rights in Article. In consideration of JoVE agreeing to publish the Article, the Author hereby grants to JoVE, subject to **Sections 4** and **7** below, the exclusive, royalty-free, perpetual (for the full term of copyright in the Article, including any extensions thereto) license (a) to publish, reproduce, distribute, display and store the Article in all forms, formats and media whether now known or hereafter developed (including without limitation in print, digital and electronic form) throughout the world, (b) to translate the Article into other languages, create adaptations, summaries or extracts of the Article or other Derivative Works (including, without limitation, the Video) or Collective Works based on all or any portion of the Article and exercise all of the rights set forth in (a) above in such translations, adaptations, summaries, extracts, Derivative Works or Collective Works and (c) to license others to do any or all of the above. The foregoing rights may be exercised in all media and formats, whether now known or hereafter devised, and include the right to make such modifications as are technically necessary to exercise the rights in other media and formats. If the “Open Access” box has been checked in **Item 1** above, JoVE and the Author hereby grant to the public all such rights in the Article as provided in, but subject to all limitations and requirements set forth in, the CRC License.

ARTICLE AND VIDEO LICENSE AGREEMENT

4. Retention of Rights in Article. Notwithstanding the exclusive license granted to JoVE in **Section 3** above, the Author shall, with respect to the Article, retain the non-exclusive right to use all or part of the Article for the non-commercial purpose of giving lectures, presentations or teaching classes, and to post a copy of the Article on the Institution's website or the Author's personal website, in each case provided that a link to the Article on the JoVE website is provided and notice of JoVE's copyright in the Article is included. All non-copyright intellectual property rights in and to the Article, such as patent rights, shall remain with the Author.

5. Grant of Rights in Video – Standard Access. This **Section 5** applies if the "Standard Access" box has been checked in **Item 1** above or if no box has been checked in **Item 1** above. In consideration of JoVE agreeing to produce, display or otherwise assist with the Video, the Author hereby acknowledges and agrees that, Subject to **Section 7** below, JoVE is and shall be the sole and exclusive owner of all rights of any nature, including, without limitation, all copyrights, in and to the Video. To the extent that, by law, the Author is deemed, now or at any time in the future, to have any rights of any nature in or to the Video, the Author hereby disclaims all such rights and transfers all such rights to JoVE.

6. Grant of Rights in Video – Open Access. This **Section 6** applies only if the "Open Access" box has been checked in **Item 1** above. In consideration of JoVE agreeing to produce, display or otherwise assist with the Video, the Author hereby grants to JoVE, subject to **Section 7** below, the exclusive, royalty-free, perpetual (for the full term of copyright in the Article, including any extensions thereto) license (a) to publish, reproduce, distribute, display and store the Video in all forms, formats and media whether now known or hereafter developed (including without limitation in print, digital and electronic form) throughout the world, (b) to translate the Video into other languages, create adaptations, summaries or extracts of the Video or other Derivative Works or Collective Works based on all or any portion of the Video and exercise all of the rights set forth in (a) above in such translations, adaptations, summaries, extracts, Derivative Works or Collective Works and (c) to license others to do any or all of the above. The foregoing rights may be exercised in all media and formats, whether now known or hereafter devised, and include the right to make such modifications as are technically necessary to exercise the rights in other media and formats. For any Video to which this Section 6 is applicable, JoVE and the Author hereby grant to the public all such rights in the Video as provided in, but subject to all limitations and requirements set forth in, the CRC License.

7. Government Employees. If the Author is a United States government employee and the Article was prepared in the course of his or her duties as a United States government employee, as indicated in **Item 2** above, and any of the licenses or grants granted by the Author hereunder exceed the scope of the 17 U.S.C. 403, then the rights granted hereunder shall be limited to the maximum rights permitted under such

statute. In such case, all provisions contained herein that are not in conflict with such statute shall remain in full force and effect, and all provisions contained herein that do so conflict shall be deemed to be amended so as to provide to JoVE the maximum rights permissible within such statute.

8. Likeness, Privacy, Personality. The Author hereby grants JoVE the right to use the Author's name, voice, likeness, picture, photograph, image, biography and performance in any way, commercial or otherwise, in connection with the Materials and the sale, promotion and distribution thereof. The Author hereby waives any and all rights he or she may have, relating to his or her appearance in the Video or otherwise relating to the Materials, under all applicable privacy, likeness, personality or similar laws.

9. Author Warranties. The Author represents and warrants that the Article is original, that it has not been published, that the copyright interest is owned by the Author (or, if more than one author is listed at the beginning of this Agreement, by such authors collectively) and has not been assigned, licensed, or otherwise transferred to any other party. The Author represents and warrants that the author(s) listed at the top of this Agreement are the only authors of the Materials. If more than one author is listed at the top of this Agreement and if any such author has not entered into a separate Article and Video License Agreement with JoVE relating to the Materials, the Author represents and warrants that the Author has been authorized by each of the other such authors to execute this Agreement on his or her behalf and to bind him or her with respect to the terms of this Agreement as if each of them had been a party hereto as an Author. The Author warrants that the use, reproduction, distribution, public or private performance or display, and/or modification of all or any portion of the Materials does not and will not violate, infringe and/or misappropriate the patent, trademark, intellectual property or other rights of any third party. The Author represents and warrants that it has and will continue to comply with all government, institutional and other regulations, including, without limitation all institutional, laboratory, hospital, ethical, human and animal treatment, privacy, and all other rules, regulations, laws, procedures or guidelines, applicable to the Materials, and that all research involving human and animal subjects has been approved by the Author's relevant institutional review board.

10. JoVE Discretion. If the Author requests the assistance of JoVE in producing the Video in the Author's facility, the Author shall ensure that the presence of JoVE employees, agents or independent contractors is in accordance with the relevant regulations of the Author's institution. If more than one author is listed at the beginning of this Agreement, JoVE may, in its sole discretion, elect not take any action with respect to the Article until such time as it has received complete, executed Article and Video License Agreements from each such author. JoVE reserves the right, in its absolute and sole discretion and without giving any reason therefore, to accept or decline any work submitted to JoVE. JoVE and its employees, agents and independent contractors shall have

ARTICLE AND VIDEO LICENSE AGREEMENT

full, unfettered access to the facilities of the Author or of the Author's institution as necessary to make the Video, whether actually published or not. JoVE has sole discretion as to the method of making and publishing the Materials, including, without limitation, to all decisions regarding editing, lighting, filming, timing of publication, if any, length, quality, content and the like.

11. **Indemnification.** The Author agrees to indemnify JoVE and/or its successors and assigns from and against any and all claims, costs, and expenses, including attorney's fees, arising out of any breach of any warranty or other representations contained herein. The Author further agrees to indemnify and hold harmless JoVE from and against any and all claims, costs, and expenses, including attorney's fees, resulting from the breach by the Author of any representation or warranty contained herein or from allegations or instances of violation of intellectual property rights, damage to the Author's or the Author's institution's facilities, fraud, libel, defamation, research, equipment, experiments, property damage, personal injury, violations of institutional, laboratory, hospital, ethical, human and animal treatment, privacy or other rules, regulations, laws, procedures or guidelines, liabilities and other losses or damages related in any way to the submission of work to JoVE, making of videos by JoVE, or publication in JoVE or elsewhere by JoVE. The Author shall be responsible for, and shall hold JoVE harmless from, damages caused by lack of sterilization, lack of cleanliness or by contamination due to the making of a video by JoVE its employees, agents or independent contractors. All sterilization, cleanliness or decontamination procedures shall be solely the responsibility of the Author and shall be undertaken at the Author's


expense. All indemnifications provided herein shall include JoVE's attorney's fees and costs related to said losses or damages. Such indemnification and holding harmless shall include such losses or damages incurred by, or in connection with, acts or omissions of JoVE, its employees, agents or independent contractors.

12. **Fees.** To cover the cost incurred for publication, JoVE must receive payment before production and publication the Materials. Payment is due in 21 days of invoice. Should the Materials not be published due to an editorial or production decision, these funds will be returned to the Author. Withdrawal by the Author of any submitted Materials after final peer review approval will result in a US\$1,200 fee to cover pre-production expenses incurred by JoVE. If payment is not received by the completion of filming, production and publication of the Materials will be suspended until payment is received.

13. **Transfer, Governing Law.** This Agreement may be assigned by JoVE and shall inure to the benefits of any of JoVE's successors and assignees. This Agreement shall be governed and construed by the internal laws of the Commonwealth of Massachusetts without giving effect to any conflict of law provision thereunder. This Agreement may be executed in counterparts, each of which shall be deemed an original, but all of which together shall be deemed to be one and the same agreement. A signed copy of this Agreement delivered by facsimile, e-mail or other means of electronic transmission shall be deemed to have the same legal effect as delivery of an original signed copy of this Agreement.

A signed copy of this document must be sent with all new submissions. Only one Agreement required per submission.

CORRESPONDING AUTHOR:

Name:	Matthew Macauley	
Department:	Chemistry, Medical Microbiology and Immunology	
Institution:	University of Alberta	
Article Title:	Full article (with video)	
Signature:		Date: April 10th, 2018

Please submit a signed and dated copy of this license by one of the following three methods:

- 1) Upload a scanned copy of the document as a pdf on the JoVE submission site;
- 2) Fax the document to +1.866.381.2236;
- 3) Mail the document to JoVE / Attn: JoVE Editorial / 1 Alewife Center #200 / Cambridge, MA 02139

For questions, please email submissions@jove.com or call +1.617.945.9051

Editorial comments:

Changes to be made by the Author(s):

1. Please take this opportunity to thoroughly proofread the manuscript to ensure that there are no spelling or grammar issues. The JoVE editor will not copy-edit your manuscript and any errors in the submitted revision may be present in the published version.

Response: The entire manuscript has been carefully re-read and numerous grammatical errors have been addressed.

2. Figure 1: Please describe panels A and B.

Response: Thank you for pointing out the fact we forgot to update the figure legend of Figure 1. The figure legend has now been updated to describe panels A and B.

3. Figure 2B: Are the lines cut off at 10-22 s?

Response: Yes, but this is for a very good reason. This the time in which the sample is taken off the flow cytometer in order to add the antigen. Although the instrument continues to acquire data during this time, the values at this point in time are confusing and meaningless, therefore, it is standard practice to not show data during this time. To avoid confusion for the reader, we have added a note about this in the figure legend: *“Note: between 10-22 s is when the stimulation is added and, therefore, no data is acquired during this time.”*

4. Figure 5: Please line up the panels better.

Response: Thank you for the good suggestion. We have now aligned panel A and B horizontally, and A and C vertically.

5. Summary: Please shorten the summary to meet the 10-50 word limit.

Response: The summary has been shortened to 50 words.

6. Please define all abbreviations before use (DMSO, RT, DTT, etc.).

Response: Abbreviations have been defined.

7. Please use SI abbreviations for all units: L, mL, μ L, h, min, s, etc.

Response: SI abbreviations have been used and defined.

8. Please include a space between all numbers and their corresponding units: 15 mL, 37 °C, 60 s; etc.

Response: The requested changes have been made.

9. Please convert centrifuge speeds to centrifugal force (x g) instead of revolutions per minute (rpm).

Response: The requested changes have been made.

10. Please revise the protocol text to avoid the use of any personal pronouns (e.g., "we", "you", "our" etc.).

Response: The requested changes have been made.

11. Please remove all commercial language from your manuscript and use generic terms instead. All commercial products should be sufficiently referenced in the Table of Materials and Reagents.

For example: Jackson Labs, stock number 000651, Sephadex G50, Kimwipe, Avanti, NuPAGE, Coomassie, etc.

Response: The requested changes have been made.

12. Please ensure that all text in the protocol section is written in the imperative tense as if telling someone how to do the technique (e.g., "Do this," "Ensure that," etc.). The actions should be described in the imperative tense in complete sentences wherever possible. Avoid usage of phrases such as "could be," "should be," and "would be" throughout the Protocol. Any text that cannot be written in the imperative tense may be added as a "Note." However, notes should be concise and used sparingly. Please include all safety procedures and use of hoods, etc. Please revise 1.3, 1.6, 4.12, etc.

Response: Sentences have been changes to make more imperative whenever possible and several 'Notes' have been added.

13. The Protocol should be made up almost entirely of discrete steps without large paragraphs of text between sections. Please simplify the Protocol so that individual steps contain only 2-3 actions per step and a maximum of 4 sentences per step. Please revise 1.3, 1.6, 1.17, 4.13, etc.

14. There is a 10 page limit for the Protocol. Please revise the protocol section to meet this page limit.

Response: The suggested sections have been shortened as requested and the revised protocol section now meets the 10-page limit.

15. There is a 2.75 page limit for filmable content. Please highlight 2.75 pages or less of the Protocol (including headings and spacing) that identifies the essential steps of the protocol for the video, i.e., the steps that should be visualized to tell the most cohesive story of the Protocol. Remember that non-highlighted Protocol steps will remain in the manuscript, and therefore will still be available to the reader.

Response: The filmable content, comprising a total of 2.75 pages, has been highlighted in yellow in the revised manuscript.

16. Please ensure that the highlighted steps form a cohesive narrative with a logical flow from one highlighted step to the next. Please highlight complete sentences (not parts of sentences). Please ensure that the highlighted part of the step includes at least one action that is written in imperative tense.

Response: We have taken significant care to provide a contiguous and logical narrative and that sentences are complete and written in the imperative tense.

17. References: Please do not abbreviate journal titles.

Response: All journal titles have been spelled out in full.

Reviewers' comments:

Reviewer #1:

Manuscript Summary:

The manuscript by Bednar et al. describes a method of peanut allergy in mice that is adoptively transferred by spleen from peanut-sensitized mice, it is reproducible and minimize the use of adjuvants and animals. To achieve an increase in Ara h 2 specific IgE and IgG1 antibodies the animals are boosted with liposomal nanoparticles containing Ara h 2 allergen.

Taking into account that food allergy models are rare, the proposed model is promising. However there are some questions that should be addressed.

Response: Thank you for the positive feedback on the promise of this new food allergy model.

Major Concerns:

1. Regarding booster: There is no information whether other types of booster would give similar results. For instance, the authors only included a booster with liposomes containing Ara h 2. They should include booster with Ara h 2 without liposomes as well as with peanut extract in order to validate the efficacy of Ara h 2 vs extract or liposome with Ara h 2 vs liposome with peanut extract.

Response: We agree with the reviewer that all the possible controls for different forms of the antigen during the boosting step (one day after the adoptive transfer) would be nice show. Since writing the first version of this manuscript nearly 6 months ago, we have been moving the model into B6 mice and have indeed performed all these controls. We will be including this data in a subsequent publication but would be happy to provide the data to satisfy the reviewer if required. What our data shows that indeed liposomal delivery of antigen is absolutely required to induce the allergic response. While soluble allergen does induce low levels of antibody, these are not enough to drive an anaphylactic response upon a subsequent challenge. These results are in line with many other studies demonstrating that the multivalent display of antigen on liposomes can potentially stimulate B-cell responses and that liposomal nanoparticles have the added benefit that

they can effectively prime T-cell responses through being taken up non-specifically by APCs. With these things in mind, it is important to point out that the primary objective of this manuscript is to demonstrate the basic techniques of preparing antigenic liposomal nanoparticles, their testing in B-cell stimulation assays using calcium flux assay, and the steps involved in setting up and measuring an anaphylactic response in an allergic mouse model.

2. IgE production: ELISA for specific IgE usually is not performed directly since specific IgG1 antibodies that are in higher concentrations than IgE antibodies could compete with epitopes recognized by IgE. For instance, to measure specific IgE in OVA model. The serum IgE is first captured by anti-IgE antibody and then is revealed by biotinylated OVA.

Response: We understand the reviewer's point and are aware of possible interference by IgG in our ELISA, however, we are clearly able to detect Ara h 2-IgE using our methodology. Additionally, we have recently published some of our work using the more traditional peanut allergy model in the Journal of Allergy and Clinical Immunology (Orgel, et al., JACI, 2017, Exploiting CD22 on antigen-specific B cells to prevent allergy to the major peanut allergen Ara h 2) and other well-known researchers in the field, such as Hugh Sampson at Mount Sinai, also use the same method as our laboratory (see for example, Srivastava, et al. Journal of Allergy and Clinical Immunology, 2016, Investigation of peanut oral immunotherapy with CpG/peanut nanoparticles in a murine model of peanut allergy). Therefore, we feel that our method is well-established and is an acceptable technique to measure allergen-specific IgE in mouse serum.

Reviewer #2:

Manuscript Summary:

This paper by Bednar et al. describes a method of inducing allergen specific IgE responses, in particular to the peanut protein Ara h2, using a mouse model. In this model, mice are sensitized to whole peanut in a classical adjuvant based technique. Splenocytes are then transferred to naive mice and then IgE to Ara h2 is boosted with injection of a liposome conjugated Ara h2 and then followed by a free Ara h2 injection. This increased both IgE and IgG responses to Ara h2. The protocol is generally well written and clear and should be published. This technique certainly has merit and is an interesting use of liposomes, but the authors need to reevaluate their claims of both simplicity and reproducibility.

Response: Thank you for the positive feedback that this should be published. Thank you for the extremely helpful comments and suggestions that have improved the manuscript.

Major Concerns:

1. The data is not sufficiently convincing to claim that this method is highly reproducible. They only had 4 mice per group and the results were fairly variable, which is to be expected in mouse experiments. They do not show a side by side comparison with other methods of inducing peanut allergies. They should have at least taken mice who were sensitized to peanut without transferring the splenocytes and used those as a control, not mice whose splenocytes were transferred and then challenged with PBS.

Response: Although the data in the manuscript only includes four mice per group, we have repeated this experiment several times and seen very reproducible results. For example, the average body temperature drop 30 minutes after i.p. challenge with Ara h 2 for two independent experiments were $7.2 \pm 1.1^{\circ}\text{C}$ and $6.7 \pm 1.9^{\circ}\text{C}$ ($n=4$ each). These standard deviations are tighter and stronger than what we typically see for peanut sensitized mice that are i.p. challenged with peanut, $3.1 \pm 2.0^{\circ}\text{C}$ ($n=12$). The goal of this manuscript is to present this new model, and show visually how we challenge and monitor anaphylaxis, not to provide a direct comparison to other peanut allergy models.

2. If they claim that there is an increase in Ara h2 specific antibodies in these mice (Figure 5A), it is critical that they also show IgE and IgG levels of other Ara h proteins, in particular Ara h 1 and Ara h 6 for comparison to show that their technique is increasing Ara h 2 specific antibodies.

Response: In response to this comment, we have quantified Ara h 1-specific IgE and IgG1, and we see an increase in both after the Ara h 2 boost injection. This is consistent with data shown in our previous publication (Orgel, *et al.*, JACI, 2017) and another publication showing human IgE cross-reactivity between Ara h 1, 2 and 3 (Bublin, *et al.* JACI, 2013). Since there is known cross-reactivity between these peanut allergens, we are not surprised by these findings. Our data do show an increase in Ara h 2-specific IgG1 and IgE and these correspond to anaphylactic reactions observed with Ara h 2 challenge in the mice.

3. They need to do a better job in the intro stressing what separates this method from other methods. Does it provide more Ara h2 specific antibodies? Is this method more simple? Given the need for multiple injections and transfer of splenocytes, I would certainly say this method is not more simple than other adjuvant based methods.

Response: We acknowledge that this model is not necessarily ‘simpler’ than other models and do not believe that we have used language to describe it in these terms. Having said this, we do think there is room to improve the description of the advantages of this method over previous methods. To address this, we have added the following text to the discussion:

“Compared to these conventional approaches, this adoptive transfer model offers three primary advantages. The first is that it enables memory B- and T-cells specific to the allergen to be studied more directly. Indeed, evidence now strongly implicates memory B-cells as the major source of long-term allergies¹⁸. Second, because the same number of memory B- and T-cells are implanted into each recipient mouse, the allergic responses are minimally variable. Third, this model provides the opportunity to study allergic responses to individual allergens, which is useful in the context of testing new immunotherapies.”

4. One interesting aspect of this work that is not sufficiently discussed is the potential for adoptive transfer of human splenocytes into a mouse model. It is well known that one of the significant challenges in mouse models of allergies is that mice IgE bind to different epitopes on allergens than humans. If T cells and B cells from sensitive individuals are taken and transplanted into a immunodeficient mice, this technique could be used to sensitize mice with the appropriate epitope profiles.

Response: This is a very intriguing point that we had also contemplated but felt that it might not be appropriate because of the lack of appropriate cells (e.g. mast cells) in such mouse models. However, upon reading more about this subject, we agree with the reviewer that this would be appropriate to discuss as an application of the model. As such, we have added the following text to the discussion:

“One intriguing application of this model is to use the general approach in the context of a humanized mouse model, where allergic responses have been studied in immunized models²¹. Applied in the context of an adoptive transfer model, a humanized mouse model could be a powerful approach to expanding and *in vivo* testing of B- and T-cells from allergic patients.”

Minor Concerns:

Some minor grammatical errors, check line 699.

Response: Thank you for pointing out the grammatical error on line 699. The manuscript has been re-read carefully and a number other errors have been fixed.