

Journal of Visualized Experiments

Elastic Staining on Paraffin-embedded Slides of pT3N0M0 Gastric Cancer Tissue --Manuscript Draft--

Article Type:	Invited Methods Article - JoVE Produced Video
Manuscript Number:	JoVE58278R2
Full Title:	Elastic Staining on Paraffin-embedded Slides of pT3N0M0 Gastric Cancer Tissue
Keywords:	Elastic staining, Elastic lamina invasion, pT3N0M0 gastric cancer, Peritoneal surface invasion, Prognostic factor
Corresponding Author:	C Dr. Zhang
Corresponding Author's Institution:	
Corresponding Author E-Mail:	900009@csu.edu.cn
Order of Authors:	Guang Lei Haiyan Yang Ting Hong Nong Yang yongchang Zhang
Additional Information:	
Question	Response
Please indicate whether this article will be Standard Access or Open Access.	Standard Access (US\$2,400)
Please indicate the city, state/province, and country where this article will be filmed . Please do not use abbreviations.	3363

TITLE:

Elastic Staining on Paraffin-embedded Slides of pT3N0M0 Gastric Cancer Tissue

AUTHORS AND AFFILIATIONS:

Guang Lei¹ *, Haiyan Yang¹ *, Ting Hong², Nong Yang¹, Yongchang Zhang¹

¹Department of Medical Oncology, Lung Cancer and Gastrointestinal Unit, Hunan Cancer Hospital and The Affiliated Cancer Hospital of Xiangya School of Medicine, Central South University, Changsha, China

²Department of Obstetrics & Gynaecology, The First Hospital of Changsha, Changsha, China

* These authors contributed equally.

Corresponding Authors:

Yongchang Zhang (zhangyongchang@csu.edu.cn)

Tel: +8613873123436

Nong Yang (yangnong0217@163.com)

Tel: +86-0731-89762322

E-mail addresses of the Co-Authors:

Guang Lei (lg_tc@163.com)

Haiyan Yang (32875997@qq.com)

Ting Hong (1223728717@qq.com)

KEYWORDS

Elastic staining, elastic lamina invasion, pT3N0M0 gastric cancer, peritoneal surface invasion, prognostic factor

SUMMARY:

Here, we present a protocol of elastic staining to identify elastic fibers in pT3N0M0 gastric cancer tissues on formalin-fixed, paraffin-embedded sections. Subsequently, we describe a method to determine whether tumor cells invade beyond the elastic lamina.

LONG ABSTRACT:

The elastic lamina, which is usually located in the sub-mesothelial layer, adjacent to the peritoneum mesothelial cells, is amphiphilic on hematoxylin and eosin (H&E) staining but can be visualized through elastic staining. One of the important benefits of elastic staining is that it makes it easy to determine whether tumor cells have invaded beyond the elastic lamina. This helps in examining the extent of peritoneal surface invasion, thereby distinguishing the pT3 and pT4 stages in gastrointestinal cancer. In this study, we present a protocol to identify elastic fibers in

the formalin-fixed, paraffin-embedded pT3N0M0 gastric cancer tissue sections. We prepare 5- μ m paraffin sections fixed on slides, and then all the slides are deparaffinated and rehydrated during the staining procedure. Subsequently, all the sections are oxidized by potassium permanganate, bleached by oxalic acid, stained by elastic staining, and counterstained by Van Gieson's. Finally, we examine the effect of staining; elastic lamina is stained blue-black and collagen fibers are stained red, while the cancer cells are stained in varying shades of yellow. We also describe in detail the methods used for determining the positional relationship between cancer cells and elastic lamina. This method is simple, low-cost, and widely applicable in the identification of peritoneal surface invasion in gastrointestinal cancer because of its outstanding selectivity for elastic fibers and authentic results.

INTRODUCTION:

As per the Tumor, Node, and Metastasis (TNM) cancer staging system, the prognosis of gastric cancer at pathologic stage pT4 is significantly worse than that at pT3 (8th UICC/AJCC)¹. With gastric cancer, classification of the primary tumor (pT) usually depends on the depth of tumor invasion². Pathologic stage pT3 gastric cancer is defined as cancer invading through the *muscularis propria* into subserosal tissues, whereas pT4 gastric cancer is defined as cancer penetrating to the surface of the visceral peritoneum. The presence of the peritoneal surface invasiveness is the key to distinguish the two stages². However, because the peritoneal mesothelial cell layer is very thin, it could be damaged during the surgery, postoperative treatment, and fixation³. Moreover, tumor-related inflammatory changes and fibrosis can damage the normal anatomy of the peritoneum, which makes it very difficult to accurately judge the peritoneal surface invasion using only H&E staining⁴. Current auxiliary diagnosis methods such as cytology and immunohistochemistry are of limited diagnostic value^{5,6} because they are false-positive or have a low cost-effectiveness.

The serosal membrane includes the peritoneum, pleura, and pericardium, and is composed of the mesothelium, a basement membrane, and a sub-mesothelial layer⁷. One common histological feature of the serosal membrane is the presence of an elastic lamina in the sub-mesothelial layer, adjacent to the mesothelial cells^{8,9}. Elastic lamina has a strong anti-damaging ability and can serve as an alternative prognostic marker if the mesothelial cells are destroyed by severe tumor-related inflammation or fibrosis³. Elastic lamina mainly comprises of elastin and microfibril¹⁰, which can be visualized by elastic staining. The principal reason behind the use of the elastic staining is that the elastin forms a hydrogen bond with the phenolic group of resorcinol in the elastin solution, causing elastic fibers to be stained blue-black. After Van Gieson (VG) contrasting staining, collagen fibers can be stained red and muscle fibers and red blood cells can be stained yellow^{8,11-13}.

The eighth edition of the TNM staging of lung cancer defines visceral pleural invasion (T2) as a tumor invasion beyond the elastic lamina or an invasion at the surface of the visceral pleura². Studies on colorectal cancer have shown that the elastic lamina invasion in pT3 colorectal cancer may be the reason for poor prognoses. The 5-year disease-free and overall survival rate of colorectal cancer have also been proven to be like pT4a^{13,14,15}. Based on our previous studies on

elastic staining, elastic lamina invasion has been found to have a significant negative influence on the prognosis of pT3 gastric cancer and should be treated the same way as pT4a gastric cancer¹². Hence, this simple and cost-effective method can help eliminate uncertainty in results obtained through H&E staining, and other common limitations associated with other auxiliary diagnosis methods, including cytology and immunohistochemistry, among others. This method can be used efficiently to diagnose peritoneal surface invasions of gastrointestinal cancer, especially in some ambiguous cases. It is convenient since H&E stain and other stains usually make it difficult to identify such invasions. This method also ensures a reliability of results since it is very selective, particularly to elastic fibers. Here, we conduct elastic staining to determine whether tumor cells have invaded the elastic lamina in pT3N0M0 gastric cancer¹².

This method is used for identifying elastic fibers in tissues on formalin-fixed, paraffin-embedded sections, and may be used for frozen sections as well. Here, we choose paraffin-embedded sections for the best maintenance of cellular and tissue morphology. All the steps in this protocol take place at room temperature. A commercial staining kit which includes a potassium permanganate solution, an oxalic acid solution, an elastin solution, and a Van Gieson's solution is used in the presented study.

PROTOCOL:

Between 1994 and 2005, patient samples were selected by two experienced gastrointestinal pathologists in the Affiliated Cancer Hospital of Xiangya School of Medicine, Central South University, from patients who suffered gastrectomy of stomach neoplasms, with a postoperative pathological diagnosis of gastric cancer at the pT3N0M0 stage (according to the seventh TNM staging). This study was approved by the ethics review committee.

1. Sectioning

1.1. Place the paraffin block into a fixed holder of the sledge microtome, which can move backward and forward across the blade. Adjust the optimal angle between the block and the microtome knife.

Note: The optimal angle not only depends on the blade's geometry but also on the cutting speed and technique.

1.2. Trim the paraffin block as necessary and cut it into 5- μ m-thick cross sections.

1.3. Place the paraffin 5- μ m sections in a water bath at about 40 - 45 °C and mount it, subsequently, from the water onto the glass slide, one section per slide.

1.4. Press the mounted section carefully against a paper towel to remove any residual water and potential air bubbles.

124
125 1.5. Allow sections to air-dry for 30 min and then bake them in an oven at 45 - 50 °C for 2 h.
126

127 **2. Deparaffinization and Rehydration of All Slides**

128

129 2.1. Immerse the slides in xylene in a Coplin jar for 10 min.
130

131 2.2. Take the slides out from the first xylene jar and immerse them in xylene in another jar for 10
132 min.
133

134 2.3. Now, immerse the slides in 100% ethanol in a Coplin jar for 5 min.
135

136 2.4. Immerse the slides in 100% ethanol in another Coplin jar, also for 5 min.
137

138 2.5. Immerse the slides in 95% ethanol in a Coplin jar for 2 min.
139

140 2.6. Immerse the slides in 70% ethanol in a Coplin jar for 2 min.
141

142 Note: Ensure that the slides are completely immersed in the solutions while performing the above
143 steps.
144

145 2.7. Rinse the slides briefly with distilled water in a new jar.
146

147 **3. Staining**

148

149 3.1. Before proceeding for staining, wipe off any excess solutions around the tissue on the slide
150 with a tissue paper.
151

152 3.2. Place the slides in room temperature and room humidity conditions to avoid drying of the
153 tissue on the slide throughout the entire staining process.
154

155 3.3. Oxidize the slides with a few drops of potassium permanganate for 5 min. Ensure that the
156 volume of potassium permanganate is enough to cover the tissue section on each slide.
157

158 3.4. Rinse the oxidized slides with distilled water in a Coplin jar with 2 - 3 changes. Observe the
159 blue color of the tissue.
160

161 3.5. Now, bleach these slides by adding a few drops of oxalic acid for 5 min. Ensure that the
162 volume of oxalic acid is enough to completely cover the tissue section on each slide.
163

164 3.6. Rinse the slides by immersing them in the Coplin jar filled with distilled water. Perform the

rinse 2x - 3x.

3.7. Now, wash these slides briefly in 95% alcohol, and then immerse the slides into an elastin solution (5 g/L) for 8 - 24 h.

Note: Elastin solution is volatile, and its staining time is relatively long, so it is best to immerse the slides with elastic staining in a sealed container, such as a transparent glass bottle with a sealing cap. The capacity of the container and the volume of the elastin solution depends on the number of immersed slides, as long as it enables the complete immersion of all the slides.

3.8. Immerse these slides directly in 95% ethanol for 1 - 2 min to differentiate each tissue section well.

Note: Differentiation refers to the change in the charge of the tissue section, which removes the excess staining absorbed by the tissue and makes the colors clearer. After elastin solution staining, samples should not be washed with distilled water to avoid any difficulty in differentiation. Check microscopically, as necessary, for blue-black elastic fibers staining and gray background. It is better to slightly underdifferentiate the tissue since the subsequent Van Gieson's counterstain can also somewhat extract the elastic stain.

3.9. Fully rinse these slides with distilled water after differentiation.

3.10. Counterstain the slides in a Van Gieson's solution for 1 min.

Note: The volume of the Van Gieson's solution needs to be enough to be able to immerse the tissue section on each slide completely.

3.11. Rapidly drop 95% ethanol onto these slices for a few seconds to differentiate each tissue section well.

Note: Do not rinse the slides with any water after the Van Gieson's counterstaining, as that could weaken or even elute the color of the Van Gieson's counterstaining.

4. Dehydration and Mounting

4.1. Immerse the slides in 95% alcohol for 5 min to let them dehydrate quickly.

4.2. Continue to dehydrate these slices by 2 changes of 100% alcohol, each time immersing the slides for 5 min.

4.3. Immerse the slides into 2 changes of xylene, each time for 3 min.

4.4. Add one drop of resinous mounting medium to the slide and place the coverslip on the top.

5. Microscopic Observation of the Slides

5.1. Find the serosal direction and observe the results of elastic staining: elastic fibers (lamina) are stained blue-black, collagen fibers are stained red, and muscle fibers are stained yellow.

5.2. Look for the cancer cells in the whole slide: cancer cells are stained yellow¹².

5.3. Determine the positional relationship between the cancer cells and elastic lamina.

Note: There will be two situations here. As long as there is one tumor cell that has invaded beyond the elastic lamina in the whole slide, then this case could be considered as elastic lamina invasion. On the other hand, only when there is no tumor cell that has invaded beyond the elastic lamina in the whole slide, this case could be considered as elastic lamina non-invasion.

REPRESENTATIVE RESULTS:

A successful elastic staining clearly reveals elastic lamina and cancer cells in pT3 gastric cancer. **Figure 1**—low-power field, microscopically checked after elastin solution staining, prior to Van Gieson's counterstain as per the protocol mentioned—shows the elastic lamina is close to the serosal mesothelial cells and is stained blue-black in the form of filaments, and there is still a certain distance between the tumor cells and the elastic lamina. **Figure 2** is a typical elastic staining with Van Gieson's counterstain, where elastic lamina is stained blue-black, collagen fibers are stained red, and muscle fibers and cancer cells are stained yellow. Elastic lamina invasion can be considered as cancer cells penetrating the elastic lamina (**Figure 2B**), whereas elastic lamina non-invasion can be considered as cancer cells that are close to the elastic lamina, but not invading (**Figure 2A**). In case the elastic staining reveals a repetitive structure, which suggests there is more than one layer of elastic lamina, if the tumor invasion does not invade beyond the outermost elastic lamina (indicated by arrows), the sample should be diagnosed as elastic lamina non-invasion (**Figure 2C**).

FIGURE & TABLE LEGENDS:

Figure 1: The microscopic image of elastic staining before Van Gieson's counterstaining. The elastic lamina is marked by arrows, "T" represents tumor cells, "S" represents the direction of the serosal membrane. The elastic lamina can be clearly visualized by elastic staining. The arrows indicate elastic lamina. The scale bar is 200 μm.

Figure 2: The representative result of elastic staining with Van Gieson's counterstain. The elastic lamina is marked by arrows, "T" represents tumor cells, "S" represents the direction of the serosal

membrane. (A) Tumor cells grow near the elastic lamina without invading beyond it. (B) Tumor cells invade beyond the elastic lamina. (C) Tumor cells exhibit invasion in the vicinity of elastic lamina but do not penetrate beyond the outermost elastic lamina.

DISCUSSION:

This method proposed here provides an accurate approach for identifying the subserosal elastic lamina. The method can be used to evaluate whether tumor cells have invaded the elastic lamina in pT3N0M0 gastric cancer¹². Elastic lamina is reddish in H&E-stained sections, which could not be easily distinguished from collagen fibers, and other existing auxiliary diagnosis methods, such as cytology and immunohistochemistry, also exerted limited diagnostic value. The finding of tumor cells in the peritoneal irrigating fluid does not necessarily indicate the presence of a serosal invasion of the primary tumor, which may be due to the lymph node metastasis or other distant metastasis⁵. As the mesothelial cells are likely to be destroyed by fibrous inflammation, an immunohistochemistry diagnosis may not be feasible, and the workload is relatively large⁶. However, elastic staining as a classic, special staining method can make the elastic lamina clearly visible¹¹⁻¹³. After standard operating, according to this protocol, the elastic lamina can be stained blue-black, collagen fibers can be stained red, and muscle fibers and red blood cells can be stained yellow, which makes it easier for pathologists to assess the distribution of tumor cells and elastic lamina. Elastic staining may also have some limitations in the diagnostic criteria. For example, in some cases, the structure of elastic lamina is not clear due to obvious tumor-related fibrous inflammation. Different observers may have differences in the understanding and practical application of the diagnostic criteria in one case, although some pathologists still believe that if the tumor tissue invades beyond one side of the remaining elastic lamina, it can be diagnosed as an elastic lamina invasion¹⁷. Nonetheless, with the continued popularization of the application of elastic staining and the standardization of diagnosis consensus of pathologists, this limitation will be weakened in the future.

Critical steps in this protocol include proper control of the differentiating process and standard tissue specimen selection. After elastin solution staining, slides should not be washed by distilled water, but differentiated slides need to be placed directly in 95% ethanol for 1 - 2 minutes to avoid the difficulty in differentiation. After Van Gieson's counterstaining, contact of the slides with water should be avoided; instead, the differentiated slices rapidly need to be washed in 95% ethanol for a few seconds. Otherwise, the color of the Van Gieson's counterstain will be weakened or even eluted. As for the tissue specimen selection, the most important part is the area where the peritoneum changes direction, especially the acute angle area, rather than the area covered by flat mesothelial tissue⁴. All the cases in this study were drawn according to this method, and the depth of the tissue specimen selecting was as deep as possible in order to assess the relationship between the tumor and the serosa. In addition, all the steps in this protocol take place at room temperature. Since elastin solution is easy to volatilize and the staining time is relatively long, it is best to immerse the slides in elastic staining solution in a sealed container. As for the microscopic observation, the result of elastic staining is accurate and reliable. However, in

some special cases, some reasonable diagnostic criteria need to be taken into account, as proposed by Grin *et al.*¹⁶. In cases where tumor-related fibrous inflammation results in an obvious instability of the elastic lamina structure, when the tumor tissue invades beyond the residual elastic lamina on one side, it can be diagnosed as elastic lamina invasion. In the case of mucinous adenocarcinoma, only if the cellular mucous component invades beyond the elastic lamina can it be diagnosed as elastic lamina invasion. If elastic staining shows a repetitive elastic lamina structure, the sample can be diagnosed as elastic lamina invasion only when the tumor invasion is beyond the outermost elastic lamina. If the above condition occurs in one or more sections, the case can be diagnosed as elastic lamina invasion¹⁶.

This protocol demonstrates a straightforward technique for visually identifying the elastic lamina in gastric cancer. This technique is widely adaptable and may be expanded to judge the serosal invasion for other prognostic predictions, such as esophageal or ovarian cancer¹⁷. It also can be utilized to identify blood and lymphatic vessel invasion in colorectal cancer as well as in other cancers, especially in some difficult cases, for the reason that elastic lamina also exists in vessel and lymphatic endothelium. Also, elastic staining is cheap and can be easily adopted by pathologists at different sites¹⁸. Furthermore, this technique is not limited to tumor tissues, but can also be used for diagnoses of dermatologic and vascular diseases, such as discoid lupus erythematosus, alopecia, and carotid artery lesion^{19,20}. With the development of the elastic staining technology and accumulating studies of tumors with large sample sizes, we expect that elastic staining can be accepted by the AJCC staging system in judging the serosal invasion of gastric cancer and colorectal cancer.

ACKNOWLEDGMENTS:

The authors thank the support in part from the National Natural Science Foundation (NO.81401902 and NO.81501992) and the Hunan Natural Science Foundation (NO.2017SK2134, NO.2018JJ2238). The manuscript is written by Guang Lei. The whole experiment is performed by Guang Lei and Haiyan Yang. The authors thank the assistance of pathologists and of fellows who follow up patients' data.

DISCLOSURES:

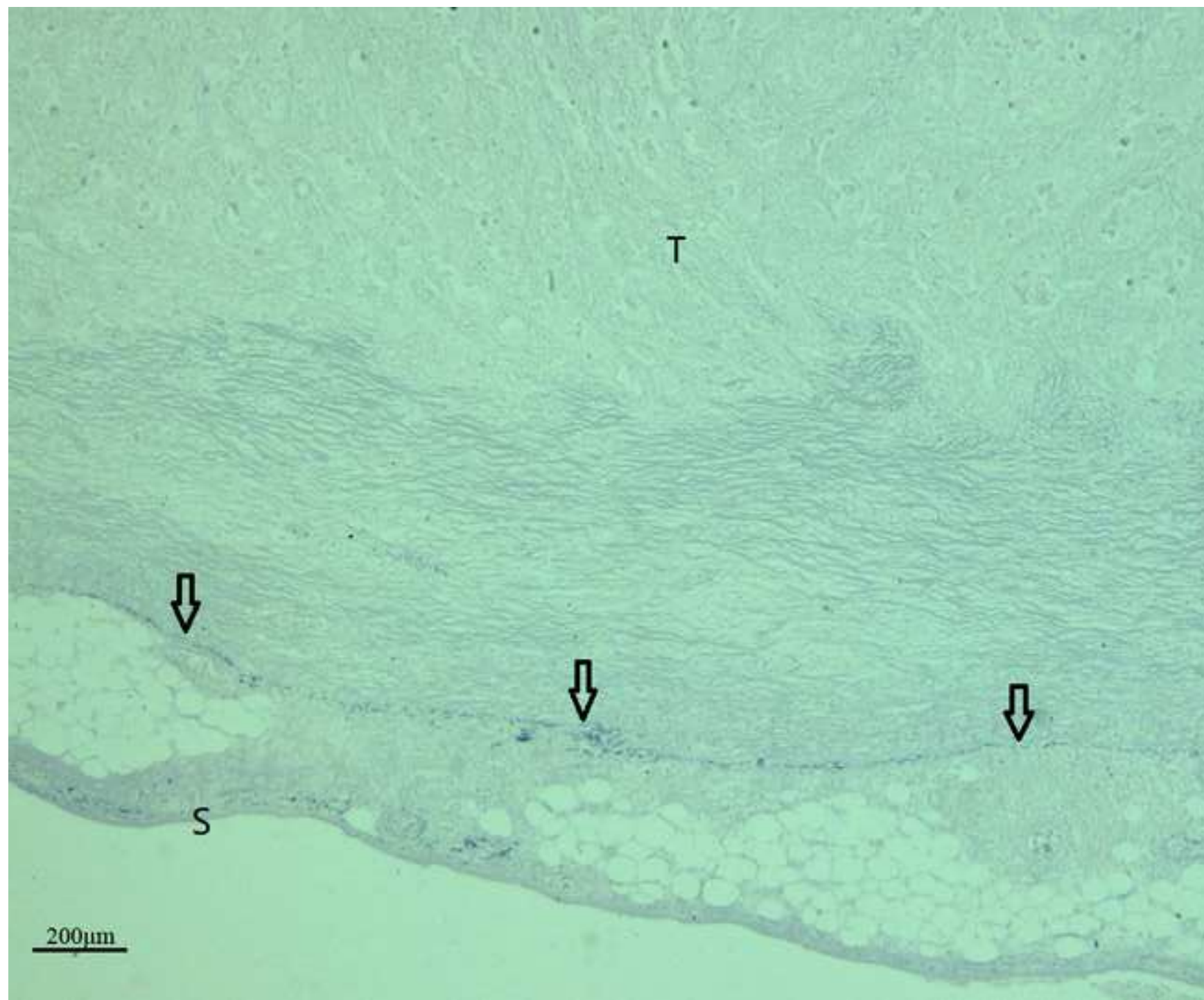
The authors have nothing to disclose.

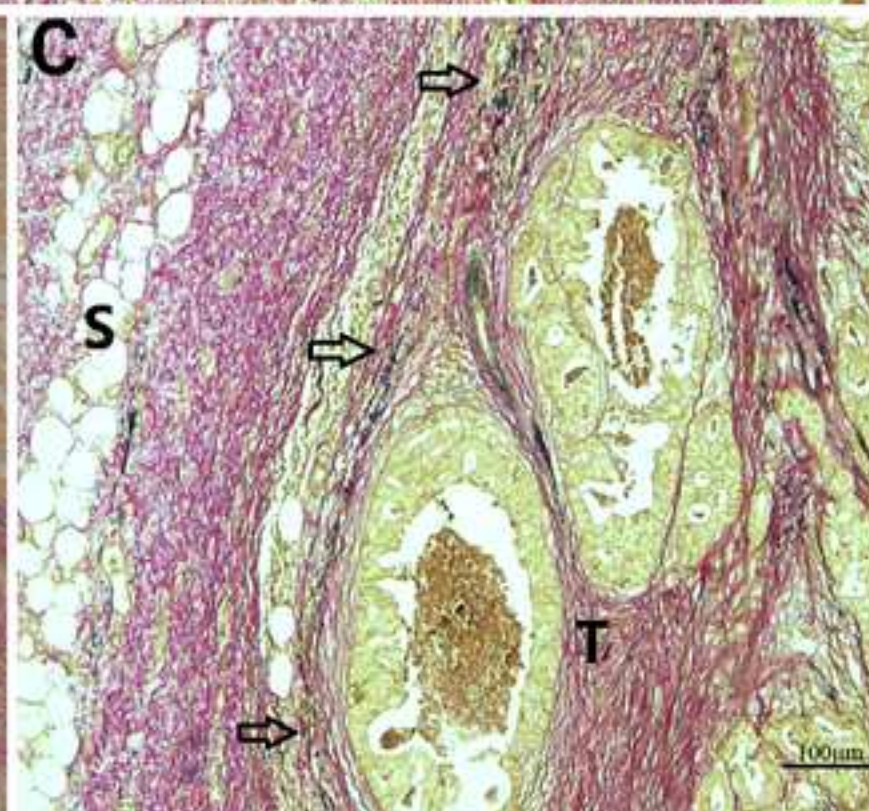
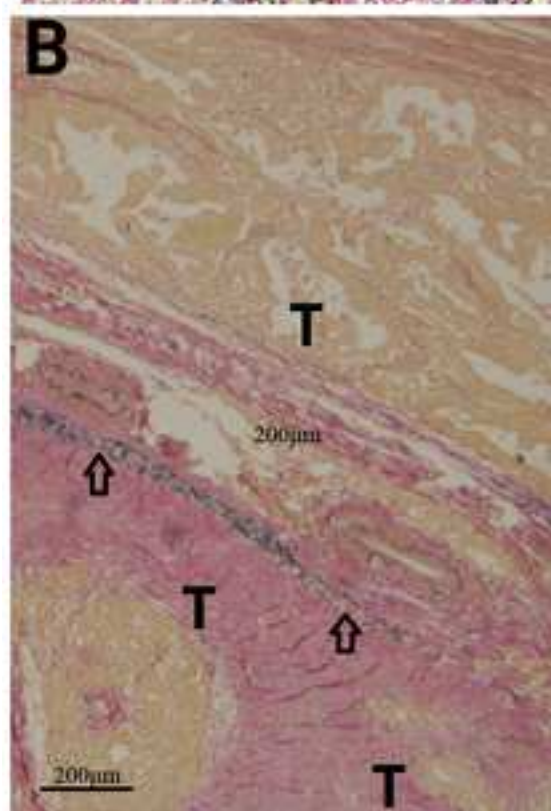
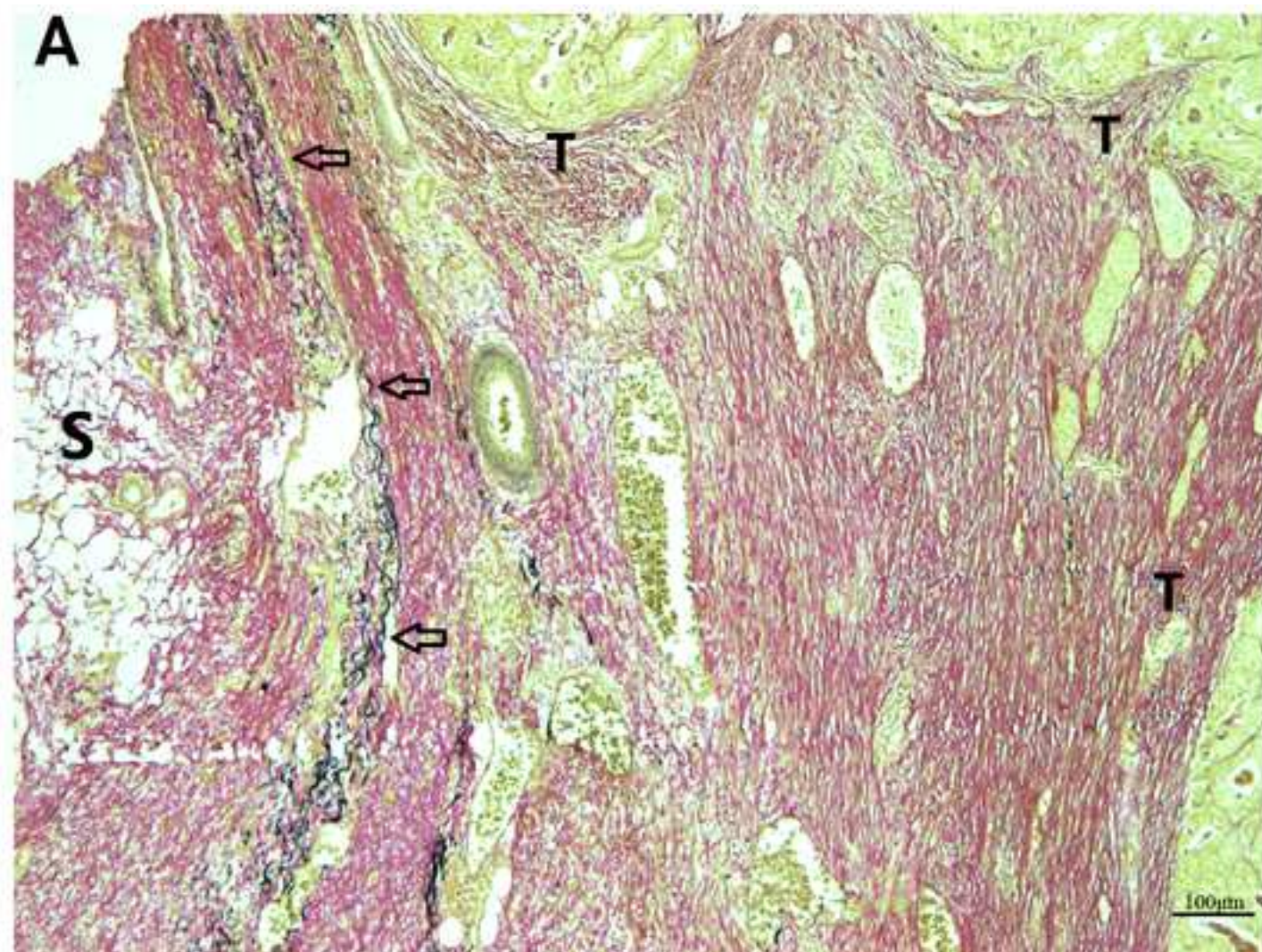
REFERENCES:

1. Jiang, C.G. *et al.* Clinicopathologic characteristics and prognosis of gastric cancer invading the subserosa. *Journal of Surgical Oncology*. **102** (7), 737-741 (2010).
2. Amin, M.B. *et al.* *AJCC Cancer Staging Manual*. 8th ed. Springer. New York, NY (2017).
3. Kojima, M. *et al.* Elastic laminal invasion in colon cancer: diagnostic utility and histological features. *Frontiers in Oncology*. **2**, 179 (2012).

4. Ludeman, L., Shepherd, N.A. Serosal involvement⁷ in gastrointestinal cancer: its assessment and significance. *Histopathology*. **47** (2), 123-131 (2005).
5. Shepherd, N.A., Baxter, K.J., Love, S.B. The prognostic importance of peritoneal involvement in colonic cancer: a prospective evaluation. *Gastroenterology*. **112** (4), 1096-1102 (1997).
6. Liang, W.Y. Retrospective evaluation of elastic stain in the assessment of serosal invasion of pT3N0 colorectal cancers. *American Journal of Surgical Pathology*. **37** (10), 1565-1570 (2013).
7. Carter, D., True, L., Otis, C.N. Serosal membranes. In: *Histology for Pathologists*. 3rd ed. Edited by Mills, S.E., 547-562, Lippincott Williams and Wilkins. Philadelphia, PA (2007).
8. Knudsen, P.J. The peritoneal elastic lamina. *Journal of Anatomy*. **177**, 41-46 (1991).
9. Shepherd, N.A., Baxter, K.J., Love, S.B. Influence of local peritoneal involvement on pelvic recurrence and prognosis in rectal cancer. *Journal of Clinical Pathology*. **48** (9), 849-855 (1995).
10. Uitto, J., Li, Q., Urban, Z. The complexity of elastic fibre biogenesis in the skin--a perspective to the clinical heterogeneity of cutis laxa. *Experimental Dermatology*. **22** (2), 88-92 (2013).
11. Kazlouskaya, V. *et al.* The utility of elastic Verhoeff-Van Gieson staining in dermatopathology. *Journal of Cutaneous Pathology*. **40** (2), 211-225 (2013).
12. Lei, G. *et al.* Elastic staining-a rejuvenated method to reassess prognosis and serosal invasion in patients with pT3N0M0 gastric cancer. *Human Pathology*. **65**, 79-84 (2017).
13. Hernández-Morera, P., Travieso-González, C.M., Castaño-González, I., Mompeó-Corredera, B., Ortega-Santana, F. Segmentation of elastic fibres in images of vessel wall sections stained with Weigert's resorcin-fuchsin. *Computer Methods and Programs in Biomedicine*. **142**, 43-54 (2017).
14. Kojima, M., Nakajima, K., Ishii, G., Saito, N., Ochiai, A. Peritoneal elastic laminal invasion of colorectal cancer: the diagnostic utility and clinicopathologic relationship. *American Journal of Surgical Pathology*. **34** (9), 1351-1360 (2010).
15. Nakanishi, Y. *et al.* Reappraisal of Serosal Invasion in Patients With T3 Colorectal Cancer by Elastic Stain. *ARCHIVES OF PATHOLOGY & LABORATORY MEDICINE*. **140** (1), 81-85 (2016).
16. Grin, A. *et al.* Peritoneal elastic lamina invasion: limitations in its use as a prognostic marker in stage II colorectal cancer. *Human Pathology*. **44** (12), 2696-2705 (2013).

17. Stewart, C.J., Brennan, B.A., Crook, M.L., Russell, P. Value of elastin staining in the assessment of peritoneal implants associated with ovarian serous borderline tumours. *Histopathology*. **51** (3), 313-321 (2007).
18. Kojima, M. *et al.* Pathological diagnostic criterion of blood and lymphatic vessel invasion in colorectal cancer: a framework for developing an objective pathological diagnostic system using the Delphi method, from the Pathology Working Group of the Japanese Society for Cancer of the Colon and Rectum. *Journal of Clinical Pathology*. **66** (7), 551-558 (2013).
19. Elston, C.A., Kazlouskaya, V., Elston, D.M. Elastic staining *versus* fluorescent and polarized microscopy in the diagnosis of alopecia. *Journal of the American Academy of Dermatology*. **69** (2), 288-293 (2013).
20. Vos, A. *et al.* Predominance of Nonatherosclerotic Internal Elastic Lamina Calcification in the Intracranial Internal Carotid Artery. *Stroke*. **47** (1), 221-223 (2016).





Name of Material/ Equipment	Company	Catalog Number	Comments/Description
Elastin-Van Gieson staining kit	Baso	BA4083B	Used for staining of elastic fibers, collagen fibers and myofibers
PermOUNT™ Mounting Medium	MXB Biotechnologies	DAB-0033	Used for mounting
Ethanol	LMAI Bio	LM64-17-5	100%
Xylene	LMAI Bio	LX820585	



1 Alewife Center #200
Cambridge, MA 02140
tel. 617.945.9051
www.jove.com

ARTICLE AND VIDEO LICENSE AGREEMENT

Title of Article: Elastic staining on paraffin-embedded slides of pT3NOMO gastric cancer tissue
Author(s): Guanglei, Haiyan Yang, Ting Hong, Nong Yang, Yongchang Zheng

Item 1 (check one box): The Author elects to have the Materials be made available (as described at <http://www.jove.com/author>) via: ☒ Standard Access ☐ Open Access

Item 2 (check one box):

- ☒ The Author is NOT a United States government employee.
☐ The Author is a United States government employee and the Materials were prepared in the course of his or her duties as a United States government employee.
☐ The Author is a United States government employee but the Materials were NOT prepared in the course of his or her duties as a United States government employee.

ARTICLE AND VIDEO LICENSE AGREEMENT

1. **Defined Terms.** As used in this Article and Video License Agreement, the following terms shall have the following meanings: “**Agreement**” means this Article and Video License Agreement; “**Article**” means the article specified on the last page of this Agreement, including any associated materials such as texts, figures, tables, artwork, abstracts, or summaries contained therein; “**Author**” means the author who is a signatory to this Agreement; “**Collective Work**” means a work, such as a periodical issue, anthology or encyclopedia, in which the Materials in their entirety in unmodified form, along with a number of other contributions, constituting separate and independent works in themselves, are assembled into a collective whole; “**CRC License**” means the Creative Commons Attribution-Non Commercial-No Derivs 3.0 Unported Agreement, the terms and conditions of which can be found at: <http://creativecommons.org/licenses/by-nc-nd/3.0/legalcode>; “**Derivative Work**” means a work based upon the Materials or upon the Materials and other pre-existing works, such as a translation, musical arrangement, dramatization, fictionalization, motion picture version, sound recording, art reproduction, abridgment, condensation, or any other form in which the Materials may be recast, transformed, or adapted; “**Institution**” means the institution, listed on the last page of this Agreement, by which the Author was employed at the time of the creation of the Materials; “**JoVE**” means MyJoVE Corporation, a Massachusetts corporation and the publisher of *The Journal of Visualized Experiments*; “**Materials**” means the Article and / or the Video; “**Parties**” means the Author and JoVE; “**Video**” means any video(s) made by the Author, alone or in conjunction with any other parties, or by JoVE or its affiliates or agents, individually or in collaboration with the Author or any other parties, incorporating all or any portion of the Article, and in which the Author may or may not appear.

2. **Background.** The Author, who is the author of the Article, in order to ensure the dissemination and protection of the Article, desires to have the JoVE publish the Article and create and transmit videos based on the Article. In furtherance of such goals, the Parties desire to memorialize in this Agreement the respective rights of each Party in and to the Article and the Video.

3. **Grant of Rights in Article.** In consideration of JoVE agreeing to publish the Article, the Author hereby grants to JoVE, subject to **Sections 4 and 7** below, the exclusive, royalty-free, perpetual (for the full term of copyright in the Article, including any extensions thereto) license (a) to publish, reproduce, distribute, display and store the Article in all forms, formats and media whether now known or hereafter developed (including without limitation in print, digital and electronic form) throughout the world, (b) to translate the Article into other languages, create adaptations, summaries or extracts of the Article or other Derivative Works (including, without limitation, the Video) or Collective Works based on all or any portion of the Article and exercise all of the rights set forth in (a) above in such translations, adaptations, summaries, extracts, Derivative Works or Collective Works and (c) to license others to do any or all of the above. The foregoing rights may be exercised in all media and formats, whether now known or hereafter devised, and include the right to make such modifications as are technically necessary to exercise the rights in other media and formats. If the “Open Access” box has been checked in **Item 1** above, JoVE and the Author hereby grant to the public all such rights in the Article as provided in, but subject to all limitations and requirements set forth in, the CRC License.

ARTICLE AND VIDEO LICENSE AGREEMENT

4. Retention of Rights in Article. Notwithstanding the exclusive license granted to JoVE in **Section 3** above, the Author shall, with respect to the Article, retain the non-exclusive right to use all or part of the Article for the non-commercial purpose of giving lectures, presentations or teaching classes, and to post a copy of the Article on the Institution's website or the Author's personal website, in each case provided that a link to the Article on the JoVE website is provided and notice of JoVE's copyright in the Article is included. All non-copyright intellectual property rights in and to the Article, such as patent rights, shall remain with the Author.

5. Grant of Rights in Video – Standard Access. This **Section 5** applies if the "Standard Access" box has been checked in **Item 1** above or if no box has been checked in **Item 1** above. In consideration of JoVE agreeing to produce, display or otherwise assist with the Video, the Author hereby acknowledges and agrees that, Subject to **Section 7** below, JoVE is and shall be the sole and exclusive owner of all rights of any nature, including, without limitation, all copyrights, in and to the Video. To the extent that, by law, the Author is deemed, now or at any time in the future, to have any rights of any nature in or to the Video, the Author hereby disclaims all such rights and transfers all such rights to JoVE.

6. Grant of Rights in Video – Open Access. This **Section 6** applies only if the "Open Access" box has been checked in **Item 1** above. In consideration of JoVE agreeing to produce, display or otherwise assist with the Video, the Author hereby grants to JoVE, subject to **Section 7** below, the exclusive, royalty-free, perpetual (for the full term of copyright in the Article, including any extensions thereto) license (a) to publish, reproduce, distribute, display and store the Video in all forms, formats and media whether now known or hereafter developed (including without limitation in print, digital and electronic form) throughout the world, (b) to translate the Video into other languages, create adaptations, summaries or extracts of the Video or other Derivative Works or Collective Works based on all or any portion of the Video and exercise all of the rights set forth in (a) above in such translations, adaptations, summaries, extracts, Derivative Works or Collective Works and (c) to license others to do any or all of the above. The foregoing rights may be exercised in all media and formats, whether now known or hereafter devised, and include the right to make such modifications as are technically necessary to exercise the rights in other media and formats. For any Video to which this Section 6 is applicable, JoVE and the Author hereby grant to the public all such rights in the Video as provided in, but subject to all limitations and requirements set forth in, the CRC License.

7. Government Employees. If the Author is a United States government employee and the Article was prepared in the course of his or her duties as a United States government employee, as indicated in **Item 2** above, and any of the licenses or grants granted by the Author hereunder exceed the scope of the 17 U.S.C. 403, then the rights granted hereunder shall be limited to the maximum rights permitted under such

statute. In such case, all provisions contained herein that are not in conflict with such statute shall remain in full force and effect, and all provisions contained herein that do so conflict shall be deemed to be amended so as to provide to JoVE the maximum rights permissible within such statute.

8. Likeness, Privacy, Personality. The Author hereby grants JoVE the right to use the Author's name, voice, likeness, picture, photograph, image, biography and performance in any way, commercial or otherwise, in connection with the Materials and the sale, promotion and distribution thereof. The Author hereby waives any and all rights he or she may have, relating to his or her appearance in the Video or otherwise relating to the Materials, under all applicable privacy, likeness, personality or similar laws.

9. Author Warranties. The Author represents and warrants that the Article is original, that it has not been published, that the copyright interest is owned by the Author (or, if more than one author is listed at the beginning of this Agreement, by such authors collectively) and has not been assigned, licensed, or otherwise transferred to any other party. The Author represents and warrants that the author(s) listed at the top of this Agreement are the only authors of the Materials. If more than one author is listed at the top of this Agreement and if any such author has not entered into a separate Article and Video License Agreement with JoVE relating to the Materials, the Author represents and warrants that the Author has been authorized by each of the other such authors to execute this Agreement on his or her behalf and to bind him or her with respect to the terms of this Agreement as if each of them had been a party hereto as an Author. The Author warrants that the use, reproduction, distribution, public or private performance or display, and/or modification of all or any portion of the Materials does not and will not violate, infringe and/or misappropriate the patent, trademark, intellectual property or other rights of any third party. The Author represents and warrants that it has and will continue to comply with all government, institutional and other regulations, including, without limitation all institutional, laboratory, hospital, ethical, human and animal treatment, privacy, and all other rules, regulations, laws, procedures or guidelines, applicable to the Materials, and that all research involving human and animal subjects has been approved by the Author's relevant institutional review board.

10. JoVE Discretion. If the Author requests the assistance of JoVE in producing the Video in the Author's facility, the Author shall ensure that the presence of JoVE employees, agents or independent contractors is in accordance with the relevant regulations of the Author's institution. If more than one author is listed at the beginning of this Agreement, JoVE may, in its sole discretion, elect not take any action with respect to the Article until such time as it has received complete, executed Article and Video License Agreements from each such author. JoVE reserves the right, in its absolute and sole discretion and without giving any reason therefore, to accept or decline any work submitted to JoVE. JoVE and its employees, agents and independent contractors shall have

ARTICLE AND VIDEO LICENSE AGREEMENT

full, unfettered access to the facilities of the Author or of the Author's institution as necessary to make the Video, whether actually published or not. JoVE has sole discretion as to the method of making and publishing the Materials, including, without limitation, to all decisions regarding editing, lighting, filming, timing of publication, if any, length, quality, content and the like.

11. Indemnification. The Author agrees to indemnify JoVE and/or its successors and assigns from and against any and all claims, costs, and expenses, including attorney's fees, arising out of any breach of any warranty or other representations contained herein. The Author further agrees to indemnify and hold harmless JoVE from and against any and all claims, costs, and expenses, including attorney's fees, resulting from the breach by the Author of any representation or warranty contained herein or from allegations or instances of violation of intellectual property rights, damage to the Author's or the Author's institution's facilities, fraud, libel, defamation, research, equipment, experiments, property damage, personal injury, violations of institutional, laboratory, hospital, ethical, human and animal treatment, privacy or other rules, regulations, laws, procedures or guidelines, liabilities and other losses or damages related in any way to the submission of work to JoVE, making of videos by JoVE, or publication in JoVE or elsewhere by JoVE. The Author shall be responsible for, and shall hold JoVE harmless from, damages caused by lack of sterilization, lack of cleanliness or by contamination due to the making of a video by JoVE its employees, agents or independent contractors. All sterilization, cleanliness or decontamination procedures shall be solely the responsibility of the Author and shall be undertaken at the Author's

expense. All indemnifications provided herein shall include JoVE's attorney's fees and costs related to said losses or damages. Such indemnification and holding harmless shall include such losses or damages incurred by, or in connection with, acts or omissions of JoVE, its employees, agents or independent contractors.

12. Fees. To cover the cost incurred for publication, JoVE must receive payment before production and publication the Materials. Payment is due in 21 days of invoice. Should the Materials not be published due to an editorial or production decision, these funds will be returned to the Author. Withdrawal by the Author of any submitted Materials after final peer review approval will result in a US\$1,200 fee to cover pre-production expenses incurred by JoVE. If payment is not received by the completion of filming, production and publication of the Materials will be suspended until payment is received.

13. Transfer, Governing Law. This Agreement may be assigned by JoVE and shall inure to the benefits of any of JoVE's successors and assignees. This Agreement shall be governed and construed by the internal laws of the Commonwealth of Massachusetts without giving effect to any conflict of law provision thereunder. This Agreement may be executed in counterparts, each of which shall be deemed an original, but all of which together shall be deemed to be one and the same agreement. A signed copy of this Agreement delivered by facsimile, e-mail or other means of electronic transmission shall be deemed to have the same legal effect as delivery of an original signed copy of this Agreement.

A signed copy of this document must be sent with all new submissions. Only one Agreement required per submission.

CORRESPONDING AUTHOR:

Name:

Yongchang Zhang

Department:

Department of medical oncology, lung cancer and gastrointestinal unit

Institution:

Hunan Cancer Hospital, The Affiliated Cancer Hospital of Xiangya School of

Article Title:

Elastic staining on paraffin-embedded slides of pT₄N₀M₀ gastric cancer tissues

Signature:

Yongchang Zhang

Date:

April 8, 2018

Please submit a signed and dated copy of this license by one of the following three methods:

- 1) Upload a scanned copy of the document as a pdf on the JoVE submission site;
- 2) Fax the document to +1.866.381.2236;
- 3) Mail the document to JoVE / Attn: JoVE Editorial / 1 Alewife Center #200 / Cambridge, MA 02139

For questions, please email submissions@jove.com or call +1.617.945.9051

Dear editor:

I'm very glad to receive your comments. I decide to revise the manuscript in response to the Editorial comments point by point as follows.

Editorial comments:

1. The editor has formatted the manuscript as per journal's style. Please retain the same.

Response: Thank you for your reminder. I have thoroughly proofread the manuscript again and revised the manuscript carefully according to your advice.

2. Please address specific comments marked in the manuscript.

Response: Thank you for your comments. I have addressed all the comments point by point in the manuscript.

3. The manuscript needs thorough proofreading for grammatical errors.

Response: Ok, thank you. I have rechecked and modified all the grammatical errors.

4. Please remove the term EVG staining kit from the manuscript and reference it sufficiently in the Table of Materials. JoVE policy states that the video narrative is objective and not biased towards a particular product featured in the video. The goal of this policy is to focus on the science rather than to present a technique as an advertisement for a specific item.

Response: Thank you for your reminder, I have removed and modified all details in the manuscript.

5. If reusing figures from previous versions, please obtain explicit copyright permission to reuse any figures from a previous publication. Explicit permission can be expressed in the form of a letter from the editor or a link to the editorial policy that allows re-prints. Please upload this information as a .doc or .docx file to your Editorial Manager account. The Figure must be cited appropriately in the Figure Legend, i.e. "This figure has been modified from [citation]."

Response: Thank you for your reminder; I didn't reuse figures from the previous publication.

6. If not then please reword lines 243-244, 248-251.

Response: Thanks for your comments; I have revised it, thank you.

7. If after formatting the protocol is more than 3 pages, then please highlight 2.75 pages of the protocol including headings and spacings for filming purpose. This will tell the most cohesive story of the protocol.

Response: Thanks for your comments. The protocol did not exceed 3 pages, thank you.

We have modified all the comments point by point in the tracked manuscript. Please check the revised manuscript.

Thank you very much for your comments on our manuscript. We have resubmitted new version of manuscript with recommendations of the editors. We have addressed the comments and the amendments are highlighted in red in the revised manuscript. We hope that the revision is acceptable and look forward to hearing from you soon.

Best wishes.

Yours

Yongchang Zhang

zhangyongchang@csu.edu.cn