

Equation 1. Dose translation based on body surface area (BSA)

Human Dose (mg/kg)

$$= \textit{Animal equivalent dose (mg/kg)} \times \frac{\textit{Animal } K_m \textit{ factor}}{\textit{Human } K_m \textit{ factor}}$$

Figure 1.

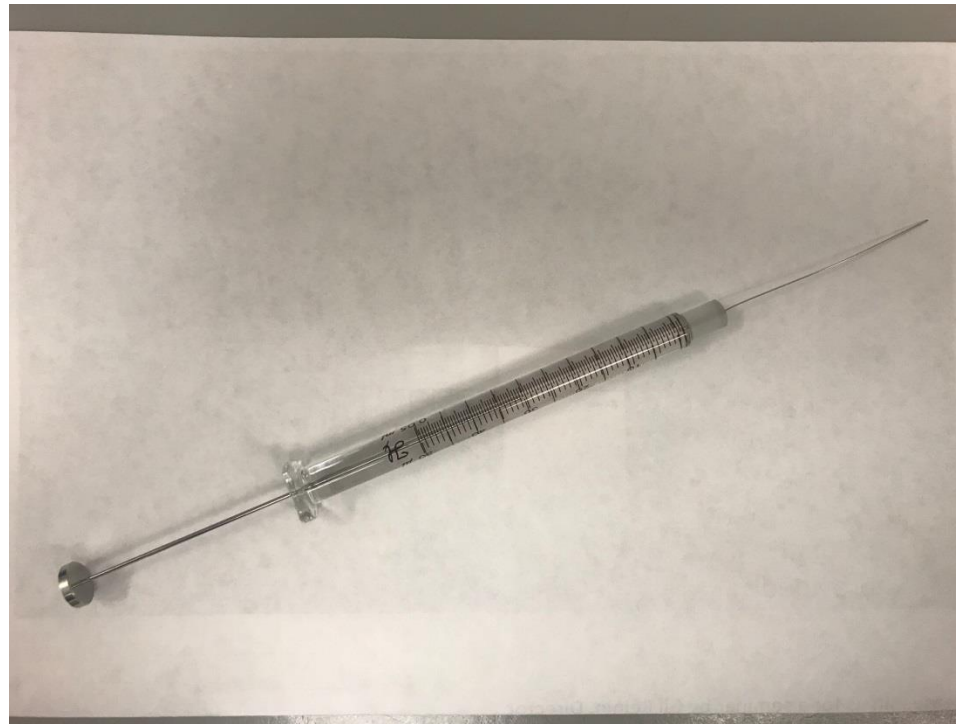
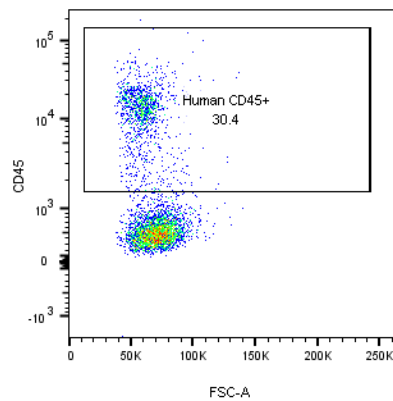
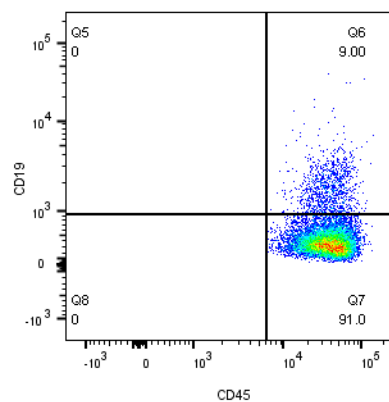


Figure 2

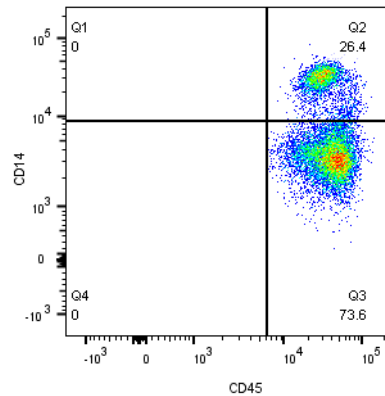
a.



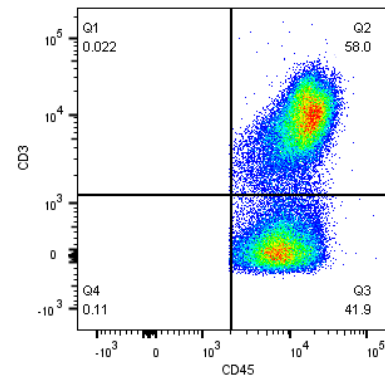
b.



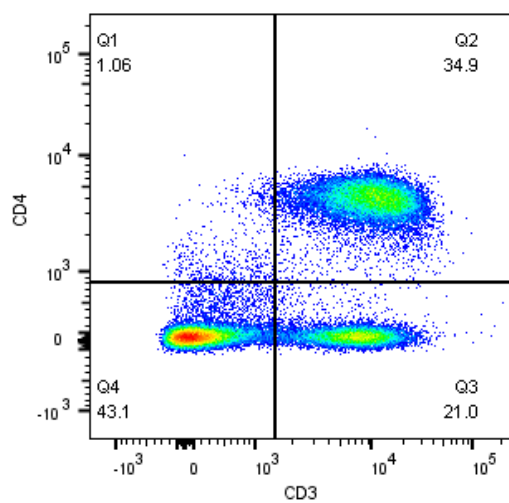
c.



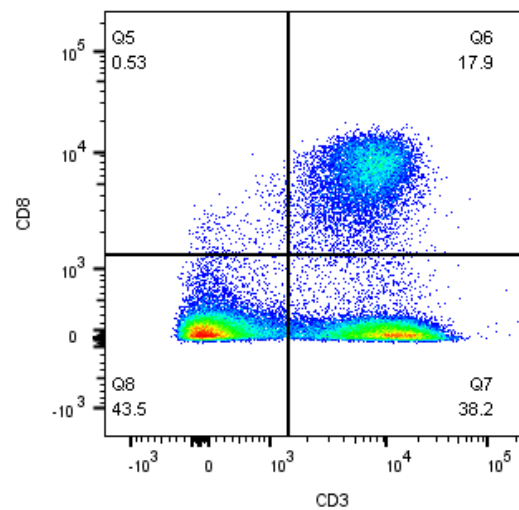
d.



e.



f.



g.

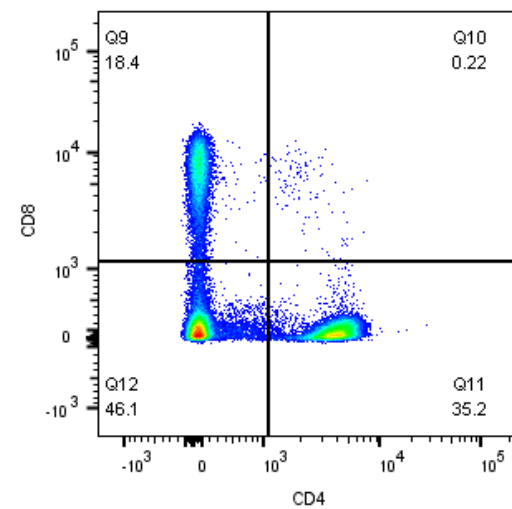
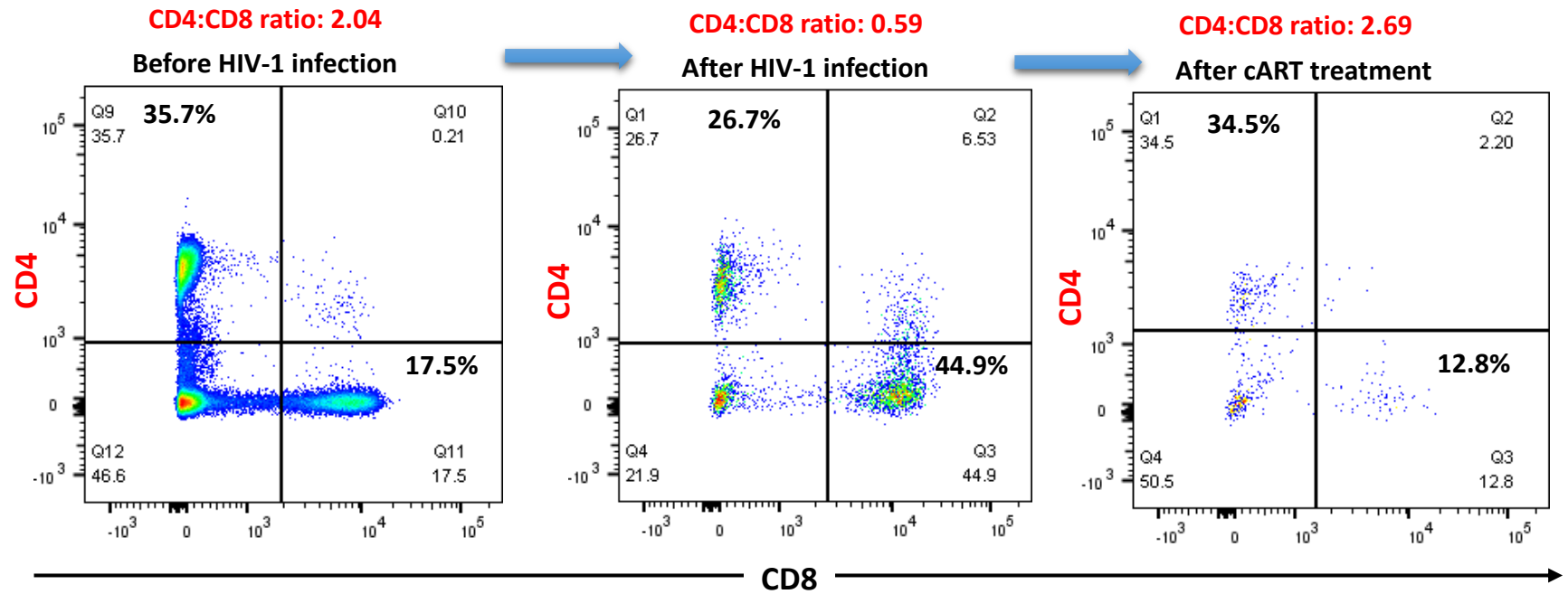


Figure 3

a



b

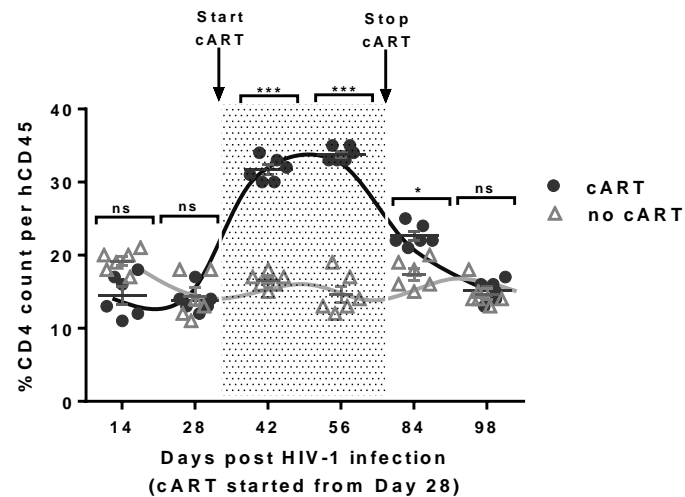


Figure 4

