

Journal of Visualized Experiments

Micropuncture of Bowman's Space in Mice Facilitated by 2 Photon Microscopy --Manuscript Draft--

Article Type:	Methods Article - JoVE Produced Video
Manuscript Number:	JoVE58206R2
Full Title:	Micropuncture of Bowman's Space in Mice Facilitated by 2 Photon Microscopy
Keywords:	Renal physiology, micropuncture, 2-photon microscopy, renal filtrate, Bowman's space, glomerular filtration.
Corresponding Author:	Michael P Hutchens UNITED STATES
Corresponding Author's Institution:	
Corresponding Author E-Mail:	hutchenm@ohsu.edu
First Author:	Katsuyuki Matsushita
Other Authors:	Katsuyuki Matsushita Kirsti Golgotiu Daniel J Orton Richard D Smith Karin D Rodland Paul D Piehowski
Additional Information:	
Question	Response
If this article needs to be "in-press" by a certain date, please indicate the date below and explain in your cover letter.	06-22-2018

TITLE:**Micropuncture of Bowman's Space in Mice Facilitated by 2 Photon Microscopy****AUTHORS AND AFFILIATIONS:**

Katsuyuki Matsushita¹, Kirsti Golgotiu¹, Daniel J. Orton², Richard D. Smith², Karin D. Rodland², Paul D. Piehowski², Michael P. Hutchens^{1,3}

¹Anesthesiology & Perioperative Medicine, Oregon Health & Science University, Portland, OR

²Pacific Northwest National Laboratory, Environmental and Biological Services Division, Richland, WA

³Portland Veterans Affairs Medical Center, Operative Care Division, Portland, OR

Corresponding Author:

Michael Hutchens (hutchenm@ohsu.edu)

Email Addresses of Co-authors:

Katsuyuki Matsushita (mysql@ohsu.edu)

Kirsti Golgotiu (kgolgo@gmail.com)

Daniel Orton (daniel.orton@pnnl.gov)

Richard Smith (dick.smith@pnnl.gov)

Karin Rodland (karin.rodland@pnnl.gov)

Paul Piehowski (paul.piehowski@pnnl.gov)

KEYWORDS:

Renal physiology, micropuncture, 2-photon microscopy, renal filtrate, Bowman's space, glomerular filtration.

SUMMARY:

We present use of 2-photon microscopy to place a micropipette within Bowman's urinary space in mice, combining 2 foundational techniques of renal physiology. Use of 2-photon microscopy overcomes critical limitations of conventional microscopy for micropuncture renal physiology studies.

ABSTRACT:

Renal micropuncture and renal 2-photon imaging are seminal techniques in renal physiology. However, micropuncture is limited by dependence on conventional microscopy to surface nephron features, and 2-photon studies are limited in that interventions can only be assessed at the organ, rather than the nephron level. In particular, micropuncture studies of the glomeruli of mice have been challenged by the paucity of surface glomeruli in mice. To address this limitation in order to pursue studies of aspirate from Bowman's space in mouse physiologic models, we developed 2-photon glomerular micropuncture. We present a novel surgical preparation that allows lateral access to the kidney while preserving the required vertical imaging column for 2-photon microscopy. Administration of high molecular weight fluorescein isothiocyanate (FITC)-dextran is used to render the renal vasculature and therefore glomeruli visible for 2-photon

imaging. A quantum dot-coated pipette is then introduced under stereotactic guidance to a glomerulus selected from the several to many which may be visualized within the imaging window. In this protocol, we provide details of the preparation, materials, and methods necessary to carry out the procedure. This technique facilitates previously-impossible physiologic study of the kidney, including recovery of filtrate from Bowman's space and all segments of the nephron within the imaging depth limit, about 100 μm below the renal capsule. Pressure, charge and flow may all be measured using the introduced pipette. Here, we provide representative data from liquid chromatography/mass spectrometry performed on aspirate from Bowman's space. We expect this technique to have wide applicability in renal physiologic investigation.

INTRODUCTION:

The purpose of this procedure is to provide routine micropuncture access to Bowman's space and other glomerular structures in mice. Micropuncture studies for renal physiology have been limited to 1-photon microscopy, which can only image within a few microns of the kidney surface, and which offers limited precision in the z-dimension. Because mice have few surface glomeruli, it is not always possible to find a surface glomerulus by 1-photon microscopy, therefore most micropuncture studies have been carried out in Munich-Wistar rats, which have more numerous surface glomeruli. Therefore, the benefits of working in mouse models have been limited in micropuncture studies¹⁻³. Recent advances in imaging technologies, including micro-CT^{4,5}, nanoparticle imaging⁶, and imaging mass spectrometry⁷ have greatly enhanced the range of modalities applicable to glomerular physiology, but there remains no substitute for the unique ability to intervene and sample that micropuncture provides. Therefore extending the use of micropuncture using the techniques presented here is expected to facilitate novel renal physiology studies, in particular, evaluation of the content of renal filtrate (*i.e.*, metabolomics) and basic physiology of transgenic mice, such as measurements of filtrate pressure and charge, previously performed only in rats.

In this technique, use of 2-photon microscopy allows visualization and micropipette access to renal structures up to about 100 μm below the renal capsule. Multiple (5-10) glomeruli are therefore accessible to micropuncture in every mouse kidney thus far imaged. Although this technique shares some features with conventional renal micropuncture, it was designed *de novo* and extensive modifications from conventional technique are required. In this protocol we demonstrate aspiration of fluid from Bowman's space and show example results of subsequent analysis with mass spectrometry (nanoproteomics)⁸⁻¹¹. Downstream use of mass spectrometry requires a specialized sample preparation workflow, which is also demonstrated here.

PROTOCOL:

All procedures described herein were approved by the Institutional Animal Care and Use Committee of Oregon Health & Science University.

1. Setup Used for Demonstration

1.1. Use an upright 2-photon microscope, a 3-axis stage controller, a headstage/pipette holder,

and a 3-axis controller for the headstage/pipette holder; all four of these items are required.

Note: Many similar setups are available and will suffice as long as independent quantitative 3-axis control of the pipette and microscope stage are available, and the microscope is set up for *in vivo* upright imaging.

2. Materials Necessary Prior to Starting Experimental Protocols

2.1. Use FITC-dextran, 2,000,000 Da, 5% solution in normal saline or phosphate-buffered saline for retroorbital injection to mark the renal vasculature. This molecular weight (MW) is selected because it remains in the vasculature and does not filter.

2.2. Machine-pulled borosilicate glass micropipettes: Pull micropipettes to 6-10 μm tip using long-taper, closed tip settings (*e.g.*, heat=10m velocity=150, time = 250 ms, looped) on a micropipette puller. Bevel to 45° and flame-polish lightly.

2.3. Quantum-dot coating of micropipettes: Coat micropipette tips with quantum dots according to the referenced protocol.¹²

2.4. Polysiloxane kidney support/spacer. Use polysiloxane putty to craft a kidney support/spacer. Fashion a 1 x 1 cm by 5 mm thick right-angle rhomboid (*i.e.*, a truncated cube) from polysiloxane putty. Remove the middle 70% of the polysiloxane from one edge and a circle comprising about 70% of the center of the rhomboid. Allow the polysiloxane to dry for 24 h. See **Figure 1**.

2.5. Microinjector preparation: Prefill a length of polyethylene (PE)-50 tubing and the micropipette-led micropipette holder with oil. If mass spectrometry is planned, perfluorodecalin is required, otherwise mineral oil may be used. Set up the microinjector with a gas-tight Hamilton-type syringe and fill with perfluorodecalin. This will be connected to the PE-50 tubing and pipette holder.

2.6. Place the pipette in the pipette holder and forward fill the PE-50 tubing and pipette, then attach the proximal end of the PE-50 tubing to the oil-filled Hamilton syringe, creating a hydraulic system from pipette to syringe.

3. Lateral Pipette Access to The Kidney Below A Fluid Imaging Column Via A Novel Surgical Procedure

Note: The assembly of the imaging support system and surgical prep is shown in **Figure 1**. The procedure described is performed on C57BL/6 mice weighing 20 - 25 g.

3.1. Weigh the mouse.

3.2. Induce anesthesia using 4% isoflurane and maintain with 1.5-2.5% isoflurane in air/oxygen mixture. Confirm that the mouse is anesthetized by absence of response to painful stimulus and

reduced respiratory rate.

3.3. Lubricate the eyes and position the animal lateral on a baseplate. Immobilize 4 extremities using tape.

3.4. Inject normal saline, 200 μ L, subcutaneously and place a rectal temperature probe. Control temperature using a heating lamp during surgery and a heating pad during imaging.

3.5. Remove all hair on the left side of the mouse using a depilatory cream.

3.6. Locate the spleen, which is visible under the skin, and locate the left kidney on the dorsal and caudal side of spleen.

3.7. Make a 0.5 cm incision on the skin and smaller incision on the peritoneum, just enough for the kidney to push through easily.

3.8. Extrude the kidney with gentle pressure. Place kidney stabilizer form made with polysiloxane around the kidney and fix with cyanoacrylate adhesive. Line the kidney up with the spacer such that the lateral-most surface of the kidney extends beyond the stabilizer by about 1 mm.

3.9. Fix a head plate to the stabilizer form with glue and mount the head plate to mounting bars on the base plate.

3.10. Fill the well in the polysiloxane support surrounding the kidney with 1% agarose solution and place the 10 mm coverslip on top and hold until agarose is firm. Seal coverslip to the head plate with glue and create a ring around the coverslip with dental cement.

3.11. Inject FITC-dextran (2,000,000 Da, 5% solution, 100-150 μ L) retro-orbitally and move the mouse and fixation plate to the 2-photon microscope stage quickly, maintaining anesthesia and ensuring adequate waste gas scavenging on the microscope stage.

4. Selection of a Suitable Glomerulus and Pipette Access to Bowman's Space

4.1. Definitions:

4.1.1. Define X as left-right on the screen and left-right facing the microscope

4.1.2. Read SX (stage X) from the stage controller

4.1.3. Define PX as pipette X, on the pipette dial controller

4.1.4. Define Y as up-down on the screen and forward toward the microscope and back toward the 2-photon setup

177 4.1.5. Define Z as up toward the ceiling, down toward the floor, and measured on the stage with
178 the objective Z position.

179
180 4.1.6. Define S(O)Z as the stage (really the objective) height.

181
182 4.2. Find the surface of the kidney, identifiable using green fluorescent protein (GFP) filter
183 settings in the ocular. Due to the injection of FITC-Dextran, the vasculature will be bright green.

184
185 4.2.1. Identify a suitable glomerulus. After identifying the surface of the kidney using the ocular,
186 switch to 2-photon (non-scanning mode) and explore the imaging window. Favorable
187 characteristics for micropuncture are the following: vertical distance below the coverslip $>30\text{ }\mu\text{m}$
188 (to prevent collision between the pipette and coverslip during access) and lateral distance from
189 the lateral kidney capsule to the glomerulus $<400\text{ }\mu\text{m}$ (beyond this distance the deviation of the
190 pipette may increase likelihood of a miss).

191
192 4.3. Record lateral and vertical distance to the puncture point, a point on the renal capsule
193 directly to the pipette-side of the glomerulus.

194
195 4.4. Raise the objective focal point into the water column, keeping the x and y stage coordinates
196 unchanged, a distance of just about a centimeter.

197
198 4.5. Drive the pipette tip into the water column and turn on 4',6-diamidino-2-phenylindol (DAPI)
199 excitation. Move the pipette in the x and y dimensions to the point of maximal fluorescence of
200 the tip, this will be the center of the objective. Finding the pipette in the ocular is difficult without
201 this precise prepositioning. Because quantum dots fluoresce at the same (in this case, red)
202 wavelength regardless of excitation wavelength, the DAPI excitation produces red fluorescence
203 which is tightly focused on the tip, illustrated in **Figure 2**.

204
205 4.6. Change the excitation setting to red fluorescent protein (RFP) and visualize the pipette in the
206 ocular, then precisely center it in the ocular view.

207
208 4.7. Switch to 2-photon and find the pipette under 2-photon, placing it precisely in the center of
209 the image. This is the registration position.

210
211 4.8. Save an image of the pipette.

212
213 4.9. Register the stage and the micropipette controller coordinates.

214
215 Note: Use the supplemental .html file (advantageous on systems which do not have installed
216 spreadsheet software) or a spreadsheet to calculate the offset between stage and pipette
217 coordinates and to calculate the target coordinates for the pipette controller.

218
219 4.10. Remove the pipette from the water column in the x axis, keeping z and y the same.

220

221 4.11. Move the pipette Z to the target glomerulus Z (*i.e.*, move the pipette down in the Z direction
222 below the coverslip)

223
224 4.12. Move the pipette Y to the target glomerulus Y coordinate.

225
226 4.13. Move the 2-photon live view to the target glomerulus Z and then to the edge of the kidney
227 and note the SX.

228
229 4.14. Calculate the kidney edge PX using the offset from the registration SX.

230
231 4.15. Move the stage toward the pipette (increase the SX) such that the edge of the kidney is far
232 to the left of the screen, but still visible.

233
234 4.16. Advance the pipette quickly to about 100 μm less than the kidney edge PX calculated above.

235
236 4.17. Locate the pipette tip, advancing the pipette slowly. Increase the red gain and watch the
237 red pixel histogram (the pixel distribution shifts before the pipette is imaged in the window, due
238 to the extreme brightness of quantum dots and off-target fluorescence).

239
240 4.18. Advance to the kidney edge under live 2-photon imaging.

241
242 Note: Prior to entering the renal capsule, it is possible to redirect the pipette in the Y and Z
243 dimensions. However, this may break the pipette tip. A more conservative measure, if the pipette
244 is off target, is to withdraw in the X dimension up to 2 cm, redirect, and then return in the X
245 dimension to the kidney edge. Once the pipette is within the tissue, movement in any axis other
246 than X leads to pipette flexion which requires great experience to make use of, and frequently
247 leads to breakage.

248
249 4.19. Drive the pipette in the X axis slowly to the glom target PX, keeping an eye on the SX. (It is
250 helpful to occasionally go back to the glomerulus to see if it has shifted at all upon insertion of
251 the micropipette).

252
253 4.20. When you are in the correct location, document position with a z-stack.

254
255 Note: With the micropipette in place, drugs, proteins, or fluorescent tracers may be injected,
256 fluid may be aspirated for later analysis, or pressure or charge relative to another electrode may
257 be measured.

258 259 **5. Aspiration of Fluid from Bowman's Space**

260
261 5.1. Set the micropump to inject 100 nL of perfluorodecalin over 2 minutes to ensure patency of
262 the pipette and reduce confounding from pipette plugging during entry. Reimage to ensure
263 pipette position.

265 5.2. Wait 4-6 minutes for additional filtration.

266
267 5.3. Set the micropump to aspirate up to 300 nL at a rate of up to 50 nL/min.

268
269 Note: Changes in glomerular morphology are not observed with this rate, suggesting it does not
270 alter the rate of delivery of fluid to the space during aspiration. As there is no oil block as in
271 conventional micropuncture, recovery of this volume, necessary for mass spectrometry, could
272 include some of the injected perflourodecalin and possibly tubular fluid. For assays such as ion-
273 sensitive electrode measurements fluorescence spectroscopy, polymerase chain reaction, and
274 other sensitive endpoints, lower volumes may be used. If mass spectrometry is not the endpoint,
275 mineral oil and standard micropuncture techniques can be used to measure the aspirated volume
276 prior to storage.

277
278 5.4. Image once more.

279
280 5.5. Withdraw the pipette and preserve the sample, adding TRIS buffer and storing at -80° prior
281 to analysis.

282
283 5.6. Euthanize the mouse using an overdose of isoflurane or other approved method.

284
285 Note: Filtrate enters the space by filtration from the glomerular capillaries. The single-nephron
286 glomerular filtration rate (SNGFR) in mice is reported between 8-14 nL/min.³ Starling forces
287 govern SNGFR, however, and negative hydrostatic pressure in Bowman's space therefore may
288 increase SNGFR. Standard micropuncture methods use tubular blockade with oil and neutral
289 pressure for tubular fluid sampling, however these compounds interfere with mass spectrometry
290 (see below); therefore, in this technique the early proximal tubule remains patent. Further, at
291 the time of aspiration, Bowman's space contains an unknown, but positive volume of filtrate.
292 Therefore, fluid aspiration rate may exceed SNGFR.

293
294 Note: In the experiments described here, the goal was to obtain a larger than usual sample of
295 glomerular filtrate for mass spectrometry analysis by nanoproteomic techniques. Since use of
296 mass spectrometry precludes use of oil blocks with mineral oil or wax (complex mixtures of
297 organic molecules which reduce signal:noise in mass spectrometry) perfluorodecalin is used to
298 fill the micropipette and syringe. Perfluorodecalin is not known to block tubular flow, but is
299 biologically inert and does not interfere with mass spectrometry.

300 301 REPRESENTATIVE RESULTS:

302 This procedure requires a unique surgical preparation of the kidney for 2-photon imaging
303 and access, which is illustrated in **Figure 1**. This preparation shown here allows a vertical imaging
304 column with the objective above the kidney with few density changes for best-possible optics for
305 2-photon microscopy simultaneously with lateral access for the pipette, driven exclusively in the
306 horizontal (x) dimension. Partial extrusion of the kidney prevents excess tension on the renal
307 pedicle and preserves vascular flow, and construction of a custom kidney support enables the
308 two objectives of imaging and access. The second challenge in this procedure is precise

positioning of the pipette within the kidney in 3 dimensions, which requires registration of the pipette and stage coordinate systems. The critical step for this process is illustrated in **Figure 2**, which shows the pipette being spotted in the water column of the 2-photon microscope under DAPI-excitation. Entering the water column and registering the coordinates of the pipette to those of the stage prior to entering the kidney is critical to enable precise stereotactic positioning of the pipette within the target Bowman's space. The pipette enters the imaging water column from the right. With DAPI excitation turned on, the red quantum dot-coated pipette fluoresces brightly in the red-orange, and it can be carefully positioned under the middle of the objective. As the excitation beam passes through the center of the objective, the pipette may be freely moved to the point of maximum fluorescence, ensuring that it will be visible in the eyepiece.

Proper pipette pulling and glomerulus selection are critical to the success of this protocol, as illustrated in **Figures 3-5**. In **Figure 3A**, a properly-pulled, red-fluorescent quantum dot-coated glass micropipette imaged in the fluid column during the pipette registration portion of the procedure can be seen. The tip is 6 microns in width. In **Figure 3B**, a poorly-pulled pipette with 12 μm tip is shown. This pipette cannot penetrate the renal capsule without causing vascular trauma due to the 12 μm diameter and irregular tip surface (note the bur at the top of the bevel). In **Figures 3C,3D**, the importance of optimal positioning rather than imaging of the target glomerulus is shown. The beautiful, near-surface glomerulus illustrated in **Figure 3C** demonstrates favorable imaging (due to its surface position at 20 μm below the renal capsule) but would not be suitable for access by this procedure because it is too close to the surface, and the pipette would hit the coverslip. In **Figure 3D**, optimally-positioned glomeruli are shown. Note the different scale used to illustrate both glomeruli (scale bars are all 50 μm). These glomeruli appear less sharp because of diffraction caused by depth; this image was taken at 70 μm below the renal capsule. The lateral kidney edge is 250 μm to the right, making both of these glomeruli accessible. During an access procedure, imaging is tightly focused on the target glomerulus as in **Figure 4**, and every-second image acquisition is used, allowing the investigator to precisely observe positioning of the pipette in Bowman's space.

Figure 4 illustrates a typical renal entry and the result, a pipette tip within Bowman's space. In **Figure 4A**, a mean intensity projection from a z-stack with orthogonal views demonstrates the pipette tip in Bowman's space. Note that there is red pipette tip spectral artifact (round ball of fluorescence) due to extremely bright fluorescence of the quantum dots arranged on the conical section of the tip. In **Figure 4B**, a volume projection of z-stack data demonstrates another pipette in Bowman's space. Note that the pipette dragged Bowman's capsule in the direction of travel on entry, creating apparent tenting behind the tip as described in the protocol.

In **Figure 5**, the results of a failed procedure are shown in which a pipette with a too-large opening broke at the renal capsule, causing bleeding. The pipette was too blunt; on attempting to pass the renal capsule, the capsule was pushed ahead of the pipette tip until breakage occurred. In this image, the renal capsule is visible, enhanced by subcapsular bleeding, in FITC-fluorescent green. FITC signal is visible within the pipette itself, indicating that blood under pressure entered the pipette lumen. The arrow points to many red blood cells visible within the

353 pipette lumen as filling defects in the FITC-dextran.

354
355 **Figure 6** depicts a representative mass spectrum obtained from Bowman's space aspirate,
356 mouse urinary protein 17 (MUP17). Lastly, **Table 1** demonstrates example results of successful
357 aspiration procedures, listing proteins identified using nanoscale mass spectrometry on aspirate
358 collected over 6 minutes from each of 3 mice. In each case, the pipette was imaged as it was
359 withdrawn from Bowman's space, and no FITC fluorescence was observed within Bowman's
360 space or the pipette lumen, indicating lack of aspirate contamination with plasma. 17 proteins,
361 primarily of low molecular weight, were identified from a minimum of 2 unique peptides per
362 protein. Spectral counts are low, consistent with prior estimates of protein in the glomerular
363 filtrate, and known filtered proteins, such as vitamin D binding protein (VTDB), albumin (ALBU),
364 and major urinary protein 17 (MUP17) are present.

365
366 **FIGURE AND TABLE LEGENDS:**

367 **Figure 1: Partial extrusion of the kidney with custom support and immobilization for lateral**
368 **access.** On the left, the parts of the imaging column and kidney support are shown, with the
369 complete assembly in center. On the right, the kidney preparation is shown before (above) and
370 after (below) application of the support.

371
372 **Figure 2: Completed kidney prep at pipette registration step of protocol.** Here, DAPI excitation
373 is being used to position the micropipette within the water column of the 2 photon microscope.

374
375 **Figure 3: Imaging of pipettes and the kidney after injection of FITC-dextran, demonstrating**
376 **suitable and unsuitable glomeruli for micropuncture. A.** A well-pulled pipette with 6 μm tip. **B.**
377 **A rough-edged, blunt tip. C.** This glomerulus is well-defined, but too close to the coverslip for
378 micropuncture. **D.** Suitably positioned glomeruli. Scale bars are all 50 μm .

379
380 **Figure 4: Successful pipette passage leads to placement in Bowman's space—views from 2**
381 **different procedures. A.** Z-stack with orthogonal projections demonstrates pipette tip in
382 Bowman's space abutting the glomerular tuft. Scale bar is 50 μm . **B.** Volume rendering from z-
383 stack similarly demonstrates a pipette in Bowman's space abutting the glomerular tuft. Scale bar
384 is 100 μm .

385
386 **Figure 5: An unsuccessful procedure due to a blunt pipette, tearing the renal capsule and**
387 **leading to bleeding into the pipette lumen.** FITC fluorescence from extravasated plasma, and
388 red blood cells (arrow) are visible within the pipette. Arrow points to red blood cells visible within
389 the pipette lumen. Scale bar is 50 μm .

390
391 **Figure 6: The mass spectrum for major urinary protein 17 (MUP17), obtained from nanoscale**
392 **liquid chromatography/mass spectrometry analysis of Bowman's space aspirate.**

393
394 **Table 1: List of proteins identified in Bowman's space aspirate from 3 mice.**

395
396 **Supplemental Video 1: a volume rendering from a z-stack acquired after positioning a pipette**

in Bowman's space demonstrates the pipette tip within the space, abutting the capillary tuft.

DISCUSSION:

We present a method to access Bowman's space of non-surface glomeruli in mice, facilitated by 2-photon microscopy. We developed this procedure to address a key limitation of glomerular micropuncture, the rarity of surface glomeruli addressable by 1-photon microscopy in mice, in order to facilitate an experimental objective, aspiration of fluid from Bowman's space for subsequent analysis. Development and practice of this technique rests on six critical steps. First, the novel surgical preparation must be carefully carried out so that the imaging water column does not run off the coverslip and the coverslip extends over the area of kidney which is the target of the pipette. Second, the glass pipette used for micropuncture must be rendered visible for 2-photon microscopy, which is accomplished using quantum dots. Third, stereotactic technique is required to precisely position a pipette in Bowman's space in three dimensions, up to 100 μm below the kidney surface. Therefore, registering the coordinate systems of the pipette and the stage with precision are critical steps. Fourth, careful selection of the target glomerulus is necessary to ensure it is accessible to the pipette without impingement by the kidney support structure and imaging column. Lastly, careful consideration must be given to the analytic steps to follow the acquisition procedure, and volume and timing of acquisition of fluid samples must be matched to the analysis and to glomerular physiology.

We designed an acquisition procedure that may be extended to many analyses, including traditional micropuncture endpoints, such as flame photometry, ion-sensitive electrode measurements, or measurements of pressure, volume or charge. Additionally, we believe this technique will be amenable to novel analytic endpoints including polymerase chain reaction (perhaps following reverse transcription for miRNA) and metabolomics downstream of mass spectrometry. The special modifications employed to facilitate mass spectrometry deserve additional discussion, and they impose some limitations. First, although mass spectrometry is highly sensitive, the low protein content and volume of micropuncture samples renders analysis of protein below the dynamic range of conventional proteomic exploration, and therefore simplified nanoproteomics were necessary.^{8,13} Second, to optimize protein yield for early assays, we determined that 200-300 nL of aspirate was necessary, but *de novo* filtrate acquisition of this volume would require perhaps as long as 20 minutes of aspiration if the mouse GFR is only 8-14 nL/min³. As Tojo and Endou demonstrated that prolonged aspiration alters the albumin content of early proximal tubule fluid¹⁴, we elected to aspirate over 6 minutes; however this means that our aspiration rate exceeds the filtrate inflow rate. Users of this procedure are encouraged to consider the physiology of glomerular filtration in their experimental system in designing their workflow. Mass spectrometry, a sensitive technique, would be overwhelmed by the signal from an introduced petroleum distillate such as mineral oil, which is commonly used in micropuncture to comprise the hydraulic system for aspiration and isolate segments of the nephron. Therefore, we could not use mineral oil for this purpose, or its other common use, quantification of volume of nanoliter range samples. Instead we fill the system with perfluorodecalin which is biologically inert, does not disturb mass spectrometry, and has favorable optical characteristics. We believe the limitations imposed by perfluorodecalin are surmountable and are working on additional technical innovations which we expect will allow measurement of sample volume and blockade

of the tubular segment.

Most micropuncture studies have been performed in Munich-Wistar rats, which demonstrate increased numbers of surface glomeruli, but this greatly limited physiologic study of tubular transport and other renal physiology because of the loss of the fundamental tool of molecular biology, transgenic mice^{2,3}. Because it facilitates micropipette access to Bowman's space in mice, the novel technique therefore mitigates these critical limitations. We adopted this technique in order to access renal filtrate for proteomic studies using high-sensitivity mass spectrometry, known as nanoproteomics⁹. However, there are likely additional applications. For example, renal physiologic study of filtered protein has been greatly aided by use of fluorescent tracers with 2-photon microscopy¹⁵⁻¹⁷. Addition of micropuncture to 2-photon microscopy offers the possibility of performing single-nephron physiologic study with fluorescent molecules, allowing neighboring, non-injected nephrons to serve as controls. It is hoped that this clear explanation of the necessary steps will allow wide adoption in labs already equipped for 2-photon microscopy and/or micropuncture. Although it is complex, we have now performed this procedure many times and the refinements presented herein represent a stable platform for physiologic discovery.

ACKNOWLEDGMENTS:

NIDDK K08 DK090754 to **MPH**. **NIGMS** P41 GM103493 to **RDS**. This material is the result of work (by MPH) which was supported with resources and the use of facilities at the Portland Veterans Affairs Medical Center. The contents do not represent the views of the U.S. Department of Veterans Affairs or the United States Government.

DISCLOSURES:

The authors have nothing to disclose.

REFERENCES:

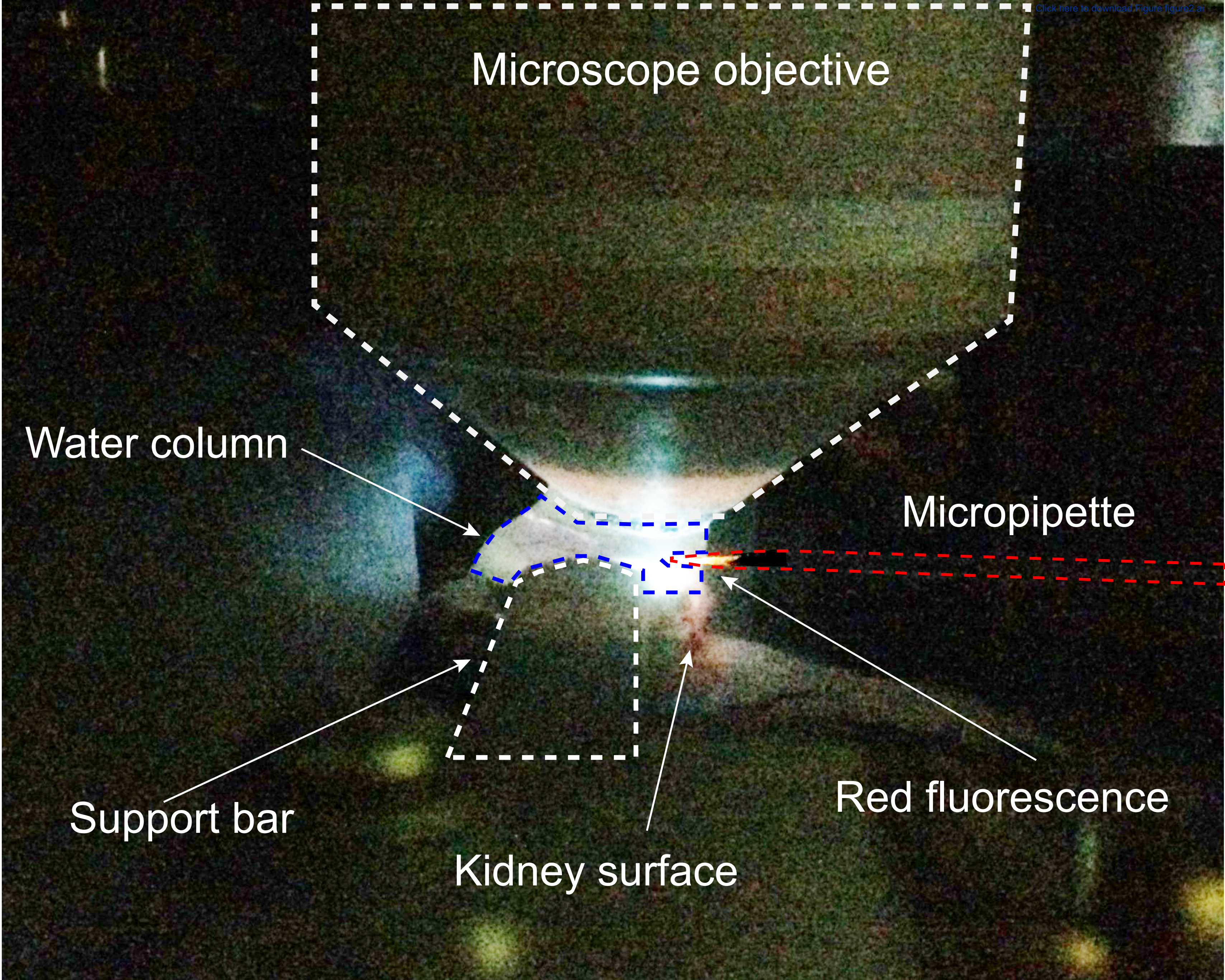
- 1 Schnermann, J. Micropuncture analysis of tubuloglomerular feedback regulation in transgenic mice. *Journal of the American Society of Nephrology*. **10** (12), 2614-2619 (1999).
- 2 Lorenz, J. N. Micropuncture of the kidney: a primer on techniques. *Comprehensive Physiology*. **2** (1), 621-637, doi:10.1002/cphy.c110035, (2012).
- 3 Vallon, V. Micropuncturing the nephron. *Pflugers Archive. European Journal of Physiology*. **458** (1), 189-201, doi:10.1007/s00424-008-0581-7, (2009).
- 4 Perrien, D. S. *et al.* Novel methods for microCT-based analyses of vasculature in the renal cortex reveal a loss of perfusable arterioles and glomeruli in eNOS^{-/-} mice. *BMC Nephrology*. **17** 24, doi:10.1186/s12882-016-0235-5, (2016).
- 5 Ehling, J. *et al.* Quantitative Micro-Computed Tomography Imaging of Vascular Dysfunction in Progressive Kidney Diseases. *Journal of the American Society of Nephrology*. **27** (2), 520-532, doi:10.1681/ASN.2015020204, (2016).
- 6 Gimenez, Y. *et al.* 3D Imaging of Nanoparticle Distribution in Biological Tissue by Laser-

- Induced Breakdown Spectroscopy. *Scientific Reports*. **6** 29936, doi:10.1038/srep29936, (2016).
- 7 Miyamoto, S. *et al.* Mass spectrometry imaging reveals elevated glomerular ATP/AMP in
diabetes/obesity and identifies sphingomyelin as a possible mediator. *EBioMedicine*. **7**
121-134, doi:10.1016/j.ebiom.2016.03.033, (2016).
- 8 Piehowski, P. D., Zhao, R., Moore, R. J., Clair, G. & Ansong, C. Quantitative proteomic
analysis of mass limited tissue samples for spatially resolved tissue profiling. *Methods in*
Molecular Biology. doi:10.1007/7651_2017_78, (2017).
- 9 Yi, L., Piehowski, P. D., Shi, T., Smith, R. D. & Qian, W. J. Advances in microscale separations
towards nanoproteomics applications. *Journal of Chromatography A*. **1523** 40-48,
doi:10.1016/j.chroma.2017.07.055, (2017).
- 10 Clair, G. *et al.* Spatially-resolved proteomics: Rapid quantitative analysis of laser capture
microdissected alveolar tissue samples. *Scientific Reports*. **6** 39223,
doi:10.1038/srep39223, (2016).
- 11 Huang, E. L. *et al.* SNaPP: Simplified nanoproteomics platform for reproducible global
proteomic analysis of nanogram protein quantities. *Endocrinology*. **157** (3), 1307-1314,
doi:10.1210/en.2015-1821, (2016).
- 12 Andrasfalvy, B. K. *et al.* Quantum dot-based multiphoton fluorescent pipettes for targeted
neuronal electrophysiology. *Nature Methods*. **11** (12), 1237-1241,
doi:10.1038/nmeth.3146, (2014).
- 13 Huang, E. L. *et al.* SNaPP: Simplified nano-proteomics platform for reproducible global
proteomic analysis of nanogram protein quantities. *Endocrinology*. **157** (3), en.2015-1821,
doi:10.1210/en.2015-1821, (2016).
- 14 Tojo, A. & Endou, H. Intrarenal handling of proteins in rats using fractional micropuncture
technique. *American Journal of Physiology*. **263** (4 Pt 2), F601-606 (1992).
- 15 Sandoval, R. M. & Molitoris, B. A. Quantifying glomerular permeability of fluorescent
macromolecules using 2-photon microscopy in Munich Wistar rats. *Journal of Visualized*
Experiments. (74), doi:10.3791/50052, (2013).
- 16 Sandoval, R. M., Kennedy, M. D., Low, P. S. & Molitoris, B. A. Uptake and trafficking of
fluorescent conjugates of folic acid in intact kidney determined using intravital two-
photon microscopy. *American Journal of Physiology: Cell Physiology*. **287** (2), C517-526,
doi:10.1152/ajpcell.00006.2004, (2004).
- 17 Salmon, A. H. *et al.* Loss of the endothelial glycocalyx links albuminuria and vascular
dysfunction. *Journal of the American Society of Nephrology*. **23** (8), 1339-1350,
doi:10.1681/ASN.2012010017, (2012).

Figure 1

[Click here to download Figure f1.tif](#)





Microscope objective

Water column

Micropipette

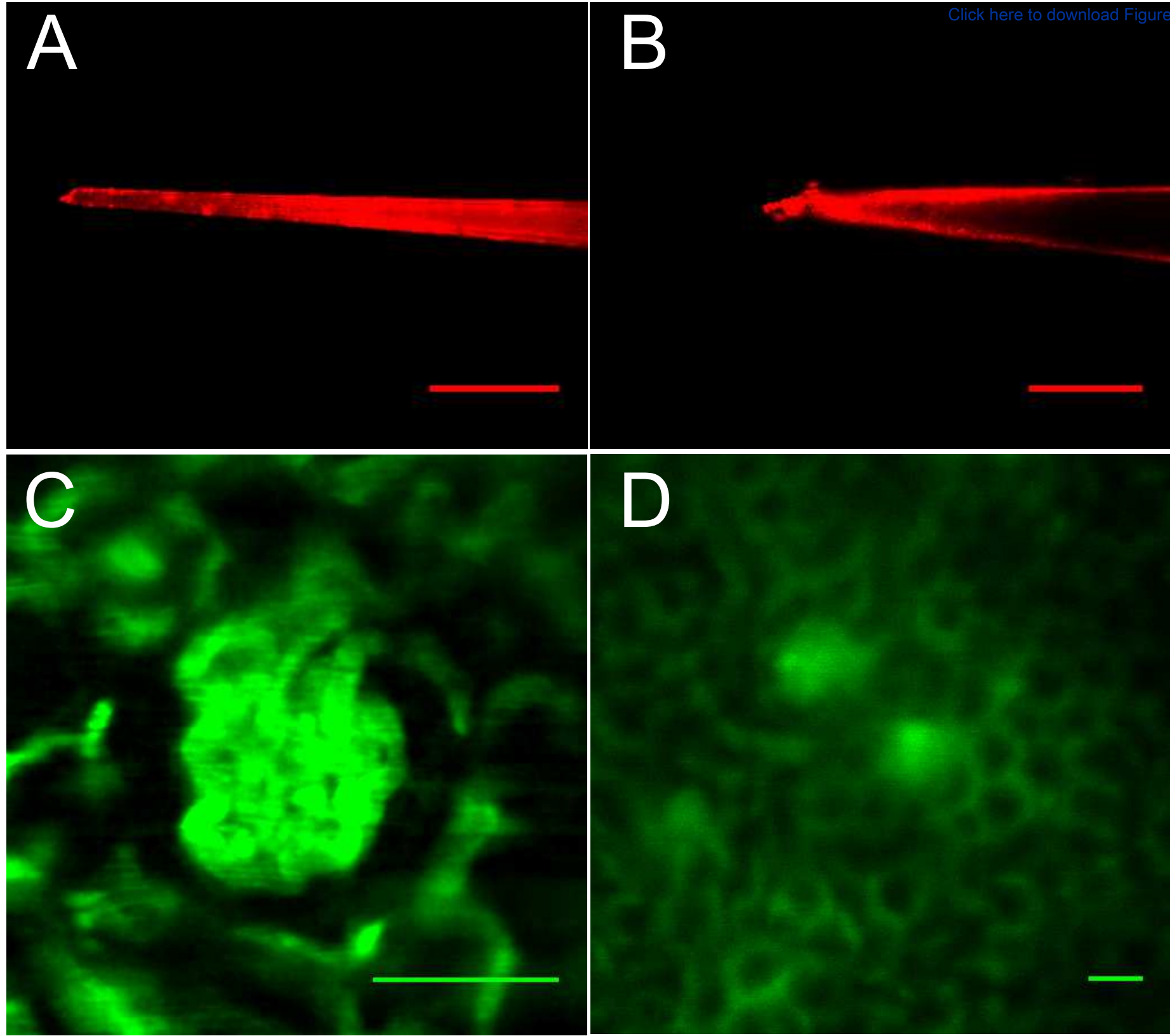
Red fluorescence

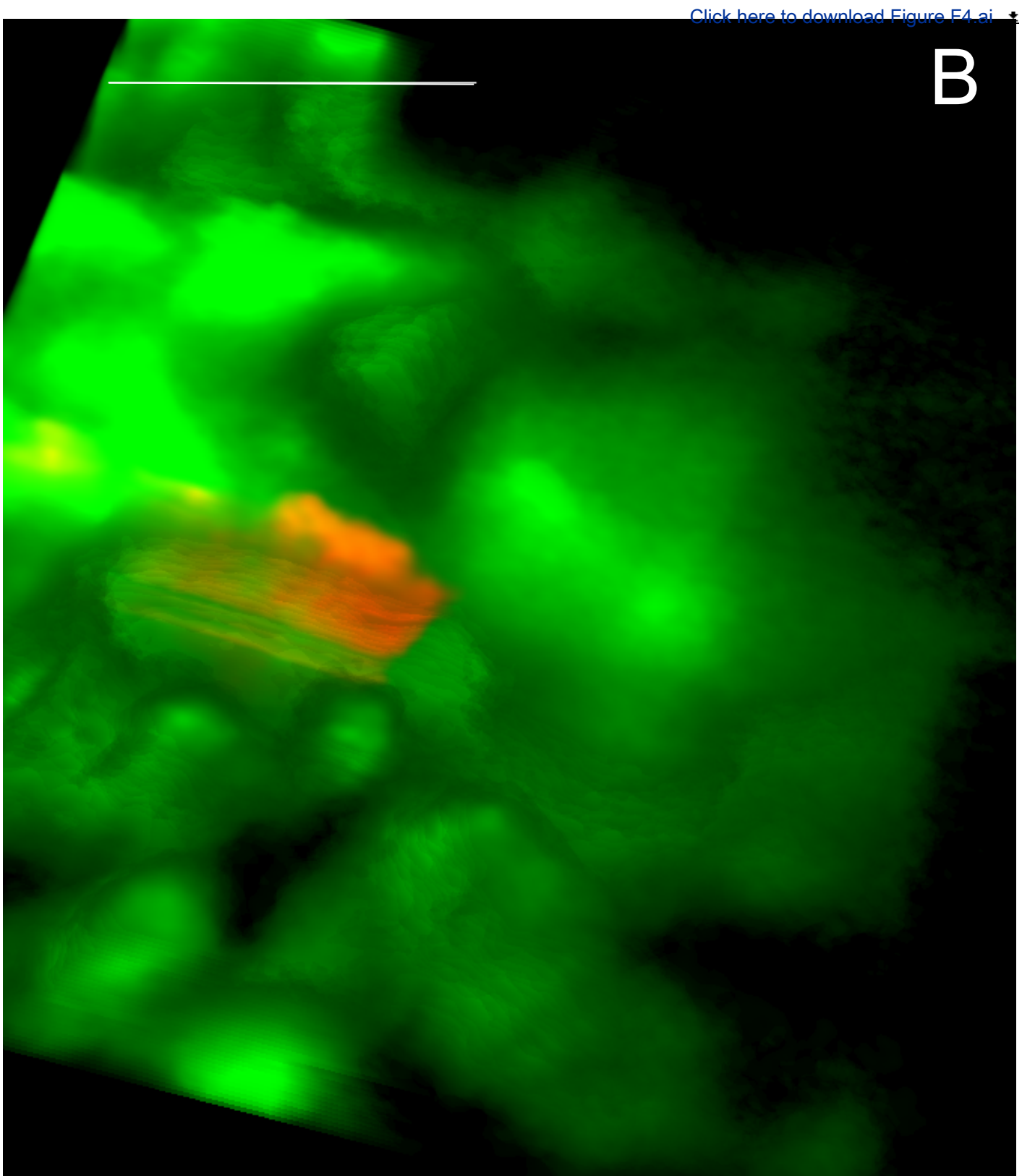
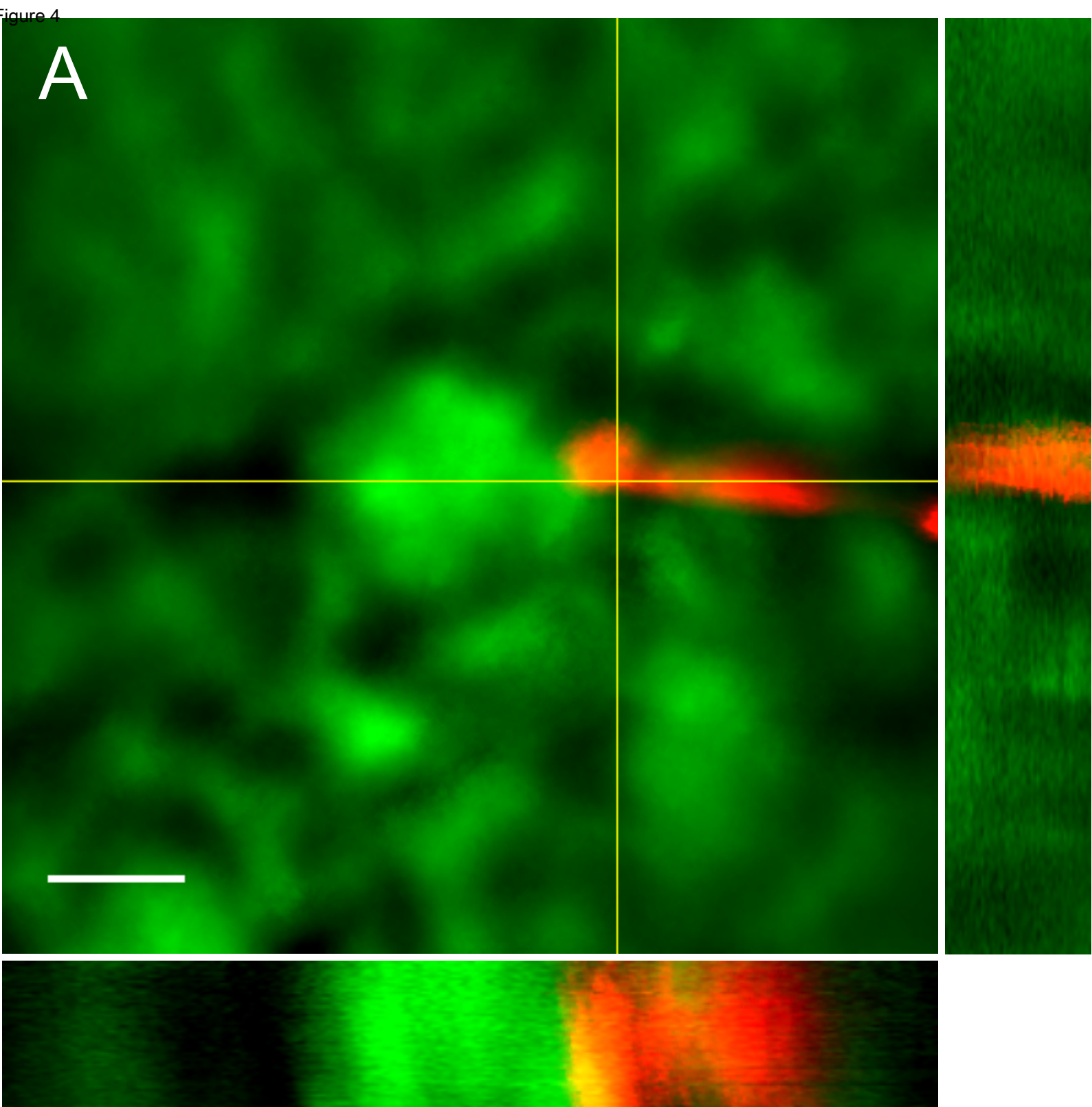
Support bar

Kidney surface

Figure 3

[Click here to download Figure f3.eps](#)





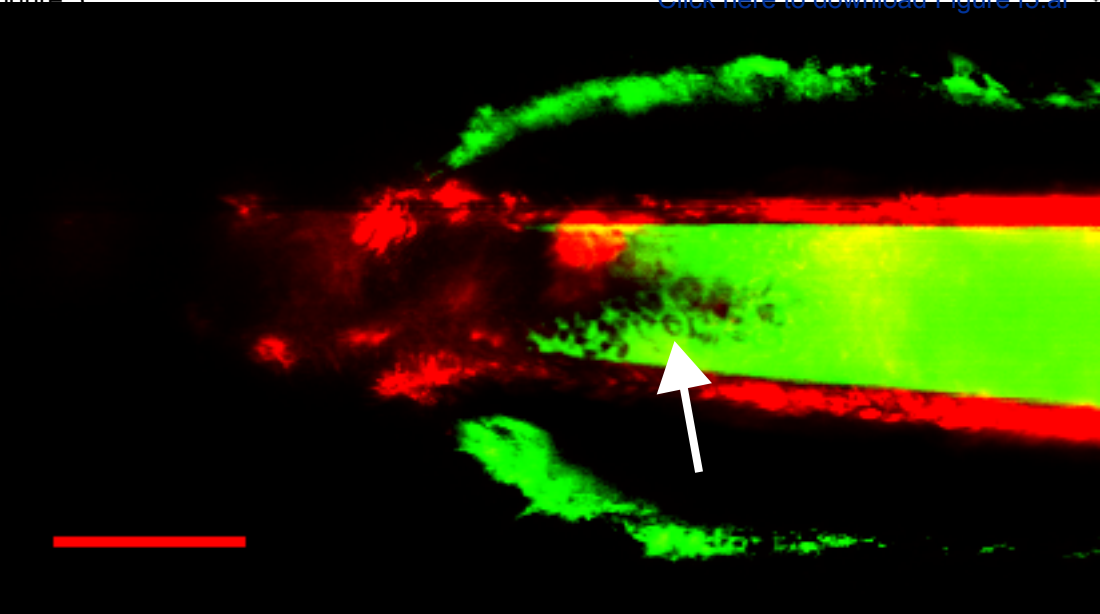
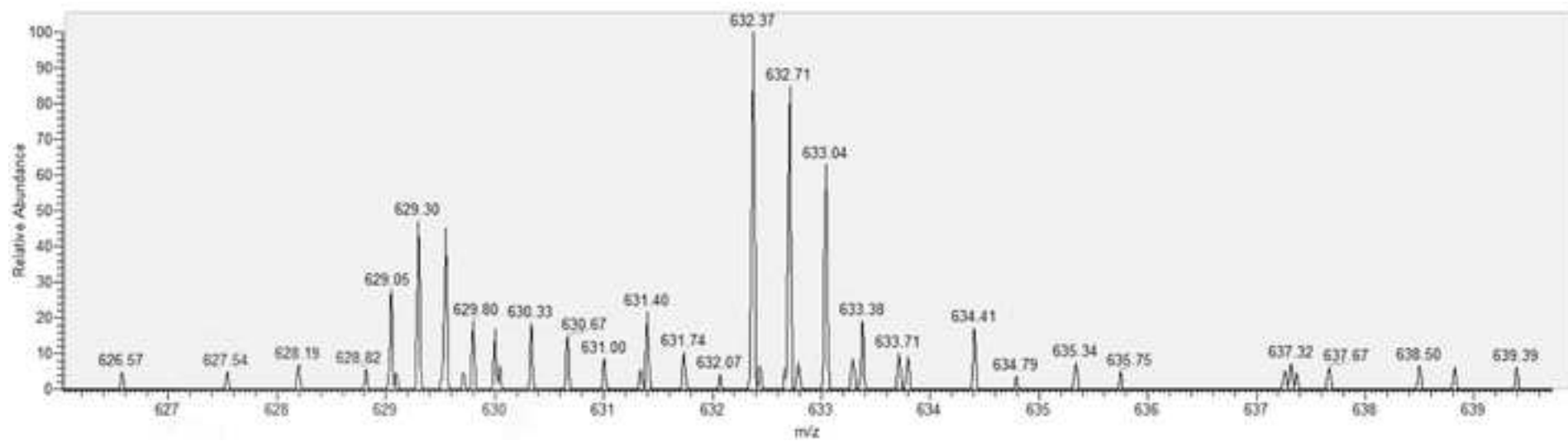
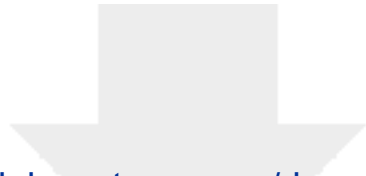


Figure 6





[Click here to access/download](#)

Video or Animated Figure

0128a-3dview03162018-3.avi



Protein	MW (kD)	Mean Spectral Count
ACTA_MOUSE	42	2
ACTB_MOUSE	42	1
CLPX_MOUSE	69	2.5
DHSA_MOUSE	73	1
FOLR2_MOUSE	29	1
GBLP_MOUSE	35	1
ALBU_MOUSE	66	6.7
HBA_MOUSE	15	2
HBB1_MOUSE	16	1
MIB1_MOUSE	110	1
MUP17_MOUSE	21	1
PERI_MOUSE	54	1
RNAS4_MOUSE	17	2
SPTB1_MOUSE	2	1
VIME_MOUSE	54	1
VTDB_MOUSE	53	1

Name of Material/ Equipment	Company	Catalog Number	Comments/Description
Upright 2 photon microscope	Zeiss	LSM 7MP	
3 axis microscope stage controller	Sutter	MP-285	
3 axis headstage controller	Sutter	MP-225	
Pipette holder	Molecular Devices	1-HL-U	
Headstage	Molecular Devices	CV203BU	
FITC-dextran 2000 kDa MW	Sigma-Aldrich	52471-1G	
borosilicate glass capillary tubes	Sutter	B150-110-7.5	
Micropipette puller	Sutter	P-97	
Quantum dots, 605 nm	Thermofisher	Q21701MP	
Polysiloxane	Sugru	No cat number	www.sugru.com, "original formula". Any color.
PE-50 tubing	Instech Labs	BTPE-50	
Microinjector	WPI	UMP-3	
Microinjector controller	WPI	Micro4	
Perfluorodecalin	Sigma-Aldrich	306-94-5	
Agarose	Sigma-Aldrich	9012-36-6	
Coverslip, 10 mm	Harvard Apparatus	64-0718	
Headplate	Custom	No part number	Common in neuroscience labs, many suppliers
Head fixation device	Custom	No part number	Common in neuroscience labs, many suppliers
30 gauge needle	Becton-Dickinson	125393	For retroorbital injection
Tuberculin syringe	Becton-Dickinson	309626	For retroorbital injection



1 Alewife Center #200
Cambridge, MA 02140
tel. 617.945.9051
www.jove.com

ARTICLE AND VIDEO LICENSE AGREEMENT

Title of Article:

Micropuncture of Bowman's Space in Mice Facilitated by 2 Photon Microscopy

Author(s):

Katsuyuki Matsushita¹, Kirsti Golgotiu¹, Daniel J. Orton², Richard D. Smith², Karin D. Rodland², Paul D. Piehowski², Michael P. Hutchens¹

Item 1 (check one box): The Author elects to have the Materials be made available (as described at

<http://www.jove.com/author>) via: ☐ Standard Access ☒ Open Access

Item 2 (check one box):

☐

The Author is NOT a United States government employee.

☒

The Author is a United States government employee and the Materials were prepared in the course of his or her duties as a United States government employee.

☐

The Author is a United States government employee but the Materials were NOT prepared in the course of his or her duties as a United States government employee.

ARTICLE AND VIDEO LICENSE AGREEMENT

1. Defined Terms. As used in this Article and Video License Agreement, the following terms shall have the following meanings: "**Agreement**" means this Article and Video License Agreement; "**Article**" means the article specified on the last page of this Agreement, including any associated materials such as texts, figures, tables, artwork, abstracts, or summaries contained therein; "**Author**" means the author who is a signatory to this Agreement; "**Collective Work**" means a work, such as a periodical issue, anthology or encyclopedia, in which the Materials in their entirety in unmodified form, along with a number of other contributions, constituting separate and independent works in themselves, are assembled into a collective whole; "**CRC License**" means the Creative Commons Attribution-Non Commercial-No Derivs 3.0 Unported Agreement, the terms and conditions of which can be found at: <http://creativecommons.org/licenses/by-nc-nd/3.0/legalcode>; "**Derivative Work**" means a work based upon the Materials or upon the Materials and other pre-existing works, such as a translation, musical arrangement, dramatization, fictionalization, motion picture version, sound recording, art reproduction, abridgment, condensation, or any other form in which the Materials may be recast, transformed, or adapted; "**Institution**" means the institution, listed on the last page of this Agreement, by which the Author was employed at the time of the creation of the Materials; "**JoVE**" means MyJoVE Corporation, a Massachusetts corporation and the publisher of *The Journal of Visualized Experiments*; "**Materials**" means the Article and / or the Video; "**Parties**" means the Author and JoVE; "**Video**" means any video(s) made by the Author, alone or in conjunction with any other parties, or by JoVE or its affiliates or agents, individually or in collaboration with the Author or any other parties, incorporating all or any portion of the Article, and in which the Author may or may not appear.

2. Background. The Author, who is the author of the Article, in order to ensure the dissemination and protection of the Article, desires to have the JoVE publish the Article and create and transmit videos based on the Article. In furtherance of such goals, the Parties desire to memorialize in this Agreement the respective rights of each Party in and to the Article and the Video.

3. Grant of Rights in Article. In consideration of JoVE agreeing to publish the Article, the Author hereby grants to JoVE, subject to **Sections 4** and **7** below, the exclusive, royalty-free, perpetual (for the full term of copyright in the Article, including any extensions thereto) license (a) to publish, reproduce, distribute, display and store the Article in all forms, formats and media whether now known or hereafter developed (including without limitation in print, digital and electronic form) throughout the world, (b) to translate the Article into other languages, create adaptations, summaries or extracts of the Article or other Derivative Works (including, without limitation, the Video) or Collective Works based on all or any portion of the Article and exercise all of the rights set forth in (a) above in such translations, adaptations, summaries, extracts, Derivative Works or Collective Works and (c) to license others to do any or all of the above. The foregoing rights may be exercised in all media and formats, whether now known or hereafter devised, and include the right to make such modifications as are technically necessary to exercise the rights in other media and formats. If the "Open Access" box has been checked in **Item 1** above, JoVE and the Author hereby grant to the public all such rights in the Article as provided in, but subject to all limitations and requirements set forth in, the CRC License.

ARTICLE AND VIDEO LICENSE AGREEMENT

4. Retention of Rights in Article. Notwithstanding the exclusive license granted to JoVE in **Section 3** above, the Author shall, with respect to the Article, retain the non-exclusive right to use all or part of the Article for the non-commercial purpose of giving lectures, presentations or teaching classes, and to post a copy of the Article on the Institution's website or the Author's personal website, in each case provided that a link to the Article on the JoVE website is provided and notice of JoVE's copyright in the Article is included. All non-copyright intellectual property rights in and to the Article, such as patent rights, shall remain with the Author.

5. Grant of Rights in Video – Standard Access. This **Section 5** applies if the "Standard Access" box has been checked in **Item 1** above or if no box has been checked in **Item 1** above. In consideration of JoVE agreeing to produce, display or otherwise assist with the Video, the Author hereby acknowledges and agrees that, Subject to **Section 7** below, JoVE is and shall be the sole and exclusive owner of all rights of any nature, including, without limitation, all copyrights, in and to the Video. To the extent that, by law, the Author is deemed, now or at any time in the future, to have any rights of any nature in or to the Video, the Author hereby disclaims all such rights and transfers all such rights to JoVE.

6. Grant of Rights in Video – Open Access. This **Section 6** applies only if the "Open Access" box has been checked in **Item 1** above. In consideration of JoVE agreeing to produce, display or otherwise assist with the Video, the Author hereby grants to JoVE, subject to **Section 7** below, the exclusive, royalty-free, perpetual (for the full term of copyright in the Article, including any extensions thereto) license (a) to publish, reproduce, distribute, display and store the Video in all forms, formats and media whether now known or hereafter developed (including without limitation in print, digital and electronic form) throughout the world, (b) to translate the Video into other languages, create adaptations, summaries or extracts of the Video or other Derivative Works or Collective Works based on all or any portion of the Video and exercise all of the rights set forth in (a) above in such translations, adaptations, summaries, extracts, Derivative Works or Collective Works and (c) to license others to do any or all of the above. The foregoing rights may be exercised in all media and formats, whether now known or hereafter devised, and include the right to make such modifications as are technically necessary to exercise the rights in other media and formats. For any Video to which this Section 6 is applicable, JoVE and the Author hereby grant to the public all such rights in the Video as provided in, but subject to all limitations and requirements set forth in, the CRC License.

7. Government Employees. If the Author is a United States government employee and the Article was prepared in the course of his or her duties as a United States government employee, as indicated in **Item 2** above, and any of the licenses or grants granted by the Author hereunder exceed the scope of the 17 U.S.C. 403, then the rights granted hereunder shall be limited to the maximum rights permitted under such

statute. In such case, all provisions contained herein that are not in conflict with such statute shall remain in full force and effect, and all provisions contained herein that do so conflict shall be deemed to be amended so as to provide to JoVE the maximum rights permissible within such statute.

8. Likeness, Privacy, Personality. The Author hereby grants JoVE the right to use the Author's name, voice, likeness, picture, photograph, image, biography and performance in any way, commercial or otherwise, in connection with the Materials and the sale, promotion and distribution thereof. The Author hereby waives any and all rights he or she may have, relating to his or her appearance in the Video or otherwise relating to the Materials, under all applicable privacy, likeness, personality or similar laws.

9. Author Warranties. The Author represents and warrants that the Article is original, that it has not been published, that the copyright interest is owned by the Author (or, if more than one author is listed at the beginning of this Agreement, by such authors collectively) and has not been assigned, licensed, or otherwise transferred to any other party. The Author represents and warrants that the author(s) listed at the top of this Agreement are the only authors of the Materials. If more than one author is listed at the top of this Agreement and if any such author has not entered into a separate Article and Video License Agreement with JoVE relating to the Materials, the Author represents and warrants that the Author has been authorized by each of the other such authors to execute this Agreement on his or her behalf and to bind him or her with respect to the terms of this Agreement as if each of them had been a party hereto as an Author. The Author warrants that the use, reproduction, distribution, public or private performance or display, and/or modification of all or any portion of the Materials does not and will not violate, infringe and/or misappropriate the patent, trademark, intellectual property or other rights of any third party. The Author represents and warrants that it has and will continue to comply with all government, institutional and other regulations, including, without limitation all institutional, laboratory, hospital, ethical, human and animal treatment, privacy, and all other rules, regulations, laws, procedures or guidelines, applicable to the Materials, and that all research involving human and animal subjects has been approved by the Author's relevant institutional review board.

10. JoVE Discretion. If the Author requests the assistance of JoVE in producing the Video in the Author's facility, the Author shall ensure that the presence of JoVE employees, agents or independent contractors is in accordance with the relevant regulations of the Author's institution. If more than one author is listed at the beginning of this Agreement, JoVE may, in its sole discretion, elect not take any action with respect to the Article until such time as it has received complete, executed Article and Video License Agreements from each such author. JoVE reserves the right, in its absolute and sole discretion and without giving any reason therefore, to accept or decline any work submitted to JoVE. JoVE and its employees, agents and independent contractors shall have

ARTICLE AND VIDEO LICENSE AGREEMENT

full, unfettered access to the facilities of the Author or of the Author's institution as necessary to make the Video, whether actually published or not. JoVE has sole discretion as to the method of making and publishing the Materials, including, without limitation, to all decisions regarding editing, lighting, filming, timing of publication, if any, length, quality, content and the like.

11. **Indemnification.** The Author agrees to indemnify JoVE and/or its successors and assigns from and against any and all claims, costs, and expenses, including attorney's fees, arising out of any breach of any warranty or other representations contained herein. The Author further agrees to indemnify and hold harmless JoVE from and against any and all claims, costs, and expenses, including attorney's fees, resulting from the breach by the Author of any representation or warranty contained herein or from allegations or instances of violation of intellectual property rights, damage to the Author's or the Author's institution's facilities, fraud, libel, defamation, research, equipment, experiments, property damage, personal injury, violations of institutional, laboratory, hospital, ethical, human and animal treatment, privacy or other rules, regulations, laws, procedures or guidelines, liabilities and other losses or damages related in any way to the submission of work to JoVE, making of videos by JoVE, or publication in JoVE or elsewhere by JoVE. The Author shall be responsible for, and shall hold JoVE harmless from, damages caused by lack of sterilization, lack of cleanliness or by contamination due to the making of a video by JoVE its employees, agents or independent contractors. All sterilization, cleanliness or decontamination procedures shall be solely the responsibility of the Author and shall be undertaken at the Author's

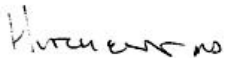
expense. All indemnifications provided herein shall include JoVE's attorney's fees and costs related to said losses or damages. Such indemnification and holding harmless shall include such losses or damages incurred by, or in connection with, acts or omissions of JoVE, its employees, agents or independent contractors.

12. **Fees.** To cover the cost incurred for publication, JoVE must receive payment before production and publication the Materials. Payment is due in 21 days of invoice. Should the Materials not be published due to an editorial or production decision, these funds will be returned to the Author. Withdrawal by the Author of any submitted Materials after final peer review approval will result in a US\$1,200 fee to cover pre-production expenses incurred by JoVE. If payment is not received by the completion of filming, production and publication of the Materials will be suspended until payment is received.

13. **Transfer, Governing Law.** This Agreement may be assigned by JoVE and shall inure to the benefits of any of JoVE's successors and assignees. This Agreement shall be governed and construed by the internal laws of the Commonwealth of Massachusetts without giving effect to any conflict of law provision thereunder. This Agreement may be executed in counterparts, each of which shall be deemed an original, but all of which together shall be deemed to be one and the same agreement. A signed copy of this Agreement delivered by facsimile, e-mail or other means of electronic transmission shall be deemed to have the same legal effect as delivery of an original signed copy of this Agreement.

A signed copy of this document must be sent with all new submissions. Only one Agreement required per submission.

CORRESPONDING AUTHOR:

Name:	Michael Hutchens		
Department:	Anesthesiology, Research and Development		
Institution:	OHSU & Portland VA Medical Center		
Article Title:	Micropuncture of Bowman's Space in Mice Facilitated by 2 Photon Microscopy		
Signature:		Digitally signed by Michael P. Hutchens Date: 2018.03.26 12:22:33 -07'00'	Date: 03262018

Please submit a signed and dated copy of this license by one of the following three methods:

- 1) Upload a scanned copy of the document as a pdf on the JoVE submission site;
- 2) Fax the document to +1.866.381.2236;
- 3) Mail the document to JoVE / Attn: JoVE Editorial / 1 Alewife Center #200 / Cambridge, MA 02139

For questions, please email submissions@jove.com or call +1.617.945.9051

Response to Editorial comments:

Note that some formatting changes have been made, in particular in the protocol.

Noted.

1. Please indicate how you will confirm anesthetization (3.3) as well as the euthanasia method.

Done. Added euthanasia as a separate, final step at the end of the protocol.

2. There are still some parts of the protocol not in imperative tense (section 1, 4.1, 4.3.1/2, 5.1, 5.4); please rewrite, change to 'Notes', or move to the Discussion section as appropriate.

Done

3. Including headers and spacing, the highlighted portion of the manuscript is too long (~3.5 pages); please reduce to 2.75 pages or less.

Done

4. Please include (brief) descriptions of panels in the legends to Figures 3 and 4 (not just in the Results section).

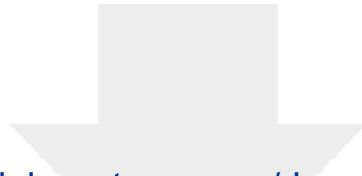
Done

5. Are scale bars in all figures 50 μm ? Please indicate as such in Figures 4 and 5.

Done.

6. The text indicates a supplemental .html file, but there is none in the current submission.

Added to the current submission.



[Click here to access/download](#)

Supplemental Coding Files

[stereotactic-calc-Matsushita-Hutchens-JOVE2018.html](#)

