

Journal of Visualized Experiments

Scalable fabrication of stretchable, dual channel, microfluidic organ chips

--Manuscript Draft--

Article Type:	Methods Article - Author Produced Video
Manuscript Number:	JoVE58151R3
Full Title:	Scalable fabrication of stretchable, dual channel, microfluidic organ chips
Keywords:	Organ-on-a-chip; microphysiological system; microfluidic; microfabrication; PDMS; porous membrane; microchannel; cyclic strain; perfusion
Corresponding Author:	Richard Novak Wyss Institute for Biologically Inspired Engineering at Harvard University Boston, MA UNITED STATES
Corresponding Author's Institution:	Wyss Institute for Biologically Inspired Engineering at Harvard University
Corresponding Author E-Mail:	richard.novak@wyss.harvard.edu
Order of Authors:	Richard Novak Meredyth Didier Elizabeth Calamari Carlos F Ng Youngjae Choe Susan L Clauson Bret A Nestor Jefferson Puerta Rachel Fleming Sasan J Firoozinezhad Donald E Ingber
Additional Information:	
Question	Response
Please indicate whether this article will be Standard Access or Open Access.	Standard Access (US\$1200)

TITLE:

Scalable Fabrication of Stretchable, Dual Channel, Microfluidic Organ Chips

AUTHORS AND AFFILIATIONS:

Richard Novak^{*1}, Meredyth Didier^{*1,2}, Elizabeth Calamari¹, Carlos F Ng¹, Youngjae Choe¹, Susan L Clauson¹, Bret A Nestor¹, Jefferson Puerta^{1,+}, Rachel Fleming¹, Sasan Jalili Firoozinezhad¹, and Donald E Ingber^{1,3,4}

¹ Wyss Institute for Biologically Inspired Engineering at Harvard University, Boston, MA, USA;

² Presently at Apple, Inc.

³ Harvard John A. Paulson School of Engineering and Applied Sciences, Harvard University, Cambridge, MA, USA

⁴ Vascular Biology Program and Department of Surgery, Boston Children's Hospital and Harvard Medical School, Boston, MA, USA

* These authors contributed equally

+ Current address: Emulate Inc., 27 Drydock Ave., Boston, MA 02210, USA

EMAIL ADDRESSES of Co-Authors:

Richard Novak	(Richard.Novak@wyss.harvard.edu)
Meredyth Didier	(meredyth@didierconsulting.com)
Elizabeth Calamari	(Elizabeth.Calamari@wyss.harvard.edu)
Carlos F Ng	(Carlos.NgPitti@wyss.harvard.edu)
Youngjae Choe	(Youngjae.Cho@wyss.harvard.edu)
Susan L Clauson	(Susan.Clauson@wyss.harvard.edu)
Bret A Nestor	(Bret.Nestor@wyss.harvard.edu)
Jefferson Puerta	(Jefferson.Puerta@emulatebio.com)
Rachel Fleming	(flemingrachelc@gmail.com)
Sasan Jalili Firoozinezhad	(Sasan.Jalili@wyss.harvard.edu)
Donald E Ingber	(Don.Ingber@wyss.harvard.edu)

CORRESPONDING AUTHOR:

Donald E Ingber (Don.Ingber@wyss.harvard.edu)

KEYWORDS:

Organ-on-a-chip, microphysiological system, microfluidic, microfabrication, PDMS, porous membrane, microchannel, cyclic strain, perfusion

SHORT ABSTRACT:

Here, we present a protocol that describes the fabrication of stretchable, dual channel, organ chip microfluidic cell culture devices for recapitulating organ-level functionality *in vitro*.

LONG ABSTRACT:

A significant number of lead compounds fail in the pharmaceutical pipeline because animal studies often fail to predict clinical responses in human patients. Human Organ-on-a-Chip (Organ Chip) microfluidic cell culture devices, which provide an experimental *in vitro* platform to assess efficacy, toxicity, and pharmacokinetic (PK) profiles in humans, may be better predictors of therapeutic efficacy and safety in the clinic compared to animal studies. These devices may be used to model the function of virtually any organ type and can be fluidically linked through common endothelium-lined microchannels to perform *in vitro* studies on human organ-level and whole body-level physiology without having to conduct experiments on people. These Organ Chips consist of two perfused microfluidic channels separated by a permeable elastomeric membrane with organ-specific parenchymal cells on one side and microvascular endothelium on the other, which can be cyclically stretched to provide organ-specific mechanical cues (*e.g.*, breathing motions in lung). This protocol details the fabrication of flexible, dual channel, Organ Chips through casting of parts using 3D printed molds, enabling combination of multiple casting and post-processing steps. Porous poly (dimethyl siloxane) (PDMS) membranes are cast with micrometer sized through-holes using silicon pillar arrays under compression. Fabrication and assembly of Organ Chips involves equipment and steps that can be implemented outside of a traditional cleanroom. This protocol provides researchers with access to Organ Chip technology for *in vitro* organ- and body-level studies in drug discovery, safety and efficacy testing, as well as mechanistic studies of fundamental biological processes.

INTRODUCTION:

Here, we describe the fabrication of dual channel, vascularized Organ-on-a-Chip (Organ Chip) microfluidic culture devices using a scalable protocol amenable for use by research groups lacking access to cleanrooms and traditional soft lithography tools. These devices have been developed to recapitulate human organ-level functions for understanding normal and disease physiology, as well as drug responses *in vitro*^{1,2}. Critical to engineering this functionality are two perfused microfluidic channels separated by a semi-permeable membrane (**Figure 1**). This design enables recreation of tissue-tissue interfaces between at least two types of tissues, typically organ parenchymal cells on one side of the porous membrane and vascular endothelium on the other, as well as their exposure to fluid flow. In addition, because the elastomeric polymer, poly (dimethyl siloxane) (PDMS), is used to fabricate the Organ Chip body and membrane components, cyclic mechanical strain can be applied to the entire engineered tissue-tissue interface *via* the elastic membrane to mimic the natural physical microenvironment of living organs, such as breathing motions in the lung and peristalsis in the intestine.

[Place **Figure 1** here]

These stretchable, dual channel, Organ Chips have been used for demonstrating the impact of breathing motion on nanoparticle absorption in the lung and drug-induced pulmonary edema^{3,4}; effects of peristaltic motion on differentiation⁵ and bacterial overgrowth in the intestine⁵⁻⁷; and influence of cyclic deformations due to the pulsation of the heart on differentiation and maturation of glomerular podocytes in the kidney⁸. Additionally, these two-

lumen devices that contain an endothelium-lined vascular channel separated by an extracellular matrix (ECM)-coated membrane from parenchymal cells within a separately accessible channel are well suited for characterization of drug PK parameters and new target discovery, which has been limited in single perfusion channel systems. Moreover, multiple Organ Chips may be linked together *via* their vascular channels to effectively create a human body-on-chips, which could offer an attractive human *in vitro* platform for therapeutics development^{9,10}. Unlike most micro-physiological systems (MPS)^{11–13}, the Organ Chips contain two microfluidic channels separated by a porous membrane that facilitates vascular-parenchymal interactions to recapitulate *in vivo* organ function. This not only simplifies linking of different organs together by perfusing a common medium through the vascular channels, but the compartmentalization of tissues and fluids mimics *in vivo* functions and supports pharmacokinetic experimentation and modeling as well as *in vitro-in vivo* extrapolation^{9,10} that is difficult or impossible in single channel MPS^{14–16}. The popularity of PDMS in microfluidic devices has led to the development of tools to overcome the material's inherent ability to absorb small molecules^{10,17}. However, the large numbers of chips required to support biological studies where the use of microbial agents and PDMS-absorbing compounds make reuse of Organ Chips difficult necessitates a scalable manufacturing process even for small research groups. The protocol described here presents a method for the device fabrication suitable for the use in academic laboratories, including those lacking access to cleanrooms and soft lithography. This protocol aims to broaden access to Organ Chips by a broad range of researchers seeking to use the stretchable, dual-channel devices for exploring basic biological processes as well as translational therapeutic development.

Leveraging best practices from micromanufacturing fields coupled with design for manufacturing, a robust approach was developed for fabricating Organ Chip devices in large quantities with high reproducibility and yield. The fabrication protocol described here provides a scalable method for Organ Chip production. We describe the use of an optional Mold-in-Place Jig (MiP; design details in **Supplemental Materials**) coupled with polyurethane gasket strips to enable scaling up of casting PDMS components. The glossy side of polyurethane strips produce optically smooth PDMS parts while the textured side facilitates demolding. We also describe the use of an optional Automated Membrane Fabricator (AMF) that provides uniform compression of membrane wafer molds during curing for fabricating up to 24 membranes per batch. The design is broadly applicable for studies of organs that are composed of tissues that experience mechanical strain and perfusion, and these chips can be produced with low chip-to-chip variability in quantities required to meet the needs of small and large research groups alike. The workflow is amenable to a batch or assembly line format, and readily compatible with quality assessment protocols for control of production processes, personnel training, and responsive troubleshooting. We hope that this protocol will expand access to the capabilities of dual channel, stretchable, Organ Chips for basic and translational research.

PROTOCOL:

1. General Preparation

1.1. To avoid debris, clean work area using packing tape and wipe down area with a cleanroom wipe and isopropyl alcohol.

1.2. For all steps requiring PDMS, mix PDMS at a 10:1 ratio (10 g of cross linking agent, 100 g of elastomer base). Mix by hand or with a commercially available mixer. Use a planetary centrifugal mixer here: mixing for 2 minutes at 2000 rpm, then degassing the PDMS for 2 minutes at 2200 rpm.

1.3. Clean all molds with air gun to blow out debris prior to use.

CAUTION: Do not use metal forceps to remove debris as it will damage the surface of the molds.

2. Top Channel Preparation

2.1. Wipe down the glossy side of each polyurethane piece with ethanol and cleanroom wipes. Make sure all residual ethanol is dried from the polyurethane surface.

2.2. Place the glossy side of the polyurethane over the open side of the MiP mold to create a seal on the open side of the mold, leaving only a well-like opening at the top of the mold for pouring PDMS.

Note: Check that every mold is covered securely by polyurethane piece or the PDMS will leak from molds during pouring.

2.3. Place the mold and polyurethane assemblies into a MiP jig, with the textured side against the end of the MiP jig. Continue to do this until all molds have been placed in the jig.

2.4. Tighten the MiP jig by turning the handle using a wrench until the jig spacing is 25 mm in width.

2.5. Make a boat of aluminum foil surrounding the MiP jig to prevent excess PDMS from leaking onto surfaces.

2.6. Pour PDMS into each of the molds well until full.

Note: Each chip top component requires about 3 mL of PDMS.

2.7. Once the entire jig is filled, place the jig into the vacuum desiccator. Pull vacuum at - 80 kPa for 1 h to degas PDMS.

2.8. After 1 h, remove the MiP jig from the desiccator and place in 60 °C oven for at least 4 h to cure PDMS.

2.9. Disassemble the MiP jig using a wrench, loosen the jig by turning the handle counter clockwise. Once molds are free from compression, remove molds from jig.

2.10. Remove the polyurethane strips from each mold and discard.

2.11. Carefully de-mold PDMS parts from their molds and lay them feature-side up.

2.12. Line up the blade of tile scraper at end tab notch and cut away each end to singulate the top components.

2.13. Check parts for any of the following failure modes and discard any unsatisfactory parts: scratches in the main channel, large debris above the channel area, large bubbles, deformed vacuum channels.

2.14. Store finished parts in square Petri dishes within pressure positive cabinets at room temperature.

3. Bottom Channel Preparation

3.1. Pour approximately 10.5 g of PDMS into molds until the PDMS reaches the top of the cavity.

3.1.1. Inspect the bottom channel mold for PDMS cured to the bottom of mold.

3.1.2. If dirty, scrape old PDMS from the bottom of the mold since an uneven surface on the bottom of the mold can cause uneven thickness of the final parts.

Note: For small $<2\text{ cm}^2$ areas that are uncovered, the air gun can be used very gently to move PDMS over the space.

3.2. Place molds into vacuum desiccator for 1 h.

3.3. After 1 h, move the molds into a level 60 °C oven for >4 h.

3.4. Place mold on table in laminar flow hood. Loosen PDMS from one edge of the mold.

3.5. Grip one corner and gently peel back the PDMS from the mold surface.

3.6. When fully removed, lay on work surface, so that channel features are face up.

3.7. Cut parts along outside edges with tile cutters, placing tile cutter blade in notched PDMS as in step 2.12.

3.8. Lay parts feature side up on tape to remove any debris.

3.9. Remove part from packing tape. Drag the loose end of the part across the slide. The loose end will laminate with the glass.

Note: It is critical to avoid stretching the part while laying it down. If bubble is trapped between part and glass, gently lift the part with the forceps and re-lay.

3.10. Perform quality control inspection of parts. Check parts for any failure modes and discard any unsatisfactory parts, including ones that contain scratches in the main channel, large debris, large bubbles, or deformed vacuum channels.

3.11. Cover features with tape.

3.12. Store parts in a positive pressure cabinet at room temperature.

4. PDMS Membrane Preparation

4.1. Check that the wafers are free of PDMS on the back.

4.2. Place each membrane wafer in the designated slots in the AMF trays.

4.3. Use the 1 mL syringe to place 0.09 mL of PDMS onto the center of each membrane wafer post array. Let PDMS sit for a minimum of 5 min to allow PDMS to spread throughout the posts of the membrane wafer.

Note: Do not proceed to next step until at least 75% of the post array is covered in PDMS. The quality of membranes improves the longer the PDMS is allowed to wick into post region so longer wait times in this step are preferred.

4.4. Plasma treat the polycarbonate strip at 20 W for 45 s, O₂ gas at 0.80 mbar in a plasma machine.

4.5. Remove the polycarbonate sheet from the plasma machine and use scissors to cut the polycarbonate sheets into 45 mm x 45 mm squares.

Note: Minimize contact with the plasma treated surface to prevent dust from sticking to the polycarbonate.

4.6. Gently lay the plasma treated side of the polycarbonate squares onto the liquid PDMS centered on the membrane wafer. Ensure that the polycarbonate and the PDMS are in contact.

Note: Avoid air pockets between the polycarbonate and the PDMS.

4.7. Place the pre-cut PDMS spacer on the center of the polycarbonate square.

4.8. Place the pre-cut textured polycarbonate sheet on the PDMS block to keep the assembly from bonding to the compression plate.

4.9. Insert tray so that Tray 3 is in the back, Tray 2 is in the middle, and Tray 1 is in the front. Tray 1 has a notch for alignment.

4.10. Open the output pressure valve and very slowly open the input pressure valve. Only then close the output pressure valve.

Note: This is so that the output 4 kg of force is gradually applied to each membrane wafer as opposed to instantly, which may break the wafers.

4.11. Flip the AMF switch to ON to begin the curing cycle. Cure wafer under 4 kg (16 kPa) of compression and a ramping temperature cycle listed in **Table 1**.

[Insert Table 1 here]

4.12. Close the input pressure valve and open the output pressure valve to release pressure from the air cylinders.

4.13. Remove the trays and bring them to the laminar flow hood.

4.14. Carefully peel off the textured polycarbonate and carefully remove the PDMS spacer.

Note: Watch the PDMS spacer to ensure it does not also peel off the polycarbonate carrier, if this occurs start peeling from a different corner.

4.14.1. Inspect the PDMS membrane through the polycarbonate carrier for areas with through-holes and use a marker to trace the outline of the through-hole area and mark any holes or defects in the membranes.

4.14.2. Using wafer handling forceps, loosen wafers from the tray.

4.14.3. Remove each membrane from the wafer and place in Petri dish.

Note: The PDMS membrane will de-mold from the membrane wafer and will be adhered to the polycarbonate backing. If PDMS starts detaching from the polycarbonate carrier, peel from a different region.

4.14.4. Store membranes and wafers in Petri dishes in a positive pressure cabinet at room temperature.

5. Top Assembly and Preparation

5.1. Using matte tape, clean the PDMS membranes as well as the insides of the Petri dish to remove debris.

5.2. Thoroughly tape the feature side of each top component to remove debris.

5.3. Place top channel part ("top") feature side up in Petri dish with PDMS membrane.

Note: Be aware that some membranes may be used for one or two top parts depending on size of the usable area. The main channels of each top part should fit within the marked area of the membrane.

5.4. Load the Petri dishes into the plasma machine.

5.5. Plasma treat membrane and top at 20 W for 45 s, O₂ gas at 0.80 mbar.

5.6. Once the bonding cycles has finished, remove the dishes and lay the activated parts feature side down on top of the membrane and ensure part is fully laminated with membrane with no bubbles.

5.7. Place parts into 60 °C oven for at least 2 h to anneal.

5.8. Using a scalpel, trace around the perimeter of the bonded top to separate top-membrane assembly from the polycarbonate carrier.

Note: Do not cut the carrier.

5.9. Once the part is traced, peel the assembly from the polycarbonate. The PDMS membrane that is bonded to the top should peel from the carrier.

5.10. Using sharp tipped forceps, remove the membrane from the ports that access the bottom channel, and remove any debris or dust with forceps under a stereoscope.

Note: Do not leave any part of the membrane covering the access port.

6. Chip Assembly

6.1. Feature side up, plasma treat assemblies with bottom components using the conditions in step 5.5.

6.2. Under an inverted microscope, align the top assembly with microscope slide to the bottom half.

353
354 6.3. Place in 60 °C oven for at least 2 h.

355
356 6.4. Chip Quality Control Inspection

357
358 Note: Pay close attention to the main ports and channel of chip. Check for failure modes by eye
359 and also under the microscope.

360
361 6.4.1. To check that the chip is bonded fully, tug lightly on each corner of the chip to check
362 for delaminating parts.

363
364 6.4.2. Look at the channel of the chip to check for a wrinkled or sagging membrane, which
365 will appear as a wavy pattern or a light deflection in the channel.

366
367 6.4.3. Perform a microscope inspection to inspect for debris in the main channel.

368
369 Note: Debris in non-critical areas, such as the vacuum channels is acceptable.

370
371 6.4.4. With the chip still on the inverted microscope, inspect main channel and vacuum
372 channels for delamination.

373
374 Note: Delamination in non-critical areas (*e.g.*, the edge of the chip) is acceptable.

375
376 6.4.5. Check that the main channels are aligned to within 50-60 μm (1-2 membrane pores).

377
378 Note: It is crucial that the channels are not overlapping with vacuum channels.

379
380 6.4.6. Check that the membrane between the main channels and the inlet and outlet
381 channels is intact without any apparent holes.

382
383 Note: Any hole in the membrane can lead to a leaky chip or cell growth outside the channels.

384
385 6.5. Store chips in Petri dishes in a positive pressure cabinet at room temperature.

386
387 **REPRESENTATIVE RESULTS:**

388 The protocol presented here describes the scalable fabrication of PDMS Organ Chips. These
389 devices enable culture of two distinct perfused tissue types on an elastic porous membrane
390 (**Figure 1**). The PDMS channels are cast using 3D printed molds, which accelerates prototyping
391 of new designs (**Figures 2A and 2B**). Top channels are cast in molds under compression against
392 a compliant polyurethane gasket to produce components with molded ports (**Figure 2C**) while
393 bottom channel components are cast in trays and handled on microscope slide backing (**Figure**
394 **2D**). This fabrication approach combines multi-scale patterning of the parts into a single step,
395 which saves time, improves reproducibility and traceability, and reduces debris generated by
396 port punching and multiple cutting steps. The porous membranes are critical to the function of

the Organ Chip, and the fabrication approach based on casting against patterned silicon wafers results in membranes of consistent thickness and surface finish (**Figure 3**). Handling *via* polycarbonate carriers allows for larger batch production and storage.

The assembled Organ Chip (**Figure 4**) consists of two perfusion channels in an optically transparent package. In the overlapping region, a porous PDMS membrane enables tissue-tissue interaction of metabolites, proteins, therapeutics, pathogens, and cells to recapitulate organ chip function while two parallel channels on either side are used to provide mechanical strain using cyclic vacuum actuation. The porosity of the PDMS membrane biomimetically supports the flux of metabolites, growth factors, and even cells between the vasculature and organ parenchyma (**Figure 5**). The apparent permeability (P_{app} , cm/s) of the membrane was determined using the dye concentration in the outlet channels with and without Caco2 gut cells. The gut chip cell layers provide a significantly increased barrier to permeability. The Organ Chip can be actuated using the parallel vacuum channels to quantitatively and reproducibly apply cyclic strain loading to the membrane and therefore the cultured tissues (**Figure 6**). This cyclic strain combined with media perfusion supports cellular differentiation to better mimic *in vivo* organ physiology, such as formation of villi in the Gut Chip.

FIGURE AND TABLE LEGENDS:

Figure 1: Organ Chip cross section. Organ Chips consist of two channels separated by a porous, elastic membrane that can be seeded with cells on both sides. Top channel cross sections are 1 mm wide x 1 mm high, bottom channel cross sections are 1 mm wide x 0.2 mm high, and vacuum channels in both and bottom parts are 0.3 mm wide, 0.5 mm high, and spaced 0.3 mm from the fluidic channels.

Figure 2: Channel fabrication with 3D printed molds. Organ chip parts are cast against high resolution 3D printed molds (A and B), which allows for greater design versatility and prototyping than traditional soft lithography. Top channel parts (C) are cured under compression eliminating the need for punching ports in the finished parts. Each triplicate casting is singulated with a single cut. Bottom channel parts (D) are placed on glass slides to facilitate ease of use and imaging. Scale bars are approximately 1 cm in all images.

Figure 3: The porous PDMS membrane is cast using DRIE patterned silicon wafers. (A) Rendering of 7 μ m diameter, 50 μ m tall micropillars etched using DRIE into a silicon wafer. (B) PDMS is cured on this array under 4 kg of compression (16 kPa) to create a 50 μ m thick membrane with an array of 7 μ m diameter though holes spaced hexagonally 40 μ m apart.

Figure 4: Photograph of an assembled PDMS Organ Chip. Red dye fills the larger apical channel used for parenchymal cells while the blue dye highlights the basal channel typically used for vascular endothelium.

Figure 5: Permeability of inert tracer Cascade Blue through the microporous PDMS membrane. Cascade Blue hydrazide dye in medium was loaded into the top channel of the

Organ Chip and perfused at 60 $\mu\text{L/h}$ to measure the flux of the dye across the membrane into the bottom channel containing medium. Empty chips were compared to Gut Chips with Caco2-BBe1 cells in the apical channel and human vascular endothelial cells (HUVEC) in the basal channel cultured for 6 days. Error bars indicate standard error of the mean.

Figure 6: Application of membrane strain using vacuum side channels. Plot indicates linear strain modulation of membrane in response to an applied vacuum pressure. Cyclic uniaxial strain is applied uniformly to the culture region of the Organ Chip using applied vacuum to parallel side channels. The Strain correlates linearly with decreasing vacuum pressure at approximately 1% strain for every -10 kPa change in vacuum pressure ($R^2 = 0.992$). Error bars indicate standard deviation of the mean.

DISCUSSION:

The fabrication process relies on high resolution 3D printed molds to pattern the PDMS top and bottom Organ Chip body components coupled with micromolded porous PDMS membranes. This critical approach was selected due to ease of prototyping combined with rapid transition into scaled up fabrication and replacement of tooling. The top component molds are designed to pattern ports in precise locations with defined vertical profiles during the casting step. This not only avoids the labor involved in manually punching access ports but also reduces debris in the workplace, enables reproducible port alignment to interface manifolds or instrumentation, and produces parts with control over the fit and sealing of inserted tubing or pins for fluidic and pneumatic connections. The molds are stacked on top of each other in a compression jig, separated by compliant polyurethane sheets to facilitate through-hole casting of ports. By stacking multiple parts in a single jig, a single user can cast large quantities of components complete with ports in a single step. Material selection and manufacturing method for the molds are critical to provide the necessary feature resolution, low surface roughness, and high degree of flatness for device assembly and subsequent imaging applications. Stereolithography can meet these requirements, although materials with high deflection temperatures ($> 80^\circ\text{C}$) and compatibility with PDMS curing reduce the available polymer range. Various commercially available resins, including glass-filled resins, meet these criteria.

The elastic porous PDMS membrane is arguably the most unique and critical component of an Organ Chip while being the most complex to fabricate. A deep reactive ion etches (DRIE) process outsourced to a vendor is used to microfabricate 50 x 50 mm hexagonal arrays of pillars (7 μm diameter, 40 μm apart, 50 μm tall, C_4F_8 coated) that are used to pattern pores in the PDMS membrane. The quality of the pillar arrays is critical to achieving robust membrane casting. In particular, pillars must be etched to tight tolerances with smooth vertical profiles to avoid undercuts or excessive sidewall roughness that can lead to mold failure. Care should be taken to avoid “grassing” at the bottom of the etched region, which can affect membrane demolding and cell attachment. Membrane fabrication with successful through-hole patterning and device integration is the single most complex section of the protocol. Critically, placing 0.09 mL of PDMS on each wafer and allowing adequate time for it to spread is essential to avoid incomplete through-hole molding. Properly plasma treating the polycarbonate backing is required to achieving robust backing of the membrane for demolding and bonding steps

without wrinkling or stretching. The backing provides a robust means of demolding the cast membrane from the fragile silicon wafer.

The compressive load applied to each wafer is also essential for uniform through-hole fabrication. Earlier efforts using weights hindered membrane production and resulted in poor yields due to non-uniform force distribution. To overcome the production bottleneck, we optimized the previously published membrane fabrication protocol¹⁸ and built an Automated Membrane Fabricator (AMF) to parallelize the process. The AMF consists of 24 pneumatic pistons supported over a programmable hot plate to provide controlled compressive force throughout a programmed PDMS curing process. A polycarbonate backing film is placed on the uncured PDMS and then uniformly compressed using pneumatic pistons of the AMF while being heated to polymerize the PDMS. Critically, the gradual curing process described in the protocol results in higher quality membranes than a single step to the maximum temperature, where feathering patterns resulting from bubble development during the curing process were observed. While optional, the AMF increases throughput significantly beyond what is possible using weights in an oven.

Troubleshooting the resulting Organ Chips takes place at two levels: during the fabrication process and during Organ Chip culture. We have developed a visual method for quality assurance (QA) of through-hole formation in the cast membranes that greatly accelerates the production process while improving the quality and reliability of assembled Organ Chips. This QA method allows for process troubleshooting, and we recommend keeping a record of process conditions to enable tracking fabrication problems that may occur during cell culture. During Organ Chip culture, inert tracer dyes are the simplest method of measuring barrier function to troubleshoot the fabrication process and cell culture steps. Lucifer Yellow has been used historically due to its small molecular mass and innate fluorescence, but Cascade Blue offers similar properties with a narrower emission spectrum that is less likely to interfere with downstream assays. Larger molecules, such as poly-ethyleneglycol (PEG)- or dextran-conjugated fluorophores are larger and consequently result in lower permeability overall and lower sensitivity. The apparent permeability (P_{app} , cm/s) of tracer dyes can be used to determine barrier function properties of organs or tissues (**Figure 4**). The following equation can be used to calculate P_{app} between the dosing channel and receiving channel and is derived from equations used primarily for Transwell studies^{19, 20} and corrects for tracer dye loss caused by absorption into PDMS by comparing the two output flows and not relying on mass balance assumptions at the outflow.

$$P_{app} = \frac{V_r \times C_r}{A \times t \times \left(\frac{C_d \times V_d + C_r \times V_r}{C_d + C_r} \right)}$$

V_r is the volume in mL of receiving channel effluent after time t ; V_d is the volume in mL of the dosing channel effluent after time t ; A is the area of membrane through-hole region in cm² (0.167 cm² for this device); t is the time of effluent collection in seconds; C_r is the measured change in concentration of the tracer dye in the receiving channel effluent; C_d is the measured concentration of the tracer dye in the dosing channel effluent. Key assumptions for this equation to be valid include: 1) steady tracer dye dosing concentration over time t , 2) the

concentration of *Cr* is small compared to *Cd*, and 3) the permeability of the system is uniformly distributed across the culture region. Although this equation can be used for static systems, care must be taken to check that the assumptions hold true. Electrical methods, including trans-epithelial electrical resistance (TEER) are commonly implemented in Transwell studies and recently have been incorporated into PDMS Organ Chips for instant and continuous barrier function measurements as well^{21,22}.

Limitations of this protocol include the elasticity of PDMS as well as the manual casting and assembly process that limits production rates. PDMS is a versatile polymer that is well-suited for Organ Chips requiring mechanical strain actuation, but its elasticity can hinder production. Parts can be difficult to handle without deformation and membranes require backing films for manipulation. As a result, automation of Organ Chip production can be limited. The casting process, unlike hot embossing or injection molding used for thermoplastic polymers, is batch-based and therefore also limits throughput.

Organ Chips enable *in vitro* studies of human organ- and body-level functions *in vivo* by perfusing a common medium through the vascular channels. By reconstituting physiological tissue-tissue interfaces, flux of molecules between the vascular and parenchymal compartments, mechanical cues, and fluidic shear and transport, these devices promote histodifferentiation and are capable of recapitulating *in vivo*-like functions of both normal and diseased organs. The compartmentalization of tissues and fluids in two compartments mimics their *in vivo* functions, and Organ Chip studies are amenable to time-resolved pharmacokinetic experimentation and modeling as well as *in vitro-in vivo* extrapolation^{9,10} that is difficult or impossible in single channel MPS^{14–16}. The microchannel structures can be leveraged for other applications, including investigating the impact of dynamic tobacco smoke exposure with bidirectional breathing in human small airway epithelium to develop novel biomarkers of lung damage²³. The defined positions of the planar membranes and high optical clarity of the devices make them uniquely suited for image-based analyses and integration of embedded sensors. The mechanical stimulation enabled by integrated vacuum channels and elastomeric materials provides functionalities not possible in Transwell systems. We have demonstrated that mechanical strain is essential for recapitulation of certain *in vivo* physiological functions, including nanoparticle absorption in the lung⁴, pulmonary edema³ and differentiation of mature iPS-derived glomerular podocytes⁸.

Future applications of this protocol may include integration of various sensing modalities that can be used to provide real-time readouts of Organ Chip response to stimuli such as drugs, toxins, or radiation. The protocol presented here could be extended to non-PDMS materials with different optical, mechanical, and chemical properties, including biodegradable materials. The Organ Chip protocol presented here should enable researchers to fabricate devices that offer a high degree of control over the microenvironment of healthy and pathophysiologic tissues and organs, which can be leveraged for therapeutic development, including target discovery, toxicity and pharmacokinetic assessments, as well as for personalized medicine.

ACKNOWLEDGEMENTS:

We thank M. Rousseau and S. Kroll for help with photography and videography and M. Ingram, J. Nguyen, D. Shea, and N. Wen for contributions to initial fabrication protocol development. This research was sponsored by the Wyss Institute for Biologically Inspired Engineering at Harvard University and the Defense Advanced Research Projects Agency under Cooperative Agreements #W911NF-12-2-0036 and #W911NF-16-C-0050, and FDA grant #HHSF223201310079C. The views and conclusions contained in this document are those of the authors and should not be interpreted as representing the official policies, either expressed or implied, of the Defense Advanced Research Projects Agency, Food and Drug Administration, or the U.S. Government.

DISCLOSURES:

D.E.I. is a founder and holds equity in Emulate, Inc., and chairs its scientific advisory board. J.P. is presently an employee of Emulate, Inc.

REFERENCES:

1. Bhatia, S.N., Ingber, D.E. Microfluidic organs-on-chips. *Nature Biotechnology*. **32** (8), 760–772, doi: 10.1038/nbt.2989 (2014).
2. Benam, K.H. *et al.* Engineered *In vitro* Disease Models. *Annual Review of Pathology: Mechanisms of Disease*. **10** (1), 195–262, doi: 10.1146/annurev-pathol-012414-040418 (2015).
3. Huh, D. *et al.* A Human Disease Model of Drug Toxicity–Induced Pulmonary Edema in a Lung-on-a-Chip Microdevice. *Science Translational Medicine*. **4** (159), 159ra147–159ra147, doi: 10.1126/scitranslmed.3004249 (2012).
4. Huh, D. *et al.* Reconstituting Organ-Level Lung Functions on a Chip. *Science*. **328** (5986), 1662–1668, doi: 10.1126/science.1188302 (2010).
5. Kim, H.J., Huh, D., Hamilton, G., Ingber, D.E. Human gut-on-a-chip inhabited by microbial flora that experiences intestinal peristalsis-like motions and flow. *Lab on a Chip*. **12** (12), 2165–2174, doi: 10.1039/C2LC40074J (2012).
6. Kim, H.J., Ingber, D.E. Gut-on-a-Chip microenvironment induces human intestinal cells to undergo villus differentiation. *Integrative Biology*. **5** (9), 1130–1140, doi: 10.1039/C3IB40126J (2013).
7. Kim, H.J., Li, H., Collins, J.J., Ingber, D.E. Contributions of microbiome and mechanical deformation to intestinal bacterial overgrowth and inflammation in a human gut-on-a-chip. *Proceedings of the National Academy of Sciences of the United States of America*. **113** (1), E7–15, doi: 10.1073/pnas.1522193112 (2016).
8. Musah, S. *et al.* Mature induced-pluripotent-stem-cell-derived human podocytes reconstitute kidney glomerular-capillary-wall function on a chip. *Nature Biomedical Engineering*. **1** (5), s41551-017-0069–017, doi: 10.1038/s41551-017-0069 (2017).
9. Somayaji, M.R., Das, D., Przekwas, A. Computational approaches for modeling and analysis of human-on-chip systems for drug testing and characterization. *Drug Discovery Today*. **21** (12), 1859–1862, doi: 10.1016/j.drudis.2016.11.002 (2016).
10. Prantil-Baun, R. *et al.* Physiologically Based Pharmacokinetic and Pharmacodynamic Analysis Enabled by Microfluidically Linked Organs-on-Chips. *Annual Review of Pharmacology and Toxicology*. **58** (1), 37–64, doi: 10.1146/annurev-pharmtox-010716-104748 (2018).

11. Mahler, G.J., Esch, M.B., Stokol, T., Hickman, J.J., Shuler, M.L. Body-on-a-chip systems for animal-free toxicity testing. *Alternatives to laboratory animals: ATLA*. **44** (5), 469–478 (2016).
12. Miller, P.G., Shuler, M.L. Design and demonstration of a pumpless 14 compartment microphysiological system. *Biotechnology and Bioengineering*. **113** (10), 2213–2227, doi: 10.1002/bit.25989 (2016).
13. Coppeta, J.R. *et al.* A portable and reconfigurable multi-organ platform for drug development with onboard microfluidic flow control. **17** (1), 134–144, doi: 10.1039/C6LC01236A (2016).
14. Wikswo, J.P. *et al.* Scaling and systems biology for integrating multiple organs-on-a-chip. *Lab on a Chip*. **13** (18), 3496–3511, doi: 10.1039/c3lc50243k (2013).
15. Sung, J.H. *et al.* Using PBPK guided “Body-on-a-Chip” Systems to Predict Mammalian Response to Drug and Chemical Exposure. *Experimental biology and medicine (Maywood, N.J.)*. **239** (9), 1225–1239, doi: 10.1177/1535370214529397 (2014).
16. Stokes, C., Cirit, M., Lauffenburger, D. Physiome-on-a-Chip: The Challenge of “Scaling” in Design, Operation, and Translation of Microphysiological Systems. *CPT: Pharmacometrics & Systems Pharmacology*. **4** (10), 559–562, doi: 10.1002/psp4.12042 (2015).
17. Shirure, V.S., George, S.C. Design considerations to minimize the impact of drug absorption in polymer-based organ-on-a-chip platforms. doi: 10.1039/C6LC01401A (2017).
18. Huh, D. *et al.* Microfabrication of human organs-on-chips. *Nature Protocols*. **8** (11), 2135–2157, doi: 10.1038/nprot.2013.137 (2013).
19. Blaser, D.W. Determination of drug absorption parameters in Caco-2 cell monolayers with a mathematical model encompassing passive diffusion, carrier-mediated efflux, non-specific binding and phase II metabolism. at <http://edoc.unibas.ch/655/1/DissB_7998.pdf> (2007).
20. Hubatsch, I., Ragnarsson, E.G.E., Artursson, P. Determination of drug permeability and prediction of drug absorption in Caco-2 monolayers. *Nature Protocols*. **2** (9), 2111–2119, doi: 10.1038/nprot.2007.303 (2007).
21. Henry, O.Y.F. *et al.* Organs-on-chips with integrated electrodes for trans-epithelial electrical resistance (TEER) measurements of human epithelial barrier function. *Lab on a Chip*. **17** (13), 2264–2271, doi: 10.1039/C7LC00155J (2017).
22. Maoz, B.M. *et al.* Organs-on-Chips with combined multi-electrode array and transepithelial electrical resistance measurement capabilities. *Lab on a Chip*. **17** (13), 2294–2302, doi: 10.1039/C7LC00412E (2017).
23. Benam, K.H. *et al.* Matched-Comparative Modeling of Normal and Diseased Human Airway Responses Using a Microengineered Breathing Lung Chip. *Cell Systems*. **3** (5), 456–466.e4, doi: 10.1016/j.cels.2016.10.003 (2016).

Figure 1

[Click here to access/download;Figure;Figure 1 schematic.tif](#)

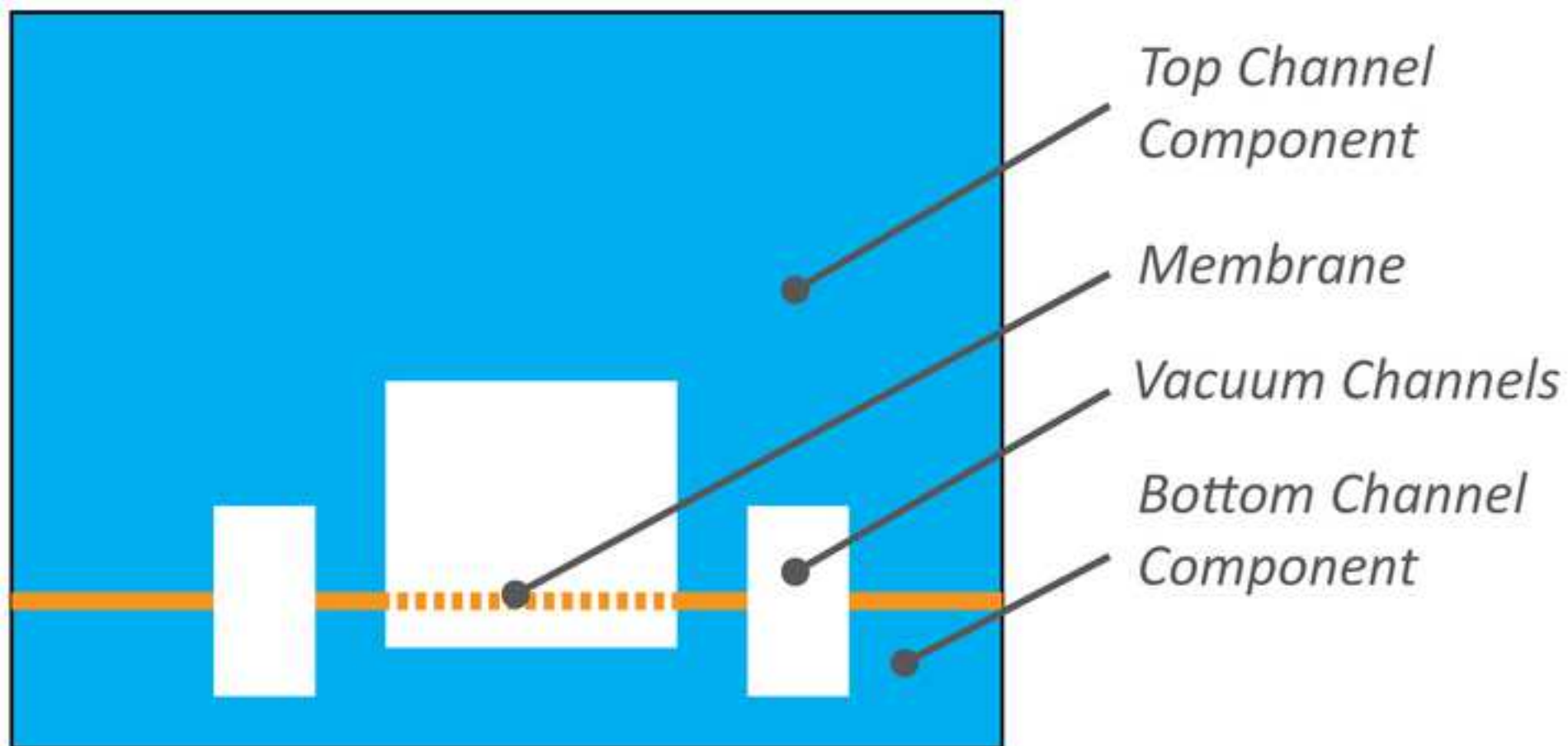
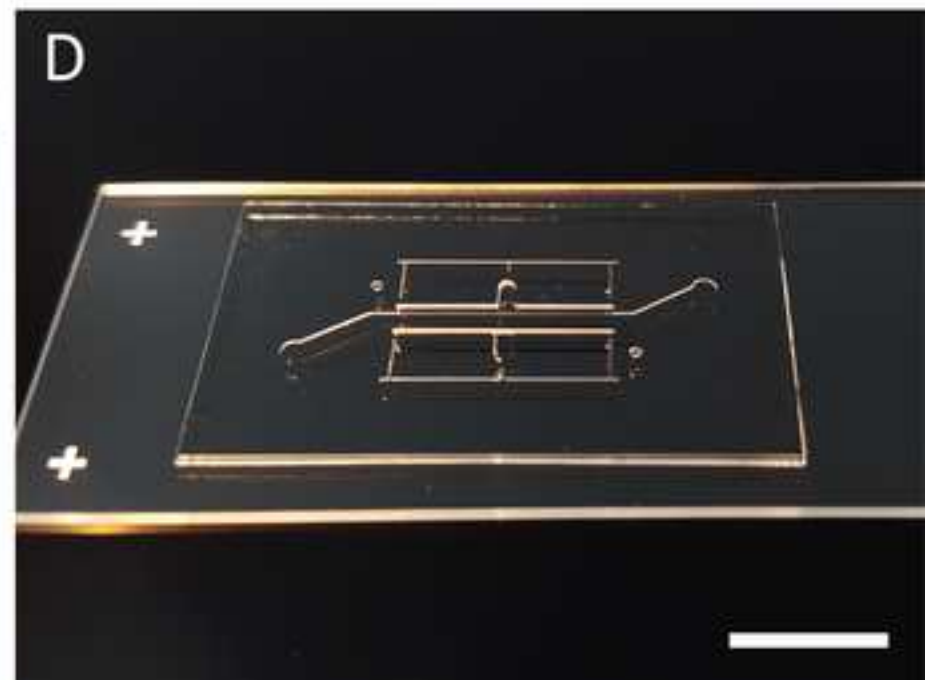


Figure 2

[Click here to access/download;Figure;Figure 2.tif](#)



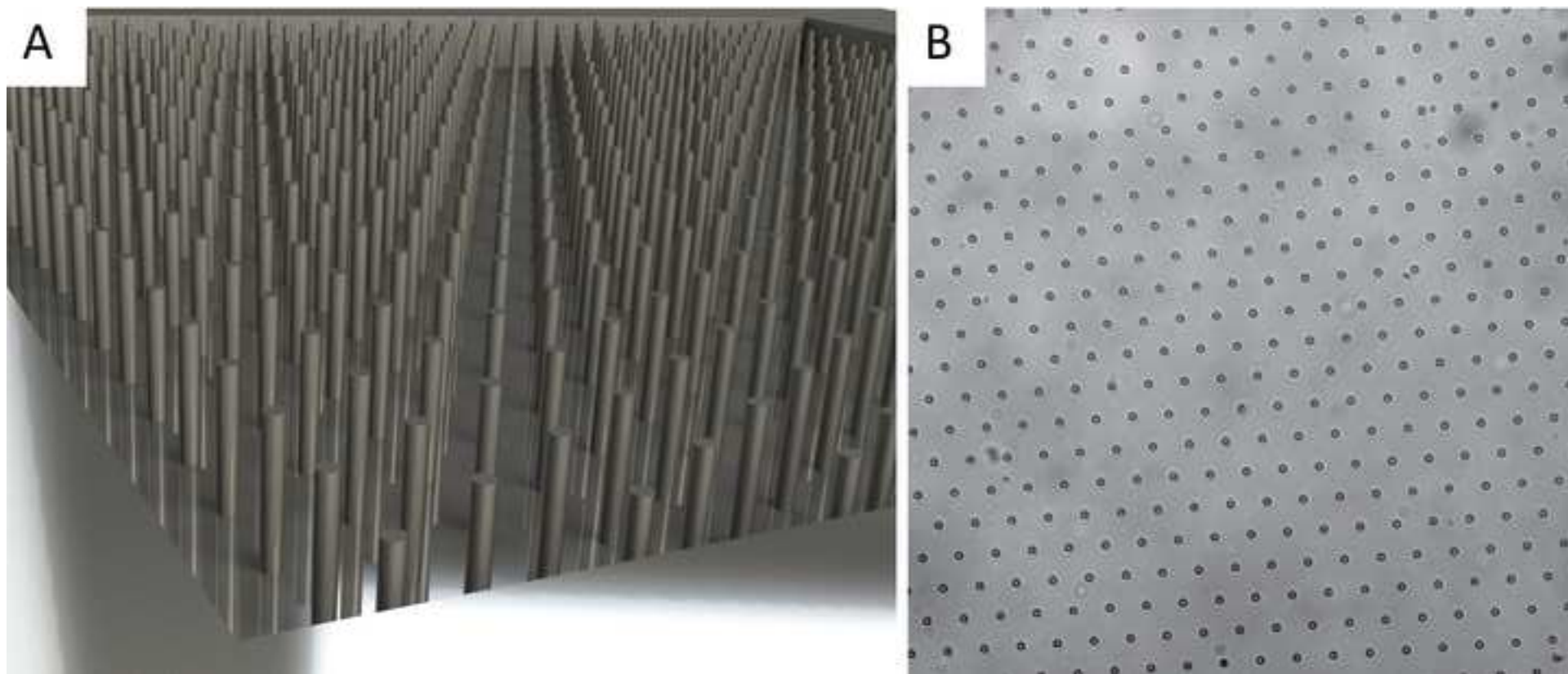
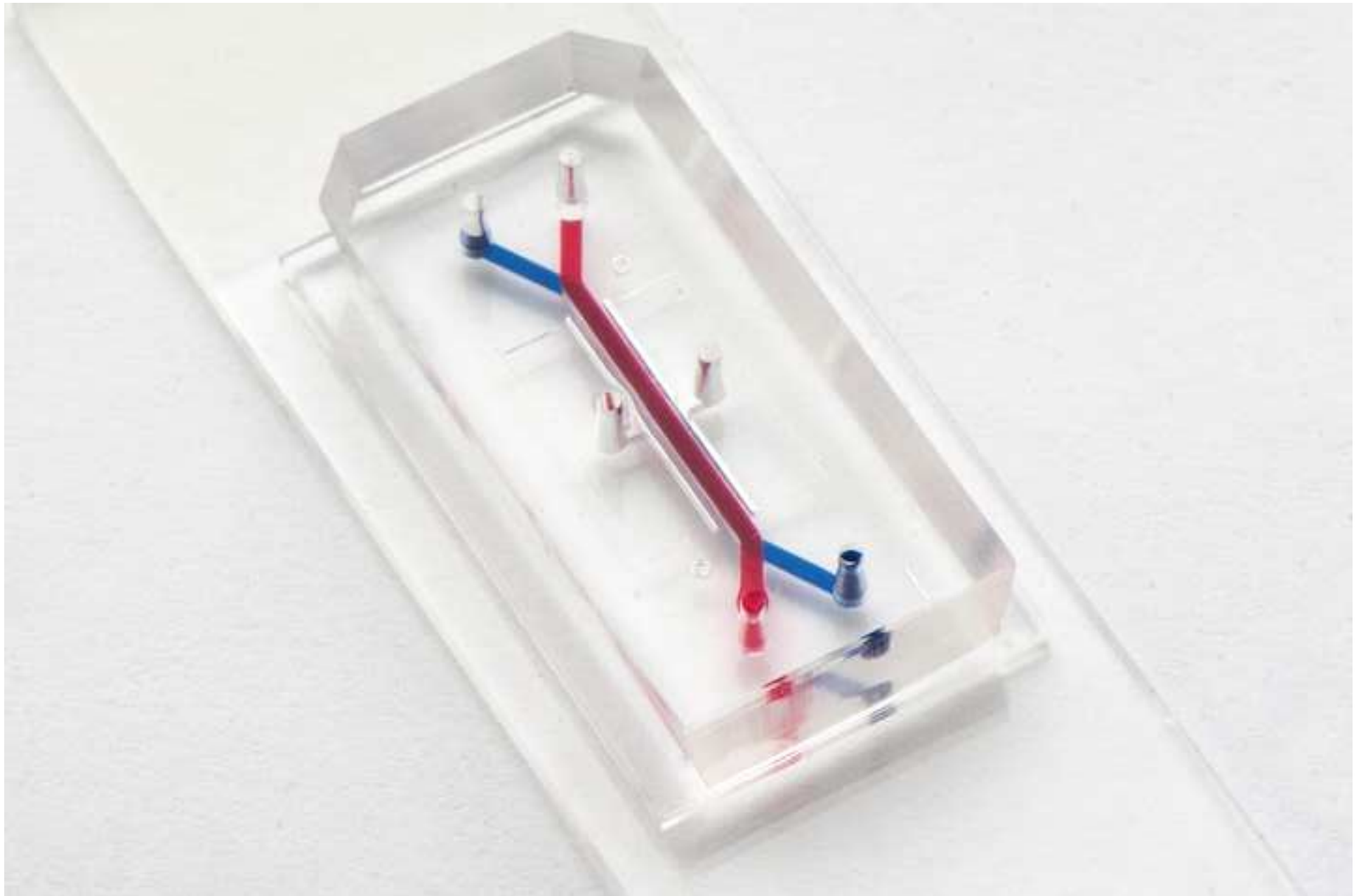


Figure 4

[Click here to access/download;Figure;Figure 4.tif](#)



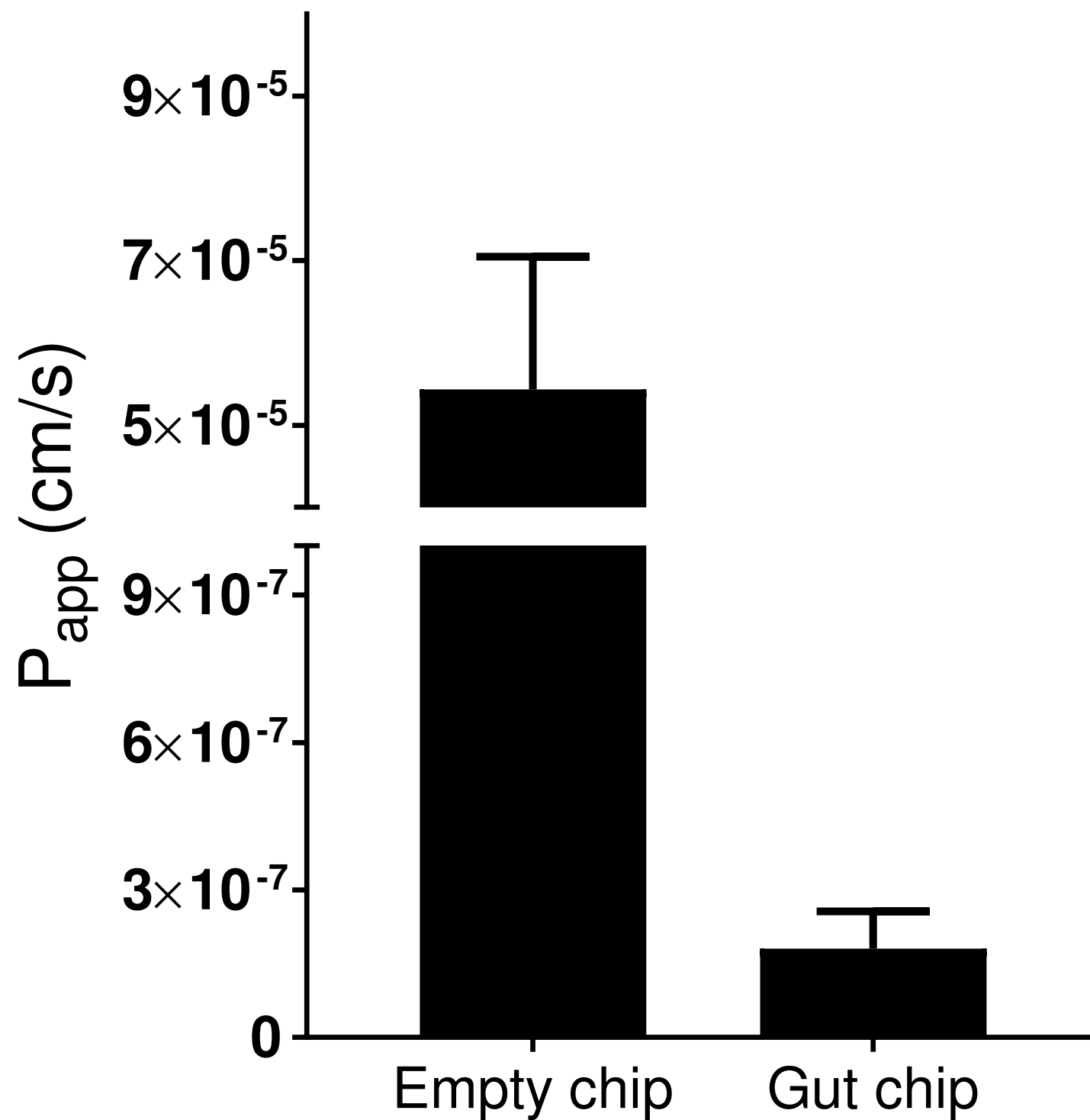
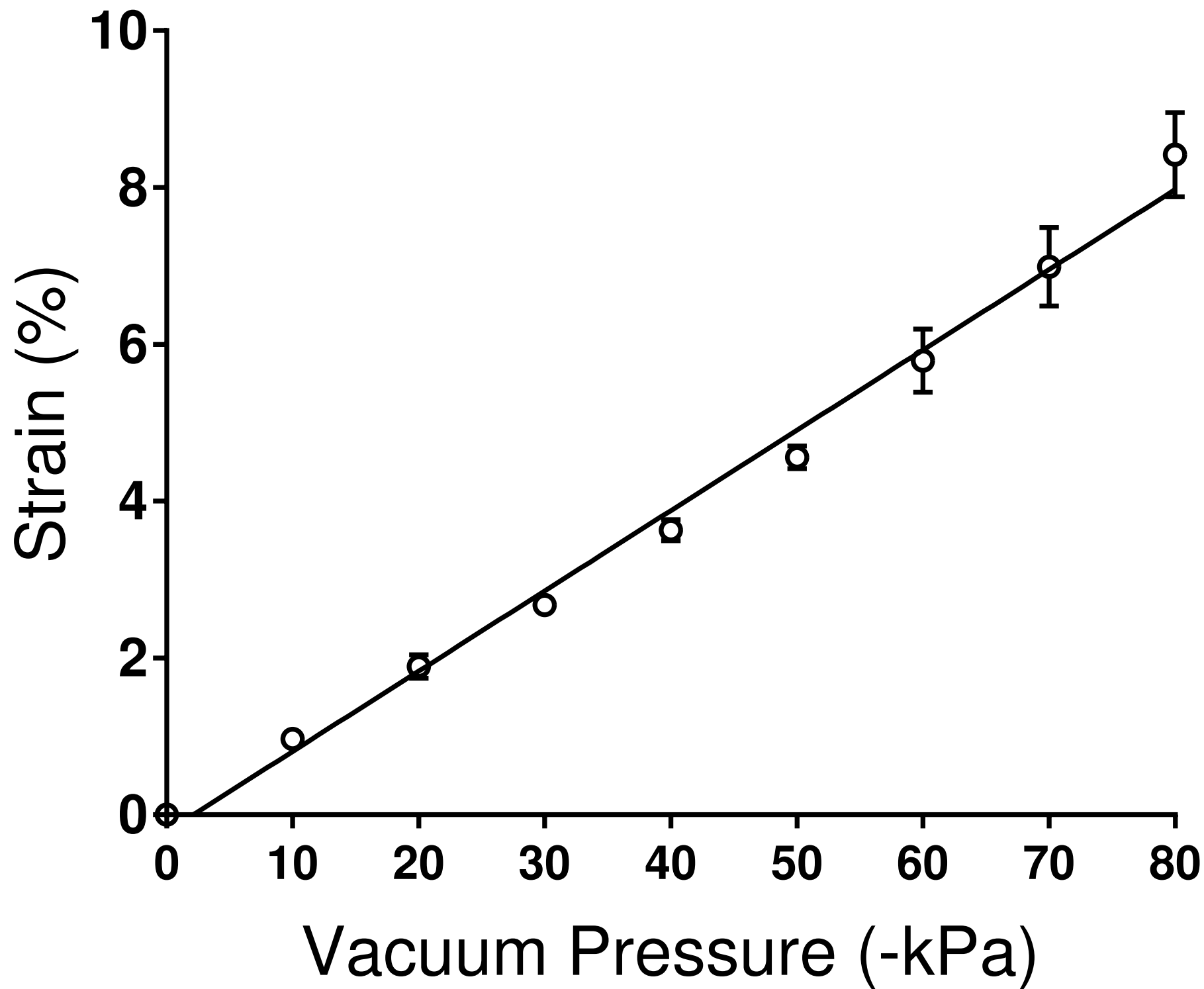


Figure 6



Step	Temperature (°C)	Duration (min)
1	20	20
2	35	10
3	45	10
4	50	60
5	60	120
6	20	Hold

Material/Equipment

Personal Protective Equipment

Hairnet
Tyvek lab coat
Extended cuff gloves

Equipment

Cutting mat
Tile cutter
Mold-in-place (MIP) top molds
Mold-in-place (MIP) bottom molds
Duckbill curved forceps
Sharp tipped forceps
Metal spatula
Deep reactive ion etch (DRIE) pillar array wafers
Textured polycarbonate .01" thick
PDMS blocks (40 x 40 x 5 mm)
Laminar flow hood
Air gun
60°C level oven
Vacuum desiccator
Mass balance
Plasma machine

Supplies

Sylgard 184 poly (dimethylsiloxane) (PDMS) base/curing agent kit
Mixing cup
1 mL syringe
Cleanroom wipes
25 x 75 mm glass microscope slides
Packing tape
Scotch tape
Die-cut Polyurethane (PU) strips
Polycarbonate film .005" thick
100 x 100 x 15 mm square gridded petri dishes
Aluminum foil

Optional Equipment

Thinky PDMS Mixer
Mold-in place (MIP) jig
Automated membrane fabricator (AMF)

Company	Catalog Number
---------	----------------

VWR	89107-770
VWR	13450-506
VWR	89521-898

VWR	102096-430
McMaster-Carr	26765A31
Protolabs, Inc.	custom
Protolabs, Inc.	custom
VWR	63041-864
Electron Microscopy Sciences	72700-D
VWR	82027-528
Sensera, Inc.	custom
McMaster-Carr	85585K33
n/a	custom
Germfree	BVBI

Diener	Nano
--------	------

Ellsworth Adhesives	4019862
---------------------	---------

VWR	10099-395
VWR	TWTX1080
VWR	48311-703
VWR	500043-724
VWR	500026-873
Atlantic Gasket, Inc.	custom: AGWI2X3
McMaster-Carr	85585K102
VWR	60872-480

Thinky	ARE-310
in-house	
in-house	

Comments/ Description (optional)

printed in Prototherm 12120

printed in Prototherm 12121

Four 50 x 50 mm pillar arrays per wafer; pillars 7 um wide, 50 um tall, spaced hexagonally 40 um apart
cut to 45 mm square

cast in-house

accuracy to 0.1 g

oxygen plasma capability is critical

Ensure adequate ventilation when handling prepolymer due to low levels of ethylbenzene

1/8" thick; 60 Durometer Black Polyurethane; 2" x 3"

screw clamp compression jig

pneumatic compression piston array with programmable heater



1 Alewife Center #200
Cambridge, MA 02140
tel. 617.945.9051
www.jove.com

ARTICLE AND VIDEO LICENSE AGREEMENT

Title of Article:

Scalable fabrication of stretchable, dual channel, microfluidic organ chips

Author(s):

R. Novak, M. Didier, E. Calamari, C.F. Ng, Y Choe, S.L. Clauson, B.A. Nestor, J. Puerta,
R. Fleming, S.J. Firoozinezhad, D.E. Ingber

Item 1 (check one box): The Author elects to have the Materials be made available (as described at

<http://www.jove.com/author>) via: ☒ Standard Access ☐ Open Access

Item 2 (check one box):



The Author is NOT a United States government employee.



The Author is a United States government employee and the Materials were prepared in the course of his or her duties as a United States government employee.



The Author is a United States government employee but the Materials were NOT prepared in the course of his or her duties as a United States government employee.

ARTICLE AND VIDEO LICENSE AGREEMENT

1. Defined Terms. As used in this Article and Video License Agreement, the following terms shall have the following meanings: “**Agreement**” means this Article and Video License Agreement; “**Article**” means the article specified on the last page of this Agreement, including any associated materials such as texts, figures, tables, artwork, abstracts, or summaries contained therein; “**Author**” means the author who is a signatory to this Agreement; “**Collective Work**” means a work, such as a periodical issue, anthology or encyclopedia, in which the Materials in their entirety in unmodified form, along with a number of other contributions, constituting separate and independent works in themselves, are assembled into a collective whole; “**CRC License**” means the Creative Commons Attribution-Non Commercial-No Derivs 3.0 Unported Agreement, the terms and conditions of which can be found at: <http://creativecommons.org/licenses/by-nc-nd/3.0/legalcode>; “**Derivative Work**” means a work based upon the Materials or upon the Materials and other pre-existing works, such as a translation, musical arrangement, dramatization, fictionalization, motion picture version, sound recording, art reproduction, abridgment, condensation, or any other form in which the Materials may be recast, transformed, or adapted; “**Institution**” means the institution, listed on the last page of this Agreement, by which the Author was employed at the time of the creation of the Materials; “**JoVE**” means MyJoVE Corporation, a Massachusetts corporation and the publisher of *The Journal of Visualized Experiments*; “**Materials**” means the Article and / or the Video; “**Parties**” means the Author and JoVE; “**Video**” means any video(s) made by the Author, alone or in conjunction with any other parties, or by JoVE or its affiliates or agents, individually or in collaboration with the Author or any other parties, incorporating all or any portion of the Article, and in which the Author may or may not appear.

2. Background. The Author, who is the author of the Article, in order to ensure the dissemination and protection of the Article, desires to have the JoVE publish the Article and create and transmit videos based on the Article. In furtherance of such goals, the Parties desire to memorialize in this Agreement the respective rights of each Party in and to the Article and the Video.

3. Grant of Rights in Article. In consideration of JoVE agreeing to publish the Article, the Author hereby grants to JoVE, subject to **Sections 4** and **7** below, the exclusive, royalty-free, perpetual (for the full term of copyright in the Article, including any extensions thereto) license (a) to publish, reproduce, distribute, display and store the Article in all forms, formats and media whether now known or hereafter developed (including without limitation in print, digital and electronic form) throughout the world, (b) to translate the Article into other languages, create adaptations, summaries or extracts of the Article or other Derivative Works (including, without limitation, the Video) or Collective Works based on all or any portion of the Article and exercise all of the rights set forth in (a) above in such translations, adaptations, summaries, extracts, Derivative Works or Collective Works and (c) to license others to do any or all of the above. The foregoing rights may be exercised in all media and formats, whether now known or hereafter devised, and include the right to make such modifications as are technically necessary to exercise the rights in other media and formats. If the “Open Access” box has been checked in **Item 1** above, JoVE and the Author hereby grant to the public all such rights in the Article as provided in, but subject to all limitations and requirements set forth in, the CRC License.

ARTICLE AND VIDEO LICENSE AGREEMENT

4. Retention of Rights in Article. Notwithstanding the exclusive license granted to JoVE in **Section 3** above, the Author shall, with respect to the Article, retain the non-exclusive right to use all or part of the Article for the non-commercial purpose of giving lectures, presentations or teaching classes, and to post a copy of the Article on the Institution's website or the Author's personal website, in each case provided that a link to the Article on the JoVE website is provided and notice of JoVE's copyright in the Article is included. All non-copyright intellectual property rights in and to the Article, such as patent rights, shall remain with the Author.

5. Grant of Rights in Video – Standard Access. This **Section 5** applies if the "Standard Access" box has been checked in **Item 1** above or if no box has been checked in **Item 1** above. In consideration of JoVE agreeing to produce, display or otherwise assist with the Video, the Author hereby acknowledges and agrees that, Subject to **Section 7** below, JoVE is and shall be the sole and exclusive owner of all rights of any nature, including, without limitation, all copyrights, in and to the Video. To the extent that, by law, the Author is deemed, now or at any time in the future, to have any rights of any nature in or to the Video, the Author hereby disclaims all such rights and transfers all such rights to JoVE.

6. Grant of Rights in Video – Open Access. This **Section 6** applies only if the "Open Access" box has been checked in **Item 1** above. In consideration of JoVE agreeing to produce, display or otherwise assist with the Video, the Author hereby grants to JoVE, subject to **Section 7** below, the exclusive, royalty-free, perpetual (for the full term of copyright in the Article, including any extensions thereto) license (a) to publish, reproduce, distribute, display and store the Video in all forms, formats and media whether now known or hereafter developed (including without limitation in print, digital and electronic form) throughout the world, (b) to translate the Video into other languages, create adaptations, summaries or extracts of the Video or other Derivative Works or Collective Works based on all or any portion of the Video and exercise all of the rights set forth in (a) above in such translations, adaptations, summaries, extracts, Derivative Works or Collective Works and (c) to license others to do any or all of the above. The foregoing rights may be exercised in all media and formats, whether now known or hereafter devised, and include the right to make such modifications as are technically necessary to exercise the rights in other media and formats. For any Video to which this Section 6 is applicable, JoVE and the Author hereby grant to the public all such rights in the Video as provided in, but subject to all limitations and requirements set forth in, the CRC License.

7. Government Employees. If the Author is a United States government employee and the Article was prepared in the course of his or her duties as a United States government employee, as indicated in **Item 2** above, and any of the licenses or grants granted by the Author hereunder exceed the scope of the 17 U.S.C. 403, then the rights granted hereunder shall be limited to the maximum rights permitted under such

statute. In such case, all provisions contained herein that are not in conflict with such statute shall remain in full force and effect, and all provisions contained herein that do so conflict shall be deemed to be amended so as to provide to JoVE the maximum rights permissible within such statute.

8. Likeness, Privacy, Personality. The Author hereby grants JoVE the right to use the Author's name, voice, likeness, picture, photograph, image, biography and performance in any way, commercial or otherwise, in connection with the Materials and the sale, promotion and distribution thereof. The Author hereby waives any and all rights he or she may have, relating to his or her appearance in the Video or otherwise relating to the Materials, under all applicable privacy, likeness, personality or similar laws.

9. Author Warranties. The Author represents and warrants that the Article is original, that it has not been published, that the copyright interest is owned by the Author (or, if more than one author is listed at the beginning of this Agreement, by such authors collectively) and has not been assigned, licensed, or otherwise transferred to any other party. The Author represents and warrants that the author(s) listed at the top of this Agreement are the only authors of the Materials. If more than one author is listed at the top of this Agreement and if any such author has not entered into a separate Article and Video License Agreement with JoVE relating to the Materials, the Author represents and warrants that the Author has been authorized by each of the other such authors to execute this Agreement on his or her behalf and to bind him or her with respect to the terms of this Agreement as if each of them had been a party hereto as an Author. The Author warrants that the use, reproduction, distribution, public or private performance or display, and/or modification of all or any portion of the Materials does not and will not violate, infringe and/or misappropriate the patent, trademark, intellectual property or other rights of any third party. The Author represents and warrants that it has and will continue to comply with all government, institutional and other regulations, including, without limitation all institutional, laboratory, hospital, ethical, human and animal treatment, privacy, and all other rules, regulations, laws, procedures or guidelines, applicable to the Materials, and that all research involving human and animal subjects has been approved by the Author's relevant institutional review board.

10. JoVE Discretion. If the Author requests the assistance of JoVE in producing the Video in the Author's facility, the Author shall ensure that the presence of JoVE employees, agents or independent contractors is in accordance with the relevant regulations of the Author's institution. If more than one author is listed at the beginning of this Agreement, JoVE may, in its sole discretion, elect not take any action with respect to the Article until such time as it has received complete, executed Article and Video License Agreements from each such author. JoVE reserves the right, in its absolute and sole discretion and without giving any reason therefore, to accept or decline any work submitted to JoVE. JoVE and its employees, agents and independent contractors shall have

ARTICLE AND VIDEO LICENSE AGREEMENT

full, unfettered access to the facilities of the Author or of the Author's institution as necessary to make the Video, whether actually published or not. JoVE has sole discretion as to the method of making and publishing the Materials, including, without limitation, to all decisions regarding editing, lighting, filming, timing of publication, if any, length, quality, content and the like.

11. **Indemnification.** The Author agrees to indemnify JoVE and/or its successors and assigns from and against any and all claims, costs, and expenses, including attorney's fees, arising out of any breach of any warranty or other representations contained herein. The Author further agrees to indemnify and hold harmless JoVE from and against any and all claims, costs, and expenses, including attorney's fees, resulting from the breach by the Author of any representation or warranty contained herein or from allegations or instances of violation of intellectual property rights, damage to the Author's or the Author's institution's facilities, fraud, libel, defamation, research, equipment, experiments, property damage, personal injury, violations of institutional, laboratory, hospital, ethical, human and animal treatment, privacy or other rules, regulations, laws, procedures or guidelines, liabilities and other losses or damages related in any way to the submission of work to JoVE, making of videos by JoVE, or publication in JoVE or elsewhere by JoVE. The Author shall be responsible for, and shall hold JoVE harmless from, damages caused by lack of sterilization, lack of cleanliness or by contamination due to the making of a video by JoVE its employees, agents or independent contractors. All sterilization, cleanliness or decontamination procedures shall be solely the responsibility of the Author and shall be undertaken at the Author's


expense. All indemnifications provided herein shall include JoVE's attorney's fees and costs related to said losses or damages. Such indemnification and holding harmless shall include such losses or damages incurred by, or in connection with, acts or omissions of JoVE, its employees, agents or independent contractors.

12. **Fees.** To cover the cost incurred for publication, JoVE must receive payment before production and publication the Materials. Payment is due in 21 days of invoice. Should the Materials not be published due to an editorial or production decision, these funds will be returned to the Author. Withdrawal by the Author of any submitted Materials after final peer review approval will result in a US\$1,200 fee to cover pre-production expenses incurred by JoVE. If payment is not received by the completion of filming, production and publication of the Materials will be suspended until payment is received.

13. **Transfer, Governing Law.** This Agreement may be assigned by JoVE and shall inure to the benefits of any of JoVE's successors and assignees. This Agreement shall be governed and construed by the internal laws of the Commonwealth of Massachusetts without giving effect to any conflict of law provision thereunder. This Agreement may be executed in counterparts, each of which shall be deemed an original, but all of which together shall be deemed to be one and the same agreement. A signed copy of this Agreement delivered by facsimile, e-mail or other means of electronic transmission shall be deemed to have the same legal effect as delivery of an original signed copy of this Agreement.

A signed copy of this document must be sent with all new submissions. Only one Agreement required per submission.

CORRESPONDING AUTHOR:

Name:	Richard Novak	
Department:	Wyss Institute for Biologically Inspired Engineering	
Institution:	Harvard University	
Article Title:	Scalable fabrication of stretchable, dual channel, microfluidic organ chips	
Signature:		Date: 3/14/18

Please submit a signed and dated copy of this license by one of the following three methods:

- 1) Upload a scanned copy of the document as a pdf on the JoVE submission site;
- 2) Fax the document to +1.866.381.2236;
- 3) Mail the document to JoVE / Attn: JoVE Editorial / 1 Alewife Center #200 / Cambridge, MA 02139

For questions, please email submissions@jove.com or call +1.617.945.9051



Vineeta Bajaj, Ph.D.
Review Editor
Journal of Visualized Experiments

August 23rd, 2018

Dear Dr. Bajaj,

We submit for your consideration a second revision to the manuscript entitled “Scalable fabrication of stretchable, dual channel, microfluidic organ chips.” We gratefully acknowledge the detailed edit suggestions and comments and provide a point-by-point response to both the editorial and reviewer comments below as well as in response to specific comments in the manuscript. We have revised the video as suggested, including completely revising the results section, and the new full-resolution video was uploaded using the link provided in the correspondence.

We look forward to your response regarding our revised manuscript and video protocol.

Sincerely,

A handwritten signature in black ink, appearing to read "R. Novak". The signature is fluid and cursive, with a long horizontal stroke at the end.

Richard Novak, PhD
Senior Staff Engineer – Advanced Technologies Team
Wyss Institute for Biologically Inspired Engineering
3 Blackfan Circle
Boston, MA 02115

Editorial and production comments:

1. The editor has formatted the manuscript to match the journal's style. Please retain the same.

We have retained the same format for the manuscript for all edits.

2. Please address all the specific comments marked in the manuscript.

We have addressed the manuscript comments. Specific responses to editorial comments are provided within the manuscript. One major point is that we have completely rewritten the protocol to match the narration in the video per the editorial suggestion. There are therefore several editorial comments that have been removed in the process as they did not pertain to the most current protocol.

3. Please include at least one paragraph of text to explain the Representative Results in the context of the technique you have described, e.g., how do these results show the technique, suggestions about how to analyze the outcome, etc. The paragraph text should refer to all of the figures. Data from both successful and sub-optimal experiments can be included.

We have added an initial Results overview that addresses all figures in the manuscript.

4. As we are a methods journal, please revise the Discussion to explicitly cover the following in detail in 3-6 paragraphs with citations:

- a) Critical steps within the protocol**
- b) Any modifications and troubleshooting of the technique**
- c) Any limitations of the technique**
- d) The significance with respect to existing methods**
- e) Any future applications of the technique**

We have revised the Discussion to fit this format.

Video:

12:02, 12:07 - Because of the white borders in between the figures, the background behind the images should also be white.

We have added a white background.

Title card: Please use title case for the title of the manuscript in the video.

This has been corrected.

Mold in Place is abbreviated as MiP in the video but MIP in the text. Please have consistency throughout.

We have opted for MiP and have made this consistent throughout.

4:18, 5:27, 7:33: Please use imperative tense throughout the protocol section.

After discussion with the Editor, these phrases are either already in imperative tense or do not need to be given the situation in the video at those times.

Please reduce the instances of text from the video.

We have greatly reduced instances of text in the video, leaving text in for only a handful of critical timepoints.

For the representative result section, please describe the results using result figures. Please do not just mention Figure number and the title of the legend.

We have completely re-narrated the Results section, more thoroughly describing the results.



Click here to access/download
Supplemental Coding Files
MIP Jig.7z

