

# Journal of Visualized Experiments

## Use of hematopoietic stem cell transplantation to assess the origin of myelodysplastic syndrome --Manuscript Draft--

<b>Article Type:</b>	Methods Article - JoVE Produced Video
<b>Manuscript Number:</b>	JoVE58140R2
<b>Full Title:</b>	Use of hematopoietic stem cell transplantation to assess the origin of myelodysplastic syndrome
<b>Keywords:</b>	MDS, HSCT, FACS, Bone Marrow, NUP98-HOXD13, AML, Hematopoietic malignancy
<b>Corresponding Author:</b>	Yang Jo Chung, Ph. D. National Cancer Institute Bethesda, Maryland UNITED STATES
<b>Corresponding Author's Institution:</b>	National Cancer Institute
<b>Corresponding Author E-Mail:</b>	chungya@mail.nih.gov
<b>First Author:</b>	Yang Jo Chung, Ph. D.
<b>Other Authors:</b>	Ghanwa Khawaja
	Karen M Wolcott
	Peter D Aplan
<b>Additional Information:</b>	
<b>Question</b>	<b>Response</b>
Please indicate whether this article will be Standard Access or Open Access.	Standard Access (US\$2,400)
Please indicate the <b>full address</b> at which this article will be <b>filmed</b> .	37 Convent Drive, Room 6002, Bethesda, MD, 20892

**TITLE:****Use of Hematopoietic Stem Cell Transplantation to Assess the Origin of Myelodysplastic Syndrome****AUTHORS AND AFFILIATIONS:**

Yang Jo Chung<sup>1</sup>, Ghanwa Khawaja<sup>1</sup>, Karen M. Wolcott<sup>2</sup>, Peter D. Aplan<sup>1</sup>

<sup>1</sup>Genetics Branch, Center for Cancer Research, National Cancer Institute, National Institutes of Health, Bethesda, MD, USA

<sup>2</sup>LGI Flow Cytometry Core Facility, Center for Cancer Research, National Cancer Institute, National Institutes of Health, Bethesda, MD, USA

Yang Jo Chung ([chungya@mail.nih.gov](mailto:chungya@mail.nih.gov))

Ghanwa Khawaja ([ghanwa.khawaja@nih.gov](mailto:ghanwa.khawaja@nih.gov))

Karen M. Wolcott ([wolcottkm@nci.nih.gov](mailto:wolcottkm@nci.nih.gov))

Peter D. Aplan ([aplanp@mail.nih.gov](mailto:aplanp@mail.nih.gov))

Corresponding Author:

Yang Jo Chung

**KEYWORDS:**

Myelodysplastic syndromes, hematopoietic stem cell transplantation, fluorescence-activated cell sorting, bone marrow, NUP98-HOXD13, acute myeloid leukemia, hematopoietic malignancy

**SUMMARY:**

We describe the use of hematopoietic stem cell transplantation (HSCT) to assess the malignant potential of genetically engineered hematopoietic cells. HSCT is useful for evaluating various malignant hematopoietic cells *in vivo* as well as generating a large cohort of mice with myelodysplastic syndromes (MDS) or leukemia to evaluate novel therapies.

**ABSTRACT:**

Myelodysplastic syndromes (MDS) are a diverse group of hematopoietic stem cell disorders that are defined by ineffective hematopoiesis, peripheral blood cytopenias, dysplasia, and a propensity for transformation to acute leukemia. NUP98-HOXD13 (NHD13) transgenic mice recapitulate human MDS in terms of peripheral blood cytopenias, dysplasia, and transformation to acute leukemia. We previously demonstrated that MDS could be transferred from a genetically engineered mouse with MDS to wild-type recipients by transplanting MDS bone marrow nucleated cells (BMNC). To more clearly understand the MDS cell of origin, we have developed approaches to transplant specific, immunophenotypically defined hematopoietic subsets. In this article, we describe the process of isolating and transplanting specific populations of hematopoietic stem and progenitor cells. Following transplantation, we describe approaches to assess the efficiency of transplantation and persistence of the donor MDS cells.

**INTRODUCTION:**

Myelodysplastic syndromes (MDS) represent a diverse set of clonal blood disorders characterized by ineffective hematopoiesis, morphologic evidence of dysplasia, and a propensity for transformation to acute myeloid leukemia (AML)<sup>1-4</sup>. Ineffective hematopoiesis is recognized as a maturation arrest in bone marrow, and results in peripheral blood cytopenias despite a hypercellular bone marrow<sup>1,3</sup>. The incidence of MDS has been variously estimated as 2-12 cases per 100,000 persons annually in the United States, and the incidence of MDS increases with age, making this an important condition to understand given the aging U.S. population<sup>3,5</sup>. Although most cases of MDS have no clear etiology, some cases of MDS are thought to be due to exposure to known genotoxic agents, including solvents such as benzene, and cancer chemotherapy<sup>6</sup>.

MDS patients typically have acquired mutations in the MDS cells<sup>7</sup>. Although relatively uncommon, a number of MDS patients have acquired balanced chromosomal translocations involving genes such as NUP98, EVI1, RUNX1, and MLL (<http://cgap.nci.nih.gov/Chromosomes/Mitelman>). Our laboratory has a long-standing interest in chromosome translocations, which involve the NUP98 gene<sup>8</sup>. Transgenic mice that express a NUP98-HOXD13 (NHD13) transgene regulated by the Vav1 promoter and enhancer elements display all of the key features of MDS, including peripheral blood cytopenias, morphologic evidence of dysplasia, and transformation to AML<sup>9</sup>.

Although MDS have been recognized for over 60 years<sup>10</sup>, and are considered to be a clonal stem cell disorder, efforts to engraft human MDS cell in immunodeficient mice have been largely unsuccessful, because the MDS cells engraft poorly<sup>11-14</sup> and the mice do not develop clinical disease. In an effort to identify which hematopoietic cells can transmit MDS, we turned to the NHD13 model, and showed that we could engraft MDS as a disease entity that showed all of the cardinal features of human MDS, including peripheral blood cytopenias, dysplasia, and transformation to AML<sup>15</sup>. In this report, we present the technical details of these experiments, as well as approaches to further fractionate hematopoietic stem and precursor cells (HSPC), in an effort to identify MDS-initiating cells.

## **PROTOCOL:**

The animal procedures described in this article were approved by the National Cancer Institute at Bethesda Animal Care and Use Committee, and conform to the policies contained within The Public Health Service Policy on Humane Care and Use of Laboratory Animals, The Animal Welfare Act, and the Guide for the Care and Use of Laboratory Animals.

### **1. Cell Preparation**

#### **1.1. Harvesting bone marrow nucleated cell (BMNC)**

1.1.1. Use only sterile materials. Sterilize re-usable instruments using a steam autoclave. Purchase needles, syringes, and plastic ware in single use sterile containers. Perform all animal and cell manipulations in a Class II, Type A2 Biological Safety Cabinet.

1.1.2. Prepare BMNCs in a 14 mL round bottom tube containing 3 mL of HF2 (Hank's balanced salt solution supplemented with 2% fetal bovine serum).

1.1.3. Euthanize C57Bl6 donor mice (positive for CD45 allele CD45.2), age typically 2-6 months, using a CO<sub>2</sub> chamber.

1.1.4. Sterilize the mouse carcass by spraying 70% ethanol over the entire body with a spray bottle. Peel the skin from the legs, from the pelvis down to the ankle.

1.1.5. Remove the femora and tibiae from the carcass using sterile scissors (straight, sharp/sharp, 11.5 cm) and forceps (Graefe, serrated, 0.8-mm tip width). Trim attached muscles clearly.

1.1.6. Cut the proximal and distal ends of the tibia with the scissors. Holding the tibia with forceps, insert a 27-gauge 3 mL syringe containing 2.5 mL of HF2 into the tibial marrow cavity at the distal end of the tibia (ankle). Flush the bone marrow cells from the tibia using gentle pressure into the 14 mL round bottom tube.

1.1.6.1 Repeat for the other tibia.

1.1.7. Cut the proximal and distal ends of the femur with scissors. Flush the femur marrow cavity by inserting a 20-gauge needle attached to a 3 mL syringe containing 2.5 mL of HF2 into the distal end of the femur marrow cavity and applying gentle pressure to the syringe.

1.1.7.1 Repeat for the other femur, collecting all bone marrow from both tibiae and femora in the same 14 mL round bottom tube.

1.1.8. Disperse the marrow mass by aspirating up and down several times with the same 20-gauge needle attached to the 3 mL syringe.

## 1.2. Antibody staining of BMNC

1.2.1. Count BMNC. Add 20 µL of a 3% acetic acid solution to 20 µL of the BMNC suspension generated in step 1.1.8. Then, count using a hemocytometer and an inverted microscope.

1.2.2. Pellet the BMNC by gentle centrifugation at 450 x g for 5 min at 4 °C. Resuspend the pellet with HF2 using 90 µL per 10<sup>7</sup> cells and add 10 µL of biotinylated anti-lineage antibody cocktail to the cell suspension.

1.2.3. After incubating for 20 min at 4 °C, wash the stained cells with 3 mL of phosphate-buffered saline (PBS).

1.2.4. Resuspend the BMNC with 100  $\mu$ L of HF2 per  $10^7$  cells. Add 2  $\mu$ L of allophycocyanin (APC) conjugated anti-biotin antibody to the cell suspension, followed by incubation at 4  $^{\circ}$ C for 20 min.

1.2.5. Rinse the stained BMNC with 3 mL of PBS and resuspend the BMNC with HF2 supplemented with 0.2  $\mu$ g/mL of propidium iodide (PI) for flow cytometry cell sorting.

### 1.3. Flow cytometry cell sorting of BMNC

1.3.1. Calibrate flow cytometry cell sorter. Optimize all photomultiplier tubes (PMTs), scatter, and fluorescence parameters using unstained cells and set within the linear range of each detector.

1.3.2. Prepare unstained, PI-stained, and APC labeled lineage cocktail cells in parallel from step 1.2. Analyze for spectral compensation.

1.3.3. Discriminate doublet cells by sequential gating of FSC-H vs. SSC-H, 640-SSC-A vs. 640-SSC-H, and 640-SSC-S vs. 640-SSC-W.

1.3.4. Exclude nonviable cells using PI excited at 561 nm and emission collected with a 614/20 band pass filter. Excite lineage APC labeled cells at 640 nm and collect emission with a 671/30 band pass filter.

1.3.5. Record fluorescence values as voltage height and collect at least 100,000 events in list mode data files to visualize the populations to be sorted.

1.3.6. Calculate spectral compensation after acquiring three samples of 10,000 cells for the following: unlabeled cells, PI labeled cells, and anti-lineage antibody cocktail conjugated with APC labeled cells.

1.3.7. Set three regions to sort Lineage negative (LN), Lineage positive (LP) with dim fluorescence intensity (LP1), and LP population with bright fluorescence (LP2) into 5 mL tubes containing 0.5 mL of 10% FBS media.

1.3.8. Sort cells using a one drop envelop and purify abort mode.

1.3.9. Perform post sort analysis with 1,000 total cells on each sorted sample to confirm the purity and viability of the sorted cells.

1.3.10. Collect sorted cells by centrifugation at 450 x g for 5 min at 4  $^{\circ}$ C and resuspend cell pellet with 0.5 mL of HF2.

1.3.11. Confirm sorted cell number with hemocytometer and Trypan blue. Adjust cell number with HF2 for transplantation.

Note: A wide spectrum of BMNC populations can be isolated for transplantation using additional combinations of fluorochrome-conjugated antibodies in step 1.2.2 above.

## **2. Recipient Mice Preparation and Hematopoietic Stem Cell Transplantation (HSCT)**

### **2.1. Preparation of transplant recipients**

2.1.1. Maintain veterinary and husbandry care of congenic recipient mice (B6-LY5.1/Cr, CD45.1) in a specific pathogen free (SPF) animal facility.

2.1.2. For prophylactic decontamination of the gastrointestinal track, provide sterile water containing 100 mg/L of ciprofloxacin to the recipients for 7 days prior to lethal dose (9 Gy) irradiation, and maintain for 14 days following irradiation.

2.1.3. Provide a lethal dose (9 Gy) irradiation from a Cs source as follows. Use a trained, certified Cs operator. Set the Cs source instrument to deliver 70 cGy/min total body gamma irradiation. Place 10 mice in a custom-designed holder and insert the holder into the irradiator chamber. Deliver 9 Gy total body irradiation in 13 min and return the mice to their cages.

### **2.2. Hematopoietic stem cell transplantation**

2.2.1. Mix wild type (WT) BMNC from a congenic recipient mouse (B6-LY5.1/Cr, CD45.1) at a cell dose of  $2 \times 10^5$  cells per mouse with  $2$  to  $5 \times 10^4$  cells of the purified test BMNC prepared with flow cytometry sorting as described in 1.3 above. Mix cells in the same syringe.

Note: The WT BMNC provide a radiation sparing-effect to the recipient mouse and allow for the survival of the recipient mouse if the test cells do not support hematopoiesis. The WT BMNC used in this type of experiment express the CD45.1 allele, and thus can be distinguished from the test cells using antibodies which discriminate between CD45.1 and CD45.2. The WT BM cells are referred to as “helper cells”, “radiation-sparing cells”, or “competitor cells”.

2.2.2. Adjust the cell mixture volume to 200  $\mu$ L per recipient using sterile HF2 for facilitating the injection.

2.2.3. Transplant the cell mixtures to the lethally irradiated recipient mice *via* intravenous tail vein injection using a 1 mL syringe and 28-gauge needle, within 24 hours of irradiation. Place the mouse tail under a heat lamp, as heat leads to tail vein dilation.

Note: Euthanize all the recipient mice at the end of the study and evaluate the disease progression by necropsy, histology, and flow cytometry.

## **3. Engraftment Assay using Flow Cytometry**

- 3.1. To evaluate donor cell engraftment, collect peripheral blood (PB) from the recipient mice at 6th week, 12th week, and 16th week after transplantation.
- 3.2. Warm the recipients in the cage with heat lamp for about 1 min and place mouse into a restrainer.
- 3.3. Cut the tail vein with a scalpel (blade 10, #3 scalpel handle) and collect 100  $\mu$ L of PB per recipient using a microcapillary tube containing EDTA as an anticoagulant.
- 3.4. Divide the collected PB into two equal aliquots by placing 50  $\mu$ L in a sterile microcentrifuge tube. Use one aliquot for an automated complete blood count (CBC) (performed at the NCI Histopathology Core) and use the second aliquot for antibody staining and flow cytometry.
- 3.5. To detect donor engraftment by flow cytometry, lyse the red blood cells (RBC) by adding 1 mL of hypotonic RBC lysis buffer (8.29 g/L of  $\text{NH}_4\text{Cl}$ , 1 g/L of  $\text{KHCO}_3$ , 0.037 g/L of  $\text{Na}_2\text{EDTA}$ , pH 7.2) to 50  $\mu$ L of the collected PB. Vortex the sample to mix and incubate 10 min at room temperature.
- 3.6. Centrifuge the lysed PB at 4600 x g for 1.5 min. Carefully aspirate the supernatant and discard.
- 3.7. Partially disrupt the cell pellet by gently tapping or “flicking” the bottom of the tube. Add 1.3 mL of PBS into the pellet located in tube and centrifuge at 4600 x g for 1.5 min. Carefully aspirate and discard the supernatant.
- 3.8. Disrupt the cell pellet by tapping or flicking, and add 200  $\mu$ L of HF2 supplemented with 5% rat serum to the cell pellet.
- 3.9. Add anti-CD45.2 antibody (1  $\mu$ L) conjugated with allophycocyanin (APC) to the cell suspension. Incubate at 4  $^{\circ}\text{C}$  for at least 30 min, and briefly vortex the mixture.
- 3.10. After the staining, wash the cells twice as described above, and resuspend with 400  $\mu$ L of HF2 supplemented with 1  $\mu\text{g}/\text{mL}$  of PI.
- 3.11. Detect engraftment using a 4-color flow cytometer. Obtain additional information on cell types within the peripheral blood by adding additional antibodies to detect specific cell types, such as B or T lymphocytes.
- 3.12. Record serial engraftment data using a spread sheet to allow for further analysis of data.

## REPRESENTATIVE RESULTS:

We show representative figures for results of several experiments. **Figure 1** shows a representative flow cytometry sorting experiment. During normal hematopoietic

differentiation, as cells become committed to a specific hematopoietic lineage, they acquire lineage-defining cell surface markers and lose the potential for self-renewal. Therefore, in wild-type mice, stem cell self-renewal is confined to lineage-negative BMNC. In this experiment, we sorted BMNC from NHD13 bone marrow into lineage-negative, low lineage positive, and high lineage-positive cells. These sorted cells were then transplanted into WT recipients to determine self-renewal capacity.

**Figure 2** shows results from a separate experiment, in which lineage negative cells or unsorted cells from NHD13 donors with MDS were transplanted into lethally irradiated WT recipients. The NHD13 donor cells expressed the CD45.2 cell surface marker, whereas the WT competitor cells (see section 2.2.1 above) expressed the CD45.1 cell surface marker. **Figure 3** shows serial engraftment analysis of either unsorted NHD13 BMNC, or lineage-negative NHD13 BMNC. After approximately 16 weeks, the NHD13 cells outcompete the WT cells, as shown by the increasing percentage of CD45.2+ cells in the peripheral blood. **Figure 4** shows an example of leukemic transformation from a mouse transplanted with NHD13 MDS cells.

#### FIGURE AND TABLE LEGENDS:

**Figure 1: Flow cytometry sorting strategy of BMNC stained with lineage antibody cocktail.**

Each rectangular box on the dot plot represents the cell population sorted for HSCT to evaluate cell function. R4, lineage negative; R5, low lineage positive; R6, high lineage positive.

**Figure 2: Representative FACS profiles for engraftment assay using donor specific anti-CD45.2 antibody.** BMNC recipient was transplanted with  $1 \times 10^6$  NHD13 BMNC (CD45.2+) and LNBM recipient with  $5 \times 10^4$  NHD13 lineage negative BM cells (CD45.2+). In each case,  $2 \times 10^5$  WT BMNC (CD45.1+) were used as competitor cells. Numbers in the upper and lower boxes represent CD45.2 positive (derived from NHD13 donor) and CD45.2 negative (derived from WT competitor cells), respectively, at post-transplantation 6 week and 24 week.

**Figure 3: Engraftment kinetics of individual recipients after transplantation.** Each line on the graph shows serial engraftment assays of an individual recipient mouse. BMNC recipients were transplanted with  $1 \times 10^6$  cells of NHD13 whole BMNC, and LNBM recipients were transplanted with  $5 \times 10^4$  of NHD13 lineage negative BM after sorting. NHD indicates NHD13 donor. BM, BMNC recipient mice; LNBM, lineage negative BM recipient; PBMC, peripheral blood mononucleated cell. In all cases, the NHD13 donor cells gradually outcompete the WT cells.

**Figure 4: May-Grünwald Giemsa (MGG) staining of bone marrow (BM) from MDS recipient that progressed to AML.** Note the presence of numerous blasts and immature forms. Arrows indicate blasts, and arrowheads indicate immature forms. Original 400X.

#### DISCUSSION:

Although MDS are a clonal hematopoietic stem cell disorder, the MDS “stem”, or initiating cells, have not yet been characterized. We previously demonstrated that MDS can be transplantable to WT mice using bone marrow from NHD13 mice by HSCT, characterized by macrocytic anemia, leukopenia, neutropenia, and morphologic evidence of dysplasia<sup>15</sup>. In addition,



competitive repopulation assays identified a growth advantage of cells from the NHD13 MDS bone marrow. Taken together, these findings imply the existence of an MDS stem or initiating cell. Additional experiments are now in progress, aimed at refining the immunophenotypic characteristics of an MDS initiating cell<sup>15</sup> using more defined stem and progenitor cell markers (CD150, CD48, c-Kit and Sca-1)<sup>16</sup> combined with the lineage marker staining method described in this protocol.

Identifying MDS initiating cells using NHD13 mice involves extensive flow cytometry sorting procedure. The *ex vivo* manipulation of primary BMNCs places stress on the cells, potentially resulting in cell death or functional loss. Therefore, efforts should be made to reduce the time of *ex vivo* manipulation including the time of flow cytometry sorting. The make and model of flow cytometry instruments and flow dynamics are additional variables that may affect cell viability after sorting. The HSCT procedure requires cell infusion through a blood vessel. Although tail vein injection may be a more challenging technique than retro-orbital injection, in our experience, tail vein injection can be performed more rapidly than retro-orbital injection as the recipient mice are not anesthetized for the tail vein injections. Limitation of injection volume (maximum 150 µL) is another issue in retro-orbital injection<sup>17</sup>, as a higher cell concentration may lead to additional loss of cells in the course of cell preparation, such as shearing of cells on the wall of syringes and needles.

Although these experiments are focused on the NHD13 model for MDS, the HSCT sorting and transplant approaches described here can be used for any genetically engineered mouse. In addition to determining the characteristics of self-renewing hematopoietic cells, this transplant approach can be used for other purposes. For instance, if one desires to obtain a large cohort of mice with MDS bone marrow to assess the efficacy of treatment with a small molecule, a large cohort (30+ mice) can be generated by transplanting WT mice with MDS BM. Alternatively, the HSCT strategy can be reversed. In an attempt to cure mice of MDS, NHD13 mice with MDS can be transplanted with WT BM, and the success of the transplant can be monitored by assessing the proportion of hematopoietic cells that express CD45.1 (which marks WT BM) as opposed to CD45.2 (which marks MDS BM)<sup>18</sup>.

#### **ACKNOWLEDGMENTS:**

This work was supported by the Intramural Research Program of the National Cancer Institute, National Institutes of Health (grant numbers ZIA SC 010378 and BC 010983).

#### **DISCLOSURES:**

We have nothing to disclose.

#### **REFERENCES:**

- 1 Corey, S. J. *et al.* Myelodysplastic syndromes: the complexity of stem-cell diseases. *Nature Reviews Cancer*. **7** (2), 118-129, doi:10.1038/nrc2047, (2007).
- 2 Garcia-Manero, G. Myelodysplastic syndromes: 2015 Update on diagnosis, risk-stratification and management. *American Journal of Hematology*. **90** (9), 831-841, doi:10.1002/ajh.24102, (2015).

352 3 Heaney, M. L. & Golde, D. W. Myelodysplasia. *The New England Journal of Medicine*. **340**  
353 (21), 1649-1660, doi:10.1056/NEJM199905273402107, (1999).

354 4 Nimer, S. D. Myelodysplastic syndromes. *Blood*. **111** (10), 4841-4851,  
355 doi:10.1182/blood-2007-08-078139, (2008).

356 5 Aul, C., Giagounidis, A. & Germing, U. Epidemiological features of myelodysplastic  
357 syndromes: results from regional cancer surveys and hospital-based statistics. *International*  
358 *Journal of Hematology*. **73** (4), 405-410, doi:10.1007/BF02994001, (2001).

359 6 Pedersen-Bjergaard, J., Christiansen, D. H., Desta, F. & Andersen, M. K. Alternative  
360 genetic pathways and cooperating genetic abnormalities in the pathogenesis of therapy-related  
361 myelodysplasia and acute myeloid leukemia. *Leukemia*. **20** (11), 1943-1949,  
362 doi:10.1038/sj.leu.2404381, (2006).

363 7 Uy, G. L. *et al.* Dynamic changes in the clonal structure of MDS and AML in response to  
364 epigenetic therapy. *Leukemia*. **31** (4), 872-881, doi:10.1038/Leu.2016.282, (2017).

365 8 Gough, S. M., Slape, C. I. & Aplan, P. D. NUP98 gene fusions and hematopoietic  
366 malignancies: common themes and new biologic insights. *Blood*. **118** (24), 6247-6257,  
367 doi:10.1182/blood-2011-07-328880, (2011).

368 9 Lin, Y. W., Slape, C., Zhang, Z. & Aplan, P. D. NUP98-HOXD13 transgenic mice develop a  
369 highly penetrant, severe myelodysplastic syndrome that progresses to acute leukemia. *Blood*.  
370 **106** (1), 287-295, doi:10.1182/blood-2004-12-4794, (2005).

371 10 Block, M., Jacobson, L. O. & Bethard, W. F. Preleukemic acute human leukemia. *Journal*  
372 *of the American Medical Association*. **152** (11), 1018-1028 (1953).

373 11 Thanopoulou, E. *et al.* Engraftment of NOD/SCID-beta2 microglobulin null mice with  
374 multilineage neoplastic cells from patients with myelodysplastic syndrome. *Blood*. **103** (11),  
375 4285-4293, doi:10.1182/blood-2003-09-3192, (2004).

376 12 Kerbaui, D. M., Lesnikov, V., Torok-Storb, B., Bryant, E. & Deeg, H. J. Engraftment of  
377 distinct clonal MDS-derived hematopoietic precursors in NOD/SCID-beta2-microglobulin-  
378 deficient mice after intramedullary transplantation of hematopoietic and stromal cells. *Blood*.  
379 **104** (7), 2202-2203, doi:10.1182/blood-2004-04-1518, (2004).

380 13 Benito, A. I. *et al.* NOD/SCID mice transplanted with marrow from patients with  
381 myelodysplastic syndrome (MDS) show long-term propagation of normal but not clonal human  
382 precursors. *Leukemia Research*. **27** (5), 425-436 (2003).

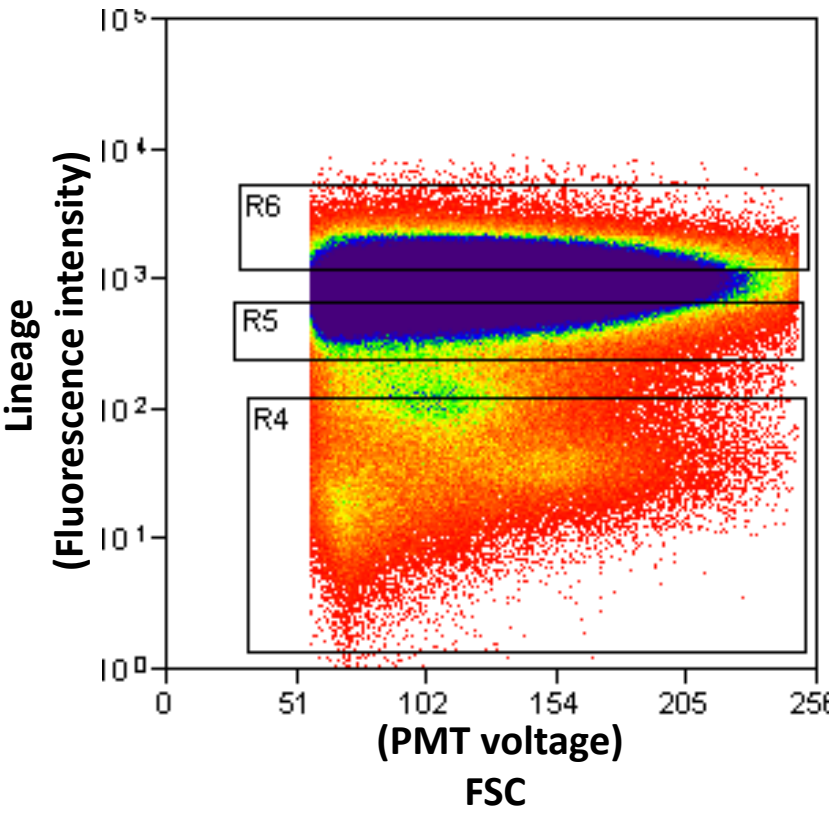
383 14 Medyouf, H. *et al.* Myelodysplastic cells in patients reprogram mesenchymal stromal  
384 cells to establish a transplantable stem cell niche disease unit. *Cell Stem Cell*. **14** (6), 824-837,  
385 doi:10.1016/j.stem.2014.02.014, (2014).

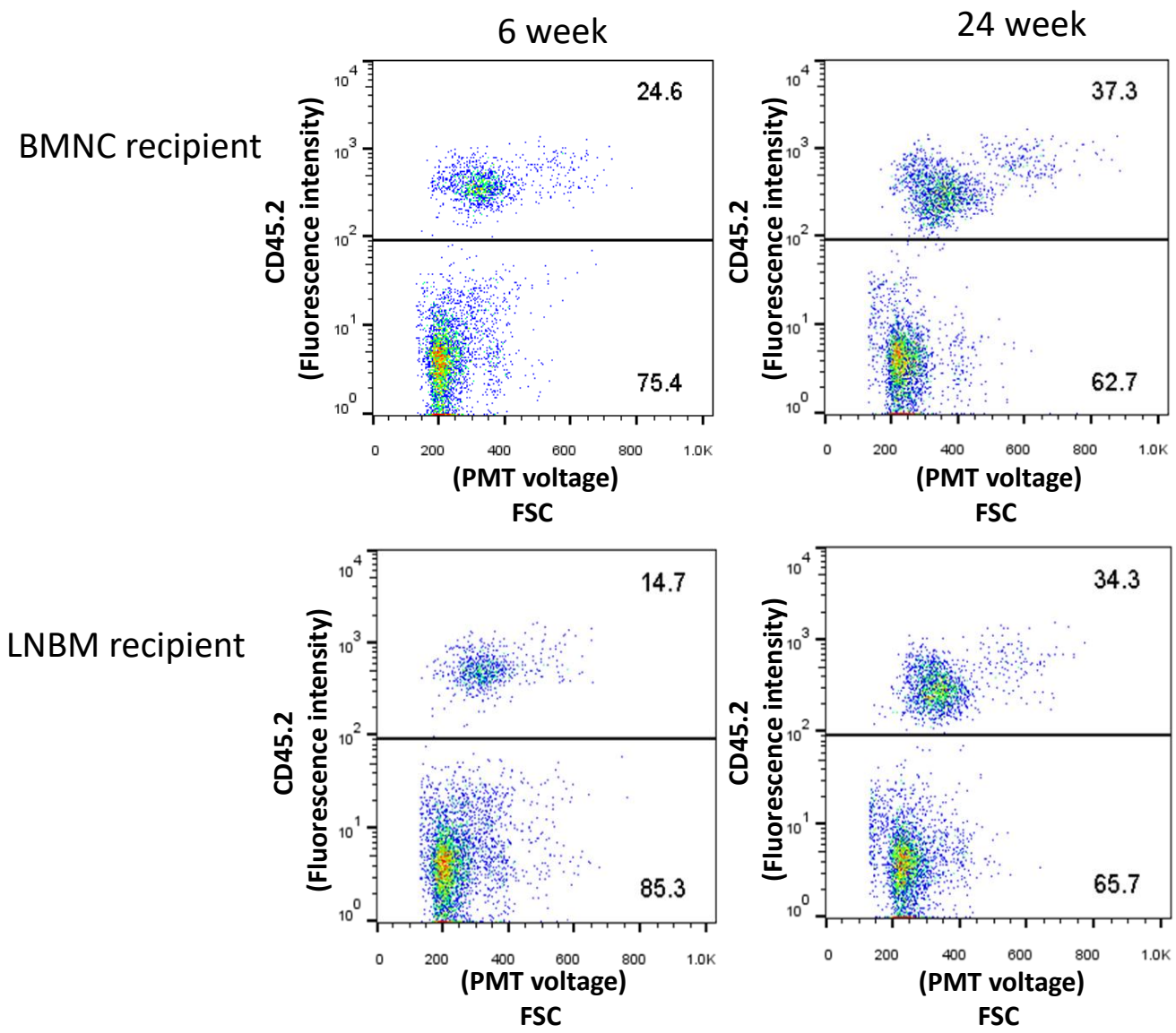
386 15 Chung, Y. J., Choi, C. W., Slape, C., Fry, T. & Aplan, P. D. Transplantation of a  
387 myelodysplastic syndrome by a long-term repopulating hematopoietic cell. *Proceedings of the*  
388 *National Academy of Sciences of the United States of America*. **105** (37), 14088-14093,  
389 doi:10.1073/pnas.0804507105, (2008).

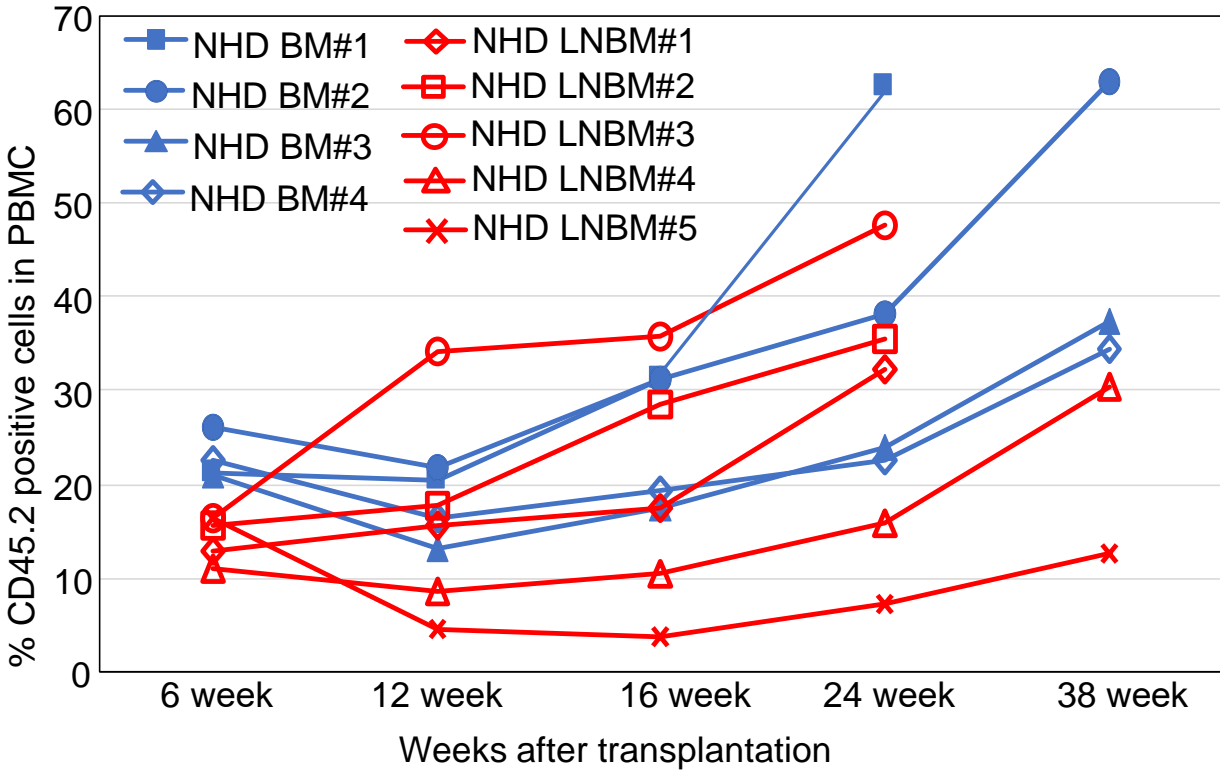
390 16 Pietras, E. M. *et al.* Functionally Distinct Subsets of Lineage-Biased Multipotent  
391 Progenitors Control Blood Production in Normal and Regenerative Conditions. *Cell Stem Cell*. **17**  
392 (1), 35-46, doi:10.1016/j.stem.2015.05.003, (2015).

393 17 Yardeni, T., Eckhaus, M., Morris, H. D., Huizing, M. & Hoogstraten-Miller, S. Retro-orbital  
394 injections in mice. *Lab Animal*. **40** (5), 155-160, doi:10.1038/Laban0511-155, (2011).

395 18 Chung, Y. J., Fry, T. J. & Aplan, P. D. Myeloablative hematopoietic stem cell  
396 transplantation improves survival but is not curative in a pre-clinical model of myelodysplastic  
397 syndrome. *PLoS One*. **12** (9), e0185219, doi:10.1371/journal.pone.0185219, (2017).









Name of Material/ Equipment	Company	Catalog Number	Comments/Description
14 mL round bottom tube	Falcon	352057	
Hank's balanced salt solution	Lonza	10-527F	
Anti-CD45.2 antibody	Southern Biotech	1800-15	LOT# A077-T044O
3 mL Syringe	Monoject	8881513934	
27-G needle	BD	305109	
20-G needle	BD	305176	
Lineage Cocktail	Miltenyi	130-090-858	LOT# 5170418221
Anti-Biotin antibodies	Miltenyi	130-113-288	LOT# 5171109046
1 mL Syringe	Excelint	26027	Insulin Syringe
Heating Lamp	Thermo Fisher Scientific	E70001901	
FACS machine	Cytec	FACScan	2 lasers, 5 color detectors
FACS sorting instrument	Beckman Coulter	MOFLO ASTRIOS	5 lasers, 23 parameters, 6 p
Propidium Iodide	Thermo Fisher Scientific	P3566	
Gamma Irradiator	Best Theratronics	Gammacell 40	
Blood collection tube	RAM scientific	76011	
Recipient mice	Charles River	B6-LY5.1/Cr, CD45.1	
NUP98-HOXD13 mice	n/a	C57Bl/6, CD45.2	Colony maintained at NIH
5 mL round bottom tube	Falcon	352058	



population sorting simultaneously



1 Alewife Center #200  
Cambridge, MA 02140  
tel. 617.945.9051  
[www.jove.com](http://www.jove.com)

## ARTICLE AND VIDEO LICENSE AGREEMENT

Title of Article:

Hematopoietic stem cell transplantation as a tool to assess the cell of origin for myelodysplastic syndrome.

Author(s):

Yang Jo Chung, Ghanwa Khawaja, Karen M. Wolcott, Peter P. Aplan

Item 1 (check one box): The Author elects to have the Materials be made available (as described at

<http://www.jove.com/author>) via: ☒ Standard Access ☐ Open Access

Item 2 (check one box):

☐

The Author is NOT a United States government employee.

☒

The Author is a United States government employee and the Materials were prepared in the course of his or her duties as a United States government employee.

☐

The Author is a United States government employee but the Materials were NOT prepared in the course of his or her duties as a United States government employee.

### ARTICLE AND VIDEO LICENSE AGREEMENT

1. **Defined Terms.** As used in this Article and Video License Agreement, the following terms shall have the following meanings: "Agreement" means this Article and Video License Agreement; "Article" means the article specified on the last page of this Agreement, including any associated materials such as texts, figures, tables, artwork, abstracts, or summaries contained therein; "Author" means the author who is a signatory to this Agreement; "Collective Work" means a work, such as a periodical issue, anthology or encyclopedia, in which the Materials in their entirety in unmodified form, along with a number of other contributions, constituting separate and independent works in themselves, are assembled into a collective whole; "CRC License" means the Creative Commons Attribution-Non Commercial-No Derivs 3.0 Unported Agreement, the terms and conditions of which can be found at: <http://creativecommons.org/licenses/by-nc-nd/3.0/legalcode>; "Derivative Work" means a work based upon the Materials or upon the Materials and other pre-existing works, such as a translation, musical arrangement, dramatization, fictionalization, motion picture version, sound recording, art reproduction, abridgment, condensation, or any other form in which the Materials may be recast, transformed, or adapted; "Institution" means the institution, listed on the last page of this Agreement, by which the Author was employed at the time of the creation of the Materials; "JoVE" means MyJoVE Corporation, a Massachusetts corporation and the publisher of *The Journal of Visualized Experiments*; "Materials" means the Article and / or the Video; "Parties" means the Author and JoVE; "Video" means any video(s) made by the Author, alone or in conjunction with any other parties, or by JoVE or its affiliates or agents, individually or in collaboration with the Author or any other parties, incorporating all or any portion of the Article, and in which the Author may or may not appear.

2. **Background.** The Author, who is the author of the Article, in order to ensure the dissemination and protection of the Article, desires to have the JoVE publish the Article and create and transmit videos based on the Article. In furtherance of such goals, the Parties desire to memorialize in this Agreement the respective rights of each Party in and to the Article and the Video.

3. **Grant of Rights in Article.** In consideration of JoVE agreeing to publish the Article, the Author hereby grants to JoVE, subject to Sections 4 and 7 below, the exclusive, royalty-free, perpetual (for the full term of copyright in the Article, including any extensions thereto) license (a) to publish, reproduce, distribute, display and store the Article in all forms, formats and media whether now known or hereafter developed (including without limitation in print, digital and electronic form) throughout the world, (b) to translate the Article into other languages, create adaptations, summaries or extracts of the Article or other Derivative Works (including, without limitation, the Video) or Collective Works based on all or any portion of the Article and exercise all of the rights set forth in (a) above in such translations, adaptations, summaries, extracts, Derivative Works or Collective Works and (c) to license others to do any or all of the above. The foregoing rights may be exercised in all media and formats, whether now known or hereafter devised, and include the right to make such modifications as are technically necessary to exercise the rights in other media and formats. If the "Open Access" box has been checked in Item 1 above, JoVE and the Author hereby grant to the public all such rights in the Article as provided in, but subject to all limitations and requirements set forth in, the CRC License.



## ARTICLE AND VIDEO LICENSE AGREEMENT

4. Retention of Rights in Article. Notwithstanding the exclusive license granted to JoVE in Section 3 above, the Author shall, with respect to the Article, retain the non-exclusive right to use all or part of the Article for the non-commercial purpose of giving lectures, presentations or teaching classes, and to post a copy of the Article on the Institution's website or the Author's personal website, in each case provided that a link to the Article on the JoVE website is provided and notice of JoVE's copyright in the Article is included. All non-copyright intellectual property rights in and to the Article, such as patent rights, shall remain with the Author.

5. Grant of Rights in Video – Standard Access. This Section 5 applies if the "Standard Access" box has been checked in Item 1 above or if no box has been checked in Item 1 above. In consideration of JoVE agreeing to produce, display or otherwise assist with the Video, the Author hereby acknowledges and agrees that, Subject to Section 7 below, JoVE is and shall be the sole and exclusive owner of all rights of any nature, including, without limitation, all copyrights, in and to the Video. To the extent that, by law, the Author is deemed, now or at any time in the future, to have any rights of any nature in or to the Video, the Author hereby disclaims all such rights and transfers all such rights to JoVE.

6. Grant of Rights in Video – Open Access. This Section 6 applies only if the "Open Access" box has been checked in Item 1 above. In consideration of JoVE agreeing to produce, display or otherwise assist with the Video, the Author hereby grants to JoVE, subject to Section 7 below, the exclusive, royalty-free, perpetual (for the full term of copyright in the Article, including any extensions thereto) license (a) to publish, reproduce, distribute, display and store the Video in all forms, formats and media whether now known or hereafter developed (including without limitation in print, digital and electronic form) throughout the world, (b) to translate the Video into other languages, create adaptations, summaries or extracts of the Video or other Derivative Works or Collective Works based on all or any portion of the Video and exercise all of the rights set forth in (a) above in such translations, adaptations, summaries, extracts, Derivative Works or Collective Works and (c) to license others to do any or all of the above. The foregoing rights may be exercised in all media and formats, whether now known or hereafter devised, and include the right to make such modifications as are technically necessary to exercise the rights in other media and formats. For any Video to which this Section 6 is applicable, JoVE and the Author hereby grant to the public all such rights in the Video as provided in, but subject to all limitations and requirements set forth in, the CRC License.

7. Government Employees. If the Author is a United States government employee and the Article was prepared in the course of his or her duties as a United States government employee, as indicated in Item 2 above, and any of the licenses or grants granted by the Author hereunder exceed the scope of the 17 U.S.C. 403, then the rights granted hereunder shall be limited to the maximum rights permitted under such

statute. In such case, all provisions contained herein that are not in conflict with such statute shall remain in full force and effect, and all provisions contained herein that do so conflict shall be deemed to be amended so as to provide to JoVE the maximum rights permissible within such statute.

8. Likeness, Privacy, Personality. The Author hereby grants JoVE the right to use the Author's name, voice, likeness, picture, photograph, image, biography and performance in any way, commercial or otherwise, in connection with the Materials and the sale, promotion and distribution thereof. The Author hereby waives any and all rights he or she may have, relating to his or her appearance in the Video or otherwise relating to the Materials, under all applicable privacy, likeness, personality or similar laws.

9. Author Warranties. The Author represents and warrants that the Article is original, that it has not been published, that the copyright interest is owned by the Author (or, if more than one author is listed at the beginning of this Agreement, by such authors collectively) and has not been assigned, licensed, or otherwise transferred to any other party. The Author represents and warrants that the author(s) listed at the top of this Agreement are the only authors of the Materials. If more than one author is listed at the top of this Agreement and if any such author has not entered into a separate Article and Video License Agreement with JoVE relating to the Materials, the Author represents and warrants that the Author has been authorized by each of the other such authors to execute this Agreement on his or her behalf and to bind him or her with respect to the terms of this Agreement as if each of them had been a party hereto as an Author. The Author warrants that the use, reproduction, distribution, public or private performance or display, and/or modification of all or any portion of the Materials does not and will not violate, infringe and/or misappropriate the patent, trademark, intellectual property or other rights of any third party. The Author represents and warrants that it has and will continue to comply with all government, institutional and other regulations, including, without limitation all institutional, laboratory, hospital, ethical, human and animal treatment, privacy, and all other rules, regulations, laws, procedures or guidelines, applicable to the Materials, and that all research involving human and animal subjects has been approved by the Author's relevant institutional review board.

10. JoVE Discretion. If the Author requests the assistance of JoVE in producing the Video in the Author's facility, the Author shall ensure that the presence of JoVE employees, agents or independent contractors is in accordance with the relevant regulations of the Author's institution. If more than one author is listed at the beginning of this Agreement, JoVE may, in its sole discretion, elect not take any action with respect to the Article until such time as it has received complete, executed Article and Video License Agreements from each such author. JoVE reserves the right, in its absolute and sole discretion and without giving any reason therefore, to accept or decline any work submitted to JoVE. JoVE and its employees, agents and independent contractors shall have



## ARTICLE AND VIDEO LICENSE AGREEMENT

full, unfettered access to the facilities of the Author or of the Author's institution as necessary to make the Video, whether actually published or not. JoVE has sole discretion as to the method of making and publishing the Materials, including, without limitation, to all decisions regarding editing, lighting, filming, timing of publication, if any, length, quality, content and the like.

11. **Indemnification.** The Author agrees to indemnify JoVE and/or its successors and assigns from and against any and all claims, costs, and expenses, including attorney's fees, arising out of any breach of any warranty or other representations contained herein. The Author further agrees to indemnify and hold harmless JoVE from and against any and all claims, costs, and expenses, including attorney's fees, resulting from the breach by the Author of any representation or warranty contained herein or from allegations or instances of violation of intellectual property rights, damage to the Author's or the Author's institution's facilities, fraud, libel, defamation, research, equipment, experiments, property damage, personal injury, violations of institutional, laboratory, hospital, ethical, human and animal treatment, privacy or other rules, regulations, laws, procedures or guidelines, liabilities and other losses or damages related in any way to the submission of work to JoVE, making of videos by JoVE, or publication in JoVE or elsewhere by JoVE. The Author shall be responsible for, and shall hold JoVE harmless from, damages caused by lack of sterilization, lack of cleanliness or by contamination due to the making of a video by JoVE its employees, agents or independent contractors. All sterilization, cleanliness or decontamination procedures shall be solely the responsibility of the Author and shall be undertaken at the Author's

expense. All indemnifications provided herein shall include JoVE's attorney's fees and costs related to said losses or damages. Such indemnification and holding harmless shall include such losses or damages incurred by, or in connection with, acts or omissions of JoVE, its employees, agents or independent contractors.

12. **Fees.** To cover the cost incurred for publication, JoVE must receive payment before production and publication the Materials. Payment is due in 21 days of invoice. Should the Materials not be published due to an editorial or production decision, these funds will be returned to the Author. Withdrawal by the Author of any submitted Materials after final peer review approval will result in a US\$1,200 fee to cover pre-production expenses incurred by JoVE. If payment is not received by the completion of filming, production and publication of the Materials will be suspended until payment is received.

13. **Transfer, Governing Law.** This Agreement may be assigned by JoVE and shall inure to the benefits of any of JoVE's successors and assignees. This Agreement shall be governed and construed by the internal laws of the Commonwealth of Massachusetts without giving effect to any conflict of law provision thereunder. This Agreement may be executed in counterparts, each of which shall be deemed an original, but all of which together shall be deemed to be one and the same agreement. A signed copy of this Agreement delivered by facsimile, e-mail or other means of electronic transmission shall be deemed to have the same legal effect as delivery of an original signed copy of this Agreement.

A signed copy of this document must be sent with all new submissions. Only one Agreement required per submission.

### CORRESPONDING AUTHOR:

Name: Yang Jo Chung  
Department: Genetics Branch  
Institution: National Cancer Institute, NIH  
Article Title: Hemopoietic stem cell transplantation as a tool to assess the cell of origin for myelodysplastic syndrome  
Signature: [Signature] Date: 4.30.2018

Please submit a signed and dated copy of this license by one of the following three methods:

- 1) Upload a scanned copy of the document as a pdf on the JoVE submission site;
- 2) Fax the document to +1.866.381.2236;
- 3) Mail the document to JoVE / Attn: JoVE Editorial / 1 Alewife Center #200 / Cambridge, MA 02139

For questions, please email [submissions@jove.com](mailto:submissions@jove.com) or call +1.617.945.9051

**Jun 1, 2018**

**Journal of Visualized Experiments (JoVE)**

[www.jove.com](http://www.jove.com)

**To the editors:**

We were pleased to have second revision for our manuscript now entitled “Use of hematopoietic stem cell transplantation to assess the origin of myelodysplastic syndrome”, by Chung et al., and have revised the manuscript according to the editorial comments. A detailed response is outlined below using blue text.

**Editorial comments:**

1. Please revise the following lines to avoid previously published text: 33-35, 47-52, 58-63, 298-303,  
-- We revised the text in the lines.
2. Please highlight only 2.75 pages of protocol text to ensure that the videography can occur in a single day. I would suggest unhighlighting the FACS.  
-- In order to facilitate the one day videography, we removed highlight on Section 3. Engraftment Assay using Flow Cytometry in Protocol.
3. Additional comments are in the attached manuscript. Please revise accordingly.  
-- We revised those accordingly.
4. For antibodies, please provide the lot numbers and the RRIDs, if possible.  
-- We provided the lot numbers for antibodies in JoVe material excel spread sheet.
5. Please revise the title to be more concise: Using hematopoietic stem cell transplantation to assess the cell of origin for myelodysplastic syndrome  
  
-- We revised and shortened the title.

We thank and hope that our revised manuscript is now acceptable for publication in JoVE. Please contact me if there are any questions regarding this revised manuscript.

Sincerely,

Yang Jo Chung, PhD  
Staff Scientist  
NIH, NCI, CCR, Genetics Branch  
37 Convent Drive, Room 6002  
Bethesda, MD 20892-4265  
Direct line: 240-760-7371  
FAX: 301-496-0047  
[chungya@mail.nih.gov](mailto:chungya@mail.nih.gov)