

# Journal of Visualized Experiments

## The Computerized Adaptive Testing System of the Functional Assessment of Stroke

--Manuscript Draft--

<b>Article Type:</b>	Invited Methods Article - JoVE Produced Video
<b>Manuscript Number:</b>	JoVE58137R2
<b>Full Title:</b>	The Computerized Adaptive Testing System of the Functional Assessment of Stroke
<b>Keywords:</b>	stroke; Patient outcome assessment; Motor Skills; Postural balance; Activities of daily living; Computerized adaptive testing; Item response theory.
<b>Corresponding Author:</b>	G. Dr. Lin
<b>Corresponding Author's Institution:</b>	
<b>Corresponding Author E-Mail:</b>	z22653987@gmail.com
<b>Order of Authors:</b>	Gong-Hong Lin
	Yi-Jing Huang
	Yeh-Tai Chou
	Hsin-Yu Chiang
	Ching-Lin Hsieh
<b>Additional Information:</b>	
<b>Question</b>	<b>Response</b>
Please indicate whether this article will be Standard Access or Open Access.	Standard Access (US\$2,400)
Please indicate the <b>city, state/province, and country</b> where this article will be <b>filmed</b> . Please do not use abbreviations.	4F, No. 17, Xuzhou Road, Taipei 100, Taiwan

**TITLE:**

Computerized Adaptive Testing System of Functional Assessment of Stroke

**AUTHORS & AFFILIATIONS:**

Gong-Hong Lin<sup>1</sup>, Yi-Jing Huang<sup>1</sup>, Yeh-Tai Chou<sup>2</sup>, Hsin-Yu Chiang<sup>3</sup>, Ching-Lin Hsieh<sup>1,4,5</sup>

<sup>1</sup>School of Occupational Therapy, College of Medicine, National Taiwan University, Taipei, Taiwan

<sup>2</sup>Research Center for Psychological and Educational Testing, National Taiwan Normal University, Taipei, Taiwan

<sup>3</sup>Department of Occupational Therapy, College of Medicine, Fu Jen Catholic University, New Taipei, Taiwan

<sup>4</sup>Department of Physical Medicine and Rehabilitation, National Taiwan University Hospital, Taipei, Taiwan

<sup>5</sup>Department of Occupational Therapy, College of Medical and Health Science, Asia University, Taichung, Taiwan

**Corresponding Author:**

Ching-Lin Hsieh (clhsieh@ntu.edu.tw)

Tel: +886-2-3366-8177

**E-mail Addresses of the Authors:**

Gong-Hong Lin (f01429005@ntu.edu.tw)

Yi-Jing Huang (hicdigic@hotmail.com)

Yeh-Tai Chou (choucygloria2007@gmail.com)

Hsin-Yu Chiang (ariel.hychiang@gmail.com)

**KEYWORDS:**

Stroke, patient outcome assessment, motor skills, postural balance, activities of daily living, computerized adaptive testing, item response theory

**SUMMARY:**

Here, we present a protocol to develop the computerized adaptive testing system of the functional assessment of stroke (CAT-FAS). The CAT-FAS can simultaneously assess four functions (two motor functions [upper and lower extremities], postural control, and basic activities of daily living) with sufficient reliability and administrative efficiency.

**ABSTRACT:**

The computerized adaptive testing system of the functional assessment of stroke (CAT-FAS) can simultaneously assess four functions (motor functions of the upper and lower extremities, postural control, and basic activities of daily living) with sufficient reliability and administrative efficiency. CAT, a modern measurement method, aims to provide a reliable estimate of the examinee's level of function rapidly. CAT administers only a few items whose item difficulties match an examinee's level of function and, thus, the administered items of CAT can provide sufficient information to reliably estimate the examinee's level of function in a short time. The

CAT-FAS was developed through four steps: (1) determining the item bank, (2) determining the stopping rules, (3) validating the CAT-FAS, and (4) establishing a platform of online administration. The results of this study indicate that the CAT-FAS has sufficient administrative efficiency (average number of items = 8.5) and reliability (group-level Rasch reliability: 0.88 - 0.93; individual-level Rasch reliability:  $\geq 70\%$  of patients had Rasch reliability score  $\geq 0.90$ ) to simultaneously assess four functions in patients with stroke. In addition, because the CAT-FAS is a computer-based test, the CAT-FAS has three additional advantages: the automatic calculation of scores, the immediate storage of data, and the easy exporting of data. These advantages of the CAT-FAS will be beneficial to data management for clinicians and researchers.

## **INTRODUCTION:**

Dysfunctions of the upper and lower extremities (UE and LE), postural control, and basic activities of daily living (BADL) are major sequelae of stroke<sup>1-3</sup>. The assessment of these four functions in patients with stroke is fundamental for clinicians to evaluate patients' levels of dysfunctions, set treatment goals and plans, and monitor the longitudinal trajectories of these functions.

The Fugl-Meyer Assessment (FM),<sup>4</sup> the Postural Assessment Scale for Stroke patients (PASS),<sup>5</sup> and the Barthel Index (BI)<sup>6</sup> have good psychometric properties to assess the UE/LE motor functions, postural control, and BADL, respectively, in patients with stroke<sup>7-9</sup>. However, the total of 72 items from these three measures impedes the feasibility of assessing all three measures within a time-limited therapeutic session. A more efficient testing method is warranted. Computerized adaptive testing (CAT) is a modern measurement method. Compared with conventional measurement methods, CAT provides a more reliable estimate of the examinee's level of function in much less time<sup>10-12</sup>. In conventional measurement methods, each examinee receives the same test form (or item sets), in which many items are too difficult or too easy for the examinee. These items provide limited information for estimating the examinee's level of function and are time-intensive for examinees. In contrast, in CAT, each examinee gets a tailored item set, in which the difficulty level of the selected items meets the function level of the examinee. Because these items are tailored for that particular examinee, CAT can provide a more reliable estimate of the examinee's level of function with fewer items and, thus, in much less time. The steps of CAT development are shown in **Supplementary File 1: Appendix 1**.

Because CAT promises reliable and efficient assessments, the CAT-FAS was developed to improve the administrative efficiency of the three measures previously used (FM, PASS, and BI)<sup>13</sup>. This paper describes the development and administration of the CAT-FAS. This protocol provides information for researchers to develop their CATs and for prospective users of the CAT-FAS to administer it. We also address the strengths and weaknesses of the CAT-FAS.

## **PROTOCOL:**

This study protocol was approved by a local institutional review board, and all patients gave informed consent.

### **1. Development of the CAT-FAS**

89 1.1. Retrieve the secondary and encrypted data from the FAS study<sup>14</sup> to conduct simulations  
90 (Supplementary File 1: Appendix 2).

91  
92 NOTE: In the study, a total of 301 patients were recruited from a rehabilitation ward of a medical  
93 center and assessed at 14 d after stroke onset. Among the 301 patients, 262 patients were  
94 repeatedly assessed at 30 d after stroke onset. The study recruited patients who had (1) a  
95 diagnosis of stroke, (2) first onset of stroke, (3) onset of stroke within 14 d before hospitalization,  
96 (4) the ability to follow commands, and (5) the ability to give informed consent personally or by  
97 proxy. Patients who had other major diseases were excluded. In each assessment session,  
98 patients were assessed with the FM, PASS, and BI by a well-trained occupational therapist  
99 (Supplementary File 1: Appendices 3-5).

100  
101 1.1.1. Establish the item bank of the CAT-FAS by adopting the item bank of the FAS  
102 (Supplementary File 1: Appendix 2A).

103  
104 NOTE: The item bank has sufficient items fit the Rasch partial credit model<sup>15,16</sup> and covers a wide  
105 range of item difficulties. The item bank contains 58 items (Supplementary File 1: Appendix 3)  
106 selected from the FM-UE (26 items), FM-LE (11 items), PASS (12 items), and BI (nine items).

107  
108 1.1.2. Retrieve the item difficulties of all items in the item bank from the FAS study  
109 (Supplementary File 1: Appendix 2A - Item difficulty).

110  
111 NOTE: Each item in the item bank has a set of parameters to depict the difficulty of the item (*i.e.*,  
112 item difficulties), which are estimated by the Rasch partial credit model. The CAT-FAS uses the  
113 item difficulties to (1) select items with difficulties tailored to the examinee's level of function  
114 (step 1.3.3) and (2) estimate the examinee's level of function (step 1.3.5).

115  
116 1.1.3. Retrieve each patient's responses (*e.g.*, 0, 1, or 2 points) to the items of the item bank of  
117 the FAS (Supplementary File 1: Appendix 2B).

118  
119 NOTE: In previous studies<sup>14</sup>, all items of the item bank of the FAS were administered to the  
120 patients. In this simulation study, these responses of the patients were retrieved and used as the  
121 simulated responses (patients were not administered by the CAT-FAS) to the items of the CAT-  
122 FAS (step 1.3.4).

123  
124 1.1.4. Retrieve the ability distribution (*i.e.*, the standard deviation [SD] of the scores) of the  
125 patients in the four functions (BADL, postural control, and UE/LE motor functions;  
126 Supplementary File 1: Appendix 2C).

127  
128 NOTE: The abilities of the patients in the four functions are the final scores of the assessment of  
129 the item bank (Supplementary File 1: Appendix 2C). The scores (and SD of the scores) of the four  
130 functions are estimated in a previous study<sup>14</sup> by the Rasch partial credit model, based on the  
131 patients' responses to each item (step 1.1.3). In this study, the SD of the scores is retrieved and  
132 used as prior information to calculate the reliability of the CAT-FAS (step 1.3.6).

1.2. Determine the operational algorithms of the CAT-FAS (**Supplementary File 1: Appendix 7**).

1.2.1. Adopt the maximum *a posteriori* (MAP) method for estimating each patient's scores of the four functions with Newton-Raphson iteration<sup>17</sup>.

1.2.2. Use the criterion of D-optimality for the item selection<sup>18</sup>. An item with the maximum determinant of the Fisher information matrix is selected from the item bank for administration.

1.2.3. Adopt 10 candidate sets of stopping rules for exploring the properties of the CAT-FAS *via* simulation (**Supplementary File 1: Appendix 8**).

NOTE: The first five candidate sets are "reaching limited reliability increase (LRI) criterion" (*i.e.*, an LRI < 0.001, < 0.005, < 0.010, < 0.015, or < 0.020). The other five candidate sets are "reaching either LRI criterion or threshold of reliability" (*i.e.*, a Rasch reliability  $\geq 0.90$ , paired with the aforementioned five LRI criteria). The LRI and threshold of reliability are frequently adopted stopping rules in CATs<sup>13,17</sup>.

1.3. Explore the measurement reliability and efficiency (number of items needed for administration) of the CAT-FAS *via* steps 1.3.1 to 1.3.11 of simulation (**Figure 1**).

NOTE: **Supplementary File 1: Appendix 9** shows the screenshot of the software.

1.3.1. Use a specified set of stopping rules (*i.e.*, from the first to the last candidate sets of stopping rules which are in step 1.2.3, successively) to explore the properties of the CAT-FAS (**Figure 1A**).

1.3.2. Set the initial CAT-FAS scores of the four functions (BADL, postural control, UE motor function, and LE motor function) to 0 for specified patients (*i.e.*, from the first to the last patient in the data, successively; **Figure 1B,C**).

1.3.3. Adaptively select an item with the maximum determinant of the Fisher information matrix (*i.e.*, the criterion of D-optimality) from the item bank for administration (**Figure 1D**).

NOTE: The information matrix of each item is calculated based on a patient's scores of the four functions and the item's difficulty (from step 1.1.2). To ensure that the CAT-FAS administers at least one item in each function/domain, the first four items of the CAT-FAS are selected from the four functions.

1.3.4. Obtain the patient's response to the selected item from step 1.1.3 (**Figure 1E**).

1.3.5. Simultaneously estimate the CAT-FAS scores (and standard errors [SEs] of the scores) of the four functions using the MAP method with an iterative Newton-Raphson process (**Figure 1F**).<sup>19</sup> During the iterative Newton-Raphson process, renew the scores and SEs of the four

functions in each iteration until the criterion of convergence is met. Convergence occurs when the differences in scores between two consecutive iterations are  $<0.001$ .

1.3.6. Count the number of items which are administered, save the latest renewed CAT-FAS scores (and SEs), and calculate the individual-level Rasch reliability of each function using the following formula:

$$1 - ([SE^2 \text{ of step 1.3.5}] / [SD^2 \text{ of the scores of step 1.1.4}]).$$

1.3.7. Calculate the LRI using the last renewed individual-level Rasch reliability (step 1.3.6) minus that of the previous estimation (**Figure 1G**).

1.3.8. Check whether the specified set (*e.g.*, the first candidate set) of stopping rules is met (**Figure 1H**). If not, repeat steps 1.3.3 - 1.3.8 until the specified set of stopping rules is met. If so, save the latest renewed CAT-FAS scores (and SEs) as the final CAT-FAS scores (and SEs).

1.3.9. Repeat steps 1.3.2 to 1.3.8 until all patients' administrations are completed (**Figure 1I**).

1.3.10. Finish the simulation of the CAT-FAS with the specific set of stopping rules and save the results of the simulation (**Figure 1J**).

NOTE: The results should include (1) the final CAT-FAS scores (and SEs) of the four functions, (2) the number of items needed to complete the CAT-FAS, (3) the Rasch reliability of each patient (*i.e.*, individual-level Rasch reliability), and (4) the average Rasch reliability of all patients.

1.3.11. Repeat steps 1.3.1 to 1.3.11 to explore the properties of the CAT-FAS with other candidate sets of stopping rules until all candidate sets of stopping rules are explored (**Figure 1K**).

1.4. Select the final set of stopping rules for the CAT-FAS according to the average Rasch reliability of  $\geq 0.90$  in at least three functions and the average items of administration of  $\leq 10.0$ .

1.5. Develop an online administration platform for the CAT-FAS by writing a computer program to establish a website (**Supplementary File 1: Appendix 10**).

## 2. Administration of the CAT-FAS

2.1. Connect the examiner's electronic device (*e.g.*, personal computer, tablet, or smartphone) to the online administration platform of the CAT-FAS using an internet browser.

2.2. Log in to the administration system (**Supplementary File 1: Appendix 11**).

2.3. Click **Data management** to access data from previous examinees (**Supplementary File 1: Appendix 12**).

2.4. Click **New examinee** to create an account for a new examinee by entering the examinee's name and ID number.

2.5. Select an examinee and click **Start (Supplementary File 1: Appendix 13)**.

2.6. Click **New assessment** to create a new assessment or click **Results** to review the results of the examinee's previous assessments.

2.7. Administer the items shown on the screen to the examinee (**Supplementary File 1: Appendix 14**).

2.8. Rate the examinee's performance or responses by clicking the rating scale shown at the bottom of the screen (**Supplementary File 1: Appendix 14**).

2.9. Explain the results of the CAT-FAS to the examinee, including the T-scores with a 95% interval, the percentile ranks of the T-scores, and the reliabilities of the four functions of the CAT-FAS. These results are calculated and shown automatically by the CAT-FAS (**Supplementary File 1: Appendix 15**).

2.10. Click **OK** and return to the **Data management** page.

#### **REPRESENTATIVE RESULTS:**

The results of the simulation showed that the 10 candidate sets of stopping rules had sufficient average Rasch reliability (0.86 - 0.95) and varied administrative efficiency (the average number of items = 6.4 - 17.5). Considering the trade-off between reliability and administrative efficiency, the set of **LRI < 0.010** was selected as the optimal set of stopping rules for the CAT-FAS because of its sufficient average Rasch reliability (0.88 - 0.93, see **Table 1**), individual-level Rasch reliability ( $\geq 70\%$  of the patients had a Rasch reliability of  $\geq 0.90$ ), and administrative efficiency (the average number of items = 8.5, see **Table 2**).

#### **FIGURE AND TABLE LEGENDS:**

**Figure 1: Process of exploring the performance of the CAT-FAS via simulation analysis.** This figure shows the process of exploring the measurement reliability and efficiency (number of items needed for administration) of the CAT-FAS with 10 candidate sets of stopping rules.

**Table 1: Rasch reliability of the CAT-FAS.** For the CAT-FAS, the average Rasch reliability of the four functions ranged from 0.88 to 0.93, and the individual-level Rasch reliability shows  $\geq 70\%$  of the participants with a Rasch reliability of  $\geq 0.90$ .

**Table 2: Efficiency (number of items) of the CAT-FAS.** The average number of items needed for administration is 8.5. Most participants (66.4%) were assessed using 5 - 10 items.

#### **DISCUSSION:**

The results presented here showed that the CAT-FAS administered about 10% of the items in the original tests (the average number of items used in the CAT-FAS: 8.5 items vs. the original tests: 72 items). These findings indicate that the CAT-FAS has good administrative efficiency. The results were in line with previous studies, which reported that a CAT administered only about 10 items or less to assess social function, balance, or activities of daily living in patients with stroke<sup>10,11,20</sup>. The CAT-FAS, having good administrative efficiency, has great potential to reduce the time and burden for both patients and clinicians.

The average Rasch reliability of the CAT-FAS was 0.88 - 0.93, and more than 70% of the patients had a Rasch reliability of  $\geq 0.90$ . These results reveal a good Rasch reliability of the CAT-FAS in patients with stroke. The good Rasch reliability of the CAT-FAS can be ascribed to two factors: a sound item bank and the feature of multidimensionality. First, the item bank of the CAT-FAS contains 58 items that cover a wide range of functional level for each domain<sup>14</sup>. The sufficient item coverage of the item bank can provide sufficient information to reliably estimate the examinee's level of function. Second, the CAT-FAS is a multidimensional CAT (*i.e.*, four domains of the CAT-FAS), in which a patient's item response on any domain can be used to simultaneously estimate the patient's abilities (scores) of all four domains by considering the correlations among all domains. This feature of a multidimensional CAT has been proven to improve the Rasch reliability in previous studies on developing multidimensional CATs<sup>21,22</sup>. The CAT-FAS with good Rasch reliability can be used to precisely calibrate the patients' levels of the four functions (UE/LE motor function, postural control, and BADL) with limited random measurement error.

In addition, because the CAT-FAS is a computer-based test, the CAT-FAS has three additional advantages: an automatic calculation of scores, an immediate storage of data, and the easy exporting of data. The automatic calculation of scores saves examiners' time and reduces mistakes in scoring. The immediate storage of data improves the efficiency of monitoring an examinee's longitudinal changes in the four functions. The easy exporting of data enhances the efficiency of processing electronic medical records, sharing administration results between/within clinicians and patients, and analyzing data for research. These advantages of the CAT-FAS improve the overall efficiency of data management for clinicians and researchers.

The results presented here revealed that the CAT-FAS, with different sets of stopping rules, showed different performances on administrative efficiency and reliability. In general, a trade-off relationship was found between administrative efficiency and reliability. For example, the set of **LRI < 0.001** had a higher reliability and lower administrative efficiency compared to the set of **Rasch reliability  $\geq 0.90$  or LRI < 0.020**. The set of **LRI < 0.010** had both sufficient administrative efficiency and sufficient reliability, so it was selected as the final set of stopping rules for the CAT-FAS. If prospective users need the CAT-FAS to have a higher administrative efficiency or reliability, they can select another set of stopping rules for administering the CAT-FAS.

The first four items of the CAT-FAS were selected within each of the four domains. This design can prevent an unexpected situation that may occur in a multidimensional CAT. The unexpected situation is that a domain's score of a multidimensional CAT might be estimated without administering any items from that domain. The unexpected situation occurs because a



multidimensional CAT can use (1) the scores of the other domains and (2) the correlations among domains to estimate the scores of the domain without any items being administered<sup>15</sup>. In contrast, the CAT-FAS's item selection rule of the first four items promises that at least one item from each domain is administered. Thus, the CAT-FAS can provide more representative information to estimate patients' four functions.

Three limitations of the CAT-FAS are noticed. First, the training time for administration may be long because prospective users have to become familiar with the 58 items in the item bank, as well as with the instructions and rating criteria. Second, the four domains of the CAT-FAS cannot be administered separately. Third, the results presented here were from a simulated study instead of actual administrations of the CAT-FAS in patients with stroke. Therefore, the results may be somewhat different from those of an actual administration. Field tests of the CAT-FAS are warranted in the future.

#### **ACKNOWLEDGMENTS:**

This study was supported by research grants from the Ministry of Science and Technology (105-2314-B-002 -015 -MY3).

#### **DISCLOSURES:**

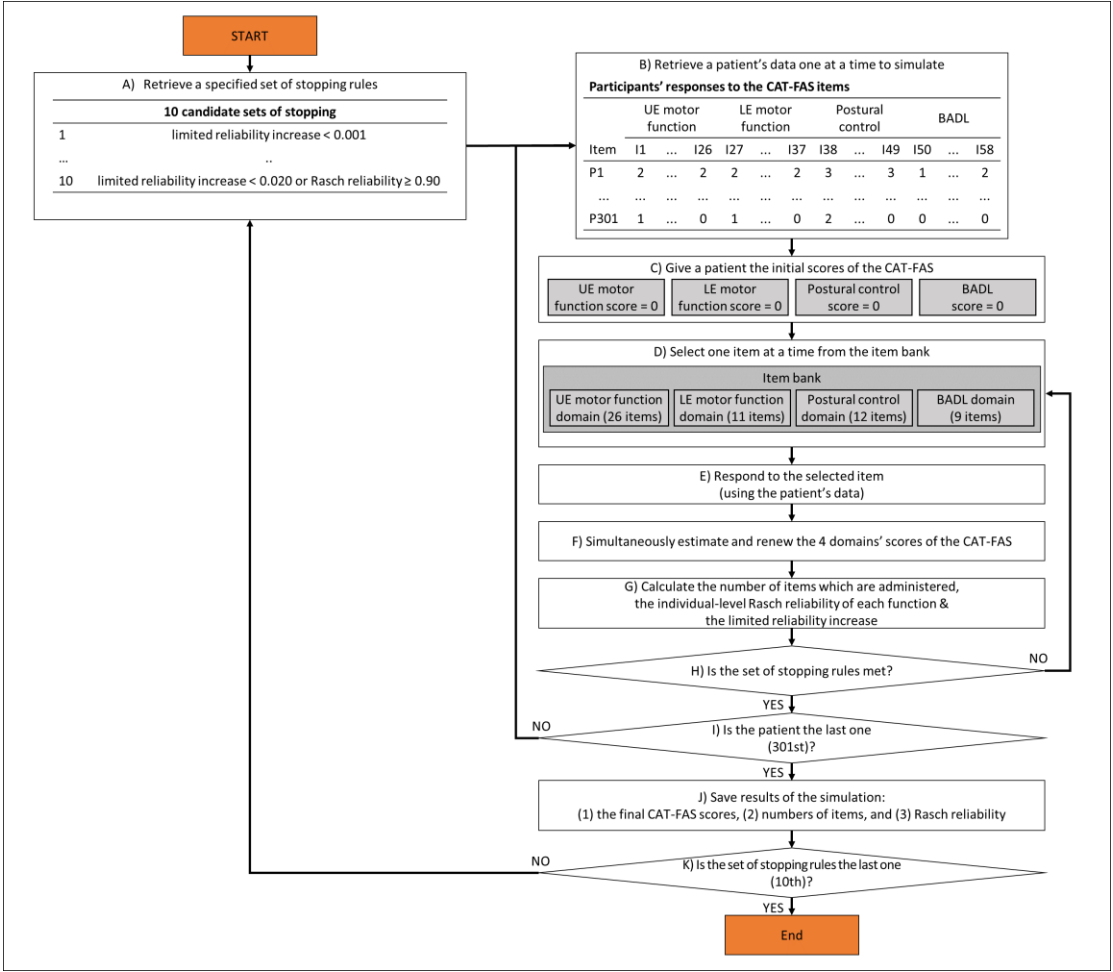
The authors have nothing to disclose.

#### **REFERENCES:**

1. Kim, S. S., Lee, H. J., You, Y. Y. Effects of ankle strengthening exercises combined with motor imagery training on the timed up and go test score and weight bearing ratio in stroke patients. *Journal of Physical Therapy Science*. **27** (7), 2303-2305 (2015).
2. Langhorne, P., Coupar, F., Pollock, A. Motor recovery after stroke: A systematic review. *Lancet Neurology*. **8** (8), 741-754 (2009).
3. Lum, P. S., Burgar, C. G., Shor, P. C., Majmundar, M., Van der Loos, M. Robot-assisted movement training compared with conventional therapy techniques for the rehabilitation of upper-limb motor function after stroke. *Archives of Physical Medicine and Rehabilitation*. **83** (7), 952-959 (2002).
4. Fugl-Meyer, A. R., Jaasko, L., Leyman, I., Olsson, S., Steglind, S. The post-stroke hemiplegic patient 1: A method for evaluation of physical performance. *Scandinavian Journal of Rehabilitation Medicine*. **7** (1), 13-31 (1975).
5. Benaïm, C., Perennou, D. A., Villy, J., Rousseaux, M., Pelissier, J. Y. Validation of a standardized assessment of postural control in stroke patients: The Postural Assessment Scale for Stroke Patients (PASS). *Stroke*. **30** (9), 1862-1868 (1999).
6. Mahoney, F. I., Barthel, D. W. Functional Evaluation: The Barthel Index. *Maryland State Medical Journal*. **14**, 61-65 (1965).

7. Duffy, L., Gajree, S., Langhorne, P., Stott, D. J., Quinn, T. J. Reliability (inter-rater agreement) of the Barthel Index for assessment of stroke survivors: Systematic review and meta-analysis. *Stroke*. **44** (2), 462-468 (2013).
8. Lin, J. H., Hsueh, I. P., Sheu, C. F., Hsieh, C. L. Psychometric properties of the sensory scale of the Fugl-Meyer Assessment in stroke patients. *Clinical Rehabilitation*. **18** (4), 391-397 (2004).
9. Mao, H. F., Hsueh, I. P., Tang, P. F., Sheu, C. F., Hsieh, C. L. Analysis and comparison of the psychometric properties of three balance measures for stroke patients. *Stroke*. **33** (4), 1022-1027 (2002).
10. Hsueh, I.-P. *et al.* Development of a computerized adaptive test for assessing balance function in patients with stroke. *Physical Therapy*. **90** (9), 1336-1344 (2010).
11. Hsueh, I.-P., Chen, J.-H., Wang, C.-H., Hou, W.-H., Hsieh, C.-L. Development of a computerized adaptive test for assessing activities of daily living in outpatients with stroke. *Physical Therapy*. **93** (5), 681-693 (2013).
12. Wong, A. W., Heinemann, A. W., Miskovic, A., Semik, P., Snyder, T. M. Feasibility of computerized adaptive testing for collection of patient-reported outcomes after inpatient rehabilitation. *Archives of Physical Medicine and Rehabilitation*. **95** (5), 882-891 (2014).
13. Lin, G.-H., Huang, Y.-J., Lee, S.-C., Huang, S.-L., Hsieh, C.-L. Development of a computerized adaptive testing system of the Functional Assessment of Stroke. *Archives of Physical Medicine and Rehabilitation*. **99** (4), 676-683 (2017).
14. Wang, Y.-L., Lin, G.-H., Yi-Jing, H., Chen, M.-H., Hsieh, C.-L. Refining three measures to construct an efficient Functional Assessment of Stroke. *Stroke*. **48** (6), 1630-1635 (2017).
15. Adams, R. J., Wilson, M., Wang, W.-c. The multidimensional random coefficients multinomial logit model. *Applied Psychological Measurement*. **21** (1), 1-23 (1997).
16. Masters, G. N. A Rasch model for partial credit scoring. *Psychometrika*. **47** (2), 149-174 (1982).
17. Wang, W.-C., Chen, P.-H. Implementation and measurement efficiency of multidimensional computerized adaptive testing. *Applied Psychological Measurement*. **28** (5), 295-316 (2004).
18. Mulder, J., Van der Linden, W. J. Multidimensional adaptive testing with optimal design criteria for item selection. *Psychometrika*. **74** (2), 273-296 (2009).
19. Segall, D. O. General ability measurement: An application of multidimensional item response theory. *Psychometrika*. **66** (1), 79-97 (2001).

20. Lee, S.-C. *et al.* Development of a social functioning assessment using computerized adaptive testing for patients with stroke. *Archives of Physical Medicine and Rehabilitation*. **99** (2), 306-313 (2018).
21. Paap, M. C. S. *et al.* Measuring patient-reported outcomes adaptively: Multidimensionality matters! *Applied Psychological Measurement*. **42** (5), 327-342 (2018).
22. Paap, M. C. S., Kroeze, K. A., Terwee, C. B., van der Palen, J., Veldkamp, B. P. Item usage in a multidimensional computerized adaptive test (MCAT) measuring health-related quality of life. *Quality of Life Research*. **26** (11), 2909-2918 (2017).



	Average	% of the patients with reliability $\geq 0.90$
CAT-FAS		
UE motor function	0.88	69.8
LE motor function	0.9	76.2
Postural control	0.93	88.6
BADL	0.9	78.9
Item bank (58 items)		
UE motor function	0.9	69.4
LE motor function	0.92	77.4
Postural control	0.96	96
BADL	0.94	93.4

UE: upper extremity; LE: lower extremity; BADL: basic activities of daily living

	Average	Range	% of the patients using 5–10 items	% of the patients using > 10 items
CAT-FAS	8.5	~4-13	66.4	19.5

Name of Material/ Equipment	Company
Computer	Any
MATLAB software	The MathWorks Inc
Java Development Kit	Oracle

**Catalog Number****Comments/Description**

<http://www.mathworks.com/products/matlab/>

<https://www.oracle.com/java/>

Compatible with software listed below

Numerical computing software, which

Programming language, which is used



$N$

$\gamma$  is used in the Protocol Section 1 (Step 1.3)

$l$  in the Protocol Section 1 (Step 1.5)



1 Alewife Center #200  
Cambridge, MA 02140  
tel. 617.945.9051  
[www.jove.com](http://www.jove.com)

## ARTICLE AND VIDEO LICENSE AGREEMENT

Title of Article:

The Computerized Adaptive Testing System of the Functional Assessment of Stroke

Author(s):

Gong-Hong Lin, Yi-Jing Huang, Yeh-Tai Chou, Hsin-Yu Chiang, Ching-Lin Hsieh

Item 1 (check one box): The Author elects to have the Materials be made available (as described at

<http://www.jove.com/author>) via: ☒ Standard Access ☐ Open Access

Item 2 (check one box):

☒ The Author is NOT a United States government employee.

☐ The Author is a United States government employee and the Materials were prepared in the course of his or her duties as a United States government employee.

☐ The Author is a United States government employee but the Materials were NOT prepared in the course of his or her duties as a United States government employee.

### ARTICLE AND VIDEO LICENSE AGREEMENT

1. Defined Terms. As used in this Article and Video License Agreement, the following terms shall have the following meanings: “**Agreement**” means this Article and Video License Agreement; “**Article**” means the article specified on the last page of this Agreement, including any associated materials such as texts, figures, tables, artwork, abstracts, or summaries contained therein; “**Author**” means the author who is a signatory to this Agreement; “**Collective Work**” means a work, such as a periodical issue, anthology or encyclopedia, in which the Materials in their entirety in unmodified form, along with a number of other contributions, constituting separate and independent works in themselves, are assembled into a collective whole; “**CRC License**” means the Creative Commons Attribution-Non Commercial-No Derivs 3.0 Unported Agreement, the terms and conditions of which can be found at: <http://creativecommons.org/licenses/by-nc-nd/3.0/legalcode>; “**Derivative Work**” means a work based upon the Materials or upon the Materials and other pre-existing works, such as a translation, musical arrangement, dramatization, fictionalization, motion picture version, sound recording, art reproduction, abridgment, condensation, or any other form in which the Materials may be recast, transformed, or adapted; “**Institution**” means the institution, listed on the last page of this Agreement, by which the Author was employed at the time of the creation of the Materials; “**JoVE**” means MyJove Corporation, a Massachusetts corporation and the publisher of *The Journal of Visualized Experiments*; “**Materials**” means the Article and / or the Video; “**Parties**” means the Author and JoVE; “**Video**” means any video(s) made by the Author, alone or in conjunction with any other parties, or by JoVE or its affiliates or agents, individually or in collaboration with the Author or any other parties, incorporating all or any portion of the Article, and in which the Author may or may not appear.

2. Background. The Author, who is the author of the Article, in order to ensure the dissemination and protection of the Article, desires to have the JoVE publish the Article and create and transmit videos based on the Article. In furtherance of such goals, the Parties desire to memorialize in this Agreement the respective rights of each Party in and to the Article and the Video.

3. Grant of Rights in Article. In consideration of JoVE agreeing to publish the Article, the Author hereby grants to JoVE, subject to **Sections 4** and **7** below, the exclusive, royalty-free, perpetual (for the full term of copyright in the Article, including any extensions thereto) license (a) to publish, reproduce, distribute, display and store the Article in all forms, formats and media whether now known or hereafter developed (including without limitation in print, digital and electronic form) throughout the world, (b) to translate the Article into other languages, create adaptations, summaries or extracts of the Article or other Derivative Works (including, without limitation, the Video) or Collective Works based on all or any portion of the Article and exercise all of the rights set forth in (a) above in such translations, adaptations, summaries, extracts, Derivative Works or Collective Works and (c) to license others to do any or all of the above. The foregoing rights may be exercised in all media and formats, whether now known or hereafter devised, and include the right to make such modifications as are technically necessary to exercise the rights in other media and formats. If the “Open Access” box has been checked in **Item 1** above, JoVE and the Author hereby grant to the public all such rights in the Article as provided in, but subject to all limitations and requirements set forth in, the CRC License.

## ARTICLE AND VIDEO LICENSE AGREEMENT

4. Retention of Rights in Article. Notwithstanding the exclusive license granted to JoVE in **Section 3** above, the Author shall, with respect to the Article, retain the non-exclusive right to use all or part of the Article for the non-commercial purpose of giving lectures, presentations or teaching classes, and to post a copy of the Article on the Institution's website or the Author's personal website, in each case provided that a link to the Article on the JoVE website is provided and notice of JoVE's copyright in the Article is included. All non-copyright intellectual property rights in and to the Article, such as patent rights, shall remain with the Author.

5. Grant of Rights in Video – Standard Access. This **Section 5** applies if the "Standard Access" box has been checked in **Item 1** above or if no box has been checked in **Item 1** above. In consideration of JoVE agreeing to produce, display or otherwise assist with the Video, the Author hereby acknowledges and agrees that, Subject to **Section 7** below, JoVE is and shall be the sole and exclusive owner of all rights of any nature, including, without limitation, all copyrights, in and to the Video. To the extent that, by law, the Author is deemed, now or at any time in the future, to have any rights of any nature in or to the Video, the Author hereby disclaims all such rights and transfers all such rights to JoVE.

6. Grant of Rights in Video – Open Access. This **Section 6** applies only if the "Open Access" box has been checked in **Item 1** above. In consideration of JoVE agreeing to produce, display or otherwise assist with the Video, the Author hereby grants to JoVE, subject to **Section 7** below, the exclusive, royalty-free, perpetual (for the full term of copyright in the Article, including any extensions thereto) license (a) to publish, reproduce, distribute, display and store the Video in all forms, formats and media whether now known or hereafter developed (including without limitation in print, digital and electronic form) throughout the world, (b) to translate the Video into other languages, create adaptations, summaries or extracts of the Video or other Derivative Works or Collective Works based on all or any portion of the Video and exercise all of the rights set forth in (a) above in such translations, adaptations, summaries, extracts, Derivative Works or Collective Works and (c) to license others to do any or all of the above. The foregoing rights may be exercised in all media and formats, whether now known or hereafter devised, and include the right to make such modifications as are technically necessary to exercise the rights in other media and formats. For any Video to which this Section 6 is applicable, JoVE and the Author hereby grant to the public all such rights in the Video as provided in, but subject to all limitations and requirements set forth in, the CRC License.

7. Government Employees. If the Author is a United States government employee and the Article was prepared in the course of his or her duties as a United States government employee, as indicated in **Item 2** above, and any of the licenses or grants granted by the Author hereunder exceed the scope of the 17 U.S.C. 403, then the rights granted hereunder shall be limited to the maximum rights permitted under such

statute. In such case, all provisions contained herein that are not in conflict with such statute shall remain in full force and effect, and all provisions contained herein that do so conflict shall be deemed to be amended so as to provide to JoVE the maximum rights permissible within such statute.

8. Likeness, Privacy, Personality. The Author hereby grants JoVE the right to use the Author's name, voice, likeness, picture, photograph, image, biography and performance in any way, commercial or otherwise, in connection with the Materials and the sale, promotion and distribution thereof. The Author hereby waives any and all rights he or she may have, relating to his or her appearance in the Video or otherwise relating to the Materials, under all applicable privacy, likeness, personality or similar laws.

9. Author Warranties. The Author represents and warrants that the Article is original, that it has not been published, that the copyright interest is owned by the Author (or, if more than one author is listed at the beginning of this Agreement, by such authors collectively) and has not been assigned, licensed, or otherwise transferred to any other party. The Author represents and warrants that the author(s) listed at the top of this Agreement are the only authors of the Materials. If more than one author is listed at the top of this Agreement and if any such author has not entered into a separate Article and Video License Agreement with JoVE relating to the Materials, the Author represents and warrants that the Author has been authorized by each of the other such authors to execute this Agreement on his or her behalf and to bind him or her with respect to the terms of this Agreement as if each of them had been a party hereto as an Author. The Author warrants that the use, reproduction, distribution, public or private performance or display, and/or modification of all or any portion of the Materials does not and will not violate, infringe and/or misappropriate the patent, trademark, intellectual property or other rights of any third party. The Author represents and warrants that it has and will continue to comply with all government, institutional and other regulations, including, without limitation all institutional, laboratory, hospital, ethical, human and animal treatment, privacy, and all other rules, regulations, laws, procedures or guidelines, applicable to the Materials, and that all research involving human and animal subjects has been approved by the Author's relevant institutional review board.

10. JoVE Discretion. If the Author requests the assistance of JoVE in producing the Video in the Author's facility, the Author shall ensure that the presence of JoVE employees, agents or independent contractors is in accordance with the relevant regulations of the Author's institution. If more than one author is listed at the beginning of this Agreement, JoVE may, in its sole discretion, elect not take any action with respect to the Article until such time as it has received complete, executed Article and Video License Agreements from each such author. JoVE reserves the right, in its absolute and sole discretion and without giving any reason therefore, to accept or decline any work submitted to JoVE. JoVE and its employees, agents and independent contractors shall have

## ARTICLE AND VIDEO LICENSE AGREEMENT

full, unfettered access to the facilities of the Author or of the Author's institution as necessary to make the Video, whether actually published or not. JoVE has sole discretion as to the method of making and publishing the Materials, including, without limitation, to all decisions regarding editing, lighting, filming, timing of publication, if any, length, quality, content and the like.

11. **Indemnification.** The Author agrees to indemnify JoVE and/or its successors and assigns from and against any and all claims, costs, and expenses, including attorney's fees, arising out of any breach of any warranty or other representations contained herein. The Author further agrees to indemnify and hold harmless JoVE from and against any and all claims, costs, and expenses, including attorney's fees, resulting from the breach by the Author of any representation or warranty contained herein or from allegations or instances of violation of intellectual property rights, damage to the Author's or the Author's institution's facilities, fraud, libel, defamation, research, equipment, experiments, property damage, personal injury, violations of institutional, laboratory, hospital, ethical, human and animal treatment, privacy or other rules, regulations, laws, procedures or guidelines, liabilities and other losses or damages related in any way to the submission of work to JoVE, making of videos by JoVE, or publication in JoVE or elsewhere by JoVE. The Author shall be responsible for, and shall hold JoVE harmless from, damages caused by lack of sterilization, lack of cleanliness or by contamination due to the making of a video by JoVE its employees, agents or independent contractors. All sterilization, cleanliness or decontamination procedures shall be solely the responsibility of the Author and shall be undertaken at the Author's


expense. All indemnifications provided herein shall include JoVE's attorney's fees and costs related to said losses or damages. Such indemnification and holding harmless shall include such losses or damages incurred by, or in connection with, acts or omissions of JoVE, its employees, agents or independent contractors.

12. **Fees.** To cover the cost incurred for publication, JoVE must receive payment before production and publication the Materials. Payment is due in 21 days of invoice. Should the Materials not be published due to an editorial or production decision, these funds will be returned to the Author. Withdrawal by the Author of any submitted Materials after final peer review approval will result in a US\$1,200 fee to cover pre-production expenses incurred by JoVE. If payment is not received by the completion of filming, production and publication of the Materials will be suspended until payment is received.

13. **Transfer, Governing Law.** This Agreement may be assigned by JoVE and shall inure to the benefits of any of JoVE's successors and assignees. This Agreement shall be governed and construed by the internal laws of the Commonwealth of Massachusetts without giving effect to any conflict of law provision thereunder. This Agreement may be executed in counterparts, each of which shall be deemed an original, but all of which together shall be deemed to be one and the same agreement. A signed copy of this Agreement delivered by facsimile, e-mail or other means of electronic transmission shall be deemed to have the same legal effect as delivery of an original signed copy of this Agreement.

Assigned copy of this document must be sent with all new submissions. Only one Agreement required per submission.

### CORRESPONDING AUTHOR:

Name:	Ching-Lin Hsieh	
Department:	School of Occupational Therapy	
Institution:	College of Medicine, National Taiwan University	
Article Title:	The Computerized Adaptive Testing System of the Functional Assessment of Stroke	
Signature:		Date: 2018/3/12

Please submit a signed and dated copy of this license by one of the following three methods:

- 1) Upload a scanned copy of the document as a pdf on the JoVE submission site;
- 2) Fax the document to +1.866.381.2236;
- 3) Mail the document to JoVE / Attn: JoVE Editorial / 1 Alewife Center #200 / Cambridge, MA 02139

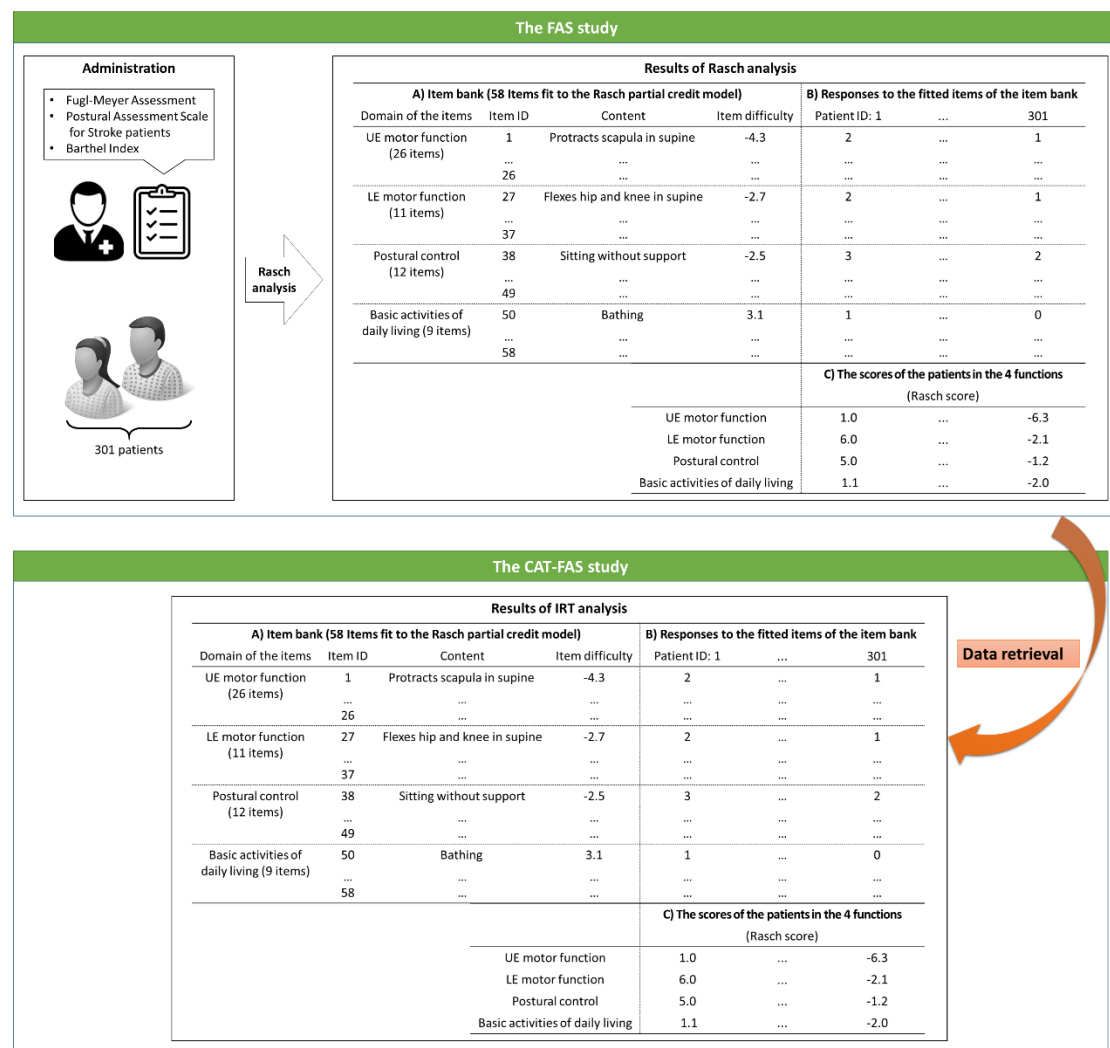
For questions, please email [submissions@jove.com](mailto:submissions@jove.com) or call +1.617.945.9051

• **Protocol:**

1) We target 1 page of filmable content in the protocol. This article lacks filmable content as we cannot film section 1. Can steps to perform FAS be shown to demonstrate how the item bank is built? This can be added as a subsection under section 1.

Response: We have added the illustration of the steps of the FAS study to the Supplementary File 1: Appendix 2 as follows: “

**Appendix 2. Data retrieval of the CAT-FAS study**



”. (Supplementary File 1: Appendix 2)

2) Several specific comments have been made on your protocol steps in the attached word doc.

Response: We have revised the manuscript according to the specific comments in the word doc. Please find the tracked changes and our responses to the specific comments in the revised manuscript.

- **Protocol Highlight:** Please highlight ~1-2.5 pages text (which includes headings and spaces) in yellow, to identify which steps should be visualized to tell the most cohesive story of your protocol steps.

1) I have highlighted steps that can be filmed. We ideally need >1-1.5 pages of filmable content in the protocol. Please see the first comment on section 1.

Response: We have highlighted the steps of the Protocol section 1 that can be filmed as follows: “

## 1 Development of the CAT-FAS

1.1 Retrieve the secondary and encrypted data from the FAS study<sup>14</sup> to conduct simulations (Supplementary File 1: Appendix 2).

1.1.1 Establish the item bank of the CAT-FAS by adopting the item bank of the FAS (Supplementary File 1: Appendix 2.A).

1.1.2 Retrieve the item difficulties of all items in the item bank from the FAS study (Supplementary File 1: Appendix 2.A. Item difficulty).

1.1.3 Retrieve each patient's responses (e.g., 0, 1, or 2 points) to the items of the item bank of the FAS (Supplementary File 1: Appendix 2.B).

1.1.4 Retrieve the ability distribution (*i.e.*, SD of the scores) of the patients in the 4 functions (BADL, postural control, UE/LE motor functions; Supplementary File 1: Appendix 2.C).

1.2 Determine the operational algorithms of the CAT-FAS (Supplementary File 1: Appendix 4).

1.2.1 Adopt the maximum *a posteriori* (MAP) method for estimating each patient's scores of the 4 functions with Newton-Raphson iteration.<sup>17</sup>

1.2.2 Use the criterion of D-optimality for item selection.<sup>18</sup> An item with the maximum determinant of the Fisher information matrix is selected from the item bank for administration.

1.2.3 Adopt 10 candidate sets of stopping rules for exploring properties of the CAT-FAS *via* simulation (Supplementary File 1: Appendix 5).

1.3 Explore the measurement reliability and efficiency (number of items needed for administration) of the CAT-FAS *via* steps 1.3.1 to 1.3.11 of simulation (Figure 1).

1.3.1 Use a specified set of stopping rules (*i.e.*, from the first to the last candidate sets of stopping rules which are in step 1.2.3, successively) to explore the properties of the CAT-FAS (Figure 1.A).



1.3.2 Set initial CAT-FAS scores of the 4 functions (BADL, postural control, UE motor function, and LE motor function) to 0 for specified patients (i.e., from the first to the last patient in the data, successively; Figure 1.B and C).

1.3.3 Adaptively select an item with the maximum determinant of the Fisher information matrix (i.e., the criterion of D-optimality) from the item bank for administration (Figure 1.D). The information matrix of each item is calculated based on a patient's scores of the 4 functions and the item difficulty (from step 1.1.2). To ensure that the CAT-FAS administers at least one item in each function/domain, the first 4 items of the CAT-FAS are selected from the 4 functions.

1.3.4 Obtain the patient's response to the selected item from step 1.1.3 (Figure 1.E).

1.3.5 Simultaneously estimate the CAT-FAS scores [and standard errors (SEs) of the scores] of the 4 functions using the MAP method with an iterative Newton-Raphson process (Figure 1.F).<sup>19</sup> During the iterative Newton-Raphson process, renew the scores and SEs of the 4 functions in each iteration until the criterion of convergence is met. Convergence occurs when the differences of scores between two consecutive iterations  $< 0.001$ .

1.3.6 Count the number of items which are administered, save the latest renewed CAT-FAS scores (and SEs), and calculate the individual-level Rasch reliability of each function using the following formula:  $1 - ([SE^2 \text{ of step 1.3.5}] / [SD^2 \text{ of the scores of step 1.1.4}])$  (Figure 1.G).

1.3.7 Calculate LRI using the last renewed individual-level Rasch reliability (1.3.6) minus that of the previous estimation (Figure 1.G).

1.3.8 Check whether the specified set (e.g., the first candidate set) of stopping rules is met (Figure 1.H). If not, repeat steps 1.3.3 to 1.3.8 until the specified set of stopping rules is met. If so, save the latest renewed CAT-FAS scores (and SEs) as the final CAT-FAS scores (and SEs).

1.3.9 Repeat steps 1.3.2 to 1.3.8 until all patients' administrations are completed (Figure 1.I).

1.3.10 Finish the simulation of the CAT-FAS with the specific set of stopping rules and save the results of the simulation (Figure 1.J).

1.3.11 Repeat steps 1.3.1 to 1.3.11 to explore the properties of the CAT-FAS with other candidate sets of stopping rules until all candidate sets of stopping rules are explored (Figure 1.K).

1.4 Select the final set of stopping rules for the CAT-FAS according to the average Rasch reliability  $\geq 0.90$  in at least 3 functions and the average items of administration  $\leq 10.0$ .

1.5 Develop an online administration platform of the CAT-FAS by writing a computer program to establish a website (Supplementary File 1: Appendix 7).

” (Lines 90–209, Pages 3–5, Protocol section 1)

2) The highlighted steps should form a cohesive narrative, that is, there must be a logical flow from one highlighted step to the next.

Response: Thank you for your reminder. We have highlighted the steps to form a cohesive narrative.

3) Notes cannot be filmed and should be excluded from highlighting.

Response: We did not highlight the text in the notes.

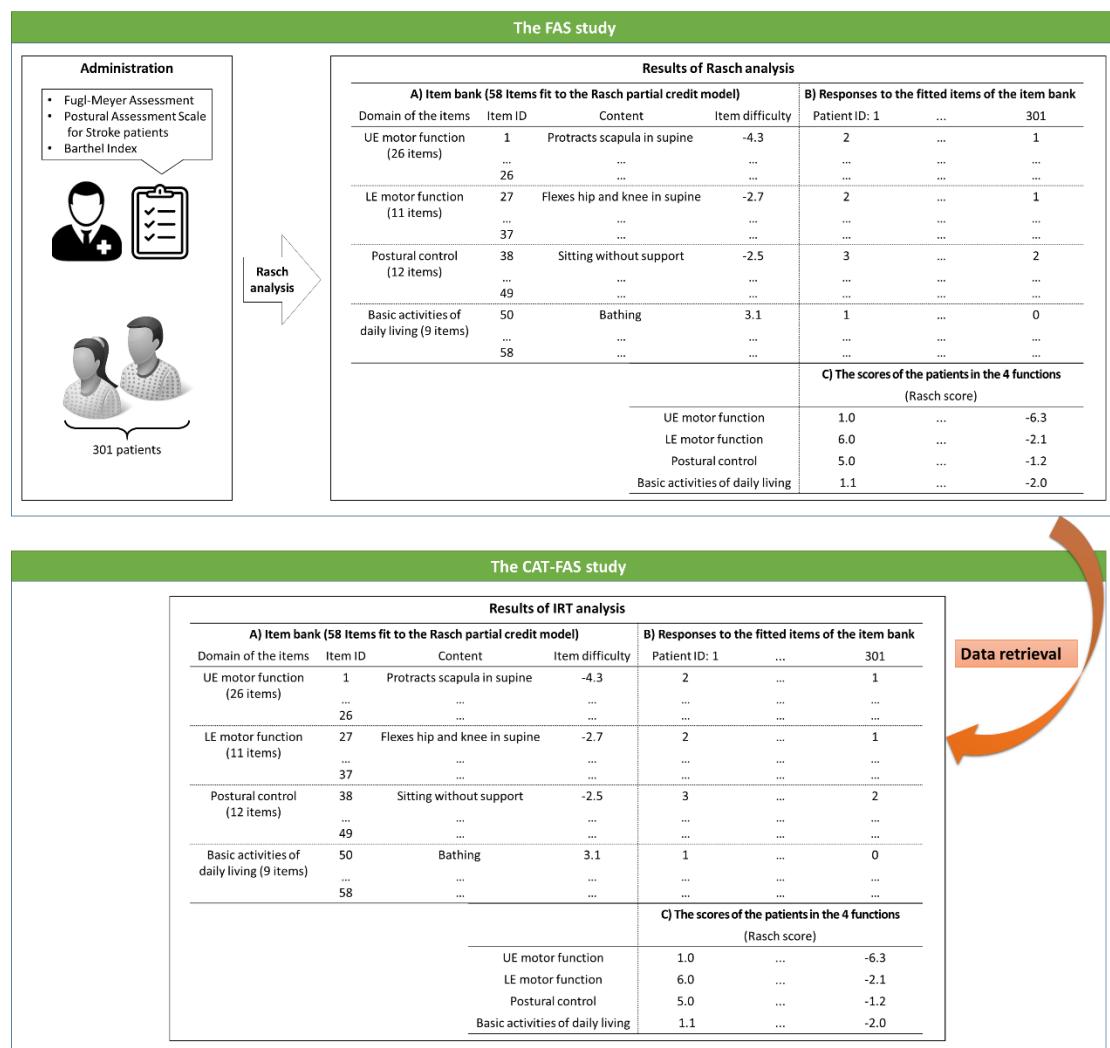
4) Please bear in mind that software steps without a graphical user interface/calculations/ command line scripting (e.g. section 1) cannot be filmed.

Response: We have added 4 figures to the Supplementary File 1 to illustrate each step of the section 1 of the Protocol as follows: “

1.1 Retrieve the secondary and encrypted data from the FAS study<sup>14</sup> to conduct simulations (Supplementary File 1: Appendix 2).



## Appendix 2. Data retrieval of the CAT-FAS study



1.1.1 Establish the item bank of the CAT-FAS by adopting the item bank of the FAS (Supplementary File 1: Appendix 2.A).

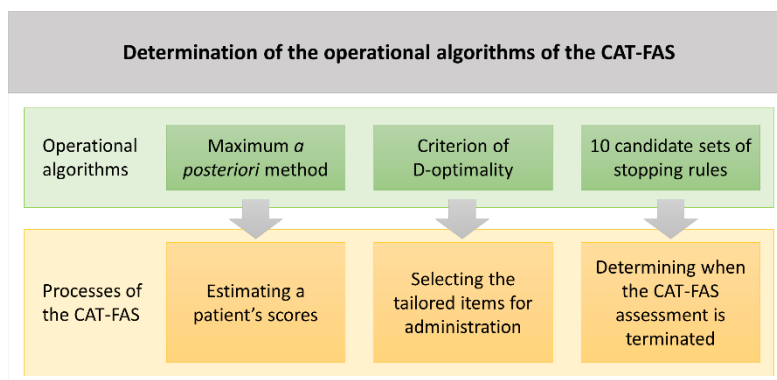
1.1.2 Retrieve the item difficulties of all items in the item bank from the FAS study (Supplementary File 1: Appendix 2.A. Item difficulty).

1.1.3 Retrieve each patient's responses (e.g., 0, 1, or 2 points) to the items of the item bank of the FAS (Supplementary File 1: Appendix 2.B).

1.1.4 Retrieve the ability distribution (i.e., SD of the scores) of the patients in the 4 functions (BADL, postural control, UE/LE motor functions; Supplementary File 1: Appendix 2.C).

1.2 Determine the operational algorithms of the CAT-FAS (Supplementary File 1: Appendix 4).

## Appendix 4. Determination of the operational algorithms of the CAT-FAS



1.2.3 Adopt 10 candidate sets of stopping rules for exploring properties of the CAT-FAS *via* simulation (Supplementary File 1: Appendix 5).

## Appendix 5. 10 candidate sets of stopping rules.

### 10 candidate sets of stopping rules

#### Reaching limited reliability increase (LRI) criterion

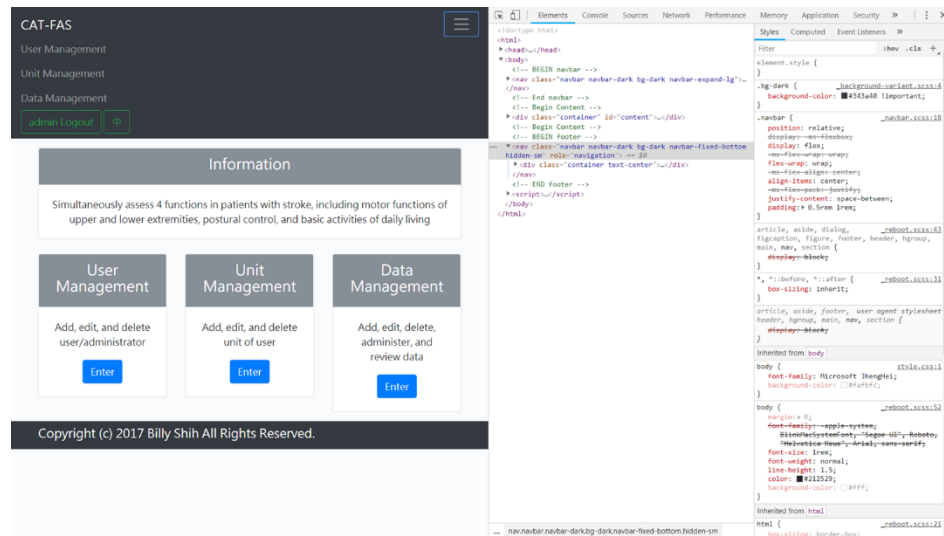
- 1 LRI < 0.001
- 2 LRI < 0.005
- 3 LRI < 0.010
- 4 LRI < 0.015
- 5 LRI < 0.020

#### Reaching either LRI criterion or threshold of reliability

- 6 LRI < 0.001 or Rasch reliability  $\geq 0.90$
- 7 LRI < 0.005 or Rasch reliability  $\geq 0.90$
- 8 LRI < 0.010 or Rasch reliability  $\geq 0.90$
- 9 LRI < 0.015 or Rasch reliability  $\geq 0.90$
- 10 LRI < 0.020 or Rasch reliability  $\geq 0.90$

1.5 Develop an online administration platform of the CAT-FAS by writing a computer program to establish a website (Supplementary File 1: Appendix 7).

## Appendix 7. Screenshot of the development of the online administration platform of the CAT-FAS



” (Lines 92–209, Pages 3–5, Protocol section 1)

- **Figures:** Fig 1 needs to be referenced somewhere in your manuscript text.

Response: We have added the reference to Figure 1 in Step 1.3 as follows:

“1.3 Explore the measurement reliability and efficiency (number of items needed for administration) of the CAT-FAS *via* steps 1.3.1 to 1.3.11 of simulation (Figure 1).” (Lines 154–155, Page 4, Protocol section 1)

- **Figure/Table Legends:** Please expand the legends to adequately describe the figures/tables. Each figure or table must have an accompanying legend including a short title, followed by a short description of each panel and/or a general description.

Response: We have added the general description of each figure and table as follows: “Figure 1: Process of exploring performance of the CAT-FAS *via* simulation analysis. The process of exploring the measurement reliability and efficiency (number of items needed for administration) of the CAT-FAS with 10 candidate sets of stopping rules.” (Lines 258–260, Page 6, Figure and table legends),

“Table 1: Rasch reliability of the CAT-FAS. For the CAT-FAS, the average Rasch reliability of the 4 functions ranges from 0.88 to 0.93, and individual-level Rasch reliability shows  $\geq 70\%$  of participants with Rasch reliability  $\geq 0.90$ .” (Lines 262–264, Page 7, Figure and table legends), and

“Table 2: Efficiency (number of items) of the CAT-FAS. The average number of items needed for administration is 8.5. Most participants (66.4%) were assessed using 5–10 items.” (Lines 266–267, Page 7, Figure and table legends)

• **Table of Materials:** Please revise the table of the essential supplies, reagents, and equipment. The table should include the name, company, and catalog number of all relevant materials/software in separate columns in an xls/xlsx file. Please include items such as software used.

Response: We have added the information on the software that was used in this study to the table of the essential supplies as follows: “

Name of Material/ Equipment	Company	Catalog Number	Comments/Description
Computer	Any		Compatible with software listed below
MATLAB software	The MathWorks Inc.	<a href="http://www.mathworks.com/products/matlab/">http://www.mathworks.com/products/matlab/</a>	Numerical computing software, which is used in the Protocol Section 1 (Step 1.3)
Java Development Kit	Oracle	<a href="https://www.oracle.com/java/">https://www.oracle.com/java/</a>	Programming language, which is used in the Protocol Section 1 (Step 1.5)

” (Table of the essential supplies)

**Table 1:** Rasch reliability of the CAT-FAS

	Average	% of the patients with reliability $\geq 0.90$
CAT-FAS		
UE motor function	0.88	69.8
LE motor function	0.90	76.2
Postural control	0.93	88.6
BADL	0.90	78.9
Item bank (58 items)		
UE motor function	0.90	69.4
LE motor function	0.92	77.4
Postural control	0.96	96.0
BADL	0.94	93.4

UE: upper extremity; LE: lower extremity; BADL: basic activities of daily living.

**Table 2:** Efficiency (number of items) of the CAT-FAS

	Average	Range	% of the patients using 5–10 items	% of the patients using > 10 items
CAT-FAS	8.5	4~13	66.4	19.5

**Appendix 1.** Steps of development of computerized adaptive testing

In general, a computerized adaptive testing (CAT) is developed through 5 stages: (1) Development of an item pool, (2) Field testing of the item pool, (3) Establishment of a calibrated item bank, (4) Simulation study to determine a set of stopping rules, and (5) Development of an administration platform of the CAT.

(1) Development of an item pool.

CAT developers have to establish a pool of items by designing new items or selecting items from existing tests/scales. The item pool should include items with varied difficulty for examinees.

(2) Field testing of the item pool.

CAT developers administer the item pool to target subjects with sufficient sample size, and the subjects' level of function (or ability) should range from low to high.

(3) Establishment of a calibrated item bank.

CAT developers analyze the data of field testing using IRT software to obtain the fitness and calibrated item parameters of each item in the item pool. Thereafter, CAT developers remove the items with poor fitness from the item pool and retain or select partial items with varied item parameters to establish the calibrated item bank of the CAT.

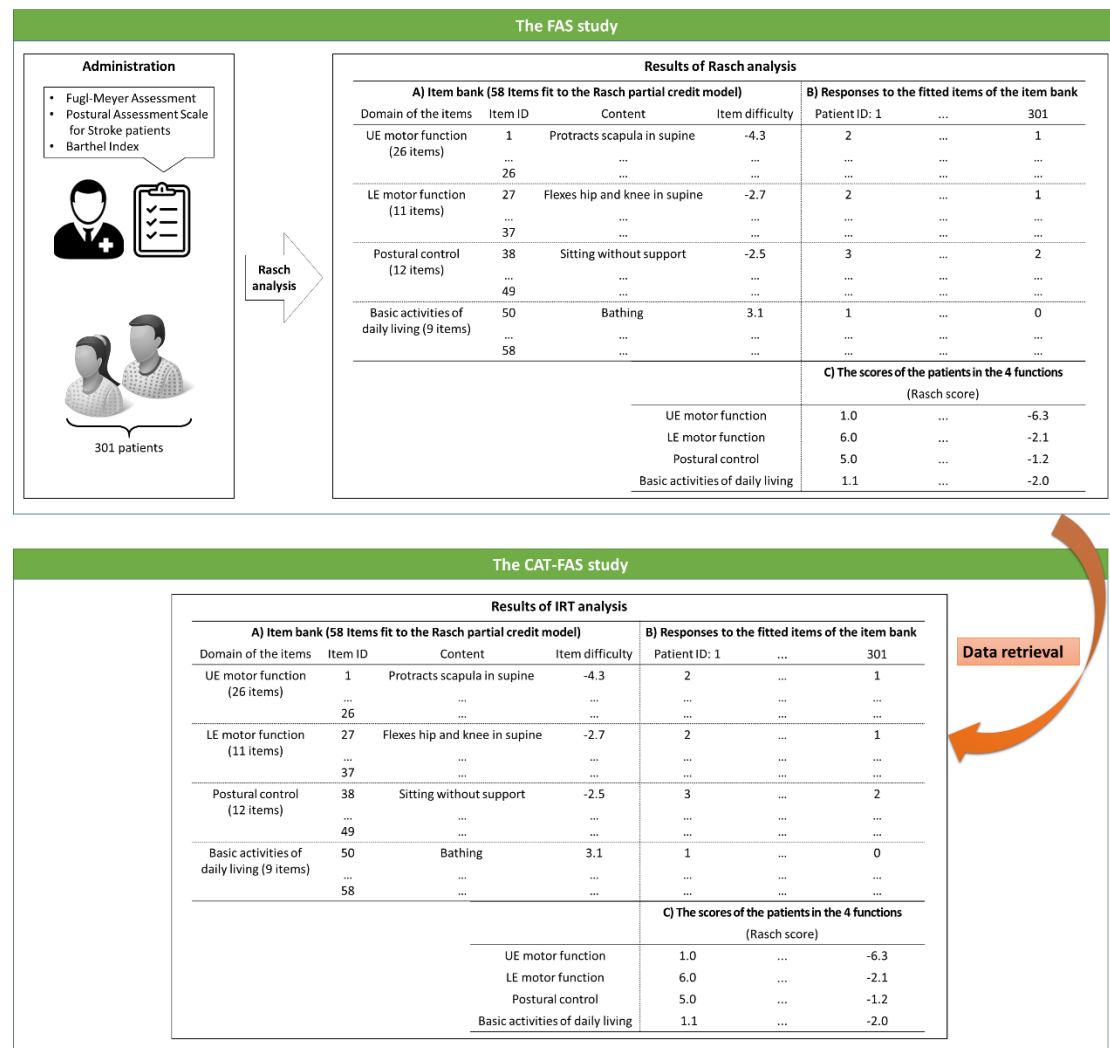
(4) Simulation study to determine a set of stopping rules

CAT developers conduct a simulation study to explore the CAT's performance (reliability and number of items administered) when the CAT adopts different sets of stopping rules. In general, the larger the number of items administered in a CAT, the higher the reliability. Therefore, CAT developers should determine a set of stopping rules with optimal balance between the reliability and the number of items administered.

(5) Development of an administration platform of CAT

CAT developers should develop a website/software/APP for administering the CAT to improve the accessibility for users.

## Appendix 2. Data retrieval of the CAT-FAS study





## Appendix 3. Fugl-Meyer Assessment

### Fugl-Meyer Motor Assessment\_U/E & L/E

#### ©Upper Extremity

##### A. SHOULDER/ELBOW/FOREARM

1. Reflex-activity	a	Flexors	0	1	2
	b	Extensors	0	1	2
2. a. flexor synergy					
Shoulder		Retraction	0	1	2
		Elevation	0	1	2
		Abduction	0	1	2
		Outwards rotation	0	1	2
Elbow		Flexion	0	1	2
Forearm		Supination	0	1	2
b. extensor synergy					
Shoulder		Add-/Inw. rotation	0	1	2
Elbow		Extension	0	1	2
Forearm		Pronation	0	1	2
3. Hand to lumbar spine			0	1	2
Shoulder		Flexion 0-90	0	1	2
Elbow 90		Pro-/Supination	0	1	2
4. Shoulder		Abduction 0-90	0	1	2
		Flexion 90-180	0	1	2
Elbow 0		Pro-/Supination	0	1	2
5. Normal reflex-activity	a	Flexors/ Extensors	0	1	2

##### B. WRIST

1. Elbow 90		Wrist-stability	0	1	2
		Wrist-flexion/extension	0	1	2
2. Elbow 0		Wrist-stability	0	1	2
		Wrist-flexion/extension	0	1	2
Circumduction			0	1	2

##### C. HAND

1. Finger		Mass flexion	0	1	2
		Mass extension	0	1	2
2. Grasp	a	MP joints extended, PIPs & DIPs flexed; grasp is tested against resistance	0	1	2
	b	Patient is instructed to adduct thumb, all other joints at 0	0	1	2

	c	Opposes thumb pad of index finger; a pencil is interposed	0	1	2
	d	Patient grasps a cylinder-shaped object (small can), with the volar surfaces of the first and second fingers against each other	0	1	2
	e	A spherical grasp; patient grasps a tennis ball	0	1	2

#### D. COORDINATION/SPEED

Finger to nose (5 repetitions)		Tremor	0	1	2
		Dysmetria	0	1	2
		Time	0	1	2

### ©LOWER EXTREMITY

#### E. HIP/KNEE/ANKLE

2. HIP/KNEE/ANKLE					
1. Reflex-activity		Flexors	0	2	
		Extensors	0	2	
2. a. flexor synergy					
Hip		Flexion	0	1	2
Knee		Flexion	0	1	2
Ankle		Dorsi-flexion	0	1	2
b. extensor synergy					
Hip		Extension	0	1	2
		Adduction	0	1	2
Knee		Extension	0	1	2
Ankle		Plantar flexion	0	1	2
3. Knee (sitting)		Flexion	0	1	2
Ankle		Dorsi-flexion	0	1	2
4. Knee (standing)		Flexion	0	1	2
Ankle		Dorsi-flexion	0	1	2
5. Normal reflex-activity		Flexors/ Extensors	0	1	2

#### F. COORDINATION/SPEED

Heel to opposite knee (5 repetitions)		Tremor	0	1	2
		Dysmetria	0	1	2
		Time	0	1	2

Fugl-Meyer, A. R., Jaasko, L., Leyman, I., Olsson, S. & Steglind, S. The post-stroke hemiplegic patient 1: A method for evaluation of physical performance. *Scandinavian Journal of Rehabilitation Medicine*. **7** (1), 13-31, (1975).

## Appendix 4. Postural Assessment Scale for Stroke patients

**Postural Assessment Scale for Stroke patients**

<i>Maintaining a Posture</i>				
1. Sitting without support (sitting on the edge of an 50-cm-high examination table [a Bobath plane, for instance] with the feet touching the floor)	0 cannot sit	1 can sit with slight support, for example, by one hand	2 can sit for more than 10 seconds without support	3 can sit for 5 minutes without support
2. Standing with support (feet position free, no other constraints)	0 cannot stand, even with support	1 can stand with strong support of 2 people	2 can stand with moderate support of 1 people	3 can stand with support of only 1 hand
3. Standing without support (feet position free, no other constraints)	0 cannot stand without support	1 can stand without support for 10 seconds or leans heavily on 1 leg	2 can stand without support for 1 minute or stands slightly asymmetrically	3 can stand without support for more than 1 minute and at the same time perform arm movements above the shoulder level
4. Standing on nonparetic leg (no other constraints)	0 cannot stand on nonparetic leg	1 can stand on nonparetic leg for a few seconds	2 can stand on nonparetic leg for more than 5 seconds	3 can stand on nonparetic leg for more than 10 seconds
5. Standing on paretic leg (no other constraints)	0 cannot stand on paretic leg	1 can stand on paretic leg for a few seconds	2 can stand on paretic leg for more than 5 seconds	3 can stand on paretic leg for more than 10 seconds
<i>B. Changing Posture</i>				
Scoring of items 6 to 12 is as follows (items 6 to 11 are to be performed with a 50-cm-high examination table, like a Bobath plane; items 10 to 12 are to be performed without any support; no other constraints):				
	cannot perform the activity	can perform the activity with much help	can perform the activity with little help	can perform the activity without help
6. Supine to affected side lateral	0	1	2	3
7. Supine to nonaffected side lateral	0	1	2	3
8. Supine to sitting up on the edge of the table	0	1	2	3
9. Sitting on the edge of the table to supine	0	1	2	3
10. Sitting to standing up	0	1	2	3
11. Standing up to sitting down	0	1	2	3
12. Standing, picking up a pencil from the floor	0	1	2	3

Benaïm, C., Perennou, D. A., Villy, J., Rousseaux, M. & Pelissier, J. Y. Validation of a standardized assessment of postural control in stroke patients: The Postural Assessment Scale for Stroke Patients (PASS). *Stroke*. 30 (9), 1862-1868, (1999).

## Appendix 5. Barthel Index

# Barthel Index

**Instructions:** Choose the scoring point for the statement that most closely corresponds to the patient's current level of ability for each of the following 10 items. Record actual, not potential, functioning. Information can be obtained from the patient's self-report, from a separate party who is familiar with the patient's abilities (such as a relative), or from observation. Refer to the Guidelines section on the following page for detailed information on scoring and interpretation.

### Bowels

- 0 = incontinent (or needs to be given enemas)
- 1 = occasional accident (once/week)
- 2 = continent

Patient's Score: \_\_\_\_\_

### Bladder

- 0 = incontinent, or catheterized and unable to manage
- 1 = occasional accident (max. once per 24 hours)
- 2 = continent (for over 7 days)

Patient's Score: \_\_\_\_\_

### Grooming

- 0 = needs help with personal care
- 1 = independent face/hair/teeth/shaving (implements provided)

Patient's Score: \_\_\_\_\_

### Toilet use

- 0 = dependent
- 1 = needs some help, but can do something alone
- 2 = independent (on and off, dressing, wiping)

Patient's Score: \_\_\_\_\_

### Feeding

- 0 = unable
- 1 = needs help cutting, spreading butter, etc.
- 2 = independent (food provided within reach)

Patient's Score: \_\_\_\_\_

### Transfer

- 0 = unable – no sitting balance
- 1 = major help (one or two people, physical), can sit
- 2 = minor help (verbal or physical)
- 3 = independent

Patient's Score: \_\_\_\_\_

### Mobility

- 0 = immobile
- 1 = wheelchair independent, including corners, etc.
- 2 = walks with help of one person (verbal or physical)
- 3 = independent (but may use any aid, e.g., stick)

Patient's Score: \_\_\_\_\_

### Dressing

- 0 = dependent
- 1 = needs help, but can do about half unaided
- 2 = independent (including buttons, zips, laces, etc.)

Patient's Score: \_\_\_\_\_

### Stairs

- 0 = unable
- 1 = needs help (verbal, physical, carrying aid)
- 2 = independent up and down

Patient's Score: \_\_\_\_\_

### Bathing

- 0 = dependent
- 1 = independent (or in shower)

Patient's Score: \_\_\_\_\_

**Total Score:** \_\_\_\_\_

(Collin et al., 1988)

### Scoring:

Sum the patient's scores for each item. Total possible scores range from 0 – 20, with lower scores indicating increased disability. If used to measure improvement after rehabilitation, changes of more than two points in the total score reflect a probable genuine change, and change on one item from fully dependent to independent is also likely to be reliable.

### Sources:

- Collin C, Wade DT, Davies S, Horne V. The Barthel ADL Index: a reliability study. *Int Disabil Stud.* 1988;10(2):61-63.
- Mahoney FI, Barthel DW. Functional evaluation: the Barthel Index. *Md State Med J.* 1965;14:61-65.
- Wade DT, Collin C. The Barthel ADL Index: a standard measure of physical disability? *Int Disabil Stud.* 1988;10(2):64-67.

## **Appendix 6.** The 58 items of the CAT-FAS

---

### Item of the CAT-FAS

---

#### FM-UE subset

1. Shoulder retraction
  2. Shoulder elevation
  3. Shoulder abduction
  4. Shoulder external rotation
  5. Elbow flexion
  6. Forearm supination
  7. Shoulder adduction/internal rotation
  8. Elbow extension
  9. Forearm pronation
  10. Hand to lumbar spine
  11. Shoulder flexion 0° to 90°
  12. Elbow 90° pronation/supination
  13. Shoulder abduction 0° to 90°
  14. Shoulder flexion 90° to 180°
  15. Elbow 0° pronation/supination
  16. Elbow 90° wrist stability
  17. Elbow 90° wrist flexion/extension
  18. Elbow 0° wrist stability
  19. Elbow 0° wrist flexion/extension
  20. Circumduction
  21. Hand, mass extension
  22. Hook grasp
  23. Lateral prehension
  24. Palmar prehension
  25. Cylinder grip
  26. Spherical grip
- 

#### FM-LE subset

27. Hip flexion, supine
28. Knee flexion, supine
29. Hip extension, supine
30. Hip adduction, supine
31. Knee extension, supine
32. Ankle plantar flexion, supine
33. Knee flexion, sitting
34. Ankle dorsiflexion, sitting

- 35. Knee flexion to 90°, standing
  - 36. Ankle dorsiflexion, standing
  - 37. Heel to opposite knee, time
- 

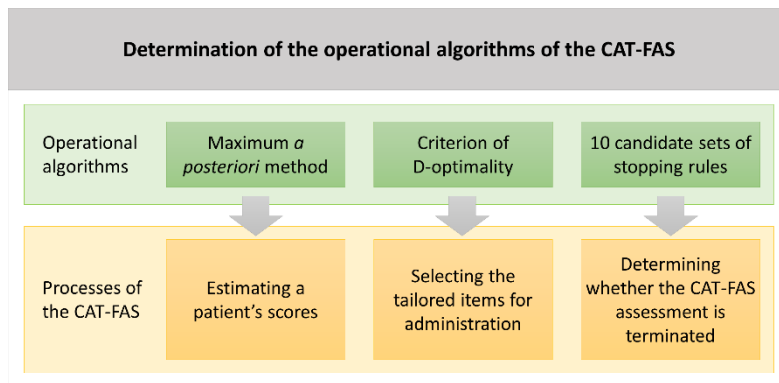
PASS subset

- 38. Sitting without support
  - 39. Standing with support
  - 40. Standing without support
  - 41. Standing on unaffected leg
  - 42. Standing on paretic leg
  - 43. Supine to affected side lateral
  - 44. Supine to unaffected side lateral
  - 45. Supine to sitting up on the edge of the table
  - 46. Sitting on the edge of the table to supine
  - 47. Sitting to standing up
  - 48. Standing up to sitting down
  - 49. Standing, picking up a pencil from floor
- 

BI subset

- 50. Bathing
  - 51. Grooming
  - 52. Dressing
  - 53. Bowels
  - 54. Bladder
  - 55. Toilet use
  - 56. Transfers
  - 57. Mobility
  - 58. Stairs
-

## Appendix 7. Determination of the operational algorithms of the CAT-FAS



## **Appendix 8. 10 candidate sets of stopping rules**

---

### **10 candidate sets of stopping rules**

---

Reaching limited reliability increase (LRI) criterion

---

1      LRI < 0.001

2      LRI < 0.005

3      LRI < 0.010

4      LRI < 0.015

5      LRI < 0.020

---

Reaching either LRI criterion or threshold of reliability

---

6      LRI < 0.001 or Rasch reliability  $\geq 0.90$

7      LRI < 0.005 or Rasch reliability  $\geq 0.90$

8      LRI < 0.010 or Rasch reliability  $\geq 0.90$

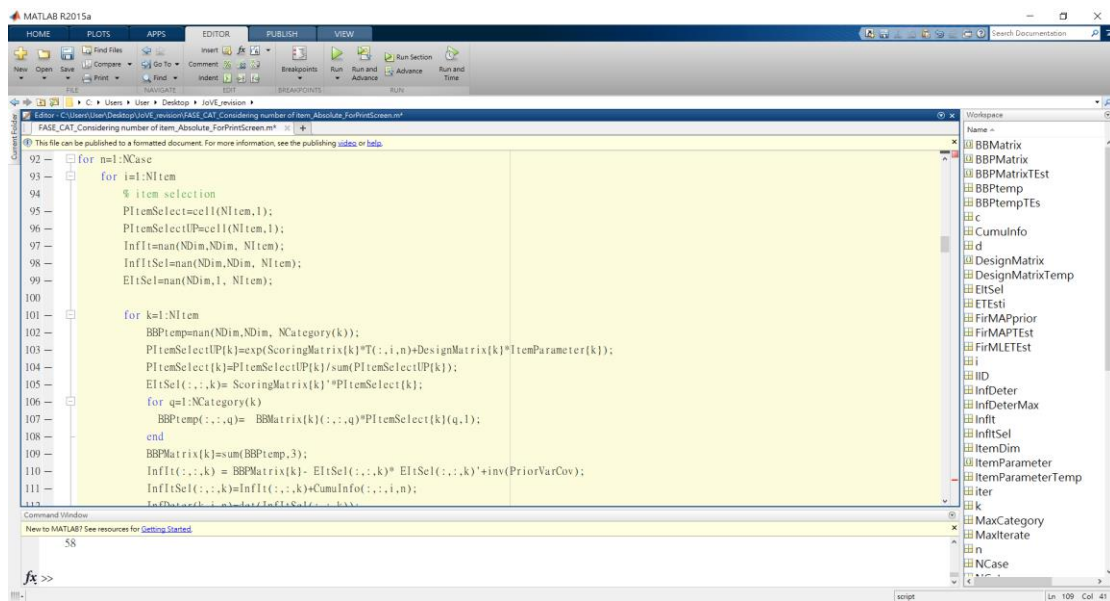
9      LRI < 0.015 or Rasch reliability  $\geq 0.90$

10     LRI < 0.020 or Rasch reliability  $\geq 0.90$

---



## Appendix 9. Screenshot of the software conducting simulation of the CAT-FAS



## Appendix 10. Screenshot of the development of the online administration platform of the CAT-FAS

The screenshot displays the development environment for the CAT-FAS online administration platform. The interface is divided into two main sections: the user interface on the left and the browser's developer tools on the right.

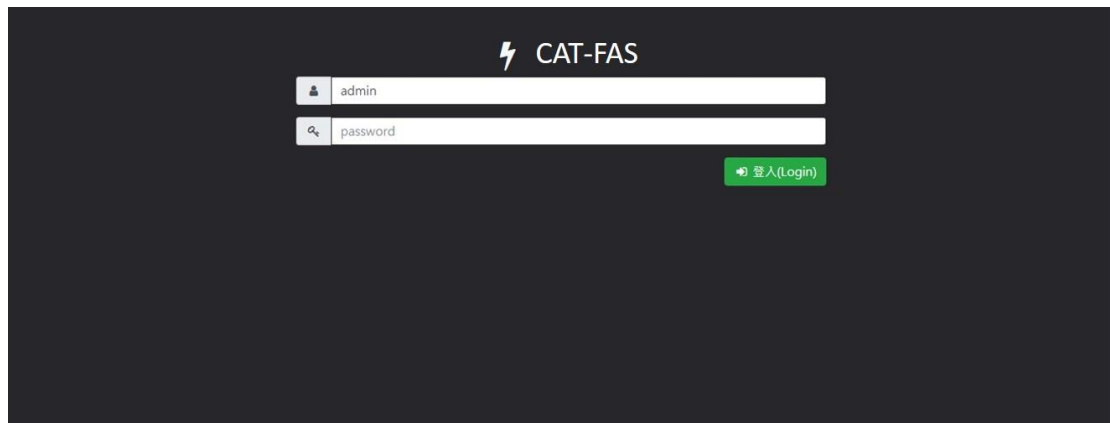
**User Interface (Left):**

- Header:** CAT-FAS logo and a hamburger menu icon.
- Navigation:** Links for User Management, Unit Management, Data Management, admin Logout, and a user profile icon.
- Main Content:**
  - Information:** A section titled "Information" with the text: "Simultaneously assess 4 functions in patients with stroke, including motor functions of upper and lower extremities, postural control, and basic activities of daily living".
  - User Management:** A card with the title "User Management" and the description "Add, edit, and delete user/administrator". It includes a blue "Enter" button.
  - Unit Management:** A card with the title "Unit Management" and the description "Add, edit, and delete unit of user". It includes a blue "Enter" button.
  - Data Management:** A card with the title "Data Management" and the description "Add, edit, delete, administer, and review data". It includes a blue "Enter" button.
- Footer:** Copyright (c) 2017 Billy Shih All Rights Reserved.

**Developer Tools (Right):**

- Elements:** Shows the HTML structure of the page, including the header, main content, and footer. The selected element is the "nav" element with the class "navbar navbar-dark bg-dark navbar-expand-lg".
- Styles:** Shows the CSS styles applied to the selected element. The styles include background-color, position, display, flex-wrap, flex-direction, flex-align, align-items, justify-content, padding, and font-family.

## Appendix 11. Login page of the CAT-FAS



The image shows the login page of the CAT-FAS system. The page has a dark blue background. At the top center, there is a logo consisting of a white lightning bolt icon followed by the text "CAT-FAS" in white. Below the logo, there are two white input fields. The first field is for the username, with a small user icon on the left and the text "admin" entered. The second field is for the password, with a small eye icon on the left and the text "password" entered. To the right of the password field, there is a green button with a white right-pointing arrow and the text "登入(Login)" in white.

## Appendix 12. Home page of the CAT-FAS

CAT-FAS

User Management

Unit Management

Data Management

admin Logout

Information

Simultaneously assess 4 functions in patients with stroke, including motor functions of upper and lower extremities, postural control, and basic activities of daily living

User Management

Add, edit, and delete user/administrator

Enter

Unit Management

Add, edit, and delete unit of user

Enter

Data Management

Add, edit, delete, administer, and review data

Enter

Copyright (c) 2017 Billy Shih All Rights Reserved.

Appendix 13. Data management page of the CAT-FAS

CAT-FAS

User ManagementUnit ManagementData Management

admin Logout 中

Data management

New subjectExport data

Display 10 records per pageSearch

ID	Chart Number	Full name	Gender	Date of birth		
1	1234	billy	Male	1234-12-12	Start	EditDelete

Showing 1 to 1 of 1Prev1Next

Copyright (c) 2017 Billy Shih All Rights Reserved.

## Appendix 14. Example of an item of the CAT-FAS

CAT-FAS

User Management

Unit Management

Data Management

admin Logout

中

No. 1

Function : UE motor

Item : Hand to lumbar spine

Introduction/Note : Put your affected hand behind your back

Start position : Sitting with hand resting on lap

☐ 0 No active motion

☐ 1 Partial motion

☐ 2 Full motion

Next >

Copyright (c) 2017 Billy Shih All Rights Reserved.

## Appendix 15. Results of the CAT-FAS administration

CAT-FASUser ManagementUnit ManagementData Managementadmin Logout

Result (Mode: high reliability)  
Number of items : 5 ; Time of assessment : 164124 ms

Function	T-score	95% CI(upper limit)	95% CI(lower limit)	Percentile Rank	Reliability
UE motor	51.06	53.43	48.69	50	0.99
LE motor	51.39	56.03	46.75	51	0.94
Postural control	52.81	57.19	48.43	57	0.95
Basic activities of daily living	53.02	58.20	47.84	58	0.93

Finish

Copyright (c) 2017 Billy Shih All Rights Reserved.