

# Journal of Visualized Experiments

## Nondestructive monitoring of degradable scaffold-based tissue-engineered blood vessel development using optical coherence tomography --Manuscript Draft--

Article Type:	Invited Methods Article - JoVE Produced Video
Manuscript Number:	JoVE58040R2
Full Title:	Nondestructive monitoring of degradable scaffold-based tissue-engineered blood vessel development using optical coherence tomography
Keywords:	vascular tissue engineering; bioengineering; optical coherence tomography; polyglycolic acid; biodegradation; mechanical conditions
Corresponding Author:	Zhanyi Lin CHINA
Corresponding Author's Institution:	
Corresponding Author E-Mail:	linzhanyi@hotmail.com
Order of Authors:	Wanwen Chen Shangmin Liu Junqing Yang Yueheng Wu Wentao Ma Zhanyi Lin
Additional Information:	
Question	Response
Please indicate whether this article will be Standard Access or Open Access.	Standard Access (US\$2,400)
Please indicate the <b>city, state/province, and country</b> where this article will be <b>filmed</b> . Please do not use abbreviations.	Guangdong General Hospital, No.106, Zhongshan Er Road, Yuxiu District, Guangzhou, Guangdong, China

**TITLE:**

Nondestructive Monitoring of Degradable Scaffold-Based Tissue-Engineered Blood Vessel Development Using Optical Coherence Tomography

**AUTHORS AND AFFILIATIONS:**

Wanwen Chen<sup>1</sup>, Shangmin Liu<sup>2</sup>, Junqing Yang<sup>1</sup>, Yueheng Wu<sup>2</sup>, Wentao Ma<sup>2</sup>, Zhanyi Lin<sup>3</sup>

<sup>1</sup>Department of Cardiology, Guangdong Academy of Medical Sciences, Guangdong General Hospital, Guangzhou, China

<sup>2</sup>Medical Research Center, Guangdong Academy of Medical Sciences, Guangdong General Hospital, Guangzhou, China

<sup>3</sup>Institute of Geriatric medicine, Guangdong Academy of Medical Sciences, Guangdong General Hospital, Guangzhou, China

**Corresponding Author:**

Zhanyi Lin (linzhanyi@hotmail.com)

Tel: +86-20-83827812-70499

**Email Addresses of Co-authors:**

Wanwen Chen (wwchen07@hotmail.com)

**KEYWORDS:**

Bioengineering, optical coherence tomography, vascular tissue engineering, polyglycolic acid, biodegradation, mechanical conditions

**SUMMARY:**

A stepwise protocol for nondestructive and long-period monitoring of vascular remodeling and scaffold degradation in a real-time culture of biodegradable polymeric scaffold-based tissue-engineered blood vessels with pulsatile stimulation is presented, using optical coherence tomography.

**ABSTRACT:**

Engineered vascular grafts with structural and mechanical properties similar to natural blood vessels are expected to meet the growing demand for arterial bypass. The characterization of the growth dynamics and remodeling process of degradable polymer scaffold-based tissue-engineered blood vessels (TEBVs) with pulsatile stimulation is crucial for vascular tissue engineering. Optical imaging techniques stand out as powerful tools for monitoring the vascularization of engineered tissue, enabling high-resolution imaging in real-time culture. This paper demonstrates a nondestructive and fast real-time imaging strategy to monitor the growth and remodeling of TEBVs in long-term culture by using optical coherence tomography (OCT). The geometric morphology is evaluated, including the vascular remodeling process, the wall thickness, and a comparison of TEBV thickness at different culture time points and in the presence of pulsatile stimulation. Finally, OCT provides practical possibilities for the real-time observation of the degradation of polymer in reconstructing tissues under pulsatile stimulation or not and in each vessel segment, compared with the assessment of polymer degradation using

a scanning electron microscope (SEM) and a polarized microscope.

## **INTRODUCTION:**

TEBVs are of the most promising material as an ideal vascular graft<sup>1</sup>. In order to develop grafts that are clinically useful, with structural and functional properties that are similar to those of native vessels, multiple techniques have been designed to maintain vascular function<sup>2,3</sup>. Although there have been engineered vessels with acceptable patency rates during implantation and in phase III clinical study<sup>4</sup>, long-term culture and high costs also show the necessity of monitoring the development of TEBVs. Trying to understand extracellular matrix (ECM) growth, remodeling, and adaptation processes in TEBVs in the biomimetic chemo-mechanical environment can provide crucial information for the development of vascular tissue engineering.

The ideal strategy to track the development of small-diameter engineered vessels<sup>5</sup> should be nondestructive, sterile, longitudinal, three-dimensional, and quantitative. TEBVs under different culture conditions could be assessed by this imaging modality, even including changes before and after vascular transplantation. Strategies to describe features of living engineered vessels are needed. Optical imaging techniques allow the visualization and quantification of tissue deposition and biomaterials. Other advantages are the possibility to enable deep-tissue and label-free imaging with high resolution<sup>6,7</sup>. However, image-specific molecules and less easily accessible optical equipment for real-time monitoring are significant practical obstacles, which have limited the extensive application of nonlinear optical microscopy. OCT is an optical approach with intravascular imaging modality as a widely-used clinical tool to guide cardiac interventional therapy<sup>8</sup>. In the literature, the method of OCT has been reported as a way to assess the wall thickness of TEBVs<sup>9,10</sup>, coupled with affirmative imaging modalities for vascular tissue-engineering research, whereas the dynamics of engineered vascular growth and remodeling has not been observed.

In this manuscript, we detail the preparation of biodegradable polymeric scaffold-based TEBVs for a four-weeks culture. Human umbilical arteries vascular smooth muscle cells (HUASMCs) are expanded and seeded into porous degradable polyglycolic acid (PGA) scaffolds in the bioreactor. Biodegradable polymers play the role of a temporary substrate for the tissue engineering and have a certain degradation rate<sup>11</sup>. In order to ensure an appropriate match between scaffold degradation and neo-tissue formation, ECM and PGA scaffolds are crucial factors for effective vascular remodeling. The perfusion system simulates the biomechanical microenvironment of native vessels and maintains a consistent deformation under pressure stimulation.

The aim of the presented protocol is to describe a relatively simple and nondestructive strategy for TEBVs imaging and the long-term monitoring of culture. This protocol can be utilized for the visualization of morphological changes and thickness measurements of engineered vessels under different culture conditions. Additionally, the analyses of polymer-based materials degradation in the tissue-engineering scaffolds can be performed for the identification. By combining the use of an SEM and a polarized microscope in this protocol, a correlation and quantification of ECM distribution and PGA degradation can be made, which can facilitate assessing scaffold degradation combined with OCT imaging.

**PROTOCOL:**

**1. Degradable PGA Scaffold-based Tissue-engineered Vessels Culture**

**1.1. PGA scaffold fabrication**

1.1.1. Sew PGA mesh (19 mm in diameter and 1 mm thick) around silicone tubing sterilized by ethylene oxide (17 cm in length, 5.0 mm in diameter, and 0.3 mm thick) using a 5-0 suture.

1.1.2. Sew polytetrafluoroethylene (ePTFE, 1 cm in length) with a 4-0 suture onto each end of the PGA mesh, overlapped by 2 mm.

1.1.3. Dip PGA scaffolds in 1 mol/L NaOH for 1 min to adjust the spatial structure of the mesh and soak it with tissue culture grade water 3x for 2 min each. Each time, gently pat dry the scaffold with a tissue paper. Then, dry up the scaffolds in a hood with a blower for 1 h.

**1.2. Assembly of the bioreactor and the Y-junction for OCT imaging**

1.2.1. Soak the self-developed glass cylindrical bioreactor (10 cm in diameter and 11.7 cm in height, with four lips inside and four side-arms outside the reactor as shown in **Figure 1**), PGA scaffolds, silicone tube (with an external diameter of 5 mm and a thickness of 0.3 mm), biocompatible tubes, and connectors in a 95% ethanol tank for 2 h.

1.2.2. Pull the PGA scaffold through the side-arms of the bioreactor connected to one side with a connector, as well as to another side with the Y-junction used to deliver OCT guidewire. Assemble another PGA scaffold in the bioreactor in the same way. Please refer to **Figure 1**.

1.2.3. Fit ePTFE to the bioreactor lips by tightening it with 5-0 sutures.

1.2.4. Put the bioreactor in the ethanol tank again for 1 h and dry up overnight in a hood with the blower on.

**1.3. Seeding of HUASMCs and static bioreactor conditioning**

1.3.1. Isolate HUASMCs from human umbilical arteries by standard explant techniques.

1.3.2. Expand and maintain the cells in smooth muscle cell growth medium composed of DMEM medium, 20% fetal bovine serum, 2.36 mg/mL HEPES, 100 U/mL penicillin G, 50 µg/mL proline, 20 µg/mL alanine, 50 µg/mL glycine, 1.5 µg/mL CuSO<sub>4</sub>, 50 µg/mL ascorbic acid, 10 ng/mL basic fibroblast growth factor, and 10 ng/mL platelet-derived growth factor.

1.3.3. Seed HUASMCs at a concentration of  $5 \times 10^6$  cells/mL in the above culture medium onto the PGA scaffolds.

133  
134 1.3.4. Insert one feeding tube (5 mm in diameter, 15 cm in length) and three short tubing  
135 segments (5 mm in diameter, 7 cm in length) for gas exchange through the silicone stopper lid.  
136 Attach PTFE 0.22- $\mu$ m filters to each air change tube and one heparin cap to the feeding tube.

137  
138 1.3.5. Put a stir bar (1.5 cm in length) in the bioreactor with a stirring speed of 13 rounds/min.  
139 Assemble the glass bioreactor, silicone stopper lid, and PGA scaffold into the culture system.

140  
141 1.3.6. Allow HUASMCs to adhere for 45 min by leaning the bioreactor every 15 min with stand,  
142 to the left and right. The reactor ports and joints are all sealed with paraffin film.

143  
144 1.3.7. Fill the culture chamber with 450 mL of the HUASMCs culture medium. Place the overall  
145 bioreactor in a humidified incubator with 5% CO<sub>2</sub> at 37 °C.

146  
147 1.3.8. Connect the Luo-Ye pump, phosphate buffered saline (PBS) bag, and driver with the  
148 biocompatible tubes to create the perfusion system. Open the driver to fill the tubes with PBS.

149  
150 1.3.9. Press the stop button and turn off the power of the drive device. Grow the seeded scaffolds  
151 under static culture for one week.

152  
153 1.3.10. Change the culture medium every 3 - 4 d by aspirating half of the old medium through  
154 the feeding tube and refilling the reactor with an equivalent amount of fresh culture medium.

## 155 156 **1.4. Preparation of the perfusion system for OCT imaging**

157  
158 1.4.1. Pump fluids in the PBS bag to circulate them through the biocompatible tubes and back to  
159 the bag.

160  
161 1.4.2. Open the power of the driver and regulate the pump setting with a frequency of 60  
162 beats/min and an output systolic pressure of 120 mmHg. Adjust the mechanical parameters  
163 according to the needs of the tissue-engineering vascular culture.

164  
165 1.4.3. Click the run button to make the perfusion system work. Provide the above fixed pulsatile  
166 stimulation to the vessels for 3 weeks by iteratively pressurizing the biocompatible tubes<sup>10,12</sup>  
167 after 1 week of static culture.

## 168 169 **2. Performing Optical Imaging with OCT**

170  
171 2.1. Use a light source to ensure the axial resolution of 15 - 20  $\mu$ m and the image depth of 1 - 2  
172 mm to identify the structure of the TEBVs based on the frequency-domain OCT intravascular  
173 imaging system<sup>9</sup>.

174  
175 2.2. Turn on the power switch and open the image capture software.  
176

2.3. Connect the fiber optic imaging catheter to the drive-motor and optical controller (DOC) with the catheter automatic retreat function.

2.4. Set the parameters of the image acquisition rate to 50 frames/s with an automatic pullback speed of 10 mm/s.

2.5. Attach the imaging catheter to the Y-junction *via* the heparin cap with an 18-G needle.

2.6. Place the catheter into the silicone tube and identify the suture tightness of the PGA mesh before loading the PGA scaffold onto the bioreactor.

2.7. Place the catheter tip over the region of interest. Adjust the pullback device and check for the image quality<sup>8</sup>.

2.8. Acquire images at 1, 4, 7, 10, 14, 17, 21, and 28 days in culture for each individual TEBV and save them sequentially with a real-time observation of the TEBV microstructure, including surface morphology, internal structure, and composition.

2.9. Repeat the measurement 3x to get a reliable measurement of the engineered vessels each time. Capture a series of images throughout testing using the image capture software.

### **3. Imaging Analysis**

3.1. Use image analysis software to measure the TEBV wall thickness. Select the image to be analyzed. Click the tracking tool to automatically identify the inner side of the TEBV with the software and manually sketch the outer side. A diagram of thickness will appear on the screen.

3.2. Repeat the measurement for 5x to get a reliable measurement of the constructs. The OCT analysis was performed by two independent investigators blinded to the obtained information.

### **4. Harvest of the TEBVs and Tissue Processing**

4.1. Open the silicone stopper lid placed over the bioreactor when the culture is finished and discard the culture medium. Lose the ePTFE from the bioreactor lips and cut the silicone tubes from the outer side of the ePTFE with scissors. Harvest TEBVs from the bioreactor and cut them into sections for a scanning electron microscopy examination.

4.2. Take out the rest of the TEBVs and cut them into 4- $\mu$ m thick sections. Pull out the supporting silicone tube and fix the sections with 1% paraformaldehyde. Perform routine histological staining with Masson's trichrome and Sirius red to examine the morphology of collagen and PGA<sup>10,13,14</sup>.

4.3. To assess the PGA content and collagen component, observe histologic samples with Sirius red staining through a polarized microscope. PGA remnants are clearly demarcated through

birefringence and the remnant area can be quantified based on the cross-sectional area<sup>10</sup>.

## REPRESENTATIVE RESULTS:

The three-dimensional culture system consists of a culture chamber in the bioreactor and a perfusion system with a closed fluid cycle<sup>10,13</sup> (**Figure 1**). The OCT imaging catheter was inserted into the distal end of the Y-junction and pulled back into the silicone tube for imaging. OCT imaging was first used to delineate the structural characterization of biodegradable polymeric scaffold-based TEBVs during bioreactor cultivation.

**Figure 2** shows the process of engineered vascular remodeling through this cross-sectional imaging of tissue microstructure in real-time. Geometric morphology was evaluated, including wall thickness, degradable PGA content, and a comparison of the TEBV thickness at different culture time points, as well as in the presence of pulsatile stimulation. A trend of decreasing thickness of, and dramatic changes in, the engineered tissue within the first two weeks of culture was seen, suggesting signal-rich PGA gradual degradation and a transition of the structure of new tissue from loose to tight. At 21 days in culture, the vasculature had formed a smooth structure, with an extracellular matrix evenly distributed and high signal components mostly dissipated. The wall thickness of TEBVs with an even signal increased gradually after three weeks of culture. This remodeling occurred earlier and the morphological changes manifested more obviously in the dynamic group (**Figure 3**). Thereby, OCT enables the imaging of engineered vascular morphology to be visualized *in situ* and in real-time in the course of long-running culture.

**Figure 4** compares OCT images with histopathological finds of TEBVs after 4 weeks of culture. Masson's trichrome staining demonstrates collagen fibers distributed in a certain direction along with PGA remnants in the media layer of the engineered vessels (**Figure 4B**). Sirius red staining revealed PGA remnants and a collagen component by using a polarized microscope (**Figure 4C**). Scanning electron micrographs of engineered vessels with a compact microstructure were compared with the histological assessment (**Figure 4D**). Taken together, the OCT images showed PGA with different sizes and a porous network structure. The structure of the PGA scaffold had no obvious change and was swollen because it came into direct contact with the culture medium in an early stage of the culture. However, the signal intensity of the PGA was reduced. PGA components were disintegrated and replaced with cells and extracellular matrix. Fewer fragments were seen over a four-week period. SEM images of cross-sectional engineered vessels demonstrated fiber rupture to the extension of the incubation time. The material and extracellular matrix composites had a honeycomb-like structure with less transparency and were more compact.

## FIGURE AND TABLE LEGENDS:

**Figure 1: Schematic of the tissue-engineering vascular culture system, consisting of a culture chamber in the bioreactor and a perfusion system for OCT imaging.** The pulsatile pump provided a stable fluid flow simulating the biomechanical microenvironment. The OCT imaging catheter was pulled back into the silicone tube in the culture chamber.

**Figure 2: The microstructure of tissue-engineered blood vessels during culture.** Over culture-time, signal-rich PGA gradually degraded, and the structure of new tissue went from loose to tight. The TEBVs had a smooth surface and an abundant extracellular matrix evenly distributed after four weeks of culture. It showed the process of engineered vascular remodeling through cross-sectional images in real-time. This figure has been modified from Chen *et al.*<sup>10</sup>.

**Figure 3: Comparison of TEBV wall thickness change during vascular remodeling in dynamic and static groups obtained from OCT measurements.** The error bars indicate standard error. This figure has been modified from Chen *et al.*<sup>10</sup>.

**Figure 4: Imaging of biodegradable polymer-based tissue-engineered blood vessels.** (A) This panel shows an OCT image of a TEBV after four weeks of culture. M = culture medium, S = silicone tube, and the white arrow indicates the TEBV. The red arrow indicates a PGA fragment. (B) Masson's trichrome staining demonstrated well-organized collagen fibers along with the residual content of PGA in the media layer of engineered vessels. The scale bar = 100  $\mu$ m. (C) Sirius red staining revealed PGA remnants by using a polarized microscope. The green arrow indicates the PGA fragment. The scale bar = 100  $\mu$ m. (D) Scanning electron micrographs of engineered vessels with a compact microstructure are shown for a comparison with the histological assessment. The scale bar = 50  $\mu$ m.

## DISCUSSION:

To generate engineered vessels with structural and mechanical properties similar to those of native blood vessels can shorten the time for clinical use and is the ultimate goal of vascular engineering. Optical imaging techniques permit the visualization of tissue-engineered vascular-specific components, which cannot monitor individual constructs throughout culture and expose grafts to a culture environment without compromising sterility<sup>7</sup>. In this article, the culture chamber is separated from the perfusion system. The relatively independent perfusion system guarantees a decrease in the risk of pollution during culture and the placement of OCT guidewire. Meanwhile, this intraluminal imaging modality adopted the easy and safety monitoring of TEBVs *in situ* with a high resolution approaching that of histopathology, which makes the assessment of the TEBV growth status more practical and is even expected to be used before or after implant placement.

The current protocol indicates a readily available, fast real-time and nondestructive imaging strategy to evaluate degradable polymer-based engineered vessel development using catheter-based OCT. Through the observation of the dynamic process, some main factors affecting vascular engineering, such as contamination or unmatched cell-material interaction leading to tissue loss, can be detected early on. Critical steps to ensure the efficacy of the protocol include the fabrication of a NaOH-modified PGA scaffold, the successful seeding of HUASMCs in the scaffold, the separation of the sterile culture system from the monitoring system, and a fast catheter operation process.

This technique can be utilized to assess degradation states and the complex structure of PGA scaffolds blended in with new tissue. The polymeric scaffold with a porous network structure



degrades gradually and dominates the process of vascular remodeling in the first three weeks, which are important for cell adhesion and extracellular matrix deposition with a three-dimensional structure for nutrient exchange and as a signal carrier<sup>15,16</sup>. For the quantification of PGA remnants in engineered vessels clearly identified by Sirius red-stained images, the use of polarized microscopes<sup>17</sup> in degradable scaffold-based vascular engineering has the potential to become the standard evaluation after cultivation. Hence, OCT imaging combined with a polarized microscope might serve as a qualitative and quantitative method for assessing PGA degradation in vascular engineering.

A limitation of this technique is the resolution limit to assess cell proliferation, distribution, and cell-cell and cell-ECM interaction during engineered vascular remodeling. We hope to find suitable methods to investigate the TEBV microstructure at a cellular or subcellular level<sup>18</sup> and quantify growth kinetics. With a quantitative analysis of average optical signals of OCT imaging, we might be more aware of the mechanism of material degradation in vascular engineering. Such experiments are being considered for our future studies.

Overall, the results presented here show that OCT is a readily available, fast real-time, and nondestructive imaging strategy to monitor the growth and remodeling of TEBVs. It is utilized to characterize structural architectural features and the long-term remodeling process of engineered vessels. The application of a polarized microscope, which provided supplementary evidence for the quantification of polymeric remnants in engineered vessels, might be useful for assessing scaffold degradation combined with OCT imaging. Taken together, the current protocol holds promising value for the application of OCT in vascular tissue engineering.

#### **ACKNOWLEDGMENTS:**

The authors would like to acknowledge the Science and Technology Planning Project of the Guangdong Province of China (2016B070701007) for supporting this work.

#### **DISCLOSURES:**

The authors have nothing to disclose.

#### **REFERENCES:**

1. Chan-Park, M. B. *et al.* Biomimetic control of vascular smooth muscle cell morphology and phenotype for functional tissue-engineered small-diameter blood vessels. *Journal of Biomedical Materials Research Part A*. **88**, 1104-1121 (2009).
2. Ballyns, J. J., Bonassar, L. J. Image-guided tissue engineering. *Journal of Cellular & Molecular Medicine*. **13**, 1428-1436 (2009).
3. Smith, L. E. *et al.* A comparison of imaging methodologies for 3D tissue engineering. *Microscopy Research & Technique*. **73**, 1123-1133 (2010).
4. Chang, W.G., Niklason, L.E. A short discourse on vascular tissue engineering. *NPJ Regenerative Medicine*. **2** (2017).

5. Appel, A. A. Anastasio, M. A., Larson, J. C., Brey, E. M. Imaging challenges in biomaterials and tissue engineering. *Biomaterials*. **34**, 6615-6630 (2013).
6. Rice, W. L. *et al.* Non-invasive characterization of structure and morphology of silk fibroin biomaterials using non-linear microscopy. *Biomaterials*. **29**, 2015-2024 (2008).
7. Niklason, L. E. *et al.* Enabling tools for engineering collagenous tissues integrating bioreactors, intravital imaging, and biomechanical modeling. *Proceedings of the National Academy of Sciences of the United States of America*. **107**, 3335-3339 (2010).
8. Zheng, K., Rupnick, M. A., Liu, B., Brezinski, M. E. Three Dimensional OCT in the Engineering of Tissue Constructs: A Potentially Powerful Tool for Assessing Optimal Scaffold Structure. *Open Tissue Engineering & Regenerative Medicine Journal*. **2**, 8-13 (2009).
9. Gurjarpadhye, A. A. *et al.* Imaging and characterization of bioengineered blood vessels within a bioreactor using free-space and catheter-based OCT. *Lasers in Surgery and Medicine*. **45**, 391-400 (2013).
10. Chen, W. *et al.* In vitro remodeling and structural characterization of degradable polymer scaffold-based tissue-engineered vascular grafts using optical coherence tomography. *Cell & Tissue Research*. **370**, 417-426 (2017).
11. Naito, Y. *et al.* Characterization of the natural history of extracellular matrix production in tissue-engineered vascular grafts during neovessel formation. *Cells Tissues Organs*. **195**, 60-72 (2012).
12. Ye, C. *et al.* The design conception and realization of pulsatile ventricular assist devices—from Spiral-Vortex pump to Luo-Ye pump. *Chinese Journal of Thoracic and Cardiovascular Surgery*. **9**, 35-40 (2002).
13. Chen, W. *et al.* Application of optical coherence tomography in tissue engineered blood vessel culture based on Luo-Ye pump. *Chinese Journal of Thoracic and Cardiovascular Surgery*. **31**, 687-690 (2015).
14. Pickering, J. G., Boughner D. R. *et al.* Quantitative assessment of the age of fibrotic lesions using polarized light microscopy and digital image analysis. *American Journal of Pathology*. **138**, 1225-1231 (1991).
15. Martinho, J. A. *et al.* Dependence of optical attenuation coefficient and mechanical tension of irradiated human cartilage measured by optical coherence tomography. *Cell Tissue Bank*. **16**, 47-53 (2015).
16. Poirierquinot, M. *et al.* High-resolution 1.5-Tesla magnetic resonance imaging for tissue-

397 engineered constructs: a noninvasive tool to assess three-dimensional scaffold architecture  
398 and cell seeding. *Tissue Engineering Part C Methods*. **16**, 185-200 (2010).  
399  
400 17. Naito, Y. *et al.* Beyond burst pressure: initial evaluation of the natural history of the biaxial  
401 mechanical properties of tissue-engineered vascular grafts in the venous circulation using a  
402 murine model. *Tissue Engineering Part A*. **20**, 346-55 (2014).  
403  
404 18. Smart, N., Dube, K. N., Riley, P. R. Coronary vessel development and insight towards  
405 neovascular therapy. *International Journal of Clinical and Experimental Pathology*. **90**, 262-283  
406 (2009).

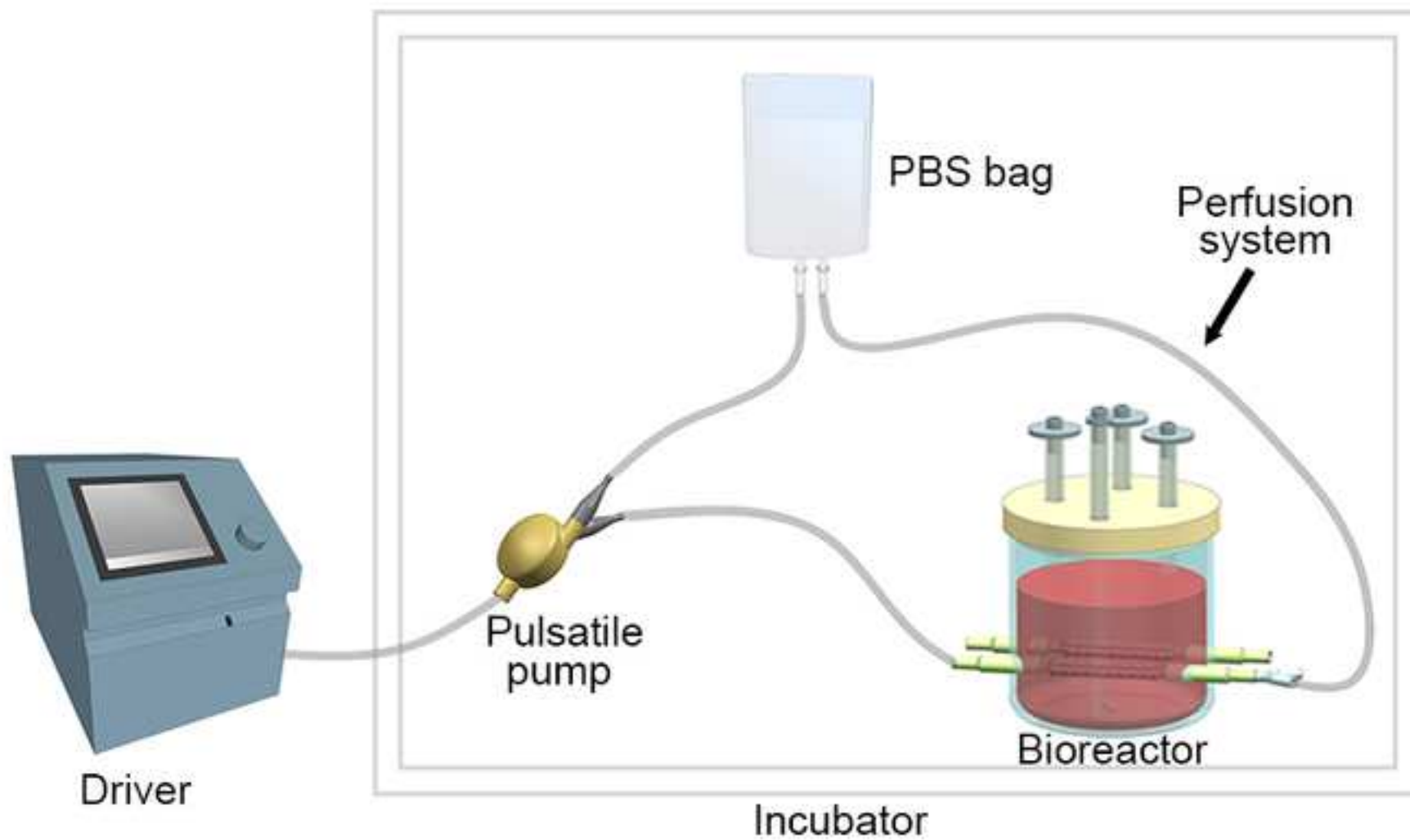


Figure 2

[Click here to download Figure Figure 2.tif](#)

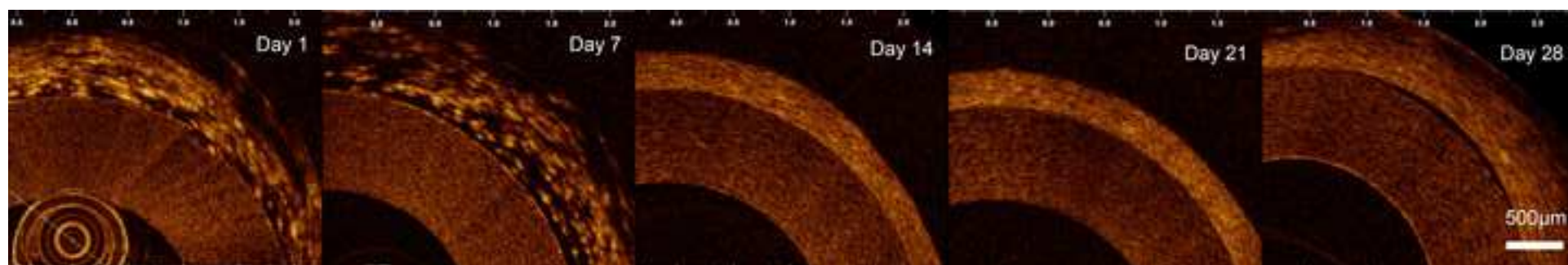


Figure 3

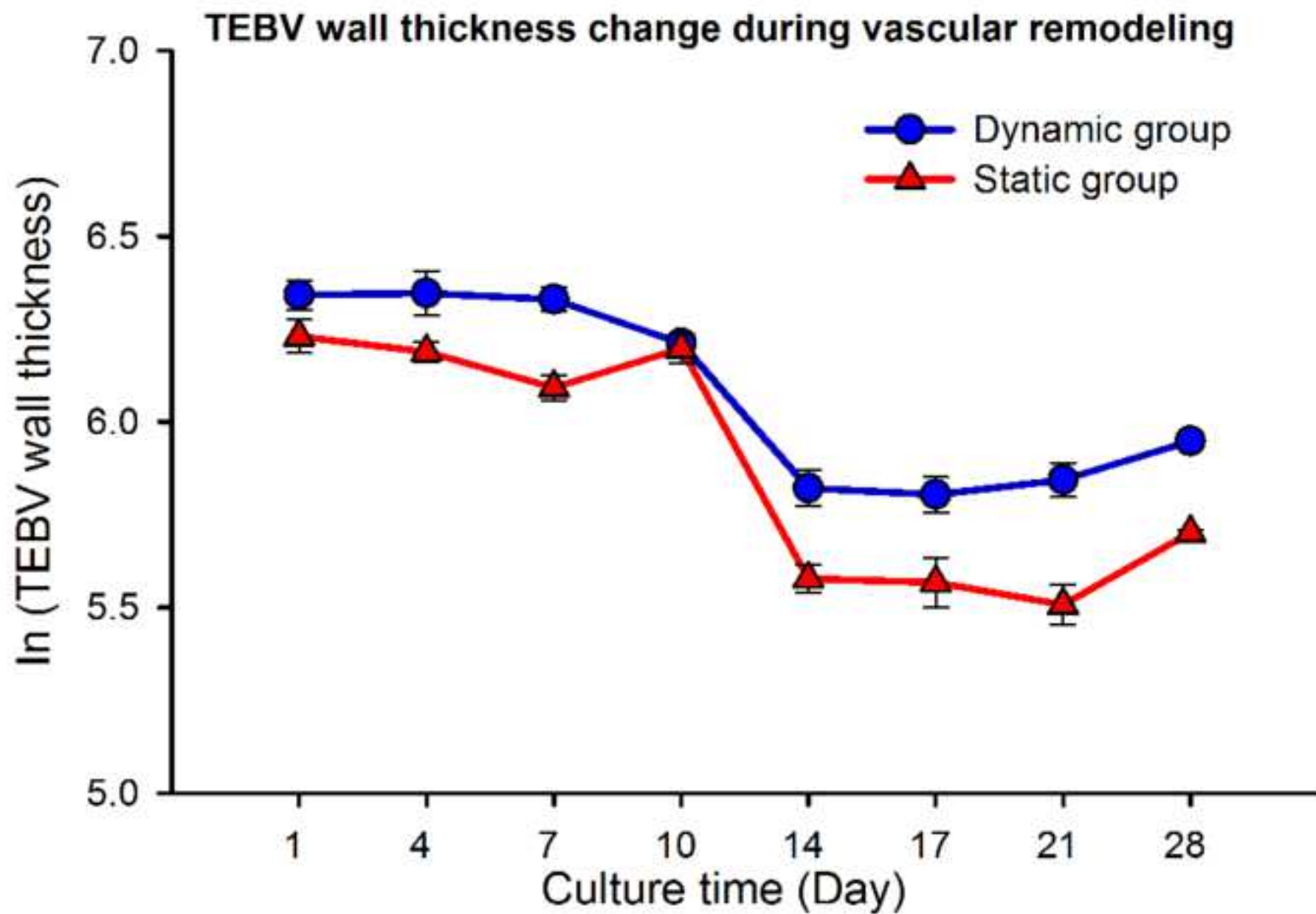
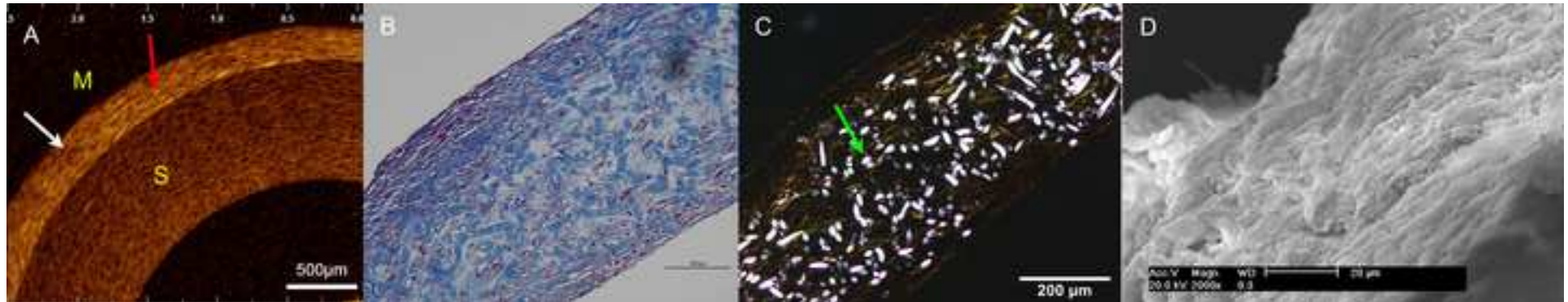


Figure 4



Name of Material/ Equipment	Company	Catalog Number	Comments/Description
PGA mesh	Synthecon		
silicone tube	Cole Parmer		
connector	Cole Parmer		
intravascular OCT system	St. Jude Medical, Inc	Dragonfly model C7	
scanning electron microscopic	Philips	FEI Philips XL-30	
polarized microscope	Olympus	Olympus BX51	
sutures	Johnson & Johnson		
pulsatile pump	Guangdong Cardiovascular Institute		
LightLab Imaging software	St. Jude Medical, Inc		





1 Alewife Center #200  
Cambridge, MA 02140  
tel. 617.845.9051  
www.jove.com

## ARTICLE AND VIDEO LICENSE AGREEMENT

Title of Article: Nondestructive imaging of tissue-engineered blood vessels using optical coherence tomography  
Author(s): Wanwen Chen, Shangmin Liu, Junqing Yang, Yueheng Wu, Wentao Ma, Zhanyi Lin

Item 1 (check one box): The Author elects to have the Materials be made available (as described at <http://www.jove.com/author>) via: ☒ Standard Access ☐ Open Access

Item 2 (check one box):

- ☒ The Author is NOT a United States government employee.  
☐ The Author is a United States government employee and the Materials were prepared in the course of his or her duties as a United States government employee.  
☐ The Author is a United States government employee but the Materials were NOT prepared in the course of his or her duties as a United States government employee.

### ARTICLE AND VIDEO LICENSE AGREEMENT

1. **Defined Terms.** As used in this Article and Video License Agreement, the following terms shall have the following meanings: "Agreement" means this Article and Video License Agreement; "Article" means the article specified on the last page of this Agreement, including any associated materials such as texts, figures, tables, artwork, abstracts, or summaries contained therein; "Author" means the author who is a signatory to this Agreement; "Collective Work" means a work, such as a periodical issue, anthology or encyclopedia, in which the Materials in their entirety in unmodified form, along with a number of other contributions, constituting separate and independent works in themselves, are assembled into a collective whole; "CRC License" means the Creative Commons Attribution-Non Commercial-No Derivs 3.0 Unported Agreement, the terms and conditions of which can be found at: <http://creativecommons.org/licenses/by-nc-nd/3.0/legalcode>; "Derivative Work" means a work based upon the Materials or upon the Materials and other pre-existing works, such as a translation, musical arrangement, dramatization, fictionalization, motion picture version, sound recording, art reproduction, abridgment, condensation, or any other form in which the Materials may be recast, transformed, or adapted; "Institution" means the institution, listed on the last page of this Agreement, by which the Author was employed at the time of the creation of the Materials; "JoVE" means MyJoVE Corporation, a Massachusetts corporation and the publisher of *The Journal of Visualized Experiments*; "Materials" means the Article and / or the Video; "Parties" means the Author and JoVE; "Video" means any video(s) made by the Author, alone or in conjunction with any other parties, or by JoVE or its affiliates or agents, individually or in collaboration with the Author or any other parties, incorporating all or any portion of the Article, and in which the Author may or may not appear.

2. **Background.** The Author, who is the author of the Article, in order to ensure the dissemination and protection of the Article, desires to have the JoVE publish the Article and create and transmit videos based on the Article. In furtherance of such goals, the Parties desire to memorialize in this Agreement the respective rights of each Party in and to the Article and the Video.

3. **Grant of Rights in Article.** In consideration of JoVE agreeing to publish the Article, the Author hereby grants to JoVE, subject to Sections 4 and 7 below, the exclusive, royalty-free, perpetual (for the full term of copyright in the Article, including any extensions thereto) license (a) to publish, reproduce, distribute, display and store the Article in all forms, formats and media whether now known or hereafter developed (including without limitation in print, digital and electronic form) throughout the world, (b) to translate the Article into other languages, create adaptations, summaries or extracts of the Article or other Derivative Works (including, without limitation, the Video) or Collective Works based on all or any portion of the Article and exercise all of the rights set forth in (a) above in such translations, adaptations, summaries, extracts, Derivative Works or Collective Works and (c) to license others to do any or all of the above. The foregoing rights may be exercised in all media and formats, whether now known or hereafter devised, and include the right to make such modifications as are technically necessary to exercise the rights in other media and formats. If the "Open Access" box has been checked in Item 1 above, JoVE and the Author hereby grant to the public all such rights in the Article as provided in, but subject to all limitations and requirements set forth in, the CRC License.

## ARTICLE AND VIDEO LICENSE AGREEMENT

4. **Retention of Rights in Article.** Notwithstanding the exclusive license granted to JoVE in **Section 3** above, the Author shall, with respect to the Article, retain the non-exclusive right to use all or part of the Article for the non-commercial purpose of giving lectures, presentations or teaching classes, and to post a copy of the Article on the Institution's website or the Author's personal website, in each case provided that a link to the Article on the JoVE website is provided and notice of JoVE's copyright in the Article is included. All non-copyright intellectual property rights in and to the Article, such as patent rights, shall remain with the Author.

5. **Grant of Rights in Video – Standard Access.** This **Section 5** applies if the "Standard Access" box has been checked in **Item 1** above or if no box has been checked in **Item 1** above. In consideration of JoVE agreeing to produce, display or otherwise assist with the Video, the Author hereby acknowledges and agrees that, Subject to **Section 7** below, JoVE is and shall be the sole and exclusive owner of all rights of any nature, including, without limitation, all copyrights, in and to the Video. To the extent that, by law, the Author is deemed, now or at any time in the future, to have any rights of any nature in or to the Video, the Author hereby disclaims all such rights and transfers all such rights to JoVE.

6. **Grant of Rights in Video – Open Access.** This **Section 6** applies only if the "Open Access" box has been checked in **Item 1** above. In consideration of JoVE agreeing to produce, display or otherwise assist with the Video, the Author hereby grants to JoVE, subject to **Section 7** below, the exclusive, royalty-free, perpetual (for the full term of copyright in the Article, including any extensions thereto) license (a) to publish, reproduce, distribute, display and store the Video in all forms, formats and media whether now known or hereafter developed (including without limitation in print, digital and electronic form) throughout the world, (b) to translate the Video into other languages, create adaptations, summaries or extracts of the Video or other Derivative Works or Collective Works based on all or any portion of the Video and exercise all of the rights set forth in (a) above in such translations, adaptations, summaries, extracts, Derivative Works or Collective Works and (c) to license others to do any or all of the above. The foregoing rights may be exercised in all media and formats, whether now known or hereafter devised, and include the right to make such modifications as are technically necessary to exercise the rights in other media and formats. For any Video to which this Section 6 is applicable, JoVE and the Author hereby grant to the public all such rights in the Video as provided in, but subject to all limitations and requirements set forth in, the CRC License.

7. **Government Employees.** If the Author is a United States government employee and the Article was prepared in the course of his or her duties as a United States government employee, as indicated in **Item 2** above, and any of the licenses or grants granted by the Author hereunder exceed the scope of the 17 U.S.C. 403, then the rights granted hereunder shall be limited to the maximum rights permitted under such

statute. In such case, all provisions contained herein that are not in conflict with such statute shall remain in full force and effect, and all provisions contained herein that do so conflict shall be deemed to be amended so as to provide to JoVE the maximum rights permissible within such statute.

8. **Likeness, Privacy, Personality.** The Author hereby grants JoVE the right to use the Author's name, voice, likeness, picture, photograph, image, biography and performance in any way, commercial or otherwise, in connection with the Materials and the sale, promotion and distribution thereof. The Author hereby waives any and all rights he or she may have, relating to his or her appearance in the Video or otherwise relating to the Materials, under all applicable privacy, likeness, personality or similar laws.

9. **Author Warranties.** The Author represents and warrants that the Article is original, that it has not been published, that the copyright interest is owned by the Author (or, if more than one author is listed at the beginning of this Agreement, by such authors collectively) and has not been assigned, licensed, or otherwise transferred to any other party. The Author represents and warrants that the author(s) listed at the top of this Agreement are the only authors of the Materials. If more than one author is listed at the top of this Agreement and if any such author has not entered into a separate Article and Video License Agreement with JoVE relating to the Materials, the Author represents and warrants that the Author has been authorized by each of the other such authors to execute this Agreement on his or her behalf and to bind him or her with respect to the terms of this Agreement as if each of them had been a party hereto as an Author. The Author warrants that the use, reproduction, distribution, public or private performance or display, and/or modification of all or any portion of the Materials does not and will not violate, infringe and/or misappropriate the patent, trademark, intellectual property or other rights of any third party. The Author represents and warrants that it has and will continue to comply with all government, institutional and other regulations, including, without limitation all institutional, laboratory, hospital, ethical, human and animal treatment, privacy, and all other rules, regulations, laws, procedures or guidelines, applicable to the Materials, and that all research involving human and animal subjects has been approved by the Author's relevant institutional review board.

10. **JoVE Discretion.** If the Author requests the assistance of JoVE in producing the Video in the Author's facility, the Author shall ensure that the presence of JoVE employees, agents or independent contractors is in accordance with the relevant regulations of the Author's institution. If more than one author is listed at the beginning of this Agreement, JoVE may, in its sole discretion, elect not take any action with respect to the Article until such time as it has received complete, executed Article and Video License Agreements from each such author. JoVE reserves the right, in its absolute and sole discretion and without giving any reason therefore, to accept or decline any work submitted to JoVE. JoVE and its employees, agents and independent contractors shall have



## ARTICLE AND VIDEO LICENSE AGREEMENT

full, unfettered access to the facilities of the Author or of the Author's institution as necessary to make the Video, whether actually published or not. JoVE has sole discretion as to the method of making and publishing the Materials, including, without limitation, to all decisions regarding editing, lighting, filming, timing of publication, if any, length, quality, content and the like.

11. **Indemnification.** The Author agrees to indemnify JoVE and/or its successors and assigns from and against any and all claims, costs, and expenses, including attorney's fees, arising out of any breach of any warranty or other representations contained herein. The Author further agrees to indemnify and hold harmless JoVE from and against any and all claims, costs, and expenses, including attorney's fees, resulting from the breach by the Author of any representation or warranty contained herein or from allegations or instances of violation of intellectual property rights, damage to the Author's or the Author's institution's facilities, fraud, libel, defamation, research, equipment, experiments, property damage, personal injury, violations of institutional, laboratory, hospital, ethical, human and animal treatment, privacy or other rules, regulations, laws, procedures or guidelines, liabilities and other losses or damages related in any way to the submission of work to JoVE, making of videos by JoVE, or publication in JoVE or elsewhere by JoVE. The Author shall be responsible for, and shall hold JoVE harmless from, damages caused by lack of sterilization, lack of cleanliness or by contamination due to the making of a video by JoVE its employees, agents or independent contractors. All sterilization, cleanliness or decontamination procedures shall be solely the responsibility of the Author and shall be undertaken at the Author's

expense. All indemnifications provided herein shall include JoVE's attorney's fees and costs related to said losses or damages. Such indemnification and holding harmless shall include such losses or damages incurred by, or in connection with, acts or omissions of JoVE, its employees, agents or independent contractors.

12. **Fees.** To cover the cost incurred for publication, JoVE must receive payment before production and publication the Materials. Payment is due in 21 days of invoice. Should the Materials not be published due to an editorial or production decision, these funds will be returned to the Author. Withdrawal by the Author of any submitted Materials after final peer review approval will result in a US\$1,200 fee to cover pre-production expenses incurred by JoVE. If payment is not received by the completion of filming, production and publication of the Materials will be suspended until payment is received.

13. **Transfer, Governing Law.** This Agreement may be assigned by JoVE and shall inure to the benefits of any of JoVE's successors and assignees. This Agreement shall be governed and construed by the internal laws of the Commonwealth of Massachusetts without giving effect to any conflict of law provision thereunder. This Agreement may be executed in counterparts, each of which shall be deemed an original, but all of which together shall be deemed to me one and the same agreement. A signed copy of this Agreement delivered by facsimile, e-mail or other means of electronic transmission shall be deemed to have the same legal effect as delivery of an original signed copy of this Agreement.

A signed copy of this document must be sent with all new submissions. Only one Agreement required per submission.

### CORRESPONDING AUTHOR:

Name: Zhangyi Lin  
Department: Institute of Geriatric medicine  
Institution: Guangdong Academy of Medical Sciences, Guangdong General Hospital  
Article Title: Nondestructive imaging of tissue-engineered blood vessels using optical coherence tomography  
Signature: Zhangyi Lin Date: 2018.02.20

Please submit a signed and dated copy of this license by one of the following three methods:

- 1) Upload a scanned copy of the document as a pdf on the JoVE submission site;
- 2) Fax the document to +1.866.381.2236;
- 3) Mail the document to JoVE / Attn: JoVE Editorial / 1 Alewife Center #200 / Cambridge, MA 02139

For questions, please email [submissions@jove.com](mailto:submissions@jove.com) or call +1.617.945.9051

**Responds to Reviewers and Editor:**

First of all, we both thank reviewers and editor for the positive and constructive comments and suggestions.

**Editorial comments:**

Changes to be made by the Author(s):

1. Please take this opportunity to thoroughly proofread the manuscript to ensure that there are no spelling or grammar issues. The JoVE editor will not copy-edit your manuscript and any errors in the submitted revision may be present in the published version.

**Answer:** We have paid attention to these issues and fixed them in the revised manuscript.

2. There are a few sections of the manuscript that show overlap with previously published work. Though there may be a limited number of ways to describe a technique, please use original language throughout the manuscript. Please see lines: 37-39, 52-57, 59-62, 67-77, 114-118, 160-163, 165-169, 179-181, 184-197, 212-237, 239-242, etc.

**Answer:** We are so sorry to make this mistake. We fixed this in the revised manuscript.

3. Please obtain explicit copyright permission to reuse any figures from a previous publication. Explicit permission can be expressed in the form of a letter from the editor or a link to the editorial policy that allows re-prints. Please upload this information as a .doc or .docx file to your Editorial Manager account. The Figure must be cited appropriately in the Figure Legend, i.e. "This figure has been modified from [citation]."

**Answer:** We have uploaded the copyright permission file and illustrated those cited figures in the figure legend.

4. Please submit the figures as a vector image file to ensure high resolution throughout production: (.svg, .eps, .ai). If submitting as a .tif or .psd, please ensure that the image is 1920 pixels x 1080 pixels or 300dpi.

**Answer:** The figures we uploaded have met the requirement.

5. Please keep the font consistent in all figures, if possible.

**Answer:** We have made the modification as required.

6. Figure 2/4A: Please provide a scale bar to provide context for the images.

**Answer:** We have made the modification as required.

7. Figure 3: Please define error bars in the figure legend.

**Answer:** We have made the modification as required.

8. Please include a space between all numbers and their corresponding units: 45 min, 450 mL, 100µm; etc.

**Answer:** We are sorry to make these mistakes. We have fixed them in our revised manuscript.

9. Please provide an email address for each author.

**Answer:** We have changed the email address of some authors.

10. Summary: Please rephrase the Summary to clearly describe the protocol and its applications in complete sentences between 10-50 words: “Here, we present a protocol to ...” Currently it reads a bit awkward.

**Answer:** Thanks for the suggestion. We have fixed this in our revised manuscript.

11. Please remove all commercial language from your manuscript and use generic terms instead. All commercial products should be sufficiently referenced in the Table of Materials and Reagents. For example: Prolene 5-0, Prolene 4-0, LightLab, etc.

**Answer:** We have fixed this in our revised manuscript and added the supplemented information to the table.

12. Please add more details to your protocol steps. Please ensure you answer the “how” question, i.e., how is the step performed? Alternatively, add references to published material specifying how to perform the protocol action.

**Answer:** We have revised the section of protocol in the manuscript and hope to meet the requirement.

13. Line 82: Please describe how silicone tubing is sterilized.

**Answer:** We have explained how to sterilize the silicone tubing in the paper.

14. Lines 86-87: What is used to hold the scaffolds in this step? Please use molar concentration for 1 N NaOH.

**Answer:** We have fixed this in the revised manuscript.

15. Line 89: Please specify the size and type of the glass bioreactor. Also provide more details about the silicone tube and connector (type and size, etc.) used. Should not the PGA scaffolds already include the silicone tube? How large is the tank?

**Answer:** It has been supplemented the size and type of the glass bioreactor and the size of silicone tube in the manuscript as recommended. Other tubes and connectors have different sizes according to different parts just to assemble the system. The ethanol tank is enough to hold the above supplies without limitation of size.

16. Line 91: Please refer to Figure 1 to guide the readers.

**Answer:** We have fixed this in the revised manuscript.

17. Line 94: Please specify the location of bioreactor lips and length of ePTFE.

**Answer:** We have fixed this in the revised manuscript.

18. Line 95: Do you mean soak the bioreactor in the ethanol tank?

**Answer:** Yes.

19. Line 98: Please describe how and where the vascular smooth muscle cells are obtained. What is the container? What is the composition of the culture medium? How is the seeding process done?

**Answer:** We have fixed this in the revised manuscript.

20. Line 100: Please specify the length and diameter of the feeding tube and the three short tubing segments for gas exchange.

**Answer:** The length and diameter of the feeding tube is 15cm and 5mm. The three short tubing segments for gas exchange have the length of 7cm and diameter of 5mm.

21. Line 102: What is the length of the stir bar?

**Answer:** The length of the stir bar is 1.5cm. We have fixed this in the revised manuscript.

22. Lines 106-107: What is the composition of culture medium? What is the moisture in the incubator? Molecular formulas should include subscripts: e.g., CO<sub>2</sub>.

**Answer:** We have fixed this in the revised manuscript.

23. Line 113: What is a Luo-Ye pump? Is a certain flow rate recommended?

**Answer:** Luo-Ye pump is a pulsatile pump to provide a stable fluid flow simulating the biomechanical microenvironment. In this paper, the flow rate is 154 mL/min and it can be adjusted according to the experimental requirements.

24. Line 116: Please define bpm, beats per minute?

**Answer:** We have fixed this in the revised manuscript.

25. Line 125: Please add more details to how the pullback device is adjusted to ensure good image quality.

**Answer:** We have fixed this in the revised manuscript.

26. Lines 143-147: Please add more details to how these are done. For instance, how are the TEBVs collected? How the PGA content is assessed? Alternatively, add references to published material specifying how to perform the protocol action.

**Answer:** We took the TEBVs out of the bioreactor and performed routine histological staining and scanning electron microscopy examination to figure out the characterization of microstructure and PGA degradation. References are made in the manuscript.

27. As we are a methods journal, please revise the Discussion to explicitly cover the following in detail in 3-6 paragraphs with citations:

- a) Critical steps within the protocol
- b) Any modifications and troubleshooting of the technique
- c) Any limitations of the technique
- d) The significance with respect to existing methods
- e) Any future applications of the technique

**Answer:** Thanks for the suggestion. We have revised this section in the manuscript.

28. Please ensure that the references appear as the following: [Lastname, F.I., LastName, F.I., LastName, F.I. Article Title. Source. Volume (Issue), FirstPage – LastPage (YEAR).] For more than

6 authors, list only the first author then et al.

**Answer:** We have fixed this section in the revised manuscript.

29. Please do not abbreviate journal titles and include volume and issue numbers for all references.

**Answer:** We are sorry to make this mistake. We have fixed this in the revised manuscript.

#### **Reviewers' comments:**

##### **Reviewer #1:**

Chen and colleagues described a protocol to image tissue-engineered blood vessels using optical coherence tomography (OCT). I think this work is useful for people studying tissue-engineered blood vessels and thus merits publication at JOVE. However, I suggest the authors enhance the reported protocol to address the following points.

First, please change the numbering scheme. Right now, it is hard for me to differentiate the different levels of numbering.

Second, it helps the readers to comprehend the protocol if the authors justify and explain the reasons to support each step of the protocol.

Third, the protocol needs more details on the production and use of VSMC. It also needs more details on the OCT system instead of just mentioning the resolution.

Fourth, it seems that only the vessel thickness was measured. If this true, it needs to be clarified throughout the article. As for now, it is unclear how "vascular remodeling" was characterized.

**Answer:** We are sorry to make it confusing and we fixed this in our revised manuscript. According to the Reviewer's suggestion, we have added more details about VSMCs and the use of OCT imaging. Nondestructive monitoring of degradable scaffold-based tissue-engineered blood vessel development in real-time culture is not simple but important. The geometrical morphology of TEBVs is part of the engineering vascular remodeling and we hope to explore more information to more clearly understand this process.

##### **Reviewer #2:**

Manuscript Summary:

the paper describe a technique which should help in following the development of the tissue-engineered blood vessels. The technique looks promising.

Major Concerns: No major concerns

Minor Concerns: No minor concerns

**Answer:** Thanks for the comment.

##### **Reviewer #3:**

Manuscript Summary:

Why is this manuscript so similar to this paper, "In vitro remodeling and structural characterization of degradable polymer scaffold-based tissue-engineered vascular grafts using optical coherence tomography" by Wanwen Chen & Junqing Yang & Wenjun Liao & Jiahui Zhou & Jianyi Zheng & Yueheng Wu & Dongfeng Li & Zhanyi Lin previously published as Cell Tissue Res (2017) 370:417-426?

This is very strange! Is this allowed by the journal?

The two texts have a few differences in their respective author lists, and the text of the manuscript is in worse English, but the figures found in the manuscript to be reviewed are exactly the same as some of the figures in the above-mentioned paper (although with worse resolution). Ironically, this paper was cited in the text.

Other critiques: The manuscript requires significant grammatical edits.

**Answer:** Thanks for the suggestions. We are so sorry to make this mistake. We have fixed this in our revised manuscript and hope to meet the requirements of the journal.

We have adjusted and uploaded documents according to the editorial office's recommendations. We greatly appreciate both your help and that of the reviewers' concerning improvement to this paper. I hope that the revised manuscript is now suitable for publication. Should you have any questions, please contact us without hesitate.



**Responds to Editor:**

1. Please take this opportunity to thoroughly proofread the manuscript to ensure that there are no spelling or grammar issues.

**Answer:** We have read the full manuscript and made corresponding modifications.

2. Please use h, min, s, etc for time units.

**Answer:** We have paid attention to these issues and fixed them in the revised manuscript.

3. Step 1.3.9: What condition is used to grow the scaffolds? Please specify the stimulation.

**Answer:** In step 1.3.9, the perfusion system is static and does not provide pulsatile stimulation. In order to avoid confusion, we have modified it here in the revised manuscript.

4. 1.4.3: How to pressurize the tubes? What pressure is used?

**Answer:** The perfusion system was driven by a pulsatile pump, which can be adjusted to the systolic pressure and frequency for different modes of mechanical stimulation. Fluids circulating through biocompatible tubes to the PBS bag act on tubes with a consistent deformation and generate force iteratively. The pressure action mode is determined by the pulsation pump system. Please see the references for details.

5. 3.1-3.2: For steps that are done using software, a step-wise description of software usage must be included in the step. Please mention what button is clicked on in the software, or which menu items need to be selected to perform the step.

**Answer:** We have paid attention to this issue and fixed it in the revised manuscript.

6. 4.1: How to harvest? Please add more details.

**Answer:** We are sorry to make it simple and we fixed this in our revised manuscript. Open the silicone stopper lid placed over the bioreactor when the culture is finished and discard the culture medium. Loose ePTFE from bioreactor lips and cut the silicone tubes from the outer side of ePTFE with scissors. Harvest TEBVs from the bioreactor and cut into sections for scanning electron microscopy examination.

7. 4.2: Please add more details to your protocol steps. Please ensure you answer the “how” question, i.e., how is the step performed? Alternatively, add references to published material specifying how to perform the protocol action.

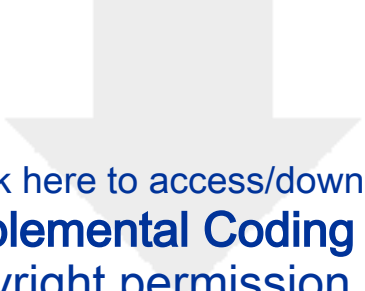
**Answer:** We have fixed this in the revised manuscript. Take out the rest of TEBVs and cut into 4  $\mu\text{m}$  thick sections. Pull out the supporting silicone tube and fix sections with 1% paraformaldehyde. Perform routine histological staining of Masson’s trichrome and Sirius red to examine the morphology of collagen and PGA.

8. 4.3: Please add more details to your protocol steps. Please ensure you answer the

“how” question, i.e., how is the step performed? Alternatively, add references to published material specifying how to perform the protocol action.

**Answer:** We have fixed this in the revised manuscript.

We have adjusted and uploaded documents according to the editorial office's recommendations. We hope that the revised manuscript is now suitable for publication. Should you have any questions, please contact us without hesitate.



Click here to access/download  
**Supplemental Coding Files**  
Copyright permission.docx

