

Journal of Visualized Experiments

Detailed setup methodology of a new ex vivo model for evaluation of endoscopic submucosal injection materials performance --Manuscript Draft--

Article Type:	Invited Methods Article - JoVE Produced Video
Manuscript Number:	JoVE58029R4
Full Title:	Detailed setup methodology of a new ex vivo model for evaluation of endoscopic submucosal injection materials performance
Keywords:	Endoscopic mucosal resection; endoscopic submucosal dissection; submucosal injection material; ex vivo model; gastrointestinal neoplasms; submucosal elevation height.
Corresponding Author:	Ryohei Hirose, Ph.D., M.D. Kyoto Furitsu Ika Daigaku Kyoto, Kyoto JAPAN
Corresponding Author's Institution:	Kyoto Furitsu Ika Daigaku
Corresponding Author E-Mail:	ryo-hiro@koto.kpu-m.ac.jp
Order of Authors:	Ryohei Hirose, Ph.D., M.D. Tomo Daidoji Yuji Naito Osamu Dohi Naohisa Yoshida Hiroaki Yasuda Hideyuki Konishi Takaaki Nakaya Yoshito Itoh
Additional Information:	
Question	Response
Please indicate whether this article will be Standard Access or Open Access.	Standard Access (US\$2,400)
Please indicate the city, state/province, and country where this article will be filmed . Please do not use abbreviations.	Kyoto Prefectural University of Medicine, 465 Kajii-cho, Kawaramachi-Hirokoji, Kamigyo-ku, Kyoto 602-8566, Japan.

TITLE:

A New *Ex Vivo* Model for the Evaluation of Endoscopic Submucosal Injection Material Performance

AUTHOR & AFFILIATIONS:

Ryohei Hirose^{1,2}, Tomo Daidoji², Yuji Naito¹, Osamu Dohi,¹ Naohisa Yoshida,¹ Hiroaki Yasuda¹, Hideyuki Konishi¹, Takaaki Nakaya², Yoshito Itoh¹.

¹Department of Molecular Gastroenterology and Hepatology, Graduate School of Medical Science, Kyoto Prefectural University of Medicine, Kyoto, Japan

²Department of Infectious Diseases, Graduate School of Medical Science, Kyoto Prefectural University of Medicine, Kyoto, Japan

Corresponding Author:

Ryohei Hirose

Tel.: +81-75-251-5519

Fax: +81-75-251-0710

E-mail: ryo-hiro@koto.kpu-m.ac.jp

KEYWORDS:

Endoscopic mucosal resection, endoscopic submucosal dissection, submucosal injection material, *ex vivo* model, gastrointestinal neoplasms, submucosal elevation height

SHORT ABSTRACT

Here, we presented the detailed set up of a new *ex vivo* model that applies constant tension to the porcine gastric specimen. This development made it possible to evaluate the performance of various SIMs accurately, using the height and duration of the submucosal elevation.

ABSTRACT:

Increasing the performance of submucosal injection materials (SIMs) is important for endoscopic therapy of early gastrointestinal cancer. It is essential to establish an *ex vivo* model that can evaluate SIM performance accurately, for developing high-performance SIMs. In our previous study, we developed a new *ex vivo* model that can be used to evaluate the performance of various SIMs in detail by applying constant tension to the specimen's ends. We also confirmed that the proposed new *ex vivo* model allows accurate submucosal elevation height (SEH) measurement under uniform conditions and detailed comparisons of the performances of various types of SIMs are presented. Here, we describe the new *ex vivo* model and explain the detailed setup methodology of this model. Since all parts of the new model were easy to obtain, the setup of the new model could be completed quickly. SEH of various SIMs could be measured more accurately by using the new model. The critical factor that determines SIM performance can be identified using

the new model. SIM development speed will drastically increase after the factor has been identified.

INTRODUCTION:

Both endoscopic submucosal dissection (ESD) and endoscopic mucosal resection (EMR) are currently common treatments for early-stage gastrointestinal cancer^{1,2}. Injecting a submucosal injection material (SIM) into the submucosa is one of the most important steps for both the EMR and ESD procedures^{2,3}. High submucosal elevation and maintenance of submucosal elevation are critical criteria for safely conducting EMR/ESD.

Although normal saline (NS) has been used as a SIM since the invention of endoscopic therapy^{4,5}, sodium hyaluronate (HA) was introduced as a treatment in recent years^{6,7}. HA became widely used in endoscopic treatments as a superior SIM due to its high performance⁸⁻¹¹. Currently, a performance comparison between the existing SIMs was conducted, and high-performance SIMs were developed to identify another superior SIM^{5,12-18}.

The *ex vivo* model using a porcine stomach specimen has been used to evaluate SIM performance, because the estimation of SIM performance in the human gastrointestinal tract is very difficult¹⁹⁻²². However, this conventional *ex vivo* model is extremely simple, and has the scope for improvement. Reproducing an environment closer to the human gastrointestinal mucosa will enable accurate evaluation of SIM performance.

In our previous study, we developed a new *ex vivo* model that can be used to evaluate the performance of various SIMs in detail by applying constant tension to the specimen's ends. Using this new *ex vivo* model, accurate SHE measurement under uniform conditions and a detailed comparison of the performances of various types of SIMs are presented²³.

In this study, we present a complete appearance of the new *ex vivo* model, and the detailed setup methodology of the new *ex vivo* model is explained in detail. The material used in this new *ex vivo* model is easily available and the model can be quickly set up. Descriptions of detailed setup methodology will contribute to the dissemination of the new model.

PROTOCOL:

The following protocol follows the animal care guidelines of the Kyoto Prefectural University of Medicine.

1. Preparation of Specimens Using a Porcine Stomach

Note: The first step is to prepare specimens to be used in the *ex vivo* model (**Figure 1**). The

thickness of the porcine gastric wall varies in different areas of the stomach. Use the upper third of the porcine stomach, which is relatively similar to the human stomach. Exclude inappropriate specimens where submucosal elevation is not found due to fibrosis.

1.1. Cut the gastric specimens into squares with approximate dimensions of 5 × 5 cm.

1.2. Store the gastric specimens immediately at a temperature of –30 °C.

1.3. Thaw frozen gastric specimens right before the measurement procedure to ensure uniform measurement conditions.

2. Detailed Setup Methodology of a New *Ex Vivo* Model

Note: The thawed specimen can be stretched out on a board in two different ways. In the conventional *ex vivo* model, fix the specimen with pins (**Figure 1A**)¹⁹⁻²². On the other hand, in the new *ex vivo* model, fix or stretch both ends of the specimen with clips to produce a constant tension (**Figure 1B, C**). All parts of the new model are easy to obtain, and the setup of the new model can be completed quickly (**Figure 2**). The procedure of the new model is as follows (**Figure 3**):

2.1. Connect the stainless-steel clip, the key wire and the S shaped hook (**Figure 3A**).

2.2. Connect the wire, the S shaped hook and the weight (**Figure 3A**).

2.3. Connect the hook to the other end of the wire. A traction device is completed in the above process (**Figure 3B**).

2.4. Fix the pulleys (**Figure 2b**) at both ends of the base (**Figure 3C**).

2.5. Place the rubber plate (5 x 5 cm) on the center of the base (**Figure 3C**).

2.6. Place the gastric specimen on the rubber plate and pinch the specimen ends with the clip of the traction device.

2.7. Hang the weight through the pulley (both side). Thereby, constant tension can be applied to the specimen (**Figure 4**).

2.8. Start the measurement of SHE after the setup of the new model is completely finished.

3. Evaluation of SIM Performance

Note: In this study, we used normal saline (NS) and 0.4% sodium hyaluronate (HA) as SIMs to be tested, and measure the SEH of the two SIMs. Three independent measurements are performed. The obtained data are expressed as the mean and standard deviation (S.D.). Statistical analysis was performed by using the statistical analysis software (GraphPad Prism 7). We analyzed continuous variables (SEH) with the Student's t-test, and the magnitudes with $p < 0.05$ were considered significant. The measurement of SEH is as follows (**Figure 5**).

3.1. Perform zero-point adjustment of the height gauge, based on the height of mucosa before a submucosal elevation procedure. In detail, perform zero-point adjustment by pushing the **PRESET** button after fixing the scribe at the height of the mucosal surface.

3.2. Inject 2.0 mL of each solution horizontally into the submucosa from the specimen margins using a 2.5-mL syringe and 23G needle, to perform a submucosal elevation procedure (**Figure 5A-C**).

3.3. Measure the SEH promptly using a digital height gage at 0, 2.5, 5, 7.5, 10, 12.5, 15, 17.5, 20, 30, 45, and 60 min after the injection (**Figure 5D**). In detail, record the height displayed on the height gauge when fixing the scribe to the top of the submucosal elevation.

3.4. Perform three independent measurements and express the obtained results as the mean and standard deviation.

3.5. Analyze the obtained data using appropriate statistical software and evaluate the performance of SIMs.

Note: The performance can be compared between each SIM.

REPRESENTATIVE RESULTS:

SEH was measured over time in the new *ex vivo* model or conventional *ex vivo* model. The values of SEH (NS) measured using the conventional model [NS was injected into the submucosa of the specimen fixed with pins (0.0 N)] were 5.7 mm (0 min), 3.6 mm (5 min), 3.0 mm (10 min), and 2.2 mm (30 min). In this way, the values of SEH decreased with increasing post injection time. A similar analysis was performed using 0.4% HA instead of NS. The values of SEH (0.4% HA) were 6.5 mm (0 min), 5.2 mm (5 min), 4.8 mm (10 min), and 4.1 mm (30 min). The resulting SEHs of 0.4% HA were higher than those of NS regardless of the post injection time. The SEHs (NS and 0.4% HA) obtained using the conventional model (in the absence of the applied tension) exhibited relatively large variations (in other words, their standard deviations were high) (**Figure 6A**).

Next, the values of SEH (NS) measured using the conventional model [NS was injected into the submucosa of the specimen stretched at a constant tension (1.5 N)] were 4.8 mm (0 min), 3.0 mm (5 min), 2.4 mm (10 min), and 1.8 mm (30 min). When the tension was increased to 3.0 N under the same conditions, the values of SEH (NS) were 4.5 mm (0 min), 2.3 mm (5 min), 1.5 mm (10 min), and 1.3 mm (30 min). The SEH measured at various post injection times decreased with increasing tension. The SEHs obtained using the new model exhibited small variations (in other words, their standard deviations were low) (**Figure 6B, C**).

For evaluating the relationship between SEH and tension applied to the specimen, we compared SEH measured at different tensions (0.0-3.0 N). In the analysis with the new model, the SEH obtained at a tension of 3.0 N was significantly lower than the SEH obtained at a tension of 1.5 N (in all cases, the condition $p < 0.001$ was satisfied). In contrast, since the standard deviations of SEHs obtained using the conventional model (0.0 N) were high, there was no significant difference between SEHs obtained using the conventional model (0.0 N) and the new model (1.5 N) (**Figure 6D, E**).

FIGURE LEGENDS:

Figure 1. New *ex vivo* model and conventional *ex vivo* model. In the conventional *ex vivo* model, the porcine specimen was fixed with pins (**A**). On the other hand, in the new *ex vivo* model, both ends of the specimen were stretched with clips to produce a constant tension (**B**). This model can be tensioned uniformly by using a weight, and the tension can be arranged by changing the weight (**C**). Each SIM was injected into the submucosa of the specimen, leading to submucosal elevation (**D**). This figure has been modified from Hirose *et al.*²³.

Figure 2. All parts used for the new model. The new *ex vivo* model consists of parts that are easily available. All parts used for the new *ex vivo* model: (**a**) approximately 50-300 g of weights (the weight can be changed appropriately depending on the applied tension); (**b**) fixed type pulley with the pulley diameter of 25 mm; (**c**) stainless steel wire with a diameter of 0.45 mm; (**d**) stainless steel clip with the width of 147 mm; (**e**) stainless steel key wire with a length of 12 cm; (**f**) stainless steel S shaped hook; (**g**) lockable stainless steel S-shaped hook. This figure has been modified from Hirose *et al.*²³.

Figure 3. The detailed setup of the new *ex vivo* model. The new *ex vivo* model can be quickly set up. (**A**) Connect the stainless steel clip (**Figure 2d**), the key wire (**Figure 2e**) and the S shaped hook (**Figure 2g**). Next, connect the wire (**Figure 2c**), the S shaped hook (**Figure 2f**) and the weight (**Figure 2a**). (**B**) Finally, connect the hook (**Figure 2g**) to the other end of the wire (**Figure 2c**). A traction device is completed in the above process. (**C**) Fix the pulleys (**Figure 2b**) at both ends of the base [rectangular wooden base (45 x 60 cm)

for assembling the model]. Next, place the rubber plate (5 x 5 cm) on the center of the base.

Figure 4. The complete appearance of the new *ex vivo* model. Accurate measurement of SEH can be performed.

Figure 5. The measurement procedure using the new *ex vivo* model. To evaluate SIM performance, the magnitude of SEH was measured by a digital height gage (**A**). Using a 2.5-mL syringe with a 23G needle, 2.0 mL of each SIM was injected into the submucosa from the specimen margins to create a submucosal elevation (**B, C**). The digital height gage was used to measure of the height of the submucosal elevation (*i.e.*, the values of SEH) (**D**).

Figure 6. Measurement of SEH using either the new or conventional model. After the injection of NS or 0.4% HA into the submucosa of the specimen fixed with pins (0.0 N) (**A**) or stretched at a constant tension (1.5 N or 3.0 N) (**B, C**), SEH was measured using the height gage. Next, we compared the values of SEH measured at different tensions (0.0, 1.5, and 3.0 N) after the submucosal injection of NS (**D**) or 0.4% HA (**E**). Data are expressed as mean \pm S.D. of more than three independent experiments. This figure has been modified from Hirose *et al.*²³.

DISCUSSION:

The porcine stomach used for the new model should be stored in a freezer immediately after the resection, and be used within a few months after freezing, since the freshness of the swine stomach is essential for SEH measurement. We measured the SEH using both frozen and unfrozen gastric specimens, and confirmed that there was no difference in the result of SEH measurement.

The quality of gastric specimens is greatly influenced by the individual differences of porcine stomachs. Hence, it is recommended to exclude obviously thick specimens or specimens with many folds before the measurement. Furthermore, some specimens may be inappropriate for SEH measurement due to fibrosis. It is recommended to exclude the inappropriate specimens where submucosal elevation is not found due to fibrosis.

Since the digestive tract is expanded by endoscopic treatment, some tension is applied to the gastrointestinal mucosa. It was revealed that SIM performance (evaluated by measuring the values of SEH) decreased with the tension applied to the specimens increasing. Therefore, the tension was an important factor affecting the SIM performance (*i.e.*, the values of SEH)²³. The application of the tension (1.5-3.0 N) can reproduce an environment closer to the human gastrointestinal mucosa. However, a limitation of this method is that the optimal tension may depend on the difference of the specimen used

for analysis.

In the conventional model, since the tension applied to each specimen varies depending on the degree of specimen fixation, the variations of measured SEH are large (which correspond to the high standard deviations of SEH). Therefore, these high standard deviations make it difficult to compare each SEH in detail and perform statistical analysis. On the other hand, owing to small variations of SEH measured in the new model, SIM performance can be compared accurately *ex vivo* and precise statistical analysis is performed.

In conclusion, the new *ex vivo* model enables accurate SEH measurement and detailed comparison of SIM performance. Descriptions of detailed setup methodology will contribute to the dissemination of the new model and the development of high-performance materials.

ACKNOWLEDGEMENTS:

This work was supported by Kyoto Innovative Medical Technology Research & Development Support System, and by the Translational Research program; Strategic PRomotion for practical application of INnovative medical Technology (TR-SPRINT) from Japan Agency for Medical Research and Development (AMED).

DISCLOSURES:

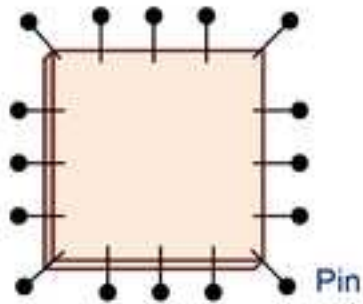
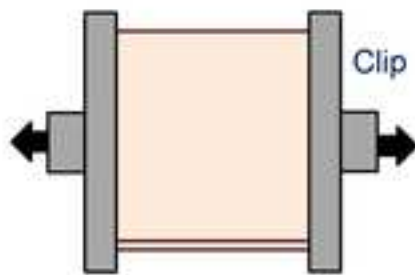
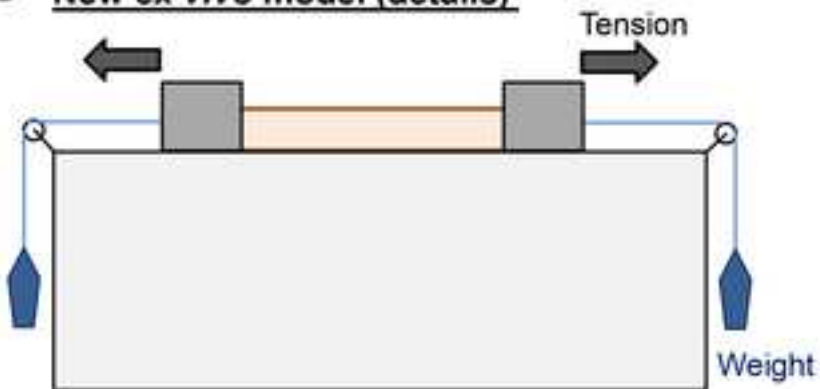
The authors have nothing to disclose.

REFERENCES:

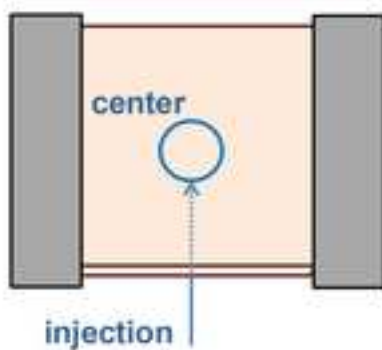
- 1 Ono, H. *et al.* Endoscopic mucosal resection for treatment of early gastric cancer. *Gut*. **48** (2), 225-229, (2001).
- 2 Conio, M., Ponchon, T., Blanchi, S. & Filiberti, R. Endoscopic mucosal resection. *The American journal of gastroenterology*. **101** (3), 653-663, (2006).
- 3 Soetikno, R. M., Gotoda, T., Nakanishi, Y. & Soehendra, N. Endoscopic mucosal resection. *Gastrointestinal endoscopy*. **57** (4), 567-579, (2003).
- 4 Iishi, H. *et al.* Endoscopic resection of large sessile colorectal polyps using a submucosal saline injection technique. *Hepato-gastroenterology*. **44** (15), 698-702, (1997).
- 5 Katsinelos, P. *et al.* A comparative study of 50% dextrose and normal saline solution on their ability to create submucosal fluid cushions for endoscopic resection of sessile rectosigmoid polyps. *Gastrointestinal endoscopy*. **68** (4), 692-698, (2008).

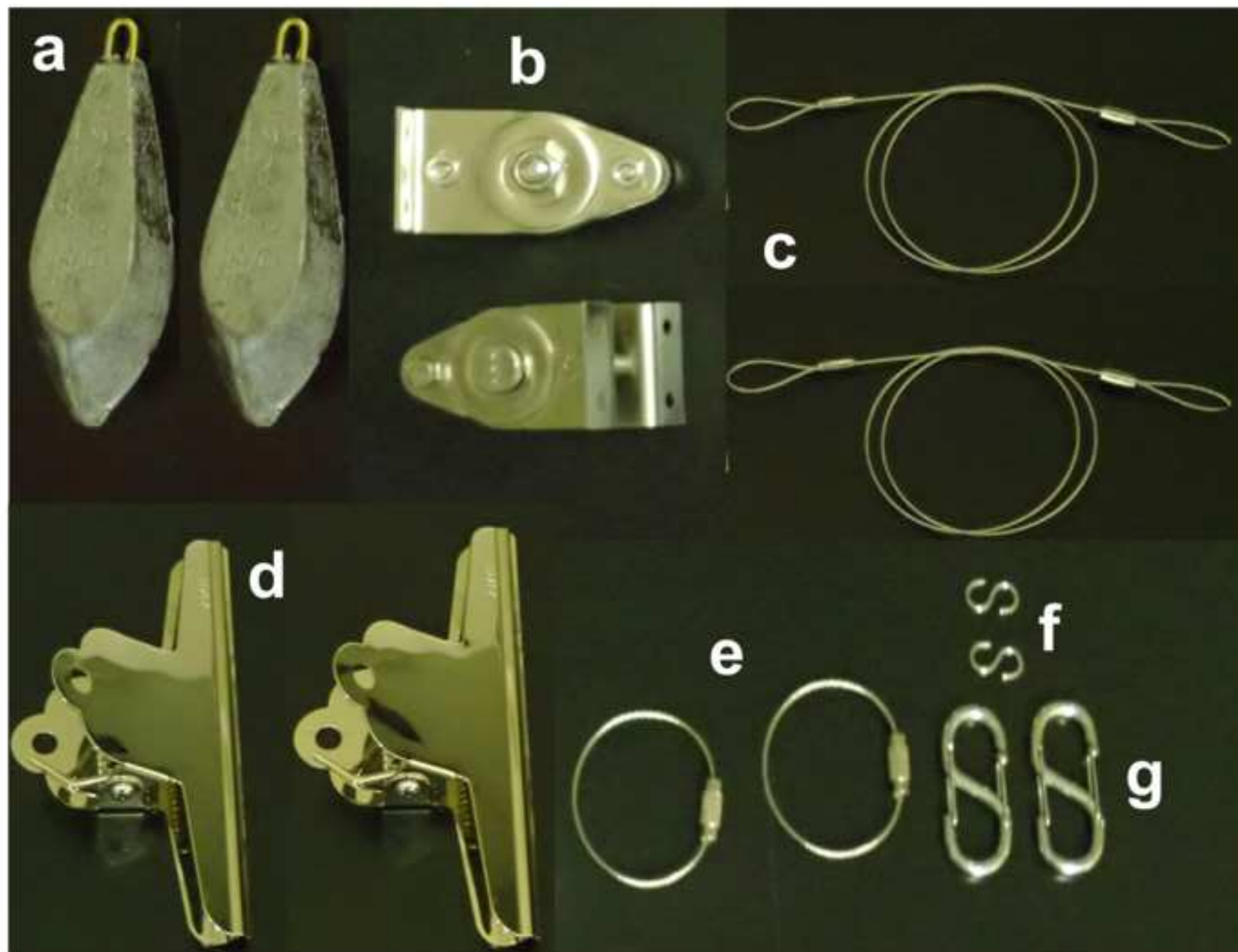
- 288
- 289 6 Yamamoto, H. *et al.* A novel method of endoscopic mucosal resection using sodium
290 hyaluronate. *Gastrointestinal endoscopy*. **50** (2), 251-256, (1999).
291
- 292 7 Yamamoto, H. *et al.* A successful single-step endoscopic resection of a 40
293 millimeter flat-elevated tumor in the rectum: endoscopic mucosal resection using
294 sodium hyaluronate. *Gastrointestinal endoscopy*. **50** (5), 701-704, (1999).
295
- 296 8 Yamamoto, H. *et al.* Usefulness and safety of 0.4% sodium hyaluronate solution as
297 a submucosal fluid "cushion" in endoscopic resection for gastric neoplasms: a
298 prospective multicenter trial. *Gastrointestinal endoscopy*. **67** (6), 830-839, (2008).
299
- 300 9 Yamamoto, H. *et al.* Successful en-bloc resection of large superficial tumors in the
301 stomach and colon using sodium hyaluronate and small-caliber-tip transparent
302 hood. *Endoscopy*. **35** (8), 690-694, (2003).
303
- 304 10 Kishihara, T. *et al.* Usefulness of sodium hyaluronate solution in colorectal
305 endoscopic mucosal resection. *Digestive endoscopy*. **24** (5), 348-352, (2012).
306
- 307 11 Yoshida, N. *et al.* Endoscopic mucosal resection with 0.13% hyaluronic acid solution
308 for colorectal polyps less than 20 mm: a randomized controlled trial. *Journal of*
309 *gastroenterology and hepatology*. **27** (8), 1377-1383, (2012).
310
- 311 12 Uraoka, T. *et al.* Effectiveness of glycerol as a submucosal injection for EMR.
312 *Gastrointestinal endoscopy*. **61** (6), 736-740, (2005).
313
- 314 13 Conio, M. *et al.* Comparative performance in the porcine esophagus of different
315 solutions used for submucosal injection. *Gastrointestinal endoscopy*. **56** (4), 513-
316 516, (2002).
317
- 318 14 Moss, A., Bourke, M. J. & Metz, A. J. A randomized, double-blind trial of
319 succinylated gelatin submucosal injection for endoscopic resection of large sessile
320 polyps of the colon. *The American journal of gastroenterology*. **105** (11), 2375-
321 2382, (2010).
322
- 323 15 Lee, S. H. *et al.* A new method of EMR: submucosal injection of a fibrinogen
324 mixture. *Gastrointestinal endoscopy*. **59** (2), 220-224, (2004).
325
- 326 16 Hurlstone, D. P. *et al.* EMR using dextrose solution versus sodium hyaluronate for
327 colorectal Paris type I and 0-II lesions: a randomized endoscopist-blinded study.
328 *Endoscopy*. **40** (2), 110-114, (2008).

- 17 Huai, Z. Y., Feng Xian, W., Chang Jiang, L. & Xi Chen, W. Submucosal injection solution for endoscopic resection in gastrointestinal tract: a traditional and network meta-analysis. *Gastroenterology research and practice*. **2015** 702768, (2015).
- 18 Yandrapu, H. *et al.* Normal saline solution versus other viscous solutions for submucosal injection during endoscopic mucosal resection: a systematic review and meta-analysis. *Gastrointestinal endoscopy*. 10.1016/j.gie.2016.12.003, (2016).
- 19 Fernandez-Esparrach, G., Shaikh, S. N., Cohen, A., Ryan, M. B. & Thompson, C. C. Efficacy of a reverse-phase polymer as a submucosal injection solution for EMR: a comparative study (with video). *Gastrointestinal endoscopy*. **69** (6), 1135-1139, (2009).
- 20 Tran, R. T., Palmer, M., Tang, S. J., Abell, T. L. & Yang, J. Injectable drug-eluting elastomeric polymer: a novel submucosal injection material. *Gastrointestinal endoscopy*. **75** (5), 1092-1097, (2012).
- 21 Akagi, T. *et al.* Sodium alginate as an ideal submucosal injection material for endoscopic submucosal resection: preliminary experimental and clinical study. *Gastrointestinal endoscopy*. **74** (5), 1026-1032, (2011).
- 22 Eun, S. H. *et al.* Effectiveness of sodium alginate as a submucosal injection material for endoscopic mucosal resection in animal. *Gut and Liver*. **1** (1), 27-32, (2007).
- 23 Hirose, R. *et al.* Development of a new ex vivo model for evaluation of endoscopic submucosal injection materials performance. *Journal of the Mechanical Behavior of Biomedical Materials*. **79** 219-225, (2018).

A Conventional ex vivo model**B** New ex vivo model**C** New ex vivo model (details)**Relationship between tension and weight**

Tension (N)	Weight (g)
0.5	51.0
1.0	102.0
1.5	153.1
3.0	306.1

D Submucosal elevation



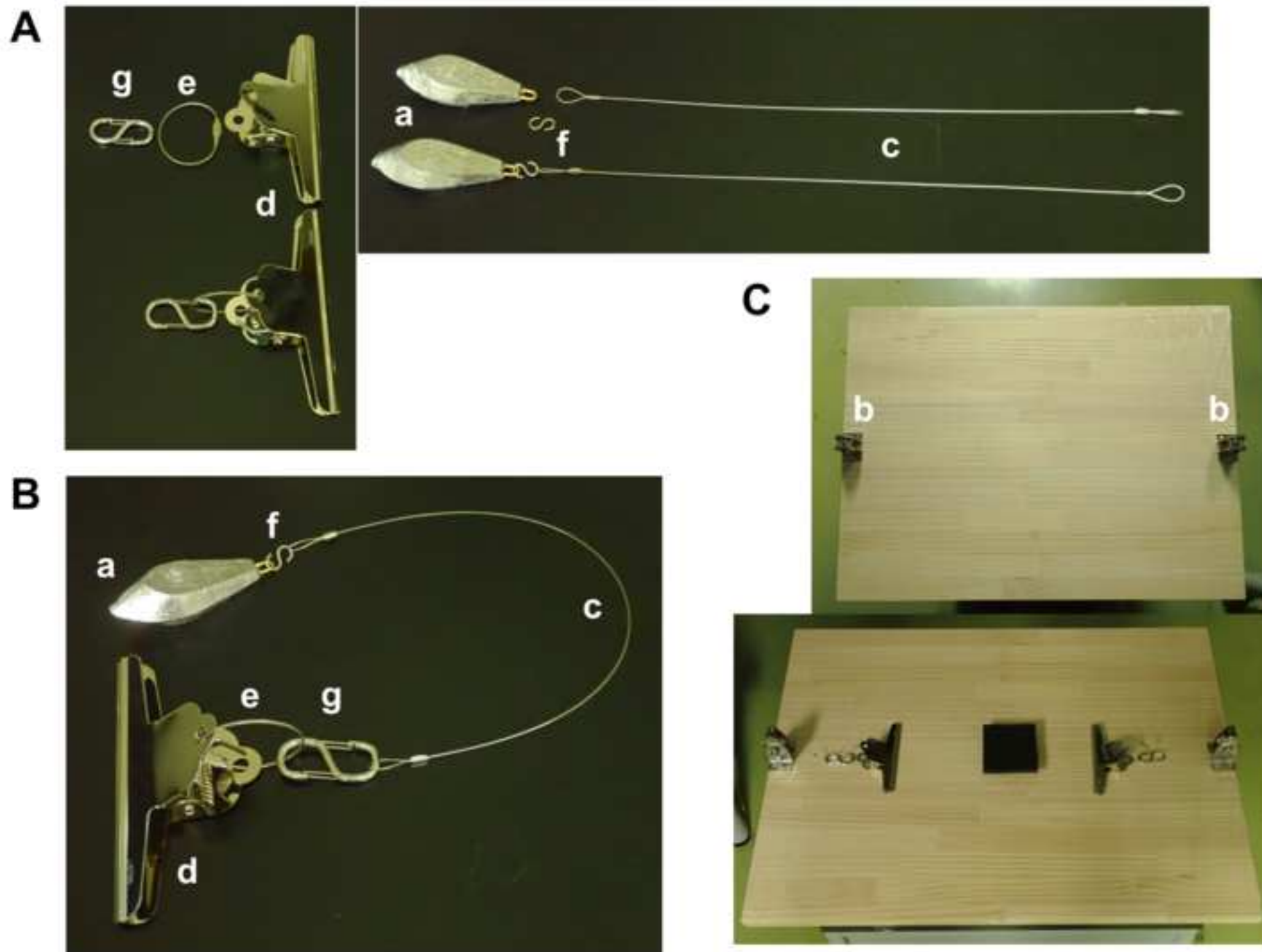
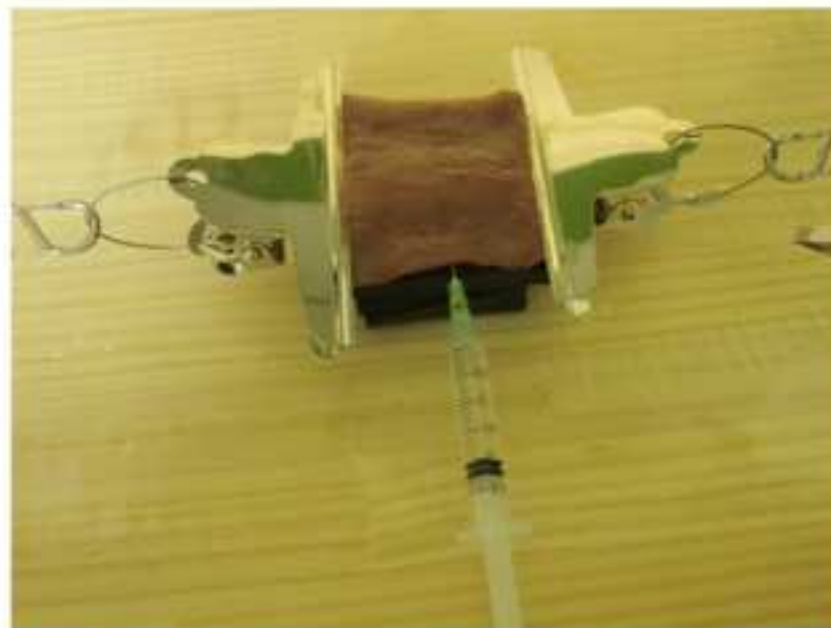
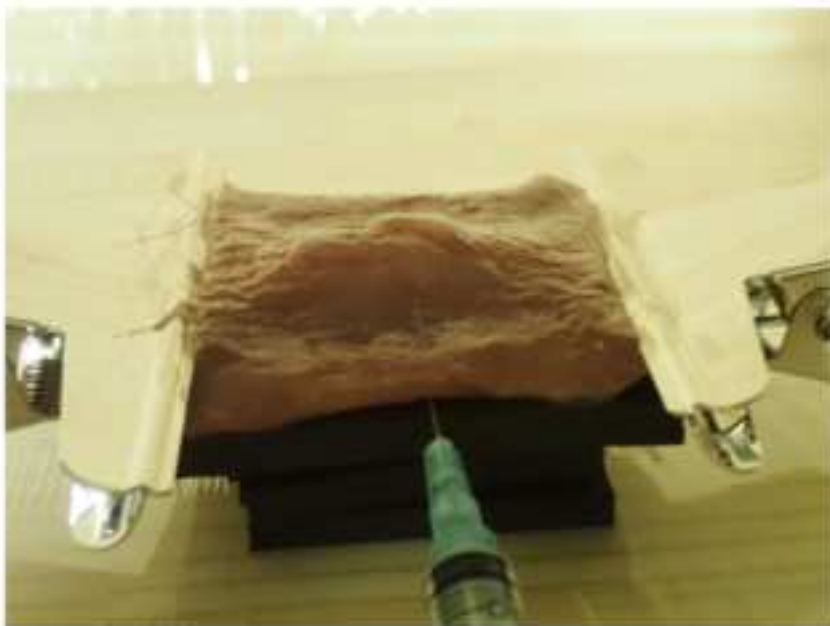
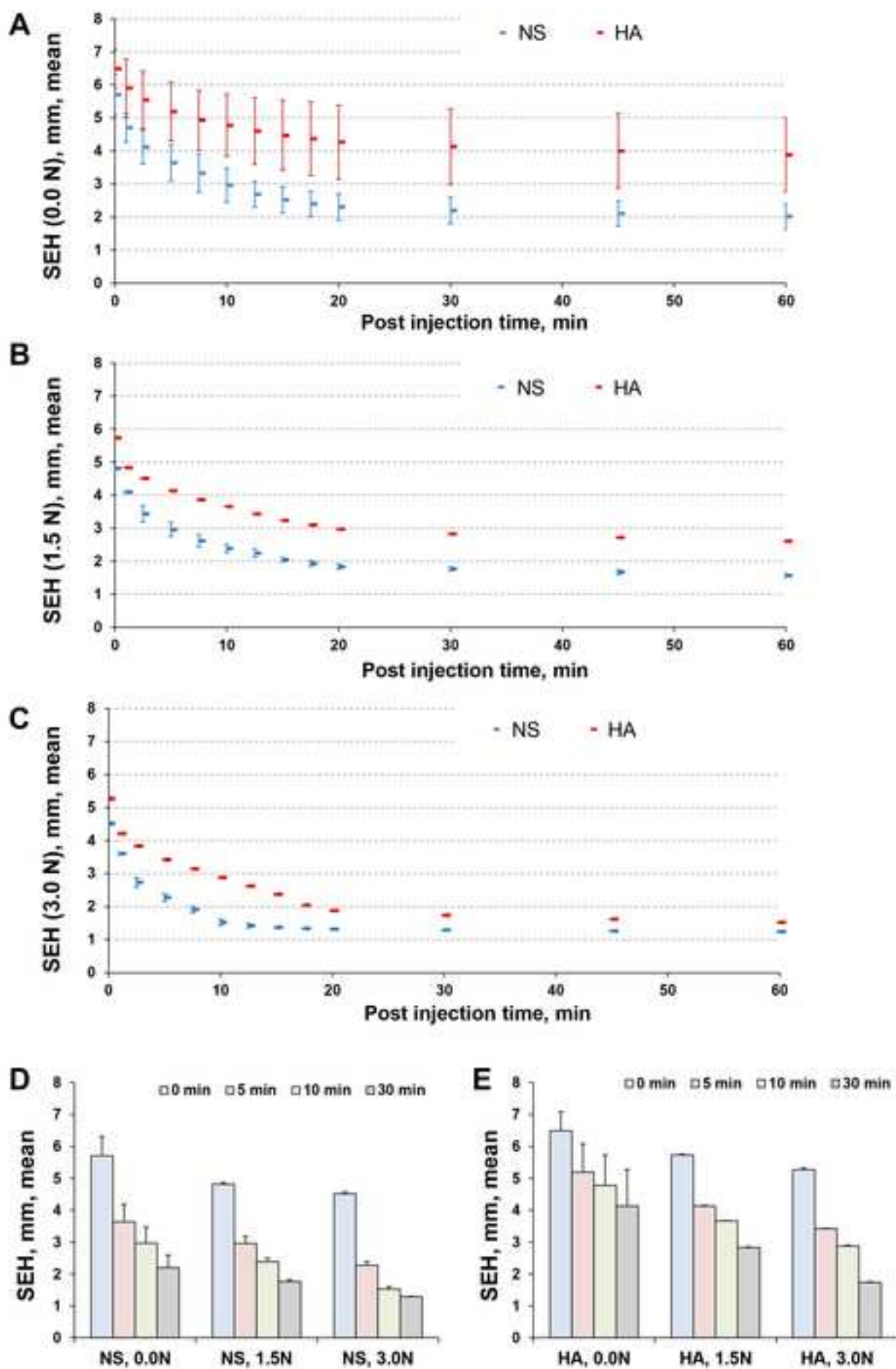


Figure4

[Click here to download Figure Fig4.TIF](#)



A**B****C****D**



Name of Material/ Equipment	Company
weight (153.1 g)	
fixed type pulley	H.H.H. MANUFACTURING
stainless steel wire with a diameter of 0.45 mm	Nissa Chain
stainless steel clip of width 147 mm	KOKUYO
stainless steel key wire with a length of 12 cm	Nissa Chain
stainless steel S shaped hook	TRUSCO NAKAYAMA
lockable stainless steel S-shaped hook	Mizumoto Machine Mfg
rectangular wooden base (45 x 60 cm)	none
rubber plate (5 x 5 cm)	none
digital height gage	Mitutoyo
2.5-mL syringe	Terumo
23-gauge needle	Terumo
MucoUp	Boston Scientific
saline (20 mL)	Otsuka Pharmaceutical
GraphPad Prism 7 software	GraphPad Inc

Catalog Number	Comments/Description
VS25	
Cut wire Y-5	
none	
P-702	
TCS1.2	
B2054	
none	
none	
HDS-20C	
SS-02SZ	
NN-2332R	
none	0.4% sodium hyaluronate (HA)
none	normal saline (NS)
none	



1 Alewife Center #200
 Cambridge, MA 02140
 tel. 617.945.9051
www.jove.com

ARTICLE AND VIDEO LICENSE AGREEMENT

Title of Article:

Author(s):

Item 1 (check one box): The Author elects to have the Materials be made available (as described at <http://www.jove.com/author>) via: ☒ Standard Access ☐ Open Access

Item 2 (check one box):

- ☒ The Author is NOT a United States government employee.
- ☐ The Author is a United States government employee and the Materials were prepared in the course of his or her duties as a United States government employee.
- ☐ The Author is a United States government employee but the Materials were NOT prepared in the course of his or her duties as a United States government employee.

ARTICLE AND VIDEO LICENSE AGREEMENT

1. **Defined Terms.** As used in this Article and Video License Agreement, the following terms shall have the following meanings: “**Agreement**” means this Article and Video License Agreement; “**Article**” means the article specified on the last page of this Agreement, including any associated materials such as texts, figures, tables, artwork, abstracts, or summaries contained therein; “**Author**” means the author who is a signatory to this Agreement; “**Collective Work**” means a work, such as a periodical issue, anthology or encyclopedia, in which the Materials in their entirety in unmodified form, along with a number of other contributions, constituting separate and independent works in themselves, are assembled into a collective whole; “**CRC License**” means the Creative Commons Attribution-Non Commercial-No Derivs 3.0 Unported Agreement, the terms and conditions of which can be found at: <http://creativecommons.org/licenses/by-nc-nd/3.0/legalcode>; “**Derivative Work**” means a work based upon the Materials or upon the Materials and other pre-existing works, such as a translation, musical arrangement, dramatization, fictionalization, motion picture version, sound recording, art reproduction, abridgment, condensation, or any other form in which the Materials may be recast, transformed, or adapted; “**Institution**” means the institution, listed on the last page of this Agreement, by which the Author was employed at the time of the creation of the Materials; “**JoVE**” means MyJoVE Corporation, a Massachusetts corporation and the publisher of *The Journal of Visualized Experiments*; “**Materials**” means the Article and / or the Video; “**Parties**” means the Author and JoVE; “**Video**” means any video(s) made by the Author, alone or in conjunction with any other parties, or by JoVE or its affiliates or agents, individually or in collaboration with the Author or any other parties, incorporating all or any portion of the Article, and in which the Author may or may not appear.

2. **Background.** The Author, who is the author of the Article, in order to ensure the dissemination and protection of the Article, desires to have the JoVE publish the Article and create and transmit videos based on the Article. In furtherance of such goals, the Parties desire to memorialize in this Agreement the respective rights of each Party in and to the Article and the Video.

3. **Grant of Rights in Article.** In consideration of JoVE agreeing to publish the Article, the Author hereby grants to JoVE, subject to **Sections 4 and 7** below, the exclusive, royalty-free, perpetual (for the full term of copyright in the Article, including any extensions thereto) license (a) to publish, reproduce, distribute, display and store the Article in all forms, formats and media whether now known or hereafter developed (including without limitation in print, digital and electronic form) throughout the world, (b) to translate the Article into other languages, create adaptations, summaries or extracts of the Article or other Derivative Works (including, without limitation, the Video) or Collective Works based on all or any portion of the Article and exercise all of the rights set forth in (a) above in such translations, adaptations, summaries, extracts, Derivative Works or Collective Works and (c) to license others to do any or all of the above. The foregoing rights may be exercised in all media and formats, whether now known or hereafter devised, and include the right to make such modifications as are technically necessary to exercise the rights in other media and formats. If the “Open Access” box has been checked in **Item 1** above, JoVE and the Author hereby grant to the public all such rights in the Article as provided in, but subject to all limitations and requirements set forth in, the CRC License.

ARTICLE AND VIDEO LICENSE AGREEMENT

4. Retention of Rights in Article. Notwithstanding the exclusive license granted to JoVE in **Section 3** above, the Author shall, with respect to the Article, retain the non-exclusive right to use all or part of the Article for the non-commercial purpose of giving lectures, presentations or teaching classes, and to post a copy of the Article on the Institution's website or the Author's personal website, in each case provided that a link to the Article on the JoVE website is provided and notice of JoVE's copyright in the Article is included. All non-copyright intellectual property rights in and to the Article, such as patent rights, shall remain with the Author.

5. Grant of Rights in Video – Standard Access. This **Section 5** applies if the "Standard Access" box has been checked in **Item 1** above or if no box has been checked in **Item 1** above. In consideration of JoVE agreeing to produce, display or otherwise assist with the Video, the Author hereby acknowledges and agrees that, Subject to **Section 7** below, JoVE is and shall be the sole and exclusive owner of all rights of any nature, including, without limitation, all copyrights, in and to the Video. To the extent that, by law, the Author is deemed, now or at any time in the future, to have any rights of any nature in or to the Video, the Author hereby disclaims all such rights and transfers all such rights to JoVE.

6. Grant of Rights in Video – Open Access. This **Section 6** applies only if the "Open Access" box has been checked in **Item 1** above. In consideration of JoVE agreeing to produce, display or otherwise assist with the Video, the Author hereby grants to JoVE, subject to **Section 7** below, the exclusive, royalty-free, perpetual (for the full term of copyright in the Article, including any extensions thereto) license (a) to publish, reproduce, distribute, display and store the Video in all forms, formats and media whether now known or hereafter developed (including without limitation in print, digital and electronic form) throughout the world, (b) to translate the Video into other languages, create adaptations, summaries or extracts of the Video or other Derivative Works or Collective Works based on all or any portion of the Video and exercise all of the rights set forth in (a) above in such translations, adaptations, summaries, extracts, Derivative Works or Collective Works and (c) to license others to do any or all of the above. The foregoing rights may be exercised in all media and formats, whether now known or hereafter devised, and include the right to make such modifications as are technically necessary to exercise the rights in other media and formats. For any Video to which this Section 6 is applicable, JoVE and the Author hereby grant to the public all such rights in the Video as provided in, but subject to all limitations and requirements set forth in, the CRC License.

7. Government Employees. If the Author is a United States government employee and the Article was prepared in the course of his or her duties as a United States government employee, as indicated in **Item 2** above, and any of the licenses or grants granted by the Author hereunder exceed the scope of the 17 U.S.C. 403, then the rights granted hereunder shall be limited to the maximum rights permitted under such

statute. In such case, all provisions contained herein that are not in conflict with such statute shall remain in full force and effect, and all provisions contained herein that do so conflict shall be deemed to be amended so as to provide to JoVE the maximum rights permissible within such statute.

8. Likeness, Privacy, Personality. The Author hereby grants JoVE the right to use the Author's name, voice, likeness, picture, photograph, image, biography and performance in any way, commercial or otherwise, in connection with the Materials and the sale, promotion and distribution thereof. The Author hereby waives any and all rights he or she may have, relating to his or her appearance in the Video or otherwise relating to the Materials, under all applicable privacy, likeness, personality or similar laws.

9. Author Warranties. The Author represents and warrants that the Article is original, that it has not been published, that the copyright interest is owned by the Author (or, if more than one author is listed at the beginning of this Agreement, by such authors collectively) and has not been assigned, licensed, or otherwise transferred to any other party. The Author represents and warrants that the author(s) listed at the top of this Agreement are the only authors of the Materials. If more than one author is listed at the top of this Agreement and if any such author has not entered into a separate Article and Video License Agreement with JoVE relating to the Materials, the Author represents and warrants that the Author has been authorized by each of the other such authors to execute this Agreement on his or her behalf and to bind him or her with respect to the terms of this Agreement as if each of them had been a party hereto as an Author. The Author warrants that the use, reproduction, distribution, public or private performance or display, and/or modification of all or any portion of the Materials does not and will not violate, infringe and/or misappropriate the patent, trademark, intellectual property or other rights of any third party. The Author represents and warrants that it has and will continue to comply with all government, institutional and other regulations, including, without limitation all institutional, laboratory, hospital, ethical, human and animal treatment, privacy, and all other rules, regulations, laws, procedures or guidelines, applicable to the Materials, and that all research involving human and animal subjects has been approved by the Author's relevant institutional review board.

10. JoVE Discretion. If the Author requests the assistance of JoVE in producing the Video in the Author's facility, the Author shall ensure that the presence of JoVE employees, agents or independent contractors is in accordance with the relevant regulations of the Author's institution. If more than one author is listed at the beginning of this Agreement, JoVE may, in its sole discretion, elect not take any action with respect to the Article until such time as it has received complete, executed Article and Video License Agreements from each such author. JoVE reserves the right, in its absolute and sole discretion and without giving any reason therefore, to accept or decline any work submitted to JoVE. JoVE and its employees, agents and independent contractors shall have

ARTICLE AND VIDEO LICENSE AGREEMENT

full, unfettered access to the facilities of the Author or of the Author's institution as necessary to make the Video, whether actually published or not. JoVE has sole discretion as to the method of making and publishing the Materials, including, without limitation, to all decisions regarding editing, lighting, filming, timing of publication, if any, length, quality, content and the like.

11. **Indemnification.** The Author agrees to indemnify JoVE and/or its successors and assigns from and against any and all claims, costs, and expenses, including attorney's fees, arising out of any breach of any warranty or other representations contained herein. The Author further agrees to indemnify and hold harmless JoVE from and against any and all claims, costs, and expenses, including attorney's fees, resulting from the breach by the Author of any representation or warranty contained herein or from allegations or instances of violation of intellectual property rights, damage to the Author's or the Author's institution's facilities, fraud, libel, defamation, research, equipment, experiments, property damage, personal injury, violations of institutional, laboratory, hospital, ethical, human and animal treatment, privacy or other rules, regulations, laws, procedures or guidelines, liabilities and other losses or damages related in any way to the submission of work to JoVE, making of videos by JoVE, or publication in JoVE or elsewhere by JoVE. The Author shall be responsible for, and shall hold JoVE harmless from, damages caused by lack of sterilization, lack of cleanliness or by contamination due to the making of a video by JoVE its employees, agents or independent contractors. All sterilization, cleanliness or decontamination procedures shall be solely the responsibility of the Author and shall be undertaken at the Author's

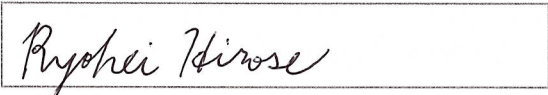
expense. All indemnifications provided herein shall include JoVE's attorney's fees and costs related to said losses or damages. Such indemnification and holding harmless shall include such losses or damages incurred by, or in connection with, acts or omissions of JoVE, its employees, agents or independent contractors.

12. **Fees.** To cover the cost incurred for publication, JoVE must receive payment before production and publication the Materials. Payment is due in 21 days of invoice. Should the Materials not be published due to an editorial or production decision, these funds will be returned to the Author. Withdrawal by the Author of any submitted Materials after final peer review approval will result in a US\$1,200 fee to cover pre-production expenses incurred by JoVE. If payment is not received by the completion of filming, production and publication of the Materials will be suspended until payment is received.

13. **Transfer, Governing Law.** This Agreement may be assigned by JoVE and shall inure to the benefits of any of JoVE's successors and assignees. This Agreement shall be governed and construed by the internal laws of the Commonwealth of Massachusetts without giving effect to any conflict of law provision thereunder. This Agreement may be executed in counterparts, each of which shall be deemed an original, but all of which together shall be deemed to be one and the same agreement. A signed copy of this Agreement delivered by facsimile, e-mail or other means of electronic transmission shall be deemed to have the same legal effect as delivery of an original signed copy of this Agreement.

A signed copy of this document must be sent with all new submissions. Only one Agreement required per submission.

CORRESPONDING AUTHOR:

Name:	Ryohei Hirose		
Department:	Molecular Gastroenterology and Hepatology		
Institution:	Kyoto Prefectural University of Medicine		
Article Title:	Detailed setup methodology of a new ex vivo model for evaluation of endoscopic submucosal injection materials performance		
Signature:		Date:	2018/02/18

Please submit a signed and dated copy of this license by one of the following three methods:

- 1) Upload a scanned copy of the document as a pdf on the JoVE submission site;
- 2) Fax the document to +1.866.381.2236;
- 3) Mail the document to JoVE / Attn: JoVE Editorial / 1 Alewife Center #200 / Cambridge, MA 02139

For questions, please email submissions@jove.com or call +1.617.945.9051

June 12, 2018

Dr. Ronald Myers, Senior Science Editor
Dr. Bing Wu, Review Editor
Journal of Visualized Experiments (JoVE)

Dear Dr. Myers and Dr. Wu:

Thank you for your kind e-mail dated Jun 06, 2018, and for the opportunity to submit a revised version of our manuscript (JoVE58029), titled “**Detailed setup methodology of a new ex vivo model for evaluation of endoscopic submucosal injection materials performance**” for your continued consideration for publication in *JoVE*.

We have carefully read the editorial comments and have revised the manuscript accordingly. Moreover, our manuscript was revised according to *JoVE* manuscript submission guidelines. We used a professional language editing service to further improve the English of our manuscript and to ensure that our meaning is clarified throughout.

We believe that we have fully addressed all the reviewers’ concerns and hope that you now find the manuscript suitable for publication in *JoVE*.

Please do not hesitate to contact me with any questions or concerns.

Yours sincerely,

Ryohei Hirose, Ph.D., M.D.
Department of Molecular Gastroenterology and Hepatology
Kyoto Prefectural University of Medicine
465 Kajii-cho, Kawaramachi-Hirokoji, Kamigyo-ku,
Kyoto 602-8566, Japan
Tel.: +81-75-251-5519
Fax: +81-75-251-0710
E-mail: ryo-hiro@koto.kpu-m.ac.jp

**ELSEVIER LICENSE
TERMS AND CONDITIONS**

Apr 10, 2018

This Agreement between Dr. Ryohei Hirose ("You") and Elsevier ("Elsevier") consists of your license details and the terms and conditions provided by Elsevier and Copyright Clearance Center.

License Number	4273161132556
License date	Jan 20, 2018
Licensed Content Publisher	Elsevier
Licensed Content Publication	Journal of the Mechanical Behavior of Biomedical Materials
Licensed Content Title	Development of a new ex vivo model for evaluation of endoscopic submucosal injection materials performance
Licensed Content Author	Ryohei Hirose,Takaaki Nakaya,Yuji Naito,Tomo Daidoji,Hiroaki Yasuda,Hideyuki Konishi,Yoshito Itoh
Licensed Content Date	Mar 1, 2018
Licensed Content Volume	79
Licensed Content Issue	n/a
Licensed Content Pages	7
Start Page	219
End Page	225
Type of Use	reuse in a journal/magazine
Requestor type	author of new work
Intended publisher of new work	Other
Portion	full article
Format	electronic
Are you the author of this Elsevier article?	Yes
Will you be translating?	No
Title of the article	Detailed setup methodology of a new ex vivo model for evaluation of endoscopic submucosal injection materials performance
Publication new article is in	Journal of Visualized Experiments (JoVE)
Publisher of the new article	Other

Author of new article	Ryohei Hirose, Takaaki Nakaya, Yuji Naito, Tomo Daidoji, Hiroaki Yasuda, Hideyuki Konishi, Yoshito Itoh
Expected publication date	Apr 2018
Estimated size of new article (number of pages)	4
Requestor Location	Dr. Ryohei Hirose 465 Kajii-cho, Kawaramachi-Hirokoji Kamigyo-ku, Kyoto Kyoto, Kyoto 602-8566 Japan Attn: Dr. Ryohei Hirose
Publisher Tax ID	JP00022
Total	0 JPY
Terms and Conditions	

INTRODUCTION

1. The publisher for this copyrighted material is Elsevier. By clicking "accept" in connection with completing this licensing transaction, you agree that the following terms and conditions apply to this transaction (along with the Billing and Payment terms and conditions established by Copyright Clearance Center, Inc. ("CCC"), at the time that you opened your Rightslink account and that are available at any time at <http://myaccount.copyright.com>).

GENERAL TERMS

2. Elsevier hereby grants you permission to reproduce the aforementioned material subject to the terms and conditions indicated.

3. Acknowledgement: If any part of the material to be used (for example, figures) has appeared in our publication with credit or acknowledgement to another source, permission must also be sought from that source. If such permission is not obtained then that material may not be included in your publication/copies. Suitable acknowledgement to the source must be made, either as a footnote or in a reference list at the end of your publication, as follows:

"Reprinted from Publication title, Vol /edition number, Author(s), Title of article / title of chapter, Pages No., Copyright (Year), with permission from Elsevier [OR APPLICABLE SOCIETY COPYRIGHT OWNER]." Also Lancet special credit - "Reprinted from The Lancet, Vol. number, Author(s), Title of article, Pages No., Copyright (Year), with permission from Elsevier."

4. Reproduction of this material is confined to the purpose and/or media for which permission is hereby given.

5. Altering/Modifying Material: Not Permitted. However figures and

illustrations may be altered/adapted minimally to serve your work. Any other abbreviations, additions, deletions and/or any other alterations shall be made only with prior written authorization of Elsevier Ltd. (Please contact Elsevier at permissions@elsevier.com). No modifications can be made to any Lancet figures/tables and they must be reproduced in full.

6. If the permission fee for the requested use of our material is waived in this instance, please be advised that your future requests for Elsevier materials may attract a fee.

7. Reservation of Rights: Publisher reserves all rights not specifically granted in the combination of (i) the license details provided by you and accepted in the course of this licensing transaction, (ii) these terms and conditions and (iii) CCC's Billing and Payment terms and conditions.

8. License Contingent Upon Payment: While you may exercise the rights licensed immediately upon issuance of the license at the end of the licensing process for the transaction, provided that you have disclosed complete and accurate details of your proposed use, no license is finally effective unless and until full payment is received from you (either by publisher or by CCC) as provided in CCC's Billing and Payment terms and conditions. If full payment is not received on a timely basis, then any license preliminarily granted shall be deemed automatically revoked and shall be void as if never granted. Further, in the event that you breach any of these terms and conditions or any of CCC's Billing and Payment terms and conditions, the license is automatically revoked and shall be void as if never granted. Use of materials as described in a revoked license, as well as any use of the materials beyond the scope of an unrevoked license, may constitute copyright infringement and publisher reserves the right to take any and all action to protect its copyright in the

materials.

9. Warranties: Publisher makes no representations or warranties with respect to the licensed material.

10. Indemnity: You hereby indemnify and agree to hold harmless publisher and CCC, and their respective officers, directors, employees and agents, from and against any and all claims arising out of your use of the licensed material other than as specifically authorized pursuant to this license.

11. No Transfer of License: This license is personal to you and may not be sublicensed, assigned, or transferred by you to any other person without publisher's written permission.

12. No Amendment Except in Writing: This license may not be amended except in a writing signed by both parties (or, in the case of publisher, by CCC on publisher's behalf).

13. Objection to Contrary Terms: Publisher hereby objects to any terms contained in any purchase order, acknowledgment, check endorsement or other writing prepared by you, which terms are inconsistent with these terms and conditions or CCC's Billing and Payment terms and conditions. These terms and conditions, together with CCC's Billing and Payment terms and conditions (which are incorporated herein), comprise the entire agreement between you and publisher (and CCC) concerning this licensing transaction. In the event of any conflict between your obligations established by these terms and conditions and those established by CCC's Billing and Payment terms and conditions, these terms and conditions shall control.

14. Revocation: Elsevier or Copyright Clearance Center may deny the permissions described in this License at their sole discretion, for any

reason or no reason, with a full refund payable to you. Notice of such denial will be made using the contact information provided by you. Failure to receive such notice will not alter or invalidate the denial. In no event will Elsevier or Copyright Clearance Center be responsible or liable for any costs, expenses or damage incurred by you as a result of a denial of your permission request, other than a refund of the amount(s) paid by you to Elsevier and/or Copyright Clearance Center for denied permissions.

LIMITED LICENSE

The following terms and conditions apply only to specific license types:

15. **Translation:** This permission is granted for non-exclusive world **English** rights only unless your license was granted for translation rights. If you licensed translation rights you may only translate this content into the languages you requested. A professional translator must perform all translations and reproduce the content word for word preserving the integrity of the article.

16. **Posting licensed content on any Website:** The following terms and conditions apply as follows: Licensing material from an Elsevier journal: All content posted to the web site must maintain the copyright information line on the bottom of each image; A hyper-text must be included to the Homepage of the journal from which you are licensing at <http://www.sciencedirect.com/science/journal/xxxxx> or the Elsevier homepage for books at <http://www.elsevier.com>; Central Storage: This license does not include permission for a scanned version of the material to be stored in a central repository such as that provided by Heron/XanEdu.

Licensing material from an Elsevier book: A hyper-text link must be

included to the Elsevier homepage at <http://www.elsevier.com> . All content posted to the web site must maintain the copyright information line on the bottom of each image.

Posting licensed content on Electronic reserve: In addition to the above the following clauses are applicable: The web site must be password-protected and made available only to bona fide students registered on a relevant course. This permission is granted for 1 year only. You may obtain a new license for future website posting.

17. **For journal authors:** the following clauses are applicable in addition to the above:

Preprints:

A preprint is an author's own write-up of research results and analysis, it has not been peer-reviewed, nor has it had any other value added to it by a publisher (such as formatting, copyright, technical enhancement etc.). Authors can share their preprints anywhere at any time. Preprints should not be added to or enhanced in any way in order to appear more like, or to substitute for, the final versions of articles however authors can update their preprints on arXiv or RePEc with their Accepted Author Manuscript (see below).

If accepted for publication, we encourage authors to link from the preprint to their formal publication via its DOI. Millions of researchers have access to the formal publications on ScienceDirect, and so links will help users to find, access, cite and use the best available version. Please note that Cell Press, The Lancet and some society-owned have different preprint policies. Information on these policies is available on the journal homepage.

Accepted Author Manuscripts: An accepted author manuscript is the manuscript of an article that has been accepted for publication and which typically includes author-incorporated changes suggested during submission, peer review and editor-author communications.

Authors can share their accepted author manuscript:

- immediately
 - via their non-commercial person homepage or blog
 - by updating a preprint in arXiv or RePEc with the accepted manuscript
 - via their research institute or institutional repository for internal institutional uses or as part of an invitation-only research collaboration work-group
 - directly by providing copies to their students or to research collaborators for their personal use
 - for private scholarly sharing as part of an invitation-only work group on commercial sites with which Elsevier has an agreement
- After the embargo period
 - via non-commercial hosting platforms such as their institutional repository
 - via commercial sites with which Elsevier has an agreement

In all cases accepted manuscripts should:

- link to the formal publication via its DOI
- bear a CC-BY-NC-ND license - this is easy to do
- if aggregated with other manuscripts, for example in a repository or

other site, be shared in alignment with our hosting policy not be added to or enhanced in any way to appear more like, or to substitute for, the published journal article.

Published journal article (JPA): A published journal article (PJA) is the definitive final record of published research that appears or will appear in the journal and embodies all value-adding publishing activities including peer review co-ordination, copy-editing, formatting, (if relevant) pagination and online enrichment.

Policies for sharing publishing journal articles differ for subscription and gold open access articles:

Subscription Articles: If you are an author, please share a link to your article rather than the full-text. Millions of researchers have access to the formal publications on ScienceDirect, and so links will help your users to find, access, cite, and use the best available version.

Theses and dissertations which contain embedded PJAs as part of the formal submission can be posted publicly by the awarding institution with DOI links back to the formal publications on ScienceDirect.

If you are affiliated with a library that subscribes to ScienceDirect you have additional private sharing rights for others' research accessed under that agreement. This includes use for classroom teaching and internal training at the institution (including use in course packs and courseware programs), and inclusion of the article for grant funding purposes.

Gold Open Access Articles: May be shared according to the author-selected end-user license and should contain a [CrossMark logo](#), the end user license, and a DOI link to the formal publication on ScienceDirect. Please refer to Elsevier's [posting policy](#) for further information.

18. **For book authors** the following clauses are applicable in addition to the above: Authors are permitted to place a brief summary of their work online only. You are not allowed to download and post the published electronic version of your chapter, nor may you scan the printed edition to create an electronic version. **Posting to a repository:** Authors are permitted to post a summary of their chapter only in their institution's repository.

19. **Thesis/Dissertation:** If your license is for use in a thesis/dissertation your thesis may be submitted to your institution in either print or electronic form. Should your thesis be published commercially, please reapply for permission. These requirements include permission for the Library and Archives of Canada to supply single copies, on demand, of the complete thesis and include permission for Proquest/UMI to supply single copies, on demand, of the complete thesis. Should your thesis be published commercially, please reapply for permission. Theses and dissertations which contain embedded PJAs as part of the formal submission can be posted publicly by the awarding institution with DOI links back to the formal publications on ScienceDirect.

Elsevier Open Access Terms and Conditions

You can publish open access with Elsevier in hundreds of open access journals or in nearly 2000 established subscription journals that support open access publishing. Permitted third party re-use of these open access articles is defined by the author's choice of Creative Commons user license. See our [open access license policy](#) for more information.

Terms & Conditions applicable to all Open Access articles published with Elsevier:

Any reuse of the article must not represent the author as endorsing the adaptation of the article nor should the article be modified in such a way as to damage the author's honour or reputation. If any changes have been made, such changes must be clearly indicated.

The author(s) must be appropriately credited and we ask that you include the end user license and a DOI link to the formal publication on ScienceDirect.

If any part of the material to be used (for example, figures) has appeared in our publication with credit or acknowledgement to another source it is the responsibility of the user to ensure their reuse complies with the terms and conditions determined by the rights holder.

Additional Terms & Conditions applicable to each Creative Commons user license:

CC BY: The CC-BY license allows users to copy, to create extracts, abstracts and new works from the Article, to alter and revise the Article and to make commercial use of the Article (including reuse and/or resale of the Article by commercial entities), provided the user gives appropriate credit (with a link to the formal publication through the relevant DOI), provides a link to the license, indicates if changes were made and the licensor is not represented as endorsing the use made of the work. The full details of the license are available at <http://creativecommons.org/licenses/by/4.0>.

CC BY NC SA: The CC BY-NC-SA license allows users to copy, to create extracts, abstracts and new works from the Article, to alter and revise the Article, provided this is not done for commercial purposes, and that the user gives appropriate credit (with a link to the formal publication through the relevant DOI), provides a link to the license, indicates if changes were

made and the licensor is not represented as endorsing the use made of the work. Further, any new works must be made available on the same conditions. The full details of the license are available at <http://creativecommons.org/licenses/by-nc-sa/4.0>.

CC BY NC ND: The CC BY-NC-ND license allows users to copy and distribute the Article, provided this is not done for commercial purposes and further does not permit distribution of the Article if it is changed or edited in any way, and provided the user gives appropriate credit (with a link to the formal publication through the relevant DOI), provides a link to the license, and that the licensor is not represented as endorsing the use made of the work. The full details of the license are available at <http://creativecommons.org/licenses/by-nc-nd/4.0>. Any commercial reuse of Open Access articles published with a CC BY NC SA or CC BY NC ND license requires permission from Elsevier and will be subject to a fee. Commercial reuse includes:

- Associating advertising with the full text of the Article
- Charging fees for document delivery or access
- Article aggregation
- Systematic distribution via e-mail lists or share buttons

Posting or linking by commercial companies for use by customers of those companies.

20. Other Conditions:

v1.9

Questions? customer care@copyright.com or +1-855-239-3415 (toll free in the US) or +1-978-646-2777.