



Journal of Visualized Experiments

estimating sheet erosion rates from dendrogeomorphology

--Manuscript Draft--

Article Type:	Invited Methods Article - JoVE Produced Video
Manuscript Number:	JoVE57987R3
Full Title:	estimating sheet erosion rates from dendrogeomorphology 
Keywords:	soil erosion; dendrogeomorphology; exposed roots; tree ring; ground microtopography; wood anatomy
Corresponding Author:	Jose Maria Bodoque del Pozo Universidad de Castilla-La Mancha Toledo, Toledo SPAIN
Corresponding Author's Institution:	Universidad de Castilla-La Mancha
Corresponding Author E-Mail:	JoseMaria.Bodoque@uclm.es
Order of Authors:	Jose Maria Bodoque del Pozo Juan Antonio Ballesteros-Cánovas Juan Manuel Rubiales Markus Stoffel
Additional Information:	
Question	Response
Please indicate whether this article will be Standard Access or Open Access.	Standard Access (US\$2,400)
Please indicate the city, state/province, and country where this article will be filmed . Please do not use abbreviations.	Dendrolab.ch, Department of Earth Sciences, University of Geneva, Rue des Maraichers 13, CH-1205 Geneva, Switzerland

TITLE:

Estimating Sheet Erosion Rates from Dendrogeomorphology 

AUTHORS & AFFILIATIONS:

Bodoque, José M.¹

Ballesteros-Cánovas, Juan A.^{2,3}

Rubiales, Juan M.^{4,5}

Stoffel, Markus^{2,3}

1: Department of Geological and Mining Engineering, University of Castilla–La Mancha (UCLM), Toledo, Spain

2: Department of Earth Sciences, University of Geneva, Geneva, Switzerland

3: Institute for Environmental Sciences, University of Geneva, Geneva, Switzerland

4: Departamento de Sistemas y Recursos Naturales, Universidad Politécnica de Madrid, Madrid, Spain

5: Departamento de Biología Vegetal I., Universidad Complutense de Madrid, Madrid, Spain

Josemaria.bodoque@uclm.es

juan.Ballesteros@unige.ch

jm.rubiales@upm.es

Markus.Stoffel@unige.ch

CORRESPONDENCE AUTHOR:

José M. Bodoque

KEYWORDS:

Soil erosion; dendrogeomorphology; exposed roots; tree ring; ground microtopography; wood anatomy

SHORT ABSTRACT:

Characterizing erosion from dendrogeomorphology has usually focused on accurately finding the starting time of root exposure, by examining macroscopic or cell level changes caused by exposure. Here, we offer a detailed description of different novel techniques to obtain more precise erosion rates from highly accurate microtopographic data.

LONG ABSTRACT:

Sheet erosion is among the crucial drivers of soil degradation. Erosion is controlled by environmental factors and human activities, which often lead to severe environmental impacts. The understanding of sheet erosion is, consequently, a worldwide issue with implications for both environment and economies. However, the knowledge on how erosion evolves in space and time is still limited, as well as its effects on the environment. Below, we explain a new dendrogeomorphological protocol for deriving eroded soil thickness (E_x) by acquiring accurate microtopographic data using both terrestrial laser scanning (TLS) and microtopographic profile gauges. Additionally, standard dendrogeomorphic procedures, dependent on anatomical

variations in root rings, are utilized to establish the timing of exposure. Both TLS and microtopographic profile gauges are used to obtain ground surface profiles, from which E_x is estimated after the threshold distance (TD) is determined, *i.e.*, the distance between the root and the sediment knickpoint, which allows defining the lowering of the ground surface caused by sheet erosion. For each profile, we measured the height between the topside of the root and a virtual plane tangential to the ground surface. In this way, we intended to avoid small-scale impacts of soil deformation, which may be due to pressures exerted by the root system, or by the arrangement of exposed roots. This may provoke small amounts of soil sedimentation or erosion depending on how they physically affect the surface runoff. We demonstrate that an adequate microtopographic characterization of exposed roots and their associated ground surface is very valuable to obtain accurate erosion rates. This finding could be utilized to develop the best management practices designed to eventually halt or perhaps, at least, lessen soil erosion, so that more sustainable management policies can be put into practice.

INTRODUCTION:

Both economic and environmental impacts produced by sheet erosion makes this topic in a worldwide concern¹. Several methods, from direct techniques to physical-based and empirical approaches, are used to calculate soil erosion rates on a variety of temporal and spatial scales. Direct techniques use field measurements under natural conditions and are mainly based on the use of Gerlach troughs², water collectors³, erosion pins⁴ and profilometers⁵. Furthermore, models of soil erosion have been increasingly focused on representing in detail the real physical processes responsible for erosion⁶.

Dendrogeomorphology⁷ is a subdivision of dendrochronology⁸ that it is successful in characterizing frequency and magnitude of geomorphic processes^{9–17}. Regarding sheet erosion, dendrogeomorphology is usually employed to enhance or replace the methodologies mentioned above, particularly in areas where erosion rates derived from direct techniques are either scarce or unavailable. Dendrogeomorphology is a very flexible method for assessing soil erosion and can be utilized to calibrate physical-based and empirical models, or perhaps as a data source to enhance the reliability of direct estimation techniques^{18,19}. Dendrogeomorphology enables soil erosion to be established over large areas where exposed roots are available. These exposed roots should show clear tree rings limits and respond to annual growth patterns to be considered as optimum to apply dendrogeomorphological techniques²⁰. Further, exposed roots to be sampled should be preferably located in homogenous units based on their reaction to soil erosion²¹.

The conventional dendrogeomorphical way of estimating sheet erosion is grounded on measuring *in situ* the eroded soil thickness (E_x) from the time of the very first exposure to the present^{22–24}. The ratio between these two variables is utilized to calculate an erosion value in $\text{mm}\cdot\text{yr}^{-1}$. Much of the research conducted to date has focused entirely on efficiently identifying the initial year of exposure. As an outcome, modifications in the root due to exposure are analyzed at the macroscopic level²⁵, or at the tissue and cellular levels^{26–28}. The principal anatomical change present in the exposed roots of conifers is increasing growth ring thickness, as a consequence of a significant number of cells within the earlywood (EW)²⁶. A cutback has

similarly been found within the lumen area of EW tracheids along with an increased cell wall structure thickness of latewood (LW) tracheids^{24,27,29}. These modifications have been described and quantified as beginning when erosion lowers the ground surface over the root to roughly three cm³⁰. Less attention was granted to the adequate determination of the E_x parameter. The age of exposed roots was typically connected with the height of the root's center axis of growth over the ground surface^{31,32}. The estimation of E_x was consequently corrected considering ongoing secondary growth^{30,33}. More recently, these methodological approaches have also integrated the characterization of soil microtopography to obtain reliable erosion rates^{34–36}.

We present a laboratory and field protocol to estimate more accurate and reliable sheet erosion rates from dendrogeomorphology. In this particular protocol, we examine the hypothesis that sampling all exposed roots, regardless of orientation relative to runoff path and in conjunction with microtopographical analysis, enables erosion rates to be precisely reconstructed and quantified. Our objective, therefore, is to provide a protocol to estimate erosion rates from maximizing the sample size of exposed roots, using macroscopic and microscopic information found in growth tree-ring series and also high-resolution topographic data.

PROTOCOL:

1. Sampling Strategy

1.1) Geomorphic process identification

1.1.1) Implement the Hydrologic Response Units approach (HRU)²¹. To this end, identify homogenous areas within the study site, comprising lithology and surface deposits, canopy cover, vegetative residue in contact with the soil surface and slope. Select among all the HRUs those in which the sheet erosion process is predominant.

[Place **Figure 1** here]

1.2) Sampling of exposed roots

1.2.1) Locate in the study site exposed roots corresponding to tree species useful for tree-ring dating (preferably coniferous)²⁰.

1.2.2) Provide a detailed description of the spatial and morphological characteristics of the surroundings of the exposed roots to be sampled. Collect the following information: geographical location (UTM coordinates); altitude; aspect in sexagesimal degrees, both for the hillside and for the particular root location (local aspect); distance of the root section to the tree trunk; hillside slope and slope of the specific root location (both expressed in degrees); orientation of the exposed root with regard to the runoff path.

1.2.3) Take one soil sample of about 1 kg from the area surrounding each exposed root. The parameters to characterize are texture, percentage of organic matter and soil structure.

1.2.4) Measure *in situ* hydraulic conductivity using a single ring infiltrometer under constant head.

Note: Implement steps 1.2.2 and 1.2.3 to characterize soil erodibility.

1.2.5) Locate exposed roots that are farther than 1.5 m from the trunk. At lesser distances the exposure could be related to tree growth.

1.2.6) Cut with a handsaw at least 30 exposed roots, with a diameter greater than 5 cm, into 15 cm-long sections. Subsequently, take two slices of approximately 1.5 cm thick.

[Place **Figure 2** here]

1.2.7) By using a gauging trowel, a handsaw and a measuring tape, sample a subset of buried roots (at least one-third of the total exposed roots sampled) at different soil depths (maximum 20 cm) to establish the minimum soil thickness below which roots begin to have an anatomical response due to exposure.

2. Microtopographic Characterization of Ground Surface and Exposed Roots at Easily Accessible Locations

2.1) Use a Terrestrial Laser Scanning device that can measure up to 50,000 points per second with a precision of 1 mm at a scanning distance of < 120 m.

2.2) Consider at least two different conventional TLS locations to avoid shadow zones.

2.3) Merge the different locations by using a minimum of four high-definition surveying (HDS) targets positioned to cover the entire area.

2.4) In order to obtain highly accurate topographic data, scan an average area of 300 cm² from the selected locations using a spatial resolution of 1 mm. Include the exposed roots and the surrounding area that is representative of the ground surface.

3. Microtopographic Characterization of Ground Surface And Exposed Roots, at Locations with Difficult and Steep Terrain (Mountain Environments)

3.1) Place a microtopographic profile gauge perpendicular to the exposed root and, subsequently, level horizontally for all measurements in such a way that different datasets can be compared.

3.2) Draw the profile obtained in step 3.1 on graph paper to be able to infer the amount of eroded soil along the profile with sub-millimeter precision.

[Place **Figure 3** here]

4. Determination of the Timing of Root Exposure

4.1) Macroscopic analysis

4.1.1) Air dry the sections obtained in step 1.2.6 for 2 months.

4.1.2) Obtain from the initial sections two slices that are each approximately 2 cm thick.

4.1.3) Sand and polish the slices with sandpaper (up to 400 grit) to facilitate recognition of growth rings.

4.1.4) Scan slices at a minimum resolution of 2,800 dpi so that they can be accurately analyzed even when rings are particularly thin.

4.1.5) Use the increase in latewood percentage and larger growth-ring widths as indicators of stress induced by exposure.

4.1.6) Mark at least 4-5 radii along the diameters of the slices that show the highest variability in growth-ring widths.

[Place **Figure 4** here]

4.1.7) Use an image analysis system or a measuring table to measure tree-ring width.

4.1.8) Apply visual cross-dating procedures by comparing variability in growth-ring widths between the different radii, to both improve the dating precision for the first year of exposure to soil erosion and to correctly date subsequent rings and recognize the presence of multiple or discontinuous rings.

4.2) Microscopic analysis

4.2.1) For both exposed and non-exposed root samples, use a sliding microtome to obtain radial cross-sections of approximately 1 cm in width and 20 microns thick.

4.2.2) Stain cross-sections with safranin (*i.e.*, 1 g of safranin + 50 g of water + 50 g of 96% ethanol) and dehydrate with increasingly richer ethanol-water solution up to 96% ethanol (*e.g.*, 50% and 96% ethanol) until the ethanol runs clear. Soak the samples in xylol or a citrus oil clearing agent (*e.g.*, Histoclear).

4.2.3) Mount cross-sections on coated slides, cover-slip with a hardening epoxy (*e.g.*, Eukitt, Canada balsam and dry at ambient temperature (*i.e.*, about 5-8 h for Eukitt, at least 24 h for Canada balsam)).

4.2.4) Observe (under 125X magnification) and photograph samples with a digital imaging system under optical microscopy.

4.2.5) Compare under an optical microscope the anatomical footprint of both exposed and non-exposed root samples (steps 1.2.5 and 1.2.6).

4.2.6) Take microscopic measurements using an image analyzer on the digital photographs of the ensuing parameters: a) width of the growth ring; b) number of cells per ring; c) percentage of latewood; and d) lumen area in earlywood.

4.2.7) Test with the image analyzer (step 4.2.6) the occurrence of resin ducts and take measurements for each growth ring.

4.2.8) Perform a one-way analysis ANOVA with multiple range tests (method: 95% LSD –Least Significant Difference) for the anatomical variables considered (step 4.2.6) to verify the existence of statistically significant differences between the two groups of measurements (pre-exposed vs exposed roots).

5. Estimation of the Thickness of the Soil Layer Eroded Since Initial Exposure (*Ex*)

5.1) Scenario 1: exposed roots that run parallel to the runoff path.

5.1.1) Based on the data obtained in step 2.4, use inverse distance weighting as the interpolation method to obtain highly accurate digital elevation models (DEMs) with a spatial resolution of 3 mm.

5.1.2) Use GIS tools to extract from the DEM perpendicular profiles of the exposed root with a rough distance of 150 cm.

5.1.3) Perform steps 5.1.1 and 5.1.2 at easily accessible locations (step 2).

5.1.4) Use the perpendicular profiles of the exposed root obtained in step 3.2 when the study site is located in areas where the terrain is difficult and steep (mountain environments) (step 3).

5.1.5) In the profiles obtained in steps 5.1.2 and 5.1.3 use visual interpretation to locate the threshold distance (*TD*), defined as the distance between the root and the knickpoint at the ground surface. This establishes the lowering of ground surface for the profiles due to sheet erosion.

[Place **Figure 5** here]

5.1.6) Estimate the thickness of the soil layer eroded, by measuring the height between the top of the root and the knickpoint at the ground surface estimated in step 5.1.5.

5.1.7) Correct the measurement obtained in step 5.1.6 by subtracting it from the ongoing secondary growth (*i.e.*, growth of the root since the year of exposure) and the bark thickness on the upper/lower side of the root. See Corona *et al.*³⁰ for a detailed description.

5.2) Scenario 2: exposed roots that run perpendicular to the runoff path

5.2.1) Implement steps 5.1.1 to 5.1.4 as stated under step 5.1.

5.2.2) Using the raster calculator available in any Geographic Information System (GIS) software, for each perpendicular profile measure the height between the top of the root and the ground surface using the knickpoint at the ground surface as a reference. At this point measurements of E_x are not influenced by sedimentation and/or scour erosion and, therefore, it is possible to measure soil erosion.

[Place **Figure 6** here]

5.2.3) Correct the measurement obtained in step 5.2.2 using the procedure in step 5.1.7.

6. Sheet Erosion Rate Estimation

6.1) Depending on the soil mechanic characteristics of the study site, apply equation 1 (*i.e.*, hypothesizes that the radial growth pressure applied by the root is lower than shear strength of the soil), or equation 2 (*i.e.*, supposes stability of the root axis through time)³⁰:

$$E_R = \frac{E_X - (G_{r1} - G_{r2}) + \left(\frac{B_1 + B_2}{2}\right) + \varepsilon}{NR_{ex}} \quad (1)$$

$$E_R = \frac{E_X - (G_{r1}) + \frac{B_1 + B_2}{2} + \varepsilon}{NR_{ex}} \quad (2)$$

Where:

E_R (mm·yr⁻¹), is the sheet erosion rate to be estimated.

E_X (mm), is the thickness of the soil layer eroded since initial exposure. This is obtained by performing steps 5.1.1 to 5.2.3.

G_{r1} and G_{r2} (mm) represent the secondary (subsequent) growth on the upward/downward part of the root after exposure. It is obtained after performing step 5.1.7.

B_1 and B_2 (mm) are the bark thickness on the upper/Lower part of the root. It is obtained with the procedure in step 5.1.7.

ε (mm), is defined as the minimal depth of soil below which root begin to change its anatomical configuration.

NR_{ex} (yr), is the number of tree-rings developed after the year of exposure. It is obtained using steps 4.1.1 to 4.2.8.

REPRESENTATIVE RESULTS:

Samples of exposed roots suffer serious cambial deterioration due to the impact of exposure (e.g., modifications in temperature, incidence of light) plus the physical stress, due to trampling by hikers or animal grazing and browsing that the roots undergo after they are exposed. Determining the existence of discontinuous rings, as well as precisely dating the first year of response to exposure was accomplished in the lab as in Protocol 4 (steps 4.1.6 to 4.1.8). We chose the increase of latewood percentage and the presence of tree-ring significantly wider than the average as indicators of first exposure.

114 sections of exposed *Pinus uncinata* Ramond ex DC, *Fagus sylvatica* L., *Pinus pinaster* Ait. and *Pinus sylvestris* roots were used for this purpose. As a result of the death of the cambium on the top part of the root, we found severe changes in the tree-ring growth pattern, which shifted from concentric to eccentric growth (**Figure 7**), as well as discontinuous tree-rings or even some that had been completely destroyed in the outer tree-rings. The above suggests that the approach we implemented was successful in determining with enough accuracy the age of the roots and the particular year in which the first exposure ring was formed.

[Place **Figure 7** here]

A lab experiment was conducted as in protocol 4 (steps from 4.2.1 to 4.2.8) to determine how roots anatomically respond to exposure. To this end, the same exposed roots sample described above was used. Samples were examined below optical microscopy and photographed with a digital imaging system. Microscopic images were analyzed at 50× magnification with an accuracy of 1 μ m in the measurements. The first time of exposure can be seen in the characteristic anatomical changes. Tree-rings show evident increased growth (particularly recognizable in two or three succeeding rings), which is as a result of an increase in both tracheid number and their size. An increase in the number of vessels was also noticeable. Resin ducts usually appear in tangential rows in earlywood. Latewood is readily observable as it has several rows of thick-walled tracheids. A significant decline in the tracheid lumen of earlywood once root is exposed also occurs. With respect to the anatomical footprint of the ten buried roots sampled, results indicate that this sample group starts to react according to the behavior described above when the edaphic cover fall below 3 cm (**Figure 8**).

[Place **Figure 8** here]

Characterization of surface microtopography variability plays a critical role in obtaining reliable sheet erosion rates derived from dendrogeomorphology (**Figure 9**). To this end, we designed an

experimental and field experiment aimed at capturing highly accurate microtopographic surface profiles to be analyzed using protocol 5 on 114 samples of exposed roots. We utilized the distance between the root and the knickpoint, from which the profile defines the lowering of ground surface due to sheet erosion as a criterion to estimate the thickness of the soil layer eroded since initial exposure (E_x). Concerning sampled exposed roots running parallel to the runoff path, all profiles analyzed showed a concave configuration on both sides of the exposed roots that were characterized. This morphological pattern ends at a specific distance (TD), from which ground surface is only shaped by sheet erosion, determining, therefore, the location where E_x has to be measured. Concerning exposed roots that run perpendicular to the runoff path, our procedure made it possible to systematically determine the height between the topside of the root and a virtual plane tangential to the ground surface. It also allowed locating small-scale impacts of sedimentation and scour erosion and, hence, ensuring that sheet erosion is accurately estimated.

[Place **Figure 9** here]

Estimates of sheet erosion rates have been obtained according to the equation included in protocol 6 (**Figure 10**). As regards the 114 samples analyzed, the year of very first root exposure fluctuates from 1900-2012, which enables the medium-term (multidecadal) characterization of the erosion rates. Additionally, we examined ten buried roots, which were still protected by a thin soil cover. Results showed that buried roots began to anatomically respond to the exposure effects when they were 2.3 ± 1.1 cm below the ground surface (**Figure 11**). We considered this specific soil level as a value to be added to the thickness of the soil layer eroded (E_x).

[Place **Figure 10** here]

[Place **Figure 11** here]

FIGURE AND TABLE LEGENDS:

Figure 1: Example of HRUs associated to a sandy gully. Regarding the protocol proposed here, the sampling of exposed roots must be conducted in an HRU in which the effective erosive process is sheet erosion (in this figure legend corresponding to exposed sand with moderate slopes). This figure has been modified from Bodoque *et al.*²¹.

Figure 2: Example of how to conduct field sampling. At least 30 exposed roots are selected and, subsequently, cut with a handsaw.

Figure 3: Example of characterization of ground microtopography using a microtopographic profile gauge. (A) Illustration of exposed roots as observed along a hiking trail; (B) measurements of soil microtopography using a microtopographic profile gauge; (C) estimation of E_x through the acquisition of microtopographic profiles by drawing them on a graph paper to allow inference of the amount of eroded soil along the profile and with sub-millimeter precision.

Figure 4: Example of how to prepare a section of an exposed root to accomplish dendrochronological dating of growth ring series. In each section, four or five radii are marked along the directions that show the highest variability regarding tree-ring width.

Figure 5: Example is illustrating how to place TD when the exposed roots sampled are orientated according to the runoff path. This figure shows a common microtopographic transversal profile of uncovered root and its immediate vicinity. E_{x1} is the location applied to the traditional dendrogeomorphical approach to determine the eroded soil thickness; E_{x2} belongs to the position where this parameter needs to be assessed. TD is taken as a guide position from which the ground surface is changed by sheet erosion only. This figure has been modified from Bodoque *et al.*³⁴

Figure 6: Example drawing how to proceed when the exposed roots sampled are orientated according to the perpendicular to the runoff path. This figure shows a schematic view of a ground surface profile related to an exposed perpendicular root concerning the runoff path. Eroded soil thickness (E_x) is quantified at the knickpoint coinciding to prevailing sedimentation and scour erosion processes nearby the root. This figure has been modified from Ballesteros-Cánovas *et al.*³⁵

Figure 7: Examples of eccentric tree-ring pattern in roots due to exposure. This figure shows a view of a polished section of a root exposed in the absence scars (A) and with scars (B). In both cases, it is feasible to observe the pattern of eccentric tree-rings as a clear reaction to soil erosion.

Figure 8: Example of anatomical response of roots to exposure. Wood anatomy of *Pinus uncinata* Ramond ex DC roots: (A) anatomy of buried roots (200 μm); (B) anatomy of exposed wood (500 μm). Wood anatomy from roots of *Fagus sylvatica* L.: (C) anatomy of a buried root (500 μm); (D) anatomy of exposed wood (500 μm). This figure has been modified from Bodoque *et al.*³⁶

Figure 9: Example of outputs of ground surface microtopography characterization obtained from TLS and a microtopographic profile gauge. (A) Hillshade model achieved using microtopographic profiles and (B) raster of slopes derived from the hillshade model; (C) hillshade model obtained from TLS and (D) resulting raster of slopes. Slopes are expressed in sexagesimal degrees. In plots B and D, dashed lines indicate the TD at which E_x must be measured. This figure has been modified from Bodoque *et al.*³⁶

Figure 10: Example of sheet erosion rates estimated from dendrogeomorphology. Graph linking erosion rates and years of exposure of the exposed roots. Erosion rates inside the square are those used for quantification purposes. This figure has been modified from Bodoque *et al.*²¹

Figure 11: Example of anatomical response in buried root sections. Dark grey circles show buried roots with exposure evidence. The size of circles shows root diameter, whereas the numbers indicate root depths. This figure has been modified from Ballesteros-Cánovas *et al.*³⁵

DISCUSSION:

The protocol deployed demonstrates the value of detailed and proper characterization of ground surface microtopography, as it enables to measure trustworthy sheet erosion rates from dendrogeomorphology. Our methodological approach focuses on the importance of characterizing the microtopography in the surroundings of exposure roots to improve erosion rate estimation. This factor has been largely ignored in previous studies, resulting in a misinterpretation of soil erosion rates derived from dendrogeomorphology³⁴. The inclusion of microtopography allows erosion rates to be estimated regardless of root orientation, which favors the replicability of the methods³⁵. The acquisition of microtopography may be performed using different techniques. Therefore, we recognize differences between the DEM produced from microtopographic profiles (step 5.2.1) and TLS (steps 5.1.1 to 5.1.2). Despite these differences sometimes being even within the order of up to 50% of the variance of the measures³⁶, we highlight that the reliability of our protocol based on microtopographic profiles (step 5.2.1) is comparable to that achieved with TLS (~mm).

This study also demonstrates that the protocol deployed here can be used in mountainous areas as an alternative approach to TLS. The use of TLS in this specific geographic context is not practical due to the size and weight of the device, which hinder its transport through inaccessible areas. The application of the *TD* criteria as an indication of the distance at which ground surface is not changing as a result of axial and radial pressures exerted by the root^{37, 38}, or where there is no sedimentation (upslope of the root) or scour erosion (downslope of the root)³⁵ is illustrated as well (steps 5.1.5 and 5.2.2). We determined that this particular distance must be utilized in future work involving the definition on the point at which E_x shall be measured.

Macroscopic and microscopic observations (steps 4.1 and 4.2) are essential to decipher the environmental signal in tree-ring records. The only use of tree-ring width measurements might not be enough to determine the moment of exposure, since anatomical changes are more sensitive³⁹ and could even be produced when root are still buried by a thin soil layer³⁰. Thus, existing studies suggest that the coniferous tree species used in this paper (*i.e.*, *Pinus uncinata* Ramond ex DC, *Pinus pinaster* Ait. and *Pinus sylvestris*) react to exposure with eccentric growth and a significant development of latewood tracheids, which is congruent with former findings on other conifer species^{21, 27, 29, 30}. Reactions start happening when the soil coverage of the root declines below 2.3 ± 1.1 cm and therefore agrees with the observation from marly badlands in France in which the analysis was focused on *Pinus sylvestris* and *Pinus nigra*³⁰.

The first exposure reaction is translated as a reaction to boosting temperature variability as well as drought stress that will happen more quickly in the top of the detrital level of loose sediment close to the soil surface^{29, 30, 40, 41}. This anatomical modification may also be viewed as a predictable response of the root to lessen the chance of dysfunctional tracheids due to

cavitation, caused by the development of ice crystals in the sap⁴², or even due to mobile embolism associated with water stress⁴³. Our observations, consequently, verify the hypothesis of Corona *et al.*³⁰ and also propose that previous assessments that did not consider this bias could have undervalued erosion rates. In the case of *Fagus sylvatica* L., we can confirm similarities in the patterns and reactions between this particular species and other deciduous species discussed in the literature^{26, 28, 29}.

Dendrogeomorphology has competitive advantages compared to other methods of direct estimation. So, the analysis based on exposed roots enables to be ambitious in terms of characterizing soil erosion even at the basin scale, providing representative erosion rates of the last decades. In contrast, the use of direct methods, as Gerlach troughs², water collectors³ or gauging stations⁴⁴, is usually limited to a few years and to the use at the hillslope scale, due to the high cost of maintenance and operation of these devices²¹. Similar thinking could also be applied to models aimed at estimating soil erosion⁴⁵, since they require gauges located in the field to allow their validation and calibration⁴⁶. Concerning the analysis of soil erosion in recreation trails, our protocol is much more easily applied than standard protocols, *i.e.*, cross-sectional area (CSA), variable CSA, maximum incision to the trail or topographic surveys^{47–49}, particularly if the trail is positioned in mountainous areas. In this particular geographic context, it is a challenge to use the protocols above owing to the heavy equipment required, which is difficult to move in such environments. This limitation can restrict the number of transects collected and can consequently impact spatiotemporal estimates of soil erosion⁵⁰. Furthermore, it is a challenge to accurately determine the horizontal position and guarantee that the same height above the fixed points is considered, as soil creep tends to play a role in such environments⁴⁹.

The limitations of erosion rates derived from dendrogeomorphology are related to the fact that the age of exposed roots is usually limited to a few decades. Nevertheless, this time window is usually larger than the one defined by erosion rates obtained from direct techniques. Cross-dating, the basic principle of dendrochronology, also has proven difficult to be implemented in roots, even though they pertain to the same tree^{51, 52}. Besides, the consistency of root-based estimation of erosion rates is probable to be affected by restrictions similar to those noted for documentary sources or approaches based on radioisotopes⁵³. Concerning the above, soil erosion will be a consequence of a non-linear response to rainfall. Average erosion rates obtained from dendrogeomorphology might be, therefore, less reliable to characterize soil erosion in areas where this process is mostly due to a few heavy rainfall events, since under this circumstance erosion rates could be skewed⁵⁵. Additionally, the sampling of large exposed roots may lead to underestimate erosion rates since it has been demonstrated that erosion rates and root thickness has an inversed proportional relationship¹⁹.

The results produced from the protocol deployed here offer useful information on soil degradation. In that sense, dendrogeomorphology may aid decision makers to design long-term management plans, due to the spatiotemporal representativeness of erosion rates derived from exposed roots.

ACKNOWLEDGMENTS:

The research projects that funded this research were: MARCoNI (CGL2013-42728-R); Dendro-Avenidas (CGL2007-62063); MAS Dendro-Avenidas (CGL2010-19274) of the Spanish Ministry of Science and Technology and the project IDEA-GESPPNN (OAPN 163/2010), which was funded by the Environmental Ministry of Spain.

DISCLOSURES:

The authors have nothing to disclose.

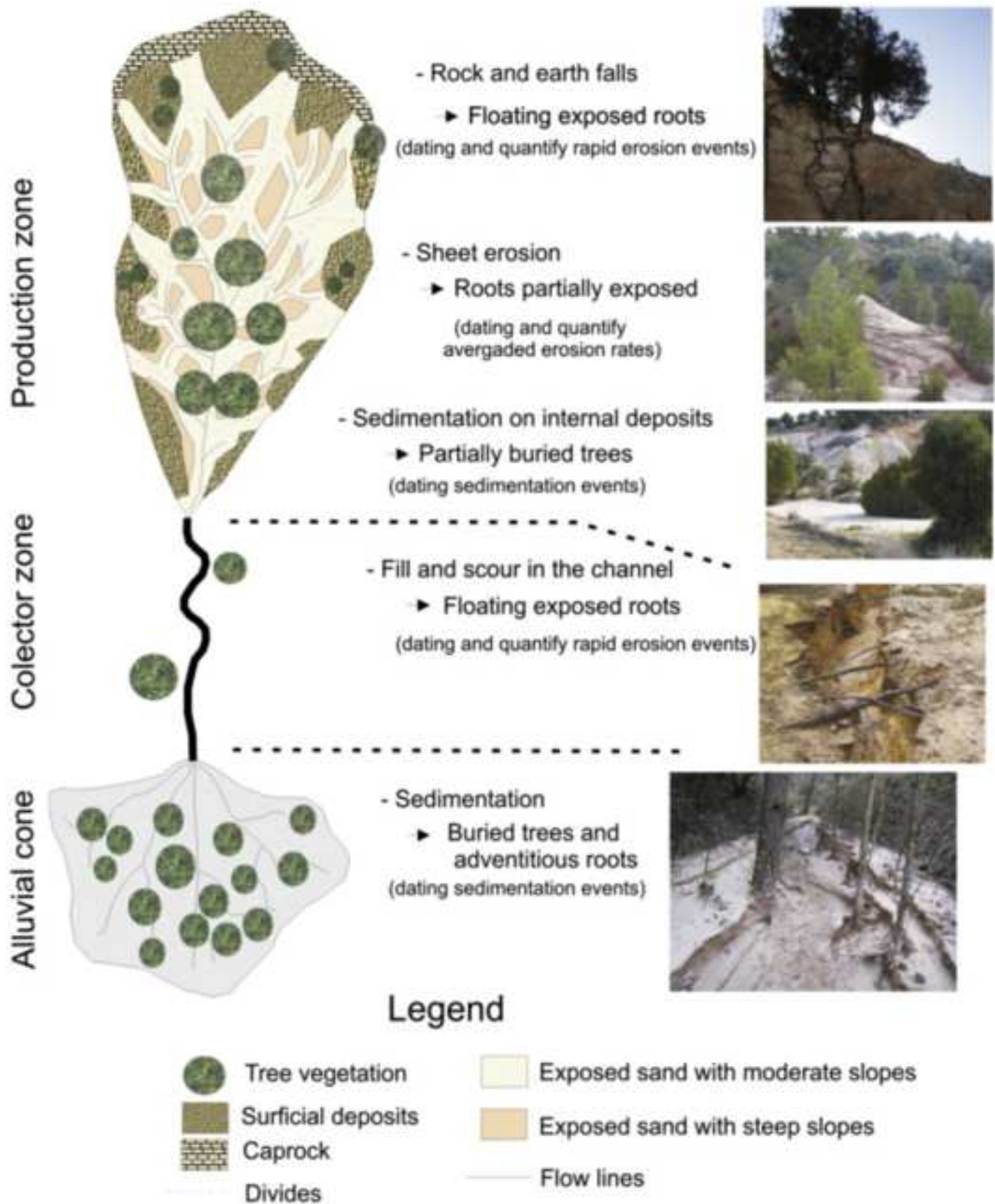
REFERENCES:

1. Montgomery, D.R. Soil erosion and agricultural sustainability. *Proceedings of the National Academic of Sciences of the United States of America*. **104** (33), 13268–72, doi: 10.1073/pnas.0611508104 (2007).
2. Novara, A., Gristina, L., Saladino, S.S., Santoro, A., Cerdà, A. Soil erosion assessment on tillage and alternative soil managements in a Sicilian vineyard. *Soil & Tillage Research*. **117**, 140–147, doi: 10.1016/j.still.2011.09.007 (2011).
3. Desir, G., Marín, C. Factors controlling the erosion rates in a semi-arid zone (Bardenas Reales, NE Spain). *Catena*. **71** (1), 31–40, doi: 10.1016/j.catena.2006.10.004 (2007).
4. Shi, Z., Wen, A., Zhang, X., Yan, D. Comparison of the soil losses from 7Be measurements and the monitoring data by erosion pins and runoff plots in the Three Gorges Reservoir region, China. *Applied Radiation and Isotopes*. **69** (10), 1343–1348, doi: 10.1016/j.apradiso.2011.05.031 (2011).
5. Sirvent, J., Desir, G., Gutierrez, M., Sancho, C., Benito, G. Erosion rates in badland areas recorded by collectors, erosion pins and profilometer techniques (Ebro Basin, NE-Spain). *Geomorphology*. **18** (2), 61–75, doi: 10.1016/S0169-555X(96)00023-2 (1997).
6. Flanagan, D., Ascough, J., Nearing, M., Laflen, J. The WaterErosion Prediction Project (WEPP) model. *Harmon, RS, Doe III, WW (eds), Landscape Erosion and Evolution Modelling*. Kluwer Academic, New York, pp. 145–199 (2001).
7. Alestalo, J. Dendrochronological interpretation of geomorphic processes. *Fennia - International Journal of Geography*. **105**, 1–139 (1971).
8. Cook, E.R., Kalriukstis, L. a Methods of Dendrochronology. *Methods of Dendrochronology*. 97–104, doi: 10.2307/1551446 (1990).
9. Pelfini, M. Dendrogeomorphological study of glacier fluctuations in the Italian Alps during the Little Ice Age. *Annals of Glaciology*. **28** (1639), 123–128, doi: 10.3189/172756499781821634 (1999).
10. Malik, I., Matyja, M. Bank erosion history of a mountain stream determined by means of anatomical changes in exposed tree roots over the last 100 years (Bílá Opava River - Czech Republic). *Geomorphology*. **98** (1–2), 126–142, doi: 10.1016/j.geomorph.2007.02.030 (2008).
11. Stoffel, M., Bollschweiler, M., Butler, D., Luckman, B. *TreeRings and Natural Hazards: A State-of-the-art*. Springer. Berlin. (2010).
12. Ballesteros, J.A., Bodoque, J.M., Díez-Herrero, A., Sanchez-Silva, M., Stoffel, M. Calibration of floodplain roughness and estimation of flood discharge based on tree-ring evidence and hydraulic modelling. *Journal of Hydrology*. **403** (1–2), 103–115, doi: 10.1016/j.jhydrol.2011.03.045 (2011).

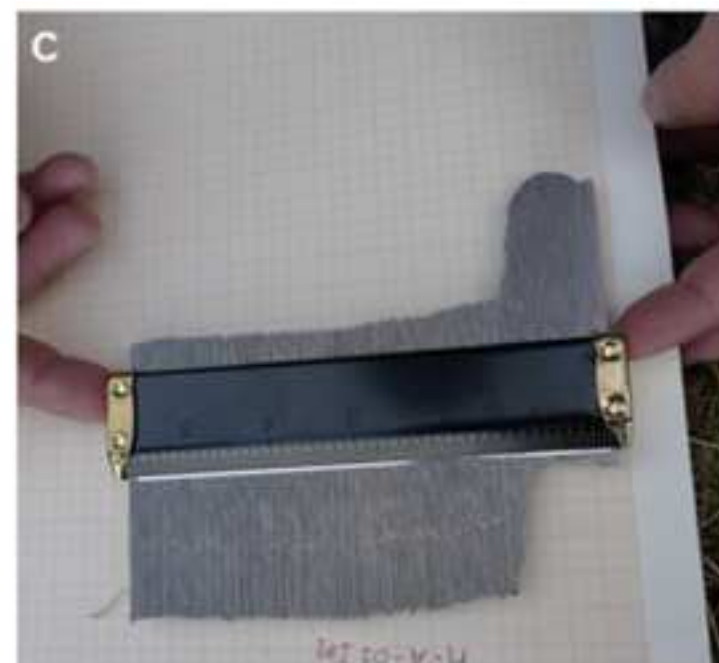
13. Procter, E., Stoffel, M., Schneuwly-Bollschweiler, M., Neumann, M. Exploring debris-flow history and process dynamics using an integrative approach on a dolomitic cone in western Austria. *Earth Surface Processes and Landforms*. **37** (9), 913–922, doi: 10.1002/esp.3207 (2012).
14. Corona, C., Saez, J.L., Stoffel, M., Rovéra, G., Edouard, J.L., Berger, F. Seven centuries of avalanche activity at Echalp (Queyras massif, southern French Alps) as inferred from tree rings. *Holocene*. **23** (2), 292–304, doi: 10.1177/0959683612460784 (2013).
15. Ballesteros-Cánovas, J.A. *et al.* Can tree tilting be used for paleoflood discharge estimations? *Journal of Hydrology*. **529** (P2), 480–489, doi: 10.1016/j.jhydrol.2014.10.026 (2015).
16. Šilhán, K. Dendrogeomorphic chronologies of landslides: Dating of true slide movements? *Earth Surface Processes and Landforms*. **42** (13), 2109–2118, doi: 10.1002/esp.4153 (2017).
17. Ballesteros Cánovas, J.A. *et al.* Gully evolution and geomorphic adjustments of badlands to reforestation. *Scientific Reports*. doi: 10.1038/srep45027 (2017).
18. Ballesteros-Cánovas, J.A. *et al.* Dendrogeomorphology in badlands: Methods, case studies and prospects. *Catena*. **106**, 113–122, doi: 10.1016/j.catena.2012.08.009 (2013).
19. Stoffel, M., Corona, C., Ballesteros-Cánovas, J.A., Bodoque, J.M. Dating and quantification of erosion processes based on exposed roots. *Earth-Science Reviews*. **123**, 18–34, doi: 10.1016/j.earscirev.2013.04.002 (2013).
20. Grissino-Mayer, H.D. An updated list of species used in tree-ring research. *Tree-Ring Bulletin*. **53**, 17–43 (1993).
21. Bodoque, J.M., Lucía, A., Ballesteros, J.A., Martín-Duque, J.F., Rubiales, J.M., Genova, M. Measuring medium-term sheet erosion in gullies from trees: A case study using dendrogeomorphological analysis of exposed pine roots in central Iberia. *Geomorphology*. **134** (3–4), 417–425, doi: 10.1016/j.geomorph.2011.07.016 (2011).
22. LaMarche, V. Rate of slope erosion in the White Mountains, California. *Geological Society of America Bulletin*. **72** (10), 1579–1580 (1961).
23. LaMarche, V.C. Rates of Slope Degradation as Determined from Botanical Evidence White Mountains California Rates of Slope Degradation as Determined from Botanical Evidence White Mountains California. *U.S. Geological Survey Professional Paper*. **352** (1), 354–376 (1968).
24. Bodoque, J.M., Dies-Herrero, A., Martín-Duque, J.F., Rubiales, J.M., Godfrey, A., Pedraza, J., Carrasco, R.M., Sanz, M.A. Sheet erosion rates determined by using dendrogeomorphological analysis of exposed tree roots: Two examples from Central Spain. *Catena*. **64** (1), 81–102, doi: 10.1016/j.catena.2005.08.002 (2005).
25. Carrara, P.E., Carroll, T.R. The determination of erosion rates from exposed tree roots in the piceance basin, Colorado. *Earth Surface Processes and Landforms*. **4** (4), 307–317, doi: 10.1002/esp.3290040402 (1979).
26. Fayle, D. *Radial Growth in Tree Roots – Distribution, Timing, Anatomy*. Toronto. (1968).
27. Gärtner, H., Schweingruber, F., Dikau, R. Determination of erosion rates by analyzing structural changes in the growth pattern of exposed roots. *Dendrochronologia*. **19**, 81–91 (2001).
28. Hitz, O.M., Gärtner, H., Heinrich, I., Monbaron, M. Application of ash (*Fraxinus excelsior* L.) roots to determine erosion rates in mountain torrents. *Catena*. **72** (2), 248–258, doi: 10.1016/j.catena.2007.05.008 (2008).

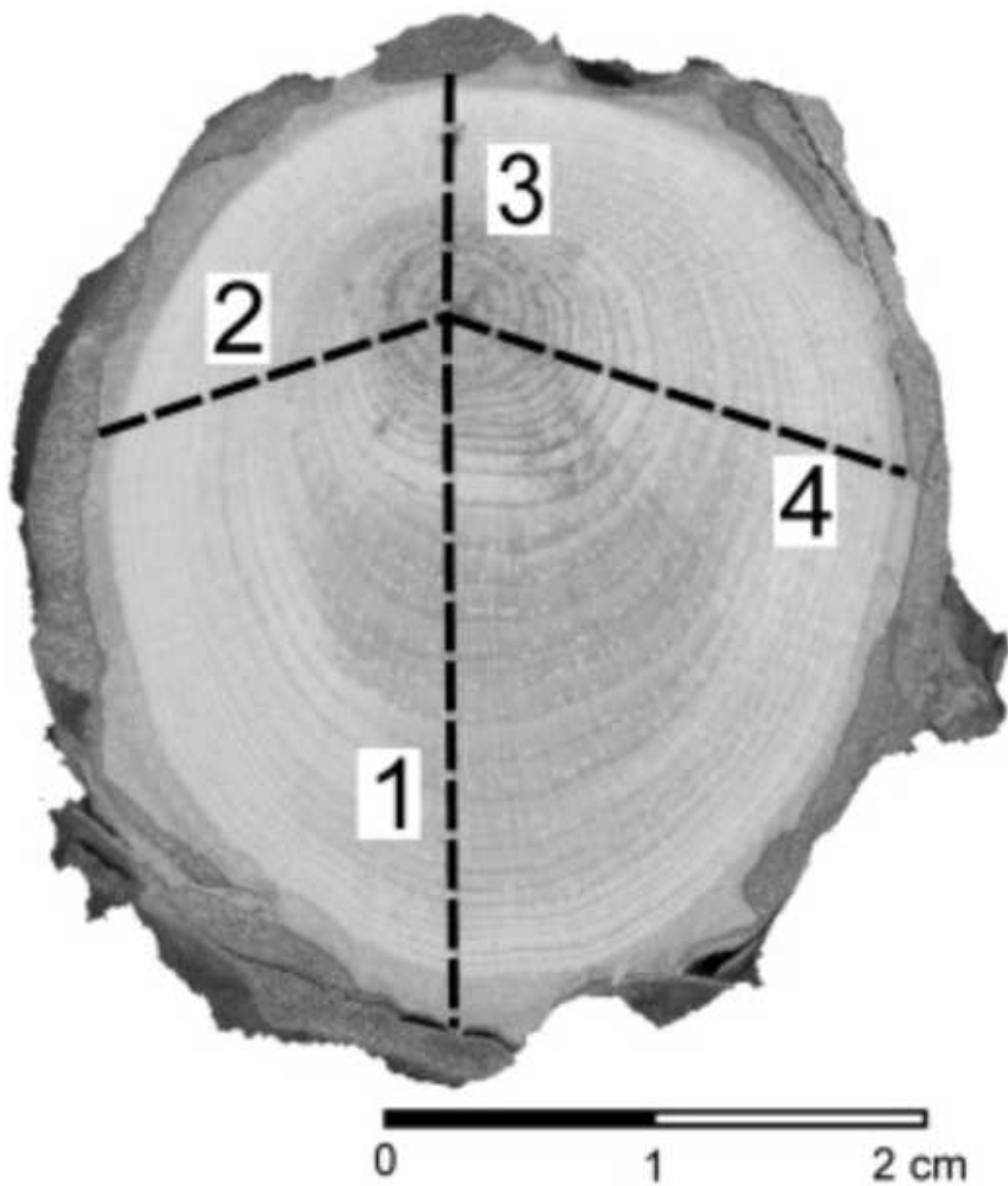
29. Rubiales, J.M., Bodoque, J.M., Ballesteros, J.A., Díez-Herrero, A. Response of *Pinus sylvestris* roots to sheet-erosion exposure: An anatomical approach. *Natural Hazards and Earth System Science*. **8** (2), 223–231 (2008).
30. Corona, C., Lopez Saez, J., Rovéra, G., Stoffel, M., Astrade, L., Berger, F. High resolution, quantitative reconstruction of erosion rates based on anatomical changes in exposed roots at Draix, Alpes de Haute-Provence - critical review of existing approaches and independent quality control of results. *Geomorphology*. **125** (3), 433–444, doi: 10.1016/j.geomorph.2010.10.030 (2011).
31. McAuliffe, J.R., Scuderi, L.A., McFadden, L.D. Tree-ring record of hillslope erosion and valley floor dynamics: Landscape responses to climate variation during the last 400 yr in the Colorado Plateau, northeastern Arizona. *Global and Planetary Change*. **50** (3–4), 184–201, doi: 10.1016/j.gloplacha.2005.12.003 (2006).
32. Danzer, S. Rates of slope erosion determined from exposed roots of ponderosa pine at Rose Canyon Lake, Arizona. *Dean, J, Meko, DM, Sewtnam, TW (eds.), Tree Rings, Environment, and Humanity*. Department of Geosciences, The University of Arizona, Tucson, pp. 671–678 (1996).
33. Gärtner, H. Tree roots - Methodological review and new development in dating and quantifying erosive processes. *Geomorphology*. **86** (3–4), 243–251, doi: 10.1016/j.geomorph.2006.09.001 (2007).
34. Bodoque, J.M., Ballesteros-Cánovas, J.A., Lucía, A., Díez-Herrero, A., Martín-Duque, J.F. Source of error and uncertainty in sheet erosion rates estimated from dendrogeomorphology. *Earth Surface Processes and Landforms*. **40** (9), 1146–1157, doi: 10.1002/esp.3701 (2015).
35. Ballesteros-Cánovas, J.A., Corona, C., Stoffel, M., Lucia-Vela, A., Bodoque, J.M. Combining terrestrial laser scanning and root exposure to estimate erosion rates. *Plant and Soil*. **394** (1–2), 127–137, doi: 10.1007/s11104-015-2516-3 (2015).
36. Bodoque, J.M., Ballesteros-Cánovas, J.A., Rubiales, J.M., Perucha, M.Á., Nadal-Romero, E., Stoffel, M. Quantifying Soil Erosion from Hiking Trail in a Protected Natural Area in the Spanish Pyrenees. *Land Degradation & Development*. **28**, 2255–2267 doi: 10.1002/Ldr.2755 (2017).
37. Misra, R., Dexter, A., Alston, A. Maximum axial and radial growth pressures of plant-roots. *Plant and Soil*. **95** (3), 315–326, doi: 10.1007/BF02374612 (1996).
38. Clark, L.J., Bengough, A.G., Whalley, W.R., Dexter, A.R., Barraclough, P.B. Maximum axial root growth pressure in pea seedlings: Effects of measurement techniques and cultivars. *Plant and Soil*. **209** (1), 101–109, doi: 10.1023/A:1004568714789 (1999).
39. Gärtner, H., Cherubini, P., Fonti, P., von Arx, G., Schneider, L., Nievergelt, D., Verstege, A., Bast, A., Schweingruber, F.H., Büntgen, U.A. A Technical Perspective in Modern Tree-ring Research - How to Overcome Dendroecological and Wood Anatomical Challenges. *Journal of Visualized Experiments*. (97), 1–10, doi: 10.3791/52337 (2015).
40. Antonova, G., Stasova, V. Effects of environmental factors on wood formation in Scots pine stems. *Trees*. **7** (4), 214–219, doi: 10.1007/BF00202076 (1993).
41. Saez, J.L., Corona, C., Stoffe, M., Rovéra, G., Astrade, L., Berger, F. Mapping of erosion rates in marly badlands based on a coupling of anatomical changes in exposed roots with slope maps derived from LiDAR data. *Earth Surface Processes and Landforms*. **36** (9), 1162–1171, doi: 10.1002/esp.2141 (2011).

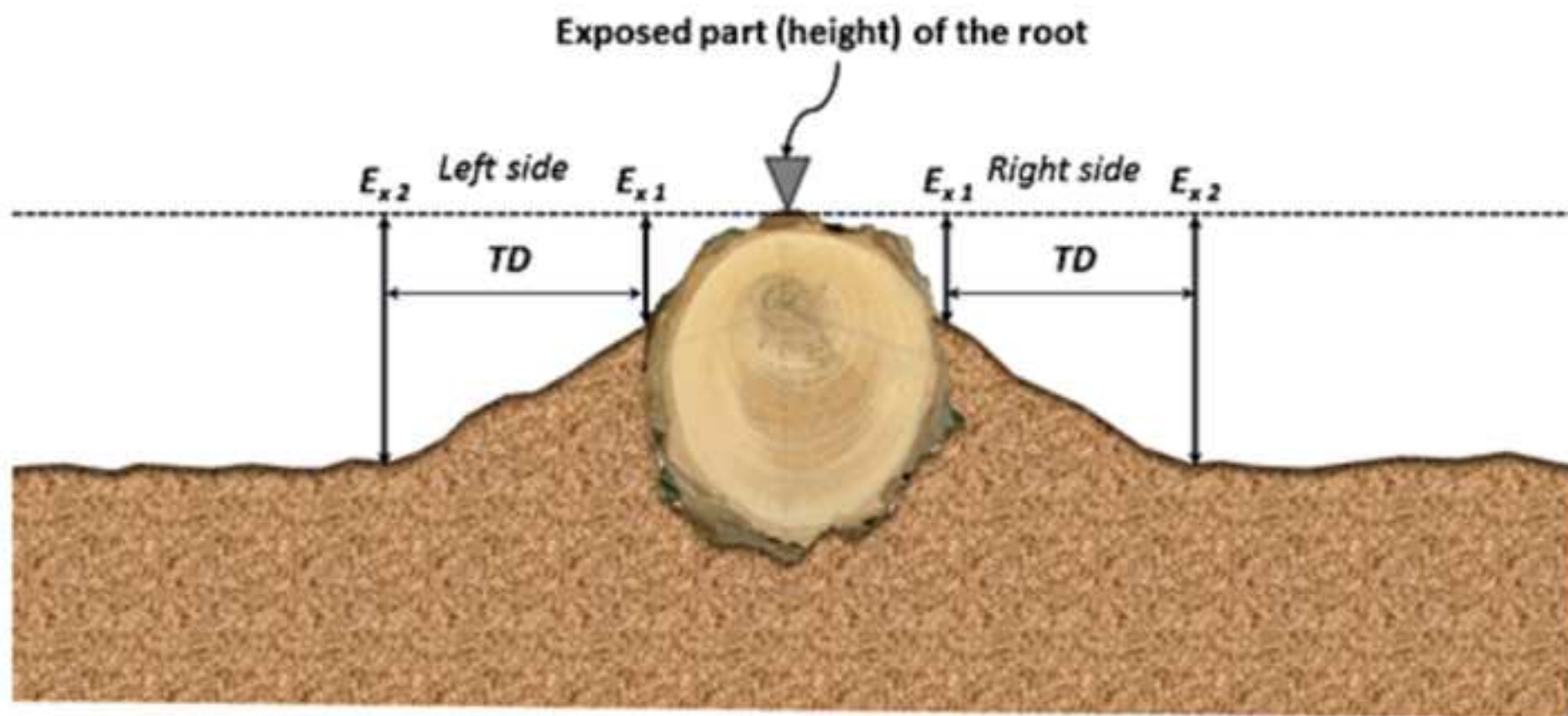
- 653 42. Zimmermann, M.. *Xylem Structure and the Ascent of Sap*. Springer Verlag. New York.
654 (1983).
- 655 43. Tyree, M., Sperry, J. Characterization and propagation of acoustic emission signals in
656 woody plants: towards an improved acoustic emission counter. *Plant, Cell and Environment*. **12**,
657 371–382 (1989).
- 658 44. Zheng, M., Chen, X. Statistical determination of rainfall-runoff erosivity indices for single
659 storms in the Chinese Loess Plateau. *PLoS One*. **10** (3), 1–18, doi:
660 10.1371/journal.pone.0117989 (2015).
- 661 45. Morgan, R.P., Quitor, J.N., Smith, R.E., Govers, G., Poesen, J.W., Auerswald, K., Chisci,
662 G., Torri, D., Stycaen, M.E. The European Soil Erosion Model (Eurosem): a Dynamic Approach
663 for Predicting Sediment Transport From. *Earth Surface Processes and Landforms*. **23**, 527–544,
664 doi: 10.1002/(SICI)1096-9837(199906)24 (1998).
- 665 46. Ciampalini, R., Follain, S., Le Bissonnais, Y. LandSoil: A model for analysing the impact of
666 erosion on agricultural landscape evolution. *Geomorphology*. **175–176**, 25–37, doi:
667 10.1016/j.geomorph.2012.06.014 (2012).
- 668 47. Hammitt, W., Cole, D. *Wildland recreation: ecology and management*. Wiley. New York.
669 (1998).
- 670 48. Marion, J.L., Leung, Y.F., Nepal, S.K. Monitoring trail conditions: new methodological
671 considerations. *George Wright Society Forum*. **23** (2), 36-49 (2006).
- 672 49. Tomczyk, A.M., Ewertowski, M.W. Recreational trails in Poprad Landscape Park ,
673 Poland : the spatial pattern of trail impacts and use-related , environmental and managerial
674 factors. *Journal of Maps*. **12**, 1227-1235, doi: 10.1080/17445647.2015.1088751 (2015).
- 675 50. Jewell, M.C., Hammitt, W.E. Assessing soil erosion on trails: A comparison of techniques.
676 Cole, DN McCool, SF Borrie, WT O'Loughlin, J(eds), *Proceedings: Wilderness Science in a time of*
677 *change Conference Volume 5: Wilderness Ecosystems, Threats, and Management (Proceedings*
678 *RMRS-P-15-VOL-5)*. USDA FS, Rocky Mountain Research Station, Ogden, pp. 133–140 (2000).
- 679 51. Krause, C., Eckstein, D. Dendrochronology of roots. *Dendrochronologia*. **11**, 9–23 (1993).
- 680 52. Krause, C., Morin, H. Root growth and absent rings in mature black spruce and balsam
681 fir, Quebec, Canada. *Dendrochronologia*. **16–17**, 21–35 (1999).
- 682 53. Poesen, J. Gully erosion and environmental change: importance and research needs.
683 *Catena*. **50** (2–4), 91–133, doi: 10.1016/S0341-8162(02)00143-1 (2003).
- 684 54. Favis-Mortlock, D., Boardman, J. Nonlinear responses of soil erosion to climate change:
685 a modelling study on the UK South Downs. *Catena*. **25** (1–4), 365–387, doi: 10.1016/0341-
686 8162(95)00018-N (1995).
- 687 55. Boardman, J., Favis-mortlock, D. Frequency-magnitude distributions for soil erosion,
688 runoff and rainfall - a comparative analysis. *Zeitschrift für Geomorphologie*. **115**, 51–70, doi:
689 10.1127/zfgsuppl/115/1999/51 (1999).
- 690 56. Haubrock, S.N., Kuhnert, M., Chabrilat, S., Güntner, A., Kaufmann, H. Spatiotemporal
691 variations of soil surface roughness from *in situ* laser scanning. *Catena*. **79** (2), 128–139, doi:
692 10.1016/j.catena.2009.06.005 (2009).
- 693

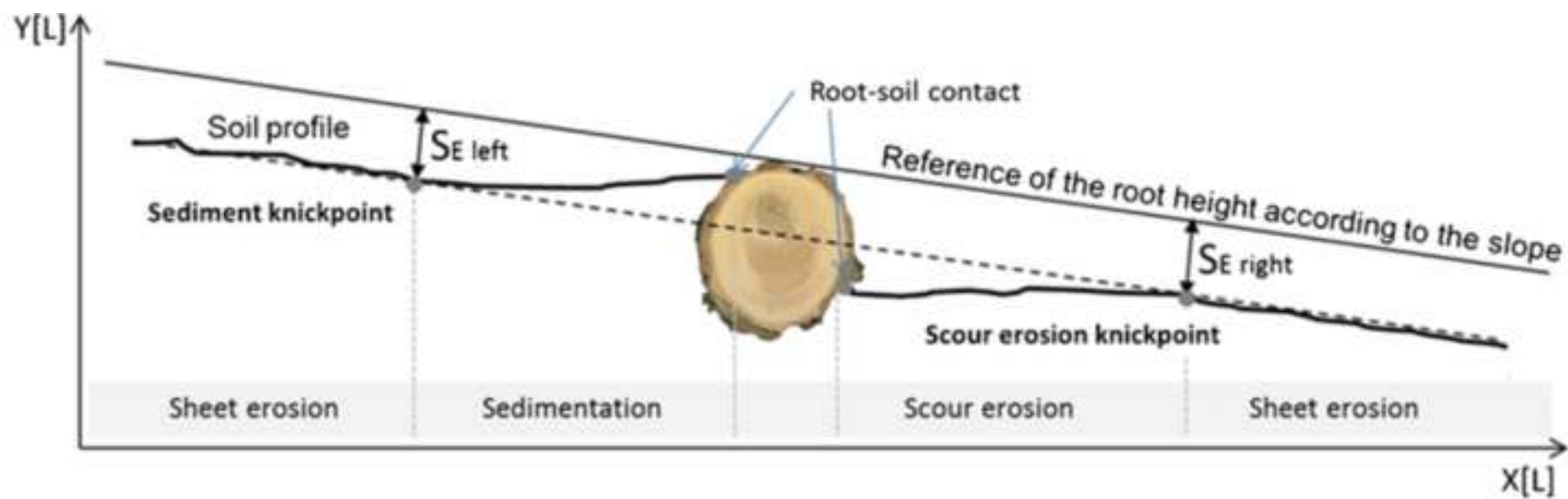


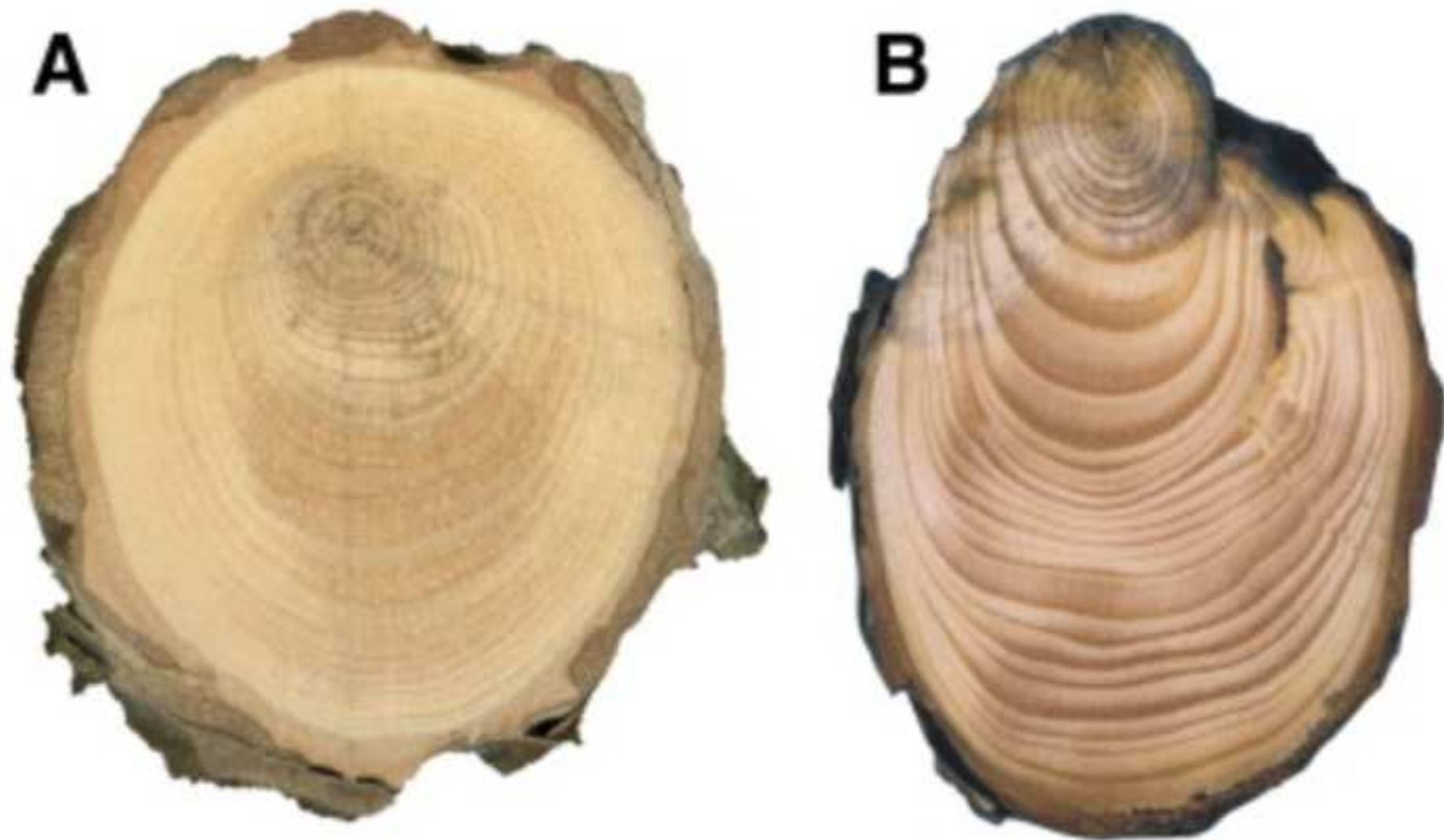


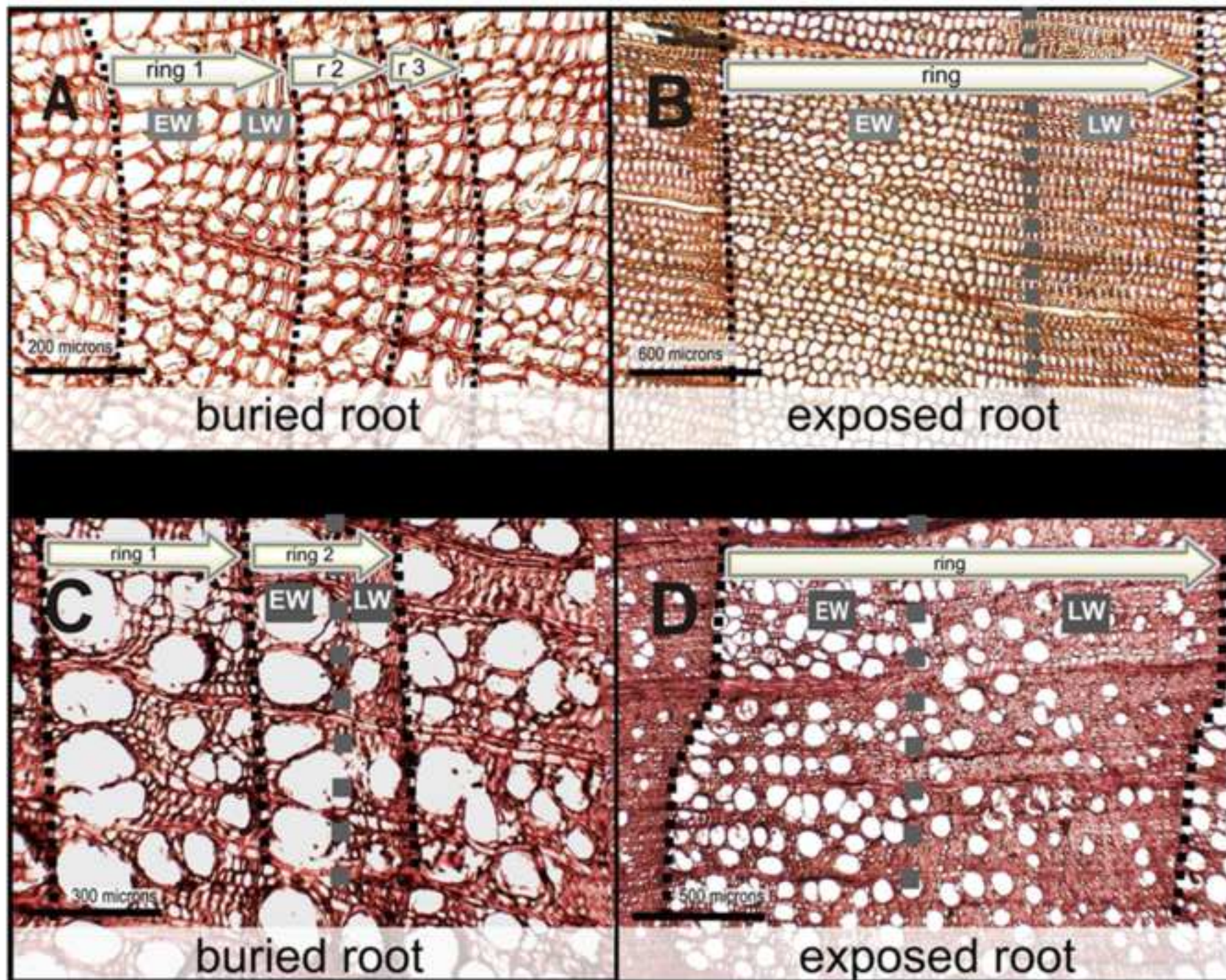


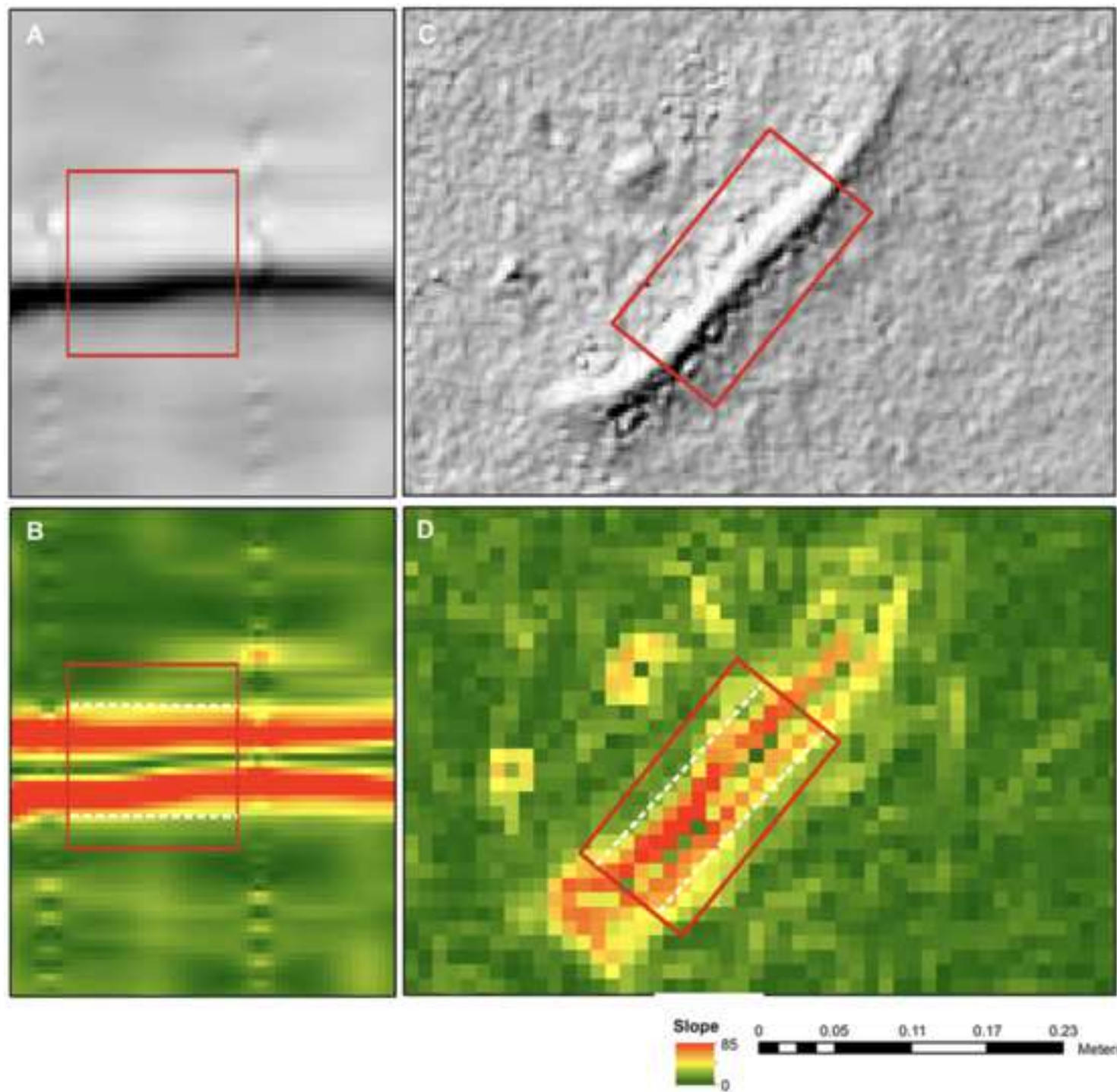


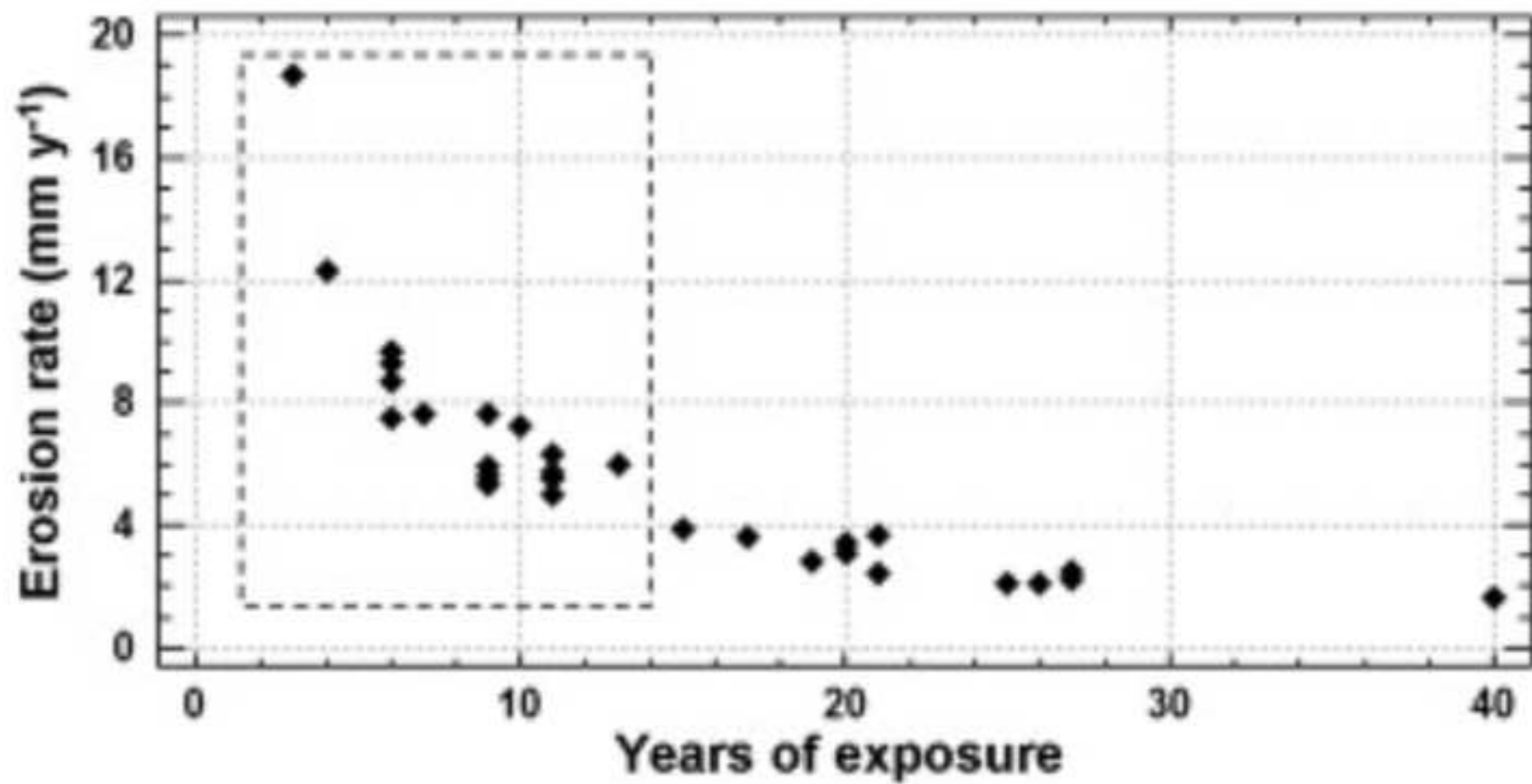


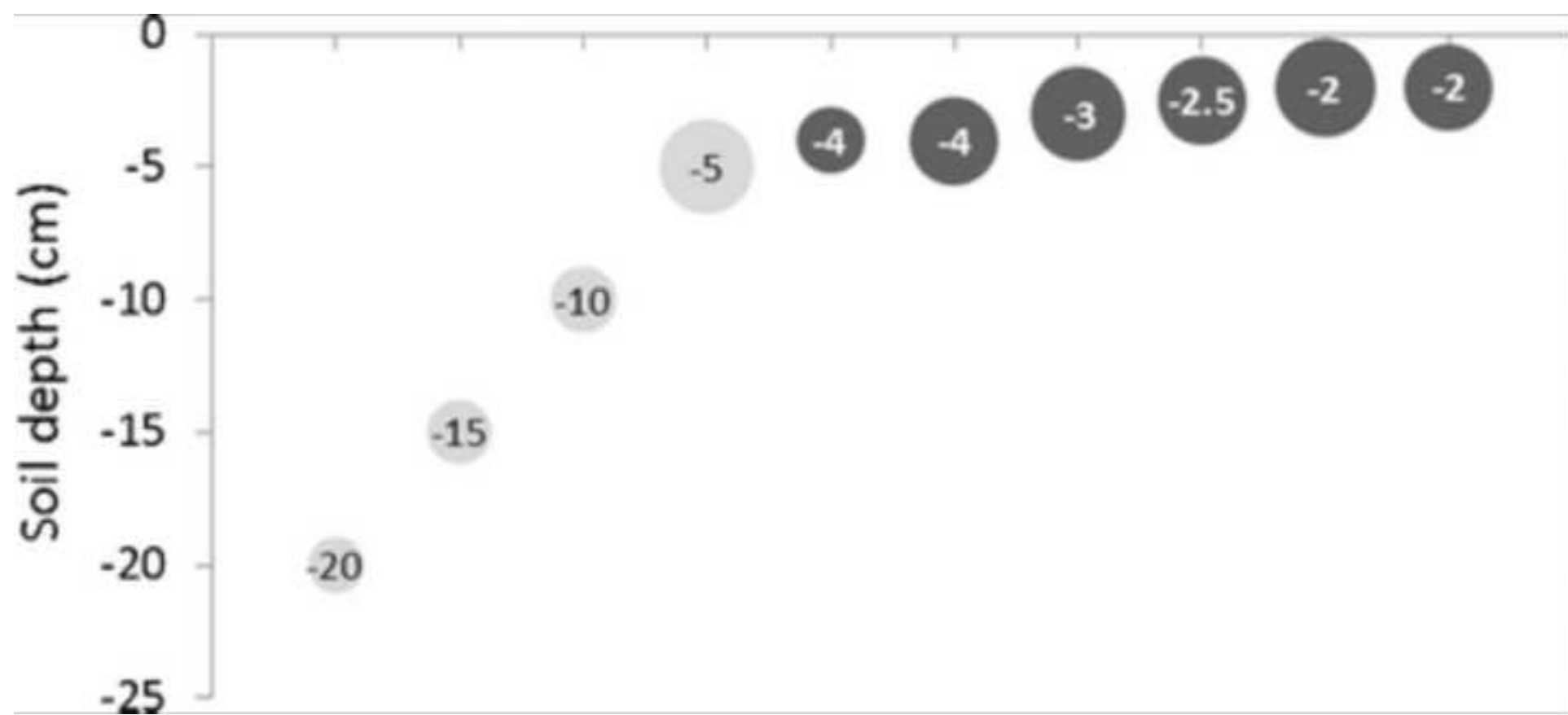












Name of Material/ Equipment	Company	Catalog Number
Topographic map, soil map, land cover map		
Single ring infiltrometer	Turf-Tec International	IN16-W
Handsaw		
Measuring tape		
Terrestrial Laser Scanning (TLS)	Leica-Geosystems	Leica ScanStation P16
Microtopographic Profile Gauge	RS Online	Facom, 19
Sandpaper		
Scanner	EPSON	Perfection V800 Photo
Image analysis system	Regent Instruments Inc.	WinDENDRO
Measuring table	IML	
Sliding microtome	Thermo Fisher SCIENTIFIC	Microm HM 450-387760
Optical microscope	OLYMPUS	MX63/MX63L
Digital camera for microscope	OLYMPUS	DP74
Safranin		
Astrablue		
Alcohol		
Distilled water		
Citrus oil clearing agent		
Coated slides	Thermo Fisher SCIENTIFIC	
Hardening epoxy	MERCK	

Comments/Description
To be obtained from public institutions or generate at the first phase of research
http://www.turf-tec.com/IN16Lit.html
There is noy any specific characteristics to be considered regarding the model
With accuracy of 1 mm
https://leica-geosystems.com/products/laser-scanners/scanners/leica-scanstation-p16
https://www.classic-conservation.com/es/herramientas-para-talla-y-escultura-en-madera/511-galga-medidora-de-perfiles.html
from 80 to 400 grit
https://www.epson.co.uk/products/scanners/consumer-scanners/perfection-v800-photo
http://www.regentinstruments.com/assets/windendro_analysisprocess.html
https://www.iml-service.com/product/iml-measuringtable/
http://www.thermofisher.com/order/catalog/product/910020
https://www.olympus-ims.com/en/microscope/mx63l/
https://www.olympus-ims.com/en/microscope/dc/
Empirical Formula (Hill Notation) C ₂₀ H ₁₉ ClN ₄
Empirical Formula C ₄₇ H ₅₂ CuN ₁₄ O ₆ S ₃
Alcohol by volume (50%, 75% and 100%)
H ₂ O
https://www.nationaldiagnostics.com/histology/product/histo-clear
https://www.fishersci.com/us/en/products/I9C8JXMT/coated-glass-microscope-slides.html
https://www.sigmaaldrich.com/catalog/product/sial/03989?lang=es&region=ES



1 Alewife Center #200
Cambridge, MA 02140
tel. 617.945.9051
www.jove.com

ARTICLE AND VIDEO LICENSE AGREEMENT

Title of Article:

Laboratory and Field Protocol for estimating sheet erosion rates from deuterium photo

Author(s):

Boedeker, Jose M.; Ballesteros-Cincoas, Juan A.; Rubiales Juan M.
Stoffel Markus

Item 1 (check one box): The Author elects to have the Materials be made available (as described at

<http://www.jove.com/author>) via: ☒ Standard Access ☐ Open Access

Item 2 (check one box):



The Author is NOT a United States government employee.



The Author is a United States government employee and the Materials were prepared in the course of his or her duties as a United States government employee.



The Author is a United States government employee but the Materials were NOT prepared in the course of his or her duties as a United States government employee.

ARTICLE AND VIDEO LICENSE AGREEMENT

1. **Defined Terms.** As used in this Article and Video License Agreement, the following terms shall have the following meanings: "Agreement" means this Article and Video License Agreement; "Article" means the article specified on the last page of this Agreement, including any associated materials such as texts, figures, tables, artwork, abstracts, or summaries contained therein; "Author" means the author who is a signatory to this Agreement; "Collective Work" means a work, such as a periodical issue, anthology or encyclopedia, in which the Materials in their entirety in unmodified form, along with a number of other contributions, constituting separate and independent works in themselves, are assembled into a collective whole; "CRC License" means the Creative Commons Attribution-Non Commercial-No Derivs 3.0 Unported Agreement, the terms and conditions of which can be found at: <http://creativecommons.org/licenses/by-nc-nd/3.0/legalcode>; "Derivative Work" means a work based upon the Materials or upon the Materials and other pre-existing works, such as a translation, musical arrangement, dramatization, fictionalization, motion picture version, sound recording, art reproduction, abridgment, condensation, or any other form in which the Materials may be recast, transformed, or adapted; "Institution" means the institution, listed on the last page of this Agreement, by which the Author was employed at the time of the creation of the Materials; "JoVE" means MyJoVE Corporation, a Massachusetts corporation and the publisher of *The Journal of Visualized Experiments*; "Materials" means the Article and / or the Video; "Parties" means the Author and JoVE; "Video" means any video(s) made by the Author, alone or in conjunction with any other parties, or by JoVE or its affiliates or agents, individually or in collaboration with the Author or any other parties, incorporating all or any portion of the Article, and in which the Author may or may not appear.

2. **Background.** The Author, who is the author of the Article, in order to ensure the dissemination and protection of the Article, desires to have the JoVE publish the Article and create and transmit videos based on the Article. In furtherance of such goals, the Parties desire to memorialize in this Agreement the respective rights of each Party in and to the Article and the Video.

3. **Grant of Rights in Article.** In consideration of JoVE agreeing to publish the Article, the Author hereby grants to JoVE, subject to Sections 4 and 7 below, the exclusive, royalty-free, perpetual (for the full term of copyright in the Article, including any extensions thereto) license (a) to publish, reproduce, distribute, display and store the Article in all forms, formats and media whether now known or hereafter developed (including without limitation in print, digital and electronic form) throughout the world, (b) to translate the Article into other languages, create adaptations, summaries or extracts of the Article or other Derivative Works (including, without limitation, the Video) or Collective Works based on all or any portion of the Article and exercise all of the rights set forth in (a) above in such translations, adaptations, summaries, extracts, Derivative Works or Collective Works and (c) to license others to do any or all of the above. The foregoing rights may be exercised in all media and formats, whether now known or hereafter devised, and include the right to make such modifications as are technically necessary to exercise the rights in other media and formats. If the "Open Access" box has been checked in Item 1 above, JoVE and the Author hereby grant to the public all such rights in the Article as provided in, but subject to all limitations and requirements set forth in, the CRC License.

ARTICLE AND VIDEO LICENSE AGREEMENT

4. Retention of Rights in Article. Notwithstanding the exclusive license granted to JoVE in **Section 3** above, the Author shall, with respect to the Article, retain the non-exclusive right to use all or part of the Article for the non-commercial purpose of giving lectures, presentations or teaching classes, and to post a copy of the Article on the Institution's website or the Author's personal website, in each case provided that a link to the Article on the JoVE website is provided and notice of JoVE's copyright in the Article is included. All non-copyright intellectual property rights in and to the Article, such as patent rights, shall remain with the Author.

5. Grant of Rights in Video – Standard Access. This **Section 5** applies if the "Standard Access" box has been checked in **Item 1** above or if no box has been checked in **Item 1** above. In consideration of JoVE agreeing to produce, display or otherwise assist with the Video, the Author hereby acknowledges and agrees that, Subject to **Section 7** below, JoVE is and shall be the sole and exclusive owner of all rights of any nature, including, without limitation, all copyrights, in and to the Video. To the extent that, by law, the Author is deemed, now or at any time in the future, to have any rights of any nature in or to the Video, the Author hereby disclaims all such rights and transfers all such rights to JoVE.

6. Grant of Rights in Video – Open Access. This **Section 6** applies only if the "Open Access" box has been checked in **Item 1** above. In consideration of JoVE agreeing to produce, display or otherwise assist with the Video, the Author hereby grants to JoVE, subject to **Section 7** below, the exclusive, royalty-free, perpetual (for the full term of copyright in the Article, including any extensions thereto) license (a) to publish, reproduce, distribute, display and store the Video in all forms, formats and media whether now known or hereafter developed (including without limitation in print, digital and electronic form) throughout the world, (b) to translate the Video into other languages, create adaptations, summaries or extracts of the Video or other Derivative Works or Collective Works based on all or any portion of the Video and exercise all of the rights set forth in (a) above in such translations, adaptations, summaries, extracts, Derivative Works or Collective Works and (c) to license others to do any or all of the above. The foregoing rights may be exercised in all media and formats, whether now known or hereafter devised, and include the right to make such modifications as are technically necessary to exercise the rights in other media and formats. For any Video to which this Section 6 is applicable, JoVE and the Author hereby grant to the public all such rights in the Video as provided in, but subject to all limitations and requirements set forth in, the CRC License.

7. Government Employees. If the Author is a United States government employee and the Article was prepared in the course of his or her duties as a United States government employee, as indicated in **Item 2** above, and any of the licenses or grants granted by the Author hereunder exceed the scope of the 17 U.S.C. 403, then the rights granted hereunder shall be limited to the maximum rights permitted under such

statute. In such case, all provisions contained herein that are not in conflict with such statute shall remain in full force and effect, and all provisions contained herein that do so conflict shall be deemed to be amended so as to provide to JoVE the maximum rights permissible within such statute.

8. Likeness, Privacy, Personality. The Author hereby grants JoVE the right to use the Author's name, voice, likeness, picture, photograph, image, biography and performance in any way, commercial or otherwise, in connection with the Materials and the sale, promotion and distribution thereof. The Author hereby waives any and all rights he or she may have, relating to his or her appearance in the Video or otherwise relating to the Materials, under all applicable privacy, likeness, personality or similar laws.

9. Author Warranties. The Author represents and warrants that the Article is original, that it has not been published, that the copyright interest is owned by the Author (or, if more than one author is listed at the beginning of this Agreement, by such authors collectively) and has not been assigned, licensed, or otherwise transferred to any other party. The Author represents and warrants that the author(s) listed at the top of this Agreement are the only authors of the Materials. If more than one author is listed at the top of this Agreement and if any such author has not entered into a separate Article and Video License Agreement with JoVE relating to the Materials, the Author represents and warrants that the Author has been authorized by each of the other such authors to execute this Agreement on his or her behalf and to bind him or her with respect to the terms of this Agreement as if each of them had been a party hereto as an Author. The Author warrants that the use, reproduction, distribution, public or private performance or display, and/or modification of all or any portion of the Materials does not and will not violate, infringe and/or misappropriate the patent, trademark, intellectual property or other rights of any third party. The Author represents and warrants that it has and will continue to comply with all government, institutional and other regulations, including, without limitation all institutional, laboratory, hospital, ethical, human and animal treatment, privacy, and all other rules, regulations, laws, procedures or guidelines, applicable to the Materials, and that all research involving human and animal subjects has been approved by the Author's relevant institutional review board.

10. JoVE Discretion. If the Author requests the assistance of JoVE in producing the Video in the Author's facility, the Author shall ensure that the presence of JoVE employees, agents or independent contractors is in accordance with the relevant regulations of the Author's institution. If more than one author is listed at the beginning of this Agreement, JoVE may, in its sole discretion, elect not take any action with respect to the Article until such time as it has received complete, executed Article and Video License Agreements from each such author. JoVE reserves the right, in its absolute and sole discretion and without giving any reason therefore, to accept or decline any work submitted to JoVE. JoVE and its employees, agents and independent contractors shall have

ARTICLE AND VIDEO LICENSE AGREEMENT

full, unfettered access to the facilities of the Author or of the Author's institution as necessary to make the Video, whether actually published or not. JoVE has sole discretion as to the method of making and publishing the Materials, including, without limitation, to all decisions regarding editing, lighting, filming, timing of publication, if any, length, quality, content and the like.

11. Indemnification. The Author agrees to indemnify JoVE and/or its successors and assigns from and against any and all claims, costs, and expenses, including attorney's fees, arising out of any breach of any warranty or other representations contained herein. The Author further agrees to indemnify and hold harmless JoVE from and against any and all claims, costs, and expenses, including attorney's fees, resulting from the breach by the Author of any representation or warranty contained herein or from allegations or instances of violation of intellectual property rights, damage to the Author's or the Author's institution's facilities, fraud, libel, defamation, research, equipment, experiments, property damage, personal injury, violations of institutional, laboratory, hospital, ethical, human and animal treatment, privacy or other rules, regulations, laws, procedures or guidelines, liabilities and other losses or damages related in any way to the submission of work to JoVE, making of videos by JoVE, or publication in JoVE or elsewhere by JoVE. The Author shall be responsible for, and shall hold JoVE harmless from, damages caused by lack of sterilization, lack of cleanliness or by contamination due to the making of a video by JoVE its employees, agents or independent contractors. All sterilization, cleanliness or decontamination procedures shall be solely the responsibility of the Author and shall be undertaken at the Author's

expense. All indemnifications provided herein shall include JoVE's attorney's fees and costs related to said losses or damages. Such indemnification and holding harmless shall include such losses or damages incurred by, or in connection with, acts or omissions of JoVE, its employees, agents or independent contractors.

12. Fees. To cover the cost incurred for publication, JoVE must receive payment before production and publication the Materials. Payment is due in 21 days of invoice. Should the Materials not be published due to an editorial or production decision, these funds will be returned to the Author. Withdrawal by the Author of any submitted Materials after final peer review approval will result in a US\$1,200 fee to cover pre-production expenses incurred by JoVE. If payment is not received by the completion of filming, production and publication of the Materials will be suspended until payment is received.

13. Transfer, Governing Law. This Agreement may be assigned by JoVE and shall inure to the benefits of any of JoVE's successors and assignees. This Agreement shall be governed and construed by the internal laws of the Commonwealth of Massachusetts without giving effect to any conflict of law provision thereunder. This Agreement may be executed in counterparts, each of which shall be deemed an original, but all of which together shall be deemed to me one and the same agreement. A signed copy of this Agreement delivered by facsimile, e-mail or other means of electronic transmission shall be deemed to have the same legal effect as delivery of an original signed copy of this Agreement.

A signed copy of this document must be sent with all new submissions. Only one Agreement required per submission.

CORRESPONDING AUTHOR:

Name:

Jose M.

Department:

Department of Geological and Mining Engineering

Institution:

University of Castilla-La Mancha

Article Title:

Laboratory and field protocol for estimating sheet resistance from dark-field microscopy

Signature:

Date:

February 6, 2018

Please submit a signed and dated copy of this license by one of the following three methods:

- 1) Upload a scanned copy of the document as a pdf on the JoVE submission site;
- 2) Fax the document to +1.866.381.2236;
- 3) Mail the document to JoVE / Attn: JoVE Editorial / 1 Alewife Center #200 / Cambridge, MA 02139

For questions, please email submissions@jove.com or call +1.617.945.9051

UNIVERSITY OF CASTILLA LA MANCHA
Environmental Science Faculty
Dr. José María Bodoque del Pozo
Avda/ Carlos III, s/n
E-45071 Toledo
Spain
E-mail: josemaria.bodoque@uclm.es



Dear Editor,

I am submitting a revised copy of our manuscript "Laboratory and field protocol for estimating sheet erosion rates from dendrogeomorphology" (REF.: JoVE57987) by Bodoque et al. We are most grateful to you for the helpful comments to our manuscript. To facilitate the new review, we have modified the document highlighting the changes carried out in blue. Regarding requests carried for you, we have:

- ✓ Reviewed the following lines to avoid previously published text: 54-55, 316-317, 352-355, 439-442, 452-455, 457-461, 488-493, 521-523.

We thank you for the opportunity to resubmit our manuscript to JoVE and hope that it is now suitable for publication. We look forward to hearing from you at your earliest convenience.

At Toledo (Spain), on May 31, 2018

A handwritten signature in blue ink, which appears to read 'Bodoque', is written over a faint, light blue grid background.

José María Bodoque del Pozo

ELSEVIER LICENSE
TERMS AND CONDITIONS

Mar 22, 2018

This Agreement between University of Castilla -- Jose Bodoque ("You") and Elsevier ("Elsevier") consists of your license details and the terms and conditions provided by Elsevier and Copyright Clearance Center.

License Number	4314321144589
License date	Mar 22, 2018
Licensed Content Publisher	Elsevier
Licensed Content Publication	Geomorphology
Licensed Content Title	Measuring medium-term sheet erosion in gullies from trees: A case study using dendrogeomorphological analysis of exposed pine roots in central Iberia
Licensed Content Author	J.M. Bodoque,A. Lucía,J.A. Ballesteros,J.F. Martín-Duque,Juan M. Rubiales,M. Genova
Licensed Content Date	Nov 15, 2011
Licensed Content Volume	134
Licensed Content Issue	3-4
Licensed Content Pages	9
Start Page	417
End Page	425
Type of Use	reuse in a journal/magazine
Requestor type	author of new work
Intended publisher of new work	Other
Portion	figures/tables/illustrations
Number of figures/tables/illustrations	2
Format	electronic
Are you the author of this Elsevier article?	Yes
Will you be translating?	No
Original figure numbers	Figure 2 and Figure 10
Title of the article	Laboratory and field protocol for estimating sheet erosion rates from dendrogeomorphology
Publication new article is in	Journal of Visualized Experiments
Publisher of the new article	JoVE
Author of new article	Jose Maria Bodoque, Juan Antonio Ballesteros, Juan Manuel Rubiales, Markus Stoffel
Expected publication date	Sep 2018

Estimated size of new article 12
(number of pages)

Requestor Location University of Castilla-La Mancha
Avda/ Carlos III s/n

Toledo, Toledo 45071
Spain
Attn: Mr

Publisher Tax ID GB 494 6272 12

Customer VAT ID ESQ1368009E

Total 0.00 EUR

Terms and Conditions

INTRODUCTION

1. The publisher for this copyrighted material is Elsevier. By clicking "accept" in connection with completing this licensing transaction, you agree that the following terms and conditions apply to this transaction (along with the Billing and Payment terms and conditions established by Copyright Clearance Center, Inc. ("CCC"), at the time that you opened your Rightslink account and that are available at any time at <http://myaccount.copyright.com>).

GENERAL TERMS

2. Elsevier hereby grants you permission to reproduce the aforementioned material subject to the terms and conditions indicated.

3. Acknowledgement: If any part of the material to be used (for example, figures) has appeared in our publication with credit or acknowledgement to another source, permission must also be sought from that source. If such permission is not obtained then that material may not be included in your publication/copies. Suitable acknowledgement to the source must be made, either as a footnote or in a reference list at the end of your publication, as follows:

"Reprinted from Publication title, Vol /edition number, Author(s), Title of article / title of chapter, Pages No., Copyright (Year), with permission from Elsevier [OR APPLICABLE SOCIETY COPYRIGHT OWNER]." Also Lancet special credit - "Reprinted from The Lancet, Vol. number, Author(s), Title of article, Pages No., Copyright (Year), with permission from Elsevier."

4. Reproduction of this material is confined to the purpose and/or media for which permission is hereby given.

5. Altering/Modifying Material: Not Permitted. However figures and illustrations may be altered/adapted minimally to serve your work. Any other abbreviations, additions, deletions and/or any other alterations shall be made only with prior written authorization of Elsevier Ltd. (Please contact Elsevier at permissions@elsevier.com). No modifications can be made to any Lancet figures/tables and they must be reproduced in full.

6. If the permission fee for the requested use of our material is waived in this instance, please be advised that your future requests for Elsevier materials may attract a fee.

7. Reservation of Rights: Publisher reserves all rights not specifically granted in the combination of (i) the license details provided by you and accepted in the course of this licensing transaction, (ii) these terms and conditions and (iii) CCC's Billing and Payment terms and conditions.

8. License Contingent Upon Payment: While you may exercise the rights licensed immediately upon issuance of the license at the end of the licensing process for the

transaction, provided that you have disclosed complete and accurate details of your proposed use, no license is finally effective unless and until full payment is received from you (either by publisher or by CCC) as provided in CCC's Billing and Payment terms and conditions. If full payment is not received on a timely basis, then any license preliminarily granted shall be deemed automatically revoked and shall be void as if never granted. Further, in the event that you breach any of these terms and conditions or any of CCC's Billing and Payment terms and conditions, the license is automatically revoked and shall be void as if never granted. Use of materials as described in a revoked license, as well as any use of the materials beyond the scope of an unrevoked license, may constitute copyright infringement and publisher reserves the right to take any and all action to protect its copyright in the materials.

9. **Warranties:** Publisher makes no representations or warranties with respect to the licensed material.

10. **Indemnity:** You hereby indemnify and agree to hold harmless publisher and CCC, and their respective officers, directors, employees and agents, from and against any and all claims arising out of your use of the licensed material other than as specifically authorized pursuant to this license.

11. **No Transfer of License:** This license is personal to you and may not be sublicensed, assigned, or transferred by you to any other person without publisher's written permission.

12. **No Amendment Except in Writing:** This license may not be amended except in a writing signed by both parties (or, in the case of publisher, by CCC on publisher's behalf).

13. **Objection to Contrary Terms:** Publisher hereby objects to any terms contained in any purchase order, acknowledgment, check endorsement or other writing prepared by you, which terms are inconsistent with these terms and conditions or CCC's Billing and Payment terms and conditions. These terms and conditions, together with CCC's Billing and Payment terms and conditions (which are incorporated herein), comprise the entire agreement between you and publisher (and CCC) concerning this licensing transaction. In the event of any conflict between your obligations established by these terms and conditions and those established by CCC's Billing and Payment terms and conditions, these terms and conditions shall control.

14. **Revocation:** Elsevier or Copyright Clearance Center may deny the permissions described in this License at their sole discretion, for any reason or no reason, with a full refund payable to you. Notice of such denial will be made using the contact information provided by you. Failure to receive such notice will not alter or invalidate the denial. In no event will Elsevier or Copyright Clearance Center be responsible or liable for any costs, expenses or damage incurred by you as a result of a denial of your permission request, other than a refund of the amount(s) paid by you to Elsevier and/or Copyright Clearance Center for denied permissions.

LIMITED LICENSE

The following terms and conditions apply only to specific license types:

15. **Translation:** This permission is granted for non-exclusive world **English** rights only unless your license was granted for translation rights. If you licensed translation rights you may only translate this content into the languages you requested. A professional translator must perform all translations and reproduce the content word for word preserving the integrity of the article.

16. **Posting licensed content on any Website:** The following terms and conditions apply as follows: Licensing material from an Elsevier journal: All content posted to the web site must maintain the copyright information line on the bottom of each image; A hyper-text must be included to the Homepage of the journal from which you are licensing at <http://www.sciencedirect.com/science/journal/xxxxx> or the Elsevier homepage for books at

<http://www.elsevier.com>; Central Storage: This license does not include permission for a scanned version of the material to be stored in a central repository such as that provided by Heron/XanEdu.

Licensing material from an Elsevier book: A hyper-text link must be included to the Elsevier homepage at <http://www.elsevier.com>. All content posted to the web site must maintain the copyright information line on the bottom of each image.

Posting licensed content on Electronic reserve: In addition to the above the following clauses are applicable: The web site must be password-protected and made available only to bona fide students registered on a relevant course. This permission is granted for 1 year only. You may obtain a new license for future website posting.

17. For journal authors: the following clauses are applicable in addition to the above:

Preprints:

A preprint is an author's own write-up of research results and analysis, it has not been peer-reviewed, nor has it had any other value added to it by a publisher (such as formatting, copyright, technical enhancement etc.).

Authors can share their preprints anywhere at any time. Preprints should not be added to or enhanced in any way in order to appear more like, or to substitute for, the final versions of articles however authors can update their preprints on arXiv or RePEc with their Accepted Author Manuscript (see below).

If accepted for publication, we encourage authors to link from the preprint to their formal publication via its DOI. Millions of researchers have access to the formal publications on ScienceDirect, and so links will help users to find, access, cite and use the best available version. Please note that Cell Press, The Lancet and some society-owned have different preprint policies. Information on these policies is available on the journal homepage.

Accepted Author Manuscripts: An accepted author manuscript is the manuscript of an article that has been accepted for publication and which typically includes author-incorporated changes suggested during submission, peer review and editor-author communications.

Authors can share their accepted author manuscript:

- immediately
 - via their non-commercial person homepage or blog
 - by updating a preprint in arXiv or RePEc with the accepted manuscript
 - via their research institute or institutional repository for internal institutional uses or as part of an invitation-only research collaboration work-group
 - directly by providing copies to their students or to research collaborators for their personal use
 - for private scholarly sharing as part of an invitation-only work group on commercial sites with which Elsevier has an agreement
- After the embargo period
 - via non-commercial hosting platforms such as their institutional repository
 - via commercial sites with which Elsevier has an agreement

In all cases accepted manuscripts should:

- link to the formal publication via its DOI
- bear a CC-BY-NC-ND license - this is easy to do
- if aggregated with other manuscripts, for example in a repository or other site, be shared in alignment with our hosting policy not be added to or enhanced in any way to appear more like, or to substitute for, the published journal article.

Published journal article (JPA): A published journal article (PJA) is the definitive final record of published research that appears or will appear in the journal and embodies all value-adding publishing activities including peer review co-ordination, copy-editing, formatting, (if relevant) pagination and online enrichment. Policies for sharing publishing journal articles differ for subscription and gold open access articles:

Subscription Articles: If you are an author, please share a link to your article rather than the full-text. Millions of researchers have access to the formal publications on ScienceDirect, and so links will help your users to find, access, cite, and use the best available version. Theses and dissertations which contain embedded PJAs as part of the formal submission can be posted publicly by the awarding institution with DOI links back to the formal publications on ScienceDirect.

If you are affiliated with a library that subscribes to ScienceDirect you have additional private sharing rights for others' research accessed under that agreement. This includes use for classroom teaching and internal training at the institution (including use in course packs and courseware programs), and inclusion of the article for grant funding purposes.

Gold Open Access Articles: May be shared according to the author-selected end-user license and should contain a [CrossMark logo](#), the end user license, and a DOI link to the formal publication on ScienceDirect.

Please refer to Elsevier's [posting_policy](#) for further information.

18. **For book authors** the following clauses are applicable in addition to the above:

Authors are permitted to place a brief summary of their work online only. You are not allowed to download and post the published electronic version of your chapter, nor may you scan the printed edition to create an electronic version. **Posting to a repository:** Authors are permitted to post a summary of their chapter only in their institution's repository.

19. **Thesis/Dissertation:** If your license is for use in a thesis/dissertation your thesis may be submitted to your institution in either print or electronic form. Should your thesis be published commercially, please reapply for permission. These requirements include permission for the Library and Archives of Canada to supply single copies, on demand, of the complete thesis and include permission for Proquest/UMI to supply single copies, on demand, of the complete thesis. Should your thesis be published commercially, please reapply for permission. Theses and dissertations which contain embedded PJAs as part of the formal submission can be posted publicly by the awarding institution with DOI links back to the formal publications on ScienceDirect.

Elsevier Open Access Terms and Conditions

You can publish open access with Elsevier in hundreds of open access journals or in nearly 2000 established subscription journals that support open access publishing. Permitted third party re-use of these open access articles is defined by the author's choice of Creative Commons user license. See our [open access license policy](#) for more information.

Terms & Conditions applicable to all Open Access articles published with Elsevier:

Any reuse of the article must not represent the author as endorsing the adaptation of the article nor should the article be modified in such a way as to damage the author's honour or reputation. If any changes have been made, such changes must be clearly indicated.

The author(s) must be appropriately credited and we ask that you include the end user license and a DOI link to the formal publication on ScienceDirect.

If any part of the material to be used (for example, figures) has appeared in our publication with credit or acknowledgement to another source it is the responsibility of the user to ensure their reuse complies with the terms and conditions determined by the rights holder.

Additional Terms & Conditions applicable to each Creative Commons user license:

CC BY: The CC-BY license allows users to copy, to create extracts, abstracts and new works from the Article, to alter and revise the Article and to make commercial use of the Article (including reuse and/or resale of the Article by commercial entities), provided the user gives appropriate credit (with a link to the formal publication through the relevant DOI), provides a link to the license, indicates if changes were made and the licensor is not represented as endorsing the use made of the work. The full details of the license are available at <http://creativecommons.org/licenses/by/4.0>.

CC BY NC SA: The CC BY-NC-SA license allows users to copy, to create extracts, abstracts and new works from the Article, to alter and revise the Article, provided this is not done for commercial purposes, and that the user gives appropriate credit (with a link to the formal publication through the relevant DOI), provides a link to the license, indicates if changes were made and the licensor is not represented as endorsing the use made of the work. Further, any new works must be made available on the same conditions. The full details of the license are available at <http://creativecommons.org/licenses/by-nc-sa/4.0>.

CC BY NC ND: The CC BY-NC-ND license allows users to copy and distribute the Article, provided this is not done for commercial purposes and further does not permit distribution of the Article if it is changed or edited in any way, and provided the user gives appropriate credit (with a link to the formal publication through the relevant DOI), provides a link to the license, and that the licensor is not represented as endorsing the use made of the work. The full details of the license are available at <http://creativecommons.org/licenses/by-nc-nd/4.0>. Any commercial reuse of Open Access articles published with a CC BY NC SA or CC BY NC ND license requires permission from Elsevier and will be subject to a fee.

Commercial reuse includes:

- Associating advertising with the full text of the Article
- Charging fees for document delivery or access
- Article aggregation
- Systematic distribution via e-mail lists or share buttons

Posting or linking by commercial companies for use by customers of those companies.

20. Other Conditions:

v1.9

Questions? customer care@copyright.com or +1-855-239-3415 (toll free in the US) or +1-978-646-2777.

**JOHN WILEY AND SONS LICENSE
TERMS AND CONDITIONS**

Mar 22, 2018

This Agreement between University of Castilla -- Jose Bodoque ("You") and John Wiley and Sons ("John Wiley and Sons") consists of your license details and the terms and conditions provided by John Wiley and Sons and Copyright Clearance Center.

License Number	4314320301864
License date	Mar 22, 2018
Licensed Content Publisher	John Wiley and Sons
Licensed Content Publication	Earth Surface Processes and Landforms
Licensed Content Title	Source of error and uncertainty in sheet erosion rates estimated from dendrogeomorphology
Licensed Content Author	José M. Bodoque, Juan A. Ballesteros-Cánovas, Ana Lucía, et al
Licensed Content Date	Feb 10, 2015
Licensed Content Volume	40
Licensed Content Issue	9
Licensed Content Pages	12
Type of use	Journal/Magazine
Requestor type	Author of this Wiley article
Is the reuse sponsored by or associated with a pharmaceutical or medical products company?	no
Format	Electronic
Portion	Figure/table
Number of figures/tables	1
Original Wiley figure/table number(s)	Figure 4
Will you be translating?	No
Title of new article	Laboratory and field protocol for estimating sheet erosion rates from dendrogeomorphology
Publication the new article is in	Journal of Visualized Experiments
Publisher of new article	JoVE
Author of new article	Jose Maria Bodoque, Juan Antonio Ballesteros, Juan Manuel Rubiales, Markus Stoffel
Expected publication date of new article	Sep 2018
Estimated size of new article (pages)	12

Requestor Location	University of Castilla-La Mancha Avda/ Carlos III s/n Toledo, Toledo 45071 Spain Attn: Mr
Publisher Tax ID	EU826007151
Customer VAT ID	ESQ1368009E
Total	0.00 EUR
Terms and Conditions	

TERMS AND CONDITIONS

This copyrighted material is owned by or exclusively licensed to John Wiley & Sons, Inc. or one of its group companies (each a "Wiley Company") or handled on behalf of a society with which a Wiley Company has exclusive publishing rights in relation to a particular work (collectively "WILEY"). By clicking "accept" in connection with completing this licensing transaction, you agree that the following terms and conditions apply to this transaction (along with the billing and payment terms and conditions established by the Copyright Clearance Center Inc., ("CCC's Billing and Payment terms and conditions"), at the time that you opened your RightsLink account (these are available at any time at <http://myaccount.copyright.com>).

Terms and Conditions

- The materials you have requested permission to reproduce or reuse (the "Wiley Materials") are protected by copyright.
- You are hereby granted a personal, non-exclusive, non-sub licensable (on a stand-alone basis), non-transferable, worldwide, limited license to reproduce the Wiley Materials for the purpose specified in the licensing process. This license, **and any CONTENT (PDF or image file) purchased as part of your order**, is for a one-time use only and limited to any maximum distribution number specified in the license. The first instance of republication or reuse granted by this license must be completed within two years of the date of the grant of this license (although copies prepared before the end date may be distributed thereafter). The Wiley Materials shall not be used in any other manner or for any other purpose, beyond what is granted in the license. Permission is granted subject to an appropriate acknowledgement given to the author, title of the material/book/journal and the publisher. You shall also duplicate the copyright notice that appears in the Wiley publication in your use of the Wiley Material. Permission is also granted on the understanding that nowhere in the text is a previously published source acknowledged for all or part of this Wiley Material. Any third party content is expressly excluded from this permission.
- With respect to the Wiley Materials, all rights are reserved. Except as expressly granted by the terms of the license, no part of the Wiley Materials may be copied, modified, adapted (except for minor reformatting required by the new Publication), translated, reproduced, transferred or distributed, in any form or by any means, and no derivative works may be made based on the Wiley Materials without the prior permission of the respective copyright owner. **For STM Signatory Publishers clearing permission under the terms of the [STM Permissions Guidelines](#) only, the**

terms of the license are extended to include subsequent editions and for editions in other languages, provided such editions are for the work as a whole in situ and does not involve the separate exploitation of the permitted figures or extracts,

You may not alter, remove or suppress in any manner any copyright, trademark or other notices displayed by the Wiley Materials. You may not license, rent, sell, loan, lease, pledge, offer as security, transfer or assign the Wiley Materials on a stand-alone basis, or any of the rights granted to you hereunder to any other person.

- The Wiley Materials and all of the intellectual property rights therein shall at all times remain the exclusive property of John Wiley & Sons Inc, the Wiley Companies, or their respective licensors, and your interest therein is only that of having possession of and the right to reproduce the Wiley Materials pursuant to Section 2 herein during the continuance of this Agreement. You agree that you own no right, title or interest in or to the Wiley Materials or any of the intellectual property rights therein. You shall have no rights hereunder other than the license as provided for above in Section 2. No right, license or interest to any trademark, trade name, service mark or other branding ("Marks") of WILEY or its licensors is granted hereunder, and you agree that you shall not assert any such right, license or interest with respect thereto
- NEITHER WILEY NOR ITS LICENSORS MAKES ANY WARRANTY OR REPRESENTATION OF ANY KIND TO YOU OR ANY THIRD PARTY, EXPRESS, IMPLIED OR STATUTORY, WITH RESPECT TO THE MATERIALS OR THE ACCURACY OF ANY INFORMATION CONTAINED IN THE MATERIALS, INCLUDING, WITHOUT LIMITATION, ANY IMPLIED WARRANTY OF MERCHANTABILITY, ACCURACY, SATISFACTORY QUALITY, FITNESS FOR A PARTICULAR PURPOSE, USABILITY, INTEGRATION OR NON-INFRINGEMENT AND ALL SUCH WARRANTIES ARE HEREBY EXCLUDED BY WILEY AND ITS LICENSORS AND WAIVED BY YOU.
- WILEY shall have the right to terminate this Agreement immediately upon breach of this Agreement by you.
- You shall indemnify, defend and hold harmless WILEY, its Licensors and their respective directors, officers, agents and employees, from and against any actual or threatened claims, demands, causes of action or proceedings arising from any breach of this Agreement by you.
- IN NO EVENT SHALL WILEY OR ITS LICENSORS BE LIABLE TO YOU OR ANY OTHER PARTY OR ANY OTHER PERSON OR ENTITY FOR ANY SPECIAL, CONSEQUENTIAL, INCIDENTAL, INDIRECT, EXEMPLARY OR PUNITIVE DAMAGES, HOWEVER CAUSED, ARISING OUT OF OR IN CONNECTION WITH THE DOWNLOADING, PROVISIONING, VIEWING OR USE OF THE MATERIALS REGARDLESS OF THE FORM OF ACTION, WHETHER FOR BREACH OF CONTRACT, BREACH OF WARRANTY, TORT, NEGLIGENCE, INFRINGEMENT OR OTHERWISE (INCLUDING, WITHOUT LIMITATION, DAMAGES BASED ON LOSS OF PROFITS, DATA, FILES, USE, BUSINESS OPPORTUNITY OR CLAIMS OF THIRD PARTIES), AND WHETHER OR NOT THE PARTY HAS BEEN ADVISED OF THE POSSIBILITY OF SUCH DAMAGES. THIS LIMITATION SHALL APPLY NOTWITHSTANDING ANY FAILURE OF ESSENTIAL PURPOSE OF ANY LIMITED REMEDY PROVIDED

HEREIN.

- Should any provision of this Agreement be held by a court of competent jurisdiction to be illegal, invalid, or unenforceable, that provision shall be deemed amended to achieve as nearly as possible the same economic effect as the original provision, and the legality, validity and enforceability of the remaining provisions of this Agreement shall not be affected or impaired thereby.
- The failure of either party to enforce any term or condition of this Agreement shall not constitute a waiver of either party's right to enforce each and every term and condition of this Agreement. No breach under this agreement shall be deemed waived or excused by either party unless such waiver or consent is in writing signed by the party granting such waiver or consent. The waiver by or consent of a party to a breach of any provision of this Agreement shall not operate or be construed as a waiver of or consent to any other or subsequent breach by such other party.
- This Agreement may not be assigned (including by operation of law or otherwise) by you without WILEY's prior written consent.
- Any fee required for this permission shall be non-refundable after thirty (30) days from receipt by the CCC.
- These terms and conditions together with CCC's Billing and Payment terms and conditions (which are incorporated herein) form the entire agreement between you and WILEY concerning this licensing transaction and (in the absence of fraud) supersedes all prior agreements and representations of the parties, oral or written. This Agreement may not be amended except in writing signed by both parties. This Agreement shall be binding upon and inure to the benefit of the parties' successors, legal representatives, and authorized assigns.
- In the event of any conflict between your obligations established by these terms and conditions and those established by CCC's Billing and Payment terms and conditions, these terms and conditions shall prevail.
- WILEY expressly reserves all rights not specifically granted in the combination of (i) the license details provided by you and accepted in the course of this licensing transaction, (ii) these terms and conditions and (iii) CCC's Billing and Payment terms and conditions.
- This Agreement will be void if the Type of Use, Format, Circulation, or Requestor Type was misrepresented during the licensing process.
- This Agreement shall be governed by and construed in accordance with the laws of the State of New York, USA, without regards to such state's conflict of law rules. Any legal action, suit or proceeding arising out of or relating to these Terms and Conditions or the breach thereof shall be instituted in a court of competent jurisdiction in New York County in the State of New York in the United States of America and each party hereby consents and submits to the personal jurisdiction of such court, waives any objection to venue in such court and consents to service of process by registered or certified mail, return receipt requested, at the last known address of such party.

WILEY OPEN ACCESS TERMS AND CONDITIONS

Wiley Publishes Open Access Articles in fully Open Access Journals and in Subscription journals offering Online Open. Although most of the fully Open Access journals publish open access articles under the terms of the Creative Commons Attribution (CC BY) License only, the subscription journals and a few of the Open Access Journals offer a choice of Creative Commons Licenses. The license type is clearly identified on the article.

The Creative Commons Attribution License

The [Creative Commons Attribution License \(CC-BY\)](#) allows users to copy, distribute and transmit an article, adapt the article and make commercial use of the article. The CC-BY license permits commercial and non-

Creative Commons Attribution Non-Commercial License

The [Creative Commons Attribution Non-Commercial \(CC-BY-NC\)License](#) permits use, distribution and reproduction in any medium, provided the original work is properly cited and is not used for commercial purposes.(see below)

Creative Commons Attribution-Non-Commercial-NoDerivs License

The [Creative Commons Attribution Non-Commercial-NoDerivs License](#) (CC-BY-NC-ND) permits use, distribution and reproduction in any medium, provided the original work is properly cited, is not used for commercial purposes and no modifications or adaptations are made. (see below)

Use by commercial "for-profit" organizations

Use of Wiley Open Access articles for commercial, promotional, or marketing purposes requires further explicit permission from Wiley and will be subject to a fee.

Further details can be found on Wiley Online Library <http://olabout.wiley.com/WileyCDA/Section/id-410895.html>

Other Terms and Conditions:

v1.10 Last updated September 2015

Questions? customercare@copyright.com or +1-855-239-3415 (toll free in the US) or +1-978-646-2777.

JOHN WILEY AND SONS LICENSE TERMS AND CONDITIONS

Mar 22, 2018

This Agreement between University of Castilla -- Jose Bodoque ("You") and John Wiley and Sons ("John Wiley and Sons") consists of your license details and the terms and conditions provided by John Wiley and Sons and Copyright Clearance Center.

License Number	4314301137583
License date	Mar 22, 2018
Licensed Content Publisher	John Wiley and Sons
Licensed Content Publication	Land Degradation & Development
Licensed Content Title	Quantifying Soil Erosion from Hiking Trail in a Protected Natural Area in the Spanish Pyrenees
Licensed Content Author	José María Bodoque, Juan Antonio Ballesteros-Cánovas, Juan Manuel Rubiales, et al
Licensed Content Date	Jul 13, 2017
Licensed Content Volume	28
Licensed Content Issue	7
Licensed Content Pages	13
Type of use	Journal/Magazine
Requestor type	Author of this Wiley article
Is the reuse sponsored by or associated with a pharmaceutical or medical products company?	no
Format	Electronic
Portion	Figure/table
Number of figures/tables	2
Original Wiley figure/table number(s)	Figure 3 and Figure 4
Will you be translating?	No
Title of new article	Laboratory and field protocol for estimating sheet erosion rates from dendrogeomorphology
Publication the new article is in	Journal of Visualized Experiments
Publisher of new article	JoVE
Author of new article	Jose Maria Bodoque, Juan Antonio Ballesteros, Juan Manuel Rubiales, Markus Stoffel
Expected publication date of new article	Sep 2018
Estimated size of new article	12

(pages)

Requestor Location University of Castilla-La Mancha
Avda/ Carlos III s/n

Toledo, Toledo 45071
Spain
Attn: Mr

Publisher Tax ID EU826007151

Customer VAT ID ESQ1368009E

Total 0.00 EUR

Terms and Conditions

TERMS AND CONDITIONS

This copyrighted material is owned by or exclusively licensed to John Wiley & Sons, Inc. or one of its group companies (each a "Wiley Company") or handled on behalf of a society with which a Wiley Company has exclusive publishing rights in relation to a particular work (collectively "WILEY"). By clicking "accept" in connection with completing this licensing transaction, you agree that the following terms and conditions apply to this transaction (along with the billing and payment terms and conditions established by the Copyright Clearance Center Inc., ("CCC's Billing and Payment terms and conditions"), at the time that you opened your RightsLink account (these are available at any time at <http://myaccount.copyright.com>).

Terms and Conditions

- The materials you have requested permission to reproduce or reuse (the "Wiley Materials") are protected by copyright.
- You are hereby granted a personal, non-exclusive, non-sub licensable (on a stand-alone basis), non-transferable, worldwide, limited license to reproduce the Wiley Materials for the purpose specified in the licensing process. This license, **and any CONTENT (PDF or image file) purchased as part of your order**, is for a one-time use only and limited to any maximum distribution number specified in the license. The first instance of republication or reuse granted by this license must be completed within two years of the date of the grant of this license (although copies prepared before the end date may be distributed thereafter). The Wiley Materials shall not be used in any other manner or for any other purpose, beyond what is granted in the license. Permission is granted subject to an appropriate acknowledgement given to the author, title of the material/book/journal and the publisher. You shall also duplicate the copyright notice that appears in the Wiley publication in your use of the Wiley Material. Permission is also granted on the understanding that nowhere in the text is a previously published source acknowledged for all or part of this Wiley Material. Any third party content is expressly excluded from this permission.
- With respect to the Wiley Materials, all rights are reserved. Except as expressly granted by the terms of the license, no part of the Wiley Materials may be copied, modified, adapted (except for minor reformatting required by the new Publication), translated, reproduced, transferred or distributed, in any form or by any means, and no derivative works may be made based on the Wiley Materials without the prior permission of the respective copyright owner.**For STM Signatory Publishers**

clearing permission under the terms of the [STM Permissions Guidelines](#) only, the terms of the license are extended to include subsequent editions and for editions in other languages, provided such editions are for the work as a whole in situ and does not involve the separate exploitation of the permitted figures or extracts, You may not alter, remove or suppress in any manner any copyright, trademark or other notices displayed by the Wiley Materials. You may not license, rent, sell, loan, lease, pledge, offer as security, transfer or assign the Wiley Materials on a stand-alone basis, or any of the rights granted to you hereunder to any other person.

- The Wiley Materials and all of the intellectual property rights therein shall at all times remain the exclusive property of John Wiley & Sons Inc, the Wiley Companies, or their respective licensors, and your interest therein is only that of having possession of and the right to reproduce the Wiley Materials pursuant to Section 2 herein during the continuance of this Agreement. You agree that you own no right, title or interest in or to the Wiley Materials or any of the intellectual property rights therein. You shall have no rights hereunder other than the license as provided for above in Section 2. No right, license or interest to any trademark, trade name, service mark or other branding ("Marks") of WILEY or its licensors is granted hereunder, and you agree that you shall not assert any such right, license or interest with respect thereto
- NEITHER WILEY NOR ITS LICENSORS MAKES ANY WARRANTY OR REPRESENTATION OF ANY KIND TO YOU OR ANY THIRD PARTY, EXPRESS, IMPLIED OR STATUTORY, WITH RESPECT TO THE MATERIALS OR THE ACCURACY OF ANY INFORMATION CONTAINED IN THE MATERIALS, INCLUDING, WITHOUT LIMITATION, ANY IMPLIED WARRANTY OF MERCHANTABILITY, ACCURACY, SATISFACTORY QUALITY, FITNESS FOR A PARTICULAR PURPOSE, USABILITY, INTEGRATION OR NON-INFRINGEMENT AND ALL SUCH WARRANTIES ARE HEREBY EXCLUDED BY WILEY AND ITS LICENSORS AND WAIVED BY YOU.
- WILEY shall have the right to terminate this Agreement immediately upon breach of this Agreement by you.
- You shall indemnify, defend and hold harmless WILEY, its Licensors and their respective directors, officers, agents and employees, from and against any actual or threatened claims, demands, causes of action or proceedings arising from any breach of this Agreement by you.
- IN NO EVENT SHALL WILEY OR ITS LICENSORS BE LIABLE TO YOU OR ANY OTHER PARTY OR ANY OTHER PERSON OR ENTITY FOR ANY SPECIAL, CONSEQUENTIAL, INCIDENTAL, INDIRECT, EXEMPLARY OR PUNITIVE DAMAGES, HOWEVER CAUSED, ARISING OUT OF OR IN CONNECTION WITH THE DOWNLOADING, PROVISIONING, VIEWING OR USE OF THE MATERIALS REGARDLESS OF THE FORM OF ACTION, WHETHER FOR BREACH OF CONTRACT, BREACH OF WARRANTY, TORT, NEGLIGENCE, INFRINGEMENT OR OTHERWISE (INCLUDING, WITHOUT LIMITATION, DAMAGES BASED ON LOSS OF PROFITS, DATA, FILES, USE, BUSINESS OPPORTUNITY OR CLAIMS OF THIRD PARTIES), AND WHETHER OR NOT THE PARTY HAS BEEN ADVISED OF THE POSSIBILITY OF SUCH

DAMAGES. THIS LIMITATION SHALL APPLY NOTWITHSTANDING ANY FAILURE OF ESSENTIAL PURPOSE OF ANY LIMITED REMEDY PROVIDED HEREIN.

- Should any provision of this Agreement be held by a court of competent jurisdiction to be illegal, invalid, or unenforceable, that provision shall be deemed amended to achieve as nearly as possible the same economic effect as the original provision, and the legality, validity and enforceability of the remaining provisions of this Agreement shall not be affected or impaired thereby.
- The failure of either party to enforce any term or condition of this Agreement shall not constitute a waiver of either party's right to enforce each and every term and condition of this Agreement. No breach under this agreement shall be deemed waived or excused by either party unless such waiver or consent is in writing signed by the party granting such waiver or consent. The waiver by or consent of a party to a breach of any provision of this Agreement shall not operate or be construed as a waiver of or consent to any other or subsequent breach by such other party.
- This Agreement may not be assigned (including by operation of law or otherwise) by you without WILEY's prior written consent.
- Any fee required for this permission shall be non-refundable after thirty (30) days from receipt by the CCC.
- These terms and conditions together with CCC's Billing and Payment terms and conditions (which are incorporated herein) form the entire agreement between you and WILEY concerning this licensing transaction and (in the absence of fraud) supersedes all prior agreements and representations of the parties, oral or written. This Agreement may not be amended except in writing signed by both parties. This Agreement shall be binding upon and inure to the benefit of the parties' successors, legal representatives, and authorized assigns.
- In the event of any conflict between your obligations established by these terms and conditions and those established by CCC's Billing and Payment terms and conditions, these terms and conditions shall prevail.
- WILEY expressly reserves all rights not specifically granted in the combination of (i) the license details provided by you and accepted in the course of this licensing transaction, (ii) these terms and conditions and (iii) CCC's Billing and Payment terms and conditions.
- This Agreement will be void if the Type of Use, Format, Circulation, or Requestor Type was misrepresented during the licensing process.
- This Agreement shall be governed by and construed in accordance with the laws of the State of New York, USA, without regards to such state's conflict of law rules. Any legal action, suit or proceeding arising out of or relating to these Terms and Conditions or the breach thereof shall be instituted in a court of competent jurisdiction in New York County in the State of New York in the United States of America and each party hereby consents and submits to the personal jurisdiction of such court, waives any

objection to venue in such court and consents to service of process by registered or certified mail, return receipt requested, at the last known address of such party.

WILEY OPEN ACCESS TERMS AND CONDITIONS

Wiley Publishes Open Access Articles in fully Open Access Journals and in Subscription journals offering Online Open. Although most of the fully Open Access journals publish open access articles under the terms of the Creative Commons Attribution (CC BY) License only, the subscription journals and a few of the Open Access Journals offer a choice of Creative Commons Licenses. The license type is clearly identified on the article.

The Creative Commons Attribution License

The [Creative Commons Attribution License \(CC-BY\)](#) allows users to copy, distribute and transmit an article, adapt the article and make commercial use of the article. The CC-BY license permits commercial and non-

Creative Commons Attribution Non-Commercial License

The [Creative Commons Attribution Non-Commercial \(CC-BY-NC\) License](#) permits use, distribution and reproduction in any medium, provided the original work is properly cited and is not used for commercial purposes.(see below)

Creative Commons Attribution-Non-Commercial-NoDerivs License

The [Creative Commons Attribution Non-Commercial-NoDerivs License](#) (CC-BY-NC-ND) permits use, distribution and reproduction in any medium, provided the original work is properly cited, is not used for commercial purposes and no modifications or adaptations are made. (see below)

Use by commercial "for-profit" organizations

Use of Wiley Open Access articles for commercial, promotional, or marketing purposes requires further explicit permission from Wiley and will be subject to a fee.

Further details can be found on Wiley Online Library

<http://olabout.wiley.com/WileyCDA/Section/id-410895.html>

Other Terms and Conditions:

v1.10 Last updated September 2015

Questions? customercare@copyright.com or +1-855-239-3415 (toll free in the US) or +1-978-646-2777.

**SPRINGER NATURE LICENSE
TERMS AND CONDITIONS**

Mar 22, 2018

This Agreement between University of Castilla -- Jose Bodoque ("You") and Springer Nature ("Springer Nature") consists of your license details and the terms and conditions provided by Springer Nature and Copyright Clearance Center.

License Number	4314330438963
License date	Mar 22, 2018
Licensed Content Publisher	Springer Nature
Licensed Content Publication	Plant and Soil
Licensed Content Title	Combining terrestrial laser scanning and root exposure to estimate erosion rates
Licensed Content Author	J. A. Ballesteros-Cánovas, C. Corona, M. Stoffel et al
Licensed Content Date	Jan 1, 2015
Licensed Content Volume	394
Licensed Content Issue	1
Type of Use	Journal/Magazine
Requestor type	academic/university or research institute
Format	electronic
Portion	figures/tables/illustrations
Number of figures/tables/illustrations	2
Will you be translating?	no
Circulation/distribution	>50,000
Author of this Springer Nature content	yes
Title	Laboratory and field protocol for estimating sheet erosion rates from dendrogeomorphology
Author	Jose Maria Bodoque, Juan Antonio Ballesteros, Juan Manuel Rubiales, Markus Stoffel
Publication	Journal of Visualized Experiments
Publisher	JoVE
Publisher imprint	
Expected publication date	Sep 2018
OA License	None
Expected size	12
Standard identifier	Prof.
Portions	Figure 4 and Figure 5

Requestor Location	University of Castilla-La Mancha Avda/ Carlos III s/n Toledo, Toledo 45071 Spain Attn: Mr
Customer VAT ID	ESQ1368009E
Billing Type	Invoice
Billing Address	University of Castilla-La Mancha Avda/ Carlos III s/n Toledo, Spain 45071 Attn: Mr
Total	0.00 EUR
Terms and Conditions	

Springer Nature Terms and Conditions for RightsLink Permissions

Springer Customer Service Centre GmbH (the Licensor) hereby grants you a non-exclusive, world-wide licence to reproduce the material and for the purpose and requirements specified in the attached copy of your order form, and for no other use, subject to the conditions below:

1. The Licensor warrants that it has, to the best of its knowledge, the rights to license reuse of this material. However, you should ensure that the material you are requesting is original to the Licensor and does not carry the copyright of another entity (as credited in the published version).

If the credit line on any part of the material you have requested indicates that it was reprinted or adapted with permission from another source, then you should also seek permission from that source to reuse the material.

2. Where **print only** permission has been granted for a fee, separate permission must be obtained for any additional electronic re-use.
3. Permission granted **free of charge** for material in print is also usually granted for any electronic version of that work, provided that the material is incidental to your work as a whole and that the electronic version is essentially equivalent to, or substitutes for, the print version.
4. A licence for 'post on a website' is valid for 12 months from the licence date. This licence does not cover use of full text articles on websites.
5. Where **'reuse in a dissertation/thesis'** has been selected the following terms apply: Print rights for up to 100 copies, electronic rights for use only on a personal website or institutional repository as defined by the Sherpa guideline (www.sherpa.ac.uk/romeo/).
6. Permission granted for books and journals is granted for the lifetime of the first edition and does not apply to second and subsequent editions (except where the first edition permission was granted free of charge or for signatories to the STM Permissions Guidelines <http://www.stm-assoc.org/copyright-legal-affairs/permissions/permissions-guidelines/>), and does not apply for editions in other languages unless additional translation rights have been granted separately in the licence.
7. Rights for additional components such as custom editions and derivatives require additional permission and may be subject to an additional fee. Please apply to

Journalpermissions@springernature.com/bookpermissions@springernature.com for these rights.

8. The Licensor's permission must be acknowledged next to the licensed material in print. In electronic form, this acknowledgement must be visible at the same time as the figures/tables/illustrations or abstract, and must be hyperlinked to the journal/book's homepage. Our required acknowledgement format is in the Appendix below.
9. Use of the material for incidental promotional use, minor editing privileges (this does not include cropping, adapting, omitting material or any other changes that affect the meaning, intention or moral rights of the author) and copies for the disabled are permitted under this licence.
10. Minor adaptations of single figures (changes of format, colour and style) do not require the Licensor's approval. However, the adaptation should be credited as shown in Appendix below.

Appendix — Acknowledgements:

For Journal Content:

Reprinted by permission from [the Licensor]: [Journal Publisher (e.g. Nature/Springer/Palgrave)] [JOURNAL NAME] [REFERENCE CITATION (Article name, Author(s) Name), [COPYRIGHT] (year of publication)]

For Advance Online Publication papers:

Reprinted by permission from [the Licensor]: [Journal Publisher (e.g. Nature/Springer/Palgrave)] [JOURNAL NAME] [REFERENCE CITATION (Article name, Author(s) Name), [COPYRIGHT] (year of publication), advance online publication, day month year (doi: 10.1038/sj.[JOURNAL ACRONYM].)]

For Adaptations/Translations:

Adapted/Translated by permission from [the Licensor]: [Journal Publisher (e.g. Nature/Springer/Palgrave)] [JOURNAL NAME] [REFERENCE CITATION (Article name, Author(s) Name), [COPYRIGHT] (year of publication)]

Note: For any republication from the British Journal of Cancer, the following credit line style applies:

Reprinted/adapted/translated by permission from [the Licensor]: on behalf of Cancer Research UK: : [Journal Publisher (e.g. Nature/Springer/Palgrave)] [JOURNAL NAME] [REFERENCE CITATION (Article name, Author(s) Name), [COPYRIGHT] (year of publication)]

For Advance Online Publication papers:

Reprinted by permission from The [the Licensor]: on behalf of Cancer Research UK: [Journal Publisher (e.g. Nature/Springer/Palgrave)] [JOURNAL NAME] [REFERENCE CITATION (Article name, Author(s) Name), [COPYRIGHT] (year of publication), advance online publication, day month year (doi: 10.1038/sj.[JOURNAL ACRONYM].)]

For Book content:

Reprinted/adapted by permission from [the Licensor]: [Book Publisher (e.g.

Palgrave Macmillan, Springer etc) **[Book Title]** by **[Book author(s)]**
[COPYRIGHT] (year of publication)

Other Conditions:

Version 1.0

Questions? customercare@copyright.com or +1-855-239-3415 (toll free in the US) or
+1-978-646-2777.
