

Journal of Visualized Experiments

Analyzing protein architectures and protein-ligand complexes by integrative structural mass spectrometry --Manuscript Draft--

Article Type:	Invited Methods Article - JoVE Produced Video
Manuscript Number:	JoVE57966R1
Full Title:	Analyzing protein architectures and protein-ligand complexes by integrative structural mass spectrometry
Keywords:	Mass spectrometry (MS), native MS, ion-mobility, protein complexes, non-covalent interactions, nucleotide binding, DNA binding, molecular dynamics, modelling.
Corresponding Author:	Argyris Politis UNITED KINGDOM
Corresponding Author's Institution:	
Corresponding Author E-Mail:	argyris.politis@kcl.ac.uk
First Author:	Zainab Ahdash
Other Authors:	Zainab Ahdash Andy M. Lau Chloe Martens
Author Comments:	<p>April 12, 2018 Dear Dr Alisha DSouza, Thank you for forwarding the reviewers' comments on our article titled "Analysing protein architectures and protein-ligand complexes by integrative structural mass spectrometry". We are delighted by the overall positive tone of the reviews. We would like to thank you and the two reviewers for their thoughtful reviews and comments. We have revised our manuscript in light of these comments and we think that the revisions have made the manuscript stronger. Please find attached our response to the referees together with the revised text.</p> <p>Editorial comments:</p> <p>We would like to thank the editor for their comments on our work and helpful suggestions. We agree with the important points raised, and hence we have addressed these points (1-18) in our revised manuscript.</p> <p>Changes to be made by the Author(s):</p> <ol style="list-style-type: none">1. Please take this opportunity to thoroughly proofread the manuscript to ensure that there are no spelling or grammar issues. The JoVE editor will not copy-edit your manuscript and any errors in the submitted revision may be present in the published version.2. Please use American English.3. Please adjust the numbering of the Protocol to follow the JoVE Instructions for Authors. For example, 1 should be followed by 1.1 and then 1.1.1 and 1.1.2 if necessary. Please refrain from using bullets or dashes.4. JoVE cannot publish manuscripts containing commercial language. This includes trademark symbols (™), registered symbols (®), and company names before an instrument or reagent. Please remove all commercial language from your manuscript and use generic terms instead. All commercial products should be sufficiently referenced in the Table of Materials and Reagents. For example: Sigma-Aldrich, Millipore, etc.5. The Protocol should contain only action items that direct the reader to do something. Please move the discussion about the protocol to the Discussion.6. Please add more details to your protocol steps. Please ensure you answer the "how" question, i.e., how is the step performed? Alternatively, add references to published

material specifying how to perform the protocol action.

7. Please provide the volumes used throughout. We need specific values in order to film and publish. Generalized protocols are not compatible with a video article.
8. What containers are being used throughout? 1.5 mL microcentrifuge tube? 15 mL tube?
9. 1.7: How is the buffer exchange done?
10. Please specify all incubation times. We need specific values.
11. Please specify all experimental values and parameters used.
12. The Protocol should be made up almost entirely of discrete steps without large paragraphs of text between sections. Please simplify the Protocol so that individual steps contain only 2-3 actions per step and a maximum of 4 sentences per step.
13. Please highlight 2.75 pages or less of the Protocol (including headings and spacing) that identifies the essential steps of the protocol for the video, i.e., the steps that should be visualized to tell the most cohesive story of the Protocol. Remember that non-highlighted Protocol steps will remain in the manuscript, and therefore will still be available to the reader.
14. Please ensure that the highlighted steps form a cohesive narrative with a logical flow from one highlighted step to the next. Please highlight complete sentences (not parts of sentences). Please ensure that the highlighted part of the step includes at least one action that is written in imperative tense.
15. Please do not highlight calculations for the video: step 3.4-3.6, 4.3-4.7
16. Please include at least one paragraph of text to explain the Representative Results in the context of the technique you have described, e.g., how do these results show the technique, suggestions about how to analyze the outcome, etc. The paragraph text should refer to all of the figures. Data from both successful and sub-optimal experiments can be included.
17. As we are a methods journal, please revise the Discussion to explicitly cover the following in detail in 3-6 paragraphs with citations:
 - a) Critical steps within the protocol
 - b) Any modifications and troubleshooting of the technique
 - c) Any limitations of the technique
 - d) The significance with respect to existing methods
 - e) Any future applications of the technique
18. Please do not abbreviate journal titles.

Reviewers' comments:

Reviewer #1:

We would like to thank the first reviewer for their very positive comments on our work and helpful suggestions. We agree with important points raised by the first reviewer, and hence addressed these points in our revised manuscript.

Manuscript Summary:

The manuscript is intended to be a tutorial for the analysis of non-covalent protein complexes using native state nano-electrospray ionization coupled with ion mobility mass spectrometry. The interaction between the helicase-nuclease protein complex (HerA-NurA) with several ligands (DNA, ATP, ADP) studied in a previous publication [21] is used as a model compound for this tutorial. The manuscript provides adequate details for sample preparation, mass spectrometer operation as well as data interpretation. I believe this manuscript would be of great utility to everyone interested in hands-on characterization of complex protein complexes using intact mass analysis, therefore I recommend the publication of this manuscript with several revisions.

Major Concerns:

We have now divided the previous 'part 3' into two parts (part 3 and 4) and therefore highlighted section 2-5 to be included in the video.

Part 1 of the Protocol section contains mostly general guidelines for optimizing the sample preparation before the analysis of the HerA-NurA protein complex interacting with several ligands. I don't think that Part 1 should be highlighted in yellow and

included in the video material because is not as relevant as Parts 2-4.

Minor Concerns:

We have addressed all points (1-25) raised in the revised manuscript. We have revised our figures such that numbers used for subscript notation. Figures are now provided at a higher resolution.

Please find below a list of my suggested revisions and comments:

1. Page 3, Lines 127-128:

For HerA-NurA studies 200 nM ammonium acetate pH 7 was used.

2. Page 4, Line 143:

Please indicate the upper m/z value of the quadrupole installed in the Synapt G2-Si instrument used for these experiments (e.g. 4,8 or 32 k).

3. Page 4, Lines 147-149:

For IM separations, Nitrogen (60 mL/min) and Argon (8.4mL/min for the Trap region) were used. However, Helium can be used for IM separations as well.

4. Page 4, Lines 152-153:

... and insert it into a capillary holder.

5. Page 4, Line 156:

Please indicate the pressure units for the nano-flow pressure gauge.

6. Page 4, Line 159:

Apply a capillary voltage in the range of 0.9-1.6 kV.

7. Page 4, Lines 161-162:

... adjusting the gas flow in the Trap (2-8 mL/min), He Cell (180 L/min) and the IMS cell (90mL/min) ...

8. Page 4, Line 168:

The Synapt G2-Si instrument does not have an extraction cone. Please provide instead the optimized values of other nano-ESI source parameters like source offset, source temperature and cone gas flow.

9. Page 5, Lines 180-182:

To quantify the relative abundance of species use the corresponding ion intensities observed in the raw ESI-MS spectra (for example ligand bound, different oligomers, etc). Alternatively, quantification can be performed using specialized software like UniDec and Massign34 (Figure 1 and 3).

10. Page 5, Line 209:

... use the SUMMIT software...

11. Page 6, Line 230:

... by subjecting it to CIU.

12. Page 6, Line 231:

Specialized software packages such as PULSAR32,

13. Page 6, Line 245:

... transitions and stabilizations of protein ions.

14. Page 7, Line 306, Figure 1 caption:

... composition and topology of the HerA-NurA non-covalent complex.

15. Page 8, Line 313, Figure 2 caption:

Native ESI-MS reveals the mechanism ...

16. Page 8, Lines 334-335:

... (after considering the typical uncertainty in the resolution of travelling wave ion mobility mass spectrometry of $\pm 5-8\%$).

17. Page 8, Lines 338-339, Figure 5 caption:

Colored circles indicate conditions where each sub-complex was observed: native (blue, prior to disruption), ...

18. Page 8, Line 348, Figure 7 caption:

There is a discrepancy between the Figure 7 caption and the actual Figure shown on Page 19.

The figure caption needs to be corrected (Figure 7A is mentioned 3 times in the caption).

19. Page 9, Lines 376-377:

... careful sample preparations steps are essential, ...

20. Page 9, Line 382:

... electrospray mass spectrometers.

21. Page 10-12, References section:

Please reformat references no 7, 16, 18, 28, 38, 40 and 44 to match the format used

for the the authors's names in all other references.

22. Page 11, Line 461:
Reference 27 has several typos.

23. Page 16, Figure 4C:
Please provide the Figure 4C with higher resolution, the labeling of the oligomeric species is not clear at all! The numbers used for subscript notation are barely distinguishable.

24. Page 17, Figure 5:
Please provide the Figure 5 with better resolution, the numbers used for subscript notation are barely distinguishable.

25. Page 20, Table 1:
Please avoid the decimals for the theoretical and experimental CCS values of the gas phase complexes and sub-complexes. Use instead the integer numbers because the IMS method is not that precise for this large molecular weight complexes.

Reviewer #2:

We would like to thank the second reviewer for their comments on our work and supportive suggestions. We agree with important points raised in the minor and major concerns sections and have addressed these points in our revised discussion. Moreover, all parts now have a paragraph in the beginning that provides a brief explanation of the section. .

Manuscript Summary:

The manuscript addresses an important aspect of analyzing biomolecular structure using mass spectrometry, and should be published.

Major Concerns:

The manuscript suffers from a lack of clear structure and organization, which makes it difficult to follow - particularly the breakdown into sections and the logic flow of the experiment with options such as ligand binding studies clearly described. For example the main exp part starts with preparation of ATP in a very specific way, without explaining the goal and limitations of the intended experiment first.

Generally many points might well apply to the particular complex but other statements of apparent universal applicability are mixed in with this, which makes the instructions very confusing.

Statements such as "To obtain sufficient DNA binding, screen different DNA concentrations." are not of general validity - is this complex particularly difficult to form? He gas can indeed be used for ion mobility, but not easily on the instrument described here or by the non-expert user, so it would be best if the authors describe a "standard" workflow, and clearly highlight which points are specific to the system studied here and why.

The instrument tuning strategy makes no sense to me, it should start with the inlet (Cone) and only increase coll. energies if "front end" voltage offsets are insufficient. What does the used need to look out for when setting these parameters? How do we know if conditions are still "native"?

Also section titles such as "Part 4: Investigating protein-ligand interactions using collision induced unfolding (CIU)" are not very clear, why would CIU only inform on ligand interactions rather than e.g. protein stability towards unfolding? Please re-organise the sections to create a logic flow.

I would strongly discourage reporting of ccs values as "average of all 358 charge states." - please discuss and justify which charge states should be used.

Minor Concerns:

We have addressed these points in our revised manuscript. With regards to proteins used for calibration, we have rephrased the sentence to be clearer "Select four calibrants, two with a mass above and two with a mass below that of the protein under investigation". To make Figure 4 clearer, we have split the content into two Figures (Fig.4. and Fig.5).

Why are ammonium acetate buffers non-physiological? Why not use MgATP? Part II 20 - I would not recommend making any calibration with just two reference points?

Figure 2: please check if the labels got mixed up

What are the curves representing in Fig 3B? Symbols in Fig4 are too small and blurred.

	<p>Yours sincerely,</p> <p>Argyris Politis</p>
Additional Information:	
Question	Response
If this article needs to be "in-press" by a certain date, please indicate the date below and explain in your cover letter.	

TITLE:

Analyzing Protein Architectures and Protein-Ligand Complexes by Integrative Structural Mass Spectrometry

AUTHOR:

Zainab Ahdash¹, Andy M. Lau¹, Chloe Martens¹, Argyris Politis¹

¹Department of Chemistry, King's College London, London, United Kingdom

zainab.ahdash@kcl.ac.uk

andy.lau@kcl.ac.uk

chloe.martens@kcl.ac.uk

argyris.politis@kcl.ac.uk

Corresponding Author:

Argyris Politis

argyris.politis@kcl.ac.uk

Keywords:

Mass spectrometry (MS), native MS, ion-mobility, protein complexes, non-covalent interactions, nucleotide binding, DNA binding, molecular dynamics, modelling.

Summary:

Mass spectrometry (MS) has emerged as an important tool for the investigation of structure and dynamics of macromolecular assemblies. Here, we integrate MS-based approaches to interrogate protein complex formation and ligand binding.

Abstract:

Proteins are an important class of biological macromolecules that play many key roles in cellular functions including gene expression, catalyzing metabolic reactions, DNA repair and replication. Therefore, a detailed understanding of these processes provides critical information on how cells function. Integrative structural MS methods offer structural and dynamical information on protein complex assembly, complex connectivity, subunit stoichiometry, protein oligomerization and ligand binding. Recent advances in integrative structural MS have allowed for the characterization of challenging biological systems including large DNA binding proteins and membrane proteins. This protocol describes how to integrate diverse MS data such as native MS and ion mobility-mass spectrometry (IM-MS) with molecular dynamics simulations to gain insights into a helicase-nuclease DNA repair protein complex. The resulting approach provides a framework for detailed studies of ligand binding to other protein complexes involved in important biological processes.

Introduction:

Native mass spectrometric analysis of intact proteins and their complexes is carried out using electrospray and nano-electrospray ionization (nESI), which preserve protein folding and non-

covalent interactions during the ionization process^{1,2}. In native MS, the structure of proteins and their complexes are retained in a near-native state in the gas-phase^{3,4}. Native MS detects multiple charged protein ions, which are separated according to their mass to charge ratio (m/z) allowing the mass of the protein or protein-ligand complex to be calculated. This information enables the determination of an intact protein's stoichiometry, subunit composition, ligand binding, and interaction networks³⁻⁶. Native MS has several advantages compared to other techniques such X-ray crystallography and nuclear magnetic resonance spectroscopy⁵. Firstly, native MS is a rapid and highly sensitive technique, requiring only a few microliters (2-3 μ L) of sample at relatively low final complex concentrations in the high nM to low μ M range⁶. Secondly, native MS can be used to interrogate heterogeneous protein samples making it possible to analyze multiple proteins and oligomeric states simultaneously. Thirdly, native MS does not require protein samples to be modified before analysis by chemical crosslinking or protein labelling. These advantages have made structural MS a powerful tool for the structural investigation of protein complexes.

Native MS can be combined with ion mobility (IM), a technique that measures the time a protein ion takes to travel through an electric field, enabling the collisional cross section (CCS) to be determined. The CCS provides low-resolution structural information, which enables topology and conformational heterogeneity information of proteins to be obtained. Furthermore, it allows the examination of protein structural models generated by computational approaches.

Protein gas-phase stability can be investigated using collision induced unfolding (CIU) measured by IM-MS. During the CIU process, protein ions are accelerated and activated through increased accelerating collisions with an inert buffer gas within a mass spectrometer⁷⁻⁹. This collisional activation process causes the protein to partially unfold, which translates into an increase in CCS. This change in CCS and the energy required to unfold the protein can be measured by IM-MS. Using this approach, the effect of ligand binding on protein stability can be measured¹⁰. Subcomplexes can be generated in solution using in-solution disruption methods such as the addition of organic solvents to monitor native-like topologies of protein complexes. Disruption of the protein complexes is mainly due to the disruption of intra non-covalent interactions. The sub-complexes maintain native-like topologies and, upon MS detection, reveal information about inter-subunit connectivity.

Integrative approaches in structural biology combine diverse methods to study the structure and dynamics of proteins and their complexes³⁻⁶. Native MS and IM-MS have been used to uncover the molecular details of challenging biological systems. There have been several examples of applications including the study of protein assembly pathways¹¹⁻¹⁴, studying protein-protein interaction networks¹⁵⁻¹⁷, membrane proteins^{6,18-21}, and protein-ligand interactions such as nucleic acids²²⁻²⁴.

However, native MS also has its limitations. Native MS measurements are often performed in volatile buffers such as aqueous ammonium acetate in which some proteins will not retain their folded native state^{3,25}. Nevertheless, recent work has shown that this limitation can be

overcome by optimization of spraying needle tip diameter (0.5 mm tips) such that protein and protein complex ions can be formed directly from non-volatile buffers with high-ionic-strength that better mimic the physiological environment²⁶. Additionally, native MS uses electrospray to ionize and transfer non-covalent assemblies from solution to the gas phase; therefore, the relative abundance of detected complexes may not wholly represent that in solution^{5,27}. Moreover, in comparison to in solution, the gas phase hydrophobic interactions become weaker and electrostatic interactions become stronger and hence favored^{3,28}.

In this article, we provide protocols, data analysis, and interpretation for protein identification and ligand binding using native MS, IM-MS, CIU, in-solution disruption, and modelling. The DNA repair complex, HerA-NurA, is used as a model system. DNA double-stranded breaks (DSBs) are one of the most cytotoxic and deleterious forms of DNA damage, resulting in genetic instability and the eventual development of cancer in humans. Homologous recombination is the repair mechanism which eradicates DSBs, a process which is orchestrated by the ATP dependent helicase-nuclease complex, HerA-NurA²².

Combining native MS and IM-MS with functional assays and modelling allowed the investigation of: i) the role of NurA in the assembly, conformation, and stability of the complex, ii) the interaction between dsDNA and the complex and its influence on the overall stability of the complex, and iii) the stoichiometry and impact of ATP binding on the assembly²². Overall, this work led to an improved understanding of the molecular basis of the HerA-NurA complex by linking protein complex conformational changes and stability with nucleotide binding. This protocol is generic for any protein complex(es) which interacts with one or several ligand(s) types.

Protocol

1. Sample Preparation for Native MS of Protein and Protein-Ligand Complexes

Note: To gain an understanding of the molecular basis of a protein complex and ligand binding using native MS, suitable sample preparation is key. The aim of this section is to highlight the essential sample preparation steps prior to MS analysis using the HerA-NurA complex which binds DNA and nucleotides as an example.

1.1. Prepare 20 μ L aliquots of concentrated purified protein (typically 15 – 30 μ M) in a 1.5 mL tube.

1.2. For ATP or ADP binding analysis

Note: Add increasing concentrations of the non-hydrolyzable ATP analog adenosine 5'-O-(3'-thiotriphosphate), tetralithium salt (ATP- γ -S) or adenosine 5'-diphosphate (ADP). Non-hydrolyzable ATP derivatives generate a stable complex which would enable the ATP-bound protein to be captured. Other non-hydrolysable ATP analogues that could be tested include AMP-PNP and ATP- γ -S-Mg²⁺.

1.2.1. For HerA-NurA studies, mix 5 μ M of purified protein with ATP- γ -S and ADP at concentrations ranging from 0-1 mM.

1.2.2. To capture simultaneous ATP- γ -S and ADP binding, add both nucleotides at the same or varying concentrations.

1.2.3. Add 2 mM MgCl₂ and incubate at 25 °C in a dry bath incubator for 1 h.

Note: Analysis of nucleotide binding using nESI native MS can result in artefactual binding at high concentrations, therefore non-specific binding must be taken into account²⁹. To investigate non-specific binding, add a higher concentration of nucleotides between 2-5 mM).

1.3. For DNA binding analysis

1.3.1. Mix the protein and DNA at a molar ratio that allows for protein-DNA complex formation. For HerA and HerA-NurA, mix 5 μ M of purified protein with DNA at a 1:1 ratio.

1.3.2. Incubate the HerA-NurA or HerA - DNA mixture for 30 min at 25 °C in a dry bath incubator until it reaches equilibrium. The duration and temperature of incubation may vary depending on the protein under investigation.

1.3.3. Buffer exchange protein samples to MS compatible buffers. Commonly, aqueous ammonium acetate solution between 5 mM-1 M at pH 7-8 are used. Other MS compatible buffers include ethylenediammonium diacetate (EDDA) and Triethylammonium acetate (TEAA)³⁰. For HerA-NurA studies, use 200 mM ammonium acetate pH 7.

Note: There are several methods for buffer exchange prior to analysis by MS such as using a spin concentrator or chromatography columns. Native MS is mostly limited by the quality of the sample such as buffers and adducts used during purification. Therefore, it is essential to perform sufficient desalting to obtain resolved peaks.

1.3.4. For HerA-NurA ligand binding studies, buffer exchange samples 6–8 times into 200 mM ammonium acetate using a concentrator. Although this method is more time consuming, it ensures that resolved peaks are achieved and allows for accurate mass determination of ATP/ADP bound species.

2. Native MS Acquisition and Analysis for Investigating Protein Complexes and Protein-Ligand Complexes

Note: MS conditions should be optimized to achieve highly resolved peaks to enable accurate mass measurements. This section details optimized parameters on a Q-ToF mass spectrometer with a 32k upper limit m/z quadrupole.

2.1. Prepare in-house capillaries for nano-electrospray and perform instrument mass calibration for accurate mass measurements as detailed by Kirshenbaum *et al.*¹.

2.2. Select sensitivity, positive ion acquisition and mobility TOF modes.

2.3. Turn on the Trap, API and IMS gases. For IM separation, use nitrogen (60 mL/min) and argon (8.4 mL/min for the trap region) as starting points and then adjust.

2.4. Set an appropriate m/z acquisition range. For an unknown protein, initial optimization steps should use a wide range such as 500-32000 m/z.

2.5. Load 2-3 µL of the protein complex solution to be analyzed into a gold coated capillary and insert it into a capillary holder.

2.6. Gently tighten the capillary and place the capillary in the electrospray source stage and slide the stage into position to start acquiring data.

2.7. Apply low nano-flow gas pressure (0.00-0.05 Bar) until a drop is formed at the tip of the capillary. The nano-flow pressure can then be dropped until the spray is maintained.

2.8. Adjust the capillary with respect to the cone by moving the capillary in x, y, z positions and monitor the ion current to achieve a stable ion current. Apply a capillary voltage in the range of 0.9-1.6 kV.

2.9. Set the sampling cone (50-120 V), source offset (60.0), source temperature (25 °C) and cone gas flow (0.0 L/h). These suggested initial conditions can be adjusted.

2.10. To acquire a well resolved mass spectrum and to maximize ion transmission, adjust MS parameters and monitor the resulting change in the spectra. These include adjusting the gas flow in the Trap (2-8 mL/min), He Cell (180 mL/min) and IMS cell (90 mL/min) to achieve best separation at maximum transmission.

2.11. Adjust the trap collision energies if voltage offsets are insufficient. An optimal starting point is between 10-50 V.

Note: Increasing the trap energy can remove non-covalently bound adducts. However, take care to avoid collision induced dissociation and unfolding of the protein-ligand complex. Perform ion mobility measurements to check if instrument conditions retain the protein in the native folded state (Step 3).

2.12. Improve desolvation by optimizing the trap bias voltage. An optimal starting point is 20-45 V.

2.13. Optimize the wave velocity and wave height to achieve best mobility separation. A detailed explanation and protocol can be found here³¹. For the HerA-NurA studies, use wave velocity of 40 (m/s) and wave height of 550-650 (V).

2.14. Use all other parameters as instrument default values.

2.15. Prepare a ligand-free sample for analysis as a control for each run (**Figure 1**). For ligand binding experiments, perform at least three independent measurements.

2.16. Use the Masslynx software to measure masses of generated species and identify the ligand binding, such as ATP and ADP binding and oligomeric states (**Figure 2 and 3**). Other software available include UniDec³², PULSAR³³ and Amphitrite³⁴.

2.17. To quantify the relative abundance of species, use the corresponding ion intensities observed in the raw ESI-MS spectra (for example ligand bound, different oligomers, *etc.*). Alternatively, perform quantification using specialized software like UniDec and Massign³⁵ (**Figure 1 and 3**).

3. Acquiring and Analyzing IM-MS

Note: IM-MS separates ions in the gas-phase based on their size (mass), shape and charge. Every feature resolved in m/z spectrum is associated with a drift time distribution. IM-MS measures the drift-time of an ion which can be used to calculate the collision cross section (CCS). Drift time values measured from IM-MS data acquired using a drift-tube can be linearly correlated to CCS values³⁶. For travelling wave IM-MS (TWIMS) measurements, calculating CCS values requires a calibration curve obtained from protein standards with known CCS values³⁷.

Compact structures travel faster than extended or elongated structures due to reduced interactions with buffer gas in the mobility cell³⁸. Therefore, IM-MS can be used to detect if the native folded structure has been retained in the gas phase^{39,40}. This section outlines how to measure IM-MS and calculate the CCS of protein using TWIMS.

3.1. After optimizing instrument conditions for stable transmission (**Step 2**), reduce the collisional energy and sampling cone as low as possible whilst retaining good spectra quality.

3.2. Use the optimized wave velocity and wave height to acquire IM-MS (**Step 2**).

3.3. Measure the ion drift time with IM-MS at three different wave velocities (*e.g.*, 550, 600 and 650 m/s) whilst maintaining the same wave height (*e.g.*, 40 V).

3.4. To determine the protein ions CCS, measure protein calibrants under the same instrument conditions used for protein under investigation. Optimal drift-time calibration requires measurement of proteins with known CCS.

3.4.1. Select four calibrants, two with a mass above and two with a mass below that of the protein under investigation³⁷. Most importantly, make sure that the wave height and wave velocity are the same as those recorded for the protein under investigation.

3.5. Calculate CCS manually⁴¹ or using a specialized software such as PULSAR³³ and Amphitrite³⁴ (**Figure 5**).

3.6. To check whether the protein is native-like in the gas-phase, compare experimental CCS to theoretical CCS obtained from high resolution structures. For HerA-NurA, calculate theoretical CCS using the Projection Approximation (PA) method used in MOBCAL⁴². Other methods include trajectory method (TM)⁴² and exact hard sphere scattering (EHS)⁴³.

4. In-Solution Disruption of Protein Complexes for Native MS and IM-MS Led Structure Determination

Note: Protein sub-complexes can in some cases be identified from the same solution as the intact complex. However, further structural information such as inter-subunit connectivity and complex assembly can be attained from disrupting protein interactions in solution, to form sub-complexes. This can be achieved in several ways such as the addition of organic solvent, increasing the ionic strength or manipulating the pH. To gain insight into the HerA-NurA complex subunit connectivity and complex assembly, sub-complexes were generated in solution by adding solvents which perturb subunit interactions.

4.1. Prepare the protein sample and buffer exchange into ammonium acetate as described in **Step 1**.

4.2. Add 10-40% of solvent in 10% increments. Solvents typically used are Methanol (MeOH), dimethyl sulfoxide (DMSO) or acetonitrile (ACN).

Note: This can be performed within a polypropylene microcentrifuge tube.

4.3. Incubate the mixture on ice for 1 h.

4.4. Acquire an IM-MS spectrum for each condition (**Steps 2 and 3**) (**Figure 4**).

4.5. Use the SUMMIT software⁴⁴ to assign protein sub-complexes and generate protein interaction networks. Alternatively, manually generate a list of theoretical masses of the expected species.

4.6. To ensure subcomplexes are folded, calculate the experimental CCS values for the sub-complexes and compare to theoretical CCS as explained in **Step 3 (Table 1, Figure 5 and Figure 6)**.

5. Investigating Protein Complex Stability using Collision Induced Unfolding (CIU)

Note: CIU can be used to probe the structural stability of proteins and their complexes upon ligand binding. Specialist software packages such as PULSAR³³, Amphitrite³⁴ and CIU suite⁹ can then be used to model the gas-phase unfolding of the protein under investigation with and without ligand. As an example, this section outlines procedure for monitoring gas-phase unfolding trajectories and investigating the stabilizing effect of DNA and ATP binding on the HerA-NurA complex.

5.1. Record IM-MS data whilst increasing the trap acceleration voltage from 10 V to 200 V in 2-10 V increments to progressively unfold the protein in the gas-phase.

Note: Recording smaller increments results in more data files to process, however this approach provides more resolved unfolding plot, which is important for analyzing the transition points between folded/unfolded species.

5.2. Analyze the data acquired using PULSAR³³, Amphitrite³⁴ or CIU suite⁹ and generate two-dimensional unfolding plots in units of CCS as a function of accelerating voltage (**Step 3**). For each charge state, this is created by stacking the intensity-normalized CCS distributions at each accelerating voltage (**Figure 7 A-Bi**).

5.3. Generate a theoretical unfolding plot using one of the software packages. The data will be fitted to an unfolding model. This makes it possible to quantify the collisional energy at which unfolding transitions occur and determine the stability of proteins with and without bound ligands³³. An unfolding transition is when a species transitions from one state (based on their experimental CCS values) to another state with a larger CCS.

5.4. To quantitate the transitions, calculate the transitional midpoint(s) between states using algorithms and software such as PULSAR³³. This is commonly reported as CV₅₀, which is the collision (trap) voltage value at which 50% of a specific state is depleted.

5.5. Using the CV₅₀ value, calculate the total internal energy of an ion using the center-of-mass collision energy (KE_{COM})⁴⁵. KE_{COM} is defined by the total internal energy available for the unfolding transition of an ion and is calculated from the kinetic energy and masses of the collision partners (protein ion and neutral gas) as described in equation (1)¹⁰:

$$KE_{\text{com}} (\text{eV}) = CV_{50} \times Z \frac{M_N}{M_N + M_{\text{ION}}} \text{ (equation 1).}$$

Where Z is the ion charge, M_N is the mass of the neutral gas and M_{ION} is the mass of the protein ion.

Note: This is because CIU of proteins is charge dependent^{46,47}. It is recommended to perform the KE_{COM} analysis to more than one charge state (**Figure 7Aii**).

6. Modelling Procedures for Differential Molecular Dynamics Simulations used in Integrative MS

Note: Using models of protein subunits or complexes such as from crystal structures, differential MD simulations (protein complex with and without ligand) can be used to determine effects of for example ligand presence on protein structure and dynamics. This section details a workflow and tools needed for modelling procedures necessary to set-up differential molecular dynamics simulations.

6.1. Identify the subunits which compose the complex (**Figure 8A, in Steps 2 and 3**). Source existing models of subunits, *e.g.*, crystal structures from the RCSB databank (<https://www.rcsb.org>). The UniProt entry of the protein will contain a list of known crystallographic/NMR structures (<http://www.uniprot.org>). If these are not available, the theoretical sequence can be input to BLAST to identify suitable templates for homology modelling (<https://blast.ncbi.nlm.nih.gov/>).

6.2. Assemble the complex in the correct topology (**Figure 8A-ii**). This can be done through various methods. The individual subunits can be fitted into available electron microscopy maps found on the EMDB to assemble the intact complex (<https://www.ebi.ac.uk/pdbe/emdb/>). A tutorial for fitting PDBs into EM maps using Molecular Dynamics Flexible Fitting (MDFF) can be found here: http://www.ks.uiuc.edu/Training/Tutorials/science/mdff/tutorial_mdff-html/.

6.3. Identify missing regions of the complex (**Figure 8A-iii**). Perform multiple sequence alignment (MSA) between the PDB and theoretical sequence to identify residues which may be unfitted into crystal structures, or any mutations inherited from crystallographic experiments. MSA can be performed using the webserver such as T-Coffee (<http://tcoffee.crg.cat/apps/tcoffee/do:regular>).

6.4. Regenerate missing residues via homology modelling (**Figure 8A-iv**). Missing residues of the protein complex can be built using the MODELLER program (<https://salilab.org/modeller/>). MODELLER can output an ensemble of *n* models in different regenerated configurations. Good models can be identified based on their Discrete Optimised Protein Energy (DOPE) score. A comprehensive tutorial is provided on the software website (<https://salilab.org/modeller/tutorial/>).

6.5. Perform differential molecular dynamics (MD) simulations of the protein complex (**Figure 8B**) to identify regions of proteins which respond to a particular environmental change, *e.g.*, presence of a ligand. In such simulations, behavioural parameters from Simulation A (protein only) which acts as a reference, is subtracted from Simulation B (protein+ligand). The differential root mean square fluctuation (RMSF) calculated between Simulations A and B can inform on regions of the protein which increase or decrease in flexibility in a ligand dependent manner.

6.5.1. Perform MD simulations and downstream analysis using GROMACS (<http://www.gromacs.org>). A tutorial can be found at: <http://www.bevanlab.biochem.vt.edu/Pages/Personal/justin/gmx-tutorials/Lysozyme/index.html>. To eliminate model bias, the structure of the ligand-bound complex should be generated first. The protein is then copied from this without the ligand, to yield a protein model identical to the ligand-bound complex.

Representative results:

Native MS results revealed the oligomeric state, composition and topology of the HerA-NurA complex (**Figure 1**). As non-covalent interactions are preserved in the gas-phase, native MS of ATP- γ -S and ADP titrations experiments determined the pairwise nucleotide binding to HerA-NurA (**Figure 2**) and that increasing the ATP- γ -S concentration increases the relative intensity of hexameric HerA (**Figure 3**). Structural information regarding subunit interactions were obtained from in-solution disruption followed by native MS and were in agreement with and theoretical masses (**Figure 4 and Table 1**).

The experimental CCS values of proteins and their complexes was derived from IM-MS experiments (**Figure 5**). These values are rotationally averaged gas-phase cross-sectional calculations of the molecular shape, and describe the dimensional state of the protein. CCS values are compared to theoretical measurements from x-ray crystallography and a good agreement infers that the native shape is retained in the gas-phase (**Table 1**). This validates using CCS values for building low-resolution models of the protein assembly⁴⁸.

Experimental CCSs can be calculated for each charge state ion. A native-like protein conformer may give rise to charge state ions with similar CCS values. However, higher charge state ions increased coulombic repulsions which may lead to protein gas-phase unfolding and larger CCS values compared to the theoretical CCSs. The CCS value of the lowest charge state ions are therefore usually used⁴⁹. For HerA-NurA, in-solution disruption experiments on HerA and HerA-NurA with and without DNA prompted the generation of an assembly pathway starting with monomers then forming the entire hexameric HerA (HerA₆)-dimeric NurA (NurA₂) complex with DNA (**Figure 6**).

Differences in the CIU unfolding plots between the apo (ligand-free) and ligand bound define the change in complex stability upon ligand binding. A higher CV₅₀ or KE_{COM} value implies a more stabilized ion in the gas-phase. CIU and KE_{COM} analysis revealed DNA-bound HerA-NurA is more stable than the DNA-free complex (**Figure 7Aii**). From CIU-MS analysis in the respective ATP-binding states, the four-ATP- γ -S bound state reduced complex stability in the gas-phase and the six -ATP- γ -S bound state where all sites are occupied was the most stable (**Figure 7Bii**). Native MS can reveal the discrete nucleotide binding states of HerA; however, it cannot distinguish which HerA subunits are binding ATP and where this binding takes place. This information can be derived from explicit solvent MD simulations on the hexameric HerA and the HerA-NurA following the summarised Workflow (**Figure 8**).

Figure 1. Interrogating the oligomeric state, composition and topology of the HerA-NurA non-covalent complex. (A) Mass spectra of HerA, HerA-NurA and HerA-NurA in the presence of DNA (15.4 kDa 25 bp double-stranded DNA). The HerA sub-complex exists as both a hexamer and a heptamer. NurA dimer binds to a HerA hexamer imposing oligomeric conversion. The DNA binds the formed HerA– NurA complex (Results adapted from Z. Ahdash *et al.*, 2017²²). (B) Relative intensities of the identified species are calculated using UniDec³².

Figure 2. Native ESI-MS reveals the mechanism of nucleotide binding to HerA-NurA. Mass spectra (A) HerA-NurA and (B) HerA-NurA-DNA with increasing concentrations of (i) ATP- γ -S and (ii) ADP. Measured masses are compared to theoretical masses and the amount of ATP- γ -S or ADP bound are determined. Measured masses and number of bound nucleotides are shown on the spectra. ATP- γ -S and ADP titrations experiments determined the pairwise nucleotide binding to HerA-NurA alone and when in complex with DNA indicating a cyclical reaction mechanism (Results adapted from Z. Ahdash *et al.*, 2017²²).

Figure 3. Measuring the effect of increasing ATP- γ -S concentrations on HerA oligomeric state. (A) Mass spectra of HerA at increasing concentrations of ATP- γ -S. (B) Graph showing the relative intensities of different species from native MS calculated using UniDec deconvolution software³². As the ATP- γ -S concentration increases, the relative intensity of hexameric HerA also increases. Number of ATP- γ -S molecules bound is shown on the spectra (Results adapted from Z. Ahdash *et al.*, 2017²²).

Figure 4. Mass spectra and sub-complex dissociation products of (A) HerA and (B) HerA-NurA (i) alone and in the presence of (ii) DNA following in-solution disruption. In-solution disruption experiments were performed using 10-40% of Acetonitrile, Methanol (MeOH) or dimethyl sulfoxide (DMSO) and resulted in the formation of various subcomplexes.

Figure 5. Ion mobility arrival time distributions shown on a CCS axis for complexes and generated sub-complexes. Icon for each sub-complex correlate with those annotated on the spectra in **Figure 4**. Experimental and calculated masses and CCS values of Sub-complexes are listed in **Table 1** all of which showed an agreement between experimental and calculated values (after considering the typical uncertainty in the resolution of travelling wave ion mobility mass spectrometry of ± 5 –8%³⁷).

Figure 6. Assembly pathway of the HerA-NurA complex generated from in-solution disruption native MS and IM-MS. Colored circles indicate conditions where each sub-complex was observed: native (green, prior to disruption), Methanol (yellow), DMSO (purple) or Acetonitrile (red).

Figure 7. Investigating the stabilizing effect of (A) DNA on HerA-NurA and (B) ATP binding to HerA-NurA-DNA. (i) Gas-phase CIU-MS plots and (ii) center-of-mass collision energies (KEcom) calculation show that the presence of dsDNA stabilizes the HerA-NurA complex and that the six ATP- γ -S bound state is the most stable. Stabilization for different charge states is shown. Plots were generated using PULSAR³³. Results from (A) adapted from Z. Ahdash *et al.*, 2017²².

Figure 8. Workflow for the modelling procedures for differential molecular dynamics simulations. (A) Generating the complex under investigation by building the topology from existing subunits and rebuilding missing residues. (B) Workflow for running molecular dynamics simulations on the protein complex with and without ligand. Molecular dynamics simulations are ran for the protein only which acts as a reference and which is subtracted from simulation of protein plus ligand. This is followed by calculating the differential root mean square fluctuation (RMSF) between the simulations and determining the effect of ligand binding.

Table 1. Experimental and calculated masses and CCS values of HerA-NurA and its sub-complexes generated from in-solution disruption studies.

Discussion:

MS is playing an increasingly important role in characterizing the stoichiometry, interactions and subunit architecture of protein complexes. IM-MS data can be used to define topological arrangements of subunits within multicomponent complexes. Compared to other existing structural biology methods, MS has several advantages. Native MS is a rapid and highly sensitive technique and can be used to probe heterogeneous protein samples. When coupled with in-solution disruption experiments, dissociation pathways of protein assemblies can be monitored. Together with crystal structures or homology models, the information offered by structural MS offers a tool for investigating protein-ligand interactions and provide near-native models and assembly pathways¹¹.

Here, we describe the necessary experimental procedures for analyzing the stoichiometry and composition of protein-ligand interactions, with one or more ligands, using integrative MS. This includes MS sample preparation, data acquisition, data analysis, and the integration of MS data using computational tools. To do this, we used the DNA-resection HerA-NurA hetero-oligomeric protein complex, bound to three ligands (DNA, ATP, and ADP), as our model system. The protocol shows the use of the currently available software to aid data analysis and presentation.

Acquiring high quality spectra is important for ligand binding analysis, therefore, careful sample preparation steps are critical, including protein purification, ligand titration, and buffer exchange. One limitation of nESI native MS when studying ligand binding is non-specific binding. Non-specific binding occurs during droplet desolvation throughout the electrospray process. This increases the ligand concentrations and therefore alters the protein/Ligand ratio²⁹. The binding of nucleotides results in a relatively small mass difference between apo and nucleotide-bound protein which does not alter the ionization efficiency^{50,51}.

We used the Synapt G2-Si MS system for our work, but the protocols are applicable for different investigations of other protein-ligand complexes using other commercially available nano-electrospray mass spectrometers. Integrative structural MS is increasingly playing an important role in addressing biological problems of greater complexity. The workflow and techniques described here are well-suited for understanding the structural consequences and

building mechanisms of protein complex and protein-ligand formation which are otherwise difficult to study using conventional structural techniques.

Disclosures:

No conflicts of interest declared.

Acknowledgments:

We would like to thank Karl-Peter Hopfner and Robert Thomas Byrne for kindly providing HerA and HerA-NurA protein samples and for their help with experimental design. We also thank Dr. Eamonn Reading for his review of the manuscript. We gratefully acknowledge our funding bodies: Wellcome Trust [109854/Z/15/Z] and Royal Society [RG150216 to A.P.].

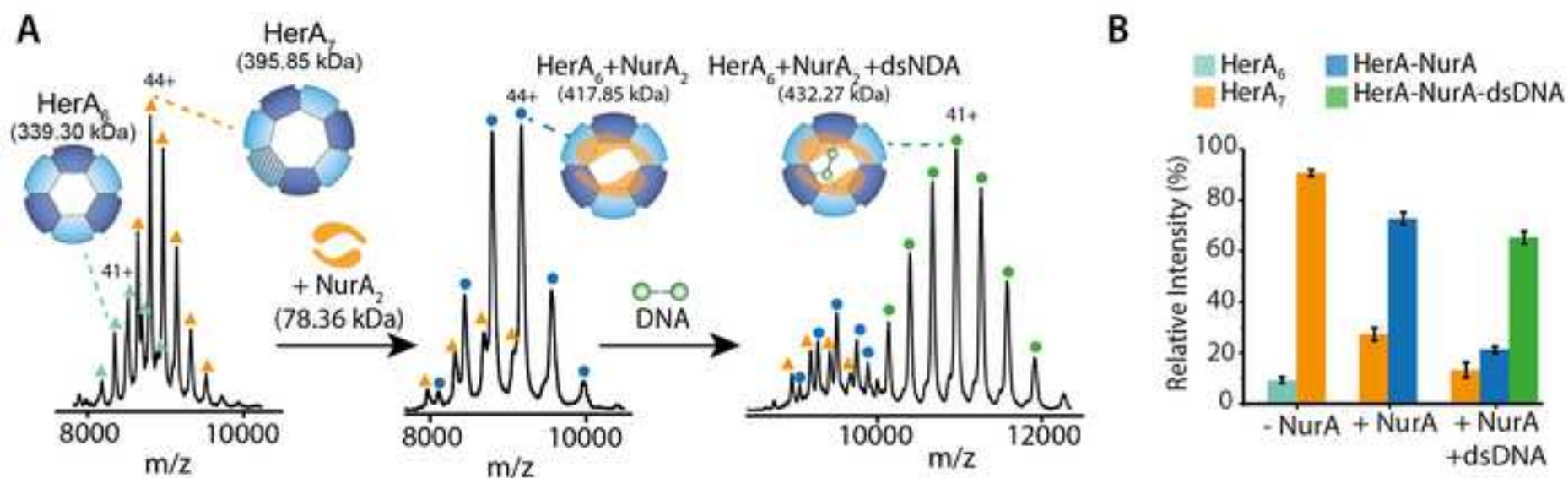
References:

- 1 Wilm, M. & Mann, M. Analytical Properties of the Nanoelectrospray Ion Source. *Analytical Chemistry*. **68** (1), 1-8, (1996).
- 2 Fenn, J.B., Mann, M., Meng, C.K., Wong, S.F. & Whitehouse, C.M. Electrospray ionization for mass spectrometry of large biomolecule. *Science*. **246** (4926), 64-71, (1989).
- 3 Hernandez, H. & Robinson, C. V. Determining the stoichiometry and interactions of macromolecular assemblies from mass spectrometry. *Nature Protocols*. **2** (3), 715-726, (2007).
- 4 Heck, A. J. & Van Den Heuvel, R. H. Investigation of intact protein complexes by mass spectrometry. *Mass Spectrom Review*. **23** (5), 368-389, (2004).
- 5 Boeri Erba, E. & Petosa, C. The emerging role of native mass spectrometry in characterizing the structure and dynamics of macromolecular complexes. *Protein Science*. **24** (8), 1176-1192, (2015).
- 6 Arthur Laganowsky, E. R., Jonathan T S Hopper & Carol V Robinson. Mass spectrometry of intact membrane protein complexes. *Nature*. **8** (4), 639-651, (2013).
- 7 Benesch, J. L. Collisional activation of protein complexes: picking up the pieces. *Journal of the American Society for Mass Spectrometry*. **20** (3), 341-348, (2009).
- 8 Tian, Y., Han, L., Buckner, A. C. & Ruotolo, B. T. Collision Induced Unfolding of Intact Antibodies: Rapid Characterization of Disulfide Bonding Patterns, Glycosylation, and Structures. *Analytical Chemistry*. **87** (22), 11509-11515, (2015).
- 9 Joseph D. Eschweiler, J. N. R.-G., Yuwei Tian, and Brandon T. Ruotolo. CIUSuite: A Quantitative Analysis Package for Collision Induced Unfolding Measurements of Gas-Phase Protein Ions. *Analytical Chemistry*. **87** (22), 11516-11522, (2015).
- 10 Hopper, J. T. & Oldham, N. J. Collision induced unfolding of protein ions in the gas phase studied by ion mobility-mass spectrometry: the effect of ligand binding on conformational stability. *Journal of the American Society for Mass Spectrometry*. **20** (10), 1851-1858, (2009).
- 11 Politis, A., *et al.* Topological models of heteromeric protein assemblies from mass spectrometry: application to the yeast eIF3:eIF5 complex. *Chemical Biology*. **22** (1), 117-128, (2015).
- 12 Morgner, N., *et al.* Hsp70 forms antiparallel dimers stabilized by post-translational modifications to position clients for transfer to Hsp90. *Cell Reports*. **11** (5), 759-769, (2015).
- 13 Lai, Y.T., *et al.* Structure of a designed protein cage that self-assembles into a highly porous cube. *Nature Chemistry*. **6** (12), 1065-1071, (2014).

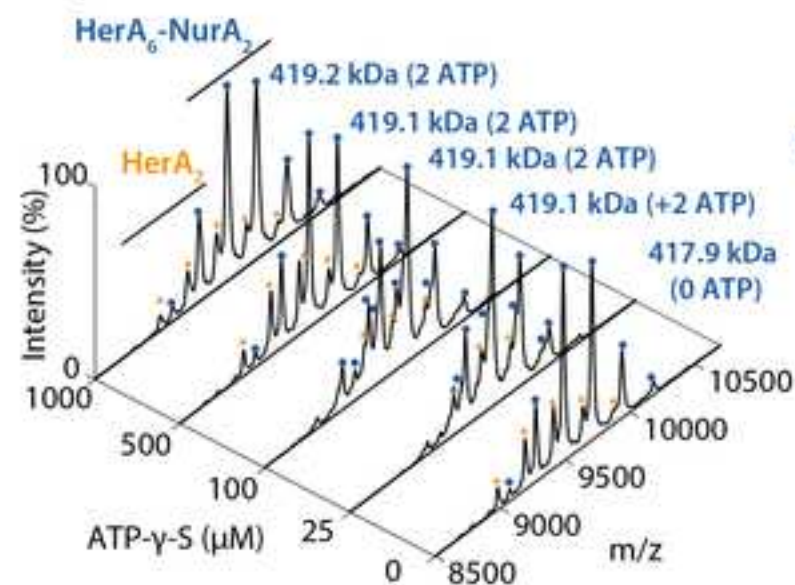
568 14 Levy, E. D., Boeri Erba, E., Robinson, C. V. & Teichmann, S. A. Assembly reflects evolution
 569 of protein complexes. *Nature*. **453** (7199), 1262-1265, (2008).
 570 15 Sharon, M., *et al.* Symmetrical modularity of the COP9 signalosome complex suggests its
 571 multifunctionality. *Structure*. **17** (1), 31-40, (2009).
 572 16 Jurneczko, E. & Barran, P. E. How useful is ion mobility mass spectrometry for structural
 573 biology? The relationship between protein crystal structures and their collision cross sections in
 574 the gas phase. *Analyst*. **136** (1), 20-28, (2011).
 575 17 Politis, A. & Schmidt, C. Structural characterisation of medically relevant protein
 576 assemblies by integrating mass spectrometry with computational modelling. *Journal of*
 577 *Proteomics*. **175**, 34-41, (2017).
 578 18 Zhou, M., *et al.* Mass spectrometry of intact V-type ATPases reveals bound lipids and the
 579 effects of nucleotide binding. *Science*. **334** (6054), 380-385, (2011).
 580 19 Barrera, N.P., Booth, P.J. & Robinson, C.V. Micelles Protect Membrane Complexes from
 581 Solution to Vacuum. *Science*. **321** (5886), 243-246, (2008).
 582 20 Konijnenberg A., *et al.* Global structural changes of an ion channel during its gating are
 583 followed by ion mobility mass spectrometry. *Proceedings of the National Academy of Sciences*
 584 *of the United States of America*. **111** (48), 17170-17175, (2014).
 585 21 Schmidt, C., Beilsten-Edmands, V., Mohammed, S. & Robinson, C. V. Acetylation and
 586 phosphorylation control both local and global stability of the chloroplast F1 ATP synthase.
 587 *Scientific Reports*. **7**, 44068, (2017).
 588 22 Ahdash, Z. *et al.* Mechanistic insight into the assembly of the HerA-NurA helicase-
 589 nuclease DNA end resection complex. *Nucleic Acids Research*. **45** (20), 12025-12038, (2017).
 590 23 Pagel, K., Natan, E., Hall, Z., Fersht, A. R. & Robinson, C. V. Intrinsically disordered p53
 591 and its complexes populate compact conformations in the gas phase. *Angewandte Chemie*. **52**
 592 (1), 361-365, (2013).
 593 24 Afonso, J.P., *et al.* Insights into the structure and assembly of the Bacillus subtilis clamp-
 594 loader complex and its interaction with the replicative helicase. *Nucleic Acids Research*. **41** (9),
 595 5115-5126, (2013).
 596 25 van Duijn, E. Current limitations in native mass spectrometry based structural biology.
 597 *Journal of the American Society for Mass Spectrometry*. **21** (6), 971-978, (2010).
 598 26 Susa, A. C., Xia, Z. & Williams, E. R. Native Mass Spectrometry from Common Buffers
 599 with Salts That Mimic the Extracellular Environment. *Angewandte Chemie*. **56** (27), 7912-7915,
 600 (2017).
 601 27 Breukera, K., and McLafferty, F.W. Stepwise evolution of protein native structure with
 602 electrospray into the gas phase, 10 to 10 s. *Proceedings of the National Academy of Sciences of*
 603 *the United States of America*. **105** (47), 18145-18152, (2008).
 604 28 Robinson, C.V., *et al.* Probing the Nature of Noncovalent Interactions by Mass
 605 Spectrometry. A Study of Protein-CoA Ligand Binding and Assembly. *Journal of the American*
 606 *Chemical Society*. **118** (36), 8646-8653, (1996).
 607 29 Shimon, L., Sharon, M. & Horovitz, A. A method for removing effects of nonspecific
 608 binding on the distribution of binding stoichiometries: application to mass spectroscopy data.
 609 *Biophysical Journal*. **99** (5), 1645-1649, (2010).

- 30 Dyachenko, A., Gruber, R., Shimon, L., Horovitz A., Sharon, M. Allosteric mechanisms can
be distinguished using structural mass spectrometry. *Proceedings of the National Academy of
Sciences of the United States of America*. **110** (18), 7235–7239, (2013).
- 31 Kirshenbaum, N., Michaelievski, I. & Sharon, M. Analyzing large protein complexes by
structural mass spectrometry. *Journal of Visualized Experiments*. **19** (40), (2010).
- 32 Marty, M.T., *et al.* Bayesian deconvolution of mass and ion mobility spectra: from binary
interactions to polydisperse ensembles. *Analytical Chemistry*. **87** (8), 4370-4376, (2015).
- 33 Allison, T.M., *et al.* Quantifying the stabilizing effects of protein-ligand interactions in
the gas phase. *Nature Communications*. **6**, 8551-8561, (2015).
- 34 Sivalingam, G.N., Yan, J., Sahota, H. & Thalassinou, K. Amphitrite: A program for
processing travelling wave ion mobility mass spectrometry data. *International Journal of Mass
Spectrometry*. **345-347**, 54-62, (2013).
- 35 Morgner, N. & Robinson, C. V. Massign: an assignment strategy for maximizing
information from the mass spectra of heterogeneous protein assemblies. *Analytical Chemistry*.
84 (6), 2939-2948, (2012).
- 36 Matthew, F., *et al.* Collision Cross Sections of Proteins and Their Complexes: A
Calibration Framework and Database for Gas-Phase Structural Biology. *Analytical Chemistry*. **82**,
9557–9565, (2010).
- 37 Ruotolo, B. T., Benesch, J. L., Sandercock, A. M., Hyung, S. J. & Robinson, C. V. Ion
mobility-mass spectrometry analysis of large protein complexes. *Nature Protocols*. **3** (7), 1139-
1152, (2008).
- 38 Lanucara, F., Holman, S. W., Gray, C. J. & Evers, C. E. The power of ion mobility-mass
spectrometry for structural characterization and the study of conformational dynamics. *Nature
Chemistry*. **6** (4), 281-294, (2014).
- 39 Wytenbach, T. & Bowers, M. T. Structural stability from solution to the gas phase:
native solution structure of ubiquitin survives analysis in a solvent-free ion mobility-mass
spectrometry environment. *Journal of Physical Chemistry B*. **115** (42), 12266-12275, (2011).
- 40 Marcoux, J. & Robinson, C. V. Twenty years of gas phase structural biology. *Structure*. **21**
(9), 1541-1550, (2013).
- 41 Michaelievski, I., Kirshenbaum, N. & Sharon, M. T-wave ion mobility-mass spectrometry:
basic experimental procedures for protein complex analysis. *Journal of Visualized Experiments*.
41, (2010).
- 42 Mesleh, M. F., Hunter, J.M., Shvartsburg, A.A., Schatz, G.C. & Jarrold, M.F. Structural
Information from Ion Mobility Measurements: Effects of the Long-Range. Potential. *Journal of
Physical Chemistry A*. **100** 16082-16086, (1996).
- 43 Shvartsburg, A.A. & Jarrold, M. F. An exact hard-spheres scattering model for the
mobilities of polyatomic ions. *Chemical Physics Letters*. **261** 86-91, (1996).
- 44 Taverner, T., Hernández, H., Sharon, M., Ruotolo, B.T., Matak-Vinković, D., Devos, D.,
Russell, R.B & Robinson, C.V. Subunit Architecture of Intact Protein Complexes from Mass
Spectrometry and Homology Modeling. *Accounts of Chemical Research*. **41** (5), 617–627,
(2008).
- 45 Wysocki, V. H., Joyce, K. E., Jones, C. M. & Beardsley, R. L. Surface-induced dissociation
of small molecules, peptides, and non-covalent protein complexes. *Journal of the American
Society for Mass Spectrometry*. **19** (2), 190-208, (2008).

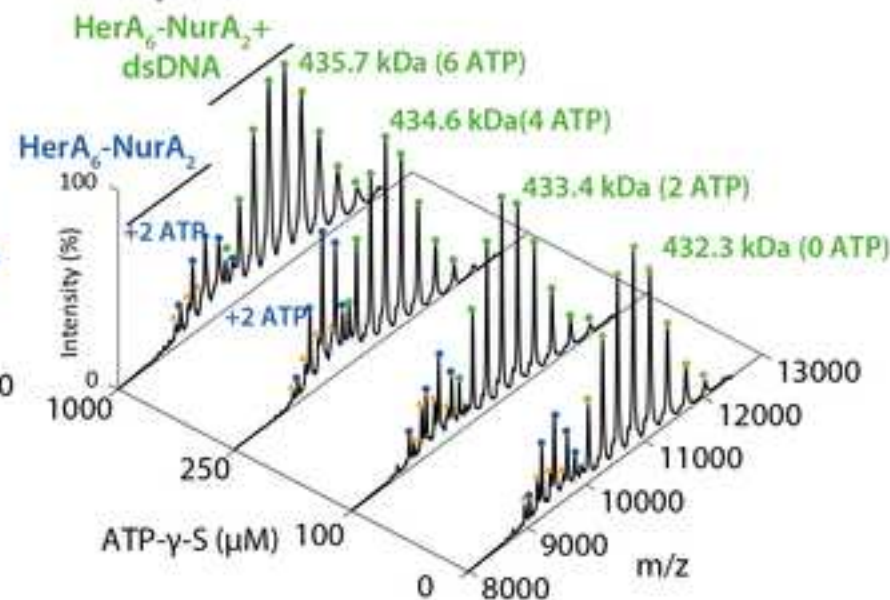
654 46 Hall, Z., Politis, A., Bush, M. F., Smith, L. J. & Robinson, C. V. Charge-state dependent
655 compaction and dissociation of protein complexes: insights from ion mobility and molecular
656 dynamics. *Journal of the American Chemical Society*. **134** (7), 3429-3438, (2012).
657 47 Hyung, S.J., Robinsons, C. V. & Ruotolo, B.T. Gas-Phase Unfolding and Disassembly
658 Reveals Stability Differences in Ligand-Bound Multiprotein Complexes. *Chemistry & Biology*. **16**,
659 382–390, (2009).
660 48 Hall, Z., Politis, A. & Robinson, C. V. Structural modeling of heteromeric protein
661 complexes from disassembly pathways and ion mobility-mass spectrometry. *Structure*. **20** (9),
662 1596-1609, (2012).
663 49 Woods, L. A., Radford, S. E. & Ashcroft, A. E. Advances in ion mobility spectrometry-
664 mass spectrometry reveal key insights into amyloid assembly. *Biochimica et Biophysica Acta*.
665 **1834** (6), 1257-1268, (2013).
666 50 Daubenfeld, T., Bouin, A. P. & van der Rest, G. A deconvolution method for the
667 separation of specific versus nonspecific interactions in noncovalent protein-ligand complexes
668 analyzed by ESI-FT-ICR mass spectrometry. *J Am Soc Mass Spectrom*. **17** (9), 1239-1248, (2006).
669 51 Loo, J. A. Studying noncovalent protein complexes by electrospray ionization mass
670 spectrometry. *Mass Spectrometry Reviews*. **16** 1–23, (1997).



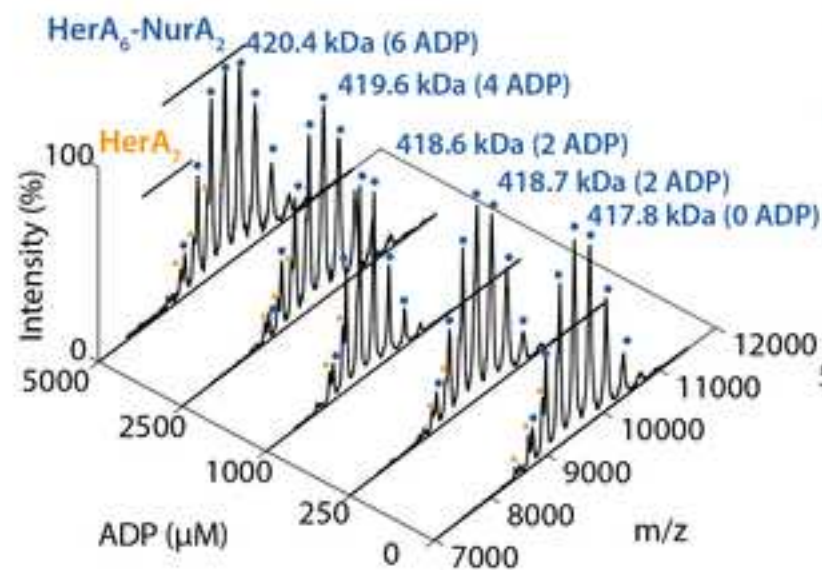
A HerA₆-NurA₂
(ii) ATP-γ-S



B HerA₆-NurA₂+dsDNA
(ii) ATP-γ-S



(ii) ADP



(ii) ADP

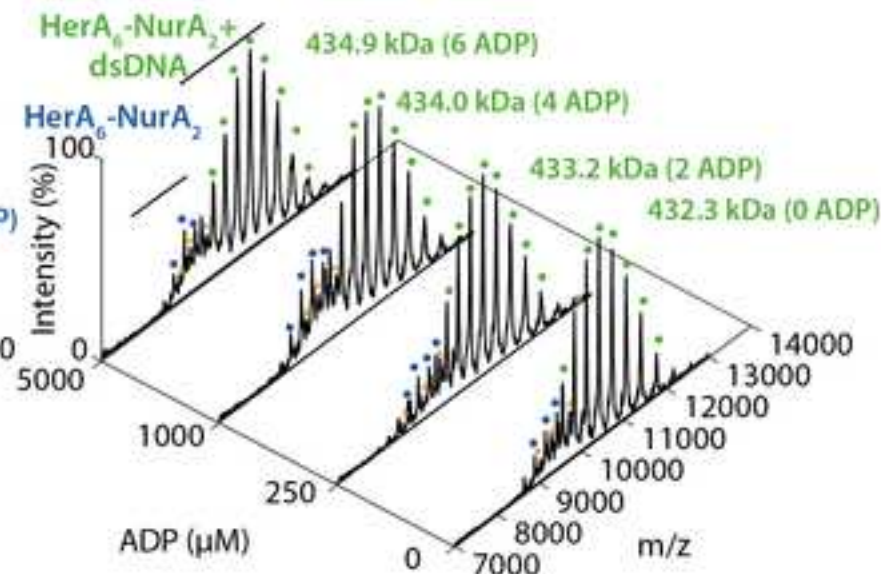
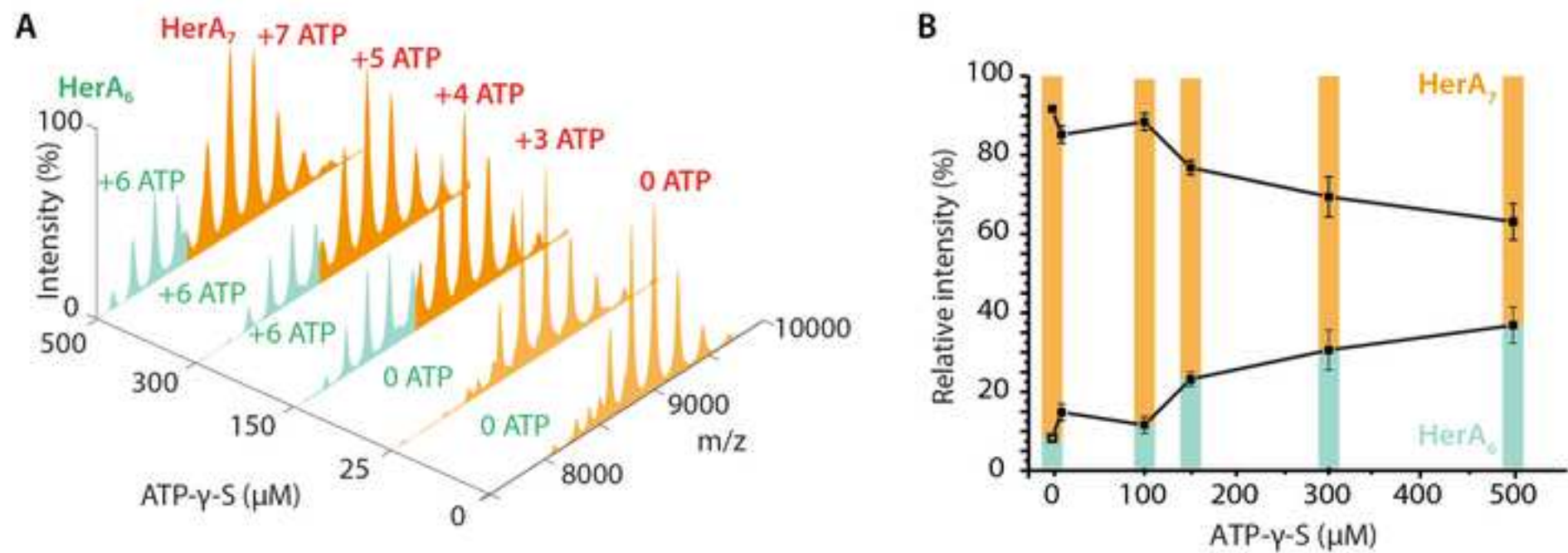


Figure 3

[Click here to download Figure_Jove_Ahdash_Figure_3.png](#)



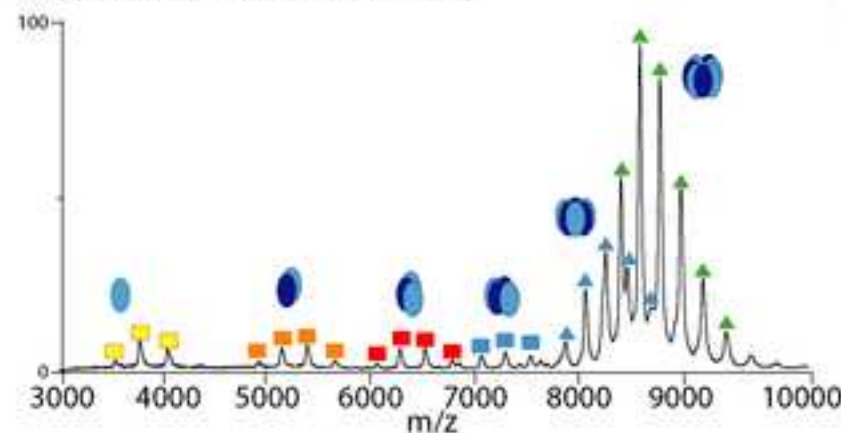
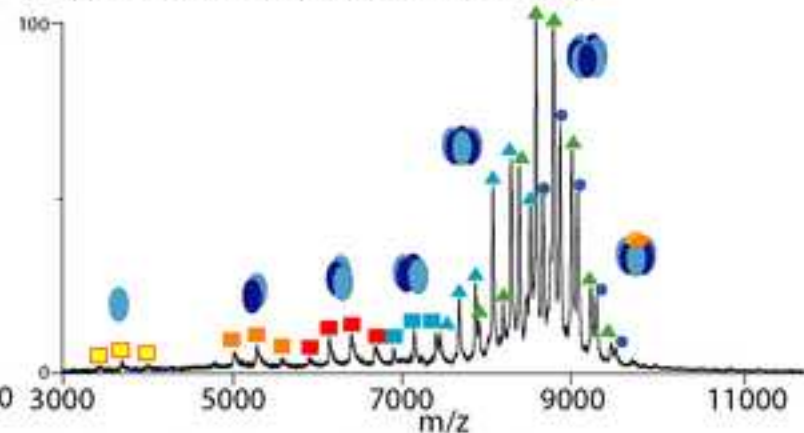
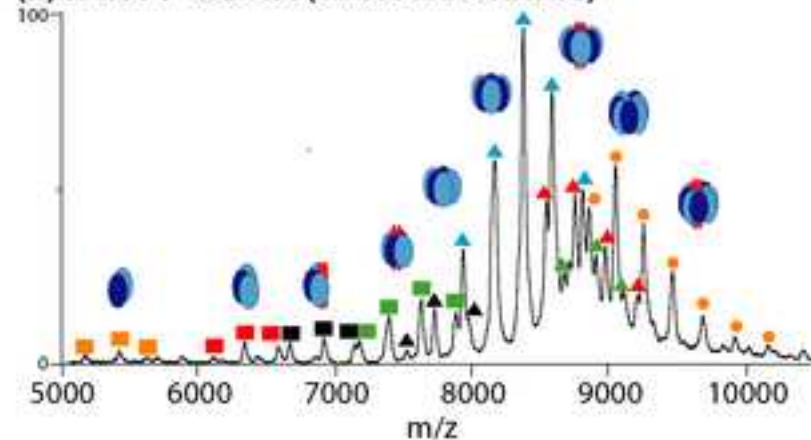
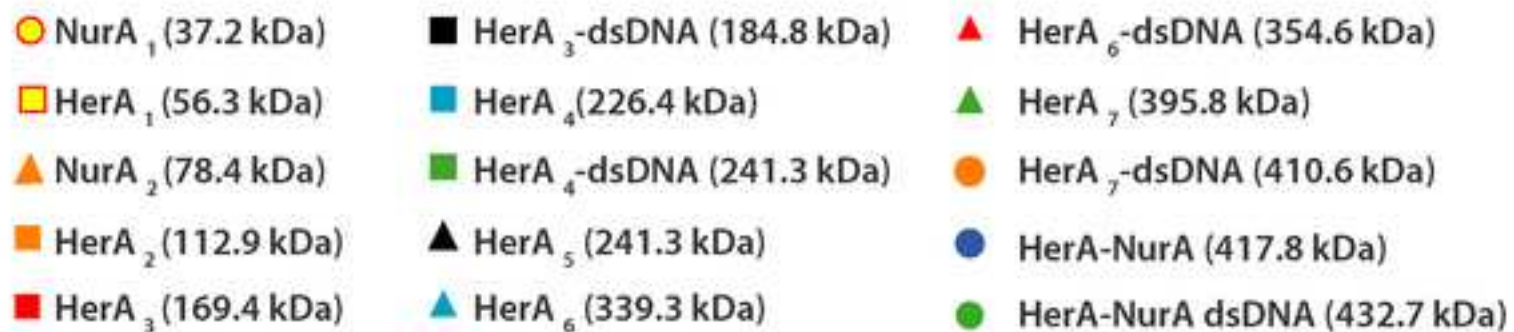
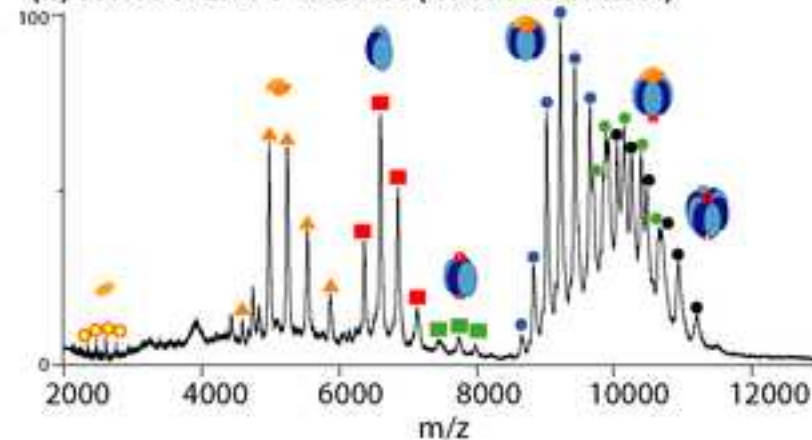
A (i) HerA (30% Acetonitrile)**B (i) HerA-NurA (10% Acetonitrile)****(ii) HerA + dsDNA (30% Acetonitrile)****(ii) HerA-NurA + dsDNA (40% Methanol)**

Figure 5

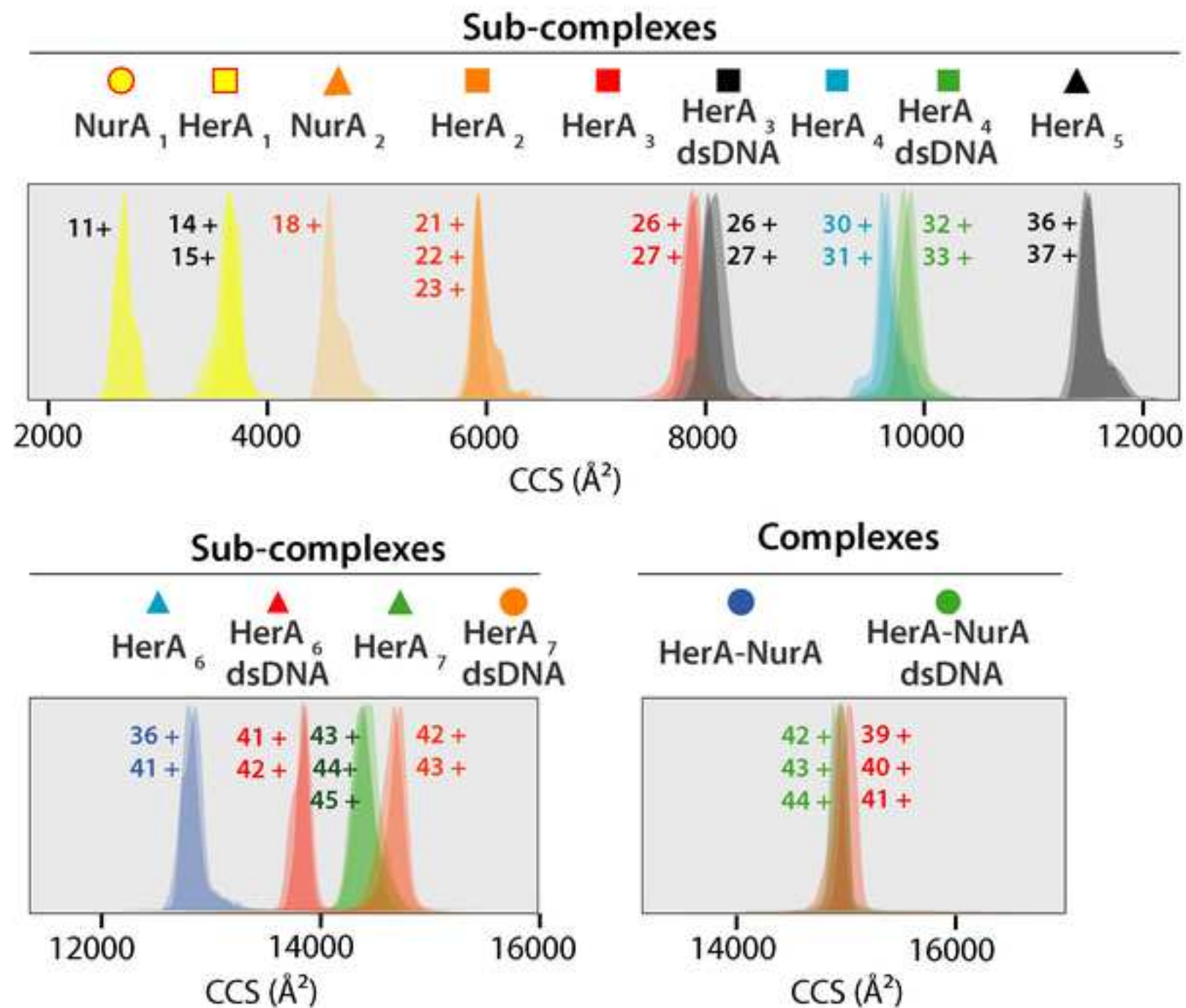
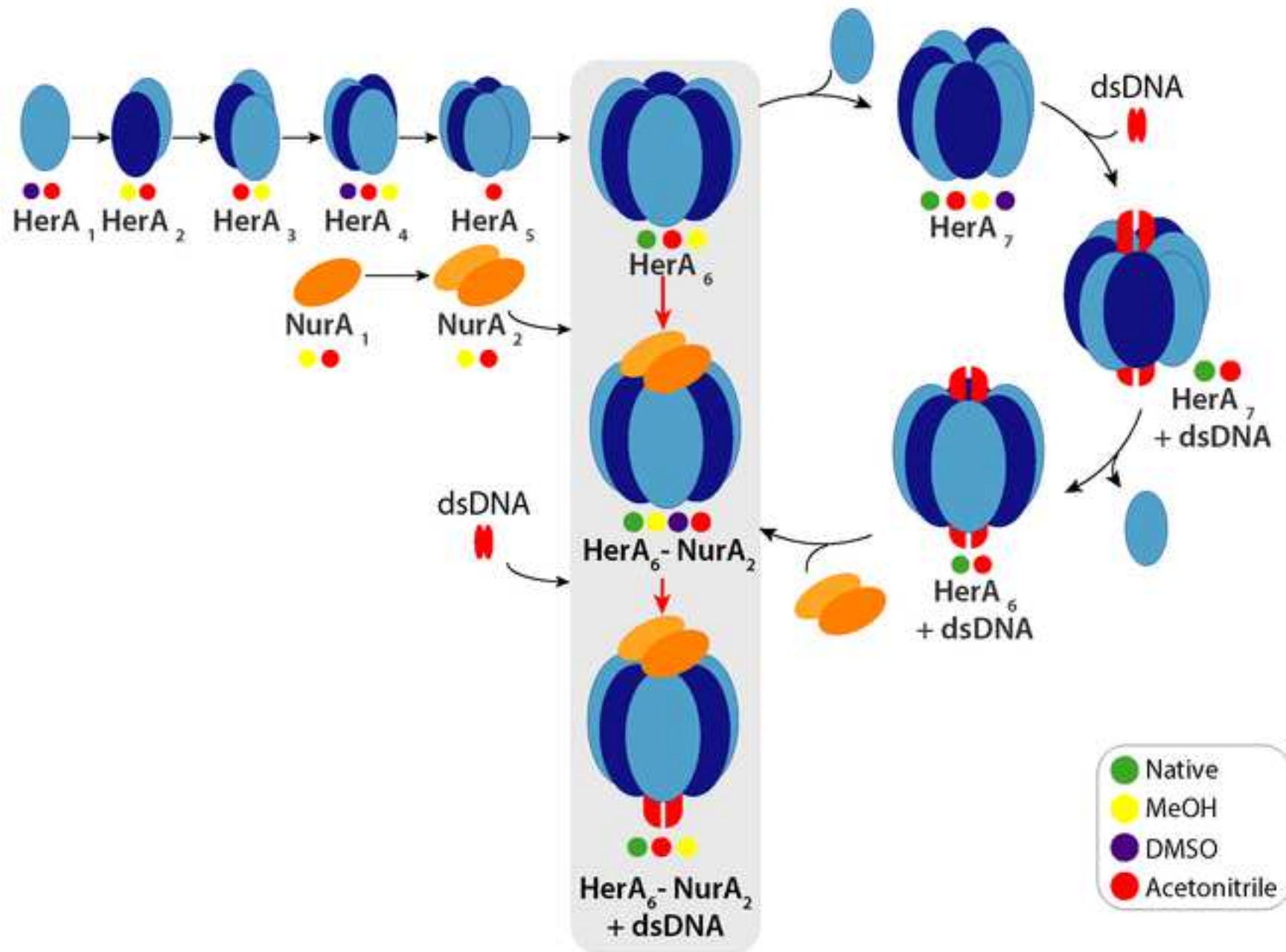
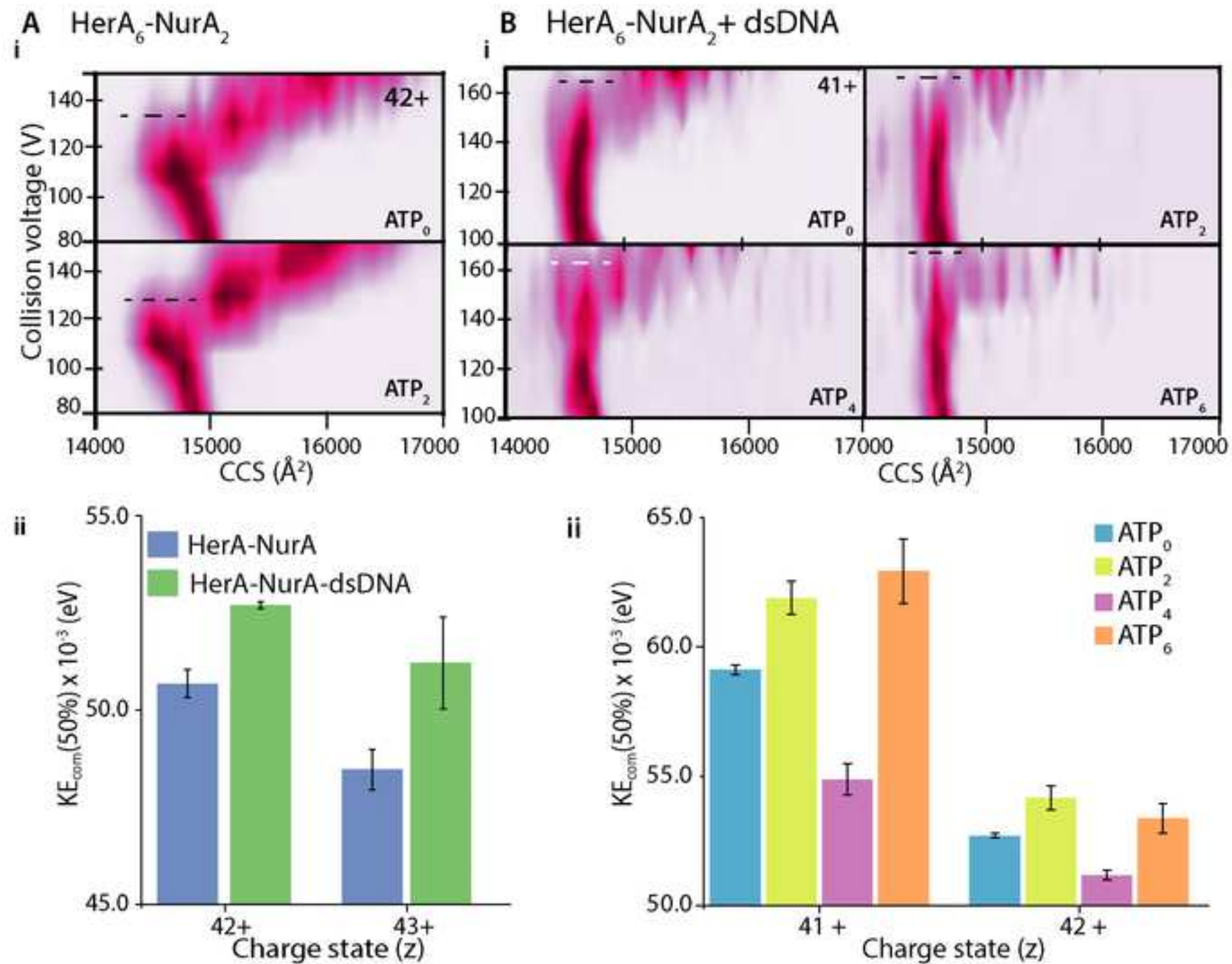
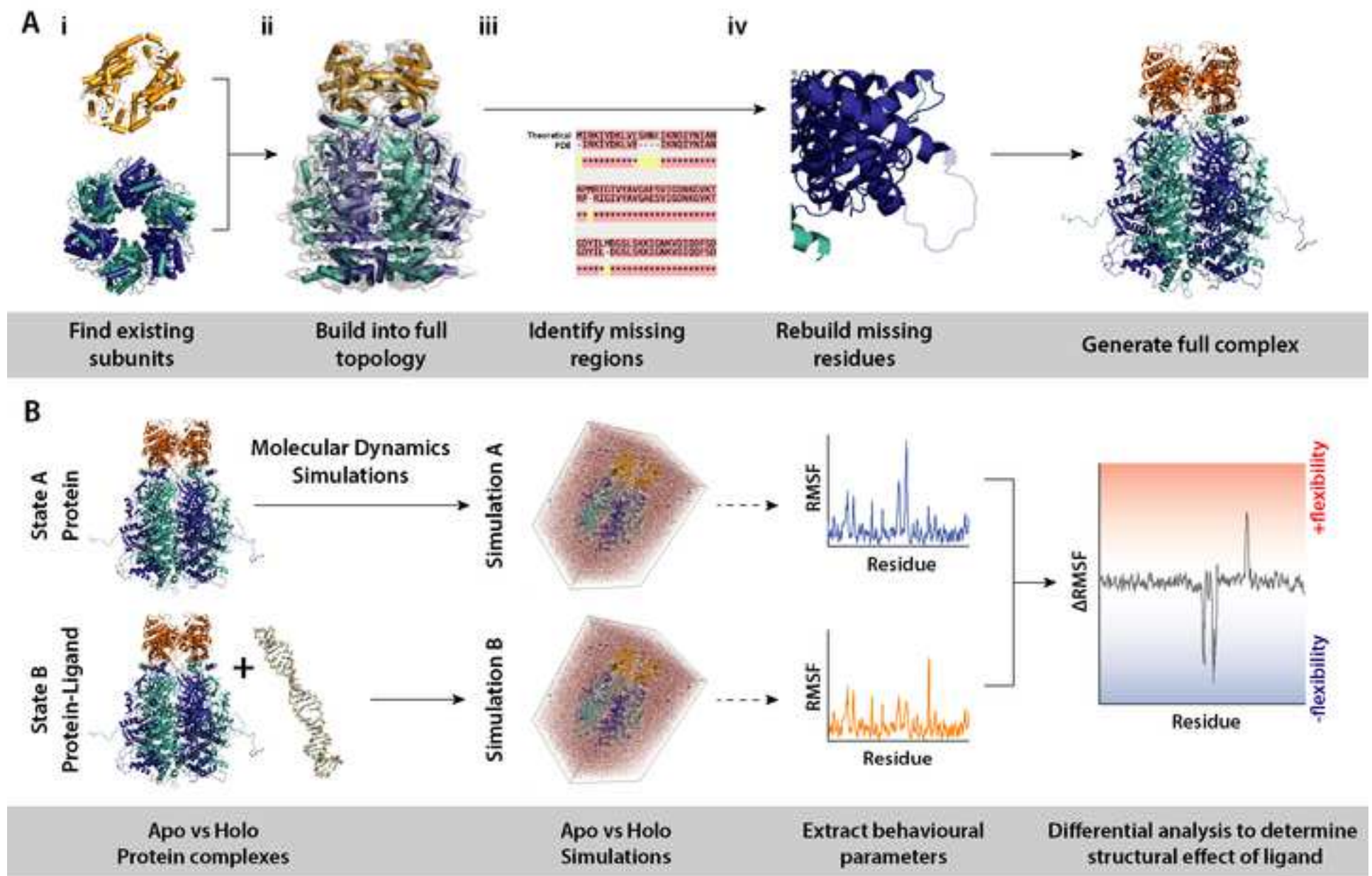


Figure 6







Complex / sub-complex	Theoretical Mass (kDa)	Experimental Mass (kDa)	Theoretical CCS (Å ²)	Experimental CCS (Å ²) [charge]
HerA ₆ -NurA ₂	416.22	417.85	14531	14577 [42+] 14599 [43+] 14608 [44+] 14637 [45+]
HerA ₆ -NurA ₂ -dsDNA	431.72	432.27	-	14661 [39+] 14728 [40+] 14781 [41+] 14837 [42+]
NurA ₁	39.12	38.18	3254	2618 [10+] 2746 [11+] 2878 [12+]
NurA ₂	78.24	78.36	4890	4903 [16+] 4614 [17+] 4537 [18+] 4666 [19+]
HerA ₁	56.33	56.32	4131	3647 [14+] 3792 [15+] 3950 [16+]
HerA ₂	112.66	112.95	6475	5648 [20+] 5747 [21+] 5842 [22+] 5996 [23+]
HerA ₃	168.99	169.39	8607	7501 [25+] 7616 [26+] 7717 [27+] 7867 [28+]
HerA ₃ + DNA	183.99	184.976	-	7655 [26+] 7990 [27+] 8107 [28+]
HerA ₄	225.32	226.2	10477	9205 [30+] 9287 [31] 9493 [32+] 9961 [33+]
HerA ₄ +DNA	240.82	241.33	-	9637 [31+] 9756 [32+] 9830 [33+]
HerA ₅	281.65	282.75	11853	10847 [36+] 10958 [37+] 11161 [38+]
HerA ₆	337.98	339.3	12517	12335 [38+] 12386 [39+] 12498 [40+] 12590 [41+] 12676 [42+] 13019 [43+]

HerA ₆ +DNA	353.48	354.626	-	12890 [40+] 13081 [41+] 13184 [42+] 13273 [43+] 13463 [44+] 13576 [45+]
HerA ₇	394.3	395.85	13901	14154 [42+] 14219 [43+] 14261 [44+] 14285 [45+] 14335 [46+]
HerA ₇ +DNA	409.8	410.62	-	14414 [41+] 14510 [42+] 14558 [43+] 14598 [44+] 14630 [45+] 14641 [46+]

Condition HN
10-20% ACN, 10-40% DMSO, 10% MeOH
10% ACN, 10% MeOH
10-40% ACN, 10% MeOH, 20-40% DMSO
10-40% MeOH, 20-40% DMSO
10-40% ACN, 40% DMSO
40% Meth, 10-40% ACN
10-40% MeOH, 10-40% CAN, 40% DMSO
10-30% ACN
10-40% MeOH, 10-40% ACN
10-30% ACN
30-40% ACN
10-40% MeOH, 10-40% ACN

30% ACN

10-40% MeOH, 10-40% ACN, 10-40%
DMSO

10% ACN

Name of Material/ Equipment	Company	Catalog Number	Comments/Description
Adenosine 5′-(3-thiotriphosphate) tetralithium salt	Merck Millipore	119120-25MG	
Adenosine 5′-diphosphate	Sigma-Aldrich	20398-34-9	
Ammonium acetate solution	Sigma-Aldrich	A2706	
Micro Bio-Spin Chromatography Columns	Bio-Rad	7326204	
Vivaspin concentrator	Sartorius	Z614041-25EA	
Magnesium chloride hexahydrate	Sigma-Aldrich	246964	
Water TraceSelect	Sigma-Aldrich	95305	
Borosilicate Capillaries	Harvard Apparatus	300060	



1 Alewife Center #200
Cambridge, MA 02140
tel. 617.945.9051
www.jove.com

ARTICLE AND VIDEO LICENSE AGREEMENT - UK

Title of Article:

Analysing protein architectures and protein-ligand complexes by integrative structural mass spectrometry

Author(s):

Zainab Ahdash, Andy M. Lau, Chloe Martens, Argyris Politis

Item 1 (check one box): The Author elects to have the Materials be made available (as described at

<http://www.jove.com/author>) via:

☐

Standard Access

☒

Open Access

Item 2 (check one box):

☒

The Author is NOT a United States government employee.

☐

The Author is a United States government employee and the Materials were prepared in the course of his or her duties as a United States government employee.

☐

The Author is a United States government employee but the Materials were NOT prepared in the course of his or her duties as a United States government employee.

ARTICLE AND VIDEO LICENSE AGREEMENT

1. **Defined Terms.** As used in this Article and Video License Agreement, the following terms shall have the following meanings: "Agreement" means this Article and Video License Agreement; "Article" means the article specified on the last page of this Agreement, including any associated materials such as texts, figures, tables, artwork, abstracts, or summaries contained therein; "Author" means the author who is a signatory to this Agreement; "Collective Work" means a work, such as a periodical issue, anthology or encyclopedia, in which the Materials in their entirety in unmodified form, along with a number of other contributions, constituting separate and independent works in themselves, are assembled into a collective whole; "CRC License" means the Creative Commons Attribution 3.0 Agreement (also known as CC-BY), the terms and conditions of which can be found at: <http://creativecommons.org/licenses/by/3.0/us/legalcode>; "Derivative Work" means a work based upon the Materials or upon the Materials and other pre-existing works, such as a translation, musical arrangement, dramatization, fictionalization, motion picture version, sound recording, art reproduction, abridgment, condensation, or any other form in which the Materials may be recast, transformed, or adapted; "Institution" means the institution, listed on the last page of this Agreement, by which the Author was employed at the time of the creation of the Materials; "JoVE" means MyJoVE Corporation, a Massachusetts corporation and the publisher of *The Journal of Visualized Experiments*;

"Materials" means the Article and / or the Video; "Parties" means the Author and JoVE; "Video" means any video(s) made by the Author, alone or in conjunction with any other parties, or by JoVE or its affiliates or agents, individually or in collaboration with the Author or any other parties, incorporating all or any portion of the Article, and in which the Author may or may not appear.

2. **Background.** The Author, who is the author of the Article, in order to ensure the dissemination and protection of the Article, desires to have the JoVE publish the Article and create and transmit videos based on the Article. In furtherance of such goals, the Parties desire to memorialize in this Agreement the respective rights of each Party in and to the Article and the Video.

3. **Grant of Rights in Article.** In consideration of JoVE agreeing to publish the Article, the Author hereby grants to JoVE, subject to Sections 4 and 7 below, the exclusive, royalty-free, perpetual (for the full term of copyright in the Article, including any extensions thereto) license (a) to publish, reproduce, distribute, display and store the Article in all forms, formats and media whether now known or hereafter developed (including without limitation in print, digital and electronic form) throughout the world, (b) to translate the Article into other languages, create adaptations, summaries or extracts of the Article or other Derivative Works (including, without limitation, the Video) or Collective Works based on all or any portion of the Article and exercise all of the rights set forth in (a) above in such translations, adaptations, summaries, extracts, Derivative Works or Collective Works and

(c) to license others to do any or all of the above. The foregoing rights may be exercised in all media and formats, whether now known or hereafter devised, and include the right to make such modifications as are technically necessary to exercise the rights in other media and formats. If the "Open Access" box has been checked in Item 1 above, JoVE and the Author hereby grant to the public all such rights in the Article as provided in, but subject to all limitations and requirements set forth in, the CRC License.

4. **Retention of Rights in Article.** Notwithstanding the exclusive license granted to JoVE in Section 3 above, the

ARTICLE AND VIDEO LICENSE AGREEMENT - UK

Author shall, with respect to the Article, retain the non-exclusive right to use all or part of the Article for the non-commercial purpose of giving lectures, presentations or teaching classes, and to post a copy of the Article on the Institution's website or the Author's personal website, in each case provided that a link to the Article on the JoVE website is provided and notice of JoVE's copyright in the Article is included. All non-copyright intellectual property rights in and to the Article, such as patent rights, shall remain with the Author.

5. Grant of Rights in Video – Standard Access. This Section 5 applies if the "Standard Access" box has been checked in Item 1 above or if no box has been checked in Item 1 above. In consideration of JoVE agreeing to produce, display or otherwise assist with the Video, the Author hereby acknowledges and agrees that, Subject to Section 7 below, JoVE is and shall be the sole and exclusive owner of all rights of any nature, including, without limitation, all copyrights, in and to the Video. To the extent that, by law, the Author is deemed, now or at any time in the future, to have any rights of any nature in or to the Video, the Author hereby disclaims all such rights and transfers all such rights to JoVE.

6. Grant of Rights in Video – Open Access. This Section 6 applies only if the "Open Access" box has been checked in Item 1 above. In consideration of JoVE agreeing to produce, display or otherwise assist with the Video, the Author hereby grants to JoVE, subject to Section 7 below, the exclusive, royalty-free, perpetual (for the full term of copyright in the Article, including any extensions thereto) license (a) to publish, reproduce, distribute, display and store the Video in all forms, formats and media whether now known or hereafter developed (including without limitation in print, digital and electronic form) throughout the world, (b) to translate the Video into other languages, create adaptations, summaries or extracts of the Video or other Derivative Works or Collective Works based on all or any portion of the Video and exercise all of the rights set forth in (a) above in such translations, adaptations, summaries, extracts, Derivative Works or Collective Works and (c) to license others to do any or all of the above. The foregoing rights may be exercised in all media and formats, whether now known or hereafter devised, and include the right to make such modifications as are technically necessary to exercise the rights in other media and formats.

7. Government Employees. If the Author is a United States government employee and the Article was prepared in the course of his or her duties as a United States government employee, as indicated in Item 2 above, and any of the licenses or grants granted by the Author hereunder exceed the scope of the 17 U.S.C. 403, then the rights granted hereunder shall be limited to the maximum rights permitted under such statute. In such case, all provisions contained herein that are not in conflict with such statute shall remain in full force and effect, and all provisions contained herein that do so conflict

shall be deemed to be amended so as to provide to JoVE the maximum rights permissible within such statute.

8. Likeness, Privacy, Personality. The Author hereby grants JoVE the right to use the Author's name, voice, likeness, picture, photograph, image, biography and performance in any way, commercial or otherwise, in connection with the Materials and the sale, promotion and distribution thereof. The Author hereby waives any and all rights he or she may have, relating to his or her appearance in the Video or otherwise relating to the Materials, under all applicable privacy, likeness, personality or similar laws.

9. Author Warranties. The Author represents and warrants that the Article is original, that it has not been published, that the copyright interest is owned by the Author (or, if more than one author is listed at the beginning of this Agreement, by such authors collectively) and has not been assigned, licensed, or otherwise transferred to any other party. The Author represents and warrants that the author(s) listed at the top of this Agreement are the only authors of the Materials. If more than one author is listed at the top of this Agreement and if any such author has not entered into a separate Article and Video License Agreement with JoVE relating to the Materials, the Author represents and warrants that the Author has been authorized by each of the other such authors to execute this Agreement on his or her behalf and to bind him or her with respect to the terms of this Agreement as if each of them had been a party hereto as an Author. The Author warrants that the use, reproduction, distribution, public or private performance or display, and/or modification of all or any portion of the Materials does not and will not violate, infringe and/or misappropriate the patent, trademark, intellectual property or other rights of any third party. The Author represents and warrants that it has and will continue to comply with all government, institutional and other regulations, including, without limitation all institutional, laboratory, hospital, ethical, human and animal treatment, privacy, and all other rules, regulations, laws, procedures or guidelines, applicable to the Materials, and that all research involving human and animal subjects has been approved by the Author's relevant institutional review board.

10. JoVE Discretion. If the Author requests the assistance of JoVE in producing the Video in the Author's facility, the Author shall ensure that the presence of JoVE employees, agents or independent contractors is in accordance with the relevant regulations of the Author's institution. If more than one author is listed at the beginning of this Agreement, JoVE may, in its sole discretion, elect not take any action with respect to the Article until such time as it has received complete, executed Article and Video License Agreements from each such author. JoVE reserves the right, in its absolute and sole discretion and without giving any reason therefore, to accept or decline any work submitted to JoVE. JoVE and its employees, agents and independent contractors shall have full, unfettered access to the facilities of the Author or of the Author's institution as necessary to make the Video, whether actually published or not. JoVE has sole discretion as to the method of making and publishing the Materials, including,

ARTICLE AND VIDEO LICENSE AGREEMENT – UK

without limitation, to all decisions regarding editing, lighting, filming, timing of publication, if any, length, quality, content and the like.

11. Indemnification. The Author agrees to indemnify JoVE and/or its successors and assigns from and against any and all claims, costs, and expenses, including attorney's fees, arising out of any breach of any warranty or other representations contained herein. The Author further agrees to indemnify and hold harmless JoVE from and against any and all claims, costs, and expenses, including attorney's fees, resulting from the breach by the Author of any representation or warranty contained herein or from allegations or instances of violation of intellectual property rights, damage to the Author's or the Author's institution's facilities, fraud, libel, defamation, research, equipment, experiments, property damage, personal injury, violations of institutional, laboratory, hospital, ethical, human and animal treatment, privacy or other rules, regulations, laws, procedures or guidelines, liabilities and other losses or damages related in any way to the submission of work to JoVE, making of videos by JoVE, or publication in JoVE or elsewhere by JoVE. The Author shall be responsible for, and shall hold JoVE harmless from, damages caused by lack of sterilization, lack of cleanliness or by contamination due to the making of a video by JoVE its employees, agents or independent contractors. All sterilization, cleanliness or decontamination procedures shall be solely the responsibility of the Author and shall be undertaken at the Author's expense. All indemnifications provided herein shall include JoVE's attorney's fees and costs related to said losses or

damages. Such indemnification and holding harmless shall include such losses or damages incurred by, or in connection with, acts or omissions of JoVE, its employees, agents or independent contractors.

12. Fees. To cover the cost incurred for publication, JoVE must receive payment before production and publication the Materials. Payment is due in 21 days of invoice. Should the Materials not be published due to an editorial or production decision, these funds will be returned to the Author. Withdrawal by the Author of any submitted Materials after final peer review approval will result in a US\$1,200 fee to cover pre-production expenses incurred by JoVE. If payment is not received by the completion of filming, production and publication of the Materials will be suspended until payment is received.

13. Transfer, Governing Law. This Agreement may be assigned by JoVE and shall inure to the benefits of any of JoVE's successors and assignees. This Agreement shall be governed and construed by the internal laws of the Commonwealth of Massachusetts without giving effect to any conflict of law provision thereunder. This Agreement may be executed in counterparts, each of which shall be deemed an original, but all of which together shall be deemed to be one and the same agreement. A signed copy of this Agreement delivered by facsimile, e-mail or other means of electronic transmission shall be deemed to have the same legal effect as delivery of an original signed copy of this Agreement.

A signed copy of this document must be sent with all new submissions. Only one Agreement required per submission.

AUTHOR:

Name:

Argyris Politis

Department:

Chemistry Department

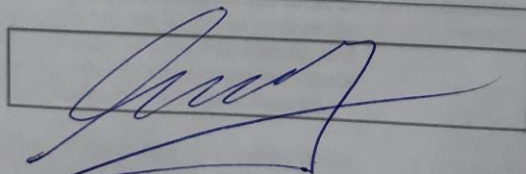
Institution:

King's College London

Article Title:

Analysing protein architectures and protein-ligand complexes by integrative structural mass spectrometry

Signature:



Date:

01/02/2018

Please submit a signed and dated copy of this license by one of the following three methods:

- 1) Upload a scanned copy as a PDF to the JoVE submission site upon manuscript submission (preferred);
- 2) Fax the document to +1.866.381.2236; or
- 3) Mail the document to JoVE / Atn: JoVE Editorial / 1 Alewife Center Suite 200 / Cambridge, MA 02140

For questions, please email editorial@jove.com or call +1.617.945.9051.

MS # (internal use):

Faculty of Natural & Mathematical Sciences

Department of Chemistry

Lecturer in Chemical Systems Biology
Dr Argyris PolitisBritannia House
7 Trinity Street
London SE1 1DBTelephone: +44 (0) 20 7848 7514
Email: argyris.politis@kcl.ac.uk

April 12, 2018

Dear Dr Alisha DSouza,

Thank you for forwarding the reviewers' comments on our article titled "Analysing protein architectures and protein-ligand complexes by integrative structural mass spectrometry". We are delighted by the overall positive tone of the reviews. We would like to thank you and the two reviewers for their thoughtful reviews and comments. We have revised our manuscript in light of these comments and we think that the revisions have made the manuscript stronger. Please find attached our response to the referees together with the revised text.

Editorial comments:

We would like to thank the editor for their comments on our work and helpful suggestions. We agree with the important points raised, and hence we have addressed these points (1-18) in our revised manuscript.

Changes to be made by the Author(s):

1. Please take this opportunity to thoroughly proofread the manuscript to ensure that there are no spelling or grammar issues. The JoVE editor will not copy-edit your manuscript and any errors in the submitted revision may be present in the published version.
2. Please use American English.
3. Please adjust the numbering of the Protocol to follow the JoVE Instructions for Authors. For example, 1 should be followed by 1.1 and then 1.1.1 and 1.1.2 if necessary. Please refrain from using bullets or dashes.
4. JoVE cannot publish manuscripts containing commercial language. This includes trademark symbols (™), registered symbols (®), and company names before an instrument or reagent. Please remove all commercial language from your manuscript and use generic terms instead. All commercial products should be sufficiently referenced in the Table of Materials and Reagents. For example: Sigma-Aldrich, Millipore, etc.
5. The Protocol should contain only action items that direct the reader to do something. Please move the discussion about the protocol to the Discussion.
6. Please add more details to your protocol steps. Please ensure you answer the "how" question, i.e., how is the step performed? Alternatively, add references to published material specifying how to perform the protocol action.
7. Please provide the volumes used throughout. We need specific values in order to film and publish. Generalized protocols are not compatible with a video article.
8. What containers are being used throughout? 1.5 mL microcentrifuge tube? 15 mL tube?
9. 1.7: How is the buffer exchange done?
10. Please specify all incubation times. We need specific values.
11. Please specify all experimental values and parameters used.

12. The Protocol should be made up almost entirely of discrete steps without large paragraphs of text between sections. Please simplify the Protocol so that individual steps contain only 2-3 actions per step and a maximum of 4 sentences per step.
13. Please highlight 2.75 pages or less of the Protocol (including headings and spacing) that identifies the essential steps of the protocol for the video, i.e., the steps that should be visualized to tell the most cohesive story of the Protocol. Remember that non-highlighted Protocol steps will remain in the manuscript, and therefore will still be available to the reader.
14. Please ensure that the highlighted steps form a cohesive narrative with a logical flow from one highlighted step to the next. Please highlight complete sentences (not parts of sentences). Please ensure that the highlighted part of the step includes at least one action that is written in imperative tense.
15. Please do not highlight calculations for the video: step 3.4-3.6, 4.3-4.7
16. Please include at least one paragraph of text to explain the Representative Results in the context of the technique you have described, e.g., how do these results show the technique, suggestions about how to analyze the outcome, etc. The paragraph text should refer to all of the figures. Data from both successful and sub-optimal experiments can be included.
17. As we are a methods journal, please revise the Discussion to explicitly cover the following in detail in 3-6 paragraphs with citations:
 - a) Critical steps within the protocol
 - b) Any modifications and troubleshooting of the technique
 - c) Any limitations of the technique
 - d) The significance with respect to existing methods
 - e) Any future applications of the technique
18. Please do not abbreviate journal titles.

Reviewers' comments:

Reviewer #1:

We would like to thank the first reviewer for their very positive comments on our work and helpful suggestions. We agree with important points raised by the first reviewer, and hence addressed these points in our revised manuscript.

Manuscript Summary:

The manuscript is intended to be a tutorial for the analysis of non-covalent protein complexes using native state nano-electrospray ionization coupled with ion mobility mass spectrometry. The interaction between the helicase-nuclease protein complex (HerA-NurA) with several ligands (DNA, ATP, ADP) studied in a previous publication [21] is used as a model compound for this tutorial. The

manuscript provides adequate details for sample preparation, mass spectrometer operation as well as data interpretation. I believe this manuscript would be of great utility to everyone interested in hands-on characterization of complex protein complexes using intact mass analysis, therefore I recommend the publication of this manuscript with several revisions.

Major Concerns:

We have now divided the previous 'part 3' into two parts (part 3 and 4) and therefore highlighted section 2-5 to be included in the video.

Part 1 of the Protocol section contains mostly general guidelines for optimizing the sample preparation before the analysis of the HerA-NurA protein complex interacting with several ligands. I don't think that Part 1 should be highlighted in yellow and included in the video material because is not as relevant as Parts 2-4.

Minor Concerns:

We have addressed all points (1-25) raised in the revised manuscript. We have revised our figures such that numbers used for subscript notation. Figures are now provided at a higher resolution.

Please find below a list of my suggested revisions and comments:

1. Page 3, Lines 127-128:

For HerA-NurA studies 200 nM ammonium acetate pH 7 was used.

2. Page 4, Line 143:

Please indicate the upper m/z value of the quadrupole installed in the Synapt G2-Si instrument used for these experiments (e.g. 4,8 or 32 k).

3. Page 4, Lines 147-149:

For IM separations, Nitrogen (60 mL/min) and Argon (8.4mL/min for the Trap region) were used. However, Helium can be used for IM separations as well.

4. Page 4, Lines 152-153:

... and insert it into a capillary holder.

5. Page 4, Line 156:

Please indicate the pressure units for the nano-flow pressure gauge.

6. Page 4, Line 159:

Apply a capillary voltage in the range of 0.9-1.6 kV.

7. Page 4, Lines 161-162:

... adjusting the gas flow in the Trap (2-8 mL/min), He Cell (180 L/min) and the IMS cell (90mL/min)

...

8. Page 4, Line 168:

The Synapt G2-Si instrument does not have an extraction cone. Please provide instead the

optimized values of other nano-ESI source parameters like source offset, source temperature and cone gas flow.

9. Page 5, Lines 180-182:

To quantify the relative abundance of species use the corresponding ion intensities observed in the raw ESI-MS spectra (for example ligand bound, different oligomers, etc). Alternatively, quantification can be performed using specialized software like UniDec and Massign34 (Figure 1 and 3).

10. Page 5, Line 209:

... use the SUMMIT software...

11. Page 6, Line 230:

... by subjecting it to CIU.

12. Page 6, Line 231:

Specialized software packages such as PULSAR32,

13. Page 6, Line 245:

... transitions and stabilizations of protein ions.

14. Page 7, Line 306, Figure 1 caption:

... composition and topology of the HerA-NurA non-covalent complex.

15. Page 8, Line 313, Figure 2 caption:

Native ESI-MS reveals the mechanism ...

16. Page 8, Lines 334-335:

... (after considering the typical uncertainty in the resolution of travelling wave ion mobility mass spectrometry of $\pm 5-8\%$).

17. Page 8, Lines 338-339, Figure 5 caption:

Colored circles indicate conditions where each sub-complex was observed: native (blue, prior to disruption), ...

18. Page 8, Line 348, Figure 7 caption:

There is a discrepancy between the Figure 7 caption and the actual Figure shown on Page 19.

The figure caption needs to be corrected (Figure 7A is mentioned 3 times in the caption).

19. Page 9, Lines 376-377:

... careful sample preparations steps are essential, ...

20. Page 9, Line 382:

... electrospray mass spectrometers.

21. Page 10-12, References section:

Please reformat references no 7, 16, 18, 28, 38, 40 and 44 to match the format used for the the authors's names in all other references.

22. Page 11, Line 461:

Reference 27 has several typos.

23. Page 16, Figure 4C:

Please provide the Figure 4C with higher resolution, the labeling of the oligomeric species is not clear at all! The numbers used for subscript notation are barely distinguishable.

24. Page 17, Figure 5:

Please provide the Figure 5 with better resolution, the numbers used for subscript notation are barely distinguishable.

25. Page 20, Table 1:

Please avoid the decimals for the theoretical and experimental CCS values of the gas phase complexes and sub-complexes. Use instead the integer numbers because the IMS method is not that precise for this large molecular weight complexes.

Reviewer #2:

We would like to thank the second reviewer for their comments on our work and supportive suggestions. We agree with important points raised in the minor and major concerns sections and have addressed these points in our revised discussion. Moreover, all parts now have a paragraph in the beginning that provides a brief explanation of the section. .

Manuscript Summary:

The manuscript addresses an important aspect of analyzing biomolecular structure using mass spectrometry, and should be published.

Major Concerns:

The manuscript suffers from a lack of clear structure and organization, which makes it difficult to follow - particularly the breakdown into sections and the logic flow of the experiment with options such as ligand binding studies clearly described. For example the main exp part starts with preparation of ATP in a very specific way, without explaining the goal and limitations of the intended experiment first.

Generally many points might well apply to the particular complex but other statements of apparent universal applicability are mixed in with this, which makes the instructions very confusing.

Statements such as "To obtain sufficient DNA binding, screen different DNA concentrations." are not of general validity - is this complex particularly difficult to form?

He gas can indeed be used for ion mobility, but not easily on the instrument described here or by the non-expert user, so it would be best if the authors describe a "standard" workflow, and clearly highlight which points are specific to the system studied here and why.

The instrument tuning strategy makes no sense to me, it should start with the inlet (Cone) and only increase coll. energies if "front end" voltage offsets are insufficient. What does the used need to look out for when setting these parameters? How do we know if conditions are still "native"?

Also section titles such as "Part 4: Investigating protein-ligand interactions using collision induced unfolding (CIU)" are not very clear, why would CIU only inform on ligand interactions rather than e.g. protein stability towards unfolding? Please re-organise the sections to create a logic flow.

I would strongly discourage reporting of ccs values as "average of all 358 charge states." - please discuss and justify which charge states should be used.

Minor Concerns:

We have addressed these points in our revised manuscript. With regards to proteins used for calibration, we have rephrased the sentence to be clearer "Select four calibrants, two with a mass above and two with a mass below that of the protein under investigation". To make Figure 4 clearer, we have split the content into two Figures (Fig.4. and Fig.5).

Why are ammonium acetate buffers non-physiological? Why not use MgATP? Part II 20 - I would not recommend making any calibration with just two reference points?

Figure 2: please check if the labels got mixed up

What are the curves representing in Fig 3B? Symbols in Fig4 are too small and blurred.

Yours sincerely,

A handwritten signature in blue ink, appearing to read "Argyris Politis".

Argyris Politis



Nam Nguyen <nam.nguyen@jove.com>

Fw: Re-print permission - urgent

Ahdash, Zainab <zainab.ahdash@kcl.ac.uk>
To: "nam.nguyen@jove.com" <nam.nguyen@jove.com>
Cc: "Politis, Argyris" <argyris.politis@kcl.ac.uk>

Mon, Apr 30, 2018 at 9:28 AM

Dear Nam,

Please see email below.

Kind regards,
Zainab

From: Academic Permissions <Academic.permissions@oup.com>
Sent: 30 April 2018 14:21
To: Ahdash, Zainab
Cc: Politis, Argyris
Subject: RE: Re-print permission - urgent

Dear Zainab,

As stated in Rightslink " You are not required to obtain permission to reuse this article" . This is because it is published under a CC BY licence.

Best wishes,

Ben

From: Ahdash, Zainab [mailto:zainab.ahdash@kcl.ac.uk]
Sent: 30 April 2018 13:41
To: Academic Permissions
Cc: Politis, Argyris
Subject: Re: Re-print permission - urgent

Dear Ben,

thank you very much for the information. When following the instructions, I noticed it the RightsLink states that:

"You are not required to obtain permission to reuse this article." (Please see image attached below)

Just to clarify, does that mean I don not need to continue with permission process? and can I get an official proof letter to send to the journal I am publishing with?

Kind regards,

Zainab



Secure | <https://s100.copyright.com/AppDispatchServlet?publisherName=OUP&publication=1362-4962&title>

Copyright Clearance Center RightsLink®

OXFORD
UNIVERSITY PRESS

Title: Mechanistic insight into the assembly of the HerA-NurA helicase-nuclease DNA end resection complex

Author: Ahdash, Zainab; Lau, Andy M.

Publication: Nucleic Acids Research

Publisher: Oxford University Press

Date: 2017-10-09

Copyright © 2017, Oxford University Press

Creative Commons

This is an open access article distributed under the terms of the [Creative Commons CC BY](#) license, which permits unrestricted use, distribution, and reproduction in any medium, provided the original work is properly cited.

You are not required to obtain permission to reuse this article.

Zainab Ahdash

PhD student and Graduate Teaching Scholar (GTS)

King's College London

Department of Chemistry

[7 Trinity Street, SE1 1DB](#)

From: Academic Permissions <Academic.permissions@oup.com>

Sent: 30 April 2018 09:23:50

To: Ahdash, Zainab

Subject: FW: Re-print permission - urgent

Dear Zainab,

Thank you for your email requesting permission to reuse material originally published in an Oxford Journals title. In order to obtain the permission you will need to enter your application through our Rightslink® permission service.

Rightslink ® is a fast easy-to-use online service, through which permission can be obtained within minutes, at the point of content.

In order to obtain permission from Oxford Journals, please follow the notes below carefully:

- Locate the article on the Oxford Journals website
- Follow the Permissions link to the Rightslink page
- Create your own Rightslink account (a two-step process) if you haven't already done so (this will include choosing either the credit card or invoice option should a request ever incur a fee)
- Select your reuse preferences and accept the terms and conditions (one click). **If the reuse option required is not available, In the "I would like to" field select "I don't see my intended use" and in the "My special requirements are" field enter your full usage details. We will then review your request on Rightslink.**

Please contact Rightslink Customer Care with any questions or comments concerning this permission service at:

Rightslink Customer Care

Tel (toll free): (001) 877 622 5543

Tel: (001)978 777 9929

E-mail: customercare@copyright.com

If you are unable to obtain the permission you require via Rightslink email full details of your request to journals.permissions@oup.com. Please specify the type of publication in which the material will appear (journal and article title/book title etc.), author/editor of the publication, name of the publisher, format (print, ebook, ejournal, password-protected online etc.), total print run/circulation and date of publication.

Best wishes,

Ben

Ben Kennedy

Permissions Team Lead

Oxford University Press

Great Clarendon Street

Oxford

OX2 6DP

Direct tel. +44 (0)1865 354728

e mail: ben.kennedy@oup.com

From: CHILD, Jenny

Sent: 25 April 2018 16:44

To: zainab.ahdash@kcl.ac.uk; Academic Permissions

Cc: Politis, Argyris

Subject: Re-print permission - urgent

Dear Zainab,

Thanks very much for your phone call this afternoon. I am forwarding your enquiry to our Permissions Team, who will be able to look into this as soon as possible, as I understand that the Journal of Visualized Experiments is waiting to hear back from you.

If they need any further information, my colleagues will be in touch with you shortly.

Kind regards

Jenny

Jenny Child

Senior Rights Manager

Global Business Development and Rights

Oxford University Press | Great Clarendon Street | Oxford | OX2 6DP | UK
Tel: +44 (0)1865 353 847 | Email: jennifer.child@oup.com

Please note I work Tuesday – Thursday each week

From: Ahdash, Zainab [<mailto:zainab.ahdash@kcl.ac.uk>]
Sent: 23 April 2018 07:57
To: Academic Reprints
Cc: Politis, Argyris
Subject: Re-print permission

Dear Sir/Madam,

We would like to re-use some content (adapted figures and data) from a recent publication at OUP, Nucleic Acid Research journal in a methods manuscript in the Journal of Visualized Experiments (JoVE).

Ahdash, Z. et al. Mechanistic insight into the assembly of the HerA-NurA helicase nuclease DNA end resection complex. Nucleic Acids Research. 45 (20), 12025-12038, (2017).

<https://academic.oup.com/nar/article/45/20/12025/4372482>

Can you please provide us with information regarding re-print permission?

Kind regards,

Zainab Ahdash

Zainab Ahdash

PhD student and Graduate Teaching Scholar (GTS)

King's College London

Department of Chemistry

[7 Trinity Street, SE1 1DB](#)

Oxford University Press (UK) Disclaimer

This message is confidential. You should not copy it or disclose its contents to anyone. You may use and apply the information for the intended purpose only. OUP does not accept legal responsibility for the contents of this message. Any views or opinions presented are those of the author only and not of OUP. If this email has come to you in error, please delete it, along with any attachments. Please note that OUP may intercept incoming and outgoing email communications.

Oxford University Press (UK) Disclaimer

This message is confidential. You should not copy it or disclose its contents to anyone. You may use and apply the information for the intended purpose only. OUP does not accept legal responsibility for the contents of this message. Any views or opinions presented are those of the author only and not of OUP. If this email has come to you in error, please delete it, along with any attachments. Please note that OUP may intercept incoming and outgoing email communications.