

Journal of Visualized Experiments

Severe Burn Injury in a Swine Model for Clinical Dressing Assessment

--Manuscript Draft--

Article Type:	Invited Methods Article - JoVE Produced Video
Manuscript Number:	JoVE57942R4
Full Title:	Severe Burn Injury in a Swine Model for Clinical Dressing Assessment
Keywords:	Swine, Experimental animal models, Burns, Surgical, Scarring, Wound healing
Corresponding Author:	R Poongodi TAIWAN
Corresponding Author's Institution:	
Corresponding Author E-Mail:	poongodiraju@gmail.com
Order of Authors:	Gang-Yi Fan Juin-Hong Cherng Shu-Jen Chang Raju Poongodi Chih-Hsin Wang Yi-Wen Wang Yao-Horng Wang Cheng-Che Liu En Meng
Additional Information:	
Question	Response
Please indicate whether this article will be Standard Access or Open Access.	Standard Access (US\$2,400)
Please indicate the city, state/province, and country where this article will be filmed . Please do not use abbreviations.	Department of Biology and Anatomy Tri-Service General Hospital National Defense Medical Center Neihu Dist., Taipei City 114, Taiwan (R.O.C)

TITLE:**Severe Burn Injury in a Swine Model for Clinical Dressing Assessment****AUTHORS AND AFFILIATIONS:**

Gang-Yi Fan, MS¹, Juin-Hong Cherng, Ph.D^{2,3}, Shu-Jen Chang, Ph.D⁴, Raju Poongodi, Ph.D², Chih-Hsin Wang, MD⁵, Yi-Wen Wang, Ph.D², Yao-Horng Wang, Ph.D⁶, Cheng-Che Liu, Ph.D⁷, En Meng, Ph.D^{8†}

¹Graduate Institute of Medical Sciences, National Defense Medical Center, Taipei, Taiwan (R.O.C)

²Department and Graduate Institute of Biology and Anatomy, National Defense Medical Center, Taipei, Taiwan (R.O.C)

³Department of Gerontological Health Care, National Taipei University of Nursing and Health Sciences, Taipei, Taiwan (R.O.C)

⁴Division of Rheumatology/Immunology/Allergy, Department of Internal Medicine, Tri-Service General Hospital, National Defense Medical Center, Taipei, Taiwan (R.O.C)

⁵Department of Plastic and Reconstructive Surgery, Tri-Service General Hospital, Taipei, Taiwan (R.O.C)

⁶ Department of Nursing, Yuanpei University, Hsinchu, Taiwan (R.O.C)

⁷Department of Physiology and Biophysics; Graduate Institute of Physiology, National Defense Medical Center, Taipei, Taiwan (R.O.C)

⁸Division of Urology, Department of Surgery, Tri-Service General Hospital, National Defense Medical Center, Taipei, Taiwan (R.O.C)

Gang-Yi Fan: u9310318@gmail.com

Juin-Hong Cherng: i72bbb@gmail.com

Shu-Jen Chang: belle661011@gmail.com

Raju Poongodi: poongodiraju@gmail.com

Chih-Hsin Wang: super-derrick@yahoo.com.tw

Yi-Wen Wang: christmas1035@hotmail.com

Yao-Horng Wang: pigmodel@gmail.com

Cheng-Che Liu: chencheliu2002@gmail.com

†Corresponding author:

En Meng, MD, Ph.D

en.meng@gmail.com

KEYWORDS:

Swine, Experimental animal models, Burns, Surgical, Scarring, Wound healing

SUMMARY

To closely mimic the mode of burn injuries requires the interplay between clinical observation and studies in animal models. In this study, a swine model of severe burn injury was established to assess an experimental dressing in physiological and pathophysiological settings.

ABSTRACT

Wound healing is a dynamic repair process and is the most complex biological process in human life. In response to burn injury, alterations in biological pathways impair the inflammation response, resulting in delayed wound healing. Impaired wound healing frequently occurs in patients with diabetes leading to unfavorable outcomes such as amputation. Hence, dressings having beneficial effect in promoting burn wound repair are needed. However, studies on burn wound treatment are limited due to lack of proper animal models. Our previous study demonstrated wound-healing performance in rat and swine models using a minimally invasive surgical technique. This study aimed to demonstrate a swine model of severe burn injury that eliminates wound contraction and more closely approximates the human processes of re-epithelialization and new tissue formation. This protocol provides a detailed procedure for creating consistent burn wounds and examining the wound-healing performance under the treatment of an experimental dressing in a swine model. Six burn wounds were created symmetrically on the dorsum, which were covered with a clinical dressing composed of four layers: an inner contact layer of experimental materials, an inner intermediate layer of waterproof film, an outer intermediate layer of gauze, and an outer layer of adhesive plaster. Upon the completion of experiments, wound closure, wound area, and Vancouver Scar Scale score were examined. The samples of skin resected from each animal post-sacrifice were histologically prepared and stained using hematoxylin and eosin staining. Antibacterial activity of each dressing in the context of wound healing was also examined. The application of the clinical dressing to the wounds in swine model mimics the biological processes of human wound healing with respect to the processes of epithelialization, cellular proliferation, and angiogenesis. Therefore, this swine model provides an easy-to-learn, cost-effective, and robust method to assess the effect of clinical dressings in severe burn injury.

INTRODUCTION

A burn injury initiates the inflammatory process and induces complex pathological effects, which influence numerous body functions immediately after an accident, resulting in negative impact on patients' quality of life. Impaired wound healing causes significant morbidity and mortality among patients with diabetes mellitus^{1,2}. Most patients with burn injuries experience pain during burn wound debridement, which is known as an excruciating process despite the use of powerful opioid analgesics³.

In contrast to other mammals, swine share several anatomic and physiologic characteristics with humans regarding the process of epithelialization, cellular proliferation, and angiogenesis. This makes swine a potentially better model for certain procedures and studies, and they are often used in subsequent studies that demonstrated promising results in mice. These features have led to the increasing use of swine as a major species in preclinical testing. Recently, a rapid increase in biomedical research with respect to cardiovascular, urinary, integumentary, and digestive systems has been observed^{4,5,6}. This study aims to demonstrate a swine model of severe burn injury that eliminates wound contraction and provides a closer approximation of the human wound healing processes and the formation of new tissue. Six burn wounds were created symmetrically on the dorsum, three on each side of the spine of the swine. Next, an experimental dressing was examined in a swine model of severe burn injury, which can be adapted to replicate human wound healing (**Figure 1**). The wounds were covered with a clinical dressing, which is composed of four layers: an inner contact layer of experimental materials, an inner

intermediate layer of waterproof film, an outer intermediate layer of gauze, and an outer layer of adhesive plaster. A waterproof film keeps the wound environment moist while preventing bacterial infection and allowing gases to permeate the dressing. The outer intermediate layer of gauze was applied on the waterproof films and secured by an outer layer of adhesive plaster. At the completion of experiments, wound closure, wound area, and Vancouver Scar Scale (VSS) score were examined. The samples of skin resected from each animal post-sacrifice were histologically prepared and stained using hematoxylin and eosin (HE) staining. Antibacterial activity of each dressing in the context of wound healing was also examined in this model. Our previous study has demonstrated wound-healing performance in rat and swine model using a minimally invasive surgical technique⁷. Since there were six burn wounds on the dorsum within each swine, each experimental dressing was tested and evaluated in all positions to minimize bias related to wound healing process in different spots on the swine dorsum. Therefore, the swine model of severe burn injury established in this study provides a new approach for the evaluation of clinical dressings and facilitates the development of a novel treatment for burn injury. This study provides crucial tools to uncover the pathophysiology of burn wound healing.

PROTOCOL

Procedures involving animal subjects have been approved by the Animal Care Committee at National Defense Medical Center, Taiwan (R.O.C). This study was conducted in the Laboratory Animal Center at the National Defense Medical Center. Swine weighing between 20 and 25 kg has been successfully instrumented using this protocol.

1. Adaptation of the Animals to Human Handling

1.1. After arrival in the facility, house the animals solitarily but let them interact with each other.

1.2. Provide the animals *ad libitum* access to food and water.

1.3. Acclimate swine to human handling and transportation from the animal facility to the experimental laboratory by handling the animal at least once a day for one week.

1.4. Fast the animal for at least 12 hours before surgery to prevent nausea, vomiting, and aspiration of stomach fluids.

2. Sedation

2.1. Before the burn wound creation, sedate animals *via* an intravenous injection with Zoletil 50 (25 mg/kg).

3. Intubation and Ventilation

3.1. Place the animal on a table and/or trolley in standing position.

3.2. Open the mouth of the animal with an oral spreader.

3.3. In case of insufficient relaxation of the jaws or presence of swallowing reflexes, which hinder intubation, mask the swine with isoflurane to induce sedation.

3.4. Monitor blood pressure, heart rate, and body temperature by physiological signal monitor during the surgery to prevent potential complications.

4. Anesthesia

4.1. Induce and maintain anesthesia; preferably anesthetize the animal *via* an intramuscular injection of ketamine (5 mg/kg), sternal (cazaporonum, 20 mg/kg), and atropine (5 mg/kg).

4.2. Intubate the animal with the endotracheal tube when muscle relaxation, characterized by loss of jaw tone and palpebral reflexed, was observed.

4.3. Maintain all pigs in an anesthetic state at a vaporizer setting of 0.5–2.5% (v/v) isoflurane until the end of the surgery.

4.4. Examine the depth of anesthesia by testing pain reflexes with a hind leg toe pinch before surgery. When necessary, add additional anesthesia or wait for a few minutes. Check pain reflexes regularly throughout the surgery.

5. Sterilization of the Surgical Site

5.1. Shave and clean the skin of the animal over an area of approximately 25 cm width from the vertebral column all the way to the axilla on both sides.

5.2. Scrub the moisturized skin with povidone-iodine scrub (75 mg/mL) for approximately 5 min.

5.3. Remove the povidone-iodine soap from the skin using wet sterile gauzes.

5.4. Sterilize the skin with povidone-iodine lotion (100 mg/mL).

5.5. Cover the animal with sterile surgical drapes to reduce bacterial transfer and subsequent contamination of the surgical site.

6. Burn Wound Creation

6.1. Use a surgical marking pen to mark the center of six burn wounds symmetrically on the dorsum of the pig. Ensure that the distance between each burn wound is at least greater than the radius of the wound (**Figure 1A**).

6.2. Fill a modified soldering iron with 50 mL of glycerin and insert an electronic thermometer into it to monitor the temperature. The hot iron possesses a flat area of approximately 9 cm² (**Figure 1B**).

189
190 6.3. Heat up the iron to 137–139 °C with a hot plate (**Figure 1C**).

191
192 6.4. Create six uniform burn wounds by placing the iron on the marked area without
193 applying any force for 30 seconds (**Figure 1C**).

194
195 6.5. Wash the burn wounds with 0.9% saline solution (**Figure 1D**).

196
197 6.6. Measure wound dimensions and record the wound by photomicrography (**Figure**
198 **1E**).

199 200 7. Preparation of Dressings

201
202 7.1. Cover each wound with the inner contact layer of a four-layer clinical dressing
203 through direct contact. For this layer, use CAPS-containing dressing or alternative materials
204 (**Figure 1F**).

205
206 7.2. Apply a waterproof film onto the clinical dressing to serve as a barrier against
207 bacterial penetration (**Figure 1F**).

208
209 7.3. Cover each wound with a gauze (0.5 cm thick) and fix with paper tape to serve as the
210 mid-layer of the dressing (**Figure 1G**).

211
212 7.4. Secure the gauze with an outer layer of adhesive plaster. Extend this layer to the
213 torso to avoid the displacement of the dressing (**Figures 1H-1J**).

214 215 8. Post-burn Care and Measurement

216
217 8.1. Inject the swine with buprenorphine (0.1 mg/kg, IM) for pain management for one
218 week to reduce potential pain.

219
220 8.2. Allow the pig free access to feed and water.

221
222 8.3. Change the clinical dressings every 2 days for the first 10 days and then twice a week
223 for the 6-week study.

224
225 8.4. Clean and measure wounds before reapplying clinical dressings. Administer
226 anesthetics during dressing changes.

227
228 8.5. Record the wound by photomicrography for comparison of wound healing rate every
229 2 days for the first 10 days and then twice a week for the 6-week study.

230
231 8.6. Calculate the wound re-epithelialization or contraction as the percentage of the
232 original wound size according to a previously described method. The analysis of wound
233 closure was conducted in a double-blinded manner.

8.7. Measure the burn scar using VSS, which consists of four variables: vascularity, height (thickness), pliability, and pigmentation on post-burn days 0, 7, 21, and 42. Each variable has four to six possible scores. The total score ranges from 0 to 14, whereby a score of 0 reflects normal skin.

9. Bacterial Growth Experiments of Post-burn Tissues

9.1. Swab the wound for antibacterial testing on post-burn days 0, 7, 21, and 42.

9.2. Place the swab into 100 mL of 0.9% sterile saline solution and gently vortex to achieve a homogenous suspension.

9.3. Serially dilute (10^{-1} – 10^{-5}) the homogenate and plate 100 μ L of each dilution in selective and nonselective media, respectively.

9.4. Incubate all dilutions under aerobic conditions at 37 °C for 24–72 hours.

9.5. Plate triplicate aliquots of 10 μ L each from all dilutions onto blood agar plate supplemented with 5% sheep blood to isolate aerobic Gram-positive organisms.

9.6. Incubate the sample by spreading or pouring the sample uniformly on the surface of an agar plate overnight for determining the number of colony-forming units (CFUs).

9.7. Read the plates after overnight incubation. Invert the sheep blood agar plate and divide the bottom of the dish into four equal quadrants using a marker and small ruler.

9.8. Place the plate onto the stage of a dissection microscope and count the colonies on each plate. By definition, a colony must have a minimum of 300 CFU to be enumerated.

9.9. Count the bacterial colonies in each of the three replicates. Calculate the average value of the three replicates. Determine the CFU per plate by multiplying the average value by the final dilution factor.

10. Euthanasia and Tissue Fixation

10.1. Intraperitoneally inject an overdose of sodium pentobarbital euthanasia solution (80–120 mg/kg).

10.2. Perform en bloc excision of burn wound tissue to include the underlying musculature and surrounding unwounded tissue.

10.3. Fix tissues with 10% neutral buffered formalin.

10.3.1. Mix 10 mL of formaldehyde (37%) in 90 mL of phosphate buffered solution (PBS) and store in 4 °C.

10.3.2. Transfer tissues to fixative and swirl the container to ensure all tissues are completely immersed in fixative. The volume of fixative must be 30 times the tissue volume.

10.3.3. Fix tissues overnight at 4 °C.

10.4. Dehydrate tissues with ethanol and embed into paraffin blocks. Perform the following steps at 4 °C on a shaker.

10.4.1. Wash twice with PBS for 30 minutes.

10.4.2. Dehydrate tissues with 70% ethanol for 8 hours, 80% ethanol overnight, 95% ethanol for 8 hours, and then in 100% ethanol overnight.

10.4.3. Incubate tissues in 100% ethanol for a further 8 hours.

10.4.4. Incubate tissues in three changes of xylene each for 30 minutes.

10.4.5. Replace the xylene with freshly melted (52 °C) wax, and incubate at 52 °C in an oven for 1 hour.

10.4.6. Replace the wax with fresh wax and incubate at 52 °C in an oven for 3 hours, and then replace once more and incubate at 52 °C overnight.

10.4.7. Incubate tissues with two more changes of wax each for 1 hour, and then embed the tissue and store at 4 °C.

10.5. Cut and stain the paraffin-embedded sections with HE, and visualize *via* a light microscope with 100× magnification.

10.5.1. Create paraffin sections using a rotary microtome.

10.5.2. Dewax sections with three changes of xylene each for 3 minutes.

10.5.3. Rehydrate tissues with 100%, 95%, 80%, and 70% ethanol each for 3 minutes, and then immerse in distilled water.

10.5.4. Stain with hematoxylin for 10 minutes, and then rinse in running tap water.

10.5.5. Differentiate with 0.1% hydrochloric acid ethanol for 5 minutes, and rinse in tap water.

10.5.6. Stain with 0.5% eosin for 1 minute.

10.5.7. Dehydrate tissues with 70%, 80%, 95%, and 100% ethanol each for 2 minutes.

10.5.8. Clear the staining with xylene, and dry in fume hood.

REPRESENTATIVE RESULTS

Burn duration of 30 seconds by hot iron resulted in wounds that were circular with a well-defined margin and uniformly pale with a rim of erythema (**Figure 1D**). Within each animal, there were six burn wounds on the dorsum. The arrangement of burn wounds was depicted in **Figure 1K**. Burn wounds were completely covered with CAPS-containing dressing and used to evaluate the depth of scar formation on post-burn days 0, 7, 21, and 42 and re-epithelialization, as determined by gross inspection. Burn wounds were re-epithelialized based on gross inspection on post-burn day 42. Wound size in these animals was evaluated to determine the wound healing rate (**Figure 2A**). Wound areas were 9, 10, 8, and 3 cm² on post-burn days 0, 7, 21, and 42, respectively. A significant reduction in wound area was observed on post-burn day 42 compared with day 0. The healing rate was defined as the greatest average wound margin distance from the wound center divided by the time to complete wound closure. Wounds treated with CAPS-containing dressing showed a 73.43±6.33% wound closure on post-burn day 42 (**Figure 2B**).

Figure 3 shows the VSS scores with respect to scar vascularity, pliability, pigmentation, and height on post-burn days 0, 7, 21, and 42. The VSS score peaked at 7.4±0.5 on post-burn day 21 and decreased to 3.33±0.58 on post-burn day 42.

All animals were sacrificed on post-burn day 42. Samples of skin resected from each animal post-sacrifice were histologically prepared and stained by H&E. Histologic examination of the samples confirmed that full-thickness burns were achieved, and the wounds appeared fully healed (**Figure 4**). Necrosis resulting from burns could be observed in the epidermis, dermis, and dermal components of the wound without significantly affecting the underlying muscle (**Figure 4**). The dermis thickness beneath the experimental dressing was 5.4 mm (**Figure 4A**). In addition, the sloughing of the dermis and lymphocytic infiltration are observed in the H&E staining, as indicated by the red arrow in **Figure 4B**.

The antibacterial property of the experimental dressing was determined using a CFU assay on post-burn days 0, 7, 21, and 42. The result showed a slight increase in bacterial cell numbers observed between post-burn days 0 and 21 followed by a significant increase on post-burn day 42 (**Figure 5**). This result suggests that the swine model of severe burn injury established in this study could be used to monitor the clinical performance of experimental dressings, including antibacterial property.

Figure 1. Burn wound creation and application of a CAPS-containing clinical dressing. Following hair removal and preparation of the skin with iodine and alcohol, **(A)** surgical marking pen was used to outline six circles on the dorsum, either side of the midline. **(B)** The modified iron was filled with glycerin and an electronic thermometer inserted into glycerin to show the temperature. **(C)** The iron is heated to 137–139 °C with a hot plate, and six uniform burn wounds were created on the marks of the skin. To create burn wounds, place the hot iron with no external force on the swine's back skin (30 seconds) to create two full-thickness wounds. **(D)** After all the wounds were created, the wounds were washed with 0.9% saline solution. **(E)** The scales were placed next to the wounds for taking pictures. **(F)** The first layer is covered with a test dressing and the second layer with a waterproof film. **(G)** The third layer is covered with the gauze of about 0.5 cm thickness and fixed with paper tape. **(H-J)** Secure the gauze with an outer layer of adhesive

plaster. This layer extends to the torso to avoid the displacement of the dressing. **(K)** Schematic diagram of the burn wound distribution.

Figure 2. Change of wound size in a swine model. (A) The rate of wound closure was determined as a percentage of the original wound on day 0. Wounds had almost completely contracted on post-burn 42 day, and **(B)** changes of the wound area were observed between 0 to 42 days of a post-burn animal model. It shows the greatest decrease on post-burn day 42, exhibiting $90 \pm 4\%$ wound area closure.

Figure 3. The average total scores of Vancouver Scar Scale (VSS) using a double-blind experimental design on post-burn days in a swine model. Scar assessment includes pigmentation, vascularity, pliability, and height of scar. A lower score indicates the scar on the condition that closely approximates normal skin ($P = 0.0005$).

Figure 4. Hematoxylin and eosin staining on post-burn day 42. (A, B) The black inverted triangle indicates the repaired burn tissue. The morphology of the full-thickness wound was smooth and continuous, and the papillary layer resembled features of hypertrophic scarring. Note the presence of neo-epidermis covering the wound surface. **(B)** The red arrow indicates the dermal connective tissue-infiltrated inflammatory cells in the burn wound eschar above the viable dermis below. Original magnification, $\times 10$.

Figure 5. A bar diagram showing bacterial counting of wounds at different time points. Antibacterial activity of post-burn wound animal model at 0, 7, 21, and 42 days. Antibacterial activity was evaluated by colony-forming units (CFU) assay in three independent experiments.

DISCUSSION

The present study established a swine model of severe burn injury and examined the model using a CAPS-containing dressing. Our results suggest that this swine model can be used for monitoring the clinical performance of experimental dressings, including antibacterial property. Wound healing rate, wound closure, and antibacterial activity were also analyzed using VSS, H&E staining, and antibacterial test. The use of animal burn models has been developed as a valuable tool to review the pathophysiology of burn injury. There are certain biological benefits of using rats as experimental subjects, including the high number of rat-specific reagents and the practical aspects of obtaining transgenic rats, to discovering the molecular signaling pathways active in the recovery process. However, the major disadvantage of using rats in an animal burn model is its failure to completely approximate the human wound healing process. Re-epithelialization is the main healing approach observed in humans⁸, while wound healing in rats strongly depends on wound contraction in a rapid manner⁹. In addition, the non-vulnerability of rats to hypertrophic or keloid scar formation confirmed the dissimilarity of their wound recovery process from that of humans. On the other hand, swine have recently become the subject of researcher attention because their skin architecture is similar to that of human skin. Additionally, the wound healing process in swine and humans occurs through physiologically similar phases such as inflammation, proliferation, re-epithelialization, and remodeling. Generally, burns in swine heal by 21 days, with re-epithelialization occurring between 7 and 14 days post-wound infliction^{10,11}, which fit to the timelines observed in humans. Swine also show greater

morbidity compare to the rats due to their body size that makes more resistant to wound infection. Mice are usually the first model used to evaluate burn wound conditions under different treatments. Additionally, in contrast to other mammals, swine share a number of anatomic and physiologic characteristics with humans regarding the process of epithelialization, cellular proliferation, and angiogenesis. This makes swine potentially a better model, and they are often used in subsequent studies that demonstrated promising results in mice^{12,13,14,15}. Moreover, the distribution of dermal collagen and elastic content, cutaneous blood supply, the sequence of events in wound healing, and re-epithelialization have made the swine a standard model of wound healing and reconstructive surgical treatments^{15,16,17,18}. Within each animal, there were six burn wounds located on the upper, middle, and lower back of the swine and distributed symmetrically to the spine. Burn wounds can be created on the similar locations but on different swine. Therefore, each experimental dressing can be tested and evaluated in different locations to minimize bias related to wound healing process in different spots on the swine dorsum. In addition, this swine model of severe burn injury established in this study also benefits from ensuring that each swine serves as its own control with one wound receiving novel treatment and the other as vehicle control, leading to a significant reduction in the number of animals.

The management of burn injuries is one of the major complications in wound healing. The human healing process is composed of four biological processes: hemostasis, inflammation, proliferation, and maturation. Once the healing process is disturbed or retarded, it promotes a fibroblastic proliferation that results in a hypertrophic scar, which is visible and tends to be raised above the surrounding skin¹⁶. To ensure reproducibility and accurate quantification, adequate adhesion using adhesive plaster is required immediately after the injury to minimize the delay in time. Cutaneous irritation is a common reaction from adhesive plaster that results in a rash around the clinical dressing. Thus, caution is recommended in the use of currently available adhesive plaster to prevent itchiness. Following aseptic techniques and thoroughly disinfecting all equipment (*e.g.*, caliper) to avoid cross-contamination between swines are imperative.

Burn wound healing is an intricate process. A certain number of factors have been identified to have a negative influence on the wound healing process such as pain, itching, and bacterial contamination. Pain has a negative impact on animal's diet. Without sufficient nutrient uptake, delayed wound healing is inevitable. Therefore, each swine was injected with buprenorphine (0.1 mg/kg, IM) daily for 7 consecutive days to reduce pain. Food intake was monitored one week after the burn wound creation. Once a decrease in food intake was observed on day 7, buprenorphine (0.1 mg/kg, IM) administration was continued until day 14. Bacterial infection, which is a potential risk for wound healing, may trigger inflammation and further dampen the healing process. Therefore, clinical dressings were covered with waterproof films to prevent and minimize potential contamination. Itching is an uncomfortable part of the wound healing process. Swine may scratch their own back on the ground to reduce itch, which can be unfavorable for wound healing process. A good dressing possesses the properties of accelerating burn wound healing with an acceptable scar, preventing infection and inflammation, alleviating pain, and permitting easy and early mobilization^{19,20}. The dressing can be removed when required for further topical applications and/or measurement of the wound area^{21,22}. Although applying a four-layer clinical dressing to a swine is a more complicated and time-consuming process than clinical,

swine model allows closer approximation to a human biological response than mouse model. The many potential advantages of using swine model make it a better platform for preclinical testing than other species.

The clinical efficacy in terms of wound closure efficiency and wound area reduction was monitored using a CAPS-containing dressing that revealed a $73.43 \pm 6.33\%$ wound closure on post-burn day 42. Moreover, the VSS score, a validated subjective scale score, was also used to assess wounds in swine in this study¹⁷. It is important to monitor hypertrophic scar formation during treatment with experimental dressings, particularly in clinical trials¹⁸. Application of CAPS in the treatment of burn wounds resulted in a significant change in VSS scores on post-burn day 42 compared with the scores on day 21. A lower score indicates the injured area attempts to restore to a condition that closely approximate normal skin color pigmentation, vascularity, pliability, and height. In addition, the results of H&E staining indicated an intact stratum corneum layer in the CAPS-treated area. This result suggests that the swine model of a severe burn injury can be used reliably to evaluate the wound area, wound closure, VSS score, and healing progress.

This protocol represents the numerous detailed steps for demonstrating the use of an experimental dressing on a swine model of severe burn injury and can be applied to the evaluation of any types of clinical dressing. A modified soldering iron filled with 50 mL of glycerin is capable of maintaining temperature within 137 to 139°C during the wound creation process. However, this method has limitations such as inability to absolutely mimic the real burn temperature and the narrowness of the burn created area due to the soldering iron scope. However, the main advantages of the method overcome those limitations. This modified iron can be used to create consistent wounds with accuracy and ease compared to the traditional methods. Moreover, this model provides a sensitive measure of the physiological and pathophysiological response of a thermal burn injury under the treatment of various clinical dressings. The advantage of the proposed model, besides the economic advantages, is that it is easy to be handled by those with relatively little surgical experience. The application of the clinical dressing to the wounds in the swine model mimics the biological processes of human wound healing. Therefore, the swine model of severe burn injury established and tested with clinical dressing in this study facilitates the development of novel treatment for burn injury. This study provides crucial tools to uncover the pathophysiology of burn wound healing. In conclusion, this swine model provides an easy-to-learn, cost-effective, and robust method to assess the effect of clinical dressings in severe burn injury.

ACKNOWLEDGMENTS

This study was supported by a grant from the Tri-Service General Hospital; National Defense Medical Center, Taiwan (TSGH-C107-042); Ministry of Science and Technology, Taiwan (MOST 106-2314-B-016 -014); and the National Defense Medical Center (MAB-106-055; MAB-106-010; MAB-107-064).

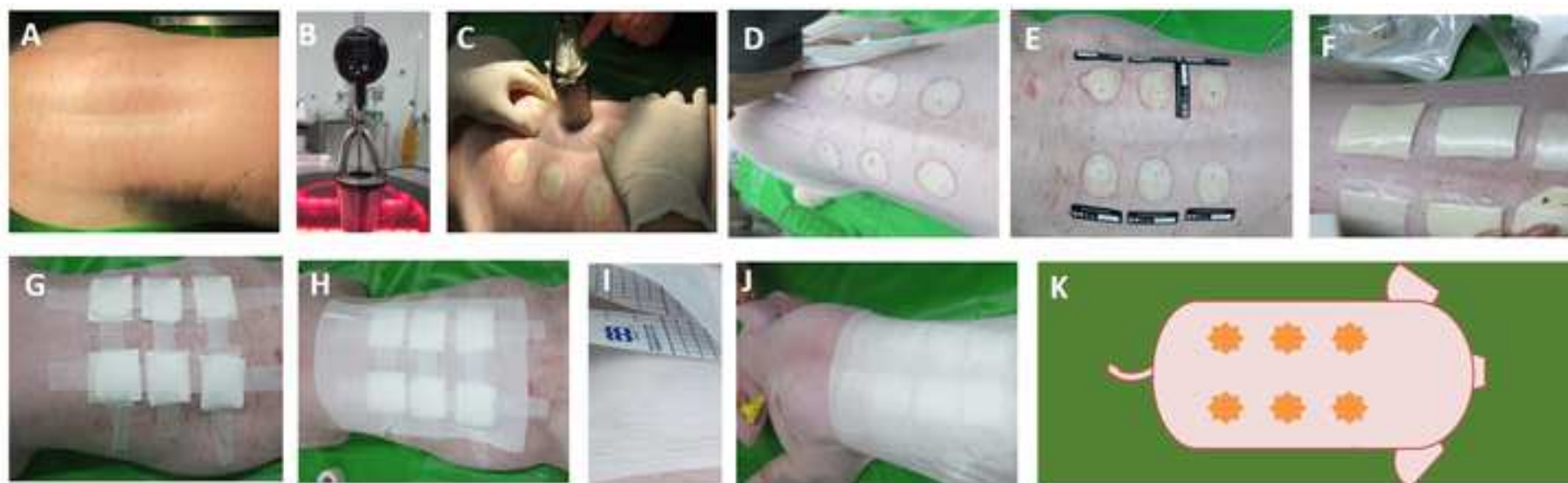
DISCLOSURES

The authors have nothing to disclose.

REFERENCES

- 516 1. Sen, C.K., *et al.* Human skin wounds: a major and snowballing threat to public health
517 and the economy. *Wound Repair Regeneration*. **17**, 763-771 (2009).
- 518 2. Sen, C.K. Wound healing essentials: let there be oxygen. *Wound Repair*
519 *Regeneration*. **17**, 1-18 (2009).
- 520 3. Verhaegen, P.D., *et al.* Differences in collagen architecture between keloid,
521 hypertrophic scar, normotrophic scar, and normal skin: an objective histopathological
522 analysis. *Wound Repair Regeneration*. **17**, 649-656 (2009).
- 523 4. Swindle, M.M., Adams RJ, eds. *Experimental Surgery and Physiology: Induced Animal*
524 *Models of Human Disease*. Williams and Wilkins. Baltimore (1988).
- 525 5. Swindle, M.M., Smith, A.C. *Swine as Models in Biomedical Research*. Iowa State
526 University Press. Ames (1992).
- 527 6. Tumbleson ME, Schook LB, eds. *Advances in Swine in Biomedical Research*. Vols 1-2.
528 Plenum Press. New York (1996).
- 529 7. Wang, C.H., *et.al.* Enhanced wound-healing performance of a phyto-polysaccharide-
530 enriched dressing – a preclinical small and large animal study. *International Wound Journal*.
531 **14**, 1359-1369 (2017).
- 532 8. Rowan M.P., Cancio L.C., Elster E.A., Burmeister D.M., Rose L.F., Natesan S., Chan
533 R.K., Christy R.J., Chung K.K. Burn wound healing and treatment: review and advancements.
534 *Journal of Critical Care*. **19**, 243, (2015).
- 535 9. Wong V.W., Sorkin M., Glotzbach J.P., Longaker M.T., Gurtner G.C. Surgical
536 approaches to create murine models of human wound healing. *Journal of Biomedicine and*
537 *Biotechnology*. **969618**, 8, (2011).
- 538 10. Gaines C., Poranki D., Du W., Clark R.A., Van Dyke M. Development of a porcine deep
539 partial thickness burn model. *Burns*. **39**, 311-9, (2013).
- 540 11. Gnyawali S.C., Barki K.G., Mathew-Steiner S.S., Dixith S., Vanzant D., Kim J., Dickerson
541 J.L., Datta S., Powell H., Roy S., Bergdall V., Sen C.K. High-resolution harmonics ultrasound
542 imaging for non-invasive characterization of wound healing in a pre-clinical swine model.
543 *PLoS One*. **e0122327**, 10, (2015).
- 544 12. Eaglstein, W.H., Mertz, P.M. New method for assessing epidermal wound healing:
545 the effects of triamcinolone acetate and polyethylene film occlusion. *Journal of*
546 *Investigative Dermatology*. **71**, 332-384 (1978).
- 547 13. Swindle, M.M., Smith, A.C. Comparative anatomy and physiology of the pig.
548 *Scandinavian Journal of Laboratory Animal Sciences*. **25**, 1-10 (1998).
- 549 14. Swindle, M.M. *Swine in the Laboratory: Surgery, Anesthesia, Imaging and*
550 *Experimental Techniques*, 2nd ed. CRC Press. Boca Raton (2007).
- 551 15. Mertz, P.M., *et al.* IL-1 as a potential inducer of wound re-epithelialization. *Progress*
552 *in Clinical and Biological Research*. **365**, 473-480 (1991).
- 553 16. Eming, S.A., Martin, P., Tomic-Canic, M. Wound repair and regeneration:
554 mechanisms, signaling, and translation. *Science Translation Medicine*. **6**, 265-266 (2014).
- 555 17. Aryza, M.J., Baryza, G.A. The Vancouver Scar Scale: an administration tool and its
556 interrater reliability. *The Journal of Burn & Rehabilitation*. **16**, 535-538 (1995).
- 557 18. Bystrom, A., Claesson. R., Sundqvist, G. The antibacterial effect of camphorated
558 paramonochlorophenol, camphorated phenol and calcium hydroxide in the treatment of
559 infected root canals. *Endodontics & Dental Traumatology*. **1**, 170-175 (1985).
- 560 19. Reig, A., Tejerina, C., Codina, J., Hidalgo, J., Mirabet, V. Application of a new
561 cicatrization dressing in treating second-degree burns and donor sites. *Annals of Burn and*
562 *Fire Disasters*. **4**, 174 (1991).

- 563 20. Hindy, A. Comparative study between sodium carboxymethyl-cellulose silver, moist
564 exposed burn ointment, and saline-soaked dressing for treatment of facial burns. *Annals of*
565 *Burn and Fire Disasters*. **22**, 131-137 (2009).
- 566 21. Galiano, R.D., *et al.* Topical vascular endothelial growth factor accelerates diabetic
567 wound healing through increased angiogenesis and by mobilizing and recruiting bone
568 marrow-derived cells. *The American Journal of Pathology*. **164**, 1935-1947 (2004).
- 569 22. Thangarajah, H., *et al.* The molecular basis for impaired hypoxia-induced VEGF
570 expression in diabetic tissues. *Proceedings of the National Academy of Sciences of the*
571 *United States of America*. **106**, 13505-13510 (2009).



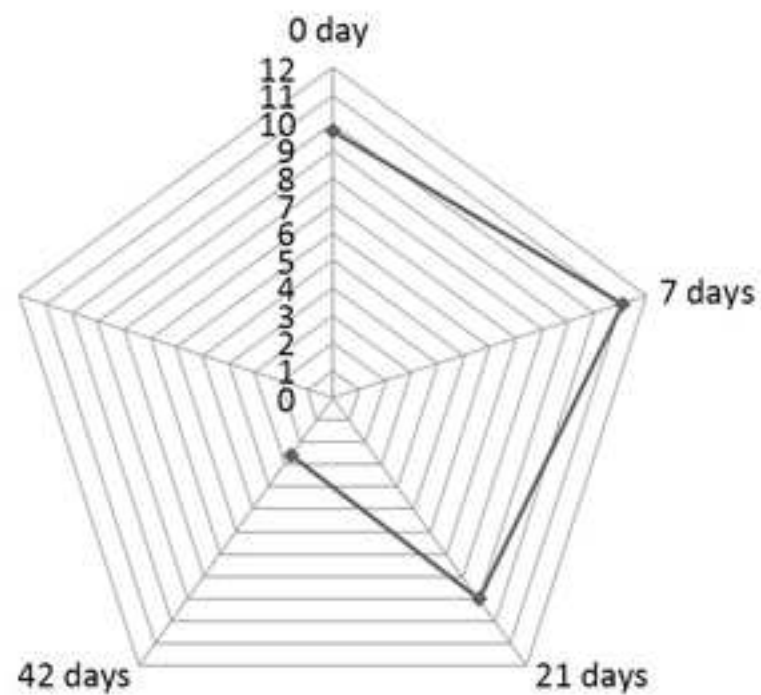
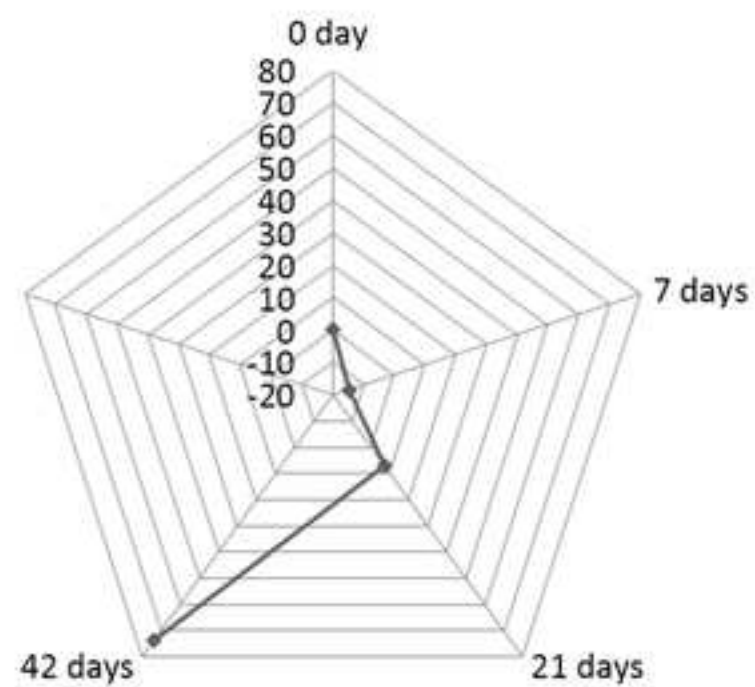
A**Wound area (cm²)****B****Wound closure (%)**

Figure 3

[Click here to download Figure Figure 3.tif](#)

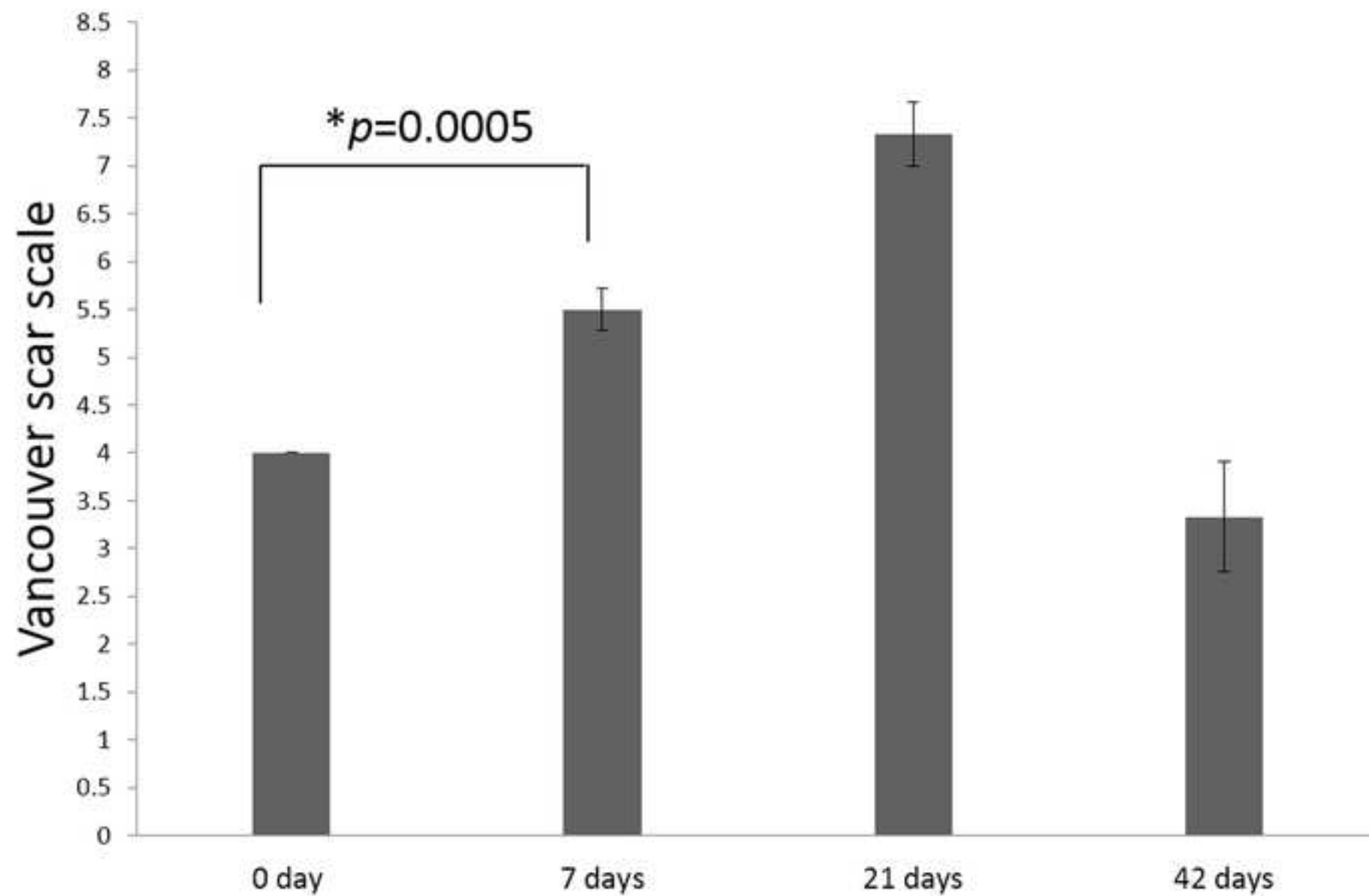


Figure 4

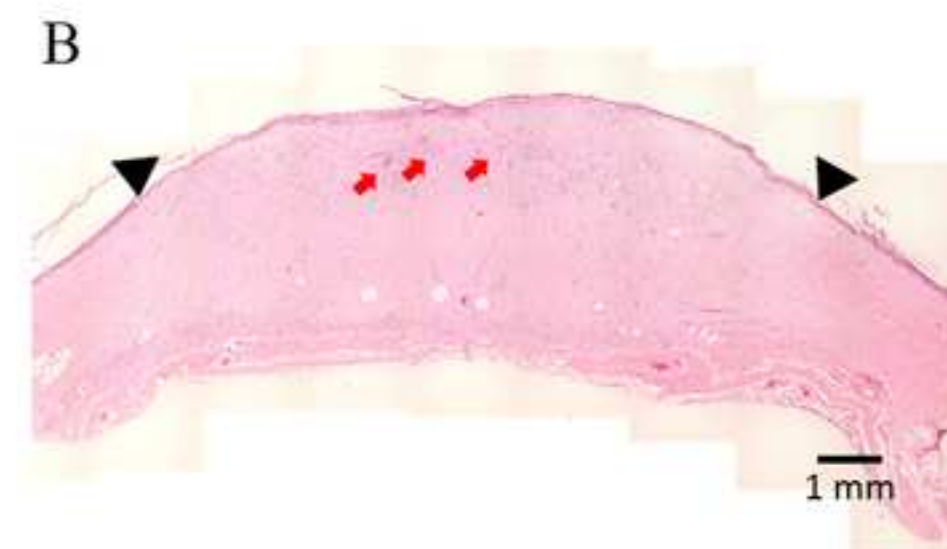
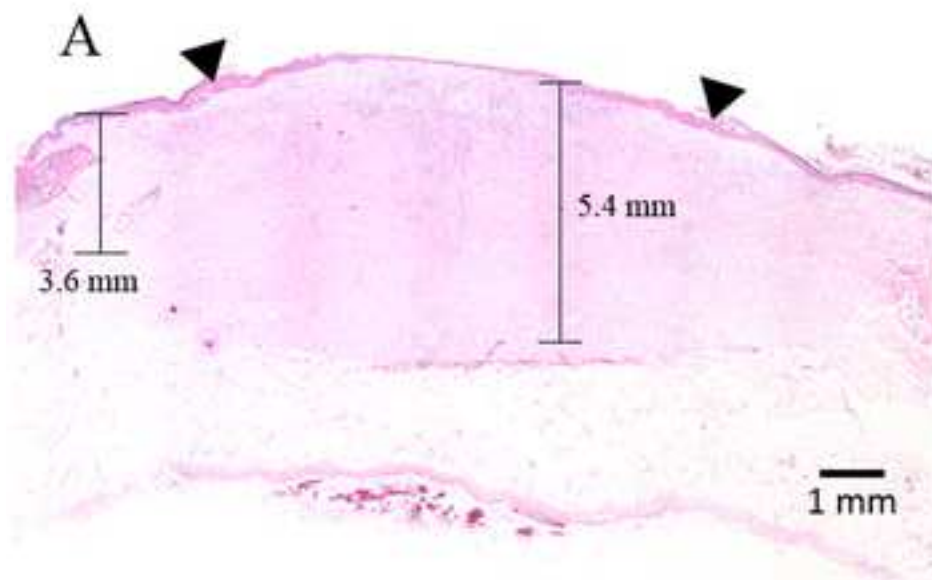
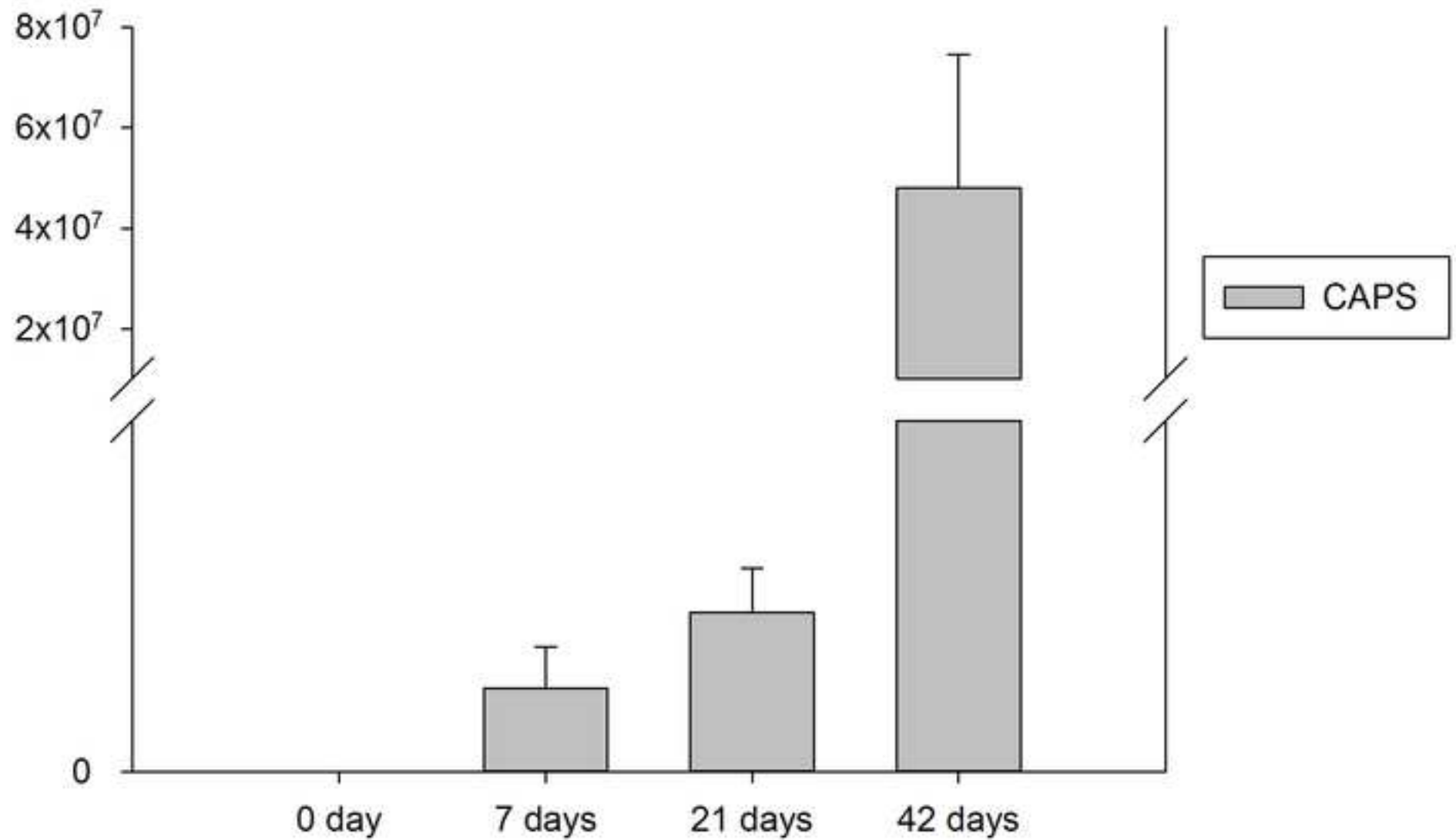


Figure 5

Bacterial Growing Experiment



Item	Company	Catalog Number	Comments
Sedation:			
ketoprofen	Astar	1406232	2 mL vial
azaperone	China chemical & pharmaceutical	47W406	100 mL vial
atropine	Oriental chemical works	IN120802	1 mL vial
Anesthetic:			
Zoletil 50	Virbac	BC91	5 mL vial
isoflurane	Baxter	N002A225	100 mL vial
Surgery:			
hair clippers	Moser	-	-
povidone iodine scrub solution	Ever star	HA161202	4 L barrel
modified iron	-	-	-
electronic thermometer	Dogger	A9SA-ST9215C	- 50~300℃
0.9% saline solution	CHI SHENG	KC130	500 mL vial
gauze	China Surgical Dressings Center	MO15900080	10 x 10 cm
CAPS	CoreLeader Biotech Co., Ltd, Taipei, Taiwan	-	-
paper tape	3M	NDC-8333-1530-01	2.5 cm x 9.1m
waterproof film	3M	NDC-8333-1600-40	10 cm x 10 m
adhesive plaster	Young chemical	BH1426015	10 cm x 10 m
Dissection:			
Pair of standard sharp/blunt straight scissors (14 cm)	Shinotec instruments	ST-S114	-
Halstead-Mosquito (12.5 cm)	Shinotec instruments	ST-H012	-
Handle(# 4)	Shinotec instruments	ST-H004	-
Surgical Blade(#21)	Shinotec instruments	ST-B021	-
Post-Fixation & Storage:			
50 ml Plastic centrifuge tube	Falcon	352070	-
10% neutral buffered formalin,	Leica	3800604EG	-
Bacterial Growth Experiments			
Blood agar plate (BAP) (TSA with 5% sheep blood)	CMP	-	90 mm Mono



1 Alewife Center #200
Cambridge, MA 02140
tel. 617.945.9051
www.jove.com

ARTICLE AND VIDEO LICENSE AGREEMENT

Title of Articles: Sever Burn Injury Swine Model for Clinical Dressing Assessment

Author (S): Gang-Yi Fan, MS, Juin-Hong Cherng, Ph.D, Shu-Jen Chang, Ph.D, Yao-Hong Wang, Ph.D, Chih-Hsin Wang, MD, Raju Poongodi, Ph.D, Yi-Wen Wang, Ph.D, Cheng-Che Liu, Ph.D En Meng, Ph.D.

Item 1 (check one box): The Author elects to have the Materials be made available (as described at <http://www.jove.com/author>) via: ☒ Standard Access ☐ Open Access

Item 2 (check one box):

- ☒ The Author is NOT a United States government employee.
- ☐ The Author is a United States government employee and the Materials were prepared in the course of his or her duties as a United States government employee.
- ☐ The Author is a United States government employee but the Materials were NOT prepared in the course of his or her duties as a United States government employee.

ARTICLE AND VIDEO LICENSE AGREEMENT

1. **Defined Terms.** As used in this Article and Video License Agreement, the following terms shall have the following meanings: **"Agreement"** means this Article and Video License Agreement; **"Article"** means the article specified on the last page of this Agreement, including any associated materials such as texts, figures, tables, artwork, abstracts, or summaries contained therein; **"Author"** means the author who is a signatory to this Agreement; **"Collective Work"** means a work, such as a periodical issue, anthology or encyclopedia, in which the Materials in their entirety in unmodified form, along with a number of other contributions, constituting separate and independent works in themselves, are assembled into a collective whole; **"CRC License"** means the Creative Commons Attribution-Non Commercial-No Derivs 3.0 Unported Agreement, the terms and conditions of which can be found at: <http://creativecommons.org/licenses/by-nc-nd/3.0/legalcode>; **"Derivative Work"** means a work based upon the Materials or upon the Materials and other pre-existing works, such as a translation, musical arrangement, dramatization, fictionalization, motion picture version, sound recording, art reproduction, abridgment, condensation, or any other form in which the Materials may be recast, transformed, or adapted; **"Institution"** means the institution, listed on the last page of this Agreement, by which the Author was employed at the time of the creation of the Materials; **"JoVE"** means MyJoVE Corporation, a Massachusetts corporation and the publisher of *The Journal of Visualized Experiments*; **"Materials"** means the Article and / or the Video; **"Parties"** means the Author and JoVE; **"Video"** means any video(s) made by the Author, alone or in conjunction with any other parties, or by JoVE or its affiliates or agents, individually or in collaboration with the Author or any other parties, incorporating all or any portion of the Article, and in which the Author may or may not appear.

2. **Background.** The Author, who is the author of the Article, in order to ensure the dissemination and protection of the Article, desires to have the JoVE publish the Article and create and transmit videos based on the Article. In furtherance of such goals, the Parties desire to memorialize in this Agreement the respective rights of each Party in and to the Article and the Video.

3. **Grant of Rights in Article.** In consideration of JoVE agreeing to publish the Article, the Author hereby grants to JoVE, subject to **Sections 4** and **7** below, the exclusive, royalty-free, perpetual (for the full term of copyright in the Article, including any extensions thereto) license (a) to publish, reproduce, distribute, display and store the Article in all forms, formats and media whether now known or hereafter developed (including without limitation in print, digital and electronic form) throughout the world, (b) to translate the Article into other languages, create adaptations, summaries or extracts of the Article or other Derivative Works (including, without limitation, the Video) or Collective Works based on all or any portion of the Article and exercise all of the rights set forth in (a) above in such translations, adaptations, summaries, extracts, Derivative Works or Collective Works and (c) to license others to do any or all of the above. The foregoing rights may be exercised in all media and formats, whether now known or hereafter devised, and include the right to make such modifications as are technically necessary to exercise the rights in other media and formats. If the "Open Access" box has been checked in **Item 1** above, JoVE and the Author hereby grant to the public all such rights in the Article as provided in, but subject to all limitations and requirements set forth in, the CRC License.

ARTICLE AND VIDEO LICENSE AGREEMENT

4. Retention of Rights in Article. Notwithstanding the exclusive license granted to JoVE in **Section 3** above, the Author shall, with respect to the Article, retain the non-exclusive right to use all or part of the Article for the non-commercial purpose of giving lectures, presentations or teaching classes, and to post a copy of the Article on the Institution's website or the Author's personal website, in each case provided that a link to the Article on the JoVE website is provided and notice of JoVE's copyright in the Article is included. All non-copyright intellectual property rights in and to the Article, such as patent rights, shall remain with the Author.

5. Grant of Rights in Video – Standard Access. This **Section 5** applies if the "Standard Access" box has been checked in **Item 1** above or if no box has been checked in **Item 1** above. In consideration of JoVE agreeing to produce, display or otherwise assist with the Video, the Author hereby acknowledges and agrees that, Subject to **Section 7** below, JoVE is and shall be the sole and exclusive owner of all rights of any nature, including, without limitation, all copyrights, in and to the Video. To the extent that, by law, the Author is deemed, now or at any time in the future, to have any rights of any nature in or to the Video, the Author hereby disclaims all such rights and transfers all such rights to JoVE.

6. Grant of Rights in Video – Open Access. This **Section 6** applies only if the "Open Access" box has been checked in **Item 1** above. In consideration of JoVE agreeing to produce, display or otherwise assist with the Video, the Author hereby grants to JoVE, subject to **Section 7** below, the exclusive, royalty-free, perpetual (for the full term of copyright in the Article, including any extensions thereto) license (a) to publish, reproduce, distribute, display and store the Video in all forms, formats and media whether now known or hereafter developed (including without limitation in print, digital and electronic form) throughout the world, (b) to translate the Video into other languages, create adaptations, summaries or extracts of the Video or other Derivative Works or Collective Works based on all or any portion of the Video and exercise all of the rights set forth in (a) above in such translations, adaptations, summaries, extracts, Derivative Works or Collective Works and (c) to license others to do any or all of the above. The foregoing rights may be exercised in all media and formats, whether now known or hereafter devised, and include the right to make such modifications as are technically necessary to exercise the rights in other media and formats. For any Video to which this Section 6 is applicable, JoVE and the Author hereby grant to the public all such rights in the Video as provided in, but subject to all limitations and requirements set forth in, the CRC License.

7. Government Employees. If the Author is a United States government employee and the Article was prepared in the course of his or her duties as a United States government employee, as indicated in **Item 2** above, and any of the licenses or grants granted by the Author hereunder exceed the scope of the 17 U.S.C. 403, then the rights granted hereunder shall be limited to the maximum rights permitted under such

statute. In such case, all provisions contained herein that are not in conflict with such statute shall remain in full force and effect, and all provisions contained herein that do so conflict shall be deemed to be amended so as to provide to JoVE the maximum rights permissible within such statute.

8. Likeness, Privacy, Personality. The Author hereby grants JoVE the right to use the Author's name, voice, likeness, picture, photograph, image, biography and performance in any way, commercial or otherwise, in connection with the Materials and the sale, promotion and distribution thereof. The Author hereby waives any and all rights he or she may have, relating to his or her appearance in the Video or otherwise relating to the Materials, under all applicable privacy, likeness, personality or similar laws.

9. Author Warranties. The Author represents and warrants that the Article is original, that it has not been published, that the copyright interest is owned by the Author (or, if more than one author is listed at the beginning of this Agreement, by such authors collectively) and has not been assigned, licensed, or otherwise transferred to any other party. The Author represents and warrants that the author(s) listed at the top of this Agreement are the only authors of the Materials. If more than one author is listed at the top of this Agreement and if any such author has not entered into a separate Article and Video License Agreement with JoVE relating to the Materials, the Author represents and warrants that the Author has been authorized by each of the other such authors to execute this Agreement on his or her behalf and to bind him or her with respect to the terms of this Agreement as if each of them had been a party hereto as an Author. The Author warrants that the use, reproduction, distribution, public or private performance or display, and/or modification of all or any portion of the Materials does not and will not violate, infringe and/or misappropriate the patent, trademark, intellectual property or other rights of any third party. The Author represents and warrants that it has and will continue to comply with all government, institutional and other regulations, including, without limitation all institutional, laboratory, hospital, ethical, human and animal treatment, privacy, and all other rules, regulations, laws, procedures or guidelines, applicable to the Materials, and that all research involving human and animal subjects has been approved by the Author's relevant institutional review board.

10. JoVE Discretion. If the Author requests the assistance of JoVE in producing the Video in the Author's facility, the Author shall ensure that the presence of JoVE employees, agents or independent contractors is in accordance with the relevant regulations of the Author's institution. If more than one author is listed at the beginning of this Agreement, JoVE may, in its sole discretion, elect not take any action with respect to the Article until such time as it has received complete, executed Article and Video License Agreements from each such author. JoVE reserves the right, in its absolute and sole discretion and without giving any reason therefore, to accept or decline any work submitted to JoVE. JoVE and its employees, agents and independent contractors shall have

ARTICLE AND VIDEO LICENSE AGREEMENT

full, unfettered access to the facilities of the Author or of the Author's institution as necessary to make the Video, whether actually published or not. JoVE has sole discretion as to the method of making and publishing the Materials, including, without limitation, to all decisions regarding editing, lighting, filming, timing of publication, if any, length, quality, content and the like.

11. **Indemnification.** The Author agrees to indemnify JoVE and/or its successors and assigns from and against any and all claims, costs, and expenses, including attorney's fees, arising out of any breach of any warranty or other representations contained herein. The Author further agrees to indemnify and hold harmless JoVE from and against any and all claims, costs, and expenses, including attorney's fees, resulting from the breach by the Author of any representation or warranty contained herein or from allegations or instances of violation of intellectual property rights, damage to the Author's or the Author's institution's facilities, fraud, libel, defamation, research, equipment, experiments, property damage, personal injury, violations of institutional, laboratory, hospital, ethical, human and animal treatment, privacy or other rules, regulations, laws, procedures or guidelines, liabilities and other losses or damages related in any way to the submission of work to JoVE, making of videos by JoVE, or publication in JoVE or elsewhere by JoVE. The Author shall be responsible for, and shall hold JoVE harmless from, damages caused by lack of sterilization, lack of cleanliness or by contamination due to the making of a video by JoVE its employees, agents or independent contractors. All sterilization, cleanliness or decontamination procedures shall be solely the responsibility of the Author and shall be undertaken at the Author's

expense. All indemnifications provided herein shall include JoVE's attorney's fees and costs related to said losses or damages. Such indemnification and holding harmless shall include such losses or damages incurred by, or in connection with, acts or omissions of JoVE, its employees, agents or independent contractors.

12. **Fees.** To cover the cost incurred for publication, JoVE must receive payment before production and publication the Materials. Payment is due in 21 days of invoice. Should the Materials not be published due to an editorial or production decision, these funds will be returned to the Author. Withdrawal by the Author of any submitted Materials after final peer review approval will result in a US\$1,200 fee to cover pre-production expenses incurred by JoVE. If payment is not received by the completion of filming, production and publication of the Materials will be suspended until payment is received.

13. **Transfer, Governing Law.** This Agreement may be assigned by JoVE and shall inure to the benefits of any of JoVE's successors and assignees. This Agreement shall be governed and construed by the internal laws of the Commonwealth of Massachusetts without giving effect to any conflict of law provision thereunder. This Agreement may be executed in counterparts, each of which shall be deemed an original, but all of which together shall be deemed to be one and the same agreement. A signed copy of this Agreement delivered by facsimile, e-mail or other means of electronic transmission shall be deemed to have the same legal effect as delivery of an original signed copy of this Agreement.

A signed copy of this document must be sent with all new submissions. Only one Agreement required per submission.

CORRESPONDING AUTHOR:

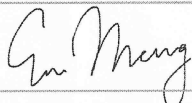
Name:

Department:

Institution:

Article Title:

Signature:



Date:

2018-01-31

Please submit a signed and dated copy of this license by one of the following three methods:

- 1) Upload a scanned copy of the document as a pdf on the JoVE submission site;
- 2) Fax the document to +1.866.381.2236;
- 3) Mail the document to JoVE / Attn: JoVE Editorial / 1 Alewife Center #200 / Cambridge, MA 02139

For questions, please email submissions@jove.com or call +1.617.945.9051

2018.04.09

Dear Editor,

Sincerest thanks for your response and reviewers' comments on our manuscript "JoVE57942-Sever Burn Injury Swine Model for Clinical Dressing Assessment". We sincerely apologise for the great time it has taken us to respond to these comments, and hope that a revised version of the manuscript will still be considered to accept by JoVE. We have modified the paper in response to the extensive and insightful reviewer comments. We have rewritten sections of the manuscript and we hope that this comply with the referee's remarks. We hope that the revised manuscript may suitable for the publication in JoVE. We are looking forward to hear from you.

Thanking You

Sincerely,
En Meng

.....
Dr. En Meng, MD, Ph.D.
Division of Urology, Department of Surgery,
Tri-Service General Hospital,
No.325, Cheng-Kung Road,
Sec.2, Taipei 114, Taiwan.
E.mail: en.meng@gmail.com
Tel: + 886-2-87927169
Fax: +886-2-87927172

Editorial comments: Changes to be made by the Author(s):

1. Please take this opportunity to thoroughly proofread the manuscript to ensure that there are no spelling or grammar issues. The JoVE editor will not copy-edit your manuscript and any errors in the submitted revision may be present in the published version.

Corrected.

2. Figure 2A: Please provide units on the scale bar.

Corrected.

3. Please be consistent with panel labeling for the Figures. Figure 1 has no parentheses but the other Figures have parentheses for the panel labels (A), etc.

Corrected.

4. Please combine all panels of one figure into a single image file.

All panels have been combined in a single image file.

5. Please mention how proper anesthetization is confirmed.

Please refer to “4. Anesthesia”.

6. 6.3: 137 degrees Celsius? Where are the 6 wounds made? What order?

It should be 137 degree Celsius. Wound creation please refer to “6. Burn Wound Creation”.

7. 9.2: What temperature for growth?

Plates were incubated at 37°C. Please refer to “9. Bacterial Growth Experiments of Post Burn Tissues”

8. Please revise the text to avoid the use of any personal pronouns (e.g., "we", "you", "our" etc.).

Corrected

9. Please specify the composition of all solutions/media used.

The composition of all solutions/media are shown in “MATERIALS”.

10. Please specify the euthanasia method.

Please refer to “10. Euthanasia and Tissue Fixation”.

11. Please move step 11 to the Discussion.

Step 11 has been incorporated into Discussion.

12. Please highlight 2.75 pages or less of the Protocol (including headings and spacing) that identifies the essential steps of the protocol for the video, i.e., the steps that should be visualized to tell the most cohesive story of the Protocol. Remember that non-highlighted Protocol steps will remain in the manuscript, and therefore will still be available to the reader.

Highlighted in yellow. Please refer to “Protocol”.

13. Please ensure that the highlighted steps form a cohesive narrative with a logical flow from one highlighted step to the next. Please highlight complete sentences (not parts of sentences). Please ensure that the highlighted part of the step includes at least one action that is written in imperative tense.

Reviewer #1:

Manuscript Summary:

The manuscript describes a method to create burn wounds in a pig model. The authors are evaluating whether a CAPS wound dressing vs. traditional dressings (designated "CMC", Aquacel) will improve wound healing (re-epithelialization and scarring).

Major Concerns: Burn depth and lack of clinical translation: Burns of >100C for 30 seconds will be full thickness wounds (and acknowledged by the author on line 255). Clinical practice would be to excise the necrotic tissue and apply a graft (if donor sites are available) or an allograft/skin substitute. The proposed model does not mimic clinical practice and therefore makes it less desirable.

In this study, we are seeking treatments which are differ from clinical practice. Rat, mouse, and rabbit have been used in dermatologic toxicology. However, swine share a number of anatomic and physiologic characteristics with humans in terms of the process of epithelialisation, cellular proliferation, and angiogenesis that make swine potentially a better model for certain procedures and studies comparing with other species. Although there is still a slightly different in burn conditions between human and swine model, this model still facilitates the development of novel treatment for burn injury.

Analgesia concerns: The authors use ketoprofen as analgesia daily for at least 1 week but it is an NSAID. It is widely known that NSAIDS delay wound healing. A more appropriate analgesic for swine would be buprenorphine SR-LAB which requires administration every 72 hours and will not impact wound healing.

Ketoprofen should be corrected as transdermal fentanyl patch (50 µg/hour).

Comparison between treatments: The authors are comparing CAPS vs. "CMC" (Aquacel); however, Figures 2-4 do not show any of the results from the Aquacel group. In the corresponding text of the results section and the figure legends, again only CAPS data is provided. If the authors want to state CAPS is superior to traditional dressings (lines 315- 317), the appropriate data needs to be shown with significantly statistical results.

Comparison between different dressings was not our intension. Related paragraphs have been rewritten.

Bacterial quantification: Swabs only collect bacteria on the surface of the wound. Non debrided burn wounds will get infected and the most prevalent bacterial species (e.g> Pseudomonas aeruginosa) can penetrate the eschar which may not all be collected with swabs. A more common approach would be to collect biopsies and report as CFUs/g of tissue.

Although collection of biopsies is a better method to evaluate the anti-bacterial activity, it significantly changes the wound condition to create other factors which may further affect the study. Besides, the collection of biopsies in different time points in different conditions may increase the number of animals in this study, which is impractical.

VSS scores: What is the point of performing VSS analysis on days 0, 7, 21? The necrotic eschar wasn't removed which delays the wound healing. Until the wounds are completely re-epithelialized which signifies a transition to the remodeling phase of wound healing, it is pointless to perform any type of scar assessment. Extending the study to 60, 90, or 120 days to allow remodeling to actually occur will provide more insight into scarring.

The scar scale reflects the progress of wound closure. Rapid wound closure implies a short inflammatory phase, suggesting the dressing facilitate the healing process.

Minor Concerns: Timeline: Lines 164, 168, and 176 do not coincide. "The dressings were changed every 2 days for 10 days and then twice a week for 6 weeks." The entire experiment was only 42 days. Also how was a swab collected on days 0 and 7 when the dressings were changed every 2 days for 10 days?

The dressings were changed every 2 days for 10 days and then twice a week until week 6. We did collect samples on day 0 and 7. The dressings were removed for measurements and put back immediately without renewing.

Wound size: Line 147 states the hot iron creates wounds of 20cm² but Figure 2 shows a ruler with the diameter of the wounds to be 3 cm which results in a wound size of ~7cm². This is further confirmed in Figure 3 with a starting wound area depicted of 9cm². Please reconcile. Image quality: Figure 1 and 4 are too low quality to see details.

Wound area should be 9 cm².

Terminology issues: Exercise, darning, adhesive plaster, epithelial gap - These terms were used and need further clarification. Please elaborate on their meaning or change the terminology.

Corrected.

Pain: line 96-97 states "the present study provide new insights into how a CAPS containing dressing affects pain". No data was provided to show a difference in pain. How can pain be measured in a pig and differentiated between wounds? Was CAPS and Aquacel both used on the same animal?

Any types of dressing can be applied to the swine model. However, comparison between CAPS and Aquacel was not our intension. Related paragraphs have been rewritten.

Reviewer #2:

1. There is no novelty in the protocol of experiment to publish in Journal of Visualized experiments. Similar experiments have been carried out in rats and mice "Flexible, micro-porous chitosan-gelatin hydrogel/nanofibrin composite bandages for treating burn wounds" published in RSC advances in 2014. "Honey based hydrogel: In vitro and comparative In vivo evaluation for burn wound healing" published in Nature: Scientific reports in 2017.

This model may benefit from ensuring that each swine serves as its own control with one wound receiving treatment and the other vehicle control, thereby reducing animal numbers.

2. Check for spelling, punctuation marks, grammatical errors and sentence formation throughout the article. Eg: In Abstract, line no. 3 "exercise", line no:8 "complementary" In article, line no:49 "composite", line no:57 "scar", line no:69 "trigger-off" are some of the irrelevant words to be replaced.

Corrected

3. No reference for protocol supporting material preparation. Try to include reference of your previously published paper.

Included. Please refer to Ref. 7.

4. Check for the standard protocol for antibacterial activity. Lack of data supporting antibacterial activity of your scaffold. No error bar and statistical significant data in bacterial growth experiments though you have mentioned in the line 246 as CFU assay was performed in triplicates.

Corrected.

Editorial comments:

1. Please employ professional copy-editing services as the language in the manuscript is not publication grade. The language significantly detracts from the scientific value of the manuscript.

Response: We have had the manuscript edited by a professional editing service.

2. Please revise the following lines of the manuscript to avoid previously published text: 60-61, 65-72, 78-80, 246-247, 267-270, 327-333, 335-336, 343-349, 381-384,

Response: Thank you for pointing this out. All the above sentences have been edited

3. Please obtain explicit copyright permission to reuse any figures from a previous publication. Explicit permission can be expressed in the form of a letter from the editor or a link to the editorial policy that allows re-prints. Please upload this information as a .doc or .docx file to your Editorial Manager account. The Figure must be cited appropriately in the Figure Legend, i.e. "This figure has been modified from [citation]."

Response: These contents have been removed to avoid potential infringement.

4. Please include all institutional emails of the authors in the manuscript.

Response: We have included the following email addresses in the manuscript

Gang-Yi Fan: u9310318@gmail.com

Juin-Hong Cherng: i72bbb@gmail.com

Shu-Jen Chang: belle661011@gmail.com

Yao-Horng Wang: pigmodel@gmail.com

Chih-Hsin Wang: super-derrick@yahoo.com.tw

Raju Poongodi: poongodiraju@gmail.com

Yi-Wen Wang: christmas1035@hotmail.com

Cheng-Che Liu: chencheliu2002@gmail.com

En Meng: en.meng@gmail.com

5. Please include at least 6 keywords. Please use MeSH terms whenever possible.

Response: We have included the following keywords in the manuscript

Swine; Polysaccharides; Burn; Surgical; Experimental animal models; Scarring

6. Please reduce the Short Abstract to be 50 words or less.

Response: The short abstract is within 50 words now

7. Revisions are required for the protocol:

Why are there 10 panels of Figure 1 that are not referenced? Please reference these panels or remove Figure 1.

Response: Each panel has been referenced with a corresponding step.

How many animals are used? Where are they housed and in what conditions?

Response: We created 6 burns on each of the 3 pigs; for a total of 18 burns, with 3 replicates dressed with CMC and CAPS. This study was conducted in the Laboratory Animal Center at the National Defense Medical Center. Three domestic pigs were used in this study. The animals were provided a standard diet ad lib several days before the investigation and were fasted overnight before any procedure. The animals were housed in individual pens upon their arrival and allowed to acclimatize for at least 7 days.

What volume of glycerin?

Response: We used 50 mL of glycerin

Streak on what?

Response: The samples were collected on post-burn days 0, 7, 21, and 42; they were placed in sterile tubes containing 0.9 % normal saline.

What dilution? How many Petri dishes?

Response: We estimated microbial concentration from measured counts on a single agar plate and used serial dilutions. We used 10 small sterile test tubes, labeled the tubes 1 through 10, and added 4.5 mL of 0.9 % normal saline to each test tube. The dilution ratios ranged from 10^{-1} to 10^{-5} .

Employ the agar how? What is actually done?

Response: Blood agar plate (BAP) (TSA with 5% Sheep Blood) was used in routine laboratory procedures. Each sample was inoculated with 10 μ L onto BAP.

How is each step explicitly done? This is unclear.

Response: Each step has been described in detail.

8. Figures: Please define the error bars in Figure 3 and 5 (SD, SEM, etc.). Please reference Figure 5 in the manuscript.

Response: These errors have been corrected

9. Please do no abbreviate journal titles.

Response: This has been corrected

Reviewers' comments:**Reviewer #2:**

Authors duly revised the manuscript. Accept.

Reviewer #3:

Major Concerns:

Why do you use antiseptics before creating the burn wounds? Not similar to "normal" burn wounds. Three layer clinical dressing? Why this? That's not adapted to the amount of wound exudate. Why gauze on top and then paper tape?

So in sum you have the test-material, film dressing, gauze and paper-tape? Why gauze and paper-tape? Test-material and film dressing is absolutely enough at low exudate level? With the gauze and the paper-tape you reduce the MVTR of the film dressing.

Response: This model was not established to mimic clinical practice but to provide a robust platform to compare the clinical efficacy of different experimental dressings. Thus, the use of antiseptics before creating the burn wounds provides a consistent environment for all dressings.

Due to the constant movement of the animal (standing and lying down, running around, scratching against enclosure, and rubbing the wall), we needed waterproof film, gauze, and an outer layer of adhesive plaster to fix the dressing, as per our experience. Additionally, the gauze absorbed fluids from the wound, which made it easy for us to observe the healing process.

Swab on day0? After antiseptic and burn this result is worthless.

Response: The swab on day 0 served as a control to ensure that the disinfection process was executed thoroughly.

Reviewer #4:

Manuscript Summary:

The manuscript describes a method to create burn wounds in a pig model. The authors are evaluating whether a CAPS wound dressing will improve wound healing.

Major Concerns:

Line 86 and 333: "Currently, there are no swine models that examine the six burn wound simultaneously."

This statement is blatantly false. A number of groups work on burn wounds in pigs and can simultaneously monitor wound healing. Drs. Singer, Sen, Herndon/Finnerty, Christy, Shupp, Tredget, Davis/Tomic-Canic, etc...

Response: We apologize for the misleading information. The content has been rewritten.

Burn depth and lack of clinical translation: Burns of >100C for 30 seconds will be full thickness wounds (and acknowledged by the author on line 266). Clinical practice would be to excise the necrotic tissue and apply a graft (if donor sites are available) or an allograft/skin substitute. The proposed model does not mimic clinical practice and therefore makes it less desirable.

Issue is still not addressed

Response: Although the swine model of severe burn injury proposed in this study is not identical to clinical practice, it is an easy-to-learn, cost-effective, and robust method to assess the effect of clinical dressings at several time points. Besides, there is still a slight difference in burn conditions between humans and the swine model. This model was not designed to mimic clinical practice but to establish a reliable platform to facilitate the development of novel treatments for burn injuries.

Image quality: Figure 1 and 4 are too low quality to see details. The authors are attempting to establish this model in their laboratory. It would be helpful to see the burn depth generated by this method. I agree this is a full thickness burn without muscle damage but the histology provided is not sufficient.

5.4mm of granulation tissue within the wound bed is significant. The dermal thickness for ~50 kg Yorkshire pig is only 2-3mm. This is an artificial outcome generated by not performing the standard of care of debriding the burns and treating with a graft/skin substitute.

Response: The thickness of normal skin next to the black triangle on Figure 4A is 3.6 mm. When the wound starts to fill with granulation tissue, the new skin begins to form over the tissue. This structure is not scar tissue and will keep remodeling, resulting in a smooth area. The skin thickness of swine varies with foster and individual differences, we try to show the difference between normal tissues and burned wound in the figure at the same time. Regards to provide macroscopic view of large area and continuous skin which may be sacrificed the resolution of the graph under our limitation of tools.

Comparison between treatments: The authors are comparing CAPS vs. "CMC" (Aquacel); however, Figures 2-4 do not show any of the results from the Aquacel group. In the corresponding text of the results section and the figure legends, again only CAPS data is provided.

Figure 5 (bacterial activity) is the only comparison to the CMC that is reported. Obviously wounds were covered with the CMC and all other data would have been collected. Did the CAPS and CMC heal similarly?

Response: In this study, we did not intend to compare the clinical efficacy of CMC and CAPS. Thus, all the comparison between these dressings has been removed.

Bacterial quantification: Swabs only collect bacteria on the surface of the wound. Non-debrided burn wounds will get infected and the most prevalent bacterial species (e.g> Pseudomonas aeruginosa) can penetrate the eschar which will not be collected with swabs. A most common approach would be to collect biopsies and report as CFUs/g of tissue.

Issue is still not addressed

Figure 5 legend doesn't match the figure. No values below the cutoff are shown on the y axis of the figure so can't make any sense of the CFU's at day 7 or 21. The clinical definition of an infection is 1×10^5 , which the day 42 values exceeds. The new figure removed the CMC data completely.

Response: We agree that collection of biopsies is a better method to evaluate the anti-bacterial activity as it significantly changes the wound condition to eliminate other factors that may further affect the study. Additionally, collecting biopsies at different time points in different conditions would have increased the number of animals in this study, which is impractical. As mentioned above, the comparison between CAPS and CMC is confusing and diverts attention from the purpose of this study. Thus, in the new figure, we have removed the CMC data completely.

VSS scores: What is the point of performing VSS analysis on days 0, 7, 21? The necrotic eschar wasn't removed which delays the wound healing. Until the wounds are completely re-epithelialized which signifies a transition to the remodeling phase of wound healing, it is pointless to perform any type of scar assessment. Extending the study to 60, 90, or 120 days to allow remodeling to actually occur will provide more insight into scarring.

Not addressed.

Response: The scar scale reflects the progress of wound closure. Rapid wound closure implies a short inflammatory phase, suggesting that the dressing facilitated the healing process. This protocol provides a tool to compare the clinical efficacy of clinical dressings in a limited time.

Also, given how delicate any newly formed epidermis would be, how was the pliability measured without damaging this newly formed epidermis? No score was given for "normal" skin. The day 0 states it is post-burn with the figure only showing significance from 0 to 7 but the discussion states differences from 21 to 42 (line 371). It is not surprising to see the scores increase from 0 to 7 or 21. Nor is it surprising to see scores decrease by day 42 as the wounds heal. In line 334 you state "This model may also benefit from ensuring that each swine serves as its own control with one wound receiving treatment and the other vehicle control, thereby reducing animal numbers."

And then on line 372 "A lower score indicates the injured area attempts to restore to a condition that closely approximate normal skin color pigmentation, vascularity, pliability and height."

But then don't show VSS scores for this comparison or even to normal skin.

Response: In this study, we provide a comprehensive protocol to evaluate experimental dressings on a swine model of severe burn injury. CAPS-containing dressing was only used as an example. We did not intend to compare the efficacy of any clinical dressings in this study. The results of wound closure, VSS score, and antibacterial activity collected from this model can be analyzed to compare the clinical efficacy of experimental dressings within 42 days.

Minor Concerns:

Timeline Issues are not resolved: "The dressings were changed every 2 days for 10 days and then twice a week for 6 weeks." The entire experiment was only 42 days.

Change to state "....then twice a week for the 6 week study."

Reconcile the dressing changes with VSS and bacterial swabs and figure legends:

Line 194 and 200: "every 2 days for the first 10 days and then twice a week for 6 weeks."

But on line 208 and 214: "on post-burn days 0 and 3 and week 1, 2, 3, 4, 5 215 and 6"

Then line "298 Figure 2. Change of wound size in a swine model. (A) The burns were photographed immediately after the burn injury and every three days afterwards,"

What was the actual time line?

The grammar has significantly improved as far as grammar/copy editing. Some errors still persist.

Lines 86, 369 - incorrect references - I would suggest checking all of them for accuracy.

Response: All these errors have been corrected.

Wound closure/Contraction: Figure 2 shows wound contraction and wound closure

Are the authors taking into account the growth of the animals over the 42 day study? We have seen the animals increase in body weight significantly during these longer studies. We actually tattoo around the wounds to make it easier to monitor the contraction over time and also tattoo a normal non-injured area of the same size to account for any increase in body weight/surface area. Generally speaking, for a 42day study, we may see an increase in surface area of 10-20% which needs to be account for the calculations.

Response: Thank you for pointing this out. We did not consider the growth of the animals in this study. However, six wounds were created on one animal, which allow several experimental dressings to be evaluated simultaneously to further reduce the impact of animal growth on the evaluation of clinical efficacy.