

Journal of Visualized Experiments

Pore-scale imaging and characterization of hydrocarbon reservoir rock wettability at subsurface conditions using X-ray microtomography --Manuscript Draft--

| | |
|--|--|
| Article Type: | Invited Methods Article - JoVE Produced Video |
| Manuscript Number: | JoVE57915R2 |
| Full Title: | Pore-scale imaging and characterization of hydrocarbon reservoir rock wettability at subsurface conditions using X-ray microtomography |
| Keywords: | wettability; contact angle; X-ray microtomography; pore-scale; multiphase flow; subsurface conditions; segmentation. |
| Corresponding Author: | Amer Alhammadi Imperial College London London, UNITED KINGDOM |
| Corresponding Author's Institution: | Imperial College London |
| Corresponding Author E-Mail: | a.alhammadi15@imperial.ac.uk |
| First Author: | Amer Alhammadi |
| Other Authors: | Ahmed AlRatrout Branko Bijeljic Martin Blunt |
| Author Comments: | I would like to say thank you for the invitation to publish at JoVE. Publishing our method as a video would help other researchers to replicate our technique and investigate not only hydrocarbon reservoirs but also, other systems for variety of applications. |
| Additional Information: | |
| Question | Response |
| If this article needs to be "in-press" by a certain date, please indicate the date below and explain in your cover letter. | |

TITLE:

Pore-scale Imaging and Characterization of Hydrocarbon Reservoir Rock Wettability at Subsurface Conditions using X-ray Microtomography

AUTHORS & AFFILIATIONS:

Amer M. Alhammadi¹, Ahmed AlRatrout¹, Branko Bijeljic¹, Martin J. Blunt¹

¹Department of Earth Science and Engineering, Imperial College London, London, UK

Corresponding Author:

Amer M. Alhammadi (a.alhammadi15@imperial.ac.uk)

E-mail Addresses of Co-authors:

Martin J. Blunt (m.blunt@imperial.ac.uk)

Branko Bijeljic (b.bijeljic@imperial.ac.uk)

Ahmed AlRatrout (a.alratrout14@imperial.ac.uk)

KEYWORDS:

Wettability contact angle, X-ray microtomography, pore-scale, multiphase flow, subsurface conditions, segmentation.

SUMMARY:

This protocol is presented to characterize the complex wetting conditions of an opaque porous medium (hydrocarbon reservoir rock) using three-dimensional images obtained by X-ray microtomography at subsurface conditions.

ABSTRACT:

In situ wettability measurements in hydrocarbon reservoir rocks have only been possible recently. The purpose of this work is to present a protocol to characterize the complex wetting conditions of hydrocarbon reservoir rock using pore-scale three-dimensional X-ray imaging at subsurface conditions. In this work, heterogeneous carbonate reservoir rocks, extracted from a very large producing oil field, have been used to demonstrate the protocol. The rocks are saturated with brine and oil and aged over three weeks at subsurface conditions to replicate the wettability conditions that typically exist in hydrocarbon reservoirs (known as mixed-wettability). After the brine injection, high-resolution three-dimensional images (2 $\mu\text{m}/\text{voxel}$) are acquired and then processed and segmented. To calculate the distribution of the contact angle, which defines the wettability, the following steps are performed. First, fluid-fluid and fluid-rock surfaces are meshed. The surfaces are smoothed to remove voxel artefacts, and *in situ* contact angles are measured at the three-phase contact line throughout the whole image. The main advantage of this method is its ability to characterize *in situ* wettability accounting for pore-scale rock properties, such as rock surface roughness, rock chemical composition, and pore size. The *in situ* wettability is determined rapidly at hundreds of thousands of points.

The method is limited by the segmentation accuracy and X-ray image resolution. This protocol could be used to characterize the wettability of other complex rocks saturated with different fluids and at different conditions for a variety of applications. For example, it could help in determining the optimal wettability that could yield an extra oil recovery (*i.e.*, designing brine salinity accordingly to obtain higher oil recovery) and to find the most efficient wetting conditions to trap more CO₂ in subsurface formations.

INTRODUCTION:

Wettability (the contact angle between immiscible fluids at a solid surface) is one of the key properties that control fluid configurations and oil recovery in reservoir rocks. Wettability affects macroscopic flow properties including relative permeability and capillary pressure¹⁻⁶. However, measuring the *in situ* wettability of reservoir rock has remained a challenge. Reservoir rock wettability has been determined traditionally at the core-scale, indirectly using wettability indices^{7,8}, and directly *ex situ* on flat mineral surfaces^{4,9-11}. Both wettability indices and *ex situ* contact angle measurements are limited and cannot characterize the mixed-wettability (or range of contact angle) that typically exist in hydrocarbon reservoirs. Moreover, they do not account for pore-scale rock properties, such as rock mineralogy, surface roughness, pore-geometry, and spatial heterogeneity, that have a direct impact on the fluid arrangement at the pore scale.

Recent advances in non-invasive three-dimensional imaging using X-ray microtomography¹², in combination with the use of an elevated temperature and a pressure apparatus¹³, have allowed the study of multiphase flow in permeable media¹⁴⁻²³. This technology has facilitated the development of manual *in situ* contact angle measurements at the pore scale in an opaque porous medium (quarry limestone rock) at subsurface conditions²⁴. A mean contact angle value of $45^\circ \pm 6^\circ$ between CO₂ and potassium iodide (KI) brine was obtained by hand from raw images at 300 points. However, the manual method is time-consuming (*i.e.*, 100 contact angle points could take up to several days to be measured) and the values obtained could have a subjective bias.

The measurement of an *in situ* contact angle has been automated by different methods applied to segmented three-dimensional X-ray images²⁵⁻²⁷. Scanziani *et al.*²⁵ improved the manual method by placing a circle at the fluid-fluid interface that intersects with a line placed at the fluid-rock interface on slices orthogonal to the three-phase contact line. This method has been applied to small sub-volumes extracted from three-dimensional images of quarry limestone rock saturated with decane and KI brine. Klise *et al.*²⁶ developed a method to quantify the *in situ* contact angle automatically by fitting planes to the fluid-fluid interfaces and fluid-rock interfaces. The contact angle was determined between these planes. This method was applied to three-dimensional images of beads saturated with kerosene and brine. Both automated methods were applied to voxelized images that might introduce error, and in both methods, lines or planes were fitted at the fluid-fluid and fluid-rock interfaces and the contact angle was measured between them. Applying these two approaches on voxelized segmented images of complex rock geometry could lead to errors while also being time-consuming.

In this protocol, we apply the automated *in situ* contact angle method developed by AlRatrout *et al.*²⁷ that removes voxelization artefacts by applying Gaussian smoothing to the fluid-fluid and fluid-solid interfaces. Then, a uniform curvature smoothing is applied only to the fluid-fluid interface, which is consistent with the capillary equilibrium. Hundreds of thousands of contact angle points are measured rapidly in combination with their *x*-, *y*-, and *z*-coordinates. The approach of AlRatrout *et al.*²⁷ has been applied to water-wet and mixed-wet quarry limestone samples saturated with decane and KI brine.

In this protocol, we employ the latest advances in X-ray microtomography combined with a high-pressure and high-temperature apparatus to conduct an *in situ* wettability characterization of complex carbonate reservoir rocks, extracted from a very large producing oil field located in the Middle East. The rocks were saturated with crude oil at subsurface conditions to reproduce the reservoir conditions upon discovery. It has been hypothesized that parts of the reservoir rock surfaces (with direct contact with crude oil) become oil-wet, while others (filled with initial formation brine) remain water-wet²⁸⁻³⁰. However, the reservoir rock wettability is even more complex due to several factors controlling the degree of wettability alteration, including the surface roughness, the rock chemical heterogeneity, the crude oil composition, the brine composition and saturation, and the temperature and pressure. A recent study³¹ has shown that there is typically a range of contact angle in reservoir rocks with values both above and below 90°, measured using the automated method developed by AlRatrout *et al.*²⁷.

The main objective of this work is to provide a thorough protocol to characterize the *in situ* wettability of reservoir rocks (mixed-wettability) at subsurface conditions. An accurate measurement of an *in situ* contact angle requires a good segmentation quality. Hence, a machine learning-based segmentation method known as Trainable WEKA Segmentation (TWS)³² was used to capture not only the amount of remaining oil but also the shape of the remaining oil ganglia, thus facilitating more accurate contact angle measurements. Recently, TWS has been used in a variety of applications, such as the segmentation of packed particle beds, liquids within textile fibers, and pores of tight reservoirs³³⁻⁴⁰. To image the remaining oil accurately at a high resolution and at subsurface conditions, a novel experimental apparatus was used (**Figures 1 and 2**). Mini-samples of rock were loaded into the center of a Hassler-type core holder⁴¹ made of carbon fiber. The use of a long and small diameter carbon fiber sleeve allows an X-ray source to be brought very close to the sample, hence increasing the X-ray flux and reducing the required exposure time, resulting in a better image quality in a shorter period of time. The carbon fiber sleeve is strong enough to handle high pressure and temperature conditions while remaining sufficiently transparent to X-rays²¹.

In this study, we outline the steps followed to characterize the *in situ* wettability of reservoir rocks at subsurface conditions. This includes drilling representative mini-samples, the core holder assembly, the flow apparatus and flow procedure, the imaging protocol, the image processing and segmentation, and finally running the automated contact angle code to generate contact angle distributions.

PROTOCOL:

1. Drilling Representative Mini-samples of Rock

1.1. To acquire high-resolution scans, drill mini-samples (*i.e.*, with a diameter of 5 mm and a length of 15 - 30 mm). Firstly, label the core plug with 2 reference marks orthogonal to each other as shown in **Figure 3**. Then, acquire a full field-of-view (FFOV) scan of the core plug with a voxel size of 40 μm /voxel to visualize the internal distribution of pores and grains.

1.2. Identify and label good drilling locations carefully: these avoid large vugs or mineral grains. Use a data visualization software (**Table of Materials**) to visualize the three-dimensional image of the rock as shown in **Figure 3**. Open a two-dimensional slice of the rock dry image and identify good drilling locations while moving the slice from the top to the base of the rock.

1.3. Use a stainless-steel drilling bit to drill the mini-samples while using running water as a cooling fluid. Extract the fragile mini-samples carefully, using a thin chisel (*i.e.*, a small flat head screwdriver) to remove the mini-samples from their base. Make both ends of the minisamples flat to facilitate good contact with the flow end pieces.

1.4. Measure the dimensions of the mini-samples accurately using a caliper. Use the measured dimensions to calculate the bulk volume. Multiply the measured bulk volume by the measured helium porosity to find the pore volume.

1.5. To measure the helium porosity of the mini-samples, use a gas pycnometer. First, use the gas pycnometer to measure the grain density (kg/m^3) of the dry rock sample. Divide the mass (kg) of the dry sample by the measured grain density (kg/m^3) to obtain the grain volume (m^3). Subtract the grain volume from the bulk volume calculated in step 1.4 and, finally, divide the difference by the bulk volume to obtain the total porosity (fraction).

1.6. Scan the drilled mini-samples at a higher resolution (*i.e.*, 5.5 μm /voxel) using an X-ray microtomography scanner to assess the internal pore structure. Refer to step 4 for more details on how this is done.

Note: Drilling mini-samples involves moving mechanical parts. So, wear complete personal protective equipment (PPE) and take appropriate precautions while drilling.

2. Core Holder Assembly

2.1. Load the sample into a Hassler-type core holder⁴¹ (**Figure 1**) by following the steps below.

2.2. Dismantle the core holder assembly by removing the sealing screw and the M4 bolts of the flowhead. Remove the sealing ring from its groove in the flowhead and clean the sealing surfaces using a clean cloth with a cleaning liquid such as acetone. Place the core holder assembly components on a clear bench in good order (see **Figure 1A** for the sealing screw, **Figure 1B** for the flowhead, **Figure 1C** for the 1/16 PEEK tubing, **Figure 1D** for the stainless steel end fitting,

Figure 1E for the rock sample, **Figure 1F** for the rubber tubing, **Figure 1G** for the thermocouple, **Figure 1I** for the carbon fiber sleeve, and **Figure 1J** for the flexible heating jacket).

2.3. Wrap the flexible heating jacket around the carbon fiber sleeve.

2.4. Insert a thermocouple to the annulus via the base of the core holder.

2.5. Use a proportional-integral-derivative (PID) controller (**Figure 2**) that is custom built to control the temperature within $\pm 1\text{ }^{\circ}\text{C}$ ²¹.

Note: Maintaining a stable temperature within $\pm 1\text{ }^{\circ}\text{C}$ is important to avoid changing the interfacial tension of oil and brine that could affect the contact angle measurement^{42,43}.

2.6. Thread polyether ether ketone (PEEK) tubing through the top and base of the core holder. Then, connect the PEEK tubing to the custom-made end pieces.

2.7. Cut a rubber tubing to a length approximately equal to the rock sample length plus the end pieces. Slide the sample gently into a rubber tubing and connect it to the end pieces. Ensure that the rubber tubing gives a tight fit over the end pieces to avoid having a leak of the confining fluid into the sample.

2.8. Place the thermocouple tip next to the sample to measure the temperature of the fluids within the pores.

2.9. Carefully assemble both ends of the core holder. Ensure that the sample is positioned at the center of the core holder to be in the scanning field of view.

3. Flow Apparatus and Flow Procedure

3.1. Prepare the flow apparatus (**Figure 2**) that is made up of 4 high-pressure syringe pumps (see **Figure 2A** for the oil pump, **Figure 2B** for the receiving pump, **Figure 2C** for the brine pump, and **Figure 2D** for the confining pump), a core holder assembly (see **Figure 2E**), a PID controller (see **Figure 2F**), and a CO₂ cylinder (see **Figure 2G**), to perform waterflooding at the subsurface conditions.

3.2. Use a clamp to hold the core holder assembly and place it on the rotation stage inside the X-ray microtomography scanner.

3.3. Use the flexible PEEK tubing to connect the fluids from the pumps to the sample and the confining annulus.

3.4. Fill the isolated annulus gap with deionized water and vent the air out. Apply 1.5 MPa of confining pressure to squeeze the rubber tubing to prevent a flow along the sides of the core.

219 3.5. Connect the CO₂ cylinder to the base three-way valve and flush CO₂ at a low rate through the
220 sample for 1 h to remove the air from the pore space.

221
222 3.6. Connect the brine pump (filled with 7 weight percent KI brine) to the base of the core holder
223 via the base three-way valve and flush the air out of the brine injection line into the other side of
224 the three-way valve before injecting the brine into the pore space. Inject the brine at 0.3 mL/min
225 for 1 h (about 200 pore volumes) to fully saturate the sample with brine. Then, close the top and
226 base three-way valves.

227
228 3.7. Pressure test the oil pump against the receiving pump to determine the equivalent pressure
229 in both pumps before conducting any drainage (oil injection). First, connect both pumps through
230 a two-way valve and keep the valve closed. Increase the pressure to 10 MPa in both pumps and
231 stop the oil pump and open the two-way valve while the receiving pump is still running. Record
232 the pressure reading of the oil pump (*i.e.*, 10.01 MPa), which is equivalent to 10 MPa in the
233 receiving pump.

234
235 3.8. Establish the subsurface conditions by raising the pore pressure to 10 MPa and the
236 temperature to 60 or 80 °C. Connect the flexible heating jacket and the thermocouple to the PID
237 controller and apply the target value (60 or 80 °C). Connect the receiving pump (filled with KI
238 brine) to the base three-way valve and increase the pore pressure in 1 MPa steps along with the
239 confining pressure until achieving a pore pressure of 10 MPa and a confining pressure of 11.5
240 MPa. At this stage, the conditions replicate the hydrocarbon reservoir before the oil migration
241 from the source rock.

242
243 3.9. Connect the oil pump to the top of the core holder via the top three-way valve and flush the
244 oil through the other side of the valve to remove any air in the line. Increase the pressure to the
245 tested equivalent pressure (*i.e.*, 10.01 MPa) while keeping the valve closed. Then, stop the oil
246 pump and open the top three-way valve and start the drainage by injecting 20 pore volumes of
247 oil using a constant flow rate of 0.015 mL/min (this rate is in the capillary-dominated flow regime)
248 at subsurface conditions of 10 MPa and 60 or 80 °C.

249
250 3.10. Leave the system to reach equilibrium for at least 2 h after the oil injection and then acquire
251 a high-resolution scan (*i.e.*, 2 µm/voxel) using an X-ray microtomography scanner. Please refer to
252 step 4 for more details on how this is done.

253
254 3.11. Then, move the core holder assembly out of the X-ray microtomography scanner very
255 carefully with all safety precautions in place, place the core holder assembly inside the oven, and
256 reconnect the flow lines to perform the aging over 3 weeks to alter the rock wettability.

257
258 3.11.1. To investigate the oil recovery as a function of wettability, use different aging protocols
259 to generate different wettability conditions. Control the degree of wettability alteration (water-
260 wet to oil-wet) by using different temperatures and oil compositions^{30,31,44}.

261

3.11.2. For example, to generate mixed-wet rock with more oil-wet surfaces, apply a relatively high temperature (80 °C) and inject crude oil (with a density of $830 \pm 5 \text{ kg/m}^3$ at 21 °C) continuously or frequently (dynamic aging) to provide a continuous supply of the polar crude oil components that can speed up the wettability alteration⁴⁵. To generate weakly water-wet rock, use a lower temperature (60 °C) and no crude oil injection during the aging (static aging). To generate a mixed-wet reservoir rock with a mean contact angle close to 90°, perform dynamic aging with relatively heavier crude oil (with a density of $870 \pm 5 \text{ kg/m}^3$ at 21 °C mixed with heptane to induce asphaltene precipitation⁴⁶⁻⁴⁸) but at 60 °C³¹.

3.12. Once the aging process is completed, move the core holder assembly back into the X-ray microtomography scanner.

3.13. Conduct waterflooding at subsurface conditions. Pressure test the brine pump against the receiving pump before conducting waterflooding by following the same procedure as mentioned in step 3.7.

3.13.1. First, connect the brine line to the base three-way valve, and connect the receiving pump to the top of the core holder via the top three-way valve.

3.13.2. Perform waterflooding of 20 pore volumes at subsurface conditions using a constant low flow rate (*i.e.*, 0.015 mL/min), ensuring a low capillary number of approximately 10^{-7} .

3.13.3. Finally, leave the system to reach equilibrium for at least 2 h after waterflooding and acquire a high-resolution scan again at the same location.

Note: Conducting such high-pressure and -temperature experiments requires a detailed risk assessment and rigorous testing of the whole flow apparatus outside the X-ray microtomography scanner before conducting any *in situ* experiments with all safety precautions in place.

4. Imaging Protocol

4.1. Use an X-ray microtomography scanner to acquire the three-dimensional X-ray scans at the micron scale of the reservoir rock saturated with oil and brine at subsurface conditions.

4.2. Find the most effective phase contrast between oil, brine, and rock by doping the brine phase, using KI to be the intermediate phase in terms of X-ray adsorption. To achieve a good contrast between oil (lowest sorption, black), brine (intermediate, dark gray) and rock (most sorbing phase, light gray), as shown in **Figure 4**, prepare mini-containers with a different weight percent of KI brine, and perform the scanning. The histogram of the gray-scale value should show 3 separate phases (**Figure 4b**).

4.2.1. To prepare a contrast sample, half-fill a small cylindrical glass container (1 mL) with both oil and KI brine phases. Then, fill the other half of the container with crushed pieces of rock and mix them rigorously. Use a clean cylindrical metal to compact the mixture, avoiding any grain

movement while scanning. Wear complete PPE and perform the mixing of the crude oil and the KI brine in a fume cupboard.

4.3. Use a relatively long carbon fiber core holder with a small diameter to allow the X-ray source to be brought as close as possible to the sample. Do not use a very long core holder, which could increase the sample movement due to rotation during the scan acquisition.

4.4. Use the 4X objective to acquire X-ray images at a high resolution (*i.e.*, 2 $\mu\text{m}/\text{voxel}$) sufficient to measure the effective *in situ* contact angle. Use flexible PEEK tubing as injection lines to allow a smooth 360° rotation of the core holder assembly during the scan acquisition.

4.5. For thin or low-density samples, use an X-ray source voltage and power of 80 kV and 7 W, respectively. For thick or high-density samples, use an X-ray source voltage and power of 140 kV and 10 W, respectively.

Note: In this case, an X-ray source voltage of 80 kV and a power of 7 W were used.

4.6. To acquire the 2 $\mu\text{m}/\text{voxel}$ scans, use the 4X objective with an exposure time (*i.e.*, 1.5 s or more) sufficient to obtain an X-ray radiation intensity of greater than 5,000 counts/s.

4.7. Use a high number of projections (at least 3,200 projections) depending on time constraints.

Note: X-ray microtomography involves an ionizing radiation risk. Hence, an appropriate risk assessment is required to ensure a safe working environment.

5. Image Processing and Segmentation

5.1. First, reconstruct the X-ray tomography dataset using the software (**Table of Materials**) to generate three-dimensional X-ray images (.txm). Click **Browse** to import the input file (.txrm). Then, select the **Manual Center Shift** and search for the most appropriate center shift correction value to account for any sample movement during the scan acquisition.

5.1.1. Search for the appropriate center shift value. Start with a large range (-10 to 10) and a large step size (1.0). Then narrow down the search range and the step size (0.1), until the optimal value is obtained.

5.1.2. Reconstruct the scan using the optimal center shift value. Account for any beam hardening effects before the image reconstruction.

5.2. Use an appropriate segmentation method that is suitable for the specific application. To characterize the *in situ* wettability accurately, use a machine learning-based image segmentation method such TWS³² to turn gray-scale images to three-phase segmented images (oil, brine, and rock). Open the image in TWS—which is a Fiji (ImageJ)³² plugin—to segment the images without applying any noise filtering to avoid voxel averaging especially close to the

three-phase contact line at which the contact angle is measured.

5.3. Select the random-forest algorithm and training features, such as Mean, Variance, and Edges, to apply a featured-based segmentation.

5.3.1. Click **Settings** to find the 12 **Training Features** in the Segmentation settings (Gaussian blur, Derivatives, Structure, Difference of Gaussian, Maximum, Median, Variance, Mean, Minimum, Edges, Laplacian, and Hessian) from which to select the best training features. The selection is based on segmentation trials using different training features or a combination of them. For example, the combination of the Edges, Mean, and Variance training features was found to give the best segmentation results for this carbonate reservoir rock system.

5.3.2. In the **Classifier options**, choose **FastRandomForest**.

5.3.3. To add a new phase (*i.e.*, oil), click **Create new class**.

5.4. Label the pixels from all 3 phases (oil, brine, and rock) manually as an input to train a classifier model. Using the freehand drawing tool in ImageJ software (Fiji), highlight the 3 phases. Try to follow the shape of the phase while labeling the pixels. Once completed, click **Add to class**. Then, perform the same for the other 2 phases.

5.5. Apply the trained classifier to segment the whole image into 3 phases by clicking the **Train classifier** button.

5.6. Repeat steps 5.4 and 5.5 until good segmentation results are achieved. Click **Create result** to visualize the segmented image. Finally, click **Save as TIFF** to save the image. Look at **Figure 5** to see an example of a good segmentation image.

5.7. Make sure that the segmented images are in an 8-bit unsigned format and the 3 phases are assigned as 0, 1, and 2 for brine, rock, and oil, respectively, before measuring the *in situ* contact angle using the automated method.

5.7.1. In the data visualization and data analysis software (**Table of Materials**), use the module **Convert Image Type** to convert the image to the **16-bit label** type. Use the **Arithmetic** module to perform the computation on the segmented image. In the **Expression**, specify the mathematical expression to change the number of the assigned phase [*i.e.*, if rock is phase 2, then a mathematical expression of **1*(a==2)** means to assign rock as phase 1 instead of phase 2].

5.7.2. Convert the three-dimensional segmented X-ray images from (.am) to binary raw un-signed data of 8-bit format (*.raw). Use the **Convert Image Type** module and, in the **Output Type**, select the option **8-bit unsigned** and click **Apply**. Export data as **Raw Data 3D** (*.raw).

6. Measuring the Contact Angle Distribution

6.1. Measure the *in situ* contact angle distribution from the segmented images using the automated contact angle method of AlRatrout *et al.*²⁷ (example results are shown in **Figure 6**). To perform these measurements, follow the steps below, as illustrated in **Figure 7**.

6.2. Install the OpenFOAM library to perform the automatic contact angle and fluid-fluid interface curvature measurements.

6.3. Save the image file (*.raw) in a folder (case) which contains a header file and a folder called **System**.

6.3.1. Open the header file and declare the number of voxels in three dimensions (x, y, and z), the voxel dimensions (x, y, and z) in microns, and the offset distance (0 0 0 for no shifting). Rename the header file as the image file.

6.3.2. Use the folder called **System** to comply with the basic directory structure for an OpenFOAM case.

6.4. Make sure that there are 2 files (a *controlDict* file and a *meshingDict* file) in the system folder that contain the setting parameters. The *controlDict* file is where the run control parameters are set, including the start/end time. The *meshingDict* file is where the input and output files in each step of the algorithm are specified. Replace the file name with the new segmented image name in the *meshingDict* file for the steps explained below (**Figure 7**).

6.4.1 Extract the surface (multi-zone mesh *M*) (look at **Figure 7b**).

6.4.2. Add a **layer** near the three-phase contact line.

6.4.3. Smooth the surface (look at **Figure 7c**).

6.4.4. Set the required smoothing parameters that include the Gaussian radius kernel (R_{Gauss}), Gaussian iterations, the Gaussian relaxation factor (β), the curvature radius kernel (R_K), the curvature relaxation factor (γ), and curvature iterations. For more details, see AlRatrout *et al.*²⁷.

6.5. Open a terminal from the same folder directory and type the following command, **voxelToSurfaceML && surfaceAddLayerToCL && surfaceSmoothVP**, to run the code and perform the contact angle and oil/brine curvature measurements.

6.5.1. Look at **Figure 7** to follow the computation steps of the contact angle on each vertex belonging to the contact line ($i \in V_{CL}$) through the brine phase by:

$$\theta_i = \pi - \cos^{-1}(n_i|_{z_2} \cdot n_i|_{z_3}), i \in V_{CL}$$

Note: The normal vectors are computed on the vertices comprising the contact line $i \in V_{CL}$. Each vertex is represented with 2 vectors normal to the oil/brine interface (z_2) and the brine/rock

interface (z_3), as shown in **Figure 7.**

6.6. Make sure that the smooth surface file *_Layered_Smooth.vtk is generated. This file contains the measurements of the contact angle and the oil/brine interface curvature, which can be visualized using a data visualization software (**Table of Materials**), as demonstrated in **Figure 7.**

7. Quality Control

7.1. To be confident with the obtained automated contact angle, conduct a quality check by comparing the automated contact angle values measured from the segmented images using the AlRatrou *et al.*²⁷ method to the values measured manually from raw X-ray images using the approach of Andrew *et al.*²⁴.

7.2. To conduct the quality check, crop and segment a sub-volume from each mini-sample (**Figure 8**). Use the data visualization and data analysis software to crop a small sub-volume containing 1 or more oil ganglia that can be used to perform the manual contact angle measurement.

7.3. Run the automated code to measure the *in situ* contact angle distribution of these sub-volumes. Please refer to step 6 for how this is done.

7.4. Load the *_Layered_Smooth.vtk file in the data visualization software to visualize the surfaces and select the **Region** option to view the oil and brine phases, see **Figure 9.**

7.4.1. Click on **Probe Location** and add the spatial coordinates (x , y , and z) of a randomly selected contact angle point measured using the automated contact angle method (*i.e.*, 60°). Locate its spatial location at the three-phase contact line, such as that at **Figure 9a** showing the location of the selected point (60°) as a yellow dot.

7.5. Then, go to the data visualization and data analysis software to conduct the manual contact angle measurement. Load the segmented sub-volume image.

7.6. Filter the noise from the raw X-ray image using a noise reduction filter to be used for the manual contact angle measurement only.

Note: A non-local means filter^{49,50} was applied in this case.

7.7. Use the segmented image to render the rock transparent and only visualize the oil and brine phases to help in identifying the location of the selected point, as shown in **Figure 9b.**

7.7.1. Use the **Arithmetic** module to perform the calculation on the segmented image. In the **Expression**, specify the mathematical expression to isolate the oil and brine phases separately [*i.e.*, the mathematical expression $a==1$ means to isolate phase 1 (brine in this case)].

7.7.2. Then, use the module **Generate Surface** to generate the oil and brine surfaces, and use the module **Surface View** to visualize the oil and brine surfaces in the desired colors.

7.8. Once the location of the point is identified, bring the filtered-raw X-ray image slice to the same location, as shown in **Figure 9c**.

7.8.1. Open the module **Slice** and change the **Translate** value.

7.9. Extract the three-phase contact line using the **Label Interfaces** module on the segmented image.

7.9.1. Type **3** in the **Number of Phases** box. Select **No** in the **Only Black Voxels**, apply and open the **Isosurface** module on the labeled interfaces, and change the **Colormap** and **Threshold** values as desired for the effective visualization.

7.10. In the **Slice** module, turn on the **Plane Definition**, and in the options, select **Show dragger**. Hold the dragger and move it to the desired location at which that manual contact angle will be measured.

7.10.1. In the **Display Options**, select the rotate option. Hold the rotate handle to rotate the slice. Rotate the slice to be perpendicular to the three-phase contact line and measure the contact angle manually using the angle measurement tool as shown in **Figure 9d**.

Note: Here, the contact angle was found to be 61°.

7.11. Plot the manually measured contact angle against the automated contact angle value measured at the same location to confirm the accuracy of the automated contact angle measurements. Look at **Figure 10** to observe the comparison measurements of the contact angle between the automated method and the manual method of the sub-volume from mini-sample 1.

REPRESENTATIVE RESULTS

For the 3 samples studied, the measured *in situ* distribution of the contact angle is shown in **Figure 6**, with the oil recovery shown in **Figure 11**. **Figure 12** shows images of the remaining oil distributions for different wetting conditions at the end of the waterflooding. The mixed-wettability (or the range of the contact angle) was measured using the automated contact angle method²⁷. The measured contact angle distributions are considered to be representative results if there is a good match between the contact angle points measured using the automated method from segmented images compared to the manually measured contact angles from X-ray images. **Figure 10** shows an example of a good match of a comparison measurement between the automated contact angles and the manual contact angles at the same locations for a sub-volume from mini-sample 1 (weakly water-wet).

Three aging protocols were performed to treat the 3 samples and generate 3 wetting conditions (**Figure 6**). Aging the sample at a lower temperature (60 °C) and statically (no oil injection during the aging period) could result in a weakly water-wet condition, such as the distribution shown for sample 1 in blue (**Figure 6**). On the other hand, aging the sample at a higher temperature (80 °C) and with partially dynamic aging (an oil injection during the aging period) could result in mixed-wet conditions with more oil-wet surfaces, like that of sample 2 shown in gray (**Figure 6**).

The oil recovery was found to be a function of wettability, similar to earlier core-scale studies⁵¹. However, at that time, the oil recovery was shown as a function of the core-scale wettability index. Similar oil recovery behavior has been observed at the pore-scale and was plotted as a function of the mean value of the *in situ* contact angle distribution (**Figure 11**). The low oil recovery of sample 1 (weakly water-wet) was due to the trapping of oil in larger pore spaces. The brine percolated through the small pore corners, leaving the oil trapped as disconnected ganglia in the center of the pore spaces with quasi-spherical shapes (**Figure 12a**), similar to what has been observed in previous investigations in water-wet media⁵²⁻⁵⁵. In contrast, sample 2 (a mixed-wet case with more oil-wet surfaces) had oil layers that were largely connected (**Figure 12b**). These thin layers only allowed a slow oil production, leaving a high remaining oil saturation at the end of the waterflooding. The highest oil recovery was achieved in sample 3 (mixed-wet with a mean contact angle close to 90°) which was neither water-wet (so there is less trapping in large pores) nor strongly oil-wet (less oil is retained in small pore spaces)¹. In the mixed-wet cases of sample 2 and 3, oil was left in connected, thin sheet-like structures (**Figures 12b and 12c**) similar to other studies in oil-wet porous media^{52,53,56}.

FIGURE LEGENDS:

Figure 1: A schematic illustration diagram of the core holder assembly. Components of the core holder are labeled, and the internal cross-section view of the core holder is shown.

Figure 2: The high-pressure, high-temperature flow apparatus. The flow apparatus is comprised of four high-pressure syringe pumps: (A) an oil pump, (B) a receiving pump, (C) a brine pump, and (D) a confining pump. Panel (E) shows the core holder assembly, (F) shows the PID controller, and (G) shows the CO₂ cylinder.

Figure 3: Images demonstrating the drilling of representative mini-samples. (a) This cartoon illustrates the orthogonal marks with a good drilling location. *x* and *y* are the distances from the center of the core plug used to find where to drill. (b) This panel shows a dry X-ray three-dimensional image of the core plug (rendered semi-transparent) with a mini-sample (in dark gray). (c) This is a horizontal cross-sectional view of the core plug (scanned at 40 μm/voxel). The rock grains and pores are shown in gray and black, respectively. (d) This panel shows a horizontal scan of the mini-sample (scanned at 5.5 μm/voxel). (e) This is a vertical cross-sectional view of the core plug showing the complex and heterogeneous pore sizes and geometries along with the location of the mini-sample indicated by the black box. (f) This is a magnified vertical cross-sectional view of the highlighted mini-sample shown in panel e that was scanned at 5.5 μm/voxel.

Figure 4: A phase contrast scan. (a) This panel shows a contrast scan of crushed rock (light gray) mixed with brine (dark gray) and oil (black) phases. This was used to determine the appropriate doping of the brine to ensure a good phase contrast. (b) This is a histogram of the gray-scale value of the three phases.

Figure 5: A horizontal cross-sectional view of raw and segmented X-ray images of three mini-samples. Panels (a), (b), and (c) show xy cross-sectional views of mini-samples 1, 2, and 3, respectively. The top row shows the raw gray-scale X-ray images (oil, brine, and rock, are in black, dark gray, and light gray, respectively). The lower images show the segmented images of the same slice using Trainable WEKA Segmentation (oil, brine, and rock, are in black, gray, and white, respectively).

Figure 6: Distributions of the contact angle measurement of the three mini-samples. Sample 1 has a mean contact angle of $77^\circ \pm 21^\circ$ with 462,000 values shown in blue. Sample 2 has a mean contact angle of $104^\circ \pm 26^\circ$ with 1.41 million values shown in gray. Sample 3 has a mean contact angle of $94^\circ \pm 24^\circ$ with 769,000 values shown in red.

Figure 7: The workflow for an automated contact angle measurement. (a) This is a three-dimensional segmented image showing brine in blue and oil in red, while rock is rendered transparent. (b) This panel shows extracted surfaces of the whole image. The oil/brine surfaces are shown in green, while the oil/rock surfaces are shown in red. (c) This panel shows the smoothed surfaces of the whole image. (d) This panel shows the three-phase contact line of the whole image. (e) This is an example of the smoothed surfaces of an oil ganglion highlighted by the black square. (f) This panel shows the three-phase contact line of the highlighted oil ganglion. (g) This is an example of a single contact angle measuring at point i (highlighted in panel f). The oil/brine, oil/rock, and brine/rock surfaces are shown in green, red, and blue, respectively.

Figure 8: Three sub-volumes extracted from the three mini-samples. (a) This panel shows the sub-volume extracted from mini-sample 1 (weakly water-wet). (b) This panel shows the sub-volume extracted from mini-sample 3 (mixed-wet). (c) This panel shows the sub-volume extracted from mini-sample 3 (mixed-wet).

Figure 9: A one-to-one contact angle measurement workflow. (a) This is a visualization of a randomly selected contact angle point (60°) measured using the automated code (the image is obtained from the data visualization software used). (b) This panel shows how to identify the location of the same point using the data visualization and analysis software. (c) This panel shows how to conduct a manual contact angle measurement at the same location. (d) This is an example of the manually measured contact angle point at the same location (61°).

Figure 10: Automated contact angle measurements compared to the manual contact angle measurements at the same locations of the sub-volume from mini-sample 1. The values were measured following the procedure described in Figure 9.

Figure 11: Oil recovery as a function of wettability. The oil recoveries of sample 1, 2, and 3 are 67.1%, 58.6%, and 84.0%, respectively.

Figure 12: The remaining oil morphology for different wetting conditions. (a) In sample 1 (weakly water-wet), the remaining oil was trapped at the center of the pores as disconnected ganglia with quasi-spherical shapes. Panels (b) and (c) show how in samples 2 and 3 (mixed-wet), the remaining oil was left in connected, thin sheet-like structures in small pores and crevices. The different colors represent disconnected oil ganglia.

DISCUSSION

The most critical steps for an *in situ* wettability characterization at high pressure and temperature to be successful are as follows. 1) Generate a good image segmentation that is essential to obtain accurate contact angle measurements. 2) Avoid including large impermeable grains in the mini-samples that could seal off the flow, and large vugs resulting in a very fragile sample with non-representative porosity. 3) A well-controlled flow experiment with no leaks is important because mini-samples are very sensitive to the amount of injected fluid (*i.e.*, one pore volume is about 0.1 mL). 4) Avoid the presence of air (as a fourth phase) in the pore space. 5) Maintain a temperature control of the sample during the whole flow experiment. 6) Avoid any interface relaxation during the scan acquisition by waiting for the system to reach equilibrium. 7) Use an appropriate center shift correction, which is necessary for the effective X-ray image reconstruction.

The automated contact angle method is limited by the accuracy of the image segmentation because it is applied to segmented images only. Image segmentation depends largely on imaging quality that depends on the imaging protocol and the performance of the microtomography scanner. Furthermore, it is sensitive to the image reconstruction and the noise reduction filters, as well as the segmentation method such as the TWS³² or the seeded watershed method⁵⁷. In this work, the TWS method provided more accurate contact angle measurements on raw X-ray images compared to those by a watershed method applied to filtered X-ray images (using noise reduction filters). The use of noise reduction filters makes the interface appear to be less oil-wet at some parts of the rock, due to the voxel averaging especially close to the three-phase contact line³¹. TWS can capture not only the amount of remaining oil saturation but also the shape of the remaining oil ganglia. This is especially the case for the remaining oil in the mixed-wet cases, in which oil is retained in the pore space as thin sheet-like structures, making it a challenge to be segmented based on gray-scale threshold values only.

This *in situ* wettability determination provides a thorough description of the wetting conditions of reservoir rocks compared to other conventional wettability measurement methods. It takes into account all important pore-scale rock parameters, such as rock surface roughness, rock chemical compositions, and pore size and geometry, that are not possible by wettability indices^{7,8} and *ex situ* contact angle methods^{4,9-11}. The use of an automated *in situ* contact angle measurement at the micron scale is robust and removes any subjectivity associated with the manual method²⁴. Moreover, it is more effective in removing voxelization artefacts compared to other automated methods^{25,26}. The *in situ* contact angle distribution measured using the automated method was relatively rapid. For example, the runtime for measuring the contact

angle on any of the three sample images that contain 595 million voxels is approximately 2 h, using a single 2.2 GHz CPU processor.

In the future, this protocol can be used to characterize other reservoir rock systems saturated with formation brine and crude oil. The same method is not limited to the petroleum industry only and can be modified and adapted to characterize the wettability from any segmented three-dimensional images with two immiscible fluids in porous media with a variety of wettability conditions.

ACKNOWLEDGMENTS:

We gratefully thank Abu Dhabi National Oil Company (ADNOC) and ADNOC Onshore (previously known as Abu Dhabi Company for Onshore Petroleum Operations Ltd) for funding this work.

DISCLOSURES:

The authors have nothing to disclose.

REFERENCES:

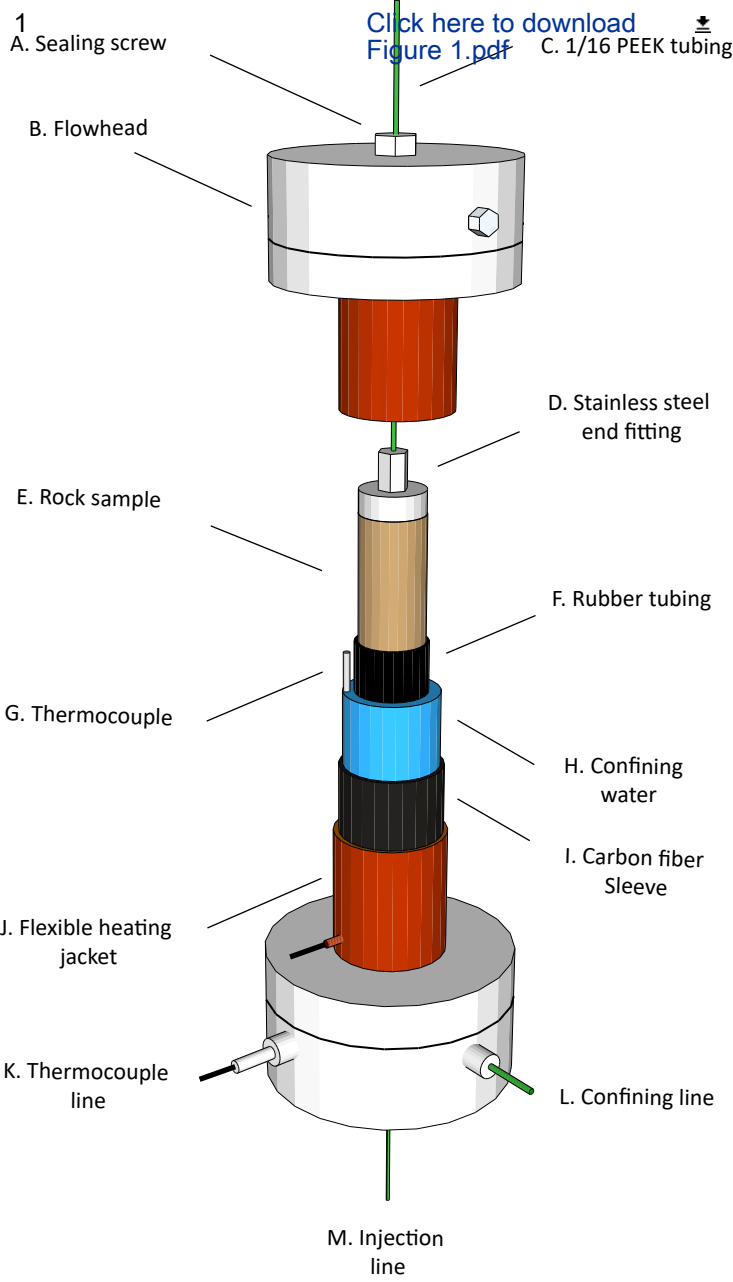
1. Blunt, M.J. *Multiphase flow in permeable media: A pore-scale perspective*. Cambridge University Press (2017).
2. Anderson, W.G. Wettability literature survey-part 2: Wettability measurement. *Journal of Petroleum Technology*. **38** (11), 1246-1262 (1986).
3. Cuiec, L.E. Evaluation of reservoir wettability and its effect on oil recovery. In *Interfacial Phenomena in Petroleum Recovery*. edited by Morrow, Norman R., 319-375, CRC Press (1990).
4. Morrow, N.R. Wettability and its effect on oil recovery. *Journal of Petroleum Technology*. **42** (12), 1476-1484 (1990).
5. Anderson, W.G. Wettability literature survey - part 5: The effects of wettability on relative permeability. *Journal of Petroleum Technology*. **39** (11), 1453-1468 (1987).
6. Anderson, W.G. Wettability literature survey - part 6: The effects of wettability on waterflooding. *Journal of Petroleum Technology*. **39** (12), 1605-1622 (1987).
7. Amott, E. Observations relating to the wettability of porous rock. *Petroleum Transactions, AIME*. **216**, 156-162 (1959).
8. Donaldson, E.C., Thomas, R.D., Lorenz, P.B. Wettability determination and its effect on recovery efficiency. *Society of Petroleum Engineers Journal*. **9** (1), 13-20 (1969).
9. Wagner, O.R., Leach, R.O. Improving oil displacement efficiency by wettability adjustment. *Transactions of the AIME*. **216** (1), 65-72 (1959).

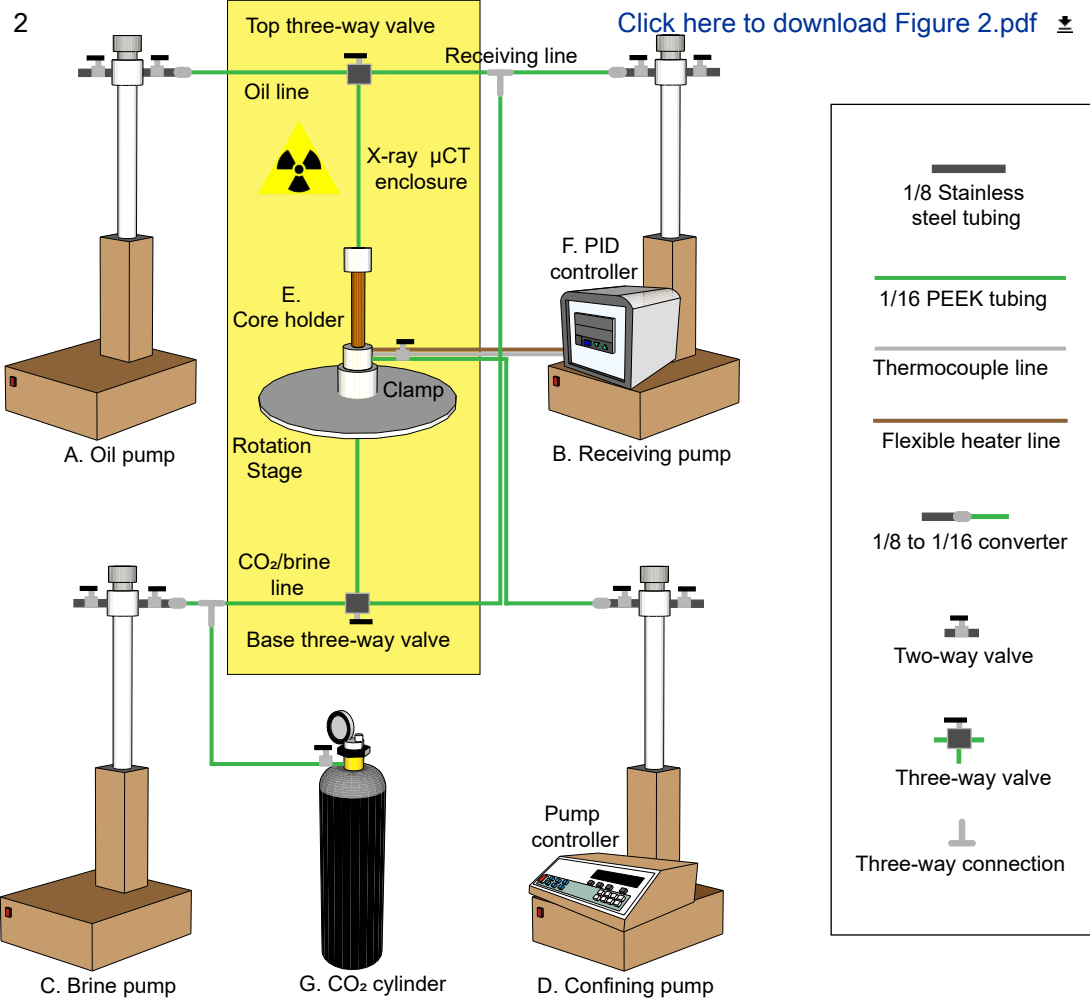
10. McCaffery, F.G. Measurement of interfacial tensions and contact angles at high temperature and pressure. *Journal of Canadian Petroleum Technology*. **11** (3), 26-32 (1972).
11. Buckley, J.S. Effective wettability of minerals exposed to crude oil. *Current Opinion in Colloid & Interface Science*. **6** (3), 191-196 (2001).
12. Wildenschild, D., Sheppard, A.P. X-ray imaging and analysis techniques for quantifying pore-scale structure and processes in subsurface porous medium systems. *Advances in Water Resources*. **51**, 217-246 (2013).
13. Andrew, M., Bijeljic, B., Blunt, M.J. Pore-scale imaging of geological carbon dioxide storage at *in situ* conditions. *Geophysical Research Letters*. **40** (15), 3915-3918 (2013).
14. Blunt, M.J. *et al.* Pore-scale imaging and modelling. *Advances in Water Resources*. **51**, 197-216 (2013).
15. Berg, S. *et al.* Real-time 3D imaging of Haines jumps in porous media flow. *Proceedings of the National Academy of Sciences*. **110** (10), 3755-3759 (2013).
16. Schlüter, S., Sheppard, A., Brown, K. Wildenschild, D. Image processing of multiphase images obtained via X-ray microtomography: a review. *Water Resources Research*. **50** (4), 3615-3639 (2014).
17. Reynolds, C.A., Menke, H., Andrew, M., Blunt, M.J., Krevor, S. Dynamic fluid connectivity during steady-state multiphase flow in a sandstone. *Proceedings of the National Academy of Sciences*. **114** (31), 8187-8192 (2017).
18. Singh, K. *et al.* Dynamics of snap-off and pore-filling events during two-phase fluid flow in permeable media. *Scientific Reports*. **7**(1), 5192 (2017).
19. Armstrong, R.T., Porter, M.L., Wildenschild, D. Linking pore-scale interfacial curvature to column-scale capillary pressure. *Advances in Water Resources*. **46**, 55-62 (2012).
20. Andrew, M., Bijeljic, B., Blunt, M.J. Pore-by-pore capillary pressure measurements using X-ray microtomography at reservoir conditions: Curvature, snap-off, and remobilization of residual CO₂. *Water Resources Research*. **50** (11), 8760-8774 (2014).
21. Andrew, M., Bijeljic, B., Blunt, M.J. Pore-scale imaging of trapped supercritical carbon dioxide in sandstones and carbonates. *International Journal of Greenhouse Gas Control*. **22**, 1-14 (2014).
22. Herring, A.L., Middleton, J., Walsh, R., Kingston, A., Sheppard, A. Flow rate impacts on capillary pressure and interface curvature of connected and disconnected fluid phases during multiphase flow in sandstone. *Advances in Water Resources*. **107**, 460-469 (2017).

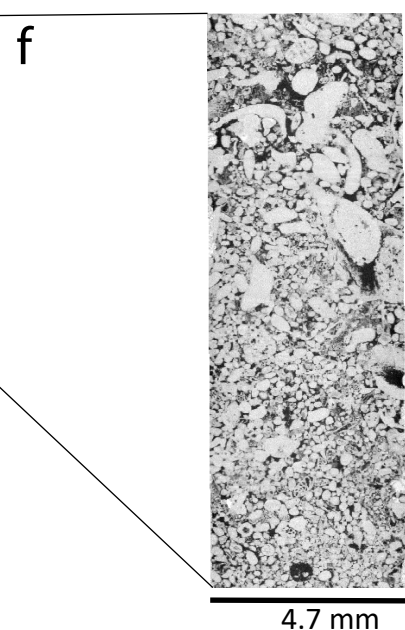
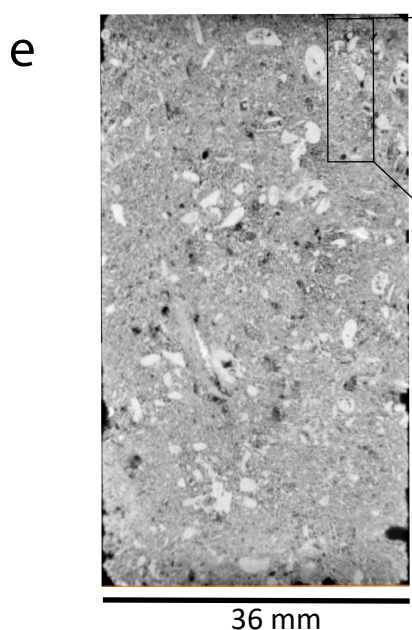
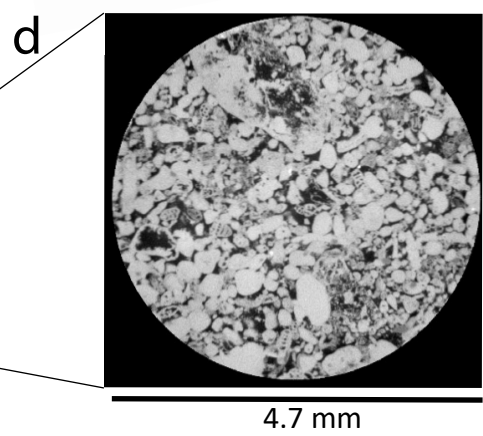
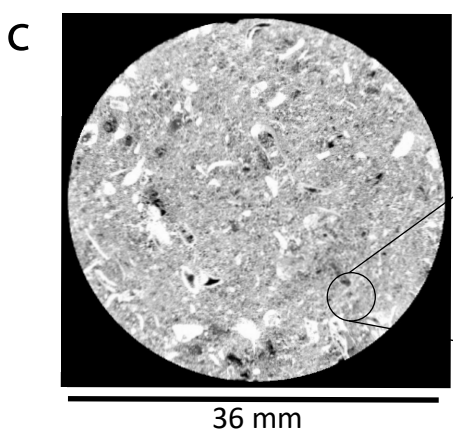
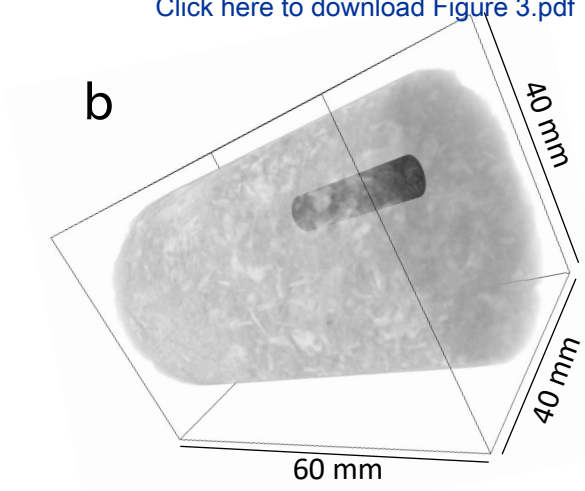
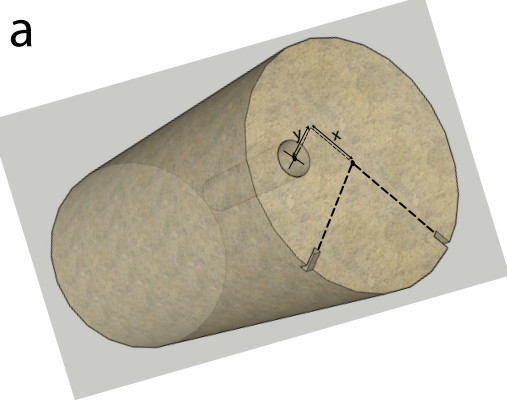
23. Herring, A.L., Andersson, L., Wildenschild, D. Enhancing residual trapping of supercritical CO₂ via cyclic injections. *Geophysical Research Letters*. **43** (18), 9677-9685 (2016).
24. Andrew, M., Bijeljic, B., Blunt, M.J. Pore-scale contact angle measurements at reservoir conditions using X-ray microtomography. *Advances in Water Resources*. **68**, 24-31 (2014).
25. Scanziani, A., Singh, K., Blunt, M.J., Guadagnini, A. Automatic method for estimation of *in situ* effective contact angle from X-ray micro tomography images of two-phase flow in porous media. *Journal of colloid and interface science*. **496**, 51-59 (2017).
26. Klise, K.A., Moriarty, D., Yoon, H., Karpyn, Z. Automated contact angle estimation for three-dimensional X-ray microtomography data. *Advances in Water Resources*. **95**, 152-160 (2016).
27. AlRatrout, A., Raeini, A.Q., Bijeljic, B., Blunt, M.J. Automatic measurement of contact angle in pore-space images. *Advances in Water Resources*. **109**, 158-169 (2017).
28. Salathiel, R.A. Oil recovery by surface film drainage in mixed-wettability rocks. *Journal of Petroleum Technology*. **25** (10), 1216-1224 (1973).
29. Kovscek, A.R., Wong, H., Radke, C.J. A pore-level scenario for the development of mixed wettability in oil reservoirs. *AIChE Journal*. **39** (6), 1072-1085 (1993).
30. Buckley, J.S., Liu, Y., Monsterleet, S. Mechanisms of wetting alteration by crude oils. *Society of Petroleum Engineers Journal*. **3** (1), 54-61 (1998).
31. Alhammadi A.M., AlRatrout, A., Singh, K., Bijeljic, B., Blunt, M.J. In situ characterization of mixed-wettability in a reservoir rock at subsurface conditions. *Scientific Reports*. **7** (1), 10753 (2017).
32. Arganda-Carreras, I. *et al.* Trainable weka segmentation: a machine learning tool for microscopy pixel classification. *Bioinformatics*. **33** (15), 2424-2426 (2017).
33. Wang, Y., Lin, C. L., Miller, J.D. Improved 3D image segmentation for X-ray tomographic analysis of packed particle beds. *Minerals Engineering*. **83**, 185-191 (2015).
34. Zhang, G., Parwani, R., Stone, C.A., Barber, A.H., Botto, L. X-ray imaging of transplanar liquid transport mechanisms in single layer textiles. *Langmuir*. **33** (43), 12072-12079 (2017).
35. Su, Y., *et al.* Pore type and pore size distribution of tight reservoirs in the Permian Lucaogou Formation of the Jimsar Sag, Junggar Basin, NW China. *Marine and Petroleum Geology*. **89**, 761-774 (2018).
36. Ozcelikkale, A. *et al.* Differential response to doxorubicin in breast cancer subtypes simulated by a microfluidic tumor model. *Journal of Controlled Release*. **266**, 129-139 (2017).

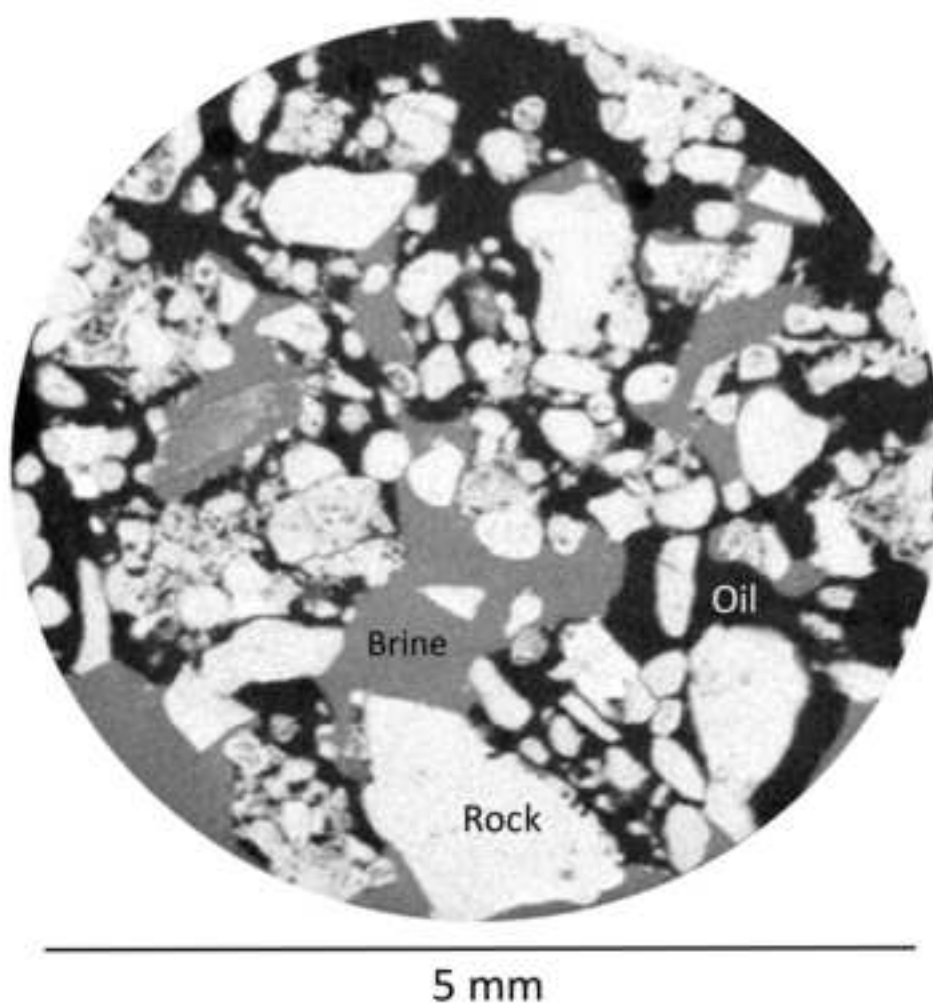
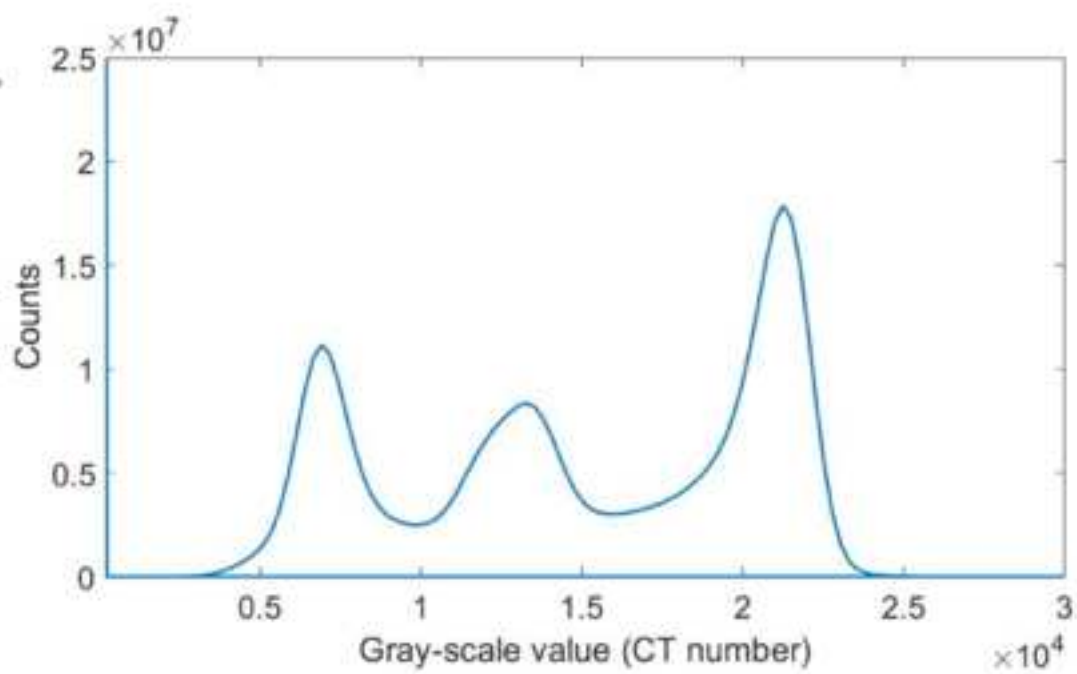
37. Zeller-Plumhoff, B. *et al.* Quantitative characterization of degradation processes *in situ* by means of a bioreactor coupled flow chamber under physiological conditions using time-lapse SR μ CT. *Materials and Corrosion*. **69** (3), 298-306 (2017).
38. Daly, K.R. *et al.* Modelling water dynamics in the rhizosphere. *Rhizosphere*. **4**, 139-151 (2017).
39. Borgmann, K., Ghorpade, A. Methamphetamine Augments Concurrent Astrocyte Mitochondrial Stress, Oxidative Burden, and Antioxidant Capacity: Tipping the Balance in HIV-Associated Neurodegeneration. *Neurotoxicity Research*. **33** (2), 433-447 (2018).
40. Wollatz, L., Johnston, S.J., Lackie, P.M., Cox, S.J. 3D histopathology—a lung tissue segmentation workflow for microfocus X-ray-computed tomography scans. *Journal of Digital Imaging*. **30** (6), 772-781 (2017).
41. Hassler, G.L. Method and apparatus for permeability measurements. U.S.A. Patent No. 2,345,935 (1944).
42. McCaffery, F.G. Measurement of interfacial tensions and contact angles at high temperature and pressure. *Journal of Canadian Petroleum Technology*. **11** (03), 26-32 (1972).
43. Hjelmeland, O.S., Larrondo, L.E. Experimental investigation of the effects of temperature, pressure, and crude oil Composition on interfacial properties. *SPE Reservoir Engineering*. **1** (04), 321-328 (1986).
44. Buckley, J.S., Takamura, K., Morrow, N.R. Influence of electrical surface charges on the wetting properties of crude oils. *SPE Reservoir Engineering*, **4** (03), 332-340 (1989).
45. Fernø, M.A., Torsvik, M., Haugland, S., Graue, A. Dynamic laboratory wettability alteration. *Energy & Fuels*. **24** (07), 3950-3958 (2010).
46. Al-Menhali, A.S., Krevor, S. Capillary trapping of CO₂ in oil reservoirs: Observations in a mixed-wet carbonate rock. *Environmental Science & Technology*. **50** (05), 2727-2734 (2016).
47. Wang, J., Buckley, J.S. Asphaltene stability in crude oil and aromatic solvents-the influence of oil composition. *Energy & Fuels* **17** (06), 1445-1451 (2003).
48. Wang, J.X., Buckley, J.S. A two-component solubility model of the onset of asphaltene flocculation in crude oils. *Energy & Fuels* **15** (05), 1004-1012 (2001).
49. Buades, A., Coll, B., Morel, J.M. A non-local algorithm for image denoising. *Proceedings / CVPR, IEEE Computer Society Conference on Computer Vision and Pattern Recognition*. **2** (7), 60-65 (2005).

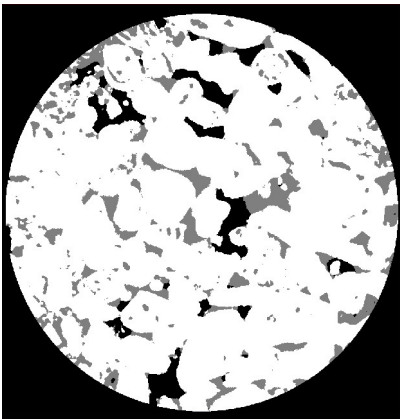
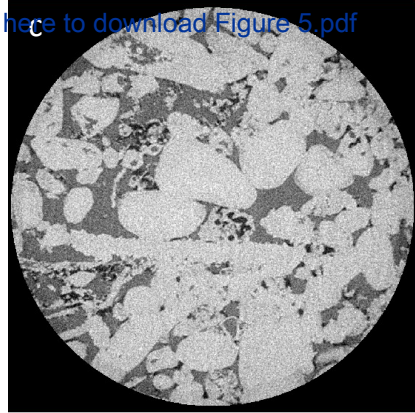
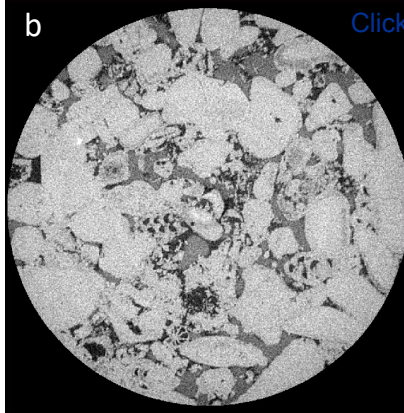
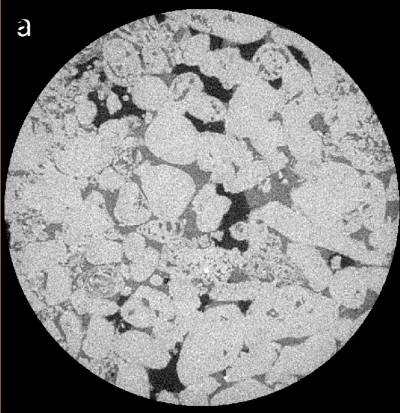
50. Buades, A., Coll, B., Morel, J.M. Nonlocal image and movie denoising. *International Journal of Computer Vision*. **76** (2), 123-139 (2008).
51. Jadhunandan, P.P., Morrow, N.R. Effect of wettability on waterflooding recovery for crude oil/brine/rock systems. *SPE Reservoir Engineering*. **10** (1), 40-46 (1995).
52. Singh, K., Bijeljic, B., Blunt, M.J. Imaging of oil layers, curvature and contact angle in a mixed-wet and a water-wet carbonate rock. *Water Resources Research*. **52** (3), 1716-1728 (2016).
53. Iglaue, S., Fernø, M.A., Shearing, P., Blunt, M.J. Comparison of residual oil cluster size distribution, morphology and saturation in oil-wet and water-wet sandstone. *Journal of Colloid and Interface Science*. **375** (1), 187-192 (2012).
54. Al-Raoush, R.I. Impact of wettability on pore-scale characteristics of residual nonaqueous phase liquids. *Environmental Science & Technology*. **43** (13), 4796-4801 (2009).
55. Chatzis, I., Morrow, N.R., Lim, H.T. Magnitude and detailed structure of residual oil saturation. *Society of Petroleum Engineers Journal*. **23** (2), 311-326 (1983).
56. Alhammad, A.M., AlRatrout, A., Bijeljic, B., Blunt, M.J. In situ wettability measurement in a carbonate reservoir rock at high temperature and pressure. Paper Presented at *Abu Dhabi International Petroleum Exhibition & Conference, Abu Dhabi, UAE, 13-16 November 2017*, SPE-188510-MS (2017).
57. Jones, A.C. *et al.* Assessment of bone ingrowth into porous biomaterials using micro-CT. *Biomaterials*. **28** (15), 2491-2504 (2007).



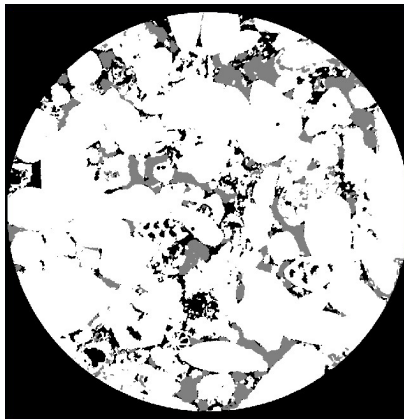




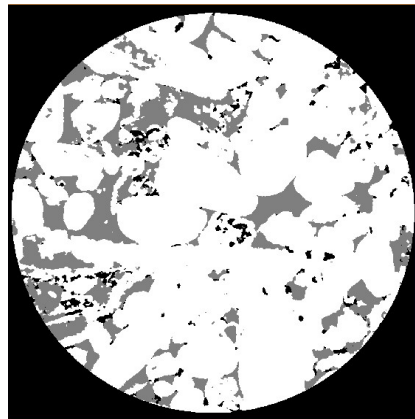
a.**b.**



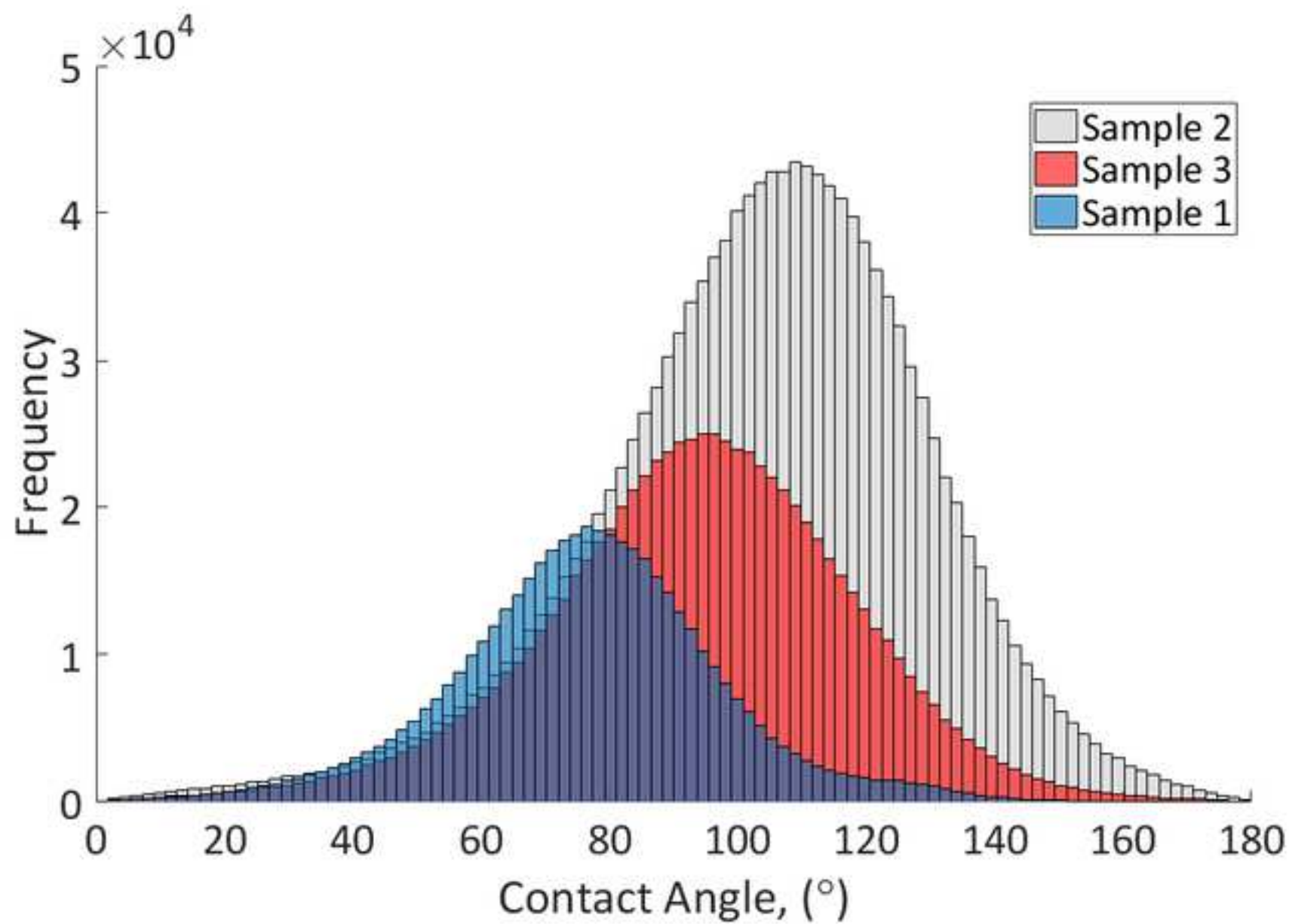
2mm

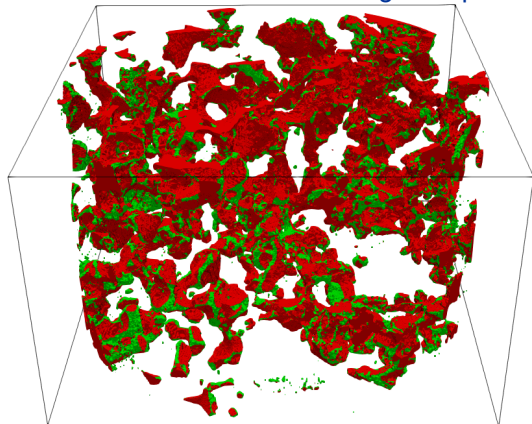
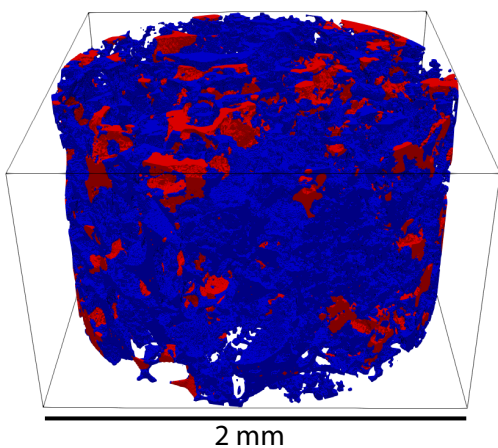


2mm

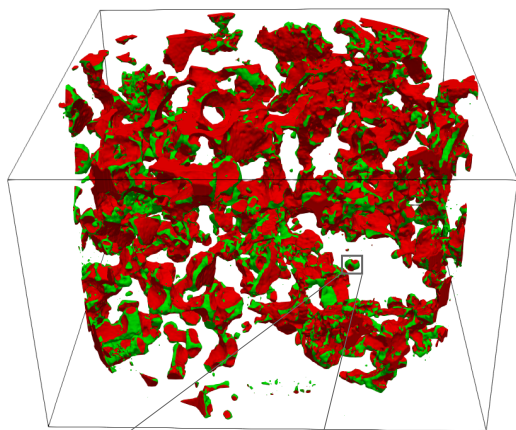


2mm

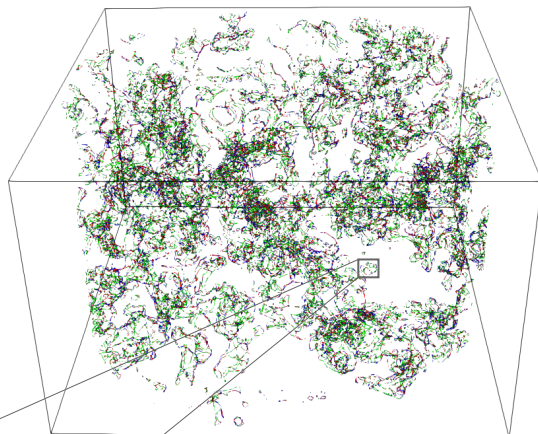




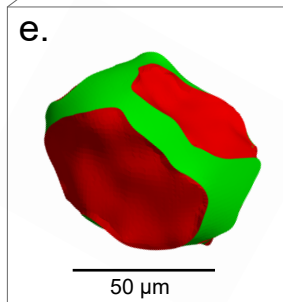
c. Smooth surfaces



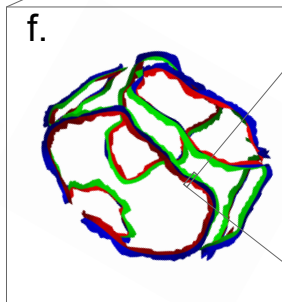
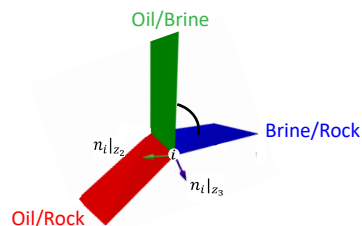
d. Three-phase contact line

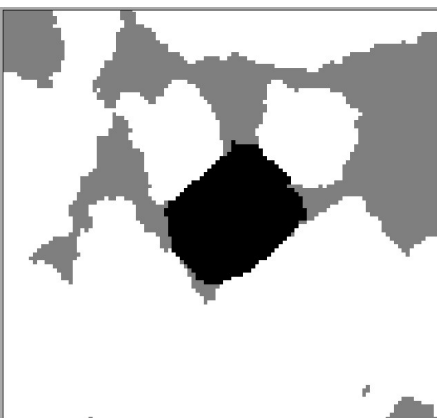
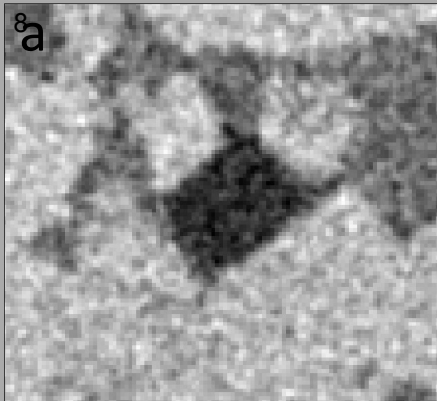


e.

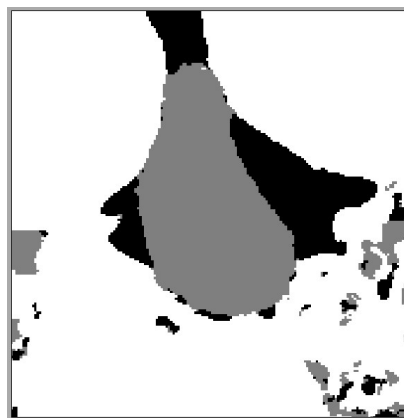
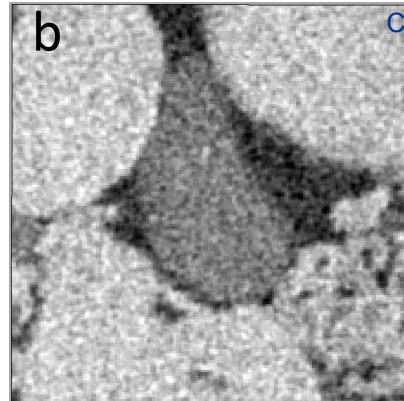


f.

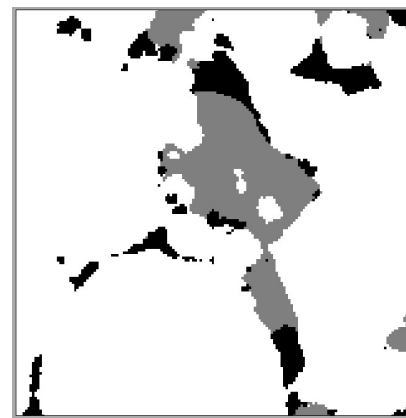
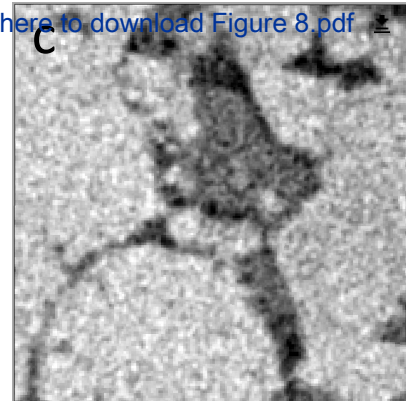
g. Contact angle at point i 



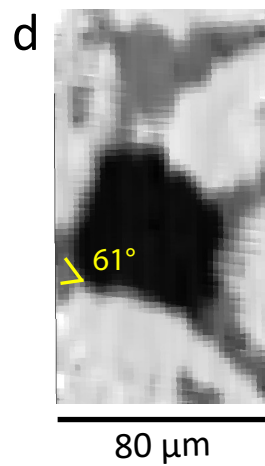
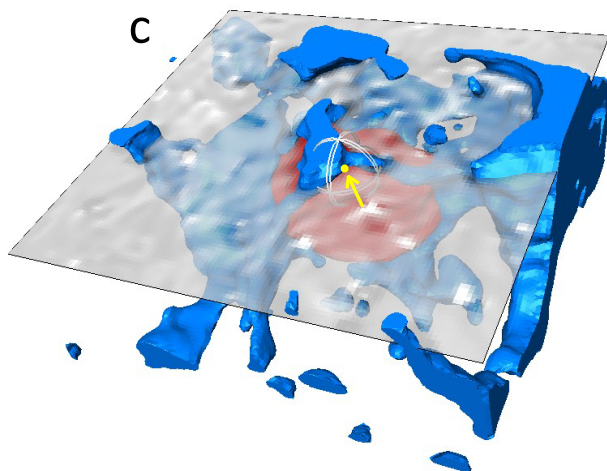
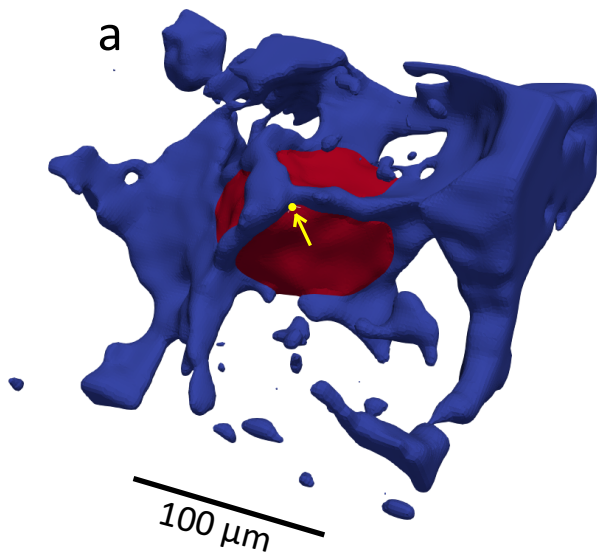
220 μm

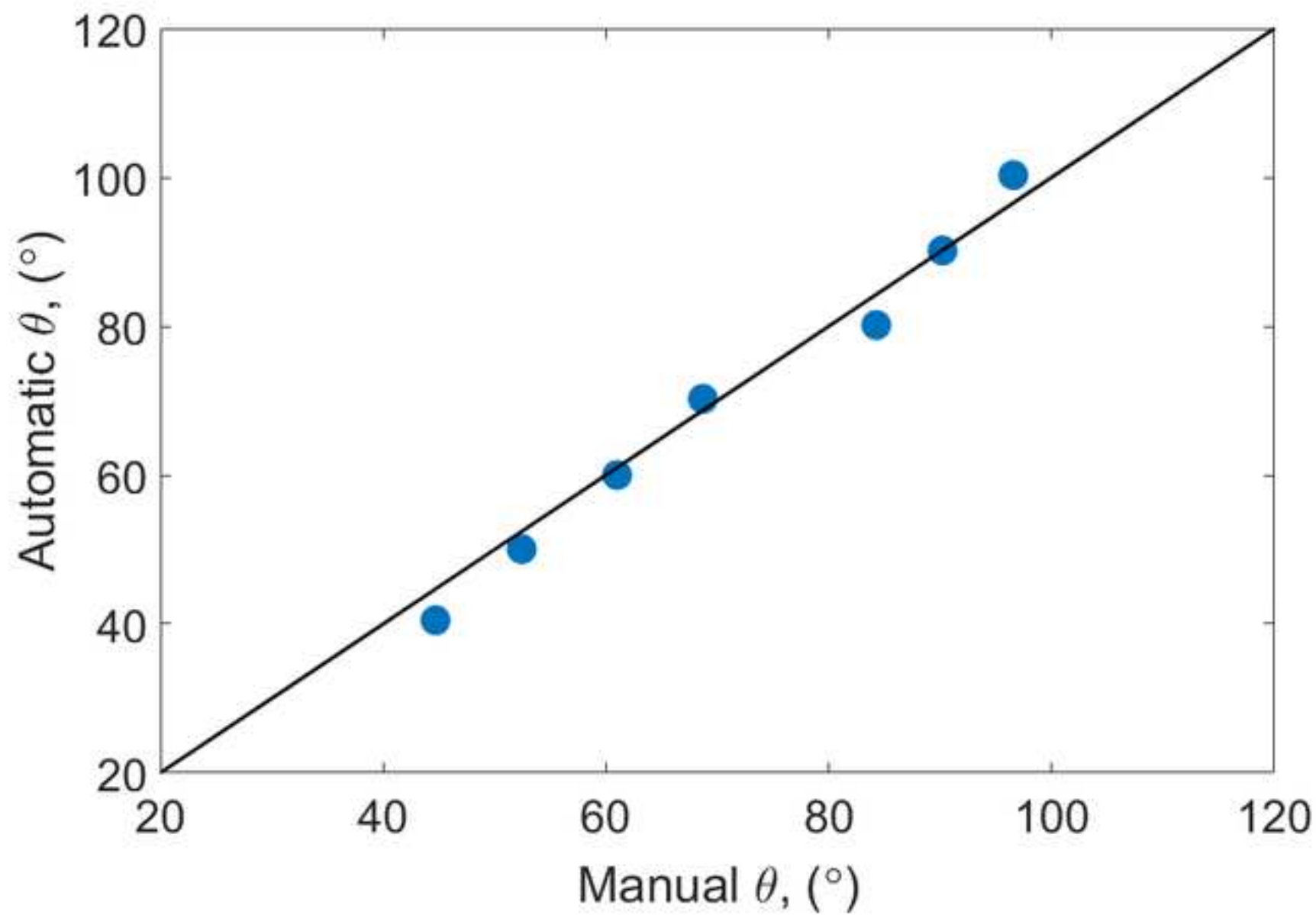


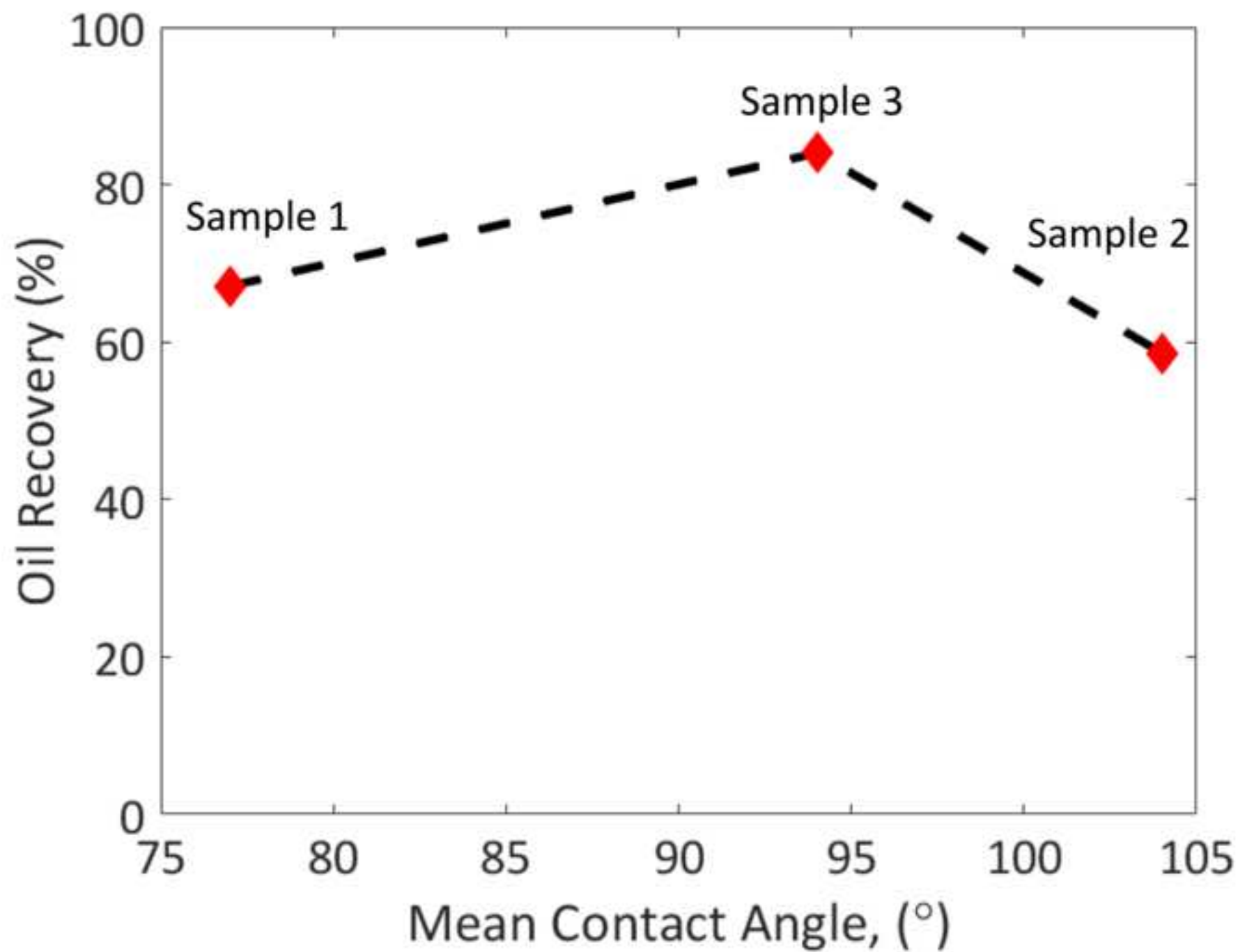
320 μm

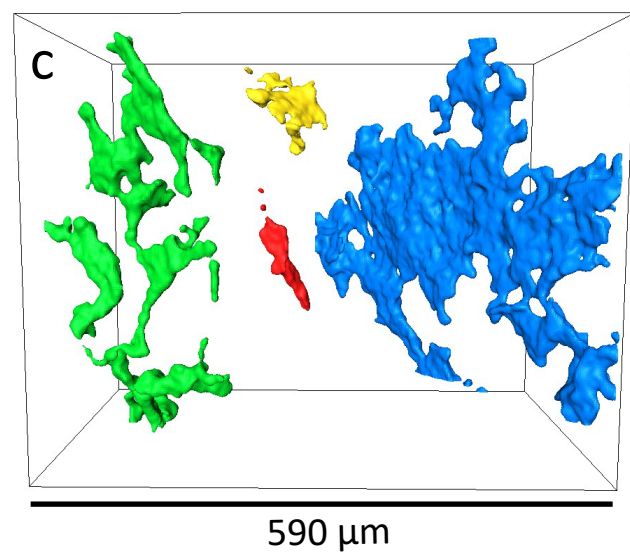
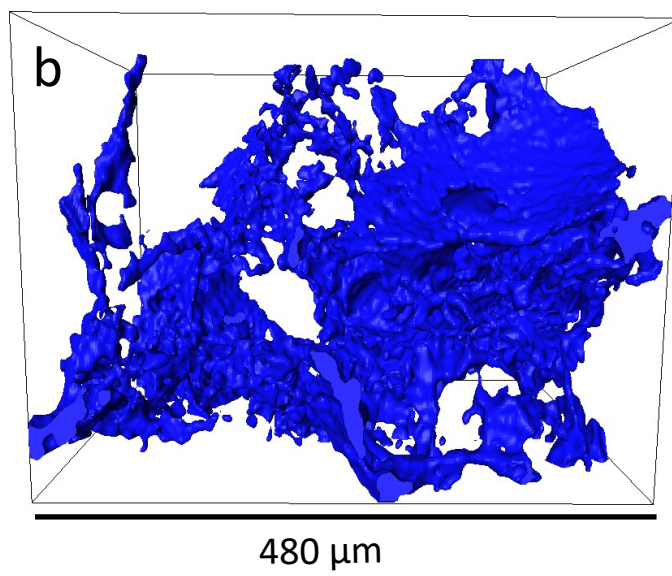
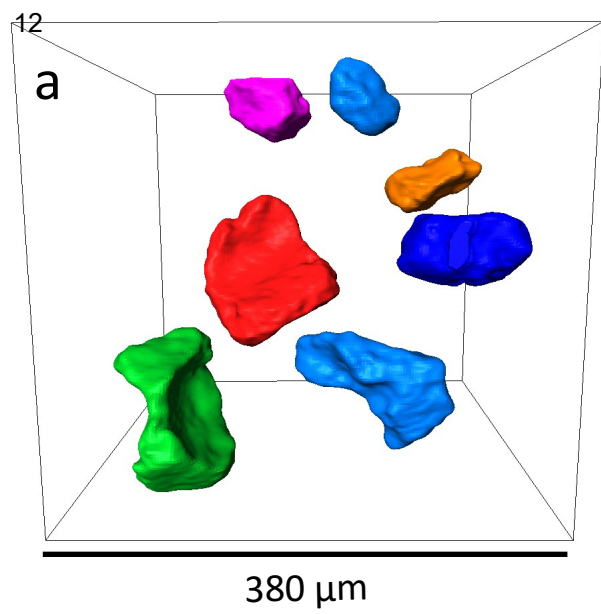


320 μm









| Name of Material/ Equipment | Company | Catalog Number |
|------------------------------------|----------------|------------------|
| Xradia VersaXRM-500 X-ray micro-CT | ZEISS | Quote |
| Teledyne Isco syringe pumps | Teledyne Isco | Quote |
| Core holder | Airborne | Quote |
| Gas pycnometer | Micromeritics | Quote |
| Thermocouple | Omega | KMTSS-IM025U-150 |
| Flexible heating jacket | Omega | KH-112/5-P |
| PEEK tubing | Kinesis | 1533XL |
| Tube cutter | Kinesis | 003062 |
| PEEK fingertight fitting | Kinesis | F-120X |
| PEEK adapters and connectors | Kinesis | P-760 |
| PEEK plug | Kinesis | P-551 |
| Digital Caliper | RS | 50019630 |
| Three-way valve | Swagelok | SS-41GXS1 |
| Viton sleeve | Cole-Parmer | WZ-06435-03 |
| Drilling bit | dk-holdings | quote |
| Heptane | Sigma-Aldarich | 246654-1L |
| Potassium iodide | Sigma-Aldarich | 231-659-4 |
| ParaView | Open source | Free |
| Avizo Software | FEI | License |
| Reconstructor Software | | |

Comments/Description

X-ray microtomography scanner

Model 100DM, Model 260D and Model 1000D

9.5 ID Coreholder

AccuPyc II 1340 Pycnometer

0.25 to 1.0 mm Fine Diameter MI Construction Thermocouples Terminated With A Mini Pot-Seal and 1m PFA Lead Wire

Kapton Insulated Flexible Heaters

PEEK Tubing 1/16"OD X 0.030" (0.75mm) ID Green

Tube cutter

Fingertight Fitting, single piece, for 1/16" OD Tubing, 10-32 Coned, PEEK, Natural

Adapters & Connectors: PEEK DV Union, for 1/16" OD Tubing, 10-32 Coned

Plug, 10-32 Coned, PEEK, Natural

Digital caliper

Stainless Steel 1-Piece 40G Series 3-Way Ball Valve, 0.08 Cv, 1/16 in. Swagelok Tube Fitting

Viton FDA Compliant Tubing, 3/16" (4.8 mm) ID

Standard wall drill *EDS540, 5mm internal diameter x continental shank, reinforced stepped shank 5mm of the tube behind 20mm of diameter

Heptane, anhydrous, 99%

purity \geq 99.0%

Data visualization software (Protocol step 1.2, 6.6)

Data visualization and analysis software (Protocol step 5.7.1)

Website

<https://www.zeiss.com/microscopy/int/products/x-ray-microscopy.html>

<http://www.teledyneisco.com/en-uk>

www.airborne-international.com

<http://www.micromeritics.com/Product-Showcase/AccuPyc-II-1340.aspx>

https://www.omega.co.uk/pptst/TJMINI_025-075MM_IEC.html

https://www.omega.co.uk/pptst/KHR_KHLV_KH.html

<http://kinesis.co.uk/tubing-tubing-peek-green-1-16-x-0-030-0-75mm-x100ft-1533xl.html>

<http://kinesis.co.uk/tubing-tube-cutter-003062.html>

<http://kinesis.co.uk/fingertight-fitting-single-piece-for-1-16-od-tubing-10-32-coned-peek-natural-f-120x.html>

<http://kinesis.co.uk/catalogsearch/result/?q=P-760>

<http://kinesis.co.uk/plug-10-32-coned-peek-natural-p-551.html>

<http://uk.rs-online.com/web/>

<https://www.swagelok.com/en/catalog/Product/Detail?part=SS-41GXS1>

<https://www.coleparmer.com/i/mn/0643503>

<http://www.dk-holdings.co.uk/glass/stanwall.html>

<http://www.sigmaaldrich.com/catalog/product/sial/246654?lang=en®ion=GB>

<https://www.sigmaaldrich.com/catalog/product/sigma/60399?lang=en®ion=GB>

<https://www.paraview.org/>

<https://www.fei.com/software/amira-avizo/>

<https://www.gexcel.it>



1 Alewife Center #200
Cambridge, MA 02140
tel. 617.945.9051
www.jove.com

ARTICLE AND VIDEO LICENSE AGREEMENT - UK

Title of Article: Pore-scale imaging and characterization of hydrocarbon reservoir rock wettability at subsurface conditions using X-ray microtomography

Author(s): Amer M. Alhammadi, Ahmed AlRatrou, Branko Bijeljic, Martin J. Blunt

Item 1 (check one box): The Author elects to have the Materials be made available (as described at

<http://www.jove.com/author>) via: ☐ Standard Access ☒ Open Access

Item 2 (check one box):

- ☒ The Author is NOT a United States government employee.
- ☐ The Author is a United States government employee and the Materials were prepared in the course of his or her duties as a United States government employee.
- ☐ The Author is a United States government employee but the Materials were NOT prepared in the course of his or her duties as a United States government employee.

ARTICLE AND VIDEO LICENSE AGREEMENT

1. **Defined Terms.** As used in this Article and Video License Agreement, the following terms shall have the following meanings: "Agreement" means this Article and Video License Agreement; "Article" means the article specified on the last page of this Agreement, including any associated materials such as texts, figures, tables, artwork, abstracts, or summaries contained therein; "Author" means the author who is a signatory to this Agreement; "Collective Work" means a work, such as a periodical issue, anthology or encyclopedia, in which the Materials in their entirety in unmodified form, along with a number of other contributions, constituting separate and independent works in themselves, are assembled into a collective whole; "CRC License" means the Creative Commons

Attribution 3.0 Agreement (also known as CC-BY), the terms and conditions of which can be found at: <http://creativecommons.org/licenses/by/3.0/us/legalcode>;

"Derivative Work" means a work based upon the Materials or upon the Materials and other pre-existing works, such as a translation, musical arrangement, dramatization, fictionalization, motion picture version, sound recording, art reproduction, abridgment, condensation, or any other form in which the Materials may be recast, transformed, or adapted; "Institution" means the institution, listed on the last page of this Agreement, by which the Author was employed at the time of the creation of the Materials; "JoVE" means MyJoVE Corporation, a Massachusetts corporation and the publisher of *The Journal of Visualized Experiments*;

"Materials" means the Article and / or the Video; "Parties" means the Author and JoVE; "Video" means any video(s) made by the Author, alone or in conjunction with any other parties, or by JoVE or its affiliates or agents, individually or in collaboration with the Author or any other parties, incorporating all or any portion of the Article, and in which the Author may or may not appear.

2. **Background.** The Author, who is the author of the Article, in order to ensure the dissemination and protection of the Article, desires to have the JoVE publish the Article and create and transmit videos based on the Article. In furtherance of such goals, the Parties desire to memorialize in this Agreement the respective rights of each Party in and to the Article and the Video.

3. **Grant of Rights in Article.** In consideration of JoVE agreeing to publish the Article, the Author hereby grants to JoVE, subject to Sections 4 and 7 below, the exclusive, royalty-free, perpetual (for the full term of copyright in the Article, including any extensions thereto) license (a) to publish, reproduce, distribute, display and store the Article in all forms, formats and media whether now known or hereafter developed (including without limitation in print, digital and electronic form) throughout the world, (b) to translate the Article into other languages, create adaptations, summaries or extracts of the Article or other Derivative Works (including, without limitation, the Video) or Collective Works based on all or any portion of the Article and exercise all of the rights set forth in (a) above in such translations, adaptations, summaries, extracts, Derivative Works or Collective Works and

(c) to license others to do any or all of the above. The foregoing rights may be exercised in all media and formats, whether now known or hereafter devised, and include the right to make such modifications as are technically necessary to exercise the rights in other media and formats. If the "Open Access" box has been checked in Item 1 above, JoVE and the Author hereby grant to the public all such rights in the Article as provided in, but subject to all limitations and requirements set forth in, the CRC License.

4. **Retention of Rights in Article.** Notwithstanding the exclusive license granted to JoVE in Section 3 above, the

Author shall, with respect to the Article, retain the non-exclusive right to use all or part of the Article for the non-commercial purpose of giving lectures, presentations or teaching classes, and to post a copy of the Article on the Institution's website or the Author's personal website, in each case provided that a link to the Article on the JoVE website is provided and notice of JoVE's copyright in the Article is included. All non-copyright intellectual property rights in and to the Article, such as patent rights, shall remain with the Author.

5. Grant of Rights in Video – Standard Access. This Section 5 applies if the "Standard Access" box has been checked in Item 1 above or if no box has been checked in Item 1 above. In consideration of JoVE agreeing to produce, display or otherwise assist with the Video, the Author hereby acknowledges and agrees that, Subject to Section 7 below, JoVE is and shall be the sole and exclusive owner of all rights of any nature, including, without limitation, all copyrights, in and to the Video. To the extent that, by law, the Author is deemed, now or at any time in the future, to have any rights of any nature in or to the Video, the Author hereby disclaims all such rights and transfers all such rights to JoVE.

6. Grant of Rights in Video – Open Access. This Section 6 applies only if the "Open Access" box has been checked in Item 1 above. In consideration of JoVE agreeing to produce, display or otherwise assist with the Video, the Author hereby grants to JoVE, subject to Section 7 below, the exclusive, royalty-free, perpetual (for the full term of copyright in the Article, including any extensions thereto) license (a) to publish, reproduce, distribute, display and store the Video in all forms, formats and media whether now known or hereafter developed (including without limitation in print, digital and electronic form) throughout the world, (b) to translate the Video into other languages, create adaptations, summaries or extracts of the Video or other Derivative Works or Collective Works based on all or any portion of the Video and exercise all of the rights set forth in (a) above in such translations, adaptations, summaries, extracts, Derivative Works or Collective Works and (c) to license others to do any or all of the above. The foregoing rights may be exercised in all media and formats, whether now known or hereafter devised, and include the right to make such modifications as are technically necessary to exercise the rights in other media and formats.

7. Government Employees. If the Author is a United States government employee and the Article was prepared in the course of his or her duties as a United States government employee, as indicated in Item 2 above, and any of the licenses or grants granted by the Author hereunder exceed the scope of the 17 U.S.C. 403, then the rights granted hereunder shall be limited to the maximum rights permitted under such statute. In such case, all provisions contained herein that are not in conflict with such statute shall remain in full force and effect, and all provisions contained herein that do so conflict

shall be deemed to be amended so as to provide to JoVE the maximum rights permissible within such statute.

8. Likeness, Privacy, Personality. The Author hereby grants JoVE the right to use the Author's name, voice, likeness, picture, photograph, image, biography and performance in any way, commercial or otherwise, in connection with the Materials and the sale, promotion and distribution thereof. The Author hereby waives any and all rights he or she may have, relating to his or her appearance in the Video or otherwise relating to the Materials, under all applicable privacy, likeness, personality or similar laws.

9. Author Warranties. The Author represents and warrants that the Article is original, that it has not been published, that the copyright interest is owned by the Author (or, if more than one author is listed at the beginning of this Agreement, by such authors collectively) and has not been assigned, licensed, or otherwise transferred to any other party. The Author represents and warrants that the author(s) listed at the top of this Agreement are the only authors of the Materials. If more than one author is listed at the top of this Agreement and if any such author has not entered into a separate Article and Video License Agreement with JoVE relating to the Materials, the Author represents and warrants that the Author has been authorized by each of the other such authors to execute this Agreement on his or her behalf and to bind him or her with respect to the terms of this Agreement as if each of them had been a party hereto as an Author. The Author warrants that the use, reproduction, distribution, public or private performance or display, and/or modification of all or any portion of the Materials does not and will not violate, infringe and/or misappropriate the patent, trademark, intellectual property or other rights of any third party. The Author represents and warrants that it has and will continue to comply with all government, institutional and other regulations, including, without limitation all institutional, laboratory, hospital, ethical, human and animal treatment, privacy, and all other rules, regulations, laws, procedures or guidelines, applicable to the Materials, and that all research involving human and animal subjects has been approved by the Author's relevant institutional review board.

10. JoVE Discretion. If the Author requests the assistance of JoVE in producing the Video in the Author's facility, the Author shall ensure that the presence of JoVE employees, agents or independent contractors is in accordance with the relevant regulations of the Author's Institution. If more than one author is listed at the beginning of this Agreement, JoVE may, in its sole discretion, elect not take any action with respect to the Article until such time as it has received complete, executed Article and Video License Agreements from each such author. JoVE reserves the right, in its absolute and sole discretion and without giving any reason therefore, to accept or decline any work submitted to JoVE. JoVE and its employees, agents and independent contractors shall have full, unfettered access to the facilities of the Author or of the Author's institution as necessary to make the Video, whether actually published or not. JoVE has sole discretion as to the method of making and publishing the Materials, including,

ARTICLE AND VIDEO LICENSE AGREEMENT – UK

without limitation, to all decisions regarding editing, lighting, filming, timing of publication, if any, length, quality, content and the like.

11. Indemnification. The Author agrees to indemnify JoVE and/or its successors and assigns from and against any and all claims, costs, and expenses, including attorney's fees, arising out of any breach of any warranty or other representations contained herein. The Author further agrees to indemnify and hold harmless JoVE from and against any and all claims, costs, and expenses, including attorney's fees, resulting from the breach by the Author of any representation or warranty contained herein or from allegations or instances of violation of intellectual property rights, damage to the Author's or the Author's institution's facilities, fraud, libel, defamation, research, equipment, experiments, property damage, personal injury, violations of institutional, laboratory, hospital, ethical, human and animal treatment, privacy or other rules, regulations, laws, procedures or guidelines, liabilities and other losses or damages related in any way to the submission of work to JoVE, making of videos by JoVE, or publication in JoVE or elsewhere by JoVE. The Author shall be responsible for, and shall hold JoVE harmless from, damages caused by lack of sterilization, lack of cleanliness or by contamination due to the making of a video by JoVE its employees, agents or independent contractors. All sterilization, cleanliness or decontamination procedures shall be solely the responsibility of the Author and shall be undertaken at the Author's expense. All indemnifications provided herein shall include JoVE's attorney's fees and costs related to said losses or

damages. Such indemnification and holding harmless shall include such losses or damages incurred by, or in connection with, acts or omissions of JoVE, its employees, agents or independent contractors.

12. Fees. To cover the cost incurred for publication, JoVE must receive payment before production and publication the Materials. Payment is due in 21 days of invoice. Should the Materials not be published due to an editorial or production decision, these funds will be returned to the Author. Withdrawal by the Author of any submitted Materials after final peer review approval will result in a US\$1,200 fee to cover pre-production expenses incurred by JoVE. If payment is not received by the completion of filming, production and publication of the Materials will be suspended until payment is received.

13. Transfer, Governing Law. This Agreement may be assigned by JoVE and shall inure to the benefits of any of JoVE's successors and assignees. This Agreement shall be governed and construed by the internal laws of the Commonwealth of Massachusetts without giving effect to any conflict of law provision thereunder. This Agreement may be executed in counterparts, each of which shall be deemed an original, but all of which together shall be deemed to be one and the same agreement. A signed copy of this Agreement delivered by facsimile, e-mail or other means of electronic transmission shall be deemed to have the same legal effect as delivery of an original signed copy of this Agreement.

A signed copy of this document must be sent with all new submissions. Only one Agreement required per submission.

AUTHOR:

Name:

Amer Alhammadi

Department:

Earth Science and Engineering

Institution:

Imperial College London

Article Title:

Pore-scale imaging and characterization of hydrocarbon reservoir rock wettability at subsurface conditions using X-ray microtomography

Signature:



Date:

24/01/2018

Please submit a signed and dated copy of this license by one of the following three methods:

- 1) Upload a scanned copy as a PDF to the JoVE submission site upon manuscript submission (preferred);
- 2) Fax the document to +1.866.381.2236; or
- 3) Mail the document to JoVE / Attn: JoVE Editorial / 1 Alewife Center Suite 200 / Cambridge, MA 02140

For questions, please email editorial@jove.com or call +1.617.945.9051.

MS # (internal use):

Pore-scale imaging and characterization of hydrocarbon reservoir rock wettability at subsurface conditions using X-ray microtomography

Amer M. Alhammadi¹, Ahmed AlRatrout¹, Branko Bijeljic¹, Martin J. Blunt¹

¹*Department of Earth Science and Engineering, Imperial College London, London, UK*

First of all, we would like to thank the Editor for the valuable points that was raised. Hopefully the revised version of the paper and the point-by-point response have addressed all the concerned raised. Below is the point-by-point response to editorial comments.

Editorial comments:

1. The editor has formatted the manuscript to match the journal's style. Please retain the same.
[The manuscript format was retained the same to match the journal style.](#)

2. Please address specific comments marked in the manuscript.
[All of the comments in the manuscript have been addressed and the manuscript content was modified accordingly.](#)

3. Our hard cut limit for protocol section is 10 pages including heading and spacings. Please ensure your protocol fits that limit. Presently it's more than that.
[The length of the protocol section has been reduced to 9 pages.](#)

4. The Protocol should contain only action items that direct the reader to do something. Please avoid making redundant steps. There are many places where the steps can be combined into one. I have made extensive comments for section 1. Please use this as an example and make changes throughout the protocol section.
[We would like to thank the editor for the useful comments. The Protocol section has been revised thoroughly following the provided editorial comments as an example. Only action items that direct the reader to do something were included and other steps that might not be necessary have been removed.](#)

5. For highlighting, please highlight concrete steps and complete sentences. Also, please check that the highlight is no more than 2.75 including heading and spacings.
[Only concrete steps and complete sentences have been highlighted now. The highlighted text is less than 2.75 pages including headings and spacing. All scripting steps and calculation steps that cannot be filmed were not highlighted.](#)

6. Please include all relevant details that are required to perform the step in the highlighting. For example: If step 2.5 is highlighted for filming and the details of how to perform the step are given in steps 2.5.1 and 2.5.2, then the sub-steps where the details are provided must be highlighted.
[All relevant details that are required to perform protocol steps were highlighted. In some points, the extra details in the sub-steps were not highlighted that are not necessary needed for](#)

filming but could be useful for the reader. Only critical steps were highlighted that form a cohesive narrative with a logical flow.

7. Please also check that the figures are referenced in the order of their numbering. Please also see that the figure number and the legends match. Figure 9, 10: X-axis is cut out.

The figures were referenced in the order of their numbering.

All figure numbering and legends are matching now.

Figure 6 (previously known as Figure 10) and Figure 10 (previously known as Figure 9) were reproduced again and they are presented without any cut out.