

# Journal of Visualized Experiments

## Healthy brain-pituitary slices for electrophysiological investigations of pituitary cells in teleost fish --Manuscript Draft--

<b>Article Type:</b>	Methods Article - JoVE Produced Video
<b>Manuscript Number:</b>	JoVE57790R2
<b>Full Title:</b>	Healthy brain-pituitary slices for electrophysiological investigations of pituitary cells in teleost fish
<b>Keywords:</b>	Brain-pituitary; tissue-slice; electrophysiology; fish; Patch-Clamp; Endocrine cells
<b>Corresponding Author:</b>	Finn-Arne Weltzien Norges miljø- og biovitenskapelige universitet Oslo, Oslo NORWAY
<b>Corresponding Author's Institution:</b>	Norges miljø- og biovitenskapelige universitet
<b>Corresponding Author E-Mail:</b>	finn-arne.weltzien@nmbu.no
<b>First Author:</b>	Romain Fontaine, Ph.D.
<b>Other Authors:</b>	Romain Fontaine, Ph.D. Kjetil Hodne
<b>Author Comments:</b>	
<b>Additional Information:</b>	
<b>Question</b>	<b>Response</b>
If this article needs to be "in-press" by a certain date, please indicate the date below and explain in your cover letter.	



**Norwegian University of Life Sciences**  
Faculty of Veterinary Medicine  
Department of Basic Sciences and Aquatic Medicine

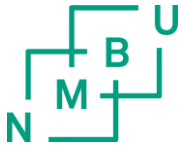
Professor Finn-Arne Weltzien  
[finn-arne.weltzien@nmbu.no](mailto:finn-arne.weltzien@nmbu.no)  
<https://www.nmbu.no/go/weltzienlab>  
+47 950 960 15

Oslo December 23, 2017

Dear Nandita Singh,

Please accept our manuscript entitled "*Healthy brain-pituitary slices for electrophysiological investigations of pituitary cells in teleost fish*" by Romain Fontaine, Kjetil Hodne and Finn-Arne Weltzien, for consideration of publication in JoVE.

The patch-clamp technique is a powerful tool with unprecedented temporal resolution and sensitivity, allowing investigations of electrical properties from intact whole cells down to single ion channels. This technique is particularly relevant to study pituitary endocrine cells, which possess important exocytosis mechanisms. While the limited number of studies conducted on pituitary cells from fish have been performed on dissociated primary cells, we present here a detailed technique to prepare healthy brain-pituitary slices, using the medaka as model. Following slice preparation, we demonstrate how to conduct electrophysiological recordings using the perforated patch-clamp technique that is more reliable to study small cells such as the pituitary cells than whole cell configuration. We also emphasize the importance of correctly adjusting parameters such as pH and osmolality in the different slicing and recording media to what is



found in the model organism.

Believing that these findings may interest a large scientific audience in the field of basic and applied endocrinology, we would like to publish them in your Journal.

Yours sincerely,

A handwritten signature in blue ink, appearing to read 'Finn-Arne Weltzien'. The signature is stylized with a large, looping 'S' at the end.

Finn-Arne Weltzien

**TITLE:**

Healthy Brain-Pituitary Slices for Electrophysiological Investigations of Pituitary Cells in Teleost Fish

**AUTHORS AND AFFILIATIONS:**

Romain Fontaine\*, Kjetil Hodne\* and Finn-Arne Weltzien

Department of Basic Sciences and Aquatic Medicine, Faculty of Veterinary Medicine, Norwegian University of Life Sciences, 0454 Oslo, Norway

\* These authors contributed equally

**EMAIL ADDRESSES OF CO-AUTHORS:**

Romain Fontaine (romain.fontaine@nmbu.no)

Kjetil Hodne (kjetil.hodne@nmbu.no)

**CORRESPONDING AUTHOR:**

Finn-Arne Weltzien (finn-arne.weltzien@nmbu.no)

**KEYWORDS:**

Brain-pituitary, tissue-slice, electrophysiology, fish, patch-clamp, endocrine cells

**SHORT ABSTRACT:**

The article describes an optimized protocol for making viable brain-pituitary tissue slices, using the teleost fish medaka (*Oryzias latipes*), followed by electrophysiological recordings of pituitary cells using the patch-clamp technique with the perforated patch configuration.

**LONG ABSTRACT:**

Electrophysiological investigations of pituitary cells have been conducted in numerous vertebrate species, but very few in teleost fish. Among these, the clear majority have been performed on dissociated primary cells. To improve our understanding of how teleost pituitary cells, behave in a more biologically relevant environment, this protocol shows how to prepare viable brain-pituitary slices using the small freshwater fish medaka (*Oryzias latipes*). Making the brain-pituitary slices, pH and osmolality of all solutions were adjusted to values found in body fluids of freshwater fish living at 25 to 28 °C. Following slice preparation, the protocol demonstrates how to conduct electrophysiological recordings using the perforated whole-cell patch-clamp technique. The patch-clamp technique is a powerful tool with unprecedented temporal resolution and sensitivity, allowing investigation of electrical properties from intact whole cells down to single ion channels. Perforated patch is unique in that it keeps the intracellular environment intact preventing regulatory elements in the cytosol from being diluted by the patch pipette electrode solution. In contrast, when performing traditional whole-cell recordings, it was observed that medaka pituitary cells quickly lose their ability to fire action potentials. Among the

various perforation techniques available, this protocol demonstrates how to achieve perforation of the patched membrane using the fungicide Amphotericin B.

## INTRODUCTION:

The pituitary is a key endocrine organ in vertebrates located below the hypothalamus and posterior to the optic chiasm. It produces and secretes six to eight hormones from the specific cell types. Pituitary hormones constitute an intermediate between the brain and peripheral organs and drive a wide range of essential physiological processes including growth, reproduction, and regulation of homeostasis. Similar to neurons, endocrine cells of the pituitary are electrically excitable with the ability to fire action potentials spontaneously<sup>1</sup>. The role of these action potentials is cell dependent. In several cell types of the mammalian pituitary, action potentials can elevate the intracellular  $\text{Ca}^{2+}$  sufficiently for a sustained release of hormone<sup>2</sup>. In addition, the pituitary receives both stimulatory and inhibitory information from the brain that affects the membrane potential of the cells<sup>3-6</sup>. Typically, stimulatory input increases the excitability and often involves the release of  $\text{Ca}^{2+}$  from intracellular stores as well as increased firing frequency<sup>7</sup>. Understanding how the cell utilizes the ion channel composition and adapts to these input signals from the brain is key to understanding hormone synthesis and release.

The patch-clamp technique was developed in the late 1970s by Sakmann and Neher<sup>8-10</sup> and further improved by Hamill<sup>11</sup>, and allows detailed investigations of electrophysiological properties of cells down to single ion channels. Moreover, the technique can be used for studying both current and voltage. Today, patch-clamping is the gold standard for measuring electrophysiological properties of the cell. Four major configurations of the tight seal patch-clamp technique have been developed<sup>11</sup>; the cell-attached, the inside-out, the outside-out, and the whole-cell patch. The three first configurations are typically used for single ion channel investigations. For the fourth, following the cell-attached configuration, a hole in the cell membrane is made using sub-atmospheric pressure. This configuration also allows investigations of the ion channel composition of the whole cell<sup>12</sup>. However, one limitation of this technique is that cytoplasmic molecules are diluted by the patch pipette solution<sup>13</sup> (**Figure 1A**), thus affecting the electrical and physiological responses of the studied cells. Indeed, some of those molecules may play important roles in the transduction of the signal or in the regulation of different ion channels. To avoid this, Lindau and Fernandez<sup>14</sup> developed a method where a pore-forming compound is added to the patch pipette. Following the cell-attached configuration, the compound will incorporate into the plasma membrane under the patch and slowly perforate the membrane creating electrical contact with the cytosol (**Figure 1B**). Several different antifungals such as nystatin<sup>15</sup> and amphotericin B<sup>16</sup>, or surfactants such as the saponin beta-escin<sup>17,18</sup> can be used. These compounds create pores large enough to allow monovalent cation and  $\text{Cl}^-$  diffusion between the cytosol and the patch pipette while preserving the cytosolic levels of macromolecules and larger ions like  $\text{Ca}^{2+}$ <sup>15,16</sup>.

The challenge of using perforated patch is the potentially high series resistance. Series resistance ( $R_s$ ) or access resistance is the combined resistance over the patch pipette relative to the ground. During patch-clamp recordings, the  $R_s$  will be in parallel with membrane resistance ( $R_m$ ).  $R_m$  and

86  $R_s$  in parallel work as a voltage divider. With the high  $R_s$ , the voltage will fall over the  $R_s$  giving  
87 errors in the recordings. The error will become larger with larger currents recorded. In addition,  
88 the voltage divider is also frequency dependent creating a low-pass filter, thus affecting the  
89 temporal resolution. In effect, the perforated patch may not always allow recordings of large and  
90 fast currents like the voltage gated  $Na^+$  currents (for detailed readings see <sup>19</sup>). Also,  $R_s$  may vary  
91 during patch-clamp recordings, again leading to changes in the recorded current. Thus, false  
92 positives may occur in situations where  $R_s$  changes during drug application.

93  
94 The electrophysiology on the sliced tissue was first introduced by the Andersen lab to study  
95 electrophysiological characteristics of the neurons in the brain <sup>20</sup>. The technique paved the way  
96 for detailed investigations of single cells as well as cell-cell communications and cell circuits in a  
97 more intact environment. A similar technique for making pituitary slices was introduced in 1998  
98 by Guérineau *et al.* <sup>21</sup>. However, it was not before 2005, that brain-pituitary slice preparation was  
99 used successfully for patch-clamp studies in teleost <sup>22</sup>. In this study, the authors also reported  
100 the use of perforated patch-clamp recordings. However, by far, most of the electrophysiological  
101 investigations of pituitary cells have been conducted in mammals, and only a handful of other  
102 vertebrates, including teleost fish <sup>1,2,22,23</sup>. In teleosts, almost all studies were performed on  
103 primary dissociated cells <sup>24-30</sup>.

104  
105 In the present paper, we outline an optimized protocol for preparation of healthy brain-pituitary  
106 slices from the model fish medaka. The approach represents several advantages compared to  
107 primary dissociated cell cultures. First, the cells are recorded in a relatively preserved  
108 environment compared to dissociated cell culture conditions. Second, slice preparations allow us  
109 to study indirect pathways mediated by cell-cell communication <sup>22</sup>, which is not possible in  
110 dissociated cell culture conditions. Furthermore, we demonstrate how to conduct  
111 electrophysiological recordings on the obtained tissue slices using the perforated whole-cell  
112 patch-clamp technique with amphotericin B as the pore-forming agent.

113  
114 Medaka is a small freshwater fish native to Asia, primarily found in Japan. The physiology,  
115 embryology, and genetics of medaka have been extensively studied for over 100 years <sup>31</sup>, and it  
116 is a commonly used research model in many laboratories. Of particular importance to this paper  
117 is the distinct morphological organization of the hypothalamus-pituitary complex in teleost fish:  
118 Whereas in mammals and birds the hypothalamic neurons release their neuro-hormones  
119 regulating pituitary endocrine cells into the portal system of the median eminence, there is a  
120 direct nervous projection of hypothalamic neurons onto the endocrine cells of the pituitary in  
121 teleost fish <sup>32</sup>. Thus, carefully conducted brain-pituitary slicing is of particular importance in fish,  
122 allowing us to investigate electrophysiological characteristics of the pituitary cells in a well-  
123 preserved brain-pituitary network, and in particular how pituitary cells control their excitability  
124 and thereby  $Ca^{2+}$  homeostasis.

## 125 126 **PROTOCOL:**

127 All animal handling was performed according to the recommendations for the care and welfare  
128 of research animals at the Norwegian University of Life Sciences, and under the supervision of

authorized investigators.

## **1. Preparation of Instruments and Solutions**

Note: All solutions should be sterile. Careful attention should be given to the pH and the osmolality (osmol/kg water) of all solutions, which should be carefully adapted to the extracellular environment of the studied species. pH and osmolality should be adjusted with precise electronic equipment such as pH meter and freezing point osmometer respectively.

1.1. Make 500 mL of extra-cellular solution without  $\text{Ca}^{2+}$  ( $\text{Ca}^{2+}$  free EC): 150 mM NaCl, 5 mM KCl, 1.3 mM  $\text{MgCl}_2$ , 4 mM glucose, 10 mM Hepes.

1.1.1. Dissolve 4.38 g of NaCl, 186.37 mg of KCl, 61.89 mg of  $\text{MgCl}_2$ , 360.32 mg of Glucose and 1.19 g of HEPES in 450 mL of ultrapure (0.055  $\mu\text{S}/\text{cm}$  at 25 °C, the resistivity of 18.2 MOhm)  $\text{H}_2\text{O}$  in a glass beaker using a magnetic agitator.

1.1.2. Adjust the pH to 7.75 with NaOH.

1.1.3. Transfer the solution into a 500 mL volumetric flask. Fill the volumetric flask with ultrapure  $\text{H}_2\text{O}$  until 500 mL.

1.1.4. Mix the solution well before measuring the osmolality. Adjust to 290-300 mOsm with mannitol. Filter sterilize the solution using water vacuum system and 0.2  $\mu\text{m}$  filter.

1.2. Make 500 mL of extra-cellular solution (EC): 150 mM NaCl, 5 mM KCl, 2 mM  $\text{CaCl}_2$ , 1.3 mM  $\text{MgCl}_2$ , 4 mM glucose, 10 mM Hepes.

1.2.1. Dissolve 4.38 g of NaCl, 186.37 mg of KCl, 147.01 mg of  $\text{CaCl}_2$ , 61.89 mg of  $\text{MgCl}_2$ , 360.32 mg of Glucose and 1.19 g of HEPES in 450 mL of ultrapure  $\text{H}_2\text{O}$  in a glass beaker using a magnetic agitator.

1.2.2. Adjust the pH to 7.75 with NaOH.

1.2.3. Transfer the solution into a 500 mL volumetric flask. Fill the volumetric flask with ultrapure  $\text{H}_2\text{O}$  until 500 mL.

1.2.4. Mix the solution well before measuring the osmolality. Adjust to 290-300 mOsm with mannitol. Filter sterilize the solution using water vacuum system and 0.2  $\mu\text{m}$  filter.

1.3. Make 500 mL of extra-cellular solution with 0.1% bovine serum albumin (EC with BSA): 150 mM NaCl, 5 mM KCl, 2 mM  $\text{CaCl}_2$ , 1.3 mM  $\text{MgCl}_2$ , 4 mM glucose, 10 mM Hepes.

1.3.1. Dissolve 4.38 g of NaCl, 186.37 mg of KCl, 147.01 mg of CaCl<sub>2</sub>, 61.89 mg of MgCl<sub>2</sub>, 360.32 mg of Glucose and 1.19 g of HEPES in 450 mL of ultrapure H<sub>2</sub>O in a glass beaker using a magnetic agitator.

1.3.2. Adjust the pH to 7.75 with NaOH.

1.3.3. Transfer the solution into a 500 mL volumetric flask. Fill the volumetric flask with ultrapure H<sub>2</sub>O until 500 mL.

1.3.4. Mix the solution well before measuring the osmolality. Adjust to 290-300 mOsm with mannitol. Filter sterilize the solution using water vacuum system and 0.2 µm filter. Add 50 mg BSA.

1.4. Make 250 mL of intracellular solution (IC): 110 mM KOH, 20 mM KCl, 10 mM Hepes, 20 mM sucrose.

1.4.1. Dissolve 1.54 g KOH, 327.75 mg of KCl, 595.75 mg of HEPES and 1.712 g of sucrose in 450 mL of ultrapure H<sub>2</sub>O in a glass beaker using a magnetic agitator.

1.4.2. Adjust the pH to 7.2 with (N-morpholino) ethane sulfonic (MES) acid.

1.4.3. Transfer the solution into a 250 mL volumetric flask. Fill the volumetric flask with ultrapure H<sub>2</sub>O until 250 mL.

1.4.4. Mix the solution well before measuring the osmolality. Adjust to 280-290 mOsm (10 mOsm lower than EC) with sucrose. Filter sterilize the solution using water vacuum system and 0.2 µm filter.

1.5. Make 100 mL of 2% low melting agarose solution in Ca<sup>2+</sup> and BSA free EC (2 g of low melting agarose in 100 mL of Ca<sup>2+</sup> free EC). Dissolve using a microwave and place the melted agarose in a water bath at 40 °C. Let it cool down until it reaches 40 °C before use on the tissues.

Note: EC, Ca<sup>2+</sup> free EC may be stored at 4 °C for several weeks if sterile and IC solutions at -20 °C, for several months. Agarose can be stored for a week at 4 °C and can be reused 3-5 times by briefly microwaving. Excessive reuse will lead to evaporation and alteration of agarose and salt concentration and quality.

1.6. Make agar bridge:

1.6.1. Heat 7.5 mm long borosilicate glass capillaries with outside diameter (O.D.) 2 mm and inside diameter (I.D.) 1.16 mm using a Bunsen burner at a focal point about 1/3 from one end until the glass starts to bend. Remove the glass from the flame and allow the glass to bend with an angle of about 120 degrees (**Figure 2A**).



214  
215 1.6.2. Melt 2% agar in normal EC without glucose using a microwave, and while the agarose is  
216 liquid fill the pre-made glass capillary using capillarity forces by putting one of the ends of the  
217 glass into the liquid and waiting for few minutes. Store bridges until use at 4 °C in EC without  
218 glucose.

219  
220 1.7. Prepare borosilicate glass with filament patch pipettes using a suitable pipette puller. Refer  
221 to the pipette puller manual to obtain the desired electrode resistance.

222  
223 Note: The taper of the pipette should be as short as possible. Short pipette taper is achieved by  
224 using 4-6 pulling steps. The electrode resistance should be between 2 and 6 MΩ depending on  
225 cell size.

226  
227 1.8. To avoid movement of tissue during the patch-clamp experiments coat the surface of the  
228 recording chamber with 0.1% of polyethylenimine (PEI) in borate buffer.

229  
230 1.8.1. Prepare 500 mL of borate buffer (25 mM):

231  
232 1.8.1.1. Dissolve 4.768 g of  $\text{Na}_2\text{B}_4\text{O}_7/10\text{H}_2\text{O}$  in 450 mL of ultrapure  $\text{H}_2\text{O}$  in a glass beaker using a  
233 magnetic agitator.

234  
235 1.8.1.2. Adjust pH to 8.4 with HCl.

236  
237 1.8.1.3. Transfer the solution into a 500 mL volumetric flask. Fill the volumetric flask with  
238 ultrapure  $\text{H}_2\text{O}$  until 500 mL and 0.2 μm filter sterilize the solution using water vacuum system.

239  
240 1.8.2. Prepare a 1% stock solution of PEI (1 mL 50% PEI to 49 mL 25 mM borate buffer) and a 0.1%  
241 PEI dilution by diluting 10 μL of 1% stock solution in 100 μL of borate buffer for final use.

242  
243 1.8.3. Add 2 mL of 0.1% PEI on the glass of the slice holder and let the coating incubate for 1  
244 minute. Then briefly wash the glass twice with 5 mL of ultrapure  $\text{H}_2\text{O}$  and let air dry until use.

245  
246 1.9. Prepare amphotericin B solutions.

247  
248 1.9.1. Make 60 mg/mL stock solution by dissolving 3 mg of amphotericin B powder in 50 μL  
249 dimethyl sulfoxide (DMSO), in a 1 mL tube protected from light. Vortex at the maximum speed  
250 for 30 s and sonicate for 15 min to homogenize. Store aliquots into 3-5 tubes at -20 °C and use  
251 one aliquot per day.

252  
253 Note: If the amphotericin B stock solution is not clear and yellow color but milky (still yellow)  
254 after 15-20 min sonication make a new stock solution.

1.9.2. Make IC solution with amphotericin B by pipetting 2 mL of the IC into a clean glass beaker with more than 10 mL capacity. Add 8  $\mu$ L of amphotericin B stock solution into the pipette solution and mix by pipetting. Wrap the beaker with aluminum foil and place on ice until use and renew it every 3 h.

## 2. Dissection and Slicing with Vibratome

2.1. Prepare the dissection tools before dissecting, including one sharp and one strong forceps with scissors. Clean the tools (tissue holder, brush, forceps) with ethanol and make sure that they are used only for dissection purposes and never in contact with fixed tissues. Keep them in a separate box to avoid contamination.

2.2. Euthanize the fish in cold ice water for 1 min.

2.3. Follow the subsequent steps to quickly dissect the medaka brain and pituitary with sharp forceps (use no more than 3 min).

2.3.1. While holding the fish with the strong forceps sever the two optic nerves behind the eyes with scissors or sharp forceps.

2.3.2. Open the dorsal part of the skull from the posterior to the anterior side by breaking the skull bones step by step with strong forceps.

2.3.3. Peel off the skull on one side with strong forceps.

2.3.4. Sever the spinal cord with scissors or sharp forceps.

2.3.5. Gently, grab the spinal cord with the forceps, flip the brain from posterior to anterior and place it into a dish with the ice-cold  $\text{Ca}^{2+}$  free EC.

2.4. Fill a 1.5-2  $\text{cm}^3$  metal mold with liquid agarose and place it on the ice.

2.5. Just before the agarose solidifies (at around 25-30  $^{\circ}\text{C}$ ), gently grab the brain by the spinal cord with the forceps, dry the forceps with a piece of fine paper and put the tissue into the agarose. Quickly mix the agarose to dilute the traces of EC left around the tissue and orientate the tissue and let the mold on ice for a few seconds until the agarose hardens.

Note: It is essential for this step to be fast. The agarose solidifies quickly as the metal mold is cooled down by the ice.

2.6. Trim a square block of agarose containing the tissue with a scalpel blade and glue it on the vibratome specimen holder using surgery (non-toxic) glue.

2.7. Fill the cuvette of the vibratome receiving the specimen (brain-pituitary) holder with ice-cold  $\text{Ca}^{2+}$  free EC.

2.8. Place the specimen holder into the vibratome and cut the agarose block to make parasagittal sections of 150  $\mu\text{m}$ , using high frequency and the low speed for the sectioning. Collect the selected sections and place them into the patch-clamp recording chamber with 3 mL of ice-cold  $\text{Ca}^{2+}$  free EC.

2.9. Place the grid harp (**Figure 2B**) on the tissue section.

Note: The harp will together with the coating stabilize the tissue and prevent it from moving during the patch-clamp recordings.

2.10 After the harp is in place, change the  $\text{Ca}^{2+}$  free EC medium to the normal EC with  $\text{Ca}^{2+}$  and BSA. Let the tissue rest for 10 min.

### 3. Perforated Patch-clamp and Electrophysiological Recordings

3.1. Before starting the experiment, chloride the silver wire electrodes by the following steps: First, use a fine sandpaper (p180) to clean the silver wire electrodes. Second, rinse with 2 mL, 70% ethanol. Third, dip the wires in 2 mL, 2-5% chlorine for 10 min. Finally, rinse with 2 mL, ultrapure  $\text{H}_2\text{O}$ .

3.2. Place the recording chamber with the brain-pituitary slice in the microscope stage and locate the target area (pituitary) using 10X objective and inspect the cells using 40X objective.

Note: If the preparation is successful, very few round cells should be visible. These round cells are usually damaged cells that are detaching from the tissue.

3.3. Place the grounding electrode through the 2% agar bridge into the EC bath.

3.4. Locate a healthy cell using the 40X objective.

Note: A healthy cell should be firmly attached to the tissue slice and not rounded up and detached from the slice.

3.5. Set the amplifier in voltage-clamp (VC; **figure 4A** point 1) mode. Open the seal test window and press the **bath** configuration (**Figure 4B** point 1 and 2. Use a 5-mV pulse to monitor pipette resistance (**Figure 4B** point 3).

3.6. Backfill the tip of the patch pipette with the antifungal free IC solution before adding the IC solution with amphotericin B using a micro-filler syringe (see **Figure 3**).

3.7. Add a slightly positive air pressure into the patch pipette using 1 mL syringe.

Note: This makes a small liquid flow from the patch pipette that avoid contamination of the tip.

3.8. Once in the bath, assess the patch pipette resistance and make sure no particles are attached to the tip of the pipette (**Figure 4C**).

Note: A small piece of tape is attached onto the monitor displaying the video recording from the field of view. This makes the positioning of the patch pipette relative to cell easier when the objective is not focusing on the cell.

3.9. Guide the patch pipette down to the cell using micromanipulators.

Note: Make sure that the pipette is clean by looking for small particles that may have attached to the tip of the pipette. Sudden changes in resistance may also be a result of particles stuck in the pipette tip.

3.10. Readjust the pipette when a few microns above the cell so that the tip of the pipette will touch the cell 1/3 from the middle of the cell, as shown in **Figure 5**. When touching the cell, release the pressure and apply the gentle suction to make a seal.

Note: The time from the patch pipette enters the bath to a successful seal should be kept as short as possible. Not more than 1-1.5 min in order to avoid amphotericin B reaching the tip of the pipette and leak into the bath.

3.11. Immediately switch to the **patch** window in the patch-clamp software (**Figure 4D** point 1) and have a holding potential between -50 and -60 mV (**Figure 4D** point 2). Zero out the fast capacitance made up by the glass pipette (**Figure 4D** point 3).

3.12. Switch to the **cell** window in patch-clamp software (**Figure 4E** point 1 and 2) and start monitoring access resistance, **R<sub>a</sub>**, displayed on the window. Zero out the membrane capacitance in the amplifier software (**Figure 4E** point 3) after sufficient access.

Note: Sufficient access might take 10 to 30 min (**figure 4E** point 2). A good access for current clamp recordings should be below 20 MΩ .

3.13. Switch to current clamp, **IC**, in amplifier software window (**Figure 4F** point 1). Adjust the fast-capacitive currents in the **I-clamp** window of the amplifier software (**Figure 4F** point 2 and 3) to the same value as in 3.12. Check membrane potential (**Figure 4F** point 1).

Note: Importantly, if the membrane potential is shallow (typical above -35 mV) the cell might be damaged. Cancel the recording and find a new cell.

3.14. After finding a healthy cell (firmly attached to the tissue with membrane potential below -40 mV), start the experimental recordings as detailed in the manufacturer's protocol<sup>33,34</sup>.

#### REPRESENTATIVE RESULTS:

This protocol demonstrates a step by step protocol of how to achieve reliable electrophysiological recordings from pituitary (gonadotrope) cells, using a medaka transgenic line [Tg(*lhb*-hrGfpII)] where the target cells (Lh-producing gonadotropes) are labeled with green fluorescent protein (GFP).

Initially, the electrophysiological investigations were conducted using whole-cell configuration. However, spontaneous action potentials were not observed in any of the studied cells. In a subset of cells, action potentials could be triggered using small current injections (5-9 pA) from a resting potential between -50 and -60 mV (**Figure 6**). These action potentials had a fast rundown, and after about 4-6 min triggered action potentials were no longer possible. The particularly fast rundown observed may be explained by the small cell size. In general, pituitary cells are smaller than neurons<sup>30</sup>. For instance, average membrane capacitance of gonadotrope cells ranges between 4 and 10 pF<sup>3,30,35</sup>. Similar to these findings medaka gonadotrope cells had an average membrane capacitance of (mean  $\pm$  S.D)  $3.4 \pm 0.9$  pF (n = 67).

Switching to the perforated patch configuration using amphotericin B, spontaneous action potentials were observed in about 50% of the recorded cells (**Figure 7A**, n = 63 cells from 21 animals). Moreover, action potentials could be triggered in 95% of these cells with no observable rundown even after prolonged recordings (up to 1 h). Importantly, in order to achieve reliable and high-quality recordings, it is necessary to first fill the tip with antifungal-free IC solution. If small amounts of antifungals escape the pipette tip before making the gigaseal, it can damage the target cell as well as surrounding cells.

In order to test if cells in the perforated patch configuration are able to respond to their main releasing hormone, we applied 1  $\mu$ M GnRh1 puff ejected on the target cells. The experiments were performed in the current clamp to allow us to monitor changes in voltage. These experiments revealed a biphasic response (**Figure 7B**). The first phase is a hyperpolarization where the release of Ca<sup>2+</sup> from internal stores activate Ca<sup>2+</sup> activated K<sup>+</sup> channels causing the hyperpolarization. The first phase is followed by a depolarization and increased action potential frequency from 1-2 Hz to around 3 Hz. In some of the recordings, the second phase had pseudo plateau potentials where 2 or 3 small spikes were observed before repolarization.

#### FIGURE LEGENDS:

**Figure 1: Difference between the whole-cell (A) and the perforated patch (B) configurations of the patch-clamp technique.** In the whole-cell configuration (**A**), after gigaseal is in place, a hole is made in the membrane by applying a small negative pressure into the patch pipette. In this configuration, important intracellular molecules such as signaling molecules can be diluted into the patch pipette solution thus affecting the electrical and physiological responses of the cell. This phenomenon is even more important in small cells, such as pituitary cells. In contrast, in

perforated-patch configuration **(B)**, following gigaseal, electrical contact between the cytosol and the patch pipette is made up of antifungals or surfactants. The antifungal or surfactant is loaded into the patch pipette before patching and will be incorporated into the plasma membrane under the patch, thereby slowly perforating the membrane, allowing only small molecules like monovalent ions to pass.

**Figure 2: Pictures of the Agar bridge (A) and the Harp (B) used in the protocol. Scale in mm.**

**Figure 3: Filling of the patch-pipette. (A)** Antifungal free IC solution (blue liquid) is backfilled by capillary forces due to the filament inside the pipette. **(B)** After filling the pipette tip with antifungal free IC, the posterior part of the pipette is filled with IC solution containing amphotericin B (yellow liquid) using a syringe needle (micro filler).

**Figure 4: Software screenshots. (A)** showing amplifier software window. 1. highlights (red circle) the mode area that allows switching between voltage clamp (VC), current clamp without any current injection ( $I=0$ ) and current clamp with possibility for current injections (IC). 2 highlights (red circle) the area for adjusting fast capacitive current in voltage clamp as well as whole-cell capacitive current adjustments. **(B)** shows the patch-clamp software with the membrane test window open. 1. highlights (red circle) the membrane test button. 2. highlights (red circle) the different pulse configurations, Bath, Patch, and Cell. 3. highlights (red circle) the pulse configuration amplitude and frequency. (C-F) shows a combined window of the patch-clamp software (left) and amplifier (right) software. **(C)** highlights (red circle) the resistance when the pipette is in the bath and proper grounding using agar bridge (in Bath mode). **(D)** 1. highlights (red circle) the switching to Patch mode following gigaseal. 2. highlights (red circle) the pulse configuration (10 mV pulse) and holding potential adjusted to -60 mV. 3. highlights (red circle) the window for correcting or zeroing the fast-capacitive currents following a giga seal. **(E)** 1. highlights (red circle) the Cell mode used for monitoring access resistance. 2 highlights (red circle) the cell parameters, membrane capacitance ( $C_m$ ), seal quality ( $R_m$ ), access resistance ( $R_a$ ), the time constant ( $\tau$ ) and holding current (Hold). 3. highlights (red circle) the button for correcting the membrane capacitive currents. **(F)** 1. Highlights (red circle) the IC mode for monitoring membrane potential. 2. Highlights (red circle) the button to switch to current clamp adjustments (I-clamp). 3. Highlights (red circle) the window for correcting the fast-capacitive currents.

**Figure 5: Micrograph from a patch-clamp recording on a pituitary cell using the perforated patch configuration.**

**Figure 6: Current clamp recordings from a GFP-labeled Lh-producing cell following current injections using normal whole-cell configuration.** The cells were kept between -50 and -60 mV. Typical action potentials could be triggered in a subset of cells using 5 - 10 pA current injections immediately after achieving access to the cell (black trace). After 1 - 3 min the action potential amplitude started to decrease, a typical sign of rundown (cyan trace). After 4 - 6 min the action potential amplitude almost completely disappeared (magenta trace).

**Figure 7. Current clamp recording from a GFP-labeled Lh-producing cell using the perforated patch configuration, following stimulation with the Gonadotropin-releasing hormone GnRH1.** (A) Current clamp recording demonstrating spontaneous action potentials from a Lh producing gonadotrope cell. (B) A biphasic response where GnRH1 stimulation for 10 s first induced a hyperpolarization of the cell membrane followed by a depolarization and increased firing frequency (from 1-2 Hz to 3 Hz) of action potentials in a cell which previously fired spontaneous action potentials.

## DISCUSSION:

Electrophysiological recordings using the patch-clamp technique on brain-pituitary slices require careful optimization. Well-optimized protocols for conducting live-cell investigations specifically in teleosts are limited, with the majority of publications using protocols based on mammalian systems. In this regard, it is important to be aware of the fact that several physiological parameters like pH and osmolality are not only species dependent, but also very much dependent on whether the organism in question lives on land or in water. For fish, it is also necessary, to take into account, if they live in a marine or freshwater environment. For example, the CO<sub>2</sub> partial pressure is much lower in fish compared to mammals with levels ranging from 1.7 - 3.4 mmHg pCO<sub>2</sub> in fish and 40 - 46 mmHg pCO<sub>2</sub> in mammals<sup>36</sup>. Based on this, we adjust the pH to 7.75<sup>37-40</sup> in all solutions used in the current protocol. We also use HEPES buffer as it has been shown to possess excellent buffering capacities in the pH region of 7.4 – 7.8<sup>41</sup>. For the osmolality, we use 290 - 300 mOsm which is what has been measured in the extracellular environment of medaka<sup>42</sup>. The temperature used during the electrophysiological recordings has been selected according to the environment of the fish. Indeed, medaka is living in waters with a wide temperature range (from 4 to 40 °C), while in our laboratory they are raised in a controlled environment at 26-28 °C. Based on this, we performed our recordings at room temperature (around 25 °C), different from what is used for mammalian tissues (37 °C) or for cold water fish species such as Atlantic cod (12 °C)<sup>18</sup>.

To be able to patch pituitary cells, it is critical to generate healthy tissue slices. It is imperative to use clean tools (tissue holder, brush, forceps, etc) that are only in contact with live tissue (free of fixatives). A quick dissection of the brain and pituitary and keeping the tissue at low temperature (4 °C) while dissecting and slicing are other key factors to provide viable sections. Specific attention should also be given to the temperature of the agarose upon tissue embedding. Too warm agarose could damage the tissue while too cold agarose will not leave you time to orientate the tissue for proper sectioning. In addition, slicing should be done with EC solution without Ca<sup>2+</sup> to avoid the damaged cells following sectioning to enter into apoptosis. Bubbling is not necessary, but the tissue slices should be collected immediately after sectioning. Leave the slice about 15 min following sectioning to let the cells rest a bit before patching.

Teleost fish are excellent models to investigate electrophysiological properties of pituitary cells. Indeed, contrary to mammals and birds, fish do not possess a median eminence, meaning that the hypothalamic neurons controlling the pituitary directly project their axons onto their target cells<sup>32</sup>. Thus, in a brain-pituitary slice, the pituitary cells are maintained in a more intact

environment compared to primary pituitary cell cultures where the cells are dissociated using chemical and mechanical treatments. Interestingly, using brain-pituitary slices of medaka, we could observe that the action potential firing frequency in Lh cells, upon GnRH1 activation, increased (**Figure 5**). These observations are in agreement with what has been reported in pituitary cell culture studies from our own lab <sup>29</sup> indicating that using primary pituitary cell cultures are still relevant to characterize the membrane properties of pituitary cells. However, brain-pituitary slices allow us to study also indirect effects of different compounds as well as interactions between cells, as it maintains structural connections that are lost in primary pituitary cell cultures. In addition, slice preparation is faster to prepare compared to a dissociated primary cell culture, and electrophysiological recordings can be conducted in the following 30 minutes after dissection. This means that, contrary to a primary cell culture, circadian rhythms can be addressed in a meaningful way using freshly prepared slices.

Because of the small size of the pituitary cells in fish (membrane capacitance around 3 - 10 pF), and our own observations showing that gonadotrope cells lose their ability to fire action potentials (**Figure 3**) and thus lose their ability to respond to releasing hormones when recording in whole-cell configuration, we decided to use and present the perforated patch technique herein. Indeed, it has been shown that whole-cell configuration could lead to the diffusion of important cytoplasmic molecules thus changing the electrophysiological cell properties <sup>13</sup>. Using instead the perforated patch configurations with amphotericin B to perforate the cell membrane into the patch pipette, making only small holes allowing only small ions to pass through <sup>15,16,43,44</sup>, we could avoid this dilution and record the electrical activity of the cell for a prolonged time.

One important point in the perforated patch technique is to first back-fill the pipette with IC solution without antifungals in order to avoid releasing antifungals into the medium and damage all cells of the section while approaching with the patch pipette. Indeed, because of the positive pressure applied to the patch pipette while approaching the tissue, some liquid is leaking through the patch pipette until the patch is made. This flow helps to keep the tip clean until you reach the targeted cell but if antifungal is released in the medium before the patch is made, it can perforate all membranes of all cells, changing dramatically the permeable characteristics of the cell membranes and thus their electrical properties.

The presented procedure has been optimized and successfully used to study the electrical activity of medaka gonadotrope cells. In addition, the protocol may be used to study all (endocrine) cell types found in the pituitary of medaka and other teleost fish species. Keep in mind only that the osmolality and pH of all solutions must be adjusted to that of the body fluids of the species in question.

#### **ACKNOWLEDGMENTS:**

We thank Ms. Lourdes Carreon G Tan for her help maintaining the medaka facility and Anthony Peltier for the illustrative figures. This work was funded by NMBU and by the Research Council of Norway, grant numbers 244461 (Aquaculture program) and 248828 (Digital Life Norway program).



## DISCLOSURES:

The authors have nothing to disclose

## REFERENCES

- 1 Stojilkovic, S. S., Tabak, J. & Bertram, R. Ion channels and signaling in the pituitary gland. *Endocr Rev.* **31** (6), 845-915, (2010).
- 2 Stojilkovic, S. S., Zemkova, H. & Van Goor, F. Biophysical basis of pituitary cell type-specific  $\text{Ca}^{2+}$  signaling-secretion coupling. *Trends Endocrinol Metab.* **16** (4), 152-159, (2005).
- 3 Van Goor, F., Goldberg, J. I. & Chang, J. P. Dopamine-D2 actions on voltage-dependent calcium current and gonadotropin-II secretion in cultured goldfish gonadotrophs. *J Neuroendocrinol.* **10** (3), 175-186, (1998).
- 4 Chang, J. P. & Pemberton, J. G. Comparative aspects of GnRH-Stimulated signal transduction in the vertebrate pituitary - Contributions from teleost model systems. *Mol Cell Endocrinol.* 10.1016/j.mce.2017.06.002, (2017).
- 5 Heyward, P. M., Chen, C. & Clarke, I. J. Inward membrane currents and electrophysiological responses to GnRH in ovine gonadotropes. *Neuroendocrinology.* **61** (6), 609-621, (1995).
- 6 Ben-Jonathan, N. & Hnasko, R. Dopamine as a Prolactin (PRL) Inhibitor. *Endocrine Reviews.* **22** (6), 724-763, (2001).
- 7 Sanchez-Cardenas, C. & Hernandez-Cruz, A. GnRH-Induced  $[\text{Ca}^{2+}]_i$ -signalling patterns in mouse gonadotrophs recorded from acute pituitary slices in vitro. *Neuroendocrinology.* **91** (3), 239-255, (2010).
- 8 Neher, E. & Sakmann, B. Single-channel currents recorded from membrane of denervated frog muscle fibres. *Nature.* **260** (5554), 799-802, (1976).
- 9 Sakmann, B. & Neher, E. Patch clamp techniques for studying ionic channels in excitable membranes. *Annu Rev Physiol.* **46** 455-472, (1984).
- 10 Neher, E. in *Techniques in cellular physiology* (ed Baker PF), 4-19 (Elsevier/North-Holland, 1981).
- 11 Hamill, O. P., Marty, A., Neher, E., Sakmann, B. & Sigworth, F. J. Improved patch-clamp techniques for high-resolution current recording from cells and cell-free membrane patches. *Pflugers Arch.* **391** (2), 85-100, (1981).
- 12 Cahalan, M. & Neher, E. Patch clamp techniques: an overview. *Methods Enzymol.* **207** 3-14, (1992).
- 13 Marty, A. & Neher, E. in *Single Channel Recording* (ed B. Sakmann and E. Neher) , 113-114 (Plenum Press, 1983).
- 14 Lindau, M. & Fernandez, J. M. IgE-mediated degranulation of mast cells does not require opening of ion channels. *Nature.* **319** (6049), 150-153, (1986).
- 15 Horn, R. & Marty, A. Muscarinic activation of ionic currents measured by a new whole-cell recording method. *J Gen Physiol.* **92** (2), 145-159, (1988).

599 16 Rae, J., Cooper, K., Gates, P. & Watsky, M. Low access resistance perforated patch  
600 recordings using amphotericin B. *J Neurosci Methods*. **37** (1), 15-26, (1991).

601 17 Fan, J. S. & Palade, P. Perforated patch recording with beta-escin. *Pflugers Arch*. **436** (6),  
602 1021-1023, (1998).

603 18 Hodne, K., von Krogh, K., Weltzien, F. A., Sand, O. & Haug, T. M. Optimized conditions  
604 for primary culture of pituitary cells from the Atlantic cod (*Gadus morhua*). The  
605 importance of osmolality, pCO<sub>2</sub>, and pH. *Gen Comp Endocrinol*. **178** (2), 206-215,  
606 (2012).

607 19 Sigworth, F. J. in *Single-Channel Recording* 10.1007/978-1-4615-7858-1\_1 eds Bert  
608 Sakmann & Erwin Neher) 3-35 (Springer US, 1983).

609 20 Andersen, P. Brain slices — a neurobiological tool of increasing usefulness. *Trends in*  
610 *Neurosciences*. **4** 53-56, (1981).

611 21 Guerineau, N. C., Bonnefont, X., Stoeckel, L. & Mollard, P. Synchronized spontaneous  
612 Ca<sup>2+</sup> transients in acute anterior pituitary slices. *J Biol Chem*. **273** (17), 10389-10395,  
613 (1998).

614 22 Levavi-Sivan, B., Bloch, C. L., Gutnick, M. J. & Fleidervish, I. A. Electrotonic coupling in  
615 the anterior pituitary of a teleost fish. *Endocrinology*. **146** (3), 1048-1052, (2005).

616 23 Guerineau, N. C., McKinney, R. A., Debanne, D., Mollard, P. & Gahwiler, B. H.  
617 Organotypic cultures of the rat anterior pituitary: morphology, physiology and cell-to-  
618 cell communication. *J Neurosci Methods*. **73** (2), 169-176, (1997).

619 24 Yu, Y., Ali, D. W. & Chang, J. P. Characterization of ionic currents and electrophysiological  
620 properties of goldfish somatotropes in primary culture. *Gen Comp Endocrinol*. **169** (3),  
621 231-243, (2010).

622 25 Price, C. J., Goldberg, J. I. & Chang, J. P. Voltage-activated ionic currents in goldfish  
623 pituitary cells. *Gen Comp Endocrinol*. **92** (1), 16-30, (1993).

624 26 Van Goor, F., Goldberg, J. I. & Chang, J. P. Electrical membrane properties and ionic  
625 currents in cultured goldfish gonadotrophs. *Can J Physiol Pharmacol*. **74** (6), 729-743,  
626 (1996).

627 27 Xu, S., Shimahara, T. & Cooke, I. M. Capacitance increases of dissociated tilapia prolactin  
628 cells in response to hyposmotic and depolarizing stimuli. *Gen Comp Endocrinol*. **173** (1),  
629 38-47, (2011).

630 28 Haug, T. M., Hodne, K., Weltzien, F. A. & Sand, O. Electrophysiological properties of  
631 pituitary cells in primary culture from Atlantic cod (*Gadus morhua*). *Neuroendocrinology*.  
632 **86** (1), 38-47, (2007).

633 29 Strandabo, R. A. *et al.* Signal transduction involved in GnRH<sub>2</sub>-stimulation of identified  
634 LH-producing gonadotropes from lhb-GFP transgenic medaka (*Oryzias latipes*). *Mol Cell*  
635 *Endocrinol*. **372** (1-2), 128-139, (2013).

636 30 Hodne, K. *et al.* Electrophysiological differences between fshb- and lhb-expressing  
637 gonadotropes in primary culture. *Endocrinology*. **154** (9), 3319-3330, (2013).

638 31 Wittbrodt, J., Shima, A. & Scharl, M. Medaka—a model organism from the far East. *Nat*  
639 *Rev Genet*. **3** (1), 53-64, (2002).

640 32 Ball, J. N. Hypothalamic control of the pars distalis in fishes, amphibians, and reptiles.  
641 *Gen Comp Endocrinol*. **44** (2), 135-170, (1981).

- 33 pCLAMP 10 Data Acquisition and Analysis For Comprehensive Electrophysiology User  
Guide. *Molecular Devices Corporation*. (2006).
- 34 MultiClamp 700B COMPUTER-CONTROLLED MICROELECTRODE AMPLIFIER Theory and  
Operation *Axon Instruments / Molecular Devices Corp.*, (2005).
- 35 Dominguez-Mancera, B. *et al.* Leptin regulation of inward membrane currents, electrical  
activity and LH release in isolated bovine gonadotropes. *Biochem Biophys Res Commun.*  
**491** (1), 53-58, (2017).
- 36 Schmidt-Nielsen, K. *Animal Physiology : adaptation and environment fifth edition*. p613  
(Cambridge university press, 1997).
- 37 Burton, R. F. Evolutionary determinants of normal arterial plasma pH in ectothermic  
vertebrates. *J Exp Biol.* **205** (Pt 5), 641-650, (2002).
- 38 Burton, R. F. The dependence of normal arterial blood pH on sodium concentration in  
teleost fish. *Comparative Biochemistry and Physiology Part A: Physiology.* **114** (2), 111-  
116, (1996).
- 39 Heming, T. A. & Blumhagen, K. A. Plasma acid-base and electrolyte states of rainbow  
trout exposed to alum (aluminum sulphate) in acidic and alkaline environments. *Aquatic  
Toxicology.* **12** (2), 125-139, (1988).
- 40 Reeves, R. B. The interaction of body temperature and acid-base balance in ectothermic  
vertebrates. *Annu Rev Physiol.* **39** 559-586, (1977).
- 41 Baicu, S. C. & Taylor, M. J. Acid–base buffering in organ preservation solutions as a  
function of temperature: new parameters for comparing buffer capacity and efficiency.  
*Cryobiology.* **45** (1), 33-48, (2002).
- 42 Miyanishi, H., Inokuchi, M., Nobata, S. & Kaneko, T. Past seawater experience enhances  
seawater adaptability in medaka, *Oryzias latipes*. *Zoological Lett.* **2** 12, (2016).
- 43 Cass, A., Finkelstein, A. & Krespi, V. The ion permeability induced in thin lipid  
membranes by the polyene antibiotics nystatin and amphotericin B. *J Gen Physiol.* **56**  
(1), 100-124, (1970).
- 44 Holz, R. & Finkelstein, A. The water and nonelectrolyte permeability induced in thin lipid  
membranes by the polyene antibiotics nystatin and amphotericin B. *J Gen Physiol.* **56**  
(1), 125-145, (1970).

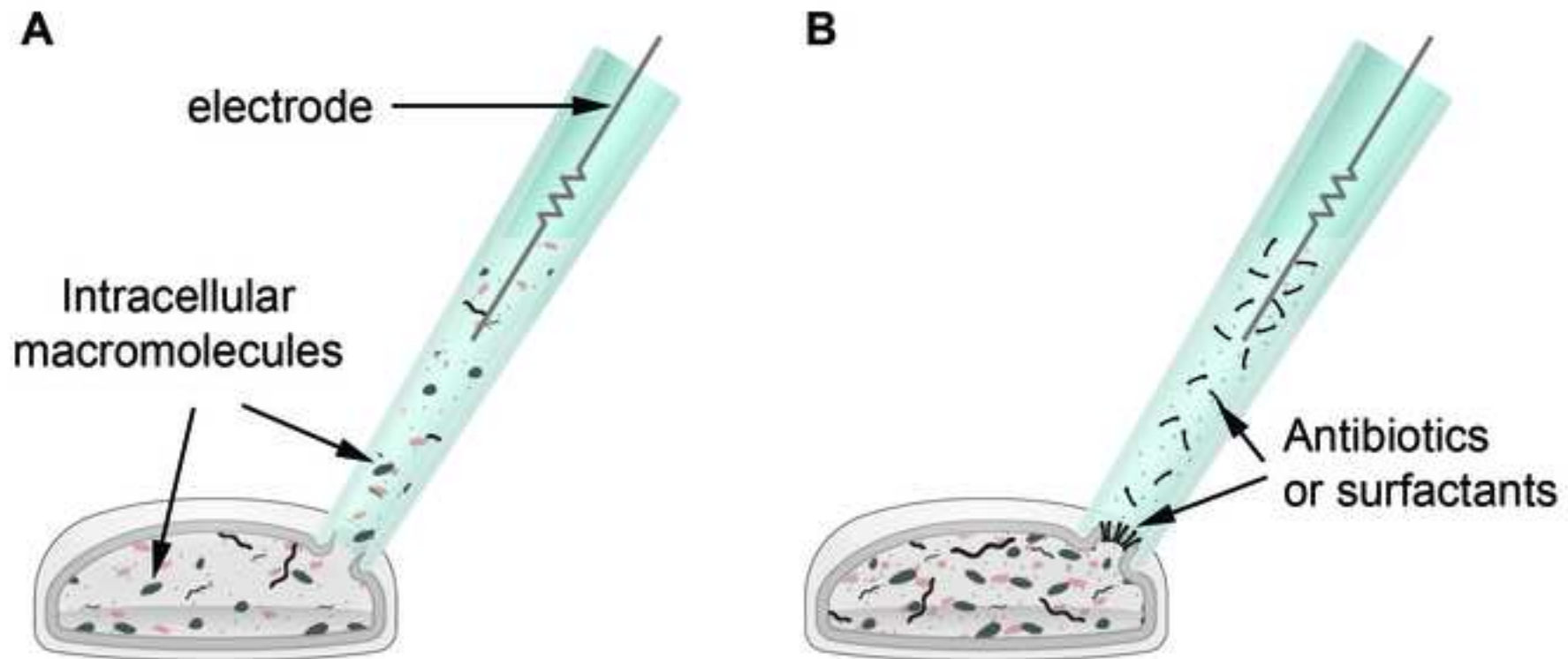
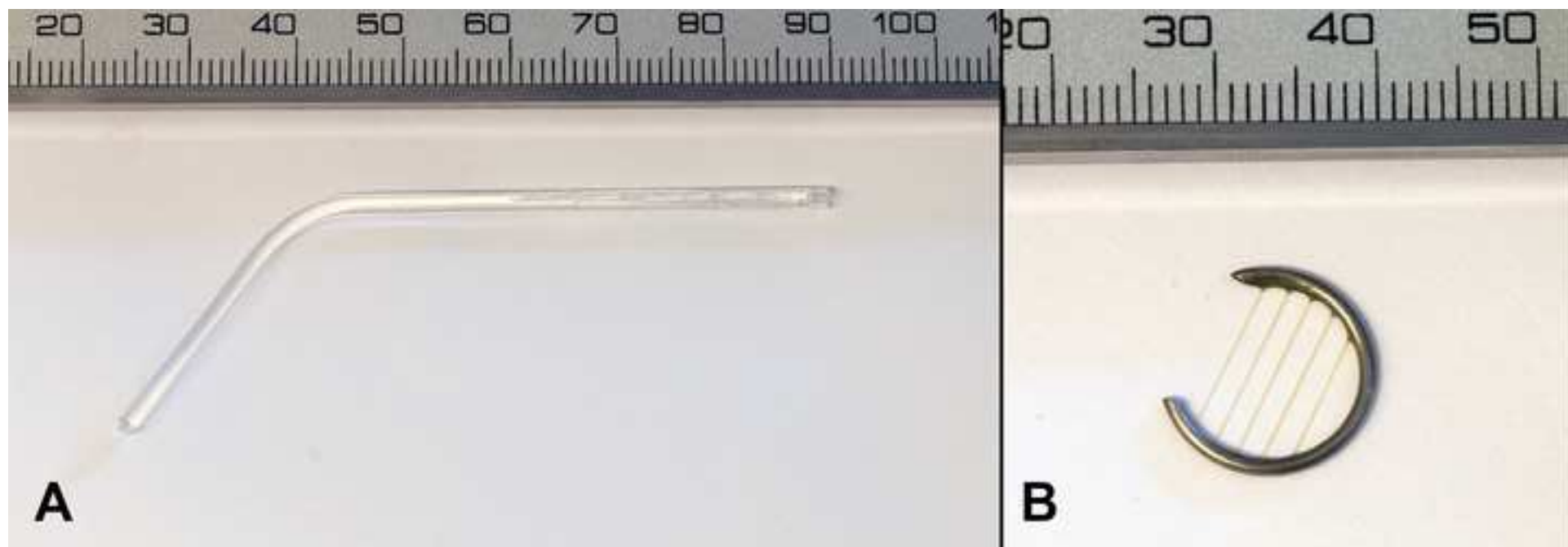
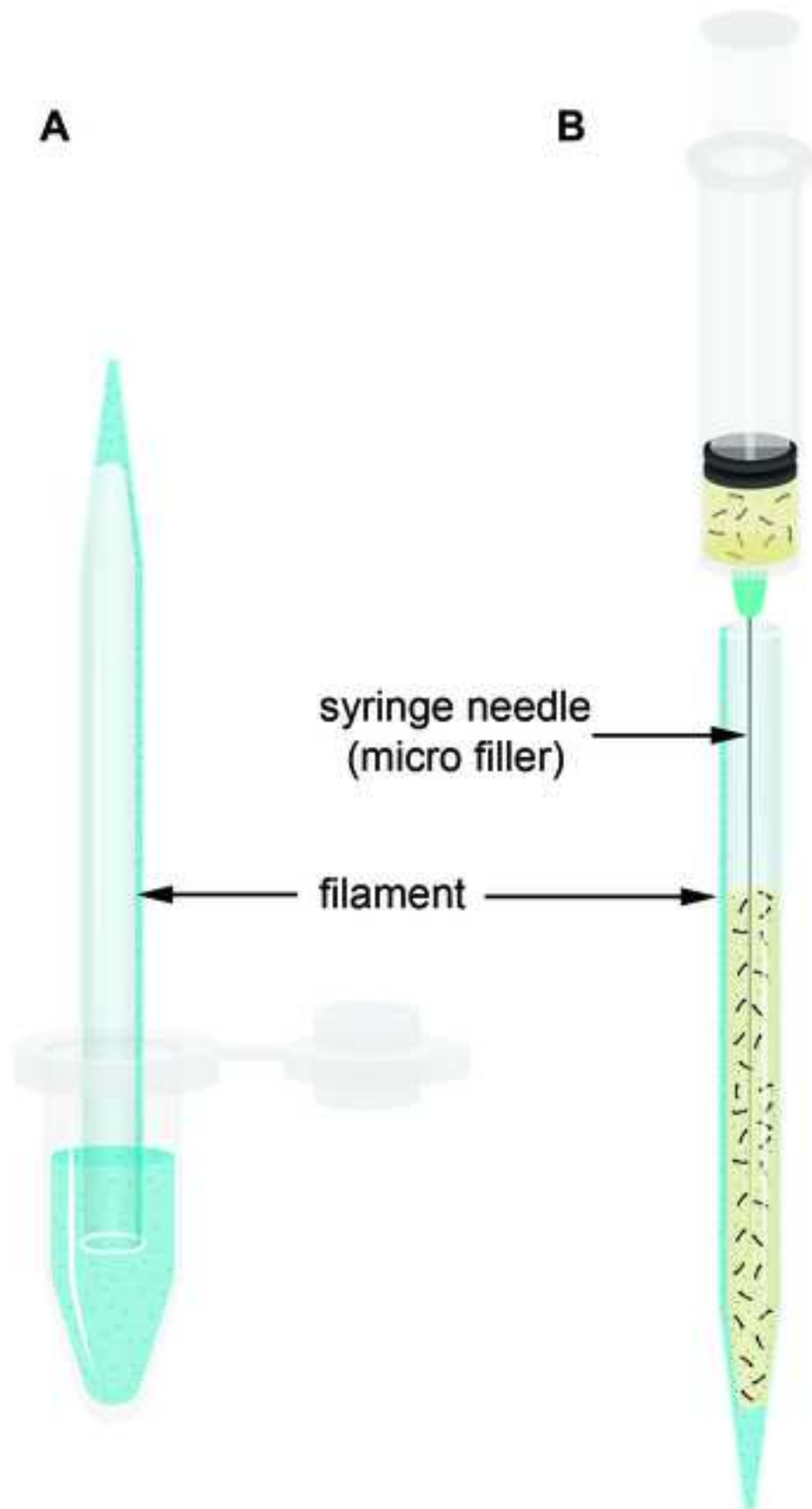


Figure 2

[Click here to download Figure figure 2.tif](#)





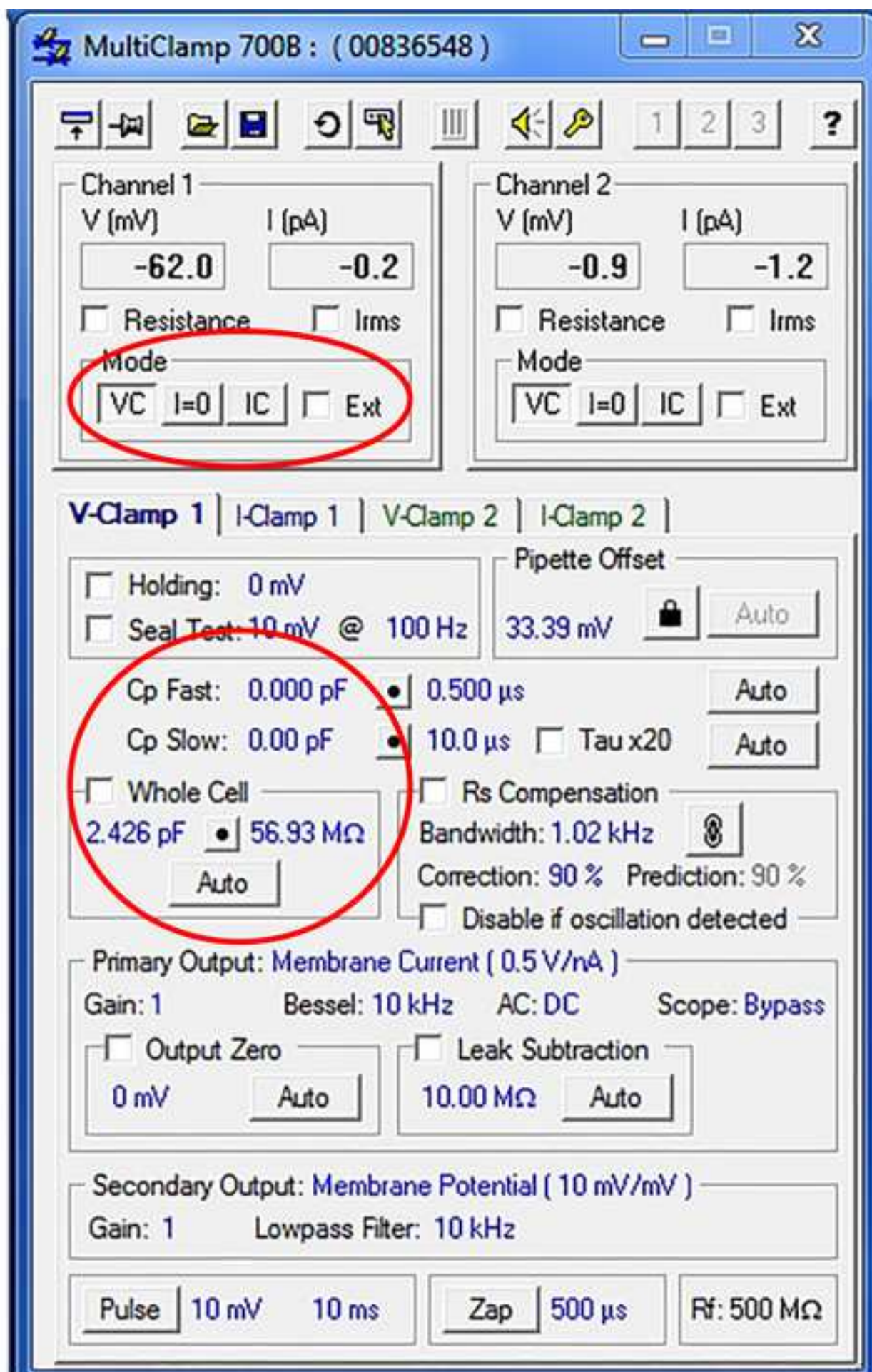
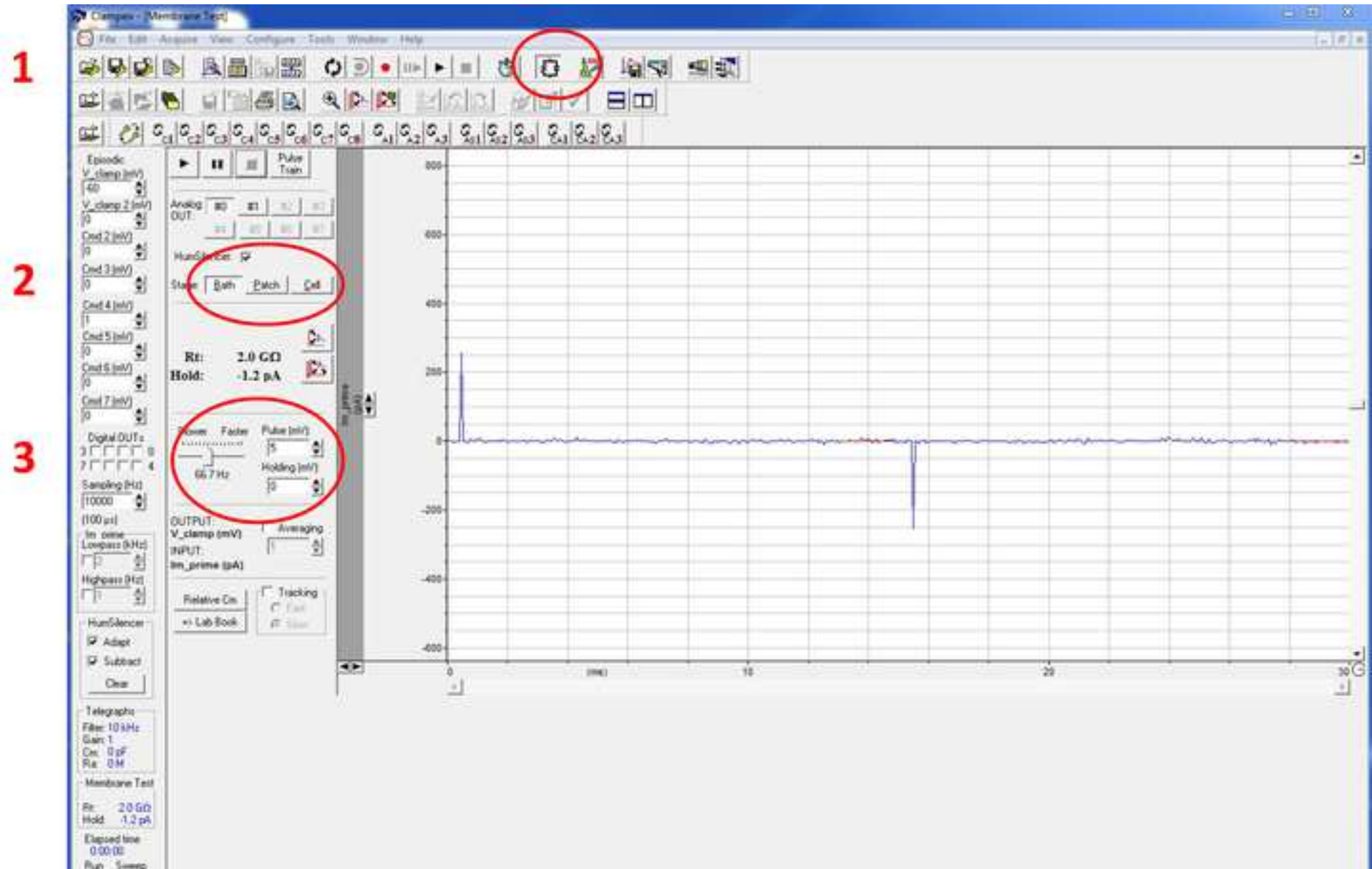


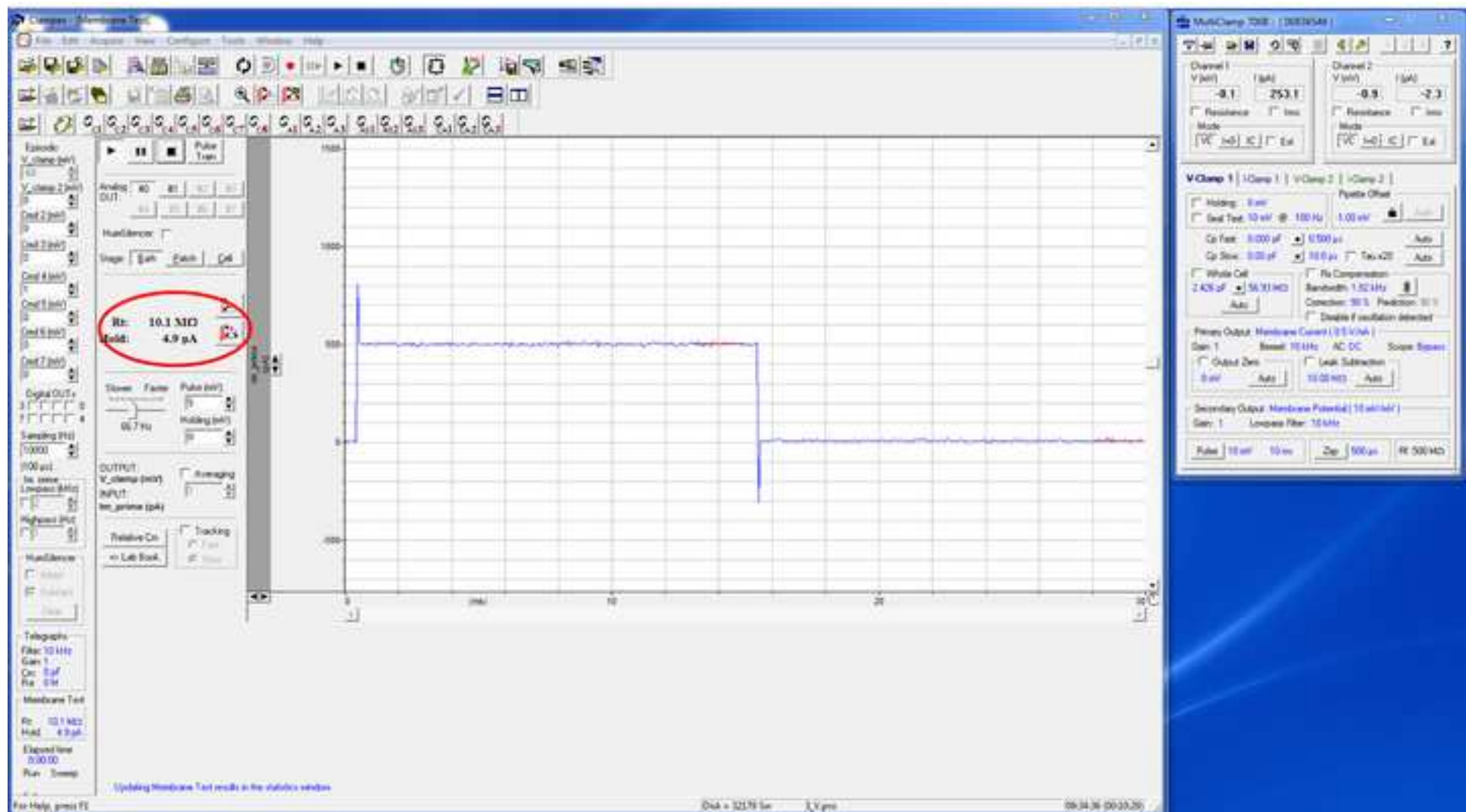


Figure 4B

[Click here to download Figure 4b.tif](#)



[Click here to download Figure 4c.tif](#) 



[Click here to download Figure 4d.tif](#) 



Figure 4E

[Click here to download Figure 4e.tif](#)

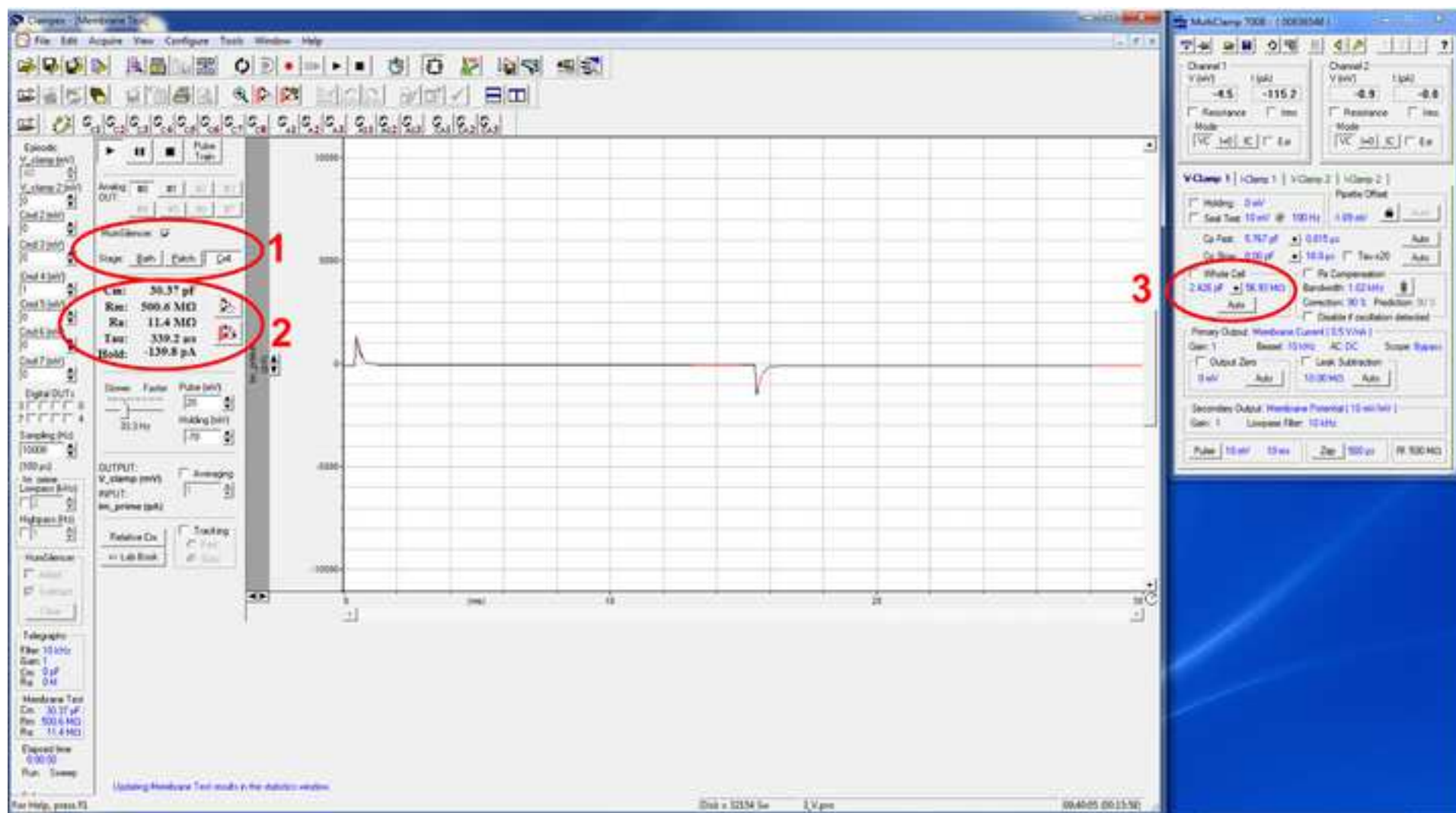
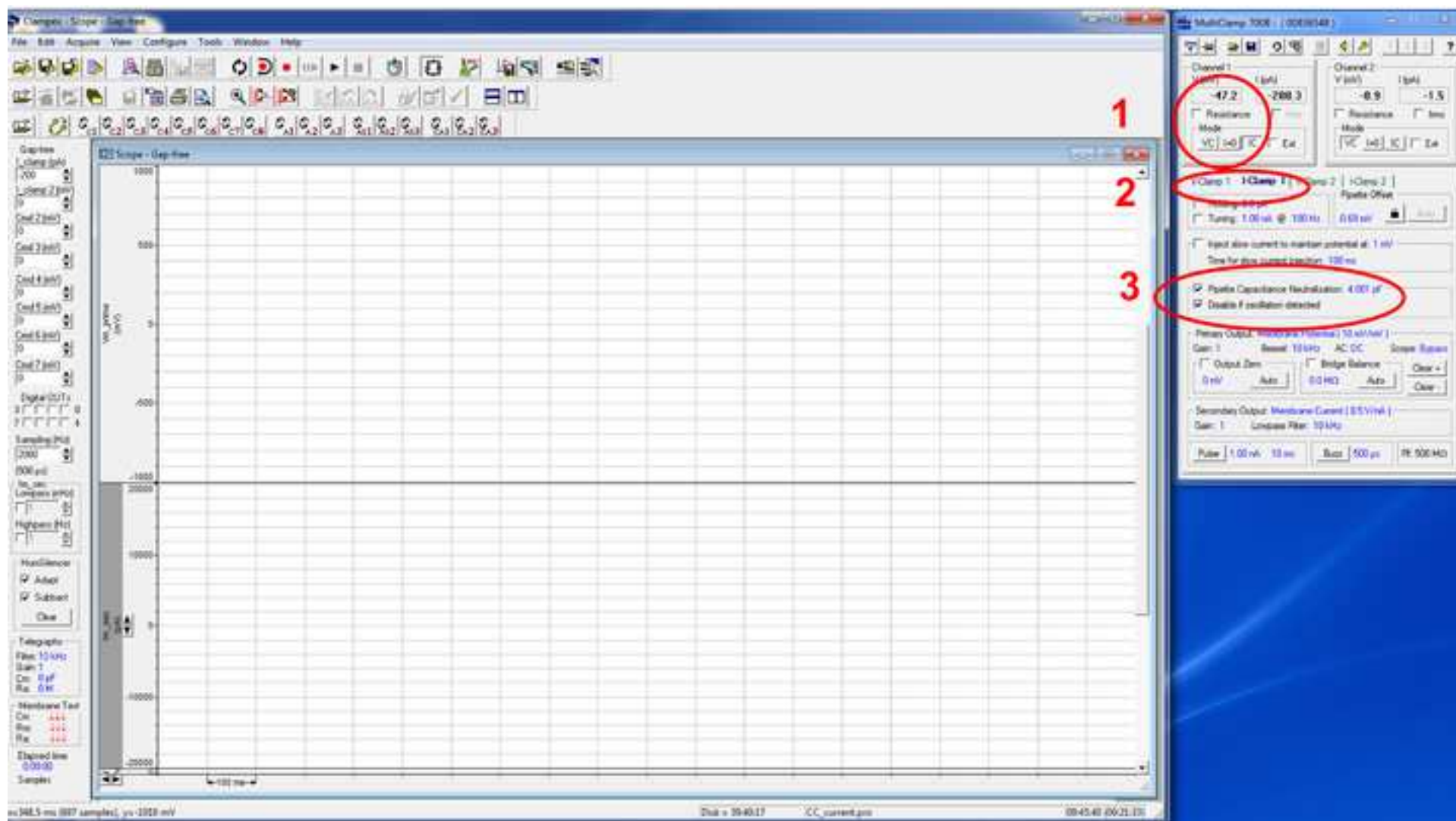


Figure 4F

[Click here to download Figure 4f.tif](#)





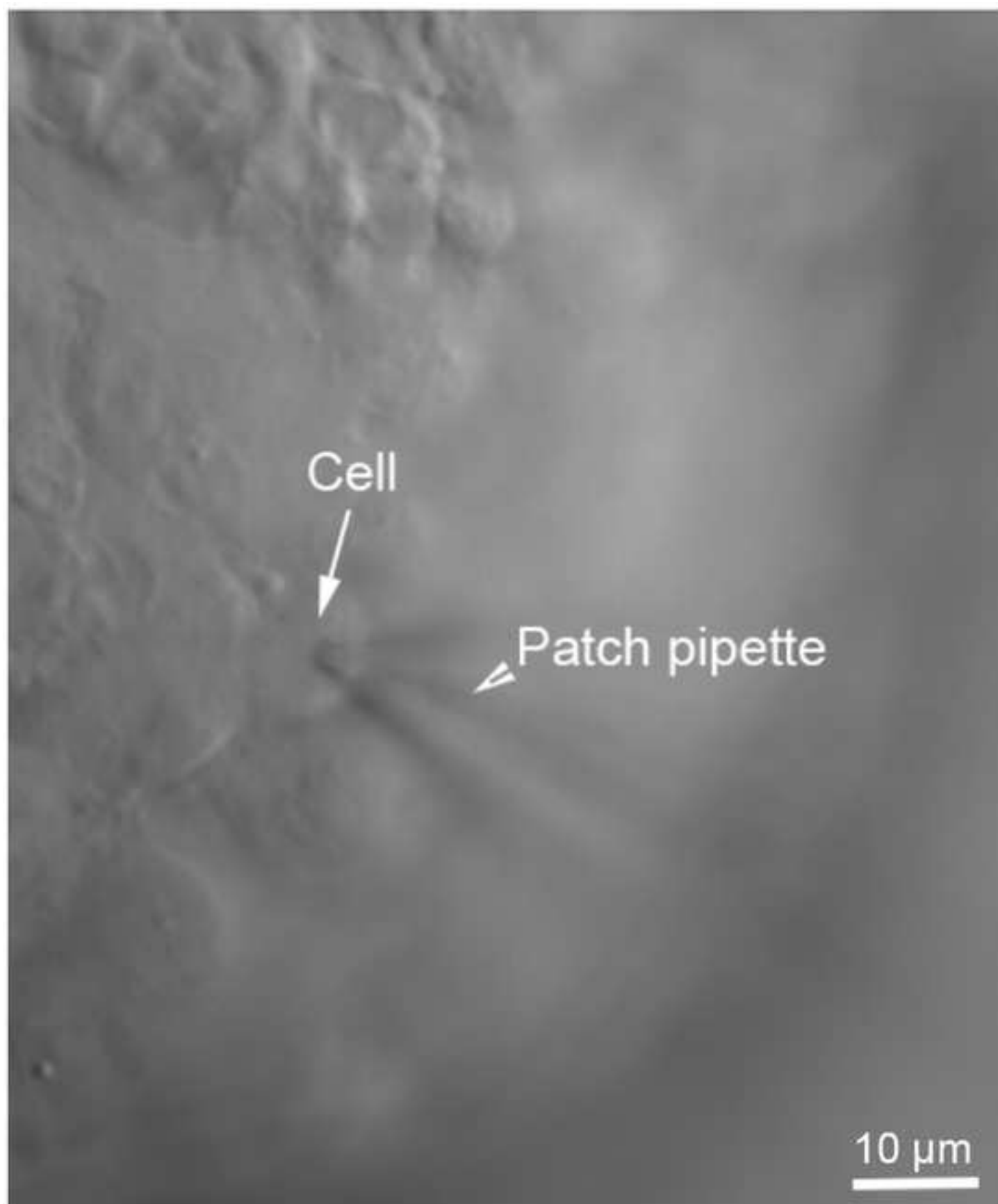
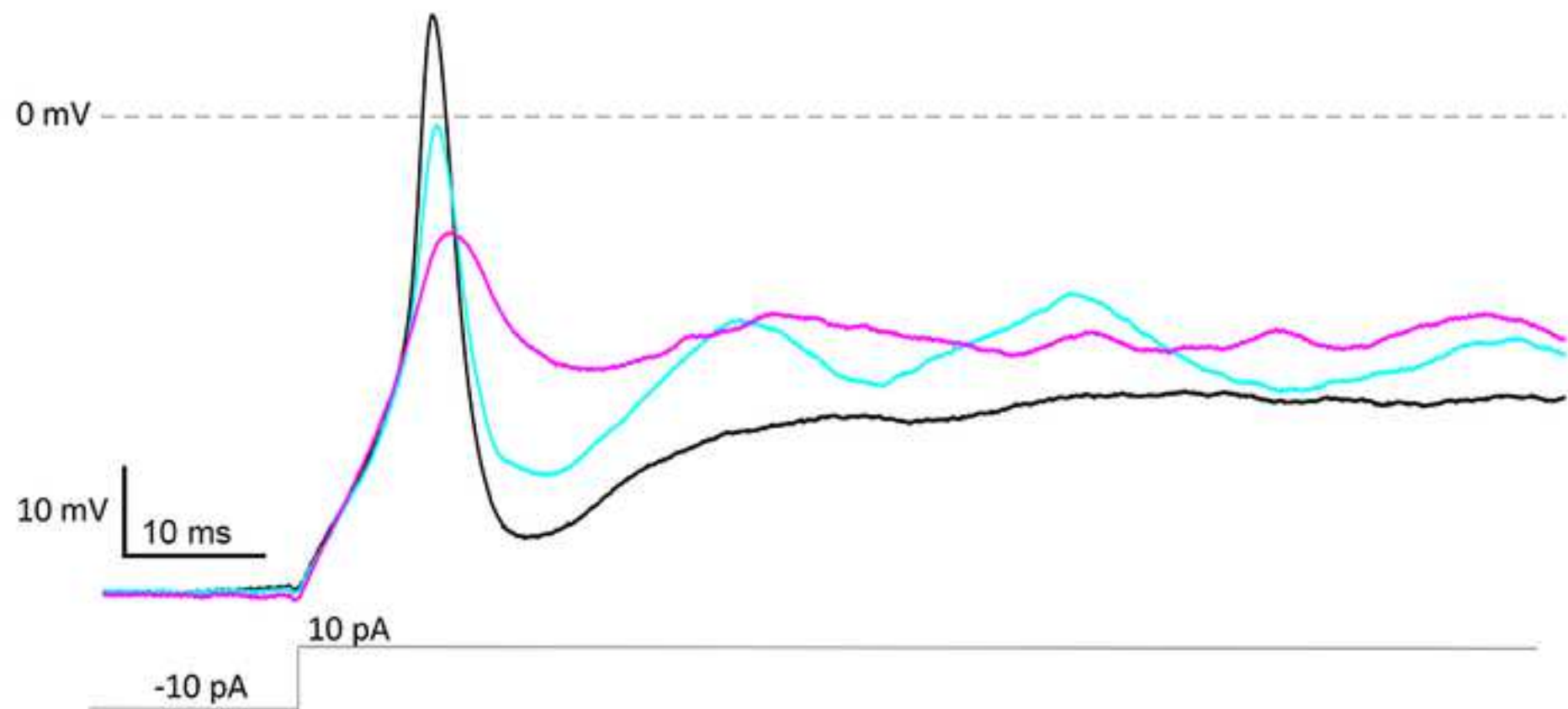
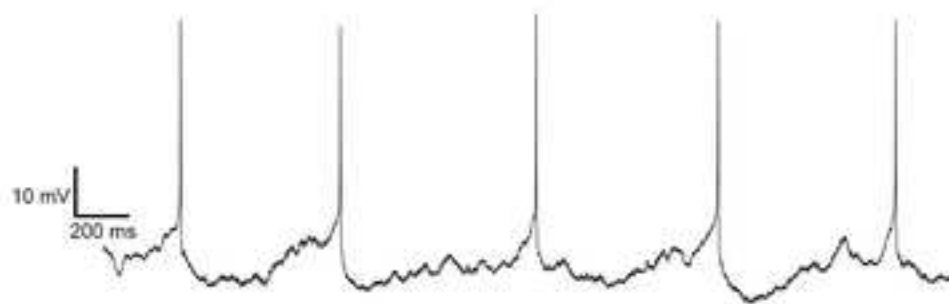
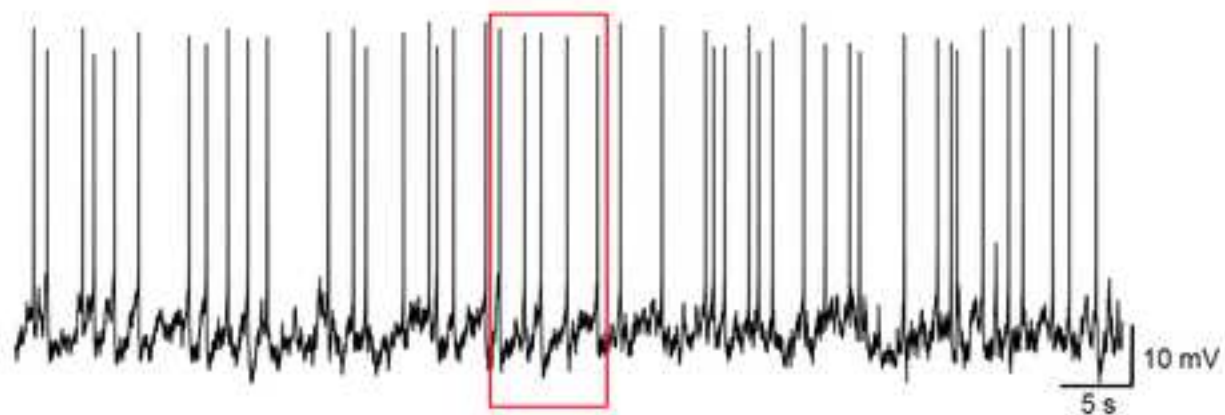
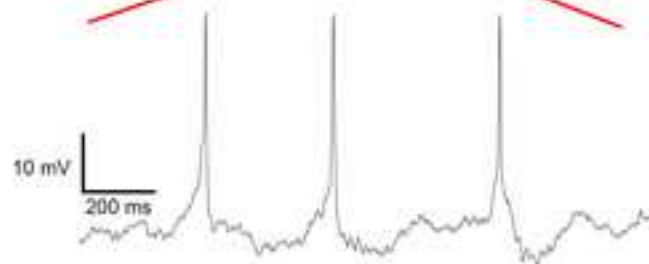
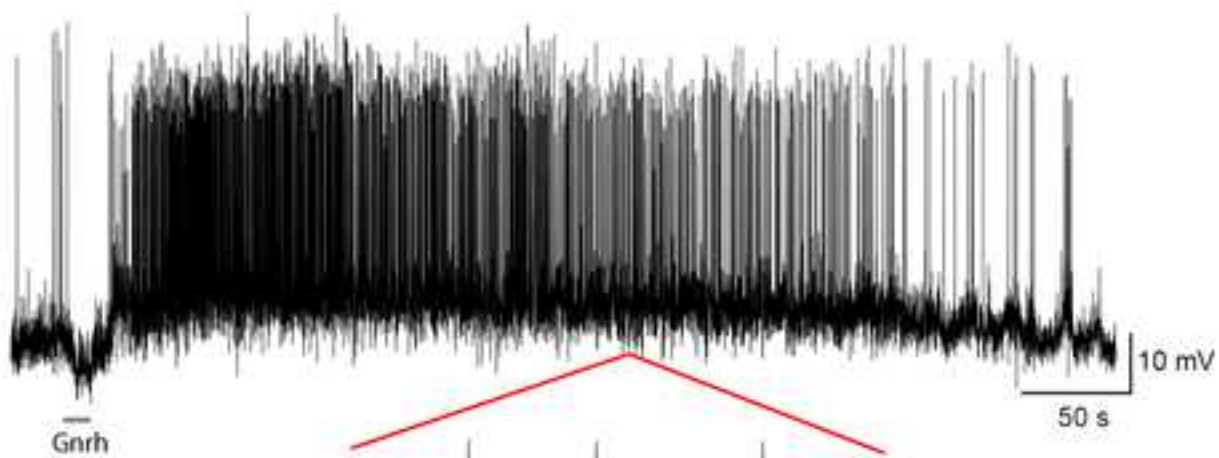


Figure 6



**A****B**

Name of Reagent/ Equipment	Company	Catalog Number
Vibratome	Leica	VT1000 S
Chirurgical glue	WPI	VETBOND
Stainless steel blades	Campden Instruments	752-1-SS
metal molds	SAKURA	4122
steel harp	Warner instruments	64-1417
PBS	SIGMA	D8537
Ultrapure LMP agarose	invitrogen	166520-100
patch pipettes	Sutter Instrument	BF150-110-10HP
Microscope Slicescope	Scientifica	pro6000
P-Clamp10	Molecular Devices	#1-2500-0180
Digitizer Digidata 1550A1	Molecular Devices	DD1550
Amplifier Multiclap 700B Headstage CV-7B	Molecular Devices	1-CV-7B
GnRH	Bachem	4108604
pipette puller	Sutter Instrument	P-1000
amphotericin B	SIGMA	A9528
polyethylenimine	SIGMA	P3143
microfiler syringe	WPI	MF28/g67-5
glass for the agar bridge	Sutter Instrument	BF200-116-15
Micro-Manager software		
optiMOS sCMOS camera	Qimaging	01-OPTIMOS-R-M-16-C
sonicator	Elma	D-7700 singen
NaCl	SiGMA	S3014
KCl	SiGMA	P9541
MgCl <sub>2</sub>	SiGMA	M8266
D-Glucose	SiGMA	G5400
Hepes	SiGMA	H4034
CaCl <sub>2</sub>	SiGMA	C8106
Sucrose	SiGMA	84097



D-mannitol	SIGMA		63565
MES-acid	SIGMA	M0895	
BSA	SIGMA	A2153	

**Comments/Description**

3M Vetbond Tissue Adhesive

Borosilicate with filament O.D.:1.5mm, I.D.:1.10mm

software

H-Glu-His-Trp-Ser-His-Gly-Leu-Ser-Pro-Gly-OH trifluoroacetate salt

pore-forming antibiotic

50% PEI solution

Borosilicate with filament O.D.:2.0mm, I.D.:1.16mm Fire polished

Open Source Microscopy Software



1 Alewife Center #200  
Cambridge, MA 02140  
tel. 617.945.9051  
[www.jove.com](http://www.jove.com)

## ARTICLE AND VIDEO LICENSE AGREEMENT

Title of Article:

Healthy brain-pituitary slices for electrophysiological investigations of pituitary cells in teleost fish

Author(s):

Romain Fontaine, Kjetil Hodne and Finn-Arne Weltzien

Item 1 (check one box): The Author elects to have the Materials be made available (as described at

<http://www.jove.com/author>) via: ☒ Standard Access ☐ Open Access

Item 2 (check one box):



The Author is NOT a United States government employee.



The Author is a United States government employee and the Materials were prepared in the course of his or her duties as a United States government employee.



The Author is a United States government employee but the Materials were NOT prepared in the course of his or her duties as a United States government employee.

### ARTICLE AND VIDEO LICENSE AGREEMENT

1. **Defined Terms.** As used in this Article and Video License Agreement, the following terms shall have the following meanings: “**Agreement**” means this Article and Video License Agreement; “**Article**” means the article specified on the last page of this Agreement, including any associated materials such as texts, figures, tables, artwork, abstracts, or summaries contained therein; “**Author**” means the author who is a signatory to this Agreement; “**Collective Work**” means a work, such as a periodical issue, anthology or encyclopedia, in which the Materials in their entirety in unmodified form, along with a number of other contributions, constituting separate and independent works in themselves, are assembled into a collective whole; “**CRC License**” means the Creative Commons Attribution-Non Commercial-No Derivs 3.0 Unported Agreement, the terms and conditions of which can be found at: <http://creativecommons.org/licenses/by-nc-nd/3.0/legalcode>; “**Derivative Work**” means a work based upon the Materials or upon the Materials and other pre-existing works, such as a translation, musical arrangement, dramatization, fictionalization, motion picture version, sound recording, art reproduction, abridgment, condensation, or any other form in which the Materials may be recast, transformed, or adapted; “**Institution**” means the institution, listed on the last page of this Agreement, by which the Author was employed at the time of the creation of the Materials; “**JoVE**” means MyJoVE Corporation, a Massachusetts corporation and the publisher of *The Journal of Visualized Experiments*; “**Materials**” means the Article and / or the Video; “**Parties**” means the Author and JoVE; “**Video**” means any video(s) made by the Author, alone or in conjunction with any other parties, or by JoVE or its affiliates or agents, individually or in collaboration with the Author or any other parties, incorporating all or any portion of the Article, and in which the Author may or may not appear.

2. **Background.** The Author, who is the author of the Article, in order to ensure the dissemination and protection of the Article, desires to have the JoVE publish the Article and create and transmit videos based on the Article. In furtherance of such goals, the Parties desire to memorialize in this Agreement the respective rights of each Party in and to the Article and the Video.

3. **Grant of Rights in Article.** In consideration of JoVE agreeing to publish the Article, the Author hereby grants to JoVE, subject to **Sections 4 and 7** below, the exclusive, royalty-free, perpetual (for the full term of copyright in the Article, including any extensions thereto) license (a) to publish, reproduce, distribute, display and store the Article in all forms, formats and media whether now known or hereafter developed (including without limitation in print, digital and electronic form) throughout the world, (b) to translate the Article into other languages, create adaptations, summaries or extracts of the Article or other Derivative Works (including, without limitation, the Video) or Collective Works based on all or any portion of the Article and exercise all of the rights set forth in (a) above in such translations, adaptations, summaries, extracts, Derivative Works or Collective Works and (c) to license others to do any or all of the above. The foregoing rights may be exercised in all media and formats, whether now known or hereafter devised, and include the right to make such modifications as are technically necessary to exercise the rights in other media and formats. If the “Open Access” box has been checked in **Item 1** above, JoVE and the Author hereby grant to the public all such rights in the Article as provided in, but subject to all limitations and requirements set forth in, the CRC License.

## ARTICLE AND VIDEO LICENSE AGREEMENT

4. Retention of Rights in Article. Notwithstanding the exclusive license granted to JoVE in **Section 3** above, the Author shall, with respect to the Article, retain the non-exclusive right to use all or part of the Article for the non-commercial purpose of giving lectures, presentations or teaching classes, and to post a copy of the Article on the Institution's website or the Author's personal website, in each case provided that a link to the Article on the JoVE website is provided and notice of JoVE's copyright in the Article is included. All non-copyright intellectual property rights in and to the Article, such as patent rights, shall remain with the Author.

5. Grant of Rights in Video – Standard Access. This **Section 5** applies if the "Standard Access" box has been checked in **Item 1** above or if no box has been checked in **Item 1** above. In consideration of JoVE agreeing to produce, display or otherwise assist with the Video, the Author hereby acknowledges and agrees that, Subject to **Section 7** below, JoVE is and shall be the sole and exclusive owner of all rights of any nature, including, without limitation, all copyrights, in and to the Video. To the extent that, by law, the Author is deemed, now or at any time in the future, to have any rights of any nature in or to the Video, the Author hereby disclaims all such rights and transfers all such rights to JoVE.

6. Grant of Rights in Video – Open Access. This **Section 6** applies only if the "Open Access" box has been checked in **Item 1** above. In consideration of JoVE agreeing to produce, display or otherwise assist with the Video, the Author hereby grants to JoVE, subject to **Section 7** below, the exclusive, royalty-free, perpetual (for the full term of copyright in the Article, including any extensions thereto) license (a) to publish, reproduce, distribute, display and store the Video in all forms, formats and media whether now known or hereafter developed (including without limitation in print, digital and electronic form) throughout the world, (b) to translate the Video into other languages, create adaptations, summaries or extracts of the Video or other Derivative Works or Collective Works based on all or any portion of the Video and exercise all of the rights set forth in (a) above in such translations, adaptations, summaries, extracts, Derivative Works or Collective Works and (c) to license others to do any or all of the above. The foregoing rights may be exercised in all media and formats, whether now known or hereafter devised, and include the right to make such modifications as are technically necessary to exercise the rights in other media and formats. For any Video to which this Section 6 is applicable, JoVE and the Author hereby grant to the public all such rights in the Video as provided in, but subject to all limitations and requirements set forth in, the CRC License.

7. Government Employees. If the Author is a United States government employee and the Article was prepared in the course of his or her duties as a United States government employee, as indicated in **Item 2** above, and any of the licenses or grants granted by the Author hereunder exceed the scope of the 17 U.S.C. 403, then the rights granted hereunder shall be limited to the maximum rights permitted under such

statute. In such case, all provisions contained herein that are not in conflict with such statute shall remain in full force and effect, and all provisions contained herein that do so conflict shall be deemed to be amended so as to provide to JoVE the maximum rights permissible within such statute.

8. Likeness, Privacy, Personality. The Author hereby grants JoVE the right to use the Author's name, voice, likeness, picture, photograph, image, biography and performance in any way, commercial or otherwise, in connection with the Materials and the sale, promotion and distribution thereof. The Author hereby waives any and all rights he or she may have, relating to his or her appearance in the Video or otherwise relating to the Materials, under all applicable privacy, likeness, personality or similar laws.

9. Author Warranties. The Author represents and warrants that the Article is original, that it has not been published, that the copyright interest is owned by the Author (or, if more than one author is listed at the beginning of this Agreement, by such authors collectively) and has not been assigned, licensed, or otherwise transferred to any other party. The Author represents and warrants that the author(s) listed at the top of this Agreement are the only authors of the Materials. If more than one author is listed at the top of this Agreement and if any such author has not entered into a separate Article and Video License Agreement with JoVE relating to the Materials, the Author represents and warrants that the Author has been authorized by each of the other such authors to execute this Agreement on his or her behalf and to bind him or her with respect to the terms of this Agreement as if each of them had been a party hereto as an Author. The Author warrants that the use, reproduction, distribution, public or private performance or display, and/or modification of all or any portion of the Materials does not and will not violate, infringe and/or misappropriate the patent, trademark, intellectual property or other rights of any third party. The Author represents and warrants that it has and will continue to comply with all government, institutional and other regulations, including, without limitation all institutional, laboratory, hospital, ethical, human and animal treatment, privacy, and all other rules, regulations, laws, procedures or guidelines, applicable to the Materials, and that all research involving human and animal subjects has been approved by the Author's relevant institutional review board.

10. JoVE Discretion. If the Author requests the assistance of JoVE in producing the Video in the Author's facility, the Author shall ensure that the presence of JoVE employees, agents or independent contractors is in accordance with the relevant regulations of the Author's institution. If more than one author is listed at the beginning of this Agreement, JoVE may, in its sole discretion, elect not take any action with respect to the Article until such time as it has received complete, executed Article and Video License Agreements from each such author. JoVE reserves the right, in its absolute and sole discretion and without giving any reason therefore, to accept or decline any work submitted to JoVE. JoVE and its employees, agents and independent contractors shall have



## ARTICLE AND VIDEO LICENSE AGREEMENT

full, unfettered access to the facilities of the Author or of the Author's institution as necessary to make the Video, whether actually published or not. JoVE has sole discretion as to the method of making and publishing the Materials, including, without limitation, to all decisions regarding editing, lighting, filming, timing of publication, if any, length, quality, content and the like.

11. **Indemnification.** The Author agrees to indemnify JoVE and/or its successors and assigns from and against any and all claims, costs, and expenses, including attorney's fees, arising out of any breach of any warranty or other representations contained herein. The Author further agrees to indemnify and hold harmless JoVE from and against any and all claims, costs, and expenses, including attorney's fees, resulting from the breach by the Author of any representation or warranty contained herein or from allegations or instances of violation of intellectual property rights, damage to the Author's or the Author's institution's facilities, fraud, libel, defamation, research, equipment, experiments, property damage, personal injury, violations of institutional, laboratory, hospital, ethical, human and animal treatment, privacy or other rules, regulations, laws, procedures or guidelines, liabilities and other losses or damages related in any way to the submission of work to JoVE, making of videos by JoVE, or publication in JoVE or elsewhere by JoVE. The Author shall be responsible for, and shall hold JoVE harmless from, damages caused by lack of sterilization, lack of cleanliness or by contamination due to the making of a video by JoVE its employees, agents or independent contractors. All sterilization, cleanliness or decontamination procedures shall be solely the responsibility of the Author and shall be undertaken at the Author's

expense. All indemnifications provided herein shall include JoVE's attorney's fees and costs related to said losses or damages. Such indemnification and holding harmless shall include such losses or damages incurred by, or in connection with, acts or omissions of JoVE, its employees, agents or independent contractors.

12. **Fees.** To cover the cost incurred for publication, JoVE must receive payment before production and publication the Materials. Payment is due in 21 days of invoice. Should the Materials not be published due to an editorial or production decision, these funds will be returned to the Author. Withdrawal by the Author of any submitted Materials after final peer review approval will result in a US\$1,200 fee to cover pre-production expenses incurred by JoVE. If payment is not received by the completion of filming, production and publication of the Materials will be suspended until payment is received.

13. **Transfer, Governing Law.** This Agreement may be assigned by JoVE and shall inure to the benefits of any of JoVE's successors and assignees. This Agreement shall be governed and construed by the internal laws of the Commonwealth of Massachusetts without giving effect to any conflict of law provision thereunder. This Agreement may be executed in counterparts, each of which shall be deemed an original, but all of which together shall be deemed to me one and the same agreement. A signed copy of this Agreement delivered by facsimile, e-mail or other means of electronic transmission shall be deemed to have the same legal effect as delivery of an original signed copy of this Agreement.

A signed copy of this document must be sent with all new submissions. Only one Agreement required per submission.

### CORRESPONDING AUTHOR:

Name:

Finn-Arne WELTZIEN

Department:

Department of Basic Sciences and aquatic Medicine


Institution:

Faculty of Veterinary Medicine, Norwegian University of Life Sciences

Article Title:

Healthy brain-pituitary slices for electrophysiological investigations of pituitary cells in teleost fish

Signature:



Date:

23/12-2017

Please submit a signed and dated copy of this license by one of the following three methods:

- 1) Upload a scanned copy of the document as a pdf on the JoVE submission site;
- 2) Fax the document to +1.866.381.2236;
- 3) Mail the document to JoVE / Attn: JoVE Editorial / 1 Alewife Center #200 / Cambridge, MA 02139

For questions, please email [submissions@jove.com](mailto:submissions@jove.com) or call +1.617.945.9051

## Editorial comments

1. Please reduce the instances of personal pronoun- we.

We removed all the pronoun we used in the manuscript and change the text to put it at the passive tense

2. Please check

We checked and corrected everywhere it was suggested

3. Osmolality

Osmolality is the right term

4. Please do not use commercial language and use generic term instead. MQ is ultrapure .  
Maybe ...ultrapure?

We changed everywhere it was necessary for ultrapure H2O

5. 2.3 Line 320 : Dissect how?

This is explained in 2.3.1 /2 /3 /4 /5

6. Figure 4 : Figure 4 is the reference figure for the scriptwriters.. All these steps will be filmed since this is highlighted in the protocol. SO essentially this figure can be removed and uploaded as supplementary files for scripting purpose.

If you intend to make this as a figure, then please place all the panels together in one figure.

The reason why we did not fit all figures into one panel is the reduced resolution. The viewers will not be able to see the small details on the figures. We believe that the figures are important because it points to where to focus. Often the readers will not be able to follow details in the video while making experiments and thus figures with printed pictures will be helpful.

7. References : Please do not abbreviate the journal name.

We followed the template that you sent us which use abbreviated names for the journals and we in addition verified in some published articles from Jove, this is the format that has been used.

8. How

Everywhere it was asked we added some more information

9. 2.5 Which liquid? Do you wash the brain (which solution) prior to making the agarose block?

In 2.3.5 the brain is place in ice cold EC