

Journal of Visualized Experiments

Detection of Small GTPase Prenylation and GTP binding using Membrane Fractionation and GTPase-linked immunosorbent assay --Manuscript Draft--

Article Type:	Invited Methods Article - Author Produced Video
Manuscript Number:	JoVE57646R4
Full Title:	Detection of Small GTPase Prenylation and GTP binding using Membrane Fractionation and GTPase-linked immunosorbent assay
Keywords:	Simvastatin; glioblastoma; Rho GTPase; Cancer Cell Biology; prenylation; mevalonate pathway.
Corresponding Author:	Saeid Ghavami University of Manitoba Neil John Maclean Health Sciences Libraries Winnipeg, Manitoba CANADA
Corresponding Author's Institution:	University of Manitoba Neil John Maclean Health Sciences Libraries
Corresponding Author E-Mail:	Saeid.Ghavami@umanitoba.ca
Order of Authors:	Javad Alizadeh Shahla Shojaei Simone dasilva Rosa Adel Rezaei Moghadam Amir A Zeki Mohammad Hashemi Marek J. Los Joseph W. Gordon Saeid Ghavami
Additional Information:	
Question	Response
Please indicate whether this article will be Standard Access or Open Access.	Standard Access (US\$1200)



Max Rady College
of Medicine

Dr. Saeid Ghavami
Assistant Professor
Department of Human Anatomy
and Cell Science
Basic Medical Sciences Bldg.
104-745 Bannatyne Avenue
Winnipeg, Manitoba
Canada R3E 0J9
Tel (Office): (204)-272-3061
Tel (Lab): (204)-272-3071
saeid.ghavami@umanitoba.ca

September 26, 2018

Journal of Visualized Experiments

Re: Invited Manuscript Submission; Alizadeh et al.

Dear Dr. Myers,

We are pleased to submit the revision of the paper entitled “**Detection of Small GTPase Prenylation and GTP binding using Membrane Fractionation and GTPase-linked immunosorbent assay**” by Javad Alizadeh, Shahla Shojaei, Simone da Silva Rosa, Adel Rezaei Moghadam, Amir A. Zeki, Mohammad Hashemi, Marek J. Los, Joseph W. Gordon, Saeid Ghavami, for consideration and evaluation to be published in “**Journal of Visualized Experiments**”.

This method paper is based on our research paper which has been recently published in “Scientific Reports” in focuses on measuring RhoA GTPase localization and GTP bound assay.

We addressed all the editorial points as following:

We have carefully addressed all of the respected editor comments and hopefully we can satisfy the high quality exception of JOVE journal.

It is worthy to mention that University of Manitoba Audio/Visual unit has helped us to prepare VIDEO for the manuscript.

Sincerely,

Saeid Ghavami, BSc, MSc, PhD, Assistant Professor

Room 104 Basic Medical Science Building.

Department of Human Anatomy & Cell Science,

Max Rady College of Medicine, Rady Faculty of Health Sciences,

University of Manitoba, Winnipeg, Canada

<http://home.cc.umanitoba.ca/~ghavami/>

<http://scholar.google.ca/citations?user=uX7QLiMAAAAJ&hl=en>

<http://www.linkedin.com/pub/saeid-ghavami/24/7/606>

Office: +1 204 272 3061, Lab: +1 204 272 3071, Email: saeid.ghavami@umanitoba.ca, saeid.ghavami@gmail.com

Saeid Ghavami

TITLE:

Detection of Small GTPase Prenylation and GTP Binding Using Membrane Fractionation and GTPase-linked Immunosorbent Assay

AUTHORS AND AFFILIATIONS:

Javad Alizadeh^{1,2}, Shahla Shojaei^{1,2}, Simone da Silva Rosa¹, Adel Rezaei Moghadam^{1,2}, Amir A. Zeki³, Mohammad Hashemi⁴, Marek J. Los^{5,6,7}, Joseph W. Gordon^{1,8}, Saeid Ghavami^{1,2,9}

¹Department of Human Anatomy and Cell Science, Rady Faculty of Health Sciences, Max Rady College of Medicine, University of Manitoba, Winnipeg, Canada

²Biology of Breathing Theme, Children Hospital Research Institute of Manitoba, University of Manitoba, Winnipeg, Canada

³Division of Pulmonary, Critical Care, and Sleep Medicine, Department of Internal Medicine, Center for Comparative Respiratory Biology and Medicine, Davis, CA, USA

⁴Department of Clinical Biochemistry, School of Medicine, Zahedan University of Medical Sciences, Zahedan, Iran

⁵Department of Molecular Biology, School of Pharmacy with the Division of Laboratory Medicine in Sosnowiec, Medical University of Silesia, Katowice, Poland

⁶Centre de biophysique moléculaire - UPR 4301, Centre national de la recherche scientifique (CNRS) CS80054, Orleans, France

⁷LinkoCare Life Sciences AB, Linköping, Sweden

⁸College of Nursing and Children's Hospital Research Institute of Manitoba, Rady Faculty of Health Sciences, University of Manitoba, Winnipeg, Canada

⁹Health Policy Research Center, Institute of Health, Shiraz University of Medical Sciences, Shiraz, Iran

Corresponding Author:

Saeid Ghavami (saeid.ghavami@umanitoba.ca)

E-mail Addresses of the Co-authors:

Javad Alizadeh (alizadej@myumanitoba.ca)

Shahla Shojaei (shojaeis@uvic.ca)

Simone da Silva Rosa (dasilvas@myumanitoba.ca)

Adel Rezaei Moghadam (rezaeima@myumanitoba.ca)

Amir A. Zeki (aazeki@ucdavis.edu)

Mohammad Hashemi (mhd.hashemi@gmail.com)

Marek J. Los (mjelos@gmail.com)

Joseph W. Gordon (joseph.gordon@umanitoba.ca)

KEYWORDS:

Simvastatin, glioblastoma, Rho GTPase, cancer cell biology, prenylation, mevalonate pathway

SUMMARY:

Here we describe a protocol to investigate the prenylation and guanosine-5'-triphosphate (GTP)-loading of Rho GTPase. This protocol consists of two detailed methods, namely membrane fractionation and a GTPase-linked immunosorbent assay. The protocol can be used for measuring the prenylation and GTP loading of different other small GTPases.

ABSTRACT:

The Rho GTPase family belongs to the Ras superfamily and includes approximately 20 members in humans. Rho GTPases are important in the regulation of diverse cellular functions, including cytoskeletal dynamics, cell motility, cell polarity, axonal guidance, vesicular trafficking, and cell cycle control. Changes in Rho GTPase signaling play an essential regulatory role in many pathological conditions, such as cancer, central nervous system diseases, and immune system-dependent diseases. The posttranslational modification of Rho GTPases (*i.e.*, prenylation by mevalonate pathway intermediates) and GTP binding are key factors which affect the activation of this protein. In this paper, two essential simple methods are provided to detect a broad range of Rho GTPase prenylation and GTP binding. Details of the technical procedures that have been used are explained step by step in this manuscript.

INTRODUCTION:

Rho GTPases are a group of small proteins (21 - 25 kDa), which are well conserved throughout evolution, and form a unique subfamily in the Ras superfamily of small GTPases. In each subfamily within this superfamily, there is a shared G domain core that is involved in the GTPase activity and nucleotide exchange¹. The difference between the Rho family and the other Ras subfamilies is the presence of a "Rho insert domain" within the 5th β strand and the 4th α helix in the small GTPase domain².

Based on the recent classification, Rho GTPases are considered a family of signaling proteins that fit into the Ras GTPase superfamily³. Mammalian Rho GTPases have 22 members based on their specific function and general characterization⁴ in which RhoA, Rac1, and Cdc42 are among the most-studied members in this group. Rho GTPases are linked to intracellular signaling pathways *via* a tightly regulated mechanism which is dependent on molecular switches *via* protein posttranslational modifications⁵.

GTP loading and hydrolysis are essential mechanisms in the activation/deactivation cycle of small Rho GTPases and are regulated *via* GTPase-activating proteins (GAPs). GAPs are responsible for the GTP hydrolysis and work in concert with guanine nucleotide exchange factors (GEFs) which are responsible for the GTP-loading reaction. Rho GDP dissociation inhibitors (GDIs) provide further regulation of small Rho GTPases *via* binding to the GDP-bound Rho GTPases. This inhibits GDP dissociation and facilitates sequestering of small Rho GTPases away from the active intracellular membrane sites. There is also further regulation of Rho GTPase proteins involving the prenylation of GDIs which regulates both nucleotide hydrolysis and exchange and controls GDP/GTP cycling^{1,6-8}.

Both GTP-loading and Rho GTPase prenylation are involved in the movement of Rho GTPase between cytosol and cell membranes by changing the lipophilic properties of these proteins^{1,9}.

The abovementioned regulators interact with phospholipids of the cell membrane and other modulating proteins of the GDP/GTP exchange activity¹⁰. Moreover, GDIs, dissociation inhibitors, block both the GTP hydrolysis and the GDP/GTP exchange. GDIs inhibit the dissociation of the inactive Rho proteins from GDP and, therefore, their interaction with downstream effectors. GDIs also regulate the cycling of GTPases between the cytosol and membrane in the cell. The activity of Rho GTPases depends to a great extent on their movement to the cell membrane; thus, GDIs are regarded as critical regulators that can sequester GTPases in the cytoplasm through hiding their hydrophobic region/domains^{11,12}.

For Rho GTPase to have an optimum signaling and function in all stages of its activation cycle, the dynamic cycle of GTP-loading/GTP hydrolysis is crucial. Any kind of alterations in this process may result in subsequent changes in cell functions regulated by Rho GTPase, such as cell polarity, proliferation, morphogenesis, cytokinesis, migration, adhesion, and survival^{13,14}.

The current protocol provides readers with a detailed method to monitor small RhoA GTPase activation *via* the investigation of their prenylation and GDP/GTP loading. This method can also be used to detect the prenylation and GTP binding of a wide range of small GTPases. The GTPase-linked immunosorbent assay can be used to measure the level of activation of other kinds of GTPases, such as Rac1, Rac2, Rac3, H-, K-, or N-Ras, Arf, and Rho¹⁵. The pharmacological agent simvastatin is used as an example, as it was recently reported to be involved in the regulation of small Rho GTPase prenylation and activity^{8,9,14,16}.

PROTOCOL:

1. Determination of RhoA Localization Using Membrane/Cytosol Fractionation

1.1. Cell culture and simvastatin treatment

1.1.1. Seed 50,000 of U251 cells in a 100 mm dish and culture them in Dulbecco's modified Eagle's medium (DMEM) (high glucose, 10% fetal bovine serum [FBS]).

1.1.2. When 30% confluent, treat the cells by removing the medium and adding simvastatin-containing medium to it (10 μ M of simvastatin dissolved in dimethyl sulfoxide [DMSO]), and incubate for 36 h at 37 °C⁸. Use DMSO alone as a vehicle control.

NOTE: Ten million cells are needed for the cytosol and membrane fractionation of the cells.

1.2. Collection of cells

1.2.1. Remove the cells from the 37 °C incubator. Look at the cells under a microscope to confirm the confluency.

NOTE: The cells should be 70% - 80% confluent.

1.2.2. Aspirate the medium, wash the cells 1x with cold phosphate-buffered saline (PBS). Add 5 mL of ethylenediaminetetraacetic acid (EDTA) buffer (KCl: 400 mg/L, NaCl: 6800 mg/L, NaHCO₃: 2200 mg/L, NaH₂PO₄·H₂O: 140 mg/L, D-glucose: 1,000 mg, EDTA disodium: 373 mg/L) per plate and place the cells back into the 37 °C incubator for 5 min.

1.2.3. After 5 min of incubation, collect the EDTA with the cells in a 15 mL tube containing the same amount of medium as EDTA.

NOTE: Having medium in the tube neutralizes the EDTA and prevents any further digestion of the cell membranes.

1.2.4. Place the tube in an ice box and proceed to the centrifuge.

1.2.5. Set up the centrifuge to 1,500 x *g* at 4 °C and spin the cells for 5 min.

1.2.6. Remove the supernatant without disturbing the pellet and add 1 mL of cold PBS. Mix the cells well.

1.2.7. Transfer the cell mixture (solution) to a new 1.5 mL tube, centrifuge at 1,500 x *g* at 4 °C, and spin the cells for 5 min.

1.2.8. Check the pellet size (for estimating the volume of the buffer for the next step). Place the samples on ice. Discard the supernatant completely without disturbing the pellet.

1.2.9. Add ice-cold buffer I (10 mM Tris-HCl [pH 7.5], 0.1 mM EDTA, 0.1 mM EGTA, 1 mM dithiothreitol, and protease inhibitor cocktail), mix the samples well by pipetting up and down, and then, proceed to sonication.

1.3. Sonication

1.3.1. Set the sonicator for five cycles, 5 s each, and repeat 3x.

1.3.2. Perform the sonication on ice. Proceed to the ultracentrifuge.

NOTE: Ice and cold condition preserve the proteins and make the results more reliable.

1.4. Ultracentrifugation

1.4.1. Use an ultracentrifuge to separate the cell homogenates into cytoplasmic and membrane fractions. Set the centrifuge to 100,000 x *g* for 35 min at 4 °C. As shown in **Figure 1**, check the pellet size.

NOTE: The membrane fraction is at the very bottom of the tube and the rest is other cytoplasmic components.

176
177 1.4.2. Collect the supernatant completely while being careful not to disturb the pellet. The
178 supernatant is the cytosolic fraction. Place the supernatant in a newly labeled tube.

179
180 1.4.3. Add 300 μ L of dissociation buffer (buffer II) (50 mM Tris-HCl [pH 7.5], 0.15 M NaCl, 1 mM
181 dithiothreitol, 1% SDS, 1 mM EDTA, 1 mM EGTA, and protease inhibitor cocktail) to the pellet
182 (contains the membrane fraction). Mix well by pipetting up and down.

183
184 1.4.4. Proceed to protein determination and western blot (immunoblot analysis) sample
185 preparation.

186 187 **1.5. Immunoblotting**

188
189 1.5.1. Prepare the cell protein extracts from the separated fractions in lysis buffer (20 mM Tris-
190 HCl [pH 7.5], 0.5 mM PMSF, 0.5% non-ionic detergent-40, 100 μ M β -glycerol 3-phosphate, and
191 0.5% protease inhibitor cocktail).

192
193 1.5.2. Measure the protein concentration using the Lowry method⁸ and calculate the volume of
194 the lysis buffer (20 mM Tris-HCl [pH 7.5], 0.5 mM PMSF, 0.5% nondenaturing detergent,
195 octylphenoxypolyethoxyethanol, 100 μ M β -glycerol 3-phosphate, and 0.5% protease inhibitor
196 cocktail) to normalize the concentration of protein between the samples.

197
198 1.5.3. Heat the samples at 90 °C for 5 min and load 15 - 20 μ L of the samples on a 15% SDS-PAGE
199 gel to separate the proteins.

200
201 NOTE: Load 1 μ g of protein for each sample. Calculate the volume that needs to be run
202 accordingly.

203
204 1.5.4. Transfer the separated proteins to nylon membranes under reducing conditions (500 mM
205 glycine, 50 mM Tris-HCl, and 20% methanol) for 2 h, at room temperature (RT) at 100 V.

206
207 NOTE: To confirm the successful protein transfer, use Ponceau stain or visualize the protein
208 marker on the membrane.

209
210 1.5.5. Block the membranes with 5% nonfat dried milk and 1x Tris-buffered saline containing
211 detergent (TBS/0.01% nonionic detergent; TBST) to block nonspecific antibody binding at 4 °C
212 overnight or at RT for 1 h.

213
214 1.5.6. Add primary antibodies for immunoblotting analysis and incubate overnight at 4 °C.

215
216 NOTE: In this experiment, Rac1/2/3, cdc42, RhoA, GAPDH, and pan-Cadherin were used at a
217 1:1,000 dilution in 1% milk in 1x TBST. Pan-Cadherin and GAPDH were used to confirm membrane
218 and cytosolic fraction purity, respectively.

1.5.7. Wash the membranes 3x with a washing buffer with 1x TBST for 20 min.

1.5.8. Incubate the membranes with anti-rabbit horseradish peroxidase (HRP)-conjugated secondary antibody for the respective primary antibodies (for 1 h at RT).

1.5.9. Wash the blots 3x for 20 min and develop them with enhanced chemiluminescence (ECL) detection.

2. Measurement of the RhoA GTP Load Using a Small G-protein Activation Assay

2.1. Count 10,000 cells/mL and culture the U251 cells in a 100 mm dish.

2.2. When they are 30% confluent, treat the cells with simvastatin as described in step 1.1.2.

2.3. Bring the culture plates out of the incubator. Look at the cells under the microscope to confirm confluency. Ensure that the cells are 70% - 80% confluent. Place the Petri dish on ice, aspirate the media, and wash the cells 3x with ice-cold PBS (pH 7.2).

2.4. Aspirate the PBS. Tilt the Petri dish on ice for an additional minute to remove all remnants of PBS.

NOTE: Residual PBS adversely affects this assay.

2.5. Lyse the cells in a 700 μ L volume of ice-cold lysis buffer containing protease and phosphatase inhibitors.

NOTE: 700 μ L is usually enough for a 100 mm Petri dish. See **Table 1** to find the proper volume for each culture vessel.

2.6. Harvest the cell lysate with the cell scraper. Incline the culture plate for this technique.

2.7. Transfer the lysate to a labeled ice-cold cryotube and keep it on ice.

2.8. Mix thoroughly using a vortex. Keep 10 μ L of the lysate for the protein assay, to measure the protein concentration in the sample.

2.9. Snap-freeze the remaining cell lysate in liquid nitrogen.

NOTE: Prepare multiple aliquots of cell lysate before snap-freezing them, to avoid repeated freeze/thaw cycles which can lead to the loss of activity of RhoA GTPase.

2.10. Transfer the snap-frozen cryotubes to a -80 $^{\circ}$ C freezer and store the samples for the GTPase-linked immunosorbent assay.

NOTE: Do not store the samples for longer than 14 days. Work quickly and never leave the samples on ice for longer than 10 min. Never handle all Petri dishes simultaneously.

2.11. Measure the protein concentration using the Lowry method⁸ and calculate the volume of the lysis buffer to normalize the concentration of protein between the samples.

NOTE: The best concentration is usually 1 mg/mL; however, 0.3 - 2 mg/mL can be detectable.

2.12. Prepare a blank control by adding 60 μ L of lysis buffer and 60 μ L of binding buffer to a microtube.

NOTE: The blank control has all reagents except the antigen and is used for the subtraction of the background.

2.13. Prepare a positive control by adding 12 μ L of Rho control protein, 48 μ L of lysis buffer, and 60 μ L of binding buffer.

NOTE: The positive control has all reagents plus a confirmed antigen for Rho-A-GTP.

2.14. Take the Rho affinity plate out of its bag and place it on ice.

2.15. Dissolve the powder in the wells with 100 μ L of ice-cold distilled water. Keep the plate on ice.

2.16. Thaw the snap-frozen cell lysates in a water bath set to 25 °C.

2.17. Add the calculated volume of ice-cold lysis buffer (from step 2.2.11) to each sample to normalize the protein concentration.

NOTE: Remove the PBS after washing the cells (using a vacuum tube aspirator) to avoid causing changes in the composition of the lysis buffer. Equalize the sample protein to a concentration between 0.8 and 2 mg/mL for an accurate comparison between samples in GTPase activation assays. **Table 2** provides details about the buffer to be used for this assay.

2.18. Transfer 60 μ L of the normalized ice-cold samples to microtubes and add 60 μ L of binding buffer; mix the samples thoroughly and keep them on ice.

2.19. Completely remove the water/solutions from the microplate by vigorous flicking, followed by five to seven hard taps on a lab mat.

2.20. Add 50 μ L of the normalized samples, a blank control, and a positive control to the wells in duplicates.

2.21. Place the plate on an orbital shaker for 30 min at 4 °C at 300 rpm.

NOTE: The shaking step is very important, and it is recommended to use the orbital plate shaker at 300 rpm.

2.22. Clear the samples from the plate by flicking and wash them 2x with 200 μ L of washing buffer at RT. Vigorously remove the washing buffer from the wells after each wash by flicking, followed by tapping, and keep the plate on the bench at RT.

2.23. Add 200 μ L of RT antigen-presenting buffer to each well and incubate at RT for 2 min.

2.24. Flick out the solution from the wells and wash the wells 3x with 200 μ L of washing buffer at RT.

2.25. Add 50 μ L of freshly prepared 1/250 anti-RhoA primary antibody to each well.

2.26. Place the plate on an orbital shaker for 45 min at 300 rpm set to 25 $^{\circ}$ C. Flick out the solution from the well.

2.27. Repeat the washing steps 2x (step 2.24).

2.28. Add 50 μ L of freshly prepared 1/250 anti-RhoA secondary antibody to each well.

2.29. Place the plate on top of an orbital shaker for 45 min at 300 rpm set to 25 $^{\circ}$ C.

2.30. Prepare the HRP detection reagent by mixing equal volumes of reagent A and reagent B.

2.31. Flick out the solution from each well and wash the wells 3x with 200 μ L of washing buffer at RT.

2.32. Add 50 μ L of freshly prepared HRP detection reagent to each well.

2.33. Read the luminescent signal within 3 - 5 min to obtain the maximum signal and analyze the results using an appropriate software package.

NOTE: Readings must be taken within 3 - 5 min to obtain the maximum signal. Run a "test plate" to confirm the proper lysis buffer volume is being used for the cell lysates so that the protein concentration is high enough to detect RhoA GTPase activity. (A test plate is a plate of cells used to determine if the protein concentration falls within the acceptable range and also to determine if the volume of the lysis buffer being used is appropriate.) The positive control should read 4- to 10-fold higher than the blank wells if it is in the linear range. If not, then adjust the luminometer by consulting the manufacturer. Also, when the positive control reads 6x - 9x higher than the buffer blank, then the assay is in the linear range. The settings for the luminometer are given in **Table 3**.

2.34. Enter raw data in the columns where the headings read **Sample, Mean, Standard Deviation, rep1, rep2, rep3, and rep4**, which is to show the number of replicates being done on each sample.

2.35. Under **Mean**, enter the formula **=average(Xn:Yn)** where X = the column designator for **rep1**, Y = the column designator for **rep4**, and n = the row designator of the row being worked on.

2.36. Under **Standard Deviation**, enter the formula **=stdev (Xn:Yn)** where X = the column designator for **rep1**, Y = the column designator for **rep4**, and n = the row designator of the row being worked on.

2.37. Enter the replicate data into **rep1, rep2, etc.**

2.38. After entering the data, use the click-and-drag method to select the **Sample, Mean, and Standard Deviation**.

2.39. Then, in data analysis software, select the function for chart making which looks like a square with a mini bar chart inside.

NOTE: This brings up the chart making process where it is possible to design charts based on the data entered.

2.40. Choose **column chart** and, for input values, designate the **Mean** numbers.

NOTE: The chart for the **Mean** numbers is first made, and then, the **Standard Deviation** column for the y-axis error bars is designated. To do this, double-click on the graph bars, select the **Y-axis error** tab, click the **Custom** option, and select the area in the worksheet to enter the location of the **Standard Deviation** data. The difference between the groups that need to be compared can be seen after the creation of the desired charts.

REPRESENTATIVE RESULTS:

Membrane Fractionation:

Ultracentrifugation was used for the fractionation of membrane and cytosol components. As shown in **Figure 1**, the supernatant contains the cytosolic fraction and the pellet contains the membrane fraction. The abundance of RhoA in cytosolic and membrane fractions obtained from U251 cells was examined after the treatment with simvastatin using immunoblotting. The purity and loading control of the membrane and cytosol fraction were confirmed by pan-Cadherin and GAPDH. As shown in **Figure 2**, the simvastatin treatment reduced the amount of membrane-bound RhoA GTPase, while it increased its cytosolic content. This is consistent with the known effects of statins on the translocation of GTPases based on the inhibition of RhoA prenylation. Simvastatin inhibits the prenylation of RhoA GTPase, and therefore, unprenylated RhoA is unable to anchor in cell plasma membranes, which results in its higher cytosolic concentrations.

RhoA-GTP Bound:

We measured GTP-bound RhoA protein using a GTPase-linked immunosorbent assay and showed that simvastatin significantly ($P < 0.05$) increased GTP-bound RhoA in U251 cells (**Figure 3**). Therefore, while simvastatin inhibited RhoA GTPase protein prenylation (**Figure 2**), it also increased its GTP loading as compared to the control cells. This points to the fact that prenylation and GTP binding both play a role in the activity and regulation of RhoA GTPase. For additional details regarding this phenomenon, please refer to the original publication using this protocol⁸.

FIGURE AND TABLE LEGENDS:

Figure 1: Schematic view of the cytosolic and membrane fractions after ultracentrifugation. The pellet contains the membrane fraction and the supernatant contains the cytosolic fraction.

Figure 2: Simvastatin changes the localization of RhoA. U251 cells were treated with simvastatin (10 μ M; 12, 24, and 36 h) and the abundance of RhoA in the membrane and cytosolic fractions was determined by immunoblotting. The GAPDH and pan-Cadherin abundance was also assessed to control for loading in the cytosolic and membrane fractions and to confirm the lack of cytosolic contamination in the membrane fractions. The data are typically from three independent experiments using different primary cultures. This figure has been modified from Alizadeh *et al.*⁸.

Figure 3: Simvastatin modulates RhoA GTPase activity. The GTPase-linked immunosorbent assay was used to measure GTP-bound Rho protein in U251 cells. Different conditions were tested for 36 h, including starvation and simvastatin (10 μ M). For each experiment, a constitutively active RhoA protein provided in the kit was used as a positive control. The results are expressed as the mean \pm SD of two replicates in independent experiments ($*** P < 0.001$). This figure has been modified from Alizadeh *et al.*⁸.

Table 1: Recommended volumes of lysis buffer for U251 Cells. The volume is adjustable for different cell types.

Table 2: List of GTPase-linked immunosorbent assay lysis buffers and recommended lysis composition for small GTPases.

Table 3: A detailed description of luminometer settings.

DISCUSSION:

Here we describe an accurate method to measure small GTPase prenylation and GTP binding shown as small GTPase subcellular localization (membrane *versus* cytosol) and Rho GTP loading. Small GTPases are expressed in eukaryotic cells and play essential roles in cellular proliferation, motility, and structure. Both prenylation and GTP binding are involved in the regulation of GTPase activity; therefore, assays to evaluate the prenylation and GTP binding of these proteins are important tools for cell biologists^{1,8}.

Based on the results of a recent study, Rho protein GTP loading is cell-type specific⁸, and therefore, differs among different cell types. Also, the subcellular localization and

geranylgeranylation (GGT) of Rho proteins are the determining steps in the regulation of their function. This is also further regulated by the interplay of the effector proteins GEF, GAP, and GDI for the major GTPases.

Simvastatin is known to increase Rac GTP loading in THP-1 monocytes, decrease the prenylation of Rac in the presence of amyloid β stimulation, and reduce inflammatory responses from these cells¹⁷. We also know that T-cell function is not affected by Rho GTP loading but, rather, the GGT of Rho determines function^{18,19}. Therefore, we recommend that, in order to detect Rho GTPase activity, both prenylation and GTP loading must be simultaneously measured in cells.

Of note, to achieve high-purity cytosolic and membrane fractions, the most important steps of the protocol are the sonication and the ultracentrifugation. For the Rho GTP-binding assay, the most critical step is snap-freezing the cell lysates before sequential processing. Following these important steps will produce consistent and reproducible results in the study of GTPases in living systems.

A key step to examine a particular intracellular structure or membrane protein is the separation of cellular compartments from one another. Fractionation takes advantage of the properties of each cellular compartment, like size and shape, surface charge density, and buoyant density²⁰. It is mainly based on differential centrifugation in media of high viscosity at 4 °C. The membrane fractionation method which was used here is mainly based on the size of each compartment and on high gravitational speed where, after ultracentrifugation, membrane proteins go to the bottom of the tube and the cytosolic proteins remain in the supernatant.

It is important to note that samples containing high protein concentrations and, possibly, high levels of GAPs can potentially inactivate the target GTPase. This issue can occur even in lysis buffer and may lead to false negative results. One of the key parameters that determine the success and reproducibility of GTPase activity assay results is the health and responsiveness of the cells being used in the experiment⁸. It is strongly recommended that investigators identify the optimal/appropriate growth conditions and doubling time for the cells under study to determine the GTPase activation/inhibition. Additionally, the GTPase activity of all small GTPases is tightly regulated and is, therefore, susceptible to rapid decreases *via* hydrolysis of the GTP molecule bound to the enzyme *via* the action of GAPs (during and after the cell lysis procedure). This action results in the rapid inactivation of the GTPase of interest. Therefore, it is strongly recommended that cell lysis is rapidly performed at 4 °C, to achieve accurate and reproducible results.

There are several factors depending on experimental conditions that determine the final cell lysate. First, the total amount of RhoA GTPase in the cell line or specific tissue: the amount of endogenous RhoA GTPase is variable in different types of cells and tissues; therefore, this can result in a more vigorous response to an activator or deactivator. Second, the amount of activation/deactivation achieved under the experimental conditions: it is important to consider that approximately 2% to 10% of the total cellular small GTPase is possibly activated in response to a specific stimulus⁸. The amount of deactivation also solely depends on the type of stimuli and

it is variable in different cells and tissues. Therefore, for each type of small Rho GTPase activity assay, the composition of the lysis buffer and cellular compartment is crucial. **Table 3** shows the recommended composition of the lysis buffer for each specific small GTPase protein.

The normalized cell lysate protein concentration is a major requirement because it enables investigators to compare the GTPase activity of different samples. Therefore, washing the cells from all samples in all conditions with cold PBS is mandatory to remove protein from the tissue culture media. It is also essential that all reagents and buffers are used at cold temperatures (4 °C) in all steps of the experiment. This cold temperature will minimize the hydrolysis of GTPases, including Rho GTPase, during sample preparation. It is critical that this processing of cell lysates is conducted rapidly (in 10 - 15 min in total) in order to avoid the loss of RhoA GTPase activity. Furthermore, the most important step of the cell lysate preparation is to snap-freeze aliquots of the lysate in liquid nitrogen to maintain the RhoA small GTPase enzymatic activity. This is especially important if there are different timepoints or multiple samples in the experiment. After the preparation of snap-frozen lysates, the samples can be kept in -80 °C without losing their Rho GTPase activity.

The provided protocol for the analysis of the membrane anchoring of RhoA GTPase represents only an indirect tool to measure the prenylation of small GTPases and is not able to directly detect or quantify the binding of isoprenoid residues to the target protein. This is one of the very few limitations of this assay. Therefore, it gives an estimation of the prenylation of proteins. Some approaches have been defined that are able to directly measure FT (farnesylation) and/or GGT by farnesyl transferase and/or geranylgeranyl transferase, respectively, both in cultured cells and in animals and human-derived tumors. The assays use electrophoretic mobility shift, [3H]farnesyl diphosphate and [3H]geranylgeranyl diphosphate, and [3H]mevalonic acid labeling, followed by immunoprecipitation and SDS-PAGE²¹.

We used the RhoA GTPase-linked immunosorbent assay to detect any membrane anchoring and activity of RhoA GTPase. It consists of a Rho-GTP-binding protein which is linked to the wells of a 96-well plate. So, the GTP-bound active Rho in cell or tissue lysates binds to the wells, while GDP-bound inactive Rho is washed away during the washing steps. Then, the bound, active RhoA in the wells will be detected using a RhoA-specific antibody and chemiluminescence. It is possible to determine the degree of RhoA activation by comparing readings from activated to nonactivated cell lysates. Serum starvation (the use of serum-free medium on cultured cells) is usually used to inactivate RhoA in tissue culture. It should also be mentioned that the GTPase-linked immunosorbent assay's range of activation requires 10 - 50 µg of protein for the detection of RhoA GTPase activity.

It is strongly recommended that untreated samples have low basal cellular levels of GTPase activity (control state). As an example, proper cell starvation conditions can downregulate GTPase activity and provide ideal conditions to show their activation under experimental conditions. Also, both activation and inhibition assays are performed in a time- and dose-response manner to get the best GTPase activation/inhibition responses. More importantly,

during cellular preparation, it is very important to use cells which are not overconfluent (>70%), to avoid any nonresponsiveness of the cells to activation/inhibition stimuli.

Luminometers differ greatly in terms of sensitivity and absolute readings. Therefore, in order to determine that it is in the linear range, we suggest running a GTPase-linked immunosorbent assay with a blank and a positive control. If the assay is out of the linear range (the positive control should be 6x - 9x higher than the buffer-only reading) or the blank reading is higher than 9 - 10 million, then it is recommended to use further antibody dilutions. Moreover, we highly recommend calibrating the luminometer to read within the linear range of the assay before beginning the assay.

There are also advantages to the GTPase-linked immunosorbent assay that are worth mentioning. GTPase-linked immunosorbent assays improve the current experimental design and enable technology to facilitate experiments that were not possible with old pull-downs techniques²². The GTPase-linked immunosorbent assays also provide detection accuracy and sensitivity that allows analyses of GTPase activity in preparations previously off-limits to pull-down assays²³. A couple of recent studies compared GTPase-linked immunosorbent activation assays with pull-downs and concluded that GTPase-linked immunosorbent assay has some clear advantages, namely that GTPase-linked immunosorbent assays are superior due to their ability to use small amounts of protein^{22,24}, their greater sensitivity²⁴, and their quantitative measurements²³. The GTPase-linked immunosorbent assay kit is available in either luminometric or colorimetric detection versions, where the luminometric assays are more sensitive. This GTPase-linked immunosorbent assay is based on a rather simple and fast protocol, requires only small amounts of sample, and yields quantitative and accurate results. Therefore, it might be a good idea to further develop this assay to detect other types of GTPase-based proteins in different cell lines and tissue culture cells with a much higher specificity and accuracy.

ACKNOWLEDGMENTS:

Saeid Ghavami was supported by a Health Science Centre Operating Grant and Research Manitoba New Investigator Operating Grant, Javad Alizadeh was supported by Research Manitoba studentship, Shahla Shojaei was supported by a Health Science Foundation Operating grant and the MITACS Accelerate postdoctoral fellowship. Adel Rezaei Moghadam was supported by an NSERC operating grant which was held by Joseph W. Gordon. Amir A. Zeki was supported by the NIH/NHLBI K08 award (1K08HL114882-01A1). Marek J. Los kindly acknowledges the support from NCN grant #2016/21/B/NZ1/02812, supported by LE STUDIUM Institute for Advanced Studies (region Centre-Val de Loire, France) through its Smart Loire Valley General Program and co-funded by the Marie Skłodowska-Curie Actions, grant #665790.

DISCLOSURES:

The authors have nothing to disclose.

REFERENCES:

1. Yeganeh, B. *et al.* Targeting the mevalonate cascade as a new therapeutic approach in heart disease, cancer and pulmonary disease. *Pharmacology & Therapeutics*. **143** (1), 87-110 (2014).

2. Valencia, A., Chardin, P., Wittinghofer, A., Sander, C. The ras protein family: evolutionary tree and role of conserved amino acids. *Biochemistry*. **30** (19), 4637-4648 (1991).
3. Hall, A. Rho family GTPases. *Biochemical Society Transactions*. **40** (6), 1378-1382 (2012).
4. Rojas, A.M., Fuentes, G., Rausell, A., Valencia, A. The Ras protein superfamily: evolutionary tree and role of conserved amino acids. *The Journal of Cell Biology*. **196** (2), 189-201 (2012).
5. Cherfils, J., Zeghouf, M. Regulation of small GTPases by GEFs, GAPs, and GDIs. *Physiological Reviews*. **93** (1), 269-309 (2013).
6. Shojaei, S. *et al.* Perillyl Alcohol (Monoterpene Alcohol), Limonene. *Enzymes*. **36**, 7-32 (2014).
7. Ghavami, S. *et al.* Airway mesenchymal cell death by mevalonate cascade inhibition: integration of autophagy, unfolded protein response and apoptosis focusing on Bcl2 family proteins. *Biochimica et Biophysica Acta*. **1843** (7), 1259-1271 (2014).
8. Alizadeh, J. *et al.* Mevalonate Cascade Inhibition by Simvastatin Induces the Intrinsic Apoptosis Pathway *via* Depletion of Isoprenoids in Tumor Cells. *Scientific Reports*. **7**, 44841 (2017).
9. Ghavami, S. *et al.* Mevalonate cascade regulation of airway mesenchymal cell autophagy and apoptosis: a dual role for p53. *PLoS One*. **6** (1), e16523 (2011).
10. Tang, Y., Olufemi, L., Wang, M.T., Nie, D. Role of Rho GTPases in breast cancer. *Frontiers in Bioscience: A Journal and Virtual Library*. **13**, 759-776 (2008).
11. DerMardirossian, C., Bokoch, G.M. GDIs: central regulatory molecules in Rho GTPase activation. *Trends in Cell Biology*. **15** (7), 356-363 (2005).
12. Garcia-Mata, R., Boulter, E., Burridge, K. The 'invisible hand': regulation of RHO GTPases by RHOGDIs. *Nature Reviews Molecular Cell Biology*. **12** (8), 493-504 (2011).
13. Etienne-Manneville, S., Hall, A. Rho GTPases in cell biology. *Nature*. **420** (6916), 629-635 (2002).
14. Ghavami, S. *et al.* Geranylgeranyl transferase 1 modulates autophagy and apoptosis in human airway smooth muscle. *American Journal of Physiology - Lung Cellular and Molecular Physiology*. **302** (4), L420-L428 (2012).
15. Clark, E.A., Golub, T.R., Lander, E.S., Hynes, R.O. Genomic analysis of metastasis reveals an essential role for RhoC. *Nature*. **406** (6795), 532-535 (2000).

16. Ghavami, S. *et al.* Statin-triggered cell death in primary human lung mesenchymal cells involves p53-PUMA and release of Smac and Omi but not cytochrome c. *Biochimica et Biophysica Acta*. **1803** (4), 452-467 (2010).
17. Cordle, A., Koenigsknecht-Talboo, J., Wilkinson, B., Limpert, A., Landreth, G. Mechanisms of statin-mediated inhibition of small G-protein function. *Journal of Biological Chemistry*. **280** (40), 34202-34209 (2005).
18. Waiczies, S., Bendix, I., Zipp, F. Geranylgeranylation but not GTP-loading of Rho GTPases determines T cell function. *Science Signaling*. **1** (12), pt3 (2008).
19. Waiczies, S. *et al.* Geranylgeranylation but not GTP loading determines rho migratory function in T cells. *Journal of Immunology*. **179** (9), 6024-6032 (2007).
20. Satori, C.P., Kostal, V., Arriaga, E.A. Review on Recent Advances in the Analysis of Isolated Organelles. *Analytica Chimica Acta*. **753**, 8-18 (2012).
21. Berndt, N., Sebti, S.M. Measurement of protein farnesylation and geranylgeranylation *in vitro*, in cultured cells and in biopsies, and the effects of prenyl transferase inhibitors. *Nature Protocols*. **6** (11), 1775-1791 (2011).
22. Keely, P.J., Conklin, M.W., Gehler, S., Ponik, S.M., Provenzano, P.P. Investigating integrin regulation and signaling events in three-dimensional systems. *Methods in Enzymology*. **426**, 27-45 (2007).
23. Oliver, A.W. *et al.* The HPV16 E6 binding protein Tip-1 interacts with ARHGEF16, which activates Cdc42. *British Journal of Cancer*. **104** (2), 324-331 (2011).
24. Moniz, S., Matos, P., Jordan, P. WNK2 modulates MEK1 activity through the Rho GTPase pathway. *Cellular Signalling*. **20** (10), 1762-1768 (2008).

Figure 1

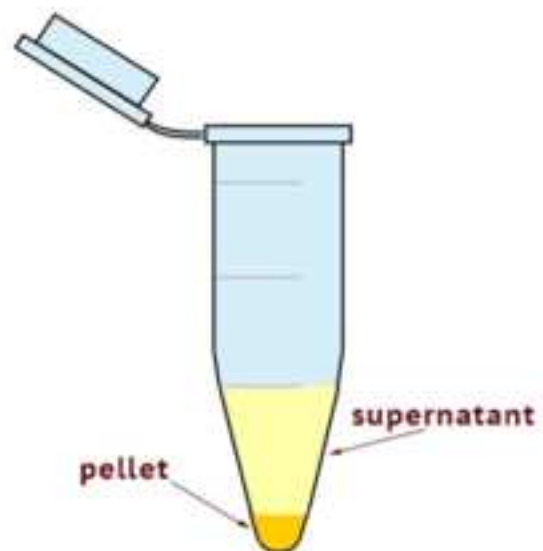


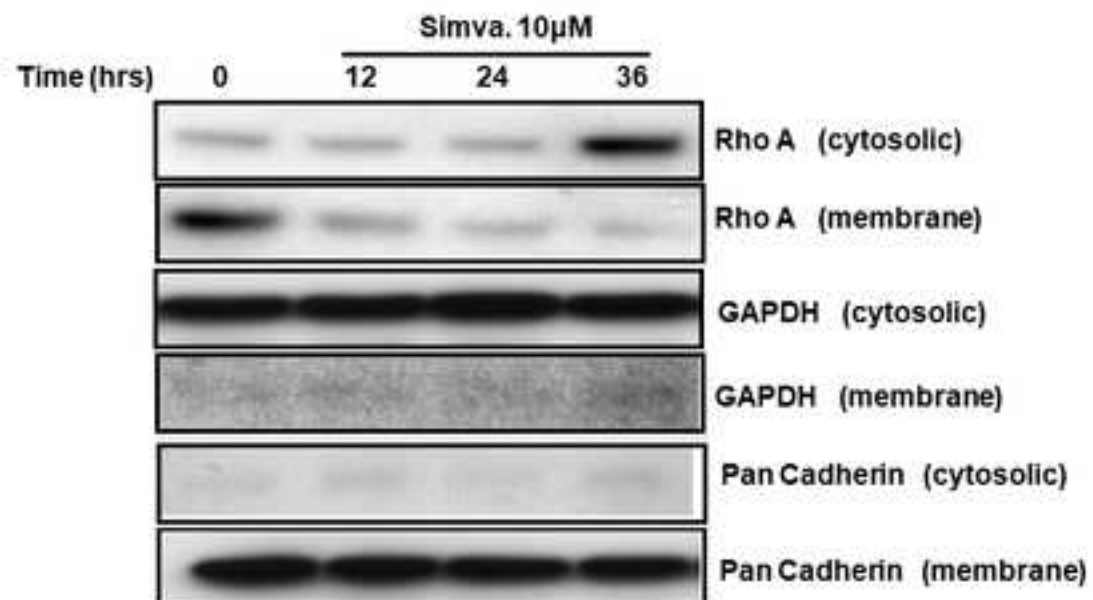
Figure 2**U251**

Figure 3

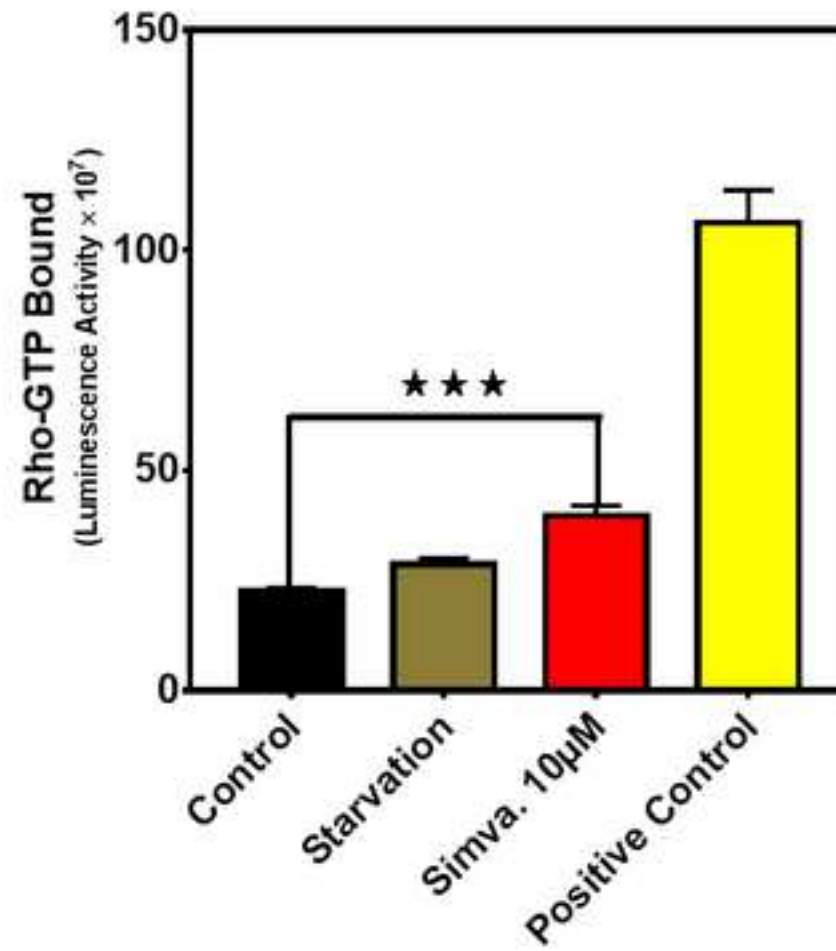


Table 1. Recommended volumes of lysis buffer for U251 Cells. It is adjustable for c

Cell Culture Vessel		Surface area (cm ²)	Lysis Buffer (μl)
Dishes	35 mm	9	100
	60 mm	21	300
	100 mm	55	700
	150 mm	145	1500
Plates	6-well	9.4 / well	100
	12-well	3.8 / well	70
	24-well	1.9/ well	40
Flasks	T-25	25	250
	T-75	75	1000
	T-150	150	1500

different cell types

Table 2. List of GTPase-linked immunosorbent assay lysis buffers and recommended ly for small GTPases

Lysis Buffer Name	Lysis Buffer Composition	Small G-Protein Target	Notes
GL35	Tris (1X GL36), MgCl ₂ (8X GL36), NaCl (2X GL36), IGEPAL (1X GL36), SDS (5X GL36)	Cdc42	Identical components to GL36, composition varies as follows;
GL36	a proprietary formulation of Tris pH 7.5, MgCl ₂ , NaCl, IGEPAL and SDS	RalA	Standard buffer, compatible with most GTPase-linked immunosorbent assays.
GL36	a proprietary formulation of Tris pH 7.5, MgCl ₂ , NaCl, IGEPAL and SDS	Rac1	Standard buffer, compatible with most GTPase-linked immunosorbent assays.
GL36	a proprietary formulation of Tris pH 7.5, MgCl ₂ , NaCl, IGEPAL and SDS	Rac1,2,3	Standard buffer, compatible with most GTPase-linked immunosorbent assays.

GL36	a proprietary formulation of Tris pH 7.5, MgCl ₂ , NaCl, IGEPAL and SDS	Ras	Standard buffer, compatible with most GTPase-linked immunosorbent assays.
GL36	a proprietary formulation of Tris pH 7.5, MgCl ₂ , NaCl, IGEPAL and SDS	RhoA	Standard buffer, compatible with most GTPase-linked immunosorbent assays.
GL36	a proprietary formulation of Tris pH 7.5, MgCl ₂	Arf1	Standard buffer, compatible with most GTPase-linked immunosorbent assays.

/sis composition

Table 3. A detailed description of luminometer settings

Parameters	Notes
GAIN	GAIN option adjusts the machine sensitivity. Most luminometers use automatic calibration or limited calibration function. User should read the GAIN at low, medium, and high in order to see if the reading is within the linear range which varies in different instruments.
INTEGRATION TIME	It is recommended to have this option at its lowest as the very high times might read out of the linear range. This might require unnecessary work like using lower dilution or primary and secondary antibodies. INTEGRATION TIME also varies in different instruments.
SHAKING	It is recommended to use the 5s orbital SHAKING. It is not as critical as other parameters for the accuracy of the assay.

TEMPERATURE	Room temperature is recommended
PLATE TYPE	Use according to the plate you are using. Usually the plate is 96-well, flat and white.
FILTERS	Excitation or emission filters are not required for Luminescence. excitation can be set at any desired value and optimal range for emission is 430-445 nm. Leave the spaces of the filter blank. If this is not an option,

Name of Material/ Equipment**Company**

DMEM high Glucose

VWR (Canada)

Fetal Bovine Serum

VWR (Canada)

Penicillin/Streptomycin

VWR (Canada)

EDTA (Ethylenediamine tetraacetic acid)

VWR (Canada)

EGTA (Ethylene glycol bis(2-aminoethyl ether)-N,N,N',N'-tetraacetic acid)

VWR (Canada)

DTT (DL-Dithiothreitol)

VWR (Canada)

Ammonium Persulfate

VWR (Canada)

Tris-Hydroxymethylaminomethane

VWR (Canada)

30% Acrylamide/Bis Solution

Biorad (Canada)

TEMED

Biorad (Canada)

Protease Inhibitor cocktail

Sigma/Aldrich (Canada)

Rho-GTPase Antibody Sampler Kit

Cell Signaling (Canada)

Pan-Cadherin antibody

Cell Signaling (Canada)

GAPDH antibody

Santa Cruz Biotechnology (USA)

RhoA G-LISA Activation Assay (Luminescence format)

Cytoskeleton Inc. (USA)

RhoA Antibody

Cell Signaling

ECL

Amersham-Pharmacia Biotech

Anti-Rabbit IgG (whole molecule) Peroxidase antibody

Sigma

SpectraMax iD5 Multi-Mode Microplate Reader

Molecular Devices

Nonidet P-40

Sigma

DMSO

Sigma

PBS

Sigma

Phosphatase Inhibitor cocktail

Sigma

Catalog Number	Comments/Description
VWRL0101-0500	
CA45001-106	
97062-806	
CA71007-118	
CAAAJ60767-AE	
CA97061-340	
CABDH9214-500G	
CA71009-186	
1610158	
1610801	
P8340-5ML	1:75 dilution
9968	1:1000 dilution
4068	1:1000 dilution
sc-69778	1:3000 dilution
BK121	Cytoskeleton I. G-LISA Activation Assays Technical Guide. 2016.
2117	
RPN2209	
A6154-1ML	
1612071A	Spectrophotometer non-denaturing detergent, octylphenoxypolyethoxyet hanol
11332473001	
D8418-50ML	
P5493-1L	
P5726-5ML	1:75 Dilution



1 Alewife Center #200
Cambridge, MA 02140
tel. 617.945.9051
www.jove.com

ARTICLE AND VIDEO LICENSE AGREEMENT

Title of Article: Detection Small GTPase Prenylation and GTP binding using Membrane Fractionation and G-LISA
 Author(s): Javad Alizadeh, Shahla Shojaei, Adel Rezaei Moghadam, Amir A. Zeki, Joseph W. Gordon, Saeid Ghavami

Item 1 (check one box): The Author elects to have the Materials be made available (as described at

<http://www.jove.com/author>) via: ☒ Standard Access ☐ Open Access

Item 2 (check one box):

- ☒ The Author is NOT a United States government employee.
☐ The Author is a United States government employee and the Materials were prepared in the course of his or her duties as a United States government employee.
☐ The Author is a United States government employee but the Materials were NOT prepared in the course of his or her duties as a United States government employee.

ARTICLE AND VIDEO LICENSE AGREEMENT

1. **Defined Terms.** As used in this Article and Video License Agreement, the following terms shall have the following meanings: “**Agreement**” means this Article and Video License Agreement; “**Article**” means the article specified on the last page of this Agreement, including any associated materials such as texts, figures, tables, artwork, abstracts, or summaries contained therein; “**Author**” means the author who is a signatory to this Agreement; “**Collective Work**” means a work, such as a periodical issue, anthology or encyclopedia, in which the Materials in their entirety in unmodified form, along with a number of other contributions, constituting separate and independent works in themselves, are assembled into a collective whole; “**CRC License**” means the Creative Commons Attribution-Non Commercial-No Derivs 3.0 Unported Agreement, the terms and conditions of which can be found at: <http://creativecommons.org/licenses/by-nc-nd/3.0/legalcode>; “**Derivative Work**” means a work based upon the Materials or upon the Materials and other pre-existing works, such as a translation, musical arrangement, dramatization, fictionalization, motion picture version, sound recording, art reproduction, abridgment, condensation, or any other form in which the Materials may be recast, transformed, or adapted; “**Institution**” means the institution, listed on the last page of this Agreement, by which the Author was employed at the time of the creation of the Materials; “**JoVE**” means MyJoVE Corporation, a Massachusetts corporation and the publisher of *The Journal of Visualized Experiments*; “**Materials**” means the Article and / or the Video; “**Parties**” means the Author and JoVE; “**Video**” means any video(s) made by the Author, alone or in conjunction with any other parties, or by JoVE or its affiliates or agents, individually or in collaboration with the Author or any other parties, incorporating all or any portion of the Article, and in which the Author may or may not appear.

2. **Background.** The Author, who is the author of the Article, in order to ensure the dissemination and protection of the Article, desires to have the JoVE publish the Article and create and transmit videos based on the Article. In furtherance of such goals, the Parties desire to memorialize in this Agreement the respective rights of each Party in and to the Article and the Video.

3. **Grant of Rights in Article.** In consideration of JoVE agreeing to publish the Article, the Author hereby grants to JoVE, subject to **Sections 4 and 7** below, the exclusive, royalty-free, perpetual (for the full term of copyright in the Article, including any extensions thereto) license (a) to publish, reproduce, distribute, display and store the Article in all forms, formats and media whether now known or hereafter developed (including without limitation in print, digital and electronic form) throughout the world, (b) to translate the Article into other languages, create adaptations, summaries or extracts of the Article or other Derivative Works (including, without limitation, the Video) or Collective Works based on all or any portion of the Article and exercise all of the rights set forth in (a) above in such translations, adaptations, summaries, extracts, Derivative Works or Collective Works and (c) to license others to do any or all of the above. The foregoing rights may be exercised in all media and formats, whether now known or hereafter devised, and include the right to make such modifications as are technically necessary to exercise the rights in other media and formats. If the “Open Access” box has been checked in **Item 1** above, JoVE and the Author hereby grant to the public all such rights in the Article as provided in, but subject to all limitations and requirements set forth in, the CRC License.

ARTICLE AND VIDEO LICENSE AGREEMENT

4. Retention of Rights in Article. Notwithstanding the exclusive license granted to JoVE in **Section 3** above, the Author shall, with respect to the Article, retain the non-exclusive right to use all or part of the Article for the non-commercial purpose of giving lectures, presentations or teaching classes, and to post a copy of the Article on the Institution's website or the Author's personal website, in each case provided that a link to the Article on the JoVE website is provided and notice of JoVE's copyright in the Article is included. All non-copyright intellectual property rights in and to the Article, such as patent rights, shall remain with the Author.

5. Grant of Rights in Video – Standard Access. This **Section 5** applies if the "Standard Access" box has been checked in **Item 1** above or if no box has been checked in **Item 1** above. In consideration of JoVE agreeing to produce, display or otherwise assist with the Video, the Author hereby acknowledges and agrees that, Subject to **Section 7** below, JoVE is and shall be the sole and exclusive owner of all rights of any nature, including, without limitation, all copyrights, in and to the Video. To the extent that, by law, the Author is deemed, now or at any time in the future, to have any rights of any nature in or to the Video, the Author hereby disclaims all such rights and transfers all such rights to JoVE.

6. Grant of Rights in Video – Open Access. This **Section 6** applies only if the "Open Access" box has been checked in **Item 1** above. In consideration of JoVE agreeing to produce, display or otherwise assist with the Video, the Author hereby grants to JoVE, subject to **Section 7** below, the exclusive, royalty-free, perpetual (for the full term of copyright in the Article, including any extensions thereto) license (a) to publish, reproduce, distribute, display and store the Video in all forms, formats and media whether now known or hereafter developed (including without limitation in print, digital and electronic form) throughout the world, (b) to translate the Video into other languages, create adaptations, summaries or extracts of the Video or other Derivative Works or Collective Works based on all or any portion of the Video and exercise all of the rights set forth in (a) above in such translations, adaptations, summaries, extracts, Derivative Works or Collective Works and (c) to license others to do any or all of the above. The foregoing rights may be exercised in all media and formats, whether now known or hereafter devised, and include the right to make such modifications as are technically necessary to exercise the rights in other media and formats. For any Video to which this Section 6 is applicable, JoVE and the Author hereby grant to the public all such rights in the Video as provided in, but subject to all limitations and requirements set forth in, the CRC License.

7. Government Employees. If the Author is a United States government employee and the Article was prepared in the course of his or her duties as a United States government employee, as indicated in **Item 2** above, and any of the licenses or grants granted by the Author hereunder exceed the scope of the 17 U.S.C. 403, then the rights granted hereunder shall be limited to the maximum rights permitted under such

statute. In such case, all provisions contained herein that are not in conflict with such statute shall remain in full force and effect, and all provisions contained herein that do so conflict shall be deemed to be amended so as to provide to JoVE the maximum rights permissible within such statute.

8. Likeness, Privacy, Personality. The Author hereby grants JoVE the right to use the Author's name, voice, likeness, picture, photograph, image, biography and performance in any way, commercial or otherwise, in connection with the Materials and the sale, promotion and distribution thereof. The Author hereby waives any and all rights he or she may have, relating to his or her appearance in the Video or otherwise relating to the Materials, under all applicable privacy, likeness, personality or similar laws.

9. Author Warranties. The Author represents and warrants that the Article is original, that it has not been published, that the copyright interest is owned by the Author (or, if more than one author is listed at the beginning of this Agreement, by such authors collectively) and has not been assigned, licensed, or otherwise transferred to any other party. The Author represents and warrants that the author(s) listed at the top of this Agreement are the only authors of the Materials. If more than one author is listed at the top of this Agreement and if any such author has not entered into a separate Article and Video License Agreement with JoVE relating to the Materials, the Author represents and warrants that the Author has been authorized by each of the other such authors to execute this Agreement on his or her behalf and to bind him or her with respect to the terms of this Agreement as if each of them had been a party hereto as an Author. The Author warrants that the use, reproduction, distribution, public or private performance or display, and/or modification of all or any portion of the Materials does not and will not violate, infringe and/or misappropriate the patent, trademark, intellectual property or other rights of any third party. The Author represents and warrants that it has and will continue to comply with all government, institutional and other regulations, including, without limitation all institutional, laboratory, hospital, ethical, human and animal treatment, privacy, and all other rules, regulations, laws, procedures or guidelines, applicable to the Materials, and that all research involving human and animal subjects has been approved by the Author's relevant institutional review board.

10. JoVE Discretion. If the Author requests the assistance of JoVE in producing the Video in the Author's facility, the Author shall ensure that the presence of JoVE employees, agents or independent contractors is in accordance with the relevant regulations of the Author's institution. If more than one author is listed at the beginning of this Agreement, JoVE may, in its sole discretion, elect not take any action with respect to the Article until such time as it has received complete, executed Article and Video License Agreements from each such author. JoVE reserves the right, in its absolute and sole discretion and without giving any reason therefore, to accept or decline any work submitted to JoVE. JoVE and its employees, agents and independent contractors shall have

ARTICLE AND VIDEO LICENSE AGREEMENT

full, unfettered access to the facilities of the Author or of the Author's institution as necessary to make the Video, whether actually published or not. JoVE has sole discretion as to the method of making and publishing the Materials, including, without limitation, to all decisions regarding editing, lighting, filming, timing of publication, if any, length, quality, content and the like.

11. **Indemnification.** The Author agrees to indemnify JoVE and/or its successors and assigns from and against any and all claims, costs, and expenses, including attorney's fees, arising out of any breach of any warranty or other representations contained herein. The Author further agrees to indemnify and hold harmless JoVE from and against any and all claims, costs, and expenses, including attorney's fees, resulting from the breach by the Author of any representation or warranty contained herein or from allegations or instances of violation of intellectual property rights, damage to the Author's or the Author's institution's facilities, fraud, libel, defamation, research, equipment, experiments, property damage, personal injury, violations of institutional, laboratory, hospital, ethical, human and animal treatment, privacy or other rules, regulations, laws, procedures or guidelines, liabilities and other losses or damages related in any way to the submission of work to JoVE, making of videos by JoVE, or publication in JoVE or elsewhere by JoVE. The Author shall be responsible for, and shall hold JoVE harmless from, damages caused by lack of sterilization, lack of cleanliness or by contamination due to the making of a video by JoVE its employees, agents or independent contractors. All sterilization, cleanliness or decontamination procedures shall be solely the responsibility of the Author and shall be undertaken at the Author's


expense. All indemnifications provided herein shall include JoVE's attorney's fees and costs related to said losses or damages. Such indemnification and holding harmless shall include such losses or damages incurred by, or in connection with, acts or omissions of JoVE, its employees, agents or independent contractors.

12. **Fees.** To cover the cost incurred for publication, JoVE must receive payment before production and publication the Materials. Payment is due in 21 days of invoice. Should the Materials not be published due to an editorial or production decision, these funds will be returned to the Author. Withdrawal by the Author of any submitted Materials after final peer review approval will result in a US\$1,200 fee to cover pre-production expenses incurred by JoVE. If payment is not received by the completion of filming, production and publication of the Materials will be suspended until payment is received.

13. **Transfer, Governing Law.** This Agreement may be assigned by JoVE and shall inure to the benefits of any of JoVE's successors and assignees. This Agreement shall be governed and construed by the internal laws of the Commonwealth of Massachusetts without giving effect to any conflict of law provision thereunder. This Agreement may be executed in counterparts, each of which shall be deemed an original, but all of which together shall be deemed to be one and the same agreement. A signed copy of this Agreement delivered by facsimile, e-mail or other means of electronic transmission shall be deemed to have the same legal effect as delivery of an original signed copy of this Agreement.

A signed copy of this document must be sent with all new submissions. Only one Agreement required per submission.

CORRESPONDING AUTHOR:

Name:	Saeid Ghavami	
Department:	Human Anatomy and Cell Science	
Institution:	Univeristy of Manitoba	
Article Title:	Detection Small GTPase Prenylation and GTP binding using Membrane Fractionation and G-LISA	
Signature:		Date: 30/june/2017

Please submit a signed and dated copy of this license by one of the following three methods:

- 1) Upload a scanned copy of the document as a pdf on the JoVE submission site;
- 2) Fax the document to +1.866.381.2236;
- 3) Mail the document to JoVE / Attn: JoVE Editorial / 1 Alewife Center #200 / Cambridge, MA 02139

For questions, please email submissions@jove.com or call +1.617.945.9051



Max Rady College
of Medicine

Dr. Saeid Ghavami
Assistant Professor
Department of Human Anatomy
and Cell Science
Basic Medical Sciences Bldg.
104-745 Bannatyne Avenue
Winnipeg, Manitoba
Canada R3E 0J9
Tel (Office): (204)-272-3061
Tel (Lab): (204)-272-3071
saeid.ghavami@umanitoba.ca

September 26, 2018

Journal of Visualized Experiments

Re: Invited Manuscript Submission; Alizadeh et al.

Dear Dr. Myers,

We are pleased to submit the revision of the paper entitled “**Detection of Small GTPase Prenylation and GTP binding using Membrane Fractionation and GTPase-linked immunosorbent assay**” by Javad Alizadeh, Shahla Shojaei, Simone da Silva Rosa, Adel Rezaei Moghadam, Amir A. Zeki, Mohammad Hashemi, Marek J. Los, Joseph W. Gordon, Saeid Ghavami, for consideration and evaluation to be published in “**Journal of Visualized Experiments**”.

This method paper is based on our research paper which has been recently published in “Scientific Reports” in focuses on measuring RhoA GTPase localization and GTP bound assay.

We addressed all the editorial points as following:

We have carefully addressed all of the respected editor comments and hopefully we can satisfy the high quality exception of JOVE journal.

It is worthy to mention that University of Manitoba Audio/Visual unit has helped us to prepare VIDEO for the manuscript.

Sincerely,

Saeid Ghavami, BSc, MSc, PhD, Assistant Professor

Room 104 Basic Medical Science Building.

Department of Human Anatomy & Cell Science,

Max Rady College of Medicine, Rady Faculty of Health Sciences,

University of Manitoba, Winnipeg, Canada

<http://home.cc.umanitoba.ca/~ghavami/>

<http://scholar.google.ca/citations?user=uX7QLiMAAAAJ&hl=en>

<http://www.linkedin.com/pub/saeid-ghavami/24/7/606>

Office: +1 204 272 3061, Lab: +1 204 272 3071, Email: saeid.ghavami@umanitoba.ca, saeid.ghavami@gmail.com

Saeid Ghavami

**RightsLink®****SPRINGER NATURE**

Title: Mevalonate Cascade Inhibition by Simvastatin Induces the Intrinsic Apoptosis Pathway via Depletion of Isoprenoids in Tumor Cells

Author: Javad Alizadeh, Amir A. Zeki, Nima Mirzaei, Sandipan Tewary, Adel Rezaei Moghadam et al.

Publication: Scientific Reports

Publisher: Springer Nature

Date: Mar 27, 2017

Copyright © 2017, Springer Nature

Creative Commons

This is an open access article distributed under the terms of the [Creative Commons CC BY](#) license, which permits unrestricted use, distribution, and reproduction in any medium, provided the original work is properly cited.

You are not required to obtain permission to reuse this article.

To order reprints of this content, please contact Springer Nature by e-mail at reprintswarehouse@springernature.com, and you will be contacted very shortly with a quote.