

Journal of Visualized Experiments

A method for islet transplantation to the omentum of the mouse

--Manuscript Draft--

| | |
|--|--|
| Article Type: | Methods Article - JoVE Produced Video |
| Manuscript Number: | JoVE57160R3 |
| Full Title: | A method for islet transplantation to the omentum of the mouse |
| Keywords: | C57BL/6 mice, islet transplantation model, omentum, diabetes mellitus, hydrogel, blood glucose level |
| Corresponding Author: | Mou Lisha Institute of Translation Medicine Shenzhen, Guangdong CHINA |
| Corresponding Author's Institution: | Institute of Translation Medicine |
| Corresponding Author E-Mail: | 15899876015@163.com |
| First Author: | Ying Lu, Ph.D. |
| Other Authors: | Ying Lu, Ph.D. |
| | Shangyou Zou |
| | Suzanne Bertera |
| | Rita Bottino |
| | David K.C. Cooper |
| | Zhengzhao Liu |
| | Yi Huang |
| | Chengjun Wang |
| | Chungu Hong |
| | Tian He |
| | Hancheng Zhang |
| | Qin Huo |
| | Hongxing Fu |
| | Zhiming Cai |
| Author Comments: | <p>Islet transplantation has been proposed to be a potential treatment for type 1 diabetes. Recent compelling evidence indicates that intravascular islet infusion is far from ideal and so, the omentum is re-emerging as a potentially valuable site for islet transplantation. This experiment requires the isolation of high quality islets and implantation of the islets to the diabetic recipients. Transplantation to the omentum requires surgical steps that can be better demonstrated by video than by text. Here, we document the detailed steps for this procedure by both video and written protocol.</p> <p>We describe 2 methods of mixing the isolated islets with hydrogel before placing the mixture into the omental pouch of diabetic mice. The transplanted animals were then monitored with blood glucose readings for up to 35 days. Some animals were sacrificed after 14 days to perform immuno-histochemical analysis. This model can be used for the evaluation of islet omental transplantation before non-human primate experiments, laying the foundation for subsequent clinical transplantation.</p> |
| Additional Information: | |
| Question | Response |
| If this article needs to be "in-press" by a certain date, please indicate the date | |

below and explain in your cover letter.

TITLE:

A Method for Islet Transplantation to the Omentum in Mouse

AUTHORS and AFFILIATIONS:

Ying Lu^{1*}, Shangyou Zou^{1*}, Suzanne Bertera^{2*}, Rita Bottino², David K. C. Cooper³, Zhengzhao Liu¹, Yi Huang¹, Chengjun Wang¹, Chungu Hong¹, Tian He¹, Hancheng Zhang¹, Qin Huo⁴, Hongxing Fu⁵, Zhiming Cai¹, Lisha Mou¹

¹Shenzhen Xenotransplantation Medical Engineering Research and Development Center, Institute of Translational Medicine, Shenzhen Second People's Hospital, First Affiliated Hospital of Shenzhen University, Shenzhen, China

²Institute for Cellular Therapeutics, Allegheny-Singer Research Institute, Pittsburgh, PA, USA

³Xenotransplantation Program/Department of Surgery, The University of Alabama at Birmingham, Birmingham, AL, USA

⁴College of Life Science and Oceanography, Shenzhen University, Shenzhen, China

⁵School of Pharmacy, Wenzhou Medical College, Wenzhou, China

*These authors contributed equally to this work.

CORRESPONDING AUTHOR:

Lisha Mou

Tel: (086) 0755-83366388-3230;

Fax: (086) 0755-83366388-3230;

E-mail: lishamou@gmail.com

KEYWORDS:

C57BL/6 mice, islet transplantation model, omentum, diabetes mellitus, hydrogel, blood glucose level

SHORT ABSTRACT:

A method for the omental transplantation of islets in a mouse is introduced. The isolated islets are mixed with hydrogel and the mixture is placed into the omental pouch of a diabetic mouse. Then, the blood glucose is monitored, and immuno-histochemical analysis is performed.

LONG ABSTRACT:

Islet transplantation has been proposed to be a potential treatment for type 1 diabetes. Recent compelling evidence indicates that intravascular islet infusion is far from ideal and therefore, the omentum is re-emerging as a potentially valuable site for islet transplantation. This experiment requires the isolation of high quality islets and the implantation of the islets to the diabetic recipients. Transplantation to the omentum requires surgical steps that can be better demonstrated visually. Here, the detailed steps for this procedure are presented. Two methods of mixing the isolated islets with hydrogel before placing the mixture into the omental pouch of diabetic mice are described here. Different hydrogels are used for the different conditions. Blood glucose levels of diabetic mouse recipients of syngeneic islets in the omentum were monitored for up to 35 days. Some animals were sacrificed after 14 days to perform immuno-histochemical analysis. This pre-clinical transplantation approach can be used as preliminary data leading up to translation to clinical transplantation.

INTRODUCTION:

According to the International Diabetes Federation (IDF), diabetes mellitus currently affects 382 million people, with a projected increase to 592 million people by 2035¹. In both allogeneic and xenogeneic islet transplantation, systemic immunosuppressive therapy is necessary. Without immunosuppression, immune rejection is a major cause of graft loss². There is also a significant problem of transplanted islet loss due to the instant blood mediated inflammatory reaction (IBMIR)^{3,4}. However, even in the absence of an immune response such as in syngeneic or auto-transplantation models, islet cells transplanted into the liver via the portal vein are lost due to inflammation and/or to unfavorable environmental conditions, such as poor blood supply with reduced oxygenation and/or nutrients^{5,6}. As a result, in order to ensure long-term metabolic function, higher islet numbers are necessary to compensate for the initial cell loss that reduces engraftment⁷.

In an attempt to optimize islet engraftment, several alternative anatomical sites have been investigated experimentally as well as clinically, with promising, yet not definitive results⁸. Whereas some of the alternative sites offer easy and safe access (*e.g.*, skin, kidney capsule, gastric submucosa and anterior chamber of the eye) or a wider surface for larger islet masses (*e.g.*, peritoneal cavity), survival and physiologic metabolic performance of the transplanted islets are still limited and remain a concern⁹. The search for a more suitable site for islet engraftment is ongoing.

The omentum was among the many anatomical sites that were investigated in the early development of islet transplantation, and proved a successful environment for islets¹⁰⁻¹⁴. However, intraportal islet infusion became the clinical choice due in part to the relative simplicity of the procedure and early success in animal models⁶. Also, in part, the negatives associated with this site, particularly massive early islet loss, were less understood and less constraining in the early days of experimental islet transplantation as the field matured. With more recent compelling evidence indicating that intravascular islet infusion is far from ideal, the omentum is re-emerging as a potentially valuable site for cell transplantation.

The omentum (in the form of an omental pouch) offers relative advantages over the liver^{15,16}. It is well-vascularized and easily accessible. It allows retrieval of the graft (if necessary) and/or biopsy. The ischemic period experienced by the islets is reduced compared to the liver, and the omentum can accept relatively large islet masses which is not possible intraportally, where a rise in portal pressure can cause complications.

A syngeneic mouse model of transplantation was used in the protocol tested in the study, employing C57BL/6 male mice between 6-8 weeks old with a body weight of 20-25 g. Islet recipients were rendered diabetic with a single injection of streptozotocin with a dose of 250 mg/kg ip. The induction of diabetes can be considered successful if the blood glucose level of the mouse is greater than 24 mmol/L 48 h after injection and remains above that level for a minimum of 5 days.

Syngeneic islets were isolated from the pancreas of age-matched donors following previously published methods with some modifications. In brief, the collagenase was injected into the gall bladder instead of the bile duct. This was done as an improvement to facilitate the ease of injection. Collagenase infusion was followed by incubation, tissue disruption, density gradient separation and hand-picking to obtain pure islets. Islets were cultured overnight in

CMRL-1066 medium supplemented with 10% heat-inactivated fetal bovine serum (FBS) in T175 flasks at 37 °C, under 95% air-5% CO₂ before transplantation.

PROTOCOL:

All mice used in this study were obtained from the Medical Animal Center of Guangdong Province. The use of animals was approved by the Ethics Review Committee of Shenzhen Second People's Hospital, in accordance with the principles of animal welfare.

1. Islet Transplantation to the Omentum

Note: This protocol requires 2 persons to accomplish.

1.1. Assemble surgical materials which are listed in **Table 1**. Prepare aseptic field in surgical area with sterile materials such as drapes and disposables and maintain aseptic conditions throughout surgery. Sterilize all surgical instruments. Wear sterile gowns.

1.2. Pick the islets using a 200 µL pipette tip under the stereomicroscope. Each mouse will receive 450-500 Islet equivalent (IEQ) per transplant. For each animal, place enough islets for a single transplant into a sterile 1.5 mL snap-top tube with 100 µL of CMRL-1066 medium.

Note: Islets can be isolated on the day of transplantation, but it is better to isolate them the day before to allow recovery for the isolation process.

1.3. Keep the snap-top tubes with islets on ice until ready to transplant.

1.4. Thaw the basement membrane matrix hydrogel and keep it on ice after removing it from the -20 °C freezer. The hydrogel is liquid at 4 °C to 10 °C and solidifies at higher temperatures.

1.5. Weigh and tag all diabetic recipient mice. Inject 60 mg/kg pentobarbital sodium intraperitoneally. Test the depth of anesthesia by administering a toe pinch. Give an additional 10 mg/kg pentobarbital sodium if the animal reacts to the pinch. If there is no withdraw reflex, the level of anesthesia is correct for surgery.

1.6. Swab the surgical site on the abdomen using 70% ethanol. Shave the hair from the site with a razor blade and disinfect the area with Iodophor. Administer vet ointment to the eyes to prevent dryness while under anesthesia.

1.7. Use the ophthalmic scissors to open the abdomen along the abdomen midline with an incision of 4 to 5 cm. Move the intestines to the left side and cover with saline soaked gauze to prevent excessive dehydration during the surgery procedure.

1.8. Use cotton swabs to fully expose the visual field of the stomach and locate the omentum (located below the stomach). Use two pair of fine forceps to distend the omentum. Take care to prevent damage from tearing.

1.9. The hydrogel is completely thawed at this point. Spin the tube with the islets for 30 s at

200 x g and remove the supernatant. Aspirate 50 μ L of hydrogel, add it to the tube containing the islets, and resuspend the mix gently avoiding the formation of bubbles. Keep the tubes on ice during the procedure.

1.10. Use two pair of forceps to pick up the edges of the omentum and gently raise it to form a groove between the gastric wall and intestines that can accommodate a small volume of liquid with the islet graft.

1.11. Let the second person assist in the procedure and aspirate the resuspended islet-hydrogel mixture (the entire contents of the tube) with a 200 μ L pipette tip, Deliver the content into the groove.

1.12. Ensure that the mixture is well positioned into the groove by gently raising or lowering the edges of the omentum. Complete positioning of the mixture within 3 min before the hydrogel solidifies as an effect of the body temperature. After the hydrogel sets, fold the omentum to cover the graft.

Note: The omentum will adhere to the surrounding gastric wall as the hydrogel solidifies.

1.13. After the hydrogel is completely solidified, use cotton swabs to reposition the intestines back into the abdominal cavity, taking care not to touch the site of transplantation.

1.14. Add 20 μ L of cephalosporin (5~10 mg) into the abdominal cavity to prevent infection, then use 4-0 suture to close the abdomen.

1.15. Return the mouse to its cage and repeat all steps for each mouse recipient. Keep the mice warm and monitor visually until they fully regain sufficient consciousness to maintain sternal recumbency. Keep the mice separate from other animals until they have fully recovered.

1.16. Inject 50 μ L of cefazolin sodium (0.05 mg/mL) each day for a week as post-surgery prophylaxis.

1.17. Measure non-fasting blood glucose level from a tail-vein blood sample using a blood glucose meter once a day after the transplant. When transplanting to the omentum, the islet graft may have a delayed function and not reach a completely normal blood glucose level for 2-3 weeks.

1.18. For histology, remove the omental graft from the mouse at the end of the experiment following the transplantation. Fix the tissue according to the histological protocols. The graft can be analyzed for immunostaining or immunofluorescence studies.

2. Alternative Method for Transplantation to the Omentum

Note: An alternative fibrin-thrombin hydrogel that is used at room temperature may be substituted for the basement membrane matrix hydrogel. It consists of 2 components, a fibrin sealer protein solution (50 U/mL thrombin and 10 mg/mL fibrinogen). When the components

are mixed, they form a clot that holds the islets in place.

2.1. Use the fibrin-thombin hydrogel compound at room temperature. As in step 1.2, each mouse will receive 450-500 islet equivalents (IEQ) per transplant. Place the islets in a sterile 1.5 mL snap-top tube with 100 μ L of CMRL-1066 medium. Immediately before transplantation, aspirate the islets into a sterile PE50 tubing for a length of 10 cm and centrifuge gently (30 s at 200 x g) to form a loose pellet.

2.2. Prepare the animal as stated above (steps 1.5-1.8) with the omentum spread out. Mix the hydrogel components (10 μ L/each) and place on the omentum. (**Figure 3D**)

2.3. Immediately expel the islets from the tubing onto the hydrogel. The hydrogel forms a clot around the islets. (**Figure 3E**)

2.4. Fold the omentum over the hydrogel and islets to form a pouch. (**Figure 3F**) Continue with steps 1.13 to 1.18.

REPRESENTATIVE RESULTS:

Post-digestive state of the pancreas is shown in **Figure 1A**. Purified islets are shown in **Figure 1B**. Dithizone staining and viability testing of the islets are shown in **Figure 2**. The main steps of the islet transplantation to the omentum are shown in **Figure 3**. The blood glucose levels of the recipients after omental transplantation are shown in **Figure 4**. Histological analysis of grafts is shown in **Figure 5**.

FIGURE AND TABLE LEGENDS:

Figure 1: Pancreas digestion and islet isolation. (A) The pancreas following the digestion. Note the sand-sized particles in the suspension. (B) Light microscopy image of the islets after isolation.

Figure 2: Islet dithizone staining and fluorescence viability dyes. (A) Islets are stained in red by dithizone. (B) Light microscopy. (C) Propidium Iodide fluorescence red staining (dead cells). (D) Calcein-AM green staining (viable cells).

Figure 3: Transplantation in the omentum. (A) After the recipient laparotomy, the stomach is exposed and the omentum located. (B) Islets are mixed in hydrogel and slowly placed onto the omental tissue. (C) Islet graft at higher magnification. The hydrogel is a semi-solidified state. (D) Alternative method. Hydrogel is placed on the omentum without islets. (E) Islets are placed on top of the hydrogel. (F) The omentum is folded around the islets.

Figure 4: Blood glucose levels post-transplant. Non-fasting blood glucose levels of recipients (n = 7) up to 35 days after transplantation. The graft recipients did not all receive the same batch of islets so there are differences in quality and function resulting in large fluctuations in blood glucose level.

Figure 5. Histology. Graft sections (graft retrieval 14 days after transplantation) were stained with DAPI (nuclei), anti-mouse insulin antibodies, and hematoxylin.,

DISCUSSION:

Islet transplantation to the liver via the portal vein is the most commonly used method of islet transplantation in humans, but there are still efficiency and safety concerns such as portal vein thrombosis and liver steatosis¹⁷. Recent studies show that the omentum may be a suitable alternative to the liver, but more research needs to be conducted prior to clinical translation^{12,14,18,19}.

The mouse is a suitable model for testing the omentum as a site for islet transplantation. In the mouse, the omentum is located under the stomach wall and is generally folded. However, the size of the omentum in mice is small and challenging to access. In order to use it for transplantation, it is necessary to gently spread it out to its full size then fold it over after the islets/hydrogel mix is deposited. In a larger animal, the omental tissue is more extensive and can be sutured to construct one or more pouches into which the islets are deposited. The mouse omentum is fragile and does not easily accept sutures without breaking. For this reason, a hydrogel is used to make the pouch without sutures.

In the first method (steps 1.1-1.18), the hydrogel used is a basement membrane matrix and is composed of laminin, collagen IV and growth factors. It solidifies as it warms to body temperature. In the second method (steps 2.1-2.4), a different hydrogel is used composed of 50U/mL thrombin and 10 mg/mL fibrinogen. Two different hydrogels are used to show the versatility of this technique. It may be tailored to fit many circumstances and to establish proof of principle. For clinical applications, whether a sutured pouch or a clinical-grade hydrogel is used, the technique can be combined with a minimally invasive approach, (*e.g.*, an endoscopic method of delivery to the omentum). To this aim, additional studies using larger mammal pre-clinical models are required.

The time to normalize the blood glucose levels in the mouse recipients after transplantation in the omentum in our as well as other studies suggest that the islets in the omentum require slightly longer time to achieve sufficient insulin production. Revascularization efficiency appears to be one important factor, as outlined in the study. Whether the presence of a hydrogel affects the speed of islet revascularization and performance, that remains to be determined.

ACKNOWLEDGMENTS

Some of the authors of this work were supported in part by grants from National Key R&D Program of China (2017YFC1103704), Sanming Project of Medicine in Shenzhen (SZSM201412020), Fund for High Level Medical Discipline Construction of Shenzhen (2016031638), Shenzhen Foundation of Science and Technology (JCJY20160229204849975, GJHZ20170314171357556, JCYJ20160425110110658), Shenzhen Foundation of Health and Family Planning Commission (SZXJ2017021).

DISCLOSURES:

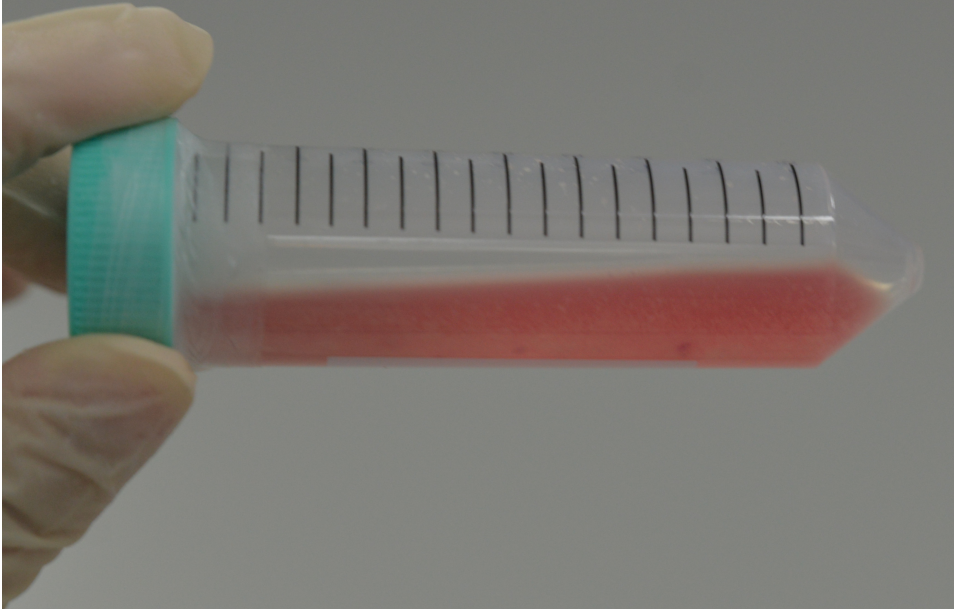
The authors report no conflicts of interest.

REFERENCES

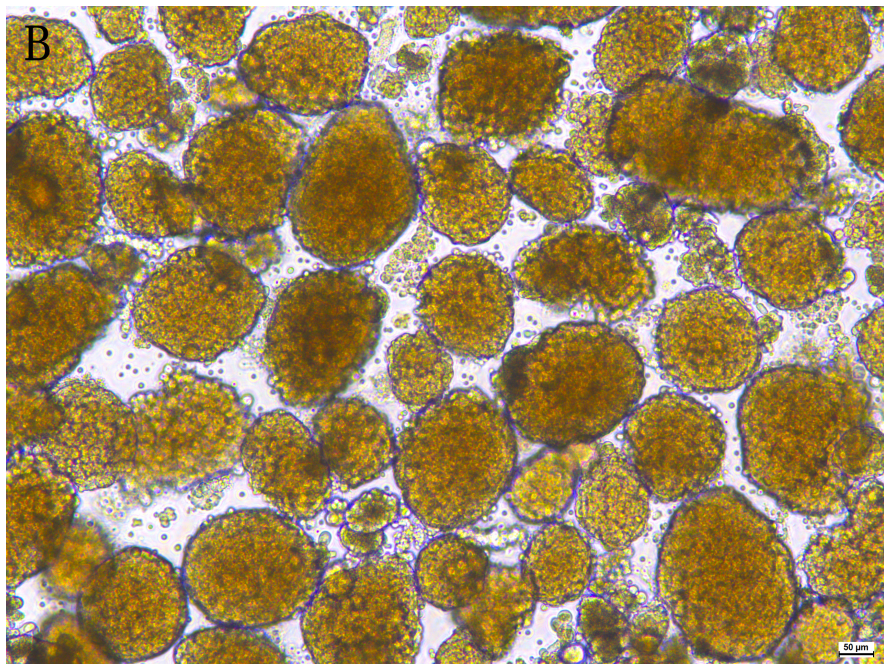
- 1 Guariguata, L. *et al.* Global estimates of diabetes prevalence for 2013 and projections for 2035. *Diabetes research and clinical practice*. **103** (2), 137-149,DOI: 10.1016/j.diabres.2013.11.002 (2014).
- 2 Bellin, M. D. *et al.* Potent Induction Immunotherapy Promotes Long-Term Insulin Independence After Islet Transplantation in Type 1 Diabetes. *American Journal of Transplantation*. **12** (6), 1576-1583,DOI: 10.1111/j.1600-6143.2011.03977.x (2012).
- 3 Moberg, L. *et al.* Production of tissue factor by pancreatic islet cells as a trigger of detrimental thrombotic reactions in clinical islet transplantation. *The lancet*. **360** (9350), 2039-2045(2002).
- 4 Nilsson, B., Ekdahl, K. N. & Korsgren, O. Control of instant blood-mediated inflammatory reaction to improve islets of Langerhans engraftment. *Current Opinion in Organ Transplantation*. **16** (6), 620-626,DOI: 10.1097/MOT.0b013e32834c2393 (2011).
- 5 Bellin, M. D. *et al.* Similar islet function in islet allotransplant and autotransplant recipients, despite lower islet mass in autotransplants. *Transplantation*. **91** (3), 367-372,DOI: 10.1097/TP.0b013e318203fd09 (2011).
- 6 Bruni, A., Gala-Lopez, B., Pepper, A. R., Abualhassan, N. S. & Shapiro, A. J. Islet cell transplantation for the treatment of type 1 diabetes: recent advances and future challenges. *Diabetes, metabolic syndrome and obesity: targets and therapy*. **7** 211,DOI: 10.2147/DMSO.S50789 (2014).
- 7 Shapiro, A. J., Pokrywczynska, M. & Ricordi, C. Clinical pancreatic islet transplantation. *Nature reviews Endocrinology*. **13** (5), 268-277,DOI: 10.1038/nrendo.2016.178 (2017).
- 8 Cantarelli, E. & Piemonti, L. Alternative transplantation sites for pancreatic islet grafts. *Current diabetes reports*. **11** (5), 364,DOI: 10.1007/s11892-011-0216-9 (2011).
- 9 Cantarelli, E. *et al.* Murine animal models for preclinical islet transplantation: no model fits all (research purposes). *Islets*. **5** (2), 79-86,DOI: 10.4161/isl.24698 (2013) (2013).
- 10 Beli, E. *et al.* Erratum to: CX3CR1 deficiency accelerates the development of retinopathy in a rodent model of type 1 diabetes. *J Mol Med (Berl)*. **95** (5), 565-566,DOI: 10.1007/s00109-017-1530-8 (2017).
- 11 Hafner, J. *et al.* Regional Patterns of Retinal Oxygen Saturation and Microvascular Hemodynamic Parameters Preceding Retinopathy in Patients With Type II Diabetes. *Invest Ophthalmol Vis Sci*. **58** (12), 5541-5547,DOI: 10.1167/iovs.17-22523 (2017).
- 12 Schmidt, C. Pancreatic islets find a new transplant home in the omentum. *Nature Biotechnology*. **35** (1), 82017).
- 13 Voigt, M. *et al.* Prevalence and Progression Rate of Diabetic Retinopathy in Type 2 Diabetes Patients in Correlation with the Duration of Diabetes. *Exp Clin Endocrinol Diabetes*. DOI: 10.1055/s-0043-120570,DOI: 10.1055/s-0043-120570 (2017).
- 14 Baidal, D. A. *et al.* Bioengineering of an Intraabdominal Endocrine Pancreas. *New England Journal of Medicine*. **376** (19), 1887-1889,DOI: 10.1056/NEJMc1613959 (2017).
- 15 Espes, D. *et al.* Rapid restoration of vascularity and oxygenation in mouse and human islets transplanted to omentum may contribute to their superior function compared to intraportally transplanted islets. *American Journal of Transplantation*. DOI: 10.1111/ajt.13927,DOI: 10.1111/ajt.13927 (2016).

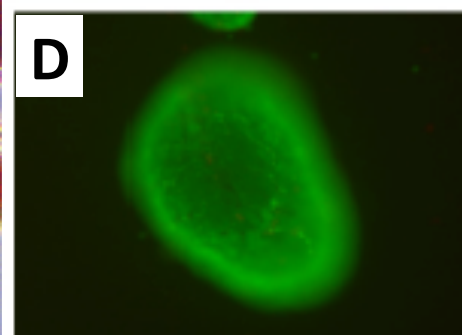
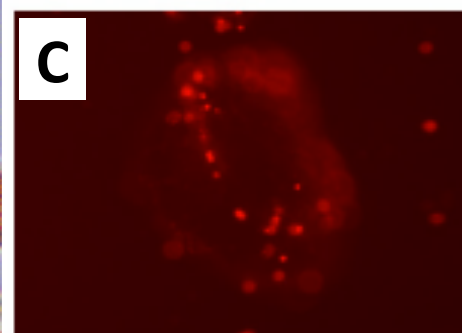
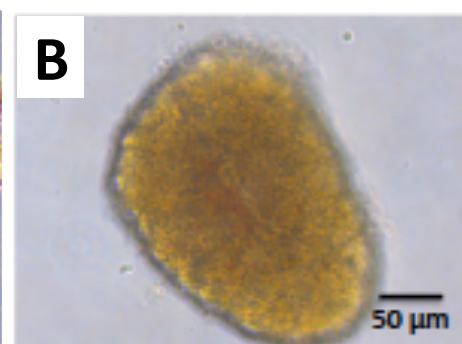
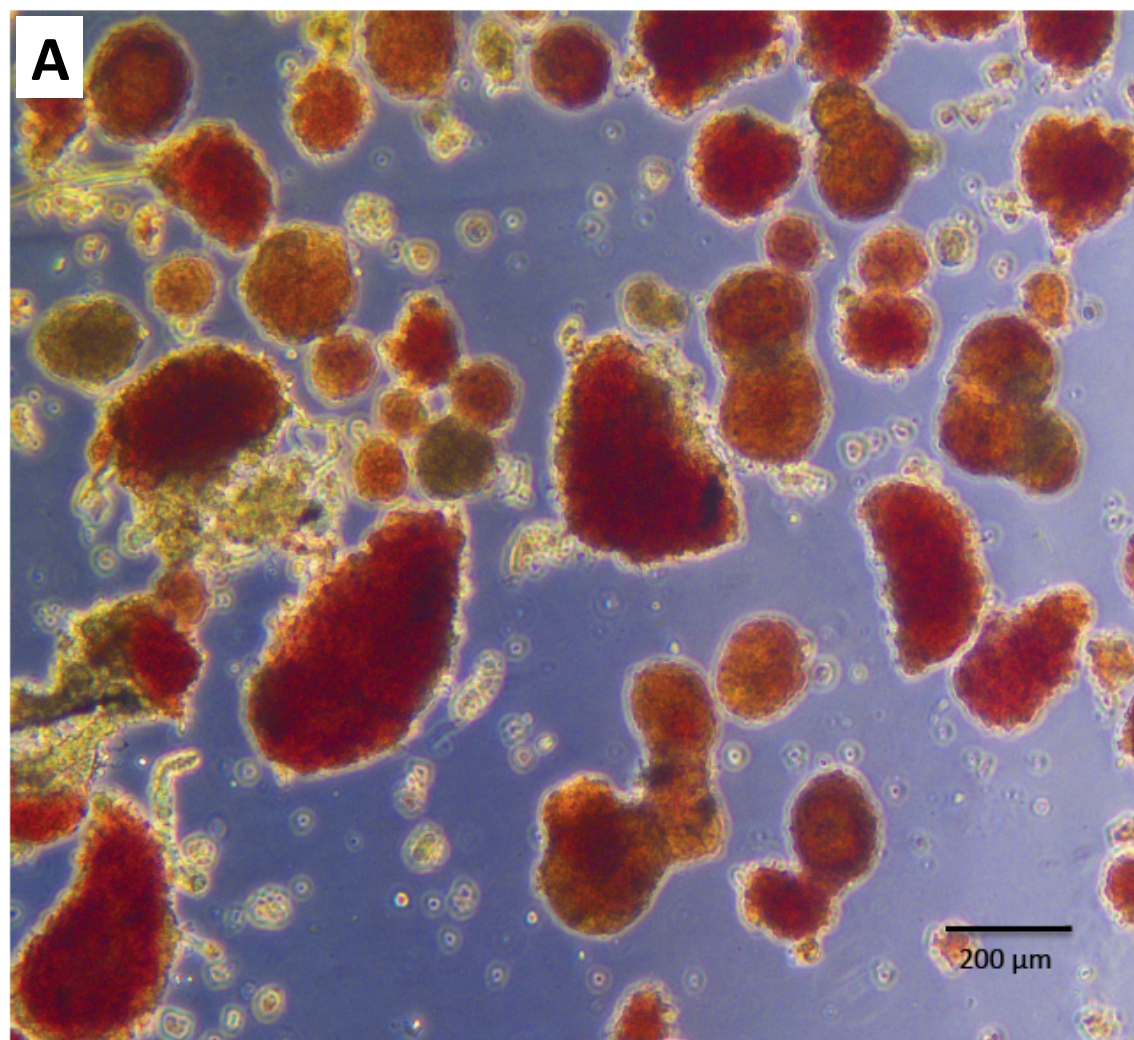
- 324 16 Berman, D. M. *et al.* Bioengineering the endocrine pancreas: intraomental islet
325 transplantation within a biologic resorbable scaffold. *Diabetes*. **65** (5), 1350-1361,DOI:
326 10.2337/db15-1525 (2016).
- 327 17 Delaune, V., Berney, T., Lacotte, S. & Toso, C. Intraportal islet transplantation: the
328 impact of the liver micro-environment. *Transplant International*. **30** (3), 227-238,DOI:
329 10.1111/tri.12919 (2017).
- 330 18 Espes, D. *et al.* Rapid restoration of vascularity and oxygenation in mouse and human
331 islets transplanted to omentum may contribute to their superior function compared
332 to intraportally transplanted islets. *American Journal of Transplantation*. **16** (11), 3246-
333 3254(2016).
- 334 19 Hajizadeh-Saffar, E. *et al.* Inducible VEGF expression by human embryonic stem cell-
335 derived mesenchymal stromal cells reduces the minimal islet mass required to reverse
336 diabetes. *Scientific Reports*. **5** 2015).
- 337

A



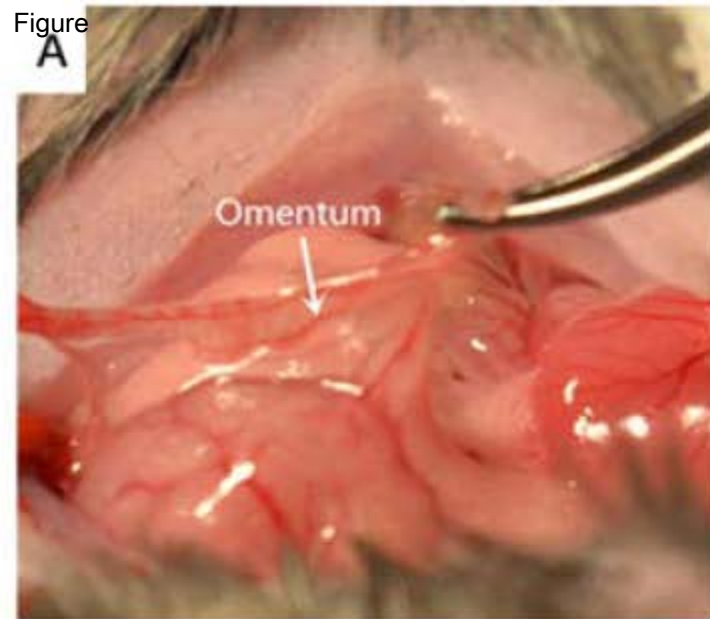
B



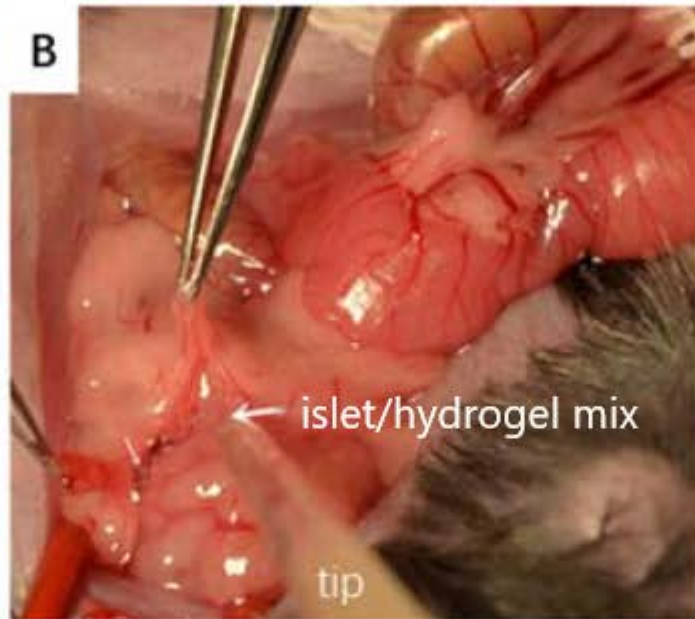


Figure

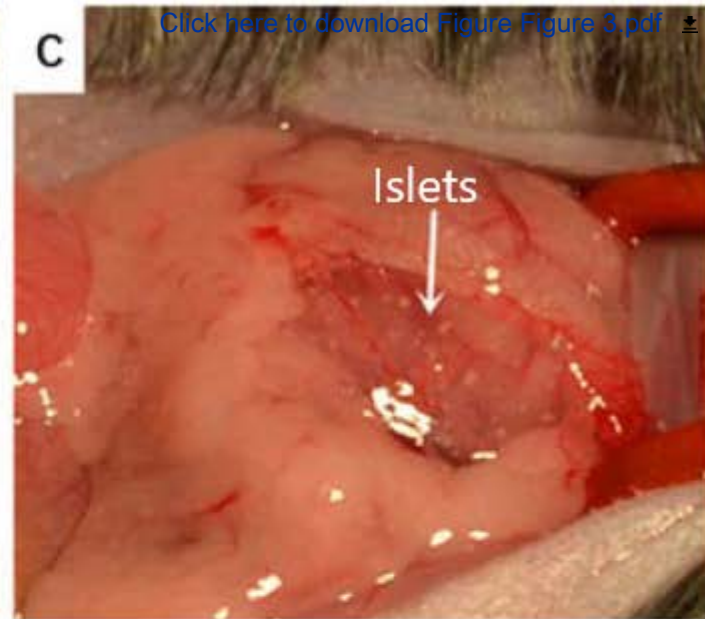
A



B



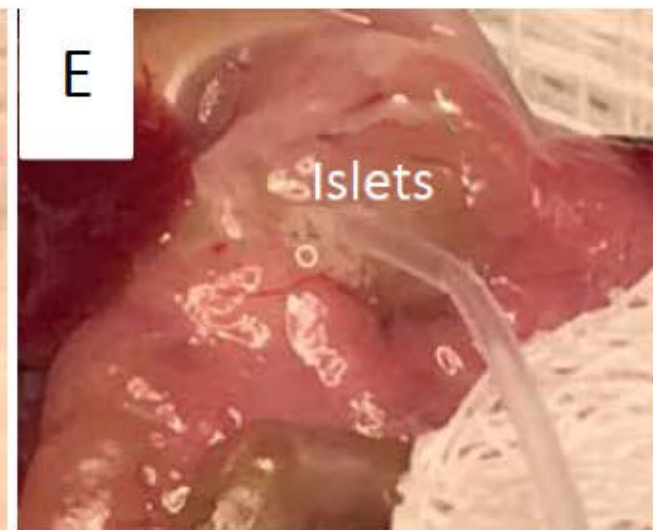
C



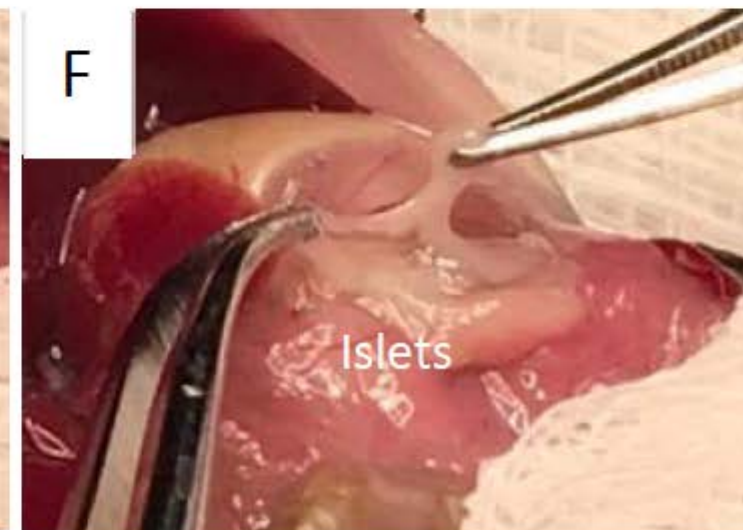
D



E

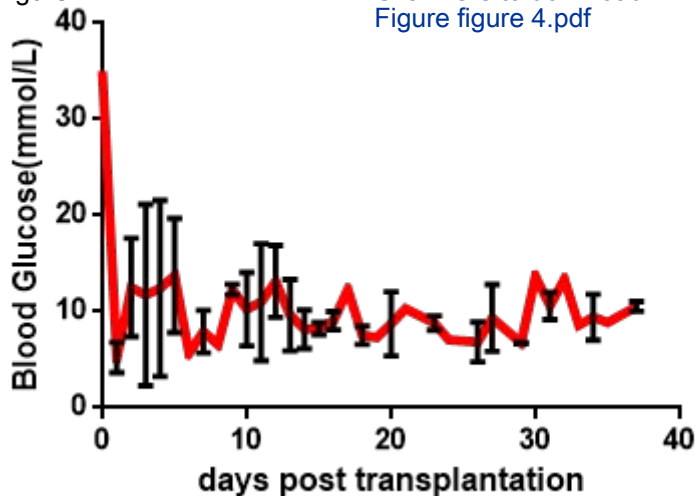


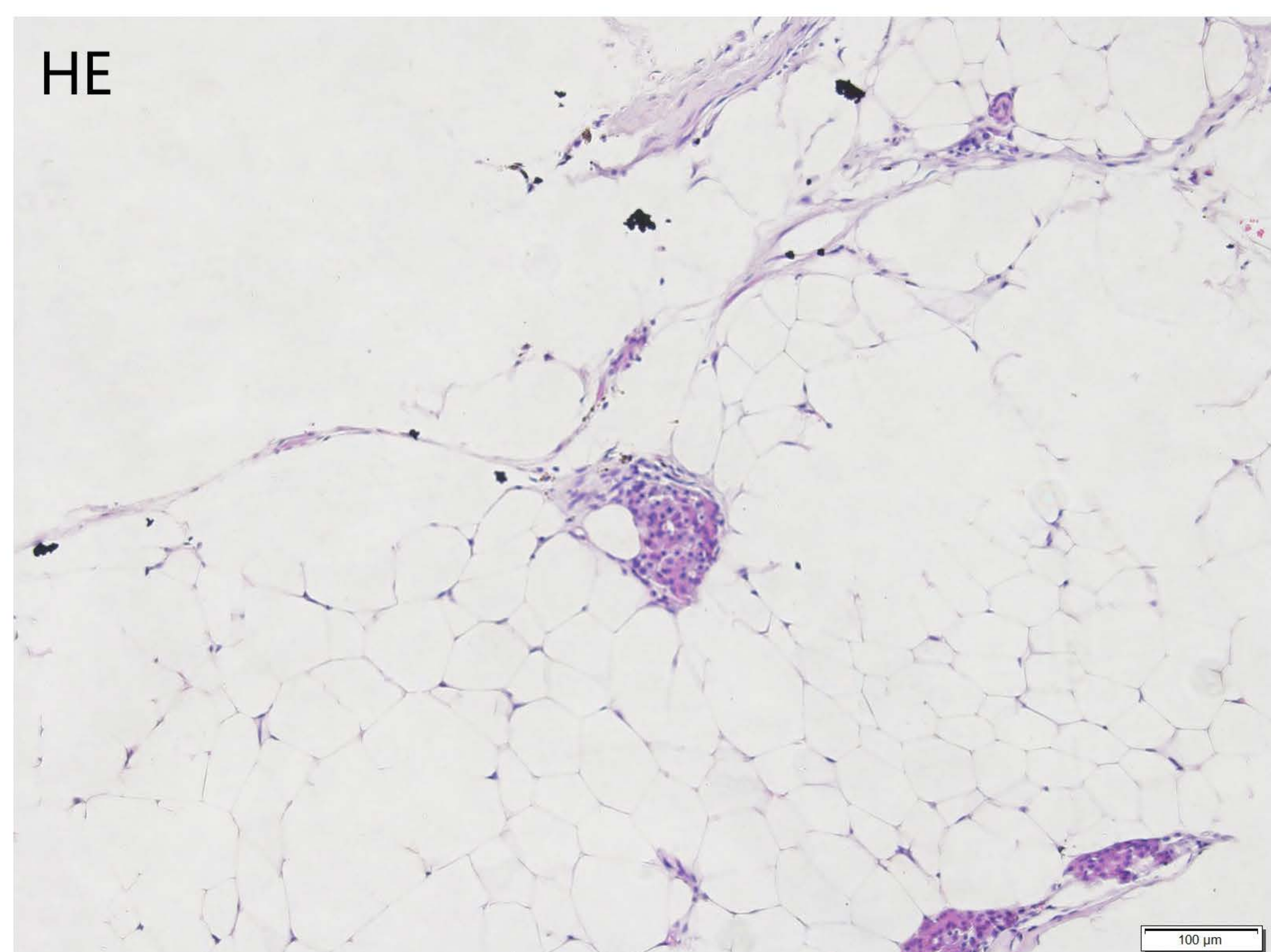
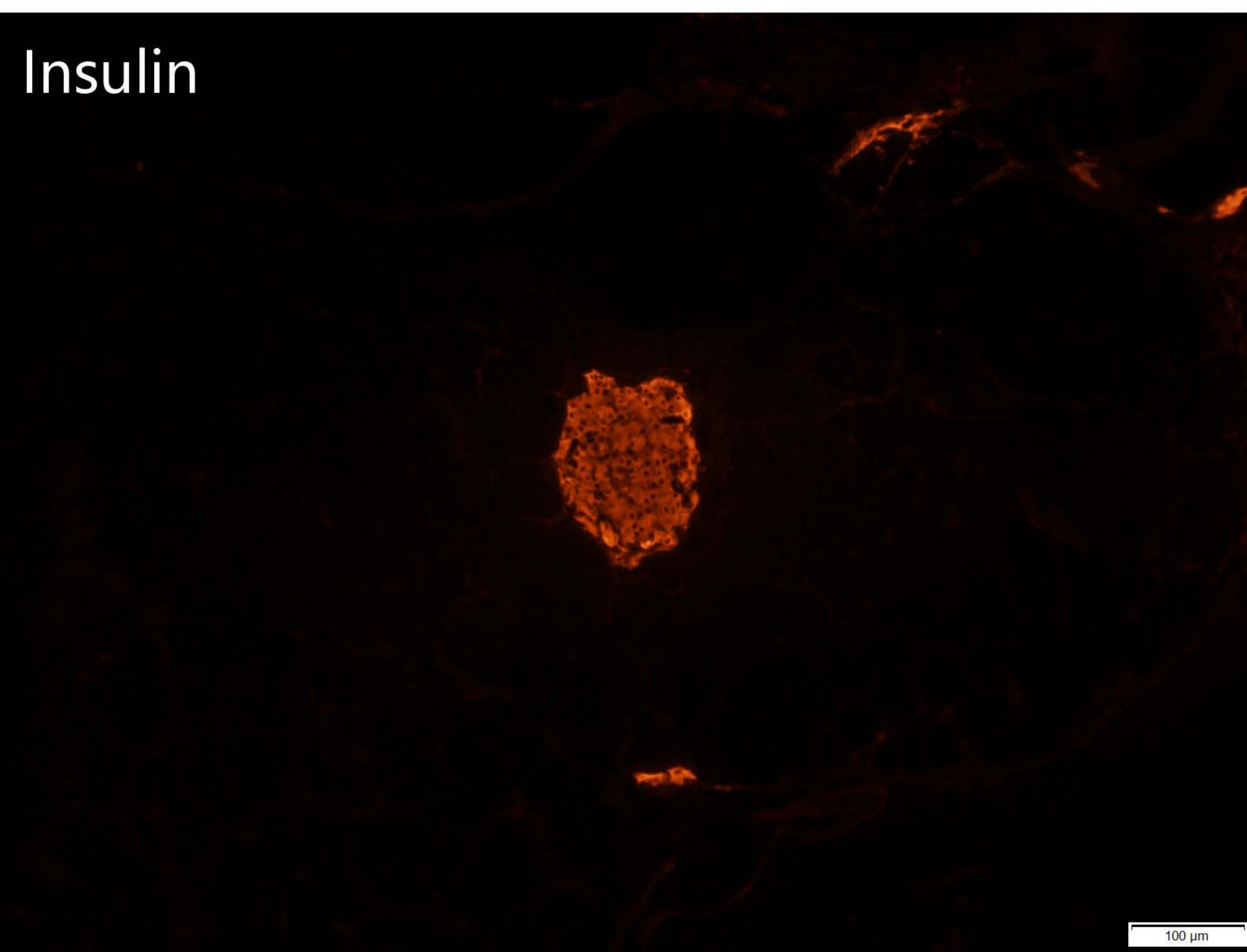
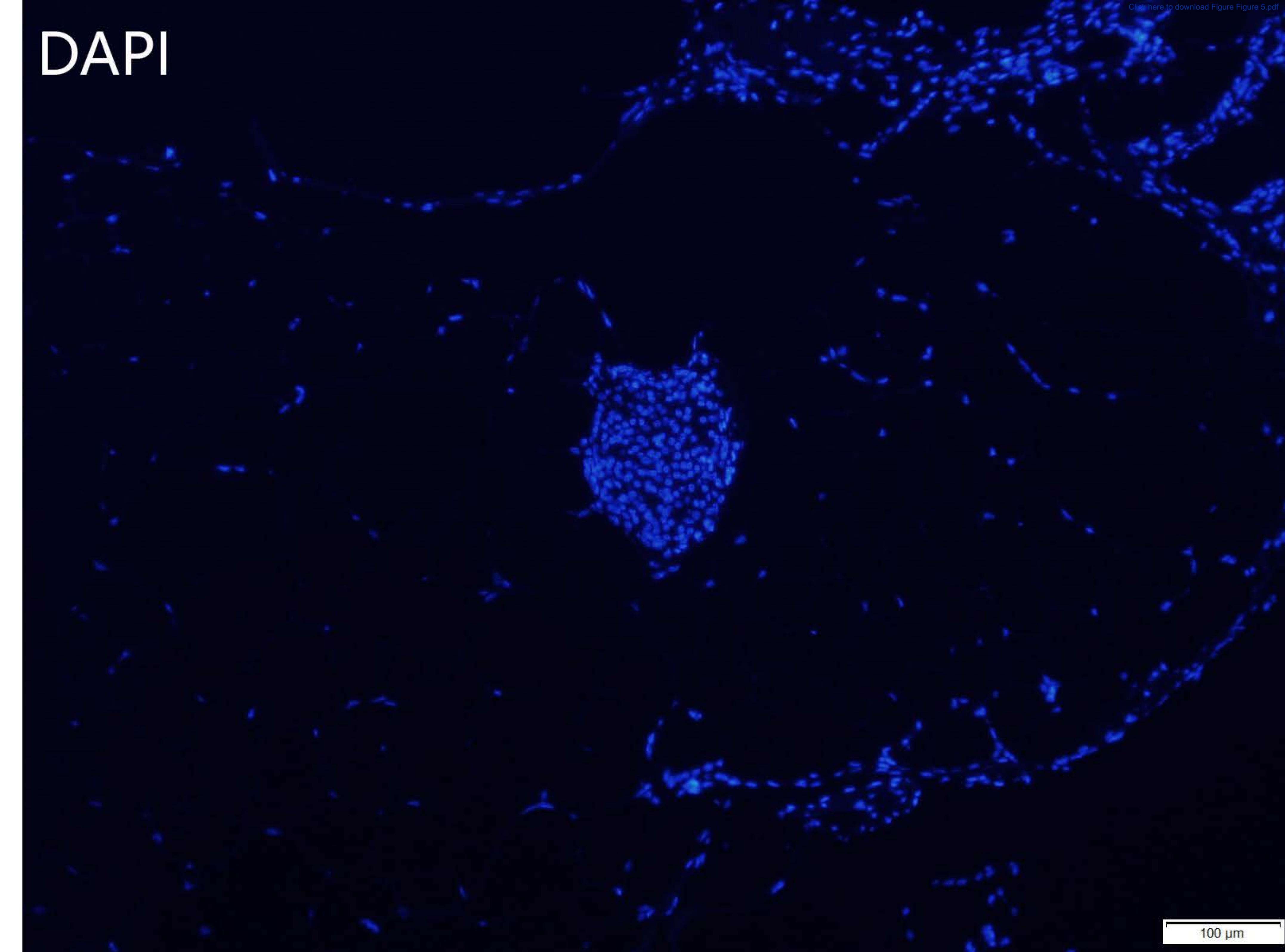
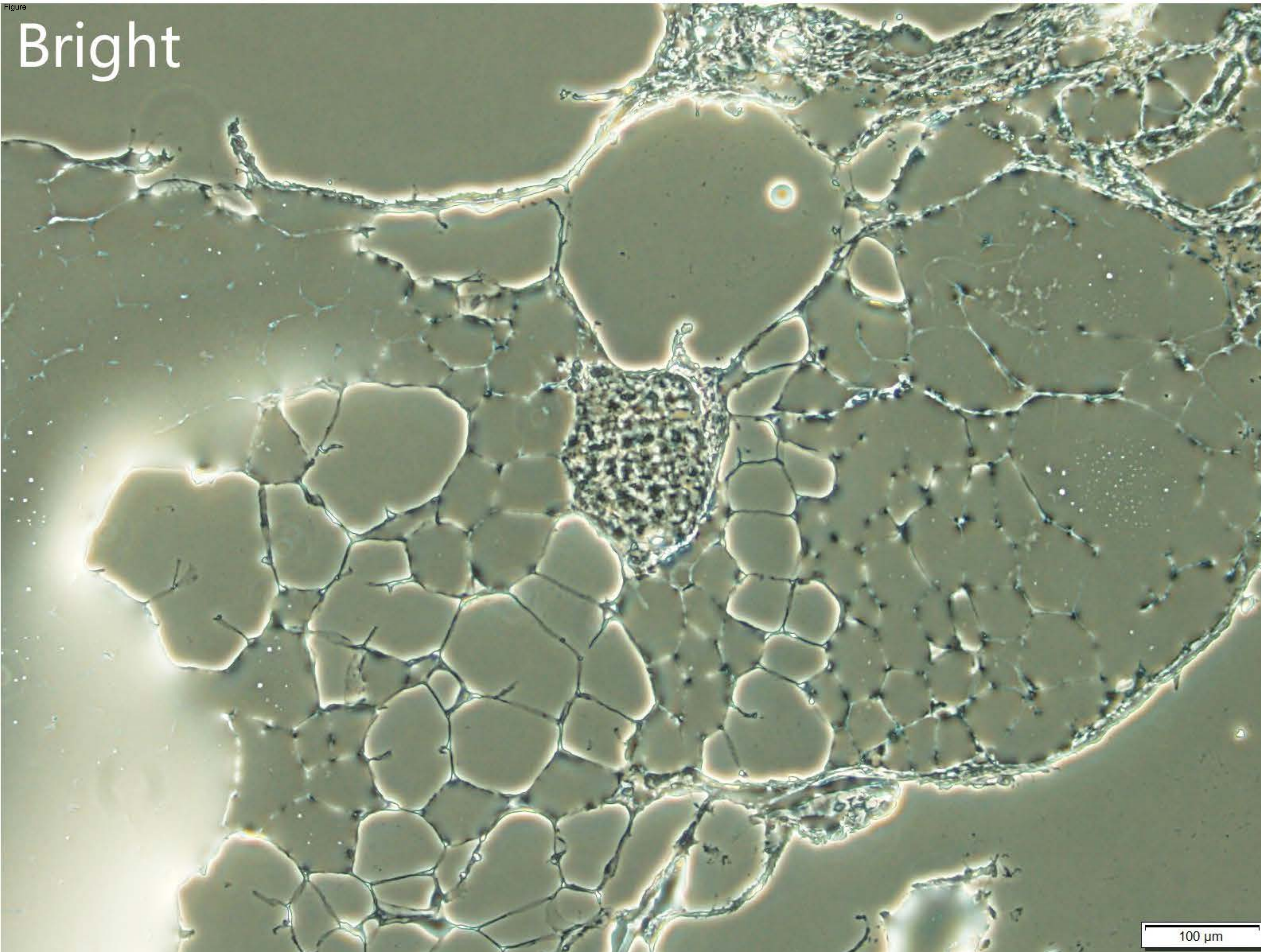
F



Figure

[Click here to download Figure figure 4.pdf](#)





| |
|---|
| Equipment |
| 5 inch (12-13 cm) Scissors |
| Fine Forceps |
| Small wound clips |
| Acutenaculum |
| 2 pair tissue forceps |
| 4-0 Suture with needle |
| 200µl Pipette and tips |
| One Touch ultraeasy Basic blood glucose monitoring system |
| razor blade |
| |
| Material and animals |
| Pentobarbital Sodium |
| Hydrogel |
| Fibrin-Thrombin Hydrogel |
| 70% Ethanol |
| Iodophor |
| Normal saline |
| Cephalosporin |
| Cefazolin |
| lubricant eye ointment |
| streptozotocin |
| collagenase Type V |
| CMRL-1066 media |
| histopaque |
| PE50 tubing |
| Calcein AM |
| Propidium iodide |
| optimal cutting temperature compound (OCT) |
| insulin antibody |
| hematoxylin staining media |
| eosin staining media |
| DAPI |
| C57Bl/6 Mice |
| Fetal Bovine Serum |
| T175 flasks |
| 1.5mL Snap-top tubes |

| Company | Catalog Number |
|---|-----------------------|
| RWD Life Science | S12030-11 |
| RWD Life Science | F11010-13 |
| RWD Life Science | R33003-01 |
| RWD Life Science | F31044-13 |
| RWD Life Science | F13023-10 |
| Chenghe, China | 17094 |
| Gilson | PN11 |
| Johnson & Johnson | 33391713 |
| Philips | HC1099/15 |
| | |
| Company | Catalog Number |
| Sigmaaldrich.com | P3761 |
| bdbiosciences.com | 356234 |
| Baxter.com | 1501250 |
| Yingniu medical, Anhui, China | 23170608 |
| Lierkang medical technology, Shangdong, China | 170521 |
| Baxter.com | 2B1324 |
| Lukang medical, Shangdong, China | 150303 |
| Baxter.com | 2G3508 |
| Major Pharmaceuticals | 203964 |
| Sigmaaldrich.com | S0130 |
| Sigmaaldrich.com | C9262 |
| celltrans, Wenzhou, China | X018D1 |
| Sigmaaldrich.com | 10771 |
| Braintreesci.com | PE50 100 FT |
| Sigmaaldrich.com | C1359 |
| Sigmaaldrich.com | P4864 |
| Tissue-Tek; Miles, Naperville, IL | 4583 |
| Cell Signaling Technology, Danvers, MA 01923 | 8138S |
| Cell Signaling Technology, Danvers, MA 01923 | 14166S |
| Beyotime Biotech, China | C0109 |
| Thermo Fisher Scientific Inc. | D1306 |
| Medical Animal Center of Guangdong Province | / |
| GE Healthcare Life Sciences | SH30084 |
| Falcon | 353112 |
| Axygen | MCT-150-C |



1 Alewife Center #200
Cambridge, MA 02140
tel. 617.945.9051
www.jove.com

ARTICLE AND VIDEO LICENSE AGREEMENT

Title of Article:

A method for islet transplantation to the omentum of the mouse

Author(s):

Ying Lu, Shangyou Zou, Suzanne Bertera, Rita Bottino, David K.C. Cooper

Item 1 (check one box): The Author elects to have the Materials be made available (as described at

http://www.jove.com/author) via: ☒ Standard Access ☐ Open Access

Qin Hua, Hongling Fu, Zhiming Cao, Lisha Mao

Item 2 (check one box):



The Author is NOT a United States government employee.



The Author is a United States government employee and the Materials were prepared in the course of his or her duties as a United States government employee.



The Author is a United States government employee but the Materials were NOT prepared in the course of his or her duties as a United States government employee.

ARTICLE AND VIDEO LICENSE AGREEMENT

1. **Defined Terms.** As used in this Article and Video License Agreement, the following terms shall have the following meanings: “**Agreement**” means this Article and Video License Agreement; “**Article**” means the article specified on the last page of this Agreement, including any associated materials such as texts, figures, tables, artwork, abstracts, or summaries contained therein; “**Author**” means the author who is a signatory to this Agreement; “**Collective Work**” means a work, such as a periodical issue, anthology or encyclopedia, in which the Materials in their entirety in unmodified form, along with a number of other contributions, constituting separate and independent works in themselves, are assembled into a collective whole; “**CRC License**” means the Creative Commons Attribution-Non Commercial-No Derivs 3.0 Unported Agreement, the terms and conditions of which can be found at: <http://creativecommons.org/licenses/by-nc-nd/3.0/legalcode>; “**Derivative Work**” means a work based upon the Materials or upon the Materials and other pre-existing works, such as a translation, musical arrangement, dramatization, fictionalization, motion picture version, sound recording, art reproduction, abridgment, condensation, or any other form in which the Materials may be recast, transformed, or adapted; “**Institution**” means the institution, listed on the last page of this Agreement, by which the Author was employed at the time of the creation of the Materials; “**JoVE**” means MyJoVE Corporation, a Massachusetts corporation and the publisher of *The Journal of Visualized Experiments*; “**Materials**” means the Article and / or the Video; “**Parties**” means the Author and JoVE; “**Video**” means any video(s) made by the Author, alone or in conjunction with any other parties, or by JoVE or its affiliates or agents, individually or in collaboration with the Author or any other parties, incorporating all or any portion of the Article, and in which the Author may or may not appear.

2. **Background.** The Author, who is the author of the Article, in order to ensure the dissemination and protection of the Article, desires to have the JoVE publish the Article and create and transmit videos based on the Article. In furtherance of such goals, the Parties desire to memorialize in this Agreement the respective rights of each Party in and to the Article and the Video.

3. **Grant of Rights in Article.** In consideration of JoVE agreeing to publish the Article, the Author hereby grants to JoVE, subject to **Sections 4 and 7** below, the exclusive, royalty-free, perpetual (for the full term of copyright in the Article, including any extensions thereto) license (a) to publish, reproduce, distribute, display and store the Article in all forms, formats and media whether now known or hereafter developed (including without limitation in print, digital and electronic form) throughout the world, (b) to translate the Article into other languages, create adaptations, summaries or extracts of the Article or other Derivative Works (including, without limitation, the Video) or Collective Works based on all or any portion of the Article and exercise all of the rights set forth in (a) above in such translations, adaptations, summaries, extracts, Derivative Works or Collective Works and (c) to license others to do any or all of the above. The foregoing rights may be exercised in all media and formats, whether now known or hereafter devised, and include the right to make such modifications as are technically necessary to exercise the rights in other media and formats. If the “Open Access” box has been checked in **Item 1** above, JoVE and the Author hereby grant to the public all such rights in the Article as provided in, but subject to all limitations and requirements set forth in, the CRC License.

ARTICLE AND VIDEO LICENSE AGREEMENT

4. Retention of Rights in Article. Notwithstanding the exclusive license granted to JoVE in **Section 3** above, the Author shall, with respect to the Article, retain the non-exclusive right to use all or part of the Article for the non-commercial purpose of giving lectures, presentations or teaching classes, and to post a copy of the Article on the Institution's website or the Author's personal website, in each case provided that a link to the Article on the JoVE website is provided and notice of JoVE's copyright in the Article is included. All non-copyright intellectual property rights in and to the Article, such as patent rights, shall remain with the Author.

5. Grant of Rights in Video – Standard Access. This **Section 5** applies if the "Standard Access" box has been checked in **Item 1** above or if no box has been checked in **Item 1** above. In consideration of JoVE agreeing to produce, display or otherwise assist with the Video, the Author hereby acknowledges and agrees that, Subject to **Section 7** below, JoVE is and shall be the sole and exclusive owner of all rights of any nature, including, without limitation, all copyrights, in and to the Video. To the extent that, by law, the Author is deemed, now or at any time in the future, to have any rights of any nature in or to the Video, the Author hereby disclaims all such rights and transfers all such rights to JoVE.

6. Grant of Rights in Video – Open Access. This **Section 6** applies only if the "Open Access" box has been checked in **Item 1** above. In consideration of JoVE agreeing to produce, display or otherwise assist with the Video, the Author hereby grants to JoVE, subject to **Section 7** below, the exclusive, royalty-free, perpetual (for the full term of copyright in the Article, including any extensions thereto) license (a) to publish, reproduce, distribute, display and store the Video in all forms, formats and media whether now known or hereafter developed (including without limitation in print, digital and electronic form) throughout the world, (b) to translate the Video into other languages, create adaptations, summaries or extracts of the Video or other Derivative Works or Collective Works based on all or any portion of the Video and exercise all of the rights set forth in (a) above in such translations, adaptations, summaries, extracts, Derivative Works or Collective Works and (c) to license others to do any or all of the above. The foregoing rights may be exercised in all media and formats, whether now known or hereafter devised, and include the right to make such modifications as are technically necessary to exercise the rights in other media and formats. For any Video to which this Section 6 is applicable, JoVE and the Author hereby grant to the public all such rights in the Video as provided in, but subject to all limitations and requirements set forth in, the CRC License.

7. Government Employees. If the Author is a United States government employee and the Article was prepared in the course of his or her duties as a United States government employee, as indicated in **Item 2** above, and any of the licenses or grants granted by the Author hereunder exceed the scope of the 17 U.S.C. 403, then the rights granted hereunder shall be limited to the maximum rights permitted under such

statute. In such case, all provisions contained herein that are not in conflict with such statute shall remain in full force and effect, and all provisions contained herein that do so conflict shall be deemed to be amended so as to provide to JoVE the maximum rights permissible within such statute.

8. Likeness, Privacy, Personality. The Author hereby grants JoVE the right to use the Author's name, voice, likeness, picture, photograph, image, biography and performance in any way, commercial or otherwise, in connection with the Materials and the sale, promotion and distribution thereof. The Author hereby waives any and all rights he or she may have, relating to his or her appearance in the Video or otherwise relating to the Materials, under all applicable privacy, likeness, personality or similar laws.

9. Author Warranties. The Author represents and warrants that the Article is original, that it has not been published, that the copyright interest is owned by the Author (or, if more than one author is listed at the beginning of this Agreement, by such authors collectively) and has not been assigned, licensed, or otherwise transferred to any other party. The Author represents and warrants that the author(s) listed at the top of this Agreement are the only authors of the Materials. If more than one author is listed at the top of this Agreement and if any such author has not entered into a separate Article and Video License Agreement with JoVE relating to the Materials, the Author represents and warrants that the Author has been authorized by each of the other such authors to execute this Agreement on his or her behalf and to bind him or her with respect to the terms of this Agreement as if each of them had been a party hereto as an Author. The Author warrants that the use, reproduction, distribution, public or private performance or display, and/or modification of all or any portion of the Materials does not and will not violate, infringe and/or misappropriate the patent, trademark, intellectual property or other rights of any third party. The Author represents and warrants that it has and will continue to comply with all government, institutional and other regulations, including, without limitation all institutional, laboratory, hospital, ethical, human and animal treatment, privacy, and all other rules, regulations, laws, procedures or guidelines, applicable to the Materials, and that all research involving human and animal subjects has been approved by the Author's relevant institutional review board.

10. JoVE Discretion. If the Author requests the assistance of JoVE in producing the Video in the Author's facility, the Author shall ensure that the presence of JoVE employees, agents or independent contractors is in accordance with the relevant regulations of the Author's institution. If more than one author is listed at the beginning of this Agreement, JoVE may, in its sole discretion, elect not take any action with respect to the Article until such time as it has received complete, executed Article and Video License Agreements from each such author. JoVE reserves the right, in its absolute and sole discretion and without giving any reason therefore, to accept or decline any work submitted to JoVE. JoVE and its employees, agents and independent contractors shall have

ARTICLE AND VIDEO LICENSE AGREEMENT

full, unfettered access to the facilities of the Author or of the Author's institution as necessary to make the Video, whether actually published or not. JoVE has sole discretion as to the method of making and publishing the Materials, including, without limitation, to all decisions regarding editing, lighting, filming, timing of publication, if any, length, quality, content and the like.

11. **Indemnification.** The Author agrees to indemnify JoVE and/or its successors and assigns from and against any and all claims, costs, and expenses, including attorney's fees, arising out of any breach of any warranty or other representations contained herein. The Author further agrees to indemnify and hold harmless JoVE from and against any and all claims, costs, and expenses, including attorney's fees, resulting from the breach by the Author of any representation or warranty contained herein or from allegations or instances of violation of intellectual property rights, damage to the Author's or the Author's institution's facilities, fraud, libel, defamation, research, equipment, experiments, property damage, personal injury, violations of institutional, laboratory, hospital, ethical, human and animal treatment, privacy or other rules, regulations, laws, procedures or guidelines, liabilities and other losses or damages related in any way to the submission of work to JoVE, making of videos by JoVE, or publication in JoVE or elsewhere by JoVE. The Author shall be responsible for, and shall hold JoVE harmless from, damages caused by lack of sterilization, lack of cleanliness or by contamination due to the making of a video by JoVE its employees, agents or independent contractors. All sterilization, cleanliness or decontamination procedures shall be solely the responsibility of the Author and shall be undertaken at the Author's

expense. All indemnifications provided herein shall include JoVE's attorney's fees and costs related to said losses or damages. Such indemnification and holding harmless shall include such losses or damages incurred by, or in connection with, acts or omissions of JoVE, its employees, agents or independent contractors.

12. **Fees.** To cover the cost incurred for publication, JoVE must receive payment before production and publication the Materials. Payment is due in 21 days of invoice. Should the Materials not be published due to an editorial or production decision, these funds will be returned to the Author. Withdrawal by the Author of any submitted Materials after final peer review approval will result in a US\$1,200 fee to cover pre-production expenses incurred by JoVE. If payment is not received by the completion of filming, production and publication of the Materials will be suspended until payment is received.

13. **Transfer, Governing Law.** This Agreement may be assigned by JoVE and shall inure to the benefits of any of JoVE's successors and assignees. This Agreement shall be governed and construed by the internal laws of the Commonwealth of Massachusetts without giving effect to any conflict of law provision thereunder. This Agreement may be executed in counterparts, each of which shall be deemed an original, but all of which together shall be deemed to be one and the same agreement. A signed copy of this Agreement delivered by facsimile, e-mail or other means of electronic transmission shall be deemed to have the same legal effect as delivery of an original signed copy of this Agreement.

A signed copy of this document must be sent with all new submissions. Only one Agreement required per submission.

CORRESPONDING AUTHOR:

Name: Lisha Mou
Department: Shenzhen Xenotransplantation Medical Engineering Research and Development Center
Institution: Shenzhen Second people's Hospital
Article Title: A method for Islet transplantation to the omentum of the mouse
Signature: Lisha Mou Date: 2017-11-16

Please submit a signed and dated copy of this license by one of the following three methods:

- 1) Upload a scanned copy of the document as a pdf on the JoVE submission site;
- 2) Fax the document to +1.866.381.2236;
- 3) Mail the document to JoVE / Attn: JoVE Editorial / 1 Alewife Center #200 / Cambridge, MA 02139

For questions, please email submissions@jove.com or call +1.617.945.9051

Dear editor,

Thanks for offering the opportunity to further revise the manuscript.

Our reply to your comments is as follows (see blue font).

In order to improve the clarity of the manuscript we have done additional revisions of the language and the narrative.

1. Protocol step 2.1: Please rewrite this step in imperative tense.

We had rewrite this step in imperative tense.

2. 1.2: What is IEQ? Please define an abbreviation before first use. Do you use 200 μ L pipette or 200 μ L pipette tip?

IEQ means islet equivalents, we had define this abbreviation. We picked islets using a 200 μ L pipette tip under the stereomicroscope.

3. 1.2, 2.2: How many islets are picked or gathered?

Typically 200-300 islets.

4. 1.4: Please specify the hydrogel. What type of hydrogel is it?

We used basement membrane matrix hydrogel.

5. 1.8: Do you use two pairs of forceps or two forceps? Two forceps are only one pair of forceps.

We used two pair of fine forceps to distend the omentum.

6. 1.9: Do you use 200 μ L pipette or 200 μ L pipette tip?

We used 200 μ L pipette tip.

7. 1.10: Do you use two pairs of forceps or two forceps?

We used two pair of forceps.

8. 2.1: Please rewrite it in imperative tense. Please specify what hydrogel it is?

We had rewrite it in imperative tense. We used fibrin-thrombin hydrogel.

9. Please employ professional copy-editing services. The language in the manuscript is not publication grade.

We've reworked the article once again, modifying several statements, especially the discussion section.

10. Please ensure that the references appear as the following:

Lastname, F.I., LastName, F.I., LastName, F.I. Article Title. Source. Volume (Issue),
FirstPage – LastPage, doi: DOI (YEAR).

Please bond the Volume number and italicize the Journal names.

We have checked the format of the reference again, and several articles do not provide the DOI

Figure Permission & Use of Copyrighted figure Form

I, Lisha Mou of Shenzhen Second People's Hospital, as correspond author, on behalf of all authors, Ying Lu, Shangyou Zou, Zhengzhao Liu, Yi Huang, Chengjun Wang, Chungu Hong, Tian He, Hancheng Zhang, Zhiming Cai of Shenzhen Second People's Hospital, Suzanne Bertera, Rita Bottino of Allegheny-Singer Research Institute, David K. C. Cooper of The University of Alabama at Birmingham, Qin Huo of Shenzhen University, Hongxing Fu of WenZhou Medical College, whom hold the copyright on figures of the manuscript which titled 'A Method for Islet Transplantation to The Omentum of Mouse' and I understand and agree to the terms of this form where I have indicated.

Signature Lisha Mou

Date 2017-12-13

Address: Room 203, Surgery Building, 3002, West Shungang Road Futian District,

City: Shenzhen, Guangdong

Country: China

Email: lishamou@gmail.com

By signing this form I guarantee that the information included is accurate to the best of my knowledge. I also give my permission to JoVE to utilize the figures.