

# Journal of Visualized Experiments

## Full-field optical coherence microscopy for histology-like of stromal features in corneal grafts --Manuscript Draft--

<b>Article Type:</b>	Invited Methods Article - JoVE Produced Video
<b>Manuscript Number:</b>	JoVE57104R1
<b>Full Title:</b>	Full-field optical coherence microscopy for histology-like of stromal features in corneal grafts
<b>Keywords:</b>	imaging; cornea; keratoconus; optical coherence tomography; microscopy, donor tissue; keratocyte; stroma; corneal transplantation; corneal storage
<b>Corresponding Author:</b>	Kristina Irsch Institute de la Vision / Quinze-Vingts National Eye Hospital, UPMC-Sorbonne Universities & The Wilmer Eye Institute, The Johns Hopkins University School of Medicine Paris, Paris FRANCE
<b>Corresponding Author's Institution:</b>	Institute de la Vision / Quinze-Vingts National Eye Hospital, UPMC-Sorbonne Universities & The Wilmer Eye Institute, The Johns Hopkins University School of Medicine
<b>Corresponding Author E-Mail:</b>	kristina.irsch@gmail.com;kategrieve@gmail.com;vincent.borderie@upmc.fr
<b>First Author:</b>	Kristina Irsch
<b>Other Authors:</b>	Kate Grieve Marie Borderie Djida Ghoubay Cristina Georgeon Vincent Borderie
<b>Author Comments:</b>	
<b>Additional Information:</b>	
<b>Question</b>	<b>Response</b>
If this article needs to be "in-press" by a certain date, please indicate the date below and explain in your cover letter.	



THE WILMER EYE INSTITUTE  
THE JOHNS HOPKINS UNIVERSITY SCHOOL OF MEDICINE

**KRISTINA IRSCH, Ph.D.**  
*Assistant Professor of Ophthalmology*

*Laboratory of Ophthalmic Instrument Development  
The Wilmer Institute, 233  
600 North Wolfe Street  
Baltimore, Maryland 21287-9028  
TEL: 443-287-0068 – FAX: 410-955-0809  
e-mail: [kirsch1@jhmi.edu](mailto:kirsch1@jhmi.edu)  
[www.wilmer.jhu.edu](http://www.wilmer.jhu.edu)*

October 22, 2017

**Alisha DSouza, Ph.D.**  
Review Editor  
JoVE

Dear Dr. DSouza:

Please find enclosed the revised manuscript entitled “Full-field optical coherence microscopy for histology-like analysis of stromal features in corneal grafts,” authored by myself, Kate Grieve, Marie Borderie, Djida Ghoubay, Cristina Georgeon, and Vincent Borderie.

Two versions are attached, one with all changes tracked and another one with all changes accepted.

Each of the editorial and peer reviewer comments and recommendations has been fully considered in the revised manuscript. Please see detailed responses (in red) to editorial and reviewer comments in the attached file “Responses to editorial and reviewer comments.”

We respectfully re-submit this manuscript for consideration of publication in your journal.

Thank you for your time and consideration.

Sincerely,

  
Kristina Irsch, Ph.D.

**TITLE:**

Full-field Optical Coherence Microscopy for Histology-like Analysis of Stromal Features in Corneal Grafts

**AUTHORS & AFFILIATIONS:**

Kristina Irsch<sup>1,2, 3</sup>, Kate Grieve<sup>1,2</sup>, Marie Borderie<sup>1</sup>, Djida Ghoubay<sup>1,2</sup>, Cristina Georgeon<sup>1</sup>, Vincent Borderie<sup>1,2</sup>

<sup>1</sup>Quinze Vingts National Ophthalmology Hospital, 28 rue de Charenton, 75012 Paris, France

<sup>2</sup>Vision Institute/CIC 503, UPMC-Sorbonne Universities, UMR\_S 968 / INSERM, U968 / CHNO des XV-XX / CNRS, UMR\_7210, 17 rue Moreau, 75012 Paris, France

<sup>3</sup>Laboratory of Ophthalmic Instrument Development, The Wilmer Eye Institute, The Johns Hopkins University School of Medicine, Baltimore, MD, USA

**EMAIL ADDRESSES:**

Kristina Irsch (kristina.irsch@gmail.com)

Kate Grieve (kategrieve@gmail.com)

Marie Borderie (borderie.ma@gmail.com)

Djida Ghoubay (djida.ghoubay@inserm.fr)

Cristina Georgeon (cristina\_georgeon@yahoo.it)

Vincent Borderie (vincent.borderie@sfr.fr)

**CORRESPONDING AUTHOR:**

Kristina Irsch

Email address: kristina.irsch@gmail.com

Tel: +1 (443) 858-4255

**KEYWORDS:**

Imaging, cornea, keratoconus, optical coherence tomography, microscopy, donor tissue, keratocyte, stroma, corneal transplantation, corneal storage

**SHORT ABSTRACT:**

We describe use of full-field optical coherence microscopy as a method for high quality assessment of corneal donor stroma. This protocol can be used to identify features indicative of health or disease, and is aimed at improving the screening and selection of donor tissues, and hence the results of keratoplasty.

**LONG ABSTRACT:**

The quality of donor corneal stroma, which makes up about 90% of total corneal thickness, is likely to be one of the main, if not the major, limiting factor(s) for success of deep anterior lamellar and penetrating keratoplasty. These are surgical procedures that involve replacing part or all of the diseased corneal layers, respectively, by donated tissue, the graft, taken from a recently deceased individual. However, means to evaluate stromal quality of corneal grafts in eye banks are limited and lack the capability of high-resolution quantitative assessment of disease

indicators. Full-field optical coherence microscopy (FF-OCM), permitting high-resolution 3D imaging of fresh or fixed *ex vivo* biological tissue samples, is a non-invasive technique well suited for donor cornea assessment. Here we describe a method for the qualitative and quantitative analysis of corneal stroma using FF-OCM. The protocol has been successfully applied to normal donor corneas and pathological corneal buttons, and can be used to identify healthy and pathologic features on both the macroscopic and microscopic level, thereby facilitating the detection of stromal disorders that could compromise the outcome of keratoplasty. By improving the graft quality control, this protocol has the potential to result in better selection (and rejection) of donor tissues and hence decreased graft failure.

## INTRODUCTION:

Corneal diseases are amongst the major causes of blindness worldwide<sup>1</sup>. Some diseases can only be treated surgically, often involving the replacement of part (*i.e.*, lamellar keratoplasty) or the entire (*i.e.*, penetrating keratoplasty) diseased cornea, by donated tissue, the graft, taken from a recently deceased individual. For corneal diseases that do not affect the endothelium (*e.g.*, keratoconus, stromal scars after infectious keratitis, trauma, and stromal dystrophies), deep anterior lamellar keratoplasty (DALK) is currently considered as the surgical technique of choice<sup>2-5</sup>. This technique makes possible the preservation of the recipient's corneal endothelium, by replacing only the central corneal epithelium and stroma, which is associated with a lower incidence of graft rejection, absence of endothelial rejection, lower endothelial cell loss, and favorable cost-effectiveness ratio<sup>6-11</sup>. DALK further allows corneas with less than optimal endothelium quality to be used as grafts, as this compromised layer will not be transplanted<sup>12</sup>. Conversely, quality of donor corneal stroma is likely to be the major limiting factor for graft success and vision recovery because the stroma is the only donor corneal layer to remain, while the donor epithelium will be replaced by recipient epithelium. Unfortunately, means to assess donor corneal stroma in eye banks are limited. They usually include slit-lamp examination of the donor eyeball when tissue retrieval is made by enucleation and light microscope examination of the donor stroma<sup>13</sup>. Some eye banks have started supplementing such standard procedures using Fourier-domain optical coherence tomography (FD-OCT)<sup>14</sup>.

Ophthalmic optical coherence tomography (OCT), an optical analogue to ultrasound imaging<sup>15</sup>, uses interference of broadband or tunable light to generate optical sections of the retina<sup>16</sup> and anterior segment<sup>17</sup>. In time-domain OCT, the basis of early clinical systems, the position of a reference mirror is altered, so that interference patterns show up whenever the reference beam has traveled almost the same amount of time as the beam reflected at the various tissue interfaces, with A-scans being generated as a function of time. In FD-OCT (also called spectral- or frequency-domain OCT), the basis of most modern clinical systems, the reference mirror is fixed at one position and an individual A-scan, with all interference patterns mixed together, is acquired at a time, and dissected apart via Fourier analysis.

While clinical (time or spectral-domain) OCT systems permit cross-sectional views of the cornea and the detection of stromal opacities at a higher axial resolution than slit-lamp biomicroscopy, their lateral resolution is limited. Confocal microscopy<sup>18</sup> allows examination of the cornea at a lateral resolution approaching histological detail, but is limited axially.

Full-field optical coherence tomographic microscopy (FF-OCT or FF-OCM)<sup>19,20</sup> combines elements of both confocal microscopy and OCT, achieving a lateral resolution comparable to the axial resolution of about 1  $\mu\text{m}$ . More specifically, FF-OCM uses incoherent broadband light sources (e.g., a halogen lamp) and high numerical aperture optics to acquire *en face* 2D tomographic images without lateral scanning. By scanning in the depth direction, FF-OCM enables non-invasive 3D imaging of fresh or fixed *ex vivo* biological tissue samples. It has been used to image the cornea<sup>21-23</sup>. By providing both high-resolution *en face* and cross-sectional views, FF-OCM provides information on both the histological structure and cellular details of the cornea. In fact, FF-OCM has been shown to provide structural information superior to histology and was able to identify more disease indicators as was possible with the combination of spectral-domain OCT and confocal microscopy<sup>24,25</sup>.

Here we describe a protocol for the qualitative and quantitative assessment of corneal donor stroma using FF-OCM. The method is based on the histology-like analysis of macroscopic and microscopic features indicative of stromal condition, including three quantitative stromal parameters (*i.e.*, Bowman's layer thickness and its variability, and stromal reflectivity). The described protocol is therefore applied to normal and abnormal cornea tissues and permits differentiation of diseased from normal human corneal tissues.

## **PROTOCOL:**

All methods described here were carried out according to the tenets of the Declaration of Helsinki and followed international ethical requirements for human tissues. This was a prospective observational case control study. Informed consent was obtained from patients. No modifications to French standards of treatment or follow-up were made. Institutional Review Board (IRB) approval was obtained from the Patient Protection Committee, Ile-de-France V (14944).

## **1. Tissue Selection and Preparation**

### **1.1. Select donor corneas.**

1.1.1. Transfer donor corneas stored in organ culture medium<sup>26</sup> to dextran-supplemented organ culture medium for 3 days to allow deturgescence<sup>27</sup> prior to FF-OCM imaging<sup>28</sup> (see **Table of Materials**).

### **1.2. Prepare the samples.**

1.2.1. Position the cornea, immersed in storage medium, in the sample holder with the epithelium facing up.

1.2.2. Place a clean silica coverslip (provided with the sample holder) on top of the cornea and close the holder by gently turning its base until the sample is slightly flattened and immobilized under the coverslip providing a relatively even imaging surface. Take precautions to avoid any air

bubbles.

1.2.3. Apply a thick layer of ophthalmic or optical gel on the coverslip as the immersion medium.

## **2. FF-OCM Initialization, Setup, and Image Acquisition**

### **2.1. Initialize the device.**

2.1.1. Turn on the device by operating the power switch on the back of the device; illumination of a green LED on the front of the device indicates that the power is on.

2.1.2. Turn on the dedicated computer and halogen light source by operating the power switch on the front.

2.1.3. Launch the acquisition software (see **Table of Materials**) by double-clicking on the desktop shortcut.

2.1.4. Ensure that the imaging stage is clear except for the movable tray. Then click “OK” to initialize the motors at the prompt.

2.1.5. Pull out the tray and insert the sample holder in the dedicated container, then gently push back the tray.

### **2.2. Setup the device.**

2.2.1. Enter a “sample identifier” in the designated and mandatory field; optionally enter a “sample description” and/or “study description”.

2.2.2. Click “Acquire macro image” when ready, to create a snapshot of the sample that can be used for lateral positioning and navigation purposes later; once satisfied, validate the image at the prompt by clicking “Yes”, after which the device moves the sample tray underneath the objective and performs an auto-adjustment.

2.2.3. Ensure that the microscope objective is well immersed in the optical gel before proceeding further.

### **2.3. Acquire the stacks.**

#### **2.3.1. Select the “Explore” tab to prepare an acquisition.**

2.3.1.1. Before acquiring a stack of images, navigate to the center of the cornea, via translation of the joystick or manual selection on the screen (that is, by clicking and dragging the red square on the acquired macro image to the desired location).

2.3.1.2. Vary the imaging depth via rotation of the joystick, adjustment of the slider, or manual keyboard input in the graphical user interface (GUI), and adjust the averaging value (an averaging of 40 is generally recommended for optimal corneal imaging).

Note: This is done to determine the thickness of the corneal sample and the averaging necessary to image through the entire corneal thickness while noting the first and last image location in depth. The bottom surface of the coverslip creates parallel interference fringes that are seen on the tomographic image (on the right-hand side of the GUI), which facilitate locating the corneal surface.

2.3.1.3. Enter the corneal surface value or first image location in depth into the “Depth” field.

### **2.3.2. Select the “Acquire tab”, to acquire images.**

2.3.2.1. Select the “Slice spacing” (the default and recommended setting is 1  $\mu\text{m}$ , matching the axial resolution of the device) and enter the corneal thickness value accordingly, under “Number of slices”.

2.3.2.2. Review parameters and acquisition time, and when satisfied press “OK” to launch the acquisition.

2.3.2.3. During the acquisition, avoid any contact with the table on which the FF-OCM is positioned.

## **3. Management of Acquired Images**

### **3.1. View and export images.**

3.1.1. Launch the FF-OCM viewing software (see **Table of Materials**) by double-clicking on the desktop shortcut; acquired images (identified by the sample ID) appear in the “Local Studies” list.

3.1.2. Select the study with corresponding sample ID, which contains both the macro image and acquired image stack, and “export” the latter by right-clicking on the series of images and selecting the “DICOM” format to retain the raw pixel data and metadata for further analysis.

3.1.3. Display the 3D image stacks in *en face* and cross-sectional views using the multiplanar reconstruction (MPR) mode, by double-clicking on the series of images; navigate through the images (*e.g.*, via mouse-wheel scroll or slider adjustment) and select representative *en face* and cross-sectional views of each stack.

3.1.4. Export the selected views by clicking on the icon at the bottom right of the window, using the “DICOM” format.

### **3.2. Import images.**

3.2.1. Open the image processing software (see **Table of Materials**) by double-clicking on the desktop shortcut, and navigate to the “Bio-Formats” “Importer” under “Plugins” to import DICOM images; make sure that “Group files with similar names” is selected in the “Bio-Formats Import Options” window.

## **4. Image Analysis: Qualitatively and Quantitatively Assessment of Stromal Morphology and Features**

### **4.1. Assess stromal and Bowman’s layer thickness.**

4.1.1. Measure distances manually on corneal cross-sections, for example at five equally spaced points across the cross-section<sup>25</sup>.

4.1.1.1. Draw a line between two points of known distance (such as, from left to right of the entire image, that is according to the default field-of-view, 1,024 pixels or 780  $\mu\text{m}$ ), go to “Analyze” and select “Set Scale”, and enter the “Known distance” and “Unit of length” in the appropriate fields and click “OK”.

4.1.1.2. Draw a line between two points of unknown distance; read the length or distance measured directly from the status bar.

4.1.2. Record the mean and coefficient of variation (COV). Bowman’s layer thickness less than 6.5  $\mu\text{m}$  and a COV greater than 18.6% have been associated with abnormal corneal stroma<sup>25</sup>.

### **4.2. Determine the keratocyte density.**

4.2.1. Following convention of confocal microscopy: sum stromal *en face* images in groups of 7 to produce slices of comparable thickness. For this, go to the “Image” tab and select “Reslice Z” under “Stacks”.

4.2.2. Take into account the differing (decreasing) cell density on progression through the stroma<sup>24,25</sup>. For this, the stroma may be considered as being composed of 4 regions according to depth: (1) the very anterior stroma below Bowman’s layer, that is 2% of entire stromal thickness; the remaining stroma (that is, 98% of entire stromal thickness), with three zones of identical thickness: (2) anterior stroma, (3) mid stroma, and (4) posterior stroma.

4.2.3. For further analysis, include all available *en face* slices for the very anterior stroma, 15 images for the anterior stroma, 5 images for the mid stroma, as well as 5 images for the posterior stroma (where the number of images per region required for a reliable count was determined by stepwise analysis<sup>29</sup>).

4.2.4. On each *en face* image, select a 300  $\mu\text{m}$  x 300  $\mu\text{m}$  region of interest. To enhance nucleus visualization, invert the image, using “Invert” under the “Edit” tab, and adjust contrast and



brightness. For the latter, go to “Image” and navigate to “Brightness/Contrast” under “Analyze”.

4.2.5. Manually count cell nuclei, using for example the “cell counter” function<sup>25</sup>. For this, go to “Plugins” and navigate to “Cell Counter” under “Analyze”. Select a counter type and then press “Initialize”. Then start counting the cell nuclei by clicking on dark oval features in the inverted image, considering those landing on an image border only for two of the four sides of the image<sup>25</sup>.

4.2.6. Record the cell density in terms of area density, that is in cells/mm<sup>2</sup> (multiply the number of cells counted by 0.09, to convert from cells/90,000 µm<sup>2</sup> to cells/mm<sup>2</sup>), following confocal microscopy convention where keratocyte densities have been shown to be lower in patients (*e.g.*, with keratoconus) than in healthy subjects and to be correlated with disease severity<sup>25</sup>.

Note: Further clinical studies are necessary to determine whether a minimal threshold of keratocyte density is required to obtain a perfectly clear corneal graft after transplantation.

### **4.3. Assess the stromal reflectivity.**

4.3.1. Generate mean intensity depth profiles of stromal image stacks, using for example the “Z-axis profile” function and/or custom software<sup>30,25</sup>.

4.3.1.1. Calculate the mean grey level for each *en face* stack.

4.3.1.2. Subtract the minimum grey value and normalize by the maximum grey value.

4.3.1.3. Display in log scale as a function of stromal depth (% of the stromal thickness).

4.3.1.4. Approximate the resulting logarithmic profile by a linear regression line, which minimizes the sum of the squared residuals (least-squares fit).

4.3.1.5. Record the R-square value ( $R^2$ ) as a measure of linearity. Values below 0.94 could be an indication of corneal pathology<sup>25</sup>.

### **4.4. Assess the visibility of other stromal features and disease indicators.**

4.4.1. Check for the presence of scars, fibrotic tissue, lakes, or Vogt striae.

4.4.2. Assess mean thickness of nerves in the stroma, if sufficiently visible for measurement<sup>24</sup>.

4.4.2.1. Select one *en face* image where the stromal nerve is most visible (generally in the mid-stromal region).

4.4.2.2. Measure the thickness of the nerve, for example at five points<sup>24</sup>, then calculate the mean and standard deviation. Nerve thicknesses above 9 µm may be an additional indicator for pathology, such as keratoconus<sup>24</sup>.

## REPRESENTATIVE RESULTS:

The FF-OCM device (see **Table of Materials**)<sup>28</sup> and general setup used in this manuscript is shown in **Figure 1**. **Figure 2** shows a swelled human donor cornea after storage in organ culture medium, giving a pathophysiological model of edematous cornea and preventing FF-OCM image acquisition through the entire corneal thickness due to limited penetration depth. Transfer to dextran-supplemented organ culture medium causes deswelling and results in donor corneas of normal thickness, as represented in **Figure 3**. Diseased corneas can be recognized by morphological changes and typical stromal features, including a decreased and variable thickness of the stroma (**Figure 4**) and/or Bowman's layer (**Figure 5**). Assessment of the keratocyte density (**Figure 6**) and stromal reflectivity (**Figure 7**) may further aid in the histology-like analysis and differentiation of normal from pathologic corneal tissues with FF-OCM, beyond the capabilities of clinical OCT systems (**Figure 8**).

## FIGURE LEGENDS:

**Figure 1: Schematic and photographs of the general setup and FF-OCM device used in this work.** (A) Photograph of the FF-OCM device (see **Table of Materials**)<sup>28</sup>. (B) Schematic and optical setup of the device. (C) Photograph of a human donor cornea in the sample holder. (D) Zoom on the immersion objective and the sample holder.

**Figure 2: Organ-cultured normal human cornea before deturgescence.** Cross-sectional (A) and *en face* view (B, slice through the stroma) of swelled ("edematous") cornea caused by storage in organ culture medium, where lakes can be seen as dark areas (as indicated by arrows). Corneal thickness has doubled to over 1,100  $\mu\text{m}$ , preventing image acquisition through the entire depth.

**Figure 3: Organ-cultured normal human cornea after deturgescence.** Cross-sectional view through the entire cornea (A) and *en face* stromal view (B) of de-swelled cornea immersed in dextran-supplemented medium, showing regularly distributed hyper-reflective (white) keratocytes.

**Figure 4: Overall assessment of stromal morphology and features, including stromal thickness.** Compared with normal human cornea (A), corneas with keratoconus (B) feature decreased and variable stromal thickness, along with numerous, parallel Vogt striae that are observable as dark vertical bands in cross-sectional views, and thick stromal nerves that may be found in mid-stromal *en face* slices (C).

**Figure 5: Assessment of Bowman's layer thickness, which is delineated anteriorly by the hyper-reflective epithelial basement membrane and posteriorly by the hyper-reflective keratocytes in the very anterior stroma.** Compared with a normal human cornea (A), pathologic cornea (*e.g.*, keratoconus) (B) features decreased and variable Bowman's layer thickness due to interruption and scarring.

**Figure 6: Assessment of keratocyte density.** (A) Keratocyte nuclei are manually counted on

enhanced and inverted *en face* images after selection of a 300  $\mu\text{m}$  x 300  $\mu\text{m}$  region of interest. (B) Counted nuclei are indicated by arrows.

**Figure 7: Assessment of stromal reflectivity.** The intensity of backscattered light decreases (exponentially) with depth in the stroma of normal donor corneas (see **Figure 3** and **Figure 4A**), resulting in linear logarithmic depth profiles, represented by R-square values close to 1 (green trace). This may not hold true for pathological corneas featuring stromal regions of increased light backscatter (see **Figure 4B**). The presence of such macroscopic features, as in the example of a cornea with stromal scar after infectious keratitis (depicted in the inset), will thus create non-linear logarithmic intensity depth profiles, represented by an R-square value lower than 0.94<sup>25</sup> (red trace).

**Figure 8: Demonstration of benefits of FF-OCM over histology and spectral-domain OCT.** (A) Histology and (B) corresponding spectral-domain-OCT image acquired on the same cornea *in vivo* prior to keratoplasty. (C) Corresponding FF-OCM cross section of the *ex vivo* corneal button post-keratoplasty, illustrating superior resolution compared to the clinical spectral-domain OCT images. The fibrosis is also more clearly visible in FF-OCM images than in the histology. The high density of keratocytes in the upper stroma can clearly be seen in both the (C) cross-sectional and (D) *en face* views.

## DISCUSSION:

The protocol described here for the qualitative and quantitative assessment of corneal donor stroma using FF-OCM is based on the histology-like analysis of macroscopic and microscopic features indicative of stromal condition, beyond the capabilities of spectral-domain OCT and confocal microscopy<sup>21,24,25</sup>, and enables differentiation of diseased from normal human tissues.

Aside from an excellent endothelial quality assessment of human donor corneas by means of specular microscopy, assessment of stromal quality is challenging in eye banks, and generally limited to a gross observation with slit-lamp biomicroscopy and/or light microscopy in current protocols. Lack of fine resolution with existing methods not only means that corneas with some stromal disease may be selected that compromise the result of keratoplasty, but also that corneas may be rejected for stromal opacities that are in fact constraint to anterior stroma or epithelial regions and could still be used for endothelial keratoplasty procedures<sup>14</sup>.

The current eye-bank protocol could be supplemented by the addition of FF-OCM, which due to its superior resolution, constitutes a powerful and non-invasive tool to complete the quality assessment of the cornea, especially the stroma (including Bowman's layer). Unlike during slit-lamp examination, the graft remains immersed in a closed chamber filled with storage medium throughout FF-OCM image acquisition, decreasing any potential risk of contamination.

For successful image acquisition with FF-OCM (see **Table of Materials**), it is important for the microscope objective to be well immersed in the optical gel that is applied on top of the coverslip of the sample holder (step 2.2.3). It is further recommended to regularly check the calibration of the device, a procedure also to be performed after unsuccessful auto-adjustment (step 2.2.2) and

accessed via “Tools and options” in the acquisition software (see **Table of Materials**). The procedure, which involves the utilization of a calibration mirror in the sample holder, is the same as the usual sample preparation (see step 1.2) except that the optical gel should be applied on the mirror before positioning of the coverslip.

A series of donor corneal grafts, considered to have normal stroma as per existing eye-bank procedures, were used to describe the protocol in this manuscript and specifically demonstrate the suitability of FF-OCM for precise and reliable assessment of donor stromal quality. These normal donor corneas were compared with pathological corneas immersed in storage medium, showing that the histology-like analysis made possible with FF-OCM of several stromal features (illustrated in **Figures 2–8**) in corneal grafts allows distinguishing diseased from normal human corneal tissues.

Aside from morphological changes, such as the presence of scars (**Figure 5** and **Figure 7**), fibrotic tissue (**Figure 8**), lakes (**Figure 2**), Vogt striae (**Figure 4**), or increased stromal nerve diameter (**Figure 4**), typical stromal features are present in diseased corneas. Stromal parameters particularly relevant in the stromal quality assessment appear to be Bowman’s layer thickness and its variability, and stromal reflectivity. Critical steps within the protocol are thus steps 4.1 and 4.3.

While being secreted during human corneal development, Bowman’s layer, in particular, becomes distinct by 19 weeks of gestation and never repairs after birth<sup>31</sup>. Damage to Bowman’s layer is thus irreversible and serves as an ideal indicator of previous stromal damage in donor corneal tissue, including damage caused by refractive surgery, infectious keratitis, keratoconus. Such corneal diseases, which constitute contraindications for donor corneal usage, are associated with decreased and variable Bowman’s layer thickness due to interruption and scarring (**Figure 5**), and are likely to be missed by current eye-bank protocols when the donor history is not precisely known.

Although corneal transparency is impaired after donor death due to *post mortem* corneal edema, the intensity of backscattered light, or stromal reflectivity is expected to decrease exponentially with depth in the stroma (see **Figure 3** and **Figure 4A**); as a result, the logarithm of normalized stromal reflectivity will be a linear function of stromal depth in normal donor corneas, represented by R-square values close to 1. Conversely, the presence of macroscopic features is associated with non-linear logarithmic intensity depth profiles and indicative of stromal disease (**Figure 4B** and **Figure 7**)<sup>25</sup>.

Since keratocyte density is responsible for stromal collagen fibril and extracellular matrix synthesis and renewal, it appears reasonable to assume that keratocyte density is another relevant parameter for assessing donor stromal quality, and that tissues exhibiting very low keratocyte counts should not be transplanted. The protocol therefore includes a precise and reliable method to measure keratocyte density from FF-OCM images that can be easily used in eye banks<sup>25</sup> and follows the convention of confocal microscopy. Note that with FF-OCM, keratocyte density may also be determined by counting keratocytes directly in the cross-sectional

view<sup>32</sup>, a potential advantage over confocal microscopy, which requires keratocytes to be counted on multiple *en face* slices. However, unlike in living patients, where keratocyte densities have been demonstrated to be lower in disease patients than in normal controls<sup>33-36</sup> and to correlate with disease severity<sup>33,37</sup>, this was not the case in human *ex vivo* tissue samples<sup>25</sup>, and further studies are necessary to determine whether a minimal number of keratocytes is required in donor corneas to result in good visual recovery after transplantation. Low keratocyte density in donor tissue as in pathological tissue could be explained by aging, *post mortem* loss of cells induced by ischemia, and/or storage of donor tissue<sup>27,38-40</sup>. It should also be pointed out that the normal donor corneas that were obtained and imaged in this protocol were either stored and edematous or de-swelled, or had been discarded by the eye bank before transplantation because of poor endothelial quality according to the standards of the EU Eye Bank Association. Were FF-OCM imaging along with the described protocol to be included in the eye bank setting, the corneas would typically be assessed in a fresher state than was possible here, which may affect the keratocyte densities.

The protocol described here for the stromal quality analysis could be extended for assessment of Descemet's membrane, which can also be resolved with FF-OCM in terms of thickness and structure<sup>21,24</sup>. This may prove useful for selection of tissues for Descemet's membrane endothelial keratoplasty, where thin Descemet's membranes may be more difficult to separate from the stroma.

In conclusion, FF-OCM enables precise and reliable assessment of human donor corneal stroma during storage. By improving the graft quality, the addition of this protocol to current eye-banking procedures has the potential to improve the screening and selecting of donor tissues, and hence the results of keratoplasty. Real-life integration of the FF-OCM device into the eye-bank routine should be facilitated by recent technological updates, including faster image acquisition and larger field of view thanks to the development of a custom CMOS camera, and the design of custom sterile disposable cassettes for cornea storage and handling during imaging.

#### ACKNOWLEDGMENTS:

This work has received funding from the Agence Nationale de Recherche (ANR), under a PRTS (Projet de Recherche Translationnelle en Santé) grant No ANR-13-PRTS-0009 (V.B.) and from the European Union's Horizon 2020 research and innovation programme under the Marie Skłodowska-Curie grant agreement No 709104 (K.I.). The authors thank Céline de Sousa for help with cell counting and histological processing.

#### DISCLOSURES:

The authors have nothing to disclose.

#### REFERENCES:

1. Pascolini, D., Mariotti, S.P. Global estimates of visual impairment: 2010. *Br J Ophthalmol.* **96**, 614 – 618 (2012).
2. Shimazaki, J., Shimmura, S., Ishioka, M., Tsubota, K. Randomized clinical trial of deep lamellar keratoplasty vs penetrating keratoplasty. *Am J Ophthalmol.* **134**, 159 – 165 (2002).

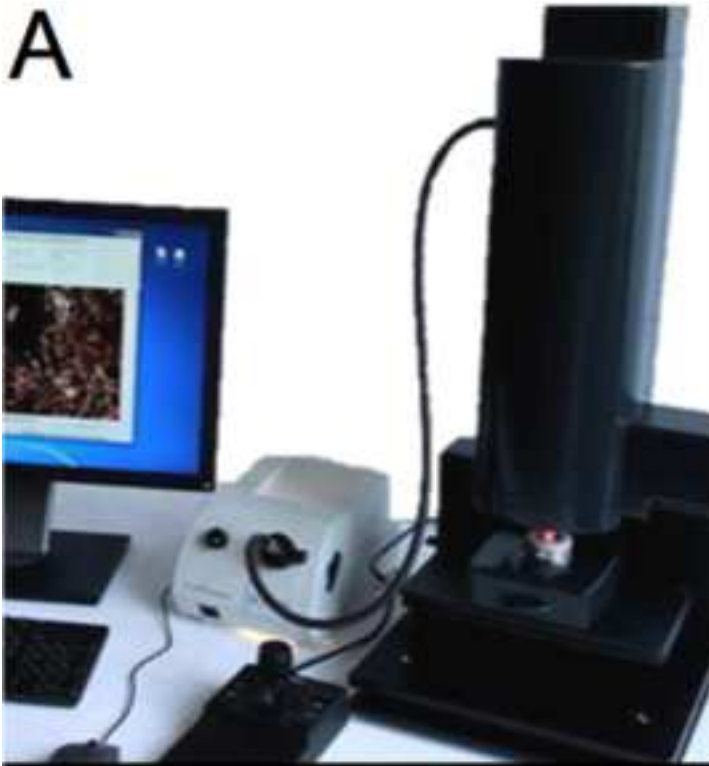
- 485 3. Tsubota, K., Kaido, M., Monden, Y., Satake, Y., Bissen-Miyajima, H., Shimazaki, J. A new  
486 surgical technique for deep lamellar keratoplasty with single running suture adjustment. *Am J*  
487 *Ophthalmol.* **126**, 1 – 8 (1998).
- 488 4. Busin, M., Zambianchi, L., Arffa, R.C. Microkeratome-assisted lamellar keratoplasty for the  
489 surgical treatment of keratoconus. *Ophthalmology.* **112**, 987 – 997 (2005).
- 490 5. Amayem, A.F., Anwar, M. Fluid lamellar keratoplasty in keratoconus. *Ophthalmology.*  
491 **107**, 76 – 79 (2000).
- 492 6. Borderie, V.M., Guilbert, E., Touzeau, O., Laroche, L. Graft rejection and graft failure after  
493 anterior lamellar versus penetrating keratoplasty. *Am J Ophthalmol*, **151**, 1024 – 1029 (2011).
- 494 7. Borderie, V.M., Sandali, O., Bullet, J., Gaujoux, T., Touzeau, O., Laroche, L. Long-term  
495 results of deep anterior lamellar versus penetrating keratoplasty. *Ophthalmology.* **119**, 249 – 255  
496 (2012).
- 497 8. Koo, T.S., Finkelstein, E., Tan, D., Mehta, J.S. Incremental cost-utility analysis of deep  
498 anterior lamellar keratoplasty compared with penetrating keratoplasty for the treatment of  
499 keratoconus. *Am J Ophthalmol.* **152**, 40 – 47 (2011).
- 500 9. Bahar, I., Kaiserman, I., Srinivasan, S., Ya-Ping, J., Slomovic, A.R., Rootman, D.S.  
501 Comparison of three different techniques of corneal transplantation for keratoconus. *Am J*  
502 *Ophthalmol.* **146**, 905 – 912 (2008).
- 503 10. Bahar, I., Kaiserman, I., Srinivasan, S., Ya-Ping, J., Slomovic, A.R., Rootman, D.S. Longterm  
504 results of deep anterior lamellar keratoplasty for the treatment of keratoconus. *Am J Ophthalmol.*  
505 **151**, 760 – 767 (2011).
- 506 11. Cheng, Y.Y., *et al.* Endothelial cell loss and visual outcome of deep anterior lamellar  
507 keratoplasty versus penetrating keratoplasty: a randomized multicenter clinical trial.  
508 *Ophthalmology.* **118**, 302 – 309 (2011).
- 509 12. Borderie, V.M., Sandali, O., Bullet, J., Guilbert, E., Goldschmidt, P., Laroche, L. Donor tissue  
510 selection for anterior lamellar keratoplasty. *Cornea.* **32**, 1105 – 1109 (2013).
- 511 13. Borderie, V., Martinache, C., Sabolic, V., Touzeau, O., Laroche, L. Light microscopic  
512 evaluation of human donor corneal stroma during organ culture. *Acta Ophthalmol Scand.* **76**, 154  
513 – 157 (1998).
- 514 14. Bald, M.R., Stoeger, C., Galloway, J., Tang, M., Holiman, J., Huang, D. Use of fourier-  
515 domain optical coherence tomography to evaluate anterior stromal opacities in donor corneas. *J*  
516 *Ophthalmol.* **2013**, 397680, 10.1155/2013/397680 (2013).
- 517 15. Huang, D., *et al.* Optical coherence tomography. *Science.* **254**, 1178–1181 (1991).
- 518 16. Swanson, E.A., *et al.* In vivo retinal imaging by optical coherence tomography. *Opt Lett.*  
519 **18**, 1864 – 1866 (1993).
- 520 17. Izatt, J.A., *et al.* Micrometer-scale resolution imaging of the anterior eye in vivo with  
521 optical coherence tomography. *Arch Ophthalmol.* **112**, 1584 – 1589 (1994).
- 522 18. Stave, J., Zinser, G., Grummer, G., Guthoff, R. Modified Heidelberg retinal tomograph HRT.  
523 Initial results of in vivo presentation of corneal structures. *Ophthalmologe.* **99**, 276 – 280 (2002).
- 524 19. Beaurepaire, E., Boccara, A.C., Lebec, M., Blanchot, L., Saint-Jalmes, H. Full-field optical  
525 coherence microscopy. *Opt Lett.* **23**, 244 – 246 (1998).
- 526 20. Dubois, A., Vabre, L., Boccara, A.C., Beaurepaire, E. High-resolution full-field optical  
527 coherence tomography with a Linnik microscope. *Appl Opt.* **41**, 805 – 812 (2002).

21. Ghouali, W., *et al.* Full-field optical coherence tomography of human donor and pathological corneas. *Curr Eye Res.* **24**, 1 – 9 (2014).
22. Akiba, M., *et al.* Ultrahigh-resolution imaging of human donor cornea using full-field optical coherence tomography. *J Biomed Opt.* **12**, 041202, 10.1117/1.2764461 (2007).
23. Latour, G., Georges, G., Lamoine, L.S., Deumie, C., Conrath, J., Hoffart, L. Human graft cornea and laser incisions imaging with micrometer scale resolution full-field optical coherence tomography. *J Biomed Opt.* **15**, 056006, 10.1117/1.3486544 (2010).
24. Grieve, K., Georgeon, C., Andreiuolo, F., Borderie, M., Ghoubay, D., Rault, J., Borderie, V.M. Imaging microscopic features of keratoconic corneal morphology. *Cornea.* **35**, 1621 – 1630 (2016).
25. Borderie, M., *et al.* New parameters in assessment of human donor corneal stroma. *Acta Ophthalmol.* **95**, e297 – e306 (2017).
26. Borderie, V.M., Scheer, S., Touzeau, O., Védie, F., Carvajal-Gonzalez, S., Laroche, L. Donor organ cultured corneal tissue selection before penetrating keratoplasty. *Br J Ophthalmol.* **82**, 382 – 388 (1998).
27. Borderie, V.M., Baudrimont, M., Lopez, M., Carvajal, S., Laroche, L. Evaluation of the deswelling period in dextran-containing medium after corneal organ culture. *Cornea.* **16**, 215 – 223 (1997).
28. <http://www.litechimaging.com/products-applications/products/>
29. Doughty, M.J., Müller, A., Zaman, M.L. Assessment of the reliability of human corneal endothelial cell-density estimates using a noncontact specular microscope. *Cornea.* **19**, 148 – 158 (2000).
30. Irsch, K., Borderie, M., Grieve, K., Plamann, K., Laroche, L., Borderie, V.M. Objective analysis of stromal light backscattering with full-field optical coherence tomographic microscopy shows potential to quantify corneal transparency. *Frontiers in Optics*, OSA Technical Digest (online), paper FW6A.6 (2015).
31. Tisdale, A.S., Spurr-Michaud, S.J., Rodrigues, M., Hackett, J., Krachmer, J., Gipson, I.K. Development of the anchoring structures of the epithelium in rabbit and human fetal corneas. *Invest Ophthalmol Vis Sci.* **29**, 727 – 736 (1998).
32. Karimi, A.H., Wong, A., Bizheva, K. Automated detection and cell density assessment of keratocytes in the human corneal stroma from ultrahigh resolution optical coherence tomograms. *Biomed Opt Express.* **2**, 2905 – 2916 (2011).
33. Ku, J.Y., Niederer, R.L., Patel, D.V., Sherwin, T., McGhee, C.N. Laser scanning in vivo confocal analysis of keratocyte density in keratoconus. *Ophthalmology.* **115**, 845 – 850 (2008).
34. Ozgurhan, E.B., Kara, N., Yildirim, A., Bozkurt, E., Uslu, H., Demirok, A. Evaluation of corneal microstructure in keratoconus: a confocal microscopy study. *Am J Ophthalmol.* **156**, 885 – 893 (2013).
35. Erie, J.C., Patel, S.V., McLaren, J.W., Nau, C.B., Hodge, D.O., Bourne, W.M. Keratocyte density in keratoconus. A confocal microscopy study. *Am J Ophthalmol.* **134**, 689 – 695 (2002).
36. Imre, L., Resch, M., Nagymihaly, A. Konfokale In-vivo-Hornhautmikroskopie nach Keratoplastik. *Ophthalmology.* **102**, 140 – 146 (2005).
37. Niederer, R.L., Perumal, D., Sherwin, T., McGhee, C.N. Laser scanning in vivo confocal microscopy reveals reduced innervation and reduction in cell density in all layers of the keratoconic cornea. *Invest Ophthalmol Vis Sci.* **49**, 2964 – 2970 (2008).

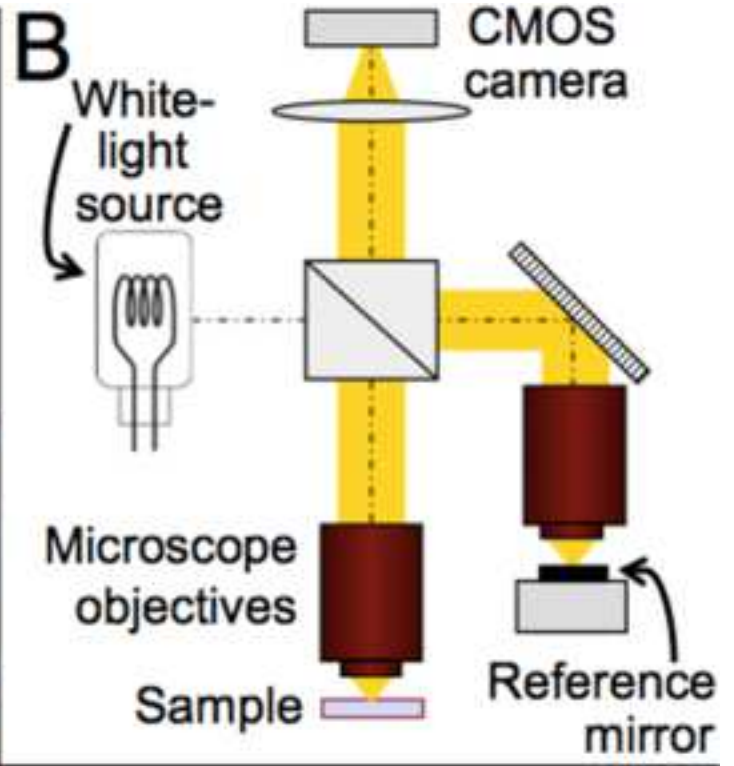
- 572 38. Patel, S., McLaren, J., Hodge, D., Bourne, W. Normal human keratocyte density and  
573 corneal thickness measurement by using confocal microscopy in vivo. *Invest Ophthalmol Vis Sci.*  
574 **42**, 333 – 339 (2001).
- 575 39. Komuro, A., Hodge, D.O., Gores, G.J., Bourne, W.M. Cell death during corneal storage at  
576 4 degrees C. *Invest Ophthalmol Vis Sci.* **40**, 2827 – 2832 (1999).
- 577 40. Gambato, C., Longhin, E., Catania, A.G., Lazzarini, D., Parrozzani, R., Miden, E. Aging and  
578 corneal layers: an in vivo corneal confocal microscopy study. *Graefes Arch Clin Exp Ophthalmol.*  
579 **253**, 267 – 275 (2015)



A



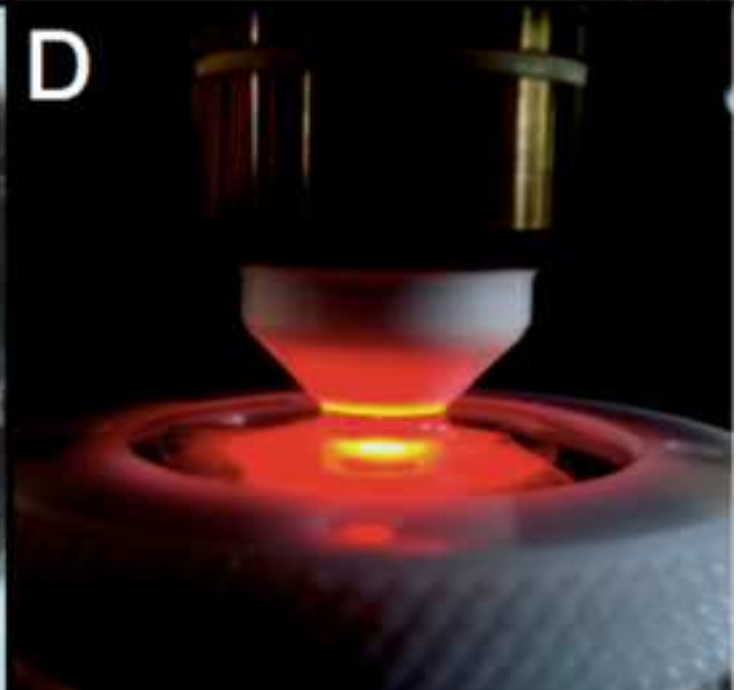
B

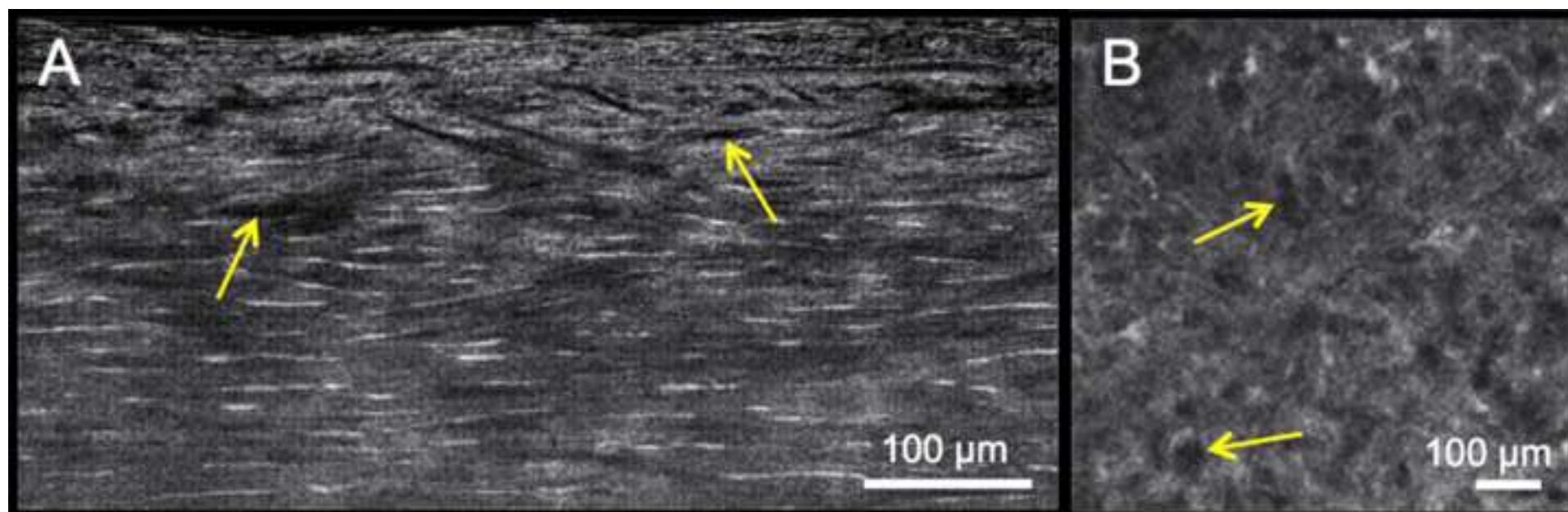


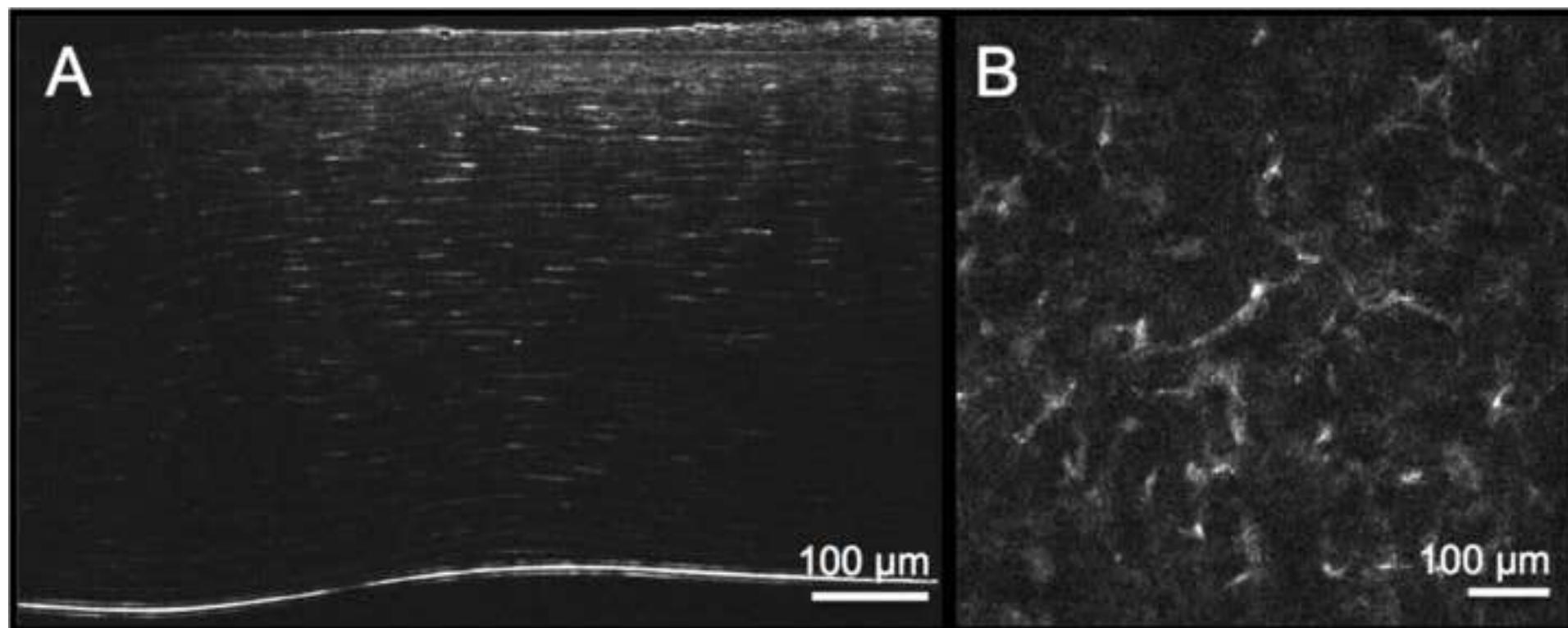
C

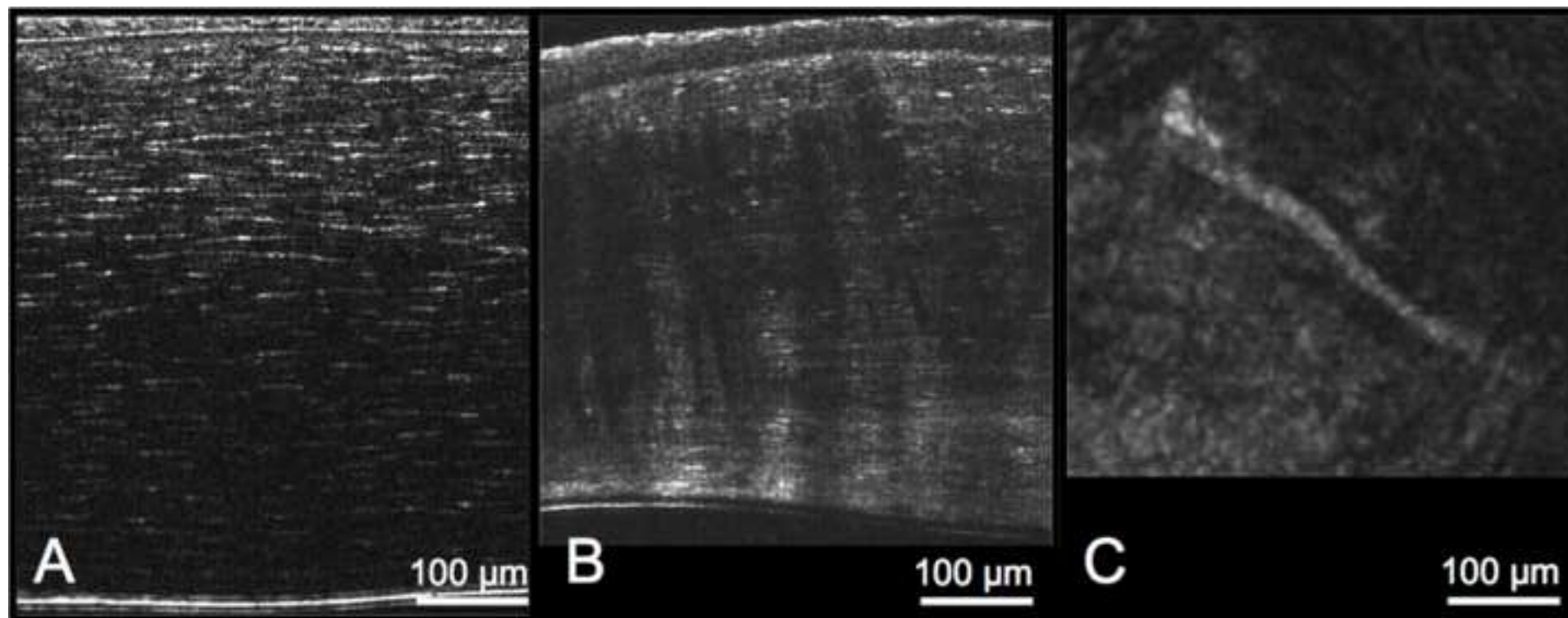


D

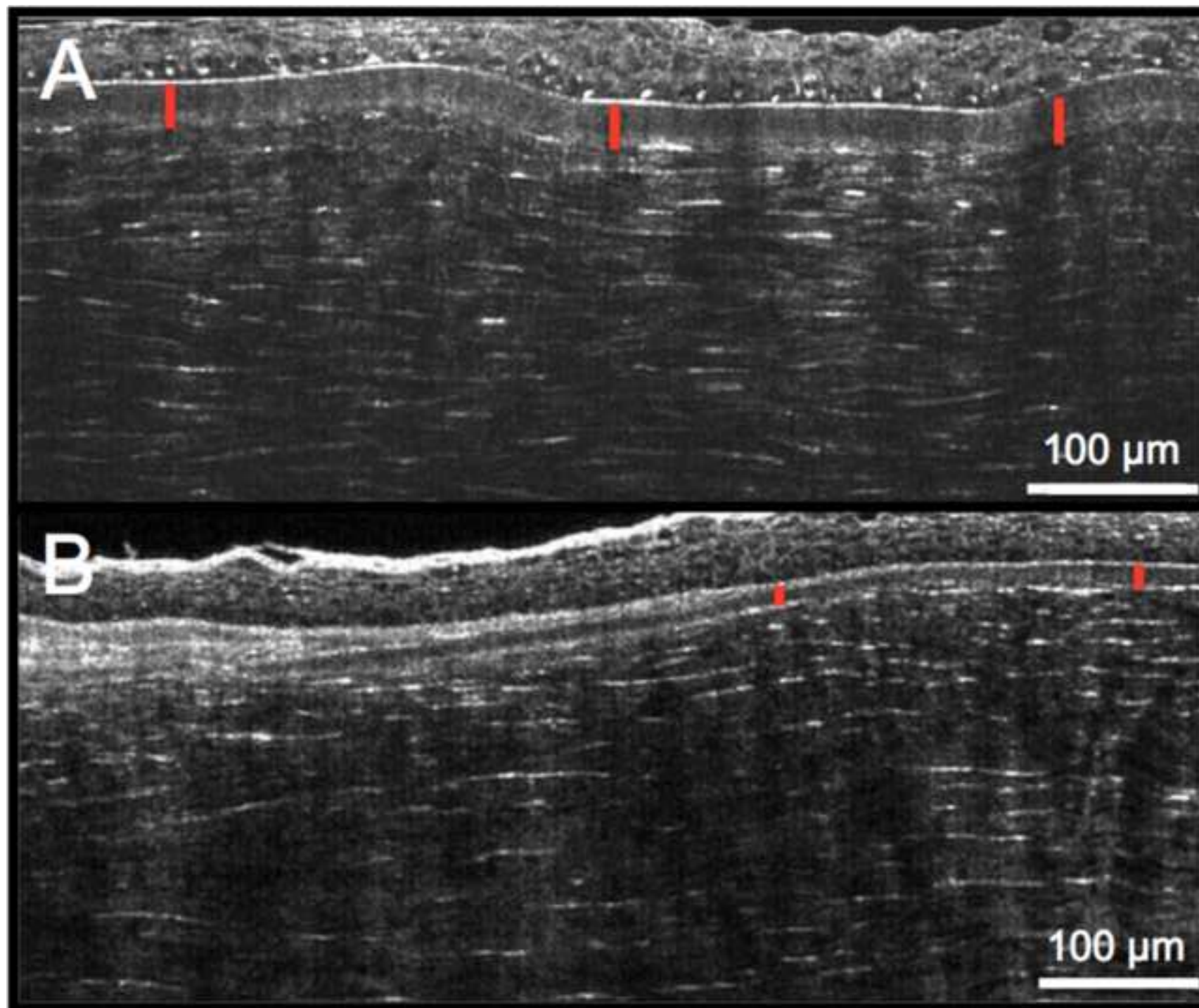












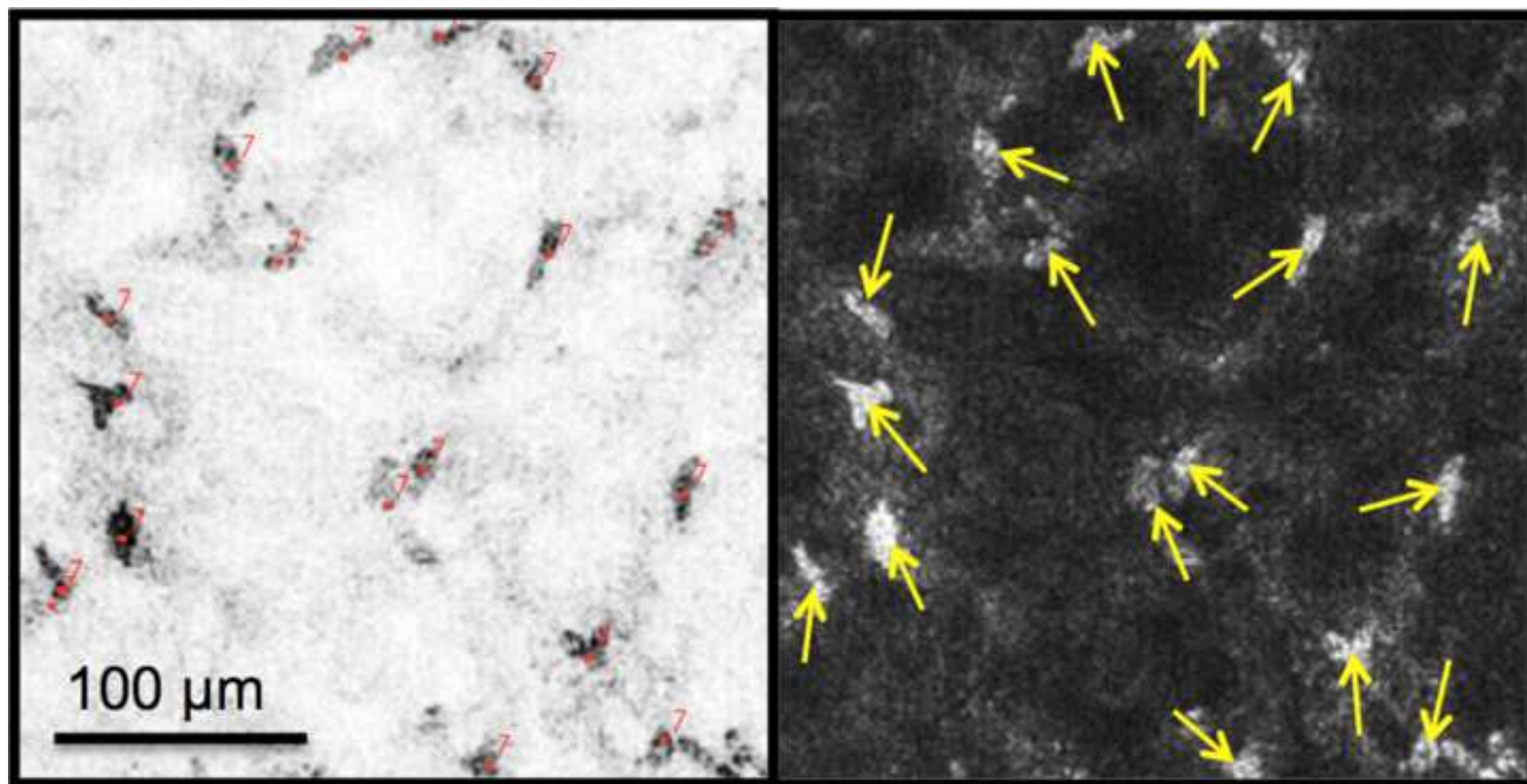
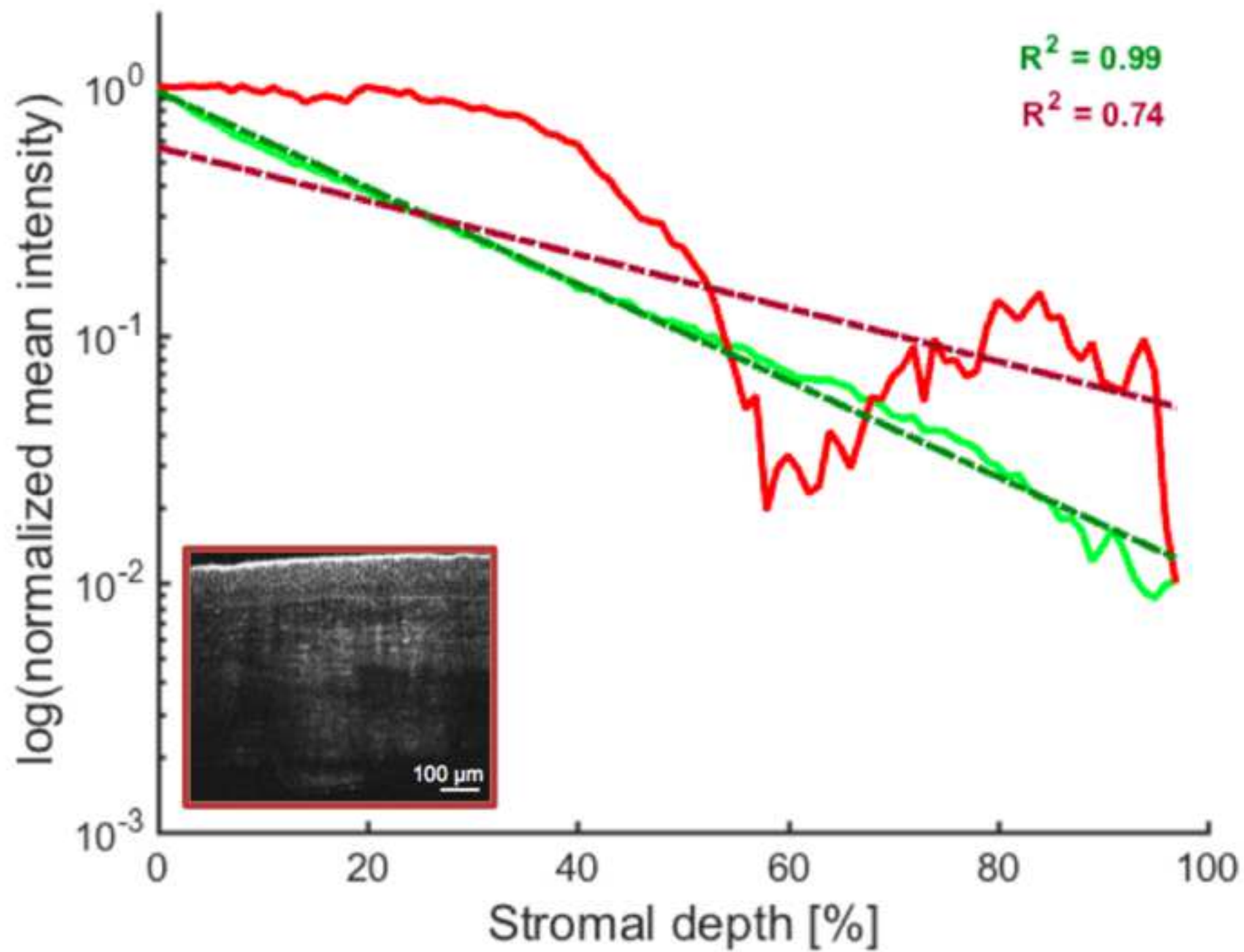
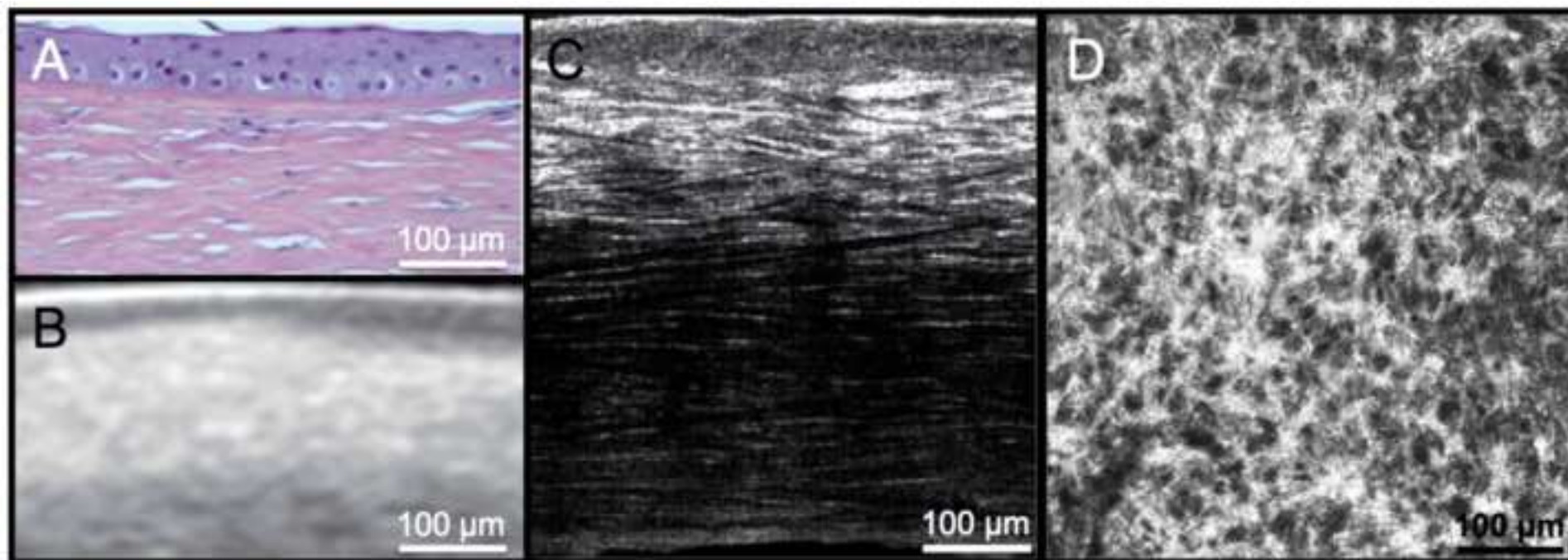


Figure 7









Name of Material/ Equipment	Company
Light-CT Scanner	LLTech, France
CorneaJet	EuroBio, France
CorneaMax	EuroBio, France
Fiji (ImageJ)	National Institute of Health, Bethesda, MD, USA
Matlab	Mathworks, Inc., Natick, MA, USA

### **Catalog Number**

<http://www.ltechimaging.com/products-applications/products/>  
<http://www.eurobio-cornea.com/en/corneamax-10-100-ml-xml-352-822.html>  
<http://www.eurobio-cornea.com/en/corneajet-10-50-ml-xml-352-823.html>

<https://fiji.sc/>  
<https://www.mathworks.com/products/matlab.html>

### **Comments/Description**

FF-OCM device used in this manuscript for imaging

Organ culture medium in which donor corneas are stored

Dextran-supplemented organ culture medium used for deturgescence

Open source image processing software

Mathematical computing software

Title of Article:

Full-field optical coherence microscopy for histology-like analysis of stromal features in corneal grafts

Author(s):

Kristina Irsch, Kate Grieve, Marie Borderie, Djida Ghoubay, Cristina Georgeon, Vincent Borderie

Item 1 (check one box): The Author elects to have the Materials be made available (as described at

<http://www.jove.com/author>) via:

☐

Standard Access

☒

Open Access

Item 2 (check one box):

☒

The Author is NOT a United States government employee.

☐

The Author is a United States government employee and the Materials were prepared in the course of his or her duties as a United States government employee.

☐

The Author is a United States government employee but the Materials were NOT prepared in the course of his or her duties as a United States government employee.

## ARTICLE AND VIDEO LICENSE AGREEMENT

1. **Defined Terms.** As used in this Article and Video License Agreement, the following terms shall have the following meanings: “**Agreement**” means this Article and Video License Agreement; “**Article**” means the article specified on the last page of this Agreement, including any associated materials such as texts, figures, tables, artwork, abstracts, or summaries contained therein; “**Author**” means the author who is a signatory to this Agreement; “**Collective Work**” means a work, such as a periodical issue, anthology or encyclopedia, in which the Materials in their entirety in unmodified form, along with a number of other contributions, constituting separate and independent works in themselves, are assembled into a collective whole; “**CRC License**” means the Creative Commons Attribution 3.0 Agreement (also known as CC-BY), the terms and conditions of which can be found at: <http://creativecommons.org/licenses/by/3.0/us/legalcode>;

“**Derivative Work**” means a work based upon the Materials or upon the Materials and other pre-existing works, such as a translation, musical arrangement, dramatization, fictionalization, motion picture version, sound recording, art reproduction, abridgment, condensation, or any other form in which the Materials may be recast, transformed, or adapted; “**Institution**” means the institution, listed on the last page of this Agreement, by which the Author was employed at the time of the creation of the Materials; “**JoVE**” means MyJoVE Corporation, a Massachusetts corporation and the publisher of *The Journal of Visualized Experiments*;

“**Materials**” means the Article and / or the Video; “**Parties**” means the Author and JoVE; “**Video**” means any video(s) made by the Author, alone or in conjunction with any other parties, or by JoVE or its affiliates or agents, individually or in collaboration with the Author or any other parties, incorporating all or any portion of the Article, and in which the Author may or may not appear.

2. **Background.** The Author, who is the author of the Article, in order to ensure the dissemination and protection of the Article, desires to have the JoVE publish the Article and create and transmit videos based on the Article. In furtherance of such goals, the Parties desire to memorialize in this Agreement the respective rights of each Party in and to the Article and the Video.

3. **Grant of Rights in Article.** In consideration of JoVE agreeing to publish the Article, the Author hereby grants to JoVE, subject to **Sections 4 and 7** below, the exclusive, royalty-free, perpetual (for the full term of copyright in the Article, including any extensions thereto) license (a) to publish, reproduce, distribute, display and store the Article in all forms, formats and media whether now known or hereafter developed (including without limitation in print, digital and electronic form) throughout the world, (b) to translate the Article into other languages, create adaptations, summaries or extracts of the Article or other Derivative Works (including, without limitation, the Video) or Collective Works based on all or any portion of the Article and exercise all of the rights set forth in (a) above in such translations, adaptations, summaries, extracts, Derivative Works or Collective Works and

(c) to license others to do any or all of the above. The foregoing rights may be exercised in all media and formats, whether now known or hereafter devised, and include the right to make such modifications as are technically necessary to exercise the rights in other media and formats. If the “Open Access” box has been checked in **Item 1** above, JoVE and the Author hereby grant to the public all such rights in the Article as provided in, but subject to all limitations and requirements set forth in, the CRC License.

4. **Retention of Rights in Article.** Notwithstanding the exclusive license granted to JoVE in **Section 3** above, the



Author shall, with respect to the Article, retain the non-exclusive right to use all or part of the Article for the non-commercial purpose of giving lectures, presentations or teaching classes, and to post a copy of the Article on the

Institution's website or the Author's personal website, in each case provided that a link to the Article on the JoVE website is provided and notice of JoVE's copyright in the Article is included. All non-copyright intellectual property rights in and to the Article, such as patent rights, shall remain with the Author.

5. Grant of Rights in Video – Standard Access. This **Section 5** applies if the "Standard Access" box has been checked in **Item 1** above or if no box has been checked in **Item 1** above. In consideration of JoVE agreeing to produce, display or otherwise assist with the Video, the Author hereby acknowledges and agrees that, Subject to **Section 7** below, JoVE is and shall be the sole and exclusive owner of all rights of any nature, including, without limitation, all copyrights, in and to the Video. To the extent that, by law, the Author is deemed, now or at any time in the future, to have any rights of any nature in or to the Video, the Author hereby disclaims all such rights and transfers all such rights to JoVE.

6. Grant of Rights in Video – Open Access. This **Section 6** applies only if the "Open Access" box has been checked in **Item 1** above. In consideration of JoVE agreeing to produce, display or otherwise assist with the Video, the Author hereby grants to JoVE, subject to **Section 7** below, the exclusive, royalty-free, perpetual (for the full term of copyright in the Article, including any extensions thereto) license (a) to publish, reproduce, distribute, display and store the Video in all forms, formats and media whether now known or hereafter developed (including without limitation in print, digital and electronic form) throughout the world, (b) to translate the Video into other languages, create adaptations, summaries or extracts of the Video or other Derivative Works or Collective Works based on all or any portion of the Video and exercise all of the rights set forth in (a) above in such translations, adaptations, summaries, extracts, Derivative Works or Collective Works and (c) to license others to do any or all of the above. The foregoing rights may be exercised in all media and formats, whether now known or hereafter devised, and include the right to make such modifications as are technically necessary to exercise the rights in other media and formats.

7. Government Employees. If the Author is a United States government employee and the Article was prepared in the course of his or her duties as a United States government employee, as indicated in **Item 2** above, and any of the licenses or grants granted by the Author hereunder exceed the scope of the 17 U.S.C. 403, then the rights granted hereunder shall be limited to the maximum rights permitted under such statute. In such case, all provisions contained herein that are not in conflict with such statute shall remain in full force and effect, and all provisions contained herein that do so conflict

shall be deemed to be amended so as to provide to JoVE the maximum rights permissible within such statute.

8. Likeness, Privacy, Personality. The Author hereby grants JoVE the right to use the Author's name, voice, likeness, picture, photograph, image, biography and performance in any way, commercial or otherwise, in connection with the Materials and the sale, promotion and distribution thereof. The Author hereby waives any and all rights he or she may have, relating to his or her appearance in the Video or otherwise relating to the Materials, under all applicable privacy, likeness, personality or similar laws.

9. Author Warranties. The Author represents and warrants that the Article is original, that it has not been published, that the copyright interest is owned by the Author (or, if more than one author is listed at the beginning of this Agreement, by such authors collectively) and has not been assigned, licensed, or otherwise transferred to any other party. The Author represents and warrants that the author(s) listed at the top of this Agreement are the only authors of the Materials. If more than one author is listed at the top of this Agreement and if any such author has not entered into a separate Article and Video License Agreement with JoVE relating to the Materials, the Author represents and warrants that the Author has been authorized by each of the other such authors to execute this Agreement on his or her behalf and to bind him or her with respect to the terms of this Agreement as if each of them had been a party hereto as an Author. The Author warrants that the use, reproduction, distribution, public or private performance or display, and/or modification of all or any portion of the Materials does not and will not violate, infringe and/or misappropriate the patent, trademark, intellectual property or other rights of any third party. The Author represents and warrants that it has and will continue to comply with all government, institutional and other regulations, including, without limitation all institutional, laboratory, hospital, ethical, human and animal treatment, privacy, and all other rules, regulations, laws, procedures or guidelines, applicable to the Materials, and that all research involving human and animal subjects has been approved by the Author's relevant institutional review board.

10. JoVE Discretion. If the Author requests the assistance of JoVE in producing the Video in the Author's facility, the Author shall ensure that the presence of JoVE employees, agents or independent contractors is in accordance with the relevant regulations of the Author's institution. If more than one author is listed at the beginning of this Agreement, JoVE may, in its sole discretion, elect not take any action with respect to the Article until such time as it has received complete, executed Article and Video License Agreements from each such author. JoVE reserves the right, in its absolute and sole discretion and without giving any reason therefore, to accept or decline any work submitted to JoVE. JoVE and its employees, agents and independent contractors shall have full, unfettered access to the facilities of the Author or of the Author's institution as necessary to make the Video, whether actually published or not. JoVE has sole discretion as to the method of making and publishing the Materials, including,



without limitation, to all decisions regarding editing, lighting, filming, timing of publication, if any, length, quality, content and the like.

**11. Indemnification.** The Author agrees to indemnify JoVE and/or its successors and assigns from and against any and all claims, costs, and expenses, including attorney's fees, arising out of any breach of any warranty or other representations contained herein. The Author further agrees to indemnify and hold harmless JoVE from and against any and all claims, costs, and expenses, including attorney's fees, resulting from the breach by the Author of any representation or warranty contained herein or from allegations or instances of violation of intellectual property rights, damage to the Author's or the Author's institution's facilities, fraud, libel, defamation, research, equipment, experiments, property damage, personal injury, violations of institutional, laboratory, hospital, ethical, human and animal treatment, privacy or other rules, regulations, laws, procedures or guidelines, liabilities and other losses or damages related in any way to the submission of work to JoVE, making of videos by JoVE, or publication in JoVE or elsewhere by JoVE. The Author shall be responsible for, and shall hold JoVE harmless from, damages caused by lack of sterilization, lack of cleanliness or by contamination due to the making of a video by JoVE its employees, agents or independent contractors. All sterilization, cleanliness or decontamination procedures shall be solely the responsibility of the Author and shall be undertaken at the Author's expense. All indemnifications provided herein shall include JoVE's attorney's fees and costs related to said losses or

damages. Such indemnification and holding harmless shall include such losses or damages incurred by, or in connection with, acts or omissions of JoVE, its employees, agents or independent contractors.

**12. Fees.** To cover the cost incurred for publication, JoVE must receive payment before production and publication the Materials. Payment is due in 21 days of invoice. Should the Materials not be published due to an editorial or production decision, these funds will be returned to the Author. Withdrawal by the Author of any submitted Materials after final peer review approval will result in a US\$1,200 fee to cover pre-production expenses incurred by JoVE. If payment is not received by the completion of filming, production and publication of the Materials will be suspended until payment is received.

**13. Transfer, Governing Law.** This Agreement may be assigned by JoVE and shall inure to the benefits of any of JoVE's successors and assignees. This Agreement shall be governed and construed by the internal laws of the Commonwealth of Massachusetts without giving effect to any conflict of law provision thereunder. This Agreement may be executed in counterparts, each of which shall be deemed an original, but all of which together shall be deemed to be one and the same agreement. A signed copy of this Agreement delivered by facsimile, e-mail or other means of electronic transmission shall be deemed to have the same legal effect as delivery of an original signed copy of this Agreement.

A signed copy of this document must be sent with all new submissions. Only one Agreement required per submission.

**AUTHOR:**

Name:

Kristina Irsch

Department:

Institute de la Vision / Quinze-Vingts National Eye Hospital

Institution:

UPMC-Sorbonne Universities

Article Title:

Full-field optical coherence microscopy for histology-like analysis of stromal features in corneal grafts

Signature:



Date:

August 1, 2017

Please submit a signed and dated copy of this license by one of the following three methods:

- 1) Upload a scanned copy as a PDF to the JoVE submission site upon manuscript submission (preferred);
- 2) Fax the document to +1.866.381.2236; or
- 3) Mail the document to JoVE / Attn: JoVE Editorial / 1 Alewife Center Suite 200 / Cambridge, MA 02140

For questions, please email [editorial@jove.com](mailto:editorial@jove.com) or call +1.617.945.9051.

MS # (internal use):

Please see detailed responses (in red) to editorial and reviewer comments below.

---

**Changes recommended by the JoVE Scientific Review Editor:**

- Please take this opportunity to thoroughly proofread the manuscript to ensure that there are no spelling or grammatical errors. **The authors have proofread the manuscript and corrected spelling and grammatical errors.**

- **Protocol Detail:** Please note that your protocol will be used to generate the script for the video, and must contain everything that you would like shown in the video. **Please add more details to the following protocol steps.** There should be enough detail in each step to supplement the actions seen in the video so that viewers can easily replicate the protocol. **More details have been added throughout the protocol to facilitate understanding and replication.**

1) 2.1: Please describe how imaging is performed. Your steps provide guidelines but do not provide sufficient instruction.

Please mention any settings used. Please mention what button is clicked on in the software, or which menu items need to be selected to perform the step. **Step 2 is now called “FF-OCM initialization, setup, and image acquisition” and has been significantly revised and expanded to provide more explicit descriptions (including the particular settings used, buttons clicked, and menu items to be selected) on how imaging is performed.**

2) 2.2.2: How do you note the thickness? **The thickness is noted by manually varying the imaging depth in preparation of an acquisition. This is now described in more detail in step “2.3.1.2. Vary the imaging depth via rotation of the joystick, adjustment of the slider or manual keyboard input in the graphical user interface (GUI), and the averaging value (an averaging of 40 is generally recommended for optimal corneal imaging), to determine the thickness of the corneal sample and the averaging necessary to image through the entire corneal thickness, noting the first and last image location in depth; the bottom surface of the coverslip creates parallel interference fringes that are seen on the tomographic image (on the right-hand side of the GUI), facilitating to locate the corneal surface.”**

3) 2.2.3, 2.2.4: How? Please mention any settings used. Please mention what button is clicked on in the software, or which menu items need to be selected to perform the step. **This is now described in much more detail (including the particular settings used, buttons clicked, and menu items to be selected) from step “2.3. Acquisition of stacks” until “3.2. Importing of images”.**

4) 3.2.1.1, 3.2.2.5, 3.2.2.6, : Please mention any settings used. Please mention what button is clicked on in the software, or which menu items need to be selected to perform the step. We require explicit descriptions for filming. **Now 4.1.1.1, 4.1.2.5, and 4.1.2.6 have also been revised and expanded to provide more explicit descriptions (including the particular settings used, buttons clicked, and menu items to be selected).**

- **Protocol Highlight:** After you have made all of the recommended changes to your protocol (listed above), please reevaluate the length of your protocol section. There is a 10-page limit for the protocol text, and a 3-page limit for filmable content. If your protocol is longer than 3 pages, please highlight ~2.5 pages or less of text (which includes headings and

spaces) in yellow, to identify which steps should be visualized to tell the most cohesive story of your protocol steps.

Remember that the non-highlighted protocol steps will remain in the manuscript and therefore will still be available to the reader.

- o The highlighting must include all relevant details that are required to perform the step. For example, if step 2.5 is highlighted for filming and the details of how to perform the step are given in steps 2.5.1 and 2.5.2, then the sub-steps where the details are provided must be included in the highlighting.

- o The highlighted steps should form a cohesive narrative, that is, there must be a logical flow from one highlighted step to the next.

- o Please bear in mind that software steps without a graphical user interface/calculations (e.g. 3.2.3) cannot be filmed.

The protocol steps to be visualized have been highlighted in yellow and follow the guidelines elaborated above.

- **Discussion:** JoVE articles are focused on the methods and the protocol, thus the discussion should be similarly focused. Please ensure that the discussion covers the following in detail and in paragraph form: 1) modifications and troubleshooting, 2) limitations of the technique, 3) significance with respect to existing methods, 4) future applications and 5) critical steps within the protocol. The Discussion has been updated to also cover “troubleshooting” and “critical steps within the protocol,” see lines 388 through 395, as well as 409 and 410.

- **Figures:**

- 1) Fig 1A: Please ensure that appropriate reprint permissions are obtained. We will provide appropriate permissions once obtained.

- **Commercial Language:** JoVE is unable to publish manuscripts containing commercial sounding language, including trademark or registered trademark symbols (TM/R) and the mention of company brand names before an instrument or reagent. Examples of commercial sounding language in your manuscript are LightCT, Matlab, LLTech, (CorneaMax, Eurobio, 1) Please use MS Word’s find function (Ctrl+F), to locate and replace all commercial sounding language in your manuscript with generic names that are not company-specific.

All commercial products should be sufficiently referenced in the table of materials/reagents. You may use the generic term followed by “(see table of materials)” to draw the readers’ attention to specific commercial names. All commercial sounding language has been removed or replaced by generic, non-company-specific terms followed by “(see table of materials).”

- **Table of Materials:** Please revise the table of the essential supplies, reagents, and equipment. The table should include the name, company, and catalog number of all relevant materials/software in separate columns in an xls/xlsx file. The table of materials has been revised to include all requested information.

- Please define all abbreviations at first use. Yes, thank you.



- Please use standard abbreviations and symbols for SI Units such as  $\mu\text{L}$ , mL, L, etc., and abbreviations for non-SI units such as h, min, s for time units. Please use a single space between the numerical value and unit. **Yes, thank you.**
  - If your figures and tables are original and not published previously or you have already obtained figure permissions, please ignore this comment. If you are reusing figures from a previous publication, you must obtain explicit permission to reuse the figure from the previous publisher (this can be in the form of a letter from an editor or a link to the editorial policies that allows you to republish the figure). Please upload the text of the reprint permission (may be copied and pasted from an email/website) as a Word document to the Editorial Manager site in the "Supplemental files (as requested by JoVE)" section. Please also cite the figure appropriately in the figure legend, i.e. "This figure has been modified from [citation]." **While none of the figures has been previously published in the form presented here, we are checking journal policies for reusing modified versions of previous figures.**
- 

### Comments from Peer-Reviewers:

#### Reviewer #1:

##### Manuscript Summary:

Clearly written, good structured, no major concerns.

##### Major Concerns:

none.

**Thank you!**

##### Minor Concerns:

line 138: how can this be better assured? Can cornea be marked? **This can be better assured by the visual feedback provided by acquisition of a "macro image," that is, a snapshot of the sample that can be used for lateral positioning and navigation purposes in preparation of an acquisition, as outlined in 2.2.2. of the revised text (see line 152).**

line 152: is depth resolution of 1micron standard? Why 1 micron? **Yes, "the default and recommended setting is 1  $\mu\text{m}$ , matching the axial resolution of the device" as explained now in step 2.3.2.1. (see line 181).**

line 163: please provide some more detail about how and why. **More details have been added in the revised text (see line 223 and step 4.1.1.1.).**

line 193: this might be clear during the experiment, but: is there a better definition of "clear oval features"? **The text has been revised, with more detail added, to describe the counting of keratocyte nuclei, such as in step "4.1.2.5.1. Go to "Plugins" and navigate to "Cell Counter" under "Analyze". Select a counter type and then press "Initialize" and start counting the cell nuclei by clicking on dark oval features in the inverted image, considering those landing on an image border only for two of the four sides of the image<sup>25</sup>" (see line 261).**

figures: not required, but arrows for might help to point out some of the structures (for example the "lakes" in figure 2, one could mark one "lake" as example. **We have added arrows to mark two lakes in Figure 2 as example.**

**Reviewer #2:**

## Manuscript Summary:

Authors described innovative method of imagining corneal stroma using full-field optical coherence microscopy (FFOCM).

This technique allows qualitative and quantitative analysis of corneal stroma. This procedure could be very useful in detection of corneal stromal diseases. It may have positive impact on better outcome of corneal transplantation.

## Major Concerns:

N/A

Thank you!

## Minor Concerns:

N/A

Thank you!