

Journal of Visualized Experiments

Ultrasonic fatigue testing in the tension-compression mode

--Manuscript Draft--

Manuscript Number:	JoVE57007R2
Full Title:	Ultrasonic fatigue testing in the tension-compression mode
Article Type:	Invited Methods Article - JoVE Produced Video
Keywords:	fatigue; ultrasound; ultrasonic fatigue testing; structural materials; cyclic loading; mechanical stress
Manuscript Classifications:	93.39.22: fatigue (structural); 93.39.45: structural fatigue
Corresponding Author:	Libor Trsko Research Centre, University of Zilina Zilina, Slovakia SLOVAKIA
Corresponding Author Secondary Information:	
Corresponding Author E-Mail:	libor.trsko@rc.uniza.sk
Corresponding Author's Institution:	Research Centre, University of Zilina
Corresponding Author's Secondary Institution:	
First Author:	Libor Trsko
First Author Secondary Information:	
Order of Authors Secondary Information:	
Abstract:	<p>Ultrasonic fatigue testing is one of a few methods, which allow investigating the fatigue properties in the ultra-high cycle region. The method is based on exposing the specimen to longitudinal vibrations on its resonance frequency close to 20 kHz. With use of this method it is possible to significantly decrease the time required for the test, when compared to conventional testing devices usually working at frequencies under 200 Hz. It is also used to simulate loading of material during the operation at high speed conditions, such as components of jet engines or car turbo pumps. It is necessary to operate only in the high and ultra-high cycle region due to the possible extremely high deformation rates, which can have significant influence on the test result. Specimen shape and dimensions has to be carefully selected and calculated to fulfil the resonance condition of the ultrasonic system; thus it is not possible to test the full components or specimens of arbitrary shape. Before each test, it is necessary to harmonize the specimen with the frequency of ultrasonic system to compensate for deviations of the real shape from the ideal one. It is not possible to run a test until a total fracture of the specimen, since the test is automatically terminated after initiation and propagation of the crack to a certain length, when the stiffness of the system changes enough to shift the system out of the resonance frequency.</p> <p>This manuscript describes the process of evaluation of materials fatigue properties at high-frequency ultrasonic fatigue loading with use of mechanical resonance at frequency close to 20 kHz. The protocol includes a detail description of all steps required for a correct test including specimen's design, stress calculation, harmonizing with the resonance frequency, performing the test and final static fracture.</p>
Author Comments:	I will be unavailable from 9th of September until 18th of September, because I will be abroad and unable to communicate or make any revisions. All questions and request will be processed later in September.
Additional Information:	
Question	Response
If this article needs to be "in-press" by a certain date, please indicate the date below and explain in your cover letter.	

TITLE:

Ultrasonic Fatigue Testing in the Tension-Compression Mode

AUTHORS AND AFFILIATIONS:

Libor Trško¹, František Nový², Otakar Bokůvka², Michal Jambor²

¹Research Centre of the University of Žilina
Division of Materials Research for Transport
University of Žilina
Žilina, Slovak Republic

²Department of Materials Engineering
University of Žilina
Žilina, Slovak Republic

EMAIL ADDRESSES:

Libor Trško (libor.trsko@rc.uniza.sk)
František Nový (frantisek.novy@fstroj.uniza.sk)
Otakar Bokůvka (otakar.bokuvka@fstroj.uniza.sk)
Michal Jambor (michal.jambor@fstroj.uniza.sk)

CORRESPONDING AUTHOR:

Libor Trško (libor.trsko@rc.uniza.sk)
cell: +421 903 581 391

KEYWORDS:

Fatigue, ultrasound, ultrasonic fatigue testing, structural materials, cyclic loading, mechanical stress

SHORT ABSTRACT:

A protocol for ultrasonic fatigue testing in the high and ultra-high cycle region in axial tension-compression loading mode.

LONG ABSTRACT:

Ultrasonic fatigue testing is one of a few methods which allow investigating fatigue properties in the ultra-high cycle region. The method is based on exposing the specimen to longitudinal vibrations on its resonance frequency close to 20 kHz. With use of this method, it is possible to significantly decrease the time required for the test, when compared to conventional testing devices usually working at frequencies under 200 Hz. It is also used to simulate loading of material during operation in high speed conditions, such as those experienced by components of jet engines or car turbo pumps. It is necessary to operate only in the high and ultra-high cycle region, due to the possibility of extremely high deformation rates, which can have a significant influence on the test results. Specimen shape and dimensions have to be carefully selected and calculated to fulfill the resonance condition of the ultrasonic system; thus, it is not possible to test the full

components or specimens of arbitrary shape. Before each test, it is necessary to harmonize the specimen with the frequency of the ultrasonic system to compensate for deviations of the real shape from the ideal one. It is not possible to run a test until a total fracture of the specimen, since the test is automatically terminated after initiation and propagation of the crack to a certain length, when the stiffness of the system changes enough to shift the system out of the resonance frequency. This manuscript describes the process of evaluation of materials' fatigue properties at high-frequency ultrasonic fatigue loading with use of mechanical resonance at a frequency close to 20 kHz. The protocol includes a detailed description of all steps required for a correct test, including specimen design, stress calculation, harmonizing with the resonance frequency, performing the test, and final static fracture.

INTRODUCTION:

Fatigue damage of structural materials is strongly connected with industrialization and mainly with use of steam engine and steam locomotives for railway transport, where a lot of metal components, mainly iron based, have been used and had to withstand various types of cyclic loading. One of the earliest tests was done by Albert (Germany 1829)¹ on welded chains for mine hoists. The loading frequency was 10 bends per minute, and the maximal tests recorded reached 100,000 loading cycles¹. Another important work was carried out by William Fairbairn in 1864. Tests were performed on wrought-iron girders with use of a static load, which was lifted by a lever and then dropped causing vibrations. The girder was loaded with gradually increasing loading stress amplitude. After reaching several hundred thousand cycles on various loading stress amplitudes, in the end the girder failed after just about five thousand loading cycles at a loading amplitude of two fifths of the ultimate tensile strength. The first comprehensive and systematic study of the influence of repeated stress on structural materials was done by August Wöhler in 1860-1870¹. For these tests, he was using torsion, bending, and axial loading modes. Wöhler designed many unique fatigue testing machines, but their disadvantage was low operation speeds, for example the fastest rotating bending machine operated at 72 rpm (1.2 Hz), thus completion of the experimental program took 12 years¹. After performing these tests, it was considered that after reaching a loading amplitude at which the material withstands 10^7 cycles, the fatigue degradation is negligible and the material can withstand an infinite number of loading cycles. This loading amplitude was named the "fatigue limit" and became the main parameter in industrial design for many years^{2,3}.

Further development of new industrial machines, which required higher efficiency and cost savings, had to provide the possibility of higher loading, higher operation speeds, higher durations, and high reliability with low maintenance requirements. For example, components of the high-speed train Shinkansen, after 10 years of operation, have to withstand approximately 10^9 cycles and failure of a main component can have fatal consequences⁴. Furthermore, components of jet engines often operate at 12,000 rpm, and components of turbo blowers often exceed 17,000 rpm. Those high operation speeds increased requirements for fatigue life testing in the so-called ultra-high cycle region, and to assess if the fatigue strength of a material could be really considered constant for more than 10 million cycles. After the first tests performed by exceeding this endurance, it was obvious that fatigue failures can occur even at applied stress

amplitudes lower than the fatigue limit, after a number of cycles much more than 10^7 , and that the damage and failure mechanism could be different from the usual ones⁵.

Creating a fatigue test program aimed at investigating the ultra-high cycle region required the development of new testing devices to strongly increase the loading frequency. A symposium focused on this topic was held in Paris in June 1998, where experimental results were presented which were obtained by Stanzl-Tschegg⁶ and Bathias⁷ at 20 kHz loading frequencies, by Ritchie⁸ with the use of 1 kHz closed loop servo-hydraulic testing machine, and by Davidson⁸ with a 1.5 kHz magneto-strictive testing machine⁴. From that time, many solutions were proposed, but still the most commonly used machine for this kind of test is based on the concept of Manson from 1950 and uses frequencies close to 20 kHz⁹. These machines exhibit a good balance between strain rate, the determination accuracy of the number of cycles, and the time of the fatigue test (10^{10} cycles are achieved in approximately 6 days). Other devices were able to provide even higher loading frequencies, like the one used by Giraldo in 1959 – 92 kHz and Kikukawa in 1965 – 199 kHz; however, these are rarely used because they create extremely high deformation rates and, since the test lasts for only few minutes, a remarkable error in the cycle counting is expected. Another important factor limiting the loading frequency of resonance devices for fatigue testing is the size of the specimen, which is in direct relation with the resonance frequency. The larger the requested loading frequency, the smaller the specimen. This is the reason why frequencies above 40 kHz are rarely used¹⁰.

Since the displacement amplitude is usually limited within the interval between 3 and 80 μm , ultrasonic fatigue testing can be successfully applied on most metallic materials, though techniques for the testing of polymeric materials such as PMMA¹¹ and composites¹² were also developed. Generally, ultrasonic fatigue testing is possible to perform in modes of axial loading: tensile – compression symmetrical cycle^{13,14}, tension - tension cycle¹⁵, three-point bending¹⁵, and there are also a few studies with special modifications of the system for torsion testing^{15,16} and biaxial bending¹⁷. It is not possible to use arbitrary specimens, because for this method, the geometry is strictly related to achieving the resonance frequency of 20 kHz. For the axial loading, several types of specimens have been commonly used, usually with an hour-glass shape with a gauge length diameter from 3 to 5 mm. For the three-point bending, thin sheets are commonly used, and for other methods special types of specimens are designed, according to the method type and testing conditions. The method was designed for evaluation of fatigue life in the high and ultra-high cycle region, and this means that at 20 kHz loading, a million cycles is obtained in 50 s; therefore, this is usually considered the bottom limit of loading cycles which can be investigated with reasonable accuracy, with respect to the number of cycle determination. Each specimen has to be harmonized with the ultrasonic horn by changing the specimen's mass to provide the right resonance frequency of the system: ultrasonic horn with specimen.

PROTOCOL:

Note: Each specimen's geometry has to be selected and calculated according to the mechanical and physical properties of the tested material, so that it has an identical resonance frequency as the ultrasonic testing system.

1. Determination of the Fatigue Test Specimen Dimensions

Note: The standard “hourglass” tension-compression specimen geometry, with defined main dimensions, is shown in **Figure 1**. Dimensions d , D , and r are user defined (independent), while l and L dimensions have to be calculated, according to the conditions of the correct resonance frequency (dependent). The gauge length l results only from the geometry ratio between d , r , and D , and can be calculated easily or obtained from a component model; thus, it will not be an object of further discussion.

1.1. Determination of Independent Dimensions

Note: The main dimensions of the specimen (d , D , r) are chosen according to the material parameters and the test conditions.

1.1.1. Determine the gauge diameter d according to the required volume of material for testing. In the case of a homogenous microstructure with no internal defects, a smaller gauge diameter is preferred. In the case of a material with significant internal defects (such as voids and shrinkages in cast materials), a bigger gauge diameter is necessary. The gauge diameter d is usually from 2 mm to 5 mm.

1.1.2. Determine the head diameter D according to available experimental material size. The used head diameter D is usually from 10 mm to 15 mm.

Note: The larger the D is, the shorter the head length (L) will be.

1.1.3. Determine the gauge radius r according to the required mechanical stress distribution in the specimen's gauge length. The larger the gauge diameter r is, the smoother is the mechanical stress distribution. A commonly used gauge radius is $r = 20$ mm or $r = 32$ mm.

Note: The larger the r is, the longer the specimen will be.

1.2. Determination of Dependent Dimensions

1.2.1. Determine the wave number K according to the following formula^{9,18}:

$$K = 2\pi f_r \sqrt{\frac{\rho}{E_d}} \quad (-) \quad [1]$$

Note: Here the f_r is the resonance frequency of the ultrasonic system (Hz), ρ is the volume density (kg m^{-3}), and E_d is the dynamic modulus of elasticity (kg m^{-3}).

1.2.2. Determine the hyperbolic approximation of the gauge radius, according to the following formula^{9,19}:

$$A = \frac{2}{l} \arg \cosh \left(\frac{D}{d} \right) (m^{-1}) [2]$$

Note: Here l is the gauge length (m), D is the head diameter (m), and d is the gauge diameter (m) (Figure 1).

1.2.3. Determine the effective eccentricity according to following formula^{9,18}:

$$\beta = \sqrt{A^2 + K^2} (m^{-1}) [3]$$

Note: Here A is the hyperbolic approximation (m^{-1}) determined by equation (2), and K is the wave number (-) determined according to expression (1).

1.2.4. Determine the length of head (L) according to the following equation^{9,18}:

$$L = \frac{1}{K} \arctan \left[\frac{1}{K} \left(\beta \coth \left(\frac{l}{2} \beta \right) - A \tanh \left(\frac{l}{2} A \right) \right) \right] (m) [4]$$

Note: Here K is the wave number (-) determined according to expression (1) in point 1.2.1, β is the effective eccentricity (m^{-1}) determined by equation (3), and l is the gauge length (m) (Figure 1).

2. Calculation of the Mechanical Stress in the Gauge Length of the Specimen

2.1. Determine the norming geometrical factor Φ according to the following equation^{9,18}:

$$\Phi = \cos(K L) \frac{\cosh \left(\frac{l}{2} A \right)}{\sinh \left(\frac{l}{2} \beta \right)} (-) [5]$$

2.2. Determine the deformation amplitude ε according to the following equation^{9,18}:

$$\varepsilon = \beta \Phi u (-) [6]$$

Note: Here Φ is the geometrical factor (-) and u is the required displacement amplitude of the free end of the specimen (m).

2.3. Determine the mechanical stress amplitude σ_a according to the following equation^{9,18}:

$$\sigma_a = \varepsilon E_d (Pa) [7]$$

Note: Here ε is the deformation amplitude (-) determined according to expression (5), and E_d is the dynamic modulus of elasticity ($kg \cdot m^{-3}$). If the calculated mechanical stress is too low, it is necessary to increase the displacement amplitude u (m), and vice versa.

3. Manufacturing of the Specimen with Machining Operations

3.1. Due to various small deviations of the machined specimens from an ideal shape, manufacture specimens with longer heads, usually $L + 0.5$ mm.

4. Harmonizing of the Resonance Frequency of the Specimen with the Ultrasonic System

Note: Harmonizing is the process of compensating various small deviations of the real specimen from the ideal, calculated shape, to obtain the correct resonance frequency, which is in harmony with the ultrasonic acoustic sonotrode.

4.1. Choose the proper type of acoustic sonotrode, according to the required displacement range, which is able to provide proper mechanical stress in the specimen.

Note: Each type of sonotrode is designed and calibrated for a different displacement range, thus the proper sonotrode is chosen according to the required displacement amplitude calculated according to section 2.

4.2. Mount the sonotrode on the piezo-electric converter.

4.2.1. Screw the connection screw inside the central hole on the sonotrode until it reaches the bottom.

4.2.2. Spread acoustic gel on the face of the sonotrode.

Note: A small amount of gel is used, just enough to fill the irregularity of the surfaces, which improves the transfer of the mechanical wave between piezo-electric converter and the sonotrode.

4.2.3. Screw the sonotrode into the piezo-electric converter.

4.3. Run the ultrasonic system with a piezo electric converter with mounted sonotrode to measure the resonance frequency of the particular system at actual temperature.

4.3.1. Run the ultrasonic testing software (e.g., Win20k).

4.3.2. Choose the type of the used sonotrode in the drop-down menu in the "Model" box.

4.3.3. Enter the lowest possible displacement amplitude for the particular sonotrode into the "Amplitude" box.

4.3.4. Click the "Start" button.

4.3.5. Read the actual resonance frequency of the system in the "Frequency" box.

4.3.6. Click the "Stop" button.

255
256 4.4. Mount the specimen at the end of the sonotrode.

257
258 4.4.1. Screw the connection screw into the central hole of the specimen until it reaches the
259 bottom.

260
261 4.4.2. Screw the specimen to the sonotrode.

262
263 4.5. Run the ultrasonic system with a piezo electric converter with mounted sonotrode and
264 specimen to measure the resonance frequency of the particular system at actual temperature.

265
266 4.5.1. Run the ultrasonic testing software.

267
268 4.5.2. Choose the type of sonotrode used in the drop-down menu in the “Model” box.

269
270 4.5.3. Enter the lowest possible displacement amplitude for the particular sonotrode into the
271 “Amplitude” box.

272
273 4.5.4. Click the “Start” button.

274
275 4.5.5. Read the actual resonance frequency of the system in the “Frequency” box.

276
277 4.5.6. Click the “Stop” button.

278
279 4.6. When the resonance frequency of the system with mounted specimen is lower than that
280 without the specimen, reduce the mass of the specimen by cutting off the faces of the specimen’s
281 head.

282
283 **Note:** If the resonance frequency with a mounted specimen is higher, it would be necessary to
284 reduce the gauge diameter d , which would change the conditions of the test. This is the reason
285 0.5 mm is added to length of the heads in the manufacturing process.

286
287 4.6.1. Dismount the specimen from the sonotrode.

288
289 4.6.2. Mount the specimen into a lathe and turn down 0.1 mm of the face of the first head.

290
291 4.6.3. Mount the specimen into a lathe and turn down 0.1 mm of the face of the second head.

292
293 4.6.4. Repeat step 4.6 until the resonance frequency is within tolerance of ± 10 Hz.

294 295 5. Final Mounting of the Specimen to the Sonotrode before the Fatigue Test

296
297 5.1. Apply acoustic gel on the faces to create connections between the sonotrode and the
298 specimen.

5.1.1. Screw the connection screw into the central hole of the specimen until it reaches the bottom.

5.1.2. Spread the acoustic gel on the face of the specimen.

Note: Just a small amount of acoustic gel is used to fill in the irregularities on the surface to improve the acoustic wave transfer from the sonotrode to the specimen.

5.1.3 Screw the specimen to the sonotrode.

6. Run the Cooling System for Specimen

6.1. If air cooling is used, focus the air stream directly on the middle of the gauge length of the specimen, and wait for about 20 s, so the flow of the air stream saturates the specimen.

6.2. If water cooling is used, focus the water nozzles at the top head of the specimen, and adjust the stream intensity so the water flows smoothly along the gauge length, to avoid cavitation.

Note: Submerging the specimen into water or oil is possible as well, however this can be used only for short time tests due to the significant cavitation effect, which accelerates the fatigue crack initiation process.

7. Run the Cooling System of the Piezo Electric Converter

7.1 Open the valve of the air stream and adjust the pressure in the interval between 0.5 and 1 bar.

8. Run the Test at Required Displacement Amplitude

8.1. Run the ultrasonic testing software.

8.2. Choose the type of the used sonotrode in the drop-down menu in the "Model" box.

8.3. Enter the requested displacement amplitude for the particular sonotrode into the "Amplitude" box.

8.4. Click the "Start" button.

9. Fatigue Crack Initiation and Propagation

9.1. Observe that after the fatigue crack initiation and propagation through a part of the cross section, the system is shifted out of the resonance frequency and the test is naturally terminated.

9.2. If the test does not end with a fracture, after reaching requested number of loading cycles, (the test is a run-out) terminate using the “Stop” button in the ultrasonic testing software.

10. Dismount the Specimen from the Sonotrode

10.1. Screw off the specimen from the ultrasonic sonotrode.

11. Static Loading Force Fracturing

11.1. Use static loading force to fracture the rest of the cross section with use of a static loading machine.

Note: The vector and type of the loading force for the static fracture should correspond with the type of the fatigue loading so that the fracture surface has consistent character.

REPRESENTATIVE RESULTS:

Fatigue test results include loading stress, number of loading cycles, and the test termination character (fracture or run-out) can be seen in **Table 1**, where results of fatigue life of the 50CrMo4 quenched and tempered steel are provided. The most common interpretation of the fatigue life test results is the so-called S – N plot (S – stress, N – number of cycles), also known as the Wöhler’s plot. The dependence of fatigue life on the applied loading stress is plotted in a diagram with historically given inverted axis, where the independent value (loading stress) is on the y axis and the dependent value (number of cycles) is on the x axis. Various types of regression analysis are applied¹⁹ on the fatigue life results and, in case a fit is added to the diagram, it is commonly called the S – N curve. However, there was no difference with the original plot, which includes just a data fit. If the test does not end with a fracture, and it is terminated after reaching the required number of loading cycles without damage, this result is called a run-out and in the S-N plot usually marked by arrow. **Figure 2** shows a typical S – N plot of three tested steels: Hardox 450, Strenx 700 MC, and S355 J2.

In addition, the fracture surfaces of the specimens are analyzed, usually with use of scanning electron microscopy (SEM), where the character of the fatigue crack initiation and propagation is identified and interpreted. **Figure 3** shows a fatigue fracture surface after ultrasonic fatigue testing of 50CrMo4 quenched and tempered steel. The crack was initiated on a free surface of the specimen and then propagated through the cross section until the ultrasonic system was shifted out of the resonance frequency (dark area). Consequently, the rest of the cross section was fractured by static loading that created the lighter area on the top of the figure. **Figure 4** shows the area of the fatigue crack propagation in extruded AW 7075 – T6511 aluminum alloy. **Figure 5** shows a cavity created on the surface due to submerging of the specimen into cooling liquid (distilled water with anti-corrosive inhibitor at room temperature) for a long-time test (several hours). The cavity accelerated the fatigue crack initiation and the result of this test cannot be considered as valid.

FIGURE AND TABLE LEGENDS:

Figure 1: Drawing of the standard tension-compression ultrasonic fatigue test specimen. The with dimensions are defined as follows: d – gauge diameter, D – head diameter, r – gauge radius, L – head length, l – gauge length.

Figure 2: The S – N plot of the Hardox 450, Strenx 700 MC and S355 J2 steel. Run-out test is marked by arrow.

Figure 3: Fracture surface character of the 50CrMo4 steel specimen loaded at 365 MPa and fractured after 1.97×10^8 loading cycles. The fracture initiated on the free surface of the specimen. The fracture surface consists of the area of stable fatigue crack propagation (dark area) and the area of the unstable crack propagation, the so called static fracture (light area).

Figure 4: Area of the fatigue crack propagation in the AW 7075 aluminum alloy specimen loaded at 203 MPa and fractured after 8.3×10^6 loading cycles. The crack propagated with a transcrystalline fatigue mechanism and the band-kind character of the fracture surface is a result of the strong deformation texture after extrusion of the material in the manufacturing process. The arrow shows the direction of fatigue crack propagation.

Figure 5: Cavity on a surface of the 50CrMo4 steel specimen when an improper cooling process was used. The specimen was submerged in the liquid (distilled water with anti-corrosive inhibitor at room temperature). Cavities accelerate the fatigue crack initiation process because they serve as stress concentration notches, thus the result of this fatigue test is not valid.

Table 1: Results of the 50CrMo4 steel fatigue life analysis by ultrasonic fatigue testing. Fatigue life results represent the dependence on the number of loading cycles on the applied loading stress. The test can end with fracture, or by a run-out when no fatigue fracture occurs after the requested number of loading cycles.

DISCUSSION:

Ultrasonic fatigue testing is one of the few methods which allows testing of the structural materials in the ultra-high cycle region. However, the specimen shape and size are very limited with respect to the resonance frequency. For instance, testing of thin sheets in the mode of axial loading is generally not possible. In addition, testing of large specimens is usually not possible, because the testing machines do not provide such power and it would require the design of a special ultrasonic system.

The proper design, calculation, and harmonizing of the specimen should not be underestimated, even when modern ultrasonic generators are able to modulate the ultrasonic wave and successfully resonate a specimen with slightly different dimensions. However, this causes a shift of the node of the ultrasonic wave away from the middle part of the gauge length, and then the specimen is not correctly loaded in the gauge length. For the same reason, great care has to be taken to ensure the symmetry of the test specimen with respect to both axes.

A big discussion was held about the correlation of the test results performed at high frequencies with data obtained on conventional testing devices with the low frequency loading. Many tests have shown that results of the high frequency tests fluently extended results obtained at low frequencies, and also some part of the results have overlapped, when the same loading mode was considered¹⁰. Later, it was generally understood that the frequency of loading is not the parameter determining the fatigue properties, but the deformation rate is, and large deformations at low frequency of loading provide similar deformation rates as loading with small deformations at high frequency. However, this is the main reason why this technique can be used for tests in the range of high and mainly ultra-high cycle region, where the deformation amplitudes are small. An increase of the operation frequencies of various components made this discussion less important, as well, since this method provides more similar loading conditions than the ones in the high-speed operation.

The internal damping ability of the tested material determines the amount of heat produced during the test (internal damping is the ability of material to convert mechanical energy to heat). In the case of insufficient cooling, the gauge length is significantly heated, which accelerates initiation of a fatigue crack due to the lower mechanical properties of the tested material at elevated temperatures. In case of most aluminum and magnesium alloys, a stream of cold air is sufficient to cool down the specimen during the test. For materials with higher internal damping capacity such as steel, nickel, and titanium alloys, a stream of liquid coolant is used. During the cooling with liquid coolant, the cavitation in the middle part of the gauge length has to be avoided, because cavities accelerate initiation of the crack, which may invalidate the test results.

Fatigue tests on most of the conventional testing devices end with a complete fracture of the cross section. After the cross section of the specimen is reduced by the continuously growing crack to a so-called "critical cross section", the specimen is then fractured in one cycle and has a character of a static fracture. In the process of ultrasonic testing, when the crack length reaches a critical length which shifts the stiffness of the system out of the resonance frequency, the vibrating stops causing a natural termination of the test. This means that it is not possible to reach the critical cross section and the test does not end with a full fracture, which is later performed artificially. Since the fatigue crack initiation in smooth fatigue specimens (without an artificial notch) represents more than 95% of the number of cycles to fracture, when such a high number of cycles is considered, the difference is considered negligible.

Ultrasonic fatigue testing is a very important method, which allows the simulation of conditions of high-speed loading, and reduces testing time. In this protocol, we highlighted the most critical points, possibilities, and limitations of the method for successful applications in material research and safety verification in industrial operation.

ACKNOWLEDGEMENT:

The work was supported by projects: "Research Centre of University of Žilina – 2nd phase", ITMS 313011D011, Scientific Grant Agency of the Ministry of Education, Science and Sports of the Slovak Republic and Slovak Academy of Sciences, grants No.: 1/0045/17, 1/0951/17 and 1/0123/15 and Slovak Research and Development Agency, grant No. APVV-16-0276.

DISCLOSURE:

We have nothing to disclose.

REFERENCES:

- 1 Moore, H.F., Kommers, J.B. *The fatigue of metals*. McGraw-Hill book company, inc., New York, 321 (1927).
- 2 Nicholas, T. *High Cycle Fatigue: A Mechanics of Materials Perspective*. Elsevier Science (2006).
- 3 Schijve, J. *Fatigue of Structures and Materials*. Springer Netherlands (2008).
- 4 Murakami, Y. *Metal Fatigue: Effects of Small Defects and Nonmetallic Inclusions*. Elsevier Science (2002).
- 5 Trsko, L., Bokuvka, O., Novy, F., Guagliano, M. Effect of severe shot peening on ultra-high-cycle fatigue of a low-alloy steel. *Mater. Design*. **57**, 103-113, doi:10.1016/j.matdes.2013.12.035 (2014).
- 6 Stanzl, T. Fracture mechanisms and fracture mechanics at ultrasonic frequencies. *Fatigue. Fract. Eng. M.* **22** (7), 567-579, doi:10.1046/j.1460-2695.1999.00180.x (1999).
- 7 Bathias, C. There is no infinite fatigue life in metallic materials. *Fatigue. Fract. Eng. M.* **22** (7), 559-565, doi:10.1046/j.1460-2695.1999.00183.x (1999).
- 8 Ritchie, R.O. *et al.* High-cycle fatigue of Ti-6Al-4V. *Fatigue. Fract. Eng. M.* **22** (7), 621-631, doi:10.1046/j.1460-2695.1999.00194.x (1999).
- 9 Bathias, C., Paris, P.C. *Gigacycle Fatigue in Mechanical Practice*. CRC Press (2004).
- 10 Bokuvka, O. *et al.* *Fatigue of Materials at Low and High Frequency Loading*. 2nd ed., University of Zilina, Zilina (2015).
- 11 Almaraz, G.M.D. *et al.* Ultrasonic Fatigue Testing on the Polymeric Material PMMA, Used in Odontology Applications. *Procedia Structural Integrity*. **3**, 562-570, doi:https://doi.org/10.1016/j.prostr.2017.04.039 (2017).
- 12 Flore, D. *et al.* Investigation of the high and very high cycle fatigue behaviour of continuous fibre reinforced plastics by conventional and ultrasonic fatigue testing. *Compos. Sci. Technol.* **141**, 130-136, doi:https://doi.org/10.1016/j.compscitech.2017.01.018 (2017).
- 13 Trško, L. *et al.* Influence of Severe Shot Peening on the Surface State and Ultra-High-Cycle Fatigue Behavior of an AW 7075 Aluminum Alloy. *J. Mater. Eng. Perform.* **26** (6), 2784-2797, doi:10.1007/s11665-017-2692-9 (2017).
- 14 Mayer, H. *et al.* Cyclic torsion very high cycle fatigue of VDSiCr spring steel at different load ratios. *Int. J. Fatigue*. **70**, 322-327, doi:http://dx.doi.org/10.1016/j.ijfatigue.2014.10.007 (2015).
- 15 Bathias, C. Piezoelectric fatigue testing machines and devices. *Int. J. Fatigue*. **28** (11), 1438-1445, doi:http://dx.doi.org/10.1016/j.ijfatigue.2005.09.020 (2006).
- 16 Mayer, H. Ultrasonic torsion and tension-compression fatigue testing: Measuring principles and investigations on 2024-T351 aluminium alloy. *Int. J. Fatigue*. **28** (11), 1446-1455, doi:http://dx.doi.org/10.1016/j.ijfatigue.2005.05.020 (2006).
- 17 Brugger, C., Palin-Luc, T., Osmond, P., Blanc, M. A new ultrasonic fatigue testing device for biaxial bending in the gigacycle regime. *Int. J. Fatigue*. **100**, Part 2, 619-626,

519 doi:<https://doi.org/10.1016/j.ijfatigue.2016.12.039> (2017).
520 18 Wagner, D., Cavalieri, F.J., Bathias, C., Ranc, N. Ultrasonic fatigue tests at high
521 temperature on austenitic steel. *J. Propul. Power.* **1** (1), 29-35,
522 doi:<http://dx.doi.org/10.1016/j.jppr.2012.10.008> (2012).
523 19 Kohout, J. Vechet, S. A new function for fatigue curves characterization and its multiple
524 merits. *Int. J. Fatigue.* **23** (2), 175-183, doi:10.1016/S0142-1123(00)00082-7 (2001).

Figure 1

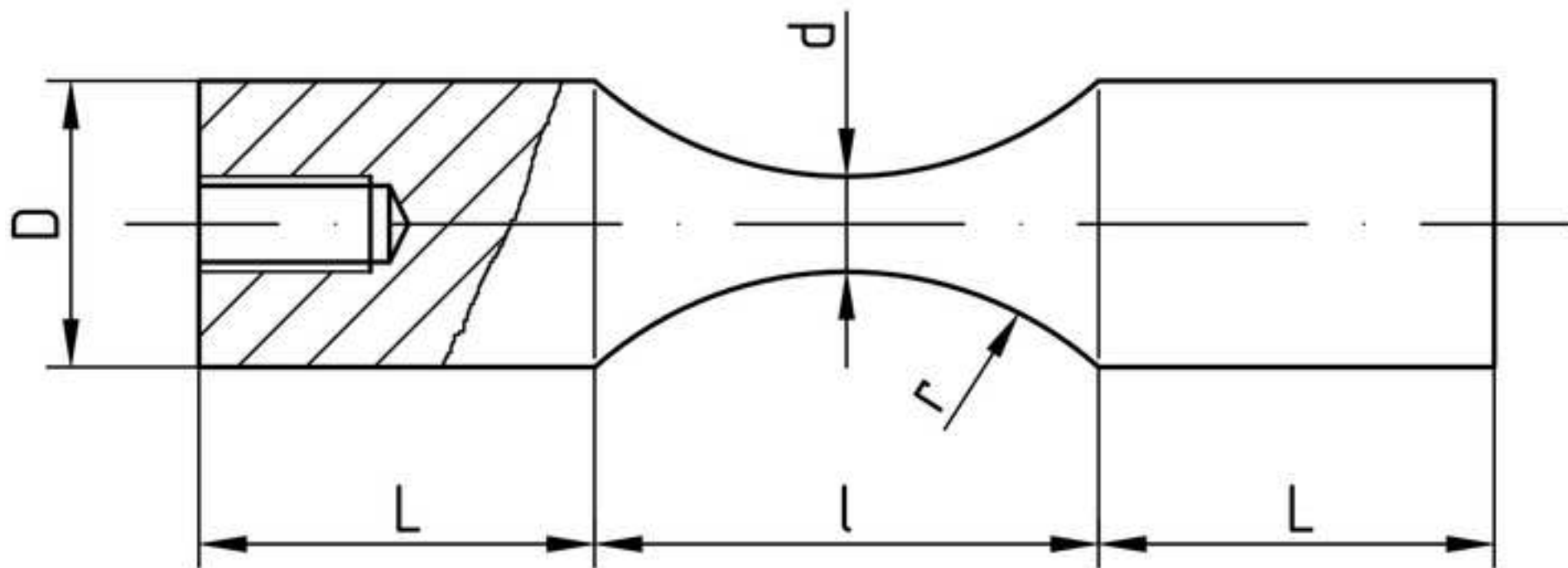
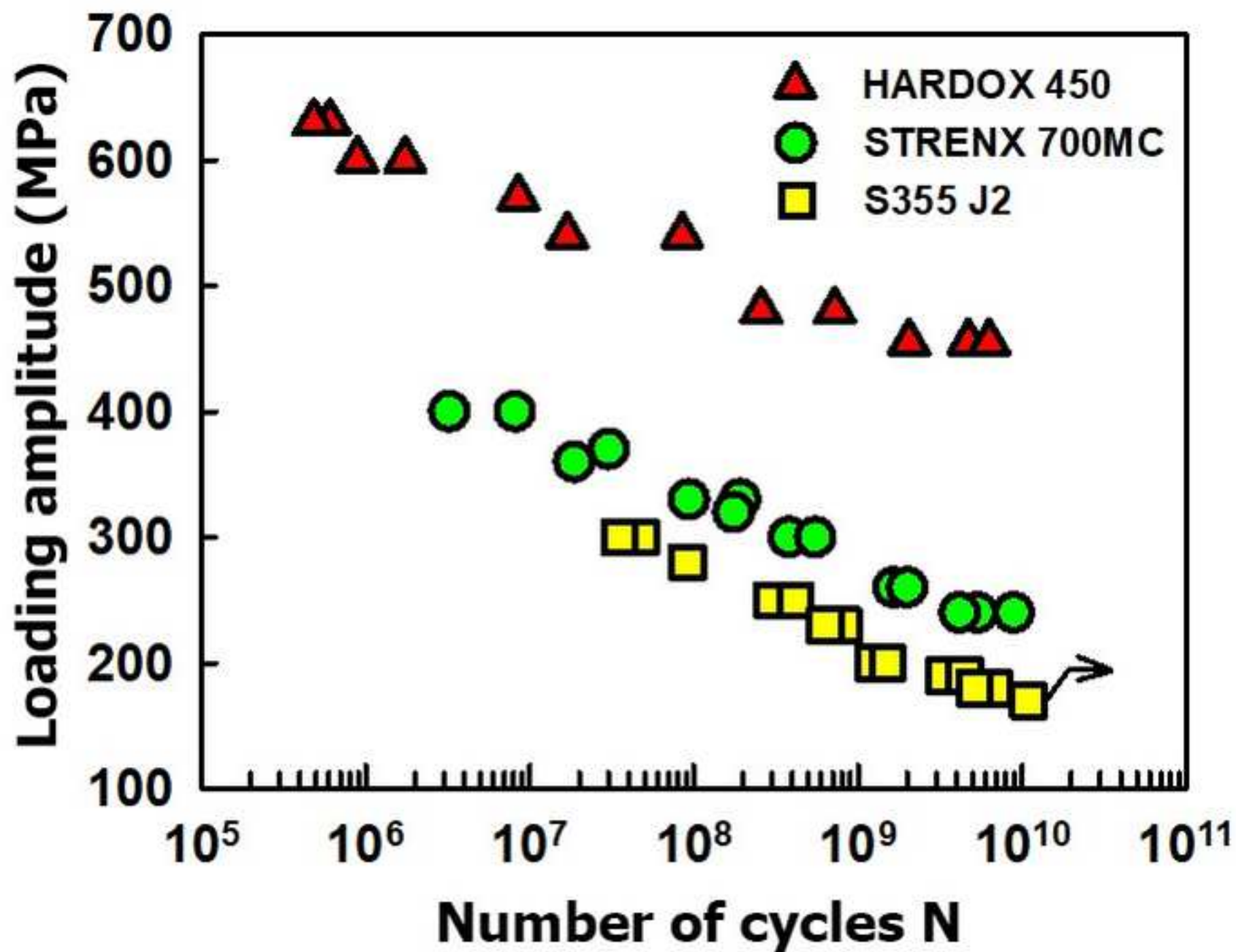
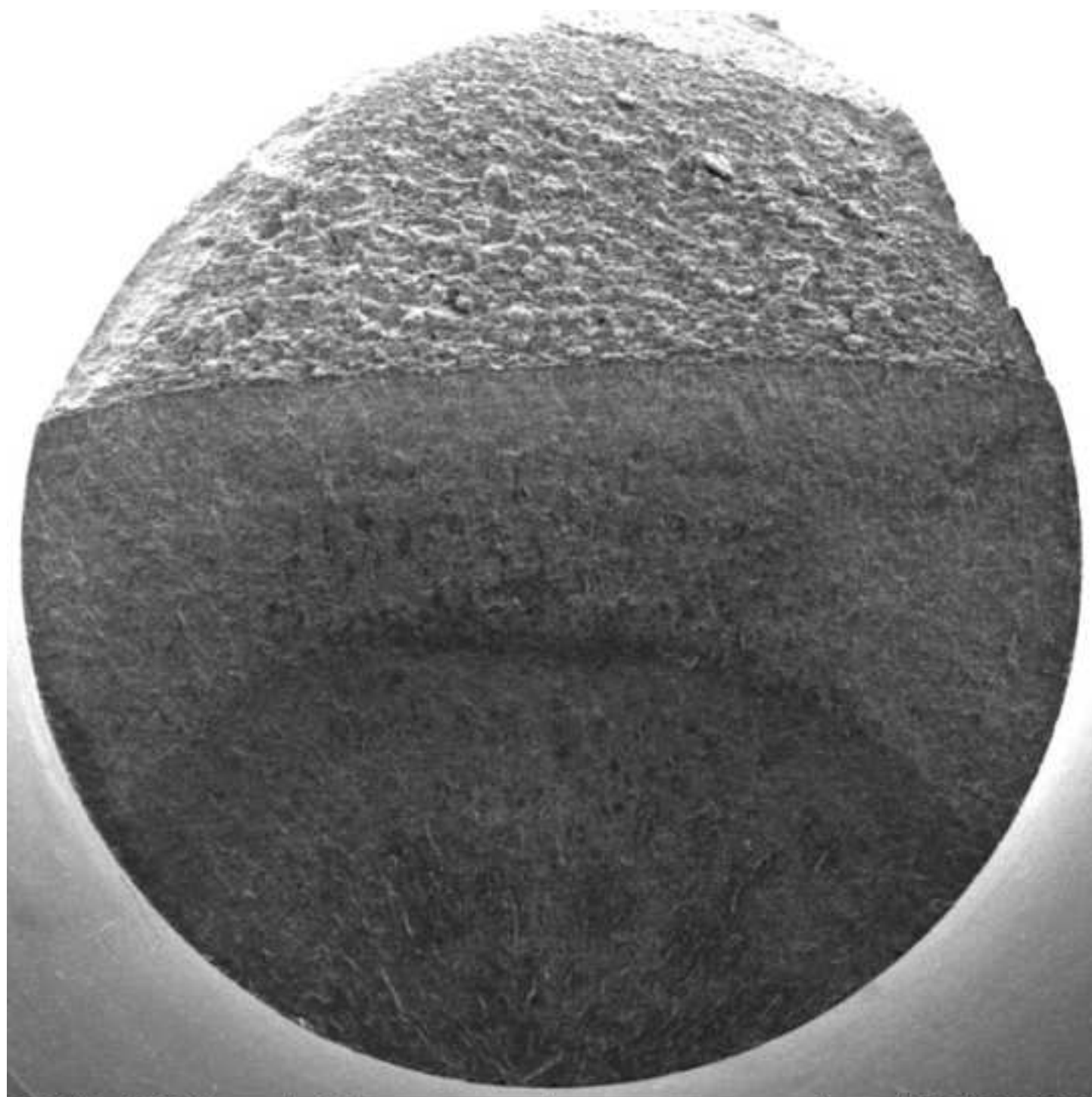


Figure 2





SEM HV: 30.00 kV
View field: 4.06 mm
WD: 15.39 mm

chmkmi
Det: SE Detector
SEM MAG: 53 x

1 mm

VEGA\\ TESCAN

Digital Microscopy Imaging



Figure 4

[Click here to download Figure4-Fracture_surface_AW7075-arrow.tif](#)

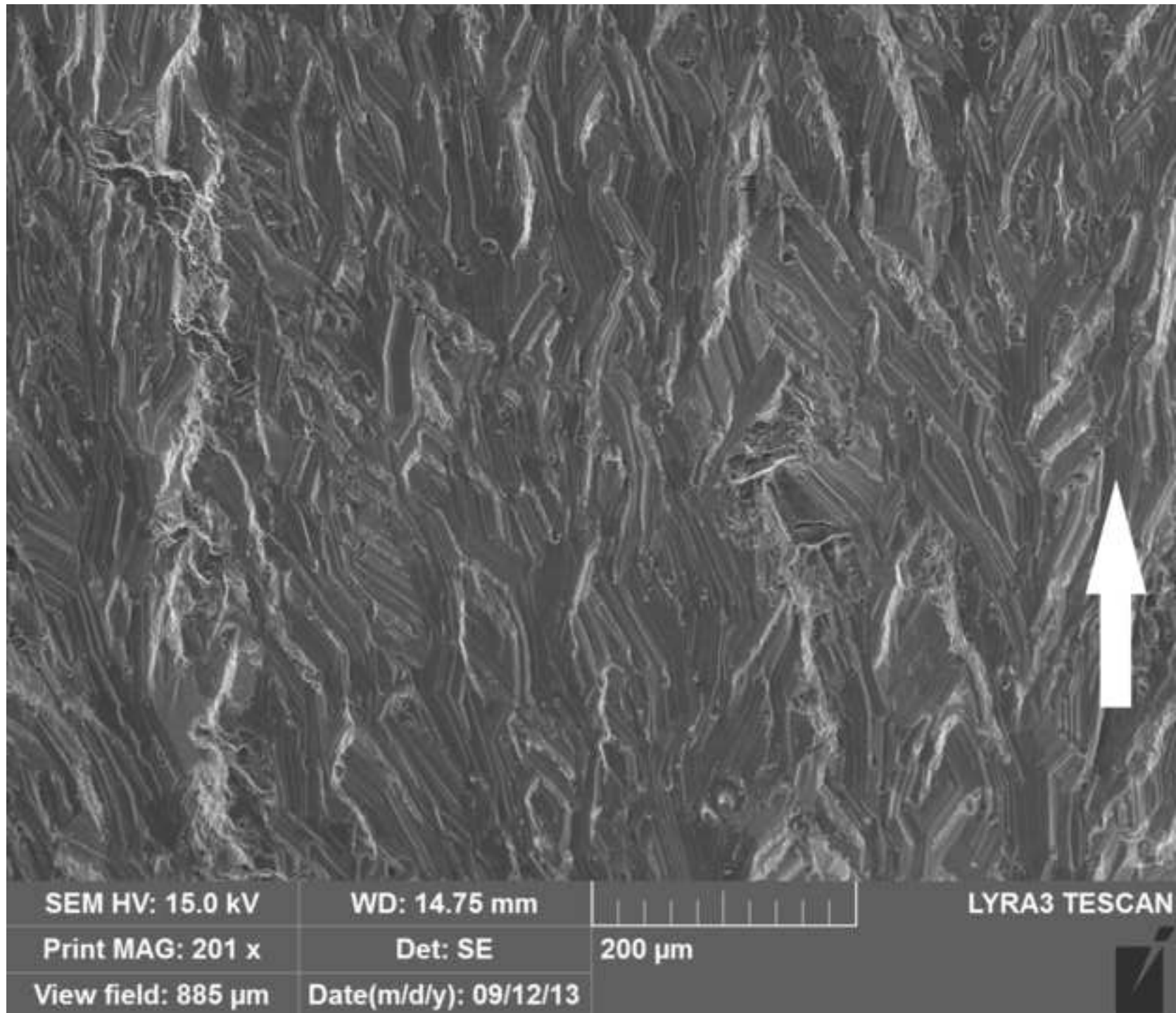
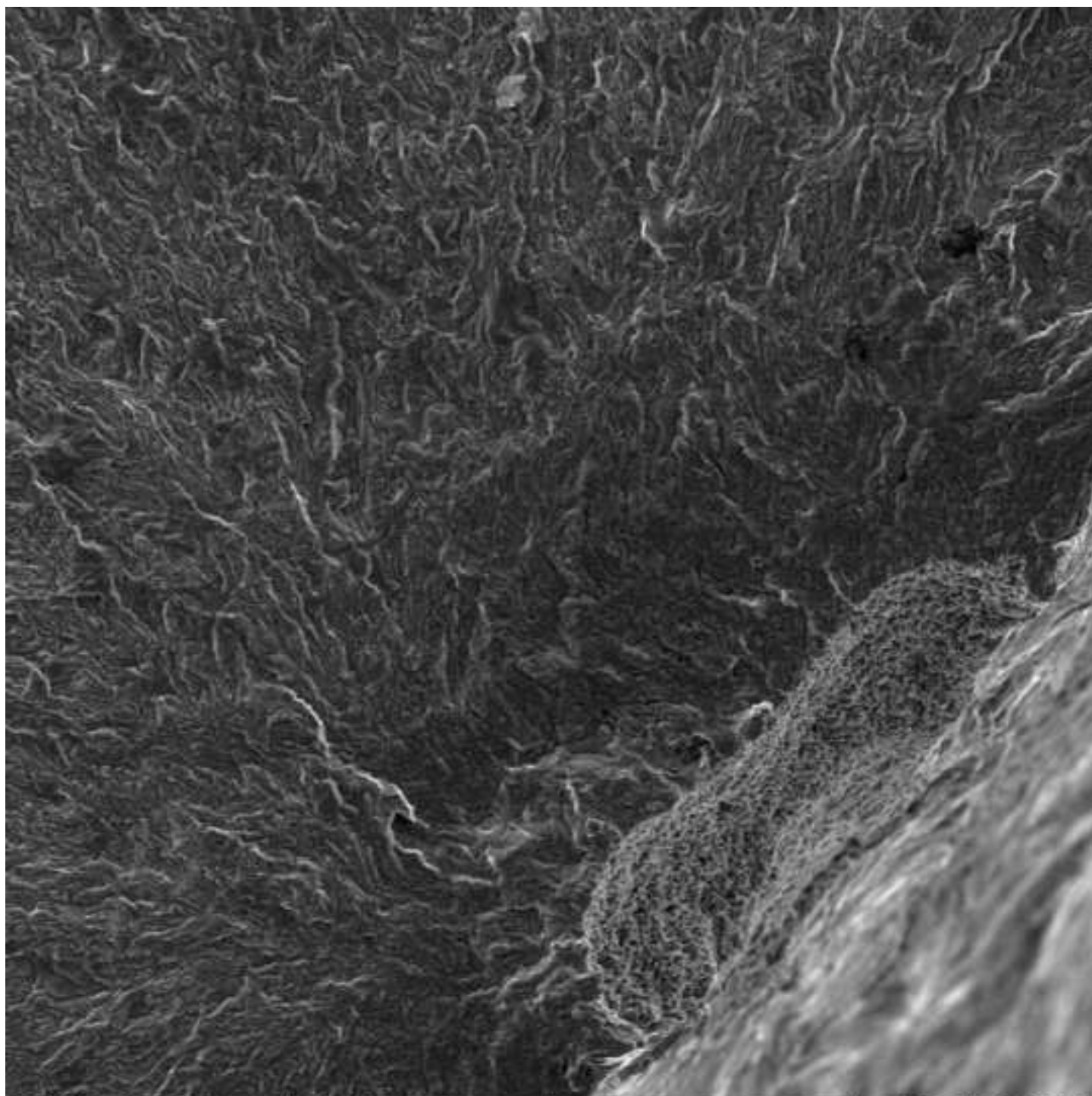


Figure 5

[Click here to download Figure Figure5-fracture_surface50CrMo4-with cavity.jpg](#)



SEM HV: 30.00 kV
View field: 723.8 μm
WD: 12.73 mm

chmkmi
Det: SE Detector
SEM MAG: 300 x

200 μm

VEGA\\ TESCAN

Digital Microscopy Imaging



Specimen No.	Stress amplitude (MPa)	Number of loading cycles	Result
1	449	1.22×10^7	Fracture
2	505	4.87×10^6	Fracture
3	421	2.08×10^7	Fracture
4	449	8.50×10^6	Fracture
5	421	1.59×10^7	Fracture
6	393	8.90×10^7	Fracture
7	365	1.22×10^8	Fracture
8	337	2.39×10^8	Fracture
9	337	5.55×10^8	Fracture
10	309	7.28×10^8	Fracture
11	365	1.97×10^8	Fracture

Name of Material/ Equipment	Company	Catalog Number	Comments/Description
Ultrasonic fatigue testing device	Lasur	-	20 kHz, used for fatigue tests
Nyogel 783	Nye Lubricants	-	Used as acoustic gel for connection of the parts of the ultrasoni
Win 20k software	Lasur	-	Software for operation of the Lasur fatigue testing machine

c system



1 Alewife Center #200
Cambridge, MA 02140
tel. 617.945.9051
www.jove.com

ARTICLE AND VIDEO LICENSE AGREEMENT

Title of Article:

Author(s):

Item 1 (check one box): The Author elects to have the Materials be made available (as described at <http://www.jove.com/author>) via: ☒ Standard Access ☐ Open Access

Item 2 (check one box):

- ☒ The Author is NOT a United States government employee.
- ☐ The Author is a United States government employee and the Materials were prepared in the course of his or her duties as a United States government employee.
- ☐ The Author is a United States government employee but the Materials were NOT prepared in the course of his or her duties as a United States government employee.

ARTICLE AND VIDEO LICENSE AGREEMENT

1. **Defined Terms.** As used in this Article and Video License Agreement, the following terms shall have the following meanings: “**Agreement**” means this Article and Video License Agreement; “**Article**” means the article specified on the last page of this Agreement, including any associated materials such as texts, figures, tables, artwork, abstracts, or summaries contained therein; “**Author**” means the author who is a signatory to this Agreement; “**Collective Work**” means a work, such as a periodical issue, anthology or encyclopedia, in which the Materials in their entirety in unmodified form, along with a number of other contributions, constituting separate and independent works in themselves, are assembled into a collective whole; “**CRC License**” means the Creative Commons Attribution-Non Commercial-No Derivs 3.0 Unported Agreement, the terms and conditions of which can be found at: <http://creativecommons.org/licenses/by-nc-nd/3.0/legalcode>; “**Derivative Work**” means a work based upon the Materials or upon the Materials and other pre-existing works, such as a translation, musical arrangement, dramatization, fictionalization, motion picture version, sound recording, art reproduction, abridgment, condensation, or any other form in which the Materials may be recast, transformed, or adapted; “**Institution**” means the institution, listed on the last page of this Agreement, by which the Author was employed at the time of the creation of the Materials; “**JoVE**” means MyJoVE Corporation, a Massachusetts corporation and the publisher of *The Journal of Visualized Experiments*; “**Materials**” means the Article and / or the Video; “**Parties**” means the Author and JoVE; “**Video**” means any video(s) made by the Author, alone or in conjunction with any other parties, or by JoVE or its affiliates or agents, individually or in collaboration with the Author or any other parties, incorporating all or any portion of the Article, and in which the Author may or may not appear.

2. **Background.** The Author, who is the author of the Article, in order to ensure the dissemination and protection of the Article, desires to have the JoVE publish the Article and create and transmit videos based on the Article. In furtherance of such goals, the Parties desire to memorialize in this Agreement the respective rights of each Party in and to the Article and the Video.

3. **Grant of Rights in Article.** In consideration of JoVE agreeing to publish the Article, the Author hereby grants to JoVE, subject to **Sections 4 and 7** below, the exclusive, royalty-free, perpetual (for the full term of copyright in the Article, including any extensions thereto) license (a) to publish, reproduce, distribute, display and store the Article in all forms, formats and media whether now known or hereafter developed (including without limitation in print, digital and electronic form) throughout the world, (b) to translate the Article into other languages, create adaptations, summaries or extracts of the Article or other Derivative Works (including, without limitation, the Video) or Collective Works based on all or any portion of the Article and exercise all of the rights set forth in (a) above in such translations, adaptations, summaries, extracts, Derivative Works or Collective Works and (c) to license others to do any or all of the above. The foregoing rights may be exercised in all media and formats, whether now known or hereafter devised, and include the right to make such modifications as are technically necessary to exercise the rights in other media and formats. If the “Open Access” box has been checked in **Item 1** above, JoVE and the Author hereby grant to the public all such rights in the Article as provided in, but subject to all limitations and requirements set forth in, the CRC License.

ARTICLE AND VIDEO LICENSE AGREEMENT

4. **Retention of Rights in Article.** Notwithstanding the exclusive license granted to JoVE in **Section 3** above, the Author shall, with respect to the Article, retain the non-exclusive right to use all or part of the Article for the non-commercial purpose of giving lectures, presentations or teaching classes, and to post a copy of the Article on the Institution's website or the Author's personal website, in each case provided that a link to the Article on the JoVE website is provided and notice of JoVE's copyright in the Article is included. All non-copyright intellectual property rights in and to the Article, such as patent rights, shall remain with the Author.

5. **Grant of Rights in Video – Standard Access.** This **Section 5** applies if the "Standard Access" box has been checked in **Item 1** above or if no box has been checked in **Item 1** above. In consideration of JoVE agreeing to produce, display or otherwise assist with the Video, the Author hereby acknowledges and agrees that, Subject to **Section 7** below, JoVE is and shall be the sole and exclusive owner of all rights of any nature, including, without limitation, all copyrights, in and to the Video. To the extent that, by law, the Author is deemed, now or at any time in the future, to have any rights of any nature in or to the Video, the Author hereby disclaims all such rights and transfers all such rights to JoVE.

6. **Grant of Rights in Video – Open Access.** This **Section 6** applies only if the "Open Access" box has been checked in **Item 1** above. In consideration of JoVE agreeing to produce, display or otherwise assist with the Video, the Author hereby grants to JoVE, subject to **Section 7** below, the exclusive, royalty-free, perpetual (for the full term of copyright in the Article, including any extensions thereto) license (a) to publish, reproduce, distribute, display and store the Video in all forms, formats and media whether now known or hereafter developed (including without limitation in print, digital and electronic form) throughout the world, (b) to translate the Video into other languages, create adaptations, summaries or extracts of the Video or other Derivative Works or Collective Works based on all or any portion of the Video and exercise all of the rights set forth in (a) above in such translations, adaptations, summaries, extracts, Derivative Works or Collective Works and (c) to license others to do any or all of the above. The foregoing rights may be exercised in all media and formats, whether now known or hereafter devised, and include the right to make such modifications as are technically necessary to exercise the rights in other media and formats. For any Video to which this Section 6 is applicable, JoVE and the Author hereby grant to the public all such rights in the Video as provided in, but subject to all limitations and requirements set forth in, the CRC License.

7. **Government Employees.** If the Author is a United States government employee and the Article was prepared in the course of his or her duties as a United States government employee, as indicated in **Item 2** above, and any of the licenses or grants granted by the Author hereunder exceed the scope of the 17 U.S.C. 403, then the rights granted hereunder shall be limited to the maximum rights permitted under such

statute. In such case, all provisions contained herein that are not in conflict with such statute shall remain in full force and effect, and all provisions contained herein that do so conflict shall be deemed to be amended so as to provide to JoVE the maximum rights permissible within such statute.

8. **Likeness, Privacy, Personality.** The Author hereby grants JoVE the right to use the Author's name, voice, likeness, picture, photograph, image, biography and performance in any way, commercial or otherwise, in connection with the Materials and the sale, promotion and distribution thereof. The Author hereby waives any and all rights he or she may have, relating to his or her appearance in the Video or otherwise relating to the Materials, under all applicable privacy, likeness, personality or similar laws.

9. **Author Warranties.** The Author represents and warrants that the Article is original, that it has not been published, that the copyright interest is owned by the Author (or, if more than one author is listed at the beginning of this Agreement, by such authors collectively) and has not been assigned, licensed, or otherwise transferred to any other party. The Author represents and warrants that the author(s) listed at the top of this Agreement are the only authors of the Materials. If more than one author is listed at the top of this Agreement and if any such author has not entered into a separate Article and Video License Agreement with JoVE relating to the Materials, the Author represents and warrants that the Author has been authorized by each of the other such authors to execute this Agreement on his or her behalf and to bind him or her with respect to the terms of this Agreement as if each of them had been a party hereto as an Author. The Author warrants that the use, reproduction, distribution, public or private performance or display, and/or modification of all or any portion of the Materials does not and will not violate, infringe and/or misappropriate the patent, trademark, intellectual property or other rights of any third party. The Author represents and warrants that it has and will continue to comply with all government, institutional and other regulations, including, without limitation all institutional, laboratory, hospital, ethical, human and animal treatment, privacy, and all other rules, regulations, laws, procedures or guidelines, applicable to the Materials, and that all research involving human and animal subjects has been approved by the Author's relevant institutional review board.

10. **JoVE Discretion.** If the Author requests the assistance of JoVE in producing the Video in the Author's facility, the Author shall ensure that the presence of JoVE employees, agents or independent contractors is in accordance with the relevant regulations of the Author's institution. If more than one author is listed at the beginning of this Agreement, JoVE may, in its sole discretion, elect not take any action with respect to the Article until such time as it has received complete, executed Article and Video License Agreements from each such author. JoVE reserves the right, in its absolute and sole discretion and without giving any reason therefore, to accept or decline any work submitted to JoVE. JoVE and its employees, agents and independent contractors shall have

ARTICLE AND VIDEO LICENSE AGREEMENT

full, unfettered access to the facilities of the Author or of the Author's institution as necessary to make the Video, whether actually published or not. JoVE has sole discretion as to the method of making and publishing the Materials, including, without limitation, to all decisions regarding editing, lighting, filming, timing of publication, if any, length, quality, content and the like.

11. **Indemnification.** The Author agrees to indemnify JoVE and/or its successors and assigns from and against any and all claims, costs, and expenses, including attorney's fees, arising out of any breach of any warranty or other representations contained herein. The Author further agrees to indemnify and hold harmless JoVE from and against any and all claims, costs, and expenses, including attorney's fees, resulting from the breach by the Author of any representation or warranty contained herein or from allegations or instances of violation of intellectual property rights, damage to the Author's or the Author's institution's facilities, fraud, libel, defamation, research, equipment, experiments, property damage, personal injury, violations of institutional, laboratory, hospital, ethical, human and animal treatment, privacy or other rules, regulations, laws, procedures or guidelines, liabilities and other losses or damages related in any way to the submission of work to JoVE, making of videos by JoVE, or publication in JoVE or elsewhere by JoVE. The Author shall be responsible for, and shall hold JoVE harmless from, damages caused by lack of sterilization, lack of cleanliness or by contamination due to the making of a video by JoVE its employees, agents or independent contractors. All sterilization, cleanliness or decontamination procedures shall be solely the responsibility of the Author and shall be undertaken at the Author's


expense. All indemnifications provided herein shall include JoVE's attorney's fees and costs related to said losses or damages. Such indemnification and holding harmless shall include such losses or damages incurred by, or in connection with, acts or omissions of JoVE, its employees, agents or independent contractors.

12. **Fees.** To cover the cost incurred for publication, JoVE must receive payment before production and publication the Materials. Payment is due in 21 days of invoice. Should the Materials not be published due to an editorial or production decision, these funds will be returned to the Author. Withdrawal by the Author of any submitted Materials after final peer review approval will result in a US\$1,200 fee to cover pre-production expenses incurred by JoVE. If payment is not received by the completion of filming, production and publication of the Materials will be suspended until payment is received.

13. **Transfer, Governing Law.** This Agreement may be assigned by JoVE and shall inure to the benefits of any of JoVE's successors and assignees. This Agreement shall be governed and construed by the internal laws of the Commonwealth of Massachusetts without giving effect to any conflict of law provision thereunder. This Agreement may be executed in counterparts, each of which shall be deemed an original, but all of which together shall be deemed to be one and the same agreement. A signed copy of this Agreement delivered by facsimile, e-mail or other means of electronic transmission shall be deemed to have the same legal effect as delivery of an original signed copy of this Agreement.

A signed copy of this document must be sent with all new submissions. Only one Agreement required per submission.

CORRESPONDING AUTHOR:

Name:	<input type="text" value="Libor Trško"/>	
Department:	<input type="text" value="Research Centre"/>	
Institution:	<input type="text" value="University of Žilina"/>	
Article Title:	<input type="text" value="Ultrasonic fatigue testing in the tension-compression mode"/>	
Signature:		Date: <input type="text" value="12th of July, 2017"/>

Please submit a signed and dated copy of this license by one of the following three methods:

- 1) Upload a scanned copy of the document as a pdf on the JoVE submission site;
- 2) Fax the document to +1.866.381.2236;
- 3) Mail the document to JoVE / Attn: JoVE Editorial / 1 Alewife Center #200 / Cambridge, MA 02139

For questions, please email submissions@jove.com or call +1.617.945.9051

The language needs thorough revision by a native English speaker. – After almost 2 months of waiting for the review you have given me 7 days for the corrections. Since I am abroad working on a partner university where I have limited machine time, I have done the best I could.

Reference? – added

Reference? – added

Please avoid using third person pronouns. – corrected Wöhler designed many unique fatigue testing machines but their disadvantage was low operation speeds, for example the fastest rotating bending machine operated at 72 rpm (1.2 Hz), thus completing of experimental program took 12 years¹.

Add to the table of materials. – this is a part of the Lasur ultrasonic testing system

What do you use? There is nothing you can use, you have sonotrodes with different geometry and each is calibrated for a different range of amplitudes. When you calculate the required stress according to the first half of the protocol you know which one to choose. Like when you want to loosen a nut. You measure that it has 10 mm so you take the 10 mm socket on wrench.

Add to the table of materials. – Again this is a part of the ultrasonic testing system.

Add to the table of materials. – Done

Add to the table of materials. – Done

Read or enter? – Read

What kind of specimen do you use? Add to the table of materials. - You use a specimen from a material which you want to test on resistance to cyclic loading. This method is for TESTING OF METALLIC MATERIALS PROPERTIES so you can use it for various materials, but each specimen has to be calculated and manufactured according to the resonance condition, which is described in points 1 and 2 of the protocol, manufacturing of the specimen is point 3. In the first round of review, reviewers suggest removing the specimen from the table of materials, because it is not essential to the method itself, so now I should add it back?

Do you mean „enter“? Also exactly what do you enter? You just use the lowest possible displacement amplitude for the particular sonotrode to see the resonance frequency and not damage the specimen. That is all, each type of sonotrode you choose has a different minimal loading amplitude so I cannot just write „Enter 4 μm “. This point results from point 4.1.

Every subsection should have 1 or steps under it. – corrected, the step is 5.2.3

Add to the table of materials. Please also highlighted either 6.1 or 6.2. – it is a part of the ultrasonic testing system

Add to the table of materials. Please also highlighted either 6.1 or 6.2. – it is a part of the ultrasonic testing system

How ? What is done here? What will you show? Every subsection should have 1 or steps under it. – step was added 7.1 Open the valve of the air stream and adjust the pressure in the interval between 0.5 and 1 bar.

What exactly do you enter? How many cycles? – Again half of the protocol is calculation of the specimen and the loading amplitude. The testing is based on using various testing amplitudes and recording the number of loading cycles to fracture. So the question „how many cycles“ is absurd, because that is what you are testing and what your result is.

What is done here? Please describe all the actions. It is unclear what we can show here. Please understand, that when the specimen breaks, the test stops, because when a crack is initiated it changes the resonance frequency of the system (the stiffness is different) and after certain length the system is not able to resonate and the test is naturally stopped. This was explained several times in the protocol.

What is done here? Please describe all the actions. It is unclear what we can show here. – substep was added 10. 1 Screw off the specimen from the ultrasonic sonotrode.

What is done here? Please describe all the actions. It is unclear what we can show here. As when the test is naturally stopped, some part of the cross section is not broken and you just need to finish it so you have two separate fracture surfaces for analysis. The only condition is that you keep the type of the loading vector. It is absolutely a basic thing to anyone who works in the field of fatigue. There is no exact process, for this, you can do it in your fingers if the holding cross section is small enough, or you can use some kind of hydraulic machine, or mechanical or anything that will separate the specimen on two parts. In the previous version I had the tensile testing Instron machine listed for this, however the reviewer requested to remove it because it is not essential to the test and it does not matter what type of machine you use. What should I do?

What is the strength of the force? – The force is just enough to create the final fracture of the specimen. This is not a part of the test which you need to control. It differs on each specimen.

? do you mean shifted? – Yes, thank you.

What is the pressure? – This was explained, there is absolutely no reason to record these values, they do not tell anything and have no meaning to the fatigue test itself.

It will be useful if an arrow can be added to point it out. – the whole image is from the area of fatigue crack propagation, an arrow was added to show the direction of the crack propagation. To Fig. 3 description was added: Arrow shows the direction of fatigue crack propagation.

Which liquid and at what temperature? - added distilled water with anti-corrosive inhibitor at room temperature

How long? – added (several hours)

Which liquid and at what temperature? – added (distilled water with anti-corrosive inhibitor at room temperature)

Note: Please understand, that ultrasonic fatigue testing machine is a custom made device and hundreds of modifications are often done in the testing laboratories. For testing of particular material the specimen's size and dimensions are modified to fulfill the resonance frequency. However, sometimes to be able to test a particular material you even modify the machine itself for example by manufacturing a special sonotrode. In this protocol was described a typical application of this device for tension-compression fatigue test setting, but still on some of your question there is no exact answer, because you always require some measure, but some points vary due to different material properties (for example enter the minimal displacement amplitude which is based on the sonotrode characteristic).