

# Journal of Visualized Experiments

## Movement-related changes in cortico-pallidal coupling revealed by simultaneous intracranial and magnetoencephalography recordings in dystonia patients

--Manuscript Draft--

<b>Article Type:</b>	Invited Methods Article - JoVE Produced Video
<b>Manuscript Number:</b>	JoVE56659R2
<b>Full Title:</b>	Movement-related changes in cortico-pallidal coupling revealed by simultaneous intracranial and magnetoencephalography recordings in dystonia patients
<b>Keywords:</b>	Deep Brain Stimulation; Dystonia; local field potentials; magnetoencephalography; beta oscillations; coherence; movement; basal ganglia
<b>Corresponding Author:</b>	Roxanne Lofredi Charite Universitätsmedizin Berlin Berlin, Berlin GERMANY
<b>Corresponding Author's Institution:</b>	Charite Universitätsmedizin Berlin
<b>Corresponding Author E-Mail:</b>	lofredi@googlemail.com
<b>First Author:</b>	Roxanne Lofredi
<b>Other Authors:</b>	Bernadette van Wijk Wolf-Julian Neumann Gerd-Helge Schneider Tilmann H. Sander Andrea A. Kühn
<b>Author Comments:</b>	
<b>Additional Information:</b>	
<b>Question</b>	<b>Response</b>
If this article needs to be "in-press" by a certain date, please indicate the date below and explain in your cover letter.	



CharitéCentrum für Neurologie, Neurochirurgie und Psychiatrie

Charité Campus Virchow-Klinikum|Augustenburger Platz 1|13353 Berlin

**Neurologische Klinik und Poliklinik  
Campus Virchow-Klinikum  
Augustenburger Platz 1**  
Direktor: Prof. Dr. M. Endres

**Neurologie AG Bewegungsstörungen**  
Leiterin: OA Prof. Dr. A. Kühn

Tel.: (030) 450-66 02 03  
Tel.: (030) 450-56 01 23 (Sekretariat)  
Fax: (030) 450-56 09 01  
E-Mail: [Andrea.Kuehn@charite.de](mailto:Andrea.Kuehn@charite.de)  
Homepage: [www.bewegungsstoerungen-charite.de](http://www.bewegungsstoerungen-charite.de)  
[www.charite.de/neurologie](http://www.charite.de/neurologie)

Date: 7. Dezember 2017

Dear Dr. Steindel,

Thank you very much for allowing us to resubmit the revised manuscript **"Movement-related changes in cortico-pallidal coupling revealed by simultaneous intracranial and magnetoencephalography recordings in dystonia patients"** as a video article for publication in *Journal of Visualized Experiments (JoVE)*. We are grateful for the thoughtful comments and have carefully addressed them in our rebuttal letter. We believe that the manuscript has gained significantly from the revision and hope that it is now acceptable for publication in JoVE.

Thank you very much for considering our manuscript for publication,

Best regards,

Dr. med. Roxanne Lofredi  
(Corresponding author)

**TITLE:**

**Movement-Related Changes in Cortico-Pallidal Coupling Revealed by Simultaneous Intracranial and Magnetoencephalography Recordings in Dystonia Patients**

**AUTHORS:**

Roxanne Lofredi<sup>1</sup>, Bernadette C.M. van Wijk<sup>1</sup>, Wolf-Julian Neumann<sup>1</sup>, Gerd-Helge Schneider<sup>2</sup>, Tilmann H. Sander<sup>3</sup>, Andrea A. Kühn<sup>1</sup>

<sup>1</sup>Movement Disorders and Neuromodulation Unit, Department of Neurology, Charité - Universitätsmedizin Berlin, Berlin, Germany

<sup>2</sup>Department of Neurosurgery, Charité - Universitätsmedizin Berlin, Berlin, Germany

<sup>3</sup>Physikalisch-Technische Bundesanstalt, Institut Berlin, Berlin, Germany

**CORRESPONDING AUTHOR:**

Andrea A. Kühn (andrea.kuehn@charite.de)

**EMAIL ADDRESSES OF CO-AUTHORS:**

Roxanne Lofredi (roxanne.lofredi@charite.de)

Bernadette C.M. van Wijk (bernadette.van-wijk@charite.de)

Wolf-Julian Neumann (julian.neumann@charite.de)

Gerd-Helge Schneider (gerd-helge.schneider@charite.de)

Tilmann H. Sander (Tilmann.Sander-Thoemmes@ptb.de)

**KEYWORDS:**

Deep brain stimulation, Dystonia, Local field potentials, Magnetoencephalography, Beta oscillations, Coherence, Beta oscillations, Movement, Basal ganglia

**SHORT ABSTRACT:**

Here, we describe how to combine simultaneous subcortical local field potential recordings and whole-head magnetoencephalography in patients with dystonia during the performance of a Stop-signal task. This method allows for the investigation of task-specific changes in network connectivity through changes in coherence.

**LONG ABSTRACT:**

Primary dystonia is a movement disorder characterized by involuntary twisting movements and abnormal postures. It has been hypothesized that the pathophysiology of dystonia may arise from disturbed oscillatory connectivity between distant brain regions. An experimental setup of simultaneous local field potential (LFP) recordings from deep brain nuclei (here, globus pallidus internus) and whole-head magnetoencephalography (MEG) enables the investigation of cortico-subcortical connectivity patterns in patients with dystonia who underwent implantation of deep brain stimulation (DBS) electrodes. Our group previously described resting connectivity in three spatially distinct and frequency-specific cortico-pallidal networks: pallido-temporal coherence in the theta band (4-8 Hz), pallido-cerebellar coherence in the alpha band (7-13 Hz) and pallido-sensorimotor coherence in the beta band (13-30 Hz). The experimental approach also allows for

investigation of task-specific changes in coherence between cortical and subcortical structures during motor processing. The methodology can easily be extended to emotional or cognitive processing, thereby opening a wide window for new research questions. Here, we demonstrate an investigation of pallido-sensorimotor beta band coherence during movement in a single illustrative patient.

## **INTRODUCTION:**

Patients with dystonia suffer from sustained or intermittent muscle contractions and abnormal posturing, sometimes accompanied by tremor<sup>1</sup>. Although it is suggested that dystonia is most likely associated with basal ganglia dysfunction<sup>2</sup>, abnormal brain activity has recently been identified in a wider network of regions including the cortex, cerebellum, brainstem and spinal cord<sup>3</sup>. While first line therapy for focal dystonia remains chemical denervation with botulinum toxin, pallidal deep brain stimulation (DBS) is a successful therapeutic option for otherwise refractory or complex cases<sup>4,5</sup>.

Externalization of DBS electrodes for clinical test stimulation before connection to the pulse generator gives the unique opportunity of recording electrophysiological activity from the target area. Such local field potential (LFP) recordings of the globus pallidus internus (GPi) revealed a characteristic increase in local low frequency (4 – 8 Hz) activity in dystonia<sup>6,7</sup>. Given that pallidal low-frequency oscillations temporally lead dystonic muscle activity, it has been suggested that they may play a causal role in dystonic symptom generation<sup>8</sup>. However, it is unclear whether the increased synchronization in GPi is accompanied by altered functional connectivity between brain areas.

Recently, a few research centers have started to use subcortical LFP recordings via DBS electrodes in combination with simultaneous whole-head magnetoencephalography (MEG) to study the electrophysiology of functional connections within the cortico-basal ganglia network in patients undergoing DBS for movement disorders<sup>9–13</sup>. Functional connectivity can be assessed through coherence of two signals, which quantifies their degree of oscillatory synchronization and can be interpreted as interaction or communication between brain areas<sup>14</sup>. Using this technique, we have previously identified a frequency-specific and spatially-distinct cortico-pallidal source of beta band coherence (13–30 Hz) over sensorimotor areas in dystonia patients at rest, as well as a pallido-temporal source of theta band (4–8 Hz) coherence and a pallido-cerebellar source of alpha band (7–13 Hz) coherence<sup>9</sup>. To investigate the role of sensorimotor beta coherence for movement generation, we used simultaneous GPi-LFP and MEG recordings in patients with dystonia while they performed a Stop-signal task and focused on movement-related changes in coherence<sup>13</sup>. In the following protocol, we describe this experimental approach in detail for one patient (female, age 48) with generalized dystonia with prominent lower body involvement who underwent implantation of pallidal DBS electrodes at the neurosurgery department of Charité – Universitätsmedizin Berlin.

## **PROTOCOL:**

The study was approved by the local ethics committee of the Charité - University Medicine Berlin, Campus Virchow Klinikum, and was conducted in accordance with the declaration of Helsinki.

## 1. Patient Selection and Preparation of Experiment

1.1. Identify appropriate subjects for study: subjects who have been referred for pallidal DBS because of focal, segmental or generalized dystonia. Exclude patients with 1) severe phasic head movements or head tremor to avoid movement artifacts in the MEG recordings, 2) implanted metallic medical devices to avoid artifacts in the MEG recordings, or 3) an inability to give informed consent.

1.2. Conduct the experiment in the time interval between surgical implantation of the DBS electrodes and the implantation of the pulse generator device 5-7 days later.

Note: The DBS electrodes are externalized during this time and can therefore be used for intracerebral recordings.

1.3. Inform the patient about the possibility to partake in a scientific experiment and explain the experimental procedure the day after the DBS-electrode implantation. Hand over an information sheet about the experiment. Sign informed consent forms at least 24 hours later to ensure that the patient has enough time to consider his/her participation.

Note: Participating in the experiment does not bring additional risks for the patient and does also not delay the onset of their treatment.

1.4. The day before recordings, train the subject with a block (100 trials) of the experimental paradigm. The presented results here are from a Stop-signal task (**Figure 1**):

1.4.1. Have the subjects hold an MEG-compatible response box in each hand, of which one button is used. Use professional experiment presentation software using a custom-written script to present stimuli.

1.4.2. Start each trial with a black fixation cross against a white background. After a variable delay of 4-6 s, present the Go-signal, a double arrow pointing towards the left or right. Instruct the subject to respond as quickly as possible by pressing the button with the index finger of the corresponding hand.

1.4.3. In 33% of the trials, present a Stop-signal, a red box around the Go-signal, at a variable delay after the Go-signal. In this case, instruct the subject to withhold the button press and wait for the next trial.

1.4.4. Update the Stop-signal delay value in a trial-by-trial fashion via a staircase procedure to ensure 50% performance accuracy. Increase the delay by 50 ms after a successful Stop trial, and decrease by 50 ms after a Stop trial in which the subject fails to inhibit their response.

1.4.5. Display the Go-signals until a response has been made or for a maximum duration of 1 s.

133  
134 1.4.6. Proceed with the next trial until the end of the experimental block.  
135

136 1.5. For information on precise localizations of DBS electrodes within the pallidum, use the Lead-  
137 DBS toolbox: 1) fuse preoperative and postoperative magnetic resonance images (MRI) or  
138 computed tomography (CT) scans, 2) normalize to Montreal Neurological Institute (MNI) space,  
139 and 3) map electrode contacts to a normalized subcortical atlas (for detailed information see Horn  
140 and Kühn, 2015<sup>15</sup>).  
141

## 142 **2. Preparation of LFP-MEG Setup**

143  
144 2.1. Accompany the subject to the MEG facility in presence of a medical doctor.  
145

146 2.2. Upon arrival, ask the subject and the medical doctor to take off all removable metal objects.  
147

148 2.3. Put on medical gloves and carefully remove the bandage around the percutaneous wires on  
149 the subject's head. Clean the electrode wires and external connectors from blood and iodine  
150 residuals and apply disinfection spray on the externalized materials.

151 2.4. Locate the nasion and left and right pre-auricular points and place the three head position  
152 coils there.

153 2.5. Clean and abrade the skin (~2 cm) and apply contact gel above the eyes for placement of  
154 electro-oculography (EOG) electrodes at 2 cm above the right eye and 1 cm to the right of the  
155 right canthus. Proceed likewise on the first dorsal interosseous muscle of the left and right hand.  
156 Place one electromyography (EMG) electrode on the belly of the muscle between index finger and  
157 thumb, and another on the metacarpophalangeal joint of the index finger.  
158

159 2.6. Fix the head positions coils, EOG and EMG electrodes with bandage material.  
160

161 2.7. Guide the subject into the magnetically shielded room and gently place the subject into a  
162 supine position with the head inside the MEG helmet. Leave a medically trained professional in  
163 the magnetically shielded room during the experiment seated in the corner of the room at a  
164 distance of 2.5 m from the MEG helmet. The subject and the medically trained professional should  
165 wear clothing free of any metal.  
166

167 2.8. Instruct the subject to avoid movement other than the button presses on the non-magnetic  
168 response boxes.  
169

170 Note: These boxes are compatible with MEG, as they are made solely of glass fibers and plastics.  
171

172 2.9. Connect the externalized DBS, EOG and EMG electrodes to an electroencephalography (EEG)  
173 amplifier integrated with the MEG. Connect the response boxes to the personal computer outside  
174 the shielded room running the experiment presentation software.

Note: The EEG amplifier used for recordings from the externalized DBS electrodes must be designed, safety tested, and validated to class BF (body floating).

2.10. Make sure the subject is in a comfortable position and feels at ease within the room as some subjects may suffer from claustrophobia. Emphasize that the subject may indicate a wish to stop the experiment at any time, for example when they feel very fatigued. In that case, terminate the recordings.

2.11. Exit and close the magnetically shielded room. Give instructions to the subject through an integrated intercommunication system.

### **3. Recording LFP and MEG Signals**

3.1. Start the MEG data acquisition software and switch on the amplifiers and the SQUID sensors of the MEG through the control software.

3.2. Set the parameters in the data acquisition software for a continuous and synchronous recording of pallidal LFP, EOG, EMG, MEG, stimulus trigger, and response button signals. Settings of the EEG and MEG channels are a high-pass filter (in hardware) of 0.1 Hz and a low-pass filter of 250 Hz. Set sampling rate to 2 kHz.

3.3. Use the MEG control software to activate the head position coils to measure the head position in the MEG helmet. Repeat this measurement between blocks to assess head movement.

3.4. Record the LFP signals using a common reference connected to the lowermost contact of the left DBS electrode. Offline re-referencing yields bipolar signals (c.f. section 4)

3.5. Run the presentation software. The visual stimuli are generated by a separate computer with the presentation software installed. This generates the timing and sequence of visual stimuli that are projected from outside the shielded room onto a translucent glass panel that is visible to the subject at 20 cm distance from the subject's head.

3.6. Run the first recording, which is a three-minute rest recording that measures the outputs listed in step 3.2. Instruct the subject to keep their eyes open and to fixate their gaze at a fixation cross that is displayed on the glass panel. Measure the head position before and after the rest recording.

3.7. Next, run the task-specific recording. Instruct the subject that this recording will require performing the task as previously trained (see step 1.4). Also, instruct the subject to keep their head and body as still as possible during the recording. Measure the head position before and after the task.

3.8. Record during task participation in 2 blocks of 100 trials. Between blocks, propose rest time

to the subject if needed.

#### 4. Preprocessing of MEG and LFP Recordings

4.1. Analyze recorded data sets in a numerical computing environment using custom scripts and functions from SPM12 (<http://www.fil.ion.ucl.ac.uk/spm/>)<sup>16</sup>, DAiSS (<https://github.com/spm/DAiSS>) and Fieldtrip-20170307 (<http://www.ru.nl/neuroimaging/fieldtrip/>)<sup>17</sup> toolboxes.

Note: Mentioned toolboxes are recommendations. It is of course also possible to analyze the data with software and toolboxes of your choice.

4.2. Read the raw signals into the computing environment (function: `spm_eeg_convert.m`).

4.3. Visualize all data to inspect signal quality and correct channel assignments (function: `spm_eeg_review.m`).

4.4. Re-reference the LFP signals to bipolar montages by subtraction of recordings from adjacent contacts to limit effects of volume conduction. Include all contact pairs in further data analysis to avoid selection bias.

4.5. Down-sample the data to 1 kHz (function: `spm_eeg_downsample.m`) and apply notch filters at 50 Hz and higher-order harmonics to eliminate power line noise with fifth order zero-phase Butterworth filters (function: `spm_eeg_filter.m`).

4.6. Divide recordings into trials of 7 s length around movement onset (function: `spm_eeg_epochs.m`).

4.7. Discard trials with LFP amplitude values exceeding 7 standard deviations around the mean, as they are likely to be artifacts.

4.8. Consider a segment saturated when the differences between adjacent samples stays <5 fT for ≥10 consecutive samples. Exclude channels when >20% of the epochs are contaminated by these artifacts (function: `spm_eeg_artefact.m`). Note: The MEG system used here has a rather low dynamic range which results in intermittent saturations in some channels that are close to the wires.

4.9. Visually inspect all data after artifact rejection to ensure sufficient control of artifacts (see 4.3).

4.10. For characterization of movement-related changes in sensorimotor cortico-pallidal coherence, include only Go-trials with successful motor response as determined from the response button channels.



## 5. Characterization of LFP-MEG Coherence

5.1. Compute coherence between bipolar GPI-LFP and MEG epoched data via Welch's method with 50% overlapping 250 ms Hanning windows<sup>18</sup> using all available data (function: ms\_cohere.m). Visualize results for the a-priori chosen beta frequency range (13-30 Hz) as a topography (function: ft\_topoplotTFR.m).

5.2. Ensure that for each LFP channel the five MEG sensors with largest coherence values are selected.

5.3. Re-compute coherence spectra for a time interval before movement (-3 s to 1 s, defined as 'rest') and a time window during movement (-1 s to 1 s) using the selected LFP-MEG channel combinations.

5.4. Average resulting coherence spectra for left- and right-hand conditions to show the difference between rest and movement time intervals for the LFP electrodes of one hemisphere (see **Figure 2**).

5.5. Check whether the head localization measurements before and after the rest recording have been performed successfully. This is achieved if the goodness-of-fit is at least 98%. Create a head model based on the inner skull derived from the subjects MRI with marked fiducial points (using SPM).

5.6. Use the DICS (dynamic imaging of coherent sources) beamforming method for identification of the underlying source of the beta coherence seen on sensor level in resting data (using DAiSS). Compute coherence values on a 3D grid in MNI space and use linear interpolation at the grid points to produce volumetric images with 2 mm resolution. Visualize the result in 3D (see **Figure 3**).

## 6. Statistics

6.1. In case the experiment is repeated for additional subjects, perform paired-samples t-tests on the coherence spectra to test for significant changes in coherence between rest and movement<sup>13</sup>.

6.2. Obtain group-level statistics for the source localization by comparing real and surrogate coherence images in a fixed-effect ANOVA with subject and side as additional factors<sup>9</sup>.

## REPRESENTATIVE RESULTS:

The presented data here stems from a female patient, 48 years old, presenting with generalized dystonia (preoperative Burke van Marsden Dystonia Rating Score<sup>19</sup> of 19) and a disease duration of 20 years. Results from this subject show lateralized coherence in the averaged beta band (13-30 Hz) for MEG channels overlying ipsilateral sensorimotor areas when averaged across the entire trial (-3 to +3 s around movement onset); see **Figure 2**, upper panel.

When assessing the entire coherence spectrum averaged across the selected LFP-MEG channel combinations, a distinct coherence peak can be identified at 18 Hz. This shows that sensorimotor cortico-pallidal coherence is specifically present in the beta band. During movement, coherence in the beta frequency range decreased compared to rest. This decrease is more accentuated in frequencies of the low-beta range (13-20 Hz); see **Figure 2**, lower panel.

For the same patient, the source of the beta band coherence at rest was localized using beamforming. A peak was found in the sensorimotor cortex, as seen in **Figure 3**.

#### **FIGURE LEGENDS:**

**Figure 1: Scheme of Stop-signal Task.** For detailed description see Protocol step 1.4. Only Go-trials with button presses were used to investigate movement-related changes in coherence between the left GPi and cortex.

**Figure 2: Beta band coherence.** Upper panel: Beta band (13-30 Hz) coherence between the left GPi and cortex could be observed at rest for MEG channels overlying ipsilateral sensorimotor areas (nose at top, sensors indicated by black dots). Red colors indicate stronger coherence values. Lower panel: Beta band coherence was found to decrease during movement compared to rest. Shown is the coherence spectrum averaged across selected left-hemisphere LFP-MEG channel combinations and left- and right-hand movement conditions. The blue line indicates average coherence before movement onset and the green line coherence during movement (-1 to +1 s around movement onset).

**Figure 3: Dynamic Imaging of Coherent Sources (DICS) beamforming.** DICS beamforming was used to localize the anatomical source of cortico-pallidal coherence for the same subject as presented in **Figure 1**. A spatially and spectrally focal peak of coherence was found in the ipsilateral sensorimotor cortex (red colors indicate higher coherence values).

#### **DISCUSSION:**

In this article we show how to perform simultaneous subcortical LFP recordings and whole-head MEG for the identification of frequency- and task-related changes in functional connectivity.

The externalization of DBS-electrodes in a short post-operative interval gives the unique opportunity of recording subcortical local activity from the DBS-target structure. A major difficulty in the attempt of simultaneously recording from those externalized leads within the MEG may consist of the occurrence of high-amplitude artifacts originating from the percutaneous extension wires. However, Litvak *et al.* (2010)<sup>20</sup> have shown that these artifacts can be suppressed by using beamforming methods.

Our experimental procedure is demonstrated with an example of a simple, visually cued reaction time task in dystonia patients with externalized pallidal DBS leads allowing for subcortical LFP recordings in parallel with whole-head MEG. Representative results of one subject revealed a movement-related decrease in cortico-pallidal coherence estimates in the beta frequency band that was most pronounced in the low-beta range and localized over ipsilateral sensorimotor areas.

We have recorded both the movement-related and the rest activity in a group of subjects (n=9) with various subtypes of dystonia (cervical, segmental and generalized). Across patients, cortico-pallidal beta-band coherence significantly decreased before and during movement. For the low-beta frequencies (13-21 Hz), this decrease correlated with subjects' reaction time. For detailed information, see van Wijk *et al.* (2017)<sup>13</sup>. The source reconstruction of cortico-pallidal beta band coherence in the resting state as reported here for a single subject is also consistent across patients, as reported in Neumann *et al.* (2015)<sup>9</sup>.

It has to be kept in mind that these results derive from a population cohort with severe movement disorders. Indeed, the invasive nature of intracerebral recordings does not allow the comparison of results to a healthy control group. Instead, the occurrence of similar electrophysiological activity patterns across different pathologies (*e.g.*, Dystonia and Parkinson's disease) may suggest the generalizability of certain phenomena to the physiological brain. Also, subjects may be tired in the post-operative interval and therefore have difficulties in performing experimental tasks that are cognitively very demanding. The willingness and patience of the subject are a critical factor in the protocol to which the investigator should be attentive.

Another limitation when reporting results from human brain recordings is the presumption that the recorded signal stems from a specific brain structure which cannot be verified histologically. Therefore, one can only rely on indirect verification of the electrode locations. Intraoperatively, multi-unit activity can be recorded that displays a structure-specific activity pattern. Clinically effective macrostimulation provides additional evidence for correct electrode placement. Post-operatively, the toolbox "Lead-DBS" (<http://www.lead-dbs.org/>) permits localization of DBS-electrodes by fusing pre- and post-operative images before normalizing to MNI space, which allows for comparison of electrode placement to subcortical atlases.

Those limitations and critical steps kept in mind, the combination of intracerebral recordings with whole-head MEG covers a very large part of the cortico-subcortical network. MEG is especially well suited for this experimental set-up when compared to electroencephalography (EEG), as it lacks any contact to the skin. Given that recordings can be realized only in a brief post-operative interval, patients still present with wounds and bandages which makes an EEG with equal spatial resolution to a 125 channel MEG very difficult to obtain. In addition, MEG signals are less disturbed by skull holes compared to EEG signals<sup>21</sup>, and therefore require less detailed head models for accurate source localization.

Summing up, we showed how cortico-pallidal beta coherence decreases during movement in an example subject. We described how to study functional connectivity between subcortical and cortical structures using simultaneous LFP and MEG recordings in patients with implanted DBS electrodes. LFP-MEG recordings from subjects with different medical conditions are very valuable for our understanding of both pathological and physiological functional connectivity between distant brain regions and its specific changes related to motor, cognitive or emotional tasks. Moreover, future developments may allow LFP-MEG recordings during deep brain stimulation<sup>22</sup>, which would shed light on the still poorly understood mechanisms underlying the therapeutic

success of deep brain stimulation.

#### ACKNOWLEDGMENTS:

The authors want to thank the German Research Foundation (DFG) for supporting this work with a grant for clinical research group “KFO247”.

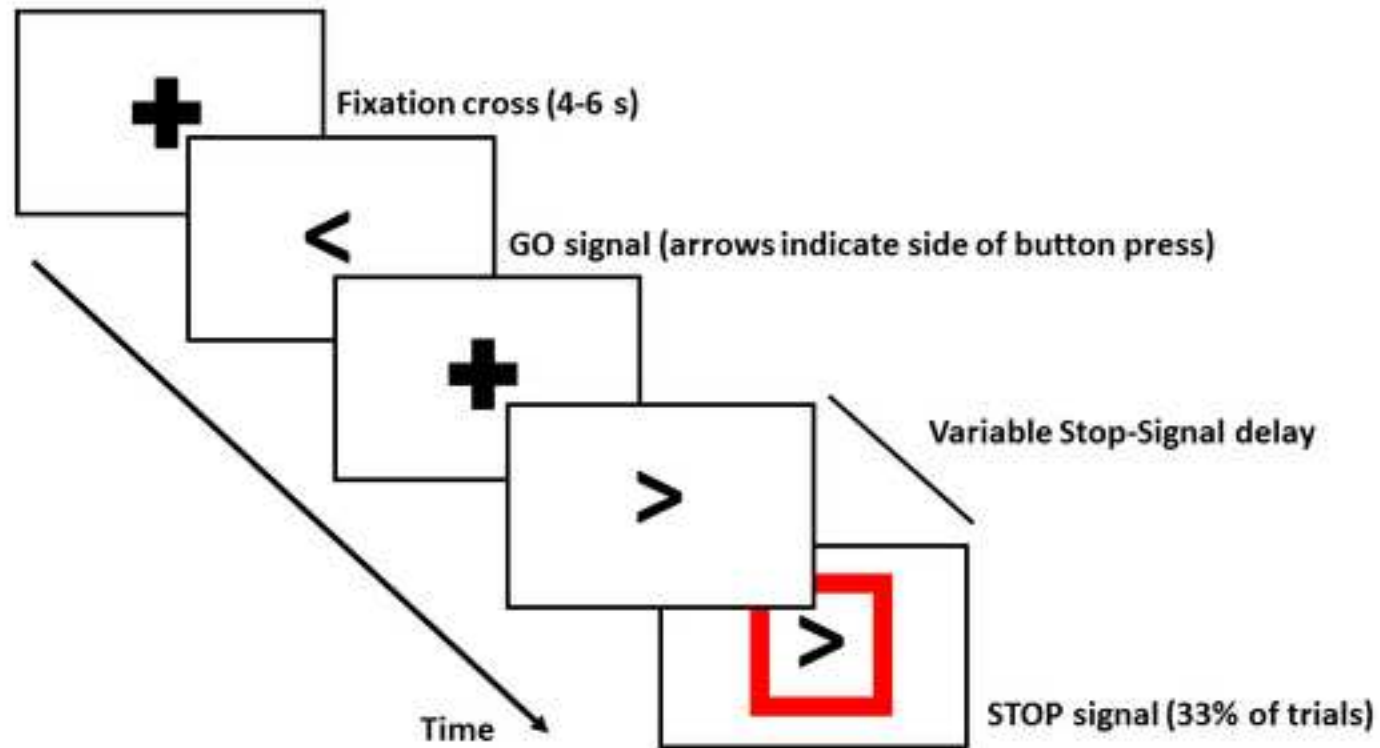
#### DISCLOSURES:

The authors have nothing to disclose.

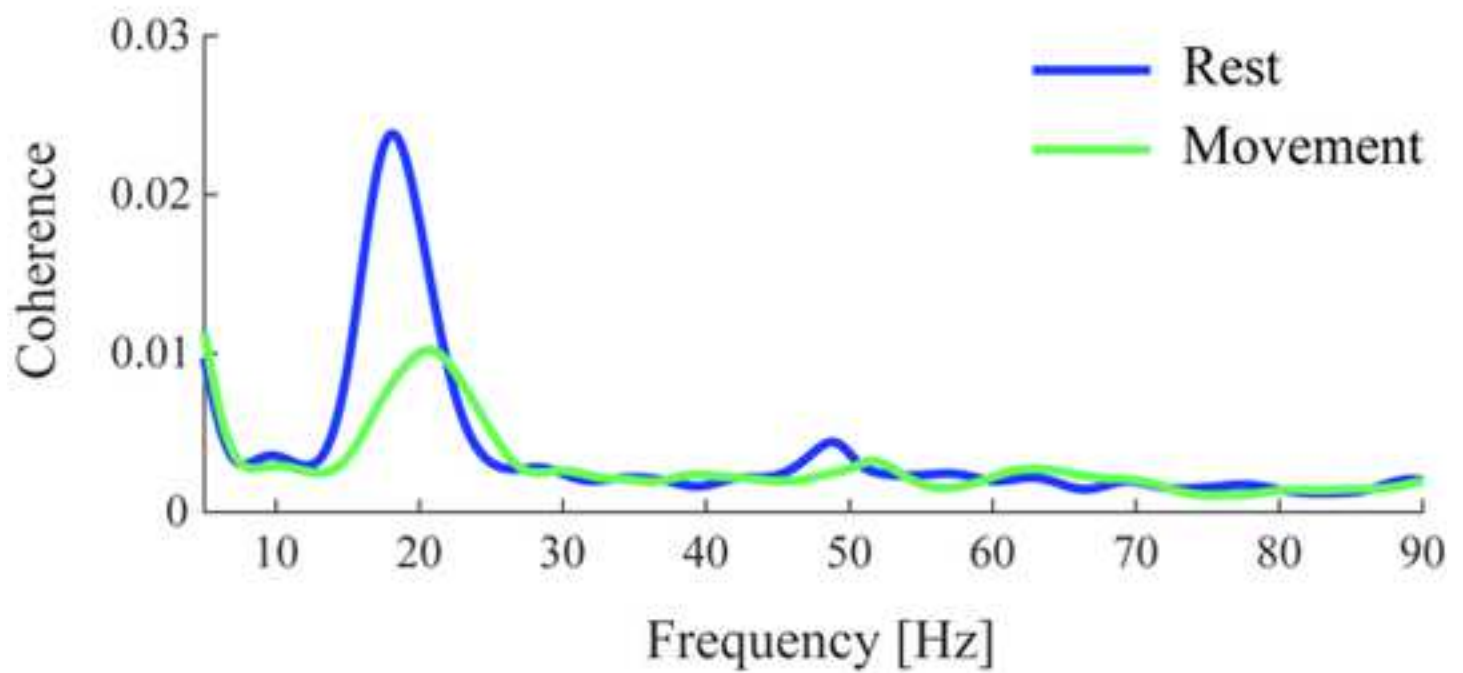
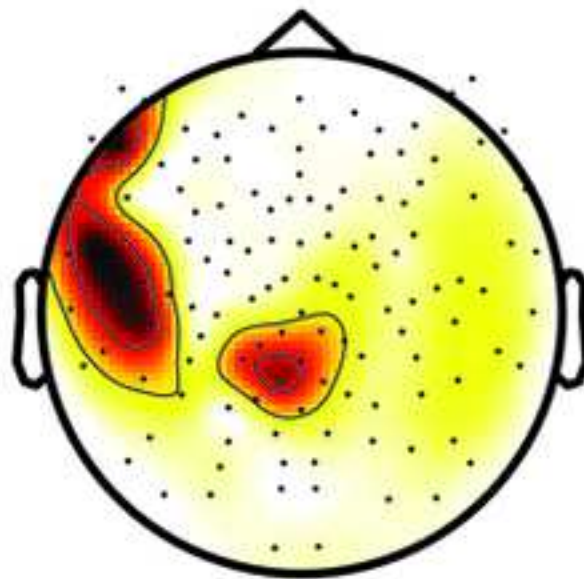
#### REFERENCES:

1. Albanese, A. *et al.* Phenomenology and classification of dystonia: a consensus update. *Mov. Disord.* **28**, 863–873 (2013).
2. Hallett, M. in *Parkinson's Disease and Related Disorders* (eds. Riederer, P., Reichmann, H., Youdim, M. B. H. & Gerlach, M.) 485–488 (Springer Vienna, 2006). doi:10.1007/978-3-211-45295-0\_72
3. Hendrix, C. M. & Vitek, J. L. Toward a network model of dystonia. *Ann. N. Y. Acad. Sci.* **1265**, 46–55 (2012).
4. Kupsch, A. *et al.* Pallidal deep-brain stimulation in primary generalized or segmental dystonia. *N. Engl. J. Med.* **355**, 1978–1990 (2006).
5. Volkmann, J. *et al.* Pallidal deep brain stimulation in patients with primary generalised or segmental dystonia: 5-year follow-up of a randomised trial. *Lancet Neurol.* **11**, 1029–1038 (2012).
6. Silberstein, P. *et al.* Patterning of globus pallidus local field potentials differs between Parkinson's disease and dystonia. *Brain* **126**, 2597 (2003).
7. Liu, X. *et al.* The sensory and motor representation of synchronized oscillations in the globus pallidus in patients with primary dystonia. *Brain* **131**, 1562 (2008).
8. Sharott, A. *et al.* Is the synchronization between pallidal and muscle activity in primary dystonia due to peripheral afference or a motor drive? *Brain* **131**, 473 (2008).
9. Neumann, W. *et al.* Cortico-pallidal oscillatory connectivity in patients with dystonia. *Brain* **138**, 1894–1906 (2015). doi:10.1093/brain/awv109
10. Litvak, V. *et al.* Movement-related changes in local and long-range synchronization in parkinson's disease revealed by simultaneous magnetoencephalography and intracranial recordings. *J. Neurosci.* **32**, 10541–10553 (2012).
11. Hirschmann, J. *et al.* Differential modulation of STN-cortical and cortico-muscular coherence by movement and levodopa in Parkinson's disease. *Neuroimage* **68**, 203–213 (2013).
12. Litvak, V. *et al.* Resting oscillatory cortico-subthalamic connectivity in patients with Parkinson's disease. *Brain* **134**, 359 (2011).
13. van Wijk, B. C. M. *et al.* Low-beta cortico-pallidal coherence decreases during movement and correlates with overall reaction time. *Neuroimage* **159**, 1–8 (2017).
14. Fries, P. Rhythms for cognition: Communication through coherence. *Neuron* **88**, 220–235 (2015).
15. Horn, A. & Kühn, A. A. Lead-DBS: a toolbox for deep brain stimulation electrode localizations and visualizations. *Neuroimage* **107**, 127–135 (2015).

- 438 16. Litvak, V. *et al.* EEG and MEG data analysis in SPM8. *Comput. Intell. Neurosci.* **2011**, (2011).
- 439 17. Oostenveld, R., Fries, P., Maris, E. & Schoffelen, J.-M. FieldTrip: Open source software for  
440 advanced analysis of MEG, EEG, and invasive electrophysiological data. *Comput. Intell.*  
441 *Neurosci.* **2011**, 156869 (2011).
- 442 18. Welch, P. Fast Fourier transform for the estimation of power spectra: A method based on  
443 time averaging over short, modified periodograms. *IEEE Trans. Audio Electroacust.* **15**, 70–  
444 73 (1967).
- 445 19. Comella, C. L., Leurgans, S., Wu, J. & Stebbins, G. T. Rating scales for dystonia : A  
446 multicenter assessment. *Mov. Disord.* **18**, 303–312 (2003).
- 447 20. Litvak, V. *et al.* Optimized beamforming for simultaneous MEG and intracranial local field  
448 potential recordings in deep brain stimulation patients. *Neuroimage* **50**, 1578–1588 (2010).
- 449 21. Lau, S., Flemming, L. & Haueisen, J. Magnetoencephalography signals are influenced by  
450 skull defects. *Clin. Neurophysiol.* **125**, 1653–1662 (2014).
- 451 22. Oswal, A. *et al.* Analysis of simultaneous MEG and intracranial LFP recordings during Deep  
452 Brain Stimulation: A protocol and experimental validation. *J. Neurosci. Methods* **261**, 29–  
453 46 (2016).
- 454
- 455



**Beta coherence (13-30Hz)**  
**Left GPI**









Name of Material/ Equipment	Company
Magnetoencephalogram/ MEG Vision	formerly Yokogawa, now Ricoh systems
Deep Brain Stimulation Macroelectrodes and percutaneous extension wires	Medtronic
Matlab R2015a	Mathworks
Presentation Software	Neurobehavioral Systems
Supervisc EEG Gel	MedCat GmbH
Medical gloves	Vinyl 2000 PF

Catalog Number	Comments/Description
not released yet	Yokogawa transferred the MEG business to Ricoh Company, Ltd. on 1st April, 2016.
DBS 3387 Lead Kit for Deep brain stimulation	<a href="http://www.medtronic.com">www.medtronic.com</a>
Online	<a href="https://de.mathworks.com/store">https://de.mathworks.com/store</a>
Online	<a href="http://www.neurobs.com/menu_licensing/prices">http://www.neurobs.com/menu_licensing/prices</a>
V16	<a href="mailto:supplies@medcat.de">supplies@medcat.de</a>
MT-2001-XL	



1 Alewife Center #200  
Cambridge, MA 02140  
tel. 617.945.9051  
www.jove.com

## ARTICLE AND VIDEO LICENSE AGREEMENT

Title of Article:

Author(s):

Movement related changes in cortico-pallidal coupling in Dystonia revealed by simultaneous intracranial and magnetoencephalography recordings

Roxanne Lofredi, Bernadette Van Wijk, Wolf-Julian Neumann, Gerd-Helge Schneider, Tilman H. Sander, Vladimir Litvak, Andrea A. Kühn

Item 1 (check one box): The Author elects to have the Materials be made available (as described at

http://www.jove.com/author) via: ☐ Standard Access ☒ Open Access

Item 2 (check one box):

☒

The Author is NOT a United States government employee.

☐

The Author is a United States government employee and the Materials were prepared in the course of his or her duties as a United States government employee.

☐

The Author is a United States government employee but the Materials were NOT prepared in the course of his or her duties as a United States government employee.

### ARTICLE AND VIDEO LICENSE AGREEMENT

1. **Defined Terms.** As used in this Article and Video License Agreement, the following terms shall have the following meanings: “**Agreement**” means this Article and Video License Agreement; “**Article**” means the article specified on the last page of this Agreement, including any associated materials such as texts, figures, tables, artwork, abstracts, or summaries contained therein; “**Author**” means the author who is a signatory to this Agreement; “**Collective Work**” means a work, such as a periodical issue, anthology or encyclopedia, in which the Materials in their entirety in unmodified form, along with a number of other contributions, constituting separate and independent works in themselves, are assembled into a collective whole; “**CRC License**” means the Creative Commons Attribution-Non Commercial-No Derivs 3.0 Unported Agreement, the terms and conditions of which can be found at: <http://creativecommons.org/licenses/by-nc-nd/3.0/legalcode>; “**Derivative Work**” means a work based upon the Materials or upon the Materials and other pre-existing works, such as a translation, musical arrangement, dramatization, fictionalization, motion picture version, sound recording, art reproduction, abridgment, condensation, or any other form in which the Materials may be recast, transformed, or adapted; “**Institution**” means the institution, listed on the last page of this Agreement, by which the Author was employed at the time of the creation of the Materials; “**JoVE**” means MyJoVE Corporation, a Massachusetts corporation and the publisher of *The Journal of Visualized Experiments*; “**Materials**” means the Article and / or the Video; “**Parties**” means the Author and JoVE; “**Video**” means any video(s) made by the Author, alone or in conjunction with any other parties, or by JoVE or its affiliates or agents, individually or in collaboration with the Author or any other parties, incorporating all or any portion of the Article, and in which the Author may or may not appear.

2. **Background.** The Author, who is the author of the Article, in order to ensure the dissemination and protection of the Article, desires to have the JoVE publish the Article and create and transmit videos based on the Article. In furtherance of such goals, the Parties desire to memorialize in this Agreement the respective rights of each Party in and to the Article and the Video.

3. **Grant of Rights in Article.** In consideration of JoVE agreeing to publish the Article, the Author hereby grants to JoVE, subject to **Sections 4** and **7** below, the exclusive, royalty-free, perpetual (for the full term of copyright in the Article, including any extensions thereto) license (a) to publish, reproduce, distribute, display and store the Article in all forms, formats and media whether now known or hereafter developed (including without limitation in print, digital and electronic form) throughout the world, (b) to translate the Article into other languages, create adaptations, summaries or extracts of the Article or other Derivative Works (including, without limitation, the Video) or Collective Works based on all or any portion of the Article and exercise all of the rights set forth in (a) above in such translations, adaptations, summaries, extracts, Derivative Works or Collective Works and (c) to license others to do any or all of the above. The foregoing rights may be exercised in all media and formats, whether now known or hereafter devised, and include the right to make such modifications as are technically necessary to exercise the rights in other media and formats. If the “Open Access” box has been checked in **Item 1** above, JoVE and the Author hereby grant to the public all such rights in the Article as provided in, but subject to all limitations and requirements set forth in, the CRC License.

## ARTICLE AND VIDEO LICENSE AGREEMENT

4. Retention of Rights in Article. Notwithstanding the exclusive license granted to JoVE in **Section 3** above, the Author shall, with respect to the Article, retain the non-exclusive right to use all or part of the Article for the non-commercial purpose of giving lectures, presentations or teaching classes, and to post a copy of the Article on the Institution's website or the Author's personal website, in each case provided that a link to the Article on the JoVE website is provided and notice of JoVE's copyright in the Article is included. All non-copyright intellectual property rights in and to the Article, such as patent rights, shall remain with the Author.

5. Grant of Rights in Video – Standard Access. This **Section 5** applies if the "Standard Access" box has been checked in **Item 1** above or if no box has been checked in **Item 1** above. In consideration of JoVE agreeing to produce, display or otherwise assist with the Video, the Author hereby acknowledges and agrees that, Subject to **Section 7** below, JoVE is and shall be the sole and exclusive owner of all rights of any nature, including, without limitation, all copyrights, in and to the Video. To the extent that, by law, the Author is deemed, now or at any time in the future, to have any rights of any nature in or to the Video, the Author hereby disclaims all such rights and transfers all such rights to JoVE.

6. Grant of Rights in Video – Open Access. This **Section 6** applies only if the "Open Access" box has been checked in **Item 1** above. In consideration of JoVE agreeing to produce, display or otherwise assist with the Video, the Author hereby grants to JoVE, subject to **Section 7** below, the exclusive, royalty-free, perpetual (for the full term of copyright in the Article, including any extensions thereto) license (a) to publish, reproduce, distribute, display and store the Video in all forms, formats and media whether now known or hereafter developed (including without limitation in print, digital and electronic form) throughout the world, (b) to translate the Video into other languages, create adaptations, summaries or extracts of the Video or other Derivative Works or Collective Works based on all or any portion of the Video and exercise all of the rights set forth in (a) above in such translations, adaptations, summaries, extracts, Derivative Works or Collective Works and (c) to license others to do any or all of the above. The foregoing rights may be exercised in all media and formats, whether now known or hereafter devised, and include the right to make such modifications as are technically necessary to exercise the rights in other media and formats. For any Video to which this Section 6 is applicable, JoVE and the Author hereby grant to the public all such rights in the Video as provided in, but subject to all limitations and requirements set forth in, the CRC License.

7. Government Employees. If the Author is a United States government employee and the Article was prepared in the course of his or her duties as a United States government employee, as indicated in **Item 2** above, and any of the licenses or grants granted by the Author hereunder exceed the scope of the 17 U.S.C. 403, then the rights granted hereunder shall be limited to the maximum rights permitted under such

statute. In such case, all provisions contained herein that are not in conflict with such statute shall remain in full force and effect, and all provisions contained herein that do so conflict shall be deemed to be amended so as to provide to JoVE the maximum rights permissible within such statute.

8. Likeness, Privacy, Personality. The Author hereby grants JoVE the right to use the Author's name, voice, likeness, picture, photograph, image, biography and performance in any way, commercial or otherwise, in connection with the Materials and the sale, promotion and distribution thereof. The Author hereby waives any and all rights he or she may have, relating to his or her appearance in the Video or otherwise relating to the Materials, under all applicable privacy, likeness, personality or similar laws.

9. Author Warranties. The Author represents and warrants that the Article is original, that it has not been published, that the copyright interest is owned by the Author (or, if more than one author is listed at the beginning of this Agreement, by such authors collectively) and has not been assigned, licensed, or otherwise transferred to any other party. The Author represents and warrants that the author(s) listed at the top of this Agreement are the only authors of the Materials. If more than one author is listed at the top of this Agreement and if any such author has not entered into a separate Article and Video License Agreement with JoVE relating to the Materials, the Author represents and warrants that the Author has been authorized by each of the other such authors to execute this Agreement on his or her behalf and to bind him or her with respect to the terms of this Agreement as if each of them had been a party hereto as an Author. The Author warrants that the use, reproduction, distribution, public or private performance or display, and/or modification of all or any portion of the Materials does not and will not violate, infringe and/or misappropriate the patent, trademark, intellectual property or other rights of any third party. The Author represents and warrants that it has and will continue to comply with all government, institutional and other regulations, including, without limitation all institutional, laboratory, hospital, ethical, human and animal treatment, privacy, and all other rules, regulations, laws, procedures or guidelines, applicable to the Materials, and that all research involving human and animal subjects has been approved by the Author's relevant institutional review board.

10. JoVE Discretion. If the Author requests the assistance of JoVE in producing the Video in the Author's facility, the Author shall ensure that the presence of JoVE employees, agents or independent contractors is in accordance with the relevant regulations of the Author's institution. If more than one author is listed at the beginning of this Agreement, JoVE may, in its sole discretion, elect not take any action with respect to the Article until such time as it has received complete, executed Article and Video License Agreements from each such author. JoVE reserves the right, in its absolute and sole discretion and without giving any reason therefore, to accept or decline any work submitted to JoVE. JoVE and its employees, agents and independent contractors shall have

## ARTICLE AND VIDEO LICENSE AGREEMENT

full, unfettered access to the facilities of the Author or of the Author's institution as necessary to make the Video, whether actually published or not. JoVE has sole discretion as to the method of making and publishing the Materials, including, without limitation, to all decisions regarding editing, lighting, filming, timing of publication, if any, length, quality, content and the like.

11. **Indemnification.** The Author agrees to indemnify JoVE and/or its successors and assigns from and against any and all claims, costs, and expenses, including attorney's fees, arising out of any breach of any warranty or other representations contained herein. The Author further agrees to indemnify and hold harmless JoVE from and against any and all claims, costs, and expenses, including attorney's fees, resulting from the breach by the Author of any representation or warranty contained herein or from allegations or instances of violation of intellectual property rights, damage to the Author's or the Author's institution's facilities, fraud, libel, defamation, research, equipment, experiments, property damage, personal injury, violations of institutional, laboratory, hospital, ethical, human and animal treatment, privacy or other rules, regulations, laws, procedures or guidelines, liabilities and other losses or damages related in any way to the submission of work to JoVE, making of videos by JoVE, or publication in JoVE or elsewhere by JoVE. The Author shall be responsible for, and shall hold JoVE harmless from, damages caused by lack of sterilization, lack of cleanliness or by contamination due to the making of a video by JoVE its employees, agents or independent contractors. All sterilization, cleanliness or decontamination procedures shall be solely the responsibility of the Author and shall be undertaken at the Author's

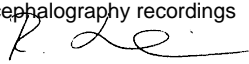
expense. All indemnifications provided herein shall include JoVE's attorney's fees and costs related to said losses or damages. Such indemnification and holding harmless shall include such losses or damages incurred by, or in connection with, acts or omissions of JoVE, its employees, agents or independent contractors.

12. **Fees.** To cover the cost incurred for publication, JoVE must receive payment before production and publication the Materials. Payment is due in 21 days of invoice. Should the Materials not be published due to an editorial or production decision, these funds will be returned to the Author. Withdrawal by the Author of any submitted Materials after final peer review approval will result in a US\$1,200 fee to cover pre-production expenses incurred by JoVE. If payment is not received by the completion of filming, production and publication of the Materials will be suspended until payment is received.

13. **Transfer, Governing Law.** This Agreement may be assigned by JoVE and shall inure to the benefits of any of JoVE's successors and assignees. This Agreement shall be governed and construed by the internal laws of the Commonwealth of Massachusetts without giving effect to any conflict of law provision thereunder. This Agreement may be executed in counterparts, each of which shall be deemed an original, but all of which together shall be deemed to be one and the same agreement. A signed copy of this Agreement delivered by facsimile, e-mail or other means of electronic transmission shall be deemed to have the same legal effect as delivery of an original signed copy of this Agreement.

A signed copy of this document must be sent with all new submissions. Only one Agreement required per submission.

### CORRESPONDING AUTHOR:

Name:	Andrea A. Kühn	
Department:	Sektion für Bewegungsstörungen, Klinik für Neurologie	
Institution:	Charité - Universitätsmedizin Berlin	
Article Title:	Movement related changes in cortico-pallidal coupling in Dystonia revealed by simultaneous intracranial and magnetoencephalography recordings	
Signature:		Date: 22.05.2017

Please submit a signed and dated copy of this license by one of the following three methods:

- 1) Upload a scanned copy of the document as a pdf on the JoVE submission site;
- 2) Fax the document to +1.866.381.2236;
- 3) Mail the document to JoVE / Attn: JoVE Editorial / 1 Alewife Center #200 / Cambridge, MA 02139

For questions, please email [submissions@jove.com](mailto:submissions@jove.com) or call +1.617.945.9051



## CharitéCentrum für Neurologie, Neurochirurgie und Psychiatrie

Charité Campus Virchow-Klinikum|Augustenburger Platz 1|13353 Berlin

**Neurologische Klinik und Poliklinik**  
**Campus Virchow-Klinikum**  
**Augustenburger Platz 1**  
 Direktor: Prof. Dr. M. Endres

**Neurologie AG Bewegungsstörungen**  
 Leiterin: OA Prof. Dr. A. Kühn

Tel.: (030) 450-66 02 03  
 Tel.: (030) 450-56 01 23 (Sekretariat)  
 Fax: (030) 450-56 09 01  
 E-Mail: [Andrea.Kuehn@charite.de](mailto:Andrea.Kuehn@charite.de)  
 Homepage: [www.bewegungsstoerungen-charite.de](http://www.bewegungsstoerungen-charite.de)  
[www.charite.de/neurologie](http://www.charite.de/neurologie)

Date: 7. Dezember 2017

### Rebuttal Letter

#### Editorial comments:

*1.4: What is the trial here? What are the blocks and the timing of the blocks? What is the experimental paradigm? We need to know more about the stop-signal task. A schematic would help greatly. What program is used and how? Presumably the paradigm has been predetermined but it is unclear what it is. (Note: this has been altered to numbered protocol steps, as should be the case if you want to film this).*

Following your recommendation, we added a schematic of the stop signal task as Figure 1 to the manuscript and described in greater detail the stop signal paradigm in paragraph 1.4 that now reads as follows:

1.4. The presented results here are from a stop-signal task. Subjects are holding an MEG-compatible response box in each hand of which one button is used. Stimuli are presented with a professional experiment presentation software using a custom-written script. Start each trial with a black fixation cross against a white background. After a variable delay of 4-6 s, present the Go-signal that consists of a double arrow pointing towards the left or right. Instruct the subject to respond as quickly as possible by pressing the button with the index finger of the corresponding hand. In 33% of the trials, present a Stop-signal at a variable delay after the Go-signal. In this case, instruct the subject to withhold the button press and wait for the next trial. The Stop-signal consists of a red box around the Go-signal. The stop-signal delay value is updated in a trial-by-trial fashion via a staircase procedure to ensure 50% performance accuracy. The delay is increased by 50 ms after a successful Stop trial, and decreased by 50 ms after a Stop trial in which the subject fails to inhibit their response. Display the Go-signals until a response has been made or for a maximum duration of 1 s. Proceed with the next trial until the end of the experimental block. Train the subject with a block (100 trials) of the experimental paradigm the day before the recordings. (L112-L126)

*1.4.1: What is the subject doing? Not pressing the button on the stop task? Is the subject pressing down the button initially? 1.4.2: How is the stop-signal delay done? What are the variables in play?*

The subject is not pressing the button initially but in response to the go signal, this has now been precisely described in 1.4 (see above). The stop signal delay is also described in 1.4.

*2.4: Just two coils, one at each point?*

Three head position coils are placed. One at the nasion and one at the right and left pre-auricular points respectively. This has been described more concisely and the paragraph now reads as follows:

2.4. Locate the nasion and left and right pre-auricular points and place the three head position coils there. (L144-L145)

*2.5: How far above the eyes? One above each eye? How many EMG electrodes are placed and where specifically on the muscle/tendon?*

The exact locations and distances have been specified in the text which now reads as follows:

2.5. Clean and abrade the skin (~2 cm) and apply contact gel above the eyes for placement of electro-oculography (EOG) electrodes at 2 cm above the right eye and 1 cm to the right of the right canthus. Proceed likewise on the first dorsal interosseous muscle of the left and right hand. Place one electromyography (EMG) electrode on the belly of the muscle between index finger and thumb, and another on the metacarpophalangeal joint of the index finger. (L146-L150)

*2.7: Please quantitate the 'maximal distance.'*

The “maximal distance” has been quantitated in paragraph 2.7:

Leave a medically trained professional in the magnetically shielded room during the experiment seated in the corner of the room at a distance of 2.5 m from the MEG helmet. (L154-L158)

*2.8: The non-magnetic response buttons were not mentioned prior. Presumably because it is in an MRI.*

MEG and MRI share similar requirements of special equipment. The text has been changed:

2.8. Instruct the subject to avoid movement other than the button presses on the non-magnetic response boxes, which are compatible with MEG as they are made of glass fibres and plastics only. (L160-L162)

*3.1: What are typical values of head positions? There is no indication in the Representative Results or the Figures.*

The head position values reflect the position of the three head position coils in the MEG coordinate system (and hence the distance between the subject's head and the MEG sensors). They are used for the computation of the head model (5.5) and subsequently used in the beamformer source identification that localizes coherence to voxels in the brain (5.6). As such, the exact head position values are typically not of interest to report as the primary outcome are the voxel-wise activations. We therefore decided not to include them in the manuscript. The visual inspection of measured head localization described in 5.5 is merely a check to see whether the measurement have been performed successfully: with left and right pre-auricular points and nasion in the expected locations. Sometimes these measurements may fail, which would therefore give an incorrect source localization outcome. We have slightly rephrased the text in section 5.5 to avoid confusion: “Check whether the

head localization measurements before and after the rest recording have been performed successfully. This is achieved if the goodness-of-fit is at least 98%. Create a head model based on the inner skull derived from the subjects MRI with marked fiducial points (using SPM).” (L271-L274)

*3.2: Reference? Please use another word for clarity.*

For clarity the paragraph has been changed and now reads as follows:

3.4. Record the LFP signals using a common reference connected to the lowermost contact of the left DBS electrode. Offline re-referencing yields bipolar signals (c.f. section 4) (L191-L192)

*3.3: How is the generation and recording done? How is the timing and sequence generated and how are the recordings done? What is the actual experimental paradigm? Please quantitate the 'comfortable distance.'*

The task paradigm has now been emphasized in 1.4 (see above) and we describe the presentation software in detail and quantify the distance to the glass panel as follows:

3.5. Run the presentation software. The visual stimuli are generated by a separate computer with the presentation software installed. This generates the timing and sequence of visual stimuli that are projected from outside the shielded room onto a translucent glass panel that is visible to the subject at 20 cm distance from the subject's head. (L194-L197)

*3.5: What is being recorded? The same outputs as 3.4?*

Yes, this has been now specified in the text which reads as follows:

3.6. The first recording is a three-minute rest recording that measures the same outputs as in 3.2. (L199-L201)

*3.6: It is still unclear what the task is.*

The task is now described in detail in 1.4 and visualized with a schematic (Figure 1).

*3.7: Please revise for clarity. What is recorded? How long is a trial? What is the rest time? 3 min as step 3.5?*

The trial length and details are now specified in 1.4. Rest time differs between subjects and is offered to them if they need to go to the toilet, have something to drink, or would like to rest a few moments before continuing. This is now specified in the text:

3.8. Record during task participation in 2 blocks of 100 trials. Between blocks, propose rest time to the subject if needed. (L208-L209)

*4.1: How will you visualize the data?*

We can show trials of raw data and the figure of the representative results.



*4.2: Please provide citations for these.*

The references have been added.

*5.1: Please provide a citation for Welch's method.*

The reference has been added.

*5.2: It was unclear if this could be filmed. If it just involves typed commands, then it cannot. If however, it does involve a graphic user interface (GUI) and you still want it to be filmed, then please provide more detail, including specific user commands (File/Save/Open/etc) (and insure the total filmed portion does not exceed 2.75 pages).*

The raw data can be shown within a GUI (command: `spm_eeg_review.m`, has been added to the manuscript in L224) but the preprocessing steps consist just of typed commands and can therefore not be filmed.

*5.3 In the Representative Results, please provide a reference for the 'Burke van Marsden Dystonia Rating Score.'*

The reference has been added.