

Journal of Visualized Experiments

Methods to study changes in inherent protein aggregation with age in *Caenorhabditis elegans* --Manuscript Draft--

Manuscript Number:	JoVE56464R2
Full Title:	Methods to study changes in inherent protein aggregation with age in <i>Caenorhabditis elegans</i>
Article Type:	Invited Methods Article - JoVE Produced Video
Keywords:	Aging, Protein insolubility, Protein aggregation, Protein misfolding, Proteostasis, <i>C. elegans</i> , Neurodegenerative diseases, Biochemistry
Manuscript Classifications:	3.10.574: Neurodegenerative Diseases; 3.23.888.69: Aging, Premature; 4.12.776.419.500: <i>Caenorhabditis elegans</i> Proteins (<i>C. elegans</i>); 4.12.776.49.407: Amyloidogenic Proteins; 7.4.299.119: Cell Aging
Corresponding Author:	Della David Deutsches Zentrum für Neurodegenerative Erkrankungen Tübingen, Baden-Württemberg GERMANY
Corresponding Author Secondary Information:	
Corresponding Author E-Mail:	Della.David@dzne.de
Corresponding Author's Institution:	Deutsches Zentrum für Neurodegenerative Erkrankungen
Corresponding Author's Secondary Institution:	
First Author:	Nicole Groh
First Author Secondary Information:	
Other Authors:	Nicole Groh Ivan Gallotta Marie C Lechler Chaolie Huang Raimund Jung
Order of Authors Secondary Information:	
Abstract:	In the last decades, the prevalence of neurodegenerative disorders, such as Alzheimer's and Parkinson's disease, has grown. These age-associated disorders are characterized by the appearance of protein aggregates with fibrillary structure in the brains of these patients. Exactly why normally soluble proteins undergo an aggregation process remains poorly understood. The discovery that protein aggregation is not limited to disease processes and instead part of the normal aging process enables the study of the molecular and cellular mechanisms that regulate protein aggregation, without using ectopically expressed human disease-associated proteins. Here we describe methodologies to examine inherent protein aggregation in <i>Caenorhabditis elegans</i> through complementary approaches. First we examine how to grow large numbers of age-synchronized <i>C. elegans</i> to obtain aged animals and we present the biochemical procedures to isolate highly-insoluble-large aggregates. In combination with a targeted genetic knockdown, it is possible to dissect the role of a gene of interest in promoting or preventing age-dependent protein aggregation by using either a comprehensive analysis with quantitative mass spectrometry or a candidate-based analysis with antibodies. These findings are then confirmed by in vivo analysis with transgenic animals expressing fluorescent-tagged aggregation-prone proteins. These methods should help clarify why certain proteins are prone to aggregate with age and

	ultimately how to keep these proteins fully functional.
Author Comments:	
Additional Information:	
Question	Response
If this article needs to be "in-press" by a certain date, please indicate the date below and explain in your cover letter.	

TITLE:

Methods to Study Changes in Inherent Protein Aggregation with Age in *Caenorhabditis Elegans*

AUTHORS & AFFILIATIONS:

Nicole Groh^{1,2}, Ivan Gallotta¹, Marie C. Lechler^{1,2}, Chaolie Huang¹, Raimund Jung¹, Della C. David^{1*}

¹Protein Aggregation and Aging, DZNE, German Center for Neurodegenerative Diseases, Tübingen, Germany

²Graduate School of Cellular and Molecular Neuroscience, Tübingen, Germany

AUTHOR EMAILS:

Nicole Groh (nicole.groh@dzne.de)

Ivan Gallotta (ivan.gallotta@dzne.de)

Marie C. Lechler (marie.lechler@dzne.de)

Chaolie Huang (chaolie.huang@dzne.de)

Raimund Jung (raimund.jung@dzne.de)

Della C. David (della.david@dzne.de)

CORRESPONDING AUTHOR:

Della C. David (della.david@dzne.de)

KEYWORDS:

Aging, protein insolubility, protein aggregation, protein misfolding, proteostasis, *C. elegans*, neurodegenerative diseases, biochemistry

SHORT ABSTRACT:

The goal of the method presented here is to explore protein aggregation during normal aging in the model organism *C. elegans*. The protocol represents a powerful tool to study the highly insoluble large aggregates that form with age and to determine how changes in proteostasis impact protein aggregation.

LONG ABSTRACT:

In the last decades, the prevalence of neurodegenerative disorders, such as Alzheimer's disease (AD) and Parkinson's disease (PD), has grown. These age-associated disorders are characterized by the appearance of protein aggregates with fibrillary structure in the brains of these patients. Exactly why normally soluble proteins undergo an aggregation process remains poorly understood. The discovery that protein aggregation is not limited to disease processes and instead part of the normal aging process enables the study of the molecular and cellular mechanisms that regulate protein aggregation, without using ectopically expressed human disease-associated proteins. Here we describe methodologies to examine inherent protein aggregation in *Caenorhabditis elegans* through complementary approaches. First, we examine how to grow large numbers of age-synchronized *C. elegans* to obtain aged animals and we present the biochemical procedures to isolate highly-insoluble-large aggregates. In combination

with a targeted genetic knockdown, it is possible to dissect the role of a gene of interest in promoting or preventing age-dependent protein aggregation by using either a comprehensive analysis with quantitative mass spectrometry or a candidate-based analysis with antibodies. These findings are then confirmed by *in vivo* analysis with transgenic animals expressing fluorescent-tagged aggregation-prone proteins. These methods should help clarify why certain proteins are prone to aggregate with age and ultimately how to keep these proteins fully functional.

INTRODUCTION:

Protein misfolding and aggregation are recognized as a hallmark of several neurodegenerative diseases such as AD, PD, amyotrophic lateral sclerosis (ALS), frontotemporal dementia (FTD), and many others. For instance, α -synuclein assembles into amyloid fibrils that accumulate as Lewy bodies particularly in the substantia nigra of PD patients, while in ALS patients TDP-43 or FUS misfold to form cytoplasmic aggregates in degenerating motor neurons. In each of these neurodegenerative disorders, mechanisms maintaining protein homeostasis or proteostasis fail to prevent the accumulation of misfolded proteins, consequently leading to disease.

Proteostasis is critical to ensure cellular functions and under normal conditions these regulatory mechanisms tightly control the rate of protein synthesis, folding, and degradation. Several studies demonstrate that with ageing, the ability of many cells and organs to preserve protein homeostasis is gradually compromised and the physiological deterioration of the proteostasis networks with age is an important aggravating factor for neurodegenerative diseases (reviewed in¹⁻³). The fact that the protein quality control and the cellular response to unfolded protein stress are compromised with age suggests that protein misfolding and aggregation could be a general consequence of aging. Indeed, we and others have demonstrated that protein aggregation is not restricted to disease and instead part of the proteome becomes highly detergent-insoluble in aged animals⁴⁻¹⁰. Computational and *in vivo* analysis revealed that these physiological age-related aggregates resemble disease aggregates in several aspects⁵. The discovery of endogenous, age-dependent protein aggregation gives us the opportunity to dissect the molecular and cellular mechanisms that regulate protein aggregation, without using ectopically expressed human disease-associated proteins. At present, only limited information exists about the regulation of widespread protein insolubility and about the effects of this dysregulation on the health of the organism.

The nematode *C. elegans* is one of the most extensively studied model organisms in aging research as these animals have a relatively short lifespan and show many characteristic aging features observed in higher organisms. The effects of aging on protein insolubility have been studied in *C. elegans* by sequential biochemical fractionation based on differential solubility, which is widely used to extract disease aggregates in the field of neurodegeneration research¹¹. By quantitative mass spectrometry, several hundred proteins were shown to become aggregation-prone in *C. elegans* in the absence of disease⁵. Here we describe in detail the protocol to grow large numbers of worms in liquid culture and the sequential extraction to isolate aggregated proteins for quantification by mass spectrometry and analysis by Western blot. Because misfolded and aggregation-prone proteins accumulate in aged *C. elegans* gonads

and masks changes in other somatic tissues^{5,12,13}, we use a gonad-less mutant to focus the analysis on protein insolubility in non-reproductive tissues. The method presented enables the analysis of highly-insoluble, large aggregates that are insoluble in 0.5% SDS and pelleted by relatively low centrifugal speed. Alternatively, a less stringent extraction protocol to collect also smaller and more soluble aggregates has been published elsewhere¹⁰. In addition, we describe the method used to assess aggregation *in vivo* in *C. elegans*.

Overall, these methods in combination with RNA interference (RNAi) can evaluate the role of a gene of interest in modulating age-dependent protein aggregation. For this we describe the analysis of extracts from young and aged worms with and without knockdown of a specific protein of interest using RNAi. These methods should be a powerful tool to determine which components of the proteostasis network regulate protein insolubility. Several interventions such as reduced insulin/insulin-like growth factor (IGF) 1 signaling (IIS) have been shown to dramatically delay *C. elegans* aging¹⁴. Longevity pathways often induce protein-quality control mechanisms and thus these pathways could be actively influencing the rate of protein aggregation. As an example, we demonstrate reduced inherent protein aggregation in long-lived animals upon inhibition of the IIS pathway⁷.

PROTOCOL:

Note: For a better understanding of the procedure, a schematic of the workflow (**Figure 1**) is attached.

1. Growth of Large Numbers of Young and Aged *C. Elegans* Subjected to RNAi Targeting a Gene of Interest

Note: Use *C. elegans* temperature-induced sterile *gon-2(q388)* mutants (CF2253) to obtain large aged-synchronized populations. During all steps, it is important to work under semi-sterile conditions with an open flame and to check that no contaminations (for example, with fungi or bacteria) are present. Perform the steps (also centrifugations) at room temperature if the temperature is not described.

1.1. Preparation of *C. elegans gon-2(-)* mutants to obtain gonad-less animals

Note: To obtain sterile animals lacking gonads, the loss-of-function mutation must be induced in the parent animals by shifting these at the last larval stage (L4) to 25 °C in order to avoid maternal contribution.

1.1.1. First expansion of *gon-2(-)* animals to collect parental generation for temperature shift

1.1.1.1. Streak *Escherichia coli* OP50 strain onto a Lysogeny Broth (LB) plate and incubate it overnight at 37 °C.

1.1.1.2. The next day inoculate 200 mL LB medium with one OP50 clone and incubate it

overnight at 37 °C.

1.1.1.3. The next day seed 15 High Growth (HG) medium plates (diameter 9 cm) with 0.5 mL OP50 and distribute OP50 with a spatula. Keep the plates at room temperature for two days.

1.1.1.4. Chunk *gon-2(-)* animals (not starved for the last two generations) onto 15 HG medium plates seeded with OP50 and maintain them at 20 °C until the plates are confluent with adults and some OP50 is still available.

1.1.1.5. In the meantime, seed 60 HG medium plates with OP50 as described in step 1.1.1.3 and keep the plates at room temperature. Careful: Seeded plates should not be kept for more than one week as the agar will crack at room temperature.

1.1.1.6. Bleach the confluent plates once most adults start to lay eggs as previously described¹⁵. Collect eggs in two 15 mL-tubes and place on a nutating mixer overnight at 20 °C.

1.1.1.7. The next day wash hatched L1s with M9 buffer (85 mM NaCl, 42 mM Na₂HPO₄·7H₂O, 22 mM KH₂PO₄): centrifuge at 3,000 x g for 30 s, discard the supernatant, and fill up to the 15-mL mark with M9. Centrifuge, discard the supernatant, and repeat the step 1.1.1.6. Fill the tubes with the resulting worm pellets up to the 15-mL mark with M9.

1.1.1.8. Evaluate the total number of L1s with a dissection microscope by counting the L1s present in 2 µL drops placed on non-seeded agar plates. Average the numbers obtained from at least nine drops.

1.1.1.9. Add 6,500 L1s per seeded HG plate and let the worms grow at 20 °C until L4 stage.

1.1.2. Second expansion of *gon-2(-)* animals to obtain gonad-less animals for experiment

1.1.2.1. At L4 stage, shift the worms from step 1.1.1.9 to 25 °C until they start to lay eggs and L1s are hatching.

1.1.2.2. Collection of eggs and L1s by sedimentation

Note: After the temperature shift to 25 °C, it is preferable to use sedimentation as a gentle technique to separate the fragile eggs and L1s from the adults.

1.1.2.2.1. Wash the plates with M9 by using 5 mL M9 per five plates. Transfer the worms into 50 mL tubes.

1.1.2.2.2. Fill up all tubes to the 45-mL mark with M9, let the adults sediment for approximately 10 min, collect each supernatant in a 50 mL tube, and repeat this step with the pellet. Centrifuge the supernatant that contains eggs and L1s at 3,000 x g for 1 min, let the L1s sediment for approximately 10 min, and remove the supernatant until 15 mL are left.

Note: This is a critical step. Do not remove the supernatant too early, to collect as many L1s as possible.

1.1.2.2.3. Place the tubes containing eggs and L1s on a nutating mixer overnight at 25 °C.

1.2. Liquid culture of gonad-less animals to collect young and aged animals subjected to RNAi targeting a gene of interest

Note: The response of some genes to RNAi can be temperature dependent as previously described¹⁶. As an alternative to RNAi, a mutant gene could be incorporated into the *gon-2(-)* background.

1.2.1. Preparation of bacteria for liquid culture

1.2.1.1. Prepare OP50 and RNAi bacteria (bacteria producing the desired dsRNA and bacteria with the empty vector as control) by inoculating 4 L LB medium with 12 mL of the respective bacterial culture (add a final concentration of 50 µg/mL carbenicillin and 1 mM IPTG to the RNAi bacterial cultures) and incubate them at 37 °C overnight at 180 rpm. Refer to **Table 1** for recipes of buffers.

1.2.1.2. The next day harvest the cultures at 6,700 x g for 10 min at 4 °C. Remove the supernatants and resuspend each pellet in 60 mL ice-cold S basal media (100 mM NaCl, 50 mM Potassium phosphate pH 6, kept on ice). Keep the three resuspended pellets (OP50, control RNAi bacteria, and RNAi bacteria for the gene of interest) at 4 °C until step 1.2.2 or 1.2.3.

Note: Worms can be grown on RNAi from L1 stage (see step 1.2.3) or to avoid developmental defects from the last larval stage L4 (see step 1.2.2).

1.2.2. Liquid culture for treatment with RNAi starting at last larval stage L4

1.2.2.1. Add 200 mL S basal media in a Fernbach culture flask (capacity 2,800 mL). For a final culture volume of 300 mL (see 1.2.2.4), add 10 mM potassium citrate, pH 6, 3 mL Trace metals solution (5 mM ethylenediaminetetraacetic acid (EDTA), 2.5 mM FeSO₄, 1 mM MnCl₂, 1 mM ZnSO₄, 0.1 mM CuSO₄), 3 mM MgSO₄, 3 mM CaCl₂, 100 ng/mL carbendazim, and 5 µg/mL cholesterol). Close the flask with a membrane screw cap.

1.2.2.2. Take the L1s out of 25 °C (step 1.1.2.2.3) and transfer them to 15 mL tubes. Centrifuge at 1,900 x g for 3 min, remove the supernatant, and count the L1s per 2 µL as in step 1.1.1.8. Add 500,000 L1s into the Fernbach culture flask prepared in the previous step.

1.2.2.3. Add OP50 (from step 1.2.1) proportionally to the number of worms. For example, for 500,000 worms add 60 mL OP50.

1.2.2.4. Add complete worm culture with S basal to bring the total volume to 300 mL. Incubate the worm culture until L4 stage at 25 °C in a shaking incubator with 150 rpm.

1.2.2.5. The next day, the worms should be the size of wild-type L4s. To change from OP50 to RNAi bacteria, collect animals in six 50 mL-tubes, let them sediment and remove the supernatant. Wash the L4s with M9 to remove residual OP50 bacteria: centrifuge at 1900 x g for 3 min, remove the supernatant and transfer all L4s into one 50 mL-tube. Count the L4s per 5 µL (at least nine times). Two times 50,000 L4s are needed for the young worm collection and two times 100,000 L4s are needed for the aged worm collection.

1.2.2.6. Prepare four Fernbach culture flasks as described in 1.2.2.1. Add also a final concentration of 50 µg/mL Carbenicillin and 1 mM IPTG to each flask.

1.2.2.7. Add control RNAi bacteria and RNAi bacteria for the gene of interest (from step 1.2.1) proportionally to the number of worms: Add 7 mL of the respective bacteria per flask for young worms and 14 mL per flask for the aged worms.

1.2.2.8. Add 50,000 worms per flask for the young worm collection and 100,000 worms per flask for the aged worm collection, and complete the cultures with S basal to fill up to 300 mL. Incubate the worm cultures (four in total) at 25 °C and 150 rpm.

1.2.3. Liquid culture for treatment with RNAi starting at L1 stage

1.2.3.1. Prepare four Fernbach culture flasks as described in 1.2.2.1 and add a final concentration of 50 µg/mL carbenicillin and 1 mM IPTG.

1.2.3.2. Continue with the preparation of L1s as described in 1.2.2.2. In total, 300,000 worms are needed to divide them into four flasks.

1.2.3.3. Add control RNAi bacteria and RNAi bacteria for the gene of interest (from step 1.2.1) proportional to the number of worms as described in step 1.2.2.7 and consider also the growth phase between the L1 and L4 stage: Add 13 mL of the respective bacteria per flask for young worms and 26 mL per flask for the aged worms.

1.2.3.4. Continue as described in step 1.2.2.8.

1.2.4. Maintenance of *C. elegans* liquid cultures

1.2.4.1. Periodically collect an aliquot from each liquid culture and place on a glass slide (alternatively on an agar plate) to verify that there are no contaminations. Using a dissection microscope, check the bacterial food levels in the culture especially during the growth phase. Prepare in advance 2 L cultures of control RNAi bacteria and RNAi bacteria for the gene of interest as described in step 1.2.1. Add these to *C. elegans* liquid cultures if necessary and keep the rest at 4 °C.

1.2.4.2. Periodically check that the animals are sterile. The majority of animals will not have a gonad. Depending on the penetrance of the *gon-2* mutation, some may have aborted gonadal structures but no animals with eggs should be observed.

1.3. Collection of young and aged worms subjected to RNAi in liquid culture

Note: All of the following steps are for one liquid culture flask but both cultures of the same age with control and RNAi bacteria for the gene of interest should be processed together.

1.3.1. Collect young worms at day 2 or day 3 to measure basal levels of protein insolubility. Aged worms should be collected (at the latest) when half of the population has died. To determine this, dead and alive worms are counted in several drops of liquid culture placed on an agar plate. Ratios are averaged over at least nine drops.

1.3.2. Prepare the following reagents: 1 L M9, 1 L M9 with 0.01% Octoxynol-9 (M9 + Octoxynol-9), and 40 mL 60% sucrose in ddH₂O. Keep the reagents on ice.

1.3.3. Pour the worms from one flask into a separation funnel and let the worms sediment for 10 min at room temperature. Open the stopcock and drip the worms into one 50 mL tube.

1.3.4. Split the worm pellet into two 15 mL-tubes and centrifuge at 1,900 x g for 5 min at room temperature. To wash the worms, remove the supernatant and fill up to 15 mL with M9. Repeat the centrifugation. Finally transfer the worms to two 50 mL tubes and fill up to 20 mL total volume with ice-cold M9.

1.3.5. To remove bacteria and dead worms, add the two 20 mL diluted worm pellets to two 50 mL-tubes filled with 20 mL ice-cold 60% sucrose. Quickly centrifuge at 2,670 x g for 5 min at room temperature, acceleration 9 and deceleration 7. Carefully remove the top worm layer with a large pipet (25 mL). Take up to 15 mL (but less if there are obviously a lot of dead worms). Put this directly into 37 mL of M9 + Octoxynol-9 (3 tubes per sucrose tube) prepared on ice. Centrifuge at 2,670 x g for 3 min at room temperature, acceleration 9 and deceleration 7.

Note: Both need to be ice-cold; otherwise the separation will not work. Do not mix! Because sucrose is toxic to the worms it is important to be quick for the following step.

1.3.6. Divide the pellet into four 15 mL-tubes and wash twice with ice-cold M9+ Octoxynol-9: centrifuge at 1,900 x g for 1 min at room temperature. Remove supernatant, fill up to 15 mL mark with ice-cold M9+Octoxynol-9 and repeat procedure.

1.3.7. Wash once with ice-cold M9 and combine the four tubes to two tubes. Fill up with M9 at room temperature to a total volume of 4 mL in the 15 mL-tubes and rotate on a nutating mixer at 25 °C for 40 min.

Note: This helps the worms to digest any residual bacteria in the gut. Check the worms under the microscope to see that there are no dead ones.

1.3.8. Wash the worms twice with ice-cold M9+Octoxynol-9 as described in 1.3.5. Wash twice with M9 and transfer the worms to one tube.

1.3.9. Wash the worms once in the Reassembly (RAB) high-salt extraction buffer without inhibitors (0.1 M 4-morpholineethanesulfonic acid (MES), 1 mM ethyleneglycoltetraacetic acid (EGTA), 0.1 mM EDTA, 0.5 mM MgSO₄, 0.75 M NaCl, 0.02 M sodium fluoride (NaF)) before collection. Remove the supernatant until there is no liquid on top of the worm pellet.

Note: This step and the next one should be done rapidly to avoid artifacts in the worms caused by the high salt concentration in the buffer.

1.3.10. Estimate the volume of worm pellet and add an identical volume of RAB with inhibitors (2x Protease Inhibitor Cocktail). Using a Pasteur pipette, draw up the worms and slowly drip into a 50 mL tube half filled with liquid nitrogen placed in dry ice. Let the liquid nitrogen evaporate and store the frozen worms at -80 °C until further processing.

Caution: Liquid nitrogen is at an extremely low temperature; wear appropriate protection.

2. Insoluble Protein Extraction with Young and Aged Animals Subjected to RNAi Targeting a Gene of Interest

2.1. Disruption of animals collected in step 1.3

Note: It is important to avoid any thawing of the worm samples. Cool down the mortar with liquid nitrogen and perform the complete procedure on dry ice.

Caution: Liquid nitrogen is at an extremely low temperature; wear appropriate protection.

2.1.1. Transfer the frozen worms to the pre-cooled mortar and grind for 2.5 min.

Note: Be careful during the grinding: at the beginning, the frozen worms are in small bullets and it is easy to lose them.

2.1.2. Add liquid nitrogen (approximately 100 mL) to the powder to cool it down again and grind for another 2.5 min. Check with the microscope that the worm bodies are broken. Transfer the powder into 2 mL tubes and store them at -80 °C.

2.2. Quick insoluble protein extraction for Western blot analysis

Note: Use this method to compare the total protein content and insoluble protein levels

between the different days with and without RNAi targeting the gene of interest. Perform all steps until step 2.2.3 on ice!

2.2.1. Solubilize 50 mg of ground worms from step 2.1 with 150 μ L Radioimmunoprecipitation assay (RIPA) buffer (50 mM Tris pH 8, 150 mM NaCl, 5 mM EDTA, 0.5% sodium dodecyl sulfate (SDS), 0.5% sodium deoxycholate (SDO), 1% nonylphenylpolyethyleneglycol (NP40), 1 mM phenylmethylsulfonyl fluoride (PMSF), 1x Protease Inhibitor Cocktail). Homogenize the suspension using a 1 mL syringe with gray needle (27 G x $\frac{1}{2}$ ", 0.4 mm x 13 mm); draw up the suspension 10 times.

2.2.2. Centrifuge at 18,400 x g for 20 min at 4 °C. Collect the supernatant.

2.2.3. Resuspend the pellet in 100 μ L RIPA buffer and centrifuge at 18,400 x g for 20 min at 4 °C. Discard the supernatant, spin shortly, and be careful to remove leftover supernatant.

2.2.4. To solubilize the highly insoluble proteins, resuspend the pellet in 75 μ L Urea/SDS buffer (8 M urea, 2% SDS, 50 mM dithiothreitol (DTT), 50 mM Tris, pH 8) and incubate for 10 min at room temperature.

2.2.5. To analyze the total protein content, combine the first RIPA supernatant from step 2.2.2 and the Urea/SDS pellet resuspension. To account for the volumes used for the extraction, the total fraction should contain two thirds of RIPA supernatant and one third of Urea/SDS pellet fraction. On a small 4–12% gradient gel, check the levels of insoluble protein by loading 9 μ L of the Urea/SDS fraction and 4 μ L total combined protein. Perform a total protein blot staining to monitor protein levels. By Western blotting using specific antibodies, verify changes in insolubility for individual proteins quantified by mass spectrometry (see Section 3).

2.3. Insoluble protein extraction to isolate SDS-insoluble proteins for mass spectrometry

Note: Perform all steps on ice.

2.3.1. On dry ice weigh out two times 350 mg ground worms per time point and per RNAi bacteria (young and aged worms, control RNAi bacteria, and RNAi bacteria for gene of interest) into 2 mL tubes.

2.3.2. To remove the high-salt soluble proteins, add two volumes of RAB per weight (700 μ L) with inhibitors 1 mM PMSF, 200 U/mL DNase I, and 100 μ g/mL RNase A to each tube and solubilize the powder on ice. Draw up the suspension into a 1 mL syringe (gray needle, 27 G x $\frac{1}{2}$ ", 0.4 mm x 13 mm) 15 times and incubate it on ice for 10 min. Centrifuge at 18,400 x g for 20 min at 4 °C. Go through the fat layer and collect the supernatant containing high-salt soluble proteins into one 2 mL tube per condition (four tubes in total). Remove the fat and discard it. Aliquot high-salt soluble proteins to freeze at -80 °C.

2.3.3. To discard lipids, solubilize the pellet with 700 μ L RAB with inhibitors containing 1 M

sucrose (without DNase I and RNase A). Draw up the suspension into a syringe 10 times and incubate it on ice for 5 min. Centrifuge at 18,400 x g for 20 min at 4 °C. Be careful to remove all supernatant and lipids and discard them.

2.3.4. To remove SDS-soluble proteins, solubilize the pellet with 700 µL RIPA buffer. Draw up the suspension into a syringe 10 times and incubate it for 10 min on ice. Centrifuge at 18,400 x g for 20 min at 4 °C. Collect the supernatant containing SDS-soluble proteins and aliquot for freezing at -80 °C.

2.3.5. Pool two samples of each condition together after solubilizing each pellet with 500 µL RIPA buffer. Draw up the suspension into a syringe 10 times. Centrifuge at 18,400 x g for 20 min at 4 °C. Be careful to remove all supernatant and discard it.

Note: The goal of the extraction is to separate the soluble proteins from the insoluble proteins. Therefore, it is important to remove all residual RIPA supernatant before adding formic acid in the next step.

2.3.6. Solubilize the final pellet containing highly insoluble proteins with 400 µL 70% formic acid and draw up the suspension into a syringe 20 times. Incubate for 20 min on ice. Centrifuge at 50,000 x g for 20 min at 4 °C, acceleration 3 and deceleration 5, to remove worm cuticle debris. Collect the supernatant that contains highly insoluble proteins and freeze it at -80 °C.

2.3.7. Dialysis of insoluble protein fractions for mass spectrometry

Note: Dialyze at 4 °C.

2.3.7.1. Prepare 8 L dialysis buffer (50 mM Tris, 1 mM DTT, 0.1 mM PMSF, pH 7.5) and divide it to eight 1 L beakers. Place three membranes (membrane filters = 0.025 µM) on the buffer surface for each 1 L beaker.

2.3.7.2. Per membrane, carefully load 65 µL of insoluble protein solubilized in formic acid obtained in step 2.3.6. Each condition is divided onto six membranes.

2.3.7.3. Check the pH of one sample by removing 5 µL and adding it onto a pH strip. If the pH is between 7 and 8 (approximately after 2 h), collect the sample by pipetting up and down gently. Finally, use 10 µL dialysis buffer to wash the precipitate off each membrane. Freeze samples at -80 °C.

3. Comprehensive Identification and Quantification of Changes in Protein Insolubility with Age Induced by RNAi Targeting a Gene of Interest

3.1. Preparation for Mass spectrometry analysis

3.1.1. Evaluate the amount of insoluble proteins in the dialyzed samples by loading an aliquot

onto a 4–12% gradient gel together with a reference sample of known concentration. Perform a total protein gel staining and quantify the protein amount with an image analysis software. This step is necessary to estimate the amount of trypsin needed for the digestion (step 3.1.4).

3.1.2. Concentrate the samples using a centrifugal evaporator and solubilize the insoluble proteins in a final concentration of 8 M urea.

3.1.3. Alkylation and reduction

3.1.3.1. Add Tris(2-carboxyethyl)phosphine hydrochloride (TCEP) to a final concentration of 4 mM to the samples. Incubate for 1 h at 57 °C with 300 rpm. Put the samples to room temperature.

3.1.3.2. Add iodoacetamide to a final concentration of 8.4 mM. Incubate it for 45 min (can be incubated for 2 h) in the dark at room temperature.

3.1.3.3. Dilute the samples in 150 mM ammonium bicarbonate to obtain a final 2 M urea concentration.

3.1.4. Digest proteins with 5% w/w modified trypsin overnight at 37 °C and 400 rpm.

3.1.5. Load a sample of the digested proteins on a 12% SDS gel and perform a total protein gel staining to analyze if the digestion worked. If there are still some bands present, repeat steps 3.1.4 and 3.1.5.

3.1.6. Peptides from young and aged control and RNAi treated *C. elegans* are labeled with isobaric tags for relative and absolute quantitation following the manufacturer's instructions.

Note: Alternatively, other methods for labeling the peptides or proteins could be used for quantification such as tandem mass tags.

Note: Mass spectrometry analysis: To reduce sample complexity, peptides should be separated by strong cation exchange chromatography into different fractions for mass spectrometry analysis⁵. Several mass spectrometers are capable of analyzing isobaric tags for relative and absolute quantitation as described elsewhere¹⁷. The data obtained should be processed with appropriate software. Overall this analysis allows the identification of highly insoluble proteins and their changes upon age and upon proteostasis modulation.

4. In Vivo Evaluation of the Influence of a Gene of Interest on the Aggregation Pattern During Aging

4.1. From the mass spectrometry analysis in Section 3, select an age-dependent aggregation-prone protein that accumulates to a different extent in the animals subjected to RNAi. Generate transgenic *C. elegans* lines expressing this protein tagged with a fluorescent protein

and under the control of its respective promoter or a tissue-specific promoter (see **Discussion** for the choice of an appropriate promoter). Maintain the strain at 15 °C by standard techniques on Nematode Growth (NG) plates seeded with OP50. For example, we chose a worm strain expressing polyadenylate-binding protein (PAB-1) fused at the N-terminus to tagRFP under the control of the pharyngeal muscle promoter *pmyo-2*.

4.2. *In vivo* evaluation of changes in aggregation with age upon inhibition of the gene of interest

4.2.1. One to two days in advance, prepare NG/carbenicillin (Carb)/IPTG plates with a control (empty RNAi vector L4440) bacteria and RNAi bacteria to inhibit the gene of interest. (For a detailed protocol about RNAi in *C. elegans* see JoVE Science Education Database. *Essentials of Biology 1: yeast, Drosophila and C. elegans*. RNAi in *C. elegans*. JoVE, Cambridge, MA, doi: 10.3791/5105 (2017)).

4.2.2. For RNAi treatment from L1, place egg-laying worms onto several separate small NG/Carb/IPTG (6 cm diameter) plates seeded with control RNAi or RNAi bacteria for the gene of interest at 20 °C. Remove the adults after 2 h, keeping the progeny at 20 °C. To avoid developmental defects, RNAi treatments can be started after the L4 larval stage.

4.2.3. Once the offspring reaches the L4 larval stage, transfer these L4s onto new NG/Carb/IPTG plates seeded with control RNAi or RNAi bacteria for the gene of interest. Set up nine plates with 15 transgenics each for both conditions and keep them at 20 °C. The aging worms need to be transferred away from their progeny to new plates every second day until the end of their reproductive period in order to be able to distinguish them from their offspring.

4.2.4. Evaluate changes in the distribution of the aggregation-prone protein labeled with a fluorescent tag under a fluorescent stereo-microscope with 24x magnification during adulthood, every other day.

Note: The age-dependent accumulation of the aggregation-prone protein in bright puncta is used as a read-out for aggregation. These puncta should be highly immobile structures to be characterized as aggregates. This should be determined by fluorescence recovery after photobleaching (FRAP) using confocal microscopy. For aggregated protein, no recovery should be observed in the bleached region after at least 4 min^{5,18}. To quantify the changes with age, we scored the distribution patterns in the age-synchronized worms overexpressing PAB-1 at day 2, day 5, and day 7 of adulthood as the following: low aggregation levels (0–10 tagRFP::PAB-1 puncta in posterior pharyngeal bulb), medium aggregation levels (more than 10 puncta in the posterior pharyngeal bulb), and high aggregation levels (more than 10 puncta in the anterior pharyngeal bulb).

REPRESENTATIVE RESULTS:

We used the methods presented here to evaluate how long-lived animals with reduced IIS modulate age-dependent protein aggregation. By Western blot (see step 2.2, Quick insoluble

protein extraction for Western blot analysis), we analyzed the total and the insoluble protein content of young (day 3 of adulthood) and aged (day 18 of adulthood) worms on control RNAi and on RNAi targeting the insulin/IGF-1-like receptor *daf-2*. We observed no large changes in total protein levels with age or between control and *daf-2* RNAi conditions (**Figure 2A**). As expected, we detected a strong age-related increase in levels of highly-insoluble proteins in control animals (**Figure 2B**). In comparison in the long-lived animals on *daf-2* RNAi, aggregation propensity was greatly reduced. Whole protein staining of the insoluble extracts revealed a less complex protein band pattern in extracts from 18-day-old worms on *daf-2* RNAi compared to age-matched controls. Quantitative mass spectrometry analysis demonstrated that long-lived animals with reduced IIS have overall less age-associated protein aggregation and importantly, *daf-2* inhibition completely abrogated the age-dependent insolubility of a specific subset of proteins⁷. To follow-up on these findings, we focused on one of these aggregation-prone proteins, PAB-1. PAB-1 is an RNA-binding protein with a predicted “prion-like” domain. Antibody staining confirmed that long-lived animals maintained PAB-1 soluble with age (**Figure 2C**).

For *in vivo* analysis of PAB-1 aggregation, we produced transgenic animals expressing tagRFP::PAB-1 in the pharyngeal muscles. In young animals, tagRFP::PAB-1 was mainly diffusely located throughout the pharynx (**Figure 3A**, “low” aggregation level) but with age, we observed a progressive accumulation in bright puncta starting in the posterior pharyngeal bulb (**Figure 3A**, “intermediate” aggregation level). During aging, we also observed aggregation in the anterior pharyngeal bulb (**Figure 3A**, “high” aggregation level) in an increasing number of animals. By grouping animals into these different categories, we scored the rate of PAB-1 aggregation in a population. At day 2 of adulthood most of the worms (88%) had none or very few puncta and no animals with high aggregation levels were detected. Already at day 5, 19% of the population showed intermediate and 16% high aggregation levels, while at day 7 more than 70% of the worms presented intermediate and high aggregation levels. To analyze the effect of longevity on the age-dependent aggregation of tagRFP:PAB-1, we generated transgenic tagRFP::PAB-1 worms with a *daf-2* mutation. These animals showed significantly reduced tagRFP:PAB-1 puncta formation with aging, with less than 15% of the population exhibiting intermediate and high aggregation levels even at day 7 (**Figure 3B**).

By using the different approaches described here, we revealed that reduced IIS prevents age-dependent protein aggregation to different extents and long-lived animals are particularly efficient in restoring the dynamics of PAB-1⁷.

FIGURE AND TABLE LEGENDS:

Figure 1: Schematic of the workflow to study changes in inherent protein aggregation with age in *C. elegans*. Main steps are bold.

Figure 2: Protein insolubility increases with age in control animals, but not in animals with reduced *daf-2* signaling. (A) Total protein staining of total fraction from day 3 and day 18 *gon-2*(-) mutants subjected to control and *daf-2* RNAi (grown at 25 °C). (B) Total protein staining of SDS-

insoluble fraction from day 3 and day 18 *gon-2(-)* mutants subjected to control and *daf-2* RNAi (grown at 25 °C). Panel republished from⁷. (C) Immunoblot detecting PAB-1 in SDS-insoluble fraction, relevant protein bands indicated by red arrow. Panel republished from⁷.

Figure 3. Reduced *daf-2* signaling prevents the accumulation of tagRFP::PAB-1 puncta with age. (A) Representative pictures of worms with tagRFP::PAB-1 overexpression in the pharyngeal muscles (high magnification microscope, tagRFP detection settings: excitation 558 nm, emission 583 nm). Animals with low (0–10 tagRFP::PAB-1 puncta in posterior pharyngeal bulb), intermediate (more than 10 puncta in the posterior pharyngeal bulb), or high aggregation levels (more than 10 puncta in the anterior pharyngeal bulb) are shown. Scale bar = 20 µm. (B) Quantification of different tagRFP::PAB-1 aggregation levels with age in wildtype and *daf-2* mutant background reveals strongly delayed tagRFP::PAB-1 aggregation with age in long-lived animals. Day 2, day 5, and day 7 *daf-2(-)* versus wildtype background, low compared to intermediate and high aggregation levels: Fisher's exact test, **** $p < 0.0001$. Panel republished from⁷.

Table 1. Buffers for liquid culture, insoluble protein extraction, and dialysis.

DISCUSSION:

Here we report a methodology to isolate highly-insoluble protein aggregates from aging *C. elegans* subjected to RNAi for analysis by mass spectrometry and Western blotting. We show that improving proteostasis by reducing IIS greatly prevents age-dependent protein aggregation. By selecting specific aggregation-prone proteins to overexpress in *C. elegans*, it is possible to dissect further the mechanisms modulating inherent protein aggregation.

Inherent Age-dependent Protein Aggregation Versus Disease-associated Protein Aggregation:

This current work is based on the previous findings that protein aggregation is not restricted to specific proteins aggregating in a disease context. By focusing on endogenous aggregation-prone proteins rather than ectopically expressed disease-associated proteins, the expectation is to provide novel insight into physiological regulation of the aggregation process. As age-dependent protein aggregates are found in different cellular locations⁵, their study should also provide insight into compartment specific quality-control mechanisms. Overall, the mechanisms that control inherent protein aggregation could also be relevant in preventing disease protein aggregation. Of note, although age-dependent protein aggregation resembles in several aspects disease protein aggregation, it still remains unclear whether these aggregates contain amyloid fibrils, a characteristic of many disease aggregates.

Choice of *C. Elegans* Model: Advantages and Limitations:

Compared to a mammalian model, one of the greatest advantages of using *C. elegans* to study an aging-related characteristic is its very short lifespan. Several hundred proteins consistently become highly-aggregation-prone during aging and this large increase in insolubility is easily

detectable even with a simplified biochemical extraction. However, a major limitation of using *C. elegans* for studying age-dependent protein aggregation is the necessity to isolate large numbers of aged animals. As *C. elegans* are hermaphrodites and produce approximately 220 or more progeny during their reproductive phase¹⁹, it is essential to prevent reproduction or eliminate progeny in order to age a population. Several options are available to induce sterility: One option is to use the chemical fluorodeoxyuridine (FUDR), an inhibitor of DNA synthesis. However, FUDR leads to numerous side-effects including changes in proteostasis and reduced protein aggregation²⁰⁻²². Importantly, FUDR induces genotype-specific responses²³. Another option is to use temperature-sensitive sterile mutants. For example, *spe-9(hc88)*, *fer-15(b26)*, *fem-1(hc17)*, *glp-1(e2141)*, and *gon-2(q388)* have been used previously for mass spectrometry analyses of the age-dependent aggregating proteome^{5,8}.

Yet there are several limitations associated with using these mutants. First, as the sterility is temperature-dependent, it is necessary to grow the animals at 25 °C, which constitutes a mild stress and accelerates aging as well as protein aggregation. Conversely, we have observed that *gon-2*, *glp-1* and *fem-1* mutants are longer-lived compared to wild-type when maintained at 25 °C (data not shown). Second, there are specific limitations associated with each type of reproductive defect. One disadvantage of using sperm-defective mutants is the production of unfertilized oocytes (also produced in aged wild-type hermaphrodites). The quality of these oocytes greatly declines with age and they accumulate in the gonad^{24,25}. Quantitative mass spectrometry analysis demonstrates that sperm-defective mutants have several fold higher levels of insoluble proteins accumulating with age compared to gonad-less or germline-deficient mutants. This indicates protein misfolding and aggregation located in the gonad⁵, in agreement with previous studies^{12,13} and *in vivo* experiments revealing aggregated proteins located in the abnormal oocyte clusters⁵. Therefore, excessive protein aggregation in the gonad would mask more subtle changes in protein aggregation in the somatic tissues. This should also be considered when comparing interventions that act to different extents on reproductive and somatic tissue proteostasis. Therefore, to assess only somatic protein aggregation, we favor using gonad-less *gon-2* mutants. An alternative would be to use germline-deficient *glp-1* mutants. However, we note that these animals have less inherent protein aggregation with age compared to *gon-2* mutants⁵. This is likely a consequence of improved proteostasis in somatic tissues due to signaling from the germline-defective gonad²⁶⁻²⁸. Another alternative is to use wild-type animals and remove progeny every day by sedimentation. However, this is problematic due to the difficulty of completely removing all progeny.

Another general limitation of using *C. elegans* is its small size which makes specific tissue extractions challenging. As such whole animal extractions do not provide relevant information related to how different conditions modulate protein aggregation in specific tissues. Of note, this issue could potentially be circumvented by using a recently developed method based on fluorescence-activated cell sorting to isolate specific cells from *C. elegans*²⁹. Yet it remains to be determined whether this method would be suitable to obtain sufficient material for insoluble protein extraction and whether it would be applicable to aged animals. Alternatively, tissue specific protein aggregation and its regulation can be investigated by additional *in vivo* experiments. As transgenic animals expressing a fluorescently-labeled aggregation-prone

protein of choice can be rapidly generated and as the animals are transparent, it is relatively easy to examine protein aggregation *in situ*.

Overall, it is essential to follow up the proteomic results with *in vivo* experiments in a wild-type background. The combination of a biochemical and microscopy-based characterization enables a comprehensive study of protein aggregation and an assessment of the role of genes of interest. The latter is facilitated in *C. elegans* by RNAi mediated through feeding and the availability of whole genome RNAi libraries. In addition, a large number of characterized mutants exist to confirm results obtained by RNAi or to use instead of RNAi.

Liquid Culture and Biochemical Extraction: Advantages and Limitations:

As highly-aggregated proteins make up only a small fraction of total proteins, it is necessary to start the extraction with a large number of animals. With large quantities of insoluble proteins, it is then feasible to perform extensive peptide fractionation to reduce sample complexity for mass spectrometry and thus improve identification of lower abundant proteins. If only small amounts of insoluble proteins are required, an alternative is to grow worms on plates and homogenize them with ceramic beads. One of the disadvantages of liquid culture is that in the case of a contamination, the whole culture is affected and must be discarded. In general, *C. elegans* aging is strongly influenced by temperature and this parameter must be tightly controlled in the liquid culture to avoid variations in age-dependent protein aggregation. Temperature control is also essential to obtain a homogenous population of gonad-less animals when using the *gon-2(-)* mutants.

Depending on the goal of the study, it is important to consider different extraction methods. The biochemical extraction presented here was initially adapted from protocols to isolate disease-associated aggregates^{11,30,31}. We chose relatively high concentrations of detergents such as 0.5% SDS to isolate the more insoluble aggregates. Also by pelleting the 0.5% SDS insoluble aggregates with low centrifugal speeds, this protocol would only isolate the larger aggregates. Alternatively, a less stringent protocol was recently published¹⁰. In this study, more soluble and smaller aggregates were also extracted by omitting SDS and by using very high centrifugal speeds at 500,000 x g. A comparison of the different protocols shows a general increase in the number of proteins in the aggregating proteome using the less stringent protocol⁷. We note that long-lived animals with reduced *daf-2* signaling efficiently prevented the accumulation of both SDS-soluble and SDS-insoluble aggregates in gonad-less animals⁷.

In Vivo Analysis of Age-Dependent Protein Aggregation:

When constructing transgenic models for following age-dependent protein aggregation, it is relevant to consider in which tissue to overexpress the aggregation-prone protein of interest and at which expression levels. We favor expression in tissues located in the head region to avoid interference with autofluorescence, which is prominent in the aging intestine. To visualize fluorescent-labeled aggregates with low-magnification, the aggregation-prone protein should be expressed at a relatively high level. On the other hand, too high expression will cause the

aggregation-prone protein to form aggregates already in young animals.

Taken together, these methods will help us to understand why part of the proteome aggregates with age and ultimately lead to the development of strategies promoting healthy aging.

ACKNOWLEDGMENTS:

This work was supported by funding from the DZNE and a Marie Curie International Reintegration Grant (322120 to D.C.D.)

DISCLOSURES:

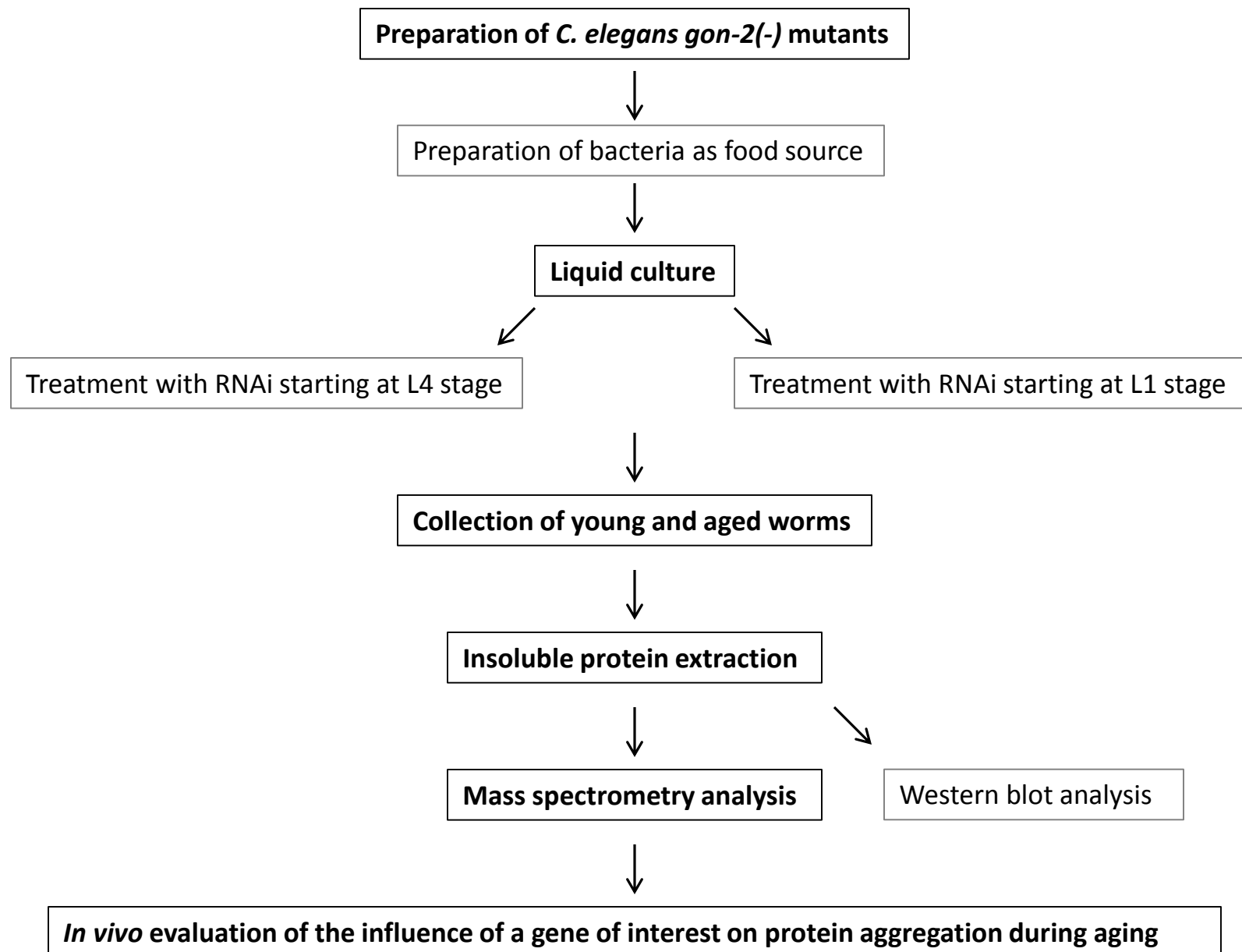
The authors have nothing to disclose.

REFERENCES:

- 1 Balch, W. E., Morimoto, R. I., Dillin, A. & Kelly, J. W. Adapting proteostasis for disease intervention. *Science* **319**, 916-919, doi:10.1126/science.1141448 (2008).
- 2 David, D. C. Aging and the aggregating proteome. *Frontiers in genetics* **3**, 247, doi:10.3389/fgene.2012.00247 (2012).
- 3 Hartl, F. U., Bracher, A. & Hayer-Hartl, M. Molecular chaperones in protein folding and proteostasis. *Nature* **475**, 324-332, doi:10.1038/nature10317 (2011).
- 4 Ayyadevara, S. *et al.* Age- and Hypertension-Associated Protein Aggregates in Mouse Heart Have Similar Proteomic Profiles. *Hypertension* **67**, 1006-1013, doi:10.1161/HYPERTENSIONAHA.115.06849 (2016).
- 5 David, D. C. *et al.* Widespread protein aggregation as an inherent part of aging in *C. elegans*. *PLoS biology* **8**, e1000450, doi:10.1371/journal.pbio.1000450 (2010).
- 6 Demontis, F. & Perrimon, N. FOXO/4E-BP signaling in *Drosophila* muscles regulates organism-wide proteostasis during aging. *Cell* **143**, 813-825, doi:10.1016/j.cell.2010.10.007 (2010).
- 7 Lechler, M. C. *et al.* Reduced Insulin/IGF-1 Signaling Restores the Dynamic Properties of Key Stress Granule Proteins during Aging. *Cell reports* **18**, 454-467, doi:10.1016/j.celrep.2016.12.033 (2017).
- 8 Reis-Rodrigues, P. *et al.* Proteomic analysis of age-dependent changes in protein solubility identifies genes that modulate lifespan. *Aging cell* **11**, 120-127, doi:10.1111/j.1474-9726.2011.00765.x (2012).
- 9 Tanase, M. *et al.* Role of Carbonyl Modifications on Aging-Associated Protein Aggregation. *Scientific reports* **6**, 19311, doi:10.1038/srep19311 (2016).
- 10 Walther, D. M. *et al.* Widespread Proteome Remodeling and Aggregation in Aging *C. elegans*. *Cell* **161**, 919-932, doi:10.1016/j.cell.2015.03.032 (2015).
- 11 Lee, V. M., Wang, J. & Trojanowski, J. Q. Purification of paired helical filament tau and normal tau from human brain tissue. *Methods in enzymology* **309**, 81-89 (1999).
- 12 Goudeau, J. & Aguilaniu, H. Carbonylated proteins are eliminated during reproduction in *C. elegans*. *Aging cell* **9**, 991-1003, doi:10.1111/j.1474-9726.2010.00625.x (2010).
- 13 Zimmerman, S. M., Hinkson, I. V., Elias, J. E. & Kim, S. K. Reproductive Aging Drives Protein Accumulation in the Uterus and Limits Lifespan in *C. elegans*. *PLoS genetics* **11**,

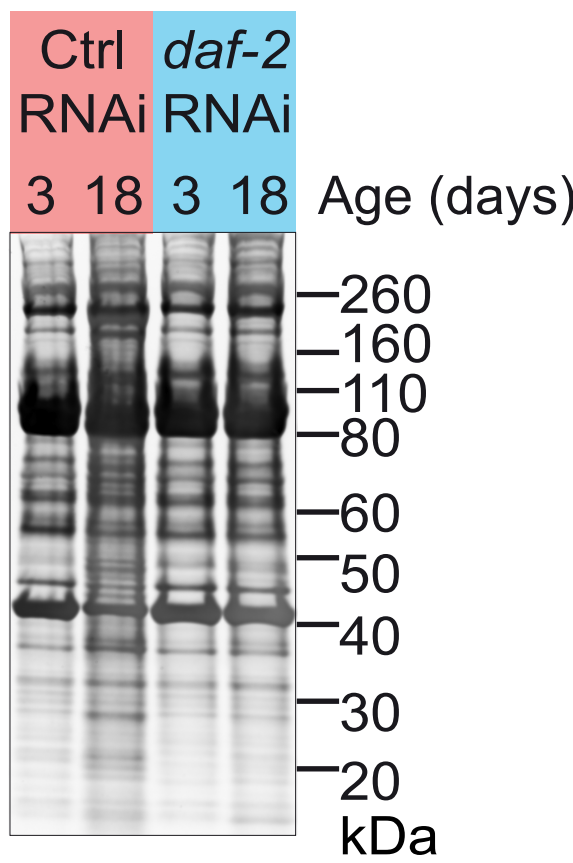
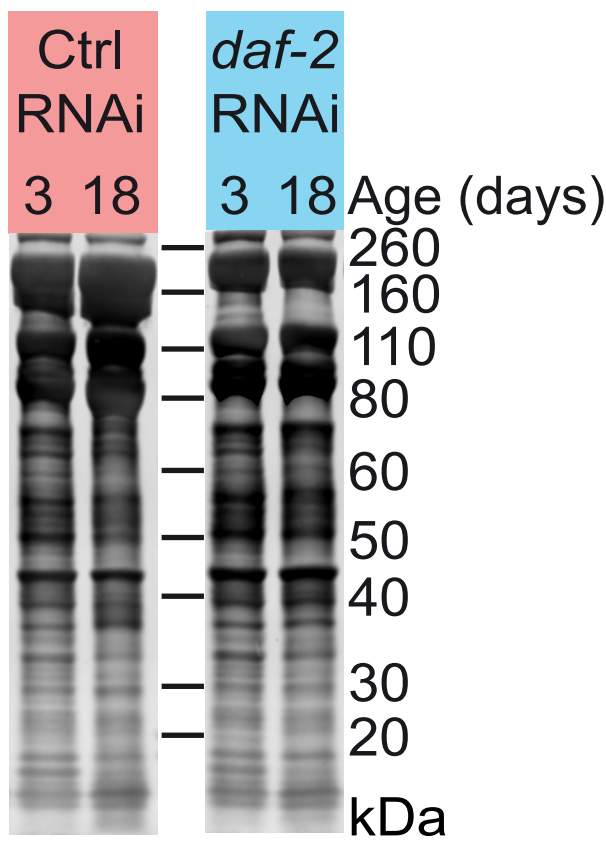
- e1005725, doi:10.1371/journal.pgen.1005725 (2015).
- 14 Uno, M. & Nishida, E. Lifespan-regulating genes in *C. elegans*. *Npj Aging And Mechanisms Of Disease* **2**, 16010, doi:10.1038/npjamd.2016.10 (2016).
- 15 Sulston, J. H., J. . *The Nematode Caenorhabditis elegans* 587-606 (Cold Spring Harbor Laboratory Press, 1988).
- 16 Maine, E. M. RNAi As a tool for understanding germline development in *Caenorhabditis elegans*: uses and cautions. *Developmental biology* **239**, 177-189, doi:10.1006/dbio.2001.0394 (2001).
- 17 Rauniyar, N. & Yates, J. R., 3rd. Isobaric labeling-based relative quantification in shotgun proteomics. *Journal of proteome research* **13**, 5293-5309, doi:10.1021/pr500880b (2014).
- 18 Brignull, H. R., Morley, J. F., Garcia, S. M. & Morimoto, R. I. Modeling polyglutamine pathogenesis in *C. elegans*. *Methods in enzymology* **412**, 256-282, doi:10.1016/S0076-6879(06)12016-9 (2006).
- 19 Fay, D. S. Classical genetic methods. *WormBook*, 1-58, doi:10.1895/wormbook.1.165.1 (2013).
- 20 Brunquell, J., Bowers, P. & Westerheide, S. D. Fluorodeoxyuridine enhances the heat shock response and decreases polyglutamine aggregation in an HSF-1-dependent manner in *Caenorhabditis elegans*. *Mech Ageing Dev* **141-142**, 1-4, doi:10.1016/j.mad.2014.08.002 (2014).
- 21 Angeli, S. *et al.* A DNA synthesis inhibitor is protective against proteotoxic stressors via modulation of fertility pathways in *Caenorhabditis elegans*. *Aging (Albany NY)* **5**, 759-769, doi:10.18632/aging.100605 (2013).
- 22 Feldman, N., Kosolapov, L. & Ben-Zvi, A. Fluorodeoxyuridine improves *Caenorhabditis elegans* proteostasis independent of reproduction onset. *PLoS One* **9**, e85964, doi:10.1371/journal.pone.0085964 (2014).
- 23 Davies, S. K., Leroi, A. M. & Bundy, J. G. Fluorodeoxyuridine affects the identification of metabolic responses to *daf-2* status in *Caenorhabditis elegans*. *Mech Ageing Dev* **133**, 46-49, doi:10.1016/j.mad.2011.11.002 (2012).
- 24 Luo, S., Kleemann, G. A., Ashraf, J. M., Shaw, W. M. & Murphy, C. T. TGF-beta and insulin signaling regulate reproductive aging via oocyte and germline quality maintenance. *Cell* **143**, 299-312, doi:10.1016/j.cell.2010.09.013 (2010).
- 25 Andux, S. & Ellis, R. E. Apoptosis maintains oocyte quality in aging *Caenorhabditis elegans* females. *PLoS genetics* **4**, e1000295, doi:10.1371/journal.pgen.1000295 (2008).
- 26 Vilchez, D. *et al.* RPN-6 determines *C. elegans* longevity under proteotoxic stress conditions. *Nature* **489**, 263-268, doi:10.1038/nature11315 (2012).
- 27 Ghazi, A., Henis-Korenblit, S. & Kenyon, C. A transcription elongation factor that links signals from the reproductive system to lifespan extension in *Caenorhabditis elegans*. *PLoS genetics* **5**, e1000639, doi:10.1371/journal.pgen.1000639 (2009).
- 28 Shemesh, N., Shai, N., Meshnik, L., Katalan, R. & Ben-Zvi, A. Uncoupling the Trade-Off between Somatic Proteostasis and Reproduction in *Caenorhabditis elegans* Models of Polyglutamine Diseases. *Front Mol Neurosci* **10**, 101, doi:10.3389/fnmol.2017.00101 (2017).
- 29 Kaletsky, R. *et al.* The *C. elegans* adult neuronal IIS/FOXO transcriptome reveals adult

- phenotype regulators. *Nature* **529**, 92-96, doi:10.1038/nature16483 (2016).
- 30 Kawarabayashi, T. *et al.* Age-dependent changes in brain, CSF, and plasma amyloid (beta) protein in the Tg2576 transgenic mouse model of Alzheimer's disease. *The Journal of neuroscience : the official journal of the Society for Neuroscience* **21**, 372-381 (2001).
- 31 Kraemer, B. C. *et al.* Neurodegeneration and defective neurotransmission in a *Caenorhabditis elegans* model of tauopathy. *Proceedings of the National Academy of Sciences of the United States of America* **100**, 9980-9985, doi:10.1073/pnas.1533448100 (2003).

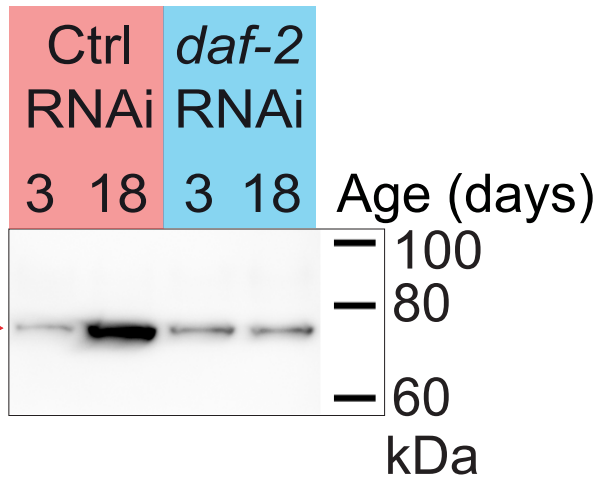


A Total extract

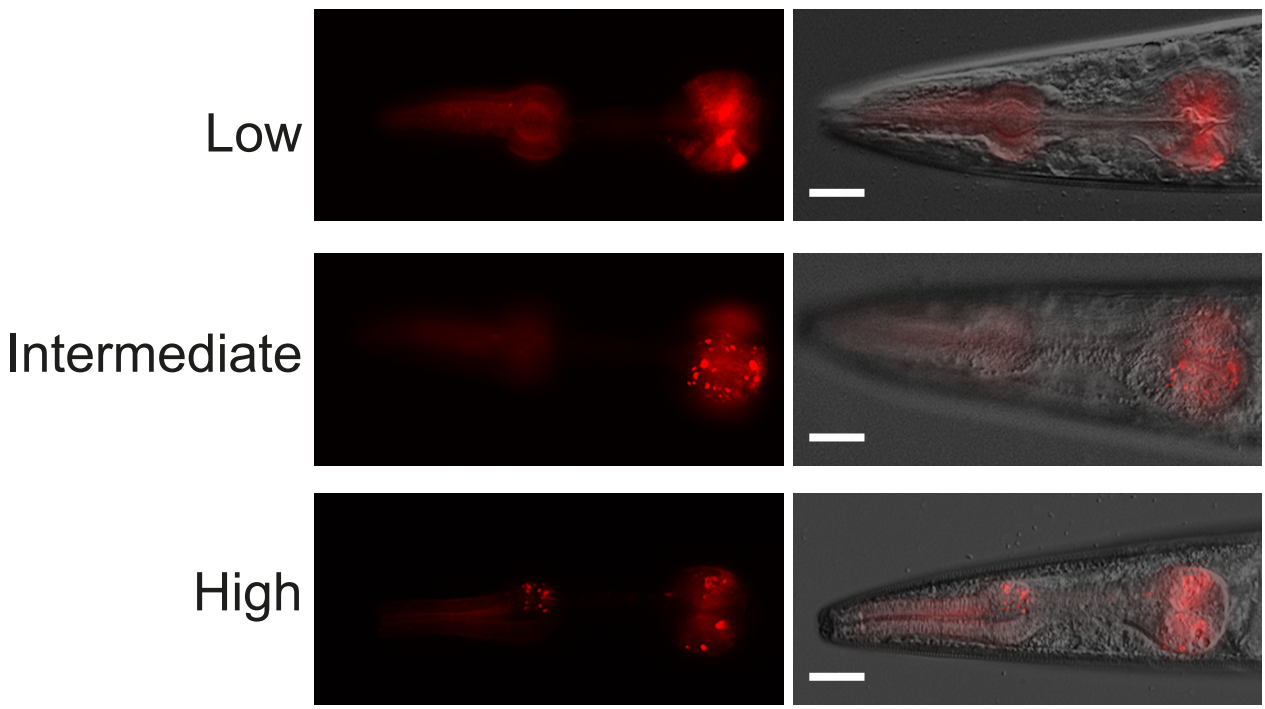
B SDS-insoluble extract



C SDS-insoluble PAB-1



A tagRFP::PAB-1 aggregation levels, day 8



B tagRFP::PAB-1 puncta formation

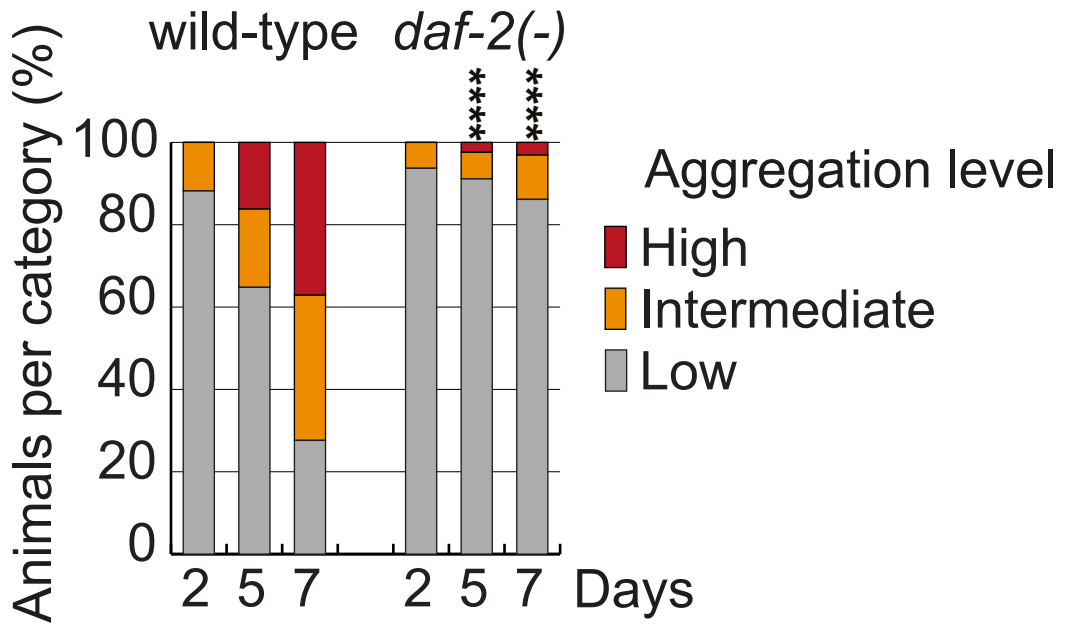


Table 1. Buffers for liquid culture, insoluble protein ex

Stock Solution	Amount	Final Concentration
Liquid culture, total volume 300 mL		
S basal (For 500 mL: 5.9 g NaCl, 50 mL 1 M Potassium phosphate pH 6)	200 mL	
1 M Potassium citrate pH 6 (For 400 mL: 13.1 g citric acid monohydrate, 134.4 g	3 mL	10 mM
Trace metals solution (For 1 L: 1.86 g Ethylenediaminetetraacetic acid (EDTA), 0.69 g $\text{FeSO}_4 \cdot 7 \text{H}_2\text{O}$, 0.2 g $\text{MnCl}_2 \cdot 4 \text{H}_2\text{O}$, 0.29 g $\text{ZnSO}_4 \cdot 7 \text{H}_2\text{O}$, 0.025 g $\text{CuSO}_4 \cdot 5 \text{H}_2\text{O}$)	3 mL	
1 M MgSO_4 (For 500 mL: 123.3 g)	0.5 mL	3 mM
1 M CaCl_2 (For 500 mL: 73.5 g)	0.5 mL	3 mM
200 $\mu\text{g/mL}$ Carbendazim (For 50 mL: 10 mg in Methanol)	150 μL	100 ng/mL
5 mg/mL Cholesterol (For 100 mL: 0.5 g in Ethanol)	300 μL	5 $\mu\text{g/mL}$
Reassembly (RAB) high-salt extraction buffer, 30 mL		
1 M 4-Morpholineethanesulfonic acid (MES)	3 mL	100 mM
0.5 M Ethyleneglycoltetraacetic acid (EGTA)	60 μL	1 mM
0.5 M Ethylenediaminetetraacetic acid (EDTA)	6 μL	0.1 mM
1 M MgSO_4	15 μL	0.5 mM
5 M NaCl	4.5 mL	750 mM
Sodium fluoride (NaF)	600 μL	20 mM
50x Protease Inhibitor Cocktail	*	2x
100 mM Phenylmethylsulfonyl fluoride (PMSF)	*	1 mM
10 U/ μL DNaseI	*	200 U/mL
4 mg/mL RNaseA	*	100 $\mu\text{g/mL}$
RAB with 1 M sucrose, 30 mL		
2 M sucrose (For 50 mL: 34.2 g)	15 mL	1 M
Radioimmunoprecipitation assay (RIPA) buffer, 30 mL		

1 M Tris(hydroxymethyl)aminomethane (Tris) pH 8	1.5 mL	50 mM
5 M NaCl	0.9 mL	150 mM
0.5 M EDTA	0.3 mL	5 mM
10 % Sodium dodecyl sulfate (SDS)	1.5 mL	0.50%
10 % Sodium deoxycholate (SDO)	1.5 mL	0.50%
Nonylphenylpolyethylenglycol (NP40)	0.3 mL	1%
100 mM PMSF	*	1 mM
50x Protease Inhibitor Cocktail	*	1x
Urea/SDS buffer, 10 mL		
Urea	4.8 g	8 M
10 % SDS	2 mL	2%
Dithiothreitol (DTT)	77 mg	50 mM
1 M Tris pH 8	0.5 mL	50 mM
Dialysis buffer, 1 L		
Tris	6 g	50 mM
DTT	154 mg	1 mM
100 mM PMSF	1 mL	0.1 mM

traction and dialysis.

Comments
1 M Potassium phosphate pH 6: For 1 L: 129 g KH_2PO_4 monobasic, 52 g K_2HPO_4 dibasic anhydrous
Store stock solution in the dark at 4 °C
RAB stock buffer component
RAB stock buffer component
RAB stock buffer component
RAB stock buffer component
RAB stock buffer component
RAB stock buffer component
Complete to 30 mL total with ddH ₂ O
*Add reagents after taking the amount of RAB stock buffer that is needed (for the extraction for mass spectrometry 6 mL).
Add the RAB buffer reagents besides DNaseI and RNaseA

RIPA stock buffer component
RIPA stock buffer component
RIPA stock buffer component
RIPA stock buffer component
RIPA stock buffer component
RIPA stock buffer component
Complete to 30 mL total with ddH ₂ O
*Add reagents after taking the amount of RIPA stock buffer that is needed (for the extraction for mass spectrometry 10
Complete to 10 mL total with ddH ₂ O
Adjust to pH 7.5 and complete to 1 L total with ddH ₂ O

Name of Material/ Equipment	Company
Fernbach culture flask	Corning
Membrane Screw Cap	Schott
Nutating Mixer	VWR
Separatory funnel	Nalgene
1 ml syringe	BD Plastipak
Gray needle, 27 G x ½ ", 0.4 mm x 13 mm	BD Microlance 3
Membrane filters 0.025 µM	Millipore
pH strip	Machery-Nagel
Protease Inhibitor Cocktail	Roche
Octoxynol-9	Applichem
4-Morpholineethanesulfonic acid (MES)	Sigma-Aldrich
Nonylphenylpolyethylenglycol	Applichem
DNaseI	Roche
RNaseA	Promega
Total protein blot staining	Thermofisher
Total protein gel staining	Thermofisher
TCEP (tris (2-carboxyethyl) phosphine hydrochloride)	Serva
Iodoacetamide	Serva
Ammoniumbicarbonate	Sigma-Aldrich
Sequencing Grade Modified Trypsin	Promega
Isobaric tags for relative and absolute quantitation	Sciex

Centrifuge Avanti J-26XP	Beckmann Coulter
Ultracentrifuge Optima Max-XP	Beckmann Coulter
Centrifuge 5424R	Eppendorf
Centrifuge 5702	Eppendorf
Centrifuge Megafuge 40R	Thermo Scientific
Concentrator Plus	Eppendorf
Fluorescent stereo-microscope M165 FC	Leica
Dissection microscope	Leica
High magnification microscope Zeiss Axio Observer Z1	Zeiss

Software	Name
Image analysis software	ImageJ
Analysis of mass spectrometry data	Protein Prospector

<i>E.coli</i> strain	Source
OP50	CGC

RNAi bacteria	Source
L4440	Julie Ahringer RNAi library

<i>C. elegans</i> mutants	Source
---------------------------	--------

CF2253

CGC, strain name:
EJ1158

***C. elegans* transgenics**

Source

DCD214

Della David's lab at
DZNE Tübingen

DCD215

Della David's lab at
DZNE Tübingen

Catalog Number	Comments/Description
4425-2XL	Pyrex, Capacity 2,800 ml, with 3 baffle indents
1088655	GL45
444-0148	
4300-1000	Capacity 1,000 ml
300013	
300635	
VSWP04700	
92110	pH-Fix 0-14
4693132001	Complete Mini EDTA-free tablets
A1388	Triton X-100
M1317	
A1694	Nonidet P40 (NP40)
04716728001	recombinant, RNase free
A7973	solution
S11791	Sypro Ruby protein blot stain
S12001	Sypro Ruby protein gel stain
36970	
26710	
09830	
V5111	
4352135	iTRAQ Reagents Multiplex Kit

393126

393315

5404000413

5702000329

75004518

5305000304

Centrifugal evaporator

With Planapo 2.0x
objective

Leica S6E

With PlanAPOCHROMAT
20x objective and Zeiss
Axio Cam MRm

Source

<http://prospector.ucsf.edu/prospector/mshome.htm>

Genotype

gon-2(q388)

Genotype

N2; uqls24[Pmyo-2::tagrfp::pab-1]

daf-2(e1370) III; uqls24[Pmyo-2::tagrfp::pab-1]

ARTICLE AND VIDEO LICENSE AGREEMENT

1 Alewife Center #200
Cambridge, MA 02140
tel. 617.945.9051
www.jove.com



Title of Article: Methods to study changes in inherent protein aggregation with age in C. elegans
Author(s): Nicole Gosh, Ivan Galloffa, Maria Decker, Anne Murray, Reinhard Jung, Delia David

Item 1 (check one box): The Author elects to have the Materials be made available (as described at <http://www.jove.com/author>) via: ☒ Standard Access ☐ Open Access

Item 2 (check one box):

☒ The Author is NOT a United States government employee.

☐ The Author is a United States government employee and the Materials were prepared in the course of his or her duties as a United States government employee.

☐ The Author is a United States government employee but the Materials were NOT prepared in the course of his or her duties as a United States government employee.

ARTICLE AND VIDEO LICENSE AGREEMENT

2. Background. The Author, who is the author of the Article, in order to ensure the dissemination and protection of the Article, desires to have the JOVE publish the Article and create and transmit videos based on the Article. In furtherance of such goals, the Parties desire to memorialize in this Agreement the respective rights of each Party in and to the Article and the Video.

3. Grant of Rights in Article. In consideration of JOVE agreeing to publish the Article, the Author hereby grants to JOVE, subject to Sections 4 and 7 below, the exclusive, royalty-free, perpetual (for the full term of copyright in the Article, including any extensions thereto) license (a) to publish, reproduce, distribute, display and store the Article in all forms, formats and media whether now known or hereafter developed (including without limitation in print, digital and electronic form) throughout the world, (b) to translate the Article into other languages, create adaptations, summaries or extracts of the Article or other Derivative Works (including without limitation, the Video) or Collective Works based on all or any portion of the Article and exercise all of the rights set forth in (a) above in such translations, adaptations, summaries, extracts, Derivative Works or Collective Works and (c) to license others to do any or all of the above. The foregoing rights may be exercised in all media and formats, whether now known or hereafter devised, and include the right to make such modifications as are technically necessary to exercise the rights in other media and formats. If the "Open Access" box has been checked in Item 1 above, JOVE and the Author hereby grant to the public all such rights in the Article as provided in, but subject to all limitations and requirements set forth in, the CRC License.

1. Defined Terms. As used in this Article and Video License Agreement, the following terms shall have the following meanings: "Agreement" means this Article and Video License Agreement; "Article" means the article specified on the last page of this Agreement, including any associated materials such as texts, figures, tables, artwork, abstracts, or summaries contained therein; "Author" means the author who is a signatory to this Agreement; "Collective Work" means a work, such as a periodical issue, anthology or encyclopedia, in which the Materials in their entirety in unmodified form, along with a number of other contributions, constituting separate and independent works in themselves, are assembled into a collective whole; "CRC License" means the Creative Commons Attribution-Non Commercial-No Derivs 3.0 Unported Agreement, the terms and conditions of which can be found at: <http://creativecommons.org/licenses/by-nc-nd/3.0/legalcode>; "Derivative Work" means a work based upon the Materials or upon the Materials and other pre-existing works, such as a translation, musical arrangement, dramatization, fictionalization, motion picture version, sound recording, art reproduction, abridgment, condensation, or any other form in which the Materials may be recast, transformed, or adapted; "Institution" means the institution, listed on the last page of this Agreement, by which the Author was employed at the time of the creation of the Materials; "JOVE" means MyJove Corporation, a Massachusetts corporation and the publisher of The Journal of Visualized Experiments; "Materials" means the Article and / or the Video; "Parties" means the Author and JOVE; "Video" means any video(s) made by the Author, alone or in conjunction with any other parties, or by JOVE or its affiliates or agents, individually or in collaboration with the Author or any other parties, incorporating all or any portion of the Article, and in which the Author may or may not appear.

statute. In such case, all provisions contained herein that are not in conflict with such statute shall remain in full force and effect, and all provisions contained herein that do so conflict shall be deemed to be amended so as to provide to JOVE the maximum rights permissible within such statute.

8. **Likeness, Privacy, Personality.** The Author hereby grants JOVE the right to use the Author's name, voice, likeness, picture, photograph, image, biography and performance in any way, commercial or otherwise, in connection with the Materials and the sale, promotion and distribution thereof. The Author hereby waives any and all rights he or she may have, relating to his or her appearance in the Video or otherwise relating to the Materials, under all applicable privacy, likeness, personality or similar laws.

9. **Author Warranties.** The Author represents and warrants that the Article is original, that it has not been published, that the copyright interest is owned by the Author (or, if more than one author is listed at the beginning of this Agreement, by such authors collectively) and has not been assigned, licensed, or otherwise transferred to any other party. The Author represents and warrants that the author(s) listed at the top of this Agreement are the only authors of the Materials. If more than one author is listed at the top of this Agreement and if such author has not entered into a separate Article and Video License Agreement with JOVE relating to the Materials, the Author represents and warrants that the Author has been authorized by each of the other such authors to execute this Agreement on his or her behalf and to bind him or her with respect to the terms of this Agreement as if each of them had been a party hereto as an Author. The Author warrants that the use, reproduction, distribution, public or private performance or display, and/or modification of all or any portion of the Materials does not and will not violate, infringe and/or misappropriate the patent, trademark, intellectual property or other rights of any third party. The Author represents and warrants that it has and will continue to comply with all government, institutional and other regulations, including, without limitation, all institutional, laboratory, hospital, ethical, human and animal treatment, privacy, and all other rules, regulations, laws, procedures or guidelines, applicable to the Materials, and that all research involving human and animal subjects has been approved by the Author's relevant institutional review board.

10. **JOVE Discretion.** If the Author requests the assistance of JOVE in producing the Video in the Author's facility, the Author shall ensure that the presence of JOVE employees, agents or independent contractors is in accordance with the relevant regulations of the Author's institution. If more than one author is listed at the beginning of this Agreement, JOVE may, in its sole discretion, elect not take any action with respect to the Article until such time as it has received complete, executed Article and Video License Agreements from each such author. JOVE reserves the right, in its absolute and sole discretion and without giving any reason therefore, to accept or decline any work submitted to JOVE. JOVE and its employees, agents and independent contractors shall have

4. **Retention of Rights in Article.** Notwithstanding the exclusive license granted to JOVE in Section 3 above, the Author shall, with respect to the Article, retain the non-exclusive right to use all or part of the Article for the non-commercial purpose of giving lectures, presentations or teaching classes, and to post a copy of the Article on the institution's website or the Author's personal website, in each case provided that a link to the Article on the JOVE website is included. All non-copyright intellectual property rights in and to the Article, such as patent rights, shall remain with the Author.

5. **Grant of Rights in Video – Standard Access.** This Section 5 applies if the "Standard Access" box has been checked in Item 1 above or if no box has been checked in Item 1 above. In consideration of JOVE agreeing to produce, display or otherwise assist with the Video, the Author hereby acknowledges and agrees that, Subject to Section 7 below, JOVE is and shall be the sole and exclusive owner of all rights of any nature, including, without limitation, all copyrights, in and to the Video. To the extent that, by law, the Author is deemed, now or at any time in the future, to have any rights of any nature in or to the Video, the Author hereby disclaims all such rights and transfers all such rights to JOVE.

6. **Grant of Rights in Video – Open Access.** This Section 6 applies only if the "Open Access" box has been checked in Item 1 above. In consideration of JOVE agreeing to produce, display or otherwise assist with the Video, the Author hereby grants to JOVE, subject to Section 7 below, the exclusive, royalty-free, perpetual (for the full term of copyright in the Article, including any extensions thereto) license (a) to publish, reproduce, distribute, display and store the Video in all forms, formats and media whether now known or hereafter developed (including without limitation in print, digital and electronic form) throughout the world, (b) to translate the Video into other languages, create adaptations, summaries or extracts of the Video or other Derivative Works or Collective Works based on all or any portion of the Video and exercise all of the rights set forth in (a) above in such translations, adaptations, summaries, extracts, Derivative Works or Collective Works and (c) to license others to do any or all of the above. The foregoing rights may be exercised in all media and formats, whether now known or hereafter devised, and include the right to make such modifications as are technically necessary to exercise the rights in other media and formats. For any Video to which this Section 6 is applicable, JOVE and the Author hereby grant to the public all such rights in the Video as provided in, but subject to all limitations and requirements set forth in, the CRC License.

7. **Government Employees.** If the Author is a United States government employee and the Article was prepared in the course of his or her duties as a United States government employee, as indicated in Item 2 above, and any of the licenses or grants granted by the Author hereunder exceed the scope of the 17 U.S.C. 403, then the rights granted hereunder shall be limited to the maximum rights permitted under such

ARTICLE AND VIDEO LICENSE AGREEMENT

1 Alewife Center #200
Cambridge, MA 02140
tel. 617.945.9051
www.jove.com



expense. All indemnifications provided herein shall include Jove's attorney's fees and costs related to said losses or damages. Such indemnification and holding harmless shall include such losses or damages incurred by, or in connection with, acts or omissions of Jove, its employees, agents or independent contractors.

12. Fees. To cover the cost incurred for publication, Jove must receive payment before production and publication the Materials. Payment is due in 21 days of invoice. Should the Materials not be published due to an editorial or production decision, these funds will be returned to the Author. Withdrawal by the Author of any submitted Materials after final peer review approval will result in a US\$1,200 fee to cover pre-production expenses incurred by Jove. If payment is not received by the completion of filming, production and publication of the Materials will be suspended until payment is received.

13. Transfer, Governing Law. This Agreement may be assigned by Jove and shall inure to the benefits of any of Jove's successors and assigns. This Agreement shall be governed and construed by the internal laws of the Commonwealth of Massachusetts without giving effect to any conflict of law provision thereof. This Agreement may be executed in counterparts, each of which shall be deemed an original, but all of which together shall be deemed to me one and the same agreement. A signed copy of this Agreement delivered by facsimile, e-mail or other means of electronic transmission shall be deemed to have the same legal effect as delivery of an original signed copy of this Agreement.

full, unfettered access to the facilities of the Author or of the Author's institution as necessary to make the Video, whether actually published or not. Jove has sole discretion as to the method of making and publishing the Materials, including, without limitation, to all decisions regarding editing, lighting, filming, timing of publication, if any, length, quality, content and the like.

11. Indemnification. The Author agrees to indemnify Jove and/or its successors and assigns from and against any and all claims, costs, and expenses, including attorney's fees, arising out of any breach of any warranty or other representations contained herein. The Author further agrees to indemnify and hold harmless Jove from and against any and all claims, costs, and expenses, including attorney's fees, resulting from the breach by the Author of any representation or warranty contained herein or from allegations or instances of violation of intellectual property rights, damage to the Author's or the Author's institution's facilities, fraud, libel, defamation, research, equipment, experiments, property damage, personal injury, violations of institutional, laboratory, hospital, ethical, human and animal treatment, privacy or other rules, regulations, laws, procedures or guidelines, liabilities and other losses or damages related in any way to the submission of work to Jove, making of videos by Jove, or publication in Jove or elsewhere by Jove. The Author shall be responsible for, and shall hold Jove harmless from, damages caused by lack of sterilization, lack of cleanliness or by contamination due to the making of a video by Jove its employees, agents or independent contractors. All sterilization, cleanliness or decontamination procedures shall be solely the responsibility of the Author and shall be undertaken at the Author's

CORRESPONDING AUTHOR:

Name: Della David
Department: Protein Aggregation and Aging
Institution: JZVE
Article Title: Metabolic activity changes in islet and podocyte with age in C. elegans
Signature: [Signature]
Date: 26.04.17

Please submit a signed and dated copy of this license by one of the following three methods:

- 1) Upload a scanned copy of the document as a pdf on the Jove submission site;
- 2) Fax the document to +1.866.381.2236;
- 3) Mail the document to Jove / Attn: Jove Editorial / 1 Alewife Center #200 / Cambridge, MA 02139

For questions, please email submissions@jove.com or call +1.617.945.9051

1) Editor modified the formatting of the manuscript and adjusted spacing of the protocol section. Please read the entire manuscript carefully and make changes if required. Do not change the formatting.

[Done.](#)

2) Editor added track changes to the word document of your manuscript, attached to this email. Please approve/revise all track changes; however, do not accept the changes so that we can confirm the changes you made.

[Done.](#)

3) Please provide email address of all co-authors on line 11

nicole.groh@dzne.de, ivan.gallotta@dzne.de, marie.lechler@dzne.de, chaolie.huang@dzne.de, raimund.jung@dzne.de, della.david@dzne.de

4) Editor moved the supplementary figure to main text as Figure 1. Please write a legend for it. Explain why some steps are bold.

[We included the following to the protocol section:](#)

[Note: For a better understanding of the procedure a schematic of the workflow \(Figure 1\) is attached.](#)

[Figure 1: Schematic of the workflow to study changes in inherent protein aggregation with age in *C. elegans*. Main steps are bold, minor steps are regular.](#)

5) References 2, 30, 31, etc – abbreviate journal titles similar to other references. For example, Frontiers in genetics = Front Genet.

[For the references we worked with EndNote and used the "JoVE" style. Unfortunately we cannot change it or we have to use a different style. Maybe the journal could rectify the respective references?](#)

