

Journal of Visualized Experiments

Structural analysis of mannan cell wall polysaccharides in plants using PACE.

--Manuscript Draft--

Manuscript Number:	JoVE56424R1
Full Title:	Structural analysis of mannan cell wall polysaccharides in plants using PACE.
Article Type:	Invited Methods Article - JoVE Produced Video
Keywords:	Gel electrophoresis; polysaccharides; glycosyl hydrolases; mannanases; mannan; glucomannan; cell wall; hemicellulose; biofuels.
Manuscript Classifications:	1.11.284.183: Cell Wall; 4.5.750.78: Biopolymers; 4.8.811.277.450: Glycoside Hydrolases; 4.8.811.913.400: Glycosyltransferases; 4.9.698: Polysaccharides; 5.5.196.401: Electrophoresis; 7.2.149.115.160.812: Glycosylation; 8.1.181.122.508: Glycomics
Corresponding Author:	Jenny C Mortimer, Ph.D. E O Lawrence Berkeley National Laboratory Berkeley, CA UNITED STATES
Corresponding Author Secondary Information:	
Corresponding Author E-Mail:	jcmortimer@lbl.gov
Corresponding Author's Institution:	E O Lawrence Berkeley National Laboratory
Corresponding Author's Secondary Institution:	
First Author:	Venkataramana R Pidatala
First Author Secondary Information:	
Other Authors:	Venkataramana R Pidatala Amir Mahboubi
Order of Authors Secondary Information:	
Abstract:	Plant cell wall polysaccharides are notoriously difficult to analyze, and most methods require expensive equipment, skilled operators, and large amounts of purified material. Here, we describe a simple method for gaining detailed polysaccharide structural information, including resolution of structural isomers. For polysaccharide analysis by gel electrophoresis (PACE), plant cell wall material is hydrolyzed with glycosyl hydrolases specific to the polysaccharide of interest (e.g. mannanases for mannan). Large format polyacrylamide gels are then used to separate the released oligosaccharides, which have been fluorescently labelled. Gels can be visualized with a modified "geldoc" system. The resulting oligosaccharide fingerprint can either be compared qualitatively or, with replication, quantitatively. Linkage and branching information can be established using additional glycosyl hydrolases (e.g. mannosidases and galactosidases). Whilst this protocol describes a method for analyzing glucomannan structure, it can be applied to any polysaccharide for which characterized glycosyl hydrolases exist. Alternatively, it can be used to characterize novel glycosyl hydrolases using defined polysaccharide substrates.
Author Comments:	We have revised the manuscript according to the comments received from the Reviewers and the Scientific Editor. These are noted, line-by-line, in the attached document ("response to reviewers Mortimer). We have also attached a revised version of the manuscript with the Track Changes left on, so that you can see these changes. Finally, we have uploaded a new version of Fig2
Additional Information:	
Question	Response

If this article needs to be "in-press" by a certain date, please indicate the date below and explain in your cover letter.



Joint BioEnergy Institute
Lawrence Berkeley National Lab
1 Cyclotron Road
Berkeley, 94720
USA

12 June 2017

Re: JoVE submission 56424

Dear Editor,

Please find enclosed our revised manuscript entitled “Structural analysis of mannan cell wall polysaccharides in plants using PACE” by Pidatala et al. for consideration for publication in the Journal of Visualized Experiments.

We thank the Editor and Reviewers for their helpful comments, which we have addressed in their entirety, as outlined in our “Response to Reviewers”. This is included alongside the revised manuscript.

If you require clarity on any further points, then please don’t hesitate to get in touch,

Yours,

A handwritten signature in black ink, appearing to read "Jenny Mortimer", with a small horizontal line underneath.

Jenny Mortimer, PhD

Director of Plant Systems Biology

TITLE:

Structural Characterization of Mannan Cell Wall Polysaccharides in Plants Using PACE.

AUTHORS & AFFILIATIONS:

Venkataramana R. Pidatala^{1,2,*}, Amir Mahboubi^{1,2,*}, Jenny C. Mortimer^{1,2}

¹Joint BioEnergy Institute, Emeryville, CA, USA

²Environmental and Systems Biology, BioSciences Division, Lawrence Berkeley National Laboratory, Berkeley, CA, USA

*indicates equal contribution

E-MAIL ADDRESSES:

Venkataramana R. Pidatala (ramana@lbl.gov)

Amir Mahboubi (mmahboubi@lbl.gov)

Jenny C. Mortimer (jcmortimer@lbl.gov)

CORRESPONDING AUTHOR:

Jenny C. Mortimer (jcmortimer@lbl.gov)

Tel: +1-510-486-6627

KEYWORDS:

Gel electrophoresis, polysaccharides, glycosyl hydrolases, mannanases, mannan, glucomannan, cell wall, hemicellulose, biofuels.

SHORT ABSTRACT:

A protocol for the structural analysis of polysaccharides by gel electrophoresis (PACE), using mannan as an example, is described.

LONG ABSTRACT:

Plant cell wall polysaccharides are notoriously difficult to analyze, and most methods require expensive equipment, skilled operators, and large amounts of purified material. Here, we describe a simple method for gaining detailed polysaccharide structural information, including resolution of structural isomers. For polysaccharide analysis by gel electrophoresis (PACE), plant cell wall material is hydrolyzed with glycosyl hydrolases specific to the polysaccharide of interest (*e.g.*, mannanases for mannan). Large format polyacrylamide gels are then used to separate the released oligosaccharides, which have been fluorescently labeled. Gels can be visualized with a modified gel imaging system (see **Table of Materials**). The resulting oligosaccharide fingerprint can either be compared qualitatively or, with replication, quantitatively. Linkage and branching information can be established using additional glycosyl hydrolases (*e.g.*, mannosidases and galactosidases). Whilst this protocol describes a method for analyzing glucomannan structure, it can be applied to any polysaccharide for which characterized glycosyl hydrolases exist. Alternatively, it can be used to characterize novel glycosyl hydrolases using defined polysaccharide substrates.

INTRODUCTION:

Polysaccharide analysis by gel electrophoresis (PACE) is a method for the detailed characterization of polysaccharides¹⁻³. Plant cell wall polysaccharides are notoriously difficult to analyze, and most methods require expensive equipment, skilled operators, and large amounts of purified material. Here, we describe a simple method for gaining detailed polysaccharide structural information, including resolution of structural isomers.

Understanding plant cell wall polysaccharide structure is necessary for those researchers exploring plant cell wall biosynthesis or the role of the plant cell wall in plant development. Recently, however, plant cell wall composition has become interesting to a wider group of researchers due to the focus on using plant biomass (essentially the cell wall) as a feedstock to produce biofuels and biochemicals⁴. As an example, efficient enzymatic saccharification of this material requires a detailed understanding of the polysaccharide structures, so that optimized enzymatic cocktails can be selected⁵.

PACE has several advantages over alternative methods which make it ideal for the rapid analysis of complex glycan structures. Firstly, it does not require purification of the polysaccharide in question, as is required for solution state nuclear magnetic resonance (NMR)⁶. Secondly, PACE can resolve structural isomers, unlike mass spectrometry (MS, *e.g.*, matrix-assisted laser desorption/ionization (MALDI) and electrospray ionization (ESI)), which can also be challenging to perform by liquid chromatography (LC)⁷. Thirdly, PACE is very sensitive, with low-picomole resolution, unlike thin-layer chromatography (TLC) or paper chromatography. Finally, it does not require expensive equipment or specialist knowledge, as is the case for MS, NMR and LC.

The PACE method relies on the specificity of glycosyl hydrolase (GH) enzymes, which target certain glycosidic linkages in a mixture of polysaccharides. When the GH enzyme acts on the polysaccharide chain, it reveals a reducing end which can then be chemically derivatized, in this case with a fluorescent label. The unhydrolyzed portion of the sample is therefore rendered undetectable by this method. The labeled oligosaccharides are then separated in a large-format acrylamide gel by electrophoresis. This gives excellent resolution of very similar molecules, for example, the trisaccharides Glc-Man-Man and Glc-Man-Glc will have a different R_f .

PACE has been used extensively to characterize different xylan structures across plant species⁸, to identify glycosyltransferase mutants in *Arabidopsis*^{6,9-11}, to perform glycosyltransferase assays⁹, and to characterize novel GH activities^{12,13}. We have also recently used it to characterize yeast cell wall mannan (Mahboubi and Mortimer, in preparation). Here we describe a method for characterizing plant cell wall glucomannan structure, based on previous reports^{11,14}.

PROTOCOL:

1. Harvesting of Plant Material

1.1. Harvest fresh plant material (~20 mg) and immediately submerge it in 96% (v/v) ethanol and incubate at 70 °C for 30 min; this deactivates any cell wall degrading enzymes present. For dry

material, start at step 2.

CAUTION: Ethanol is flammable.

Note: A single stem or rosette leaf will provide enough material for analysis. However, fewer errors arise if a larger amount of tissue is pooled and analyzed since this is easier to weigh out and handle.

1.2. Carefully record tissue type and developmental stage, as polysaccharide structure varies with both. For example, with *Arabidopsis thaliana* (used here), stage the tissue according to the methods from Boyes *et al.*¹⁵

Note: In this protocol, we have used the lower half of the inflorescence stem, where the first silique is fully elongated but not yellowing.

2. Preparation of Alcohol Insoluble Residue (AIR)

2.1. Prepare AIR, following the method of Mortimer *et al.*⁹ or another similar method, in order to produce a powder lacking soluble sugars, such as sucrose and starch.

3. Aliquoting and Pre-treatment of AIR

Note: The exact quantity of AIR needed for each sample will depend upon (a) the abundance of the polysaccharide of interest in the material and (b) the average size of oligosaccharides released by the GH. The method adds a single fluorescent molecule to the reducing end of each oligosaccharide, so the number of oligosaccharides determines the sensitivity of the experiment. As a guideline, for glucomannan in *Arabidopsis* stem digested with GH5/GH26 (as described), 500 µg is recommended¹¹, whereas for xylan in *Arabidopsis* stem digested with GH11, 100 µg is recommended as in Mortimer's study³.

3.1. Weigh AIR (10-15 mg) into a 15-mL centrifuge tube, and add H₂O to a final concentration of 2 mg/mL. Vortex to achieve an even suspension. If this is problematic, then use a glass homogenizer to assist this process.

3.2. Aliquot 500 µg into microfuge tubes. Dry aliquots using a vacuum centrifuge (see the **Table of Materials**) overnight at 30 °C.

3.3. Pre-treat AIR with 1 M NaOH (20 µL) for 1 h at room temperature; this de-acetylates the polysaccharides and swells the cellulose microfibrils, disrupting the biomass structure and allowing GH access.

Note: This step can be skipped for purified polysaccharides. **CAUTION** – strong acid/base.

3.3.1. Include an aliquot for a no-enzyme AIR control (treated the same as all samples, except

step 4.1. is excluded).

3.4. Add 200 μL of H_2O and 20 μL 1 M HCl to neutralize. Test that the pH is $\sim 6\text{--}7$ by removing 1 μL and spotting it onto paper pH indicator strips.

3.5. Add 50 μL 1 M ammonium acetate buffer, pH 6.0 (or whichever pH is appropriate for the GHs used in the study) and H_2O to give a total volume of 500 μL .

Note: Ammonium acetate is used since it sublimates upon drying, and so it does not add additional salt to the sample. An excess of salt can lead to poor band-shape and resolution on the PACE gel.

4. Hydrolysis of AIR with Glycosyl Hydrolases (GHs).

Note: As mentioned in the Discussion, the purity of the GHs is critical. Only use heterologously expressed, affinity purified enzymes. Upon receipt of each lot from the manufacturer, hydrolyze defined aliquots of substrate (*e.g.*, 500 μg AIR) with increasing quantities of GH overnight (*e.g.*, 0.5, 1, 2, 5, 10, 15, 20 μL) (3 units/ μL). When there is an excess of GH, the PACE fingerprint will look identical. An excess of enzyme is required to deliver a reproducible result because it must be certain that the hydrolysis reaction is approaching the endpoint.

4.1. Add a pre-determined amount (see above) of mannanases (GH5 and GH26¹¹) to the AIR aliquots in buffer from step 3.5, as well as a positive control (30 μg of konjac glucomannan), and a no-AIR negative control (enzyme mix in an empty tube). Vortex, and then spin briefly to collect the reaction mixture in the bottom of the tube.

4.2. Incubate overnight at 37 $^{\circ}\text{C}$ (or the appropriate temperature for the GH of choice) with gentle agitation (~ 100 rpm).

4.3. Stop the reaction by incubating at 95 $^{\circ}\text{C}$ for 20 min.

Note: Cap closures can be used to seal flip-top microfuge tubes.

4.3.1. Centrifuge using a bench top microfuge at maximum speed for 10 min, and retain supernatant.

4.4. Resuspend pellet in 250 μL H_2O , centrifuge as above, and retain supernatant.

4.5. Combine both supernatants, and dry in a vacuum centrifuge (see the **Table of Materials**) at 30 $^{\circ}\text{C}$ (~ 3 h or overnight without heating).

5. Preparation of Oligosaccharide Standards

5.1. Prepare 1 mM stock solutions in H_2O of mannose (Man), mannobiose (Man_2), mannotriose (Man_3), mannotetraose (Man_4), mannopentaose (Man_5) and mannohexaose (Man_6), all $\beta,1\text{--}4$

linked. Aliquot and store at -20 °C until required.

5.2. Prepare 3 different concentrations of a Man₁₋₆ mixture by combining 1 µL (Standard S1), 2 µL (S2) or 5 µL (S3) of all six.

5.3. Dry in a vacuum centrifuge (see **Table of Materials**) at 30 °C (~1 h).

6. Derivatization of Oligosaccharides

6.1. Prepare a stock solution of 0.2 M ANTS (8-Aminonaphthalene-1,3,6-trisulfonic acid) in H₂O:acetic acid 17:3. Warm stock to 60 °C to completely dissolve the solid. Store at -20 °C, protected from light, for 2-3 months.

6.2. Prepare a 0.2 M stock solution of 2-picoline borane (2-PB) in DMSO. This is extremely hygroscopic, so immediately resuspend all powder upon receipt in DMSO. Aliquot, and store at -20 °C for 1-2 years. Thaw aliquots as required (store at 4 °C for 2 weeks, and then discard).

6.3. Prepare the derivatization buffer of H₂O:acetic acid:DMSO at 17:3:20.

6.4. To each sample, add 5 µL of ANTS, 5 µL of 2-PB and 10 µL of derivatization buffer. Spin briefly to collect in the bottom of the tube, vortex thoroughly, and then spin briefly again. See **Figure 1** for reaction description.

6.5. Incubate samples overnight at 37 °C, protected from light.

6.6. Dry in a vacuum centrifuge (see **Table of Materials**) at 30 °C (~2 h).

6.7. Resuspend samples and standard in 100 µL 3 M urea. Store at -20 °C, protected from the light until required.

7. Preparation of PACE gels

Note: Assembly of the gel casting equipment will depend on the brand. Here, we use a vertical electrophoresis system (see **Table of Materials**), equipped with 18 cm x 24 cm glass plates and 0.75 mm spacers.

7.1. Assemble gel casting equipment per the manufacturer's instructions.

7.2. Make 10x PACE buffer (1M Tris-Borate, pH 8.2) as follows: add 121.14 g of Tris-Base to ~400 mL of H₂O, and mix to dissolve. Adjust the pH to 8.2 by addition of solid boric acid (approximately 60 g), and then make volume up to 1 L.

7.3. Make a 10% (w/v) ammonium persulfate (APS) stock in H₂O. Aliquot and store at -20 °C. Thaw aliquots once, store at 4 °C and discard after 2 weeks.

7.4. Make and pour the resolving gel. For the above equipment, 2 gels equate to 50 mL. In a 50 mL centrifuge tube, mix H₂O (20.2 mL), 5 mL 10x PACE buffer, 24.6 mL 40% acrylamide/Bis-acrylamide (29:1 acrylamide:Bis). (**Caution:** toxic).

7.4.1. Add 200 µL of APS and 20 µL of N,N,N,N'-tetramethyl-ethylenediamine (TEMED). Invert gently to mix (to avoid introducing air bubbles). Pour the gel using a serological or other large volume pipette, to ~4 cm below the top of the glass plates. Pay attention to the possibility of air bubbles getting trapped in the gel. If they do, stop pouring, and tilt/tap the gel to release them.

7.5. Overlay the gel with isopropanol (**Caution:** flammable) or, carefully, with H₂O. Allow gel to polymerize (20-30 mins), then pour off the top layer. If isopropanol was used, then wash 2x with H₂O. Dry any excess liquid using blotting paper.

7.6. Make and pour the stacking gel. Mix 6.8 mL H₂O, 1 mL 10x PACE buffer, 2.8 mL acrylamide/Bis-acrylamide (**Caution:** toxic), 80 µL APS and 8 µL of TEMED in a 15-mL centrifuge tube. Invert to mix, and overlay on top of polymerized resolving gel. Gently insert combs, avoiding trapping air bubbles under the comb teeth.

7.7. Allow gel to polymerize (20-30 mins), wrap in moist tissue and then in plastic wrap, and store at 4 °C until required. Store with the combs in place.

Note: PACE gels can be stored for a maximum of 2 weeks (although less than 1 week is ideal), if they are kept moist.

8. Running a PACE Gel

8.1. Use a permanent marker to label the well positions on the glass, which will assist in keeping track of the loading order, and in identifying where the wells are once the comb is removed.

8.2. Remove the comb. Fill the wells with 1x PACE buffer.

8.3. Use a 10 µL microsyringe to load 2 µL of standards and samples into wells. Avoid using the outermost lanes, which tend to run samples poorly.

8.4. Assemble the upper chamber of the gel-running apparatus, and place the gel in a cooled running tank (10 °C) containing 1x PACE buffer. Fill the upper chamber with 1x PACE buffer.

8.5. Turn on the power, and run the gel at 200 V (constant V) for 30 mins, and then increase voltage to 1000 V for 1 h 40 mins. Protect gels from light (*e.g.*, by wrapping tanks in black garbage bags).

9. Visualizing a PACE gel

Note: Use a gel imaging system equipped with long-wave UV bulbs in the transilluminator, and an emission filter for the camera which is suitable for the fluorophore, here 530 nm. Alternatively, a laser scanner may also be used, as described in Goubet².

9.1. Ensure the gel imaging system is dust free by wiping it with moist lint-free tissue.

9.2. Remove the gel from the PACE tank, and view briefly whilst the gel is still in the glass plates (<80 ms) to determine if the dye front is still on the gel.

9.3. Open the gel using a wedge tool, and whilst gel is still on one glass plate, use a pizza cutter to remove both the stacking gel and, if the dye front is still on the gel, the bottom of the gel.

9.4. Put ~5 mL H₂O onto the surface of the transilluminator, and then transfer the gel directly onto the transilluminator. Set the filter to UV 605, and turn on the longwave UV transilluminator (see **Table of Materials**) using the software.

Note: The ANTS fluorophore used here has an excitation/emission of 353/520 nm.

9.5. Take several images at various exposure times (*e.g.*, 100 ms to 10 s). Ensure that the UV light is turned off between images by clicking the UV light button (to turn it off) to avoid degrading the fluorescence. Ensure that at least 2 of the images have no saturated bands (the gel imaging software will indicate this).

9.6. Save files as high-resolution.tif images.

Note: Images can be analyzed using the software provided with the gel imaging system, or by using freely available image analysis software, such as ImageJ (<https://imagej.nih.gov/ij/>). See the results section for a discussion of quantitation.

REPRESENTATIVE RESULTS:

Here, we show an example PACE gel run per the protocol, along with descriptions to assist with data interpretation and troubleshooting, and this is followed by a general guide to successful PACE gel interpretation^{13,16}. A representative gel of a standard PACE assay of cell wall mannan content is shown in **Figure 2**, and is described lane by lane.

Standards: Lanes 1, 2 and 3 show a ladder of commercially purchased oligosaccharides (Man₁ – Man₆) at 5 (S1), 10 (S2) and 50 (S3) pmol concentration. When receiving a new lot of a commercial oligosaccharide, it is important to check the purity on a gel. Many oligosaccharides, particularly tetrasaccharides and longer, can have significant contamination with oligosaccharides of other degrees of polymerization (DPs), as shown here for Man₆ (marked with *). While quantitating a gel, it is important to have at least 3 concentrations of the standards, since it is necessary for calculating the standard curve. Calculation of the standard curve can also be helpful for ensuring that the derivatization reaction is essentially at completion. Standards of known concentrations allow comparisons between gels, and are a useful control for separation quality and

derivatization quality.

Positive control: Lane 4 shows a mannanase digestion of konjac glucomannan. Konjac glucomannan is available commercially, and whilst it does not have the same structure as that, for example, found in Arabidopsis, it serves two purposes. Firstly, it is an important control for the enzymatic digestion. The researcher should establish what a commercial substrate digested with their GHs of choice looks like when digested to completion (*i.e.*, a vast excess of GH is added to the reaction). If in future experiments the pattern changes, this can indicate either a loss of activity or contamination of the GH stock. Secondly, it serves as a control for the derivatization reaction in the presence of the enzyme and buffer salts. If the standards look good, but the positive control is poor, then this may indicate that a component of the hydrolysis reaction is inhibitory to the derivatization.

Wild type (WT) Arabidopsis stem AIR + mannanase cocktail (GH5 + GH26): Lane 5 shows the PACE fingerprint of a WT Arabidopsis stem (compare with^{11,14}).

***csla9* Arabidopsis stem AIR + mannanase cocktail (GH5 + GH26):** Lane 6 shows shows the PACE fingerprint of the stem from an Arabidopsis plant lacking the major stem mannan synthase¹¹. Compare to the WT and negative control fingerprints. Whilst the majority of the mannan is absent in this plant, a small quantity remains, as evidenced by the reduced band intensities for all mannanase-derived oligosaccharides This is synthesized by additional mannan synthases (CSLA2, 3)¹¹.

Negative control - enzyme only: Lane 8 shows bands on the gel that are not specific that derive from contaminants in the mannanase cocktail, and should be excluded from the analysis (marked with *).

Negative control - WT AIR only: Lane 9 shows bands on the gel that are not specific and should be excluded from the analysis (marked with *).

Negative control - *csla9* AIR only: Lane 10 shows bands on the gel that are not specific and should be excluded from the analysis (marked with *).

Pine wood AIR + mannanase cocktail (GH5 + GH26): Lane 7 shows the PACE fingerprint of pine wood, which contains galactoglucomannan. This clearly has a different pattern of released oligosaccharides to Arabidopsis, due to its different structure.

Negative control - Pine AIR only: Lane 11 shows bands on the gel that are not specific and should be excluded from the analysis (marked with *).

Interpreting a PACE gel is relatively straightforward, but requires awareness of the following points. For robust data, it is recommended to carry out PACE on at least 3 independently grown biological replicates, and it is recommended to perform at least 2 technical replicates on each biological replicate. The controls described are critical for interpretation, as non-specific bands

need to be excluded. We also recommend loading samples in a different order on replicate gels, to exclude effects which result from uneven illumination by the transilluminator. Accurate interpretation requires analysis of bands which are not saturated. Since some oligosaccharide fingerprints may contain both very high and low abundance polysaccharides, we recommend analyzing multiple exposures of the same gel. The standards can be used to normalize between different images.

For some types of experiments, it may be desirable to quantify the amount of polysaccharide in the AIR preparation. Whilst it is possible to quantify from a PACE gel, it requires knowledge of the exact molecular identity of each oligosaccharide released by the GHs and where it is located on the PACE gel. This is currently not fully known for mannan, but it has been determined for other polysaccharides *e.g.* xylan³. The standards do provide a way of normalizing between gels, even when quantitation is not being performed, and so will assist in any qualitative or semi-quantitative analysis.

Identifying the structure of individual oligosaccharides can be achieved using cocktails of GHs. Sequential addition of further GHs can reveal details about linkages and substitutions of the released oligosaccharides (*e.g.*, addition of β -1,4-glucosidase that acts on the non-reducing end will reveal which oligosaccharides in the mixture contain that feature). Available enzymes include galactosidases, glucuronidases and glucosidases (see the CAZy database¹⁶ for additional information); see Hogg, D. *et al.*¹⁷ as an example.

The protocol above can be used to characterize the activity of unknown GHs. In this case, a defined biomass, such as Arabidopsis stem or konjac glucomannan, should be used to screen the unknown GHs¹³.

FIGURE LEGENDS:

Figure 1. This shows the scheme for the fluorescent derivatization of oligosaccharides with ANTS. Modified from Goubet².

Figure 2. Representative PACE gel showing the mannan fingerprint from Arabidopsis, pine and an Arabidopsis mutant (*cs1a9*) which has impaired mannan biosynthesis. AIR was hydrolyzed with a mannanase cocktail, and the released oligosaccharides were derivatized with a fluorophore. The oligosaccharides were separated by gel electrophoresis on the basis of size, shape, and charge. A ladder of manno-oligosaccharides (Man1-6) is shown to assist in identifying relative mobilities of the released oligosaccharides, and a hydrolysis of purified mannan (derived from konjac) is shown as a positive control. * = non-specific bands.

DISCUSSION:

PACE is a straightforward method for characterizing polysaccharide structure. It can be applied to any polysaccharide for which there are known GHs with characterized activity, see numerous examples in the literature^{1,6,9,11}. It has also been applied to the characterization of novel GHs^{12,13,18} and glycosyltransferases⁹, by making use of defined polysaccharide substrates and

acceptors.

Reproducible, interpretable results are dependent on three key steps. First, the GHs used should be free from contaminating activities. This is best achieved by only using heterologously expressed, affinity purified enzymes. Second, for most experiments, it is important that the enzymatic hydrolysis of the substrates is at completion. This will ensure that the same biomass hydrolyzed with the same GH gives the same fingerprint in every experiment. Finally, there should be an excess of fluorophore in the derivatization reaction. This ensures that the available reducing ends are labelled at close to 100%. This will result in high reproducibility of results, as well as data that is quantitative.

Gel and reagent quality are critical to ensuring reproducible data. Poor quality buffers, especially of incorrect pH, air bubbles in the gel, and samples with an excess of salt can all affect resolution and retention factor of the oligosaccharides. However, inclusion of the recommended controls described in the **Protocol** and **Results** section will enable troubleshooting.

PACE is limited by its ability to identify oligosaccharides. For some experiments, a simple fingerprint is all that's necessary. However, to truly quantitate the amount of glucomannan in a sample of AIR, for example, the identity of all the released oligosaccharides is required, which is a time-consuming process. This is more straightforward for less complex polysaccharides such as xylan³. Since there are few oligosaccharide standards commercially available, it may not always be possible or desirable to identify all the bands. In this case, PACE can provide very complimentary data to mass spectrometry (*i.e.*, MALDI-CID⁹ or ESI-MS⁷, and NMR⁶). For these methods, it is often helpful to do a large-scale preparation, separate by size-exclusion chromatography, and then analyze each fraction by both PACE prior to MS or NMR. Whilst it has been reported that bands can be excised and identified by MALDI-CID, in practice we have found that this has a low rate of success (possibly due to interactions of the labeled oligosaccharides with the acrylamide gel when exposed to UV light).

The other major limitation of PACE is throughput. To have good quality, interpretable gels with the appropriate controls, each gel will only have ~10 experimental samples, and a researcher can expect to run ~4 PACE gels per day. Recently, a version of PACE using capillary electrophoresis (CE) has been developed¹⁹, which allows preparation of samples in 96-well plates. It has been used successfully to characterize glycosyltransferase enzyme activities and polysaccharide structures^{6,19}, although it requires access to a CE machine, which can be expensive to purchase and maintain.

ACKNOWLEDGMENTS:

The PACE method was developed and optimized by various members of the Dupree group (University of Cambridge, UK) over the years, and we appreciate all their contributions. This work was funded as part of the DOE Joint BioEnergy Institute (<http://www.jbei.org>) supported by the U. S. Department of Energy, Office of Science, Office of Biological and Environmental Research, through contract DE-AC02-05CH11231 between Lawrence Berkeley National Laboratory and the U. S. Department of Energy. We also thank Thea Pick and Vy Ngo for help with preparing the *csIa9*

samples.

DISCLOSURES:

The authors have nothing to disclose.

REFERENCES:

- 1 Barton, C. J. *et al.* Enzymatic fingerprinting of Arabidopsis pectic polysaccharides using polysaccharide analysis by carbohydrate gel electrophoresis (PACE). *Planta*. **224** (1), 163-174, doi:10.1007/s00425-005-0185-9, (2006).
- 2 Goubet, F., Jackson, P., Deery, M. J. & Dupree, P. Polysaccharide analysis using carbohydrate gel electrophoresis: A method to study plant cell wall polysaccharides and polysaccharide hydrolases. *Anal Biochem*. **300** (1), 53-68, doi:DOI 10.1006/abio.2001.5444, (2002).
- 3 Mortimer, J. C. Structural Analysis of Cell Wall Polysaccharides Using PACE. *Methods Mol Biol*. **1544** 223-231, doi:10.1007/978-1-4939-6722-3_16, (2017).
- 4 Pauly, M. & Keegstra, K. Cell-wall carbohydrates and their modification as a resource for biofuels. *Plant J*. **54** (4), 559-568, doi:DOI 10.1111/j.1365-313X.2008.03463.x, (2008).
- 5 Lopez-Casado, G., Urbanowicz, B. R., Damasceno, C. M. & Rose, J. K. Plant glycosyl hydrolases and biofuels: a natural marriage. *Curr Opin Plant Biol*. **11** (3), 329-337, doi:10.1016/j.pbi.2008.02.010, (2008).
- 6 Mortimer, J. C. *et al.* An unusual xylan in Arabidopsis primary cell walls is synthesised by GUX3, IRX9L, IRX10L and IRX14. *Plant J*. **83** (3), 413-426, doi:10.1111/tpj.12898, (2015).
- 7 Ridlova, G., Mortimer, J. C., Maslen, S. L., Dupree, P. & Stephens, E. Oligosaccharide relative quantitation using isotope tagging and normal-phase liquid chromatography/mass spectrometry. *Rapid Commun Mass Spectrom*. **22** (17), 2723-2730, doi:10.1002/rcm.3665, (2008).
- 8 Busse-Wicher, M. *et al.* Evolution of Xylan Substitution Patterns in Gymnosperms and Angiosperms: Implications for Xylan Interaction with Cellulose. *Plant Physiol*. **171** (4), 2418-2431, doi:10.1104/pp.16.00539, (2016).
- 9 Mortimer, J. *et al.* Absence of branches from xylan in Arabidopsis gux mutants reveals potential for simplification of lignocellulosic biomass. *Proc Nat Acad Sci USA*. **107** (40), 17409-17414, doi:10.1073/pnas.1005456107, (2010).
- 10 Anders, N. *et al.* Glycosyl transferases in family 61 mediate arabinofuranosyl transfer onto xylan in grasses. *Proc Nat Acad Sci USA*. **109** (3), 989-993, doi:10.1073/pnas.1115858109, (2012).
- 11 Goubet, F. *et al.* Cell wall glucomannan in Arabidopsis is synthesised by CSLA glycosyltransferases, and influences the progression of embryogenesis. *Plant J*. **60** (3), 527-538, doi:10.1111/j.1365-313X.2009.03977.x, (2009).
- 12 Rogowski, A. *et al.* Evidence That GH115 alpha-Glucuronidase Activity, Which Is Required to Degrade Plant Biomass, Is Dependent on Conformational Flexibility. *J Biol Chem*. **289** (1), 53-64, doi:10.1074/jbc.M113.525295, (2014).
- 13 Rogowski, A. *et al.* Glycan complexity dictates microbial resource allocation in the large intestine. *Nat Commun*. **6** 7481, doi:10.1038/ncomms8481, (2015).
- 14 Handford, M. G. *et al.* Localisation and characterisation of cell wall mannan polysaccharides in Arabidopsis thaliana. *Planta*. **218** (1), 27-36, doi:DOI 10.1007/s00425-003-

1073-9, (2003).

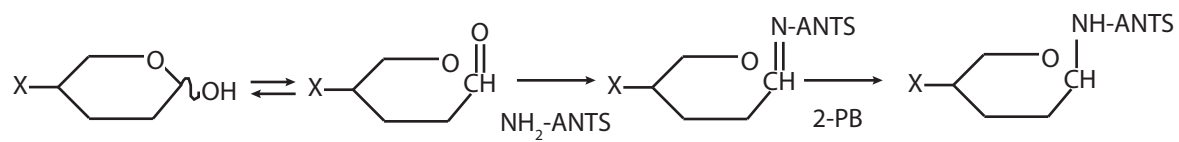
15 Boyes, D. C. *et al.* Growth stage-based phenotypic analysis of Arabidopsis: a model for high throughput functional genomics in plants. *Plant Cell*. **13** (7), 1499-1510 (2001).

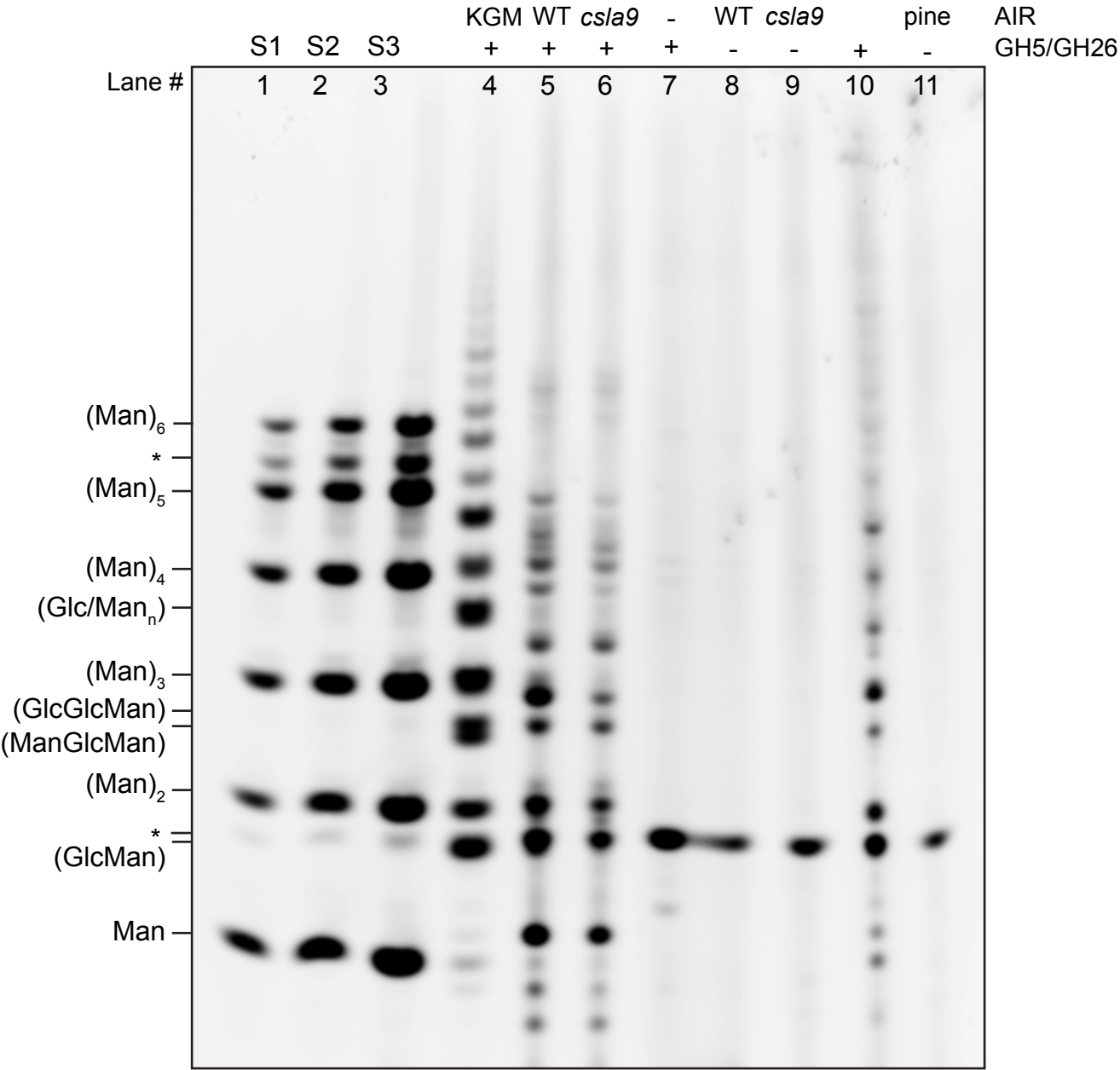
16 The Carbohydrate Active Enzyme Database, www.cazy.org. (2017)

17 Hogg, D. *et al.* The modular architecture of Cellvibrio japonicus mannanases in glycoside hydrolase families 5 and 26 points to differences in their role in mannan degradation. *Biochem J*. **371** (Pt 3), 1027-1043, doi:10.1042/BJ20021860, (2003).

18 Brennan, Y. *et al.* Unusual microbial xylanases from insect guts. *Appl Environ Microbiol*. **70** (6), 3609-3617, doi:10.1128/AEM.70.6.3609-3617.2004, (2004).

19 Li, X. *et al.* Development and application of a high throughput carbohydrate profiling technique for analyzing plant cell wall polysaccharides and carbohydrate active enzymes. *Biotechnol Biofuels*. **6**, doi:10.1186/1754-6834-6-94, (2013).





Name of Material/ Equipment	Company	Catalog Number
Oligosaccharide Standards		
Mannose	Sigma-Aldrich	CAS 3458-28-4
Mannobiose	Megazyme	CAS: 14417-51-7
Mannotriose	Megazyme	CAS: 28173-52-6
Mannotetraose	Megazyme	CAS: 51327-76-5
Mannopentaose	Megazyme	CAS: 70281-35-5
Mannhexaose	Megazyme	CAS: 70281-36-6
Glucomannan (Konjac; Low Viscosity)	Megazyme	P-GLCML
Other specialty chemicals		
	(Molecular probes)	
8-Aminonaphthalene-1,3,6-trisulfonic acid	Thermo	A350
2-picoline borane	TCI	B3018
40 % acrylamide/Bis-acrylamide (29:1 acrylamide:Bis)	Bio-rad	1610146
Specialty Equipment		
Gel casting kit	Hoefer	SE660 kit
Cooling recirculating water bath	Hoefer	RCB20-plus 115v
G:Box Chemi XRQ Imaging System	Syngene	05-GBOX-CHEMI-XRQ
High Voltage Power Pack	Thermo	EC1000XL
Vacuum centrifuge(Speedvac)	Savant	SPD131
Vertical Gel electrophoresis system	Hoefer	SE660
Glycosyl hydrolases		
These can be obtained from companies e.g. Megazyme (https://www.megazyme.com/) or Prozomix (http://www.prozomix.com/), or can be expressed in house by requesting the plasmid from the relevant research group.		

Lab supplies

15 ml Centrifuge tube (Falcon Centrifuge Tubes,
Polypropylene, Sterile, Corning)

VWR

21008-918

50 ml Centrifuge tube (Falcon Centrifuge Tubes,
Polypropylene, Sterile, Corning)

VWR

21008-951

Software

Gel imaging software (Genesys)

Syngene

Comments/Description

18x24 cm glass plates, 0.75 mm spacers

Needs to be able to maintain temperature at ~10 C

Order with filters appropriate to fluorophore, and transilluminator should be fitted with long-wave UV light bulbs
1000V



1 Alewife Center #200
Cambridge, MA 02140
tel. 617.945.9051
www.jove.com

ARTICLE AND VIDEO LICENSE AGREEMENT

Title of Article:

STRUCTURAL ANALYSIS OF MANNAN CELL WALL POLYSACCHARIDES IN PLANT USING PAGE

Author(s):

V.R. PIDATLA ; A. MAHBOUBI ; J.C. MORTIMER

Item 1 (check one box): The Author elects to have the Materials be made available (as described at

<http://www.jove.com/author>) via: ☐ Standard Access ☒ Open Access

Item 2 (check one box):

- ☐ The Author is NOT a United States government employee.
- ☒ The Author is a United States government employee and the Materials were prepared in the course of his or her duties as a United States government employee.
- ☐ The Author is a United States government employee but the Materials were NOT prepared in the course of his or her duties as a United States government employee.

ARTICLE AND VIDEO LICENSE AGREEMENT

1. **Defined Terms.** As used in this Article and Video License Agreement, the following terms shall have the following meanings: “**Agreement**” means this Article and Video License Agreement; “**Article**” means the article specified on the last page of this Agreement, including any associated materials such as texts, figures, tables, artwork, abstracts, or summaries contained therein; “**Author**” means the author who is a signatory to this Agreement; “**Collective Work**” means a work, such as a periodical issue, anthology or encyclopedia, in which the Materials in their entirety in unmodified form, along with a number of other contributions, constituting separate and independent works in themselves, are assembled into a collective whole; “**CRC License**” means the Creative Commons Attribution-Non Commercial-No Derivs 3.0 Unported Agreement, the terms and conditions of which can be found at: <http://creativecommons.org/licenses/by-nc-nd/3.0/legalcode>; “**Derivative Work**” means a work based upon the Materials or upon the Materials and other pre-existing works, such as a translation, musical arrangement, dramatization, fictionalization, motion picture version, sound recording, art reproduction, abridgment, condensation, or any other form in which the Materials may be recast, transformed, or adapted; “**Institution**” means the institution, listed on the last page of this Agreement, by which the Author was employed at the time of the creation of the Materials; “**JoVE**” means MyJoVE Corporation, a Massachusetts corporation and the publisher of *The Journal of Visualized Experiments*; “**Materials**” means the Article and / or the Video; “**Parties**” means the Author and JoVE; “**Video**” means any video(s) made by the Author, alone or in conjunction with any other parties, or by JoVE or its affiliates or agents, individually or in collaboration with the Author or any other parties, incorporating all or any portion of the Article, and in which the Author may or may not appear.

2. **Background.** The Author, who is the author of the Article, in order to ensure the dissemination and protection of the Article, desires to have the JoVE publish the Article and create and transmit videos based on the Article. In furtherance of such goals, the Parties desire to memorialize in this Agreement the respective rights of each Party in and to the Article and the Video.

3. **Grant of Rights in Article.** In consideration of JoVE agreeing to publish the Article, the Author hereby grants to JoVE, subject to **Sections 4 and 7** below, the exclusive, royalty-free, perpetual (for the full term of copyright in the Article, including any extensions thereto) license (a) to publish, reproduce, distribute, display and store the Article in all forms, formats and media whether now known or hereafter developed (including without limitation in print, digital and electronic form) throughout the world, (b) to translate the Article into other languages, create adaptations, summaries or extracts of the Article or other Derivative Works (including, without limitation, the Video) or Collective Works based on all or any portion of the Article and exercise all of the rights set forth in (a) above in such translations, adaptations, summaries, extracts, Derivative Works or Collective Works and (c) to license others to do any or all of the above. The foregoing rights may be exercised in all media and formats, whether now known or hereafter devised, and include the right to make such modifications as are technically necessary to exercise the rights in other media and formats. If the “Open Access” box has been checked in **Item 1** above, JoVE and the Author hereby grant to the public all such rights in the Article as provided in, but subject to all limitations and requirements set forth in, the CRC License.

ARTICLE AND VIDEO LICENSE AGREEMENT

4. Retention of Rights in Article. Notwithstanding the exclusive license granted to JoVE in **Section 3** above, the Author shall, with respect to the Article, retain the non-exclusive right to use all or part of the Article for the non-commercial purpose of giving lectures, presentations or teaching classes, and to post a copy of the Article on the Institution's website or the Author's personal website, in each case provided that a link to the Article on the JoVE website is provided and notice of JoVE's copyright in the Article is included. All non-copyright intellectual property rights in and to the Article, such as patent rights, shall remain with the Author.

5. Grant of Rights in Video – Standard Access. This **Section 5** applies if the "Standard Access" box has been checked in **Item 1** above or if no box has been checked in **Item 1** above. In consideration of JoVE agreeing to produce, display or otherwise assist with the Video, the Author hereby acknowledges and agrees that, Subject to **Section 7** below, JoVE is and shall be the sole and exclusive owner of all rights of any nature, including, without limitation, all copyrights, in and to the Video. To the extent that, by law, the Author is deemed, now or at any time in the future, to have any rights of any nature in or to the Video, the Author hereby disclaims all such rights and transfers all such rights to JoVE.

6. Grant of Rights in Video – Open Access. This **Section 6** applies only if the "Open Access" box has been checked in **Item 1** above. In consideration of JoVE agreeing to produce, display or otherwise assist with the Video, the Author hereby grants to JoVE, subject to **Section 7** below, the exclusive, royalty-free, perpetual (for the full term of copyright in the Article, including any extensions thereto) license (a) to publish, reproduce, distribute, display and store the Video in all forms, formats and media whether now known or hereafter developed (including without limitation in print, digital and electronic form) throughout the world, (b) to translate the Video into other languages, create adaptations, summaries or extracts of the Video or other Derivative Works or Collective Works based on all or any portion of the Video and exercise all of the rights set forth in (a) above in such translations, adaptations, summaries, extracts, Derivative Works or Collective Works and (c) to license others to do any or all of the above. The foregoing rights may be exercised in all media and formats, whether now known or hereafter devised, and include the right to make such modifications as are technically necessary to exercise the rights in other media and formats. For any Video to which this Section 6 is applicable, JoVE and the Author hereby grant to the public all such rights in the Video as provided in, but subject to all limitations and requirements set forth in, the CRC License.

7. Government Employees. If the Author is a United States government employee and the Article was prepared in the course of his or her duties as a United States government employee, as indicated in **Item 2** above, and any of the licenses or grants granted by the Author hereunder exceed the scope of the 17 U.S.C. 403, then the rights granted hereunder shall be limited to the maximum rights permitted under such

statute. In such case, all provisions contained herein that are not in conflict with such statute shall remain in full force and effect, and all provisions contained herein that do so conflict shall be deemed to be amended so as to provide to JoVE the maximum rights permissible within such statute.

8. Likeness, Privacy, Personality. The Author hereby grants JoVE the right to use the Author's name, voice, likeness, picture, photograph, image, biography and performance in any way, commercial or otherwise, in connection with the Materials and the sale, promotion and distribution thereof. The Author hereby waives any and all rights he or she may have, relating to his or her appearance in the Video or otherwise relating to the Materials, under all applicable privacy, likeness, personality or similar laws.

9. Author Warranties. The Author represents and warrants that the Article is original, that it has not been published, that the copyright interest is owned by the Author (or, if more than one author is listed at the beginning of this Agreement, by such authors collectively) and has not been assigned, licensed, or otherwise transferred to any other party. The Author represents and warrants that the author(s) listed at the top of this Agreement are the only authors of the Materials. If more than one author is listed at the top of this Agreement and if any such author has not entered into a separate Article and Video License Agreement with JoVE relating to the Materials, the Author represents and warrants that the Author has been authorized by each of the other such authors to execute this Agreement on his or her behalf and to bind him or her with respect to the terms of this Agreement as if each of them had been a party hereto as an Author. The Author warrants that the use, reproduction, distribution, public or private performance or display, and/or modification of all or any portion of the Materials does not and will not violate, infringe and/or misappropriate the patent, trademark, intellectual property or other rights of any third party. The Author represents and warrants that it has and will continue to comply with all government, institutional and other regulations, including, without limitation all institutional, laboratory, hospital, ethical, human and animal treatment, privacy, and all other rules, regulations, laws, procedures or guidelines, applicable to the Materials, and that all research involving human and animal subjects has been approved by the Author's relevant institutional review board.

10. JoVE Discretion. If the Author requests the assistance of JoVE in producing the Video in the Author's facility, the Author shall ensure that the presence of JoVE employees, agents or independent contractors is in accordance with the relevant regulations of the Author's institution. If more than one author is listed at the beginning of this Agreement, JoVE may, in its sole discretion, elect not take any action with respect to the Article until such time as it has received complete, executed Article and Video License Agreements from each such author. JoVE reserves the right, in its absolute and sole discretion and without giving any reason therefore, to accept or decline any work submitted to JoVE. JoVE and its employees, agents and independent contractors shall have

ARTICLE AND VIDEO LICENSE AGREEMENT

full, unfettered access to the facilities of the Author or of the Author's institution as necessary to make the Video, whether actually published or not. JoVE has sole discretion as to the method of making and publishing the Materials, including, without limitation, to all decisions regarding editing, lighting, filming, timing of publication, if any, length, quality, content and the like.

11. Indemnification. The Author agrees to indemnify JoVE and/or its successors and assigns from and against any and all claims, costs, and expenses, including attorney's fees, arising out of any breach of any warranty or other representations contained herein. The Author further agrees to indemnify and hold harmless JoVE from and against any and all claims, costs, and expenses, including attorney's fees, resulting from the breach by the Author of any representation or warranty contained herein or from allegations or instances of violation of intellectual property rights, damage to the Author's or the Author's institution's facilities, fraud, libel, defamation, research, equipment, experiments, property damage, personal injury, violations of institutional, laboratory, hospital, ethical, human and animal treatment, privacy or other rules, regulations, laws, procedures or guidelines, liabilities and other losses or damages related in any way to the submission of work to JoVE, making of videos by JoVE, or publication in JoVE or elsewhere by JoVE. The Author shall be responsible for, and shall hold JoVE harmless from, damages caused by lack of sterilization, lack of cleanliness or by contamination due to the making of a video by JoVE its employees, agents or independent contractors. All sterilization, cleanliness or decontamination procedures shall be solely the responsibility of the Author and shall be undertaken at the Author's

expense. All indemnifications provided herein shall include JoVE's attorney's fees and costs related to said losses or damages. Such indemnification and holding harmless shall include such losses or damages incurred by, or in connection with, acts or omissions of JoVE, its employees, agents or independent contractors.

12. Fees. To cover the cost incurred for publication, JoVE must receive payment before production and publication the Materials. Payment is due in 21 days of invoice. Should the Materials not be published due to an editorial or production decision, these funds will be returned to the Author. Withdrawal by the Author of any submitted Materials after final peer review approval will result in a US\$1,200 fee to cover pre-production expenses incurred by JoVE. If payment is not received by the completion of filming, production and publication of the Materials will be suspended until payment is received.

13. Transfer, Governing Law. This Agreement may be assigned by JoVE and shall inure to the benefits of any of JoVE's successors and assignees. This Agreement shall be governed and construed by the internal laws of the Commonwealth of Massachusetts without giving effect to any conflict of law provision thereunder. This Agreement may be executed in counterparts, each of which shall be deemed an original, but all of which together shall be deemed to me one and the same agreement. A signed copy of this Agreement delivered by facsimile, e-mail or other means of electronic transmission shall be deemed to have the same legal effect as delivery of an original signed copy of this Agreement.

A signed copy of this document must be sent with all new submissions. Only one Agreement required per submission.

CORRESPONDING AUTHOR:

Name: JENNY C. MORTIMER
Department: ECSE, BIOENGINEERING
Institution: LAWRENCE BERKELEY NATIONAL LABORATORY
Article Title: STRUCTURAL ANALYSIS OF MANNAN CELL WALL POLYSACCHARIDES IN PLANTS
Signature: [Signature] Date: 4/13/2017

84 PAGE

Please submit a signed and dated copy of this license by one of the following three methods:

- 1) Upload a scanned copy of the document as a pdf on the JoVE submission site;
- 2) Fax the document to +1.866.381.2236;
- 3) Mail the document to JoVE / Attn: JoVE Editorial / 1 Alewife Center #200 / Cambridge, MA 02139

For questions, please email submissions@jove.com or call +1.617.945.9051

Notes on addressing Scientific Reviewer's Comments

Scientific Review Editor:

Introduction: We have added in some more references, and some wider context.

Protocol Language:

This has been adjusted

Protocol Detail:

- 1) 1.1 Rephrased the sentence
- 2) 3.2, 5.3, 6.6 – added the speedvac settings
- 3) Done

Protocol Numbering: Changed the indentions.

Protocol Highlight: Fine

Discussion: I think the manuscript already address the requirements.

Figure/Table Legends: Done

References: Checked the references and abbreviated wherever necessary.

Commercial Language: Changed the commercial terms to generic terms

Table of Materials: Revised the table of materials and updated

Edited SI unit symbols as recommended.

Notes on addressing Reviewers Comments

Reviewer 1:

- 1- *Requested drying conditions were added to lines 136, 148, 169.*
- 2- *Figure adjusted*

Reviewer2:

- 1- *Line 59: "my" was changed to "our".*
- 2- *Line 68: a note was added*
- 3- *Line 90: 15 ml was changed to 15-ml.*
- 4- *Line 117: (3 units/ μ l).*
- 5- *4.1: edited for clarity*
- 6- *Added the excitation and emission wavelength conditions.*
- 7- *Added in ImageJ info, as well as some discussion about quantitation can be done in the results.*

Reviewer 3:

Major comments:

- 1- *See notes in the Results and Discussion (NMR, MS and further digestion with GHs have all been mentioned. I have now added some extra details in the discussion to emphasize this.*
- 2- *Here, the comparison is between lane 5 and 6. There is a clear decrease in intensity in lane 6 vs 5. Mannan is still detectable since CSLA9 only partially synthesizes the mannan in Arabidopsis stems (see the cited pubs). It is explained in the results.*

Minor comments:

- 1- *Line 30: geldoc was changed to gel documentation systems*
- 2- *Line 59: done*
- 3- *Line 78: Both need to be removed, so and is correct. I have added in "such as sucrose" to clarify what I mean by soluble sugars*
- 4- *Line 220: "Since" changed to "where".*
- 5- *Line 249: Added gel imaging settings – line 330*
- 6- *Line 271: Done*
- 7- *Line 368: Altered for clarity*